

PEANUT TOURS ANNOUNCED NEXT WEEK

The Gorman area tour scheduled to leave from the Brown Jug Cafe, in that city, on Monday at 1 p.m. will have four irrigated farms on the itinerary for the afternoon. Crops will be inspected on the Charley Underwood, Jr. Jackson, Norman Park and Wayne Eaves places.

Five farms are on the agenda for the Tuesday afternoon tour in the Rising Star peanut belt with stops at the Ben Cook, Pat Shirley, J. R. Receptor, Jr., Cowan Hutton and Ed Schaefer places. Two of the have dryland crops with three of them having received irrigation during the growing season. The tour will leave from the Elite Cafe in that city at 1 p.m.

Use of dusting sulphur to control leaf spot fungus, results from using pre-emergence herbicide to control weeds and grass in the drill as well as other practices are to be observed, it was said.

B. C. Langley, Stephenville, agronomist for the Texas Agricultural Experiment Station and developer of the Starr variety of peanuts, will be in attendance on both tours.

Harvest of the 32,000 acre crop is expected to get underway in the next two or three weeks depending upon the weather.

Local Hereford Is Planned October 14

Annual fall tour of the County Hereford Association will be October 14th with stop at different ranches in the part of the county.

Harvest of the 32,000 acre crop is expected to get underway in the next two or three weeks depending upon the weather.

600 Attend Stephenville PCA Meeting

Over six hundred stockholders wives, and guests registered for the 31st Annual Stockholders' Meeting of the Stephenville Production Credit Association in Stephenville, Sept. 25th.

Mr. Bob Murphey of Nacogdoches was the principal speaker.

The stockholder meeting was concluded with a barbecue dinner at the City Park. In the afternoon meeting was the Board of Directors, the following officers were elected: James W. Crouch, President; C. M. McCain, Vice President; W. M. Irwin, General Manager; R. T. Norwood and C. C. Russell, Assistant Managers.

Highlight of the meeting was the election of Mr. Winston Randle of Cresson in Hood County to the Board of Directors for a term of three years. He replaced Director R. Cal McCurdy who has been a charter member and served as a director since the association's charter was issued in 1934. Mr. McCurdy was elected Director Emeritus by the stockholders and is the first director to serve in this capacity in the production credit system in Texas. Mr. McCurdy has also held the office of President continuously since 1950. Carryover directors are James W. Crouch of Arlington; Tom Mazurek of Comanche; Tommie Winters of Evant and C. M. McCain of Eastland.

Business reports were given by Director C. M. McCain who pointed out the many problems confronting the directors each month. "Our greatest problem," Mr. McCain stated, "is the decline in profits to all our people in agriculture."

The operation of the ten-county association was presented by General Manager and Secretary-Treasurer, W. M. Irwin. The theme of his presentation was the rapid decline of farm operators and the tremendous increase in the cost of operation per individual farm, dairy and ranch operator.

600 Attend Stephenville PCA Meeting

Over six hundred stockholders wives, and guests registered for the 31st Annual Stockholders' Meeting of the Stephenville Production Credit Association in Stephenville, Sept. 25th.

600 Attend Stephenville PCA Meeting

Over six hundred stockholders wives, and guests registered for the 31st Annual Stockholders' Meeting of the Stephenville Production Credit Association in Stephenville, Sept. 25th.

600 Attend Stephenville PCA Meeting

Over six hundred stockholders wives, and guests registered for the 31st Annual Stockholders' Meeting of the Stephenville Production Credit Association in Stephenville, Sept. 25th.

600 Attend Stephenville PCA Meeting

Over six hundred stockholders wives, and guests registered for the 31st Annual Stockholders' Meeting of the Stephenville Production Credit Association in Stephenville, Sept. 25th.

Local Youngsters Invited To Party For Elephant

Children from area towns are invited to Abilene Saturday, Oct. 9, for a "welcome elephant" party to be held at Fair Park Zoo at 10 a.m., it has been announced by David Hooper, president of Abilene Zoological Society, and Mrs. Julia Pickard, president of Abilene Republican Women's Club.

The party was planned to introduce children to a baby girl elephant newly arrived from the African jungles, gift of the Abilene Republican Women's Club to the new Abilene Zoo.

Locals Invited for Abilene Bridge

The Abilene Woman's Club will sponsor its annual public bridge and Luncheon Benefit on Nov. 5, according to Mrs. Paul Melton of Abilene, ticket chairman.

All women are extended an invitation to attend.

Bridge playing will begin at 10 a.m., with the luncheon at 12 noon. Bridge tickets are \$1 each and lunch tickets, \$1.25 each.

Those desiring tickets are asked to contact Mrs. Paul Melton, Abilene woman's Club Abilene.

Door prizes will be given and a bake sale held.

COASTAL BERMUDA GRASS TOUR SET FOR OCT. 13

All Eastland County agricultural agencies are cooperating to sponsor a Coastal Bermuda grass tour October 13th to three different farms in the Desdemona area according to an announcement today.

The Soil Conservation Service, the Farmers Home Administration, the Agricultural Stabilization and Conservation Service and the Extension Service at a meeting last year set a goal of encouraging the planting of at least 1500 acres of the new type of Bermuda grass for the three years ending in 1967. A total of 4450 acres were sprigged in the county in 1965 according to the records. Personnel of the agencies are of the opinion that several thousand acres properly established and managed would materially increase the over-all agricultural economy of the county from the sale of more livestock.

Farmers, ranchers, business and professional people are cordially invited and urged to participate on the tour. The group will assemble and leave from the Methodist Church promptly at one o'clock on the above date.

The R. L. Lewis, the Ed Harrison and the Sam Powers farms are to be visited on the tour. Preparation of the soil, fertilization, importance of fresh sprigs, proper rate of sprigging, deferred grazing, importance of mowing or shredding of competing weeds and grass and other proper management practices will be discussed at each of the stops. Mr. E. E. McAlister, SCS Office, Eastland will be the tour leader.

Prices Effective Oct. 7-8-9



JRB SUPER MARKETS
S&H GREEN STAMPS WITH EVERY PURCHASE

RANGER — EASTLAND — CISCO
We Reserve the Right to Limit Quantities — No Sales to Dealers

DOUBLE S&H Green Stamps with cash purchases of \$2.50 or more on Wednesdays!

SHURFINE YELLOW CLING PEACHES
SLICED OR HALVES — No. 2 1/2 Can 29c

TOMATO SAUCE DEL MONTE 10 8-OZ. CANS \$1
GREEN BEANS DEL MONTE 4 303 CANS \$1

PLASTIC WRAP 100-Ft. Roll 29c
CUT-RITE 29c
NU-PINE 15-OZ. Size 39c
PINE OIL 15-OZ. Size 39c

SOAP
LIFEBUOY 2 REG. BARS 29c
LIFEBUOY 2 BATH BARS 39c
LUX SOAP 2 REG. SIZE 25c
LUX SOAP 2 BATH SIZE 37c

2-PLY SCOTTIES 2 200-CT. BOXES 49c
VIGO BEEF or HORSE MEAT 2 NO. 1 CANS 23c
DOG FOOD 49-OZ. BOX 77c
ALL POWDER DETERGENT 19-OZ. BOX 35c
FLUFFY ALL 20-OZ. BOX 45c
DISH ALL QUART 83c
COLD WATER ALL

DEL MONTE ROUND-UP

DEL MONTE CORN CREAM STYLE or WHOLE KERNEL 6 303 CANS \$1
DEL MONTE CATSUP 5 14-OZ. BOTS. \$1
DEL MONTE SPINACH 7 303 CANS \$1
DEL MONTE PEAS 4 303 CANS \$1

DEL MONTE FRUIT Cocktail 4 303 CANS \$1



CRISCO 3 LB. CAN 69c

HIGHLY UNSATURATED

WITH PURCHASE OF \$2.50 OR MORE

DUNCAN HINES LAYER Cake Mix Asst. Flavors 3 19-OZ. BOXES \$1

SHURFRESH BISCUITS 3 8-OZ. CANS 27c

BOOTH FROZEN SHRIMP BREADED 10-OZ. 69c
BIRDS EYE FROZEN AWAKE 3 9-OZ. CANS \$1

HAIR SPRAY 99c
Vick's VAPORUB 55c
Size 69c Jar 39c

MARKET

FRESH DRESSED FRYERS 27c 33c
WHOLE — Lb. CUT-UP — Lb.

MOHAWK CANNED HAMS 3-lb. can \$2.79

DANDY BEEF STEAKS Lb. 59c

PRODUCE

DELICIOUS APPLES 4-lb. bag 39c
TEXAS ORANGES 5-lb. bag 39c
KENTUCKY BEANS lb. 19c
1-LB. CELO CARROTS 2 for 15c

LIBBY'S VIENNA SAUSAGE void After Oct. 9, 1965

J.R.B. BONUS STAMP COUPON 50 Free S&H Green Stamps with purchase of 3-lb. can Shurfine Shortening void After Oct. 9, 1965

J.R.B. BONUS STAMP COUPON 50 Free S&H Green Stamps with purchase 3 pkgs. Shurfine CAKE MIXES void After Oct. 9, 1965

J.R.B. BONUS STAMP COUPON 50 Free S&H Green Stamps with purchase 2 qt. bottles AF PICKLES void After Oct. 9, 1965

J.R.B. BONUS STAMP COUPON 50 Free S&H Green Stamps with purchase 3 pkgs. Sea Star FISH STICKS void After Oct. 9, 1965

J.R.B. BONUS STAMP COUPON 75 Free SH Green Stamps with purchase of 25-lb. bag SHURFINE FLOUR void After Oct. 9, 1965

J.R.B. BONUS STAMP COUPON 25 Free S&H Green Stamps with the purchase of 2 lbs. BANANAS void After Oct. 9, 1965

GET SET TO Win A Mustang!

There's still time to get in on JRB's big FREE MUSTANG event. Get your cards punched. Win a prize and be eligible for the GRAND AWARD. The brand new FORD MUSTANG will be given away at —

4 P. M. Tuesday, Oct. 12, at JRB RANGER!

OPEN 6:45 — START 7:00
TWO BIG FEATURES

AT 7:00 AT 8:35

BLOOD and BLACK LACE
TERROR HOUSE OF BLOOD!

HERE COME THE GLORY GUYS

COLOR BY DELUXE
TOM HARVE | SENTA TRYON | PRESNELL BERGER
AND MICHAEL ANDERSON, JR.

Stan Stephen Is Vice President of Bryan Bank

Stan Stephen, son of Mr. and Mrs. Joe Stephen, has been named senior vice president and trust officer of the Bryan Bank and Trust of Bryan, and he will serve on the board of directors. He is presently a Tyler attorney and financial counselor.

Mr. Stephens has practiced law in Tyler since early 1964 specializing in wills, estate planning, trusts, oil and gas and banking.

Graduating from Eastland High School in 1950, he is a member of Sigma Alpha Epsilon and Delta Theta Phi, a law fraternity. He received his law degree at the University of Texas and is former legal officer and trial counsel, General Courts Martial,



STAN STEPHEN

Office of the Judge Advocate General, United States Navy. Stan is a member of the Methodist Church and the Texas Bar Association. He and his wife, Jean, have two children, Brian and Brad.

Run-Away Cars Do Damage In Two Accidents

Autos out of control resulted in two wrecks in Eastland this past week, according to City Patrolman R. D. Arnold, who investigated.

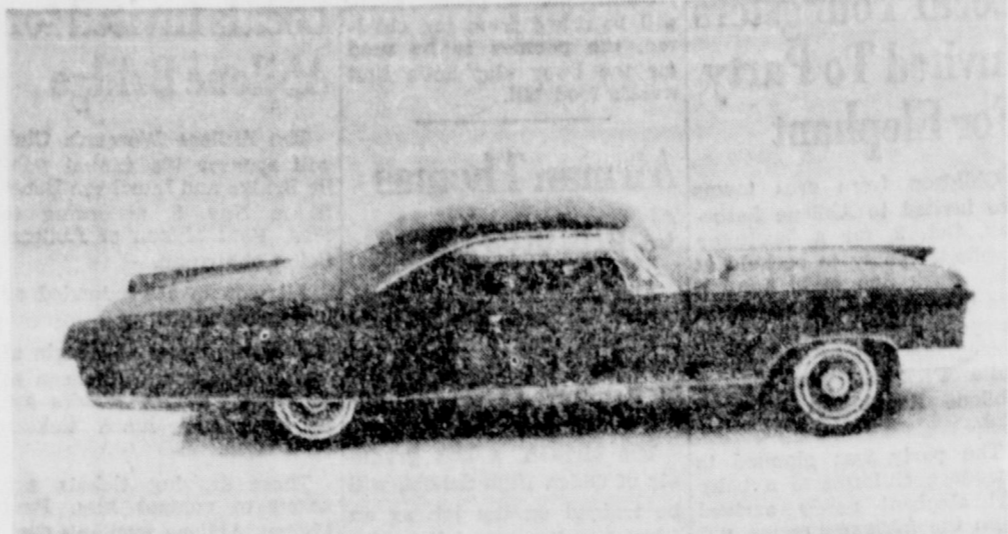
The accidents occurred last Saturday.

The first accident, taking place at 8:05 p. m., resulted in slight injuries to a passenger, H. L. Phillips of Ranger. Driver of the car, Robert Batte, also of Ranger, apparently lost control of his car, which ran upon the curb in front of the Post Office, the patrolman said. The automobile hit a speed zone sign and the light pole on the corner of West Main and Daugherty Streets.

At 10:20 p. m. Saturday, J. B. Jesse apparently lost control of his car, colliding with two parked cars on South Connelley, near the corner of Connelley and Plummer. A total of \$50 damage was done to one of the parked cars and about \$250 to the other. Jesse's 1957 Oldsmobile received a total of \$300 damages.

A two car accident occurred at 2:30 p. m. Monday at the intersection of Olive and Seaman, according to Police Chief Ray Laney.

No injuries resulted; however, damages totaling about \$200 was done to one car and \$150 to the other car involved.



PONTIACS FOR '66 — This 1966 Bonneville hardtop coupe again represents the styling and engineering leadership offered by Pontiac. Other Bonneville models available are the convertible, four-door hardtop and station wagon. The 1966 Pontiacs go on display Thursday at Muirhead Motor Co. in Eastland.

NEW PONTIACS

(Continued from Page 1.)

Pontiac has increased the number of models from 26 last year to 33 in 1966.

The Tempest series includes a sports coupe, four-door sedan and station wagon.

In addition to the four-door hardtop, which is new this year, a sports coupe, four-door sedan, hardtop coupe, convertible and station wagon are available in the Tempest Custom.

A LeMans four-door hardtop is also new for 1966 and it

joins a sports coupe, hardtop coupe and convertible in that series.

The new GTO series includes a sports coupe, hardtop coupe and convertible.

The Catalina series has a two and four-door sedan, a hardtop coupe, four-door hardtop, convertible and both a two-seat and three-seat station wagon.

The new 2 Plus 2 series offers a hardtop coupe and a convertible.

A four-door sedan, four-door hardtop and a new model, a

two-door hardtop coupe, are available in the Star Chief Executive series.

A Bonneville hardtop coupe, four-door hardtop, convertible and station wagon are offered in that series and the Grand Prix hardtop, coupe tops Pontiac's new car list.

GUESTS

Visiting this week in the home of Mr. and Mrs. Ralph Stevens have been her sister and family, Mr. and Mrs. Marion Barrett of Wichita Falls.

OES MEETING
Eastland Chapter No. 289, Order of Eastern Star will meet for a regular stated meeting on Tuesday, Oct. 5, at 7:30 p. m. in Masonic Lodge.

FROM MESQUITE
Guests last weekend in the home of Mr. and Mrs. E. E. McAllister were a son, Mr. and Mrs. E. E. McAllister, Jr. and children of Mesquite.

IN COMMUNION
Mr. and Mrs. Jones visited in Commerce with their student at East University.

Tyler, Texas, than two-thirds commercial rose buds the United States.

Gospel With a Methodist Flavor

Services for Sunday, Oct. 10 Laymen's Day Services: 10:50 a.m. Lay Speaker—Mr. O. L. Stamey Evening Worship: 7 p.m. The pastor will preach

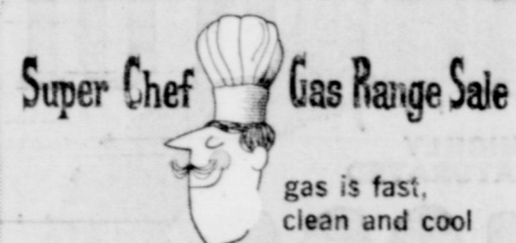
Other Services:

Sunday School: 9:45 a.m. Senior MYF: 6:00 p.m. Junior High: 6:00 p.m. Children's Fellowship: 6:00 p.m.

J. Lester Davenport, Pastor

FIRST METHODIST CHURCH

215 S. Mulberry EASTLAND, TEXAS



Super Chef Gas Range Sale

gas is fast, clean and cool

LOOK AT THESE GAS TAPPAN RANGE PRICES NOW AT GOODYEAR IN EASTLAND

36-IN.

Tappan

\$199⁹⁵

30-IN.

Tappan Holiday

\$229⁹⁵

FREE (Favorite Breads) RECIPE BOOKLET

Get your free copy of this recipe-packed guide to great breads when you view the full line of 1966 fashions in modern gas ranges... on sale now!

Goodyear Service Store

306 E. Main

EASTLAND

MA 9-2662

'Cost of Anger' Is Program For Rotary Meeting

A program entitled "The High Cost of Anger" was presented to Rotarians by M. K. Beazley, program chairman, Monday when the Rotary Club met.

The Eastland Industrial Foundation was discussed by Virgil Seaberry, Jr., followed by a report on the United Fund by Jack Arrington.

Kenneth Thompson introduced guests, Bill Gaines of Dublin and Grady Hogue and Leland Willis, both Cisco Rotarians; and the club sweetheart, Lois Ann Sims introduced Eastland High School senior guests, Bill Boles and Keith Elliott.

Vice President R. E. McFarland presided.

MAVERICKS...

(Continued from Page 1.)

District "Game of the Week" will likely be in Ranger when Clyde takes on the Bulldogs. They each have a 3-1 record for the season. Ranger has amassed 111 points and their opponents only 59 for the season. Clyde boasts 53 to their opponents'



The tiger scores again!

It's dramatically fresh and new, but still very, very Pontiac. That's written all over it, from the no-doubt-about-it new front end trimly tailored rear. (Did you think for one minute that we'd leave out the unique Pontiac styling character you like so well?)

Another nice thing about the '66 Pontiacs is that there are more of them—3 new super-sumptuous Broughams and 4 Venturas. And, of course, for you other Pontiac lovers we've got a bright new Grand Prix, new Catalinas, new Star Chief Executives—all with new Wide-Track ride and improved cat-

quick handling. But you'll discover that when you slip behind the wheel and take the '66 tiger loose. **Wide-Track Pontiac**



and again!

You're looking at the newest thing in tigers. Sleek, lean-muscled new style. New power that starts with a revolutionary new kind of V-8 and ranges through four V-8's. Crisp curves shape the new silhouette, and the sports coupe sports a smartly recessed rear window.

Pontiac's revolutionary overhead cam six acts more like a V-8, looks like no six you ever saw, and still remembers that saving is what six buyers buy sixes for. Delivers 165 hp (or you can specify the sports package which includes the 207-hp version). And it's standard on all Tempests, Tempest Customs and Le Mans. V-8's 360 hp in the GTO. See all the '66 tigers in your country today. **Wide-Track Pontiac**

Come to tiger country. See all the Wide-Track tigers at your Pontiac dealers.

MUIRHEAD MOTOR COMPANY

301 W. COMMERCE

EASTLAND, TEXAS

Insurance is a Life-time Affair —

... and is so considered by those who figure safety as a business and protection as an investment. The fact that a person has carried insurance all his life and never had a claim does not mean that he has lost his money premiums. Rather has he gained them because he invested in safety, got protection and lost none of his property. If we buy insurance for what it really is the most of our financial problems will solve themselves.

Earl Bender & Company

Eastland

(Insurance since 1924)

Texas

COMPLETE AUTO SERVICE CENTER



24 HOUR WRECKER SERVICE

Complete Auto Repairs

Safety Inspection Center

Phones MA 9-2270 Night MA 9-2224

Allen Auto Repair

AT RUSHING MOTOR CO. 215 SOUTH SEAMAN

GET YOUR AUTO WINTER FOR READY NOW!

24 HOUR TOWING SERVICE



Look Who's New

Mr. and Mrs. Kenneth Watson of 417 S. Connelley announce the arrival of a baby daughter named Kathryn Ann. She was born Sept. 24 at 7:30 a.m. at Eastland Memorial Hospital and weighed seven lbs. and 14 ozs.

Maternal grandparents are Mr. and Mrs. R. P. Watson of Gorman.

Kathryn has two brothers Kenny and Kerry.

Trades Day SPECIALS

Thursday, Friday & Satur.

DRESS CLEARANCE Values to 6.99 SALE 1.99 Values to 8.99 SALE 2.99

1 group Children Dresses Size 4 to 12 Reg. 3.99 — SALE 2.00

BLOUSES Values 2.99 & 3.99 SALE 1.59

Seamless Run-Resist INTRIGUE NYLONS Reg. 99c pair SALE ONLY 2 pair for 1.59

mode o'day

East Side of Square

Beta Club Inducts New Members

The National Beta Club of Eastland High School held an inductive service at the high school auditorium Monday afternoon, Sept. 30, when Amy Jordan, president of the club, welcomed parents, relatives, and the student body to the annual program. The Pledge of Allegiance, led by Dale Squires, and the singing of "America", accompanied by Jennifer Pryor, opened the ceremony. Steve Perdue gave the devotion entitled "The Education of Tomorrow". The purpose of the National Beta Club, a nationally affiliated honor society, was stated by Jimmy Jordan, who said "It is a non-secret, leadership service club which exists for the whole school as well as for the members."

The insignia, a hooded knight and shield in gold and black, was described by Vicki Trout. Cathy Lowrance gave the Beta Creed which sets forth the principles of honesty, justice, service, cooperation, responsibility, industriousness, humility, and charity. The motto, "Let us lead by serving others", was defined by Doris Trout. Sharon Spradling informed the members and guests of the club activities.

Anna Huffman, vice-president, presented the Beta keys as she said, "There are four keys that will unlock any door we may wish to enter. They are not the exclusive property of the Beta Club; any of you may possess them."

The club treasurer, Tamara Sosebee, presented the Key to Achievement which requires accomplishments that build up from small to ever-increasing effort. As Lois Sims, secretary of the club, placed the Key of Character on this key ring, she remarked, "When this key was forged, many different metals—dependability, humility, justice, compassion, and integrity—were fused into it."

Donna Vieregger introduced the Key of Leadership that yields great influence and therefore must be used skillfully and wisely. The last of the keys, the Key of Service, was presented by Carolyn Thomas with the advice to use the key often in order to increase its effectiveness.

Following the presentation of the keys, Jimmy Jordan administered the Beta Pledge to the new members: Sherry Butler, Keith Elliott, Patty Pryor, Nita Bradford, Randy Beskow, Sandra Harp, Kathy Kincaid, Lela Lee, Steve Lund, Judy Robertson, Clara June Smith, Rhett Smith, Gary Spradling, and Mary Turner. Mr. Charles Marshall, high school principal, presented the certificates to the inductees as Jennifer Pryor played the Beta Song in the piano.

The program was closed with the Response to the Pledge by Keith Elliott. The junior Beta members served as ushers. They are the following: Arlina Arnold, Sue Brewer, Connie Coan, Sharon Harbin, Marilyn Huckaby, James McKensie, Sally Perkins, Becky Simms, and Marsha Treadwell. A reception and tea in the school cafeteria followed the induction ceremony. The table was laid with a yellow cloth. A gold-yellow flower arrangement between two candles centered the table. Golden punch, tea, cookies, and nuts were served to over sixty guests, thirty-six members, and the club sponsor, Mrs. J. C. Whatley.

BONUS CARS AT FULLEN MOTOR CO.



WHAT IN THE WORLD IS A BONUS CAR?
— READ ON & SEE —
BONUS CARS ARE EXTRA SPECIAL CAPS — SPECIAL, first of all, because they are bright, shiny, new 1965 model CHEVROLETS, ready to provide your family with all kinds of auto pleasure. SPECIAL, secondly, because the price on these BONUS BABYS is low. That's why they're bonus cars. Through VOLUME BUYING, and strategic ordering, Fullen Motor Co. earned extra-special General Motor Co. bonuses through the year. And now these savings are all passed on to you... You'll save several hundred on each unit... and now's the time to buy and SAVE... Just ask the friendly, courteous salesmen at Fullen Motor Co. to show you the BONUS CARS and explain your savings.

PICK A BONUS AND POCKET THE SAVINGS!
AT **FULLEN MOTOR CO.**
EASTLAND
305 E. MAIN MA 9-2676

Each of the 14 station wagons has an all-vinyl interior. Regular Chevrolet—Headed by the luxury Caprice series,

there are 19 models in five series. A color-keyed paint stripe distinguishes the Caprice Custom coupe—which has a special roofline unique among all Chevrolet models—and the Caprice Custom sedan. The two Caprice Custom station wagons have walnut grained exterior trim. All Caprice models have high prestige interiors.

The regular Chevrolets have a more powerful appearance, with a forward-thrust to front fenders and bold horizontal bars in the grille. Individual moldings and ornamentation designate each series. All have taillamps integrated into the rear quarters and deck giving a wider look.

Structural improvements have been made in both chassis and body. New springs, shock absorbers and softer bushings and body mounts increase smoothness and quietness of ride. The 110-inch wheelbase is retained.

Performance of the base six cylinder engine is improved by increasing displacement from 230 to 250 inches. Six V8's are available, including the two new 427-cubic inch engines. Horsepower range is from 155 to 425. Five basic transmissions are offered, including Turbo Hydramatic.

Mechanical Features—New engines include a 250-cubic inch L6 and two 427-cubic inch V8's. A new three-speed fully synchronized transmission is standard on all Chevrolet models.

Options—Offered for the first time, in addition to the more than 400 options and accessories already available to Chevrolet buyers, are a single-dial automatic heating and air conditioning system, a bench front seat with center armrest, adjustable front seat headrests and tilt-telescoping steering.

Interiors — Restyled, high fashion interiors are featured in all models. Bucket seats in Chevrolets, Chevelle and Chevy II models are a new slim "Strato" design.

Regular Chevrolet—Headed by the luxury Caprice series,

WE GIVE GOLD BOND STAMPS

FOLGER'S COFFEE Pound Can **79¢**

CAMPBELL'S TOMATO SOUP 2 No. 1 Cans **25¢**

CATSUP	2 1/2 lbs.	21¢	CRACKERS	1 lb. Box	19¢
PUDDING MIX	2 1/2 lbs.	25¢	SCOTT'S TISSUE	2 Reg. Boxes	27¢
CORNED BEEF	2 1/2 lbs.	29¢	PARD	2 300 Cans	29¢
TOMATOES	2 1/2 lbs.	27¢	BISCUITS	4 Cans	35¢

Budget-Wise QUALITY FOOD BUYS

PRICES GOOD THROUGH SATURDAY, OCT. 9.

RATH BLACK HAWK Sliced Bacon	lb.	79¢
RATH BLACK HAWK FRANKS	pkg.	49¢
MARKET SLICED BOLOGNA	lb.	49¢
FIRST CUT PORK CHOPS	lb.	59¢
GOOCH BLUE RIBBON Beef Club Steak	lb.	89¢
HOME-KILLED, BABY-BEEF LOIN STEAK	lb.	89¢

CRISCO SHORTENING 3-lb. Can **79¢**

INSTANT TEA 4-Oz. Jar **79¢**

CRACKERS 1 lb. Box **33¢**

WHITE SWAN COFFEE 1 lb. Box **67¢**

WOLF BRAND CHILI No. 2 Can **65¢**

SCOTT'S TOWELS Junior Roll **35¢**

SUNSHINE YUM COOKIES 11-Oz. Box **45¢**

DIETARY LIQUID SEGO 10-Oz. Can **27¢**

GRAPES CALIF. FLAME TOKAY lb. **12 1/2¢**

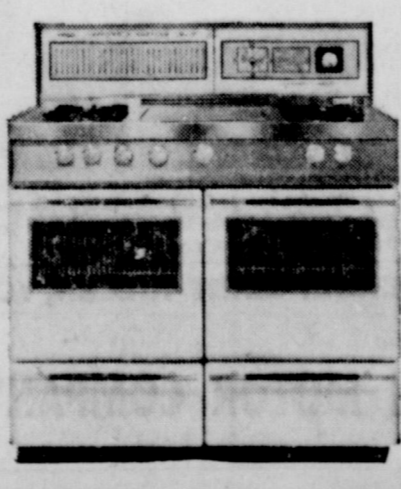
PICNIC GOOCH Blue Ribbon CANNED 3 lb. Can **\$2.29**

CASCADE CLEANER	20-Oz. Box	43¢	SOAP LAVA	2 Reg. Boxes	27¢	DASH	4-Oz. Box	69¢	TURNIP GREENS	2 303 Cans	25¢
SPIC & SPAN	Reg. Box	29¢	LIBBY'S VIENNA SAUSAGE	4-Oz. Can	23¢	WHIT SWAN APPLE JUICE	Quart	29¢	BONL' CHICKEN	5-Oz. Can	33¢
OXYDOL	Reg. Box	35¢	PERSONAL SIZE IVORY DRETT	4 Bars	29¢	INST. BREAKFAST	5-Srv. Pack	79¢	NOODLES ROMANOFF	5 1/2-Oz. Box	45¢
FABRIC SOFTENER DRETT	Reg. Box	35¢	FABRIC SOFTENER DRETT	17-Oz. Plastic	45¢	MR. CLEAN	28-Oz. Bottle	69¢	BANQUET Assorted DINNERS	11-Oz. Pkg.	39¢
JOY LIQUID	22-Oz. Plastic	65¢	SCOTTIE FACIAL TISSUE	400-Ct. Box	23¢	PINE OIL	28-Oz. Bottle	69¢	HAIR SPRAY STYLE	Reg. Or Hard To Hold Size	59¢



Uncommonly good cooks use modern gas and the Burner-with-a-Brain

The automatic Burner-with-a Brain holds temperatures exactly as you set them. Every pot and pan becomes an automatic appliance. Foods won't burn. Other unique advantages of a gas range: Cook 'n' Keep Oven — which cooks perfectly then holds foods serving-hot for hours without over-cooking; automatic roast thermometer; self-basting rotisserie; temperature-controlled griddle. And with touch-conscious gas you are in control always. (There are a 1001 different settings on a gas range.) Uncommonly good suggestion: see the modern gas ranges now on sale at your favorite Gas Appliance Dealers — or Lone Star Gas. Super Chef Gas Range Sale



BEEF ROUND STEAK lb. **79¢**

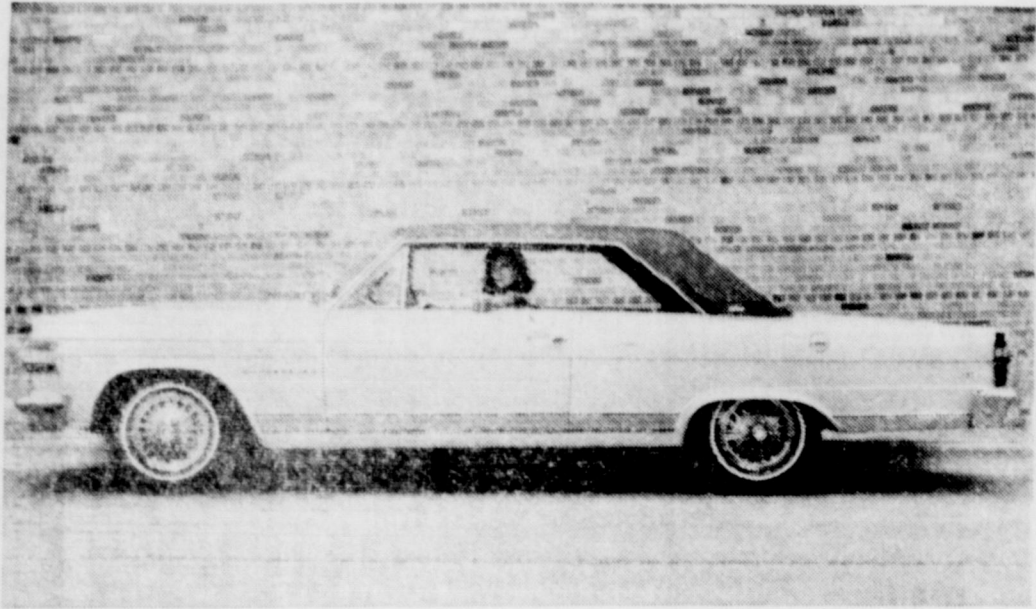
SLICED BACON lb. **59¢**

RUSSETT POTATOES 10 lbs. **49¢**

MacMoys SUPER SAVE

Home Owned—Home Operated 400 S. Seaman

East Texas Gold Rush YAMS lb. 10¢



NEW RAMBLER FOR '66 — The DPL is a new top-of-the-line hardtop in the 1966 Ambassador by American Motors series. One of eight Ambassador models, it features a new crisp-line roof which closely resembles a convertible top. The American Motor Co. autos go on display Thursday in Eastland at Bruce Pipkin Motor Co.

NEW RAMBLERS
(Continued from page 1)

1965, and the top-volume Classic feature new roof panels for hardtops, and for station wagon models. Overall length of Ambassador and Classic station wagons has been increased two inches to provide added cargo space.

The American, economy champion of the compact field, has been increased nearly four inches in overall length with the added inches most evident in the front for a longer, more balanced profile. Only minor changes have occurred in the Marlin, which was introduced in mid-March.

New options include a four-speed floor shift transmission, "Cruise - Command" automatic speed control, a special handling package for American and Classic sixes, "Turbo-Cast" wheel covers, and a four-way hazard warning signal.

In addition, rear seat belts, padded instrument panel and visors, back-up lights, left outside mirror, and windshield washers will join front seat belts and variable speed wipers as standard equipment on all 1966 models retained are all long-life and safety features such as advanced unit construction, double safety brakes and ceramic-armored exhaust system.

All of the cars also will feature new higher-strength laminated safety plate glass windshields for greater durability and resistance to penetration.

The 1966 American Motors cars go on display Thursday, Oct. 7, at Bruce Pipkin Motor Co. in Eastland.

RECENT GUESTS

Mr. and Mrs. Jim Copeland of Jacksonville visited recently with Mrs. R. L. Copeland.

Visitors in the Bennett and Mrs. A. L. Seay over the weekend was Mrs. Willie Ames of Abilene.

Date Book

Saturday, October 9
Fall Regional meeting of Delta Kappa will be held Saturday, Oct. 9 in Brownwood at the new high school building.

Tuesday, October 12
Peanut bowl queen contest will be held at the Majestic Theatre Tuesday, 8 p.m.

Wednesday, October 13
A luncheon at 12 noon Wednesday Oct. 13 at Lone Cedar Country Club will open the Civic League Club year.

Reservation for the luncheon and the nursery must be made by Monday, Oct. 13, by contacting Mrs. Tom Staggs at MA 9-2352. The nursery will open at 11:30 a.m.

The program will be "Sound of Music." All ladies are urged to attend.

Tuesday, October 19.
All parents are urged to attend the P-TA meeting, 7:30 p.m., in the cafetorium. A musical program will be presented by the fifth grade students.

FROM ODESSA

Guests in the home of Mr. and Mrs. Russell Turner over the weekend were Mr. and Mrs. W. E. White, Bill and Scott of Odessa.

VISITS IN TEMPLE

Mr. and Mrs. Jack Lusk visited in Temple over the weekend with a daughter and family, Mr. and Mrs. James LeFan.

WEEKEND GUESTS

Visiting in the home of Mr. and Mrs. Don Doyle last weekend were her parents, Mr. and Mrs. J. E. Harkrider of Fort Worth.

VISITING

Guests this weekend in the home of Mr. and Mrs. A. W. Cogburn have been Jarene Carnation and Pauline Cogburn, both of Houston.

famous Carrier central AIR CONDITIONING

\$568
as little as installed*

Just because Carrier is the recognized leader in air conditioning, some people have the mistaken idea it costs more. The truth is, you can have world-famous Carrier air conditioning in your home for about what you'd pay for ordinary, compromise brands! And it will be installed by air conditioning specialists, not general merchandisers! Our experienced installers do the job right to begin with . . . and back it up with a written guarantee of temperature and humidity conditions to be maintained. You'll enjoy years of top performance and low operating costs only fine equipment, properly applied and expertly installed can deliver.

*The price quoted as an example is based on a typical 1400 square foot home installation where adequate central heating and electrical facilities exist. While each job differs, this low price is typical of Carrier installations.

Included in The Price: Carrier Weathermaker Air Conditioner / 38 GA 002 condensing unit with 28 BA 002 cooling coil and casing / 25,000 BTU, ARI Certified Capacity / Expansion device / 18' of insulated refrigerant piping / combination thermostat / installation by specialists in air conditioning

- INSTALL NOW BETWEEN COOLING AND HEATING SEASONS — THE TIME TO REMODEL
- DEFERRED PAYMENT, FIRST PAYMENT DUE NEXT YEAR OR NO MONEY DOWN — UP TO 5 YEARS TO PAY ON FHA TITLE ONE!



Roy Smith Plumbing

114 N. Seaman Eastland, Texas Phone MA 9-1722

LOW BANK financing

choose the car you want to own

WE'LL SAVE YOU MONEY ON THE LOAN

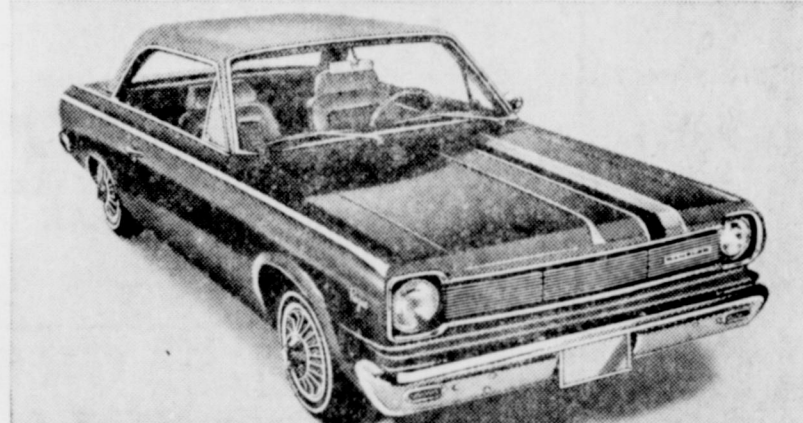
Eastland National Bank

"On the Square" EASTLAND, TEXAS

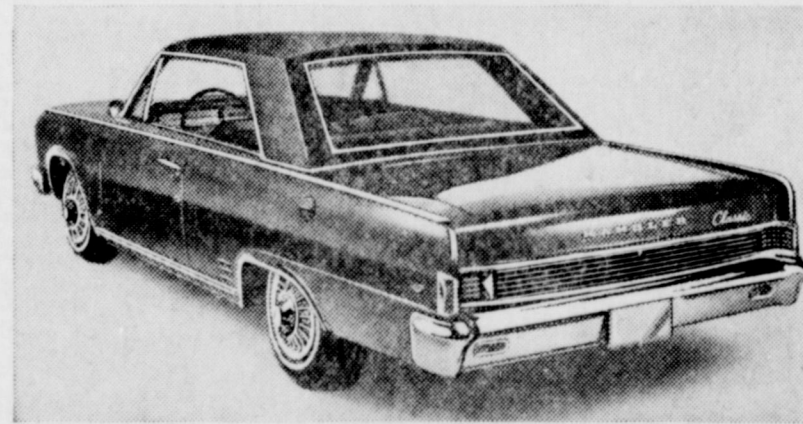
The Giant-Killer Rides Again

American Motors Challenges the "Big 3" of Detroit—With 4 New Lines of '66 Cars that Give the Public What it Wants

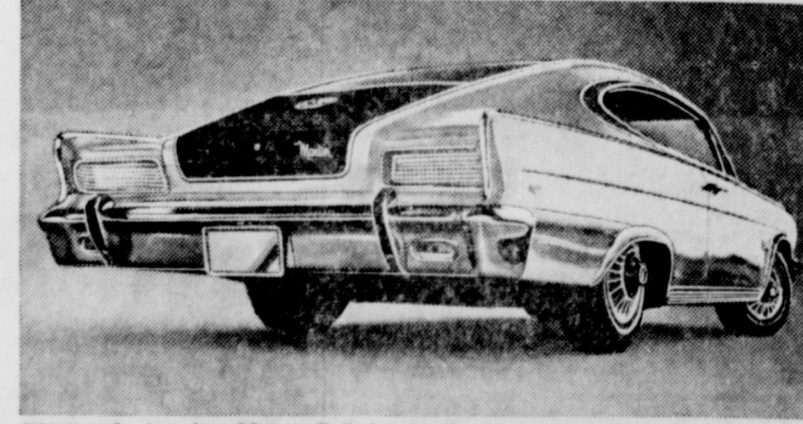
Last time it was size. This time? Quality! Quality that's built added on. The promise: more built-in quality features at no extra



ROGUE: new razzle-dazzle Rambler. Outperforms every other car in its class (with standard engine!). "Do Rogues really come with rally stripes?" "No, but with the big new engine they drive that way." '66 Rambler American Rogue here October 7th.



REBEL: new roomy, zoomy Rambler. Doesn't cramp your style, or your legs, or your family, or your pocketbook. Think you know a Rambler when you see one? Think again, look again. See the '66 Rambler Classic Rebel at your friendly Giant-Killer's, October 7th.



MARLIN '66 by American Motors. Full-size, family-size sports fastback seats 6—in comfort. (Even with bucket seats.* Flip down the front and rear armrests and turn your Marlin into a 2 + 2.) Don't miss it at your friendly Giant-Killer's on October 7th.

Remember when American Motors came out with the trim little Rambler and knocked the Detroit "Giants" on their collective ear? Overnight, big fins and fat land yachts went out of style. American Motors came along with the right cars at the right time and caught the competition napping. This year, almost half the automobiles sold are Rambler-size cars.

Round one to the "Giant-Killer." What next? For '66, American Motors again gets the jump on the big boys with a new rallying cry: Quality! A new kind of quiet quality that is built in as standard equipment on every car in the line.

This is the American Motors credo. Quality that's built in—not added on. First, determine what has to go into a car to make it stronger, safer, more dependable, more luxurious. Then put it there. Regardless of cost. Build it in.

Ready to be convinced? Ready to be surprised? Check this page for a preview of the 4 sleek challengers. New cars. New names. Then admire the styling of these exciting new cars. When you have finished, please get on your horse and go to the friendly Giant-Killer in your town, your American Motors/Rambler Dealer.

*Optional on most models. †Based on a comparison of manufacturer's suggested retail prices.

TV PREMIERE THURSDAY NIGHT! See the new American Motors '66 cars "The Andy Griffith, Don Knotts, Jim Nabors Special," CBS-TV, October 7th.



AMBASSADOR DPL by American Motors. Now you can have your first luxury car you're still young enough to enjoy it. Coil-spring seats like Cadillac. Double-drum brakes like Cadillac. Price? Like Impala, Fury, Galaxie. Be sure to see it October 7th.

SEE YOUR FRIENDLY GIANT-KILLER, YOUR AMERICAN MOTORS/RAMBLER DEALER

PIPKIN MOTOR COMPANY

314 West Main

Man Ables, On Leave Here, Counts Carriers Problems

aman J. D. Ables of East-land and a buddy, Seaman Turfus, whose home is Flint, Mich., have in Eastland these past weeks visiting in the home of Mr. and Mrs. Gerald Ables. They reported back for duty aboard the U.S.S. Shangri-La, Ables and Turfus docked at ports in Italy, Greece, Spain, Turkey during the past months. Their ship docked at Catania, Sicily, at Palermo, Italy, Mal- (an island in the Medi-

terranean); Istanbul, Turkey; Rhodes, Greece; Naples, Italy; Palma, Spain and Barsalona, Spain.
 There were two incidents, Ables and Turfus recall, that especially excited the crew. While in the ocean, their ship was hit by a destroyer and the Shangri-La had to turn back to Naples, Italy, from where it had just left, to check damages.
 The Shangri-La was docked along the French Riviera when someone accidentally opened the wrong valve, resulting in some 2,700 gallons of oil escaping onto the resort.
 The worst part of this tale is that French officials would not give consent for the ship to leave until the area looked much better than it did with puddles of oil here and there. It took 100 men, equipped with shovels, about twelve hours to dig up the "oily" soil along the French Riviera, Ables stated—he was among the 100 unfortunate sailors.

**GUARANTEED
 ELECTRIC
 SERVICE
 BOND
 ELECTRIC
 808 W. Commerce
 MAIN 9-1724**

**LAUNDRY
 FREE PICK UP
 AND DELIVERY
 SERVICE**

**CISCO STEAM
 LAUNDRY
 HI 2-2151**

**It's Time to Spray un-
 der your house and in
 your house for termites,
 fleas, ants, fleas, spi-
 ders.**

**H. D. WARREN
 209 E. Valley
 Phone MA 9-2434**

Try This Car Quiz!
 Do you get speedy automotive service? () ()
 Do you get friendly, courteous treatment? () ()
 Do you get complete satisfaction in every way? () ()

your answers are yes, you must already be one of our customers!

On the other hand, if one or more of your answers are no, we invite you to try our service. You see, we've studied the book on customer satisfaction and how to achieve it. Our facilities are clean and modern, our equipment is the finest.

**OBIE'S
 HUMBLE
 SERVICE STATION
 802 W. Main
 MA 9-8866**

RADIATOR TROUBLE?
SEE US FOR FREE INSPECTION

DANIEL Gold Seal RADIATOR WORKS

EXPERT RADIATOR SERVICE | cleaning, repairing, recoring, rebuilding

GUARANTEED QUALITY PRODUCTS
PICKUP AND DELIVERY SERVICE

PROCTOR RADIATOR WORKS
 2-3170 CISCO 1306 Ave. D

**106TH
 ANNIVERSARY**



**Prices Good Thru Oct. 9, 1965
 Quantity Rights Reserved**

**FOR A WIDE CHOICE
 OF WONDERFUL GIFTS!**

**SAVE
 PLAID
 STAMPS!**

NO COUPON NECESSARY

**50 GET 50 EXTRA PLAID STAMPS WITH
 JANE PARKER 2-CUT
 BUNS Pineapple 10-oz. 39c
 Topped Pkg.**

**50 GET 50 EXTRA PLAID STAMPS WITH
 JANE PARKER 2-CUT
 CAKE Golden 1-lb. 5-oz. 59c
 Leaf Each**

**HEALTH & BEAUTY AIDS
 MIX OR MATCH SALE!**

LANOLIN PLUS REG. OR HARD TO HOLD
HAIR SPRAY 13-oz. Size **2 For \$1**

MENNEN
SKIN BRACER 4 1/2-oz. Size

WOODBURY LANOLIN
PINK LOTION 10-oz. Size

GILLETTE 3-OZ. TUBE OR 4-OZ. BOTTLE
HAIR DRESSING Each

SCHICK STAINLESS STEEL
RAZOR BLADES Pkg. of 5

BRECK NORMAL OR DRY 7¢ OFF
SHAMPOO 4-oz. Size **3 For \$1**

LUSTRE CREME
CREAM RINSE 4-oz. Size

COLGATE 4¢ OFF
TOOTH PASTE 6-oz. Tube

ARRID CREAM
DEODORANT 5¢-oz. Size **4 For \$1**

DERMA FRESH
HAND LOTION 4-oz. Size

COTTON
Q-TIPS BALLS Pkg. of 65 **4 For \$1**

COTTON
Q-TIPS BUDS Pkg. of 54

CASHMERE BOUQUET DEODORANT
TALCUM 1-gal. Size

CUTEX OILY 6¢ OFF
POLISH REMOVER 4-oz. Size **5 For \$1**

CO-ETS. Pkg. of 40

AURORA BATHROOM
TISSUE 2-Roll Pack 29c

NORTHERN PAPER
TOWELS Jumbo Roll 31c

NORTHERN PAPER
NAPKINS 2 Pkgs. of 80 29c

DEODORANT
DIAL SOAP 2 Bath Bars 45c

PRODUCE FEATURES

TOKAY
GRAPES lb. 10c
TOMATOES lb. 19c

WHITE — Large Size
GRAPEFRUIT 4 for 49c
CAULIFLOWER each 29c

LOMBO CHEESE, 15-OZ.; SAUSAGE, 18-OZ.; PEPPERONI, 18-OZ.; OR HAMBURGER, 18-OZ.

PIZZA Each 69¢

SAU SEA FROZEN SHRIMP
Cocktail 3 4-oz. Jars 89¢

ALLGOOD BRAND SLICED
BACON 1-lb. Pkg. 75¢

"SUPER-RIGHT" HEAVY CALF SHOULDER ARM
POT ROAST lb. 49¢

"SUPER-RIGHT" OLD FASHIONED PURE PORK
SAUSAGE 2-lb. Baa 99¢

SUPER-RIGHT HEAVY CALF
ROUND STEAK lb. 69c

CYPRESS GARDEN FRESH FLORIDA
Orange Juice Qt. Btl. 29¢

OSCAR MAYER WITH GRAVY

Roast Beef 2 12-oz. Cans 85¢

A&P FROZEN SLICED
Strawberries 4 10-oz. Pkgs. 89¢

EIGHT O'CLOCK CUSTOM GROUND
COFFEE 3-lb. Bag 1-lb. Bag \$1.89 65¢

DEL MONTE CREAM OR WHOLE KERNEL GOLDEN
CORN 3 1-lb. Cans 49¢

MAGIC FINISH
SPRAY STARCH 1-lb. 4-oz. Size 69c

BORDEN'S NON DAIRY CREAMER
CREMORA 4-oz. Size 27c 1-lb. Size 79c

JANE PARKER
Fruit Cakes 1 1/2 lb. 1.49 3 lbs. 2.89

ANN PAGE REALLY FINE
Mayonnaise Qt. Jar 49¢

NORTHERN TOILET
TISSUE 4-Roll Pack 39c

LIQUID DETERGENT
CHIFFON T-pt. 6-oz. Size 49c

MARYLAND CLUB
COFFEE

3 Pkgs. For \$1.00

ANN PAGE REALLY FINE
Mayonnaise Qt. Jar 49¢

NORTHERN TOILET
TISSUE 4-Roll Pack 39c

LIQUID DETERGENT
CHIFFON T-pt. 6-oz. Size 49c

MARYLAND CLUB
COFFEE

ANN PAGE CANE &
MAPLE SYRUP 24 Ounces 49c

DETERGENT
SURF 15c Off Gt. Box 64c

ANN PAGE
Tomato Soup 5 10 1/2-oz. cans 49

DETERGENT
BREEZE Giant Box 81c

DETERGENT
Silver Dust Giant Box 81c

AUTOMATIC WASHER DETERGENT
Active "all" 30c Off 9-lb. 13-oz. Box \$2.35

AUSTEX WITH BEANS
Chili 1-lb. Can 39c

AUSTEX WITH MEAT BALLS
Spaghetti 1-lb. Can 29c

AMERICAN DILL
PICKLES 1-pt. 6-oz Jar 33c

DETERGENT
Fluffy "all" Giant Box 79c

AUTOMATIC DISHWASHER DETERGENT
Dish "all" 1-lb. 4-oz. Box 45c

LIQUID DETERGENT
COLD WATER "all" Qt. Size 79c

ROAST



39¢

"Super-Right" Heavy Calf Chuck Blade Lb.

"SUPER-RIGHT" HEAVY CALF STEAK
SIRLOIN lb. 69¢

TATER BOY FROZEN FRENCH FRIED
POTATOES 2-lb. Pkg. 29¢

SUNNYFIELD
Plain Flour 5-lb. Bag 39¢

A&P WHOLE GREEN
BEANS 4 1-lb. Cans 89¢

Clip These Coupons

100 Extra Plaid Stamps
 With This Coupon and Purchase of ROOM DEODORIZER
LYSOL SPRAY 14-oz. Size \$1.49
 AT YOUR A&P SUPERMARKET
 Coupon Good Thru Oct. 9, 1965

50 Extra Plaid Stamps
 With This Coupon and Purchase of GOLDEN RISE ASSORTED
COOKIES Pre-Sliced Refrigerated 1-lb. Pkg. 39c
 AT YOUR A&P SUPERMARKET
 Coupon Good Thru Oct. 9, 1965

100 Extra Plaid Stamps
 With This Coupon and Purchase of NON DAIRY CREAMER
PREAM 14-oz. Size 79c
 AT YOUR A&P SUPERMARKET
 Coupon Good Thru Oct. 9, 1965

50 Extra Plaid Stamps
 With This Coupon and Purchase of DELTA SUMMER
DILL PICKLES Qt. Jar 45c
 AT YOUR A&P SUPERMARKET
 Coupon Good Thru Oct. 9, 1965

25 Extra Plaid Stamps
 With This Coupon and Purchase of AEROSOL
WINDEX 7.5-oz. Size 55c
 AT YOUR A&P SUPERMARKET
 Coupon Good Thru Oct. 9, 1965

25 Extra Plaid Stamps
 With This Coupon and Purchase of SIMONIZ 10¢ OFF
VINYL WAX Qt. Size 88c
 AT YOUR A&P SUPERMARKET
 Coupon Good Thru Oct. 9, 1965

25 Extra Plaid Stamps
 With This Coupon and Purchase of BREAKFAST DRINK
TANG Pkg. Size 39c
 AT YOUR A&P SUPERMARKET
 Coupon Good Thru Oct. 9, 1965

25 Extra Plaid Stamps
 With This Coupon and Purchase of DOG FOOD
GAINES BURGERS 2-lb. 4-oz. Size 89c
 AT YOUR A&P SUPERMARKET
 Coupon Good Thru Oct. 9, 1965

50 Extra Plaid Stamps
 With This Coupon and Purchase of ROOM DEODORIZER
LYSOL SPRAY 7-oz. Size 98c
 AT YOUR A&P SUPERMARKET
 Coupon Good Thru Oct. 9, 1965

50 Extra Plaid Stamps
 With This Coupon and Purchase of FOUR CANS GLAMOUR PUSS
CAT FOOD 2 6-oz. Cans 27c
 AT YOUR A&P SUPERMARKET
 Coupon Good Thru Oct. 9, 1965

25 Extra Plaid Stamps
 With This Coupon and Purchase of TWO CANS ANN PAGE PREPARED
SPAGHETTI 2 1-lb. 4 1/2-oz. Cans 37c
 AT YOUR A&P SUPERMARKET
 Coupon Good Thru Oct. 9, 1965

25 Extra Plaid Stamps
 With This Coupon and Purchase of ANN PAGE IMITATION
VANILLA Pk. 27c
 AT YOUR A&P SUPERMARKET
 Coupon Good Thru Oct. 9, 1965

25 Extra Plaid Stamps
 With This Coupon and Purchase of ANN PAGE BLACKBERRY
JELLY 12-oz. Jar 39c
 AT YOUR A&P SUPERMARKET
 Coupon Good Thru Oct. 9, 1965

AUSTEX WITH BEANS
Chili 1-lb. Can 39c

AUSTEX WITH MEAT BALLS
Spaghetti 1-lb. Can 29c

AMERICAN DILL
PICKLES 1-pt. 6-oz Jar 33c

DETERGENT
Fluffy "all" Giant Box 79c

AUTOMATIC DISHWASHER DETERGENT
Dish "all" 1-lb. 4-oz. Box 45c

LIQUID DETERGENT
COLD WATER "all" Qt. Size 79c



NEW RAMBLER FOR '66 — The DPL is a new top-of-the-line hardtop in the 1966 Ambassador by American Motors series. One of eight Ambassador models, it features a new crisp-line roof which closely resembles a convertible top. The American Motor Co. autos go on display Thursday in Eastland at Bruce Pipkin Motor Co.

famous Carrier central
AIR CONDITIONING

\$568
as little as installed*

Just because Carrier is the recognized leader in air conditioning, some people have the mistaken idea it costs more. The truth is, you can have world-famous Carrier air conditioning in your home for about what you'd pay for ordinary, compromise brands! And it will be installed by air conditioning specialists, not general merchandisers! Our experienced installers do the job right to begin with . . . and back it up with a written guarantee of temperature and humidity conditions to be maintained. You'll enjoy years of top performance and low operating costs only fine equipment, properly applied and expertly installed can deliver.

*The price quoted as an example is based on a typical 1400 square foot Home installation where adequate central heating and electrical facilities exist. While each job differs, this low price is typical of Carrier installations.

Included In The Price: Carrier Weathermaker Air Conditioner / 38 GA 002 condensing unit with 28 BA 002 cooling coil and casing / 25,000 BTU, ARI Certified Capacity / Expansion device / 18' of insulated refrigerant piping / combination thermostat / installation by specialists in air conditioning

- INSTALL NOW BETWEEN COOLING AND HEATING SEASONS — THE TIME TO REMODEL
- DEFERRED PAYMENT, FIRST PAYMENT DUE NEXT YEAR OR NO MONEY DOWN — UP TO 5 YEARS TO PAY ON FHA TITLE ONE!



Roy Smith Plumbing

114 N. Seaman Eastland, Texas Phone MA 9-1722

NEW RAMBLERS —
(Continued from page 1)

1965, and the top-volume Classic feature new roof panels for hardtops, and for station wagon models. Overall length of Ambassador and Classic station wagons has been increased two inches to provide added cargo space.

The American, economy champion of the compact field, has been increased nearly four inches in overall length with the added inches most evident in the front for a longer, more balanced profile. Only minor changes have occurred in the Marlin, which was introduced in mid-March.

New options include a four-speed floor shift transmission, "Cruise - Command" automatic speed control, a special handling package for American and Classic sixes, "Turbo-Cast" wheel covers, and a four-way hazard warning signal.

In addition, rear seat belts, padded instrument panel and visors, back-up lights, left outside mirror, and windshield washers will join front seat belts and variable speed wipers as standard equipment on all 1966 models retained are all long-life and safety features such as advanced unit construction, double safety brakes and ceramic-armored exhaust system.

All of the cars also will feature new higher-strength laminated safety plate glass windshields for greater durability and resistance to penetration.

The 1966 American Motors cars go on display Thursday, Oct. 7, at Bruce Pipkin Motor Co. in Eastland.

RECENT GUESTS
Mr. and Mrs. Jim Copeland of Jacksonville visited recently with Mrs. R. L. Copeland.

Visitors in the Bennett and Mrs. A. L. Seay over the weekend was Mrs. Willie Ames of Abilene.

Date Book

Saturday, October 9
Fall Regional meeting of Delta Kappa will be held Saturday, Oct. 9 in Brownwood at the new high school building.

Tuesday, October 12
Peanut bowl queen contest will be held at the Majestic Theatre Tuesday, 8 p.m.

Wednesday, October 13
A luncheon at 12 noon Wednesday Oct. 13 at Lone Cedar Country Club will open the Civic League Club year.

Reservation for the luncheon and the nursery must be made by Monday, Oct. 13, by contacting Mrs. Tom Staggs at MA 9-2352. The nursery will open at 11:30 a.m.

The program will be "Sound of Music." All ladies are urged to attend.

Tuesday, October 19.
All parents are urged to attend the P-TA meeting, 7:30 p.m., in the cafeterium. A musical program will be presented by the fifth grade students.

FROM ODESSA
Guests in the home of Mr. and Mrs. Russell Turner over the weekend were Mr. and Mrs. W. E. White, Bill and Scott of Odessa.

VISITS IN TEMPLE
Mr. and Mrs. Jack Lusk visited in Temple over the weekend with a daughter and family, Mr. and Mrs. James LeFan.

WEEKEND GUESTS
Visiting in the home of Mr. and Mrs. Don Doyle last weekend were her parents, Mr. and Mrs. J. E. Harkrider of Fort Worth.

VISITING
Guests this weekend in the home of Mr. and Mrs. A. W. Cogburn have been Jarene Carnation and Pauline Cogburn, both of Houston.

EARLY BIRD SPECIAL
BREAKFAST

- 1 EGG AS-U-LIKE IT
- 2 SLICES CRISP BACON
- 1 CUP MARYLAND CLUB TOAST AND JELLY

BEGINNING MONDAY, OCT. 11

SERVED BETWEEN

6:00 a.m. and 7:30 a.m.

MON. THRU FRI.

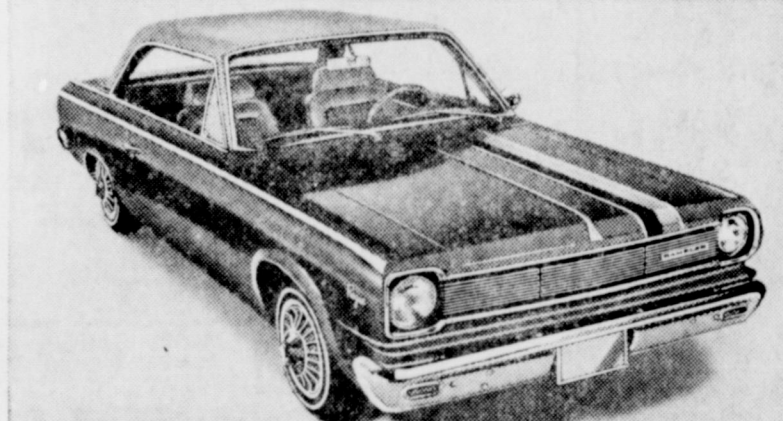
49¢ ONLY

THE WHITE ELEPHANT RESTAURANT
EASTLAND

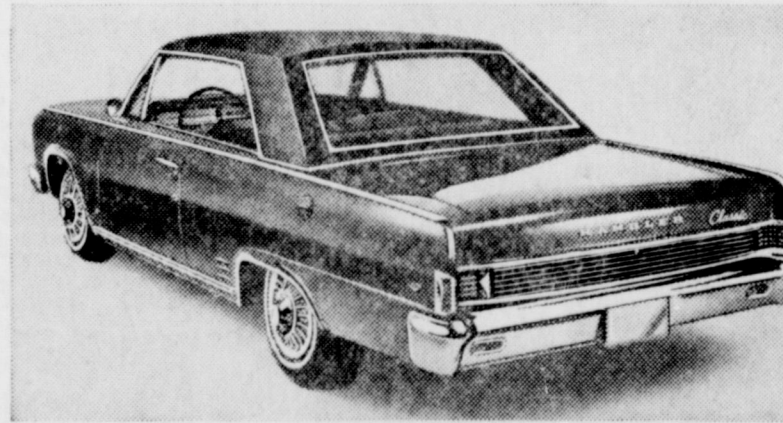
The Giant-Killer Rides Again

American Motors Challenges the "Big 3" of Detroit—With 4 New Lines of '66 Cars that Give the Public What it Wants

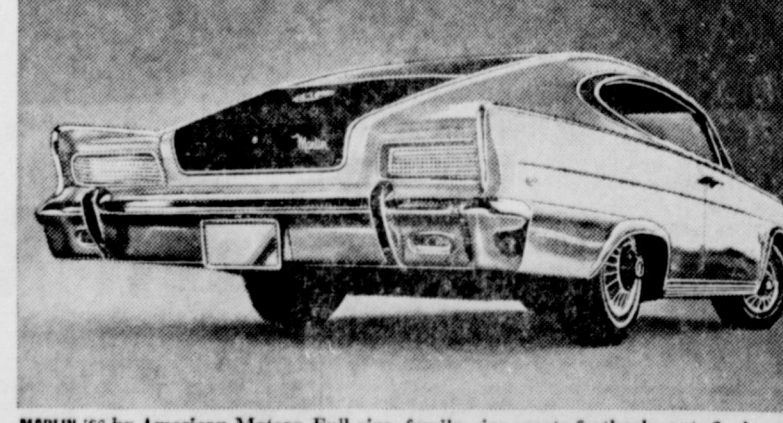
Last time it was size. This time? Quality! Quality that's built-in, added on. The promise: more built-in quality features at no extra cost.



ROGUE: new razzle-dazzle Rambler. Outperforms every other car in its class (with standard engine!). "Do Rogues really come with rally stripes?" "No, but with the big new engine they drive that way." '66 Rambler American Rogue here October 7th.



REBEL: new roomy, zoomy Rambler. Doesn't cramp your style, or your legs, or your family, or your pocketbook. Think you know a Rambler when you see one? Think again, look again. See the '66 Rambler Classic Rebel at your friendly Giant-Killer's, October 7th.



MARLIN '66 by American Motors. Full-size, family-size sports fastback seats 6—in comfort. (Even with bucket seats.) Flip down the front and rear armrests and turn your Marlin into a 2 + 2. Don't miss it at your friendly Giant-Killer's on October 7th.

Remember when American Motors came out with the trim little Rambler and knocked the Detroit "Giants" on their collective ear? Overnight, big fins and fat land yachts went out of style. American Motors came along with the right cars at the right time and caught the competition napping. This year, almost half the automobiles sold are Rambler-size cars.

Round one to the "Giant-Killer." What next? For '66, American Motors again gets the jump on the big boys with a new rallying cry: Quality! A new kind of quiet quality that is built in as standard equipment on every car in the line.

This is the American Motors credo. Quality that's built-in—not added on. First, determine what has to go into a car to make it stronger, safer, more dependable, more luxurious. Then put it there. Regardless of cost. Build it in.

Ready to be convinced? Ready to be surprised? Check this page for a preview of the 4 sleek challengers. New cars. New names. Then admire the styling of these exciting new cars. When you have finished, please get on your horse and go to the friendly Giant-Killer in your town, your American Motors/Rambler Dealer.

*Optional on most models. †Based on a comparison of manufacturers' suggested retail prices.

TV PREMIERE THURSDAY NIGHT! See the new American Motors '66 cars "The Andy Griffith, Don Knotts, Jim Nabors Special," CBS-TV, October 7th.



AMBASSADOR DPL by American Motors. Now you can have your first luxury car you're still young enough to enjoy it. Coil-spring seats like Cadillac. Double-brake system like Cadillac. Price? Like Impala, Fury, Galaxie. Be sure to see it October 7th.

SEE YOUR FRIENDLY GIANT-KILLER, YOUR AMERICAN MOTORS/RAMBLER DEALER

PIPKIN MOTOR COMPANY --

314 West Main

LOW BANK financing

choose the car you want to own

WE'LL SAVE YOU MONEY ON THE LOAN

Eastland National Bank

"On the Square" EASTLAND, TEXAS

Aman Ables, On Leave Here, counts Carriers Problems

aman J. D. Ables of Eastland and a buddy, Seaman Turfus, whose home is Flint, Mich., have in Eastland these past weeks visiting in the home of Mrs. Gerald Ables, reported back for duty at airport, Fla. Wednesday, arriving aboard the U.S.S. Gri-La, Ables and Turfus docked at ports in Italy, Greece, Spain, Turkey during the past 10 months. Their ship docked at Catania, Sicily, at Palama, Italy, Malan island in the Medi-

terranean; Istanbul, Turkey; Rhodes, Greece; Naples, Italy; Palma, Spain and Barsalona, Spain.
 There were two incidents, Ables and Turfus recall, that especially excited the crew. While in the ocean, their ship was hit by a destroyer and the Shangri-La had to turn back to Naples, Italy, from where it had just left, to check damages.
 The Shangri-La was docked along the French Riviera when someone accidentally opened the wrong valve, resulting in some 2,700 gallons of oil escaping onto the resort.
 The worst part of this tale is that French officials would not give consent for the ship to leave until the area looked much better than it did with puddles of oil here and there. It took 100 men, equipped with shovels, about twelve hours to dig up the "oily" soil along the French Riviera, Ables stated—he was among the 100 unfortunate sailors.

GUARANTEED ELECTRIC SERVICE BOND ELECTRIC
 808 W. Commerce
 Main 9-1724

LAUNDRY
 REE-PICK-UP and DELIVERY SERVICE

CISCO STEAM LAUNDRY
 HI 2-2151

It's Time to Spray under your house and in your house for termites, fleas, ants, spiders.

Also time to spray your grass, trees, and shrubbery.

H. D. WARREN
 209 E. Valley
 Phone MA 9-2434

Try This Car Quiz!

Do you get speedy automotive service? () ()
 Do you get friendly, courteous treatment? () ()
 Do you get complete satisfaction in every way? () ()

If your answers are yes, you must already be one of our customers!

On the other hand, if one or more of your answers are no, we invite you to try our service. You see, we've studied the book on customer satisfaction and how to achieve it. Our facilities are clean and modern, our equipment is the finest.

OBIE'S HUMBLE SERVICE STATION
 802 W. Main
 MA 9-8866

RADIATOR TROUBLE?
 SEE US FOR FREE INSPECTION

DANIEL Gold Seal RADIATOR CORP.
 EXPERT RADIATOR SERVICE
 cleaning repairing recoring rebuilding

PROCTOR RADIATOR WORKS
 GUARANTEED QUALITY PRODUCTS
 PICKUP AND DELIVERY SERVICE
 2-3170 CISCO 1306 Ave. D

106TH ANNIVERSARY



Prices Good Thru Oct. 9, 1965
 Quantity Rights Reserved

FOR A WIDE CHOICE OF WONDERFUL GIFTS!

SAVE PLAID STAMPS!

NO COUPON NECESSARY

50 GET 50 EXTRA PLAID STAMPS WITH JANE PARKER
BUNS Pineapple 10-oz. 39c
 Topped Pkg.

50 GET 50 EXTRA PLAID STAMPS WITH JANE PARKER 2-CUT
CAKE Golden 1-lb. 5-oz. 59c
 Leaf Each

HEALTH & BEAUTY AIDS MIX OR MATCH SALE!

LANOLIN PLUS REG. OR HARD TO HOLD
HAIR SPRAY 13-oz. Size **2** For **\$1**

MENNEN
SKIN BRACER 4 1/2-oz. Size

WOODBURY LANOLIN
PINK LOTION 10-oz. Size

GILLETTE 3-OZ. TUBE OR 4-OZ. BOTTLE
HAIR DRESSING Each

SCHICK STAINLESS STEEL
RAZOR BLADES Pkg. of 5

BRECK NORMAL OR DRY 7 1/2 OFF
SHAMPOO 4-oz. Size **3** For **\$1**

LUSTRE CREME
CREAM RINSE 4-oz. Size

COLGATE 4 1/2 OFF
TOOTH PASTE 6-oz. Tube

ARRID CREAM
DEODORANT 5 1/2-oz. Size **1** For **\$1**

DERMA FRESH
HAND LOTION 4-oz. Size

COTTON
Q-TIPS BALLS Pkg. of 65 **4** For **\$1**

COTTON
Q-TIPS BUDS Pkg. of 54

CASHMERE BOUQUET DEODORANT
TALCUM Lge. Size

CUTEX OILY 6 1/2 OFF
POLISH REMOVER 4-oz. Size **1** For **\$1**

CO-ETS Pkg. of 40

AURORA BATHROOM
TISSUE 2-Roll Pack 29c

NORTHERN PAPER
TOWELS Jumbo Roll 31c

NORTHERN PAPER
NAPKINS 2 Pkgs. of 80 29c

DEODORANT
DIAL SOAP 2 Bath Bars 45c
 1-lb. Can. 84c 2-lb. Can. \$1.67 3-lb. Can. \$2.55

PRODUCE FEATURES

TOKAY
GRAPES lb. 10c
TOMATOES lb. 19c

WHITE — Large Size
GRAPEFRUIT 4 for 49c

LARGE HEAD
CAULIFLOWER each 29c

ANN PAGE CANE & MAPLE SYRUP 24 Ounces 49c	DETERGENT SURF 15c Off Gt. Box 64c	ANN PAGE Tomato Soup 5 10 1/2-oz. cans 49	AUSTEX Chili WITH BEANS 1-lb. Can 39c	AUSTEX WITH MEAT BALLS Spaghetti 1-lb. Can 29c	AMERICAN DILL PICKLES 1-pt. 6-oz Jar 33c
DETERGENT BREEZE Giant Box 81c	DETERGENT Silver Dust Giant Box 81c	AUTOMATIC WASHER DETERGENT Active "all" 30c Off 9-lb. 13-oz. Box \$2.35	DETERGENT Fluffy "all" Giant Box 79c	AUTOMATIC DISHWASHER DETERGENT Dish "all" 1-lb. 4-oz. Box 45c	LIQUID DETERGENT COLD WATER "all" Qt. Size 79c

COLOMBO CHEESE, 15-OZ.; SAUSAGE, 18-OZ.; PEPPERONI, 18-OZ.; OR HAMBURGER, 18-OZ.

PIZZA Each 69¢

SAU SEA FROZEN SHRIMP
Cocktail 3 4-oz. Jars 89¢

ALLGOOD BRAND SLICED
BACON 1-lb. Pkg. 75¢

"SUPER-RIGHT" HEAVY CALF SHOULDER ARM
POT ROAST lb. 49¢

"SUPER-RIGHT" OLD FASHIONED PURE PORK
SAUSAGE 2-lb. Baa 99¢

SUPER-RIGHT HEAVY CALF
ROUNDSTEAK lb. 69¢

CYPRESS GARDEN FRESH FLORIDA
Orange Juice Qt. 29¢
 Btl.

OSCAR MAYER WITH GRAVY

Roast Beef 2 12-oz. Cans 85¢

A&P FROZEN SLICED
Strawberries 4 10-oz. Pkgs. 89¢

EIGHT O'CLOCK CUSTOM GROUND
COFFEE 3-lb. Bag 1-lb. Bag \$1.89 65¢

DEL MONTE CREAM OR WHOLE KERNEL GOLDEN
CORN 3 1-lb. Cans 49¢

TATER BOY FROZEN FRENCH FRIED
POTATOES 2-lb. Pkg. 29¢

SUNNYFIELD
Plain Flour 5-lb. Bag 39¢

A&P WHOLE GREEN
BEANS 4 1-lb. Cans 89¢

Clip These Coupons

MAGIC FINISH
SPRAY STARCH 1-lb. 4-oz. Size 69c

BORDEN'S NON DAIRY CREAMER
CREMORA 4-oz. Size 27c 1-lb. Size 79c

JANE PARKER
Fruit Cakes 1 1/2 lb. 1.49 3 lbs. 2.89

POST RAISIN BRAN 14-oz. Pkg.
POST BRAN FLAKES 1-lb. Pkg.
FLAKES Post Bran and Prune 10-oz. Pkg.
SPARKLE Sugar Frosted Corn Flakes 10-oz. Pkg.
RICE KRINKLES Sugar Sparkled 10-oz. Pkg.

3 Pkgs. For \$1.00

ANN PAGE REALLY FINE
Mayonnaise Qt. 49¢
 Jar

NORTHERN TOILET
TISSUE 4-Roll Pack 39c

LIQUID DETERGENT
CHIFFON T-pf. 6-oz. Size 49c

MARYLAND CLUB
COFFEE

100 Extra Plaid Stamps

With This Coupon and Purchase of ROOM DEODORIZER
LYSOL SPRAY 14-oz. Size \$1.49

AT YOUR A&P SUPERMARKET
 Coupon Good Thru Oct. 9, 1965

100 Extra Plaid Stamps

With This Coupon and Purchase of NON DAIRY CREAMER
PREAM 14-oz. Size 79c

AT YOUR A&P SUPERMARKET
 Coupon Good Thru Oct. 9, 1965

50 Extra Plaid Stamps

With This Coupon and Purchase of DELTA SUMMER
DILL PICKLES Qt. 45c

AT YOUR A&P SUPERMARKET
 Coupon Good Thru Oct. 9, 1965

25 Extra Plaid Stamps

With This Coupon and Purchase of AEROSOL
WINDEX 7.5-oz. Size 55c

AT YOUR A&P SUPERMARKET
 Coupon Good Thru Oct. 9, 1965

25 Extra Plaid Stamps

With This Coupon and Purchase of SIMONIZ 10 1/2 OFF
VINYL WAX Qt. Size 88c

AT YOUR A&P SUPERMARKET
 Coupon Good Thru Oct. 9, 1965

25 Extra Plaid Stamps

With This Coupon and Purchase of BREAKFAST DRINK
TANG 7-oz. Size 39c

AT YOUR A&P SUPERMARKET
 Coupon Good Thru Oct. 9, 1965

25 Extra Plaid Stamps

With This Coupon and Purchase of DOG FOOD
GAINES BURGERS 2-lb. 4-oz. Size 89c

AT YOUR A&P SUPERMARKET
 Coupon Good Thru Oct. 9, 1965

50 Extra Plaid Stamps

With This Coupon and Purchase of ROOM DEODORIZER
LYSOL SPRAY 7-oz. Size 98c

AT YOUR A&P SUPERMARKET
 Coupon Good Thru Oct. 9, 1965

50 Extra Plaid Stamps

With This Coupon and Purchase of GOLDEN RISE ASSORTED
COOKIES Pre-Sliced Refrigerated 1-lb. Pkg. 39c

AT YOUR A&P SUPERMARKET
 Coupon Good Thru Oct. 9, 1965

50 Extra Plaid Stamps

With This Coupon and Purchase of OUR OWN
INST. TEA 3-oz. Jar 69c

AT YOUR A&P SUPERMARKET
 Coupon Good Thru Oct. 9, 1965

50 Extra Plaid Stamps

With This Coupon and Purchase of FOUR CANS GLAMOUR PUSS
CAT FOOD 2 6-oz. Cans 27c

AT YOUR A&P SUPERMARKET
 Coupon Good Thru Oct. 9, 1965

25 Extra Plaid Stamps

With This Coupon and Purchase of TWO CANS ANN PAGE PREPARED
SPAGHETTI 2 1-lb. 4 1/2-oz. Cans 37c

AT YOUR A&P SUPERMARKET
 Coupon Good Thru Oct. 9, 1965

25 Extra Plaid Stamps

With This Coupon and Purchase of ANN PAGE IMITATION
VANILLA 1-pt. 27c

AT YOUR A&P SUPERMARKET
 Coupon Good Thru Oct. 9, 1965

25 Extra Plaid Stamps

With This Coupon and Purchase of ANN PAGE BLACKBERRY
JELLY 12-oz. Jar 39c

AT YOUR A&P SUPERMARKET
 Coupon Good Thru Oct. 9, 1965

TO THE MAVERICKS . . . WE'RE BEHIND YOU ALL THE WAY

EASTLAND vs. BAIRD

FRIDAY NIGHT, 7:30 p. m. HERE

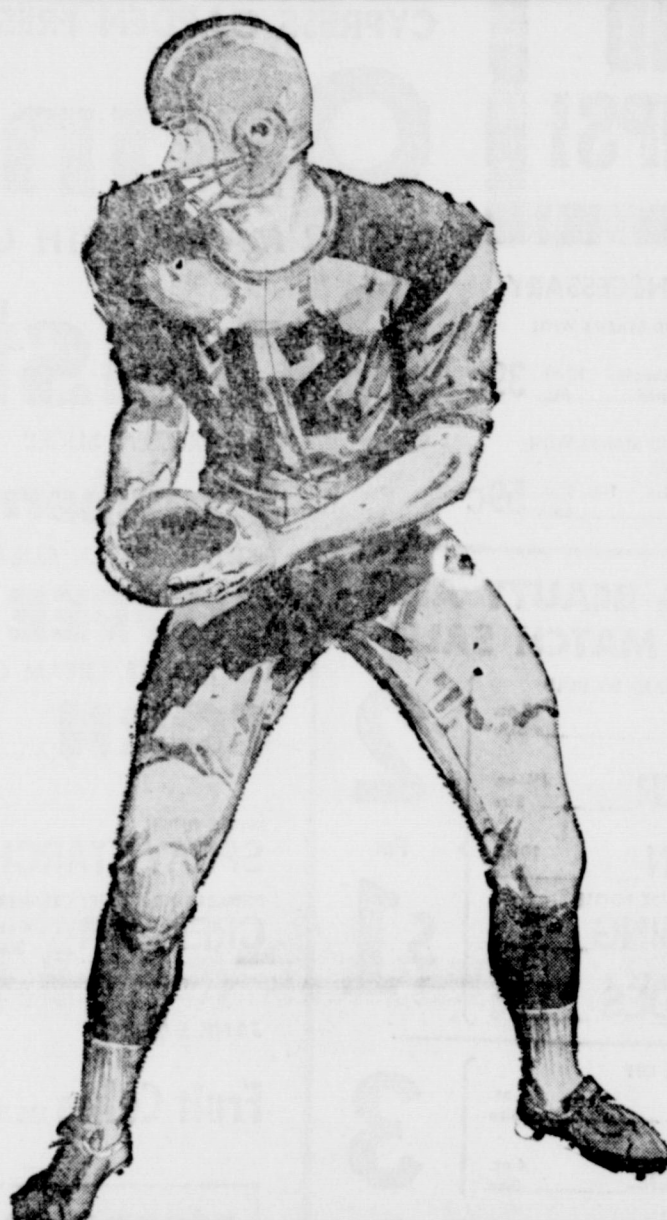
MAVERICK 1965 SCHEDULE

Sept. 3 — Eastland 7, Comanche 6.
 Sept. 10 — Eastland 14, Rising Star 6.
 Sept. 17 — Eastland 14, Cisco 8.
 Sept. 24 — Dublin 32, Eastland 0.
 *Oct. 1 — Albany 26, Eastland 0.
 *Oct. 8 — Baird, here.
 *Oct. 15 — Clyde, there.
 *Oct. 22 — Ranger, here.
 Oct. 29 — Open Date.
 *Nov. 5 — DeLeon, there.
 *Nov. 12 — Cross Plains, here.

*District Games.



The 10-10 C.B. Club will furnish emergency communication facilities to the Stadium — and may be contacted for the transmission of messages to and from Maverick Stadium.
TELEPHONE NUMBER IS
 MAin 9-1678



MAVERICK ROSTER

No.	Name	Pos.	Class	Weight
12	McCullough, Jerry	QB	Senior	165
20	Wilson, Gene	QB	Junior	180
40	Moylan, John	FB	Senior	160
42	Gregory, Layne	FB	Senior	160
22	Fullen, James	HB	Senior	155
24	Martin, Ted	E	Senior	135
25	Bass, Bill	WB	Sophomore	155
14	Daniels, Jay	WB	Sophomore	155
30	Wilson, Larry	E	Senior	150
86	McKenzie, James	E	Junior	125
82	Miller, Jim Pat	E	Senior	150
69	McCoy, Rodney	T	Senior	165
73	Keith, Fred	T	Sophomore	225
70	Porter, Boyd	T	Sophomore	195
75	Lowrance, Tony	T	Sophomore	165
65	Hazard, David	G	Senior	160
50	Boles, Bill	G	Senior	155
67	West, James	G	Senior	150
51	Terrell, Rodger	C	Senior	150
52	McCullough, Tommy	C	Junior	185
84	Emfinger, Greg	FB	Freshman	155
10	Lund, Steve	QB	Sophomore	150
66	Holt, Sidney	T	Sophomore	160

Bond Electric Co.
 Phone MA 9-1724

- Sunshine Laundry and Dry Cleaning**
 Pearson Grimes
 106 East Plummer — MA 9-8812
- White Food Store**
 Mr. and Mrs. G. A. White
 1102 West Main — MA 9-8857
- Pool's Dry Cleaners**
 Mr. and Mrs. Lester R. Smith
 209 South Lamar — MA 9-2055
- C. M. Cox Dirt Contractor**
 Highway 80 West — MA 9-2670
- Otis Coleman Humble Service Station**
 Complete Car Service
 400 East Main — MA 9-2545
- Howard Bookkeeping Service**
 Mr. and Mrs. Veon Howard
- Alma's Beauty Parlor**
 An Invitation to Greater Beauty
 211 West Main — MA 9-1151
- The Hairdresser**
 Let Us Style Your Hair to Flatter Your Face
 1302 South Seaman — MA 9-1430
- M. L. Terrell Real Estate and Robert Kincaid**
 Farms — Ranches — City Property
 211½ West Main — Phone MA 9-1725
- Hood King Motor Co.**
 Ford and Mercury — Sales and Service
 On the Square — MA 9-1786
- Webb's 7-11 Grocery**
 George and Wanda — Staples and Fancy Groceries, Fresh & Cured Meats
 1006 W. Main — MA 9-8897

- Buck Wheat Ranch and Farm Service**
 City Property
 New FHA and GI Homes
 301 North Seaman — MA 9-2131
- Eastland Truck Stop Service Station**
 A. O. Gist — Highway 80 West
 Premier Gasoline
 All Brands Motor Oil
 Quick Service
- Bray's DEPARTMENT STORE EASTLAND**
- Eastland Truck Stop Cafe**
 Highway 80 West
 Venna Justice — Gyrin Simmons
 Serving Delicious Plate Lunches
 Steaks — Chops — Homemade Pies
- Mr. & Mrs. Paul McFarland**
- Eastland Auction Company**
 Located on Highway 80 East
 Ph. MA 9-1760
- Texas Lightweight Aggregate Company**
 Producers of Concrete Aggregates
 C. W. Martin, Manager — MAin 9-2060
- Eddie Pevchouse Texaco**
 503 W. Main — MA 9-8895
- JRB Super Market**
 Carey Hightower, Mgr.
- Obie's Humble Station**
 802 W. Main — MA 9-8366

- City Garage**
 J. J. Finley, Proprietor
 Engine, Starter, and Generator Work
 103 White Street — Ph. MA 9-1709
- Hillcrest Food Market**
 When You Run Out — Run In
 1401 W. Main — Ph. MA 9-1600
- Western Auto Associate Store**
 J. L. Pittman, Owner
 Ph. MA 9-2011
 Corner of Lamar and Commerce
- Majestic Theatre**
- Toombs and Richardson Drug Store**
 108 S. Seaman — MA 9-1475
 Free Delivery
- Harelik's Department Store**
 212 W. Main
- Mr. & Mrs. Victor Cornelius**
- Central Drug**
- Altman's "Smart Women's Wear"**
 North Side of the Square
- Freyschlag Insurance Agency**
 North Side of the Square
 Ph. MA 9-2275
- Texas Electric Service Co.**
 F. N. Sayre, Manager
 MA 9-2651
- Eastland Iron & Metal Co.**
 Henry, Tillie and Saul Pullman
- Petroleum Corp. of Texas**
 Walter E. Ruby, Mgr.
- Judge & Mrs. Wells Dalton**

- Eastland National Bank**
 "On The Square" — Member FDIC
- Modern Village Barber Shop**
 George Carter
- Graham's Trim Shop**
 709 W. Main — Ph. 9-2266
- Goodyear Service Store**
 Don Pop, Manager
 306 East Main — Ph. MA 9-2662
- Dr. and Mrs. M. A. Treadwell Jr.**
- Eastland Memorial Hospital**
- Chamber of Commerce of Eastland**
- Hamilton Fruit Market**
 Fresh Fruit and Vegetables
- Pete Tucker**
- Fina Service Station**
 Washing — Greasing — Tire Repairing
 207 East Main Street
- Phagan Oil Co.**
 L. C. Phagan, Distributor
 Premier Oil Co.
- Quality Shoe Service**
 Longer Wear by Shoe Repair
 103 South Lamar Street
- George Van Lines**
 Moving — Storage
- B&W Clinic**
 H. J. Bulgerin, M. D.
 B. E. Alexander, M. D.
 310-30 Petroleum Bldg.
- Judge & Mrs. Frank Sparks**

- Horton Tire Service**
 Sciberling Tires — Batteries
 East Main
- Allen's Auto Repair**
 215 South Lamar — Phone MA 9-2244
 24 Hour Repair Service
- Kellar's Fix-It Shop**
 206 South Seaman — Phone MA 9-2244
- Dale Langlitz Texaco Service**
 Washing — Greasing — Tire Repairing
 702 West Main — Phone 9-8350
- Green Acres Nursing Home**
 111 North Daugherty — Ph. MA 9-2244
- Sunrise Manor Nursing Home**
 411 West Moss
- R. M. Sneed**
 Contractor
 Highway 80 East — Phone MA 9-2244
- Safeway Store**
- Foremost Dairies**
 Clyde Manning, Manager
 410 West Commerce — MA 9-1700
- Vic's Auto Repair**
 306 West Main — MA 9-2111
- Hanna Hardware and Lumber Co.**
- Standlee McCracken**
 Consignee, Mobil Oil Co.
 MAin 9-2145
- Romeo Eastland Mfg. Co.**
 Pottery, Wholesale and Retail
 411 E. Main — MA 9-2121
- Judge & Mrs. Scott Bailey**

SOUTHERN TELEVISION SYSTEMS CORPORATION

Cisco - Eastland - Ranger . . . Inviting You to Watch All of the Games — NCAA - AFL - NFL

SECOND JURY LIST CALLED FOR OCT. 11 HALL TRIAL

A second special venire has been called for the Monday, Oct. 11, murder trial of Robert Hall in 91st District Court, as has been announced here.

The first 100-name list was called for Sept. 20, date originally set for the trial, but were released when motion by defense for a continuance was granted by District Judge J. Frank Sparks.

The trial was reset for Oct. 11, and since a new term of court began Oct. 1, a new list of potential jurors was required.

Prosecuting Attorney Perry T. Brown has indicated that he will not qualify the jury on the death penalty.

Hall is free on \$3,500 bond, under indictment for the July 19 slaying of his brother Johnny Hall in Eastland.

Earl Conner Jr. of Eastland is defense attorney.

Called for possible jury service are:

Joe Collins, J. R. Boggus, L. G. Kennedy, J. D. Nichols, O. L. Cantrell, Roy Plumley, Leonard Arterburn, Mrs. F. R. King, J. D. Johnson, W. P. Hatfield, W. A. Halbrooks, Roy O. Watson, W. T. Hagar, W. H. Jacobs, Wanda Guess, Linda Forney, E. F. Penn, Mrs. Lester Crossley, Mrs. Virginia Collins, Mrs. Audrey Rose, Charles Rose, H. L. Gibbs, Ross Hodge, O. D. Hise, Charles Novak and Joe Lezini, all of Ranger.

E. G. Elliot, W. N. Jenkins, John W. Lee, L. G. Burkhalter, Elgie Crisp, Jack Schlenker, Mrs. J. C. Turner, Mrs. Ray Nunnally, J. P. Ventimillion, Miley Wilson, C. N. Huddleston, Herman H. Claborn, Mrs. Jay Koonce, Mrs. J. W. Gerhardt, Mrs. James Rutherford, Mrs. R. E. Darnell, Mrs. Margaret McDonald, Mack Gray, Kenneth Bibb, C. C. Rutherford, H. M. Jones, Charles Davidson, Tennie Johnson, Lee Culwell, Mrs. Robert Butler, F. L. Merrill, Jack Bibby, John D. Clark, Wayne Westerman, Mrs. Bill Medley, Curtis Smith, Naomi Pruet and J. D. Somerford, all of Rising Star.

Eldress Gattis, R. O. Duncan, W. D. Crabtree, T. M. Halford, James Glenn, J. B. Arther, Clint Brav, Robert W. Fox and W. L. Griffin, all of Eastland.

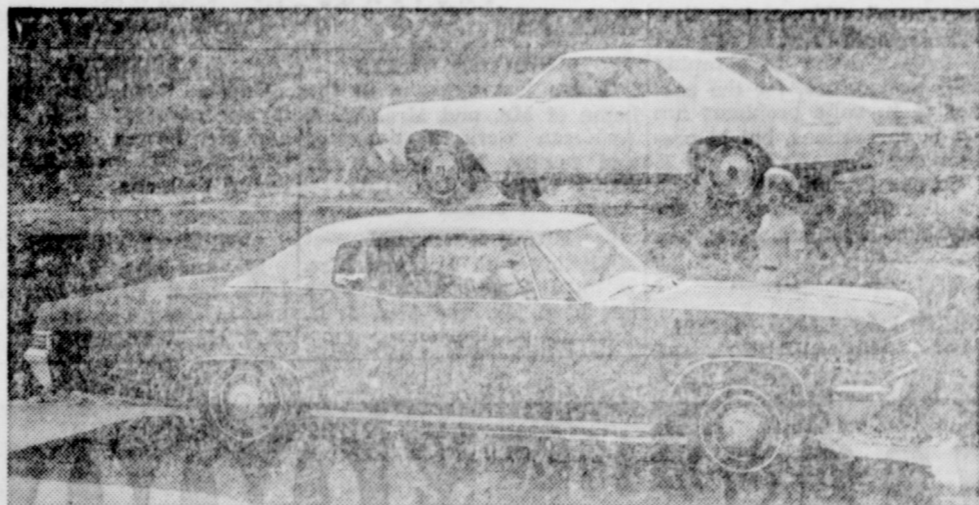
O. E. Qualls, Ralph Morton, E. D. Farley, Billy J. Reynolds, V. L. Robbins, O. L. Lee, Leo Phagan, Mrs. Anna Pryor, Jack Ledbetter, Wilson Meglasson, Jay Richardson, Mrs. Harry Gurney, Arlin Agnew, Mrs. Bob Elliott, W. E. Kirkland, J. H. Kendricks, Durwood Norris, Lillian F. Hansen, Lewis Morgan, C. W. Latham, J. C. Fletcher, and Olin Odum, Jr., all of Cisco.

E. E. Donaldson, Tom Glenn, W. T. Norris, and R. D. Meadford, all of Carbon.

Seth Hallmark, J. R. Grimshaw, Clyde L. Lewis and B. D. Wisdom, all of Desdemona.

Kenneth Whitt of Gorman.

Only 13 muscles are required to smile—fifty to frown.



NEW 1966 CHEVYS—Two of Chevrolet's newest additions for 1966 are the luxurious Caprice Custom Coupe (below) and the stylish Chevelle Super Sport 396 Coupe. Along with these two models, Chevrolet will offer 48 other models for 1966. Fullen Motor Co. in Eastland will show the new cars for the first time Thursday, Oct. 7.

20 Are Called For Physicals

Notified by the local Selective Service Board to report Oct. 19 for physical examinations were 20 Eastland County men, according to Mrs. Jewell Reaves, secretary. Inductions for Oct. 19 are six. In the future, draft boards will not be as liberal in granting deferments for college and university study as in the past few years, it has been announced by Colonel Morris Schwartz, state Selective Ser-

vice director.

State draft headquarters normally will not recommend the deferment of any student carrying less than a load of nine semester hours, said Schwartz.

"If the student deferred on the basis of a nine-hour load doesn't go to school in the summer, we will recommend termination of his deferment. He must make normal progress toward his four-year degree in four successive calendar years, or his five-year degree in five, if he expects to continue to earn a recommendation for deferment from us," stated Schwartz.



Box Office Opens 7:00 — Show Starts 7:15
Box Office Closes 9:00
ADMISSION: Adults 60c, Children 12 Free; Each Wednesday & Thursday are bargain nights—admission 25c.

Friday and Saturday, Oct. 8 and 9
'THOSE CALLOWAYS'
Brian Keith — Vera Miles — Brandon de Wilde
IN COLOR

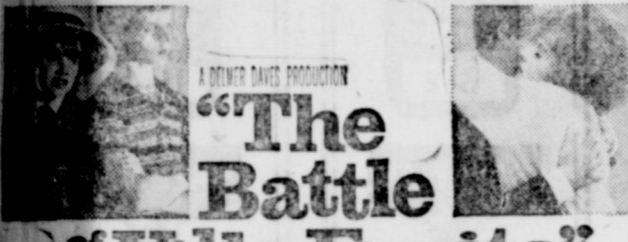
Friday and Saturday, October 15 and 16
'THE MONKEY'S UNCLE'
Tommy Kirk — Annette

RANGER DRIVE-IN THEATRE

Adults 50c Kiddies Under 11 FREE
Box Office Open 6:45 — Show Starts 7:15

THURSDAY — FRIDAY — SATURDAY
October 7-8-9

Two blue-eyed brats who stormed the Villa Fiorita to rescue Mother from her Italian love affair.



A DOLBY DIGITAL PRODUCTION
"The Battle of the Villa Fiorita"
MAUREEN O'HARA-ROSSANO BRAZZI
with MARTIN STEPHENS - ELIZABETH DEAR - OLIVIA HUSKEY - RICHARD TODD - PHYLIS CALVERT
Directed by DELMER DAVES. TECHNICOLOUR® PANAVISION®

SUNDAY — MONDAY — TUESDAY
October 10-11-12



TWO MEN ARE ONE MAN ON THE THIRD DAY
GEORGE PEPPARD AND ELIZABETH ASHLEY IN "THE THIRD DAY"
TECHNICOLOR® PANAVISION® FROM WARNER BROS.
RODDY McDOWALL ARTHUR O'CONNELL

NOW! '66 CHEVROLETS



NEW CAPRICE BY CHEVROLET
Custom Coupe, Sedan and two luxurious new Custom Wagons now. Liquid smooth ride. Power you can order just as smooth and pin-drop quiet. Turbo-Jet V8 engines that go all the way up to 425 hp. Shimmering new interiors. The look of hand-rubbed walnut trim. Elegance everywhere. Made by Chevrolet, so you know what a beautiful value it must be.



NEW CHEVROLET JET-SMOOTHER

We've again specially tailored those coil springs at every wheel to each body style. We've put in new softer shock absorbers. No Chevrolet has ever had a ride like this. Power begins with a thrifty Six at 155 hp, and goes on from there. Turbo-Jet V8's available at 325 hp, 390 hp and 425 hp in all the new Impalas, Bel Airs and Biscaynes. Model shown: Impala Super Sport Coupe.

NEW CHEVELLE SUPER SPORT 396

New 300's. New 300 Deluxe models. New Malibus. And two new Super Sport 396's—coupe and convertible—with engines that tell you exactly what kind of Chevelles they are. Both are available with 396-cu.-in. Turbo-Jet V8's, either 325 hp or 360 hp. And both come with special hood, grille, suspension, emblems, red stripe tires, floor-mounted shift. Twelve beautiful new Chevelles in all—and all as new inside as they are outside, headlamps to taillights.



ALL NEW CHEVY II

It's so different, we should really call it the Chevy III. Roofs are swept way back on coupes. Fenders, grille, hood, taillights and bumpers are new on all seven models. Interiors are richer. Power available up to a 350-hp Turbo-Fire V8. You can even order headrests for the front seats and Mag-style wheel covers. What's the economical, dependable Chevy II coming to? A lot of smart '66 car buyers, we figure.

'66 CORVAIR UNIQUE

Still America's only rear-engine car. And with the special steering and suspension you can add, there's no better way to rid yourself of prematurely gray driving. Lots now, Corvair, like all the '66 Chevrolets, has a padded dash, seat belts front and back, new fully synchronized 3-speed, Corsas, Monzas, 500's. Get one. Stay young.

SEE THE NEW 1966 CAPRICE • CHEVROLET • CHEVELLE • CHEVY II • CORVAIR • CORVETTE NOW AT YOUR CHEVROLET DEALER'S

State Fair of Texas!

EXPOSITION OF THE AMERICAS

ROYAL CANADIAN MOUNTED POLICE
"MUSICAL RIDE"
Appearing at Horse Show Performances, State Fair Coliseum, Oct. 9-17.

DANZAS Y CANTOS DE MEXICO
Performing Daily Oct. 15-21.

DEEP RIVER FIFE & DRUM CORPS
All the way from Deep River, Conn. Daily Oct. 16-24

BROADWAY MUSICAL HIT "FUNNY GIRL"
Starring Lillian Roth, Anthony George, Marilyn Michaels (as Fanny Brice). Music Hall Daily, Oct. 8-24.

THE EXCITING WORLD OF ICE CAPADES
All-new edition of popular ice extravaganza, Ice Arena Daily.
*** COLOSSAL FREE CIRCUS ***
Presented by Dr Pepper and Morton Foods free daily.

MARK WILSON AND HIS MAGIC LAND OF ALLAKAZAM
TV Magician in daily free performances presented by Frito-Lay and Pepsi-Cola.

FALL FASHION FIESTA, TEXAS KITCHEN WINDOW.
"LET'S FACE IT!"

Prize-winning exhibits, contests, special events and activities all in the Women's Building.

*** FREE SPECTACULARS IN THE COTTON BOWL ***
Mon. Oct. 11—TEXAS MUSIC FESTIVAL, fireworks, 8 p.m.; Thurs. Oct. 14—MEXICO DAY PROGRAM, featuring Danzas y Cantos de Mexico, fireworks, 8 p.m.; Fri. Oct. 15—DALLAS SYMPHONY SPECTACULAR, featuring "Music of the Americas," fireworks, 7 p.m.; Sat. Oct. 16—MILITARY TATTOO, armed forces units in impressive pageantry, fireworks, 8 p.m.; Tues. Oct. 19—EAST TEXAS ON PARADE, entertainment spectacle, fireworks 8 p.m.

PAN-AMERICAN LIVESTOCK EXPOSITION
International show window and market place for purebred livestock featuring Premier Angus show of the Americas, Oct. 9-17. Junior Livestock show, Oct. 18-23. Poultry Shows. FFA Children's Barnyard.

*** HORSE SHOWS ***
Oct. 9-12, gaited, fine harness, walking horses, saddlebred pleasure and roadster horses. Oct. 13-17, Arabian horses and Shetland ponies. Oct. 20-21, Open Cutting Horse Contest. Oct. 21-24, American Quarter Horse Show.

TEXAS INTERNATIONAL TRADE FAIR
AGRICULTURE SHOW
Fantastic Story of SUN • LIFE • ENERGY.
*** FREE THRILLING SKY REVUE ***
Daredevil Aerialists on the Mobil Stage. Also daily concerts and other entertainment. And much, much more, including 1966 Auto Show, Wax Museum and more than you can see in 16 days!

Coming OCT. 9-24

FULLEN MOTOR COMPANY INC.

305 E. Main

Eastland

HD Agent, Three Delegates Attend Texas HD Meeting

Mrs. Beverly Nicholson, Eastland County Home Demonstration Agent, and three delegates, Mrs. L. B. Mayhew of Cisco, Mrs. J. A. Pogue of Eastland and Mrs. Arlin Bintliff of Cisco county HDA chairman, recently attended the annual meeting of the Texas Home Demonstration Association in Austin.

Speaker for the meeting was Texas Attorney General Waggoner Carr. Theme for

his speech was "juvenile delinquency." He stated that "Texas youth must be allowed to have a hand in planning their own future, for the answer to juvenile problems lies not in corrections, but in prevention."

Corpus Christi will be host for the 1966 meeting of the women's organization, it was announced.

SHOP EASTLAND FIRST!

EASTLAND TELEGRAM Thursday, October 7, 1965

DAUGHTER VISITS
Guests last weekend in the home of Mr. and Mrs. W. A. Anderson were a daughter and family, Mr. and Mrs. Henry White of Knox City.

VISITORS
Guests this week in the homes of Mrs. D. L. Houle and Mr. Lowell Snyder have been Mr. and Mrs. Olen Snyder of Delmeda.

FROM HOUSTON
Visiting with Mr. and Mrs. Howard Bradford this week has been Mr. and Mrs. J. C. Harrison of Houston.

SUNDAY GUESTS
Mr. and Mrs. W. S. Rice of Lake Leon visited last Sunday in the home of Mr. and Mrs. H. C. Pounds.

50 SENIORS 'RINGED'

There were 50 happy and smiling Eastland High School seniors Monday afternoon as they received their class rings for 1965-66.

The rings were given out during a class assembly by Mr. Charles P. Marshall, principal of the local high school. The senior class sponsor is Mrs. Earl Conner, Jr.

WATCH REPAIR

Your watch will receive the care in our repair department.

feature:

- Ring Sizing
- Engraving
- Jewelry
- Pearl

BESKOW JEWELRY

210 W. Main Eastland



WIN UP TO \$1000 CASH

START PLAYING BONUS BINGO 96 WAYS TO WIN!!

Start playing "Bonus Bingo" today. Anyone 16 or over may pick up a "Bonus Bingo" slip at your Safeway Store. No purchase required. Secure your card at either end of the checkstand or from any store employee except in the Meat Department, and from our ad. Save all slips, play on the game specified on each slip. You may win horizontally, vertically or diagonally. Win from \$1 to \$1,000.

OVER \$83,000 IN PRIZES... OVER 40,000 CASH WINNERS!

Skylark Bread 19¢
Petite Sliced. (Regularly 25¢)—1-Lb. Loaf

Coffee Cake 33¢ **Cake Donuts** 29¢
Mrs. Wright's. 11-oz. Pkg. (2¢ off label) Mrs. Wright's. Plain, Crunch or Sugared—Pkg.

VELVEETA 2 Lb. 85¢
Kraft Cheese Food, Box

Cinnamon Rolls 5 for \$1 **Dressing** 45¢
Mrs. Wright's—1/2-oz. Can. Roulettes—Lucerne—8-oz. Jar

Instant

Maxwell House Coffee \$1.39
(FREE 2-oz. Bonus Pack) (20¢ off label) 12-oz. Jar

Coffee Maryland Club, Regular or Drip. (10¢ off label) 2 Lb. \$1.59
(Edwards, All Grinds—2-Lb. Can \$1.53)

Golden Corn Del Monte, Whole Kernel, No. 303 Can or 12-oz. Can. Cream Style—No. 303 Can 6 for \$1

Catsup Del Monte, For that extra taste 20-oz. Bottle 2 for 59¢

Miracle Whip Kraft Salad Dressing—Quart Jar (Nu Made Salad Dressing, Quart Jar 43¢) 55¢

CLIP THESE SLIPS AS A BONUS

BONUS BINGO PRIZE SLIP

\$1000 GAME B-2 SAFEWAY

BONUS BINGO PRIZE SLIP

\$1000 GAME U-4 SAFEWAY

Safeway Fresh Produce!

APPLES \$1.00
★ Red Delicious Mix 'em
★ Golden Delicious or Match 'em
★ Jonathans 6 Lbs.

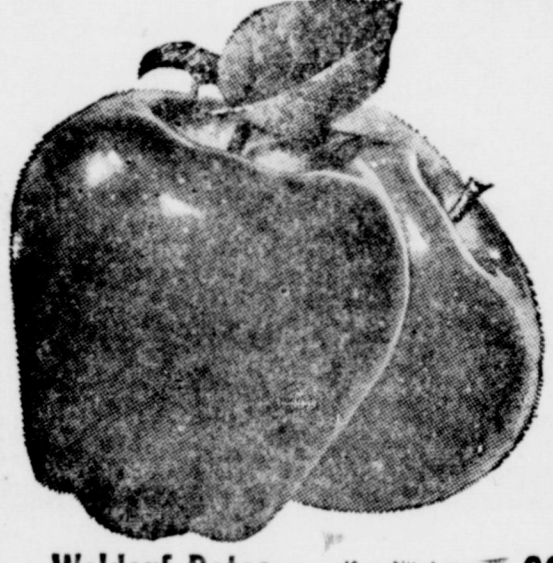
Red Potatoes 10 Lb. 49¢
U. S. No. 1. Serve generous portions.

Bell Peppers Firm and tender—Lb. 2 for 15¢

Sunkist Lemons Serve Lemonade. —Each 6 for 19¢

Yellow Onions Add flavor to roast. Lb 10¢

Coconuts Fresh and Flavorful—Each 25¢ **Broccoli** Serve with Cheese Sauce—Lb. 25¢



Waldorf Dates 10-oz. Pitted or 12-oz. Unpitted—Each 39¢

Fresh Spinach Fresh and crisp—10-oz. Pkg. 35¢

Cranberries Full of flavor—1-Lb. Pkg. 35¢

Salad Mix Easy to Serve—8-oz. Pkg. 23¢

Holland Bulbs Imported from Holland—Pkg. 79¢

Chicken of Sea Tuna 3 for \$1
Chunk Light Meat—6 1/2-oz. Can

Star-Kist Tuna 3 for \$1
Chunk Light Meat—6 1/2-oz. Can

Beans 5 for \$1
Ranch Style—No. 300 Can

Cake Mixes 41¢
Fillsbury, Assorted Flavors—Regular Box

Coffee 82¢
Maryland Club, All grinds. (5¢ off label)—1-Lb. Can

Frosting Mixes 39¢
Pillsbury, Mocha Fudge, Creamy Lemon, Creamy Fudge, Milk Chocolate, Double Dutch—Regular Pkg.

Large 'A' Eggs 47¢
Breakfast Gems, Large Size, Grade "A" Quality—Doz.

Shortening 3 Lb. 59¢
Valley, Can

Green Beans 3 for 89¢
Del Monte, Whole—No. 303 Can

Frito Chili 2 for 99¢
Plain—No. 300 Can

Paper Towels 3 for \$1
Gala, Ass. Colors—Big Roll

Dial Soap 4 for 85¢
Gold, Pink, White—Bath Size

Cream Pies 4 for \$1
Bellair Frozen, Banana, Chocolate, Coconut, Lemon—14-oz. Pkg.

Ice Milk 49¢
Lucerne, Assorted Flavors, 1/2-Gallon Carton

Dinners 3 for \$1
Morton, Frozen, Chicken, Turkey, Beef, Salisbury Steak—11-oz. Pkg.

Potato Soup 5 for \$1 **Pizza** 59¢
Campbell, Frozen—10-oz. Can. Bellair, Cheese—16-oz.

Liquid Bleach 23¢
Purex—Quart Plastic Bottle

Detergent 49¢
Trend—Giant Box

Liquid Detergent 69¢
Trend—32-oz. Plastic Bottle

Liquid Starch 49¢
Sta-Flo—1/2-Gallon Jun

Sta-Puf Rinse 47¢
Quart Plastic Bottle



Fryer Parts!
Cut from U.S.D.A. Inspected Grade A Fryers.

Breast or Pulley Bones —Lb. 69¢
(5-Lb. Box Breast... \$2.79)

Thighs or Legs —Lb. 49¢
(5-Lb. Box Legs or Thighs... \$2.39)

Fryer Wings —Lb. 29¢
(5-Lb. Box Wings... \$1.39) Serve Chicken Stew.

Fryer Livers —8-oz. Pkg. 3 for 79¢
Delicious Fried.

Perch Fillets Or Cod or Rockfish, Raw—Lb. 49¢

Corny Dogs Woody's—Package of 5 49¢

Bacon Squares Smoked Chunks—Lb. 49¢

Bacon Squares Smoked Sliced—Lb. 55¢

Safeway Quality Meats!

FRYERS 29¢
Fancy Whole, U.S.D.A. Inspected and Grade A. Ready for frying.
(Cut-Up Fryers 31¢) Lb. Manor House—Lb.

Boneless Roast 69¢
Chuck or Shoulder, U.S.D.A. Choice Beef—Lb.

Chuck Steak 59¢
U.S.D.A. Choice Heavy or Baby Beef—Lb.

Pork Loin Quarter Sliced—Lb. 69¢

Sliced Bacon Safeway—1-Lb. Pkg. 75¢

Franks Samuel's Mohawk—1-Lb. Pkg. 55¢
Sterling Franks—1-Lb. Pkg. 49¢

Canned Picnic Samuel's Mohawk 3 for \$1

Short Ribs U.S.D.A. Choice Grade Heavy Beef—Lb. 35¢

Bologna Jumbo, Sliced—1-Lb. Pkg. 59¢

Anti-Freeze Penn Champ—Gallon \$1.39

Hosiery 2 Pairs 88¢
Nylon, Seamless.

Room Deodorant 39¢
Breath of Spring, 7-oz. Can

SAVE at SAFEWAY
It takes less books to Get More Gifts with
GOLD BOND STAMPS

This Coupon Worth 25 Free Gold Bond Stamps
Plus your regularly earned Gold Bond Stamps with the purchase of 13-oz. Carton TOMATOES
Coupon Expires October 9, 1965.

This Coupon Worth 75 Free Gold Bond Stamps
Plus your regularly earned Gold Bond Stamps with the purchase of 3-Lb. Pkg. Safeway Club-Pak GROUND BEEF
Coupon Expires October 9, 1965.

This Coupon Worth 50 Free Gold Bond Stamps
Plus your regularly earned Gold Bond Stamps with the purchase of 48-oz. Bottle Nu Made SALAD OIL
Coupon Expires October 9, 1965.

This Coupon Worth 25 Free Gold Bond Stamps
Plus your regularly earned Gold Bond Stamps with the purchase of 8 1/2-oz. Can LUCERNE CREAM TOPPING
Coupon Expires October 9, 1965.

This Coupon Worth 50 Free Gold Bond Stamps
Plus your regularly earned Gold Bond Stamps with the purchase of Regular Package Cozy Kitchen ASSORTED CAKES
Coupon Expires October 9, 1965.

Prices and Coupons Effective Thurs., Fri. and Sat., Oct. 7, 8 and 9 in... EASTLAND
We Reserve the Right to Limit Quantities. No Sales to Dealers.

