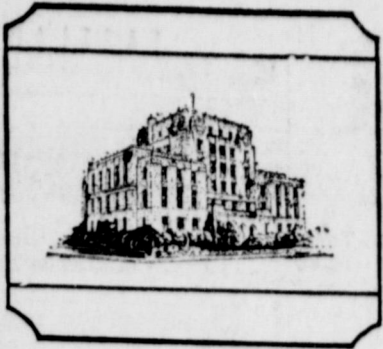


before op- as do good - Gal 6:10. ple kindness; you may not like widening ernity.



# EASTLAND TELEGRAM



A Day's Pay  
The UNITED Way!  
Say 'Yes' Generously

NUMBER 85

EASTLAND, TEXAS 76448, SUNDAY, OCTOBER 24, 1965

10 Cents

## Retail Merchants Exec Wednesday Speaker Here

Mr. Lux received a B. A. degree from the University of Texas in Austin, 1925. Upon graduation he was appointed credit manager and personnel director of Washer Bros. in San Antonio, a position which he held for nine years. He has served as a director of the San Antonio Retail Merchants Association for five years and is past president of the Retail Credit Executives of San Antonio.

In September, 1934, he was appointed executive vice president of Retail Merchants Association of Texas and the Associated Credit Bureaus of Texas.

When the Secretaries Presidents Association of the Associated Credit Bureaus of America was organized in 1956, Mr. Lux was selected the first president. When his term expired, he was re-elected to serve another year. He has served as an instructor of the institute since its inauguration.

As a nationally recognized authority on retail trade procedures, particularly consumer credit, Mr. Lux is frequently called upon to write articles on the protection and promotion of consumer credit. His latest work is a pamphlet tracing the history of bankruptcy and procedures to alleviate bankruptcy problems.

Mr. Lux, who edits the monthly publication of the ACB of Texas, is a member of the Austin Rotary Club,

noon at the White Elephant Restaurant, President Grover Hallmark has announced. It will be a dutch lunch and the public is cordially invited to attend and hear this well-known speaker.

## Tickets On Sale For QB Pancakes

Tickets are still on sale at Earl Bender's, Corner Drug and The Men's Shop in Eastland for the Quarterback Club pancake supper to be held on Thursday, Nov. 4 at the Elementary School Cafeteria. The time will be from 5 until 10 p.m., according to President Bill Bass.

Proceeds from the supper will help pay for the football banquet, scheduled to be held Nov. 16, when Delmer Brown will be speaker.

SHOP EASTLAND FIRST!

## W. H. Drake Is Buried In Tulia

Funeral services for Mr. W. H. Drake were held at 2 p.m. Friday at the Wallace Funeral Home in Tulia.

Mr. Drake was a resident of Eastland until Oct. 13, when he moved to Earth, where his brother lives. He spent a lengthy period of time in the Eastland hospital before moving.

He was preceded in death by his wife, Millie Drake, who passed away on Aug. 14, 1965.

Mr. Drake was a well educated Bible student and was a member of the First Christian Church and the Men's Bible Class.



'JUST RIGHT STEAK' — Mrs. Clint Bray samples a tasty morsel of steak, preffered by A. J. Sanders during a steak fry at Eastland's City Park Thursday evening during an outing of the Pioneer Club of Southwestern Bell Telephone Co. Members and families enjoyed the cookout amid the gale winds and wintery evening. (Photo by Lloyd Armstrong.)

## Carolyn Thomas, Donna Viergever Are Football, Band Sweethearts



CAROLYN THOMAS ... football sweetheart



DONNA VIERGEVER ... band sweetheart

Two beautiful high school girls were presented as football sweetheart and band sweetheart Friday night. Miss Carolyn Thomas, daughter of Rev. and Mrs. A. J. Thomas, was crowned football sweetheart and Miss Donna Viergever was crowned Eastland Band Sweetheart. Both are seniors at Eastland High School.

The girls were presented at half-time of the Eastland-Ranger game. Donna was presented by Eddie Gallagher, president of the band. Carolyn was presented by Ted Martin, football captain.

Other football nominees were Lois Ann Sims, Anna Huffman, and Sherry Butler.

Band nominees were Miss Viergever, Sharon Gist, and Dana Edwards.

## Mavs Maul Dogs, 18-0, In Shocker!

Eastland's new-suited Mavericks were fired to a fever peak Friday night and appeared incapable of doing wrong as they put together an offensive game that left the District-Hopel Ranger Bulldogs with an 18-0 blasting.

A packed Maverick Stadium roared as the Mavs scored in the first, second and last quarters, and time and time again stalled Ranger drives. The Bulldogs, with stalwarts on the sidelines with injuries, never got their offense wound up, and netted only seven first downs all in the last quarter.

The Mavericks, who had lost the services of their No. One Quarterback Jerry McCullough, early in the season, had found themselves new material and light, but ready, Gene Wilson spirited the team throughout the tussle, assisted twice by ball throwing Jim Herridge.

Halfback James Fullen and Fullback John Moylan nosed out well-earned yardage, netting most of Eastland's gain on the ground. Fullen had 85 yards and Moylan 68.

Fullen opened scoring in the first quarter when he romped over from six yards out. Try for extra failed as it did following the other two touchdowns.

Behind Wilson's leadership, the Mavericks marched for their second touchdown in the second quarter. Wilson ended the 50-yard drive with a 15-yard toss to End Larry Wilson who went over in a breeze.

Moylan romped 40 yards in the final period for the third and final tally. Defensively Tommy McCullough and Guard Rodney McCoy, who also did a splendid punting job during the evening, were standouts.

End Ted Martin and Moylan each snagged a Ranger pass to break up threats from the invaders.

The Bulldogs' only smell of goal-dust came following a punt-return by Wingback Mike Landtroop who had perfect protection and clearance by his teammates. The goal was in sight as last-Mav-around Johnny Moylan snagged a shoestring and pulled Landtroop down on the 12-yard line. An interception by the Mavs stopped the threat cold on the next Ranger play.

(Continued on page 2)

GAME AT A GLANCE		
Eastland	Ranger	
12	First downs	7
253	Rushing yardage	76
32	Passing yardage	62
3 of 11	Passes	7 of 23
2	Passes Intercepted	1
6 for 35	Punts	3 for 34
0	Fumbles lost	2
10 for 50	Penalties	2 for 30

Score by quarters:  
EASTLAND -- 6 6 0 6--18  
RANGER -- 0 0 0 0--0

... Terry Tread... of the Abilene... tournament... with an H... to win the... last weekend.

... DRYING opera... and County are... visiting this past... Melvin Shell... Gorman Peanut... at his plant has... capacity for dry... per cent -- and... this plant at the... season, you... per cent more is... available goobers.

... an interesting... week down at Hor... service, when we... ed to Mr. J. P... his Clifton. Mr... ropes, is the illu... rator of the old... bone Says" fea... appears in many... on Page 2)

... Scott... Thurs.

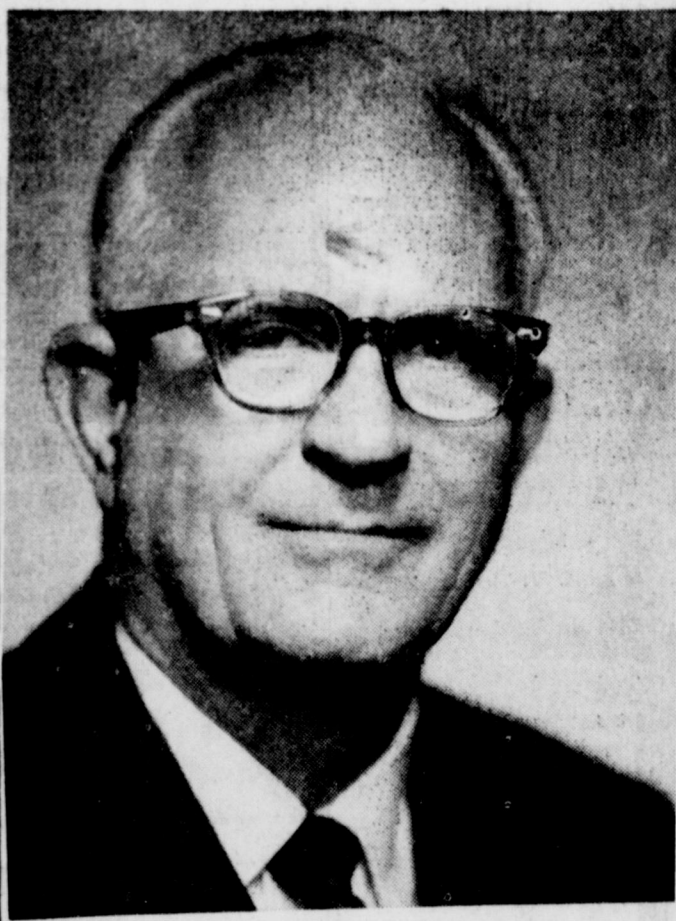
... vices for Henry... 80, were held... Thursday in... Ramner Funeral... Rev. J. Lester... ator of the First... church, officiating.

... 18, 1885. Mr... away on Oct. 20... a resident of... ce 1928 and was... the First Metho...

... include three... atin, Leslie and... shines, all of Wi... and three nieces... Townsend and... Kinburg, both of... Mrs. Roberta... ita Falls.

... was in Eastland... arrangements were... in Arrington Ham... Home.

... TO LOANS, See... National Bank... TEXAS



Mr. Charles T. Lux ... To Speak Here

## Pecan Growers To Meet Monday

Members of the Eastland County Pecan Association will meet at 7:30 p.m. Monday, Oct. 25, in the Reddy Room of Texas Electric Service Co. It has been announced by Ben McKinnis, secretary.

Ballot cards, which were mailed about two weeks ago to all members of the Association, will be counted to determine where the show will be held Dec. 10-11.

ATTENDS CONVENTION Miss Mattie Hubbard attended the Texas Inventors Congress held in Odessa on Oct. 15-17 and exhibited her invention of an infant seat and bed and a multi-purpose chair.

SHOP EASTLAND FIRST!

## RESOURCES OF BANK HIT NEW HIGH MARK IN CALL

The total resources of the Eastland National Bank stood at an all-time high of \$5,789,469.82 when the quarterly call came Oct. 13 from the U. S. Comptroller of the Currency, according to President H. T. Wilson.

This third-quarter total is some \$200,000 above the mid-year figure of \$5,583,192.76. Deposits currently reported total \$5,318,775.63 and amount on loan is \$2,530,428.09. Amount on loan is down slightly from the June 30 report of \$2,533,214.91 but deposits are considerably above the \$5,129,402.59 at mid-year.

A year ago, the third-quarter report showed \$5,1530,

632.35 total resources, with \$4,693,179.62 on deposit and \$2,261,681.29 on loan. Resources of the bank continue to increase each quarter indicating a healthy, steady growth in the city and trade area.

The April (first quarter) resources, this year, were \$5,470,439.13 with \$5,019,713.27 on deposit and \$2,409,254.65 on loan. "We like to think that the condition of the bank is a good reflection of the community generally. It is a source of real pride to serve an area of progressive people such as ours," Mr. Wilson said.

## Rotary District Leader To Visit Here Monday

Mr. Walter Riley, district governor, will make an official visit to the Eastland Rotary Club on Monday, Oct. 25, at 12 noon. The club assembly is scheduled for 7 a. m. on the same day.

A member of Texas Independent Producers - Owners Association and Dale Carnegie International, Mr. Riley has been an active Rotarian since first becoming a member of the organization in 1937, and has never missed a meeting.

He served as president of Rotary in Burkburnett, where he is a resident, from 1948 until 1949, was chairman of International Committee for ten years and has attended several national conventions.

Receiving his education in Oil City Public Schools in Louisiana, Mr. Riley began apprenticeship as machinist in 1924. He began operating Riley Machine Shop in 1937 and currently operates a successful Machine Shop and Oil Field Supply House in Burkburnett.

He is a former member of both the City Council and the Chamber of Commerce, is former mayor of Burkburnett and has been active in Camp Fire Work.

All Rotarians are urged to attend the Oct. 25 assembly and noon luncheon meeting, President A. D. Taylor announced.



WALTER RILEY ... here Monday

## EVFD to Host Special Course

The Eastland Volunteer Fire Department will be host to Olden, Carbon, Cisco and Ranger departments in Eastland for a special explosive demolition school Nov. 25, 26, 27 and 28. Eastland Volunteer Chief Wayne Jackson has announced.

Conducting the special school will be personnel of the 47th Ordinance Detachment Explosive Demolition Team from Fort Hood.

Site for the four-day school will be the Eastland Fire Department Headquarters and purpose of the school will be to give expert instruction in the safe demolition of explosives which may be found in this area occasionally.

## Bonfire Torched Early; Second Is On Schedule

The Eastland High School Cheerleaders want to thank everyone who helped in building the bonfire for last Thursday night's pep rally. Especially those people who furnished wood and various other articles for the "second" bonfire.

Wood gather for the fire last Tuesday & Wednesday nights mysteriously caught ahead of time Wednesday night and a second bonfire was needed for the Thursday night official burning.

Whether opponents had set a torch to the material or not was still a matter of conjecture -- but the fact remains that the Mavs were victorious bonfire No. One or Two notwithstanding.



CREDIT UNION QUEEN — Mrs. Kate Dixon of Breckenridge was crowned Queen of the Hollywood-Vassarette Credit Union by Manager Don Viergever during a ceremony at the local plant Friday morning. Runnersup were Nelda Gary of Cisco and Charlene Bruton of DeLeon. Gwen Simmons of Eastland is retiring queen. Corsages and pretty smiles were much in attendance as the employes saw their nominees and selections honored, in observance of National Credit Union Day.

CHARLIE CHUCKLES says:

A car hit a tree with a "wham"  
The driver's as meek as a lamb  
As they put him to bed  
To the sheriff he said  
"I'm not as thunk as you drink I am."

... ..

'Nuff said about that feller. But if you're feeling low, a trip to Fullen Motor Co. will really pick you up.

FULLEN MOTOR CO.  
305 E. Main St. Eastland MA 9-2676



GRAM  
y. October  
ND  
LAMA  
707  
Eastla  
e, establ  
ablishe  
the Post  
of Congr  
lays and  
papers, the  
itor  
er in city,  
county, \$3  
year by  
open the  
firm or e  
this news  
ght to th  
HAVER  
tinued fro  
d-gainer  
rking in  
t for R  
ent to ha  
d had tre  
r's Wedding  
lofs and  
the air  
cost the  
und.  
ness, if  
to be th  
as they  
ards on  
or moti  
problem  
for 30,  
foul.  
d earned  
owns in  
er got d.  
Wat  
during  
g with  
2 yards.  
32 yard  
g conn  
riday  
two team  
n, with  
I re  
thy De  
the M  
h an of  
eon th

**THEATRE**  
**MAJESTIC**  
SUNDAY — MONDAY  
Shows 1:15 - 3:15 - 5:15 - 7:15 - 9:15  
Shows 5:15 - 7:15 - 9:15  
SHETTE — BRADFORD DILLMAN  
IN JOHN O'HARA'S  
**"RAGE TO LIVE"**  
FACE CALDWELL TATE —  
AND PLACES DIDN'T MATTER —  
ONLY WHEN!  
75c Discount 50c  
SDAY — WEDNESDAY  
"An Evening with  
the Royal Ballet"  
S DAILY — 4:00 P. M. & 8:00 P. M.  
TS \$1.50 — STUDENTS \$1.25  
NOW ON SALE — CALL MA 9-1120

**TOY DRIVE-IN**  
Opens 6:45 — Stars 7 p.m.  
TWO BIG FEATURES  
LAST NIGHT  
This Feature At 7:00  
**THE HUMAN DUPLICATOR**  
This Feature At 8:30  
**NOVAK-HARVEY**  
OF HUMAN BONDAGE  
MARGOT FONTEYN AND  
RUDOLPH NUREYEV —

### Jack Cozart Re-Elected President Farm Bureau

The Eastland County Farm Bureau Convention was held Tuesday night at the First Christian Church annex, with the Kendrick Quartet providing entertainment.

Officers elected at that time were the following: Jack Cozart of Cisco, re-elected president; B. T. Graham of Cisco, vice president; and Herman Schaefer, Cisco, second vice president.

A committee report was given and Membership Chairman John Love reported that 661 families in the county are members of the Farm Bureau.

Other reports included Public Information by Cyrus Justice, Service Committee by Willie Cantrell, Policy Execution by Herman Schaefer, Scrapbook by Mrs. Henry Fry and the Womens Report by Mrs. Dora Schaefer.

New directors elected were Herman Schaefer, Jack Cozart, Ray Norris, Luke Palmer, Mrs. Henry Fry, Glenn Jordan, Ed Harrison, K. F. Kirk, R. L. Ricks and Earl Lane.

Holdover directors are J. C. Coats, Sam Kimmell, John Love, J. D. Griffin, Jr., W. O. Cantrell, Henry Fry, Aubrey Easter, B. T. Graham,

### MISS WANDA WATSON

Miss Wanda Watson, a North Texas State University graduate, began her duties in Eastland County as assistant home demonstration agent on Oct. 1. She replaced Miss Delmelia Dunn, who is presently serving as home demonstration agent in Meridian, Bosque County.

Receiving her B. S. degree in Vocational Home Economics at North Texas, Miss Watson has been in training as junior assistant in Fall County since she graduated in June of 1965.

She is the daughter of Mr. and Mrs. W. J. Watson of Jonesboro and in this county, she will be working with 4-H Clubs.

Calvin Coolidge wrote a history of the United States in five hundred words.

France was the first country to recognize the United States of America.

**STOP WORRYING!**  
**HELP!**  
**IS ON THE WAY!**  
CALL MA 9-1120

EASTLAND TELEGRAM  
Sunday, October 24, 1965 Page Three

### JUNIOR BOWLING

AT  
**FIESTA BOWL, Eastland**

Starting Saturday, Oct. 23, 9:30 to 12:30  
Bowling 25c per game — shoes free

Join your A.J.B.C. Junior League  
Have your own team.

**FREE INSTRUCTIONS**

READ THE CLASSIFIEDS

### CHILI

WOLF'S No Beans No. 2 Can **59c**

BAKE-RITE SHORTENING  
3-Lb. Can **59c**

CAMPBELL'S — 10 1/2-oz. Cans  
SOUP All Meat Varieties **6 for \$1**

PATIO FROZEN CHEESE — 12-oz. **39c**

ENCHILADAS **39c**

MORTON'S FROZEN — Makes 3 Loaves  
BREAD DOUGH **39c**

FOLGER'S SHURFINE, MARYLAND CLUB, MAXWELL HOUSE

### COFFEE

With \$7.50 or more purchase **49c**

SHURFINE FROZEN ORANGE JUICE 12-oz. can **29c**

PAL PEANUT BUTTER 16-oz. jar **39c**

SHURFINE RED SALMON No. 1/2 can **65c**

ZEE TOILET TISSUE 4-roll Pkg. **29c**

**JRB**  
SUPER MARKETS  
S&H GREEN STAMPS  
RANGER — EASTLAND — CISCO  
We Reserve the Right to Limit Quantities — No Sales to Dealers

**DOUBLE Green Stamps**  
on Wednesday  
With Purchase of \$2.50 or More

**J.R.B. BONUS STAMP COUPON**  
50 Free S&H Green Stamps with purchase of 1-lb., 14-oz. Chef Boy-Ar Dee All-Beef Chili  
Void After Oct. 27, 1965

**J.R.B. BONUS STAMP COUPON**  
50 Free S&H Green Stamps with purchase 3 18-oz. jars Bama Jam, Jelly or Preserves  
Void After Oct. 27, 1965

**J.R.B. BONUS STAMP COUPON**  
50 S&H GREEN STAMPS with purchase 2 pkgs. Twin-Pack Softlin Paper Towels  
Void After Oct. 27, 1965

### ATTENTION!

**MR. PEANUT FARMER**

Market your Peanuts with us.

PRICES paid for both SACKED and BULK peanuts

(90) Drying Bins and large lighted parking lot available for your use

**DRYING CHARGES FOR 1965 SEASON**  
EFFECTIVE SEPTEMBER 1

Level	Per Ton Basis
ough 17%	\$10.00 Per Ton
ough 24%	\$16.00 Per Ton
ough 29%	\$18.00 Per Ton
	\$23.00 Per Ton

**CLEANING CHARGES**  
Per Ton Basis  
Gross Weight before Cleaning  
**\$8.00 Per Ton**

uts to be cleaned and dried add \$3.00 per ton Gross Weight per ton to the applicable drying charge.

Will Pay You to Check With Us Before Selling

Latest information available to you covering recommended level for combining and drying to preserve best quality

**COMPT — EFFICIENT — COURTEOUS SERVICE**

**GORMAN PEANUTS**

DIVISION OF AMERICAN COLD STORAGE CORPORATION  
Gorman, Texas  
Telephone Area Code 817 RE 4-2266

- BO PEEP
- Ammonia — pint 17c
  - FRITO — No. 1
  - Bean Dip — can 29c
  - REALEMON — 8-oz.
  - Juice — can 29c
  - AUSTEX — 15-oz.
  - Beef Stew — can 41c
  - SIoux EXTRACTED — 12-oz.
  - Honey — jar 39c
  - TOWIE SALAD — 10-oz.
  - Olives — jar 49c
  - ARROW — Cello Bag
  - Popcorn — 2 lbs. 29c

**KRAFT**  
**VELVEETA**  
"CHEESE SPREAD"  
2-Lb. Box **79c**

**J.R.B. BONUS STAMP COUPON**  
50 Free S&H Green Stamps with purchase (3) No. 2 1/2 cans DEL MONTE PEACHES  
Void After Oct. 27, 1965

**J.R.B. BONUS STAMP COUPON**  
50 Free S&H Green Stamps with purchase 3 lbs. or more BEEF ROAST  
Void After Oct. 27, 1965

**J.R.B. BONUS STAMP COUPON**  
50 Free S&H Green Stamps with purchase of 2 or more SIRLOIN STEAKS  
Void After Oct. 27, 1965

**J.R.B. BONUS STAMP COUPON**  
50 Free S&H Green Stamps with purchase of Gladiola or SHURFINE FLOUR  
Void After Oct. 27, 1965

**J.R.B. BONUS STAMP COUPON**  
25 Free S&H Green Stamps with purchase of quart jar AF PICKLES  
Void After Oct. 27, 1965

**PRODUCE DEPARTMENT**

TOKAY GRAPES **19c**

DELICIOUS APPLES **19c**

YELLOW ONIONS **5c**

INDIAN RIVER GRAPEFRUIT **15c**

**MARKET DEPARTMENT**

**SMOKED HAM**

Shank Portion 4 to 6 lbs. — **49c**

Butt Portion 6 to 7 lbs. — **59c**

Shank Halves 7 to 8 lbs. — **59c**

Butt Halves 7 to 8 lbs. — **65c**

CENTER SLICES — Lb. **99c**

PRICES EFFECTIVE OCT. 25 - 26 - 27

**DAR To Meet Monday In Mrs. Owen's Home**

The October meeting of the Charles Crawford Chapter, Daughters of the American Revolution, will be held in Eastland Monday, Oct. 25, at 3 p.m. in the home of Mrs. W. D. R. Owen, 1203 South Seaman. All members have been urged to attend, as reports of

the Division meeting will be given in addition to the regular program.

Transportation to Eastland will be available for those who need it.

**November Bread Workshop Scheduled In This County**

Beverly Nicholson, county home demonstration agent; Wanda Watson, assistant agent; and Frances Rooney, the home service advisor of Texas Electric Service Company will show you how to make bread and rolls at a Breads Workshop in November.

During the workshop, you will learn how to make quick breads, yeast rolls and fancy breads; also, how to freeze breads and rolls.

The workshop will be held in Eastland in the Reddy Room of the Texas Electric Service Company from 9:30 a.m. until 3:30 p.m. It will be open to anyone interested at no charge. Lunch for the day will be prepared during the workshop.

Due to the nature of the event, a pre-registration will be necessary in order that preparations can be made according to the number attending.

Below is a form for you to fill in and return by Nov. 9. You will notice there are three dates listed for the workshop. Please indicate the day you would like to attend by writing first choice and second choice beside the dates that would be most convenient for you. On each of the three dates listed, the same program will be given; however, space is limited so the H. D. agents will need to work with smaller groups instead of having the workshop just one day.

"Be sure to give your name and correct mailing address and we will notify you if we have to arrange for you to attend on the date of your second choice," Mrs. Nicholson stated, and encourage friends who might be interested in the workshop to fill in the form below and mail today."

Clip and mail to:  
Mrs. Beverly Nicholson  
P. O. Box 495  
Eastland, Texas  
By November 9, 1965

Name \_\_\_\_\_  
Mail address \_\_\_\_\_  
Town \_\_\_\_\_

Indicate 1st choice and 2nd choice for 9:30 - 3:30 daily on Nov. 16— Nov. 17—, Nov.—  
(Check one)

The shot fired by the American colonists at Concord was the "shot heard round the world."

Napoleon crowned himself Emperor of France.

Wallabies are baby kangaroos.

**NOTICE**

Water Well Service  
Pulling & Bailing  
30' Mast for 20' Pipe

A. O. HOOVER  
Olden, Texas  
Phone 2372

**Your Lowest Long Distance Rates Are in Effect All Day Sunday**

Why wait till 8 or 9 p.m. to call? Telephone Sunday any time, anywhere in the continental United States (except Alaska) for \$1\* or less. \*Three minutes station-to-station

**Southwestern Bell**



**Bowling News**

**BOWLING RESULTS LADIES TUESDAY NIGHT LEAGUE**

October 19, 1965

	W	L
Poe Floral	28	4
Koen Salvage	24	8
Scott's Bait House	18	14
Kinnard Ins.	18	14
VC Menuettes	18	14
Fiesta Bowl	16	16
Modern Dry Cleaners	14	18
Central Drug	14	18
Roy's Repair Service	14	18
Altman's	12	20
Hollywood Casserette	10	22
Johnson Appliance, Ran.	6	26

**HIGH TEAM 3 GAMES**

Kinnard Ins.	2262
Altman's	2254
VC Menuettes	2240

**HIGH INDIVIDUAL 3 GAMES**

Lou Dell Bryan	525
Jane Carter	520
Modell Gann	515

**HIGH TEAM GAME**

Kinnard Ins.	828
Altman's	821
Koen Salvage	788

**HIGH INDIVIDUAL GAME**

Helga Tiner	199
Ruby Barton	198
Lou Dell Bryan	192

**ABEL ALLEY CAT says:**

"I'm Not Being Catty, But My Offer is Good Only Until I Join the Witch on October 31!"

CALL ME TODAY FOR

**FREE HOOK UP**

AND 30 DAYS

**FREE SERVICE**

ON ABEL CABLE

Absolutely No Obligation!

Get Better Looking With a Cable Connection!

**SOUTHERN TV SYSTEMS CORP.**

PHONE MA 9-1580

EASTLAND

**RANGER DRIVE-IN THEATRE**

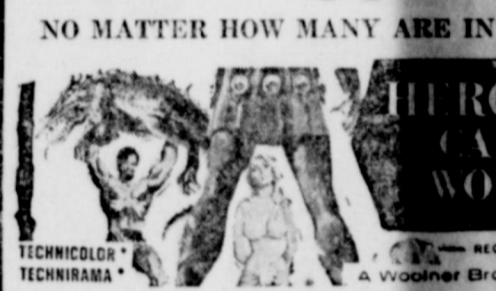
Adults 50c Kiddies Under 12c  
Box Office Open 6:45 — Show Starts 7:00

SUNDAY — MONDAY — TUESDAY  
OCTOBER 24 - 25 - 26



EACH WEDNESDAY IS

BARGAIN NITE 50¢ CAR



COMING: SONS OF KATIE

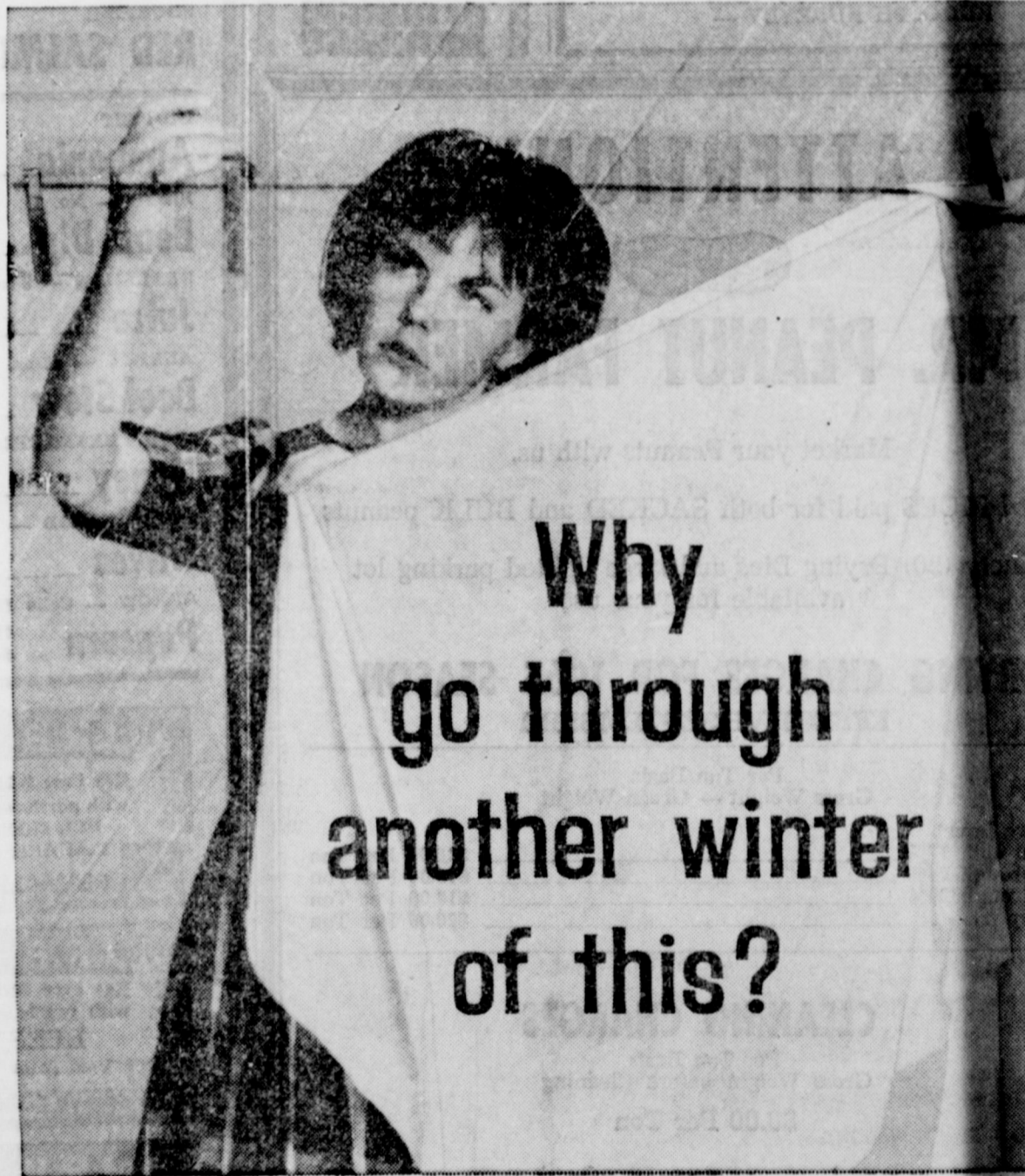
**MAJESTIC IN EASTLAND**

PERFORMANCES AT 2:00 AND 8:00 DAILY  
**AN ACTUAL PERFORMANCE!**  
Through breathtaking new techniques in film making and highest fidelity sound



TECHNICOLOR® FROM WARNER BROS.  
Premiere Performances 4 Times only—November 3 and 4, 1965

Artistic Director and Conductor, Herbert von Karajan  
Production Designed and Directed by Franco Zeffirelli



Why go through another winter of this?

See your dealer soon about his special installation offer on an ELECTRIC DRYER

You can forget winter weather worries—dry clothes in indoor comfort anytime—when you have an electric clothes dryer. And right now's the time to buy—now while you can take advantage of your dealer's money-saving special installation offer. You actually save two ways by buying your electric dryer now. You save on initial cost because an electric dryer costs up to \$40 less to buy than other types. And you save again because of the special installation offer now in effect. See your electric dryer dealer soon. Enjoy weatherproof washdays the clean, modern, flameless way... electrically!



Waltz through waspday... with a flameless electric dryer!

**TEXAS ELECTRIC SERVICE COMPANY**

FRANK SAYRE, Manager Phone MA 9-2651

## WEEK OF REVIVAL



OCTOBER 24-31, 1965

YS — 10:50 and 7:00 o'clock.  
Y through FRIDAY — 7:00 a. m. and 7:15 p. m.  
-Opener — Coffee and doughnuts: 6:30 a. m.  
Dr. S. Wayne Reynolds, Guest Speaker  
J. Lester Davenport, Pastor and Song Leader  
e Gospel with Methodist Flavor — A Hearty Welcome to All

### FIRST METHODIST CHURCH

S. Mulberry — EASTLAND — MA 9-1022

## Nieces, Nephews Fete Miss Sallie Day Here On Her 95th Birthday

Nieces and nephews of Miss Sallie Day made last Wednesday, Oct. 13, a very happy occasion for their aunt at Sunrise Manor Nursing Home, where she resides. At 1 p. m. Wednesday, Miss Day celebrated her 95th birthday.

A lovely birthday cake, given to Miss Day by two great nieces, Mrs. R. L. Wright of Fort Worth and Mrs. Cecil Mayfield of Arlington, was decorated with white icing and artificial orchids. An inscription on the cake read "Happy 95th Birthday to Our Aunt Sallie."

Another cake given to Miss Day from friends in Fort Worth was decorated with two shades of pink icing, inscribed with "Happy Birthday to Aunt Sallie from The Don Pearsons." The cake represented a birthday card.

Two tables held refreshments for the party. One from which cake and re-

freshments were served, was decorated with an arrangement of beautiful orchid mums; and another table held a crystal punch bowl, filled with iced red cherry punch, covered with an orchid net cloth and narrow purple ribbon. A tall silver candelabra also graced the table.

Guests were welcomed by Mmes. R. E. Sikes, Frank Day and Clyde Garrett. As Miss Day greeted her friends, she was showered with many beautiful gifts and floral arrangements.

Refreshments of cake and punch were served by Mmes. Cecil Mayfield, R. L. Wright and Harry Wood.

Perhaps the most enjoyable surprise of the afternoon for the honoree was the arrival of Mrs. Minnie Wood Wood Palmer of Dallas, sisters of the late Earnest Wood, whom Miss Day had

not seen for ten years. Other out-of-town guests were Mrs. Lon Day of Fort Worth, Carl, Emma and Dave Fambrough of Breckenridge, Mrs. Will Wood of Abilene, Billie Wood, of Abilene, and Mrs. G. W. Wilcox of Cisco. Eastland relatives who attended the party were Mr. and Mrs. Neil Day, Mrs. Milton Day and Mrs. Sue Ragsdale.

Several flash bulb pictures were taken of Miss Day, her room-mates, nurses and relatives.

Major & Minor  
**ENGINE TUNEUPS**  
•  
**COMPLETE BRAKE SERVICE**  
•  
**WHEEL BALANCING & ALIGNING**  
•  
**VIC'S AUTO REPAIR**  
305 W. Main  
MAIN 9-2111  
Eastland

**COMPLETE AUTO SERVICE CENTER**

**GET YOUR AUTO READY FOR WINTER NOW!**

**24 HOUR TOWING SERVICE**

24 HOUR WRECKER SERVICE

Complete SAFETY INSPECTION CENTER  
Auto Repairs

Phones  
MA 9-2270  
Night  
MA 9-2224

**Allen Auto Repair**  
At Rushing Motor Co.  
215 South Seaman

Let Yourself Go PLYMOUTH



The 1966 PLYMOUTHs Are Here Now!

PLUS: Strictly BANK-RATE FINANCING

See for Yourself at

## RUSHING MOTOR CO.

SEAMAN EASTLAND MA 9-2430

## Music Club Hospitality Awaiting

The Music Study Club will join in the promotion and ticket sale for the ballet movie to be shown Tuesday and Wednesday, Oct. 26-27, and the opera, Nov. 3-4 at the Majestic Theatre in order to guarantee a flourishing production, according to Mrs. Donald Russell, president.

A hospitality committee will be on hand to welcome audiences for all performances and the club will serve punch and coffee to the first night's audience, Mrs. Russell said.

Matinees will begin each evening at 4 p.m. and the film will run for a period of one hour and 45 minutes.

Advanced tickets may be purchased from Mrs. Floyd Robertson at Altman's.

Celebrating the 65th ANNIVERSARY of FIRESTONE!

## Firestone Champion Nylons

Built with Firestone speedway proved SUP-R-TUF rubber for EXTRA mileage, safety and durability

SIZE	Tubeless BLACKWALLS		Tubeless WHITEWALLS	
	1st Tire*	2nd Tire*	1st Tire*	2nd Tire*
6.00-13	\$15.80	\$ 7.90	\$18.65	\$ 9.32
6.50-13	17.15	8.57	20.05	10.02
7.00-14(7.75-14)	20.45	10.22	23.20	11.60
7.50-14(8.25-14)	23.10	11.55	25.90	12.95
8.00-14(8.75-14)	25.35	12.67	28.10	14.05
8.50-15(9.00-15)	28.85	14.42	31.50	15.75

\*All prices plus tax. No trade-in needed

Limited Time OFFER!

Get the 2nd TIRE for

# 1/2-PRICE

Buy the 1st Firestone Champion or Safety Champion at price listed ... get the 2nd tire for ONE-HALF THAT PRICE!

## Firestone Safety Champion Nylons

Deeper tread and 10% more traction edges give you 25% MORE MILEAGE than the Firestone Champion

SIZE	Tubeless BLACKWALLS		Tubeless WHITEWALLS	
	1st Tire*	2nd Tire*	1st Tire*	2nd Tire*
6.00-13	\$19.85	\$ 9.92	\$23.15	\$11.57
6.50-13	21.00	10.50	24.35	12.17
7.00-14(7.75-14)	23.35	11.67	26.65	13.32
7.50-14(8.25-14)	23.80	11.90	27.05	13.52
8.00-14(8.75-14)	27.25	13.62	30.50	15.25
8.50-15(9.00-15)	29.90	14.95	33.05	16.52
8.00-15(8.85-15)	33.30	16.65	36.45	18.22

\*All prices plus tax. No trade-in needed

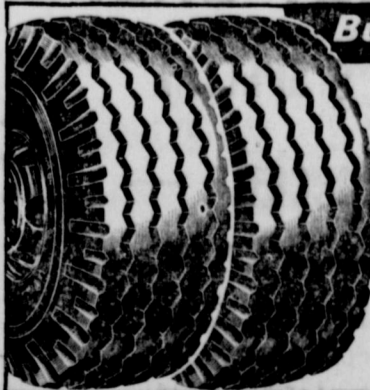
NO MONEY DOWN

Charge	Pay Only
\$50.00	\$5 Per Mo.
\$75.00	\$7 Per Mo.
\$95.00	\$9 Per Mo.

Priced as shown at Firestone Stores; competitively priced at Firestone Dealers and at all service stations displaying the Firestone sign.

Buy NOW and SAVE!

Buy Now... At Less Than Passenger Tire Prices!



## Firestone TRANSPORT NYLON TRUCK TIRES

- Shock-Fortified Nylon, 6-Ply Rating
- Sup-R-Tuf Long Mileage Rubber
- Famous Gear-Grip, Non Skid Tread Design
- Comparable size—original equipment quality.

**2 FOR \$28.90\***

Size 6.00-16 Plus tax and 2 tires off your truck

Low, Low Prices. On All Other Sizes

# HORTON TIRE SERVICE

403 East Main — EASTLAND — MA 9-1420

# Penney's EOM End-of-month clean-up!

FOR WOMEN!		FOR GIRLS!	
DRESSES	\$3 to \$8	DRESSES	\$2 & \$3
BLouses	\$1.44 & \$2.44	BLouses	\$2 & \$3
PANTS	\$1.44 & \$2.44	PANTS	\$2.00
ARM HOUSE COATS	\$2.99	PETTI PANTS	44c

MENS SUITS	Reg. \$47.95 — now \$40.00
MENS SPORT SUITS	Reg. \$29.95—now \$20.00
MENS DRESS PANTS	\$3 & \$5

SEWING SAVINGS!		FOR THE HOME!	
COLL	\$1.88 yd.	THERMAL BLANKETS	\$4.99
DUROY	68c yd.	DUAL CONTROL	
ITTON DENIM	44c yd.	ELECTRIC BLANKETS	\$13.66
		(2-Year Guarantee)	

## BARGAIN TABLES GALORE YOUR CHOICE \$1.00

- Boys Shirts
- Infant Crawlers
- Womens Shorts
- Mens Walk Shorts
- Window Blinds
- Window Shades

Many Other Items! Just a Few of Some! Hurry! Save!

Charge It At Penney's! Cisco Open Till 5:30

