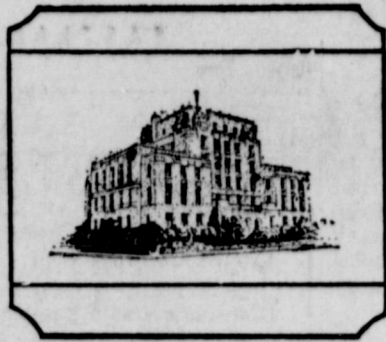


Seeing that we have a great high priest, that is passed into the heavens, Jesus the Son of God, let us hold fast our profession.—Heb. 4:14.

Our Great High Priest sitting At God's right hand above, For us His hands uplifting, In sympathy and love.



TidBits



By H.V.O.

MR. BRUCE Pipkin has just learned that he will have a brand new front wheel drive Olds Toronado here for the big Saturday auto show.

OUT-OF-STATE hunters, generally speaking, have reported much luck this year. The various parties from Eastland report excellent outings but not a lot of game.

RAIN AMOUNTED to .25 of an inch through 8 a.m. Wednesday. Official Weather Observers James Smith reported.

The J. H. Kendrick family, well known all over West Texas for their religious music, will furnish the program at the Men's Fellowship Bible Class this Sunday morning, according to Mr. Morris Keasler.

An interesting lecture by Carl Garrett will follow the program; also, coffee and cookies will be served from 9:30 a.m. until the program begins. Men are invited to attend.

OWN AT Rising Star, B. A. Butler has changed the name of his newspaper — from the Rising Star Record to THE RISING STAR.

At first we decided that we didn't like the change much for the 76-year old newspaper, but it kind of grows on you. Perhaps the change will be good for the newspaper and the community.

Editor Butler puts out a newspaper that is a real credit to his town. He used to be manager of the Chamber of Commerce in Cisco and, before that, edited the Cisco newspaper for a good many years. Besides his newspaper, work, Editor Butler is justice of the peace at Rising Star.

ACCORDING TO Associated Press, at least one man on the LBJ staff dares stand his ground with the President. He is Press Secretary Bill Moyers, a devout Baptist, who recently was asked by LBJ to say the blessing at the White House table.

Moyers began, but Johnson interrupted to tell him to speak a little louder. "I'm not talking to you, Mr. President," Moyers replied.

Mrs. Helen Pugh, Mr. and Mrs. F. B. Altman, and Mrs. Floyd Robertson planned to leave Tuesday for Dallas where they will spend several days at spring market making purchases for Altman Stores in Cisco, Eastland and Abilene.

\$112,000 Loan For Lakewood Approved

A Farmers Home Administration insured loan in the amount of \$112,000 has been approved for the Lakewood Recreation Center, west of Rising Star, in Eastland County, according to word from Congressman Omar Burlerson.

The loan will cover the cost of a golf course and related facilities serving 230 families of that area, he reported said. Official notification will go to the club in a few days, Mr. Burlerson added.

For '66 AUTO LOANS, See Eastland National Bank EASTLAND, TEXAS

Mav-Bearcat Battle Friday

A large entourage of Eastland Maverick fans are expected to be in DeLeon Friday evening when their favorite club takes on the much-touted Bearcats in what will probably be the deciding game in District 10-A.

Refreshed after a weeks rest, the Mavs will be doing battle on their opponents' soil, and realize that their work is cut out for them with the powerful DeLeon squad.

Head Coach Millard Glass and Assistant Coaches Harold Price and Shirley Frazier report their club in good form, with a brisk but not excitable workout Monday, with the Black and Reds building up toward the Friday night tilt in what is expected to be peak shape. There's a lot of Lamb ahead for the Mavs, what with

Bearcat Fullback Bill Lamb looming on the horizon. It's the last game for DeLeon in the regular season play, and they give every sign of wanting to play in the post-season playoffs. But then the Mavs wouldn't mind a little of that themselves, best reports are.

For the year, DeLeon packs a 7-2 record, just a (Continued on Page 2)

Mavs By 6 -- Mr. Predictor

The Mystery Predictor is riding with the Mavericks as they clash with the powerful De Leon Bearcats Friday night. Basing his prognostication on a weeks rest and the zeal to win by the Eastland lads, and of course, his crystal ball, Mr. Predictor says:

EASTLAND BY 6 points.

Albany is getting his nod too in their dual with Clyde. He's taking Albany by 13.

Ranger is due for a comeback, the Mysterious One says, and picks the Bulldogs over Cross Plains, by 9.

For a reason, he's picking Carbon over Gordon too, by 18 points.

Kilgore Junior College appears to be the better by 10 points, over CJC, he avows.

And then takes Navarro JC over RJC by 11 points to round out the weeks forecast.

Linda Graham In Poor Condition; Fund Still Grows

Little Linda Graham, 12, a patient in Eastland Memorial Hospital since last January, has been in very poor condition this week, it has been reported.

Many people and organizations continue to remember the Jack Graham family and Linda by sending donations to the Linda Graham Medical Fund in care of Eastland National Bank, or taking their contributions to James Reid at the bank.

All donations are being recorded and acknowledged.

- Current donations: Brazoria Volunteer Fire Dept. \$10.00 Tommy Alford and Leo Gann \$65.00 Cisco Fire Dept. \$30.00 Mrs. Ed F. Willman \$5.00 Gloria, Suzanne, Pete, Forrest and Jerry Tucker \$5.00 Mrs. Allan D. Dabney \$5.00 Anonymous \$10.00 Children's Fellowship, First Methodist Church \$5.00 Gleaner Sunday School Class \$5.00 Bethel Baptist \$5.00 Previously donated \$1,691.51 Total to date \$1,831.51

Dystrophy Drive Begins Monday

Eastland Volunteer Firemen will sponsor the Muscular Dystrophy march in Eastland, beginning Monday, Nov. 15.

They will be assisted in the house-to-house march by Boy Scout Troops Six and 103. All proceeds will be used for research in finding the cause and cure for muscular dystrophy.



HEADED FOR THE EASTLAND AUTO SHOW — Saturday will be the day for loading the family in the old bus and making for Eastland, that's where all the 1966 automobiles will be on display at one location (100 block of E. Commerce St.) from 12 noon until sundown. (Presiding Eastland dealers might even talk trade-in on your chariot.)



GAYLE BAUCUM new FB general agent

Gayle Baucum Is New County General Agent

Gayle Baucum assumed his duties this week as new general agent for Farm Bureau, replacing Pat Moseley who recently resigned the Eastland County post.

A 1961 graduate of Anson High School, where he was a Lone Star farmer, Baucum attended Abilene Christian College. He has participated in

livestock shows in Abilene and Houston.

He has been engaged in farming and ranching and has been working for the past year as a special agent for Jones County Farm Bureau. Baucum, 22, is married to the former Patricia Ann Newman of Jones County and both he and his wife are active members of the First Baptist Church.

The Baucums have purchased a ten-acre farm between Eastland and Cisco on Highway 80, where they will move in the near future.

This letter was this week by United Fund Treasurer James Reid, from an Eastland woman in her late 80s. Attached were two one-dollar bills.

Significant of the appeal that United Fund has to local people, and time is running out. Faithful volunteers and workers hope to wrap the campaign up at least by Friday. If you haven't been contacted, please call either James Smith, UF president, or Jack Arrington, drive chairman, and volunteer your own "day's pay, with a little overtime," the way this dear woman has.

Reid reports 95 per cent of the goal in, with \$7,026.52 reported. That's just short of the \$7,350 goal — and perhaps your donation would put it over the top.



TRUITT GREGORY in charge of event

Area Voters Okay Seven; Nix Long Terms, Pay Hikes

Eastland County voters favored seven of the proposed constitutional amendments but turned thumbs down on the three that would lengthen officials and legislators terms and increase salaries for some.

A total of 1,760 turned out Tuesday, in what was called a heavier-than-expected, but not heavy vote.

Eleven of the counties 12 favored was reported in by 9 p.m. Scranton was still out at press time.

Not a single box went for amendments nine and ten (salaries and representatives four-year terms) and only Rising Star and Cisco voted for No. Four, (governor's four-year term).

Incomplete statewide re-

turns show the amendments faring like this:

- 1. Financing college buildings, carried. 2. Veterans' land fund, defeated. 3. ARI to needy, approved. 4. Four-year term state officials, defeated. 5. Teachers' retirement fund, approved. 6. Texas opportunity plan, approved. 7. Hospital tax exemption, defeated. 8. Judges retirement; approved. 9. Salaries (lt. gov. & speaker), against. 10. Four-year term representatives, defeated.

It was estimated that only some 20 votes were out in the Scranton box.

County totals on the ten proposals went like this:

- 1. 919 for, 658 against. 2. 1,112 for, 506 against. 3. 1,327 for, 428 against. 4. 735 for, 893 against. 5. 978 for, 626 against. 6. 1,088 for, 517 against. 7. 809 for, 788 against. 8. 1,096 for, 500 against. 9. 470 for, 1,039 against. 10. 507 for, 973 against.

HOW COUNTY VOTED

How each Eastland County box voted, reported as the returns came in. (A—against; F—For)

Table with columns for Voting Box (Desdemona, Carbon, Eastland, Cisco, Kokomo, Olden, Gorman, Rising Star, Nimrod, Pioneer, Ranger, Scranton) and rows for propositions 1 through 10.

*—Split, equal vote for each proposition.

'Pancakes Are Served'

"Mothers, don't cook tonight!"

That's the word from Eastland Quarterback Club members.

The Quarterback Club's Pancake Supper will begin this evening at 5 p.m. at the Elementary School Cafeteria, according to club prexy, Bill Bass.

Tickets may be purchased at Earl Bender's Insurance, Corner Drug Store and The Men's Shop.

Proceeds will be used for the expense of the Football Banquet.

Freyschlag INSURANCE weather report

THURSDAY — Unsettled. Sun rises 7:27, sets 5:59. Moon sets 2:45 a. m. Fishing best.

FRIDAY — Possible showers. Sunrises 7:28, sets 5:58. Moon sets 3:50. Fishing best.

SATURDAY — Clear. Sun rises 7:30, sets 5:57. Moon sets 4:45 a. m. Fishing fair.

Teachers To Be Honored At Appreciation Banquet

Eastland public school teachers are to be honored by the city in a program launched by the local Lions Club, according to an announcement made this week, by H. V. O'Brien, club president.

The club has set as its major project for the year, a Teacher Appreciation Banquet to be held next spring, at which time all teachers and their spouses will be feted.

In addition, one teacher will be singled out for special recognition for service and quality of teaching.

Truitt Gregory has been elected by the Lions Club board of directors to serve as general chairman for the Teacher Appreciation event. Working with existing committees within the club, he will oversee the plans for the committee will be selected by the board of directors, under Gregory's supervision, to make the selection for the

Outstanding Teacher. Representatives to the special committee will be named from all the service and social clubs of the town. Many factors will be considered in selecting the outstanding teacher.

Gregory and members of the club will accept recommendations and suggestions from the public beginning im-

mediately concerning nominees for the honor of Outstanding Teacher, he said.

Date and specific details concerning the banquet are to be set, but work is beginning now to make it one of the highlights of the city year, it has been announced.

Even after selection, the (Continued on page 2)

CHARLIE CHUCKLES says:



Let's all help our city to grow Our money like seeds we can sow The shopping here done Should embrace everyone The harvest will work to and fro.

Whether you shop here or not — when we buy locally we are helping our city to grow.

FULLEN MOTOR CO. 305 E. Main St. Eastland MA 9-2676

EASTLAND TELEGRAM

Phone MA 9-1707

110 W. Commerce St. — Eastland, Texas

(Consolidate with Eastland Chronicle, established in 1887, and Eastland County Record, established in 1931).

Entered as second class matter at the Post Office in Eastland, Texas, under the act of Congress of March 3, 1879.

Published Semi-Weekly — Thursdays and Sundays
By Eastland County Newspapers, Inc.
H. V. O'BRIEN, Editor

SUBSCRIPTION RATES: By carrier in city, 15c week or 65c month; one year by mail in county, \$3; one year by mail elsewhere in state, \$5; one year by mail out of state, \$6.

NOTICE: Any erroneous reflection upon the character, standing or reputation of any person, firm or corporation which may appear in the columns of this newspaper will be gladly corrected upon being brought to the attention of the editor.

Eastland Memorial Hospital

The following persons were listed as patients in Eastland Memorial Hospital Wednesday:

Hugh Armstrong, surgical.
Mrs. Thomas Lockhart, medical.
Joyce Kenity, Comanche, medical.
Mrs. Oscar Turner, Cisco, medical.
Claud Hammett, medical.
Hallie Lane, medical.
Sam Dunlap, medical.
A. D. Stewart, medical.
Daisy Motley, Ranger, medical.
Ben Stovall, Rising Star, medical.
Mrs. George Bennett, medical.
J. N. Jordan, medical.
Robert Jones, Cisco, medical.
Floyd Nichols, medical.
Mrs. J. N. Chesshir, Cross Plains, surgical.
Mrs. Robert Nealy, medical.
Corrye Blackburn, Cisco, medical.
Mrs. W. S. McCann, Cross Plains, medical.
Samuel Gamble, medical.

H. A. Freeman, medical.
James Poe, surgical.
Linda Graham, medical.
Mrs. Gail Whitley, OB.
Mrs. C. F. Huffman, Ranger, medical.
Aletha Gosnell, Cisco, medical.
Cindy Baggett, Breckenridge, surgical.
Viola Collie, medical.
Zula Groves, surgical.
Mrs. W. L. Whorton, medical.
Jeannie Wright, medical.
Mrs. James T. Wright, medical.
Mrs. J. D. Richards, Cisco, medical.
Mrs. Clyde Custer, Cisco, medical.
Mrs. Norman Vaughn, Arlington, OB.
Mrs. David Snyder, Cisco, OB.
Frances Daffern, surgical.
Mrs. Byron Johnson, surgical.
Baby Girl Snyder.
Baby Girl Whitley.

SON VISITS HERE
Oran Rhodes, a teacher at the Clyde Public School, visited last Sunday with his parents, Mr. and Mrs. Al Rhodes.

TRADE LEASE
ADS

FOR SALE: Mouton coat, hip length, size 14-16. Perfect condition, \$35. See Mrs. Sullivan, 110 W. Plummer. 88

FOR SALE: 50 foot trailer house. Central heating, ideal for lake cabin, \$2,000. 205 E. 17th St., Cisco. 91

FOR SALE: Three bedroom home, reasonably priced, 1205 W. Commerce. Phone MA 9-2117. 89

FOR SALE: Nice two bedroom home, priced reasonably. See at 1209 W. 12th— Call HI 2-7111, Cisco; or MA 9-1213, Eastland. 91

FOR SALE OR TRADE: Cushman motor scooter. New tires and runs good. Phone MA 9-210. Elton Falk, 303 S. Mainera. 88

TRUCKS FOR SALE: Five Diesel Tandem tractors; nine single axle gas truck tractors; one tandem with or without quickway with backhoe; three tandems with mixers, one nine yard, one seven yard and one six yard; two tandem dump trucks, one mack diesel and R. T. 212 Int.; six sing. and tandem winch trucks; six other trucks and pickups; six I. H. C. trucks and Scouts; T 104 Gas motor grader, single and tandem floats, pole and grain trailers. Johnson Truck and Supply, 725-2181, Cross Plains (closed Sundays) 90

FOR SALE: 1952 one-half ton pickup. Rebuilt motor and transmission, five good tires and good cattle frames, \$250. See at Sport Center. Phone MA 9-1640. 88

NOTICE: Peanut hay baled. 5 cents per bale. I. B. Walker, Olden, Phone 2501. 88

FOR SALE: 670 x 15 four ply black tires, \$10.95 plus tax. Horton Tire Service, Eastland. 88

FOR SALE: All sizes re-reads. \$5.99 plus tax and reapplicable car c.u.s. Goodyear Service Store, Eastland. 88

FOR SALE: All sizes re-reads. \$5.99 plus tax and reapplicable car c.u.s. Goodyear Service Store, Eastland. 88

new takeoff, \$15 each. Tire Service, Eastland. 88

FOR SALE: 600x16 Special Triple Rib Nylon tube-type 4-ply tires, \$12 plus tax. 550x16 at \$10 plus tax. Goodyear Service Store, Eastland. 88

FOR SALE: Two bedroom house, 100x100 lot, new roof, plenty of closet space. Call MA 9-1568 after 2 p. m., 108 East Conner. 88

Homes For Sale
merman St. with lots of fruit trees, nice yard, storm cellar etc. in excellent repair. \$8,000.
3 bdrm home. Olden, 11 acres land Highway frontage. Pecan & fruit trees. Well, barns and good location. Will finance.
75x100 lot corner Sadosa & Halbryan, 1250.
3 bdrm house & 6 acres land Olden, \$6750.
Apartment house with 100x150 ft. lot, 306 N. Daugherty.

Farms & Ranches
124 acres Olden, lots pecan & fruit. Plenty shallow water. some coastal Bermuda. Lge house, good 4 per cent loan.
215 acres Carbon area shallow water. 40 acres peanuts. 3 bdrm house. 1-2 min. go. 29 per cent dn. 5 per cent on balance.
40 acres land S. Cisco, all minerals. House, well & pressure system. \$6500. Will G.I.
50 acres land & house close to Eastland well located.
80 acres mostly bottom land lots pecans well located.
160 acres Extra nice modern home on pavement. Close in.
670 acres good grass land on Eastland-Stephens Co. line 1-2 min. go. \$79.00 Loan avl. 1,000 acres 105 Coastal, 45 peanuts. Home, barns, good fences, & well watered. 29 per cent dn. Bal 5 per cent int.
We have several good peanut farms from 100 up to 600 acres.
We have Ranches in this area up to 4,000 acres, let us know your needs. All listings appreciated.

311 1/2 West Main Eastland, Texas
Off. Phone MA 9-1725
M. L. TERRELL
MA 9-1928
ROBERT KINCAID
MA 9-2721

Service, 301 N. Seaman, Eastland. Phone MA 9-2131, night MA 9-1973. 88

FOR SALE: Clean, high tread, used tires. All inspected and re-conditioned. Prices start at just \$3.95. Free installation. All guaranteed. Goodyear Service Store, Eastland. 88

FOR SALE: All sizes re-reads. \$5.99 plus tax and reapplicable car c.u.s. Goodyear Service Store, Eastland. 88

FOR SALE — Beauty shop, good location, reasonable rent, 311 W. Main, Eastland. Phone MA 9-1060 or MA 9-1926. 88

FOR SALE: 1957 Chevrolet station wagon, four-door. Phone MA 9-1626, or see at 201 W. Burkett. 88

FOR SALE: Eastland's newest Addition. Valley View Estates. Kinnaid Real Estate. 88

FOR SALE: All sizes re-reads. \$5.99 plus tax and reapplicable car c.u.s. Goodyear Service Store, Eastland. 88

WALKER'S Dressing Plant Custom Dressing Phone D. J. Walker Eastland MA 9-1192

MATRESSES
● New Innerspring Unit
● Choice of Ticking
● New and Renovate
● Choice of Firmness
● Cleaned, Felted Cotton
● New Mattress Guarantee

WESTERN MATTRESS CO.
Box 5288 — San Angelo
In Eastland Call MA 9-1398

Little events become great events when you remember them with FLOWERS

POE FLORAL
MA 9-1711
609 W. Main Eastland, Texas

● Rentals
FOR RENT: Small unfurnished house, close in. Double garage. Apply 210 East Valley after 6 p.m. or any time Sunday morning. 88

FOR RENT: Four room apartment, walk-in closet, two beds. Call MA 9-2186. 88

FOR RENT: House, elderly couple preferred. Phone MA 9-2649. After 5, MA 9-2147. 88

FOR RENT: Five room unfurnished house with bath. Adjoining car port. 1400 West Commerce. 88

FOR RENT: Three room furnished apartment. Bills paid. Walk-in closets. Adults only. 1400 W. Commerce. 88

FOR RENT: Two bedroom house. Apply at 507 S. Mainera. 88

FOR RENT: Four room furnished apartment, newly decorated, close in, and garage. Bedroom, private entrance, bath. Phone MA 9-1062. 89

WHY WORRY ABOUT WEATHER? LET US JO THE LAUNDRY
FREE PICK-UP and DELIVERY SERVICE
CISCO STEAM LAUNDRY
HI 2-2151

ROLLINS & SONS MOBIL SERVICE
Call for Appointments on Wash - Grease Oil Changes
601 W. MAIN
Main 9-8816

Try This Car Quiz!
Do you get speedy automotive service? () ()
Do you get friendly, courteous treatment? () ()
Do you get complete satisfaction in every way? () ()
If your answers are yes, you must already be one of our customers!
On the other hand, if one or more of your answers are "no," we invite you to try our service. You see, we've studied the book on customer satisfaction and how to achieve it. Our facilities are clean and modern, our equipment is the finest.

OBIE'S HUMBLE SERVICE STATION
802 W. Main
MA 9-8868

BASHAM Beauty Bar
Shampoo and set \$1.50
Permanents \$7.50 and up
Phone MA 9-2526

VALLEY VIEW ESTATES
Eastland's Newest Addition
Near the New School Level: 3 Bedroom Homes
FHA & GI Financing Built to your plans or ours
No Two Homes Exactly Alike
CONTACT
D. L. KINNAIRD REAL ESTATE
MA 9-2544

Wanted

WANTED: Plumbing and heating work, re-model and repairs. All work guaranteed. Phone R. D. Hitt, plumbing and heating contractor, MA 9-1311. Higginbotham Bartlett. 94

WANTED: Carpenter work, large or small jobs, free estimates. Call MA 9-1654. U. V. Williams. 87

WANTED: The opportunity to prove how effective Want Ads work for you. Low cost, high readership means results. Buy, sale, rent, trade, swap, hire or find a job. Try 'em and see! The Telegram Want Ad number is MA 9-1707. 88

WANT TO BUY: Land on Highway between Ranger and Eastland, from two to ten acres. Call A. P. Fambro at Fambro Gate Co., Eastland. 88

See ahead with M.H. PERRY
MA 9-1095
Ph. MA 9-2275
FAMILY PROTECTION
Let him show you how little it costs to see ahead — and be sure.
Southland Life
INSURANCE COMPANY
Home Office • Southland Center • Dallas

Major & Minor ENGINE TUNEUPS
COMPLETE BRAKE SERVICE
WHEEL BALANCING & ALIGNING
VIC'S AUTO REPAIR
306 W. Main
MA 9-2111
Eastland

C. E. PAUL, D. C.
Complete Chiropractic Health Service
Ave. I at 8th St.—(Hwy. 80)
Cisco, Texas
Phone HI 2-1677

SEIBERLING FIRESTONE COOPER
The Reliable One
HORTON Tire Service
Eastland

JOE CULPPER
The object of oratory alone is not truth, but persuasion.
JOE CULPPER
of Hood King Motor Co., also says: "See me for the best automobile deal."

Gobble! Gobble!
From a turkey, a gobble is fine but when your car starts gobbling more gasoline than it should, it's no laughing matter. Chances are though, that we can restore top mileage with a simple, economical tune-up.
FOR BETTER ALL-AROUND PERFORMANCE, HAVE YOUR CAR SERVICED REGULARLY AT
24 HOUR WRECKER SERVICE
Complete SAFETY INSPECTION CENTER Auto Repairs
Phones MA 9-2270 Night MA 9-2224
Allen Auto Repair
At Rushing Motor Co. 215 South Seaman

OLDSMOBILE, CADILLAC. RAMBLER, GMC TRUCKS AND PIPKIN MOTOR CO. INVITES YOU TO THE ONE-STOP AUTO SHOW IN EASTLAND SATURDAY 100 Block E. Commerce FREE PRIZES SEE ALL THE '66s AT ONE TIME!

Lone Cedar Plans Dance Saturday

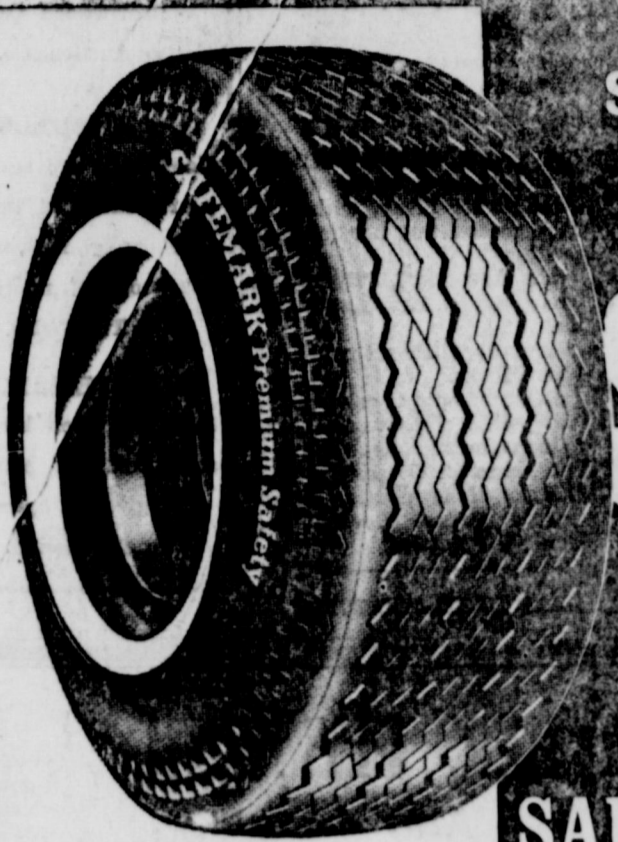
There will be a dance at Marslender. There will be a Lone Cedar Country Club on charge of \$5 per couple. Saturday night, Nov. 6, with a combo furnishing the music for Thanksgiving and Christmas activities at the club, according to an announcement by President W. H. Mr. Marslender reported.

From 1613 to 1917 the Romanoff family ruled Russia.

Alexander Hamilton was the first secretary of the treasurer.

Peter Minuit purchased Manhattan Island from the Indians.

ANNOUNCING FARM BUREAU'S



new Service to Members program!

SAVE

with FARM BUREAU'S new SAFEMARK tire program exclusively for FARM BUREAU MEMBERS

THIS NEW MONEY-SAVING TIRE PROGRAM, another service exclusively for Farm Bureau members, can mean miles of smiles for you. Savings are big. All tires are premium quality and available in all sizes. They are guaranteed by Farm Bureau and are adjusted immediately at your local Servicing Agent. Be smart and thrifty, contact County Farm Bureau office or Servicing Agent now for details and prices.

SQUIERS FARM STORE

514 W. Main MA 9-2220

ATTENTION!

MR. PEANUT FARMER

Market your Peanuts with us.

TOP PRICES paid for both SACKED and BULK peanuts

Ninety (90) Drying Bins and large lighted parking lot available for your use

DRYING CHARGES FOR 1965 SEASON EFFECTIVE SEPTEMBER 1

Per Ton Basis		
Gross Weight — Green Weight		
Moisture Level		
11% through 17%		\$10.00 Per Ton
18% through 24%		\$16.00 Per Ton
25% through 29%		\$18.00 Per Ton
30% Up		\$23.00 Per Ton

CLEANING CHARGES

Per Ton Basis
Gross Weight before Cleaning
\$8.00 Per Ton

For peanuts to be cleaned and dried add \$3.00 per ton Gross Weight per ton to the applicable drying charge.

It Will Pay You to Check With Us Before Selling

Latest information available to you covering recommended level for combining and drying to preserve best quality

PROMPT — EFFICIENT — COURTEOUS SERVICE



GORMAN PEANUTS

A DIVISION OF AMERICAN COLD STORAGE CORPORATION

Gorman, Texas

Telephone Area Code 817 RE 4-2266



MIMI'S DEATH SCENE of the La Scala Opera Company's brilliant production of Puccini's romantic "La Boheme," which will be presented by Warner Bros. for four premiere performances in Technicolor and newly-developed highest fidelity sound at the Majestic Theater in Eastland on Nov. 3-4. Principals are (left to right): Adriana Martino (Musetta), Gianni Raimondi (Rodolfo), Mirella Freni (Mimi), Rolando Panerai (Marcello) and Gianni Maffeo (Schaunard).

Kile-Elliott Vows To Be Read Sunday

Miss Joan Kile of Cisco and James Lee Elliott of Winters, formerly of Olden, will be married in ceremonies Sunday, Nov. 7, at 3 p.m. in the East Cisco Baptist Church. Rev. Mart Agnew, Baptist minister, will perform the ceremony.

Miss Kile is the daughter of Mrs. C. A. Kile of Cisco, and the late Mr. Kile, and Mr. Elliott is the son of Mr. and Mrs. Buster P. Elliott of Olden.

All friends and relatives of the couple have been invited to attend the ceremony and the reception which will follow in the fellowship hall.

James A. Farley's middle name is Aloysius.

Broadway avenue in New York City is the longest street in the world.

AN ACTUAL PERFORMANCE!
Through breathtaking new techniques in film making and highest fidelity sound.



TECHNICOLOR® FROM WARNER BROS.
Premiere Performances 4 Times
ONLY — Nov. 3 and 4, 1965

MAJESTIC

SHURFINE CARNIVAL OF '65

SHURFRESH SALTINES CRACKERS 1-lb. Box 19c SHURFRESH BISCUITS 6 for 39c

SHURFINE — No. 300 PORK & BEANS 10 cans \$1



1-Lb. Can 59c

SHURFINE — No. 303 APPLE SAUCE can 10c

SHURFINE CREAM STYLE OR WHOLE KERNEL CORN No. 303 6 cans \$1

SHURFINE FROZEN — 12-oz. ORANGE JUICE 3 cans 89c

SHURFINE MILK Tall Can 10c

SHURFINE SALAD DRESSING quart 39c

SHURFINE — 1-Lb. Pkgs. MARGARINE 5 lbs. \$1

SHURFINE — No. 303 ENGLISH PEAS 2 cans 35c

SHURFINE — All Flavors CAKE MIX 4 boxes \$1

ENERGY LIQUID DETERGENT 22-oz. bottle 29c

SHURFINE LUNCHEON MEAT 12-oz. can 39c

SHURFINE — 46-oz. TOMATO JUICE can 29c

SHURFINE — No. 303 SWEET POTATOES 5 cans \$1

ROXEY

DOG

FOOD

No. 300

14 FOR \$1

SHURFINE — 24-oz. GRAPE JUICE 3 bottles \$1

SHURFINE CUT — No. 303 GREEN BEANS 2 cans 35c

SHURFINE — No. 303 TURNIP GREENS can 10c

CRANBERRY SAUCE

SHURFINE No. 300 2 cans 39c

— JRB MARKET FEATURES —

JRB QUALITY ARM ROAST lb. 59c GOOCH'S COUNTRY SAUSAGE 2 lbs. 98c

RUMP OR PIKE'S PEAK ROAST lb. 69c AF BRAND Sliced Bacon lb. 75c

CHUCK ROAST lb. 49c

PRICES EFFECTIVE NOVEMBER 4-5-6



RANGER — EASTLAND — CISCO
We Reserve the Right to Limit Quantities — No Sales to Dealers

SHURFINE — 14-oz. CATSUP 2 bottles 39c

SHURFINE — 6 1/2-oz. TUNA 4 cans \$1

J.R.B. BONUS STAMP COUPON
50 Free S&H Green Stamps with purchase of 1/2-gal. AF ICE CREAM
Void After Nov. 6, 1965
America's Most Valuable Stamps

J.R.B. BONUS STAMP COUPON
50 Free S&H Green Stamps with purchase 2 lbs. any brand THICK SLICED BACON
Void After Nov. 6, 1965
America's Most Valuable Stamps

J.R.B. BONUS STAMP COUPON
50 S&H GREEN STAMPS with purchase Vicks Form. 44 COUGH SYRUP
Void After Nov. 6, 1965
America's Most Valuable Stamps

J.R.B. BONUS STAMP COUPON
50 Free S&H Green Stamps with purchase \$1 size Right Guard DEODORANT
Void After Nov. 6, 1965
America's Most Valuable Stamps

J.R.B. BONUS STAMP COUPON
100 Free S&H Green Stamps with purchase 14-oz. Listerine ANTISEPTIC
Void After Nov. 6, 1965
America's Most Valuable Stamps

J.R.B. BONUS STAMP COUPON
100 Free S&H Green Stamps with purchase of Aqua Net HAIR SPRAY
Void After Nov. 6, 1965
America's Most Valuable Stamps

PRODUCE

GOLDEN-RIPE BANANAS LB. 10c

GREEN CABBAGE LB. 5c

BELL PEPPERS LB. 15c

THE BEST IN Country Music Each \$1

RECORD WITH TOP WESTERN FAVORITE — WITH \$5 PURCHASE THIS WEEK!

FB To Offer Members Tires In New Program

The Eastland County Farm Bureau has entered into an agreement with the Texas Agricultural Service Co. of Waco, a recently incorporated, wholly-owned subsidiary of the Texas Farm Bureau, to set up a retail tire sales program for its members, according to Jack Cozart, local county FB president.

One of the world's largest manufacturers, General Tire and Rubber Co. of Akron, O., is manufacturing tires for the TASCOS under the exclusive brand name, "Safemark." Several other state Farm Bureaus are already marketing the new "Safemark" tire which is produced at a GT&R Waco plant.

All standard sizes in the premium deluxe grade of passenger car tires and first-line premium truck and tractor tires will be offered Eastland County Farm Bureau members, Mr. Cozart said. The cost will be the factory price plus a very nominal distribution charge which will make them available to members "a very substantial saving" the county FB president declared.

Squiers Farm Store, 514 W. Main, Eastland, has been named the authorized FB Tire Service Agent for the county, Mr. Cozart said. Tires can be purchased directly from him by any FB members by presenting a current membership card. Members actively engaged in farming or ranching may buy any tires they need for personal vehicles. All members will be limited to passenger car tires.

"This is strictly a service-to-member program instituted to help cut cost of production and thereby increase net income of our members," Cozart said. "Sales will be restricted in order to prevent buying through the program for commercial use by anyone other than farmers and ranchers."

Safemark tires will be guaranteed by TASCOS, and serving agents will make necessary adjustments on the basis of the original cost of the tire with no charge for mounting replacement tires, he said.

Credit Bureau Hears Mr. Lux

Mr. Charles T. Lux of Austin spoke on the "Usage and Benefits of the Credit Association" at a quarterly luncheon of the Retail Merchants Credit Association Wednesday afternoon at the White Elephant.

Those attending the meeting were Mrs. Floyd Robertson, Earl Bender, Willard Griffen, Otis Coleman, Frank Crowell, Frank Deaton, Leon Musgrove, Ruth Hallmark, Dorothy Smith, Grover Hallmark, James Reid, Tom Wilson, Mike Collins, Mrs. Helen Murrell, Morris Jones, Don Popp, J. T. Gregory, J. A. y Staggs, Tom Staggs, Joe Culpepper, James K. Smith, Mrs. Wright Emfinger, Jack Muirhead, Arthur Murrell, B. W. Robertson, Taylor Smith, Mr. and Mrs. J. T. Carter, James Glenn and Dayton Bray.

Auxiliary Is Given Lesson In Bandages

Mrs. G. A. Fyffe of Ranger, a member of the Eastland County Cancer Society, met with the Ladies Auxiliary, Post No. 4136, recently.

She assisted and instructed the group on how to make bandages for cancer patients. More material will be bought to make this a successful project for the Auxiliary.

THIS WEEKEND
Visiting in the Milton Hunt home this weekend will be Mr. and Mrs. Dana Paris of Port Lavaca.

Circle Meets At Hoffman Home

The Martha Dorcas Circle of the First Methodist Church met in the home of Mrs. C. W. Hoffman, Sr., at 3 p. m. Thursday, with Mrs. Earl Bender, president, presiding.

Opening the meeting was the song, "In the Garden." Mrs. Bender read definitions of prayer from the Bible followed by a devotional, theme of which was "Ambassadors of God's Love," given by Mrs. Carl Elliott.

An article from "The Upper Room" entitled "Do I Allow Jesus to Walk in My Shoes," was presented by Mrs. Frank Crowell.

Prayers were offered by each member of the class for

success in the current revival at the church.

The hostess committee, Mrs. Hoffman, Mrs. Harold Durham and Mrs. Floyd Robertson, served pie and coffee to the following: Mmes. Bender, Crowell, Fred Davenport, Lester Davenport, James Horton, Elliott, Roy Lawson, J. E. Loughry, Charles Marshall, R. A. Poole, R. E. Sikes, Roy Townsend, Ed Willman and L. C. Brown.

VISITS EIDSONS

Weekend guests in the home of Mr. and Mrs. J. W. Eldson were Mr. and Mrs. David Farmer of Lubbock.

RECENT VISITORS

Visiting in the home of Mrs. B. O. Harrell recently were Mr. and Mrs. J. E. Hair of Hobbs, N. M. and Mrs. Bert Hair of Gatesville.

Officers Elected By Dorcas Class

The Dorcas Class of the First Baptist Church met in the home of Mrs. Tina McBee on Thursday evening for the election and installation of new officers.

Mrs. Don Estes, outgoing president, presided.

Officers elected were Mrs. Opal Whitten, teacher; Mrs. Adele Whitten, president; Mrs. Russell Turner, secretary; Mrs. Ruby Barton, assistant secretary; and group captains, Mmes. Jimmy Garner, J. D. Pittman, Sidney Roff and Tina McBee.

Mrs. Nell Ragland, a guest, gave the devotional on "Letters."

Next meeting of the class

will be on Nov. 18 in the home of Mrs. C. M. Cox.

Refreshments of cake and coffee were served to Mmes. Hearn, Garner, A. K. Garrett, Barton, Gayle Hardin, Myrl Poe, W. H. Hailey, Estes, Roff, Whitten and R. C. Turner and Miss Florence Barber.

C. E. PAUL, D. C.

Complete
Chiropractic
Health Service
Ave. 1 at 8th St.—(Hwy. 80)
Cisco, Texas
Phone III 2-1677

Don't Let Life Escape You —

... without giving it your best to stay alive to enjoy the heritage of living in the greatest country on earth. Avoid worry and be prepared for the common emergencies — illness, accidents, disasters — and the inevitable hard knocks that beset us all. It's a small matter to mention here, but don't be careless about your INSURANCE. If you do you may be letting life escape you without giving it a chance to keep you free from fear and safe from financial embarrassments.

Earl Bender & Company

Eastland (Insurance since 1924) Texas



BESIDES SERVICE AND SAVINGS
YOU GET
PLAID STAMPS
too!

"SUPER-RIGHT" HEAVY CALF SIRLOIN OR ROUND

STEAK 69¢

... lb.

PRICES AND COUPONS GOOD THRU NOV. 6, 1965

"SUPER-RIGHT" HEAVY CALF
ROAST
39¢
CHUCK
BLADE
POT... lb.

"SUPER-RIGHT" HEAVY CALF
RIB STEAKS 59¢
RATIO FROZEN CHEESE OR Beef Enchilada
Dinners 2 12 oz. 69¢
ALLGOOD BRAND SLICED
BACON 1 lb. 65¢
"SUPER-RIGHT"
FRANKS 1 lb. 55¢
HEAVY CALF
ARM ROAST 1 lb. 49¢

Clip These Coupons

50 **AP** 50
Extra Plaid Stamps
With This Coupon and Purchase of 1-LB. NABISCO PREMIUM
CRACKERS AND 3 CANS ANN PAGE TOMATO-RICE SOUP Deal 75¢
AT YOUR A&P SUPERMARKET
Del. Coupon Good Thru Nov. 6, 1965

25 **AP** 25
Extra Plaid Stamps
With This Coupon and Purchase of TWO CANS ANN PAGE W/ CHEESE SAUCE
MACARONI 2 15-oz. Cans 37¢
AT YOUR A&P SUPERMARKET
Del. Coupon Good Thru Nov. 6, 1965

EXTRA PLAID STAMPS — NO COUPON NEEDED

- 25 GET 25 EXTRA PLAID STAMPS WITH 2 CANS ANN PAGE ITALIAN **SPAGHETTI** 2 15-oz. Cans 29¢
- 25 GET 25 EXTRA PLAID STAMPS WITH ANN PAGE PANCAKE AND WAFFLE SYRUP 1 1/2-QT. AND SUNNYFIELD PANCAKE MIX, 2-LB. Both For 98¢
- 25 GET 25 EXTRA PLAID STAMPS WITH JANE PARKER BROWN 'N SERVE **FRENCH ROLLS** 10-oz. Pkg. 27¢

- JANE PARKER WHITE — SPECIAL **BREAD** 2 1 1/2-lb. Loaves 39¢
- JANE PARKER ANGEL FOOD **CAKES** 3 1-lb. 1-oz. Size \$1.00
- BAMA **Apple Butter** 2-lb. 12-oz. Jar 45¢

JANE PARKER FRUIT CAKES
1 1/2-lb. Ea. \$1.49 3-lb. Ea. \$2.89 5-lb. Ea. \$3.99

- HERSHEY CHOCOLATE **SYRUP** 2 1-lb. Cans 39¢
- A&P PINEAPPLE **JUICE** 3 1-qt. 14-oz. Cans 89¢

- DOUBLE LUCK BLUE LAKE CUT **GREEN BEANS** 4 1-lb. Cans 45¢
- A&P LIGHT MEAT CHUNK STYLE **TUNA FISH** 4 6 1/2-oz. Cans 89¢

- SIMPLE SIMON FROZEN **PIES** Mince or Pumpkin Size 49¢
- BATH OIL **SOFTIQUE** 2.5-oz. Size 79¢
- O'CLAIR APPLE **JUICE** 3 1-qt. 14-oz. Cans \$1.00
- HEADACHE REMEDY **BUFFERIN** 60 of 60 59¢
- HAIR CREAM **SCORE** 3-oz. Size 49¢
- SUNSHINE WITH DICED TURNIPS **GREENS** 2 15 1/2-oz. Cans 25¢

Ann Page Candy
CHOCOLATE COVERED
THIN MINTS 12-oz. Box 39¢
CHERRIES 12-oz. Box 49¢
CREAM DROPS 11-oz. Box 29¢

- AUSTEX **PLAIN CHILI** 15-oz. Can 49¢
- AUSTEX **TAMALES** 2 15-oz. Cans 49¢
- BOUNTY **CHILI** With Beans 2 15-oz. Cans 49¢
- BROWN BEAUTY **BEANS** In Sauce or B.B.Q. 15-oz. Can 10¢
- HUNT'S TOMATO **CATSUP** 2 1-lb. 4-oz. Bottles 49¢
- DETERGENT **DRY TREND** 2-lb. 1-oz. Box 39¢
- CHARMIN TOILET **TISSUE** 3 4-Roll Packs \$1.00
- PUFFS FACIAL **TISSUES** 4 Boxes 200 2-Ply 99¢
- BLUE BONNET 2¢ OFF REGULAR **MARGARINE** 1-lb. Ctn. 29¢
- BLUE BONNET 2¢ OFF WHIPPED **MARGARINE** 1-lb. Ctn. 33¢

CONTESSA ASSORTED FLAVORS
MELLORINE 3 1/2 Gal. Ctns. \$1

- SUNNYBROOK **GRADE A LARGE EGGS** doz. 49¢
- BANANAS** lb. 19¢
- Florida Oranges . 5-lb. bag 59¢
- Delicious **APPLES** . . . lb. 19¢
- JONATHAN BAG **APPLES** 4-lb. bag 39¢
- Florida Grapefruit 5-lb. bag 59¢
- RUSSETT **POTATOES** . . 10-lb. bag 59¢

WHITE TOOTH PASTE Pepsodent 7-oz. Tube 75¢	PILLSBURY WHITE, YELLOW OR SWISS CHOCOLATE Cake Mixes Pkg. 43¢	JANE PARKER TWIN PACK POTATO CHIPS 1-lb. Box 49¢	OLDEN RISE—8-oz. Size BISCUITS 6 cans 49¢	ARMOUR VIENNAS 2 5-oz. Cans 51¢	ARMOUR LUNCHEON MEAT TREET 12-oz. Can 57¢
KEN-L-RATION STEW For Dogs 2 15 1/2-oz. Cans 39¢	JEFF CREAMY OR CRUNCH Peanut Butter 12-oz. Jar 49¢	MORTON TABLE SALT Plain or Iodized 2 1-lb. 10-oz. Rounds 25¢	CHICKEN OF THE SEA TUNA Chunk Style 9 1/4-oz. Can 49¢	CHICKEN OF THE SEA TUNA Chunk Style 6 1/2-oz. Cans 35¢	ARMOUR Potted Meat 2 3 1/4-oz. Cans 27¢

HITT PLUMBING & HEATING
LICENSED
25 YEARS IN THE PLUMBING HEATING AIR CONDITIONING 24 HOUR SERVICE SALES & SERVICE REPAIRS LAWN SPRINKLER SYSTEMS PHONE MA 9-1671 OR MA 9-1311 HIGGINBOTHAM-BARTLETT

WINTERIZE YOUR CAR!
Get a **SAFETY CHECK-UP!**
GET A WINTER LUBRICATION!
BE PREPARED FOR WINTER DRIVING AHEAD TRUST YOUR CAR TO THE MAN WHO WEARS THE STAR
Your **TEXACO** Dealers in Eastland
A. L. ALDRIDGE SERVICE STATION East Main
EDDIE'S TEXACO SERVICE 503 W. Main MAIn 9-8895
LANGLITZ TEXACO SERVICE 702 W. Main MAIn 9-8850

WINTERIZE YOUR CAR!
Get a **SAFETY CHECK-UP!**
GET A WINTER LUBRICATION!
BE PREPARED FOR WINTER DRIVING AHEAD TRUST YOUR CAR TO THE MAN WHO WEARS THE STAR
Your **TEXACO** Dealers in Eastland
A. L. ALDRIDGE SERVICE STATION East Main
EDDIE'S TEXACO SERVICE 503 W. Main MAIn 9-8895
LANGLITZ TEXACO SERVICE 702 W. Main MAIn 9-8850

From Del Monte!

Tomato Juice Or Pineapple-Grapefruit Drink. Del Monte—46-oz. Can	2 for 69¢	Spinach Or Golden Whole Kernel or Cream Style Corn, Del Monte—No. 303 Can	4 for 73¢
Prune Juice Del Monte—32-oz. Bottle	2 for 89¢	Early Peas Del Monte Garden—No. 303 Can	4 for 89¢
<i>Fine Foods by Kraft!</i>			
Mayonnaise Kraft—Quart Jar	65¢	Kraft Dinner Macaroni & Cheese—7/4-oz. Pkg.	5 for \$1
Dressings Kraft, 1000 Island, Italian, Herb Garlic, or Low Calorie French—8-oz. Bottle	2 for 75¢	Margarine Kraft Miracle—1-Lb. Ctn.	2 for 69¢

Stock Up Today!

Juice Pineapple La Lani—46-oz. Can	3 for 89¢
Grape Juice Walch—24-oz. Bottle	2 for 69¢
Chicken Boneless Or Turkey, Swanson—5-oz. Can	2 for 69¢
Zee Tissue Toilet, White or Assorted Colors—4-Roll Pak	2 for 69¢
Electrasol Dishwashing Detergent—33-oz. Pkg.	59¢

National brands and locally-popular brands! You'll always find them at low prices at Safeway. But this week, you can make extra savings on many of your favorites. Come in and stock up from our fine variety of the brands you know and like. And don't miss out on the extra values on fine fresh produce and Safeway Guaranteed meats.



Come to Safeway for your favorite brands!

Frozen Food Buys!

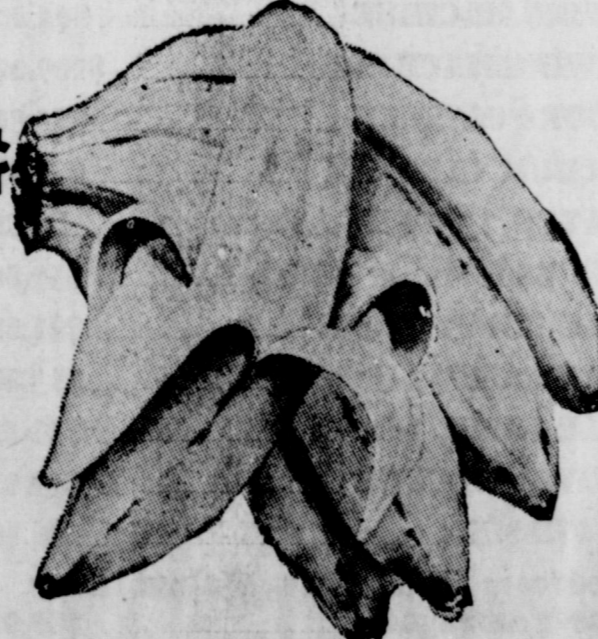
ICE CREAM Party Pride, 4 Flavors—1/2-Gallon Carton	69¢
Orange Juice Bel-air, 12-oz. Can	3 for \$1
Strawberries Bel-air Sliced, 16-oz. Pkg.	39¢
Bel-air Vegetables Whole Baby Okra, Broccoli Spears, Footlock Lima Beans or Blackeye Peas—10-oz. Pkg.	5 for \$1
Johnston's Pies 9-Inch Custard, Dutch Apple, Blackberry, or Pecan—Reg. Pkg.	69¢

Colgate Florient Orchard Blossom Touch of Spice Bathroom—7-oz. Can	59¢
Vel Liquid Detergent, Rose Lotion, 22-oz. Plastic	67¢
Fab Detergent With Borax. (5¢ off Label)—Large Box	30¢

Palmolive Toilet Soap—Green—Bath Size (Pink, Reg. Bar—2 for 23¢)	2 for 35¢
White Bread Mrs. Wright's, Regular or Sandwich Sliced (Large "A" Eggs, Breakfast Gems... 2 Doz. 93¢)	39¢
Lucerne Mill Homogenized—1/2-Gal. Ctn.	53¢
Whipping Cream Lucerne—1/2-Pint Ctn.	27¢
Lucerne Milk 2% Homogenized—1/2-Gal. Ctn.	47¢
Velveeta Cheese Kraft,	2 lb. 89¢
Kraft Sliced Cheese American, Pimento, or Swiss—1/2-Lb. Pkg.	2 for 75¢

Safeway Fresh Produce!

Bananas Ideal for the lunchbox; every- body likes banana cream pie.	3 Lbs. 35¢
Texas Yams From East Texas—Lb.	3 Lbs. 29¢
Yellow Onions For extra zest.	3 lb. 19¢
Bell Pepper Adds flavor—Each	2 for 19¢
Cranberries Ocean Spray—1-Lb. Pkg.	35¢
Yellow Squash Delicate flavor—Lb.	19¢
Cucumbers Good in salad—Each	3 for 25¢
McIntosh Apples Fresh and flavorful—Lb.	23¢
Ruby Red Grapefruit Juicy.	2 Lbs. 29¢
Pascal Celery Crisp and crunchy—Stalk	25¢



SAVE at SAFEWAY
It takes less books
to Get More Gifts with
GOLD BOND STAMPS

Coupon Worth 25
FREE GOLD BOND STAMPS
With the Purchase of
10-Lb Bag
RUSSET POTATOES
Coupon Expires November 6, 1945.

Coupon Worth 50
FREE GOLD BOND STAMPS
With the Purchase of
3 Lbs. or Large Heavy Beef or
BABY BEEF ROAST
Coupon Expires November 6, 1945.

Coupon Worth 50
FREE GOLD BOND STAMPS
With the Purchase of
5 1/2-oz. Bottle
VASELINE HAIR TONIC
Coupon Expires November 6, 1945.

Coupon Worth 25
FREE GOLD BOND STAMPS
With the Purchase of
16-oz. Ctn. Assorted
LUCERNE SALADS
Coupon Expires November 6, 1945.

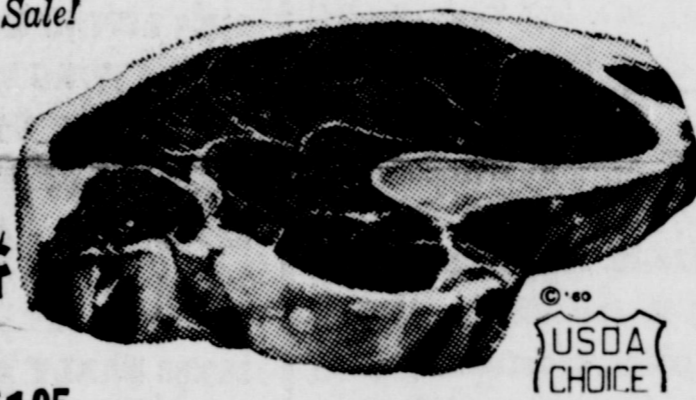
Coupon Worth 50
FREE GOLD BOND STAMPS
With the Purchase of
20-oz. Pkg. Hereford Chicken
BREADED STEAKS
Chicken Fry,
Beef, Veal
Coupon Expires November 6, 1945.

Non-Food Buys!

Vicks' VapoRub Relieves congestion—1 1/2-oz. Jar	49¢
Shampoo Halo Regular or Dry, (29¢ off label). 11 1/2-oz. Bottle	69¢
Glade Mist Johnson, French Modern, Spring Flower, Floral Sachet, or Evergreen—7-oz. Can	53¢
Multi-Vitamins Safeway Chewable, 100-Ct. Bottle	98¢
Hair Spray Truly Fine. For perfect control. 14-oz. Can	67¢
Bayer Aspirin Fast headache relief, 100-Ct. Bottle	79¢

U. S. D. A. Choice Grade Beef Steak Sale!

Sirloin Steak U.S.D.A. Choice Grade Heavy Beef. Trimmed before weighing— giving you more good eating for your money.	lb. 95¢
(Top Sirloin Boneless, \$1.39)	



T-Bone Steak Or Club, U.S.D.A. Choice Grade Heavy Beef—Lb. (New York or Strip Steak—Lb. \$1.59)	\$1.05
Slab Bacon Smoked. Half or Whole 8 to 12-Lb. Avg.—Lb. (Sliced Slab Bacon, Kind-on—Lb. 65¢)	59¢
Pork Backbone Country Style—Lb.	49¢
Sliced Pork Loin Quarter—Lb.	69¢
Boneless Ham Samuel's Chieftain, Half or Whole—Lb.	\$1.33
Armour Franks Or Safeway, All Meat Skinless—1-Lb. Pkg.	55¢

Chunk Tuna Sea Trader, Light Meat—6 1/2-oz. Can	3 for 79¢
Pillsbury Flour Pillsbury Best. For all your Baking.	5 Lb. Bag 51¢
Hunt's Peaches Yellow Cling, Sliced or Halves, No. 2 1/2 Can	3 for 89¢
Lucerne Tortillas 15-Count 9-oz. Pkg.	2 for 35¢
Whole Tomatoes Del Monte, No. 303 Can	3 for \$1
Soda Crackers Wussy Baker, The Crispier Cracker.	2 Lb. 49¢

Hunt's Catsup Hickory, Pizza, or Regular, 14-oz. Bottle	5 for \$1
Morton Pickles Whole Dill, Sliced Dill, or Whole Sour, 22-oz. Jar	3 for \$1
Chunk Pineapple Or Crushed, La Lani—No. 211 Can	5 for \$1

Crisco Shortening, Light and fluffy, 1-Lb. Can	35¢
Sweet Pickles Morton, Whole Midget 16-oz. Jar	65¢

Cleaning Aid!
Twinkle Silver Cream
or Copper Cream—4 1/2-oz. Jar **45¢**

Fresh Bakery Goods!

Skylark Bread Power Packed with Protein added (Reg. 27¢)—1-Lb. Loaf	19¢
Club Rolls Skylark. (2¢ off label)—6-count 12-oz. Pkg.	21¢
Party Rye Bread Skylark—1-Lb. Loaf	29¢
Cinnamon Rolls Mrs. Wright's Brown & Serve—14-oz. Pkg.	35¢

Instant Milk Carnation non-fat dry, 14-Quart Pkg.	\$1.10
Dry Milk Carnation Instant Non-fat—8-Quart Size	69¢
Dry Milk Carnation Instant Non-fat—3-Quart Size	29¢
Olive Oil Pompelan. For good Dressings—2-oz. Bottle	17¢
Sugarine Adds taste without calories, 4-oz. Bottle	65¢

Vienna Fingers Sunshine—12 1/2-oz. Cello	39¢
Swel Frosting Vanilla or Chocolate—12-oz. Can	39¢
Spaghetti Sauce Lawry's Mix—1 1/2-oz. Pkg.	27¢
Green Giant Peas Fancy sweet Buffer Can	2 for 35¢
Mexicorn Corn and Peppers—12-oz. Can	2 for 43¢

Your Friends are Winning at Bonus Bingo... Why Don't You?

WINNERS

MISS E. E. NEAL	5.00
MARGARET BEARMAN	5.00
LINDA JOINER	10.00
REV. H. F. WILKINS	1.00
JANETT HAMILTON	1.00
SUSIE MAE HOWARD	1.00
MARTHA DEMPSEY	1.00
MRS. HOLLIS JONES	1.00

CLIP THESE SLIPS TO HELP YOU WIN!

BONUS BINGO PRIZE SLIP

\$20 GAME

0-2

SAFEWAY

BONUS BINGO PRIZE SLIP

\$50 GAME

B-5

SAFEWAY

Prices and Coupons Effective
Thurs., Fri. and Sat., Nov. 4,
5 and 6, in
Eastland
We Reserve the Right to
Limit Quantities. No Sales to
Dealers.



COURT NEWS

CAR REGISTRATIONS

Geneva Sharrock, Chevrolet, Eastland.
 O. G. Campbell, Chevrolet sports coupe, Gorman.
 Dorothy Anderson, Chevrolet, Gorman.
 Jackie Adams, Chevrolet sports coupe, Gorman.
 J. F. Alderman, Chevrolet pickup, Gorman.
 Eulan Dennis, Chevrolet pickup, Gorman.
 Gulf Oil Corp., trailmobile trailer, Eastland.
 C. C. Rutherford, Ford pickup, Rising Star.
 L. C. Huckaby, Ford pickup, Ranger.
 W. L. Agnew, Chevrolet pickup, Cisco.
 Betsy Worden, Chevrolet, Eastland.
 Bill Harrison, Honda motorcycle, Eastland.
 Ronald Overend, Ford, Eastland.
 J. J. Finley, Ford, Cisco.
 Pullen Motor Company, Chevrolet, Eastland.
 Gibbs Motors, Cadillac, Eastland.
 Lewis Tiner, Jeep universal, Eastland.
 Morris Campbell, Chevrolet pickup, Eastland.
 Betty Cecil, Plymouth, Cisco.
 E. C. Burnett, Chevrolet pickup, Eastland.
 Marjorie Maddocks, Dodge, Ranger.
 Jimmie Labor, Chevrolet sports coupe, Gorman.
 R. A. Barnett, Chevrolet, Gorman.
 Andrew Elliott, Chevrolet, Gorman.
 Terrill Sharp, Chevrolet, Gorman.
 J. C. Collier, Jr., Ford, Cisco.
 Jesse Hathcock, Ford pickup, Ranger.
 Morris Newnam, Chevrolet, Ranger.
 Robert Dale Watson, Chevrolet pickup, Ranger.

SUITS FILED
 William Strader vs. Mary Alice Strader, divorce and child custody.
 James Williams vs. Pamela Kay Williams, divorce, property settlement and custody of minor child.
 E. B. Overstreet vs. Martha Overstreet, divorce.

MARRIAGE LICENCE
 Jimmy Lee Gary and Mary Louella Porteous.
 Billy Joe Carlton and Mrs. Oma Thackerson.
 Edward Wallace Hart and Mary Ellen Boggs.

INSTRUMENTS FILED
 H. Abell, deceased, to the public, proof of heirship.
 Allied Finance Co. to Roy Lee Culver, Sr., abstract of judgment.
 R. E. Booth, et al, to Samuel Dunlap, et al, partition.
 Teona Bow to Mary Williamson, warranty deed.
 Elia Brock to Choyce Brock, power of attorney.
 E. H. Bobo, et ux, to Charles Bobo, quit claim deed.
 Melvin Carery, et ux, to Lane Carey, mechanic v. materialman's lien and assignment.
 W. H. Clarke, Sr., et ux, to Gaston Dixon, et ux, warranty deed.
 Mrs. W. O. Croft, et al, to Bob Hallmark, power of attorney.
 Bobby Jack Carlton, et ux, to the United States of America, deed of trust.
 Gaston Dixon to Commercial State Bank, Ranger, deed of trust.
 Eastland National Bank to Neal Douglas Tankersley, release of deed of trust.
 L. B. Forbes, et ux, to J. D. Somerford, et ux, warranty deed.
 First Federal Savings and Loan Association, Ranger, to Bueford, et ux, release of deed of trust.
 First Federal Savings and Loan Association, Ranger, to Bueford Jordan, et ux, release of mechanic v. materialman's lien.
 J. J. Gracie, et ux, to Colonel Gracie Cherry, deed of trust.
 Claude Hill, et al, to E. H. Hill, warranty deed.
 E. J. Joyce to Nora Armstrong, deed of trust.
 Bueford Jordan, et ux, to Stephenville Savings and Loan Association, deed of trust.
 Wesley Kinser, et ux, to Jarbe Oil Company, Inc., ratification of oil and gas lease.
 Cecil Lindsey to First State Bank, Morton, deed of trust.
 Ned Morris, attorney-in-fact, to Carleon Cemetery Association, warranty deed.
 Frank Pierce, deceased, et ux, to the public, proof of heirship.
 Imogene Pierce, et al, to Ted Waters, warranty deed.
 Pan American Petroleum Corp. to Euna Porter, et vir,

release of oil and gas lease.
 Pan American Petroleum Corp. to W. E. Tyler, et al, release of oil and gas lease.
 Bruce Reeves to Billy Patton, warranty deed.
 J. F. Schlueter to Jarbe Oil Company, Inc., assignment of interest.
 State of Texas vs. Educational Laboratory, Inc., abstract of judgment.
 State of Texas to Newton Tribute Acre, Inc., notice of franchise tax lien.
 State of Texas to L. L. Bales Cattle Co., notice of franchise tax lien.
 Charles Sandler to Cisco Junior College District, deed.

O. J. Treadway to First National Bank, Cisco, assignment of mechanic v. materialman's lien.
 Neal Tankersley, et vir, to Cecil Lindsey, warranty deed.
 A. D. Thurman, et al, to State of Texas, deed.
 United States to Buford Hogeman, et ux, release of deed of trust.
 United States vs. Faye Callison, notice of federal tax lien.
 Gill Walker, et ux, to James Walker to First Federal Savings and Loan Association, Ranger, mechanic v. materialman's lien and assignment.
 J. T. Wilson, et al, to Mrs. Lela Raspberry, warranty deed.
 Ed Willingham, et ux, to

Plans Complete For Rotary Club Inter-City Meet

Dr. John C. Stevens, assistant president of Abilene Christian College, will address the Rotary Clubs of Cisco, Breckenridge, Eastland, and Ranger at their inter-city dinner meeting at 7 p.m. Thursday, Nov. 4, in the Corral Room of the Victor Hotel, according to Eris Ritchie, president of the Cisco club.
 Joe Camacho to Commercial State Bank, Ranger, mechanic v. materialman's lien and assignment.

The topic of Dr. Stevens' talk has not been related, but Mr. Ritchie said he is "noted for after-dinner speeches on American patriotic themes."
 In addition to his assistant presidential duties at ACC, Dr. Stevens is chairman of the American Studies program for public school teachers. He is also a lay minister for the Church of Christ, Mr. Ritchie said. Before occupying his present position, Dr. Stevens was a professor of history and government at ACC. He has also served as dean of students.
 Dr. Stevens took his Ph.D. and master degree from the University of Arkansas. He holds a bachelor degree from ACC.
 Mrs. Stevens, the former Ruth Rambo of Abilene, will

Morton Valley HD Club Meets Last Wednesday

Members of the Morton Valley Home Demonstration Club met Wednesday, Oct. 27, in the club house with 15 members and two guests present.
 probably accompany Dr. Stevens to the dinner Thursday, Mr. Ritchie said. Wives of Rotarians will be welcome at the dinner, which will serve as the weekly meeting for the various clubs. Mr. Ritchie will be master of ceremonies, and dinner music will be provided by Mrs. Jo White of Cisco.

EASTLAND TELEGRAM
 Thursday, November 4, 1954
 Page Two
 Mrs. C. T. Brokman, president, presided.
 The group was led in the club motto, pledge and prayer by Mrs. Alvin Kincaid, after which, Mrs. Danley gave the devotional.
 After a short business session, Mrs. Harrison asked each member to write an essay on Gold Bond Stamps for extra points.
 An interesting program on "Dress Right" was presented by Mrs. Beverly Nicholson, Eastland County home demonstration agent, followed by a question and answer period.
 Mrs. H. C. Pounds, hostess, served sandwiches, cookies and toasted nuts from an elaborately decorated table with an autumn flower center and a Thanksgiving cloth.
 Present were Meses. Mrs. Miller, W. S. Rice, Harrison, Jeff Laughlin, White, D. J. West, Brockman, L. W. H. N. Sherman, J. B. R. W. Gordon and Mrs. Bond.
 Mrs. Dub Chambers welcomed a new member and Mrs. W. E. Tank and Mrs. Thad Henderson. Levelland were guests.
 There is no scheduled meeting for November.
 George Washington cornerstone of the capitol.

JOIN THE THOUSANDS SWITCHING TO WARDS

3 DAYS ONLY

MONTGOMERY WARD

THURSDAY, FRIDAY & SATURDAY

For three big days unprecedented savings on hundreds and hundreds of quality merchandise items in our WAREHOUSE SALE in the building at the corner of Main and Marston Streets in downtown Ranger. Check these values . . . check these prices . . . then shop and save plenty during this day event . . . one of the most sensational sales in the history of WARD'S Ranger store. Open a . . .

All Account. Buy NOW for Christmas! No money down.

IN WAREHOUSE—Main & Marston—RANGER

FOR THREE BIG DAYS ONLY — THURSDAY, FRIDAY AND SATURDAY, NOV. 4-5-6!

FREE TOYS

WITH THE PURCHASE OF MAJOR APPLIANCES DURING WARD'S BIG "WAREHOUSE SALE"

Wow! What a big extra bonus for every family with Christmas only a few weeks away. Choose your appliance — then select the toys of your choice. They're FREE at Ward's! But — remember this offer is positively for three days only . . . Thursday, Friday, and Saturday, Nov. 4-5-6. Don't miss this sensational offer.

39.95 BOX SPRINGS	\$24.88
179.95 BED ROOM SUITE, 2-pc.	\$144.00
179.95 DIVAN	\$138.00
22.95 Coffee Table, Walnut and Blond	\$15.00
22.95 END TABLE, Birch	\$15.00
22.88 UNPAINTED CHEST	\$17.88
12.98 UNPAINTED CHEST	\$7.88
24.95 CHAIR	\$16.88
44.95 CHAIR	\$29.00
199.5 LIVING ROOM SUITE, 2-pc.	\$139.00
229.95 LIVING ROOM SUITE, 2-pc.	\$149.00
14.99 TABLE LAMP	\$12.00
159.95 SLEEPER	\$138.00
139.88 EARLY AMERICAN SOFA	\$99.00
199.95 EARLY AMERICAN SOFA, 120-in. long	\$159.95
189.88 EARLY AMERICAN SOFA, 96-in. long	\$149.88
5.95 Unpainted STOOLS, slightly soiled or damaged	\$2.95
6.95 Unpainted CHAIRS, slightly soiled or damaged	\$3.95
69.95 CHAIR, one only	\$49.00
69.95 CHAIR, one only	\$48.00
29.95 MAPLE ROCKER	\$23.00
33.95 Unpainted CHEST, 10-drawer	\$21.95
119.95 SEWING MACHINE & CABINET	\$99.95
55.00 SEWING MACHINE	\$44.00
140.00 SEWING MACHINE	\$109.00
29.95 FLOOR POLISHER	\$23.00
47.88 VACUUM CLEANER	\$39.88
17.95 HEATER, 17,500 BTU, in carton	\$9.88
84.95 Sofa Bed, Maple Finish	\$59.88
29.95 POLE LAMP, 3-light	\$21.88
17.95 POLE LAMP, 3-light	\$13.88
14.95 POLE LAMP, 3-light	\$12.44
69.95 SWIVEL ROCKER	\$49.00
9.95 BED FRAME	\$6.88
180.00 Bedroom Suite, 2-pcs., Walnut finish. Dresser damaged	\$88.00
80.00 MATTRESS & SPRINGS, 39-inch slightly damaged, one only	\$24.88
17.95 MATTRESS & SPRINGS, 39-inch, slightly damaged, one only	\$8.97

59.95 INNERSPRING MATTRESS, 54-inch slightly damaged, one only	\$24.88
59.95 RADIO, 10-Transistor, damaged, one only	\$4.99
199.95 STEREO, Walnut, 6-Speakers	\$16.99
234.95 TV SET, 21-Inch, Walnut Cabinet	\$79.95
Repossessed Console TV Set, 23-inch	\$2.99
Repossessed GAS RANGE, 30-Inch, Coppertone	\$14.98

FREE \$40.00 WORTH OF TOYS OF YOUR CHOICE WITH THE PURCHASE OF ANY APPLIANCE LISTED BELOW:

13.5 Cu. Ft. FREEZER, 120-lb. frostless	\$289.95
18 Cu. Ft. FREEZER, 175-lb. frostless	\$359.95
14.6 Cu. Ft. FREEZER, 150-lb., frostless	\$349.95
14.6 Cu. Ft. ICEMAKER, 150-lb. FREEZER	\$399.95

UPRIGHT FREEZERS

15-Ft. 510 lb. capacity	\$229.95
17-Ft. — 615 lb. capacity	\$259.95
30-Ft. — 1,054 lb. capacity	\$288.00

CHEST FREEZERS

17-Ft. — 615 lb. capacity	\$249.95
21-Ft. — 795 lb. capacity	\$259.95

FREE! \$25.00 WORTH OF TOYS OF YOUR CHOICE WITH THE PURCHASE OF ANY APPLIANCE LISTED BELOW

AUTOMATIC WASHER, 12 lbs.	\$209.99
AUTOMATIC WASHER, 15 lbs.	\$219.99
AUTOMATIC WASHER, 10 lbs.	\$144.00
ELECTRIC DRYER, 15 lbs.	\$169.88
AUTOMATIC WASHER, 6-cycle, 15 lbs.	\$219.99
AUTOMATIC WASHER 6-cycle, 12 lbs.	\$209.99
AUTOMATIC WASHER, 3-cycle, 12 lbs.	\$144.00
30-inch Gas RANGE	\$169.95
30-inch Gas RANGE	\$158.00
30-inch Gas RANGE	\$199.95
30-inch Gas RANGE	\$194.95

TOOLS & HARDWARE

7.45 WOODWORK VISE	\$9.00
9.95 MECHANICS VISE, 4-Inch	\$9.00
11.50 GRINDER, 5-Inch	\$9.00
2.29 BALL PEIN HAMMER, 3-oz.	\$6.95
3.49 CLAW HAMMER, 16-oz.	\$5.98
42.95 SABRE SAW	\$2.98
6.49 PARTS CABINET	\$4.99
3.39 Adjustable WRENCH	\$4.99
2.98 Comination WRENCH SET, 6-pc.	\$4.99
2.49 PUNCH & CHISEL SET	\$2.99
5.49 SMALL BIT AXE	\$4.99
7.99 STEEL SHELVING	\$4.99
3.29 DECORATOR KITS	\$4.99
5.99 SOLDER GUN	\$4.99
5.69 TOOL BOX	\$4.99
1.69 PROPANE FUEL	\$4.99
39.99 SAW, 7-Inch	\$2.99
34.99 RECIPROCAL SAW	\$2.99
42.95 ROUTER	\$4.98
46.22 TOOL SET, 62 Pieces	\$4.98
8.99 ELECTRIC DRILL	\$4.99
29.95 SPRAYER	\$2.99
3.77 LATEX	\$1.99
14.95 Aluminum Extension Ladder, 14-ft.	\$1.99
Assortment of Wrenches	\$1.99
14.95 WALL HEATER	\$1.99
27.00 GALVANIZED TANK, 20-Gal.	\$1.99
102.50 JET PUMP, 1/2 hp with tank	\$1.99
11.95 Kitchen Sink, 24x21-In	\$1.99
124.95 Tiller, 3-hp	\$1.99
139.95 CHAIN SAW, 6 hp	\$1.99
54.95 POWER MOWER, 20-Inch, 3 hp., slightly used	\$1.99
54.95 POWER MOWER, 20-Inch, 3-hp	\$1.99
69.95 POWER MOWER, 20-Inch, 3 hp	\$1.99
119.95 MOWER, Self-Propelled	\$1.99
PLASTIC ROLLS, 50 Feet	\$1.99

FURNITURE

129.95 DINETTE SUITE, 5-pc. Round	\$84.00
27.95 DINETTE SUITE, 3-pc.	\$21.88
99.95 DINETTE SUITE, 7-Pc.	\$78.88
39.95 MATTRESS	\$24.88

PINWALE
Corduroy 37-in. wide Reg. 1.00 **64c** yd.

An Ideal Christmas Gift at a Price You Can Afford!

3-Position RECLINER
 Reg. 69.95 **39.88**

Pliable Naugahyde, Upright, TV and full reclining positions. Padded seat and back. Choice of 5 style-setting colors.

County Draft Board May Call Young Childless Married Men

Young childless married men of Eastland and Stephens Counties will not be overlooked when Selective Service Board 36 calls 31 men for pre-induction physical examinations Nov. 17, according to Mrs. Jewell Reeves, clerk.

Childless married men who pass the examinations will be eligible for December's draft, regardless of date of

selected." He said an unborn child must be certified by a physician.

Draft Board No. 36, which serves both Eastland and Stephens counties, will forward six men for induction to help fill November's state quota of 1,456. Texas' December quota is 1,714, a part of the national call for 45,224 men, 40,200 for the Army and 5,024 for the Marine Corps.

Childless married men may be called for examinations in December as well as November.

IN AUSTIN

Mr. and Mrs. John Willingham spent the weekend in Austin with a daughter, Mr. and Mrs. Marlin Johnston.

BOWLING NEWS

Scores for the Ladies Wednesday Night League at Fiesta Bowl were reported by Sandra Holloway, secretary, as follows:

	W	L	TP
Konc. Bait House	34	6	11031
Smith Plumbing	20	20	10873
The Point	20	20	10723
W. T. U.	18	22	10631
Team No. 4	14	26	10500
R. Froz. Food	14	26	10427

First high team, three games
Konczak's Bait House 2330

Second high team, three games
Smith Plumbing 2268

Third high team, three games
West Texas Utilities 2202

Second high, individual three games, Lou Dell Bryan 475

Third high, individual three games, Carla Morris 459

First High, team game Konczak's Bait House 1841

Second high, team game The Point 1672

Third high, team game Smith Plumbing 1605

First high, individual game Pat Turnipseed 197

Second high, individual game Annette Justice 172

Third high, individual game Lou Dell Bryan 171

Lazelle Johnson 170

Scores reported for the Monday Nitemen's Handicap

League at Fiesta Bowl last week were reported by Clyde Benton, president, and George Carter, secretary, as follows:

Team Standings	W	L	TP
Dodge Boys	24	8	12094
Vil. Barber S.	22	10	11290
Tex. Electric	20	12	11309
Hoffman W. Ser.	18	14	11466
H. Vassarette	18	14	11500
Premier O. Co.	16	16	11247
Mont. Ward	14	18	11122
Eastland Auto	12	20	11286
Tex. Elec.	8	24	11009
Pickrell Ins.	8	24	11060

First high team, three games
Dodge Boys 3096

Second high team, three games — Dodge Boys 3064

Third high team, three games — Dodge Boys 3045

First high, individual three games — Howard Langford 616

Second high, individual three

games — Howard Langford 585
Third high, individual three games — Morris 575

First high, team game — Dodge Boys 1083

Second high, team game — Dodge Boys 1080

Third high, team game — Dodge Boys 1060

First high, individual game — H. Langford 245

Second high, individual game — T. Alford 225

Third high, individual game — C. Offield, 215

LADIES TUESDAY NIGHT LEAGUE

October 26, 1965

	W	L
Poe Floral	34	6
Koen Salvage	32	8
Kinnaird Ins.	26	14
Scott's Bait House	24	16
VC Menuettes	20	20

Altman's	18
Modern Dry Cleaners	16
Fiesta Bowl	16
Roy's Repair Service	16
Central Drug	14
Johnson Appliance	14
Ranger	12
Hollywood Vassarette	12

High Team 3 Games

Kinnaird Ins.	2
Johnson Appliance	2
Koen Salvage	2

High Individual 3 Games

Bette Maynard	2
Lazelle Johnson	2
Dot Wright	2

High Team Game

Kinnaird Ins.	2
Johnson Appliance	2
Altman's & Koen Salvage	2

High Individual Game

Bette Maynard	2
Sara Peel	2
Dot Wright	2



NO MONEY DOWN! NO PAYMENTS UNTIL FEBRUARY, 1966
on Furniture & Appliances

SALE

STORE HOURS
9 A. M.
TO
5 P. M.
Saturday
til 6 P. M.

WAREHOUSE

- ### BOYS' & MEN'S WEAR
- 2.99 Sweat SHIRTS, s,m,l \$1.50
 - 3.99 STRETCH DENIM PANTS, limited \$2.50
 - 79c DRESS SOX, 100 % Cotton 50c
 - 2.99 MEN'S SPORT SHIRTS, solids, stripes, plaids s-m-l \$1.99
 - 4.98 HOUSE SLIPPERS, leather \$3.22

- ### WOMEN'S WEAR
- GROUP 2.98-3.98 HOUSE DRESSES \$2.00
 - GROUP 8.99 DRESSES \$3.00 & \$4.00
 - GROUP 6.99 DRESSES \$2.00
 - 6.99 SEMI-FORMALS, two only \$5.00
 - 5.98 Skirts, pastels, all sizes \$3.00
 - 2.98 Sleeveless BLOUSES, lg. Asstment. \$1.50
 - 4.99-3.99 SHORTS, Knee Knockers \$2.00
 - Women's FLATS, values to 4.99 \$2.66
 - House SLIPPERS, values to 3.98 \$1.99
 - 4.99 Broadcloth PAJAMAS, 32-46 \$2.00
 - Group Women's & Children's SKIPS, values up to \$2.99 \$1.57
 - 99c Nylon HOSE mesh and plain knit limited stock 57c

- ### CHILDREN'S WEAR
- 2.99 Girls Flannel Pajamas, 7-14 assorted colors \$1.44
 - 4.98 2-Piece Suits, 7-14 \$3.44
 - Assortment Blouses, Hooded Sweat Shirts, Petti Pants & Slacks, values to 2.99 \$1.00
 - 2.99 Knit SUITS, 8-24 mos., asstd. colors \$1.44
 - 1.99 Slips, Crew Sox, Batiste Suits, 9-18 Mos \$1.
 - 1.99 Infants Corduroy Overalls, Flannel lined, all colors \$1.37
 - 1.99 Boys Corduroy Boxer Jeans, Flannel lined \$1.37

- ### HOUSEWARES
- Picnic Set Service for Four 66c
 - laundry Basket, plastic, large size 44c
 - 2.99 Teflon Cookware, 5-Pc. Set \$9.99
 - 7.98 Electric Knife \$13.88
 - 4.95 Coffee Urn, 24 cups \$8.44
 - 9.95 Semi-Porcelian Dinnerware \$11.88
 - 4.95 Melmac Dinnerware, 45-pc. \$8.88

- ### SAVE ON TIRES!
- Limited Supply of Odds and Ends in Sizes as Shown Below at Carry-Out Prices. Extra Charge for Mounting.
- 29.95 7.60/15 White Wall, 4 only ea. \$14.44
 - 26.48 7.60/15 Black Tubeless, 2 only ea. \$14.44
 - 29.48 7.60/15 White Wall Tubeless, 2 only ea. \$14.44
 - 26.82 8.00/14 White Wall Tubeless, 3 only ea. \$14.44
 - 32.06 8.00/15 White Wall, 4 only ea. \$14.44
 - 19.32 8.00/14 Black Tubeless, 3 only ea. \$10.44
 - 22.32 8.00/14 White Wall Tubeless, 4 only ea. \$14.44
 - 19.61 6.40/15 White Wall, 4 only ea. \$10.44
 - 13.98 6.70/15 Black, 2 only ea. \$6.44
 - 24.50 7.60/15 Black Tubeless, 5 only ea. \$14.44
 - 22.05 7.50/14 Tubeless, factory rejects, 4 only ea. \$10.44
 - 34.36 8.50/14 Black Tubeless, 2 only ea. \$16.44
 - 31.62 8.00/14 Black Tubeless, 2 only ea. \$14.44
 - 20.00 6.50/16/6, 2 only ea. \$10.00
 - 64.30 7.50/16/8, 1 only ea. \$30.00
 - 78.10 8.25/20 Rayon, 2 only ea. \$40.00
 - 69.66 11/24 Tractor, 2 only ea. \$40.00

- ### FOR THE HOME
- 3.49 Tier CURTAINS, asstd colors, limited stock \$2.00
 - 9.98 DRAPES, 48x84, 3 pr. only \$6.00
 - 8.98 DRAPES, 48x63, 4 pr. only \$5.00
 - 5.00 PILLOW, Dacron filled, 21x27 finished \$3.99
 - 2.95 RUG SAMPLES \$1.50
 - 3.95 RUG SAMPLES \$2.00
 - 4.95 RUG SAMPLES \$2.50
 - 34.95 FOAM BACK RUG, 9x12 \$19.88
 - 14.95 THROW RUG, 3x5 \$9.88
 - 4.98 THROW RUG, 24x36 inches \$2.99
 - 11.49 LINOLEUM RUG, 9x12 \$8.88
 - 6.49 LINOLEUM RUG, 9x12 \$4.49
 - Odd Lots Floor Tile, 9x9 Asbestos, ea. 4c
 - 9x9 Vinyl Asbestos, ea. 8c

WASH CLOTHS
12 for 88c

- ### MEN'S AND WOMEN'S DRESS SHOES 1/4 off
- ### SPORTING GOODS
- 25.88 303 RIFLE, Enfield Sport \$20.88
 - 39.95 30 /06 RIFLE, 1903 Springfield \$34.88
 - 41.95 30/06 FN MAUSER \$36.88
 - 30.95 20-ga. Single SHOT GUN \$26.88
 - 64.95 12-ga. Pump SHOT GUN \$57.88
 - 6.50 BANANA SEAT for bicycle \$4.44
 - 8.88 BRONCO KIT for bicycle \$6.44
 - 8.99 FOOT LOCKER \$5.99
 - 10.99 FOOT LOCKER \$7.99
 - 8.98 ALUMINUM COT \$6.88
 - 58c MINNOW BUCKETS 33c
 - 40.88 BICYCLES \$36.99
 - 14.95 FAMILY FISHING SET \$9.88
 - 9.44 Volley Ball Badminton Set \$6.44
 - 14.95 COT with Mattress \$10.88
 - 15.95 B-B RIFLE Co2 \$11.88
 - 11.95 SLEEPING BAG \$8.88
 - 8.95 CAMP KIT \$6.88
 - 5.95 TABLE TENNIS SET \$4.44

- ### AUTOMOTIVE ACCESSORIES
- 3.49 BOOSTER CABLES \$2.88
 - 98c STANDARD FILTERS 79c
 - 6.95 All Terry Cloth COVERS \$4.88
 - 5.95 THUNDERBIRD COVERS \$3.88
 - 22.95 FULL SEAT COVERS \$18.88
 - 1.79 5 Qt. can HD OIL \$1.44
 - 3.69 Car Wash BRUSH \$2.88
 - 2.79 FOAM CUSHION \$2.22
 - 6.89 TOP CARRIER \$5.88
 - 4.49 DRY CELL CHARGER \$3.44
 - 1.99 CHAMOIS \$1.33
 - 2.49 CHAMOIS \$1.88
 - 11.95 TIRE CHAINS \$8.88

PLASTIC TUMBLERS 8-oz.—each 3c

Final Bohem Thursday, 4,

The final showings of "Boheme," starring Mirella Freni, a young Italian soprano, Baritone Rolando Panerai, will be at the Majestic Theatre, day at 4 and 8 p.m.

A La Scala production, the film recreates Parisian life the 1830's of a poet, a painter, a musician, a philosopher, Freni Mimi and Musetta.

"Most of the cast act refreshingly unlike opera singers. Freni Panerai acts natural and unaffected. Tenor Gianni Bonardi is a little "stiff" as an ardent hero, but sings beautifully. Miss Freni's portrait Mimi is simple, straightforward and most moving," says Emily Coleman, free-lance critic of music, drama and dance.

Members of the Eastland Music Study Club were official hostesses for the premier performances Wednesday.

Republicans Will Meet on Monday

The Eastland County Republicans will meet Monday, Nov. 8, at 7:30 p. m. in the home of Mrs. Donald H. Russell, county chairman, in the city.

A special report from the John Tower will be read. Other reports from the State Finance Committee and the County Committee will follow, including a note from the newly organized T.A.R. (Teen-Age Republicans) headed by Gr Pierson.

Pecan Show Is Set For Dec. 10-11

The 13th annual Eastland County Pecan Show will be held in Cisco on Friday and Saturday, Dec. 10-11, according to an announcement from Oscar Schaefer, county chairman of the Pecan Growers Association.

Details for the show were worked out at meetings Monday night in Eastland and Thursday night at the Chamber of Commerce in Cisco. The show will be sponsored jointly by the county association and the Cisco CoFC. The CoFC agriculture committee will handle local details.

Mr. Schaefer said the rules of the show have been changed to allow anyone in this area of the state to have an entry of pecans. A quantity of pecans will constitute entry. All first and second place winners will be entered in the Texas State Pecan Show at A&M College in December.

In addition to the pecan show, there will be a pecan bake show and a pecan centerpiece division. Cash prizes will be paid to the winners of the centerpiece event.

Tails of this and the show will be announced Saturday.

A county pecan queen contest will also be held in Cisco. The winner will succeed Miss Susan Griffin of Cisco who was elected queen last year. All communities in the county will be asked to submit entries in the queen contest.

"We are delighted to have the pecan show in Cisco gain," Manager Jim Smathers of the Cisco CoFC said.

THURSDAY
Visiting in the home of Mrs. E. D. Allgood Thursday were Mr. and Mrs. B. B. Morris of Rising Star. They were here for a luncheon honoring a grandniece, Bobby Phillips, who celebrated a birthday.

VISITING
Mr. and Mrs. Warren Egan are visiting this week in Graham with her mother, Mr. and Mrs. J. O. Egan.

TO THE MAVERICKS . . . WE'RE BEHIND YOU ALL THE WAY

EASTLAND vs. De LEON

FRIDAY NIGHT, 7:30 p. m. THERE

MAVERICK 1965 SCHEDULE

Sept. 3 — Eastland 7, Comanche 6.
 Sept. 10 — Eastland 14, Rising Star 6.
 Sept. 17 — Eastland 14, Cisco 8.
 Sept. 24 — Dublin 32, Eastland 0.
 *Oct. 1 — Albany 26, Eastland 0.
 *Oct. 8 — Eastland 44, Baird 6.
 *Oct. 15 — Eastland 14, Clyde 6.
 *Oct. 22 — Eastland 18, Ranger 0.
 Oct. 29 — Open Date.
 *Nov. 5 — DeLeon, there.
 *Nov. 12 — Cross Plains, here.

*District Games.



The 10-10 C.B. Club will furnish emergency communication facilities to the Stadium — and may be contacted for the transmission of messages to and from Maverick Stadium.
TELEPHONE NUMBER IS
 MAin 9-1678



MAVERICK ROSTER

No.	Name	Pos.	Class	Weight
12	McCullough, Jerry	QB	Senior	165
20	Wilson, Gene	QB	Junior	130
40	Moylan, John	FB	Senior	165
42	Gregory, Layne	FB	Senior	160
22	Fullen, James	HB	Senior	155
24	Martin, Ted	E	Senior	135
25	Bass, Bill	WB	Sophomore	155
14	Daniels, Jay	WB	Sophomore	155
80	Wilson, Larry	E	Senior	150
86	McKenzie, James	E	Junior	125
82	Miller, Jim Pat	E	Senior	150
69	McCoy, Rodney	T	Senior	165
73	Keith, Fred	T	Sophomore	225
70	Porter, Boyd	T	Sophomore	195
75	Lowrance, Tony	T	Sophomore	165
65	Hazard, David	G	Senior	160
50	Boles, Bill	G	Senior	155
67	West, James	G	Senior	150
51	Terrell, Rodger	C	Senior	150
52	McCullough, Tommy	C	Junior	185
84	Emfinger, Greg	FB	Freshman	155
10	Lund, Steve	QB	Sophomore	150
66	Holt, Sidney	T	Sophomore	180

<p>Bond Electric Co. Phone MA 9-1724</p> <p>White Food Store Mr. and Mrs. G. A. White 1102 West Main — MA 9-8857</p> <p>Pool's Dry Cleaners Mr. and Mrs. Lester R. Smith 209 South Lamar — MA 9-2055</p> <p>C. M. Cox Dirt Contractor Highway 80 West — MA 9-2670</p> <p>Otis Coleman Humble Service Station Complete Car Service 400 East Main — MA 9-2545</p> <p>Howard Bookkeeping Service Mr. and Mrs. Veon Howard</p> <p>Alma's Beauty Parlor An Invitation to Greater Beauty 211 West Main — MA 9-1151</p> <p>The Hairdresser Let Us Style Your Hair to Flatter Your Face 1302 South Seaman — MA 9-1430</p> <p>M. L. Terrell Real Estate and Robert Kincaid Farms — Ranches — City Property 311½ West Main — Phone MA 9-1725</p> <p>Hood King Motor Co. Ford and Mercury — Sales and Service On the Square — MA 9-1786</p> <p>Webb's 7-11 Grocery George and Wanda — Staples and Fancy Groceries, Fresh & Cured Meats 1006 W. Main — MA 9-8897</p>	<p>Buck Wheat Ranch and Farm Service City Property New FHA and GI Homes 301 North Seaman — MA 9-2131</p> <p>Eastland Truck Stop Service Station A. O. Gist — Highway 80 West Premier Gasoline All Brands Motor Oil Quick Service</p> <p>Bray's DEPARTMENT STORE EASTLAND</p> <p>Eastland Truck Stop Cafe Highway 80 West Venna Justice — Gyrin Simmons Serving Delicious Plate Lunches Steaks — Chops — Homemade Pies</p> <p>Mr. & Mrs. Paul McFarland</p> <p>Eastland Auction Company Located on Highway 80 East Ph. MA 9-1760</p> <p>Texas Lightweight Aggregate Company Producers of Concrete Aggregates C. W. Martin, Manager — MAIn 9-2060</p> <p>Eddie Pevehouse Texaco 503 W. Main — MA 9-8895</p> <p>JRB Super Market Carey Hightower, Mgr.</p> <p>Obie's Humble Station 802 W. Main — MA 9-8866</p>	<p>City Garage J. J. Finley, Proprietor Engine, Starter, and Generator Work 103 White Street — Ph. MA 9-1709</p> <p>Hillcrest Food Market When You Run Out — Run In 1401 W. Main — Ph. MA 9-1600</p> <p>Western Auto Associate Store J. L. Pittman, Owner Ph. MA 9-2011 Corner of Lamar and Commerce</p> <p>Majestic Theatre</p> <p>Toombs and Richardson Drug Store 108 S. Seaman — MA 9-1475 Free Delivery</p> <p>Harelik's Department Store 212 W. Main</p> <p>Mr. & Mrs. Victor Cornelius</p> <p>Central Drug</p> <p>Altman's "Smart Women's Wear" North Side of the Square Ph. MA 9-2275</p> <p>Freyschlag Insurance Agency North Side of the Square Ph. MA 9-2275</p> <p>Texas Electric Service Co. F. N. Sayre, Manager MA 9-2651</p> <p>Eastland Iron & Metal Co. Henry, Tillie and Saul Pullman</p> <p>Petroleum Corp. of Texas Walter E. Ruby, Mgr.</p> <p>Judge & Mrs. Wells Dalton</p>	<p>Eastland National Bank "On The Square" — Member FDIC</p> <p>Modern Village Barber Shop George Carter</p> <p>Graham's Trim Shop 709 W. Main — Ph. 9-2266</p> <p>Goodyear Service Store Don Popp, Manager 306 East Main — Ph. MA 9-2662</p> <p>Dr. and Mrs. M. A. Treadwell Jr.</p> <p>Eastland Memorial Hospital</p> <p>Chamber of Commerce of Eastland</p> <p>Hamilton Fruit Market Fresh Fruit and Vegetables</p> <p>Pete Tucker</p> <p>Fina Service Station Washing — Greasing — Tire Repairing 207 East Main Street</p> <p>Phagan Oil Co. L. C. Phagan, Distributor Premier Oil Co.</p> <p>Quality Shoe Service Longer Wear by Shoe Repair 103 South Lamar Street</p> <p>George Van Lines Moving — Storage</p> <p>B&W Clinic H. J. Bulgerin, M. D. B. B. Alexander, M. D. 310-30 Petroleum Bldg.</p> <p>Judge & Mrs. Frank Sparks</p>	<p>Horton Tire Service Seiberling Tires — Batteries East Main</p> <p>Allen's Auto Repair 215 South Lamar — Phone MA 9-2270 24 Hour Repair Service</p> <p>Kellar's Fix-It Shop 206 South Seaman — Phone MA 9-1393</p> <p>Dale Langlitz Texaco Service Washing — Greasing — Tire Repairing 702 West Main — Phone 9-8850</p> <p>Green Acres Nursing Home 111 North Daugherty — Ph. MA 9-2624</p> <p>Sunrise Manor Nursing Home 411 West Moss</p> <p>R. M. Sneed Contractor Highway 80 East — Phone MA 9-1756</p> <p>Safeway Store</p> <p>Foremost Dairies Clyde Manning, Manager 410 West Commerce — MA 9-1701</p> <p>Vic's Auto Repair 306 West Main — MA 9-2111</p> <p>Hanna Hardware and Lumber Co.</p> <p>Standlee McCracken Consignee, Mobil Oil Co. MAIn 9-2145</p> <p>Romeo Eastland Mfg. Co. Pottery, Wholesale and Retail 411 E. Main — MA 9-2121</p> <p>Judge & Mrs. Scott Bailey</p>
-----------------------------------------------------------------------------------------------------------------------------------------------------------------------------------------------------------------------------------------------------------------------------------------------------------------------------------------------------------------------------------------------------------------------------------------------------------------------------------------------------------------------------------------------------------------------------------------------------------------------------------------------------------------------------------------------------------------------------------------------------------------------------------------------------------------------------------------------------------------------------------------------------------------------------------------------------------------------------------------------------------------------------------------------------------------------------------------------------------------------	----------------------------------------------------------------------------------------------------------------------------------------------------------------------------------------------------------------------------------------------------------------------------------------------------------------------------------------------------------------------------------------------------------------------------------------------------------------------------------------------------------------------------------------------------------------------------------------------------------------------------------------------------------------------------------------------------------------------------------------------------------------------------------------------------------------------------------------------------------------------------------------------------------------------------------------------------------------	----------------------------------------------------------------------------------------------------------------------------------------------------------------------------------------------------------------------------------------------------------------------------------------------------------------------------------------------------------------------------------------------------------------------------------------------------------------------------------------------------------------------------------------------------------------------------------------------------------------------------------------------------------------------------------------------------------------------------------------------------------------------------------------------------------------------------------------------------------------------------------------------------------------------------------------------------------------------------------------------------------------------------------------------------------------------------------------------	------------------------------------------------------------------------------------------------------------------------------------------------------------------------------------------------------------------------------------------------------------------------------------------------------------------------------------------------------------------------------------------------------------------------------------------------------------------------------------------------------------------------------------------------------------------------------------------------------------------------------------------------------------------------------------------------------------------------------------------------------------------------------------------------------------------------------------------------------------------------------------------------------------------------------------------------------------------------------------------------------------------------------	----------------------------------------------------------------------------------------------------------------------------------------------------------------------------------------------------------------------------------------------------------------------------------------------------------------------------------------------------------------------------------------------------------------------------------------------------------------------------------------------------------------------------------------------------------------------------------------------------------------------------------------------------------------------------------------------------------------------------------------------------------------------------------------------------------------------------------------------------------------------------------------------------------------------------------------------------------------------------------------------------------------------------------------------------------------------------

SOUTHERN TELEVISION SYSTEMS CORPORATION
 Cisco - Eastland - Ranger . . . Inviting You to Watch All of the Games — NCAA - AFL - NFL