

BUY SELL TRADE LEASE
CLASSIFIED ADS

CALL MA 9-1707

Guests last Friday and Saturday in the home of Mr. and Mrs. Wiley Harbin were a son Hilton Harbin of Abilene; and Mr. and Mrs. Joe Bigson of Dallas.

Cards of Thanks

CARD OF THANKS
The family of Mrs. Mattie Brashears Barrow gratefully acknowledge the kindness and sympathy shown us at this time. For the nice food, beautiful flowers, comforting words of the minister, friends and neighbors. We say thanks to each of you. May God bless you all.
Dr. B. W. Barrown and children
The Brashear family.

CARD OF THANKS
The family of John Andrew Supulver gratefully acknowledge the kindness and sympathy shown us at this time. For the nice food, beautiful flowers, comforting words of the minister, friends and neighbors. We say thanks to each of you. May God bless you all.
Mr. and Mrs. W. C. Howard
Mr. and Mrs. Bill Roberts
Mr. and Mrs. Sidney Supulver

Lost

STRAYED: Black whitefaced heifer, about 300 pounds. Small notch in top of each ear. G. C. Dawkins, Route One, Gorman. Phone DE Leon 3530, 79.

FOR SALE: Good solid used tires, \$3.00 — up. Horton Tire Service, Eastland.

Try This Car Quiz!
yes no
Do you get speedy automotive service? () ()
Do you get friendly, courteous treatment? () ()
Do you get complete satisfaction in every way? () ()

If your answers are yes, you must already be one of our customers!

On the other hand, if one or more of your answers are "no," we invite you to try our service. You see, we've studied the book on customer satisfaction and how to achieve it. Our facilities are clean and modern, our equipment is the finest.

OBIE'S HUMBLE SERVICE STATION
802 W. Main
MA 9-8866

● SEIBERLING
● FIRESTONE
● COOPER
The Reliable One
HORTON Tire Service
Eastland

It's Time to Spray under your house and in your house for termites, roaches, ants, fleas, spiders.
Also time to spray your grass, trees, and shrubbery.

H. D. WARREN
209 E. Valley
Phone MA 9-2434

VALLEY VIEW ESTATES
Eastland's Newest Addition
Near the New School
Lovely 3 Bedroom Homes
FHA & GI Financing
Built to your plans or ours
No Two Homes Exactly Alike
CONTACT
D. L. KINNAIRD REAL ESTATE
MAin 9-2544

Rentals

FOR RENT: Two bedroom house, 401 S. Oak. Call MA 9-2243. 79

FOR RENT: Two bedroom house, 401 S. Oak. Call MA 9-2243. 79

FOR RENT: Three bedroom cottage, 503 High St., on Park Hill, only \$35. Phone MA 9-1417. 79

FOR RENT: Four room apartment, walk-in closet, two beds. Call MA 9-2186. 79

FOR RENT: House, elderly couple preferred. Phone MA 9-2649. After 5, MA 9-2147. 79

FOR RENT: Two bedroom house in Olden, city water. See or call Jeff Woods, Village Hotel, Eastland. 79

FOR RENT: three room furnished apartment, bills paid, walk-in closets. Phone MA 9-1559. 79

FOR RENT: Two bedroom house, apply 507 S. Madera. 79

LEGAL NOTICE
The Board of Trustees of The Eastland Independent School District will accept bids until Noon Tuesday October 12th for the purpose of selling the following vehicles:
1 1957 48 Passenger Ford School Bus
1 1951 Ford 1-1-2 Ton Truck
Bids forms may be secured in the business office at Eastland High School. Vehicles may be inspected at the school. The Board reserves the right to reject any and all bids.

FOR SALE: Lady Kenmore Washer and Lady Kenmore Electric Dryer, each six months old; Kirby Sweeper with all attachments; furniture; Kenmore Polisher-Scrubber; silver; miscellaneous household furnishings; Piano. Call MA 9-1064. 79

FOR SALE: by owner — 160 acre black land stock farm, four miles southwest of Gorman, 80 acres cultivated, 80 acres in good grass. Plenty of water, good fences. New 40 by 40 foot barn, all weather road. Terms five percent interest. J. Davis Smith, Box 83, Phone RE 4-5313, Gorman. 79

FOR SALE: All sizes re-treads, \$5.99 plus tax and re-cappable c a r c u s. Goodyear Service Store, Eastland. 79

FOR SALE: Clean, high tread, used tires. All inspected and re-conditioned. Prices start at just \$3.95. Free installation. All guaranteed. Goodyear Service Store, Eastland. 79

FOR SALE: Weeping Lovegrass. Very good quality. Call 43 3591 or write Box 2335, Abilene. 79

FOR SALE: All sizes re-treads, \$5.99 plus tax and re-cappable c a r c u s. Goodyear Service Store, Eastland. 79

FOR SALE: Lake cabin to be moved, frame construction, hardwood floors. Contact Crowell Lumber Company. 79

FOR SALE: All sizes re-treads, \$5.99 plus tax and re-cappable c a r c u s. Goodyear Service Store, Eastland. 79

FREE
Estimates on
RE-ROOFING
Or Repair of Your Old Roof.
Residential and Commercial
Eastland Roofing Co.
Noble Squiers
Phone MA 9-2370

MATTRESSES
● New Innerspring Unit
● Choice of Ticking
● New and Renovate
● Choice of Firmness
● Cleaned, Felted Cotton
● New Mattress Guarantee
WESTERN MATTRESS CO.
Box 5288 — San Angelo
in Eastland Call MA 9-1342

ROLLINS & SONS MOBIL SERVICE
Call for Appointments on Wash - Grease Oil Changes
601 W. MAIN
MAin 9-8816

Little events become great events when you remember them with
FLOWERS
POE FLORAL
MAin 9-1711
609 W. Main
Eastland, Texas

FOR SALE: 700 x 14 white-walls. New takeoff, \$15 each. Horton Tire Service, Eastland. 79

NOTICE: Why rent? See Valley View Estates. Kinnaird Real Estate. 79

FOR SALE: New five room house on Lake Leon. MA 9-1912, Eastland, or WO 5-7437, Stephenville. 80

DON'T merely brighten your carpets... Blue Lustre them... eliminate re-soiling. Rent electric shampooer \$1. Coats Furniture Co. 79

FOR SALE: 600x16 Special Triple Rib Nylon tube-type 4 ply tires, \$12 plus tax. 550x16 at \$10 plus tax. Goodyear Service Store, Eastland. 79

FOR SALE — 50x10 M-System Mobil house trailer. Excellent condition and has washer. Two bedroom. Take up payments plus \$100. Call MA 9-2155 after 5 p.m. 79

FOR SALE: 1938 Pontiac Coupe. See and drive to appreciate. Also outboard motors; 7 1/2, 25 and 40 hp. Mahogany boat. MA 9-1927. 79

FOR SALE: Two bedroom house, 100x100 lot, new roof, plenty of closet space. Call MA 9-1568 after 2 p. m., 103 East Conner. 79

FOR SALE: 1952 one-half ton pickup. Rebuilt motor and transmission, five good tires and good cattle frames, \$250. See at Sport Center. Phone MA 9-1640. 79

FOR SALE: Newest edition "Old Rip" on sale at the Telegram Office. Includes many pictures, including color cover. \$1. 79

FOR SALE: 750 x 14 recaps. \$7.95 each. Horton Tire Service, Eastland. 79

FOR SALE: Lake Leon property. All improvements, reasonable. Call MA 9-2624. 79

FOR SALE: Two and three bedroom houses at Breckenridge. Finance available. See or call O. E. Bradford house-mover, HI 9-4506 or HI 9-3780, Breckenridge. 79

FOR SALE: Coin books, 35c each or 3 for \$1, while they last. Telegram office. 79

FOR SALE: One 12 cubic feet freezer, trade-in, \$135. Goodyear Service Store, Eastland. 79

FOR SALE: 1950 one-half ton Ford pickup, 1954 motor, clean, good tires. Call MA 9-2160 or see, 1204 South Green. 79

FOR SALE: All sizes re-treads, \$5.99 plus tax and re-cappable c a r c u s. Goodyear Service Store, Eastland. 79

FOR SALE: '53 model Pontiac, good tires, runs good \$125. See at 303 South Connellie between 9:30 a. m. and 2:30 p. m. 79

FOR SALE: Two used refrigerators, trade-ins, \$45 each. Goodyear Service Store, Eastland. 79

FOR SALE: 600 x 16 four ply nylon tires, \$9.95 plus tax. Limited supply. Horton Tire Service, Eastland. 79

FOR SALE: Set of four shoe absorbers installed, for only \$39.95. Goodyear Service Store, Eastland. 79

FOR SALE: Ranches and farms — 160, 290 and 753, etc. of Ranger, good deer country; 81.5 acres real cow country, one mile east of Ranger; 186 acres, below lake, nice three bedroom home, peanut all; 40 acres, alt., nice 1400 square feet home, near Carbon; 100 acres, well fenced, west of Ranger four miles; other larger tracts in this area. HOMES AND LOTS — Two bedroom, Cisco to rent; two bedroom, Cisco to sell; two and three bedrooms in Eastland; new three bedroom brick homes, F.H.A. or G.I. Loan; three acres, nice home sites, Olden; several lots, two houses in Ranger, \$2,500. Contact Buck Wheat, Ranch and Farm Service, 301 N. Seaman, Eastland. Phone MA 9-2131, night MA 9-1973. 79

FOR SALE: Three bedroom house, 2 1/2 lots, located in Cisco, 1309 Bliss. Cyclone fenced, carport, large double tile garage, carpeted living room. Priced to sell. Call DeLeon 4786 or days, 5121. 79

FOR SALE: Over cab camper, good condition. Good for fishing and deer hunting. See at Doc O'Keefe's, Lake Leon. \$1,000. 79

FOR SALE: All sizes re-treads, \$5.99 plus tax and re-cappable c a r c u s. Goodyear Service Store, Eastland. 79

FOR SALE: Telephone Company property, land and building located Westland Avenue and Hillcrest Drive, Lot 17, Block 6, Ranger, Texas. Bids received after 5 p.m. Thursday, October 21, 1965 will not be considered. The right to reject any or all bids is reserved. Mail bids to: District Plant Superintendent, Southwestern Bell Telephone Co., 200 N. E. 1st Avenue, Mineral Wells, Texas. 11

FOR SALE: Willis Jeep. Can be seen three miles south of Eastland. John Kidd, MA 9-2753. 83

FOR SALE to be moved: Two bedroom modern resident. Alvin Kincaid. Phone MA 9-2726. 79

FOR SALE: Good used Ford tractor and tandem disc, three point. Call MA 9-2518. 79

FOR SALE: Piano. Call MA 9-1064. 79

FOR SALE: 1957 Chevrolet station wagon, four-door. Phone MAin 9-1626, or see at 201 W. Burkett. 79

FOR SALE: 139 acres on the highway near Ranger. Small four room house. All net wire fenced, 50 acres in cultivation, 5/16 of minerals go. W. H. Hinkson Real Estate, Box 566, Strawn, Texas. Phone OR 2-5575. 79

FOR SALE: Eastland's newest Addition. Valley View Estates. Kinnaird Real Estate. 79

FOR SALE: All sizes re-treads, \$5.99 plus tax and re-cappable c a r c u s. Goodyear Service Store, Eastland. 79

FOR SALE: Clean, high tread, used tires. All inspected and re-conditioned. Prices start at just \$3.95. Free installation. All guaranteed. Goodyear Service Store, Eastland. 79

FOR SALE: Weeping Lovegrass. Very good quality. Call 43 3591 or write Box 2335, Abilene. 79

FOR SALE: All sizes re-treads, \$5.99 plus tax and re-cappable c a r c u s. Goodyear Service Store, Eastland. 79

FOR SALE: Hand made quilts, two chairs, yard tools and several other items, 414 South Lamar. 79

FOR SALE: All sizes re-treads, \$5.99 plus tax and re-cappable c a r c u s. Goodyear Service Store, Eastland. 79

FOR SALE: Lake cabin to be moved, frame construction, hardwood floors. Contact Crowell Lumber Company. 79

FOR SALE: All sizes re-treads, \$5.99 plus tax and re-cappable c a r c u s. Goodyear Service Store, Eastland. 79

FOR SALE: Hand made quilts, two chairs, yard tools and several other items, 414 South Lamar. 79

FOR SALE: All sizes re-treads, \$5.99 plus tax and re-cappable c a r c u s. Goodyear Service Store, Eastland. 79

FOR SALE: Lake cabin to be moved, frame construction, hardwood floors. Contact Crowell Lumber Company. 79

FOR SALE: All sizes re-treads, \$5.99 plus tax and re-cappable c a r c u s. Goodyear Service Store, Eastland. 79

FOR SALE: Hand made quilts, two chairs, yard tools and several other items, 414 South Lamar. 79

FOR SALE: All sizes re-treads, \$5.99 plus tax and re-cappable c a r c u s. Goodyear Service Store, Eastland. 79

FOR SALE: Lake cabin to be moved, frame construction, hardwood floors. Contact Crowell Lumber Company. 79

FOR SALE: All sizes re-treads, \$5.99 plus tax and re-cappable c a r c u s. Goodyear Service Store, Eastland. 79

FOR SALE: Hand made quilts, two chairs, yard tools and several other items, 414 South Lamar. 79

FOR SALE: All sizes re-treads, \$5.99 plus tax and re-cappable c a r c u s. Goodyear Service Store, Eastland. 79

FOR SALE: Lake cabin to be moved, frame construction, hardwood floors. Contact Crowell Lumber Company. 79

FOR SALE: All sizes re-treads, \$5.99 plus tax and re-cappable c a r c u s. Goodyear Service Store, Eastland. 79

FOR SALE: Hand made quilts, two chairs, yard tools and several other items, 414 South Lamar. 79

FOR SALE: All sizes re-treads, \$5.99 plus tax and re-cappable c a r c u s. Goodyear Service Store, Eastland. 79

FOR SALE: Lake cabin to be moved, frame construction, hardwood floors. Contact Crowell Lumber Company. 79

FOR SALE: All sizes re-treads, \$5.99 plus tax and re-cappable c a r c u s. Goodyear Service Store, Eastland. 79

FOR SALE: Hand made quilts, two chairs, yard tools and several other items, 414 South Lamar. 79

FOR SALE: All sizes re-treads, \$5.99 plus tax and re-cappable c a r c u s. Goodyear Service Store, Eastland. 79

NOTICE: Get your new Seiberling tires mounted and balanced at Horton Tire Service, Eastland. 79

NOTICE: Authorized Firestone sales and adjustments. Horton Tire Service, Eastland. 79

NOTICE: Carport sale—lamps, children's clothes; and women's, men's and big boy's clothes, jewelry, iron, etc. 401 S. Dixie, 9 a. m. to 5 p. m. Saturday. 78

NOTICE: Any debts made from this date forward for anyone other than myself, I am not responsible. Buster L. Bryant. 78

NOTICE: Automatic washing machine repair service. Experienced. Call Eddie Grisham, MA 9-1532 after 5:30 p. m. on weekends. 85

FOR SALE: 800/820/15 Seiberling four ply nylon tires, \$22.50 each. Horton Tire Service, Eastland. 79

NOTICE: Close to schools. Valley View Estates. Kinnaird Real Estate. 79

NOTICE: Coastal Bermuda planting. Two row pray machine with fertilizer attachment. Call E. C. Jones GI 5-3501, Dublin or B. L. Hunter, 2374 Olden. 79

NOTICE: After Sept. 24, 1965, I will not be responsible for any debts made other than those of myself. Ivy T. Reed. 78

For Sale

FOR SALE: 670 x 15 four ply black tires, \$10.95 plus tax. Horton Tire Service, Eastland. 79

FOR SALE: 1964 Chevrolet Impala, fordor hardtop. Power, air, automatic, white with red interior, 16,000 miles, extra clean. \$2,395.00. Wyndle Armstrong at bank during day or at 404 S. Hillcrest after 5 p. m. 79

FOR SALE: AKC registered toy white poodle, male. See 609 Austin Avenue, College Heights, Cisco. 79

FOR SALE: G-John Deere Tractor and 10 disc Schafer Plow. Call MA 9-1200 or MA 9-1230 after 5 p. m. 79

FOR SALE: Merle Norman Cosmetics at Ruby Lee's Beauty Shop. All type beauty work, specials on cold wave permanents. 403 S. Lamar St. Phone MAin 9-2168. 79

FOR SALE: Singer Sewing Machine authorized sales and service representative for this territory is J. T. Beggs. Write Route Two Rising Star or call 6434384. Good selection of used and repossessed sewing machines. 79

FOR SALE: 670 x 15 four ply black tires, \$10.95 plus tax. Horton Tire Service, Eastland. 79

FOR SALE: 1964 Chevrolet Impala, fordor hardtop. Power, air, automatic, white with red interior, 16,000 miles, extra clean. \$2,395.00. Wyndle Armstrong at bank during day or at 404 S. Hillcrest after 5 p. m. 79

FOR SALE: AKC registered toy white poodle, male. See 609 Austin Avenue, College Heights, Cisco. 79

FOR SALE: G-John Deere Tractor and 10 disc Schafer Plow. Call MA 9-1200 or MA 9-1230 after 5 p. m. 79

FOR SALE: Merle Norman Cosmetics at Ruby Lee's Beauty Shop. All type beauty work, specials on cold wave permanents. 403 S. Lamar St. Phone MAin 9-2168. 79

FOR SALE: Singer Sewing Machine authorized sales and service representative for this territory is J. T. Beggs. Write Route Two Rising Star or call 6434384. Good selection of used and repossessed sewing machines. 79

FOR SALE: 670 x 15 four ply black tires, \$10.95 plus tax. Horton Tire Service, Eastland. 79

FOR SALE: 1964 Chevrolet Impala, fordor hardtop. Power, air, automatic, white with red interior, 16,000 miles, extra clean. \$2,395.00. Wyndle Armstrong at bank during day or at 404 S. Hillcrest after 5 p. m. 79

FOR SALE: AKC registered toy white poodle, male. See 609 Austin Avenue, College Heights, Cisco. 79

FOR SALE: G-John Deere Tractor and 10 disc Schafer Plow. Call MA 9-1200 or MA 9-1230 after 5 p. m. 79

FOR SALE: Merle Norman Cosmetics at Ruby Lee's Beauty Shop. All type beauty work, specials on cold wave permanents. 403 S. Lamar St. Phone MAin 9-2168. 79

FOR SALE: Singer Sewing Machine authorized sales and service representative for this territory is J. T. Beggs. Write Route Two Rising Star or call 6434384. Good selection of used and repossessed sewing machines. 79

FOR SALE: 670 x 15 four ply black tires, \$10.95 plus tax. Horton Tire Service, Eastland. 79

FOR SALE: 1964 Chevrolet Impala, fordor hardtop. Power, air, automatic, white with red interior, 16,000 miles, extra clean. \$2,395.00. Wyndle Armstrong at bank during day or at 404 S. Hillcrest after 5 p. m. 79

FOR SALE: AKC registered toy white poodle, male. See 609 Austin Avenue, College Heights, Cisco. 79

FOR SALE: G-John Deere Tractor and 10 disc Schafer Plow. Call MA 9-1200 or MA 9-1230 after 5 p. m. 79

FOR SALE: Merle Norman Cosmetics at Ruby Lee's Beauty Shop. All type beauty work, specials on cold wave permanents. 403 S. Lamar St. Phone MAin 9-2168. 79

FOR SALE: Singer Sewing Machine authorized sales and service representative for this territory is J. T. Beggs. Write Route Two Rising Star or call 6434384. Good selection of used and repossessed sewing machines. 79

FOR SALE: 670 x 15 four ply black tires, \$10.95 plus tax. Horton Tire Service, Eastland. 79

Announcements

MASONIC LODGE NO. 467
Meets second Thursday of each month at 8 p.m. in the Masonic Hall, Call B. K. Drake, W. M., MA 9-2250 or L. E. Huckabay, Sec., MA 9-1391 for information.

EASTLAND ROTARY CLUB
Meets each Monday noon at White Elephant Restaurant in Eastland.
A. D. Taylor, President

Notice

NOTICE: Texas Barber College, 450 Pine, Abilene offers expert training at reasonable cost, with terms to fit each individual student. State and V.-A. approved. OR 4-5891. 79

NOTICE: Homes, 100 percent financed, one, two and three bedrooms. Payments, \$38 to \$89/month. Built on your lot or will buy you one anywhere in Texas. Also for Negro and Spanish. Good credit not required. Call 894-5769 collect or write, Homes, Box AA, Levelland, Tex. 79

NOTICE: Custom breaking, sowing, fertilizing, and spraying. MA 9-1200 or MA 9-1230. 79

NOTICE: FHA and GI home financing. Valley View Estates. Kinnaird Real Estate. 79

NOTICE: Own your own home. Valley View Estates. Kinnaird Real Estate. 79

NOTICE: For custom breaking and sowing of land, call Harold Courtney, MA 9-1340. 79

NOTICE: Now's the time to stock up on office supplies before the busy fall season begins. Telegram office. 79

NOTICE: For home repairs, call R. C. Turner, Home Services, Eastland, MA 9-2286. No job too small. Free estimates. 79

NOTICE: Save money. Have your tires retreaded for winter wear. Most sizes, \$7.95. One year guarantee. Jim Horton Tire Service, Eastland, Texas. 79

NOTICE: Free demonstration of Merle Norman Cosmetics at Ruby Lee's Beauty Shop. All type beauty work, specials on cold wave permanents. 403 S. Lamar St. Phone MAin 9-2168. 79

NOTICE: Singer Sewing Machine authorized sales and service representative for this territory is J. T. Beggs. Write Route Two Rising Star or call 6434384. Good selection of used and repossessed sewing machines. 79

NOTICE: We've re-opened and our stock includes 500 khaki shirts 500 khaki pants, 200 pairs overshoes, sleeping bags, other used and new items. Also we offer 500 new steel Westinghouse cabinet units at \$10 ea. They're worth many times more. Good used Chevy 1953 model truck, two ton, bargain at \$900. Norton's Army Surplus Store, 1291 Avenue D, Cisco. 79

NOTICE — Call or see us for rubber stamps. The Eastland Telegram. 79

NOTICE: Just arrived: modern design, rigid constructed attach-eases, with dividers inside and locking feature. Ideal for work and/or school. Assorted colors. Only \$10.95. Telegram office. 79

WILL TRADE — 14' boat, motor, and trailer, for livestock, farm equipment. Call HI 2-3629. 79

NOTICE: Peanut hay baled. 25 cents per bale. I. B. Walker, Olden, Phone 2501. 79

NOTICE: Peanut hay baled. 25 cents per bale. I. B. Walker, Olden, Phone 2501. 79

NOTICE: Peanut hay baled. 25 cents per bale. I. B. Walker, Olden, Phone 2501. 79

NOTICE: Peanut hay baled. 25 cents per bale. I. B. Walker, Olden, Phone



'Beat the Champ' Winners Named - To Vie in Abilene

Winners of the Beat the Champ Tournament which ended last week at Fiesta Bowl are, in the women's division, Sara Peel, first place with 627; Sandra Strothers, second, 575; and Myrtle Aaron, third, 558.

In the men's division, winners were Jerry Carter, first place, 647; Mack Heard, second, 600; and Clyde Benton, third, 572.

These winners will compete in the "Beat the Champ" finals to be held in Abilene at the VFW Lanes. They will be rolling on the same lanes as Dick Weber and Donna Zimmerman in a effort to beat

PECAN ORCHARDS JUDGED EXCELLENT ON FIELD DAY

Approximately 100 pecan growers and other interested persons from Eastland and all surrounding counties made the annual tour of the Eastland County Pecan Growers Association last Friday, reported to be one of the best tours ever conducted.

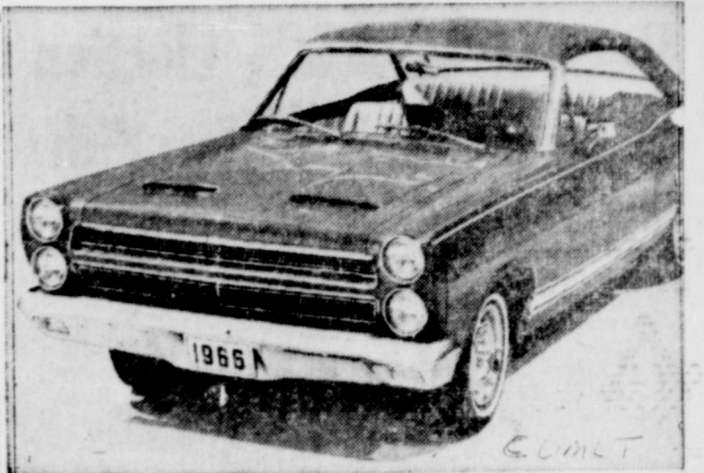
Prospects for the pecan harvest appeared to be excellent, with clusters averaging six to seven pecans, and some as many as 13. Orchards visited prior to lunch were the Lynn Daniels, Doss Alexander M. H. Montford, and Weldon Fenter. The Carl Taylor and C. E. Smith orchards were toured following lunch and a business session.

A huge tree in the Smith orchard attracted considerable attention, and a pot was made up with tourists guessing the number of pecans that will be yielded.

Results of demonstrations from using the new insecticide - Di-Syston - in the soil beneath the trees were reported to be excellent, according to an agriculture specialist from College Station who was present on the tour. Di-Syston prevents yellow aphids and the resulting honey dew.

Several pecan authorities from Big Spring, Lubbock and Fort Worth were present.

At the directors meeting after lunch, Cisco and Rising Star were the only two towns making a bid for the annual fall pecan show. Members of the Pecan Growers Association will vote on the matter at a date to be announced.



'66 COMETS - Completely restyled for 1966, Comet features a new larger body, a host of luxury appointments and a wider choice of engines. Sportiest of the new Comets is the Cyclone GT model shown here, which offers a high performance 335-horsepower V-8 engine. The Comets go on sale at Hood King Motor Co. in Eastland Oct. 1.

WINNING THE CROP - Eastland County officials the harvest from the courthouse lawn's Carpathian Walnut orchard (two trees) and find that will be quite a few nuts this year. From left these are Courthouse Maintenance Man Collin Campbell, Judge Scott Bailey, County Agent J. M. Cooper, Clerk Johnson Smith, and Maintenance Man Rogers. Mr. Rogers helped Mr. Cooper set the Walnut trees out on the courthouse lawn back (Staff Photos)

Carpathian Walnut Orchard Appears Good

Two specimens of Carpathian Walnut trees on the Eastland County Courthouse are doing their part to the testimony of nurserymen who call the rare-in-our-county tree, as the "tree of the century."

Planted only five years ago, the English variety walnuts are already beautiful trees on the south corner of the courthouse and yield an ample crop of excellent nuts each year. The trees are also yielding white barks as but the rare tree's characteristic.



A CHARACTERISTIC - Common only to the rare Carpathian Walnut trees, two samples of which are found on the Eastland County Courthouse lawn, is the rapid growth of ones or more shoots in a short period of time. The two limbs rising high above this tree show the fast growth, and is evident on both trees on the lawn.

Brownwood according to Cooper who was along when the scionwood was given to be tried.

This particular walnut is a beautiful, self-pollinating tree with large green, glossy, lush growing leaves. They grow much faster than do pecan trees. If a large tree, six to seven feet, is set out it will generally start bearing the first year. It only needs a large enough to produce its own pollen.

The nuts mature in September, when they start opening the nuts are pulled from the tree and placed in a shady place to cure out.

Others in the county are finding the trees to be fine nutbearing trees that provide quick shade as an ornamentals. Trees are available in the county.

Carpathian was introduced into Eastland County by B. B. Freeman, grower and nurseryman, who budded a large nutlack walnut to the new tree made its first crop of nuts in 1967 and has not had a crop since. Some crops have been heavier than others. Freeman had the budwood from the Pecan Field Station near

GO ON A FOOD

Bargain Spree!

JRB SELECTED QUALITY
ROUND STEAK
TENDER AND LEAN
Lb. **69¢**

Market Sliced or Piece Kind on Hickory Smoked **BACON** **69¢**

JRB SELECTED QUALITY - Sunday Dinner Special
RUMP ROAST Lb. **59¢**

JRB SELECTED QUALITY
BEEF CUTLETS Chicken Fry Lb. **99¢**

LEAN BONELESS
STEW MEAT Selected Cuts Lb. **59¢**

AF ALL-MEAT
FRANKS 12-oz. Pkgs. Each **49¢**

CRISCO OIL 24 OZ. BOTTLE **39¢**

DREFT REG. SIZE **35¢** OLEO Shurfresh 1 LB. **49¢**

MARYLAND CLUB
COFFEE
Reg., Drip or Fine
1-LB. CAN **69¢**

SHURFINE COFFEE
1 LB. CAN **59¢**

FRUIT PIES SHURFROST FROZEN APPLE, CHERRY, PEACH 4 22-OZ. **\$1**

SHURFROST FROZEN DINNERS 2 11-OZ. **69¢**

CHUNK TUNA LIBBY'S 4 303 CANS **49¢**

TOMATO JUICE LIBBY'S 46-OZ. CAN **39¢**

PINEAPPLE-GRAPEFRUIT JUICE DEL MONTE 2 46-OZ. CANS **69¢**

DEL MONTE CATSUP 20-Oz. Bottles **29¢**

ANACIN TABLETS 30's **44¢**

SUBDUE SHAMPOO \$1.00 Size **79¢**

CONTACT GOLD CAPSULES 10's-\$1.49 **99¢**

GILLETTE STAINLESS BLADES 8 1/2" Size **69¢**

ROYAL PUDDING 50 Free S&H Green Stamps with purchase of 6 pkgs. Void after Oct. 2, 1965

Frozen Vegetables 50 Free S&H Green Stamps with purchase 4 pkgs. Shurfine Void after Oct. 2, 1965

CREAM PIES 50 Free S&H Green Stamps with purchase 2 Morton's Void after Oct. 2, 1965

Del Monte Peaches 50 Free S&H Green Stamps with purchase 3 No. 2 1/2 Void after Oct. 2, 1965

Lipton Tea 50 Free S&H Green Stamps with purchase of 1/2-lb. pkg. Void after Oct. 2, 1965

50% OFF EVERYTHING
Except Guns, Ammo, Boats, Motors, Trailers, Shopsmith)

SALE ENDS DOORS CLOSE SATURDAY

SPORT CENTER
EASTLAND

SAVE DURING FINAL DAYS OF OUR BIG QUITTING BUSINESS SALE

RED POTATOES 10-LB. BAG **45¢**

IVORY FLAKES Reg. Size **35¢**

IVORY SNOW Reg. Size **35¢**

IVORY LIQUID Giant Size **67¢**

Kendrick's Grade A Medium **EGGS** 2 doz. **89¢**

JONATHAN APPLES 4-Lb. Bag **39¢**

CRISP CELERY 15c

GREEN Cucumbers 10c Lb.

JRB SUPER MARKETS AFFILIATED

RANGER - EASTLAND - CISCO We Reserve the Right to Limit Quantities - No Sales to Dealers

DOUBLE S&H Green Stamp with cash purchases of \$2.50 or more on Wednesdays!

WIN A FORD MUSTANG!

YOUR JRB FOOD STORES OF EASTLAND COUNTY WILL GIVE AWAY A BRAND NEW FORD MUSTANG DURING THE WEEK OF OCTOBER 1-7. Watch for Date and Place - GET YOUR CARD PUNCHED & BE FORTUNATE!

50% OFF EVERYTHING
Except Guns, Ammo, Boats, Motors, Trailers, Shopsmith)

SALE ENDS DOORS CLOSE SATURDAY

SPORT CENTER
EASTLAND

SAVE DURING FINAL DAYS OF OUR BIG QUITTING BUSINESS SALE

WIN A FORD MUSTANG!

YOUR JRB FOOD STORES OF EASTLAND COUNTY WILL GIVE AWAY A BRAND NEW FORD MUSTANG DURING THE WEEK OF OCTOBER 1-7. Watch for Date and Place - GET YOUR CARD PUNCHED & BE FORTUNATE!

Results of ASCS Election Announced By Meredith

Votes have been tabulated for the recent community committeemen election and results were reported by Jesse Meredith, county ASCS office manager, as follows:

Elected for Community A were Glenna Jordan and Ted J. Snider, both of Gorman, and Joe Hudson of Ranger; Community B, N. E. Richardson, Melvin Adams and W. O. Cantwell, all of Ranger; Community C, Paul Norris and Cecil Self, both of Gorman, and Charles Little,

Eastland; Community D, Jess Reynolds and Charlie Livingston, both of Cisco, and M. M. Farmer Cisco; Community E, Clarence Stroebel, J. F. Cooper and R. C. Long, all of Rising Star; and Community F, Joe B. Hunt of Cisco and Calvin Roady and D. G. Strover, both of Rising Star.

At the county convention, held Sept. 22, there were 16 delegates present and the following members were elected:

R. G. Lyerla was elected for a three year term as chairman; Garland Garrett, regular member, two year term; and E. E. Blackwell, vice chairman, one year term; also Paul Norris and Clarence Stroebel were elected alternate committeemen, Meredith reported.

WEEKEND IN DALLAS
Mrs. Prudie Gibson and daughters, Glenda and Sandra visited in Dallas last weekend with friends.

FREE FILM
You will receive a FREE ROLL of FILM for each roll of color or black and white film you bring to our store to be developed.
NO SLIDES OR MOVIES
PERRY'S

WATCH REPAIR
Your watch will receive the very finest care in our repair department. We also feature:
● Ring Sizing ● Jewelry Repair
● Engraving ● Pearl Restringing
BESKOW JEWELRY
210 W. Main Eastland MA 9-2529

RADIATOR TROUBLE?
SEE US FOR FREE INSPECTION
EXPERT RADIATOR SERVICE
cleaning repairing recoring rebuilding
GUARANTEED QUALITY PRODUCTS
PICKUP AND DELIVERY SERVICE
PROCTOR RADIATOR WORKS
HI 2-3170 CISCO 1306 Ave. D



THE FORDS FOR '66 — Dramatic Styling — including a new 2-door hardtop roof line — is shown in these photos of the Ford Galaxie 500 2-door hardtop, top, and the Ford Galaxie 500 7 Litre 2-door hardtop. All 1966 Fords will be at Hood King Motor Co. Friday, Oct. 1.

School Okays \$331,151 Budget for '65-'66

A budget for the Eastland Independent School District for 1965-66 in the amount of \$331,151.05 has been approved by the Board of Trustees, Chairman J. T. Gregory has announced.

The budget is some \$300,000 above last year's total, which included quite a bit of building material fixtures. Increase this year is due mainly to upped state local fund assignment and legislative salary increase, Supt. Wendell Siebert reports.

Actually budgeted last year was \$328,826.55 and the district only spent some \$350,000 — some of which was for building costs.

The Eastland state local fund assignment (the amount set by the state as this district's share in the state-wide education program) was increased from \$31,690 last year, to \$34,877 this year, Siebert reports. (Ten years ago it was \$19,000.)

School property valuation is up this year by some \$500,000

WALKER'S Dressing Plant
Custom Dressing
Phone D. J. Walker
Eastland MA 9-1192

to \$7,181,000 due to a recent re-evaluation of rural property, he said.

Approximately 95 per cent of the budgeted \$215,769.43 for instruction is for salaries, he said. The rest is for visual aids, etc.

The 1965-66 budget looks like this:

EXPENDITURES
Administrative, \$22,974; Instruction, \$215,769.43; Health Services, \$150; Pupil Transportation, \$8,303.83; Operation of plant, \$22,305; Maintenance of plant, \$5,000; Fixed charges, \$2,771; Total for computing per pupil cost, \$277,273.26. Study body activities, \$7,240; Total all current operational expenses, \$294,513.26; Capital outlay, \$8,800.31; Debt service, \$37,837.48; total expenditures for year, \$331,151.05.

RECEIPTS
Local sources, \$108,414.35; county sources, \$441; state sources, \$208,904; total revenue receipts \$317,759.35; non-revenue receipts (sale of property), \$1,500; total non-revenue receipts \$1,500; total revenue for year, \$319,259.35; unencumbered fund balances (from preceding year), \$11,891.70; total funds available, \$331,151.05.

Officers Will Have Workshop

A workshop for officers and members of Masonic Lodges in this area will be held at 8 p.m. Thursday, Sept. 30 at the Masonic Hall in Eastland. Officers of Breckenridge, Cisco Rising Star, Gorman, Ranger Carbon Desdemona and Eastland Lodges are expected to attend.

Purpose of the workshop, to be conducted by Stanley B. Aldrich of Minerals Wells, is to enable Masons to study common problems of Masonic Lodges and their operations.

BRAND NEW
1965 GMC Pickup
\$1749⁰⁰
Wright Implement
GORMAN, TEXAS
Phone RE 4-5513

See ahead with

M.H. PERRY
MA 9-1095
Ph. MA 9-2275
FAMILY PROTECTION
Let him show you how little it costs to see ahead — and be sure.
Southland Life
INSURANCE COMPANY

EASTLAND TELEGRAPH Thursday, Sept. 29, 1965 Page Four

handy

in the kitchen, workshop or anywhere. Wall-mounted extension are great space-savers (save you time and steps, too). And their delightful colors to complement any decor. Cost a lot? No. No, you can have two phones for just a fraction more than one.

SOUTHWESTERN

"YOU'LL LOOK GOOD IN A '66!"

START THE WHEELS ROLLING FOR A NEW CAR LOAN TODAY!

In buying a new car, you're forced with many decisions. But when it comes to making that "money" decision, let us help you make it. We will tailor an auto loan to your budget and at low, easy to pay-back bank rates. Put yourself in the driving seat . . . finance with us now.

★ ★ ★

Eastland National Bank
On the Square
MEMBER FDIC

Auto Tires... Truck Tires... Retreads... Ten Days!

TIRE CLEARANCE

A DEAL FOR EVERY WHEEL!

WHITEWALL
NEW ALL-WEATHER "42" NYLONS WITH TREADS
STARTING AT **\$11**

GOODYEAR

AUTO RETREADS \$5.99

NYLON All-Weather CLOSE-OUT! 25% OFF

RIB HI-MILER TRUCK TIRES 2 FOR \$29⁹⁵

GO GOODYEAR

new 7 Litre series, and optional on all other Ford models. It is unique in offering the best of two worlds: outstanding performance, combined with smoothness, speed and low-speed tractability. The '66 Fords will be on display at Hood King Motor in Eastland, Friday. The skillful blending of crisp soft surfaces gives the Ford a look that is new and still clearly Ford. The new silhouette includes subtle, graceful pop-up in rear-quarter area — commented by a divergent styled line in the lower quarter, reminiscent of 1964-65 Thunderbirds. A tapered windsplit runs from front fender to the rear. Wheel covers with deep second emphasis to the rear portion of the car. Upper series Fords draw even attention to this area with use of wheel lip moldings and ribbed moldings on rocker panels and lower fender panels.

ests last weekend in the of Mrs. Milburn Long her daughter and family. Mr. and Mrs. Pat Owen, Stacy, and Lucinda of gene.

IN OLNEY
Mrs. Frank Lovett, accompanied by her daughter, Mrs. Cates of Breckenridge, returned last weekend in Olney. Mrs. Lovett's sons and daughters, Dr. J. T. Lovett and E. Lovett. Mrs. Cates just recently returned from a trip to Connecticut, New York and other England states.

FROM ARKANSAS
Visitors in the home of Mr. Mrs. Paul Hodge last weekend were a son and family. Mr. and Mrs. Jack Hodges of Eldorado, Ark.

September Only
Mon., Tues., Wed. 8.50 Waves -- \$6.50
Casham Beauty Bar

Delta Kappa Meeting Hosted by Eastlanders

Victor Hotel Coffee Shop in Cisco was the scene of the Delta Kappa Gamma Society's first meeting of the year on Saturday, Sept. 25, at 9:30 a. m. The meeting was hosted by Mrs. Verna Johnson, Ethel Johnson and Evelyn Whatley. Mrs. Lela Lloyd presided and three new members were accepted.

Look Who's New!

Mr. and Mrs. Jim Roberts of Dallas announce the arrival of their first child, a son whom they named James Caldwell. Born Sept. 22, the baby weighed nine pounds, two ounces. Mrs. Roberts is the former Judy Inzer of Eastland. Grandparents of the baby are Mr. and Mrs. I. C. Inzer of Eastland and Judge and Mrs. Earl Roberts of Longview.

Mrs. Don Viergever Is Hostess for Xi Alphas

Members of Xi Alpha Beta met in the home of Mrs. Don Viergever Sept. 27 for a regular meeting with Mrs. Viergever, president, presiding. Plans for a winter rummage sale were discussed and Mrs. Marene Johnson discussed the "Santa Derby," asking the member's assistance in making it a success. A program on "Southern

Mrs. C.J. Lovell, Carbon To Note 92nd Birthday

Mrs. C. J. Lovell of Carbon will observe her 92nd birthday Sunday, Oct. 3, with open house from 2 until 5 p. m. in her home. Although no invitations are being mailed, all friends are cordially invited. Hosting the open house affair will be Mrs. Lovell's children, Mr. and Mrs. H. A. Lovell of Carbon and Mr. and Mrs. Clyde Lovell of Clyde; and grandchildren.

DAs WORK...

(Continued from page 1) said that Mr. Hogue had attempted to make a citizen's arrest in an incident. The case was presented to the grand jury and the indictment resulted. It was understood that a request for a special prosecutor in the district court would have to be initiated by the district attorney. Mr. Brown told interviewers that he had no plans at this time to request help.

District Clerk Roy Lane did not file the grand jury report, noting that it was not properly prepared. Judge Sparks said that although the report was read in open court, he doubted if it would be recorded. Mr. Hogue issued the following statement Wednesday: "Most all of our students come from good Christian homes. They are setting the patterns for their lives, and I am morally obligated, as well as entrusted by their parents, to guide and direct the students toward good wholesome lives."

In the incident that brought this case about, I could have turned my head. But no one with any moral principles could have acted differently or endorse such activities as were going on that night. "I am highly embarrassed by the proceedings, but I feel to the bottom of my heart that I was acting in the best interests of the young men and women involved — most of whom were college students who have been placed in my trust."

MC CUTCHENS RETURN
Mr. and Mrs. Billy McCutchen have returned from a recent trip to South Texas. They visited in Gatesville with Mr. and Mrs. Eric McCutchen, his parents; and in Temple with her parents, Mr. and Mrs. Fred Beerwinkle.

COMET...

(Continued From Page 1) sporty Cyclone series add a convertible model and special high performance "GT" option. "The larger, more elegant 1966 Comet is a response to the public demand for premium automobiles in every segment of the market," said Bob King. "While moving this beautiful new Comet upwards on the product ladder, we are retaining one series at traditional Comet length for our customers who want a premium car value at no appreciable size increase."



MERCURY FOR US — The Mercury again moves forward as a premium car in the middle-price field with tasteful styling changes, new engines and important additions to the option list. Standard in top-of-the-line Park Lane series shown and optional in others is an exclusive new 410-cubic inch 330-horsepower engine. The new Mercurys will be at Hood King Motor Co. in Eastland Friday.

The 1966 Comet offers customers a choice of two lengths, 196 inches for the "202" series and 203 inches — an increase of almost eight inches over 1965 — for the upper series Capri, Caliente and Cyclone. Wheelbase is 116 inches, up two inches. The new Comets are more spacious, with curved side glass and three-inch wider bodies significantly increasing

roominess. Shoulder room is increased up to three inches and hip room more than two-and-a-half inches. Front and rear head room and leg room are greater, also. Front and rear tread are 58 inches, an increase of three inches in the front and two inches in the rear. Overall width of the car, including bumpers, is increased less than one inch, to 74 inches.

MERCURY...
(Continued from Page 1) ing Mercury in the Lincoln Continental tradition with evolutionary styling changes, plus luxury car standards of top quality design and assembly, superiority in comfort and performance, and a wide choice of options for the custom touches demanded by owners in this premium car market.

The new Mercury features a completely fresh front end appearance, with new hood, fenders, bumper, grille and lights. Rear appearance is changed with new tail lamp assemblies and rear bumper arms which increase the overall length by two inches to 220 inches. Tow-door hardtops have a new roofline with a concave fastback blending smoothly into the rear deck.

Other new styling features are revised side ornamentation, new styling features are instrument cluster, facing and trim styles. The wastegate on the front fender can be replaced with an optional cornering light. The overall result of these styling changes is an even longer, well-proportioned silhouette.

Mercury's big change for 1966 under the hood include an exclusive new 410-cubic inch engine, a new optional 428-cubic-inch engine, and two improved and more-powerful 390-cubic-inch engines.

Mercury also has an exciting new product offering in the S-55 two-door hardtop convertible, sporty performance models with bucket seats and console, special S-5 ornamentation, and the new 428-cubic-inch engine with dual exhausts.

WE GIVE GOLD BOND STAMPS

Fall FOODS Spectacular

- IMPERIAL SUGAR 10-Lb. Bag 89¢
- IMPERIAL PURE CANE SUGAR 10-Lb. Bag 89¢
- WHITE SWAN BISCUITS 6 Pkg. 39¢
- DEL MONTE CUT GREEN BEANS 303 Can 25¢
- BAMA FRUIT PIES 20-Oz. Pkg. 25¢
- SNOW CROP ORANGE JUICE 12-Oz. Can 49¢
- REFRIKLE KUT TATER BOY POTATOES 2-Lb. Pkg. 29¢
- BOOTH FISH STICKS 3 8-Oz. Pkg. \$1.00
- ZEE Assorted TOWELS Jumbo Roll 19¢
- SKINNER'S RAISIN BRAN 11-Oz. Box 27¢
- MARYLAND CLUB or RANCH STYLE COFFEE ALL GRINDS Pound Can 69¢

PRICES GOOD THROUGH SATURDAY, OCT. 2

- Goch Blue Ribbon Beef CLUB STEAK 1 lb. 89¢
- Goch Blue Ribbon Beef Chuck BLADE ROAST 1 lb. 49¢
- HOME-KILLED BABY BEEF LOIN STEAK 1 lb. 89¢
- GOCH BLUE RIBBON Fully-Cooked, Ready-to-Eat PICNIC 3-lb can \$2.19
- SWIFT PREMIUM FRANKS 1 lb. 59¢
- FLOR Assorted TOILET TISSUE 4 Roll Pkg. 25¢
- DUNCAN MIXES PANCAKE MIX 2 lb. 49¢
- CARRINGTON INSTANT MILK 8-Oz. Box 65¢

SWIFT PREMIUM SLICED BACON lb. 79¢

MISSOURI EXTRA FANCY APPLES lb. 19¢

SUPERSAVE

- COFFEE MATE 6-Oz. Jar 47¢
- WHITE SWAN COFFEE Pound Can 67¢
- LIBBY'S BEEF STEW 24-Oz. Can 49¢
- SWANSDOWN Ass't'd CAKE MIX Layers Reg. Box 25¢
- ALKA SELTZER 50-Ct. Reg. 70¢ Size 49¢
- ANACIN 7-Oz. Reg. 69¢ Size 63¢
- LISTERINE 7-Oz. Reg. 69¢ Size 57¢
- TOOTH PASTE GLEEM Reg. 53¢ Size 39¢

WAPCO WHOLE NEW POTATOES 2 303 Cans 31¢

WHITFIELD Fresh Kasher Dill Quart Bottle 39¢

WHITE SWAN OLIVES 6-Oz. Jar 49¢

Spanish Beef-Chicken RICE-A-RONI 8-OZ FOOD FRISKIES 2 303 Cans 29¢

For Cooking or Salads WESSON OIL 24-Oz. Bottle 39¢

WHITE SWAN SHORTENING 3 lb. 59¢

DETERGENT W-P Giant Box 49¢

DETERGENT RINSO BLUE GLEEM Giant Box 67¢

ALL FABRIC SOFTENER FINAL TOUCH 33-Oz. Plastic 69¢

DETERGENT LUX LIQUID 22-Oz. Plastic 59¢

Super Save Specials!

Goch Blue Ribbon BEEF ROUND STEAK lb. 89¢

Rath Racorn SLICED BACON lb. 69¢

U.S. No. 1 RUSSETT POTATOES 10 lbs. 49¢

MacMoys SUPER SAVE

Home Owned-Home Operated 400 S. Seaman

FRESH TOMATOES lb. 19¢

Announcing: Mercury for 1966

a new definition of driving pleasure

MERCURY PARK LANE 4-DOOR HARDTOP

Moving ahead in the Lincoln Continental tradition

This is the year to move ahead to the new Mercury year. Your year. And just look at all the news there is! Ride news: the way Mercury moves is unique. Smooth, substantial, hushed — the finest ride this side of the Lincoln Continental. Style news: clean, classic lines — the only car in its class with a look all its own. Power news: engines range up to a muscular [428 cu. in. V-8]. Luxury news: options such as the [Stereo-Sonic Tape System] that uses plug-in cartridges. Safety news: helpful options such as [cornering lights] that show you the way when turning into dark driveways. Exclusive options such as [rear doors that lock automatically] at 8 miles per hour. And in every Mercury, without extra cost, you get 12 important safety features, including [back-up lights, emergency flasher, padded dash and visors, four seat belts front and rear, and outside rear-view mirror. Model news: the widest choice of Mercurys ever. 17 models in 4 series — sedans, hardtops, convertibles, and 2 wagons with the new [Dual-Action Tailgate] that turns into a door. Now's the time to see your Mercury dealer — and move ahead with

Mercury

HOOD KING MOTOR COMPANY

Main at Seaman EASTLAND, TEXAS Phone MA 9-1786

LINCOLN-MERCURY DIVISION OF

Youngs Describe Communist Tour For Lions Club

Mr. and Mrs. Roy L. Young, who toured Russia and other Communist countries on the Murray Cox Farm Tour last spring, shared their experience with color slides and comment for the Eastland Lions Club at the regular luncheon meeting Tuesday.

J. C. Poe was program chairman.

Guests included Helen Weaver, daughter of Member Weaver; Royce Taylor of Cisco; and these Cisco Lions, Weaver; Royce Taylor of Cisco; McGlasson, Clarence Richardson and John Huffmyer.

Eastland Memorial Hospital

The following persons were listed as patients in Eastland Memorial Hospital Wednesday:

Pat McPherson, Cisco, medical.

Mrs. H. D. Warren, medical.

Mrs. Clifford Thomas, medical.

Sarah Martin, medical.

James Rush, Strawn, medical.

Eddie Ray Thomas, Olden, medical.

Nell Patty, Strawn, medical.

Mrs. Dero Rains, Cisco, medical.

Mrs. Don Hull, Cisco, medical.

Mrs. Joe Harris, Cisco, medical.

Mrs. Victoriano Huerta, Ranger, medical.

Mrs. Carl Page, Ranger, medical.

Mrs. George Bennett, medical.

Mrs. George Bennett, medical.

Mrs. Paul Smith, Ranger, medical.

Nettie Thornton, medical.

Mrs. Riley, Freeman, medical.

Mrs. Riley, Freeman, medical.

Joe Hearn, medical.

H. A. Freeman, medical.

Cathy Ensor, medical.

Cathy Ensor, medical.

Mrs. Camde Martinez, medical.

Mrs. Maco Williams, medical.

Mrs. Allen Rushing, surgical.

Ima Bean, medical.

Mrs. William Reese, medical.

Cecile Stuart, Strawn, medical.

Mrs. Freddie Rodger, Graham, medical.

Mrs. Willie Speaker, medical.

Rev. Paul Fleming, medical.

Melvin Williams, surgical.

Marjorie van Hoose, medical.

Alyson Taylor, Midland, accident.

Linda Graham, medical.

Mrs. Lewis Sutherland, El Dorado, Kan., medical.

Ola Boles, Cisco, medical.

Mrs. Billy Ray Patton, surgical.

Mrs. Ollie Wilson, Cisco, surgical.

Mrs. Kenneth Watson, OB.

Mrs. Fred Moseley, Ranger, OB.

A. D. Stewart, medical.

C. E. PAUL, D. C.

Complete
Chiropractic
Health Service

Ave. I at 8th St.—(Hwy. 80)

Cisco, Texas
Phone III 2-1677

C. E. PAUL, D. C.

Complete
Chiropractic
Health Service

Ave. I at 8th St.—(Hwy. 80)

Cisco, Texas
Phone III 2-1677

SEE
YOU
IN
EASTLAND

GUARANTEED ELECTRIC SERVICE BOND ELECTRIC

808 W. Commerce
MAin 9-1724

Insurance is a Life-time Affair —

... and is so considered by those who figure safety as a business and protection as an investment. The fact that a person has carried insurance all his life and never had a claim does not mean that he has lost his money premiums. Rather has he gained them because he invested in safety, got protection and lost none of his property. If we buy insurance for what it really is the most of our financial problems will solve themselves.

Earl Bender & Company

Eastland (Insurance since 1924) Texas

COMPLETE AUTO SERVICE CENTER

GET YOUR AUTO WINTER FOR READY NOW!

24 HOUR TOWING SERVICE

24 HOUR WRECKER SERVICE

Complete Auto Repairs Safety Inspection Center

Allen Auto Repair
AT RUSHING MOTOR CO.
215 SOUTH SEAMAN

Phones
MA 9-2270
Night
MA 9-2224

U. Z. Aaron, Rising Star, surgical.

R. M. Humphries, Comanche, surgical.

Ben Stovall, Rising Star, surgical.

Rosalie Leslie, medical.

Noble Squires, medical.

Curtis Blackwell, Ranger, medical.

Mrs. Ben Brown, Cisco, surgical.

Florence Miller, medical.

Mrs. Francis, Urban, surgical.

Mrs. E. V. Lippard, Sr., surgical.

Mrs. B. M. Lusk, Cisco, surgical.

James Monroe Poe, surgical.

Baby Girl Watson.

Baby Boy Moseley.

Pat Miller Talks Abstracting For Rotary Meeting

Mr. Pat Miller spoke to the Eastland Rotary Club Monday at their regular weekly meeting at the White Elephant.

Mr. Miller spoke on abstracts. He commented that it was a most interesting business which requires patience and time.

Also Mr. Jack Arrington gave a report on the United Fund and urged everyone that a day's pay the United Way was well worth giving to.

Visitors for the meeting were Vic Behrens of Abilene and J. D. Collier of Cisco. The high school guests were Miss Sharon Spradling and d Homer Terry.

DINNER GUESTS

Dinner guests recently in the home of Mrs. Sophie Harris were Mr. and Mrs. Coy Hudson of Irving, Mr. and Mrs. Jimmy Lindsey of the Bermuda Islands and Mr. and Mrs. Bob O'Steen and baby of Lubbock; also Mr. and Mrs. James Harris and children, Mr. and Mrs. D. J. Walker and children and Mrs. Lula Walker, all of Eastland.

Mrs. Harris and Mrs. L. L. Walker visited recently at Possum Kingdom Lake with their children, the Coy Hudsons and the W. T. Harris family.

FROM OKLAHOMA

Visiting in the home of Rev. and Mrs. Haston Brewer this week has been his father, Rev. O. S. Brewer of Mangum, Okla.

Mike Collins On Wright Salute Planning Group

Mike Collins has been appointed by Anon Carter, Jr. to a 100-member steering committee for an appreciation dinner saluting Representative Jim Wright, congressman.

The \$10 - a - plate dinner, service in Congress, will be held on Oct. 23 at the Commercial Exhibit Building at Will Rogers Memorial Center.

"Jim right stands as one of the truly great legislative leaders, and as a man who gets things done for his district, state and nation," Carter said.

Tickets for the dinner may be purchased from Mike Collins.

VISITS ARNOLDS

Visiting in the home of Mr. and Mrs. Richard Arnold last weekend were Mr. and Mrs. J. W. Davidson of Seagoville; Mr. and Mrs. Abb Putman of Cisco; Mr. and Mrs. J. D. Clements, Jr., Gene and Larry of Ranger; Mrs. Rosie Hogue, Zoetta, Toni, Utah and Junior of Eastland; and Mr. and Mrs. Weldon Fenter of Rising Star.

GUESTS SUNDAY

Guests last Sunday in the home of Mr. and Mrs. G. W. Jones were Mr. and Mrs. Henry Curry of Sweetwater and Mr. and Mrs. Lester Stewart of Cisco.

Pvt. Danny McKelvain was home on leave these past two weeks, from Fort Polk, La., visiting his parents, Mr. and Mrs. Elvin McKelvain, and other relatives. He is stationed at Fort Irwin, California.

Be Sure to SAVE PLAID STAMPS! Don't Miss Out on GIFTS!

A&P

"SUPER-RIGHT" HEAVY CALF STEAK SIRLOIN 1-lb. 75c

"SUPER-RIGHT" HEAVY CALF STEAK T-BONE 1-lb. 89c

BELLE O'SEA PEELLED AND DEVEINED SHRIMP 3-lb. Bag \$3.99

CAP'N JOHN'S FROZEN FILLETS FLOUNDER 1-lb. Pkg. 49c

MORTON'S FROZEN ALL VARIETIES DINNERS Each 39¢

PRICES GOOD THROUGH OCT. 2 QUANTITY RIGHTS RESERVED

- BATHROOM TISSUE
- CHARMIN 4 Roll Pks. 39c
- FACIAL TISSUE
- PUFFS 200 2-Ply Box 27c
- TOILET SOAP
- LUX 2 Reg. Bars 23c
- TOILET SOAP
- LUX 2 Bath Bars 33c
- DEODORANT SOAP
- LIFEBUOY 2 Reg. Bars 29c
- DEODORANT SOAP
- LIFEBUOY 2 Bath Bars 39c
- DETERGENT
- DOVE LIQUID 12-oz. Size 39c
- COMPLEXION BAR
- DOVE SOAP 2 Bath Bars 49c
- VEGETABLE SHORTENING
- CRISCO 3-lb. Can 85c
- VEGETABLE SHORTENING
- FLUFFO 3-lb. Can 77c
- MIRACLE WHIPPED 2¢ OFF
- MARGARINE 1-lb. Ctn. 33c
- MIRACLE CORN OIL
- MARGARINE 1-lb. Ctn. 39c

"SUPER-RIGHT" HEAVY CALF CHUCK BLADE

POT ROAST 39¢

"SUPER-RIGHT" HEAVY CALF ROUND

STEAK 79¢

2 1/2 TO 3 1/2 POUNDS AVERAGE

STEWING HENS 23¢

ALLGOOD BRAND

SLICED BACON 75¢

1-lb. Pkg.

MORTON'S BEEF, CHICKEN OR TURKEY

MEAT PIES 6 For \$1.00

TIP TOP

SPINACH 10¢

1-lb. Can

SUNNYBROOK RED

SALMON 89¢

1-lb. Can

SWEET TREAT VANILLA

WAFERS 23¢

1-lb. 4-oz. Pkg.

A&P FROZEN VANILLA CREME ICED DEVIL'S FOOD CAKE 12-oz. Each 49c

SULTANA STRAWBERRY PRESERVES 1-lb. Jar 65c

IPANA TOOTH PASTE 2 Gt. Tubes in Pack 59c

A&P VACUUM CASHEW NUTS 10-oz. Can 89c

SULTANA PORK 'N BEANS 2-lb. 9-oz. Can 25c

HEADACHE REMEDY EXCEDRIN TABLETS 81¢ 49c

SUNNYBROOK GRADE "A" LARGE EGGS Dozen 49c

PRODUCE FEATURES

BANANAS 1-lb. 12c

Texas CARROTS 2-lb. bag 19c

CORN 6 ears 39c

CELERY 1 Stalk 19c

GALVANIZED WITH LID GARBAGE CANS \$1.89

SNOW CROP FLORIDA ORANGE JUICE 4 6-oz. Cans 89c or 2 12-oz. Cans 79c

MORTON FROZEN HONEY BUNS 4 9-oz. Pks. 99c

EIGHT O'CLOCK COFFEE

1-lb. Bag 65¢ 3-lb. Bag \$1.89

JEFFY ASSORTED MIXES Cake or Frosting Pkg. 10¢

GREEN GIANT GREEN PEAS 2 1-lb. Cans 45¢

NO COUPON NEEDED — GET 50 EXTRA PLAID STAMPS WITH JANE PARKER CAKE 1-lb. 1-oz. Ring 49c

HUNT'S TOMATO CATSUP 1-lb. 4-oz. Bit 29c

PILLSBURY OR BALLARD BISCUITS 6 8-oz. Cans 49c

DANISH COFFEE, FRENCH VANILLA, DOUBLE FUDGE METRECAL Rum Punch 8-oz. Can 29c

NON DAIRY COFFEE CREAMER Coffee Mate 11-oz. 6-oz. 49c 3-oz. 29c

DIAMOND ALUMINUM

Foil Wrap 2 12" x 25' Rolls 39¢

MARVEL ASSORTED FLAVORS

ICE CREAM 49¢

1/2-Gal. Ctn.

SHOP EASTLAND

LET US HELP YOU ENJOY YOUR SUMMER COMPLETE LAUNDRY SERVICE — FREE — AND DELIVER

CISCO STEAM LAUNDRY

III 2-2131

Clip These Coupons

100 Extra Plaid Stamps

With This Coupon and Purchase 3 CANS AAP PINEAPPLE GRAPEFRUIT DRINK 3 1-qt. 14-oz. Cans

AT YOUR ASP SUPERMARKET Coupon Good Thru Oct. 1965

100 Extra Plaid Stamps

With This Coupon and Purchase 25-LB. DAILY GRAVY DOG MEAL 25-lb. Highways, Sliced on

AT YOUR ASP SUPERMARKET Coupon Good Thru Oct. 1965

50 Extra Plaid Stamps

With This Coupon and Purchase CHEF BOY AR DEE CHEESE PIZZA 15-lb. Town Ho

AT YOUR ASP SUPERMARKET Coupon Good Thru Oct. 1965

50 Extra Plaid Stamps

With This Coupon and Purchase CHEF BOY AR DEE SAUSAGE PIZZA 17-lb. odo oile ape acio

AT YOUR ASP SUPERMARKET Coupon Good Thru Oct. 1965

50 Extra Plaid Stamps

With This Coupon and Purchase ASP APPLE SAUCE 2-lb. 3-oz. M

AT YOUR ASP SUPERMARKET Coupon Good Thru Oct. 1965

50 Extra Plaid Stamps

With This Coupon and Purchase LUNCHEON MEAT SPAM 12-lb. W

AT YOUR ASP SUPERMARKET Coupon Good Thru Oct. 1965

50 Extra Plaid Stamps

With This Coupon and Purchase AMERICAN SLICES MEL-O-BIT 15-lb. W

AT YOUR ASP SUPERMARKET Coupon Good Thru Oct. 1965

50 Extra Plaid Stamps

With This Coupon and Purchase OUR OWN INST. TEA 1-lb. 4-oz. W

AT YOUR ASP SUPERMARKET Coupon Good Thru Oct. 1965

25 Extra Plaid Stamps

With This Coupon and Purchase TWO CANS ANN PAGE PREPARED SPAGHETTI 2 1-lb. 4-oz. W

AT YOUR ASP SUPERMARKET Coupon Good Thru Oct. 1965

25 Extra Plaid Stamps

With This Coupon and Purchase SANITARY NAPKINS 100 4-1/2" x 7" MODESS 100 4-1/2" x 7" W

AT YOUR ASP SUPERMARKET Coupon Good Thru Oct. 1965

SAFEGWAY BRANDS SALE



MORE for your DOLLAR

This sale is loaded with savings! Our "MORE for your DOLLAR" prices are planned to introduce Safeway Brands to more people. If you already know about these wonderful Brands you'll want to stock up now. If you have yet to try them, it's a perfect week to do so. Safeway Brands users ask, "Why pay more? Why settle for less?"

SAFEGWAY

<p>MORE for your DOLLAR</p> <p>Apple Juice Town House, 32-oz. Bottle Grape Juice Empress, 32-oz. Can Tomato Juice Town House, 46-oz. Can Fruit Drink La Lani, Pineapple-Grapefruit—46-oz. Can</p> <p>Your Choice 3 for 89¢</p>	<p>MORE for your DOLLAR</p> <p>Dill Pickles Zippy, Fancy Sliced, 22-oz. Jar Sour Pickles Zippy, Whole Dill, 22-oz. Jar Chunk Tuna Sea Trader, Light Meat—6 1/2-oz. Can Cake Mixes Mrs. Wright's, Assorted, 19-oz. Box</p> <p>Your Choice 4 for \$1</p>
<p>MORE for your DOLLAR</p> <p>Sweet Peas Town House, Fancy, No. 303 Can Whole Tomatoes Town House, Choice, No. 303 Can Peeled Apricots Town House, Whole, No. 303 Can Red Cherries Town House, Sour Fitted—No. 303 Can</p> <p>Your Choice 5 for \$1</p>	<p>MORE for your DOLLAR</p> <p>Tomatoes Gardenside—No. 303 Can Green Beans Highway, Cut, No. 303 Can Golden Corn Town House, Cream Style—No. 303 Can Sauerkraut town House—No. 303 Can</p> <p>Your Choice 7 for \$1</p>

Edwards Coffee 2 Lb. **\$1.53**
All Grinds.

Canned Milk 8 for **\$1**
Lucerne, Evaporated—14 1/2-oz. Can

Cling Peaches 4 for **89¢**
Highway, Yellow Sliced or Halves—No. 2 1/2 Can

Family Flour 10 Lb. **79¢**
Kitchen Craft.

Pinto Beans 4 Lb. **59¢**
Town House.

Safeway Fresh Meats!

Chicken Hens **Lb. 35¢**
U.S.D.A. Inspected and Grade "A"
Serve chicken and dumplings.
3 1/2 to 6-Lb. Average.

U.S.D.A. Choice Grade Heavy Beef Sale!

Sirloin Steak Perfect for broiling—Lb. **95¢**

T-Bone Steak Or Club Steak. Your Choice—Lb. **\$1.09**

Round Steak Thin Cut, Serve pan fried. Lb. **79¢**

Top Sirloin Steak Boneless, Lb. **\$1.49**

New York Steak \$1.60 Or Strip, Boneless—Lb.

Rump Roast Serve with potatoes—Lb. **75¢**

All Meat Franks Safeway—1-Lb. Pkg. **55¢**

Luncheon Meats Safeway Sliced, Assorted—8-oz. Pkg. **3 for \$1**

Pork Sausage Wingers, Regular or Hot. 2 Lb. **89¢**

Turkey Slices Or Chicken, White Meat, Lea's—Pkg. **2 for 89¢**



Leg-O-Lamb **85¢**
U.S.D.A. Choice Grade—Lb.

Shoulder Roast U.S.D.A. Choice Grade Lamb—Lb. **59¢**

Loin Chops Sirloin, T-Bone or Rib—Lb. **\$1.15**

Freezer Beef Sale!

Beef Loin Heavy Beef, U.S.D.A. Choice, 45 to 55-Lb. Avg. Trimmed—Lb. **75¢**

Short Loin Heavy Beef, U.S.D.A. Choice, Trimmed—Lb. **\$1.03**

Beef Side Baby Beef—Lb. **49¢**

Hindquarter Baby Beef, 40 to 80-Lb. Average, Untrimmed—Lb. **59¢**

Smoked Ham

Full Shank Half or Whole—Lb. **55¢**

Shank Portion Lb. **45¢**

Full Butt Half 59¢ **Center Slices** 99¢
Ideal for breakfast—Lb.

Breakfast Prunes Town House, 2 Lb. **47¢**

Tomato Catsup Town House, Fancy, 14-oz. Bottle **21¢**

Instant Coffee Safeway, (30¢ off label) 10-oz. Jar **\$1.19**

Whole Oysters Sea Trader, 8-oz. Can **3 for \$1**

Peanut Butter No. Made, Creamy or Chunky—28-oz. Jar **79¢**

Short Grain Rice Town House, 3 Lb. **39¢**

Doa Food Pouch, Regular or Liver Flavored—1-Lb. Cans **12 Cans \$1**

Dow Saran Wrap Ideal for wrapping sandwiches—50' Roll **33¢**

Stuffed Olives Empress, Thrown, No. 12 Manzanilla—5-oz. Jar **47¢**

Yellow Popcorn Town House, 2 Lb. **29¢**

Woda Crackers Busy Baker—1-Lb. Box **29¢**

Toilet Tissue Truly Fine, Assorted Colors—4-Roll Pack **2 for 69¢**

Paper Towels Truly Fine, White, 190-Ct. Large Roll **4 for \$1**

Facial Tissues Truly Fine, Assorted Colors—200-Ct. Box **5 for \$1**

Safeway Non-Foods!

Aspirin Tablets Safeway, 5 Grain—100-Count Bottle **19¢**

Vitamin "C" Safeway, 100 Mg., 100-Ct. Bottle **39¢**

Buffered Aspirin Safeway, Tablets, 100-Ct. Bottle **49¢**

Aspirin Tablets Safeway, 5 Grain, 100-Ct. Bottle **29¢**

Green Shampoo Truly Fine—16-oz. Bottle **79¢**

Vitamins Safeway—100-Ct. Bottle **98¢**

Hair Spray Truly Fine—14-oz. Can **66¢**

Vitamins Safeway Chewable, Multiple—100-Ct. Bottle **\$1.15**

Ladies Hose Truly Fine, Plain Seam Beige or Taupe—Pair **59¢**

Frozen Favorites!

MELLORINE 3 for **\$1**
Coffey, Assorted Flavors—1/2-Gallon Carton

Orange Juice 3 for **\$1**
Bel-air, Breakfast Delight—12-oz. Can

Grape Juice Bel-air—8-oz. Can **5 for \$1**

Strawberries Bel-air, 9 1/2-oz. Can **45¢**

Fish Sticks Captain's Choice, Precooked—8-oz. Pkg. **35¢**

Pot Pies Bel-air, Chicken, 8-oz. Package **5 for \$1**

Pumpkin Pie Or Mince, Bel-air, 1 1/2-Lb. Package **3 for \$1**

Broccoli Spears Bel-air—10-oz. Pkg. **4 for \$1**

French Fries Bel-air, Crinkle Cut—9-oz. Pkg. **5 for \$1**

Baby Okra Bel-air, Whole, 10-oz. Pkg. **4 for \$1**

Lima Beans Bel-air, Fordhook, 10-oz. Pkg. **4 for \$1**

Dairy Case Buys!

Buttermilk Lucerne, Wonderful Tasting—1/2 Gallon Carton. **39¢**

Cheddar Cheese Safeway, Mild—Lb. **65¢**

Longhorn Cheese Best Buy—16-oz. Pkg. **49¢**

Party Dips Lucerne, Assorted—8-oz. Ctn. **3 for \$1**

Sliced Cheese Dutch Mill, American or Pimiento—1/2-Lb. Pkg. **33¢**

Bakery Buys!

Multi-Grain Bread Skylark, (Regular 2 1/2 loaf) 1-Lb. Loaf **19¢**

French Rolls Skylark, Poppyseed, (24 off label) 10 1/2-oz. Pkg. **21¢**

French Bread Skylark, Foil Wrap, 1-Lb. Loaf **25¢**

Skylark Bread Western Farms, 1 1/2-Lb. Loaf **27¢**

Sliced Bread Skylark, Sandwich, Butter Milk—1 1/2-Lb. Loaf

Cake Donuts Mrs. Wright's, Plain, 12-oz. Pkg., 12-Count **29¢**

Donuts Mrs. Wright's, French Cake—12-oz. Pkg., 12-Count **35¢**

WIN UP TO \$1000... PLAY BONUS BINGO!

96 WAYS TO WIN!

Play all 8 Games at once. Win early and often on each and every game. Each time you visit your Safeway Store, you receive Absolutely FREE a Bonus Bingo Prize Slip. There are 12 ways to win on each game... so HOLD ALL SLIPS. You get the prize shown for any game just by scoring any 5 boxes on that game in a straight line... either vertically, horizontally or diagonally. When you have collected the necessary slips to win a prize as indicated in your Game Book, bring them to your Safeway Store and receive your Cash prize.

Win One or More Prizes of \$1000 \$500 \$100 \$50 \$20 \$10 \$5 \$1

Just pick up your free BONUS BINGO slips at Safeway today and Start Playing... Start Winning Cash prizes of \$1000, \$500, \$100, \$50, \$20, \$10, \$5, \$1. One free slip per store visit. No purchase required. Purchasers not favored. No need to pass through checkstand. Secure your FREE slip at either end of the checkstand or from any store employee other than in Meat Department. Safeway and their immediate families are not eligible. You must be 18 years of age or over to receive Bonus Bingo slips. Only bona fide Bonus Bingo slips issued by Safeway Stores, Inc., will be honored.

Clip these coupons and use with the Bonus Bingo Slips you receive at the store. All Bonus Bingo coupons appearing in our ads may be used to make a winning game as well as the coupons received at the stores.

BONUS BINGO PRIZE SLIP

\$100 GAME

U-5

SAFEGWAY

BONUS BINGO PRIZE SLIP

\$1000 GAME

U-1

SAFEGWAY

Safeway's Guaranteed Produce!

Russet Potatoes U.S. No. 1. Serve baked, fried, creamed, any way you like. A versatile vegetable. **10 Lb. Bag 49¢**

Lettuce Iceberg. Fresh, crisp head—Each **2 for 29¢**

Holland Bulbs Imported from Holland—Box **79¢**

Cranberries Ocean Sprav. Fresh—1-Lb. Pkg. **35¢**

Bartlett Pears Fresh and Juicy—Lb. **29¢**

Raw Peanuts In the hull—Lb. **3 for \$1**

Fresh Radishes Tender and Tasty, 6-oz. Cello Bag **2 for 25¢**

Honeydew Melons Each **49¢**

Michigan Peat For your lawn, 100-Lb. Sack **\$1.99**

Onions Yellow, —Lb. **2 for 19¢**

Yams Texas, —Lb. **3 for 25¢**

Celery Pascal, —Each **19¢**



SAVE at SAFEGWAY

It takes less books to Get More Gifts with **GOLD BOND STAMPS**

This Coupon Worth 100 Free Gold Bond Stamps

Plus your regularly earned Gold Bond Stamps with the purchase of 2-Lb. Package Safeway THICK SLICED BACON

Coupon Expires October 2, 1965.

This Coupon Worth 25 Free Gold Bond Stamps

Plus your regularly earned Gold Bond Stamps with the purchase of 13-oz. Carton TOMATOES

Coupon Expires October 2, 1965.

This Coupon Worth 50 Free Gold Bond Stamps

Plus your regularly earned Gold Bond Stamps with the purchase of 2-Lb. Ctn. All Styles Lucerne COTTAGE CHEESE

Coupon Expires October 2, 1965.

This Coupon Worth 50 Free Gold Bond Stamps

Plus your regularly earned Gold Bond Stamps with the purchase of 4-oz. Can Crown Colony PURE BLACK PEPPER

Coupon Expires October 2, 1965.

Prices and Coupons Effective Thurs., Fri. and Sat., Sept. 30, Oct. 1 and 2, in EASTLAND

We Reserve the Right to Limit Quantities. No Sales to Dealers.

SAFEGWAY

WHAT'S THE SCORE— CONSERVATION WISE?

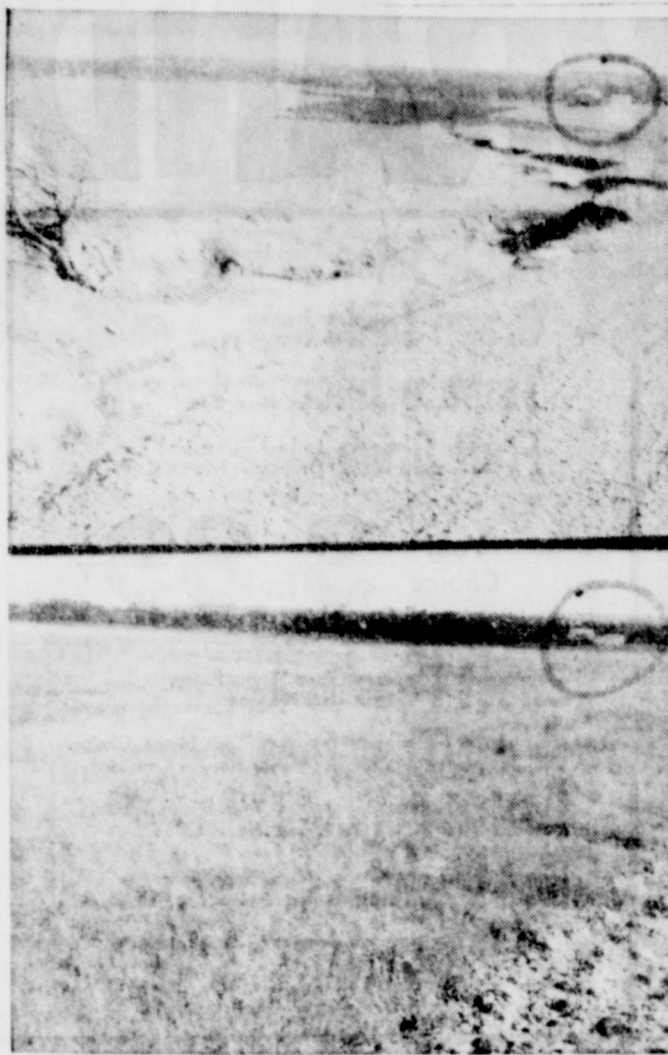
By EDDIE SIMMS
Soil Conservation Service
Football season is here. For illustrative purposes a game has been in progress throughout Eastland County in 1965. It is the team of Conservation Programs and Soil and Water Conservation treatments versus the weather, erosion, and brush and weeds. Farmers, ranchers, business men, professionals, and others are exercising the plays and providing the interference for reaching the goal of sound land use and treatment.

During 1965, the line plunges of brush control accompanied some 7,000 acres. These gains came hard because of the strength of the opponent. Substantial gains were made by the forward passes of pasture establishments, with some 4,400 acres established through the efforts of the quarterbacks, landowners and operators, and the ends, the varied soils of Eastland County.

Only a small percentage of these passes were failures. The end runs of range seeding made the next largest gains with the establishment of approximately 3,000 acres. The end runs suffered losses however from the opponent's dry weather. Off-tackle plays of cross fences, ponds, terraces, diversions, and other treatments during the year contributed to advances made.

The Conservation team is not without a defense. Conservation cropping systems, strip cropping, and cover crops; along with range deferment and pasture and range management, are holding the line against the slashes of dry weather, erosion, and brush and weeds.

The coaches, Upper Leon Soil and Water Conservation District Supervisors; and managers, Soil Conservation Service and other agency personnel, have been on the sidelines with equipment, new practices or methods and



GROUND GAINED — In the continuing contest between good conservation practices and opposing elements of nature, there are record-book statistics to show that ground is being gained. This Eastland County farm is an example. Both photos were taken from the same spot on the Tom Noble place between Eastland and Cisco, with the circled buildings as reference points. The top picture shows a raw gully being shaped into waterway for highway and terrace drainage. The bottom photo, taken six months later, and five months after Coastal Bermuda sprigging, shows the end results of of good ground care. (SCS Photos by W. L. Garner).

RAWLINS SINCE 1911
Monuments
WEATHERFORD — PHONE LY 4-2726

IF WE MAY ASSIST YOU, CALL US COLLECT OR MAIL THIS AD

NAME _____ PHONE _____
ADDRESS _____ CITY _____

DIXIE Drive-In
EASTLAND RANGER HIGHWAY

Box Office Open 7:45; Show Starts 8:15; Box Office Closes 9:30.
ADMISSION: Adults 60c, Children 12 Free; Each Wednesday & Thursday are bargain nights—admission 25c.

Wednesday and Thursday, Sept. 29 and 30
'SASKATCHEWAN'
Alan Ladd — Shelley Winters
IN COLOR

Friday and Saturday, Oct. 1 and 2
'IN HARMS WAY'
John Wayne — Kirk Douglas — Patricia Neal

RANGER DRIVE-IN THEATRE

Adults 50c Kiddies Under 11 FREE
Box Office Open 6:45 — Show Starts 7:15

THURSDAY — FRIDAY — SATURDAY
SEPTEMBER 30 — OCTOBER 1 - 2

See the BEACH PARTY gang go SKY DIVING!

BEACH BLANKET BINGO

Pathecolor — Panavision

FRANKIE AVALON - ANNETTE FUNICELLO - DEBORAH WALLEY - HARVEY LEMBECK
JOHN ASHLEY - JODY MCGREA - DONNA LOREN - MARTA KRISTEN - LINDA EVANS
BOBBI SHAW - DON RICKLES - PAUL LYNDE - BUSTER KEATON - EARL WILSON

SUNDAY — MONDAY — TUESDAY
OCTOBER 3 - 4 - 5

It happened in Climax, Nevada...

Dean Martin, Kim Novak, Ray Walston

KISS ME, STUPID

TOP DRIVE-IN OPEN 6:45 — STARTS 7:00
Feature 7:10 and 9:00

FRIDAY — SATURDAY — SUNDAY

FOLLOW US... and find the answer to the comedy question of the year!

Gomy Schneider, Capucine, Paula Prentiss, Peter Sellers, Woody Allen, Peter O'Toole, Ursula Andros

What's New Pussycat?

cost share help for use in this game of games. What is the score in this lifetime game? Land treated (Conservation Team) — approximately 150,000 acres. Land needing treatment (Weather, Erosion, Brush) — approximately 450,000 acres. The gains made can be wiped out in a few years time by weather, erosion and brush, if there is any let up by the Conservation team efforts.

Applause and encouragement from the boosters of the underdog Conservation team, during 1965, has been good; however a few boos of interest and pessimism have been heard. Enthusiastic support is needed if the Conservation team is to be a winning team.

Conservationists Mark 25th Date At Corpus in Oct.

Soil and Water Conservation Districts of Texas will be celebrating their 25th anniversary during their annual meeting in Corpus Christi, October 12, 13 and 14.

There are 183 Soil and Water Conservation Districts in Texas, covering better than 99 per cent of the land area with over 160,000 landowner operators. There are five Supervisors on the governing body of each Soil and Water Conservation District totaling 915 Supervisors in Texas.

The local Upper Leon Soil Conservation District Board is composed of C. M. McCain of Eastland, chairman; Gene Gilbreath of Dublin, secretary; Wade George of DeLeon vice chairman; and John D. Clark of Rising Star and Ory Beaty of Comanche, members.

Several members from the Upper Leon Soil and Water Conservation District plan to attend the important meeting in Corpus Christi. State Speaker of the House Ben Barnes of De Leon will deliver the principle address on the evening of October 13th.

Former Flatwood Citizen Dies In Borger Monday

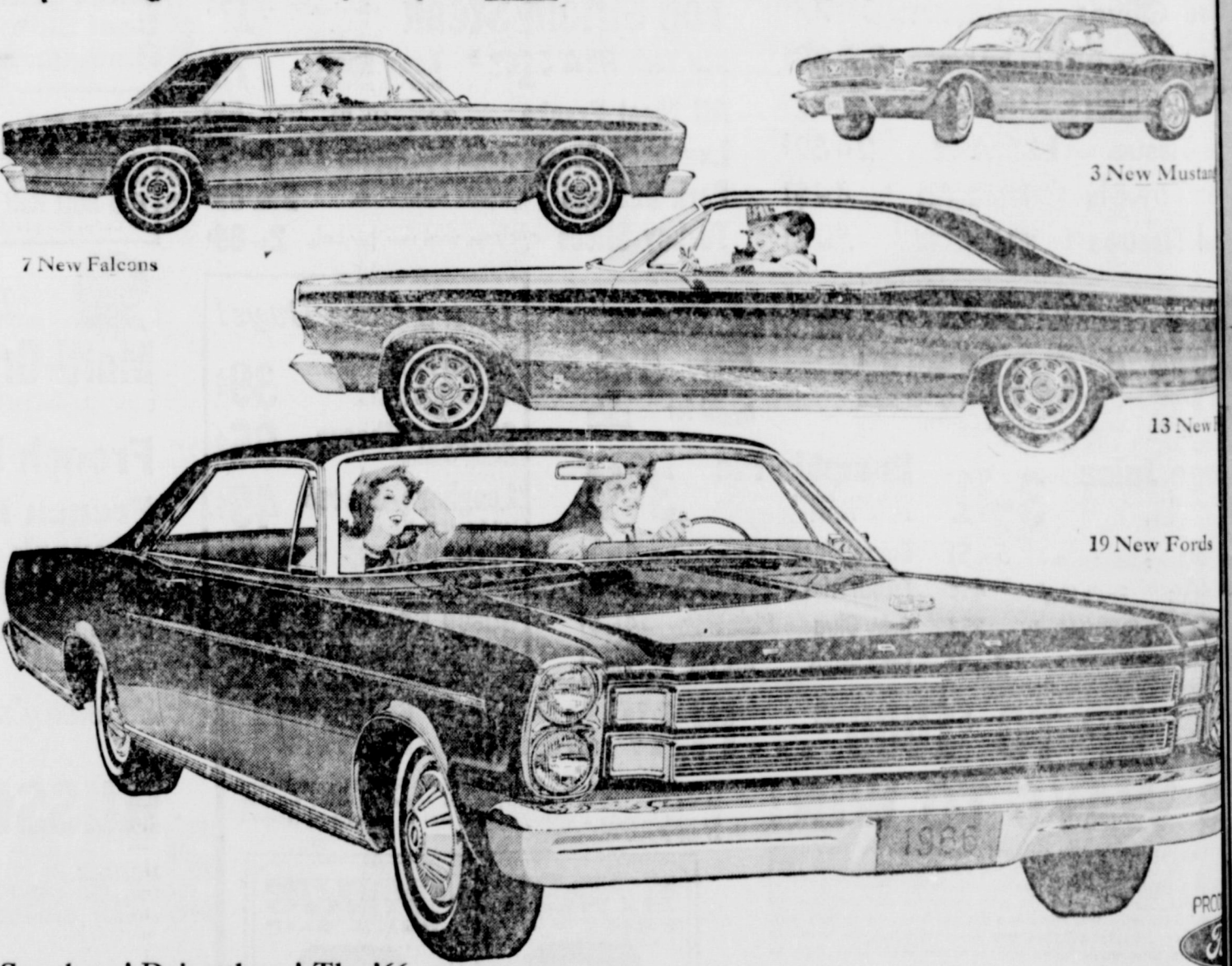
Funeral services for Milton Miller, 87, will be held at 2 p.m. Thursday in Rust Chapel in Cisco with burial in Flatwood Cemetery near Eastland. Gary Adams, minister of the Eighth Street Church of Christ, will officiate.

Mr. Miller died Monday night following a long illness in the home of his daughter, Mrs. T. F. Stewart of Borger. He was born April 6, 1878, in Grayson County, Kentucky, and came to Texas in 1900. He married Elzora Byrd July 30, 1902, in Eastland, and farmed for 26 years in the Flatwood Community. His wife died in 1928. Mr. Miller retired in 1940 and moved to Borger.

Survivors include one son, W. E. Miller of Cisco; three daughters, Mrs. R. G. Campbell of Skellytown, Mrs. H.J. Norris of Amarillo and Mrs. T. F. Stewart of Borger; one half brother Richard Miller of Arkansas; one sister, Mrs. Sarah Bennett of Chandler, Okla.; one half sister, Mrs. Zella Upshaw of Arkansas; 11 grandchildren, and 25 great grandchildren.

ANNOUNCING THE '66s FROM FORD

FORDS: new quiet, ultra-luxurious LTD's, new high-performance 7-Litre models with 428-cu.in. V-8. **FAIRLANES:** lively new XL GT's, convertibles. **FALCONS:** new flair for the economy charm. **MUSTANGS:** more fun-filled than ever. **FEATURES:** from a new stereo tape player option...to a new Magic Doorgate for wagon (swings out for people and down for cargo).



See them! Drive them! The '66s at your Ford Dealer's: ■ 19 new Fords—offering one of the world's quietest rides. ■ New Stereo-sonic Tape Player option—provides over 70 minutes of music. ■ New station wagon Magic Doorgate—swings out for people and down for cargo. ■ New V-8 power up to 428 cu. in. ■ New 7-Litre high-performance series. ■ Seven new Standard Safety Package features (on all '66 cars from Ford) including emergency flasher system. ■ 13 new Fairlanes—new looks, liveliness, luxury. ■ New convertibles, wagons, XL's, GT's and GT/A's. ■ GT/A's have new "Sport Shift" Cruise-O-Matic—it's automatic or manual. ■ 7 new Falcons—now America's Economy Champ is smoothest, smartest, the most spacious ever. Lively 170-cu. in. Six. ■ 3 new Mustangs—more fun than ever in America's Fast Car. ■ New stereo tape player option. ■ Instrument cluster, 200-cu. in. Six, ■ New sporty floor shift, carpeting—all standard. Total Performance '66.



America's Total Performance Cars... 49 new models... see your Ford Dealer tomorrow

HOOD KING MOTOR COMPANY 100 E. Main — Eastland

TO THE MAVERICKS . . . WE'RE BEHIND YOU ALL THE WAY

EASTLAND vs. ALBANY

FRIDAY NIGHT, 7:30 p. m. THERE

MAVERICK 1965 SC HEDULE

Sept. 3 — Eastland 7, Comanche 6.
 Sept. 10 — Eastland 14, Rising Star 6.
 Sept. 17 — Eastland 14, Cisco 8.
 Sept. 24 — Dublin 32, Eastland 0.
 *Oct. 1 — Albany, there.
 *Oct. 8 — Baird, here.
 *Oct. 15 — Clyde, there.
 *Oct. 22 — Ranger, here.
 Oct. 29 — Open Date.
 *Nov. 5 — DeLeon, there.
 *Nov. 12 — Cross Plains, here.

*District Games.

SUPPORT THE HOME TEAM

The 10-10 C.B. Club will furnish emergency communication facilities to the Stadium — and may be contacted for the transmission of messages to and from Maverick Stadium. TELEPHONE NUMBER IS MAIN 9-1678



MAVERICK ROSTER

No.	Name	Pos.	Class	Weight
12	McCullough, Jerry	QB	Senior	165
20	Wilson, Gene	QB	Junior	130
40	Moylan, John	FB	Senior	165
42	Gregory, Layne	FB	Senior	160
22	Fullen, James	HB	Senior	155
24	Martin, Ted	E	Senior	135
25	Bass, Bill	WB	Sophomore	155
14	Daniels, Jay	WB	Sophomore	155
80	Wilson, Larry	E	Senior	150
86	McKenzie, James	E	Junior	125
82	Miller, Jim Pat	E	Senior	150
69	McCoy, Rodney	T	Senior	165
73	Keith, Fred	T	Sophomore	225
70	Porter, Boyd	T	Sophomore	195
75	Lowrance, Tony	T	Sophomore	165
65	Hazard, David	G	Senior	160
50	Boles, Bill	G	Senior	155
67	West, James	G	Senior	150
51	Terrell, Rodger	C	Senior	150
52	McCullough, Tommy	C	Junior	185
84	Emfinger, Greg	FB	Freshman	155
10	Lund, Steve	QB	Sophomore	150
66	Holt, Sidney	T	Sophomore	180

Bond Electric Co.
Phone MA 9-1724

Bray's
DEPARTMENT STORE
EASTLAND

Sunshine Laundry and Dry Cleaning
Pearson Grimes
106 East Plummer — MA 9-8812

White Food Store
Mr. and Mrs. G. A. White
1102 West Main — MA 9-8857

Poof's Dry Cleaners
Mr. and Mrs. Lester R. Smith
209 South Main — MA 9-2055

C. M. Cox Dirt Contractor
Highway 80 West — MA 9-2670

Otis Coleman Humble Service Station
Complete Car Service
400 East Main — MA 9-2545

Howard Bookkeeping Service
Mr. and Mrs. Veon Howard

Alma's Beauty Parlor
An Invitation to Greater Beauty
211 West Main — MA 9-1151

The Hairdresser
Let Us Style Your Hair to Flatter Your Face
1302 South Seaman — MA 9-1430

M. L. Terrell Real Estate and Robert Kincaid
Farms — Ranches — City Property
311½ West Main — Phone MA 9-1725

Hood King Motor Co.
Ford and Mercury — Sales and Service
On the Square — MA 9-1786

Webb's 7-11 Grocery
George and Wanda — Staples and Fancy Groceries, Fresh & Cured Meats
1006 W. Main — MA 9-8897

Buck Wheat Ranch and Farm Service
City Property
New FHA and GI Homes
301 North Seaman — MA 9-2131

Eastland Truck Stop Service Station
A. O. Gist — Highway 80 West
Premier Gasoline
All Brands Motor Oil
Quick Service

Roy Justice Grocery and Gulf Station
1300 South Seaman
A Complete Line of Groceries, Tobaccoes, Drinks
Open Week Days Only
6 a.m. to 7 p.m.

Eastland Truck Stop Cafe
Highway 80 West
Venna Justice — Gyrun Simmons
Serving Delicious Plate Lunches
Steaks — Chops — Homemade Pies

Mr. & Mrs. Paul McFarland

Eastland Auction Company
Located on Highway 80 East
Ph. MA 9-1760

Texas Lightweight Aggregate Company
Producers of Concrete Aggregates
C. W. Martin, Manager — MAIn 9-2060

Eddie Pevehouse Texaco
503 W. Main — MA 9-8895

JRB Super Market
Carey Hightower, Mgr.

Obie's Humble Station
802 W. Main — MA 9-8866

City Garage
J. J. Finley, Proprietor
Engine, Starter, and Generator Work
163 White Street — Ph. MA 9-1709

Hillcrest Food Market
When You Run Out — Run In
1401 W. Main — Ph. MA 9-1600

Western Auto Associate Store
J. L. Pittman, Owner
Ph. MA 9-2011
Corner of Lamar and Commerce

Majestic Theatre

Toombs and Richardson Drug Store
108 S. Seaman — MA 9-1475
Free Delivery

Harelik's Department Store
212 W. Main

Mr. & Mrs. Victor Cornelius

Central Drug

Altman's
"Smart Women's Wear"
North Side of the Square

Freyschlag Insurance Agency
North Side of the Square
Ph. MA 9-2275

Texas Electric Service Co.
F. N. Sayre, Manager
MA 9-2651

Eastland Iron & Metal Co.
Henry, Tillie and Saul Pullman

Petroleum Corp. of Texas
Walter E. Ruby, Mgr.

Judge & Mrs. Wells Dalton

Eastland National Bank
"On The Square" — Member FDIC

Modern Village Barber Shop
George Carter

Graham's Trim Shop
709 W. Main — Ph. 9-2266

Goodyear Service Store
Don Pop, Manager
306 East Main — Ph. MA 9-2662

Dr. and Mrs. M. A. Treadwell Jr.

Eastland Memorial Hospital

Chamber of Commerce of Eastland

Hamilton Fruit Market
Fresh Fruit and Vegetables

Pete Tucker Fina Service Station
Washing — Greasing — Tire Repairing
207 East Main Street

Phagan Oil Co.
L. C. Phagan, Distributor
Premier Oil Co.

Quality Shoe Service
Longer Wear by Shoe Repair
103 South Lamar Street

George Van Lines
Moving — Storage

B&W Clinic
H. J. Bulgerin, M. D.
B. B. Alexander, M. D.
310-30 Petroleum Bldg.

Judge & Mrs. Frank Sparks

Horton Tire Service
Seiberling Tires — Batteries
East Main

Allen's Auto Repair
215 South Lamar — Phone MA 9-2270
24 Hour Repair Service

Kellar's Fix-It Shop
206 South Seaman — Phone MA 9-1393

Dale Langlitz Texaco Service
Washing — Greasing — Tire Repairing
702 West Main — Phone 9-8850

Green Acres Nursing Home
111 North Daugherty — Ph. MA 9-2624

Sunrise Manor Nursing Home
411 West Moss

R. M. Sneed Contractor
Highway 80 East — Phone MA 9-1756

Safeway Store

Foremost Dairies
Clyde Manning, Manager
410 West Commerce — MA 9-1701

Vic's Auto Repair
306 West Main — MA 9-2111

Hanna Hardware and Lumber Co.

Standlee McCracken
Signee, Mobil Oil Co.
MAIn 9-2145

Romco Eastland Mfg. Co.
Pottery, Wholesale and Retail
411 E. Main — MA 9-2121

Judge & Mrs. Scott Bailey

SOUTHERN TELEVISION SYSTEMS CORPORATION

Cisco - Eastland - Ranger . . . Inviting You to Watch All of the Games — NCAA - AFL - NFL

COURT NEWS

CAR REGISTRATIONS

M. H. Davidson, Ford pickup, Eastland.
W. Martin Hager Chevrolet Gorman.
Gladys Green Ford, Eastland.
J. W. Adams, Chevrolet, Eastland.
Horton Tire Company Inc., Chevrolet, Eastland.
C. L. Bigby, Chevrolet, Eastland.
Mrs. A. F. Bendey, Ford, Eastland.
Hazel D. Phillips, International Truck Tractor, Ranger.
C. A. Robit, Buick, Snyder.
Steel Bros., Buick, Abilene.
Travis Spence Ford pickup, Carbon.
Floyd Nunnally, Ford pickup, May.
Luther Pryor, Ford, Cisco.
Bob England Chevrolet pickup, Ranger.
Herbert Jones, Chevrolet Coupe, Ranger.
Bob McGown, Chevrolet, Ranger.
A. W. Warford, Oldsmobile, Ranger.
W. E. Hallenbeck, Jr., Chevrolet, Eastland.
O. G. Lanier, Chevrolet, Ranger.
Darris Miller, Chevrolet, Cisco.
James Coats, Chevrolet pickup, Cisco.
S. E. Hittson, Chevrolet pickup, Cisco.
I. G. Strawn, Chevrolet, Cisco.
Ralph Morton, Chevrolet, Cisco.
Joe Bob Browning, Chevrolet, pickup, Gorman.
Estes Burgamy, Chevrolet, Eastland.
Vernie Long, Ford flat-bed, Olden.

SUITS FILED
C. U. Norton, et ux, vs. State of Texas suit to remove cloud on title.
Dorothy Marie Jobe vs. James Jobe divorce and custody of minor child.
Ralph Smith vs. C. W. Crow-

den, doing business as Noble Crowder Food Products, Inc., damages.
Ranger Oil Field Supply Salvage vs. J. D. Kemp, damages.
Inez Buse, et vir vs. Delia Dalton damages.
Hulon Underwood vs. Melrose Underwood, divorce.
C. C. Sears vs. Wilma Sears divorce.
Helen Marie Reed vs. Ivy T. Reed, divorce.
Oliver Canet Jr. vs. Mary Lou Canet, divorce.
MARRIAGE LICENSE
Harold Conner Gressett and Margaret Ann Britt.
Franklin Dale Cox and Shalryn Kay Roach.
Sammy James Davis and Paula Mabine Dupuy.
Wayne Clark Durham and Betty Kay Garrett.

Instruments Filed
American Sentinel Life Insurance Co. to the public assumed certificate.
William L. Brittain, deceased, to the public, certified copy of probate.
Henry D. Ballinger to Fullen Motor Co., warranty deed.
Boase Petroleum Transport, Inc. vs. W. V. Edwards, doing business as W. V. Edwards and Associates, abstract of judgment.
Carl Bohanan, et ux, to Sally Hope Jay, deed of trust.
Katherine Byrd to M. B. Gilbert, warranty deed.
Lucy Boase to the public, affidavit.
H. J. Bulgerin to J. L. H. Inc., warranty deed.
Bobby Clark, et ux to Texas Building Materials Inc. to Investors Syndicate Credit Corp., mechanic v. materialman's lien and assignment.
Z. J. Carter, deceased, to the public, proof of heirship.
City of Cisco to E. A. Rice, quit claim deed.
Jerry Carter, et ux, to Lillie Moon, deed of trust.
Wayne Durham to Herbert Ekruat deed of trust.

Ditmore Land and Cattle Co. to State of Texas, notice of franchise tax lien.
Maud Dial to Luther Gohlke et ux, warranty deed.
Eastland National Bank to Harley Fox, release of mechanic v. materialman's lien.
C. W. Eddy, et ux, to D. E. Jacobs et ux warranty deed.
Federal Land Bank, Houston to Davis Smith, et ux, release of deed of trust.
J. A. Fox et ux, to H. J. Eulerin, warranty deed.
First National Bank, Cisco, to Lawrence Hamilton, release of vendors lien and deed of trust.
First National Bank, Cisco, to E. R. Overstreet, et ux release of vendors lien and deed of trust.
more
Donald Gorr to Federal Land Bank, Houston, deed of trust.
B. J. Greenhaw, et ux, to J. E. Whiteside, quit claim deed.
R. W. Gordon, et ux, to the public, affidavit.
R. W. Gordon, et ux, to Federal Land Bank, Houston, deed of trust.
H. F. Hodges, deceased, to the public, proof of heirship.
J. T. Hodges, et al to Elsie Sue Davis Release of deed of trust.
Jim Huddleston, et ux, deceased, to the public, proof of heirship.
Rae Hodges to R. W. Gordon release of deed of trust.
Claude Ingram et ux, to Truman Kirk, warranty deed.
J. I. Case Credit Corps. vs. Billy Zirkle, abstract of judgment.
Ila Johnson, et al. to M. J. Duncan warranty deed.
Sally Hope Jay to Carl Bohanan et ux, warranty deed.
Jarhe Oil Co., et al, to W. M. Jarrell assignment of oil and gas lease.
C. D. Jones to First Federal Savings and Loan, Ranger, deed of trust.
A. D. Jenkins, et al, to the public, affidavit.
Era Wilson Key, et al to Nettie Innis warranty deed.
Hannah Lindsey to the public, affidavit.
Hannah Lindsey to Wayne Durham, warranty deed.
Earl Little, et ux to Lynn Gillespie, oil and gas lease.
Ola Newman Lusk to Ila

Johnson, warranty deed.
A. J. Lowrance, et ux, to Crowell Lumber Co. To East and National Bank, mechanic v. materialman's lien and assignment.
Mid-States Home, Inc. to the public, resolution.
Main Bank of Houston to Elgin Wilson, assignment and abstract of judgment.
Merchants Credit Association of Cisco to State of Texas, notice of franchise tax lien.
W. L. Moore, et ux, to Charles Robert Lattiman, et al, warranty deed.
Mid-States Home, Inc. to Raymond Alvarado, et ux, release of deed of trust.
B. P. Miller, et ux, to Dena Lois Rhodes warranty deed.
Lillie Moon to Jerry Carter, et ux, warranty deed.
Carl McGough, et ux, to John Nail, mechanic v. materialman's lien.
Pearl McMurray to Donald Gorr, warranty deed.
A. M. McKinnerney, et ux, to First Federal savings and Loan Association Ranger, assignment of vendors lien and deed of trust.
Mrs. Venia Norvell to West Texas Utilities Co., easement and right of way.
Norman Owen, et ux, to Stanley Underwood, et ux, warranty deed.
Pan American Petroleum Corp. to W. M. Morgan, et al, release of oil and gas lease.
Leroy Park et ux to Ruth Slatton warranty deed.
Pan American Petroleum Corp. to Henry Scitern, release of oil and gas lease.
Tollye Pierce, et al, to E. A. Rice, quit claim deed.
Annie Parks, trustee to E. A. Rice, warranty deed.
Frank Rosales, et ux, to Mid-State Homes Inc., quit claim deed.
Frank Rosales, et ux, to Mid-State Homes, Inc., deed of trust.
F. W. Roberts, et al, to Monroe Byrd, et ux, release of vendors lien.
Royalty Properties, et al, to W. E. Stack assignment of oil and gas lease.
Frank White, trustee, to Turley Carter, et ux, warranty deed.
L. D. Yielding et ux, to W. D. Freeman, et ux, warranty deed.

39,766 Families Are Given Help By Rural Agency

Over 39,766 families of Farmers, ranchers and rural residents in Texas benefitted from Farmers Home Administration loan services during 1965. This is an all-time high, according to L. J. Cappelman, state director for the agency. Loans made or insured by the Farmers Home Administration in Texas during the fiscal year ended June 30 total a record \$88,289,230. State Director Cappelman said that the Farmers Home Administration preserved its long-standing record for keeping its various lending programs in a sound position during fiscal 1965. Repayments of principal land interest by borrowers totaled the largest volume collected in the agency's 30-year history. "This good credit record signifies the initiative and integrity displayed by the people of rural Texas in their vast self-help effort which these loans represent," Cappelman stated. Included in the number of Texas rural people benefitting from these programs are the members of 28,245 families forming rural groups that use Farmers Home Administration credit. Most of these groups borrowed funds to develop rural community water systems. State Director Cappelman emphasized that loans to strengthen family farms and build new rural homes continued as the agency's largest program in fiscal 1965.

Administration preserved its long-standing record for keeping its various lending programs in a sound position during fiscal 1965. Repayments of principal land interest by borrowers totaled the largest volume collected in the agency's 30-year history. "This good credit record signifies the initiative and integrity displayed by the people of rural Texas in their vast self-help effort which these loans represent," Cappelman stated.

Included in the number of Texas rural people benefitting from these programs are the members of 28,245 families forming rural groups that use Farmers Home Administration credit. Most of these groups borrowed funds to develop rural community water systems. State Director Cappelman emphasized that loans to strengthen family farms and build new rural homes continued as the agency's largest program in fiscal 1965.



If you can go through winter without a cold shoulder...

you have modern central gas heat—the fine. If you don't, now is the time to get

Tired of chilly rooms in winter, shiver-y shoulders in the morning, frosty floors? Get luxurious thermostat-regulated central gas heat. It pours out fast, room filling fresh-air circulating winter comfort — at the lowest possible cost! Act now — modern gas heating equipment is at once-a-year bargain prices. central floor and wall furnaces, space heaters. See your local gas heating contractor or Lone Star Gas.

OFF-SEASON GAS HEATING

COMET

Introducing the lively new driving machines: the big, new-generation Comets.

Listen to the roar of the '66 Comets. They're bigger, wider, up to 8 inches longer than any Comet before. They make driving other cars seem like walking. Comet's new fire and spirited luxury come in 11 roomier models.

For a sample of Comet's style, take the Caliente. Notice the smart upholstery... the handsome, simulated wood-grain panels. For spine-tingling action try Comet's new Cyclone GT. Its new 390 4-barrel V-8 delivers

the kind of go that can shove you right back in your bucket seat. Whatever you want — action cars with pure excitement, 3-speed or 4-speed manual transmissions or automatics, inviting interiors — Comet's got it.

Plus a long, tempting list of options that includes built-in air conditioning... power windows, power brakes, and power everything. All this in the most exciting parade of Comets ever. Drive a real driving machine at your Mercury dealer's today.

Mercury COMET

GRAND OPENING FIESTA BOWL EASTLAND

ALL LANES AND APPROACHES RE-SANDED RE-FINISHED

GRAND OPENING SPECIALS:

BOWLING 30c LINE	HOT DOG & PEPSI only 10c	PRIZES: Jack Pot Bowling! Free Bowling Ball!
------------------	--------------------------	--

HAVE FUN AND SUPPORT YOUR LOCAL ENTERTAINMENT CENTER AT THE SAME TIME!

BEGINNERS - REGULARS - PROS ALL HAVE FUN AT THE FIESTA!

SIGN UP NOW FOR LEAGUE PLAY - 40c A LINE
WINTER OPEN BOWLING - 3 LINES FOR \$1.

Come Out For F-u-n-!

New Owner: Hidalgo Oil Co. New Manager: Ralph Sittle

HOOD KING MOTOR COMPANY
Main at Seaman EASTLAND, TEXAS Phone MA 9-1786
LINCOLN-MERCURY DIVISION OF Ford