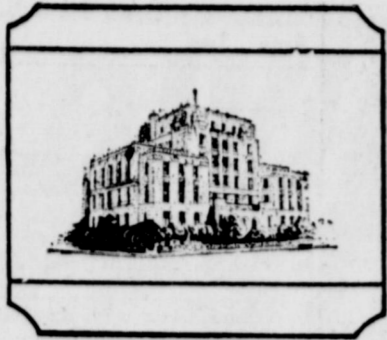


... were the disciples when they saw the Lord. John 20:20. ... wonder, joy and glad ... fill our hearts when ... Him in the air; ... glory then we'll



# EASTLAND TELEGRAM



It's COOL at Lake Leon!

## Grades 1 to 8 Students Will Register Aug. 16

1965-66 school registration for all students in grades through eight will be held at the Elementary School on Monday, Aug. 16,

from 2 until 7 p.m., it has been announced by Supt. Wendell Siebert.

Students who will enter the first grade for the first time must have their birth certificate and proof of smallpox vaccination. Only those students born on or before Sept. 1, 1949, are eligible to attend.

Those who will be out of town on Aug. 16 are requested to call the Superintendent's office in the high school building and give your name and grade in order that instructions may be given for a later registration date.

High school students who are new in Eastland should contact the high school principal, Mr. Charles Marshall, in the high school building as soon as possible.

### Now in Progress

A revival is in progress at Mangum Baptist Church with Rev. Ray Hartline, pastor of East Cisco Baptist Church, as guest evangelist. It will continue through Sunday, Aug. 15, according to Rev. A. J. Thomas, pastor.

Frank Park of Carbon is song leader.

## FidBits

By H.V.O.

PRESIDENT BILL BASS of Eastland Quarterback Club issued notice of a special meeting of that group to be held Monday, Aug. 16, at 7:30 at the New Gym for an important business meeting. All members and prospective members are urged to be present, he said.

TEACHING STAFF for the 1966 school year has been announced by Supt. Wendell Siebert as follows: V. Bailey, Rayneal Baze, D. Conner, Hazel B. Bernice Durham, John R. Ruby Frazer, Ellis R. Frazier, Jessie R. Millard Glass, Gladys Ben, Laura Grimes, Opal Hearn, Ruth Poe Her-Verna F. Johnson, Opal Little, Charles P. Marshall, L. Marshall, Ruby W. Nzie, Loretta Morris and L. Price. Winford Walker Bennett Rags-Beulah B. Smith, Patsy Edward, Nettie Thornton, Turner, Mildred M. Turner, Ethel Simmons, Eve-Whitley, Keith Watkins and Marjorie M. Young.

D. H. HARBIN of One, Eastland, reports eight-pound cantaloupe his good crop. He calls it of the most perfect he's ever seen — and seen quite a few, having on a farm in Eastland for some 80 years.

TOM CREIGHTON'S presence here this week is a result of a recent incident in which several Eastlanders were down for the visit to the State Highway Commission. A group which included Dayton Bray and Dick Payne paid a brief visit to the chambers in the morning. There, the group asked the man who greets the tourists in the off-session, where Sen. Creighton sits. She pointed out the then-empty and commented "I've continued on page 6)



HAVING FUN AT CAMP MYSTIC — Enjoying summer camp at Camp Mystic near Hunt, are Vicki King, daughter of Mr. and Mrs. Bob King, 101 S. Hillcrest and Susie Sneed, daughter of Mr. and Mrs. R. M. Sneed, 503 S. Oaklawn.

## Peanut Farmers Urged To Attend Association Meet

Peanut farmers over Eastland County are being urged by agricultural officials to attend the annual meeting of the Southwestern Peanut Growers Association in the air conditioned Student Center at Tarleton College at Stephenville, on August 18th.

The annual meeting of the group will begin at 9 a.m. on the above date with a report by Ross Wilson, manager, of the work and activities for the past year.

The latest research results on production, curing, disease, and insect control will be given by personnel of the various Texas and Oklahoma Experiment Stations working on peanut problems, after Wilson's report is given.

Dr. George W. Donaldson, executive secretary of the Georgia Agricultural Commodities Authority will explain the purposes and functions of this

Largest quantity and best quality of cod liver oil comes from the Lofoten Isles in Norway.

IS YOUR AUTO air condition in top shape for vacation time? If you're not sure, better have it checked at Otis Coleman's Humble Service Station, East Main St.

organization with special emphasis on their promotional activities.

Door prizes, that have proven so popular at the annual meetings in recent years, will again be a feature of the program.

## COUNTY GROUP PLANS TOUR OF UNDERGROUND FACILITIES

The Eastland County USDA Defense Board has completed arrangements for a visit to the nation's first protected underground facility, near Denton, on Sept. 8 according to J. G. Meredith, ASCS Office Manager and chairman of the group.

Permission has been secured and plans have been completed with officials of the underground defense center for the visit, he said.

Besides Meredith, others of the Department of Agricultural Defense Board include E. E. McAlister, SCS, Homer Cole, FHA Supervisor, and County Agent J. M. Cooper, all of Eastland.

The chairman said that the county judge, county civil defense authorities, school per-

sonnel and other key personnel over the county were also being invited to participate in the tour and observe the underground center.

The group will leave from in front of the Methodist Church in Eastland at 9 a.m. on the above date with arrival time at the center at 1:30 p.m. They will be briefed prior to the tour of the underground facilities. They will likely eat lunch in Denton.

Expected arrival time back in Eastland is 7 p.m. Those who go from Ranger may join the group at the Ratliff Feed Store, on the highway there, at 9:15 a.m.

The USDA Defense Board has certain duties and responsibilities relative to food supplies in the case of a national emergency.

## Mrs. Vaught Is Opening Studio For Piano Study

Mrs. Elizabeth Isbell Vaught announces the opening of her studio for teaching private piano lessons to beginning and elementary pupils, both children and adults.

Mrs. Vaught began the study of piano with her grandmother, the late Mrs. Harriet Eddins Isbell, continued her studies for many years with Mrs. Donald Kinnard Sr. of Eastland and since 1960 has been a pupil of Charles Kiker, Abilene, in organ, piano, and piano pedagogy. In June of this year, Mrs. Vaught attended the Leo Podolsky Piano Lessons, conducted by Leo Podolsky of the Sherwood School of Music, University in Abilene.

She is a member of the National Guild of Piano Teachers and of the Music Teachers National Association.

For information call MA 9-2416 in Eastland.

## Physicals Urged For Mavericks

All Eastland boys who wish to be on the Maverick team this year are urged to take physicals as soon as possible.

Physical blanks are available at all doctors offices in Eastland, according to Coach Millard Glass.

## Re-Appportionment Law Enormous Legislative Task Sen. Creighton Says Here

The highly controversial state and federal re-apportionment measures presented the recent 59th Texas Legislature with the most trying and difficult session in many years, according to Senator Tom Creighton of the 22nd District, which includes Eastland County.

Mr. Creighton was the guest speaker Tuesday noon at the weekly luncheon of the Lions Club at the White Elephant Restaurant in Eastland. Lion Ernest Moore, the program chairman, presented the speaker, Ed Ethridge, vice president, presided.

Mr. Creighton noted that "a good many of us were probably as confused over how to cope with the re-apportionment problems as were the observers sitting in the galleries."

The 22nd District lost Callahan and Denton Counties but gained a big part of Tarrant County, raising the number of people that Mr. Creighton represents to some 309,000 from about 200,000.

Under the finally enacted legislation, 13 state senators are in the same districts and must run against each other for re-election. The validity of the law is now being studied in a court case as is the new federal congressional re-apportionment measure.

Texans will vote Sept. 7 on

a proposed state constitutional amendment to increase the number of state senators from 31 to 39. This, Mr. Creighton noted, was an effort to keep rural areas represented in the Texas senate.

The 59th Legislature had more bills by 17 per cent than the previous session and passed

a total of 43 per cent of the measures.

Top laws enacted had to do with creating the new college education board, the student loan program, modernization of the mental health program, the new Texas Water Development Board law, oil and gas

(Continued on page 6)

## Farm Bureau Queen Contestants Named

Five new contestants have been named for the Eastland County Farm Bureau Queen Contest.

They are Bernadine Campbell, daughter of Mr. and Mrs. Bernard Campbell of Star Route, Carbon; Sharon Brown, daughter of Mr. and Mrs. Kenneth Brown of Ranger; Leanna Leveridge, daughter of Mr. and Mrs. John Leveridge, Route Two, Cisco; Madge Justice, daughter of Mr. and Mrs. Glen Justice of Carbon; and Sarah Jo Wright, daughter of Mr. and Mrs. Gaylon Wright of Gorman.



SARAH WRIGHT



BERNADINE CAMPBELL



LOUISE WOODS

## First Christian Church Revival Begins Monday

The First Christian Church of Eastland will hold revival services Monday, Aug. 23, through Friday, Aug. 27, according to Rev. Clayton Jackson, pastor.

Services will begin each evening at 7:30 p.m., with Rev. Wayne Robinson, pastor of the Dublin Christian Church, as guest evangelist.

## Old Fort Blair Ceremony Is Set

Ceremonies for the dedication of a marker to old Fort Blair in Desdemona will be held Saturday, Aug. 14 at 11:30 a.m., according to Mike Collins, Eastland County Historical Survey Committee chairman.

That will also be the weekend of the Desdemona homecoming.

## H. B. MacMoys to Attend Meeting

Mr. and Mrs. H. B. MacMoy, manager-owner of Super Save Food Market, will attend the 38th annual convention of Texas Retail Grocers Association in Dallas Aug. 14-17.

Congressman Earle Cabell of Dallas will keynote the opening general session of the convention Sunday afternoon. Before the activities come to a close Tuesday, Aug. 17,

more than 120 commercial exhibitors will have shown grocers latest innovations in all phases of the food industry.

SHOP EASTLAND FIRST!

CHECK THE NEW Property Improvement Loans Available Eastland National Bank "The Original" EASTLAND, TEXAS

# Woman, Slain and Scalped By Indians, Is Buried at Alameda in 1860

of the oldest graves of pioneers is located in Eastland County's Alameda cemetery, located in the Eastland of the county.

year was 1860 — back than a century ago.

section of then-frontier was teeming with un-

branded Longhorns and the meager remnants of a fast-diminishing buffalo population.

Human inhabitants included a sparse number of hardy pioneers and more than a few savage Comanche Indians whose bloody raids, looting and pillaging kept the white settlers in constant peril.

One of the frontier homes—a log cabin — was located near the Leon River below the site of the present Lake Leon Dam on land of W. H. Mansker, one of the earliest settlers in this area.

Its occupants were Mrs. Martha Coffee, her husband and their eight-month-old baby — one of those typical pioneer families who braved the dangers of the wilderness to establish a home and to toil in the soil.

The Coffees' modest cabin — ironically — was built on acreage which earlier had been the site of a Comanche camp before the thinning buf-

falo population and the invading white settlers forced most of the red men to migrate to hunting and camping grounds elsewhere.

Late one afternoon in 1860, according to Mrs. Ethel Brookes Gilmore of Ranger, Eastland County historian, Mrs. Coffee left the cabin to go down into a nearby draw where her beautiful filly was pastured. She planned to bring the horse up to the cabin.

But she never made it. Nor did the filly.

From ambush a band of Comanche renegades stealthily watched the attractive young farm woman approach. And they saw another fine prize — the beautiful filly tethered only a few yards from their lair.

Her long skirt swishing as she walked, Mrs. Coffee entered the draw unaware of her impending doom. Suddenly, the whooping savages, in war-

paint and wielding deadly tomahawks, sprang out of the brush and grabbed her roughly. She screamed in terror, but a red hand quickly moved

to her face, clamped tightly over her mouth.

For a few seconds she kicked, squirmed, scratched desperately at her tormentors,

then several tomahawks tore into the woman's body and she crumpled to the ground, bleeding heavily as she breathed her last. Moments later she was scalped, and the Comanches took the filly and galloped away on their spotted ponies.

While this bloody tragedy was unfolding, her husband lay helpless — seriously ill — in the nearby cabin with the couple's infant child.

A short time later when neighbors brought food to the cabin — as they had been doing during Mr. Coffee's illness — they found him in bed with a burning fever and in a semi-conscious state. The baby was crawling around on the floor and crying lustily.

Concerned with the absence of Mrs. Coffee, the neighbors began a search of the area around the couple's rustic dwelling.

It was only a few minutes before they ventured down to-



FIRST GRAVE in Alameda Cemetery — that of the late Martha Coffee, killed and scalped by Indians — bears the marker shown above.

## Wayschlag INSURANCE

Other report

WEDNESDAY — Pleasant. Sun 8:15, sets 6:57. Moon rises 1 p.m. Fishing best.

THURSDAY — Sunny. Sun rises 6:55. Moon rises 1 p.m. Fishing best.

FRIDAY — Hot. Sun rises 6:55. Moon rises 1 p.m. Fishing best.

## CHARLIE CHUCKLES says:



A bird with his head in the sand Was living it up really grand He wasn't prepared He should've been scared But he lived in his own fairyland.

You'll think this is a fairyland when you see what we have to offer — try us!

## FULLEN MOTOR CO.

305 E. Main St. Eastland MA 9-2676



EASTLAND TELEGRAM

Phone MA 9-1707  
110 W. Commerce St.

(Consolidate with Eastland Chronicle, established 1879, and Eastland County Record, established in 1880.)  
Entered as second class matter at the Post Office at Eastland, Texas, under the act of Congress of March 3, 1879.

Published Semi-Weekly — Thursdays and Saturdays  
By Eastland County Newspapers, Inc.  
H. V. O'BRIEN, Editor

SUBSCRIPTION RATES: By carrier in city, \$2.00 per month; one year by mail in county, \$18.00; by mail elsewhere in state, \$5.00; one year by mail state, \$6.00.

NOTICE: Any erroneous reflection upon the standing or reputation of any person, firm or company, which may appear in the columns of this newspaper, will be gladly corrected upon being brought to the attention of the editor.

1965 member WEST TEXAS PRESS ASSOCIATION

Say It with Flower and Gift  
200 N. G...  
Mrs. Ita R... MA 9-1101 — Florafax Deliver...

BUY SELL TRADE LEASE  
**CLASSIFIED ADS**

**EASTLAND MEMORIAL HOSPITAL**

The following persons were listed as patients in Eastland Memorial Hospital Wednesday:

- Rosalie Leslie, medical.
- Arminta Hadley, Ranger, medical.
- Mrs. Glen Graham, medical.
- Mrs. W. H. Drake, medical.
- Corra Webb, medical.
- Sadie Grozier, Cisco, medical.
- Carl McIlvain, Olden, medical.
- Ethel Pryor, medical.
- Charley Ross, Odessa, accident.
- Mamie Pistole, medical.
- Mary Liles, medical.
- Mrs. H. E. Sprayberry, Rising Star, medical.
- Nellie Williams, medical.
- Mrs. L. A. Horn, accident.
- Pearl Bennett, medical.
- Fred Foley, Carbon, medical.
- Eula Rutherford, Gordon, medical.
- Paul Fleming, medical.
- P. E. Thorp, surgical.
- D. C. Stuard, Ranger, medical.
- J. M. Wilcoxin, Desdemona, accident.
- Melvin Williams, medical.
- Mrs. John Swint, medical.
- Martha Poe, medical.
- Linda Graham, medical.
- Mrs. Herman Hull, Carbon, OB.
- Mrs. Forrest Seabourn, OB.
- Eula Ayers, medical.
- Luna Lane, Ranger, surgical.

**Announcements**

**MASONIC LODGE NO. 467**  
Meets second Thursday of each month at 8 p.m. in the Masonic Hall. Call E. M. Simpson, W. M., MA 9-1665 or L. E. Huckabay, Sec., MA 9-1391 for information.

**EASTLAND ROTARY CLUB**

Meets each Monday noon at White Elephant Restaurant in Eastland.  
A. D. Taylor, President

**Notice**

**CLEAN** rugs, like new, so easy to do with Blue Lustre. Rent electric shampooer \$1. Coats Furniture Co. 65

NOTICE: For custom breaking and sowing of land, call Harold Courtey, MA 9-1340. tf

NOTICE: Now's the time to stock up on office supplies before the busy fall season begins. Telegram office. tf

NOTICE: For home repairs, call R. C. Turner, Home Services, Eastland, MA 9-2286. No job too small. Free estimates. tf

NOTICE: Save money. Have your tires retreaded for winter wear. Most tires \$7.95. One-year guarantee. Jim Horton Tire Service, Eastland, Texas. tf

NOTICE: Free demonstration of Merle Norman Cosmetics at Ruby Lee's Beauty Shop. All type beauty work, specials on cold wave permanents. 403 S. Lamar St., Phone MA 9-2168. tf

NOTICE: Singer Sewing Machine authorized sales and service representative for this territory is J. T. Beggs. Write Route Two Rising Star or call 534334. Good selection of used and reprocessed sewing machines. tf

**OPEN AGAIN**

We've re-opened and our stock includes 500 khaki shirts 500 khaki pants, 200 pairs overcoats, sleeping bags, other use it and new items. Also we offer 500 new steel Westinghouse cabinet units at \$10 ea. They're worth many times more. Good used Chevy 1953 model truck, two ton, bargain at \$500. Norton's Army Surplus Store, 1201 Avenue D, Cisco.

**ANGORA GOAT SALE**

100 Bucks, 20 Does — Saturday, August 14. Sale starts 1 p.m. Stephenville Auction Barn, Stephenville, Texas. Breeders: M. C. Jones, Dublin, Texas, Feltz Terrill, De Leon, Texas. 64

**Notice to Bidders**

The Eastland County Commissioners' Court will receive bids for the purchase of a 1965 Model Dump Truck, (Two-Ton). Bidders must take in trade a 1959 truck, which may be inspected at the County Equipment Yard in Cisco, Texas. Bids must be sealed and presented to the Eastland County Commissioners' Court not later than 10:00 a.m. on August 9, 1965 at which time all bids will be opened. The Court reserves the right to reject any and all bids. Specifications and further information may be obtained from the Eastland County Auditor, Eastland, Texas.

**NOTICE: Texas Barber College**, 450 Pine, Abilene offers expert training at reasonable cost, with terms to fit each individual student. State and V. A. approved. OR 4-5891. 79

**NOTICE: Homes, 100 percent financed**, one, two and three bedrooms. Payments, \$38 to \$69/month. Built on your lot or will buy you one anywhere in Texas. Also for Negro and Spanish. Good credit not required. Call 894-5769 collect or write, Homes, Box AA, Levelland, Tex. tf

**NOTICE: Coastal Bermuda planting**. Two row pray machine with fertilizer attachment. Call E. C. Jones GI 5-3501, Dublin or B. L. Hunter, 2374 Olden. tf

**IS YOUR AUTO air condition in top shape** for vacation-time? If you're not sure, better have it checked at Otis Coleman's Humble Service Station, East Main St.

**NOTICE: The El Rancho Coffee Shop**, one of the best businesses in Eastland County, is for sale due to my needs to retire. This cafe has never had a bad day's business since it has been in operation. Located in Ranger, Texas, on H. W. 90 West, between Ranger Junior College and Rodeo Grounds. I have this priced well below my investment. If you are interested please check with Raymond Bryan at the Point Liquor Store in Ranger or phone MI 7-1360. 46tf

**For Sale**

NEEDED: City lots suitable for building, peanut acreage and ranchland. Buck Wheat, Ranch and Farm Service. tf

NOTICE — Call or see us for rubber stamps. The Eastland Telegram. tf

NOTICE: Just arrived! modern design, rigid constructed attache cases, with dividers inside and locking feature. Ideal for work and/or school. Assorted colors. Only \$10.95. Telegram office. tf

**WHITE TRADE** — 14' boat, motor, and trailer, for livestock, farm equipment. Call HI 2-3639. tf

FOR SALE: 186 acres, three bedrooms, bath and a half, 21 acres peanuts, good field below Lake Leon; 290 acres - bottom on highway near south Gordon; 753 acres south Gordon. \$85 per acre. 160 acres plus goats, well located and fence, priced to sell. Buck Wheat, Ranch and Farm Service, Eastland, MA 9-2131 — night, MA 9-1973. tf

FOR SALE: 600x16 Special Triple Rib Nylon tube-type 4-ply tires, \$12 plus tax. 550x16 at \$10 plus tax. Goodyear Service Store, Eastland. tf

FOR SALE: Set of four shock absorbers installed, for only \$39.95. Goodyear Service Store, Eastland. tf

FOR SALE: 1957 Chevrolet station wagon, four-door. Phone MA 9-1626, or see at 201 W. Burkett. tf

FOR SALE: Clean, high tread, used tires. All inspected and re-conditioned. Prices start at just \$3.95. Free installation. All guaranteed. Goodyear Service Store, Eastland. tf

FOR SALE: Newest edition "Old Rip" on sale at the Telegram Office. Includes many pictures, including color cover. \$1. tf

FOR SALE: '53 model Pontiac, good tires, runs good, \$125. See at 303 South Connelley between 9:30 a.m. and 2:30 p.m. tf

FOR SALE OR TRADE: Modern three bedroom home, two baths. Out of Brownwood on Cisco Highway. Will sell or trade for home in Eastland. Call MI 3-4447, Brownwood. 65

FOR SALE: B-Flat clarinet, used one year and four months. Bought from King Music Co. Call MA 9-1936. 64

FOR SALE: 3 bedroom house, double garage, \$6,500. Also 2-bedroom house, garage, \$5,500. Both in good condition and well located. Call MA 9-2436. 64

FOR SALE: Two used refrigerators, trade-ins, \$45 each. Goodyear Service Store, Eastland. tf

**FOR SALE**

Seven Poodle puppies, six weeks old. Two brown and five black. Call HI 2-3639, Cisco. 90

**FOR SALE:** Coin books, 35c each or 3 for \$1, while they last. Telegram office. tf

**FOR SALE:** Two row James Way Sprigger, Good condition, \$800. Call MA 9-2131. 34tf

**FOR SALE:** Two bedroom house, 100x100 lot, new roof, plenty of closet space. Call MA 9-1568 after 2 p.m., 108 East Conner. tf

**FOR SALE:** G-John Deere Tractor and 10 disc Schaefer Plow. Call MA 9-1200 or MA 9-1230 after 5 p.m. tf

**FOR SALE:** Lake Leon property. All improvements, reasonable. Call MA 9-2624. tf

**FOR SALE:** Two and three bedroom houses at Breckenridge. Finance available. See or call O. E. Bradford, house-mover, HI 9-4506 or HI 9-3780, Breckenridge. tf

**FOR SALE:** Two and three bedroom houses — new FHA or GI home to suit you. Two houses on several lots in Ranger for \$2,500. Ranch and Farm Service, 301 North Seaman. MA 9-2131, Eastland. tf

**FOR SALE:** Weeping Lovegrass. Very good quality. Call 43 3591 or write Box 2335, Abilene. tf

**FOR SALE:** One 12 cubic feet freezer, trade-in, \$135. Good-year Service Store, Eastland. tf

**Wanted**

HELP WANTED: inside help wanted. Apply at Dairy King. 65

HELP WANTED: Apply in person, Eastland Steam Laundry, 210 N. Lamar, Eastland. tf

WANTED: The opportunity to prove how effective Want Ads work for you. Low cost, high readership means results. Buy, sale, rent, trade, swap, hire or find a job. Try 'em and see! The Telegram Want Ad number is MA 9-1707. tf

WANTED: Reliable woman to live in, do light house work and care for child. Write Box 55, Eastland. 64

HELP WANTED: female. Apply 7-11 Grocery. No phone call for application. Must be 25 or over. Night work. Apply Webb's 7-11. tf

WANTED: All kinds dirt work have D7 Cat. dozer for tilling, cleaning, terracing, brush clearing, or what have you Call Brooks Dirt Work, Cisco HI 2-3291, or write Box 666, Cisco. tf

WANTED: Church nursery keeper — 11 o'clock Sunday and first and third Tuesday mornings. Phone MA 9-1324 or MA 9-1167. tf

**MATTRESSES**

- New Innerspring Unit
- Choice of Ticking
- New and Renovate
- Choice of Firmness
- Cleaned, Felted Cotton
- New Mattress Guarantee

**WESTERN MATTRESS CO.**  
Box 5288 — San Angelo  
In Eastland Call MA 9-1342

**IF YOU'RE DRIVING YOUR CAR ON VACATION BE SURE**

Bring your car to us for service, a complete tune-up and ENCO lubrication... then you'll know you are ready.

**BE SAFE**  
All during your trip and summer driving. You'll avoid dangerous and costly car problems.

**BE SATISFIED**  
with the way your car performs. We guarantee our work.

**OBIE'S HUMBLE SERVICE STATION**

802 W. Main  
MA 9-8866

**HELP WANTED:**

Apply in person at Eastland Steam Laundry. tf

WANTED: To buy one or two bedroom house with small acreage on Eastland-Cisco Highway or Eastland-Carbon Highway. Phone MA 9-1544, Eastland, or write Box O, Eastland Telegram. tf

WANT TO BUY: Low cost lots anywhere in town. Call 894-5769 or write the Highway-Trade Co., Box AA, Levelland, Tex. tf

WANTED: Your winter garments to clean and store in our modern storage vault. Call Modern Dry Cleaners, MAIN 9-1344, for free pickup and delivery. 65

WANT TO BUY: Land on Highway between Ranger and Eastland, from two to ten acres. Call A. P. Fambro at Fambro Gate Co., Eastland. tf

**Rentals**

FOR RENT: Three bedroom cottage, 503 High St., on Park Hill, only \$35. Phone MA 9-1417. tf

FOR RENT: Attractive re-decorated apartment downtown; also bedroom and bath, adults only. Call MI 9-1731 or MA 9-2083. 64

FOR RENT: Two room furnished apartment, two blocks from square. T. V. cable, bills paid, adults only. Call MA 9-2613. tf

FOR RENT: Large, furnished 2-bedroom apartment in duplex. 611 W. Plummer St. tf

FOR RENT: Four room apartment, walk-in closet, two beds. Call MA 9-2186. tf

FOR RENT: Furnished apartments, gas and water paid. Phone MA 9-1359. tf

FOR RENT: House, elderly couple preferred. Phone MA 9-2649. After 5, MA 9-2147. tf

**It's Time to Spray under your house and in your house for termites, roaches, ants, fleas, spiders.**

Also time to spray your grass, trees, and shrubbery.

**H. D. WARREN**  
209 E. Valley  
Phone MA 9-2434

**FOR SALE HOMES FOR SALE**

Nice three bedroom, two bath home on Oaklawn. Nice yard, dishwasher, etc., ready to move in, has good FHA loan payments \$75 per month. Low down payment.

Nice four bedroom home on Commerce. Hardwood floors, lots of room and in condition. Loan can be arranged.

Three bedroom brick home on Bassett St., \$8500. Good loan, low payments. Nice corner lot.

We have these and several others, call us or come by and let us show you today.

**FARMS AND RANCHES FOR SALE**

160 A. on pavement close to town, make offer.  
190 A. near Lake Leon. Improved and on pavement.  
290 A. farm, 100 acres peanuts, some grain allotments. All cult., but 20 acres Bermuda, \$157.50. Good terms.

140 acres sandy land, new net fence, one-half minerals, well and tank, brush pushed, \$75.  
250 A., 52 acres peanuts, 40 grain, good water, some bottom land, \$125.  
Section good grass land, Stephens County, \$79.  
Many others, large and small, sale or trade, call or come to see us today.

**LISTINGS APPRECIATED.**

311½ West Main  
**EASTLAND, TEXAS**  
Off. Phone MA 9-1725  
**M. L. TERRELL**  
MA 9-1926  
**ROBERT KINCAID**  
MA 9-2721

**Card of Thanks**

Words alone are inadequate to express our appreciation to the many who did so much to comfort and assist us during our recent bereavement. Expressions of sympathy and every act of assistance were appreciated more than you can know. To all, we say thank you.  
Mrs. Fannie O'Brien and Family.

I wish to express my sincere appreciation and thanks to my friends for the cards, letters, phone calls and beautiful flowers sent to me during my stay in the hospital. May God bless each one of you.  
Tom Sharpe

**Shop Here First And Save Time and Money**

1961 Buick Invicta, air-power. \$1295

1961 Valiant, stick shift. Six with air. \$695

1961 Plymouth, power and air \$895

1958 Cadillac hardtop. Two tone. Real nice car. \$995

1963 Ford Fairlane 500. One owner, power and air. Real clean. \$1795

1960 Ford, automatic. \$495

1959 Chevrolet Bel-air. Fordor, standard shift, air. \$750

1958 Ford station wagon V-8. Automatic - nice. \$695

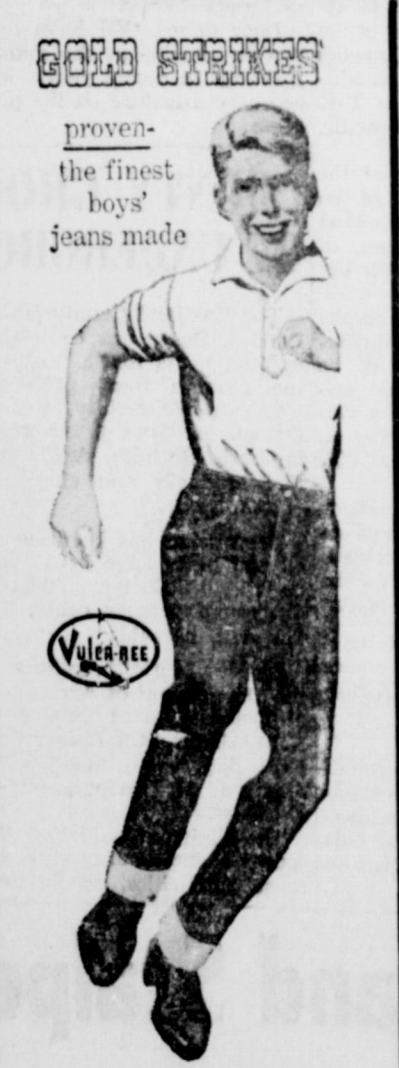
1961 Ford Ranchero pickup. As is special. \$377

1964 Volkswagen. Red. Low mileage, one owner, extra clean. \$1495

**BRUCE PIPKIN**  
OLDS-CADILLAC RAMBLER  
314 Main MA 9-2636  
EASTLAND

**VALLEY VIEW ESTATES**  
Eastlar's Newest Addition  
Near the New School  
Lovely 3 Bedroom Homes  
FHA & GI Financing  
Built to your plans or ours  
No Two Homes Exactly Alike  
CONTACT  
**D. L. KINNAIRD**  
REAL ESTATE  
MA 9-2544

**EVERYTHING A BOY NEEDS FOR SCHOOL days '65!**



made by **FARAH OF TEXAS**

**LEVIS**  
Waist 27-29  
Waist 30-42  
Extra Lengths up to 38

**BOYS' SHIRTS**  
\$2.98

**HUSH PUPPIES**  
Mens 6½ to 13  
Boys 2 to 6

**TRACK SHOES**  
Boys 2 to 5½  
Mens Size 6 to 11  
Also White Oxford

**TENNIS SHOES**  
**US KEDS**

**MEN AND BOYS SOCKS**  
White Athletic Socks  
Crew Socks  
Tom Sawyers Knit and Sport  
Colors Grey and Brown  
15 Colors to Pick From

Sizes: 2 to 12 Regulars & Slims... \$2.98  
Suspender Gold Stripes for Little Fellas... \$2.98  
Sizes: 13 to 16 Regulars & Slims... \$3.75  
Hushies: Waists 26" to 36"... \$4.75

**THE MEN'S SHO**  
111 W. MAIN EASTLAND Ph. MA 9-



**JOE SAYS:**  
The object of oratory alone is not truth, but persuasion.  
**JOE CULPEPPER**  
of Hood King Motor Co., also says: "See me for the best automobile deal."



# PLAY DIVIDEND SWEEPSTAKES

Start your free dividend sweepstakes Card today! Plug your card in with each time you shop. INSTRUCTIONS on the back of each punch card. Start yours today...

VOID IF OPENED  
Must be opened by a Store Employee  
THIS CARD MAY BE WORTH \$25.00 CASH, A COLOR TV OR A NEW FORD MUSTANG  
Complete instructions on reverse side  
NO PURCHASE NECESSARY TO OBTAIN FREE PUNCHES ON YOUR FREE CARD  
CUT HERE TO REVEAL PRIZE  
Copyright 1965 CASH-IN CARDS, Inc.  
From Each Section  
Section 1 Not Redeemable

**DIVIDEND SWEEPSTAKES**

**J.R.B. SUPER MARKETS**  
Cisco-Eastland  
Ranger

\$2	\$2	\$2	\$2	\$2	\$1
\$1	\$1	\$1	\$1	\$1	\$1
\$1	\$1	\$1	\$1	\$1	\$1
\$1	\$1	\$1	\$1	\$1	\$1



Win a Ford Mustang!  
**FREE!**  
BRAND NEW FORD **MUSTANG**  
**FREE!**  
ALSO... TWO COLOR TV SETS

DILL, SOUR, KOSHER

**AF PICKLES** **25c**

<b>DINNERS</b>	BANQUET BEEF, TURKEY OR CHICKEN - ea.	49c
<b>ORANGE JUICE</b>	SHURFINE	5 6-oz. cans \$1
<b>TOOTH PASTE</b>	CREST	Large 53c Size 45c
<b>ROYAL PUDDINGS</b>		2 reg. pkgs. 23c

**DEL MONTE CATSUP** **5** 14-oz. Bottles **\$1**

**GLADIOLA WHITE MEAL** 5-lb. bag **47c**  
**SHURFINE SHORTENING** 3-lb. can **75c**

**PINEAPPLE-GRAPEFRUIT DRINK** 39c  
**ROXEY DOG FOOD** 3 No. 300 cans **25c**

ALL DELICIOUS FLAVORS  
**HI-C DRINKS** **3** For **89c**

**THOMPSON'S SEEDLESS grapes** lb. **19c**

**COCA-COLA**  
**59c** Plus Deposit  
12 REGULAR

**SCOTT TISSUE**  
**3** 4-roll Packs **\$1**

**CELLO-PAK CARROTS**  
**2** 1-lb. bags **25c**

**J.R.B. BONUS STAMP COUPON**  
50 Free S&H Green Stamps with purchase of 2 Doz. Lg. **KENDRICK EGGS**  
America's Most Valuable Stamps

**CHOICE MEATS**  
Armour Star LUNCH MEATS  
Bologna, Souse, Pickle Loaf, Olive Loaf  
**6 oz. pkg. 29c**

**J.R.B. BONUS STAMP COUPON**  
100 Free S&H Green Stamps with purchase of 1-lb. **Shurfine Coffee**  
America's Most Valuable Stamps

**LIPTON'S INSTANT TEA**  
50c OFF LABEL  
6-oz. Size **99c**  
All Coupons Void After Aug. 14

**CALIFORNIA FANCY avocados** Ea. **19c**

**J.R.B. BONUS STAMP COUPON**  
50 Free S&H Green Stamps with purchase of 1 Doz. **ORANGES**  
America's Most Valuable Stamps

Chuck Roast . lb. 35c  
Arm Roast . . lb. 39c  
Club Steak . . lb. 59c  
Youngblood Cut-Up — 1 lb., 12-oz. box  
**FRYERS . . . . . box 69c**

**J.R.B. BONUS STAMP COUPON**  
50 S&H GREEN STAMPS with purchase of 10 lbs. **SUGAR**  
America's Most Valuable Stamps

**J.R.B. BONUS STAMP COUPON**  
50 S&H GREEN STAMPS with purchase of 3 lbs. **CRISCO**  
America's Most Valuable Stamps

**J.R.B. BONUS STAMP COUPON**  
100 FREE Green Stamps with purchase of any brand **3-Lb. CANNED HAM**  
America's Most Valuable Stamps

**J.R.B. BONUS STAMP COUPON**  
50 Free S&H Green Stamps with purchase of 2 lbs., more **GROUND BEEF**  
America's Most Valuable Stamps

We Reserve the Right to Limit Quantities  
No Sales to Dealers  
**J.R.B. SUPER MARKETS** AFFILIATED  
S&H GREEN STAMPS WITH EVERY PURCHASE  
**RANGER — EASTLAND — CISCO**  
Double S&H Green Stamps on Wednesday with purchase of \$2.50 or more.

**J.R.B. BONUS STAMP COUPON**  
100 S&H GREEN STAMPS with purchase of Two 2-lb. **K&M COOKIES**  
America's Most Valuable Stamps

**J.R.B. BONUS STAMP COUPON**  
100 Free S&H Green Stamps with purchase of 3 Pkgs. **Shurfine Cake Mix**  
America's Most Valuable Stamps

## COURTHOUSE REPORT...

**REGISTRATIONS**  
Star Producing Co., tank truck, Ranger, E. Caudle, Ford, Rising Star.  
Beth Deitker, Sea King trailer, Cisco.  
Thompson, Chevrolet, Eastland.  
McKnight, Oldsmobile, Eastland.  
Taylor, Ford, Cisco.  
Gunner and McConnell, net pickup, Eastland.  
Eastland County Precinct, Ford dump truck, Eastland.  
Everett, Chevrolet, Eastland.  
Baptist Church, Ran-

ger, to Z. Crossley, deed of trust.  
Federal Land Bank, Houston, to First State Bank, Rising Star, assignment of lien.  
Tom Flippin, et ux, to First State Bank, Rising Star, deed of trust.  
Nettie Fox, deceased, to the public, proof of heirship.  
Arvie Green, et ux, to First State Bank, Rising Star, warranty deed.  
C. T. Bibbons to Jerry Slo- uacek, assignment of oil and gas lease.  
Roy Gann, et ux, to Ben Hamner, deed of trust.  
**MARRIAGE LICENSE**  
Terry Geye and Sharon

Ann Donham.  
Richmond Thomas Ezzell, Jr. and Roberta Joyce Mitchell.  
Larry Roger Brown and Billie Dairlene Humphrey.  
Robert Lee Rowch and Mary Jane Arther.  
Roland Franklin Ziehr and Melba Jean Donham.  
**SUITS FILED**  
Flora Townsend, et vir, vs. James Koger and Frankie Koger, suit on note.  
Betty Monroe vs. Raymond Monroe, divorce and child custody.  
J. D. Felder vs. Vergie Felder, divorce.  
Higginbotham Bros. and Co. vs. S. J. Chapman, suit on note.  
**INSTRUMENTS FILED**  
Burl Blair, et ux, to Eastland National Bank, assignment of liens.  
Granvil Byrom to Eastland National Bank, warranty deed.  
Raymond Bryan, et ux, to Lud McGown, warranty deed.  
George A. Brown Jr. to J. C. Noble, et ux, release of vendor's lien.  
H. V. Burk et ux to Southern Savings and Loan Association, deed of trust.  
H. V. Burk, et ux, to the public, designation of homestead.  
Ralph Berry et ux to Veterans Land Bank of Texas, warranty deed.  
Fannye Burkett to Mrs. Dorothy Palmie, warranty deed.  
H. W. Clifton, et ux, to Grover Hallmark, deed of trust.  
Nancy Chapman to Cardie McKinney, et al, transfer.  
Cate Crawford, et al, to J. D. Yardley, warranty deed.  
Commerce State Bank, Ranger, to Stephenville Savings and Loan Assn., assignment of mechanics & materialman's lien.  
Daisey Dill et vir, to Mary Stephenson, warranty deed.  
Tincie Davenport, et vir, to A. O. Tindall, quit claim deed.  
Mrs. L. E. Duncan to I. W. McCrum, warranty deed.  
Ina Lee Dobbs to Victor Cornelius, warranty deed.  
Eastland National Bank to Burl Blair, release of lien.  
William Edwards Jr. to State National Bank Iowa Park, deed of trust.  
Bessie Erwin to R. D. Cooksey, et ux, warranty deed.  
J. A. Fox, et ux, to W. W. Worley, warranty deed.

Hatcher Haskins, et ux, to Lester Crossley, deed of trust.  
Samuel Hannold, deceased, to the public, proof of heirship.  
Mollie Hale, to Barney Hale, warranty deed.  
B. F. Hanna to Frank White, warranty deed.  
Mary Huett, et vir, to Onnie Bennett, mineral deed.  
E. E. Hollingshead, et ux, to Ralph Berry, et ux, warranty deed.  
Vernon Harris, et ux, to Lina Harrell, warranty deed.

Ollie Larkin to Sears Roebuck and Co., mechanic v. materialman's lien.  
Lovera Oil and Gas Company Inc. to Fort Worth Pipe and Supply Co., mechanic v. materialman's lien affidavit.  
Edna Loflin, deceased, to the public, proof of heirship.  
Ralph Morton, et ux, to the public, designation of homestead.  
Ralph Morton, et ux, to First Federal Savings and Loan, Ranger, deed of trust.  
Jerry Mehafefy, et ux, to

Magnolia Pipe Line Co., easement.  
James Query, et ux, to Russell Hill deed of trust.  
L. H. Rhodes, et ux, to Delano Castle, et al, warranty deed.  
Republic National Life Insurance Co. to J. T. Hale, release of deed of trust.  
Marion Sprabery, et ux, to Delano Castle and Henry Castle, warranty deed.  
Ralph Morton, et ux, to State of Texas vs. R. C. Pressley, et al, certified copy of judgment.

Doyle Squiers, et ux, to Stephenville Savings and Loan Assn., deed of trust.  
Texas Standard Life Insurance Co. to W. G. Kirk, transfer of lien.  
James Tidwell to Dorothy Tidwell, power of attorney.  
United States to Doyle Ward, notice of federal tax lien.  
United States vs. D. J. West, et al, release of federal tax lien.  
United States vs. Doyle Ward (doing business as

Brown Jug), notice of federal tax lien.  
United States to J. C. Long, power of attorney.  
D. W. Underwood to Murray Fasken, trustee, assignment of oil and gas lease.  
Veteran's Land Board to Ralph Morton, warranty deed.  
W. W. Worley, et ux, to L. Crossley, deed of trust.  
Frank White to Hatcher Haskins, et ux, warranty deed.  
Frank Wright, trustee, to First National Bank, Cisco, deed of trust.

**MID-SUMMER SPECIAL!**

**BAR-B-Q SHORT RIBS** PER LB. **89c** per lb.

**COLE SLAW** Quart **59c**

OPEN 10 a. m. to 8 p. m.  
SERVING SERVICE anywhere anytime  
**Bank's Cafeteria**  
Ave. D — CISCO — HI 2-9954

**"STAYING IN BUSINESS" SALE**

**WE'RE HERE TO STAY - Must make lots of friends**

Lowest Prices for Top Quality is the **BEST WAY**

**SEIBERLING**  
Performance Rated TIRES  
**HORTON TIRE SERVICE**  
403 East Main — EASTLAND — MA 9-1420



**RAWLINS SINCE 1881**  
**Monuments**  
WEATHERFORD, PHONE LY 4-2726

IF WE MAY ASSIST YOU, CALL US COLLECT OR MAIL THIS AD

NAME \_\_\_\_\_ PHONE \_\_\_\_\_  
ADDRESS \_\_\_\_\_ CITY \_\_\_\_\_

**RANGER**  
**DRIVE-IN THEATRE**

Box Office Opens 7:15 — Show Starts At 7:45  
Adults 50c Kiddies Under 11 FREE

THURSDAY — FRIDAY — SATURDAY  
AUGUST 12—13—14

Tony RANDALL & Shirley JONES  
**FUFFY**  
King of Beasts... or Prince of Pussycats?

In COLOR

SUNDAY — MONDAY — TUESDAY  
AUGUST 15—16—17

SHAKES THE SCREEN LIKE CANNON THUNDER!  
**JAMES STEWART**

**SHENANDOAH**  
TECHNICOLOR

CO-STARRING DOUG McCLURE · GLENN CORBETT · PATRICK WAYNE  
and ROSEMARY FORSYTH · KATHARINE ROSS · A UNIVERSAL PICTURE

**JOY DRIVE-IN** Open 7:30 — Starts 8:00  
COCO — EASTLAND HIGHWAY FEATURE 8:10

Thurs. - 50¢ Carload

FRIDAY - SATURDAY DOUBLE FEATURE  
Each Movie Shows One Time Only AT 8:00 AT 9:30

Brian Epstein presents **Gerry AND THE Pacemakers**  
"Ferry Cross The Mersey"

**GUY MADISON** as Wyatt Earp  
**GUNMEN OF THE RIO GRANDE**  
EASTMANCOLOR · TECHNISCOPE

SUNDAY — MONDAY — TUESDAY

TWO CAREFREE AMERICANS TURN PARIS ON ITS EAR  
**JAMES GARNER · DICK VAN DYKE**

**The ART of LOVE**  
COLOR ELKE SOMMER · ANGIE DICKINSON

**DIXIE Drive-In**  
EASTLAND RANGER HIGHWAY

Box Office Open 7:45; Show Starts 8:15; Box Office Closes 9:30.

ADMISSION: Adults 60c, Children 12 Free; Each Wednesday & Thursday are bargain nights—admission 25c.

Wednesday and Thursday, August 11 and 12  
"BABY THE RAIN MUST FALL"  
Steve McQueen — Lee Remick — Don Murray

Friday and Saturday, August 13 and 14  
ELVIS PRESLEY as the  
"ROUSTABOUT"  
IN COLOR

Sunday, Monday and Tuesday, August 15, 16 and 17  
"QUICK BEFORE IT MELTS"  
George Maharis — Robert Morse — Anjanette Comer  
IN COLOR

**'LOOK-SEE' HISTORY AND FUN COMBINED IN FT. DAVIS VISIT**

"LOOK-SEE" history and family fun can be combined in a visit to old Fort Davis and Davis Mountains State Park.

The Mays Massacre, conquest of the Apaches, fights with the Comanches, stage-coaches on the San Antonio-El Paso road — these are all part of the old Fort Davis story.

Fort Davis National Historic Site was established as part of the National Park System in 1963. The Fort is located on the northern edge of the town of Fort Davis, Texas, and can be reached from U. S. Highway 290 on the north, 90 on the south, and then by paved Texas Roads 17 and 118.

At nearby Davis Mountains State Park, motorists will find it far enough south for comfort in the winter, yet high enough for pleasant summer touring.

The Park's camping area is equipped with concrete tables, cooking grills, showers, and restrooms. The camping fee is \$1.00 per day per car.

Indian Lodge, at Davis Mountains State Park, affords sleeping accommodations for tourists and its own special brand of West Texas cooking. A few miles from the Lodge,

**Wayne Gibbens Is Appointed To Legislative Body**

AUSTIN — Speaker of the House Ben Barnes has announced the appointment of Representative Wayne Gibbens of Breckenridge to the Texas Legislative Council of the 59th Legislature.

The Council, of which Barnes is vice chairman, is a permanent legislature service agency with a full-time professional staff which provides research, statutory revision and bill-drafting assistance. Council members, who determine policy and provide general direction for the agency's work, are designated by the presiding officers of the House of Representatives and Senate after each regular session of the Legislature. They participate actively in dealing during the interim with problems of state-wide significance confronting the next Legislature. Appointments to the Council are considered choice assignments by legislators because of the influence and prestige attached to membership.

In announcing the appointment, Speaker Barnes said, "Representative Gibbens is uniquely qualified to render distinguished service in this capacity because of experience gained in three terms in the Legislature and one previous term as a member of the Council. His knowledge and experience will provide continuity in the work of the agency and enable him to make significant contributions in developing a constructive program for the 1967 legislative session."

The highest paved highway in Texas climbs Mount Locke to an elevation of 6,791 feet. The McDonald Observatory and Harvard College Solar Radio Laboratory are located on Mount Locke.



**If you have springtime air in your home all winter...**

you have modern central gas heat-the first time to go

Stale, musty odors and stuffy rooms are banished! Clean, fresh air is warmed, filtered and circulated throughout your home with luxurious central gas heat. So economical! Installs easily in attic, closet or crawl space. Buy now. All gas heating equipment prices are lower than ever: central, floor and wall furnaces and space heaters — all are bargains! See your local gas heating contractor or Lone Star Gas.

OFF-SEASON GAS HEATING

AN INTERESTING THEATRE  
**MAJESTIC**  
THURSDAY

LAST DAY

Box Office Open 5:15  
FEATURES — 5:45 — 7:25 — 9:10

WILLIAM CASTLE'S  
*"I saw what you did and I know who you are!"*

JOAN CRAWFORD

FRIDAY — SATURDAY  
FRIDAY OPEN — 4:45 — SHOWS 5:00 — 7:15 — 9:35  
SATURDAY OPEN — 1:15 — SHOWS 1:40 — 4:10 — 6:40 — 9:05

**THE TRAIN WILL CARRY YOU TO THE PEAK OF ADVENTURE!**

JULES BRICKEN presents  
**BURT LANCASTER**  
in JOHN FRANKENHEIMER'S  
**THE TRAIN**  
Released by UNITED ARTISTS

SATURDAY — MIDNIGHT SHOW  
BOX OFFICE OPEN 11:30 — DOORS OPEN 11:45  
FEATURES 12:00 — ALL SEATS \$1.00

THE SWINGINGEST GO-GO SHOW EVER! EVER!!

**"Go-Go Big Beat!!"**  
IT'S THE BIGGEST BEAT IN BEATLE-LAND!

For all you Swingers HEAR HEAR! THE BEATLES!

14 TOP BANDS 28 HIT TUNES

STARTS AUGUST 18th

PARAMOUNT PICTURES PRESENTS  
**JOHN DEAN WAYNE · MARTIN**  
HAL WALLIS PRODUCTION  
**THE SONS OF KATIE ELDER**  
TECHNICOLOR · PRIMAVISION

**VALUES**  
In Fine Furniture  
**CARPETS - APPLIANCES**

PERSONALIZED PAYMENT PLANS  
No Carrying Charges on Furniture and Carpets  
For One Full Year. Free Delivery, of Course!

**Ranger Furniture Exchange**  
"BRASHER'S"  
123 N. Rusk Ranger Phone MI 7-1404

JOIN THE THOUSANDS SWITCHING TO WARDS

**MONTGOMERY WARD**

STOREWIDE CLEARANCE SALE

3 DAYS ONLY — Starts THURSDAY, AUGUST 12  
RUNS THRU SATURDAY, AUGUST 14  
QUANTITIES ARE LIMITED

Clearance of Refrigerated AIR CONDITIONERS

Dehumidifies as it cools — cool or fan control — Washable air filter — attractive grill front — Kit for easy installation.

Reg. 139.95	<b>99<sup>00</sup></b>
5,000 BTU	
Reg. 239.95	<b>188<sup>00</sup></b>
11,000 BTU	
Reg. 249.95	<b>199<sup>00</sup></b>
15,000 BTU	
Reg. 339.95	<b>218<sup>00</sup></b>
20,000 BTU	

20-inch lawn mowers — grooms as it mows

Turbo-Chamber lifts grass for even cut! 3-hp engine has Dial-Control throttle recoil starter. Height adjusters, free oil supply.

**20-INCH ROTARY MOWER**  
3-hp. Briggs-Stratton Motor Reg. 69.95

**20-INCH ROTARY MOWER. Self-Propelled**  
3-hp. Briggs-Stratton Motor. Reg. 119.95

**TILLER—3-hp. Briggs-Stratton Motor.**  
16 tines. Reg. 124.50

**Special! EVAPORATIVE COOLERS Special**

4,000 CFM—One-speed; adjustable louvers, water pump. Reg. 99.25	<b>77<sup>00</sup></b>	4,500 CFM—Two Speed, adjustable louvers, water pump, Reg. 149.95	<b>149<sup>95</sup></b>
4,100 CFM—Two-speed; adjustable louvers, water pump. Reg. 119.95	<b>102<sup>00</sup></b>	PORTABLE EVAPORATIVE COOLER Two speed, reg. 39.95	<b>39<sup>95</sup></b>
4,200 CFM—Two Speed; adjustable louvers, water pump. Reg. 139.95	<b>119<sup>00</sup></b>	PORTABLE EVAPORATIVE COOLER Three speed. Reg. 49.95	<b>49<sup>95</sup></b>

**WE SERVICE WHAT WE SELL -- NO MONEY DOWN AT W**



**MARTHA COFFEE**  
(Continued From Page 1)  
now of tremendous size. Forty-two years later, some in 1902, Mrs. Gilmore re- Mr. Coffee returned af- long absence. He visited home of Mrs. Stella Black- and inquired if she knew anyone who might help locating the grave of

his slain wife.  
The Blackwells suggested that Joe Jones could probably be of assistance since he lived near the Alameda Cemetery. Later, following a search by Jones, W. C. McGough and Mrs. Coffee's husband, the burial place was found.  
Coffee, deeply moved and his eyes wet, knelt beside it and prayed silently. Solemnly he slowly arose, turned and quietly thanked Jones and McGough. Then he numbly wandered away. Apparently his long, pent-up grief kept him from speaking further. No one knew where he had been during his many years of absence or where he had come from. And he was never seen again.  
"I had hoped that someday a monument would be placed at this historic grave," the Eastland County historian said. "And my wish came true about four years ago when

there was a formal unveiling of a small marker."  
The inscription:  
**MARTHA COFFEE**  
Given in Honor of Mrs. Coffee, Killed and Scalded by Indians in 1860 on the Duffer Ranch. The First Grave in the Alameda Cemetery. Donated by the Alameda Cemetery Assn.  
Grace Langston's history of Eastland County, Mrs. Gilmore explains, gave Martha's name as "Coffer." But as much older history, compiled by John Hart, was found and the name was spelled "Coffee."  
That's the way the name is spelled on the little monument which was placed on the pioneer woman's grave by the Alameda Cemetery Association.  
Every year — on the first Saturday in May — relatives and friends of those in eter-

nal sleep make a pilgrimage to the Alameda Cemetery for an extensive annual cemetery working. They come from near and far, even from out-of-state.  
A noon lunch is served on picnic tables just outside a fragrant aroma of coffee boiling in the big iron kettle fills the air.  
Then the relatives and friends of those buried there, gather in the chapel. There's a prayer, a short talk, and the melodic singing of beloved old hymns echoes over the graves of those they love.  
Pl. Shampoo and Set - \$1.50  
Hair Cuts - \$1.50  
\$12 Lanolin Waves - \$8.50  
\$10 Creme-Oil Waves \$7.50  
Other waves \$10 and up  
**Basham Beauty Bar**

This is the oldest known annual cemetery working event in Eastland County, according to Mrs. Gilmore.  
A short time after the Coffee tragedy in 1860, the acreage for the Alameda Cemetery was given to the settlers in the area by the late W. H. Mansker.

Andrew Carnegie, industrial tycoon and philanthropist, came to this country from Scotland at the age of 10.  
Some \$500,000 worth of chrysanthemums are sold annually in the U. S.  
A chronometer is an instrument designed to measure time with great accuracy.

**The Next Best Thing -**  
... to a clear conscience or a good night's sleep is the feeling of security in knowing that all of your property is adequately insured and by agents in your home town who are always on hand when you need them most. This is especially true around vacation time. Whether you stay at home or take a trip vacation time is hazard time for you and yours. Be sure to check with us if you don't feel quite right about your insurance coverages.  
★ ★ ★  
**Earl Bender & Co.**  
Eastland (Insurance Since 1924) Texas  
112 W. Commerce MA 9-1077

**MONTGOMERY WARD**  
RANGER  
Best 3/4-inch rubber hose  
Reg. 8.95  
**4.88**  
Lasts for years! Reinforced with same TYREX used in automobile tires. Resists oil, heat, cold.  
Tyrex Inc.

**FREE**  
Estimates on RE-ROOFING  
Or Repair of Your Old Roof.  
Residential and Commercial  
**Eastland Roofing Co.**  
Noble Squiers  
Phone MA 9-2370

**LET'S GO FISHING**  
Enjoy fishing in the comfort of a covered fishing barge... 40x60 indoor fishing area plus fishing from outdoor walkways.  
Perch and Minnows  
Fish all day ..... \$1  
**FISHARAMA**  
Lake Cisco

**WALKER'S Dressing Plant**  
Custom Dressing  
Phone D. J. Walker  
Eastland MA 9-1192

**ROLLINS & SONS GULF SERVICE**  
Call for Appointments on Wash - Grease Oil Changes  
500 W. MAIN  
MAIn 9-8840  
We Give S&H Green Stamps

**C. E. PAUL, D. C.**  
Complete Chiropractic Health Service  
101 E. 8th St. (Hwy. 80)  
Cisco, Texas  
Phone HI 2-1677

**LOOK**  
661 Station Wagon, standard Shift, rack on top, radio, heater. Very nice, sedan, white.  
Only \$845  
★  
**Hood King Motor**  
Ph. MA 9-1786  
EASTLAND

**TRUMAN P. KIRK**  
Announces the Opening of  
Offices for the General Practice of Law  
702 Avenue D (Upstairs)  
HI 2-3182 — Cisco — P. O. Box 606

**ON YOUR Vacation Trip FAMILY SAFETY**  
IS THE MOST IMPORTANT THING IN YOUR LIFE  
**Old Friends Trust our Service**  
It doesn't always happen to someone else — Let us help make your vacation free of Accidents  
**BRAKES**  
... Do they hold properly and evenly? How about the brake and cylinder? We'll check and adjust for your safety.  
**Complete Safety Inspection Center**  
**24 HOUR WRECKER SERVICE**  
Phone MA 9-2270  
Night 9-2224  
**Allen Auto Repair**  
AT RUSHING MOTOR CO.  
215 SOUTH SEAMAN

**\* LIGHTS**  
... Are all lights, turn, head, stop, tail, signal, working properly? How about the dimmer switch? We'll check them for you.  
**\* MUFFLER**  
... A defect here can allow deadly carbon monoxide to enter your car. Let us see if they are tight, free of worn spots.  
**\* STEERING**  
... Is steering wheel free of excess play? Wheel bearings tight? Wheels balanced?  
**\* HORN & WIPERS**  
... Both pretty important when you need them. Let us check and make sure.  
... and then a good **Motor Tune-Up**



PRICES GOOD THRU AUG. 14, 1965  
QUANTITY RIGHTS RESERVED

DECKER'S SMOKED DRY CURED **PICNICS** 39¢ lb.  
RATH'S BLACKHAWK SLICED **BACON** 79¢ 1-lb. Pkg.  
BANQUET FROZEN ALL VARIETIES **DINNERS** 39¢ Each

**50 Extra Plaid Stamps**  
With This Coupon and Purchase of 20-qt. WHITE HOUSE NON FAT DRY INSTANT MILK 4-lb. Pkg. \$1.35  
AT YOUR A&P SUPERMARKET  
Coupan Good Thru Aug. 14, 1965

**25 Extra Plaid Stamps**  
With This Coupon and Purchase of LIQUID PEPTO BISMOL 4-oz. Size 55c  
AT YOUR A&P SUPERMARKET  
Coupan Good Thru Aug. 14, 1965

**25 Extra Plaid Stamps**  
With This Coupon and Purchase of ANN PAGE PLAIN GELATIN 8-oz. Pkg. 95c  
AT YOUR A&P SUPERMARKET  
Coupan Good Thru Aug. 14, 1965

**25 Extra Plaid Stamps**  
With This Coupon and Purchase of ANN PAGE RED RASPBERRY PRESERVES 12-oz. Jar 35c  
AT YOUR A&P SUPERMARKET  
Coupan Good Thru Aug. 14, 1965

**25 Extra Plaid Stamps**  
With This Coupon and Purchase of 2 CANS ANN PAGE RED KIDNEY BEANS 2 1-lb. Cans 29c  
AT YOUR A&P SUPERMARKET  
Coupan Good Thru Aug. 14, 1965

**STORE MANAGER'S Summer Sale!**  
A WONDERFUL CHOICE OF GIFTS TO TAKE HOME FOR **PLAID STAMPS!**

"SUPER-RIGHT" HEAVY BEEF FULL CUT ROUND  
**STEAK 75¢ lb.**

"SUPER-RIGHT" SHOP SLICED **Cooked Ham 69¢ 8-oz. Pkg.**  
**50 EXTRA PLAID STAMPS**  
NO COUPON NEEDED — GET 50 EXTRA PLAID STAMPS WITH 3 LBS. OR OVER "SUPER-RIGHT" HEAVY BEEF **RUMP ROAST 73¢ lb.**

**Farm Fresh Produce**  
Tree Ripened Freestone **PEACHES** 2 lbs. 29c  
Red U. S. No. 1 Russett **POTATOES** 10 lbs. 69c  
Fresh **CABBAGE** lb. 5c  
**LEMONS** 6 for 39c

KAISER ALUMINUM **FOIL** Regular 12" x 25' Roll. 35c  
INSTANT 50c OFF LABEL **NESTEA** 3-oz. Jar 89c

**MORTON FROZEN CREAM PIES**  
4 14-oz. Pies 89¢

**25 EXTRA PLAID STAMPS**  
NO COUPON NEEDED — GET 25 EXTRA PLAID STAMPS WITH JANE PARKER **CHEESE BREAD** 1-lb. loaf 29c  
**25 EXTRA PLAID STAMPS**  
NO COUPON NEEDED — GET 25 EXTRA PLAID STAMPS WITH JANE PARKER ICED SPICED **SPANISH BAR** 1-lb. 3-oz. Each 35c

ARMOUR'S 2c OFF LABEL **Potted Meat** 3 3 1/2-oz. Cans 25¢  
BONDWARE COLD DRINK **REFILL CUPS** Pkg. of 50 29¢  
ORANGE, GRAPE OR FLORIDA PUNCH **HI-C Drinks** 3 1-qt. 14-oz. Cans 89¢

TREE TOP FROZEN (3 12-oz. cans \$1.00) **APPLE JUICE** 6 6-oz. Cans \$1  
LIBBY'S CREAM STYLE **GOLDEN CORN** 2 1-lb. Cans 35¢  
LIBBY'S **BEEF STEW** 1 1/2-lb. Can 49¢  
LIBBY'S **TOMATO JUICE** 3 1-qt. 14-oz. Cans 89¢  
AFTER SHAVE REG. OR MENTHOL **AQUA VELVA** 6-oz. Size 59¢

CAPN JOHN'S FROZEN **FISHSTICKS** 1-lb. Pkg. 49c  
FONDA **PAPER PLATES** Pkg. of 100 49¢  
DASH **DOG FOOD** 8 1-lb. Cans 99¢  
ISLAND SUN HALF OR WHOLE SLICES **PINEAPPLE** 4 8 1/2-oz. Cans 45¢

LIQUID CLEANER **TOP JOB** 1-qt. 12-oz. Size 69c  
WHITE TOOTH PASTE **Pepsodent** 5-oz. Tube 63c  
BAR SOAP **DOVE** 2 Bath Bars 49c

WYLER CHICKEN NOODLE OR VEG. **SOUP MIX** 2-oz. Pkg. 10c  
ZEE BATHROOM **TISSUE** 4-Roll Pack 39c  
ZEE WHITE OR ASS'D PAPER **NAPKINS** 2 Pkg. of 80 29c

**MIX or MATCH SALE**  
LIBBY'S TOMATO JUICE 5 1/2-oz. Can  
V-8 COCKTAIL JUICE 6-oz. Can  
DOLE PINEAPPLE JUICE 6-oz. Can  
Mix or Match **12 Cans 89¢**

MILD AND MELLOW **EIGHT O'CLOCK Coffee** A&P Store Manager's **Sale!**  
1-LB. BAG 67¢ REGULARLY 73¢  
3-LB. BAG \$1.95 REGULARLY \$2.13

MARVEL ASSORTED FLAVORS **ICE CREAM** 1/2-Gal. Ctn. 49¢

SPOT LIFTER K-2-R 6-oz. Aerosol \$1.79	STOKELY CUT GREEN BEANS 15-oz. Can 25c	ZEE Wax Paper 200-Ft. Roll 39c	ZEE Lunch Bags 2 Pkgs. of 20 31c	RED HART Dog Food 2 16-oz. Size 31c	DETERGENT Dove Liquid 13c Off 1-pt. 6-oz. 54c
ZEE PAPER TOWELS 2 Jumbo Rolls 49c	DETERGENT CHEER 10c Off Gt. Box 69c	DETERGENT Lux Liquid 12-oz. Size 39c	DETERGENT Wisk Liquid Qt. Size 71c	DEODORANT SOAP Lifebuoy 2 Reg. Bars 29c	DEODORANT SOAP Lifebuoy 2 Bath Bars 39c



## Friends Are Invited to Call For Anniversary

All friends and relatives of Mr. and Mrs. Curt Williams are cordially invited to attend an open house, celebrating their 60th wedding anniversary, Sunday afternoon. Open house will be held at their home on 301 High St. from 2 until 5 p.m. Sunday afternoon.

No invitations have been

sent out to the friends or relatives of the couple but all are welcome. The Williams are long time Eastland County residents and were married on August 16, 1905 in Carbon.

Mr. Williams is the son of the late Mr. and Mrs. A. C. Williams and Mrs. Williams was the daughter of the late Mr. and Mrs. J. N. Hudson. They are both members of the Bethel Baptist Church here in Eastland.

They have two sons, Burl of Eunice, N. M. and A. C. of Kermit. Also they are grandparents of seven grandchildren and four great-grandchildren.

See ahead with



M.H. PERRY  
MA 9-1095  
Ph. MA 9-2275

### FAMILY PROTECTION

Let him show you how little it costs to see ahead — and be sure.

### Southland Life

INSURANCE COMPANY  
Main Office • Southland Center • Dallas

### \$364 WEEK

Management opening with national life insurance company.

Phone: Joe F. Rowland  
Walnut 6-5426  
Fort Worth  
Write:  
325 Seminary South Tower  
Fort Worth 76115

## TIDBITS . . .

(Continued from Page 1)

known Tom, his wife and children for a long time. He's the best in the business." This woman who works just a few feet from Sen. Creighton when the Legislature is in session, was highly complimentary of his businesslike conduct and manner — labeling him, not "one of the best"—but the best. Our county can be grateful for its representation.

**ANOTHER NOTE** from Mrs. Florence Savage of Bridgeport, asking, for "Two more Old Rip books, for my son and daughter in California. I remember when it happened but had forgotten the year as I am 72 years old. I have always liked frogs. Have two for planters on my ice box. I see a horn frog around my yard every year. I was digging by a post one time to put a plant and dug up a toad, it was real yellow. Guess it had been there all winter. He wasn't very thin though. I went in the house for something and it was gone, when I came back. I saw a horn frog in an ant bed (red) eating them, when I came back by it and the ants were gone. Was lots of them too."

Lima beans are of South American origin.

Barley is the world's fourth most important cereal.

## Three Eastland Countians To Receive Degrees

Among the 1965 summer graduates of Hardin-Simmons University receiving degrees on Aug. 19 at the H-SU Chapel Auditorium are the following:

Mrs. Gloria Henson Benton and Mrs. Carolyn Page, both of Cisco; and Mrs. Laura Tettens Thames of Eastland.

## CREIGHTON . . .

(Continued from Page 1) pooling, and the criminal code revision.

Guests included T. C. Williams, Gene Abbott, Sutton Crofts, Scott Bailey and J. W. Sitton of Cisco; Joe Dennis, Mrs. P. M. Kuykendall, Mrs. Roscoe Hopper, Mrs. James P. Morris and Roy Thackerson of Ranger; George S. Blackburn and Carroll A. Magers of Breckenridge; and Rev. J. Lester Davenport, Mike Collins, Jack Arrington, Helen Murrell, Jay Staggs and Donna Ford of Eastland.

## DESEMONA REUNION

The annual "Homecoming" will be held Saturday, Aug. 14. Come and meet your friends. There will be catering service at the noon hour by Eubanks of Cisco.

# SO IT'S BACK-TO-SCHOOL

What Fun in Clothes from Altman's!

YOU'VE BEEN viewing the new Campus and Career in "Seventeen," "moiselle" and other famous magazines. Now come see them at your favorite ALTMAN'S, of course.

### SWEATERS - SKIRTS TAPERS

By JANTZEN, CATALINA, HELM HARPER and Others.

Dresses by

GAY GIBSON - VICKY VAUGHAN  
BETTY BARCLAY

and other famous names you know

KNIT SUITS by "Butte Knit," "Dale" and others . . . The greatest look in for your every need . . . Latest colors, fabulous fabrics . . . All with very able price tags!



ALTMAN'S STYLE SHOP

109 W. Main St. — EASTLAND — Phone MA 9-2275

SEE



YOU



IN



EASTLAND

# Bray's

DEPARTMENT STORE  
Eastland County's Family Store  
Eastland — Open 8:30 to 5:30

# BACK-TO-SCHOOL HEADQUARTERS

the magic touch of Cinderella makes school so beautifully practical.

She wants beautiful things to wear Back-to-School . . . but look to Cinderella for practical fashion, too! We're showing everything that's gay, brightly accented, flattering for Fall. Stop in this week!

Sizes 3 to 6X. 4.99  
Sizes 7 to 14. 5.99



HANES MAKES THE KIND OF UNDERWEAR AN ACTIVE BOY NEEDS!

Boys need underwear that won't bind. Hanes makes it that way! Take the T-shirts. A tail that stays tucked in. A reinforced no-sag neckband. Soft, strong, whitest-white cotton that launders perfectly. And Hanes briefs. Springy elastic waistband is heat-resistant, keeps its give after countless washings. And there's a double seat for extra wear.

Hanes Briefs 2-18 79c—3 only \$2.35  
Hanes Briefs 2-18 79c—3 only \$2.35  
Hanes T-Shirts 2-18 79c—3 only \$2.35  
Hanes Briefs 28-44 1.00—3 only \$2.95  
Hanes T-Shirts 36-46 1.00—3 only \$2.95

HANES

STUDENTS FOR LEVI'S STA-PREST



NEVER NEEDS IRONING

50% polyester FORTREL

50% Combed COTTON

Toddlers Size 2 thru 7

3.98

Boys Sizes 6 thru 12

4.98

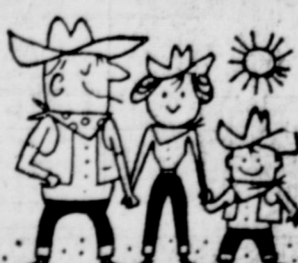
Pred Sizes 26 thru 28

5.98

Young Mens 29 thru 38

6.98

THE WEST GREW UP IN



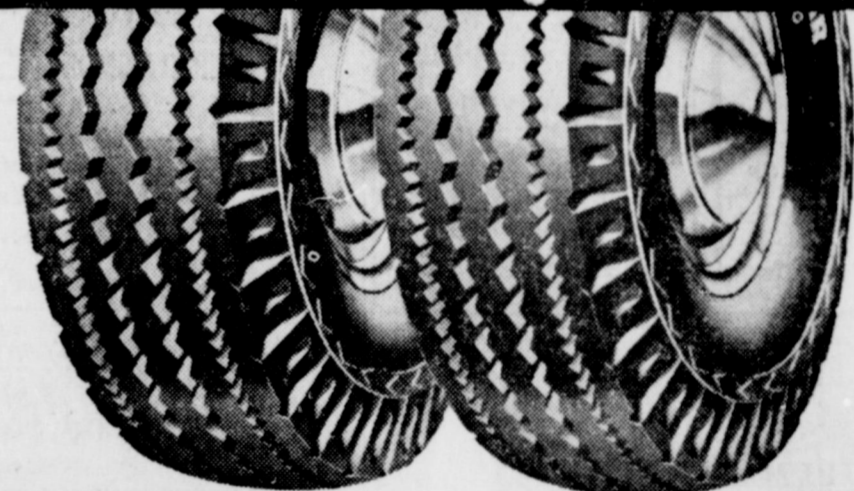
LEVI'S

### GIRLS ANKLETS

100% COTTON TRIPLE ROLL CREW STYLE

2 pr. 77c

# GOOD YEAR TUFFSYN-TOUGH TRUCK TIRES



# 40% OFF

ON SECOND TIRE . . . WHEN YOU BUY THE FIRST TIRE AT PRICES LISTED BELOW

### 3-T NYLON CORD HI-MILER R-C

• Contains Tufsyn, the toughest rubber ever used in Goodyear tires. A real mileage maker!

• Contains triple tempered 3-T nylon cord that, pound for pound, is stronger than steel!

NO MONEY DOWN!

Easy Terms-Mounting Free

GO

# GO GOOD YEAR

BUDGET TERMS

# GOOD YEAR SERVICE STORE

306 E. MAIN - - EASTLAND - - MA 92

PICK YOUR SIZE AND SAVE NOW!		
SIZE	FIRST TIRE PRICE	2ND TIRE PRICE
6.00 x 16	\$15.95	\$ 9.55
6.70 x 15	17.95	10.75
6.50 x 16	19.95	11.95
7.00 x 15	23.95	14.35
7.00 x 16	23.95	14.35
8.25 x 20	49.95	29.95

Tube-type plus tax & 2 recappable tires



**Court Of Civil Appeals**

Following proceedings in the Court of Civil Appeals, Eleventh Supreme District of Texas: **Motions Submitted** Herbert A. Sawyer v. Gerold L. Getz et al. Agreed motion for extension of time to file Appellee's briefs. Placid Sowa v. Willie Sodalak. Appellee's motion for extension of time to file Appellee's briefs. Mable Richardson v. Lon E. Alsup et al. Appellees' motion to issue mandate. Mable Richardson v. Lon E. Alsup et al. Application for stay of mandate.

Herbert A. Sawyer v. Gerold L. Getz et al. Agreed motion for extension of time to file Appellant's briefs. Claborn Newsom, et al. v. Mrs. Bessie Newsom, et al. Appellant's motion to postpone submission date, Brown. Faith Marilyn Mable v. Paul David Mable. Appellant's motion for extension of time to file briefs, Galveston. Ed Eisemann v. Ike Emmons, et ux. Agreed motion for extension of time to file appellant's briefs, Harris.

**MOTIONS GRANTED** Herbert A. Sawyer v. Gerold L. Getz et al. Agreed motion for extension of time to file Appellee's briefs. Placid Sowa v. Willie Sodalak. Appellee's motion for extension of time to file briefs, Harris. Mable Richardson v. Lon E. Alsup et al. Appellees' motion to issue mandate.

**MOTION OVERRULED** Mable Richardson v. Lon E. Alsup et al. Application for stay of mandate. Claborn Newsom, et al. v. Mrs. Bessie Newsom, et al. Appellant's motion to postpone submission date, Brown. Faith Marilyn Mable v. Paul David Mable. Appellant's motion for extension of time to file briefs, Galveston.

Ed Eisemann v. Ike Emmons, et ux. Agreed motion for extension of time to file appellant's briefs, Harris. Guadalupe Hernandez v. Texas Department of Public Safety. Appellant's motion for extension of time to file briefs, Galveston.

**WATCH REPAIR**  
Your watch will receive the very finest care in our repair department. We also feature:  
● Ring Sizing ● Jewelry Repair  
● Engraving ● Pearl Restringing  
**BESKOW JEWELRY**  
210 W. Main Eastland MA 9-2529

**Del Monte Juice**  
3 for \$1

**Green Beans**  
2 for 25¢

**Pork & Beans**  
3 for 89¢

**Your money's worth more at SAFEWAY!**

**Coffee** [ Airway (2-Lb. Bag... 98¢) Nob Hill... 1-Lb. Bag... 51¢ ] 49¢  
(2-Lb. Bag... \$1.02)

**Shortening** 3 Lb. 59¢  
Velkay—Baking Need.

**Pineapple** 4 for \$1  
Libby. Sliced, Crushed or Chunks. No. 1 1/2 Can

**Crepe Cookies** Supreme, Caramel. 12/oz. Bag 49¢  
**Crackers** Wortz. Tend. Dir. Rig. 1-Lb. Box 39¢  
**Awake** Birdseye. Imitation Orange Juice. (4¢ off label)—Por. Can 35¢  
**Crisco Oil** Cooking Need—24-oz. Bottle 49¢

**Graham Crackers** Bus. Baker. 1-Lb. Box 29¢  
**Aurora Tissue** Toilet. Assorted Colors. 2-Ply. 2-Ct. Pkg. 49¢  
**Dental Cream** Colgate. With Gardol. King Size. 53¢  
**Aero Shave** Regular—4 1/2-oz. Can With Free 4 1/2 Tube Vaseline Hair Cream. 59¢



**Fresh Elberta Peaches**  
California, Golden Yellow Freestones. Crammed with juice and flavor. Enjoy them in many ways. Absolute beauties!  
2 Lbs. 29¢

**Watermelons** 39¢  
Charleston Grey. Full Red Ripe and delicious. Each

**Fresh Plums** 25¢  
Queen Anne. Honey-Like Flavor when ripe. Lb.

**Fresh Prunes** 25¢  
Italian. Juicy Goodness—Lb.

**Bartlett Pears** 29¢  
For a delicate Salad—Lb.

**Lucerne Dry Milk** Non-fat—12-Quart Size 79¢  
**Empress Grape Juice** 24-oz. Bottle 3 for 89¢  
**Lucerne Chocolate Milk** 1/2-Gal. Ctn. 39¢  
**Graham Crackers** Nabisco. Sugar Honey. 1-Lb. Box 39¢  
**Top Job Cleaner** Household Cleaner with Ammonia. 15-oz. Bottle 39¢  
**Mr. Clean Cleaner** Liquid Cleaner. All Purpose. 28-oz. Bottle 69¢  
**Zest Beauty Bar** Deodorant—Bath Size 2 for 45¢  
**Camay Toilet Soap** Assorted Colors. Bath Size 2 for 35¢  
**Safeguard** Toilet Soap—Bath Size 2 for 45¢  
**Personal Ivory** Toilet Soap—Personal Size 4 for 29¢  
**Gala Paper Towels** Assorted Colors. 2-Ply. 2-Count Pkg. 39¢

**Kraft Dressing** Italian. 8-oz. Bottle 3 for \$1  
**Instant Tea** Nestles Nestea. 1 1/2-oz. Jar 79¢  
**Toilet Tissue** Northern. White or Assorted Colors. 4-Roll Package 2 for 69¢  
**Cat Food** Pure-N-Boots. Tuna, Chicken Parts, or Chicken Parts & Liver. Regular Can 4 for 59¢ (Liver and Gravy... 2 for 37¢)

**Freshly Baked Foods!**  
**Sliced Bread** 19¢  
Skyler. Petite. (Regular 25¢ loaf)—1-Lb. Loaf  
Or Twin. Skyler. Brown & Serve. 12-Ct. (2¢ off)—13-oz. Pkg. 23¢

**Cloverleaf Rolls** 23¢  
Mrs. Wright's. 8-Ct. 11-oz. Pkg.

**Hot Dog Buns** 23¢  
Skyler. Sliced. 1-Lb. Loaf 25¢

**French Bread** 25¢

**Frozen Foods!**  
**Mellorine** 3 for \$1  
Jayett. Assorted Flavors. 1/2-Gallon Ctn.

**Apple Pie** 3 for 89¢  
Also Peach, Cherry, or Coconut Custard. Morton—20-oz. Pkg.

**Mexican Dinner** 2 for 79¢  
or Enchilada. El Chico. 16-oz. Package

**Grape Juice** 2 for 39¢  
Welch—8-oz. Can

**Beef Tacos** 59¢  
Patio. (New at Safeway) 4-Count—13 1/2-oz. Pkg.

**Onion Rings** 37¢  
She-Fresh. French Fried—8-oz. Pkg.

**Sausage Pizza** 75¢  
Bel-air—19-oz. Pkg.

**Breast or Pulley Bones** 69¢  
Choice White Meat—Lb.

**Legs or Thighs** 49¢  
For extra pieces—Lb.

**Fryer Wings** 33¢  
White Meat—Lb.

**Fryer Backs** 19¢  
Perfect for dumplings—Lb.

**Fryer Livers** 29¢  
Serve Pan Fried—8-oz. Pkg.

**Fryer Gizzards** 39¢  
Ideal for Gravies—Lb.

**Smoked Ham**  
**Shank Portion** 45¢  
Bake and Serve with Yams—Lb.

**Butt Half** 65¢  
Or Whole. Smoked Ham. No Center Slices removed—Lb.

**Center Slices** 99¢  
Smoked Ham. Delicious Fried—Lb.

**U.S.D.A. Inspected and Grade A.**  
**FRYERS**  
Whole. Stock up now at this Low, Low, Price.  
(Cut-Up Fryers 33¢) Lb. 29¢  
Manor House—Lb.

**Canned Picnic** 3 for \$2.29  
Armour's Star. Delicious Served Hot or Cold.

**Hormel Bacon** 85¢  
Sliced. Wonderful served with Safeway Breakfast Gems Eggs—1-Lb. Pkg.

**Jumbo Bologna** 55¢  
Sliced. Perfect for Sandwiches—16-oz. Pkg.

**Pork Sausage** 49¢  
Wingate. Regular or Hot—1-Lb. Pkg.

**Chuck Steak** 53¢  
Baby Beef. Real Tasty—Lb.

**Spareribs** 49¢  
3 to 5-Lb. Average—Lb.

**Play Texas Money at Safeway!**  
**3 WAYS TO WIN**  
1. Save your Texas Money Bills and Win up to \$1313.00.  
2. Save your Texas Bonds and win from \$1 to \$1313.00.  
3. Watch for the \$100,000.00 Jackpot Bill and exchange it for a Special Prize.  
Your Safeway has all the Rules

**WINNERS:**

**Safeway Guarantee**  
Every item at Safeway is sold on Money-back guarantee. This means the full purchase price will be cheerfully refunded on any item that does not give you complete satisfaction. Buy with Confidence at Safeway

**This Coupon Worth 25 Free Gold Bond Stamps**  
Plus your regularly earned Gold Bond Stamps with the purchase of 13-oz. Carton **TOMATOES**  
Coupon Expires August 14, 1965.

**This Coupon Worth 100 Free Gold Bond Stamps**  
Plus your regularly earned Gold Bond Stamps with the purchase of Any TWO Heavy Beef **STEAKS** \* Sirloin \* Full-cut Round \* T-Bone \* Porterhouse  
Coupon Expires August 14, 1965.

**This Coupon Worth 25 Free Gold Bond Stamps**  
Plus your regularly earned Gold Bond Stamps with the purchase of Half-Pint Carton **LUCERNE WHIPPING CREAM**  
Coupon Expires August 14, 1965.

**Oxydol** Detergent—Large Box 35¢  
**Large Duz** Detergent. Premium Pack (off label)—Large Box 53¢  
**Blue Cheer** Detergent—Large Box 35¢  
**Large Tide** Detergent—Large Box 35¢

**Detergent** Draft Germaseptic—Large Box 35¢  
**Ivory Snow** Soap Powder—Large Box 35¢  
**Detergent** Dash. Washday Helper 9-Lb. 13-oz. Box \$2.35  
**Liquid Joy** Detergent—12-oz. Plastic 39¢

Prices and Coupons Effective Thurs., Fri. and Sat., Aug. 12, 13 and 14, in Eastland  
We Reserve the Right to Limit Quantities. No Sales to Dealers.

**SAFEWAY**



**GRANDDAUGHTER**  
Visiting in the home of Mrs. Bess Bennett last week was her granddaughter, Judy Crosby of Abilene. Judy returned home Monday.

**IN BROWNWOOD**  
Mr. and Mrs. Bill England and daughters visited last weekend in Brownwood with a son, Bill England, and family, and a daughter-in-law, Mrs. Marvin England.

**FROM KANSAS**  
Mr. and Mrs. Velton A. Moser of Junction City, Kansas and Mrs. Larry Armstrong and daughter of Abilene were recent guests of Mr. and Mrs. Glenn Hart.

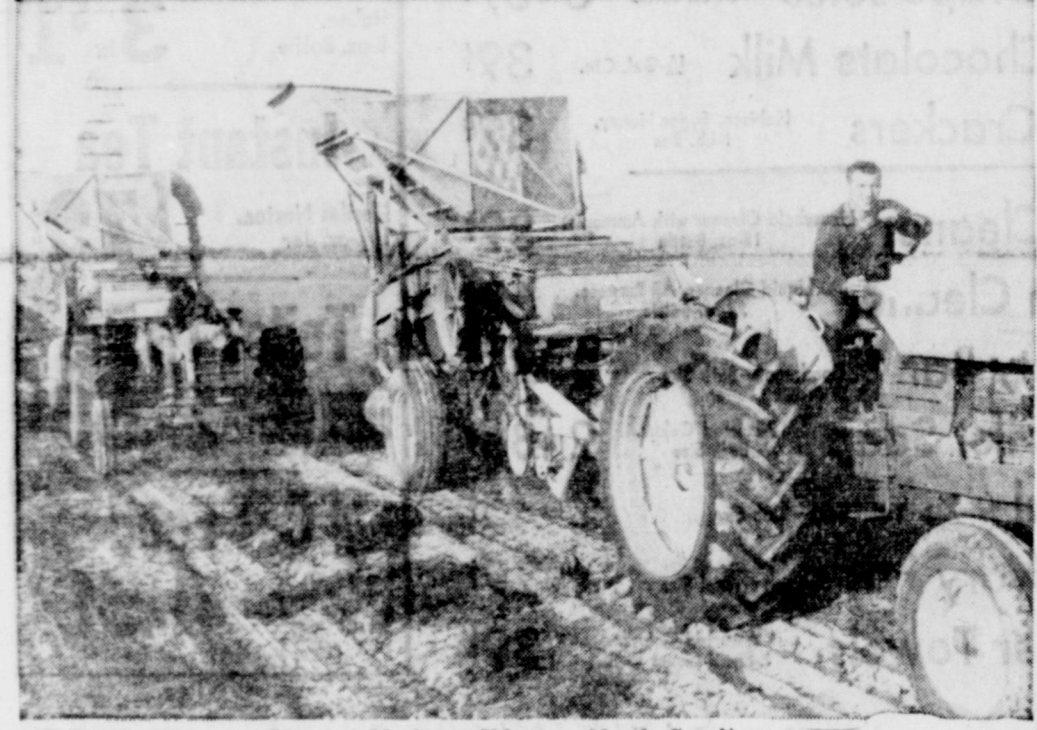
**Dry Clean Clothes Now for BACK-TO-SCHOOL**

Send them off in style... Save yourself work, too!

**Free Pick-up and Delivery**

**POOL'S DRY CLEANERS**

209 S. Lamar — EASTLAND — Phone MA 9-2055



Howard M. Ange, Edenton, North Carolina

Owners who have to make Peanut Combines Pay... know they can depend on **LONG**



Read what Mr. Howard M. Ange, farmer and custom operator has to say about Long peanut combines and drying equipment—  
"I had one Long and one competitive make peanut combine. Traded the competitive machine back for another Long after the first season. I like the Long since it has the lowest maintenance. I am not bothered by breakdowns and can get in more harvesting time. Especially like the way it picks peanuts up off the ground—like a baby in a cradle. It picks under any conditions, wet or dry. I picked this year in the field with other machines that had to stop because of wet weather. I get good service and have never been to my dealer that he didn't get help. Long fans, heaters and drying wagons work just fine."  
Mr. Ange has two Long peanut combines and 17 Long drying wagons. He grows 80 acres of peanuts and harvests approximately 600 acres for others on a custom basis.

**LONG PEANUT COMBINES**  
Can Be More Profitable For You, Too!

Whether you are a custom operator or a grower you will find that Long peanut combines will pay off with extra money and peanuts. Long's proved record of lower upkeep means less down time and more harvesting time. Sometimes this can be the difference between profit and loss when you have to harvest in a hurry due to weather. Every hour counts then. You will find that LONG does a good clean job and will help you get more peanuts, too. See the LONG combines at your dealer now. Let him show you why so many growers and custom operators have found the Long to be the best combine they can buy.



MANUFACTURED BY **LONG MANUFACTURING CO., INC.**  
TARBORO, N. C. / DAVENPORT, IOWA  
BRANCHES: FLORENCE, S. C. / TIFFON, GA.  
DALLAS, TEXAS / COLUMBUS, OHIO

**DUNN TRACTOR**  
Rising Star, Texas

**WRIGHT IMPLEMENT**  
Gorman, Texas

**Meade Griffin Will Speak At Pioneer Reunion**

Meade Griffin, associate justice of the Texas supreme court, will deliver the principal address at the 37th annual meeting of the Callahan County Pioneer Association, which will be held Aug. 13 in Cross Plains. The speaker will be introduced by James Paul Shanks, Callahan County attorney. A parade at 9:30 will open reunion activities, and one of the highlights will be the noon barbecue. County businesses and individuals have donated funds for the barbecue which will be served free to callahan pioneers.

**VISIT HERE**  
Mr. and Mrs. H. S. Curtis had as their guest over the weekend Mr. and Mrs. Pete Cross and Mr. and Mrs. Troy

**Jamboree Is Termed Success**

The Kendrick Jamboree, held annually for the past few years, was termed a success on every hand by the Kendrick family, who were host for the event.

According to Mrs. J.H. Kendrick, approximately 4,000 to 4,500 attended the musical event. The 23 inch television set was given to John Harris of Breckenridge and the bicycle went to Roger Castleberry of Cisco.

**VISITS BEGGS**  
Guests last weekend in the home of Mr. and Mrs. Sam Eggs were their daughter and family, Mr. and Mrs. Jackie Shoemaker and daughters of De Leon.

Cross. Also visiting were Mr. and Mrs. Reese from Grapevine.

**Resort Setting in the center of PHOENIX / ARIZONA**

Desert-Resort Atmosphere in Downtown Phoenix—500 beautiful rooms and patio suites • Huge, Heated Swimming Pool in Garden Setting • Dining Room • Coffee Shop • Cocktail Lounge • Free TV and Radio in each Room • Finest Convention Hotel in the Southwest—new Auditorium seating 1,500 • Free Parking adjoining

Telephone: (602) AL3-2181  
Teletype: 602-949-0134

**Hotel Westward Ho**

John B. Mills, Chairman of the Board / Cecil Mills, President  
ASSOCIATED FEDERAL HOTELS  
LA CONCHA—SAN JUAN GUNTER—SAN ANTONIO  
ROBERT DRISCOLL—CORPUS CHRISTI

meet our staff ...

**Two Sons, 4, 2, Are Pride Of The Jay Grimshaws**

Jay Rogers Grimshaw has been an employee of Arrington Hamner Funeral Home since March of 1965. He moved to Eastland last May from Desdemona.

A graduate of Gorman High School, Jay attended Ranger Junior College for a year and a half.

He and his wife, Helen, have two sons, Randall Jay, age four and Jim Ferrell, age two. Mr. and Mrs. J. J. Grimshaw are his parents.

**JAY R. GRIMSHAW**

**Arrington Hamner Funeral Home**

301 S. Lamar  
EASTLAND, TEXAS

**A good Diet IS IMPORTANT TO GOOD SCHOOL PERFORMANCE ...**

Give 'em at least 3 glasses a day of **MILK**

At your store, or at your door — **BORDEN'S** is BEST for You and Yours!

Call for **FREE** Home Delivery.

**J. T. GREGORY**  
INDEPENDENT DISTRIBUTOR  
Serving: Eastland, Stephens, Brown, Comanche and Coleman Counties — Phone MA 9-1100

**2 From County Seeking NTSU Degrees Aug. 24**

Mrs. Betty Birt Fry of Cisco and Linda Ann Greenhaw of Desdemona are among 665 seniors who have applied for bachelor's degrees at North Texas State University.

Summer commencement exercises are scheduled for 8 p. m. Aug. 24 at Fouts Field. Mrs. Fry, daughter of Mr. and Mrs. Arlin Birt, Cisco, is seeking the bachelor of science degree in elementary education.

Daughter of Mr. and Mrs. Bill J. Greenhaw, Desdemona, Miss Greenhaw, is a candidate for the bachelor of science degree in elementary education.

**CHILDREN VISIT**  
Visitors last Sunday in the home of Mr. and Mrs. Weldon Armstrong were their daughter and family, Mr. and Mrs. Dwayne Knight and children of Wichita Falls; and their son, Mr. and Mrs. Larry Armstrong and baby of Abilene.

**IN KINGSLAND FOR OUTING**

Donnie Rogers and Lucille Taylor of Eastland and Helen Hall, Kenmy Lynn and Roger of Plainview will be guest of their sister, Mrs. Roy Ayers of Andrews at her summer home at Kingsland on Sunday, Aug. 13, through Aug. 19.

Others visiting at Kingsland will be Mr. and Mrs. Horace Lane of Desdemona, their granddaughters, Marsha and Julia Hanna of Eastland, and Mr. S. H. Lanier of Fort Worth.

Donnie and Lucille wish to thank their customers for the privilege of taking this time off from their businesses for a little boating, fishing and swimming at the Lyndon B. Johnson Lake.

Land area of Texas is 263,513 square miles.

**FOR SALE**

My home at 302 S. Ostrom, close to High and Jr. High Schools, and two blocks of all other schools. 90 foot front by 150 deep. Pecan trees, peach, and plenty shrubbery. Priced to sell.

**WEAVER HAGUE**

EASTLAND TELEGRAM Thursday

Page Two

**RETURN**  
Mr. and Mrs. C. W. Coan and children, Connie and Ronnie, have returned from a vacation trip in Dallas, Fort Worth, and De Leon. While in Fort Worth they visited with Mr. Coan's brother, Mr. and Mrs. Kenneth Coan.

Texas' constitution is 43,000 words long.

**Free Estimates**  
On A New **ROOF**

Or Repair your old Roof Residential & Commercial

**Eastland - Ranger Roofing Co.**  
Noble Squires  
Ph. MA 9-2370 Eastland

**THIS IS THE WAY WE DO OUR BUSINESS**

**WE MARK WHILE IT GETS DRY**

**LAUNDRY**

SAVE MONEY... WITH SERVICE DRY CLEAN **LAUNDRY**  
515 W. Main — MA 9-2370

**24 HOUR COIN-OPERATED LAUNDRY**

**GET A TEXAS-SIZE DEAL ON A PLYMOUTH VALIANT**

Plymouth sales in Texas are booming!

What are the reasons for Plymouth's popularity in Texas? The Plymouth Valiant is one. Texans hear about Valiant's smart styling, peppy performance and low, low price and they head for their Plymouth Dealer's showroom. There they discover that Valiant is the compact that hasn't forgotten why it's a compact. And there's also this thing else that Texans get: Valiant's 5-year/50,000-mile drive train warranty\*. So you tote up Valiant's plus list you can see why Plymouth's in Texas are booming!

\*Here's how Plymouth's 5-year/50,000-mile engine and drive train warranty works: Chrysler Corporation confidently warrants all of the following vital parts of its 1965 cars for 50,000 miles, whichever comes first, during which time any such parts that prove defective in place of bus-ness without charge for such parts or labor: Chrysler Motors Corporation Automatic manifold, water pump, transmission case and internal parts (excluding manual clutch), rear drive shaft, universal joints, rear axle and differential and rear wheel bearings. Required repairs or 4,500 miles, whichever comes first, replace oil filter every second oil change, clean and required service to a Chrysler Motors Corporation Authorized Dealer and request him to certify of such evidence and your car's mileage. Simple enough for such important protection.

Get Texas-size savings at Plymouthland now!

**RUSHING MOTOR COMPANY**  
211 S. Seaman  
Eastland, Texas







