

Eastland Telegram

Eastland County Record established in 1931, consolidated August 31, 1951. Chronicle established 1887. Telegram established 1923. Entered as second class matter at the Post Office at Eastland, Texas under the act of Congress of March 3, 1879.

VIRGIL E. MOORE, Editor
TIMES PUBLISHING COMPANY
Published Tri-Weekly—Tuesdays - Thursdays - Sundays

CLAUDE DICK and JOE DENNIS, Publishers
FRANCES MOORE, Society Editor

One week by carrier in city 15
One month by carrier in city 45
One year by mail in County 2.95
One year by mail in state 3.95
One year by mail out of state 5.95

NOTICE TO PUBLIC—Any erroneous reflection upon the character, standing or reputation of any person, firm or corporation which may appear in the columns of this newspaper will be gladly corrected upon being brought to the attention of the publishers.

Classified Ads.

Cards of Thanks charged for at rate of \$2.00 Each
MISC. FOR SALE - FOR RENT -

FOR SALE: 40-foot telescopic crank-up pole, big rainbow antenna and Philco rotator. Call 848.

55 GALLON Steel Barrels, 1st class, while they last \$4 each. Smith Bros. Chevrolet Co., Gorman, Texas.

FOR SALE: Sacrifice. Brand new all-steel kitchen unit, \$190.00; automatic washer, \$175.00; large refrigerator, \$200.00. Sell together or separately. Inquire Eastland Telegram.

FOR SALE: Used upright piano. Call 695.

MINNOWS for sale, big golden shiners and red horses. Harley Fox, Highway 80, East of Eastland. Phone 620.

FOR SALE: 193 1/2 acre oil lease. Call 243 or 1328 W. Main.

FOR SALE: Genuine Mexican burros. Phone 370.

FOR SALE: Bred Hampshire girls, with or without papers. Homer Stephens, Route 1, Gorman. Mile west of Boodle.

FOR SALE: MINNOWS. BIG Golden Shiners and Red Horses. Pink Haley, east side of Olden.

NOTARY SEALS: At Eastland Telegram Office Supply.

FOR SALE: Liberty Record Storage Boxes. Telegram Office Supply.

FOR SALE: Ed T. Cox's Eastland County Histories. Eastland Telegram.

FOR SALE: A.K.C. registered Boxer pup. T. R. Craig, 522 Pine, Ranger.

REAL ESTATE -

FOR SALE: four room house, 2 gardens, free gas and lease paid until January 1. Some house-hold goods. Phone 809-J-2.

LOT FOR SALE. Phone 631.

FOR SALE: 270 acres, ideal stock farm or dairy. Good grass, plenty of water. Good improvements. \$85 acre. J. A. Ferguson, Route 3, Hico.

FOR SALE: New home, Tom Stamey, phone 875.

FOR SALE Cheap: 5 nice lots in Olden. See O. H. Dick at Telegram Office.

FOR SALE: Three bedroom house at 409 South Walnut. For information call 541.

FOR SALE: 6 room house. Priced for quick sale. Phone 579-W.

FOR SALE: Extra large 4-room frame house to be salvaged. M. A. Clayatt. Phone 107-J-1.

MISC. WANTED -

NOTICE.—Would you consider selling your producing royalty? Write G. M. Howard, Box 2486, Wichita Falls, Texas.

ROY WATER WELL Drilling see Roy Parker, North Kent Street, or Box 223, Gorman, Tex.

HELP WANTED Male -

SALESMEN WANTED — Man wanted for 1500 family Rawleigh business in West Eastland County or Eastland. Permanent if you are a hustler. See J. E. Bouldin, 1713 2nd, Brownwood, or write Rawleigh's Dept., TXF-1022-123, Memphis, Tenn.

LOST & FOUND -

LOST: 5 head of calves—4 white faced heifers, 1 black steer. Should be near town. Phone 73 or 74 between 3 a.m. and 6 p.m., or 130 at night.

FOUND: Pinto mare. Phone 746-W-2.

SPECIAL NOTICES

Stated meeting Eastland Lodge No. 467, Second Thursday each month, 8:00 p.m.
Henry Van Geem, W.M.
L. E. Huckabay, Sec'y.

EARN \$40.00

Churches - Clubs - Schools and other Organizations. Distribute 96 Bottles of Watkins Vanilla. Or same amount of Beverage Base. Or combination of both. See your local dealer or

WATKINS PRODUCTS
Mrs. J. G. Batley
901 West Commerce
Eastland, Texas

THE OLD TIMER

"He who carries a tale makes a monkey of himself!"

MAYTAG
AUTOMATIC AND CONVENTIONAL
WASHERS - GAS RANGES
"We Service What We Sell"

Hamner Appliance Store
805 S. Lamar Phone 623

MOBIL 210
★ Stays 34% Stronger
★ Lasts 14% Longer
At the Sign of the FLYING RED HORSE

Earley Tire Service
302 W. Main - Eastland - Phone 20

THE TRUTH IS VICTORY BY LOSS

TO DEFEND A CIVIL, WITHOUT HIS OWN TRIAL, IS A KNIGHTLY DEED. (OF THE ALASKA PLANT BEANS AREA) WOULD DESTROY MORE PROPERTY THAN HIS ENEMY. TO SAVE HIMSELF FROM BEING THE CIVIL, HE MUST TO DESTROY AN EQUAL AMOUNT OF VILLAGERS!

FOR THE BIG THINGS
IN LIFE... BE GRABBY WITH U.S. SAVINGS BONDS

AMERICA'S FIRST "ASSEMBLY LINE"
THE DEVELOPMENT OF U.S. SAVINGS BONDS BEGINS THE EFFICIENCY OF MANUFACTURE. THE EARLY PART OF THE "ALL OF WHICH PAY EACH OTHER" IS ASSEMBLED WITH ALPHABETIC PLACING INETS AT THE END OF EACH LINE. THE ALPHABETIC PLACING INETS AT THE END OF EACH LINE AND THE ALPHABETIC PLACING INETS AT THE END OF EACH LINE.

WHAT'S THE DIFFERENCE
BETWEEN A BIRD'S EYE AND A BIRD'S EAR? THE BIRD'S EYE SEES AND SPEAKS, AND SPEAKS IN THE BIRD'S EYE. THE BIRD'S EAR HEARS AND SPEAKS, AND SPEAKS IN THE BIRD'S EAR.

Political Announcements

This paper is authorized to make the following announcements, subject to the Democratic primary election, July 28, 1954.

For Congress, 17th District
Dan Kralis
Omar Burleson

For Dist. Judge
T. M. Collier

For Sheriff
J. B. Williams
(For Re-election)

For County Attorney
J. M. Nussle
Earl Conner, Jr.

For Assessor-Collector
J. C. Allison
Truly Carter

For Constable Pct. 1
Tom C. High
Porter Woods

For Commissioner Pct. 1
Tip Arther
W. J. (Bill) Herrington

For State Senator, 22nd District
Floyd Bradshaw
Herman Fitts

For State Representative, 76th District
Omar Burkett
Paul Brashear

Alex Rawlins & Sons

MONUMENTS
WEATHERFORD, TEX.
Serving This Community Since 1884

Auto Glass Replaced

Yes, we fit any and all makes. Glass cut and ground on the latest glass refinishing machine. Windshields replaced. See us for that glass replacement on your auto.

BLEVINS MOTOR COMPANY

36 EXTRA EGGS PER HEN

Proved by 1033 Purina feeders who kept records

Some folks think pullets produce about the same on one feed as they do on another. Purina asked 1033 ladies with average farm flocks to keep records and see.

These careful day-to-day records showed that more than 2 million hens produced 3 dozen extra eggs per bird—over U. S. average production in just the first 4 months of laying. Your pullets should lay more eggs than average and make more money on Purina, too. Call us or stop in and let us show you what other folks in our neighborhood are doing.

PURINA LAYENA SNOW

WORM PULLETS

for less than 1¢ a bird right before housing. Just put Purina Liquid Wormer in the drinking water.

WE BUY EGGS

EASTLAND FEED & SEED

Chigger Larvae Cause The Itching; Red Bugs Don't Bite, State Says

Whether you call them red bugs or harvest mites or chiggers or just plain Eutrombicula alfreddugesi, you'll meet them this spring and summer. Forewarned is forearmed.

Texas, say state health department entomologists, has more than its fair share of the parasites, a statement with which anyone who has endured ceaseless spasms of itching misery from red bug bites will agree.

They—the chiggers—have a special affinity for low, damp places covered with vegetation. Bermuda grass lawns harbor them well, but for some unexplainable reason they are not usually found in carpet grass.

Bugs Don't Bite
Just for the record, it's the larvae which do the damage, attaching themselves with their mouthparts and sucking blood until they become engorged and fall off. The severe itching is caused by an anti-coagulant material they inject into their host.

Although adult chiggers—large, red, and velvety—are entirely harmless to man, their wayward offspring can be serious as well as annoying. The entomologists say they do not spread any specific disease entity in this country, but their bites often produce secondary infections in the form of sores and boils.

Few Immunities
A few people have an apparent immunity to chigger attacks, but the vast majority are fair game from about May until cold weather reduces chigger ranks. Favorite spots to attach themselves for blood meals seems to be hands, feet, and the stomach around the belt line.

They attack lizards, snakes, birds, and rodents with the same vigor and resourcefulness they display in attacking man. No distinction is drawn between humans and lesser animal species, which is hardly complimentary to us Homo sapiens.

WENT VISITING
Mr. and Mrs. Fred Hale visited this week with Mr. and Mrs. P. J. Cullin in Fort Worth.

VISITED IN ATHENS
Mr. and Mrs. Andy Taylor visited over the holiday with Mr. and Mrs. John Lively and family in Athens.

VISITED HERE
Visiting in the home of Mr. and Mrs. Norman Guess this week were his sister, Miss Nancy Guess of San Angelo and Miss Merna Hanley of Lawn.

Save water in which rice is boiled. It's good to use in making gravy and thickens itself.

DIXIE Drive-In

EASTLAND RANGER HIGHWAY

Box Office Opens 7:45
First Showing 8:15
Second Showing 10:15

WEDNESDAY - THURSDAY, JULY 4 - 5

WARNER BROS. PRESENT
Battle Cry
WARNERCOLOR CINEMASCOPE STEREOPHONIC SOUND

STARRING VAN ALAN MONA NANCY JAMES RAYMOND TAB DOROTHY ANNE
BEFLIN - RAY-FREEMAN - OLSON - WHITMORE - MASSEY - HUNTER - MALONE - FRANKS

SCREEN PLAY BY LEON MURDIS - ORIGINAL MUSIC BY MAX STEINER - DIRECTED BY RAQUEL WALZER

PLUS: Color Cartoon

FRIDAY - SATURDAY, JULY 6 - 7

LUSTIEST OF THEM ALL!

The First Texan

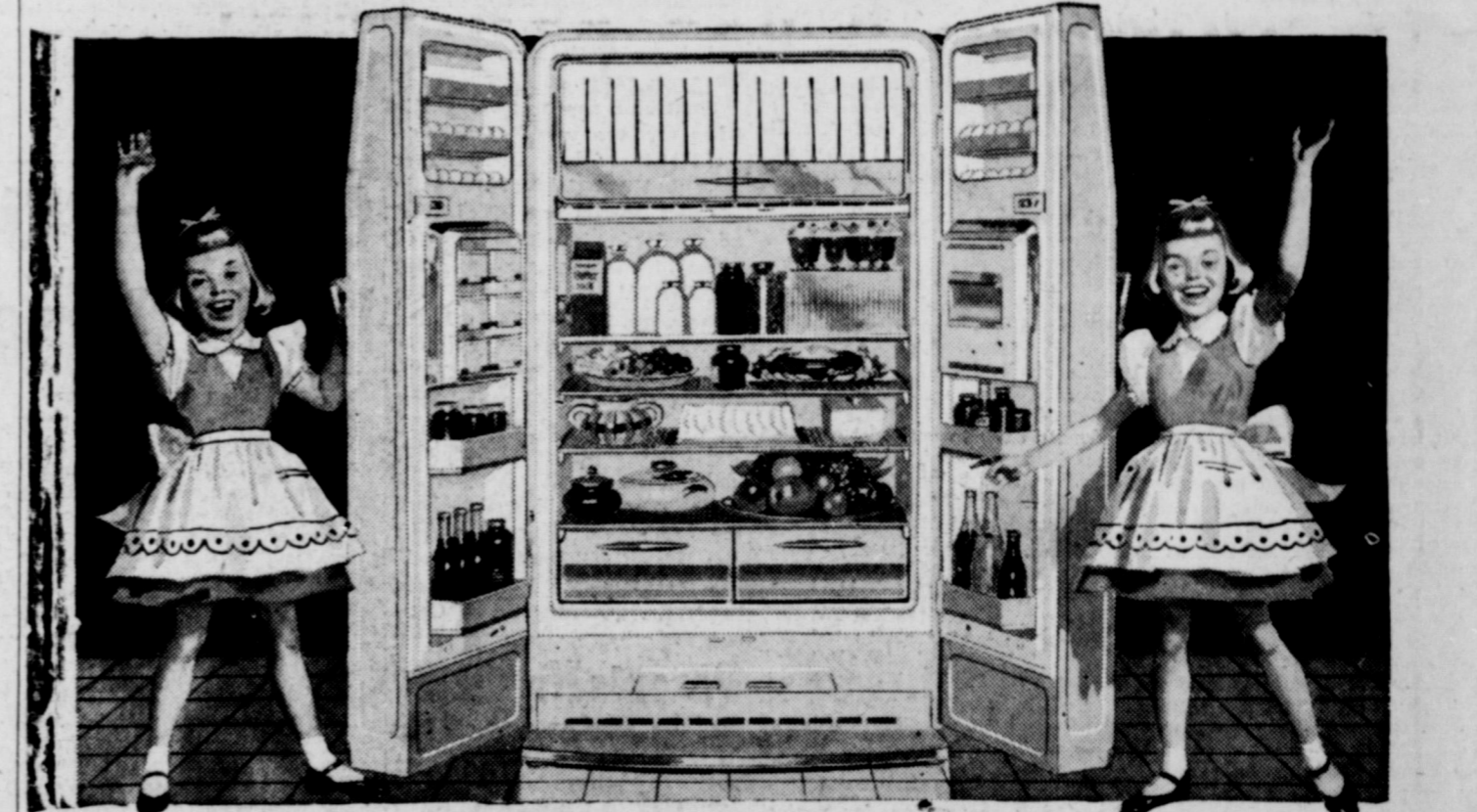
CINEMASCOPE

AS STARRING ARTISTE PHOTOMONTAGE
JOEL MCCREA
FELICIA FARR - JEFF MORROW

PRINT BY TECHNICOLOR

PLUS: Color Cartoon

SO YOU'VE NEVER HAD ONE big enough???



Puts a Supermarket at Your Finger Tips With This New Frigidaire Twin-Door Refrigerator

Imagine all this in a space just 39 inches wide—a full 15-cubic-foot Frigidaire Imperial Refrigerator with a giant capacity separate freezer and two full-length Storage Doors that surround you with rows and rows of departmentized foods—just like a supermarket.

Everything from eggs to frozen juices keep at just-right temperatures! Everything is finger-tip handy, and there's no defrosting ever in the refrigerator compartment. No center post, either, to get in your way.

Yes, this is living at its luxurious best—with freedom from food shopping for weeks on end—with storage for countless kinds of fresh and frozen foods.

Got a growing family? A big family? Then seeing this new Frigidaire development is a "must." With our low weekly payments, it's cheaper than shoe leather, carfare and parking bills.

Got a "too small" refrigerator? We will take it in trade and give you a wonderful allowance.

Look at All the Extra Values

- A REAL CYCLO-MATIC FOOD FREEZER-REFRIGERATOR
- BIG 8 1/2 LB. FOOD FREEZER
- 3 QUICK-ICE TRAYS AND 1 QUICK-CUBELET TRAY
- 3 ROLL-TO-YOU SHELVES
- 3 JUICE CAN DISPENSERS—9 CANS
- TWIN PORCELAIN HYDRATORS
- 6 LEFTOVER DISHES
- EGG SHELVES (28 CAPACITY)
- BUTTER CONDITIONER
- CHEESE COMPARTMENT

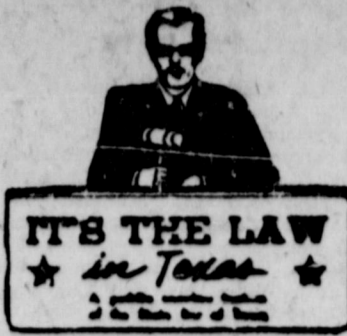
NEW FRIGIDAIRE FIW-150 Food Freezer-Refrigerator Combination

LAMB MOTOR COMPANY
305 E. Main EAST LAND Phone 44

Mrs. Tom Wilson To Conduct Hour Of Story Telling

Mrs. Tom Wilson will be in charge of the Story Hour Saturday morning at 10 o'clock in the Women's Club.

Children between the ages of three and the fifth grade are invited to attend and hear Mrs. Wilson read stories. The Story Hour is sponsored by the Thursday Afternoon Club.



IT'S THE LAW
in Texas

AGENT'S ACTS BIND PRINCIPAL

Suppose that you hire your neighbor's teen age son, Jimmy, to cut your grass, and he runs your new mower into another neighbor's hedge. The hedge is ruined. Are you responsible for the damages? Quite likely you are.

Or let us suppose that you find you need a loaf of bread for the evening meal. You ask a friend to take your car and run to the store for it. On the way, he runs down old Mr. Peabody, seriously injuring him. Can you be held responsible? It is possible that you can.

In both instances, an "agent" was acting for you. His acts while performing those duties are, in the eyes of the law, your acts. In

SKIN ITCH HOW TO RELIEVE IT IN JUST 15 MINUTES

If not pleased, your 40¢ back at any drug store. Instant-drying ITCH-ME-NOT deadens itch and burning; kills germs ON CONTACT. Use day or night for eczema, insect bites, foot itch, other surface rashes. Now at Eastland Drug Store.

legal terms, you are the "principal."

You may be liable despite the fact that you may have cautioned him to be extremely careful.

The average individual expects to answer for his own actions. He does not usually consider that he may be responsible for the actions of other persons. That, however, is frequently the case.

Suppose you ask another person to do something for you, that is, to act as your agent. You may pay him, or he may be doing it without compensation.

You may ask him to buy or sell property for you. Or, his responsibility may be to negotiate an agreement for you with a third person.

If representations or warranties are made by your agent in performing the task which you assigned to him, you are responsible.

In a like manner, you are responsible for the contract made by him while he was acting for you.

You may be held responsible for the acts of a person who customarily represents you even though he entered into a contract for you without your consent or approval.

For example, you may have a partner in a business, and you and he have agreed that certain contracts shall be made only upon the signature of both of you.

Unknown to you and without your consent, your partner signs such a contract with a third person involving partnership business. If the person with whom this contract is made has no knowledge of the terms of your partnership agreement, you are responsible for the contract which your partner has made.

You may have agreed between you that neither of you would buy, without the other's consent, any items of merchandise costing more than \$50. You did not give this information to salesmen that called on you. In your absence on a Thursday afternoon, your partner ordered merchandise for your store costing more than the \$50 limit.

When the merchandise is delivered, you can not refuse to accept it because you can be bound by the contract of your partner. This is true in many situations, and the salesman is not bound by your partnership agreement because you did not advise him of the \$50 limitation.

As the actions of your agent are considered to be your actions, you assume the responsibility of his doing them correctly.

(This column, based on Texas law, is written to inform — not to advise. No person should ever apply or interpret any law without the aid of an attorney who knows the facts, because the facts may change the application of the law.)

To Save Water in Garden Learn How It Behaves



Canvas Hose Which Leaks Through Mesh Spreads Water Evenly Over Garden.

Watering the lawn and garden often becomes a difficult problem in summer. In desert areas where water is scarce, scientists have studied ways of using it efficiently.

In their findings are some facts which all gardeners will find helpful. For example, the storage capacity of different kinds of soil. When water is applied to soil it is held as surface film on soil particles. A cubic foot of sand will hold 1/4-gallon of water for plant roots to take up. The same amount of loam will hold one gallon, and of clay 1 1/2 gallons.

An inch of water applied evenly over your lawn or garden area should wet a clay soil to a depth of 3 inches, a good garden loam 10 inches and a sandy soil 15 inches.

Note that in all types of soil the water stays near the surface, unless applied in quantities larger than 1-inch. It is on this moisture that plants depend. Rarely is the water table so near the surface that significant quantities of water rise from below to help the plants.

Lateral movement also is limited. Moisture does not spread far outward in the soil, but must be applied evenly to the surface in order to cover the area.

Root growth is governed by the depth of moisture. When soil is sprinkled frequently and never gets a good soaking, roots are short. They may be so short as to suffer from drying by evaporation, which affects the top two or three inches of soil. Short roots do not make vigorous plants, and cannot carry plants well through dry periods.

Light rains may upset a watering schedule by wetting the soil only a few inches deep, which stimulates shallow roots. The longer roots may dry out unless sufficient water is added by irrigation to moisten the entire root system. This is the way to insure benefit by light rains.

The ideal irrigation program would be to wet the soil to capacity as far down as roots will go, then apply no more water until the roots have used up half this stored moisture. This might take a week in sandy soil, 10 days in loam, and two to three weeks in clay. Then apply enough water to replace what has been used.

Christian Women Entertained At Coffee Monday

Members of the First Christian Church Woman's Fellowship were entertained at a coffee hosted by their president, Mrs. H. R. Garrett, in the church annex Monday at 9 a.m.

Coffee, orange juice, nuts, pineapple and cantaloupe tidbits, individual fried pies, olives, and doughnuts were served from a pink lace buffet table. The centerpiece was a beautiful rose and pink floral arrangement. Mrs. Roy Turner and Mrs. J. W. Watson poured and crystal and silver were used.

Mrs. Howard Gill, accompanied by Mrs. N. L. Smithan, sang a CWF solo number rendered at the church's state convention.

During the business session, plans were announced for the ensuing year and the annual budget was explained to the members. Reports were given by various officers and names were read by group chairmen for the four divisions of the CWF membership.

Attending other than those listed above were Mesdames Mar-

garet East, Homer Meek, Winnie Wynne, Eugene Day, Bill Collins, Cyrus Miller, Curtis Young, Lou Horn, T. L. Cooper, Neil Day, Joe Tow, Jerry Freeze, Millie Brittain, B. H. Clifton, L. C. McNatt and Mrs. Pearl Line, of Tujunga, California and Mrs. Ruth Fowlkes of Amarillo.

OLDEN VISITORS

Mr. and Mrs. Dale Norton and baby daughter, Alena Gayle, of Andrews, visited with his mother, Mrs. Ruth Norton in Olden over the week-end.

ON BUSINESS

Mrs. A. M. Wolf of Okra was in Eastland Tuesday on business.

GRAHAM'S DAIRY SUPPLY

Lingerville, Texas

SURGE MILKERS AND PIPE LINES

CARD OF THANKS

We wish to take this means of expressing our sincere appreciation to the host of neighbors and friends for their many acts of kindness and expressions of sympathy in the final illness and death of our beloved and mother.

Fred and Fred Allen Walker
Mr. and Mrs. Richard Robinson



We Make Your Machines Just Like New

- Typewriters
- Adding Machines
- Cash Registers

Completely Rebuilt and

Refinished in Colors

Hail Typewriter Co.

204 S. Seaman Phone 94

EASTLAND

Demand!

ACCEPT NO IMITATION

CAR AIR CONDITIONING

Yes, its hot enough to dream of going to some cool snow-bound place, but dreaming won't make it cooler. No, if you have to stay here and endure the heat, you might as well stop dreaming, and do something real about making yourself more comfortable. Mark IV air conditioners from the low price of \$295 installed.

BLEVINS MOTOR COMPANY

OIL FIELD Equipment

- SURFACE CASING
- OIL STRING CASING
- TUBING
- RODS
- PUMPING UNITS
- TANKS

BOUGHT - SOLD - TRADED

IRISH DRILLING CO., INC.

208 W. Commerce—Eastland, Texas
Pipe Yard Highway 80 East
Office Phone 100 - 101 Yard Phone 199

NOW... At A New LOW PRICE!

2 REFRIGERATORS in 1

A BIG G-E Refrigerator-Food Freezer Combination

With True Zero Degree Freezer Storage PLUS Normal Refrigeration Temperature

MAGNETIC DOOR
opens at a touch of your toe, closes automatically, silently, surely

REVOLVING SHELVES
put all food at your fingertips

Model LM-11N

REGULARLY \$399.95
\$299.95

AND YOUR OLD REFRIGERATOR

- 2 Big Appliances In 1.
- Automatic Defrosting Refrigerator Section.
- 70-Lb. Zero Degree Freezer
- Magnetic Doors
- Revolving Shelves
- Door Shelves PLUS ALL OTHER DE LUXE CONVENIENT FEATURES.

Coats Furniture & Carpets, Ltd.

EASY TERMS FREE DELIVERY GOOD TRADE-INS
305 S. Seaman Authorized G. E. Appliance Dealer EASTLAND Phone 585

Your old refrigerator is worth more than you think... trade it today on this new G-E

RETURNED HOME

Mrs. F. L. Drago has returned home after a two weeks vacation in South Texas. While away, she attended the wedding of her grandson, Bobby Drago Beall and Gloria Woods of Waco. The wedding which was June 24 in the First Methodist Church in Galveston. During the ceremony, the bridegroom's brother-in-law and sister, Mr. and Mrs. W. W. Wendland of Dallas, played a violin duo.

Mrs. Drago, along with Dr. and Mrs. Beall spent several days visiting places of interest in South Texas.

EXCITING CLEARANCE

USED SEWING MACHINES SINGER

JULY FOUR STAR JUBILEE

BIG SAVINGS

All Reconditioned and Guaranteed!

PORTABLES
CABINET MODELS
SPINET—DESK MODELS
CONTEMPORARY OR PERIOD

COMPLETELY RECONDITIONED MACHINES AS LOW AS \$39.95

COMPLETELY RECONDITIONED SINGER CONSOLE MACHINES AS LOW AS \$69.95

COME TO YOUR SINGER SEWING CENTER

West Side of Square Eastland

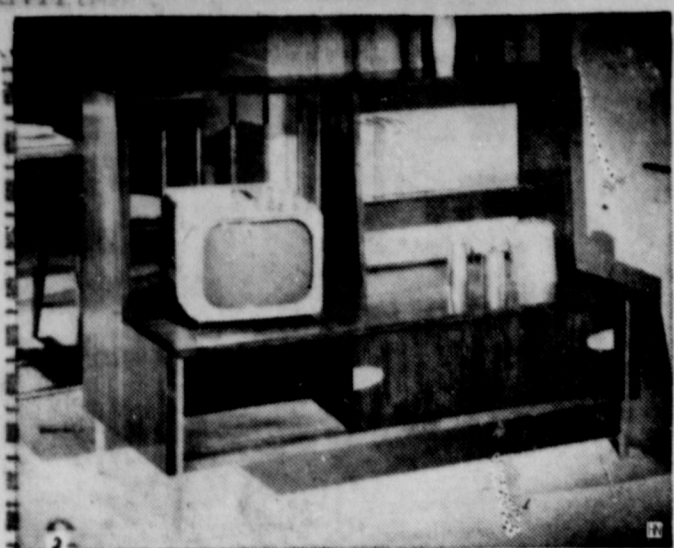
Friday - Saturday

Open Til 8 P.M. Saturday For Your Convenience

Sugar Imperial Pure Cane	10 Lb. Bag	95c
OLEO	Kimbell's, Lb.	23c
SUGAR PEAS, Mission	2 No. 303 cans	33c
GREEN BEANS, Whole, Renown Brand	303 can	19c
Napkins Charmin	2 80 Count	25c
Kleenex	400 Count	25c
EGGS Fresh	Intertile, Doz.	39c
BEANS Pinto	2 Lb. Cells Bag	19c
CORN, Diamond Brand	2 No. 303 cans	25c
CARNATION TOPIC, 1/2 gallon		59c
Flour Kimbell's Best	25 Lb. Bag	1.75
7-Roast Baby Beef, Lb.		35c
Short Ribs Baby Beef, Lb.		19c
Club Steak Baby Beef, Lb.		49c
7-Steak Baby Beef, Lb.		39c
BACON Mid West Slice, Lb.		39c
HAMBURGER Fresh Ground, Lb.		25c

EARNEST Frozen Food Center

210 South Lamar Phone 11



This interesting low room divider in rosewood walnut is designed to provide space for books, accessories, and a television set. Since the bookshelf is interchangeable, the television set can be used on either side of the divider. Sliding doors conceal storage space in the base of the divider. Completely contemporary in design, the divider is part of a modular grouping which reflects Italian Provincial styling. Anodized aluminum brushed to a silver finish is used as an accent in the hardware. (The Mengel Co.)

Harold Hitts Hostesses For Lawn Party

The True Light Training Union of the First Baptist Church had a lawn party Friday evening in the home of Mr. and Mrs. Harold Hitt, 215 North Connelley.

Various games were directed by Miss Vern Allison, social chairman. Refreshments of ice cream and cake were served. Fellowship followed.

Those present were Mr. and Mrs. R. D. Harris, Dr. and Mrs. J. O. Jolly, Jr., Mr. and Mrs. James Hardwick, Rev. and Mrs. Harvey Kimbler, Mr. and Mrs. Charles Layton, Mr. and Mrs. Benny Edwards, Mr. and Mrs. Stanley Lynn, Mrs. Douglas Kelley, Miss Allison and the hostess, Mr. and Mrs. Hitt and Terry.

Brock Attends Training School In Mississippi

Lieutenant Colonel C. G. Brock of Eastland is in Gulfport, Mississippi with the 448th Fighter Bomber Wing from Hensley Field, Dallas. He is in a two week training school there of the U.S. Air Force Reserve.

In civilian life Brock is on the staff of the Army Engineers in Fort Worth. He spent two years in England and France in World War II. He received the bronze star from the Airborne Troop Carrier Command. He is a 1927 graduate of Eastland High School and has a B.S. degree from Texas A&M.

Captain Francis J. Brock, his brother, is now in the Air Force located in England. His younger brother, Howard M. Brock, a 1950 graduate of the school of Chemical Engineering, University of Texas, served in the U.S. Navy. He is now a lieutenant junior grade Naval Reservist and is employed as a production engineer with Dow Chemical Company in Freeport.

JOIN SON AND BROTHER

Mr. and Mrs. Joe Stephen and son, Rodney, joined their son and brother, Stan Stephen, at Bryan Saturday for the week-end. They were guests of Mr. and Mrs. W. R. McCullough and daughters, Miss Karel McCullough, a student at Mount Vernon College at Washington, D.C. and Miss Jean McCullough, a senior at the University of Texas. Several informal parties were given for the Stephens among which was a milk punch party Sunday at the home of Mr. and Mrs. Charles Edge.

Comets -

(Continued from Page One)

Player	ab	r	h
Treadwell	3	0	0
Wheat	3	0	0
Graham	3	1	1
Moser	2	1	1
Kimbler	0	1	0
Johnson	1	0	0
Garrett	1	0	0
Jones	2	1	1
Perry	2	0	0
Justice	2	0	1
Totals	19	4	4

VISITED LAST WEEK

Mr. and Mrs. H. E. White and family of Hubbard visited in the home of their daughter and son-in-law, Mr. and Mrs. H. E. Grizzle and daughter.

Women's Activities

Visitors, Picnics, Fishing Made A Happy Holiday For All

Picnics, fishing, golfing, visiting and just plain resting, help to make this fourth of July one of the happiest ever for many Eastlanders.

Among the ones visiting their families were Mrs. Jo Evans and her family who went to Dublin to visit with her mother, Mrs. M. D. Ross. Mr. and Mrs. Taylor Smith went to Waco to visit with his mother, Mrs. Ben E. Smith.

Garry and Gale Downard and sons, Chris and Stevie of Kansas are here visiting with their parents, Mr. and Mrs. Charles Underwood and Mr. and Mrs. Milton Nash.

Mr. and Mrs. Don Myrick and children of Graham will visit here over the week-end with his parents, Mr. and Mrs. A. R. Myrick and his sister and brother-in-law, Mr. and Mrs. Jerry Carter.

Mr. and Mrs. Emory McBeth stopped by from Mt. Pleasant Tuesday to visit with Mrs. Myrtle Anderson, and stayed over for the holiday.

Mrs. Pearl Line and daughter Madolyn Janet of Burbank, California are visiting in the home of Mrs. Line's mother, Mrs. L. C. McNatt this week. They plan to leave Friday.

Mr. and Mrs. Robert Perkins have as their guests this week her niece and nephew, Mary and Hank Smoot of Colorado City.

Others were crowded around the picnic tables at parks and lakes, and others were resting at home with a good book. With the holiday come and gone again, it can still be said that there is no other holiday like Independence Day.

Four Girls And Sponsor Attend Baptist Camp

Miss Julia Lynn Inzer and Miss Rebecca Graham along with their sponsor, Mrs. Jim Hardwick, members of the Sarah Henley Girl's Auxiliary of the First Baptist Church, attended the Baptist Encampment last week at Lueders.

Mrs. Hardwick also sponsored Kathy Williamson and Ella Joy Walker of Morton Valley.

Three speakers highlighted the encampment. They were all missionaries and were Mrs. Doris Jackson of Japan, and Rev. and Mrs. John Oakes of Brazil.

The group reported having a very educational and enjoyable

trip. Their only misfortune came when Ella Joy stepped on a piece of glass and had to have five stitches taken in her foot.

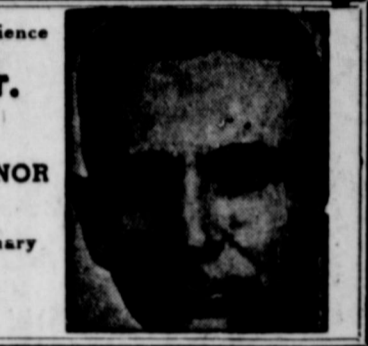
ATTEND THE CHURCH OF FOUR CHOICE EACH SUNDAY

For Your . . . **Building Needs**
PHONE 881
• New Homes
• Remodeling
All Work Guaranteed
J. D. Parson - Frank Harris

REAL ESTATE ?
Phone 1065
TRI-CITIES
Real Estate Exchange
Box 22 Eastland

**T. L. FAGG
R. L. JONES**
REAL ESTATE
Property Management
Home and Farm Loans

23 Years Legislative Experience
A. M. Aikin, Jr.
OF LAMAR COUNTY
Candidate for
LIEUTENANT GOVERNOR
OF TEXAS
Subject to Democratic Primary
July 28, 1956
(Paid Political Ad)



Hospital Report

Patients in the Eastland Memorial Hospital are:

- L. Rhyne, medical
 - Mrs. Susan Gourley, surgical
 - J. Southerland, medical
 - Dessie Reel, surgical
 - Maggie Owen, medical
 - Dismissed were:
 - Lou Beck
 - Jeannie Thompson
 - Mr. Billy Wood
 - Kenneth Notgrass
- Patients in the Ranger General Hospital from Eastland are:
- Mrs. Tee Williams, medical
 - A. Fricke, surgical
 - Mrs. Rabb Steddum, surgical.

Former Olden Man Honored With Banquet

J. Fred Warren, formerly of Olden and now of Electra, was honored with a retirement banquet by the Magnolia Petroleum Company June 15 in the First Methodist Church in Electra. Warren is retiring from the company after 37 years continuous employment with the firm.

Frank Wall, head of the material department in the Magnolia headquarters in Dallas, presented a plaque and emblem to Warren along with a brief resume of the honoree's affiliation with the company.

After having received his army discharge on July 15, 1919, Warren went to work for the Magnolia Petroleum Company at Olden, July 22, 1919. He remained with the producing department 11 years before transferring to the material department. He transferred to the Electra District in 1940 as assistant material foreman and was advanced to material foreman in 1950.

Those attending the banquet from Olden were Mr. and Mrs. W. C. Crone, Mr. and Mrs. R. O. Crowder, Mrs. W. P. Edwards, Stella Jarrett and Mr. and Mrs. Joe Lawrence.

PUSHBUTTON Power Flight

The new Chrysler and Plymouth have it! It's major competitors don't. See and drive these wonderful cars at BLEVINS MOTOR COMPANY

ALL RISK . . . POLICY

FIRE - THEFT - COLLISION
OUTBOARD MOTORS
BOATS
BOAT TRAILERS
KINNAIRD INSURANCE AGENCY
207 W. Main
"37 Years In Eastland"



LOOK WHO'S NEW

M. H. FERRY

Representing **Southland Life**
Life - Retirement Income
Partnership
Mortgage Cancellation
Educational - Annuities
Accident - Sickness
Hospitalization - Group
Call 173 or 713-J
107 W. Main • Eastland

Mr. and Mrs. C. L. Johnson of Denton, are the parents of a boy, Robert Mark, born July 3 at 11:50 p.m. in the Flow Memorial Hospital in Denton. The baby weighed 7 pounds and one and one half ounces.

Grandparents are Mr. and Mrs. Dennis Farr and Mrs. Johnson of Fort Worth.

Mr. and Mrs. W. E. Brashier, Jr. are the parents of a boy, William Randall, born June 29 at 2:30 p.m. in the Flow Memorial Hospital in Denton. The boy weighed five pounds.

Grandparents are Mr. and Mrs. Neil Day and Mr. and Mrs. W. E. Brashier.

Mr. and Mrs. Leo Charles Smith are the parents of a baby girl, Debra Annette, born July 1 at 1:16 a.m. in the Graham Hospital in Cisco. She weighed 7 pounds and 4 ounces.

Grandparents are Mr. and Mrs. M. L. Carey of Cisco and Mr. and Mrs. J. M. Smith of Olden.

SAVE ON SEAT COVERS

Custom Made For Your Car
Beautiful Selection Materials
Come In and See
The Trim Shop
E. L. GRAHAM
51 W. Main Eastland

WE BUY SCRAP
IRON AND METAL
Get Our Prices Before You Sell
WE PAY HIGHEST MARKET PRICES
WE APPRECIATE YOUR BUSINESS
KOEN SALVAGE
Highway 80 West 1315 W. Main

COMPLETE **WRECKER SERVICE**
DAY AND NIGHT
Ph. 42
Expert Body Work and Painting
Choice of Colors
KING MOTOR CO.
Phone 42 NE Corner Square

Big brothers of the best seller ... and every bit as modern!



Series 9000 L.C.F.

Series 10000 Tandem

New Chevrolet Heavyweight Champs

These new additions to America's best selling truck line are Chevies through and through! For proof, just take a look at these years-ahead big-truck features!

New Loadmaster V8! This big heavy-duty load puller delivers 195 hp, 310 ft.-lbs. of torque! It's the leader in its class for compact short-stroke design that delivers most horsepower per pound!

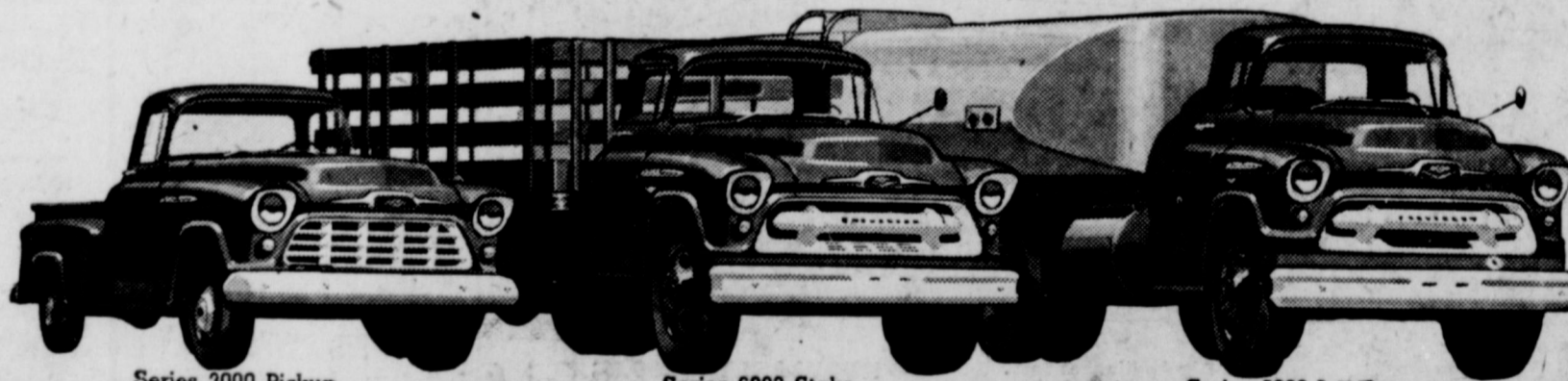
New Powermatic Transmission! Six fully automatic forward speeds and a torque converter virtually eliminate manual gear shifting on hills or in traffic! Revolution ary "Retarder" gives safer downhill

hauling, less brake wear.

New Triple-Torque Tandems! Optional at extra cost in new Series 10000 models, new Triple-Torque Tandem hikes G.V.W.'s up to 32,000 lbs., G.C.W.'s up to 50,000 lbs.! These brawny haulers give you bigger, more profitable payloads, reduced operating cost per ton mile!

New big-truck styling! That sleek, massive front-end styling reflects the POWER these new Chevies provide!

Modern features such as these spark all phases of performance in these new "heavies." If big trucks are part of your business, we'll expect to see you soon! *Optional at extra cost in Series 5000 through 10000 truck models.



Series 3000 Pickup

Series 6000 Stake

Series 5000 L.C.F.

Champs of every weight class!

Only franchised Chevrolet dealers  display this famous trademark

FULLEN MOTOR COMPANY

305 E. Main

EASTLAND, TEXAS

Phone 44

My Neighbors



"Good morning glory! Here's Merry Sunshine, in person!"

NEWS FROM STAFF

By Mrs. M. O. Hazard

Barbara Bennett from Big Spring and Lavell Garrett of Koko, were the overnight guests Thursday of Mrs. Jimmy Little. Barbara also spent Friday and Saturday nights in the Little home.

Mr. and Mrs. J. C. Foreman, Kenneth and Allen of Olden were guests Sunday afternoon of Mrs. Foreman's parents, Mr. and Mrs. Allen Crosby.

A number from here attended the funeral of Joe Brashear in Ranger Saturday afternoon. The family has a large circle of friends in this community who extend to them their sympathy.

The Earl Little family from Cisco were out to visit with the J. L. Littles and George Bennetts Saturday afternoon.

Mr. and Mrs. M. O. Hazard were Abilene visitors Monday.

Audrey Fae Collins, daughter of Mr. and Mrs. Sam Collins had the misfortune of breaking her arm recently while at play. She is reported to be doing nicely at this time.

The J. A. Fox family are having visitors from Carbon this week.

The drought is getting to be something serious in this part of the country.

Those from this community who attended the funeral of Mrs. Julia Blackwell at the Church of Christ in Eastland Sunday afternoon were Mr. and Mrs. Walter Duncan, Mr. and Mrs. O. T. Hazard, Mr. and Mrs. Wayne White and Mr. and Mrs. M. O. Hazard. Mrs. Blackwell had many friends here who extend sympathy to the bereaved family.

Zelma Hendricks of Flatwoods, was the overnight guest Sunday of her cousin, Mrs. Jimmy Little.

Mr. and Mrs. M. O. Hazard were transacting business in Cisco Monday afternoon.

Rev. Boyd Tabor of Moran was here Sunday to fill his regular appointment at the Baptist Church. He and Mrs. Tabor were guests of Mr. and Mrs. J. L. Little.

Mr. and Mrs. J. H. Partney from Wichita Falls spent the day Saturday with Mrs. Partney's parents, Mr. and Mrs. J. W. Mounce.

Mr. and Mrs. M. O. Hazard were Gorman visitors Thursday.

Mrs. Jimmy Little visited with her grandmother, Mrs. Ella Garrett of Flatwood Monday afternoon.

Work on the Baptist Church building here is nearing completion.

Mr. and Mrs. L. L. Collins and children from Kermit came Monday for a visit with Mr. Collins' brother and sister-in-law, Mr. and Mrs. Sam Collins and children.

Mr. and Mrs. J. H. (Slim) Adams of Desdemona were here Wednesday evening to visit with Mrs. Adams' mother, Mrs. Zona Griffin.

Mr. and Mrs. A. G. Crosby and Judy Beth recently moved from Burkburnett to Eastland. The Crosbys have a host of friends here who will be glad to know they are moving closer to their old home here.

VISITING SON

Mr. and Mrs. Harry W. Eddy of Greenville, Pennsylvania, are visiting in the home of her son, Mr. and Mrs. Gene Rhodes and family, 605 South Mulberry.

Dan Kralis

Candidate for United States Congress United States Representative 17th Congressional District Democratic Ticket



WARNING

The Russia-China Axis

While our politicians are giving our money away to our foreign friends and taxing us to death to the delight of the Red Chinese and Russians, you might be interested in what Dimitry Z. Manvilsky stated at the Lenin School Political Warfare in Moscow in 1931.

"War to the hilt between Communism and Capitalism is inevitable—We shall begin (1951-1961) by launching the most spectacular peace movement on record. There will be unheard of concessions. The capitalist countries, stupid and decadent, will rejoice to cooperate in their own destruction. They will leap at another chance to be friends. As soon as their guard is down, we shall smash them with our clenched fist."

It is not too late for we the people to get more statesmen into Congress and fewer federal governmental politicians.

We cannot pin our hopes on the false friends and bogus peace promises.

We need refreshing representation in Congress. Spokesmen, for the people. Stop giving our billions away. We better have the atomic weapons, aircraft, and missiles to take care of any emergency. If we don't have, we should find out what our politicians have been doing all these years with our money and our liberties.

Paid Pol. Adv.

Advertisement for Kincaid's Feed & Turkey Hatchery featuring Herbageres. Text includes: 'WE WITNESSED A MIRACLE! A New, Revolutionary Method of Feeding Cattle and Farm Animals! HERBAGERE... NOW ON DISPLAY IN OUR STORE... NOW IS THE TIME TO BOOK YOUR CHICKS AND POULTS. ASK ABOUT OUR TURKEY FINANCE PLAN. KINCAID'S FEED & TURKEY HATCHERY 303 N. Seaman Eastland Phone 43'

Clover Farm Value DAYS! We Give B & B Stamps With Each 10c Purchase

Reynolds Aluminum FOIL 25 Foot x 12-in. Roll 29c

FLUFFO Golden 3-Lb. Can 89c

CLOVER FARM COFFEE Drip or Reg. Lb. Can 85c

CLOVER FARM VIENNA Sausage No. 1/2 Can 16c

CLOVER FARM Margarine Lb. 25c

LENDALE Tomatoes 2 No. 303 Cans 25c

LIPTON'S Tea Bags 16-Count Box 23c

LENDALE CATSUP 14-Oz. Bot. 15c

CLOVER FARM GRAPEFRUIT JUICE 46-Oz. Can 25c

CLOVER FARM PEANUT BUTTER 12-Oz. Jar 29c

HOME GROWN SQUASH Lb. 9c

CALIFORNIA WASHED BURBANK POTATOES 10 Lb. Bag 89c

PENNANT SLICED BACON Lb. 39c

ALL MEAT FRANKS Lb. 39c

Chuck Roast Choice Beef, Lb. 35c

Loin Steak Choice Beef, Lb. 55c

Club Steak Choice Beef, Lb. 49c

Ground Beef Fresh Lb. 29c

BACON Wilson Thick Sliced 2 Lbs. 89c

SPECIAL! CONCHO CUT GREEN BEANS No. 303 Can 10c

SPECIAL! LIPTON'S TEA 1/4 Lb. Pkg. 39c

SPECIAL! SUNSHINE KRISPY CRACKERS 1-Lb. Box 25c

SPECIAL! CLOVER FARM MILK 2 Gall Cans 25c

SPECIAL! CENTRAL AMERICAN BANANAS Pound 12 1/2c

OPEN EVERY NIGHT TIL 8 P.M.—SATURDAY TIL 9 P.M. CLOVER FARM STORES 400 South Seaman Phone 31



WISTFUL VISTA FOR UNIQUE BIRD—Tiny turkey poul on scale, hatched from an unfertilized egg (parthenogenesis), is weighed by Dr. Marlow W. Olsen, co-discoverer of the phenomenon in turkey eggs, at Department of Agriculture's research center, Beltsville, Md. The bird, first of known parthenogenetic origin to live for more than a few hours, has already made poultry history. Dr. Olsen and co-workers hope to grow the poul to maturity so that it can be used as a breeder, to test, against normal breeders, the incidence of the occurrence and whether it is hereditary. Researchers hope it will provide a key to unlock at least part of the mystery surrounding fertility and hatchability of turkey eggs, a serious problem to the turkey industry.

Bible Comment:

Tolerance Is a Vital Part of Christianity

If one reads the earlier history of many churches, the impression spreads that there were individuals whose religion consisted chiefly in the delight that they took in disciplining others. In general it may be said that the Church has been far readier to adopt Paul's suggestions about discipline than it has been to put into practice Paul's much more important teaching concerning love as the greatest thing in the world.

A good cause is never well served by intolerant attitudes. There is such a thing as being intemperate, even in our advocacy of temperance.

At a temperance convention was heard the loud and raucous voice of a rather intolerant man who was haranguing the crowd. My friend, a total abstainer and strongly opposed to the liquor traffic, said to me, "I never hear that man advocate temperance without feeling like going out and having a drink."

If a man so thoroughly devoted to the cause could be reelected upon in that way, what must have been the effect upon others? The temperance cause has been served most ably by those who have first of all practiced temperance, and who in their total life and conduct have manifested the beauties and graces of Christian living.

In his letter to Titus, Paul sets forth the things which, as he puts it, "beget the sound doctrine." It is a plea for temperance, sober-mindedness, love, and patience, for well-disciplined, noble living, the sort of thing that will never bring shame upon ourselves or disgrace upon the Church. It is as we make all these constructive virtues evident in our lives that we exert the truest influence on others, while attaining what is best for ourselves.



DR. EDMUND STEELMAN

Dr. Steelman To Fill Pulpit At Methodist Church

to fill Methodist pulpit Rev. Edmund H. Steelman will occupy the pulpit at the First Methodist Church Sunday morning and at the evening hour also. He has been associated with Southwestern University in Georgetown as teacher of Bible and philosophy for the past 10 years. He holds a doctor's degree of Sacred Theology from Temple School of Theology in Philadelphia. He has served in the Methodist pastorate for 13 years before going to Southwestern. He is very well known as an "outstanding Bible teacher."

The public is cordially invited to hear him at one or both services next Sunday. The title of his sermon Sunday morning will be "Christ the Lord." The evening subject is to be "The Citadel of the Soul."

The pastor, Rev. Richard R. Smith and family are on their annual vacation. He will be in the pulpit the following Sunday which will be July 15.

Santa Fe Halts Brownwood Train Service To Temple

Discontinuance of Santa Fe Railway motor trains nos. 73 and 74 between Temple and Brownwood, authorized by the state railroad commission, has been effected, L. M. Olson, vice president and general manager of the Santa Fe, announced today.

Olson said the discontinuance was requested because the service was operating at a loss and there was no expectancy of any business which would justify the costly operation. Baggage and express between these two points will be handled by the Santa Fe Trail Transportation Company, Olson said.

C. D. Wescotts Honored By Their Children On Golden Anniversary

The son and daughters of Mr. and Mrs. C. D. Wescott honored their parents Sunday afternoon on their golden wedding anniversary with open house at the home of Mr. and Mrs. E. S. Perdue, 401 East Corner.

Host and hostesses were Hall Wescott, Mrs. E. C. Henderson, Odessa, and Mrs. E. S. Perdue, Eastland.

Other members of the house party were Mrs. Hall Wescott, Mike, Pat and Nikki of Odessa; Mrs. Larry Gage and LaNell; Mrs. B. M. Woods, and Danny of McCarney; Mrs. Carl Duncan and Wesley of Aspermont; Jackie Taylor of Carlsbad, New Mexico; Mrs. C. W. Campbell, E. S. Perdue and Stephen of Eastland.

Mr. and Mrs. Perdue greeted guests at the door where they were received by the honorees.

The register table held an arrangement of styrofoam bells and gold metallic lace lawn. Each guest registered in a white leather bound guest book which was inscribed in gold.

Guests were invited into the dining room where the table was

laid with a white linen cloth. An arrangement of white gladioli with a gold wedding band, spires and leaves formed the table decoration. The three tiered wedding cake was decorated with yellow and white roses and festoons of white frosting interspersed with pearl crystals. Punch was served from a crystal punch bowl.

On the buffet was a miniature bride and groom standing in an archway of gold lace lawn intertwined with baby's breath and flanked with shasta daisies. On the large mirror above the buffet a cluster of gold bells hung from white satin streamers bearing the wedding date, 1906 and the golden wedding date, 1956.

C. D. Wescott and his bride of 50 years, the former Miss Gertrude Taylor, were married July 4, 1906 in Seminole, Texas. They have the honor of being the first couple on record to be married in Gaines County.

More than 75 relatives and friends called to honor the couple. The Wescotts reside in Carbon.

HERE THIS WEEK

Mr. and Mrs. N. P. McCarney of Silsbee are visiting friends here this week. McCarney is the former manager of the Burr's Store here.

SUNDAY VISITORS

Mr. and Mrs. R. L. Young, Jr. of Abilene and their daughter, Joan Young of Houston, spent Sunday in the home of Mrs. Young's parents, Mr. and Mrs. W. A. Martin.

only \$1 down
as low as \$12.12 monthly with trade-in

NEW 1957 Servel
gas ICESERVER
REFRIGERATOR

Mrs. America
Iceserver
Model 1079G

(Also available without automatic Iceserver, Model 1078G)

First choice because it's 3 great appliances in 1! All the convenience of the automatic Iceserver, spacious 49 lb. freezer, plus a luxurious 10.9 cu. ft. automatic defrosting refrigerator. A Gas Servel is your best refrigerator buy. Come to Lone Star today!

TEN YEAR WARRANTY ON FREEZING SYSTEM OF GAS SERVEL

NOW! STEP UP TO SERVEL... AND SAVE!

LONE STAR GAS COMPANY

WATCH FOR...
OPENING DATE
of
KLINE'S
STEAK & CHICKEN SHACK
HIGHWAY 80 WEST
C. S. Kline, New Owner

Overseas Veterans Welcome
Karl and Boyd Tanner
Post No. 4136
VETERANS OF FOREIGN WARS
Meets 2nd and 4th Thursday 8:00 p.m.

SPECIAL!
\$5,000 to \$50,000
VACATION OR TRIP INSURANCE
WORLDWIDE
Auto - Boat - Train - Plane
Kinnaird Ins. Agency
New Location 207 W. Main

1 WEEK TO GO!
\$100,000 TO WIN!

Time's running out in Plymouth's colossal \$100,000 Solid Gold License Plate Jackpot! You must register your car's license number by Saturday, July 14, to be eligible to win up to \$50,000 in cash! You can win if you own ANY car—any make, any model, any year. Hurry! Enter today!

HERE'S HOW TO ENTER—AND WIN!

IF YOU HURRY, your car's license plate may be worth (in cash) its weight—or more—in solid gold! You can win up to \$50,000 in cold cash—if you own any car at all, and if you visit your Plymouth dealer and register its license number by Saturday, July 14.

It's easy to enter—and easy to win! Just go to your Plymouth dealer's and register your car's state license number on the FREE entry blank. (Be sure to bring proof of ownership.) Then complete the simple entry blank and drop it in the official box. Now you're set to win your share of the \$100,000 Jackpot—there's nothing to buy!

Don't put off this chance to hit the Jackpot. Hurry to your Plymouth dealer's and enter today. Complete rules at showroom.

Enter today—see your dealer who sells

446
HUGE CASH PRIZES!

1st PRIZE \$50,000 CASH
2nd PRIZE \$10,000 CASH
3rd PRIZE \$5,000 CASH
4th PRIZE \$1,000 CASH

2 prizes of \$500 cash
40 prizes of \$200 cash
100 prizes of \$100 cash
300 prizes of \$50 cash
Grand total of \$100,000

PLYMOUTH

SOCIAL CALENDAR

Thursday, July 5
2:00 p.m. — The Thursday Art Club will meet in the home of Mrs. Louie Corbell, 311 North Dixie.

2 p.m. — The Morton Valley Home Demonstration Club will meet in the home of Mrs. B. J. French. Mrs. Minnie Mae Hart will present the program.

Saturday, July 7
10 a.m. — The Thursday Afternoon Club will sponsor the Saturday Story Hour for children ages three through the fifth grade in the Woman's Club.

Thursday, July 12
2 p.m. The Morton Valley Home Demonstration Club will meet in the home of Mrs. B. J. French. Mrs. Minnie Mae Hart will be in charge of the program.

FOR GOOD USED CARS
Where the "Golden Rule" is more important than the sharp pencil.
BLEVINS MOTOR COMPANY

CITY ICE
Ph. 10
BLOCK OR CRUSHED
Weekdays and Sundays
Hours: 6:30 a.m. to 7:30 p.m.
"Pop" Whitaker
Open Sundays

no other refrigerator gives you even 1 of the 4 big advantages of a gas Servel

WORLD'S ONLY REALLY MODERN REFRIGERATOR

- 1 AUTOMATIC ICE-SERVER**
Exclusive Servel feature automatically keeps an endless supply of ice cubes ready to use. No more messy ice trays!
- 2 TEN YEAR WARRANTY**
5 years longer than for any other refrigerator! Since there's nothing to wear out, a gas Servel gives you this amazing guarantee.
- 3 NO MOVING PARTS**
No motor to break down or wear out... and no noise ever! Tiny gas flame does all the work. You're always dollars ahead with Gas Servel!
- 4 DEPENDABLE SERVICE**
Years of silent stand-out efficiency through all kinds of weather. Provides continuous moist cold with no "on-and-off" fluctuations!

MERRY MODERN SAYS:
New styling... new features... new everything... it's the 1957 Servel GAS Ice-Server Refrigerator

Not only a large, luxurious, automatic defrosting refrigerator, it's a huge freezer and automatic ice-server, too! Refrigerator has plenty of room for everything, at your fingertips. Separate spacious freezer holds 70 pounds of frozen foods, as well as automatic ice-server!

(Also available without automatic ice-server, Model 1178G)

Only SERVEL makes ice cubes without trays and serves up all you want—automatically!

Reach in... help yourself to one or a bucketful! Servel always serves up more automatically. It makes every other refrigerator old-fashioned the day you buy it!

NOW! STEP UP TO SERVEL—AND SAVE!
at LONE STAR GAS COMPANY or
SMITH PLUMBING & TIN CO.
114 North Seman Street
EASTLAND

PHONE
894
Air
Conditioner
SALES and
SERVICE
Wayne Jackson
AUTO SUPPLY

VISIT FROM GEORGIA
Mr. and Mrs. J. D. Pittman, Jeannie and Anne have as their guests, Mrs. Pittman's parents, Mr. and Mrs. O. T. Hudson and Miss Georgia Braden of Rome, Georgia.
PAINT AND Body Shop
Have the wrinkles rolled out. Paint up the old buggy and make it look like new. Check with us on any painting or body work that you may need done.
BLEVINS MOTOR COMPANY

COURTHOUSE NEWS AND RECORDS
Real Estate Transfers, Marriages, Suits Filed. Court Judgments, Orders, Etc.

INSTRUMENTS FILED
County Clerk's Office
Art's Tool Supply Company to E. F. Arterburn, warranty deed.
E. F. Arterburn to Commercial State Bank, Ranger, deed of trust.
E. F. Arterburn to Commercial State Bank, Ranger, deed of trust.
Earl Bender to W. H. Greer, quit claim deed.
B. M. Bennett to T. C. Terrell, warranty deed.
James A. Bentley to Schlumberger Oil Corporation, assignment of oil and gas lease.
B. O. Blair to Roy H. Horn, warranty deed.
Carbon Independent School District to C. M. Cox, quit claim deed.
C. M. Caraway & Sons to Gorman Seed Company, warranty deed.
S. E. Carter to J. E. Crowder, release of vendor's lien.
H. A. Courtney to J. E. Crowder, release of vendor's lien.
Jim Ray Cox to S. B. Jones, oil and gas lease.
G. C. Cooper to James Cooper, warranty deed.
City of Cisco to S. L. Yeager, quit claim deed.
CIT Corporation to T. C. Fisher, release of abstract of judgment.
W. E. Cureton to Standard Oil Company of Texas, oil and gas lease.
John Davis to Andrew J. Elliott, MML.
Eastland National Bank to Tom Stamey, release of deed of trust.
Eastland National Bank to First National Bank, Cisco, assignment of M.L.
Federal Land Bank of Houston to C. H. Poe, release of deed of trust.
J. W. Finley to V. D. Maynard, warranty deed.
J. W. Finley to V. D. Maynard, deed of trust.
W. H. Greer to Mrs. W. T. Powers, warranty deed.
James E. Graham to First National Bank, Cisco, deed of trust.
Gorman Peanut Company to C. M. Caraway & Sons, deed of trust.
Daniel Hamilton to The Public, proof of heirship.
Vera Hale to L. A. Warren, oil and gas lease.
F. G. Head to Curtis S. Goodman, warranty deed.
J. S. Jones to Roy Wallace, assignment of oil and gas lease.
J. S. Jones to Roy Wallace, assignment of oil and gas lease.
J. S. Jones to Omer O. Bateman, assignment of oil and gas lease.
J. Floyd Killingsworth to E. F. Arterburn, warranty deed.
T. A. Kirk to John R. McFarlin, assignment of oil and gas lease.
Ella M. Key to Jewell Hallmark, warranty deed.
Alvin Kineaid to Lone Star Gas Company, right of way.
Ralph T. Morton to O. C. Morton, MML.
O. C. Morton to First National Bank, Cisco, assignment of MML.
V. D. Maynard to J. W. Finley, warranty deed.
Legion T. Marshall to Aubrey G. Lawrence, assignment.

Roscoe L. Seay to J. W. Foster, warranty deed.
O. F. Sutton to The Public, proof of heirship.
Mary Sutton to S. L. Jones, oil and gas lease.
Raymond F. Smith to First National Bank, Cisco, transfer of vendor's lien.
Tom Stamey to First Federal S & L Assn., deed of trust.
Southwestern Life Insurance Company to J. H. Reynolds, release of deed of trust.
State of Texas to Lone Star Gas Company, contract.
J. M. Smith to E. A. Norton, warranty deed.
T. C. Terrell to B. M. Bennett, warranty deed.
C. E. Wheat to Gulf Oil Corporation, warranty deed.
Travis D. Wheat to Arthur L. Gallagher, warranty deed.
MARRIAGE LICENSES
Arthur Anderson Mosley and Teresia B. Speegle.
Willie Alonzo Ayers and Lemmer Josephine Low.
Jimmy Ray Colburn and Wanda Joyce Yielding.
PROBATE
Joe Brasshears, deceased, application to probate will.
John M. Dunn, deceased, application to probate will.
Argus Craig Loper, minor, application for guardianship.
Mary A. Gage, deceased, application to probate will.
SUITS FILED
91st District Court
Maud Ward v. Claude L. Ward, divorce.
Mrs. Julie Westerman, guardian of the Estate of B. H. Westerman v. B. R. Graves, et al, suit on note and to foreclose vendor's lien.
R. H. Green v. Midori Green, divorce.
Billy F. Sisemore v. Lawanda Yvonne Sisemore, divorce.
Carl Lummus v. Barney Carter, suit on note.
Betty Jane Steffen v. M. E. Steffen.

LOVELACE
Funeral Directors
HAMNER FUNERAL HOMES
Ben E. Hamner
Oxygea Equipped - Air Conditioned
Eastland Phone 17
Cisco Phone 166
AMBULANCE SERVICE ANY WHERE ANY TIME
Nominal Cost Burial Insurance
For The Entire Family

We Are Making No Predictions—
... either about the weather or the elections, but it is certain that many of our customers would find themselves without adequate insurance for replacement in case of total loss by fire, windstorm or other hazards. Building material and labor have greatly increased the past few years. Discuss this matter of increased coverage with us at once if you feel that you could not replace with the amount of insurance you now carry.
EARL BENDER & COMPANY
Eastland (Insurance since 1924) Texas

We're Authorized Dealers For ALL HOTPOINT APPLIANCES
Washing Machines — Dryers — Ranges
Dish Washers — Disposals
Home Freezers — Refrigerators
Air Conditioners — Hot Water Heaters
Call Us For Complete Service On ALL Appliances
SMITH PLUMBING & TIN
114 S. Seaman Phone 304

DAN KRALIS
Candidate for U. S. CONGRESS
U. S. Representative Democratic Ticket
17th Congressional District

Bring the government back to you. It is your servant, not your dictator. I pledge myself before GOD to represent you uncompromisingly and defend our Constitution as a living document meeting the needs of a great growing, powerful technologically advanced, self governing republic. I am willing to die in the defense of this GOD given right.
DO NOT FORGET TO VOTE AT THE JULY 28TH. PRIMARY FOR THE CANDIDATE OF YOUR CHOICE
Pd. Pol. Adv.

80 MERCURY PHAETONS FREE
IN ED SULLIVAN'S \$425,000 MERCURY CONTEST
JUNE 11th—AUGUST 4th
TO EACH WEEK IN 8 WEEKLY CONTESTS
2680 PRIZES IN ALL
1st PRIZE EACH WEEK
MERCURY MONTCLAIR PHAETON
plus all-expense paid trip to New York for two via American Airlines • suite at Waldorf-Astoria • guest of Ed Sullivan at his show.
2nd - 10th PRIZES EACH WEEK
9 MERCURY MONTEREY PHAETONS
... plus 25 G.E. portable TV sets, light, easy to carry ... 300 Elgin American Signet automatic cigarette lighters each week.
SPECIAL BONUS AWARDS
\$10,000 CASH to new Mercury buyers—Awarded instead of new Phaeton if you buy a new Mercury during contest and before being advised of winning one of the 10 top weekly prizes.
\$2,000 cash to used car buyers—Awarded in addition to new Phaeton if you buy a used car during contest and before being advised of winning one of the 10 top weekly prizes.
(See Official Entry Blank for details)
YOU CAN ENTER EVERY WEEK ... here's all you do!
1 Go to your Mercury dealer today. 2 Complete last line of Mercury Phaeton rhyme. 2 Pick up Official Rules and Entry Blank. 4 Mail Official Entry Blank to "Mercury Contest".
GO TO YOUR MERCURY DEALER TODAY!

YOUR FRIENDLY 5-10-25c STORE
PERRY'S SERVING TEXAS AND TEXANS FOR 41 YEARS
41st Anniversary SALE
Celebrating 41 Years of Steady Progress
BEGINS SATURDAY, JULY 7th
AND CONTINUES THROUGH SATURDAY, JULY 14th
7 BIG DAYS OF REAL BARGAINS FOR THE ENTIRE FAMILY

LOOK! LOOK!
VALUES TO 49c YARD
BIG ASSORTMENT DRESS MATERIALS
All New ... Just Received
29c YARD

Regular \$1.98 Rug 27x50 INCH LOOP
RUGS
8 Beautiful Colors to Choose From
\$1.57

BIG 22x44 INCH TOWELS
2 FOR **87c**
These are seconds of a much higher price towel but a real value at

DON'T MISS THIS VALUE!
Our FAMOUS
51 - GAUGE
15 - DENIER
FIRST QUALITY
PATRICIA NYLON HOSE
2 Pairs For **\$1**

CHILD'S COTTON PANTIES
Colors: White, Pink, Blue, Maize
Sizes 2 - 4 - 6
5 pairs for 1.00

SPUN RAYON HEADSQUARES
Size 24 x 24 inches
Regular 35c
4 for 1.00

Girls Rayon PANTIES
Colors: White, Pink, Blue, Maize.
Sizes 2 to 4
4 pairs for 1.00

Boys POLO SHIRTS
4 for 1.00
Sizes 4 - 6 - 8

Mens Heavy Cotton SOCKS
Color: White
Size 10 1/2 to 12
5 pairs 1.00

Imported
CHINA CUP and SAUCER
19c

Folding LAWN CHAIRS
Steel Frame
5.95 value .. **3.87**

26 Quart Metal WASTE BASKET
1.19 value .. **87c**

49c VALUE NYLON AND ACETATE LADIES PANTIES
MESH STYLE, ELASTIC LEG BREE
3 PAIRS FOR \$1.00

SUMMER GOODS REDUCED

39c Girls and Boys Play Shorts	3 for 1.00
49c Girls & Boys Play Shorts	37c
79c Girls Shorts	57c
1.00 Girls Shorts	77c
1.00 Ladies Shorts	77c
1.00 Shortie Pajamas	77c
1.00 Boys Sport Shirts	77c
1.39 Boys Sport Shirts	1.07
1.49 Mens Sport Shirts	1.17
1.98 Mens Sport Shirts	1.57
2.49 Mens Sport Shirts	1.97
69c Straw Spor t Caps	47c
49c Straw Sport Caps	37c
39c Straw Sport Caps	29c

LADIES Summer Cotton DRESSES
1.97
Reg. 2.93 Value

BE HERE SATURDAY

You'll find MANY GOOD VALUES that are not mentioned in this ad.

PIGGY WIGGLY

KNOWN FOR FINER FOODS!

HUNT'S FRUIT Cocktail No. 2 1/2 Size 39c	BORDEN'S Mellorine 1/2-Gal. 59c
PINTO BEANS 2 Lbs. 19c	ZESTEE APPLE or GRAPE JELLY 3 20-Oz. Jars 1⁰⁰
WHITE BEAUTY SHORT'N 3 Lb. Can 75c	IMPERIAL PURE CANE SUGAR 10 Lb. Bag 95c
HOLLENDALE OLEO 2 Lbs. 39c	HI-C ORANGEADE 46-Oz. Can 25c

COCA-COLA 12-Bottle Carton **49c**

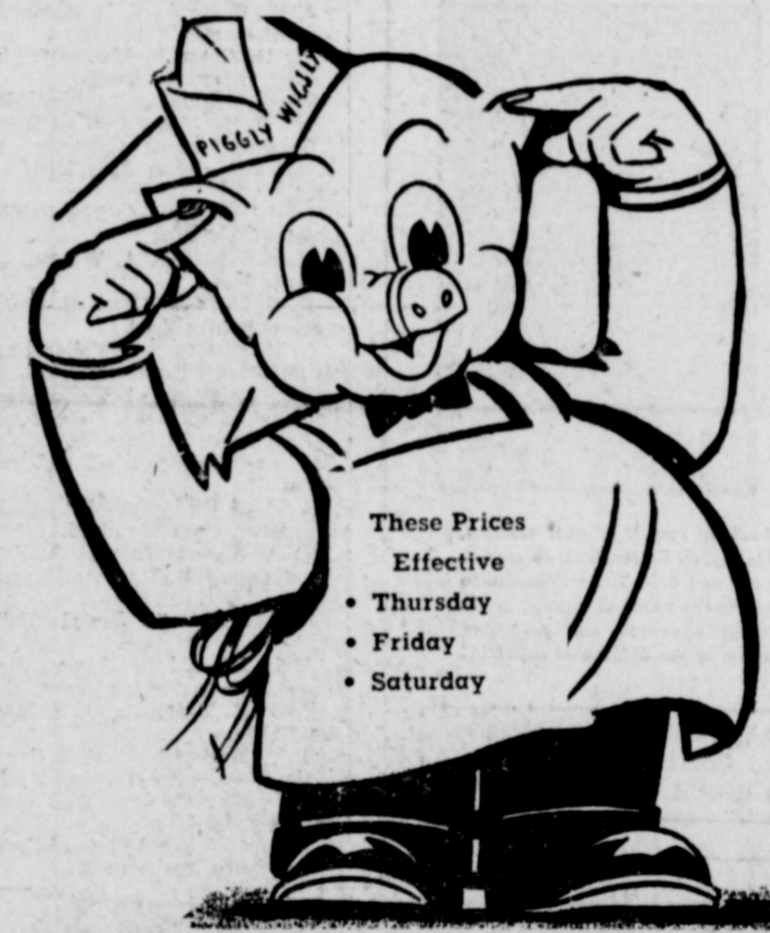
DR. PEPPER 12-Bottle Carton **49c**

SALAD OLIVES Pine Grove 10-Oz. Jar 39c
BETTY PICKLES Sour or Dill Qt. Jar 29c
FRENCH'S MUSTARD 9-Oz. Jar 15c
PECAN SANDIES New Supreme 1-Lb. Bag 49c

LIBBY'S VIENNA
SAUSAGE
2 for 35c

LIBBY'S LUNCHEON
MEAT 35c

LIBBY'S FROZEN
MEAT PIES
Chicken or Beef **25c**



HAMS Half or Whole, Lb. 59c
ARMOUR'S MATCHLESS BACON Sliced Lb. 39c
SLICED SWISS or PIMENTO CHEESE 3-Oz. Pkg. 35c
FRANKS Lb. 39c
BABY BEEF 7-ROAST Lb. 39c
FRESH GROUND BEEF Lb. 29c
VELVEETA CHEESE 2-Lb. Box 89c
ARMOUR'S LUNCH LOAVES Fields Loaf Olive Loaf Liver Cheese Bologna, Pkg. 29c

LEMONS Lb. 17c
KY. FRESH GREEN BEANS Lb. 25c
FRESH CORN 3 Ears 19c

CROWN PLASTIC CUPS 6 For 25c
DIAMOND PAPER PLATES 9-Inch Pkg. 17c
ZEE 80 Count—Assorted Colors NAPKINS 2 For 27c

BANANAS 2 Lbs. **25c**

FRESH—CARTON TOMATOES 19c
SANTA ROSA PLUMS Lb. 25c

"THERE'S NO BETTER PLACE FOR FOODS"

PIGGY WIGGLY