

# Eastland Echoes

By Casey

**THOUGHT FOR TODAY:** "Don't argue with a fool. He might win." — (Crawfordville, Ga., Advocate).

Gotten your Quarterback Club membership card yet? We have a very strong feeling that Chairman Hubert Westfall or any member of his soliciting staff will let you talk them out of one — for just the reasonable fee which goes to a wonderful local cause, wholesome youth recreation.

The Quarterback club is trying to finish up the campaign right away so we know they'll be grateful to all who take their memberships at once. Remember: It's an investment in health, happiness and general well-being of our youngfolk!

A woman went to buy a drinking bowl for her dog, and the shopkeeper asked if she would like one with the inscription "For the Dog." "It really doesn't matter," she replied. "My husband never drinks water, and the dog can't read." — Virginia Trower.

It's a darn good idea to get to tidying premises right now, in the clean-up campaign sponsored by the Civic League and Garden Club, in which the city is cooperating wholeheartedly. While the actual community-wide rubbish pickup isn't until April 9, that date will roll around before we hardly can realize it.

You know it's a fact, by the way, that folks all too often aren't even aware that the need for renovating exists, until they make a careful check-around. Of course, there are many worthy angles greater attractiveness, naturally, and also public health and better prevention of fires.

## In 2 1/2 Hours This Party Nabs 33 Black Bass

If we had not seen it, we wouldn't have believed it! Warner and Nell Coffman, with a small party of friends, caught 33 black bass in 2 1/2 hours Saturday afternoon at Lake Daniel, near Breckenridge.

## Mavs Miss Win At Bangs By 1-16 Point

The Eastland High School Mavericks came within one-sixteenth of a point winning the Bangs Invitational Track Meet in competition with a dozen schools of this area Saturday.

## Hamner Tells Plans For Convention Of Funeral Directors

Six hundred persons — funeral directors and their wives — are expected to attend the annual Texas Funeral Directors association convention which will be held May 24 and 25 at the Statler-Hilton Hotel, Dallas, according to

Association President Ben Hamner of Eastland.

Partly cloudy, cooles with a chance for dust Tuesday. Cooler Tuesday night and Wednesday. High Tuesday 90-95, low Tuesday night 45-60 and high Wednesday in the 70s.

## Eastland Girl To Return From Choraliers Trip

Miss Edith Cox is returning today from South Texas and the Rio Grande Valley, with the Mary Hardin - Baylor Choraliers, of whom she is a member.

School, radio, TV and church appearances were held at San Marcos, Beeville, Alice, Premont, Falfurrias, Rio Grande City, McAllen, Mercedes, Mission, Harlingen, Brownsville, Victoria, Cuero and Belville.

Members of the Choraliers are Jackie Campbell; Richardson; Pat Davis, Minden, La.; Marilyn Watkins, Smithville; Shirley Able, Killeen; Edith Cox, Eastland; Janice Wheeler, Irving; Mary Ann Adams, Georgetown; Bobbie Skinner, Houston; and Raye Veach, Premont, with Lou Shelton, Walnut Ridge, Ark., as accompanist.

## 45 Years Ago . . .

W. C. Hammond, Eastland merchant, at 2 p.m. Monday held up his watch and said: "Forty-five years ago exactly Mrs. Hammond and I got married. We were from Mineral Wells and married in the Palo Pinto Courthouse, by Dist. Judge Oxford."

## Smaller Farmer Is Not To Gain Through Farm Bill - Burleson

By OMAR BURLESON, M.C. 17th District, Texas

WASHINGTON, D.C. — Three weeks ago, this column carried some definitions of terms frequently heard in Washington. It provoked quite a few comments, so I shall try a few more. Some of these are often heard which an inquiry is made to a governmental agency:

**Expedite:** To confound confusion with commotion.  
**To activate:** To make carbons and add more names to the memo.  
**To implement a program:** To hire more people and expand the office.  
**Under active consideration:** We are looking for it in the files.  
**Clarification:** To fill in the background with so many details that the foreground goes underground.  
**To make a survey:** We need more time to think of an answer.  
**Will advise you in due course:** If we figure it out, we'll let you know.  
**Board:** First, made of wood; second, long and narrow; and third, sometimes warped.  
**Although legislation for feder-**



VOLUME TWENTY-SIX

## Cantata Is Given At First Methodist

Palm Sunday evening was the occasion for the presentation of a choir of 35 voices in the Easter Cantata, "The Crucifixion," at the First Methodist Church under the direction of Mr. and Mrs. Al Lospiech.

Soloists for the largely attended religious production were Mrs. Don Doyle, Janis Little, Bill Frost, Howard Gill and Director Lospiech. Mrs. Joseph M. Perkins was hymn narrator. The invocation was given by the pastor, the Rev. Richard R. Smith III.

Included in the inspiring program were choruses, duets, solos and hymn readings.

# Eastland Telegram

"COVERING EASTLAND COUNTY"

EASTLAND, TEXAS, TUESDAY, MARCH 27, 1956

## Countians To Austin To Ask For Road Over Dam At Leon



**EASTLAND HIGH SCHOOL BAND**—here's a musical organization which gives much life and color to school and community. Pictured (left to right) Back row—Carl True, Lanny Lee, Gary Lusk, Richard Connell, Otis Green, Wayne Dodson. Next row—Terry Gattis, Hubert Williams, Benny Cogburn, Victor Miller, 3rd from back—Beverly Moezer, Charlotte Vaught, Rosemary Jones, Freddie Taylor, Juan Jay Smith, Band Director Howard Gill. 4th from back—Alice Joyce Cushman, Geraldine Johnson, Martha Freese, Kay Culbertson, Jackie Baggett. 5th from back—Frances Cogburn, Linda Huckabay, Drum Major David Carothers, Betty Young, Ann Toombs. Front row—Jo Ann Hollis and Sylvia Latham, majorettes.

## Haynes, Chairman Of Oil Info Unit, New Citizen Of Eastland

Ed Haynes has been appointed chairman of the Eastland Oil Industry Information Committee and Service Program. Appointment of Mr. Haynes, who is assistant treasurer and auditor of the Irish Drilling Company of Eastland, was announced by John W. Storey, area oil industry information committee chairman.

This American Petroleum Institute-sponsored program seeks to make clear how well the people of this area are served by many oil businesses, and to gain support for conditions under which they can continue to be privately managed, fully competitive and financially sound.

## Taxable Owners Property Water Dist. Voters

Taxable property holders in the Eastland County Water Supply District will be entitled to vote in the district election of four directors April 3.

The Eastland voting box will be at the office of Peace Justice Jim Boggs, with H. P. Pentecost as election judge, while the vote at Ranger will be in the Chamber of Commerce office, with W. W. Paschal as judge.

Names of four whose terms are expiring have been submitted for re-election: President Guy Parker and Larry E. McGraw, Eastland and C. B. Pruet and Dr. P. M. Kuykendall, Ranger.

## Cafe Business In Cisco Bought By W. Coffmans

Mr. and Mrs. Warner Coffman will discontinue operation of the Connellee Hotel Coffee Shop Friday night. It has been announced.

The Coffmans, who own a home in Cisco, have purchased a cafe in that city and will begin its operation within the next few days. To be known as "Coffman's Coffee Shop," the cafe is located a few blocks south of the Cisco overpass on the Rising Star highway.

Ed Murphy, manager of the Connellee Hotel, said no new operators of the Connellee Coffee Shop had been obtained as of this moment, although several were under consideration.

The hotel hopes to obtain a new operator by Friday so that service may continue uninterrupted.

## Eastland And Ranger CC Delegations To Meeting In Capital

### County Youth Is Geography Frat Member

Ben Nix, Gorman, is one of 12 new members of Gamma Theta Upsilon, national professional geography fraternity at North Texas State College.

Nix, the son of Mr. and Mrs. James M. Nix, Gorman, is a freshman accounting major.



PATSY HILL

### Patsy Hill In Graduate Course Offered In NY

Miss Patsy Hill is in the midst of a 16-week graduate course in operating room technique at New York University Hospital and Bellevue Medical Center. The course began earlier this month.

Daughter of Mr. and Mrs. Samuel E. Hill of Abilene, Miss Hill is a 1951 graduate of Abilene High School. She graduated from City - County Hospital School of Nursing in Fort Worth in 1954.

She worked for one year in the operating room of Medical Center Hospital at Odessa. She is now with B&W Clinic in Eastland.

Miss Hill plans to return to the B&W Clinic in Eastland after she finishes the course in July.

## Whiskey Trial Proceeds In District Court

Mrs. Lola Harris, Ranger Negro, went on trial in District Court this morning on the charges of possession of alcoholic beverages for sale.

Charges were filed by the Ranger police department Feb. 13 after a surprise raid netted nearly \$2000 in illegal whiskey.

Mrs. Harris pleaded "not guilty" in county court and the case was automatically transferred to the higher court.

Found in a special built cement trough in a small, abandoned house, the stash included 24 fifths of whiskey and gin, 185 pints, and 519 half pints.

The contraband was released to the State Liquor Control Board the day following the raid. The raid netted more illegal whiskey than at any other time in modern history in Ranger, police surmised.

### RETURNS HOME

D. R. Gilbreath of Houston has returned home after a visit with his parents, Mr. and Mrs. J. R. Gilbreath, here. He had brought home his mother, who had been visiting him in Houston.

Seeking early improvement of a road in the Lake Leon region, which traverses the dam, a delegation from the Eastland and Ranger Chambers of Commerce will go into conference with the State Highway Commission at Austin at 10:30 a.m. Thursday, March 29.

The route, for which hard-surfacing is sought, would be a farm-to-market road, leaving Highway 80 and going thence to the lake and across the dam, then on south to the Staff - Desdemona road. The chambers have been working on this project for some time.

It was known definitely that Manager H. J. Tanner and Dr. J. C. Whittington will represent the Eastland chamber and it was considered probably that there will be others from Eastland also.

### Fisherman Made Happy by Catch

Among happy individuals in this community today was J. H. Pittman, for yesterday afternoon, at Lake Leon, he landed a 4 pound 1 ounce bass.

**BE SURE—SEE**  
Don Pierson Olds-Cadillac Eastland  
Quality Cars at Volume Prices

## Prizes Offered For Big Fish At Leon

### Pierson V-P of Rotary Ranger Jr. In Program

A male quartet from Ranger Junior College furnished a heartily-received program for Rotary at its Monday meeting at the Connellee Roof Garden.

President Bernard Hanna, who presided over the session, presented Taylor Smith, who, in turn, introduced Al Lospiech of the Ranger college Department of Music. Mr. Lospiech presented the talent.

The quartet members are Tommy Stark, Rubba Canuteson, Dan Mitchell and Bobby Martins. They gave a varied musical program interspersed with a bit of clowning, keeping the smiles going.

Jo Ann Crider, prominent in many student activities at the college, announced the March 27 musical play, "Gone With A Debrize," and invited the Rotarians to attend.

In "deciding a tie," Don Pierson — winner by the flip of a coin — was chosen Rotary vice-president, after he and Larry McGraw had tied in a recent election, it was announced by President Hanna.

Messrs. Pierson and McGraw, the food committee, announced that Mrs. Ed Wende had been engaged as food caterer for the club's luncheons.

Charles Turner was a guest of Henry Pullman. The club voted to take a program to Ranger Rotary April 11. It was announced that Rotary Scout Troop No. 6 will have a float in the County Livestock Show Parade March 30.

The president appointed the following committee to handle Rotary's participation in a baseball game between Rotary and Lions, a Little League benefit: The Rev. Richard R. Smith III, Dr. B. B. Westbrook, Hubert Westfall, Tom Wilson and the Rev. Harvey Kimbler.

**Your New Car Financed At Low Bank Rates With Your—**  
**EASTLAND NATIONAL BANK**  
Member F. D. I. C.



PVT. JERRY M. COLLINS

### Pvt. Collins On Pre-Embarking Visit At Home

Pvt. Jerry M. Collins, son of Mr. and Mrs. Henry Collins of Carbon is enjoying a pre-embarking leave prior to shipping overseas. Jerry (Mike) has been assigned to the 57th Anti-Aircraft Artillery of the 3rd Armored Division stationed at Ft. Knox, Kentucky.

The Division has completed its stateside field training and will embark for Germany under the command of Lt. Gen. Bruce C. Clarke. The 3rd Armored Division will team up with the 2nd Armored Division in strengthening the striking power of the 7th Army.

Graduating from Carbon High School, Mike was employed at the Gorman Progress for a short time before enlisting in the Army.

## Hope Sizable Group Goes To WTCC Meeting

Just to sweeten the pot a little bit, E. Richardson, caretaker at the Lake Leon Dam, is offering a batch of prizes for the biggest fish that are weighed in at his place, beginning April 1.

Richardson is offering \$10 for the biggest crappie, \$5 for the biggest catfish, and a fine rod and reel for the biggest bass.

Richardson's contest lasts from April 1 to September 1 and he invites all fishermen to stop by his headquarters at the dam and weigh their catches if they think they have a chance of winning a prize.

### DWI Conviction Monday; Liquor Trial Tuesday

Floyd Spencer of Abilene, tried in Dist. Judge Turner Collier's court, on third-offense driving while intoxicated, was assessed 90 days in jail and court costs Monday. He had pleaded guilty.

The case Lola Harris of Ranger, charged with possession of intoxicating beverages, was continued from Monday until Tuesday, for trial.

## Hope Sizable Group Goes To WTCC Meeting

Chamber of Commerce authorities today expressed hope that a sizable delegation will go from Eastland to the West Texas Chamber of Commerce Convention in Mineral Wells March 28, 29 and 30.

Grady Pipkin is local member of the West Texas CC directorate. The chamber here has been informed that an interesting and instructive program has been arranged.

**AIR CONDITION**  
ANY CAR—3 HOURS  
Reg. \$400 with 4-cyl. compressor and electric slat.  
SPECIAL ONLY \$299  
Don Pierson Olds - Cadillac  
Eastland



# Eastland Telegram

Eastland County Record established in 1931, consolidated August 31, 1951. Chronicle established 1887, Telegram established 1923. Entered as second class matter, U. S. Post Office at Eastland, Texas under the act of Congress of March 3, 1879.

FLOYD W. CASEBOLT, EDITOR and MANAGER

TIMES PUBLISHING COMPANY  
Published Tri-Weekly—Tuesdays—Thursdays—Sundays  
FLOYD W. CASEBOLT and JOE DENNIS, Publishers  
FAY CASEBOLT, Associate Editor  
NORMAN WRIGHT, Advertising Manager

One week by carrier in city 1  
One month by carrier in city 2.75  
One year by mail in County 27.50  
One year by mail in state 27.50  
One year by mail out of state 32.50

NOTICE TO PUBLIC—Any erroneous reflection upon the character, standing or reputation of any person, firm or corporation which may appear in the columns of this newspaper will be strictly corrected upon being brought to the attention of the publishers.

## Classified Ads..

### FOR RENT - MISC. FOR SALE -

**FOR RENT:** small furnished apartment for one or two people. Call 811-W.

**FOR RENT:** Nice unfurnished house. Call 323-W.

**FOR RENT:** Furnished or unfurnished duplex. 106 E. Valley, Phone 612.

**FOR RENT:** 3 room house on North Hillcrest. See Ben Hamner at Hamner Funeral Home.

**FOR RENT:** Four room furnished duplex. Phone 394-J.

**FOR RENT:** Furnished apartment. Phone 9589. Hillside Apartments.

**FOR RENT:** 2 furnished apartment. 1201 S. Seaman, Phone 358.

**FOR RENT:** One and two bedroom furnished apartment, 612 W. Plummer.

**FOR RENT:** 2 - room furnished apartment, close in. See Mrs. John Smith at Eastland Hotel.

**FOR RENT:** Nice Bedroom, air conditioned, private entrance and garage. 462 S. Oak Lawn.

### SPECIAL NOTICES

Stated meeting Eastland Lodge No. 467, Second Thursday each month, 7:30 p.m.  
Henry Van Geem, W.M.  
L. E. Huckabay, Sec'y.

### REAL ESTATE -

**FOR SALE:** 460 acres land 4 miles north of Eastland. Ed Sargent, Phone 707-J-4.

**DO YOU WANT A NEW HOME?** I have two of the nicest locations in Eastland to build on. One lot 103' x 160' on South Daugherty, the other 100' x 140' on South Hillcrest. If you are interested please call 112 or 1014 after six o'clock.

### MISC. WANTED -

**WANT TO BUY:** Good used windmill head complete with 8-foot wheel. H. C. Jordan, Rt. 1, Eastland, Phone 812-W-1.

**WANTED:** Ironing, 413 S. High.

**CONCRETE WORK** of all kinds. House leveling. Foundations at reasonable prices. Phone 425 Ranger.

**WANTED:** Hauling of any kind. Phone 795-J.

**FOR SALE:** Bedding plants for your flower beds and vegetable garden: Red Cloud and Earliana Tomatoes, Hungrain & Bell Peppers, Canna Bulbs, Elephant Ear Bulbs, Caladium and Dahlia Bulbs. Poe Floral, West Main Street.

**FOR SALE:** Almost new Huff Sportsman English Bicycle. Well kept. 3-speed gears, tools, tool bag, hand brakes. Regular price \$54.95. Will sacrifice. Call Buddy Moser phone 1069, Eastland.

**FOR SALE:** OR TRADE for 2 wheel trailer; upright Wurliitzer piano, or 1940 Hotpoint electric range and divan. Phone 797-R.

**FOR SALE:** 2—100 feet water-front lots or 1—200 feet lot. Good location on Lake Leon. Call 752-W-4.

**FOR SALE:** A few fat butcher goat kids weighing about 40 pounds. \$5 each. H. C. Jordan, Rt. 1, Eastland, Phone 812-W-1.

**FOR SALE:** Kitchen range, separate broiler unit and also a (Rudd) table-top water heater, both in good condition. Mrs. S. Perlestein, 717 Cypress St., phone 539 or 284, Ranger.

**BUY CHAIN LINK FENCE:** 3 years to pay, no down payment. Keep your own children and pets at home, keep strays out. Call Marvin Hood, 108-J.

**NOTARY SEALS:** At Eastland Telegram Office Supply.

**FOR SALE:** Liberty Record Storage Boxes. Telegram Office Supply.

**FOR SALE:** All types of bedding plants, including several most wanted varieties of tomatoes. Flower Shop, 200 N. Green St.

**FOR SALE:** Ed T. Cox's Eastland County Histories. Eastland Telegram.

**FOR SALE:** A.K.C. registered Boxer pups. T. R. Craig, 522 Pine, Ranger.

**FOR SALE:** Helpy Self Laundry, only one in town, doing nice business. Phone 63, Moran, Texas, or write Box 165, Moran.

**FOR SALE:** Cheap. Woodwit clarinet and flute, 912 Young Street, Ranger.

**FOR SALE:** Bred Hampshire gilts with or without papers. Homer Stephens, Route 1, Gorman. Midwest of Rucker.

**HELP WANTED Male -**

HELP WANTED: Service Station Attendant, experienced only. Earley Tire Service, 302 W. Main.

### Mavs -

(Continued From Page One)  
Larry Tankersley was third in the discus and fourth in the shot-put events.

The Mavericks placed third in the mile relay with a team composed of Clyde Evatt, Henry Sims, Don Smith and Duard Turner. The Mavs were also third in the sprint relay (440) with Dick Corbell, Duard Turner, Clyde Young and Charlie Dry participating.

Some of the teams taking part in the meet besides Eastland, Early and Bangs were, Mason, Llano, Cross Plains, Richland Springs, Rising Star and Santa Anna.

Mrs. Carl Jones returned home Friday night from Lingleville where she visited her mother, Mrs. Texa Garrison, who is recuperating after having been ill in the Dublin hospital.

### Pipkin -

(Continued From Page One)  
per-market on South Grant. At present there are Piggly Wiggly stores at West 10th and North Golder and East County Road near East 27th.

The new southside Piggly Wiggly will have approximately 12,000 square feet of floor space and an additional 70,000 square feet of space for customer's parking.

Along with the supermarket, there will be built a variety store and a cleaning plant. The date for completion is set for around Sept. 1. The company has markets now in Ranger, Eastland, Cisco, Graham, Coleman, Kermit and four in Midland, besides the three here.

Perry, who is president of the First State Bank, said the really deal was made by him and his associates, and is not a bank transaction in any way.

There are no definite plans for the Piggly Wiggly property just yet, Perry said, as far as a building is concerned. However, it is planned to develop a parking place there for the time being for customers of First State Bank and other customers.

As the growth of the town continues and developments warrant, Perry said an investment in a new structure is contemplated.

Mrs. Ruby Crawley and mother, Mrs. George Prestridge, attended the presentation of Icecapades in Fort Worth Sunday.

AN INTERSTATE THEATRE

## MAJESTIC

Tuesday - Wednesday

### JOAN CRAWFORD

PERSONAL AND REVEALING!  
A Stinging Performance!

## QUEEN BEE

BARRY SULLIVAN  
BETSY PALMER

## T. L. FAGG R. L. JONES

REAL ESTATE  
Property Management  
Home and Farm Loans

LOVELACE  
EASTLAND TEXAS  
PHO. 314

## PHILCO

TV with Automatic TOP TOUCH TUNING

### FREE Remote Control

With purchase of any Philco TV with Top Touch Tuning

**Hamner Appliance Store**  
205 S. Lamar Phone 623

## AROUND the TOWN

By Fay

A man's first care should be to avoid the reproaches of his own heart; his next to escape the censures of the world. — Addison

We like quotations. Here is another we like by Ralph Waldo Emerson: Great men are they who see that spiritual is stronger than any material force; that thoughts rule the world.

Truly beautiful and wondrous—"The Crucifiction" by John Stainer, this writer heard Sunday night at the First Methodist Church, with Mrs. Don Doyle, soprano; Bill Frost, tenor; Howard Gill, bass; Janice Little, mezzo soprano, and Mrs. Joseph M. Perkins, narrator. The church choir was directed by H. S. Lotspeich with Mrs. Lotspeich as organist.

Yesterday and today the Sixth District, TFWC, is meeting in San Angelo. Mrs. George A. Beard of San Angelo is general convention chairman; Mrs. Mason Altman of Abilene, convention program chairman; Mrs. L. E. Dudley of Abilene, TFWC president, was speaker at the President's Dinner; Mrs. Joseph M. Perkins of Eastland, chairman of education department, GFWC, was the speaker at the Education Luncheon today-noon; and Mrs. Dudley is serving as chairman of the nominating committee composed also of Miss Eudora Hawkins of Abilene and Mrs. Perkins of Eastland.

Going to the convention from Eastland were Mrs. Frank Sparks, who is representing the Thursday Afternoon Club, of which she is president; Mrs. Horace Horton, delegate from the Civic League of which she is first vice president and immediate past president, and Mrs. Perkins, GFWC board member.

### Smaller -

(Continued From Page One)  
"family-size" farmer will not have his purchasing power increased under the bill.

Strangely enough, if we go far enough back in history, we can usually find a parallel to most any situation experienced today.

The decay of Rome began when the hardy farmer - citizens, whose valor made Rome great, ceased to be able to maintain themselves and their families by their small holdings. In hardly more than a generation, the family-size farms were swept away in Italy. That made way for cast consolidated absentee owners. It was the beginning of the end. When the little farms went, it was as though the nation's healthy roots in native soil were stricken and withered. In the end the nation was stricken also.

The warnings of history need to be remembered at this moment. A single statistic tells the story. Per capita farm income has now declined to the level of \$860. The per capita income of Americans in other business and occupations now stands at \$1922. Farm folks are less than half as well off as others in America.

"When we have gone as far as we can on our feet, we might try our knees."

## Lacasa Lines

Mr. and Mrs. D. B. Roney

Mr. and Mrs. Zelma Herrington and son, Larry, went to Lubbock over the weekend to visit her father, Jim McNabb who is ill at the home of a son. Their son, Bill Herrington, who is a student at Hardin-Simmons University, Abilene, spent the weekend at home.

Mrs. Charlie Morris of Wichita Falls spent last week visiting Mr. and Mrs. Jack Pockrus.

### Political Announcements

This paper is authorized to make the following announcements, subject to the Democratic primary election, July 24, 1956.

**For Dist. Judge**  
T. M. Collie

**For Sheriff**  
J. B. Williams  
(For Re-election)

**For County Attorney**  
J. M. Nuessle

**For Assessor-Collector**  
J. C. Allison  
Truly Carter

**For Constable Pct. 3**  
Tom C. High  
Porter Woods

**For Commissioner Pct. 1**  
Tip Artlett

A group of visitors from Oak Grove Church rendered a song service for Mr. and Mrs. Jack Pockrus Sunday afternoon. They were Rev. and Mrs. Bill Brock, Jamie Hoft, and Robert Groom of Abilene and Mr. and Mrs. T. R. Farrar, Kitty, Lloyd, Lynn and Jerry Farrar of Fort Worth.

Mrs. Zelma Herrington is ill in the West Texas Clinic at Ranger.

### CARD OF THANKS

We wish to express our sincere appreciation to the many friends for every act of kindness and expression of sympathy for the nice food and beautiful floral offerings shown us at the loss of our loved one. May God bless you. The family of Durward Dick.

### Off to a Good Start—

... is the way one of our customers expressed it a few days ago in commenting on the wind and hail in February. It does seem to us that the two twins have gotten their seasons mixed up. We do expect their appearance in April and May, but February, how naughty! Any way it's best to be prepared for all seasons. Do you have the deductible on your policy? If so, this might be the year to have it removed. Who knows?

## EARL BENDER & COMPANY

Eastland (Insurance since 1924) Texas

## DIXIE Drive-In

EASTLAND RANGER HIGHWAY

Box Office Opens 7:00  
First Showing 7:30  
Second Showing 9:30

**TUESDAY ONLY, MARCH 27**  
Tuesday Is Bargain Day—Adults 25c  
Children Under 12—FREE

ONE OF THE ALL-TIME GREATS!

FRED MacMURRAY  
SYLVIA SIDNEY  
HENRY FONDA

## THE TRAIL OF THE LONESOME PINE

Color by TECHNICOLOR

with FRED STONE - NIDEL BRUCE - BELLUAH BOND - ROBERT BARRETT - SPANKY McFARLAND - FUZZY KNIGHT - Based on John Fox, Jr.'s Famous Novel - Directed by HENRY HATHAWAY - A WALTER WANGER Production - A Paramount Release

PLUS: Color Cartoon

WEDNESDAY - THURSDAY, MARCH 28 - 29

THEY HOLED UP IN HELL!

RICHARD CONTE  
VICTOR McLAGLEN  
RICHARD CARLSON  
MALA POWERS

## BENGAZI

with RICHARD CARLSON  
SUPERSCOPE

PLUS: Color Cartoon and Live Adventure

Call 601 For Classified Ad Service

OPEN UNDER NEW MANAGEMENT

## MAJESTIC CAFE

South Side of Square

Breakfast Lunch Dinner

We Specialize In STEAKS AND PIES

Mr. and Mrs. S. D. Pack

## MAYTAG

AUTOMATIC AND CONVENTIONAL WASHERS - GAS RANGES

"We Service What We Sell"

**Hamner Appliance Store**  
205 S. Lamar Phone 623

## MOBIL 210

★ Stays 34% Stronger  
★ Lasts 14% Longer  
★ At the Sign of the FLYING RED HORSE

**Earley Tire Service**  
302 W. Main - Eastland - Phone 208

## Believe It Or Not!

This Beautiful Gleaming White

### 3-Pc. BATHROOM SUITE

FOR ONLY... **\$110** \$179 VALUE!

A tremendous Special Purchase! And get this—the price includes all the fittings—something you seldom get at any price! Five-foot cast iron tub with porcelainized finish with mixer faucet and drain; 19x17-inch vitreous china lavatory with mixer faucet, trap and supplies; all-in-one-piece commode with white seat and supplies. A sensational value if we ever saw one.

Remember... This suite is complete with all fittings  
Only the Best - Guaranteed By A Plumber.

## SMITH PLUMBING & TIN

114 S. Seaman Phone 304

## BE SURE YOU ARE READY TO GET INTO The Easter Parade

<h3>BOTANY (500)</h3> <p>SPRING &amp; SUMMER SUITS of Dacron &amp; Wool <b>\$55.00</b></p>	<h3>CLOTHCRAFT</h3> <p>SPRING &amp; SUMMER SUITS of Dacron &amp; Wool <b>\$49.50</b></p>	<h3>MOHARA</h3> <p>SPRING &amp; SUMMER SUITS 100% All Wool <b>\$49.50</b></p>
<h3>SPORT COATS</h3> <p>Beautiful snow white coats to blend with any color, and pastels PRICED FROM <b>\$25.00</b></p>	<h3>RAYON &amp; RAYON Blend</h3> <p>SPRING &amp; SUMMER SUITS PRICED FROM <b>\$27.50</b></p>	<h3>JARMAN</h3> <p>SPORT SHOES PRICED FROM <b>\$9.95</b></p>
<h3>Men's SLACKS</h3> <p>A large selection of all the new shades and patterns in all the new materials. PRICED FROM <b>\$6.95</b></p>	<h3>BOYS</h3> <p>Sport Coats Slacks Sport Shirts Shoes Socks &amp; Ties Pay a visit to our BOYS DEPARTMENT</p>	<h3>MEN'S Sport Shirts</h3> <p>Short Sleeves Beautiful new colors and patterns for spring and summer wear. PRICED FROM <b>\$2.98</b></p>

## NICK MILLER

THE MAN'S STORE  
VISIT OUR BOYS' DEPARTMENT

CISCO



# New Arrivals For...

## Easter

at **ALTMAN'S**



- NEW DUSTERS in Rayon, Linens and Failles, in cool pastels, blacks and browns—some with matching skirts, and dresses.
- NEW DRESSES from LeVine, Nelly Don, Hobbies, Nardis, R. & K., Carlie E and others.
- NEW SUITS in light woollens, linens and Textured Fabrics.
- NEW HATS, Costume Jewelry, and Accessories.

# ALTMAN'S

Nationally Advertised Brands

North Side Square

Eastland

## Public Invited To Education Panel At South Ward Tonight

When Mrs. Joseph M. Perkins, chairman of education, General Federation of Women's Clubs, directs the education panel at 7 o'clock tonight at South Ward School, the same six questions discussed at the White House Conference she attended in November will be discussed.

On this occasion, South Ward

## Local Music Pupils Attend Brownwood Meet

The Junior Music Festival of Sixth District, Texas Federation of Music Clubs, was held at Howard Payne College, Brownwood, March 17.

Students participating from Mrs. F. L. Drago's Class and their ratings follow: Barbara McCullough, Charlotte Vaught and Sharon Sayre, superior; Mike Siebert, Sue Koch, Gretchen Hailey, Jessie Hernandez, Shirley Smith, Julie Frost, Carol June Hilliard, Mitzi Davis, Kay Culbertson, excellent; Jennifer Fryor, Kay Poe, Nora Jean Jordan, Weldon Broussard, very good; Jane Jessup and Kimberly Hailey, good.

Judges were Mrs. Few Brewster, Austin; Jim Noodle, Miss Alis Dickinson and Frederick Thiebard, Brownwood.

Parents going with Mrs. Drago's students were: Wendell Siebert, Mrs. J. B. Jessup and "Grandmother Jessup"; Mrs. Billy Frost, Mrs. Parks Poe, Mrs. Johnson Smith, Mrs. Travis Hilliard of Olden, Mr. and Mrs. W. H. Hailey of the Staff community, Mrs. Jordan of Carbon, Elizabeth Vaught, E. H. Culbertson, W. R. Fryor, W. J. Broussard.

Also Mrs. Drago, the teacher, and her daughter, Wanda Drago Beall of San Angelo, Mrs. L. E. Corbell, auditor.

## HOSPITALIZED AT RANGER

Eastland patients hospitalized at Ranger General Hospital include Joe Kay and Tom Kelley, both medical.

P-TA will entertain West Ward and the public is invited.

Subjects will be: (1) What Should our Schools Accomplish? (2) In What Ways Can We Organize Our School Systems More Efficiently and Economically? (3) What Are Our School Building Needs? (4) How Can We Get Enough Good Teachers and Keep Them? (5) How Can We Finance Our Schools, Build and Operate Them? (6) How Can We Attain a Continuing Public Interest in Education?

Besides Mrs. Perkins, those taking part on the panel will be Mrs. Harold H. Durham, Charles Freyschlag, M. H. Perry, Wendell Siebert, Mrs. Richard R. Middleton and Mrs. J. C. Whittington.

The meeting will open with a Litany, compiled by Mrs. Perkins, and which she has used in all her regional meetings of federated clubs throughout the nation.

## W. Ward Reports New Lighting; Other Events

The school board has installed beautiful fluorescent lights in each of the rooms at West Ward school. This represents a vast improvement to the school plant as the former lights were inadequate, it was reported.

Other West Ward school news is that Mrs. Marvin Hood was in charge of the assembly program this morning.

Too, there will be an egg hunt for each room from 2 to 3 p.m. Friday at various grassy plots surrounding Eastland, it was announced.

## Hospital Auxil. Executive Board Will Meet Friday With President

Mrs. Samuel Butler, president of Eastland Memorial Hospital Auxiliary, has called a meeting of the auxiliary's executive board at 10 a.m. Friday at her home, 603 S. Connellee.

The board includes Mrs. Butler; Mrs. Ben Hamner, immediate past president; Mrs. Dudley L. Houle, first vice president; Mrs. H. T. Weaver, second vice president; Mrs. Jack Frost, secretary; Mrs. H. B. MacMoy, treasurer; Mrs. T.

Mr. and Mrs. Billy Green and children, Tammy and Becky, of Snyder, and Mr. and Mrs. M. O. Cleveland and daughter, Kathy, of Abilene, spent the weekend with Mr. Green's and Mrs. Cleveland's parents, Mr. and Mrs. S. A. Green.

M. Fullen, hospital grounds; Mrs. Larry McGraw, historian; Mrs. Floyd Casebolt, publicity; Mrs. Grace R. Reed, superintendent of Eastland Memorial Hospital.

## A Beautiful Memory

### COLEMAN MEMORIALS

MRS. R. H. ROSS  
Agent  
Phone 757-W-3

**BODY AND FENDER REPAIRS**

**RESTORED LIKE NEW**

**Complete New Dep't To Serve You**  
Superior quality workmanship at competitive prices.  
It costs no more to get the best.

CALL JIMMY DOVE  
For Free Estimates

**Don Pierson Olds Cadillac**  
314 W. Main Phone 802

**'56 FORD V-8 MAINLINE "SPECIAL" Equipped! \$58\* PER MONTH**

**MARCH ONLY!**

Available for delivery at  
**KING MOTOR CO.**

\*Price may vary slightly according to individual dealer's pricing policy. Tax and license not included. \$500 down payment.

# WEDNESDAY ONLY

DOUBLE STAMPS WEDNESDAY ON PURCHASES OF \$2.50 OR MORE

## EASTER EGGS

10-Oz. Pkg. **23c**

### PICTSWEET FROZEN

**GREEN BEANS**  
5 10-Oz. Pkgs. \$1.00

**GREEN PEAS**  
5 10-Oz. Pkgs. \$1.00

**CHICKEN POT PIES**  
4 8-Oz. Pkgs. \$1.00

**FRUIT PIES**  
4 10 1/2-Oz. Pkgs. \$1.00

<b>PEACHES</b> Del Monte	3 No. 2 1/2 Cans	\$1.00
<b>TUNA FISH</b> Kimbell's Flat Can		23
<b>PIE CHERRIES</b> Kimbell's 303 Can		23
<b>HOMINY</b> Diamond Brand	3 300 Cans	25
<b>PORK &amp; BEANS</b> Kimbell's	2 300 Cans	19
<b>PICKLES</b> Diamond Brand		25
<b>OLIVES</b> Stuffed 3-Oz. Bottle		35
<b>JELLO</b> All Flavors	3 Boxes For	25
<b>COCONUT</b> Bakers 4-Oz. Can		19
<b>FLOUR</b> Kimbell's Best	25 Lb. Bag	\$1.59
<b>OLEO</b> Kimbell's 1-Lb. Ctn.		21
<b>PINTO BEANS</b> Cello Bag	2 Lbs.	19
<b>SHORTENING</b> Kimbell's	3 Lb. Ctn.	63
<b>SWEET POTATOES</b> No. 2 1/2		19

## WHY PAY FOR BONES ?

ALL OUR STEAKS AND ROASTS ARE BONELESS — TABLE TRIMMED!

<b>ALL BEEF GRAIN FED</b>		<b>SAUSAGE</b> Country Style, Lb.	19
<b>LOIN STEAKS</b> Boneless Lb.	63	<b>SLICED BACON</b> Midwest Sliced, Lb.	39
<b>ROUND STEAK</b> Boneless Lb.	69	<b>PORK ROAST</b> Boneless	39
<b>CLUB STEAK</b> Boneless Lb.	69	<b>CHEESE</b> Longhorn Lb.	49
<b>SEVEN STEAK</b> Boneless Lb.	49	<b>SUGAR CURED HICKORY SMOKED BACON</b> Thick Sliced	2 Lbs. 79
<b>SEVEN ROAST</b> Boneless Lb.	43		
<b>PIKES PEAK</b> Boneless Lb.	49		

Tired of Lifting heavy wet clothes..?

Dry clothes the easy way...with an **Electric DRYER**

Washdays are easy days with an electric dryer. No more carrying heavy baskets of laundry out to the line. No more stooping, lifting and pinning up heavy wet clothes. With an electric dryer...you just put in fresh-washed clothes...set the automatic dial...and leave. Clean electric heat dries your clothes soft, fluffy and sweet-smelling... automatically! Save work, save time on washdays...with an automatic electric dryer.



See your favorite electric appliance dealer soon for a work-saving electric dryer that will help you LIVE BETTER ELECTRICALLY!

# TEXAS ELECTRIC SERVICE COMPANY

F. N. SAYRE, Manager

Phone 18

# Earnest Frozen Food Center

200 S. Lamar

Phone 11



**Perfect Match**  
for WALLS and TRIM

- GLIDES ON EASILY
- NO "PAINTY" ODOR
- EXTREMELY WASHABLE
- VARIETY OF LOVELY COLORS

Finest for Kitchen and Bathroom walls, too

**CROWELL LUMBER CO.**  
"Everything To Build Anything"  
722 W. Main Phone 300

PITTSBURGH PAINTS—keep that best Painted

**FISHING CONTEST**  
LAKE LEON  
April 1 to Sept. 1

\$10 for Biggest Crappie  
\$5 for Biggest Catfish  
Rod & Reel for Biggest Bass

CHECK IN AND OUT  
AT LAKE LEON HEADQUARTERS  
See Us For  
Minnows - Baits - Refreshments

**E. RICHARDSON**  
LAKE LEON CARETAKER  
AT THE DAM

**Mrs. Hogan Feted With Stork Shower Held At Carbon**

Mrs. Carroll W. Hogan of Eastland was complimented with a pink and blue shower recently at the home of Mrs. Lynn Davis in Carbon. Upon arriving, Mrs. Hogan was presented a corsage fashioned of baby sox.

Mrs. Obie Duncan welcomed the guests at the door and Mrs. Walter Maynard presided at the registry. Mrs. Paul Norris and Mrs. Lynn Davis were assisted in serving by Mrs. C. W. Norris, the honoree's grandmother.

Cake squares frosted in pink and blue were served with fruit punch. Nuts and mints in miniature pastel baby clothing were plate favors.

A large stork, used as a centerpiece, watched over the many gifts that were attractively displayed.

**White Circle Is Hosted By Mrs. Guy Quinn**

The White Circle held its regular meeting Monday when Mrs. Guy Quinn was hostess to the group.

Mrs. O. M. White, chairman, presided, and Mrs. Will Martin gave the opening prayer.

The program was given from the program book, "Go To The End of The Earth." Special prayer was given for the ill members and cards were sent to six persons.

Coffee and cookies were served to those present.

The next meeting will be held at the home of Mrs. Frank Castleberry the fourth Monday in April, it was announced.

**SOCIAL CALENDAR**

**Tuesday, March 27**  
7:30 p.m. — South Ward P-TA Beta Sigma Phi will meet.  
8 p.m. — Eastland County Unit of the American Cancer Society will meet at the Texas Electric Service Company conference room, Eastland.  
7:30 p.m. — Zeta Pi chapter of will host West Ward P-TA at the school for a panel on education; the public is invited.  
12 M. — Pioneer Club will meet for covered-dish luncheon at the home of Mrs. T. M. Johnson, 405 S. Connellee, with Mrs. Charles B. Harris as hostess.

**Wednesday, March 28**  
12 M. Civic League and Garden Club-sponsored monthly luncheon will be held at the Woman's Club, followed by games.  
9:30 a.m. — The Charles Crawford chapter of the Daughters of the American Revolution will meet at the home of Mrs. Joseph M. Perkins, 1021 S. Seaman with Mrs. Grace Reed as co-hostess.

**Friday, March 30**  
10 a.m. — The executive board of Eastland Memorial Hospital Auxiliary will meet at the home of Mrs. Samuel Butler, 603 S. Connellee.

**Rebecca Graham Hostess To The Double-Sevens**

Rebecca Graham was hostess to the Double-Seven Club recently at the Graham home, 605 S. Green.

A brief business session was conducted by the president, Gaila Walters. The matter of a new sponsor was discussed.

Refreshments of Cokes and Valomiks were served by the hostess and her mother, Mrs. Lee Graham.

Members present were Rosemary Jones, Sandy Taylor, Gaila Walters, Jamie Stamey, Kathy Williamson, Julia Lynn Inzer, Patricia Fullen, Nancy Beck, Dot Gibbs, Olivia Holiman, Dixie Durham, Jackie Baggett, Laura Harris, Mainelle Cole and the hostess, members; Laverne Akers and Geraldine Johnson, visitors.

**Look Who's New**

Dr. and Mrs. R. L. Spencer have announced the arrival of a baby son, weighing 7 3/4 pounds at birth, March 23, at Midland. He has been named Jett Albright Spencer.

He has a brother and a sister. His mother is the former Nanette Tanner, daughter of Mr. and Mrs. H. J. Tanner of Eastland.

**Hospital News**

Patients in Eastland Memorial Hospital follow:

Mrs. Alice Cowan, medical.  
Harley Sanders of Cisco, medical.  
Mrs. Sam K. Walker of Cisco, who underwent surgery this morning.  
Mrs. Ola Wilson, medical.  
Mrs. H. C. McAdams, medical.  
J. D. Herrell of Olden, medical.  
Edgar K. Whitley, medical.  
Glenn Gooch of Cisco, medical.  
Mrs. W. H. White, medical.  
Mrs. Willie Bell Harris, medical.

**The Owens And Mr. Cox Attend Legion Meet**

Mr. and Mrs. S. F. Owen attended the American Legion and auxiliary convention for 17th District at Mineral Wells Saturday and Sunday.

Also, Richard Cox, adjutant of the local post, attended the convention.

Mrs. Owen is historian and immediate past president of the local auxiliary.

**WHAT'S COOKING?**



By Norman Wright

By NORMAN WRIGHT

If you think the poor sap in the above sketch is in a stew, you'd be in a much worse mess if you tried to keep up with all the things that are coming up in April.

On our desk is a calendar of events for next month and you get dizzy just reading about it.

April 1, besides being Easter Sunday and April Fool's Day, is also Daughter's Day, it says here.

April 1 to April 7 is Sunday School Week, Honey for Breakfast Week, National Arts and Crafts Week, Conservation Week and National Laugh Week.

April 1 to 30 is the Cereal and Milk Spring Festival, Cancer Control Month and National Hobby Month.

April 2-8 is National Boys Club Week; April 6 is Army Day (the day the U.S. entered World War I in 1917) and April 8 is National Mother-in-Law Day.

April 8-14 is National Noise Abatement Week, Pan American Week and National Model Building Week.

April 12-21 is National Hardware Week; April 13 is National Fun Day; your Income Tax is due on April 15, and April 15-21 is Classified Brand Names Week.

April 16-21 is Bike Safety Week, National Coin Week and National Do-It-Yourself Week.

April 16-23 is Passover Week, a Jewish religious period. April 22 is Social Hygiene Day.

April 22-28 is National Garden Week, National Secretaries Week,

U.S. and Canada Good Will Week, National Photography Week and World Fellowship Week.

April 26 is Confederate Memorial Day and a legal holiday in some states.

Along about this time we are running out of enough days to make a week but April isn't to be outdone. Starting on April 28 is National Baby Week, and April 29 sees the beginning of Mental Health Week, Summer Millinery Week, Boys' and Girls' Week, and Daylight Saving Time begins.

On April 19 Grace Patricia Kelly, 26, will be married in an old world cathedral by an archbishop to His Serene Highness Prince Rainier III of Monaco, and a few days later Mary Margaret Truman, 32, will be married in the Episcopal Church of Independence, Mo., to Clifton Daniel, a newspaper man, and on April 5

the battle of the century takes place here in Eastland when the Lions and Rotarians square away for their Grudge Basketball Game for benefit of the Little Leaguers.

Mr. and Mrs. E. R. Buchanan of Oklahoma City are visiting Mrs. Buchanan's mother, Mrs. Fronia Grubb and brother-in-law and sister, Mr. and Mrs. Carl Johnson.

**CALL 601 FOR CLASSIFIEDS**

We're Authorized Dealers For  
**ALL HOTPOINT APPLIANCES**  
Washing Machines — Dryers — Ranges  
Dish Washers — Disposals  
Home Freezers — Refrigerators  
Air Conditioners — Hot Water Heaters

Call Us For Complete Service  
On ALL Appliances

**SMITH PLUMBING & TIN**  
114 S. Seaman Phone 304

**HENRY Always Says YES!**

**WE'RE ALWAYS IN THE MARKET FOR**

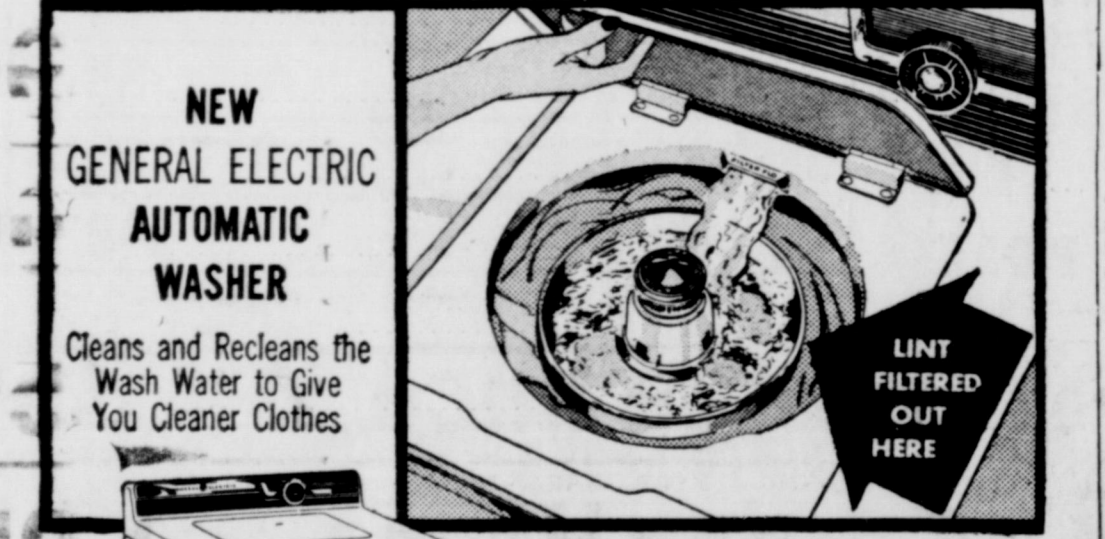
- No. 1 Scrap Iron — \$25.00 Ton
- No. 2 Scrap Iron — \$20 Ton
- Cast Iron — \$25 Ton
- Oil Field Cabel — \$15 Ton
- No. 1 Copper Wire — 38c lb.
- Auto Radiators — 24c lb.
- Red Brass — 28c lb.
- Aluminum — 14c lb.
- Babbitt — 12c lb.
- Lead — 10c lb.
- Batteries — \$2 ea.

New and Used We Buy And Sell

Structural Steel and Pipe  
Scrap Iron & Metal  
Plumbing Supplies  
Electrical Supplies

**EASTLAND**  
IRON & METAL CO.  
Phone 270 Henry Pullman, Owner East Main St.

**G-E FILTER-FLO WASHER**  
REMOVES LINT • REMOVES SAND  
REMOVES SOAP SCUM



NEW GENERAL ELECTRIC AUTOMATIC WASHER  
Cleans and Recleans the Wash Water to Give You Cleaner Clothes

Full tub of wash water circulates and filters five times during the wash cycle without wasting water or detergent. As the Filter-Flo system circulates the water, sand settles out the bottom of the washbasket, soap scum floats away, and lint is trapped in the filter which lets only cleansed sudsy water flow back into the washbasket.

**only \$279.95**  
Reg. Price \$329.95  
NOW — With \$50.00 Trade-In Allowance For Your Old Washer

**AND YOUR OLD WASHER**

- Big Capacity** — Compare the 10 pound clothes capacity of the GE with that of other washers.
- Water Saver Control** — Saves detergent and gallons of hot water, ideal for small loads.
- Activator Washing Action** — Your clothes are individually cleansed as though washed by hand.
- Matching GE Dryer** — New dryer with Automatic Clothes Conditioning. Your choice of Mix or Match colors, too.

See the new Filter-Flo washer in these exciting colors: pearl pink, cadet blue, turquoise green, canary yellow or woodstone brown. And, of course, solid white.

Authorized Dealer  
**GENERAL ELECTRIC APPLIANCES**  
Easy Terms Free Delivery

**Coats Furniture & Carpets, Ltd.**  
305 S. Seaman AUTHORIZED DEALER Eastland

**REAL ESTATE ?**  
Phone 1065  
TRI-CITIES Real Estate Exchange Box 22 Eastland

**AUTO INSURANCE**  
Premiums Now Payable On Easy Monthly Payment Plan  
**Earl Bender and Company**

**ALEX RAWLINS & SONS**  
MONUMENTS WEATHERFORD, TEX.  
Serving This Community Since 1884

Famous bulletin from Mobilgas Economy Run

**FORD WINS IN ECONOMY TOO!**

**V-8 WINS CLASS A**

In this year's Economy Run a new Ford V-8, with Fordomatic, was the official victor over every car in its field, with a winning average of 47.7643 ton-miles per gallon. This means that the sturdier, heavier Ford carried more weight, with greater gas economy per pound, than any car in its field.

This latest Ford victory was scored over a rough and rigorous 1,468.8-mile route running from Los Angeles to Colorado Springs. Through the heat of Death Valley and over chilling mountain heights... through gas-eating city traffic and over the straight-line open road... Ford proved anew its traditional reputation for economical performance.

The winning Ford was a regular-production model taken right from the assembly line. It was no different than thousands of '56 Fords you see on the road and in dealer's showrooms. This proves that Ford, the Performance, Style and Safety leader, leads in Economy, too! That adds up to four big reasons why the '56 Ford is worth more when you buy it, while you drive it, and when you sell it, too!

The "ton-mile" formula is used by contest officials to insure equal chance for all cars in each class, regardless of size or weight. Ton-miles per gallon equals the car weight (including passengers) in tons, multiplied by the number of miles traveled, divided by number of gallons of gasoline consumed.

Test Drive the Economy Winner... '56 Ford

**FORD ALL-AMERICAN PERFORMANCE CHAMPION**

Top-Award Winner for All-Around Stock Car Performance... Winner of MANUFACTURER'S TROPHY Daytona Beach, Florida

Since 1913 1,553,444 FORD CARS and TRUCKS have been BUILT IN TEXAS BY TEXANS!

**King Motor Company**  
100 E. Main EASTLAND Phone 42  
See Great TV, Ford Theatre Channel 9 KRBC-TV, Thursday 8:30 p.m.



Mrs. Leonard Florence has returned home from Fort Worth where she visited her son and daughter-in-law, Mr. and Mrs. L. K. Florence and children, Janet, Suzanne and 11-day-old Pattie Jean.

### Sarah Henley GA Attends Revival In A Body

The Sarah Henley Girls Auxiliary of First Baptist Church attended in a group the revival service at First Baptist Church, recently.

Those present were Kay Culberson, Dot Gibbs, Olivia Holiman, Roma Kay Plowman, Julia Lynn Inzer, Rebecca Graham, Anne Pittman, Mrs. Jim Hardwick and Mrs. Jones, sponsor and co-sponsor.



### County Unit of American Cancer Society Be Organized Tonight

Eastland County Unit of the American Cancer Society will meet at 8 o'clock tonight at the TESCO conference room, Eastland.

### Mrs. V. Hale Is Hostess To Home Dem Club

Mrs. Virgie Hale was hostess to Pleasant Hill Home Demonstration Club recently.

Mrs. Hermon Schaeffer, president, opened the meeting with motto, pledge and prayer. Mrs. Hale read the devotional from Prov. 3:27-28. Roll call was by "name a county officer."

The council delegate was absent so Mrs. Schaeffer and Mrs. Gov gave the report. A donation to the Red Cross was voted.

Mrs. Don Hart, county home demonstration agent, led an interesting lesson on "planning and spending."

The next lesson will be April 6 in the home of Mrs. Bela Tucker. It will be an all-day meeting.

Mrs. Hale, assisted by Mrs. Harris, served refreshments to the following guests: Mrs. Hagaman, Mrs. Bob Stephen and daughter, Elaine; Perry Fisher and the agent, Mrs. Hart, and Meses. Garr, Schaeffer, Hale and Harris, members.

Mrs. A. Louise Weber of Rising-Star, chairman of the nominating committee, and committee members Travis Wheat, Eastland; Mrs. J. J. Porter, Cisco, and Mrs. John Love, Ranger, will submit a slate of nominees for officers of the Unit.

Mrs. Jack Frost of Eastland is chairman of the by-laws committee and her committee members are Mrs. A. N. Larson of Ranger, Mrs. Don Hart of Eastland and Mrs. L. B. Jones of Cisco, route 1.

Plans were set in motion for the forming of the unit at a meeting at the TESCO conference room Monday night, March 19, when Gene Baker of Gorman served as temporary chairman and Mrs. Roscoe Hopper of Ranger as temporary secretary.

The organization will be completed at the meeting tonight.

### Mrs. Perkins Has Guests from Stow and Boston, Mass.

Mr. and Mrs. William Smith of Stow, Mass.; C. Condon of Boston and Susan Beyette of Fort Worth spent the weekend with Susan's grandmother, Mrs. Joseph M. Perkins.

Mr. Smith is vice president of First National Bank in Boston and Mrs. Smith was a member of the wedding party at the marriage of Mr. and Mrs. Perkins.

Mr. and Mrs. Smith and Mr. Condon had been attending the National Bankers' convention in St. Louis, coming from there to Dallas to visit the banks there. They will visit banks in Arizona and Los Angeles before returning to Stow and Boston.

### Local Clubwomen Attending Dist. Meet, San Angelo

Mrs. Joseph M. Perkins, Mrs. Frank Sparks and Mrs. Horace Horton went to San Angelo early Monday morning to attend the convention of Sixth District, Texas Federation of Women's Clubs, held there Monday and today.

Mrs. Perkins, education chairman of the General Federation of Women's Clubs, is representing the GFWC and was to be the speaker for the "Education Luncheon" today at noon. Her subject was Pursuit of Learning.

Mrs. Frank Sparks, president of the Thursday Afternoon Club, is delegate from that organization and gave the club report.

Mrs. Horace Horton, first vice president and past president of the Civic League and Garden Club, is the League delegate at the convention and thus gave its report.

The Eastland clubwomen are expected home early this evening.

Mrs. Hart Shoemaker of Abilene, president of the district, presided at most of the sessions.

Mrs. L. E. Dudley of Abilene, president of Sixth District, was an honoree at the Texas Heritage dinner honoring the club presidents throughout the district. Mrs. Mason Altman of Abilene served as convention program chairman and Mrs. George A. Beard of San Angelo was general convention chairman.

### DAR To Meet Wednesday With Mrs. Perkins

Mrs. Joseph M. Perkins and Mrs. Grace Reed will be hostesses to the Charles Crawford chapter of the Daughters of the American Revolution at a coffee at 9:30 a. m. Wednesday at Mrs. Perkins home, 1021 S. Seaman.

Mrs. Yancey McCrea of Cisco is regent.

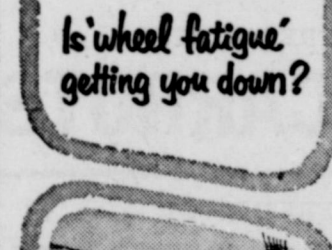
The chapter is made up of Eastland, Ranger and Cisco members.

### CARD OF THANKS

I want to thank all of my good friends and neighbors for the many courtesies and acts of kindness shown me while I was in Eastland Memorial Hospital recently. We appreciate all of the flowers and cards sent to us, and especially your visits and words of cheer. Many, many thanks until you are better paid.

Milton Underwood.

### PATRONIZE YOUR HOME TOWN MERCHANTS!



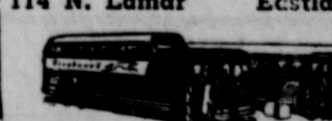
- ★ You can travel straight thru or stop along the way
- ★ Hotel reservations can be made for any night.
- ★ Sight-seeing trips can be arranged.
- ★ You'll see All the country, close up!

at savings like these:

Abilene	\$1.35
Ft. Worth	\$2.25
Dallas	\$3.00
Waco	\$3.30
Odessa	\$5.15
Houston	\$7.55

Fast shown one way plus tax  
SHIP YOUR PACKAGES BY GREYHOUND

Call PHONE 84  
114 N. Lamar Eastland



### Countians Urged To Aid Easter Seal Campaign

Eastland Countians are urged by the sponsoring Beta Sigma Phi to give generously to the Easter Seal campaign for the aid of crippled children:

"This is your opportunity to help the crippled and to help each one of us who participates in this important work. Let's not sit back and let others carry all the responsibility for the crippled children in our county.

"Remember that your support

helps in research through the Easter Seals Research Foundation, as well as providing care, education and treatment on the local, state and national levels.

"As we come upon the glorious season of Easter, perhaps we can help many to rise again. We can do it with faith in God, who put us on this earth to help others."

Mr. and Mrs. O. M. White will go to Eagle Mountain, near Fort Worth, Wednesday to spend Wednesday and Thursday with their son and daughter-in-law, Mr. and Mrs. Leon White and children, Ronald and Mayna. They will hear the Rev. Rathel, former pastor

here, preach Wednesday at the Baptist Church at Eagle Mountain.

**Earn \$40.00 Cash TO CHURCHES, SCHOOLS, CLUBS & ORGANIZATIONS. DISTRIBUTE 96 BOTTLES OF WATKINS DOUBLE STRENGTH VANILLA Watkins Products**

See Your Dealers Mr. and Mrs. J. G. Batley 901 W. Commerce Eastland

## Easter CORSAGES TO GIVE... TO WEAR

- Gorgeous  
ORCHIDS  
IRISES  
ROSES  
CARNATIONS



Place Orders Now

Beautiful Potted Plants  
Azaleas - Mums - Lillies  
Hydrangeas

All Beautifully Decorated In Easter Motifs

POE FLORAL SHOP  
608 W. Main Phone 96

**Insurance AND Real Estate D. L. KINNAIRD**

Life - Fire - Auto - Farm  
Polio - Bonds

36 years in the Insurance Business in Eastland

## Try the BIG ECONOMY PACKAGE

**This 1956 Buick SPECIAL**  
2-Door, 6-Passenger Sedan  
delivers locally for less than some models of the well-known smaller cars.  
Come in and check!



THIS is the one that measures BIG—by any yardstick you choose...

**BIG** in solid pounds and honest inches...

**BIG** in high-compression horsepower...

**BIG**, best of all, in the way it makes small money talk.

For this strapping beauty is the 1956 Buick SPECIAL—biggest package of high-fashion luxury and high-stepping performance ever offered in Buick's lowest-priced Series.

What that boils down to is just this:

You can call this brawny Buick your own for only a few dollars more than the price of the well-known smaller cars—for even less than some models of those very same cars. And the price we'll proudly show you backs up that statement.

But low price, alone, doesn't explain why Buick outsells every other car in America except the two well-known smaller ones.

The big reason, you will find, is because Buick gives you so much more pure automobile for the money.

You'll find it in the bigger thrill you get from commanding the agile might of Buick's big new 322-cubic-inch V8 engine.

You'll find it in the greater smoothness of Buick's superb, new ride—in the utter serenity of Buick's new handling ease—in the bigger satisfaction of Buick size and roominess and steadiness and styling.

You'll find it, too, in the fact that here you can get the matchless smoothness of the world's most modern transmission. For, at your option, you can also have the new double-action take-off—and the extra gas-saving mileage—of Buick's advanced new Variable Pitch Dynaflo.

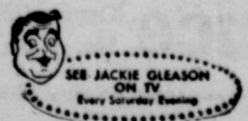
So, how about it? Will you come in real soon? We've got the facts and the figures—and the car—to prove everything we've told you—waiting for you.

†New Advanced Variable Pitch Dynaflo is the only Dynaflo Buick builds today. It is standard on Roadmaster, Super and Century—optional at modest extra cost on the Special.

**Join Buick's "THRILL-A-MINUTE CLUB"**

Just drop in and drive a 1956 Buick. Discover the new thrills in ride, handling, power and switch-pitch performance to be had in the Best Buick Yet.

## BEST BUICK YET



AT A NEW LOW PRICE—4-Season Comfort in your new Buick with FRIGIDAIRE CONDITIONING—WHEN BETTER AUTOMOBILES ARE BUILT BUICK WILL BUILD THEM

## Muirhead Motor Co.

304 W. Main Street

EASTLAND, TEXAS

Phone 692

# Wednesday DOUBLE BB STAMPS

AT MacMOY CLOVER FARM STORE PLUS THESE WEDNESDAY SPECIALS

MARYLAND CLUB  
**COFFEE** Reg. or Drip, Lb. .... **95c**

**FAB** Large Size ..... **25c**

CLOVER FARM  
**MARGARINE** 1-Lb. Pkg. .... **23c**

CLOVER FARM  
**PINEAPPLE JUICE** 46-Oz. Can ..... **29c**

PREMIUM SALTINE  
**CRACKERS** 1-Lb. Box ..... **25c**

GLENDALE CUT  
**Green Beans** 2 303 Cans ..... **29c**

STOKLEY'S WHOLE FROZEN  
**Strawberries** 1-Lb. Box ..... **49c**

STOKLEY'S SLICED FROZEN  
**Strawberries** 10-Oz. Pkg. .... **29c**

STOKLEY'S FROZEN CONCENTRATE  
**Orange Juice** 2 6-Oz. Cans ..... **35c**

VINYL PLASTIC—3 YEAR GUARANTEE  
**Garden Hose** 50-Ft. .... **1.95**

GOOD QUALITY SLICED  
**BACON** 2-Lbs. .... **49c**

**Round Steak** Choice Beef, Lb. .... **69c**

**Chuck Roast** Choice Beef, Lb. .... **39c**

**Smoked Picnics** Lb. .... **29c**

**GROUND BEEF** Fresh Lb. .... **29c**

OPEN EVERY NIGHT TIL 8 P.M.—SATURDAY TIL 9 P.M.

FOODS CLOVER FARM STORES

400 South Seaman

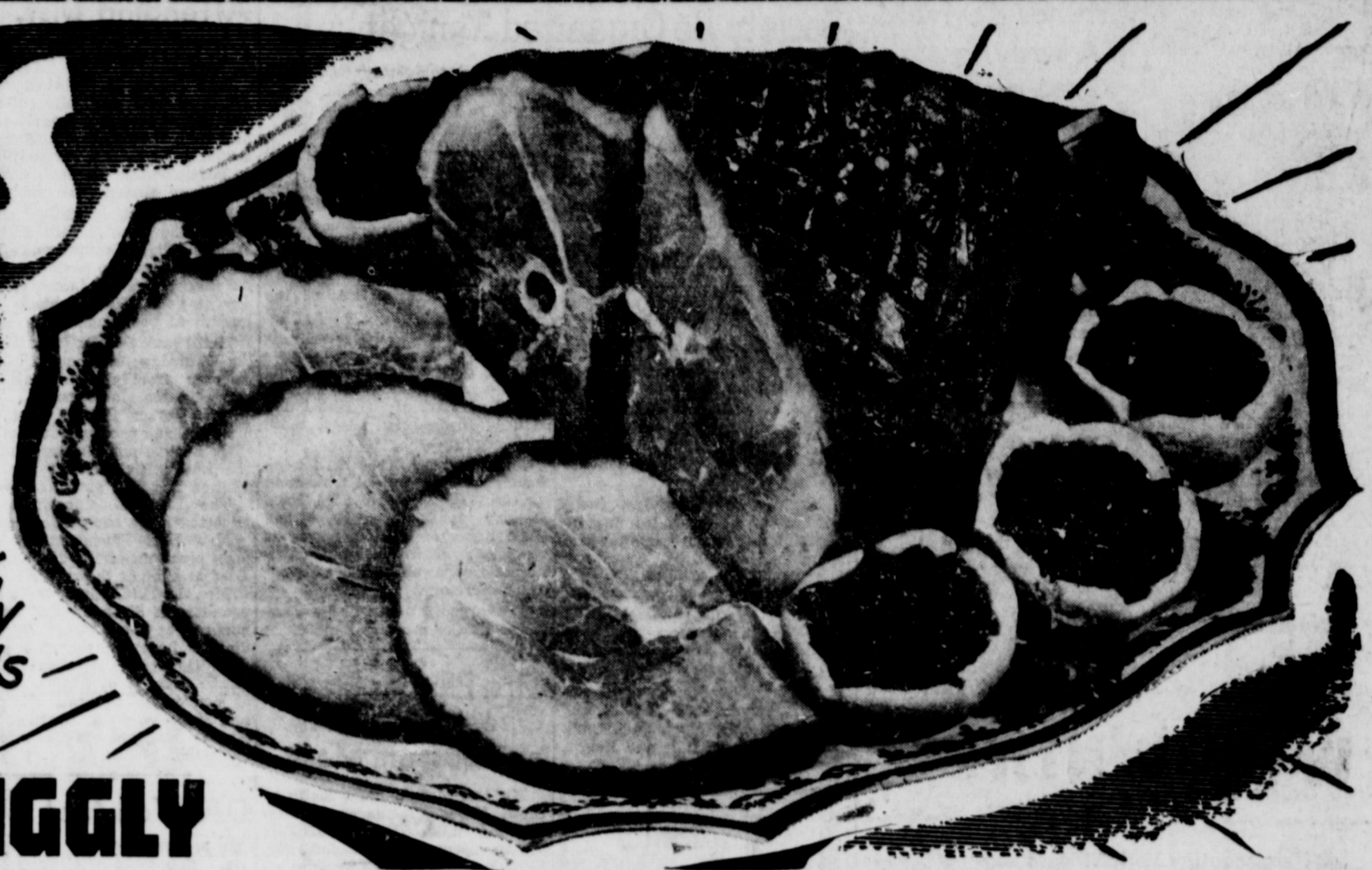
Phone 31



# EASTER'S Here



Feast your family with Holiday Foods from... **PIGGLY WIGGLY**



**COFFEE**  
Maryland Club  
Lb. .... **97c**

These Prices Effective  
**Wednesday thru Saturday**  
March 28 - 31

**SAVE TWO WAYS**  
**LOW S & H**  
EVERY DAY PLUS GREEN  
**PRICES STAMPS**

We Give **S & H Green Stamps**  
With Each 10c Purchase  
\*  
**Open til 8 p. m.**  
WED. & SAT.  
For Your Convenience

**CURED HAM**  
Half or Whole  
Lb. .... **49c**

## CANNED FOOD BUYS!

FRESH COUNTRY  
**Eggs** Dz. **35c**

LIBBY'S WHOLE GREEN  
**Beans** 303 Can **27c**

NIBLETS  
**Corn** 12-Oz. Can **19c**

TRELLIS  
**Peas** 303 Can **15c**

LIBBY'S PINEAPPLE  
**Juice** 46-Oz. Can **33c**

WITH FREE CANNISTER  
**Crisco** 3-Lb. Can **89c**

PIC-L-BARREL SWEET  
**Pickles** Qt. **54c**

LIGHT CRUST  
**FLOUR**  
10 Lb. Bag **93c**



GOLDEN RIPE  
**BANANAS** 2 Lbs. **19c**

PASCAL  
**CELERY** Stalk **15c**

FRESH CRISP  
**CARROTS** 2 Cello Bags **15c**

FRESH CRISP  
**LETTUCE** 2 Large Heads **25c**

**CANE SUGAR** 10 Lb. Bag **97c**

**Marshmallows** Miniature 7-Oz. Pkg. **20c**

**Easter Eggs** Marshmallow 16-Oz. Pkg. **33c**

**JELLO** Assorted All New Flavors 3 Pkgs. **25c**

**JELLY** Zestee Grape - Apple 3 20-Oz. Glasses **\$1.00**

**Cranberry Sauce** Ocean Spray No. 1 Can **19c**

**Tomato Soup** Campbell's 2 Cans **25c**

KRAFT MIRACLE **WHIP** Pt. Jar **35c**

DURAND'S SWEET **POTATOES** No. 2 1/2 Can **19c**

ARMOUR'S or GOOCHES' SLICED  
**THICK BACON** 2 Lbs. **79c**

HIGHEST QUALITY  
**GROUND BEEF** Lb. **29c**

SUGAR CURED  
**Smoked Picnics** Lb. **29c**

BONELESS  
**STEW MEAT** Lb. **39c**

CHOICE BEEF  
**ROUND STEAK** Lb. **69c**

**WIN A HAM**  
FREE ENTRY BLANKS AT **Friskies** DISPLAY IN OUR STORE  
DRAWING ON

**DRAWING ON SATURDAY**  
**MARCH 31 AT 5:45 P. M.**

