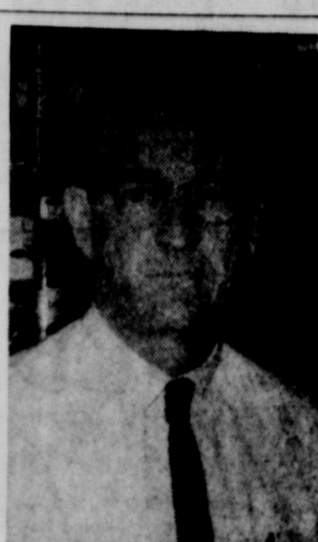
EASTLAND  
TELEGRAM

SECTION TWO

SUNDAY, JUNE 20, 1965

SECTION TWO

JIMMY LONG  
Cisco ManagerJAMES H. BOGGUS  
Ranger ManagerCAREY HIGHTOWER  
Eastland ManagerVeteran Grocers Are  
Managing JRB Stores

Three JRB Super Markets in the Eastland County area are managed by three veteran men who are veterans of the food store business. Jimmy Long in Cisco, James H. Boggus in Ranger and Carey Hightower in Eastland. The three stores have some 30 employees.

Three managers, along with the other employees of the three stores, will remain with the JRB Super Markets when the firm acquires the stores last month of the Worth chain. They are in charge of plans for the grand opening celebration week.

**Cisco Employees**  
Long has been manager of the Cisco store since 1961. He was briefly an assistant manager before being promoted to manager. He formerly was with the Ranger store and worked there for several years before being transferred to Cisco. He is married and has three children.

Don Cook, a member of the staff since January, 1963, is assistant manager. The market manager is Cliff Brown, who was transferred from Brownwood recently. He moved his wife and three children to Cisco last week.

On the staff of the store are Mrs. Howell (Sledge), full-time clerk, who is well known; Vera Mae Ingram, check-out clerk; Ronnie Ledbetter, clerk; and college student; Ronnie Willis, high school student who recently moved to work for the company. Mrs. L. O. Swinburn is assistant butcher.

**The Ranger Staff**  
The staff of the Ranger store is headed by James H. Boggus, manager. He began

his career with the Pipkin Piggly-Wiggly organization at Eastland in 1950. Three years later — in 1953 — he became manager of the Ranger Piggly-Wiggly unit which was purchased by Worth Food Mart in 1956.

Don Lawrence is assistant manager and also is manager of the produce department.

Pete Miller is manager of the meat department.

Everett Noth is stock clerk, and checkers include Mrs. Vivian Hart, Mrs. Marjorie Fox, and Mrs. Bargesley. Mrs. Bertha Hazard is a clerk in the meat department.

Other employees in the Ranger store include Gary Hames, Kyge Edmonds, Wayne Boone, and Donald Bunton.

**At Eastland Store**  
Four of the Eastland JRB employees collectively have spent 36 years serving the public in the retail grocery business. And "9" is the magic number for all four — each has been with the firm that many years.

Employees of Eastland's JRB are as follows: Carey Hightower, manager of the store for the past nine years. He and his wife, Mary, have two children, Katy and Carey Wayne. They are nine-year residents of Eastland.

Preston Crabtree, assistant manager for the past nine years, and his wife, Grace, have lived in Eastland County for 42 years. They have three children, Melvin, Doug and Brenda.

Market Manager Howell Sledge and wife, Jimmie, have one daughter, Mrs. Eugene Gist. They moved to Eastland three years ago. He also has been employed by the company for nine years.

Angie Everett, checker, and husband, Everett Everett, have lived in Eastland County 39 years. She is a nine-year em-

ployee of the store.

An Eastland resident for 17 years, Jessie Woolsey has been with the company six years. She and her husband, Hollis Woolsey, have one son, Hollis Don.

For the past two years, Gerald Hammond has been employed with the company as stock clerk. Residents of Olden, he and his wife, Jill, have a daughter four and a half months old.

Melton Hood, son of Mr. and Mrs. E. M. Hood Sr. of Olden, has been with the company one month. He has lived in Eastland County for 18 years.

Shurfresh Cheese  
Turns Ordinary  
Foods To Feasts

Most people, man or woman, could become not just cooks, but good cooks, if they applied the same imagination and creative ability to cooking as they do to other everyday pursuits.

For instance, the addition of cheese, good cheese like the Shurfresh brands, can transform an ordinary food into a gourmet feast.

Sprinkle homely cooked cabbage with 1/2 cup grated cheese instead of bread crumbs and butter.

Potatoes become something else when you remove a cylinder from the center of each potato with an apple corer and fill each cavity with cheese, seal ends with tiny pieces of cylinders which have been removed, and bake in moderate oven (350 degrees F.) until tender, about 45 to 50 minutes.

Cheese sauce substituted for cream sauce on cauliflower is delicious when light and expertly seasoned.

Fresh green broccoli served with Parmesan cheese is an unforgettable treat.

Artichokes are a delicious and entertaining vegetable when served with a luscious cheese sauce.

COMMUNITY SERVICE, BUYING  
POWER AND INDEPENDENCE

How well do you know your grocer? If he's an Affiliated grocer, chances are you know him pretty well. Why?

Because he's a responsible member of your community, just like you. He doesn't just mind a store. He's a firmly established local businessman. He's interested in the welfare of his immediate area because he lives there, and his roots are there.

His interests are those of his customers. He pays his poll tax, and more than likely takes an active interest in political questions that affect his own community. He's interested in schools because he's either got children or grandchildren attending the same schools his customers' children attend. He wants to know about street and road improvements and taxes. He probably belongs to the Dad's Club, the Parent-Teacher Association, goes fishing in the same lake as his customers, and attends a local church.

Why? Because he's an independent grocer. He owns his own store, and he is a permanent member of his community. And what benefits his customer's interests also benefit him. He wants his area to grow and strengthen.

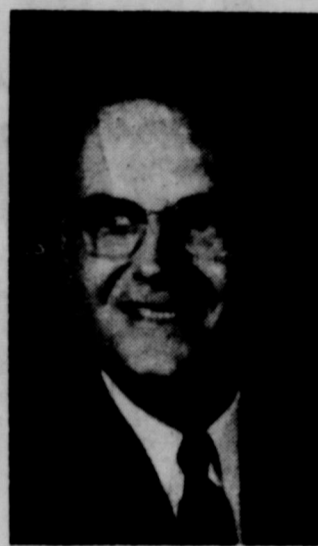
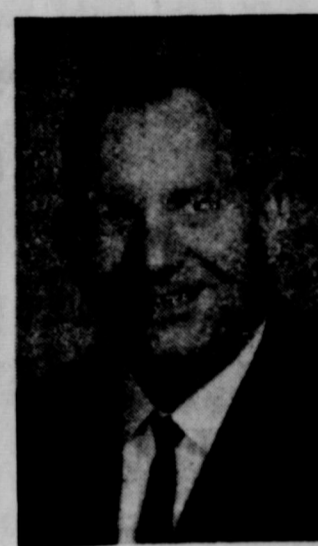
How then can Affiliated customers save money shopping with an independent grocer?

Because the Affiliated grocer is a member of a cooperative enterprise of hundreds, now numbering more than 850, independent grocers, who banded together to take advantage of collective buying power.

He can take advantage of the experience of seasoned food buyers who insist that only the highest quality foodstuffs enter the huge Affiliated warehouses and thereby his store. In fact, these buyers can dictate to growers and processors and insist that Affiliated quality standards be observed and adhered to, and no merchandise is allowed to even come near the Affiliated warehouse which can't measure up to highest standards.

That's why Affiliated customers can buy the finest fresh vegetables, canned goods, and meats at bonus saving prices.

Your Affiliated grocer is an independent businessman with collective buying power, and this formula assures success for him with satisfied customers. He's an independent businessman, a friend, and a community servant. He's a good neighbor.

County JRB Super Markets Plan  
Grand Opening Event This WeekJ. R. BEADEL  
OwnerALLEN BEADEL  
OwnerJ. L. McMILLON  
SupervisorSHURFINE  
IS SYMBOL  
OF QUALITY

The Shurfine Brands featured at your Affiliated food stores is not just a name, it is the symbol for the highest quality food which can be provided for a grocer's shelves.

It's your Affiliated grocer's promise to you that only the very best will do to serve his customers.

And no processed food earns the right to quarter in Shurfine packaging without undergoing the most rigid specifications. Affiliated has gone to great lengths to set up true yardsticks of quality for each of the Shurfine brand foodstuffs, based upon essential factors such as color, flavor, tenderness, and all around appetite appeal. They post a constant guard of inspection at all levels of growing, processing and distribution to see that the specifications are met. The result is no set of arbitrary grades.

SUMMER  
COOLER

Tired of the same old summer cooler aids? Try the refreshing, zingy taste of Shurfine Grape Soda in quick cooling cans. Wonderful over-ice crystal clear ice for a summer picnic, or for a special treat, over grape-flavored ice cream. The coolest mamas in the block pop in a candy sticks as a lickin'-good stirrer for good kids and friends.

Brownwood Men Head  
JRB Super Markets

The JRB Super Markets in Cisco, Eastland and Ranger are owned by the J. R. Beadel Company of Brownwood, and J. R. Beadel is president of the company. Allen Beadel, his brother, is a co-owner and official of the firm.

J. L. McMillon, also of Brownwood, is supervisor for five of the company stores, including the three in Eastland County.

J. R. and Allen Beadel have been in the retail grocery business for 20 years and previously were engaged in the wholesale grocery business. Their entire career has been spent in Central and West Texas and both men are firm believers in the future growth and development of this section of Texas.

Both J. R. and Allen Beadel are well known civic leaders in Brownwood and are known throughout the region.

Mr. McMillon, who joined JRB Super Markets recently, is a veteran in the grocery business. He is a native of Coleman and grew up in this region. As a boy, he lived for a year with his family in Ranger. He and Mrs. McMillon are the parents of three children.

In his work as a supervisor, Mr. McMillon has been a frequent visitor in Cisco, Eastland and Ranger since the company purchased the three stores. He works with the store, market and produce

managers in operating the stores.

Mr. McMillon said the company plans to handle area items when possible. For example, they are offering eggs from the large Kendrick Egg Farm, which is located between Cisco and Eastland. In addition, the produce departments are featuring peaches grown at the large W. H. Smith Peach Orchards in Eastland and Comanche Counties. The markets stock top lines, including Gooch products from Abilene.

The JRB Super Market in east Brownwood was burned recently in a disastrous fire. The company immediately announced plans to rebuild it with a bigger and better store.

Personnel of the three stores remained virtually unchanged after the recent purchase. The three stores were originally owned by the Pipkin chain, which sold out six years ago to Worth.

## Skillet Biscuits . . .

If you know there's a barbecue grill at the area where you plan to picnic, take along a skillet. Serve golden brown canned Shurfine biscuits camp style. They'll cause a sensation.

Most Photos in  
JRB SUPER MARKET  
Edition by  
COTTON'S STUDIO-CISCO

Auto, Television  
Sets Are Prizes

The JRB Super Market stores in Cisco, Eastland and Ranger, which were purchased by the company recently from Worth Food Mart, will stage a week-long grand opening celebration during the coming week — Monday, June 21, through Saturday, June 26.

Features of the week will include the introduction of a new Dividend Sweepstakes event with prizes of a Ford Mustang automobile and three color T-V's. Dividend sweepstakes cards will be distributed at the JRB Stores beginning Monday. Details of the event are contained in an advertisement elsewhere in this edition of this newspaper and at the stores.

Other features of the week will be double S&H Green Stamps with purchases all day Wednesday, Thursday, Friday and Saturday.

There will be numerous special offers and merchandising features, many of which are described in the four pages of JRB Super Market advertising elsewhere in this section.

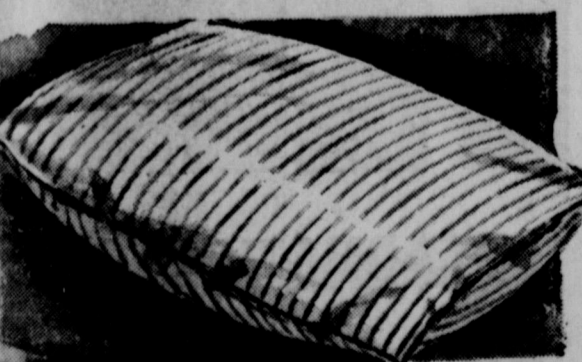
It was on May 17th that the J. R. Beadel and Company of Brownwood acquired the three Worth Food Mart stores in Cisco, Eastland and Ranger. The company also operates JRB Super Markets in Brownwood, Bangs, Cross Plains, Coleman, Abilene and Lampasas.

All of the stores stock nationally advertised food lines, including the Shurfine and Always Fresh lines, and all except Lampasas give S&H Green Stamps with purchases.

"We have sought to increase the efficiency of the three Eastland County stores and to offer the best of service," according to J. R. Beadel, "We always try very hard to offer the best quality foods together with fair prices and courteous service."

"Our policy of stocking our stores with complete lines of the best of foods has been responsible in a large measure to the fact that the JRB stores are among the leaders in their localities. In addition to top grocery lines, we offer high quality meats in our markets where we carry only the best graded meats, and our produce departments handle only the finest fruits and vegetables."

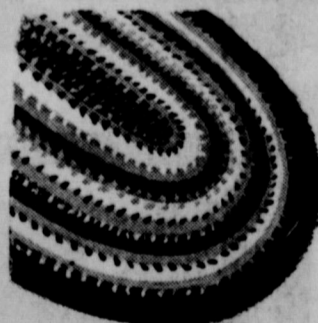
**Bray's**  
DEPARTMENT STORE  
Eastland County's Family Store  
Eastland — Open 8:30 to 5:30

KAPAK or FEATHER  
PILLOWS

STRIPE TICKING  
LARGE SIZE  
SPECIAL!

Reg. 1.99 — NOW

**\$1.44**

REVERSIBLE  
WOVEN  
RUG

BROWNS  
GREENS  
BEIGES

LARGE GENEROUS 30 x 54" SIZE

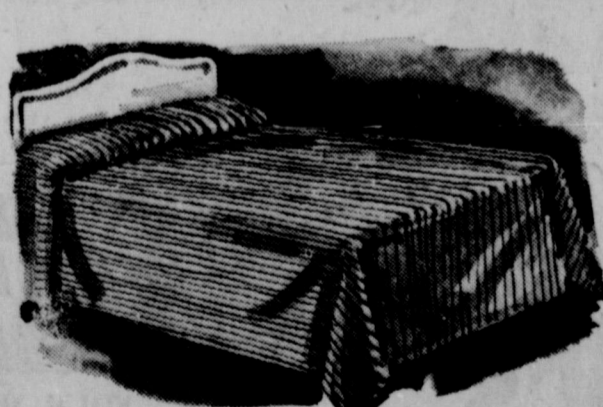
COMPARE!  
Reg. 4.88

**\$3.77**

OSANBURG  
TIER CURTAIN SET

Natural Color, Tier Curtain  
Size, 60x36 — Valance, 60x10  
Trimmed in red, gold, brown ONLY  
and green.

**\$1.99**  
A SET



## CHENILLE SPREADS

DOUBLE BED SIZE  
MANY COLORS  
MACHINE WASHABLE  
PRACTICALLY LINT FREE

PICK UP SEVERAL  
AT THIS PRICE

**\$2.99**

DECORATIVE  
TOSS PILLOWS  
CORDUROY FABRIC  
RAYON IRIDESCENT  
MANY COLORS

2 FOR

**\$3**

WASHABLE  
SHOES

WHITE  
BLACK  
RED  
CHINO

Sizes for Girls & Women

**\$2.99**

# GRAND

# OPENING

Prices Effective All Week June 21-26

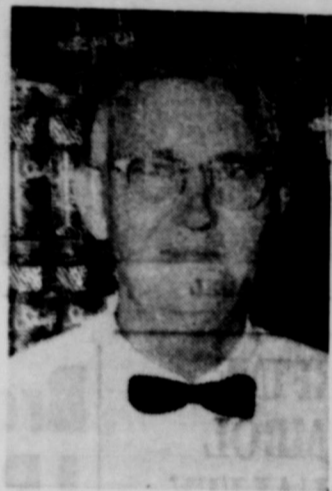
Double S&H Green Stamps Wed., Thu., Fri. & Sat. - June 23

## SWEEPSTAKES PLAY DIVIDEND



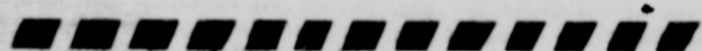
CAREY HIGHTOWER  
... Manager

SOMEONE IS  
GOING TO WIN  
LOTS OF MONEY  
3 COLOR T V'S  
AND  
A MUSTANG  
IT COULD BE  
YOU



PRESTON CRABTREE  
... Assistant Manager

START YOUR FREE DIVIDEND SWEEPSTAKES CARD TODAY!  
BRING YOUR CARD WITH YOU EACH TIME YOU SHOP -



INSTRUCTIONS: When all free punches are punched with an official punch, the seal will be opened by the store manager or his assistant. You may win up to \$25.00 cash. Fill in your name, address and phone number on the back of the card and deposit it for the free SWEEPSTAKES drawing.

# WIN

# CASH

# COLOR TV's

# FORD MUSTANGS



FOUR BIG DAYS  
WEDNESDAY  
THURSDAY  
FRIDAY  
SATURDAY

JUNE 23-24-25-26, 1965



## GOLD MEDAL FLOUR



5 <sup>1/2</sup> BAG. 49¢



MARYLAND CLUB  
COFFEE  
1-1B. CAN 69¢



NEW! Carnation  
instant breakfast



6 ENVELOPE BOX  
CHOCOLATE, COFFEE,  
PLAIN, CHOCOLATE MALT,  
EGG NOG

79¢

Coffee Mate 3-oz. jar 23¢  
Coffee Mate 6-oz. jar 45¢  
Coffee Mate 11-oz. jar 69¢

CARNATION  
INSTANT  
8-QUART 59¢

Friskies — 15 1/2 oz. Can 2-25¢  
Dog Food Friskies — 15-oz. Can 2-25¢  
Cat Food Contadina — 303 Can 2-39¢  
Tomatoes

# MILK

CARNATION



Tall Can

# 10¢

# GRAND OPENING

PRICES EFFECTIVE ALL WEEK-MONDAY THRU SATURDAY-JUNE 21 THRU 26  
DOUBLE S&H GREEN STAMPS WED. - THU. - FRI. - SAT.

SHURFINE 14-Oz.

CATSUP

\$1  
6 FOR

CATSUP

Del Monte  
14-oz. Bottle

5

FOR

SHURFINE 300 Can

PORK & BEANS

\$1  
10 FOR

PORK & BEANS

Van Camps  
300 Can

8

FOR

SHURFINE 19-oz.

CAKE MIX

\$1  
4 FOR

CAKE MIX

Duncan Hines 19 oz  
Devils Food - Spice  
White or Yellow

3

FOR

SHURFINE 13 1/2-oz.

FROSTING

\$1  
4 FOR

FROSTING

Betty Crocker  
14-oz. Chocolate  
Fudge or White

3

FOR

SHURFINE 25-oz.

APPLESAUCE

\$1  
4 FOR

APPLESAUCE

Lucky Leaf  
35-ounce

3

FOR

SHURFINE No. 2 1/2 Can

PEACHES

\$1  
5 FOR

PEACHES

Del Monte  
No. 2 1/2 Can  
Slices or Halves

4

FOR

SHURFINE 303 Can

GREEN BEANS

\$1  
6 FOR

GREEN BEANS

Del Monte  
303 Can  
Cut

5

FOR

SHURFINE 6-oz. Can

ORANGE JUICE

\$1  
6 FOR

ORANGE JUICE

Minute Maid  
Frozen  
6-ounce

5

FOR

SHURFRESH 8-oz.

BISCUITS

\$1  
13 FOR

BISCUITS

Ballard or Pillsbury  
Sweetmilk or Buttermilk  
8-ounce Can

12

FOR

SHURFRESH 1-lb.

MARGARINE

\$1  
5 FOR

MARGARINE

Bluebonnet  
1-Pound  
Carton

4

FOR



Garden Fresh

Cantaloupes

5

FOR

\$1



BANANAS

CENTRAL AMERICAN

9

POUND



CORN

FLORIDA SWEET

6

EARS

25c

60

EAR SACK

\$2.39

SUGAR

5 pounds

29c

With \$5.00 Purchase  
49c Otherwise

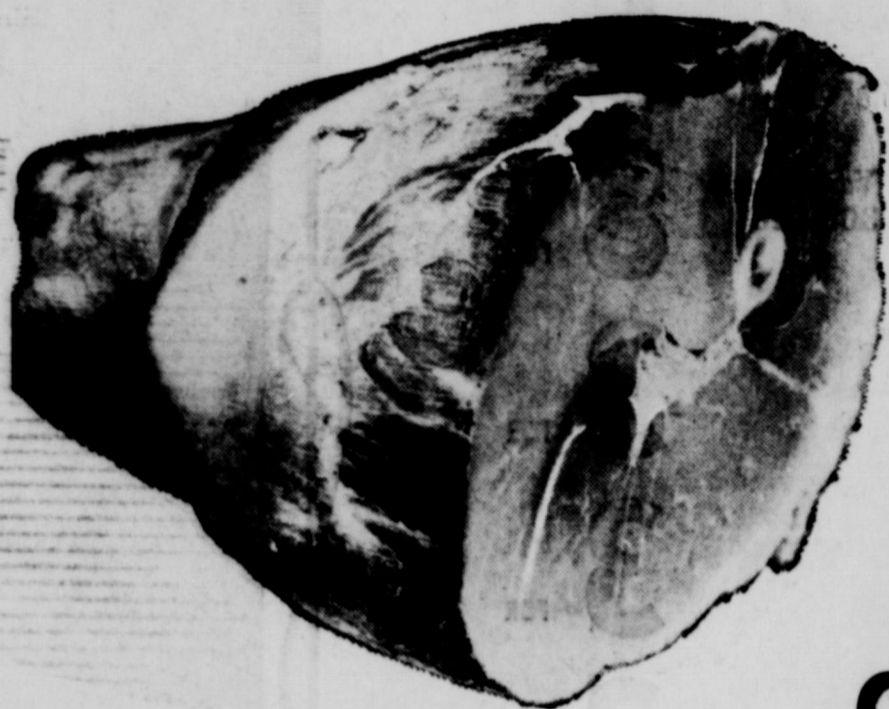


Cisco—Eastland—Ranger

# GRAND

# OPENING

PRICES EFFECTIVE ALL WEEK - MON. thru SAT. JUNE 21 -  
**DOUBLE S&H GREEN STAMP** ALL DAY WEDNESDAY, THURSDAY,  
 FRIDAY and SATURDAY - JUNE 23 - 26



GOOCH BLUE RIBBON

## H A M

**HALF or WHOLE** lb. **49¢**  
**BUTT PORTION** lb. **45¢**  
**SHANK PORTION** lb. **39¢**  
**CENTER SLICES** lb. **89¢**

WE RESERVE THE RIGHT TO LIMIT - NO SALES TO DEALERS



GOOCH BLUE RIBBON FIRST  
 QUALITY - PEN FED - HAND  
 PICKED FOR J.R.B. SUPER  
 MARKETS

*Gooch Blue Ribbon - First Quality Beef;*

<b>STEAK</b>	Gooch Blue Ribbon T-Bone - Pound	<b>89¢</b>	<b>ROAST</b>	Gooch Blue Ribbon Rump - Pound	<b>59¢</b>
<b>STEAK</b>	Gooch Blue Ribbon Sirloin - Pound	<b>79¢</b>	<b>ROAST</b>	Gooch Blue Ribbon Pikes Peak - Pound	<b>69¢</b>
<b>STEAK</b>	Gooch Blue Ribbon Round - Pound	<b>79¢</b>	<b>ROAST</b>	Gooch Blue Ribbon Arm - Pound	<b>59¢</b>
<b>STEAK</b>	Gooch Blue Ribbon Rib - Pound	<b>79¢</b>	<b>ROAST</b>	Gooch Blue Ribbon 7-Bone Chuck - lb.	<b>59¢</b>
<b>STEAK</b>	Gooch Blue Ribbon Chuck - Pound	<b>59¢</b>	<b>ROAST</b>	Gooch Blue Ribbon Blade Chuck - lb.	<b>49¢</b>

**Fresh Ground BEEF** Regular Pound **39¢** Extra Lean Pound **59¢** Ground Round Pound **79¢**

**BACON** Gooch Blue Ribbon 1-Pound Regular Slice **59¢**

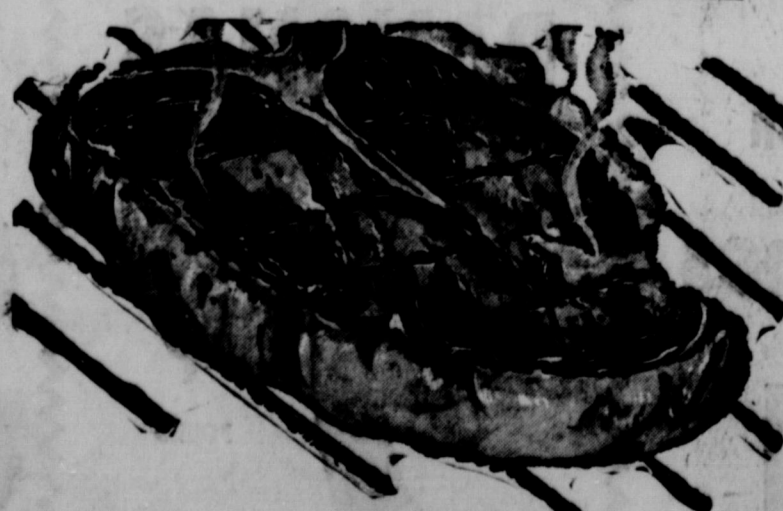
Gooch Blue Ribbon 2-Pound Thick Sliced **\$1.17**

**FRANKS** Gooch Blue Ribbon All Meat Pound **49¢**

**STEAK FINGERS** 12 oz. Pkg. **69¢**

**GERMAN SAUSAGE** 12 oz. Pkg. **79¢**

GOOCH BLUE RIBBON  
**LUNCH MEATS**  
 6-oz. Pkgs. **4 FOR \$1**

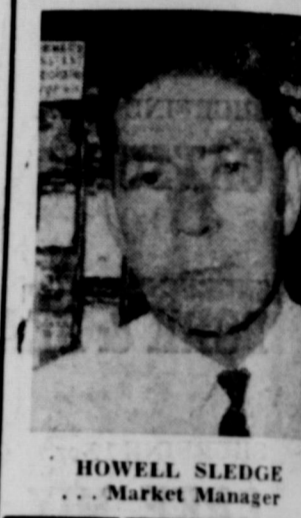


### FREE

- BACK SCRATCHERS
- Balloons
- S&H GREEN STAMPS



CISCO-EASTLAND-RANGER



HOWELL SLEDGE  
 Market Manager

**J.R.B. BONUS STAMP COUPON**  
 50 Free S&H Green Stamps with the purchase of  
**Gooch's Boiled Ham**  
 1-lb. or more  
 at reg. price-Void after June 26  
 America's Most Valuable Stamp

**J.R.B. BONUS STAMP COUPON**  
 50 Free S&H Green Stamps with the purchase of  
**Gooch's Pork Liver**  
 2 lbs. or more  
 at reg. price-Void after June 26  
 America's Most Valuable Stamp

**J.R.B. BONUS STAMP COUPON**  
 50 Free S&H Green Stamps with the purchase of  
**Gooch's BOLOGNA**  
 2 lbs. or more  
 at reg. price-Void after June 26  
 America's Most Valuable Stamp

**J.R.B. BONUS STAMP COUPON**  
 50 Free S&H Green Stamps with the purchase of  
**Gooch's Beef Steaks**  
 2 lbs. or more  
 at reg. price-Void after June 26  
 America's Most Valuable Stamp

**J.R.B. BONUS STAMP COUPON**  
 50 Free S&H Green Stamps with the purchase of  
**Gooch's Rib Steaks**  
 2 lbs. or more  
 at reg. price-Void after June 26  
 America's Most Valuable Stamp

**J.R.B. BONUS STAMP COUPON**  
 50 Free S&H Green Stamps with the purchase of  
**Gooch's Beef Liver**  
 2 lbs. or more  
 at reg. price-Void after June 26  
 America's Most Valuable Stamp

**J.R.B. BONUS STAMP COUPON**  
 100 Free S&H Green Stamps with the purchase of  
**HEART-O-HAM**  
 Gooch's - 2-lb. Can  
 at reg. price-Void after June 26  
 America's Most Valuable Stamp

**J.R.B. BONUS STAMP COUPON**  
 100 Free S&H Green Stamps with the purchase of  
**Gooch's Can Picnics**  
 3-lb. can  
 at reg. price-Void after June 26  
 America's Most Valuable Stamp

J. R. B. SUPER MARKETS - FORMERLY WORTH FOOD MART - CISCO, E. ASTLAND and RANGER, TEXAS

# GRAND

# OPENING

Prices Effective All Week - Monday thru Saturday - June 21 - 26  
Double S&H Green Stamps Wed. - Thurs. - Fri. & Sat.



BUY 1/2-GALLON  
FOREMOST  
BIG DIP

**49¢  
FREE**

RECEIVE 6-PACK  
POPSICLES

## Whipping Cream

Foremost  
1/2-Pint  
Carton

**19¢**

## Strawberries

Shurfine  
Frozen  
10-oz. Pkg.

**4 FOR \$1.**



MRS.  
BAIRDS  
Shortcake  
Cups

**10¢**

Pkg. of 2

## BUTTERMILK

FOREMOST

1/2-Gal. Ctn.

**39¢**

BUY ONE 1/2-Gal. Ctn. FOREMOST ORANGE DRINK -  
GET ONE 1/2-Gal. Ctn. FOREMOST ORANGE DRINK . . .

**FREE**

BUY TWO 10¢ MRS BAIRDS  
CREAM FILLED CUPS CAKES

**19¢**

GET ONE  
MORE . . .

**FREE**

BUY ONE 16oz. BOOTH FROZEN BREADED SHRIMP -  
GET ONE 8-oz. BOOTH FROZEN FISH STICKS . . .

**FREE**

BUY ONE 2-lb. ARROW PINTO BEANS -  
GET ONE 1-lb. ARROW PINTO BEANS . . .

**FREE**

BUY ONE 4-oz. FRENCH'S PEPPER  
GET ONE 1-oz. FRENCH'S PEPPER . . .

**FREE**

BUY ONE BON-AMI JET SPRAY  
GET ONE BON-AMI POWDER . . .

**FREE**

BUY ONE 2-lb. ARROW POP CORN -  
GET ONE 1-lb. ARROW POP CORN . . .

**FREE**

BUY ONE 20-POUND ARROW CHARCOAL -  
GET ONE 5-POUND ARROW CHARCOAL . . .

**FREE**

BUY ONE 29¢ MORTON'S POTATO CHIPS -  
GET ONE 29¢ MORTON'S CHIP-O'S . . .

**FREE**

BUY TWO 15-oz. FROZEN PATIO MEXICAN DINNERS -  
GET ONE 15-oz. FROZEN PATIO MEXICAN DINNERS . . .

**FREE**

BUY ONE 16-oz. BETTY SWEET SLICED PICKLES -  
GET ONE 16-oz. BETTY SWEET SLICED PICKLES . . .

**FREE**



SIX  
BOTTLE  
CARTON  
KING SIZE

**DR. PEPPER**

**29¢**

PLUS DEPOSIT



J. R. B. SUPER MARKETS — FORMERLY WORTH FOOD MART — CISCO, EASTLAND, and RANGER, TEXAS



Cisco-Eastland-Ranger

- ★ CISCO
- ★ RANGER
- ★ EASTLAND

formerly  
Worth Food Mart

# *famous for values* gives you America's most valuable stamps ...S&H Green Stamps

***Super Foods! Super Values! Super Service!***

We're always at your service with the *best of everything*. And you'll discover a quality, value-packed atmosphere throughout our stores.

That goes for the S&H Green Stamps we always give you, too. Remember, S&H is no "here-today - gone-tomorrow" stamp plan. Established in 1896, S&H Green Stamps have become an American way of thrift with over 35,000,000 smart, budget-minded women. With S&H you have your selection of the finest, top-quality name-brand gifts in the land. You can trust S&H to have the gift you want—when you want it because S&H Green Stamps are America's most reliable most valuable stamps.

Our welcome mat is out. Come on in today.



## Mrs. Vinita Miller Is Installation Officer

Mrs. Ima Jordan was installed on June 5 as worthy matron and J. N. Poe, worthy patron, of Eastland Chapter No. 280, Order of the Eastern Star in an open installation ceremony.

Installation officer was Mrs. Vinita Miller, past matron, who was assisted by Mrs. Corrine Weathersby, installing marshal; Mrs. Ruby Denny, installing chaplain; Mrs. Anna Barbara Kinnaird, installing organist; and Mrs. Pebble Boles, installing secretary.

Special music was presented by a choir, composed of Homer Smith, Johnson Smith, Mr. and Mrs. R. E. Head and Mrs. Belma Pounds.

Candles were lighted by Randy Boles and Dennis Tidmore; reading from the Holy Bible was presented by Mrs. Gertrude Richardson, chaplain; and the choir sang "The Old Rugged Cross."

The chapter room was artistically decorated by the outgoing worthy matron, Mrs. Lorine Crawford and her core of officers.

Other officers installed were Mrs. Edna Poe, associate matron; H. C. Pounds, associate patron; Mrs. Pebble Boles, secretary; Mrs. Vinita Miller, treasurer; Mrs. Prudence Hardeman, conductress; Mrs. Lois Morton, associate conductress; Mes. Vaneta Rhodes, marshal; Mrs. Christine Baskow, organist; Mrs. May Dell Jordan, Adah; Mrs. Anna Gipson, Ruth; Mrs. Bernice Tankersley, Esther; Mrs. Erma Kelly, Martha; Mrs. Betty Jackson, Electra; Mrs. Belma Pounds, Warder; and Claude C. Gipson, sentinel.

The program for the evening was under the direction of Mrs. G. M. Hargus. An informal social hour was enjoyed after the meeting with refreshments served in the banquet room by the outgoing officers.

Mrs. Pat Crawford gave the benediction. Some 125 guests registered for the occasion.

### FROM TEMPLE

Miss Sharon Miller of Temple is visiting in Eastland with her parents, Mr. and Mrs. Pat Miller.

**It's Time to Spray under your house and in your house for termites, roaches, ants, fleas, spiders.**

Also time to spray your grass, trees, and shrubbery.

**H. D. WARREN**

209 E. Valley

Phone MA 9-2434

### WANT-ADS

**The People's Market Place!**

Now's the time to sell or buy band instruments, pianos, bicycles, shotguns, and so forth.

Want-Ads in this newspaper get results.

## "The Living Bible"

A warm welcome is extended to everyone interested in the moving, dynamic, truly Biblical portrayal of the Life of Christ from Advent to the Ascension.

A movie in Technicolor on a large screen.

Don't miss this extraordinary presentation shown in a series — four Sunday Evenings beginning June 27 and continuing through July 18 — 7:30 p.m.

★ ★ ★

### FIRST CHURCH OF GOD

Corner Valley and Lamar Sts.  
Eastland, Texas

You are cordially invited to attend each showing.



MISS MARTHA SUE HOLLAR

## Hollar-Lusk Wedding Announced for Aug. 22

The engagement and approaching marriage of Miss Martha Sue Hollar and Raymond Lee Lusk has been announced by her parents, Mrs. Ena Belle Hollar and Thaddeus Ail Hollar, both of Amarillo. The prospective bridegroom is the son of Mr. and Mrs. Jack Jordan of Kerrville.

The wedding date has been set for August 22 at the Christian Church of Amarillo. Lusk, a 1961 graduate of Eastland High School, attended Tarleton State College and is presently a senior majoring in Music Education at Texas Tech. He is past treasurer of the Texas Tech Band and is president of his fraternity, Kappa Kappa Psi.

Miss Hollar, Amarillo High School graduate, received her B. A. degree in mathematics from Texas Tech in the spring of 1965. While attending college, she was a member of Mu Phi Epsilon, presidents hostess and the general council of the Association of Women Students.

### Mrs. Wood Is Hostess For Flatwoods HD

Members of the Flatwood Home Demonstration Club will meet on July 1 with Mrs. Genoa Brown as hostess.

At the last meeting with Mrs. Earnest Wood, six members and visitors, Mrs. Troy Cross and children were present. Mrs. Beverly Nicholson, Eastland County home demonstration agent, presented a program on "Making a Will."

Mrs. Horn, president, presided.

## Mr. & Mrs. D. H. Harbin Note 50th Anniversary

Mr. and Mrs. D. H. Harbin children, Elzo Harbin of O. residents of Eastland County, celebrated their 50th wedding anniversary last Sunday, June 13.

Mr. and Mrs. Harbin moved to Eastland from Cherokee County, Ga. on Nov. 16, 1883.

## Luncheon Honors Club, Mrs. Vaught Tuesday

Mrs. Nora Vaught was honored Thursday with a luncheon given by her son, Bob Vaught of Washington, D. C. The luncheon was held in the White Elephant Restaurant with members of the Eastland Pioneer Club attending.

Mrs. Ina Mae Hill, member of the club, read a reminiscence of early days in Eastland, written by Mrs. Gene C. Boney.

The invocation was given by Mrs. Josie Nix.

Others who attended the luncheon were Mes. Alma Castleberry, Myrtle McNatt, Tonsie Johnson, Reva Horn, Millie Drake, Winnie Bassett, Fannie Lockhart, Mattie Miller.

Mmes. Mable White, Mae

Harrison, Louise Stroebel, Susie Hearn, Minnie Williams, Josie Jones, Pebble Boles, Prudie Hardeman, Lona Sikes, Rose Day, Sally Garrett, and Florine Martin. Mr. Vaught was in Eastland over the weekend to visit with his mother and to attend the EHS Homecoming Reunion.

### HERE FOR HOMECOMING

Visiting with Mrs. Grady Pipkin, from Saturday until Tuesday, is Mrs. J. E. Hickman of Austin, formerly of Eastland.

### VISITS BROTHER

Mrs. Nell Hatten of Oklahoma is visiting in the home of her brother and family, Mr. and Mrs. W. A. Anderson.

### WATCH REPAIR

Your watch will receive the very finest care in our repair department. We feature:

- Ring Sizing
- Engraving
- Jewelry Repair
- Pearl Restringing

### BESKOW JEWELRY

210 W. Main Eastland MA 9-25

To The Customers of

## ROGERS GROCERY

The fact is — we will be closed

June 22, 23 and 24.

# SALE

## GAS AIR CONDITIONING

Factory Specialists in Town

NEW LOW PRICES  
NEW EQUIPMENT

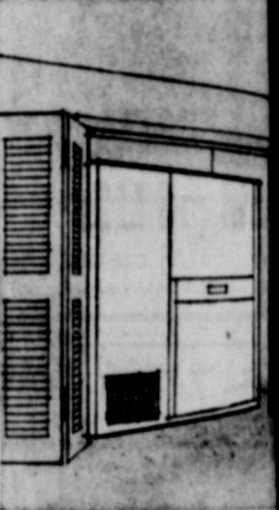
have a free  
air-conditioning survey  
of your home



**Bryant Add-on** If you have central heating, you are halfway toward year-round comfort. This simple, compact system is as maintenance-free as a good gas furnace, and ties in with existing ductwork at no loss of floor space. Available in 3 and 4½ ton units.

### GAS AIR CONDITIONING IS YOUR BEST BUY

- Outlasts electric systems 2 to 3 times
- Lower operation and maintenance costs
- More than 20 models to choose from
- No moving parts for quiet, efficient operation
- Lone Star Gas Co. stands behind every installation



**Arkla Year-round System** Here's a complete heating-cooling package for year-round air-conditioned comfort that comes in indoor and outdoor model to suit your particular need. These models give complete year-round heating-cooling comfort in one economical package. Available in 2 R to 25 tons.

Gentlemen: Please have your representative call on me for a free air-conditioning survey of my home.

Name \_\_\_\_\_ Phone \_\_\_\_\_  
Address \_\_\_\_\_ City \_\_\_\_\_

FREE SURVEY — SEND THIS COUPON TODAY

**LONE STAR GAS COMPANY**



# SOMETHING NEW HAS BEEN ADDED!!

## TO PROPERTY IMPROVEMENT LOANS IN EASTLAND. NOW: Borrow Up To \$7,500.00 ★ Take 7 Years To Repay!

IMPROVE YOUR  
PROPERTY FOR  
COMFORT, VALUE

Build a Garage, Carport or Utility Buildings.  
Air Condition • Put Up a Fence  
Add a Patio • Install a Swimming Pool  
Build that New Bedroom, or Bath or Both.

Commercial Property, Too!  
Build A Lake Cottage

Ask These Firms About the NEW Improvement Loans:

**CROWELL LUMBER CO. --- EASTLAND NATIONAL BANK --- HANNA HARDWARE & LMB.**

715 W. Main

MAin 9-2411

On the Square — Member FDIC

201 N. Seaman

MA 9-2104