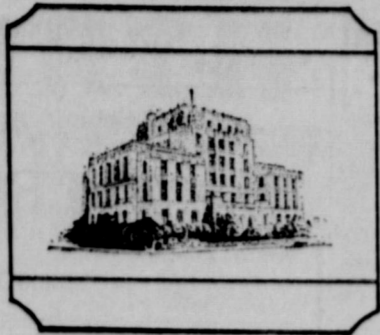


Well Done' Champions



EASTLAND TELEGRAM



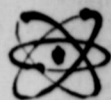
Let's Win Bi-District

VOLUME 89, NUMBER 14

EASTLAND, TEXAS 76448, THURSDAY, FEBRUARY 18, 1965

PRICE 10c

TidBits



By H.V.O.

WASSAR—plant expansion is due completed March 1, and increase of employees is to begin at that building up to a total of 100 more workers, a total of some 300. Eastland Industrial Foundation will distribute U. S. Department of Commerce booklet which point out what 100 factory workers mean to you. The figures were taken from a survey of 11 states in the nation, one of which was Gray County, Texas, a major town in which of which is Pampa, in the Panhandle. The survey compared developed in these 11 states which added industry jobs, with similar counties in other states which did not.

Figures are eye-openers, reminders that Eastland area folks can thank their stars for such assets as manufacturing people.

Figures are eye-openers, reminders that Eastland area folks can thank their stars for such assets as manufacturing people.

Figures are eye-openers, reminders that Eastland area folks can thank their stars for such assets as manufacturing people.

Figures are eye-openers, reminders that Eastland area folks can thank their stars for such assets as manufacturing people.

Figures are eye-openers, reminders that Eastland area folks can thank their stars for such assets as manufacturing people.

Figures are eye-openers, reminders that Eastland area folks can thank their stars for such assets as manufacturing people.

Figures are eye-openers, reminders that Eastland area folks can thank their stars for such assets as manufacturing people.

Figures are eye-openers, reminders that Eastland area folks can thank their stars for such assets as manufacturing people.

Figures are eye-openers, reminders that Eastland area folks can thank their stars for such assets as manufacturing people.

Figures are eye-openers, reminders that Eastland area folks can thank their stars for such assets as manufacturing people.

Figures are eye-openers, reminders that Eastland area folks can thank their stars for such assets as manufacturing people.

Figures are eye-openers, reminders that Eastland area folks can thank their stars for such assets as manufacturing people.

Figures are eye-openers, reminders that Eastland area folks can thank their stars for such assets as manufacturing people.

Figures are eye-openers, reminders that Eastland area folks can thank their stars for such assets as manufacturing people.

Figures are eye-openers, reminders that Eastland area folks can thank their stars for such assets as manufacturing people.

Figures are eye-openers, reminders that Eastland area folks can thank their stars for such assets as manufacturing people.

Figures are eye-openers, reminders that Eastland area folks can thank their stars for such assets as manufacturing people.

Figures are eye-openers, reminders that Eastland area folks can thank their stars for such assets as manufacturing people.

Figures are eye-openers, reminders that Eastland area folks can thank their stars for such assets as manufacturing people.

Figures are eye-openers, reminders that Eastland area folks can thank their stars for such assets as manufacturing people.

Figures are eye-openers, reminders that Eastland area folks can thank their stars for such assets as manufacturing people.

Figures are eye-openers, reminders that Eastland area folks can thank their stars for such assets as manufacturing people.

Figures are eye-openers, reminders that Eastland area folks can thank their stars for such assets as manufacturing people.

Figures are eye-openers, reminders that Eastland area folks can thank their stars for such assets as manufacturing people.

Figures are eye-openers, reminders that Eastland area folks can thank their stars for such assets as manufacturing people.

Figures are eye-openers, reminders that Eastland area folks can thank their stars for such assets as manufacturing people.

Figures are eye-openers, reminders that Eastland area folks can thank their stars for such assets as manufacturing people.

Figures are eye-openers, reminders that Eastland area folks can thank their stars for such assets as manufacturing people.

Figures are eye-openers, reminders that Eastland area folks can thank their stars for such assets as manufacturing people.

Figures are eye-openers, reminders that Eastland area folks can thank their stars for such assets as manufacturing people.

Figures are eye-openers, reminders that Eastland area folks can thank their stars for such assets as manufacturing people.

Figures are eye-openers, reminders that Eastland area folks can thank their stars for such assets as manufacturing people.

Figures are eye-openers, reminders that Eastland area folks can thank their stars for such assets as manufacturing people.

Figures are eye-openers, reminders that Eastland area folks can thank their stars for such assets as manufacturing people.

Figures are eye-openers, reminders that Eastland area folks can thank their stars for such assets as manufacturing people.

Grand Jury Indicts 15

Fifteen indictments were handed down by a 91st District Court grand jury which recessed Monday evening.

They included two for burglary, one robbery by assault, three DWI's, and nine thefts. Judge Floyd Jones, retired of Breckenridge, accepted the indictments, and 91st District Court Judge J. Frank Sparks said at mid-week that the cases would be set down on his docket as soon as possible to be disposed of.

Judge Sparks declined to empanel the grand jury or accept the indictments himself because he, as an attorney before his gubernatorial appointment, had represented some of the grand jury members.

Morris Keasler's Brother Buried at Hughes Springs

Funeral services for L. D. Keasler, 82, brother of Morris Keasler, were held at 2:30 p.m. Tuesday in the First Methodist Church of Hughes Springs. Burial was in Hughes Springs Cemetery.

Keasler, who died at 6:30 a.m. Monday in a Lindon Texas hospital, was a member of a pioneer East Texas family and managed T. B. Keasler and Company General Merchandise from 1913-1959. The firm was established by his father in 1879. He was a director of the First National Bank in Hughes Springs and was currently serving as vice-president of the bank. He was also a member of the First Methodist Church and a member of its Board of Stewards.

Survivors include his wife; two grandsons, David Crouch of the United States Navy, stationed in Fort Worth, and Jeffrey Lynn Crouch of Hughes Springs; three brothers, Morris Keasler of Eastland, Frank Keasler of Jacksonville and E. F. Keasler of Hughes Springs; and three sisters, Mrs. W. A. Hooten of Danglerfield, Mrs. H. L. D. Jenkins and Mrs. Carrie V. Carter, both of Hughes Springs.

Recovered Hub Caps At Police Department

The Eastland Police Department has recovered several hub-caps, which had been stolen and taken to another city, according to Policeman R. D. Arnold, who said that anyone who will stop by the Police Dept. and properly identify any of them, can claim them.

Chicken Fight Hearing In Ranger JP Court Friday Morning At 10

Seven men from Young and Stephens Counties will go on trial in the court of Justice of Peace M. D. Underwood Friday morning at 10 a.m. on charges of "being concerned with a chicken fight."

A six-member jury, Underwood said, will hear the cases. Defense attorney will be Payne Royce, Graham attorney-at-law, and County - District Attorney Perry T. Brown of Eastland will be the prosecutor.

The men, among 66 arrested Jan. 10, at a gathering on a place southeast of Ranger allegedly the site of a chicken fight, had originally been scheduled to be tried in the Ranger JP court Wednesday, Feb. 10.

In two prior trials of the same nature, several Abilene men were convicted on a charge by a Ranger jury and



OFFICERS AND GUNS — Eastland County and Ranger law enforcement officials display part of the cache of guns recovered after a gun-theft ring was squashed. From left they are Sheriff L. E. Sublett, Ranger Justice of the Peace M. L. Underwood, Deputy Loy Williams, Constable Ralph Veal and Ranger Police Chief Bill Ogden.

Gun-Theft Ring Broken -- 5 Students Charged

An arsenal of 17 weapons, including high-powered rifles and shotguns valued at some \$3,000, has been recovered by Ranger and Eastland County law enforcement officers, putting an end to a gun-stealing ring that was operating in at least four counties.

Five former Ranger Junior College male students have been indicted by a 91st District Court grand jury and are free on \$1,000 bond each. And proving that there's no honor among thieves, the case was broken open, County Sheriff L. E. (Lefty) Sublett reports, after one of the young men filed charges against another of the ring for stealing one of the stolen rifles.

Key officers in solving the robberies were Ranger Police Chief Bill Ogden, Ranger Constable Ralph Veal and Justice of the Peace M. L. Underwood. One of the five young men filed a complaint with Judge Underwood on Feb. 8, accusing another college student of stealing his rifle. Officials began questioning the students and after some 30 hours of close interrogation by the Ranger officials, Sheriff Sublett and Deputy Loy Williams, the case began "to crack."

One was taken in Young County, two in Stephens County, five in Jones County and the rest from Eastland County. It is believed that these represent all that were stolen by the quintet of students, although about that many more thefts of guns have been reported, indicating that there are still gun thieves at work in the area.

Two of the college students are from Fort Worth, two from Jones County and the other from Young County, Sublett said. These weapons, stored in the sheriff's department safe, at the courthouse, may be claimed by their owners, the sheriff said by persons giving a complete description or numbers. The students are charged with theft over \$50.

Gun thefts began to be reported to authorities as far back as last September, Sublett said, causing his and adjoining counties' sheriffs departments to launch an intensive search for clues, which were hard to turn up, because most had been taken from unlocked pickups. Of the 17 guns recovered,

one was taken in Young County, two in Stephens County, five in Jones County and the rest from Eastland County. It is believed that these represent all that were stolen by the quintet of students, although about that many more thefts of guns have been reported, indicating that there are still gun thieves at work in the area.

Two of the college students are from Fort Worth, two from Jones County and the other from Young County, Sublett said. These weapons, stored in the sheriff's department safe, at the courthouse, may be claimed by their owners, the sheriff said by persons giving a complete description or numbers. The students are charged with theft over \$50.

Gun thefts began to be reported to authorities as far back as last September, Sublett said, causing his and adjoining counties' sheriffs departments to launch an intensive search for clues, which were hard to turn up, because most had been taken from unlocked pickups. Of the 17 guns recovered,

Electric Rate Cut Approved By Council With 'Thanks'

A rate reduction resulting in a drop of more than five per cent annually in revenue from customers of Texas Electric Service Co. was approved by Eastland City Commissioners

at their regular monthly meeting Monday evening.

Mr. Frank Sayre, TESCO division manager, appeared before the commission and submitted a proposal which includes both a voluntary reduction in electric service rates in the city and an increase in street and alley rental payments by his company.

The principal changes being proposed in rates are a reduction in the rate applicable to residential customers, additional promotional features to encourage increased residential use in the winter months, and the addition of a new rate for all-electric homes. All residential customers using more than 65 kilowatt-hours in a month will be benefitted most, he explained. These changes will result in a reduction in excess of five per cent annually.

The rate adjustment made by the company in 1963 was proportionally larger for the

below average residential user. The benefits under the new rates are proportionally larger to the above average use residential customer, such as those with summer air conditioning in their homes, Sayre explained.

Other proposed changes in rates reduce the minimum bills under the large general service rate and bills for public schools, and the company proposed to update the adjustment clauses in all rates by changing the date in the tax clause from Jan. 1, 1963, to Jan. 1, 1965, and changing the 20 cents in the fuel clause to 21 cents.

No electric service bills will be increased by the revised schedule, Sayre told the commissioners.

The proposed rate reduction is a continuation of the long-established policy of Texas Electric Service Co. to voluntarily reduce electric rates (Continued on page 2)

Carl C. Cox, 50 Carbon Native, Buried Tuesday

Funeral services for Carl Chester Cox, 50, were held Tuesday at 2 p.m. in the Arlington Hamner Funeral Chapel with the Rev. Haston Brewer, pastor of the First Baptist Church, officiating. Burial was in Eastland Cemetery.

Mr. Cox died at 11:30 p.m. Sunday in the General Hospital at Andrews.

Born Nov. 13, 1914 in Carbon, he lived in Eastland County until enlisting in the Marines. He served in the South Pacific during World War II, was a truck driver for Wood Van Lines in San Angelo, and he moved from San Angelo back to Ranger last year.

Survivors include one son, Edward Carl Cox of San Angelo; his mother, Mrs. Sally Cox of Ranger; and five sisters, Mrs. W. E. Hallenback of Flagstaff, Ariz., Mrs. Howard Peevey of Eldorado, Ark., Mrs. O. L. Jumper of Ranger, Mrs. W. L. Lechabay of Monahans and Mrs. L. B. Lemmons of Cedar Hill.

Arrangements through Arlington Hamner Funeral Home.

COMPARATIVE ELECTRIC RATES

Monthly Kwh use	Monthly Bill	Monthly Bill	Monthly Bill
	On Rate Prior to '63 Decrease	On Present Rate	On Proposed Rate
100	\$ 4.94	\$ 4.52	\$ 4.45
250	9.18	8.25	8.02
500	14.18	13.00	12.42
750	19.18	17.75	16.82
1000	24.18	22.50	21.22
1250	29.18	27.25	25.62
1500	34.18	32.00	29.70

This tabulation shows that the two reductions combined reduce rates by about the same proportion for both above and below average residential customers. The 1963 adjustments was proportionally larger for the below average residential user. The benefits under the new rates are proportionally larger to the above average use residential customer such as those with summer air conditioning in their homes.

\$100 In Scrip Given Saturday

The hopper which holds ticket stubs for the Old Rip Scrip Drawing is presently at The Men's Shop and will be there until the next drawing Feb. 27 on the south side of the square, it has been announced.

Winners at the last drawing were Mrs. J. B. O'Neil, \$50; Mrs. L. L. Vines, \$30; Mr. R. L. Long, \$10; and Vicki Trout, \$10.

Mavericks' Bi-District Foe Undetermined Yet

The District Champion Eastland Maverick Cagers will take on the Carbon Wolverines Thursday night here in a practice session in preparation for their Bi-District tilt — opponent, time and the place to be announced.

The Mavericks played the Comanche Indians in a practice round Tuesday in Indian gym.

District 9-A leaders Early and Marble Falls each played Tuesday evening, with Early defeating Santa Anna and Marble Falls undoing Goldthwaite, resulting in a play-off situation, to be played Thursday night.

Coach Denson Moody's 10-A Champs swept into their championship with a 12-1 win-loss record last week, in defeating Cross Plains. A win by Clyde over Baird, who had been tied with Eastland, helped ease the victory, precluding a playoff.

Individually the Mavericks have been red-hot all season, with top performances being turned in by every member of the team.

Fast and furious, double-digit scoring has highlighted the Maverick games consistently, with the fire-ball shooting of Terry Treadwell and Mike Miller pacing the field, followed closely by Hayden Wilson, Larry Wilson and Jim Herridge.

Treadwell, a senior, in 26 games, has tallied a grand total of 701 points for a per game average of 26.9.

Senior Miller has scorched the nets for 391 points in 24 games for an impressive 15.5 average.

Hayden Wilson, a junior, has meshed 184 points in 25 games for a 7.4 average.

Larry Wilson, another junior, sank 101 points during 24 regular season games for a 4.1 average per outing.

Other varsity Mavericks are Norman Rhodes, senior; Gary Rollins, senior; Homer Terry, junior; Johnny Moylan, junior; Jim Pat Miller, junior; and James Whitehead, sophomore.

Mavs Beaten By Comanche

The Eastland Mavericks were downed Tuesday night in a practice drill before Bi-District competition, by a hot-hitting, hard-missing Comanche Indian team. The tribe, led by the crack shooting of Hugh Fletcher, defeated the Mavs, 72-47.

The Mavericks hit a cold streak to match the outside weather from the beginning, without scoring two points as four minutes passed.

Terry Treadwell led the Mavs, hitting 18, followed by teammates, Mike Miller, Hayden Wilson and Larry Wilson, scoring eight each. James Whitehead added three and Jim Herridge sank 2.

The Indians are winners of their A district and the Mavs are 10-A champs. In earlier games this year, the Indians were victorious over Eastland, this being their fourth.

Shop Eastland First!

Freyschlag INSURANCE

weather report

THURSDAY — Fair. Sun rises 6:47, sets 5:42. Moon rises 9:02 p. m. Fishing fair. FRIDAY — Colder. Sun rises 6:46, sets 5:43. Moon rises 10:06 p. m. Fishing poor. SATURDAY — Sunny. Sun rises 6:44, sets 5:44. Moon rises 11:09 p. m. Fishing good.

BREAD of Life

With good will doing service as to the Lord, and not to men.—Eph. 6:7.

Then murmur not, if toils obscure, And thorny paths be thine; To God be true — they shall secure, The joy of life divine.

Olden P-T A To Meet

Olden P-T A will meet Thursday (this afternoon.) at 7:30 p.m. at Olden Community Center. All members are urged to attend.

BRING YOUR dirty old radiator in for cleaning and winterizing. Also major and minor tune-ups. Otis Coleman's Humble Service. East Main St.

LOOKS nice doesn't we need to remember industrialization has its not all just to us on a silver platter our case, Musing must believe in us a deal, and we in turn, ready to prove our help our community area by investing the ingredients to achieve these goals. Capital expenditures are often to provide services new firms and their systems may fire expansion. New and traffic control measures may increase. Police and fire protection is required. Not of these things have necessary with the continued on Page 7)

G.R.O-W FAST Insured Accounts at

Eastland National Bank

EASTLAND TELEGRAM

110 W. Commerce St. — Eastland, Texas
Phone MI 9-1707

(Consolidate with Eastland Chronicle, established in 1907, and Eastland County Record, established in 1931).

Entered as second class matter at the Post Office in Eastland, Texas, under the act of Congress of March 3, 1879.

Published Semi-Weekly — Thursdays and Sundays
By Eastland County Newspapers, Inc.
H. V. O'BRIEN, Editor

SUBSCRIPTION RATES: By carrier in city, 15c week or 65¢ month; by mail in county, \$3; one year by mail elsewhere in state, \$5; one year by mail out of state, \$6.

NOTICE: Any erroneous reflection upon the character, standing or reputation of any person, firm or corporation which may appear in the columns of this newspaper will be gladly corrected upon being brought to the attention of the editor.

Jackie Woods, surgical. Mrs. Charles Harris, OB. Mrs. Richard May, surgical. Mrs. George Barnard, Cross Plains, medical.	Baby Boy Harris. Baby Girl Banks.
Mrs. H. J. Tanner, medical. L. C. Freeman, medical. Eddie L. McCarthy, Moran, surgical.	Visiting recently with and Mrs. L. E. Huck were her brother and wife, Mr. and Mrs. Sam thews of Fort Worth.



TO SWING IN EASTLAND — Ronal McCown of Abilene, will be one of the features of the combined stage and screen musical entertainment offering at the Majestic Theater in Eastland Friday night. Backed by his Overall Good Band, McCown will share the jestic stage with Joe Terry of Abilene and Jim W. and "The Boys" of Cisco Junior College. On the show will be the first annual TAMI Show, featuring national musical stars. Showtime is 11:45 p. m.

Shifting Insurance Burdens —

... has long been an American custom, and it's a good custom. Don't try to carry the load of financial risks yourself against the hazards of the modern times, but shift it to your local agent and let Insurance do it. Your losses may be hours or years away but meanwhile Insurance will give you peace of mind and financial protection that's worth far more than it costs. Loss or no loss you win either way — with Insurance.

Earl Bender & Co.
Eastland (Insurance Since 1924) Texas
112 W. Commerce

There's a Treasure Chest of values in our store ... you'll find modern, traditional — the just-right piece for your home. Shop here and see

Furniture Buys Spectacular
VALUES FOR MODERN HOMES

COATS FURNITURE EASTLAND

Eastland Memorial Hospital

The following persons were listed as patients in the Eastland Memorial Hospital Wednesday:

- T. E. Payne, medical.
- Joseph Lon Lasater, medical.
- Mrs. Joseph Lasater, medical.
- H. A. Freeman, medical.
- Miles T. Pharris, medical.
- Barbara Wagley, Moran, surgical.
- Mrs. Jim E. Hallmark, medical.
- Dianne Yancey, Graham, medical.
- J. D. Yancey, Graham, medical.
- Alex Brown, surgical.
- Foy L. True, accident.
- Emma Wade, medical.
- Mrs. H. D. Waller, medical.
- Jannie M. Burtis, medical.
- Mrs. J. L. Banks, Cisco, OB
- John Fehl, medical.
- Mrs. Fernie Mitchell, Carbon, medical.
- Mrs. R. L. Taylor, medical.
- Doyle Johnson, Desdemona, medical.
- Millard Slaughter, Cisco, medical.
- Leonard Hollander, Cisco, medical.
- Grady Bond, Rising Star, medical.
- H. J. Lane, medical.
- Clyde Garrett, medical.
- Charles Colvard, Gordon, medical.
- Judy Spence, Carbon, medical.
- Alice B. Chrisman, Waco, medical.
- Corry Blackburn, Cisco, accident.
- Mrs. Darrell Basham, medical.
- Mrs. Jack Mace, medical.
- Mrs. Robert Daniels, Cisco, medical.
- Addie P. Overstreet, medical.
- Larenda Merworth, Rising Star, medical.
- Mrs. Walter Rice, accident.
- Mrs. Tom Amis, medical.
- Mrs. J. L. Mitchell, Gordon, medical.
- Ethel Woloszyn, surgical.
- Gennie Elrod, Ranger, surgical.
- Billie Richards, Cisco, medical.
- Mrs. Charles Phillips, Olden, medical.
- L. M. Miller, Gorman, medical.
- H. M. Ellison, Olden, surgical.
- Linda Graham, medical.
- Margaret Walker, surgical.
- Douglas Burns, accident.
- Edgar Ringo, Gordon, surgical.
- Troy Woods, surgical.

OLDEN WATER ...

(Continued from Page One) ers in order to induce them to go into our system." Olden residents present were Gene and Danny Woods, Pat Moseley, Bill Hunter, Hilliard and L. J. Williamson. Also in attendance were Eastland County Water Board members H. T. Wilson, Charles Freyschlag and M. H. Perry.

The question was asked: "Can Eastland enter into a 40-year agreement, with the last 10 years being a commitment between the city and the Olden water system, without regard to the present contract Eastland has with the Water District?"

"Not without an election," Mayor Frank Deaton explained, stating that Eastland's attorney had advised that it cannot be done.

"Can Olden go into a 30-year contract with a 10-year option at the end" Olden residents were asked.

"Possibly. Of course our engineer will have to help us determine this, but it might mean a \$7.50 monthly minimum because of the increased payments."

A question as to whether Eastland might consider putting in a water system for Olden, including it in its present system, brought no comment.

Point was also brought up about the some 53 customers in Olden who presently are Eastland water users, as to whether they would be released to the Olden system, and whether Eastland would release Olden to buy raw water from the Water District in the event the Olden system elects to include a filtration plant in their system.

Director Wilson said that it might be possible if the cities release present agreements.

During the informal discussion the Olden residents agreed that the cost of a filter plant and added piping would probably be prohibitive.

A Commissioners comment that maybe it could be worked out if Eastland annexed Olden, brought only chuckles.

Tiner explained that it was his understanding that the engineers only wanted a resolution that the city would sell water to the system, with details to be worked out later.

FOR SALE — 1963 Pontiac Grand Prix Sports coupe, bucket seats, full power, air-conditioned, looks and runs like new, beautiful dark blue metallic. Original price \$4,750. Our price \$2,750. Muirhead Motor Company, Eastland, MA 9-1731.

ELECTRIC RATES ...

(Continued from Page One) from time to time as conditions permit," he said.

The street and alley rental payments to the City are presently based on two per cent of the gross revenues received from the sale of all electricity within the city limits. The proposal would increase this to three per cent, resulting in an additional payment for 1965 of approximately \$2,420, bringing the total 1965 street and alley rental payment to approximately \$7,260.

Commissioner James Reid made the motion to accept the proposal "With thanks to Texas Electric Service Co." Commissioner Curtis Koen seconded the motion. "With thanks."

Mayor Frank Deaton presided and Commissioners Koen and Reid were present.

Mr. Sayre explained that the street and alley rental payments will be increased effective with the payment to be made March 15, 1965, and the revised Schedule of Rates will become effective on bills prepared from meter readings made on and after 30 days following Monday night's meeting.

The rate change for schools will result in a saving of \$13,050 a year for the local schools, it was pointed out. The proposal also included the re-signing of a 10-year street lighting contract between the company and the city.

In other business this week, the Commission:

- Raised City Manager Lewis Tiner's salary from \$550 monthly to \$600 a month. He went to work for the city two years ago at \$475 a month.
- Instructed Tiner to investigate the possibility of selling B. H. Rogers water from Lake Eastland for irrigation purposes, as requested by Mr. Rogers.
- Voted to put Block 47 (New Elementary School system) into the city limits. The site includes 30 acres, and was passed on a motion by Koen, seconded by Reid.
- Heard Fire Marshall Guy Robinson report on the inadequacy of the 1919, chain driven, pumper truck, and the need for considering the purchase of a newer fire-fighting piece of equipment. No action was taken.
- Heard Volunteer Fire Chief Wayne Jackson report that the department is ready to assist the city in building a fire department recreation room at such time as the city is ready to consider such a move. The department, he said, will finish a building if the city will pour the foundation and put up the walls. No action was taken and it was taken under advisement.
- Heard a report from Tiner on an investigation of the city's responsibility for maintaining the old filtration plant at Lake Eastland.

Wanted

- WANTED: All kinds dirt work, have D7 Cat. dozer for tank cleaning, terracing, brush clearing, or what have you. Call Brooks Dirt Work, Cisco HI 2-3291, or write Box 666, Cisco.
- WANTED: All kinds dirt work, have D7 Cat. dozer for tank cleaning, terracing, brush clearing, or what have you. Call Brooks Dirt Work, HI 2-3291, Cisco, or write Box 666, Cisco.
- WANTED: All kinds dirt work, have 2 D-7 Cats, Seeder, factory rake, grubber, scraper or anything you may need. Phone: Randy Brooks, HI 2-3291, Cisco.
- WANTED: Man or woman spare time. To refill and collect money from machines; dispensing HiGrade candy, gum and sport cards in this area. Supplement your income. Easy to do. \$475.00 cash required for inventory. Include phone number. Write P. O. Box 2231, Waco. 18
- WANTED: Job for high school senior in desperate need of employment to supplement college funds. Has experience in saleswork, cooking, butchering and photography. See or call Bill Herdridge after 5:30 p. m., MA 9-1453. 14
- WANTED: Salesgirl for retail store. Apply at Romeo Factory, 1208 South Bassett, Eastland. 14

Cards of Thanks

CARD OF THANKS
We want to express our deepest appreciation to our friends for the cards, flowers, food and prayers. Our special thanks to Brother Lamb. May God bless each and everyone of you.
The S. B. Mize Family

ROLLINS & SONS GULF SERVICE

Call for Appointments on Wash - Grease Oil Changes
500 W. MAIN
MA'n 9-8840
We Give S&H Green Stamps

WALKER'S Dressing Plant Custom Dressing

Phone D. J. Walker
Eastland MA 9-1192

Bring Your Battery Troubles To Us

Reliance

JIM HORTON Tire Service
East Main EASTLAND

LAND FOR SALE

160 acres six miles west of Cisco, pecan and apple orchard, small house, spring fed tank.

20 miles north of Cisco on State Highway, 2700 acres level rolling brush free grassland.

MacDONALD & CO.
Abilene — 120 Mulberry
Phone 915 ORchard 4-8585

CALL MA 9-1707

CLASSIFIED ADS

TRADE LEASE

Announcements

MASONIC LODGE NO. 467
Meets second Thursday of each month at 7:30 p. m. in the Masonic Hall. Call E. M. Simpson, W. M., MA 9-1665 or L. E. Huckabay, Sec., MA 9-1391 for information.

EASTLAND ROTARY CLUB

Meets each Monday noon at White Elephant Restaurant in Eastland.
Charles Freyschlag, President.

Notice

CALL OR WRITE the authorized Singer Sewing Machine representative, Rising Star, Route-2, Phone 643-4384, for sales and service.

NOTICE: Save money. Have your tires retreaded for winter wear. Most sizes, \$7.95. One year guarantee. Jim Horton Tire Service, Eastland, Texas.

NOTICE: Free demonstration of Merle Norman Cosmetics at Ruby Lee's Beauty Shop. All type beauty work, specials on cold wave permanents. 403 S. Lamar St., Phone MAIN 9-2168.

BOILED BARBECUE — Barbecue, pit cooked from choice heavy beef. Barbecue to go. Highway 20 West, 2200 Commerce, Eastland.

NOTICE: Make Baby Best-Dressed by visiting Mrs. Houle's Babyland, where you'll find beauties for the 0 to 4; Mrs. Day's shoe shop (we have the Vis-U-Vue for correct measurements); and P. S., spring love-lies are already arriving, and you'll love them. Also full stock of gift items. At Babyland, 612 N. Daugherty, MA 9-2089.

NOTICE: Coastal Bermuda sprigs 4c lb. Dug with Janesway digger and baled immediately to keep fresh. Go 5.4 miles east of Desdemona on Farm Road 8, then turn right and go 4 miles south. M. C. Jones, Rt. 3, Dublin, Texas. Phone GI 5-3591.

FOR SALE: Clean, high tread, used tires. All inspected and re-conditioned. Prices start at just \$3.95. Free installation. All guaranteed. Goodyear Service Store, Eastland.

NOTICE: Coastal Bermuda planting. Two row spray machine with fertilizer attachment. Call E. C. Jones GI 5-3591, Dublin or B. L. Hunter, 2374 Olden.

FREE

Estimates on RE-ROOFING
Or Repair of Your Old Roof.
Residential and Commercial
Eastland Roofing Co.
Noble Squiers
Phone MA 9-2370

GET A GOOD START Here!

OBIE'S HUMBLE SERVICE STATION
802 W. Main
MA 9-8868

WITH FIRST CLASS SERVICE PRODUCTS

OPEN ALL NIGHT

NOTICE: Mack's Electric Sewer Service — Sewer Rooter — Sewer, sinks and drains, cleaned electrically. Fast emergency service. Call MA 9-1221, Eastland. Commercial and residential. Free estimate. 14

NOTICE: Your car, washed and waxed to a beautiful sheen, only \$10. Call Marvin Grubb after 6 p. m., MA 9-2547 or MA 9-1574. 20

SPECIAL SALE: New shipment — Friday and Saturday only. No fabric in store over 96 cents. 4,000 yards of lace and trim, one cent to 25 cents. Helene's Thrifty Shop, Gorman Hotel, Gorman. 14

NOTICE: Coastal Bermuda Grass planting, three automatic machines, highly fertilized sprigs; hauled in insulated van for protection. Call or write for prices and information. Ardean Kimmell, De Leon, Texas. Phone 3922. 10tc

NEED new furniture, T.V. set or new car? A real opportunity for willing workers with Avon fine cosmetics. Write Mrs. Painter, Box 13446, Fort Worth. 14

FOR "a job well done feeling" clean carpets with Blue Lustre. Rent electric shampooer \$1. Coats Furniture Co. 13

For Sale

FOR SALE: We have several good, used, traded-in refrigerators. Priced from \$39.95. 60 day warranty. Terms available. Goodyear Service Store, Eastland. 14

FOR SALE: Our entire stock of Dearborn Room Heaters, reduced for end-of-season closeout. Buy on easy budget terms — No money down. Goodyear Service Store, Eastland. 14

FOR SALE: Young's Goat Island at Lake Leon Summer cabin — electricity, deeded land, \$1,000. Call MA 9-1878 or contact James W. Young, 14

FOR SALE: Two and three bedroom houses at Breckenridge. Finance available. See or call O. E. Bradford, house-mover, HI 9-4506 or HI 9-3780, Breckenridge. 14

FOR SALE: Two and three bedroom houses, small and large tracts of land. Ranch and Farm Service, 301 N. Seaman, Eastland, MA 9-2131. 14

SPECIAL SALE: New shipment — Friday and Saturday only. No fabric in store over 98 cents. 4,000 yards of lace and trim, one cent to 25 cents. Helene's Thrifty Shop, Gorman Hotel, Gorman. 14

FOR SALE: Coastal springing or contracting. We furnish fresh sprigs dug daily. Phone 7296 or 2375, Ed Nabors, De Leon. 14

FOR SALE: Two row Riggs sprigging machine. \$250.00. Sanders Tractor Supply, Stephenville, Texas. Phone WO 5-4900. 14

FOR SALE — 1964 Grand Prix, white outside, turquoise vinyl upholstery. Looks like just off show floor. New tires, power steering, 4-power brakes, air-conditioned, low mileage. Priced for quick sale. Muirhead Motor Company, Eastland, MA 9-1731.

FOR SALE: 30 acres and 3 bedroom house, stock and equipment, \$8400 cash. 64 acres, 10 cultivation, \$82 per acre. Other large and small tracts — 2 and 3 bedroom houses. Listings appreciated.
M. L. TERRELL REAL ESTATE
311 1/2 W. Main
Eastland, Texas
Ph. MA 9-1725
Nites — MA 9-1926

MATTRESSES
● New and Renovate
● Choice of Firmness
● Choice of Ticking
● New Innerspring Unit
● Cleaned, Felted Cotton
● New Mattress Guarantee

WESTERN MATTRESS CO.
Box 5288 — San Angelo
in Eastland Call MA 9-1342

JOE CULPEPPER
of Hood King Motor Co., also says: "See me for the best automobile deal."

FOR SALE: Weeping Lovegrass. Very good quality. Call 43 3591 or write Box 2335, Abilene.

FOR SALE: Coin operated laundry. Reasonable. Write Box A, Care of Eastland Telegram, Eastland, Texas. 15

FOR SALE: 1953 Ford work-car, cheap. 400 E. Main or call MA 9-2545. 14

FOR SALE: 4,000 CFM down-draft air conditioner with two-phase motor. The price is right. Phone MAIn 9-2413. 14

Rentals

FOR RENT: Three bedroom house and four bedroom house. D. L. Kinnaid General Insurance, Phone MA 9-2544. 14

FOR RENT: Unfurnished house, 414 East Sadosa. Call MA 9-1977. 14

FOR RENT: Apartment—nice, clean, furnished. Large living room, large bedroom, kitchen and bath. Bills paid. Phone MA 9-2362. 14

FOR RENT: Four room apartment, walk-in closet, two beds. Call MA 9-2186. 14

FOR RENT: Two bedroom house, new, 305 N. College St., \$50 monthly. Call MA 9-2370. 14

FOR RENT OR LEASE: Nice clean two bedroom house, 709 South Halbryan. No small children. See Ben Hamner. 14

FOR RENT OR LEASE: 330 acres — 140 in cultivation, 78 acres peanut allotment. Net fence, plenty water. Call Rising Star, 643 6108. 19

FOR RENT: One two-room and one three-room apartment. Close in. Bills paid. T.V. cable. Single person or couple. MA 9-2613. 14

RAILROAD COMMUNICATIONS

Men and women 17-34 wanted to start training at once in Teletype, Telegraph, Train Orders and Freight Rates. Qualified personnel earning up to \$486 mo. and more plus benefits. Terms on tuition. For interview give age, address and time to see. If rural give directions. Write M.I.T.T.C. Box 524 Ft. Worth, Tex.

C. E. PAUL, D. C.

Complete Chiropractic Health Service
Ave. I at 8th St.—(Hwy. 80)
Cisco, Texas
Phone HI 2-1677

FOR SALE
Modern six room, three bedroom house. With two lots. Located 110 E. Conner. Phone MA 9-1756.

FOR SALE

Modern six room, three bedroom house. With two lots. Located 110 E. Conner. Phone MA 9-1756.

WORTH FOOD MART

The SURE SIGN OF QUALITY!

Prices Effective: Feb. 18, 19, 20, 1965

CHUCK ROAST



W.C.Q. HEAVY BEEF

39¢ Lb.

- IRLOIN STEAK Baby Beef Lb. 69c
- ROUND STEAK Baby Beef Lb. 79c
- T-BONE STEAK Baby Beef Lb. 89c
- RIB CHOPS Baby Beef Lb. 79c
- SHORT RIBS Baby Beef Lb. 29c
- ARM ROAST Baby Beef Lb. 49c

Tennessee Farm PORK SAUSAGE 2-lb. Sack 1.19

- Sea Catfish — 1-lb. FILLETS Pkg. 59c
- Sea Shrimp — 3 4-oz. COCKTAIL Pkgs. \$1.
- Juan Fish — 1 1/2-lb. FILLETS Pkg. 99c

FLOUR 49¢

Light Crust 5 LBS.



COFFEE RANCH STYLE

LETTUCE ICEBURG LARGE HEADS

VINE RIPENED TOMATOES

1-LB. CAN 69¢

EA. 19¢



- GREEN ONIONS 2 Bunches 15c
- PASCAL CELERY Large Stalk 15c
- Idaho Select Russet POTATOES 2 Lbs. 29c
- Bell PEPPERS Lb. 19c
- Garden Fresh — 1-lb. Cello CARROTS 2 Bags 19c
- Long Green CUCUMBERS Lb. 19c

- PINEAPPLE Dole Sliced — No. 2 2 Cans 69c
- MUSHROOMS Pieces & Stems 4-oz. Can 29c
- MARGARINE Blue Bonnet 2 1-lb. Pkg. 49c

WELCH'S Grape Jelly Grapelade Fruit of the Vine

3 22-Oz. \$1.00

- Kraft — 8-oz. FRENCH DRESSING 2 Btls. 49c
- Del Monte ASPARAGUS All Green No. 300 Can 39c
- Libby's — 4-oz. VIENNA SAUSAGE 5 Cans \$1.
- Hunt's Yellow Cling — No. 2 1/2 PEACHES 3 Cans 79c
- Frozen Food
- Libby CHERRY PIES Family Size 3 8-inch \$1.
- DINNERS Banquet All Varieties Ea. 39c
- El Chico — 13-oz. BEEF TACOS Frozen r/kg. 49c
- Health & Beauty Aids
- SHAMPOO Breck 6oz Size 39c
- RAZOR Gillette Slim Adjustable Reg. \$1.50 \$1.

Special OFFER STARTS TODAY!

No. 1 VALUABLE TRAY TABLE COUPON

KING-SIZE TRAY TABLE

REGULAR RETAIL VALUE UP TO \$1.59 EACH WITH THIS COUPON 79¢ EACH AND \$5 PURCHASE

COUPON EXPIRES Feb. 21, 1965

CLIP AND SAVE!

100 BONUS S&H Green Stamps With This Coupon and Purchase of (1) 10-oz. Jar NESCAFE Void After Feb. 20, 1965

WORTH FOOD MART

CLIP AND SAVE!

50 BONUS S&H Green Stamps With this Coupon & Purchase of (2) 12-ct. Boxes Reg. or Super MODESS Void After Feb. 20, 1965

WORTH FOOD MART

CLIP AND SAVE!

50 BONUS S&H Green Stamps With this Coupon & Purchase of (3) No. 2 Cans Cherry, Apple, or Peach Wilderness Pie Filling Void After Feb. 20, 1965

WORTH FOOD MART

CLIP AND SAVE!

25 BONUS S&H Green Stamps with this Coupon & Purchase of (2) 16 1/2-oz. Cans Morton House BAKED BEANS Void After Feb. 20, 1965

WORTH FOOD MART

CLIP AND SAVE!

100 BONUS S&H Green Stamps with this coupon and purchase of (1) 1 1/2-lb. Pkg. San Juan FISH FILLETS Void After Feb. 20, 1965

WORTH FOOD MART

CLIP AND SAVE!

50 BONUS S&H Green Stamps With this Coupon and Purchase of (1) 30 1/2-oz. Jeno's PIZZA Void After Feb. 20, 1965

WORTH FOOD MART

CLIP AND SAVE!

25 BONUS S&H Green Stamps with this Coupon & Purchase of (1) Qt. Texize Transparent LIQUID STARCH Void After Feb. 20, 1965

WORTH FOOD MART

CLIP AND SAVE!

100 BONUS S&H Green Stamps with this Coupon & Purchase of 3-lbs. or More GROUND BEEF Void After Feb. 20, 1965

WORTH FOOD MART

CLIP AND SAVE!

50 BONUS S&H Green Stamps With this Coupon & Purchase of (2)-lbs. or More BEEF SHORT RIBS Void After Feb. 20, 1965

WORTH FOOD MART

CLIP AND SAVE!

75 BONUS S&H Green Stamps with this coupon and purchase of (3)-Lbs. or More BEEF ROAST Void After Feb. 20, 1965

WORTH FOOD MART

CLIP AND SAVE!

25 BONUS S&H Green Stamps With This Coupon and Purchase of (1) 1-lb. Pkg. Armour Star BACON Void After Feb. 20, 1965

WORTH FOOD MART

CLIP AND SAVE!

50 BONUS S&H Green Stamps With this Coupon & Purchase of (1) 2-lb. Sack Tenn. Farm SAUSAGE Void After Feb. 20, 1965

WORTH FOOD MART

CLIP AND SAVE!

50 BONUS S&H Green Stamps with this coupon and purchase of (1) 8-lb. Cello or (1) 10-lb. Cello RUSSET POTATOES Void After Feb. 20, 1965

WORTH FOOD MART

WE GIVE S&H GREEN STAMPS

**if winter comes ...
is Spring far behind?
-- You'll find Spring
at Altman's now!**

*dressed-up
dash,
whatever
the
weather!*

Let it rain or shine--
you're wearing water-
repellent crepe
(acetate/rayon, foam
laminated). No drizzle
can dampen its
beauty. Styled with
wide lapels, raglan
sleeves, huge woven-
look buttons, curved
pockets. Gay lining of
pastel stripes. Black
or Navy. Sizes 6-16.



\$29.00

Betty
Rose.

Visit Altman's, 109 W. Main, Eastland, and you'll know it's Spring. The fresh, new colors of dresses and sportswear will tell you so. The terrific feminine look will tell you so. The enhancing fashion changes in coats and suits will spell Spring 1965. The budget prices will be good news too. So no matter the weather it's Spring at Altman's. Come see for yourself what's new in Juniors, Misses, Womens and half sizes flawlessly tailored for every occasion.

Altman's
Style Shop
EASTLAND

**State Mental Health Act
Is Receiving Local Support**

A very worthy program which should be publicized throughout the county is the "Texas Mental Health Services Act," according to Dr. R. C. Ferguson, Eastland County Health Officer.

The act, designed to provide for conservation and restoration of mental health among the people of Texas, has been submitted to the present state legislature.

Introduced to the House of Representatives recently was House Bill No. 3, a bill which would pay the way for new dimensions in the present state system of treating mentally ill persons, in the form of community mental health centers located throughout the state.

It is expected to bring changes from custodial and institutional care of the mentally ill to early detection and prevention of mental illness; also establishing in or near a disabled person's home city, "community" facilities with which to treat them.

Last year, sent to either veterans or the state hospital at Wichita Falls, from Eastland County were 37 mentally ill cases; 4 mentally retarded; 15 alcoholics and one person with TB, reports show, making the year's total 57.

Acceptance and support given to the new system by local taxpayers and governmental units will aid in a gradual change to more "community" services located nearer home, it is reported.

Mrs. Frank Hightower visited in Houston recently with her daughter and family, Mr. and Mrs. Sam Miller, Steven, Sammy and Mark.

Visiting recently in the home of Mr. and Mrs. W. E. Goode were Mrs. Willa Brock and son of Arlington.



LT. HOMER CARROLL
... commissioned Monday

**Homer Carroll
Commissioned
2nd Lieutenant**

Homer Lee Carroll, Eastland native and son of the late Mrs. Fannie Belle Carroll of Eastland, graduated from the Officer Candidate School at Fort Benning, Ga., and was commissioned a second lieutenant Monday, according to an announcement received here.

Lt. Carroll enlisted in the Army in Eastland in August, 1962, after graduating from a Baton Rouge, La., high school. He had attended Eastland schools through his

junior year. He took basic training at Fort Polk, La., and went directly to Germany. He attended the Non-Commissioned Officers Academy in Badtolez, Germany, and was one of four honor graduates of a class of 133 men.

He was then assigned to the Adjutant General's Corps and worked in personnel section at Stuttgart, Germany. He applied for Officer Candidate School and returned to Fort Benning in August, 1964.

He is also the nephew of Mrs. Jewell Reaves, with whom he will visit this weekend during leave, before reporting to his next assignment at Fort Polk.

He has also been visiting his sisters, Mrs. Leroy Hoov-

Say It with Flowers
Flower and Gift Shop
200 N. Green

Mrs. Ita R. Parrish
MA 9-1101 - All Hours
Florafax Delivery Service

Browns Sanatorium and Chiropractic Clinic
Office Hours 8 to 6
Cisco, Texas

VILLAGE HOTEL COFFEE SHOP
SPECIAL SUNDAY DINNER

Chicken noodle soup — Apple — Celery Salad
Baked young Hen, Dressing, giblet gravy, cranberry sauce
Baked Ham, Hawaiian Sauce
Roast Prime Rib of Beef, au jus
Butter New Potatoes — Cauliflower au gratin
Coconut or Apple Pie

★ ★ ★
Village Hotel Coffee Shop
Eastland — MA 9-1716

100	GROUND BEEF	10 lb. Pkg.	\$3.95
50	PORK SAUSAGE	2 lb. Bag	99c
25	CHOPPED STEAKS	Box	59c
50	POT ROAST	lb.	59c
50	RIB ROAST	4th, 5th and 6th Ribs lb.	69c
50	ANGEL FOOD	1-lb. 1-oz.	49c
50	RAISIN BREAD	1-lb. loaf	29c
50	WALNUTS	1-lb. Pkg.	99c
50	CHERRIES	12-oz. Pkg.	49c
25	HYDROX COOKIES	1-lb. Pkg.	49c

"SUPER-RIGHT" BROWN 'N SERVE SAUSAGE Patties... Pkg. 43c

FOX DELUXE LARGE PIZZA Ea. 79c

FOX DELUXE SAUSAGE & CHEESE PIZZA 9-oz. Size 2 For 69c

LOW, LOW PRICES MEAN MORE FOR YOUR WEEKLY MONEY!

PLAID STAMPS
MEAN A BIG, BIG CHOICE OF GIFTS!

PRICES GOOD THRU FEB. 20, 1965

"SUPER-RIGHT" HEAVY BEEF CHUCK BLADE

ROAST 39c Lb.

U.S.D.A. GRADE A FRESH OR FROSTED

FRYERS 27c Lb.

A&P

"SUPER-RIGHT" HEAVY BEEF FOR HOME FREEZER

SIDES 275-350 lb Average lb. 45c

135 TO 175 LB. AVG. HINDQUARTERS lb. 55c

40 TO 60 LB. BEEF LOINS lb. 75c

ALL CUT AND WRAPPED FOR YOUR FREEZER

"SUPER-RIGHT" SMOKED

HAMS

Whole or Shank Half lb. 49¢ Butt Half lb. 53¢

SHANK PORTION lb. 33c
BUTT PORTION lb. 43c
CENTER SLICES lb. 89c

MAXWELL HOUSE COFFEE 1-lb. Can 85c

MAXWELL HOUSE COFFEE 2-lb. Can \$1.69

MAXWELL HOUSE INSTANT COFFEE 10-oz. Jar \$1.89

PILLSBURY FLOUR Plain 5-lb. 61c

WHITE HOUSE CANNED MILK 6-pk. 81c

EIGHT O'CLOCK Coffee Sale!

MILD & MELLOW

1-LB. BAG 67c | 3-LB. BAG \$1.95

SAVE 6¢ | SAVE 18¢

Hunt Tomato Rama

Tomatoes Solid Pack 15-oz. Cans 21c | 1-lb. 2-oz. Can 27c

Tomato Paste 2 4-oz. Cans 29c

Sauce 2 8-oz. Cans 25c or 2 15-oz. Cans 39c

SUPER-RITE HEAVY CALF

Rib Steak lb. 75c | Sirloin Steak lb. 89c

Arm Roast lb. 55c | T-Bone Steak lb. 99c

Chuck Roast lb. 45c | Sides lb. 45c

Hind-Quarter lb. 55c

AUTOMATIC WASHER DETERGENT "all" 9-lb. 13-oz. Size \$2.35	SANDWICH BAGS Glad Bags Pkg. of 75 29c	FOOD WRAP Glad Wrap 100-Ft Roll 29c	DETERGENT Silver Dust "10c Off" Gt. Size 69c	DISHWASHER DETERGENT Dish "all" 1-lb. 4-oz. Pkg. 45c	DETERGENT Fluffy "all" Gt. Size 79c	DETERGENT Lux Liquid 1-pt. 6-oz. Plastic 61c	DETERGENT RINSO 10c Off Gt. Size 69c
LIFEBUOY SOAP 2 Bath Bars 39c	LIFEBUOY SOAP 2 Reg. Bars 29c	GALA TOWELS Jumbo Roll 29c	A&P RED SOUR PITTED CHERRIES 2 1-lb. Cans 29¢	MORTON ASS'D FROZEN FRUIT PIES 4 8" Size 99¢	LIQUID DETERGENT SUN-GLO Qt. Size 39¢	JANE PARKER 8-INCH PECAN PIES 1 1/4-lb. Ea. 49¢	JANE PARKER GOLDEN, SUGAR OR CINNAMON CAKE DONUTS Pkg. of 12 19¢
VINE RIPE Tomatoes lb. 19c	SNOW WHITE Cauliflower Head 19c	HELLO Carrots 2 lb. bag 19c	U. S. NO. 1 RUSSET Potatoes 10 lb. bag 89c	CALIF. NAVAL Oranges lb. 10c	COLD WATER "all" LIQUID DETERGENT Qt. Size 79c	LIQUID CLEANER Handy Andy 15-oz. Bd. 39c	FACIAL TISSUE Puffs Pkg. of 200 2-Ply Tissue 27c
DETERGENT BREEZE Gt. Size 79c	DETERGENT SURF "15c Off" Gt. Size 64c	BATHROOM TISSUE Charmin Pkg. of 4 Rolls 39c	BLUEBONNET REG. Margarine 1-lb. Ctn. 29c	LIQUID WISK Qt. Size 71c	LIQUID DETERGENT Pink Swan 1-pt. 6-oz. Plastic 61c		

99c Sale!

WOODBURY Moisture Preserves 1.35-oz. 2/99c

PRUNE JUICE 1-qt. 2/99c

CAKE MIX Assorted Layer Pkg. 4/99c

FROSTING MIX Assorted Pkg. 4/99c

CLING PEACHES Hunt's 12-oz. Pkg. of 2 4/99c

AURORA TISSUE Toilet 4 1/2-oz. Can 4/99c

TUNA FISH Chicken of the Sea Chunk 8-oz. Can 5/99c

ALKA-SELTZER 8-oz. Can 5/99c

BAYER ASPIRIN 1-lb. Can 5/99c

PACIFIC PEAS Green 1-lb. Can 5/99c

SWEET POTATOES Mission 12-oz. 5/99c

GRAPEFRUIT SECTIONS 1-lb. 5/99c

S-P ANTISEPTIC 14-oz. 5/99c

HEINZ KETCHUP 8-oz. 5/99c

NAPKINS Paper 200 5/99c

25 Extra Plaid Stamps

With This Coupon and Purchase of ANN PAGE CHILI SAUCE 12-oz. 29c

AT YOUR A&P SUPERMARKET

Del. Coupon Good thru Feb. 20, 1965

25 Extra Plaid Stamps

With This Coupon and Purchase of SULTANA SMALL STUFFED OLIVES 5-oz. 35c

AT YOUR A&P SUPERMARKET

Del. Coupon Good thru Feb. 20, 1965

25 Extra Plaid Stamps

With This Coupon and Purchase of ANN PAGE B-B-Q SAUCE 1-lb. 33c

AT YOUR A&P SUPERMARKET

Del. Coupon Good thru Feb. 20, 1965

25 Extra Plaid Stamps

With This Coupon and Purchase of TWO CANS ANN PAGE PREPARED SPAGHETTI 2 1-lb. 4-oz. Cans 37c

AT YOUR A&P SUPERMARKET

Del. Coupon Good thru Feb. 20, 1965

25 Extra Plaid Stamps

With This Coupon and Purchase of TWO CANS BIRDSEYE FROZEN AWAKE Orange Drink 2 4 1/2-oz. Cans 43c

AT YOUR A&P SUPERMARKET

Del. Coupon Good thru Feb. 20, 1965

25 Extra Plaid Stamps

With This Coupon and Purchase of ANN PAGE CHILI SAUCE 12-oz. 29c

AT YOUR A&P SUPERMARKET

Del. Coupon Good thru Feb. 20, 1965

25 Extra Plaid Stamps

With This Coupon and Purchase of SULTANA SMALL STUFFED OLIVES 5-oz. 35c

AT YOUR A&P SUPERMARKET

Del. Coupon Good thru Feb. 20, 1965

25 Extra Plaid Stamps

With This Coupon and Purchase of ANN PAGE B-B-Q SAUCE 1-lb. 33c

AT YOUR A&P SUPERMARKET

Del. Coupon Good thru Feb. 20, 1965

25 Extra Plaid Stamps

With This Coupon and Purchase of TWO CANS ANN PAGE PREPARED SPAGHETTI 2 1-lb. 4-oz. Cans 37c

AT YOUR A&P SUPERMARKET

Del. Coupon Good thru Feb. 20, 1965

25 Extra Plaid Stamps

With This Coupon and Purchase of TWO CANS BIRDSEYE FROZEN AWAKE Orange Drink 2 4 1/2-oz. Cans 43c

AT YOUR A&P SUPERMARKET

Del. Coupon Good thru Feb. 20, 1965

Cancer Is Major Child Killer, Reports Head of County ACS Unit

More school children will die of cancer this year than any other disease," said Kimmell of Cisco, chairman of the Eastland County American Cancer Society. "That's why so many mothers will be working for a Cancer Drive early in the year."

Children with acute leukemia die for many months and in some cases for as long as seven or eight years.

"Like adults, children should have regular physical examinations but there are some warning signs that should be called to the physician's attention if they persist longer than two weeks. We urge parents to watch for: swellings, lumps, or masses in any part of the body; pains, or the persistent crying of a baby or child, for which no reason can be found; any change in the size or appearance of outward growths, such as moles or birthmarks; nausea and vomiting for which there is no apparent cause; a marked change in bowel or bladder habits; bloody discharge of any sort; blood in the urine; heavy spontaneous nose bleeds or other type of hemorrhage; failure of bleeding to stop in the usual time after a cut or injury; unexplained stumbling in a child

about half of the cancer in children are from leukemia, which is a cancer of the blood-forming tissue. This type of cancer is primarily a disease of children. There is an increase among adults," Kimmell reported.

American Cancer Society is currently supporting research on leukemia and any other form of cancer and many scientists believe that cures will be found for leukemia sooner than for any other cancer. Seeing some progress because we have drugs that can extend the lives of

'Expense Item' Is Explained By County Official

"Every county official in Eastland County except one draws more salary than a county commissioner," Commissioner L. J. (Buck) Collins pointed out this week. "And yet the commissioners and the county judge have the primary responsibility for the conduct of a business with an annual budget in excess of \$400,000 of public money."

"The action of the commissioners court last week in approving a \$75 per month expense allowance for each commissioner was in line with the ruling of the attorney-general of the State of Texas which says that even though each of the commissioners precincts operates county pick-ups, expenses for travel on official business within the county can be allowed, providing the commissioners use their privately owned motor vehicles for traveling on official business within the county rather than the county vehicles."

Each of the commissioners, Commissioner Collins pointed out, uses his own car a great deal in the performance of his duties, and it is only fair that he be reimbursed for costs out of pocket. It is even more fair that he be paid a salary commensurate with his duties and responsibilities and with the salaries received by other officials of comparable responsibilities.

"The \$75 per month expense allowance made each commissioner will just about bring the commissioner's salary in line with that received by other county officials."

At the same session at which the expense account item was approved, Mr. Collins said, the court set the following salaries for county officials:

County Attorney	\$6,072
County Judge	5,520
Comm'r's	4,620
County Clerk	5,520
District Clerk	5,520
Tax Ass'r.-Col.	5,520
Co. Treas.	3,948
Sheriff	5,520
Constables	1,500

"These salaries are well in line with those paid by counties of comparable population," said Mr. Collins. "I don't think any of our county officials is over-paid, especially when you consider the costs of running for office and the hazardous nature of the job. Unless we pay our public officials salaries that are decent and attractive to men and women of ability we stand a poor chance of securing good officials. They can earn more and be more secure in private jobs."

"I believe that the county business, which is the business of all of us, should be given full publicity. It is the right of the people to know. But I do think they should be given the benefit of the whole story and not just a part of it."—Rising Star Record.

Farm Bureau Member Drive Begins With Kick-Off Today

Millard Shivers, director of Rural Development of Blue Cross-Blue Shield of Texas, will be featured speaker for the Eastland County Farm Bureau Membership Drive to be launched today.

Shivers, who works exclusively with county Farm Bureau - Blue Cross groups in Texas, was previously organization director of Texas Farm Bureau in Waco for nine years, during which time the state Farm Bureau increased in membership each year for a total of 24,100.

Native of Gibson County, Tenn., he graduated from the University of Tennessee in 1941 with a B.S. degree in Agriculture. While in college, he was active in the Ag. Club, was a member of the University dairy judging team and of Phi Delta Kappa.

He and his wife, Marian, have two children and reside at Richardson.

The drive will be launched with a Kick-Off supper at 7 p.m. at the White Elephant in Eastland Thursday. Attending the rally will be community membership captains and workers from all over the county.



MILLARD SHIVERS To Speak Here

Two Countians Earn Degrees At Howard Payne

Willard Ray Rodgers, son of Mr. and Mrs. W. R. Rodgers of Olden, and Jerry Lee Davis, son of Mr. and Mrs. Oral Davis of Rising Star, completed their work for de-

grees in January at Howard Payne College.

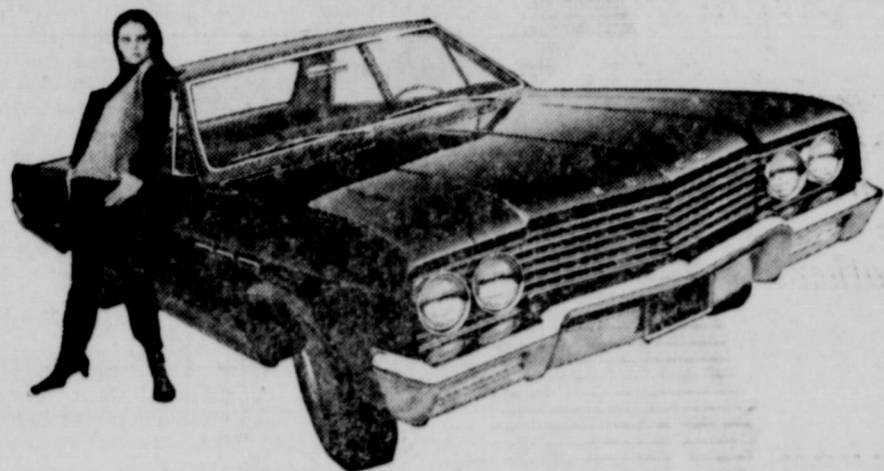
Rodgers majored in religious knowledge and took English as a minor subject; and Davis majored in chemistry and secondary education, studied mathematics as a minor subject.

Lt. Bill Graham In Crete Landing

Navy Lieutenant (jg) Billy M. Graham, son of Mr. and Mrs. R. Q. Graham, Route One, Gorman, participated Feb. 2-9 in an amphibious training landing at Timbakion, Crete, while serving aboard

the attack transport USS Cambria. Following the completion of the training operation, U.S. ships and forces enjoyed a ten-day port visit to Athens, Greece.

Fancy car: Buick Special V-6



Fancy. But not too fancy. Just enough to make your friends think you've found oil in the basement. You may think so, too, when you get acquainted with Buick's V-6—the best thing that ever happened to 6 cylinders. Its 225 cu. in. delivers 155 h.p., without delivering you to the gas station all the time. As to the plain, homely price: you'll find it looks restful in the family budget. We design the Buick Special so you can drive a Buick and still enjoy the other good things in life. See your Buick dealer. Remember: a Buick for only \$2343.00*. That's the plain, honest (inspiring) truth.

Plain price: \$2343.00

*Manufacturer's suggested retail price for Special V-6 2-dr. coupe. Price includes Federal Excise Tax and suggested dealer delivery and handling charge (transportation charges, accessories, other optional equipment, state and local taxes additional).

Wouldn't you really rather go first class?

See your local authorized Buick dealer

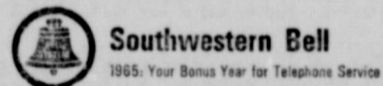
TUNE IN "LOWELL THOMAS AND THE NEWS"—CBS RADIO

Follow that truck

(but if you do, plan to step lively)

You're looking at one of the busiest trucks in the world, especially this year. During 1965 Southwestern Bell's motor fleet will travel 88 million miles in the biggest construction program ever undertaken. A one-year \$350 million effort (this means up to 17,500 new jobs among the firms which sell supplies, services and materials to the telephone company) to make the world's

best telephone service even better. You will benefit directly. In cities, on farms, at home, at your office or in your car, you'll be able to call easier and faster in all kinds of weather. Next time you see a big telephone truck, take a second look. You'll be looking at rolling proof of a really massive effort to make your telephone serve you better, of more personal value to you.



RANGER DRIVE-IN THEATRE

Highway 80 — East on Ranger Hill
Box Office Opens 6:30 - Show Starts 7
PLTS 50c KIDDIES UNDER 11 FREE
WEDNESDAY — THURSDAY — FRIDAY — SATURDAY — SUNDAY
FEBRUARY 19 — 20 — 21



BLAKE EDWARDS
ETER ELKE
ELLERS SOMMER
A SHOT IN THE DARK
RECORDED BY UNITED ARTISTS

COIN FARM BUREAU TO PROMOTE BETTER RURAL LIVING

Farm Bureau works for betterment of rural life through:

- Sponsorship of youth activities
- Social events for the entire family
- Crop and livestock improvement
- Safety projects
- Animal health

FARM BUREAU SERVES YOU EVERYDAY!
EASTLAND COUNTY FARM BUREAU
N. Commerce EASTLAND Phone MA 9-1704

WE Specialize IN HOME LOANS



When you get ready to buy a home are looking for a loan — look to an association such as ours. SPECIALIZE in loans for... we are able to devote time to keeping up with the facets of the ever-changing estate picture. We are better able to help you and obtain a loan that fits your particular... F.I.A. LOANS AVAILABLE RIGHT NOW at

1st FEDERAL SAVINGS & LOAN ASSN.
Main RANGER MI 7-1611

Scout Council Offices Moved

BROWNWOOD — The council service center (office) of the Comanche Trail Council Boy Scouts of America, moved to new quarters on Monday, February 15, Paul A. Cuyus, Council President, announced.

The new offices of the council are located at 409 East Lee Street, Brownwood. Mailing address and telephone number of the council remain the same.

Move of the service center to the new quarters was approved at the executive board meeting of the council held on February 4.

who has been walking well; a general "run-down" condition," Kimmell explained. "We know," concluded Kimmell "that the people of Eastland County will be generous when their neighbors call on them in this year's education and fund raising drive."

MANY CHANGES IN 1964 TAX LAW. Forms have been changed — Also many changes to benefit YOU the tax payer. So come in EARLY.

Office hrs. Mon-Fri. 9 to 5
Office hrs. Sat. 9 to 12 noon.
EXCEPT by appointment

RUBY SPRINGER
Income Tax Service
120 W. Main — Ranger, Texas
MI 7-3230 Res. MI 7-3237

WEATHERFORD PHONE LY 2-2724

Monument's

IF WE MAY ASSIST YOU, CALL US COLLECT OR MAIL THIS AD

NAME _____ PHONE _____

ADDRESS _____ CITY _____

AN INTERSTATE THEATRE

MAJESTIC

THURSDAY — FRIDAY — SATURDAY
Th.-Fri. — Open 1:45 — Shows 5:00 - 7:05 - 9:10
Sat. Open 1:45 — Shows 2:20 - 4:40 - 7:00 - 9:25

"GIVE ME ANY AMERICAN FOR 36 HOURS AND I'LL GIVE YOU BACK A TRAITOR"

Take Col. Jeff Pike of U.S. Intelligence. He's tough, loyal, dedicated. BUT...

"In 12 hours, I can make him remember things that haven't yet happened!"

"In 24 hours, I can teach him to love this woman, and betray a million men!"

MICRO-COLORIA-MAYER PRESENTS A PERSEUS-SEARON PRODUCTION

JAMES GARNER - EVA MARIE SAINT - ROD TAYLOR

36 HOURS

FRIDAY MIDNITE SHOW
Box Office Open 11:00 — Doors Open 11:20 — Show 11:45

On Stage — In Person
From Abilene Recording
Artist Ronal McCoven
Singing His "What" & "Fool's Day Off" Plus Other Hits. — — —
Plus Our Own Swinging Combo "THE BOYS"
ALSO FROM ABILENE JOE TERRY

IT'S THE GREATEST, GROOVIEST, WILDEST, MOST EXCITING BEAT BLAST EVER TO POUND THE SCREEN!

STARRING
THE BEACH BOYS * CHUCK BERRY * JAMES BROWN & THE FLAMES * THE BARDARIANS * MARVIN GAYE BERRY AND THE PACEMAKERS * LESLEY GORE JAN AND DEAN * BILLY J. KRAMER & THE DAKOTAS SMOKEY ROBINSON AND THE MIRACLES * THE SUPREMES THE ROLLING STONES

THE FIRST ANNUAL TAMISHOW

ALL SEATS \$1.00

ELECTROVISION SCREEN ENTER-AIRMENT CO.

Mrs. Horton's Book To Be Reviewed Friday

A Silver Tea honoring Mrs. Jim Horton, who recently wrote an autobiography entitled "Mama Was Pregnant," will be held Friday, Feb. 19, at 3 p.m. at the Woman's Club Building, sponsored by the Thursday Afternoon Club.

Mrs. Horton will review her book, the story of which began in Kansas where she was born, and ended here in Eastland. The eldest of 12 children, she can very well recall many fun-loving, heart-warming and, also, tragic moments during her days of growing up.

The public is cordially invited to attend the tea and hear Mrs. Horton's book review.



MRS. JIM HORTON
... to review book

92-Year-Old Gives Rotary Program Here

Mr. W. C. Clements, 92-year-old active businessman of Cisco, was the guest speaker last Monday at the Eastland Rotary Club meeting. A blacksmith the past 68 years, Mr. Clements is still "going strong," he told the club. He has also been a resident of Eastland County for the past 68 years.

At the Rotary meeting, he recited, by memory, four poems, "I Ain't Dead Yet," "My Get Up and Go Has Got Up and Went," "I'm Awful Fine for the Shape I'm In," and "The Bridge Builder."

Members enjoyed the program thoroughly and Joe Culppepper, program chairman, said of Mr. Clements, "He has a wonderful voice and a wonderful memory."

Other guests at the meeting were Leland Huston of Loveland, Colo. and Eris Ritchie, band director at Cisco High School.

President Charles Freyschlag presided.

A guest of Mrs. Charles Black last week was her sister, Mrs. Juanita Yarbrough of Denver City.

Pl. Shampoo and Set - \$1.50
Hair Cuts - \$1.50
\$12 Lanolin Waves - \$8.50
\$10 Creme-Oil Waves \$7.50
Other waves \$10 and up
Basham Beauty Bar

FAMILY SECURITY

- Life
- Retirement
- Educational
- Hospitalization
- Accident
- Sickness
- Mortgage

CALL ME ABOUT IT TODAY!

Southland
Life Insurance Company

M. H. PERRY
107 W. Main
MI 9-2275 Office
MI 9-1095 Residence

Letters TO THE EDITOR

Editor:
Many years ago Eastland won first prize three different years for being the cleanest town in Texas of less than ten thousand population. Why can't we have a clean town again? And why should we wait until April first to start cleaning it up?

Can't you please stress making our town more attractive to tourists and also for home folks. Wouldn't a town without so many eye sores help attract new industry to our city?

When men come in, they bring their families with them. Many times it is the wife who makes the decision as to which town the family will settle in. North Seaman, North Lamar, North Connellee and West Commerce, between Connellee and Walnut are enough to discourage anyone.

Who is interested in a cleaner Eastland?
(name withheld by request)

Students Enjoy Musical Event On EHS Stage

Students of Eastland High and Junior High Schools were entertained by a group of singers and musicians Monday — compliments of the Chrysler Motors Corporation.

The "Spurrows," led by Thurlow Spurr, consisted of 25 talented musicians and singers, ranging in age from 17 to 24, from 11 states. Seven of the young entertainers held various degrees from colleges and universities, and four of the group are former high school music and voice instructors. All of them held individual music awards at state or national levels.

Miss Jane Ann Stephens, "Miss Ohio" in the 1963-64 Miss America Pageant, was a featured soloist with the group.

Music in the program ranged from old favorites such as "September Song," "Misty," and "Canadian Sunset," to popular favorites of today, such as "Hello, Dolly." A velvet-smooth brass ensemble consisting of two trombones, one bass trombone, one French horn, and three trumpets, provided the singers with accompanying music. A string bass and drums were also used.

Mr. Thurlow Spurr, of stage and T.V., serves as leader of the group. In a short interlude from the musical segment of the program, Mr. Spurr stressed the importance of highway safety, getting an education, and staying away from the wrong influences encountered in life.

The students and faculty of Eastland High School and Junior High enjoyed the hour-long program very much.

VISITS COUSIN

Visiting recently with Mr. D. K. Williamson while in the hospital were his cousin and wife, Mr. and Mrs. O. L. Hissam of Akron, Ohio.

It was the first time the cousins had been together in 55 years.

WEEKEND GUESTS

Visiting with Mrs. Harry Wood last weekend were Mr. and Mrs. Olen Parker of Glenwood Springs, Colo. The Parkers are spending their winter vacation with friends and relatives in Arizona, California, and Texas.

Jack Arrington Attending Course Funeral Service

Jack Arrington of Arrington Hammer Funeral Home is one of a group of funeral directors from the four corners of the nation now attending a specialized course conducted by the School of Management, National Foundation of Funeral Service. The course began Feb. 7-12.

Located in Evanston, Ill., the School of Management is essentially a school of business administration, keyed to the specific needs of funeral service firms and based upon the principle that sound operating techniques will result in better public service.

In addition to the courses offered, the school maintains a library of funeral service literature, model mortuary rooms and public information service. It is open to all who may desire to visit or inspect.

Art Club Meets In Home Of Mrs. W. Walters

The Eastland Art Club will have its next regular meeting March 11 in the home of Mrs. Homer White.

The club met last Thursday, Feb. 11, in the home of Mrs. W. W. Walters. President Mrs. Roy Lawson presided during the business session and members decided to meet at 1:30 p.m. on each meeting date, the second Thursday of each month, in order to give members more time to devote to their paintings.

Minutes and treasurers report were read by Secretary-Treasurer Mrs. Mary Hood and members who brought their work, spent the afternoon painting.

Refreshments of orange pie, hot spiced tea, coffee, salted nuts and sandwiches were served by Mrs. Walters to the following members present: Mmes. Joe Tow, Frank Sayre, Francis Urban, Ed Layton, Lawson, J. C. Poe and Hood; also two guests, Mrs. Mary Sluyter and Miss Melinda Urban.

Leon Briefs

The recent siege of colds and influenza has not by-passed Lake Leon people. We have reports from people in most all general areas of Texas, from New Mexico and Arkansas. Hospitals everywhere have been full, not enough beds to take care of all the sick people. We hope the worst is over.

Among some of our recent visitors at Lake Leon were the Perry Nunnelys of Odessa, Naomi Heyser and Grace Ray of Baird, Mr. and Mrs. John Forbes of Anton, Mr. and Mrs. Norman Coffey of Cottonwood, Mr. and Mrs. Charles Farris of Sweetwater and Mr. and Mrs. Herman Pearce of Monahans.

Bass are being caught, most of them quite large. R. E. Henderson of Ranger took only about ten minutes to string two nice ones. He had two witnesses. Check with Stubby Warren or C. W. Collins for details on this fishing story.

Spring is just around the corner. Now is the time to get out that tackle box and get it in order. Look especially for a good supply of deep runners such as Hellbenders, Jigs and Spring Lizards.

Airman First Class Marvin England, who has been stationed with the USAF in Alaska, returned home over the weekend to visit with his parents and family, Mr. and Mrs. Bill England, Lissie, Audrey and Billie.

Also visiting in their home is Glenda Sue Mills, of Erowood. She and Marvin plan to be married this month.

Miss Jean Riddell spent part of last week in the Gorman hospital and returned home Friday.

WATCH REPAIR

Your watch will receive the very finest care in our repair department. We also feature:

- Ring Sizing
- Jewelry Repair
- Engraving
- Pearl Restringing

BESKOW JEWELRY

210 W. Main Eastland MA 9-2529

Announcing...

EASTLAND PLUMBING CO.

OPEN

FOR GENERAL PLUMBING SERVICE

HEATING

INSTALLATION - REPAIR

COMMERCIAL - RESIDENTIAL

EASTLAND PLUMBING CO.

RUFUS CHOATE, Owner-Manager
311 N. Seaman St. — MA 9-1726

**BETTER BUYS!
BETTER TERMS!
BETTER PRICES!**

ON
Armstrong
TIRES
and
We Specialize
In Washing &
Greasing
Your Car.

DELCO BATTERIES
BUY NOW AND SAVE

PETE TUCKER
Eastland Fina Station
207 East Main — Eastland

ANNOUNCING:

TO BETTER SERVE YOU,
YOUR CHAMBER OF COMMERCE
WILL BE OPEN EACH SATURDAY
MORNING, FROM 8:30 UNTIL 11 A.M.

Daily hours to remain the same:
8:30 to 11 a.m. — 12 to 5 p.m.

Use your Chamber of Commerce,
it's good business!

FAMILY SECURITY

- Life
- Retirement
- Educational
- Hospitalization
- Accident
- Sickness
- Mortgage

CALL ME ABOUT IT TODAY!

Southland
Life Insurance Company

M. H. PERRY
107 W. Main
MI 9-2275 Office
MI 9-1095 Residence

See us. We deliver:
5 years or 50,000 miles
of protection*,
not promises.
CHRYSLER '65

*Only Chrysler in its class gives you 5 years or 50,000 miles of warranty protection like this: Chrysler Corporation warrants, for 5 years or 50,000 miles, whichever comes first, against defects in materials and workmanship and will replace or repair at a Chrysler Motors Corporation Authorized Dealer's place of business, the engine block, head and internal parts, intake manifold, water pump, transmission case and internal parts (excluding manual clutch), torque converter, drive shaft, universal joints, rear axle and differential, and rear wheel bearings of its 1965 automobiles, provided the owner has the engine oil changed every 3 months or 4,000 miles, whichever comes first, the oil filter replaced every second oil change and the carburetor air filter cleaned every 6 months and replaced every 2 years, and every 6 months furnishes to such a dealer evidence of performance of the required service, and requests the dealer to certify (1) receipt of such evidence and (2) the car's then current mileage.

Rushing Motor Company
215 South Seaman

NOTICE

APRIL 15 IS DEADLINE FOR AUTO INSPECTION

HAVS YOURS DONE NOW AND AVOID THE RUSH

Complete Auto Repairs **Safety Inspection Center**

24 HOUR WRECKER SERVICE

Phones
MA 9-2270
Night
MA 9-2224

Allen Auto Repair
AT RUSHING MOTOR CO.
215 SOUTH SEAMAN

AT YOUR GOODYEAR SERVICE STORE

GOODYEAR February MARKDOWNS
Just say "Charge'em Please"

WHITEWALLS

★ NO MONEY DOWN ★ FREE MOUNTING

COMPACT BUY!

All new Nylon tires with Tufsyn rubber and gleaming narrow whitewalls. Go on these Goodyear tires — ask for the nylon All-Weather.

2 for 29

6.00x13 plus tax and 2 tires

RETREADS

We've retreaded sound tire casings with Goodyear long mileage tread rubber. These bargain buys have the new narrow whitewalls.

2 for 20

Any 14" size plus tax and 2 tires

TUBELESS BUY

Great economy buy for owners of late model Fords, Plymouths, and Chevrolets. Ask for All-Weather 42 whitewalls!

2 for 27

7.50x14 tubeless plus tax and 2 tires

HIGH TREAD USED TIRES

★ Too good to recap
★ White or Blackwalls

\$6.00 EACH!

2 FOR \$10

PRICE BREAK SPECIAL

5-Cell FLASHLIGHT

FIVE BATTERIES INCLUDED
Limit one per customer at 69c. Additional Flashlights \$1.
Batteries alone worth this price! Red plastic glow ring, chrome-plated case.

69c
5 Batteries included!

EASY BUDGET TERMS

PAY AS LITTLE AS \$1.25 WEEKLY FOR A FULL SET OF TIRES

—
"SHOP AT GOODYEAR & SAVE"

GOODYEAR SERVICE STORE

308 E. Main EASTLAND MA 9-2663

Keeton Of UT Law Will Address Exes' Meeting on Mar. 2

Dean Keeton, dean of the University of Texas Law School, will be the speaker during the quiet and business of the Oil Belt University Ex-Students Club Tuesday March 2, at 7:30 p.m. at the home of Ranger, Gorman, Rising Star, Breckenridge, Mineral Wells, Albany and Baird.

"We feel most fortunate for the privilege of having the University's highly distinguished Dean Keeton as our special guest and speaker," Warford said, "and we are looking forward to a big attendance of exes for this annual event."

Dean Keeton served on the University of Texas Law School faculty from 1932 to 1946 before leaving to become dean of the University of Texas Law School. Three years later he returned to UT to become Law School dean. During World War II he was on leave to serve as counsel for the Petroleum Administration for War and the Office of



W. PAGE KEETON
... Will Address University of Texas Exes

Price Administration. Tickets are available from vice presidents of the organization:

Jack Gorman, Eastland; Leon Maner, Cisco; J. A. Bates, Ranger; John Kimble, Gorman; Bill Dennard, Rising Star; L. W. Brooks Jr., Breckenridge; Bob Upham, Mineral Wells; Fred Douglas, Albany, and James Paul Shanks, Baird.

a patient in the De Leon Hospital.

Mr. and Mrs. Chubby Foreman and children of Irving visited last weekend with her parents, Mr. and Mrs. Roy Guthery.

TIDBITS . . .

(Continued from Page One) lywood expansion, but what about other things to come. And that's why it's so important for us to take the bull by the horns and go to work with the Eastland Industrial Foundation by participating in their program so that more good things can come Eastland's way. When the Foundation asks our help, let's respond an enthusiastic "You bet."

TODAY'S FLAG - BIT from the VFW: "No other flag or pennant should be placed above, or, if on the same level, to the right of the U. S. Flag, except during church services conducted by Naval chaplains at sea, when the church pennant may be flown above the Flag during church services for Navy personnel."

VISITORS HERE

Visiting in the home of Mrs. Curt Williams over the weekend were her son, A. C. Williams of Kermit, and her granddaughter, Gill Williams of Odessa.

Mr. Williams and Gill were on their way to Dallas to meet his son, Mike, who has been in the service in Germany.

SISTERS VISIT

Guests last week in the home of Mr. and Mrs. O. M. White were her sister and husband, Mr. and Mrs. George Reick of Tyler.

RECENT GUESTS

Visitors recently with Mr. and Mrs. James Ward were Mr. and Mrs. John Cheat and Mr. and Mrs. Earl Baines, all of Fort Worth.

VISITS PARENTS

Visitors recently in the home of Mr. and Mrs. Wayne White were their daughter and family, Mr. and Mrs. Dwaine Dennis of Jefferson.

SUNDAY GUESTS

Last Sunday afternoon, guests of Mr. and Mrs. J. H. Windland were Mr. and Mrs. Lonnie Mayhall and children of Abilene.

RECENT VISITORS

Guests last Monday in the home of Mr. and Mrs. Jack Lusk were Mr. and Mrs. D. B. Cox of Breckenridge and Mrs. W. A. Teatsworth of Eastland.

Mrs. Florine Miller visited last week in Midland with her daughter and family, Mr. and Mrs. Lee Puckett, Carolyn and Colleen.

Exciting New Hairdos for 1965



Here are the styles to glamorize you in the year ahead!

THE NEW MODIFIED BOUFFANT LOOK

A softer, more feminine look, in keeping with the new gentlewoman fashions. Gone is the hard, severe coiffure of 1964 . . . here is the graceful look of 1965.

Alma's Beauty Parlor

211 W. Main — Ph. MA 9-1151

Tankersley Auctioneer
of the Auction
land, Texas
S. Halbryan

A beautiful tribute...
Professional Preparation
There is no substitute for training and experience. Our well-trained staff is ready to assist you in your time of bereavement.

Arrington Hamner Funeral Home
"Friendly Personalized Service"
MAin 9-2611

Desdemona News

By MRS. ETHEL KEITH
So much sickness has kept the attendance of our churches down; also our school was closed for four days due to sickness.

Rev. E. E. Dossey was back in the pulpit Sunday after a case of the flu.

Danny Dyson remains a patient in the Gorman Hospital following an appendix operation and a round with pneumonia. We wish for him a speedy recovery.

Mr. Raymond Joiner remains a patient in the hospital.

Mrs. Annie Koonce is still

LAUNDRY SERVICE

- Family Finish
- Rough Dry
- Linen Supply
- Free Pickup and Delivery
- A Complete Laundry Service

Cisco Steam Laundry
HI 2-2151
MA 9-2122

WE GIVE GOLD BOND STAMPS

MARYLAND CLUB OR RANCH STYLE COFFEE
CHOICE OF GRINDS
Pound Can **79¢**

INSTANT MILK 14 Oz. Box **77¢**

COFFEE 16 Oz. Tumbler **29¢**

PRESERVES 16 Oz. Tumbler **33¢**

PICKLES 16 Oz. Tumbler **31¢**

MARGARINE 16 Oz. Tumbler **49¢**

COOKIES 16 Oz. Tumbler **39¢**

CORN 16 Oz. Tumbler **49¢**

COFFEE-MATE 16 Oz. Tumbler **49¢**

CRACKERS 16 Oz. Tumbler **31¢**

FLOURIENT 7 Oz. Can **49¢**

QUANTITY RIGHTS RESERVED

DETERGENT AJAX Giant Box 65¢

CRISCO 3 Pound Can 79¢

SWANSDOWN Assorted CAKE MIX Reg. Box 29¢

WHITE SWAN FRUIT COCKTAIL 303 Can 19¢

EL CHICO MEXICAN OR ENCHILADA FROZEN DINNERS Reg. Pkg. 39¢

WAPCO RED SOUR PITTED PIE CHERRIES 303 Can 19¢

DETERGENT SUPER SUDS Giant Box 59¢

GREEN SOAP PALMOLIVE 3 Reg. Bars 35¢

GREEN SOAP PALMOLIVE 2 Reg. Bars 35¢

CASHMERE BOUQUET 3 Reg. Bars 35¢

CASHMERE BOUQUET 2 Reg. Bars 35¢

AJAX CLEANSER 2 Giant Cans 39¢

AJAX FLOOR & WALL CLEANER 2 Reg. Boxes 25¢

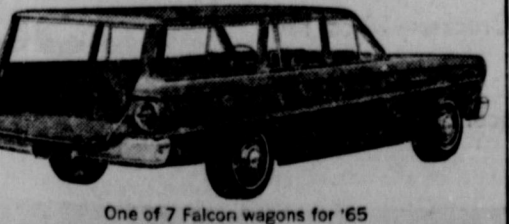
NOW-HIGHEST TRADES YET ON THE LOWEST-PRICED FORDS



'65 Falcon Futura 4-Door Sedan



Power top standard on this Falcon



One of 7 Falcon wagons for '65

STEP RIGHT UP TO THE WIDEST ARRAY OF COMPACT ECONOMY EVER FOUND UNDER ONE TENT

13 Falcons! 8 Fairlanes! 21 great new ways to save at your Texas Ford Dealer's Falcon-Fairlane Trading Fair! But don't let our money-saving deals fool you: Both cars have more luxury and more powerful Sixes standard for '65. Or you can get them equipped with V-8 power and a big choice of elegant accessories!

FORD DEALER FALCON-FAIRLANE TRADING FAIR
BLUE RIBBON SAVINGS! HURRY!

HOOD KING MOTOR CO.
Main at Seaman Eastland, Texas

FRESH

Ground Beef 3 lbs. \$1

GOUCH BLUE RIBBON Beef Cutlets lb. 69¢

GOUCH BLUE RIBBON Beef Club Steak lb. 79¢

SWIFT PREMIUM Sliced Bologna lb. 49¢

KATH BLACK HAWK Weiners pkg. 39¢

DEAR HAYES LUNCHEON MEAT 12 Oz. Can 39¢

WHITE SWAN EVAPORATED MILK 3 Tall Cans 39¢

KRAFT DRESSING 8 Oz. Bottle 27¢

KRAFT DRESSING 8 Oz. Bottle 33¢

KRAFT CHEESE 8 Oz. Pkg. 39¢

SANDWICH BAGS 20 Oz. Pkg. 25¢

FROSTED FLAKES 10 Oz. Box 33¢

CORNED BEEF HASH 10 Oz. Can 43¢

WOODY'S SAUCE 12 Oz. Bottle 69¢

PALMOLIVE POT OF GOLD SWEETSTALKS ACTION BLEACH 31 Oz. Box 39¢

PALMOLIVE SOAP GOLD BARS 2 Reg. Bars 33¢

PALMOLIVE SOAP GOLD BARS 2 Reg. Bars 45¢

VEL LIQUID 22 Oz. Plastic 59¢

SWANSDOWN Assorted CAKE MIX Reg. Box 29¢

DETERGENT SUPER SUDS Giant Box 59¢

GREEN SOAP PALMOLIVE 3 Reg. Bars 35¢

GREEN SOAP PALMOLIVE 2 Reg. Bars 35¢

CASHMERE BOUQUET 3 Reg. Bars 35¢

CASHMERE BOUQUET 2 Reg. Bars 35¢

AJAX CLEANSER 2 Giant Cans 39¢

AJAX FLOOR & WALL CLEANER 2 Reg. Boxes 25¢

SLICED BACON 49¢

BEEF CHUCK ROAST 33¢

MacMoys SUPER SAVE
Home Owned-Home Operated 400 S. Seaman

SUNKIST CALIF. ORANGES lb. 15¢

WHITE IRISH COBBLER POTATOES 10 lbs. 79¢

EXTRA FANCY Red Delicious APPLES Lb. 19¢

CELLO CARROTS 2 for 19¢

Jury Called For Monday; \$67,000 Damage Suit Set

A petit jury has been called for Monday, Feb. 22, in 91st District Court to hear Ciseo tax suits and a damage suit involving Rising Star on Nov. 27, 1963, when she residents asking some \$67,000 in damages.

by Jimmie Johnson in behalf of his daughter, George Ann Johnson, who reportedly received injuries in an accident near the Rising Star Public School. Named defendant is Jerry

Winfrey, also of Rising Star. The Abilene law firm of Scarborough, Black, Tarpley and Scarborough represent the Johnsons.

Called for possible jury service are:
Danny Claborn, Earnest Reich, Joe Philpott, A. M.

F. Deaton, J. I. Brinkley, M. O. Erown, Wayne C. Durham, Mrs. Lois Mezell A. D. Taylor, C. T. Lucas, H. H. Hardeman and Wayne Jackson, all of Eastland.

Green, Roy Cozart, R. D. Kinzer, Sam B. King, A. C. Holder, Roy Maynard, Mrs. Lloyd London, W. B. Norton, E. H. Lawson, W. B. Eaves and Earl D. Gorr, all of Cisco.

Joe Criswell, and R. C. Long, all of Rising Star.
R. L. Sharp and R. O. Buckley, both of Desdemona.
It will be the first jury over which Judge J. Frank Sparks will preside as judge, 91st District Court.

Aluminum is the most abundant of metals.

Mrs. Curt Williams had a birthday party over weekend for six members of the Gleasons Sunday School Class, Bethel Baptist Church, who had birthdays during month of January.
There were 14 women present for the exchanging birthday gifts and refreshments of coffee, cake, punch were served.

SAFEWAY'S BIG STOCK-UP SALE

Pure SUGAR
Great Western
10 Lb. Bag 89¢
Limit One
(Imperial-10-lb. Bag 89¢)



Sliced or Halves PEACHES
Highway, Yellow Cling No. 2 1/2 Can
4 for \$1



TOMATO JUICE
DEVILED HAM
CHUNK TUNA

Libby—46-oz. Can **29¢**
Underwood—4 1/2-oz. Can **3 for 99¢**
Breast-O-Chicken, Light Meat—6 1/2-oz. Can **4 for \$1**

SERVE CHERRY PIE ALAMODE
CHERRY PIE Bel-air, Frozen, 24-oz. Pkg. (Reg. 45¢)
ICE CREAM Lucerne Party Fridge, Vanilla or Cherry Vanilla (Reg. 79¢) 1/2-Gal. Ctn. [Regular \$1.24 Value] **BOTH FOR 99¢**

GOOD BUYS
Plain Chili Wolf—No. 2 Can **65¢**
Peanut Butter Peter Pan, Smooth or Crunchy, 12-oz. Jar **47¢**
Baby Food Heinz Strained Fruits or Vegetables, 4 1/2-oz. Jar **6 for 71¢**

LEVER PRODUCTS
Silver Dust Blue Detergent—Large Box **35¢**
Extra Fluffy All Detergent—19-oz. Box **35¢**
Rinso Blue Detergent (5¢ off label)—Large Box **30¢**
Wisk Liquid Detergent—16-oz. Can **43¢**
Liquid All Cold Water Detergent (4¢ off label)—22-oz. Plastic **73¢**
Lux Toilet Soap White and Assorted Colors Bath Bar, 2 for **33¢**

MORE VALUES
Veg-All Larsen—No. 303 Can **17 for 99¢**
Ken-L-Ration Dog Food, Liver—15 1/2-oz. Can (Regular Flavor, 26-oz. Can ... 4 for 99¢) **7 for 99¢**
Liquid Detergent Dove, (16¢ off label) 22-oz. Plastic (32-oz. Plastic (25¢ off label) .70¢) **51¢**

SUNKIST NAVEL ORANGES
Sweet, juicy Oranges. Buy plenty at Safeway's Low Prices!
9 Lbs. 99¢




Margarine Kraft Miracle Whipped—1-lb. Ctn. **35¢**
Coffee Chase & Sanborn, Regular or Drip, (4¢ off label)—1-lb. Can **81¢**
Toilet Soap Lifebuoy, White, Coral or Pine, Bath Bar, 2 for **39¢**

Tomatoes Vine Ripen, Healthy eating for your whole family—Lb. **19¢**
Rhubarb Hot House, Grown to a tender ripeness—Lb. **29¢**
Grapefruit Start your Breakfast off with a fresh grapefruit, 5 Lb. Bag **39¢**

Cucumbers For a great salad addition, 2 for **29¢**
Crisp Celery Pascal, Crunchy and nourishing—Stalk **19¢**
Mushrooms Fresh, Serve with Safeway Steak—Pint Cup **39¢**
Iceberg Lettuce Great for salads—Each **2 for 29¢**
Eggplant Delicious baked, Try some—Lb. **19¢**
Potatoes New, Boiling size, 2 Lb. Bag **29¢**

THICK SLICED BACON

Safeway. Serve with Fresh Safeway Eggs.
2 Lb. Pkg. 89¢



U.S.D.A. CHOICE GRADE HEAVY BEEF
Rib Roast Standing, Featuring the Famous Safeway Trim—Lb. **75¢**
Rib Steaks Bone-In, Featuring the Famous Safeway Trim—Lb. **89¢**
Rib Steak Boneless—Lb. **99¢** Shoulder Roast Boneless—Lb. **79¢**
Sliced Meats Leo's Beef, Ham, Corned Beef, Spicy Beef or Dark Turkey—Pkg. **2 for 75¢**

Canned Ham Armour Star or Samuel's Mohawk, 3 Lb. **39¢**
Quick Steaks Manor House, Buttered Beef—Lb. **79¢**
U.S.D.A. GRADE A FANCY TURKEYS
HENS 8-Lb. to 14-Lb. Avg.—Lb. **39¢** TOMS 18-Lb. to 22-Lb. Avg.—Lb. **35¢**
FULLY COOKED PICNICS Swift's Premium, 5 to 7-Lb. Avg.—Lb. **35¢**
ALL MEAT FRANKS Sterling, 1-Lb. Pkg. **45¢** Bell Black Hawk, 1-Lb. Pkg. **49¢**

FRESH PORK VALUES
Center Cut Pork Chops Rib, **65¢** Loin, **79¢** Thin Breakfast Cut—Lb. **85¢**
Pork Backbone Country—Lb. **35¢** Pork Roast Loin End—Lb. **39¢**

BAKERY BUYS
Nut Snails Mrs. Wright's—4 Ct. (2¢ off label)—10-oz. Pkg. **33¢**
Mrs Baird's Bread White, Sandwith Sliced—1/4-Lb. Loaf **27¢**
RAISIN BREAD Skylark, Not Tied, (Regular 27¢) 1-lb. Loaf **19¢**
Vigo Dog Food Blue or Yellow Label, 1-Lb. Can **10¢**
Friskies Dog Food—1-Lb. Can **2 for 29¢**

CROWN COLONY
★ Celery Salt ★ Seasoning Salt
★ Garlic Salt ★ Onion Salt
Mix or Match—Regular Size **2 for 49¢**
Margarine Bluebonnet—1-Lb. Ctn. **2 for 57¢**
Comet Rice Long Grain, 2 Lb. Box **49¢**
Coffee Mate Carnation—3-oz. Jar **29¢**

SAFEWAY SAVINGS
Sweet Peas Green Giant, Fancy—No. 303 Can **5 for 99¢**
Golden Corn Green Giant, Cream Style—No. 303 Can **6 for 99¢**
Niblets Corn Whole Kernel Golden—12-oz. Can **7 for 99¢**
TEA GARDEN PRESERVES
★ Apricot-Pineapple ★ Blackberry
★ Grape ★ Raspberry **4 for \$1**
★ Strawherry 10-oz. Jar

MORE LEVER PRODUCTS
Surf Detergent, (7¢ off label)—Large Box **25¢**
Breeze Detergent—Large Box **35¢**
Condensed All Detergent—24-oz. Box **39¢**
Lux Liquid Detergent—12-oz. Plastic **39¢**
Swan Liquid Detergent—12-oz. Plastic **39¢**

JELL-O Gelatin Dessert, Assorted Flavors—3-oz. Pkg. **4 for 39¢**
PIE CRUST Mix, Betty Crocker—20-oz. Pkg. **38¢**
PUMPKIN PIE Or Mince, Bel-air Frozen—24-oz. Pkg. **29¢**

Safeway Guarantee
Every item at Safeway is sold on Money-back Guarantee. This means the full purchase price will be cheerfully refunded on any item that does not give you complete satisfaction.
Shop with Confidence at Safeway

This Coupon Worth 100 Free Gold Bond Stamps
Plus your regularly earned Gold Bond Stamps with the purchase of Any 2 (Full-Cut Round, Sirloin-T-Bone, Porterhouse) HEAVY BEEF STEAKS
Coupon Expires February 20, 1965.

This Coupon Worth 25 Free Gold Bond Stamps
Plus your regularly earned Gold Bond Stamps with the purchase of 10-Lb. Bag RUSSET POTATOES
Coupon Expires February 20, 1965.

This Coupon Worth 50 Free Gold Bond Stamps
Plus your regularly earned Gold Bond Stamps with the purchase of 100-Ct. Bottle BUFFERIN TABLETS
Coupon Expires February 20, 1965.

This Coupon Worth 100 Free Gold Bond Stamps
Plus your regularly earned Gold Bond Stamps with the purchase of 4 1/2-oz. Tube SCORE HAIR CREAM
Coupon Expires February 20, 1965.

This Coupon Worth 50 Free Gold Bond Stamps
Plus your regularly earned Gold Bond Stamps with the purchase of Large Jar MUM DEODORANT
Coupon Expires February 20, 1965.

Prices and Coupons Effective Thurs., Fri. and Sat., February 18, 19 and 20, in Eastland
We Reserve the Right to Limit Quantities, No Sales to Dealers.

