

THE NEW CAR CAPITAL

EASTLAND, TEXAS, THURSDAY, AUGUST 27, 1964

PRICE 10¢

First Case Encephalitis Reported at Lake Leon, But No Epidemic Likely

First known recent case of encephalitis — or "sleeping sickness" — in Eastland County was reported over the weekend.

Mrs. James B. Krantz of Lake Leon was taken to Eastland Memorial Hospital Saturday, a victim of the disease in very early stages.

She is the former Miss Janice Page, daughter of Mr. and Mrs. Carl Page of Ranger. Her condition is reported as steadily improving and physicians are of the opinion that

she will recover rapidly.

Dr. W. P. Watkins, Ranger city health officer, said Monday that "precautions to prevent and eradicate mosquitoes should be taken by area and county residents. All containers and trash cans should be covered so they won't retain stagnant water — common breeding place of the mosquito."

Commenting on the possibility of an epidemic of encephalitis breaking out in this area — such as the outbreak reported in the Houston vicinity along the Gulf Coast — Dr. Watkins said: "At this time it is very improbable that such an epidemic will strike here. Nevertheless," he added, "residents should be vigilant in eliminating possible breeding places for mosquitoes, some of which may carry the disease."

Although recent downpours cut down the number of mosquitoes in the air, standing water from the rains provides new breeding places, and in a few days there'll likely be more of the insect pests.

The disease is not contagious in that it may be transmitted directly from one person to another. But it is spread by the female culex mosquitoes which carry the St. Louis encephalitis virus. They receive the virus from biting birds or reptiles which are infected, passing it on to all persons whom they happen to bite.

Most of the persons infected will suffer no ill effects or will become only mildly sick, but in some cases the disease produces severe illness or death. Many cases are at first diagnosed as aseptic meningitis, which is similar to, but not as severe as encephalitis.

Grid Prospect Preview Program For Lions Club

"We're not going to be whipped this year — 'course, we might lose a ballgame or two!"

That was the word from the Eastland High School coaching staff as they sized up this season's team as program for the Eastland Lion's Club Tuesday.

Guest speakers were Head Coach Millard Glass, Backfield Coach Denson Moody and Line Coach Harold Price. Jim Parks was program chairman and introduced the coaching staff.

"Desire" was the one item listed by each coach, as the team's biggest asset this year. "We may not have the size or the speed, but we do have the desire to play ball," Coach Glass said.

Even though three backs were graduated last year, Coach Moody said, the backfield this year is in good condition and has been improving daily.

We'll have four lettermen on the line, Coach Price pointed out in sizing up his line. "Right now we're proud of all our linemen, but we're really 'proud' of five of them," he joked.

Glass sized up the opposition like this: Albany, toughest; Dublin, next toughest; and Ranger, a question mark. Guests were Herman and Vernon Gregory, brothers of Truitt Gregory; Bill White, formerly of Eastland and now of Houston; David Whittington; and John Elliott of Grand Prairie.

Local Woman's Nephew Dies

Mrs. Hattie Baker received word Tuesday evening of the death of her nephew, Mr. Mark Boren, 49.

Mr. Boren passed away at 4 p.m. Sunday, Aug. 23 in Oklahoma City, Okla. Funeral services were held at 2 p.m. Wednesday in Oklahoma City.

Other survivors include his wife, two brothers and one sister.

Revival Continues At Bethel Baptist

Revival services are in progress this week at the Bethel Baptist Church and will continue through the evening worship service, Sunday, August 30.

Evangelist is Rev. Floyd D. Newberry of Gordon. Rev. Newberry is the pastor of the First Baptist Church of Gordon.

Frank Parks, song leader of the Carbon Baptist Church, is music director for the services. Mrs. T. M. Clark is pianist and Homer Terry, organist.

Services are being held each morning at 10 a.m., prayer services each evening at 7:30 p.m., with the evening worship service at 8 p.m.

Rev. H. B. Terry, Jr., pastor, extends a cordial welcome to the public to attend the services.



IN CHARGE OF CHEER—These six misses are in charge of the good cheer department for the Eastland Mavericks this year and are soliciting the active support of every loyal Maverick fan to generate the "spirit for the team". From left the ladies are Sue Underwood, sophomore cheerleader; Sherry Butler, junior; Sharon Sayre, head cheerleader; Julie Elrod, senior; and Kathy Kincaid, freshman. And out front is Mascot, Lee Ann Glass, daughter of Coach and Mrs. Millard Glass. (Photo by Cottons)

C-C Directors Meet Thursday For Business

Reports on projects and studies will be part of business when the Eastland chamber of commerce directors meet Thursday at noon at the White Elephant, President James Smith said.

Reports will be heard on a study of campsite development at Lake Ringing and at Lake Cisco by Director A. D. Taylor. At the last directors' meeting it was discussed briefly, when it was pointed out how important is the "self-contained" camping tourists now, and the importance of providing locations for such visitors to camp.

It was suggested by directors, and later by citizens in entries to the chamber's tourist contest, that development of camping sites would be important to luring tourists off Int. 20 and into the area for a visit.

Other business will include a report by Don Viereger, chairman of the chamber's special events committee, on a membership breakfast.

Frank Deaton will also report on the chamber's current Tourist of the Month program.

New business will include discussion of the chamber's entry of a float in the forthcoming Peanut Bowl parade, and the purchase of a duplicating machine.

Local Woman's Brother Dies In Arkansas

James B. Nunn, brother of Mrs. Donald Kinnaird, Sr., died suddenly Tuesday morning in Camden, Arkansas. Funeral services will be held at 10:30 a.m. Thursday (today) in Camden.

Mr. Nunn was labor relations director for International Paper Company. He was a former resident of Eastland and attended Eastland High School.

His survivors include his wife, Alice, and a daughter, Betty Jo. Mr. and Mrs. Kinnaird have gone to Arkansas for the funeral services.

Masons to Confer Master Degrees

Eastland Lodge No. 467, AF&AM, will confer two Master Mason degrees Friday at 7 p.m. at the lodge, it has been announced.

All master masons are invited, it was reported by L. E. Huckabay, secretary.

Classes Tuesday

School Registration Friday 8 a.m. 'til Noon

Eastland Public School students in grades two through eight will register from 8 a.m. 'til 12 noon, Friday, August 28 for the 1964-65 school year.

Students in grades two through six will register in the new elementary school building and those in grades seven and eight will register at the Junior High building.

First grade registration was completed at the school business office on August 15 with 79 first graders registered. The first grade will be divided into three sections, with grouping to be done by age.

Superintendent Wendell Siebert said. If there are those with first graders who have moved to Eastland since the completion of the registration of August 15, they are urged to register their child as soon as possible at the school business office. The child must have a birth certificate and a smallpox vaccination certificate when they register.

A total of 235 high school students were registered in the spring and any high school student who was not registered at that time should register at the school office prior to the opening of school, Principal Charles Marshall has announced.

The school office is located in the high school building. Only those who will be attending the local high school here for the first time should be pre-registered, Mr. Marshall said. This does not apply to freshmen transferring from junior into high school.

Classes in all of the Public Schools will begin Tuesday morning, September 1. Buses will run on regular schedule and the lunch rooms will be in operation.

Holidays scheduled during the 1964-1965 school year are Labor Day — Sept. 7; Thanksgiving — November 26-27; Christmas — December 24-Jan. 3 (Inclusive); Oilbelt Teachers Meeting, Vernon — March 5; Eastland County Livestock Show — March 12; Easter — April 16-19 (Inclusive); and End of School — May 21.

6 Games On Tap For J-High Team

The Eastland Junior High football team has been scheduled for six games this coming season.

The games include two each with Cisco, Ranger, and Clyde. The team will be coached this year by Kenneth Norris, and the three high school coaches.

The team will be made up of the seventh and the eighth grade boys.

Marcus Bassett of Haynes City, Florida visited last week with Mr. and Mrs. Benn Bassett. He is the nephew of Mr. Bassett.

BREAD of Life

And now abideth faith, hope, love, these three; but the greatest of these is love. Corinthians 13:13.

All things change He Changeth not. Nor e'er forgets, though oft forgot; His love's unchangeably the same. And as enduring as His name.

Local Post Office Air Conditioning Okayed by GSA

Air conditioning of the Eastland post office in an estimated \$60,000 project has been approved by the General Services Administration, according to a telegraphed report from Cong. Omar Burleson.

Bid opening date for the project has been set for Sept. 24. Postmaster Marene Johnson said, in announcing that plans and specifications will be posted on the bulletin board at the post office as soon as they are available.

The GSA report stated that bids would be solicited after Aug. 27.

Modernization of the Eastland postal facilities are in line with the improved mail-handling systems such as the use of the Zip code and sectional centers, Mrs. Johnson pointed out.

Bids have already been opened and contract let for lighting improvements and other repairs, she said. Robert Hanna of DeSota is contractor for this work, and will begin work as soon as all the equipment is delivered here.

A "Face-lifting" of the interior service area is among the plans and will include the remodeling of the window areas.

The air conditioning of the building of Eastland's Class A postal facility has been a prospective project for the past six years and will be of benefit in comfort and convenience for both postal employees and patrons.

Cooling of the building has been needed, it is reported, with certain areas of the building, particularly the west loading dock area registering as high as 120 during the hot weather this summer.

Already one of Eastland's finest showpieces thanks to the flag bed and stamps mural, created by Mrs. Johnson.

THE TEXAN
DRIVE-IN
JEST for fun

A visitor looked dotingly at the little boy of the house and said to the mother, "You know, he has your mouth."

And the mother said softly, "And his father's chin and eyes."

"Yeah," spoke up the lad, "and my brother's trousers."

the post office will, with the addition of air conditioning and certain other modernization, be an outstanding example of attractive government facility.



DON ALEXANDER

Don Alexander Named License-Weight Patrol

Sgt. Jim Jordan and Dan Nowlin of the Texas Department of Public Safety announce the appointment of Don Alexander as new license and weight patrolman for the Eastland — Stephens County area.

The Eastland-Stephens County area was formerly supported by the license and weight office in Brownwood. The appointment of Alexander establishes a new license and weight office. The office is mainly concerned with commercial traffic. Anyone having any problems on registration, or other traffic problems are asked to contact Alexander.

Alexander and his wife Martha have two children, Gretchen, 7, and Susan, 3. They are making their home at 102 N. Iowa Breckenridge. He is a native of McCawley, and came to Breckenridge from Kingsville to assume his new duties August 15. He has been with the Department of Public Safety since May 22, 1962.

Auto Safety Is Rotary Program

Automotive safety precautions and individual responsibility in helping prevent accidents were vividly portrayed on film as program for the Rotary Club at its regular meeting at noon Monday.

A. D. Taylor was program chairman and introduced the program.

President Dr. Cyrus Barcus presided and Secretary Kenneth Thompson introduced four guests.

VACATIONING

Bernice Copeland, manager of the Safeway Store in Weatherford, is filling in for the local store manager, T. M. Temple who is on vacation. Mr. Temple will return from vacation Monday, August 31.

Freyschlag INSURANCE

weather report

THURSDAY — Clear. Sun rises 5:25, sets 6:37. Moon rises 9:26 p. m. Fishing poor.
FRIDAY — Fair. Sun rises 5:26, sets 6:35. Moon rises 10:00 p. m. Fishing fair.
SATURDAY — Cooler. Sun rises 5:27, sets 6:34. Moon rises 10:41 p. m.

County Farms Yield \$7,425,000 in 1963

For Eastland County's farm population, 1963 proved to be a better year, by and large, than it was for farmers in many parts of the country.

Although some local operators barely held their own in the year, others, especially those with well-equipped, commercial-size farms, ended up on the plus side.

They were able to raise more livestock and produce a larger volume of crops than before, despite the smaller amount of land under cultivation.

Much of this gain was offset, however, by the drop in prices for farm products and cattle.

Details on the year's operations, for the local area and for all other sections of the United States, are contained in the annual survey report released by the Standard Rate and Data Service.

It shows that Eastland County farmers accounted for gross revenues of \$7,425,000 in 1963. This is a gross figure — before taxes and before deductions for operating costs. Included in it are the cash proceeds from farm marketings, Government payments

and "income in kind," which is the value of products grown and consumed on the farm.

An estimated 30 percent of the income from the marketing of farm goods came from the sale of livestock, poultry and dairy products.

While the average American farmer has been able to boost his production and thereby increase his gross receipts, he has not succeeded in turning this gain into added net income. The price squeeze has been against him.

As a result, he has failed to share in the prosperity enjoyed by the country as a whole. Only because there are fewer farmers than before to share in the income has per capita earnings gone up.

For the farm population of Eastland County, the gross income, \$7,425,000, was at the rate of \$2,183 per capita.

Despite the difficulties connected with farming, it continues to be the nation's largest single industry, providing jobs for more than 6,500,000 people.

Gross income from farming and ranching in the year amounted to over \$41 billion.

NUMBER 54
ITs
L.V.A.
ed in about a
plication for
rners Home
ow - interest
ng purposes,
omer Cole
Application
e special
ns about ten
relieve the
of drought-
Countians.
re operating
am and we
land County
Approval
Washington
nts will be
the official
procedures
rent houses
apparent as
come in for
These are
ant ads and
lk this week
owning con-
ing of more
oping of cer-
ns, indicating
for the city.
the planning
ing personal
y... Along
ert Meredith
e called the
family of the
in Cisco;
Stabilization
committee of
h offices in
Meredith will
anger school
e family at-
Eastland.
Eastland Coun-
County Judge
an to attend
of two passen-
dies through
needs to re-
the past few
ations in this
en lowered in
ciating equip-
les and to fur-
that it refers to
ed decrease of
county needs
dules — for
for passenger
the transport
plies. East-
ght be consid-
too, to the ex-
company should
its growth and
maybe, de-
cent of its opera-
big-city cen-
g some of its
s lines to
ort to stir up
within and
of this might
ch extra busi-
ore schedules
You don't
man just be-
leave you a
is the day on
sion commission-
likely consider
petition — if
ber of signers
time, which
at Saturday,
be most likely
ction based on
the commis-
days and not
Understand
s were on the
y week. Some
Unofficial
Ranger won't
ition election
is back from
fish stories
dren's clothes
ted at Mode
market in Dal-
ere Mrs. Floyd
Altman's de-
of Harelik's De-
on Page 4)
ails or a Low
ement Loan
onal Bank
72223

DIXIE Drive-In
EASTLAND RANGER HIGHWAY

Box Office Opens 7:45; Show starts 8:15; Box Office closes 9:30. Admission: Adults 60c, Children under 12 Free Each Wed. - Thurs. — Bargain Nights (Adults 25c)

Friday & Saturday, Aug. 28 & 29
Kirk Douglas & Anthony Quinn

'Last Train From Gun Hill'
IN COLOR
Sunday, Monday & Tuesday, Aug. 30, 31 & Sept. 1
'Sunday in New York'
Cliff Robertson, Jane Fonda & Rod Taylor
IN COLOR

Courthouse Records

- Oil & Gas Leases
- Court Proceedings
- Property Transfers
- Marriage Licenses

New Car Registrations

M. B. Rodgers, Eules, Plymouth.
John Strickland, Cisco, Chevrolet.
Kenneth Leach, Cisco, Chevrolet.
City of Cisco, Cisco, Chevrolet Dump Truck.
Cyrus B. Frost, Jr., Eastland, Pontiac.
Bill B. Hart, Eastland, Ford.

R. A. Kinser, Gorman, GMC pickup.
Ted Hale, Eastland, Ford.
Lee Roy Cole, Gorman, Chevrolet.
E. D. Brinson, Gorman, Chevrolet.
James B. Morris, Gorman, Chevrolet pickup.
Mrs. Grady Pipkin, Eastland, Cadillac.
A. L. Rhodes, Eastland, Cadillac.

Suits Filed

C. J. Manske, Jr. vs Eddie Manske, divorce.
Linda Burns vs. Billy Gene Burns, divorce and child custody.
Robert Fox vs. William V. Edwards, damages.
Southland Paint Co., Inc., a corporation vs. Walter Hutchens, debt.

Marriage Licenses

Hiram Marshall Andrew and Maxine Leota Drennan.
William Earl Boyd and Brenda Alese Treadway.
Melvin Otis Thetford and Virginia Dee Rogers.



AT MAJESTIC SUNDAY — To be seen and sometimes heard, above the screeching and screaming, will be the Beatles in their first feature film, "A Hard Day's Night," beginning Sunday for three days at the Majestic in Eastland. Les fans misplace them, their order from left is Ringo, George, John and Paul.

MONUMENTAL
SINCE 1884
WEATHERFORD PHONE

WE Specialize IN HOME LOANS

When you get ready to buy a home and are looking for a loan — look first to an association such as ours. We SPECIALIZE in loans for homes, so we are able to devote our time to keeping up with the many facets of the ever-changing real estate picture. We are better able to find and obtain a loan that fits your needs. FHA LOANS AVAILABLE RIGHT

1st FEDERAL SAVINGS & LOAN ASSOCIATION
204 Main RANGER MISSISSIPPI

WE'RE RINGING IN BACK-TO-SCHOOL SAVINGS

LEVIS WHITE - GREEN - BLUE ALL SIZES	FARAH REG., SLIMS & HUSKIES 2.98 & 3.75
FARAH CASUALS 5.98 & UP	CROSBY SQUARE SHOES SIZES 4-12 — ALL STYLES FROM 13.95
HUSH PUPPIES BOY'S & MEN'S 8.95 & 9.95	OTHER FALL MERCHANDISE ARRIVING DAILY

THE MEN'S SHOP
EASTLAND

Commissioners Hear Group On Road Opening At Lake Leon

Eastland County Commissioners, in a meeting Monday morning, approved a public weigher's bond for J. L. Thornton of Cisco and received and heard interested parties concerning the possibility of opening a road near Lake Leon. The delegation was led by W. E. Hallenbeck of Eastland who has filed a petition for a road in the county clerk's office. No formal action was taken by the commissioners. An order was approved by the commissioners on the continuance of the county's part

Instruments Filed

G. W. Alexander et ux to Ward D. Robinson et ux, warranty deed.
Ray Agnew et ux to E. E. Rutledge, warranty deed.
Gene Agnew et ux to First Federal Savings and Loan Assn., Ranger, deed of trust.
Tempest Brandon, Individual and Independent ex'rx estate Dr. J. B. Brandan, deceased to Housing Authority of the City of Gorman, warranty deed.
J. C. Baker et ux to M. J. Kee et ux, deed of trust.
Odessa Brooks to Otto Spratt, oil, gas, mineral lease.
George B. Brooks to Otto Spratt, oil, gas, mineral lease.
Jake Cadenhead et al to Tempest Brandon, quit claim deed.
R. L. Carter to Marjorie Jones, release deed of trust.
Citizens State Bank, Cross Plains to Paul B. Conn et al partial release deed of trust.
Dolly Catherine Carswell et vir to Otto Spratt, oil, gas, mineral lease.
Eastman Oil Well Survey Co. to Glen Hubbard Individual and dba Hubbard Drilling Co., abstract judgement.
C. F. Ervin et ux to Carl Ervin, warranty deed.
E. C. Johnston Co. to Sabre Oil and Drilling Co., assignment oil, gas, lease.
George P. Fee et al to E. V. McCright, oil, gas, mineral lease.
House Fidelity Inc., vs. James Dabney, abstract judgement.
R. E. Grantham to Wayne Wallace, quit claim deed.
Gulf Oil Corp. to George P. Fee et al, release oil, gas, mineral lease (5).
Elsie Glenn to R. Wallace Cantrell et ux warranty deed.
W. E. Hallenbeck et al to Floyd White et ux warranty deed.
W. E. Hallenbeck et al to Joy White, warranty deed.
W. E. Hallenbeck et al June Bunch, warranty deed.
Ben E. Hamner et ux to Arrington - Hamner Funeral Home, Inc., warranty deed.
Stella Hatten to Wayne Wallace, easement.
Grady Claude Hogue et ux to Edwin F. Wende et ux, warranty deed.
Dalton Hatton et ux to Commercial State Bank, Ranger, extension deed of trust.
Bernice Jeffs et al to Tempest Brandon, quit claim deed.
Jim Walters Corp. to Mid State Homes, Inc., assignment material mechanics lien.
W. L. Jacoby et ux to Mickey Kitchen, warranty deed.
Mrs. Majorie Jones to R. L. Shultz, warranty deed.
Callie O. Justice Individual dba Eastland Truck Stop Cafe to State of Texas, state tax lien.
J. D. Lauderdale et al to the Public, affidavit.
Vera Elizabeth London et al to Donnie D. Dent, warranty deed.
Minnie Mae Lay to Veterans Land Board of Texas, warranty deed.
Mary E. Michael to H. C. Nix, warranty deed.
Edward W. Mince et ux to Eris A. Ritchie et ux, warranty deed.
John Delma Moody, deceased to the Public, proof of heirship.
H. B. Murray et ux to Gere A. Agnew et ux, warranty deed.
Clay Nichols to the Public, affidavit.
W. F. Nuss, Jr. to Graridge Corp., bill of sale.
W. F. Nuss, Jr. et al to Albert F. Selman et ux, release oil, gas lease.
H. D. Pyke et ux to the Public, homestead designation.
Susie Etta Placker, Individual and Independent ex'rx estate Lazarus B. Placker to Lester Mayes et al, warranty deed.
Billy Pritchard to First National Bank, Cisco, deed of trust.
Everett Plowmen et ux to Olive E. Underwood, warranty deed.

BACK-TO-SCHOOL Specials

MAKE WORTH FOOD MART YOUR BACK TO SCHOOL HEADQUARTERS

NOTEBOOK FILLER PAPER Package of 40
ELMER'S "GLUE ALL" White Glue - 59c Size
MARBLIZED CLIPBOARDS
ZIPPER BINDER POUCH
BOND TYPING TABLET
ASSIGNMENT BOOK Spiral Bound
WATER COLORS Semipermanent
PENCIL TABLETS
NOTEBOOK Each Package (225 Sheets) 59c Value
FILLER PAPER 3 225 Sheets Pkg.

RANGER JUNIOR COLLEGE

Fall Semester - 1964

REGISTRATION SEPTEMBER 14 CLASSES BEGIN SEPTEMBER 15

- Fully Accredited Courses.
- Modern Facilities.
- An Excellent Faculty.
- A Complete Athletic Program.

Young men and women planning careers in medicine, business, dentistry, science, education, law, engineering, music, physical education and other fields will find at Ranger Junior College the courses they need toward degrees. Our curriculum is parallel with the first two years of a four-year college.

Our faculty members keep abreast of their profession by constantly improving their academic standing through further post-graduate study. Courses are offered for those who seek degrees in certain fields and for those who want specific training, but do not plan on advanced studies. Inquiries are invited.

FOR INFORMATION AND CATALOG, WRITE, BOX 135, RANGER, TEXAS

"ADVANCING ACADEMIC EXCELLENCE AND FOSTERING FRIENDLY ATTITUDES"

Established 1926 — Our 38th Year

BACK-TO-SCHOOL Specials

MAKE WORTH FOOD MART YOUR BACK TO SCHOOL HEADQUARTERS

NOTEBOOK FILLER PAPER Package of 40
ELMER'S "GLUE ALL" White Glue - 59c Size
MARBLIZED CLIPBOARDS
ZIPPER BINDER POUCH
BOND TYPING TABLET
ASSIGNMENT BOOK Spiral Bound
WATER COLORS Semipermanent
PENCIL TABLETS
NOTEBOOK Each Package (225 Sheets) 59c Value
FILLER PAPER 3 225 Sheets Pkg.

WE GIVE 5¢ GREEN STAMPS

WORTH FOOD MART
The SURE SIGN OF SAVINGS!

WORTH FOOD MART

RE SIGN OF QUALITY!

WINNERS IN WORTH FOOD MART'S MONEY TREE GAME!



\$100 WINNER
Mrs. J. E. Jennings



\$100 WINNER
Nolan T. Carter



\$100 WINNER
Mrs. J. T. Overby



\$100 WINNER
CHUCK WILLIAMS

PLAY THE MONEY TREE GAME * IT'S FREE * EVERYONE WINS * NO PURCHASE NECESSARY
200 CASH WINNERS IN EACH STORE * WINNERS IN EACH STORE * WIN UP TO \$100.

ROUND STEAK 69¢

Thrifty-Cut Baby Beef Lb.

Check These Values!

- TOMATOES Mountain Pass 4 No. 303 Cans 49c
- ORANGE DRINK Trop-Cal-Lo 1/2 Gal. 49c
- DINNER Kraft Spaghetti 2 7 1/2 oz. Pkg. 49c
- KLEENEX TOWELS Jumbo 2-Roll Pkg. 59c
- KLEAR WAX Johnson's 27-oz. 89c
- DOG FOOD 6 1-lb. Cans 49c

- ROUND Steak - Tenderized - Boneless Thrifty Cut Baby Beef lb. 79c
- RUMP ROAST or Pikes Peak Lb. 69c
- SLICED BACON Hormel - Dairy Lb. Pkg. 53c
- SHRIMP Breaded - Tid Bits Lb. Pkg. 59c
- COD PORTIONS Taste O'Sea 12 oz. Pkg. 49c
- CATFISH STICKS Taste O'Sea Frozen 8 oz. Pkg. 39c

STEAK T-BONE Thrifty-cut Baby Beef Lb. 79¢

- Frozen Food Features!
- Libby's - Regular or Pink 10 6 oz. Cans 99c
 - DINNERS Beef Chicken or Turkey 11-oz. Pkg. 39c
 - PIES 4 8 oz. Pies 89c
 - BUTTER Bama 18-oz Jar. 55c
 - DETERGENT 33c
 - TERGENT King Size \$1.25
 - AN Liquid Cleaner 28 oz. 69c

Taylor's Mellorine All Flavors 3 \$1.00

- SNOWDRIFT All Vegetable Shortening 3 Lb. Can 49c
- CANNED MILK Evaporated Carnation 8 Tall Cans \$1
- VIENNA SAUSAGE 5 4 oz. Cans \$1
- PIE FILLINGS Cherry, Wilderness No. 2 Can 39c

Health Aids!

- KLEENITE For Clean Dentures 58c Size 41c
- BUFFERIN Regular \$1.29 Size 100 ct. Bottle 91c

CANNED DRINKS Mission - All Flavors 12 12 oz. Cans \$1

- Green Giant SWEET PEAS 2 No. 303 Cans 47c
- Green Giant NIBLET'S CORN 2 12 oz. Cans 39c
- Green Giant GREEN BEANS No. 303 Cans 21c
- Green Giant GOLDEN CORN 2 No. 303 Cans 39c
- Green Giant ASPARAGUS "Cut" No. 1 Can 27c
- Hunt's Fruit Cocktail No. 300 Cans 27c
- Morton's SANDWICH SPREAD Pint Jar 29c
- Gulf Belle Regular MEDIUM SHRIMP 4 1/2 oz. Can 45c

Coupon No. 6-B
FREE!
WEDGWOOD & CO., LTD.
WEDGE ROSE ENGLISH DINNERWARE
CUP
WITH COUPON AND PURCHASE OF \$10.00 OR MORE OR COUPON, 50¢ AND \$1.00 PURCHASE
Void After Aug. 31

POTATOES 59¢

RUSSET U.S. No. 1 10-Lbs.

- ONIONS U. S. No. 1 Texas Mild Flavored Lb. 5¢
- BELL PEPPERS Large California Wonda's Lb. 19¢
- BARTLETT PEARS California Fancy Lb. 19¢

AND SAVE!
100 BONUS S&H Green Stamps with this coupon and purchase of One 2-Lb. Can Maxwell House BAKED BEANS After Aug. 29, 1964
WORTH FOOD MART

CLIP AND SAVE!
100 BONUS S&H Green Stamps With this Coupon & Purchase of One 2-Lb. Can Maxwell House COFFEE Void After Aug. 29, 1964
WORTH FOOD MART

CLIP AND SAVE!
100 BONUS S&H Green Stamps With this Coupon & Purchase of One 4 1/2-oz. Jar Lipton INSTANT TEA Void After Aug. 29, 1964
WORTH FOOD MART

CLIP AND SAVE!
50 BONUS S&H Green Stamps with this coupon and purchase of One 5 Lb. Box Light Crust FLOUR Void After Aug. 29, 1964
WORTH FOOD MART

CLIP AND SAVE!
25 BONUS S&H Green Stamps with this Coupon & Purchase of One 12-oz. Can Hormel SPAM Void After Aug. 29, 1964
WORTH FOOD MART

SELL AND PROFIT... BUY AND SAVE... GET A BETTER JOB... HIRE GOOD HELP!

Read and Use the Want Ads!

CALL MA 9-1707

Announcements

MASONIC LODGE NO. 467
Meets second Thursday of each month at 8 p.m. In the Masonic Hall. Call Joe W. Anderson, MA 9-2331, for information or L. E. Huckaby, Sec., 9-1391, for information.

EASTLAND ROTARY CLUB

Meets each Monday noon at White Elephant Restaurant in Eastland. Cyrus Barcus, president.

Notice

NOTICE: You'll profit by using accurate farm record books, and other record-keeping material, available at the Eastland Telegram. Complete stock of Garner and Simplified books. tf

NOTICE: Ross' Bicycle Shop. Two blocks west of A&P store, Cisco. Repairing, sell, trade or buy bicycles, also repair wheel chairs. HI 2-2085. tf.

SEALING BID OFFER: HWY. 12598, 11:00 A. M. August 26, 1964.

Sealed bids will be received in the office of the State Board of Control, Sam Houston State Office Building, 201 East 14th Street, Austin, Texas until 11:00 A. M. of the above listed date covering the sale of 2 improvements belonging to the Texas Highway Department located at Cisco, Texas, and may be inspected by contacting:

R. P. Haun, Jr., Texas Highway Department, Eastland, Texas. 51

NOTICE OF SALE

Notice is hereby given that The Valley National Bank of Arizona will sell at public auction to the highest bidder for cash the following: One (1) Ford Galaxie 500, 2 Dr. H. T. Eng. Number 2463V-108783, Model Number 65A, at Graham Motor Company, Inc., 119 West 7th Street, Cisco, Texas, August 21, 1964 at 10:00 a.m., which property was retained pursuant to a conditional sale contract, dated November 15, 1964, in the name of Carl E. Graves, Jr.

Dated this 5th day of August, 1964.

THE VALLEY NATIONAL BANK OF ARIZONA

Casa Grande, Arizona
By Arlo D'Pew, Assistant Manager

Whittenton T. V. Repair

Guaranteed Service
RCA & Sylvania
Tubes & parts.
AT
WESTERN AUTO
MA 9-2011

EASTLAND AUTO PARTS MACHINE SHOP

300 S. Seaman
MAin 9-2158

FULLY-EQUIPPED AUTOMOTIVE

VALVE GRINDING
BRAKE DRUM TURNING
HEAD SURFACING
VALVE JOBS
BLOCK BORING
SLEEVE INSERTING
VALVE SEATING

COMPLETE LINE AUTOMOTIVE TRUCK TRACTOR PARTS

ALWAYS IN STOCK

AUTO PARTS

300 S. Seaman MAin 9-2158
EASTLAND

SPECIALIZING in private dinners, luncheons and banquets, seating up to 200 persons. Victor Hotel Coffee Shop, Cisco.

For Sale

FOR SALE: House trailer, 1959 Model M-System, 2 bedrooms, 42'x10'. Call MA 9-1531 after 4 p.m. tf.

FOR SALE: Two 10 cubic foot used refrigerators. Good condition. Terms available. Good-year Service Store, Eastland.

FOR SALE: Singer treadle sewing machine. Phone MA 9-2325. 56

TRUCKS FOR SALE: Must reduce our inventory, we have \$90,000 worth of used trucks, trailers and truck and trailer equipment that must go. Johnston Truck & Supply, 725-2181, Cross Plains. 56

FOR SALE: Edgeware Clarinet, case and accessories. Perfect condition, reasonably priced. Call MA 9-2227. 36

FOR SALE: 1962 Buick Electra 225 fully equipped, air and power, extra nice. \$2650. Muirhead Motor Co., Eastland. 54

FOR SALE — 1960 Cadillac. \$1795. 108 West Valley. Call MA 9-2592. tfe

FOR SALE: 1963 Pontiac Star Chief, 4 door sedan, performs and looks like new, equipped with air and power. \$2950. Muirhead Motor Co., Eastland. 54

FOR SALE: 2 Frigidaires Imperial 150, 1 1/2 ton air conditioner, like new. Two Rheems Frigidaire room air conditioners like new. These units are being used but will be available Monday July 13. Phone MA 9-1640 or MA 9-2301. tf

FOR SALE: 1961 Buick Special Station Wagon, V8 with air conditioner. \$1595. Muirhead Motor, Eastland. 54

FOR SALE: 1958 Pontiac Star Chief, power steering and brakes. \$875. Muirhead Motor, Eastland. 54

FOR SALE: Young's Goat Island at Lake Leon Summer cabin — electricity, deeded land. \$1,000. Call MA 9-1878 or contact James W. Young. tf

FOR SALE: 1959 Chevrolet Station Wagon, 6 cylinder, standard shift. \$950. Muirhead Motor Co., Eastland. 54

FOR SALE: Remington portables. Brand new. Envoy II \$59.95. Monarchs, \$79.95, (both plus tax). Eastland Telegram. For gifting, for schooling, for self. tf

FOR SALE: 1957 Plymouth Station Wagon, 4 door V8 with automatic drive. \$675. Muirhead Motor, Eastland. 54

FOR SALE: 1956 2 door, 6 cylinder, A-1 mechanically and in appearance. \$350. Muirhead Motor, Eastland. 54

FOR SALE — Complete set grocery and meat market fixtures, including shelving, bins, cash register, adding machines, 22-ft. meat case, frozen food case, dairy cooler, walk-in cooler, meat block, knives, saws, meat grinder, scales, etc. Phone MI 7-3433, Ranger. 54

FOR SALE: 1957 Buick Super Sport Coupe. Wouldn't find nicer for this model. \$750. Muirhead Motor, Eastland. 54

FOR SALE: 1958 Chevrolet. Good condition. Standard, overdrive. Call Olden 2765 about 8 p.m. tf.

FOR SALE: 1957 Buick Super 4 door hardtop, air conditioned, power steering and brakes. \$875. Muirhead Motor, Eastland. 54

FOR SALE — Remington Portable Typewriters, the best bargain in a typewriter. Easy terms. See at Eastland Telegram, Eastland. tfe

FOR SALE: Used 15 cu. ft. upright home freezer. Perfect condition. Three years old. Terms available. Goodyear Service Store, Eastland. tf

FOR SALE: House trailer, 10 feet by 50 feet, 1958 Palace, furnished. Phone MA 9-1881. tf

FOR SALE: Large selection of clean used tires. Popular sizes priced from \$4 up. Goodyear Service Store, Eastland. tf.

FOR SALE: Adorable AKC male poodle puppy wants family to love. Siamese kittens, bargains. Half Siamese male kitten to give away. MA 9-1211. 32

Real Estate

FOR QUICK SALE: Four room house, five lots, Bedford St. Contact Olden 2531. 56

FOR SALE: Two bedroom, enclosed sleeping porch, paneled kitchen, den, living, dining room carpeted. Double garage, patio. Phone MA 9-2279. 54

FOR SALE — Three nice homes. Bargain prices. One small equity. All well located. M. A. Treadwell, Sr. MA 9-2017. tf

FOR SALE — South Hillcrest choice house, large fenced lot. Three bedrooms, living room, dining room, kitchen, den, lots of good storage. Best location in Eastland. M. A. Treadwell, Sr. MA 9-2017. tf

FOR SALE: Two and three bedroom houses at Breckenridge. Finance available. See or call O. E. Bradford, house-mover, HI 9-4506 or HI 9-3780, Breckenridge. tf

FOR SALE OR TRADE: Three bedroom home, 2 baths, 2 acres land. 12 miles north Brownwood on Cisco Highway. Phone MI 3-4447 Brownwood or write Rt. 2, Box 71, May, Texas. 54

Rentals

LIVE AT the Victor Hotel in Cisco. Permanent guest rooms. \$12.50 weekly. 55

FOR RENT: Newly decorated 2 bedroom house for rent. Location 415 N. Daugherty. Call MA 9-1501 after 5 p.m. 56

FOR RENT: Four room furnished duplex, walk-in closet and air conditioner. Call MA 9-2186. 33

FOR RENT: Unfurnished 2-bedroom house. 414 East Sadosa. Phone MA 9-1977. tf

FOR RENT: By day, week or month: trailer mounted camper ready to go. Sleeps four in luxury and will take more. See Otis Coleman at Coleman Humble Service Station. tf

FOR RENT: Apartment, nice clean furnished, air conditioned. Large living room, bedroom, small kitchen and bath. Bills paid. Phone MA 9-2362. tf

FOR RENT: Furnished or unfurnished two bedroom apartment in duplex. 611 West Plummer. tf

FOR RENT: Dandy two bedroom furnished cabins with titchienettes. Ideal for week-ends during winter. Good rates. Lynn's Lake Lodge, Lake Cisco. Phone HI 2-2064. tfe

FREE

Estimates On
RE-ROOFING

Or Repair Your Old Roof.
Residential and Commercial

Roofing Co. Eastland
Nobie Squiers
Phone MA 9-2370

ROLLINS & SONS GULF SERVICE

Call for Appointments on Wash - Grease Oil Changes
500 W. MAIN
MAin 9-8840
We Give S&H Green Stamps

WALKER'S Dressing Plant

Custom Dressing
Phone D. J. Walker
Eastland MA 9-1192

Insurance and Real Estate

D. L. Kinnaird
Life - Fire - Auto - Farm
Polio - Bonds
42 years in the Insurance Business in Eastland

Wanted

WANTED: Grocery clerks. Inquire Ranger Times. Box 118-B. 52

WANTED: The opportunity to prove that classifieds get results. People read the Classifieds — and look to them first for apartments, jobs, bargains, etc. Call today and put the Classifieds to work for you. MAin 9-1707. tf

HELP WANTED: Eastland Steam Laundry, 210 North Lamar. Apply in person. tf

WANTED: Someone to take up payments of \$2.50 weekly on slightly used 23" General Electric Television. Goodyear Service Store, Eastland. tf

ONE of the finer things of life — Blue Lustre carpet and upholstery cleaner. Rent electric shampooer \$1. Coats Furniture Co. 53

WANTED: Custom breaking, sawing and fertilizing. Call M. C. Key at MA 9-1230 or MA 9-2678, or see O. Carter at Olden. tf

WANTED: Carpenter contract work. No job too large or too small. Phone MA 9-1297. 64

HELP WANTED
Someone to do housework.
Apply 610 South Lamar.

ARTHRITIS
If you are suffering from pain, soreness, stiffness or swelling caused by arthritis, neuritis or rheumatism, I think I can help. Write me for free information.
KAYE SMITH
2301 Terry Road, 516
Jackson, Miss. 39204

MATTRESSES
Save up to 50% renovating choice of color and firmness. Complete bedding. Made and guaranteed by WESTERN MATTRESS CO., San Angelo. Phone MA 9-1342 or MA 9-1304, Eastland and leave address.

FOR LEASE TO COUPLE ONLY
Clean, 2-bedroom house. Oak floors. Lots of closet space. Located 709 S. Halbryan. \$65. See Ben Hamner at Hamner Funeral Home. No telephone calls, please. tf

SPORTS-STANDARDS COMPACTS WE SERVICE THEM ALL

OBIE'S HUMBLE SERVICE STATION
802 W. Main
MA 9-8866

Man or Woman
OWN YOUR OWN BUSINESS
A new item. First time offered. Start in spare time, if satisfied then work full time.

Refilling and collecting money from bulk machines in this area. To qualify you must have a car, reference, \$500 cash to secure territory and inventory. (Deposit secured by written contract.) Devoting a few hours a week to business your end on percentages of collections should net above average income with very good possibility of taking over full time. Income increasing accordingly. If applicant can qualify financial assistance will be given by Co. for expansion to full time position. Include phone in application. Write Box A, Eastland Telegram.

Eastland Memorial Hospital

The following were reported as patients at Eastland Memorial Hospital Wednesday:
Hanna Lindsey, surgical.
Janice Bradford, medical.
L. A. Horn, medical.
John Sawyer, medical.
John Claborn, medical.
Mrs. W. N. Fox, medical.
W. S. Poe, medical.
J. W. Fleming, Cisco, surgical.

Mrs. John Smith, medical.
Mrs. Cecil Copeland, medical.
Mrs. W. L. Kellar, Mineral Wells, surgical.
Mrs. Russell Rutherford, Gordon, medical.
Addie Shirley, medical.
Mrs. R. L. Taylor, medical.
Mrs. James R. Krantz, medical.

Mrs. John W. Mitchell, Olden, accident.
Eva Eaton, Ranger, medical.
Mrs. C. L. Mitchell, Olden, medical.
Mrs. L. A. Drake, medical.
Mrs. Jim Ingram, Ranger, surgical.
Mrs. W. H. Drake, medical.
Mrs. Earl A. Brown, surgical.

Elbert Jackson, Carbon, medical.
Mrs. Lewis Fagan, medical.
Monroe Poe, medical.
Miller baby girl.
Williams baby boy.
C. W. Hoffman Sr., surgical.
Allie Bridges, Gordon, medical.

Russell Barton, accident.
Mrs. Wayne Williams, Cisco, OB.
Bessie Lee, Rising Star, medical.

Ruth McLendon, surgical.
Mrs. H. J. Lane, surgical.
Mrs. Earl S. Lee, medical.
C. R. Neeley, Ranger, medical.

Elizabeth Rhyne, Albany, medical.
Minnie Baker, medical.
Mrs. C. L. Miller, Moran, OB.
Mrs. T. E. Payne, medical.
Sandra Taylor, surgical.
Mrs. Ben Williams, medical.
Claude C. Gipson, surgical.

Bluff Branch, 10; Bullock, 10; Carbon, 299; Chaney, 24; Cisco, 4,545; Cook, 25; Corinth, 10; Desdemona, 198; Dothan, 10; Eastland, 3,342; Flatwoods, 25; German a Settlement, 25; Gorman, 990; Kokomo, 25; Lake Cisco, 50; Lake Leon, 100; Long Branch, 10; Mangum, 10; Merriam, 10; Mitchell, 10; Morton Valley, 25; Mountain Top, 10; Nimrod, 25; Okra, 10; Olden, 200; Pioneer, 35; Pleasant Hill, 10; Pueblo, 25; Punkin Center, 10; Ranger, 3,363; Rising Star 916; Romney, 16; Sabanno, 11; Seranton, 60; Staff, 51; and Union Center, 24.

RETURNS HOME
Mrs. Glen Gray and Russell of Eastland and Miss June Sharpe of Olden have returned home from a visit in California. They visited in San Pedro with Mrs. Gray's son, Nathan Kidd, who is stationed aboard the James E. Kyes in the United States Navy.

While Mrs. Gray visited with Mr. and Mrs. Richard Brown of Lakewood, former residents of Olden, and Miss Sharpe visited in Playa Del Rey with Mr. and Mrs. Charles Williamson, Travis and Randy. Mrs. Williamson is the former Mary Ann Reese of Olden.

Mrs. Gray's grandchildren, Pat and Carol Ann Kidd returned home with her for an extended visit.

RETURNS FROM VACATION
Mrs. T. M. Alford has returned from a vacation trip to Creed, Colorado. She accompanied her children, Mr. and Mrs. Richard Southern and children of Mineral Wells, and Mr. and Mrs. Tommy Alford, Jr. of Dallas on the trip. While in Climax, Colorado her daughter and her husband, Mr. and Mrs. Acker Everett of Idabel, Oklahoma came and spent the weekend with the group.

ABIENEL VISITORS
Prince Altom, student of Hardin-Simmons in Abilene, is visiting this week with his grandparents, Mr. and Mrs. Edgar Altom. His roommate at HSU, Aubrey Howard of Port Arthur, spent the weekend here with him and with Mr. and Mrs. Edgar Altom.

ODESSA VISITORS
Mr. and Mrs. Pat Miller and family had as their guests last week Mrs. Miller's nieces, Julie and Annette Goode of Odessa. Mr. and Mrs. Miller returned the children to their home in Odessa over the weekend and Janie and Susie Miller remained in Odessa to spend the week there with the Goode family.

VISITS MOTHER
Mrs. G. A. Barker had as her guest last Thursday her son, G. A. Barker of Abilene, and her daughter and her husband, Mr. and Mrs. R. G. Johns of Abilene visited in her home Sunday.

FROM BIG LAKE
Mrs. Edith Burnett and daughter, Nancy of Big Lake visited Monday with Mr. and Mrs. Luther L. Adams. Mrs. Burnett is a niece of Mr. Adams.

Special Beautiful Assorted Philodendrons, Sheffellers and Bedding Plants
(Useful Item to each Customer)

Florafax Delivery Service
We send Flowers Anywhere, Anytime

ITA PARRISH Green Street Flower Shop
200 N. Green St.

POE FLORAL
When Its Flowers Say It With Ours

Experienced designers at your service.

Highest quality stock and material

assure your satisfaction.

Since 1946

Eastland
MA 9-1711 609 W. Main

TIDBITS... (Continued from Page One)

partment Store... Don't forget: season football ticket options need to be picked up before Sept. 1. The price is still \$5 per seat for all games. Several options are to be picked up, the school office reports... This ticket price change on student tickets ONLY. The price this year is 50 cents. Up from 25 cents because of district ruling. General admission is \$1 for adults. New furniture for the elementary building has arrived, is stored in the old gym, and is being moved into and installed in the new building as fast as possible.

Eastland C-C Working On County Count

The Eastland Chamber of Commerce would appreciate help in "guess-timing" the populations of the various incorporated and unincorporated towns in the county. Such information is valuable for inclusion in information about the county, President James Smith said, and is another of the valuable tools the chamber uses to interest others, including industry, in settling here.

The 1960 census figures for all areas in the county are given below, and a post card from persons in these areas now, explaining any changes, up or down, will certainly be appreciated, he said. The information will be passed on for use in the Texas Almanac.

According to the 1960 census the population was:
Bluff Branch, 10; Bullock, 10; Carbon, 299; Chaney, 24; Cisco, 4,545; Cook, 25; Corinth, 10; Desdemona, 198; Dothan, 10; Eastland, 3,342; Flatwoods, 25; German a Settlement, 25; Gorman, 990; Kokomo, 25; Lake Cisco, 50; Lake Leon, 100; Long Branch, 10; Mangum, 10; Merriam, 10; Mitchell, 10; Morton Valley, 25; Mountain Top, 10; Nimrod, 25; Okra, 10; Olden, 200; Pioneer, 35; Pleasant Hill, 10; Pueblo, 25; Punkin Center, 10; Ranger, 3,363; Rising Star 916; Romney, 16; Sabanno, 11; Seranton, 60; Staff, 51; and Union Center, 24.

PERMANENTS
\$12 Lanolin Waves — \$8.50
\$10 Creme-Oil Waves \$7.50
Other waves \$10 and up

Basham Beauty Bar

FOR SALE
Small farm. Five miles N-E of Eastland. Grass and cultivated land. Improved 5 room house. Priced to sell.

D. L. KINNAIRD REAL ESTATE
207 W. Main, Ph. MA 9-2544

Special Beautiful Assorted Philodendrons, Sheffellers and Bedding Plants
(Useful Item to each Customer)

Florafax Delivery Service
We send Flowers Anywhere, Anytime

ITA PARRISH Green Street Flower Shop
200 N. Green St.

POE FLORAL
When Its Flowers Say It With Ours

Experienced designers at your service.

Highest quality stock and material

assure your satisfaction.

Since 1946

Eastland
MA 9-1711 609 W. Main

EASTLAND TELEGRAM

110 W. Commerce St. — Eastland
Phone MI 9-1707

(Consolidate with Eastland Chronicle, established 1885, and Eastland County Record, established 1905.)
Entered as second class matter at the Post Office at Eastland, Texas, under the act of Congress of March 3, 1879.

Published Semi-Weekly — Thursdays
By Eastland County Newspapers, Inc.
H. V. O'BRIEN, Editor

SUBSCRIPTION RATES: By carrier in county, 65¢ per month; one year by mail in county, \$6.00; by mail elsewhere in state, \$5; one year by state, \$6.

NOTICE: Any erroneous reflection upon the standing or reputation of any person, firm or corporation which may appear in the columns of this paper will be gladly corrected upon being brought to the attention of the editor.

Member WEST TEXAS PRESS ASSOCIATION

CB Jamboree To Have Hundreds To Represent For Two-Day Meeting

The big second annual Ten-Ten CB Club-sponsored "Jamboree" will be staged in Ranger on Friday and Saturday, Sept. 5-6.

Several hundred owners and operators of the increasingly popular citizens' band short-wave sets — base and mobile units, many of them used for business and professional purposes — will attend the two-day meeting, Ed Black of Ranger, president of the Eastland County Ten-Ten CB Club, said Friday.

Highlights of the two-day "Jamboree," he added, will include:

A barbecue at the National Guard Armory, U. S. Highway 80 west, to be catered by Ranger Frozen Food Center, owned and operated by Mayor Morris Newham.

Displays and exhibits of citizens' band equipment. Short wave units valued at \$15,000 or more will be shown, Black said.

The club members will also be given a tour of the city. Slogans of the Ten-Ten Club are: "We're on the air."

Swimming Lessons

Beginners — Intermediates — Advanced (Also Advanced Tricks and Swim Suits)

Red Cross Qualified Instructors
\$1.50 per hour
Call MA 9-2410 after 5:30

DR. C. E. PAUL

Chiropractic Health Services

OFFICE HOURS
Mon-Wed-Fri — 9 to 12; 2 to 5
Tues-Thurs-Sat — 8 to 2
or by appointment

Hwy. 80 & Ave. I — CISCO — PHONE 9-1707

make a SMART MOVE

WHEN IT'S YOUR MOVE CALL MA 9-2044

EASTLAND TRANSFER & STORAGE
315 E. Main — Eastland

WATCH YOUR INVESTMENT

Years of experience in every watch at Beskow's. Buy your old watch here.

BESKOW JEWELRY
210 W. Main EASTLAND

Recent guests in the home of Mr. and Mrs. A. D. Taylor were their son and his wife, Mr. and Mrs. David Taylor of Midland, and other friends from Midland, Mrs. Bill Frasier and daughters, Beth and Rebecca, formerly of Eastland. The Frasier family accompanied the Taylors home to Eastland from Midland, and Mrs. Frasier and her daughters went on to Graham to visit relatives.

WANT-ADS
The People's Market Place!
Now's the time to sell or buy band instruments, pianos, bicycles, shotguns, and so forth.
Want-Ads in this newspaper get results.

Mr. and Mrs. H. S. Lewis have returned from a visit with her sister and family, Mr. and Mrs. Paul Davis and Nancy of Houston. En route home they stopped in Kerrville and visited with Mr. and Mrs. Jack Jordan.

Mr. and Mrs. A. D. Taylor and sons, Joe and Lee, will accompany their daughter Karen to Dallas this weekend where she will leave for Gloversville, New York, where she will be employed this fall.

Janice Watson attended the wedding of her cousin Rebecca Peaks and visited with relatives in Irving.

This company has been in operation in this section since 1942 selling policies to be used primarily for burial purposes. We write from \$100 to \$600 and our policies are paid in cash, which allows freedom in the selection of the Funeral Director of your choice.

Ages from 1 month to 90 years.
For further information come by to see us at

Hammer Life Insurance Company
301 S. Lamar, Eastland
P. O. Box 431 Dial MAin 9-2611

A Look at the Aborigines In Remote Australia Bush

By JOSEPH PERKINS

More About Alice Springs
While eating breakfast the morning after my arrival in Alice Springs, a gentleman sitting at my table got into conversation with me, as often happens in Australia.

He is with a large contracting and engineering firm and came in the night before in the company's private plane from Darwin. In a little while he asked me what I had planned for the day, and I told him I intended to visit one of the settlements of the aborigines.

He then asked if I would like to join him and other company men in a short flight to Ayers Rock, one of the great tourist attractions of the region. I could not refuse such a wonderful opportunity and at 10 a.m. seven of us left the airport in a fine new Beechcraft capable of carrying eight.

My new friend introduced me to the others and in about an hour and a half we had flown roughly three hundred miles to the great red granite monolith, said to be the largest in the world.

The part above ground is shaped like a loaf of French bread and rises to a height of 1,148 feet above the surrounding level plain. There is no telling how large it may be underground. The distance around its base is 5 1/2 miles. At places there are caves where the aborigines have left rude paintings of men and animals.

After landing at a nearby air-strip we were met by a bus of the Broomerang Tours and taken for the seven-mile drive around the rock and back to a refreshment center where we all had cool drinks, as the weather was dry and very warm.

Soon we were in the air again flying at 6,000 feet over the desert with its dark ridge-winding stream beds and dried up lakes. This central Australian desert, unlike those in the United States, has no cacti. At 1:30 p.m. we were back in Alice Springs after a wonderful and exciting trip.

That afternoon I hired a taxi and was driven eight miles to the Amoonguna Settlement where about 500 aborigines live. In northern territory there are about 17,000 aborigines and they are increasing in number. Most of them are wards of the state and all are citizens. All can get assistance from the state as well as medical care whenever it is needed, and the state is doing a good job of caring for these rather backward, but deserving people. They are restricted regarding liquor and firearms, but are privileged to help themselves to all wild game and firewood everywhere.

There are 13 government settlements in northern Territory, and also 14 Christian missions. At the Amoonguna Settlement, I was escorted about and given a chance to see the school, hospital, mess hall, workhous, vegetable gardens and all of the facilities for the care and convenience of these wards.

The houses are all made of sheet iron. Wooden houses were not suitable because they were soon torn apart and the wood was used for firewood. Every effort is being made to give the children something of an education and to teach them to work and earn a living.

Many have advanced in civilized ways and work in Alice Springs and are earning wages. They are very poor at farming, but are much better with horses, cattle and ranch work. Men over 65 get pensions, and women over 60 do.

There is a weekly picture show at the Settlement and cowboy and wild west pictures are the kind preferred. Young girls are encouraged to join an Aboriginal group of Girl Guides, which correspond to our Girl Scouts.

The young man who served as my guide certainly is a dedicated man! He has a firm belief that he is making some progress with these irresponsible people. He has one tough problem that worries him constantly and adds greatly to his work. It is the habit of the aborigines to take a name, use it for awhile and discard it for another that seems more attractive. Thus Marc Smith may soon be Violet West, and Roy Timbers may become John Teacake. Such is the life of a social worker in Northern Territory!

Note: You recall that Brother Paul was lost for days after driving away from Alice Springs about ten days ago. His car broke down on the

Jack Arrington Is President Of Insurance Co.

Ben Hamner resigned as the president of Hammer Life Insurance Co. this week after serving for 42 years as head of the Eastland company.

Bill Arrington was elected president to replace Hamner during a board of directors meeting Tuesday. Arrington has recently come to Eastland and joined a corporation that owns the Hammer Funeral Home and other holdings.

Hammer Life Insurance Co. was organized in 1922 and has paid over \$300,000 in claims since that time, a company spokesman said.

In other board action, Frank Sparks resigned as a director and was replaced on the board by Bill Angus.

Mrs. Arrington was elected vice president. Dale Bakker, also a director, is secretary of the firm. Ray Laney is the one holdover director.

Mr. Hamner will continue to be active both in the insurance and funeral home businesses, he said, to help assist Eastland County patrons.

Odessa Man Winner In Old Rip Drawing

An Odessa resident, Jimmy Johnson, walked away with the top money in the Old Rip Scrip drawing held Saturday in Eastland. He won the \$50 prize in Old Rip Scrip with a ticket from Earl Bender & Co.

Mrs. Bill Bass of Eastland, with a ticket from Safeway, won \$30 in Old Rip Scrip; and \$10 each was won by J. H. Windland of Eastland, with a ticket from Super Save, and Mrs. Waverly Massengale of Eastland, with a ticket from Perkins Implement Co.

A larger crowd was in attendance for the Saturday drawing as compared to the past three or four drawings, probably due to the cooler weather, a spokesman said.

The Old Rip Scrip Drawing is sponsored by the local Chamber of Commerce and Chamber members participate by giving their customers tickets for the drawing when they purchase merchandise at their place of business. The participating merchants redeem the Old Rip Scrip at the Chamber of Commerce office. The Scrip is redeemable in merchandise at any of the participating merchants and may be used only in Eastland.

A large number of Eastland shoppers have been lucky winners of the Scrip since the drawings began in March.

The next drawing will be held Saturday, September 5, at 2 p.m. on the West Side of the Square in Eastland. There will be \$100 given away in four separate drawings, one will be for a \$50 certificate, one for \$30; and two for \$10 certificates.

Shoppers may deposit their ticket stubs in the barrel which is located until next drawing day at the Eastland Drug.

MOVES TO COPPERAS COVE

Mrs. Jessie Ellis, formerly of Eastland and a teacher in the Carbon Public Schools, she moved to Copperas Cove where she will teach in the Public School there next term.

VISITS BROTHER

Mrs. Minnie Milburn of Crowell visited her brother, John Wilson, a patient in Eastland Memorial Hospital, last week-end.

RETURNS HOME

Mr. and Mrs. Jack Therswanger and daughters, Susie and Angie, have returned from a vacation trip to Weinert and Lamesa, where they visited relatives and friends.

FROM WINK

Mr. and Mrs. Raymond Beck have had as their guests Mrs. Beck's brother and his son, A. C. Morton and Allen of Wink.

VISITORS

Mr. and Mrs. Freddie Stice and baby of Tahoka visited Monday night with Mr. and Mrs. Joe Ools.

VISITS PARENTS

Miss Dixie Day is visiting her parents, Mr. and Mrs. Neil Dav, for a few days before going to Fort Worth where she will teach in the schools this term. She has been working through the summer as swimming instructor at Camp Waldamar.

READ THE CLASSIFIEDS

Mother Ranger Woman Dies; Buried Monday

Funeral services for Mrs. Barbara King, 78-year-old Ranger resident, were held Monday afternoon at 2:30 o'clock in the Fairview Community Church at Tuxedo near Stamford.

Rev. Jarrell Sharp, pastor of Knox City Methodist Church, officiated during the final rites. Burial followed in the Fairview Cemetery.

Mrs. King, widow of the late Newton E. King, died Saturday morning in Ranger General Hospital.

She had lived in Ranger for the last nine months with a daughter, Mrs. A. F. Hughes, and prior to that time had made her home in Knox City for 19 years.

Mrs. King was born Jan. 4, 1886. The former Barbara S. Smith was married to Newton Elbert King in Hamlin on June 9, 1909. He preceded her in death on Feb. 9, 1941. She was a Methodist.

Survivors include two sons, Elbert B. of Knox City and Jack T. of Dallas; two daughters, Mrs. A. J. (Viola) Bartholomew of Los Angeles, Calif., and Mrs. (Annie Lee) Hughes of Rt. 3, Ranger; one brother, Baker Smith of Roswell, N. M.; two sisters, Mrs. J. V. Robinson of Knox City

IN CISCO

Penneys
ALWAYS FIRST QUALITY

Everything they need to get ready for school or college is right here... all Penney-quality, all better-than-ever buys! Come, SAVE!

Back-to-School Bargain Days

CRISP SHIRT DRESSES . . . OUR OWN country fair hits!

Gay and exciting as a day at the fair! Full, fresh cottons in the classic shirtwaist style . . . priced so low! Come see the solids, prints, woven plaids and stripes! See the generous skirts, neat roll up sleeves, button-down or Bermuda collars, all the colors of Fall! Scoop them NOW at the fairest savings!

4⁹⁸ 7 to 16

Girls Cotton Crew Socks

WHITE ONLY **5 FOR \$1**

WOMENS RAYON Pettù Pants

WHITE COLORS **77¢**

Boys Short Sleeve Sport Shirts

Acrylic Knits in Solid Colors
Cotton Button Down Collars - All Boys Sizes

CHARGE IT! Penney's Open to 5:30 p. m.

Special group of Lady Towncraft Shirts reduced!

FIRST TIME EVER!
reg. 2.98 NOW **2 FOR \$5**

A. Roll sleeve Dacron polyester and cottons with Bermuda or convertible collars. Terrific color choice! White, blue, pink, maize, olive, black, navy. 8-16, 40-46.

B. Cotton oxford shirt with roll up sleeves, trim Bermuda collar. A classic for back to school! White, blue, beige, pink, olive, maize, red or deep navy. 8-16.

MENS BETTER SHIRTS Sport Shirts

SHORT SLEEVE
SOLIDS, PLAIDS
Small, Medium, Large **2 for 5⁸**

3 FOR \$5

VISITS MOTHER AND SISTER
Mr. and Mrs. R. M. Dolf and boys, Ricky and Randy of Cincinnati, Ohio and Mr. and Mrs. W. C. Hill and daughter, Sue of Odessa have been visiting Mrs. Dolf's and Mrs. Hill's mother, Mrs. A. H. Lockhart and their sister, Mrs. C. P. Hasting.

VISITS PARENTS
Mr. and Mrs. Joe Ernst, Gil and Brandon of Odessa are visiting Mr. Ernst's parents, Mr. and Mrs. John Ernst this week.

WEEKEND GUESTS
Mrs. Ina Bean, Hillside Apartments, had as her weekend guests her daughter-in-law, Mrs. Carrie Bean and children, Bobby and Donna of Kansas City, Kansas.

FROM DALLAS
Mrs. Joe Clements and baby daughter of Dallas are visiting this week with Mr. and Mrs. J. D. Clements.

GOLD BOND Redemption Center at THE GIFT SHOP
510 E. Conner
Eastland MA 9-2386

Best Advertisement -
Food and satisfied patrons.
Breakfast, luncheon or dinner -
Be glad you came to Cisco's dining center.
WEEK DAYS
Breakfast from 6 a. m.
Lunch, 11:30 a. m. to 2 p. m.
Dinner, 5:30 p. m. to 9 p. m.
Choice meat, 2 vegetables)
75¢
and supper, until 8 p. m.
Private dinners, luncheons and banquets,
to 200 persons. Phone Earl Floyd.

HOTEL COFFEE SHOP
Cisco

YARN SHOP
Knitted and Domestic Yarns
INSTRUCTIONS WITH PURCHASE
OF YARN
to Match 100 Percent Wool
Sack Fabric for Skirts
MRS. BOB ALLEN
RANGER Phone MI 7-3512

AMERICAN THEATRE

WESTIC

FRIDAY - SATURDAY
Shows 5:45 - Shows 6:15 & 8:45 Only
Shows 1:45 - 4:15 - 6:45 - 9:15

SLAM! Jack LEMMON
BAM! Romy SCHEIDER

HERE COMES **GOOD NEIGHBOR SAM**

ROBINSO
CONNORS
ANDREWS
HWE
LEWIS

STARTS SUNDAY

A Hard Day's Night

6 Brand New Songs
plus your Beatles favorites!

Released thru UNITED ARTISTS

RANGER DRIVE-IN

Highway 80 — East on Ranger Hill
ADULTS 50c KIDDIES UNDER 11 FREE

SHOW STARTS AT DUSK

THURSDAY, AUGUST 27

First KISS (in PARIS) to last BUSH (in GREECE) see...



CLIFF RICHARD-LAURIE PETERS-DAVID KOSOFF

PATRONIZE ONE OF THE FOLLOWING LEADING MERCHANTS AND RECEIVE A GUEST TICKET GOOD EACH

THURSDAY NITE

You Must Have a Ticket or Pay Regular Admission

- WESTERN AUTO ASSOCIATE STORE
- THE GLOBE CLOTHIERS
- FRIGID QUEEN
- RANGER FROZEN FOOD CENTER
- RANGER DRY CLEANERS
- PORKEY PIG

AUGUST 28 - 29

TROY DONOVAN-SUZANNE PLESNETTE-DIANE MACAL

The Last of the Great Indian Wars!

A DISTANT TRUMPET

JAMES GREGORY

LaJuan Dorsey And Larry Rollins Married In Carbon Ceremony

Miss LaJuan Dorsey became the bride of Larry Rollins in a ceremony performed at 1:30 p.m. Thursday, August 6th, at the home of Rev. and

Mrs. Lee Fields in Carbon, with Rev. Fields officiating. The bride is the daughter of Mrs. Louise Dorsey, 300 South Maderia and the groom is the son of Mr. and Mrs. F. N. Rollins of Eastland.

GUESTS

Mr. and Mrs. H. C. Pounds have had as their guests his brother and wife, Mr. and Mrs. R. H. Pounds of Roswell, New Mexico. Sunday guests in the Pounds home were Bill Amason of Eolian, Mrs. Pearl Cozart of Cisco, Herman Bearden of Frankel and Mrs. Emma Vaughn of Ranger.

Attendants were Jeanna Norris of Carbon and the groom's brother, Gary Rollins of Eastland.

Following a wedding trip to Carlsbad, New Mexico, the couple are making their home at 107 East Sadesa, Eastland.

The bride is a 1949 graduate of Eastland High School and was a member of the Sub Deb Club, Tri-Hi-Y, a member of the senior play cast and a student typist.

The groom is a 1963 graduate of Eastland High School and is employed at MacMoy Super Save.

VISIT HERE

Mr. and Mrs. John Elliott and son Johnny of Grand Prairie were visitors Wednesday with her grandmother, Mrs. Fannie O'Brien in Eastland. Mrs. Elliott is the daughter of Mr. and Mrs. H. L. Thompson, formerly of Carbon and Cisco, and now of Lewisville.

1965 Wheat Program Will Remain Same As Past Year

The 1965 voluntary wheat program in general will operate about the same as the 1964-crop program, E. E. Blackwell, Chairman, Agricultural Stabilization and Conservation Eastland County Committee, has announced.

While some program provisions have been modified for 1965, he said, participating farmers can get about the same returns as from the 1964 program. Some farmers may get more by using new options that will enable many producers to adapt the program more closely to their farming operations.

The principal changes, compared with 1964-program provisions, are:

1. Domestic certificates will be worth 75 cents per bushel (were 70 cents), and export certificates will be worth 30 cents per bushel (were 25 cents).
2. Price support national average loan rate will be \$1.25 per bushel (was \$1.30).
3. Program participants can qualify for domestic certificates on as much as 45 per cent and export certificates on as much as 35 per cent of the normal production from their allotment (were 45 per cent

each).

4. Wheat and feed grain, including oats and rye, acreage substitution will be possible. (There was no provision for substitution in the 1964 program).

5. If the grower underplants his 1965 wheat allotment by at least 10 per cent and devotes those acres to an approved conserving use — in addition to the 11.11 per cent minimum diversion — payment on such additional diversion will be made at 50 per cent of the county loan rate on the farm's normal production of such additional acres diverted to conserving use. Maximum diversion for payment can be 20 per cent of the allotment or enough additional acreage within the allotment to make a total of 15 acres. No payment will be made for

diverting to an approved conserving use the minimum diverted acreage, equal to 11.11 per cent of the 1965 allotment. (Payment in 1964 was at 20 per cent for all acres diverted to conserving use.)

6. A producer can qualify for loans and certificates even though he exceeds his acreage allotment by not more than 50 per cent on any farm in which he has an interest if he stores the wheat from the excess acreage under bond and carries out conserving-use requirements of the program. (This provision was not included in the 1964 program.)

The chairman pointed out that the sign-up for the 1965 wheat program in predominantly winter wheat areas will be held in the ASCS county office from August 24 through October 2.

UNITED IN COAST-TO-COAST SERVICE

Membership in the ASSOCIATED FUNERAL DIRECTORS... qualifies us to take immediate charge when death occurs... Every duty is performed by competent people of the Association. Reasonable fees, established by the members result in a saving to the families.

Arrington-Hammer Funeral Home
"Friendly, Personalized Service"
Eastland Dial M A 9-2811

A & P QUALITY has a Low-Price Tag!

CLIP THESE COUPONS

50 Extra Plaid Stamps
With This Coupon and Purchase of MORTON'S BLUEBERRY MUFFINS Frozen 8-oz. 39c

50 Extra Plaid Stamps
With This Coupon and Purchase of MORTON'S FROZEN CASSEROLE Macaroni and Cheese 1-lb. 4-oz. 39c

50 Extra Plaid Stamps
With This Coupon and Purchase of RISE PUSH BUTTON SHAVE 6 1/2-oz. 75c

50 Extra Plaid Stamps
With This Coupon and Purchase of OUR OWN INSTANT TEA 3-oz. 69c

25 Extra Plaid Stamps
With This Coupon and Purchase of OUR OWN INSTANT TEA 1 1/2-oz. 39c

25 Extra Plaid Stamps
With This Coupon and Purchase of ANN PAGE GARLIC SALT 3 1/2-oz. 19c

BANQUET ALL VARIETIES FROZEN DINNERS 3 For \$1.00

BANQUET ALL VARIETIES FROZEN MEAT PIES 6 For \$1.00

"SUPER-RIGHT" HEAVY CALF CHUCK BLADE POT ROAST lb. 39¢

STEAKS lb. 69c

BACON 2-lb. Pkg. 89¢

School Supplies

CRAYOLA CRAYONS Pkg. of 12 25c

ELMER'S GLUE-ALL 4-oz. Size 59c

BOOK Wirebound Composition 80 Sheet 39c

BINDER Nifty Vinyl Covered Push Button 2-Ring Ea. 89c

NIFTY LOOSE LEAF FILLER 2-HOLE PAPER Pkg. of 10 300 Sheets 39c 500 Sheets 69c

Buy a Book a Week

16-Volume Set of Books on the History of the United States AMERICAN HERITAGE Vol. No. 1 49c Vols. 2 Thru 16, Ea. 99c

MARGARINE 1-lb. 25¢

CORN OIL 1 1/2-Qt. 79¢

ROAST BEEF 3 12-oz. Cans \$1.00

Mellorine 3 1/2-Gal. Ctn. \$1.00

Ketchup 3 14-oz. Btls. 49¢

APPLE PIES 1 1/2-lb. Each 39c

MAYONNAISE Ann Page 49¢

CUT CORN A&P Frozen 2 10-oz. Pkgs. 29¢

POTATOES Col-Ide French Fried Frozen 3 9-oz. Pkgs. 25¢

POT CLEANER Handy Mandy Plastic 3 For 25¢

MELONS HONEYDEW Each 39c

Nectarines lb. 19c

RED POTATOES 10-LB. BAG 49c

CALIF. TOMATOES lb. 19c

DETERGENT BREEZE Gt. Box 77c	DETERGENT RINSO 10c Off Gt. Box 65c	DETERGENT Silverdust Gt. Box 77c	AUTOMATIC WASHER DETERGENT COND "all" 3-lb. 1-oz. Size 75c	DETERGENT Fluffy "all" 3-lb. Box 75c
LIQUID DETERGENT Lux Liquid 12-oz. Size 35c	DIXIE COLD DRINK CUPS 9-oz. Paper Pkg. of 80 85c	SWIFT'S LUNCHEON MEAT PREM 12-oz. Can 49c	BUY 3 BARS AT REGULAR PRICE, GET A BAR FOR 1c EXTRA SOAP Woodbury 4 Reg. 1c Sale Bars 31c	DETERGENT COLD WATER "all" Qt. Size 79c

PRE-WINTER TUNE-UP SPECIAL

Complete Auto Repairs Safety Inspection Center

24 HOUR WRECKER SERVICE

Phones MA 9-2270 Night MA 9-2224

ALLEN AUTO REPAIR
A1 RUSHING MOTOR CO.
215 SOUTH SEAMAN

ZEE BATH TISS 4-Roll Pack

HANDY CLEAN 15-oz. Size

SANDWICH BAGS Tear Off Bags

LIQUID DETERGENT Qt. Size

CAP'N JOHN'S FROZEN HADDOCK 50

CODFISH Fillets

Flounder Fillets

PERCH Fillets

FRENCHETTE REGULAR DRESSING

FRENCHETTE ITALIAN DRESSING

NABISCO VANILLA WAFERS

NABISCO WAVERLY WAFERS

STRAWBERRY CHERRY OR STRAWBERRY-BANANA JELLO 2-lb. Box

15c OFF LABEL DETERGENT SURF

SULTANA LARGE OR SMALL STUFFED OLIVES

ANN PAGE BARBECUE SAUCE 1-pt. 2-oz. Btl. 29c

SULTANA SALAD OLIVES

25 Extra Plaid With This Coupon

ANN PAGE ITALIAN DRESSING At Your A&P Supermarket

25 Extra Plaid With This Coupon

ANN PAGE ONION SALT At Your A&P Supermarket

25 Extra Plaid With This Coupon

ANN PAGE BEANS With This Coupon

EVERY DAY IS SAVINGS DAY AT SAFEWAY



Folger's Coffee 1-Lb. Can **85¢**

All Grinds. Rich and aromatic flavor cup after cup.

Shortening 3-Lb. Can **57¢**

Snowdrift. All vegetable. New tenderness for your pies.

Clorox Bleach 1/2-Gal. Plastic **33¢**

Liquid. Disinfects, Sanitizes, Deodorizes. It's safe, fast, sure.

Kleenex 4 200-Ct. Boxes **89¢**

Facial Tissue. 2-Ply. The tissues that pop up to meet you.

This Coupon Worth 50
FREE GOLD BOND STAMPS
Plus your regularly earned Gold Bond Stamps with the purchase of
**One Medium Jar
HEAD & SHOULDER'S SHAMPOO**
Coupon Expires August 29, 1964.

This Coupon Worth 100
FREE GOLD BOND STAMPS
Plus your regularly earned Gold Bond Stamps with the purchase of
**7-Oz. Aero Can—Hard-to-Hold or Normal
VO-5 HAIR SPRAY**
Coupon Expires August 29, 1964.

This Coupon Worth 200
FREE GOLD BOND STAMPS
Plus your regularly earned Gold Bond Stamps with the purchase of
**Any Safeway
GARDEN HOSE**
Coupon Expires August 29, 1964.

Camay Soap Toilet Soap, Assorted, Leaves skin soft, 2 Bath Bars **29¢**

Complexion Soap Camay Toilet Soap, Assorted, 2 Reg. Bars **21¢**

Ivory Liquid Detergent, So gentle to your hands, 12-Oz. Plastic **35¢**

Ivory Snow Soap Powder, For all your extra special washables, Large Box **33¢**

Zest Soap Deodorized Beauty Bar, Gives extra protection, 2 Bath Bars **39¢**

Zest Soap Deodorized Beauty Bar, Gives that Zest Glow, 2 Reg. Bars **29¢**

Peaches 2 No. 303 Cans **45¢**

Apple Juice 3 46-Oz. Cans **\$1**

Chow Mein 2 12-Oz. Cans **35¢**

Tomato Soup No. 1 Can **10¢**

Hot & Egg Bread 1-Lb. Loaf **19¢**

Meat Dinners 11-Oz. Pkg. **39¢**

Eggs 2 Doz. **79¢**

Flour 1 Pint **39¢**

Washers Giant Roll **29¢**

Toilet Tissue 2 Roll Pkg. **27¢**

Biscuits 3 4-Oz. Cans **29¢**

Condiments 2 14-Oz. Bottles **35¢**

Chili No. 2 Can **59¢**

Beans 2 No. 300 Cans **29¢**

Instant Tea Lipton, Has that fresh-brewed flavor. Tasty. (3-Oz. Jar, 89¢) 1/2-Oz. Jar **49¢**

Lipton Tea Orange Pekoe. Tastes so good, you know it's Lipton. (1/2-Lb. Pkg., 85¢) 1/2-Lb. Pkg. **43¢**

Tea Bags Lipton Orange Pekoe. Brews full-strength flavor. (48-Ct. Pkg., 67¢) 16-Oz. Pkg. **25¢**

Chunk Tuna Starkist Light Meat. Good to the last bite. 3 6 1/2-Oz. Cans **\$1.00**

Chunk Tuna Starkist Light Meat. (4¢ Off Label) Tasty. 9 1/4-Oz. Can **43¢**

Biscuits Ballard Sweetmilk or Pillsbury Buttermilk, 3 8-Oz. Cans **29¢**

U. S. D. A. GRADE "A"

FRYERS 27¢
Whole, U.S. Inspected for Wholesomeness and Graded A. Tender and Meaty.

Sliced Bacon 49¢
Safeway. Serve with Breakfast Gems Eggs. (Armour Sliced Bacon, Lb. Pkg. 55¢) T-Lb. Pkg.

Chuck Steak U.S.D.A. Choice Grade Heavy Beef. Serve steak tonight. Lb. **63¢**

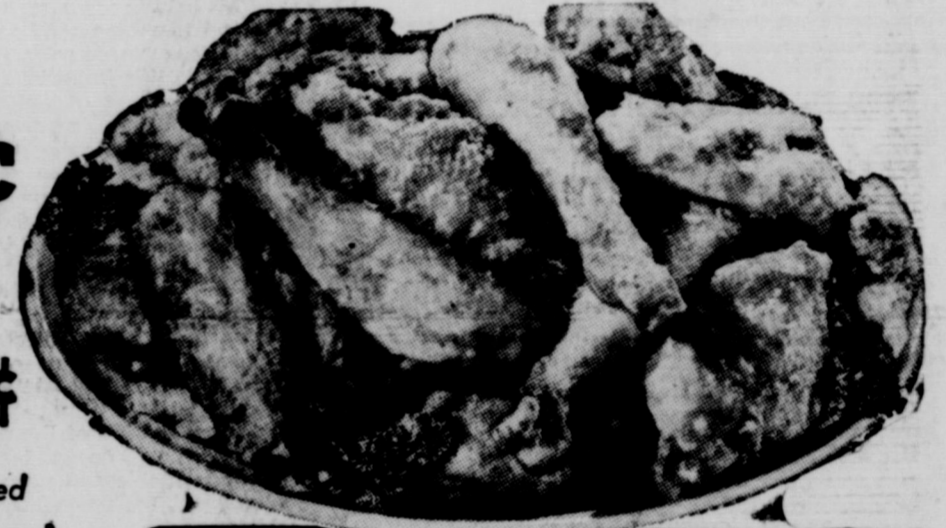
Spareribs Pork. 3 to 5-Lb. Avg. Easy to prepare. Lb. **39¢**

Boneless Ham Samuel's Chieftan, Half or Whole. Lb. **\$1.09**

Sausage Wingate Pork, Regular or Hot. 2 Lb. Pkg. **69¢**

Luncheon Meat 3 8-Oz. Pkgs. **\$1**

Mix or Match Sliced
★ Olive Loaf ★ Square Bologna
★ Salami ★ Combination Loaf



Fryer Breasts All White meat, Lb. **69¢**

Thighs Lb. **49¢**

Wings Meaty, Young and tender, Lb. **27¢**

Backs Economical for soups and stews, Lb. **15¢**

Gizzards For gravies, stuffings, and sandwich fillings, Lb. **39¢**

Breaded Shrimp 59¢
Captain's Choice. Frozen. Just a rich golden brown. 10-Oz. Pkg.

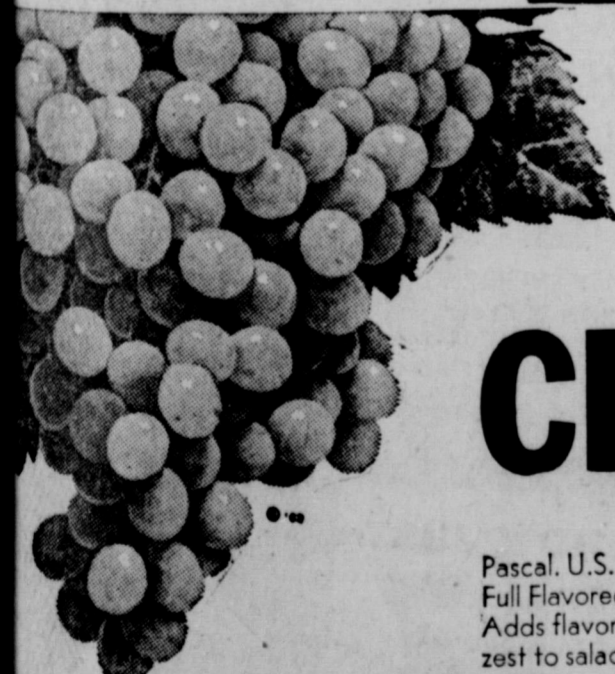
Sherbet Lucerne Party Pride, Assorted Flavors. Delicate and sweet tasting. 1/2-Gal. Ctn. **59¢**

Orange Juice Scotch Treat Frozen. Freshly squeezed flavor, 4 6-Oz. Cans **\$1**

FROZEN FOODS!

This Coupon Worth 50
FREE GOLD BOND STAMPS
Plus your regularly earned Gold Bond Stamps with the purchase of
**Any 3-Lb. or Larger Heavy Beef or
BABY BEEF ROAST**
Coupon Expires August 29, 1964.

This Coupon Worth 25
FREE GOLD BOND STAMPS
Plus your regularly earned Gold Bond Stamps with the purchase of
**ONE — 2-Lb. Bag
CARROTS**
Coupon Expires August 29, 1964.



THOMPSON SEEDLESS
GRAPES 15¢
U.S. No. 1. Bunches of juicy flavor. Gay in color and taste. Luscious.

CELERY 19¢
Pascal, U.S. No. 1. Full Flavored. Adds flavor and zest to salads. Each

More Produce Values...

Tomatoes Vine Ripe, U.S. No. 1, Puts vitality in salads. Lb. **25¢**

Fresh Corn U.S. No. 1. Full of country sweetness. 4 Ears **29¢**

White Onions U.S. No. 1. Flavorful. 2 Lbs. **19¢**

SCHOOL SUPPLIES!

Filler Paper 300 Ct. Pkg. **39¢**

Theme Books Pkg. **59¢**

5-Star Binder Special. Contains: Filler Paper, 2-Ring Binder, Index Tabs, Theme Book, Presidential Election Map. Each **99¢**

Binder Blue Canvas, 2-Ring. Pkg. **79¢**

Lunch Kit With 10-Oz. Thermos bottle, Assorted Colors. Each **\$2.49**

Safeway Guarantee!
Every item at Safeway is sold on a Moneyback Guarantee. This means the full purchase price will be cheerfully refunded on any item that does not give you complete satisfaction.
Shop Safeway with Confidence!

Maxwell House Instant Coffee (15¢ Off Label) 6-Oz. Jar **\$1.14**
Tastes as good as it smells.

Fig Newtons Nabisco, Smooth, moist fig jam wrapped in fresh tender cake. 8-Oz. Pkg. **29¢**

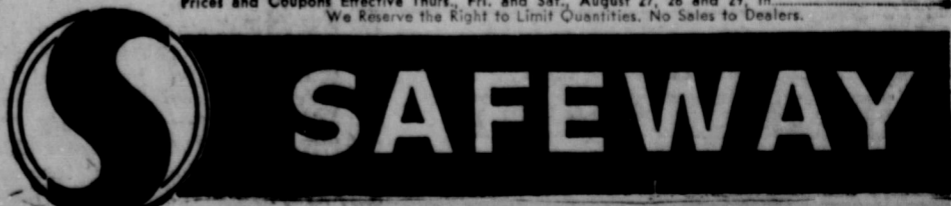
Detergent Dash. For the really clean wash your family deserves. 25-Oz. Box **39¢**

Duz Detergent Premium Pack. Does everything. Large Box **55¢**

Prices and Coupons Effective Thurs., Fri. and Sat., August 27, 28 and 29, 1964. We Reserve the Right to Limit Quantities. No Sales to Dealers.

PROCTER & GAMBLE PRODUCTS!

Liquid Detergent For lovely hands and sparkling dishes. 12-Oz. Plastic 31¢	Salvo Tablets Pre-Measured Detergent Tablets. 12-Ct. Box 41¢	Dreft Detergent Germaseptic Detergent. Cuts grease fast. Mild for dishes and fine fabrics. Large Box 33¢
22-Oz. Plastic 53¢	24-Ct. Box 77¢	Giant Box 77¢
32-Oz. Plastic 89¢	72-Ct. Box \$2.29	



A weekly public service feature from the Texas State Department of Health

Accent on Health

J.E. PEAVY, M.D., Commissioner of Health

AUSTIN — Anyone who is under the impression that glue sniffing gives a fellow a few harmless kicks is sadly mistaken.

Serious damage can be caused by the solvents in glues. Exactly how serious or extensive the damage can be is not yet known.

But it is a fact that nine recent deaths are attributed to this practice. Six of these involved glue sniffing while the victim's head was covered with a plastic bag.

Some of the "sniffing" symptoms reported to poison control centers ranged from headache, dizziness and breathlessness to intoxication, unconsciousness, blurred vision and paleness.

Apart from the physical injury produced by the inhalation of the solvents from glues, incalculable harm can be done while youngsters are

One youngster described his sensations: "I saw two of ev-

erything, and everything far away looked real near. I had noise in my ears like a fire-cracker going off, and then I blacked out."

One boy in his early teens was so exhilarated by glue sniffing that he assumed a fighting stance before an oncoming freight train, narrowly escaping death.

A 12-year-old who had never been known to steal, robbed a florist shop while under the influence of glue. Another young glue-sniffer jumped off a low building, convinced he could fly.

Inevitably, the question must be asked: What can be done? Some local jurisdictions have passed legislation aimed at combating the problem. Researchers are searching for a method of eliminating toxic vapors and thereby eliminating the glue-sniffing practice.

Unfortunately there seems to be no single simple answer.

Recommendations from the National Clearinghouse for Poison Control Centers include advising parents and children as to the potential risk of sniffing, making glues and related substances less available in self-service stores, and substituting less toxic ingredients in glue products.

It is important not to consider glue sniffing as amusing nonsense. A little sniffing may cause serious consequences.

(A weekly feature from the Division of Public Health Education, Texas State Department of Health.)

AUSTIN — All available money and manpower of the Texas Water Commission is being dedicated to a long-range state water master plan.

Gov. John Connally authorized the agency to transfer money already appropriated by the Legislature for other purposes. Existing state plans, in Connally's opinion, "fall short of satisfying the water needs for all of Texas."

In 1961, the Commission produced a plan for meeting Texas water needs to the year 1980.

Both the U. S. Bureau of Reclamation and the U.S. Army Corps of Engineers, are coming up with their own long-range plans covering parts of Texas. They propose diversion of water from surplus areas like the Sabine to water-shy areas like the Nueces.

Connally said the federal government is considering a water pollution control bill which would supplant state authority in the field.

He urged the Commission to explore "all reasonable alternatives," including those contained in preliminary reports of U.S. Agencies.

The Governor indicated he will authorize other state agencies to cooperate in the crash program. He also pledged his help in any way possible and to recommend to the Legislature "necessary funds to fulfill this important responsibility."

Pressure from prosecuting attorneys is beginning to sift through legislative candidates who are being urged to pass a gun registration law during the 1965 session in an attempt to reduce the crime rate and help police solve crimes.

Latest of the recommendations along this line comes from Dallas' District Attorney Henry Wade. Gun registration is on the list of the most controversial issues a legislature can tackle and proposals on the subject frequently are skirted.

About 500 individual letters and 39 petitions bearing some 3,398 signatures concerning three high school biology books have been received by Governor Connally, Education Commissioner J. W. Edgar, and the State Board of Education.

And more are arriving every day. Most protestors claim three of the eight biology books being considered for public school adoption by the State Textbooks Committee have "an excessive amount of evolution in them."

All letters and petitions are being filed for the State Textbooks Committee to review, since Connally, Edgar and the State Board have no say on Textbooks selection.

The 15-member committee has the task of picking five books each in 18 subjects from the 220 books under consideration. Public then will have an opportunity to make formal complaints about the biology texts, as well as any others which are considered "objectionable," before the committee's selection list is submitted to individual school districts.

Some 23 counties now qualify for drought aid under two federal programs.

Eligible for emergency loans through the Farmers Home Administration are Brazoria, Dallam, Dawson, Falls, Gonzales, Hardin, Hartley, Jefferson, Lavaca, Navarro, Wharton and Wilson counties.

Eligible for haying and grazing privileges until October 31 under a U.S. Agriculture Department program are Collin, Dallas, Doney, Eastland, Freestone, Jones, Rockwall, Rusk, San Augustine, Scurry, and Taylor counties.

A Texas State Teachers Association spokesman last week suggested the Legislature raise additional funds for education through increasing the sales tax rate or removing present exemptions.

L. P. Sturgeon, TSTA public relations director, said a half cent increase would raise \$50,000,000 a year and an across-the-board amendment another \$61,000,000. TSTA is driving for a \$5 a month increase in teachers' pay.



BROWSING with BEV.....

By BEVERLEY NICHOLSON
Eastland County Home Demonstration Agent

There are many different types of velvet, but all are described as a "pile construction." Some imported types are described as having raised and flat figured sections produced by weaving on a Jacquard loom. The background fabric may be satin, twill or plain weave.

Velvets also may be classed as to the type of pile — the V-type and the W-type. In the V-type, the pile goes under only one warp yarn; while in the latter type, the pile goes under and over two warp yarns and is more firmly locked into place.

Terms used to describe various types of velvet may be of interest to consumers. Here are some of them:

Silk velvet — silk background weave, silk pile.

Cotton-backed velvet — cotton background weave, silk or synthetic fibers in the pile.

Chiffon velvet — a lightweight soft velvet with a short, thick pile. When held to the light, it's transparent. Hence, the name chiffon.

Brocade velvet — sometimes called faconne velvet, it is a fabric woven like others from velvets, then chemicals are applied in the desired pattern to the back of the fabric.

Crusheq velvet — fabric is placed between rollers and heat, and moisture and pressure are applied. The pile is not pressed in one direction, and there is a variation of reflection of the pile, creating a mixed effect.

Embossed velvet — also known as sculptured velvet. In making this fabric, areas of the pattern that are to stand higher are first laid flat, then the fabric is sheared to a lower height. The fabric is then steamed to raise the pile that has been flattened so that it stands higher than the sheared part of the design.

Moireed velvet — the fabric is passed through rollers that are engraved with a design. In the presence of heat, pressure and moisture, the design is transferred to the fabric.

Velvet with metallic yarns — metallic yarns are woven into the velvet construction to create an unusual all-over effect.

Laminated velvet — fabrics intended for use in coats are sometimes laminated to urethane foam. This type of velvet is found in rainwear, coats, theatre coats and other special garments.

Eastland Co. Home Dem. Agent You can judge a cantaloupe by the way it smells and the way it looks. Don't rely on how it feels or how it sounds. Feeling the blossom end of a melon to find out if it's ready to eat is not always a good test. If you're the first one to do it, that's all right. But what if a few other shoppers have made the touch test before you?

The same thing is true about shaking a melon to see if the seeds are loose — another sign of ripeness. The seeds may rattle because so many other people already have given it a shake.

The most reliable way to get a good cantaloupe is by smell and sight.

Look at the netting. It should be coarse, corky and well-defined, and the color underneath the netting should be turning from green to yellow. Look at the stem end. There should be a slightly sunken, smooth, well-cauloused scar.

Smell the melon. If it smells good, it should taste the same.

Chiggers can be controlled by spraying. But often it's hard to tell where to spray. These mites are so small they are not easily seen. And often the bites are not felt until several hours after you've picked them up.

Here's a tricky way to locate chigger-infested areas. Place a piece of black card-

board or construction paper edgewise on the ground, or lean it against a tuft of grass, or fallen branch where you suspect there might be chiggers. Watch it carefully for a few minutes. If you see small orangeish or pinkish mites moving rapidly across the paper and accumulating on the upper edge, you've found them.

Now spray!

Altman's Buyers To Attend Fashion Show

Buyers for Altman's stores in Cisco, Eastland, and Abilene will attend the annual Holiday Fashion Market being held August 23-25 in Dallas. They are Mr. and Mrs. F. B. Altman, Mrs. Floyd Robertson, and Mrs. Lester Pugh.

During the market, buyers from all over the Southwest will select winter fashions from over 3,000 lines, including clothing and casual wear which will be on sale in retail stores in the fall and early winter. The Dallas Market is known as one of the top three fashion markets in the nation.

SOCIAL SECURITY OFFICIAL CLEARS MISUNDERSTANDING

Over the years three major misconceptions have arisen here and there concerning social security financing, according to R. R. Tuley, Jr., district manager of the Social Security Administration in Abilene.

Tuley lists the most common of these as the belief that the social security trust funds are "in the red." In the opinion of such believer, the social security program is bankrupt and there won't be enough money to pay off when many of these working today reach retirement age.

"These critics," Tuley said, "base their assertion on the fact that we do not operate on a 'full-reserve' basis like private insurance companies do."

Tuley pointed out that private insurance must be ready to pay off 100 per cent on the dollar if they should cease to operate. No such total reserve is required under the social security program, because social security is a non-voluntary program for coverage of future as well as present generations of workers.

The program is thus guaranteed new entrants year after year. Therefore, the social security program does not need a 100 per cent reserve because it is assured permanent income from those who work for a living.

"A second misconception," he stated, "is that the social security program always pays out more than it takes in. Here again it is implied that the social security program is slowly going broke and won't be able to meet future com-

mittments." He added, "This is simply not true. It is true that for short periods of time the expenditures exceeded the receipts. But this is a temporary condition due primarily to expanding the program. The point the critics miss is that the social security law has provided for a higher tax scale at specified times to assure its solvency."

The third misconception, cited by Tuley, is that the payment of full scale benefits to people who have worked under social security only a short time is financially dangerous. Here the critics fail to understand the basic concept of social legislation, he said.

Tuley explained that social security was born during the depression of the 30's. A primary concern at that time was to get purchasing power into the hands of the older people who were the first thrown out of work and would be the last rehired. Over the long pull, social security was intended to compensate for loss of earning power due to old-age, death or disability.

Eight Countians To Be Graduated At North Texas

Eight Eastland County students are among 650 seniors who have applied for bachelor's degrees at North Texas State University. Summer commencement exercises are

Arrington-Hammer Funeral Home

Serving Eastland County with ambulance and funeral service. Our ambulances are oxygen equipped and air conditioned.

Through our nation-wide connections with other funeral directors, we can handle a funeral from any point in America. We offer this service knowing that we can relieve the family of all burdens incident to any death away from home.

"Friendly, Personalized Service"
Eastland Dial MA 9-2611

PUT HARMONY IN YOUR HOME

Class organ lessons will soon be offered in Eastland under the leadership of Mrs. V. Cyrus Barcus at 805 South Seaman Street.

An organ will be placed in your home for 2 months with class lessons weekly for a lot less than you would expect to pay for lessons alone.

- This class is being formed now.
- For further information contact:

MRS. CYRUS BARCUS

805 S. Seaman MA 9-1653

This class is made possible by the sponsorship of —

Caldwell Music Co. — 221 Grape St. — Abilene



LONG DIGGER-SHAKER WITH PATENTED VINE LIFTER

When it comes to digger-shakers, you'll find the LONG tops. A patented lifter action knocks out dirt as vines are lifted off the shaker chain. Keeps chain from dragging vines under, too! No other shaker has this important feature.

Throughout, you will find a heavier, stronger-built machine to give long, useful life. Special flattened points shed grass better and reduce peanut loss caused by stripping.

Many other features, too... adjustable vine deflectors, adjustable shaker pick-up drive, precision machined gear box operating in oil, ball bearing pillow block bearings and double V-belts.

Let your LONG dealer show you this shaker today. See for yourself why it does such a good job.



TERRELL'S USED EQUIPMENT EASTLAND, TEXAS



GOODYEAR Get Goodyear Tires with TUFFSYN

The exclusive extra-mileage rubber that makes Goodyear Tires up to 50% more durable!



NOW JUST \$9 plus tax and old tire Nylon All-Weather "42" 6.70 x 15 black tube-type

NOW JUST \$11 plus tax and old tire Nylon All-Weather "42" 6.70x15 WHITEWALL tube-type

NOW JUST \$12 plus tax and old tire Nylon All-Weather "42" 7.50 x 14 or 6.70 x 15 black tubeless

NOW JUST \$13 plus tax and old tire Nylon All-Weather 6.50 x 13 black tubeless

NOW JUST \$14 plus tax and old tire Nylon All-Weather "42" 7.50 x 14 or 6.70 x 15 WHITEWALL tubeless

NOW JUST \$15 plus tax and old tire Nylon All-Weather "42" 8.00 x 14 black tubeless

NOW JUST \$17 plus tax and old tire Nylon All-Weather "42" 8.00x14 WHITEWALL tubeless

- NO MONEY DOWN!
- INSTANT CREDIT for holders of charge plates and national credit cards
- FREE MOUNTING

Pay as little as \$125 weekly for a Full Set of Tires!

GOODYEAR SERVICE STORE

EASTLAND

Browning Is Queen For Year

Browning will be crowned as the 16-year-old daughter of Mr. and Mrs. Kathy began her reign over county Farm Bureau activities Thursday evening at the City Park in Eastland when she was chosen from a covey of beautiful county girls for the title.



KATHY BROWNING

Joe Bob Browning, Rt. 1, Gorman, Queen Kathy replaces Susan Griffin, 17, daughter of Mr. and Mrs. J. D. Griffin Jr. of Carbon, who has reigned for the past year.

The queen contest was held in conjunction with the Bureau's annual barbecue and the event held under a cloudy, cool sky attracted some 200 people.

First runnerup was Glenda Jordan, 16, daughter of Mr. and Mrs. Glenn O. Jordan, Rt. 1, Gorman.

Kathy will be a junior this fall at Gorman High School, where she played basketball in her freshman and sophomore years. She is a member of FHA, and was reporter her sophomore year and elected to the same office for the coming year. She belongs to the Rock Bluff Baptist Church and is pianist for that church.

County Bureau President, Jack Cozart presided and introduced James Wright as master of ceremonies. Wright presented and talked with each entrant as she appeared

on the beautifully-decorated outdoor stage adjacent to the barbecue area. All queen entries appeared in evening wear and talked briefly on the subject, "Why I'm glad my family belongs to the Farm Bureau."

Other entries were Carolyn Key, daughter of Mr. and Mrs. M. G. Key of Eastland; Betty Easter, daughter of Mr. and Mrs. Aubrey Easter, Cisco; Ruby Wende, daughter of Mr. and Mrs. Herbert E. Wende, Cisco; and Sharon Brown, daughter of Mr. and Mrs. Kenneth Brown, Ranger; and Judy Pippen, daughter of Mr. and Mrs. Clifford Pippen, Cisco.

The Rev. H. B. Terry, pastor of Bethel Baptist Church, gave the invocation. Guests included B. J. Gist of Abilene, state FB director from this District 7 and Ed Cumbly, area field director, from Bronte.

Escorts for the queen hopefuls were Ronny Yeager and Larry Slatton.

Kokomo News

Mr. and Mrs. J. L. Morrow and Mrs. R. L. Higginbottom went to Levelland on Wednesday night after receiving word that their brother, Mr. Earl Creager, was seriously ill in a Levelland hospital following a heart attack. Mr. and Mrs. Morrow returned home on Sunday night. They report that Mr. Creager was a little improved, but still seriously ill. Mrs. Higginbottom remained in Levelland with her mother, Mrs. W. S. Creager, for a few days.

Mr. L. R. Higginbottom and Bobby left early on Monday morning to help Mr. and Mrs. Lee Roy Higginbottom and children move to Earth, Texas. Mrs. Higginbottom will be a teacher in the Springlake school near Earth this fall. Lee Roy will be seeking employment there. We wish this family the very best in their new home.

John W. Henderson took his brother, Willie Henderson of Oliver Springs to Abilene, Okla. Friday for a medical check-up. Mr. Henderson received a good report, but must report for another check-up in three weeks.

Mr. and Mrs. Rollo Tinkler and Sherri of Lawton, Okla. have been visiting her parents, Mr. and Mrs. Henry Seitern.

Mrs. Tinkler and Sherrie and Mrs. Seitern were visiting with Mrs. Albert Hendricks on Thursday.

Ray Holiday of Houston visited with Albert Hendricks on Friday.

Recent visitors in the Rhodie Richburg home were Mr. and Mrs. Garnett Stokes, Kathy and Kenny of Midland, Mr. and Mrs. A. J. Jacobs of Midland, Mr. and Mrs. Floyd Greenwald of Houston, Mr. and Mrs. S. C. Watson of Albuquerque, New Mex., Mr.

and Mrs. Norman Gandy of Lamesa. They all attended the Watson reunion at Bass Lake and report a very enjoyable time.

Mrs. Pete Snider visited in De Leon on Sunday afternoon with Mrs. E. B. Foster.

Mr. and Mrs. Claude Fuller and children were visiting with the Glenn Jordans on Saturday night.

Mr. and Mrs. Albert Hendricks visited with Mr. and Mrs. Buel Bryan on Saturday night.

Mr. and Mrs. John W. Henderson were dinner guests of Mrs. W. F. Bryant on Sunday. In the afternoon, the Hendersons, Mrs. Bryant and Mr. and Mrs. Joe O'Neal attended the singing at Scranton.

Mrs. Albert Hendricks honored Ray Neal Little with a party on Sunday honoring his 9th birthday. Ray Neal was presented a camera. Cold drinks and cake were served to Teresa Fields, Cassie Nelson, Christi Fuller, Kathy Grisham, Teddy Jordan, Chester Joiner, Bobby Eaves, Johnny Eaves, Danny Snider and Ray Neal Little.

Mrs. Hendricks also recently honored Christi Fuller and Cassie Nelson on their 11th birthdays. Each was presented a camera.

Mr. and Mrs. Bill Brown and Kris visited with her grandmother, Mrs. C. J. Lovell, of Carbon, who is ill in the hospital at Gorman, on Sunday afternoon.

Mr. and Mrs. Leonard Flakney, Sheri and Mike of Lubbock visited on Monday night and Tuesday with the J. L. Meadows.

Visitors at the Kokomo Baptist Church on Sunday morning were Kathy Grisham of De Leon, Paula Norris of Carbon and Mrs. Billie Roberts. Sunday night visitors were Kathy Browning of Gorman and Dickey Eaves of Big Spring.

County 4-H'ers Capture Wins At Melon Festival

"Learning By Doing" has long been the 4-H slogan and Eastland County 4-H'ers, by taking an active part in the 56th annual Peach and Melon Festival held in DeLeon, August 4-8, turned that slogan into reality and so captured the highlights for the second year in succession.

Some 202 entries were entered in the food, clothing and craft divisions by 4-H'ers of the area. Judges were Mrs. Clarence Rea, Comanche; Miss Artie Coley and Miss Lela Vaughn, DeLeon; and Miss Hanna Belcher, Stephenville. Mrs. Hiram W. Smith, Jr. was general superintendent; Mrs. Burton Cunningham was superintendent of the Food's Department; Mrs. D. F. Pair of the Cloth-

ing's Department; and Mrs. J. A. Cox of the Craft Department.

Eastland County winners by division and classes are as follows: Foods Department Division 1, Class 1 - Chocolate cake, Sharon Harbin, Eastland 4-H Club; Class 3, German Chocolate cake, 1st Suzanne Harbin, 2nd, Sharon Harbin, both of Eastland 4-H Club; Cookies Division 2, Class 1, Refrigerator Cookies, 3rd Suzanne Harbin and Class 2 Drop Cookies Sharon Harbin; Division 3, Bread, Class 1 Yeast Rolls, 1st Sharon Harbin and 2nd Barbara Williams Gorman 4-H Club, class 3 Quick Bread, 2nd Sharon Harbin; Division 4 Candy, Class 1 Fudge, 2nd Sharon Harbin and 3rd Suzanne Harbin.

Clothing Department: Apparel Division Class 1 Tailor Suit, 1st Sharon Harbin; Class 2 Dress, Seniors 2nd Joy Love, Gorman 4-H, Juniors 3rd Brenda Browder, Gorman 4-H Club; Class 4 Blouse, Juniors, 1st Suzanne Harbin, Eastland

Mike Manning, who has been working in Houston, is visiting his parents, Mr. and Mrs. Clyde Manning, his sister, Mrs. Mary Ann Lewis and son Jimmy, before leaving this week for Sweetwater where he will be employed as a coach and teacher in the Sweetwater Public School system.

Mr. and Mrs. Charles Chaney of Bangs have been visiting their parents, Mr. and Mrs. C. 4-H Club.

Household Linens Division Class 1 Cup Towel, Senior 2nd, Sharon Harbin and Junior 1st Suzanne Harbin; Class 3 Pot Holder, Senior 3rd Sharon Harbin and Junior 3rd Suzanne Harbin.

Craft Department Class 4 Leather or Metal article, 2nd Brenda Browder, Gorman 4-H Club and Class 6 Miscellaneous, 2nd Barbara Browder.

B. Chaney and Mrs. Fern Green. Mrs. Chaney recently returned from the hospital with her new son, Charles Howard.

Mr. and Mrs. Butch Martin and baby son of Abilene visited her parents, Mr. and Mrs. Wells Dalton, last weekend.

Mr. and Mrs. Melvin Cole of Midland recently visited her parents, Mr. and Mrs. M. S. Holt. The Coles had just returned from a trip to Alex and Chickasaw, Okla., where they visited other relatives. Also visiting the Holts were their granddaughter and her husband Mr. and Mrs. David Taylor of Midland.

Miss Guylynn Quinn and Miss Patty Johnson returned Thursday from a visit in Wichita Falls.

WANTED

House to rent or take up payments. Prefer Hillcrest Addition.
Write Post Office Box 1254, Midland, Texas.

WE GIVE GOLD BOND STAMPS

BLUE BONNET MARGARINE 25¢ MORTON'S SALT 25¢ INSTANT POTATOES 10¢ SEGO LIQUID 10¢ TOILET TISSUE 27¢ BABY FOOD 65¢	DEL MONTE TOMATO JUICE 46-Oz. Can 29¢	WHITE SWAN PICKLES 29¢ HONEY BOY SALMON 49¢ ORANGE JUICE 25¢ VEGETABLES 29¢ SHRIMP 39¢ STRAWBERRIES 19¢
---	---------------------------------------	--

SHOP HERE MORE FOOD FOR YOUR \$\$

SWIFT PREMIUM SLICED BACON . lb. 55¢ SWIFT PREMIUM FRANKS lb. 59¢ SWIFT PREMIUM SLICED BOLOGNA lb. 49¢ GOOCH BLUE RIBBON Fully Cooked - Ready to Eat PICNIC . . 3 lb. can \$1.99 SALT JOWL lb. 19¢ V-F COOKIES VANILLA WAFERS 25¢ WHITE SWAN COFFEE \$1.49 DEL MONTE CATSUP 15¢ DETERGENT CHEER 65¢ SLICED BACON HAM 49¢ MACMOYS SUPER SAVE 49¢	NORTHERN Assorted FACIAL TISSUE 25¢ CAMPBELL'S TOMATO SOUP 25¢ CAMPBELL'S TOMATO SOUP 2 No. 1 Cans 25¢ DEL MONTE FRUIT COCKTAIL 23¢ MELLORINE COCKTAIL SAUCE 19¢ DOG FOOD 10¢ KOTEX 35¢	HI-C Assorted FRUIT DRINKS 29¢ LIGHT CRUST FLOUR 49¢ CAMPBELL'S TOMATO SOUP 25¢ DEL MONTE FRUIT COCKTAIL 23¢ MELLORINE COCKTAIL SAUCE 19¢ DOG FOOD 10¢ KOTEX 35¢
--	---	--

Mode O' Day
NEW... right now...
Pretty DRESSES to make TEACHER'S PETS CUTEST LITTLE GIRLS.
SIZES 3 to 6x 2.99
SIZES 7 to 14 3.99

NEW SHIPMENT WHITE DRESSES FOR BACK-TO-SCHOOL 3.99 - 8.99
East Side of Square



UP TO TALK? YOU NEED Farm Phone Service
Working to take a call on Farm with special loudspeaker-microphone located at busy points around town. Take or make calls right on the spot. The Interphone, all you do is talk. No lost motion or time.
WESTERN BELL

ORGAN IN CONVENTION HALL IS DESCRIBED BY CISCOAN

By WINIFRED FISHER HITTSON

The largest organ in the world is in convention hall at Atlantic City, scene of the National Democratic Convention which opened August 24. It is the only console in history to have seven manuals and also twelve portable keyboards.

The largest console contains 1477 stop controls, 1250 stop tablets and 933 speaking stops. There are 220 combination pistons and canels. The wiring in the connections between the pipes and this console could circle the earth five and one half times at the equator.

It takes eight large rooms to house the over 33000 speaking pipes in the organ and another twelve rooms to accommodate the electrical and mechanical devices. Wind for the pipes is supplied by eight motors with a combined output of 395 horsepower. These motors can supply 36,400 cubic feet of air per minute at anywhere from 3 1/2 inch to 100 inch pressure.

The organ includes the following departments: pedal organ, great, grand great solo, woodwind, great ancillary, swell, choir, un-enclosed choir, grand choir, swell ancillary, brass chorus, fanfare, echo, three distinct string organs, four gallery organs and a percussion division.

The total number of speaking pipes is 33,112 and the range from the 64 foot low C of the diaphone profunda stop to a pipe whose speaking length is about 1/4 inch. Where most organs have no, or at the most one, 32 foot stop, the Convention Hall organ has 10 such stops in addition to the 64 foot diaphone profunda. The low C mentioned above is the largest organ pipe in the world, is made of Oregon fir three inches thick, and the pipe tapers from a 10 inch square at its base to a 36 inch square at the top.

This tremendous instrument, in a room seating 41,000 people, was designed by Emerson L. Richards of Atlantic

City, later State Senator, deputy attorney general of the State of New Jersey, and for several months in 1933 served as acting governor. The organ required four years to build, having been completed in 1932, and many of the large pipes were built right in Convention Hall by Midmer-Losh, Inc., organ builders of Merrick, Long Island.

A total of 225,000 board feet of lumber was used to construct the organ estimated to have cost nearly half a million dollars to build. Metal pipes are made of tin, lead, zinc and brass.

Miss Lois Miller, official organist at Convention Hall for the past twenty three years, will be at the console during the Democratic Convention. She plays annually for an estimated 150,000 to 200,000 conventioners and at such special events as the Miss America Pageant.

Vets Questions And Answers

Q — I hold a permanent plan GI life insurance policy. I need money to pay bills. Should I cash in my policy?

A — You should consider borrowing on your policy. You may borrow as much as 94 per cent of the cash surrender value without losing your insurance protection. Once a policy is surrendered for cash, it cannot be restored.

Q — I was discharged from the service less than a year ago. Is it possible to receive dental outpatient care from the VA?

A — It will be necessary that you file a claim for dental treatment within a year from the date of your active duty. The VA will make a determination as to the outpatient care you may receive.

Q — I was hospitalized in a VA Hospital for six weeks due to an auto accident. During this period I also received treatment for my service-connected nervous condition. Am

I entitled to a total rating of 100 per cent for this period of hospitalization due to treatment of my service-connected disability?

A — Where hospitalization is for a non-service connected disability coincidental treatment for a service connected disability not requiring hospitalization will not qualify for a service connected rating of 100 per cent while hospitalized.

Q — Under the terms of the GI loan benefit, can a veteran mortgage his present home to obtain money for other expenses?

A — Only for home improvement. GI loans are not available to pay doctor bills, buy furniture, etc.

Monterrey, third largest city in Mexico, is known as the "Pittsburg of Mexico."

Court Of Civil Appeals

The following proceedings were had in the Court of Civil Appeals, Eleventh Supreme Judicial District of Texas:

Affirmed

Lloyd Presswood v. Dorothy Jones et vir, Taylor. (Opinion by Judge Collings).

Motions Submitted

United Press International, Inc. v. Bruce B. Mohs, Dallas. Appellant's motion for rehearing.

Oltha Warren v. B. E. Hanson et al. Comanche. Appellant's motion for rehearing.

W. B. Fultz v. Anzac Corporation, Coleman. Appellee's motion for rehearing.

Billy Mitchell Village, Inc. v. New York Life Insurance Company, Bexar. Appellee's motion for advance submission date.

J. G. Groves v. N. C. Sawyer, Jim Wells. Appellee's motion for extension of time to file briefs.

Manhattan Shirt Company v. Wesley Moore et al, Jim Wells. Appellant's motion for extension of time to file briefs.

Larry B. Summers et ux v. Bransford - Hinds Building Company, Taylor. Appellant's motion for permission to file supplemental transcript.

Motions Granted

J. G. Groves v. N. C. Sawyer, Jim Wells. Appellee's motion for extension of time to file briefs.

Manhattan Shirt Company v. Wesley Moore et al, Jim Wells. Appellant's motion for extension of time to file briefs.

Larry B. Summers et ux v. Bransford - Hinds Building Company, Taylor. Appellant's motion for permission to file supplemental transcript.

Motions Overruled

W. B. Fultz v. Anzac Corporation, Coleman. Appellee's motion for rehearing.

Billy Mitchell Village, Inc. v. New York Life Insurance Company, Bexar. Appellee's motion to advance submission date.

Williams Family Reunion Is Held In Eastland Park

The annual Williams family reunion was held Saturday and Sunday, August 8-9, at the Eastland Park.

Those attending included Mrs. W. V. Massey, Post; Raymond Marr, Aspermont; P. M. Munn, Cisco; E. R. Williams, Lovington, New Mexico; Ben Williams, Cisco; Manmie Swafford, Cross Plains;

Lillian Smith, Cross Plains; Mr. and Mrs. Veral Williams, Cisco; Calvin and Mamie Mars, Comanche; Eunice Strockland, Comanche; Cytha Whit, Rochester; Clyde Williams, Big Spring; Ruth Williams, Big Spring; Clydette Lakay Parks, Big Spring.

Roscoe L. Sea, Marry L. Sea, and Lauana Fay, Odessa; Mr. and Mrs. H. W. Seay, Eastland; Mrs. Lina Lassiter and Louise, Cisco; Mr. and Mrs. Floyd Lassiter, David, Floyd and Deborah, Cisco; Joseph Clyde Williams, Weinert; Jimmy Williams, Doris McFadden and James; James McFadden, Willie Mae Atkinson and sons, Mr. and Mrs. Doc Brown, Cisco; J. V. Seay, Darlene, J. V. Butch, James, and George, Fort Worth; Buford and Willie Cozart, Bobby Wayne Cozart, Cisco; Homer and Beulah Smith, Eastland; Horace and Ruby Smith, Bluffton;

Alton and ...
Baird; Loren ...
LaVerne, De ...
Courtney; Mrs. ...
S. M. Ramsey ...
and Mr. and ...
send, Cisco.

READ THE ...

IT'S to spray house, spray shrubs, gran fertilizer ...
Call ...

H. D. V. Call about ...

WHOLE HOG SALE

It's the end of the Summer selling season and time to liquidate inventory... so we've gone Whole Hog to bring you the appliance values ever... you'll see the greatest buys of the year during our Whole Hog—Hog Wild sales event. Big as a razorback. Prices down to ground level or below. Lets make your piggy bank squeal for joy.

STORE UP TO 475 POUNDS — SAVE \$41.87—LIMITED TIME ONLY

- Fast freezing section
- All aluminum liner, steel cabinet
- Counter balance lid, opens easily
- Two sliding baskets, vertical divider
- 17 Cubic Feet of food storage

\$198

NO DOWN PAYMENT—YEARS TO PAY

Price includes delivery, set in place and one year's free service by G-E factory-trained technicians.

FREE WIN A WHOLE HOG!... Just estimate the weight of the hog in the G-E Freezer in our store... NO OBLIGATION!

There's a Treasure Chest of values in our store... you'll find modern, traditional — the just-right piece for your home. Shop here and save!

COATS FURNITURE EASTLAND

Furniture Buys Spectacular

VALUES FOR MODERN HOMES

TO WHOM IT MAY CONCERN

I will not be responsible for any debts other than made by me. I am not married and never have been. I am innocent of the accusation against me. P.F.C. Lonnie Joe Basham, U.S.M.C.

PUBLIC NOTICE

In as much as two property owners are threatening all except myself, who go across their land with the law, I am asking all who have loved ones in the cemetery on my land and all that have bought land from me to come to my house and sign a petition to have the county commissioners court to open a road on section lines that goes across the property in question. Everyone interested in seeing justice done, may also sign.

W. E. HALLENBECK

It's Almost Unbelievable —

... but statisticians tell us that we Americans go more places in our cars and trucks nowadays than ever before, with an increase of 30 million vehicles since 1954. Every extra mile is a hazard and the chance for another accident. So far 1964 promises to be the Big Daddy of them all! Since the driving public determines the insurance rates it must pay, higher rates are inevitable. Better begin revising your budget now to include the high cost of driving in modern '64.

★ ★ ★

Earl Bender & Co.

Eastland (Insurance Since 1924) Texas

112 W. Commerce MA 9-1077

10 IN. STEEL CHICKEN FRYER

Extra durable, triple chromed, heavy gauge steel, for long wear and even heat. Highly polished with matching lid. It gives you tender, golden frying every time.

100¢ A REAL VALUE

4-PIECE "COPPER" CANISTER SET

"Colonial" print in copper and black. Four generous sizes: 5 lb. flour, 5 lbs. sugar, 1 1/2 lb. coffee and 1 1/2 lb. tea canister. All-metal construction for long service.

100¢ A REAL VALUE

Hurry!

BIG 2 SPEED 3-CYCLE FILTER-FLO WASHER

with MINI-BASKET gives kid glove treatment for your dainty delicates

Deluxe styling-lighted backplash. Rinse water temperature selector. No more hand washing with MINI-BASKET.

\$219.95 red

MATCHING HI-SPEED DRYER — \$178.00

NO DOWN PAYMENT YEARS TO PAY

NO DEFROSTING EVER

Tested against 6 leading brands this No-Defrost Freezer proved to cost less to operate. Let us prove it.

- Giant 126-Lb. Freezer
- No coils on the back

\$298.00

NO DOWN PAYMENT YEARS TO PAY

BARGAIN PRICED FREEZER

- Holds 420 lbs.
- Refrigerated surfaces above and below all food
- Solid shelves... total contact freezing — faster, surer!

\$188.66

NO DOWN PAYMENT YEARS TO PAY

CELEBRITY PORTABLE Big Screen Pleasure 19"

- Slim silhouette styling
- All-channel UHF
- Hi impact polystyrene cabinet

\$149.44

NO DOWN PAYMENT YEARS TO PAY

PERSONAL PORTABLE TV

- 21-inch screen
- All-features
- Front control
- Complete
- Lifetime board

\$99.00

NO DOWN PAYMENT YEARS TO PAY

GOODYEAR SERVICE STORE

Buy Now

Eastland