

## Mavericks Dual Loboes Local Field Friday Night

Bucking a 17-year, three-to-one won-loss record against the Cisco Loboes, the Eastland Mavericks will meet their neighbors from the West on local sod Friday night to see if a dent can be made in that record—and the chances are less than bright.

The Mavericks have lost their first two games of the current season and Cisco has given signs of being the sleeper club in their AA district by downing Ranger to open the season and coming back last week to out-play and nearly out-score the mighty Albany Lions, team picked to win the 10-A trophy. Albany won 23-20.

The 17-year record shows Eastland with only four wins against the Loboes' 12, with one tie on the books.

A slightly re-arranged Maverick squad will toe the mark at kick-off time in Maverick Stadium Friday night, it has been reported by Head Coach Millard Glass.

Leading ground-gainers in the heart-stopping Maverick-Rising Star Wildcat tilt last week were Quarterback Jerry McCullough with 34 yards, Mike Miller, 50; Johnny Moylan 45; Mickey Sargeant, 15; and Gaylon Griffen, 5.

Probably starters for the Mavericks include:

Mike Miller, No. 10, end, 150 pounds; Jerry McCullough, 12, quarterback, 150; Gaylon Griffen, 22, fullback, 150; John Moylan, 40, halfback, 155; Bill Boles, 50, center, 150; Garry Rollins, 52,

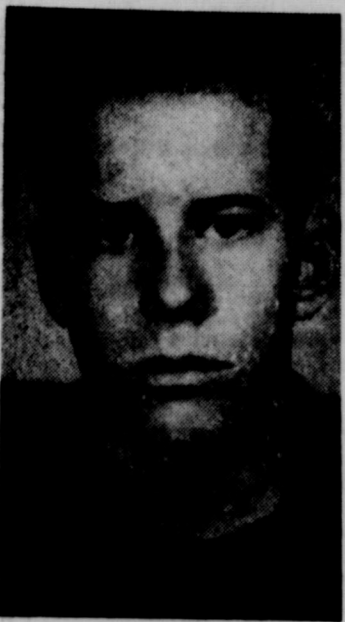
tackle, 170; Wayne Waldon, 65, guard, 145; James Fullen, 67, guard, 140; Butch Phillips, 70, tackle 172; Larry Wilson, 80, end, 135; Mickey Sargeant, 82, halfback, 145.

The Lobo offense starting team listed Tim Bennie, 189; and David Waters, 155, at ends; Bengie Burnam, 188, and Richard Coats, 194, at tackles; Gary Phipps, 179, and C. B. Rust, 174, at guards; Jimmy Smith, 164, center; Anthony Strother, 150, quarterback; Jimmy Brown, 145, and Nicky Lopez 162, halfbacks; and Danny Clack, 155 fullback.

Coach Billy Bates said that Backs Bobby Smith, Leon Bint and Larry Hargrave would see plenty of action along with Mark Gerrard, Ervin Addy, Greg Graham, Larry Pilgrim, Robert Pitts, Travis Roach and David Boland in the line.

### MAVERICK-LOBO RECORD

Year	Eastland	Cisco
1947	0	14
1948	6	0
1949	13	13
1950	0	20
1951	13	6
1952	6	26
1953	7	0
1954	12	31
1955	13	33
1956	26	27
1957	18	21
1958	6	28
1959	8	35
1960	0	28
1961	0	41
1962	20	18
1963	14	34



JERRY McCULLOUGH  
... Mav signal-caller

## Funeral For Mrs. Wharton Thursday At 2

Funeral for Mrs. Earline L. Wharton, 64, will be held Thursday at 2 p. m. in the Church of Christ in Eastland with Larry Marshall officiating.

Mrs. Wharton, a long-time Eastland resident, died at her home in Clinton, Okla., Tuesday.

Born in Mangum, Okla., she lived here for many years before returning to Clinton where she was a member of the Clinton Eastern Star and a member of the Church of Christ.

Arrington Hamner Funeral Home will be in charge of arrangements and burial will be in the Eastland Cemetery beside her husband.

Survivors include one brother, Roy King of Mountaineer, N. M., and several nieces and nephews including Mr. W. L. Wharton of Eastland.

## John S. Wilson, Long Of Carbon, Buried Monday

Funeral services for John Seller Wilson, 78, were held Monday afternoon in the Arrington Hamner Funeral Chapel with the Rev. Floyd Littlepage, pastor of the First Baptist Church in Carbon, officiating.

Burial was in the Carbon Cemetery.

Mr. Wilson died Sunday afternoon after an illness of some two months.

A resident of Eastland County for over 50 years, Mr. Wilson came home from Comanche and farmed in the Carbon area. He was a member of the First Baptist Church of Carbon.

He is survived by his wife, Mrs. Minnie Fay Wilson of Eastland; one son, J. T. Wilson of Eastland; two daughters, Mrs. J. R. Murry and Mrs. Gardner Harris, both of Eastland; two sisters, Mrs. Ada Brown of Paducah, Texas and Mrs. Minnie Milburn of Crowell; 11 grandchildren and 12 great grandchildren.

Guests last weekend in the home of Mr. and Mrs. E. E. McAllister were John E. McAllister and Tracey of Spearman, Mr. and Mrs. Elmo McAllister, Kim and Dana of Dallas and Mr. and Mrs. Nevil Moore and son of Fort Worth.

Last weekend Mr. and Mrs. Troy Ray had the pleasure of their son's visit, W. H. Ray of Mirando City.

**THE TEXAN**  
DRIVE-IN  
**TEST for fun**

Student: "It says here that if we study hard, don't drink, smoke, or run around with girls, we'll live longer. Is that true?"  
Professor: "We won't know for sure until somebody tries it."

# County Leaders Adopt 8-Point Program For Industry Progress

An eight-point program to provide new payroll jobs was adopted by a group of Eastland County civic leaders last Saturday as they held an organizational meeting to undertake a new industrial expansion plan that has the blessings of the Texas Industrial Commission.

The meeting was held at Texas Electric Service Com-

men from the towns of Eastland, Cisco, Gorman and Ranger in attendance, along with County Judge Scott Bailey and Larry Milner, West Texas coordinator for the Texas Industrial Commission.

Eastland representatives at Saturday's meet were City Manager Lewis Tiner and Frank Sayre, Texas Electric Service Co. Division manager and officer of the Eastland Industrial Foundation Inc. Committee member for East-

land is Mayor Frank Deaton who was unable to attend the Saturday meet but who will serve in future negotiations. The Saturday meeting agreed that Eastland County should be considered as one economic unit and that everyone should work together in all things.

During the two-hour session, the committee adopted an 8-point plan of action, as follows:

1. Bring all county brochures of facts and figures up to date with the help of Mr. Bailey and Mr. Milner.

2. Contact all county businesses and industries to determine their problems and if something can be done to help them.

3. Meet at a place to be announced on Nov. 5 for an all-day session that will be held to brief everyone on the facts and figures at hand and to conduct a leadership training program for a year-long campaign for new jobs.

4. Organize an "EC-65" (Eastland County, 1965) group to be composed of the county's most interested 65 citizens willing to donate their time — and if necessary — some money for the program.

5. Form industrial teams composed of informed people on every segment of the economy, including taxes, transportation, natural resources, insurance, utilities, and so forth.

6. Meet with "Allies," defined by Mr. Milner as men from railroads, banks, utilities, the Small Business Administration, West Texas Chamber of Commerce, and others who frequently know where industrial prospects can be found.

7. Attend with some 15 people the Texas Industrial Planning Seminar to be held in Austin in the near future.

8. Plan a program of Advertising and promotion.

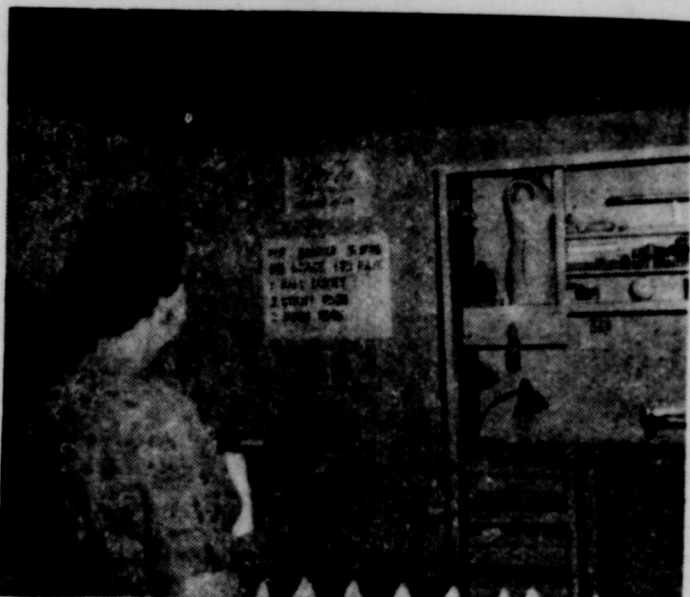
Harry Clark, executive director of the TIC, told the group at a meeting last week that one of the first things they should do was to correct problems hampering businesses already established.

Mr. Milner told the Saturday meeting that some 1,500 plants are established each year in the United States and that some 15,000 communities compete for them. The TIC, he added, has been finding from 5 to 40 prospects per month through advertising and contacts.

The county judge pointed out that Eastland County's population now stands at 19,000 as compared with 3,500 in 1950 — a trend that must be halted, he said. He called for "a positive attitude," noting that Eastland County has many desirable things.

The new industrial program with state assistance is being organized with the pledge of Governor John Connally to make Eastland County a pilot project.

"All of us appreciates the gesture of Mr. Connally in designating our county for this program," Judge Bailey said. "This is a challenge that we as a county must accept. Here is an opportunity to work together for a solution to such problems as jobs for our young people as well as others."  
Mr. Milner has been assigned by the TIC to work closely with the county committee.



**WINNING ENTRY** — Visitors at the West Texas Fair in Abilene examine the winning entry, prepared by members of the Eastland County Home Demonstration clubs. Theme of the exhibit is "We'd rather Switch Than Fight". The creation contrasts a cluttered, uncomfortable sewing center, at left, to a well-planned, organized unit which is not only attractive but functional. The exhibit was judged best and its creators will receive an \$85 first prize.

(Photo by Abilene Chamber of Commerce)

## Exhibit Wins First for Eastland HD Clubs

The Eastland County Home Demonstration Club's exhibit, "We'd Rather Switch Than Fight," featuring a well-arranged sewing center contrasted to a cluttered sewing machine has been judged first place winner at the West Texas Fair in Abilene.

The committee of the County Home Demonstration Council began work on the exhibit in July. Mrs. Beverly Nicholson, Home Demonstration Agent, said. The Club will receive \$85 prize from the exhibit.

"Don't be Misled," Taylor county entry on milk superiority as a source of calcium, won second place and will receive \$65.

Third place, "Improved Living Through Extension Service," a display on how the family food dollar is spent on many other items, will receive \$35, according to Mrs. Nicholson.

Other Eastland County winners reported by Mrs. Nicholson were:

Junior Cup Towel, second place, Suzanne Harbin; Junior Pot older, first place Suzanne Harbin; Senior Cotton Dress, second place Kathy Kincaid and third place, Sharon Harbin.

Senior Suit, first place, Sharon Harbin; Junior Household, first place, Suzanne Harbin.

Plain Biscuits, second place, Sharon Harbin; Pound Cake, third place, Sharon Harbin; Peaches, first place, Suzanne Harbin.

and third place Sharon Harbin; Field Peas, third place, Sharon Harbin; Cucumber Pickles, first

place, Sharon Harbin; Grape Jelly, third place, Suzanne Harbin; Peach Preserves, second place, Suzanne Harbin.

Crochet Centerpiece, Mrs. W. V. Fenter of the Rising Star Home Demonstration Club and Knitted Stole, Mrs. W. V. Fenter.

Suzanne and Sharon Harbin are members of the Eastland 4-H Club. They are daughters of Mr. and Mrs. Jeff Harbin of Flatwood Community.

Kathy Kincaid is a member of the Morton Valley 4-H Club and is the daughter of Mr. and Mrs. Robert Kincaid of Morton Valley.

## 19 Attend Law Meet In Eastland

According to Lefty Sublett, deputy sheriff, the Eastland County Law Enforcement Association will have their next meeting in Cisco, Oct. 12.

The last meeting of the association was held Monday, 7 p. m. at Jordan's Drive-in.

There were 15 officers and four guests present. Guests were Sergeant Davidson, Highway Patrolman in the MVI Division; Mr. Larry Marshall of the Church of Christ; Judge Perry T. Brown who will become district attorney next year; and Leon Musgrove, Eastland local administrator.

Guests and members of the association had supper at 7 p. m. and business began at 8 p. m., which consisted of short talks from all four guests and general law enforcement discussion. The meeting drew to a close at 9 p. m., Mr. Sublett said.

## Maverick 'B' Beats Cisco, 30-0

The Maverick "B" team beat out the Cisco "B" team last Saturday morning at the Maverick Stadium, 30-0.

The Maverick squad scored behind the quarterbacking of Jay Daniels and the running of Gene Wilson. Wilson accounted for two Maverick touchdowns.

The Maverick "B" team will play its next game September 6, at Ranger, at 9 a. m.

## Cancer Society Will Meet Thursday Night

The Eastland County chapter of the American Cancer Society will hold the first meeting of the year at 7:30 p. m. Thursday, Sept. 17, at the Texas Electric conference room in Eastland, according to Sam Kimmell, county chairman. All chairmen and committee members were urged to attend, and the public is invited.

## Frank Claborn, 11, Is the Top Southdown Exhibitor at Fair

Frank Claborn, 11-year-old 4-H'er and son of Mr. and Mrs. Bill Claborn of south of Eastland, took all the grand champion honors in the junior and open Southdown ram and ewe classes in the junior and open classes sheep show Monday at the West Texas Fair in Abilene.

He also had reserve ewe in the junior division.

An active Eastland County exhibitor, young Claborn's stock has won honors in county shows.

His West Texas Fair prizes included:

Junior Southdown class — first, two-four tooth rams; grand champion Southdown ram; first ewe lambs; first and second in two-four tooth

ewes; grand champion ewe; reserve champion ewe; first with pen of three lambs; first sexes.

Open Southdown Classes — first in two-four tooth rams; grand champion ram; first with ewe lambs and fifth same division; second with go to Cisco for a game with and fourth with two-four tooth ewes; second with pen of two-four tooth ewes; grand champion ewe; and first exhibitor's flock.

## Rev. Surface Re-Elected Prexy

The Eastland Ministers Association met for their first meeting of the fall and winter season Monday and the Rev. Eugene H. Surface was re-elected president of the group, which meets at the White Elephant Restaurant.

Rev. Surface, pastor of the First Presbyterian Church, presided.

Others present were Rev. Haston Brewer of the First Baptist Church, Rev. J. H. Smith of the Assembly of God, Rev. Ray Cameron of the First Christian Church and Rev. H. B. Terry of the Bethel Baptist Church.

## BREAD of Life

Giving thanks always for all things unto God and the Father in the name of our Lord Jesus Christ.

—Eph. 5:20.

Oh, Thou whose bounty fills our cup  
With every blessing meet,  
We give Thee thanks for every drop,  
The bitter and the sweet.

## Final Plans Announced For Oil Barbecue At Lone Ceder

West Central Texas Oil & Gas Association has announced final plans for their Annual Barbecue which will be held at Lone Cedar Country Club on Lake Leon in Eastland County, Texas, Thursday, September 24, 1964, according to George Straughan, President.

The plans are much the same as in past years with a Board of Directors meeting at 2 p. m. The main festivities will get underway at approximately 4 p. m. with supper served at 6 p. m.

Special invitations to this affair have been extended to both the Governor and Lt. Governor, the Attorney General, members of the Senate and House from West Central Texas and to Senator John Tower, Ralph Yarborough and

Congressman Omar Burleson. Mr. Straughan advised that he hoped for an attendance of approximately 1,000 persons again this year.

This year all tickets will cost the membership \$2.00 each with voting members being able to purchase 5 additional tickets. Associate members are allowed to purchase only 1 ticket. "The Association regrets having to make this nominal charge for tickets this year, but it has become necessary due to a substantial loss in revenue," the president said.

Tickets are now available in the Association Office at 201 First National - Ely Building, Abilene, Texas, or if members are mailing for tickets they should be addressed to P. O. Box 2332, Abilene, Texas.

## Freyschlag INSURANCE

weather report

**THURSDAY** — Sunny. Sun rises 5:43, sets 6:05. Moon sets 1:23 a. m. Fishing good.  
**FRIDAY** — Pleasant. Sun rises 5:44, sets 6:04. Moon sets 2:22 a. m. Fishing best.  
**SATURDAY** — Hot. Sun rises 5:45, sets 6:03. Moon sets 3:23 a. m. Fishing best.



# Read and Use the Want Ads!

CALL MA 9-1707

## Announcements

**MASONIC LODGE NO. 467**  
Meets second Thursday of each month at 8 p.m. In the Masonic Hall. Call Joe W. Anderson, MA 9-2331, for information or L. E. Huckaby, Sec., 9-1391, for information.

## EASTLAND ROTARY CLUB

Meets each Monday noon at White Elephant Restaurant in Eastland. Cyrus Barcus, president.

## Notice

NOTICE: Tent sale coming Wednesday, Sept. 23 at your Goodyear Service Store, Eastland.

NOTICE: You'll profit by using accurate farm record books, and other record-keeping material, available at the Eastland Telegram. Complete stock of Garner and Simplified books.

NOTICE: Classifieds are the people's market place. Buy, sell, swap, rent, hire, announce — all these you can do with thrifty Classifieds in this newspaper. Be descriptive, use 20 words and get results. Call MA 9-1707.

SPECIALIZING in private dinners, luncheons and banquets, seating up to 200 persons. Victor Hotel Coffee Shop, Cisco.

NOTICE: Wedding, birthday and anniversary cakes a specialty. Catering services also available. Call Mrs. Fred Brown, MA 9-1823.

FOR LEASE: Food and concessions bar in Ranger Junior College Student Union Building. Contact in person, Dr. Theodore Nickisch, Jr., at the college.

PAINTING, paper hanging, taping, carpenter repairs, large or small jobs references. True estimates. MA 9-1503.

## For Sale

FOR SALE: Remington portables. Brand new. Envoy II, \$59.95. Monarchs, \$79.95, (both plus tax). Eastland Telegram. For gifting, for schooling, for self.

## SPECIAL

on beautiful green plants free item to visitors Florafax Delivery Service  
ITA PARRISH  
Green Street Flower Shop  
206 N. Green — MA 9-1101

## Whittenton T.V. Repair

Guaranteed Service RCA & Sylvania Tubes & parts.  
AT WESTERN AUTO  
MA 9-2011

## EASTLAND AUTO PARTS MACHINE SHOP

300 S. Seaman MA 9-2158  
FULLY EQUIPPED AUTOMOTIVE VALVE GRINDING BRAKE DRUM TURNING HEAD SURFACING VALVE JOBS BLOCK BORING SLEEVE INSERTING VALVE SEATING

## COMPLETE LINE AUTOMOTIVE TRUCK TRACTOR PARTS

ALWAYS IN STOCK  
**AUTO PARTS**  
300 S. Seaman MA 9-2158 EASTLAND

FOR SALE: Small house, four lots, Bedford Street. For information, call MA 9-1133 or Olden 2531 after 6 p.m. 61

FOR SALE — All kinds of advertising novelties to give your customers and friends... ball points, notebooks, rain gauges — everything. Call at The Telegram office. tfc

FOR SALE — Fat hens, 3 for \$1. Kendrick Dairy. 58

FOR SALE — Service man being transferred will sacrifice real ski rig. Borum 15-ft boat with Mark 75 Mercury, Little Dude trailer, boat has horn, lights, new top. Like new condition. Real bargain at \$1100. Will finance 100%. Contact CPO Calvin Hill, Naval Reserve, Brownwood. Phone Milton 5-5042. 59

FOR SALE — 1960 Cadillac. \$1995. 108 West Valley. Call MA 9-2592. tfc

FOR SALE: Young's Goat Island at Lake Leon Summer cabin — electricity, deeded land \$1,000. Call MA 9-1878 or contact James W. Young. tfc

FOR SALE — Headquarters for Famous Cedar Crest work shoes and boots. Dress and work oxfords, work shoes, black, brown, tan, rawhide and rough out slip on Wellington boots. Several styles of lace up high top work and hunting boots. Also, steel toe and insulated boots, from \$6.95 to \$12.95. Army Surplus Store, Eastland, Texas. 3 mos.

FOR SALE: Baby Grande piano for \$225. Contact at 501 S. Daugherty or call MA 9-2261 after 5 p.m. tf

FOR SALE: Large house, excellent location. Will take automobile or pickup as down payment. Balance \$40 per month. MA 9-2410. tf

TAKE soil away the Blue Lustre way from carpets and upholstery. Rent electric shampooer \$1. Coats Furniture Co. 59

FOR SALE: 20 ft., 6 barrel fishing dock. Phone MA 9-1192 Walker's Dressing Plant. 62

FOR SALE: Hereford two year old registered bull, weight approximately 1,000 pounds. Will trade for springer Hereford grade cows. Location two miles east of Strawn. Phone H. C. Vandaveer. Phone OR 2-5261. 61

FOR SALE: 1958 Chevrolet. Good condition. Standard, overdrive. Call Olden 2765 about 8 p.m. tf

FOR SALE — Remington Portable Typewriters, the best bargain in a typewriter. Easy terms. See at Eastland Telegram, Eastland. tfc

FOR SALE: House trailer, 10 feet by 50 feet, 1958 Palace, furnished. Phone MA 9-1881. tf

FOR SALE: Large selection of clean used tires. Popular sizes priced from \$4 up. Goodyear Service Store, Eastland. tf

**GOLD BOND Redemption Center**  
at  
**THE GIFT SHOP**  
510 E. Conner  
Eastland MA 9-2386

**SPORTS • STANDARDS • COMPACTS •**  
**WE SERVICE THEM ALL**

**OBIE'S HUMBLE SERVICE STATION**  
802 W. Main  
MA 9-8866

**WANT-ADS**  
The People's Market Place!  
Now's the time to sell or buy band instruments, pianos, bicycles, shotguns, and so forth.  
Want-Ads in this newspaper get results.

## Real Estate

FOR SALE — Three nice homes. Bargain prices. One small equity. All well located. M. A. Treadwell, Sr. MA 9-2017. tf

FOR SALE — South Hillcrest choice house, large fenced lot. Three bedrooms, living room, dining room, kitchen, den, lots of good storage. Best location in Eastland. M. A. Treadwell, Sr. MA 9-2017. tf

## Rentals

FOR RENT: Nice clean furnished apartment. Air conditioned and garage. Couple only. 302 E. Main. tf

FOR RENT: Small furnished house. 503 E. Sadosa. Phone MA 9-1977. tf

FOR RENT: House. 412 E. Sadosa. Phone MA 9-1977. tf

FOR RENT: Furnished or unfurnished two bedroom apartment in duplex. 611 West Plummer. tf

FOR RENT: Dandy two bedroom furnished cabins with kitchenettes. Ideal for weekends during winter. Good rates. Lynn's Lake Lodge, Lake Cisco. Phone HI 2-2064 tfc

## Wanted

WANTED: Someone to take up payments on upright deep freeze. Payments \$8 month. No money down. Still in warranty. Goodyear Service Store, Eastland. tf

WANTED: One good man that can do two of the following: Diesel or V8 Truck Mechanic. Truck Body repair or welding. Johnston Truck and Supply, Cross Plains, Texas. 62

WANTED: Carpenter contract work. No job too large or too small. Phone MA 9-1297. 64

HELP WANTED: Full-time male grocery clerk. Apply Super Save Grocery. tf

WANTED TO BUY: Good, clean 1955, '56 or '57 Chevrolet or Ford. Must be in top shape. Phone MA 9-1619. tf

WANTED — To buy warehouse building approximately 20x40 feet... to be moved. Call HI 2-2244 in Cisco. tfc

WANTED: The opportunity to prove that classifieds get results. People read the Classifieds — and look to them first for apartments, jobs, bargains, etc. Call today and put the Classifieds to work for you. MA 9-1707. tf

HELP WANTED: Eastland Steam Laundry, 210 North Lamar. Apply in person. tf

WANTED: Custom breaking sowing and fertilizing. Call M. C. Key at MA 9-1230 or MA 9-2678, or see O. Carter at Olden. tf

**MATTRESSES**  
Save up to 50% renovating choice of color and firmness. Complete hedding. Made and guaranteed by WESTERN MATTRESS CO., San Angelo. Phone MA 9-1342 or MA 9-1304. Eastland and leave address.

**FREE**  
Estimates On  
**RE-ROOFING**  
Or Repair Your Old Roof.  
Residential and Commercial  
**Roofing Co. Eastland**  
Noble Squiers  
Phone MA 9-2370

Insurance and Real Estate  
**D. L. Kinnaird**  
Life - Fire - Auto - Farm  
Polio - Bonds  
42 years in the Insurance Business in Eastland

## Card of Thanks

**CARD OF THANKS**  
I want to thank the city employees, the Mens Fellowship Bible Class and Mr. and Mrs. O. M. White for the pretty flowers they sent me while in the hospital; also the nurses and attendants for being so nice to me. Dr. Bulgerin and Dr. Alexander were just wonderful. Larry Marshall and Haston Brewer surely make sick folks feel fine; and thanks to all the visitors, may God bless each and every one of you.  
Mrs. Ray Laney

## FOR SALE

85 Acres — \$6,500 No. Eastland.

32 Acres — All cultivation, well, \$85 per acre.

192 Acre farm, \$92.50. Near Romney.

70 Acres — will G. I. — all cultivation.

387 Acres — 90 bottom; \$105 per acre.

45 Acres — two houses near city — \$2,200 down.

5-room house — Eastland. 2-bedroom houses in Ranger. House — 3 acres — Morton Valley.

Station; Grocery Store; Cabins; Living Quarters in Ranger.

Other homes, businesses, lake property, ranches and farms.

**Ranch & Farm Service**  
301 N. Seaman, Eastland  
MA 9-2131  
**BUCK WHEAT**  
MA 9-1973  
**M. L. TERRELL**  
MA 9-2035

**ROLLINS & SONS GULF SERVICE**  
Call for Appointments on Wash - Grease Oil Changes  
500 W. MAIN  
MA 9-8840  
We Give S&H Green Stamps

**Wheel Alignment Wheel Balancing Complete Brake Service VIC'S AUTO REPAIR**  
306 W. Main - MA 9-2111

**FOR SALE**  
Small farm. Five miles N-E of Eastland. Grass and cultivated land. Improved 5 room house. Priced to sell.  
**D. L. KINNAIRD REAL ESTATE**  
207 W. Main, Ph. MA 9-2544

**PERMANENTS**  
\$12 Lanolin Waves — \$8.50  
\$10 Creme-Oil Waves \$7.50  
Other waves \$10 and up  
**Basham Beauty Bar**

**POE FLORAL**  
When Its Flowers Say It With Ours  
Experienced designers at your service.  
Highest quality stock and material assure your satisfaction.  
Since 1946  
Eastland  
MA 9-1711 609 W. Main

**Bring Your Battery Troubles To Us**  
\$8.95 and up  
**JIM HORTON Tire Service**  
East Main EASTLAND

## EASTLAND MEMORIAL HOSPITAL

Hannah Lindsey, surgical.  
Mrs. E. M. McCoy, medical.  
Mrs. Dave Watkins, medical.  
L. A. Horn, medical.  
John Sawyer, medical.  
Mary Bayne, Cisco, medical.  
Mrs. L. A. Lowrance, medical.

Harvey Boggs, Breckenridge, surgical.  
Mrs. Rudolph Huber, Cisco, medical.

J. T. Poe, Carbon, surgical.  
Mrs. William Reese, surgical.  
Mrs. W. L. Wharton, medical.

Addie Shirley, medical.  
Mrs. R. L. Taylor, medical.  
Trannie Stephens, Gorman, medical.

Ida Belle Box, medical.  
Mrs. Jim Woods, medical.  
Mrs. Dave Stanley, medical.  
Scottie R. Cummings, Gordon, accident.

Price Barker, Ranger, accident.  
Mrs. Jim Ingram, Ranger, surgical.

T. M. Collie, medical.  
Mrs. Gene Rhodes, medical.  
Mrs. W. E. Johnson, DeLeon, accident.

Ruth Mobley, Putnam, medical.  
H. J. Lane, medical.  
J. M. Poe, medical.

Frank Walton, Cisco, medical.  
Lillie Sneed, surgical.  
Mrs. Hubert Rainey, Desdemona, surgical.

Willie Fisher, surgical.  
Miss Bonnie Kay Woods, medical.

Miss Nancy Elliott, accident.  
Otis Green, medical.  
Mrs. Lester Stewart, Cisco, surgical.

C. R. Neeley, Ranger, medical.  
Lon Horn, surgical.  
Novie Pafford, medical.

Mrs. H. J. Lane, medical.  
Mrs. T. E. Payne, medical.  
Hank Sims, medical.  
David W. Whittenton, Stephenville, medical.

Mrs. Bud Hill, Rising Star, medical.

**AUTO PILE-UPS**  
(Continued from Page One)  
minor injuries to Mrs. Underwood and her infant daughter. Two young boys in the auto were apparently uninjured.

One of three accidents reported last Saturday resulted in minor injuries to Bill Boles, high school football player and son of Mr. and Mrs. Winston Boles. Young Boles was the passenger in a car driven by his father that was in collision with one driven by an out-of-town man at the intersection of Plummer and Daugherty Streets.

Mr. and Mrs. Ben Hamner received minor injuries and their auto damaged when it was hit by another vehicle at the intersection of Valley and Basnett Streets Saturday afternoon.

Another collision was reported from the 900 block of West Main Saturday afternoon, which reportedly resulted in the hospitalization of an occupant.

Complete details of the rash of accidents were not available from police sources.

Mrs. Katherine Glover of Snyder visited her mother, Mrs. Sam Woodruff, also Mr. Glover's mother, Mrs. E. W. Glover this past week. While here, she also visited Mr. and Mrs. Lee Clark.

## Browsing With Bev

Ground beef — or hamburger — is designed for huge appetites and pocketbook ease. This ground beef accounts for about 25 percent of all beef sales.

Not all ground beef is the same composition. Regular ground beef usually indicates ground beef with a high proportion of beef fat, and many people prefer it for the rich flavor imparted by the fat. Lean ground beef is made from the chuck or various cuts of beef which are leaner than those that go into hamburger. It costs a bit more per pound, but is probably the most efficient purchase.

Ground round steak is the leanest of all ground beef, and usually sells for about the same price per pound as sliced round steak. It costs more, but shrinks less in cooking than other types of ground beef.

Handle ground beef as little as possible. Too much handling make the finished product tough and packed. Keep ground beef under refrigeration and use it within three days after purchase.

Add new flavor and interest to cooked green vegetables by trying some of these seasonings: Cook a tablespoon or two of minced onion, green pepper, or parsley with snap beans or summer squash; cook a few mint leaves with peas; put a small pinch of herb or spice in the water when cooking lima beans; and a little vinegar and sugar heated together to make a good dressing for snap beans or cabbage, with or without a few tablespoons of cream; point up the flavor of green vegetables with meat drippings, butter or margarine, or salad oil with lemon juice, horseradish, or garlic; add bits of crisply fried bacon to spinach or other greens.

Mr. and Mrs. Ralleggh Darnell and Mr. and Mrs. Ray Darnell of Rising Star attended the 50th Wedding Anniversary of Mr. and Mrs. Buford R. Parker, Route 1, Gorman, which was held Aug. 30. The event was hosted by the Parker children.

Beat the heat in this extra clean 59 Noma d station wagon, with factory air. Auto. transmission, power steering & brakes. Ready for vacation.  
**\$995**

Off to college in a '59 PLYMOUTH Fury, 2 door hardtop. One Owner  
**\$695**

'62 CHEVROLET 4-door sedan, 6 cyl., auto. transmission & air conditioning. A real honey for only  
**\$1495**

THE cleanest '56 FORD in town. 6 cyl., standard shift. You must see to appreciate.  
**\$495**

For the best selection of used PICKUPS in this area. Come to FULLEN'S NOW!! A price for EVERY POCKET BOOK.

**FULLEN MOTOR CO.**  
305 E. Main  
MA 9-2676  
Eastland

**WALKER'S Dressing Plant**  
Custom Dressing  
Phone D. J. Walker  
Eastland MA 9-1192

IT'S TIME to spray under your house, spray your trees, shrubs, grass. Time to fertilize your grass.  
Call MA 9-2434  
★  
**H. D. WARREN**  
Call about other ward work, too.

## EASTLAND TELEGRAM

110 W. Commerce St. Phone MI 9-1707

(Consolidate with Eastland Chronicle, established 1879, and Eastland County Record, established 1879)  
Entered as second class matter at the Post Office at Eastland, Texas, under the act of Congress of March 3, 1879.

Published Semi-Weekly — Thursdays and Saturdays  
By Eastland County Newspapers, Inc.  
H. V. O'BRIEN, Editor

**SUBSCRIPTION RATES:** By carrier in city or 65¢ month; one year by mail in county, \$5; by mail elsewhere in state, \$5; one year by mail, \$6.

**NOTICE:** Any erroneous reflection upon the standing or reputation of any person, firm or corporation which may appear in the columns of this newspaper will be gladly corrected upon being brought to the attention of the editor.



A program of music, a barbecue lunch and reminiscing has been arranged for the Old Settlers who will meet for the annual reunion at the American Legion Hall in Rising Star on Tuesday, Sept. 15.

Plans and last minute details are being worked out by a committee named at a meeting in August. A business session will be held in the afternoon.

Major Max Prentice of May is president of the association. Cecil Shults and Fred Roberts are vice presidents and Mrs. Olice Jones, secretary.

All senior residents and those who have lived in the area for as many as ten years are eligible for membership. A catered luncheon will be served at the Legion dining hall at noon.

Mr. and Mrs. R. H. Whittaker of Coleman were visitors in the home of Mr. and Mrs. Harry Frye on Monday.

This company has been in operation since 1942 selling policies to be primarily for burial purposes. We write for \$600 and our policies are paid in cash allows freedom in the selection of the Director of your choice.  
Ages from 1 month to 90 years.  
For further information come by to

**Hammer Life Insurance Company**  
301 S. Lamar, Eastland  
P. O. Box 431 Dial MA 9-1122

**BESKOW JEWELRY**  
210 W. Main EASTLAND  
Years of experience in materials and equipment into every watch at Beskow's. Let your old watch

There's a Treasure of values in every store... you'll find modern, traditional — the just-right piece for your Shop here and

**Furniture Buys Spectacular**  
VALUES FOR MODERN

make a SMART MOVE  
**WHEN IT'S YOUR MOVE CALL MA 9-2044**  
EASTLAND TRANSFER & STORAGE  
315 E. Main — Eastland

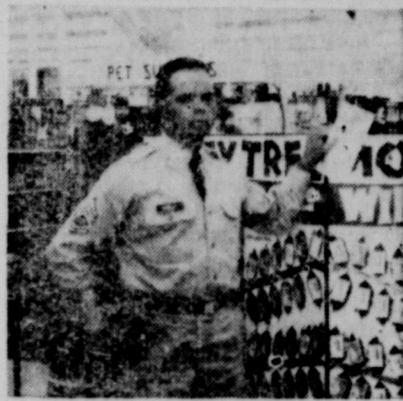


WINNERS IN WORTH FOOD MART'S

# MONEY TREE GAME!



\$100.00 WINNER  
Mrs. J. W. TIDWELL



\$100.00 WINNER  
JAMES MOBLEY



\$100.00 WINNER  
DORTHY F. DUDLEY



\$100.00 WINNER  
MRS. ROGINA E. DOUGLASS

**WORTH FOOD MART**

THE SIGN OF QUALITY!

PRICES EFFECTIVE  
Sept. 17 thru 19, 1964

## Libby's HARVEST of VALUES

**WATER CORN** LIBBY'S CREAM STYLE OR WHOLE KERNEL **6** 303 Cans **\$1.00**

**SAUSAGE SALISAGE** LIBBY'S FANCY **5** 4 OZ. CANS **\$1.00**

**PEACHES** LIBBY'S YELLOW CLING HALVES OR SLICES **5** 303 Cans **\$1.00**

**T-BONE STEAK** Thrifty-cut Baby Beef **Lb. 79c**

**RUMP ROAST** or Pikes Peak **Lb. 69c**

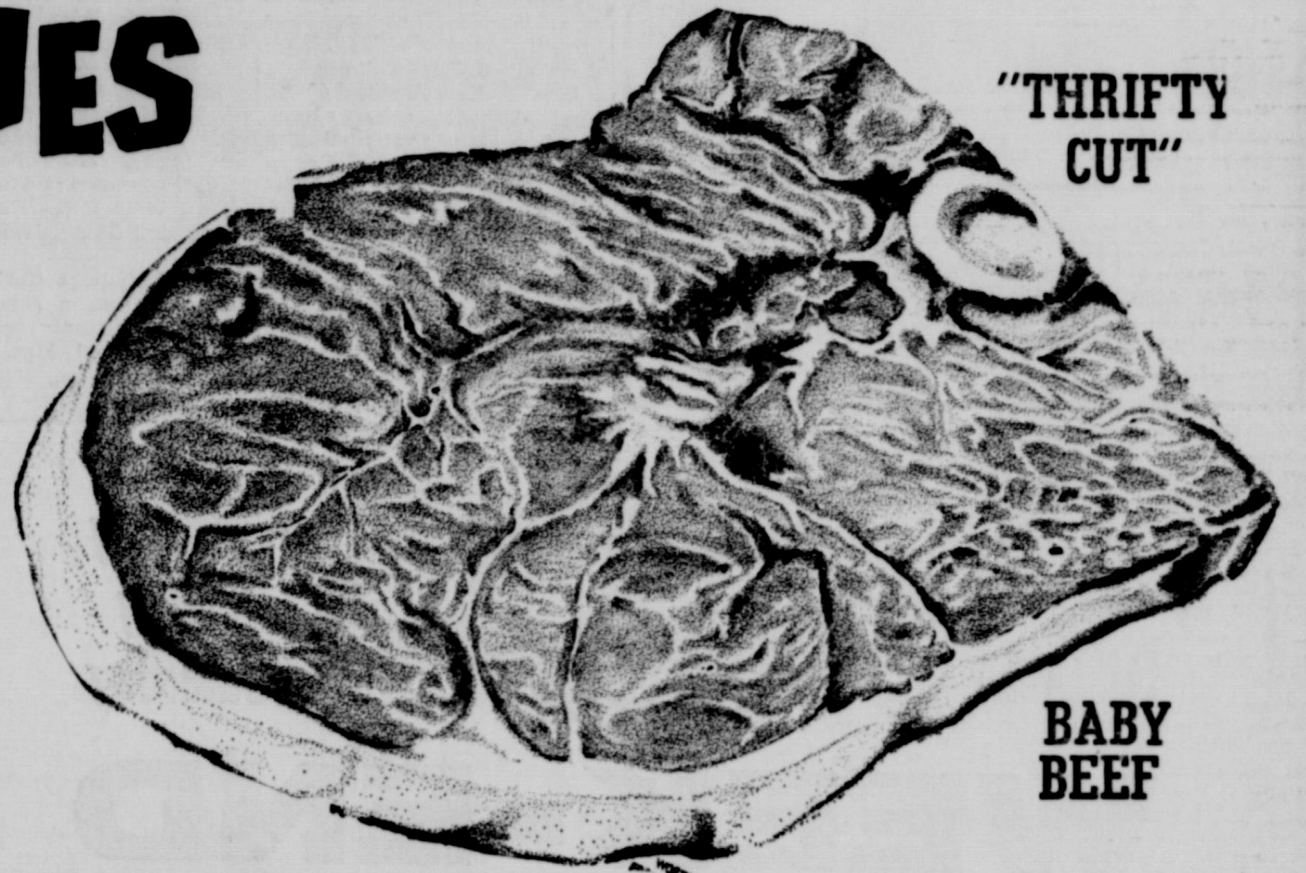
**SLICED BACON** Hormel Dairy **Lb. 53c**

**BONELESS ROUND** Baby Beef **Lb. 79c**

**BREADED SHRIMP** Captain Krusty 8-oz. Pkg. **39c**

**FISH STEAKS** Taste O'Sea Frozen Big 4 10-oz. Pkg. **39c**

**COD PORTIONS** Taste O'Sea 12-oz. Pkg. **49c**



"THRIFTY CUT"

BABY BEEF

**ROUND or SIRLOIN STEAK** THRIFTY CUT BABY BEEF **69c**

### Libby's Frozen Food MIX or MATCH

**CHOPPED BROCCOLI** 10-OZ. **10-OZ.**  
**CORN C. S. or CUT** 10-OZ.  
**LEAF OR CHOPPED SPINACH** 10-OZ.  
**WITH DICED TURNIPS** 10-OZ.  
**TURNIPGREENS** 10-OZ. **\$1.**  
**6** Pkgs.

**GREEN BEANS** 9-OZ. **9-OZ.**  
**OKRA** 10-OZ. **10-OZ.**  
**BLACKEYED PEAS** 10-OZ. **10-OZ.**  
**SWEET PEAS** 10-OZ. **10-OZ.**  
**MIXED VEGETABLES** 10-OZ. **10-OZ.**  
**5** Pkgs. **\$1.**

Libby's French Fried or Rippled Cut

**POTATOES** **6** Pkgs. **\$1.**

**BROCCOLI SPEARS** 10-OZ. **10-OZ.**  
**CAULIFLOWER** 10-OZ. **10-OZ.**  
**LIMA BEANS** 10-OZ. **10-OZ.**  
**SLICED Strawberries** 10-OZ. **10-OZ.**  
**SLICED PEACHES** 10-OZ. **10-OZ.**  
**4** Pkgs. **\$1.**

WORLD FOOD MART Coupon No. 6-E

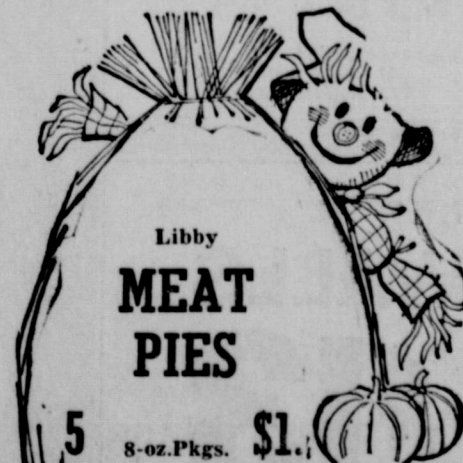
**FREE!**

**WEDGWOOD & CO., LTD.**

DESERT DISH

WITH COUPON AND PURCHASE OF \$10.00 OR MORE OR COUPON, 50¢ AND \$5.00 PURCHASE

VOID AFTER SEPT. 20



Libby's **MEAT PIES** **5** 8-oz. Pkgs. **\$1.**

**TOMATOES** **lb. 19c**

**LETTUCE** LARGE CRISP CALIF. ICEBERG **2** HEADS **25c**

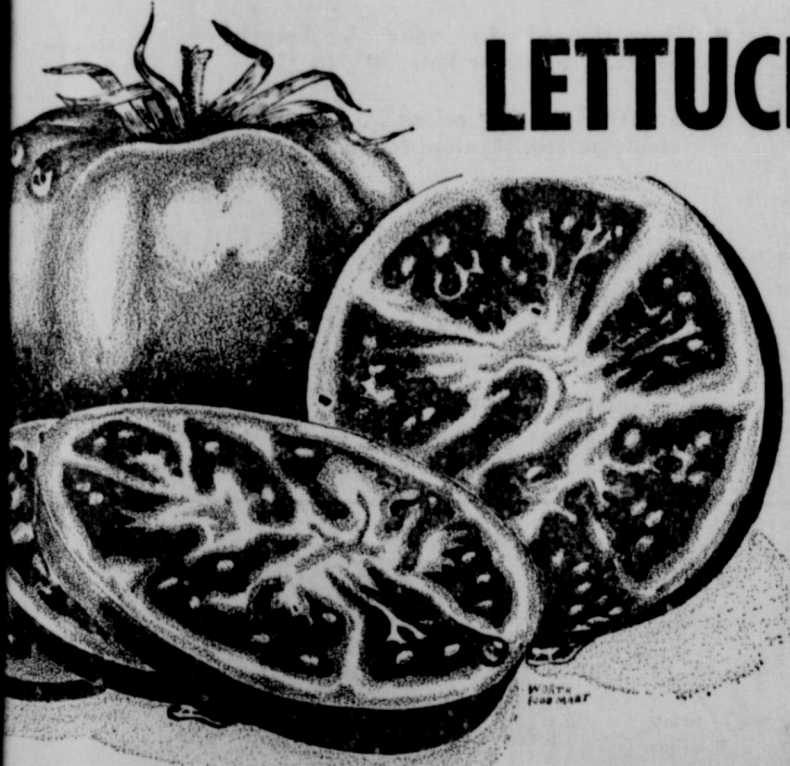
Large-Sunkist **LEMONS** Calif. **6** For **25c**

Large-Select **BELL PEPPERS** Lb. **19c**

California Calavo **AVACADOS** Each **23c**

Crookneck or Banana **SQUASH** **2** Lbs. **25c**

**Health & Beauty Aids!**  
Luster Creme 99c Size  
**HAIR SPRAY** Plus Tax **69c**  
Deodorant Large Size Plus Tax  
**ARRID CREAM** **45c**



**CLIP AND SAVE!**

50 BONUS S&H Green Stamps  
With this Coupon and Purchase of  
5 No. 303 Cans Libby  
PEACHES 5 No. 303 Cans \$1.00  
After Sept. 19, 1964

WORTH FOOD MART

**CLIP AND SAVE!**

50 BONUS S&H Green Stamps  
With this Coupon & Purchase of  
5 No. 303 Cans Libby Yellow Cling  
PEACHES 5 No. 303 Cans \$1.00  
Void After Sept. 19, 1964

WORTH FOOD MART

**CLIP AND SAVE!**

50 BONUS S&H Green Stamps  
With this Coupon & Purchase of  
2 No. 300 Cans Libby All Green  
Asparagus . 2 No. 300 Cans 89c  
Void After Sept. 19, 1964

WORTH FOOD MART

**CLIP AND SAVE!**

50 BONUS S&H Green Stamps  
with this coupon and purchase of  
5 4-oz. Cans Libby  
VIENNAS . . . 5 4-oz. Cans \$1.00  
Void After Sept. 19, 1964

WORTH FOOD MART

**CLIP AND SAVE!**

50 BONUS S&H Green Stamps  
with this Coupon & Purchase of  
3 46-oz. Cans Libby  
Tomato Juice 3 46-oz. Cans \$1.00  
Void After Sept. 19, 1964

WORTH FOOD MART

**CLIP AND SAVE!**

50 BONUS S&H Green Stamps  
with this Coupon and Purchase of  
2 No. 303 Cans Libby  
Deluxe  
After Sept. 19, 1964

WORTH FOOD MART

**CLIP AND SAVE!**

50 BONUS S&H Green Stamps  
with this Coupon & Purchase of  
One No. 1/2 Can Libby Red  
SALMON . . . No. 1/2 Cans 69c  
Void After Sept. 19, 1964

WORTH FOOD MART

**CLIP AND SAVE!**

50 BONUS S&H Green Stamps  
with this Coupon & Purchase of  
6 14-oz. Btls. Libby  
CATSUP . . . 6 14-oz. Btls. \$1.00  
Void After Sept. 19, 1964

WORTH FOOD MART

**CLIP AND SAVE!**

50 BONUS S&H Green Stamps  
with this Coupon & Purchase of  
6 No. 211 Cans Libby  
NECTAR 6 No. 211 Cans \$1.00  
Void After Sept. 19, 1964

WORTH FOOD MART

**CLIP AND SAVE!**

50 BONUS S&H Green Stamps  
with this Coupon & Purchase of  
2 8-oz. Jars Libby Plain  
Sweet Pickles . 2 8-oz. Jars 59c  
Void After Sept. 19, 1964

WORTH FOOD MART



**PRE-WINTER  
TUNE-UP  
SPECIAL**



Complete Auto Repairs Safety Inspection Center

24 HOUR WRECKER SERVICE

Phones  
MA 9-2270  
Night  
MA 9-2224

**ALLEN AUTO REPAIR**  
A1 RUSHING MOTOR CO.  
215 SOUTH SEAMAN

### Eastland Members Present District Wesleyan Program

Methodist Cisco District Wesleyan Service Guild met in the First Methodist Church in Cisco last Sunday afternoon at 2 p.m., Mrs. Ed Willman reports.

Miss Loretta Morris of Eastland, the secretary of the Guild, presided over a short business session at which time the Guild voted to add a charm to the bracelet that had been presented to Mrs. Johnson of Fort Worth. Mrs. Johnson is the Conference Secretary of the Wesleyan Service Guild.

Mrs. Willman of Eastland presented a program based on the subject, "We Would See Jesus." Those taking part in the program were Mrs. E. J. Turner, Mrs. Ruth Poe Herring, Mrs. Rudolph Little, Mrs. Joe Stephens, Mrs. Harold Durham, Miss Loretta Morris and Mrs. Willman, all of Eastland.

Mrs. T. E. Robertson of the First Methodist Church of Breckenridge presented the new purpose of the Wesleyan Service Guild and the Woman's Society of Christian Service.

At the conclusion of the program, which was held in the sanctuary of the church, refreshments of fruit punch and assorted cookies were served in Fellowship Hall from a tea table presided over by Mrs.

Morris Bailey of Cisco. Refreshments were served by the women of the Cisco Gewell Primm of the First Methodist Church of Mineral Wells presented a study on Genesis and Mrs. Julia Mobley of the First Church of Graham presented a study on "The Nation and a Kingdom."

Every Wesleyan Service Guild in the district was represented. The town from where the representatives came were: Breckenridge, Cisco, Eastland, Graham, Mineral Wells — the Central Methodist Church and the First Methodist Church. Some 38 members were registered, reported Mrs. Willman.

**Court of Civil Appeals**  
Affirmed: Robinson Drilling Co. v. Clifton N. Thomas, Scurry. (opinion by Judge Collings)

Mrs. R. E. Sikes has returned home after a five weeks visit with her son, Bob Sikes, and family of Tulsa, Okla. Mrs. Sikes accompanied them on a trip to Estes Park, Colorado and Red River, N. M.

Mrs. Margaret Corbell has returned from a recent visit with her daughter and husband, Dr. and Mrs. D. W. Donegan and son, Michael of Austin.

### Floral Industry Is Lion Club Fare

"The power of flowers is strong and they speak an international language," Mrs. J. C. (Merrell) Poe told the Eastland Lions Club at their regular meeting at the White Elephant Restaurant Tuesday at noon.

Explaining that floral service is the perfect way to express sentiment, Mrs. Poe said that "Just as flags appeal to the hearts of men, so

too do flowers appeal to the heart."

J. C. Poe was program chairman and introduced his wife.

President Leon Musgrove presided and guests were introduced by Ed Etheridge as follows: T. C. Williams and Charles Sandler, both of Cisco.

Mr. and Mrs. E. G. Rice spent the weekend seeing "My Fair Lady" at Casa Manana, Friday night and taking part in the tenth anniversary of the Ridgela Country Club Saturday.

**IMPORTANT NOTICE**

The annual meeting of the Contributed Eastland Memorial Hospital will be held on September 22, 1964, at 7:30 p. m. at the Service Building in Eastland, Texas. It will be elected for the ensuing year.

**MRS. SAMUEL BUTLER,**  
Board of Directors — Eastland Memorial Hospital

**DR. C. E. PAUL**  
Chiropractic Health Service

OFFICE HOURS  
Mon-Wed-Fri — 9 to 12; 2 to 7  
Tues-Thurs-Sat — 8 to 2  
or by appointment

Hwy. 80 & Ave. I — CISCO — Phone HI 2-1677

**Organ Classes Are Still Open**

CALL MRS. CYRUS BARNETT  
805 S. Seaman St., MA 9-2224

for further information

Don't Miss This chance for you to learn to play the organ in your own home

3 DAYS ONLY! **GOOD YEAR** Thursday Friday Saturday

# WEEK-END SALE

72-HOUR PRICE CUTS ON NEW GOODYEAR NYLON TIRES WITH TUF SYN



ALL-WEATHER "42"  
**BLACKWALLS**  
**\$8 \$11**

6.70 x 15 tube-type plus tax and recappable tire. Add \$2 if your trade-in is not recappable.

7.50 x 14 or 6.70 x 15 black tubeless, plus tax and recappable tire. Add \$1.00 if your trade-in is not recappable.

ALL-WEATHER "42"  
**WHITWALLS**  
**\$10 \$13**


6.70 x 15 tube-type plus tax and recappable tire. Add \$2 if your trade-in is not recappable.

7.50 x 14 or 6.70 x 15 tubeless, plus tax and recappable tire. Add \$1.00 if your trade-in is not recappable.

NO MONEY DOWN — FREE MOUNTING  
**GOODYEAR SERVICE STORE**  
308 E. MAIN ST. EASTLAND

**it's our birthday**

**Penneys**  
ALWAYS FIRST QUALITY



**FOR A LIMITED TIME**

**our entire stock of 95¢ Gaymode nylons reduced**

- Plain knit, micro mesh, double loop dress sheers, service weights!
- Proportioned to your leg-length! Short, average or long, 8½ to 11!
- Subtly flattering colors . . . there's a shade perfectly suited for everything!

save 58c when you buy 3 pair for only 2.77

**COMPARE THE SAVINGS ON GAYMODE SUPPORT HOSIERY**

Compare them for comfort, quality, good-looks — and our special

nylon with Spandex reg. 3.98 NOW **2.77**

all nylon seamless reg. 2.98 NOW **1.77**

**SPORT SHIRT SPECIAL!**  
Top Off Your Campus Wardrobe with These Shirts

Cotton Plaids, Fashion Solids  
New Jac Shirts **1.88**

**BLANKETS ALIVE WITH VIVID COLORS**  
72"x90" **3.99**

A soft-touch blend of rayon/acrylic finished with Supernap for extra fluffiness, machine washability\*. Long wearing nylon binding. \*lukewarm water.

**SAVE MONEY ON WOOL ORLON**

Perfect for fall. Vivid colors. Machine washable. Patterns to your favor. L in the

**CHARGE IT. PENNEY'S IN CISCO OPEN TO**



# RCA VICTOR WEEK



**RCA VICTOR**  
Table Model Ensemble  
Includes handsome castor cart... roll it anywhere. Giant 23" (overall diag).

**\$219<sup>95</sup>**

With Trade



**Robertson**  
Radio & TV Repair  
Southeast Corner of Square

## \$1.5 Million Spent Annually For Home Repairs in County

An average of a million and a half dollars is spent annually in Eastland County toward the improvement of homes in alterations, additions and repairs. This estimate is based on a sampling of dwellings in the area and in other parts of the United States made by the Department of Commerce in connection with the National Association of Home Builders and other agencies. These authorities report that Eastland County residents spend some \$1,547,000 for repairs yearly or about \$217 per housing unit. Extensive programs emphasizing the Federal Housing Administration's Title I Home Improvement loans are conducted yearly by the banks and building material dealers in the three larger towns in the county which is believed to influence the total figure. How was the \$1 1/2 million in this county spent? Hard to say, the authorities report, but national figures indicate that some 41 per cent of it went for alterations and additions to the homes. Painting accounted for another 17 per cent; plumbing, 8 per cent; roofing, 6 per cent and central heating and air conditioning, 5 per cent.

Miscellaneous costs for repairs, replacements and extensions made up the balance. The authorities report that much more money is spent on homes that are occupied by their owners than on those occupied by tenants. The Census Bureau tabulations show that 74 per cent of the county homes are owner-occupied which is higher than the national average of 61.9 and the state average of 64.8.

Last Tuesday, visitors in the home of Mr. and Mrs. R. B. Wesson was her father, Mr. and Mrs. B. E. Foreman of Las Cruces, N. Mex.

Visitors last week in the home of Mr. and Mrs. R. D. Ridling were her sister and family, Mr. and Mrs. C. A. Johnson and grandson, Kenny Evert of Odessa.

Guests in the home of Mrs. Clara T. Cockrill last weekend were her daughter and granddaughter, Mrs. Hamrick and Kay, of San Antonio. They left Tuesday for La., where Kay will enter the Louisiana State University.

The Rising Star Quarterback Club will meet each Wednesday evening during the football season. The meetings will be held at the Elite Cafe following the mid-week services of the various churches.

Barbara, Glen and Charles Honea of Amarillo recently visited with their grandparents, Mr. and Mrs. A. O. Angel, also Mrs. Arnold Dupree and daughter, Margaret, from Odessa.



Membership in the ASSOCIATED FUNERAL DIRECTORS SERVICE qualifies us to take immediate charge when death occurs at a distant point. Every duty is performed by competent, professional members of the Association. Reasonable fees, established by agreement between members result in a saving to the families we serve.

**Arrington-Hammer Funeral Home**  
"Friendly, Personalized Service"  
Eastland Dial M A 9-2611



WHITE BEAUTY Shortening 3 Lb. Can 49c

PRICES GOOD THROUGH SEPT. 17, 1964

- 25 NO COUPON NEEDED - GET 25 EXTRA PLAID STAMPS WITH NABISCO OREO COOKIES 1-lb. Pkg. 49c
- 25 NO COUPON NEEDED - GET 25 EXTRA PLAID STAMPS WITH NABISCO Fig Newton Cakes 1-lb. Pkg. 43c
- 25 NO COUPON NEEDED - GET 25 EXTRA PLAID STAMPS WITH NABISCO CHOC. CHIP 14 1/2-oz. Pkg. 49c
- 25 NO COUPON NEEDED - GET 25 EXTRA PLAID STAMPS WITH NABISCO VANILLA WAFERS 12-oz. Pkg. 39c
- 25 NO COUPON NEEDED - GET 25 EXTRA PLAID STAMPS WITH JANE PARKER SPANISH BAR 1-lb. 3-oz. Each 35c
- 25 NO COUPON NEEDED - GET 25 EXTRA PLAID STAMPS WITH JANE PARKER BREAD Cracked Wheat 1-lb. Loaf 23c

- BANQUET FROZEN MEAT PIES 6 8-oz. Pies \$1.00
- BANQUET FROZEN DINNERS Each 39c
- WOODY'S FROZEN CORNY DOGS 15-oz. Pkg. 49c
- "SUPER-RIGHT" SLICED BOILED HAM 8-oz. Pkg. 69c

AIR FRESHENER  
**FLORIENT** 7-oz. Can 59c

- MORTON'S FROZEN FOODS
- APPLE, PEACH OR CHERRY PIES 8-oz. Each 39c
- BISCUITS 10-oz. Pkg. 25c
- HONEY BUNS 9-oz. Pkg. 29c
- PECAN PIES 1-lb. Each 89c

"SUPER-RIGHT" GRAIN FED HEAVY BEEF SALE  
**SIDES** lb. 49¢ **LOINS** lb. 79¢  
**HINDQUARTERS** lb. 59¢

ALLGOOD BRAND SLICED **BACON**  
2-lb. Pkg. 89¢

- "Super-Right" Heavy Calf Chuck Blade POT ROAST lb. 39c
- "Super-Right" Heavy Calf ROUND STEAK lb. 79c
- "Super-Right" Heavy Calf Bone In RUMP ROAST lb. 69c
- Heavy Calf SIRLOIN STEAK lb. 75c
- "Super-Right" Heavy Calf T-BONE STEAK lb. 89c
- "SUPER-RIGHT" GROUND BEEF lb. 49c

- Frozen Seafood**
- CAP'N JOHN'S PERCH FILLETS 1-lb. Pkg. 39c
- CAP'N JOHN'S FILLETS FLOUNDER 1-lb. Pkg. 49c
- SLICED HALIBUT STEAKS 1-lb. Pkg. 49c
- NABISCO RITZ CRACKERS 12-oz. Pkg. 35c
- FRENCH'S ONION POWDER 3/4-oz. Btl. 25c
- NATION'S SMOKED SAUSAGE 1-lb. Pkg. 59c
- JONES CHUB BRAUNSCHWEIGER 8-oz. Size 29c
- CANNED LUNCHEON MEAT SWIFTS PREM 2 12-oz. Cans 75¢
- GOLDEN RISE SWEETMILK OR BUTTERMILK BISCUITS 6 8-oz. Pkgs. 39¢
- A&P APPLESAUCE 7 15-oz. Cans \$1.00
- MARY LOU DICED IRISH POTATOES 3 15-oz. Cans 25¢
- SUNNYBROOK Large Eggs Grade "A" 2 Doz. 89c

- HOUSEHOLD CLEANER AJAX LIQUID 1-qt. 12-oz. Btl. 69c
- CLEANSER AJAX 2 14-oz. Size 33c
- AJAZ CLEANSER FLOOR & WALL 1-lb. Size 33c
- DETERGENT AJAX POWDER 6 75c
- DETERGENT FAB POWDER 6 75c

GET YOUR SWEEPSTAKE COUPON AT A&P

Clip These Coupons

**100 Extra Plaid Stamps**  
With This Coupon and Purchase of PERSEPHONE CHILD'S TOOTH BRUSHES Ea. 39c  
AT YOUR A&P SUPERMARKET  
Del. Coupon Good thru Sept. 19, 1964

**25 Extra Plaid Stamps**  
With This Coupon and Purchase of ANN PAGE PURE HONEY 1-lb. Jar 43c  
AT YOUR A&P SUPERMARKET  
Del. Coupon Good thru Sept. 19, 1964

**25 Extra Plaid Stamps**  
With This Coupon and Purchase of ANN PAGE SANDWICH SPREAD 1-lb. Jar 39c  
AT YOUR A&P SUPERMARKET  
Del. Coupon Good thru Sept. 19, 1964

**25 Extra Plaid Stamps**  
With This Coupon and Purchase of SANITARY NAPKINS REG. MODESS 13 4 1/2-oz. Pkg. \$1.39  
AT YOUR A&P SUPERMARKET  
Del. Coupon Good thru Sept. 19, 1964

**25 Extra Plaid Stamps**  
With This Coupon and Purchase of A&P CHOCOLATE DRINK MIX 13 4 1/2-oz. Pkg. 33c  
AT YOUR A&P SUPERMARKET  
Del. Coupon Good thru Sept. 19, 1964

SAVE AT A&P

# The MONEY'S WORTH Store!

- IMPERIAL MARGARINE 1-lb. Ctn. 37c
- GOLD MEDAL FLOUR 5-lb. Bag Plain 61c 5-lb. Bag Self Rising 63c
- BETTY CROCKER WASHINGTON SQUARE CAKE MIX Cherry 18.5-oz. Pkg. 43c Fudge 43c
- BETTY CROCKER WASHINGTON SQUARE FROSTING MIX Cherry 13 1/2-oz. Pkg. 41c
- INSTANT 10¢ OFF LABEL TENDERLEAF TEA 1 1/2-oz. Size 79c
- OUR OWN Instant Tea 3-oz. Jar 69c
- KLEENEX REGULAR SIZE ROLL PAPER TOWELS Twin Pack 43c
- KLEENEX JUMBO TOWELS Twin Pack 69c
- DETERGENT TREND LIQUID 1-pt. 6-oz. Size 49c
- BORDEN'S INSTANT MALTED MILK 14-oz. Size 49c
- ZEE ASSORTED COLORS TOILET TISSUE 4-Rol Pacl 39c
- HOT SHOT BUG BOMB 14-oz. Can 89c

- ZION FIG BARS 3 2-lb. Pkgs. \$1.00
- CANDY CLARK BARS 10-oz. Pack 29c
- OLD SOUTH FROZEN PIE SHELLS 2 Pkgs. of 2 45c
- GIANT WRITING TABLET FILLER 8 x 10 1/2" 175 Sheets Ea. 29c
- ANN PAGE GROUND BLACK PEPPER 4-oz. Tin, 29¢ 8-oz. Tin, 15¢
- CENTURY STAINLESS STEEL RAZOR BLADES Pkg. of 10 89c
- A&P FROZEN POTATO MORSELS 2 1-lb. Pkgs. 35c
- A&P YELLOW POPCORN 2 2-lb. Bags 45c

- BUY 4, GET ONE AT NO EXTRA COST SPARKLE Ass'd Gelatin 5 Pkgs. 33c
- ANN PAGE TOMATO KETCHUP 2 1-lb. 4-oz. Btts. 45c
- ALUMINUM WRAP WONDER FOIL 12" x 25' Roll 25c
- ANN PAGE FRENCH DRESSING 2 8-oz. Btts. 35c
- ANN PAGE WITH PORK BEANS 3 1-lb. Cans 35c
- ANN PAGE SALAD DRESSING Qt. Jar 45c
- JANE PARKER CHERRY or Pineapple PIES 1 1/2-lb. Each 39c
- TOOTH PASTE DENTI-KISS 5 4-oz. Tubes 99c

### Produce Features

- McINTOSH APPLES (4-Lb. Cello Bag) 29c
- TOKAY GRAPES California 2 Lbs. 25c
- HONEYDEW MELONS Large Each 39c
- YAMS East Texas 2 Lbs. 29c

DETERGENT Sail Giant Size 49c	AUSTEX TAMALES 15-oz. Can 31c	AUSTEX CHILI With Beans 15-oz. Can 37c	AUSTEX Plain Chili 15-oz. Can 51c	LIQUID CLEANER AJAX 1-pt. 12-oz. Btl. 69c	TOOTH PASTE COLGATE 5-oz. Tube 63c
TOILET SOAP Palmolive 2 Reg. Bars 21c	TOILET SOAP Palmolive 2 Bath Bars 29c	TOILET SOAP REG. CASHMERE BOUQUET Buy 3-Bar Get 4-Bar 1-Bar for 1c extra Pack 33c	TOILET SOAP BATH CASHMERE BOUQUET Buy 3-Bar Get 4-Bar 1-Bar for 1c extra Pack 45c	BALL REGULAR PINT JARS Case of 12 \$1.25	WHITE HOUSE Canned Milk 6 Pk. ... 77c

## GOODYEAR TIRE SALE

Sept. 23 Through Sept. 26  
Shop for it on the Wagon Yard  
100 Block of East Main St. in Eastland  
Gifts.  
For Color TV to be given away.  
100 New appliances to be sold at a drastic price.  
Refreshments.

**GOODYEAR Service Store**  
304 E. Main — Eastland

## FIRE?

Insurance and Your Future —  
All bound up together. The family who is adequately insured is not only wise but thrifty. Insurance provides protection for the thrifty. If total loss should occur in the household, the uninsured his life's savings may be lost. But not so with the insured. To be wise and wise, be insured. And the less this world's goods the more it is a part to guard against financial destruction.

★ ★ ★  
**Earl Bender & Co.**  
Insurance (Since 1924) Texas  
Mercedes MA 9-1077



## Rising Star News

On Saturday night, Sept. 12, the North Star Home Demonstration Club members, husbands and friends enjoyed the Annual Club Supper and recreation program at the Club House. The supper, which is always scheduled in Aug. had to be postponed until Sept. due to the illness of several members. Mrs. Clara Burkhead, President of the club, was in charge of the meeting.

After the long table was spread with home-cooked food brought by the ladies of the

club, Mrs. Lee White said grace and everyone helped himself to supper and coffee and tea. The air of fellowship and neighborliness prevailed and following the bountiful repast, Mrs. Hattie Goss, Mrs. Je's Perry and Mrs. Lee White directed recreation for those who liked games and songs. The others enjoyed the Raffle game, consisting of a huge box to which each member had contributed an item (or items) was emp-

tyed out on a table and after a minute of observation, members were to guess the number of items in the pile. Mrs. Lee White, with her guess of "49" was the winner of the box and its contents.

Mrs. D. V. Fenter won the Door prize. Approximately 30 persons attended the supper.

Approval of the first phase of the project for developing Lakewood Country Club and the 69-acre park area into a rural recreation center for Rising Star Cross Plains and the surrounding area has been received from the state FHA office and clears the way for development of plans, specifications and estimates of costs by the Lakewood Club engineer on which final approval of a loan application will be secured.

Much progress has been made, according to Homer Cole, County FHA Administrator, who said that the final approval may go through in time for actual work on the project to begin early in Dec. Details of a project under development in New Mexico is being studied, Mr. Cole said, and this information pattern will be used in promoting the Lakewood Recreation Program.

Heading the committee on development of the Lakewood play ground and recreational center are R. D. Needham of Cross Plains and W. E. (Bill) Tyler of Rising Star.

Newly elected officers of the Rising Star Chapter FHA are Becky Nowlin, president; Marcia Lee, secretary; Sue Harris, treasurer; Roxie Smith, historian; Sally Medford, parliamentarian and Pamea Geye, reporter and fifth vice-president. Other vice-presidents are Judy Rutherford, Linda Ezzell, Caroline Brown and Julie Watkins. A program of work is being planned and also meeting dates. These meetings will be scheduled.

Old settlers and longtime residents of Rising Star and the surrounding area met at the American Legion Hall in Rising Star, Sept. 15 for the annual reunion which is sponsored each year on that date by the Old Settlers Association.

Registration began at 10 a.m. and each member paid a registration fee of one dollar which included the barbecue lunch at noon.

The morning program included talks by various old-timers reminiscing of the past years and events that happened, some humorous, some sad, but as always, events bringing chuckles mixed with tears as the audience were made to remember. Walter Henderson directed the song service.

The barbecue lunch was spread in the American Legion Hall dining room and approximately 150 persons attended.

Officers of the Association

## Mrs. Garrett's Sister Buried

Mrs. Ethel Walker of Big Spring died Friday, Sept. 11, at 2 p.m. Mrs. Walker was a sister of Mrs. Florence Garrett of Eastland. Funeral services were held Sunday, Sept. 13, at 2 p.m.

Survivors include her husband, Mr. A. E. Walker; one daughter, Mayron Shields of Alpine; six sisters, Mrs. Loy Smith and Mrs. Annie Thorp of Abilene, Mrs. Wayne Hale of Alpine, Mrs. Florence Garrett of Eastland, Mrs. Modell Hughes of California and Mrs. Ralph Bones of Plains; two brothers, W. H. Foresyth of Big Spring and Vinus Foresyth of Big Spring.

## Thursday Club Meeting Today

Next Thursday, (today) the Thursday Club will have its first meeting of the year.

The meeting will begin at 6:30 p.m. at the home of Mrs. W. D. R. Owen.

Hostesses will be Mrs. Carl Timmons, Mrs. Iral Inzer and Mrs. W. P. Leslie.

## TO CJC

Bobby Frank O'Steen son of Mrs. Sophia Harris of Eastland has pre-registered for the fall semester at Cisco Junior College.

are Major Max Prentice, president; Cecil Shults and Fred Roberds, vice-presidents and Mrs. Olive Jones, secretary. Mrs. Clara Burkhead serves as historian for the Association.

Word was received Monday evening by Walter L. Boggs telling of the death of his nephew, Dennis Boggs of Statesville, N. C.

Dennis, 15-year old son of Mr. and Mrs. Lee Boggs of Statesville, was crushed to death in a hay baler while helping with the bayer on the farm.

Relatives in this area were unable to attend the funeral.

## Topsy-Turvy 10-As Meet Non-Cons

With only two 10-A circuit members — Baird's battling Bears and DeLeon's befuddling Bearcats — having unblemished season grid records, the situation may become even more perplexing come post-game hours Friday night.

Top-ranked Albany, with a win over Cisco last Friday night and a loss a week earlier to Olney, takes on a third Double A crew, Anson, Friday night.

Eastland plays Cisco. No. 2 pegged Ranger, with two losses (their opener to Cisco, their second to Dublin), should be a cinch over the B-circuit, Gorman Panthers.

Baird, undefeated, hosts Roscoe hoping for victory No. 3, and Clyde's Bulldogs lay out the unwelcome mat for Santa Anna.

The Bearcats at DeLeon will battle invading Dublin of 7-AA, gunning for an upset, and Cross Plains Buffaloes take a week's respite from pigskin action.

## DISTRICT 10-A SEASON STANDINGS

Team	W	L	T	Pct.
Baird	2	0	0	1.000
DeLeon	2	0	0	1.000
Clyde	1	1	0	.500
Cross Plains	1	0	1	.500
Albany	1	1	0	.500
Ranger	0	2	0	.000
Eastland	0	2	0	.000

READ THE CLASSIFIEDS

Mrs. Murphy Slatton has just returned from a trip to Missouri, Kansas City, Kan., Kansas City, and Grand View, Mo., and Iowa. While visiting her son, Don and Sylvia Slatton of Mo., Mrs. Slatton visited President Truman's Library and his home. Don Slatton is a professional wrestler, and Mrs. Slatton visited five different states to watch him perform.

# Sale!

PRICE FOR SATURDAY TRADE

REG. 59c & 69c Yd.

FALL PIECE GOODS

NEW COLORS — WASH & WEAR — BEAUTIFUL PRINTS

NOW 2 YDS. FOR \$1 MAKE HARELIK'S Your Gift

## TO WHOM IT MAY CONCERN

I will not be responsible for any debts other than made by me. I am not married and never have been. I am innocent of the accusation against me. P.F.C. Lonnie Joe Basham, U.S.M.C.

## mode o'day

first at Mode O'Day... new 'plush' bra by

Loveable

has adjustable stretch straps

2.00

NEW BRA shapes you softly... naturally...

NEW PADDED CUPS of soft polyester are gently rounded, keep shape perfectly after every washing...

NEW NECKLINE plunges into today's fashion...

NEW STRETCH STRAPS adjust in length for better fit.

32 36A 32 38B

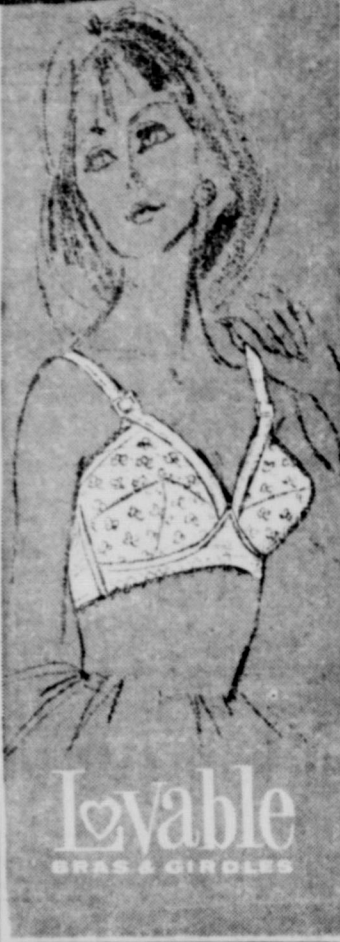
OLD RIP SCRIP SPECIALS

SHORT SPORT COATS ..... \$8.99  
RED, BEIGE, BLUE

SALE DRESSES ..... \$3.99 & \$5.99

(CLEARANCE) SWEATERS, ORLON ..... \$3.99

WHITE, RED, BEIGE, BLUE, BLACK HOSE. First Quality ..... 2 pr. \$1.00  
SEAM & SEAMLESS



**ZARPE**  
THE ESSENCE OF ALLURE...  
Zarpe, an excitingly new Parisian type fragrance, recaptures the haunting, lingering scent of the Cleopatra era... unlocks the ageless secret of blending rare and precious aromatic oils into a fragrance that is delightfully different, tantalizingly alluring. And the delicate scent of Zarpe pure perfume oils, undiluted by fugitive alcohol and water, whispers its story of feminine loveliness hour after hour after hour.

Now Available at  
**Central Drug**

## LAUNDRY SERVICE

- Family Finish
- Rough Dry
- Linen Supply
- Free Pickup and Delivery
- A Complete Laundry Service

**Cisco Steam Laundry**  
HI 2-2151  
MA 9-2122

## WE GIVE GOLD BOND STAMPS

DEL MONTE PINEAPPLE-GRAPEFRUIT DRINK 46-Oz. Cans 3 \$1

DEL MONTE YELLOW CLING PEACHES Sliced or Halves 4 No. 2 1/2 \$1.00



DEL MONTE EARLY GARDEN GREEN PEAS 5 303 Cans  
DEL MONTE Golden Cream Style CORN 303 Cans  
DEL MONTE GARDEN SPINACH 7 303 Cans  
DEL MONTE Sliced Or Whole BEETS 5 303 Cans  
DEL MONTE MARY WASHINGTON ASPARAGUS 3 303 Cans

DEL MONTE TOMATO SAUCE 10 303 Cans \$1

HOME-KILLED BABY BEEF Loin Steak ..... lb. 89c  
FRESH Ground Beef ..... lb. 39c  
GOOCH BLUE RIBBON Beef Chuck Roast ..... lb. 49c  
GOOCH BLUE RIBBON Beef Club Steak ..... lb. 89c  
RATH BLACK HAWK PURE Pork Sausage ..... 2 lbs. 89c

DEL MONTE Whole Peeled TOMATOES 4 303 Cans \$1

## DEL MONTE DOLLAR SALE

DEL MONTE TOMATO CATSUP \$1  
6 14-Oz. Bottles

KAISER ALUMINUM FOIL 12" x 25' Roll 33c  
WHITE SWAN POPCORN 9 1/2-Oz. 25c

AUSTEX BEEF STEW 24-Oz. Can 49c  
AUSTEX SPAGHETTI & MEAT BALLS 24-Oz. Can 39c

EVAPORATED PET MILK 3 Tall Cans 43c  
KELLOGG'S PLUM JELLY 18-Oz. Tumbler 37c  
KELLOGG'S CORN FLAKES 12-Oz. Box 29c

HOUSEHOLD CLEANER TEXTIZE 28-Oz. Bottle 69c  
FAULTLESS SPRAY STARCH 16-Oz. Can 49c  
DETERGENT DASH Giant Box 75c

LIQUID IVORY 22-Oz. Plastic 63c  
CLEANER COMET 2 Reg. Cans 33c  
SOAP ZEST 4 Bath Bars 79c

TOOTHPASTE GLEEM  
HAIR TONIC VITALIS  
LOTION JERGEN'S  
PICKLES  
FRUIT PIES  
GULF OIL BREADED SHRIMP  
CAL-TREAT STRAWBERRIES  
DINNERS

GIADOLA FLOUR 5-Pound Bag 53c  
NABISCO CHOC. CHIP COOKIES 14 1/2-Oz. Pkg. 49c  
KRAFT'S MIRACLE MARGARINE Reg. Pound Cn. 31c  
BALLARD OF PILLSBURY BISCUITS 3 8-Oz. Cans 25c  
PILLSBURY Vienna Style-White-Swiss Cheese Biscuits 3 19-Oz. Boxes \$1.00  
FOLGER'S INSTANT COFFEE 10-Oz. Jar \$1.49

FOLGER'S COFFEE Pound Can 79c



2 23c  
SLICED BACON

HOME MADE CHILI

RUSSET Potatoes 10 lbs. 49c

MacMoys SUPER SAVE  
Home Owned--Home Operated 400 S. Seaman

TERRELL'S USED EQUIPMENT  
Eastland, Texas

MANUFACTURED BY  
**LONG** MANUFACTURING CO., INC.  
TARBORO, N. C. / DAVENPORT, IOWA

TWO SIZES—LONG Super-extra large capacity, handles up to 4 rows, bulk basket PTO or 60 hp air-cooled engine. LONG Standard—with bagging attachment or bulk bin PTO or 35 hp air-cooled engine.

The Farmer Owner...the Custom Operator  
★ Lowest Upkeep Costs ★ Faster Harvesting ★ Bigger Yields  
★ Lowest Down-Time ★ Cleaner Peanuts

See your dealer now. Let him show you the many features that make Long the truly outstanding peanut combine. See for yourself why you will be money ahead when you own the Long.



MANUFACTURED BY  
**LONG** MANUFACTURING CO., INC.  
TARBORO, N. C. / DAVENPORT, IOWA

BRANCHES: FLORENCE, N. C. / TIFTON, GA. / GALLATIN, TEXAS / COLUMBUS, OHIO



# GER DRIVE-IN

ay 80 — East on Ranger Hill  
KIDDIES UNDER 11 FREE  
HOW STARTS AT DUSK

THURSDAY, SEPT. 17



SIZE ONE OF THE FOLLOWING  
MERCHANDISE AND RECEIVE  
BEST TICKET GOOD EACH

THURSDAY NITE

Have a Ticket or Pay Regular Admission

- ERN AUTO ASSOCIATE STORE
- GLOBE CLOTHIERS
- QUEEN
- ER FROZEN FOOD CENTER
- ER DRY CLEANERS
- KEY PIG

FRIDAY & SATURDAY  
SEPT. 18 - 19



**Click**  
**Click**  
**Click!**



Think of the money you'll save with gas heat when you modernize now [at a discount]!

Modern gas heating equipment is on sale now, not waiting for you to make that smart buy! Upgrade, improve your winter comfort with any of these housewarming gifts for your family: central fresh air furnace (goes in attic, closet, under house), thermostat-controlled floor space, wall heater. Bath-room and vented room heaters are also on sale. For the best, most economical heat, put on gas (and plan to add air conditioning later!) come to the Housewarming Sale now!



Heating Contractors and Lone Star Gas

## Per Capita Pay Checks Up For Texas Workers

DALLAS.—Personal income for the State of Texas rose \$1,782 millions of dollars from 1961 to 1963, from a total of \$19,569 millions in 1961 to \$21,351 millions of dollars in 1963. Major sources of income in 1963 were from Wage and Salary Disbursement \$13,934 millions, Manufacturing \$2,814 millions, Wholesale and Retail Trade \$2,778 millions, Services \$1,469 millions, Government \$2,999 millions, with State and Local Governments accounting for \$1,433 millions, while the Federal Civilian total was \$774 millions. Farm income totalled \$863 millions while Non-farm totalled \$2,077 millions.

Per capita income in Texas rose from \$1,973.00 dollars in 1961 to \$2,068.00 dollars in 1963, according to Harry C. Mayers, Director, Dallas Field Office, U. S. Department of Commerce.

The August 1964 issue of Survey of Current Business published by the Commerce Department's Office of Business Economics, he said, presents data on Personal and Per Capita income by states for 1961, 1962 and 1963.

Copies of the August Survey of Current Business may be obtained for thirty cents from the Commerce Department's Dallas Field Office, 1114 Commerce Street, Room 1200, Dallas, Texas 75202.

The above is typical of much of the important statistics on the economy of the United States available to businessmen in the Dallas Field Office.

John Brown had 18 men with him on the Harper's Ferry raid.

## County Shriners Enjoy Fish Fry At Lake Cisco

Some 60 persons were present Saturday night when the Cross Timber Shrine Club held their fall barbecue at the Lake Cisco cabins of W. V. Gardenhire and W. E. Dean. The club is affiliated with Mosiah Temple of Fort Worth.

Arthur Harrison of the Fort Worth temple was at the affair as the official representative of the Masonic order. He brought greetings from the high officials of the organization.

The menu featured fried fish and barbecued ham with all of the trimmings. Mr. Gardenhire, Mr. Dean and W. W. Sawyers were in charge of local arrangements.

The Cross Timber club is composed of Shrine members of Eastland and adjoining counties.



Harry Henry of Ranger, Arthur Harrison of Fort Worth and Carl Garner of Eastland at Saturday night's Shrine Club party at Lake Cisco.



T. C. Wylie of Ranger and W. V. Gardenhire of Cisco posed for this picture at the fish supper held at Gardenhire and W. E. Dean cabins at Lake Cisco.



W. E. Dean (top) and J. L. Thornton were waiting to be served plates of fried fish when this picture was made.

## PILOT INDUSTRY PROJECT BOON TO EASTLAND COUNTY

Eastland County has had the good fortune to be picked as a pilot county for a new industrial development program being instituted by the Texas Industrial Commission.

Gov. John Connally advised County Judge Scott Bailey of the selection late in August, and the first in a series of meetings to develop the program was held at Eastland Tuesday. The second was held there Saturday morning.

The pilot plan is described as "community development program" in which facilities of the individual community and the state will be joined in an effort to provide industrial development, particularly in the smaller cities.

Saturday's session was given to discussing this five-point general program:

1. Coordination of data on each community and the county as a whole.
2. Study organization of a county-wide financing program for industry.
3. Create an industrial sales team for the county.
4. Create a countywide promotional program carried out by a paid staff.
5. Establish local industry.

Harry Clark, executive director of the Texas Industrial Commission, explained Tuesday that the commission's role would be advisory, leaving the work to local leaders. The value of the commission's advisory function should not, however, be underestimated. It amounts to having expert guidance for free.

Eastland County offers a challenging laboratory for an industrial effort. It has a multiplicity of towns — Ranger, Eastland, Cisco, Rising Star, Carbon, Gorman, Desdemona and Olden — all of which would welcome the diversification that industry would bring.

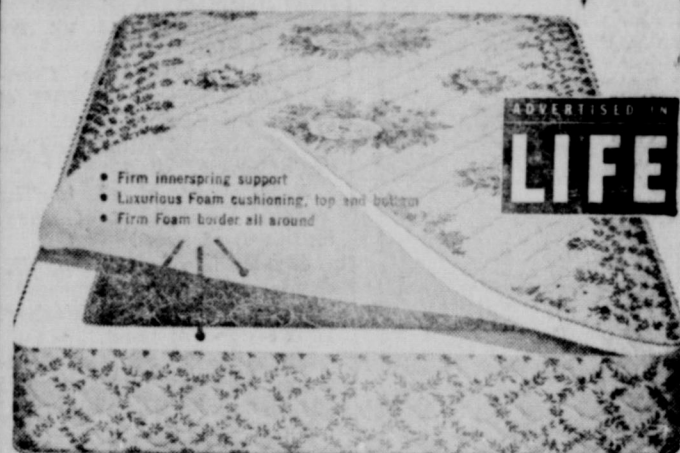
There already is some small industry in the county with successful records of operation which can be cited. There are junior colleges at Ranger and Cisco which enhance the county's appeal to industries. Lakes Leon and Cisco constitute two good water supplies. All the towns together, and adjacent rural communities, have a trainable labor supply.

This pilot program will not evolve overnight, nor produce results overnight. But it will be watched with interest, both in the immediate area, and statewide. It provides Eastland County with invaluable opportunities for publicity and, more importantly, profitable action.

—Abilene Reporter-News.

## READ THE CLASSIFIEDS

### never before A REVOLUTIONARY NEW MATTRESS AT SUCH A LOW INTRODUCTORY PRICE!



### ENGLANDER'S PERFECT FIT MATTRESS SALE!

There's a mattress to fit every budget in this great introductory sale. And every mattress is designed and constructed to conform to every line of your tired body. Made to help you relax, to sleep.

Revolutionary new firm comfort! Famous Englander innerspring construction completely encased in luxurious foam. The durability and support of springs with the sleep-inducing comfort of foam. This marvelously new sleep surface has an edge-to-edge firmness never before known in old-fashioned innersprings.

### FIGURE FIT QUEEN \$49.95\*

You must come in and see this great new mattress. Lie on it — just once, just for a moment... and you'll know at once this mattress is for you. The firm support of innersprings, plus the comfort of foam. Makes you want to curl up, relax and sleep. Beautiful comfort-quilted cover, too. At the unheard of introductory price of \$49.95 each, you'll want the set — mattress and box spring, maybe two sets. Come see it — lie on it — TODAY!



Our finest budget-priced construction, coil-on-coil innerspring construction, firm foam padding top and bottom. Priced for family buying at \$39.95 for mattress or matching foundation. Sturdy blue stripe ticking sets it off. \$39.95\* Twin or full size.

\*Also available in 100% foam

Englander a subsidiary of UNION CARBIDE CORPORATION

## SCENES AT SHRINE PARTY



W. W. Sawyers of Cisco was the official fish chef for the dinner. Mrs. Sawyers can be seen in the background.

## LADIES!!

For the newest concept in cosmetics — find out why FASHION TWO TWENTY stands far above all others. See how lovely YOU can look WITHOUT the "heavy made-up" look which usually accompanies cosmetics.

Watch your paper for date, time, and place of free demonstrations.

In just one application the superiority of FASHION TWO TWENTY will be revealed to the delight of your skin.

You owe it to yourself and your complexion to try it.

FORM-FIT FIBER GLASS CHAIR

Choice of Colors

- Coral
- White
- Turquoise

Reg. \$8.95  
**5.95** each

DEARBORN HEATERS FROM 19.95

Up FREE Normal Installation

SPECIAL! SPECIAL! SPECIAL!

IMPEL-AIRE BLOWER KIT 9.95

Reg. 19.95 only

With Purchase of Any Dearborn Heater

CARPET SPECIALS YOUR CHOICE OF

- 100% 501 NYLON
- OR
- 100% WOOL

Installed Over 40-oz. Rubberized Pad.

**6.95** Sq. Yd.

## RANGER FURNITURE EXCHANGE

123 North Rusk RANGER, TEXAS Phone MI 7-1404



## Annual Pecan Orchard Tour Is Planned For Sept. 25th

Six orchards will be visited in the growth and development of the pecan industry in the county and area are invited to participate on the tour.

Purpose of the annual affair, according to County Agent Jim Cooper, is to observe the size and condition of the crop and the nuts in the orchards, learn the fertilizer practices, see the various varieties growing under field conditions, compare spray schedules and dates for both insect and disease control and check on the emergence and population of the pecan weevil.

Oscar Schaefer, Cook, is vice president and Ben McKinnis, Eastland, is Secretary-Treasurer of the group.

In grandmother's day the burning of a sulphur candle was a regular part of the housecleaning that followed every case of scarlet fever, measles, or other contagious disease.

Starting from the El Rancho Cafe in Ranger at 9 a.m. on the above date the tour will be at the B. B. Freeman orchard in the Chesney Community, 10 miles south of that city.

The second scheduled stop will be at the E. A. Walker orchard followed by the orchard of Joe Bob Browning, both south of Germano.

After lunch and a short business session of the organization at the Brown Jug Cafe in Germano, the group will inspect the Charley Underwood, the Las Wallace and the C. D. Simmons orchards. All orchards to be visited on the tour are set orchards of paper-shell varieties on deep sandy soils underlain with a red clay subsoil.

All members of the association as well as others interested in the growth and development of the pecan industry in the county and area are invited to participate on the tour.

After lunch and a short business session of the organization at the Brown Jug Cafe in Germano, the group will inspect the Charley Underwood, the Las Wallace and the C. D. Simmons orchards. All orchards to be visited on the tour are set orchards of paper-shell varieties on deep sandy soils underlain with a red clay subsoil.

After lunch and a short business session of the organization at the Brown Jug Cafe in Germano, the group will inspect the Charley Underwood, the Las Wallace and the C. D. Simmons orchards. All orchards to be visited on the tour are set orchards of paper-shell varieties on deep sandy soils underlain with a red clay subsoil.

**DIXIE Drive-In**

EASTLAND HIGHWAY

Box Office Opens 7:45; Show starts 8:15; Box Office closes 9:20. Admission: Adults 60c, Children under 12 Free Each Wed. - Thurs. - Bargain Nights (Adults 25c)

Wednesday & Thursday, Sept. 16 and 17  
**VINCENT PRICE in Nathaniel Hawthorne's**  
**'Twice Told Tales'**

IN COLOR

Friday & Saturday, Sept. 18 and 19  
**'Law of the Lawless'**

Dale Robertson - Yvonne de Carlo

## Courthouse Records

- Oil & Gas Leases
  - Court Proceedings
  - Property Transfers
- Car Registration**
- George L. McGargo, Chevrolet, Eastland.
- Mrs. Ed F. Willman, Chevrolet, Eastland.
- Chip White, Chevrolet, Cisco.
- Dann Barger, Ford, Cisco.
- Lewis Fagan, Plymouth, Eastland.
- Mrs. Jeanette Ebenhart, Chevrolet, Cisco.
- John Tom Campbell, Chevrolet pickup, Cisco.
- Barbara Bledsoe, Chevrolet, Ranger.
- M. V. Fenter, Chevrolet, Cisco.
- Daisy Erwin, Chevrolet, Cisco.
- M. J. Dixon, Ford, Eastland.
- William A. Leslie, Oldsmobile, Eastland.
- L. T. Toombs, Oldsmobile, Eastland.
- Morris L. Newnam, Oldsmobile, anger.
- Suits Filed**
- Laura Myers vs. David Myers, divorce.
- Pauline Shubert vs. William Daniel Shubert, divorce.
- Monroe Byrd vs. Katherine Byrd, divorce.
- Christina Spradling vs. Johnny Spradling, divorce.
- Marriage License**
- Charles Patterson and Carol Diane Ponder.
- Harold Lynn Rodgers and Annette Bradford.
- Instruments Filed**
- G. W. Alexander, et ux, to Verle Simmons, warranty deed.
- Andrews Land Company to Odess Suburban Acres Incorporated, warranty deed.
- Allied Building Credits, Inc. to Elva Moad, release mineral lease.
- Buel Bryan to the Public, affidavit.
- May Bailey, et al to Veterans Land Board of Texas, warranty deed.

## Deer Hunting Is Set To Open Day Early This Year

AUSTIN — Ranchers in the battle-blitzed big game country have embraced the bonus early opening provision for the fall deer season in regulatory responsibility areas, reports J. Weldon Watson, executive director of the Parks and Wildlife Department.

The proposal to open the season on Saturday, November 14, rather than the traditional November 16 as provided by state law, got a resounding sanction at the public hearings in early summer.

The Parks and Wildlife Commission, which originally proposed the early opener, promptly acknowledged the support at its next meeting and set the wheels in motion to effect the historic change.

The extra weekend arrangement will be followed in most of the counties where the wildlife resources are managed directly by the Commission.

The 102 counties still under General Law will not be affected by the early opener since the November 16 date is set by law and therefore is unyielding.

Watson said the earlier opening date will not generally affect the usual December 31 closing of the season.

"These are two extra days allowed to give the hunters a break and to harvest a greater share of the deer herd which has now grown to saturation proportions in some areas," said Watson.

Paul Barton to Earlene Walker, deed.

Lois Irene Baird to Earlene Walker, deed.

Inez Bourdeau to the Public, wives election to manage property.

Laura Carver to James Carver, power of attorney.

O. L. Duckett, et ux, to Consolidated Gasoline Company, contract and agreement.

Mamie Drake to the Public, affidavit.

Donnie Dent et ux, to Veterans Land Building of Texas, warranty deed.

Kenneth E. Eoff to Loe Phagan, warranty deed.

First Federal Savings and Loan Association, Ranger to Edward Squires, et ux release deed of trust.

Franklin Insurance Company to Woodrow W. Hitt, et ux release deed of trust.

A. E. Guy, et al to The Public, affidavit.

A. E. Guy, et al, to The Federal Land Bank of Houston, deed of trust.

Jim Huff to the Public, affidavit.

Grover Hallmark to Herbert Ekurt, deed of trust.

Haiwath Oil and Gas Company to Brendon Trees Oil Company, et al, assignment oil and gas lease.

Luther Hardin et al, to L. A. Moody, warranty deed.

Thomas Holloway, now deceased, to the public, certified copy probate.

M. E. Hallenbeck et al to E. V. Lippard, warranty deed.

Lillie Harris et vir, to Gilbert Gaeta et ux, warranty deed.

Marcus Hill to Minnie Hill, warranty deed.

Lillie Harris et vir, to Coy Hudson, deed of trust.

Lillie Harris et vir, to L. A. Scott, warranty deed.

Bill Johnson, et ux to Triangle Aluminum Incorporated, assign mineral lease.

A. D. Jenkins et al, to the Public, affidavit.

Lane Wood and Company et al, to Mayne Robinson, abstract judgment.

J. M. Moore et ux, to Tom Noble, warranty deed.

Morris Association to Kenneth Eoff, release deed of trust.

Dole McIntosh et ux, to E. L. Simmons, assignment.

A. D. Pittman et ux, to W. G. Kirk, deed of trust.

Fannie Proctor et al, to Kenneth B. Cooper et ux, warranty deed.

Leo Phagan et ux, to First National Bank of Cisco, assignment of mineral lease.

O. J. Rone et ux, to O. J. Treadway, mineral lease.

Don Ramsey et ux, to Wyndell Armstrong, warranty deed.

Gladys Smith et al, to A. E. Guy, quit claim deed.

Johnny Spradling et ux, to Robert P. Dunn, warranty deed.

United States of America to Aubrey E. Guy et ux, release deed of trust.

Veteran's Land Board of Texas to Frank Rone, contract.

Mrs. W. D. Wisdom to the public, certificate number.

## Lacasa News

**BY MRS. D. B. RANEY**

Mr. and Mrs. Van Templeton and children of Quanah visited his brother and wife, Mr. and Mrs. A. O. Templeton last week. They were here to attend funeral services for Mrs. Van Templeton's father, Mr. J. W. Truesdell, at Brad.

Mr. and Mrs. Frank Archer of Duncanville spent the weekend with her brother, G. V. McGowan.

Mr. and Mrs. Bill Herrington and Billy Lynn visited his parents, Mr. and Mrs. Zelma Herrington over the weekend.

Mr. and Mrs. D. B. Raney took their grandchildren, Leland and Synthia Gorrell, home to Fort Worth Friday. While there they visited her

sister, Mrs. Susie Smith and her daughter and family, Mrs. Bill Harris. Mrs. Harris has new twin boys and two older daughters. They spent the weekend with the Gorrells.

Mr. and Mrs. A. N. Bradford attended the funeral services for her uncle, Mr. T. L. Gilstrap, at Cleburne Sunday. They were accompanied by her brother, Frank Taylor of Kermit and her sister, Mr. and Mrs. A. L. Stiles of Ranger. An aunt, Mrs. Lucy Kendrick of Ranger returned home with them.

Mr. and Mrs. Billy Jack Pockrus and Angie of Abilene were here for the weekend visiting his parents, Mr. and Mrs. Hubert Pockrus. Mrs. Pockrus and Angie visited at New Hope Baptist Church Sunday.

Carla and Karen Templeton of Abilene spent Monday with their grandparents, Mr. and Mrs. A. O. Templeton. They were to start school at Abilene Tuesday.

Mr. and Mrs. Joe Jackson, Shirley and Robert Joe spent the weekend in Mexico.

The WMS of Baptist Church Mission Study covered dishes completed the book, Spiritualism.

READ THE CLASSIFIEDS

**WE Specialize IN HOME LOANS**

When you get ready to buy a home and are looking for a loan — look first to an association such as ours. We SPECIALIZE in loans for homes, so we are able to devote our time to keeping up with the many facets of the ever-changing real estate picture. We are better able to help you find and obtain a loan that fits your particular needs. FHA LOANS AVAILABLE RIGHT NOW at



**1<sup>st</sup> FEDERAL SAVINGS & LOAN ASSN.**

204 Main RANGER MI 7-1611

Carla and Karen Templeton of Abilene spent Monday with their grandparents, Mr. and Mrs. A. O. Templeton. They were to start school at Abilene Tuesday.

Mr. and Mrs. Joe Jackson, Shirley and Robert Joe spent the weekend in Mexico.

The WMS of Baptist Church Mission Study covered dishes completed the book, Spiritualism.

RAWLINS

**MONTELEONE**

AN INTERSTATE THEATRE

**MAJESTY**

LAST DAY THURSDAY  
Open 4:45 — Shows 5:15 - 8:15

TERRIFYING...WEIRD...  
**UNEARTHLY STRANGERS**

PLUS AT 6:30 & 9:30

VINCENT PRICE  
The Last Man on Earth

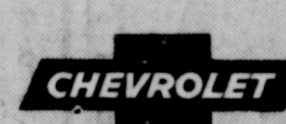
FRIDAY - SATURDAY  
Open Fri. 5:00 — Shows 5:30 - 7:25 - 9:15  
Sat. Open 1:15 — Shows 1:45 - 3:40 - 5:35 - 7:30

**ATTACK! ATTACK! ATTACK!**


THE GREATEST ADVENTURE SINCE MEN FOUGHT ON EARTH...OR FLEW OVER IT!

COLOR...DELUXE PANAVISION

LUFF ROBERTSON - GEORGE CHAKIRIS 633-5000



HERE'S CHEVROLET'S LONG STRONG LINE OF



workpower

TRUCKS FOR '65!

*More models, more engines, more Chevy workpower!*

The long strong line of Chevy trucks for '65 is rolling in with miles of new working equipment. Like that handsome Fleet-side pickup that leads the pack... one of the 18 pickup models in the line this year.

Further along, you'll find economical Chevy Vans, a wide selection of walk-in vans, a bigger choice of big trucks, more job-tailored components—trucks built to fit your business and budget. And under those hoods you'll find the best in 4- and 6-cylinder, V8 and diesel power, 18 tough truck engines in all including 4 new lower cost diesels. Here's the huskiest bunch of haulers that ever came looking for work!

Our word for all this is *workpower*. That's the stuff that makes a truck a real truck. A hard-nosed money-saver. Yes, *workpower*'s here and Chevy's got it, in such a variety of types and sizes that picking the best truck for your job will be easier than it's ever been before. If you're in the market, just get in touch with your dealer.

Telephone your Chevrolet dealer about any type of truck

FULLEN MOTOR COMPANY INC.

305 E. Main Eastland



help... THAT'S WHAT YOU GET PLENTY OF WITH YOUR TELEPHONE

Your phone makes it so easy to get things done. Calls to order things, to find out things, to tell the news, to organize activities—or you name it.

The busier you are, the more helpful the telephone is. Day in and day out, your phone is an important part of your busy life.

When you stop to think about it, is there really anything else that helps you so much for so little? Or that is of so much personal value?

SOUTHWESTERN BELL

Making telephone service better to serve you better.



# THE MAVERICKS . . . WE'RE BEHIND YOU ALL THE WAY

## EASTLAND vs CISCO

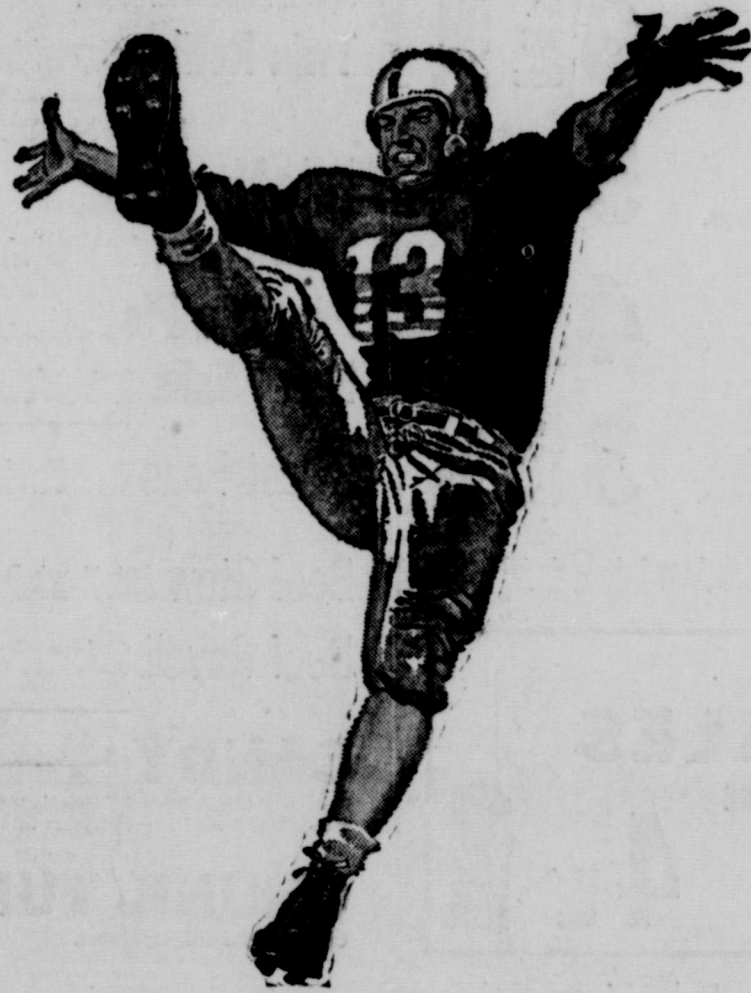
### FRIDAY NIGHT, 8:00 P. M., HERE

#### MAVERICK 1964 SCHEDULE

Sept. 4 — Comanche 18, Eastland 6  
 Sept. 11 — Rising Star 14, Eastland 13  
 Sept. 18 — Cisco at Eastland  
 Sept. 25 — Dublin at Dublin  
 \*Oct. 2 — Albany at Eastland  
 \*Oct. 9 — Baird at Baird  
 \*Oct. 16 — Clyde at Eastland  
 \*Oct. 23 — Ranger at Ranger  
 Oct. 30 — Open  
 \*Nov. 6 — DeLeon at Eastland  
 \*Nov. 13 — Cross Plains at Cross Plains



The 10-10 C.B. Club will furnish emergency communication facilities to the Stadium — and may be contacted for the transmission of messages to and from Maverick Stadium. TELEPHONE NUMBER IS Main 9-1678



#### MAVERICK ROSTER

No.	Name	Pos.	Wt.	Class.
10	Miller, Mike	E	150	Senior
12	McCullough, Jerry	QB	150	Junior
20	Wilson, Gene	QB	120	Sophomore
22	Griffin, Gaylon	FB	150	Senior
24	Martin, Ted	HB	125	Junior
25	Bass, Bill	HB	135	Freshman
40	Moylan, John	HB	155	Junior
42	Gregory, Layne	HB	145	Junior
50	Boles, Bill	C	150	Junior
51	Terrill, Rodger	C	140	Junior
52	Rollins, Garry	T	170	Senior
65	Waldon, Wayne	G	145	Senior
66	Wilson, Haydon	C	142	Junior
67	McCoy, Rodney	G	140	Junior
68	Fullen, James	G	140	Junior
70	Phillips, Dan	T	172	Senior
73	Keith, Fred	T	210	Freshman
75	Moon, Charles	T	195	Junior
77	West, James	G & T	142	Junior
80	Wilson, Larry	E	135	Junior
82	Sargent, Mickey	HB	145	Senior
84	Whitehead, James	E	140	Junior
86	Rhodes, Norman	T	150	Senior

#### COACHES:

Millard Glass, Head Coach; Denson Moody, Backfield Coach  
 Harold Price, Line Coach

**Eastland Supply Co.**  
 Oil Field Supplies  
 15 E. Main — MA 9-1595

**Perkins Implement Co.**  
 E. Main — Ph. MA 9-2666

**Eastland Steam Laundry**  
 Home Owned — B. W. Lasater  
 Ph. MA 9-2613

**Eastland Auction Co.**  
 Hwy. 80 East — MA 9-1760

**Modern Dry Cleaners**  
 Approved Sanitone Service  
 210 S. Seaman — MA 9-1344

**Standlee McCracken**  
 Mobil Oil Co.  
 Consignee

**Roy's Repair Service**  
 Roy and Stella Gann  
 205 S. Lamar — MA 9-2474

**Hillcrest Food Market**  
 When you run out — run in  
 401 W. Main — Ph. MA 9-1600

**Obie's Humble Service Station**  
 802 W. Main — MA 9-8866

**Western Auto Associate Store**  
 J. L. Pittman, Owner  
 Ph. MA 9-2011  
 Corner of Lamar & Commerce

**Kinnaird Insurance**  
 and Real Estate Agency  
 207 W. Main — MA 9-2544

**Eastland Service Parts Co.**  
 112 E. Commerce — MA 9-1733

**Majestic Theater**

**Toombs & Richardson**  
 Drug Store  
 108 S. Seaman — MA 9-1475  
 FREE DELIVERY

**Harelik's Department Store**  
 212 W. Main

**Mr. and Mrs. Victor Cornelius**

**Eastland Drug Store**  
 201 S. Main — MA 9-2112

**Central Drug**  
 Free Delivery — Dale Troutt, Owner

**Altman's**  
 "Smart Women's Wear"  
 North Side of Square

**Freyschlag Insurance Agency**  
 North Side of Square  
 Ph. MA 9-2275

**Texas Electric Service Co.**  
 F. N. Sayre, Mgr. — MA 9-2651

**The Men's Shop**  
 Correct Styles for Men and Boys  
 James Smith, Owner

**City Garage**  
 J. J. Finley, Proprietor  
 Engine, Starter, and Generator Work  
 103 White St. — MA 9-1709

**Eastland National Bank**  
 "On the Square" — Member FDIC

**Village Barber Shop**  
 George Carter

**Village Hotel Coffee Shop**

**Hood King Motor Co.**  
 Ford Sales and Service—On the Square  
 Phone MA 9-1786

**Graham's Trim Shop**  
 709 W. Main — Ph. MA 9-2266

**White Elephant Cafe**  
 724 W. Main — MA 9-8831

**Texas Lightweight Aggregate Co.**  
 Producers of Concrete Aggregates  
 C. W. Martin — Ph. MA 9-2060

**Jordan's Drive In**  
 Hwy. 80 East  
 Louise and Harry Jordan

**Eastland Iron & Metal Co.**  
 Henry, Tillie and Saul Pullman

**Koen Salvage**  
 Your Scrap Iron and Metal Dealer  
 Hwy. 80 West — MA 9-2649

**B&W Clinic**  
 H. J. Bulgerin, M. D.  
 B. B. Alexander, M. D.  
 310-30 Petroleum Bldg.

**Rushing Motor Co.**  
 Herman Rushing — Bill Hunter  
 Chrysler, Plymouth, Valiant  
 215 S. Seaman — Ph. MA 9-2430

**Goodyear Service Store**  
 Neal Edwards, Mgr.  
 306 East Main — Ph. MA 9-2662

**Dr. and Mrs. M. A. Treadwell Jr.**

**Ed Bradshaw**  
 Eastland Texaco Consignee  
 Phone MA 9-1310

**Eastland Memorial Hospital**

**Chamber of Commerce**

**Angelino Marble Co.**  
 Ph. MA 9-1662

# SOUTHERN TELEVISION SYSTEMS CORPORATION

Cisco-Eastland-Ranger . . . Inviting You to Watch All of the Games — NCAA — AFL — NFL



# DOLLAR DAYS

A dollar bill is your magic carpet to Bargainland this week!



**Tomatoes** 8 No. 303 Cans **\$1**  
Gardenside. For extra flavor in soups, stews and casseroles.

**Corn** 10 No. 303 Cans **\$1**  
Gardenside. Cream Style. Tender melt-in-your-mouth goodness.

**Pet Milk** Evaporated. For cooking, coffee, for babies. **7** 1 1/2-Oz. Cans **\$1**

**Applesauce** Town House. Fresh-fruit flavor of apples from the trees. **6** No. 303 Cans **\$1**

**Del Monte Peas** Early Garden. Full of garden sweetness. **5** No. 303 Cans **\$1**

**Tomato Juice** Town House. Refreshing — breakfast and snack treat! **4** 46-Oz. Cans **\$1**

**Fruit Cocktail** Del Monte. Five delicious fruits, ready to serve. **3** No. 2 1/2 Cans **\$1**

**Puffin Biscuits** Sweetmilk or Buttermilk. Or Betty Crocker Homestyle or Buttermilk. **3** 8-Oz. Cans **29¢** **Golden Corn** Green Giant Cream Style. Fresh from the field flavor. **2** No. 303 Cans **39¢**

MIX or MATCH!

**Highway VEGETABLES** **10** No. 300 Cans **\$1**  
★ Large Dry Lima Beans ★ Mexican Style Beans ★ Pork & Beans ★ Fresh Blackeye Peas ★ Dark Red Kidney Beans ★ Pinto Beans.

**Zippy PICKLES** **4** 22-Oz. Jars **\$1**  
★ Whole Sour ★ Sliced Dill ★ Sliced Kosher Dill ★ Whole Dill ★ Whole Kosher Dill

**BAKERY FRESH**  
**Wheat Bread** 1-Lb. Loaf **19¢**  
Skylark. Crushed (Req. 23¢) Serve it toasted with butter.

**Twin Rolls** or Cloverleaf Rolls. Skylark. (2¢ Off Label) Brown & Serve. **12-Oz. 13-Oz. Pkg. 23¢**

**FROZEN FOODS**  
**Mellorine** 3 1/2-Gal. Cans **\$1**  
Joyett. Assorted Flavors. A real treat! Get some for your family.

**Pumpkin Pie** Bel-air. Early Bird Special! **24-Oz. Pkg. 45¢**

**Fish Sticks** Captain's Choice. Just brown & serve. **14-Oz. Pkg. 49¢**

**Sweet Peas** Green Giant Fancy. Full natural flavor. **2** No. 303 Cans **47¢**

**Beef Stew** Dinty Moore's. Tasty! Just heat and serve. **24-Oz. Can 51¢**

**Beef Ravoli** Chef-Boy-er-Dee. Meaty and full of flavor. **No. 300 Can 31¢**

**CANDY** **4** Reg. Pkgs. **\$1**  
Roxbury. ★ Lemon Drops ★ Creme de Menthe ★ Sour Balls ★ Mint Straws ★ French Burnt Peanuts

**CHUNK TUNA** 4 6 1/2-Oz. Cans **\$1**  
Chicken of the Sea. Light meat.

Buy Two — Get One FREE  
**Enchilada Dinner**  
PATIO FROZEN. They're delicious. Just heat and serve. **12-Oz. Pkg. You Get All 3**

This Coupon Worth 50 FREE GOLD BOND STAMPS  
Plus your regularly earned Gold Bond Stamps with the purchase of  
**Large Tube Crest TOOTHPASTE**  
Coupon Expires September 19, 1964.

This Coupon Worth 25 FREE GOLD BOND STAMPS  
Plus your regularly earned Gold Bond Stamps with the purchase of  
**1-Lb. Box Busy Baker CRACKERS**  
Coupon Expires September 19, 1964.

**Safeway Guarantee!**  
Every item at Safeway is sold on a Moneyback Guarantee. This means the full purchase price will be cheerfully refunded on any item that does not give you complete satisfaction.  
**Shop Safeway with Confidence!**

**Shampoo** Halo. For regular or dry hair. **2** 12-Oz. Btl. **25¢**

**Toothpaste** Colgate. For sweet-smelling breath. **2** 4-Oz. Tubs **25¢**

**Reynolds Wrap** Aluminum Foil. For freezing or broiling. **2** 25-Sq. Ft. Rls. **25¢**

**Dog Food** Vigo "100 Brand." Dogs love it. **2** 16-Lb. Cans **25¢**

MIX or MATCH!

**CAKE MIXES** **3** Reg. Pkgs. **\$1**  
Pillsbury. Lemon Cream; Double Dutch Devil Food; Vienna Style White; Bavarian Cream Yellow; Deluxe Yellow, White, Pineapple, Chocolate and Banana Sundae.

**DAIRY FOOD VALUE**  
**Carrot-Raisin Salad** 1-Lb. Ctn. **29¢**  
Lucerne. Delicious. Serve salad often.

**Large Eggs** Cream O' the Crop. Large "AA". Doz. **49¢**

This Coupon Worth 50 FREE GOLD BOND STAMPS  
Plus your regularly earned Gold Bond Stamps with the purchase of  
**2-Lb. Pkg. Rath THICK SLICED BACON**  
Coupon Expires September 19, 1964.

This Coupon Worth 25 FREE GOLD BOND STAMPS  
Plus your regularly earned Gold Bond Stamps with the purchase of  
**1/2-Gal. Carton Lucerne BUTTERMILK**  
Coupon Expires September 19, 1964.

This Coupon Worth 25 FREE GOLD BOND STAMPS  
Plus your regularly earned Gold Bond Stamps with the purchase of  
**Two Heads U. S. No. 1 Iceberg LETTUCE**  
Coupon Expires September 19, 1964.



**Greens** Turnip or Mustard. Fresh & tender. **2** Bunches **29¢**  
**Lettuce** Leaf, U.S. No. 1. Fresh & Crisp. **2** Bunch **25¢**  
**Romaine** U.S. No. 1. Young and tender. **2** Bunches **39¢**  
**Carrots** U.S. No. 1. Colorful. **2** 1-Lb. Bag **29¢**  
**Lemons** Sunlit. Cool and refreshing flavor. **6** Pcs. **29¢**

**BABY BEEF**

**ROUND STEAK** **69¢**  
Or Sirloin. Tasty & nutritious. Serve Steak for dinner tonight. **Lb.**

**T-Bone Steak** Baby Beef. Tender and juicy as only Safeway meats can be. **Lb. 79¢**

**Rump Roast** Or Pikes Peak. Baby Beef. A grand main course. **Lb. 59¢**

**Short Ribs** Or Brisket. Baby Beef. Serve with noodles or barbecued. **Lb. 25¢**

**Chicken Hens** 3 1/2 to 6-Lb. Avg. Whole. U.S.D.A. Grade "A." **Lb. 39¢**

**Maxwell House Instant Coffee** **8-Oz. Jar \$1.09**  
(20¢ Off Label). Fresh aroma — fresh coffee flavor.

**U. S. No. 1. POTATOES** **10** -Lb. Bag **49¢**  
Russet. Potatoes make the meal. Delicious served in many ways.

**Yellow Onions** U.S. No. 1. Add zip and nip. **Lb. 5¢**

**Honeydews** Melons. U.S. No. 1. Refreshing. **Each 39¢**

**Fresh Dates** Waldorf. 10-Oz. Cups Fitted or 12-Oz. Unpitted. **Cup 39¢**



**Seafood Favorites!** Quick Frozen at Peak of flavor. **Lb. 69¢**  
**Swordfish Steaks**  
**Dungeness Whole Crab**  
**Halibut Steaks**

**Instant Tea** Tenderleaf (5¢ Off Label). 1 1/2-Oz. Jar. (10¢ Off Label). **3/4-Oz. Jar 44¢**

**Chunk Tuna** Breast-O-Chicken. Light meat. Delicate tasting. **6 1/2-Oz. Can 35¢**

**Cake Mix** Betty Crocker Washington Square Cherry Fudge. **18 1/2-Oz. Pkg. 41¢**

**Frosting Mix** Betty Crocker Washington Square Cherry Fudge. **13 1/2-Oz. Pkg. 39¢**

**Coffee** Chase & Sanborn. Regular or Drip (4¢ Off Label). **1-Lb. Can 81¢**

**Trend Liquid** Detergent. For soft hands and clean clothes. **22-Oz. Plastic 49¢**

**Purex** Liquid Bleach. Safe, Fast, Sure. Disinfects. **1 Quart Plastic 23¢**

**SUGAR** Imperial Cane. Or Great Western Best. Flavors as it sweetens. **5-Lb. Bag 45¢**

**Tower Franks** Slices. For Hot Dogs. **3** 12-Oz. Cans **39¢**

**Canned Ham** Rath. No Waste Heat and Serve. **3** 3-Lb. Cans **39¢**

**Sausage** Winkette Pure Pork. Regular or Hot. **2** 16-Lb. Cans **29¢**

**GREAT SONGS OF THE 60's** **NEW! VOLUME LIMITED EDITION COLLECTOR'S ALBUM**  
Only at SAFEWAY  
THIS COLLECTION OF COLUMBIA RECORDING

**TONY BENNETT** **BARBRA STREISAND** **JERRY VALD**  
**PATTI PAGE** **ANDRE KOSTELANETZ** **ERNE BECKER**  
**PERCY FAITH** **SKITCH HENDERSON** **ANTA BELL**  
**LESTER LANIN** **LES & LARRY ELGART** **HOWARD MORSE**

**\$100** WITH \$2.50 PURCHASE  
Exclusive of items on which offers of this kind are prohibited.

Prices and Coupons Effective Thurs., Fri. and Sat., September 17, 18 and 19, 1964. We Reserve the Right to Limit Quantities. No Sales to Dealers.

