



VOLUME TWENTY-FIVE

EASTLAND, TEXAS, TUESDAY, DECEMBER 13, 1955

## Santa Party Saturday Be Followed By Carol Sing on Square Here



**POOHED**—Travel sure takes it out of you. Take the word of Wolfgang Zeller, 10 months old, left, and one-year-old Bela Molnar, right. Played-out Wolfgang is pictured in a porthole as his ship arrived in New York City. His parents will make a new home in Cleveland, Ohio. Bela and her twin sister, who had enough squirm left to get out of camera range, hail from the Austrian Tyrol. Mom and Dad are making a new home in Chicago. The children were among 1215 refugees who recently arrived in the United States under the Refugee Relief Act of 1953.

## Y Student Leaders Tell of Projects They Are Pushing

### Eastland Echoes

By Casey

**THOUGHT FOR TODAY:**  
"There's nothing wrong with any psychiatrist that a couple of wealthy neurotics couldn't cure."  
— (Earl Bostick).

Whether or not you took in the Santa Party Saturday afternoon, don't miss the one next Saturday, as it will be bigger than that one. At the upcoming event, Eastland High School band will be in the Santa parade and play a brief concert while Santa is visiting and before the giving away of the five turkeys. It's going to be a lot of fun, and you'll get a great deal of Christmas enjoyment out of it. Eastland's latchstring is on the outside. Test its welcome... at Christmas time — any time!

Sammy Kaye, to a nightclub heckler, "Why don't you go to a dentist and have your head pulled?"

Those who pay their poll taxes will be readying themselves for an important privilege. They'll be glad they've provided themselves the franchise this coming Election Year.

There's bound to come a lot of highway travel between now and Christmas — between now and the first of the year, to be more accurate. Obey carefully every rule of the road. It's hard enough even then, in times of congestion, to keep from becoming a statistic!

## Ford Fdn. Grant To Hospital Here

### Christmas Night At First Baptist Honor Students

The Christmas night service — Sunday night Dec. 25 — at First Baptist Church will be given by the Baptist students home from colleges.

Students will serve as ushers, preach the service, offer the prayers and take part in various ways at the regular worship hour—7:30. Following the service, there will be a reception for the entire church membership honoring the students home from college. The reception honoring the college students, will be in Fellowship Hall and is an annual Yule season custom.

Installment Loans Custom Made For Each Customer  
**EASTLAND NATIONAL BANK**  
Member F. D. I. C.

Rotary gained a look into projects, present and planned, by the Y at Eastland High School when it met at the Connellee Roof Garden Monday.

Student leaders in the movement were speakers Arthur Murrell was program chairman. Bernard Hanna presided over the meeting.

Miss Annette Sherman, president of the Tri-Hi-Y, emphasized the community-wide Christmas project for the underprivileged that the Y is pushing, through placing gift boxes in stores and churches, and stated that delivery of these presents will be made by a committee who will include one of the Y boys dressed as old Santa. She said that the Tri-Hi-Y also is interested in social activities, sports, and other campus affairs. She expressed appreciation for assistance of adults interested in the Y.

Don Smith, president of the Hi-Y, said that activities on early dates will include the spending of a day at TCU for the career conference; the senior play in February; later, the autobiography text, then, in the spring, the banquet and graduation day. He said that the Y is trying to find a meeting place "and we believe we've located one." He thanked the Hi-Y sponsors — Hubert Westfall, E. K. Henderson and D. L. Houle — for faithful and effective work. Guests included Rotarians Dewey Cox and J. H. Denton of Ranger and Howard Turner and W. H. McAnally of Cisco. Ray Humphreys was a visitor with Ben Hamner.

**Weather**  
**FREYSCHLAG**  
INSURANCE AGENCY  
No. Side Square Phone 173  
Presents the Weather Report

Fair and mild with fresh southerly winds Tuesday. Partly cloudy and cooler with winds shifting to northerly Tuesday night. Partly cloudy and cold Wednesday. High Tuesday near 65, low Tuesday night near 30 and high Wednesday in the 40s.

A Ford Foundation grant of \$10,000 to Eastland Memorial Hospital, along with numerous other institutions over the nation, has been announced in news dispatches from New York.

Hospital board members were deeply pleased with this news. Board President T. M. Fullen was out of the city on business and thus will be interviewed later concerning plans for use of this financial assistance for the local hospital.

In one stroke the foundation gave away \$500,000,000 to colleges and hospitals, in an amount estimated at about \$3 for every man, woman and child in this nation.

The huge gift was the largest single benevolence in history and was \$150,000,000 more than the institution had given previously in the nearly two decades of its history.

BE SURE—SEE  
Don Pierson Olds-Cadillac  
Eastland  
Quality Cars at Volume Prices

## B. D. Tidwell Funeral Rites Are Conducted

Bernard D. Tidwell, pioneer Rising Star area resident, died at his home at Rising Star after a serious illness of five weeks. He was 74.

Funeral services were held Friday at the First Methodist Church, Rising Star, with the Rev. R. A. Brooks, Jr., pastor, officiating, assisted by Harry Tansil, minister of the Rising Star Church of Christ. Burial was in the Rising Star Cemetery.

Mr. Tidwell was born May 15, 1881 in Beebe, Ark., and came to Texas when a boy with his parents. He had lived in the Rising Star area for 53 years and farmed for several years in the Okra community. He was a member of the Methodist Church.

Surviving are his wife; three daughters, Mrs. Nona Sanders and Miss Leota Tidwell, both of Abilene, and Mrs. Aline Pittman of Killen; and two grandchildren.

## TEC Gets Jobs For 1,037,593 During Year

The Texas Employment Commission during the last year found 1,037,593 jobs and that was only a part of the agency's work.

Also, the Texas Employment Commission points out in its annual report, that agency also collected over \$16 millions in payroll taxes and investigated 161,234 claims for unemployment compensation.

The job placements represented an increase over the 1954 figure and the taxes collected were lower than last year's by four and one-quarter millions, a change of pace for governmental agencies. But then no other tax collecting unit can offer what the TEC may hold out under Texas unemployment compensation statutes, a chance for taxpayers to reduce their own liability.

A better employer experience rating can accomplish such a reduction, and Texas employers realized a neat saving by such means in 1955. The payroll tax starts at a flat 3 per cent, which would be a fixed rate under Federal control instead of state operation. Texas' taxable payrolls for the year amounted to \$3,973,000,000. The saving to Texas employers because of the employer experience rating operation amounted to \$92 millions.

More than half of the million-odd job placements by the TEC's 77 local offices were on farms, showing that agriculture still is a leading industry. And women filled 39.7 per cent of the 501,161 non-agricultural jobs, eloquent testimonial of woman's place in the booming Texas economy.

The TEC's report, currently being distributed to all newspapers as well as state officials, also revealed that of 496,091 job applicants 28,861 were physically handicapped, 21.3 per cent were veterans; more Texans look for jobs in June than any other month and fewer in December; the state's cotton farms need four times as many hands as all other farming activities combined; and

(Continued on Page Four)

## Act Your Age Being Readied As Junior Play

Did you think that an Eastland High School boy would look so nice in sailor suits? Two EHS boys make typical sailors on stage. They are here visiting the home of Jerry Joyce and her friend Angy, their fiancées. Their home is a small, comfortable home on the Eastland High School auditorium stage.

"If you would like to listen to their problems and how they solve them, come to the Junior Play, 'Act Your Age.' It will be staged at 8 p.m. Friday, at Eastland High School," said the committee members Monday.



**SHEAR PLEASURE**—Nick Luhman, 19, left, of Goodhue, Minn., is the new National 4-H Club sheep-shearing champion. His sheep was shorn in 4 minutes, 46 seconds during competition at the recent International Livestock Exposition, Chicago, Ill. At right, Darrell Stoops, Sharpville, Ind., clipped off top honors in the professional division in 1 minute, 48 seconds.

## County Pecan Show Winners Announced

B. B. Freeman of Ranger walked off with first place prizes in seven divisions of the third annual Eastland County Pecan Show at Cisco Saturday to easily become the event's top exhibitor.

Wayne Thurman of Cisco made the next best showing, taking two first place prizes and placing second in three divisions. Martha Wende of Cisco took first in two divisions, Eastern Schleys and Kincaids.

Honors were evenly distributed among the other exhibitors. Freeman dominated the most popular divisions, winning with his Burketts, Mahans, Western Schleys, Texas Prolifics, Stuarts, John Garners and San Saba Improved.

Thurman's two first place prizes came in the divisions of Squirrels' Delight and Jersey. He also had the second place pecans in the Eastern Schley, Stuart and San Saba Improved divisions.

Other first place winners were N. B. Eaves of Carbon, seedlings; Mrs. A. C. Underwood of Gorman, Onilwon; Doss Alexander of Pioneer, Halbert; and B. M. Bennett of Gorman, Success.

In the culinary division, Mrs. C. E. Ragland of Desdemona took first with her pies and Mrs. Mabel Ralston won with her cookies. Judges of the nuts were Blufford Hancock, Extension Service horticulturist of College Station; Fred Brisson, professor of horticulture at Texas A&M; and W. Williams, assistant Extension Service horticulturist.

Entries in the culinary division were judged by Martha Graves, a native of Cisco who is now home economics supervisor in Idaho; Mrs. O. O. Odum, home economics teacher at Cisco High School; and Mrs. E. C. McMurray of Eastland. Approximately 1,000 persons viewed the exhibits during the show's two-day stand.

**Pioneer Gets "Feeler" From Cisco Junior**  
The Pioneer Conference had a feeler today from Cisco Junior College regarding membership.

The conference, holding its winter meeting in Dallas, heard from Dean R. L. Willis of Ranger that he had been approached by a Cisco representative to determine if the Pioneer Conference would admit that school.

There was no formal application made but Cisco is expected to do it at the spring meeting of the conference at Stephenville April 28. Cisco now is in the Texas Junior College Conference.

BE SURE—SEE  
Don Pierson Olds-Cadillac  
Eastland  
Quality Cars at Volume Prices

## 5 More Turkeys To Be Given Away At Three in Afternoon

Eastland's biggest Santa Party will be staged by the Chamber of Commerce Saturday, and about three hours later — the Yule affair will be followed by a Christmas carols sing — song, for which County Tax Assessor - Collector Stanley Webb will be master-of-ceremonies.

Chamber Manager H. J. Tanner stated that the singing will take place at 6:45 p.m. in the vicinity of the community Christmas tree on the northeast corner

## Olden Boys, Scranton Girls Tourney Champs

Olden High School Invitation Basketball Tournament came to a very successful end Saturday night with the Olden High School boys and the Scranton High School girls taking first places honors.

Abilene Christian High School, sponsored by Abilene Christian College, took second place in the boys bracket after losing a hard-fought game to Olden. The Carbon girls, barely nosed out by Scranton, took second place.

Third place honors went to a couple of scrappy Eastland teams, the Eastland girls winning over a tall Strawn team, 41-31. The Eastland boys downed the Gordon boys to the tune of 50-41.

In the two championship games, scoring honors went to Jimmy Colburn of Olden with 30 and Decker of Abilene Christian High School with 11. In the girls game, Mangum of Carbon dunked 17 points, while Ingram of Scranton netted 27 points.

In the third place girls game, Shepard of Eastland made 14 while Sinclair of Strawn made 13. In the third place boys' game, Foster of Gordon put 22 points through the hoop while Cates of Eastland made 21 points.

High scoring boy for the tournament was Jimmy Colburn of Olden with 54 points in two games and the high scoring girl was Mangum of Carbon with 62 in three games.

An All-Tournament team was selected from both boys and girls teams. They were as follows: Girls All-Tournament Team: Guards: Johnson, Eastland; James, Scranton; M. Underwood, Gordon.

Forwards: Ingram, Scranton;

(Continued on Page 2)

## Victor Cornelius Injured In Fall Installing Light

Victor Cornelius, well-known Eastland businessman, was injured Sunday night in a fall off a kitchen stool on which he was standing installing a light bulb in a socket at his home.

He is recuperating at his residence, after examination at Eastland Memorial Hospital, and his physician advises him that he may be able to be out and around again after a period of 3 or 4 weeks if the injury mends nicely.

Leave will be granted to those who specifically request it. However, such leave will not be authorized to extend January 3, 1956, Sgt. Lowe pointed out.

Persons who desire to enter the Army this month and spend the holidays at home are urged to contact the U.S. Army recruiting station, Room 303, Court House, Breckenridge, or phone 244 for complete information.

## Sgt. McAllister And Family Are Olden Visitors

Sgt. and Mrs. R. J. McAllister and daughter, Sandra, here from Germany, have been visiting in the home of his parents, Mr. and Mrs. O. L. Woods of Olden. They plan to be here through the Christmas holidays, then proceed to El Paso, where Sgt. McAllister will be stationed at Fort Bliss.

BE SURE—SEE  
Don Pierson Olds-Cadillac  
Eastland  
Quality Cars at Volume Prices

of the Courthouse lawn. All who like to sing have been invited to take part and requested to bring their own hymn books — containing the carols.

Mr. Webb, the m-c, is a trained singer and formerly toured with a male quartet. One of the musical features will be trumpet numbers by Al Lotspeich, a member of the faculty of Ranger Junior College, who is minister of music of the Eastland First Methodist Church.

The lighted tree, a part of the downtown Yule decoration scheme, is on Highway 80 and attracts considerable attention from passers — through. Approximately 75 lights illuminate the tree.

C of C Christmas Chairman Carl Johnson anticipates a sizable gathering for the Yule singing.

The Santa Party series consists of three. Last Saturday's drew one of the largest crowds here in a long while. Santa came downtown on a fire truck and the fire and police departments and Chamber of Commerce assisted him, as he distributed candy gifts to the children. In his second appearance, next Saturday, he will be led downtown at 2:45 p.m. by marching and playing Eastland High School Band. Five turkeys will be drawn about 3 p.m.

Last Saturday's turkey winners were: Mrs. Bill Brown, C. J. Germany (2), Mrs. Roy Young and Mrs. Wince Graham. All are from Eastland except Mrs. Graham, who lives in Morton Valley. The final Santa appearance in this series will be the afternoon of Dec. 23.

## Quarterback Club To Meet 7:30 Thursday

The Eastland Quarterback Club will meet at 7:30 p.m. Thursday at the High School Cafeteria.

It will be a business meeting, closing out the year.

Also, definite arrangements for the annual football banquet will be mapped.

## W. Joe Blackmon Home From Far Eastern Waters

Fireman Second Class W. Joe Blackmon, U. S. Navy, who has been aboard the USS Erben, 7th fleet, in China, Japan and Formosa areas, flew to Dallas Saturday from the West Coast.

He was met at Love Field by his parents, Mr. and Mrs. W. A. Blackmon, 310 S. Lamar. He will be here 30 days before he returns to his ship. He has been in the navy two years and three months.

## Cotton Vote Will Be At ASC Office Here

Eastland will be one of the six voting places for area farmers to cast their ballots in the national cotton election Tuesday, Dec. 13. Balloting here in Eastland will take place at the ASC office in the Courthouse.

The announcement was made by ASC Manager Emmett E. Powell.

All farmers and their wives who grew cotton in 1955 are eligible to vote.

Towns where voting will take place in the county, besides Eastland, are: Cisco, Ranger, Gorman, Rising Star and Carbon. Landowners and farmers and their wives may vote from 8 a.m. to 6 p.m. Outcome of the national election will determine the cotton acreage and support situation for the coming year.



**SIGNAL ACHIEVEMENT**—Joseph Dolina, Dunellen, N.J., displays the filet crocheted tablecloth which won him first prize in a nationwide crocheting contest. A railroad signal tower operator, Dolina began crocheting 11 years ago.

## Band Concert Slated Tuesday At Hi School

The informal Christmas band concert, calendared for 7 p.m. Tuesday, Dec. 20, at the high school auditorium, is free to all students in the Eastland schools and is free to all members of the Band Boosters Club.

All families who have not already joined the Band Boosters Club are invited to this performance and to join at the door. Those who attended this concert may join the Band Boosters Club for the membership fee of 50 cents, which entitles them to free admission to this performance and all future performances of the band for the remainder of this fiscal year.

All band students in the ward schools, junior high school and high school will take part in the Christmas concert.

There has been a movement to make every family in town members of the Band Boosters Club at \$1 a family or 50 cents a person, and most families have joined.

## WEAVERS ATTEND 50TH WEDDING OPEN HOUSE AT PROCTOR SUNDAY

Mr. and Mrs. H. T. Weaver attended the golden wedding anniversary open house party honoring her uncle and aunt, Mr. and Mrs. Henry Dean of Proctor Sunday afternoon.

The party was given at the Deans' ranch home near Proctor with their children as hosts. Mrs. Weaver presided at the silver coffee service.

## Johnny Fehl Is Home After Year In Greenland

Johnny Fehl, engineer in the Army, has returned from Greenland. He made the trip by plane to Albuquerque where he was joined by his wife and son, Johnny. They drove here Sunday night to spend Christmas with his parents, Mr. and Mrs. John Fehl, 1307 S. Seaman.

He has been in Greenland a year. After his vacation here he will be stationed at Fort Hood. His son was a week old when he left for Greenland and Johnny now is a year and two-months-old.

# Eastland Telegram

Eastland County Record established in 1931, consolidated August 31, 1951. Chronicle established 1887. Telegram established 1923. Entered as second class matter June 16, Post office at Eastland, Texas, under No. 517 of Post Office of March 3, 1939.

FLOYD W. CASEBOLT, EDITOR AND MANAGER

TIMES PUBLISHING COMPANY  
Published Tri-Weekly—Tuesdays - Thursdays - Sundays  
FLOYD W. CASEBOLT and JOE DENNIS, Publishers  
RAY CASEBOLT, Associate Editor  
NORMAN WRIGHT, Advertising Manager

One week by carrier in city . . . \$4.00  
One month by carrier in city . . . \$12.00  
One year by mail in County . . . \$120.00  
One year by mail in State . . . \$135.00  
One year by mail out of state . . . \$150.00

NOTICE TO PUBLIC—Any erroneous reflection upon the character, standing or reputation of any person, firm or corporation which may appear in the columns of this newspaper will be gladly corrected upon being brought to the attention of the publishers.

## Classified Ads..

### MISC. FOR SALE - FOR RENT -

**FOR SALE:** Used conret in good condition. \$25. Phone 657.

**READER'S DIGEST SPECIAL:** 8 issues \$1.00. James N. Jordan, Phone 727-J-1.

**FOR SALE:** Hot water heater, 20 gallon. Cost \$85, will sell \$42.50. Phone 727-J-1.

**WE SELL and RENT** typewriters and adding machines. Stephens Typewriter Co. 417 S. Lamar.

**FOR SALE:** A.K.C. registered Boxer pups. T. R. Craig. 522 Pine, Ranger.

**FOR SALE:** Cheap. Woodwix clarinet and flute, 912 Young Street, Ranger.

**FOR SALE:** Bred itampaire gifts, with or without papers. Homer Stephens, Route 1, Gorman. Mills west of Rucker.

**FOR SALE:** Lone Star Boats 25 Aluminum and Fiberglass Models Mrs. Waverly Massengale. Phone 755-W2.

**NOTARY SEALS:** At Eastland Telegram Office Supply.

**FOR SALE:** Liberty Record Storage Boxes. Telegram Office Supply.

**STOP - LOOK - LISTEN**  
We have market for several farms, 3 ranches and several homes in Eastland. Let us know what you have to sell.  
H. P. Pentecost and J. C. Day

**FOR SALE:** Ed T. Cox's Eastland County Histories. (Give one for Christmas). Eastland Telegram.

**PIANOS FOR SALE:** Christmas sale on pianos. New Spinnet Cable Nelson, used baby grande, good used up rights — all in good condition. Terms if desired. 700 S. Seaman, phone 320 or 713-J. Mrs. A. F. Taylor.

**CHRISTMAS GIFTS** especially priced. China, wrought iron, and redwood planters. New shipment tropical plants. Pottery Sales-room of Horton Ceramics, Highway 80, Eastland.

**FOR SALE:** Tabletop stove, Frigidaire refrigerator, clay back heater. Good condition. 209 W. Patterson.

**AUTOS FOR SALE**  
**FOR SALE:** 1955 Ford pick-up—like new, 8,000 miles. Bargain. Call 312.

**FOR SALE:** 1941 Plymouth. Good work car. Phone 508-J.

**FOR SALE:** 1953 Plymouth, good clean car, low miles, owner gone to Japan. Phone 74-W.

**Brown Sanatorium**  
Office Hours 8 to 5 p.m.  
Dr. N. A. Brown, D. C.  
In Charge  
800 W. 6th St. Cisco

**MINNOWS**  
J. L. Whisenant  
Olden

**SHAW'S COTTAGE SANITARIUM**  
or Rest, Treatment and Health  
GLENROSE, TEXAS  
(Business Route 67)

**MOBIL 210**  
★ Stays 34% Stronger  
★ Lasts 14% Longer  
At the Sign of the FLYING RED HORSE

**Earley Tire Service**  
302 W. Main - Eastland - Phone 208

**Winter Special!**  
**DuPONT SPRAY GLAZE**  
A REGULAR \$15.00 JOB

**MOST BEAUTIFUL POLISH**  
**JOB ON THE MARKET**  
**\$10**

**OBIE & DOC COSDEN STATION**  
E. Main At Bassett Phone 9535

**Olden -**  
(Continued From Page One)  
Mangum, Carbon; Pierce, Gordon. Boys All-Tournament Team - Starr, Scranton; Beal, Abilene Christian High School; McCotter, Olden; Colburn, Olden; Munn, Olden.

Olden's next home game will be here Tuesday night, December 13, when they face the Eastland Mavs.

**PALACE**  
THEATRE - CIRCUS THEATRE  
Dec. 13 - 14 - 15  
**A Prize of Gold**  
Technicolor  
Richard Widmark and Mai Zetterling  
**Shack out on 101**  
Terry Moore

**Mattresses - All Sizes**  
We renovate and make over all layer-built mattresses.  
**Interspring Mattresses**  
Made from Old Mattress  
**\$17.50 and up**  
**Phone 166**  
New Mattresses For Sale We Take Trade-Ins Box Springs To Match - Foam Rubber Mattresses

### Chance For Rain Tonight; Colder Wed.

Fresh southerly winds that brought a new chill to this area today are expected to bring in clouds from over the coast that brought rain to that locality earlier this week.

Actually the chances of rain here today and tonight are slight, but the possibility remains. However, the showers will have only a limited time to fall here. With clear and crisp skies this morning, northwesterly winds are expected to push the clouds out of this vicinity during the night tonight.

Only areas reporting rain in the past few days have been in the Gulf Coast area, the direction from which today's clouds will come. Temperatures are expected to drop nearly to the freezing mark tonight and will rise no higher than the mid 40s tomorrow.

### All HD Members of County Are Urged To Attend Yule Meeting And Covered-Dish Luncheon

Wednesday, Dec. 14, the Eastland County Home Demonstration Council will meet for its annual Christmas party. The party will get underway at 10 a.m. in the Christian Church annex in Eastland.

The morning will consist of group singing and games. Each club in the county will furnish a part of the recreation.

At noon there will be a covered-dish luncheon furnished by the home demonstration club members.

In the afternoon there will be an installation service conducted by the agent, Mrs. Minnie Mae Hart. All of the old and new council officers, old and new council delegates will participate in this. The committee chairman will also have a part in the service.

### Ticklers By George



"I'll say this about Smith, our new member. He really tries to get into the spirit of this thing!"

### HERE FROM OREGON AND WICHITA FALLS

Mr. and Mrs. D. J. Carithers of Springfield, Ore., are visiting in the home of her brother-in-law and sister, Mr. and Mrs. J. M. Davis. Mr. and Mrs. Lloyd Bland and son and Mr. and Mrs. Claud Lewis, all of Wichita Falls, were weekend guests of Mr. and Mrs. Davis and their guests from Oregon.

Mrs. Bland is Mrs. Davis' niece and Mrs. Lewis is her sister. Miss Genevieve Truly, another sister of Mrs. Davis, who has been in Oregon in her sister's home since summer, returned here with the Carithers. This is the first time the three sisters and niece have been together for some time.

### HERE FROM LAKE JACKSON

Mr. and Mrs. J. D. Kveton and children, Tena and Leah, of Lake Jackson, will return home Thursday after visiting since Friday with Mrs. Kveton's parents, Mr. and Mrs. J. R. Gilbreath.

Mrs. Gilbreath, who underwent cataracts to both eyes the first of September, is getting along fine.

### LLL Class Meets With Teacher, Mrs. B. Perkins

The LLL Class of the Young People's Department of First Baptist Church was entertained at a supper Thursday night at the home of the teacher, Mrs. Robert G. Perkins, 501 Pershing.

Yule decorations were used in the reception rooms of Mrs. Perkins house and as a centerpiece for the dining table where places were designated for those present, as follows: Jeannie Pittman, Jane Jordan, Sylvia Latham, Barbara Dalton, Patsy Rosser, Donna Scott, Betty Nell Jones and the hostess, Mrs. Perkins.

### VISITS HERE AND IN CISCO

Miss Joe Newman, formerly of Cisco and former technician at Eastland Medical and Surgical Clinic, now of St. Joseph Hospital Fort Worth, spent the weekend with her parents in Cisco and visited Miss Martha Hubbard of Eastland Sunday.

### HERE FROM BALLINGER FOR BALL GAME SAT.

Mr. and Mrs. Guy White and children of Ballinger were guests Saturday of her brother-in-law and sister, Mr. and Mrs. Hubert Westfall and daughter, Betty. They attended the Breckenridge-Stamford game at Breckenridge Saturday.

**MAJESTIC**  
INTERSTATE'S NEW HANDY, THRIFTY BOOK OF THEATRE TICKETS  
A DISCOUNT BONUS WITH EACH BOOK  
AN IDEAL CHRISTMAS GIFT  
ON SALE NOW

**NEW 225-HORSEPOWER\* SAFETY-SURGE V-8 ENGINE.** Here's high horsepower with a big difference. More of it's usable—for faster getaway, safer passing.

**NEW IMPACT-ABSORBING STEERING WHEEL** is stronger, gives better control, greater safety. Recessed hub protects driver, makes instruments easier to see.

**NEW SAFETY DOOR LOCKS.** Give added protection against doors springing open. Child-guard locking device for rear doors available as an option.

**NEW SAFETY-BEAM HEAD LAMPS** help you see up to 80 feet more of the road ahead—help pierce fog, rain, snow, yet cause less glare to oncoming cars.

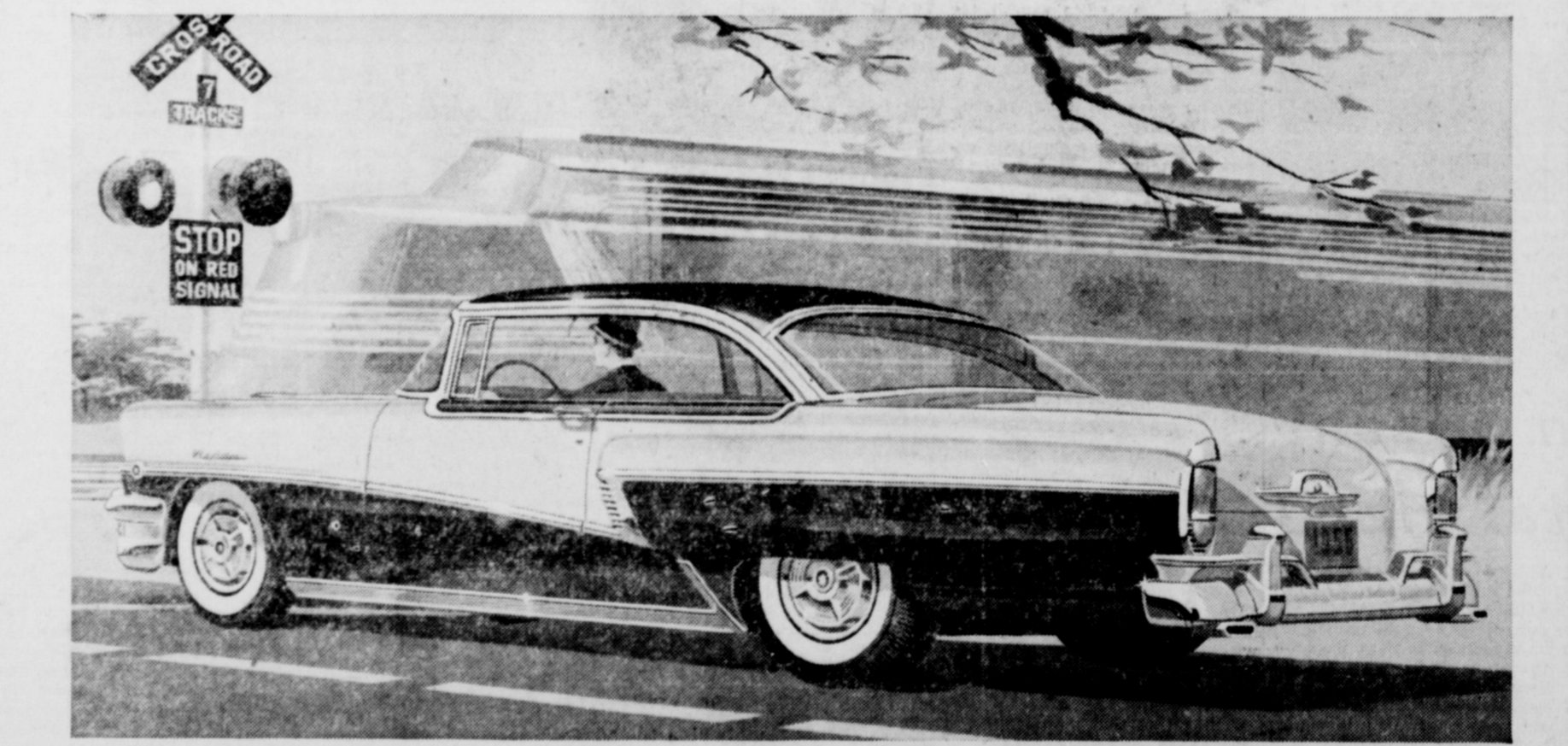
**NEW PADDED INSTRUMENT PANEL.** This attractive optional feature consists of an expanded plastic protective pad. Cuts down annoying glare in windshield.

**NEW SAFETY SEAT BELTS.** Strong, Comfortable. Add to your comfort on rough roads. Easily fastened with one hand. Bolted to floor. (Optional.)

**NEW PADDED SUN VISORS** offer you the same kind of protection as padded instrument panel. These handsome visors are available as an option.

**NEW SAFETY REARVIEW MIRROR** swivels easily and fully in all directions. The safety-glass mirror gives an exceptionally broad view of the road behind.

## Now see the 10 new safety features in THE BIG M



NEW SAFETY-GRIP BRAKES, NEW SAFETY EVERYWHERE. THE BIG M offers a new kind of motoring security. For instance, amazingly little foot pressure is needed on Mercury's big new brakes for smooth, sure stops. Look for many more extra values. Bold new styling ideas. New low-silhouette hardtops in all Mercury series. And a new budget-priced model—the Medalist. Our showrooms are displaying these big new cars now. See them firsthand.

**For 1956—the big move is to THE BIG MERCURY**

**WAYNE MOTORS**

Don't miss the big television hit, ED SULLIVAN'S "Toast of the Town," Saturday evening, 8:00 to 9:00, KRBC, Channel 9.

**306 E. Main EASTLAND Phone 40**

**NOW! ENJOY TV ANYWHERE IN YOUR HOME!**

**IN THE LIVING ROOM**

**ON THE PATIO**

**RCA Victor 21-inch Transette.** Mahogany grained finish. Model 2116225. \$269.95

**NEW 21-INCH RCA VICTOR Rollaround TV with "Hidden Panel" Tuning!**

It's here! RCA Victor's exciting new "Big-Wheel" Rollaround TV! Large wheels—not casters—make it easy to move anywhere in your home—even on thick carpets or over doorrails. Come in today—see, roll the new 21-inch RCA Victor Transette!

**NEW "4-PLUS" PICTURE QUALITY**

- (1) 100% automatic gain control.
- (2) "Sync" stabilizer that kills interference jitters.
- (3) 7% extra brightness.
- (4) 32% extra contrast.

For UNF—New High Speed UNF fronting covers 20 UNF channels in 2 1/2 seconds! Optional, extra, of new low cost!

Ask about the exclusive RCA Victor service contract

**EASTLAND DRUG CO.**  
203 W. Main Phone 59

### Brenda Sue Tankersley And H. D. Warren Exchange Vows

Miss Brenda Sue Tankersley, daughter of Mr. and Mrs. W. E. Tankersley, Rt. 2, Eastland, became the bride of Harold Douglas Warren of Eastland in a double ring ceremony at 8 p.m. Saturday. The bridegroom is the son of Mr. and Mrs. M. S. Warren of 701 S. Halbray street.

Roy M. Turner, minister of First Christian Church, officiated at the rites in the presence of members of the Tankersley and Warren families.

Decorating the church altar

### Past Matrons Have Annual Yule Party

The Past Matrons Association met for the annual Christmas party Thursday night at the home of Mrs. Pebble Boles. Mary Barton, president, called the meeting to order and gave an interesting talk on Christmas.

Mrs. Barton presented each member with a new yearbook whose covers were gold with forged-me-nots tied with blue ribbon. Yearbooks were fashioned by Mrs. Barton who was given a rising vote of thanks for making them.

Mrs. Barton thanked Mrs. Bessie McWilliams, associational mother, for her faithful services. The benediction was given by Mrs. Fania Carpenter.

The gifts on the brilliantly-decorated tree were opened and refreshments of pie and coffee were served to those present, as follows: Meses. Bessie McWilliams, Everella Stetson, Edna Oakley, Corrine Weathersby, Fania Carpenter, Lena Kincaid, Vinita Miller, Laverne Wingate, Velmah Van Hoy, Mary Barton, Mary Hancock, Beulah Cooper and the hostess, Pebble Boles.

The next meeting will be in the home of Velmah Van Hoy.

were baskets of white gladioli and stock and white tapers in cascading floor candelabra. The tapers were lighted by Gracie and J. B. Tankersley, twins, sister and brother of the bride.

Mr. Tankersley gave his daughter in marriage. She wore a white brocaded cotton frock, fashioned with long fitted torso, flared skirt and bolero with bracelet-length sleeves, high neckline and many tiny buttons down the front. With this she wore a pink beaded hat, pink slippers and carried a bouquet of white gardenias.

Miss Elnora Phelps was maid of honor and wore a gold-flecked blue linen frock with black hat and corsage of pink carnations.

Barry Bownds of Brownwood attended Mr. Warren as best man. Ushers were Paul Tankersley of 401 S. Madera, Eastland, and Larry Tankersley, Rt. 2, brothers of the bride.

Mrs. Earl Lewis, organist, played a prelude of nuptial music as the candles were lighted and accompanied Mrs. Howard Gill who sang "Because" (Guy d'Hardelot). Mrs. Lewis played Wagner's Wedding March from Lohengrin for the processional and soft music during the pledging of the vows.

For her daughter's wedding, Mrs. Tankersley chose a navy blue frock while Mrs. Warren wore a two-piece grey ensemble. Both wore corsages of white carnations.

Following their wedding trip the couple is at home at 610 W. Plummer street.

The bride, a junior at Eastland High School, is continuing her school work. Her husband was graduated from Eastland High School in May and is employed by the Men's Shop in Eastland.

Besides members of the two families in this community, the wedding was attended by Mr. and Mrs. P. D. Warren of Sweetwater, uncle and aunt of the bridegroom.

## of interest to WOMEN

Edited by FAY CASEBOLT

### Prize Winners In Pecan Bake Show Held In Connection With Co. Pecan Show Are Announced

The Pecan Bake Show held in Cisco in connection with the annual Eastland County Pecan Show December 9 and 10 has been proclaimed "very successful" by the county home demonstration agent, Mrs. Minnie Mae Hart.

About forty entries comprised the bake show, which was an improvement over last year's show. Ribbons and cash prizes were awarded to the following:

Pies — 1. Mrs. C. E. Ragland, Desdemona; 2. Mrs. Marshall Berry, Carbon; 3. Mrs. J. E. Stansell, Cisco.

Cakes — 1. Mrs. W. D. Hazel, 2. Mrs. Alice Gorr, 3. Mrs. W. C. Clements, Cisco. Grand prize winner in the cake division was Mrs. J. E. Stansell, Cisco.

Cookies — 1. Mrs. Ross Dennington, 2. Mrs. J. V. Heizer, Cisco; 3. Mrs. Vergie Hale, Pleasant Hill.

Candy — 1. Mabel Ralston, Rising Star; 2. Mrs. B. B. Freeman, Ranger; 3. Mrs. Walter Tonne, Nimrod.

Nut Bread — 1. Mrs. M. M. Sheffield, Rising Star; 2. Mrs. J. E. Heeter, Desdemona; 3. Mrs. Cleo Rice, Cisco.

Judges for the event were Martha Greaves, state supervisor in Home Economics Education in Idaho; Mrs. O. O. Odom, home-

making teacher at Cisco, and Mrs. E. C. McMurray, Eastland. "On behalf of the Home Demonstration clubs of Eastland County, we want to express our sincere appreciation to all those who assisted us in any way," stated Mrs. Hart.

#### It Takes More Than Luck—

... to get money when you need it most. When the unexpected happens you can't count on Luck to get you out of financial difficulties. YOU CAN count on insurance! It will give you the cash you need when you need it most to meet the costs of fires, tornadoes, hail, accident liability, illness, etc. See us now for complete insurance coverage to safeguard your future. Use our monthly payment plan if you like. Many are.

### EARL BENDER & COMPANY

Eastland (Insurance since 1924) Texas



### Borden's MILK



YOUR ASSURANCE "If It's Borden's It's Got To Be Good"

J. T. GREGORY - DISTRIBUTOR Phone 36 - Eastland

Serving Eastland, Stephens, Brown, Comanche Counties

### Martha Dorcas Class Meets For Christmas Party

The Martha Dorcas Class of First Methodist Church met at the home of Mrs. Turner Collie, 1407 S. Seaman, Friday, for its Christmas party.

Hostesses besides Mrs. Collie were Mrs. Guy Parker, Mrs. Claud Boles, Mrs. J. H. Parker and Mrs. Earl Bender.

Mrs. C. M. Pogue, president, conducted a brief business meeting which was opened with prayer by Mrs. W. P. Leslie. Mrs. L. C. Brown read the Christmas story from the second chapter of Luke and Mrs. Joe Stephen told a Christmas story, "The Wise Men."

Fruit cake and hot fruit punch were served by the hostesses. Gifts were exchanged from around the base of a tree fashioned on a table as a golden winding stairway with varicolored angels.

on the steps, an arrangement fashioned by Mrs. Collie. Red, green, silver and gold Christmas ornaments and greenery were used at focal points throughout the reception suite.

Present were Meses. Pogue, Leslie, Stephen, Boles, Bender, Brown, Collie, Guy Parker, Albert Fauth, Fred Davenport, J. C. Looney, Tom Halley, J. H. Brock, Will Martin, E. Roy Townsend, J. C. Whitley, Taylor Smith and B. O. Harrell.

#### VISIT IN GORMAN

Mr. and Mrs. J. U. Johnson visited relatives in Gorman Sunday.

### HAMNER FUNERAL HOME

Funeral Directors

REN E. HAMNER EASTLAND, TEXAS PHONE 17

### THOMAS FUNERAL HOME

PHONE 166 CISCO, TEXAS

Nominal Cost Burial Insurance For The Entire Family

# WEDNESDAY DOUBLE BB STAMPS

AT MacMOY CLOVER FARM STORE PLUS THESE WEDNESDAY SPECIALS

EXTRA FANCY DARK RED WASHINGTON DELICIOUS

**APPLES** Buy Your Xmas Apples Now Large Sizes, Lb. **19c**

NEW KING SIZE

**Dr. Pepper** Full 10-Oz. Bot. 6-Bottle Carton **18c**

RED CUP

**COFFEE** Lb. **75c**

BETTY CROCKER

**CAKE MIX** All Flavors 20-Oz. Pkg. **27c**

GLENDALE PINK

**SALMON** No. 1 Flat **33c**

AMERICAN BEAUTY MACARONI or

**Spaghetti** 7-Oz. Pkg. **19c**

SUPREME SALAD WAFFER

**CRACKERS** 1-Lb. Box **25c**

BALLCREST WHOLE SPICED

**PEACHES** No. 2 1/2 Can **29c**

Austex New Family Size

### CHILI

Big 24-Oz. Can **56c**

U.S. No. 1 Idaho Russett

### POTATOES

10 Lb. Bag **39c**

ARMOUR'S MATCHLESS

**Sliced Bacon** Lb. **35c**

PURE PORK

**SAUSAGE** Lb. **29c**

**Pork Chops** Lb. **45c**

FRESH GROUND

**BEEF** Lb. **29c**

ARMOUR'S STAR

**FRYERS** Lb. **45c**

OPEN EVERY NIGHT TIL 8 P.M.—SATURDAY TIL 9 P.M.

## FOODS CLOVER FARM STORES

400 South Seaman

Phone 91

### AROUND the TOWN By Fay

MRS. W. J. BROUSSARD phoned and said she picked up her paper, read in this column the suggestion that folk read the Santa letters as they are highly entertaining — turned to them and the first one she saw was her son's.

It seems that 6-year-old son EDWARD wrote the letter, printing it, of course, placed it in an envelope, unsealed, placed a two-cent stamp on the wrong side of the envelope and failed to address the envelope. Well, he had faith, anyway, and it reached its destination!

Mrs. Broussard phoned J. D. PITTMAN who said they saw the letter at the post office with no writing at all on the envelope; as it was not sealed and bore a two-cent stamp they figured it was a Santa letter, opened it and it said on one page: "Dear Santa, I want a" and on the next page "bicycle," all printed in large letters.

She said the post office always puts such letters in the Telegram Office box and sure enough it came out in the paper, pronto! Just as if it had all been done according to Hoyle! And no one was surprised except Edward's mother, and his grandmother, MRS. W. R. USSERY.

You see, faith in a thing goes a long way and Edward never doubted but what Santa would get his letter — and he did!

### Please Phone If You Miss Your Paper

TO OUR SUBSCRIBERS: If, for any reason, you fail to receive your Eastland Telegram, by late afternoon, please phone the office (No. 601) by 5:30 p.m. or, afterward, the Casebolt residence (No. 1088) and a copy will be brought to you.

### RANGER IRON WORKS

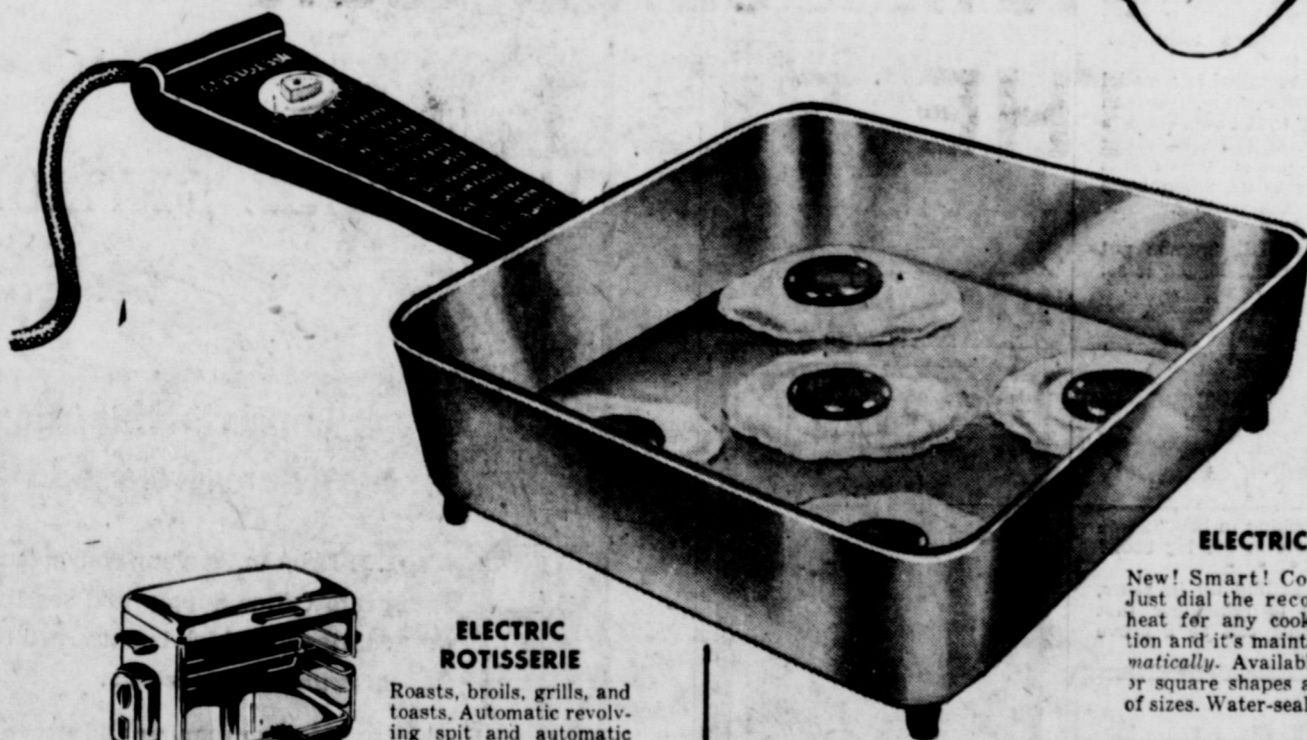
ORNAMENTAL and WROUGHT IRON

PORCH POSTS AS LOW AS **\$9.50**

HAND RAILINGS DOOR GRILLES 40-ft. Crank-Up TV TOWER **\$32.50**

Custom Designs by Master Craftsmen PHONE 405 BOX 148 RANGER, TEXAS

*A Gift She'll Truly Love!*  
**Electric Cooking Appliances**  
WITH "MEASURED HEAT BUILT-IN"

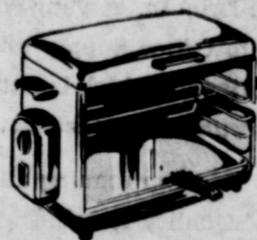


#### ELECTRIC SKILLET

New! Smart! Convenient! Just dial the recommended heat for any cooking operation and it's maintained automatically. Available in round or square shapes and variety of sizes. Water-sealed element.

Here's a Christmas gift of wonderful convenience! The electric skillet is one of the newest of the electric cooking appliances with "measured heat built right in." It enables her to enjoy many of the advantages of modern electric cooking... no matter how her present kitchen is equipped. It's an amazingly versatile appliance that can be used for many purposes in addition to frying... even popping corn and making casserole dishes. And she can use it any place (indoors, porch, or patio) within reach of an electrical outlet.

Visit your favorite appliance store soon. Select an electric skillet or one of the other electric cooking appliances that will make this Christmas one she'll long remember!



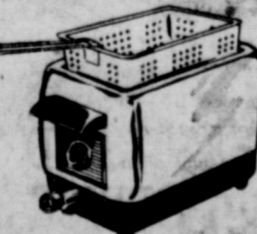
#### ELECTRIC ROTISSERIE

Roasts, broils, grills, and toasts. Automatic revolving spit and automatic heat control.



#### ELECTRIC SAUCE PAN

Imagine! Your favorite vegetable, casserole dish, or stew cooked automatically and kept warm right at the table.



#### ELECTRIC COOKER-DEEP FRYER

Chicken, seafoods, doughnuts, potatoes and onion rings French fried to a golden brown... heat controlled automatically.



#### ELECTRIC ROASTER-OVEN

Cooks complete meals... bakes and roasts... automatically... with thermostatically controlled heat.

## TEXAS ELECTRIC SERVICE COMPANY

F. N. SAYRE, Manager

Phone 18

**Insurance AND Real Estate**  
**D. L. KINNAIRD**  
 Life - Fire - Auto - Farm  
 Polio - Bonds  
 36 years in the Insurance Business in Eastland

**MRS. WELLMAN SUFFERS BREAKS TO ANKLE**  
 Mrs. C. B. Wellman turned her ankle in her back yard and fell about 5 p.m. Sunday, suffering three breaks, two to her ankle and one to her heel bone. She was taken by Hammer ambulance from Eastland Memorial Hospital to Harris Memorial Hospital, Fort Worth, Monday morning.

**HERE FROM MIDLAND**  
 Jean Pipkin of Midland spent the weekend with her grandparents, Mr. and Mrs. Grady Pipkin.

**Eastland County Created 1858; Named For Murdered Prisoner**

Eastland County was created on Feb. 1, 1858 and was named in honor of William M. Eastland, who had been murdered while a prisoner in Mexico.

Eastland County was one of the number of blocks of territory carved from the public domain, before the Civil War, by legislative enactment, but which, for many years, had no population to justify a county government. The county was formally organized Dec. 2, 1873.

In 1860 the federal census enumerated 99 inhabitants for Eastland County and in 1870 this number had decreased to 88. The few settlers that remained during the 60's comprised a sort of advance guard against the forces of barbarism that still held the entire western region of Texas.

From the immigration that followed the war Eastland County profited to some degree, but its real development was due to railroads, and in this connection some generalization may be noted with reference, not only to Eastland but to other counties in the same vicinity.

The decades of the 70's and 80's witnessed the real settlement of Western Texas. During the 70's the buffalo were finally hunted from the plains and quickly following them came the great herds of domestic stock and the old-time stockmen. For a few years these latter were supreme lords of the domain of grass-covered prairies. Not far behind was another instrument of progress—the railroad—which invaded the cattleman's country and, while co-operating with the stock industry, it also served to introduce permanent settlers.

More than any factor the railroad has made West Texas a home

for people. Where the railroad penetrated counties were organized, towns built and fences divided the prairies from the sown fields.

In anticipation of the railway, settlement became fairly rapid in Eastland County in the middle of the 70's. A newspaper correspondent writing in January, 1876, said, "Six months ago Eastland City, the county seat, was laid out on the north prong of the Leon River, at that time it was nothing more than a wilderness. We now number about 250 people; have 25 dwelling houses; one saw and grist mill; two large retail stores; one large stone house is being built on the public square, the upper story to be used gratis for a court house. Our county has not been troubled by the red men for two years." This last reference indicates how closely the modern era followed the close of Indian troubles.

By October, 1880, the construction trains of the Texas and Pacific had reached Eastland City and Ranger had become a regular station on the road.

In 1881 the Texas Central was built from the southwest to Cisco, making a junction with the Texas and Pacific. It was soon afterwards continued into Shackelford County, and these two lines comprised the only railways of Eastland County for some time.

The settlement of the county following the railroad period is indicated by the following statistics for the 10-year periods beginning in 1860:

In 1860 the population was 99; in 1870 it was 88; in 1880, 4,855; in 1890, 10,373; in 1900, 17,971; in 1910, 23,421; in 1920, 58,505, and in 1930, 33,981. As the railroad junction Cisco was the chief population and business center of the country until the discovery of oil in the county, since which time Eastland and Ranger have large populations.

In 1881 the county had taxable values of \$1,077,682; in 1903 it was \$4,575,172; by 1913 it had risen to \$9,816,415; in 1920, due largely to discovery of oil, it had skyrocketed to \$24,037,100.

The county has an area of approximately 592,000 acres, part of it rugged land and best suited for grazing purposes, though

**Oil News**  
**County Gets Two Regular Field Producers**

Stanley J. Pirtle of Cisco has completed No. 1 B. F. Ponville as a regular field producer in Eastland County five miles northeast of Desdemona. It is in E. Brown Survey.

Daily potential was 42 barrels of 43 gravity oil, plus 50 per cent water. It pumped from 48 perforations at 1,943-51 feet. Casing was set at 1,986 feet, with total depth of 2,000 feet.

Another regular field producer is W. M. Jarrell, et al, of Houston No. 1 P. L. Peoples, four miles northeast of Eastland in Section 3, Block 4, H & TC Survey. Daily potential was 10 barrels of 38 gravity oil, plus 50 per cent water. It pumped from open hole at 1,717-1733 feet. Pay was topped at 1,724 feet.

Staked in the regular field one and a half mile northwest of Olden was L. R. Pearson of Ranger No. 1 W. E. Rice. Slated for 1,999 feet with rotary, it spots 150 feet from the west and 450 feet from the north lines of the south half of Mary Fury Survey.

Three miles northwest of Eastland, Jim Bell, et al, of Eastland will drill No. 1 C. G. Pence as a 1,950-foot rotary project.

Location is 650 feet from the north and 750 feet from the east lines of Section 42, Block 4, H&TC Survey.

**TEC Gets -**

(Continued from Page One) the TEC, as agent of the federal government, paid out nearly \$4,500,000 to unemployed veterans.

All, according to the TEC, in a year's work.

much of it is fertile and was estimated that only 10,000 acres were in cultivation, and the stock industry, according to assessment returns, was at the time not so important as in other counties in the same general locality. In 1910 about 420,000 acres were included in farms and the amount of "improved land" was approximately 174,000 acres. There were 2,891 farms in 1910 compared with 2,510 in 1900. The stock interests in 1920 were 14,550 cattle, about 7,340 horses and mules and 9,560 hogs.

Up until 1917 Eastland County was a typical West Texas county, with a population of about 20,000 people and almost wholly a pastoral and agricultural county, with a predominating rural population. Then, almost overnight, came a dramatic and spectacular change. The discovery of oil in October, 1917, in the McCleskey well, southwest of Ranger, precipitated an economic revolution in the county and ushered in the biggest and most quickly developed oil field in the southwest, if not in the United States.

**STRICTLY FRESH**

ARMY recently announced it was accepting a limited number of young men for overseas assignment. Cuffit would be in Europe in time to spend April in Paris, it said. Fellow across the desk says it reminds him of his Navy outfit which called for shorthand volunteers. They were short handed in the galley.

District of Columbia school officials found that newly printed report cards listed "A" as "excellent," and "U" as "improvements is needed." They sure is, in some teacher-proofreader's technique.

Air coolers installed in a model village at Austin, Tex., lengthen nights in terms of hours slept, a report says. And tall tales about Texas only make the nights seem longer to us, when Lone Star fans come a-visitng.

Bloomington, Ill., firemen put out a tree fire and logged it as:



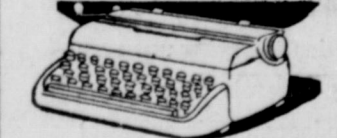
"Squirrel smoking in bed." Same one that wrote in the log book!

If you're getting up in years, it's prudent to remember that snow shoveling can be a grave undertaking.

**Real Savings**

On A **PORTABLE**

**TYPEWRITER**



... A fortunate buy has allowed for a substantial price cut on these well-built machines.

**ROYALS and CORONAS**

**TELEGRAM EASTLAND**

**OFFICE SUPPLY 5. Side Square**

**BABIES LIKE**



**IT LIKES THEM**



Merry Christmas as only YOU can say it

A portrait of your daughter—for grandparents far away? Perhaps, a portrait of you—the one your family's been begging for?

Think of the ways a Portrait may solve an important gift problem for you this Christmas—and phone for an appointment at our Studio this week.

**CANARIS STUDIO**

Phone 46 East Side of Square

**County Man Gets High Air Force Award**

Mr. and Mrs. Connie A. Yarbrough of Olden, were notified this week that their son, James, a staff sergeant with the Air Force, was recently selected as the Base Crew Chief of the Month for November at Vance Air Force Base in Oklahoma.

It was his second award. Notification was made by Lt. Col. Marvin M. Hammack, commander of the 3575th Maintenance and Supply Group.

Lt. Col. Hammack said, "James' aircraft flew more hours than any other B-25 on this base in the month of November. This is a feat achieved by hard work and a de-

termination to duty on his part." "Because Sgt. Yarbrough is a member of my command, I share your pride in his achievement. Upon such individual ability and effort depends the continuing effectiveness of the United States Air Force."

Mr. and Mrs. Herbert T. Weaver visited Thursday and Friday with Mr. and Mrs. Clyde Sims of Stamford. They were accompanied there and back by Mrs. Hubert Westfall, who visited her parents, Mr. and Mrs. J. F. Compton.

**AUTO INSURANCE**  
 Premiums Now Payable On Easy Monthly Payment Plan  
**Earl Bender and Company**



**MAYTAG**  
 AUTOMATIC AND CONVENTIONAL  
**WASHERS - GAS RANGES**  
 "We Service What We Sell"  
**Hammer Appliance Store**  
 205 S. Lamar Phone 623

**TRUETONE TV SETS**  
 SALES \* INSTALLATIONS \* SERVICE  
 12 MONTHS GUARANTEE ON ALL PARTS  
**WESTERN AUTO STORE**  
 Phone 38 Eastland

**FREE TURKEY COUPONS**  
 On What We Pay Out To You  
 The merchants of Eastland are giving away 5 turkeys on Dec. 10, and 5 more on Dec. 17. Bring us your scrap iron and metal and we will give you a FREE turkey coupon for each dollar we pay out to you. You may win a big Christmas turkey.  
**WE PAY FOR**  
 Mixed Scrap Iron \$20 - \$26 ton  
 Mixed Cast Iron \$27 ton  
 Copper Wire 36c lb.  
 Car Radiators 22c lb.  
 Red Brass 26c lb.  
 Aluminum 15c lb.  
 Old Batteries \$2.00 ea.  
**EASTLAND IRON & METAL CO.**

**Get Your XMAS Turkey**  
 Absolutely Free or One of Many Prizes To Be Given Away At  
**E. L. (Pete) TUCKER'S ONYX SERVICE STATION**  
 600 West Main Street  
 Onyx Ethyl - 26.9c gal. Onyx Reg. 24.9c gal.  
 PRIZES TO BE GIVEN AWAY SAT., DEC. 17 ARE AS FOLLOWS:  
 1.—One Oil Change 2.—5 Gals. Onyx Ethyl 3.—One Case of Cokes  
 PRIZES TO BE GIVEN AWAY SAT., DEC. 24 ARE AS FOLLOWS:  
 1.—Case of Cokes and 1 box Hershey Candy Bars  
 2.—One case K Orange and one box Hershey Candy Bars  
 3.—One Oil Change  
 4.—One Grease Job  
**5.-1 12-LB. TURKEY**  
 Drawings will be at 7 p.m. Sat., Dec. 17 and 3 p.m. Sat., Dec. 24. You do not have to be present to win. Register any time between 8 a.m. Dec. 12 and 3 p.m. Dec. 24. Come in and let us tell you how to be eligible for the drawings. All chances are good for both drawings.  
 Here are additional savings: Red Star Stamps are given with each 10c purchase and may be redeemed in merchandise, trade or cash.  
 Winners of oil changes may have their choice of the following motor oils: Mobil — Amalite — Grand Prize — Conoco — Quaker State — Pennzoil — Gulfpride — Havoline.

"This one is my masterpiece— it's an OK Used Car."  
 OK Used Cars are pretty as pictures—and masterpieces of performance. That's because "OK" means thoroughly inspected and reconditioned used car values. Choose your used car where volume trade-ins mean extra savings and wide selections of models and makes. Get the dealer OK warranty in writing!  
 Sold only by an Authorized Chevrolet Dealer  
**FULLEN MOTOR CO.**  
 105 E. Main EASTLAND Phone 44

**FINE STATIONERY**  
 Imprinted Napkins and Many Related Items  
 ... Drop in, at your convenience, at Telegram Office Supply and see the Beautiful Stationery which is patterned to suit every discriminating taste ...  
 Monogramming and Other Quality Imprinting ...  
**EASTLAND TELEGRAM OFFICE SUPPLY**  
 Phone 46 East Side of Square

## SOCIAL CALENDAR

**Tuesday, Dec. 13**  
7:30 p.m. — Eastland chapter No. 280, OES, Christmas party will be held at the home of Mr. and Mrs. Aubrey Van Hoy, 511 S. Walnut.  
Zeta Pi chapter of Beta Sigma Phi will meet at the home of Mrs. R. M. Sneed, 403 Oak Lawn.

**Wednesday, Dec. 14**  
3 p.m. — Civic League and Garden Club will meet at the Woman's Club for a Christmas program-tea.

**Thursday, Dec. 15**  
12 M — Thursday Art Club will meet for Yule covered-dish luncheon and exchange of gifts party at the home of Mrs. W. W. Walters, 404 W. Patterson.  
12:30 p.m. — Ruth Class of First Baptist Church will meet for bring-a-dish Yule luncheon at the home of Mrs. Frank Sayre, 208 S. Dixie.

7 p.m. — The Evangel Class of First Baptist Church will meet for Yule party at the home of Mrs. Lewis Fagen, 207 S. Connellee.

7 p.m. — Juniors of First Baptist Church will meet in Fellowship Hall for Yule party; each is to bring a pair of socks for one of the 1st children's home.

7 p.m. — Thursday Afternoon Club will meet for its traditional Yule dinner at the Woman's Club, honoring husbands of members; each member is to bring canned goods or Christmas goodies for a basket the club always prepares for a needy family.

**Friday, Dec. 16**  
2 p.m. — West Ward P-TA will present a Christmas program at the school auditorium; refreshments will be served in the lunch room at 1:30; public invited.

8 p.m. — Junior Class Play will be presented in the high school auditorium. Public invited.

**Friday, Dec. 16**  
7:30 p.m. — The annual Yule-

### Mrs. Hill Shows Colored Slides; Jack Chambliss, Also of CJC, Sings at Homemakers Yule Party

Husbands of members were honored guests of the First Baptist Homemakers Class at the traditional Christmas dinner Friday night at the church.  
Mrs. Ben Hamner was program chairman and presided throughout the evening. The Rev. Harvey Kimbler, pastor of the church, offered the invocation.

The long U-shaped table was laid with a white cloth and red and green Christmas balls and greenery.

Following the turkey dinner, Mrs. Hamner introduced Mrs. Minnie Hill of the business department, Cisco Junior College, who told of her trip to the Holy Land and showed colored films of the places she visited there. When she took her audience to Jerusalem she left a panoramic view of the city on the screen as Jack

Chambliss, chairman of the division of fine arts, Cisco Junior College, sang "The Holy City."  
The many scenes of the Holy Land were climaxed by a picture of the Tomb believed to be that of the Lord, Jesus Christ. As this picture was projected, and after Mrs. Hill had described the Tomb in detail, the audience was spiritually moved as Mr. Chambliss sang "The Lord's Prayer" by Malotte. Mr. Chambliss' songs were accompanied at the piano by Miss Wilma Mashburn, student at Cisco Junior College. As Mrs. Hill lectured, Mr. Chambliss projected the slides on the screen.

Mrs. Hamner recognized the Rev. and Mrs. Harvey Kimbler and Mr. and Mrs. Gayle Gowen, guests of the class; Mrs. Roy Young, teacher; Mrs. T. L. Amis, former teacher; Mrs. Artie Liles, class president, and others.

She asked those present to introduce their guests and among those were Mrs. Florine Miller and Mrs. E. O. Everett with Mrs. Victor Cornelius; Mr. and Mrs. Wiley Biggs with Mr. and Mrs. C. C. Cornelius; Mrs. Lillian Boon with Miss Mabel Hart; Mrs. H. N. Law and Mrs. Ben Norman, both of Killeen, with Mr. and Mrs. Hamner.

Mrs. Hamner then thanked the decorations, foods and arrangements committee members as follows: Mrs. Liles, Mrs. Carl Timmons, Mrs. O. L. Hooper, Mrs. Victor Cornelius and Mrs. C. T. Lucas.

Mrs. Young, class teacher, was presented a gift from the class. Members present made an offering for a personal gift to the H. E. Buddins, missionaries to South America, a custom of the class as its Yule party each year. Those who had not done so made their offerings to the Lottie Moon fund, also.

Numbers had been issued and gifts were drawn from the brilliantly decorated Christmas tree.

### Mrs. Westfall Gives Program At YWA Meeting

The Young Women's Auxiliary of First Baptist Church met Wednesday night at the church.

Mrs. Hubert Westfall, assistant counselor, gave the lesson from the Mission Study, "Among the Minarets," a book of the Moslem religion.

Mrs. H. T. Weaver, counselor, served hot cocoa and cookies. Present were Betty Jo Westfall, Jeannie Pittman, Patsy Rosser, Jane Jordan and Mmes. Weaver and Westfall.

### TO VISIT HERE FROM MISSISSIPPI AND HOUSTON


Mr. and Mrs. Jack Pogue and sons, Jack, Mike and Bob, of Pass Christian, Miss., and Mr. and Mrs. Horace Pogue of Houston will spend the holidays with their parents, Mr. and Mrs. C. M. Pogue, Highway 80 east.

### CARD OF THANKS

It is impossible to find words to express our thanks and appreciation to our dear friends, who brought and served food, for the many beautiful floral offerings and for the kind words of sympathy during our dark hours of sorrow in the passing of our loved one, Richard Elvy Marlow.  
May God bestow his richest blessings upon you.

Mrs. R. E. Marlow  
Mr. and Mrs. T. B. Marlow and Children.

Overseas Veterans Welcome  
Karl and Boyd Tanner  
Post No. 4136  
VETERANS OF FOREIGN WARS  
Meets 2nd and 4th Thursday  
8:00 p.m.



Picture your home with this smart new

**Hearth Glo RADIANT GAS CIRCULATOR**

REALLY two heaters in one! Cheery, glowing radiants plus the efficiency of a circulating heater. The modern copper-tone, hammered enamel finish of the cabinet with its gleaming chrome hearth plate and grille harmonizes with any interior. Easy-to-reach regulator handle at front of heater. Unsurpassed for style, comfort and economy of operation, this HEARTH-GLO model is the gas heater you've been searching for. See it today! A.G.A. approved.

20,000 BTU size ONLY \$19.45

Other Stoves At Large Savings  
Ranges, Refrigerators,  
Dishwashers, Dryers



**Hotpoint Automatic WASHER**

2 Automatic Washers in 1  
Washes All Fabrics Really Clean  
GENTLY... SAFELY... AUTOMATICALLY

- Color lighted pushbuttons—automatic selection of wash and rinse water temperatures
- 2 separate washing cycles—"Regular" for sturdy clothes... "Delicate" for fragile fabrics
- Rubber-Finned Aquator—newest and best wash-rinse action gets clothes really clean safely... gently... automatically!
- Deep-Overflow Rinse with sanitary solid-wall spin tub. Soil and suds float up and out of tub—net through the clothes
- All porcelain inside and out... new 50th Anniversary advanced design

\$2.90 Per Week and Your Old Washer

SEE IT NOW AT  
**SMITH PLUMBING & TIN**  
Phone 304 114 N. Seaman

# 4 DAYS

Wednesday - Thursday - Friday - Saturday

DOUBLE STAMPS WEDNESDAY ON PURCHASE OF \$3.00 OR MORE


SERRA MISSION PEACHES	3 No. 2 1/2 Cans	79 <sup>c</sup>
KIMBELL'S PIE CHERRIES	No. 303 Can	25 <sup>c</sup>
KIMBELL'S GRAPEFRUIT JUICE	46-Oz. Can	25 <sup>c</sup>
DIAMOND CORN	2 No. 303 Cans	25 <sup>c</sup>
PICNIC PORK AND BEANS	2 No. 300 Cans	19 <sup>c</sup>
KIMBELL'S TUNA	Flat Can	23 <sup>c</sup>
WILSON'S PLAIN CHILI	No. 300 Can	35 <sup>c</sup>
SUPREME SALAD WAFERS	Pound Box	25 <sup>c</sup>
KIMBELL'S BEST SHORTENING	3 Lb. Ctn.	65 <sup>c</sup>
KIMBELL'S POP CORN	1 Lb. cello bg.	19 <sup>c</sup>
KIMBELL'S BEST FLOUR	25 Lb. Bag	1 <sup>79</sup>
KIMBELL'S OLEO	Lb.	19 <sup>c</sup>
KIMBELL'S GREEN BEANS AND POTATOES	No. 303 Can	15 <sup>c</sup>
DEL MONTE SEEDLESS RAISINS	15 Oz. Box	21 <sup>c</sup>

BABY BEEF  
**LOIN STEAK** Lb. 49<sup>c</sup>  
BABY BEEF  
**CLUB STEAK** Lb. 49<sup>c</sup>

BABY BEEF — T-BONE  
**STEAK** Lb. 55<sup>c</sup>  
LEAN  
**PORK ROAST** Lb. 35<sup>c</sup>  
COUNTRY STYLE  
**SAUSAGE** Lb. 25<sup>c</sup>  
MIDWEST—SLICED  
**BACON** Lb. 45<sup>c</sup>  
SLICED  
**SIDE PORK** 3 Lbs. 1.00

GIVE US YOUR ORDER FOR YOUR CHRISTMAS TURKEY, HEN OR HAM AND BE SURE OF GETTING THE SIZE YOU WANT

**EARNEST**  
Frozen Food Center  
206 South Lamar Phone 11



Just Received - Brand New Shipment  
for Christmas Giving  
**PAPER-MATE PENS**  
In the Beautiful New Car Colors  
You're Now Seeing on TV  
**\$1.69**  
COMPLETE WITH PLASTIC GIFT BOX AND GIFT CARD

**PAPER MATE CAPRIS**  
IN JEWELRY FINISH CHROME  
**\$2.95**  
ALSO IN PLASTIC GIFT BOXES WITH GIFT CARDS

**Eastland Telegram**

See and **DRIVE** the **1956 FLAIR-FASHIONED DODGE!**  
THE CAR BORN OF SUCCESS TO CHALLENGE THE FUTURE  
Thrill to Push-Button Driving - Break-Away Power - Jet Styling - Dazzling Beauty

**McGRAW MOTOR COMPANY**  
416 S. Seaman Phone 80

**Winsome Class Meets For Yule Dinner - Program**

The Winsome Sunday School Class of First Baptist Church met Thursday night for a Christmas supper-program at Fellowship Hall.

Each couple brought a toy to be given to a child at Christmas. Decorations included a Christmas tree and a lighted Nativity scene on the piano.

Christmas greens and candles adorned the serving table while the long dining table was laid with a white cloth and runner of green, red and white Christmas scenes. Red and green candles, bright ribbons and Christmas balls were placed along the center of the dining table. Green programs with white Merry Christmas seals carried out the class colors of green and white.

Christmas records provided the background music throughout the mealtime.

The menu consisted of chicken and dressing, candied sweet potatoes, English peas, Waldorf salad, cranberry sauce, hot rolls and butter, pie and coffee or tea.

The Rev. Harvey Kimbler, pastor of the church, gave the invocation, and the program included caroling by the entire group led by Gayle Bowen, music and education director; a reading, "Gold, Frankincense and Myrrh," by Mrs. Charles Layton; a trio composed of Mrs. Harold Hitt, Mrs. Harvey Kimbler and Mrs. Jim Hardwick. Mrs. Gayle Bowen accompanied the musical selections at the piano. The closing prayer was by Charles Layton.

Mrs. Doug Kelley, class president, presented a gift from the class to Mrs. Harvey Kimbler, teacher.

Honored guests were A. J. Blevins, Sunday School superintendent, and Mrs. Blevins, and Frank Sayre, Adult I Sunday School superintendent, and Mrs. Sayer.

Others present were Mr. and Mrs. Jim Hardwick, Mrs. J. R. Rippey, Mr. and Mrs. Bobby Warren, Mr. and Mrs. Doug Kelley, Mr. and Mrs. Charles Layton, Mr. and Mrs. Harold Hitt, Mr. and Mrs. Pennie Edwards, Mr. and Mrs. Gayle Bowen, Mrs. Cotton Maynard, the Rev. Mr. and Mrs. Kimbler, Mr. and Mrs. Harold Dillender and Mr. and Mrs. Howard Jones.

**To Present Yule Program**

South Ward P-TA will present the children of the school in a Christmas program at 7:30 p.m. Monday instead of Tuesday night because the band concert has been scheduled at the high school at 7 p.m. Tuesday and most everyone will want to go to both events, it was announced.

The P-TA program is planned for night so both fathers and mothers as well as others interested in the schools may attend, it was announced. The children will give music and skits of various kinds and much planning has gone into the program, which is expected to be especially interesting and entertaining.

**HOSPITAL NEWS**



Patients in Eastland Memorial Hospital follow:

Mrs. Herbert Lewis, who underwent surgery this morning.  
Norman Wright, medical.  
J. F. Holloway, medical.  
Fenny Hart, medical.  
D. J. Carter, medical.  
Mr. and Mrs. R. R. Jones of Cisco.  
Mrs. Clara Bisbee, surgical.  
W. D. R. Owen, medical.  
Clifford Wilson, medical, to be dismissed this afternoon.

**NEWS FROM STAFF**

By Mrs. M. O. Hazard

Mr. and Mrs. T. E. Pope were visitors recently with relatives in Stephenville.

Mr. and Mrs. C. L. Henderson, Mrs. M. A. Abel and Mrs. Floyd Crawley were Ranger visitors Friday afternoon.

Mr. and Mrs. M. O. Hazard were business visitors in Eastland and Ranger Friday.

Mr. and Mrs. John F. White of Odessa were the week-end guests of Mr. White's brother - in - law and sister, Mr. and Mrs. O. T. Hazard.

Mrs. A. J. Fox was visiting in Eastland Saturday.

Mr. and Mrs. Lonnie Crosby and daughter, Brenda, of Fort Worth were visitors over the week-end with Mr. Crosby's parents.

**T. L. FAGG  
R. L. JONES**

REAL ESTATE  
Property Management  
Home and Farm Loans

**WE RECOMMEND  
Garner's**

**Farm Tax Records**

Completely Meets All  
Income Tax Requirements  
NOW COMPLETELY WITH  
SOCIAL SECURITY RECORDS

APPROVED BY TAX EXPERT  
BANKERS AND FARMERS EVERYWHERE

- SIMPLE
- ECONOMIC
- COMPLETE

MADE FOR THE FARMER WHO WANTS THE BEST

EASTLAND TELEGRAM  
OFFICE SUPPLY

(Approved by Many Auditors)

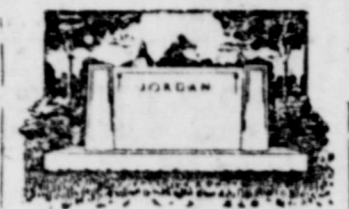
ents, Mr. and Mrs. Allen H. Crosby.

Mr. and Mrs. Jim Coop were in Eastland Saturday on business.

Mr. and Mrs. L. G. Powell were visitors recently in Oklahoma with their son, Buster Powell, and family.

Most farmers in this locality have finished harvesting their crops and are wishing for a good clod-soaking rain on their grain crops and pastures.

**MAJESTIC**  
INTERSTATE-NEW  
HANDY, THRIFTY  
**BOOK OF THEATRE TICKETS**  
A MOUNT MONIES WITH EACH BOOK  
AN IDEAL CHRISTMAS GIFT  
ON SALE NOW



**Alex Rawlins & Sons**  
MONUMENTS  
WEATHERFORD, TEX.  
Serving This Community  
For More Than 71 Years.

**My Husband Calls Me**

**"ANGEL"**



I've Discovered That  
Nitone Dry Cleaning Means a  
Sitter, Longer-Lasting Press!

There's a real treat in store for you when you try our Sanitone Dry Cleaning. More dirt out spots gone! No trace of cleaning odors! And you'll love that perfect press!

**MODERN  
DRY CLEANERS**

209 S. Seaman  
Phone 132

**Take a Tip from "SANTA"...**



**SHOP EARLY**

**BEFORE the BIG HOLIDAY RUSH!**

**LOAD UP WITH PIGGLY WIGGLY FINE FOODS**

**Double S & H Stamps Wednesday Only**

ON PURCHASES OF \$2.50 OR MORE

Open 'Til 8 p.m. for your convenience Wed.

IMPERIAL  
**SUGAR 5 Lb. Bag 49c**

LIBBY'S  
**Peaches 2 1/2 Can 37c**

GOLD MEDAL  
**Flour 10 Lbs. 95c**

Northern Wax Tex — 25-ft. Roll | Karo White  
**WAX PAPER 21c | SYRUP 1 1/4 25c**

U. S. NO. 1  
**Spuds 10 Lbs. 39c**  
or 4c A Lb.

Campfire Salad Bits | Quart  
**MARSHMALLOWS 20c | WESSON OIL 59c**

Durand's 2 1/2 | 3-lb.  
**SWEET POTATOES Can 18c | CRISCO ... Can 83c**

OCEAN SPRAY  
**Cranberry Sauce 19c**

XMAS MIX  
**Candy Lb. Pkg. 39c**

California  
**Almonds & Brazil Nuts 45c**  
PLENTY OF FRUIT  
CAKE INGREDIENTS  
FOR HOLIDAY  
COOKING

DELICIOUS  
**APPLES 2 For 25c**

FRESH  
**Cranberries 1-Lb. Pkg. 19c**

CALIFORNIA  
**ORANGES Lb. 15c**

ARMOUR STAR FRYERS	Lb.	45c
MATCHLESS SLICED BACON	Lb.	39c
PORK ROAST	Lb.	39c
FRESH GROUND BEEF	Lb.	29c
CLEARFIELD CHEESE	2 Lb. Box	79c
CLUB STEAK	Lb.	49c
CENTERCUT PORK CHOPS	Lb.	49c

*Christmas*  
**FOOD BUYS**

Demonstrated  
In  
**OUR STORE  
ALL DAY  
WEDNESDAY**

Compare Taste...  
Compare Texture  
and you, too, will choose  
**GLADIOLA  
CAKE MIXES**



2 for 37c

CALIFORNIA  
**WALNUTS 1-Lb. Cello Bag 59c**



**Christmas Special**

**WATCHES 1/2 PRICE**

AS LONG AS THEY LAST

HAMILTON'S	Were 60.50 to 71.50—NOW	30 <sup>25</sup> To 35 <sup>75</sup>
WITNAUER'S	Were 45.00 to 69.50—NOW	22 <sup>50</sup> To 33 <sup>75</sup>
WYLER'S	Were 42.50 to 55.00—NOW	21 <sup>25</sup> To 27 <sup>50</sup>

DELTA (Simulated) PEARLS	1/2 PRICE
ELGIN AMERICAN COMPACTS AND CIGARETTE CASES	1/2 PRICE
EXTRA SPECIAL DISKS ON CHAINS	89c
ALL LEATHER COVERED JEWELRY CASES, were 3.95, Now	2 <sup>00</sup>

And Many Other Articles At Reduced Prices

**D. E. PULLEY**

JEWELER

JEWELRY - SILVERWARE - DIAMONDS - WATCHES