

EASTLAND TELEGRAM



Volume 104

Number 7

Six Pages

Sunday, January 23, 1972

EASTLAND, TEXAS 76448: Today's CENTER for tomorrow's FUTURE!

Dr. Kim To Be Speaker

Dr. Thomas K. Kim became the eighth president of McMurry College in June 1, 1970. He is the second layman in McMurry's history to be president of the college.

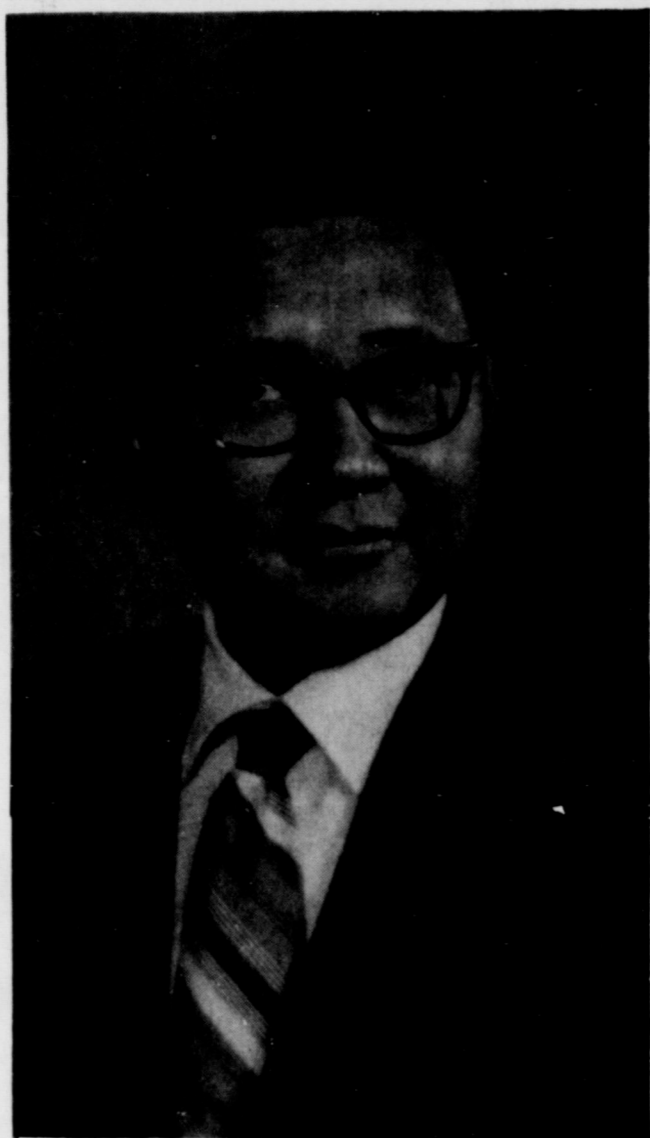
Dr. Kim came to McMurry from Texas Tech University, where he served as professor of economics. He was on the Tech faculty from 1965 until 1970 and also served as an advisor to the president of the university.

Dr. Kim was born February 18, 1929, in Shanghai, China, of South Korean parents. Dr. Kim came to the United States in 1948 to attend Berea College in Kentucky and has been in this country since that time. He became an American citizen in 1955.

After receiving his bachelor of arts degree in economics from Berea College in 1952, Dr. Kim received his master of business administration degree in general business at Indiana University in 1952 and his Ph. D. in economics at Tulane University in 1961.

He met the young lady who was to be his wife at Berea College - while she was a student and while he was teaching there in 1957 - 58. Dr. Kim and Martha now have two children, Larry and Cathy.

Dr. Kim is an active United Methodist layman, holds many memberships in professional organizations, and is author of several works. His new book, **Mathematical and Quantitative Analysis for Economists**, is soon to be published by Scott, Foresman and Company.



The annual Chamber of Commerce Banquet will be held Thursday at the Eastland Elementary Cafeteria. Golden Deed Award, High School Honor Students and other awards will be given.

(A PROCLAMATION)

WHEREAS, The time has come for the Eastland Public Library to expand its services to the city and to the trade territory; and because the present facilities are absolutely inadequate it becomes imperative to enter into a community improvement project; and

WHEREAS, the City Commission of Eastland had authorized the Mayor, James Reid, to call a Town Meeting on February 7, 1972 and has appointed a committee of club presidents to make suitable arrangements meeting several community needs; and

WHEREAS, Since the library was begun in 1901 by the Hawthorne Club which in 1916 became the Thursday Afternoon Club; and today the Eastland Public Library with 15,000 volumes is housed in one - half of the Women's Club building, which is owned by the City of Eastland but was paid for by the club women on April 12, 1926 having been purchased from the Prairie Oil Company; therefore,

BE IT RESOLVED: That the Thursday Afternoon Club pledges its support to the Community Project, and it is further recommended that a careful study be made to assure proper and safe housing and more adequate maintenance in order that the Eastland Public Library may continue and expand its services to the people.

BE IT FURTHER RESOLVED, That a copy of this resolution be recorded in the minutes of the Club, and that copies be sent to both morning and evening newspapers and KERC Radio.

Mrs. J.F. Francis, President; Mrs. Roy Young Rec. Sec.; Mrs. D.L. Childress, Mrs. Turner Collier, Mrs. C.L. Bigby, Mrs. Gladys Milner, Mrs. Fred Maxey, Mrs. D.L. Kinnaird, Mrs. Marene Johnson, Mrs. Iral Inzer, Mrs. James Horton, Mrs. Herman Hassell, Mrs. Guy Patterson, Mrs. Ben Hamner, Mrs. Cyrus Frost, Mrs. J.O. Earnest, Mrs. Fred Davenport, Mrs. Pat Crawford, Mrs. Cecil Collings, Mrs. Arthur Murrell, Mrs. E.R. Townsend, Mrs. Jos. M. Perkins, Mrs. Grady Pipkin, Mrs. E.G. Rice, Mrs. Floyd Robertson, Mrs. T.E. Richardson, and Mrs. Charles Terrell.



City of Eastland

P. O. Box 749 / Telephone 629-1754 / Eastland, Texas 76448

January 18, 1972

Mrs. Sandy Alsop, President
Zeta Phi, Chapter of Beta Sigma Phi
Eastland, Texas 76448

Dear Sandy:

The City Commission has decided to put action to our words and realizing that Eastland is a "do something" rather than a "do nothing" city and understanding that the Library and Woman's Club House are high on the list of immediate needs of our town.

Commissioner Durel Reid has agreed to be chairman of this committee and will be calling on you to meet with him at the club house in the near future and report back to a town hall meeting tentatively set for February 7, 1972.

I am asking you and the following people to serve on this committee with Durel:

- Mrs. Beverly Nicholson President, Civic League
- Mrs. Herman Hassell President, Las Leales
- Mr. Dee Gordon President, Lions Club
- Mr. Saul Pullman President, Rotary Club
- Mr. Bob McCoy President, Eastland Jaycees
- Mrs. J. F. Francis President, Thursday Afternoon Club
- Mrs. Virginia Russell President, Music Club
- Mrs. Ginny Mathews President, Xi Alpha Zeta
- Mrs. Durel Reid Chairman, Club House Board
- Mrs. Emily G. Perkins Chairman, Library Committee
- Mrs. Jim Horton Mayor's Representative

I will appreciate any help that you will give Durel. Your opinions are coveted on this urgent matter.

Very truly yours,

JR:aj

Eastland Mayor James Reid and the Thursday Afternoon Club have started the ball rolling for a better Eastland. Shown is the club's Library Proclamation and a copy of a letter sent to members of the Mayor's committee to study the needs of the city.

Astronaut to Speak Monday at CJC

Colonel John H. Glenn, Jr., the first American Astronaut to orbit the earth, will be the guest speaker in the Cisco Junior College Current Affairs Series on Monday evening, January 24 at 8:00 p.m. in the college auditorium.

Colonel Glenn will be the third in the 1971 - 72 CJC program series. Psychologist Dr. Murray Banks and Miss America of 1971, Phyllis George, spoke during the fall semester, and Georgia Lieutenant Governor Lester Maddox is scheduled later in the spring.

John Glenn was not a newcomer to danger when he was chosen as one of the original seven U.S. astronauts in 1959. Accumulating a distinguished record as a combat pilot in the Marine Corps, Glenn was awarded two Distinguished Flying Crosses and ten Air Medals during World War II and five DFC's and an Air Medal with eighteen clusters during the Korean War. As a test pilot, he was awarded a DFC in 1957 for his non-stop supersonic flight from Los Angeles to New York.

His accolades since becoming an astronaut include a Distinguished Service Medal from the National Aeronautics and Space Administration, Astronaut Wings from the Navy, and the Astronaut Medal from the Marine Corps, all awarded in 1962. He and Russia's Yuri Gagarin were jointly awarded the Galabert International Astronautical Prize in 1963.

Glenn, a retired Colonel in the United States Marine Corps, is currently a consultant to NASA and a member of the Board of Directors and Vice President, Corporate Development for Royal Crown Cola.

Born in Cambridge, Ohio on July 18, 1921, Glenn is married and has a son and a daughter.

Colonel Glenn is scheduled to fly to Dallas via commercial airliner from his home in Columbus, Ohio and then drive to Cisco. He will spend the night in Abilene and then be picked up by private plane at the Abilene Municipal Airport on Tuesday morning. He will be introduced to the Cisco audience by Dr. Leland Willis, CJC President, and Eris Ritchie, the college's Public Relations Director, will be in charge of all arrangements for the program.

Ritchie stated that plenty of tickets are still available for the Monday night program at \$2.50 for adults and \$1.00 for all students - public school or college - and all seats are reserved. Persons desiring to make reservations may call the college Business office, 817 -

442 - 2567 between 8:00 a.m. and 4:00 p.m. weekdays or 9:00 a.m. to 12:00 noon Saturday, or tickets may be secured at the door.

Col Glenn's subject will be, "America Today: What Should Our Priorities Be?" He will accept questions from the audience following his speech.

THIS WEEK IN EASTLAND

- MONDAY, JAN. 24
 - Rotary Jaycees
 - Rebekahs
 - Xi Alpha Zeta
 - Zeta Pi
- TUESDAY, JAN 25
 - Lions
 - Boys basketball with Ballinger - there
- THURSDAY, JAN. 27
 - Pioneer Club
 - Jr. Hi Basketball
 - C of C Banquet



Pictured above are several members of the Co-ordinating Committee for Good Government in Eastland County. This recently formed group is supporting Lt. Gov. Ben Barnes for governor, and State Senator Tom Creighton, and State Representative Joe Hanna in their respective races. Seated, left to right, are: Eastland Mayor James Reid, County Chairman; Inez Bourdeaux, Ranger; Bruce Goleman, Ranger; and Charles Hill, Cisco. Standing are: H.D. Alsop, Eastland Telegram Editor; Pat Collins, Ranger Times Editor; and Larry Marshall, Cisco Press Editor. Other members will be announced later.



TIMELY HUMOR concerns Alexander the Great who developed a solution which darkened when exposed to sunlight. Tearing a narrow strip from the hem of his tunic, he saturated it in the solution and wore it around his left wrist. By observing change of color during the day, he could tell the approximate hour. The humorist suggests that this was the first wrist watch - probably called "Alexander's Ragtime Band."



J.T. Gregory Rites Set Sunday

Funeral services for John Truit Gregory, 48, will be held Sunday, January 23, at 2:30 p.m. in the First Baptist Church of Eastland. The Rev. Lee Fields, pastor of the Eastside Baptist Church in Ranger will officiate, assisted by Rev. Dwayne Martin, pastor of Bethel Baptist Church in Eastland.

FREYSCHLAG Insurance Presents THE WEATHER

Partly cloudy with chance of showers

BARNES TO OPEN CAMPAIGN WITH BROWNWOOD RALLY

Lt. Gov. Ben Barnes will officially open his statewide campaign for governor with a "home country" rally in the Brownwood Coliseum at 7:30 p.m. Thursday, Feb. 3.

The rally is being organized by a group from Barnes' old legislative district, who urged him to start his campaign "back among the people who know and respect you the most."

Co-chairmen for the event will include Groner Pitts and Stuart Coleman of Brownwood; Gayle Pirkle of Comanche; Ham Locke of DeLeon; Milton Autry of Coleman; and Mrs. Warren Duren of Goldthwaite.

The steering committee said participants in the rally will come from a 43-county area.

"We have delegations coming from more than 100 miles away, and special entertainment is being planned along with a few surprises," the committee announced.

Barnes, a native of DeLeon, first entered politics as a state representative from the West Central Texas area around Brownwood.

The lieutenant governor was especially pleased to have this display of support from his home area," said Rep. Ralph Wayne, Barnes' state campaign manager.

"Barnes will take his campaign to the people, and it is always good to have the support of the people who know him best," Wayne concluded.

Voter Registration Deadline Is Jan. 31



Gregory passed away Friday, January 21, at 7 p.m. at Hendrick Memorial Hospital in Abilene following a brief illness. He had been transferred to the Abilene hospital from Eastland Memorial Hospital earlier in the day.

Born March 14, 1923, in Ranger, he was married to the former Louise May of Ranger. He had resided at 517 East Connelley in Eastland for the past 18 years.

He served as distributor for Borden's Milk Co. for 11 counties and had been a member of the Eastland School board since 1958, serving as president for the past 7 years.

Survivors include his wife; two sons, Layne of Dallas and Grady of Eastland; one daughter, Kathy of the home; one sister, Mrs. Gertie Emfinger of Ranger; two brothers, R.E. of Big Spring, and Truman of Stephenville; and three step brothers, Bruell Webb of Odessa, Earl Webb of Kirbyville, and Kenneth Webb of Houston.

Library Committee Report

The Eastland Public Library now has 14,634 volumes on its crowded shelves, reports the Library Committee of the Thursday Afternoon Club. 245 new books were added during 1971 (not counting 105 paper backs) and where to put them is the number 1 question at the Library as our shelves are full to overflowing.

5,305 books were read by Eastlanders during 1971 with young people accounting for 2,432 of them. 38 Memorial books were added to our growing Memorial section.

The latest Memorial books are: "All the Animals of the Bible Lands" - given in memory of June Hargus by Mrs. Jos. M. Perkins.

"Off the Beaten Trail" in memory of June Hargus by Judge and Mrs. Cecil Collings.

"Lay Down My Sword and Shield" in memory of June Hargus by Judge and Mrs. Earl Conner and Verna Johnson.

"Mandy" given in memory of Mr. E.E. Layton by Mrs. Jos. M. Perkins.

"Making the Most of Life" given by Mr. and Mrs. E.G. Rice in memory of Mrs. C.W. Hoffmann.

"The Victor Book of the Opera" given in Memory of Martha Satterwhite by the Eastland Music Study Club.

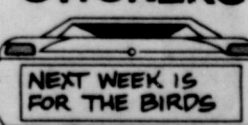
"The Indian Tribes of Texas" in memory of Mrs. T.E. Richardson given by Mr. and Mrs. Jos. M. Perkins and Judge and Mrs. Cecil Collings.

Other late novels added to the library:

- "The Brides of Belenmore" - Maybury.
- "Thomas Jefferson" - Schackner.
- "Womans Life in Colonial Days" - Holliday.
- "Listen For the Whisperer" - Whitney.
- "The Beloved Invader" - Price.
- "The Peaceable Kingdom" - de Hartog.
- "Incident at Hawk's Hill" - Eckert.
- "Gypsy in Amber" - Martin.
- "Seasons of Snows and Sins" - Moyes.
- "Summer of '42" - Raucher.
- "A Shooting Star" - Stegner.

FULLEN MOTOR

BUMPER STICKERS



Gordon pot

by DeMarquis Gordon

Over \$12 million worth of agricultural products came from Eastland County in 1971. Those are the estimates we have. This is an increase of about 1/2 million over last year. The increased income is due mainly to beef cattle and forage crops. Good grass during the

summer and fall plus favorable cattle prices helped to give this increase. Income from most crops dropped below the 1970 figures. Peanut yield fell about 100 pounds per acre on the average. However, because of an increase in number of acres

of peanuts and an increase in price the total county peanut income in 1971 was about the same as in 1970. The current state-wide program to increase agricultural income in Texas to \$3.76 billion in 1976 is geared to help the agriculture industry - but what does it mean to the consumer? Consumers are concerned with an assurance of adequate food supply, and 3.76 in '76 is a program of growth. The program is important because the increasing population must be fed on a decreasing amount of land used for agricultural

production. Guidelines in the program are meant to increase production and improve quality. The project seeks to increase cash receipts to agriculture by one billion dollars at the end of the 1976 crop year. The increase in production and cash receipts will benefit the consumer as well as the producer. Food prices will undoubtedly reflect an increased efficiency in production and marketing as costly practices in current use are improved or eliminated. Technology in production and

food preparation will be reflected in food prices, although cost of individual items will also be determined by the amount of preparation before purchase by the consumer. This would include special services such as pre-cooking and speciality packaging. Farmers will gear their production to specific markets that are dictated by consumers' preferences. This in turn will provide consumers with higher quality foods in greater amounts at stable prices. Everyone is concerned about

cleaning up the environment. Did you know that besides providing landscape beauty, trees and shrubs help clean up the environment? Research already has shown that the effective use of tree and shrub plantings can cut noise pollution by 50 to 65 percent. Greenbelts of trees and shrubs in cities are also helpful in removing pollutants from the air. Each year, some 183 million tons of pollutants go into the air in the United States alone. This figures out to nearly 1,500 pounds of airborne filth for every American. Twelve

million tons of this is particulate matter, such as dust, grit and cinders. Trees, shrubs, vines and flowers act as natural traps for this airborne matter. Many plants have fine hairs on leaves and stems which help trap these particles. In large cities, trees are such effective dust catchers that they should be washed occasionally with a detergent solution. The annual cost of air pollution in the United States is estimated at \$20 billion. In addition to helping purify the air we breathe, plants provide us with our only source of new

oxygen. For example, a 50 by 50-foot section of lawn releases enough oxygen to meet the needs of four people.

**REDA PUMPS
PALO PINTO
DRILLING CO.**
Water Well drilling - Water Well service, Mineral Wells, Texas

**Kenneth Hahn
325-3225**

J R B

SUPER MARKETS



Unbeatable prices

Look at the way we've cut prices and you get S&H Green Stamps, too!

Unbeatable stamps

PRICES GOOD at EASTLAND, RANGER, CISCO
Monday through Saturday Jan. 29
NO SALES TO DEALERS

Brownwood, Brady, Cisco, Eastland, Ranger,
Wichita Falls, Cross Plains, Abilene Coleman,

MID-WINTER CORNER ON SAVINGS

DOUBLE S & H GREEN STAMPS

Every WEDNESDAY AND SATURDAY
With purchase of \$2.50 or more

JRB MEATS ARE U.S. GOVERNMENT INSPECTED. IF FOR ANY REASON YOU ARE NOT SATISFIED WE WILL CHEERFULLY REFUND YOUR MONEY.

Shurfine
Sugar
5 lb. **49¢**
(With \$5.00 Purchase)

Food King Flour 5-lb. bag **29¢** Limit 1

Armours Mira-Cure Bacon Sliced Pan Size 12 oz. pkg. **63¢**

Bama Apple Jelly 18 oz. **4/\$1.00**

A.F. All Meat Franks 12 oz. **53¢**

Chicken Fried Beef Patties lb. **79¢**

- Excellent for Sandwiches Chef-Quick
- Turkey Patties** — lb. — **99¢**
 - For-That Quick to Fix Meal lb. **99¢**
 - Pizza Patties** Chef-Quick — **99¢**
 - Calf Liver** Fresh Tender lb. **79¢**
 - Beef Liver** Thin Sliced — lb. **59¢**
 - Pork Liver** Fresh Sliced lb. **39¢**
 - Ends & Pieces **Bacon** — 3 lb. box — **79¢**
 - Pratt's Hickory Smoked 2 lb. **\$1.69**
 - Pork Sausage** — bag — **1.69**
 - Hormel Little Sizzlers 12 oz. **59¢**
 - Breakfast Links** 1 lb. **59¢**
 - Shop Made Seasoned Just Right **Pork Sausage** — 2 lbs. / **89¢**
 - Excellent Seasoning **Salt Bacon** — lb. — **49¢**
 - Thin Breakfast Slices **Sliced Picnics** — lb. — **55¢**

- Nabisco Oreos** 15 oz. **45¢**
- Cookies Sandwich** **45¢**
- Foremost Cottage Cheese** 24 oz. **49¢**
- Savory Margerine** 1 lb. Solids **5/\$1.00**
- Mellorine JRB** 1/2 gal. **3/\$1.00**
- Mix or Match **Del Monte** **4/\$1.00**
- Spinach Cut Green Beans** WK and CS Corn
- Red Devil Hot Sauce** 6 oz. **19¢**
- Shurfine White Dist. Vinegar** Qt. **29¢**
- Shurfine 1/2 can Tuna Fish** **37¢**
- Shurfine Iodized or Salt Free Running** 26 oz. **10¢**
- Shurfine Reg. or Drip Coffee** 1 lb. can **85¢**
- Texsun** 46 oz. can **45¢**
- American Beauty Cut Macaroni** 10 oz. **24¢**
- Shurfine Cello Bag Rice** 2 lb. **37¢**
- Shurfine Instant Coffee** 10 oz. **\$1.39**
- Tree Sweet Crushed Pineapple** 300 can **4/\$1.00**

Pan Ready Cut Up lb. 35¢ FRYERS "Farm Fresh" Whole lb. 29¢ Salad Dressing Tart & Creamy Qt. 49¢

Ranch Oven Biscuits 12/\$1.00
8 oz. can

Lee Jumbo Roll Paper Towels **3/\$1.00**

CASSEROLE & COVER

THIS WEEK'S SERVICE PIECE SPECIAL
Redeem This Coupon
SAVE \$3.95

COUPON

VALUABLE COUPON WORTH \$3.95

TOWARD THE PURCHASE OF CHINA SERVICE PIECE SPECIAL

CASSEROLE & COVER Reg. Price \$14.90 Less Coupon 3.95 You Pay (with coupon) **10.95**

in the pattern of your choice
COUPON GOOD THRU Jan. 29

- Produce**
- Bananas** Golden Ripe lb. **10¢**
 - Yellow Onions** lb. **2/29¢**
 - Potatoes** Russet 10 lbs. **69¢**
 - Red Rome Apples** lb. **25¢**
 - Texas Oranges** lb. **15¢**

DELSEY

TOILET TISSUE
4 2-Roll Pkgs. **\$1.00**

Liptons Onion Soup Mix 2 pack. **35¢**



Plus Spectacular Ski Short "Get Hot" Sun International Productions Inc. *Wholesome Family Entertainment Always

MAJESTIC THEATRE EASTLAND
Fri. Jan. 28 ONE DAY ONLY
 Box Office Open 6:30
 Features at 7:00 and 9:00

EDDIE'S PHILLIPS 66
 513 West Main
 629-8838

OFFERING THE BEST IN AUTO SERVICE

Complete Auto tune-up and repair
 Mechanic Vic Edwards

Free Pickup and Delivery
 Guaranteed Service

At Phillips 66
 its performance that counts

HERE'S WHERE YOU GET MORE FOR YOUR MONEY!

When You Think of FOOD THINK OF SLEDGES!

SLEDGES is the only truly ONE-Stop Spot for Eating--Your Table or Ours!

In our retail market, you'll find the freshest, finest cuts of your choice, all guaranteed to please you!

DELICATESSEN For convenience you can appreciate, shop our ready-to-go dept.

You can set your table extra-good and extra-quick with selections from our wide variety of delicious, fresh items. Barbecue-Beans-Salads-All the fixin's

★ **One-Stop Grocery For You**

Then for Eating-Out Treats: Remember our dining rooms: convenient, delicious and economical. Luncheon treats from our wide menu, be it barbecue or lighter.

And for that extra-special meal, REMEMBER SLEDGE'S STEAKS. The best to start with and cooked the way YOU want 'em to make your dining out pleasure complete. You'll Find It All at SLEDGE'S

And You'll Like What You Find
SLEDGES MARKET & DINING ROOM
 210 S. Lamar 629-2913

Mrs. Horton Has WSCS Meet

The WSCS of the First United Methodist Church met Tuesday morning at the home of Mrs. James Horton. Members were greeted at the door by Mrs. Pearson Grimes and directed to the dining table where they were served coffee, nut bread, assorted cookies, and candy. Mrs. Horton presided over the business session, after which Mrs. Joseph M. Perkins continued the study on "Africa" using posters and literary contributions in her lecture. Mrs. Horton told briefly of her travels in Africa and showed some carvings she brought back. She also described the diamond mines in Kimberly.

Those present were: Mesdames: T.M. Collie, Henry Van Geem, Fred Davenport, Pearson Grimes, Joe Stephen, Ed Willman, Earl Bender, O.O. Mickle, Rev. and Mrs. Cecil Ellis, Walter Rice, Guy Paterson, Austin McCloud, Frank Sparks, Y.A. Wright, C.T. Brockman, Lucille Allen, Jewel Poole, Cora Davis, Rose Day, Iona Sikes, George Heck, Ina Bean, Pebble Boles, H.J. Bulgerin, Alma Hassell, Harold Ray, Joe Perkins, Miss Opal Morris and the hostess, Mrs. James Horton. The next meeting will be at the home of Judge and Mrs. Austin McCloud on Tuesday, Jan. 25th.

Hospital Report

Patients in Ranger General Hospital Saturday morning were:
 Mary Blakney
 Mrs. Leslie Bond
 Helen Hagaman.
 Albin Fleming
 Claude Chadwick
 D.C. Boney
 Clyde Farmer
 Dora Lovera
 T.B. Harris
 Nina Choate
 Laura Shugart
 Claude Gilliam
 Charlie Nosek
 Mrs. Maurice Grumbles
 Naomi Polk
 Ira Ainsworth
 O.R. Ervin
 Travis Reese
 Sam Naylor

Mary Heatherington
 Hollis Jones
 Jack Rawls
 Gayla Stacy
 Anna Anderson
 Arthur Jimenez
 Patients in the Eastland Memorial Hospital Saturday were:
 Vernon Carter.
 Homer Duncan.
 James Franklin, Cisco.
 Mildred Smith, Moran.
 Myrtle Holland, Gorman.
 David Livingston.
 John Cozart, Cisco.
 Eva Butler.
 Bernice Lee.
 Irene Preslar.
 Ethel Levens.
 David Harden.
 Maurice ZMorgan.
 Avie Allgood.
 Geneva Sessum.
 R.L. Fields.

Wayne Callaway, Rising Star.
 Effie Sharp, Olden.
 Susie Howard.
 John Armstrong.
 Buford Parker, Gorman.
 Dorothy Massey.
 Lucille Atwood, Carbon.
 Ethelyne Niver.
 Mary McCoy.
 Sue Hamilton, Olden.
 Mary Burns, Comanche.
 Iona Sikes.
 Janie Pistole, Cisco.
 Edna Thompson, Cisco.
 Donny Pierce.
 Lindell Levens.
 Carol Rossander.
 Margie Green.
 Linda Swofford, Clyde.
 Baby Boy Cozart, Cisco.
 Eva Davis.
 Vernon Davis, Gorman.
 Winnie Sue.
 Pearlle Highsmith, DeLeon.
 Veta Cozart, Cisco.
 Yvonne Revels, Ranger.
 Lenora Steinman, Cisco.

Adrian Swindle, Cisco.
 Henry Killian, Goldthwaite.
 Lottie Raney.
 Millie Waldrep, Cisco.
 Melrose Weems.
 Tana Weems.
 Betty Threet, Cisco.
 Willie Halford.
 Ollie Dolberry.
 Sue Simmons, Gorman.
 Ruth Haney.
 Georgia Whitlock.
 Desdemona.
 Carol Kidd.

NOTICE
 Lites, brakes & running gears installed. All Types of New Trailers For Sale.
Roy Cozart
 1107 W. 15th
 442-1912

STOP
 for Brake Service
 Wash & Grease
 Brake Shoes, Mufflers, Flats and Road Service.
 Minor Auto Repairs

S&H GREEN STAMPS WITH EVERY PURCHASE.
LEVENS ENCO
 400 E. Main - Eastland - 629-1688

CENTRAL DRUG
 EXPERIENCE-INTEGRITY-SERVICE

Prescribed Health Needs

Your medical prescription is our number one concern. That's why it is accurately filled... no matter how quickly you need it. Your pharmacist really cares.

Call for Free Delivery
 629-2681 103 W. Main St.

NO HIGH PRESSURE... JUST BIG SAVINGS

Pickup ¾ Ton 360 4 speed
 '66 Plymouth Belvadier 2 speed air cond.-power steering-automatic
 '70 Ford Custom, Loaded, Extra clean
 '61 Ford Pickup
 '56 Ford Pickup
 Make good work trucks
 Will make reasonable deal

HOOD KING MOTOR CO.
 100 E. Main Eastland 629-1786

Personal
 Out of town guests of Mr. and Mrs. J.C. Allison were: Mrs. Ann Shelburne, Mrs. Vera Adams, of Ft. Hancock, Nelson Allison and Marion Luper of Odessa, Rev. and Mrs. Weems S. Dykes, and Susan Jane of Colorado City; Ed Allison and Mrs. Annie Allison of Carbon; Rev. and Mrs. Euel Allison and Ann of Gorman; Mr. and Mrs. Alvie Allison of Stephenville; Rev. and Mrs. Beaty, David and James of Robert Lee; and Rev. and Mrs. James C. Allison, Cathy and Jerry of Harlingen. James Allison is head of Development of the Baptist Academy of Harlingen. He was elected Second Treasurer of the Texas Baptist Development Association of Texas at the November meeting in Dallas.

New Arrival
 Mr. and Mrs. Al Hill announce the birth of their first child, a son. Kevin Lloyd was born Dec. 13 1971 and weighed 6 lbs. 14 ozs. His paternal grandparents are Mr. and Mrs. Lloyd Hill of Andrews, and maternal grandparents are Mr. and Mrs. J.W. (Bill) McAfee of Eastland. Mrs. Hill is the former Jodi McAfee.

Get Your Films Developed Here

SEE OUR COMPLETE LINE OF KODAK CAMERA SUPPLIES

Check our COMPLETE **CAMERA CENTER** Prescription Pharmacy
 Telephone 629-1475
 East Side of Square

Ask about our 2 day film service for all black and white and colored films. Get 1 regular print plus 1 miniature print FREE!

OUR FINAL CLEARANCE SALE

Begins Monday January 24th and continues through Saturday January 29th. We have a fine selection of SALE items from our regular stock of quality merchandise. This is a clearance of odd lots and broken sizes priced to sell and a real savings to you our customers.

Group Men's Sport Coats NOW ½ the Original Price Alterations Extra	Group Men's Suits NOW ⅓ Off The Original Price Alterations Extra	Group Men's Sweaters NOW ½ The Original Price
Group Men's All-Weather Coats NOW ½ The Original Price	Group Men's Casual Slacks NOW ½ The Original Price	Group Men's Jackets NOW ½ The Original Price
Group Arrow White Shirts NOW ½ The Original Price	Group Men's Wellington Boots NOW ½ The Original Price	Group Slim-fit Colored Jeans NOW ½ The Original Price
Group Men's Pajamas NOW ½ The Original Price	Group Ladies .Gowns. .Pettiskirts Panties NOW ½ The Original Price	Group Ladies Panty Hose. . . .Stuffs NOW ½ The Original Price

THE MAN'S STORE
 No Easy Ways No Approvals
 Bob Elliott
 CISO

CLASSIFIED ADS

get action

Sunday,
January 23, 1972



EASTLAND TELEGRAM

629-1707

11 W. Commerce St. Eastland, Texas 76448

Consolidated with Eastland Chronicle, established in 1887, and Eastland County Record, established in 1931

H.V. O'BRIEN, Publisher and Editor
HERMAN ALSUP, Associate Editor

Second Class Postage paid at Eastland Texas under Act of Congress on March 1870.
Published semi-weekly - Thursdays and Sundays by Eastland County Newspapers, Inc.

SUBSCRIPTION RATES: By carrier in city, 15 c a week or 65 c a month; one year by mail in county, \$5; city P.O. Boxes, \$6; one year elsewhere in state, \$7; out of state, \$8.

NOTICE: Any erroneous reflection upon the character, standing, or reputation of any person, firm or corporation which may appear in the columns of this newspaper will be gladly corrected upon being brought to the attention of the editor.

since 1962

Roy's Complete Appliance Center
629-2474 Roy Gann 205 S. Lamar

"Any person qualified to vote who does not receive a ballot prior to March 13, 1972, may obtain one at his local County Agent's office."

REAL ESTATE

Large 2 bedroom house, needs some repair. So. Daugherty St \$8,000.00
2 bdrm house, good roof. S. Seaman \$5500.00
Small 2 bdrm-3 lots \$2500.00 Smith St.
1 bdrm house, frame, Ranger, large lot \$1500.00
2 1/2 bdrm Needs repair, 8 pecan trees, approx. 1 1/2 ac., Hiway 80 Ranger \$5500.00
Small 2 bdrm house, garage, large lot \$3000.00
Large 2 bedroom frame, 4 lots, in good repair, \$5500.00
Nice 3 bedroom brick, Cisco.
4 bedroom frame house, 2 baths, Burkett St. \$8,000.00
3 bedroom frame house, 2 lots, garage, Mulberry St. \$4,750.00
3 bedroom brick, double garage, fair, Ranger.
4 bedroom, 1 ac. city water & well, 2 baths, some pecan trees. Olden.
Extra nice 3 bedroom brick, 13 acres, 70 pecan trees, Coastal Bermuda, 2 wells, tank, all electric.
4 ac 2 bedroom, city water, lots pecan trees. Olden.
3 bedroom rock home, 11 acres 2 acres orchard, large barn Olden.

FARMS & RANCHES

80 acre, 2 bedroom house, 5 miles out, \$16,000.00
194 acres, some lake frontage, pecan trees, close in.
210 acres, cleared native pasture, pecan trees & creek bottom, net fences-Will subdivide for G.I. \$150.00 per acre.
40 acres, 3 bedroom house. Some improved grasses. South part of County. \$17,000.00.
51 acres-38 cult. balance brush 17 acre peanut allot. Water well, 6 miles from Ranger, Will G.I. or owner will finance.
120 acres, 200 native pecan trees, 3 tanks, 20 acres Coastal-approx. 20 acres bottom on Sabanna River, good grass.
160 acres near Cisco, will subdivide for G.I.
45 acres-10 cult. on Interstate 20 near Cisco.
14,000 acres improved No. Texas ranch. Will consider trade.
2,800 acre improved Lampasas Co. ranch. Running water.
1,750 acre ranch, some clear, excellent hunting, good location.
Well improved 1000 acre ranch with cheap int. rate. Will consider some clear trade for equity.
Several nice cabins at Lake Leon and also 2 nice lots on South Side.
We have large and small Motels in thr area for sale or trade.
For these and other places contact:

KINCAID
REAL ESTATE
100 South Seaman
Eastland, Texas 629-1781
Robert M. Kincaid
629-2721
J.W. Elder 647-13211

POLITICAL ANNOUNCEMENTS

For County Sheriff:
Bennie Moseley
L. E. (Lefty) Sublett (Re-Election)
County Commissioner,
Pct. 1 Danny Woods
91st District Court
Earl Conner Jr.
(Re-Election)

State Representative,
District 54
Joe Hanna

Constable Precinct 1
Bill Hunter

Criminal District Attorney
(Un-Expired term)
Emory Walton

County Tax Assessor-Collector
Nancy Trout

Notice

NOTICE TO BIDDERS
Eastland County will open bids on Monday, January 24th at 10:00 a.m. in the Eastland County Commissioners' Courtroom for the purchase of a new 1972 model automobile for use by Eastland County Sheriff's Office. Successful bidder must take in trade 1968 model Ford automobile. Specifications for new automobile may be obtained from Eastland County Auditor's Office. Trade-in may be inspected by contacting Eastland County Sheriff. Published by order of Eastland County Commissioners' Court. (9)

SCHOOL MENU

Monday Jan. 24
Frito pie
Buttered potatoes
Green beans
Stuffed celery
Hot rolls
Cookies
Tuesday Jan. 25
Baked beans with Franks
Buttered corn
Steamed cabbage
Tossed salad
Corn bread
Cake squares
Wednesday Jan. 26
Steak fingers
French fries
Green peas
Lettuce & tomato salad
Sliced bread
Sliced peaches

For Sale

TRUETONE CONSOLE COLOR TV. NICE SET. \$150.00 NEARLY NEW COMPLETE SNOW CONE ICE MACHINE WITH ALL SUPPLIES. \$100.00 USED DEEP WELL PUMP AND TANK. WORKS GOOD \$65.00 NICE REFINISHED PRACTICE PIANO. \$150.00 NICE 10 FT. STEEL STOCK TRAILER. \$150.00 WITH LIGHTS Call Bob at the Dairy Treat 629-1144 after 10 a.m.

Notice

NOTICE - Mattresses: Complete bedding made by Western Mattress Co., San Angelo. Best quality, low price, renovate or exchange new. Every other Wednesday. They're guaranteed. For home appointment, call Lois Meazell, 629-2703, leave name. tf

Peanut and candy vending machines. Used. 5 stands. 10 machines. Cheap. CaCall 442-2615, Cisco. t-8

PICKUP SALE

71 1210 LWB 3/4 Ton Int. V345 Automatic, Air Cond. Etc.
71 1010 LWB 1/2 Ton Int. V345 Automatic, Air, Power Steering & Brakes. Custom Interior & Exterior. Out Demo.
70 1100 LWB 3/4 Ton Int. with New V392, 5 spd. Overdrive. Air, New Tires, etc.
69 LWB 1/2 Ton Chev. V8 and 3 spd.
66 Chev. V8, 1/2 Ton 3 spd.
New 72 & 71 Int. Pickups, Scouts, & Travelalls in Stock at LOW, LOW Prices.
68 Int. Travelall, V8 with Automatic.
New 1-2-3 & 5 Ton Trucks in Stock.
Johnston Truck Cross Plains 725-2181

State Farm is now paying big 20% car insurance dividends-

to eligible Texas policy holders on expiring six-month policies.
CALL 629-1096



like a good neighbor, B.T. Van Cleave is there.
STATE FARM MUTUAL AUTOMOBILE INSURANCE COMPANY - HOME OFFICE: BLOOMINGTON, ILLINOIS

"We can handle anything but litterbugs."
Goode Pest Control
Phone 629-1179 after 3:00
310 N. Ammerman roaches, ants, termites, moths, spiders.
ALL WORK GUARANTEED

Poodle Grooming
Telephone
647-1288 -- 647-1845

Complete Electrical Wiring Home Maintenance Service
Homer H. Kirk
629-2411
508 S. Connellee

ABC Plumbing & Heating Contracting and Repairing Complete Plumbing Service
Call 629-1200 Day or Nite
BOB WILLIAMS Master Plumber Serving Texans 25 years

For Sale

1966 Chevy Pickup, 4 speed transmission, long wheel base, 6 cyl. May be seen at 1014 Bassett or call 629-2559. t-tf

VACUUM CLEANERS sales and service New and used
Phone 629-1370 t-9

2 Charolais Brahman bulls 22 months old, 1200 lbs. Good condition \$325 and \$375. Phone 653-2486 in Olden t-8

1957 Chevrolet, Bel Air, Black & White, 327 V-8 engine, Standard. \$350.00. Call 629-1941. t-tn

Sewing Machine (Kenmore Electric) slightly used, pretty cabinet. Call 442-1303 to see \$160.00.

TESTED and approved by millions of homemakers. Blue Lustre carpet cleaner is tops. Coats Furniture. t-7

Fence building, any kind, will chain link, sell by foot or install. Call 442-2197. 405 West 11th, Cisco.

TREAT rugs right, they'll be a delight if cleaned with Blue Lustre. Rent electric shampooer \$1. Perry Brothers. t-7

Double inner-spring mattress, and box springs; practically new; Early American love seat; light fixtures and other household items. Phone O.M. Boyle 629-2507. t-7

Solid 62 International Travelall. Worth the money. Phone 629-2647 Week-days. t-8

FOR SALE

4 1/2 acres with real nice 3 bedroom, 1 1/2 bath home with orchard. Located in Morton Valley Community, city water. House only 6 years old and in excellent shape. Price \$22,000; may assume \$13,000 note. Contact M.L. Terrell, 629-1725 or Buck Wheat, 629-2552.

Wanted

Women 18 - 65. Add to family income only a few hours daily. We train you. Phone 629-1875. t-8

WANTED: To rent 3 bedroom house within 10 mile radius of Eastland. Contact Melvin C. Brown. 629-1023.

Experienced and dependable nurses aides, Licensed Vocational Nurses and Registered Nurses. 11-7 shift. Ranger General Hospital. t-tf

WANTED: To rent 3 bedroom house within 10 mile radius of Eastland. Contact Melvin C. Brown. 629-1023.

FOR LEASE... 9 acre peanut allotment for 1972. Write: C.F. Offield, Jr. 200 W. 1st Breckenridge, Texas. 76024 or call before 7 a.m. and after 7 p.m. t-9

NOTICE

Sewing machine, Singer Dial A Stitch, mends and darts. All for \$22.50 with free home demonstration. Phone 629-1634. t-10

BUSINESS OPPORTUNITY PEANUT, CANDY & GUM VENDING BUSINESS in Eastland, requires few hours weekly. Total investment \$1,138.00 cash. Write TEXAS KANDY COMPANY, Inc. 1135 Basse Rd. San Antonio, Tex. 78212. Include phone number. t-9

For Rent

Furnished Apartment Close in. Bills paid cable and telephone. Phone 629-2083 or 629-8821. t-9

Small 5 room cottage on top of park Hill, 503 High street. Unfurnished. Only \$35 per month. Phone 629-1417. t-tf

MEETINGS

***** MASONIC LODGE NO. 467 *****

Meets second Thursday of each month at 7:30 p.m. in the Masonic Hall. Call Pat Miller, W. M. at 629-1077 or L. E. JHuckabay sec'y at 629-1391 for information.

***** SAUL PULLMAN, president *****



Meets each Monday at White Elephant Restaurant in Eastland 12:00 noon.

EASTLAND ROTARY CLUB

Rebeckah Lodge 177



Meetings each 2nd & 4th Monday at 7:30 p.m., 300 N. Lamar St.
Sec'y Dorothy Awalt
Phone 629-1682



MAYBE YOU DON'T NEED INSURANCE

If you don't own a home, furniture, jewelry or a car, you can get along without the services of an insurance agent. But for the most of us, life is not that simple. Modern living has

become so complex that the protection of property and personal liability is a major problem and we must be insured. The individual you can always depend on for accurate solutions of your insurance problems is your local agent.

Earl Bender & Company
Eastland Insurance since 1924 Texas

REAL ESTATE

ALL TYPES OF REAL ESTATE:

HOMES

farms

ranches

Financing Assistance

Listings requested and long list of good properties on hand

CALL US AND LET US SHOW YOU HOW WE CAN HELP YOU

TERRELL REAL ESTATE

Farm Bureau Building Hiway 80 East Tel. 629-1725 Day Night call 629-2443 Eastland, Texas

Carbon News

Dr. and Mrs. W.T. Guy of Austin visited his sister Mrs. Cullen Rogers and Mr. Rogers Tuesday night.

Mr. J.H. Weaver reported Sunday that Mrs. Weaver is improving very well and possibly will be able to return home soon. Mrs. Weaver had the misfortune to fall and break her hip just before New Years. She has been a patient in Hendricks Memorial Hospital in Abilene.

Mr. R.E. McMillan has been in New Mexico this week on business.

Mr. and Mrs. Leamon Cozart of Breckenridge and Mr. and Mrs. B.K. Boggs of Ranger visited Mr. and Mrs. Houston Cozart Sunday afternoon.

Miss Jo Ann Been left last Friday for Devine, where she has accepted a teaching position in the Home Economics Department of Devine High School.

Rev. and Mrs. R.B. Murray were in Moran Sunday where Rev. Murray filled the pulpit Sunday morning and Sunday night.

Mr. and Mrs. Clarence Files visited his mother, Mrs. Pearl Files of Gorman Sunday.

Steven Walker of Midland who is a student at A&M spent Friday night with his grandparents and Mr. and Mrs. Elmer Walker.

Mr. and Mrs. W.J. Greer tell us of a new great-granddaughter born Jan. 13. The young lady is Angelyn Noel Armes, daughter of Mr. and Mrs. Ronnie Armes of Fort Worth. Mr. and Mrs. Monty Montgomery of Fort Worth are her maternal grandparents.

The Henry Rice's report a great grandson born to Mr. and Mrs. Jeffery Rice in Abilene January 15. Jeffery is serving in the U.S. Navy and at present is stationed in the state of Maryland.

The Jim Hogans also report a great grandson born January 14. He is James Gregory Warren, son of Mr. and Mrs. Tim Warren of Stephenville. Grandparents are Mr. and Mrs. Gaylon Warren and Mr. and Mrs. Bill Carlton of Carbon.

Mr. and Mrs. Glen Justice attended a Telephone Convention at Miami Beach, Florida, last week. They reported nice warm weather there and returned to 6 degree weather here Saturday morning.

Mrs. Irene McKinnery of Romney visited Mrs. Edith McMillan a few days last week.

Wayne Campbell of Azle visited Mr. and Mrs. Dan Boat Wright last Saturday.

Mr. and Mrs. Victor Pack and family visited Mrs. Packs mother, Mrs. Verla Alexander and helped to celebrate her birthday on Sunday.

Relatives and friends who were here for the funeral of William (Bill) Parten were Mr. and Mrs. A.O. Fenwick of San Angelo, Mrs. John Harding and Mr. and Mrs. Darrell Fenwick of Ballinger, Mrs. Carrie Fenwick of Stephenville; Mrs. Chris Eggemeyer and daughter of Ballinger; Mr. L.L. Fenwick of Bronte; Walter Knox of Houston; Mrs. Grace and Dell Harrison of Ranger; Harold Parten of Dayton, Ore.; Mr. and Mrs. James Parten and family of Cisco; Mr. and Mrs. Jack Mitchell and family of Fort Worth, Leo McDaniel of Abilene; D. Smith of Comanche and Mr. and Mrs. Frank Redwine of Fort Worth.

Mrs. W.O. Hamilton, a former resident of Carbon, passed away in a Houston Hospital Sunday evening. She is survived by two daughters, Mrs. Exia Bledsoe of San Antonio

and Mrs. Ila Mae Woody of Katy; 3 grandchildren and nine great-grandchildren. Her husband one one granddaughter preceded her in death.

Some out of town relatives and friends here for the funeral of Mrs. Hamilton were Mr. and Mrs. Boyd Bledsoe of San Antonio, Mr. and Mrs. Tommie Woodie of Katy, Mr. and Mrs. Donald Weeks and family of Fort Worth, Mr. and Mrs. Maalcone Green of Houston, Mr. and Mrs. N. cwt Campbell of Lovington, New Mexico; Mrs. Maurice Clements of Houston, John Campbell and son of Abilene, Mr. and Mrs. Al Anderson of Cisco, Mrs. Denis Clower of Jacksboro, Mrs. W.R. Collins of Gorman and Rev. and Mrs. Roger Butler of Knox City.

4-H NEWS

Parents of Eastland 4-H club members are encouraged to attend a meeting on Monday, January 24, at 7:30 p.m. at the Farm Bureau.

The purpose of the meeting is to plan projects, activities and club programs for 1972. Assistance and support of parents is greatly needed in 4-H Club work.

It is hoped that a good number of parents will attend this meeting.

Nimrod and Cisco clubs are doing a fine job of recruiting and keeping 4-H Club members. Both clubs have enrolled several new members the past few months. At the January meetings Cisco enrolled nine new members

and Nimrod 2 new members. Upcoming 4-H club meetings include the Ranger 4-H club on Tuesday, January 25 and Carbon on Thursday, January 27. Both of these clubs will have yearbooks ready to be distributed to its members.

What is 4-H? What makes 4-H different?
 - 4-H is real life experiences.
 - 4-H can be a family affair
 - 4-H is flexible
 - 4-H provides for ownership
 - 4-H is a part of the community
 - 4-H is "learning by doing"
 - 4-H is tax supported

Gordon News

Several members of the First Baptist Church of Gordon attended the preaching assembly during the three day session at the Convention Center at Fort Worth Monday through Wednesday of last week, where more than 15,000 Texas Baptists attended. Those attending were Rev. and Mrs. Cecil Harper and Jim, Mr. and Mrs. H.E. Cromer, Mrs. Delphia Deaton, Mrs. Robert Dennis, Mrs. Bennie Johnson, Benita Johnson and Mrs. Lena Rogers.

You can find out other interesting facts about 4-H through a short four lesson correspondence course offered by the County Extension office. This correspondence course is offered to parents of 4-H club members and will be sent to you free of charge upon request.

Mr. and Mrs. Raymond Silvers of Mineral Wells visited his mother, Mrs. Era Mae Silvers, Sunday.

Mr. and Mrs. L.O. Watson and Dianna of Azle spent the weekend with Mrs. Hugh Segars.

Mr. and Mrs. Jim Barrett of Hobbs, N.M. visited Thursday with her aunt, Mrs. Cora Pierce.

Mr. and Mrs. Ott McQueary of Mineral Wells visited Saturday with Mr. and Mrs. Dewey McQueary.

Calvin Stoner will lead a discussion type study taken from John 4, at the Sunday evening service at the First United Methodist Church, beginning at 6:30 Sunday, Jan. 23.

Mrs. O.R. Clardy and Mrs. Aaron Roberts, Rhonda, Marty and Richard of Brownwood visited Friday and Saturday night with Rev. and Mrs. James Lane and Cynthia.

Those visiting Mr. and Mrs. Paul Rexroat and Mrs. J.P. Clepper during the weekend were Rev. and Mrs. Calloway Atkins of Mineral Wells; Mrs. Ora Lee Rexroat of Grand Prairie; Mrs. Eddie Purdue, Lisa and Lee of Arlington; Mr. and Mrs. Perry Clepper of Azle.

Thomas Dickson of Dallas spent the weekend with his mother, Mrs. Lillie Dickson and brother, Norman Dickson.

Mr. and Mrs. Clark Stewart spent the weekend in Dallas visiting their son and family. Mr. and Mrs. Clark Stewart Jr. They also visited her brother and sister-in-law, Mr. and Mrs. G.W. Holloway.

The junior high boys and girls basketball teams will compete in a basketball tournament at Tolar Thursday, Friday and Saturday of this week.

Mr. and Mrs. Don Stringer and Mrs. Lynn Stringer, Cindy and Lisa visited in Stephenville Saturday with Mr. and Mrs. Wayne Logan, Marleigh and Rickey.

The Baptist Women met at the church Wednesday night for a Bible study led by Mrs. Bill Keener. Appearing on the program were Mrs. Boyd Hart, Mrs. H.E. Cromer and Mrs. Lena Rogers. They spoke on "Manifestation", "The Message" and "Mission" respectively.

Mr. and Mrs. E.H. Lindsay have returned to their home in Omaha, Neb. following a visit with her mother and sister, Mmes. J.B. Shirley and Elizabeth Moore. Visiting the ladies this weekend are Mr. and Mrs. E.E. Shirley of Hobbs, N.M.

SAFEWAY COMPARE LOW EVERYDAY PRICES Plus SPECIALS!

Large 'A' Eggs 38¢
Breakfast Gems, Grade 'A' —Dozen
Safeway Special!

Sliced Bacon 73¢
Safeway #1 Quality. —1-Lb. Pkg.
Safeway Big Buy!

Orange Juice 19¢
Texsun, Frozen Rich in Vitamin 'C'! —6-oz. Can
Big Buy!

Good morning to you.

Waffles 10¢
Bel-air, Frozen Breakfast Treat! —5-oz. Pkg.
Big Buy!

Coffee 69¢
Safeway, Pre-ground Fresh Flavor! —1-Lb. Bag
Big Buy!

Canned Biscuits 8¢
Mrs. Wright's *Sweet Milk or *Buttermilk. —10-Ct. Can
Big Buy!

Start The Day With a Nourishing Breakfast!

Corn Flakes 25¢	Inst. Breakfast 58¢
Creamery Butter 88¢	Waffle Syrup 25¢
Strained Honey 37¢	Preserves 39¢

Hearty Breakfast Foods
from Safeway at Low, Low Prices plus Fine Foods for all meals. Shop Safeway for all your meal-time needs. Remember Safeway has Low, Low Everyday Prices plus Specials Every Day!

Safeway Values to Please Every Taste!

Fresh Milk 54¢	White Bread 29¢
Margarine 17¢	Texas Toastin' 33¢
Cinnamon Rolls 27¢	English Muffins 35¢

Finest Quality Fruits & Vegetables!

Oranges 99¢
Texas Juice Oranges. Full of Vitamin 'C'! Economy Pack —15 Lb. Bag

Green Cabbage 9¢
New Texas Harvest. Crisp Green Heads! —1-Lb.

Golden Bananas 2 lbs. 25¢

Pineapples 39¢

Large Papayas 45¢

D'Anjou Pears 29¢

Large Apples 29¢

Red Apples 59¢

Broccoli 29¢

Rutabagas 2 lbs. 29¢

Orange Juice 89¢

Dried Prunes 95¢

Best for Baking!

Potatoes 5 49¢

Compare Low Prices! Check These Values!

Chunk Tuna 35¢

Salad Dressing 37¢

Saltines 23¢

Enriched Flour 39¢

Detergent 49¢

Dog & Cat Food 7¢

Safeway Meats Are Guaranteed to Please!

Pork Chops 68¢

Rib Steaks \$1.09

Chicken Hens 39¢

Compare Low Prices! Save With These Values!

Tomato Soup 10¢

Golden Corn 19¢

Pork & Beans 16¢

Tomato Catsup 19¢

Canned Pop 8¢

Paper Towels 28¢

Paper Napkins 10¢

Del Monte Catsup 37¢

Gadiola Flour 62¢

9-Lives Cat Food 31¢

Star-Kist Tuna 40¢

Grape Juice 69¢

Maryland Club 1.77

Fresh 'n Ready Omelets 98¢

Soft Chiffon 45¢

Money Saving Values!

Macleans 69¢

Mouthwash 47¢

Variety and Quality Meats... Always at Safeway!

Pork Spareribs 49¢

Pork Backbone 68¢

Short Ribs 49¢

Lean Ground Beef 87¢

Hamburger Steaks 83¢

Ground Beef 1.45

Perch Fillets 69¢

Cod Fillets 69¢

Catfish Fillets 85¢

All Meat Wieners 48¢

Neuhoff Franks 52¢

All Beef Wieners 79¢

Safeway Bacon 73¢

Armour Bacon 79¢

Corn Dogs \$1

Lunch Meat \$1

Sliced Bologna 69¢

Boneless Ham \$1.40

USDA Inspected Grade 'A'!

FRYERS 29¢

Fryer Thighs 73¢

Split Breasts 77¢

Toothpaste Colgate Dental Cream Helps Fight Cavities! 3 1/2-oz. Tube 59¢	Colgate Instant Shave *Regular *Lime *Menthol 11-oz. Can 63¢	Comet Rice Long Grain 28-oz. Pkg. 47¢	Hour After Hour Anti-Perispirant 5-oz. Can 98¢
		Comet Rice Extra Fluffy Long Grain 14-oz. Pkg. 27¢	Romilar C. F. 8 Hour Couch Syrup 3-oz. Bottle \$1.37

Prices Effective January 24-26, in Eastland. No Sales to Dealers.

SAFEWAY

Eastland Art Club Holds Meeting

The Eastland Art Club met in the home of Mrs. Y.A. Young on Thursday Jan. 13th.

Being the first meeting of the year many plans were made. The following officers were elected:

Mrs. Sibyl Urban, President; Mrs. Anna Lee Young, vice president; Mrs. Dorothy Williams, Secretary and Treasurer; Mrs. Evelyn Daniels, Reporter; and Mrs. Margaret Tow and Dorothy Williams, Purchasing Committee.

Members painted, planned and visited.

Buffet refreshments of chips, dips, cake, spiced tea and coffee were available all afternoon.

It was a most enjoyable January 23, 1972

meeting for the following members. Sibyl Urban, Dorothy Williams, Lily Lawson, Mary Hood, Ita Perrish, Mildred Syare, Ruth Layton, Margaret Tow and hostess Anna Lee Wright.

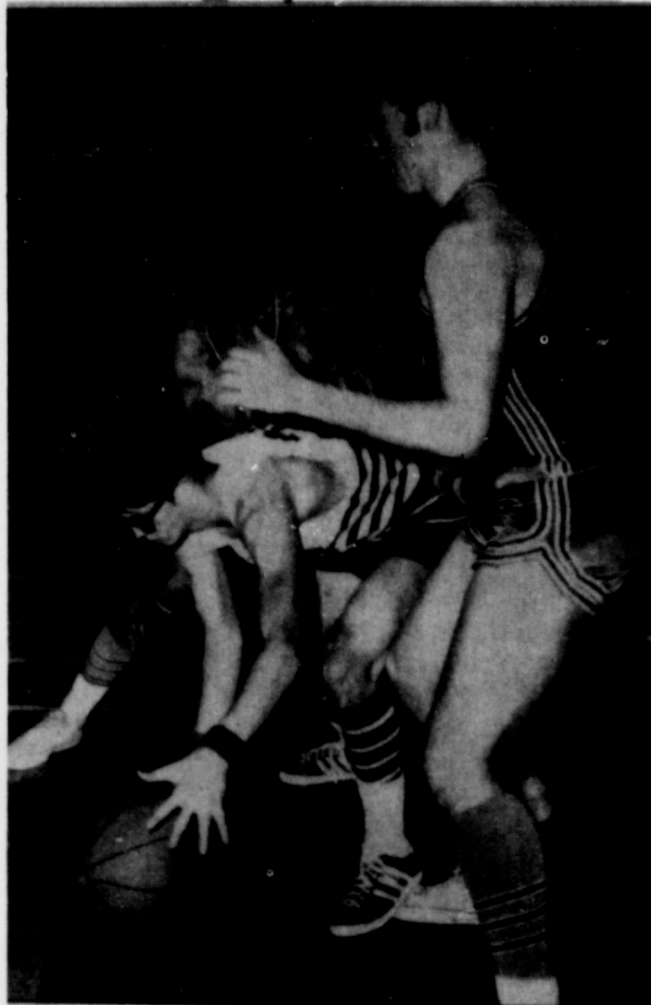
The next meeting will be in the home of Mrs. Mary Hood, Feb. 10th

Honor Roll

Two students from Eastland are included on Hardin - Simmons University's Dean's List for the fall term, according to Mrs. Bill Maupin registrar. They are Mary Ann Turner, senior and Randall Treadwell Freshman.

A student must take at least 12 hours and make a grade of "A" in all courses to make the Dean's List.

Sports



Oops - That's my ball says Bob Mace as he tries for rebound between two Coleman Bluecats. Coleman won 69-54 - to put Eastland 4-4 in District Play.

Sorority Candlelight Ceremony Pledges Five New Members

The Pledge Ritual of Beta Sigma Phi was read to five pledges of the Zeta Pi Chapter of Beta Sigma Phi in the Community Room of Eastland National Bank, Monday, January 17.

Candlelight rites were read by Mrs. H.D. Alsup, president of the chapter.

Receiving the Ritual of membership into the sorority were Mmes. James Fullen, Robert Mangum, Ted Martin, Russell Walker, and Richard Wilhelm.

Members present were Mmes. Alsup, Don Brumbelow, Don Joiner, C.P. Chick, C.R.

Kinser, and Kenny Payne. Refreshments were served following the ceremony.

Singing Convention To Be Held

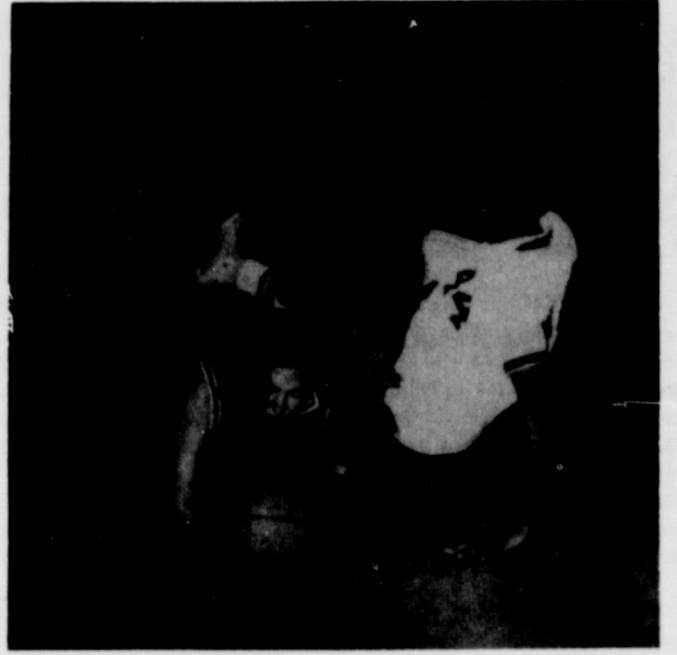
The Eastland County Singing Convention will be January 23 at Mangum Baptist Church. Singing all day and lunch will be served. Promises of the Brown Family Quartet and other good singing from Abilene are expected. The public is invited to attend.

16 Day Trip In Hawaii

Mrs. Harvey Basham has recently returned home after a 16 day trip to Hawaii. She spent 10 days in Honolulu, 2 days on the island of Kauai, and 2 days on Maui Island.

While on the island of Maui, she took a helicopter trip to view the island from above and as sailboat trip around the entire island. "The most beautiful sight of my trip was the blue water and sky surrounding the islands. No wonder they call it 'Blue Hawaii'."

After her sailboat trip, Mrs. Basham said that she fell on the sidewalk and hurt her knee, requiring a trip to the hospital for treatment. However, this did not spoil the remaining days of her visit, she stated. During this time, she viewed the volcanic craters on Hawaii Island before returning to Dallas and then home. Mrs. Annie Harper of Ranger also made the trip with Mrs. Basham.



Jo Ann Crawford takes a spill as she attempts to stop the Coleman girls here Friday night. Jo Ann scored 22 points to put the Eastland girls 54-42 over Coleman.

RANGER DRIVE-IN THEATRE

BOX OFFICE OPENS 6:45 PICTURE STARTS 7:15

Last times **SUN.** January 23rd

THEY HUNTED THE BIGGEST GAME OF ALL - MAN AND WOMAN!





THE HUNTING PARTY

COLOR
United Artists

FRI. - SAT. - SUN.
January 28th, 29th and 30th

IT'S LAUGH TIME
A JACK ROLLINS CHARLES H. JOFFE Production

woody allen's "bananas"

GP COLOR by DeLuxe
United Artists

Personal

Mr. and Mrs. Phillip Waldon and Chris of Garland were weekend guests of her parents, Mr. and Mrs. D. Glenn Jones.

Olden WMU

Olden W.M.U. met Tuesday afternoon in the home of Mr. and Mrs. I.E. Talley. Miss Onis Dick had charge of the program titled Family Crises. The song was "There Am I Send Me, and was lead by Mr. Wallace Pierce. Prayer was lead by Mrs. Pat Crawford of Eastland. 1 Cor. 10:23 - 33 was read by Mrs. Viola Langlitz. Mrs. Pat Crawford told about some of the work as a state worker.

Refreshments were served by Mrs. Talley and Mrs. Everts.

Those attending were Mrs. Carl Butler, Frank Collins, Onis Dick, Bud Griffin, S.G. Everts, Viola Langlitz, Jerry Osteen, Bill Howard, Wallace Pierce, and the hostess Mrs. I.E. Talley. Special visitors were Mrs. Pat Crawford, Mrs. Johnnie Boen and Mrs. Jewel Browning.

Richard Myrick

Funeral services for Richard Henry Myrick, 84, of Midland and formerly of Eastland, will be at 2 p.m. Sunday in Ellis Funeral Home Chapel in Midland.

Mr. Myrick passed away Saturday at 1:00 a.m. at his home in Midland. He was born May 7, 1888 in Gadsden, Ala. and moved to Eastland when he was eight years old. In 1946 he moved to Abilene and later moved to Midland.

Survivors include his wife of Midland; three daughters, Mrs. S.T. Steele and Mrs. James Jennings, both of Midland and Mrs. W.R. Erickson of Hobbs, N.M.; one sister, Mrs.



The Eastland S.O.S. Club met in the fellowship hall of the First United Methodist Church Friday afternoon. Claude Music gave an interesting demonstration on Arts and Crafts. Members present were Jewell Herweck, volunteer vista worker, Mrs. Ella Burns, Mrs. Cleo Greenwood, Mrs. Dan Putnam, Claude Music, Martha Cashio, and Mr. Will Reagan.

Quen Hawthorne of Abilene; and three grandchildren.

ROBERTSON TV



The ERICKSON Model GQ-729 25" diagonal picture

RCA SPECIAL XL-100 100% SOLID STATE AccuColor TV

A quarter century of TV leadership culminates in XL-100. Here is the finest color in RCA history, 100% solid state. Tuning's a snap with AccuMatic color monitor. Ultra-bright tube. And this giant-screen XL-100 console model is Anniversary priced!

SPECIAL PRICE \$598⁰⁰

PORTRAIT SPECIAL



8x10 natural color portrait


99¢ Plus 50¢ Handling Charge

Wide choice of proofs
One per subject - two per family
Groups \$1.00 extra per person
Cannot be used in conjunction with other advertising offers
COME EARLY AND BRING THIS AD TO:

Montgomery Ward
Eastland Texas
Thursday, Jan. 27th
Hours: 10 a.m. to 5 p.m.

IN PERSON **JOHNNY CASH**

JUNE CARTER
★
CARTER FAMILY



★
STATLER BROTHERS

CARL PERKINS
★

THE TENNESSEE THREE


FRI., FEB. 4, 8:00 p.m.

TAYLOR COUNTY COLISEUM

TICKETS: \$6.00 - \$5.00 - \$4.00 - \$3.00

Mail Orders: Send Cashiers Check or Money Order with stamped addressed envelope to: The Johnny Cash Show, Taylor County Coliseum, Box 3016, Abilene, Texas 79604

IN PERSON ASTRONAUT JOHN GLENN



Speaking on "America's Priorities"

CISCO JR. COLLEGE AUDITORIUM

MON. JAN. 24 - 8 p.m.

Adults \$2.50. All students \$1.00, all seats reserved; Call 817, 442-2567 for reservations or secure tickets at the door.

The Spot Restaurant

Featuring

Mexican Food
every Tuesday night

Fresh Water Cat-
every Friday night

The best eating for the whole family is **The Spot** in Cisco.

Phone 442-1949

Open 7 a.m. - 9 p.m. - 7 days a week

Mr. and Mrs. Charles Hill, owners

JRB FAMILY CENTER EASTLAND

9 1/2 inch Pyrex Pie Plate
Reg. 98¢ Sale Price **88¢**

Flannel Back Asstd. Colors Table Cloth
Reg. \$3⁰⁰ Sale Price **\$2⁴⁹**

Dandy Polyester Sewing Thread
Sale Price **3 for 49¢**

Teflon Cookie Sheet or Roaster **\$1⁹⁹**
Reg. \$2²⁹

Long Play 33 1/3 Record Album
WHILE SUPPLY LASTS **44¢**

We give S&H Green Stamps with every purchase.

J.R.B. Variety Dept.