

# EASTLAND TELEGRAM

EASTLAND, TEXAS 76448: Today's CENTER for tomorrow's FUTURE!

Volume 104 Number 13

Ten Pages

Sunday, February 13,

## Tid Bits

By HVO

MAYBE THAT'S when it began: 157 years ago today, Congress authorized money to rebuild the Capitol and the White House.

PR CHAIRMAN Mrs. Bernice Stephen reports that time runneth out soon for reservations for the Big Monthly Game Day to be held Friday, Feb. 18 at Lone Cedar Country Club. It's to be a day of fun and games, with mighty prizes, she says... Saturday morning's glaze of ice under bright sun was a sight to behold. Busiest place in town just prior to 8 a.m. had to be the Old Rip Cafe where good hot coffee, breakfasts and conversation were bubbling.

TWO TALKS this week sound extra - special good: Mrs. Beeman Fisher's book review for the Civic League Wednesday and District Attorney Emory Walton's talk for the P - TO Tuesday at 7:30. Reservations for the Wednesday meet need to be made no later than Monday noon, President Beverly Nicholson reports.

Farmers are plowing less and enjoying it more, thanks to a new conservation measure being pushed by the Soil Conservation Service.

As a result, there may be less dust in the air you breathe this winter and spring. Or less sediment in your city's water supply.

More moisture conservation, higher profits, more free time, and less soil loss are some of the benefits to farmers.

"All this is possible because of a new farming system called minimum tillage," E.E. McAllister explained. "With minimum tillage, crops are planted without prior land preparation. Weeds are controlled with herbicides. Since the land is not plowed, leaves and stalks from the previous crop are left on the soil surface as a protective cover during the fall, winter and early spring."

The surface cover is highly effective in preventing erosion. It breaks up the erosive effect of falling raindrops, letting them fall harmlessly onto the surface. The residues also protect the soil from windstorms.

McAllister pointed out that wind-blown dust is our state's largest source of air pollution. He also stressed that erosion-produced sediment is our biggest water pollutant, muddying streams and filling natural channels and lakes. Reducing water and air pollution from erosion has vast environmental benefits, he said.

"And think what scattered seed and residues left on the surface do for wildlife," he said. "In some farming areas, wildlife are almost entirely dependent upon crop residues for food and cover needed for survival during the winter months. Pheasant, dove, quail, geese, songbirds, deer, turkey, antelope and other wildlife benefit from such practices."

"In fact, widespread use of minimum tillage in Texas would be a great boost to our state's wildlife."

He pointed out that farming operations destroy surface residues. If farmers can substitute herbicides for cultivation in controlling competition, they can reap the many benefits possible from

Continued

## Phone Co. To Ask Rate Hike Here

An application for an increase in basic telephone rates - the first such request in more than seven years - will be filed by Southwestern Bell Monday with the Eastland City Commission.

John McGowan, Manager for Southwestern Bell, told Commission members Friday that the requested rate schedule meets the guidelines set by the Price Commission in Washington and the company will abide by future directives.

### Mavericks Close at 7-7

The Winters Blizzards scored 26 points in the final period Friday night and took a rallying 68 - 66 District 8-AA victory over the Eastland Mavericks.

Jerry Mack Jackson pumped in 22 leading Winters, while teammates Jimmy Benson added 14, Jimmy Sims 10 and Lee Choate 11. Winters is now 5 - 8 and plays a makeup game against Hamilton next week. Meanwhile, Eastland finished the season at 7 - 7 with Craig Lund scoring 20 points and James Eidson getting a game-high 26.

### This Week In Eastland

SUNDAY, FEB. 13  
5:00 p.m. McMurray Folksingers  
MONDAY, FEB. 14  
12:00 noon, Rotary meets at Sledges Cafeteria  
7:30 p.m. Jaycees  
7:30 p.m. Rebekahs  
Xi Alpha Chapter  
TUESDAY, FEB. 15  
12:00 - Lions at Sledges Cafeteria  
3:30 p.m. - PTO Elementary School  
Boy Scouts  
WEDNESDAY, FEB. 16  
12:00 - Civic League  
3:30 - Music Study Club.

EASTLAND NATIONAL BANK  
EASTLAND, TEXAS

Board of Trustees  
Eastland Independent School District  
Eastland, Texas

Dear Sirs:

The Eastland Quarterback Club would like to convey, through this Board of Trustees, their sincere appreciation to Coach Shirley Frazier and his assistants, Don Jones, Eddie Spiller and Doug Dallas, for their untiring efforts, Christian leadership and devotion to molding young men culminating in the most successful football season we have ever enjoyed.

We feel that all too frequently a "heartfelt thank you" goes unsaid and the silence in it's place is always misunderstood.

For this reason we would like to again say "Thank You Coach" and the best of luck in your new venture.

Sincerely,  
Eastland Quarterback Club

McGowan went on to tell commission members that "continued inadequate earnings on our operations - in the face of today's high cost of doing business - leaves us no choice but to ask for this increase in local rates."

The new rates requested by the company include a monthly increase in business one-party from \$10.50 to \$13; residence one-party from \$5.50 to \$6; and residence two-party from \$4.25 to \$4.70.

"Present rates in Eastland were established in 1964, based on statistics gathered in 1963," McGowan explained. "Since then, taxes, wages and the company's investment in Eastland have all grown to the extent that we must seek this increase. The present rates, based on 1963 operations, are

simply too low to meet the company's cost of doing business today."

McGowan stressed that the company has been able to hold the line on basic rates over the last seven years by continued and increased sales activities and use of numerous technological advances in equipment and facilities. These factors, he pointed out, allowed the company to meet some of the increased costs of doing business without asking an increase.

"The company has done all it can to keep expenses here as low as possible," McGowan said, "but the only solution is to request a reasonable increase in rates in line with today's higher costs. We hope the request will receive prompt and favorable action."

## Over 1,000

Today's farmers and ranchers are the producing marvels of the world. As agriculture becomes more and more efficient, fewer and fewer producers are needed to grow our food and fiber.

This efficiency means (1) that more people are free to work in other industries to create the wealth of goods and services that go to make up our high standard of living, and (2) that less of the family's take-home pay is needed to buy groceries. What it has also meant to producers is overproduction. Because of this, prices for farm products have not risen nearly as much as prices farmers must pay for production and family living items.

Agricultural producers today represent only about five percent of the total population of this country. If farmers and ranchers are ever to have any clout in the marketplace and in places where laws are made affecting their industry, they are going to have to get organized. This is no time for rugged individualism on the farm. It is the time for participation in a responsible organization. The Eastland County Farm Bureau is conducting a county-wide drive for members Feb. 14th through Feb. 18th. Dues are paid on an annual basis. This means the Farm Bureau must go back to each individual member once a year for renewal of its program. This is a sound approach to organizing. It is perhaps the only way to guarantee that an organization is responsive to its membership.

The Eastland County Farm Bureau deserves the active support of all who make their living in agriculture, directly or indirectly

## WE SALUTE

## Crocker Award Won By Brenda

Brenda Daniel has been named Eastland High School's Betty Crocker Homemaker of Tomorrow for 1972. She was chosen on the basis of her score in a written knowledge and attitude examination taken by senior girls on December 7, and has received a specially designed award charm from General Mills, sponsor of the annual educational program. She is now eligible for state and national honors.

The award charm and letter of appreciation was presented to Brenda during the Future Homemakers of America meeting at Eastland High School Monday at 11:00 by the Homemaking advisor, Miss Loretta Morris. Her test has been sent to state competition.

Brenda has been in Homemaking for three years and has been a member of FHA for four years. She served as Vice-president in her Sophomore year and as secretary her junior year. She was a representative of the Eastland Chapter to the State

Future Homemakers of America Convention in Dallas last April. She plans to major in Home Economics at Cisco Junior College next year.

This is the eighteenth year the Betty Crocker Homemaker of Tomorrow award has been given. With this year's grants, scholarship awards will reach almost \$2 million. The State Homemaker of Tomorrow will be awarded a \$1,500 college scholarship and her school will receive a complete set of Encyclopedia Britannica. A \$500 scholarship will go to the second-ranking girl in the state. The All-American Homemaker of Tomorrow will receive a \$5,000 scholarship with the three runner-ups receiving scholarships of \$4,000, \$3,000, and \$2,000. This year a \$1,000 Nutrition Scholarship has been added to the Betty Crocker Search program and will be awarded to the girl who ranks among the highest in her state and achieves the top score on the test's nutrition questions.



Brenda Daniel

## Emory Walton To Be Speaker For P-TO Meet

The role of the founding fathers in education will be the topic for District - County

## Pat Miller Is School Board Candidate



R. Pat Miller, well-known Eastland businessman, has filed as a candidate for Place Four on the Eastland Independent School District Board of Trustees.

Owner-operator of Earl Bender Co. Insurance and Abstracting, Mr. Miller is a longtime Eastland resident, and he and Mrs. Miller have four children, Mrs. W.L. Bogg of Italy, Jim Pat of Dallas, Janie, a student at Tarleton State University, and Susie, and EHS Junior.

The trustee election is April 1 and filing deadline is March 1. Three places are to be filled: the terms of Don Kinnaird and Bill B. Hart expire and the unexpired term of the late J.T. Gregory.

Mr. Miller is filed for the Hart post as is Police Chief John Morren. Hart is not seeking re-election and Kinnaird has filed for re-election. Mr. Gene Frost is a candidate for the unexpired term.

A native of Moody, Mr. Miller graduated Moody High School and North Texas State and served in the Marine Corps as a First Lieutenant.

## Emory Walton To Be Speaker For P-TO Meet

Attorney Emory Walton when he speaks for the P-TO Tuesday, Feb. 15 beginning at 3:30 p.m. at the Eastland Elementary School, President Mrs. Mackey O'Neal has announced.

The third grades will perform

## Mrs. Fisher To Review Book Here

Mrs. Beeman Fisher of Fort Worth will present a book review at the Civic League luncheon Wednesday Feb. 16th at the Women's Clubhouse. Reservations should be in no later than noon Monday. Mrs. Marcus O'Dell will be accepting reservations at 629 - 1395.

Mrs. Fisher is a noted reviewer and is in great demand. She is very active in the civic and cultural life of Fort Worth. She serves on the Executive Board of the Fort Worth Art Association. She was the founding president of the Women of the West, the women's auxiliary of the Wm. Edrington Scott Theatre. She was president two years, then became chairman of the board operating the theater, and she still serves on that board.

She is on the Board of the Community Theatre and frequently serves on the play reading committee. She is a member of the Community Theatre Guild.

She is very active in the Women's Shakespeare Club which is part of the Woman's Club. She teaches a five-week course each summer, serves on the yearbook and gives numerous talks.

She is an International Honorary Member of Beta Sigma Phi which is the highest honor the sorority gives.

She is the wife of Beeman Fisher, former President and Chairman of the Board of Texas Electric Service.

a patriotic, musical program

A nursery will be provided. Room mothers will host Valentine Parties for the Elementary Grades Monday at 1:30 p.m. it has been announced.

## Little Miss Plans Discussed Here

The Zeta Pi Chapter of Beta Sigma Phi met Tuesday, February 8 in the home of Mrs. L.R. Webb with the president, Mrs. H.D. Alsop, presiding.

Mrs. Alsop gave the club a report on the Mayor's Committee activities concerning civic projects. The organization had previously voted to support this program in any way possible.

In other business, a Valentine social Saturday, Feb. 12; a ways and means project; and preparations for the 1972 "Little Miss Eastland" Pageant were discussed. It will be held March 28 in the Eastland High School Auditorium.

The president led the group in a discussion, "Three Dots for Chapter Improvement". Refreshments of the Arabic dishes Kibbi (a meat and wheat ball), and Feeha (a meat appetizer), chips, dip, angel food cake, cokes and coffee were served by the hostess.

Members attending were Mrs. Alsop, Webb, Don Brumbelow, Ted Martin, Don Simpson, Robert Mangum, Russell Walker, Kenny Payne and James Fullen.

## Hope Singers To Sing Here Sunday At 5

The McMurry Hope Singers, with Mr. Bernhardt Tiede as Director, will appear in the First United Methodist Church of Eastland next Sunday, February 13, at 5:00 p.m. The group is composed of 12 voices, two accompanists, and three dancers.

The 30 minute program will be a unique blending of song, music and religious interpretive dancing. They will sing such popular numbers as "What The World Needs Now Is Love", "This Is The Message", and "I've Got Peace Like A River".

The public is invited and urged to attend this unusual program of music, dance, and song," states the pastor Rev. Cecil Ellis.

## FULLEN MOTOR

"A pessimist complains about the noise made when opportunity knocks."

## FREYSLAG Insurance Presents THE WEATHER

CLEAR to partly cloudy and warmer.

The Northeast District of the Comanche Trail Council, Boy Scouts of America will hold their February Roundtable meeting in the meeting room of the First National Bank Monday, Feb. 14th, at 7 p.m. according to Jesse Sexton, Stephenville, District Chairman.

Sexton went on to say that the Roundtable meetings are for Unit adult leaders and rotated throughout the towns of the District monthly and that the content of the meeting is mainly keeping the Adult Scouters up to date in programming on the National and Council level.

The Northeast District includes Eastland, Cisco, Ranger, Breckenridge, Rising Star, DeLeon, Gorman, Dublin and Stephenville.

The highlight of this month is the Scout - O - Rama to be held in Stephenville Saturday, Feb. 19th 1 to 6 p.m. at the Recreation Center where over 500 Cubs and Scouts will participate in a booth type show.

This month is the 62nd Anniversary of Scouting in the United States and Cub Packs are having Blue and Gold Banquets and the Troops Courts of Honor.

Eastlands Cub Pack 23 will have their Blue and Gold Banquet on Monday night Feb. 21st.

Local Scout leaders learned today that the Comanche Trail Council, Boy Scouts of America, will be served through a new organizational structure adopted by the BSA's Executive Board.

Council President Harold Yarbrough, Goldthwaite announced that the local council will no longer report to Region 9 in Dallas. The former 12 - region structure has been reduced to 6 regions, and the Comanche Trail Council is now a part of a larger region with headquarters in Dallas.

As council president, Yarbrough will be a member of the new regional committee which will be responsible for Cub Scouting, Scouting, and Exploring in Texas, New Mexico, Oklahoma, Arkansas, and Louisiana.

A special committee has been appointed to serve as a nominating committee for new regional officers to be elected at the National Council Annual Meeting to be held in Los Angeles from May 17 - 19.

Yarbrough explained that the new 6 - region plan will offer more effective direction and assistance to the Comanche Trail Council and should result in financial savings to the national organization.



The McMurry Hope Singers

# CLASSIFIED ADS



Sunday,  
February 13, 1972



## EASTLAND TELEGRAM

629-1707

11 W. Commerce St. Eastland, Texas 76448

Consolidated with Eastland Chronicle, established in 1887, and Eastland County Record, established in 1931

H.V. O'BRIEN, Publisher and Editor  
HERMAN ALSUP, Associate Editor

Second Class Postage paid at Eastland Texas under Act of Congress on March 1870.  
Published semi-weekly - Thursdays and Sundays by Eastland County Newspapers, Inc.

SUBSCRIPTION RATES: By carrier in city, 15 c a week or 65 c a month; one year by mail incountry, \$5; city P.O. Boxes, \$6; one year elsewhere in state, \$7; out of state, \$8.

NOTICE: Any erroneous reflection upon the character, standing, or reputation of any person, firm or corporation which may appear in the columns of this newspaper will be gladly corrected upon being brought to the attention of the editor.

### For Sale

1966 Chevy Pickup, 4 speed transmission, long wheel base, 6 cyl. May be seen at 1014 Bassett or call 629-2559. t-tf

Newly remodeled house and beauty shop. Call 629-1222. t-tf

1967 Chevrolet, Bel Air, Black & White, 327 V-8 engine, Standard. \$350.00. Call 629-1941. t-tf

Fence building, any kind, will chain link, sell by foot or in-stall. Call 442-2197. 405 West 11th, Cisco.

Two Wooden overhead garage doors. Ben Hammer, 1001 S. Seaman. t-tf

Coastal Bermuda Sprigs Machine Dug. P.E. Fox, Desdemona, Tex. Call 758-2623. t-14

3 bedroom house, bath and a half. Also small lot. Call 629-1020. t-14

1969 Chevrolet Caprice. All Caprice extras. Air conditioned. Power steering. Cruise control and others. Will take trade Ph. 629-2102. Priced right at \$2,195.00. t-16

Like new copper tone refrigerator \$125. Call 629-2478. t-13

Sewing machines Touch and Sew does everything \$92.50. Call 629-2920.

### Wanted

WANTED: To rent 3 bedroom house within 10 mile radius of Eastland. Contact Melvin C. Brown. 629-1023.

Farm hand wanted. Must know how to drive tractor. Full time job. Call Gorman, 734-5385. t-12

wanted to buy  
Older house or lot. Call 629-1992. t-21

Land to lease. Call after 5 p.m. on weekdays or any time on weekends. 442-2700.

### For Sale

FOR SALE: 1961 Econline Pickup, new leatherette seat covers \$275.00

Nearly new complete snow cone ice machine with all supplies. \$100.00  
Used deep well pump and tank. Works good \$65.00.  
Nice refinished practice piano. \$150.00.

Nice 10 ft. steel stock trailer \$150.00 with lights.  
Call Bob at the Dairy Treat 629-1144 after 10 a.m.

2 bedroom home 404 S. Hillcrest on 2 1/2 lots, heavily wooded. Call Wyndie Armstrong at 629-1751 day or 629-2236 after 5 for appointment. t-tf

### NEW 71 TRUCKS

1910A Int. 5 Ton Truck Tractor, VS478V8, 23,000 lb. 2 spd.

2 Scout II, 4 Wheel Drives, Both V8's, One with Air Custom Trim, & AAuto Trans.

2 1110 Int. 1/2 Ton Pickups

These are New & Unused & must be moved at Some Price.

New 72 Models of all sizes in Stock.

Johnston Truck 817-725-2181 Cross Plains, Texas t-15

Model 854 G E Dishwasher, \$235.00

Model 5FK5 Westinghouse Dishwasher, \$225.00

Model Gnn 595L RCA Color TV, \$400.00

Model WM 441 18" G E B&W TV, \$150.00

Model WM 507 G E B&W TV, \$100.00

Model HK 4250 Westinghouse Console TV, \$175.00

Ranger 8 Track Car Stereo with speakers, \$75.00.

Call 629-2662 or SEE Goodyear Service Store on East Main.

### Notice

NOTICE - Mattresses. Complete bedding made by Western Mattress Co., San Angelo. Best quality, low price, renovate or exchange new. Every other Wednesday. They're guaranteed. For home appointment, call Lois Mezell, 629-2703, leave name. t-f

Open for Business: Quality products at a discount price. West side Skelly, Hi-way 80 west Pete and Walter Tucker - operators. 629-8842. t-13

VACUUM CLEANERS sales and service new and used. Phone 629-1370. t-18

NOT SATISFIED? Want to make \$10,000 plus? We train - Car necessary - Bondable. Start part-time. Write P.O. B Box 45028, Dallas, Texas 75235. t-17

### ROY LEE SMITH PLUMBING

Contracting and Repairing Complete Plumbing fixtures and Supplies Bath & Kitchen Improvements

Trained, Adequate Staff Call a Licensed Plumber Day or Night 629-1722

### SMITH PLUMBING

114 N. Seaman Eastland

### Wanted Immediately

Old and New Customers at West Side Skelly Hiway 80 West

Courteous, Efficient Service and Discount Prices

Pete & Walter Tucker

629-8842

### For Rent

Small 5 room cottage on top of park Hill. 503 High street. Unfurnished. Only \$35 per month. Phone 629-1417. t-tf

Nice small apt., close in, bills paid, cable and telephone. Call 629-2083 or 629-8821. t-13

Furnished rooms and apartments, \$55 a month, bills paid. Commodore Hotel Eastland, Tex Call 629-1011

2 bedroom apartment bills paid, cable and telephone. Call 629-2083 or 629-8821. t-13

### Notice

MERCER'S APPLIANCE SERVICE Dishwashers - Washers - Dryers - Stoves - Disposals - Ovens

G.R. MERCER P. O. Box 34 Telephone: 653-2473 Olden, Texas 76466

### Poodle Grooming

Telephone 647-1288 -- 647-1845

### Card of Thanks . . .

CARD OF THANKS  
May I use this method to express my thanks and appreciation to Dr. Treadwell and the staff at Eastland Manor Nursing Home, who were so thoughtful and comforting during the illness and loss of our loved one.

For the flowers, cards, visits, and food, we are grateful and pray God's richest blessings be bestowed upon each of you.

Mrs. O.T. Shell and the family of Mrs. Linnie Walker

CARD OF THANKS  
We wish to express our heartfelt thanks to all the friends, neighbors, Dr. Bulgerin, Dr. Alexander and the nursing staff of Eastland Memorial Hospital for being so gracious during the illness and loss of our loved one. The many cards, floral offerings, food and comforting words are greatly appreciated by the family of J.T. Gregory

Mrs. J.T. Gregory  
Mr. and Mrs. Layne Gregory  
Mr. and Mrs. Grady Gregory  
Miss Kathy Gregory

### SOUTHLAND LIFE INSURANCE

M. H. PERRY  
100 S. Seaman

629-1566  
629-1095

### NOTICE

Lites, brakes & running gears installed. All Types of New Trailers For Sale.

Roy Cozart  
1107 W. 15th  
442-1912

### ABC Plumbing & Heating

Contracting and Repairing Complete Plumbing Service

Call 629-1200 Day or Nite  
BOB WILLIAMS  
Master Plumber  
Serving Texans 25 years

### POLITICAL ANNOUNCEMENTS

For County Sheriff: Bennie Moseley  
L. E. (Left) Sublett (Re-Election)  
County Commissioner, Pct. 1 Danny Woods

Judge, 91st District Court Earl Conner Jr. (Re-Election)  
Truman P. Kirk  
Bill B. Hart

State Representative, District 54 Joe Hanna (Re-Election)  
Jack Hetzel

Constable Precinct 1 Bill Hunter  
Howard A. Parson, Jr.  
Criminal District Attorney (Un-Expired term)

Emory Walton  
County Tax Assessor-Collector Nancy Trout  
Eddie Pietraszek

Senate, 22nd District Tom Creighton (Re-Election)  
Carnie Marsh  
Tom Holmes

### For Sale

We've got the new TEXAS ALMANAC with all the latest census figures AND a world of other important information. Get yours at the Telegram now at \$1.95 while they last. t-fn

Used two-tube fluorescent desk lamp with swivel arm. \$24.95, at the Telegram office where you'll also find a complete line of office supplies. Paper, files, typewriter ribbons, cash registers, adding machine tape, and much more. Just come look. It's for you desk or office, you'll find it at the Telegram.

"We can handle anything but litterbugs."  
Goode Pest Control  
Phone 629-1179 after 3:00  
310 N. Ammerman  
roaches, ants, termites, moths, spiders.

HELP WANTED  
Registered Nurse for director of nurses. Breckenridge Nursing Home. Call 559-2717 for interview. Breckenridge, Texas

MARY COME HOME  
sympathy and advice...  
WE ARE HERE TO SERVE YOU  
Whatever the hour, feel free to call on us for understanding counsel in time of sorrow.

### Arrington Funeral Home

Eastland 629-2611

since 1962  
  
Roy's Complete Whirlpool Appliance Center  
629-2474 Roy Gann 205 S. Lamar

NOTICE If you need irrigation equipment-check with us. Largest supply in Central Texas Pump Units All Sizes Pipe - Wheel Lines - Traveling Systems - KIMMEL IRRIGATION SUPPLY, INC. DE LEON, TEXAS PHONE: 817-893-6266

### REAL ESTATE

Large 2 bedroom house, needs some repair. So. Daugherty St. \$8,000.00  
2 bdrm house, good roof. S. Seaman. \$5500.00  
Small 2 bdrm-3 lots \$2500.00 Smith St.  
1 bdrm house, frame, Ranger. large lot. \$1500.00  
2 1/2 bdrm Needs repair, 8 pecan trees, approx. 1 1/2 ac., Hiway 80 Ranger \$5500.00  
Small 2 bdrm house, garage, large lot. \$3000.00  
Large 2 bedroom frame, 4 lots, in good repair, \$5500.00  
Nice 3 bedroom brick, Cisco. 4 bedroom frame house, 2 baths, Burkett St. \$8,000.00  
1 bedroom frame house, 2 lots, garage, Mulberry St. \$4,750.00  
3 bedroom brick, double garage, fair, Ranger.  
4 bedroom, 1 ac. city water & well, 2 baths, some pecan trees. Olden.  
Extra nice 3 bedroom brick, 13 acres, 70 pecan trees, Coastal Bermuda, 2 wells, tank, all electric.  
4 ac 2 bedroom, city water, lots pecan trees. Olden.  
3 bedroom rock home, 11 acres-2 acres orchard, large barn Olden.

FARMS & RANCHES  
80 acre, 2 bedroom house, 5 miles out, \$16,000.00  
194 acres, some lake frontage, pecan trees, close in.  
210 acres, cleared native pasture, pecan trees & creek bottom, net fences-Will subdivide for G.I. \$150.00 per acre  
40 acres, 3 bedroom house  
Some improved grasses. South part of County. \$17,000.00.  
51 acres-38 cult. balance brush  
17 acre peanut allot. Water well, 6 miles from Itanger, Will G.I. or owner will finance.  
120 acres, 200 native pecan trees, 3 tanks, 20 acres Coastal approx. 20 acres bottom on Sabanna River, good grass.  
160 acres near Cisco, will subdivide for G.I.  
45 acres-10 cult. on Interstate 20 near Cisco.  
14,000 acres improved No. Texas ranch. Will consider trade.  
2,800 acre improved Lampasas Co. ranch. Running water.  
1,750 acre ranch, some clear, excellent hunting, good location.  
Well improved 1000 acre ranch with cheap int. rate. Will consider some clear trade for equity.  
Several nice cabins at Lake Leon and also 2 nice lots on South Side.  
We have large and small Motels in thr area for sale or trade.  
For these and other places contact:

KINCAID REAL ESTATE  
100 South Seaman  
Eastland, Texas 629-1781  
Robert M. Kincaid  
629-2721  
J.W. Elder 647-13211

### REAL ESTATE

ALL TYPES OF REAL ESTATE:

HOMES  
farms  
ranches

Financing Assistance

Listings requested and long list of good properties on hand

CALL US AND LET US SHOW YOU HOW WE CAN HELP YOU

### M. L. TERRELL REAL ESTATE

Farm Bureau Building  
Hiway 80 East  
Tel. 629-1725 Day  
Night call 629-2443  
Eastland, Texas

### MEETINGS

MASONIC LODGE NO. 467

Meets second Thursday of each month at 7:30 p.m. in the Masonic Hall. Call Pat Miller, W. M. at 629-1077 or L. E. JHuckabay sec'y at 629-1391 for information.

EASTLAND ROTARY CLUB

Meets each Monday at White Elephant Restaurant in Eastland 12:00 noon.

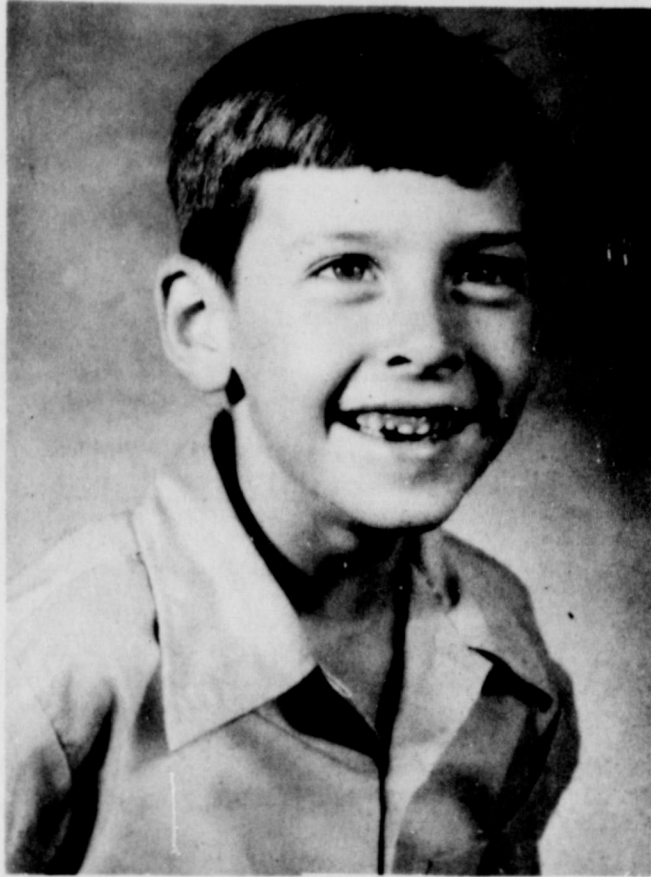
Rebeckah Lodge 177

Meetings each 2nd & 4th Monday at 7:30 p.m., 300 N. Lamar St.  
Sec'y Dorothy Awalt  
Phone 629-1682

MAYBE YOU DON'T NEED INSURANCE

If you don't own a home, furniture, jewelry or a car, you can get along without the services of an insurance agent. But for the most of us, life is not that simple. Modern living has become so complex that the protection of property and personal liability is a major problem and we must be insured. The individual you can always depend on for accurate solutions of your insurance problems is your local agent.

Earl Bender & Company  
Eastland Insurance since 1924 Texas



**A WHOLE LOT OF SMILE** - - Good-looking Shem Culpepper, 6, son of Mr. and Mrs. W.D. Culpepper, thinks Eastland is a mighty fine town.

### LVN Assoc. Plans Meeting Monday at 7

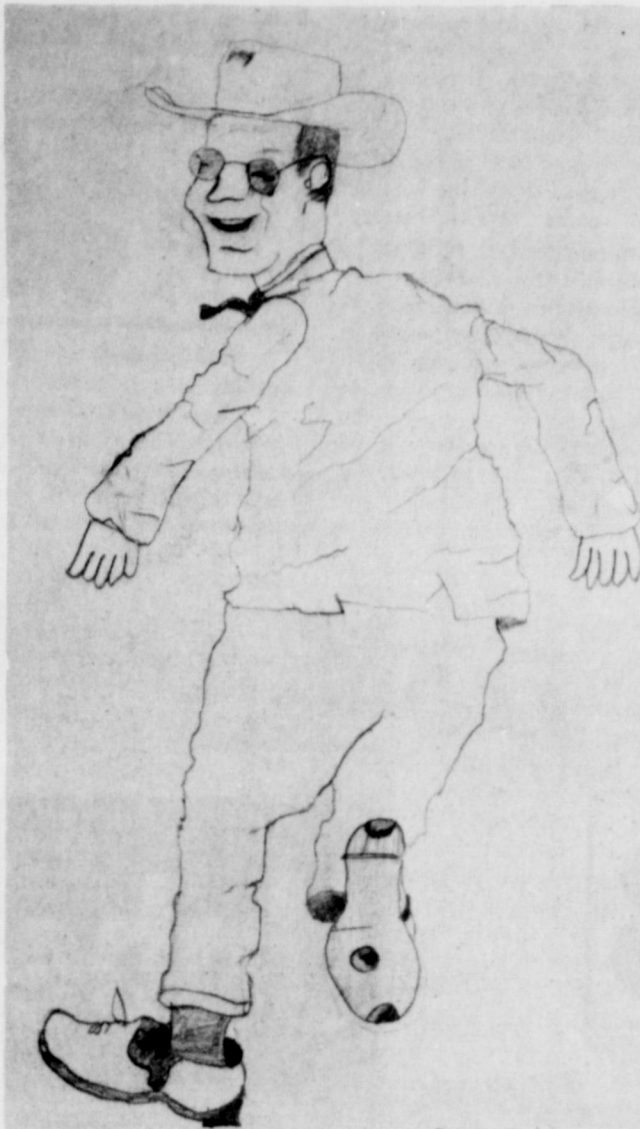
The monthly meeting of Licensed Vocational Nurses Association, Division No. 64, will be held at 7 p.m. Monday, Feb. 14, in the Conference Room of Eastland Memorial Hospital, according to Ranger nurses who will be hostesses for the evening.

Guest speaker will be Dr. William P. Buckner, III, a member of the faculty of Ranger Junior College.

All members are encouraged to attend.

### BRIEFLY TOLD

Stan Stephen, son of Mr. and Mrs. Joe Stephen, was in Eastland this week on business. Stan is Executive Vice-President, Trust officer, and a Director of the First Bank and Trust at Bryan.



**WHO COULD THIS BE?** - Huey Long? The sheriff who says "Boy, you're in big trouble". It's another drawing from Mrs. J.M. Cooper's Fifth Grade Class where students are learning to illustrate stories. This fine one is done by Bart Boles.

A 7-year old boy was being taught the proper way to ask a girl for a dance by the teacher in the dance instruction class. A half hour later the kid asked the teacher, "Now, how do I get rid of her?"

### Tid-Bits continued

maintaining crop residues on the soil surface year long.

He emphasized that residues keep the soil cooler in the summer, warmer in the winter. They reduce evaporation, saving valuable soil moisture. The residues protect young seedlings. The cover also produces better soil tilth and it increases insoak.

He said, however, that many farmers still plow their land over and over again, more from habit and custom than from actual need.

"Farmers have reported eliminating as many as 12 tractor trips across a field in one year with minimum tillage." "However, about six is probably closer to an average. With average farming operations costing at least \$1.50 per acre, cutting out six to 10 trips can mean big savings."

On the other hand, the state conservationist said cost of herbicides used for weed control can be expected to offset part of the savings.

"The big reason for using minimum tillage is that it allows a farmer to do a superior job of conserving his soil and," he stressed, "the fact that most farmers report higher profits is also significant. But the advantages from a soil and water conservation standpoint justify use of the system."

He said the Soil Conservation Service has published a new booklet "Minimum Tillage in Texas" which describes minimum tillage farming systems. To get a free copy, contact the nearest SCS office or write P.O. Box 648, Temple, Texas 76701.

**Briefly Told**  
Mrs. F.M. Jones of Van, Texas, visited her sister, Mrs. Joe Stephen this week.

forming a curl. The other factor is the static electricity generated by friction as the synthetic thread passes through the fabric. The static electricity attracts the thread to itself, forming a twist which can then turn into a knot.

For more information on sewing and construction hints, contact the County Home Demonstration Agent's Office for free bulletins on sewing with knits, vinyl, fake furs, sheer fabrics, and the newest information in sewing men and boy's knit slacks.

### Graveside Rites Held Tuesday for Kinser Infant

Graveside rites for the infant daughter of Mr. and Mrs. Clyde Richard Kinser were held at 3 p.m. Tuesday, Feb. 8, at Oakland Cemetery in Gorman with the Rev. Huron Poinac, pastor of Gorman's First Baptist Church, officiating.

The infant was born at 12 a.m. Monday in Eastland Memorial Hospital and died four hours later.

Survivors are the parents, Mr. and Mrs. Clyde Richard Kinser of Gorman; maternal grandparents Mr. and Mrs. A.W. Warford of Ranger; paternal grandparents Mr. and Mrs. Roy Kinser of Gorman and great-grandparents Mr. and Mrs. George Porter, also of Gorman.



**HAPPY BIRTHDAY TO ME** - - Pretty Josefa, daughter of Mr. and Mrs. Pedro Orozco, celebrated her second birthday Sunday, Feb. 6, and says: "Why I don't feel much older. Do I look any older?"



**Easy does it** - - Gary Mathis is operating a Hew Wel Saw Power Hack Saw and cutting a 1-inch piece of tubing. The new saw is automatic and will cut the pipe in about 5 seconds. This is one of the new saws that the ag classes are learning to operate. Gary is a junior and is participating in Ag. III at Eastland High School. Mr. Don Griffin is Vo. Agriculture instructor. Photo by Herman Alsop

## Carbon News

### CARBON NEWS

By Mrs. Bob Hastings

Mrs. Truman Bryant and Candi visited their daughter and sister and family Mr. and Mrs. Dwayne Clower of Sweetwater last weekend.

Mrs. Bess Green visited her uncle and family Mr. and Mrs. J.W. McNeese of Brownwood last week.

Mr. and Mrs. John Burns and Tim Wooley attended the funeral of little Michael Vandever in Rising Star last Thursday.

Mr. and Mrs. Elmer Walker and Mr. and Mrs. Coda McDaniel attended the funeral of Mrs. H.M. Weston in Goldthwaite last Thursday. Mrs. Weston was the mother of Mr. Buck Weston of Carbon.

Mr. and Mrs. Jack Weston of Fort Sumner, New Mexico spent Wednesday night Wednesday night with his parents Mr. and Mrs. Buck Weston and attended the funeral of his grandmother in Goldthwaite Thursday.

Mrs. Gerald Smith and children of Dyersburg, Tennessee, are visiting her mother, Mrs. John Burns and family this week.

Mr. and Mrs. J.W. Jackson

have returned home from their stay in the Lawndale nursing home in Gorman.

Mr. and Mrs. Floyd Girtz of Abilene visited her parents Mr. and Mrs. James Smith Tuesday.

Mr. and Mrs. Oran Justice of Gorman attended church service at Carbon Baptist Church Sunday and visited friends Sunday morning.

Mr. and Mrs. Jack Burke and daughter and Mr. and Mrs. Danny Wooley and daughters of Fort Worth visited their parents Mr. and Mrs. John Burns last week.

Mr. and Mrs. Carroll Hogan of Albany and Mr. and Mrs. John Hull of Cisco visited their parents Mr. and Mrs. Jim Hogan Sunday.

Mr. and Mrs. Don Weaver of Abilene visited their parents Mr. and Mrs. Jim Weaver Sunday.

Mr. Bob Jackson of Odessa and Mr. and Mrs. Henry Sims and children of Graham spent last weekend with their mother Mrs. Jewel Jackson.

Mrs. Ione Bounds of Eastland was a Sunday afternoon visitor in the home of Mr. and Mrs. J.E. McDaniel.

## HD NEWS

By Janet Thomas County Home Demonstration Agent

The Importance of Play for Children is the subject of one of the four lessons of the home study course "YOUR PRESCHOOL CHILD" which is being sponsored by the Eastland County Family Living Committee. This lesson includes finger games and songs for young children to learn as well as what toys and books are best for certain age groups. Pre-registration deadline is February 21st with the first lesson starting February 28th. If you are interested in enrolling in the home study course where you read the lessons at home at your own convenience, call the County Home Demonstration Agent's Office, 629-1729, for information about the course and how to enroll.

Mrs. Bernard Campbell, County THDA Chairman, will be serving as chairman of the Cultural Arts and Recreation workshop to be held in conjunction with the District THDA meeting in Gatesville on March 23rd.

### SEWING HINTS:

To keep light weight plastic spools in the machine spindle, place an empty bobbin, or washer on top of the spool when sewing.

With the modern synthetic fabrics, you should change your machine needle more often. Why? Synthetic fibers are denser and more abrasive than simple cottons, silks and wools, and dull the needle quite rapidly. The condition of the needle and needle size are

Mr. and Mrs. Pat Guy, Lisa and Lori of Plainview visited in the homes of their parents Mr. and Mrs. Pete Hallmark and Mr. and Mrs. Odis Guy over the weekend.

Mr. and Mrs. Roy Iley of India, California, and Mrs. of vital importance when sewing on modern fabrics.

Also check your scissors, for scissor blades need sharpening more often for the synthetic fabrics will dull the scissor blades.

What causes polyester core thread to knot and curl in hand sewing? Two factors contribute. The polyester core stretches when pulled and snaps back when released.

TO REGISTER, COMPLETE THE BELOW FORM AND MAIL TO:  
MRS. JANET THOMAS  
COUNTY HOME DEMONSTRATION AGENT  
P.O. BOX 189  
EASTLAND, TX 76448

RETURN THIS FORM WITH \$1.00 REGISTRATION FEE BEFORE FEBRUARY 21ST.

NAME \_\_\_\_\_  
ADDRESS \_\_\_\_\_

YES, ENROLL ME IN THE HOME STUDY COURSE, "YOUR PRE-SCHOOL CHILD".

**perry's** EASTLAND No. 2

**fabricic**  
FABRIC CENTERS

**45" Printed Flannel**  
100% Combed Cotton  
Machine Wash N' Dry  
Easy Care Values to 69¢  
yard **49¢**

**Big New**  
**Spring Shipment**  
**100% Dacron**  
**Polyester**  
**Double Knit**

- All Fine Quality
- Dressmaker Lengths  
2 to 5 Yards
- All 60 inch widths
- Completely Machine Wash and Dry
- Beautiful Stitches Including  
Jacquards, Crepes, Ribs,  
Etc.

**36" Printed Flannel**  
100% Combed Cotton  
Machine Wash N' Dry  
Values to 59¢ yard  
yard **39¢**

**100% Cotton**  
**Perma Press**  
Machine Wash /Dry  
Values to \$1.49  
yard **99¢**

**Special yard \$2.44**

LEGAL NOTICE  
UNITED STATES  
DEPARTMENT OF  
AGRICULTURE  
Rural Electrification  
Administration

STATEMENT OF  
NONDISCRIMINATION

Comanche County Telephone Co., Inc. has filed with the Federal Government a Compliance Assurance in which it assures the Rural Electrification Administration that it will comply fully with all requirements of Title VI of the

Civil Rights Act of 1964 and the Rules and Regulations of the Department of Agriculture issued thereunder, to the end that no person in the United States shall, on the ground of race, color, or national origin, be excluded from participation in, be denied the benefits of, or be otherwise subjected to discrimination in the conduct of its program and the operation of its facilities. Under this Assurance, this organization is committed not to discriminate against any person on the ground of race, color or national origin in its policies

and practices relating to applications for service or any other policies and practices relating to treatment of beneficiaries and participants including rates, conditions and extension of service, use of any of its facilities, attendance at and participation in any meetings of beneficiaries and participants or the exercise of any rights of such beneficiaries and participants in the conduct of the operations of this organization.

"Any person who believes himself, or any specific class of

individuals, to be subjected by this organization to discrimination prohibited by Title VI of the Act and the Rules and Regulations issued thereunder may, by himself or a representative, file with the Secretary of Agriculture, Washington, D.C. 20250, or the Rural Electrification Administration, Washington, D.C. 20250, or this organization, or all, a written complaint. Such complaint must be filed not later than 90 days after the alleged discrimination, or by such later date to which the Secretary of Agriculture or the

Rural Electrification Administration extends the time for filing. Identity of complainants will be kept confidential except to the extent necessary to carry out the purposes of the Rules and Regulations."

members and their exhibits will be judged from 9:30 - 11:30.

The County Foods Show is the grand finale for the 4 - H foods - nutrition projects that some 90 members have been participating in. Adult and Junior leaders have taught the groups for the past four months.

The Foods Show is divided into two groups - Junior and Senior. The winners in each division will participate in the District Foods Show on March 11.

4 - H friends, parents, leaders and guests are cordially invited to attend the

showing on Saturday, February 19.

Look for the results of the County Show in next week's "4 - H News".

Eastland 4 - H club members will meet on Monday night, February 14 for their monthly meeting. All members are urged to attend. Meeting place is the Farm Bureau meeting room at 7:30 p.m.

**KIRK WILL WORK**  
For Fairness and Justice  
As your Judge - 91st  
District Court  
The people's candidate  
**Truman P. Kirk**



4 - H NEWS  
By Judy Cardwell  
Associate CHDA  
"Special Occasions and Special People" is the theme of the Eastland County 4 - H  
Foods Show to be held on Saturday, February 19 at the Cisco Junior College Student Union Building.  
The Show will be open to the public from 11:30 - 12:15. 4 - H

# VALENTINE'S DAY SPECIALS

## J R B

### SUPER MARKETS

PRICES GOOD at EASTLAND, RANGER, CISCO  
Monday through Saturday February 19  
NO SALES TO DEALERS



## Unbeatable prices

Look at the way we've cut prices and you get S&H Green Stamps, too!

## Unbeatable stamps

Brownwood, Brady, Cisco, Eastland, Ranger,  
Wichita Falls, Cross Plains, Abilene Coleman.

### S & H GREEN STAMPS

Every WEDNESDAY AND SATURDAY  
With purchase of \$2.00 or more

JRB MEATS ARE U.S. GOVERNMENT INSPECTED. IF FOR ANY REASON YOU ARE NOT SATISFIED WE WILL CHEERFULLY REFUND YOUR MONEY.

Fresh Thin Sliced Beef Liver	lb.	59¢
Lean & Tender Pork Steak	lb.	69¢
Fresh Tender Calf Liver		79¢
Thin Breakfast Slices Sliced Picnics	lb.	59¢
Lean Boston Butt Pork Roast	lb.	65¢
Small "Little Pig" Spare Ribs	lb.	79¢
Gooch Blue Ribbon Franks	12 oz. pkg.	55¢
Gooch Blue Ribbon Smokies Breakfast Links		69¢
Lone Star Sliced Luncheon Meats	lb.	79¢
Gooch Blue Ribbon Brick Chili	lb.	89¢
Cut-Up Pan Ready Fryers	lb.	35¢
Wisconsin 9/15 oz. cuts	lb.	99¢
Longhorn Cheese		
Swift's "Each Slice Wrapped" Sliced Cheese American	12 oz.	69¢
Shop Made Seasoned Just Right Pork Sausage	lb.	49¢

Whole U.S.D.A. Inspected "Farm Fresh" Fryers	lb.	29¢
Gooch Blue Ribbon Sliced Bacon	lb.	69¢
Del Monte Cr. Style or Wh. Kernel Corn		4/\$1.00
Shurfine Tuna Fish Chunk No. 1/2 can		37¢
Shurfine Salad Dressing	qt.	59¢
Towie Salad Cherries	9 oz.	39¢
Del Monte Pickles Dills	22 oz.	49¢
McCormick Black Pepper	4 oz. can	53¢
Energy Bleach	Gal.	38¢
Shurfine Orange Juice	6 oz.	5/\$1.00
J.R.B. Mellorine	1/2 gal.	3/\$1.00
Rama Apple Jelly	18 oz.	3/\$1.00
Keeblers Fudge Choc. Cookies		49¢
Del Monte Pineapple Juice	46 oz. can	3/\$1.00
Kounty Kist Whole Kernel Corn	12 oz.	5/\$1.00

**CUPID'S CHOICES FOR VALENTINE VALUES**

Mortons Frozen Cream Pies 14 oz. 29¢

Gold Tip 8 oz. can Tomato Sauce 10/\$1.00

Hunts Catsup 14 oz. 4/\$1.00

Shurfine Frozen Orange Juice 6 oz. 5/\$1.00

J.R.B. Mellorine 1/2 gal. 3/\$1.00

Rama 18 oz. Apple Jelly 3/\$1.00

Keeblers Fudge Choc. Cookies 49¢

Del Monte 46 oz. can Pineapple Juice 3/\$1.00

Mrs. Bairds Honey Pecan Rings 49¢

Kounty Kist Whole Kernel Corn 12 oz. 5/\$1.00

Ranch Oven BISCUITS 12/\$1.00

Trellis Std. Peas 303 can 6/\$1.00

**Produce**

TOMATOES Large Vine Ripe ctn. 39¢

Rome Apples Good eating and cooking lb. 19¢

Grapefruit Ruby Red Texas Sweet lb. 19¢

Bananas Golden Ripe - lb. 10

Potatoes Russet 10 lb. bag 69¢

**SUGAR BOWL**

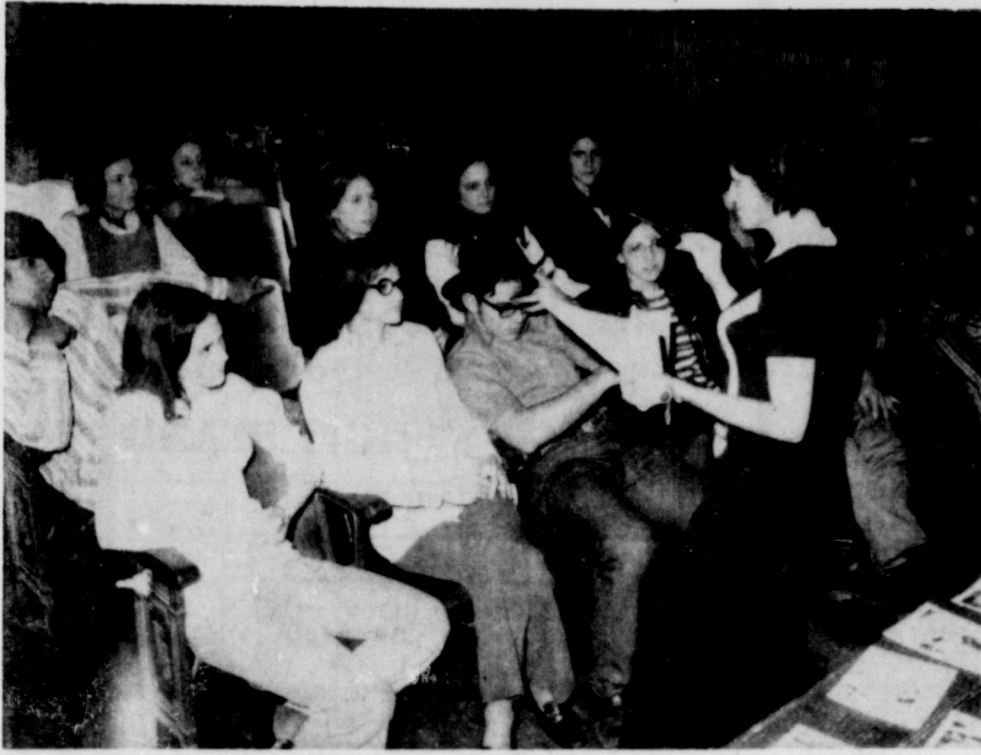
THIS WEEK'S SERVICE PIECE SPECIAL  
Redeem This Coupon  
Save \$1.35

**VALUABLE COUPON WORTH \$1.35**

TOWARD THE PURCHASE OF CHINA SERVICE PIECE SPECIAL SUGAR BOWL  
Reg. Price \$5.60  
Less Coupon 1.35  
You Pay (with coupon) 4.25

in the pattern of your choice  
COUPON GOOD THRU Feb. 19

To Be Presented Soon



Now students...The junior play will be in a couple of weeks and we still need some work on it. Here are a few pointers, says Mrs. Nancy Mahan, play sponsor and coordinator, as she works with the junior play cast after a rehearsal this week.

The junior class of Eastland High School will present "Finders Creepers" by Donald Payton on February 18th at 8:00 p.m. in the Eastland High School auditorium.

The play is a mystery thriller about a boy, Hercules and his friend Wilbur who go to see Hercules' aunt and uncle. The boys are mortally terrified when they find out Hercules' uncle is a mortician. The thrills and laughs of the wildest weekend ever, promise an entertaining and exciting evening.

Tickets may be purchased at the door or from any member of the junior class. Tickets are: Adults - \$1.00 and students - 75 cents. Photos by Herman Alsup



Leander Longfellow, hero, looks bravely as Purity Dean, heroine, is being revived from a fainting spell. Mr. and Mrs. Jonathan Logan, inn-keepers assist. Rehearsal shot from E.C.T.'s forthcoming production of "Pure As the Driven Snow". (Left to right) John Frost, Dan Childress, Debbie Whaley, and Maxine Ellis. Photos by Herman Alsup

## 'Two-Timer' Speaks For Lions on Camp

Mrs. Gladys Marie Stacey of Bangs, a two-timer at the Lions Camp for the Blind, was a two-timer for members of the Eastland Lions Club Tuesday in their meeting at the High School.

Visually handicapped since diphtheria left scar tissue on her eyes at age 10, Mrs. Stacey first went to the training Camp for the blind at age 35, and seven years later went back for further training.

She now reports that she is entering a new career as the result of help and assistance through the blind training program and the state assistance for the blind. She is taking extensive training from a qualified instructor of body massage in Brownwood, and hopes to complete her training and open her own practice in Bangs in about a year.

"Patience" is the keyword in working with the blind she said, and the instructors at the camp, many of whom are blind

themselves, certainly display that quality, plus many other talents.

Displaying handicrafts which she made there, she explained that this work developed sensitivity in her finger tips for braille work.

President De Gordon presided and announced that the club will meet next Tuesday at Sledge's Barbecue Restaurant for their meeting.

Guests included Mr. Stacey, Mrs. Monroe Rollins and Mr. Sharp of Dallas, and State Rehabilitation Counselor Jerry Lewis of Abilene.

In her training, she was taught to use electrical devices, hand and power tools and other skills, Mrs. Stacey explained. She has been helped so much, she said, and her goal now is to be able to help others.

President Gordon announced that the three-club (Eastland, Ranger and Cisco) 50th Anniversary Celebration is tentatively set for March 30, with details to be announced.

## Peanut Producers Board Required To Hold Elections

The Texas Peanut Producers Board is required by law to hold biennial elections for the purpose of electing board members. At the first meeting of the Board October 1, 1969, lots were drawn by members to determine the tenure of office of the initial board members. As a result of this drawing Lyndell Coan of DeLeon, Billy Carruth of DeLeon, and Ben Cook of May were elected for terms of two years. These members are all from District No. 1 which includes these counties: Brown, Comanche, Mills, Hamilton, San Saba, McCullough, Mason, Llano, Coryell, and Gillespie. Therefore, two members will be elected to represent this district and one to represent the state at large. Election of these members must be completed and tabulated by May 1, 1972. All producers of peanuts

within the area defined including owners of farms on which peanuts are produced, are eligible to vote in the election if such producer would be required under H.B. 525 to pay the assessment.

Any producer of peanuts who

## Dividends Up 10%

DALLAS -- Directors of Lone Star Gas Company, Dallas, Texas, today declared a regular quarterly dividend of 34 cents per share on common stock payable March 6, 1972, to shareholders of record February 18, 1972. This rate is equivalent to \$1.36 on an annual basis.

1971 dividends totaled \$1.30 per share of common stock, up 10 percent over the 1970 total of \$1.18.

is qualified to vote in the election who desires to be a candidate for membership on the Texas Peanut Producers Board, shall file with the principle office P.O. Box 398, Gorman, Texas 76454, an application to have his name printed on the ballot to be used in the election. The application must be signed by the candidate and by at least 10 peanut producers who are qualified to vote in the election and must be filed at least 30 days prior to the election. All ballots must be postmarked by midnight April 28, 1972.

No candidate, unless so nominated shall have his name placed on the official ballot. However, this does not prevent the writing of the name of any candidate on the ballot by any qualified voter at the election, and spaces shall be provided on the ballot for such write-in candidates.

Wayne Eaves, Executive Secretary Texas Peanut Producers Board

## Sunday, February 13, 1972 Area FHA Meeting Discussed by Local Chapter

The Eastland Chapter of the Future Homemakers of America held their meeting for the month of February on Monday morning, February 13.

The meeting was presided over by vice-president, Evelyn Chapman. The girls discussed matters of business, including the coming Area F.H.A. meeting which is to be held March 10 and 11. This meeting is open to all members of F.H.A. and we are hoping to have Eastland well represented by a good sized group attending.

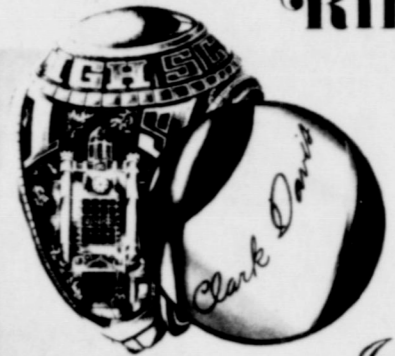
Awards were made at this meeting to two outstanding senior girls. Lynn Robertson was presented the Crisco Award for being the most outstanding homemaking

student during the first semester. Brenda Daniels was presented with the Betty Crocker Award for being the high scorer on the Betty Crocker Test given to senior girls. She received a charm, to go on her bracelet.

After the business discussion, the program was presented by Franklin Krause, youth director at the First Baptist Church in Eastland. He gave the girls a few "helpful hints on boy-catching". The girls were able to get a few first-hand clues that will surely come in handy. The girls presented Franklin with a gift of appreciation as the meeting closed.

Diane Mahaney Reporter

## Golden Signature Ring



John Roberts

Personalize Your ring

Add the most personal mark, your signature engraved in gold, to your class ring created by John Roberts. Ask about the Golden Signature Ring today.

## Eastland Drug

## The Spot Restaurant

Featuring

Mexican Food every Tuesday night

Fresh Water Cat-every Friday night

The best eating for the whole family is The Spot in Cisco.

Phone 442-1949

Open 7 a.m. - 9 p.m. - 7 days a week

Mr. and Mrs. Charles Hill, owners

## CENTRAL DRUG

Sweethearts Everywhere-Prefer

# CANDY

Show Her You Love Her with



Call for Free Delivery 629-2681 103 W. Main St.

**RANGER DRIVE-IN THEATRE**  
BOX OFFICE OPENS 6:45 PICTURE STARTS 7:15

Last time SUNDAY, February 13th.

Valentine Greeting  
THE #1 NOVEL OF THE YEAR - NOW A MOTION PICTURE!  
**AIRPORT**  
BURT LANCASTER LEAN RANDALL  
A UNIVERSAL PICTURE - TECHNICOLOR - Produced in 70MM TOCUCAD  
G ALL AGES ADMITTED

FRI. FEBRUARY 11, 1972

**CLINT EASTWOOD**  
The scream you hear may be your own!

**"PLAY MISTY FOR ME"**  
...an invitation to terror...  
A UNIVERSAL-MALPASO COMPANY PICTURE - TECHNICOLOR

**Eastland Paint & Body Shop**

Insurance Claims  
Windshields Installed  
Vinyl Tops Installed  
Air Conditions Installed  
Auto Body Repair  
Painting

629-1543  
304 E. Main  
Gene Millican Owner

Give your toes a hard hat  
**FACTORY WORKERS SAFETY**

Safety Wing Safety Shoes fit your work - fit you. They stand up to rough work. Crafted for extra protection, with safety steel toes. Oil-tanned uppers, Neoprene cord soles, steel shank.

**RED WING**  
THE MAN'S STORE  
Bob Elliott  
CISCO

"Because Someone Lived"  
**RAWLINS MONUMENTS**

Since 1884 THE NAME to look for in distinctive memorials

Roy Taylor 500 East 8th St. Cisco  
Please Call Collect  
CALL 442-1127

**NOTICE**  
Now open for business  
**Tropical Aquarium No. 2**  
Located - Hillside Apt. No. 3 Unit 21  
Hours 8:00 a.m. to 10:00 p.m.  
For all your Tropical Fish Needs  
come and take a look.

STOP for Brake Service  
Wash & Grease  
Minor Auto Repairs  
S&H GREEN STAMPS WITH EVERY PURCHASE.  
**LEVENS ENCO**  
400 E. Main - Eastland - 629-1688

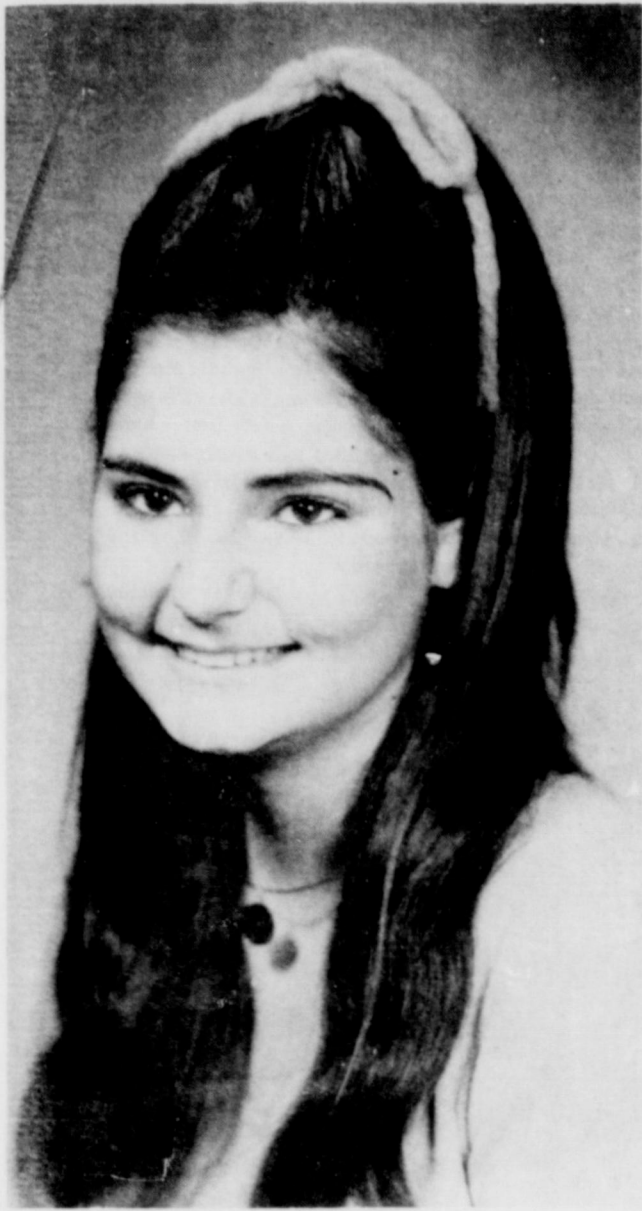
**King Motor Co. Special of the Year**

1971 Torino - 4 door sedan, air-conditioned, automatic transmission, power steering, 302 V-8 engine, no miles. Come by and See **\$2995**

**Used Cars**  
1970 model 3/4 ton custom pick-up, real work truck  
1971 Ranger XLT air-cond. auto-trans, power steer, 390 engine  
1966 Mercury 4 door sedan, loaded, local car, extra clean  
1970 Ford custom, 360, 4 speed transmission

**HOOD KING MOTOR CO.**  
100 E. Main Eastland 629-1786

# Engagement Told



Mrs. B. F. Chick and Donald Chalk of Rising Star have announced the engagement and approaching marriage of their daughter Paula to Rickey F. Morton, son of Mr. and Mrs. Ralph T. Morton of Cisco. The bride-elect is a senior at Rising Star High School and will attend Tarleton State College in the fall. The groom-elect is a 1969 graduate of Cisco High School. He is a graduate of Cisco Junior College and is a senior at Tarleton State College. The wedding is planned for June 17 in the First Baptist Church of Rising Star at 7:00 p.m. Relatives and friends are invited, a reception will follow.

## Sunday's Subject

What is the nature of the joy that lasts? An answer to this question will be brought out at Church of Christ, Scientist, Sunday in a Bible Lesson - Sermon entitled "Soul." "Thou wilt shew me the path of life: in thy presence is fulness of joy: at thy right hand there are pleasures for evermore," a passage from Psalms states.

and Health with Key to the Scriptures by Mary Baker Eddy concludes with this statement: "Truth will at length compel us all to exchange the pleasures and pains of sense for the joys of Soul." Services in Eastland will begin at 11 a.m. Sunday, February 13, in the First Church of Christ Scientist Building on the corner of Plummer and Lamar.

# OBITUARIES

## Mrs. Griffin

Funeral services for Nellie Ester Griffin were held Thursday, Feb. 10 at 10 a.m. in Arrington Funeral Chapel. The Rev. Haston Brewer officiated. Burial was in Murray Cemetery in Carbon.

Mrs. Griffin died Tuesday night at the age of 70 in Gulf Coast Hospital in Alvin, Texas. She was born Sept. 2, 1901 in Fulton, Mississippi and married James Russell Griffin in 1921 in Eastland. Mrs. Griffin was a long time resident of Carbon and a member of the Baptist Church.

Survivors are her husband James of Ranger; five sons, Morris of Alvin, Elmer of Gardendale, Eudell of Houston, Bobby and Gaylon of Breckenridge; one daughter, Eva Nell Southerland of Amarillo; one sister, Mrs. Mamie Hazard of Ranger; three brothers, John Hughes of Midland, Kelvin of Brownwood, Orville of Breckenridge; 18 grandchildren and one great grandchild.

Pallbearers were George Carter, James Reed, John Mc Farland, Nezaro Soto, and W.B. Ensor.

## Mr. Hunt

Funeral services for N.R. (Buddy) Hunt, 56, were held at 2 p.m. Thursday, Feb. 10 in the Killingsworth Funeral Chapel with Rev. K.C. Edmonds, officiating. Burial was in the Eastland Cemetery.

Mr. Hunt was born Feb. 23, 1915 in Eastland County. He made his home in Odessa for 10 years before moving back to Olden. He was a World War II veteran and an oilfield worker. He was a member of the Olden Baptist Church.

Survivors include one son, Larry of Houston; three brothers, L.J. of Fort Worth, Jack of Olden, and Doyle of Africa; three sisters, Mrs. W.H. Seale of Amarillo, Mrs. Ed Winchell of Odessa and Mrs. Charley Weekes of Midland, and several nieces and nephews.

Pallbearers will be J.R. Hunt, June Hunt, George Falls, Gene Falls, B.J. Ogden, and J.C. Everett.

## Mrs. Morrison

Funeral services for Mrs. Lola Ina Morrison, 69, were held at 2:30 p.m. Saturday, Feb. 12 in Arrington Funeral Chapel with Rev. Lee Fields officiating. Burial was in Eastland Cemetery.

Mrs. Morrison died Thursday, February 10 at 6 a.m. in a local hospital.

She was born in Carbon Jan. 11, 1903 and married Herbert Morrison in 1943 in Eastland. Mrs. Morrison was formerly of Odessa and was a member of the Baptist Church. She was presently living at Olden.

Survivors include her husband; two sisters, Mrs. Ola Patterson of Denver City and Mrs. Jean Funderburgh of Santa Clara, Calif. five brothers, W.V. Hurst of Clyde, Leo Hurst of Odessa, L.W. Hurst of Odessa, Pete Hurst of Lubbock and W.E. Walker of Carbon.

## Mrs. Tucker

Funeral services for Mrs. Roy Tucker, 76 were held Sat. Feb. 12 at Pleasant Hill. Mrs. Tucker died at 1:45 Thursday in Graham Hospital.

She had lived in Eastland many years.

Survivors include three sons, Claude, Gerald, and Joe Donald, all of Cisco, two daughters, Reba Burke of Odessa, and Raynell of Fort Worth, five brothers, three sisters and a number of grandchildren and great grandchildren.

## Mr. Watts

Odessa attorney John J. Watts, 60, died Thursday at his home in Odessa.

Watts was the Shackelford County Attorney from 1931 to 1932 and was judge of Crane County from 1941 to 1946.

## Notice

Fine printing available at the Telegram: calling cards from \$9.95 for 500; your own personal letterhead from \$9.20 for 500; personalized envelopes from \$8.15 per 500; padded statements, from \$8.30 to per. Bigger values in larger lots. You can get it printed at the Telegram. t-tf

## Eastland Has 9 New Families

According to Maybelle Trout, town receptionist, there are nine new families now living in Eastland.

Mr. and Mrs. Billy J. Todd moved here from Ranger and reside at 204 N. Lamar. He is the new jailer.

Mrs. Nina L. Wallace, and two daughters, ages 7 and 10 moved here from Fort Worth. They live at 407 E. Sadosa and she is with Ann's Beauty Shop.

Mr. and Mrs. Raymond D. Butler are now making their home at 300 W. Sadosa are formerly of Phoenix, Ariz. They are retired.

Mr. and Mrs. George T. Moore living at 516 South

Madera came here from Buchanan Dam. They, too, are retired.

Mrs. Jerry G. Booth moved here from Cisco and lives at 300 South Bassett. She is employed at Nora's Beauty Shop in Cisco and has three daughters, ages 10, 11, and 13.

Mr. and Mrs. L.G. Powell, living at 300 W. Moss, are former residents at Lake Leon. He is a retired farmer.

Mrs. Mary E. Williamson from Breckenridge, has moved to Route 2, Eastland. She is employed at Hickman Nursing Home.

Mrs. Estelle Crutchfield, formerly of Lubbock, now lives at the Parrack Trailer Park and is an employee at Eastland Memorial Hospital.

Mr. and Mrs. Melvin McDaniel of 205 N. Daugherty came here from Ballinger. He is with J.H. Strain.

Sunday, February 13, 1972

**NO BRAG—JUST FACT**  
**PRESTON FRESH MILK**  
 IS STILL YOUR BEST MILK BUY  
**THIS COUPON WORTH 10¢**  
 ON PURCHASE OF ONE GALLON  
**PRESTON FRESH MILK**  
 Reg. Price 89¢ Gallon  
**HAMILTON'S FRUIT STAND**  
 W. Main St.  
**WITH COUPON 79¢**  
 VOID AFTER April 10

**Remember Your Valentine**  
 on Monday with a  
**Valentine Card or Gift of Candy**  
 from  
**Eastland Drug**

Hallmark -  
 When you care  
 enough to send  
 the very best

## Music Club To Meet Wed.

The Music Study Club of Eastland will meet Wednesday, Feb. 16 at 3:30 p.m. in the Woman's Club, presenting "Music In The Home" with Mrs. Jack W. Frost as leader. She will present students from the T.M. Clark Studio.

Marjorie van Hoose  
 Club Reporter

At your service:

# Enough electricity for today and tomorrow.

Dependable electric power in ample supply helps make good living possible today—and is essential for tomorrow's growth and progress—throughout the area served by Texas Electric.

Providing enough electricity to meet these needs will require over \$165 million in new construction in the next two years. That's a lot of money. And about \$100 million of this

will have to be raised in a competitive market at a time when interest rates are much higher than they were just a few years ago.

This, added to other higher costs of doing business, makes the job of planning and building ahead an even bigger task. At Texas Electric, providing enough electricity is a commitment and a continuing effort that keeps us at your service.

**TEXAS ELECTRIC SERVICE COMPANY**  
 People power... at your service  
 F. N. SAYRE, Manager, Phone 629-2651



Mrs. W. M. Brown  
 604 Pine St. 647 - 3292  
 Ranger

DISTRIBUTOR OF

**Luzier**

FINE  
 COSMETICS  
 AND  
 PERFUMES

## CUSTOM COASTAL SPRIGGING

Own Sprigs and Two Row Machine

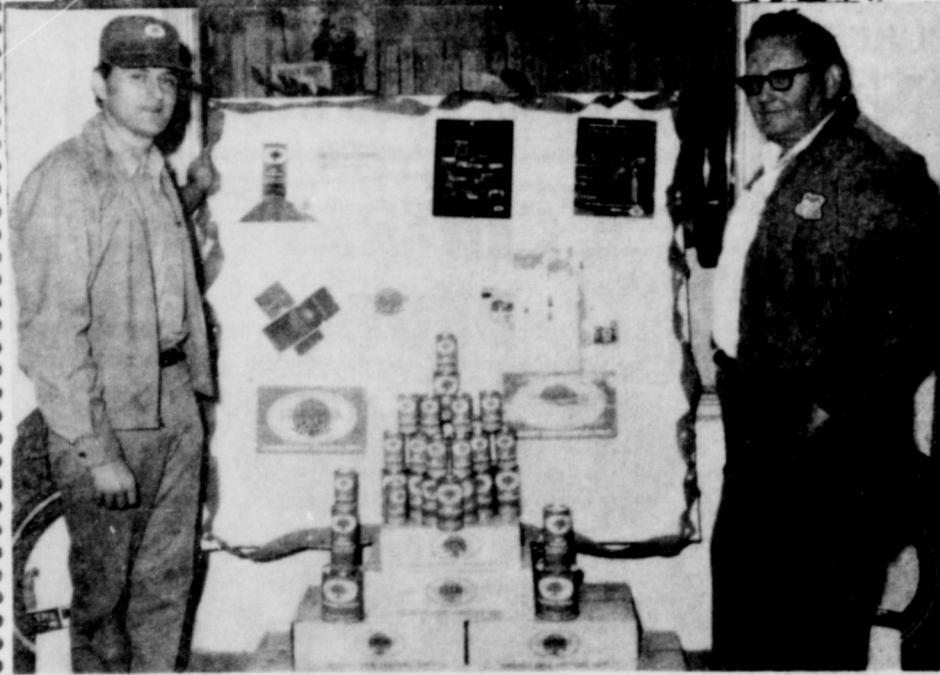
Heulon Perrin  
 Rt. 1  
 647-1028  
 Ranger

Want to save up to \$125 when you buy a car?



Ask me about the State Farm Car Finance Plan.  
 B.T. Van Cleave.  
 211 W. Main  
 629 - 1096  
**Eastland**  
 STATE FARM MUTUAL AUTOMOBILE INSURANCE COMPANY  
 Home Office  
 Bloomington, Illinois

# ...Time for a TUNE-UP



Get All This and More

**EDDIE'S**  
 513 West Main  
 629-8838



STA-POWER GAS CONDITIONER:

NEUTRALIZES SULPHURIC ACID AND OTHER HARMFUL ACIDS FORMED IN YOUR ENGINE.

STA-POWER OIL CONDITIONER:

NEUTRALIZES SULPHURIC ACID AND OTHER HARMFUL ACIDS.



513 West Main Pick up & Delivery 629-8838

Congratulations to Eastland County Farm Bureau

We are proud to be a member of your organization.

**GREER'S WESTERN STORE**

Ranger



PETE HATHCOCK

# It takes more than optimism!



The farmer/rancher is an eternal optimist. He must be—to contend with such imponderables as weather, prices and costs.

Yet, it takes more than optimism in today's high cost agriculture. It takes an organization the farmer/rancher knows he can count on. Farm Bureau is such an organization. That's why four out of five farmers in the nation are members of Farm Bureau.

## Farm Bureau works for agriculture on three broad fronts—

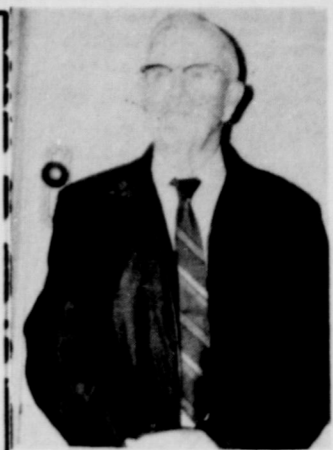
1. TO INCREASE ECONOMIC OPPORTUNITY—Through effectiveness in Public Affairs (policy development & legislative activities)
2. TO STRENGTHEN FARMERS' COMPETITIVE POSITION IN MARKETPLACE—Through marketing programs, commodity activities, market expansion
3. TO CONTROL PRODUCTION COSTS—Through group purchasing (tires & batteries), insurance protection (fire, life & casualty), group insurance (medical care)



## JOIN THE FARM BUREAU TODAY!

EASTLAND COUNTY FARM BUREAU

HWY 80 EAST BOX 470, EASTLAND, TEXAS



Sam Kimmel - President

We Salute The Eastland County Farm Bureau and Its Membership

**FIRST FEDERAL SAVINGS AND LOAN**

Ranger



J.C. Clearman

Congratulations to Eastland County Farm Bureau and Its Membership

**RATLIFF FEED AND SEED**

Ranger

We Join The Many Area Businessmen in Saluting Eastland County Farm Bureau

**KREI'S FEED STORE**

Hwy 80 W.  
647-1775

Ranger



TED BOTT

Congratulations to Eastland County Farm Bureau

"See Us For All Your Building and Repair Needs"

**RANGER LUMBER and SUPPLY**

105 N. Commerce  
647-1481



H.H. HARRELSON

We Salute Eastland County Farm Bureau And Its Membership

**RANGER FROZEN FOOD LOCKER PLANT**

216 N Austin



K.F. KIRK

Hats Off To Eastland County Farm Bureau and Its Membership

**BEN FRANKLIN STORE**

209 Main  
Ranger



Congratulations Eastland County Farm Bureau and Its Membership

**GREENWOOD AUTO PARTS**

Ranger



JAMES FIELDS

Congratulations To Eastland County Farm Bureau and Its Membership

**SEARS, ROEBUCK & CO.**

Cisco

We Salute Eastland County Farm Bureau and Its Membership

**FANNIN BUTANE CO.**

Cisco



Congratulations To Eastland County Farm Bureau and Its Membership

**J. C. PENNEY COMPANY**

Cisco



J.R. GRIMSHAW

Congratulations to Eastland County Farm Bureau and Its Membership

**THE MAN'S STORE**

Cisco



JACK COZART

We Salute Eastland County Farm Bureau and Its Membership

**CISCO FUNERAL HOME**

Cisco



D.F. WILLIAMSON



Congratulations To Eastland County Farm Bureau and Its Membership

**FIRST NATIONAL BANK**

Cisco



HENRY FRY

We Salute Eastland County Farm Bureau

**AUSTIN'S FURNITURE CO.**

Cisco



WINFORD FRY

Congratulations to Eastland County Farm Bureau

**BILL HILL Distributor of Gulf Oil Products**

Cisco



Hats Off to Eastland County Farm Bureau and Its Membership

**SUPER SAVE GRO. & MKT.**

Eastland

"Keep up the Good Work"

**J.R.B. FOOD STORES**

Eastland-Ranger-Cisco



GROVER HALLMARK

We Salute Eastland County Farm Bureau

**CITY GARAGE**

Jonah Finley

Eastland



We Salute Eastland County Farm Bureau

**SQUIRES FARM STORE**

Eastland



RAY NORRIS

We Salute Eastland County Farm Bureau and Its Membership

**SAFEWAY**

Eastland



Richard Burgess



We Salute Eastland County Farm Bureau

**EASTLAND PAINT & BODY SHOP**

Gene McMillan  
Eastland



J.C. COATES

"Keep up the Good Work"

**B&B SALES & SERVICE**

Your Admiral Dealer - Eastland



HERMAN SCHAEFER

Congratulations to Eastland County Farm Bureau

**EASTLAND AUCTION CO.**

Lloyd Roen  
Eastland



**PROCLAIMING WEEK** - Making Farm Bureau Membership Week official, County Judge Scott Bailey signs a proclamation while Membership Committee Members J.C. Clearman of Gorman, Mrs. Dee Williamson and Chairman Dee Williamson of Eastland look on.

## Hospital Report

Patients in the Eastland Memorial Hospital Friday were:

May Harbin,  
Adrian Swindle, Cisco  
Clarence Rhyne, Cisco  
Vena Whiteley,  
Mary Kuykendall  
Deane Pelfrey,  
Breckenridge,  
Thad Weaver, Cisco.  
Harrison Pitman, Gordon.  
James Hart,  
Audley Winn  
Viola Winn  
Millie Waldrep, Cisco  
Ruby McPherson,  
Breckenridge  
Willie Carter  
Mary Burns, Comanche.  
Effie Sharp, Olden  
Susie Howard  
Hattie Duncan  
Nannie Yell, Strawn  
Sherra Cate  
Eva Butler

Aggie Harrell, Cisco  
Viola Thomas, Olden  
Henry Lovell, Carbon  
Joseph Buckner, Cisco  
Lottie Raney  
Edna Thompson, Cisco  
D.B. Warren, Gorman  
Harry Eddy,  
Addie Faulkenberry, Rising  
Star  
Millie Baggett, Breckenridge  
Amy Rice, Carbon  
Annie Westmoreland, Gorman  
Sue Hamilton, Olden  
Eva Davis,  
Claude Greenlee,  
Nancy Harris, Olden  
Barbara Brinkley  
Ruby Crawley  
Linda Kinser, Gorman  
Julia Collinsworth, Albany  
Betty Day,  
Runa Warren, Cisco  
Homer Duncan  
Lawrence Simpson, Cisco

Juanita Fullen  
George Norris  
Doyle Welch  
Henry Pence, Cisco  
Ida Carter  
Lillie Constanco  
Ola Childers, Rising Star  
Nancy Elliott  
Lucille Atwood, Carbon  
Pearlie Highsmith, DeLeon  
Vera Darby  
Velma Hollis, Rising Star  
Lola O'Leary, Rising Star

Paul Deitz  
Henry Hamilton  
Mary Hightower  
Lillie Patton  
Kenneth Twyman

J.C. Carter  
Mrs. Marjorie Couch and  
baby girl  
Bernice Bearden  
Frank Maupin

## HIGHER COURT

The following proceedings were had in the Court of Civil Appeals, Eleventh Supreme Judicial District of Texas:

**Affirmed**  
Carroll R. Rogers v. Trinity Universal Insurance Company. (Opinion by Judge McCloud) - Taylor

**Reversed and Remanded**  
Hubert Bingham et ux v. City of Colorado City. (Opinion by Judge Walter) - Mitchell

**Affirmed**  
Atoka, Inc. v. R.E. Thornton. (Opinion by Judge McCloud) - Taylor



### Judge Bailey Proclaims FB Week

The week of Feb. 14 - 18 has been designated "Farm Bureau Week" in Eastland County by County Judge Scott Bailey.

During this period the Eastland County Farm Bureau will have a special membership enrollment drive as a part of a statewide effort to exceed last year's total of 127,402 member families. Eastland County ended its 1971 year with 948 members. Sam Kimmell of Cisco is president of the local county Farm Bureau. Membership chairman is Dee Williamson of Eastland. Membership captains who will be working on the drive will be Directors and their wives.

The county president said "farmers and ranchers need an organization more than ever before."

"We producers need a stronger organization to help solve problems in marketing, agricultural public relations, taxation, as well as other matters affecting our net incomes," Mr. Kimmell said.

The text of the proclamation issued by Judge Bailey reads: "Agriculture is vital to the economy of Eastland County, our State and Nation. A large percentage of our citizens is dependent directly or indirectly upon Agriculture for their livelihood. All of our people benefit from the productive efficiency of modern agriculture.

"Farmers and ranchers have learned to promote their industry through organization. Four out of five agricultural producers in this Nation belonging to a general farm organization are members of Farm Bureau.

"Farm Bureau is an independent, non-partisan, non-governmental voluntary organization of families united for the purpose of analyzing their problems and formulating solutions to those problems.

"Therefore, I, Scott Bailey, County Judge of Eastland County, do hereby designate February 14 - 18 as Farm Bureau Week in Eastland County, and urge our citizens to give due recognition to this observance honoring the E. Eastland County Farm Bureau.

"In official recognition thereof, I hereby affix my signature this 14th day of February, 1972.

Signed: Scott Bailey  
Eastland County Judge

**DON'T FORGET. HIRE THE VET!**

### Business For Sale

The Montgomery Ward Catalog Stores in Both Eastland and Ranger. For Details Call Wallace Gibson, ADays 915 - 356 - 2593, nights 915 - 356 - 3695 or See At Montgomery Ward Catalog Store, 117 W. Grand, Comanche, Texas.

**Safeway Special!**

**Biscuits** Mrs. Wright's #Sweet Milk or #Buttermilk (Limit 6) 10-Ct. Can **5¢**

**Pinto Beans** Town House Dry, Easy to Prepare! -2-Lb. Bag **31¢**

**Chunk Tuna** Sea Trader Light Meat 6 1/2-oz. Can **35¢**

**Salad Dressing** Piedmont Creamy! Quart Jar **37¢**

**Tomato Catsup** Highway Tangy! 14-oz. Bottle **19¢**

**Serving You Better... Saving You More!!!**

**Safeway Has Low Everyday Prices!**  
Safeway has big Specials, too, every time you shop... for total savings that add up fast! And Safeway offers a large selection of all your favorite products... the quality you're looking for... the extra values in Every Department that stretch your grocery dollars.

**Safeway Big Buy!**

**Margarine** Coldbrook Quarters. Economical! 1-Lb. Pkg. **19¢**

**Canned Pop** Snowy Peak Assorted Flavors -12-oz. Can **8¢**

**Enriched Flour** Harvest Blossom Bag 5-Lb. **39¢**

**Tomato Soup** Town House Zesty! 10 1/2-oz. Can **10¢**

**Saltines** Melrose Soda Crackers 1-Lb. Box **23¢**

## SAFEGWAY COMPARE LOW EVERYDAY PRICES Plus SPECIALS!

**Safeway Big Buy!**

**Detergent** Parade. 49-oz. Box **49¢**

**Safeway Big Buy!**

**Liquid Bleach** White Magic. Gallon Plastic **38¢**

**Safeway Big Buy!**

**Paper Towels** Tree Saver, White. 175-Ct. Roll **28¢**

**Safeway Big Buy!**

**Fresh Coffee** Safeway Pre-Ground. 1-Lb. Bag **69¢**

**Lean Ground Beef** Compare Lean & Fat Content! (Regular Ground Beef \$1.49) -1-Lb. **87¢**

**Sliced Bacon** Capital Brand. Full of Flavor! (Safeway Bacon No. 1 Quality! -1-Lb. Pkg. 79¢) 1-Lb. Pkg. **69¢**

**All Meat Wieners** Safeway. Compare Quality! (Armour Star Franks 69¢) 1-Lb. Pkg. **65¢**

**FRESH FRYERS** USDA Inspected Grade 'A' Special! (Cut-Up Fryers Ready to Cook! -1-Lb. 38¢) Whole -1-Lb. **29¢**

**Eckrich Sausage** Smoked, Heat and Serve! -1-Lb. **\$1.09**

**Link Sausage** Fresh Pork. Safeway -1-Lb. **69¢**

**Fresh Pork Chops** Family Pack -1-Lb. **75¢**

**Fresh Pork Steak** Extra Lean. Boston Butt Cuts -1-Lb. **79¢**

**Fish Sticks** Pre-Cooked, Large -1-Lb. **69¢**

**Perch Fillets** Raw, Fresh-Frozen -1-Lb. **65¢**

**Sliced Beef Liver** Fresh, Skinned and Deveined! -1-Lb. **59¢**

**Beef Short Ribs** Baby Beef, Lean & Meaty! -1-Lb. **49¢**

**Boneless Brisket** Baby Beef, Waste Free! -1-Lb. **\$1.09**

**Rib Steaks** Baby Beef, Ready to Grill! -1-Lb. **\$1.19**

**Rump Roast** Baby Beef, Compare Trim! -1-Lb. **\$1.19**

**Beef Patties** Shurterda, Pre-Cooked, Chicken Fried -1-Lb. **89¢**

**Armour Bacon** Armour Star MiraCure, Sliced -1-Lb. Pkg. **88¢**

**All Beef Wieners** Safeway 1-Lb. Pkg. **85¢**

**Sliced Bologna** Safeway Jumbo #Regular or #Thick 1-Lb. Pkg. **73¢**

**Sliced Salami** Cooked, Safeway 6-oz. Pkg. **42¢**

**Lunch Meat** Safeway Sliced #Pickle-Pimiento #All Beef Bologna #Spiced #Olive #Macaroni & Cheese 12-oz. Pkg. **\$1**

**Canned Ham** Safeway, Compare Quality! 3-Lb. Can **\$3.19**

**Swift's Butterball** Fryer-Roaster Turkey, Deep Basted, 5 to 9-Lb. Avg. USDA Grade 'A' -1-Lb. **65¢**

**4-Legged Fryer** 2 Extra Drumsticks & Thighs, USDA Grade 'A' Fryers -1-Lb. **43¢**

**Fryer Thighs** or #Drumsticks, Cut from USDA Grade 'A' Fryers -1-Lb. **73¢**

**Split Breasts** Boneless, Major House, Light & Dark Meat -1-Lb. **77¢**

**Turkey Roast** Boneless, Major House, Light & Dark Meat 2-Lb. Pkg. **\$2.49**

**Cure 81 Hams** Boneless, Normal #Half or #Whole -1-Lb. **\$1.53**

**Grapefruit** Texas Ruby, Economy Pack 15 lb. Bag **99¢**

**Oranges** Texas Juice Oranges, Economy Pack 15 lb. Bag **99¢**

**Apples** Washington Extra Fancy! #Red Delicious #Jonathans 3 lb. Bag **69¢**

**Check These Low Prices!**

**Air Freshener** Wizard, Assorted Fragrances 9-oz. Can **49¢**

**G. E. Globes** Soft White, #60 Wt. #75 Wt. #100 Wt. -4-Pack **\$1.21**

**Oven Cleaner** White Magic 8-oz. Aerosol **79¢**

**Hair Spray** Truly Fine, Assorted 13-oz. Can **53¢**

**Protein Shampoo** Soave 16-oz. Bottle **69¢**

**Hand Lotion** Truly Fine 16-oz. Bottle **79¢**

**Crisp Carrots** Vitamin Rich! 2-Lb. Cello **29¢**

**Green Onions** Large Batch, Each 2 for **29¢**

**Red Radishes** Tops Removed! 2 6-oz. Cellos **29¢**

**Fresh Corn** Florida, Full Ears 2 Ears **25¢**

**Bell Peppers** Large Size, Each 2 for **29¢**

**Acorn Squash** Danish, For Baking! -1-Lb. **19¢**

**D'Anjou Pears** Washington, Large Size -1-Lb. **29¢**

**Orange Juice** Safeway, Pure 1/2-Gal. Decan. **89¢**

**Pitted Prunes** Del Monte 12-oz. Pkg. **49¢**

**3-Minute Oats** Quick & Easy! -42-oz. Box **63¢**

**Tomato Paste** Hunt's 6-oz. Can **17¢**

**Wesson Oil** Cooking Oil -38-oz. Bottle **89¢**

**La Choy Chow Mein** #Beef #Chicken #Port -42 1/2-oz. Can **\$1.07**

**Mini Donuts** Morton's, Frozen -10-oz. Pkg. **45¢**

**Blueberry Muffins** Morton's, Frozen -11 1/2-oz. Pkg. **45¢**

**Rapid Shave** Palmolive #Regular #Menthol #Lime -11-oz. Can **97¢**

**Bright Side** Shampoo -11-oz. Plastic **\$1.29**

Contains Lemon Freshened Borax!

**Fab Detergent** Freshens and Cleans All Your Wash!

49-oz. Box **86¢**

Safe For Colors!

**Cold Power** Detergent, Cleans in Cold Water!

49-oz. Box **86¢**

Dow

**Bathroom Disinfectant**

14-oz. Aerosol **\$1.39**

**SAVE EVERY DAY AT SAFEGWAY**

Prices Effective February 14-16, in **EASTLAND**  
No Sales to Dealers.

# SAFEGWAY



## Morton Valley HD Club Has Covered Dish Affair

Fourteen ladies were present for a covered dish luncheon and all-day meeting of the Morton Valley H.D. Club Wednesday in the home of Mrs. Alvin Kincaid.

The morning was spent in making aprons for the 4 - H Club and turning in our Stanley orders to Mrs. Ora Roberts, our new member and Stanley agent. We get a percent of the intake for our club.

We enjoyed a wonderful lunch, after which Mrs. H.C. Pounds called us to order for our club meeting.

Mrs. R.W. Gordon led us in our opening exercise. Mrs. Buddy White read our devotional from Matt: ch. 5

Roll call was answered with "The Happiest Time of My Life"

Mrs. C.T. Brockman gave the Council Report. Mrs. Janet Thomas, our agent, brought a wonderful program on "Are You Listening".

Present to enjoy the day were Mrs. Joe Bond, C.T. Brockman, R.W. Gordon, Paul Hodge, Alvin Kincaid, J.F. Moseley, Josie Knix, Bessie Peeples, H.C. Pounds, Ralph Roberts, Homer White, Buddy White, Herring, Robert Kincaid, and our agent Janet Thomas.

Our next meeting will be in

the home of Mrs. Paul Hodge Feb. 23.

Reporter Mrs. Alvin Kincaid.

February 13, 1972

George Fox

Condition Good

George Fox, Jr., formerly of Eastland underwent open heart surgery about a week ago in West Texas Medical Center in Abilene. Latest reports are good and he is recovering well. He isn't allowed visitors for awhile.

**SALUTE TO J.T. GREGORY**  
He left his mark on all our lives.  
It is he not us, who does survive.  
His hand is seen in all good things  
and will show to all as time will bring  
His work unfinished now we must do,  
And do it well as he would do.  
In a few short years upon this earth,  
He's known to us through its breadth and girth.  
The town, the school and the people all  
Cannot believe this thing at all.  
To say we'll miss him is not saying enough  
He faced all problems head - on  
and called their bluff.  
A final salute to Gregory, to show we care.  
There is a vacant place in many a chair.  
In all the places you sat while here.  
We will remember and pretend you are there.  
May God keep you safe in His bosom on high  
With hearts that are heavy we'll tell you good - bye  
Lois Mezell

## Eastland's "Oldest Man On The Square"



The 22nd of February will make it 72 years for Roy E. Lawson. He was born and raised in Stephenville and later moved to Eastland. He married his wife, Lillie in 1919. She is from San Saba County.

The Lawson's have three children, Royce Earl of Midland, Julia Hooper of Killeen, and Ruth Daffard from Corpus Christi.

Willie Speaker is the only other man that Roy can remember that has been on the square in Eastland almost as long as he has.

Asked if there had been many changes in the past years? "o Boy - Yea". It was bigger then than now, but it's a much better, nicer, and cleaner town today".

The late R.B. Regan stayed 20 years with Lawson and then Tommy Clark stayed another 20 years and retired.

Lawson stated that all of his good friends from the early day have either retired or died.

Roy is a member of the Methodist Church and is a Mason.

Asked about retirement Roy said "not a chance". As long as I can make it I'll be here. Photos by Herman Alsip

## EHS Faculty-Student Body and Eastlandites Honor Fraizers

Approximately 60 ladies turned out to show their appreciation to Beth Frazier at a tea given in her honor Friday afternoon in the Women's Club. Pictured below are Mrs. Frazier and her mother Mrs. Burl Roach as they greeted guests.



Photos by Herman Alsip

## School Menu

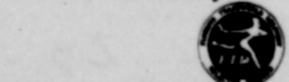
- Monday Feb. 14  
Italian spaghetti  
green peas  
Candied sweet potatoes  
Tossed salad  
Hot rolls  
Cherry cobbler
- Tuesday Feb. 15  
Fried chicken  
Whipped potatoes  
Green beans  
Cabbage & pineapple salad  
Sliced bread  
Cake squares
- Wednesday Feb. 16  
Hot dogs with chili  
Pinto beans  
Buttered spinach  
Tossed salad  
Corn bread  
Cinnamon rolls
- Thursday Feb. 17  
Sausage pizza  
Blackeye peas  
Harvard beets  
Lettuce and tomato salad  
Corn bread  
Cookies

## the FTD



## "Love Bundle"

Finest, freshest flowers professionally arranged in a re-usable, satin-white ceramic container. Available only from your FTD Florist. Just stop in or give us a call. We can send our "Love-Bundle" almost anywhere in the country.



Poe Floral  
609 W. Main 629 - 1711

## 4-H News

Seven members of the Eastland County 4 - H Clubs will show entries in the Junior Division of the Houston Livestock Show and Rodeo. Participating members will include Bo Wheat showing two heifers and one market steer, Cheryl Wheat showing a market steer, Diana Clark and Charles Clark showing Hereford heifers, Clinton Tucker showing a Polled Hereford heifer, Caryn Lee showing an Angus steer and a Charolais steer, and Theresa Scott showing two steers.

## S.S. Class

### Holds Meeting

The homemakers Sunday School class of First Baptist Church met Wednesday, Feb. 9 at 9:30 a.m. in the home of Mrs. R.L. Young, 1308 S. Seaman. The meeting was opened with prayer by Laura Lou Trammell. Class business was discussed followed by devotional by Gladys Milner.

Refreshments of coffee cake, nuts, cheese puffs and coffee were served to Dorothy Awalt, Ruth Butler, Laura Lou Trammell, Gladys Milner, Vera Keith, Vera Woodard, Irene Dutton, Mary Hood, and hostess Mrs. Young.

## Birthday Celebrated

Dan Harris celebrated his seventh birthday Tuesday, Feb. 8 in his home at 1103 South Seaman.

Guests at the party were Amy and Vance O'Brien, Penny and Mark Bakker, Cindy Wheat, Shirley Housson, Kevin Spiller, Leland Jones, and Sheryl Harris.

## Now Open Squires Enco Station Open 24 Hours

Intersection of I-20 & Lake  
Leon Road Just East of Eastland

629-8892

Wash & Grease

Minor Repairs & Tune-ups

of all types

We Give S&H Green Stamps

Jerry Squires, Dealer

## JRB FAMILY CENTER SPECIALS

EASTLAND

K-Tell Reg. \*2<sup>97</sup> \$1<sup>97</sup>

Knitter Now

Rubber Maid

Dish Pan Reg. \*1<sup>57</sup> Now \$1<sup>57</sup>

Ironing Cover & Pad Reg. \*2<sup>99</sup> Sale PRICE \$1<sup>99</sup>

Men's Spandex

Socks 84<sup>c</sup>

Shop J.R.B. Variety

S&H Green Stamps



A Complete Selection  
of Valentine's  
and  
Valentine Candy

Prescription  
Pharmacy  
Telephone 629-1475  
East Side of Square

When You Think of FOOD  
THINK OF SLEDGES!

SLEDGES is the only truly ONE-Stop Spot for Eating--Your Table or Ours!

In our retail market, you'll find the freshest, finest cuts of your choice, all guaranteed to please you!

DELICATESSEN For convenience you can appreciate, shop our ready-to-go dept.

You can set your table extra-good and extra-quick with selections from our wide variety of delicious, fresh items. Barbecue-Beans-Salads-All the fixin's

★ And a Complete One-Stop Grocery For You

Then for Eating-Out Treats: Remember our dining rooms: convenient, delicious and economical. Luncheon treats from our wide menu, be it barbecue or lighter.

And for that extra-special meal, REMEMBER SLEDGE'S STEAKS. The best to start with and cooked the way YOU want 'em to make your dining out pleasure complete.

You'll Find It All at SLEDGE'S And You'll Like What You Find

SLEDGES MARKET & DINING ROOM  
210 S. Lamar 629-2913

## PONIES WANTED

Mares - 33" or smaller at withers

Stallions - 32" or smaller at withers

2 - 9 years

Contact R. Brown

600 Murray Arlington., Texas 76012

EVERYONE'S  
A

# WINNER

Who starts taking the  
**The Eastland Telegram**

**YOUR PORTRAIT IS FREE**

With Either A New Or  
Renewal Subscription-

(In Eastland & Adjacent Counties)



- ★ of the Family
- ★ of the Children
- ★ of Mom and Dad
- ★ of your pet
- ★ OR anyone you choose



All You Do Is Subscribe For  
The Local Paper - For One  
Year For \$7.80 in Eastland  
\$5 in County \$6 P.O. Boxes in County  
PAID IN ADVANCE \$7 in State \$8 out of State  
(Eastland And Adjacent Counties)



- ★ You Select Final Portrait  
From Several Poses
- ★ All Portraits Will Be  
Taken Locally

The Eastland Telegram has arranged with a well-known professional portrait photographer to take portraits for all new subscribers, or present paid subscribers who wish to extend their subscription for another year paid in advance.

For additional information call The Eastland Telegram.  
Phone 625 - 1707.



CLIP and MAIL to: The Eastland Telegram P.O. Box 29 Eastland, Texas 76448

**Portrait  
May Include  
Single Child  
Group of Children  
or Family Group**

### SUBSCRIPTION ORDER BLANK

- Please enter my new subscription for one year.
- Please extend my present subscription for one year after the present expiration date.

I understand that I am to receive one 8 x 10 Color Portrait Photograph of any member of my family or a family group with no additional charge, and that you will notify me by mail or phone of the date of the sitting. I am enclosing my check or money order for \_\_\_\_\_ in full payment of my subscription.

Name ..... Approx. Best Time for Appt. ....  
Address .....  
Town ..... Zip ..... Phone .....

Only one gift 8 x 10 of any one child, adult or group. This offer may not be used to obtain additional gift portraits of the same subject by more than one subscriber.