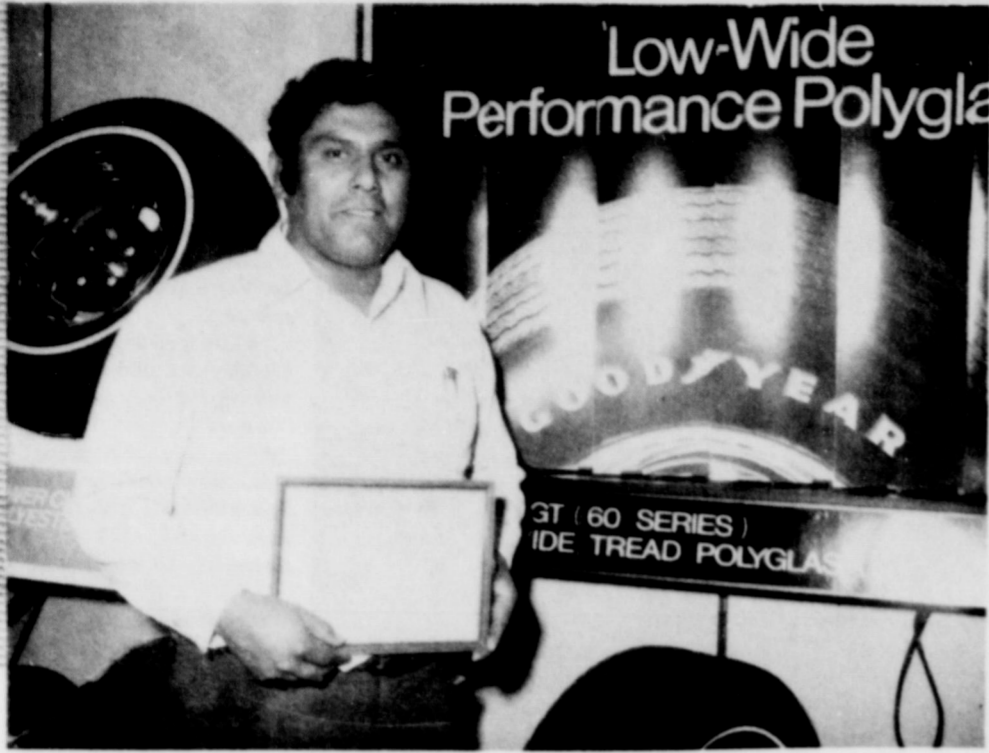


Jimenez Receives Goodyear Certificate



Everisto Jimenez proudly displays certificate that he recently received for successfully completing the "basic study of Goodyear products, sales presentation and their proper applications." This certificate is granted in recognition of this broadened understanding of these fundamentals.

Everisto attended an Incentive Sales Conference school in Dallas during the week of January 29th. He was among Goodyear salesmen from five states. Photos by Herman Alsop



WHEN'S SPRING GOING TO BE HERE? - That's what pretty Miss Jayna Holloway, 7 months, daughter of Mr. and Mrs. J.C. Holloway, seems to be saying.

Notice

We've got the new TEXAS ALMANAC with all the latest census figures AND a world of other important information. Get yours at the Telegram now at \$1.95 while they last. t-17n

Hickman To Have Party

A birthday party will be held at Hickman Nursing Home Thursday, Feb. 17 at 2:00 p.m. The volunteers of the nursing home are having the party and all patients whose birthdays are in February are guests of honor.

Jaycee Wives Serve Cup Cakes

Wives of the Eastland Jaycees showed a very thoughtful Valentine by baking cup cakes for patients in both the Eastland nursing homes, Monday, Feb. 14.

The ladies doing the baking were Pat Buchanan, LaJuan Rollins, Celya Holland, and Elaine Herweck.

A - - Yes. The mobile home loan benefit is available to eligible veterans and servicemen who have \$12,500 guaranty toward the purchase of conventional homes. VA will guarantee up to 30 percent of approved loans for mobile homes.

Sunday's Subject

Man's right to express intelligence and other Godlike qualities will be emphasized at Christian Science services Sunday in a Bible Lesson - Sermon entitled "Mind." "Let this mind be in you, which was also in Christ Jesus," a passage to be read from Philippians states. It concludes: "For it is God which worketh in you both to will and to do of his good pleasure." This citation is in the commentary from science and health with key to the Scriptures by Mary Baker Eddy: "Having no other gods, turning to no other but the one perfect Mind to guide him, man is the likeness of God, pure and eternal, having that Mind which was also in Christ." Eastland services will begin at 11:00 a.m. Sunday, February 20, in the Church of Christ Scientist building on the corner of Lamar and Plummer.

Our Loans Help Turn On a "Happy Face"



If it's a worthwhile loan to you - it's worth seeing us first. We'll start processing your loan without delay. Your banking business is taken seriously, here.



We will be closed Monday, February 21, in observance of Washington's Birthday.

Please arrange your banking business accordingly.

On Washington's Birthday, we honor a great man, a great country and a great concept: freedom to grow. Enjoy it.



EASTLAND NATIONAL BANK
EASTLAND, TEXAS

Little Bit Of News

Recent out-of-town guests of Mr. and Mrs. J.C. Allison were Rev. and Mrs. Weems S. Dykes and Susan Jane of Colorado City and Alice Ann Allison of Gorman.

Coming Events

The S.O.S. Club will meet Friday, Feb. 18 at 1:30 at the First Methodist Church.

School Lunch Menu

- Thursday Feb. 17
Sausage pizza
Blackeye peas
Harvard beets
Lettuce and tomato salad
Corn bread
Cookies
- Friday Feb. 18
Sloppy Jo burgers
Buttered corn
Potato chips
Lettuce wedges
Jello with fruit

Questions & Answers

EDITOR'S NOTE: Veterans and their dependents are asking thousands of questions concerning the benefits their Government provides for them through the Veterans Administration. Below are some representative queries. Additional information may be obtained at any VA office.

Q - - If I surrender my National Service Life Insurance permanent plan policy for a paid up policy, would I still receive dividends?

A - - Yes, but they would not be as large as dividends on your existing policy.

Q - - How can I get my claim for a pension considered since I have no doctor and can't afford the cost of an examination required by VA?

A - - Suggest you notify the VA office handling your claim what your disabilities are, describing them as best you can. Be sure to make clear you don't have money to pay for the examination, and perhaps arrangements can be made for

a VA clinic to examine you.
Q - - I have never used my World War II G.I. loan entitlement. May I use it now to buy a mobile home?

HAPPINESS IS Attending Bethel Baptist Church

A Special Invitation To Attend!

Sunday School 9:45 a.m.

Morning Worship 11:00 a.m.

Training Union 6:00 p.m.

Evening Worship 7:00 p.m.

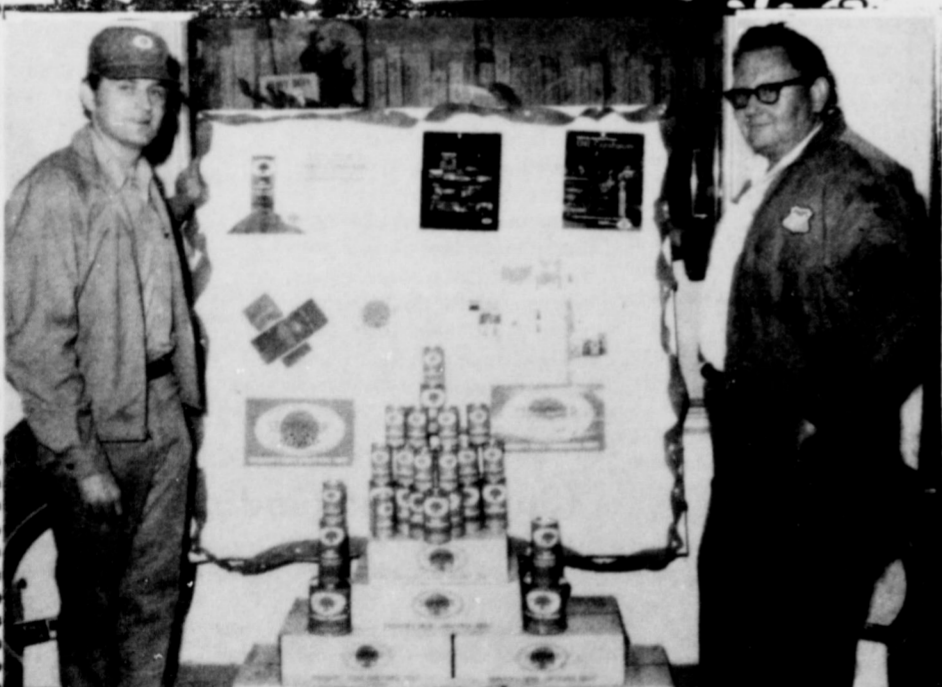
Pastor - J. Dwayne Martin



MID-ACT MANAGER - - Carl Garrett is in charge of arrangements to present between the acts Oleo entertainment for the Melodrama to be presented at BellHurst Playhouse March 2, 3, 4 and 5. Dr. Garrett has a bushel of surprises up his sleeve for the mid-act fun. Reservations may be made now by dialing 629-1141 for the Civic Theater Spring offering, which will be an evening of old-time fun in the best tradition of the American Theatre. The play is "Pure as the Driven Snow" and it's packed with heroines, villains, heroes and all the trappings for a fun time. You'll even be permitted, yeah, encouraged to hiss the dastardly evil villain. Photo by H.D. Alsop

...Time for a

TUNE-UP



Get All This and More

EDDIE'S

513 West Main
629-8838



513 West Main Pick up & Delivery 629-8838

STA-POWER GAS CONDITIONER:

NEUTRALIZES SULPHURIC ACID AND OTHER HARMFUL ACIDS FORMED IN YOUR ENGINE.

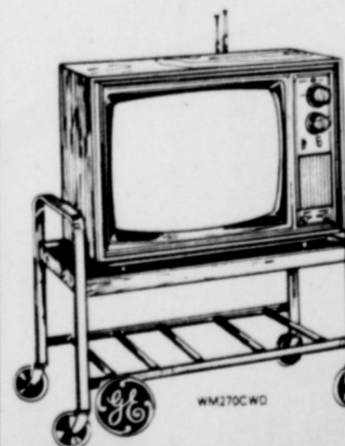
STA-POWER OIL CONDITIONER:

NEUTRALIZES SULPHURIC ACID AND OTHER HARMFUL ACIDS.

NOW YOU CAN AFFORD COLOR TV!

We have a set that suits your need and your pocketbook... Buy NOW!
HURRY TO YOUR NEAREST GOODYEAR SERVICE STORE

18" Diag. COLOR TV



WITH FREE STAND

- 18" Diag. 180 Sq. inch Viewing Area
- Automatic Fine Tuning Control
- GE Sensitronic Tuning System
- Color Keyed Tuning
- The Advanced GE 18" Spectra-Brill (TM) Picture Tube
- GE Retractor Chassis

FREE STAND with purchase of this set

\$1676 PER MONTH

You pay only \$16.76 for 26 months, and one final payment of \$16.88. Deferred payment price is \$462.64, excluding sales tax. The cash price is \$499.95, excluding sales tax.



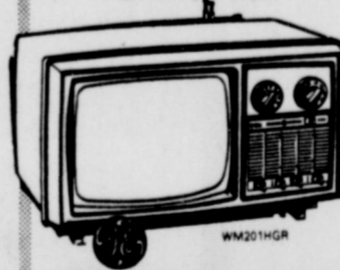
COLOR CONSOLE by GE
23" DIAGONAL, 295 SQ. IN. VIEWING AREA

- Dramatic Spanish styling in pecan cabinetry
- Automatic skintone stabilizer
- Automatic color purifier
- Keyed AGC
- GE Sensitronic tuning system
- Up front control center

\$2081 PER MONTH

You pay only \$20.81 for 26 months, and one final payment of \$21.05. Deferred payment price is \$624.34, excluding sales tax. The cash price is \$699.95, excluding sales tax.

10" PORTA-COLOR TV
10" DIAG. 60 SQUARE INCH VIEWING AREA



16" PORTA-COLOR TV
16" DIAG. 145 SQ. IN. VIEWING AREA



- GE Porta Color (R) Chassis - provides a sharp, clear color picture
- Advanced GE 16" Diag. Spectra-Brill (TM) Picture Tube - gives the brightest, richest color in GE history.
- Antennas - for both VHF & UHF reception
- Precision Etched Copper Circuitry
- Cabinet - rugged, easy to clean polystyrene in black walnut finish.

\$1061 PER MONTH

You pay only \$10.61 for 26 months, and one final payment of \$10.65. Deferred payment price is \$322.85, excluding sales tax. The cash price is \$389.95, excluding sales tax.

\$1592 PER MONTH

You pay only \$15.92 for 26 months, and one final payment of \$16.06. Deferred payment price is \$582.22, excluding sales tax. The cash price is \$639.00, excluding sales tax.

IT'S EASY TO BUY AT GOODYEAR... ON THE SPOT FINANCING

3 WAYS TO PAY AT GOODYEAR

GOODYEAR SERVICE STORE
315 East Main Street
Eastland
Phone 629-2662
Frank Murphy, Manager

*Net Dollar Price Excluding All Taxes & Handling Charges

OBITUARIES

Vanlandingham

Funeral services were held Sunday, Feb. 13, for A.O. Vanlandingham, 76, of Memphis Tenn.

He was the brother of Mrs. J.F. Williams of Eastland.

Salon Shepard

Funeral services for Salon Oliver Shepard were held Wednesday, Feb. 16 at 11 a.m. in Arrington Funeral Chapel. The Rev. Howard Peacock of the Odessa Church of Christ officiated. Burial was in Gunglight Cemetery.

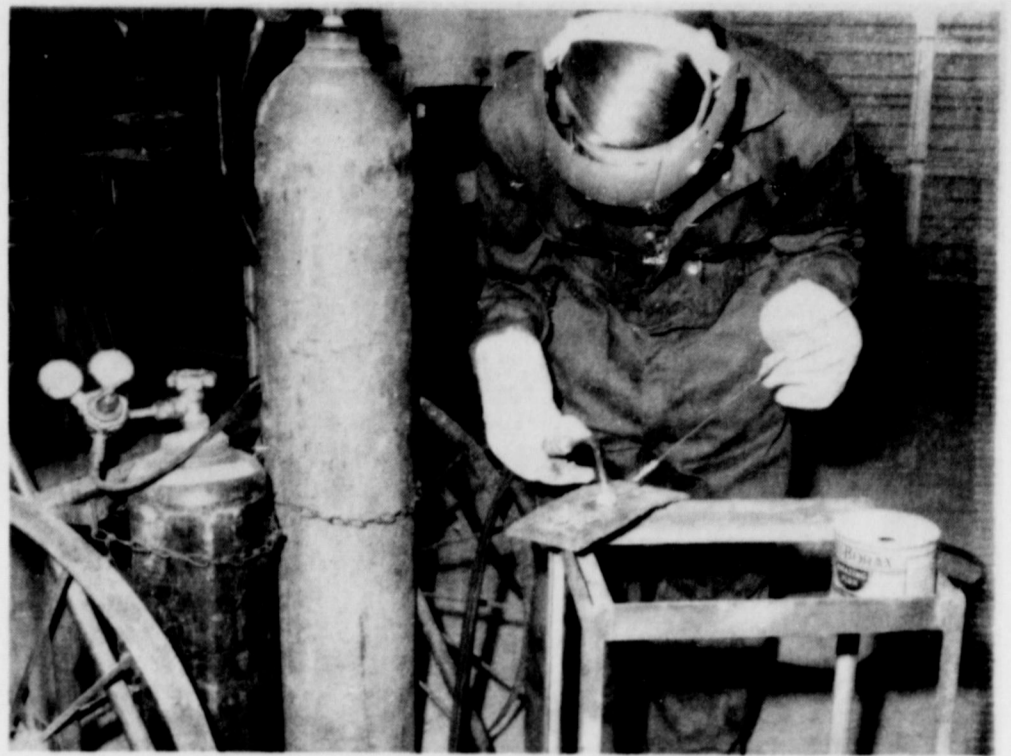
Mr. Shepard, 80 years old, was born in Texas October 2, 1891. He was a life long resident of Eastland and served as deputy sheriff in the 1920's. He married Grace Booker in 1915 in Stephenville.

He belonged to the Odd-fellows and V.F.W., and was a

member of the Methodist Church. Survivors include his wife, one son, Marshall of Amarillo; two daughters, Sylvia Stoudg of Los Angeles, Nedra Salibury of Los Angeles; two sisters Mrs. J.C. Day of Eastland and Sallie Stoker of Fort Worth; two brothers, Joe Shepard of Houston and Walter of Longview, Washington. He also had four grandchildren.



BET IT IS AN INDIAN STORY - - Drawings from Eastland Elementary School where students are illustrating stories. Ginger Hoffmann did this fine one and you can note a bit of humor, if you can read the fine print at bottom left of the canoe, which says, "Made in USA". The drawings are from Mrs. J.M. Cooper's Fifth Grade Class.



Keith Mervier, Sophomore Vo. Ag. Student in Eastland High School, is using an oxy-acetylene welding unit in the Ag. Shop. Students are given shop instruction on all phases of work by Don Griffin, Vo. Ag. Teacher. Photo by H.D. Alsop

Girl Scout COOKIES

SUTTON'S A-1 Office Machines
Call 629-1707
Eastland

TEXAS PRESS ASSOCIATION
Member **1972**

Large selection of suitable gift and personal books for gift giving and your own use. See the complete line at the Telegram. t-t.

Now Open Squires Enco Station

Open 24 Hours

Intersection of I-20 & Lake Leon Road Just East of Eastland

629-8892

Wash & Grease

Minor Repairs & Tune-ups

of all types

We Give S&H Green Stamps

Jerry Squires, Dealer

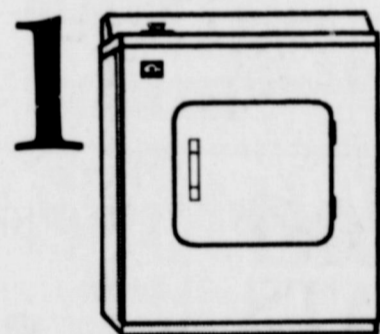
PRESCRIPTION SERVICE

FIRST AID NEEDS

FOR EMERGENCIES!

Prescription Pharmacy
629-1475
East Side of Square

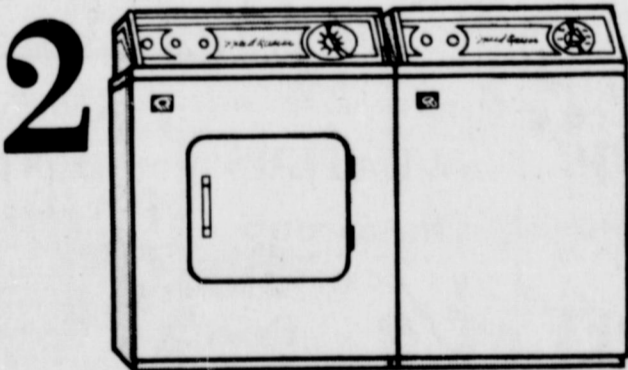
Three big bargains from the Lone Star Gas Laundry Center.



1 Gas Dryer Bargain

\$159 plus tax & installation

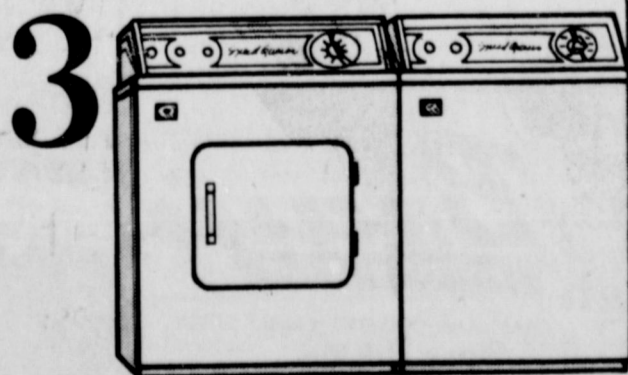
We bought these by the carload so you can save a bundle. Speed Queen automatic gas dryer. Costs 1/2 as much to operate as electric. Easy to operate, little to go wrong. Zinc-coated steel drum resists rust and chipping.



2 Gas Dryer Washer Bargain

\$25 off or more.

Save \$25 or more, on any other modern, automatic gas dryer and matching washer on our sales floors. They're loaded with new features to make washday easier on your laundry—and you. When you buy a matching washer, you get free delivery and installation (to existing washer connections). Dryer installation extra.



3 Gas Dryer Washer Water Heater Bargain

\$35 off or more.

Triple bargain! Buy an automatic gas dryer, matching washer, plus a long-lasting, dependable gas water heater. Remember gas costs 1/2 as much to operate as electric, and recovers hot water twice as fast. Shop Lone Star Gas where you'll find a wide variety of models, sizes, shapes—and attractive financing.

Lone Star Gas

WE CANNOT TELL A LIE... WE'VE CHOPPED PRICES DOWN!

SUPER SAVE MARKETS

HISTORY-MAKING VALUES

Soft 'N Lite Flour 5 lb. bag **39¢**

White Swan PORK & BEANS 16 oz. can **6/100**

White Swan SPINACH 303 Cans **8/100**

White Swan FRUIT COCKTAIL 300 Cans **4/100**

Borden's Assort. Flavors Mellorine 1/2 gal. **2/89¢**

Jif Crunchy or Smooth Peanut Butter 18 oz. jar **69¢**

Geisha Pineapple Crushed or Sliced 16 oz. can **5/\$1.00**

White Swan Tomatoes Extra Std. 300 can **5/\$1.00**

Deckers Tall Korn Bacon lb. **69¢**

Deckers Pure Pork Sausage 2 lb. Sack **\$1.09**

Decker's Fresh Calf Liver lb. **65¢**

Decker's Ground Chuck lb. **79¢**

Decker's All Meat Bologna lb. **59¢**

Grade "A" Medium Kendrick EGGS 3 doz. **\$1.00**

Health & Beauty Aids

SCHICK INJ. RAZOR **99¢** (\$1.29 Value)

SCHICK ADJ. CART. RAZOR BAND **1/19** (\$1.79 Value)

BRONCO GOLDEN COUGH SYRUP **1/00** (\$1.99 Value)

REG. W. DRY T. VO-5 SHAMPOO **99¢** (\$1.15 Value)

HAIR SPRAY STYLE **59¢** (79¢ Value)

281 POLIDENT TABLETS **79¢** (\$1.19 Value)

Keeblers Fudge Sandwich Cookies 1 lb. pkg. **39¢**

Downy Fabric Softener 33 oz. plastic **79¢**

White Swan Sweet Potatoes 303 can **39¢**

TEXAS RUBY RED GRAPEFRUIT Each **10¢**

GARDEN FRESH RADISHES 8-Oz. Cells **10¢**

HARD GREEN CABBAGE Pound **8¢**

YOUNG FRENCH GREEN ONIONS Bunch **10¢**

FANCY RED BOWL APPLES Pound **19¢**

COLO. RUSSET POTATOES 10-Lb. Bag **69¢**

SUPER SAVE

Ph. 629-1191 400 S. Seaman
G.A. WHITE—Manager
HOME OWNED—HOME OPERATED

We Give Gold Bond Stamps Double Stamps Every Wednesday With \$2.50 Purchase or more Excluding Cigarettes

Hospital Report

Patients in the Eastland Memorial Hospital Wednesday morning were:

Jesse Benavides, Cisco
Adrian Swindle, Cisco
Hugh Mahaffey
May Harbin
Viola Thomas, Olden
Curtis Koen
Deane Pelfrey, Breckenridge
Beverly Sutton, Mingus
Thad Weaver, Cisco

Harrison Pitman, Gordon
James Hart
William Stevenson, Baird
Aubrie Cross, Cisco
Bob England, Olden
Millie Waldrep, Cisco
Ruby McPherson,
Breckenridge
Willie Carter
Mary Burns, Comanche
Effie Sharp, Olden
Susie Howard

Hattie Duncan
Nannie Yell, Strawn
Sherra Cate
Eva Butler
Aggie Harrell, Cisco
Cheryl Hennech, Santo
Hattie Smith, Cisco
Henry Lovell, Carbon
Joseph Buckner, Cisco
Lottie Raney
Edna Thompson, Cisco
D.B. Warren, Gorman
Harry Eddy
Addie Faulkenberry, Rising
Star
Millie Baggett, Breckenridge

Sue Hamilton, Olden
Ruth Sudderth, Rising Star
Willie King, DeLeon
Claude Greenlee
John Rector, Rising Star
Barbara Brinkley
Hymonda Collins
Julia Collinsworth, Albany
Pauline Tickner, Cisco
Betty Day
Runa Warren, Cisco
Homer Duncan
Andrew Elliott
Juanita Fullen
George Norris
Doyle Welch, Gorman

Henry Pence, Cisco
Ida Carter
Thelma Raspberry, Carbon
Old Childers, Rising Star
Vida Agnew, Moran
Lucille Atwood, Carbon
Pearlie Highsmith, DeLeon
Vera Darby

Elbert Strickland
Chassie Whitley,
Breckenridge

Business For Sale

The Montgomery Ward Catalog Stores in Both Eastland and Ranger. For Details Call Wallace Gibson, ADays 915 - 356 - 2593, nights 915 - 356 - 3695 or See At Montgomery Ward Catalog Store, 117 W. Grand, Comanche, Texas.

KIRK WILL WORK
For Fairness and Justice
As your Judge - 91st
District Court
The people's candidate
Truman P. Kirk

REGISTERED QUARTER HORSES FOR SALE

B. L. Rogers -- SANTO, TEXAS



SAFeway

LOW, LOW PRICES EVERY DAY Plus SPECIALS!

Shop Safeway & Compare!

- Come in and Shop around, fill your cart with many bargains & Specials! Stock up on fine foods for less money.
 - ★ Extra Money Saving Safeway Brands!
 - ★ Wide Selection of Health & Beauty Aids
 - ★ Tops in Dairy Foods & Fresh Bake Goods
 - ★ Only USDA Choice Grade Heavy Beef!
 - ★ Wide Selection of National Brands!
 - ★ Finest, Freshest Fruits and Vegetables!
 - ★ Plus Specials Every Day!
 - ★ Rainchecks Which GUARANTEE You'll Get Advertised Specials!
- REMEMBER... It's the TOTAL Food Bill That Counts!



LEAN GROUND Beef
Freshly Ground!
Compare Quality!
—Lb. **87¢**



Cornish Hens
Game Hens,
USDA Grade 'A'
20-oz. Size
—Each **69¢**



Sliced Bacon
Slab, Rindless,
Breakfast Favorite!
—Lb. **69¢**



FRESH FRYERS
USDA Insp. Grade 'A',
Safeway Special!
(Cut-Up 38¢) Whole **29¢**

All Meat Wieners Safeway, Flavorful! 1-Lb. Pkg. **65¢**
Eckrich Sausage Smoked, Heart & Serve! —Lb. **\$1.09**
T-Bone Steaks Baby Beef, Tender! —Lb. **\$1.49**
Boneless Brisket Baby Beef, Waste-Free! —Lb. **\$1.09**
Beef Short Ribs Baby Beef, Lean & Meaty! —Lb. **49¢**

Rib Steaks USDA Choice Grade Heavy Beef —Lb. **\$1.09**
Top Sirloin Steak Boneless, USDA Choice Grade Heavy Beef —Lb. **\$1.79**
Boneless Roast *Pike, Peak or *Bottom Round, USDA Choice Grade Heavy Beef —Lb. **\$1.29**
Beef Tenders Whole Trimmed, USDA Choice Grade Heavy Beef —Lb. **\$2.99**
Sliced Bologna Safeway, Jumbo *Regular or *Thick —Lb. **73¢**
Armour Cervelat Texas Style, By The Chunk —Lb. **69¢**
Perch Fillets Raw, Fresh-Frozen —Lb. **65¢**
All Beef Wieners 1-Lb. Pkg. **85¢**
Chopped Ham Sliced, Oscar-Mayer 8-oz. Pkg. **79¢**
Lunch Meat Safeway, Sliced, *Pickle-Pimiento *All Beef Bologna *Olive *Mustard & Cheese *Spiced 3-oz. Pkg. **\$1**

Baking Chickens Fresh, 3 to 3 1/2-Lb. Avg. —Lb. **37¢**
Leg Quarters Fresh, Cut From USDA Inspected Grade 'A' Fryers —Lb. **39¢**
Breast Quarters Fresh, From USDA Grade 'A' Fryers —Lb. **45¢**
Pinwheel Pack *4 Thighs *4 Drumsticks, Grade 'A' Fryers —Lb. **69¢**

Pork Chops Fresh, Family Pack —Lb. **75¢**
Round Steak Baby Beef, Full Cut —Lb. **\$1.19**

Niblets 19¢
Whole Kernel Golden Corn, 12-oz. Can
Safeway Special!

Shortening 59¢
Velkay, All Purpose, 3-Lb. Can
Safeway Big Buy!

Flour 39¢
Light Crust, Enriched, 5-Lb. Bag
Safeway Special!

Coffee 69¢
Safeway, Fresh, Pre-Ground, 1-Lb. Bag
Everyday Low Price!

Scotties 25¢
Calypso Facial Tissue, 200-Ct. Box
Safeway Special!

Catsup 19¢
Highway, Rich Tomato Flavor! 14-oz. Bottle
Safeway Big Buy!

Firm and Lean!
Smoked Hams 65¢
*Whole or *Either Full Half —Lb.
Canned Ham \$3.19
Safeway, Fully Cooked! —3-Lb. Can

Safeway Everyday Low Prices!

Biscuits Mrs. Wright's, *Sweet Milk or *Buttermilk 10-Ct. Can **8¢**
Tomato Soup Town House, Zesty! 10 1/4-oz. Can **10¢**
Hormel Spam Luncheon Meat 12-oz. Can **55¢**
Vienna Sausage Libby, Tasty! 4-oz. Can **23¢**
Liquid Bleach White Magic, Sparkling Whites! Gallon Plastic **38¢**

Safeway Quality Frozen Foods!

Ice Cream 59¢
Snow Star, Assorted Flavors, —1/2-Gal. Ctn.

Strawberries Scotch Treat, Sliced 10-oz. Pkg. **25¢**

French Fries Slim Jim Shoestring —8-oz. Pkg. **10¢**
Cheese Pizza Bel-air, Taste Treat! —16-oz. Pkg. **67¢**
Banquet Dinners Assorted (Except Beef) —Reg. Pkg. **38¢**

Orange Juice Texson, For Vitamin 'C'! —4-oz. Can **19¢**
Cream Pies Bel-air, Assorted —14-oz. Pkg. **28¢**
Apple Pie Bel-air, Favorite! —24-oz. Pkg. **39¢**

Check This Value! **Cream Cheese** Lucerne, 3-oz. Pkg. **10¢**
Shop & Save! **Cake Mixes** Mrs. Wright's, Assorted 18 1/2-oz. Box **28¢**

Check These Money Saving Low Prices!

Pork & Beans Van Camp's, Hearty Flavor! Safeway Big Buy! 16-oz. Can **16¢**
Chunk Tuna Sea Trader, Light Meat Safeway Big Buy! 6 1/2-oz. Can **35¢**
Salad Dressing Piedmont, Creamy! Safeway Big Buy! Quart Jar **37¢**
Plain Chili Town House, Heat & Serve! Safeway Big Buy! 15-oz. Can **49¢**
Saltines Melrose Soda Crackers Safeway Big Buy! 1-Lb. Box **23¢**

Safeway Frozen Sea Food Values!

Ocean Perch 49¢
Fillets, Captain's Choice, Safeway Special! —1-Lb. Pkg.

Fish Sticks 39¢
Pre-Cooked, Captain's Choice, 8-oz. Pkg.

Big Buys!
Fantail Shrimp \$1.08
Breaded Captain's Choice 10-oz. Pkg.
Catfish Fillets 82¢
Captain's Choice 16-oz. Pkg.

Breaded Oysters Sea Pkg. 4-oz. Pkg. **69¢**
Rainbow Trout Captains Choice 10-oz. Pkg. **83¢**
Sea Scallops Pre-cooked, Captains Choice 7-oz. Pkg. **85¢**
Deviled Crab Mrs. Pauls 8-oz. Pkg. **69¢**
Fish Fillets Butter Dipped, Gorton's 8-oz. Pkg. **61¢**

Compare Frozen Sea Food Values!
Sea Foods are never out of season when you shop your nearby Safeway Store. Guaranteed Quality... Fresh and Wholesome!

Sparkling Fresh Fruits and Vegetables!

Sunkist Navel Oranges 19¢
Fancy, Full of Juice! —Lb.

Fresh Corn Florida 2 Full Ears **25¢**

Tomatoes Large Slicing Size —Lb. **39¢**
Pineapples Cayenne, Large Size —Each **39¢**
D'Anjou Pears Washington Extra Fancy —Lb. **29¢**
Acorn Squash Danish, For Baking! —Lb. **19¢**
Pitted Prunes Del Monte 12-oz. Pkg. **49¢**
Waldorf Dates *Pitted 10-oz. Pkg. *Regular 12-oz. Pkg. —Each **39¢**
Dried Apricots Gardenside, Breakfast Size 8-oz. Pkg. **59¢**

Crisp Carrots Safeway 2-Lb. Cello **29¢**
Bell Peppers Large, Each **2 for 29¢**
Green Onions Large Bunches **2 for 29¢**
Red Radishes Tops Removed! 2 4-oz. Cellos **29¢**
Texas Broccoli Winter Harvest —Lb. **29¢**

Apples Washington Extra Fancy! **29¢**
*Red Delicious *Red Rome —Lb.
*Golden Delicious *Winesap

Potatoes Red, Nutritious! Economy Pack **20 Lb. 89¢**

Fresh From The Bakery!

Brown & Serve Rolls 29¢
Skylark, *Twin or *Cloverleaf, —12-Ct. Pkg. Safeway Special!

Western Farms Bread, Skylark 1 1/2-Lb. Loaf **37¢**

Compare These Values!

Panty Hose 77¢
Cannon Wrinkle Fit Assorted Shades and Sizes—Pair

Intensive Care Vaseline Lotion 10-oz. Bottle **88¢**
Soft & Dri Deodorant 8-oz. Aerosol **\$1.49**
Cold Cream Pond's Lemon 3.5-oz. Jar **93¢**

Dairy Low Prices!

Fresh Milk 56¢
Lucerne Low Fat Safeway Big Buy! —1/2-Gal. Ctn.

Cottage Cheese Lucerne Assorted Styles 16-oz. Ctn. **38¢**

This Week's Special!

Sierra DINNERWARE
This Week's Feature **Saucer —Each 39¢**
WITH EVERY \$3.00 PURCHASE
EASTLAND
No Sales to Dealers.

SAFeway

© Copyright 1960, Safeway Stores, Incorporated.

Junior Play Here Friday



Ralph Harrison alias Wilber Maxwell and Steve Bulgerin alias Hercules Nelson discuss the possibility of a dead man in the next room.

The Junior Class of Eastland High School will present "Finders Creepers" by Donald Payton, Friday, February 18th in the Eastland High School auditorium at 8:00 p.m.

The cast of the mystery comedy will consist of: Ralph Harrison as Wilber Maxwell; Steve Bulgerin as Hercules Nelson; Kara Williamson as Celeste; Lisa Germany as Nina Quigley; Nancy Seaberry as Frankie; Paula Lund as Aunt Mary; Johnnie Grimes as Uncle Bob; Steve Lopez as Dr. Brown; Allen Leslie as Mr. Quigley; Susie Miller as Granny; Wendy Trout as Madeline; Allan Jolly as Harry Schuster; Sheri Nixon as Daphne; Mike Reid as Claude; and Larry Bolles as Henry.

Everyone is urged to attend. Tickets may be purchased at the door or from any member of the Junior Class. Prices are Adults, \$1.00 and Students, 75 cents.

Friendship Class Holds Meeting

The Friendship Sunday School Class of First Baptist Church met Thursday, Feb. 10, in the home of Mrs. Dora Fambrough, the class teacher. Everyone enjoyed the meeting and a covered dish luncheon. Many members were absent

due to illness. Invocation was given by Rev. Brewer and Mrs. Brewer gave the devotional on Prayer. She stressed the verse, James 4:2, "Ye have not, because ye ask not", and how thankful we should be for God's love and mercy.

Those attending were Inez Cornelius, Nina Hastings, Lorene Crawford, Ruth Layton, Bernice Cappel, Margaret Goodwin, Corrie Harlow, Dessie Reed, Mary Hood, Mae Mitchell, Mrs. Mildred Brewer, Dora and Dave Fambrough, and Rev. Brewer.

Reporter Julia Hanens.

Republican Chairman Announces Filings

Eastland County Republican Chairman Mrs. H.J. Bulgerin of Eastland has announced GOP filings as follows:

Jack Rominger of Breckenridge, banker and Stephens County GOP chairman, filed to be placed on the ballot of the Republican Primary to be elected to the State Board of Education, 17th District.

At 51, Mr. Rominger is married, has four sons in the Breckenridge schools and is a graduate of Texas A&M with a BA in accounting. He is a veteran of World War II and was an artillery officer with the

Thursday, February 17, 1972 Page 6

Rossander, Pet. 1; Mrs. W.C. Crone, Pet. 2; Ella White, Pet. 3; Mrs. Keith Whitt, Pet. 5; and Lloyd London, Pet. 8.

First Armored Division in Africa and Italy. He also was a reservist retired with the rank of colonel. He is a past president of the Lions Club, United Fund and Breckenridge Country Club and is a member of Sacred Heart Catholic Church.

He stated his qualifications as including the fact that he has served on the Breckenridge School Board for nine years.

Others to file with Mrs. Bulgerin are Jack Hetzel for State Representative. Persons filing for party offices are: County Chairman, none; precinct chairman, Richard

As the speaker droned on, small groups gradually slipped out until at last the audience had dwindled to a single man in the front row. "I wish to pause here, my dear sir," said the speaker to this lonely one, "to express my gratitude for your courtesy in remaining to hear my speech out."

"Oh, that's all right," said the other. "I don't deserve any thanks - I am the next speaker."

2 Listed On T-T-Honor Roll

LUBBOCK, Texas - A total of 897 students, including two from Eastland County, in the College of Business Administration at Texas Tech University qualified for the dean's honor list for the fall semester, according to Dean Jack D. Steele.

To qualify for the honor list, a student must be enrolled in 12 semester hours of courses, excluding pass - fail courses, and have at least a 3.0 grade point average. Texas Tech uses a 4.0 point grading system.

The College of Business Administration is one of six colleges and two schools at Texas Tech University, with a total fall enrollment of more than 21,000 students. The others are the colleges of Arts and Sciences, Agricultural Sciences, Education, Engineering and Home Economics and the Graduate School and the School of Law.

Students recognized for their high academic achievement in the College of Business Ad-

ministration are: Bill Hoffmann of Eastland and William B. Wright of Cisco.

NOTICE
Now open for business
Tropical Aquarium No. 2
Located - Hillside Apt. No. 3 Unit 21
Hours 8:00 a.m. to 10:00 p.m.
For all your Tropical Fish Needs
come and take a look.



Is your air conditioning system ready for summer?

Now's the time to replace existing air conditioning.

You can depend on the Carrier system we design for your business or plant to be both efficient and economical.

You can depend on our staff to install your Carrier system right, and then service it to keep it right.

Now, so you can change summertime to cooltime at your store or office... change to Carrier - the first choice of architects and engineers. Businessmen, too!



Smith Plumbing

SAVE ON PRE-SEASON PRICES & SERVICES NOW!

The Spot Restaurant

Featuring

Mexican Food
every Tuesday night

Fresh Water Cat-
every Friday night

The best eating for the whole family is The Spot in Cisco.

Phone 442-1949

Open 7 a.m. - 9 p.m. - 7 days a week

Mr. and Mrs. Charles Hill, owners

Golden Signature Ring



John Roberts

Personalize Your ring

Add the most personal mark, your signature engraved in gold, to your class ring created by John Roberts. Ask about the Golden Signature Ring today.

Eastland Drug

FOR RENT:
this
MINI-BILLBOARD
for
ONLY \$3.50 a month
Call your local paper!

Eastland Paint & Body Shop

Insurance Claims

Windshields

Installed

Vinyl Tops

Installed

Air Conditions

Installed

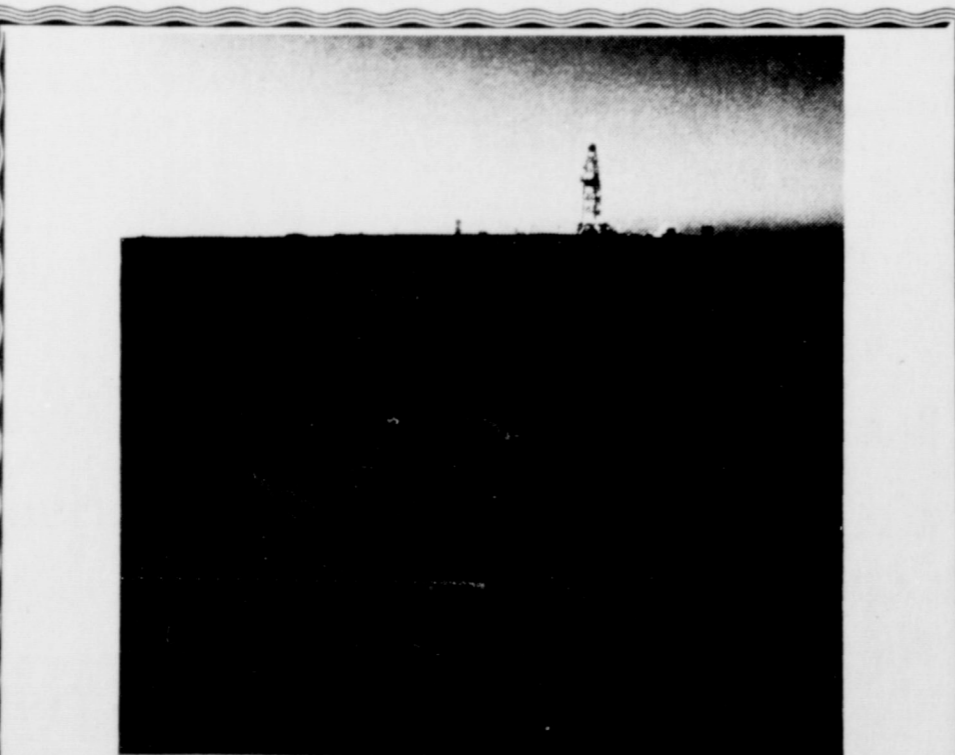
Auto Body Repair

Painting

629-1543

304 E. Main

Gene Millican
Owner



Our incredible journey
5 1/2 miles beneath the surface of the earth.

We're going deep, deep, deep into the earth, 28,000 feet beneath the surface.

We're drilling a 5 1/2 mile-deep well at the Anadarko Basin in Oklahoma. We are pioneers in drilling for gas at this great depth.

This well is just part of our continuing search for natural gas. We're continuing our

search even though we already have an adequate supply to meet our customers' needs. We know we have a responsibility to look after the needs of the next generation.

What does this mean to you? It means you'll have adequate gas energy for all your needs. It means we'll be able to operate at peak efficiency and keep your gas service reasonable. And we'll be able to support the growth of our

service area. This will mean more jobs and more money. And a better life for all of us.

You might say we're going to great depths to stretch your dollar.

Lone Star Gas

GOODYEAR SERVICE STORE

ON SALE

Goodyear 4-Ply Polyester Cord Tire with 7-Rib Tread and Low Profile



\$18.95

"MARATHON 78" TIRE
Low profile for stability, 7 rib tread pattern for mileage and traction. High priced look in shoulder and sidewall styling. Available in blackwall and extra narrow whitewall design.

HURRY - SALE ENDS SATURDAY NIGHT!

USE OUR RAIN CHECK PROGRAM: Because of expected heavy demand for Goodyear tires, we may run out of some sizes during this offer, but we will be happy to order your size tire at the advertised price and issue you a rain check for future delivery of the merchandise.

Size	Replaces	Blackwall		Whitewall		Plus Fed. Ex. Tax Per Tire
		Regular Price	Blackwall Sale Price No Trade-in	Regular Price With Trade	Whitewall Sale Price No Trade-in	
6.50-13"	-	\$20.95	\$18.95	\$24.95	\$22.45	\$1.75
E78-14	7.35x14	\$23.95	\$21.95	\$29.95	\$27.45	\$2.24
F78-14	7.75x14	\$25.95	\$23.95	\$31.95	\$29.45	\$2.39
G78-14	8.25x14	\$27.95	\$25.95	\$33.95	\$31.45	\$2.56
H78-14	8.55x14	\$30.95	\$28.47	\$36.95	\$34.47	\$2.75
J78-14	8.85x14	\$33.95	\$31.23	\$39.95	\$37.73	\$2.95
5.60-15	-	\$20.95	\$18.95	\$24.95	\$22.45	\$1.73
F78-15	7.75x15	\$26.95	\$24.79	\$30.95	\$28.29	\$2.43
G78-15	8.25x15	\$28.95	\$26.63	\$32.95	\$30.13	\$2.63
H78-15	8.55x15	\$31.95	\$29.39	\$35.95	\$32.89	\$2.81
L78-15	9.15x15	\$37.95	\$34.91	\$41.95	\$38.41	\$3.16

*Except 6.50-13 Size - 5 Rib Tread Pattern

GO TO THE GOODYEAR PRO FOR THESE EVERYDAY LOW PRICES IN ROOF-TO-ROAD CAR-CARE!

BIG POWER
"ALL-WEATHER"
BATTERY
\$19.95
12 volt with reserve power Group 24 24F

4-PLY NYLON CORD
"ALL-WEATHER IV" TIRES
\$10.95
Tufsyn rubber in the tread body gives durability. Smooth-running interlocking 'I' tread gives traction. Clean, classic sidewall design.

FRONT DISC BRAKE OVERHAUL \$39.95
Includes: Front disc pad replacement • Hydraulic system flush • Add new brake fluid • Brake system inspection. IF NEEDED: Remachine rotors \$6 ea. - Overhaul twin piston calipers \$9.50 ea. - Front grease seals \$4.50 pr. Complete rear brake service also available.

3 WAYS TO PAY AT GOODYEAR
GO TO THE PRO AT YOUR NEARBY GOODYEAR SERVICE STORE

GOODYEAR SERVICE STORE
315 East Main Street Phone 629-2662 Frank Murphy, Manager



Charles and Billie Beskow admiring one of the many diamonds that they have in their store on West Main Street.

Charles opened or "took over" the store in 1946 and married in 1948. The Beskows have two boys, Randy age 22 and Craig, age 19. Charles' mother, Mrs. E.A. Beskow is part-time help in the business. The store carries a complete line of jewelry specializing in diamonds. Charles is carrying on a third generation of jewelers and have been located in the present building since it was built in 1929.

Two Eastland Countians To Receive NTSU Degree

Mrs. Carol Brown and Kyge Edmonds of Eastland County were among 905 candidates receiving degrees at North Texas State University this winter. Among degrees conferred were NTSU's first master of journalism and master of fine arts degrees. Mrs. Brown received a master of science degree in elementary school supervision (magna cum laude). She is the daughter of Mrs. Dorothy D. Hatcher, Gorman. Edmonds received a bachelor of science degree in psychology. He is the son of Mr. and Mrs. Kyger C. Edmonds, Ranger.

Family SHOPPING BAG

ITEM: Shopping once a week, and buying in quantity may help you stretch the family food dollar. But only if you avoid waste by using fresh produce and other perishables first. Rely on canned and frozen foods to carry you through the later meals. **ITEM:** Three-fourths of the nation's families use some ready-to-eat cereals sometime during each week, and children are the biggest users of ready-to-eat cereals. **ITEM:** Leftovers, when assigned a specific place in the refrigerator, are more likely to be used. Place them in glass containers or plastic bags as visual reminders of good food to be used, thus saving the cost of buying other foods. **ITEM:** About 87 percent of all U.S. families are husband-wife families.

Barnes Special To Make Dublin Stop Wednesday

History will be made in Dublin Wednesday, Feb. 23, when Lt. Governor Ben Barnes rides into town on his Whistle Stop tour of Texas.

Reviving an old time custom, Barnes and his wife will cross the State of Texas aboard a passenger train, stopping in major Texas cities to bring the Lt. Governor's campaign for Governor before the people of the state.

Barnes' visit will be the only Whistle Stop made in Dublin by any political office, and the people of Dublin will be out en masse to welcome him.

Stores will close, high school and junior high students will be excused from classes, and everybody will flock to the Santa Fe Depot on Black Jack Street at 9:40 a.m. Wednesday, to meet Ben Barnes and hear him explain his platform for the governor's race from the platform of his passenger car.

School bands will play to the accompaniment of the electric organ, as Ben Barnes' train rolls into Dublin, to be met by the Dublin Volunteer Fire Department, the Police Department, and the State Highway Department, which will rope off Black Jack Street in time for the event.

Arriving at the same time as Barnes' Whistle Stop Train will be the Goober Special, with four passenger cars carrying 300 Barnes supporters from Gorman and DeLeon into Dublin to meet the Lt. Governor's train and hear his talk.

Hundreds of balloons will be released overhead when Barnes' train pulls into Dublin, and free balloons will be given away to spectators. Barnes supporters will be seen wearing Whistle Stop sailor hats of red, white and blue, which will be available at all downtown stores until BB-Day. A special edition of the Dublin Progress will be printed one day early next week, heralding the event of Ben Barnes' "homecoming

to Dublin" on his Whistle Stop Tour of Texas, and some 3,000 copies of the Dublin Progress Special Edition will be distributed to people in Dublin and the Dublin area.

Boarding the Whistle Stop Passenger train at Amarillo, Ben Barnes and his staff will tour the State of Texas in three days, making nine stops a day in major Texas cities and winding up the maneuver in Houston. The event will attain to voting age within the next few years, say Barnes representatives, who are fairly certain there will never be another such Whistle Stop passenger train in the future and while there were many in the past Dublin was not on their itinerary.

Easter Pageant Starts Rehearsals

The annual Easter pageant held at the Kendrick farm promises to be different this year. According to Phil Kendrick all parts will be spoken by the players. In the past a regular narrator has carried the story from loud speakers situated on the field. Now, however, the real life spoken parts will be carried by hidden microphones placed on the clothing and picked up by remote control.

Some character parts as yet are unassigned. Hence, for those wishing to participate, a few parts are still available; others might prefer to be a part of the crowd scenes.

4 EHS Girls Make CJC Wrangler Belles

Four girls from Eastland that are to major in business at Cisco Junior College. Brenda Daniels, 18, daughter of Mr. and Mrs. James D. Lewis of Route 2, Eastland was chosen. She was a cheerleader two years, played basketball two years, ran track one year, was voted "Most Likely to Succeed" her Freshman year, a member of the Beta Club for three years, served on the Student Council, a member of FHA for four years, officer for two years, second place Fire Prevention Poster Winner this year, winner of the Betty Crocker Homemaker of Tomorrow Award this year, and serves on the Library Staff. She plans to major in Home Economics at Cisco Junior College next year.

Lynn Robertson, 18, is the daughter of Mrs. Lillian Robertson of 306 1/2 East Hill. Lynn has been a member of the Beta Club for three years, the Spanish Club two years, and FHA for four years. This year she is on the Library Staff and Office Staff and is the winner of the Crisco Award. Her plans



Mrs. Don Brumbelow is shown as she was announced as the 1972 Valentine Sweetheart of the Zeta Pi Chapter of Beta Sigma Phi. She was crowned by the 1971 Sweetheart, Mrs. Jackie Don Simpson.

The chapter honored Mrs. Brumbelow with a Valentine social Saturday, Feb. 12 in the home of Mr. and Mrs. Kenneth Payne.

Members attending were Mrs. C.P. Chick, Mr. and Mrs. Don Brumbelow, Mr. and Mrs. Robert Mangum, Mr. and Mrs. James Fullen, Mr. and Mrs. H.D. Alsop, Mr. and Mrs. Don Joiner, Mr. and Mrs. Jackie Don Simpson, Mr. and Mrs. Russell Walker, Mr. and Mrs. L.R. Webb, Mr. and Mrs. Ted Martin, Mr. and Mrs. Richard Wilhelm, and Mr. and Mrs. Kenneth Payne.

Guests were Mr. and Mrs. Rodger Terrell of Fort Worth and Mr. and Mrs. David Martin of Eastland.

Hospital

Patients in Ranger General Hospital Wednesday morning were:

- James Carr
- Hazel Underwood
- Bertha Hagar
- Emma Donley
- Myrtle Douglas
- Beulah Hamilton
- Travis Reese
- Frank Maurin
- Evelyn Killingsworth

- Elmer Hall
- Sadie Jones
- E.L. Norris
- Leonard Pounds
- Viola Hall
- Ethel Forigus
- Margie Hatton
- Paul Deitz
- Mary Hightower
- Lanna Finley
- Kenneth Twyman
- J.C. Carter
- Clara Hight
- Mrs. Bill Ellis and baby girl
- Myrtle Turner

Now's the time TO TRADE UP!

1970 Ford F-100 Pickup
36,000 miles, 1 owner, 5 year-50,000 mile warranty still left.

1968 FORD RANGER Pickup.
Auto. Trans., 360 motor, Air-Extra Clean, Low Mileage

1968 PONTIAC G.T.O. Low Mileage
with only 39,000 miles. Air-Power-Factory Tape Deck, Mag.wheels

1967 CHEVY PICKUP.
6 cyl. Std., good work automobile

HOOD KING MOTOR CO.
100 E. Mair Eastland 629-1786

FINAL CLEARANCE

MEN'S DRESS PANTS Save 30%
Were NOW
Haggar \$9.00 \$6.30
Levi Strauss \$12.00 \$8.40
Wrangler \$14.00 \$9.80
Sizes 27-42, Some Short & Long, Strides included

Men's Suits to Clear
Reg. \$30 to \$60 Now
While 9 last \$15
Save 1/2 to \$30



Values to \$39.99
7 Men's Sports Coats
Wool & Wool blend
\$12.88 to \$18.88

2 Big Tables Cotton and Dacron Fabrics

Table One No iron 45 inch Mission Valley Seersucker plaid & stripe
Table Two Heavy weight sportswear No Iron 45" inch solid & print
88c YARD

HEIDENHEIMER'S

Mrs. W. M. Brown
604 Pine St. 647-3292
Ranger
DISTRIBUTOR OF
Luzier
FINE COSMETICS AND PERFUMES

CUSTOM COASTAL SPRIGGING
Own Sprigs and Two Row Machine
Heulon Perrin
Rt. 1
647-1028
Ranger

Find out why State Farm insures more cars than anybody else.
Call: 629-1096



like a good neighbor, State Farm is there.
STATE FARM MUTUAL AUTOMOBILE INSURANCE COMPANY
Home Office: Bloomington, Illinois
211 W. Main Eastland

CENTRAL DRUG
EXPERIENCE-INTegrity-SERVICE

Prescribed Health Needs

Your medical prescription is our number one concern. That's why it is accurately filled... no matter how quickly you need it. Your pharmacist really cares.

1924 FEB 72 M.P. 37

Call for Free Delivery
629-2681 103 W. Main St.

When You Think of FOOD THINK OF SLEDGES!

SLEDGES is the only truly ONE-Stop Spot for Eating--Your Table or Ours!

In our retail market, you'll find the freshest, finest cuts of your choice, all guaranteed to please you!

DELICATESSEN For convenience you can appreciate, shop our ready-to-go dept.

You can set your table extra-good and extra-quick with selections from our wide variety of delicious, fresh items. Barbecue-Beans-Salads-All the fixin's

And a Complete One-Stop Grocery For You

Then for Eating-Out Treats: Remember our dining rooms: convenient, delicious and economical. Luncheon treats from our wide menu, be it barbecue or lighter.

And for that extra-special meal, REMEMBER SLEDGE'S STEAKS. The best to start with and cooked the way YOU want 'em to make your dining out pleasure complete. You'll Find It All at SLEDGE'S And You'll Like What You Find

SLEDGES MARKET & DINING ROOM
210 S. Lamar 629-2913