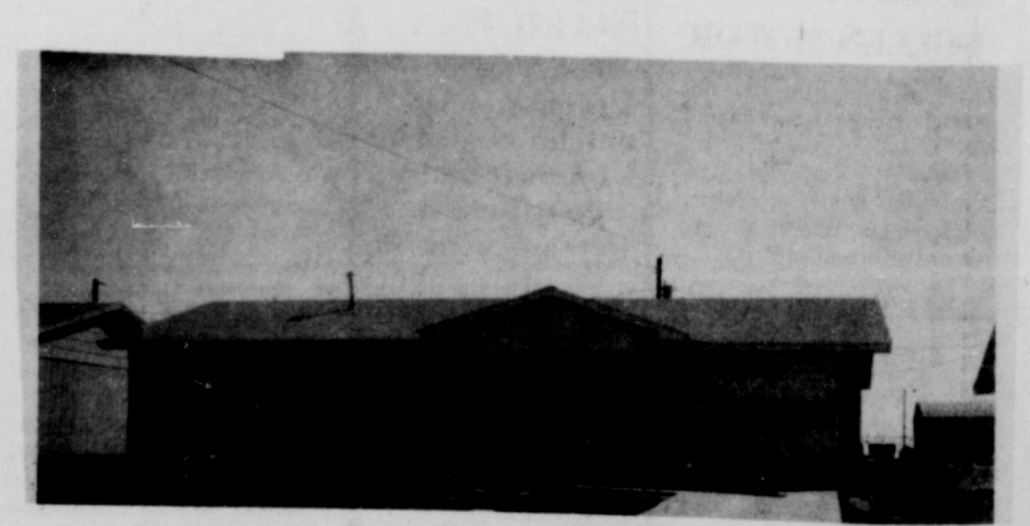
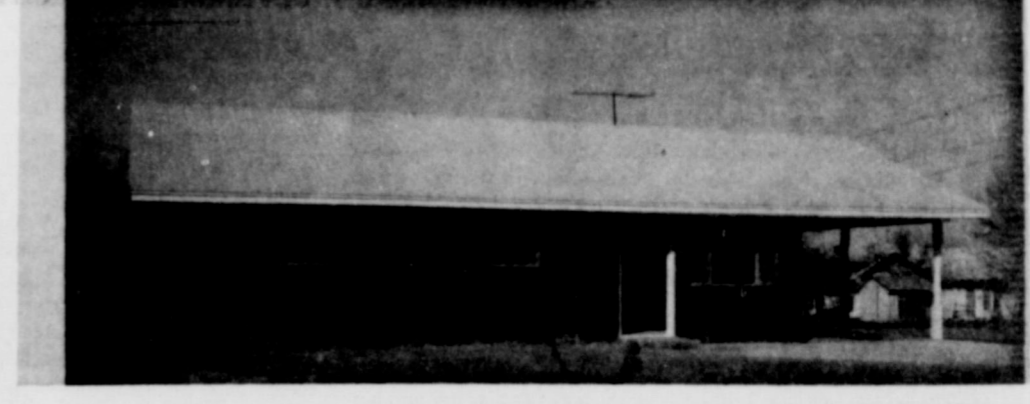
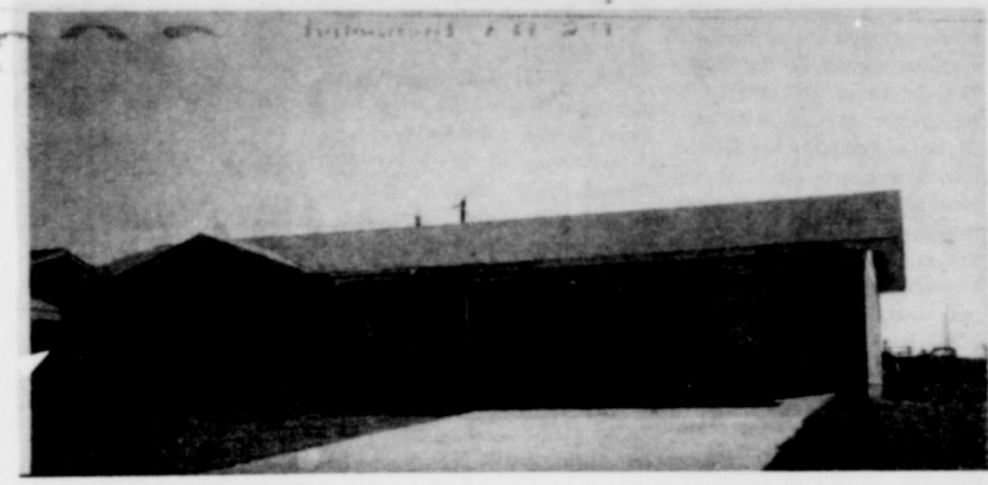
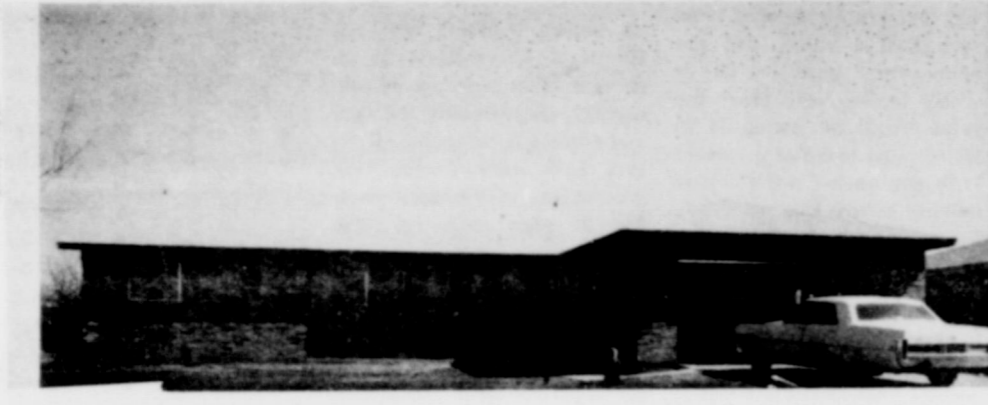
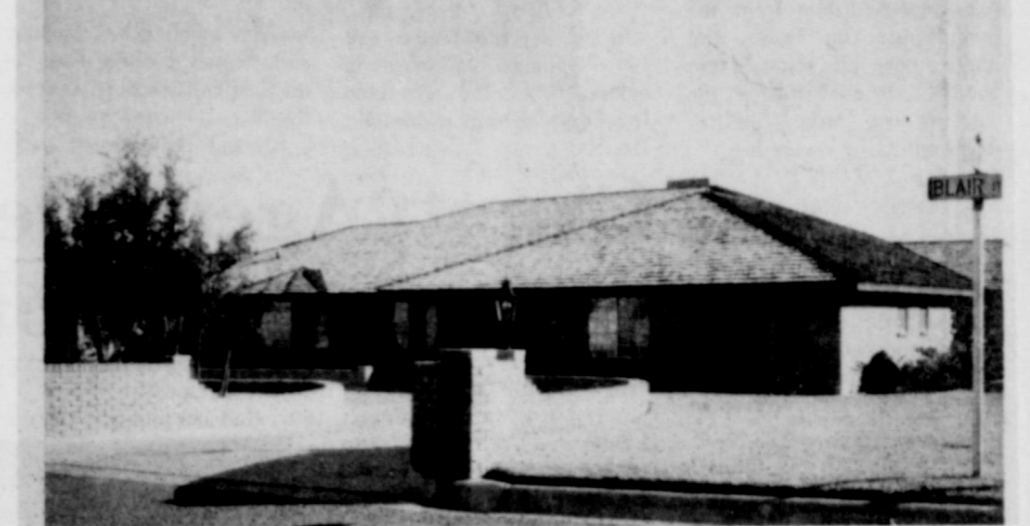
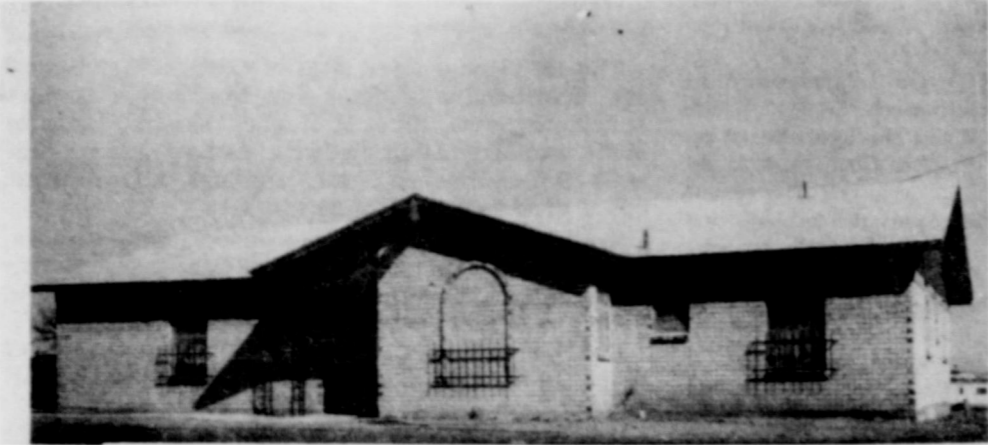
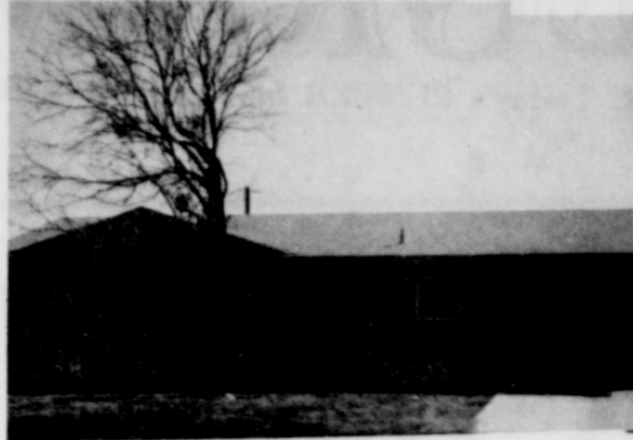
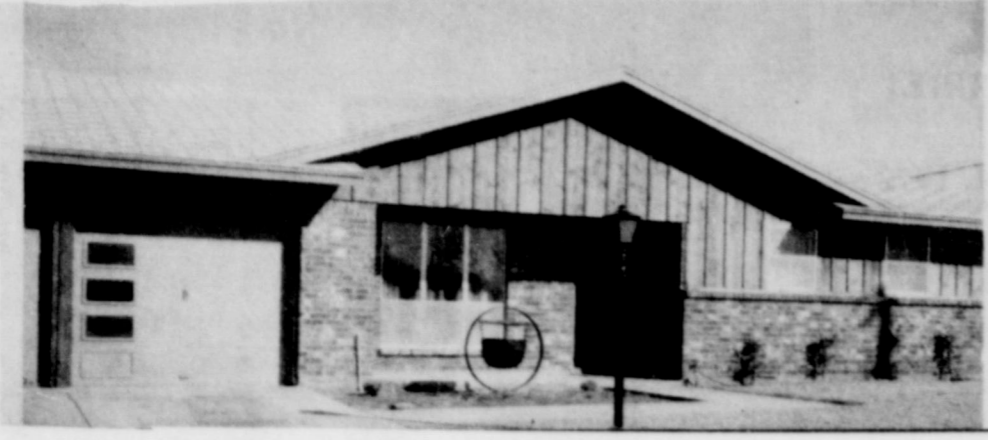


Eastland: City of Beautiful, New Homes





HD NEWS

By Janet Thomas County Home Demonstration Agent

Have a garden? If so, spring and summer meals will abound with fresh greens, such as mustard and spinach.

"But what are you doing with the surplus?" Do you have a home food freezer or locker that enables you to conserve these greens for future use?"

Food means money in your pocket if you have the time and

know - how. Greens provide vitamin A which is needed for growth, normal vision and health conditions of skin and other body surfaces.

Select mustard and spinach with young, tender leaves that are easy to freeze. Freeze as soon after picking as possible for highest quality.

To prepare the greens as you

would for cooking. Wash and remove tough stems and imperfect leaves. It's necessary to heat greens before freezing to slow or stop the action of enzymes.

Until greens are ready to pick, enzymes help them grow. After that they cause loss of flavor and color. If not heated, the enzymes continue to be active during the frozen storage. The greens then develop off - flavors in a few months and discolor and toughen.

"Heating also wilts greens and makes them easier to pack." "Heating too long

results in softening of texture and an unnecessarily large loss of water soluble vitamins and minerals."

So, put the greens in a blanching basket or large kettle or sauce pan that can be covered or into which a fine mesh wire basket fits. It's possible to use a large cheese cloth bag in a covered sauce pan.

Lower the basket or bag into boiling water and cover. Keep the heat high and begin counting the time immediately.

Heat the mustard greens in boiling water for two minutes, and heat very tender spinach

for one and one - half minutes.

Plunge the heated greens into a large container of ice water or into cold running water. When the greens are cool, remove them from the water and drain.

Pack the greens into moisture - vapor proof containers, leaving a half - inch headspace if using jars or rigid containers. When working with plastic bags, press out the air before closing with a gooseneck twist.

Freeze the greens immediately, and store at zero degrees Fahrenheit or below.

Greens will be no better when

you take them from the freezer than they were when you put them in. So remember - use fresh tender greens, freeze as soon as possible and keep the freezer temperature at zero or below. Fluctuating temperatures lower quality.

So gardeners, freeze your surplus greens for garden fresh flavor long after the season. It means money in your pocket and nutrients important for health.

Beautiful gardens and fruit trees are evident all over the county. With the good rains that we have been blessed with, an abundance of home grown fruit

and vegetables are in store. Visiting at the home of Lon and Ellen Horn in Eastland this week proved to be a real treat. The Horn family were gathering apricots, and were they ever delicious!!

The County Home Demon-

stration Agent's office has an abundant supply of bulletins "Home Canning" and "Frozen Foods" available to you free of cost upon request. These bulletins give the correct methods of food preservation.

EASTLAND TELEGRAM

used aluminum printing plates
ideal for roofing, sealing.
Sized 24x36 inches. 25c each
at the Telegram Office, Eastland

PRICES
Good
Thru
May 20

J R B

SUPER MARKETS

3 CONVENIENT LOCATIONS TO SERVE YOU

CISCO - EASTLAND - RANGER

WE RESERVE THE RIGHT TO LIMIT QUANTITIES



UNBEATABLE PRICES UNBEATABLE STAMPS

PRICES GOOD ALL WEEK

DOUBLE S&H GREEN STAMPS WEDNESDAY

& SATURDAY With purchase of \$2.00 or more (excluding cigarettes)

Gain Giant Laundry 10¢ off
DETERGENT 69¢

Kraft (With 5.00 or more Purchase) 48 oz.
MIRACLE WHIP 59¢

Zee Deep Tones 2-roll Pkgs.
BATHROOM TISSUE 5/\$1.00

JRB
ICE CREAM 1/2 gal. 59¢

Heinz 14 oz.
CATSUP - 4/\$1.00

Heinz 10 oz.
TOMATO SOUP 10¢

J.R.B. MEATS ARE U.S. GOVERNMENT INSPECTED. IF FOR ANY REASON YOU ARE NOT SATISFIED WE WILL CHEERFULLY REFUND YOUR MONEY.

Silver Spur Thick Sliced
SLICED BACON 2 lb. \$1.19

BEEF LIVER Fresh Thin Sliced lb. 69¢

CALF LIVER Fresh Tender lb. 89¢

PORK LIVER Fresh Nutritious lb. 49¢

Owens Country Style
SAUSAGE 2 lb. bag \$1.59

Deckers Bulk
FRANKS lb. 59¢

Deckers Texas Style
CERVELOT lb. 79¢

Deckers Ring
SAUSAGE lb. 69¢

PLUMROSE
SLICED HAM Reg. 59¢ Pkg. 49¢



Oscar Meyer Roll
BRAUNSCHWEIGER 8 oz. pkg 49¢

MAXWELL HOUSE
COFFEE Lb. Can 79¢

SPINACH CUT GREEN BEANS GOLDEN CORN
5 303 Cans \$1.00

Wesson Oil 24 oz. 57¢

HEINZ HOT DOG RELISH 9 3/4 oz. 35¢

U.S. D.A. Inspected 'Farm Fresh' Whole
FRYERS 29¢

FRYER PARTS & PIECES

Buy only the Pieces your family Enjoys

BREAST lb. 79¢ DRUMSTICKS lb. 55¢
THIGHS lb. 59¢ BACKS lb. 19¢

FRYERS Cut - up Pan ready lb. 37¢

FRYERS All Dark Meat Leg Quarters lb. 39¢

FRYERS All White Meat Breast Quarters lb. 45¢

Seasoned Ready to BBQ
SPLIT BROILERS lb. 39¢

SHORTENING
SNOWDRIFT 42-Oz. Can 79¢

Del Monte in Juice No. 1 Flat
Pineapple Sliced or Crushed 5/\$1.00

Pet Milk Tall Cans 6/\$1.00

Mouthwash Listerine Antiseptic 14 oz. \$1.29

Coppertone Tan Butter 1 5/8 oz. 89¢

Solarcane Spray 4-oz. \$2.19

Toothpaste Crest Large 59¢

Shampoo Liquid Prell 7-oz. 98¢

Niagra Spray Starch 22 oz. can 69¢

Pickles Rainbo Dill 22 oz. 39¢

Wishbone Deluxe French Salad Dressing 16 oz.

Diet Sweetener Sweet 10 6 oz. 98¢

QT Lotion Tube 2 oz. \$1.29

Ideal Bleach 1/2 gal. 27¢

J. R. B. COUPON

save 37¢

WITH THIS COUPON WHEN YOU BUY A 10-OZ. JAR OF

Instant MAXWELL HOUSE COFFEE

AT JRB

10 OZ. JAR ONLY \$1.29 WITH COUPON

ONE COUPON PER FAMILY - OFFER EXPIRES 6-3-72



Appetite-arousing Produce

Russet Potatoes 10 lb. bag 69¢

Texas Corn 6 Ears 59¢

Bananas 2 lb. 25¢

Celery Stalk 29¢

Cooking or Eating
Rome Apples lb. 25¢



Bicentennial Celebration

Is Eastland County making plans for its celebration in July, 1976, of the 200th anniversary of the American Revolution? This is the question currently being asked in Austin by The American Revolution Bicentennial Commission of Texas.

The Commission, created by the Texas Legislature in 1969, has used President Nixon's quote: "The Bicentennial Celebration must go directly to the people and derive its strength from the people," as its foundation for planning. The Commission's goal is to have all Texas citizens participate in the 200th Anniversary of the nation's founding, and toward that end, the Commission has been hard at work for two years planning and developing guidelines for Texas cities and towns to use in establishing their Bicentennial programs.

Copies of the Guidelines were mailed to mayors, Chambers of Commerce, and Councils of Government throughout the state last September and October. They call for the formulation of a Bicentennial committee in each city and town. Appointed by the mayor, the committee should include representatives from the communications media; trade and professional groups; educational bodies; Chambers of Commerce; Ministerial Alliances; civic, social, cultural, patriotic and historic organizations; the military (if applicable); and two elected local officials to serve as ex-officio members. The committee should have a balanced membership of race, sex and age.

Programs selected by the committee should reflect one or more of the three themes of the Bicentennial Celebration. These are "Heritage", projects having to do with history; "Open House, USA," projects designed to attract visitors to the community; and "Horizons", those projects that will provide for the future. In each community one project should be permanent. Something that will be of lasting benefit to the community and that will enrich the state and the nation.

After these local committees have decided on the projects they want to develop, plans should be submitted to the State Bicentennial Commission in Austin for endorsement. The Commission IS INTERESTED IN any community with worthwhile projects, and IS READY AND WILLING to offer advice and suggestions to city and town committees.

The Bicentennial Bandwagon is rolling. A growing list of Texas cities and towns are well along in their preparations for

the big birthday celebration in 1976. San Antonio has numerous projects, among them the extension of their delightful walking river and the building of a new downtown sports stadium. Lubbock's Texas Tech Ranch Museum is one of many projects in that city, and Temple is developing an impressive number of projects, among them a railroad museum, restoration of Scott House on the grounds of Scott and White Hospital and an early American music program for their boys choir. Austin and Wichita Falls are other larger Texas cities that are forming committees and developing Bicentennial plans.

Smaller towns are also becoming active. Seguin's Bicentennial committee is planning an enlargement of their traditional Freedom Fiesta and Belton and Killeen now have working committees.

The number and types of Bicentennial programs for a city or town is only limited by the imagination and energy of the people living there. What may be possible for a large city may not be possible for a small town, and what may be right for a rural farming town may not be proper for a large urban area, but regardless of the scope or size of a project, the important thing is to be involved in this 200th anniversary celebration.

Don't be left holding the watermelon and lots of good ideas on July 4th, 1976. Start planning and acting now so that your community will be ready to celebrate in a meaningful and lasting manner, the 200th anniversary of the founding of our great nation.

let's move ahead in '72 drive intelligently

4-H NEWS
Judy Cardwell
Assoc. CHDA

All 4-H girls and their mothers are invited to the Clothing and Grooming Workshop to be held on Saturday, May 20 at the Cisco High School Cafeteria. The morning's activities will begin with a coffee from 9:30 - 10:00

Gordon's Spot

by DeMarquis Gordon

Get your sprayers and insecticides ready to spray your pecan trees. It will soon be time to spray to control the first generation of the pecan nut casebearer. We have been examining pecan trees daily and as of Thursday had not found any casebearer eggs. We will continue to keep a close watch so look for an article in the paper to tell you when to spray.

Dr. Cliff Hoelscher, Extension Entomologist in Stephenville, has predicted that the most effective spray date will be this week, May 15 - 19th.

The insecticides that can be used for the control of these casebearers are Guthion, Thiodan, Malathion, and Toxaphene. Use these insecticides according to directions given on the label of the container.

Homeowners as well as commercial growers should look at the economics of spraying pecan trees. If you produce only enough pecans for your family use it might be cheaper to let the insect have your pecans and buy the pecans you need next fall. However, if you expect to produce enough pecans for your family and some to sell it would be profitable to spray. Casebearers do not harm the pecan tree itself, they only destroy the nuts.

Homeowners who do their own spraying will certainly find it beneficial to spray their pecan trees. If you add zinc sulfate to your spray solution you will get an extra benefit for the tree. Zinc is a necessary element for pecans and improves the appearance of the tree.

Fire blight, a bacterial disease which often attacks apples and pears, has been especially devastating on ornamental plants this spring. The disease is transmitted by

insects, principally honey bees. The bees contaminate their mouth parts by feeding in blighted blossoms. They then spread the bacterium from blossom to blossom.

Fire blight first appears as blossom blight. Infected blossoms become water-soaked and turn dark brown. From the blossoms the bacteria quickly moves down the twigs, causing leaves to turn dark brown to black. Infected twigs become dark green and look "oily".

As the disease progresses into the limbs and trunk of plants, cankers develop. These normally are sunken and dark. Next spring a sugary substance containing bacteria for new infections will ooze from the cankers.

To effectively control fire blight, both cultural and chemical control methods must be used. Prune infected portions of the plant four to six inches below the last visible symptoms. Paint large cuts with a tree paint. Dip pruning equipment in a solution of nine parts water to one part household bleach between each cut to prevent spreading the bacterium from one cut to another.

To prevent further infection, spray plants with Bordeaux mixture, Zineb or a cupric hydroxide fungicide.

Homeowners with highly valued elm trees in their yard should keep a watchful eye on the trees to spot infestations of elm leaf beetles.

The beetles are a serious pest of elm trees as they eat the surface of the leaves, leaving only the veins.

High-pressure, high-volume sprayers are necessary to completely cover the foliage. Some degree of control can be obtained by spraying the trunk and lower limbs when the larvae move down to the ground to pupate.

It's also time to spray for bagworm control. They can only be killed when they are young and in the feeding stage.

For information dealing with chemical control of bagworms and elm leaf beetles get a copy of L 199 "Texas Guide for Controlling Insects on Ornamental Plants" available at the County Agent's office.

'72 the Year of more for more

Morton Valley HD Club Meet

The Morton Valley H.D. Club met Wednesday afternoon for their regular scheduled meeting with Mrs. H.C. Pounds, president, presiding. Mrs. B.A. Blair led us in the opening exercise.

Mrs. Joe Bond read from the fourth chapter of Hebrews for our devotional.

Mrs. R.W. Gordon called the roll in the absence of our secretary and treasurer. Eleven members answered the roll with "A Beautiful Spot in Our County".

Mrs. C.T. Brockman gave the council report. Our nominee to the State T.H.D.A. meeting is



Latricia Wheat, a sophomore student from Ranger, was named most typical cowgirl during Ranch Week at Cisco Jr. College. Making the presentation is Miss Becky Garner, a member of the Student Council. Miss Wheat has been a member of the Wrangler Belles for two years, on the Dean's List, a member and officer of the Rodeo Club and was presented a certificate of recognition for Rodeo Club Publicity Director during the fourth annual Awards Presentation. She will attend Tarleton State College next year.

COURTHOUSE NEWS

R.D. Patterson, et ux to Mrs. W.E. Sitton - Warranty Deed
Millie Ellen Porter to The Public - Public Hearing
Geo. W. Porter as community administrator to S&S Contractors - Warranty Deed
Stephenville Savings & Loan Assn to S.L. Elder, et ux - Release Deed of Trust
Willie Straus, dec'd to The Public - Certified Copy Probate

Vic Shackelford et al, to Earl Wesley, et ux - Warranty Deed State of Texas vs. C.M. Pogue et ux to The Public - Certified Copy Judgement
Annette L. Shepard to Commercial Printing Co. - Release Deed of Trust
Security State Bldg. Big Spring to Harding Well Co. - Release Deed of Trust
Security State Bldg. Big Spring to Earl Wesley, et ux - Restriction agreement
J.D. Taylor et al to First National Bank, Cisco - Deed of Trust

Charles Tarver to Sam A. Phillips, Jr. - Warranty Deed
Tri - mark Development, Inc. to W.R. Collins, et ux - Warranty Deed
Tri Mark Development, Inc. to The Public - Certified Copy Minutes
Tri Mark Development, Inc. to Eastland National Bank - Deed of Trust
Texas Ice and Refrigerating Co. to David Oil Co. - Asn Oil, Gas, Lease
United States of America to W.E. Weistead - Power of Attorney
Mary L. Whiteman to Mary W. Warner - Mineral Deed

Mrs. H.E. Hartsell, Mrs. Hartsell was also nominated for the County T.H.D.A. Chairman.

We planned a covered dish luncheon for all who helped on our club house in any way, work or gifts to the club, for Friday night, May 19th, at 6:30 p.m.

Mrs. Hartsell gave a wonderful program on "The Heart of the Matter", all about diets and foods that causes hardening of the arteries, that leads to heart trouble.

Mrs. Hartsell lead us in recreation after adjournment. We could say that our club hit the jackpot on Achievement Day, May 3. We won two blue ribbons, one red, and one white and the "Woman of the Year" award.

Mrs. R.W. Gordon, our hostess, served cookies, ice cream, and punch to these ladies: Mrs. B.A. Blair, C.T. Brockman, Joe Bond, H.E. Hartsell, Paul Hodge, Alvin Kincaid, Josie K. Nix, Bessie Peoples, H.C. Pounds, and Ralph Roberts.

Our next club meeting will be May 24 with Mrs. Hartsell as hostess.

Reporter
Mrs. Kincaid

"REWARD"
For information and recovery of billfold with valuable credentials of J. F. "Jim Faulk"
Lost in Cisco or Eastland, Friday, April 28th
Write: J. F. Faulk,
P.O. Box 83 Eastland, Texas
or call 817, 629-1726
All identification was out of town addresses.

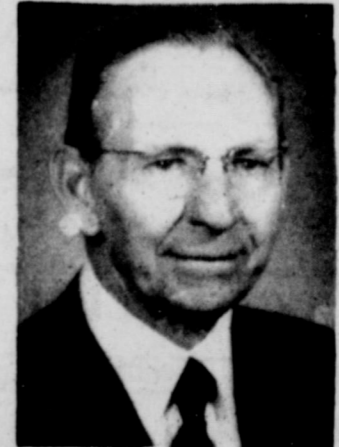
Custom Built Homes
Your Property or Ours
We Furnish Plans - Arrange Financing
One phone call gets you a Home
H & W
Development Co.
1201 W. Commerce Eastland
629-1305

MAJESTIC THEATRE
Eastland Phone 629-1120
PARAMOUNT PICTURES IS PROUD TO ANNOUNCE THE RETURN OF THE GREATEST FAMILY ENTERTAINMENT OF ALL TIME!

Cecil B. DeMille's
The Ten Commandments
THE PASSING OF THE RED SEA
The Single Most Spectacular Scene Ever Filmed
TECHNICOLOR A PARAMOUNT RELEASE
Fri. Open 7:45 Feature 8:00 only
Sat.-Sun.- 2:30 & 8:00 only

Smart Vacationers Carry... Smart For Graduates
Samsonite Silhouette
THE MAN'S STORE
Bob Elliott
CISCO

TO THE VOTERS OF EASTLAND COUNTY



Earl Conner, Jr.

With deep appreciation and humility I express my appreciation for the wonderful vote of confidence you gave me May 6. I shall continue to serve you to the very best of my ability.

Sincerely,
Earl Conner, Jr.
District Judge

RANGER DRIVE-IN THEATRE
Show Starts at Dusk
"IT'S ONE HELL OF A FILM! A COLD, SAVAGE AND CHILLING COMEDY!" - Bruce Williamson PLAYBOY
A MIKE NICHOLS FILM
ALAN ARKIN
CATCH-22
WRITTEN BY ROBERT JOSEPH HELLER

Coming Friday - Saturday & Sunday
MAY 19 - 20 - 21

ALBERT R. BROCCOLI... HARRY SAWYMAN
Sean Connery as James Bond 007
IAN FLEMING'S
"Diamonds Are Forever"
Forever
Forever
Forever
Forever

With summer camping and outings right around the corner 4-H members might be interested in having one of the many styles of 4-H shirts and blouses. Free 4-H National Supply Catalogues are available at the County Extension office with these items listed.

Also available from the supply service catalogue are 4-H jackets, shirts, hats, and caps and many other 4-H items.

Be sure to pick up a catalogue.

4-H members - be planning to complete your project records as the time is almost here for submitting record books. Record book workshops will be held throughout the county during the month of June.

"Because Someone Lived"
RAWLINS MONUMENTS
Since 1884 THE NAME to look for in distinctive memorials
Roy Taylor 500 East 8th St. Cisco
Please Call Collect
CALL 442-1127

Sunday, May 14, 1972

BUMPER TO BUMPER AUTO SERVICE

ENGINE TUNE-UP 6 cyl. Autos

\$29⁸⁸

AIR COND. CARS \$2 MORE
8 CYL. CARS \$4 MORE!

Includes • New Spark Plugs • New Points • New Condenser • Our specialists will set dwell, choke, Time Engine • Balance Carburetor • Test Starting, Charging systems, Cylinder compression, acceleration.

OTHER PARTS EXTRA IF NEEDED...

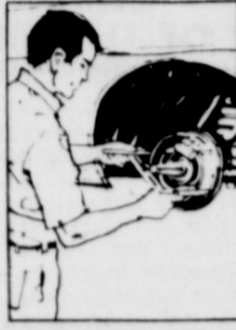


BRAKE RELINE

\$29⁹⁵

EXCEPT DISC BRAKES FOREIGN CARS...

• Install Brake Linings all 4 wheels • Inspect Master Cylinder, Hydraulic Brake Hoses • Remove, clean, inspect, repack Front Wheel Bearings • Add new fluid • Adjust all 4 brakes.
If needed: Wheel Cyls. \$7.50 ea. Drums Turned \$3 ea. Front Grease Seals \$4.50 pr. Return Springs 50¢ ea.



"ALL-WEATHER IV" TIRES

\$10⁹⁵

• Tufsyn rubber in the tread body gives durability • Smooth running interlocking "L" tread gives traction • Clean, classic sidewall design

\$1800 **\$2000**

7.75x14, 8.25x14, 7.75x15, 8.25x15, Blackwall tubeless plus \$2.12 - \$2.34 Fed. Ex. Tax and old tire

8.55x14 or 8.55x15 Blackwall tubeless plus \$2.41 - \$2.48 Fed. Ex. Tax and old tire



FRONT-END ALIGNMENT

\$9⁹⁵

Any U.S. Car Plus Parts If Needed

• Complete front end inspection to help assure maximum tire mileage • Camber, Caster, and Toe-in set by precision equipment to manufacturer's specifications



BIG POWER "ALL-WEATHER" BATTERY

\$19⁹⁵

12 Volt with exchange Group 24 241



OIL CHANGE & LUBRICATION

\$5⁵⁰

• Transmission and Differential oil check • Complete chassis lubrication • Full oil change • Price includes all labor and oil



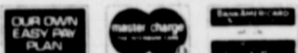
DELUXE BRAKE OVERHAUL

\$69⁹⁵

Master cal. hoses, return springs, extra if needed

Except disc brakes foreign cars

GO TO THE PRO AT YOUR NEARBY GOODYEAR SERVICE STORE



STARTS



Goodyear

6 DAYS ONLY

MANNING-BOWMAN
Portable Mixer
3-Speed Lightweight! **\$5⁹⁸**
Smartly-styled hand mixer, push-button beater release, rests on "heel" to keep the kitchen counters clean.

SPECIAL
Flashlights
2-in-1 Package! **99¢**
Two lights, 4 batteries... one utility light, one compact... two "D" and two "C" batteries, one price!

Parts Cabinet
detachable carry-handle **\$1⁶⁹**
Durable plastic cabinet for screws, washers, etc., sliding clear drawers for easy-spotting convenience.

12-Qt. Wastebasket
Unbreakable Polyethylene **79¢**
Gold leaf embossed in smart decorator colors to accent any room. 2 colors - Avocado-Gold.

PROFESSIONAL LUBE AND OIL CHANGE
\$5⁵⁰

PROFESSIONAL FRONT-END ALIGNMENT
\$9⁹⁵
Any U.S. car plus parts if needed

Booster Cable
8 ft.-7 strand aluminum cable **89¢**
Helps give emergency starts. Ends bumper damage - no need to push. Full size clamps assure solid contact.

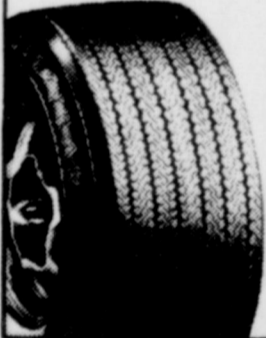
4-WHEEL BRAKE RELINE
\$29⁹⁵ except disc brakes - Foreign cars
Includes full inspection, fluid, clean - repack front bearings. If needed: Wheel Cyls. \$7.50 ea., drums turned \$3 ea., front grease seals \$4.50 pr., return springs 50¢ ea.

Our lowest priced tire in the Polyglas Family

POWER BELT POLYGLAS

Goodyear's lowest priced Polyglas tire. Built for positive performance & long mileage - priced with you in mind. That's why people choose it.

- Goodyear's Multi-directional "bar-bell" tread design gives you good steering stability, great forward and reverse traction, and excellent resistance to side slip.
- Bias-Belted Construction - Two plies of polyester cord and two fiberglass belts up through the H-78 sizes. Sizes J78-14, J78-15, L78-15 and 900-15 come with four plies of polyester cord and two fiberglass belts.
- Belts under the tread suppress tread squirm and maintain open groove traction effectiveness.



Size	Tubeless Blackwall Price	Plus Fed. Ex. Tax and Old Tire
C78-14	\$30.95	\$2.10
E78-14	\$33.95	\$2.34
F78-14	\$35.95	\$2.52
G78-14	\$37.95	\$2.69
H78-14	\$42.95	\$2.75
J78-14	\$45.95	\$2.95
F78-15	\$36.95	\$2.58
G78-15	\$38.95	\$2.78
H78-15	\$43.95	\$2.81
J78-15	\$46.95	\$3.01
L78-15	\$52.95	\$3.16
900-15	\$49.95	\$2.90

3 WAYS TO PAY AT GOODYEAR

OUR OWN EASY PAY PLAN

master charge THE INTERBANK CARD

BANK AMERICARD

Open 8 a.m. to 9 p.m. Daily

BARN STORMER



Battery-Type Trouble Light

12 Volt, 25 Ft.

\$1⁷⁹

Repairs, camping, nighttime boating and fishing. 50-watt bulb works off of battery whenever light is needed.



20-Gallon Trash Can

With "Snap Lock" cover

\$1⁹⁸

A trash can that won't rust, leak, crack, or freeze... features "Snap Lock" cover, available in avocado.

WEST BEND
9-cup
Coffee Maker
Keeps Coffee Serving Hot! **\$9⁹⁹**
Put lively color in your kitchen. Choose from Poppy, Harvest, or Avocado. 120 volts - AC only.

3-Quart Mixing Bowl
Heavy Gauge Stainless Steel! **89¢**
Heavy gauge, strong and stylish, stainless steel high-polish finish with easy-handle wide, flat rims.

12-120/4 Tumblers
Levels Apple Glass! **89¢**
Crystal-clear Av Honey-Gold color chalice is look at nice at a nice price too.

GOODYEAR

EASTLAND

Frank Murphy

308 East Main

MONDAY



SALE

Parking Lot

6 DAYS ONLY

SPECIAL PURCHASE... SPECIAL SAVINGS!

We've bought out the remaining stocks of the discontinued G.E. merchandise featured in this ad... BUY NOW AT TREMENDOUS SAVINGS... WHILE THEY LAST!

CANISTER MODEL VACUUM CLEANER

CLOSE-OUT PRICED AT **\$24⁹⁵**

- Lightweight, easy to carry
- Attachments include: floor nozzle, dusting brush, crevice tool and upholstery nozzle
- AC only - UL approved

An Excellent Value!

Model C-14

UPRIGHT VACUUM CLEANER

CLOSE-OUT PRICED AT **\$46⁹⁵**

- 2 speed power with adjustable height power-driven brush
- Two speed motor - motorized regulator
- Attraction - Harvest Gold Finish

A Really Super Buy!

CANISTER VACUUM CLEANER with AUTOMATIC CORD RETRACTOR

CLOSE-OUT PRICED AT **\$34⁹⁵**

- Lightweight & Portability
- Serves on all floors
- Motor for convenience
- Wrap-around - over bumper & foot cable included to hold all cleaning attachments

3 WAYS TO PAY AT GOODYEAR



Cup Electric Water Heater **99^c**

GE "Heavy Duty 18" Filter-Flo Washer

- 2 wash/spin speeds and 5 temperature combinations for any type clothes load
- 3 wash cycle and water level selections
- Hydropower wash action
- Filter-Flo traps lint

\$249⁰⁰



BIG POWER "ALL-WEATHER" BATTERY **\$19⁹⁵**

12 Volt with exchange - Group 24, 247



3 GO-FLITE GOLF BALLS **\$1³³**

- Constructed for long distance and accuracy
- High compression liquid center, long lasting tough cover



14' Push Broom **99^c**

- Heavy gauge 3" plastic bristles
- 48" hardwood handle - 14" hardwood lacquered block. Ideal for basement, garage, porches and driveways.



G.E. COLOR CONSOLE 23" DIAGONAL MEASURE VIEWING AREA

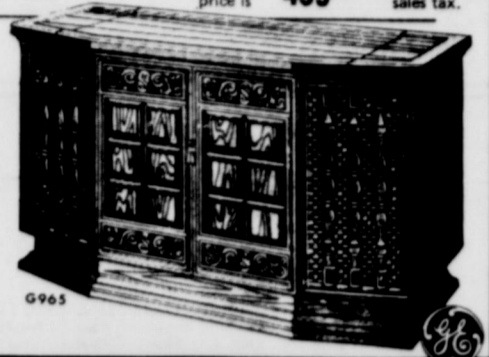
- 295 Sq. In. Viewing Area
- Dramatic Spanish styling in pecan cabinetry
- Automatic skintone stabilizer
- Automatic color purifier
- Keyed AGC
- GE Sensitronic tuning system
- Up front control center

\$20⁸¹ PER MONTH

JUST SAY CHARGE IT!

You pay only \$20.81 for 28 months, and one final payment of \$21.05. Deferred payment price is \$624.54, excluding sales tax.

The cash price is **\$499⁹⁵** excluding sales tax.



THE CONDADO

WITH 8-TRACK TAPE PLAYER

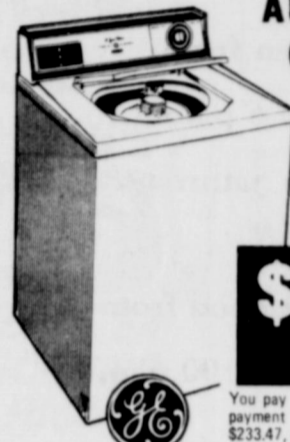
\$13⁹² PER MONTH

- Solid state amplifier with AM/FM stereo tuner
- Four speaker sound system with two 8" woofers and two 3" tweeters front mounted
- 4 speed anti-resistant changer
- 11" turntable
- Repeat play option
- Pushbutton selection
- Tape and extension speaker jacks
- Diamond styling
- Equipped for Philips (IT) remote sound system

You pay only \$13.92 for 23 months, and one final payment of \$14.13. Deferred payment price is \$334.29, excluding sales tax.

The cash price is **\$279⁹⁰** excluding sales tax.

NO MONEY DOWN ON MAJOR APPLIANCES, TV'S AND STEREO THE ANNUAL PERCENTAGE RATE IS 18.00%



AUTOMATIC WASHER G.E. FILTER-FLOW

- Two wash/spin speed selections - three wash cycles including permanent press
- Two water level/load selections let you adjust water level for size of wash
- Two wash/spin speeds
- Soak cycle

\$11¹¹ PER MONTH

You pay only \$11.11 for 20 months, and one final payment of \$11.27. Deferred payment price is \$233.47, excluding sales tax.

The cash price is **\$199⁹⁰** excluding sales tax.



PERMANENT PRESS G.E. DRYER

- Permanent Press Cycle with Cool-down
- Full Setting (Extended Time)
- Four Timed Cycles
- Separate Start Switch
- Coinvestment Lint Trap
- Porcelain Enamel Top and Clothes Drum

\$10²⁰ PER MONTH

You pay only \$10.20 for 17 months, and one final payment of \$10.32. Deferred payment price is \$183.72, excluding sales tax.

The cash price is **\$159⁹⁵** excluding sales tax.



General Electric's

giant 6.96 cu. ft. freezer

HOLDS UP TO 243 POUNDS 45% MORE CAPACITY THAN ANY GE TOP FREEZER MODEL EVER MADE!

20.8 CU. FT. NO FROST REFRIGERATOR FREEZER

- Giant 6.96 cu. ft. freezer holds up to 243 pounds
- Jet freeze ice compartment
- Ice in Easy Service
- 13.8 cu. ft. fresh food section
- Adjustable, fullwidth cantilever shelves
- Meat pan attaches to any cantilever cabinet shelf
- Twin vegetable bins
- Rolls out on big wheels

\$16⁷⁶ PER MONTH

You pay only \$16.76 for 26 months, and one final payment of \$16.88. Deferred payment price is \$452.64, excluding sales tax.

The cash price is **\$369⁹⁵** excluding sales tax.

11.6 CU. FT. ECONOMY FOOD FREEZER



- Holds up to 406 lbs. of frozen food
- Take advantage of food specials, in-season shopping, give your family the economical, nutritional advantage of convenient frozen-food storage

\$11¹¹ PER MONTH

You pay only \$11.11 for 20 months, and one final payment of \$11.27. Deferred payment price is \$233.47, excluding sales tax.

The cash price is **\$199⁹⁰** excluding sales tax.

NO MONEY DOWN ON MAJOR APPLIANCES, TV'S AND STEREO THE ANNUAL PERCENTAGE RATE IS 18.00%

FREE STAND WITH PURCHASE OF THIS SET



GENERAL ELECTRIC COLOR TV

- 18" Diagonal measure picture
- 180 Sq. Inch Viewing Area
- Automatic Fine Tuning Control
- GE Sensitronic Tuning System
- Color Keyed Tuning
- The Advanced GE 18" Spectra-Brite (TM) Picture Tube
- GE Reliacolor Chassis

\$16⁷⁶ PER MONTH

You pay only \$16.76 for 26 months, and one final payment of \$16.88. Deferred payment price is \$452.64, excluding sales tax.

The cash price is **\$369⁹⁵** excluding sales tax.

12" ADVENTURER BLACK & WHITE PORTABLE TV

- 12" Diagonal Measurement
- 74 Square Inch Viewing Area
- Up-Front Controls and Sound
- Convenient Built-in Molded Handle
- Telescoping Monopole Antenna

ON THE SPOT FINANCING

\$7³³ PER MONTH

You pay only \$7.33 for 12 months. Deferred payment price is \$87.96, excluding sales tax.

The cash price is **\$79⁹⁵** excluding sales tax.



GENERAL ELECTRIC CHEST FREEZER

ENJOY FREEZER LIVING WHERE SPACE IS LIMITED

- Holds up to 216 lbs.
- Adjustable temperature control
- Rugged steel cabinet double sealed and pressure tested
- Quiet compressor-sealed safe from air, dust & moisture
- 6.2 cu. ft.

\$15⁸

YEAR SERVICE STORES

phy, Mgr.

Phone 629-2662



TAPPAN 36" GAS RANGE

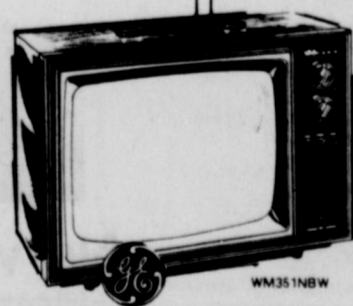


8-Pc. Bowl Set

\$1²⁹

4 Bowls and Covers

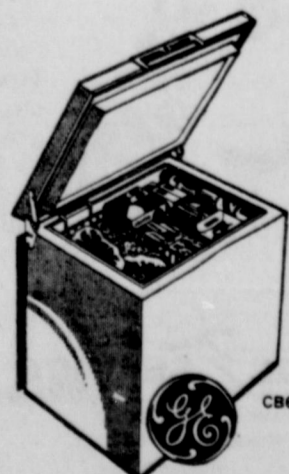
Plate, 1, 2 and 3 quart. Air-Tite, snap-on covers... High density, molded, white Polyethylene plastic.



PORTA-COLOR TV

16" DIAGONAL MEASURE PICTURE 145 SQ. IN. VIEWING AREA

- GE Porta Color (R) Chassis - provides a sharp, clear color picture
- Advanced GE 16" Diag. Spectra-Brite (TM) Picture Tube - gives the brightest, richest color in GE history
- Antennae - for both VHF & UHF reception
- Cabinet - rugged, easy to clean polystyrene in black walnut finish



These Know the Value of Chiropractic:
 ● Col. Harland Sanders Arnold Palmer
 ● Marlo Thomas Clint Walker John Gary
 ● Jack LaLanne Viking Star Fred Cox
Here's what Col. Sanders says:
 "I attribute my good health to the fact that I have taken from one to two Chiropractic adjustments every week for the past 53 years. My first adjustment was for a bad cold."

Do you know what Chiropractic can do for you?
 Find out, contact

MELVIN H. HENEXSON, D. C.
 103 S. Mulberry 629-1731
 Eastland, Texas 76448

**Open For Business
 Saturday, May 13**

	BLACK		WHITE		
	*Size Retail Price	Your Cost	*Size Retail Price	Your Cost	Federal Tax
DAYTON FLYER TUBELESS 4 PLY NYLON					
G50x13	25.95	15.57	24.90	17.28	1.75
F75x14	27.95	17.28	31.90	19.05	2.00
F75x14-775x15	28.95	18.20	32.95	20.04	2.13
R27x14-815x15	30.95	18.89	34.95	20.77	2.32
R55x14-845x15	34.00	20.21	40.00	21.76	2.51
R85x14-900x15	—	—	45.10	22.86	2.90
THORNBRED PREMIUM** 78 SERIES 4 PLY POLYESTER — 4 PLY NYLON					
A78x13	11.40	17.82	39.95	21.24	1.86
C78x13	13.25	18.89	41.75	22.55	1.95
C78x14	16.70	19.71	45.85	23.49	2.08
F78x14	16.95	20.42	46.40	24.28	2.24
F78x14-F78x15	41.95	22.62	51.45	25.95	2.43
G78x14-G78x15	45.90	23.28	55.70	26.60	2.63
H78x14-H78x15	49.45	25.14	61.95	28.60	2.81
J78x15	54.70	—	68.70	29.73	3.01
L78x15-900x15	56.00	—	71.15	30.29	3.16
DAYTON BLUE RIBBON 78 SERIES 2 2 POLYESTER & FIBERGLASS CORDS					
C78x13	52.65	24.71	1.90		
F78x14	52.70	27.40	2.34		
F78x14-F78x15	58.40	28.51	2.58		
G78x14-G78x15	64.15	29.64	2.78		
H78x14-H78x15	70.35	32.48	3.01		
J78x14-J78x15	78.00	33.16	3.12		
L78x14-L78x15	80.80	35.12	3.16		
DAYTONA SPORT 60 & 70 SERIES RAISED WHITE LETTER SIDEWALL					
F60x14-F60x15	68.70	30.20	2.92		
G60x14-G60x15	75.55	31.67	3.03		
F70x14	83.35	25.91	2.56		
F70x14	—	—	82.25	27.53	2.60
G70x14-G70x15	—	—	82.95	29.84	2.88

**Cisco Tire Service
 Auto Repair Shop**

509 E. 8th 442-2072

School Lunch Menu
 Monday May 15
 Corn dogs
 Blackeye peas
 Buttered carrots
 Tossed salad
 Corn bread
 Fruit pie
 Tuesday May 16
 Steak & gravy
 Buttered rice
 Green peas
 Lettuce & tomato salad
 Hot rolls

BEAUTY HOUSE
 Come by and get acquainted with our new operator, Wilma Harvey. As an introductory special she will be offering these special prices Tuesday thru Saturday, May 16 - 20.
 SHAMPOO SET \$1.50
 *12⁵⁰ PERMANENTS for \$10
 *15⁰⁰ PERMANENTS for \$12.50
 We specialize in all beauty care.
 Debbie George, Operator Cheryll Caraway, Owner
 Call 629-2530

Get your Meats & Eats at
Sledges Market & Dining Room
 Market open from
 8:00 a.m. to 6 p.m.
 Monday thru Saturday.

 Dining Room open from
 11:00 a.m. to 2:00 p.m.
 Monday thru Friday

SLEDGES MARKET
 629-2913

Cake squares
 Wednesday May 17
 Tacos
 Pinto beans
 Buttered spinach
 Cabbage slaw
 Corn bread
 Raisin cobbler
 Thursday May 18
 Fried chicken
 Whipped potatoes
 Green beans
 Lettuce & tomato salad
 Sliced bread
 Egg custard
 Friday May 19
 Hamburgers
 Buttered corn
 Potato chips
 Applesauce

TO MOTHER with Love

TO ALL MOTHERS EVERYWHERE

...
WE THINK YOU'RE GREAT!

CENTRAL DRUG

NOW OPEN At New Location
405 S. SEAMAN

Offering Complete Auto Repair

- Tune-ups • Over-haul
- Brakes
- Electrical • Radiator Service

COMPLETE AUTO SERVICE
STATE APPROVED AUTO INSPECTION CENTER
ALLEN AUTO REPAIR
 24-Hour Wrecker Service
 405 S. Seaman 629-2270



No worries here
 And as their parents, you'll have no worries about paying for their hospital care and doctor's expenses if you shelter them with MFA Health Insurance.

MFA INSURANCE
 The Shield of Shelter
 For your health, life, home, car. Call your MFA Insurance Agent

Richard Rossander
 West Main EASTLAND

Sunday, May 14, 1972



JAMES M. FAULK
 ...named director

James Marvin Faulk, 18, son of J.F. (Jim) Faulk of Eastland, is a spring graduate of Douglas MacArthur High School in San Antonio, and has been named Summer Youth Director of the First Baptist Church of Poteet. He is formerly Youth Director of Alamo Heights Baptist Church, San Antonio.



State Farm is now paying big 20% car insurance dividends-

to eligible Texas policyholders on expiring six-month policies.

CALL 629-1096



211 W. Main like a good neighbor, B.T. Van Cleave is there.



AIR CONDITIONERS INSTALLED
\$210⁰⁰
 in most pickups
 Service on All car Air Conditioners
 *4⁰⁰ plus Freon

Insurance Claims
 Windshields Installed
 Complete Paint & Body Repair

Eastland Paint & Body Shop
 304 E. Main 629-1543

At your service:

Electricity that helps broaden the path to knowledge.

Project a herd of charging elephants onto a movie screen, and a student sees what is happening in a far away world



Play an album of Beethoven's symphonies, and the composer suddenly becomes more in a student's mind than just a name in print. Let a student watch the world of single-celled creatures through the illumination of a microscope, and he'll take a closer look at the world around him.

Test his ability against an electronic speed-reading machine, and he almost surely will respond to the spirit of the challenge.

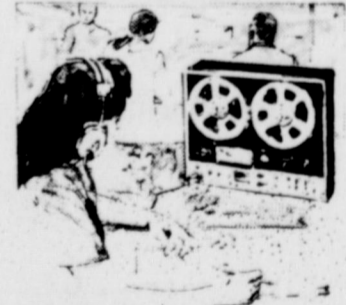
Educators today are much aware of the value of audio-visual equipment in the classroom. Modern education is a sight-and-sound world in which electricity helps bring history, geography, literature and languages to life.

Electricity is hard at work for you just about any-



where you go these days. And the use of electricity is expected to increase in the years ahead.

When additional power is needed, we'll be ready to provide it to schools and to all our customers.



But getting ready and staying ready is an increasingly expensive, never-ending job at Texas Electric. Our construction expenditures are at a record high for facilities necessary to keep an adequate and reliable power supply at your service.

TEXAS ELECTRIC SERVICE COMPANY
 People power... at your service
 F. N. SAYRE, Manager, Phone 629-2651

TRIBUTE

Religious Services For All Faiths

The deep meaning in religious services bring comfort and enlightenment. Our individual services respectfully pay tribute with dignity. Have confidence in our experience.

Arrington Funeral Home
 Ph. 629-2611 -- Eastland
 Utmost Consideration at a Time of Utmost Need

JRB FAMILY CENTER SPECIALS
 EASTLAND

ICE CREAM FREEZER
 Reg. 14.88 Now \$12⁹⁹

50-ft. 1/2" Vinyl WATER HOSE \$3¹⁹

Red Heart Wintuk ACRYLIC YARN each 88^c

Foley KITCHEN GADGETS Values to \$1.49 Now Only 88^c

One Size Fits All PANTY HOSE Seamless Stretch Pair Now 69^c

We give S&H Green Stamps with every purchase.
J.R.B. Variety Dept.

James Herridge Receives Degree

James Lee "Jim" Herridge received his Bachelor of Science degree in Industrial Technology on Saturday, May 6. The graduating class of 1350 students was the largest in the history of Texas A&M University and the commencement address was given by the eminent Dr. Michael D. DeBakey.

Jim is a 1967 graduate of Eastland High School and is the son of Mr. and Mrs. Bert Herridge of Eastland. He is married to the former Sherry Butler, who is also a graduate of Texas A&M. Mrs. Bert Herridge, Mrs. Floyd Robertson, and Mr. and Mrs. Kenneth Butler, all of Eastland, attended the graduation. While at Texas A&M University, Jim worked at the Texas A&M Variable Energy Cyclotron, was assistant instructor of the Karate Club, and was a member of the Engineering Technology Society. Jim has accepted a position with Lufkin Industries Trailer Division in Lufkin, Texas. He will work in the Industrial Engineering Department as a jig and fixture designer.

SCOTT
BODY WORKS
Serving Eastland Since 1937
Quality Workmanship
Ask Your Neighbor

LIBBY-OWENS-FORD
SAFETY GLASS
Installed
Complete Auto Body Repair
All Work Guaranteed
300 W. COMMERCE
EASTLAND, TEXAS
Phone 629-2372

Your Pre-Need Plans and
Burial Insurance Policies
Are YOUR property!

You and your family determine
where they are used!

We honor those you may have,
just as the policies we offer are
good anywhere!

Give us the honor of assisting
in making these important plans.



Bakker Funeral Home

306 W. PLUMMER • EASTLAND, TEXAS 76448 • PHONE 817-629-1726

SINCERE-EXPERIENCED SERVICE



In keeping with the observance of National Music Week, May 7th to May 14th, the Music Study Club of Eastland presented the choir of The First Baptist Church of North Seaman Street in a concert of sacred music in The First Christian Church on 215 South Lamar. Mrs. Vivian Jones, Director, Mrs. Ozona Durrall, accompanist. Soloists, Mrs. Jones and Mrs. Edwards. A large and appreciative audience enjoyed a forty-five minute period of beautiful music and song.

Mrs. Durel Reid was leader for the program. Carl Garrett welcomed everyone and gave the invocation.

EDDIE'S
513 West Main
629-8838



Don't Worry
... Let Us!

Servicing cars is our job. And we'll keep yours in top shape. We'll worry, okay? You drive.

Full Auto Service

FOR RENT:
this
MINI-BILLBOARD
for
ONLY \$3.50 a month
Call your local paper!

NOTICE
For all types of wiring,
Phone 442-1965
Stewart Slotton
Electrical Contractor
600 W. 11th Cisco

HELEN CRAWFORD
Representative of
GAY TRAVEL SERVICE, INC.
of Abilene
442-2265 442-1469

NOTICE

EASTLAND GRAIN & SEED

Is Now Located at

304 West Commerce

Eastland

Phone 629-2288

Next Door to Scott's Paint & Body Shop

Offering: ★ ★ ★

Martin Lane Feeds
Olin Matheson Fertilizers
Scott Lawn Products (Complete line)

THIS IS THE SPACE
where you'll find advertised specials every Sunday
THIS IS THE PLACE
where you'll find these week-long special prices:
PRESCRIPTION PHARMACY
EAST SIDE OF THE SQUARE
LOOK AT THESE:

- Family Size
GLEEM TOOTHPASTE ...reg. 1.09...NOW—89¢
- Breck
HAIR SPRAY ...reg. 1.09 ...NOW 79¢
- Get Set
HAIR SPRAY ...reg. 98¢ NOW 69¢
- Keri
LOTION ...reg. 3.15 NOW \$2
- Right Guard
SPRAY DEODORANT ...reg. 1.09 NOW 75¢
- VO-5
HAIR SPRAY ...reg. 1.65 NOW 1.19
- Kleenex
BOUTIQUE ...reg. 40¢ NOW 33¢
- 200 count
KLEENEX ...reg. 43¢ NOW 35¢

SHOP AND SAVE THE CONVENIENT WAY
AT PRESCRIPTION PHARMACY
FREE DELIVERY

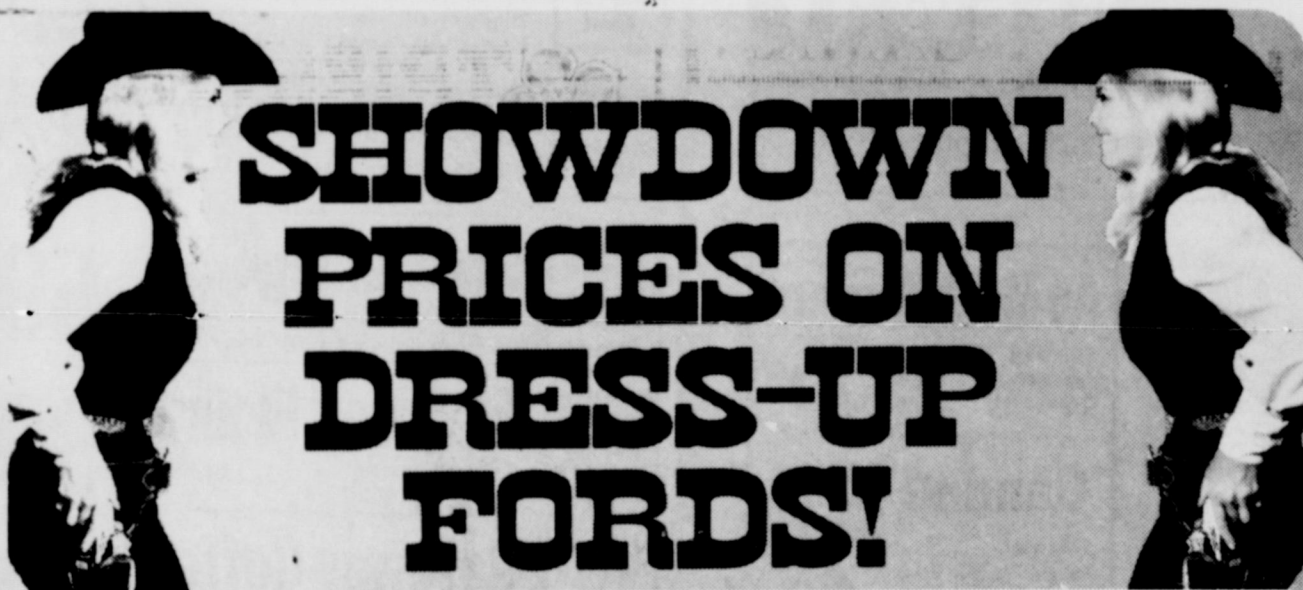
Thank You

I want to take this opportunity to thank
all of those who supported and helped
me in my re-election as Constable,

Precinct One. Again I say

Thank you,

Bill Hunter



Save up to \$212* on
Explorer Specials with luxury equipment.

Choose an F-100 or F-250 pickup and you'll save up to \$28* on Pkg. "A" on special paint and seat trim, foam seat (Custom only), bright front bumper guards, bright drip moldings, Explorer plaques, bright hub caps (4x2 models) and vinyl door trim panels (Custom). Add "mag" wheel covers (F-100), spear moldings, bright mirrors and bright box rails (F-100-131" WB

only) and save up to \$68* on Pkg. "B." Add power steering and Cruise-O-Matic to save up to \$129* on Pkg. "C." Add air conditioning and tinted glass to save up to \$212* on Pkg. "D."

*Price reductions based on manufacturers' suggested retail prices. Actual dealer price may vary. See your Ford Dealer for terms, conditions and availability. Pkg. "A" only.



Free vinyl roof, power brakes on Galaxie 500 Specials.

Order with options like Color Glow glamour paint, accent stripes, bodyside molding, intermittent wipers, bumper guards, deluxe wheel covers, woodgrained instrument panel, tinted glass, air conditioning and others... vinyl roof and power front disc brakes are free!



SAVINGS SHOWDOWN IN FORD COUNTRY
Hood King Motor Co.

High

value at low cost—
our Family Life
Insurance Plan.
Contact me today!

STATE FARM
Life Insurance Company
Home Office: Bloomington, Illinois

Van Cleave
211 W. Main
Eastland
629-1096

BUMPER TO BUMPER
BODY REPAIR
RELIABLE-ECONOMICAL
442-1789



Straight Talk!

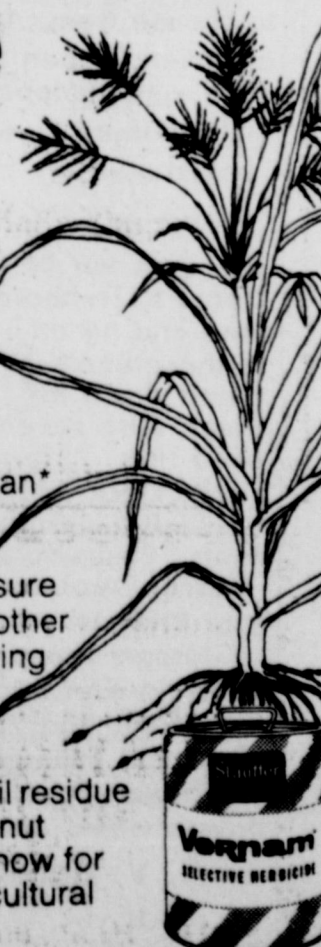
Had a fender dented?
Don't worry. We'll
straighten things out.
All work guaranteed.

Free ESTIMATE
DAN'S
Paint & Body
310 Ave. D

Nutgrass in your peanuts? Time to use Vernam.

You control nutgrass and other tough weeds for sure when you mix Vernam herbicide in the soil before peanut planting. Yes, you stop nutgrass, seedling Johnson-grass, crabgrass, pigweeds, lambsquarters and many others that foul your fields and reduce yields.

Many peanut growers use Vernam plus Treflan* tank-mix when Texas panicum or Coloradograss and light nutgrass infestations are a problem. But where nutgrass is bad, your sure control is Vernam alone. Vernam controls 27 other grass and broadleaf weeds in addition to giving outstanding control of tough nutgrass. Vernam saves much cultivation and hoeing and so reduces disease and mechanical injury. And biodegradable Vernam avoids soil residue problems for your next crop. For bigger peanut profits, see your authorized Stauffer dealer now for Vernam. Stauffer Chemical Company, Agricultural Chemical Division, Westport, CT 06880.



*Reg. T. M. Elanco Products Company


Vernam from **Stauffer**

Hospital News

Patients in Eastland Memorial Hospital Saturday morning were:

- Homer Ferguson, Cisco
- Luther Carter, Ranger
- Grady Rogers
- Georgianne Adams, Olden
- Mary Harden
- Willie McGee, Ranger
- Mary Stovall, Haskell
- Alman Smith, Cisco
- Sarah Mueller
- Stella Thurman, Gorman
- Bertie Thackerson, Cisco
- Ida Henderson, Cisco
- Christine Hights, Lillie Dunlap
- Ruby Salyer, Abilene
- Grace Brown, Cross Plains
- Miles Awalt
- Velma Lawrence
- Bessie Blue, Carbon
- Lorena Fields
- Ruby McLearn, DeLeon
- Gertie McDaniel, Carbon
- Daisy Motley, Ranger
- Marie Midkiff
- Vera Harris, Cisco
- Rose Day
- Robert McCowen, Cross Plains
- Michael Trout, Commerce
- Vanessa Day
- Lela Daniels, Gorman
- Osborne Angeley, Cross Plains
- Gene Bilbrey, Cisco
- Avie Allgood
- Lottie Vaden, Gordon
- Homer Duncan
- Bertha Alley, Gordon
- D.B. Warren, Gorman
- Wanda Blair
- Michael Butler, Comanche
- Addie Overstreet, Gorman

The Light Touch



By Cini Bray

It must be great to have a teenager in the family. How else would you get to know your faults?

The easiest way to break a habit is to drop it suddenly.

A successful marriage requires falling in love many times, always with the same person.

Influence something you think you have, until you try to use it.

An old-timer says there are three signs of old age. One is the loss of memory, and he can't remember the other two!

We always remember our motto "We Aim to Please" at Brays.

Bessie Bethany, Moran
 Mary Stewart, Olden
 Vena Whiteley
 Marjorie Young
 Walter Kuykendall
 Delma Dean, Rising Star
 Robert Sneed
 Sophie Harris
 James Luker, Ranger
 James Nowlin
 Lillie Little
 Glen Graham
 Holland Boney, Ranger
 Howard Langford, Cisco
 Patients in Ranger General Hospital Saturday morning were:

Effie High
 Purl Hunt
 Modelle Crawley
 Wesley Reasoner
 Fred Ellis
 Mae Rudder
 Roy Farley
 George Ryan
 Mabelle Smith
 Vera Davis
 Judy Geraldton
 Joe C. Boyd
 Mrs. Jimmy Wesley

Safeway Expansion Program

The initial phase of a \$49.5 million building and expansion program begun in 1969 by the Dallas Division of Safeway Stores, Inc., has resulted in the addition of 31 new locations, 34 replacement stores and the creation of approximately 1,000 new jobs, according to Vice President and Division Manager Horace Justice.

The program, encompassing 17 cities within a 300-mile radius of Dallas, included entry of Safeway into the Houston area market in 1970. "All store facilities affected by the program were designed for much greater space in order to accommodate more products and provide greater shopping convenience for customers," Justice said.

The Division Manager also revealed other major remodeling projects, paralleling the new store program, and geared to in-

crease service efficiency standards. In 1971, for example, Division headquarters in Dallas was doubled in size. Nearing completion is the expansion of the 108-acre complex of the Dallas Division Distribution Center in Garland. This portion of the project includes enlarged warehousing for the nearly 10,000 items distributed to the Division's 194 stores; building of a new milk plant with a 20,000 gallons-per-hour processing capacity, new ice cream plant, foods warehouse addition, a new non-foods warehouse, and truck repair shop for the company's multi-million-dollar fleet.

The Distribution Center employs 1,030 persons, with approximately 285 more in the surrounding milk plant, ice cream plant, beverage plant and produce Pre-pack Department. It is the largest

grocery chain center in Texas.

The second phase of the expansion program, covering 1972 through 1974, calls for 86 additional new or replacement stores at projected expenditures of \$64.8 million, according to Justice, and projected increase of some 4,300 employees.

"The phenomenal growth of this market area presents the greatest possible challenge," Justice stated. "We feel very fortunate to have expected and planned well ahead of time to meet the challenge. And we fully intend to keep right on growing, too."

The Dallas Division, serving 15 districts in Texas, employs more than 8,000 people in the area served. It is one of the largest of 25 Divisions of Safeway Stores, Inc., an international chain of supermarkets headquartered in Oakland, California.

drive friendly

AVAILABLE AGAIN! "The Ranger Story"

...
Pick-up A "10-Pack"
For \$6.00 and Resell Your Place For A \$4.00 Profit!
\$1.00 Each AT THE TIMES

TEXAS PRESS ASSOCIATION
 Member 1972

Authorized Medicare Supplier
 for
 Wheel Chairs Hospital Beds
 Walkers Crutches
 Canes Vaporizers
 Commode Chairs and other sickroom supplies

All of the above are available for non-medicaid patients on a sales or rental basis.

U-SAVE PHARMACY
 629-1166
 Commerce & Daugherty St.
 Eastland

SAFeway HAS THE LOW EVERYDAY PRICES & SPECIALS

Serve Mexican Foods Often!

Corn Tortillas 10¢
 Lucerne. Easy to Prepare! Special! —12-Ct. Pkg.

Taco Sauce 29¢
 Old El Paso 7 1/2-oz. Can

Wrapped Tamales 35¢
 Old El Paso 15-oz. Can

Beef Enchiladas 49¢
 Old El Paso 14-oz. Can

Spanish Rice 23¢
 Old El Paso 15-oz. Can

Refried Beans 14¢
 Old El Paso 15 1/2-oz. Can

Enchilada Sauce 23¢
 Old El Paso 15-oz. Can

Tomatoes 19¢
 & Green Chilies Old El Paso 10-oz. Can

Check and Compare Safeway Low Prices!

Vanilla Wafers Nabisco Nilla Vanilla—12-oz. Pkg. 44¢	Cornbread Mix Light Crust *Wild West *Mexican 2 1/2-oz. Pkg. 27¢
Texize Cleaner Janitor in a Drum—32-oz. Plastic 89¢	Scalloped Potatoes Pillsbury Hungry Jack—6 1/2-oz. Pkg. 48¢
Kleenex Towels Boutique—Jumbo Roll 39¢	Fudge Brownie Mix Pillsbury Family Size—2 1/2-oz. Pkg. 57¢
Chicken Stew Sweet Sue—24-oz. Can 61¢	Saf-Spread Margarine Imperial—1-Lb. Ctn. 44¢
Ham & Dumplings Sweet Sue—24-oz. Can 59¢	Lucky Whip Dessert Topping—9-oz. Can 49¢
Cranberry Juice Ocean Spray—32-oz. Glass 58¢	Pound Cake Sara Lee All Butter—12-oz. Pkg. 85¢
9 Lives Cat Food Nutrilicious—Buffer Can 18¢	Scotties Facial Tissues 200-Ct. Box 29¢
Jif Peanut Butter Flavorful—18-oz. Jar 67¢	Colgate 100 Antiseptic Mouthwash—12-oz. Bottle 99¢

Compare These Safeway Values!

Hair Spray Truly Fine. Holding Power! 13-oz. Can 47¢

Close-up Toothpaste 6.2-oz. Tube 73¢

Bath Beads Jergens. Refreshing! 12-oz. Box 83¢

Suave Shampoo Liquid 14-oz. Plastic 69¢

Suave Balsam Hair Conditioner Plastic 12-oz. Plastic 97¢

Plastic Strips SAND-AID 30-Ct. Box 49¢

Safeway Guaranteed Meats!

SHOP SAFEWAY & SEE HOW YOU SAVE, SAVE!

Extra Values in Every Department!



SAFeway

Dinners 33¢
 Banquet. Frozen (Except Beef) Reg. Pkg. Safeway Special!

Lemonade 10¢
 Scotch Treat. Frozen. Safeway Big Buy! 6-oz. Can

Potato Chips 49¢
 Party Pride. Crisp! Safeway Big Buy! 9-oz. Pkg.

Pork & Beans 16¢
 Van Camp's. Hearty Flavor! Safeway Big Buy! 16-oz. Can

Tomato Catsup 19¢
 Highway. Rich Flavor! Safeway Big Buy! 14-oz. Bottle

Salad Dressing 37¢
 Piedmont. Light Flavor! Safeway Big Buy! Quart Jar

Shortening 59¢
 Velkey. All Purpose! Safeway Big Buy! 3-Lb. Can

Enriched Flour 39¢
 Harvest Blossom. Safeway Big Buy! 5-Lb. Bag

Safeway Coffee 69¢
 Fresh! Pre-Ground. Safeway Big Buy! 1-Lb. Bag

Canned Pop 8¢
 Snowy Peak. For Snacks! Safeway Big Buy! 12-oz. Can

Paper Towels 28¢
 Tree Saver. White. Safeway Big Buy! 175-Ct. Roll

Toilet Tissue 9¢
 A-1 Brand. Soft! Safeway Big Buy! —Roll

Detergent 49¢
 Parade. Family Wash! Safeway Big Buy! 49-oz. Box

Liquid Bleach 27¢
 White Magic. Disinfects! Safeway Big Buy! 1/2-Gal. Plastic

Dog & Cat Food 7¢
 Favorite Brand. Thrifty! Safeway Big Buy! 15 1/2-oz. Can

FRYERS 29¢
 Fresh. USDA Inspected Grade A Whole —1-Lb. (Cut-up Regular —1.38) Grade "A" Fryers

(Baking Chickens 37¢)
 Fresh. 3 to 4-Lb. Avg. 33¢ Grade A

Pork Spareribs 59¢
 Frozen. 3 to 5-Lb. Avg. Perfect to Barbecue! —1-Lb.

Sliced Bacon (Capitol Brand) 69¢
 Safeway No. 1 Quality —1-Lb. Pkg.

Lunch Meat 35¢
 Safeway. Sliced All Beef Bologna *Spiced *Olive *Maccaroni & Cheese *Pickle-Pimientos —4-oz. Pkg.

All Meat Wieners 55¢
 Safeway. For Cookouts! 12-oz. Pkg.

Canned Ham \$2.88
 Safeway. Fully Cooked! 3-Lb. Can

SAFeway SELLS ONLY USDA GRADE 'A' WHOLE FRYERS

Pinwheel Pack 69¢
 *4 Thighs *4 Drumsticks. Cut From USDA Insp. Grade "A" Fryers

Split Breasts 77¢
 With Ribs. Cut From USDA Insp. Grade "A" Fryers

Fish Sticks 59¢
 Pre-Cooked. Large Size

Beef Patties 89¢
 Shortcuts. Pre-Cooked. Chicks Fried

Fresh Pork Chops 69¢
 Family Pack

Corn Dogs \$1
 Easy to Prepare! 10-Ct. Pkg.

Short Ribs 49¢
 Baby Beef. Lean & Meaty! —1-Lb.

Boneless Brisket \$1.09
 Baby Beef. —1-Lb.

Rump Roast 99¢
 Baby Beef. Compare Trim! —1-Lb.

Rib Steaks \$1.09
 Baby Beef. Ready to Grill! —1-Lb.

Lean Ground Beef 87¢
 Compare Lean & Fat Content! —1-Lb.

Ground Beef \$1.49
 Regular. Safeway Club Pack 2-Lb. Chub

Sliced Bologna 75¢
 Safeway Jumbo *Regular or *Thick —1-Lb. Pkg.

Grill Dogs 79¢
 Armour Star. Tasty! 1-Lb. Pkg.

All Beef Wieners 89¢
 Safeway. Ready to Eat! 1-Lb. Pkg.

Neuhoff Franks 57¢
 Tender. All Meat 12-oz. Pkg.

Armour Bacon 83¢
 Armour Star. Miro-Cure 1-Lb. Pkg.

Boneless Ham \$1.39
 *Half or *Whole. Mohawk Chateau —1-Lb.

Sparkling Fresh Fruits and Vegetables... Always at Safeway!

Garden Fresh!

Tomatoes 35¢
 Salad Size. Full of Flavor! 3-Pack Cello

Cucumbers 2 for 25¢
 Texas. Large. Low in Calories. —Each

Fresh Corn 7¢
 Texas Grown. Tender Full Ears —Each

Cantaloupes 3 for \$1
 Jumbo Size. New Texas Harvest. —Each

Navel Oranges 19¢
 Fancy. Large Sunkist. —Lb.

Romaine Lettuce 23¢
 Large Heads —Each

Nappa Cabbage 19¢
 Top Quality —1-Lb.

White Onions 19¢
 US #1 Quality —1-Lb.

Dried Apricots 59¢
 Garden-side. Breakfast Size 8-oz. Cello

Turnip Greens 35¢
 Texas Grown. Large Bunches 2 for

Collard Greens 35¢
 Texas Grown. Large Bunches 2 for

Mustard Greens 35¢
 Texas Grown. Large Bunches 2 for

Zucchini Squash 29¢
 Texas. Fancy! —1-Lb.

Red Delicious Apples 69¢
 Lunchbox Size 3-Lb. Cello

Pineapples 45¢
 Large Size Cayenne Variety. —Each

Crimson Rhubarb 29¢
 US #1 Quality —1-Lb.

Sunkist Lemons 59¢
 Refreshing! 12-Ct. Cello

Schick Razor Blades Super Chromium Double Edge 10-Ct. Pkg. \$1.59	Bridge Mix Brach's Chocolate Candy 8-oz. Box 47¢	Beef Ravioli Chef Boy-Ar-Dee 40-oz. Can 85¢	Arthritis Tablets Pain Formula. Anacin Brand 40-Ct. Bottle 89¢
	Pizza Mix 2 Cheese. Chef Boy-Ar-Dee 28 1/2-oz. Pkg. 96¢	Neet Lotion Hair Remover 1 1/4-oz. Bottle 73¢	Head & Shoulders Shampoo. Fights Dandruff! 1.7-oz. Tube 69¢

BOAT SALE

Over 35 New Rigs to choose from. All are tri-hull, open front, fully equipped with inboard, outboard motors.

All are going for 5% over our cost. Come to Hubbard Lake and try any of these boats out and check my prices. Also several used rigs. 2 late model Deck Boats, 2 - 16 ft. Evinrude Boats. Evinrude & Mercury motors

Star Craft Tri-Sonic, Glasspar Stern Craft Invader and Del-Magic Boats. 2 factory trained mechanics open 7 days a week. Ask for R. V. Carey at Carey's Marina Hubbard Lake.

Ph. 817, 559 - 2720

Eastland Store Hours 8 a.m. to 8 p.m. Mon. Thru Fri. Closed Sun.

Prices Effective May 15-17, in... No Sales to Dealers.

SAFeway

© Copyright 1970, Safeway Stores, Incorporated