

EASTLAND TELEGRAM

EASTLAND, TEXAS 76448: Today's CENTER for tomorrow's FUTURE!



Volume 104 Number 57

Published each Sunday and Thursday in Eastland--Price 10¢ plus 1¢ tax

Sunday, July 16, 1972

Tid Bits

By HVO

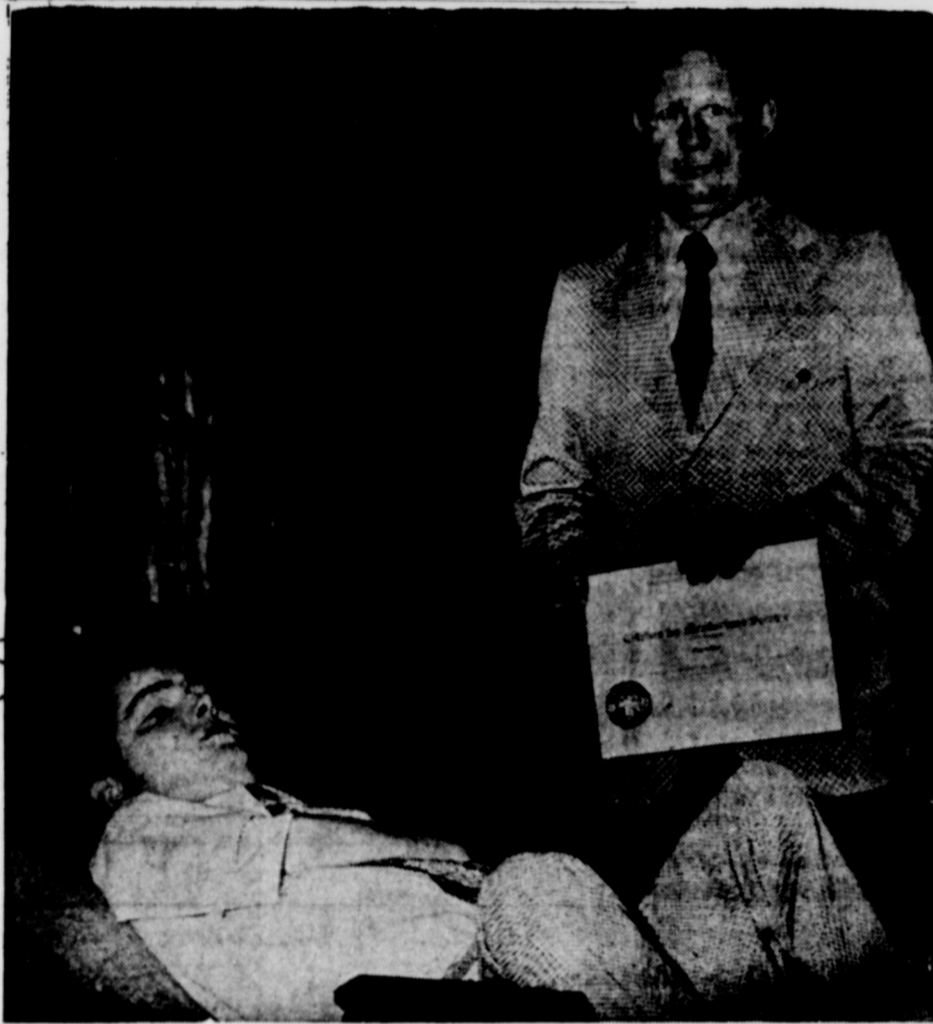
Sipe Springs will hold their annual Homecoming the last Sunday in July. Everyone is invited to come and bring a basket lunch. Officers of the Homecoming are: J.P. Whiteside, President; S.P. McKeehan, Secretary; J.R. Wyatt, Treasurer and Board Members; J.L. McKeehan, Newman Jones, Jack Millwee and W.R. Wyatt.

There will also be a musical on Saturday night at the Community Center preceding the Homecoming.

The Young Homemakers Club of Eastland held a watermelon supper Tuesday July 11 at Cisco Park.

Those attending were: Mr. and Mrs. J.D. Ables and family, Mr. and Mrs. Lewis Abel and family, Mrs. Bill Boles, Mrs. Don Barron, Mr. and Mrs. David Martin, Mr. and Mrs. Richard Watson and Mr. and Mrs. Gary Wilson.

A barbecue was planned for the month of August.



Mike LeFan Accepts Citation From C.D. Taylor

President Nixon Cites Disabled Temple Man

By WAYNE McCOY
Telegram Staff Writer

His disability as a result of polio suddenly occurred in 1954. He was totally paralyzed, except for his neck and left foot. Even his lungs were paralyzed—he couldn't breathe without a machine.

For some, that could just as well have been total disability. But not for Mike LeFan. At 26, he is a successful research analyst for the Central Texas Council of Governments and has been nominated for the Handicapped American of the Year Award. He is only one of five

Texans to achieve this honor. Louis Champion, executive secretary for the Governor's Committee for Employment of the Handicapped, presented Mike a citation from President Nixon following the Sunday morning worship service at the Church of Christ in Western Hills Addition.

Mike has also been nominated for the Texas Rehabilitation Association Award, which will be presented at the TRA conference July 24, in Dallas. A \$50 savings bond will be given with this award. A native of San Antonio, Mike lived there and in Baytown

before coming to Temple in 1950. He had finished the second grade when he was stricken with polio. He was hospitalized for six months in 1954 and went into the hospital again in 1963.

After months of therapy, Mike learned to breathe again without mechanical aid and to use his left foot and leg.

Through his own determination and with the assistance of home teachers, Mike graduated from Temple High School along with classmates who had not seen him for years. As he crossed Woodson Field to get his diploma, he received a standing ovation.

Learning to write and later to type with his toes, Mike went to Temple Junior College and graduated from Mary Hardin-Baylor College with a B.A. degree in English and sociology.

From both high school and college, Mike graduated with honors. He was in the National Honor Society in high school and Alpha Chi scholastic society in college.

Starting with only one class per semester and working up to a full load, Mike actually attended his college classes. About 80 families at the Church of Christ raised funds to buy him a van to travel in and TRA acquired a hoist lift for his wheelchair.

Mike drives the wheelchair with his left foot and has visited with people as far away as Canada and Mexico with his ham radio set.

Through the help of his TRA counselor, Jimmy Hinton, Mike was hired by CTCOG. He edits a monthly newspaper, "Focus on Aging," and does research for CTCOG through several federal documents.

He also does oil painting with his foot. A self-taught artist, Mike has sold many paintings. He supplements his income by fritting feature stories.

Mike's father is a minister at the Western Hills Church of Christ. He lives with his parents at 1802 S. 13th St.

As to why Mike was nominated for the President's Award, Hinton said, "The best reason of all: he is a winner."

Mike is the grandson of the late Jack Lusk, and Mrs. Lusk of 611 Gilmer St., Eastland.

Fullen Motor Co Laugh-A-Day

A truck driver stopped to lend assistance to a woman driver whose car had a flat tire. "What kind of jack do you have?" he asked.

After thinking for a few moments, she replied, "Not very much—would \$3 be enough?"

Church Camp Conclude

The Second Annual Church of God Texas State Camp Meeting concludes here Sunday with morning services beginning at 10:30.

Camp Evangelist Dr. Lillie McCutcheon will speak on the theme "Jesus Is Coming".

Charles Long is chairman of the closing service, and the general public is invited to attend at the Camp Inspiration Grounds on the West Edge of Eastland.

Approximately 500 persons are in attendance at the camp which opened Monday, with full schedules of meetings and services each day during the camp.

A delegation from the Camp presented a brief musical service on the south side of the courthouse in Eastland Thursday afternoon.

The camp will conclude following the noon meal.

Rev. Martin Returns

Bethel Baptist Church welcomes back Sunday, July 16, its pastor Rev. J. Wayne Martin, filling his pulpit after an absence of three months.

Brother Martin is a graduate of Howard Payne College and is now completing his degree at Southwestern Seminary in Fort Worth.

He is a Spirit-filled enthusiastic speaker with a broad vision.

Doing a fine job of filling the pulpit for the past three months was Rev. Dick Murray. The message he left with the congregation Wednesday night was "A People Without a Vision will Perish," taken from Proverbs 29:18.

All members are urged to be present Sunday for Brother Martin's return and visitors are cordially invited.

Jaycees Finish Project

The Merry-Go-Round goes 'round now.

Thanks to the Eastland Jaycees and the Jaycee Wives.

President Larry Rollins has announced the club has virtually completed its "spruce-up" project at the City Park and that the playground equipment is now safetied up and prettied up.

The club has issued a public thanks of appreciation to Wanda Webb for the contribution of barrels to be used for trash disposals at the park.

The Jaycee wives did the painting honors and using wide brushes, have done an excellent job on the equipment. The swing sets have been fixed, a new see-saw board added; and the merry-go-round fixed; as well as barrels placed.

The club is busy making plans for the August 19 Texas State Peanut Queen Pageant to be held again in Eastland.

The city's master plan for the Park is due in a few weeks.

Mrs. Tina Mae McBee has suffered a cracked vertebra while vacationing in Miami, Florida and has been hospitalized there.

Friends wishing to write or send cards, may do so to this address.

Tina Mae McBee, 8900 N. Kendall Dr. Room 308 Baptist Hospital Miami, Florida 33156

County Residents To Make Decision On Anniversary

A large group of Eastland County residents met Thursday afternoon in County Judge Scott Bailey's court room to hear plans for an Eastland County Centennial celebration. The county will celebrate its 100th anniversary in 1973.

Pat Haggerty, representing the Rogers Company of Fostoria, Ohio, met with the mayors, city councilmen and other interested persons of the county and explained how the county could have a successful celebration with the help of his company.

The Rogers Company has had over 68 years of experience in celebration management and has served over 480 communities, large and small, in the United States and Canada.

A properly planned community celebration will produce benefits such as create new civic awareness among all citizens; uncover new civic leaders; stimulate local economy; honor our heritage; and focus attention on tomorrow.

A varied program of spectator events - something for everybody, was explained by Mr. Haggerty. Examples he gave were to start the 100th celebration on a Saturday with a large parade followed by a celebration ball that night; he stressed a religious theme for the Sunday activities and begin Monday with a Merchants' Day, Ladies Day, Agriculture Day, Pioneer Day and possibly have a carnival and Mid-Way.

The financing of the centennial would come from various outdoor shows and from the sale of novelties and centennial mementoes.

The Rogers Company will supply the county with a consultant and experienced resident manager for all in-

Mrs. Betty Allen of Coleman was a weekend visitor in the home of her parents, Mr. and Mrs. Raymond Sprawls.

Annual Junior Rodeo Has Successful Climax

Jerry Ewing of Midland received a score of 58 in the bull riding Friday night to take the lead in that event of the second annual Eastland County Livestock Raisers' Assoc. sponsored Junior Rodeo.

In the bareback bronc riding, Thursday night Bobby Nixon of Ranger took first place with a score of 65.

Tim Hunter of Coleman was the producer of the rodeo which climaxed Saturday night in the Ranger Jaycee Rodeo arena. A large crowd of spectators were on hand for the three night rodeo.

Trophies were to be awarded to winners in each age group following the final performance of the rodeo Saturday night. Proceeds from the rodeo will be used to purchase prizes for the county 4-H and FFA members who show the top show animals during the annual County Livestock Show which will be held in March.

A truck driver stopped to lend assistance to a woman driver whose car had a flat tire. "What kind of jack do you have?" he asked.

After thinking for a few moments, she replied, "Not very much - would \$3 be enough?"

come projects; sample material for necessary printed matter; a professionally designed publicity campaign; resident director to produce the Historical Spectacle; all script writing for local authenticity; all costumes, scenic background, and lighting equipment and above all, experienced guidance in all phases.

A second meeting to make further plans for the gigantic celebration has been set for July 25 at 2:00 p.m. in the court room on third floor of the

courthouse. Mayors, city councilmen, presidents of civic clubs and interested residents of Eastland County are urged to attend this meeting.

It is envisioned the celebration will involve every town, community and citizen of the county.

The company fee for helping stage the centennial activities will be included in a budget the company will make. A decision will be made July 25 as to whether the county citizens wish to have a celebration or not.

Mrs. Barefoot Sanders To Visit Here Wednesday

Mrs. Barefoot Sanders will be in town Wednesday in behalf of her husband's campaign for the U.S. Senate. "Texas deserves a U.S. Senator who will work at the job fulltime - a man who will more closely represent the views of most Texans," Mrs. Sanders states.

The public is cordially invited to visit with Mrs. Sanders during a reception Wednesday at the Eastland National Bank Community Room, between 2:10 and 2:45 p.m.

The entire Sanders family of six is involved in the campaign - not just the candidate and his wife, Jan.

Janet and Martha Sanders, the oldest daughters, have a full schedule of campus appearances, small towns and media interviews. The candidate carries the major travel itinerary criss-crossing the state, sometimes with Mrs. Sanders and sometimes each carrying the message to separate areas.

The Dallas-based contingent of the family help put together the unique handouts that the Sanders' girls use on the campaign trail - a home-baked cookie in the shape of a bare foot. Barefoot's mother bakes 700 a day while Mary and Biff, the younger children, help package and staple them for use.

"Texas voters have a right to know the man they are voting for. By meeting us face to face - by asking us questions, they get a real picture of the man who would represent them for six years," Mrs. Sanders said. "And, of course, it works the other way, too. We are learning what's on the minds of the voters and what Texas needs," she added.

Mrs. Sanders has done graduate work in government and political science and is an active participant in the political arena, independent of her time in behalf of her husband. She was an advance White House Coordinator for Mrs. Lyndon Johnson's "Lady Bird Special" through the south in 1964 and was on a flying Congressional campaign for the National Committee in 1966. She feels women have a significant role to play in politics and urges them to jump in.

EHS Band Director To Graduate

Eastland Band Director Paul Wallace will graduate from West Texas State University with a master of Arts in Music Education Degree in August.

His Master Thesis was a Symphonious Band Transcription of Caesar August Frank's Prie in C minor, transposed to C minor.

This arrangement was performed at the final concert of West Texas State University's Summer Band Festival held July 11.

Wallace has been appointed coordinator of all music theory courses at WTSU summer band camp. This camp will begin July 16 and continue through July 28 Wallace said that about 800 students are expected.



LYNN GIBSON, new District Conservationist at Eastland County, expects to be working with more people here. At Van Horn where he transferred from, his office had four million acres with only about 200 farms (or work units). In Eastland County, there's some 400,000 acres with approximately 1,035 units or operators. He is a native of Roby and a graduate of Texas Tech. He was a student Soil Conservation Service trainee at Snyder and trained with SCS at Stephenville before going to Breckenridge where he was assigned for three and a half years. He was at Van Horn two years. He and his wife, Norma, a native of Rotan, have a son, Todd, 3. The family attends the Church of Christ.

TO MEET TUESDAY The Eastland Lions Club will meet for their regular Tuesday luncheon meeting at Camp Inspiration, President Clint Bray has announced. The Club skipped the past week because of the Camp Meeting in progress at the camp.

Music Study Club To Meet

Every active member of the Eastland Music Study Club is requested to attend a called meeting at the home of Mrs. Virginia Russell, club president, on Monday morning, July 17, at 10 a.m.

Marjorie van Hoose Club Reporter

A woman walked into a pet shop, looked around, and walked over to a parakeet in a cage.

"Can you talk?" she said to the parakeet. "Sure," muttered the parakeet. "Can you fly?"

I Am A Card Carrying AMERICAN

"I pledge allegiance to the flag of the United States of America and to the republic for which it stands, one nation, under God, indivisible, with liberty and justice for all."

Signed _____

I AM A CARD CARRYING AMERICAN PROGRAM

Miami, Fla. - Gerald S. Arenberg, Executive Director of the American Federation of Police announced the issuance of a card by his organization to promote patriotism. "We have all heard of those card carrying

Communists who would sell this nation out" he stated, "well now we are forming an Army of Card Carrying Americans!"

The wallet size card has an American Flag with the words, "I am A Card Carrying American" followed by the pledge of allegiance to the United States. The holders sign the card at the bottom. The reverse side offers instructions on how citizens can aid their local police.

The card is available from the American Federation of Police FREE to anyone wishing one. Simply enclose a self-addressed, postage paid envelope and a note requesting the card. Send to: Patriotism Committee, American Federation of Police, 1100 NE 125th Street, N. Miami, Fla. 33161.

The American Federation of Police is the nation's largest fraternal association of law enforcement officers with headquarters in Miami, Florida.

FREYSCHLAG Insurance Presents Weather

PARTLY CLOUDY through Sunday with chance of showers.

Work Wonders

The Eastland Telegram 629-1707

Thursday, July 13, 1972

H.V. O'BRIEN, Publisher and Editor

Second Class Postage paid at Eastland Texas under Act of Congress on March 1870.
Published semi-weekly - Thursdays and Sundays by Eastland County Newspapers, Inc.

SUBSCRIPTION RATES: By carrier in city, 15 c a week or 65 c a month; one year by mail in county, \$5; city P.O. Boxes, \$6; one year elsewhere in state, \$7; out of state, \$8.

NOTICE: Any erroneous reflection upon the character, standing, or reputation of any person, firm or corporation which may appear in the columns of this newspaper will be gladly corrected upon being brought to the attention of the editor.

FOR SALE

FOR SALE - HI neighbor! Tried Blue Lustre for cleaning carpets? It's super! Rent electric shampooer \$1. Coats Furniture. t-57

FOR SALE House with six lots 639 N. Marston St., Ranger Inquire 915 - 673 - 6119 or Write 2017 Meadowbrook, Abilene, Texas

10 FAMILY Garage Sale. July 15 - 29. Three miles east of Ranger on left side of Hwy. 80. x5

FOR SALE: 5 room house in Moran. Partially furnished. See J.D. Hitt in Cisco. Call 442 - 1604 t-65

FOR SALE: Homes and lake cabins 1, 2, 3 or 4 bedrooms, 1 1/2 - 2 baths. Deluxe compact Modular homes. Not mobil or double wides. Quality construction throughout. Financing available. Displays at factory. 2409 N. Main, Cleburne, 76031 (817) 641 - 9107 t-70

FOR SALE: Electric Motors. Prices right. 1 1/2, 2, 3, 4 and 1 H.P. Some 2 & 3 speed. Will exchange. Home after 5 p.m. 3 miles south Cisco Hwy 183. T.E. Weathersbee

FOR SALE: 3 bedroom, 2 bath frame house, lots of room, double carport, corner lot. Contact J.W. Elder, Kincaid Real Estate 629 - 1781 or after five 647 - 1321. t-57

FOR SALE: Lake cabin on Lake Leon, Contact Mrs. Joe Baucum 1815 Ave. L, Anson, Tex. Call 823 - 3870. t-57

FOR SALE: 5 room house in Moran, partially furnished. J.D. Hitt in Cisco 442 - 1604, aug 5

FOR SALE: 3 bedroom 2 bath home, excellent condition & location, carpeted. Might consider trade. Call 629 - 1676 T-61

FOR SALE: Good alfalfa \$1.35 bale, hay grazer \$1.00 a bale. Call 629 - 1850 after 7 p.m. t-11

FOR SALE

FOR SALE: 3 bedroom, 2 bath home, excellent condition and location, carpeted. Might consider trade. Call 629 - 1676. t-11

FOR SALE: Like new 2 - cycle lawnmower (fog for mosquitos while you mow) \$30. See at 1201 S. Seaman St. t-11

FOR SALE - A good buy - give it a try. Blue Lustre America's favorite carpet shampoo. Coats Furniture. t-53

MISC. FOR SALE - KEEP your carpets beautiful despite constant footsteps of a busy family. Get Blue Lustre. Rent electric shampooer \$1. Perry Brothers. t-57

FOR SALE: Surplus grocery stock greatly reduced, 1 two door freezer, 1 old freezer, 2 refrigerators, 5 ft. meat box, 2 pair of scales, air compressor and misc. items. Premier Gr. and Station Morton Valley. t-57

FOR SALE - The new Texas Almanacs. 2409 N. Main, Cleburne, 76031 (817) 641 - 9107 t-70

FOR SALE: 2 bedroom brick home, good location on corner lot, two car garage with attaching bedroom and bath. 415 S. Oaklawn. Call 629 - 1639. t-11

NOTICE

Are you sure your home is insured? Let Freyschlag Insurance Agency check over your existing policy for needed changes - or let us fix you a new one. Freyschlag Ins. Agency, 107 W. Main - 629 - 2275, "On The Square".

NOTICE - Mattresses. Complete bedding made by Western Mattress Co., San Angelo. Best quality, low price, renovate or exchange new. Every other Wednesday. They're guaranteed. For home appointment, call Lois Mezell, 629 - 2703, leave name. t-11

Freyschlag Insurance has exactly the kind of policy that you need. Check with Charles today and see just how he can help you. Freyschlag Insurance Agency, on the Square in Eastland, 629 - 2275, 107 W. Main Street

FOR RENT

FOR RENT: 2 bedroom apt. Electric kitchen, wall to wall carpet, 3 baths and air. All utilities paid. Phone 817 - 629 - 1716. 1mo.

FOR RENT: Close in bedroom and bath, refrigerated air, kitchen if desired. Call 629 - 2083 or 629 - 8821. t-59

FOR RENT: Furnished 3 room apt. carport, bills and cable paid, couple or individual. See at 203 N. Dixie. t-11

FOR RENT: 3 room unfurnished apt., close in. Call 629 - 2168 t-11

FOR RENT: Unfurnished 4 room house on North Dixie. Call 653 - 2268 or 629 - 2503. t-11

FOR RENT: Mobile home with car port and patio. Call 629 - 1252. t-11

FOR RENT: Nice furnished apartment. Bills paid, cable and telephone. Call 629 - 2083 or 629 - 8821. t-59

LOST & FOUND

LOST: Brown ladies billfold somewhere in Eastland, one day last week. Contact Carey Motgomery 629 - 2384. t-55

LOST: Male Chihuahua. Answers to name Sonny. Reward offered. Contact Roy Raspberry, Carbon. 639 - 2225. t-57

State Farm is now paying big 20% car insurance dividends

to eligible Texas policy holders on expiring six-month policies.

CALL 629-1096



211 W. Main
like a good neighbor,
B.T. Van Cleave
is there.

STATE FARM MUTUAL AUTOMOBILE INSURANCE COMPANY - HOME OFFICE BLOOMINGTON, ILLINOIS

Open for Business
Lawn Mower Parts
Small Engine Parts
Authorized Dealer for Briggs & Stratton
Also Parts for Clinton-Koler and Tecumseh
Parts and Service
Valve-Work on Car Truck and Tractor Heads See

Small Engine Parts
206 Neblett St.
Eastland, Texas
Ph. 629-2415
Doyal Rhodes Owner

WANTED

WANTED Carpenter work of all kinds. Small jobs, remodeling, room add - on's, shingling, painting, sub - contract and contract jobs, financing available. Call 629 - 2268. t-65

Village Hotel 209 West Main. Rooms by the day, week, or month. All utilities paid. Call 817 - 629 - 1716 1 mo.

Singer Sewing Machine Repair Center Servicing all makes, New and Used for sale. Complete line of parts. MODERN DRY CLEANERS 210 S. Seaman 629 - 1344

EMMET MORREN PLUMBING
COMPLETE REPAIR SERVICE
1015 W. Main
629-2092
24 Hour Service

Lively lovable registered poodles. Puppies usually available. Reasonable. 505 East Foch Street Eastland 629 - 1211.

BUSINESS OPPORTUNITY

CENTRAL TEXAS OPPORTUNITIES, INC. has seven positions open. Two positions are for Licensed Vocational Nurses for an eight county Family Planning Program. Four positions are for Out Reach workers for the same program. One position is for a bookkeeper - secretary for the same program. For further information, applications and job descriptions, write Central Texas Opportunities Inc., P.O. Box 820, Coleman, Texas 76834. Last day for filing applications is Thursday, July 20. An equal opportunity employer. t-58

INTERVIEWER WANTED for part time telephone survey work this fall. Give phone number. Must have private line. Not a selling job. Air mail letter including education, work experience and names of references to: American Research Bureau, Field Operations 4320 Ammendale Road, Beltsville, Maryland, 20705. t-58

START IMMEDIATELY Serve consumers with famous Rawleigh Household Products. Full or part - time. Experience unnecessary. Average earnings of \$3.50 per hour and up. Call collect 901 - 362 - 9380. Write Rawleigh Co. P.O. Box 18641, Memphis, Tenn. t-56

"We can handle anything but litterbugs."
Goode Pest Control
Phone 629 - 1179 after 3:00
310 N. Ammerman
roaches, ants, termites, moths, spiders.
ALL GUARANTEED
ON VACATION JULY 8th THRU JULY 23.

NOTICE If you need irrigation equipment - check with us. Largest supply in Central Texas Pump Units All Sizes Pipe - Wheel Lines - Traveling Systems
KIMMEL IRRIGATION SUPPLY, INC.
DE LEON, TEXAS
PHONE: 817 - 893 - 6266

MASONIC LODGE NO. 467
Meets second Thursday of each month at 8:00 p.m. in the Masonic Hall. Call Pat Miller, W.M. at 629 - 1077 or L.E. Huckabay, sec'y at 629 - 1391 for information.
EASTLAND ROTARY CLUB
Saul Pullman, president
Meets each Monday

Open & Offering
● Package & Bulk Garden Seed
● Cattle Sprays & Dust
● Fertilizers
● Pest & Weed Controls
● All kinds of Feed
Green Light & Acco Dusts
BROWN'S FEED STORE
Eastland
307 E. Commerce 629-2173

GARDENHIRE OIL COMPANY
Yes! We can sell wholesale to you!
See us for all your oil, grease, filters, spark plugs, brake fluid, anti-freeze, S. T. P. for oil, gasoline, diesel or radiator, tires for cars, truck or tractor. WE HAVE TANKS for farm or commercial gasoline and diesel fuel. See us before you trade. All major brands of Oil and Grease.
WHY PAY MORE??

CONFIDENCE
2933 JAN 72 M.P. 65
Our Purpose Is To Guide You
Our thoughtful attention is given to every necessary detail. You can have confidence in our experience.
We take care of all the arrangements, expertly, with earnest consideration for the family's wishes.

Arrington Funeral Home
Ph. 629-2611 -- Eastland
Friendly Personalized Service

Griffin Electric
Breckenridge, Texas
for dependable service.
Call 559-3520
Sewing machines, Singer Dial-A-Stitch. Mends & darns \$26.50. We clean, oil, & adjust all makes & models. Call 629-2920 T-61

Mercers Appliance Repair Dishwashers, washers, dryers, stoves, disposals and ovens. G. R. Mercer, Olden, Texas. Call 653-2473

STATE FARM
Fire and Casualty Company
Home Office: Bloomington, Illinois



REAL ESTATE
ALL TYPES
OF REAL ESTATE:
HOMES
farms
ranches

M. L. TERRELL REAL ESTATE
Farm Bureau Building
Hiway 80 East
Tel. 629 - 1725 Day
Night call 629 - 2443
Eastland, Texas

Veterinarian
Veterinary Medicine and Surgery
Old Sandy Sanders Farm
Vergil Patrick
6 Miles N. W. Cisco
TEL. 442-3457

REAL ESTATE
Furnished Cabin on Lake Leon \$9,000.00

2 bedroom frame house, large corner lot, plenty of closet space, low storage in garage. \$10,000.00.

Large 4 bedroom frame home in good repair. Nice big lot, near schools.

3 bedroom, 1 bath frame house, living room, dining room, service area, roomy pantry. Neat kitchen, plenty of storage, garden area.

Large city lot. Neat. \$2,500.00.

Older type three bedroom frame house, double car port, fruit trees, \$6,000.00.

Machine and lawn mower repair shop, tools, equip, included, 2 bedroom home corner lot, some fruit trees.

Flower shop and equipment, including stock hides with apt. Doing good business. Good terms can be arranged.

3 small rent houses - all two bedrooms. See one for all. Priced \$4,500.00 and \$5,000.00.

Small one bedroom house with 3 lots. A good buy \$2,850.00

2 acres and older house in Carbon. \$2,000.00

Nice corner lot on South Seaman \$1,000.00.

3 bedroom frame, living room, den, kitchen, utility room, garage, some terms.

Farms & Ranches
171 acre well improved farm and ranch with lovely three bedroom brick home, 2 baths, 5 water wells, irrigation equipment, spring, cross fenced. Fruit and pecan trees, large metal barn. A real nice home in the country. Some terms and some minerals.

Misc.
We have motels large and small, lake property, large ranches and just about anything you want in the way of real estate. Give us a call.

KINCAID REAL ESTATE
100 South Seaman
Eastland, Texas
629 - 1781
Robert M. Kincaid
629 - 2721
J.W. Elder
647 - 1321

A Message to Dads...



TO BIG, STRONG, HANDSOME DADS EVERYWHERE

Keeping home a good, secure place for the family can be a pretty tall order these days. That's why so many Dads count on us for insurance against fire, burglary, liability and all the other ills a home is heir to.

How's your insurance program? If you haven't checked up on it lately, why not let us help? There'd be no obligation, of course.

When it comes to insurance, we're experts in the kind of "better program" that makes for that secure, comfortable feeling.

D. L. Kinnaird General Insurance
Telephone 629-2544 207 WEST MAIN
EASTLAND, TEXAS 76448

Hospital News

Patients in Eastland Memorial Hospital Saturday morning were:
 Juanita McCorkle, Strawn Willie Coplen, Sarah Ervin, Desdemona Jeannie Bailey, Rising Star James Smith, Cisco Ruby Anderson, Gorman Mary Cox, Gary McLearen, DeLeon Ruby McLearen, DeLeon Doyle Carter, Glen Graham, Maurine Stephenson, Ruth Haney

Ida Parish
 Jessie Millican
 Glenda Baird
 Louise Boggs, Breckenridge Melrose Weems
 Opal Jones, Rising Star Elvira Wilkerson, Cisco Maudie Copeland
 Julia Carter, Desdemona Billy Gary, Cisco John Ray, Olden Pearl Martin, Cisco Marvin Martin, Cisco Gene Billrey, Cisco Cora Davis, Olden Connie Spurlen
 Sandra Hutton, Rising Star Duffy Frazer
 Baby Boy Moore, Lipan

Ina Bean
 Zelda Wilcoxon, Rising Star Pearl Williams, Cisco Winnie Simmons
 Glenda Reese, Olden Delores Hernandez
 Georgia Henderson, Cisco Pauline Baze, Gorman Frances Wright, Gorman Naomi Kanady, Carbon Kathy Jones
 Louise Foster
 Fannie Frost
 Velma Hastings, Carbon Penny Coplen
 Linda Moore, Lipan Robin Burgess, Gorman Cynthia Williams, Cisco Stephen Joiner

Varue Rawson
 Patients in Ranger General Hospital Saturday morning were:
 Gertrude Meredith
 Betty Nickell
 Carl Young
 Maxine Norris
 Wanda Kemmill
 Dessie Sharpe
 Clarence Davis
 Mabel Smith
 Luddy Gailey
 Delon Angus
 Susan Gourley
 Alvis Fuquay
 Marie Linebarger
 Eula Craven
 Beulah Hamilton

Starts WEDNESDAY!
MAJESTIC THEATRE
EASTLAND Wed.-Mon.

(JOHN) WAYNE & THE COWBOYS
 A MARK RYDELL FILM GP
Wed. Features-7-9:18

"Because Someone Lived"
RAWLINS MONUMENTS
 Since 1884 THE NAME to look for in distinctive memorials
 Roy Taylor 500 East 8th St. Cisco
 You may call Collect 442-1127
 You only buy a memorial once; we can help you make the right choice. Our 88 years of experience and our sincere desire to serve you are yours for the asking.

J R B
SUPER MARKETS
 3 CONVENIENT LOCATIONS TO SERVE YOU
 CISCO - EASTLAND - RANGER
 WE RESERVE THE RIGHT TO LIMIT QUANTITIES



UNBEATABLE PRICES
UNBEATABLE STAMPS
 PRICES GOOD ALL WEEK
DOUBLE S&H GREEN STAMPS WEDNESDAY & SATURDAY (With purchase of \$2.00 or more (excluding cigarettes))

P R I C E S
 Good Thru July 22

Fab DETERGENT
 10¢ off Label
 Gt. Size
69¢


JRB SUGAR
 With Purchase of \$7.50 or more
 Limit 1 5 lb.
49¢

Hunts CATSUP
 20 oz.
3/\$1.00

Gebhardt TAMALES
 300 can
3/\$1.00

Wolf BEEF STEW
 15 oz.
2/\$1.00

Star & Stripes Cold Drink CUPS
 9 oz. 80 ct. **69¢**
Star & Stripes Cold Drink CUPS
 16 oz. 24 ct. **39¢**

JRB BUTTERMILK
 1/2 gal.
49¢

Star & Stripes 10 1/4 Plastic Coated PAPER PLATES
 20 ct. **39¢**

Charmin Assorted Colors NAPKINS
 60 ct. **2/25¢**

Van Camp PORK & BEANS
 300 can **7/\$1.00**


Kraft BAR-B-Q SAUCE all flavors 18 oz. **3/\$1.00**

Foremost COTTAGE CHEESE 24 oz. **49¢**

Del Monte DRINKS Pineapple-Grapefruit Pineapple-Orange 46 oz. **3/\$1.00**

J.R.B. MEATS ARE U.S. GOVERNMENT INSPECTED. IF FOR ANY REASON YOU ARE NOT SATISFIED WE WILL CHEERFULLY REFUND YOUR MONEY.

Cedar Farm BACON
 1 lb. pkg. **69¢**

Gooch Ends & Pieces BACON
 Excellent for Seasoning
 4 lb. box **99¢**

Gooch Blue Ribbon LUNCH MEATS
 All Meat Bologna, Liver, Dutch, Pickle & Pimento Loaf 6 oz. pkg. **43¢**


Gooch Blue Ribbon HOT LINKS
 lb. **69¢**

Dankworth BEEF STEAKS
 8 count pkg. each **99¢**

A.F. All Meat BOLOGNA
 By the Piece lb. **59¢**

Dankworth GERMAN SAUSAGE
 Excellent for BBQ
 12 oz. pkg. **79¢**

Market Sliced lb. 69¢


U.S.D.A. Choice FRYERS
 U.S.D.A. Inspected
 Cut Up Pan Ready lb. **38¢**


SALT PORK lb. **59¢**
 Armour Pan Size 12 oz. pkg. each **69¢**

Schreiber's Pimento or Pepper CHEESE SPREAD
 8 oz. each **49¢**

Garden Fresh PRODUCE

Decker All Meat FRANKS
 12 oz. pkg. **49¢**


LETTUCE head **19¢**

OKRA lb. **39¢**

RED ONIONS lb. **25¢**

CANTELOUPS each **29¢**

NECTARINES lb. **39¢**

Suden Beauty HAIR SPRAY
 Reg. or Super Reg. 95¢ **69¢**

SINE AID 12's **39¢**

SINE AID 24's **79¢**

ALKA SELTZER 72's **\$1.79**


Miss Beck HAIR SPRAY 13 oz. **69¢**
Breck Basic Texturizing SHAMPOO 6 oz. **\$1.19**

Keebler Coconut Choc. Drop COOKIES
 14 oz. **59¢**

JRB POTATO CHIPS
 Req. 59¢ **49¢**

JRB BREAD 1 1/2 lb. **29¢**

Libby Vienna Sausage 5 oz.

Campbells Bar-B-Q Beans 300 can

Sweet Treet Pineapple 300 can

American Beauty Spaghetti Dinners 8 oz. **4/\$1.00**

Kobey Shoestring Potatoes 2 1/2 can

Del Monte Sweet Peas 303 can

Western Gold Pork & Beans 300 can

Allens Large Butterbeans 300 can

JRB Store Hours-Ranger & Cisco: 8 to 6

Apple Bay Applesauce 300 can

Red Bird Vienna Sausage 4 oz.

Eastland: 8 to 8

Allens Cut Green Beans 303 can **6/\$1.00**

Allens Mixed Vegetables 300 can

COURTHOUSE NEWS

91ST DISTRICT COURT
 Joy Marlene Lewis vs. James D. Lewis, Sr. - divorce
 Liberty Mutual Insurance Co. vs. Willie May Rogers and or National Guardian and next friend of Leslie Claude Rogers and Leslie Claude Rogers, individually - TO SET ASIDE AWARD OF Texas Industrial Accident Board. Rowena Hall vs. Jack Haley

Suit for damages
 Florine M. Boyd vs. Everett T. Boyd - divorce

NEW CAR REGISTRATIONS
 William E. Bettis, Bedford, Mass - Mercedes Benz
 John I. Fullen, Houston - Chevy
 Monte Kreis, Ranger - Chevy
 Breckenridge Ready Mix, Inc. - Breckenridge - Ford
 Mrs. Claud Chadwick, Eastland - Chevy
 Benjamin S. Huron, Brownwood - Chevy
 Robert K. Lawson, Eastland - Chevy
 Wayne Johnson, Ranger - Chevy
 Lone Star Gas Co., Dallas - Ford
 Betty Fay Hawk, Mingo - Maverick

INSTRUMENTS FILED IN COUNTY CLERK'S OFFICE
 Acme Buick Co. to J.T. Slaughter - release mechanic, material lien.
 Robert L. Bradford to 1st Nat'l Bk. Breckenridge - deed of trust
 John M. Bradford to The Public - disclaimer
 Roy O. Beach, Sr. to B.J. Greenshaw - quit claim deed
 W.H. Bragg - atty in fact for Hattie Bragg to Joe W. Edwards, et ux - contract
 W.H. Bragg - atty in FACT FOR Hattie Bragg to Joe W. Edwards - warranty deed
 Capital Investment Co. to Tom S. Estes, et ux - release vendors lien and deed of trust
 Wulah Mae Craven to Kathryn E. Dunaway et vir - warranty deed
 May B. Cottingham to Robert P. Pendergrass, et ux - warranty deed
 May B. Cottingham to Robert

Pre-Med Student Is Speaker For LVN Assoc. Meet

Nurses of Eastland were hostesses for the monthly meeting of Licensed Vocational Nurses Association, Division No. 64, held on Monday evening, July 10, in the Conference Room of Eastland Memorial Hospital.

B.F. Vermillion, pre-med student and summer employee of the hospital was guest speaker. His gracious audience received valuable information on "Therapy for All Patients", from infancy to senility, with ailments corresponding to age. Mrs. Vermillion, the former Marsha Treadwell, was also a guest.

The speaker was presented a hand painting by artist LaVerne Allgood.

Refreshments were served to Wanda Keller, Gladys Edwards, Louise Kimmel, Alice Eakin, Josephine Wallbraun, LaVerne Allgood, Glenda Agnew, Jean Cox, Ida Mae Jenkins, Lucille Broom, Emma Gregg, Ina Simpson and Iva Mae Hooks.

Gorman nurses will be hostesses during the August meeting.

P. Pendergrass, et ux - warranty deed
 N.D. Chancellor to Louis Morgan, Trustee - apt. subordination trustee
 Continental Nat'l Bk. of Fort Worth to Bilhartz Ops Co. Inc. - oil, gas mineral lease
 G.E. Clower, et ux to Dennis F. Clower, et ux - warranty deed
 Dennis F. Clower, et ux to G.E. Clower - deed of trust
 D&D Cattle Co. to The Public - cancellation of assumed name
 Robert E. Davenport to Myrna S. Dabney - correction deed
 W.L. Dawson, et ux, to Winifred B. Robinson - quit claim deed
 Clarence B. Dill, et ux, to Vet. Ld. Board - warranty deed
 Eastland Nat'l Bk. to L.E. Jones Const. Co. Inc. - release deed of trust
 Eastland Nat'l Bk. to L.E.

Russell Walker Takes Lakeside CC Event

Russell Walker of Eastland took medalist honors here Friday in pro-am competition before the annual partnership golf tournament at Lakeside Country Club.

Walker shot 73 in the 11-team pro-am. Saturday's first round of tournament play will begin at 8:30 a.m. for the first flight and 1:30 p.m. for the championship flight.

The top pro-am team included Scott Tower, Breckenridge, 73; Mrs. Letha Stafford, Cisco, 80; Lloyd Jones, Baird, 91; and Carlos Mainord, Ranger, 91.

The second-place team included Walker, Gene Rhodes, Eastland, 89; Bruce Pipkin, Eastland, 85; and Gary Willingham, Ranger, 99. The third-place team included Bob Mace, Eastland, 81; Bob McNeil, Baird, 79; Denver Doggett, Abilene, 86; and Jimmy Walker, Abilene, 104.

THE PAIRINGS

CHAMPIONSHIP (1-30)
 Jerry Doyle-Don Dyer - Eastland vs. G. A. Milchum-Herb Weaver - Eastland; Russell Walker - Eastland - Ralph Glenn, Cisco, vs. Butch Elison-Bob Alaco, Eastland; Charles Bridwell - Jay Tompkins - Brownwood vs. David Strickland-Roy Walker, Baird; Scott Power-Bobby Kuhl - Breckenridge vs. C. D. Beck - Alvada - Phillip Smith, Eastland; Tommy Warford, Eastland, Wayne Jowers - Abilene, vs. Mark Rader-Mike Hughes, Waco; Borcas Satterwhite-Parks - Searcy - Breckenridge, vs. Cliff - Burfield-Boo - Michels - Breckenridge; Randy Harris-Miller Scott - Clyde vs. Danny Wills-Don R. C. Daniel, Albany; J. L. Stafford-Wallace Johnston, Cisco, vs. Vannell Weathers, Cisco; Rick Whiteside - Abilene.

FIRST FLIGHT (8-30)
 Monte Land-Bill Gene, Breckenridge, vs. Don Metzger-Jimmy Walker, Stephenville; Bruce Pipkin-Buddy Haun, Eastland, vs. Roger Carr-Randall Ivy, Baird; Denver Doggett-Randall Hamrick - Dublin vs. Tommy Aldred-Thurman, Andrew, Abilene; Roland Henderson-Billy Garland - Breckenridge, vs. Joe Thurman - Cisco; Joe Turner, Graham; David Callarman - Billy Nicholas, Cisco, vs. Fabian Bell - So Pruitt, Baird; A. Surphor-Love Jones, Baird, vs. Richard Back-Clint Backo, Abilene; O. H. Dick-Harry Logan, Eastland, vs. Du - Smith, Stephenville - Gene Raritt, Comanche; Jimmy Ray Higgins-Tommy Higgins, Baird, vs. David Slaughter-John Slaughter, Abilene.

HELEN CRAWFORD
 Representative of
GAY TRAVEL SERVICE,
 INC. of Abilene
 Phone 442-2265

The Light Touch



By Clint Bray

Nerve: that which enables a man seated on a bus to flirt with a woman who's standing.

A neck is something which, if you don't stick it out, you won't get in trouble up to.

Morning is the time of day when the retiring generation rises and the rising generation retires.

Sign in a pawn shop: "See us at your earliest convenience."

See us anytime for your wardrobe needs at BRAY'S

Jones Const. Co. Inc - partial release deed of trust

Eastland Nat'l Bank to Dennis D. Allen, et ux - release deed of trust

Tom B. Ward - et ux to

Southern S&L Ass'n - deed of trust

Jim West to Tri - Cities Ready Mix - mineral mechanics lien affidavit

Glenda Sue Westmoreland, et al to 1st Nat'l Bk - gorman -

extension deed of trust

MARRIAGE LICENSES
 Harold D'Wayne Johnson and Sandra Jean Calhoun
 Gary Wayne Willingham and Mabel Elaine Hewett
 Doyle Rex Jobe and Leisa

Jane Webb
 William Bradley Seymour and Burma Lucille Broom
 William Hugh Forman and Deborah Kay George
 Robert Harold Fink and Rita Diann Webb

JULY CLEARANCE SALE

Continues for a limited time with more and greater reductions. This is a clean-up of Summer merchandise and broken sizes, good time to buy.

<p>group Men's Dress Slacks Wools & Dacron/Wools Now.. 1/2 of Regular price Alterations Extra.</p>	<p>group Men's Suits & Sports Coats Summer & Year round weight NOW.. 1/2 of Regular price A good selection in most sizes. Alterations Extra</p>	<p>group Men's Dress Shirts Long Sleeves and Short Now.. 1/2 of Regular price A time to stock up.</p>
<p>Men's Walk Shorts and Swim Trunks Now.. 1/2 of Regular price</p>	<p>Men's B.V.D. Brand Underwear Now.. 1/2 of regular price Briefs..Mids..Longs and T-Shirts</p>	<p>group Men's Jeans...Flares Knit...Stretch.. Twill Hopsack Now.. 1/2 of regular price</p>
<p>Men's Straw Hats Western and Dress NOW... 1/4 off</p>	<p>group Men's Shoes Black...Brown Lace...Slip-on Values to \$21.95 Now.. . \$9.90 Come see..big selection</p>	<p>Men's Sport Shirts Long Sleeves & Short NOW... 1/4 off</p>
<p>Now Lay Aways No Approvals</p>	<p>THE MAN'S STORE Bob Elliott CISCO</p>	<p>No Returns No Refunds</p>

RANGER DRIVE-IN THEATRE
 Only Eastland County Theatre Open Every Night

Twice as Wild Together!

WILD IN THE STREETS
 COLOR GP

AND

THE WILD ANGELS
 COLOR GP

Sunday • Monday & Tuesday July 16-18

Keep your eyes on what she cannot see

MIA FARROW

SEE NOEVIL

Wednesday & Thursday July 19-20

SUCH GOOD FRIENDS
 AN OTTO PREMINGER FILM

Starring DVAN CANNON JAMES COCO JENNIFER O'NEILL
 KEN HOWARD NINA FOCH LAURENCE LUCKINBILL
 and LOUISE LASSER as Marcy BURGESS MEREDITH as Kalman
 and O.C. SMITH SINGING "SUDDENLY, IT'S ALL TOMORROW"

Screenplay by ESTHER DALE Adaptation by DINID SHABER Based on the Novel by LOIS GOULD

Color by MOVIELAB A PARAMOUNT OTTO PREMINGER PRODUCTION

"R" restricted under 17 requires accompanying parent or adult guardian

This Sunday

GIVE OUR

SUNDAY BUFFET

A TRY

A Real Treat for the Entire Family.

Join Your Friends

The **Derrick Restaurant**
 -10th Floor, First National Tower Bldg- Breckenridge, Texas

Meet the Camper Pickup that brings you an EXTRA SEASON

INTERNATIONAL 1972

Extra places to go!
Extra stability and comfort!
Extra opportunities to get away!
Extra things to do — right near home, too!

This new Camper Pickup can take most any weather — turn those nowhere-to-go days into an Extra Season of fun! International is the only truck-built pickup, with 8-point suspension (vs. 4- and 6-pt. systems), heavy-duty front and rear springs and sway bar for safer handling in winds. Engines from standard six to V-392.

INTERNATIONAL '72 keeps it happening

CITY GARAGE

103 W. White Eastland 629-1709

As It Looks From Here

By Omar Burleson

WASHINGTON, D.C. -- THE BROOKINGS INSTITUTION here in Washington is a non-partisan, non-profit research organization. In its economic studies it draws on some of the best scholars in the Country. IN A RECENT STUDY, A GROUP headed by Mr. Charles L. Schultz, who was Budget Director in the Johnson Administration, came to conclusions and opinions considerably different from those he and associates expressed in the early 60's.

AT THAT TIME, ALONG WITH other prominent economists, Mr. Schultz, Walter Heller and others saw a "fiscal dividend" in the Country's economic growth immediately ahead. At that time they saw large amounts of revenue coming into the Federal Treasury permitting tax cuts, revenue sharing with states and localities and funds for programs of the "Great Society".

THE REPORT RECENTLY COMPLETED by these gentlemen and others has the effect of repudiating many of the actions which were a part of the Great Society. The report calls for a reversal of direction for the Federal Government from providing goods and services and other complex schemes for aiding the poor, to increasing the quality of opportunity and improving the quality of public services. In clear terms it calls for drastic changes in the spending programs of the Federal Government and warns of the fiscal plight which has overtaken it. One significant line stands out -- "For the first time in American history, except during major wars, government spending -- even without any new programs -- is now rising relentlessly faster than the growth of revenues from an expanding economy." In other words, the conclusion is that the government is over-spending itself and the programs to which the

government is committed can't be paid for without huge deficits.

FOLLOWING THIS CONCLUSION, the report says that the overcommitted Federal Government can not spend any more on trying to solve social or other problems without a big tax increase. It says that even if the Congress enacts this year only the programs that President Nixon has proposed, and no more, the Federal Budget for 1975 will reach \$300 billion and that this would be \$17 billion more than tax revenues under present rates.

THE MAKEUP OF THE BROOKINGS GROUP who produced the report reflects a change of attitude on the part of liberal intellectuals who had considerable influence in shaping policies and programs now criticized. They refer to

many programs as uncertain, wasteful and not providing solutions. It goes far in undermining the liberal intellectual belief in the Federal Government as the chief problem-solver in our society.

THE BROOKINGS PEOPLE SEEM TO AGREE with proposed reforms which have been around several years.

Essentially what is needed, among other things, is (1) 5-year budget projections submitted annually; (2) pilot testing of any new programs;

(3) a joint congressional committee to evaluate the total budget to determine both revenues and expenditures and (4) more disciplined spending.

WHAT IS NEEDED IS NEW INCENTIVE to reduce the tax drain and curb spending for programs of uncertain effect.

THIS SORT OF POLICY CONTRADICTS candidates on the camping trail who dreamingly promise to cut taxes and increase spending. It just can't be done and people know better.

Read The Classifieds!

FOR RENT: this MINI-BILLBOARD ONLY \$3.50 a month Call your local paper!

EASTLAND AUTO PARTS SHOP SERVICE

VOGUE PATTERNS Mary's Fabrics Ranger, Texas

Authorized Medicare Supplier for

- Wheel Chairs
- Walkers
- Canes
- Commode Chairs
- Hospital Beds
- Crutches
- Vaporizers
- and other sickroom supplies

All of the above are available for non-medicare patients on a sales or rental basis.

U-SAVE PHARMACY
629-1166
Commerce & Daugherty St. Eastland

CARPET
Experience-Dependability-Honesty
Trust your floors to us
We Know our business.
We want your business.
Call Collect 817-965-4093
We will bring samples to your home or business-Free estimates
Professional Installations
DENMAN Tile & Carpet
Stephenville, Texas 76401

Custom Built Homes
Your Property or Ours
We Furnish Plans- Arrange Financing
One phone call gets you a Home
H & W Development Co.
1201 W. Commerce Eastland
629-1305

You Get **LOW, LOW EVERYDAY PRICES!** and You Get... **SPECIALS EVERY DAY, too!**

Fresh Coffee 49¢
Safeway Pre-Ground 1-lb. Bag
Safeway Special!
(With \$5.00 purchase or more, excluding cigarettes)

Canned Pop 8¢
Snowy Peak Great With Snacks!
Safeway Big Buy!
12-oz. Can

Tomato Soup 10¢
Town House Rich Tomato Flavor!
Safeway Big Buy!
10 3/4-oz. Can

SAFEWAY

Store Hours
Mon. Thru Fri.
8:00 a.m. to 8:00 p.m.
Closed Sunday

Detergent 49¢
Parade Cleans All Your Wash!
Safeway Big Buy!
49-oz. Box

Liquid Bleach 38¢
White Magic For Sparkling Whites!
Safeway Big Buy!
Gallon Plastic

Paper Towels 28¢
Tree Saver White Absorbent!
Safeway Big Buy!
175-Ct. Roll

Safeway Money-Saving Low Prices!

Velkay Shortening 62¢
For Baking and Frying! Safeway Big Buy! —3-Lb. Can

Enriched Flour 39¢
Harvest Blossom All Purpose 5-Lb. Bag

Pork & Beans 16¢
Van Camp's Hearty Flavor! 16-oz. Can

Chunk Tuna 37¢
Sea Trader Light Meat 6 1/2-oz. Can

In February 1967, Safeway launched a new pricing program, DISCONTINUED STAMPS AND THEIR EXTRA COST TO YOU and offered you the lowest possible price on every item in our stores. When you compare our prices with so-called "Discounters" ... compare our quality ... compare our services, you'll see why it pays to shop at Safeway. We pledge ourselves to continue to bring you EVERYDAY low prices ... plus SPECIALS to lower your total food bill ... to maintain high standards of quality ... and to serve you better in every way.

Check These Everyday Low Prices!

Dog & Cat Food 7¢
Favorite Brand. Economical! Safeway Big Buy! —15 1/2-oz. Can

Apple Sauce 19¢
Highway. Ready to Serve! 16-oz. Can

Lemonade 10¢
Scotch Treat. Concentrate 6-oz. Can

Salad Dressing 37¢
Piedmont Creamy Texture! 32-oz. Jar

Safeway Meats Are Guaranteed!

Sliced Bacon 69¢
Slab. Rindless. Tasty! Breakfast Favorite! —Lb.

Safeway Bacon 83¢
No. 1 Quality! 1-Lb. Pkg. Sliced

Shop Safeway for Variety Meats!

Hamburger Steaks Pre-Formed Ready to Grill! —Lb. 79¢	Smoked Picnics Whole & to 8-Lb. Avg. Smoked —Lb. 48¢
Fresh Pork Steak Extra Lean Cuts From Boston Butt —Lb. 79¢	Sliced Picnics Half or Whole Smoked —Lb. 55¢
Fresh Pork Chops Economical Family Pack —Lb. 85¢	Eckrich Sausage Smoked Pre-Cooked —Lb. \$1.15
All Meat Wieners Safeway Pump & Tender! 12-oz. Pkg. 55¢	Ham Nuggets Boneless. Neuhoff Tennessee Farm —Lb. \$1.45
All Beef Wieners Safeway Ready to Eat! 1-Lb. Pkg. 89¢	Fish Fillets Greenland Turbot. Fresh-Frozen —Lb. 69¢
Lunch Meat Safeway Sliced & All Beef Bologna & Macaroni & Cheese & Spiced & Pickle-Pimiento 8-oz. Pkg. 35¢	Turkey Roast Half-Cooked. Young Hen. 2 1/2 to 2 1/2-Lb. Avg. —Lb. 29¢
Stick Salami Safeway By The Chunk Texas Style. —Lb. 89¢	Cut-Up Fryers Regular. From USDA Insp. Grade 'A' Fryers —Lb. 38¢
Armour Cervelat —Lb. 79¢	Split Breasts With Rib. Cut From USDA Insp. Grade 'A' Fryers —Lb. 77¢

Garden Fresh Produce!

Bananas 10¢
Top Quality! Golden Ripe! Nutritious For Snacks! Mellow Flavor! Large Size —Lb.

Valencia Oranges California Large Size —Lb. 19¢

Cucumbers Selected Sizes. Each 2 for 25¢	Valencia Oranges Family Pack 8-Lb. Bag 99¢
Yellow Onions US #1 Medium Size 2 Lbs. 29¢	California Plums Large Size Your Choice —Lb. 39¢
Crisp Carrots Safeway Fresh 1-Lb. Cello 19¢	Seedless Raisins Town House 2-Lb. Cello 89¢
Fresh Okra Fancy Quality! 3 Lbs. \$1	Orange Juice Safeway Pure 1/2-Gal. Decan. 89¢
Yellow Squash Crookneck Tender! —Lb. 29¢	Lemon Juice Sicily. Ready to Use! 4-oz. Plastic 39¢
Red Radishes Tops Removed! 2 Lbs. 25¢	Grape Jam Country Pure Brand. No Preservatives Added 14-oz. Jar 47¢
Green Onions Test! Large Bunch 2 for 25¢	Peanut Butter Country Pure Brand. No Preservatives Added Jar 18-oz. 79¢

Cabbage 9¢
Green Heads. Selected Sizes —Lb.

Cherries 69¢
Northwest Sweet! Large Size —Lb.

Nectarines 39¢
California Juicy! Large Size —Lb.

Compare Quality and Trim!!

Boneless Roast 99¢
*Chuck or *Shoulder. Waste-Free! USDA Choice Grade Heavy Beef (Boneless Roast —Lb. \$1.09) —Lb.

Rib Steaks USDA Choice Grade Heavy Beef. —Lb. \$1.29

Lean Ground Beef Compare Lean and Fat Content! —Lb. 89¢

Shop and Save!

Panty Hose 88¢
Safeway Brand Perfect Fit. Nylon —Pair

Aspirin Tablets Safeway 200-Ct. Bottle 35¢

S.P. Antiseptic Mouthwash 14-oz. Bottle 29¢

Prices Effective Mon., Tues. & Wed., July 17, 18 & 19, in ... No Sales to Dealers.

EASTLAND AUTO PARTS HAS IT!

Have you been by **Tharp Tire Inc.** lately?

If not you may be missing out. We are carrying about \$40,000 Tire Inventory along with distributorship for Empire, Dunlop and Hood Tires for a big part of Texas. We are tied in with several stores and a warehouse in the Dallas area. This gives us a very good purchasing price which we are passing on to you, our customers. For instance a 670 x 15 GP Hood Tire for \$19.76 Total

This is a total price all taxes mounted and balanced. A G78 x 15 mud and snow Empire 4 ply nylon for \$21.61 Total price includes mounting and balancing. A 825 x 14 Empire Black 4 ply nylon for \$18.21 Total includes mounting and balancing.

For you farmers, with farm trailers we have 760 x 15 GP for \$15.41 Total Price

900 x 14 GP for \$18.32 Total Price. Come in soon and check our prices and quality for the best deal in the big country. Tire headquarters for Eastland and surrounding Counties.

Tharp Tire Inc.
413 E. Main
Eastland, Texas
Phone 629-2922

Wholesale and Retail
Dunlop - Hood - Empire Tires.

Schick Razor Blades Super Stainless Steel Plus Platinum Double Edge 5-Ct. Pkg. 79¢	Schick Razor Blades Plus Platinum Injector Blades 11-Ct. Pkg. \$1.49	Dristan Razor Set Decongestant Tablets 24-Ct. Bottle \$1.23 Razor With Blades, Wilkinson Bonded —Each \$2.29	Sheer Strips Sea & Ski Medium Plain, BAND-AID Brand 30-Ct. Box 59¢ Sunten Lotion 2-oz. Bottle 79¢
--	--	---	--

SAFEWAY

© Copyright 1960, Safeway Stores, Incorporated.



"When my brother Richard and I toured Texas recently we discovered a whole new attitude on your highways. It's called driving friendly. No more horns honking. No more tires screeching. Driving friendly. Just good people going about their business. Keep it up."

Karen Carpenter

THE STARS DRIVE FRIENDLY



"I admit I do enjoy a nap every once in awhile. But I never drink when I'm going to have to do the driving home. If you plan to drink, let someone else drive. That's just one more way to drive friendly—the Texas way."
—Ed McMahon



"Speed on the highway usually has only one end zone... an accident. Try driving friendly. Keep your speed down. You'll make it to the goal line every time."
—Bob Hayes



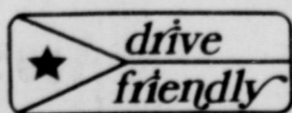
"My natural beauty usually attracts so much attention that drivers take their eyes off the road to stare at me and they run into telephone poles and fire hydrants. It's a mess. But you Texans keep your minds on your driving. You don't give beauty more than a quick glance. You drive friendly."
—Phyllis Diller



"When somebody behind you wants to pass, pull over to the right and let him by... that's driving friendly."
—Charley Pride



"There's nothing the Lettermen enjoy more than putting together a little close harmony... On the highway we make harmony by blending in with traffic. Driving Friendly to make it all work together."
—Gary Pike
of The Lettermen



Presented as a Public Service by the Governor's Committee on Traffic Safety—
Presented as a Public Service by this newspaper

AM WAY
Complete Line
Call 629-1096
or 629-1057



SCOTT
BODY WORKS
Serving Eastland Since 1937
- Quality Workmanship
Ask Your Neighbor

LIBBY-OWENS-FORD
SAFETY GLASS
Installed
Complete Auto Body Repair
All Work Guaranteed
300 W. COMMERCE
EASTLAND, TEXAS
Phone 629-2372

Burial Insurance

Your Pre-Need Plans and Burial Insurance Policies Are YOUR property! You and your family determine where they are used! We honor those you may have, just as the policies we offer are good any where! Give us the honor of assisting in making these important plans.

Bakker Funeral Home
SINCERE-EXPERIENCED SERVICE
306 W. PLUMMER • EASTLAND, TEXAS 76448 • PHONE 617-629-1728

ROY LEE SMITH
PLUMBING
Contracting and Repairing
Complete Plumbing fixtures
and Supplies
Bath & Kitchen
Improvements
Trained, Adequate Staff
Call a Licensed Plumber
Day or Night
629 - 1722

SMITH
PLUMBING
114 N. Seaman
Eastland

G&K Ceramic Tile
Service New or Repair
Free estimates
Call Levi-677-3160 or
673-8514

EDDIE'S
513 West Main
629-8838

PHILLIPS
66
VACATION
SPECIALS
Tune Up
6 cly. \$21.55
8 cly. \$21.55
Includes all parts and labor
for minor tune up.

Auto Service:
Air conditioner
Auto transmission
Complete overhaul
Washing
Lubrication
Oil Change
Tire Repair

A.D. Stuard-
Fred Pevehouse
Road Service
At Phillips 66
Its Performance
That Counts

NOTICE

LEGAL NOTICE
CITATION BY PUBLICATION
THE STATE OF TEXAS
TO: Whom It May Concern:

YOU (AND EACH OF YOU) ARE HEREBY COMMANDED to appear before the 91st Court Eastland, Texas of Eastland County at the Courthouse thereof, in Eastland, Texas, by filing a written answer at or before 10 o'clock a.m. of the first Monday next after the expiration of forty - two days from the date of the issuance of this citation, same being the 21st day of August A.D. 1972, to Plaintiff's Petition filed in said court, on the 5th day of July A.D. 1972, in this cause, numbered 25,872 on the docket of said court and styled In Re: Adoption of Ronald Keith Hollon, Tamara Denise Hollon, and Jacqueline Michelle Hollon, Minors.

A brief statement of the nature of this suit is as follows, to-wit: Adoption of Ronald Keith Hollon, Tamara Denise Hollon, and Jacqueline Michelle Hollon, Minors.

If this citation is not served within ninety days after the date of its issuance, it shall be returned unserved.

The officer executing this writ shall promptly serve the same according to requirements of law, and the mandates hereof, and make due return as the law directs.

Witness, Joe T. Gray, Clerk of the 91st Court of Eastland County, Texas.

Issued and given under my hand and the seal of said court at Eastland, Texas, this 6th day of July A.D. 1972.

Joe T. Gray Clerk,
91st Court
Eastland County, Texas
By Mary Jane Rowch,
Deputy.

LEGAL NOTICE
NOTICE TO THE PUBLIC
Notice is hereby given that by order of the District Court of Eastland County, Texas, entered June 23, 1972, the undesignated was duly appointed Receiver in Cause No. 25792 styled J. F. McMillan, et al, vs. J. L. Nichols, et al, covering the interest of the Defendants, J. L. Nichols and Ouachita Exploration Company, Inc. in the following described oil and gas leases located in Eastland County, Texas:

1. Oil and gas lease dated August 20, 1970, from Flora A. Smith, et al, to Rhodes Drilling Company recorded in Volume 592, page 537 of the Deed Records of Eastland County, Texas.

2. The Smith oil and gas lease recorded in Vol. 595, page 231, Vol. 593, page 430, Vol. 592, page 517, Vol. 592, page 464, Vol. 592, page 469, Vol. 592, page 531, all of which oil and gas leases are executed to Thodes Drilling Company and which lease cover land located in the G. W. McGrew Survey in Eastland County, Texas.

3. Oil and gas lease dated June 19, 1971, from Melva Love, et us, to J. L. Nichols recorded in Vol. 597, page 123 of the Deed Records of Eastland County, Texas.

4. Oil and gas lease dated August 20, 1970, from Agnew Rogers to Rhodes Drilling Company recorded in Vol. 592, page 466 of the Deed Records of Eastland County, Texas.

5. Oil and gas lease dated August 20, 1970, from L. E. Clark, et ux, to Rhodes Drilling Company recorded in Vol. 592, page 456 of the Deed Records of Eastland County, Texas.

6. Oil and gas lease dated August 20, 1970, from Nomi Rodgers, et vir, to Rhodes Drilling Company recorded in Vol. 592, page 467 of the Deed Records of Eastland County, Texas.

7. Oil and gas lease dated August 20, 1970 from Loula Hendry to Rhodes Drilling Company recorded in Vol. 593, page 254 of the Deed Records of Eastland County, Texas.

8. Oil and gas lease dated August 20, 1970, from Joe H. Hudson, et ux, to Rhodes Drilling Company recoded in Vol. 592, page 461 of the Deed Records of Eastland County, Texas.

Pursuant to the order of appointment of the Receiver herein notice is hereby given to all creditors and claimants having claims against the above described oil and gas leases to file petitions of intervention in the above styled and numbered cause and to present such claims together with verified vouchers to the Receiver by mailing same to Harrell & Thompson, First National Bank BBuilding, Breckenridge, Texas 76024, within four months from the date of this notice. The failure to file such proof and the failure to intervene in said lawsuit within four months from the date of this notice shall bar all creditors and claimants from participating in the assets of the receivership estate.

Dated this 29th day of June, 1972.

W. G. ARNOT, JR.
Receiver in Cause No. 25792,
District Court of Eastland County, Texas.

SUBSCRIBED AND SWORN to before me by thsaid W. G. Arnot, Jr. this 29th day of June, 1972, to certify which witness my hand and seal of office.

ROSALIE G. HARRIS
Notary public in and for Stephens County, Texas. (- 2, 7 - 9, 7 - 16)

EASTLAND AUTO PARTS SHOP SERVICE

Pre-Need Funeral Plans have only been available in Texas for a short time. . . no age limit. . . carries credit life to age 65.

Freezes Cost of actual funeral expense. This is not insurance. No obligation for counselor to consult with you. This plan guaranteed by a Trust Fund covered by Texas State Dep't. of Banking Laws.

Call . . .
Arrington
Funeral Home
629-2611 or
Emmett Blair
Counselor

Eastland -Gorman
Agent
for
Mistletoe-
Morgan
Al Gaeta
300 E. Main
629-8823
7a.m. to 8 p.m.
Receiving
Shipping Delivery

SOUTHLAND
LIFE
INSURANCE
M. H. PERRY
100 S. Seaman
629-1566
629-1095

CARD OF THANKS

WE wish to express our thanks to our many friends for the food, flowers, and their prayers in our loss of someone very dear to us, our brother, Bobbie Grimes. Mr. and Mrs. Floyd Williams and family Mr. and Mrs. Johnnie Grimes and family.

WE want to say thank you to all our friends - for their expressions of sympathy in so many ways during mother's illness and death. Mrs. Fannie E. Nash. Thank you for each prayer, visit, card, flowers and food. A special thanks to the nursing staff of Hickmar Nursing Home, Eastland, May God bless you. Mr. and Mrs. Milton Nash. Mr. and Mrs. Marvin Nash. Mr. and Mrs. Ott Green

EASTLAND AUTO PARTS
Water Pumps - Piston Rings -
Brake Shoes - Bearings - Tools
Fan Belts - Plugs - Starters
Mufflers - Gaskets - Supplies
EASTLAND AUTO PARTS

FREE
Estimates on new roofs only
Repair of Your Old Roofs
Residential and Commercial
"ALL NEW WORK GUARANTEED"
TRI-CITIES
ROOFING CO.
Call
Noble Squiers
629-2370
EASTLAND

GAME DAY TO BE AUG. 4

The committees for the next Game Day at Lone Cedar met Thursday at Lone Cedar Country Club. Mrs. E.F. Arterburn is the general chairman and the date is the first Friday in August (August 4th). More details about the affair will be issued later.

CANCER INSURANCE
UP TO
\$50,000
M.H. PERRY
629-1566

NOTICE
EASTLAND GRAIN & SEED
Is Now Located at
304 West Commerce
Eastland
Phone 629-2288
Next Door to Scott's Paint & Body Shop
Offering: ★ ★ ★
Martin Lane Feeds
Olin Matheson Fertilizers
Scott Lawn Products (Complete line)

Call No. 482 Charter No. 14299 National Bank Region No. 11

REPORT OF CONDITION, CONSOLIDATING DOMESTIC SUBSIDIARIES, OF THE
EASTLAND NATIONAL BANK of **EASTLAND, TEXAS**
IN THE STATE OF **TEXAS**, AT THE CLOSE OF BUSINESS ON **June 30, 1972**
PUBLISHED IN RESPONSE TO CALL MADE BY COMPTROLLER OF THE CURRENCY, UNDER TITLE 12, UNITED STATES CODE, SECTION 161.

ASSETS	Dollars	Cts.
Cash and due from banks (including \$ 17,472.13 unreported debits)	1,492,906.56	
U.S. Treasury securities	1,147,228.33	
Obligations of other U. S. Government agencies and corporations	3,399,492.23	
Obligations of States and political subdivisions	1,422,487.94	
Other securities (including \$ None corporate stock)	7,500.00	
Trading account securities	None	
Federal funds sold and securities purchased under agreements to resell	None	
Loans	5,620,867.58	
Bank premises, furniture and fixtures, and other assets representing bank premises	197,084.99	
Real estate owned other than bank premises	None	
Investments in subsidiaries not consolidated	None	
Customers' liability to this bank on acceptances outstanding	264,508.77	
Other assets (including \$ None direct lease financing)	13,552,076.40	
TOTAL ASSETS		
LIABILITIES		
Demand deposits of individuals, partnerships, and corporations	4,576,545.39	
Time and savings deposits of individuals, partnerships, and corporations	6,953,946.95	
Deposits of United States Government	24,890.72	
Deposits of States and political subdivisions	780,855.93	
Deposits of foreign governments and official institutions	81,288.73	
Deposits of commercial banks	40,332.04	
Certified and officers' checks, etc.	\$ 12,497,839.76	
TOTAL DEPOSITS	\$ 12,497,839.76	
(a) Total demand deposits	\$ 5,287,342.81	
(b) Total time and savings deposits	\$ 7,210,496.95	
Federal funds purchased and securities sold under agreements to repurchase	None	
Liabilities for borrowed money	None	
Mortgage indebtedness	None	
Acceptances executed by or for account of this bank and outstanding	219,991.36	
Other liabilities	12,717,831.12	
TOTAL LIABILITIES	12,717,831.12	
MINORITY INTEREST IN CONSOLIDATED SUBSIDIARIES	None	
RESERVES ON LOANS AND SECURITIES		
Reserve for bad debt losses on loans (set up pursuant to IRS rulings)	72,893.18	
Other reserves on loans	None	
Reserves on securities	None	
TOTAL RESERVES ON LOANS AND SECURITIES	72,893.18	
CAPITAL ACCOUNTS		
Capital notes and debentures	None	
% Due	\$	
% Due	\$	
EQUITY CAPITAL-total	761,352.10	
Preferred stock-total par value	None	
No. shares outstanding	None	
Common Stock-total par value	100,000.00	
No. shares authorized	5,000	
No. shares outstanding	5,000	
Surplus	150,000.00	
Undivided profits	490,421.66	
Reserve for contingencies and other capital reserves	20,930.44	
TOTAL CAPITAL ACCOUNTS	761,352.10	
TOTAL LIABILITIES, RESERVES, AND CAPITAL ACCOUNTS	13,552,076.40	
MEMORANDA		
Average of total deposits for the 15 calendar days ending with call date	12,326,944.02	
Average of total loans for the 15 calendar days ending with call date	5,659,760.93	
Interest collected not earned on installment loans included in total capital accounts	None	

I, James W. Reid, V.P., Comptroller of the above-named bank do hereby declare that this report of condition is true and correct to the best of my knowledge and belief.

We, the undersigned directors attest the correctness of this report of condition and declare that it has been examined by us and to the best of our knowledge and belief is true and correct.

James W. Reid
Johnnie Grimes
Milton Nash
Directors

July Summer Wear Clearance Sale 33 1/3 off

Ladies SHORTS Asstd. Colors & Size Reg. \$1.99 \$1.33	Childrens SHORTS Asstd. Size and Colors Reg. \$1.99 \$1.33
Ladies SHORTS Asstd. Sizes & Colors Reg. \$2.99 \$1.97	Ladies HOUSECOATS Asstd. Sizes & Colors Reg. \$3.99 \$2.66
Child's SHORTS Asstd. Sizes & Color Reg. \$1.00 67¢	Ladies SANDALS Asstd. Size Reg. \$3.37 \$2.21
Children SUN SUITS Asstd. Sizes & Colors Reg. \$1.99 \$1.33	Childrens SANDALS Asstd. Sizes Reg. \$1.99 \$1.33

perry's

Taylor Center for all your grocery needs. Old White Elephant Building. Open until 11:00 p.m. 7 days a week.

EASTLAND AUTO PARTS
Water Pumps - Piston Rings - Brake Shoes - Bearings - Tools - Fan Belts - Plugs - Starters - Mufflers - Gaskets Supplies.
EASTLAND AUTO PARTS

FOR RENT:
this
MINI-BILLBOARD
ONLY \$3.50 a month
Call your local paper!

Smith, Nicholas Vows Read July 8

Sally Francis Smith and Donald Rex Nicholas were married in a private ceremony in the home of the Reverend Haston Brewer, pastor of the First Baptist Church of Eastland, Saturday, July 8 at 4 p.m.

Mrs. Nicholas is the daughter of Mrs. J.F. Francis and the late J.F. Francis of 2002 W. Commerce, Eastland. Mr. Nicholas is the son of Mr. and Mrs. John C. Nicholas, 514 Pershing, Eastland.

Sally attended Panola Junior College, Carthage, Texas, and the University of Texas at Austin. She is employed by Ranger Junior College as secretary to Dr. Jack Elsom, president.

Don is a graduate of Cisco Junior College and is Chief Clerk of the Transmission Department of Texas Electric Service Co. of Eastland. He is president of Eastland Civic Theater, secretary of Carbon Masonic Lodge No. 467 and was recently elected president of the Men's Brotherhood of the First Baptist Church.

Sally and Don, with their two sons, Michael and Ronald Smith are at home at 708 S. Dixie in Eastland.

FOR RENT:
MINI-BILLBOARD
for
ONLY \$3.50 a month
Call your local paper!

ABCO
Plumbing & Heating
Contracting and Repairing
Complete Plumbing Service
Call 629-1200
Day or Nite
BOB WILLIAMS
Master Plumber
Serving Texans
25 years

POE FLORAL
609 W. Main
featuring

- ★ Silk Flowers
- ★ Terrariums
- ★ Dried Flowers
- ★ Original Pottery By Sue Kelly & Tom Grissom
- ★ Dish Gardens
- ★ Ivy Pole
- ★ Pot Plants
- ★ Permanent Arrangements
- ★ Gift Items
- ★ Cut Flowers



Ph 629-1711
Eastland, Texas

I Remember ...

By Dick O'Brien

I mentioned the "clay pits", where clay was used to surface sandy roads. A crew was working close to our house, and my dad and brother were in the gang.

Mother sent Roy, (that's my brother about three wash-days older than I) and me to take them lunch. While we were waiting for them to eat, then we were to have what was left, if any: Roy suggested we try out a trick on a mule colt in the camp.

He said he had heard that if you put a gravel in a mule's ear he would act up. We patted the colt's nose and rubbed his neck until we had his confidence. Then Roy deposited the gravel.

At first there was a mild reaction, then the colt shook his head, dashed up out of the pit

and headed for his mother on the other side of the camp. He took the most direct course, knocking over dinner pails, kicking dirt into men's eyes and causing other animals to break loose. I tell you it was pandemonium!

It took until about four o'clock for the gang to get back to work.

After I had been preaching several years and dad had practically forgotten the incident, I confessed it to him. With all those intervening years for cooling off, he saw the

humor in it and had a good laugh.

I suggest you take my word for it, and don't try it on a modern mule colt.

VOGUE PATTERNS
Mary's Fabrics
Ranger, Texas

SUTTON'S
A-1 Office
Machines
Call 629-1707
Eastland

ARRINGTON FUNERAL HOME

Friendly Personalized Service

301 South Lamar, Eastland, Texas 76448
Area Code 817 - 629-2611

Dear Friend:

Daily we are being approached by people in our community regarding a plan whereby they can make arrangements for themselves and their family before the need arises. Wouldn't you like to know:

1. What a funeral trust is?
2. How a funeral trust plan saves you money?
3. How you can secure the peace of mind of knowing that you, yourself, have arranged every detail without burdening others?

This new concept was devised to relieve families of having to make difficult arrangements, both financial and otherwise, at a time when grief or anxiety might outweigh good judgment or common sense. Your wishes can be fully expressed by filling out an "Emergency Record Booklet", which we feel will become one of the most important documents in your home.

You may receive your copy of an Emergency Record Booklet and complete information about a funeral trust plan by returning the enclosed card in the mail. The returning of this card will in no way obligate you and there is no charge for this service.



Yours very truly,

Eula L. Arrington

P.S. This is not insurance

Mail This Coupon Today!

Postage will be reimbursed.
Plan to eliminate Funeral Bills

NAME _____
NUMBER IN FAMILY _____ AGES _____
ADDRESS _____
CITY _____

THIS IS NOT INSURANCE



perry's
fabrific
FABRIC CENTERS



100% Dacron Polyester
DOUBLE KNITS

Dressmaker Lengths
Completely Machine Washable & Dry
Fantastic Pre-School Special
Assortment of Colors
Value \$3.99

\$1.99 yd.

PERMA PRESS SOLIDS

100% Cotton
Reg. \$1.29
88¢ yd.

POLYESTER CREPE
45" Wide
100% Dacron Polyester
Machine Wash & Dry
Wrinkle Resistant
Reg. \$1.99 **\$1.00** yd.

She'll help you get your money's worth from your electric appliances.

Any time you have questions about the operation and care of an electric appliance, ask one of our home economists. A telephone call will do it. She'll have the answers you need. Or follow through until she gets them for you.

She can help you in other ways, too. With food preparation or freezing. With the planning of your new kitchen. The tips you get from our home economists can help you get all the benefits you expect from

your electric appliances. There's no charge for this service, so don't hesitate to call.

It's the job of every one of us to see that you get the most value from your electric service.

TEXAS **ELECTRIC SERVICE COMPANY**
People power...at your service

