

MAKE EASTLAND
YOUR SHOPPING
CENTER!

Eastland Telegram

UNITED PRESS BRINGS LATE NEWS OF THE WORLD TO TELEGRAM READERS

MAKE EASTLAND
YOUR SHOPPING
CENTER!

VOL. XVI

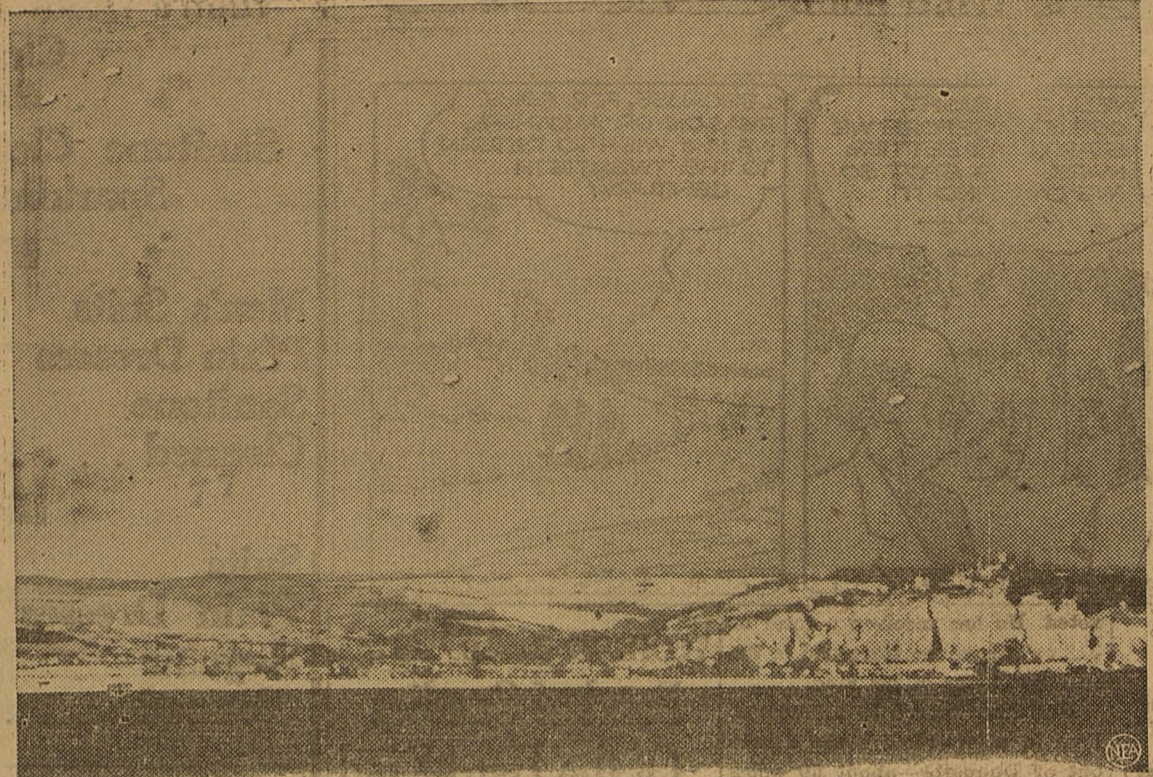
EASTLAND, TEXAS, WEDNESDAY EVENING, APRIL 9, 1941

PRICE 3c DAILY (5c ON SUNDAY)

NO. 112

Germans In Sweeping Successes In Balkans

Germans Say This Is the Dover Balloon Barrage



This picture was taken on French coast about 24 miles from Dover and shows the balloon barrage guarding that city, according to Nazi censor. German photographer assertedly used new camera with large focal length and infra-red plates.

SEN. SHEPPARD DIES SUDDENLY IN WASHINGTON

WASHINGTON, April 9.—Senator Morris Sheppard of Texas, dean of the United States Congress and "father of prohibition" died today in Washington after a brief illness. He was 66 years of age.

President Franklin D. Roosevelt and other national figures called his death a great "national, state and personal loss."

Gov. W. Lee O'Daniel, who must appoint a successor to Sen. Sheppard, until a special election can be held to fill the vacancy, was in Fort Worth today, but declined to discuss any successor. Suggestions included Gov. O'Daniel, Attorney General Gerald Mann, Tom Beauchamp, State Senator Jesse Martin, Carr Collins and many other prominent political figures.

Sen. Sheppard had served in the national congress 33 years, longer than any other living member of either the upper or lower houses.

Program for First Methodist Church

Services for Easter Sunday of the First Methodist Church, according to Rev. Lance Webb, pastor, are as follows:

1. Church School classes at 9:45 a. m. A record attendance expected.
2. Morning Worship at 10:35 o'clock will feature the Dedication of Infants, Easter Anthem under direction of Miss Wilda Druggo; Vocal Solo by Maurice Harkins, "Sheep and Lambs," (Homer); and the pastor's Easter sermon, "Victims or Victors."
3. Evening Worship at 7:30, the concluding service of the Abundant Life Series, will begin with a 15 minute organ prelude of old hymns. There will be special music by the choir and the pastor's sermon, "Where Do We Go from Here?"

The two weeks Abundant Life Services have been fruitful in results within the church as well as in the addition of around 25 new members to date.

On Good Friday evening special music by the men's quartet composed of Willard and John Edward Trimble, Grady Morton, and Eldon Smith will precede the sermon, "When Jesus Came to Eastland," Friday morning at 10:00 o'clock the sermon will be "When God and Man Meet." All are invited to these services.

Recruiting Officer For Army To Be Here Saturday, April 12

Sgt. O. W. Fraser, U. S. Army Recruiting Service, will be in Eastland Saturday, April 12, to interview applicants for enlistment in the United States Army. He may be contacted at the post office on that date between 9:00 a. m. and 5:00 p. m.

Vacancies exist for qualified applicants in the Air Corps at the following places: March Field, Cal.; Randolph Field, Texas; Brooks Field, Texas; San Angelo, Texas; Ft. Sill, Okla.; Lowery Field, Colo., and in the Field Artillery at Ft. Sill, Okla.

Revival Meeting Begins Sunday At Church of Christ

A revival meeting will begin Sunday morning at the Eastland Church of Christ it is announced by Elder A. F. Thurman. Services will be conducted each evening at 7:45. Evangelist Roy Howell of Breckenridge will do the preaching.

Soviet May Move In Balkan Crisis

LONDON, April 9.—Exchange Telegram today reported from Ankara, Turkey, a move by Russia "of surprising nature in connection with German aggression in the Balkans."

Cutters Released To Great Britain By the President

WASHINGTON, April 9.—President Roosevelt authorized release of 10 coastguard cutters to Britain today, it was announced by White House Secretary Stephen Early.

Names of the vessels to be transferred to Britain were not announced, but it was said all are in good condition and are between 10 and 13 years old.

It is believed that the vessels will be manned by British crews and will be used for convoy work near the British Isles.

Women Golfers Of Oil Belt Meet In Ranger Tuesday

The Oil Belt Golf Association met in Ranger Tuesday, with winners being declared in each of the 10 foursome played.

Mrs. H. T. Schooley of Ranger was medalist with a score of 88 and Mrs. K. N. Greer of Cisco was winner of the driving contest. Mrs. Bob Whitman of Breckenridge was winner of the approaching contest.

Winners in the foursome matches were Mrs. H. T. Schooley, Mrs. Gene Yonker, Ranger; Mrs. Brunkenhoffer, Cisco; Mrs. Van Bibber, Ranger; Mrs. Woods, Breckenridge; Mrs. Webster, Breckenridge; Mrs. Bates, Breckenridge; Mrs. Robertson, Philpeco, and Mrs. Dorothea Williams, Ranger.

El Paso Prison Is Leading Others In Food Production

By United Press
LA TUNA, Texas—La Tuna's government-operated farm, 18 miles north of El Paso, a unit of the federal correctional institution, led all other federal prisons in the production of food during 1940, prison reports reveal.

Warden T. B. White, directing officer of the institution, credited the sunny southwest climate and the "well-trained employes" of the farm.

La Tuna produced almost all of the rooty and leafy vegetables the government thinks are necessary for the proper diet of inmates and was the only federal farm to produce a great variety, the reports showed.

The average per capita production of vegetables per day, exclusive of potatoes, was 1.06 pounds.

Chief products raised include alfalfa for the farm's dairy, corn for its hogs, carrots, beets, beans, spinach, and turnips.

The farm employs prison labor only and uses modern farm equipment and tools.

Warden White points out to visitors that at one time the now fertile productive farm was desert wasteland of mesquite, cactus and greasewood.

Army Officers Get Less Mail Than Is Sent To Privates

By United Press
BROWNWOOD, Texas—If you don't like to get letters, just be an army officer.

Main Sergeant Bland T. Harper of the 142nd Infantry said that a survey shows officers get far less personal mail than the lowest private in the regiment. The enlisted men pull an average of better than a letter a day, while only a few officers get three or more letters a week.

But with bills and business letters, it's a different story. There, Sergeant Harper said, officers are "far out in front, and pulling away."

For non-commissioned officers the situation is about the same as for their superiors. Sergeant Harper says he hasn't gotten a letter himself in three weeks.

Joins the Army



Veteran luxury liner, the S. S. Washington, formerly owned by United States Lines, arrives at Brooklyn army base to enter service as a troop transport. Sentry stands guard.

Aviation Training Is Offered by Navy

Forty men from this district are wanted for immediate enlistment to be followed by training at naval aviation schools and flight activities, C. L. Wylie, in charge of the U. S. Navy Recruiting Station, Abilene, Texas, announced today.

These men must be graduates of an aviation, vocational, or aviation trade school or possess experience through previous employment, Wylie said. They must also be between the ages of 17 and 28 and have no dependents.

Those accepted for aviation training will be enlisted in Class V-2, U. S. Navy Reserve, and should expect to be ordered to active training before July 1. Members of the Naval Reserve are not subject to Selective Service.

The regular Navy has a large number of vacancies for men between the ages of 17 and 31 to be enlisted for general service and immediate transfer to the Naval Training Station at San Diego, California, where they will have an opportunity to begin training in one of the 55 trade schools employed in the service, Wylie said.

West Texas Golf Tournament To Be At Sweetwater

The 17th annual West Texas Golf Tournament will get underway at Sweetwater on Thursday, May 15th, with as many flights of 32 each as entries justify, H. M. Rogers, general chairman announced today.

Because of its central location, this year's tournament is expected to draw a large list of entries and prizes will be awarded to medalist, to the winners and runners-up in each flight, and to the winners in each consolation flight, Rogers said.

The Sweetwater course is considered a very sporty course since it crosses the 22-mile shoreline of Lake Sweetwater several times. It is an 18-hole course with grass greens. All cards must be in the hands of the pairing committee by 5:30 p. m. Thursday evening.

The stag dinner is scheduled for 7:30 p. m., Thursday, and the long-driving contest will be held at 5:30 p. m., Friday, Rogers explained.

Ranger Youth Joins United States Army

Charles A. Eyley, 102 Cypress Street, Ranger, has enlisted in the United States Army at Abilene, and has been assigned to the air corps, Mather Field, California, according to word received here from the U. S. Army Recruiting Station at Abilene.

The Abilene Recruiting office has vacancies at this time for the Air Corps in California, Brooks Field, Kelly Field and Randolph Field, the announcement stated.

BALKAN AND BRITISH FORCES ARE IMPERILED BY 72-HOUR DRIVE THROUGH JUGOSLAVIA

CHURCHILL LISTS BATTLE OF ATLANTIC AS MOST IMPORTANT NOW, WITH POSSIBLE INVASION AS A CLOSE SECOND

Germany's southeastern blitzkrieg today swept across Southern Yugoslavia and cut off the Greek arm of Macedonia at Salonika as Prime Minister Winston Churchill told the House of Commons the world was threatened by a Nazi explosion of epic proportions.

In a record-breaking 72-hour campaign the German swastika has been planted on the Aegean Sea at Salonika and Yugoslavia has been truncated, and a grave threat has been directed against the north-south defense line which British Expeditionary Forces corps hoped to hold against the Germans in Greece.

But the Balkan threat was but one of many alarms set off by Hitler.

Supplementary Cotton Program Is Given for '41

Under the 1941 Supplementary Cotton Program, recently announced by the Secretary of Agriculture, farm cotton order stamp payments will be made. These payments will be computed at the rate of 10 cents per pound of the 1941 normal yield established for the farm times the acreage of cotton voluntarily reduced. The acreage reduced will be the amount by which the 1941 planted acreage of cotton is below the smaller of the 1941 allotment or the 1940 measured cotton acreage. If a producer had no cotton planted in 1940 he is not eligible to receive the stamps, although a form will have to be signed on the farm if there is a cotton allotment for 1941.

The cotton order stamp payment to be made to any cotton producer on the farm cannot exceed a value of \$25.00 with respect to any farm \$50.00 in the case of the operator of a farm operated by two or more tenants or sharecroppers. In no event, however, can a producer's cotton order stamp payments with respect to all farms, wherever located, exceed a total number of cotton order stamps representing a value of \$50.00. If the acreage reduced is not sufficient to result in a computed farm payment of \$5.00, no cotton order stamp payment will be made with respect to the farm. Producers eligible to receive cotton order stamp payments will be eligible to receive food and feed production payments. Both the cotton order stamp payments and the food and feed production payments are in addition to, and not in substitution for, any other payments under the programs.

Producers on your farm will not be eligible to participate in cotton order stamp payments and food and feed production payments unless a prescribed form, "Intention to Participate in the 1941 Supplementary Cotton Program" is signed by you as operator of the farm and filed in the county office as soon as possible. This form, indicating your intention to participate in the 1941 Supplementary Cotton Program, should be signed at the time commitment visit your community for the purpose of the 1941 Farm Plan Sheet sign-up.

Those accepted will be enlisted in ratings ranging from hospital apprentice, first class, at \$54.00 per month, to chief pharmacists mate (acting appointment) at \$99.00 per month.

Applicants for enlistment as hospital apprentice, first class, must have experience equivalent to a Junior Red Cross First-Aid course and have a particular desire or liking for Hospital Corps duty. Those who have had experience in minor surgery, equivalent to Red Cross First-Aid courses, or are experienced orderlies in civilian hospitals, or have recently qualified in a medical department technical specialty, may be enlisted as pharmacists mate, third class, at pay \$60.00 per month.

Registered pharmacists, graduate male nurses, graduates in pharmacy, qualified medical technicians and college graduates may be enlisted as pharmacists mate, second class, at \$72.00 per month. Enlistment of pharmacists mates, first class, at \$84.00 per month, and chief pharmacists mates at \$99.00 per month, is limited to qualified men who have had previous naval or military experience. Applicants in all ratings must pass qualifying examinations and should expect a call to active duty very shortly after enlistment recruiting officers said.

Navy Wants Men For Hospital Corps

Thirty-five men are wanted from this district this month for Hospital Corps ratings in the U. S. Naval Reserve and at age limits ranging from 17 to 50 years, recruiting officers at Abilene announced today.

Those accepted will be enlisted in ratings ranging from hospital apprentice, first class, at \$54.00 per month, to chief pharmacists mate (acting appointment) at \$99.00 per month.

Army Recruiter to Visit In Ranger

Sgt. O. G. Booth, U. S. Army Recruiting Service, will be in Ranger on April 12th, to interview applicants for enlistments in the United States Army. He may be contacted at the post office on that date between 9:00 a. m. and 5:00 p. m.

Vacancies exist for qualified applicants in the Air Corps at the following places: March Field, California; Randolph Field, Texas; Brooks Field, Texas; San Angelo, Texas; Ft. Sill, Oklahoma; Lowery Field, Colo. and in the Field Artillery at Ft. Sill, Okla.

Amendment Urges a New State Building

AUSTIN, April 9.—The State Senate today voted to submit a constitutional amendment to the people advocating financing a new state office building.

Improper Use Of Gasoline Causes 30 Texas Deaths

AUSTIN, Tex.—The improper use of gasoline and kerosene has already resulted in 30 Texas deaths in 1941, Marvin Hall, state fire insurance commissioner warned today.

Starting or quickening fire with kerosene alone accounted for 15 of the deaths, while two housewives lost their lives in January and February cleaning clothes with gasoline.

Commissioner Hall pointed out that it is suicidal for any person to attempt to use gasoline in the home for such purposes as: starting or quickening a fire, cleaning clothes, woodwork and floors, or other purposes, since gasoline vaporizes at ordinary temperature and the inflammability of gasoline fumes and its explosive power is nineteen times greater than dynamite. The mere opening of a door between the room where gasoline was being used to clean gloves and a room in which there was a lighted hot water heater caused a destructive explosion.

A further warning was stressed by the state fire insurance commissioner in the use of kerosene, improper use of which in quickening fires caused during the first two months of 1941 the deaths of six Texas children. Mr. Hall said that kerosene was not intended for use to start or quicken a fire and any person who attempts to use it for this purpose is endangering the lives of his family and neighbors. If there are some home owners who will not heed the warning against the danger of using kerosene to start or quicken a fire and just must do so, it is suggested that they place some small pieces of kindling in a metal container and pour a very small quantity of kerosene on the kindling and then take the kindling and place it in the stove or fire place and apply a lighted match to it, but never bring kerosene in contact with a lighted match, open flames or slumbering coals in the stove or fireplace.

Draft To Increase College Attendance At Summer School

WACO, Tex.—Dr. Lorena B. Stretch, director of Baylor University's summer session, predicted today that the draft would increase male attendance at summer schools.

Dr. Stretch said men students are afraid the army will get them before they can finish their schooling.

Special attractions offered by Baylor this summer include a college "stock company" which will carry the drama to smaller Texas towns, a photography course and a conservation course.

Strike Agreement Not Yet Reached

Conciliators emerged today from a late conference with representatives of the Ford Motor Company and the United Automobile Workers of the Congress of Industrial Organizations, without reaching an agreement.

Mud in His Eye



Glory of battle for this German soldier apparently ended in a swamp. Nazi caption said he was preparing for offensives.

Man Drives Car a Mile Down Canal

EL PASO, Tex.—Ricardo Cordova, 42-year-old El Pasoan, drove his automobile down a canal.

It all happened when he was driving to work before daylight. The lights of approaching cars blinded him, and he lost control of his machine.

It swerved across a highway, crashed through a guard rail and steel fence and slid into an irrigation canal bordering the highway.

The car rolled over but landed right-side up and immediately was swept downstream in the canal, with Cordova still at the wheel.

He said he was afraid to get out for fear of being drowned. The car was stopped when it snagged on a bridge spanning the canal.

It took wreckers a full day to get the car out of the canal, one mile from the spot where it entered.

Judge Davenport To Preside at Coleman

Judge Geo. L. Davenport of the 91st district court Thursday will go to Coleman where he will preside over the 35th district court for Judge Newman. He expects to be there only one day.

Friday Judge Davenport will go to Palo Pinto where he will preside over the district court.

25 Million Acres Planted In Crops In State In 1940

COLLEGE STATION—A total of 25,844,000 acres of crops were harvested in Texas in 1940. According to E. A. Miller, Extension agronomist, this exceeded the 1939 acreage by about three per cent, but was about nine per cent below the 1929-1938 ten-year average. Acre yields of all major crops last year, however, exceeded the ten-year average, and in most instances those of 1939.

Cotton harvested in 1940 is estimated at 3,285,000 bales on 8,523,000 acres, with an average of 185 pounds an acre. The acre average in 1939 was 160 pounds on 8,520,000 acres and the ten-year average, 149 pounds. The ten-year harvest average, however, is 3,876,000 bales and the average acreage, 12,584,000. Production exceeded that of 1939 in every district excepting district eight, Miller says, notwithstanding that unfavorable weather shortened production in the northwestern area of the state toward the end of the season.

There were 581 organized cotton groups with 58,144 members and 1,697,737 acres, which received free federal Smith-Doxey cotton classing service, and represented 20 per cent of the total harvested acreage in the state.

The estimated 90,324,000 bushels of corn produced in 1940 is about 23 per cent more than was harvested in 1939, and 20 per cent more than the 1929-1938 average of 75,556,000 bushels. The average yield of 19.5 bushels an acre is substantially in excess of the ten-year average and is attributed to one of the best crops ever grown in the blackland area. Floods in some regions and drought in others prevented the acre average yield from reaching a higher figure.

Wheat production, on a slightly larger acreage than in 1939, but well below the ten-year average, is estimated at 29,355,000 for the ten-year average. Oats, rice, sorghums, especially sweet sorghums for forage, and peanuts showed an increase over the pre-war years with field crops were ceasing year.

During the year, 12,673 demonstrations with field crops were conducted by adults on 363,895 acres, and 4,961 by club boys on 13,293 acres. Miller says that the grand total of increased value of extension work in agronomy in 1940, excepting pastures, was \$8,104,946.15. These figures include premiums on cotton in one variety communities and the value of 879,176 acres of legumes plowed under for soil improvement.

Father of Ranger Woman Dies Today

W. W. Garrett, father of Mrs. H. C. Wilkinson of Ranger, died this afternoon at the home of his daughter.

Funeral arrangements were not immediately made, but services were tentatively set for Thursday afternoon in Ranger.

MASONRY TO MEET

There will be a regular stated meeting of the Eastland Masonic Blue lodge Thursday night opening at 8:00 o'clock.

THE WEATHER

WEST TEXAS—Fair tonight and Thursday, little change in temperature.

PETIT JURY EXCUSSED

The 88th District court petit jury summoned for Wednesday, April 9, has been excused.

EASTLAND TELEGRAM

Published every afternoon (except Thursday, Saturday and Sunday) and every Sunday morning.

Member Advertising Bureau — Texas Daily Press League
Member of United Press Association

NOTICE TO THE PUBLIC

Any erroneous reflections upon the character, standing or reputation of any person, firm or corporation which may appear in the columns of this paper will be gladly corrected upon being brought to the attention of the publisher.

Obituaries, cards of thanks, notices of lodge meetings, etc., are charged for at regular advertising rates which will be furnished upon application.

Entered as second-class matter at the post office at Eastland, Texas, under Act of March 3, 1879.

SUBSCRIPTION RATES

ONE YEAR BY MAIL (In Texas) \$3.00

National Borders and Prison Walls

There are certain things which we in free America can never understand about the totalitarian countries of Europe. One of them is their tendency to make of their national borders a prison wall.

We in the United States find it hard to imagine a condition in which we would not allow anyone to leave the country who wanted to go. Our difficulty is in getting rid of those who keep insisting that it is a terrible country, but who have to be pried out of it with a shoe-horn if it is suggested that they go anywhere else. For those who are dissatisfied, and who think they can better themselves somewhere else, the American way is to say, "O.K! On your way, and good riddance!"

It is not so in Europe today. Russia was the first to draw a tight line around her borders. Why on earth border patrols should have been stationed with leveled rifles to take pot-shots at all who tried so desperately to get away from their own homeland, we do not know, but it happened. All the totalitarian countries set up similar rules. We were accustomed to find situations in which it was hard to get INTO a country, but to find it hard to get OUT of one—that is a product of the last 20 years.

Picture the scene recently enacted at Marseilles. A French ship is ready to sail for Martinique. Aboard are 348 Spaniards, refugees from the savage civil war that recently shook Spain. They are on their way to Mexico and a new life, with valid exit visas and tickets for which they have paid the last cent they could scrape together.

Suddenly police swarm aboard. There has been a new order by the Vichy minister of interior—no Spaniards of military age is to be allowed to leave France. In tears, many of them, the refugees file back down the gang-plank—the mirage of freedom has been snatched away.

Why? Are such men likely ever to be loyal to Vichy? You might think that Hitler would be glad to be rid of man would do such a thing except under compulsion. But them—and such an act is clearly Hitler's act; no Frenchman, they must stay where they are not wanted, and where they do not want to be.

Why? Why? Why? A free mind accustomed to reason might well topple in trying to grasp the answer. We in America can not understand it, and pray God we never shall.

The outcome of the income depends on the outgo for the upkeep.

Cheer up! Your neighbor will bring back your snow shovel one of these days—and borrow your lawn mower. A street car is what there are no seats in when it is coming back from where you are going.

Society Club and Church Notes

BAPTIST ALL-CHURCH MEETING

Tonight at 7 o'clock the First Baptist Church will have all church night at the church. All members cordially invited to attend.

BITS OF NEWS

Mrs. Annie Cook and Mrs. Fred Michael were visitors in Rotan Sunday.

MISSIONARY SOCIETY HAS MEETING

The Missionary Society of the First Christian Church held its regular monthly meeting Monday in the home of Mrs. J. P. Haney. A short business meeting opened the afternoon session which was prefaced with song service and the Lord's Prayer repeated in unison.

Mrs. D. J. Fiensy was program leader. Devotional was brought by Mrs. T. A. Bendy on the subject, "I Will Build My Church." Mrs. N. L. Smitham brought a paper on the topic, "Wuhu."

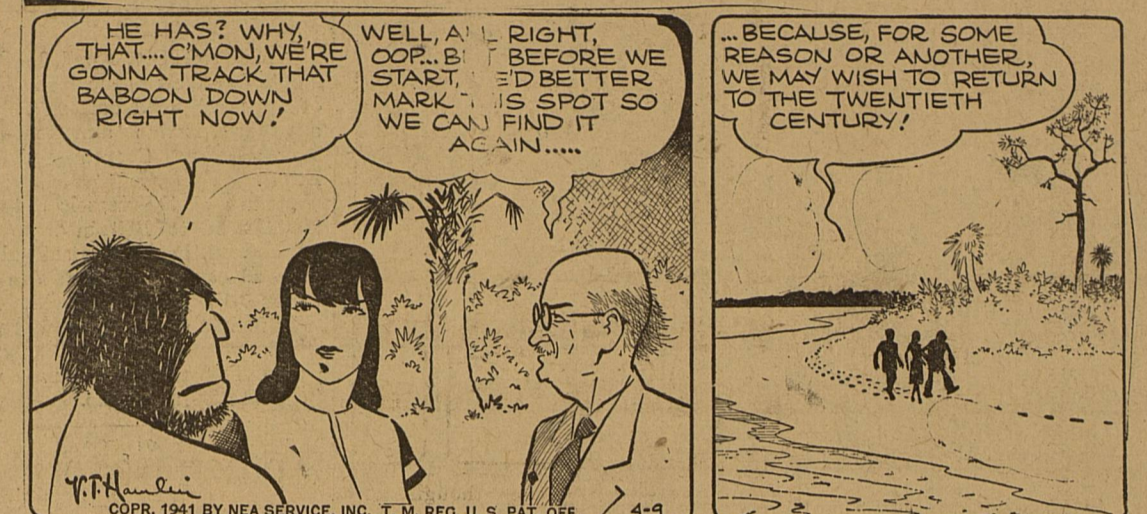
A social hour followed the meeting. Present: Mmes. J. H. Caton, Eugene Day, D. J. Fiensy, J. R. Gilbreath, N. L. Smitham, C. A. Peterson, Sallie Day, Louis Pitzer, J. B. Blank, T. A. Bendy, Bobbie Miller, W. F. Hoag, Pat Ross, W. F. Graham and Mrs. Haney.

Greyhound Lines Add New Run To Schedule Here

Increased activity due to the opening of Camp Wolters in Mineral Wells and Camp Barkeley in Abilene made itself felt again today when officials of Southwestern Greyhound Lines announced that the bus company is adding another daily schedule between Dallas and Sweetwater via here and the two new West Texas Army centers.

In order to space the new schedules for greatest passenger convenience it will be necessary to adjust east and west-bound scheduled operating between here and Abilene, Greyhound officials said, and commuters are urged to check the new departure hours.

ALLEY OOP



Iowa Is Faithful To An Ex-Convict Injured In Prison

By United Press
DES MOINES, Ia.—Nearly 50 years ago Frederick M. Hull and several other prisoners at the Iowa penitentiary were standing on a scaffold when it fell, hurling them 60 feet to a concrete floor. Three were killed. Another grabbed a rope and saved himself. Hull didn't die but he suffered 32 different bone fractures and was unconscious for 21 days. It was two years before he could walk without crutches. Recently the Iowa legislature voted to appropriate Hull a pension of \$30 a month for the next two years—as has been the custom of each legislature for 50 years. Up to 1929 he received \$20 a month, and then the increase was

voted. He has received a total of \$12,600 from the state and is the only pensioner of his kind. Hull has moved to Minnesota, lives in a two-room house a mile out of Duquette—about 50 miles south of Duluth. Today he moves with some difficulty. His jaw is crooked and his old fractures ache when the weather is damp. His left arm often is painful because of a bone infection contracted as a result of the injury. Hull, who had been sentenced to three years for arson, was pardoned after the accident. Now, once a month, he goes to Duquette to give solemn testimony before the keeper of the general store—who is also a notary public—that he is Frederick Milton Hull who fell with the prison scaffold.

The making of gloves and mittens is a \$70,000,000 industry giving employment to 28,900 persons in nearly 400 factories, according to the Census.

Woman at 103 Is Fond of Candies Of the Hard Kind

HAMILTON, Mont.—Mrs. Gertrude Peterson—"Grandma Great" to her great-grandchildren—munched her usual hard candy as she moved on toward her 103rd year of life.

Mrs. Peterson, a native of Norway, once made her home in Oregon but now lives here with her daughter, Mrs. V. O. Blood.

Mrs. Blood said her mother, who continues to eat three meals a day, has consumed a pound of hard candy "every week of her life," and that this may have something to do with her longevity.

The aged woman still eats meat and potatoes but milk has replaced the coffee she once drank six times a day in accordance with Scandinavian custom. She spends her days in bed or in a bedside chair, pulling herself upright by grasping a long cloth strip. About her in her room, Mrs.

Peterson has her pictures and other keepsakes, many of which remind her of her home near Clatskanie, Ore., where she went with her late husband, Elias Peterson, from Norway to take up a homestead. Anybody who says he doesn't love anybody forgets himself.

Look SMART For EASTER

Have All Your Dresses, Coats, Men's Suits and Hats Sanitone Cleaned!

Sanitone Cleaning Makes Them Sparkling and Lovely

Men's Suits Plain Dresses Sanitone Cleaned **75c**

Suits Plain Dresses Regular Cleaned **50c**

MEN'S AND LADIES' **HATS 75c**
CLEANED and BLOCKED on FACTORY MACHINE

IT IS STORAGE TIME

FOR YOUR FURS AND WINTER CLOTHES . . .

The Only Bonded Storage Vault in Eastland County
Fireproof—Burglar Proof—Moth Proof
OUR PRICES ARE VERY REASONABLE

Modern

DRY CLEANERS—DYERS—HATTERS
South Seaman Phone 132 Eastland

COMMERCIAL PLANT

- | | | |
|-----------------------------------|--|--------------------------------------|
| HORIZONTAL | Answer to Previous Puzzle | 17 Butter lump. |
| 1 Plant from which linen is made. | DOCTOR BANTING | 18 Five plus five. |
| 5 It belongs to genus — | MOD ILOCLES INA | 20 The fiber is freed by or rotting. |
| 8 Daub. | LENA DOETS BO | 21 Poet. |
| 12 To soften in temper. | LENTI SE COATS | 22 To harvest. |
| 14 To live again. | DOCTOR S MAR COATS | 24 Its seed is called — |
| 16 Appellation. | BANTING R CONES | 25 One that moistens. |
| 17 House cat. | YR AA REPPED | 26 Controversial. |
| 19 To shut up. | PLY RIND LORD | 28 Wand. |
| 20 Genus of roses. | POA BATTLE TAIL | 29 Before. |
| 21 More degraded. | OO DEMEANOR ICE | 30 Ratite bird. |
| 23 English title. | INSULIN TORONTO | 32 Fish. |
| 25 Daytime performance. | | 33 Indian weight. |
| 27 Vibratory motion. | 50 Enthusiasm. | 34 Unit of work. |
| 31 Ascended. | 51 Cake decorators. | 36 Senior (abbr.) |
| 33 Forms of tores. | 52 Angry. | 37 Therefore. |
| 37 Insect-like animals. | 53 Pertaining to gulls. | 41 Fence stairs. |
| 38 Thoughts. | 55 Its silky bast — is made into linen thread. | 43 Pertaining to air. |
| 39 Stream. | 56 Runs away. | 44 To tattle. |
| 40 Woolen cloth. | VERTICAL | 45 Tardy. |
| 41 Street (abbr.). | 1 France (abbr.). | 47 Roman emperor. |
| 42 End wall of a building. | 2 Cotton fabric. | 48 Journey. |
| 46 Tinged. | 3 Sound of sorrow. | 49 Domestic slave. |
| | 15 Type standard. | 52 Provided. |
| | | 54 Electric unit. |

JEAN NEDRA DRESSES 3.98

- Bright Prints!
- Sweet Colors!

Last minute fashions that look more expensive! Careful details, better price! Fine rayons in breath-fit for this low taking prints and colors, also navy, black. Size 12-44.

JEAN NEDRA HATS 98c

Face-framing new Easter bonnets for women! Sport and dress-up styles in fine straws and felts!

BUY IT AT PENNEY'S IT'S RIGHT!

For Women
New Spring Shades in Gaymode®
Hosiery 79c
Flawlessly perfect from picot tops to toes!
Women's New Jackets 2.98
Women's Spring Dresses 3.98
Women's Sport Skirts 1.98
Women's Clever Gloves 98c
Women's Cotton Kerchiefs 10c

Women's COATS 5.90
Tweeds, fleeces, for sports! Twills, eponages for dress! Many smart styles!
Smartest Suits 9.90
Beautifully tailored models. Fine fabrics!
Women's Spring Coats 7.90
Women's Classic Suits 7.90

For Men
Oxfords 2.98
Long wearing leather soles, rubber taps!
Shirts, Shorts, Briefs . . . 25c
Men's Gaberdine Slacks 4.98

For Girls
Sunday-Best **Dresses 1.98**
She'll look her prettiest for Easter in a charming rayon frock! Prints or plain colors! Sizes 3 to 14.
Jackets 2.98
Sporty plaids, checks, plain colors! Wools or wool-and-rayons!
Quality Straw Hats Beribboned! Bewlow-ered!
Patent Leather Pumps 1.98
Fitted Spring Coats . . . 4.98
Wool Flannel Skirts . . . 1.49
New Dress-Up Blouses . . . 49c
Toddlers' Dresses . . . 98c

Women's Slips 98c
Rayon crepe or satin. Trimmed or tailored types!
Handbags 98c
Brand new to p handle and under-arm bags.
Betty Co-Ed® Hats . . . 1.98
Women's Smart Shoes 2.98
Women's Suit Blouses . . . 98c
Lady-Lyke® Girdles . . . 1.98
Rayon Underwear . . . 49c
Girls' Wool Sweaters . . . 98c
*Reg. U. S. Pat. Off.

APPROVED OUTFITTERS TO THE AMERICAN FAMILY
PENNEY'S
J. C. PENNEY CO., INC.

Late No More!

PIPING HOT BREAKFAST IS READY ON THE DOT!



Modern Gas Range Makes all Cooking Faster, Easier!

You'll thank your lucky stars for buying one of these new easy-to-use gas ranges after you've used it for one meal. For you'll find out that cooking is not slow and a matter of chance but fast, easy and a sure thing! Oven watching is done by the automatic oven control. You'll enjoy a cleaner range, thanks to fewer boil-overs—broiling that's smokeless—and the porcelain finish cleans so easily. And cooking is fast because modern gas burners are high-speed, save minutes every meal, particularly breakfast.

EASIER

... to Operate ... to Keep Clean ... on the Budget

COMMUNITY Natural Gas Co.
LONE STAR GAS SYSTEM

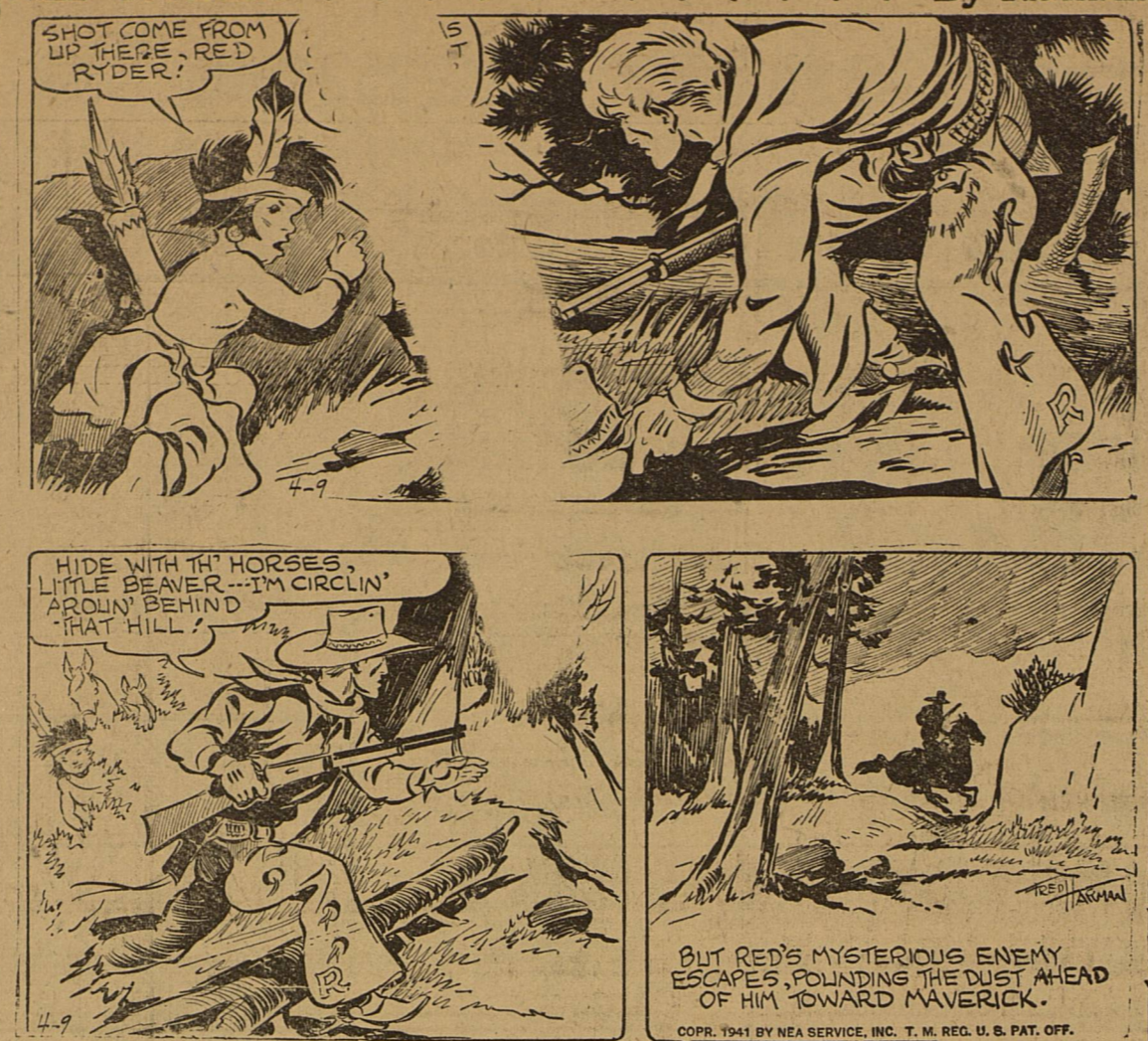
BRITISH PRAISE LINKS WINANT WITH LINCOLN

By WILLIAM DOWNS
United Press Staff Correspondent
LONDON.—Ambassador John G. Winant's biggest job—if press comment is any gage of what Englishmen expect from the new

United States diplomat—will be to live up to the label "typical American."
London newspapers already have described him as "another Abraham Lincoln." One writer predicted that Winant should soon earn the reputation of the "worst dressed man in English public life."
However, the London Times, referring to the recent visits of President Roosevelt's personal envoy, Harry Hopkins, and America's citizen-at-large Wendell L. Willkie, generously admits that there are many types of typical Americans.
"The British public has just had

RED RYDER

By Hamlin



the opportunity of making friends with one typical American, Mr. Wendell Willkie, a Times editorial said. "Mr. Winant is also a typical American though of a completely different type. Americans are no more cut on one pattern than are the people of these islands and Mr. Winant, Mr. Hopkins, and Mr. Willkie, all three outstanding in their generation, illustrate the rich variety of character which makes the greatness of the United States."
The British press was highly complimentary in approving Mr. Roosevelt's choice of ambassador to Britain. The Daily Telegraph outlined its views of the duties of the new ambassador saying:
Like Lord Halifax in Washington, Winant will interpret his own country and that to which he has been sent with the insight of sin-

General Motors Truck engineers have really taken the work and discomfort out of truck driving. GMC Ball-Bearing Steering reduces steering effort as much as 57%. GMC Cradle-Coil Seats are "comfortable as your car." GMC cabs are roomier than ever. Try a GMC today.
Time Payments through our own YMAC Plan at lowest available rates

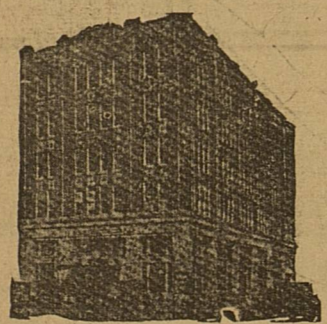
MUIRHEAD MOTOR CO.
314 W. Main Phone 692

AMERICA'S LOW-PRICED TRUCKS OF VALUE **GMC** GASOLINE—DIESEL

LYRIC
NOW PLAYING
ROBERT YOUNG
LORAIN DAY
in
"THE TRIAL
of
MARY DUGAN"

CONDENSED STATEMENT OF CONDITION — of — Eastland National Bank

AS MADE TO THE COMPTROLLER
AT CLOSE OF BUSINESS APRIL 4th, 1941



RESOURCES

LIABILITIES

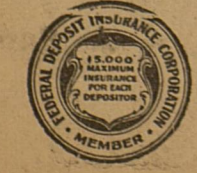
Loans and Discounts	\$279,350.35
Overdrafts	1,432.77
Trade Acceptances	250.00
Stock in Federal Reserve Bank	1,500.00
Banking House	20,000.00
Furniture & Fixtures	5,500.00
Other Real Estate	1,322.00
U. S. Bonds	22,474.66
Other Bonds & Warrants	50,361.79
Federal Deposit Insurance Acct	1.00
CASH & EXCHANGE	219,430.68
	\$601,699.25

Capital Stock—Preferred	\$15,000.00
Capital Stock—Common	35,000.00
Reserve for Retirement	1,950.00
Surplus and Undivided Profits	9,539.51
DEPOSITS	540,209.74
	\$601,699.25

Officers Directors

W. C. CAMPBELL President	W. C. CAMPBELL
ALBERT TAYLOR Vice-President	ALBERT TAYLOR
GUY PARKER Cashier	WALTER MURRAY
RUSSELL HILL Assistant Cashier	MILBURN McCARTY
LAHOMA HATHCOX Assistant Cashier	J. A. BEARD

The Above Statement Is Correct.
GUY PARKER, Cashier.



CLASSIFIED

FOR RENT—Nice clean unfurnished apartment. Modern. Private bath. See outside school hours. Lillie Moon. 311 Madera.
WILL TRADE small house and lot and Dodge sedan for small improved farm near Eastland. Write Box X in care of Eastland Telegram.
FOR RENT—4-room apartment. Entirely modern. See it outside school hours. 311 Madera.
FOR RENT—Furnished modern 3-room apartment. Electric refrigerator. 300 E. Main.
WHO EVER has my camera please return it as we need it. KING-BALL MOTORS.
BARRED Plymouth Rock Hens. All laying, no culls, \$1 each.—R. E. CRAWLEY, 1 mile south Staff.
NEED MONEY? Are your car payments too large? Do you need additional money on your car? Let us try to help you. Frank Lovett, 301 West Commerce. Telephone 19.

Edw. C. Hatcher

Palmer Graduate Chiropractor will be at the Connellee Hotel Thursday where he will advise you regarding your case without any charge or obligation to you.
Office Hours 9 to 12 — 1 to 6

SERIAL STORY DOLLARS TO DOUGHNUTS

BY EDITH ELLINGTON
YESTERDAY: Bee realizes that work has changed her appearance, that Toby and Vera really do not recognize her. But she knows that the happiness she has found in Budget Fashions must end today. She plans to help each of her friends. A man comes to supervise remodeling the department. Anthony tells her that the merchandise manager has stolen their Big Idea, is using it as his own.
BEE DEMANDS A SHOWDOWN
CHAPTER XXVII
"WHAT do you mean, Anthony? I don't understand."
"I didn't understand at first, either!" he said bitterly. "But it's very simple. He laughed me out of his office. You and I worked and dreamed and got the samples together and—after he kicked me out, he stole my idea!"
"But he can't get away with that!"
"Can't he?" Anthony asked hollowly. "You see the men measuring for carpet, don't you? I'm still section manager. Nothing else."
"Miss Dane's been telling me what a wonderful merchandising idea it is, and how he explained it all to her at a special meeting last night. New accessories counters have been ordered. Plans are laid out—but nobody said a word to me. I suppose I ought to be thankful he hasn't fired me!"
The savage anger she had experienced once before in this department came back to Beatrice. "Are you going to stand there and let him do it? If you are, Anthony, I'm not! I worked on those ensembles, too! That's half my idea! That dirty, double-crossing—"
She hadn't known she knew such words, and Anthony hadn't known either, for he stared at her. The shock in his brown face stopped her.
"I'm sorry. I—I have a bad temper. But, Anthony, you can't let him get away with this!" She stamped her foot. "Do something! Go right up to his office now and tell him. Go to Bruce Sheldrake! Come on, I'm going, too."
"I thought of that, but we can't prove anything."
"Yes, we can! We bought those hats and handbags and belts ourselves, didn't we? You signed the slips for those dresses out of stock, didn't you? What's the matter with you?"
ANTHONY picked up a salesbook. He snapped the rubber band. He opened and closed the book.
At last he said, "The fact is, Bee, I'm realizing now what a bad mistake I made. I should have listened to the old man. He wanted me to take a job in a bank. I—I've been thinking I'll go around there at lunch time and tell him I've thrown up the sponge." His lips twisted. "Banks are more ethical than stores, perhaps, and if I get a world-shaking banking idea . . ."
"But, Anthony—you belong here! You're valuable to this store! The very fact that he thought your idea good enough to steal—why, he must be slipping so badly he's got to steal ideas somewhere! If he were any good, if his job were secure, he wouldn't do such things!"
She grabbed his arm. "You're not leaving, you're going right up with me to that crook's office!"
"Bee, if we do that, you'll lose your job. It's all right about me. As I told you, I—I have a chance at something else."
He looked down at her, miserably. "I didn't want to use any influence I might have—I mean, the influence of friends. . . I've always thought pull was a shabby way to get ahead. But now that I have you, I—I've got to make more money. And I'll do anything to get a better job. But it'll take time. And meanwhile, if you lose your job—"
"The devil with my job. Anthony, come up there with me this minute!"
She dragged him to the elevator.
"I think you should be ashamed of yourself, not standing up for your rights! Where's your pride, Anthony? That merchandise manager has stolen from you. And you'd take it! You'd walk out and let him get the credit for something you worked hard to create!"
The elevator operator turned around and stared. Beatrice paid no attention.
ON the sixth floor, Anthony drew Beatrice into the corner near the fire exit. His face was very sober. He put his hands on her shoulders, looked squarely into her eyes.
"I don't want you to do this just for me, Bee," he said. "I'm all for it, and I'm mad clear through, and I can get another job anyway. But—it'll make trouble for you. Are you sure you want to?"
"Of course, I'm sure!" She patted his lean cheek. "Don't worry about me. I can take care of myself. You'd better start worrying about that merchandising manager. I'm going to kill him!"
"Bee, listen." His arms tight-

A New Shopping Center Comes To Eastland!

Be Sure to Attend the Opening - Thursday, 8. a. m. - Buy Your Easter Apparel at

GET THE HABIT QUICKLY . . . YOU WILL ENJOY SHOPPING AT—

OPENING SPECIAL

100 REGULAR 1.00 WASH FROCKS
Print Cloths and Sheers . . . all guaranteed
Color Fast—CHOICE

67c

ALTMAN'S

NEW STORE for MEN'S and WOMEN'S WEAR!

OPENING SPECIAL

100 CHILDREN'S DRESSES
Regular 1.00 and 1.25 Values
77c

Regular 1.98 to 2.98 Values
1.57

An Altman's Feature!
Beautiful New

EASTER SLIPS

1.00

and

1.98

Lovely crepe slips with wide hem of lace and chiffon and with ribbon and lace tops! In petal pink and white. Lovely—but practical too, because these are shrink-proof, seam-proof, strain-proof, and sag-proof. Size 32 to 40.



This Easter . . . and from now on—

It's ALTMAN'S for Silk Hosiery!

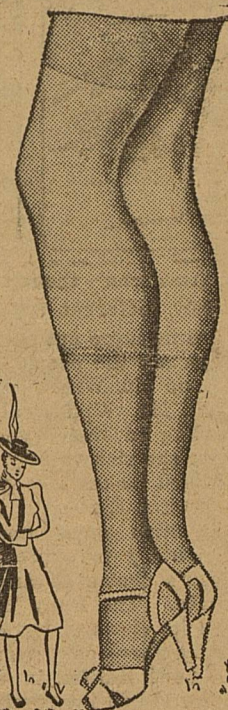
THURSDAY, 100 PAIRS

2-Thread Silk Chiffon Hose; New Spring Colors in Lovely Sheer, Serviceable Stockings.

47c pair

Nylon STOCKINGS, 1.35 and 1.50

We feature Complete Lines of Ladies' Hosiery from Anklelets at **15c, 19c** and **25c** to Silk Hose at **39c, 79c, 1.00, 1.25, 1.35** and **1.50**.



Look at these beautiful Spring Styles

Paris Fashion
FIFTH AVENUE STYLES

Seen in PHOTOPLAY-MOVIE MIRROR, SCREEN GUIDE, McCALL'S, Other Leading Magazines!

\$2.99
Casuals! and Patents! **\$3.95**
Blues! Beiges!

Thrilling, isn't it, to see so many stunning shoes at once . . . and these are only a few of the styles we have waiting for you here! SPECTATORS! SANDALS! BOW PUMPS! SLIP-ON PUMPS! OXFORDS! High to low heels! Before you choose spring shoes, come see these! All sizes..Widths AAA to C.

Ferguson SHOES
OTH A PEEPLES Manager

COSTUME JEWELRY SPECIAL

Regular 1.00 Values!
Brand New Fashion Pieces Just Unpacked!

77c

59c JEWELRY SPECIAL

47c

See Our Group of Smart DRESSES at **1.98** and **2.95**

SKIRTS and BLOUSES

Are in high favor with young moderns. See our collections at—

1.00 - 1.98 - 2.95

FOR YOUR EASTER

HERE ARE YOUR EASTER COATS

9.95

Want a new coat for Spring and Easter? Then choose from this grand variety! Here are boxy and fitted styles in darks and light colors. Sizes for misses and women.

Other Easter Coats and Suits **\$7.95** and up



—And Your New EASTER DRESSES

6.95

Your Easter dress is here! Jackets . . . Redingotes . . . dressy styles . . . all are included! Choose from crepes, sheers or chiffons in darks, pastels or gay prints. Sizes 10 to 20 and 38 to 46.

Others **3.95** to **22.50**



A GALAXY OF HIGH FASHION HANDBAGS

1.00 and 1.98

Black Patent, Beige Calf, Navy, White, Red. Altman's is known for the wide range of styles in quality hand bags at these popular prices!

We Want You Men and Young Men to Visit our Men's Department!

SHIRTS

IN SPRING COLORS TO HARMONIZE WITH YOUR NEW EASTER SUITS!



New Shirts just in time for and to get ready for Summer! Compare them **98c** 1.35 to 1.50 values

Men's Brownbilt Oxfords **2.95** and **3.95**

From our Millinery Department The Smartest Hats in Town at

1.95

Choose from dozens and dozens of new styles in straws and felts . . . black, navy, white, red, pastels.

Other Ladies' Hats . . . **1.00** to **4.95**



HERE ARE MORE EASTER VALUES for MEN:

- Men's Sox, New Lastex Top Styles, values to 35c . . . **19c** pr.
- Men's Easter Hats, Rothschild Mirakel Felt Hats That are Moth-Proof and Water-Proof **2.95**
- Men's Hanes Athletic Shirts and Shorts, 35c Value . . . **25c**

ALTMAN'S

Men's and Women's Wear North Side Square Eastland