

Your Letter Needed to Save Peanut Economy

You hold the basic economy of Eastland County in the palm of your hand.

Your writing hand. The county's basic peanut economy may depend on whether you take the little bit of time, and the little bit of effort to express your views to key government officials.

As it stands, it's pretty bleak. Your personal letter - added to thousands more like it - could change the tide.

Your response should be simple and in your own words. What words?

An objection to the administrative changes proposed by Secretary of Agriculture Butz is highly in order.

Citizens of the peanut-growing areas must ask that these changes be rescinded - or see the peanut economy crater.

The Secretary has said that his proposed changes would result in some \$6.6 million savings to the USDA. There is absolutely no way of knowing how much the financial loss would be to the peanut-growing areas and associated economy if the changes are implemented.

Russell Barton Buried Wednesday Joplin, Mo.

Russell Barton, 63, of Joplin, Missouri, and formerly of Eastland, passed away at 6:15 a.m. Monday in Joplin following a long illness.

Mr. Barton was born January 15, 1910, in Lingleville, Texas. He was a retired construction explosive superintendent with the Tecon Corporation of Dallas, Texas. He had been a resident of Joplin since 1967, moving there from Eastland.

Mr. Barton was a member of the Harmony Heights Baptist Church, Fellowship Lodge No. 345, AF & AM, Jasper Council No. 30 R & S.M. He was also a member of the Ascension Commandary No. 39, K.T., and Joplin Chapter of Royal Arc Mason No. 91. He belonged to the Abou Ben Adhem Temple Shrine in Springfield.

Survivors include his wife, Mrs. Ruby Barton; one son, Ron of Webb City, Missouri; three brothers, Virgil Barton, Sexton Creek, Ky., Edward Barton, Hobbs, N.M., and Jack Barton, League City, Texas; three sisters, Mrs. Della Humphrey, Dallas, Mrs. Bill McCoy, Cisco; and Mrs. Georgia Franklin, Dallas; and one granddaughter.

Services were held at 2 p.m. Wednesday at the Johnson-Simpson Chapel in Webb City, Missouri, with the Gerald Jeffries officiating. Burial was in the Mount Hope Cemetery.

Lowell Snyder, 1st Employee, Retires

Lowell Snyder, who was the first person employed by Victor Cornelius, and whose date of first employment goes back fifty years, was honored Thursday at a luncheon marking his retirement.

The party was held in the Cornelius plant, with fellow employees bringing favorite dishes.

A gift bonus was presented to Snyder by Cornelius, who recalled the days in 1923 when Snyder, then a high school student, first began working for him.

After Snyder had worked for a time distributing circulars,

FULLEN MOTOR CO. Laugh A Day

A draftee claimed exemption on the grounds of poor eyesight, and he brought along his wife to prove it.

Personal letters to Sec. Butz, Sen. John Tower, Sen. Lloyd Benson, Cong. Omar Burlison, Cong. Bob Pogue, Sen. Herman

Here To Talk

Attending the Friday noon meeting in Eastland were: Charles B. Bradberry, Carbon Farm Store, Carbon, T.C. Granberry, Dublin Nat'l Bank, Dublin, Lee White, Farmer, Dublin, W.D. Raley, Dublin Chamber C., Dublin

Dan Harris, Citizens Nat'l a Bank, Brownwood Finis Butler, Southwest State Bank, Brownwood, W.J. Hannaford, Callahan Shackelford Farm, Clyde Ray A. Norris, Eastland Farm Bureau, Eastland Jack Cozart, Eastland Co. Farm Bureau, Cisco Buddy Aaron, Eastland Co. Farm Bureau, Eastland, Chester Martin, Erath Co. Farm Bureau, Hico T.O. Friday, Desdemona T.H. Birdsong, Birdsong Peanut, Gorman Wayne Eaves, Tex Peanuts Prod. Board, Gorman Bob Green, S.W.P.G.A., Gorman Larry Meyer, Sen. Benton office

A.H. Linne, Erath Co. Farm Bureau, Dublin Joe Morgan, Comanche Co. Farmers Union, DeLeon Paul Hickie, Bank, Stephenville Lee Star, Farmers Union, Cisco

Lee D. Woolley, Bank, Cisco John McDaniel, West Tex. Utilities, Cisco Jerry Pruitt, Bank, Cisco Gene Abbott, Cisco Tom Dunn, Cisco Jerry Greer, Ranger Doug Ford, St. Bank, Clyde J.T. Carter, Eastland C of C, Eastland

Mike Collins, ENB, Eastland Boyd Anthe, Bank, Comanche Jerry Vine, Bank, Comanche Charles Duran, Bank, Gorman Bob Carother, Bank, Stephenville

J.L. Files, Farmer, Stephenville Keith White, Birdsong Peanut, Gorman H.T. Wilson, Bank, Eastland W.G. Kirk, Bank, Brownwood Tom Kelly, Bank, Brownwood

Fred Goll, Bank, G Tom Andry, C of C, Breckenridge Tom Locke, C of C, DeLeon J.T. Wright, C of C, Eastland James Chamber, Bank, Stephenville John Morehead, Stephenville H.V. O'Brien, Eastland Eugene Drake, Gorman Joe Brown, Gorman

Talmidge, Gov. Dolph Briscoe and any others will help.

Seven letters at the most: maybe even a post card would do. But it must be signed with your name, which carries weight.

Never has a letter writing campaign been so important. What to say?

This could be an example; put into words of your own: "I object to the administrative changes proposed for the peanut program. I strongly insist that attention be given to guidelines laid out by industry representatives and peanut raisers."

No one is exempt from the effects of the situation: merchant, housewife, rancher, the man on the street. It could be you and me.

Agriculture Secretary Butz dealt peanut growers a series of severe blows in his decision to make six administrative changes in the 1974 peanut program. These changes involve administration of the peanut price support program and involved no action on the part of the Congress. In an apparent effort to wreck the present program Butz's program adjustments are expected to increase program costs substantially in spite of the fact that the Secretary stated in his October 24 Washington Press Conference that he estimated program costs to be reduced to \$6.6 million as a result of the changes.

Butz's plan to shift the field and supervisory functions from the three area growers associations to state and county ASCS offices is expected to result in substantial cost increases as well as removing the degree of independence that peanut growers enjoy presently through the associations. The associations (Southwestern Peanut Growers Association for the Southwest) also serve the growers effectively as a bargaining tool for growers with buyers and other trade agencies. Our southwestern association also is the organization that serves growers through legislative, research, education and marketing activities.

The proposal of USDA to revise the CCC sales policy for its peanut stocks to provide a minimum resale level of 115 percent of the loan rate on both domestic and diversion sales will in all likelihood result in exorbitant costs to CCC. Presently CCC stocks are moving into the export market and domestic oil market at prices somewhat below the domestic edible price level. Export and oil markets have traditionally been at levels less than the domestic edible

Volume No. 104 Number 88

EASTLAND TELEGRAM

EASTLAND, TEXAS 76448: Today's CENTER for tomorrow's FUTURE!

Sunday, November 4, 1973

TALKING RURAL DEVELOPMENT



Governor Dolph Briscoe (right) confers with Congressman Bob Poage at the recent Governor's Conference on Rural Development.

market price which is based on the CCC loan rate. To arbitrarily place a minimum of 115 percent of the CCC loan rate on such stocks will in effect lock those stocks in warehouses at CCC expense. After a period of months these peanuts deteriorate in quality and become subject to rancidity, attacks by insects, rodents and loss of value for both food and crushing usage. This change appears to be a willful effort to totally wreck the present program by a planned escalation of program costs. Additionally, this policy is directly opposite to the direction of increased exportation of peanuts that industry has been encouraged by USDA to pursue.

The decision to eliminate transfers by lease and sale of acreage allotments will work severe hardships on elderly land holders, widows and others who had made plans to lease their allotments. It will result in reduced income to persons who through prior action of Congress planned to lease their allotments. The elimination of all tolerance in plantings of farm allotments may result in heavy marketing quota penalties against many farmers who made slight, insignificant and honest errors in calculating planted acreage. This change removes all reason and logic in traditional methods of determining farmers

continued inside

Mrs. Stella Jarrett Buried Saturday

Mrs. Stella B. Jarrett, 77, a retired postmaster of Olden, died at 4:30 a.m. Thursday in a Lubbock hospital after a long illness. Funeral was at 10 a.m. Saturday at Bakker Funeral Chapel. The Rev. Dean Franklin of Burlison officiated. Graveside services were at 2 p.m. Saturday in Valley Mills Cemetery.

Born Feb. 5, 1896, in Valley Mills, she married J.C. Jarrett in 1917 in Valley Mills. She came to Olden in 1924.

Mrs. Jarrett was postmaster at Olden from 1933 to 1966. She was a member of the First United Methodist Church of Olden.

Survivors are two sons, John H. of Eastland and James E. of Lubbock; one brother, Henry J. Gibbs Jr. of Waco; four sisters, Mrs. J.G. Simms of Valley Mills, Mrs. George Briggs of Barstow, Mrs. L.J. Wilkins of Lafayette, La., and Mrs. J.C. Cawthorn of Valley Mills; three grandsons; and three great-grandchildren. Pallbearers were Jim Everett, E.H. Everett, Milton Fullen, L.J. Williamson, Tommy Edwards, and Raymond Beck.

LODGE NOTES

The O.E.S. will have their regular meeting, Tuesday, Nov. 6, at 7:30 p.m.

Tuesday Is Election Day

Tuesday, Nov. 6, is General Election Day - but you'd hardly know it judging from the lack of hub-bub surrounding this one.

Polls open at 8 a.m. at eight voting precincts in Eastland County and close at 7 p.m.

Voters will mark "for" or "against" on nine Constitutional Amendment propositions - and in view of the Constitutional Rewriting program that's now underway, the march to the polls on this one will probably be less than brisk.

However, the nine proposals are labeled: Annual Sessions, Pay Raises; Homestead Protection For Single Adults; Homestead Exemption For Single Adults; Rules to Create Conservation Dist.; Coastal Counties Sea Wall Bonds; District Courts Jurisdiction; Veterans Land Fund Increase; Broadening Ad Valorem Tax; and Water Storage Tax Exemption.

W.J. Stone will be election judge at the Eastland voting site on the first floor, east end, of the Courthouse.

TURKEY DINNER SET

A turkey dinner will be served at the First United Methodist Church in Eastland on Wednesday, Nov. 7th. Serving will begin at 11 a.m. and continue till 1:30 p.m. Those wishing "take-out" lunches are asked to pick them up by 12 noon. A bake sale will be held and a few Bazaar items will be available. The price is two dollars and every one is invited to come "eat turkey with friends."

Mavericks Lose To Loboes, 54-7

The track was dry and cold as the undefeated Cisco Loboes kept their record clean - and probably set the stage for the District 9 - AA crown - in running away with a 54-7 win over the Eastland Mavericks in Maverick Stadium Friday night.

The visitors called the shots all night and Coach Jim Puryear's big, fast Loboes turned in near-perfect performances to claim the victory over their neighbors. It won for Cisco the mythical county title and paved the way for Cisco's duel in two weeks with Comanche where the conference title probably will be cinched.

The Mavericks, crippled from their encounter session last week with the Comanche Indians, just couldn't put it together.

The packed Maverick Stadium leaned heaviest toward the east as the brisk autumn evening wore on. (Most Cisco and Eastland fans had pancaked earlier at the Lions Club feed, but coffee and chocolate were brisk sellers at the game.)

Cisco, remembering earlier games of recent years, roared as Lobo Kelly Kent took the opening Maverick kick and went all the way back to preview the evening ahead.

Kent ripped for six touchdowns and chipped in with a two-point conversion as he led the Loboes. He galloped 58 yards with 13 seconds left for his 19th TD of the season. He has 120 points.

The sophomore went into the game with 830 yards on 82 carries and he didn't hurt his 10 yard average per carry much as he picked up 188 yards on 21 carries.

The Loboes, in winning their eighth straight game of the season without a loss, ripped the Eastland defense for 432 yards as halfback Jimmy Kanady picked up 140 yards for the other two touchdowns.

Quarterback Ronnie Powelson and fullback Billy Gary combined for 103 yards. The Cisco defense was laying for Eastland's Tony Thomas and the 190 pound fullback

wound up with 88 of test with 852 yards.

A fumble recovery by Bobby Pence at the Eastland 34 set up Cisco's second touchdown, Kent reeling off a 24 yard gallop to the one the big gainer. He scored on the next play to make it 13-0 with 6:44 left in the first quarter.

The Mavericks stayed within striking distance by marching 66 yards eight plays for their only score. The fullback pass, Tom Morren to end D.W. Robertson, gained 37 yards and quarterback Gary Wheat got the six points when he faked to Thomas and ran around right end from six yards out. But the Loboes came right back and to move 71 yards to build the margin back to two touchdowns, the big play a fourth and nine situation run where Kent gained 15 to the Eastland 23. Powelson ran to the eight and Kanady plowed up the middle for the score.

Kent's other touchdowns came on runs of 2, 12, 1, and 58 while Kanady rambled 12 for his third quarter score.

Eastland had one other major threat, moving to the Cisco 23 in the second quarter, but Powelson intercepted a pass in the end zone.

The Loboes didn't offer much of a passing attack, but they really didn't need it. They had gained possession of the ball once on the Eastland 12 (Kent recovered a fumble) but a pass interception killed that threat.

Kent was also outstanding on defense and on two occasions when the game was still close, he came from nowhere to close up what looked like a big hole and cut down Thomas after short gains both times. It appeared he might go as far as he wanted to, but Kent had other ideas.

Cisco 13 15 7 19-54
Eastland 7 0 0 0-7

FREYSLAG Insurance WEATHER REPCRT

Cloudy And Cooler



Lowell Snyder receives retirement bonus from Victor Cornelius. Thursday at noon luncheon in his honor. Mrs. Cornelius stands beside her husband.

See You In Eastland For Dollar Day Monday

TELEGRAM CLASSIFIED ADS Telephone 629-1707

H.V. O'BRIEN, Publisher and Editor
 Second Class Postage paid at Eastland Texas under Act of Congress on March 1670.
 Published semi-weekly - Thursdays and Sundays by Eastland County Newspapers, Inc.
 SUBSCRIPTION RATES: By carrier in city, 15 c a week or 65 c a month; one year by mail in county, \$6; city P.O. Boxes, \$6; one year elsewhere in state, \$7; out of state, \$8.
 Sunday, November 4, 1973

NOTICE: Any erroneous reflection upon the character, standing, or reputation of any person, firm or corporation which may appear in the columns of this newspaper will be gladly corrected upon being brought to the attention of the editor.

FOR SALE

FOR SALE IN RANGER - Almost new 3 bedroom, 1 1/2 bath, brick home. Pay equity and assume payments of \$112 monthly, including taxes and insurance. Citizens Realty 629-8048 or 629-8082. t-f

FOR SALE: Beautiful, well-built, ideally located two bedroom family home in Eastland with central heating and air conditioning, area rugs and draperies. Attached garage and beautifully landscaped, good sized lot. Call 629-2442 for information and appointment to see. t-f

FOR SALE IN CISCO - 3 bedroom, 2 bath brick home, large fence, corner lot. House is fully carpeted and has 2 car garage. Excellent location near shopping and school. Citizens Realty 629-8048 or 629-8082. t-f

FOR SALE - 3000 to 5000 bales peanut hay \$1.00 per bale in the field. Call Sam Beggs, 629-1514 after 5:30. t-f

FOR SALE IN EASTLAND - large frame home, 3 bedroom. Completely remodeled inside. Good location. Citizens Realty 629-8048 or 629-8082. t-f

FOR SALE - 2 four bedroom houses and 1 four room house. See Ben Hammer at 309 S. Lamar. t-f

FOR SALE - Extra nice 14' x 70' Ramada Mobil Home. 2 bedroom, carpet, central air and heat, unfurnished. Call 629-2766, Vernon Mahan. t-f

FOR SALE IN EASTLAND - almost new large 3 bedroom, 2 story home. This house equipped with central heat and air, dishwasher, built-in range. Located on 1 acre lot with good view. Can be purchased by paying equity and assuming 7 percent loan or new loan with 5 percent down. Citizens Realty 629-8048 or 629-8082. t-f

FABRIC SHOP - 1208 W. Main 629-1001 Open 9-5 Closed on Fridays starting Aug. 3. The best bargains in town are found here. t-f

FOR SALE IN EASTLAND - almost new large 3 bedroom, 2 story home. This house equipped with central heat and air, dishwasher, built-in range. Located on 1 acre lot with good view. Can be purchased by paying equity and assuming 7 percent loan or new loan with 5 percent down. Citizens Realty 629-8048 or 629-8082. t-f

FOR SALE - Completely remodeled 3 bedroom, 1 1/2 bath home. Carpeted throughout, gas air and heating. Located one mile out of Ranger on Breckenridge Hwy. Has 4 acres of land with fruit and pecan trees. For more information call 647-1833. t-f

FOR SALE - Registered Angus and Hereford bulls, 14-18 months. Call W.P. Watkins, 647-1112 or 647-3454, Ranger. t-f

FOR SALE - Good paint mare. Call 629-1077 or 629-1446. t-f

FOR SALE

FOR SALE - USED AND REPOSSESSED Kirby vacuum cleaners. Call Mrs. Johnnie Honea at 629-2072

FOR SALE IN RANGER - Almost new 3 bedroom, 1 1/2 bath, brick home. Pay equity and assume payments of \$112 monthly, including taxes and insurance. Citizens Realty 629-8048 or 629-8082. t-f

BUSINESS OPPORTUNITY - Profitable small grocery with beer. Main highway; 25 years in same location. Good lease or will sell building. Retiring. Tel. 817-559-5664 or write Park-In Grocery, Breckenridge, Texas 76024. t-x2

MISC. FOR SALE - SOUP'S on the rug that is, so clean the spot with Blue Lustre. Rent electric shampooer \$1. Perry Brothers. t-88

FOR SALE - 1973 Chevrolet Cheyenne 1/2 ton pickup, air conditioned, V-8, power steering, automatic transmission. Call Gorman 734-5872. t-88

FOR SALE - 1962 International Scout pickup, 4 wheel drive, 4 cylinder, 3 speed transmission, electric wench, 5 new mud and snow tires. Call Gorman 734-5872. t-88

FOR SALE - Willis Jeep, 4 wheel drive, P.T.O. Jeep, new paint, factory metal top. Camper top completely finished for wide long bed. Call Gorman 734-5872. t-88

FOR SALE - One 8 x 20 Flatbed gooseneck. 7 acres land in Humbletown. Call 442-1912, Cisco.

GARAGE SALE - sponsored by Zeta Pi - Saturday morning Nov. 10 beginning at 8:00. 611 Patterson. Clothes, toys, glassware. Lots of bargains! t-89

FOR SALE - EXCELLENT, efficient, economical, Blue Lustre carpet cleaner. Rent electric shampooer \$1. Coats Furniture. t-88

FOR SALE - 1964 Ford pickup. Good condition. Also 1964 Nova, 327 engine, 2 door hard top, floor shift. Good condition. Call 629-2068. t-89

FOR SALE - 1969 Chevelle, V8, 4 speed, air and radio, 2 new tires. In good condition. Call 639-2341. t-90

FOR SALE - Registered Angus and Hereford bulls, 14-18 months. Call W.P. Watkins, 647-1112 or 647-3454, Ranger. t-f

FOR SALE - Good paint mare. Call 629-1077 or 629-1446. t-f

FOR SALE

FOR SALE - Singer Sewing Machine in Walnut cabinet, \$51.10. We also clean, oil, and adjust all makes and models. Call 629-2920 in Eastland or 442-3283 in Cisco. t-96

PAINTING - Brush or Spray Acoustic Ceilings Free Estimates Call Harold Pippen 442-1585, Cisco.

FOR SALE - 100' x 500' lake lot. Equipped with cesspool and cabin. Ready for immediate use by trailer house. Beautiful yard with lots live oak trees. Two water pumps and new well house. Deeded land. Call 629-1621. t-88

FOR SALE - Extra nice 14' x 70x Ramada Mobile Home. 2 bedroom, carpet, central air and heat, unfurnished. Call 629-2766, Vernon Mahan. t-f

FOR SALE - 1961 Chevrolet Pickup. Good condition. Cheap. J.L. Ward, 515 S. Green, 629-1317. t-94

RITA'S FASHIONS - Dollar Day Sale. one table - 1/2 price - one day only, Monday, Nov. 5. Interstate 20 next to Ramada Inn. x1

REAL ESTATE

HOMES - 2 Bedroom home, 2 bath, central heat with garage apartment. 2 small houses east Sadosa. Good Rent property. - \$5,500. 2 Bedroom home carpeted, good shape. West Main Street. \$9,000. 2 Bedroom Home S. Bassett Street corner lot \$4,750.00. Small house, big lot. Foxworth Street \$4,750.00. 3 Bedroom, 1 bath. Good location. S. Connellee Street \$7,350.00. 2 Bedroom 1 bath, paneled, fireplace. S. Bassett Street. \$11,000. 2 Bedroom 1 bath, city water, fruit trees. Olden. \$7,875.00. 4 Bedroom home, carpeted, city water, with 1 acre north of Eastland. \$14,750. 1 1/2 acres - 3 Bedroom 2 bath, carpeted and paneled, central heat, city water, 2 wells, pecan and fruit trees. \$21,000. 2 acres with 4 room house, city water, well, near Olden on I-20 with shop building. \$15,000. 3 bedroom 2 bath brick home with built-in ins, central heat and air. \$17,850. 5 Bedroom 2 bath with fireplace, large corner lot on Oak Street \$18,000. Nice lake home and boat dock. Good water frontage, Lake Leon. Business building with living quarters. Morton Valley \$5,000.

FARMS & RANCHES - 45 Acres house and barn, 30 acres of coastal. Some pecan trees, city water. Near Eastland. 86 Acres 1 mile south of Ranger. 40 acres cultivation, old house, fair barn, good fences, city water \$31,500. 160 acres. 34 acres peanut allotment, net fences. Owner financed. 160 Acres 2 bedroom house, good corrals and barns, on pavement, good fences, small lake. 150 Acres with 130 acres of coastal south of Eastland. 344 Acres with home and good barns, city water, 1 mile of Leon River, near Eastland. 480 Acres house and barn on pavement, 300 acres of coastal irrigated, good fences. 627 acres Eastland County. Some cultivation, some peanut allotment, good fences. 865 Acres near Cross Plains, deer and turkey terms. 916 Acres, 400 acres of coastal near Eastland. Have Large Tracts. Listings Appreciated.

TERRELL REAL ESTATE - OFFICE PHONE 629-1725 FARM BUREAU BLDG. HIWAY 80 EAST EASTLAND, TEXAS. RODGER TERRELL Home Phone 629-2896 M.L. TERRELL Home Phone 629-2443 Eastland, Texas

Wanted

WANTED: Texas Veteran wants to buy few acres. Call 629-1707. t-f

Retired man wants part time work. Route 2, Cisco. Box 64A.

WANTED - 3 - 11 LVN, 11 - 7 nurses aides, and cooks. Excellent working conditions, salary, and fringe benefits. Apply in person to Eastland Manor or Valley View Lodge. t-f

CERAMIC TILE WORK - Residential, tubs, showers, floors. Repair jobs welcome. Call 629-1842

WANTED - Experienced or inexperienced cutter and helper for night shift. Apply at Boss Manufacturing, Cisco, Texas 442-1110.

HELP WANTED - Trainer to work with vocationally handicapped students. If interested, call 629-1747. t-88

HELP WANTED - METAL WORKERS AND FABRICATORS - Immediate need for welders, fitters, and trainees at our fabricating plant located in Cisco. We are in International non-defense co. and top qualified candidates we offer long term employment, inside work, company paid group insurance, personal pay increases, 7 paid holidays and 2 weeks paid vacation. New higher wage scale. Apply in person Mon - Fri. 9 a.m. to 4 p.m. Burgess Industry, 10th at Ave. D., Cisco. Equal Opportunity Employer. t-88

FOR SALE - together or separately - 630 Case diesel tractor, case s/wather, John Deere Baler, Kramer loader; '69 Dodge truck with 24 ft. bed. All reasonable. M.C. (Sonny) Carroll, Desdemona, 758-2529. t-92

REWARD OFFERED! - Monday, possibly near B&W Clinic or Dr. Treadwell's Clinic a CJC LVN pin with initials "ELH" on back was lost. Blue and gold. About the size of a nickel. If found, call 629-1779 or 734-5735. t-f

HELP WANTED - Job shop and lease welder. We have good equipment. Call collect Alva Lee, Lamesa, Texas. Home phone 806-872-5645.

NOTICES

THIS WEEK'S SPECIAL - (2) 69 White Cabovers, 318 Detroit, 15 spd. & SQHD Tandem, Power Steering, Good Tires, & Paint, Runs & looks good. Was \$9875. Your Choice \$8450. 64 White Freightliner, Twin Screw, Looks & Runs Very Good. \$3875. 67 Cabover White, 180 Cummins, 5 & 2 spd. New Paint & Very Nice. \$2875. 69 N850 Ford, 250 Cummins, 10 spd. R.R. Twin Screw, New Paint. We don't believe you can find a better truck than this is \$9500. 12 other Cabovers from \$2100 & up. 6 Other Conv. Cabs. 6 Winch Trucks \$1650 & Up. 2 Used 40' Floats \$2500 & Up. 3 New 40' Fontaine Floats. 1 New 33 Ton Tandem Fontaine Lobby. Other Used Van, & Float, Grain, & Pup Trailers. New & Used Single & Tandem Grain Trucks. New 1/2, 3/4, 1, 2, 3, & 5 Ton International Trucks in Stock. We have over 80 trucks and Trailers in Stock. Johnston Truck, Cross Plains 725-2181. t-wk

NOTICES

EASTLAND ROTARY CLUB - Pat Miller, President. Meets each Monday. MASONIC LODGE NO. 667

Meets second Thursday of each month at 7:30 p.m. in the Masonic Hall. Call L.D. Keith, W.M. at 629-1676, or L.E. Huckabay, sec'y at 629-1391 for information.

NEED EXTRA MONEY? - Celebrity Fashion Jewelry needs you! No investment. Call or write Gaila Caraway, Box 420, Clyde, Texas. 915-893-4870. t-95

NOTICE - Mattresses. Complete bedding made by Western Mattress Co., San Angelo. Best quality, low price, renovate or exchange new. Every other Wednesday. They're guaranteed. For home appointment, call Lois Mezell, 629-2703, leave name. t-f

FOR SALE - Remodeled home, 2 bedrooms, kitchen. Carpeted in living room, dining and bath. New plumbing and wiring. Close to schools and town. 807 W. Commerce. Call 629-2370 or 629-1700. t-f

LOST - Monday, possibly near B&W Clinic or Dr. Treadwell's Clinic - CJC LVN pin with initials "ELH" on back. Blue and gold. About the size of a nickel. If found, call 629-1779 or 734-5735. t-f

MILLER'S REMODELING - Additional rooms, formica tops, painting, sheetrock, paneling, custom cabinets, acoustical ceilings, etc. Tel. 647-3005 in Ranger

Do our companies give Bumper Discounts. Driver Training Credit. National Safety Council's Defensive Driving Course Credit. Second Car Credit. Dividends and Easy Payment Plans for all eligible policyholders? You bet! Come see us. Freyschlag Insurance Agency on North Side of Square.

UNFURNISHED APARTMENTS FOR RENT - Royal Oaks Apartments 1304 Royal Lane, Cisco. 442-3232, 442-3799

GREGORY PLUMBING & HEATING - 629-2844 Res. 639-2340

PATTON'S NOVELTY SHOP - 304 N. Walnut. Polyester remnants as low as \$1.49 yd. All kinds of craft supplies.

HELP WANTED - Light delivery work. Men or women. Must have car. Call 647-3335. t-f

JANITORIAL SERVICE - Quality & Dependable Service. 629-2716. Michael B. Pittman

TAYLOR CENTER - Laundry - Shell gas. Family Recreation. Groceries. 1 Gal. Milk 1.29. Large Loaf Bread 35c. Everyday Low Prices.

IMPORTANT - GARDENHIRE OIL COMPANY - Yes! We can sell wholesale to you! See us for all your oil, grease, filters, spark plugs, brake fluid, anti-freeze, S. T. P. for oil, gasoline, diesel or radiator, tires for cars, truck or tractor. WE HAVE TANKS for farm or commercial gasoline and diesel fuel. See us before you trade. All major brands of Oil and Grease. WHY PAY MORE??

NOTICES

CANCER INSURANCE - UP TO \$100,000 M.H. Perry 104 N. Lamar 629-1566

QUETTA'S SPORTSWEAR - Come and see us for Dollar Day Bargains. Interstate 20 next to Ramada Inn. x1

FOR SALE - '58 MGA, new paint, recent overhaul. Make offer. Call 559-2881, Breckenridge. t-88

PAINTING - Spray or Brush Acoustic Ceilings Free Estimates Call Harold Pippen 442-1585, Cisco, Texas.

Mercers Appliance Repair - Dishwashers, washers, dryers, stoves, disposals, and ovens. G.R. Mercer Olden, Texas. Call 653-2473

FOR RENT - 4 room furnished house, bills paid, close in. To couple or adult. Call 629-2579. t-f

FOR RENT - 20' x 40' Warehouse with office and rest room in Ranger. Call 629-1179. t-f

FOR RENT: Furnished mobile homes and mobile home spaces 653-2220. t-f

FOR RENT - 2 bedroom unfurnished cottage on top of park hill, 503 High St. Close to schools. Only \$30 a month. Call 629-1417. t-f

Singer Sewing Machine Repair Center - Servicing all makes. New and Used for sale. Complete line of parts. WRIGHT AUCTION COMPANY 106 S. Seaman 629-2468

Freyschlag Insurance Agency has exactly the kind of policy that you need. Check with Charles today and see just how he can help you. Freyschlag Insurance Agency, on the Square in Eastland. 629-2275. 107 W. Main Street

LAKE PROPERTY - 314 ac. - 3/4 mi. lake frontage, pecan trees, bottom land, lake frontage - deer, quail, turkey. Terms. 47 ac. Lake Leon, lake front property, undeveloped, paved road. Terms. Lake home - 3 bdrm., living room, kitchen, 1 bath. Leased lot. Lake home with fireplace. Large living room. Deeded lot. Lake cabin, 2 bdrm, kitchen, bathroom and dock, good waterfront - deeded lot. Lake home, 2 bdrm, 2 bath, carpets, built-in, fruit trees, cellar, city water.

HOMES AND LOTS - 3 bdrm, 1 bath, washer - dryer hook - up, city water. Terms. Olden. 5 lots Eastland, 23,000. all on same block and in a row. 3,000 sq. ft. home, central air and heat, 2 fireplaces, exceptionally improved, 3 bdrm, 2 1/2 baths. 2 bdrm. trailer home - & lot set up. New appliances & air cond. Oaklawn - 2 bdrm, 1 bath, washer & dryer hookup, carpets. Three bdrm, 1 1/2 baths, choice location, large corner lot. 3 bdrm, 1 1/4 baths, large rooms, good corner lot. 3 bdrm home plus 1 bdrm apt. close to school. 2 bdrm - 23 ac, fruit trees, city water, well, need to sell. 2 bdrm, corner lot, central heat, carpets, good loan avail. Small down payment. 2 bdrm frame, trade or terms. Close to all schools. Small 3 bdrm, new stove & refig. Small price. 1/2 block from high school, 2 bdrm. Can't beat the terms. New 3 bdrm. mobile home on large lot. All conveniences. 2 bdrm, bath, screened back porch. Cisco. 2 bdrm, bath, fireplace. Good loan on place.

ACREAGE - 8.4 acres native sandy land, no imp, on pavement. Carbon. 80 acres new land - all sand - 20 ac. peanut, excellent frontage, ideal bldg. site. 40 ac. on pavement, all sand, peanut & grain allot, all in coastal, tank, well, new fences & barn, mobile home. 40 ac. on pavement, 29 ac. coastal, 10 ac. brush, new fence, pens & tanks. Peanut allot. 63.5 ac. native pasture 4 mi. from town. Lots of possibilities. 100 ac. So. of Carbon. Some cult. Sand. 210.00 per ac. 110 ac. at Okra. Native pasture, timber deer, 210.00 ac. 600 ac. someone needs to own, let it pay for itself, coastal, peanuts, lots of water & possibilities. Priced right. This ain't all we got - - come down or call and we can probably find what you want.

At So-Lo Auto Parts - 300 S. Seaman 629-2158 Open Sat. Till 4:00 Doug Lucas Mgr.

SOUTHLAND LIFE INSURANCE - M. H. PERRY 104 N. Lamar 629-1566 629-1095

Robert M. Kincaid - Eddie Kincaid, Salesman Res. 629-1918 Eastland. J.W. Elder, Salesman Res. 647-1321 Ranger

100 So. Seaman Eastland, Tex. 629-1781 Res. 629-2721

Custom Painting - Brush Or Spray, Paper Hanging Ceiling Acoustical Antiquing - Bonded & Guaranteed Work Local References 17- Years Experience COLLINS Paint & Decorating 629-2897 - 600 E. Smith

"Where does he get the money!" - Image of a man's face.

The first rule of getting ahead is to protect what you have. Cover your risks and exposures with adequate insurance from the Kinnaid Agency to reimburse you for any loss you may sustain. KINNAIRD INSURANCE AGENCY 207 W. Main Since 1919 Don Kinnaid Eastland 629-2544

TERRELL REAL ESTATE - OFFICE PHONE 629-1725 FARM BUREAU BLDG. HIWAY 80 EAST EASTLAND, TEXAS. RODGER TERRELL Home Phone 629-2896 M.L. TERRELL Home Phone 629-2443 Eastland, Texas

TERRELL REAL ESTATE - OFFICE PHONE 629-1725 FARM BUREAU BLDG. HIWAY 80 EAST EASTLAND, TEXAS. RODGER TERRELL Home Phone 629-2896 M.L. TERRELL Home Phone 629-2443 Eastland, Texas

At So-Lo Auto Parts - 300 S. Seaman 629-2158 Open Sat. Till 4:00 Doug Lucas Mgr.

SOUTHLAND LIFE INSURANCE - M. H. PERRY 104 N. Lamar 629-1566 629-1095

At So-Lo Auto Parts - 300 S. Seaman 629-2158 Open Sat. Till 4:00 Doug Lucas Mgr.

SOUTHLAND LIFE INSURANCE - M. H. PERRY 104 N. Lamar 629-1566 629-1095

At So-Lo Auto Parts - 300 S. Seaman 629-2158 Open Sat. Till 4:00 Doug Lucas Mgr.

SOUTHLAND LIFE INSURANCE - M. H. PERRY 104 N. Lamar 629-1566 629-1095

Hospital Notes

Patients in Ranger General Hospital Saturday morning were:
 Edna Peppers
 Alvin Johnson
 Ed Willingham
 Minnie Monroe
 Ethel McGee
 Betty Lewis
 Elizabeth Stroud
 Agnes Bourdeau
 L.A. Hatfield
 Elijah Keith
 Billy Koerner

Bethel Morgan
 Ruby Varner
 Max Ohr
 Della Jones
 Timothy Cox
 Paul Smith
 Roseanne Caudle
 Baby Boy Caudle
 E.M. Mills
 Patients in Eastland Memorial Hospital Saturday morning were:
 Everett Plowman
 Mary Mehaffey, Gorman

Dale Gilmore, Gorman
 Katherine Estes, Cisco
 Golda Wilson, Cisco
 Horace Lane
 Marcus Grieger
 Laura Noble
 Gay Kirk, Gorman
 Josephine Fraser
 Millie Peel
 Arda Tibbs
 Jesse Elson, Gorman
 Fannie Frost
 Sidney Webb, Ranger
 Robert Baggett, Cisco
 Eunice Anderson, Breck
 Peggy Moore
 Shirley Gregory, Baird
 Nancy Williams, Cisco
 Robert Whisenant

Virgil Maynard, Ranger
 Sarah Baird, Cisco
 Lee Hail
 Emory Hallmark, Cisco
 Bertha Freeman
 May Woods
 Bernice Lee
 Rilla DeFord
 Gail Graham
 Velma Lawrence
 Mike Dabney, Breck
 Laverne Plambeck, Cisco
 Mary Bayne, Cisco
 Nancy Elliot
 Mary McGowen, Ranger
 Mary Henderson
 Alice Henson, Cisco
 Melvin Sandler, Cisco
 Bill Hardin

Ann Perry
 Nina Hart
 Jesse Richardson
 Bill Bledsoe, Cisco
 Dora Garrett, Gorman
 Prudie Hardeman
 Elvie Pillow
 Edna Chapman
 Sandra Carter, R. Star
 Ade.e Whitten
 Baby Girl Cater, R. Star

Laugh-A-Day
 A wife's opinion: "The average man is 40 around the chest, 40 around the waist, 95 around the golf course and a nuisance around the house."

COURTHOUSE NEWS
 The following proceedings were had in the Court of Civil Appeals, Eleventh Supreme Judicial District of Texas:
MOTION SUBMITTED
 George Alcala Gonzales v. Loyd J. Gilliam et ux. Joint motion to postpone submission. - Nolan
MOTION GRANTED
 George Alcala Gonzales v. Loyd J. Gilliam et ux. Joint motion to postpone submission. - Nolan



Custom Built Homes
 By H. & W. Development Co.
 1201 W. Commerce
 Eastland, Ph 629-1702



You can't help saving at J.R.B.

We Reserve The Right To Limit Quantity
 NO SALES TO DEALERS

Eastland, Ranger, Cisco

Through Nov. 10, 1973

Double Stamps Wednesday & Saturday



SAVES YOU MOST SERVES YOU BEST
 BROWNWOOD, COLEMAN, CROSS PLAINS, ABILENE, RANGER, EASTLAND, CISCO, DE LEON, BRADY, WICHITA FALLS, LLANO, STAMFORD.
 NO SALES TO DEALERS

HEALTH AND BEAUTY AIDS
 Rise Baby Face
SHAVE CREAM Reg. 99¢ **59¢**

Sure, Reg. Or Uncented Reg. 51²⁵
DEODORANT 6 oz. **99¢**

Micrin Plus Reg. 51²⁵
MOUTHWASH 18 oz. **59¢**

Cherry, Reg. Orange, Lemon, Lime
LISTERINE LOZENGES Reg. 84¢ **69¢**

Antiseptic Reg. 51²⁵
LISTERINE 14 oz. **99¢**

Gladiola
FLOUR 5 lb. Bag **89¢**

Cheer,
DETERGENT With 30¢ Coupon King Size **\$1.19**

UNBEATABLE PRICE MIX OR MATCH 4/\$1
 BAR-B-Q BEANS Campbells 303 can
 DINNERS Kraft, Mild Spaghetti 8 oz.
 DINNERS Kraft, Mex. Style 7 oz.
 DINNERS Kraft, Mac & Cheese 7 1/4 oz.
 PEAS Del Monte 303 can
 CORN Our Darling 303 can

MIX OR MATCH 5/\$1
 BEETS Parade, Cut, Sliced Or Whole 303 can
 GREENS Parade, Turnip, Mustard Or Collard 303 can
 CARROTS Parade Sliced 303 can

PLUS STAMPS

Maxim
INSTANT COFFEE
 With 35¢ Coupon King 4 oz. **85¢**

Ivory,
LIQUID DETERGENT
 With 15¢ Coupon Giant Size **45¢**

Post Grape Nuts, With 10¢
CEREAL Coupon 18 oz. **56¢**

Van Camp No. 2 Can
PORK & BEANS **4/\$1**

Hunts
CATSUP 14 oz. **4/\$1**

JRB Grade A Large
EGGS Doz. **69¢**

With Bits, Hunts 300 Can
TOMATO SAUCE **29¢**

With Herbs, Hunts 300 Can
TOMATO SAUCE **29¢**

Hunts
STEWED TOMATOES 300 can **4/\$1**

Downy With Free Measuring Cup Family Size 96 oz.
FABRIC SOFTENER **\$2.39**

LISTEROL SPRAY 14 oz. **\$1.39**

BACON JRB 1 lb. Pkg. **99¢**

PORK CHOPS Family Pack lb. **99¢**

PORK CHOPS Center Cut lb. **\$1.19**

PORK CHOPS Waffer Thin lb. **\$1.29**

PORK ROAST Semi Boneless lb. **89¢**

PORK STEAK Lean lb. **99¢**

SAUSAGE Pure Pork Shop Made lb. **99¢**

JRB MEATS ARE U.S. GOVERNMENT INSPECTED. IF FOR ANY REASON YOU ARE NOT SATISFIED, WE WILL CHEERFULLY RETURN YOUR MONEY.

Tendamade
BEEF PATTIES lb. **99¢**

Tendamade
PORK PATTIES lb. **99¢**

Armour Pan Size
BACON 12 oz. Pkg. **99¢**

Armour
HOT DOGS 12 oz. Pkg. **89¢**

Smoked Country Decker Quality
SAUSAGE lb. **\$1.39**

Gooch Blue Ribbon
HOT LINKS lb. **99¢**

Skinnners Large Shell
MACARONI 12 oz. **34¢**

Ranibo, Sour Or Dill
PICKLES 8 oz. **29¢**

Parade
CAKE MIX 18 oz. **3/\$1**

Nine Lives
CAT FOOD All 7 oz. Size **2/43¢**

Kounty Kist
CORN 12 oz. can **5/\$1**

Sunbean, Asst.
COOKIES Reg. 39¢ **3/\$1**

Dairy Specials

Miracle Corn Oil
MARAGINE lb. **49¢**

Miracle Whipped
MARGARINE 1 lb. Pkg. **45¢**

Nu Maid
MARGARINE 1 lb. Bowl **49¢**

J.R.B.
BUTTERMILK 1/2 gal. **63¢**

Parade
WHIPPED TOPPING 9 oz. **49¢**

Imitation Bright & Early
ORANGE JUICE 6 oz. **6/\$1**

Imitation Bright & Early
ORANGE JUICE 12 oz. **3/\$1**

Trophy
STRAWBERRIES 16 oz. **39¢**

Aero Renuzit Room
DEODORANT 7 oz. **43¢**

Betty Crocker 18 1/2 oz.
CAKE MIX **3/\$1**

VALUABLE COUPON
 1 PT. 6 FL. OZ. GIANT SIZE
IVORY LIQUID ONLY **45¢**

GOOD ONLY AT J.R.B. WITH THIS COUPON
PRICE WITHOUT COUPON 60¢

VALUABLE COUPON
 5 lb. 4 oz. KING SIZE
cheer \$1.19 ONLY

GOOD ONLY AT J.R.B. WITH THIS COUPON
WITHOUT COUPON \$1.49

Unbeatable produce

Golden Ripe
BANANAS lb. **10¢**

LETTUCE Large Heads **29¢**

Red Delicious, Golden
APPLES & Jonathan **19¢**

CABBAGE Fresh Firm Heads **12¢**

Home Grown
YAMS **19¢**

10¢ JRB 10¢
 REDEEM THIS COUPON NOW and
SAVE 10¢
 ON YOUR NEXT PURCHASE OF 18 OZ.
POST GRAPE-NUTS
 1 PACKAGE **56¢** WITH COUPON
 CASH VALUE 1/20 OF A CENT **66¢** WITHOUT COUPON
 ONE COUPON PER FAMILY
 OFFER EXPIRES **11-10-73** **10¢**

Gordon pot

by DeMarquis Gordon

Everyone appreciates a simple "thank you" or a pat on the back for doing a good job. So that is why the month of November is being set aside as a time when we show our appreciation to those engaged in food and fiber production and processing for a job well done.

Officially, November is being called "Food and Fiber Appreciation Month".

Consumers throughout our county, state and nation are blessed with high quality food and fiber products. Our life styles and living standards continue to be envied by other countries, and this prosperity is largely a result of a productive, efficient agricultural industry.

Food products are still one of the best bargains to be had anywhere despite recent rising prices. And the quality of

products is second to none. Never in the history of the world have so few fed so many with such a selection of quality foods. Less than five percent of the population is required to supply our food needs compared to more than 50 percent for many undeveloped countries.

Everyone knows that agriculture is big business in Texas! But just how big is it? Now is a good time to take a brief look at the bigness of Texas agriculture.

First of all, agriculture in all its phases - agribusiness - adds more than \$10 billion to the Texas economy each year. Agribusiness provides employment for about 30 percent of the state's labor force.

Of the state's 168 million

acres of land, 142 million are devoted to agriculture.

Realized gross farm income in 1972 totaled \$4.7 billion, up 13 percent from 1971. However, farm production expenses totaled \$3.8 billion, almost 23 percent higher than in 1971. This left realized net income 19 percent below that of 1971, but a boost in farm inventories brought total net farm income up 28 percent over that in 1971.

Texas is the third leading state in total agricultural cash receipts behind California and Iowa. However, it leads the country in producing cotton, grain sorghum and rice and is the top cattle producer. Texas also leads in the production of sheep and wool, goats and mohair.

The state is also a leader in other enterprises:

- Fourth in agricultural exports, leading in cotton and rice exports and second in hides, tallow and meat products.
- Second in peanut production.
- Third in vegetable production, leading in cabbage, watermelon and spinach and second in onions, carrots and cantaloupes.
- Second in grapefruit production and third in oranges.
- First in native pecans and third in total production.
- Third in the number of honey bee colonies.
- Among the top 10 dairy states
- First in horse numbers.
- A leading state in poultry and eggs.
- A leading state in fish farming.

These are just a few of the things that Texas is noted for on the agricultural scene. Agriculture continues to grow and to become more diversified, and it must do so to meet the ever-increasing demands for high quality food and fiber products.

Peanut producers in Eastland County are urged to attend a peanut demonstration tour at Pioneer Monday, Nov. 5. County Agent DeMarquis Gordon says the tour will begin at 10:00 a.m. and will be over by 12:00 noon.

A leaf spot control demonstration and a peanut variety demonstration will be toured. In the leaf spot demonstration three chemicals were used - Benlate, Bravo, and Du - Ter. One plot was left untreated for a check of the chemicals. The peanuts in each plot will be observed and some rows will be dug so visitors may see the peanut crop on the plants. Dr. Thomas Lee, Extension Plant

Pathologist, will be on the tour to discuss the demonstration. Other peanut specialists will also be there to answer questions, reports Gordon.

The variety demonstration was conducted by Dr. Charles Simpson of the Tarleton - Texas A&M Experiment Station. Although most of the varieties have been harvested, Dr. Simpson left an observation plot for the tour. This plot contains all the varieties tested at this location. Dr. Simpson will be present to discuss the peanut varieties.

To Attend Farmers Union Meet

Mrs. Lee Starr of Cisco will participate on November 12 and 13 in a Waco meeting to prepare a rough policy draft for consideration by delegates attending the 70th Annual Convention of Texas Farmers Union. The farm organization's annual convention will be held at the Ko Ko Palace Convention Center in Lubbock, Texas, on December 7 and 8. At that time, the rough policy draft will be given thorough consideration by delegates representing all chartered county organizations.

The Program Drafting Committee on which Mrs. Starr serves as co-chairman, is charged with the responsibility of compiling, classifying, and organizing the resolutions which have been received by the TFU state office from annual meetings held by county organizations during the fall months.

The Starr's have five children and are active ranchers in Eastland County. They own an extensive ranching and farming operation and produce peanuts, milo, and coastal bermuda grass. They also raise registered red brangus, commercial angus and charolais cattle. They are members of Pioneer Farmers Co-op and REA Co-op and Mr. Starr is presently serving as president of Eastland County Farmers Union. The Starr family are active members of the First Baptist Church of Cisco.

NEED CEMENT WORK?
Call Kincheloe Concrete Co.
Free Estimates
629-8092.

FOR SALE - Extra nice 14' x 70' Ramada Mobile Home. 2 bedroom, carpet, central air and heat, unfurnished. Call 629-2766, Vernon Mahan, t-tf

Visiting Hours
Eastland Memorial Hospital
2:30 to 4 p. m.
7 to 8:30 p. m.

HILLSIDE APTS.
Under new management
Attractive 1 bedroom & efficiencies \$66.50 per mo. & up. All utilities pd. TV, Cable service. Ask about our weekly rates. Call 629-8092, (monthly)

FOR SALE: Beautiful, well-built, ideally located two bedroom family home in Eastland with central heating and air conditioning, area rugs and draperies. Attached garage and beautifully landscaped, good sized lot. Call 629-2442 for information and appointment to see. t-tf

FOR SALE TO BE MOVED: Two Story Frame Office Building, approximately 30' x 50', at Lone Star Gas Company's Automobile Garage Site situated at the Intersection of Oak Street and Blackwell Road in Ranger, Eastland County, Texas. Sale will be made to the highest bidder, for cash on an as is basis. The successful bidder will be required to pay approximate sale tax in addition to the bid submitted. The successful bidder will have 60 days after receipt of Bill of Sale to remove the structure, clean up and remove all foundation materials, rocks, bricks, etc., leaving the premises in a good and orderly condition. Submit written bids to Lone Star Gas Company, 301 South Harwood Street, Dallas, Texas 75201. Attention: H.E. Bell, Building Management Department, not later than 5:00 p.m., November 23, 1973, to be considered. Lone Star Gas Company reserves the right to refuse any and all bids. t-36

Sunday, November 4, 1973

JAMMIES Evening Specials

MONDAY: Fried Cat Fish
TUESDAY: Mexican Food
WEDNESDAY: Southern Fried Chicken
THURSDAY: Barbecue
FRIDAY: Seafood Platter

Interstate's Last Day
abc MAJESTIC 629-1120
DOWNTOWN EASTLAND Sunday Features
5:00 - 6:33 - 8:06 - 9:35

THUNDERFIST

MARTIAL ARTS EXECUTIONER

NOW FOR THE FIRST TIME A KUNG FU-KARATE ACTION MOTION PICTURE FOR FAMILY AUDIENCES!

PG

De Leon Aviation

Will Meet Mon., Nov. 5th At

7:00 P.M. In

The De Leon City Hall Auditorium

Flight And Ground School

Sanderson Course

J.L. Condry

C.F.I. 1576283

Ground Instructor 1810293

SENIOR CITIZENS

NOW YOU CAN ENJOY THE SECURITY OF A WORRY FREE 24 HOUR NURSING CARE

* Certified By Texas State Department of Public Welfare



- 24 Hour LVN Supervision • Doctors References • Special Diets
- All Guest on Ground Floor • Controlled Air Cond. & Central Heat
- Planned Activities • Occupational Therapy • Home Like Atmosphere
- MEN - WOMEN - COUPLES • REASONABLE RATES
- CONVENIENT SUBURBAN LOCATION
- ALL CASES CONSIDERED
- DESCRIPTIVE BROCHURES SENT UPON REQUEST

- A beautiful dining room for home-like meals
- "Special Diets"
- Complete program of recreation and occupational therapy
- Private and Semi-Private Rooms
- Beautiful rooms
- Beauty Shop & Barber Shop
- Licensed Personnel
- Approved for Medicaid, Old Age Assistance and Welfare Patients

EASTLAND MANOR

1405 W. Commerce 629-2686

Gene Frost, Adm.

VALLEY VIEW LODGE

700 S. Ostrom 629-1779

Shirley Frost, Adm.

Supplies Eastland Gallery Laura Blizzard 310 S. Lamar 629-8004 Mon. 1 to 9 Eastland Tues. - Fri. 9 to 5 Sat. 9 to 1 Classes

ALL THE WONDERS AND THE SPARKLE AND THE BEAUTY UNFOLD BEFORE YOUR EYES!

SANTA'S COMING TO OUR THEATRE!
A MAGNIFICENT FULL-LENGTH MOVIE ESPECIALLY FOR THE KIDS... FROM 2 TO 92!

See SANTA'S FAMOUS CANDY-STICK WORKSHOP

SEE MERLIN THE FANTASTIC MAGICIAN

THE LAND OF THE CANDY BUILDINGS

SANTA CLAUS

MATINEE ONLY!

Sat.-Sun. At 1:00-2:50

Interstate's

abc MAJESTIC 629-1120

DOWNTOWN EASTLAND

ALL SEATS \$1.00

COLORSCOPE

in EASTMAN

PG

PANVISION METROCOLOR A Metro-Goldwyn-Mayer Presentation

Best Family Film Festival Award

Best Family Film Festival Award

Best Family Film Festival Award

Best Family Film Festival Award

Best Family Film Festival Award

Best Family Film Festival Award

Best Family Film Festival Award

Best Family Film Festival Award

Best Family Film Festival Award

Best Family Film Festival Award

Best Family Film Festival Award

Best Family Film Festival Award

Best Family Film Festival Award

Best Family Film Festival Award

Best Family Film Festival Award

Best Family Film Festival Award

Best Family Film Festival Award

Best Family Film Festival Award

Best Family Film Festival Award

Best Family Film Festival Award

Best Family Film Festival Award

Best Family Film Festival Award

Best Family Film Festival Award

Best Family Film Festival Award

Best Family Film Festival Award

Best Family Film Festival Award

Best Family Film Festival Award

Best Family Film Festival Award

Best Family Film Festival Award

Best Family Film Festival Award

Best Family Film Festival Award

Best Family Film Festival Award

Best Family Film Festival Award

Best Family Film Festival Award

Best Family Film Festival Award

Best Family Film Festival Award

Best Family Film Festival Award

Best Family Film Festival Award

Best Family Film Festival Award

Best Family Film Festival Award

Best Family Film Festival Award

For Professional Care in an Atmosphere of Family Living

Hickman Nursing Home

Offers You

- 24 hour nursing care supervised by a Registered Nurse
- Special diet management by an A.D.A. dietician
- Full program of recreation and entertainment
- Private rooms

629-2624

411 West Moss Eastland, Texas

WE CARE FOR YOU... WE CARE ABOUT YOU



COURTHOUSE NEWS

NEW CAR REGISTRATIONS
 Jerry Jensen - Ford Pkup - Caddo
 R.M. Sneed Contractor, Inc. - Cad - Eastland
 Everett R. Hutchinson, Jr. - Chev. - R. Star
 C.J. Bolton - Chev. - Eastland
 Tommy Cozart - Chev. Pkup - Carbon
 Jonah J. Finley - Int'l Pkup - Eastland
 Robert V. Robinson - Chev. - Ranger
 Birdson Peanut - Ford - Gorman
 Earl L. Brown - Chev. - Colorado City
 Kenneth D. Baker - Chev. Pkup - Grapevine
 Tex. Elec. Serv. Co. - Chev. - Eastland

91st DISTRICT COURT
 Lee Lewis Oliphant vs. Jane Marie Oliphant - divorce

MARRIAGE LICENSES
 James Vernon Rhyne and Nancy Kaye Copeland
 Haomer Ray Riodan and Lois Ophelia Griggs
 Willis James Gee, Jr. and Nell Francis Jackson
 John Richard Tankersley and Mable White
 Gary Lynn Nichols and Shirley Louise Wynn

INSTRUMENTS FILED COUNTY CLERK'S OFFICE
 Tommy Bacon and others to Clarence C. Pippen - deed of trust
 F.S. Crawley and wife to Paul E. Kasch and wife - partial release vendor's lien
 Veda Capps and husband to Tex. Elec. Serv. Co. - esm't & right of way
 Bill Carlton to the public - aff'd
 Bernard M. Campbell and wife to Natural Gas Finders Inc. - oil, gas, mineral lease
 Bill Carlton and wife to James D. Sandlin and wife - warranty deed
 Frankie Lee Cook to Q.Z. Rainey and wife - warranty deed
 Carbon Ind. School Dist. to Q.Z. Rainey and wife - warranty deed
 Eastland Nat'l Bank to Iona Day Sikes - release deed of trust
 Audrey Easter to Tex. Elec. Serv. Co. - esm't and right of way.

way.
 Eastland Ind. Found., Inc. to Tex. Elec. Serv. Co. - esm't and right of way.
 First National Bank, Cisco to First Nat'l Indemnity Co. - assign mechanics materials lien

F.B.S. Financial Inc. to Omer F. Hogan and wife - release mechanics materials lien
 Irene Finley to Agnew Keener - power of attorney
 K.E. Falls to Marie Falls - assign interest
 K.E. Falls to Alma Marie Falls - assign oil, gas lease
 Harley E. Cox Jr. and wife to Eastland Nat'l Bank - deed of trust

1st Fed. S&L Assn to John H. Kent and wife - release deed of trust
 C.E. Fox to Ruby Rutledge - quick claim deed
 1st Fed. S&L Assn to Henry D. Ballinger - release deed of trust
 1st Fed. S&L Ass'n to N.E. Richardson and wife - release deed of trust
 1st Fed. S&L Ass'n to Roy D.

Blair and wife - release deed of trust
 W.G. Gathings to Don C. Hyames - partial assign oil, gas lease
 David G. Griffith and wife to Paul E. Kasch - deed of trust
 David G. Griffith and wife to U.S.A. - deed of trust
 Getty Oil Co. to T.J. Pryor and others - certified copy designation of agent

Burditt Hitt and wife to R.L. Burditt - warranty deed
 Robert Herring and wife to W.E. Williams - warranty deed
 Lucie E. Harrell to Fannie Mae Jones - correction deed
 Purl Hunt (dec'd Estate of) to Marion Hunt and wife - warranty deed
 Rodney L. Hagan and wife to 1st Nat'l Bank, Cisco to Wayne Webb - extension mechanics

materials lien
 William F. Jay and wife to G.W. Mayfield and wife - warranty deed
 Betty Jo Jackson to Bill Carlton - quick claim deed
 Frank Kirk to the public - proof of heirship
 Sarah Isabel Kamon Estate of to the public - inheritance tax receipt
 John H. Kent and wife to

H.M. Scallorn and wife - warranty deed
 Paul E. Kasch and wife to David G. Griffith and wife - warranty deed
 L.P. King and wife to Pitts Oil Co. - oil, gas, mineral lease
 D.A. Keener to Kenneth L. Reese and wife - warranty deed
 G.W. Mayfield and wife to 1st Fed. S&L Assn - deed of trust

U.S.D.A. FOOD STAMP COUPONS Gladly Accepted



STOCK UP NOW!!

Now is the time to Stock Up... and be a smart shopper. Safeway Brands Days are happening right now, all of our Fine Quality \$ Brands are priced to save you money. All \$ Brands are sold at low, money-saving prices, and all are unconditionally guaranteed to please. Hurry down to Safeway and use the \$ as a guide to best buys when you shop.
Safeway... Your People-To-People Store!

Everyday Low Prices!

Fruit Cocktail 29¢
 Town House. Delicious! —17-oz. Can

Whole Tomatoes 29¢
 Town House. Zesty! —16-oz. Can

Cut Green Beans 21¢
 Town House. Tender! —16-oz. Can

Tomato Sauce 22¢
 Town House. Thick & Rich! —15-oz. Can

Money-Saving Values!

Diet Cola 10¢
 Cragmont. Refreshing! —12-oz. Can

Corn Chips 39¢
 Party Pride. Crisp! —11-oz. Pkg.

Instant Breakfast 58¢
 Lucerne —6-Env. Pkg.

Coffee Tone 69¢
 Lucerne. Non-Dairy —16-oz. Jar

Dry Milk 49¢
 Lucerne Non-Fat —3-Qt. Pkg.

Fountains of DeLeon
 For the Joy of a Beautiful Complexion!
 For Whatever Your Complexion!
 Non-Acrid! Problem May Be!
 "Look Younger as You Grow Older"
 Free Private Consultations
 401 Navarro (Hwy. 161)
 Call 261-1000
 892-5377, 261-1000, 1985

EASTLAND CO.
 Serving All Of Eastland County
 629 - 2287

The Light Touch
 by Clint Bray
 The way most people manage to live within their incomes is partly.

Hip huggers: belly jeans.
 Nowadays, the only time children are seen and not heard is when they're on the other side of a plate glass window.
 It's nice to have the highest standard of living in the world. Too bad we can't afford it.

Pity the poor politician - - he's either being sworn in or sworn at!
 Folks swear by our fine selection of newest styles at BRAY'S in Eastland and Ranger.

SAFEWAY BRANDS DAYS SAFEWAY

Safeway Big Buy!
Bleach
 Liquid. White Magic
 Gallon Plastic **37¢**

Safeway Big Buy!
Trash Bags
 Kitchen Craft Trash Can Liners. 30-Gallon
 10-Ct. Pkg. **69¢**

Safeway Big Buy!
Strawberries
 Bel-air. Sliced Frozen
 10-oz. Ctn. **43¢**

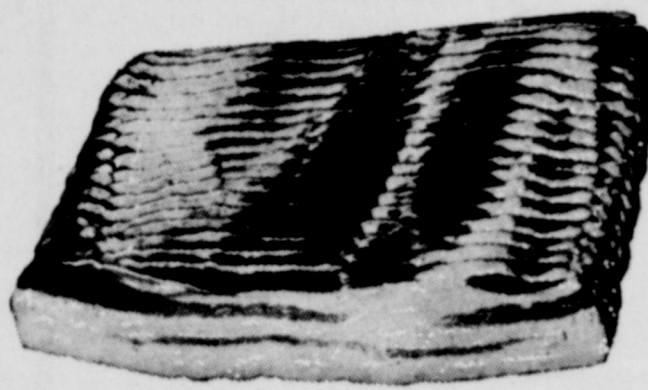
Safeway Special!
Cheese Pizza
 Bel-air. Frozen
 16-oz. Pkg. **59¢**

Safeway Special!
Detergent
 White Magic. For Laundry!
 49-oz. Box **59¢**

Safeway Big Buy!
Glass Cleaner
 With Sprayer. White Magic
 12-oz. Bottle **45¢**

Safeway Special!
Corn-on-Cob
 Bel-air. Frozen
 4-Ear Pkg. **49¢**

Safeway Special!
Apple Pie
 Bel-air. Frozen
 24-oz. Pkg. **39¢**



Sliced Slab Bacon 98¢

Rindless. Breakfast Favorite! —Lb.

Beef Short Ribs 59¢
 USDA Choice Grade Heavy Beef —Lb.

Ground Beef 89¢
 Regular. Safeway. Fresh! —Lb.

Pork Link Sausage 89¢
 Safeway. Flavorful! 1-Lb. Pkg.

Safeway Meats Are Unconditionally Guaranteed to Please!

Safeway Bacon \$1.19
 No. 1 Quality. Sliced —1-Lb. Pkg.

Rath Bacon \$1.25
 Hickory Smoked. Sliced —1-Lb. Pkg.

Hot Links 89¢
 Mexican Sausage. Spicy! —1-Lb. Pkg.

Pork Sausage \$1.12
 Safeway. Whole Hog & Medium or #Hot —1-Lb. Pkg.

Pork Sausage \$2.20
 Safeway. Whole Hog & Medium or #Hot —2-Lb. Pkg.

Chipped Meats 45¢
 Safeway. Sliced. 6 Varieties —3-oz. Pkg.

Lunch Meat 44¢
 Safeway. Sliced. #Mazara! & Cheese #Pasta-Pommes! #Olive —6-oz. Pkg.

Sliced Bologna \$1.09
 Safeway. Large Slice —1-Lb. Pkg.

Stick Salami \$1.19
 Safeway. By the Chunk —1-Lb. Pkg.

Smorgas Pac \$1.49
 Eckrich. Regular —1-Lb. Pkg.

Corn Dogs \$1.39
 Easy to Prepare! —10-Ct. Pkg.

Lean Ground Beef \$1.18
 Fresh. Flavorful! —Lb.

Chuck Roast 77¢
 Full Blade Cut. USDA Choice Grade Heavy Beef —Lb.

Hamburger Steaks 99¢
 Fresh. Pre-Formed —Lb.

Rump Roast \$1.19
 USDA Choice Grade Heavy Beef —Lb.

Boneless Roast \$1.45
 #Pikes Peak or #Bottom Round. USDA Choice Grade Heavy Beef —Lb.

Top Round Steak \$1.59
 Boneless. USDA Choice Grade Heavy Beef —Lb.

Safeway Wieners 79¢
 Plump and Tender! —12-oz. Pkg.

Armour Hot Dogs 85¢
 Armour Star —12-oz. Pkg.

All Beef Wieners \$1.09
 Safeway. Ready to Eat! —1-Lb. Pkg.

Beef Patties 97¢
 Breaded. Fully Cooked —Lb.

Fish Sticks 75¢
 Pre-Cooked. Large Size —Lb.

Perch Fillets 89¢
 Raw. Fresh-Frozen —Lb.



FRESH FRYERS 43¢
 Finest Quality! Ready to Cook!
 (Cut-Up regular—lb. 51¢) Whole—Lb.

Roasting Chickens 49¢
 Fresh. White Meat. Grade 'A' —Lb.

Pinwheel Pack 79¢
 #4 Thighs #4 Drumsticks. From USDA Insp. Grade 'A' Fryers —Lb.

Split Breasts 89¢
 With Ribs. From USDA Insp. Grade 'A' Fryers —Lb.

Shop and Save!

Tomato Catsup 25¢
 Highway. Adds Flavor! —14-oz. Bottle

Bel-air Waffles 12¢
 6-Count 5-oz. Pkg.

Pinto Beans 27¢
 Town House. Dry —16-oz. Pkg.

Canned Milk 21¢
 Lucerne Evaporated —13-oz. Can

Tomato Soup 12¢
 Town House. Tasty! —10.75-oz. Can

Check These Values!

Cornbread Mix 33¢
 Light Crust 2 1/2-oz. Pkg.

Hush Puppy Mix 27¢
 Light Crust 2 1/2-oz. Pkg.

Fabric Finish 69¢
 Fawcett—20-oz. Can

Stuff-N-Such Mix 49¢
 Uncle Ben—4-oz. Pkg.

Extra Hot Chili 61¢
 No Beans. Hormel—15-oz. Can

Extra Hot Chili 50¢
 With Beans. Hormel—15-oz. Can

Star-Kist Tuna 45¢
 Chunk Light Meat—4 1/2-oz. Can

Compare Low Prices!

Air Freshener 43¢
 Brocade. Room Deodorizer! 9-oz. Aerosol

Furniture Wax \$1.29
 Spray. White Magic. Lemon. 14-oz. Aerosol

Oven Cleaner 79¢
 White Magic Spray. Easy! 8-oz. Aerosol

ON SALE THIS WEEK!

Funk & Wagnalls \$1.69
 Students Encyclopedia Volume 15-16

FINE CHINA ON SALE THIS WEEK!

CUPS OR SAUCERS 59¢
 with every \$5 purchase Regularly \$1.00

Garden Fresh Fruits & Vegetables!

Potatoes 20¢
 Russet. Economy Pack —20-Lb. Bag **\$1.39**

Red Apples 79¢
 Red Delicious. Extra Fancy! —3-Lb. Bag

Ruby Grapefruit 79¢
 Sweet & Juicy! —4-Ct. Bag

Green Beans 39¢
 Kentucky Wonder Variety —Lb.

Fresh Carrots 39¢
 Safeway. Vitamin Rich! —2-Lb. Bag

Booth Avocados 39¢
 Florida —Each

Tangelos 19¢
 Rich in Vitamin 'C'!
 US #1. From Florida —Lb.

Celery 29¢
 Crunchy! Full-Flavored!
 Low in Calories! Large Stalks! California. Refreshing! —Stalk

Prell Shampoo
 Gets Hair Sparkling Clean!

Concentrate 87¢
 3-oz. Tube

Liquid 89¢
 7-oz. Plastic

Prices Effective Mon., Tues. & Wed., Nov. 5, 6 & 7, in EASTLAND. No Sales to Dealers.

Crest Toothpaste
 With Fluoristan!
 Helps Fight Cavities! Fresh, Clean Taste!

Regular or Mint 69¢
 5-oz. Tube

Shelf Paper 51¢
 Pretty Please Bug Proof 25-Ft. Roll

Secret Spray \$1.37
 Super Spray Deodorant 7-oz. Aerosol

Secret Spray \$1.37
 Anti-Perispirant 8-oz. Aerosol

Secret Roll-On 93¢
 Deodorant 1.5-oz. Plastic

SAFEWAY
 SAVE EVERY DAY AT SAFEWAY

Professional Pattern Fitting Clinics. Spend a knowledge - packed 2 hours in our store, Thursday, Nov. 8. Attend at 10 a.m., 2 p.m. or 7 p.m. Fee \$3.00 SATISFACTION GUARANTEED or Money back.

Davis Fabrics

610 West 2nd, Cisco

FABRIC SPECIALS

For Monday & Tuesday Reg. \$5.98 Double Knits in plaids & coordinates

\$3.98 Yd.

Reg. \$4.98 and \$3.98 double knits

\$3.98 Yd.

Some single knit & some double knit

\$1.98

Small Group knits \$1.00 Yd.

Group Cotton Blends

45" wide

2 Yds \$1

45" wide

100 percent nylon or 100 percent polyester Reg. \$1.98

NOW \$1.79 Yd.

VELMA FABRICS

100 S. Hillcrest - Eastland - 629 - 2091

Pecan Show Nov. 30

Save an entry of those good pecans! The Eastland County Pecan Show is only four weeks away. Dan Childress, president of the Eastland County Pecan Growers Association, announced today that the 1973 county pecan show will be held November 30th and December 1st in Eastland. The twenty-first annual show will be sponsored by the association and the Eastland Chamber of Commerce.

A pecan bake show and a pecan centerpiece show will be held along with the pecan show in the old Majestic cafe building on the south side of the courthouse square.

Eastland County pecans are among the best quality pecans in Texas, points out DeMarquis Gordon, Eastland County Extension Agent. Last year's county champion in - shell entry exhibited by D.B. Raney of Ranger, was also named state in - shell champion. His entry was of the Choctaw variety.

A total of 43 nuts of any variety constitutes an entry in the show. The pecans entered must have been grown in 1973 and be entered by the person who produced the pecans. They are judged on the basis of size,

Personal notes to Officials Asked Immediately

Continued From Page 1
compliance with marketing quota regulations.

The increase to \$17.00 per ton in storage, handling and inspection charges will result in a reduction in sales value of about \$30 million dollars to the nation's farmers while saving CCC an estimated 8.5 million dollars on peanuts to be placed in loan. This is true because the CCC loan rate, which will be 17 dollars less than support in 1974, will also establish the price paid by shellers on commercial purchases. This charge to growers causes the price paid them under the CCC price support program to go under the 75 percent parity level required by law and poses a legal question. This is true because the Secretary sets the loan rate to growers at 75 percent of parity and then provides for a \$17 per ton

percent kernel, quality of kernel and attractiveness of the pecan. Natives, variety seedlings and improved varieties may be entered in the show. A grower may bring one entry of each variety and as many different entries of natives as he chooses. All entries become the property of the pecan growers association. Entries winning first, second, and third will be sent to the regional pecan show. Ribbons will be given to exhibitors who have first, second and third place entries. Trophies will be given to the exhibitors of the champion shelling pecans, champion native pecans and a champion in - shell pecan.

Both commercial pecan growers and yard tree growers in Eastland County and surrounding areas are encouraged to enter pecans in the County show.

Gordon warns that pecans selected for the show should not be put into an air tight container and sealed. Paper or cloth bags are more desirable than fruit jars he said.

Pecan entries may be left at the county agent's office in Eastland or may be brought to the show on November 29th.

Roofing

New & Repair All Buildings & Houses Estimates Made.

Tri-Citys Roofing
Call Noble Squires
629-2370

ROOFING

Doyle Squires Contr. Olden, Texas. 653 - 2212. Call after 6 p.m. p-t

FOR SALE - Singer Sewing Machine in Walnut cabinet. \$51.10. We also clean, oil, and adjust all makes and models. Call 629 - 2920 in Eastland or 442 - 3283 in Cisco. t-43

handling charge to growers.

These changes were announced by the Secretary with no advance warning to industry

Sen. Bentsen Asks USDA To Rescind

WASHINGTON, D.C. - Senator Lloyd Bentsen has urged the Department of Agriculture to rescind changes in the Peanut Program, asserting that the Department has no authority to make the changes.

The changes, announced October 24, prohibit the sale or lease of peanut allotments for the 1974 crop, permit no tolerance in program compliance determinations relating to measured peanut allotments and allow sales of government acquired peanuts at no less than 115 percent of the loan rate. The present program permits sale at the prevailing market price.

Bentsen said peanuts are an important Texas farm crop, pointing out that the state has the third largest crop in the nation with peanuts grown in 117 counties. And he said the announced changes would have a severe adverse effect on Texas peanut farmers.

"These changes would dismantle the existing Peanut Program and by announcing them, USDA has shown contempt for the intent of Congress as expressed in the 1973 Farm Act", the Senator said.

Noting that the Department of Agriculture also plans to send proposed legislation Congress to change the nation's Peanut Program, Senator Bentsen said the approach is lacking in the cooperation that will be necessary to enact any legislation into law.

"It would appear that the new regulations are an effort to blackmail the Congress into taking immediate action to pass new legislation for the 1974 peanut crop, but such an attempt would be foolhardy and unsuccessful," Bentsen said.

Senator Bentsen said he has written Agriculture Secretary Earl Butz, urging that he withdraw the regulations until the farmers who would be affected have an opportunity to study and comment on them.

Oiler Added

Eastland County Regular Field has gained a new oiler in the area 1/2 mile north of Pioneer.

It is George L. Buckles Co. of Monahans No. 1 Moore, spotting 660 feet from the north and 480 feet from the west lines of P. Norton Survey.

Daily potential was 28 barrels of 39.8 gravity oil, plus four barrels of water. It is pumping from an open hole with the pay topped at 2,455 feet.

Operator set the 5 1/2 inch casing at 2,461 feet, and the hole is bottomed at 2,481 feet.

NOTE

Persons wishing to protest this action of the Secretary of Agriculture may contact by letter or telegram the following members of Congress. It is highly important that letters go to these 5 Congressmen:

Congressman Omar Burleson
Rayburn Office Building
Washington, D. C. 20515

Congressman W. R. Poage
Rayburn Office Building
Washington, D. C. 20515

Carl Albert
Speaker of the House of Rep.
Washington, D. C. 20515

Senator Lloyd Bentsen
Senate Office Building
Washington, D. C. 20510

Senator John G. Tower
Senate Office Building
Washington, D. C. 20510

The Honorable Herman Talmadge
Senate Office Building
Washington, D. C. 20510

Governor Dolph Briscoe
State Capitol
Austin, Texas 78711

WIN YOUR TURKEY

FOR A THANKSGIVING DINNER AT THE

RANGER JAYCEE TURKEY SHOOT

NOVEMBER 15-17

★ Thursday and Friday 5:30 p.m. - 10:30 p.m.

★ Saturday from 10:00 a.m. - 10:00 p.m.

30 - 30 DEER RIFLE

To Be Given Away

ONE TURKEY GIVEN AWAY EACH HOUR DURING TURKEY SHOOT

JAYCEE HALL -- MAIN ST.

ONE TURKEY GIVEN FOR BEST ARCHER EACH NIGHT

OVER ALL TROPHY PRESENTED TO HIGH SCORER IN THE ARCHERY EVENT

30 - 30 Deer Rifle Given Away For High Pointer In Men's

.22 Division 22 Single Shot Rifle Given To High Scorer In Youth

Division And Trophy To Be Given To Best Shot In The Women's Division.

Bow And Arrow -- \$1.50 -- 5 Shots .22 - \$1.50 -- 3 Shots

Great Idea For His Christmas



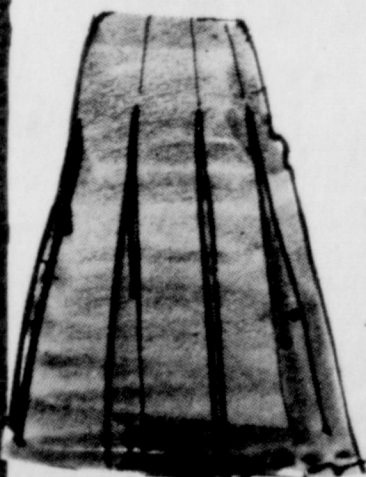
THE LAYERED LOOK

It's easy to arrive at today's fashion layered look because we've done it for you. The sweater and shirt in the newest deep tones and the classic super bow ties.

THE MAN'S STORE
Bob Elliott
CISCO

NOVEMBER

DOLLAR DAYS



Women's 100% Polyester Double Knit

SKIRTS

All Sizes \$8.99
Many Colors

Women's 100% Polyester DOUBLE KNIT PANTS

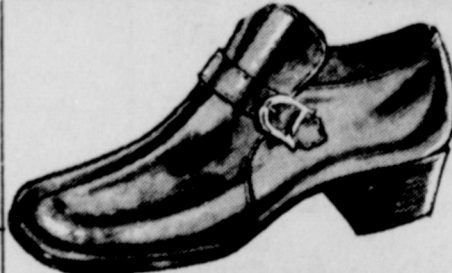
Flare Leg \$8.99
Also Some Cuffs

New Shipment Lorraine SLEEPWEAR

Gowns, Robes, Sets \$6
Many Colors New Styles And Up

100% Polyester DOUBLE KNIT FABRICS

\$2 Dollar Day Only! 60" Wide



Men's SHOES SALE

Leather Uppers
Slip-Ons, Buckles, Oxfords
Most All Sizes

1/4 To 1/2 OFF

Women's House SHOES

Fur Lined Many Colors
All Sizes Makes \$2.99
A Perfect Gift

Bray's
EASTLAND - RANGER
EASTLAND COUNTY'S FAMILY STORE

Men's Sport COAT SALE

Double Knit
Reg. \$75 Sale \$58

Men's Long Sleeve SPORT SHIRTS

Permanent Press
Many Colors
All Sizes \$4.99

Men's BOOT JEAN
Popular Brand Slightly Irregular Permanent Press Assit. \$6.88
Colors



Double Knit SUIT SALE

Many Colors Solid & Plaids
Reg. \$105. Sale \$70

Ms. Walter Rice Is Hostess For Circle

The Howard circle of the United Methodist Women met Tuesday morning at the lake home of Mrs. Walter Rice. A brief business meeting was held at which it was voted to spear head a drive for Hymnals for the Sanctuary evening services. This will be a memorial and the donors will be published with the respective honorees.

The devotion was given by Mrs. Perkins: "Brighten the Corner Where You Are". Prayer by Mrs. Bean closed the service. Pledges for the ensuing year were made and the meeting dismissed by a prayer by Mrs. Francis.

Those enjoying refreshments and the hospitality of Mrs. Rice were: Mesdames Ina Bean, C.T. Brockman, Dick Hodges, O.O. Mickle, Turner Collie, Joseph Perkins, Veon Howard, and Mrs. Rice.

DONATIONS OF HYMNALS
 Mrs. Joseph Perkins - 5 books, in honor of Mrs. Clyde Pipkin
 Mrs. O.O. Mickle - 3 books
 Mrs. Bess Francis - 2 books
 Mrs. Collie - 1 book, in honor of her son, the only minister to come out of the local Methodist Church.
 Mrs. Rice - 2 books, in honor of her parents, Mr. and Mrs. R.W. Smith
 Mrs. R.W. Smith
 Mrs. Hodges - 5 books
 Mr. and Mrs. Veon Howard - 5 books, in honor of Mr. Grady Pipkin, Jim Horton, Earl Bender, M.A. Clyatt, and Mr. Cora Davis.
 Mrs. Joe Stephen - 1 book in memory of Mrs. Cora Davis.

JOHNNY JOHNSON
 Plumbing & Septic Tank Service - Air Conditioning - Washing Machine Repair
 Phone 629-8023

Randall Kellar Participates In German Exercise

GERMANY - Army Specialist Four Randall Z. Kellar, 21, son of Mr. and Mrs. Olan Z. Kellar, Olden, participated with other American and Allied Troops in Exercise Refroger V in Germany, Oct. 10-16.

The Military Airlift Command flew approximately 11,000 U.S. Based Soldiers and more than 1,000 tons of equipment to three different airfields in Germany in preparation for the event.

Immediately after arriving overseas, the redeployed units drew combat gear and vehicles from prepositioned storage sites in Germany and moved to the exercise area to begin the seven-day field maneuver.

Pitted against the airlifted forces were Europe-based elements of NATO Forces of the U.S., Germany and Canada.

The exercise, conducted by the joint chiefs of staff and NATO, focused on the procedures and techniques for receiving, equipping, assembling and employing units after they arrive, rather than on rapid deployment of troops from the U.S.

Laura's GALLERY NOTES

The Cisco Chamber of Commerce and Cisco Art Club are jointly sponsoring a showing of the winning paintings from the Big Country Art Association's Annual Show.

The art will be on exhibit October 29 - November 23 at the Cisco Chamber of Commerce and then will continue on a tour of Texas.

The exhibit is an outstanding display of fine art and the public is invited to attend.

Palette Pals art group held their first meeting and workshop in the Gallery classroom Monday night. We studied abstract art and acrylic

paints. Present for the first night were Jamie Beetal, Sue Rossander, Janice Stroud, Jan Richards and myself. Come by and join us any Monday night 7 p.m. - 9 p.m.

Children's classes start Tuesday. I am finding out we have a lot of young Rembrandts in Eastland. Joe Flynn is one of them and I am sure he will go far. Busiest artist of the week has to be Dyanne High of Eastland. Looking forward to hanging some of her work in the Gallery soon. Mrs. O.B. Hughes and friends from Cottonwood were back in this week. One of them Mrs. O.O. Sandifer has

discovered the joy and challenge of painting.

Mrs. Babe Moates of Cisco came by and visited and I am very glad to meet her. Mrs. Moates instructed for American Handicrafts in Houston before moving to Cisco. She is going to do a free demonstration for us at the Eastland Gallery on Country and Tole Painting Tuesday - all day long so be sure and drop by and meet her. She will be holding classes at the Gallery soon on many different crafts. I plan on being her first student. Her work is beautiful.

Word of caution - when foiling with spray glue be sure room is well ventilated. Spray glues must be used with care. Government has removed several brands from the

market already. Read your label carefully.

CALENDAR OF EVENTS
 Tuesday, Nov. 6, 1973 - Demonstration Country and Tole Painting, Eastland Gallery

Tuesday, Nov. 6, 1973 - Children's Art and Craft Classes, Eastland Gallery
 Nov. 10 and 11 - Sidewalk Show, Ranger Texas, sponsored by Ranger Art Association.

TV MEMORIAM

The new Eastland Centennial Memorial Library continues to grow as Mr. and Mrs. Virgil T. Seaberry gave 52 books in honor of Judge and Mrs. Cecil Collings this past week.

Mrs. Arther Murrell presented the library with a beautiful plant.

Mrs. Kinberg loaned the library a chair that she brought with her to Texas from Bowling Green, Kentucky, in 1869.

Mrs. T.E. Castleberry presented the library a quilt that is over 100 years old that was made by her grandmother. She also gave two pictures.

Complete painting and decorating. Tape bedding. Acoustic ceiling wallpaper. Small repairs. Free estimates. 1390, Cisco, after 5 p.m., Dave Ewell.

Attention New Business
S & W Industries
 801 W. 18th-442-3399
 Custom Built Creep Feeders, Troughs, Hay Racks, Cattle Guards

LEGAL NOTICE
 Public Hearing Notice
 Sonics International, Inc., P.O. Box 47088, Dallas, Texas 75247, has applied to the Texas Water Quality Board for an initial permit pertaining to the subsurface disposal of industrial wastes (chlorinated and nonchlorinated waste solvents, coolants, spent acids and waste oils) by means of a proposed injection well to be drilled to a depth of 3,800 feet with injection depth intervals to be from 3,564 feet to 3,800 feet. The proposed well is to be located along State Highway 101 (1405 feet from the north line and 530 feet from the west line, in the Mark Haley Survey, Abstract 156.) approximately two and one-half (2½) miles west of Ranger, Eastland County, Texas. A public hearing on this application will be held in the Council and Courts Building, Main and Freeman Streets, Duncannon, Texas 10:00 a.m. December 6, 1973 to receive evidence on the conditions, if any, under which the permit may be issued. Additional date will be developed at the hearing, but further technical information concerning any specific aspect of the discharge, if available, can be obtained by writing the Texas Water Quality Board, P.O. Box 13246, Capitol Station, Austin, Texas 78711.

Southern Television Systems Inc.
 Encourages You To Attend The Church Of Your Choice!



EASTLAND CHRISTIAN SCIENCE SOCIETY
 Corner of Plummer and Lamar
 Sunday morning services 11:00. Services on first Wednesday of month 7:30 p.m. All are welcome.

FIRST UNITED METHODIST CHURCH
 Rev. Ben Marney
 Sunday School 9:45 a.m.; Morning Worship 11:00 a.m.; E. Young People's Meet 6:00 p.m. Sunday Evening Worship 7:00 p.m.; Ladies Prayer Group 9:30 a.m. Wednesday: Choir Practice Wednesday 7:30 p.m.

UNITED PENTECOSTAL CHURCH
 Rev. E.D. Norman
 Sunday School 9:45 a.m.; Morning Worship 11:00 a.m.; 5 Evening Worship 7:30 p.m.

NORTH OSTMOR ST. CHURCH OF CHRIST
 H.S. Lewis
 Worship 9:30 a.m.; Evening Worship 5:00 p.m. Wednesday Evening Service 7:00 p.m.

FIRST BAPTIST
 Rev. Hoston Brewer
 Sunday School 9:45 a.m.; Morning Worship 11:00 a.m.; Evening Worship 7:30 p.m.

BETHEL BAPTIST
 Rev. Bill Betts
 Sunday School 9:45 a.m.; C. Morning Worship 11:00 a.m.; Ev. Training Union 6:00 p.m.; Evening Worship 7:00 p.m.

CALVARY BAPTIST
 Rev. L.C. Williams
 Sunday School 10:00 a.m.; Morning Worship 10:45 a.m.; Training Union 6:00 p.m.; Evening Worship 6:30 p.m.; Wednesday Night Service 7:00 p.m.

FIRST BAPTIST CHURCH
 NO. SEAMAN ST.
 Rev. G.L. Norris
 Sunday School 9:30 a.m.; Morning Worship 11:00 a.m.; Baptist Training Union 6:00 p.m.; Evening Worship 7:00 p.m.; Wednesday Night Service 7:00 p.m.

HARMONY BAPTIST CHURCH
 RYDY FAMBROUGH - Minister
 Sunday School 9:45 a.m.; Morning Worship 11:00 a.m.; Ev. Training Union 7:30 p.m.; Wednesday Night Service 7:30 p.m.

MANGUM BAPTIST CHURCH
 Rev. A.J. Thomas
 Sunday School 10:00 a.m.; Morning Worship 11:00 a.m.; Training Union 6:00 p.m.; Evening Worship 7:00 p.m.

ST. FRANCES CATHOLIC
 Priest John Mitchell
 Mass Saturdays at 6:30 p.m.

FIRST PRESBYTERIAN CHURCH
 Rev. Robert W. Marsh
 Sunday School 10:00 a.m.; Morning Worship 11:00 a.m.

FIRST CHRISTIAN DISCIPLES OF CHRIST
 Steven Church
 Mo. Sunday School 9:30 a.m.; Morning Worship 10:55 a.m.; Evening Worship 6:00 p.m.

CHURCH OF GOD
 Main & Connellee
 Rev. Ronald Bear
 Sunday School 10:00 a.m.; Morning Worship 11:00 a.m.; Family Training 6:00 p.m.; Evening Worship 7:00 p.m.; Wednesday Night Service 7:30 p.m.

CHURCH OF CHRIST
 Daugherty St.
 Jim Pennington
 Sunday School 9:30 a.m.; Morning Worship 10:30 a.m.; Evening Worship 6:00 p.m.

HOLY TRINITY EPISCOPAL CHURCH
 Priest Raleigh Denison
 Sunday School 11 a.m.; Holy Communion 11 a.m.

CARBON FIRST BAPTIST
 Rev. Darbert Smith
 Sunday School 10:00; Morning Worship 11:00 a.m.; Ev. Training Union 5:30 p.m.; Evening Worship 6:30 p.m.; Wednesday Night Service 8:00 p.m.

CHURCH OF CHRIST
 Jack Landrum
 Sunday School 10:00 a.m.; Morning Worship 10:50 a.m.; Evening Worship 6:00 p.m.; Wednesday Night Worship 7:30 p.m.

FIRST UNITED METHODIST
 Rev. C.C. Shultz
 Sunday School 10:30 a.m.; Morning Worship 9:30 a.m.

OLDEN BAPTIST CHURCH
 Rev. Howard Mosher
 Sunday School 10:00 a.m.; Morning Worship 11:00 a.m.; Evening Prayer Service 7:00 p.m.; Evening Worship 7:30 p.m.; Wednesday Night Service 7:00 p.m.

CHURCH OF CHRIST
 Frank Kilbourne
 Bible Class 10:00 a.m.; Morning Worship 11:00 a.m.; Evening Worship 7:00 p.m.

FLATWOOD CHURCH OF CHRIST
 Willie E. Moore
 Sunday School 9:45 a.m.; Morning Worship 11:00 a.m.; Evening Worship 6:00 p.m.; Wednesday evening 8:00 p.m.

PERSONALS

Recent visitors in the home of Mrs. Lucy Stoker were her nieces, Mrs. Tom Montgomery of Tucson, Ariz., and Mrs. R.H. Haney and sons, David and Stanley of California; great nephews, Mr. and Mrs. Randy Call, Kip, and Kerri Gwyn and Mr. and Mrs. Bobby Haney and David from Brady, Texas. A friend, Mrs. Jesse Haney of Sweetwater, also visited.

Spec. Kellar is regularly assigned as a Generator Mechanic with headquarters Company, 1st Battalion of the 3rd Infantry Division's 30th Infantry at Schweinfurt, Germany. His wife, Susan, is with him in Germany.

WANTED - One warehouse man, must be over 18 years of age, and one delivery man, must be over 21 years of age, and have commercial operators license. Apply West Texas Produce Company, Cisco, 1-89

SCHOOL Lunch Menu

- MONDAY, NOVEMBER 5**
 Steak fingers
 French fries
 Green peas
 Tossed salad
 Hot rolls
 Fruit cobbler
- TUESDAY, NOVEMBER 6**
 Meat loaf
 Whipped potatoes
 Green beans
 Lettuce wedges
 Hot rolls
 Fudge cake
- WEDNESDAY, NOVEMBER 7**
 Hot dogs with chili
 Pinto beans
 Buttered cabbage
 Stuffed celery
 Cornbread
 Egg custard
- THURSDAY, NOVEMBER 8**
 Turkey pie - biscuit topping
 Buttered lima beans
 Lettuce & tomato salad
 Sliced bread
 Chocolate pudding
- FRIDAY, NOVEMBER 9**
 Sloppy Jo burgers
 Buttered corn
 Round - up salad
 Jello with fruit

Office Help Wanted

Male or Female
 Typing, invoicing, 10 key, receivables, payables, payroll
 Call Earl Bradley for appointment
Call Earl Bradley For Appointment
 629-1737

J.R.B. Family Center
 These Prices Good Eastland Store Only

BABY ALIVE
 By Kenner Special Price
 Reg. Price \$16.99 **\$13.99**

CORNING WARE TRIO Special
 Open Stock \$21.99 **\$12.99**

ROAD RACING SET
 Battery Operated \$3.99

TINY TONKA Fire Department Set
 Reg. \$9.99 NOW **\$7.69**

BODY SUIT Ribbed 3-6x \$3.99
Green Stamps

Dignity . . . Consolation . . . Concern

Trust Our Experience
 Our reputation is based on competence and caring. Every detail is taken care of.

Arrington Funeral Home
 Ph. 629-2611 -- Eastland
Friendly Personalized Service

Announcements

The public is cordially invited to attend a Gospel meeting at the North Ostrom St. Church of Christ Nov. 4 thru 7. Bro. Baxter Loe of Amarillo will be preaching. Whosoever will may come to these services of the church. Sunday 10:30 a.m. 5 p.m., Monday, Tuesday, Wednesday, 7 p.m.

Apply Now Waitresses
 Needed At **Ramada Inn**
 I-20 East Of Eastland
 Good Benefits Hospitalization
 Contact Larry Armstrong
Ramada Inn

"I enjoy working at TI a lot more than my old job . . . plus I make more money."

Glenda Locke, Electronics Assembler

There are many new openings for Electronics Assemblers right now! And, if you qualify, we'll train you - free!

If you're good at detail work, like sewing, knitting, soldering and crocheting, you're the ideal person to go to work as an Electronics Assembler. Right from the start you can earn \$2.43 an hour, plus a 20% premium for some shifts. So you could start at over \$500 a month, even with no experience.

AVAILABLE DALLAS SHIFTS			
Shift	Hours	Days	Monthly Pay
D	7:00pm - 7:00am	Thur, Fri, Sat, every other Wed, Sun, Mon.	\$525
A	7:00am - 7:00pm	Tues, every other Wed, Thur, Fri.	\$486
C	7:00am - 7:00pm	Sat, every other Wed, Thur, Fri.	\$486
1	7:00am - 3:30pm	Mon thru Fri	\$420
2	4:00pm - 12:30am	Mon thru Fri	\$455
3	12:30pm - 7:30pm	Mon thru Fri	\$387

At Texas Instruments you'll share in the company's profits, in addition to your regular salary. Plus there's a fully-paid retirement plan, financial aid with your education, paid vacations and holidays, excellent medical insurance and complete credit union facilities. TI also has the most complete recreation and travel program anywhere in the Southwest.

TI employees also get first crack at all other job openings at TI. So send for your application today:

Texas Instruments Incorporated
 ATTN: James Compton
 Post Office Box 5012
 Mail Station 67
 Dallas, Texas 75222
 or, see your local Texas Employment Commission office.

TEXAS INSTRUMENTS INCORPORATED
 AN EQUAL OPPORTUNITY EMPLOYER

Pre-Season Heating Sale

15% OFF Heating And Blown-in Insulation Through October, 31
Conserve Fuel-INSULATE

When it Comes to Air Conditioning

When it comes to air conditioning and heating, Don't make the same mistake others do, Don't think cheap is a bargain. Deal with a professional...Central Air Inc., where quality and reputable service are not just words. Your Satisfaction Is Guaranteed.

Central Air
 Heating, Air Conditioning
 Plumbing and Insulation
 201 Mesquite - Abilene, Texas

CALL: 673-9571
 For Free Estimate Terms Available

Unique Beauty Shop & Merle Norman Cosmetic Studio
 403 South Lamar Ph. 629-2883

Permanent Specials Thru Nov. 15th

Reg. \$25.00	Now \$20.00	Reg. \$15.00	Now \$12.50
Reg. \$20.00	Now \$17.50	Reg. \$12.50	Now \$10.00

We Are Happy To Announce That Barbara Jean Morrison & Jean Jackson Have Been Added To Our Staff.

Carolyn Adkins
Dee Tindall
Hattie Williamson - Mgr.
Elnora Overstreet - Owner

Phone For Your Appointment Now. And Come By And Visit Our Merle Norman Studio And See Our Line Of Cosmetics For Christmas

CHURCH OF CHRIST
 Jack Landrum
 Sunday School 10:00 a.m.; Morning Worship 10:50 a.m.; Evening Worship 6:00 p.m.; Wednesday Night Worship 7:30 p.m.

FIRST UNITED METHODIST
 Rev. C.C. Shultz
 Sunday School 10:30 a.m.; Morning Worship 9:30 a.m.

OLDEN BAPTIST CHURCH
 Rev. Howard Mosher
 Sunday School 10:00 a.m.; Morning Worship 11:00 a.m.; Evening Prayer Service 7:00 p.m.; Evening Worship 7:30 p.m.; Wednesday Night Service 7:00 p.m.

CHURCH OF CHRIST
 Frank Kilbourne
 Bible Class 10:00 a.m.; Morning Worship 11:00 a.m.; Evening Worship 7:00 p.m.

FLATWOOD CHURCH OF CHRIST
 Willie E. Moore
 Sunday School 9:45 a.m.; Morning Worship 11:00 a.m.; Evening Worship 6:00 p.m.; Wednesday evening 8:00 p.m.

I REMEMBER
By DICK O'BRIEN

Last week we had some things to say about the care of the sick in the early days of the county. I do not have the vocabulary to fully express my admiration for the faithful doctors of those days. During our stay of seven years in Carbon there were four doc-

tors. Dr. Wilson, I would designate him by the words Paul, in the Bible, described Luke as: "The Beloved Physician". Not only did he minister to the physical needs of the people, but he was a real friend and ministered to our emotional needs as well.

Dr. Jackson, can I ever forget! Many a Sunday night when I would come home from preaching his car would be parked in front of our house and he would be asleep in the back seat. I would awaken him and he would tell me where to go first, and I would drive most of the night all over the surrounding communities visiting one sick person after another.

Dr. Will Guy! He, too was a friend as well as a physician. He delivered two of our little girls. He and I spent many creative hours discussing life and its many facts.

Last, and standing tall: Dr. Lee Stubblefield. He was the youngest of the quartet and added much to the health needs of the community. He, too, was a real citizen and his influence will long be felt in Eastland county. As far as I know they have all gone to their reward, and what a reward it must be! May their tribe increase.

Mr. E.T. Tucker of Eastland and Mr. Jack Tucker and daughter, Sandy, of Sweetwater, visited recently in the home of Mr. and Mrs. T.J. Tucker and James in Umbarger, Texas.

Sunday, November 4, 1973



Eastland Manor Volunteers hosted a birthday party for residents of Eastland Manor who celebrated birthdays in October on Wednesday at 2:30 p.m.

Special birthday guests were: seated left to right: D.C. Frost, Mattie George, Clemmie Phillips. Standing left to right: Loney Brock, Willie Harris, and Lillie Dye.

Other residents having birthdays in October but not attending were Charles Meglasson and Myrtle Alvey.

A very enjoyable time was had by all the residents and visitors.

Mrs. Murrell Gives Program For Club

"Health is the second blessing, a blessing that money cannot buy", quotation from Isaac Walton was the theme of the timely paper "Medical Breakthrough" presented by Mrs. Arthur Murrell for the Thursday Afternoon Club meeting at the Woman's Club House on Nov. 15, 1973. Discussed were present American health trends, breakthrough in medical science, health care facilities and directions in these fields in the future.

Mrs. Dan Childress, president, presided over the business period and led the American Creed.

A report on the Eastland Centennial Library by Mrs. Joseph Perkins showed that 41 new library cards had been issued during the month of October. A total of 442 active patrons on file indicate Eastland readers appreciate and use the library facility frequently.

A rummage sale and bake sale is planned for November 16 and 17 with Mrs. E.G. Rice and L.E. Corbell, co-chairmen.

During the social hour, Mrs. T.E. Richardson, hostess, served refreshments to Mesdames: W.L. Borudeau, Dan Childress, Turner Collie, L.E. Corbell, Pat Crawford, J.O. Earnest, J.F. Francis, C.B. Frost, Sr., Ben Hamner, Herman Hassell, James Horton, Marene Johnson, Arthur Murrell, Joseph

Perkins, E.R. Townsend, H.E. Van Geem, R.L. Young and a guest Mrs. Marie Hodges.

Margaret Corbell
Reporter

Hostess For Circle

The regular monthly meeting of the McCloud circle of the United Methodist Women was hosted by Mrs. Young Wright in her attractive home at 506 South Oaklawn the morning of Tuesday, Oct. 30, 1973.

Circle leader Mrs. Austin McCloud, presided over the short business period. Mrs. H.J. Bulgerin, chairman of the U.M.W. turkey dinner to be held at the local church on Wednesday, Nov. 7th, discussed plans for each member's participation on that date.

A very inspiring devotion was given by Mrs. Ed. F. Willman on Stewardship and led in the Circle pledge participation for the coming year.

Using a Halloween theme Mrs. Wright served refreshments to the following Mesdames: James Horton, Pearson Grimes, E.M. Grimes, Earl Bender, L.C. Heck, H.E. Van Geem, Roy Stokes, H.R. Wyatt, Guy Patterson, Jack Frost, Ed. F. Willman, C.M. Pogue, Austin McCloud, L.E. Corbell, H.J. Bulgerin, Loretta Morris, Opal Morris and Mrs. Betty Morris, a guest.

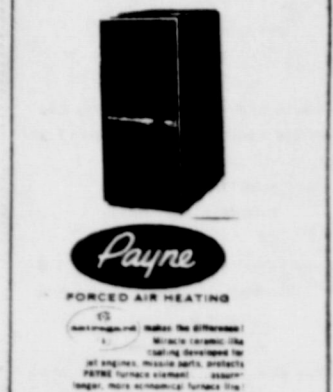
Margaret Corbell
Reporter

The J&F Poodle Grooming Shop located 14 miles south of Interstate 20 on Cisco and Cross Plains Highway 206. Phone 817 - 725 - 4304. 1-94

Custom Plowing, Cutting, & Bailing
Call Jack Johnson
647-3679



AT LOWER COST!
It's easy with a quality PAYNE system installed expertly to give you economy and comfort. Models for any size home or budget. Let us prove it! Call today!



Hargrave's Tin Shop
1110 Ave. D Cisco
Ph. 442-2337

DISTRIBUTORS NEEDED—EXCLUSIVE OPPORTUNITY
SIMONIZ AUTO HOME ACCESSORIES AND CARE PRODUCTS
\$1 MILLION ANNUAL MARKET
NO EXPERIENCE NECESSARY.
Spare, Part, or Full Time.
New marketing system permits man or woman to distribute multi-million \$ pre-sold advertised products for 5 major U.S. companies in the Division 3 Auto-home products field. Bestwide company secured accounts weekly with high profit, high impulse, fast repeat consumer items from: SIMONIZ, TEXIZE, DUPONT, JOHNSON WAX, HOLLYWOOD ACCESSORIES and PREMIUM TOOLS.
NO INITIAL SELLING! INCOME STARTS IMMEDIATELY!
COMPANY FURNISHES ACCOUNTS! GUARANTEED INVENTORY BUY-BACK!
MINIMUM CASH INVESTMENT, \$1425 or \$2450, UP TO \$4750.00
Applicant should have car, minimum of 6 spare hours weekly, reliable and able to assume business responsibilities within 30 days. If you meet these requirements, have the cash investment and sincerely want to own your own business, then write and include phone number to:
INTERNATIONAL MARKETING SYSTEMS INC.
AUTO HOME DIV. DEPT. 89
3425 MID-COUNTY INDUSTRIAL DR.
ST. LOUIS, MISSOURI 63114
JOHNSON WAX

BAKKER FUNERAL HOME

Dear friends,

We try in this series of 'open letters' to provide the public with information on funeral arrangements and death benefits which is not readily available elsewhere.

If at any time you have questions not answered here, we welcome your visit or phone call to bring your query to our attention.

Respectfully,
Darrin C. Bakker

Let us help you get your new car

Buying a new car can be easier than you'd expect—if you let us handle the financing for you.

For Information Call
Richard Rossander
Agent
Ph. 629-2563
Eastland, Texas
Financing services by
MFA Security Service Co.

HELPING TO SAFEGUARD HEALTH

A Friend You Can Rely On...

Your pharmacist should be your friend. Someone to help. Someone who's always there with careful attention to prescriptions.

And, as your doctor's back-up man, your pharmacist follows his instructions with precision.

Bandages, Strips
Central Drug
103 W. Main Eastland 629-2681

Dogies Win 7th

By Laurah Johnson

Open your eyes to those Fighting Dogies, when they played their 7th game to a 30-8 victory over the Cisco Midgets at Lobo stadium Thursday night.

The game started when Eastland lost the toss and kicked off to Cisco.

Eastland got them down on the 10 yard line. After several plays and a couple of downs, Eastland recovered the ball. Eastland came back strong with that offense when No. 42 Elwyn Davidson, for Eastland, scored the first touchdown of the game. With 3 minutes 59 seconds left in the first quarter the two point conversion was good.

Eastland kicked off to Cisco, but Cisco was unable to score against Eastland's great defense.

Eastland recovered the ball on the 20 yard line. Eastland's offense was great. After a few plays and down, Eastland's No. 11 John Hill scored the second touchdown for Eastland. With 4 minutes and 15 seconds left in the second quarter, Eastland's 2 point conversion was good.

At halftime the score was Eastland 16 Cisco 0.

The third quarter started out with Cisco kicking off to Eastland. Got Eastland down on the 45 yard line. Eastland made very good yardage and drove in to the 2 yard line. When Eastland's No. 11 John Hill made the third touchdown for Eastland. With 6 minutes 29 seconds left in the third quarter, the 2 point conversion was no good.

For Eastland's defense this 6 minutes 29 seconds was one of the roughest parts of the game.

When Eastland kicked off to Cisco and got them down on the 35 yard line, Cisco's offense went to work with good yardage on their plays. After several plays Cisco drove down to the 1 yard line and from there made their first and only touchdown of the game. Cisco's 2 point conversion was good.

Cisco kicked off to Eastland and got them down on the 35 yard line. On Eastland's first play John Hill drove in for a beautiful 60 yard touchdown. With 39 seconds left in the third quarter Eastland's 2 point conversion was good.

In the fourth quarter both teams came back strong with that defense. The score at the beginning of the fourth quarter was 30-8 Eastland's favor, and that is how it stayed with good

defense coming from both teams.

Both Cisco and Eastland were unable to score and the game ended Eastland 30 Cisco 8.

The 7th grade played before the 8th for a victory of 22-0 over Cisco. This is the best game for the 7th graders so far. Their blocking and running were great. Their defense was terrific. They held Cisco back, and Cisco was unable to score

Mr. and Mrs. Truman Maynard visited their granddaughter Angela Denise Gregory and Mr. and Mrs. Grady Gregory in Longview, Texas, for a week. They visited Mr. and Mrs. Don Barron in Marshall, Texas, and visited in Shreveport, Louisiana.

Happy Birthday, Mother
WE LOVE YOU!!
Carolyn Donna Janie Bill

Thanksgiving Greetings From Poe Floral
629-1711 609 W. Main

How long do you think it takes to plan and build a power plant like this?

2 years 4 years 8 years

time that the primary fuels we use to generate electricity — natural gas and oil — would be in short supply and thus more expensive.

Anticipating this, we and two other electric utility companies now have in operation a power plant near Fairfield which uses lignite coal for fuel. And two other lignite plants are currently under construction.

We know that by the early 1980's, we will need still another dependable fuel source — nuclear energy. Plans are under way to have a nuclear-fueled power plant near Glen Rose operational by 1980.

Diversifying to these new fuel sources will help decrease our dependence on natural gas and oil.

Unfortunately, plants designed to use lignite cost about two times as much as gas-fired plants. Nuclear plants cost more than three times as much. But we must make commitments now to be ready for the future.

We're working to supply the electricity you need, but it's costing more to make it all the time.

Give yourself an A if you said eight years.

The planning and construction of a lignite-fueled power plant like the one pictured here takes just about that long.

That's at least eight years to locate and purchase the right site, order equipment, plan and build the plant, obtain approvals from all regulatory agencies, and then test the plant's operation carefully.

The point is, we can't wait until the day you and your neighbors need more electricity. If we did, you simply wouldn't have it.

That's why we're always looking ahead. We have to. For instance, we've known for some

TEXAS ELECTRIC SERVICE COMPANY
F. N. SAYRE, Manager, Phone 629-2651