



WREATH HIGHLIGHTS ADVENT - - The First Christian Church (Disciples of Christ) recognized Advent in a special way this year. This traditional Christian celebration was aided by the progressive creation of an Advent wreath. The four Sundays in Advent were represented by four purple candles. Purple is the liturgical color of the Advent season. Each Sunday a different candle was lit symbolizing Hope, Peace, Love, and Joy. In preparation for each of the four Sundays different trimmings were added to the wreath. Fall leaves and Chrysanthemums symbolic of the autumn began the decoration. The next Sunday evergreen and mistletoe were placed on the wreath. The third Sunday Holly and artificial snow were added. The final item added was a white dove to represent Peace. The large white center candle signifying Christ birth was lit at the Christmas Eve Candlelight Service. The design and creator of the Advent wreath is Carol Church, wife of Steven Church, minister.

Postal Service Increase To Be Rescheduled

The U.S. Postal Service will postpone rate increases scheduled for Jan. 5 until March 2 in compliance with a Cost of Living Council directive, local postmaster Marcus O'Dell has announced.

That means the price of mailing a first-class letter will remain eight cents for another two months before going up to a dime.

The Cost of Living Council a week ago told the Postal Service to trim back the amount of the proposed increases but ordered no changes in the new rate structure. The reduction could be accomplished by delaying the rate hikes rather than reducing them, the council said.

The Postal Service had expected to raise annual revenue by \$1.54 billion by starting the rate increases Jan. 5. But the council said that should be reduced by \$236 million.

In addition to the boost in letter rates, the Postal Service will raise the cost of mailing a post card from six cents to eight cents and the cost of an airmail letter from 11 cents to 13 cents.

EASTLAND TELEGRAM

EASTLAND, TEXAS 76448: Today's CENTER for tomorrow's FUTURE!

Volume No. 104 Number 104

Sunday, December 30, 1973

Realignment Being Phased In Smoothly

The Texas Constitution provides that every county will be divided into four sections, which from time to time will be realigned for the convenience of the people.

In July the County Commissioners voted to realign Eastland county's four precincts to bring them in line with court rulings to equalize the precincts on basis of population, not of area or roads.

Adjustments in road and bridge maintenance and repair services for the realigned precincts will not go into effect until January 1st, 1975.

Elections for the realigned precincts will be held in the spring of 1974.

How will the realignment of the county's precincts affect next year's commission races?

In 1974 commissioners of Precincts Two and Four are up for re-election in the spring. According to Judge Scott Bailey, they will be chosen according to the new precinct lines.

Under the new lines Precinct One will consist of Eastland, extending west about four miles, south about five miles, north to Morton Valley and east to Olden with an estimated voting strength of 2,400.

Danny Woods of Olden will remain as commissioner of Precinct one, since he is not up for re-election until 1976.

The realigned Precinct Two will include Ranger, Olden, Lake Leon and Desdemona, with about 2,100 votes. There will be no incumbent for the 1974 elections and a new commissioner will have to be chosen. Danny Woods will tend to road repair and work here, until services come into effect the first day of 1975.

Precinct Three will combine Gorman, Carbon and Rising Star with an estimated 2,400 votes. L.D. Owens of Rising Star will remain as commissioner of the new Precinct Three, since he does not come up for re-election until 1976.

Dick Foster, commissioner of Precinct Two now composed of Desdemona, Gorman and Carbon, will hold that post until Jan. 1, 1975.

Precinct Four will remain unchanged, consisting of Cisco and its surrounding area with an estimated voting strength of 2,500 votes. Its commissioner, Clarence Dill is up for re-election in 1974.

According to Judge Bailey the problem of unequal districting is widespread throughout Texas Counties. For example, in neighboring Palo Pinto County its precincts, while equal in area, range from 210 to 42.8 in terms of population.

Under the "one man, one rule vote" enacted by the U.S. Supreme Court ruling, all four of Eastland's precincts did not conform to having a 50, 10, 10, and 30 percent population density.

The one vote cast by each commissioner in representing the constituents of his precinct was very disproportionate, said Judge Bailey. "Rising Star and Gorman precincts with voting strengths of from 1200 to 1500, had the same vote in county matters as that of Eastland and Cisco precincts with approximate voting strengths of 4,500 and 2500...almost a three to one disparity in proportion to population.

Commissioners voted 2-2 on the matter with Eastland County Judge Bailey casting the tie-breaking vote in favor of reapportionment.

Judge Bailey stated he voted yes to "uphold the highest law of the land" and prevent a possible court suit that would have required Eastland County to conduct a private census at a considerable cost. Bailey cited a similar court action (the Avery Case) in Midland



Services For James Isbell Thursday

James Isbell, 68, of Eastland, died at 3 a.m. Thursday in the Eastland Hospital. He was a retired professor of Latin and Greek.

Memorial services will be at 2:30 p.m. Thursday at the First Presbyterian Church in Eastland. Interment will be private.

Mr. Isbell was born Oct. 17, 1905, in Horatio, Ark. He moved to Eastland in 1920 with his parents and graduated from Eastland High School in 1924. He graduated from the University of Arkansas in 1929, and obtained a master's degree in classics from the University of Illinois in 1930. He taught in the Eastland public schools for

several years before attending the University of Virginia for advanced work in classics. He then taught at St. Christopher's School in Richmond, Va., until his retirement in 1967. He returned to Eastland in 1967. Survivors are one brother, Dr. Harris Isbell of Eastland and one aunt, Mrs. J.P. Matthews of Eastland.

He was an accomplished linguist and read five languages and spoke three with some fluency. He was a scholar who was deeply interested in history, philosophy and letters. He influenced many young people to pursue intellectual matters.

County where all four districts had been unequal in population.

Thus in an internal action and fulfilling its legislative functions, the Commissioner's Court voted to redistrict the county's four commission precincts. A major reason was for voter convenience and to substantially equal representation by population.

The action came about when a group of Ranger Citizens appeared before the commission in November of 1972 to ask that the lines be redrawn so that voters in the Ranger precinct would be more equally represented.

In January of 1973 the commissioners court appointed a select committee of two people from each precinct to study all aspects of redrawing the four precinct lines. They unanimously recommended, after three months exhaustive study, that Eastland county

precincts be redistricted to provide for "one vote, one man".

The committee also stipulated that the funds for the maintenance of county roads and bridges within each precinct be determined by actual road mileage.

Calvary Temple In Revival Nightly

The Calvary Temple Assembly of God Church 1608 W. Commerce will be in revival nightly Sunday, Dec. 30 thru Thursday, Jan. 3.

Services begin at 7:00 p.m. and will be conducted by the John K. Pratt family of Amarillo. The services will include a children's presentation each evening according to Rev. John Pratt Jr., the Evangelists son and pastor of the church.

Everyone is cordially invited to attend.

Rep. Hanna To Seek Re-election

Joe C. Hanna, state representative for the 54th district, announced today that he will be a candidate for that seat again in 1974.

Hanna is chairman of the House Rural Energy Crisis Committee, and represented Texas at a national conference on the energy crisis situation. He is also serving as chairman of the State Vocational - Education committee. He represented Texas at the Conference of National Legislators, and is also a member of the transportation and natural resources committees of the House.

Democratic primary elections will be held in May, with the general election in November. State representatives must run for that office every two years.

A new sound

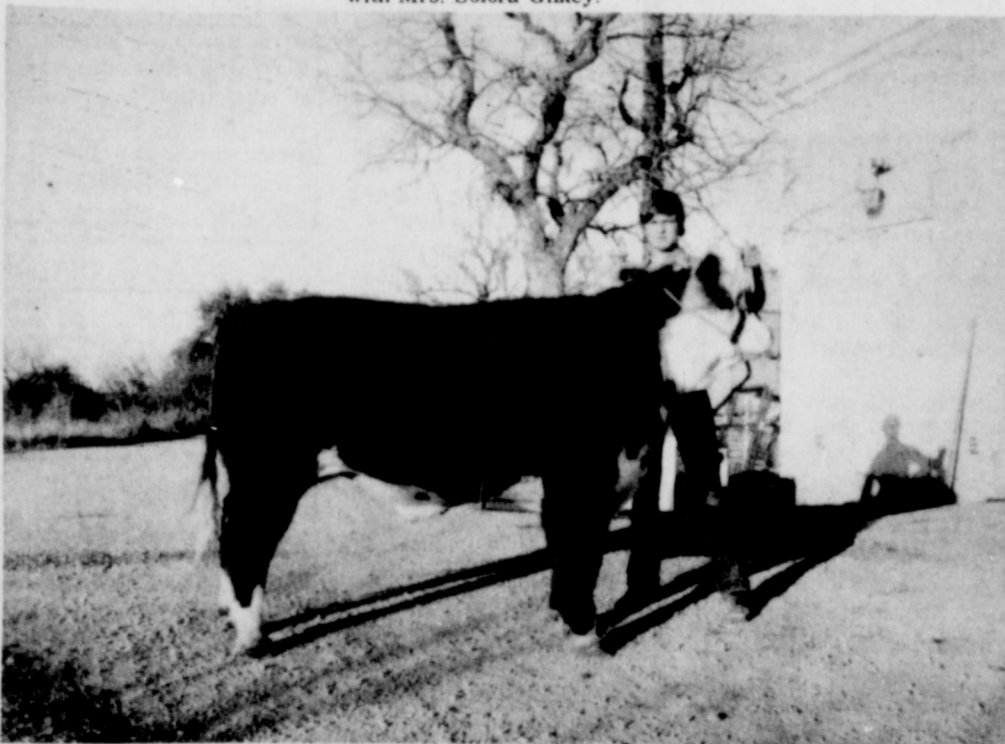
Eastland telephone users will hear a change in their telephone service on January 3, 1974.

According to Southwestern Bell Manager Burnice Gorr, the dial tone callers hear when they lift the receiver to dial a call will change to a new, low-pitched hum.

"Although the tone telephone customers hear when they lift the receiver of their telephone to dial a call will sound different after January 3, 1974, it will not affect telephone service or the way callers use the telephone. Customers should continue to dial calls in the usual way," Mrs. Gorr said.

She added that the change is necessary because of planned future improvements in Eastland telephone service.

Mr. and Mrs. James Gilkey and Lisa of Graham visited during the Christmas holidays with Mrs. Solora Gilkey.



David McKewain, Eastland FFA member and son of Mr. and Mrs. Elvin McKewain, proudly poses with his 1080 pound Hereford calf. David will be showing his calf at the Abilene and Fort Worth Stock Shows in January. The calf was purchased from R.G. (Buck) Wheat.

Hooray for the U. S. A.

EDITOR'S NOTE: An editorial by a prominent Canadian radio newscaster, Gordon Sinclair of Toronto, last summer has become the most quoted and probably most popular expression of sentiment in the United States this winter. In a late development, it has been set to music and promises to become one of the best-selling recordings of the season.

Strongly supporting the United States in a day when anti-Americanism tends to prevail throughout the world, the editorial, even without music, sounds like music to American ears. Almost every newspaper in this country has reprinted it, as have several national news magazines. It has been recorded in the Congressional Record.

With the Senate having already voted for a "National Humiliation Day" in 1974 when we as a nation are to grieve over our sins and shortcomings, we at The Telegram think it a particularly appropriate time to publish once again the glowing tribute from a gallant friend. Surely, it is just as well to consider the things this nation has done right as it is to mourn over the things it has done wrong.

This Canadian thinks it is time to speak up for the Americans as the most generous and possibly the least appreciated people on all the earth.

Germany, Japan and, to a lesser extent, Britain and Italy were lifted out of the debris of war by the Americans who poured in billions of dollars and forgave other billions in

debts. None of these countries is today paying even the interest on its remaining debts to the United States.

When the franc was in danger of collapsing in 1956, it was the Americans who propped it up, and their reward was to be insulted and swindled on the streets of Paris.

I was there. I saw it.

When distant cities are hit by earthquakes, it is the United States that hurries in to help. . . This spring, 59 American communities (were) flattened by tornadoes. Nobody helped.

The Marshall Plan and the Truman Policy pumped billions upon billions of dollars into discouraged countries. Now newspapers in those countries are writing about the decadent, warmongering Americans.

I'd like to see just one of those countries that is gloating over the erosion of the United States dollar build its own airplanes.

Come on, let's hear it!

Does any other country in the world have a plane to equal the Boeing Jumbo Jet, the Lockheed Tristar or the Douglas 10?

If so, why don't they fly them? Why do all the international lines except Russia fly American planes?

Why does no other land on earth even consider putting a man or woman on the moon?

You talk about Japanese technocracy, and you get radios. You talk about German technocracy, and you get

automobiles.

You talk about American technocracy, and you find men on the moon—not once but several times—and safely home again.

You talk about scandals, and the Americans put theirs right in the store window for everybody to look at.

Even their draft-dodgers are not pursued and hounded. They are here on our streets, and most of them—unless they are breaking Canadian laws—are getting American dollars from Ma and Pa at home to spend here.

When the railways of France, Germany and India were breaking down through age, it was the Americans who rebuilt them. When the Pennsylvania Railroad and the New York Central went broke, nobody loaned them as old caboose. Both are still broke.

I can name you 5,000 times when the Americans raced to the help of other people in trouble. Can you name me even one time when someone else raced to the Americans in trouble?

I don't think there was outside help even during the San Francisco earthquake.

Our neighbors have faced it alone, and I'm one Canadian who is damned tired of hearing them kicked around.

They will come out of this thing with their flag high. And when they do, they are entitled to thumb their nose at the lands that are gloating over their present troubles.

I hope Canada is not one of these.

TIDBITS

By HVO

THIS ONE and one more day in this old year. Were it a used car, we'd all have to declare it very used indeed. Bandaged and buffeted, it was battered by crisis big and small almost daily. Truthfully now, will any of us ever forget the winter, spring, summer and fall of '73? . . . May the magic of the black-eyed pea and - or other good fortune token bring us a new model year filled with happiness, peace, prosperity and good will - - and please, fewer hourly crisis.

COFFEE TALK is almost exclusively devoted to energy situation and opinions vary. Consensus hereabouts pretty much see it as an overblown topic which has pretty much submerged the, how do you say, Watergate affair. Few would argue against submerging that subject, and it's probably healthier for our country for all of us to get our minds on something else. Some local philosophers guesstimate that the major oil companies, and others, seized the fuel dilemma (admittedly shaky for some time) and propelled it into a national (and beyond?) cause, which can have several results: upping fuel prices and at the same time, diverting attention from the DNH - breakin fiasco and its subsequent laundry - washing. There's one end result we're hoping for from the whole thing: maybe this country will get itself in a position so as not to be dependent on any foreign power, for fuel or anything else.

CONGRATULATIONS TO County Judge Scott Bailey who has been elected to the executive committee of the West Central Texas Council of Government. On WCTCOG's board of directors from this region are Judge Bailey, M.H. Perry, Judge Miller Tuttle, Mayor W.T. Dupree, Mayor John H. Webb, W.H. Terry and John A. Isenhower.

ACCORDING TO the best mathematical minds in the Texas Highway Department, cutbacks on speed (and the hoped - for reduction in gasoline use) will cost at least \$7 million a year in tax income. And the federal government is expected to whittle the federal - aid allotment by an equivalent amount.

That makes an anticipated shortfall of \$14 million in the Department's bank account. Under normal circumstances gasoline taxes would be expected to go up about \$20 million. That has been the appreciation schedule in the last three fiscal years:

Fiscal 1971 - \$236,750,678.

Fiscal 1972 - 255,204,950.

Fiscal 1973 - 275,189,769.

Both the Texas income and the federal cutback figures are extremely speculative at this uncertain time. The School Fund share will go down \$2.5 million to \$3 million under this schedule. The schools, however, stand to pick up that much, probably, under increases in oil and gas production tax income.

If nationwide rationing comes, that's another kettle of unsavory fish for the Highway Department to digest.

Summarizing the Highway Department's already active headaches:

- Inflation keeps shoving all costs up;
- Income from the gasoline tax is uncertain;
- Contractors can't figure their bids with any confidence, not knowing enough about materials and fuel;
- Delays imposed by environmental studies and other red tape continue;
- Meanwhile increasing population complicates road planning and construction, especially urban;
- And maintenance costs keep piling up and the jobs keep backing up.

F REYSCHLAG INSURANCE

WEATHER REPORT

Partly Cloudy and Mild Sunday with the High Expected in the Mid - 50's.

FULLEN MOTOR CO. Laugh A Day

Clipped from the classified ad section of a newspaper: "Lost: my wife's charge plate. Reward - if returned AFTER Christmas."

IF YOU MISS YOUR TELEGRAM

CALL 629-2214

TO START A SUBSCRIPTION CHANGE ADDRESS CALL 629-1707

TELEGRAM CLASSIFIED ADS Telephone 629-1707

H.V. O'BRIEN, Publisher and Editor
 Second Class Postage paid at Eastland Texas under Act of Congress on March 1870.
 Published semi-weekly - Thursdays and Sundays by Eastland County Newspapers, Inc.
 SUBSCRIPTION RATES: By carrier in city, 15 c a week or 85 c a month; one year by mail in county, \$6; city P.O. Boxes, \$8; one year elsewhere in state, \$7; out of state, \$8.
 Sunday, December 30, 1973

NOTICE: Any erroneous reflection upon the character, standing, or reputation of any person, firm or corporation which may appear in the columns of this newspaper will be gladly corrected upon being brought to the attention of the editor.

FOR SALE

FOR SALE - 3 bedroom house with new paneling, also pianos, refrigerators, stoves, and misc. items. Call 647 - 1331, 1009 Spring Road, Ranger. t-x2

FOR SALE - Can you qualify for F.H.A. 235 program? 3 bedroom, 1 1/2 bath brick home in Eastland near all schools. Central heat and air. Built in range and dishwasher, one-car garage. Pay equity and assume monthly payment of approximately \$82.50. Call Citizens Realty, 629 - 8082 or 629 - 8048. t-t-f

FOR SALE - Johnson's Portable buildings 8 ft. x 12 ft. and up, 2 x 4 framing with floor. Free delivery. Phone 734 - 5377, Gorman, Texas, Hiway 6 West. t-4

FOR SALE - 10 speed Columbia bicycle. In excellent condition \$50.00. Call 629 - 2182 after 5:00 p.m. t-tf

FOR SALE - Registered Angus and Hereford bulls, 14 - 18 months. Call W.P. Watkins, 647 - 1112 or 647 - 3454, Ranger. t-tf

FOR SALE - 3000 to 5000 bales peanut hay. \$1.00 per bale in the field. Call Sam Beggs, 629 - 1514 after 5:30. t-tf

FOR SALE - 2 four bedroom houses and 1 four room house. See Ben Hammer at 309 S. Lamar. t-tf

FOR SALE - 1 acre, adjoins grade school on south side. \$1500. Low down payment. Call 629 - 2805. t-104

FOR SALE - Remodeled home, 2 bedrooms, kitchen. Carpeted in living room, dining and bath. New plumbing and wiring. Close to schools and town. 807 W. Commerce. Call 629 - 2370 or 629 - 1700. t-tf

FOR SALE - 1968 Barracusa 340S, automatic, power steering, 48,700 miles. Clean. Call 629 - 1096. t-tf

FOR SALE - 160 cc Honda Motorcycle, runs perfectly for trail road street, 6,000 miles. Call 629 - 2189 or see at 104 S. Hillcrest St., Eastland. t-104

MISC. FOR SALE - TAKE soil away the Blue Lustre way from carpets and upholstery. Rent electric shampooer \$1. Perry Brothers. t-104

FOR SALE - Almost new 3 bedroom home. Low down payment. 1206 W. Main. Call 629 - 2805. t-104

FOR SALE - 3 bedroom, 2 bath mobile home, 12 x 65, excellent condition. Call 629 - 1284 after 5 p.m. and on weekends. t-1

FOR SALE - THIS spot that spot, traffic paths too, removed with Blue Lustre carpet shampoo. Coats Furniture. t-104

FOR SALE - 2 bedroom house, 1 acre, water well, city conveniences, \$10,500. Located in Olden. Call 817 - 629 - 2493 or 915 - 949 - 8878. t-105

FOR SALE - 350 IHC tractor, new motor, new clutch, good tread on tires, 2 or 3 point hitch. Call 629 - 1109. t-5

FOR SALE

FOR SALE - Small Shetland. Ideal for small children. Also 280 gallon gasoline tank. Call 629 - 1109

FOR SALE - 2 story home with 2 lots. 413 N. Walnut. Contact Mrs. J.I. Brinkley, 233 - 5852, 1712 W. 8th St., Freepport, Texas. t-105

Triple F. Feeds - proteins, vitamins, minerals, and parasite controls. 8c per head per day. Call collect 817 - 758 - 2679. t-4

WYNELL'S TREASURE ISLAND Tropical Fish and Complete Aquarium Supplies. Next to Mode O'Day

FOR SALE - Peanut hay. \$1.00 bale. Call 817 - 758 - 2645

FOR SALE - Peanut hay. \$1.00 bale. Call 817 - 758 - 2645. t-4

FOR SALE - 25 cords of fireplace wood wholesale. Call 817 - 758 - 2645. t-4

FOR SALE - One 6 x 20 goseneck stock trailer. 7 acres land in Humboldt. Call 442 - 1912, Cisco.

FOR SALE - Johnson's Portable buildings 8 ft. x 12 ft. and up, 2 x 4 framing with floor. Free delivery. Phone 734 - 5377, Gorman, Texas, Hiway 6 West. t-tf

FOR SALE - Johnson's Portable buildings 8 ft. x 12 ft. and up, 2 x 4 framing with floor. Free delivery. Phone 734 - 5377, Gorman, Texas, Hiway 6 West. t-tf

FOR SALE - Johnson's Portable buildings 8 ft. x 12 ft. and up, 2 x 4 framing with floor. Free delivery. Phone 734 - 5377, Gorman, Texas, Hiway 6 West. t-tf

FOR SALE - Johnson's Portable buildings 8 ft. x 12 ft. and up, 2 x 4 framing with floor. Free delivery. Phone 734 - 5377, Gorman, Texas, Hiway 6 West. t-tf

FOR SALE - Johnson's Portable buildings 8 ft. x 12 ft. and up, 2 x 4 framing with floor. Free delivery. Phone 734 - 5377, Gorman, Texas, Hiway 6 West. t-tf

FOR SALE - Johnson's Portable buildings 8 ft. x 12 ft. and up, 2 x 4 framing with floor. Free delivery. Phone 734 - 5377, Gorman, Texas, Hiway 6 West. t-tf

FOR SALE - Johnson's Portable buildings 8 ft. x 12 ft. and up, 2 x 4 framing with floor. Free delivery. Phone 734 - 5377, Gorman, Texas, Hiway 6 West. t-tf

FOR SALE - Johnson's Portable buildings 8 ft. x 12 ft. and up, 2 x 4 framing with floor. Free delivery. Phone 734 - 5377, Gorman, Texas, Hiway 6 West. t-tf

FOR SALE - Johnson's Portable buildings 8 ft. x 12 ft. and up, 2 x 4 framing with floor. Free delivery. Phone 734 - 5377, Gorman, Texas, Hiway 6 West. t-tf

FOR SALE - Johnson's Portable buildings 8 ft. x 12 ft. and up, 2 x 4 framing with floor. Free delivery. Phone 734 - 5377, Gorman, Texas, Hiway 6 West. t-tf

Wanted

WANTED: Texas Veteran wants to buy few acres. Call 629 - 1707. t-tf

FEMALE HELP WANTED - Immediate opening for 2 experienced waitresses. \$1.65 an hour plus tips. Call Fountain Blu, Gorman, 734 - 5808. t-tf

WANTED - Experienced or inexperienced cutter and helper for night shift. Apply at Boss Manufacturing, Cisco, Texas 442 - 1110.

WANTED - Steam presser. Apply in person at J&H Ind., 300 Pine St. Ranger. t-tf

WANTED - Baby sitting. Close to school. 629 - 2416. t-tf

WANTED - Would like to buy some unimproved land in South Eastland County. Send details to P.O. Box 543, Rising Star.

WANTED - LVN for 3 - 11 shift. Excellent salary. Also needed - someone to work in laundry. Contact Mrs. Lou Nix, Hickman Nursing Home. t-tf

WILL BUY good assortment of hand tools. Need now. Call after 6 p.m. 442 - 1642. t-tf

FOR RENT

FOR RENT: Furnished mobile homes and mobile home spaces 653 - 2220. t-tf

UNFURNISHED APARTMENTS FOR RENT - Roy's Oaks Apartments, 1304 Royal Lane, Cisco. 442 - 2232; 442 - 2709

FOR RENT - 2 rooms and bath with TV cable and bills paid. 212 W. Patterson. Call 629 - 2396. t-tf

FOR LEASE - Business Space. Inquire at Taylor Center. Eastland t-105

FOR RENT - 2 rooms and bath with TV cable and bills paid. 212 W. Patterson. Call 629 - 2369. t-tf

FOR RENT: Furnished, private 3 room cottages with carpets. Daily, weekly, or monthly. Pleasant Place Motel west edge of Eastland. Call 629 - 8878. t-tf

FOR RENT: Furnished house, one bedroom adults only, no pets. Apply 612 W. Patterson, Phone 629 - 1361 or 629 - 1193.

See us for your complete line of office supply needs. Eastland Telegram, 110 W. Commerce

NOTICES

Freyschlag Insurance has exactly the kind of policy that you need. Check with Charles today and see just how he can help you. Freyschlag Insurance Agency, on the Square in Eastland. 629 - 2275, 107 W. Main Street

Custom Plowing, Cutting, & Bailing
 Call Jack Johnson
 647-3679

CANCER INSURANCE UP TO \$100,000
 M.H. Perry
 104 N. Lamar
 629-1566

PAINTING
 Spray or Brush Acoustic Ceilings
 Free Estimates
 Call Harold Phippen
 442 - 1585, Cisco, Texas

Complete painting and decorating. Tape bed room. Acoustic ceiling wallpaper. Small repairs. Free estimates. 28-1390, Cisco, after 5 p.m., Dave Ewell.

REDUCE SAFE and fast with GoBese Tablets and E-Vap "water pills". Central Drug. t-9 thru s only

THE BEST HAMBURGERS ARE AT HOLLAND'S DRIVE IN AT THE Y WEST 1505 W. Main EASTLAND, TEXAS FOR CALL IN ORDERS PHONE 629-2213

We Clean & Repair Venetian Blinds Care For Cemetery Lots Level Monuments Align Sunken Footstones Kill Red Ants, Etc. Chester Allen 442 - 1513, Cisco

All makes of chain saws repaired. Saw chains sharpened by grinding or machine. We will take care of your sharpening problems. OLDEN SHARP SHOP, 653 - 2224. t-tf

MILLER'S REMODELING Additional rooms, formica tops, painting, sheetrock, paneling, custom cabinets, acoustical ceilings, etc. Tel. 647 - 3005 in Ranger

HARGRAVE REFRIGERATION
 Air conditioning, installation and service Troubleshooting on all types of central heating and cooling. Ready to help you beat the heat.
 Johnnie Hargraves
 Answering Service
 442-2339

Do our companies give Bumper Discounts: Driver Training Credit; National Safety Council's Defensive Driving Course Credit; Second Car Credit; Dividends and Easy Payment Plans for all eligible policyholders? You bet! Come see us. Freyschlag Insurance Agency on North Side of Square.

SOUTHLAND LIFE INSURANCE
 M. H. PERRY
 104 N. Lamar
 629-1566
 629-1095

BUSINESS

IF YOUR CAR READY
 YOUR WHEELS BLAST!

 So-Lo Auto Parts
 300 S. Seaman
 629 - 2158
 Open Sat. Till 4:00
 Doug Lucas Mgr.

Mercers Appliance Repair
 Dishwashers, washers, dryers, stoves, disposals and ovens. G.R. Mercer
 Olden, Texas. Call 653 - 2473

EMMET MORREN PLUMBING
 COMPLETE REPAIR SERVICE
 1615 W. Main
 629-2092
 24 Hour Service


Eastland Co. T.V. Sales & Service
 MOTOROLA QUASAR
 605 W. Sadosa
 629-2287

GREGORY PLUMBING & HEATING
 629-2844
 Res. 639-2340

FOR SALE - 2 bedroom house and 4 lots in Ranger at 605 Summit. Call Terrell Real Estate 629 - 1725. Home phones: M.L. Terrell, 629 - 2896; Rodger Terrell, 629 - 2443. t-105

your family feels...

 AT LOWER COST!
 It's easy with a quality PAYNE system installed expertly to give you economy and comfort. Models for any size home or budget. Let us prove it! Call today!

Payne FORCED AIR HEATING

 Hargrave's Tin Shop
 1110 Ave. D Cisco
 Ph. 442-2337

New PAPA-BOOTS \$19.95
 Rainsuits Now In
 CISCO ARMY SURPLUS
 1201 Ave D 442-3620

"We can handle anything but litterbugs."
 Goode Pest Control
 Phone 629 - 1179 after 3:00
 310 N. Ammerman
 roaches, ants, termites, moths, spiders.
 ALL GUARANTEED
 ROOFING
 Doyle Squires Contr. Olden, Tex. 653 - 2212 Call after 6 p.m. 12 - 29 TF.

Singer Sewing Machine Repair Center
 Servicing all makes. New and Used for sale. Complete line of parts.
 WRIGHT AUCTION COMPANY 106 S. Seaman 629 - 2468

G & H ELECTRIC
 Residential - Commercial
 Industrial - Oil Field
 629 - 1221 629 - 1559
 Nite 629 - 2078 t 101

Senkel's Cabinet Shop
 303 N. College
 Custom Built Cabinets
 Mobile Home Repair
 General Carpentry
 Work
 Call 629 - 1289 after 5

Attention New Business S & W Industries
 801 W. 18th-442-3399
 Custom Built Creep Feeders, Troughs, Hay Racks, Cattle Guards


TRUMAN MILLER'S REMODELING
 Acoustical ceilings, tile and linoleum, sheet rock, paneling, roofing, custom cabinets, vanities, additional rooms or a new home, etc. Call 647 - 3005 or 647 - 1637 in Ranger.

BICYCLES-- BICYCLES
 30 Used Bicycles
 Choice \$15.00
 Cisco Army Surplus
 1201 Ave. D 442 - 3620

Kincaid's Real Estate Corner

ACREAGES:
 Texas Vets' We have 150 acres to split up any way desire **SOLD** Better hurry at \$235.00 per acre.
 80 acres, virgin sand, cleared last year, 20 ac. peanut to be put in improved grass this year, \$315.00 ac.
 40 acres coastal grain and peanut allotments, live **SOLD** well, excellent improvements, 2 ac. mobile Home. Why not live in the country? \$19,000.
 40 acres with 29 acres coastal, 10 ac. timber, new fences, pens, tank, \$16,750.00.
 63.5 acres, 4 miles from Cisco, hunt, fish, run cattle, \$275.00 per acre.
 110 acres, 1/2 **SOLD** all the deer and turkeys, all timber **SOLD** \$210 ac.
 100 acres, 1/2 **SOLD** 60 ac. cultivation, balance native **SOLD** good hunting, mostly sand, \$210 ac.
 149 acres, Stephens Co., 7 minutes from Hubbard Lake, 5 minutes from Breckenridge, 40 ac. grain field, prime land, good hunting.
 8 1/2 acres, Carbon on Hwy. 183, undeveloped, commercial site.
 314 acres, deer and dove, quail, turkey, boat through this place, 3/4 mile water front, 1/2 mile road frontage, terms (owner financed.)
 47 acres, Lake Leon frontages, undeveloped, on pavement. Terms (owner financed.)
 COMMERCIAL PROPERTY
 Want to own your own body shop or garage? 3 1/2 acres under chain link fence, all on major highway, good terms, 75' x 30' all metal shop (3 stalls) and office, priced to sell, Cisco.
 Be your own boss, put your business in this centrally heated and aired 2000 sq. ft. building, excellent location.
 Small 8 unit motel, Eastland, excellent condition.
 Lake Leon Boat - tel. We want to sell now.

HOMES
 5 lots close to Interstate, Investment opportunity 3000 sq. ft., 2 fireplaces, exceptional improvements, 3 br., 2 1/2 baths, will sell soon.
 Seaman Street, 3 Br., 1 1/4 bath, large rooms, central heat \$13700.
 3 br. and 1 br. apt., close to schools.
 Conner St., 2 br., 1 bath central heat, carpets, loan available \$12,500
 Connellee, small 3 br., new stove and refrigerator, small price, 1/2 block from school, 2 br., cheaper than rent.
 S. Seaman, 2 br., bath, fireplace, owner financed, good terms, owner.
 We have several other listings for sale and several buyers available for most types of property. If you want to sell or buy come in and we'll help you.
Robert M. Kincaid
 Eddie Kincaid, Salesman Res. 629 - 1918
 J.W. Elder, Salesman Res. 647 - 1321
 100 So. Seaman Eastland, Tex. 629 - 1781
 Res. 629 - 2721

I am more than a piece of paper.

 I am security and protection in the event of a loss or accident.
 For All Insurance Needs Contact
KINNAIRD INSURANCE AGENCY
 207 W. Main Since 1919
 Don Kinnaird Eastland 629-2544

M. L. TERRELL REAL ESTATE
 FARM BUREAU BLDG. - HIGHWAY 80 EAST
 PHONE 629-1725 NIGHTS 629-2443

HOUSES
 2 Bedroom House Carpeted and Paneled, \$9,000.00
 2 Bedroom House Corner lot 100 x 100
 3 Bedroom House Good location \$7,350.00
 3 Bedroom House 1 Bath, Nice Corner Lot. Good Location.
 5 Bedroom 2 Bath with 2 Fireplaces 138 x 150. Corner Lot close to All Schools.
 2 Acres and House on Interstate 20. City Water, Trees and Water Well.
 4 Acres on Pavement with City Water, Natural Gas.
 2 Small Houses. Been Remodeled. Good Rent Property \$10,500.00
 Nice Lake Home and Dock with Good Lake Frontage.
 FARMS AND RANCHES
 37 Acres and House and Old Barn. City Water, Natural Gas, close to Ranger.
 45 Acres and House. Some Cultivation. Close to Eastland, City Water.
 111 Acres close to Desdemona. 38 Acres of Peanut Allotment Near Pavement, \$325.00 Per Acre.
 82 Acres Near Ranger.
 174 Acres Near Eastland, 55 Acres of Coastal, 70 Acres of Love grass.
 150 Acres New Fences, Access to City Water, 130 Acres of Coastal
 247 Acres Near Eastland on County Road, Fair Fences, Some Cleared
 320 Acres in Stephens on County Road, Fair Fences.
 864 Acres Near Cross Plains, Deer and Turkey. Terms can be arranged.
 916 Acres 400 of Coastal, Close to Eastland. Good Fences. Have other tracts large or small

RODGER TERRELL Home Phone 629-2896
 M. L. TERRELL Home Phone 629-2443
 EASTLAND, TEXAS REAL ESTATE



Mrs. Stephen Richers

**Jo Ann Williamson, Stephen B. Richers
Wed at Newcastle**

Jo Ann Williamson of Newcastle became the bride of Stephen B. Richers of Freeport in a ceremony Saturday, December 22, 1973, at 7:00 p.m. at the First Baptist Church in Newcastle with the Rev. Bill Wheeler officiating.

The bride is the daughter of Mr. and Mrs. A. Gene Williamson of Newcastle and

the granddaughter of Mrs. Lee Williamson of Olden. Parents of the bridegroom are Mrs. M. Spickler of Houston and Mr. F.H. Richers of Tehran, Iran.

The church was decorated with candelabra, greenery, red candles, and poinsettias. Given in marriage by her father, the bride wore a gown of white crepe with the skirt flowing into a chapel train. Bands of lace with pearls accented the low neckline, the long fitted sleeves, and the bottom of the skirt and train. She carried a cascade of white orchids with red and white carnations and baby's breath.

Miss Susan Williamson of Olden, cousin of the bride, was bridesmaid. She wore a red velvet gown and carried a red

**Nannette De DeFord,
Fred Keith Wed Saturday**

Nannette Marie DeFord and Fred Louis Keith were united in marriage at the First Baptist Church in Eastland, Saturday, Dec. 29, 1973, at 3:00 p.m.

Parents of the bride are Mr. and Mrs. Nolan Lister DeFord of 725 South Ammerman, Eastland. The bridegroom's parents are Mr. and Mrs. Fred P. (Pat) Keith of Route 2, Eastland.

Rev. Haston Brewer, pastor of the Eastland First Baptist Church, and Rev. George Sims,

Larry Williamson of Freeport, brother of the bride, was best man. Ushers were Mike Williamson of Freeport and Jerry Williamson of Newcastle.

The mother of the bride wore a champagne and navy silk dress with a white carnation corsage.

The mother of the groom wore a blue knit dress and a white carnation corsage.

Mrs. Tommy Haisel of Houston was organist. Mrs. Ray Gross of Archer City sang "Because".

A reception was held in the home of the bride's parents. Assisting at the reception was Miss Karen Hacker of Round Rock, Miss Penny Ribble of Lafayette, La., Mrs. Billy Rains of Kempner, and Mrs. Tommy Haisel of Houston.

Miss Lisa Moody of Newcastle registered guests. For a short wedding trip the bride chose a baby blue pant suit and a white orchid from her bouquet.

The couple will make their home in Freeport, Texas.

Out of town guests included Mrs. Lee Williamson, Mr. and Mrs. L.J. Williamson, Keith Williamson, Mrs. Tom Sharp, June Sharp, all of Olden; Sue White of Eastland; and Mrs. A.B. Booth of Cisco.

ministerial student at Howard Payne College in Brownwood, officiated at the ceremony.

Organist was Durel Reid and soloist was Miss Randee Thompson. Miss Thompson sang "Love is a Many Splendored Thing", "Wedding Song", "Twelfth of Never", and "Wedding Prayer".

Given in marriage by her father, the bride wore a full length dress of ivory satin designed with an alencon lace and pearl beaded bodice, empire waist and an A line skirt with appliques of lace down the front and on the chapel length wattleau train. The bishop sleeves gathered to wide cuffs applied with lace. Her short veil fell from a Juliet cap of matching lace beaded with pearls. For something old, the bride wore her grandmother's gold lavalier; something new, her dress and veil; something borrowed, her mother's handkerchief; something blue, a blue garter. The sixpence in her shoe was given to her by a former teacher, Miss Verna Johnson. Her bouquet was of white and gold mums with greenery and baby's breath and was carried on a white bible given to her by her social club.

Matron of Honor was Mrs. John Galbraith of Alachua, Florida. Bridesmaids were Mrs. Randell Curry of Lubbock, Mrs. Terry Trout of Irving, Phyllis Harbin of El Paso, Sharon Townley of Haskell, and Denise Strickland of Abilene. Honor attendants were Mrs. Trixie Lester of Dallas and Miss Aileen Culpepper of Abilene.

Attendants of the bride wore full length antique gold velvet dresses with empire waists. The V neck was trimmed with heavy lace which went completely down the back of the dress. The long sleeves and hems of the dresses were edged with heavy lace. They carried nosegays of gold mums and baby's breath and wore bandeau headpieces of matching flowers.

Best man was Tony Lowrance of Eastland. Groomsmen were Carl Solebrig of Fredericksburg, Jack Ragsdale of Cisco, David Cooper of Odessa, Larry Courtney and Terry Grimes of Eastland. Groomsmen wore tuxedos and gold shirts.

Flower girl was Carrie DeFord of Dallas, cousin of the bride, and ring bearer was Kevin Johnson of Eastland. Candle lighters were Misses Carrie and Beverly Elkins of Roscoe, cousins of the bride. The Misses DeFord and Elkins wore full length gold velvet dresses with empire waists and leg 'o mutton sleeves. Master Johnson carried out the gold theme by wearing a gold vest.

Mrs. DeFord chose for her daughter's wedding a full length pink chiffon dress with a fitted bodice and softly



Mrs. Fred Keith

gathered skirt. The long sleeves were gathered at the wrist band. Over the dress she wore a white lace jacket embroidered with pink and white. Her corsage was of pink rosebuds.

Mrs. Keith chose a light blue floor length knit dress with a white and blue brocade sleeveless coat. The dress had a roll collar and long, gathered sleeves.

The Sanctuary of the First Baptist Church was resplendent with greenery, arrangements of gold mums, and lighted candles. An arch was placed on the rostrum and was entwined with greenery. Wedding bells and a gold bow accented the top. Candelabras with spiral candles and greenery flanked the arch, along with pedestals holding arrangements of gold mums.

The bride is a graduate of Eastland High School and Hardin - Simmons University where she received B.S. in Social Work in 1972. While in college she was a member of the Spurs; geology club, psychology club, Delta Social Club, where she held the offices of Corresponding Secretary and Vice President; Student Congress for two years. She has received the Delta Memorial Award and the Southwestern Life Youth Leadership scholarship. She was named to Who's Who in American Colleges and Universities, and has been employed by the West Texas Rehabilitation Center in Abilene.

The groom is a graduate of Olden High School and Tarleton State University. He also attended Ranger Junior College and Sul Ross University. While in Ranger Junior College he was a two year letterman in football and was named as Honorable Mention to the 1971 Texas Junior College All Conference offensive team. In 1971 he was the outstanding spring recruit to the Sul Ross Lobo team. He is employed by

Immediately following the ceremony a reception was held at the Ramada Inn in Eastland. Registering guests at the reception was M Mrs. Travis Rogers, sister of the groom. Pianist was Jo Ann Baker, who played background music during the reception.

The bride's table was covered with a gold brocade cloth with an alencon lace overlay. The centerpiece was a brass candelabrum with flowers of bronze and gold entwined. Her cake was a four - tiered Garden of Love Cake. On the top tier white love birds perched on a spray of golden sweetpeas. The bride and groom stood amid Roman columns between the top tier and the third tier. The three lower tiers of the cake were trimmed with lace overlay

EBBA Iron, Inc. at home in Eastland after
Rehearsal dinner was held at
Jammie's Restaurant in Cisco
and was hosted by Mr. and Mrs.
Fred P. Keith.
Following a wedding trip to
San Antonio, the couple will be



TONY'S CAFETERIA
Specializing in
GOOD FOOD
In Our Dining Room Or Take-Out
Closed Saturdays 10 A.M. To 8 P.M.

CITY OF EASTLAND
GENERAL FUND REVENUE
NOVEMBER 30, 1973

REVENUE	NOVEMBER	YEAR TO DATE
Tax Receivable	6,278.37	53,157.90
Tax Discounts	(61.54)	(978.41)
Delinquent Taxes	179.27	202.40
Penalty & Interest	32.86	41.25
Parking Meters - Reg. Rec.	263.55	612.43
Parking Meters - Fines	49.71	144.20
Fireman's Baseball Field	55.54	55.54
Tax Certificates	3.00	9.00
Parking Permits	16.84	31.50
Cemetery Lot Sales	1,211.25	1,961.25
Other Cemetery Rec.	150.00	250.00
Court Fines	85.00	160.00
Cer. Copies B&D Cert.	77.00	127.00
Fire Fighting Fee (City)	50.00	100.00
Accident Report Copies	7.00	7.00
Refund of Utilities	6.64	43.46
Rents & Leases		50.00
Check Street Lights		12.00
TOTAL REVENUE	8,404.49	55,986.52

Total Operating Rev. for Nov. - \$8,404.49
Total Expen. for Nov. - 27,739.75
Deficit for Nov. - 19,335.26

GENERAL FUND
EXPENDITURES
NOVEMBER 30, 1973

REVENUE	NOVEMBER	YEAR TO DATE
F.I.C.A. Account		3,413.20
Payroll Account	9,474.46	19,224.73
Notes Payable - ENB	10,000.00	10,000.00
Extra Labor	56.00	186.50
Fire Marshall Salary	80.00	160.00
Gas & Oil	799.15	799.15
Mat. & Supplies	732.74	732.74
Postage & Freight	3.60	3.60
Stationery, Printing Suppl	69.91	69.91
Chamber of Commerce	150.00	300.00
Parking Meter Expense	45.00	45.00
Pound Expense	2.95	2.95
Sanitation Supp.	5.00	5.00
Janitor Supp.	96.87	96.87
Wei Fires	24.00	24.00
Spec. Police Work	12.00	19.00
Uniform Replace	22.85	22.85
Cleaning Uniforms	99.95	99.95
Reg. B&D Cert.	27.00	27.00
Advertising & other	116.30	116.30
Recharging Fire Ext.	9.50	9.50
Eastland Vol. Fire Dept.	30.00	60.00
Fixed Assets Acquired	315.70	375.70
Miscellaneous Expense	1.05	1.05
Utilities	1,258.62	1,258.62
Repairs to Buildings	202.40	101.40
Insurance	139.47	1,157.02
Street Repair	1,528.80	1,528.80
Equipment Repair	2,046.63	2,062.22
Checking Street Lights	12.00	24.00
Note Interst ENB	478.80	478.80
Tax to State - Court Fines		21.37
TOTAL EXP.	27,739.75	42,427.23

CITY OF EASTLAND
WATER & SEWER FUND
REVENUE & EXPENDITURES
NOVEMBER 30, 1973

REVENUE	NOVEMBER	YEAR DATE
Accounts Receivable	16,311.55	35,034.06
Consumer Dep.	195.00	345.00
Turn Ons	16.00	30.00
Water & Sewer Tap		105.00
Meters, Boxes & Lids	20.00	20.00
Refund of Utilities	10.54	20.55
Cash Over (Short)	5.85	5.05 (5.20)
Sale of Meter		227.10
TOTAL REVENUE	16,557.94	35,781.56

EXPENDITURES

EXPENDITURE	NOVEMBER	YEAR DATE
FICA Account		678.70
Payroll Account	2,145.22	4,278.11
Meter Refund Acc.	300.00	600.00
Refunds of Cash Rec.	10.80	10.80
Sanitation Supplies	350.00	350.00
Travel & Other	22.75	22.75
Water Supp. Dist. (tax)	.24	.24
Recharge Fire Ext.	2.50	2.50
Gas & Oil	133.56	133.56
Mat. & Supp.	92.24	92.24
Postage & Freight	67.35	67.35
Utilities	138.31	138.31
Insurance	24.53	24.53
System Maintenance	1,009.11	1,009.11
Equipment Repair	438.60	438.60
Water Purchased	6,834.53	14,004.98
Fixed Assets Acquired	1,740.23	1,740.23
TOTAL EXPENDITURES	13,309.97	23,592.01

Total Op. Rev. for Nov. - \$16,557.94
Total Exp. for Nov. - 13,309.97
Excess for Nov. - 3,247.97

**Because of you...
today a man is
on a dusty road
leading south
from
Rawalpindi...**

reporting, analyzing, probing — to send you an eye-witness story. Other Christian Science Monitor reporters are gathering facts for you in Moscow, Nairobi, Beirut, London, Tokyo, San Francisco, and Washington.

Because you need to understand what's happening in order to change what's wrong and to support what's right.

The Christian Science Monitor gives you the facts and reports how problems are being solved. It keeps you informed but not depressed — the Monitor has a uniquely hopeful outlook.

News, commentary, art, entertainment, fashion, sports, business, family: a lively daily newspaper (Monday - Friday) with something for everyone. For 13¢ a day — less than two postage stamps.

Yes, I want this unique daily newspaper for 4 months — over 80 issues for only \$11.

Payment enclosed Bill me later

Name (Please print) _____
Street Apt. _____
City _____
State ZIP _____
The Christian Science Monitor
Box 129, Astor Station
Boston, Massachusetts 02123

**A Fabulous Pre-Inventory
Sale Now At
Quetta's Sportswear
Boutique**

IS 20 East Of Eastland

Featuring 1/3 Off

On All Merchandise In The Store

1/3 Off On

**PANT SUITS COORDINATES
FALL JEWELRY ALL JUNIOR ITEMS
AND DENIM HAND BAGS**

**Don't Delay Come And Take
Advantages Of This Fabulous
Clearance Sale**

**At Quetta's Sportswear
Boutique**

Sunday, December 30, 1973

HOLIDAY NOTICE!

EASTLAND NATIONAL BANK

will be closed

TUESDAY, JANUARY 1, 1974

In observance of

NEW YEARS DAY

Please arrange your banking

business accordingly.

EASTLAND NATIONAL BANK
EASTLAND, TEXAS

FIDC

BAKKER Funeral Home



Dear friends,

It is wise to keep a listing of all insurance policies in auto clubs, fraternal and service clubs, unions and professional organizations, so that survivors will know of all insurance in effect. A similar list of bank accounts, safe deposit box, investments and securities is also advisable.

Respectfully,

Dale O. Bakker

BUILD



a future for him.

See us about
Life Insurance.

For Information Call

Richard Rossander

Agent

Ph. 629-2563

Eastland, Texas



SEEDS FROM THE SOWER
By Michael A. Guido, Metter, Georgia



A secretary came to my study, saying, "Here is a Bible verse that bothers me. It says in Psalm 119:3, 'They do no iniquity.' Try as I may, I am not perfect. Does this mean I am not a Christian?"

Handing her a sheet of paper and an article, I asked, "Will you please type this?" "I will," she answered bewilderedly.

There were about three hundred words in the devotional, and she made only one mistake.

"You struck one wrong key," I said. "Does this mean you are not a typist?" "No," she answered. "Suppose," I

asked, "every key you struck had been a wrong key." "That would have been proof," she replied, "that I am not a typist."

Then she exclaimed, "I see it! It is one thing to strike a wrong key occasionally and to strike it habitually, and it must be the same in regards to sin."

Yes, it is possible for a Christian to commit an incidental act of sin, and for such a one there is forgiveness. But it is not possible for him to habitually practice sin.

Ready for the question? Are we habitually and characteristically righteous?

Hospital Notes

Patients in Eastland Memorial Hospital Saturday morning were:

Lonie Bohannon, Carbon Horace Browning Oliver Shell, Gorman Nick Gray, Cisco Dallas Frost William Walker, Carbon William Garrett, Gorman Sadie Rose Goode, Ranger Geneva Sessum, Commerce Ruth Ferguson, Gorman Daisy Motley, Ranger Imable Clark O.C. Gregory Vernie Long, Olden Charles Holley, Abilene Bob Revels, Ranger Roxie Hensley Kevin Jammer Bennett Shortes, Carbon Von Siebert Alma Page, Ranger Ruby Staton, Cisco Lillie Dunlap Clayton Rhyne, Carbon George Norris Jesse Simmons, Cisco Alma Castleberry Cleo Bailey, R. Star Peggy Henderson Grady Henderson Samuel Poteet, R. Star Willard Liles Laura Noble Linda Williams John Owen Myrtle Maness, Carbon Aggie Harrell, Cisco Glenn Hart Joel Bond, Olden Ike Watts, Cisco James Steel, R. Star Joyce Nichols, Clyde Annie Sublett Ethel Stevenson, Baird Elsie Glenn John Boggus, Gordon Marie Culpepper John Coplen, Beaumont Burt Herridge Nancy Wolfenbarger, Breck Zelma Lusk Ginger Mangum

Glenna Shelton, Santo Boyd Haney, Gordon Michael Rogers, Cisco Jesse Wooten, Cisco Lenora Steinman, Cisco Cathy Siplinger, R. Star Avie Allgood Eula Graham, Cisco

Patients in Ranger General Hospital Saturday morning were:

Mary Grier Johnnie Hayes Ramona Hernandez Lester Lingle Della Moore Laura Todd W.S. Vinson Ida Harrell Florence Urban Ford Blocker Gertrude Davis Bessie Dupree Velma Koerner Arthur De Shane Roxie Wilson C.D. Jones Richard Treece

1920 Club Presents Evelyn Oppenheimer

In Book Review

The 1920 Club of Ranger will present Evelyn Oppenheimer in a book review to be held at 2:30 p.m. on Thursday, Jan. 3, at Ranger Junior College Library. The famed reviewer has chosen to present "Because I Loved Him", the Life and Loves of Lillie Langtry, by Noel Gerson.

The author of four books, instructor of classes in book reviewing in Texas colleges and conductor of America's oldest sponsored weekly reviews and interviews radio program, Miss Oppenheimer is no stranger in the area having been presented in like programs on other occasions.

Tickets are \$1.50 each and may be purchased from any member of the sponsoring club or at the door. A cordial invitation is extended area residents to attend this outstanding program.

JOHNNY JOHNSON
Plumbing & Septic Tank Service - Air Conditioning - Washing Machine Repair
Phone 629 - 8023

Roofing
New & Repair All Buildings & Houses Estimates Made.
Tri-Cities Roofing
Call Noble Squiers
629-2370

Singer Sewing Machine
Touch & Sew \$48.00. Also Singer Sewing Machine \$29.10. We also clean and adjust all makes and models. Call 629 - 2920 Eastland or Cisco 442 - 3283. t-106

FOR SALE: Kimball spinet piano, \$350.00; three piece maple bedroom suite, \$125.00; 12 x 15 ft. biege carpet and pad, \$50.00. See at 1202 Desdemona Blvd. t-50

Beginning January 1, 1974,
We Will Custom Grind And Mix Only Two Days Per Week.
Monday And Thursday
This Will Enable Us To Operate More Effectively.
We Wish Everyone A Merry Christmas And Happy New Year.
Thornton Feed Mill
1200 Ave. D Cisco

Beighley Gulf Til-Tapped In Ranger Thursday

In George Beighley's words, he was "taken to the cleaners" Thursday at noon when a thief made off with more than \$4,000 in checks, credit card stubs, and cash from his Gulf Station on Hwy. 80 west in Ranger.

He had made up his holiday deposits in a white overnight bank deposit bag, then stepped next door to the Regal Cafe for lunch, intending for his station attendant to take it to the bank, he said.

The attendant became very busy and when Beighley returned he found the deposit bag gone. Gone were about \$600 in checks, more than \$800 in credit card stubs, and \$2,400 in cash.

He hopes that the checks and credit card slips, which are no good to a thief, will be found by someone. He had placed them in a plastic bag inside the bank pouch.

Ranger City Police presently have two suspects in mind, according to Beighley. One is an individual that inquired about a bus to Houston. An attendant said that this person couldn't decide between taking a bus or hitch hiking. He got a map from the office and the last anybody saw of him, he walked around the corner of the station and disappeared.

That was the last time anybody remembers seeing the deposit bag also.

Fountains of DeLeon
For the Joy of a Beautiful Complexion For Whatever Your Complexion Non-Surgical Problem May Be. "Look Younger as You Grow Older" Free Private Consultations 101 Navarro Hwy., #5 (A) Call DeLeon 983-6377 DeLeon, Texas

Owners Of Motor Vehicles In Texas To Receive Important Mail In January

Owners of some 8.4 million motor vehicles in Texas will have some important mail coming their way early in January.

Registration renewal application will be put in the mail shortly after the holiday season by the Motor Vehicle Division of the Texas Highway Department.

Vehicle owners can save time that used to be spent waiting in long lines at county tax offices throughout the state by ordering their 1974 license plates by mail.

All that must be done is to

send the entire three-part application by mail to the county tax assessor collector in the owner's home county, enclosing the registration fee plus \$1 for each vehicle to cover handling and mailing.

There are three things to remember:

1. Leave the three-part form intact. Don't separate the three parts.

2. Mail it to the county tax office in your home county. (Mailing it to the Highway Department will only delay getting your 1974 license plates).

3. Be sure to include the registration fee, plus \$1 for each vehicle for postage and handling.

You may apply for license plates by mail after January 1. However, county tax offices won't mail plates until after February 1. Owners should allow at least 30 days from the time they apply for the license plates to be returned.

In-person registrations will begin at county tax offices and, in some counties, at substations on February 1.

December 30, 1973

FAMILY RECREATION CENTER
1001 W. Commerce, Eastland
A good clean place for kids from 8 to 88. Foosball - Pool - Pinball - Car Race - Dune Buggy - Pong - Juke Box - Air Hockey - Snack Bar.
Open 11 a.m. to 1 p.m. and 3:30 p.m. to 10 p.m. on school days. 11 a.m. to midnite on Saturday and Holidays. Closed Sunday.
Bring this ad for a free game of Foosball.

RANGER DRIVE-IN THEATRE Last times Sunday DECEMBER 30
2 BIG PICTURES STARTING AT 7:00
CLINT EASTWOOD
JOE KIDD
TECHNICOLOR PANAVISION PG
A Universal/Marcello Company Production

SECOND FEATURE STARTING AT 8:30 p.m.

MARTY ROBBINS
He rode in alone - a silent stranger - until the day his blazing guns did the talking!
"GUNS OF A STRANGER"

Coming Next **FRI-SAT-SUN**

The oriental sensation - now gives America the action it's been waiting for!
Bruce Lee
every line of his body is a lethal weapon
THE CHINESE CONNECTION
R RESTRICTED - 14
Color • A National General Pictures Release

SENIOR CITIZENS

NOW YOU CAN ENJOY THE SECURITY OF A WORRY FREE 24 HOUR NURSING CARE
* Certified by Texas State Department of Public Welfare
Licensed by Texas State Department of Health
• 24 Hour LVN Supervision • Doctors References • Special Diets
• All Guest on Ground Floor • Controlled Air Cond. & Central Heat
• Planned Activities • Occupational Therapy • Home Like Atmosphere
• MEN - WOMEN - COUPLES • REASONABLE RATES
• CONVENIENT SUBURBAN LOCATION
• DESCRIPTIVE BROCHURES SENT UPON REQUEST

For professional care in a luxury atmosphere, unsurpassed by any other nursing home

VALLEY VIEW LODGE
700 S. Ostrom 629-1779
Shirley Frost, Adm.


EASTLAND MANOR
Now Offers You
24 Hour Nursing Care Supervised by a Registered Nurse at Eastland Manor
Call or Come By Today and Let Our Friendly Staff Show You Around
1405 W. Commerce 629-2686
Eugene Frost, Adm.

- A beautiful dining room for home-like meals
- "Special Diets"
- Complete program of recreation and occupational therapy
- Private and Semi-Private Rooms
- Beautiful Chapel
- Beauty Shop & Barber Shop
- Licensed Personnel
- Approved for Medicaid, Old Age Assistance and Welfare Patients



"We CARE"

CARING is more than a word at...
HICKMAN NURSING HOME
629-2624



COURTHOUSE NEWS

The following proceedings were had in the Court of Civil Appeals, Eleventh Supreme Judicial District of Texas:

AFFIRMED
Max Williams v. Glenn W. Cooper (Opinion by Judge

Brown) - - Baylor William Kemp et al v. Fidelity & Casualty Co. of New York et al (Opinion by Judge McCloud) - - Dallas.

REFORMED & AFFIRMED

Creekside Associates et al v. B&B Electric et al. (Opinion by Judge Brown) - - Dallas.

MOTIONS SUBMITTED
Marguerite L. Oram v. General American Oil Co. of Texas et al. Appellant's motion for rehearing. - - Dallas.

Mary H. Cooley, Guardian v. Doris Cooley. Appellant's motion for rehearing. - - Dallas.

MOTIONS OVERRULED
Marguerite L. Oram v. General American Oil Co. of Texas et al. Appellant's motion for rehearing. (Judge McCloud not participating.) - - Dallas.

Mary H. Cooley, Guardian v. Doris Cooley. Appellant's motion for rehearing. - - Dallas.

December 27, 1973
NEW CAR REGISTRATIONS

Raymon Bryan - Chev. Pkup - Ranger
William J. Robertson - Chev. - Gorman
Randall Roper - Chev. Pkup - Hart
Wilda Nantz - Chev. - Ranger
Gerald Bint - Chev. Pkup - Cisco
J.L. Kuhn - Ford - Olden
Vernon Mahan - Merc. -

Eastland
J.E. Thomlin - Ford Pkup - Breck
R.M. Sneed Cont. - Ford - Eastland
Jesus Elizalda - Chev. - Cisco
Raymond L. Parker - Chev. - San Antonio
Jack Burrow - Chev. - Ranger
91st DISTRICT COURT

Ramona Maxine Stacy vs. G.C. Stacy and others - suit for title
Tommy June Snyder - Dept. & Neg. Child
Russell Lyons vs. Robert Turner - suit for damages
Janice Carolyn Raper vs. Thomas De Armond Raper - suit for declaratory judgment

MARRIAGE LICENSES
Billy Jack Copeland and Patricia Ann Ramsey
Arnold Herman Gohlke and Carrie Ruth Davis
Russell Lee Fuller and Martha Ann DDavis
Alton Ray Maples and Mattie JoNell Wheat
Roger Van Weber and Carla Jane Boney
Harold Douglas Cottle Jr. and Ruby Nell Martin
December 30, 1973

The Light Touch



By Clint Bray
Sign in a department store: "Four Santa Clauses - no waiting".

Youngster we know was so excited about leaving his stocking for Santa to fill. It was his first really big hangup.

Nowadays, when you have a problem with your teenager, you talk it over, and he tells you how you can solve it.

A family man is one who doesn't get a chance to read the Sunday papers until Monday night.

The only way to be sure your train will leave exactly on time is to be 30 seconds late for it.

We don't want to be late in wishing you a happy and healthy New Year at BRAY'S in Eastland and Ranger.

Public Notices

FOR SALE TO BE MOVED:
Two Story Frame Office Building, approximately 30' x 50', at Lone Star Gas Company's Automobile Garage Site situated at the Intersection of Oak Street and Blackwell Road in Ranger, Eastland County, Texas. Sale will be made to the highest bidder, for cash on an as is basis. The successful bidder will be required to pay approximate sale tax in addition to the bid submitted. The successful bidder will have 60 days after receipt of Bill of Sale to remove the structure, clean up and remove all foundation materials, rocks, bricks, etc., leaving the premises in a good and orderly condition. Submit written bids to Lone Star Gas Company, 301 South Harwood Street, Dallas, Texas 75201, Attention: H.E. Bell, Building Management Department, not later than 5:00 p.m., January 15, 1974, to be considered. Lone Star Gas Company reserves the right to refuse any and all bids. (12 - 16, 12 - 23, 12 - 30).

MACHINE SHOP
MOTORCYCLES
MINI BIKES
CHAINSAWS
GARDEN TRACTORS
TRAILERS

BENCO
HELMETS 100% APPROVED

MOTORCYCLE PARTS & ACCESSORIES

SPECIAL HOMELIGHT CHAIN SAW AGENT

HELMET RADIOS

BILLS'S CYCLE SHOP
Phone 559-2693
Highway 180 East
Breckenridge, Texas
Open
From 10:00 To 6:00
Monday Through Saturday

Safeway Dollar Days

TOWN HOUSE Soups
*Chicken Noodle *Chicken With Rice *Cream of Chicken *Turkey Noodle

Safeway Special! **6** 10.5-oz. Cans **\$1**

Apple Sauce
Highway. Good Any Meal!

Safeway Big Buy! **5** 16-oz. Cans **\$1**

Canned Pop
Snowy Peak. Great With Snacks!

Safeway Special! **12** 12-oz. Cans **\$1**

Strawberries
Sun-Fresh. Sliced. Tasty!

Safeway Special! **4** 10-oz. Pkgs. **\$1**

Shop Safeway... Save on **DOLLAR DAY VALUES!**

Stock up with these Low, Low Prices! You'll be delighted with the Variety and Quality and Money-Saving Dollar Day Buys!

Facial Tissues
Truly Fine. Soft!
Safeway Big Buy! **4** 200-Ct. Boxes **\$1**

Cleanser
White Magic. Removes Stains!
Safeway Special! **7** 14-oz. Cans **\$1**

U.S.D.A. FOOD STAMP COUPONS Gladly Accepted

Bath Soap
Truly Fine Deodorant Bar

Safeway Special! **7** Bath Bars **\$1**

Dog Food
Pooch. For Everyday Feeding!

Safeway Special! **9** 15.5-oz. Cans **\$1**

Golden Corn
Town House. *Cream Style or *Whole Kernel

Safeway Special! **5** 17-oz. Cans **\$1**

Gelatins
Jell-well. Desserts!

Safeway Special! **12** 3-oz. Pkgs. **\$1**

SAFEGWAY OPEN NEW YEARS DAY!
Regular Store Hours
8:00 A.M. - 7:00 P.M.

Frozen Food Favorites!

Dinners 39¢
*Mexican *Mexican Combination *Mexican *Enchilada *Beef Chop Suez *Chicken Chow Mein -Reg. Pkg.

Popsicles 29¢
Snack Treat! -4-Bar Pkg.

Shoestrings 14¢
Potatoes. Slim Jim -8-oz. Pkg.

Cheese Pizza 69¢
Bel-air. Flavorful! -14-oz. Pkg.

Fish Sticks 29¢
Snow Kist -8-oz. Pkg.

Waffles 12¢
Bel-air. 6-Count
5-oz. Pkg.

Safeway Money-Saving Low Prices!

Party Mixers 15¢
Cragmont. Refreshing! 32-oz. Bottle
Safeway Big Buy!

Corn Chips 39¢
Party Pride. Crisp! 11-oz. Pkg.
Safeway Big Buy!

Dips for Chips 43¢
Lucerne. Ready to Serve! 8-oz. Ctn.
Safeway Big Buy!

Paper Plates 58¢
Brocade. 9 Inch 100-Ct. Pkg.
Safeway Big Buy!

Orange Juice 19¢
Scotch Treat. Frozen 6-oz. Can
Safeway Big Buy!

Everyday Low Prices!

Chunk Tuna 39¢
Van Camp's. Light Meat -6 1/2-oz. Can

Saltines 29¢
Melrose Soda Crackers 16-oz. Box

Plain Chili 59¢
Town House. No Beans 15-oz. Can

Paper Towels 28¢
Tree Saver. White 175-Ct. Roll

Hair Spray 49¢
Truly Fine. Holding Power! 13-oz. Can

Aspirin Tablets 18¢
Safeway. 100-Ct. 5-Grain Bottle

Finest Quality Meats!

Boneless Roast \$1.09
*Chuck or *Shoulder. USDA Choice Heavy Beef (Boneless Steak \$1.19) -Lb.

Ground Beef 87¢
Regular, Safeway -Lb.

Sliced Bacon 98¢
Slab. Rindless -Lb.

Guaranteed to Please!

Beef Short Ribs 59¢
USDA Choice Grade Heavy Beef -Lb.

Chuck Roast 77¢
Full Blade Cut. USDA Choice Heavy Beef -Lb.

Lean Ground Beef \$1.09
Freshly Ground -Lb.

Sirloin Steak \$1.49
USDA Choice Grade Heavy Beef -Lb.

Pork Spareribs 97¢
Fresh. 1 1/2 to 3-Lb. -Lb.

Chipped Meats 45¢
Safeway. Sliced -3-oz. Pkg.

Lunch Meat 48¢
Safeway. All Beef Salami *Deli *Ham *Chops *Pork *Finishes *Spiced -6-oz. Pkg.

Sliced Salami 59¢
Safeway. Cooked -6-oz. Pkg.

Sliced Bologna \$1.09
Safeway. Large Size -1-Lb. Pkg.

Safeway Bacon \$1.15
No. 1 Quality! -Lb. Pkg.

Rath Bacon \$1.19
Hickory Smoked -Lb. Pkg.

Link Sausage 89¢
Park Safeway -Lb. Pkg.

Pork Sausage \$1.13
Safeway White Hog *Medium or *Hot -Lb. Roll.

Pork Sausage \$2.25
Safeway White Hog *Medium or *Hot -2-Lb. Roll.

Eckrich Sausage \$1.45
Smoked. Heart & Serves! -Lb.

Hot Links 83¢
Mexican Sausage -Lb.

Wieners 75¢
Safeway. Tender! (Armour Hot Dogs 79¢) 12-oz. Pkg.

USDA Inspected Grade 'A' for Wholesomeness!

FRESH FRYERS 45¢
Finest Quality! Ready to Cook! Whole -Lb.

Cut-Up Fryers 53¢
Regular. USDA Insp. Grade A -Lb.

Split Breasts 89¢
With Ribs. From USDA Insp. Grade A Fryer -Lb.

Roasting Chickens 55¢
Fresh. Over 3-Lb. USDA Insp. Grade A -Lb.

Shop and Save!

Cola 39¢
Cragmont. Plus Deposit 10-oz. Bottles -8-Pack Ctn.

Potatoes 12¢
Streefield. 1.425-oz. Shredwing Can

Popcorn 18¢
Town House. Yellow 18-oz. Bag

Hi-Ho Crackers Sunshin-16-oz. Box 59¢
Ry-Krisp Snack Crackers-8-oz. Box 40¢
Prune Juice Sunweat-32-oz. Glass 61¢
Muffin Mix Duncan Hines Blueberry-13-oz. Pkg. 61¢
Pie Filling Comstock Apple-21-oz. Can 55¢
Unsalted Mazola Margarine -1-Lb. Ctn. 51¢
Maxwell House Coffee Rich Flavor! 2-Lb. Can \$2.08
Buttermilk Biscuits Borden-8-oz. Can 13¢

Compare These Low Prices!

Chiffon Liquid 48¢
Dishwashing Lotion -72-oz. Plastic

Nose Drops \$1.35
Neo-Synephrine -57-oz. Bottle

Rapid Shave 97¢
Palmaive 11-oz. Can

Decongestant Sine-off 83¢
*Tablets 24-Ct. Bottle

ultra brite 85¢
Toothpaste -7-oz. Tube

***Nasal Spray \$1.19**

Taster's Choice \$2.18
Freeze Dried Coffee 8-oz. Jar

Maclean's 54¢
Toothpaste -3-oz. Tube

Crisp Lettuce 19¢
Large Green Heads! Favorite for Salads! -Each

Variety & Quality!

Potatoes 5 lb. 69¢
Russet. US #1A -5-Lb. Bag

Cabbage 10¢
US #1. Solid Heads -Lb.

Apples 29¢
*Red or *Golden Delicious *Washington. Extra Fancy -Lb.

Avocados 39¢
Beath. Florida -Each

Crisp Carrots 39¢
Safeway. US #1 -3-Lb. Bag

Red Cabbage 19¢
Caterfall -Lb.

Salad Dressing 99¢
Marta's Avocado Dressing. -12.7-oz. Jar

Navel Oranges 25¢
California. Juicy! -Lb.

Pineapples 69¢
Hawaiian. Large Size -Each

Large Papayas 49¢
Hawaiian -Each

Orange Juice 89¢
Safeway. Pure 1/2-Gal. Decan.

Yellow Onions 25¢
US #1. Flavorful! -Lb.

Rutabagas 29¢
US #1. Waxed. Tasty! -Lb.

Prices Effective Mon., Tues. & Wed., Dec. 31, Jan. 1 & 2, in EASTLAND
No Sales to Dealers.

SAFEGWAY
© Copyright 1960, Safeway Stores, Incorporated.



MABEL KUYKENDALL



GRACE LAFFOON

Laffoon, Kuykendall Named Artists Of Month

Mrs. Grace Laffoon and Mrs. Mabel Kuykendall were named artists of the month at a recent meeting of the Local Exhibition Committee of Cisco Art Club. Perhaps art talent is a family trait, as these ladies are sisters.

Mrs. Laffoon is a native of Cisco, now residing in Eastland. She is the wife of Finis Laffoon and has one son and three grandchildren.

She has painted as a hobby for many years and is currently creating realistic and contemporary works in acrylic with oil glazing. A sample of her art is on display at Jammie's Restaurant.

She has studied with such teachers as Fity, Turman and Wallace and has recently had workshops with Jean McGee, John Crump and Jan Herring. She is a retired school teacher, teaching art in years past.

Recent awards include honorable mention in Cisco Chamber of Commerce Art Exhibit, 1973, and second place, amateur, in the First United Methodist Church Religious Art Exhibit 1971.

Exhibit 1973. She is a member of Cisco Art Club.

Mrs. Mabel Kuykendall is a native of Cisco. She is the widow of the late W.E. Kuykendall of Dallas and has one daughter, two sons, six grandchildren and two great-grandchildren.

She began painting six years ago, after retirement from Sears in Dallas and moving back to Cisco. She states that art is a good time consuming hobby. She creates realistic and contemporary works with acrylic underpainting and oil glazing. Other hobbies include art needlecraft and sewing. Two of her paintings are now on display at Anita's Spa.

Her art training began with Winnie Pippen and she has also had workshops with Jean McGee and Jan Herring.

A recent award was second place at the First United Methodist Church Religious Art Exhibit 1971.

She is a member of Cisco Art Club serving as secretary for 1971-72 and at present is on the telephone committee.

Eastland County Employees Have Retirement Plan

The Eastland County government becomes one of 200 counties and districts in Texas to have a retirement pension plan for employees effective Jan. 1.

In their December 10th meeting, the county commissioner's approved a county retirement program to go into effect the 1st of January.

County Auditor C.H. O'Brien is hard at work compiling and verifying more than 70 personnel data forms for Eastland County employees to send to the Director of the Retirement Board in Austin, J.R. Brown, before the 5th of Jan.

The most important fact in this first report is the employees' record of employment with the county. To be eligible for the retirement program an employee must have worked 12 years in a permanent position (more than 900 hrs a year) and have reached age 60. Prior service credit is also accepted.

The Texas County and District Retirement program was enacted in 1966 as part of a constitutional amendment and is now optional. It stipulates that from four to seven percent of an employee's monthly salary may be put aside for his pension. However, once the program is enacted by a county, the percentage can't be changed for five years, according to O'Brien.

Under the Eastland program, seven percent will be withheld from the employees' payroll to be matched by an equal amount by the county (7 percent).

"This strengthens our position in attracting and holding younger people", says County Judge Scott Bailey.

"Now young people will have an incentive to stay with the county instead of going on after two or three years."

The age, salary, length of service and length of prior service determine the amount put aside, says O'Brien; each individual has a different program.

But the best feature of the program is that the money put aside for each employee collects seven percent interest. "For young persons of 25 - 30 this will in effect be a savings account", stresses the county auditor. If a person leaves the employ of Eastland County before he is eligible for retirement, he is refunded the seven percent withholding, plus seven percent interest.

"This is a savings to the county", admits O'Brien, "for a person will get on the payroll and stay longer - he will have more benefits to look forward to."

In September a 10 percent across the board pay raise was enacted by the commissioners court in anticipation of the retirement program.

One of the reasons the county commission decided to enact the new program is that the county didn't have to purchase prior credit, but started on par. In effect, the county retirement program will be administered in a similar fashion as the social security program, it is believed.

LIBRARY NEWS

MRS. A. E. CUSHMAN

All thru the holidays the Library has had many visitors from far and near. Many local people have stopped in to see the new facilities and many from all over Texas and many out of State visitors from South Dakota, Alabama, New York, Calif., and others that weren't registered. We had two distinguished visitors from Edinburgh, Scotland. So our Centennial Memorial Library is much read about and appreciated.

Dorothy Perkins from Midland gave the Library a Christmas gift of five children's books and Mrs. Jos. Perkins added "Alice in Wonderland" in Easy Eye Print.

We have lots of good reading, including some new mysteries, the latest of which is: "Hail to the Chief" - McBain and "The Man Who Looked at Himself" - Constantine and "Nun's Castle" - Melville.

The American Heritage Pictured History of World War II was given in memory of Mr. James Isbell by his niece Ann Isbell Michael and presented by Dr. Harris Isbell.

Lorene Crawford read a Christmas Story.

The next Pioneer Club will meet Jan. 10, 1974, with Becky and Susie Hanna at 814 W. Patterson.

The Reader's Digest Sends Message

The Reader's Digest, in a rare "message from the editors", warns this week that "a large number of magazines" will be forced to stop publishing if projected increases in second-class postage rates are allowed to take effect as presently scheduled. In the lead article in its January issue, the Digest characterizes the increases as "the most serious financial threat in the magazine industry's history".

The rates, which apply also to newspapers, are already 50 percent higher than they were three years ago. Yet last Sept. 25, the U.S. Postal Service announced its intention to more than double second-class rates over the next three years. Moreover, some observers of postal affairs think the rates may actually triple.

Individually these increases may seem relatively small, amounting to just a few cents per copy. But cumulatively they mean many millions of dollars of added expense, which newspapers and magazines simply cannot absorb. The

Digest, for example, estimates that if the increases go through as planned they will raise its bill for second-class postage alone from the present \$7 million year to \$16 million! That's in addition to \$4 million increase in first-class postage.

Passing along these postal increases, along with increases for paper and other factors, could raise the price of a subscription from the present \$4.97 a year to \$6.97 by 1976. If other publications are forced to increase their prices in similar fashion, the result could be to create a magazine industry for the affluent only, the article says. "In other words, lower-income Americans, the very people who perhaps most need an inexpensive means of continuing education, are the main losers."

The article declares that magazines and newspapers are "captive customers" of the U.S. Postal Service which is a legal monopoly. Even so, much of the work of sorting, bagging and shipping magazines is done by private truckers, rather

than the Postal Service. But there's a catch: "At the end of each truck's journey, it must back up to a post-office ramp, where the bags are handed over to the Postal Service for the age-old give-it-to-the-mailman system of delivery".

For two centuries, it has been U.S. postal policy not to take unfair advantage of this monopoly. Following a policy first established by Benjamin Franklin, Congress has since 1782 granted rates which allowed magazines and newspapers to be mailed at less than cost, because these periodicals were considered an educational service to the nation.

In 1973, for all periodicals, this support amounted to \$190 million. "Few public policies have been more successful - or a better bargain", the article declares. For an annual charge of about a dollar per capita, the Post Office helps to maintain the health of newspapers and magazines, which together constitute our most powerful medium for the continuing education of citizens.

But under terms of the Postal Reorganization Act of 1970, the Postal Service is required by law to establish rates that by 1976 will make almost every class of mail pay its own way. Many who voted for the Act did so on the assumption that modern business techniques would help the Postal Service reduce costs and improve service, and that rates would not skyrocket. In the words of Rep. Olin Teague of Texas, "The assumption proved wrong".

Instead, service remains substantially the same, costs are rising, and the Postal Service is demanding second-class rate increases that could soar 200 or 300 percent!

How can disaster be averted? The Digest recommends two steps: one immediate, the other long-range. First, it urges that Congress act favorably on a bill sponsored by Sen. Gale McGee (D., Wyo.), that would phase in the payment by magazines of their full postal costs over the next eight years instead of the next three. Rep. James Hanley (D., N.Y.), supports similar legislation.

Letter to the Editor

Editor

Your story headlined "KRBC Forces Loss Here of Channel 5" is a bit misleading and deserves a word of explanation.

Under the federal laws governing television stations and TV cable companies upon proper notification cable companies are not to bring in duplicate network programs that are carried by a station in the area. KRBC-TV had so notified the cable company on May 31, 1966, as do all television stations.

We recently pointed out to Southern TV Systems Corporation that, perhaps without knowing it, they were in violation on both Eastland and Cisco cables. The manager said this would be corrected immediately in order to comply with the regulations of the Federal Communications Commission.

Cable subscribers will not be deprived of any television programs. Programs on WBAP-TV which are not the same as those on KRBC-TV can and, I understand, will be carried on the cable. We carry virtually all of NBC's programs.

KRBC's primary effort for more than 20 years has been to serve the public interest of our area. The goodwill of our viewers is most important.

Best regards,
William Terry
Station Manager
ED. NOTE: Misleading? As far as we can determine, no one but

KRBC has requested that Southern Television Systems Inc. remove Channel 5 from the local cable service. Therefore it would seem that the story "KRBC Forces Loss of Channel 5" would stand.)

Editor:

I'd like to say "So long", as I retire from 19 years as district manager for the Social Security Administration. May I also include my thanks that your readers have been furnished timely updates on various changes in social security over the years because the Eastland Telegram has been concerned lest any lose out due to lack of information.

You have helped the Abilene district office maintain its rank as one having almost no loss of benefits due to a person's not knowing his rights as well as his responsibilities.

Sincerely yours,
R.R. (Bob) Tuley, Jr.,
District Manager

Ad Council
A Public Service of The Newspaper & The Advertising Council

Thursday Afternoon Club Holds Annual Christmas Banquet

On Thursday night, Dec. 20, the Thursday Afternoon Club held their annual Christmas banquet at Lone Cedar Country Club with husbands of club members and friends as their guests.

Mrs. Dan Childress, club president, welcomed guests and presented Mrs. James Horton, program chairman. The hostess committee: Mrs. Horton, Mrs. Herman Hassell and Mrs. Marene Johnson, was recognized.

The spirit of the season was enjoyed by the 59 persons present in the friendly fellowship, fine food, beautiful decorations and sweets under the "Sugar Tree" as well as the exorbitant cast of a "Partridge in a Pear Tree" in modern times as told by Mrs. Marene Johnson. A delightful Christmas program was presented by the Dr. Albert Roberson family of Dallas. Mrs. Roberson portrayed the many sides of Christmas in story and song, accompanied by her daughter Elizabeth Ann Ward on the piano and daughter Jo Ann on

the hand bells and vibraphone. Jo Ann also played the hand bells as a solo. Dr. Roberson showed Christmas slides.

Pioneer Club MEETS Thursday

The Pioneer Club met Thursday with Mrs. Winnie Bassett. For their regular Christmas Luncheon and Christmas Tree she always has her house so decorated. It always looks like Santa had been there and left a present for each guest which were Mrs. Nix, Arie Herring, Lorena Crawford, Fannie O'Brien, Nora Wilkerson, Fannie Lockhart, Nina Hastings, Sallie Garrett, Teppie Rollins, Palene Lee, Mrs. Paulene Clyton, Hostess Winnie Bassett, Visitors Mrs. P. Herring of Snyder, Becky and Susie Hanna, granddaughters of Mrs. Bassett.

Lorene Crawford read a Christmas Story. The next Pioneer Club will meet Jan. 10, 1974, with Becky and Susie Hanna at 814 W. Patterson.

For SINUS Discomfort TAKE sinarest



SPECIFICALLY FORMULATED FOR SINUS HEADACHE AND CONGESTION

ROCHELLE CORP. PHARMACRAFT
Box 1212
Rochester, New York 14603

TIPS FOR OUTDOORSMEN

by Vern Sanford

Practically every outdoorsman owns an automobile—and some maintain several. A rapidly increasing number possess RV's, more commonly called recreation vehicles. These include jeeps, station wagons, suburbans, carryalls, trucks, truck campers, trailers, motor homes, and a variety of in-betweeners.

Unfortunately nearly every motor vehicle owner has had an accident of one kind or another... a minor or major collision. Some have witnessed crashes and all who travel have seen the after-effects of a wreck.

But, have you ever seen a single driver of any of these involved vehicles, or even a witness to one of the accidents, who had in his possession at the time, or in his modest transport, a simple little item that would prevent a lot of other unhappy incidents that almost invariably follow such crashes.

We're not talking about emergency life-saving kits, or Red Cross First-Aid Boxes, or warning flashlights, or reflectors, or blinkers to place along the highway to warn approaching cars to slow down and be cautious. All these items are necessities that you should carry in your car at all times.

What we're talking about is merely one simple little cleanup item. Something with which to sweep away all that broken glass and those sharp pieces of bent and splintered metal that are invariably scattered over the highway—those cutting, piercing pieces that slice or flatten tire after tire on vehicles that must roll over the scene of the wreck.

We refer, of course, to a simple broom—that's all.

Any kind will do, from whiskbroom size to one like the daughter got for Christmas with her housekeeping set. Or, better yet (room permitting) a man-sized, long-handled sweeper. Or even better, one made of metal.

Why not toss one into your car today? Fellow motorists will appreciate your thoughtfulness. You'll feel good about it—and you'll be one in a million in this self-centered "to hell with everyone else" world.

Political candidates often use the old cliché "A new broom sweeps clean" but any old broom will sweep the highway clear of debris.

Ever swerve to avoid broken glass on the highway? Almost had a wreck too, didn't you?

Guess the idea isn't quite as silly as it sounded.

M. L. TERRELL REAL ESTATE

FARM BUREAU BLDG. — HIGHWAY 80 EAST
PHONE 629-1725 NIGHTS 629-2443

- #### HOUSES
- 2 Bedroom House on N. Oaklawn. Good Terms.
 - 2 Bedroom House on W. Main, Carpeted and Paneled \$7,500.
 - 3 Bedroom. Good Location.
 - 5 Bedroom House. Nice Corner Lot
 - 2 Baths, 2 Fireplaces Good Location.
 - 3 Bedroom, 1 Bath with 2 lots. Good Location.
- #### FARMS AND RANCHES
- 37 Acres with House. Ranger City Water, Natural Gas.
 - 45 Acres 1 1/2 miles From Eastland, City Water, Some Cultivational.
 - 75 Acres House Near Carbon
 - 80 Acres, with Irrigation, two wheel moves.
 - 150 Acres Close to Eastland, New Fences, 130 Acres of Coastal.
 - 160 Acres Near Carbon with House, City Water, Natural Gas.
 - 224 Acres South of Eastland, Good Fences, Metal Pens, Coastal, Other Improved Grasses.
 - 328 Acres Near Eastland. Mile of Leon River, 2 Bedroom Home, City Water.
 - 320 Acres Carbon Area, 60 Acres of Coastal Fair Fences.
 - 864 Acres Near Cross Plains, Deer and Turkey. Terms can Be Arranged.
 - 916 Acres Close to Eastland, 400 Acres of Coastal.

Have other tracts large or small.

RODGER TERRELL
Home Phone 629-2896
M. L. TERRELL
Home Phone 629-2443
Eastland, Texas

REAL ESTATE

Would you hire you?

Of course you would. You work hard. Care about what you do. And you know your job inside and out.

That's what everybody says. And for most of us, it's true. But it's also true that we could all do better. Whether we're doctors or teachers, lathe operators or telephone operators, legislators or long-shoremans, bankers or union officials...every one of us.

And we'll all have more to show for it. More money, for one thing. Because we'll be giving each other our money's worth for the products, the services and even the government we pay for.

For another thing, we'll be giving America better ammunition to slug it out with our foreign competitors. Not just here. All around the world. That would help bring the lopsided balance of payments back onto our side. And help make your dollar worth more.

Best of all, as we hit our stride, we'll be protecting jobs here at home. For ourselves and the future. And we'll have a deeper sense of pride in the jobs we've got. So maybe we'll find our work as fresh and challenging as it was the first day on the job.

Which brings us back to the original question. Would you hire you?

America. It only works as well as we do.

For the longer range, the article declares: "Congress should take a hard look at its basic decision to make periodicals pay their full costs."

seen any good PEANUT RECIPES?

- #### PEANUT BUTTER KISSES
- 1 cup peanut butter
 - 1 stick margarine (1/2 cup)
 - 2 eggs
 - 1 cup flour
 - 1 tsp. baking powder
 - 1 tsp. cinnamon
 - 1 lb. candy kisses
 - powdered sugar
- Cream peanut butter, margarine, and sugar. Beat in eggs. Combine flour, baking powder and cinnamon. Add gradually until well blended. Chill dough at least 30 minutes. Wrap about 1 level teaspoonful of dough around each chocolate kiss. Place on ungreased cookie sheet and bake in 350 degree oven 10 to 12 minutes. Remove and cool slightly. Roll in powdered sugar and let cool completely.

The Eastland Telegram will gladly accept your recipes. They must contain peanuts or peanut products. Mail your recipes to the Eastland Telegram, P.O. Box 29, Eastland, Texas.

NEWS

Mr. and Mrs. D.D. Pugh and Vicki Ruth of Arlington were holiday guests in the home of Mmes. Frankye Flowers and Ruth Kenamer.

Lieutenant and Mrs. Bob Hart of Williams Air Force Base, Arizona, are visiting in the home of their parents, Mr. and Mrs. John Hart and Mrs. Bob Carroll.

FABRIC SHOP, 1208 W. Main, Open 9 - 5, closed Fridays, Open New Year's Day. - - Entire stock of drapery and upholstery material, twin bedspreads, canopies and pillow shams one-fourth off. - - New Shipment of double knit remnants, 59 and 98 cents per yard. - - Sale ends Saturday. t-104

Southern Television Systems Inc.
Encourages You To Attend The Church Of Your Choice!



CHRISTIAN SCIENCE SOCIETY
Parler of
Plummer and Lamar

Sunday morning services 11:00. Services on first Wednesday of month 7:30 p.m. All are welcome.

FIRST UNITED METHODIST CHURCH
Rev. Ben Marney

Sunday School 9:45 a.m.; Morning Worship 11:00 a.m.; E Young People's Meet 6:00 p.m. Sunday. Evening Worship 7:00 p.m.; Ladies Prayer Group 9:30 a.m. Wednesday; Choir Practice Wednesday 7:30 p.m.

UNITED PENTECOSTAL CHURCH
Rev. E.D. Norman

Sunday School 9:45 a.m.; Morning Worship 11:00 a.m.; 5 Evening Worship 7:30 p.m.

NORTH OSTRUM ST. CHURCH OF CHRIST
H.S. Lewis

Worship 10:30 a.m.; Evening Worship 5:00 p.m.; Wednesday Evening Service 7:00 p.m.

FIRST BAPTIST CHURCH
Rev. Hoston Brewer

Sunday School 9:45 a.m.; Morning Worship 11:00 a.m.; Evening Worship 7:30 p.m.

BETHEL BAPTIST CHURCH
Rev. Bill Betts

Sunday School 9:45 a.m.; C Morning Worship 11:00 a.m.; Ev Training Union 4:00 p.m.; Evening Worship 7:00 p.m.

CALVARY BAPTIST CHURCH
Rev. L.C. Williams

Sunday School 10:00 a.m.; Morning Worship 10:45 a.m.; Training Union 6:00 p.m.; Evening Worship 6:30 p.m.; Wednesday Night Service 7:00 p.m.

FIRST BAPTIST CHURCH
NO. SEAMAN ST.
Rev. G.L. Norris

Sunday School 9:30 a.m.; Morning Worship 11:00 a.m.; Baptist Training Union 6:00 p.m.; Evening Worship 7:00 p.m.; Wednesday Night Service 7:00 p.m.

HARMONY BAPTIST CHURCH
RUDY FAMBROUGH - Minister

Sunday School 9:45 a.m.; Morning Worship 11:00 a.m.; Evening Worship 7:30 p.m.; Wednesday Night Service 7:30 p.m.

MANGUM BAPTIST CHURCH
Rev. A.J. Thomas

Sunday School 10:00 a.m.; Morning Worship 11:00 a.m.; Training Union 6:00 p.m.; Evening Worship 7:00 p.m.

ST. FRANCES CATHOLIC
Priest John Mitchell

Mass Saturdays at 6:30 p.m.
FIRST PRESBYTERIAN CHURCH
Rev. Robert W. Marsh

Sunday School 10:00 a.m.; Morning Worship 11:00 a.m.

FIRST CHRISTIAN DISCIPLES OF CHRIST
Steven Church

Mo Sunday school 9:30 a.m.; Morning Worship 10:55 a.m.; Evening Worship 6:00 p.m.

CHURCH OF GOD
Main & Connelley
Rev. Ronald Bear

Sunday School 10:00 a.m.; Morning Worship 11:00 a.m. Family Training 6:00 p.m.; Evening Worship 7:00 p.m.; Wednesday Night Service 7:30 p.m.

CHURCH OF CHRIST
Daugherty St.
Jim Pennington

Sunday School 9:30 a.m.; Morning Worship 10:20 a.m.; Evening Worship 6:00 p.m.

HOLY TRINITY EPISCOPAL CHURCH
Priest Raleigh Denison

Sunday School 11 a.m.; Holy Communion 11 a.m.

CARBON FIRST BAPTIST CHURCH
Rev. Delbert Smith

Sunday School 10:00; Morning Worship 11:00 a.m.; Ev Training Union 5:30 p.m.; SEvening Worship 6:30 p.m.; Wednesday Night Service 8:00 p.m.

CHURCH OF CHRIST
Jack Landrum

Sunday School 10:00 a.m.; Morning Worship 10:50 a.m.; Evening Worship 6:00 p.m.; Wednesday Night Worship 7:30 p.m.

FIRST UNITED METHODIST CHURCH
Rev. C.C. Shultz

Sunday School 10:30 a.m.; Morning Worship 9:30 a.m.

OLDEN BAPTIST CHURCH
Rev. Howard Meeker

Sunday School 10:00 a.m.; Morning Worship 11:00 a.m.; Evening Prayer Service 7:00 p.m.; Evening Worship 7:30 p.m. Wednesday Night Service 7:00 p.m.

Miss Wheat And Mr. Maples Wed In Dec. 21 Ceremonies

Miss Jo Nell Wheat and Alton Ray Maples were united in marriage at 6 p.m. Friday, Dec. 21, in the home of the bride's parents, Mr. and Mrs. Joe T. Wheat, 205 West 12th Street, Cisco. Rev. W.L. Myers, pastor of the Bible Baptist Church, performed the double ring ceremony.

Decorations were white candles with blue and silver glitter with a white angel encrossed in the candles. Mrs. W.L. Myers played the wedding march.

The groom is the son of A.T. Maples of Fort Worth and M Mrs. Louise Kirkpatrick of Fort Worth, and grandson of L.E. Booth of Cisco.

Mrs. James H. Stewart of Moran, sister of the bride, was the matron of honor. Jay Wheat, brother of the bride, was the best man.

Candlelighters were Glenda Carroll, Chris York, Nancy Hull and Mary Chambaless, all of Cisco.

The bride, given in marriage by her father, wore a gown of white silk brocade with a V neckline. The gown was styled with a fish tail at the bodice of the waist line with matching draw ties in streamers the

length of the gown. The long sleeves were accented with flared cuffs, the flowers were tiny baskets of blue and pink tiny roses. She wore her late Grandmother Reeves diamond brooch pin with four blue sapphires in white gold mounting at the neckline of her gown. She wore a shoulder length lace veil. She carried a bouquet of white carnations with seed pearls and white net with long white ribbon streamers.

The matron of honor was attired in a pink Irish linen dress. She wore a white orchid corsage.

The reception was held immediately following the wedding. The table was laid with a white and blue tablecloth in the bride's chosen colors. The centerpiece was blue candles with white and silver glitter and a white angel encrossed in the candles. The six tier white cake was decorated with blue wedding bells and blue trimming around the edge of each tier. Punch was served to the guests.

Members of the houseparty were Mrs. Ray Carroll, Miss Chris York, Miss Nancy Hull of Cisco, and Mrs. Terry Wilson of

Abilene. The bride's book of white satin "Our Wedding Memories" was given to the bride after the wedding by her parents, Mr. and Mrs. Joe T. Wheat.

The bride and groom attended Cisco High School. The couple will make their home at 1401 West 12th Street, Cisco.

School Lunch

THURSDAY, JAN. 3
Homemade chili
Pinto beans
Chopped spinach
Stuffed celery
Corn bread
Fruit cobbler

FRIDAY, JAN. 4
Hamburgers
Pork & beans
Potato salad
Jello & cookies

WYNELL'S
TREASURE ISLAND
8 - Track Quality Stereo
Tapes - \$2.95
Quadasonic Tapes - \$5.95
Next to Perry's

FOR RENT:
this
MINI-BILLBOARD
for
ONLY \$3.50 a month

For Your Complete Auto Parts Service
See
Bill Green Or L.C. Swinson At S & G AUTO PARTS
115 Mulberry St.
Day: 629-2831
Night: 629-2307
629-1831
Open 8-5:30 P.M.
6 Days A Week
Can Provide Overnight Parts Service

Like a good neighbor, State Farm is there.
with help for your car, home, life and health insurance.
See me.
James O. Wortman
705 W. Main St.
Eastland
Ph. 629-1096

STATE FARM
Insurance Companies
Home Offices: Bloomington, Illinois

Apply Now Waitresses Needed At Ramada Inn
1-20 East Of Eastland
Good Benefits Hospitalization
Contact MGR
Ramada Inn

Jim Sandlin Skelly Station
Welding Of All Kinds
639-2575 Or 639-2215 - Carbon
Farm Bureau Tires & Batteries
Flatwork

Beautiful!
See Us For Pretty Ideas in Cosmetics
We have a complete line of beauty aids to help you keep looking fresh and pretty. Come in soon. We'll be happy to suggest the right cosmetics. Toiletries, too.
Your doctor prescribes medicines, and we fill his orders exactly. We're on the team to help you back to good health. Always a registered pharmacist in attendance.
Central Drug
103 W. Main Eastland 629-2681

Dignity . . . Consolation . . . Concern
Arrington Funeral Home
Ph. 629-2611 -- Eastland
Friendly Personalized Service

perry's Pre Inventory Sale

DOUBLE KNIT
100% Polyester
60" Wide
Short Length
Just Rec. 900 Yds.
Compare At \$3.99
\$1.88 Yard

WIDE WALE CORDUROY
45" Wide
100% Cotton
Machine Wash-Dry
Compare At \$1.39 Yd.
NOW **2** Yds. **\$1.00**

DECORATOR
Screen-Prints
48" 54" Wide
Cotton Ducks & Linens
Designer Fabrics From Americas
Compare At \$1.69
NOW **99c**

AMERICAN THREAD STAR
225 Yds. Size 50
100% Cotton
Reg. 29c
NOW **23c**

SAYELLE THREAD
Knitting Worsted 4 oz.
Machine Wash And
Dry Reg. \$1.39 NOW **\$1.09**

PAMPER
Day Time For Babies
Over 11 lbs.
ONLY **\$1.77** Reg. \$1.85

COLGATE INSTANT SHAVE 11 oz.
Reg. 79c NOW **53c**

GILLETTE RIGHT GUARD DEODORANT 4 oz.
Compare And Save
ONLY **66c**

JERGENS LOTION
2 oz.-Make Hand Feel Softer
Compare And Save
ONLY **20c**

VASELINE INTENSIVE CARE LOTION
6 Fl. oz.
ONLY **66c**

Closed Tues. Sale Good Through Sat.

PLAYING CARDS PLASTIC COATED
Bridge And Reg. NOW
Reg. 49c **3 FOR \$1.00**

SLUMBER BAG
Washable
Compare **\$9.95**
NOW
Compleat With Pillow At \$19.95

NYLON HEAD SQUARES SEVERAL
New Colors
Reg. 39c
NOW **17c**

DISH CLOTHS
100% Cotton
Compare At 39c
Compare And Save **4 FOR \$1.00**

TOWELS NEW
80% Novelties
20% Solids
100% Cotton
ONLY **\$1.67**

PEE WEE Desposable Diapers Over Night
Over 11 lbs.
Compare At \$1.99
NOW **\$1.00**

JOHNSON BABY OIL -Lanolin Enriched
10 Fl. oz.
Compare And Save
ONLY **\$1.09**

KLEENEX
200 2 Ply. NOW **27c**
Reg. 35c

BAYER ASPIRIN
100 Tablets
5 Grs. Ea.
Compare At \$1.00
NOW **77c**

CRAIGS ISOPRODYL
Rubbing Alcohol
Compare At 29c
NOW **11c**

JERGENS
Bath Size
ONLY **10c**

LISTERINE ANTISEPTIC
14 oz.
Compare At 99c
ONLY **77c**



Mrs. Roger Weber

Carla Boney, Roger Weber Wed Saturday

Miss Carla Jane Boney and Roger Van Weber were married in a candlelight ceremony at 7:30 in the evening Saturday, Dec. 29, at Bethel Baptist Church, Eastland.

The Rev. Tom Ruane, director of Baptist Student Union of Tarleton State University, Stephenville, officiated at the double ring ceremony.

Parents of the couple are Mr. and Mrs. Gene Carl Boney of Eastland and Mr. and Mrs. Charlie Rudolph Weber of Decatur.

The church was decorated with an arch of greenery interwoven with blue flowers, centered with a large white bow and blue wedding bells. Baskets of white gladiolas and large arched candelabras, holding white tapers, flanked the arch. Each side of the church was lined with blue candles, blue flowers and greenery.

Given in marriage by her father, the bride wore a formal gown of white polyester crepe. It featured a high neckline with

band, empire waist and long full sleeves. Her chapel-length veil of double illusion was outlined with lace. She carried a cascade bouquet of frenched white carnations around white cattleya orchids.

Miss Iris Ann Boney of San Antonio, sister of the bride, was maid of honor. She wore a royal blue dress of polyester crepe, styled identical to the bride's gown. She wore a white fur Kangol and carried a white fur muff decorated with blue carnations.

Ronnie We Weber of Bowie, brother of the groom, was best man. Ushers were Rex Boney of Eastland, brother of the bride, and Robert Marx of Austin, brother-in-law of the groom.

The mother of the bride and the mother of the groom each wore a floor-length blue gown and white orchid corsage.

Mrs. Charlie Hughes of Arlington was organist. Singers were Misses Kay Hooks and Dianne Smith, both of Stephenville.

A reception was held in the

Rep. Joe Hanna Spoke To Law Enforcement Officers Of Eastland County

"The laws are changing so fast that you (law enforcement officers of Eastland County) almost have to prove yourself not guilty when arresting a law breaker", said State

Women's Club. Miss Marilyn Thompson of Gorman registered guests. Members of the houseparty were Miss Debra Boucher of Dublin, Gene Woods of Olden; Misses Jan Brewer, Mary Jo Clearman, and Gloria McDonald, Mmes. Ed Duncan, Johnnie Honea, Obie Duncan, Darwin West, Richard Watson, and Bob Mueller all of Eastland.

The register table held large blue candles on silver bases, silver bowls were filled with wedding scrolls and miniature bridal portraits which were presented to the guests. A white map of Texas, with Decatur and Eastland outlined in pearls, hung above the table.

The bride's table was covered with a blue velvet cloth and centered with a silver tiered candelabra and filled with blue tapers and the bride's bouquet. Blue punch, nuts, mints and a blue and white tiered wedding cake were served. Appointments were of silver and crystal. Background for the table was of blue net with white streamers trimmed with pearls.

Coffee and chocolate cake were served from the groom's table which was covered with white and centered with a silver tiered candelabra holding blue tapers and a miniature "ball and chain" decoration tied with blue ribbon and silver wedding rings. Appointments were of silver and crystal.

Decorations of blue floral arrangements and candles and white pearlized hearts were used in the room.

The bride is a graduate of Eastland High School and the groom is a graduate of Slidell High School.

Following a wedding trip to San Antonio, the couple will live in Stephenville where they are students at Tarleton State University.

The bride's going away costume was a dress of blue with blue and white coat and white accessories. She wore a white orchid corsage.

The rehearsal luncheon at noon Saturday was hosted by the parents of the groom.

Representative Joe Hanna. "The offender seems privileged, while the officer has to defend himself".

Rep. Hanna spoke to more than 20 assembled listeners at the monthly meeting of the Eastland County Law Enforcement Association at a luncheon Friday in the Ramada Inn.

He praised the association, saying that it was a wonderful idea, especially in a time when groups have to be organized to be heard. Law enforcement agencies and officers are one of the most taken-for-granted groups today he said. "You have to squeak awful loud to be heard any more".

The major topic of Rep. Hanna's informal talk was his recent trip through the state prison system at Huntsville.

"I look out there and know a lot of you have been down to Huntsville on visits and returns". This drew a chuckle from the assembled law enforcement officers.

Texas has one of the finest and best run prison systems in the nation he asserted. There

Sheila Moseley, Keith Luttrell Wed at Bethel

Sheila Rose Moseley became the bride of Keith Wayne Luttrell of Mineral Wells in a ceremony Saturday at Bethel Baptist Church with the Rev. Bill Betts officiating.

The bride is the daughter of Mr. and Mrs. C.W. Moseley. Parents of the bridegroom are Mr. and Mrs. Robert Luttrell of Mineral Wells.

Organist was Mrs. Tommy Clark and soloist was Luce Pittman.

Matron of honor was Mrs. Ronnie Reese of Olden, sister of the bride.

Best man was Ronnie Reese of Olden.

The couple will live at 1117 S. Peach, Abilene, where the bridegroom is stationed with the U.S. Air Force and the bride is a student at Glen and Lottie's School of Beauty and employed at Timex.

The bride is a graduate of Eastland High School and the bridegroom graduated from Mineral Wells High School.

are not the problems at Huntsville that have happened at Attica in New York and McAlister in Oklahoma.

IMPRESSIONS
Many things impressed the area state representative about the facilities at Huntsville, especially the agricultural program that almost makes the prison system self sufficient for food stuffs.

"The 14 separate prisons comprise about 105,000 acres, he said. It takes only 62 cents a day to feed a prisoner and 3 1/2 dollars a day to keep him, way below the national average.

No prisoners have been executed since 1964, before that time 361 electrocutions had

Don Stoner Is Prexy County Law

At the monthly meeting of the Eastland Law Enforcement Association, new officers were chosen for the coming year.

Those nominated and elected at the Friday luncheon were: Don Stoner of Cisco, President; Butch (Roy) Petty of Eastland, First Vice President; Judge M.D. Underwood of Ranger, Second Vice President; Emory Walton of Eastland, Secretary - Treasurer; Judge Scott Bailey of Cisco, Chaplain.

The new board of directors include Robb Autry, David Parkhill, James Johnson, J.C. Rose, and Ben Sancillo.

Also read at the meeting was a new amendment re-defining active and associate members that will be voted on next month.

Special guest speaker for this session was State Representative Joe Hanna of Breckenridge who spoke about his recent visit to the state prison at Huntsville. His appearance was arranged by this month's program director, L.D. Adams, ABC officer for the county.

Outgoing officers for 1973 were: President Doug Fry, 1st V.P. Johnny Morren; 2nd V.P. Carl Boustead and Sec. - Treasurer Kenneth Payne.

Out going board members were Don Stoner, Tom Hart, Tom Fox, Arlie Bibby and David Mohon.

occured.
"Death row is something else", Hanna stated. "The electric chair is gruesome, awesome and bleak. Its surroundings are a chilling realization of what actually happened there".

The women's prison at Goree has the highest number of female inmates of any state prison in the nation.

"Perhaps one reason is that Texas jurors are harder on women than those of other states", he indicated.

Hanna was impressed by the cleanliness of the prison facilities and of the inmates. "They could have any kind of haircut, as long as it was a burr and they were clean shaven."

His impression of solitary was a "closed door, black as midnight and three pieces of bread plus water per day".

However, solitary confinement is not as inhumane as depicted for prisoners are examined by a doctor daily and have a hot meal every third day, said Hanna. "After two or three days a prisoner will become a working rascal."

The main problem is the do-gooders that come down to tell the wardens how to run the prison, said Hanna.

The often quoted motto there is "We either run the prison, or the prisoners do...We run the

prison". Security is tight and discipline is strict.

STATISTICS
Common crime in prison is burglary and most common crime of the women in prison is dope charges. The average stay is two years, 11 months and 18 days. 75 percent of inmates are from ages 17 - 35. Approximately 20 percent of the inmates are habitual returners.

BENEFITS OF
The prison system has its own sawmill and own shoe shop which turns out 63,153 pairs of shoes a year, enough to outfit its 15,713 inmates and various institutions around the state.

The \$220,000 made off the yearly rodeo helps pay for the inmates' vocational education training. They can obtain their high school degree and two years of credit for college there also.

Rep. Hanna is proud of this system that makes useful persons out of felons and prepares them for a gainful occupation on the outside.

"Too often we don't hear of the good things achieved, only the bad things become news," said Hanna. "We should be appreciative of the fine penal institutions we have in Texas."

He concluded by saying that in 1973 more law enforcement officers were killed than ever before. "I hope that the new

laws and new rulings will provide you with a better break".

CONSTITUTIONAL CONVENTION

January 8th Hanna will be traveling to Austin as a delegate to the constitutional convention that will draft a new Texas constitution within the next six months.

He will be one of 100 legislators that will participate. There is no legislation that is as important as this. "I hope we can create a constitution that we can work with for the next 100 years."

He was not satisfied with all the recommendations made by the special 27 man drafting committee. "I hope we can get a few changes made and come up with a constitution that we can all live with."



December 30, 1973



Rep. And Mrs. Joe Hanna and L. D. Adams

Pre-January Sale

Big Discounts

Heidenheimer's will be ready with the biggest DISCOUNTS and BIGGEST CLEARANCE On Regular Goods Starting Friday Dec. 28th

Mens, Womens & Children HOUSESHOES 20% Off

CURTAINS Less 10% TOWELS less 20%
TOWEL GIFT SETS Less 20%

NYLON PAJAMAS and GOWNS All less 20%

All LUGGAGE Less 30%

RUGS BLANKETS BATH SETS All Less 30%

Mens SHIRTS less 20% Boys SHIRTS less 20%

Boys SUITS Less 20%

All Mens Suits & SPORT COATS Reduced

Mens And Boys Heavy COATS And Outer Wear JACKETS Less 20%

Mens & Boys BELTS And Men & Boys TIES Less 20%

Mens and Boys Acme BOOTS Now Less 10%

Mens Winter CAPS Less 10%

Mens Regular Or Hooded SWEAT SHIRTS Less 20%

HEIDENHEIMER'S

Family Store in Cisco



Fuel diversification is important to you and your family.

But what is it?

Fuel diversification is the key to our being able to supply the electricity you'll need in the years ahead.

It means using several kinds of fuel to generate electricity. Making the best use out of the fuels available to us. And reducing our dependence on fuels in short supply.

At Texas Electric, natural gas is our major fuel, with oil used on a standby basis. We foresaw growing shortages of these fuels and several years ago developed long-range plans to diversify to lignite coal and nuclear fuels.

We now have one lignite plant in operation and two others under construction. A nuclear-fueled plant is planned for operation by 1980.

One advantage of lignite and nuclear fuels is that neither is being used extensively for any purpose other than generating electricity. A disadvantage is that it costs much more to build these plants than gas-fired plants. Lignite plants cost about twice as much. Nuclear plants cost more than three times as much.

In just the next five years alone TESCO must spend \$700 million on new facilities. Financing these essential expenditures makes an increase in electric service rates necessary.

We're working to supply the electricity you need, but it will have to cost more in the future.

TEXAS
ELECTRIC SERVICE COMPANY