

Patton's Fabric Shop
 304 N. Walnut, Eastland
 New coordinated colors. 100 percent polyester knit.
 Reg. \$4.98 Now \$2.99
 100 Percent polyester knit - solid and floral designs
 Reg. \$4.98 Now \$2.49
 Lace 5c yard
 Zippers 2 for 25c
 Quilt scraps Reg. 30c lb. Now 5 lb. for \$1.00.
 Non-roll elastic - 3 yards for \$1.00

A Home Of Your Own ... There's Nothing Like It




EQUAL HOUSING

Security ... happiness can be yours with your own home.

H & W Development Co.
 216 S. Seaman Eastland
 629-1702

RANGER DRIVE-IN THEATRE
 SHOW STARTS AT DUSK
 Wednesday-Thursday & Friday
 JULY 10-11-12
WHITE LIGHTNING never strikes twice - cause once is enough!



BURT REYNOLDS
WHITE LIGHTNING
 featuring JENNIFER BILLINGSLEY - NED BEATTY
 PG PARENTAL GUIDANCE SUGGESTED
 United Artists

Saturday & Sunday
 JULY 13-14
 Join the fun in Walt Disney hilarious comedy!
Walt Disney's THAT DARN CAT
 TECHNICOLOR® Walt Disney Productions

Highlights AND Sidelights

by Lyndell Williams
 AUSTIN, Tex.—Constitutional Convention delegates approved a new approach to state revenue raising and sent delegates' hopes rising for a painless tax source.

The Convention authorized the legislature to levy a petroleum products manufacturing tax that will not (like three-fourths of gasoline taxes) go into highway building.

Sen. D. Roy Harrington of Port Arthur already is preparing for introduction next year a bill to impose a two cents per gallon gasoline tax at the refinery level.

At the same time, Harrington will propose reduction of the gasoline tax at the pump from five to three cents a gallon if the new constitution is approved.

Since 75 per cent of Texas-refined gasoline is sold out of state, proponents of the tax claim the two cent levy would raise \$686 million in additional revenue without increasing the burden on Texans.

Although such a tax probably could be levied now, most of the money would go to highways instead of general revenue.

The convention went into its windup stages this week.

Delegates began voting on the entire revision package, including proposed separate submissions of five alternative propositions.

When and if a two-thirds majority is mustered, the document and the "side issues" will go to the voters in the November general election.

Historical Survey Committee Is Gathering Information

The Eastland County Historical Survey Committee is in the process of gathering information related to the old Bankhead Highway in Eastland County.

Anyone who has any information, stories, facts, pictures, etc., concerning the Bankhead Highway, please let the Historical Committee know about it preferably by mailing the information to William L. Page, 515 S. Mulberry, Eastland.

A history of the road will be written as relates to Eastland County and an official historical marker is planned to be erected on the site of the original highway which is still 1/4 intact in its original state just east of Cisco.

HEATLY CUT OFF—The Constitutional Convention Compensation Committee

served notice it didn't intend to allow Rep. W.S. (Bill) Heatly of Paducah to charter airplanes at state expense. Convention officers said they won't approve any more such charges.

However, Heatly indicated he won't take that without a fight. He produced an attorney general's ruling saying renting of aircraft by state employees on official trips is authorized, and called on officials to consider his bills legal.

Heatly blamed his troubles on a "personal vendetta" against him by Convention

President Price Daniel Jr. and Executive Director Jim Ray — which Daniel promptly denied.

A check of House records showed Heatly, as of May 31, ranked 24th among state representative-convention delegates in total spending since last January.

APPOINTMENTS—Governor Briscoe appointed Natt Burke Holman of Houston to the Texas Water Rights Commission, effective July 15.

Larry Combest is Sen. John Tower's Austin office aide for agricultural matters.

Robert Hardesty of Austin will serve as a member-at-large to the 1974 delegate assembly of National Urban League which will meet in San Francisco July 31.

County Commissioners may expend county funds for service pins to reward county employees, and pins may include a replica of an unofficial county seal.

BIG SALE

SUMMER CLEARANCE SALE STARTS FRIDAY !!

ALL SUMMER MERCHANDISE
 Misses And Juniors

1/3 OFF

Now Reduced To

Quetta's Fashion Boutique

629-8030 Int. 20-West Of The Ramada Inn Eastland

ANNOUNCING

Our annual Anniversary Sale, beginning July 10th thru July 31st. As all our friends and customers know we have A one cent sale in the pass, however we are aware pennies are scarce (don't want bubble gum). We have decided to have two for the price of one Sale. Also we have early fall goodies if you want to start your fall wardrobe-- So come in browse, grab the bargains try on or just visit, we will be glad to see you. Please dont ask to put sale's on Lay-A-Way.

Janet's Tops & Bottoms

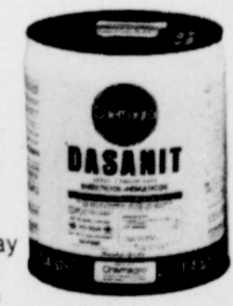
Homer At Pine (Park Place Apts.) Ranger, Texas 647-3515

COOK BROS LUMBER CO.
 Phone 968-2171 Stephenville, Texas

Carrigated SHEET IRON American Made \$19.95 Per Square	Pre Finished WALL PANELING 4 x 8 \$2.59 Per Sheet
5 Panel 12 Foot FARM GATES \$22.95	4x8x1/2 in CD PLYWOOD \$4.75 Per Sheet
No. 235 lbs. Seal Down COMPOSITION ROOFING Per Sq. \$13.95	
PARTICLE BOARD 4x8x3/8 \$2.95 Per Sheet	BARBED WIRE 12 1/2 Gauge \$25.95 Per Roll

Control Lesser Cornstalk Borer

with **DASANIT** Spray Concentrate insecticide/nematicide

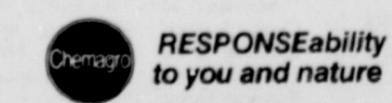


Just band DASANIT Spray Concentrate as a directed basal spray on each side of peanut plants when lesser cornstalk borers infest your fields. Gives 80% reduction of borers within two weeks, residual control for up to 28 days.

Look at these results of research conducted with Texas and Oklahoma growers:
MORE YIELD. Plots treated with DASANIT Spray Concentrate produced yield increases up to 844 pounds per acre, with most tests averaging much more than untreated check plots.
MORE INCOME. In some tests where there was no increase in yield, reduction of immature and small nuts resulted in higher grades that increased the value of the crop \$4 to \$51 an acre over untreated plots!

Make DASANIT Spray Concentrate your choice for effective, economical lesser cornstalk borer control this year! Order from your chemical supplier now.

Chemagro Division of Baychem Corporation, Box 4913, Kansas City, Missouri 64120. 7406



Control Southern Corn Rootworm

with **DASANIT** 15% Granular insecticide/nematicide



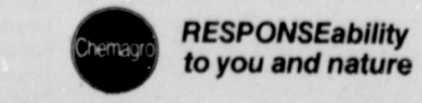
DASANIT 15% Granular insecticide/nematicide gives fast, long-lasting control of southern corn rootworms. Stops these underground pests that destroy peanut roots and pegs.

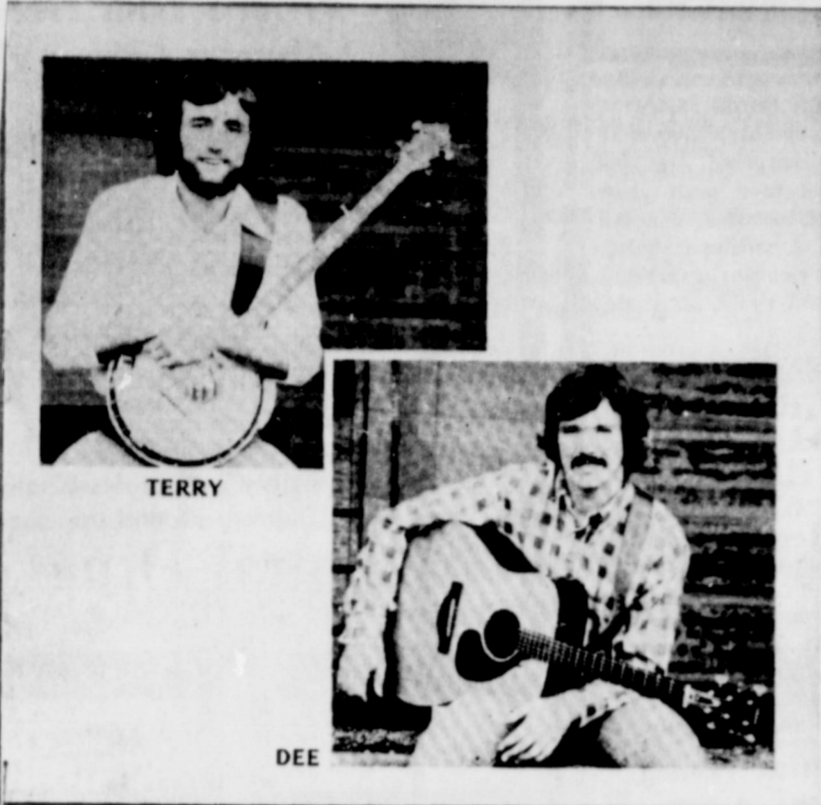
CONVENIENT TO USE! NO ROOT PRUNING!

You don't disturb root systems needed to produce big, healthy yields. Just apply a 12- to 18- inch band of DASANIT 15% Granular over the rows at pegging time. DASANIT goes to work fast. Stops pests that destroy young pegs; cause immature small nuts that lower grades.

Order DASANIT 15% Granular for outstanding control of southern corn rootworms from your chemical supplier.

Chemagro Division of Baychem Corporation, Box 4913, Kansas City, Missouri 64120. 7409





COTTON JUNCTION

**COMING TO
YOUR TOWN**

There is to be a youth revival held at the First United Methodist Church in Eastland July 14 through 17.

This revival will feature Terry Wilborn and Dee Faram, two musically talented men working in the field of ministry.

The following is a schedule of activities:

SUNDAY* JULY 14
4-5--Meet with adults, sponsors and interested parents.

6-6--Meet with Jr. & Sr. High youth
6-7--Worship
7p8:30--Covered dish supper, games, singing and recreation
8:30-??--Home fellowship

MONDAY* TUESDAY
WEDNESDAY* JULY 15, 16, 17
4-5:30--Youth Worship Workshop at the church
5:30-6:30--Snack supper, music and games.
6:30-8:30--Communications

Workshop
9-9:45--Worship in out of door settings
9:45-11--Home fellowship

COTTON JUNCTION is Dee Faram and Terry Welborn. For further information contact Cindy Locke, youth leader, or Rev. Ben Marney.



EASTLAND NATIONAL BANK EASTLAND, TEXAS

STATEMENT OF CONDITION AT THE CLOSE OF BUSINESS

JUNE 28, 1974

RESOURCES

Loans and Discounts	\$6,280,730.66
Federal Reserve Bank Stock	7,500.00
Banking Premises	286,483.71
U. S. Government Bonds and Agencies	7,123,715.42
Other Bonds and Warrants	2,379,944.51
Federal Funds Sold	400,000.00
Other Assets	333,094.11
Cash and Exchange	1,962,782.49
	\$18,774,250.90

LIABILITIES

Capital Stock	100,000.00
Surplus	150,000.00
Undivided Profits	713,363.62
Other Liabilities	478,953.43
Deposits	17,331,933.85
	\$18,774,250.90

OFFICERS

J. P. McCracken --- Chairman of Board
H. T. Wilson --- President
Grover Hallmark --- Exec. Vice-Pres.
Mike Collins --- Vice-Pres. & Cashier
E. A. Connel --- Vice-President
Larry Kirk --- Vice-President
James Reid --- Vice-Pres. & Comptroller
Inez Harrell Bourdeau --- Vice-Pres.
Wyndle L. Armstrong --- Asst. Cashier
Marianne Walker --- Asst. Cashier

DIRECTORS

GROVER HALLMARK
RUSSELL HILL
J. P. McCracken
M. H. PERRY
DR. M. A. TREADWELL, JR.
H. T. WILSON



HEARING AID SALES AND SERVICE
Batteries and Repair Work on all Brands.
John W. Clinton
Box 1206
Cisco, Texas
Ph. 442-2168

LUZIER Fine Cosmetics
announces the appointment of **Judy Donaldson** as a **trained Cosmetic Consultant.**
801 Commerce, Ph. 629-2012.

SEWING MACHINES
New and Used.
Starting at \$26.00. We also clean and adjust all makes and models. Call 442-3283 or 629-1630. t-62

FOR SALE--4 refrigerated window units. 10,000 BTU and 8,000 BTU. One 250 gallon gasoline tank. 1971 14' Hustler Bass Boat. 20 HP Chrysler motor, trolling motor, dilly lift trailer. All priced to sell. Call 647-1091. t-55

HELP WANTED--Two full time checkers with experience only. Apply in person at Thrift Mart. t-tf

YARD SALE--Clothing and misc. items. Friday and Saturday at 208 N. Oaklawn. t-55

SALE AT Nelm's Gift Shop. Antiques, collectables, South African tribe flowers, everything goes. July 13 and 15. at 1706 W. Commerce. t-55



Lana Wise and Phillip Harrison....to be married Engagement Announcement

Mr. and Mrs. Delbert Wise of Stephenville have announced the engagement and approaching marriage of their daughter, Lana, to Phillip Harrison, son of Mr. and Mrs. Bill Harrison of Eastland. The wedding will be August 3 at 8:00 p.m. at the Presbyterian Church at Harbin Drive in Stephenville. All friends and relatives are invited to attend.

CANCER INSURANCE
UP TO **\$100,000**
M.H. Perry
104 N. Lamar
629-1566

500 Work Pants. All sizes. \$1.00 Each
1/2 inch drive air compact wrenches, \$49.95
CISCO ARMY SURPLUS
1201 Ave. D 442-36720

H.L. Ferguson Backhoe Service
Digging, Ditching, Hauling Gravel And Sand, Eastland
Call 629-2081

Valuable Lake Area Land
Now you can own 5 acres or more of valuable "lake area" land for less than the cost of many 1/2 acre lake lots.
Beautiful wooded, wild game areas...plus, enough land for gardening, coastal bermuda, homesites, and abundant country living...just minutes away from the 18 hole Lake Proctor Country Club.
TRACT SIZE PER ACRE
5 ac. \$1,080
10 ac. \$980
15 ac. \$880
17.24 ac. \$780
Call Now or Stop By **PECAN TRAILS LAND OFFICE**
Proctor, Texas on Hwy. 377
Free Refreshments And Information
Proctor 817-879-2749
Stephenville 817-965-3135

Music is the Universal Language
It's one way of saying, when you need shelter, keep our song in mind -- look to the MFA Insurance Shield of Shelter.
For Information Call **Richard Rossander** Agent
Ph. 629-2563
Eastland, Texas

Arrington Funeral Home
Pre-Arranged Funeral Service
Burial Insurance Policies
Phone 629-2611
Friendly, Personel Service
A Pillar In This Area For 58 Years

Brick Cleaners Needed At Once.
\$15 Per 1000 Bricks Cleaned.
Minimum 500 Per Day Cleaned;
Otherwise, \$12 Per 1000.
Apply
210 S. Seaman At Commerce
Morrow Wrecking Co.

Dearborn Air Coolers
Quality-built for durability and dependability

A. RECIRCULATION PUMP Utilizes high impact polystyrene and brass for long, trouble-free operation.
B. SEAMLESS WATER PAN One piece of heavy-coated galvanized steel. No seams or corners to encourage rust.
C. EFFICIENT WATER DISTRIBUTION Keeps each pad evenly moist for complete cooling.
D. SELF-ALIGNING BEARINGS Blower shaft bearings are mounted on a cushion of synthetic rubber so the shaft stays perfectly aligned and protected from excess wear. Also assures quieter operation.
E. WHISPER-QUIET OPERATION Cushion mounted motor and blower shaft bearing for longer life and quieter operation.
Dearborn
DIVISION OF ADDISON PRODUCTS COMPANY
Western Auto
701 S. Lamar 629-2011

Revival Church Of God
Corner Of Main & Connellee
July 7-13 7:30 Nightly
Kenneth Adams
Evangelist
Come If You Need Salvation, Healing, Deliverance, Baptism Of The Holy Spirit.

Hospital Notes

Patients in Ranger General Hospital Wednesday morning were:
Walter Sneed
Frank Pearsall
Lewis Green

Jessie Franklin
Lester Lingle
Myrtle Moon
Tony Ash
Melva Love
J.D. Barker
Mamie Hazard
Doug Blakney

Patients in E.L. Graham Memorial Hospital Wednesday were listed as follows:
Zella Pugliese
William Brecheen
Gary Edwards
Ernest Creech
Velma Holdridge
Cinda Mellister
Donna Clark

David Lee
Bill Gatewood
Winnie Reeves
Luna Turner
David Jackson
Clara Capers
Delbert Tarver
Lloyd Johnson
Baby Girl Torres

Samuel White
Glen Graham
Gladys Walker
Melvin Walker

Barney Brannon
William Murphy
Henry Werley
Debbie Maston
Ollie Eaves
Dicie Fonville
Von Siebert
Wendell Siebert
Jesse Cox

Nolan Washington
Forrest Gleghorn
Rebecca McHargue
Ella Medford
Jewel Walker
J.D. Narry
Lilly Rodgers
Tibitha Rainey
Grace Lewis
LeVona Owen-
Roy Aaron
Martin Daniels
Berniece Stephen
Emma Kennedy
Hazel Henderson
Walter Caraway
Ora Truesdell
Sena Troutman
Mary Williams
Lydia Fonville
Isabel Elizalde
Amy Rice
Margaret Corbell
Ola Walker
Baby Boy Maston

Patients in the Eastland Memorial Hospital Wednesday morning were:

Ruth Campbell
Jessie Plummer
Lula Walker
Homer White
Harry Chambers
Stella Thurman
Pearl Williams
Nevada Smith
Grace Ashton
Vera Reeves
Laverne Stuard
Vernie Allen
Velma Honea
Loie Walton
Billie Mayfield
Helen Plew
Arthur Walton
James Seabourn
Pam Garrett
Minnie Bilbrey
Oliver Ashton
C.B. Harris
Robert Nealy
Albert Cogburn
Letha Rogers
Mae Edna Gattis
Mabel Reynolds

GOING OUT OF BUSINESS

Everything Must Go. \$1.00 Items

Going 25¢ On The Dollar. Can't Believe Until You See.

J & Y BARGAIN STORE

107 East 9th Cisco



In Central America, gold is believed to have a soul.

Thursday, July 11, 1974

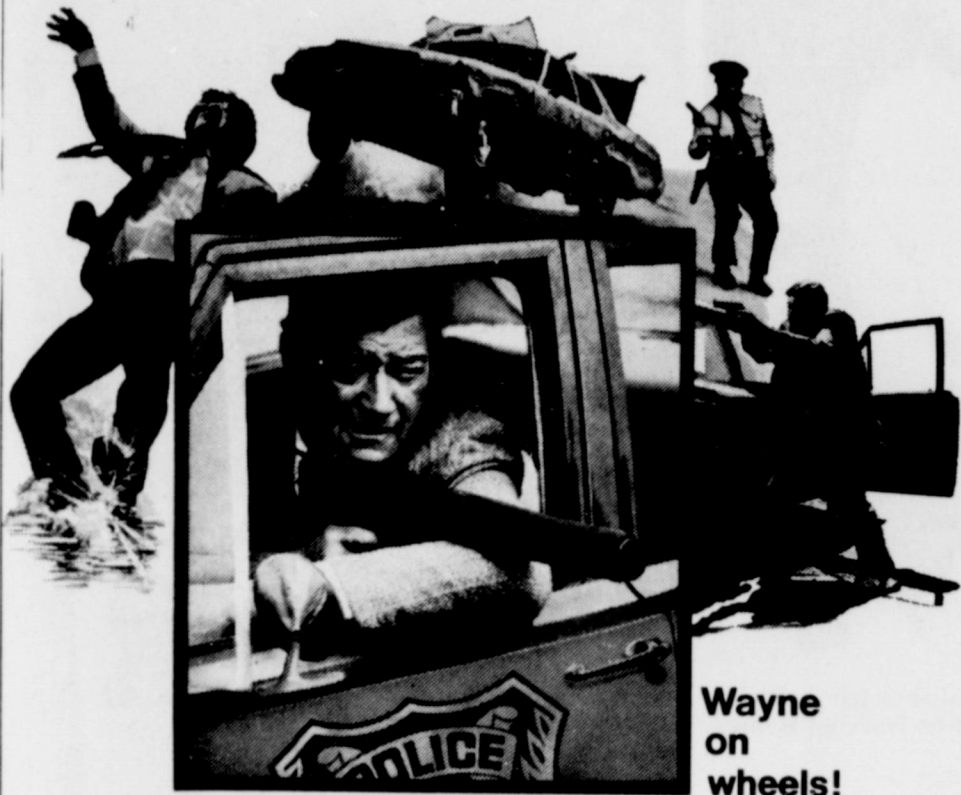
Member 1974 TEXAS PRESS ASSOCIATION

Majestic Theatre

629-1220

Thurs.-Fri.-Sat.
July 10-13

Eastland



Wayne on wheels!

JOHN WAYNE

Show Time
7:15 & 9:28 P.M.



A BATJAC AND LEVY-GARDNER PRODUCTION
EDDIE ALBERT - DIANA MULDAUR - COLLEEN DEWHURST - CLU GILGAGER - DAVID HULLBLESTON - AL LETTIERI in "McQ"
TECHNICOLOR® PANAVISION® Music by ELMER BERNSTEIN - Executive Producer MICHAEL A. WAYNE - Written and Co-Produced by LAWRENCE ROMAN
Produced by JULES LEVY and ARTHUR GARDNER - Directed by JOHN STURGES - From Warner Bros. A Warner Communications Company PG-13

Sat. Kid Show 2:00 P.M. "Cockeyed Cowboys From Calico"
Starting Sun. "The Last Picture Show"

RAMADA INN



Our dining won't put the bite on you.

Step up to The CHARLESTON HOUSE RESTAURANT for a refreshing change of pace... outstanding decor and mouth-watering steaks and seafood. For breakfast, lunch, or a leisurely dinner capped with an entertaining visit to our SWAN INN LOUNGE, you'll love every exciting bite... especially our check that doesn't bite.

The CHARLESTON HOUSE RESTAURANT & SWAN INN LOUNGE
RAMADA INN
1-20 & Hwy 570
Eastland, Texas

OPERATED BY
Transamerica Hospitality, Inc.
A Real Difference In Hospitality.

STOCK UP
for another Great
EASTLAND COUNTY RODEO SEASON



GREER'S WESTERN STORE

Ranger Jaycee Rodeo
July 11-12-13

Eastland County Junior Rodeo

July 18-19-20

- Tony Lama Boots
- Kids Acme Boots
- Bradford, Bailey Hats
- To, Rel Belts
- Levis & Wranglers
- American Hats
- Lady Wrangler
- Karman Shirts
- Lady Karman Sets

GREER'S WESTERN STORE

In Ranger

Eastland County Western Wear Headquarters.

Free Golf Balls

With Each Set Of 4 1st. Line Or Premium Passenger And Pick Up Tires.
And

Look At This:
A Fill Up Of Gasoline With Each Set Of 4 Dunlop Or Seiberling Steel Belted Radial Tires



Another Price Increase Is Coming July 1st
Beat The Price Increase

G 78 X 15 Steel Belted Radial TIRES Set Of 4 ONLY \$229⁹⁵ Plus Tax	L 78 x 15 Steel Belted Radial TIRES Only \$249⁹⁵ Plus Tax
---	---

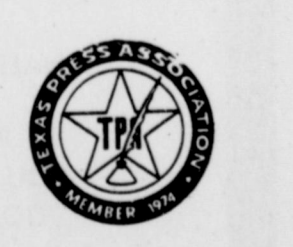
H 78 x 15 Steel Belted Radial TIRES Only \$239⁹⁵ Plus Tax

C WHOLESALE TIRE CO
FORMERLY JIM HORTON TIRE SERVICE
BRING YOUR TIRE TROUBLES TO US
403 E. MAIN EASTLAND, TEX. Phone 629-2922

FOR COASTAL SPRIGGING
Call
H.L. Perrin, Jr.
Tel. 647-1028
In Ranger

Hearing Aid, Sales and service and repair on all brands. John W. Clinton, Box 1206, Cisco, Texas. 442-2168.

Beauty By **MARY KAY**
For complimentary facial
ONEIDA HALBROOKS
647-1829
t-59



EMPLOYMENT OPPORTUNITY
Experienced tire serviceman for immediate permanent employment with chain store Tire Firm in Breckenridge. Above Average Salary and all benefits for above average employer. Apply in Person.
Joe Hudspeth's Inc.
701 W. Walker St.
559-5446
Breckenridge, Texas
Neal Edwards, Mgr.

REMODELED GRANDSTAND ALL NEW STEEL SEATS

RANGER JAYCEES

12th ANNUAL
+ OPEN +
8:30 P.M.

NELSON-SILVIA BELT BUCKLE AWARDED IN EACH EVENT!

DANCE
HELD AT RODEO BARN EACH NIGHT

GEORGE TAYLOR - Fighting Bulldog, Black Lite Trick Roping, Comedy Horse.

RODEO



JULY 11-12-13

THURS.-FRI.-SAT.

BAREBACK BRONC BULL RIDING STEER WRESTLING GIRLS BARREL RACE CALF ROPING RESCUE RACE CLOWNS

RANGER, TEXAS

Hickman Residents Hold Ice Cream Supper

King of the month of June
is Ben Cunningham.

Queen of the month of June
is Mrs. Gladys Green.



Ben Cunningham, a resident of Hickman Nursing Home in Eastland was named "King" of June Bingo Parties during the recent ceremonies held at Hickman Nursing Home, July 3rd. Cunningham was awarded shaving lotion and cologne and happily displays them to photographer Myrna Dabney, Social and Rehabilitation Director at Hickman.



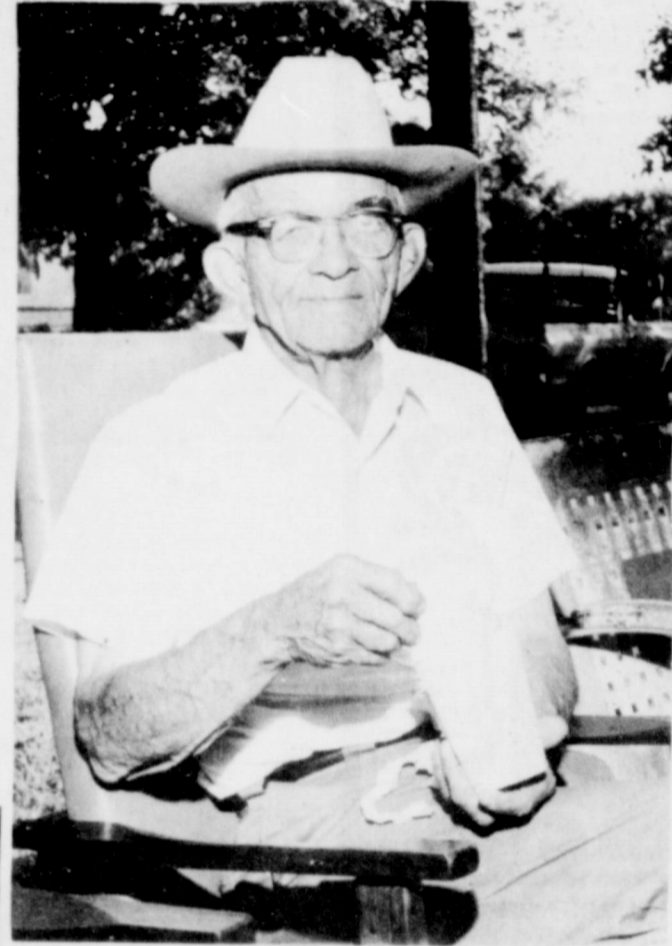
Named "Queen" at recent ceremonies at Hickman Nursing Home in Eastland was Mrs. Gladys Green former Eastland school teacher. The party was held Wednesday July 3, and honored Mrs. Green for being selected from June Bingo winners. Mrs. Green displays nylon tricot pajamas awarded as prize. (Photo by Myrna Dabney)



"O.K. PETREE, DON'T EAT ALL THE ICE CREAM..." Mrs. Jewel Petree, nurse at Hickman in Eastland is shown "putting away her portion" of the various flavors of homemade ice cream served during party at the home. (Photo by Myrna Dabney)



Providing the music at recent party at Hickman Nursing Home during crowning of "King" and "Queen", were Bill Millican, left, of Carbon, and Joe Bob Bowles, owner of Jody's Pizza Parlor. (Photo by Myrna Dabney)



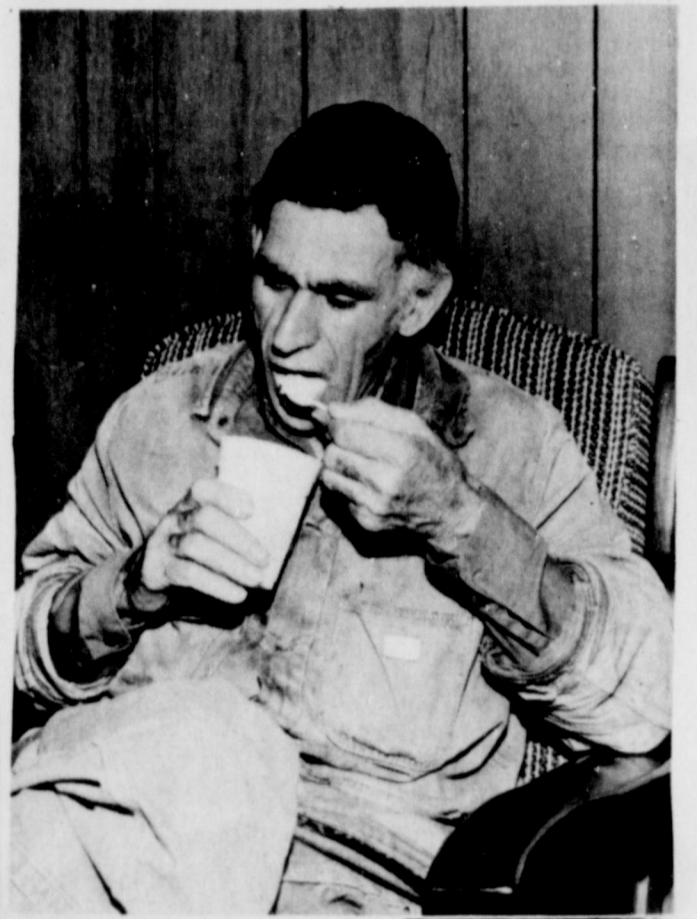
Louis Burton, Hickman Nursing Home resident is shown enjoying homemade ice cream during recent ice cream supper held at Hickman Nursing Home. Mr. Burton said, "I believe I enjoyed all flavors... but the fresh peach was my favorite." (Photo by Myrna Dabney)



Thursday, July 11, 1974



Administrator Mrs. Truman Nix dishes ice cream for Residents and staff at Hickman Nursing Home.



BAKKER Funeral Home

Dear friends,

The American flag, which is such an impressive part of a military funeral, is supplied without cost by the U.S. government.

After the funeral ceremony, the flag is awarded to the next of kin. Your funeral director performs the duty of coordinating all aspects of a military funeral.

Sincerely,

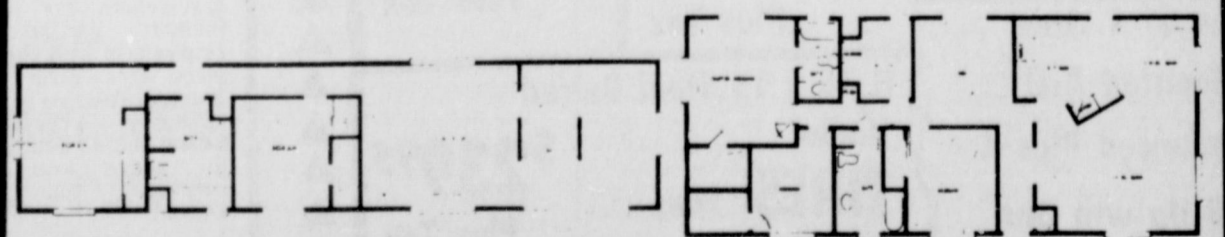
Oale C. Bakker

FUQUA HOMES EASTLAND, TX. AND ABILENE MOBILE HOMES SAY "Come to the Plant and Save"

FRIDAY-SATURDAY-JULY 12-13

FUQUA HOMES IS HOLDING ITS FIRST EVER DIRECT FACTORY SALE...FOR TWO DAYS ONLY. PRICES ARE REDUCED FOR DIRECT SALE TO SAVE YOU MONEY BECAUSE PRODUCTION QUOTAS MUST BE FILLED. WITH SOARING COSTS, MANY BUILDING MATERIALS MUST BE ORDERED MONTHS IN ADVANCE AND ONCE ORDERED THEY MUST BE USED BEFORE MATERIAL ORDERS FOR THE 2ND HALF OF 1974 ARRIVE, CURRENT STOCKPILES OF MATERIALS MUST BE USED. BY PURCHASING YOUR HOME NOW, DIRECT FROM FUQUA, YOU CAN SAVE, BECAUSE PRICES ARE BASED ON MATERIAL COSTS AS OF MARCH '74. WHEN NEW MATERIALS BEGIN ARRIVING JULY 20th, PRICES MUST BE INCREASED BY AT LEAST 200-500 PER UNIT.

COME TO THE PLANT AND SAVE JULY 12-13 OR COME TO A.M.H. AND SAVE AT FACTORY PRICES TIL JULY 20



Abilene Mobile Homes
4618 No. 1st Abilene 672-6466

LOW INTEREST FHA
LOANS ON ALL HOMES
OFFER ENDS JULY 20, 1974