

# Bailey County Journal

"The Community of Opportunity — Where Water Makes the Difference."

VOL. 4 — NO. 2

8 PAGES

Published Every Sunday At Muleshoe, Bailey County, Texas — 79347

TEMPERATURES  
By J. R. Klump  
Official U. S. Weatherman

	High	Low
Jan. 5	55	15
Jan. 6	65	19
Jan. 7	65	19
	Sunrise	Sunset
Jan. 5	7:53	5:53
Jan. 6	7:53	5:54
Jan. 7	7:53	5:55

SUNDAY, JANUARY 9, 1966



**SHEEP IN PEN** — The first 4,400 lambs to be moved into newly erected pens at King Feed lot west of Muleshoe were unloaded this week. More will be added to this number when the units are completed, probably within the next 30 days.

This number when the units are completed, probably within the next 30 days.

## King Feed Lot Expansion Is Activated 4,400 Lambs In Newly Built Feeding Plant

The first lamb feeding operation in the area went into action this week with the arrival of 4,400 animals at the newly expanded King Feed lot located west of Muleshoe.

This mammoth expansion program is 80 percent complete, and will house some 15,000 lambs upon completion in about 30 days.

The new units consist of eight sheds, numerous "shade" areas and about one mile of feeding troughs, King said. About 50,000 lambs will be fed out annually at the new plant, he added.

Muleshoe's industrial expansion committee, striving to bring new industry to Muleshoe and Bailey County, has helped to promote this expansion program.

A steering committee headed by James Cox launched the industrial program here in early October and Harry W. Clark, executive director of the Texas Industrial Committee, spoke to a group of civic-minded citizens stressing the need for industrial expansion.

Some are to be marketed in Texas as fat stock, but the majority will be sold in the (See PLANT Page 5)

## Response 'Grand' To Presentation Of 'King And I'

Some 2,000 attended the dynamic performance of "The King and I" during the three presentations at Muleshoe High School Auditorium.

On the novel "Anna and the King of Siam," by Margaret Landon, the story unfolded with astounding perfection which resulted in repeated applause from the audience.

Gracy Edwards played the role of King opposite Jane Brancuan as Ann Leonovens. Portraying "Tuptim" was Patsy Angeley; "Lady Thiang" was Berta Elizarriz; "Lun Tha," Terry Hutton; Prince Chulalongkorn, John Pitts; "Sir Edward Ramsay," Tom Jones; "The Karlohome," Bruce Purdy; "Pha Ahck," Derroll Ewins; "Louis Leonovens," Scott Biss; and "Prince Ying Yawualak," by Martha Jane Chapman.

Others members of the large cast played the lesser part in making the colorful production a marked success.

Accompanying music to all selections and musical dances was also rendered to perfection by The King and I orchestra.

## '66 License Plates On Sale Feb. 1

Bailey County's 1966 license plates were received by Jean Lovelady, the County Tax Assessor-Collector Wednesday and will be on sale February 1.

The new plates are black with white numerals. Numerals vary from last year, with the new auto licenses to use the prefix BXL 475 and go through BXR 734. Last year's prefix was BWL. The change is due to state population increases.

Personalized license plates for the coming year may still be ordered, Mrs. Lovelady said. Application forms are available at the tax office. Regular registration fees plus the additional \$10 fee for the personalized plates is necessary. Regular plates may be exchanged for the personalized plates with only the \$10 fee extra.

## Response 'Grand' To Presentation Of 'King And I'

Some 2,000 attended the dynamic performance of "The King and I" during the three presentations at Muleshoe High School Auditorium.

## Bill Clayton Receives Office

Speaker of the House Ben Barnes today announced the appointment of Bill Clayton of Springlake to the Interim House Water Committee.

## Strawn Well Test Slated South of City

Frank A. Sharp of Tulsa has scheduled No. 4-A Dewey Ross as 10,000-foot Strawn exploration, 10 miles southwest of Muleshoe.

## Garbage Unit Added to City

The city of Muleshoe is sporting a new garbage truck which holds 26 yards of garbage.

According to Albert Fields, City manager, the City did some trading to purchase the truck. Also the City purchased three containers to load on this truck, which are called "pack more units". Fields explained more containers are due to arrive at a later date, which will eventually stop the process of the old truck which has been used for several years.

The entire city of Muleshoe will have the new unit dumping their garbage at a later date, not known at this time, said Fields.

The unit, explained by Fields, simply picks up the containers and dumps them into the unit. The City is proud of the unit, said Fields and we think this is a real improvement to the City.

## Year's Cotton Ginnings Climb To 86,000 Bales in County

Members of the steering committee for the chamber of commerce economic development committee, Irvin St. Clair, Max and Joe King, were in Dallas Thursday for the opening of the Ralls Textile Mill. The mill is engaged in development of new uses for cotton, such as cotton for bale wrappers.

With the crop 90 to 95 percent harvested, Bailey County's ginning of 1965 cotton climbed to 86,221 bales late this past week, indicating a 90,000-plus yield for the year.

At this same time last year, the total number of bales ginned stood at only 69,000, it was estimated.

The 86,221-bale total was reported after a check was made of the 21 gins in Bailey County. Bailey County Electric Co-operative is its weekly check of the 16 gins served by that cooperative, reported a total of 65,664.

The Journal made a check of the other five gins in the county and added the 16-gin report to that number to arrive at the 86,221-figure.

County Agent J. K. Adams said Friday he had made a 100-mile swing through the southern, southwestern and southeastern parts of the county and reached the conclusion that the crop is 97 percent harvested.

He said gins have been very active in the Maple-Bala and Three Way areas and as a result, the harvest is especially far along in those areas.

There are still a number of trailers stashed away on gin lots, especially in the southern part of the county, Adams noted. These must yet be ginned before the year's crop total can be written off. He said he saw as many as 30 or more trailers on some gin lots in the south part of the county and since many of these trailers hold from three to five bales of cotton, the total turnout might reach as much as 350 more bales of cotton yet to be ginned.

Mr. and Mrs. Bob Bliss and Mr. and Mrs. George Mayo left Friday for a weekend in Oklahoma City where they will attend the stage play "Hello Dolly" starring Carol Channing.

Returning Tuesday from a ten day vacation during the holidays were Margaret and Bill Collins. They arrived Christmas Eve to spend several days with their daughter and family. Mr. and Mrs. Bill Jeter in Springdale, Ark. and then enjoyed hot baths and vacationing in Hot Springs before returning home.

Mr. and Mrs. Jesse Osborn are in Temple where Osborn is to undergo surgery Monday. He will be confined there about three to four weeks. After his release, they plan to go to Kingston for his recuperation period before returning home.

Announcement has been made that Carlton Parker is the new tax assessor of the Muleshoe Independent School District. Carlton moved here from Littlefield where he was employed in the same capacity for over two years. He, his wife and young daughter, Carla, live at 305 Elm.

Among the 2,000 attending production of "The King and I" were students, faculty members, and residents from Littlefield, Azabudie, Eastern N. Mexico University, Texas Tech, Big Spring, Paducah, Amarillo, Matador, Memphis and Carlsbad, N.M.

Muleshoe Masonic Lodge No. 1237 AF&M will meet at 7:30 p.m. Tuesday in the Masonic Hall here, according to Alton Euting, Master of the Lodge.

The First Methodist Church had its board meeting Wednesday. (See MULESHOE Page 5)

Members of the steering committee for the chamber of commerce economic development committee, Irvin St. Clair, Max and Joe King, were in Dallas Thursday for the opening of the Ralls Textile Mill. The mill is engaged in development of new uses for cotton, such as cotton for bale wrappers.

With the crop 90 to 95 percent harvested, Bailey County's ginning of 1965 cotton climbed to 86,221 bales late this past week, indicating a 90,000-plus yield for the year.

At this same time last year, the total number of bales ginned stood at only 69,000, it was estimated.

The 86,221-bale total was reported after a check was made of the 21 gins in Bailey County. Bailey County Electric Co-operative is its weekly check of the 16 gins served by that cooperative, reported a total of 65,664.

The Journal made a check of the other five gins in the county and added the 16-gin report to that number to arrive at the 86,221-figure.

County Agent J. K. Adams said Friday he had made a 100-mile swing through the southern, southwestern and southeastern parts of the county and reached the conclusion that the crop is 97 percent harvested.

He said gins have been very active in the Maple-Bala and Three Way areas and as a result, the harvest is especially far along in those areas.

There are still a number of trailers stashed away on gin lots, especially in the southern part of the county, Adams noted. These must yet be ginned before the year's crop total can be written off. He said he saw as many as 30 or more trailers on some gin lots in the south part of the county and since many of these trailers hold from three to five bales of cotton, the total turnout might reach as much as 350 more bales of cotton yet to be ginned.

Mr. and Mrs. Jesse Osborn are in Temple where Osborn is to undergo surgery Monday. He will be confined there about three to four weeks. After his release, they plan to go to Kingston for his recuperation period before returning home.

Announcement has been made that Carlton Parker is the new tax assessor of the Muleshoe Independent School District. Carlton moved here from Littlefield where he was employed in the same capacity for over two years. He, his wife and young daughter, Carla, live at 305 Elm.

Among the 2,000 attending production of "The King and I" were students, faculty members, and residents from Littlefield, Azabudie, Eastern N. Mexico University, Texas Tech, Big Spring, Paducah, Amarillo, Matador, Memphis and Carlsbad, N.M.

Muleshoe Masonic Lodge No. 1237 AF&M will meet at 7:30 p.m. Tuesday in the Masonic Hall here, according to Alton Euting, Master of the Lodge.

The First Methodist Church had its board meeting Wednesday. (See MULESHOE Page 5)

Members of the steering committee for the chamber of commerce economic development committee, Irvin St. Clair, Max and Joe King, were in Dallas Thursday for the opening of the Ralls Textile Mill. The mill is engaged in development of new uses for cotton, such as cotton for bale wrappers.

With the crop 90 to 95 percent harvested, Bailey County's ginning of 1965 cotton climbed to 86,221 bales late this past week, indicating a 90,000-plus yield for the year.

At this same time last year, the total number of bales ginned stood at only 69,000, it was estimated.

Mr. and Mrs. Jesse Osborn are in Temple where Osborn is to undergo surgery Monday. He will be confined there about three to four weeks. After his release, they plan to go to Kingston for his recuperation period before returning home.

Announcement has been made that Carlton Parker is the new tax assessor of the Muleshoe Independent School District. Carlton moved here from Littlefield where he was employed in the same capacity for over two years. He, his wife and young daughter, Carla, live at 305 Elm.

Among the 2,000 attending production of "The King and I" were students, faculty members, and residents from Littlefield, Azabudie, Eastern N. Mexico University, Texas Tech, Big Spring, Paducah, Amarillo, Matador, Memphis and Carlsbad, N.M.

Muleshoe Masonic Lodge No. 1237 AF&M will meet at 7:30 p.m. Tuesday in the Masonic Hall here, according to Alton Euting, Master of the Lodge.

The First Methodist Church had its board meeting Wednesday. (See MULESHOE Page 5)

Members of the steering committee for the chamber of commerce economic development committee, Irvin St. Clair, Max and Joe King, were in Dallas Thursday for the opening of the Ralls Textile Mill. The mill is engaged in development of new uses for cotton, such as cotton for bale wrappers.

With the crop 90 to 95 percent harvested, Bailey County's ginning of 1965 cotton climbed to 86,221 bales late this past week, indicating a 90,000-plus yield for the year.

At this same time last year, the total number of bales ginned stood at only 69,000, it was estimated.

Mr. and Mrs. Jesse Osborn are in Temple where Osborn is to undergo surgery Monday. He will be confined there about three to four weeks. After his release, they plan to go to Kingston for his recuperation period before returning home.

Announcement has been made that Carlton Parker is the new tax assessor of the Muleshoe Independent School District. Carlton moved here from Littlefield where he was employed in the same capacity for over two years. He, his wife and young daughter, Carla, live at 305 Elm.

Among the 2,000 attending production of "The King and I" were students, faculty members, and residents from Littlefield, Azabudie, Eastern N. Mexico University, Texas Tech, Big Spring, Paducah, Amarillo, Matador, Memphis and Carlsbad, N.M.

Muleshoe Masonic Lodge No. 1237 AF&M will meet at 7:30 p.m. Tuesday in the Masonic Hall here, according to Alton Euting, Master of the Lodge.

The First Methodist Church had its board meeting Wednesday. (See MULESHOE Page 5)

Members of the steering committee for the chamber of commerce economic development committee, Irvin St. Clair, Max and Joe King, were in Dallas Thursday for the opening of the Ralls Textile Mill. The mill is engaged in development of new uses for cotton, such as cotton for bale wrappers.

With the crop 90 to 95 percent harvested, Bailey County's ginning of 1965 cotton climbed to 86,221 bales late this past week, indicating a 90,000-plus yield for the year.

At this same time last year, the total number of bales ginned stood at only 69,000, it was estimated.

Mr. and Mrs. Jesse Osborn are in Temple where Osborn is to undergo surgery Monday. He will be confined there about three to four weeks. After his release, they plan to go to Kingston for his recuperation period before returning home.

Announcement has been made that Carlton Parker is the new tax assessor of the Muleshoe Independent School District. Carlton moved here from Littlefield where he was employed in the same capacity for over two years. He, his wife and young daughter, Carla, live at 305 Elm.

Among the 2,000 attending production of "The King and I" were students, faculty members, and residents from Littlefield, Azabudie, Eastern N. Mexico University, Texas Tech, Big Spring, Paducah, Amarillo, Matador, Memphis and Carlsbad, N.M.

Muleshoe Masonic Lodge No. 1237 AF&M will meet at 7:30 p.m. Tuesday in the Masonic Hall here, according to Alton Euting, Master of the Lodge.

The First Methodist Church had its board meeting Wednesday. (See MULESHOE Page 5)

Members of the steering committee for the chamber of commerce economic development committee, Irvin St. Clair, Max and Joe King, were in Dallas Thursday for the opening of the Ralls Textile Mill. The mill is engaged in development of new uses for cotton, such as cotton for bale wrappers.

With the crop 90 to 95 percent harvested, Bailey County's ginning of 1965 cotton climbed to 86,221 bales late this past week, indicating a 90,000-plus yield for the year.

At this same time last year, the total number of bales ginned stood at only 69,000, it was estimated.

Mr. and Mrs. Jesse Osborn are in Temple where Osborn is to undergo surgery Monday. He will be confined there about three to four weeks. After his release, they plan to go to Kingston for his recuperation period before returning home.

Announcement has been made that Carlton Parker is the new tax assessor of the Muleshoe Independent School District. Carlton moved here from Littlefield where he was employed in the same capacity for over two years. He, his wife and young daughter, Carla, live at 305 Elm.

Among the 2,000 attending production of "The King and I" were students, faculty members, and residents from Littlefield, Azabudie, Eastern N. Mexico University, Texas Tech, Big Spring, Paducah, Amarillo, Matador, Memphis and Carlsbad, N.M.

Muleshoe Masonic Lodge No. 1237 AF&M will meet at 7:30 p.m. Tuesday in the Masonic Hall here, according to Alton Euting, Master of the Lodge.

The First Methodist Church had its board meeting Wednesday. (See MULESHOE Page 5)

Members of the steering committee for the chamber of commerce economic development committee, Irvin St. Clair, Max and Joe King, were in Dallas Thursday for the opening of the Ralls Textile Mill. The mill is engaged in development of new uses for cotton, such as cotton for bale wrappers.

With the crop 90 to 95 percent harvested, Bailey County's ginning of 1965 cotton climbed to 86,221 bales late this past week, indicating a 90,000-plus yield for the year.

At this same time last year, the total number of bales ginned stood at only 69,000, it was estimated.

Mr. and Mrs. Jesse Osborn are in Temple where Osborn is to undergo surgery Monday. He will be confined there about three to four weeks. After his release, they plan to go to Kingston for his recuperation period before returning home.

Announcement has been made that Carlton Parker is the new tax assessor of the Muleshoe Independent School District. Carlton moved here from Littlefield where he was employed in the same capacity for over two years. He, his wife and young daughter, Carla, live at 305 Elm.

Among the 2,000 attending production of "The King and I" were students, faculty members, and residents from Littlefield, Azabudie, Eastern N. Mexico University, Texas Tech, Big Spring, Paducah, Amarillo, Matador, Memphis and Carlsbad, N.M.

Muleshoe Masonic Lodge No. 1237 AF&M will meet at 7:30 p.m. Tuesday in the Masonic Hall here, according to Alton Euting, Master of the Lodge.

The First Methodist Church had its board meeting Wednesday. (See MULESHOE Page 5)

Members of the steering committee for the chamber of commerce economic development committee, Irvin St. Clair, Max and Joe King, were in Dallas Thursday for the opening of the Ralls Textile Mill. The mill is engaged in development of new uses for cotton, such as cotton for bale wrappers.

With the crop 90 to 95 percent harvested, Bailey County's ginning of 1965 cotton climbed to 86,221 bales late this past week, indicating a 90,000-plus yield for the year.

At this same time last year, the total number of bales ginned stood at only 69,000, it was estimated.

**if**  
 you make your  
 livelihood  
 in this  
 community . . .  
 if your  
 business is here . . .  
 if your children  
 are in school here . . .  
 if you play, work  
 and worship here . . .  
 then . . .  
 doesn't it make  
 good sense to  
 keep your  
 money here?

BANK WITH

**"Your  
 home-  
 owned  
 Bank" . .**

**1<sup>ST</sup> NATIONAL  
 BANK**

MEMBER FDIC

MULESHOE, TEXAS



**MRS. GARY MAC BROWN**  
 . . . the former Sharon Chisholm

**Sharon Chisholm and Mac Brown  
 Are Married in Bride's Home**

Miss Sharon Kay Chisholm and Gary Mac Brown exchanged wedding vows in the home of the bride's parents at 5 p.m. Dec. 26. The Rev. Don Murray, pastor of the First Baptist Church in Muleshoe, officiated at the double ring ceremony.

Miss Chisholm is the daughter of Mr. and Mrs. W. E. Chisholm. Sudan, and the groom's parents are Mr. and Mrs. Dee Brown, Muleshoe.

Before a large white flocked Christmas tree trimmed with red satin balls and a seven branched candelabra holding red candles surrounded by holly leaves and berries, the bride was given in marriage by her father.

She was attired in a sleeveless, street length dress of white cotton brocade featuring a A-line skirt and scoop neckline. A tiara of seed pearls held her tiered veil of imported silk illusion. Long white mitts, a single strand of pearls, a gift of the groom, and a gold lapel watch completed her wedding ensemble. Her bouquet, atop a white Bible, was a cascade arrangement of miniature white mums entwined with jeweled leaves, accented by red velvet buds and featured two cymbidium orchids.

Carrying out tradition, the bride wore for something old and borrowed, a gold lapel watch belonging to Mrs. Rudolph Morrow, Nessmore; something new was her dress, and blue was the traditional, garter, a gift from Mrs. Jackie Brown, Muleshoe, an aunt of the groom.

Mrs. O. D. Morton, Sudan, serving her sister as matron of honor, was attired in a red velvet sheath dress with short white gloves and carried a bouquet featuring a red orchid surrounded by jeweled leaves and white pom-poms tied with streamers of white lace and picot ribbon.

James Brown, Muleshoe, served his brother as bestman. Bruce Shafer, Muleshoe, served as candlelighter and also assisted Wyman Prater, Canadian as usher.

Judy White registered guests. For her daughter's wedding, Mrs. Chisholm chose a beige knit suit with matching accessories. She wore a red orchid corsage accented with jeweled

leaves and tied with a white lace bow. The groom's mother was attired in a three piece gray metallic knit suit with black accessories. Her corsage was identical to the bride's mother.

Following the ceremony, a reception was given.

The bride's table was laid with a red net cloth over red polished cotton and trimmed with green felt trees and gold braid. Centering the table was a miniature white flocked tree flanked by crystal comotes holding mints and nuts. The three-tiered wedding cake, topped by a miniature bride and groom, and decorated with red flowers and white satin leaves added to the decor. A Crystal punch service was used. Red napkins bore the names of the bride and groom. "Sharon and Mac".

Dianne Wilson, Karen Black and Pam Spawm presided at the serving table. The girls were attired in red dresses with matching corsages.

For a wedding trip to Monterey, Mexico, the bride chose a neutral green wool dress with matching coat. She wore an orchid corsage taken from her bridal bouquet.

The bride will be a 1966 graduate of Muleshoe High School, finishing her senior year at mid-term. The groom is a 1964 graduate of Lazbuddie High School and is a student at Eastern New Mexico University. They will be at home at 501 University Drive, Portales, N. M. after Jan. 30.

**Hobby Club  
 Installs Officers**

New officers were installed for the Muleshoe Hobby Club in the community room here Tuesday.

Twenty-two members and one guest were present for the installation service.

Secret pals for the coming year were drawn for:

Attending the meeting were: Lillie Maddox, visitor and members, Edith St Clair, Vickie Hendricks, Ruth Bass, Elsie Eley, Eva Dell Gillis,

Mrs. Lewis Defries and Baby Boy Jerrell R. Otwell

**Hospital Notes**

**Green Memorial  
 Admitted**

Ray Martin  
 Mrs. John Seid  
 John Garrett  
 Mrs. Ida Evans  
 Mrs. W. A. Mathis  
 Wayland Harris  
 Jesse Fox  
 M. L. Brown  
 Mrs. J. W. Watts  
 Mrs. H. L. Blackburn  
 Melvin Griffin  
 Mrs. Minnie Mashburn  
 Mrs. Vance Wagon

**Dismissed**

Mrs. Merle Barnhouse  
 Mrs. W. A. Mathis  
 Mrs. Frank Hunt  
 Mrs. Guy Edwards  
 Keith Seales  
 Grady Riley  
 M. L. Boren  
 Mrs. Sarah Harris  
 Mrs. Ida Collum  
 Mrs. Myrtle Williams  
 Mrs. Janet Peel  
 Donald Peel  
 Stella Sutton  
 Sharon Busbee  
 B. R. Newman  
 Mrs. Odell Green  
 John Orazo, Jr.  
 Nursery  
 Baby Girl Edwards  
 Baby Boy Lumsden

**West Plains  
 Admitted**

Mrs. Frank White  
 Ernest L. Beauchamp  
 Mrs. Ricardo Torres  
 Margaret I. Simms  
 Paul Hofer  
 Bertha Griswold  
 Mrs. Leslie Jones  
 Mrs. Hugo Espinoza  
 Mrs. C. R. Farrell  
 Ellen Nielson  
 Leroy Rivers  
 David Patterson  
 Carl Lambright  
 Mrs. J. D. Sullivan  
 A. W. Gore

**Dismissed**

Mrs. Narciso Garza  
 Richard Gonzales  
 Rosa Linda Costilo  
 Mrs. Sam Ramirez  
 and Baby Girl  
 Mrs. Lois Williams  
 S. L. Bensfield  
 Mrs. Julio Garza  
 and Baby Girl  
 Jerry C. Otwell  
 Mrs. Luz Daniel  
 Dorothy Beckis  
 Mrs. Lois Williams  
 Mrs. Ruby Alfaro  
 J. T. Henderson  
 Mrs. Jacinto Bara  
 Tom Lewis  
 Wayne Raney  
 Durwood Chisholm  
 Narsia Otwell  
 Mrs. J. L. Alsop  
 Bervin Bunner  
 Mrs. R. O. Gregory



Elaine Embry  
 — bride elect  
 Harold Pruitt

**Elaine Embry  
 Sets February  
 Wedding Date**

Mr. and Mrs. Calvin Embry, Muleshoe, announce the engagement and approaching marriage of their daughter, Elaine, to Harold Pruitt, son of Mr. and Mrs. E. M. Pruitt, also of Muleshoe.

Vows for the couple will be repeated in the First Methodist Church in Muleshoe on Feb. 26 at 7:30 p.m.

The event is to be attended by all friends and relatives of the couple

**Mrs. Dee Brown  
 Is New President  
 For Varsity Club**

Mrs. Dee Brown was elected president for the 1966 term of Midway Varsity Club.

The women met in the home of Mrs. Dee Brown at 2 p.m. Tuesday. Other officers elected were Mrs. Mildred Redwine, vice president; Mrs. Nell Rannels, Secretary; Mrs. Dor-

Hallie Briscoe, Mary Etins, Ola Pesch, May Pattie, Ola B. Jones, Vada Bartlett, Zora Mae Beller, Gertie Kirk, Aies Barbour, Verna Demont, Mabe Henderson, Mabel Caldwell, Mabel Barry, Zona Boydston, Buna Maye Oswalt, Mae Adkins and Dora Phipps.

**Stamp Club  
 To Bring Stamps**

For the next meeting of the Muleshoe Stamp Club, which will be Feb. 1, each member is asked to bring some type stamp for trading.

The club met in the First National Bank community room Tuesday night.

Visitors present for the meeting were Mr. and Mrs. Forrest Simmons, Earth, and Larry Wilkins. Members present were Eddie, Mieke and Dobb Faust, Eric Stonecipher, O'Neal Rocky, Mike Durbin, Danny Parsons and Mike Tibbits.

**Club Reveals  
 Secret Pals**

Program chairman, Mrs. Ray Griffiths presented a program outline on suggestions as to what would make a successful year for the 1966 club year for the Friendship Club.

A buffet dinner was served by the hostess, Mrs. R. D. Pecure, Thursday, with 15 members present for the business and social meeting.

Following the business meeting which was presided over by Mrs. W. T. Andrews, a social hour was spent revealing secret pals for the club for the last year.

Names were then drawn for secret pals for the new year.

They Mason, Treasurer and Mrs. M. C. Mason, Reporter.

The women worked on several different articles and also viewed a pattern for a kitchen apron.

Refreshments of cranberry bread, candy, coffee and punch were served to Mrs. Lacy Hardage, Mrs. Lee Mason, Mrs. Varney Rannels, Mrs. Dee Brown, Mrs. Claude Walkins, Mrs. Mildred Redwine, Mrs. M. C. Mason and Mrs. Ear Peterson. Mrs. Brown's home was decorated in the Christmas motif.

Plans were made for the next meeting to be held in the home of Mrs. Lloyd Williams on Jan. 18.

**WELCOME TO  
 MULESHOE**



Carlton Parker

Carlton Parker of 305 Elm Street is a newcomer to Muleshoe. He is the new Independent School Tax Assessor. The Parkers moved from Littlefield where he was associated with the Littlefield Ind. School tax office for two and half years. Parker and his wife, Marilyn, have a daughter, Carla, 18 months. They attend the Baptist Church. The following merchants extend a cordial welcome to the Parkers:

<b>CASHWAY</b> GROCERY 402 Main Phone 272-4244	<b>DAMRON DRUG CO.</b> REXALL 308 Main Phone 272-4210
James B. Glaze Insurance - Real Estate - Loans	<b>MULESHOE STATE</b> BANK 304 Main Phone 272-4571
<b>MULESHOE MOTOR CO.</b> "At The Crossroads"	

**ANNUAL  
 ELECTION  
 TUESDAY, JANUARY 11**

**ENOCHS GIN OFFICE, ENOCHS  
 COMMUNITY HOUSE  
 MULESHOE  
 HIGH PLAINS  
 UNDERGROUND  
 WATER  
 CONSERVATION  
 DISTRICT  
 NO. 1**



MRS. ZED ROBINSON

### Enochs Postmaster Retires, Recalls Early History

Mrs. Zed — Maude to her many friends — Robinson, Postmaster of Enoch's the past 37 years, retired amidst the wet wishes of some 50 friends and associates last Sunday. The event signifies a Bailey County landmark, a time to reminisce.

Postmaster Robinson has served longer than any other postmaster in Bailey County's history. She remembers well that one apple box which held the mail for the 20 families served when she was appointed to the office in 1929, succeeding L. H. Bates, the first postmaster who held that office for only one year.

On Sunday, she was honored at a party in Fellowship Hall of the Enoch's Methodist Church where decorations appropriately depicted the progress of mail service with miniature figures of a man on horseback, a stage coach, train and modern jet with tiny US emblems on each. The background for the centerpiece, designed by Mrs. E. N. McCall of Enoch's and Mrs. G. H. McCall of Harlingen, was a group of miniature American flags centered with a larger two by four flag.

Maple Postmaster Mrs. Mary Mann served punch and cookies to more than 50 guests who included Mr. and Mrs. H. H. Snow, Muleshoe Bala Postmaster Mrs. F. L. Simmon; Mrs. C. L. Carter, Bala; Mr. and Mrs. C. L. Jackson, Mr. and Mrs. J. W. Beckum and sons J. W., Jr., and Sonny of Littlefield; Postmaster Mann of Maple; Mrs. George Fine, Morton, Mr. and Mrs. E. B. Jordan, Baileyboro, and Mr. and Mrs. G. H. McCall of Harlingen.

Enoch's story dates back to its founding father, J. C. Enoch, for whom this community in Southern Bailey county is named. Mr. and Mrs. Robinson moved from Pratt, Kansas in 1929 when Robinson decided to join his brother John Blalock who had a contract with Enoch's to sell the 90,000 acres of land. Enoch's had already built a cotton gin in the community in 1927 as well as a two-room schoolhouse and hired two teachers and paid them out of his funds until the present school was built in 1931 or 1932.

Robinson joined his brother in the selling of the land around Enoch's. He built a general store with lumber brought in from Littlefield. The post office, under Bates, was established in this building where it is today housed.

Early mail had to be picked up in Littlefield twice a week when there were no graded roads to either Muleshoe or Littlefield. In those Model A Ford pickup days, Mrs. Robinson recalls the hill north of the game preserve was the source of troubles in coming to this county seat until county commissioner John Alford had several "or 5 feet" taken off the hill so residents in the southern county could come into Muleshoe without pushing their vehicles over the hill.

"Back in 1929, two-thirds of the people lived in one-room, half-dugouts here," Mrs. Robinson remembers. "We used Coleman lights until late in '30's before electricity too. Most people used oil lamps."

Colorful events during her years as postmaster include three burglaries, only one into

the post office on June 16, 1955. The burglar split open packages with a knife, looked inside them but left the contents intact. The safe door locks were beaten off, but the safe not opened so there was no loss to the US government.

The store was burglarized twice last year: \$800 worth of appliances and merchandise but nothing from the post office contents were taken from the store.

Born in Bryson, Texas, Mrs. Robinson moved to Oklahoma City when she was a girl, where she received nurses training, which came into practical use in the early days of the Enoch's postmaster. She rendered first aid and gave medical assistance to early county doctors Matthews of Muleshoe and J. H. Logan of Morton.

From the one apple box, 30 in 1935, and over 110 now with general deliveries plus a Star Route now delivering mail to Buia School, the 37 years have been wonderful because of the friendly little visits with each person coming in to mail and receive letters. Postmaster Robinson said.

She has been active in the Enoch's Methodist church, Eastern Star in Muleshoe and Morton, holding church offices of vice-president for two years in Woman's Society of Christian

**LATE**  
**WANT ADS**  
For rent 1 — 3 bedroom with cellar. One 2 bedroom house. See Mrs. Jack Lenderson. Call 227-3038.  
4-2s-tfc

**LEGAL NOTICE**  
**Contractors' Notice Of Texas Highway Construction**  
Sealed proposals for constructing 239.248 miles of Seal Coat From Hockey C-L To Morton, Fr. Enoch's To Lamb C-L, Fr. Farmer C-L To US 385, From Ecobona, E. To SH 319, Fr. US 180 To Int. FM 2031, Fr. SH 349, S. To Martin C-L, Fr. Swisher C-L To FM 788 (N), Fr. Cotton Center To US 87, Fr. Bailey C-L To US 385 at Springlake, Fr. US 385 To Hale C-L, Fr. Bailey C-L To US 84 in Littlefield,  
Fr. Castro C-L To Int. US 70, Fr. Loop 251 NW of Slaton To FM 40, Fr. Loop 289 To

Service. Hobbies, worked in with being postmaster and assisting in the operation of the family store, include china painting in her own kiln, and flower arrangements, as well as raising and exhibiting dahlias for which a careful of blue and red ribbons gathered from Muleshoe Fairs and Morton and Cochran Garden Club Flower Shows.

The Robinsons have one daughter who was raised in Enoch's, Nelouse Graag married after graduating from Texas Tech and is teaching school in Los Angeles, Calif. Mrs. Robinson plans to visit her, and the two grandchildren Marcia, 19, and David, 13, through February now that she has retired.

Zed Robinson has been appointed acting-postmaster. Operation of the general store will continue.

Congressman George Mahon in his letter to Mrs. Robinson on her retirement, sent his congratulations for the fine service she has rendered through the years to the government as well as the people of the Enoch's area. He noted also the return of annual leave and sick leave, a very unusual occurrence when a postmaster retires 2,218 hours of sick leave. "I was happy to do, thankful I did not need to use them," Mrs. Robinson added. "I've certainly enjoyed my 37 years as postmaster of Enoch's."

Lynn C-L, Fr. US 62 To FM 179, Fr. Hockey C-L To US 87 (Old US 87), Fr. FM 41 at Union To Lynn C-L, Fr. Hockey C-L To US 62, Fr. FM 179 To FM 1730, Fr. US 60 To Castro CL, Fr. FM 1318 at Tulla To Briscoe C-L, Fr. Castro C-L To US 97 at Kross & Fr. US 97 at Kross To Briscoe C-L on Highway No. SH 116, FM 54, FM 145, FM 2051, FM 829, FM 400, FM 1315, US 70, FM 1055 FM 400 FM 1730, FM 1285, FM 597 FM 2192 SH 86 & FM 146, covered by C 130-2-11, C 563-2-5, C 2419-1-2, C 1255-2-5, C 1253-3-3, C 1638-1-4, C 1907-3-2, C 2181-1-2, C 1452-1-5, C 143-3-18, C 563-3-3, C 1291-2-6, C 1041-2-18, C 1344-2-5, C 1502-1-10, C 2047-1-3, C 2082-1-2, C 2183-3-2, C 1833-1-4, C 202-1-11, C 357-4-13, C 754-5-8 & C 754-6-11 in Cochran, Bailey, Castro, Dawson, Hale, Lamb, Lubbock, Lynn, Farmer and Swisher Counties, will be received at the Highway Department, Austin, until 9:00 A.M., January 25, 1966, and then publicly opened and read.  
Plans and specifications including minimum wage rates as

**Bailey County Commissioner's To Meet Monday**  
Bailey County Commissioner's Court will meet in its annual first-of-the-year session at the office of James W. King, Resident Engineer, Lubbock, Texas, and Texas Highway De-

Monday morning at 10:30 a.m., Glenn Williams, county judge, announced.  
Routine matters of setting terms of court for county and justice courts and the setting of salaries for all county officers and employees will be taken up at the meeting.  
Road right-of-way matter pertaining to the seven miles stretch of the farm to market road provided by Law are available at the office of James W. King, Resident Engineer, Lubbock, Texas, and Texas Highway De-

which stretches north from the Baileyboro cemetery along precinct line to farm road 746 will be considered.  
Judge Williams said that the state was "ready to go" and as soon as right-of-ways were completed construction would begin in early spring on this seven mile stretch.  
Warp chunks of frankfurter in bacon; place on a rack in a shallow baking pan and bake in a moderate oven for about half an hour. Serve at snacktime.

## HAYDON'S

# Big Surprise!

— STARTING MONDAY, JANUARY 10 —

# 1¢ SALE

**BUY ONE PAIR OF SHOES AT REGULAR PRICE . . . GET ONE PAIR OF EQUAL VALUE FOR ONLY 1c**

**ALL SHOES ON THIS SALE ARE FAMOUS BRANDS "BRING A FRIEND AND SHARE THE SAVINGS"**

## HAYDON'S

"SHOES FOR THE ENTIRE FAMILY"  
MULESHOE

224 SOUTH MAIN PHONE 272-3161

# JANUARY Clearance Sale

**FURNITURE • CARPET • APPLIANCES**

<p><b>MAN SIZE RECLINER</b> Excellent Quality \$79.95 Value <b>\$49.88</b></p> <p><b>Early American BERKLINE SOFAS</b> TWEED FABRICS REG. \$219.95 <b>\$169.95</b></p> <p><b>SOFA PILLOWS</b> LARGE ASSORTMENT REG. \$1.59 <b>98c</b></p> <p><b>SEALY MATTRESS SALE</b> FULL OR TWIN SIZE <b>\$39.88</b></p> <p><b>7 PC. Dining Suite</b> VIRTUE 6 CHAIRS FORMICA TABLE 2 EXTENSIONS <b>\$109.50</b></p> <p><b>ALL PICTURES 25% OFF</b></p> <p><b>UNFINISHED CHEST OF DRAWERS</b> 3 ONLY <b>\$12.88</b></p> <p><b>TYCORA NYLON CARPETING</b> 100% NYLON PILE Selection of Colors <b>\$3.99 sq. yd.</b> ONE WEEK ONLY</p> <p><b>EASY TERMS</b> Arranged on the Spot</p>	<p><b>Basset Early American Bedroom Suite</b> Double Dresser with Tilting Mirror 4 Drawer Chest Bed Reg. \$269.95 <b>\$188.88</b></p> <p><b>King Size Bed Ensemble</b> High Quality Sealy King Size Mattress over 6' Wide, Nearly 7' long Matching Foundation WITH 1 FREE KING SIZE BEDSPREAD VALUE \$22.50 <b>\$199.88</b></p> <p><b>STORE WIDE SAVINGS IN EVERY DEPARTMENT</b></p> <p><b>Kelvinator Automatic Washer</b> 2 Speed 6 Cycle Reg. \$299.95 <b>\$219.95 w/t</b></p> <p><b>Westinghouse 16' Refrigerator</b> White or copper reg. \$595.00 <b>\$469.95</b></p> <p><b>Tappan Gas Range</b> New silhouette line reg. \$397.95 <b>\$229.50 w/t</b></p> <p><b>40" Hotpoint Electric Range</b> Teflon Oven Liners reg. \$339.95 <b>\$249.95 w/t</b></p> <p><b>SPANISH RECLINING CHAIRS</b> Green Fabric One Only Reg. \$109.00 <b>\$69.00</b></p> <p><b>CONTEMPORARY SLEEPER SOFA</b> By Sealy . . . Containing Innerspring Mattress Foam Cushions High Grade Fabric Covering Reg. \$239.95 <b>\$149.88</b></p> <p><b>The Finest Buy In Muleshoe</b> <b>BABY BED . . . Free Sealy Mattress</b> Famous Nod-A-Way Decorated Panel Ends Teething Rail . . . Toe Touch Drop Side . . . Solid Full Size Adjustable Heights <b>\$29.88</b> \$44.95 Value</p> <p><b>BUNK BEDS</b> Sturdy Strong Salem Maple Finish. Complete With Ladder, Guard Rail and Genuine Sealy Mattress. CONVERTIBLE TO TWIN BEDS <b>\$69.88</b></p> <p><b>JOHNSON-POOL FURNITURE and APPLIANCE</b> MULESHOE 320 MAIN PHONE 272-4591 It's Really True—These Prices Are Correct</p>	<p><b>BERKLINE ROCKER RECLINER</b> REG. \$139.95 <b>\$98.00</b></p> <p><b>SALEM MAPLE FINISH BEDROOM FURNITURE</b> ANTIQUE HARDWARE — OPEN STOCK <b>HI BOY BOOKCASE</b> 3 SHELVES WITH DRAWERS REG. \$70.50 <b>\$47.75</b></p> <p><b>Corner Desk</b> REG. \$70.50 <b>\$47.75</b></p> <p><b>4 DRAWER CHEST</b> REG. \$70.50 <b>\$47.75</b></p> <p><b>5 PC. WHITE FRENCH PROVINCIAL BEDROOM FURNITURE</b> TRIPLE DRESSER MIRROR CHEST NIGHT STAND REG. \$312.50 SPECIAL <b>\$192.50</b></p> <p><b>FRENCH PROVINCIAL Dining Room Group</b> LARGE EXTENSION TABLE 4 CHAIRS HUTCH REG. \$479.95 <b>\$308.50</b></p> <p><b>LAMPS UP TO 50% OFF</b> MORE THAN 50 LAMPS TO CHOOSE FROM</p> <p><b>EVERYTHING IN OUR STORE WILL BE ON SALE STARTING MONDAY MORNING</b></p> <p><b>SAVE — SAVE — SAVE</b></p>
--	--	---

For Sunday brunch, heat drained canned hominy in heavy cream and serve with eggs and bacon or ham. Add hot muffins and currant jelly and you'll have a wonderful main course.

**WALLACE THEATRE**  
75c Adult 25c Child  
GENERAL ADMISSION  
Sun., Mon., Tues.  
JAN. 9-10-11

"As classy a spy film as you could ask to see!"  
— N.Y. TIMES

**THE IPRESS FILE**  
TECHNICOLOR™ TECHNISCOPÉ™  
A UNIVERSAL RELEASE

WED., THURS., FRI.  
JAN. 12-13-14

**A HIGH WIND IN JAMAICA**  
TECHNICOLOR™ TECHNISCOPÉ™  
A UNIVERSAL RELEASE

SAT., JAN. 15

**ONE WAY WAIKANE**  
TECHNICOLOR™ TECHNISCOPÉ™  
A UNIVERSAL RELEASE



TEACHERS PRESENTED PINS — Mrs. John Watson, Mrs. Wilson Witherspoon, Mrs. Jack Beddingfield, Bryan Brady, Mrs. Senn Slemmons and Mrs. O. G. Killingsworth were presented pins for being past presidents of the Muleshoe Classroom Teachers. Mrs. Willie McAlpin, president of the association presented the awards at a recent party honoring them. Not pictured are Rollie McNutt, Mrs. Ed Johnson and Mrs. Robert Sanders. All these teachers are with the staff at present. (J.P.)

**December Adds Library Books**

Several books were donated by different parties in the month of December according to the Muleshoe Public Area Librarian, Anne Camp.

Listed among the donations are: 11 copies of "Sundel", a magazine of and about the southwest donated by Mrs. O. C. Kirk; Money for a memorial book to be placed in the library in memory of W. C. Calbert, given by the J. A. Nickels and Guy Nickel families; Texas and Southwestern Cattle Raisers Association in Fort Worth; Great Roundup by Lewis Newkirk; the story of Texas and Southwestern cowmen, spirited, vigorous, and exciting, this is the history of the United States enterprises; The Wrecking Crew by Donald Scott Thorn; a novel of suspense; 1965 book of the month selection—today. This is about a young brilliant doctor, his marriage, doomed to dis-

ter and his wife's evil twin brother.

J. Frank Peery donated The Christian Agnostic by Leslie D. Weatherhead. In this book Dr. Weatherhead makes a strong case for his contention that loyalty to Christ and to his spirit can go hand in hand with the rejection of theological dogmas and creeds. Traditionalist will be shocked by this book for he does not pull any punches. Only a cover-to-cover reading will enable one to feel the full impact of this remarkable work by one of the truly great pulp ministers of our time.

Mrs. John Gunter donated 13 magazines and Family Yoga was donated by B. Camps. Mrs. John Thompson donated two publications by Ian Flemings — national best sellers; On Her Majesty's Secret Service; You Chance Nurse by Jane Converse; Street Rod, by Felsen; The Wrecking Crew by Donald Scott Thorn; a novel of suspense; 1965 book of the month selection—today. This is about a young brilliant doctor, his marriage, doomed to dis-

Bill Thomson.

One Man's Faith by Joseph A. Hill of West Texas State; How I Found God, by Chabravert; I Believe, Bat., by Walter Courtenay and a biography by May McNeer and Lynn Ward, John Wesley.

Muleshoe Al-Anon family donated several books last month to the library. Al-Anon Faces Alcoholism; this book might well be subtitled People Facing Their Own Problems according to Dr. Selden Bachin.

Anne Camp would like to remind everyone that the public library is open every week day from 2 p.m. to 4 p.m. and on Saturday morning from 9 a.m. to 12 o'clock.

For a buffet lunch, you might like to serve antipasto as the main course. For it arrange on a large platter: baked hard-cooked eggs, white-meat tuna, marinated asparagus and snap beans, olives (ripe and green), style sautéed mushrooms, potato-chicken hearts, Have a big basket of crusty rolls and sweet butter on hand.

**Rainbow Board Named For 1966**

Initiation and past matron and patron night was observed at the meeting of the Muleshoe Order of the Eastern Star. The organization met in the Masonic Hall here Tuesday night with the Worthy Matron, Lois Norwood, in charge of the meeting.

Harold and Margaret White were welcomed into the chapter after which they both gave interesting talks.

Following the initiation ceremony, Pat Johnson and Phyllis Beavers presented all the past matrons and patrons for instructions. Past patrons and matrons presented were Mrs. Tam Smith, Mrs. Elbert Nowell, Mrs. Willie Strong, Mrs. Frank Hinkson, Miss Elizabeth Hank Buck Creamer, Elbert Nowell and Tom Smith. Following a short program they were presented with small gavels and book marks.

Several invitations were

read inviting Mueshoe Chapter to different teas and various meetings throughout the district.

It was reported that the chapter's adopted sister, who is a resident of the Eastern Star Home in Arlington is to undergo eye surgery soon.

Names were read, approved and voted on for the new board members for the Rainbow Assembly here. On the 1966 board are: Mr. and Mrs. Alex Williams, Juarene Bovell, Wanda Newsome, Mr. and Mrs. Wayne Williams, Mr. and Mrs. James Fowler, Mr. and Mrs. Melvin Seymore, Harmon Elliott and Mr. and Mrs. Ernest Kerr.

Tossed salad takes on new interest when diced hard-cooked egg and crumbled crispy-cooked bacon are added along with the dressing.

**Mrs. Chaney Given Party**

A surprise birthday party was held in the home of Mrs. M. R. Kimbrough Tuesday for Mrs. B. E. Chaney. The party was given following the meeting of the WMA's of the Breckland Hills Baptist Church.

Mrs. Ira Waddell, president, presided over the short business meeting which was followed by the devotional by Mrs. J. C. Woods.

Mrs. Chaney, 82, was presented many pretty and useful gifts. Cake and cookies were served to 13 women.

Don't pare beets that you are going to boil; and leave on about an inch of their tops and an inch of their root.

a message to everyone who thinks all drycleaning is the same:

it isn't.

Not by a long shot. Only the new Santone method completely restores fabrics to their original beauty. Makes colors bright as new... makes the finish soft as new... makes everything you wear look like new! We are Santone Certified Master Drycleaners, and we are dedicated to providing the very best care for all your garments. Try us today.

**LAMBERT CLEANERS**  
MULESHOE  
123 Main Phone 272-4726

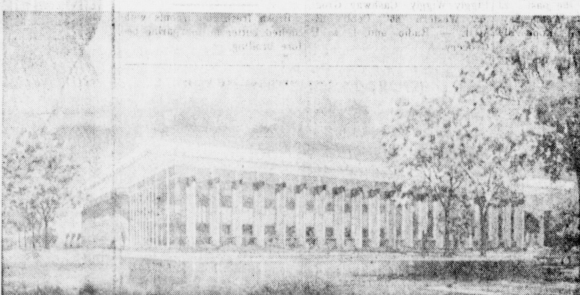
Why don't they all go home?

CHRONIC TIREDNESS calls for a medical checkup. Vitamin and chemical deficiencies can be corrected to restore your vitality. Depend on your doctor and pharmacist for reliable medication.

**Western DRUG**  
Your Walgreen Agency  
MULESHOE, TEXAS

**STATEMENT OF CONDITION**

- OFFICERS**  
CLYDE RAYL President  
LYNN L. MARTIN Exec. Vice President  
REX HUDSON Vice President  
DIXIE HOGG Ass't Vice President - Secretary  
RUFUS FREEMAN Vice President  
CHARLES RUTLEDGE Vice President  
NEIL McBRIDE Ass't Vice President  
BILL BOONE Ass't V.P. (Branch Manager)  
FAYE FARROW Ass't Secretary  
HAZEL B. TRAUGHBER Ass't Secretary (Branch)
- ATTORNEYS**  
SMITH, SMITH and THARP
- DIRECTORS**  
ARNO RODES  
N. W. BALLEW  
CLYDE RAYL  
LYNN L. MARTIN  
ROY KEETER  
REESE CAGLE  
SCOTT McGEHEE  
E. T. HENSLEY, JR.  
E. C. KELSO  
CARL RODOLPH  
K. BARNETT, JR.



NEW PROPOSED HOME OFFICE BUILDING - 8th and Pile Streets Clovis, New Mexico

**FIRST FEDERAL SAVINGS & Loan Association**

HOME OFFICE  
Fourth and Pile St. — Clovis, New Mexico

BRANCH OFFICE  
2nd and Abilene - Portales, New Mexico

DECEMBER 31, 1965

ASSETS		LIABILITIES	
First Mortgage Real Estate		Capital (Members' Shares)	\$41,631,560.14
Loans	\$43,617,544.32	Advances, Federal Home	
Home Improvement Loans	68,966.89	Loan Bank	3,500,000.00
Loans to Members, Secured by Their Shares in Association	743,640.96	Loans in Process	330,994.01
Cash and U.S. Government		Payments by Borrowers for Taxes, Insurance, etc.	318,354.91
Bonds	3,485,250.14	Other Liabilities	95,742.95
Stock in Federal Home		Reserve for Unearned Discount	138,381.06
Loan Bank	435,900.00	Reserves and Surplus	3,567,952.24
Office Sites and Buildings	761,485.97		
Furniture and Fixtures	47,138.76		
Prepaid Federal			
Insurance Premium	312,791.40		
Other Assets	110,266.87		
<b>Total</b>	<b>\$49,582,985.31</b>	<b>Total</b>	<b>\$49,582,985.31</b>

**Current Dividend 4 1/2 Compounded Quarterly**

Published each Sunday by The Muleshoe Publishing Co. 304 West Second Street, Muleshoe, Texas

# Bailey County Journal

Member of The Associated Press  
Entered as second class matter at the Muleshoe Post Office under act of Congress, March 3, 1879.

**SUBSCRIPTION RATES**  
Immediate Territory ..... \$4.00  
Outside Territory ..... \$4.50  
In combination with the Muleshoe Journal (Published each Thursday) the following rates apply

Both papers in territory ..... \$5.50  
Both papers outside territory ..... \$6.21

Advertising Rates on Application

L. B. HALL, Publisher  
RAMON MARTIN, Editor  
PAT JOHNSON, Woman's Editor  
JAY SPAIN, Mech. Supt.



## MULESHOE

Continued from Page One  
day night here, in which two new ushers were elected. C. R. Farrell, an usher in the church for approximately 30 years returned recently. Bill Moore and D. E. Beller have been elected today as head ushers.

A Lubbock Chamber of Commerce group will take business and civic leaders of the Muleshoe area at a luncheon Monday at Methodist Fellowship group will bring along entertainment for this informal visit. Traveling by charter bus, the Lubbockites will make a coffee stop in Sulzer during the morning and in Olton during the afternoon.

Ramon Martin, editor of the **CLAYTON**

Continued from Page One

Conservation and Reclamation, Municipal and Private Corporations, Public Health and State Affairs.

In announcing the appointments, Speaker Barnes reasserted his conviction that water is one of the most vital areas of state responsibility.

Texas is going to have to make a conscientious and planned effort if it is to achieve the degree of water resource development so essential to the future growth of the state. If Texas does not assume its proper responsibilities for developing and conserving water resources, the federal government is going to do it for us," Barnes said.

Bill Clayton has already rendered invaluable service in this field, and I am confident that his practical knowledge and his legislative experience will enable him to make further outstanding contributions through his work with this interim water study committee," Speaker Barnes commented.

## PLANT

Continued from Page One  
north and will be slaughtered in Denver, the nation's sheep-killing area. However, the present 4,400 are earmarked for the Fort Worth markets. The new addition to the King's Feed lot is located to the north of the cattle feeding pens and is lighted. Since 1960 the King plant has been rated as one of the largest operations in west Texas, feeding cattle for major packers, at the rate of some 35,000 annually with a grain consumption of about 52,000,000 pounds.

Muleshoe Journal, returned home Friday morning after spending a few days in the Green Memorial Hospital.

Dr. David Noebel, associate evangelist to Dr. Billy James Hargis, founder of the Christian Crusade anti-communists organization, will speak at 2 p.m. Sunday (today) at the Holiday Inn, Clovis. There will be no admission fee charged.

Average prices for the most predominant cotton qualities released last week were:  
Strict Low Middling 15-16 — 26.20  
Strict Low Middling 31-32 — 26.20  
Low Middling 31-32 — 25.35  
Midling Light Spotted 13-16 — 24.85  
Low Middling 31-32 — 25.35  
Midling Light Spotted 15-16 — 26.25  
Midling Light Spotted 31-32 — 26.25  
Strict Low Middling Light Spotted 15-16, 25.00 and Strict Low Middling Light Spotted 31-32 — 26.00  
Cottonseed prices at gin are \$45 to \$52 per ton.

Firms who received awards for outstanding contribution to the 1965 goal of Muleshoe Area

## Services Held For Resident's Mother

Services for the mother of Mrs. Kenneth D. Nesbitt, Mrs. W. C. Robinson, 59, a resident of Ropesville for the past 23 years, were held Wednesday, Dec. 29, in the Ropesville Church of Christ.

Mrs. Robinson died about 8:15 p.m. last Monday in Methodist Hospital, Lubbock, after a lengthy illness.

Officiating was Bob Reynolds, Church of Christ, Lubbock, assisted by Garnie Atkinson, minister of the Northside Church of Christ, Lubbock, both family friends.

Burial was held in Resthaven Memorial Park Cemetery under the direction of Bx Funeral Home.

Mrs. Robinson moved to Floyd County in 1936 and resided there for six years before where she lived for 23 years. She was a member of the Ropesville Church of Christ. Survivors besides her daughter, include her husband; a son, Danny, Lubbock; two brothers, C. A. Holland, Waco, and Raymond Holland, Canton; three sisters, Mrs. H. W. Barker, Monte Calm, Mrs. Ada McFarland, Houston, and Mrs. O. J. Smith, Choudrant, La.; two granddaughters and one grand son.

## LETTERS TO THE EDITOR

Dear Editor:

First let me make it clear I am not against unions as we have several union members in our organization and several relatives have been union members, however I am strictly opposed to compulsory union membership such as we will have should section 14B of the Taft-Hartley bill which merely forces few employees and employers are familiar with the Taft-Hartley bill which merely guarantees you the right to work. Should this bill be re-passed in January and an organization votes by merely a one vote majority to go union then all employees must join the union, even against their own free will, otherwise management has no alternative except to discharge them.

If you believe you should retain your right to work I suggest you attach your name to this letter along with your address and obtain as many additional signatures as possible, all qualified voters, and return same to me as quickly as possible in order that I may have time to tabulate them and forward same to the Right to Work Committee in Washington to be used by Sen. Dickson in protecting your right to work.

According to newspaper tabulations the following Senators or Representatives voted for the repeal of the Taft-Hartley bill: Senator Yarborough, Representative Funderburk, United Fund at Friday night's Jubilee dinner were: King Gram Co., Cashway Grocery, Bobo Insurance, Sam Fox — Texaco Distributor, First National Bank, E. O. Baker, Union Compress, Higginbotham Bartlett, James G. Co., St. Clair, Southwestern Public Service and Muleshoe Motor.

Also Fry & Cox, Production Credit Association, Bailey County Electric Co-op Assn., Cobb's, Muleshoe State Bank, E. R. Harp, Williams & Merriman, Russell Motor Supply, Whitt & Watts Implement Co., and Pioneer Natural Gas. Employee Groups who received 1965 awards were Bobo Insurance, Federal Land Bank, Piggly Wiggly, Cashway Grocery, Westera "66", Cobb's, K-M-U — Radio and L. & H. Grocery.

## COURTHOUSE NEWS

### Marriage Licenses

Dale Bohman to Reba Hall, Alton Aubry to Gilda Kaye Cathy, Michael Duane Grey to Sandra Kay Willford, Jimmy Wilson Weaver to Johnny Ann Miller.

### Vehicle Registrations

Whitt and Watts Imp. Co., 1956 Chev. Pickup, Crow Chev. Co. Guy Kendall, 1966 Pontiac Catalina H. T. Cpe. Pierson Pontiac. B. H. Kube, 1960 Chev., Crow Chev. Co. Eddie Montgomery, 1965 Ford Gal. 4 Dr., Muleshoe Motor Co. Duane Darling, 1966 Ford Gal. 4 Dr., Muleshoe Motor Co. Bailey County Precinct No. 2 1965 GMC Pickup, Pierson Pontiac.

Emitt W. Dean, 1965 Olds 98 Fordor. T. L. Gleason, 1966 Buick Spt. Cpe. 2 Dr. Brock Imp. Vera Carlisle, 1966 Ford Fordor H. T., Lubbock Auto Co. Ernest W. Bass, 1965 Ford 2 plus 2 Fastback, Harper Ford Sales. Edith Johnston, 1966 Buick 2 Dr. Spt. Cpe, Brock Imp. Co. J. T. Mayfield, 1966 Ford Fordor H. T., Muleshoe Motor Co.

representatives Gonzales of Bexar, Wright of Tarrant, Thompson of Galveston, Brooks of Jefferson with Thomas of Harris not voting, Senator Tower and all other Representatives voted against repeal.

Becky Triner Co. Wade R. Bedell P. O. Box 1222 San Antonio, Texas

## Civic Club Will Discuss Pastries

Mrs. Kenneth Henry will be hostess to the regular meeting of the Llano Estacado Civic club which meets Thursday, Mrs. Don Harmon will be co-hostess. The meeting which will begin at 8 p.m. will be centered around pastries, according to the president, Mrs. Bob Kiss. Brush fresh mushrooms with melted butter or margarine before broasting.

## REPORT OF CONDITION OF THE FIRST NATIONAL BANK

OF MULESHOE COUNTY OF BAILEY In The State of Texas

at the close of business on December 31, 1965 Published In Response to call made by comptroller of the currency, under section 5211, U. S. Revised Statutes

Cash, balances with other banks, and cash items in process of collection	1,575,937.78
United States Government obligations, direct and guaranteed	100,000.00
Obligations of States and political subdivisions	1,843,940.05
Loans and discounts	3,447,108.77
Accepted assets	93,287.16
Other assets	19,127.54
<b>TOTAL ASSETS</b>	<b>7,079,401.30</b>
<b>LIABILITIES</b>	
Demand deposits of individuals, partnerships, and corporations	3,825,244.37
Time and savings deposits of individuals, partnerships and corporations	1,429,099.40
Deposits of United States Government	28,974.13
Deposits of States and political subdivisions	1,061,644.29
Certified and officers' checks, etc.	78,127.90
<b>TOTAL DEPOSITS</b>	<b>6,423,090.19</b>
(a) Total demand deposits	4,593,221.20
(b) Total time and savings deposits	1,829,868.99
Other liabilities	103,781.42
<b>TOTAL LIABILITIES</b>	<b>6,526,871.61</b>
<b>CAPITAL ACCOUNTS</b>	
Common Stock Par Value Per Share	200,000.00
No. shares authorized 10,000	
No. shares outstanding - 10,000	
Surplus	250,000.00
Undivided profits	72,329.69
Total Capital Accounts	552,329.69
Total Liabilities, and Capital Accounts	7,079,401.30

## MEMORANDA

Average of total deposits for the 15 calendar days ending with call date 6,018,606.61  
Average of total loans for the 15 calendar days ending with call date 3,731,343.28  
Loans as shown above are after deduction of valuation reserves of 157,081.23

I, Robert Alford, Vice-President and Cashier of the above-named bank, do hereby declare that this report of condition is true and correct to the best of my knowledge and belief.

Signed: Robert Alford, Vice-Pres. and Cashier

We, the undersigned directors, attest the correctness of this report of condition and declare that it has been examined by us and to the best of our knowledge and belief is true and correct.

**DIRECTORS:**  
M. D. Ginstream  
Harmon Elliott  
Rufus Gilbrath

Alon G. Eck, 1966 Chev 4 Dr. Belair, Crow Chevrolet. Bill Wright, 1966 Dodge 2 Dr. H. T. Kain Motor Co. A. T. Kersey, 1966 Ford Pickup, Muleshoe Motor. Maxine Harris, 1966 Chevrolet, Temple Motor Company. Civil District Court: Carolyn Chisholm vs. Derwood Chisholm, Att. Young and Chah, Divorce. Emma Padilla vs. Abraham Padilla, Jr., Att. Norman Bays, Divorce. Betty Ruth Noble vs. Gordon E. (Jim) Noble, Att. Don R. Kidd, Divorce. Oil and Gas Lease C. L. Craig, et al. to Frank Sharp, All of Labors 4 & 7 in League 171 Hale County School Lands Survey, Bailey County. Oil Lease — C. L. Craig, et al. to Frank Sharp, All of Labors 13, 14, 15, 16, 17, 18, 23, 24 and 25 in League 171, and all of labors 4, 5, 6, 7, and 8 in League 170 Hale County to School Lands Survey, Bailey County. As Lessee's R. E. Ehridge and wife Lois Ehridge all of labors 19 and 22 in League 171, Hale County School Land Survey on the 29th day of Sept. 1964. John J. Smallwood, for all of labor 13, League 171 on 30th of Sept. 1964. Oil Lease Lessee C. L. Craig and Donald Ross All of Labors 4 & 7 in League 171 Hale County School Land Survey. The West 50 of Lot 21 and the East 1/4 of Lot 22 of the Richland Hills Addition to the town of Muleshoe, Bailey County Texas.



**NEW SANITATION TRUCK** — John Seid, superintendent of the sanitation department, and Buster Colson are dumping their first load of garbage in the City's newest truck. The turquoise truck holds 26 yards which is the largest capacity garbage truck manufactured. (JP)

Sharp, Lessee Odessa Shaver, Lessee C. L. Craig and Donald Ross All of Labors 4 & 7 in League 171 Hale County School Land Survey. Warranty Deeds Parkland Place to C. W. Wilkison.

**GOODYEAR GIGANTIC TIRE CLEARANCE!**

SAVE WITH SAFETY!

NEED ROOM FOR NEW STOCKS!

We aim to clear out to the bare walls **SAVE!**

Plenty of Bargains! Pairs, matched sets, one-of-a-kind specials, **NO MONEY DOWN** as low as 1/5 weekly Buys a Pair!

**Big Buys For Early Birds!**

**Sure-Grip FARM TIRES CLOSE-OUT BARGAINS OUTTHEYGO!**

SIZE	SALES PRICE*
10-28 SURE GRIP	\$29.95

\*Plus tax and old tire

**DOOR-BUSTER SPECIALS**

SIZE	TYPE	SALE PRICE*
815-15	TANGERINE WALL POWER CUSHION	\$19.95

\*plus tax and old tire

**GO GO GOODYEAR**

**JOHNSON - POOL TIRE CO.**

301 N. FIRST MULESHOE PHONE 272-4594

GOODYEAR NATION-WIDE "NO LIMIT" GUARANTEE - No limit on months. No limit on miles. No limit as to roads. No limit as to speed. For the entire life of the tread. ALL NEW GOODYEAR AUTO TIRES ARE GUARANTEED against defects in workmanship and materials and normal road hazards. If a Goodyear tire fails under this guarantee any of more than 80,000 Goodyear dealers in the United States and Canada will make allowance on a new tire based on original tread depth remaining and Goodyear's printed "Exchange Price" current at the time of adjustment, not on the higher "No Trade In Price."

**IRRIGATION SYSTEMS**

Fully Guaranteed — Prompt Service

- PLASTIC
- CONCRETE
- ASBESTOS-CEMENT
- PORTABLE ALUMINUM

Contact the Friendly Folks at **STATE LINE IRRIGATION**

T. L. TIMMONS, General Manager

General Office and Plant — Phone 385-4487  
Box 326 — 1601 Houston Ave. — Littlefield

Don Messer — Phone 762-4557  
1916 W. 7th St. — Clovis, New Mexico

Muleshoe — Ph. 272-3109 — John Hammock

## Muleshoe Classroom Teachers Are Adopting Code Of Ethics

The following is at the present being adopted by the Muleshoe Classroom Teachers Association. The professional rights and responsibilities committee, under the chairmanship of Mrs. O. G. Killingsworth, are working on the code of ethics now.

According to Mrs. W. V. McAlpin, Muleshoe president of the CTA Association, believes the parents of school students would be interested in what they are trying to do for the student, community, professional and to employment practices.

Preamble of the Muleshoe Classroom Teachers Association is as follows:

**PREAMBLE**

We, professional educators of the United States of America, affirm our belief in the worth and dignity of man. We recognize the supreme importance of the pursuit of truth, the encouragement of scholarship, and the promotion of democratic citizenship. We regard as essential to these goals the protection of freedom to learn and to affirm and accept our responsibility to practice our profession according to the highest ethical standards.

We acknowledge the magnitude of the standards we have chosen, and engage ourselves, individually and collectively, to judge our colleagues and to be judged by them in accordance with the applicable provisions of this code.

**PRINCIPLE I**

We measure success by the progress of each student toward achievement of his maximum potential. We therefore work to stimulate the spirit of inquiry, the acquisition of knowledge and understanding, and the thoughtful formulation of worthy goals. We recognize the importance of cooperative relationships with other community institutions, especially the home.

In fulfilling our obligations to the student, we —

1. Deal justly and consistently with each student.
2. Encourage the student to study varying points of view and respect his right to form his own judgment.
3. Withhold confidential information about a student or his home unless we deem that its release serves professional purposes, benefits the student, or is required by law.
4. Make discreet use of available information about the student.
5. Conduct conferences with or concerning students in an appropriate place and manner.
6. Refrain from commenting unprofessionally about a student or his home.
7. Avoid exploiting our professional relationship with any student.
8. Tutor only in accordance with officially approved policies.
9. Inform appropriate individuals and agencies of the student's educational needs and assist in providing an understanding of his educational improvement.

**PRINCIPLE II**

We believe that patriotism in its highest form requires dedication to the principles of our democratic heritage. We share with all other citizens the responsibility for the development of sound public policy. As educators, we are particularly accountable for participating in the development of educational programs and policies and for interpreting them to the public.

In fulfilling our obligations to the student, we —

1. Share the responsibility for improving the educational opportunities for all.
2. Recognize that each educational institution may have a person authorized to interpret its official policies.
3. Acknowledge the right and responsibility of the public to participate in the formulation of educational policy.
4. Evaluate through appropriate professional procedures conditions within a district or institution of learning, make known serious deficiencies, and take any action deemed necessary and proper.
5. Use educational facilities for intended purposes consistent with applicable policy, law, and regulation.
6. Assume full political and citizenship responsibilities, but refrain from exploiting the institutional privileges of our professional positions to promote political candidates or partisan activities.
7. Protect the educational program against undesirable infringement.

**PRINCIPLE III**

**Commitment to the Profession**

We believe that the quality of the services of the education profession directly influence the future of the nation and its citizens. We therefore exert every effort to raise educational standards, to improve our service, to promote a climate in which the exercise of professional judgment is encouraged, and to achieve conditions which attract persons worthy of the trust to careers in education. Aware of the value of united effort, we contribute actively to the support, planning, and programs of our professional organization.

In fulfilling our obligations to the profession, we —

1. Recognize that a profession must accept responsibility for the conduct of its members and understand that our own
2. Participate and conduct ourselves in a responsible manner in the development and implementation of policies affecting education.
3. Cooperate in the selective recruitment of prospective teachers and in the orientation of student teachers, interns, and those colleagues new to their positions.
4. Accord just and equitable treatment to all members of the profession in the exercise of their professional rights and responsibilities, and support them when unjustly accused or mistreated.
5. Refrain from assigning professional duties to non-professional personnel when such assignment is not in the best interest of the student.
6. Provide, upon request, a statement of specific reason for administrative recommendations that lead to the denial of increments, significant changes in employment, or termination of employment.
7. Refrain from exerting undue influence based on the authority of our positions in the determination of professional decisions by colleagues.
8. Keep the trust under which confidential information is exchanged.
9. Make appropriate use of time granted for professional purposes.
10. Interpret and use the writings of others and the findings of educational research with intellectual honesty.
11. Maintain our integrity when dissenting by basing our public criticism of education on valid assumptions as established by careful evaluation of facts or hypotheses.
12. Represent honestly our professional qualifications and identify ourselves only with reputable educational institutions.
13. Respond accurately to requests for evaluations of colleagues seeking professional positions.

conduct may be regarded as representative.

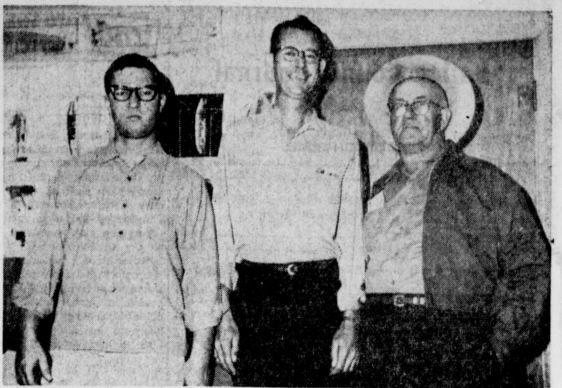
14. Provide applicants seeking information about a position with an honest description of the assignment, the conditions of work, and related matters.

**PRINCIPLE IV**

**Commitment to Professional Employment Practices**

We regard the employment agreement as a solemn pledge to be executed both in spirit and in fact in a manner consistent with the highest ideals of professional service. Sound professional personnel relationships with governing boards are built upon personal integrity, dignity, and mutual respect.

1. Apply for or offer a position on the basis of professional and legal qualifications.
2. Apply for a specific position only when it is known to be vacant and refrain from such practices as underbidding or commenting adversely about other candidates.
3. Fill no vacancy except where terms, conditions, policies, and practices permit the exercise of our professional judgment and skill, and where a climate conducive to professional service exists.
4. Adhere to the conditions of a contract or to the terms of an appointment until either has been terminated legally or by mutual consent.
5. Give prompt notice of any change in availability of service, in status of applications, or in change in position.
6. Conduct professional business through the recognized educational and professional channels.
7. Accept no gratuities or gifts of significance that might influence our judgment in the exercise of our professional duties.
8. Engage in no outside employment that will impair the effectiveness of our professional service and permit no commercial exploitation of our professional position.



**B&C OFFICERS** — Here are the officers of B&C Builders, Muleshoe, local agents for Inland Steel. Left-right are Alton T. Webb Jr., engineer; Lonnie M. Bass, president, and W. R. Carter, vice-president. (Journal Photo)

## B&C Builders Here's Growing Inland Steel Makes Strides

If you need a steel building of any kind whether for farm or business, see Lonnie M. Bass, president of B & C Builders, Inc. of Muleshoe. This company has erected dozens of steel buildings in West Texas and New Mexico since its formation and has completed one for the Johnson Furniture Co. on W. American Blvd. in Muleshoe.

B & C Builders are dealers for Inland Steel Products Company — engineered buildings, roof deck — floor deck, wall panels, bar joist and structural systems. They are presently constructing a building for Sears Automotive Center in Amarillo which is 36,000 sq. feet. They sell steel to contractors in this area as well as use it themselves.

B & C Builders does a turnkey job. They design buildings, do the drafting, engineering, and construction work and the building is complete in every detail when finished.

The firm was organized here July 1, 1963, with Lonnie M. Bass as president; W. R. Carter as vice-president and Alton T. Webb, Jr., as Engineer. Six people are employed regularly by the company and more when a building is being constructed.

Mr. Bass has been in business in Muleshoe since 1956 and is well known throughout this area as a contractor. He keeps abreast of new developments in the building industry and adopts whatever ideas he thinks will improve his construction work.

The home office of this organization is located at 217 E. Ave. B. and the phone number is 272-3078. They also have offices in Clavis and Amarillo.

Business men and farmers are more and more coming to recognize the value of steel as a construction material because of its longer lasting quality and its clean appearance. There are no termites in a steel building as there might be in a wooden structure and the new types of steel are rust-resisting and need no upkeep. Then the most important feature is that it is fire-proof and offers security against loss.

If you are planning to build any type of structure, see Mr. Bass and let him explain to you the advantages and economy of using steel in place of wood or cement blocks. There will be no obligation for an estimate.

## Boy Scouts Slate Jan. Programs

Transportation projects for Cub Scouts and displays of hobbies by Boy Scouts will be the highlights of the January programs of 135 Cub Scout packs and 159 Boy Scout troops in the South Plains Council, which includes Muleshoe units.

January's transportation theme for Cub Scouts will cover the history of transportation, models, scrapbooks to be given to children in local hospitals, exhibits, skits, and special trips and activities, according to Dr. J. Davis Armistead, South Plains Council's Scout Commissioner.

Boy Scout troops will start planning activities in January for celebrating Boy Scout Week from February 7 to 13 including the hobby show highlight which will be staged at the Boy Scout Week parents' night and open house, Dr. Armistead said.

Boy Scout troops will also plan major troop service projects to tie in with Boy Scout Week and an overnight campout in January to work on advancement needed for the February troop court of honor.

High-school-age Explorers in the 43 Explorer posts in the South Plains Council will select January activities from suggestions such as "Detect It," "Business Men and Farmers," "Knowledge of Social Customs," "Seat Belt Demo," a dramatic and effective way of showing the importance of seat belts, and "Tell and Sell," a presentation to be given to Boy Scout troops to describe the Exploring program.

Dr. Armistead explained that the suggested program themes for Scout units provide basic suggestions that may be used to fit each unit's plans, experience, leadership, and type of area in which the unit is located.

To knead yeast dough until it is smooth and satiny improves the texture of the finished product.

# BUSINESS SERVICES DIRECTORY

**REAL ESTATE**

CONSULT OUR LISTINGS FOR FARM RANCHES CITY PROPERTY GOOD INVESTMENTS

**MULESHOE REAL ESTATE AGENCY**

Monroe Lee  
113 W. Ave. D.  
Phone 272-3114

Dial 272-4536

For Classified Ads

**COTTONSEED DELINTED**  
Phone 272-3251 — Muleshoe

**WILLIAMS SEED CLEANING CO.**

Filler Queen Sales - Service  
Call 272-3163 after 6:00 p.m.

J. R. Ottwell  
Muleshoe, Texas

**INSURANCE**

COMPLETE INSURANCE SERVICE

AUTO  
 LIFE  
 FIRE  
 INSURANCE

**Jennings Ins.**  
115 E. Ave. D. - 272-3491

"FIRST IN FASHIONS"

Furnishings — Styling  
Tinting — Shaping  
Revlon Cosmetics

**MAIN STREET BEAUTY SALON**

Bernice Holdeman  
115 Main — Muleshoe  
Dial 272-3448

**BEAVER'S FLOWERLAND**

Real and Artificial Flowers — Corages  
Pot Plants — Banquets  
Funeral Designs  
520 S. First St.  
Ph. 272-3116 — Muleshoe

**MULESHOE MOTEL**

22 UNITS  
APARTMENTS WITH KITCHEN  
TV  
PHONES

Rates DAY or WEEK  
2105 W. Amer. Blvd.  
Phone 272-4440  
Muleshoe

**HEATHINGTON LUMBER COMPANY**

Lumber, Paint,  
Builders Hardware  
Cloviss Rd. — Ph. 272-4797

**BERRY ELECTRIC CO.**

ELECTRIC WIRING and REPAIRS

REFRIGERATION SERVICE  
104 E. AVE. B  
Phone 272-3375

**MULESHOE COVER SHOP**

**SEAT COVERS**

All Types Furniture Work  
All Types Auto Work  
All Types Canvas Work

CLOVIS ROAD  
Phone 272-3586  
MULESHOE, TEXAS

Phone 272-3078

— the number to call to save money on your new office, store, warehouse

Headquarters for attractive Inland steel buildings. Pre-engineered in any length, any width. Enclosed with colorful metal wall panels, glass, or other materials. Fast erection saves money.

**B & C BUILDERS, INC.**  
217 E. Ave. B Muleshoe, Texas

Ask For Polly Or  
Liz. Ph. 272-4536

— SHOP MULESHOE FIRST —

**SHOP MULESHOE FIRST**

Save Money On Auto Parts!  
**BOVELL MOTOR SUPPLY**  
107 East Ave. B — Dial 272-4288  
W. T. BOVELL, Owner

FOR FHA, GI and FARM LOANS AND THE

**BEST INSURANCE**

SEE—  
POOL INSURANCE COMPANY

Phone 272-4531 — Muleshoe  
W. M. POOL, JR. — LEE R. POOL

**A & B PLUMBING**

WE DO ALL TYPES OF PLUMBING

- INSTALLATION
- REPAIR
- FREE ESTIMATES
- 24 HOUR SERVICE

WE ARE DEALERS FOR  
PAYNE HEATING & AIR CONDITIONERS  
CALL 272-3734

202 E. CEDAR AVE.

**SINGLETON FUNERAL HOME**

24 HOUR AMBULANCE SERVICE  
PHONE 272-4574 — MULESHOE

**W. O. CASEY**  
GENERAL INSURANCE

Let Our Complete Coverage Take Care of All Your Insurance Problems

Muleshoe State Bank Bldg. — Ph. 272-4571

**COW POKES**

By Ace Reid

"Well, we're just in time to see the Wild Cow Milkin' Champion practicin'!"

**MULESHOE MOTOR CO.**

"CAR CAPITAL OF THE WEST PLAINS"

AT THE CROSSROADS PHONE 272-4251

# TRADE CLASSIFIED SELL BUY ADS LEASE

**WANT ADS - PH. 272-4536**

1 time per word — 4c      3 times per word — 10c  
 2 times per word — 7c      4 times per word — 13c

After 1st issue, 3c per word each additional time.

Minimum charge 50c  
 Card of Thanks \$1.00

**DEADLINE FOR CLASSIFIED ADVERTISING PAGE:**  
 For Thursday's Issue: Monday, 12 Noon  
 For Sunday's Issue: Thursday, 12 Noon

**TO LATE TO CLASSIFY**  
 Thursday Issue — Tuesday 5 P.M.  
 Sunday Issue — Friday 3 p.m.  
 Double Rate for Blind Ads.

**Personals**

AVON. Phone 3510 1-46-1fc

FOR RENT: 15 ft. camper by day or week. Call 272-3163. 1-35-1fc

**CHOIR PRACTICE**  
 Every Tuesday, 7:30 p.m. in Catholic Chapel, Muleshoe, Texas. New members welcome, too. 1-11-21p

**HOUSES FOR SALE**

Redi-Built or BRICK, 3-BEDROOMS, 2-BATHS, 90-FT. LOT

CALL—  
**BILLY MORRISON**  
 Ph. 272-5421 or 272-3213

Announcing the recent opening of an office at 210 West Ave. E. in Muleshoe to be known as

Ed Northcutt

Bookkeeping & Tax Service

The following services will be available for the Farmers, Individuals & Business people of this community.

Bookkeeping by the month

Quarterly Sales & Payroll Tax Reports.

Income Tax forms Prepared. 1-11-21p

Harry — If you will buy me that nice brick home from Eddie Lane Real Estate, I'll come home. 1-25-1fc

Persons interested in a day nursery being started please call 272-3774. 1-25-1fc

**4. Houses for Rent**

1 bedroom house with utility for rent. Call Lewis Blaylock, 916-2883 or 272-4373. 4-48-1fc

2 bedroom modern house for rent. Call 4080 or 4760. 4-32-1fc

For rent: 2 bedroom house. Furnished. No objections to children. See Mrs. Layne at Layne Apartments or Call 4194. 4-11-1fc

For Rent: 2 bedroom house. See Spencer Beavers. 4-11-1fc

**5. Apts. for Rent**

For Rent: 3 room and bath furnished house. See Sam Gholson or Sam's Auto Store. 5-44-1fc

For rent: furnished apartment at 319 W. Ave. E. Adults only. 5-50-1fc

Furnished Apt. 323 West Ave. E. Mrs. Melendy. Call 272-4812. 5-50-1fc

3 room Apt. for rent. See Spencer Beavers. 5-11-1fc

For Rent: One — 3 room apartment — 1 — 2 room apartment. Phone 272-3465. 5-25-1fc

**6. Rooms for Rent**

Bedroom for rent — See Ida Tapp. Last house north of Calvert's grocery. 6-45-1fc

Nice quiet bedroom for rent at Rosie McKillip, 410 West Second. 6-25-1fc

**8. Real Estate for Sale**

For Sale: Southside Golf Service Station. Call 272-3571. 506 South First. 8-40-1fc

For Sale: Nice three bedroom, 2 baths and den. Well located. Close to schools, town and church. Brand new. See Pool Ins. or call 272-4536 or 272-3139. 8-47-1fc

For Sale: 2 unit Duplex. rooms to unit. Modern with basement, garage and laundry room. Call 272-4706. 8-11-1fc

FOR SALE: Immediate possession for our 3 bedroom home, 413 East Dallas. Carpets, drapes, and built-in electric stove, 1-1/2 baths; central air-conditioning and heating; back yard fenced, plenty of closets. G.I. 4 1/2 percent loan covering purchase price. A good buy for quick sale. Contact or phone L. B. Hall at 272-4749 or 272-4536. 8-44-1fc

FOR SALE: Brick 2 bedroom and den — 3 bedroom frame house — 2 bedroom frame house. All close to school. Call 272-3365. 8-43-1fc

Prompt Buyer on this Love Nest

Three and Den with 2 car garage, all the built ins, fenced, air conditioned, in Richland Hills, 1923 Ave. F. Offered by "The Firm That Sells". Eddie Lane Real Estate 8-50-1fc

FOR SALE: 177 acres — Good House — Small Well — 139 acres in cultivation. \$280.00 per acre. Call W. C. Vanlandingham, 266-5636, or write 404 SE 7th Morton, Texas. 8-52-1fc

FOR SALE — 1/2 section, good land 2 8 1/2 wells, 3 m. E. 1 m. N. Lingo. N. M. Joins Texas line cash \$330.00 acre. Mrs. W. L. Ashbrook, 112 Milam, Amarillo, Texas. 8-50-10tc

FOR SALE — 3 bedroom house with 3 lots. Fenced in back yard. Located in Harvey addition. Phone 272-4913 before 2 p.m. or after 6 p.m. 8-25-6tp

**IDEAL FOR SMALL** cattle operation. 107 A. near town, good soil, best well, new pump, all sprinkler, pipe needed. 20 cotton 38 per, grass, 20 more for grazing. Also made 4000 lbs. avg. Owner says sell at once or he will integrate with other lands in new farm program. Price offers speculation possibility. See us now. Forbes Real Estate, 306 W. 2nd, Muleshoe, Texas. 8-25-1tc

FOR RENT — Trailer house apt. bills paid, well located. Forbes, 306 W. 2nd. 8-25-1tc

640 or 2-320 acres. 7 full 8" wells with pumps, underground pipe, 200 acres Bermuda grass, 18 acres cotton, 90 acres grain all fenced house, 4 miles West 1 mile south of Muleshoe, 20 percent down, 15 years at 5 3/4 percent; \$350 per acre, area code 806-PO 3-3223 for owner. 8-51-1fc

**11. For Sale or Trade**

For Trade Commercial building. Highway frontage and rentals in Hereford, Texas. 30,000 in notes bringing in good dividends. Price of property, \$135,325. Will trade equity of \$112,225 and notes on property a portion Muleshoe. Will consider trading 177 A at Lariat and other property above for a larger farm with good allotments and good water. PH. EM 4-3596 Day, EM4-2553 Nights 11-25-41p

**12. Household Goods**

"Need party with good credit in Muleshoe area to take over payments on late model Singer sewing machine in 5 drawer walnut cabinet. Will zig-zag, button holes, fancy stitches, etc. \$31.50 cash \$4.95 a month. Write Credit Manager, 1114 19th Street, Lubbock, Texas." 12-50-1fc

FOR SALE: Rebuilt Kirby Vacuum Cleaner with all attachments. Call 272-3940 after 3 p.m. 12-25-6tc

**13. Property for Lease**

For Sale, trade or cash lease. 340 acres irrigated land 12 miles NW of Bovina. 147 acres of wheat 162 acres mlo. D. H. Sneed, 272-3426 or 272-4156. 13-50-1tc

**FOR LEASE**

30 acres 5 1/2 miles west of Muleshoe. 500 yards off F. M. 1700 South. Modern 2 bedroom house, 8" irrigation well with motor. Sprinkler system covers all 30 acres. 10 acre cotton. 9 acres feed allotment last year. Cash lease \$1,500.00. M. H. GREATHOUSE 411 COMMERCIAL ST. SUDAN, TEXAS. PHONE NO. 227-4632 13-11-41p

**15. Miscellaneous**

GERY'S a day a week party for a whirl after cleaning carpet with Blue Lustre. Rent electric shampoer \$1 Higginbotham — Bartlett 15-25-1tc

Each Muleshoe Merchant Wants You To Shop Muleshoe FIRST!

**17. Seed & Feed**

FOR SALE: Items on foot 25 cents. Call James Wedel 925-3141. 15-25-4tc

FOR SALE: Cane Bundles, Call Jene Fox, 965-2411. 17-45-1fc

**Political Announcements**

The following candidates have authorized the Journals to announce their candidacies for the offices indicated, subject to the action of the Democratic Primaries May 7, 1966. Candidates, have your cards printed at the Journal.

County Treasurer EDITH WILT  
 County Clerk HAZEL GILBREATH  
 District Clerk NELDA MERRIOTT

**Veterans Will Receive Benefits**

Nearly 54,000 veterans will receive checks this week as the first payments are made in distribution of a 1966 GI insurance dividend totaling \$224,200,000.

In reporting this today, William J. Driver, Administrator of Veterans Affairs, said some 4,606,000 veterans are eligible to receive the dividend payments, which will be made throughout the year on the anniversary dates of the individual policies. Although the amounts due individual veterans will vary considerably, depending on the veteran's age, the amount ad

type of insurance policy, and other factors, the amount to be paid in 1966 averages out at \$47.50 for World War II policyholders and at \$73.75 for World War I policyholders.

Of the total dividend, Mr. Driver said, \$209,000,000 will be paid to 4,400,000 veterans of World War II who hold National Service Life Insurance policies, and the remaining \$15,200,000 will be shared by 206,000 World War I veterans who have U. S. Government Life Insurance policies.

Korean Conflict veterans hold low-cost, non-participating type policies that do not provide for payment of regular annual dividends.

Muleshoe 58 — Dumas 78

**OTWELL'S VACUUM CLEANER REPAIR**

Filter Queen Distributor  
 Disposable Bags For All Makes

**S A L E S**  
 All Vacuum Cleaners Repaired

**S E R V I C E**  
 New and Used Cleaners

After 6 p.m. or before 8 a.m.  
 Phone 272-3163 918 East Hickory

## Television Schedule For Muleshoe Area

Station	Channel	Daytime Viewing	Evening
<b>Higginbotham</b>	KGNC-TV (4) Amarillo Muleshoe Cable 4	Mon. thru Fri. Daytime Viewing	6:30 - Wakeup 6:30 - Am. College 7:00 - Today 7:25 - News 8:00 - Today 7:30 - Today 8:25 - S. Security 9:00 - Eye Guess 9:25 - News 9:30 - Concentration 10:00 - Moon Star 10:30 - Paro Bay 11:00 - Jeopardy 11:30 - Post Office 11:55 - NBC News 12:00 - News 12:15 - Weather 12:30 - Ruth Brent 12:30 - C-Let's Make 12:55 - News 1:00 - Days of 1:30 - The Doctors 2:00 - Another World 2:30 - Match Game 3:25 - NBC News 3:30 - Sheriff Bill 4:30 - Laramie 5:30 - Hunt-Drink 6:00 - News 6:15 - Weather 6:25 - Sports
<b>Bartlett</b>	KVII-TV (7) Amarillo Muleshoe Cable 5	Mon. thru Fri. Daytime Viewing	7:00 - Crop-Stock 7:15 - Weather 7:30 - News 8:00 - Matinee 10:00 - Super Sweep 10:30 - Dating Time 11:00 - Donna Reed 11:30 - Father Know 12:00 - Ben Casey 1:00 - Nurses 1:30 - A Time 1:55 - News 2:00 - Gen. Hospit 2:30 - Young Marrie 3:00 - To Young 4:30 - Action 4:00 - Beaver 5:00 - P. Jennings 5:15 - B. Masters 5:45 - Rifleman 6:15 - News 6:25 - Weather
<b>Building Needs</b>	KFDA-TV (10) Amarillo Muleshoe Cable 6	Mon. thru Fri. Daytime Viewing	6:25 - Sign On 6:27 - Meditation 6:30 - College 7:00 - Farm & Ranch 7:25 - Weather 7:30 - Today 7:50 - News 8:15 - Cap. Kang 9:00 - Lucy 9:30 - McCoys 10:00 - Andy 10:30 - D. Dyke 11:00 - Love of Life 11:30 - Search Tom 11:45 - Guiding Light 12:00 - News 12:10 - Weather 12:20 - Farm & Ran 12:30 - As World Tu 1:00 - Passport 1:30 - Housepart 2:00 - Tell Truth 2:25 - News 2:30 - Edge of Nigh 3:00 - Secret Storm 3:30 - Variety 4:00 - Proud Eagle 5:00 - Cartoons 5:30 - News 6:00 - News 6:20 - Weather Monday Evening 6:30 - 12:00 O'clock 7:30 - J. James 8:00 - Shenandoah 8:30 - Peyton 9:00 - Ben Casey 10:00 - News 10:10 - Weather 10:20 - Crop 10:30 - Cinema 10:55 - News 11:00 - Cinema Tuesday Evening 6:30 - Combat 7:30 - McHale 8:00 - F. Troop 8:30 - P. Place 9:00 - Fugitive 10:00 - News 10:10 - Weather 10:20 - Crops 10:30 - Cinema 10:55 - News 11:00 - Cinema Wednesday Evening 6:30 - Batman 7:00 - In Space 7:30 - Code Blue 8:00 - B. Valley 9:00 - Proud Land 9:00 - Hot Summer 10:00 - News 10:10 - Weather 10:20 - Crop 10:30 - Movie 10:55 - News 11:00 - Movie
<b>Houseware</b>	KCRD-TV (11) Lubbock Muleshoe Cable 2	Mon. thru Fri. Daytime Viewing	7:00 - News 7:05 - Farm Report 7:25 - Weather 7:30 - Today 7:50 - News 8:25 - News 9:00 - Eye Guess 9:25 - News 9:30 - Concentration 10:00 - Morn. Star 10:30 - Par. Bay 11:00 - Jeopardy 11:30 - Office 11:55 - News 12:00 - Noon Report 12:15 - C. Closeup 12:30 - C-Make Deal 12:55 - Early Report 1:00 - Days of 1:30 - The Doctors 2:00 - Another World 2:30 - P. Office 2:00 - Another World 2:30 - C-Don't Say 3:00 - Match Game 3:25 - Afternoon R 3:30 - Nurses 4:00 - Father Know 4:30 - Superman 5:00 - Woody Woodpe 5:30 - Huntley Brink 6:00 - Six Report
<b>Wallpaper</b>	KBLK-TV (13) Lubbock Muleshoe Cable 3	Mon. thru Fri. Daytime Viewing	5:55 - Sign On 6:00 - S. Semester 6:30 - Cart. Circus 7:00 - Farm & Ran 7:25 - Second Cup 7:30 - News 7:55 - News-Wea. 8:00 - Captain 9:00 - Donna Reed 9:30 - McCoys 10:00 - Andy 10:30 - D. Dyke 11:00 - Love of Life 11:25 - CBS News 11:30 - Search 11:45 - Guiding 12:00 - WTTN News 12:10 - P. Ranch 12:25 - Weather 12:30 - World Turns 1:00 - Passport 1:30 - Housepart 2:00 - Gen. Hos. 2:30 - Edge of Night 3:00 - Secret Storm 3:25 - CBS News 3:30 - B. Casey 4:30 - Col. Carvava 5:00 - Rifleman 5:30 - CBS News 6:00 - News-Wea. 6:10 - Weather 6:20 - News
<b>Hardware</b>			
<b>Gifts</b>			

**SEE US FOR YOUR EMBOSSED BUSINESS CARDS \$6.50 PER. M 10 DAY DEL. ENGRAVED & EMBOSSED ANNOUNCEMENTS INVITATIONS MULESHOE PUBLISHING CO.**

304 W. 2nd PHONE 272-4536

**Batteries — Used Tires — Fast, Efficient Service**

**Johnson-Pool Tire Co.**

301 N. 1st. Ph. 272-4594

**WALGREEN DRUG**

Call on your —  
 Complete Fountain Service  
 To the "N'th Degree"  
 We Fill All Your Prescriptions

**WALGREEN DRUG**

Call on your —  
 Complete Fountain Service  
 To the "N'th Degree"  
 We Fill All Your Prescriptions

### Tele-viewing Highlights And Program Topics

This week, colorful Channel 11 and NBC will travel roughly halfway around the world to bring viewers varied and informative entertainment. At 12:30 Sunday afternoon begins a 4-part series on the history and significance of the Ecumenical Council. The series, "Vatican Council II," was produced in Rome by the NBC Television Religious Program Unit in cooperation with the National Council of Catholic Men. It consists of two color film documentaries reviewing the development of the Council through four sessions, and two discussion programs exploring the implementation in the United States of the Council's decrees. Part One, "The Peaceful Revolution," traces the evolution of the Second Vatican Council from Pope John's announcement in January 1959, at St. Paul's Basilica, through the crisis of the first session when 2,500 bishops began to face the difficulties of aggiornamento (bringing things up to date), to the conclusion of the Second Session, and Pope Paul's historic meeting with the Greek Patriarch Athanasios in the Holy Land. Three more programs will be broadcast on following Sundays.

### Delores Gaddy Presides At First Meeting Tuesday

Delores Gaddy, new president for the Progress Home demonstration Club presided over her first meeting Tuesday in the home of Myrtle Wells.

Roll call was answered with "A Way I Will Improve Myself This Year."

Committees were appointed for the year and yearbooks were discussed. Following recreation refreshments were served to Delores Gaddy, Veta Self, Gerie Myers, Letha Wheeler, Ada Murrah, Ethel Monford, Fern Davis, Kay Mardis Marie Maltby, Jean Martin, Lela Mardis, Judy Roming, Myrtle Wells, and the new member, Elizada Gully.

Veta Self will be hostess of the next meeting.

### SCHEDULE OF EVENTS

January 10  
FIRST NATIONAL BANK  
Mabel Wolfe

January 11  
FIRST NATIONAL BANK  
Farm Bureau Meeting at 2 p.m.  
MULESHOE STATE BANK  
Bailey County Nurse's Meeting  
BAILEY CITY ELEC. COOP.  
Nominating Committee, Area  
Telephone — 7:30 p.m.

January 12  
FIRST NATIONAL BANK  
Jean Martin, Home Demonstration Agent — 2 p.m.  
Bobby Ellis — 10 a.m.  
Chamber of Commerce Budget and Committee — 10 a.m.

January 13  
MULESHOE STATE BANK  
TOPS Club — 7 p.m.  
BAILEY COUNTY ELECTRIC  
Bailey County Electric — 7:30

January 14  
BAILEY COUNTY ELECTRIC  
Telephone Safety Meeting — 8:30 a.m.  
LMITS School

### High Plains Water District Election Set

The annual election of District Directors and County Committeemen of the High Plains Underground Water Conservation District No. 1 will be held Tuesday, Jan. 11.

Candidates for County Committeeman in Bailey County are: Gene Caldwell, Rt. 1, Box 122, Muleshoe; Ernest Ramm, Rt. 2, Muleshoe; Melvin Hale, Box 76, Maple; J. W. Witherspoon, Box 261, Muleshoe.

Each county in the District will elect one new member to serve on the local Water District Committee.

Three Directors will be elected this year. One will represent Lynn and Lubbock Counties; another Hockley, Lamb and Cochran Counties; and the third one elected will represent Floyd County.

Enochs Gin office at Enochs and at the Community house in Muleshoe.

Making egg salad sandwiches for lunch? Add chopped sweet pickle along with diced celery and mayonnaise. Season to taste.

the smoke and roar of a drag strip in Oklahoma, as "NBC Sports in Action" moves to a new time position. Besides initiating a move from a Saturday time period, the program also signals the debut of Bill Cullen, popular TV host and personality, as co-host with Jim Simpson. Sixteen nations are represented as the best spearfishermen in the world gather for the biennial challenge in the exotic blue waters off the South Pacific Islands of Tahiti and Moorea. To cover the event,

Three p.m. will take Channel 11 viewers from the silent underwater beauty of Tahiti to

three special underwater color cameras will be used, as well as surface color cameras to focus on island life, showing to best advantage the resplendent glory that has long made the South Sea islands seem an earthly Paradise. As the strains of native music fade, west Speedway in Tulsa, Okla., is heard as the scene shifts abruptly to drag racing, a sport much dissimilar to spearfishing. Bill Cullen is there, as the fastest drag racers in the world zoom down

the quarter-mile track to achieve speeds of better than 200 miles per hour. To provide a special dimension to its coverage, NBC mounts a camera on a dragster to give a driver's eye-view of what it is like to be on the inside of the fastest and most furious motor sport of all.

Overtones of more travel this time to Mexico, will be heard Monday night at 8, as Andy Williams hosts Herb Alpert's bounding Tijuana Brass. The group is reminiscent of a stroll-

ing Mexican mariachi band which, it has been pointed out, has gained much in translation. Among the items added are a driving beat and bass line, electric wizardry, and the triumphant trumpet of Mr. Alpert. Also slated to appear on the star-spangled program are Eddie Fisher and Bobby Darin.

Tuesday night continues the worldwide programming, as Sophia Loren and Clark Gable star in "It Happened in Naples," this week's "Tuesday

Night at the Movies." The color film spotlights superlative acting, backed by a particularly accurate representation of high-mettled Italian life and temperament, and lilting Neapolitan music. Colorcast time for the spritely romantic comedy is 8 p.m.

Feature entertainment "comes home" Saturday, Jan. 15, as Channel 11 presents South-west Conference Basketball, at 2 p.m. The live broadcast will originate in Waco, as Texas A & M meets Baylor there. Fol-

lowing the basketball game, Channel 11 and NBC again pack up color cameras and move to Panama City for the second match in "Sheik's Wonderful World of Golf." Chi Chi Rodriguez and Mike Souchak are featured in the 4 p.m. colorcast, played on a course from which are visible the ruins of the ancient city sacked by the buccaner Henry Morgan, and the Panama City that is so very much alive today, combining both latin and Northern cultures.



# CLEARANCE

SALE

**OPEN 9:00 A.M. MONDAY, JANUARY 10th**

**SHOP EARLY FOR CHOICE SELECTIONS**

**USE OUR LAY-A-WAY**

MEN'S DRESS HATS

Values to \$12.98

9 only \$3.27

MEN'S WHITE DRESS SHIRTS

100% COTTON OR DACRON and COTTON

REG. \$2.98 and \$3.98

\$1.67

CLOSE-OUT MEN'S, YOUTH'S NEVER IRON CASUAL PANTS

REG. \$5.98-\$6.98-\$7.98 NATION'S NO. 1 NEVER IRON PANT

\$4.00 pr.

MEN'S LONG SLEEVE SPORT SHIRTS

VALUES TO \$3.98

\$1.87

MEN'S and YOUNG MEN'S Silk and Wool DRESS SUITS

REG. \$65.00

\$50.00

BROKEN SIZES

BOY'S—VALUES TO \$2.98 LONG OR SHORT SLEEVE SPORT SHIRTS

\$1.27

---

Boy's Buckhide Nylon & Cotton Reg. \$2.69—Sizes 4 to 16, Slim or Reg.

BLUE JEANS \$2.00 pair

---

Boy's Corduroy Fleece & Quilted Lining REG. \$10.98 VALUE

PARKA COATS \$5.00

---

Youth's or Men's Orion, Reg. \$1.00

CREW SOCKS 2 for \$1.22

---

Ladies Orion Fuzzy, Reg. \$16.98

ROBES \$11.00

---

Men's Permanent Press, Slim Cut

DRESS SLACKS \$4.97

Reg. \$6.95 & \$7.98 Sizes 28 to 36

---

Ladies', Misses, Girls', Reg. \$1.59

NYLON TITES 87c

---

Tot's Printed, Regular \$1.00

SWEAT SHIRTS 47c

SPORTSWEAR READY-TO-WEAR

DRESSES ROBES SUITS COATS

GROUP II Values to \$14.98

\$6

GROUP I Values to \$29.98

\$15

GROUP III Values to \$19.98

\$9

4 only Ladies FUR COLLAR CAR COATS, reg. \$24.98	\$19.00	Ladies, and Jr. Petites	
4 only Mink Collar, reg. \$89.98 DRESS COATS	\$60	DRESSES	
New Spring Laminated COATS	\$12	Values To \$10.98	\$4
9 only 100% wool DOUBLE KNIT SUITS	\$25.00		

Entire Stock Winter HATS 1/2 PRICE	All Girls COATS REDUCED UP TO 40%	Entire Stock GIRLS DRESSES 1/2 PRICE
------------------------------------	-----------------------------------	--------------------------------------

SHOE DEPARTMENT SPECIALS

MENS DRESS SHOES Values to \$17.99	GROUP I \$8.87	Ladies and Childrens Values to \$7.98	\$1 SHOES
Values to \$12.97	GROUP II \$4.87	Ladies and Girls HOUSE SHOES Val. to \$3.98	\$1.87 SHOES
Ladies Black and Brown DRESS SHOES Values to \$10.99	\$4.97	Girls and Boys SHOES Values to \$6.98, Dress Shoes, Oxfords, Loafers	\$2.87 SHOES
Ladies Better CASUAL SHOES Values to \$8.99	\$4.97	PIXIES Values To \$3.99	\$1

USE OUR LAY-A-WAY

GIRLS' PANTS-SKIRTS BLOUSES

Val. to \$3.98 \$1.47

---

FASHION TONES TEXTURED NYLONS

FIRST QUALITY REG. \$1.25 and \$1.50 Value

47c PAIR

---

SHEER NYLON SHORTY GOWNS

REGULAR \$2.98

\$1.37

---

GIRLS' FLANNEL PAJAMAS

VALUES TO \$3.98

2 for \$5.00

---

SPECIAL GROUP GIFT ITEMS

1 and 2 OF A KIND

1/2 PRICE

ENTIRE STOCK LADIES & MISSES FLANNEL SLEEPWEAR

GOWNS OR PAJAMAS REGULAR \$2.28 and \$3.98 SIZES 32 to 44

\$2.37

SPECIAL GROUP FABRICS WIDE WALE CORDUROY DAN RIVER SOLIDS AND PATTERNS YOUR CHOICE

SPRING SPORT FABRICS SARA LYNN

SPORT CLOTH VALUES TO \$1.39 YD.

57¢ YARD