







# Good News

## DOLLAR DAYS!!

### DOLLAR DAY Specials

At Coats Furniture

Extra Special For Dollar Days A 510 Coil **MATTRESS & MATCHING BOX SPRING** For Only \$125<sup>00</sup> While 8 Sets Last. We Have A 20 Year Guarantee Set For \$169<sup>00</sup> Other Sets Priced From \$99<sup>00</sup>

Special Purchase Of **LIVING ROOM TABLES** In 3 Styles, Values To \$99<sup>00</sup> Now 30% Off.

3 - Only 9-Piece **VIRTUE DINETTE SETS** Reg. \$199<sup>00</sup> Now \$169<sup>00</sup> The Table Is 42 Inches Wide And 82 Inches Long, With 8 High Back Chairs. Self Edge Table.

2 Only 7-Piece **VIRTUE DINETTE SETS** Reg. \$149<sup>00</sup> Now \$119<sup>00</sup>

Another Dollar Day Special, All 20% Off, **UNFINISHED FURNITURE** This Includes Chest, Bookcases, Nite Stand And Desk.

Vinyl Covered **RECLINER** \$59<sup>88</sup>

Remember Coats Furniture For Blue Lustre Shampoo And Bags. We Also Carry Carpet Supplies-Pad And Will Rent Carpet Stretchers For You Who Would Do This Yourself.

Free Del. Easy Terms Also Master Chg. **Coats Furniture Inc.**

## March Savings

Asst. Fancy Patterns **DOUBLE KNIT** On Bolt 60" Wide \$1<sup>99</sup> yd.

<b>POTTED ROSES</b> Reg. \$2 <sup>77</sup> <b>\$2<sup>49</sup></b>	<b>SEERSUCKER FANCIES</b> Asst. Colors And Patterns 45" Wide <b>\$1<sup>59</sup> yd.</b>	<b>SEERSUCKER DOTS</b> 50% Poly, 50% Cotton 45" Wide <b>\$1<sup>99</sup> yd.</b>	<b>ROSE BUSHES</b> 3 Per Pkg. <b>\$2<sup>97</sup></b>
--	---	---	---

Asst. Men's & Ladies Sizes <b>SANDALS</b> \$2 <sup>77</sup> VALUE <b>\$1<sup>99</sup> Pr.</b>	Pucker Asst. Spring Colors <b>GINGHAM CHECKS</b> 45" Wide <b>\$1<sup>99</sup> yd.</b>
--	--

Men's & Boy's <b>TRACK SHOES</b> <b>\$6<sup>99</sup> Pr.</b>	<b>LAWN CHAIRS</b> <b>\$4<sup>97</sup></b>
--	---

**perry's** Eastland WE HONOR BANKAMERICARD



**LamPro "KAYAK"**

- ★ STURDY — STABLE — SAFE
- ★ KEEL TYPE REINFORCED BOTTOM WITH FLOTATION SEAT
- ★ LENGTH 10 FT. — WIDTH 39" — DEPTH 11"
- ★ WEIGHT APPROXIMATELY 35 LBS.

LIST \$140.00 New  
One Used \$100.00  
One Used \$60.00  
See at 413 S. Walnut  
Eastland, Texas  
Cliff Clary  
MA-92540

### DOLLAR DAYS

**MEN'S PANTS**  
Choose From 35 Pair  
**1/2 PRICE**

Ladies  
**PANTY HOSE**  
Reg. 79¢  
**2 FOR \$1<sup>00</sup>**

**Hareluk's**  
EASTLAND

## CITY-WIDE DOLLAR DAYS

Mon., Tues. & Wed.

Women's Wedge Heel <b>SHOES</b> Washable Terry Cloth, Vinyl & Others Reg. '7 & '8 <b>NOW \$3</b>	Women's Double Knit <b>PANT TOPS</b> Reg. '16 & '18 <b>\$6</b>	Special Markdown! <b>WOMEN'S DOUBLE KNIT</b> 100% Polyester PANTS Assit. Colors Reg. '69 <b>NOW \$4</b>	Women's <b>PANT SUITS &amp; DRESSES</b> Fall Styles <b>1/2 Price</b>	Men's <b>SHOES</b> Discontinued Styles Nunn Bush Roberts <b>50% OFF</b>
Girls Corduroy Ked <b>SHOES</b> Reduced Reg. '89 <b>\$3</b>	Women's <b>SWEATERS</b> Double Knits <b>50% OFF</b>	<b>Bray's</b> DEPARTMENT STORE EASTLAND - RANGER EASTLAND COUNTY'S FAMILY STORE FEATURING NATIONALLY ADVERTISED BRANDS OF MERCHANDISE Store Hours - 9 a.m. - 5 p.m.	Men's <b>JEANS</b> Discontinued Styles Famous Brand Reg. \$11 \$13 <b>NOW \$6</b>	Women's <b>SLEEPWEAR</b> Discontinued Styles Some Year Round Styles. Assit. Colors Many Fabrics <b>50% OFF</b>
Women's Corduroy <b>KED SHOES</b> Reg. '99 <b>NOW \$4</b>	Girls <b>SPORTS WEAR DRESSES</b> Fall And Winter Styles Many Styles <b>1/2 Price</b>			

An important part of the popularity of aluminum in and around the house is that it is by nature a low maintenance material. But aluminum products do become dirty and require occasional cleaning. Because harsh abrasives do more harm than good, the rule of thumb about cleaning aluminum is to use the least strong cleaner that will do the job. The No. 1 choice, therefore, is water and that, water and mild detergent. Aluminum siding effectively cleaned with a handled brush, a hollow-handled brush used for washing, make a practice

Because men fighting a drinking problem often have a hard time getting with people who know them while they were sober. Q. Why do they do this? A. Because they are trying to make a practice

aluminum siding a couple of times a year, water alone will do the job

These are made by use of a

Granted that the

These activities do not pollute the environment and build

The main reading area could be increased nearly 50 per cent by construction of an additional bay on the College Street side of the building. The design includes also the strength and ceiling permit a

When North Americans and Europeans pay more for the coffee they drink, Julio Suzuki gets a welcome lift. Suzuki, whose immigrant father cultivated silkworms in Brazil, makes his modest living growing coffee beans. He has problems with leaf blight, rising fertilizer cost and aging coffee bushes. What trickles down from higher international coffee prices give more money to pa

of coffee has in the expense. Suzuki told his farmhouse near in the heart of coffee country. Suzuki buy petroleum, and pays has mul with world of antifungus sprays coffee rust. He of copper singly expen product. the world is and tha is the South ty's No.

free buye es, which son of the ported it rains 13 beans. rford it eurs d y see it ture o ted it is b d th secon tion inths ppor from con suri

als o titu Pub use it god -ol u arm au no aths in loc on cot pap an n . ac

ialt- es th the ad ha nei the inq ion on i just ew the ane The to ed a

rev ane are hu ir jet it pr ber nd 28, res h te

no regu help with and other workers: it of abou he said. starting it three or four hires ad ary workers. g on a 1974 har lacks of coffee He hopes to about 35 per deduc and mate

gations in adventure committee member: provided that prison officials had made it almost impossible for them to do any good by convincing excused to prevent them from talking to prisoners, demanding formal letters of introduction and, on occasion, flatly rejecting their attempts to get inside the gates.

### Foundation Program By Inflat

due of air-borne persons find that are easier to clean sprayed with this lacquer. A coat wax is also expen ing newly num from use wax a swim th leasons c weeks. every y the divi to the s On the jump clothe be ab falls accid Pa near

Irre rge il he sh No a to be di Pa lin wa be me et ar air bo at pa ad pr ing a i fa rie 19 As th 198 by

cut gra vol sco a cat beg me pro

Ty Sci av bad mu que V ine l' S' pro com ty z sch chill ly a aud and requ ing main danc The deve lead memb of drap prestig working student proposa venture could not Two offered of the other general requ ents same for both.

Customary work in College of Arts and Sciences comprises approximately of the 192 hours for a major. Both directing and performing majors take a 36-hour core of music and drama courses, which includes theory, acting, basic stage craft, piano and voice.

### Possum School Registration

In the coming year additional courses are anticipated in advanced dance, choreography and a survey course in the history of musical drama.

At another school upcountry the students walked out on their black teachers, saying they would only return if white graduate teachers were hired to teach them.

## Dollar Days

**BLUE JEAN DENIM**  
45 Inch Wide **\$1.89** Yard

**100% POLYESTER DOUBLE KNIT**  
Mix & Match **\$1.59**

**50% COTTEN & POLYESTER**  
**\$1.49** Yard

<b>CHAMBRAY</b> <b>\$1.89</b>	<b>GINGHAM</b> Check, Perment Press <b>\$1.49</b>
----------------------------------	--

**Patton's Fabrics**  
304 N. Walnut

10% OFF ON ALL FABRICS

Be Sure And Look At Our **\$1.00** Table

**Rita's Fashion Fabrics**  
1-20 East Of Eastland  
Next To The Ramada Inn 629-8020

## Dollar Days

Shop **Altman's, Eastland** Specials **And**

SAVE SAVE SAVE

**BLOUSES & PANTS, KINT-TOPS, SWEATERS**  
As Much As **1/2** Off Regular Price

By Wranglers, Act III, Fem-Form, Center Stage, And Other Famous Makers

Special Group <b>BLOUSES &amp; TOPS</b>	All Fall And Winter Dresses By Famous Makers Reduced To <b>\$5.00</b> Clear Our Stock.
On Group <b>DRESSES \$5.00</b>	One Group <b>DRESSES \$10.00</b>

Special Reductions On **ROBES, GOWNS, PAJAMAS** As Much **1/3** Off Regular Price

# Altman's Style Shop

Eastland "Smart Womens Wear" 76448

## Grand Opening

**Sherry's Chic Boutique**  
Is Open

Sherry Arther And Rhonda Hood Will Be Taking Appointments For Men And Women **Tuesday - Saturday**


Call 629-8036 107 E. Conner

**OPENING SPECIALS:**

FROSTS OR BLEACH	Reg. \$25.00	NOW <b>\$19.50</b>
PERMANENT COLOR	Reg. \$10.00	NOW <b>\$7.50</b>
STREAKS	Reg. \$16.50	NOW <b>\$13.50</b>

**Henry Block has 17 reasons why you should come to us for income tax help.**

**Reason 12.** Our people have been specially trained . . . and keep abreast of all the latest tax laws. We will do our best in preparing your return. And then we'll carefully check it for accuracy.



**HENRY BLOCK**  
THE INCOME TAX PEOPLE  
104 W. Commerce 629-8121  
9-6 Mon.-Fri. 9-5 Sat.



**Mark 50 SPECIAL**

**SHIRT 'N PANT TEAM**  
**\$6 each**

Comparable 8.99 values. Match up our pin-dot shirt and solid pants in spring's sunniest colors. Both in wash-and-go polyester that wears and wears. Shirt, sizes 34 to 46; pants, sizes 12 to 20 and 32 to 40.

**mode o'day**  
West Side Of Square

## DOLLAR DAYS!!

All Bernardo **SANDALS** Also Check Our **1/2 Price Rack & Our Special Reduced Racks**

**15%**

See Our New Spring Merchandise

# QUETTA'S

**SPORTSWEAR BOUTIQUE**  
Interstate 20 At Ramada Inn 629-8030

**YOUR DOLLAR GOES FURTHER... In Eastland**

# "The Battle Of Sabine Pass" As Told In February Issue Of Texas Parks And Wildlife Magazine

SABINE PASS--The battle to keep Union forces from invading Texas during the civil war is detailed in an article entitled "The Battle of Sabine Pass" in the February issue of TEXAS PARKS AND WILDLIFE magazine.

Author Stanley W. Taft, park superintendent in Sabine Pass Battleground State Park, gives this account:  
"On Sept. 7, 1863, 21 Union ships assembled at the mouth of Sabine Pass to begin the planned invasion of Texas.

Four poorly equipped and badly functioning shallow-draft gunboats of the U.S. Navy--the Clifton, Schem, Arizona and Granite City, under the command of Lt. Frederick Crocker, were to escort and support the landing of 17 transports carrying more than 2,000 troops of the Nineteenth Army Corps.

It was supposed to be a relatively easy task since Union information indicated the Confederate-held pass was weakly protected. But the northern forces were in for a surprise.

Word had leaked out about the Union's intent and construction had begun during the summer on a new Confederate battery position, Fort Griffin at Sabine Pass (also referred to as Fort Sabine), to protect the vulnerable Texas port near Sabine City. It was not yet finished.

The three-sided earthen work was situated on the high ground, surrounded by marshlands, overlooking the oyster reef and sandbar that split the pass into Texas and Louisiana channels. Fort Griffin's armament consisted of two 32 pound long-iron smoothbores, two 24 pound long-iron smoothbores and two 32 pound brass howitzers (short-barrel cannons), which were also unfringed. Their range was 1,800 to 1,900 yards at a five-degree elevation. The Federals only had knowledge of the first two guns and were not aware of the additional artillery.

Manning Confederate Fort Griffin's unfinished battlements was Company F., known as the Davis Guards, one of seven companies in the Third Battalion Texas Artillery. Recruited in Galveston in 1861 as a result of the Union blockade of the Texas coast, the men of Company F, principally Irish dock workers, were under the command of Captain Frederick H. Odium.

When the Union fleet was sighted off the coast, Odium left Fort Griffin for Sabine City to press for reinforcements. Lt. Richard W. Dowling, who had married Odium's niece, commanded the remaining 47 men during Odium's absence.

In the early morning of Sept. 7, a sentinel informed Dowling the federal fleet was signaling, and, fearing attack, Dowling ordered his men to cover--he was determined not to fire until the ships were well within range of their guns. His gun crews had daily practice in firing at stakes driven in both channels of the pass and had zeroed in on every inch of the area they would defend.

The Clifton, with Crocker on board, opened the action at 6:30 a.m. Sept. 8, by lobbing 26 shells at the fort with a 30 pound Parrott rifle from a position near the Louisiana shore lighthouse, which still stands today. Firing ceased at 7:30 a.m. Dowling refused to return fire so as not to disclose his strength.

At 11 a.m. the Schem fired three shells at the Confederate steamer Uncle Ben, which had dropped down to Fort Griffin from Sabine Lake upon hearing the explosions. The Schem's guns were off target, and no injuries resulted.

At 3:40 p.m., the four Union gunboats regrouped and got underway for the primary assault.

While the Schem and Arizona moved up the Louisiana

side of the pass to the Confederate garrison's fire, the Clifton, followed by the Granite City, slipped up the Texas side. The ships were only 1,200 yards away before Dowling called his gunners from their shelters to man the artillery and return the Union fire.

On the second or third shot, however, one of the Confederate howitzers fell off its platform, cutting their firepower at a crucial moment.

But skill and practice paid off to make up for the loss. Dowling's men scored a direct hit on the Schem as she steamed up the far channel.

"I opened fire with the whole of my battery on the foremost boat (Schem), which, after the third or fourth round, hoisted the white flag, one of the shots having passed through her steam drum," Dowling reported.

The 32 pound shot actually exploded the steam drum, crippling the boat and blocking the trailing Arizona from further advance.

Shot and shell continued to rain on the defenders from the sharpshooters aboard the -stalled ships.

Despite the pressure, Dowling's men turned their firepower on the rapidly approaching Clifton. When it was within 500 yards, a cannonball damaged the gunboat's tiller rope. The warship went out of control and ran aground below the fort.

"The Clifton withstood our fire some 25 or 35 minutes when she also hoisted a white flag. During the time she was aground, she used grape and her sharpshooters poured an

## Eastland County Law Enforcement Association Meets

Members of the Eastland County Law Enforcement association met Friday for lunch at the Ramada Inn in Eastland. Chairman for the luncheon was Eastland County Judge Scott Bailey who helped conduct the meeting which focused on the new Central Dispatch Radio system.

The new dispatch system has been in the making for the past several months and with completion in sight in the next few weeks all towns that will use the (which will be all towns in the county except Gorman at present) system are anxiously awaiting its operation.

Members of the Eastland and Cisco law enforcement divisions told the gathering that the foundation and siding had been secured and that the tower for the antennas is all that is now being waited on, with all other equipment now in Abilene waiting to be installed.

Other business that was looked after at the meeting was the appointment of Eastland Police Chief Johnny Morren as chairman of this year's law enforcement banquet which is held each year in April. Chief Morren named a large group of men from each town in the association to assist him in the preparations for the banquet.

## Hanna Appointed To Southwest Energy Council

AUSTIN--Rep. Joe Hanna has been appointed to the newly-formed Southwest Regional Energy Council by Speaker of the House, Bill Clayton.

The council was organized in January to study the development and conservation of natural resources in Texas, Louisiana, New Mexico, Oklahoma and Arkansas.

Three members of each state's House and Senate, along with one gubernatorial appointment from each state, and two ad hoc members make up the 35-member council.

The council plans to meet once a month.

"Because of Hanna's important position as Chairman of the House Energy Resources Committee, I know he will offer valuable input to this new council. He will also gain understanding of the energy problems of our neighboring states and the solutions to those problems. I know his presence on this council will serve to better inform the Legislature of potential solutions to the current energy crisis."

incessant shower of mine balls into the works (fort)". Dowling's report continued. Crocker and his men had continued the fight until the ship's boiler exploded from a direct hit.

Piled with dead and wounded the Schem and Clifton had surrendered and the Arizona and Granite City, seeing the channel blocked and knowing the accuracy of Dowling's artillery, withdrew from the pass.

In the fight, which lasted only 45 minutes, the Union troops had 19 killed, nine wounded, 37 missing and 315 officers and men taken prisoner, all at no cost to the defenders. Several burned Union soldiers later died and were buried by the citizens of Beaumont.

A handful of Texans had prevented the Union Army from

landing troops at Sabine Pass, saving the Texas railroad between Beaumont and Houston from falling into Union hands. Had the North succeeded in the drive, it might have weakened Texas and the western Confederacy, and severely crippled the Confederate cause since Texas was the chief supply center for the western front.

The unexpected repulse of the Union fleet kept an occupation army out of East Texas and kept the port open to blockade runners, vital to the southern effort during the Union's Red River campaign.

Today, the valiant and successful efforts of Dick Dowling and his men are still remembered.

Snuggled up against the Sabine Ship Channel in deep

southeast Texas, just a short distance from the small town of Sabine Pass a 56 acre park commemorates the historic battle that occurred nearby. The park is 2 1/2 miles southeast on Jefferson County Road from the City of Sabine Pass.

All that remains of Fort Griffin today are records of its

existence and a historical marker since the original site of the earthen fort probably has been destroyed by dredging or inundated by water from the ship channel. But the history and feeling remain. A bronze statue and pink granite monument to Dick Dowling adorns a grassy knoll in the park.

**DOLLAR DAY DOLLAR DAY DOLLAR DAY Sale**

Last Week For  
**COAT SALE**  
40% Off

Another Reduction On Sta-Pres, Bell Bottom  
**LEVIS** NOW \$8.00

Steel Toe Western Style Work Boots By **WRANGLER** NOW \$22.98 Reg. \$27.00

★ New ★ **LEVI CASUAL SUITS** For Men \$41.00 And Under

**GREER'S WESTERN STORE**  
205 S. Main Ranger

**BARGAIN DAYS MONDAY IN RANGER**

Bag **SHREDDED FOAM**  
Reg. \$1.00 NOW **88¢**

Tinkles Daytime 30's **DISPOSABLE DIAPERS**  
Reg. \$2.00 NOW **\$1.77**

**Ben Franklin Family Center**  
Ranger

**AUDIVOX**  
Hearing Aids


\$75 Off On All New Hearing Aids  
Until March 19th

Call Or Write Us And We Will Be Glad To Come To You.  
Repair service on all brands  
**Clinton Hearing Aid Service**  
609 W. 11th - Cisco 442-2168  
Licensed by State Board to fit and dispense hearing aids.

**MONUMENTS**  
442-1127  
SINCE 1884  
**RAWLINS MONUMENTS**

"Because Someone Lived"  
ELBERT  
500 East 8th St. Roy L. Taylor, Rep. Cisco

**The Home of Your Dreams— for Real!**



**7 3/4% VA & FHA Available!**

Nothing Down On VA Loans  
Low Down On FHA Loans  
Conventional Loans Also Available  
Choice Location Still Available

**H & W Development Co.**  
216 S. Seaman Eastland  
629-1702

EQUAL HOUSING

**Our Sidewalk Sale Continues**

MORE Items Added

Men's Belts \$1.00	Boys' Ladies' Infant Shoes \$3.00
Slips, Bras, Tops And Shorts 50¢ to \$1.00	Girls Sandals \$2.00
Ladies Pant Tops 2 price	Boys Shirts And Pants 2 price
Boys Shirts And Jackets	

We are adding pre-teen sized clothes for Jr.-High Set.  
Come on over! You'll find lots and lots of items At Unheard of Prices!!

**Young Age Shop**  
In RANGER



**Your Local Newspaper Does Job Work Of All Kinds**

LETTERHEADS  
ENVELOPES  
STATEMENTS  
BUSINESS CARDS  
CIRCULARS  
INVITATIONS  
WEDDING  
ANNOUNCEMENTS

If You Are Running Low - Call Us For A Quick Supply  
- Check Your Supply Of Letterheads And Envelopes -  
Send Out Statements Next Month On Your Personalized PRINTED STATEMENTS  
RULED FORMS OF ALL KINDS  
WE ARE EXPERIENCED PROFESSIONAL PRINTERS  
WHO APPRECIATE YOUR BUSINESS

Coastal Sprigging  
Call  
Johnny Cantwell  
647-1002

FOR SALE  
• Hitches (Any Make Cars)  
• Hitch-Balls  
• Tow Bars  
RENTALS:  
• Tow-Dollies  
• Tow-Bars  
• Trucks & Trailers  
• Hitches

Gilbert Gulf Service  
500 W. Main  
629-8805  
Eastland, Texas  
Also Farm Bureau  
Tires & Batteries

## COURTHOUSE NEWS

**NEW CAR REGISTRATIONS**  
Rodger Terrell--Chev.--Eastland  
Hollis D. Williams--Chev.--Cisco  
Tommy Hutchins--Chev.--Sidney  
Jim Tucker--Chev. Pkup--Stephenville  
Lyle R. Anderson--Chev.--Arlington  
Cedric W. Bettis--Chev. Pkup--DeLeon  
Sandra Wright--Chev.--Abilene  
Vergil Cozart--Ford Pkup--Cisco  
J.E. Smitherman--Ford--Crane

**MARRIAGE LICENSES**  
Terry David Clark and Debra Gail Blevins  
Marion Glenn Asher and Bertha Belle Harrison  
Larry Don Rushing and Deborah Sue Minges

**INSTRUMENTS FILED COUNTY CLERK'S OFFICE**  
Claud T. Aylesworth to State of Texas Tex. Emp. Co.--Notice

st. tax lien  
Rueben Andrade to Monroe Thurman--quit claim deed  
Ethel G. Bailey to Horace L. Callaway and wife--rel. venders lien  
Tommy Bacon and others to Bobby M. Moore--oil, gas lease  
Nolan M. Butler and wife to Ryan Mort. Co.--deed of trust  
Della Brin, dec'd to the public--certified copy probate  
The Bannsee to the public--assumed name  
H.N. Coker, Dec'd to the public--certified copy probate  
J.B. Cole and others to state tax lien--notice tax st. lien  
Ronnie Lloyd Couch and wife to Elvie F. Bryce--quit claim deed  
City of Cisco to F.D. Moore and wife--cemetery deed  
Jesse Thomas Cavanaugh, dec'd to the public--proof of heirship  
City of Cisco to the public--release paving lien  
Velma F. Chilson and others to James Robert Morrow and wife--rel. venders lien and deed of trust  
Eunice Katherine Dowdy and others dec'd to the public--proof of heirship  
Pearl Donaway and others to Lloyd Johns--oil, gas lease  
Florence Delaney est. by Ind. Exr. to Jack Hailey--rel. deed of

trust.  
Joe C. Deal and wife to Robert G. McCoy, guardian of est. of David G. McCoy--warranty deed  
Eastland Natl. Bk. to T.M. Fullen--rel. deed of trust  
Eastland Natl. Bk., to Edgar Randell Overstreet and wife--rel. mechanics and materials lien  
Eastland Natl. Bk., to Tri-Mark Dev. Co. Inc.--rel. deed of trust and venders lien  
City of Eastland to C.U. McCullough--cemetery deed  
Byrta Rose Eastham and husband to Victor Cornelius and wife--warranty deed  
Ada Sarah Follner to Raymond O. Folkner and others--warranty deed  
Ada Sarah Follner to Zelma Krysczoski and others--warranty deed  
Ada Sarah Follner to Herbert N. Folkner and others--warranty deed  
1st Natl. Bk., Cisco to H&W Dev. Co.--rel. deed of trust  
1st Fed. S&L Assn. to Marie Owens--rel. deed of trust  
J.W. Gerhardt and wife to Ralph C. Hart--oil, gas lease  
Estate of Ethel William Hise, dec'd to the public--certified copy probate  
Susan Hunt and others to the public--aff'd  
Virginia V. Johnson to Jewel S. Ingram and others--warranty deed  
Gerald W. Johnson to Virginia V. Johnson--warranty deed

Monty J. Jones to Tony Long and wife--warranty deed  
Thea Lee Jeter to James R. Taylor and wife--asn. deed of trust  
Estate of Kay Kamble, dec'd to Kimbell Art Found--warranty deed  
O.Z. Kellar and wife to J.D. Narry--warranty deed  
James A. Lewis and wife to Westley L. Rakes and wife--warranty deed  
Tony Long and wife to Hubbard Contractors Inc., to 1st St. Bk., Rising Star--mechanics, materials lien and asgn.  
Tony Long and wife to 1st St. Bk., R.S.--deed of trust  
Lomas and Nettleton Co. to Ommer Akers and wife--rel. deed of trust  
Florine Martin by Atty in fact and others to Ridglea Oil Co.--oil, gas lease  
Fred D. Mafey, Estate to the public--certified copy probate  
McVean Steel Co., Inc. to I.P.S. Inc. and others--abstract of judgment  
Mose Nantz yo Tex. Elec. Serv. Co.--esmt. and right of way  
H. Bryan Poff Jr. to N.H. Holliday--asn. oil, gas lease  
Republic Energy Corp to Henry Vincent--asn. oil, gas lease  
City of Ranger to Ranger Jr. College--warranty deed  
Floyd J. Rice and wife to Eastland Natl. Bk.--deed of trust  
I.O. Ragland and wife to James E. Riggs and wife--warranty deed  
Octavis Ragland and wife to James E. Riggs and wife--warranty deed  
Bill Reynolds and wife to Joe C. Deal and wife--warranty deed  
Clifford B. Rust to Joe C. Deal and wife--rel. venders lien and deed of trust  
Mickie Richeson and others to St. of Tex.--deed  
Oren M. Speegle and wife to 1st Natl. Bk., Cisco--deed of trust  
Kathryn L. Sullivan to Pet. Co. of Tex.--oil, gas, min. lse  
John A. Smith and others to Gerald W. Johnson--warranty deed  
H.O. Smith and wife to 1st Natl. Bk., Cisco--deed of trust  
Tom Stark and others to Leonard L. Hollander--warranty deed  
Lola Mae Sims, dec'd to the public--proof of heirship, will attached  
Norman E. Stephens and others to John W. Crocker--warranty deed  
T.L. Smythe and wife to J.G. Thompson and wife--deed of trust  
Helen D. Thomas and husband to Tex. Elec. Serv. Co.--esmt. & right of way  
Vada M. Thomas and others to St. of Tex.--notice st. tax lien  
Tri-Mark Dev. Co. Inc. to Nolan M. Butler and wife--warranty deed  
Tri-Mark Dev. Co. Inc. to H.O. Smith and wife--warranty deed  
John Thomas Taylor, dec'd to the public--proof of heirship  
J.G. Thompson and wife to T.L. Smyth and wife--warranty deed  
United States to Winfrey Feed and Peanut Co. Inc.--rel. fed. tax lien  
R.G. Wheat and others to Tex. Elec. Serv. Co.--esmt. and right of way  
Well Fluids Corp. to John R. Shaw Jr.--abstract of judgment  
Dora M. Warren to Hazel Morren Phillips--warranty deed  
91st DISTRICT COURT  
Dynthia Glenn Polk vs. Billy Fayne Polk--divorce  
Joy W. White and others vs. the unknown stockholders of Pinto-Stephens Oil Co. and others--judgment for title and possession  
Maurice Lee Grozier vs. JRB Inc.--suit for damages  
Carl Dean Stacy vs. Pamela K. Stacy--to have marriage declared void  
Sherry Fox vs. Claudie Fox--uniform reciprocal child support  
Millie Jeannette Lamb vs. Robert Anthony Lamb--divorce  
Frederick Lucille Russell vs. Edwin Leonard Russell--divorce  
Westchester Fire Ins. Co. vs. Winnie Rue Hunt--to set aside award of the industrial accident board

## Jeff Glazner Elected Director Of Graham Bank

Jeff Glazner has been elected an advisory Director of the Graham National Bank following a recent stockholder's meeting according to an announcement by Glyn Gilliam, president.

Glazner, who serves the bank as executive vice president, joined Graham National on Nov. 1, 1972, moving from Eastland. In addition to his banking responsibilities, he is active in local civic and church affairs. He serves as a director of Graham General Hospital - Board, director of Graham Chamber of Commerce, director of Heart Fund and is a member of the Graham Lions Club. He and Mrs. Glazner, along with their four sons, are active members of the First Baptist Church.

## PREVENT BROKEN HEARTS



USE YOUR SEAT BELT

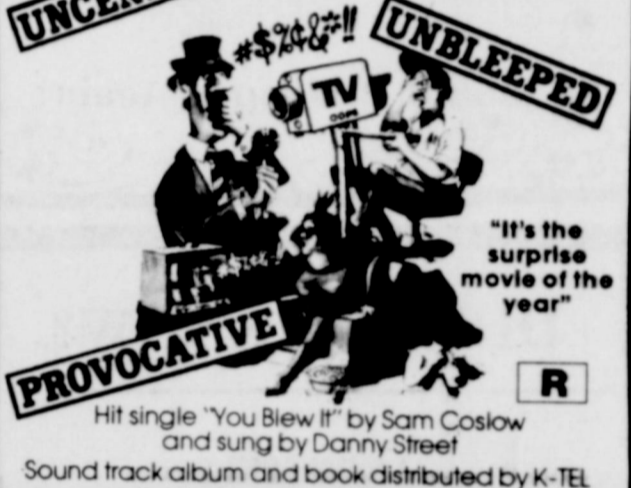
**H.L. Ferguson & Tony Lowrance**  
Backhoe Service  
Digging, Ditching,  
Sand & Gravel Hauling  
CALL IN EASTLAND 629-2795



## Majestic Theatre

Eastland 629-1220  
Sun. - Mon. 7:30 Only

K-TEL PRESENTS KERMIT SCHAFER'S  
**PARDON MY BLOOPER**  
based on radio & T.V.'s most hilarious boners!  
UNCENSORED UNBLEEPED  
PROVOCATIVE R



Thurs. 7:20 P.M. Fri. & Sat. 7:30 & 9:06 P.M.  
He's a dust eatin', Hell fightin', Dynamite dude!

**RIDING TALL**  
PG  
Andrew Prine and GILMER McGRIMMICK  
11 P.M. Fri. Late Show \$1.00 Adm.  
For \$10,000 they break your arms. For \$20,000 they break your legs. Axel Freed owes \$44,000.

**The Gambler**  
James Caan  
"The Gambler"  
Co-starring Paul Sorvino Lauren Hutton

## Final 1974 Peanut Production

Information For Eastland Co.

The Eastland County ASCS office has furnished the following final information on 1974 peanut production for the county.

1. 1974 county peanut allotment before adjustment	38,884.5 Acres
2. 1974 final county peanut allotment after adjustments for sale, lease and owner transfers	36496.0 Acres
3. Number of farms on which peanuts were harvested in 1974	640
4. Harvested acreage	35740.7
5. Number of pounds of peanuts threshed for 1974	36192627 lbs.
6. Average production per acre	1013
7. Number of peanut farms	821
8. Number of peanut farms in the county in 1974 with effective farm peanut, allotment after transfer by sale, lease and by owner	651

**NEW!** **BERNINA**

**Bernina 830**

New elegance, simplicity and versatility in a sewing machine! The all-new Bernina 830 is the modern way to sew. Compact shape, stronger construction, easier maintenance, a super selection of built-in stretch stitches, the new Bernina 830 puts fun back into sewing! There is NO major stitch the Bernina 830 cannot sew. See your nearby Bernina Dealer for a demonstration.

**Rita's Fashion Fabrics**  
Int. 20 East Of Eastland Next To Ramada Inn  
629-8020

PHONE 647-1149  
**RANGER DRIVE-IN THEATRE** Opens 7:30 Starts at 8:00  
Last times SUNDAY March 2  
**2 Big Pictures**  
do you dare spend a night with Vincent Price in the **MAD HOUSE**  
PLUS OUR SECOND FEATURE  
AN ADVENTURE IN THE ULTIMATE TERROR!  
**THE DEATHMASTER**  
ROBERT QUARRY  
Coming FRIDAY-SATURDAY-SUNDAY March 7-8-9

LIFE...LOVE...SURVIVAL...THE GREATEST ADVENTURES OF ALL.  
A MARTIN RAMSBOFF PRODUCTION  
**THE WHITE DAWN**  
A Russian girl who wanted his bathtub. An American Reporter who wanted her love. Behind the iron curtain, that's a dangerously funny proposition.  
**GOLDIE HAWN HAL HOLBROOK THE GIRL FROM PETROVKA**  
ANTHONY HOPKINS GREGORY ANSLAN  
PG PARENTAL GUIDANCE SUGGESTED

**Bellone** ANNOUNCES A **Special**  
All New Hearing Aids Are Reduced By \$50.00 Until March 15th

**Jim Graves**  
Consultant  
629-8159  
Eastland, Texas

**BELTONE HEARING AID SERVICE**  
In Eastland  
Problems & Questions  
Beltone Announces  
New Office Hours  
9 - 5  
Tues. Thru Fri.  
Free Service On All Makes  
104 Commerce  
South Side Of Square

**CITIZENS REALTY**  
YOUR RESIDENTIAL SPECIALIST

Large older home, recently remodeled. 3 bedrooms, carport. Freshly painted exterior. Approximately 1488 square feet in this home located on oversized lot in Eastland. \$250 down.

Looking for a 3bedroom home with central heat and air? This 3 year old brick home is located near Cisco High School and the new City Park. All built - ins. Pay equity and assume loan.

Nice 2 bedroom, 1 bath home on corner lot in Cisco. This two year old brick home with central heat can be yours on a loan assumption - \$950 down and \$136 monthly payments.

Brick 3 bedroom, 2 bath home with central heat and air available in Eastland. You can choose your own carpet to be installed. \$350 down.

3 bedroom, 2 bath brick home under construction in Cisco. Drop by 1408 Simms and see this home go up. Choose your own interior decor. \$1000 down

1974 14 x 70 mobile home. 2 bedroom, 2 bath. Large living room. Central heat. All built - ins and refrigerator. \$750 down and assume payments of \$115 per month plus lot rent.

Two nice lots on hill with view in Eastland, near schools. 62 x 150. Only \$300 down and \$31 monthly.

Corner lot in Eastland, near center of town. Ideal for mobile home or new home. 50 x 150. \$250 down. Close to schools.

135 acres - 46.7 acres peanut allotment. 4 irrigation wells. Good terms. Located north of Cross Plains.

**CITIZENS REALTY**  
820 West Main  
Eastland, Texas  
629 - 2404  
629-1769

Wayne Durham - Associate  
629 - 2743

B.G. Brown - Broker  
442 - 1631

Karla Brown - Broker  
442 - 1631

**We want to wipe out cancer in your lifetime.**

Gina Lollobrigida takes time out from screen roles and photography, her newest career, to remind everyone to give to the American Cancer Society. The talented beauty urges everyone to get into the fight against cancer by making a generous donation when the ACS volunteer calls.

**The Light Touch**  
By Clint Bray

It's a mistake to say you have a favorite color, because people remember it years after you've gotten to hate it.

The average man is treated like a king in his house. He keeps getting lost in the shuffle.

Senior citizen to another: "Deep down in his peacemaker, he's a real phony."

Children mature earlier these days, thereby collecting a far greater store of misinformation than their parents did at their age.

It takes less time to do a thing right than to explain why you did it wrong.

We do things right at BRAY'S in Eastland and Ranger. See us when it's time for your new spring wardrobe.

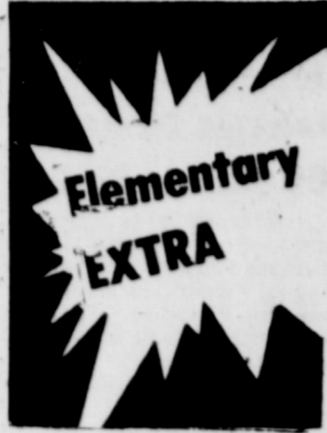
**Area Writers To Meet Tuesday**

The area writing group, formed a month ago in Cisco, will meet Tuesday, March 4, at 7:30 p.m. in the Cisco Chamber of Commerce building. All area writers are invited to attend. This month's program will be on "Fiction Writing Techniques." Even if fiction writing is not your primary interest, plan to attend because many of the techniques used in fiction writing are applicable to other forms of writing. Please bring some of your work with you, as there may be time to have a short workshop session after the program.

**drive**

Custom New Homes  
Quality Materials & Workmanship  
Complete Service Including Financing  
Visit us at our new location and find out  
how easy it is to own your own home.

**B.G. BROWN CONSTRUCTION CO., INC.**  
Residential Specialists  
820 W. Main  
629 - 2404  
Nights - 442 - 1631



**MRS. WORD  
KINDERGARTEN**  
We have been having fun this week getting ready for Open House, which is going to be next Thursday night. Tuesday everyone got to paint with tempera paint and do a pull string picture. Wednesday we painted again, except this time we made the designs by blowing through straws. All the boys and girls did nice work.

We have all enjoyed the nice weather outside. One day we took the jump ropes out and practiced jumping. Our leaders this week have been Delisa Smith, Lisa Tyson, Diana Williams, Vicki Wright, Shane Bowles, Daren Connel, Alan Crowe, and Andy Fambrough.

We hope to see you next Thursday night at Open House.

**MRS. ALLMAND  
FIRST GRADE**

We have been studying about George Washington and the symbols of the United States. We have been busy decorating our room for open house. We are looking forward to our parents coming to visit our room Thursday night. We have made kites and other things for March.

We have a new boy named donnie in our room. Our other Donnie is still in the hospital but he will be home soon.

**MRS. COATS  
SECOND GRADE**

We are busy getting ready for public school night next Thursday. We have made kites, umbrellas and scrap flowers. Our plants are growing and we are learning about the parts of plants.

We are making a seed collection and a rock collection for our room.

**MRS. DALLAS  
SECOND GRADE**

We planted a garden this week. And we did seed pictures. We made some kites. We got a new girl and her name is Michele. And we lost one girl, her name is Tammy. We made some flowers. We are making a seed chart. We have been learning about carrying in arithmetic. We have been talking about the four food groups.

Kim McPherson.

**MRS. TURNER  
THIRD GRADE**

We have been studying hard, and we have been doing art and making things with shells.

Wilson Ensor

**MRS. YOUNG  
THIRD GRADE**

This week we made an egg garden. We put dirt in empty egg shells and put them in egg cartons. Then we planted flower seeds in them. We watered them every day.

In math we have been learning about multiples, factors and prime numbers.

Love  
Cathi Coan

**MRS. WELCH  
SIXTH GRADE**

Do you want to spend the day with 6A? Well, we've been making art projects nearly all week. We've made stick people out of our school pictures, and for reading we had to make a book report and make an object out of a box, and made material pictures too. And Friday we have a social studies test, the last one of the year. And we're working fractions in math. And in PE the girls are playing soccer and with the parachute.

Lorie Bagwell

**School Menu**

- MONDAY, MARCH 3**  
Beef and cheese pizza  
Pinto beans  
Buttered cabbage  
Lettuce wedges  
Corn bread  
Cake squares
- TUESDAY, MARCH 4**  
Barbecue chicken  
Whipped potatoes  
Green peas  
Lettuce and tomato salad  
Sliced bread  
Peach cobbler
- WEDNESDAY, MARCH 5**  
Roast turkey and gravy  
Whipped potatoes  
Green beans  
Cranberry sauce  
Stuffed celery  
Sliced bread  
Pumpkin pie
- THURSDAY, MARCH 6**  
Tacos  
Pinto beans  
Seasoned spinach  
Cabbage slaw  
Corn bread  
Chocolate-oatmeal cookies
- FRIDAY, MARCH 7**  
Steak fingers  
French fries  
Buttered corn  
Round-up salad  
Jello

**Centennial  
Memorial  
Library**

Contributions to the Centennial Memorial Library for February:

- Barbara Awalt Wood in memory of Hollis (Buddy) Woolsey \$5  
Marene Johnson-Johnson in memory of Carl Jones \$5  
Marene Johnson-Johnson in memory of Ina Bean \$5  
Mr. and Mrs. H.L. Lewey, Mr. and Mrs. Chuck Williams, Mr. and Mrs. Doyle Tow in memory of Mr. and Mrs. Curt Williams \$15  
Marene Johnson-Johnson in memory of Hubert Jones \$5  
Anonymous in honor of Mike Collins \$5  
Books in memory of Young Readers Bible in memory of Mr. Ed Layton, former school teacher and Postmaster.  
"Jokes for Children and S.O.G.'s" compiled and given by Mrs. Bernice Stephens in memory of Grandfather G.W. Bull (who ran a livery stable in Eastland)  
Other new books in the Library:  
"The Will of Magda Townsend"--Banning  
"The Ultra Secret"--Winterbotham  
"Three From the 87th"--H.G. Wells and Rebecca West--Ray  
"The Ladies of Seneca Falls"--Gurko  
Ten newly rebound books of value

- Recent contributions to the 1776 Club:  
Mrs. L.E. Corbell \$2  
Mrs. A.E. Cushman \$2  
Jana Ragland \$2  
Karen Green \$5  
Mrs. D.L. Kinnaird \$5  
Mr. and Mrs. Chas. Terrell \$7.50  
Mr. and Mrs. Arthur Murrell \$10  
Mr. and Mrs. Ernie Rice \$10

**Valley View To  
Begin Arts And  
Crafts Workshop**

The residents of Valley View Lodge are interested in starting an Arts and Crafts Workshop. We need the help of the general public in obtaining materials for creative crafts.

If you have any quilting scraps, thread, artificial flowers, lumber scraps, old hose for stuffing purposes, spray paint, or anything that might be used in Arts and Crafts that you would like to donate, please leave them at Valley View Lodge or contact Judy Chaney.

Judy Chaney  
Director of Activities.  
(3-2, 3-9, 3-16)

**Caution!**



A medicine chest that's a jumble of old medicines and other health supplies can be a danger instead of a help. Clean up and clear out now, then stock up with us.

**Central Drug**  
North Side Of Square

**Debbie Smith To  
Go To Japan**

Debbie Smith, daughter of Mr. and Mrs. Leo Smith of Abilene, won a scholarship at Baylor University to go as an exchange student to Japan. Debbie is studying medicine and scored very high in her class. She will be in Japan for one year.

Debbie has a sister Sharon and a brother Rodney, both of Abilene.

Grandparents are Mr. and Mrs. Lane Carey of 208 W. 19th in Cisco and Mr. and Mrs. J.M. Smith of 110 N. Walnut in Eastland.

**Rebekah Lodge  
Accepts Three  
New Members**

The Eastland Rebekah Lodge Number 177 took in three new members at their regular meeting. They initiated two members: Juanita Massengale of Eastland Bro. C.W. Kelley of Whitney.

One member Bro. Hugh Mahaffey of Eastland was accepted by deposit of card.

The business session was presided over by Noble Grand Lula Mae Basham.

Initiating Noble Grand was Sis. Johnnie Mathews Kelley of Whitney. Assisting the Eastland Rebekah Lodge were eight Rebekah Lodge members of Cisco.

After the beautiful ceremony and initiation they adjourned and had refreshments.

**Art Association  
To Hold Second  
Art Exhibit**

The Eastland County Art Association President, Emma Lou Benton, proudly announces the second annual Art Exhibit to be held May 2, and 3, 1975.

Paintings must be registered between 1:00 and 6:00 p.m., Thursday, May 1, 1975. Hanging fee for each painting will be \$1.00 for adults and 50c for children. There will be a limit of four paintings per person.

Judging of the paintings will take place Thursday evening after 6:00 p.m. They will be on display for the public, Friday and Saturday afternoon until 4:00 p.m.

Don't forget! You have a special invitation to enter your paintings, or just come and view the displays.

The place for the exhibit to be held will be announced at a later date.

**Eastern Star To  
Meet March 4**

Eastland Chapter #280, Order of the Eastern Star, will have their regular monthly meeting Tuesday, March 4, 1975, at 7:30 p.m. at the Masonic Hall.

Mrs. Vera Keith, Worthy Matron presiding during the business hour.

**Public School Week**

How much do you know about your local school district? A surprisingly high number of citizens know very little, yet these same people would no doubt agree that a strong and vigorous public education system is absolutely essential for ensuring the continuing quality of life in Texas and the nation.

March 3-7 has been designated TEXAS PUBLIC SCHOOL WEEK across the state. Schools in our community will be open for visitation and inspection.

Students' work will be on display, and teachers and faculty will be on hand to answer questions from the public. We, as parents and concerned citizens, have a duty to ask those questions. Unless we understand how the system works, we can't determine its effectiveness, and we can't be sure our children are getting the high quality of education they will certainly need to deal with the future. It all starts with us. Observe TEXAS PUBLIC SCHOOLS WEEK this year, March 3-7.

**Livestock**

**EASTLAND**  
The market at Eastland Livestock Auction was extremely active with higher prices on all classes of cattle with packer cows as much as \$2.30 per hundred higher on a run of an estimated 800 head of cattle, 424 hogs, and 19 sheep and goats at its sale Tuesday, according to Lloyd Goan, market reporter. The sale had 207 consignors and 88 buyers. Quotations follow:  
Butcher bulls: 21 to 25.75, Stocker bulls: 17.50 to 28.  
Butcher cows: 13 to 22.75.  
Stocker calves and yearlings: 18 to 28.  
Stocker steers and heifer calves: 20 to 30.  
Stocker steer yearlings and heifer yearlings: 17.50 to 28.  
Stocker cows: \$110 to 200.  
Cows and calves by the pair: \$155 to 245.  
Butcher hogs: 38.50 to 39, sows: 34.50 to 37.

**YOUR MILITARY EXPERIENCE  
CAN GIVE YOU AN EXTRA INCOME.**



Putting in one weekend a month can give you a steady extra income. Plus important retirement benefits.

**THE ARMY RESERVE.**

*Lloyd Armstrong  
Photographer*

- Portraits
- Weddings
- Commercial
- Copying Old Photos

*A Member of the Professional  
Photographers of America*

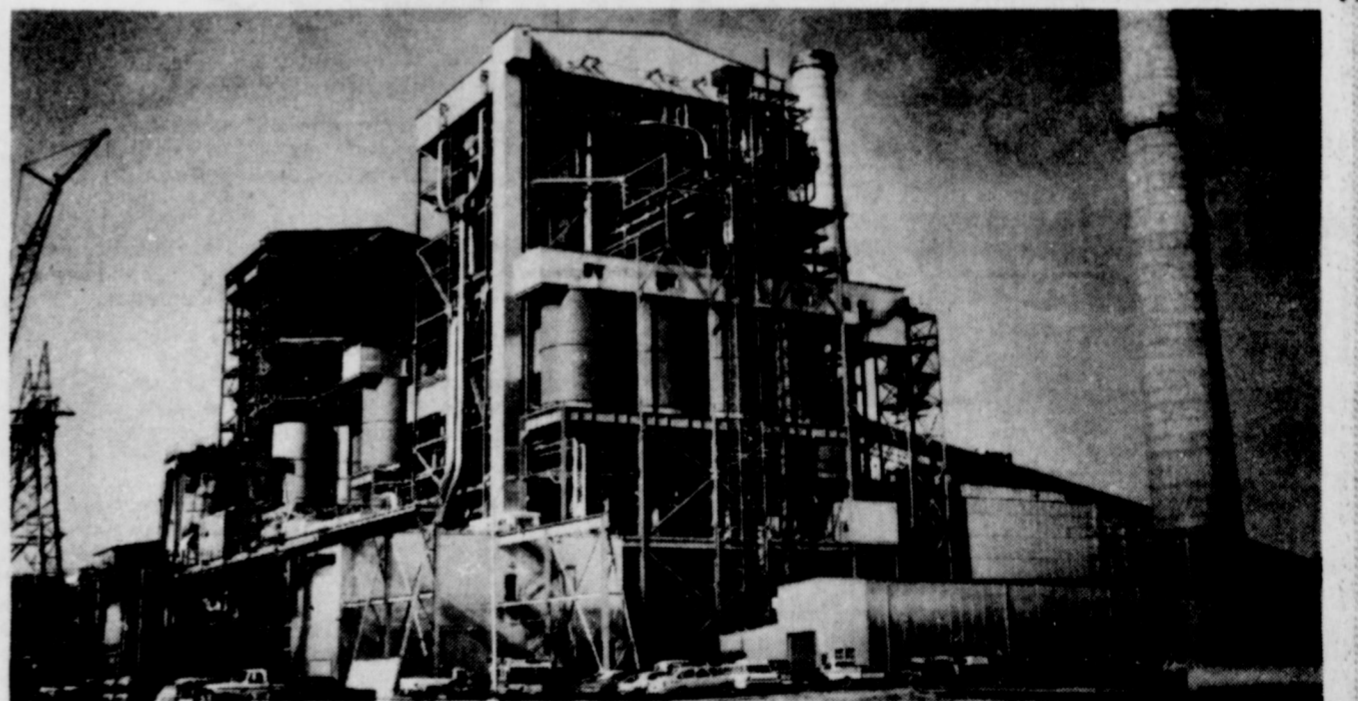
*200 S. Oaklawn - Eastland,*

*629-1677*

If You Haven't Received Your Free  
**Nite-Lite**  
In 10 Days Please Call Us And One Will Be Mailed.

- ★ Lites In Total Darkness
- ★ No Electrical Expense
- ★ No Radium! Non Toxic
- ★ Manufactured For Many Years Of Use
- ★ Your "Nite Lite" Emergency Numbers Can Stay Illuminated  
Several Hours When Completely Charged.
- ★ Recharging Your "Nite Lite" Is Unlimited--  
Automatically Recharges When Exposed To Artificial Or Natural Light.

**BAKKER  
FUNERAL  
HOME** 629-1726



The 575,000 kilowatt Unit #1 at the new lignite coal-fired Monticello generating station is now in operation. Right behind it and still under construction is Unit #2, which will have the same capacity.

**Introducing Monticello: The newest  
in a whole new generation of power plants.**

The first 575,000 kilowatt generating unit at the new Monticello power plant near Mount Pleasant, Texas, is now in service.

Monticello is the second lignite plant Texas Electric has built in cooperation with two other electric companies. The first, Big Brown, is near Fairfield and has been in operation for three years now.

These lignite plants are an important part of Texas Electric's system. We're building them because new supplies of natural gas and oil, our traditional fuels, are hard to get and extremely expensive.

In 1975, about 20% of our total generation will be fueled by lignite coal. By 1980, we'll add two other units at Monticello and four at a new site near Martin Lake. Lignite will then account for

almost one-half of our total generation. Power plants that use lignite fuel are much more costly. But lignite itself is less expensive than other fuels. Its use will help us keep the price of electricity from increasing as much as it would if we tried to depend on expensive new supplies of natural gas and oil.

At Texas Electric we're continuing the orderly development of our power system so that you'll continue having the electricity you need.

New lignite plants like Monticello are helping do the job.

**TEXAS  
ELECTRIC SERVICE  
COMPANY**

F. N. SAYRE, Manager, Phone 629-2651

*Do You Remember*

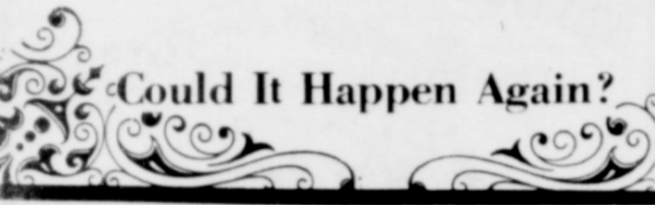
BY HERMAN DEMPSEY

In these early days, the purchase of anything for pleasure or entertainment depended on the success of the production in the "money" crop by the family.

It was one of those years when one of the more progressive families of the community raised a bumper crop of cotton. After it was gathered, hauled off to the cotton gin and sold, the father and mother decided they could afford to buy a phonograph for the children as a Christmas present. They had read where Thomas A. Edison had invented the machine in 1876 although it was not put out for sale and use until early 1900. The contraption consisted of a

rotating cylinder, with an arm holding the needle and a horn through which the sound came out. It was driven by a spring that had to be wound each time a record was played. It was not until 1925 when the phonograph was fully developed by Emile Berliner.

When the new device was brought into the home, it was only a short time until the word got around and people came from all over the community to hear the music and words come out of the horn fixed to the strange looking box. They sat in amazement as they listened to all the records they had and on some they would play over and over. This was the most popular family in the community.



**DID YOU KNOW?**

**Announcing ---  
Shorty Alcock**  
Mechanic

**Pipkin Motor Co.**



There is a sentinel we see around many lakes, bays, ponds, and rivers all over Texas, who is somewhat of a unique creature. The Belted Kingfisher is the only bird except the Tern that dives headlong from air into water, and this to secure his all important meal. Fish is the main diet, and he prefers chubs, and morsels not exceeding three inches long. The Kingfisher hovers looking for a meal, and then suddenly plunges head first to grab it. He guards his fishing rights vigorously, with an uneven wingbeat, and a loud high rattle. When his water hole is dry he eats mice, and insects. Wintering through much of the state, the Kingfisher breeds south and west to the Pecos. The name means chief of fishers, and belted refers to the breast band.

Blue gray above and white below, this big headed, big billed fellow has a bushy crest besides the broad gray band. The female has a second chestnut colored band. Normally you see this specie in singles. They burrow in a river bank or sand bank 3 to 15 feet, digging with their beak, and scratching out sand, kicking with both feet. At the end of the tunnel he prepares a nest for laying eggs, and incubation. The male does most of the work, and in burrowing he often prepares extra nesting areas which swallows take advantage of. The female lays 5 to 7 white eggs which are incubated as a joint project 16 to 17 days until hatched. In 2 to 3 weeks these youngsters can fly and dive. A few days later they are on their own.

The Greek name for this bird comes from the Greek "Halkyon". Halkyon days in a Greek myth were calm days at sea. These days were calm so that the floating nest of the Kingfisher would not be disturbed during brooding period. The story says that the days were kept calm by the order of the gods to honor Alcyone, daughter of Aeolus, god of the wind, who when widowed, threw herself into the sea, and was transformed into a Kingfisher, along with her mate. To this day both roam and nest on the sea. The next time you are out driving, keep an eye out for the Kingfisher perching above water.

There are signs of spring all around. The Robins are coming in from the woods, and are moving dead leaves, searching for food. The fat Robins in our area are evidently finding plenty. The Wrens are singing and examining the bird houses, while other birds have been preparing for new broods. It will not be long before Purple Martin time. You may wish to put up a house this year to see what happens. Whatever happens will be a source of pleasure.

AN EASTLAND BIRD WATCHER



**Brittain  
DISCOUNT  
Center**  
Eastland

**Happy FOR  
DOLLAR DAYS!!**

**Manpower DEODORANT**  
5 oz. **83¢**

**VICK'S NYQUIL**  
NIGHTTIME COLD MEDICINE  
10 oz. **\$1.67**

**Pearl Drops TOOTH POLISH**  
Regular Or Spearmint Flavor  
**97¢**

**CRICKET LIGHTER**  
\$1.77

**Arthritis PAIN FORMULA**  
40 Tablets **79¢**

**PREPARATION H**  
24 Hemorrhoidal Suppositories **\$2.37**

**MASKING TAPE**  
3/4" x 30 Yds. **57¢**

**Sominex SLEEP AID**  
32 Tablets **\$1.37**

**Miss Breck HAIR SPRAY**  
Regular/Unscented/  
Unscented Super Hold/  
Ultimate Hold  
Super Hold **67¢**

**Alka-Seltzer Plus COLD TABLETS**  
20 Tablets **71¢**

**Jergens' Clear COMPLEXION BAR**  
**37¢**

**Wernet's DENTU-CREME**  
Toothpaste For Cleaning  
False Teeth **47¢**

**New By Helene Curtis SUAVE**  
Strawberry Essence  
Shampoo And Suave  
Strawberry Creme Rinse  
With Body Your Choice Only **59¢**  
Try Them Together

**Listerine MOUTHWASH**  
32 oz. **\$1.67**

**Vicks VAPO-RUB**  
1.3 oz. **47¢**

**TAMPAX**  
Regular Or Super  
10 Tampons **37¢**

**Hospital News**

Patients in Ranger General Hospital Saturday morning - were:

- Mary Vaughn
- Docia Robinson
- Mae Johnson
- Mary Hammer
- Ravie Dugan
- Eunice Keith
- Anna McEver
- Anna Mae Gregg
- Dinah Everett
- Hollis Brooks
- Debra Ingram
- Vergie Lee
- JoAnna Olsen
- Frances Casey
- Bennie Leith
- Mary Pierce
- Frank Bargsley
- Mary Elkins
- Annie Jenkins
- Sarah Rawls
- Alice Rainey
- Baby Boy Rainey
- Susan Kitchens
- Baby Boy Kitchens
- Mona Guess
- Baby Boy Guess
- Carmon Young
- Dusty Polk
- Bertha Tankersley
- Sullivant Mauney
- R. W. Gordon
- Ollie Hennessee
- Del Walker
- Hollis Clifton
- Odessa Johnson
- Mildred Bradley

Willard Liles  
David Martin  
Edgar Harding  
Paula Ovalle  
Gayle Kline  
Mildred Faircloth  
Betty Regan  
Nina Hinchey  
Baby Boy Crawford  
Baby Girl Barber

Patients in the E. L. Graham Memorial Hospital were listed as follows:

- Lillian Thornburg.
- Josephine Clements.
- Dewey Isbell.
- Emzie Lawson.
- John Terry.
- Gladys Taylor.

Patients in the Eastland Memorial Hospital March 1, 1975, were:

- Robert Peasley
- Elbert Turner
- Archie Dunlap
- William McMillan
- Trannie Lasater
- Opal Griffin
- Rush Crawley
- Neal Langford
- Lillie Harris
- Arlee Wigington
- Rena Berkley
- Connie Escobedo
- Don Nicholas
- Charles Werley
- Clida Wharton
- Barbara Wood
- Bertha Richardson
- Quitman Ivy
- Wesley Warren
- Evert Boyd
- Idus Echols
- Wayne Thatcher
- Olen Trout
- Stella Hazard
- Florene Miller
- Doris Duke
- Ola Walker
- Nettie Eidson
- Martin Eidson
- Nannie Baggett
- Ola Morgan
- Irene Cullinan
- Mildred Davis
- George Dendy
- Luther Carter
- Effie Jackson
- Idell Warren
- Lillian Bradford
- Jewell Stroud
- Mary Jackson
- Sallie Postert
- Samuel Blackwell
- Elton Simpson
- Max Baird
- Glen Gregory
- Sharon Barber
- Jo Ann Crawford
- C. H. May
- Glen Graham
- Belle Jones
- Nettie Marshall
- Ralph Finch
- William Floyd

- Mary Boase.
- Jackson Steed.
- James Waddell.
- Beulah Heyser.
- Walter Lenz.
- Bertie Stark.
- Mildred Rylee.
- Young Rylee.
- Ione Lewallen.
- Ruby Blevins.
- Wightman Moore.
- John Longoria.

**RCG LEASING INC.**

**Medical Equipment**

9:00 a.m. To 5:00 p.m.

Monday Thru Friday

104 W. Commerce - Eastland, Texas

Tel. 629-8052



*A touch of satin*  
by VANITY FAIR

Circlets of satin flowers and leaves look as though they've been hand - applied on our bed - and - breakfast sleep - shapes. Vanity Fair adds more dashes of satiny Ravissant to buttons and bodice, hem and sleeves. Have the elegant gown in sizes S - M - L at \$8.50. Pajamas 32 - 40 at \$13. Breakfast Coat 32 - 40 at \$14. Scuffs S - M - L at \$5. All of anti - cling Antron nylon in solid tones of Prom Pink, Red Plush or Mango Tango.

**THE MAN'S STORE**

*Bob Elliott*

CISCO

"Things in Fashion for Men"

**RCG Leasing Co.**

Patient Aids

South Side Of Square

Call 629-8052

**FOR SALE**

8x28 ft. Mobile Home

Partly Furnished

Silver Painted

Price \$325.00

LARRY MONROE

Tel. 647-3543

**GREGG MOVING**

Local & Long Distance

629-2801

Day Or Night

Free Estimates

Bonded & Insured

Gregg Sedillo

Now Service This

Entire Area



**25 YEARS OF SERVICE TO EASTLAND COUNTY**

**City Garage**  
24 Hour WRECKER SERVICE  
Phone 629-1709 Night 629-1479  
Gil Biggs 629-1210  
Eastland, Texas

**Any Type Service:**  
Automobiles  
to the  
Largest Semi.  
INTERNATIONAL HARVASTER (Dealer) J.J. Finley, Owner

EASTLAND CO. TV & APPLIANCE  
 Authorized Factory Sales & Service  
 Zenith - Quasar - Whirlpool  
 900 W. 8th Phone 442-1433



**A THOUGHT FOR THE WEEK**

BY BOB BOYD

The late John Wannamaker once said, "Half the money I spend in advertising is wasted. But I have never been able to figure out just which half."

Maybe he was jesting. Maybe not. We don't know. But we do know there are problems in even attempting to do any funeral home advertising. Almost all funeral homes can and do say the same things. The ads usually stress quiet, dignified service; reverent care; sympathetic understanding; reputation for attention to detail and so on. Actually however, when funeral home services are needed, the selection is nearly always made for reasons of reputation.

Through the years, our firm has earned a deservedly good reputation. Many families already know this. Even so, to better acquaint everyone with who we are, what we stand for, how and what we think, this new column will appear every week in this paper. Watch for it. Read it. You will find it interesting.

Bob Boyd

Arrington Funeral Home  
 301 S. Lamar St.,  
 Eastland, 629 - 2611.



Recipients of three scholarships awarded by the Veterans of Foreign Wars, and their families, are (left to right) Jim Puryear, Mike Puryear (second place), Pepper Puryear (first place), Bruce Elsom (third place), and Dr. and Mrs. Jack Elsom.

**Three Area Students Receive VFW Scholarships**

"Students win more than awards and scholarships when they participate in the V.F.W. Voice of Democracy Scholarship Program", said Commander Jack Mathis of V.F.W. Post 4136, as he announced the winners of the script-writing program conducted annually by the Veterans of Foreign Wars.

Some of the fringe benefits, according to Commander Mathis are increased self-confidence and poise, experience in communicating with others, and valuable training in self-expression. For the state winners, there is also the broadening experience of a five day tour of

Washington, D.C. and the opportunity to make lasting friendships with the other state winners.

In the 13 years that the Veterans of Foreign Wars has been the sole sponsor of the Voice of Democracy Program, more than 3,000,000 high school students have participated. Participants write and then record a three-to-five minute broadcast script expressing their views on their "Responsibility as a Citizen". From among the state winners, five national winners are chosen to receive a total of \$22,500 in

scholarships. Local winners were Pepper Puryear, Cisco, first place and a \$100 scholarship to the school of his choice; Mike Puryear, Cisco, second place and a \$75 scholarship, and Bruce Elsom, Ranger, third, and a \$50 scholarship.

"One of the greatest benefits to young people who take part in the program, is that thinking, writing and speaking on their Responsibility as a Citizen, they gain a better appreciation of their obligation to maintain our freedom heritage", Commander Mathis said.

**New Peanut Seed Available**

COLLEGE STATION, Feb. - An average peanut yield increase of seven per cent may soon be possible for Texas peanut producers with the use of a newly released high yielding Spanish peanut variety, Tamnut 74.

The new variety contains medium size pods and is adapted to all peanut production areas of Texas, according to Texas Agricultural Experiment Station Director Dr. Jarvis E. Miller.

"Comparisons of Tamnut 74 and Starr have been made since 1969 in peanut yield tests throughout the major peanut growing areas of Texas. During this time, Tamnut 74 exceeded Starr by seven per cent in average yield and was equal to Starr in grade factors measured," said Dr. Olin D. Smith and Dr. Charles Simpson, Experiment Station peanut breeders.

In the field tests, the new variety has yielded eight per cent more than Starr under irrigation and three per cent

more in dryland areas. This indicates that it should perform as well as Starr under moisture stress, but has the capability to utilize optimal moisture conditions more effectively than Starr, explained the researchers.

Tamnut 74 has been compared with both Starr and Spanhoma in 44 tests in Texas since 1970, and producer high yields than each variety in 32 on the tests.

The Tamnut is similar to commercially grown Spanish varieties in product quality. It has averaged 48.5 per cent oil and 28.1 per cent protein in the samples analyzed. Also, shelling plant data indicate that the peanut will be quite acceptable for commercial shelling operations.

Besides the high yields, Tamnut 74 peanuts are characterized by uniform pod size and symmetrical pods, resulting in uniform seed size. The seedlings are vigorous, resulting in rapid early growth. Maturity range of the new variety is similar to that of Starr, and ranges from 115 to 135 days depending on growing and climatic conditions.

"Tamnuts are comparable to Starr in reactions to pathogens and insects, but the new variety has consistently averaged lower in the percentage of damaged kernels," the scientists said.

Foundation seed of Tamnut 74 are available to registered seed growers this season. They may obtain seed from the Foundation Seed Service of the Texas Agricultural Experiment Station, College Station.

The variety was developed by the Texas Agricultural Experiment Station and the research was supported in part by the grant from the Texas Peanut Producers Board. Tamnut 74 was jointly released by the Texas, Oklahoma and Georgia Experiment Stations.

As seed become more generally available, the new Spanish peanut variety is expected to replace the popular Starr variety because of its higher yield and more uniform pod size, the scientists said.

**CARD OF THANKS**

We wish to thank our many friends for the kind thoughts shown us during the loss of our wife and mother.

James Ward  
 Mr. and Mrs. Eldress Gattis

**Here is Where the Action is...**

This community. This town. This paper.

When you advertise with us you get a complete audience. Everybody who has money to spend for your goods and services. Every week. In this newspaper.



**YOU'RE IN AMERICA BE PROUD! HELP CELEBRATE ITS BICENTENNIAL**

**1-800-292-9600**  
 (TOLL FREE)  
**HELP**  
 GOVERNOR'S CITIZENS ASSISTANCE LINE

**1/2 Price Sale**

- SWEATERS
- PANT SUITS
- DRESSES
- COATS

Large Selections  
 Sizes 3 To 52

**Roselle's Dress Shop**  
 108 E. Walker St. Ph. 559-3033  
 Breckendridge, Texas 76024

**Paddle Your Own Canoe! Row Your Own Boat!**

Sail your own skiff... man your own cruiser. See us for a boat loan... no matter what your dream boat! Our rates are desirable... the lowest permissible. Come on in... why delay?

FDIC

**EASTLAND NATIONAL BANK**  
 EASTLAND, TEXAS

helping you change things for the better

Here's where **GREAT MENUS BEGIN**

**drive friendly**

**SUPER \$AVE MARKETS**

SAMMY'S PRIDE FRANKS 12-Oz. Pkg. <b>49¢</b>	GOOD BEEF ROUND STEAK 1-Pound <b>1.19</b>	GOOD BEEF T-BONE STEAK 1-Pound <b>1.39</b>	GOOD BEEF RUMP ROAST 1-Pound <b>1.09</b>	GOOD BEEF ROUND MEAT 1-Pound <b>89¢</b>	GOOD BEEF SIRLOIN STEAK 1-Pound <b>1.19</b>
GOOCH'S FRANKS: SAUSAGE 12-Oz. Pkg. <b>1.19</b>	GOOCH'S BACON 1-Pound <b>1.19</b>	GOOCH'S ROUND STEAK 1-Pound <b>1.19</b>	GOOCH'S T-BONE STEAK 1-Pound <b>1.39</b>	GOOCH'S RUMP ROAST 1-Pound <b>1.09</b>	GOOCH'S ROUND MEAT 1-Pound <b>89¢</b>
GOOCH'S CHICKEN FRY STEAK 1-Pound <b>99¢</b>	GOOCH'S GOLDEN OLIVE-PICKLE LUNCH MEAT 4-Oz. Pkg. <b>59¢</b>	GOOCH'S CALIFORNIA LETTUCE 1-Head <b>25¢</b>	GOOCH'S MEDIUM YELLOW ONIONS 1-Pound <b>10¢</b>	GOOCH'S CALIF. TEMPLE ORANGES 1-Pound <b>19¢</b>	ECONOMY BUSSET POTATOES 10-Lb. Bag <b>69¢</b>
Frozen Foods: GOLDEN NIP 100% ORANGE JUICE 6-Oz. Cans <b>5¢</b>	WEST PAC CUT OKRA 3-10-Oz. Boxes <b>1.00</b>	WEST PAC CHOPPED TURNIPS & GREENS 3-10-Oz. Boxes <b>1.00</b>	TEXSUN UNSWEETENED GRAPEFRUIT JUICE 46-Oz. Can <b>39¢</b>	MACARONI & CHEESE (KRAFT) DINNERS 4-7 1/2-Oz. Boxes <b>1.00</b>	SUNSHINE KRISPY CRACKERS 1-Lb. Box <b>59¢</b>
IVORY LIQUID DETERGENT New Size! 48-Oz. Btl. <b>1.49</b>	Mrs. Baird's Sta-Fresh BREAD 3 1/2 lb. Loaf <b>1.00</b>	LYSOL DEODORIZING CLEANER 28-Oz. Btl. <b>99¢</b>	LYSOL SPRAY DISINFECTANT 14-Oz. Can <b>1.49</b>	MOP-GLO 28-Oz. Btl. <b>1.99</b>	GOLDEN CORN WHOLE KERNEL or CREAM STYLE 3 17-Oz. Cans <b>1.00</b>
AMERICAN or PIMENTO CHEESE SINGLES 12-Oz. Pkg. <b>99¢</b>	Borden's BUTTERMILK 1/2 Gal. <b>71¢</b>	RAMA ASSORTED APPLE BASE JELLY 18-Oz. Jar <b>59¢</b>	RANCH STYLE BEANS 8-Oz. Can <b>19¢</b>	PINTO BEANS 3 15-Oz. Cans <b>89¢</b>	SNAP-E-TOM COCKTAIL 32-Oz. Can <b>69¢</b>
White Rain EFFERDENT TOOTH PASTE 4-Oz. Tube <b>89¢</b>	White Rain HAIR SPRAY 13-Oz. Can <b>89¢</b>	White Rain SHAMPOO 8-Oz. Btl. <b>89¢</b>	White Rain TOOTHBRUSHES 24-Pack <b>1.39</b>	White Rain MODISS 24-Pack <b>1.39</b>	White Rain MODISS 24-Pack <b>1.39</b>

DEL MONTE CUT GREEN BEANS 3 16-Oz. Cans **1.00**

SUGAR 5-Lb. Bag **1.99**

STEAK SAUCE 10-Oz. Btl. **89¢**

MUNT'S SOLID PACK TOMATOES 3 14.5-Oz. Cans **1.00**

FOOT-LOOSE GELATIN 3-Oz. Box **19¢**

GLAD FAMILY TRASH BAGS 30-Ct. Pkg. **1.99**

SANDWICH BAGS 150-Ct. Box **69¢**

BUTTER CRACKER ASSORTED SNACKIN' CAKE MIXES 14.5-Oz. Box **79¢**

BLACK PEPPER 4-Oz. Can **79¢**

CREAM OF ONION SOUP 4 10.5-Oz. Cans **89¢**

SANITARY NAPKINS KOTEX REG. or SUPER 40-Ct. Box **2.19**

WHITE SWAN SWEET PEAS 3 17-Oz. Cans **1.00**

DEL MONTE YELLOW CLING SLICED or HALVES PEACHES 29-Oz. Can **49¢**

VELVEETA CHEESE 1-Lb. Box **89¢**

Health & Beauty Aids: DOANS PILLS 30 TABLETS **1.19**

MODISS 24-Pack **1.39**

**Birth defects are forever. Unless you help.**

**SUPER \$AVE**

**G.A. WHITE Manager**  
 629-1191 400 S. Seaman