





# JRB

**SUPERMARKETS**

BROWNWOOD, COLEMAN, CROSS PLAINS, ABILENE, RANGER, EASTLAND, CISCO, DE LEON, BRADY, WICHITA FALLS, STAMFORD, LLANO, HAMLIN  
NO SALES TO DEALERS

# Unbeatable Values!

We feature national brands! And you get Green Stamps, too!

# Unbeatable Stamps!

We Honor U.S. Government Food Stamps

**Double Stamps**  
Wednesday & Saturday  
Prices Effective  
Thru Sat., August 16  
Hours: 8 a.m. to 8 p.m.  
Eastland Store Only

We Reserve The Right To Limit Quantity  
**NO SALES TO DEALERS**

JRB Meats Are U.S. Government Inspected. If For Any Reason You Are Not Satisfied, We Will Cheerfully Return Your Money.

**COME OVER & SAVE**

BLADE CUT



## CHUCK ROAST

(calf)

# 69¢

lb.

**PLUS STAMPS**

- FAMILY STEAK (calf) lb. 89¢
- ARM ROAST (calf) lb. 89¢
- CLUB STEAKS (calf) lb. 99¢
- SHORT RIBS (calf) lb. 69¢
- SMALL PKG. GROUND BEEF lb. 89¢
- FAMILY PACK GROUND BEEF lb. 79¢
- DECKER FLAT PIT HALF. HAMS WHOLE OR QUARTERS lb. \$1.89
- ARMOUR PAN SIZE BACON 12 oz. each \$1.49
- ARMOUR ALL MEAT OR BEEF FRANKS 12 oz. each 89¢
- ARMOUR BOLOGNA, P.P. LIVER LOAF, OLIVE LOAF lb. 59¢
- ARMOUR CAMPFIRE HOT LINKS 1 lb. DECKER JUMBO FRANKS lb. 89¢

- DECKER BACON 12 oz. each \$1.39
- GLOVER SUMMER SAUSAGE lb. 99¢
- GLOVER BOLOGNA CRACKER SIZE lb. 99¢
- GLOVER GERMAN SAUSAGE 12 oz. pkg. each \$1.09
- GLOVER BOLOGNA 12 oz. pkg. each 89¢
- TENDA MADE BLUE MORROW STEAKS or FINGERS lb. 99¢
- DECKER WHOLE ONLY PICNIC lb. 89¢
- DECKER SLICED HALF OR WHOLE PICNIC lb. 99¢
- PARADE CHEESE 12 oz. WRAPPED \$1.09
- PARADE CHEESE 8 oz. WRAPPED 75¢

**LOW, LOW PRICE!**



## SWISS STEAK

(calf)

# 99¢

lb.

**PLUS STAMPS**

**LOW, LOW PRICE!**

7 - BONE CUT



## CHUCK ROAST

(calf)

# 79¢

lb.

**PLUS STAMPS**

**"Del Monte Sale"**

| MIX OR MATCH  | EVERY DAY LOW PRICES   |
|---|--|
| DEL MONTE MIXED VEGETABLES 303 can 3/\$1.00         | DEL MONTE FRENCH STYLE OR GREEN BEANS SLICED SEASONED 303 can 37¢                |
| DEL MONTE TOMATO SAUCE 300 can 3/\$1.00             | DEL MONTE WHOLE GREEN BEANS 303 can 39¢  |
| DEL MONTE PINEAPPLE JUICE No. 2 can 3/\$1.00        | DEL MONTE SLICED BEETS 303 jar 45¢   |
| WHOLE NEW POTATOES 303 can 3/\$1.00                 | DEL MONTE SPINACH 8 oz. can 2/41¢  |
| DEL MONTE SWEET PEAS 4/\$1.00                       | DEL MONTE SPINACH 2 1/2 can 41¢  |
| DEL MONTE ZUCCHINI SQUASH 8 oz. 4/\$1.00            | DEL MONTE CATSUP 38 oz. bottle 89¢   |
| DEL MONTE TOMATO PASTE 6 oz. 4/\$1.00               | DEL MONTE HAMBURGER PICKLES 12 oz. jar 53¢                                       |
| DEL MONTE CUT GREEN BEANS 8 oz. 4/\$1.00            | DEL MONTE KOSHER PICKLES TINY DILL 15 oz. 73¢                                    |
| ZEE TOWELS JUMBO ROLL 49¢                           | DEL MONTE WHOLE OR KOSHER DILL PICKLES 22 oz. jar 65¢                            |
| CHIFFON FACIAL TISSUE 200 ct. box 49¢               | DEL MONTE FRESH WHOLE PICKLES 26 oz. 71¢   |
| PLASTIC IDEAL SPOONS OR FORKS 2/25¢                 | DEL MONTE SAUERKRAUT 8 oz. can 23¢   |
| JRB SHORTENING 3 lb. Can \$1.09                     | DEL MONTE PEAR HALVES 2 1/2 V CAN. 77¢   |
| GLADIOLA POUND CAKE MIX 17 oz. box 85¢              | DEL MONTE PRUNE JUICE 32 oz. bottle 69¢  |
| NABISCO CHIPS AHOY 89¢                              | DEL MONTE PINEAPPLE JUICE 46 oz. can 69¢   |
| COOKIES 14 1/2 oz. pkg. 89¢                         | DEL MONTE TOMATO JUICE six 6 oz. cans 89¢  |
| NABISCO RITZ CRACKERS 16 oz. box 79¢                | DEL MONTE PUDDING CUPS Butterscotch, Rice, Tapioca, Chocolate Nut or Vanilla 79¢ |
| SUNSHINE CHEEZ IT CRACKERS 16 oz. box 79¢           |  |
| KRAFT CATALINA SALAD DRESSING 8 oz. bottle 57¢      |  |
| KRAFT GREEN GODDESS SALAD DRESSING 8 oz. bottle 57¢ |  |
| KRAFT ITALIAN SALAD DRESSING 8 oz. bottle 57¢       |  |
| KRAFT FRENCH SALAD DRESSING 8 oz. bottle 57¢        |  |
| RAGU ALL FLAVORS SPAGHETTI 15 1/2 oz. jar 69¢       |  |
| FISHER RAW SPANISH PEANUTS 12 oz. can 57¢           |  |

**COME OVER & SAVE**

BONELESS



## STEW MEAT

# 99¢

lb.

**PLUS STAMPS**



## CRISCO OIL

48 oz. Bottle

# \$1.79



## SPINACH

LEAF OR CHOPPED 303 can

# 5/\$1.00

**UNBEATABLE VALUE**



## FRUIT COCKTAIL

303 can

# 3/\$1.00

**PLUS STAMPS**



## PEAS

303 can

# 3/\$1.00



## SAUERKRAUT

303 can

# 4/\$1.00

**UNBEATABLE VALUE**



## CORN

GOLDEN C.S. or W.K. 303 can

# 3/\$1.00

**PLUS STAMPS**

|  |  |  |  |   |
|--|--|--|--|---|
| LIFE LINE TOOTHBRUSH Reg. 98c <b>29¢</b> | RAPID SHAVE SHAVING CREAM Reg. Menthol, or Lemon Lime 6 1/4 oz. Reg. \$1.09 <b>59¢</b> | ARRID XX REG. ANTI PERSPIRANT 9 oz. Reg. \$1.98 <b>99¢</b> | JOHNSON & JOHNSON BAND-AID PLASTIC STRIPS Reg. \$1.19 <b>79¢</b> | VITAMIN E BAR SOAP STRAWBERRY Reg. 25c <b>19¢</b> |
|--|--|--|--|---|



## GREEN BEANS

CUT OR ITALIAN CUT 303 can

# 3/\$1.00

**UNBEATABLE VALUE**



## TUNA

FLAT CAN

# 39¢

**PLUS STAMPS**

**GARDEN FRESH PRODUCE**

AVOCADOS 3 Large Size \$1.00

Large Size TOMATOES lb. 39¢

Large Sweet PEACHES lb. 49¢

New Crop PLUMS lb. 39¢

CORN 3 Large Ears 39¢

**UNBEATABLE VALUE**



## CATSUP

20 oz. bottle

# 49¢

**PLUS STAMPS**



## TOMATO JUICE

46 oz. can

# 59¢

**Tony Lowrance**  
**Dirt Contractor**  
 Sand & Gravel Hauling - Yard Grading & Leveling - Backhoe Service  
 Install Concret Septic Tanks  
**Call 629-8191**

**Thinking of Moving?**  
**Think of GREGG VAN LINES**  
 Storage & Used Furniture

No move is too big or too small for us. We'll move anything anywhere. Speedy, safe service with special care in handling valuables.

Call Soon for Free Estimates  
 301 N. Seaman Phone 629-2801  
 Day Or Night  
 For Local Or Long Distance Moving

**CITIZENS REALTY**

820 W. Main Eastland  
 629-1769 or 629-2104

WE SELL FARMS - - NOT JUST LIST THEM

26 ACRES, ERATH COUNTY, will accept G.I., Highway Frontage, Seven acres coastal, creek, city water.  
 32 ACRES, near Eastland, will consider G.I., two tanks, city water, creek. **SOLD**  
 70 ACRES, located on I.H. 20 between Eastland and Cisco, four tanks, \$5,000 down or G.I.  
 8 ACRES, Olden, three bedroom, two bath older home, out buildings, more acreage available joining this one. \$17,500 acre.  
 140 ACRES, North of Cisco, tank, native grass, terms, \$265 acre.  
 116 ACRES - COMANCHE COUNTY, 26 ac. peanuts, Highway frontage, nice sandy land. We will help you get a good loan on this place.  
 65 ACRES - near Scranton, 35 ac. cultivation, large older home, fruit trees, spring, out building, good water well.  
 36 ACRES - Olden - will consider Texas G.I. \$15,000.  
 58 ACRES between Lake Leon and Desdemona - good natural place for lake \$350 acre.  
 21 ACRES - SW of Cisco, Highway frontage, plenty good water, also 1972 Mobil home, 14' x 80'.  
 30 ACRES - 2 1/2 miles south of Cisco, owner will finance, 1/4 minerals.  
 486 ACRES - On Lake Leon, 350 ac. in cultivation, plenty irrigation, water, irrigation equipment. Two bedroom home, city water, \$530 acre.  
 295 ACRES, 40 ac. peanuts, 14 ac. lovegrass, 60 ac. coastal, good 25 ac. oat field, two irrigation wells, deer, 29 percent down, \$395 acre.  
 175 ACRES, secluded in SE Eastland County, 75 ac. cultivation, 30 ac. peanuts, \$325 acre.  
 425 ACRES - YOUNG COUNTY, no minerals, improved grasses, six tanks, deer good hunting, beautiful kind of country. \$300 acre.  
 ACRES - 78 ac. peanuts, 42 ac. lovegrass, 75 ac. coastal, three bedroom, three good irrigation wells with equipment, very pretty place, only \$20,000 down.  
 151 ACRES - - On IH 20 one mile east of Cisco, three tanks \$375 acre.  
 331 ACRES - COMANCHE COUNTY, 500 pecan trees, springs, 30' deep lake, water overflow 3/4 of year, all coastal, twelve hundred ninety - three acres available for lease, \$625 acre.  
 160 ACRES - 120 ac. peanuts, near Gorman \$450 acre.  
 200 ACRES - ERATH COUNTY DAIRY, irrigation well with equipment, improved grasses, feed mill, steel pens, 1000 gal. stainless steel tank.  
 143 ACRES - - EASTLAND COUNTY, 40 ac. love, 11 ac. coastal, 52 ac. field, three irrigation wells, 550 per minute, \$13,625 down, \$375 acre.  
 134 ACRES - COMANCHE COUNTY, 30 ac. peanuts, 100 ac. coastal, 100 pecan trees, 20 ac. bottom land, two irrigation wells, irrigation equipment for 30 ac.  
 275 ACRES, 185 ac. improved grasses. Balance in timber. Lots of deer, older home, good terms. \$400 acre.  
 140 ACRES, 2 1/2 miles from Moran, 42 ac. peanuts, 20 ac. timber, two irrigation wells, 1440 feet of 4" wheel movement equipment. Wells pump direct. One half of minerals.  
 180 ACRES - 26 ac. peanuts, creek, spring, coastal, lovegrass, two bedroom home, cattle guards, scales, many improvements, terms.  
 492 ACRES - EASTLAND COUNTY - 3 tanks, 80 ac. in cultivation, deer. **SOLD**  
 1160 ACRES - CONCHO COUNTY - 2 3/4 miles on the Colorado River.  
 2200 ACRES - - DONLEY COUNTY - - good sandy land, all minerals, \$165 acre.  
 3851 ACRES - - MARTIN COUNTY - - 1500 ac. cultivation, up to 3400 ac. can be cultivated, four irrigation wells, ten 25' steel and concrete tanks, \$150 without royalty, \$200 ac. with 1/2 royalty, good loan of \$100 per acre ext. ting.  
 4788 ACRES - - CONCHO COUNTY - - three houses, 900 ac. in cultivation, 130 ac. coastal - - irrigation and equipment. 2 1/2 miles off CONCHO RIVER, plenty of water, good land.  
 5 to 20 ACRE TRACTS, North of Eastland in a secluded wooded area, very good terms, low down payment.

RAY MOODY - ASSOCIATE  
 1-725-7279  
 Hours: 8-6 Mon. - Fri.  
 8-2 Sat.  
 1-4 Sun.  
 WAYNE DURHAM - ASSOCIATE  
 629-2743  
 B.G. BROWN - BROKER  
 629-8082



MR. AND MRS. M. M. SHEFFIELD  
 ...to be feted on Golden Anniver ary

**M.M. Sheffields To Celebrate 50th Wedding Anniversary**

In observance of their 50th wedding anniversary, Mr. and Mrs. M.M Sheffield will be honored with a reception on Aug. 17, 1975, at the Community Room of the First State Bank in Rising Star. Reception hours will be from 2 to 4 p.m.

Mark and Lee Sheffield were married at the Methodist parsonage in Coleman on August 15, 1925. Both Mr. and Mrs. Sheffield are graduates of Santa Anna High School in the class of 1918. Mr. and Mrs. Sheffield are both retired school teachers, and are now living on their ranch in the Okra Community, east of Rising Star.

Mrs. Sheffield's hobbies include antique collections, reading, fishing and playing forty-two. Mr. Sheffield enjoys gardening, playing forty-two, and looking after his cattle. He does some farming.

The Sheffields are members of the First United Methodist Church of Rising Star.

Mr. and Mrs. Sheffield have two children: Mark, who is president of the Elgin Bank in Texas, and Joy who has a Montessori School in Fort Worth.

The reception will be hosted by Mr. and Mrs. Mark Sheffield and children, Mark, Wade, Cyd, and Paula. All friends and relatives are invited to attend.

24" x 36"  
 Used  
 Aluminum Printing Plates  
 25¢ each  
 At The Telegram Office

**drive friendly**

**Majestic Theatre**  
 Eastland 629-1220

Arrive By 9 p.m. & See Complete Show. Now Thru Thurs. No Passes

"If anything ever happens to me I want you to be sure you finish telling my story."

**BUFORD PUSSEY'S own true story:**

**PART 2 WALKING TALL**

Special Fri. Late Show 11 p.m. "Savages From Hell" R Starting Friday Mat. Sat. 2 p.m.

CAUGHT IN A WORLD WHERE THEY DON'T BELONG... THEY HAVE TO ESCAPE!

**WALT DISNEY PRODUCTIONS**  
**ESCAPE TO WITCH MOUNTAIN**  
 Released by Buena Vista Distribution Co. Inc. ©1975 Walt Disney Productions

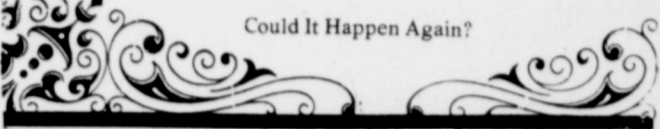
Eastland Woman's Club House Benefit  
 Showing Tues. Aug. 19

ANNA CALDER-MARSHALL TIMOTHY DALTON  
 as GARY EARLY BRONKHORST  
**Wuthering Heights**  
 An American International Picture

**Do You Remember**  
 BY HERMAN DEMPSEY

A local boy was one of the first six servicemen captured by the Germans in the beginning of World War II. With the rumors of United States involvement in the war and the increased rate of drafting men for service, this young 18 year old man elected to join the Navy instead of being drafted into the Army. After the preliminary training was over, the young man was assigned with five others to man anti-aircraft weapons on a merchant ship which was supposed to be further training on special maneuvers with other ships. As they awoke early the next morning, they discovered many other merchant ships surrounded by protective warships of many types. It was then they decided it was the real thing and they were involved in the movement of materials and supplies to friendly nations. Early one afternoon, the warships received a report the enemy was approaching from a certain direction for an attack on the convoy. The warships set out to meet the attack which developed to be false, and as soon as they were out of sight of the convoy, submarines and dive bombers opened their attack on the merchant fleet. The six Navy gunners manned their weapon and knocked out the first bomber to approach.

As the pilot was coming down in his parachute, the next bomber pilot gave him a blast from his machine guns. The Navy kids realized they meant business when they would kill their own man to keep him from being captured. A torpedo from a submarine hit their ship broad side and it started down. The kids kicked off a life raft and jumped into the ocean. It was dark soon and the battle was over for them. The next morning all they could see was debris floating all around. Soon a German seaplane appeared and picked them up. They spent the entire war in prison camps mostly with English and Russian prisoners.



**Oil News**

Signor Corp. of San Antonio No. 2 John T. Hawley was completed in the Lake Necessity (2,900) Field 11 miles southwest Breckenridge in Stephens County.

Location is 990 feet from the north and 753 feet from the east lines of the southeast quarter of Section 18, Block 6, T&P Survey.

Daily potential was 76 barrels of 39 gravity oil, plus 28 barrels of water. It is pumping from perforations at 2,890 to 2,972 feet, treated with 1,000 gallons of acid. The pay was fractured with 90,000 pounds of sand.

Operator set the 4 1/2 inch casing at 3,024 feet. The hole was drilled to a total depth of 3,050 feet and plugged back to 3,024 feet.

West Artesia Transmission Co. of San Antonio completed No. 1 M.L. Laster in the regular field 16 miles southeast of Breckenridge.

Location is 2,500 feet from the south and 730 feet from the west lines of Section 67, Block 4, T&P Survey.

Absolute, open flow was 825,000 cubic feet of gas daily. It had a gas-liquid, hydrocarbon ratio of 124,000-1 of 52 gravity. The well is producing from perforations at 3,548-64 feet, fractured with 30,000 pounds of sand and 600 barrels of water.

Operator set the 4 1/2 inch casing at 4,400 feet, total depth. The hole was plugged back to 4,399 feet.

A.C. Scott Oil Co. of Abilene will drill No. 1-B Billy C. Johnson as a proposed 5,000 foot wildcat three miles north of Carbon in Eastland County.

Location is on a 397 1/2 acre lease, apportioning 2,100 feet from the north and east lides of Section 8, Block 3, H&TC Survey.

Site is 3,100 feet southwest of an oil well.

Another wildcat location was staked 2 1/2 miles west of Eastland as John R. Shaw & Associates of Eastland No. 4 Shaw-Kinnebrew.

The planned 1,600 foot venture is on a 320 acre lease. It spots 340 feet from the north and 970 feet from the west lines of Section 29, Block 4, H&TC Survey.

Lake Necessity (2,900) Field 11 miles southeast of Breckenridge has gained a new well.

It is Sigmor Production Co. of San Antonio No. 8-A G.E. Langford, spotting 400 feet from the north and 1,280 feet from the west lines of Section 30, Block 6, T&P Survey.

Daily potential was 78 barrels of 39 gravity oil, plus 26 barrels of water. It is pumping from perforations in the interval from 2,826 to 2,905 feet, treated with 1,500 gallons of acid. The pay was fractured with 90,000 pounds of sand.

Operator set the 4 1/2 inch casing at 2,960 feet. The hole was drilled to a total depth of

**ROOFING**  
 Doyle Squires, Contr., Olden, Texas. 653-2212. Call after 6 p.m.

**Police Dispatch**  
 629-1728

**RCG Leasing, Inc.**

Medicare Approved  
 Medical Supplies

★★★  
 Sales & Rentals  
 629-8052  
 104 W. Commerce Eastland

HEADQUARTERS for CB RADIOS  
 Accessories - Installations  
**THE CLABORN - GORR COMPANY**  
 807 Aven. D., Cisco, Tex. 442 - 3642

★ **TEXAS PRESS ASSOCIATION**  
 MEMBER 1975

SHOW STARTS AT DUSK  
**RANGER DRIVE-IN THEATRE**  
**NOW**  
 THRU TUESDAY AUGUST 12

**THE ONE THAT TOWERS ABOVE THEM ALL!**

"THERE ARE ENOUGH THRILLS TO LAST MOVIE-GOERS A LIFETIME!"  
 -VERNON SCOTT, UPI

"GENUINE THRILLS! THE BEST OF THE CALAMITY PICTURES SO FAR!"  
 -David Sheehan, CBS-TV

"EXCELLENT! IT IS THE MOST EXCITING AND THE MOST SPECTACULAR DISASTER MOVIE YET."  
 -Kevin Sanders, WABC-TV, NEW YORK

STEVE MCQUEEN PAUL NEWMAN WILLIAM HOLDEN  
**THE TOWERING INFERNO**

WEDNESDAY & THURSDAY  
 AUGUST 13-14

When he stops talking... start running!

Metro-Goldwyn-Mayer presents  
**Tony Anthony in the SILENT STRANGER**

MGM METROCOLOR Released thru United Artists PG

**SCHOOL DAYS!**

Now Is The Time To Choose Your Children's Back-To-School Wardrobe  
 At **Young Age Shop**  
 120-A Main Ranger

Just In **Billy The Kid** Shirts And Jackets--Sizes 4-12

**Girls Town**  
 Pants, Blouses, Jumpers, Dresses--Sizes 2-14

Also Sandy Shaws For The Young Juniors.

"Use Our Lay-A-Way Plan"

Jean Pat

Engagement Announced



Mr. and Mrs. Ewing Baker, Jr. of 418 Pershing Street, announce the engagement of their daughter, Jo Ann, to Mr. John William Bowen, Jr., son of Mrs. John William Bowen and the late Mr. Bowen of North Little Rock, Arkansas.

Peanut Research — From Breeding to Eating

Between 300,000 and 400,000 Texas acres are planted to peanuts each year, and the annual income to Texas farmers is close to \$70 million.

Much of the improvement work involves team effort. Scientists in breeding, pest control, nutrition, management, marketing and product quality work with the peanut industry in a joint effort to find solutions to peanut problems.

A major emphasis of the research program, in which a team approach is essential, is in variety development. The goal of Experiment Station researchers is to develop peanut varieties that will give high quality consumer products at reasonable prices, fair profits for the peanut industry and a cleaner environment through reduced need for chemical pest control.

The latest variety to come out of these efforts is Tamnut-74, released in 1974. It is Spanish-type and has outyielded the well-known Starr variety during 5 years of testing.

A runner-type variety — Florunner — has shown high yield potential during 2 years of testing in Texas. The variety is predominant in southeastern states.

Florunner has averaged 15-20 percent more in gross value per acre than the closest true Spanish variety. Such results were noted after 26 trials under irrigated and dryland conditions in the state's major peanut farming areas. Its superior performance has been particularly consistent in Central and South Texas locations.

Cooperative evaluations of varieties, selections and introductions are used for parental selection in judging merits and weaknesses of offspring from crosses. Researchers Olin D. Smith and Charles E. Simpson say that combining these attributes into one package is not easy and progress will seem slow. Benefits, however, will be many.

Current breeding program emphasis is to find varieties resistant to major diseases and insects. The pests include Cercospora leafspot, the pod-rotting organisms, lesion nematodes, the lesser cornstalk borer and the burrowing bug.

Peanut entomologists are concentrating on a concept known as the "economic threshold" in the struggle against insects. This is the level of insect damage that can be tolerated without economic setback in the crop. Its purpose is to help farmers avoid unwarranted use of pesticides, thereby cutting costs and reducing chances of pollution and buildup of resistance in insect pests.

Another approach to insect control is "integrated pest management." This means that instead of covering a peanut field with regular and massive spraying programs in hopes of killing all insects, farmers can take dead aim at only the most costly bugs. The other insects are left to natural control by predators, diseases and parasites.

Walter Thames and T.E. Boswell have noted that root and pod rot diseases are increasing in severity, especially under irrigated production. They have experimented with crop rotation, chemical treatments, soil amendments and nematocides as possible control measures, but none have been highly effective.

Pod and root rot disease investigations are continuing with studies of the associated pathogenic microorganisms, of the relationship among these microorganisms in disease development and of various methods of control. Screening studies of varieties, lines and plant introductions for relative disease resistance are in progress by the Experiment Station.

In another project, Thames and Boswell have learned that plant parasitic nematodes can be controlled by various nematocides for root knot nematode host or resistant crops. The pests are considered a limiting factor in Texas peanut production.

Preplant applications of fumigant-type chemicals and planting-time doses of DBCP were generally more effective than were contact type nematocides for root knot nematode control. Applications of granular organophosphate materials at planting or pegging time pro-

Seek Resistant Varieties

Current breeding program emphasis is to find varieties resistant to major diseases and insects. The pests include Cercospora leafspot, the pod-rotting organisms, lesion nematodes, the lesser cornstalk borer and the burrowing bug.

Peanut entomologists are concentrating on a concept known as the "economic threshold" in the struggle against insects. This is the level of insect damage that can be tolerated without economic setback in the crop. Its purpose is to help farmers avoid unwarranted use of pesticides, thereby cutting costs and reducing chances of pollution and buildup of resistance in insect pests.

Another approach to insect control is "integrated pest management." This means that instead of covering a peanut field with regular and massive spraying programs in hopes of killing all insects, farmers can take dead aim at only the most costly bugs. The other insects are left to natural control by predators, diseases and parasites.

Walter Thames and T.E. Boswell have noted that root and pod rot diseases are increasing in severity, especially under irrigated production. They have experimented with crop rotation, chemical treatments, soil amendments and nematocides as possible control measures, but none have been highly effective.

Pod and root rot disease investigations are continuing with studies of the associated pathogenic microorganisms, of the relationship among these microorganisms in disease development and of various methods of control. Screening studies of varieties, lines and plant introductions for relative disease resistance are in progress by the Experiment Station.

In another project, Thames and Boswell have learned that plant parasitic nematodes can be controlled by various nematocides for root knot nematode host or resistant crops. The pests are considered a limiting factor in Texas peanut production.

Preplant applications of fumigant-type chemicals and planting-time doses of DBCP were generally more effective than were contact type nematocides for root knot nematode control. Applications of granular organophosphate materials at planting or pegging time pro-

duced favorable lesion nematode control. Nematicide results were affected by application rate and method, soil moisture, temperature, soil organic matter and other factors.

Weed control trials have determined that the recently approved chemical, 2,4-DB is effective in the control of morningglory and other broadleaf plant pests in peanut fields. Certain precautions, however, should be followed.

The recently approved chemical is related to 2,4-D and should not be sprayed where it might drift onto broadleaf, non-leguminous crops such as cotton or sunflowers. Peanuts and soybeans tend to be tolerant, but even they can be damaged when excessive rates are used.

Injury symptoms from 2,4-DB are rolled leaves and enlarged pods. The enlarged pods are especially undesirable, since they are frequently lost during grading because they fail to pass certain screen sizes.

Experiment Station engineers have found the major cause of stored peanut grade reductions, a problem that has been costing the Southwest peanut industry about \$2.26 million a year.

Eastland Day Care Center. Betty Meeks 209 E. Valley 629-1546. Planned Recreation. Also Pickup From School. Reasonable Rates. Any Time Any Day.

Jody's Pizza Will Reopen Sunday. Jody's Pizza will reopen Sunday August 10 for the fall season. It has been closed for the summer, but with the cooler weather and football season just around the corner it will open again.

Visitors. Visiting with Mrs. Zelma Lusk this week were her daughter Mrs. James LeFan and son Mike and Mrs. Lusk's granddaughter Loris Beimer and great-granddaughter Jamia Beth Beimer, all from Temple. Also visiting were Mrs. Lusk's son and family, Dwain, Maxine and Ronald Lusk and a friend Randall Shultz, from Tahoka.

VACATION TIME FOR INSURANCE ON YOUR BOAT AND MOTOR TRAVEL TRAILER OR TRIP ACCIDENT COVERAGE. CONTACT D.L. Kinnaird General Insurance 207 W. Main SINCE 1919 629-2544 General Multiple Line Agency

Public Address HORN SPEAKERS - 8 OHM \$11.95 Each. Just Received New Shipment Of STEREO SPEAKERS \$18.95 And Up. SWR & FIELD STRENGTH METER \$17.95. 8-TRACK TAPE DECK With Speakers-Now An Incredible \$59.95. Lear Jet 8 TRACK TAPE PLAYER Model A-10 \$49.95. With A Free Quick Mounting Bracket Valued At \$8.95. BAIRD'S TV & RADIO SHACK 115 West Main Street Phone 629-1334 EASTLAND, TEXAS 76448 Master Charge Bank Financing

Entrance to Elegance. designed for today's modern families... H & W Development Co. Complete Building Service One Call Does It All. Ray Winningar Lake Leon Ph. 674-1945. Walter Hall 1010 W. 6th Cisco Ph. 442-2786.

RAWLINS MONUMENTS SINCE 1884. MONUMENTS OF DISTINCTION. BAKER FUNERAL HOME PHONE 629-1726. BAKKER FUNERAL HOME 629-1726.

WANTED Housekeeper Wanted to work three days a week doing light housework. Ph. 629-2130.

Person to person health insurance. It can help pay soaring hospital and surgical bills. Call me. James O. Wortman 705 W. Main St Eastland Ph. 629-1096. STATE FARM MUTUAL Automobile Insurance Co. Home Office, Bloomington, Illinois.

HOME INSURANCE. James O. Wortman 705 W. Main St Eastland Ph. 629-1096. State Farm Fire and Casualty Company.

24" x 36" Used Aluminum Printing Plates 25¢ Each. At The Telegram Office.

OLD RIP CAFE. Eastland OPEN AGAIN & READY TO SERVE YOU! We Are Sorry For The Inconvenience Imposed On Our Customers Due To Being Closed For Repairs To Fire Damage. Re-opened Wednesday Aug. 6th Under Same Management Serving The Same Quality Good Food With Good Service. We Will Be Glad To Serve You. Open 6 To 9 Closed Sunday. Management Old Rip Cafe.



**Parasites Should Be Controlled**

Controlling internal parasites can be the most important health management practice for swine producers to perform. Internal parasites cause lung and intestinal damage and losses can range from \$1.50 to \$3 per pig.

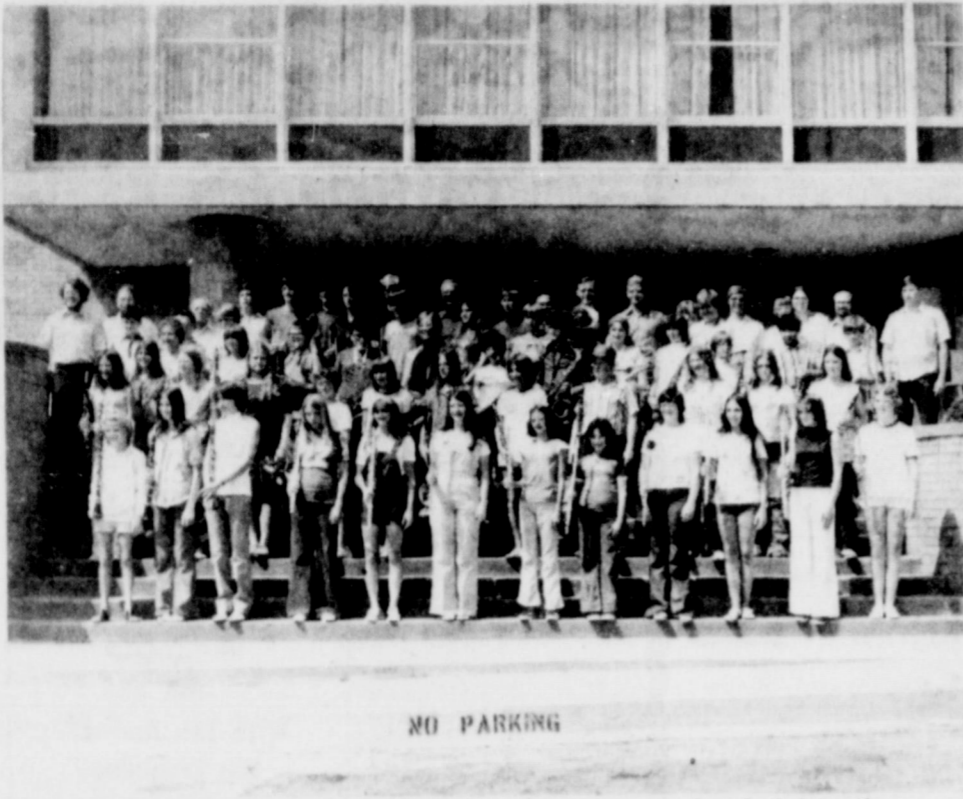
The first step in controlling internal parasites in hogs is to practice a pasture rotation and renovation program. Although parasite eggs can live in the soil for several years, soil tillage and pasture rotation can reduce the exposure of pigs to the eggs.

Since sows pick up large numbers of worm eggs on their bodies during the gestation period, they should be washed thoroughly before farrowing. Baby pigs suckling clean sows are less likely to have large numbers of worms.

A routine sow-worming program is recommended to reduce internal parasites in sows as well as to reduce the number of worm eggs that baby pigs pick up from their mothers. Sows should be wormed at breeding time and again shortly before farrowing.

Once pigs are weaned, they should be treated with a worm medication. Since there is no one medication to kill all worms, producers may want to have the pigs' fecal sample examined by a veterinarian to determine what parasites are present. Then an effective medication can be recommended.

With the current prices of hogs, producers should take every step to assure good herd health. Controlling internal parasites goes a long way in boosting the performance of the swine herd.



Area Band students and instructors pose on steps of Administration Building as the College's 1st Annual Band Camp drew to a close this past week. (Photo by James Dabney, Eastland).

**CJC Band Camp For Area Students Deemed Huge Success**

BY F. JAMES DABNEY  
Sixty members of Cisco Junior College's first annual "Drive-In Day Camp" for area band students, which ended Friday night with a free concert in the college's Fine Arts Auditorium, was hailed a "huge success" by Camp Director Dr. Douglas Fry.

Dr. Fry, who prefers to be called "Fessor" by his students

and fellow directors, said Friday afternoon that he felt plants for next year's camp would be a little more fully developed later on, and should produce an even larger turnout of area students. Some sixty area musicians each paid \$25 for the one week course. Some drove in daily from their area home towns, and others were provided bus transportation by their local

band directors. The fee also included noon lunch at the school's cafeteria.

Students were in attendance from Cisco, Eastland, Ranger, Breckenridge, Clyde, Tuscola, Cross Plains, Baird and Albany.

Assisting Fry in conducting daily classes in two rehearsals daily, classes in theory, rhythm techniques, and sectional rehearsals each day were band directors Carroll Rhodes of Cross Plains, Mark Crouch of Clyde, Wyley Peebles, CJC; Richard Morgan, Breckenridge; Art Nutt, Ranger; Bobby Bingham, Eastland; Bob McDonald of Jim Ned (Tuscola); Lynn Low of Cisco, and Fry.

After Friday night's concert in the Harrell Fine Arts auditorium, Fry said, "This was a 'first' for the college; and we feel that this activity in conjunction with the college was outstanding. Our plans are already being formulated for next summer, and are sure we will have another excellent band clinic at reasonable prices for the area students."

**Livestock Report**

**RANGER LIVESTOCK**

AUGUST 7, 1975

Receipts: Cattle 531

|                                     |          |
|-------------------------------------|----------|
| <b>BULLS</b>                        |          |
| Bologna bulls                       | 24-26.50 |
| Light bulls                         | 22-24    |
| <b>BUTCHER COWS</b>                 |          |
| Canner & cutter                     | 18-22.50 |
| Old shells                          | 13-16    |
| <b>BUTCHER CALVES AND YEARLINGS</b> |          |
| Choice                              | 30-33.50 |
| Good                                | 28-30    |
| Standard                            | 24-27    |
| <b>FEEDER STEER YEARLINGS</b>       |          |
| Choice                              | 30-34    |
| Good                                | 28-30    |
| Medium                              | 26-28    |
| <b>FEEDER HEIFER YEARLINGS</b>      |          |
| Choice                              | 25-27.50 |
| Good                                | 23-25    |
| Medium                              | 20-22    |
| <b>STOCKER STEER CALVES</b>         |          |
| Choice                              | 30-34    |
| Good                                | 28-30    |
| Medium                              | 24-26    |
| <b>STOCKER HEIFER CALVES</b>        |          |
| Choice                              | 26-27.50 |
| Good                                | 24-26    |
| Medium                              | 22-24    |
| <b>COWS &amp; CALVES</b>            |          |
| Pairs                               | 175-275  |
| Springers                           | 135-175  |

All cattle sold fully steady with last week on a run of 531 head according to Fred Rogers.

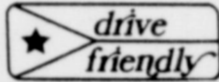
**EASTLAND LIVESTOCK**

The market at Eastland Livestock Auction was steady on a run of an estimated 889 head of cattle, 546 hogs and 41 sheep and goats at its sale Tuesday, according to Lloyd Coan, market reporter.

The sale had 201 consignors and 84 buyers.

|  |          |
|--|----------|
| Butcher Bulls                                | 20-26.50 |
| Stocker bulls                                | 22-34    |
| Butcher cows                                 | 14-23.75 |
| Butcher calves and yearlings                 | 23-34    |
| Stocker steers and heifer calves             | 22-30    |
| Stocker Steer yearlings and heifer yearlings | 23.75-38 |
| Stocker cows                                 | 90-180   |
| Cows and calves by the pair                  | 155-275  |
| Butcher hogs                                 | 56-57.50 |
| Sows   | 50-55    |

Sunday, August 10, 1975



**Numerous Burglaries Reported Over County During Week**

The Eastland County Sheriff's Department has reported a number of burglaries for the past week.

On Saturday, August 2, a bull was reported shot at Russell Creek Bridge. It is still under investigation.

Sunday, August 3, it was reported that three miles southwest of Cisco there were 12 mail boxes destroyed.

There was a burglary five miles southeast of Ranger on August 6. It is still under investigation.

Duncan Exxon in Eastland was reported burglarized on Thursday, Aug. 7. It is still under investigation.

In Ranger the school buses had damage done to them. It was reported on August 7. There was damage to the seats and some things were stolen. Damages have been estimated

at \$390. It is being investigated by the Ranger Police and Eastland County Sheriff's Office.

There was an oil theft reported August 7, four miles northwest of Eastland. The Texas Rangers and Eastland Sheriff's Department are still investigating.

The Olden Volunteer Fire Chief reported his red light stolen off his pickup August 7. It is being looked into.

The last case investigated by the Sheriff's office was number 125 since January 1, 1975.

Louis Hollywood of the Eastland Sheriff's office reminds everyone to lock your cars when you are leaving them and to always lock your windows and doors at your home. More things are stolen because people fail to take the time to "lock up" their property.

**ATTENTION MERCHANTS**

Tired of that old, drab, dark, sagging ceiling? Want to add the beauty of a bright, new, "suspended acoustical ceiling" to your business and gain:

1. Lower heating and cooling costs
2. Features of modern decor
3. Better light reflection
4. Better acoustics

Relax! A new suspended ceiling may cost less than you think.

Hicks Drywall and Acoustics will be in your area the week of August 18.

Call or write for free estimate appointment

**HICKS DRYWALL AND ACOUSTICS**

P.O. Box 2251  
Abilene, Texas 79604  
Phone [915] 673-4101.

**EMPLOYEES WANTED In Breckenridge, Texas Industrial Jobs Available Now**

- Unskilled Labor (Male)
- Semi Skilled Labor (Male)
- Sewing Machine Operator (Female)
- Furniture & Bedding Employees
- Journeyman Machinists
- Planning Engineer
- Electronic Technician
- Design Draftsman (8-10 Yr. Experience)
- Assembly Supervisor
- Secretary (Shorthand & Typing)

**CONTACT:**

Breckenridge Chamber Of Commerce

817-559-2301 Or Write Box 466 Breckenridge, Texas 76024

**Give till it helps.**



The American Red Cross. The Good Neighbor.

Sunday, August 10, 1975



**ANNIVERSARY**

**THE SPOT RESTAURANT**

Highway 80 East

Completes Its First Year Under New Management On Tuesday, August 12.

**We Would Like To Take This Opportunity To Express Our Appreciation**

**To All Of Our Patrons Of The Past Year And All The Years To Come. We Sincerely Appreciate Your Business.**

**THE SPOT RESTAURANT**

Highway 80 East Cisco

Nona Kennedy - Owner







Sunday, August 10, 1975

# COURTHOUSE NEWS

**NEW CAR REGISTRATIONS**  
Don Lane -- New Moon HT  
-- Cisco  
B.E. Miller -- Chev. --  
Ranger  
James M. Robinson -- Chev.  
-- Ranger  
Craig L. Lund -- Olds --  
Eastland  
Tex. Elec. Serv. Co. -- Ford  
-- Eastland  
Charles E. Beskow -- Chev.  
-- Eastland  
Lee Fields -- Chev. --  
Carbon  
Greg Crawford -- Chev. --  
Strawn  
LaVeda Scitern -- Ford --  
Gorman  
Leela Barrie -- Cad. --  
Ranger  
Lois Pounds -- Ford --  
DeLeon  
Fuqua Homes Inc. -- Chev.  
-- Eastland  
Paul Garvin -- Ford --  
Plainview  
E.A. Falls, Mrs. E.A. Falls --  
Ford -- Eastland  
Danny Kent -- Ford --  
Cisco  
S. Wayne Reynolds -- Ford  
-- Georgetown

**MARRIAGE LICENSES**  
Mike Dale Hagan and Peggy Ann Brewster  
Ben Tongate and Oma Lois Carter  
James Harris Jr., and Connie Blenda Robinson  
Junior Alton Howell and Dyanthia Gwenn Polk  
Coy Lee Werley and Cynthia Ann Williams  
Brent Keith Parker and Jane Ellen Krantz

**INSTRUMENTS FILED  
COUNTY CLERK'S OFFICE**  
Billy R. Adams to Lone Star Gas Co. -- FS  
R. Standley Adian to George Poe and others -- deed of trust  
Orland D. Aldridge and wife to Billy E. Guess and wife -- warranty deed  
Asburg Theological Seminary to Frances Greer -- quit claim deed  
Lloyd Bruce to Joe B. Arther and wife -- rel. deed of trust  
Joseph L. Brown to Laurel Energy Co Inc. -- asgn. OGL  
Clifford J. Buchanan and wife to Joseph L. Brown -- OGL  
Joyla Janell Berten and others to Joseph L. Brown -- OGL  
Carl W. Bray and wife to 1st Natl Bk., Cisco -- deed of trust  
Scott Bailey to Truett Been and others -- quit claim deed  
Banks and Riley Drilling to Schlumberger Well Serv. -- MML affd.  
Dorothy J. Barron and husband to Tex. Elec. Serv. Co. -- esmt. and right of way  
Lonnie Lee Bohannon and others to Mary Clark -- warranty deed  
Charles R. Barrington to Clifford L. Brown -- asgn. OGL  
B&G Const. Co. to E.A. Connel -- warranty deed  
John Geo. Cockrell and wife to Tommy G. Crenshaw -- OGL  
Jim Ray Cox and wife to Tommy G. Crenshaw -- OGL  
W.L. Curtis and others to Joseph L. Brtown -- OGL  
Cook Lumber Co. to Robert E. Morrison -- asgn. overriding royalty  
Bob Colin and others to Lloyd Ruby Ent. Inc. -- OGL  
Mary Clark to First Natl Bk., Gorman -- deed of trust  
Tommy G. Crenshaw to Wes -- Tex Land Co. Inc. -- asgn. OGL  
Cecil Clack Cooper, dec'd to the public -- certified copy probate  
Vera Cooper, dec'd to the public -- aff'd  
Louise Cooper and others to Robert J. Corss -- warranty deed  
Robert Joe Cross to 1st St. Bk., Ranger -- deed of trust  
E.A. Connel Jr. to Eastland Natl Bk. -- deed of trust  
Doris Evelyn Daniel and husband to Tex. Elec. Serv. Co. -- esmt. and right of way  
Van De Shazo to Frances Greer -- quit claim deed  
Katherine S. Davenport to the public -- proof of heirship  
Eastland Natl Bk. to Tri Mark Dev. Co. -- rel. DT  
Margie E. Earp to Tommy G. Crenshaw -- OGL  
Estate of Cynthia E. Earls NCM to the public -- certified copy probate  
Estate of Cynthia E. Earls by guardian NCM to James B. Morris -- quirdian deed  
Luther J. Fambro to O.W. Crenshaw and wife -- warranty deed

**91st DISTRICT COURT**  
Tony R. Connell vs Tommy Michile Connell -- Divorce.  
Elvi L. Pillow vs. Miller and Homes Const. Co. -- Suit for Damages.  
Tex. Employer's Insurance assn vs. Leonard Dean Martin -- To set aside award of the industrial accident board.  
J.R. Bihanty vs. R.E. Armstrong, Trustee and others --

John R. Shaw to Paul M. White -- correction asgn.  
John R. Shaw to Walter N. Thompson Sr. -- correction asgn.  
John R. Shaw to Donald J. Ternes -- correction asgn.  
John R. Shaw to Frances A. Willis -- correction asgn.  
Shriners Hosp. for crippled children to Frances Greer -- quit claim deed  
Estate of Roy D. Stevens by trustee to Frances Greer -- warranty deed  
D.G. Stevens, dec'd to the public -- certified copy probate  
Tri - Mark Dev. Co. Inc. to 1st St. Bk., Ranger -- deed of trust  
Union Central Life Ins. Co. to Joseph E. Brown -- OGML  
Veterans Ld. Bd. to W.H. Terry Jr. -- contract SP  
Veterans Ld. Bd. to Billy H. Hallmark -- contract SP  
Vet. Ld. Bd. to Silas C. Fields -- deed  
Russell E. Veatch to David L. Veatch and wife -- lake lease  
Jerel T. Varner and wife to T.C. Fisher Jr. and wife -- warranty deed  
Perry F. Vinson and wife to Tri - Mark Dev. Inc. -- warranty deed  
Robert H. Vann and wife to Howard H. Knipe -- deed of trust  
C.B. Willman, dec'd and wife to the public -- proof of heirship  
W.B. Wright to Tommy Crenshaw -- OGL  
Ivan Webb and wife to Abilene Savings Assn. -- deed of trust  
Harold Duane Wellman to T.D. Whitehorn and wife -- warranty deed  
T.D. Whitehorn and wife to 1st Fed. S&L Assn. -- deed of trust  
Frances Little Walker to Calvin Michelson -- OGML  
T.L. White Jr. and wife to J.R.B. Credit Union -- Deed of Trust.  
Oscar Wilson, dec'd and others To The Public -- Proof of Heunship.  
Joe Walton and wife To 1st Natl Bk. Cisco -- Deed of Trust.  
Jack Whitehead and wife To Joe Walton and wife -- WWARRANTY DEED.

**THE GREAT GREY MAN**  
Most people have heard of the Abominable Snowman, or Yeti, which is supposed to haunt the heights of Mount Everest. But Teacher's Scotch Information Centre would like to introduce you to Scotland's Abominable Snowman--the Great Grey Man of Ben Macdhu, a mountain in the Cairngorm range which crosses the Highlands.



Ben Macdhu is a mysterious mountain which exerts a peculiar effect on climbers who reach its summit. A Glasgow University professor described at a mountaineering club dinner how he was at the top of the Ben when he heard footsteps behind him. The footsteps followed him round the cairn at the summit and all of a sudden he was seized with an inexplicable terror. He ran down the mountain-side and the footsteps followed him for some time and then stopped.  
After this revelation other responsible mountaineers came forward and told how they had heard and sometimes had seen the Great Grey Man of Ben Macdhu. Those who heard the footsteps claimed that Scotland's Abominable Snowman took only one step for every two or three of their steps, so they thought that the Great Grey Man was at least twice the height of a normal human being.  
There is no actual proof that the Great Grey Man exists, but mountaineers still bring in reports that they have seen or heard him on Ben Macdhu.

**91st DISTRICT COURT**  
Tony R. Connell vs Tommy Michile Connell -- Divorce.  
Elvi L. Pillow vs. Miller and Homes Const. Co. -- Suit for Damages.  
Tex. Employer's Insurance assn vs. Leonard Dean Martin -- To set aside award of the industrial accident board.  
J.R. Bihanty vs. R.E. Armstrong, Trustee and others --

## HD NEWS

By Janet Thomas County Home Demonstration Agent

Many women have been calling our office requesting canning recipes for tomatoes. From the number of calls we have been receiving, there must be an abundant crop of tomatoes everywhere! One way to put up tomatoes is to make your own tomato catchup, and we recommend this recipe for good results...

**TOMATO CATCHUP**  
4 quarts peeled, cored, chopped red ripe tomatoes (about 24 large)  
1 cup chopped onions  
1/2 cup chopped sweet red peppers (about 1 medium)  
1 1/2 teaspoons celery seed  
1 teaspoon mustard seed  
1 teaspoon whole allspice  
1 stick cinnamon  
1 cup sugar  
1 tablespoon salt  
1 1/2 cups vinegar  
1 Tablespoon paprika  
Cook tomatoes, onions and pepper until soft. Press through a food mill or sieve. Cook rapidly until thick (volume is reduced about one-half), about 1 hour. Tie whole spices in a cheesecloth bag, add with sugar and salt to tomato mixture. Cook gently about 25 minutes, stirring frequently. Add vinegar and paprika, cook until thick. As mixture thickens, stir frequently to prevent sticking. Pour boiling hot, into hot jars, leaving one-eighth inch head space. Adjust caps. Process in boiling water bath for 10 minutes.

Many different looks compose the fall '75 fashion picture. Available choices from among major silhouettes, separates and accessories can extend existing wardrobes, flatter the individual and tie-in to clothing needs. The mood for fall is refined, subtle and soft.  
The newest look for fall is the tube and slim silhouette look. This slim look is seen in slim wrap skirts, softy body dresses and the single breasted blazer suits. Another look or silhouette

### Brittain DISCOUNT Center

**MAALOX**  
12 oz.  
**99¢**

**BUTANE LIGHTER**  
All Colors!  
Each **69¢**

29¢ Ross **SCHOOL GLUE**  
1 1/4 Oz.  
**12¢**

**COMPOSITION BOOKS**  
Pkg. Of 3 59¢ Books  
**87¢**

**BIC PENS**  
**10¢**

49¢ **SCHOOL BOXES**  
With Hinged Covers  
**31¢**

49¢ **CRAYOLA CRAYONS**  
Box Of 16  
**23¢**

39¢ **ALCOHOL**  
Pint  
**17¢**

**PANTY HOSE**  
2 Prs For **49¢**

24¢ Close Out On **FANS**  
20 Inch-2 Speed Metal Box With Plastic Safety Grills Front & Back  
**\$14.88**

54¢ **LUNCH KIT**  
And "Child-Proof" Thermos  
No Glass To Break  
**\$2.83**

51¢ **NOTEBOOK PAPER**  
200 Sheets  
**53¢**

55¢ **CAPRI BLANKETS**  
By Beacon Size 72x90  
80% Polyester & 20% Acrylic  
All Nylon Binding-Machine Washable-Treated To Reduce Shedding  
**\$4.47**  
All Colors  
50¢ Will Hold Layaway!

### Miller, McIntire Vows Said Aug. 2 In Eastland Church



Rebecca Lynn Miller and Monte Walter McIntire exchanged wedding vows Saturday, August 2, 1975, at 8:00 p.m. in the First Baptist Church of Eastland.

The bride is the daughter of Mr. and Mrs. H.L. Ferguson and the late Morris H. Miller. The bridegroom is the son of Mr. and Mrs. W.A. McIntire of Breckenridge.

The double ring ceremony was performed by Rudy Fambrough, pastor of Harmony Baptist Church of Morton Valley.

The church was decorated with an archway of greenery centered with two white bells and flanked by candelabras with greenery, yellow bows, yellow candles and baskets of white gladiolas. Yellow bows with white wedding bells on the pews added to the decor.

Organist was Becky Hanna and soloist was Mrs. J.L. Barnes.

The maid of honor was Carol Terrell. Bridesmaids were Susie Hanna and Milta Kincaid, all of Eastland.

The maid of honor wore a pale yellow and white embossed sheer polyester halter dress over pale yellow cotton with a sheer capelet collar. Bridesmaids dresses were identical to maid of honor of mint green. Bride's attendants carried a long stem yellow rose. Kori Lewis, cousin of the groom, served as flower girl. She was dressed in pale yellow as the maid of honor and carried a white basket of yellow roses.

Candle lighters were Kem Miller, brother of the bride, and Sherry Wheat of Eastland.

Best man was James McIntire, cousin of the groom. Groomsmen were Rodney McCollum and Rocky Holland, all of Breckenridge. Ushers were Scott Miller of Clearwater, Fla., brother of the bride and Ronald McIntire of Breckenridge, brother of the groom.

The bride, given in marriage by her stepfather wore a gown of white dotted sheer organza over white taffeta. Designed with a V neckline and fitted bodice, outlined with applied lace and three tiered lace trimmed capelet sleeves. The flared flounce was attached with venise lace and the same applique as bodice to the softly gathered skirt which extended to a full chapel length train, edged in venise lace. Her elbow length veil was gathered on to a matching Juliet crown, outlined in venise lace. Her bridal bouquet was a cascade of white roses. She wore an opal ring which belonged to her great grandmother and her mother's pearl earrings.

The bride's mother wore a floor length candlelight voile eyelet dress with bone accessories and a mint green corsage.

The groom's mother wore a floor length mint green crepe knit dress with white accessories and a yellow corsage.

The reception, hosted by the bride's parents, Mr. and Mrs. H.L. Ferguson, followed in the fellowship hall of the church.

Members of the house party were Shirley Ford, Julia Hanna, Glenda Terrell, Robin Alexander, and Jane Krantz. Assisting were Dorothy Mueller, Jean Harbin, Sharon Lewis and Margaret Hanna. Kessa Compton registered guests while Sheryl Harbin handed out rice bags with attached scrolls.

The bride's table was covered with white lace over a yellow cloth, her three-tiered white cake with yellow roses and mint green trim was appointed by crystal and silver. The centerpiece was the bride's bouquet.

The groom's table was covered with a green and white checked gingham cloth which held a coffee service, a chocolate horseshoe cake and a basket of yellow flowers for the centerpiece, along with wooden accessories.

The bride's going away outfit was a two piece mint green pant suit with yellow and bone accessories. Her corsage was yellow roses.

After a wedding trip to Ruidoso, N.M., the couple will reside in Gungshot.

The bride is a graduate of

### Honored At Shower

Brenda Daniel, bride elect of Randy Hoyle, was honored with a bridal shower Thursday, August 7, at the Texas Electric Reddy Room. Hostesses were Nancy Werley, Sandy Thompson and Della Lynch.

Eastland High School and is a sophomore at Cisco Junior College. The bridegroom is a graduate of Breckenridge High School and attended Tarleton State University. He is self employed in Breckenridge.

A rehearsal dinner was hosted by the bridegroom's parents, Mr. and Mrs. W.A. McIntire at Jammie's Restaurant in Cisco on Friday night, August 1.

### Thru Thursday Aug. 8-14 At The Majestic



Buford Pusser (Bo Svenson) (right) is aided by his deputy, Grady Coker (Bruce Glover) (left) after he was wounded during a shootout with gunmen in BCP's "PART 2 WALKING TALL."

## Panasonic



Panasonic COMPACT MICROWAVE OVEN NE-5300 \$329<sup>95</sup>

Compact, lightweight microwave oven can save up to 70% of cooking time. 15-minute automatic dial timer. Pushbutton door latch. Convenient oven light and viewing window. Signal bell. Safety seal system. Specially prepared full-color cookbook.

## Panasonic

just slightly ahead of our time

Robertsons T.V. Sales And Service  
South Side Of Square Eastland

**RESPONSIBLE... RELIABLE... READY-TO-GO**

### AMBULANCE SERVICE

2504 AUG 71 M.F. 50

**Assurance ... It Matters**

Depend on us when there's a need for immediate ambulance service. Call us day or night for fast action.

Modest Rates

**Arrington Funeral Home**  
Ph. 629-2611

MASONIC LODGE NO. 407

Meets second Thursday of each month at 8:00 p.m. in the Masonic Hall, Coll E.M. Hunt, W.M., at 629-2482 or L.E. Huckabay Call Joseph Housson, W.M. 629-1314.

### BUCK KNIVES

FAMOUS FOR HOLDING AN EDGE

Available At **H & R Lumber**  
715 West Main 629-2104

## Portrait Specials

OUR PROFESSIONAL PHOTOGRAPHER WILL MAKE 6 TO 8 DIFFERENT POSES FOR YOU TO CHOOSE FROM

SATISFACTION GUARANTEED

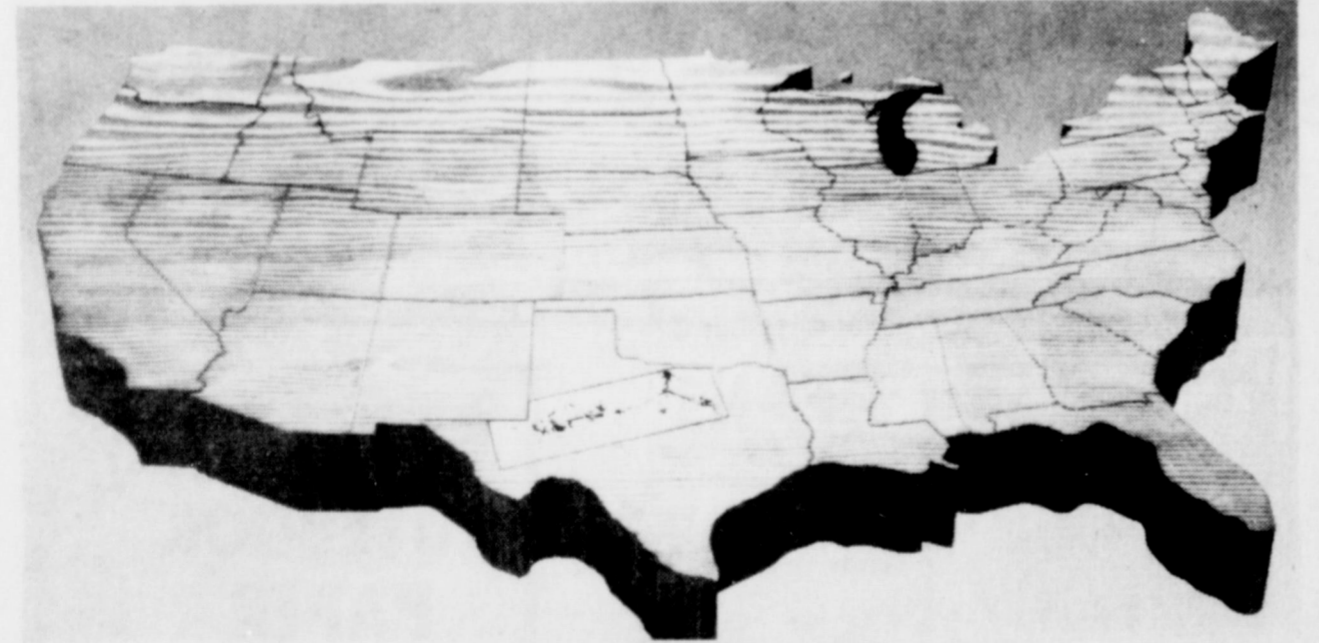
CHILDREN ADULTS GROUPS

FREE 11x14 Silvertone Portrait to EVERYONE OVER 60!

This Very Special Offer is presented as an expression of our thanks for your patronage.

**MONTGOMERY WARD**  
Frosts Sales Agency

10 a.m.-5 p.m. Thursday Aug. 14, 1975  
Lowe's Studio, Water Valley, Miss.



## Based on latest FPC figures, Texas Electric's residential rates are 27% below the national average.

The average family uses about 750 kilowatt hours of electricity per month. Based on the latest Federal Power Commission figures, Texas Electric's rates for this much electricity are about 27% below the national average.

But the costs of producing your electricity are going up.

New supplies of Texas Electric's major generating fuel — natural gas — are harder to get and much more costly.

So we're turning to lignite coal and nuclear fuels. While these fuels cost less

than new supplies of natural gas, plants that use them are considerably more expensive to build than gas-fired plants.

This means electricity will have to cost you more.

But we're working to keep your rates reasonable by using fuels that will keep costs lowest in the long run.

TEXAS **ELECTRIC SERVICE COMPANY**  
F. N. SAYRE, Manager, Phone 629-2651

## SUPER SAVE

### HARVEST OF BARGAINS

|                               |                |        |
|-------------------------------|----------------|--------|
| SUNSHINE HYDROX COOKIES       | 19-Oz. Pkg.    | 89¢    |
| LADY SCOTT BATHROOM TISSUE    | 2-Roll Pkg.    | 39¢    |
| KRAFT'S PARKAY QUES MARGARINE | 1-Lb. Can.     | 49¢    |
| SNOWDRIFT SHORTENING          | 3-Lb. Can.     | \$1.59 |
| FRZEN FOODS                   |                |        |
| SHOESTRING POTATOES           | 4 20-Oz. Pkgs. | \$1.00 |
| CRISCO OIL                    | 48-Oz. Btl.    | \$1.89 |
| WIPKA NAPKINS                 | 40-Oz. Pkg.    | 49¢    |
| WHITE SWAN PURE CANE SUGAR    | 5-Lb. Bag      | 99¢    |

|                       |             |        |
|-----------------------|-------------|--------|
| INST. TEA             | 3-Oz. Jar   | \$1.49 |
| PEANUT BUTTER         | 18-Oz. Jar  | 95¢    |
| INST. COFFEE          | 10-Oz. Jar  | \$2.59 |
| JOY LIQUID DETERGENT  | 22-Oz. Btl. | 69¢    |
| CHEER DETERGENT       | 49-Oz. Box  | 79¢    |
| CLOROX BLEACH         | Gallon Btl. | 69¢    |
| GREEN BEANS           | 16-Oz. Can. | 88¢    |
| SPINACH               | 15-Oz. Can. | 88¢    |
| POTATOES              | 4 Cans      | \$1.00 |
| GROUND BEEF           | Pound       | 99¢    |
| CHOICE BEEF SALE!     |             |        |
| ROUND STEAK           | Pound       | \$1.49 |
| CLUB STEAK            | Pound       | \$1.39 |
| BLADE CUT CHUCK ROAST | Pound       | 79¢    |
| SEVEN ROAST           | Pound       | \$1.05 |
| SIRLOIN STEAK         | Pound       | \$1.49 |
| RUMP ROAST            | Pound       | \$1.09 |
| GODCH BOLOGNA SALAMI  | 6-Oz. Pkg.  | 65¢    |
| LUNCHEON MEAT         | 3-Lb. Can.  | \$5.99 |
| CANNED HAM            | 3-Lb. Can.  | \$5.99 |

|                           |              |        |
|---------------------------|--------------|--------|
| TOOTHPASTE                | \$1.57 Value | \$1.19 |
| BRUNETTES ONLY HAIR COLOR | \$3.50 Value | \$1.89 |
| VO-5 HAIR SPRAY           | \$1.99 Value | \$1.19 |
| INSTANT SHAVE             | \$1.99 Value | 69¢    |
| ALBERTO BALSAM COND.      | \$1.49 Value | \$1.19 |
| CURAD BANDAGES            | \$1.99 Value | \$1.19 |
| SECRET ROLL ON            | \$1.99 Value | 99¢    |
| VO-5 HAIR DRESSING        | \$1.99 Value | 99¢    |
| SELSUN BLUE               | \$3.00 Value | \$1.19 |
| DOANS PILLS               | \$1.99 Value | 99¢    |
| DOANS PILLS               | \$2.99 Value | \$1.59 |
| FLICKER RAZOR             | \$1.49 Value | \$1.19 |
| COETS                     | \$1.99 Value | \$1.19 |
| PEAK TOOTHPASTE           | \$1.99 Value | 59¢    |
| TWIN INJ. BLADES          | \$1.99 Value | \$1.19 |

|                    |              |        |
|--------------------|--------------|--------|
| BISCUITS           | 9 8-Oz. Cans | \$1.00 |
| WASH               | 16-Oz. Btl.  | 99¢    |
| NEW Johnson's      |              |        |
| disposable diapers |              |        |
| DAYTIME            | 24-Oz. Btl.  | \$2.27 |
| NEWBORN            | 16-Oz. Btl.  | \$2.09 |
| OVERNIGHT          | 16-Oz. Btl.  | \$2.27 |

|                             |               |        |
|-----------------------------|---------------|--------|
| FIELD TRIAL Chunks DOG FOOD | 25-Lb. Bag    | \$3.59 |
| JALAPENO PINTOS             | 15-Oz. Can.   | 39¢    |
| SALAD DRESSING              | 16-Oz. Btl.   | 49¢    |
| CARROTS                     | 4 16-Oz. Cans | \$1.00 |
| LUNCHEON MEAT               | 12-Oz. Can.   | 89¢    |
| TRASH BAGS                  | 40-Oz. Btl.   | \$2.29 |

# SUPER SAVE

**G.A. WHITE Manager**  
629-1191 400 S. Seaman