



EASTLAND TELEGRAM



10 Pages

Eastland, Texas 76448: Today's Center For Tomorrow's Future!

Volume 46 Number 65

Thursday, August 14, 1975

10¢ EACH

EASTLAND COUNTY SUMMER '75



...IT WAS A VERY GOOD TIME

Adult Education Program Established

Membership Drive Underway

Latest development in Eastland's expanding educational opportunities is the announcement of the establishment of an

Adult Education Program which will benefit many in this area.

The program is free.

Services Thursday For Mrs. Carter

Mrs. Brittie Carter, 85, of Eastland, died at 9 a.m. Tuesday in Eastland Memorial Hospital following a lengthy illness. Services will be at 2 p.m. Thursday at Bakker Funeral Home Chapel.

Additional information or registration by telephone can be handled by calling Mrs. Ima Ruth Taylor, school secretary, at 629-2646, or Mr. Bob Blair after 4 p.m. at 629-2370.

The adult education program can help individuals find their educational weak areas, eliminate them, and pass the high school equivalency test, he explained.

Services Friday For Weaver Hague

Weaver Hague, 90, of Eastland, died at 9:45 p.m. Tuesday, August 12, in Valley View Nursing Home.

Services Monday For Mrs. Mueller

Services for Sarah Ann Mueller, 82, of Eastland were held at 4 p.m. Monday in Arrington Funeral Home Chapel.

Rites Monday For Mrs. Mueller

Services for Sarah Ann Mueller, 82, of Eastland were held at 4 p.m. Monday in Arrington Funeral Home Chapel.

Services Thursday For Mrs. Carter

Mrs. Brittie Carter, 85, of Eastland, died at 9 a.m. Tuesday in Eastland Memorial Hospital following a lengthy illness. Services will be at 2 p.m. Thursday at Bakker Funeral Home Chapel.

Services For Stanley Infant Aug. 12

Tammy Denise Stanley, infant daughter of Mr. and Mrs. James Stanley of Carbon, was stillborn at 5:30 p.m. Tuesday, August 12, 1975, at Eastland Memorial Hospital.

Services For Stanley Infant Aug. 12

Tammy Denise Stanley, infant daughter of Mr. and Mrs. James Stanley of Carbon, was stillborn at 5:30 p.m. Tuesday, August 12, 1975, at Eastland Memorial Hospital.

LODGE NOTES

Eastland Chapter No. 280, Order of the Eastern Star, will have its annual Rob Morris picnic Saturday, August 16th at 7:30 p.m. at the Eastland City Park. All members and their families are cordially invited to attend.

House Warming

Friends are invited to a house warming honoring Mr. and Mrs. Gerald Tucker, August 17, from 2 until 6 p.m. at Long Branch Community.

Morren Captures Spotlight In Green Belt Bowl Classic



TOMMY AND THE GAME BALL

All Eastland's collective hat-band expanded a few sizes as one of its own proved to be the outstanding star in an All-Star grid game in Childress this past weekend.

Mrs. John Morren, was tapped to appear for the East Team in the Childress Green Belt Bowl Classic. He went, he excelled, received three top college offers and walked away with the coveted game ball.

representatives in the event. Irene Day, daughter of Mr. and Mrs. Volna Day, represented Eastland in the Green Belt Bowl's Queen Contest.

Tommy declined the college offers, having already signed with the Howard Payne University grid team for the fall term. It was a story-book finish for the Bowl Classic thanks to young Tommy. His team won 20-19 in the last minute, when he intercepted a West pass, galloped for 89 yards to come from behind and then personally kicked the extra point that gave his team the victory.

It was the 26th annual Green Belt Classic and pitted the top high school athletes: the West strong on passing and proven, the East strong running game.

With only 38 seconds left in the game, Tom Morren of Eastland intercepted Childress' Jeffrey Reed's pass on his own 11 yard line and ran it back 89 yards to paydirt. Morren then kicked the extra point to personally clinch the victory for the East squad.

The West had time for one last desperation attempt but they were thwarted when Gene Veals of Dimmit intercepted another Reed pass on the nine yard line with only 15 ticks left on the clock. East quarterback Mike Vickers simply fell on the ball for the final two plays and it was all over.

Reed, who completed 10 of 22 passes for 24 yards, was chosen the game's most valuable back. Louis Mendoza of Amarillo, who opened gaping holes in the West line, was chosen the outstanding lineman in the game. Both players were key

factors in their team's efforts.

As an estimated 2,200 spectators looked on, the West jumped to an early lead when Reed teamed up with Tony Haskins of Rochester on a 66 yard scoring pass with three minutes and 30 seconds left in the opening quarter. The extra point try by Candy Reyes of Memphis was blocked and the West had to settle for a 6-0 lead. After the initial score, neither team was able to sustain a drive. With four minutes and 14 seconds remaining in the first half, the East took possession on their own 31 yard line. A pass interference penalty quickly gave them a first down on the West 40 yard line.

On third down with 11 yards to go for a first down, Mike Vickers of Floydada hit Mark Keys of Childress with a 29 yard pass moving the ball to the 12 yard line.

Tommy Parrish of Ballinger

FULLEN MOTOR CO. PUNCH LINE OF THE WEEK

YOU CAN GAUGE INFLATION BY THE SIZE OF THE HOLES IN SWISS CHEESE.

then carried to the two yard line and Scotty Rathliff, the 5'5", 155 pound running back from Brownwood, carried it over on the next play to even the score with only 47 seconds left in the first half. The extra point attempt by Morren was good and the East took a 7-0 lead.

However, the half didn't end quietly. Morren kicked off out of the end zone and the West took possession on their own 20 yard line. The West promptly fumbled and Morren, who was all over the field all night, recovered on the 23.

On the next play Chuck Bohner intercepted a Vickers pass on the 10 yard line and returned it to his own 24.

With only 34 seconds left in the half, Reed led his teammates down the field to the East 10 yard line before time ran out. On the final play, he completed a swing pass to Ronny Hawkins of Childress for 32 yards. Hawkins was forced out of bounds after a fine run as time ran out. The East breathed a sigh of relief and took their one point lead to the locker room with them.

The first half belonged to the West in every category except the most important one--the score. The West had nine first downs to the East's five and 193 total yards to the East's 92.

FREYSCHLAG Insurance weather. Chance of Thunderstorms Thru Thursday. High Near 90.

The third quarter provided the next episode in the see-saw battle. After taking the opening kickoff, the East ran three plays and was forced to punt.

A 43 yard punt by Morren and a clipping penalty put the West back to their own 20 yard line. On their first play, however, David Beezley of Amarillo, who ran extremely well all night, picked up 28 yards to the West 48 yard line.

After runs by Hawkins and

Chuck Bohner of Perryton, Reed completed a nine yard pass to Frank Welling of Matador for another first down on the 25 yard line.

Following two ground plays, Reed was thrown for a ten yard loss by Marvin Williams of San Angelo. Williams played both ways and turned in strong performances both on offense and defense.

On the next play, Beezley picked up ten yards but this left

the West facing a fourth down with nine yards to go for a first down.

It was at this time that an element of fate entered the picture. Reed threw a well timed pass to Barry Trickey of Amarillo. Mark Keys, the East defender, had the play diagnosed perfectly. He and Trickey arrived at the same time and the

Continued Inside



TOMMY AND THE SCORE BOARD

Thursday, August 14, 1975

**Tony Lowrance
Dirt Contractor**

Sand & Gravel Hauling - Yard Grading &
Leveling - Backhoe Service

Install Concret Septic Tanks

Call 629-8191

**Thinking of
Moving?
Think of
GREGG VAN LINES**

Storage & Used Furniture

No move is too big or too small for us. We'll move anything anywhere. Speedy, safe service with special care in handling valuables.

Call Soon for Free Estimates
301 N. Seaman Phone 629-2801
Day Or Night
For Local Or Long Distance Moving

**CITIZENS
REALTY**



820 W. Main
Eastland
629-1769 or 629-2404

WE SELL FARMS -
NOT JUST LIST THEM

- 26 ACRES, ERATH COUNTY, will accept G.I., Highway Frontage, Seven acres coastal, creek, city water.
- 32 ACRES, near Eastland, will consider G.I., two tanks, city water, creek. **SOLD**
- 70 ACRES, located on I.H. 20 between Eastland and Cisco, four tanks. \$5,000 down or G.I.
- 8 ACRES, Olden, three bedroom, two bath older home, out buildings, more acreage available joining this one. \$17,500 acre.
- 140 ACRES, North of Cisco, tank, native grass, terms, \$265 acre.
- 116 ACRES - COMANCHE COUNTY, 26 ac. peanuts, Highway frontage, nice sandy land. We will help you get a good loan on this place.
- 65 ACRES - near Scranton, 35 ac. cultivation, large older home, fruit trees, spring, out building, good water well.
- 36 ACRES - Olden - will consider Texas G.I. \$15,000.
- 58 ACRES between Lake Leon and Desdemona - good natural place for lake \$350 acre.
- 21 ACRES - SW of Cisco, Highway frontage, plenty good water, also 1972 Mobil home, 14' x 80'.
- 30 ACRES - 2 1/2 miles south of Cisco, owner will finance, 1/4 minerals.
- 486 ACRES - On Lake Leon, 350 ac. in cultivation, plenty irrigation, water, irrigation equipment. Two bedroom home, city water, \$530 acre.
- 295 ACRES, 40 ac. peanuts, 14 ac. lovegrass, 60 ac. coastal, good 25 ac. oat field, two irrigation wells, deer, 29 percent down, \$395 acre.
- 175 ACRES, seclided in SE Eastland County, 75 ac. cultivation, 30 ac. peanuts, \$325 acre.
- 425 ACRES - YOUNG COUNTY, no minerals, improved grasses, six tanks, deer good hunting, beautiful kind of country. \$300 acre.
- ACRES - 78 ac. peanuts, 42 ac. lovegrass, 75 ac. coastal, three bedroom, three good irrigation wells with equipment, very pretty place, only \$20,000 down.
- 151 ACRES - - On IH 20 one mile east of Cisco, three tanks \$375 acre.
- 331 ACRES - COMANCHE COUNTY, 500 pecan trees, springs, 30' deep lake, water overflow 3/4 of year, all coastal, twelve hundred ninety - three acres available for lease, \$625 acre.
- 160 ACRES - 120 ac. peanuts, near Gorman \$450 acre.
- 200 ACRES - ERATH COUNTY DAIRY, irrigation well with equipment, improved grasses, feed mill, steel pens, 1000 gal. stainless steel tank.
- 143 ACRES - - EASTLAND COUNTY, 40 ac. love, 11 ac. coastal, 52 ac. field, three irrigation wells, 550 per minute, \$13,625 down, \$375 acre.
- 134 ACRES - - COMANCHE COUNTY, 30 ac. peanuts, 100 ac. coastal, 100 pecan trees, 20 ac. bottom land, two irrigation wells, irrigation equipment for 30 ac.
- 275 ACRES, 165 ac. improved grasses. Balance in timber. Lots of deer, older home, good terms. \$400 acre.
- 140 ACRES, 2 1/2 miles from Moran, 42 ac. peanuts, 20 ac. timber, two irrigation wells, 1440 feet of 4" wheel movement equipment. Wells pump direct. One half of minerals.
- 180 ACRES - 26 ac. peanuts, creek, spring, coastal, lovegrass, two bedroom home, cattle guards, scales, many improvements, terms.
- 492 ACRES - EAS **SOLD** NTY - 3 tanks, 80 ac. in cultivation, deer.
- 1160 ACRES - CONCHO COUNTY - 2 1/4 miles on the Colorado River.
- 2200 ACRES - - DONLEY COUNTY - - good sandy land, all minerals, \$165 acre.
- 3851 ACRES - - MARTIN COUNTY - - 1500 ac. cultivation, up to 3400 ac. can be cultivated, four irrigation wells, ten 25' steel and concrete tanks, \$150 without royalty, \$200 ac. with 1/2 royalty, good loan of \$100 per acre exi ting.
- 4788 ACRES - - CONCHO COUNTY - - three houses. 900 ac. in cultivation, 130 ac. coastal - irrigation and equipment. 2 1/2 miles off CONCHO RIVER, plenty of water, good land.
- 5 to 20 ACRE TRACTS, North of Eastland in a secluded wooded area, very good terms, low down payment.

Hours: WAYNE DURHAM -
RAY MOODY - 8-6 Mon. - Fri. ASSOCIATE
ASSOCIATE 8-2 Sat. 629-2743
1-725-7279 1-4 Sun.
B.G. BROWN - BROKER 629-8082

**STATE CAPITAL
Highlights
AND Sidelights**
by Lyndell Williams
TEXAS PRESS ASSOCIATION

AUSTIN - Inflation closed in on Texans from two more fronts within the last week.

A court order lifting a 90-day medical malpractice insurance rate freeze (see story below) will boost medical bills \$50 million to \$200 million a year, according to Texas Hospital Association.

One medical official estimated hospital costs will increase \$2 to \$8 a day due to the increasing insurance charges for doctors and hospitals which are passed on to patients.

Meanwhile, Texas Department of Highways and Public Transportation launched a 90-day study to determine how it can trim payrolls and services in the face of rising costs.

The Department already

has announced its scheduled August letting of contracts for road repair and reconstruction would not be held. It also has practiced a reduced hiring policy in an effort to hold down numbers of employees.

Engineer-Director Luther DeBerry of the Department of Highways and Public Transportation said there is no way of knowing how many jobs will be knocked out due to the study.

He indicated the reduction may be as much as 20 per cent over a two-year period, however.

"Watchdog" Job Mapped
"Common Cause," the citizens' lobby, and a coalition of other consumer-

oriented groups will monitor work of the new Public Utilities Commission.

The group warned that utility monopolies will try to "capture" the regulatory group. A non-profit, tax-exempt organization will be formed to protect consumer interests in rate and service disputes.

At about the same time, the Texas Coalition for Utility Regulation urged Governor Dolph Briscoe to make public names of persons he is considering for appointment to the Commission. Briscoe's appointments assistant, George Lowrance, said the governor has no intention of doing so.

CIA Funded Research

The Central Intelligence Agency funded \$436,702 worth of research in six projects at the Texas Research Institute for Mental Sciences in Houston.

Projects were criticized by Rep. Lane Denton of Waco who claimed studies were "only remotely related" to the state institution's job of research in treatment of mental illness.

Most of the funds apparently went to efforts to improve the polygraph or lie detector. The scientist in charge of the project said polygraphs are used widely in evaluation of mental illness.

Courts Speak

An Austin district judge blocked State Board of Insurance plans to freeze medical malpractice insurance rates at the June 3 level, leaving them unregulated until September.

Fourth Court of Civil Appeals declined to reinstate ousted Duval County Judge Archer Parr. Parr is appealing to the Supreme Court.

The State Supreme Court agreed to reconsider lower court decisions that rules requiring unmarried undergraduate women students at Texas Woman's University to reside in dormitories are unconstitutional.

Former all-American football player John Kimbrough succeeded in getting a Supreme Court order to try his \$1 million lawsuit growing out of use of his picture in a Coca-Cola ad.

The Supreme Court agreed to review lower court findings that corroborated testimony of an accomplice is sufficient to judge an Ector County youth a delinquent.

Right of a state agency to stop savings and loan associations from giving premiums to attract deposits was upheld by the Supreme Court. The finding backed up trial and intermediate courts.

AG Opinions

A school board is not required to reveal identity of employees discussed and evaluated in a properly-closed meeting, Attorney General John Hill held.

In other recent opinions, Hill concluded:
Persons committing crimes while under 17 years of age are within exclusive jurisdiction of juvenile court.

Individual teacher retirement records are not subject to disclosure under the open meetings law.

ROOFING

Doyle Squires, Contr., Olden, Texas. 653-2212. Call after 6 p.m.

**Police
Dispatch
629-1728**

RCG Leasing, Inc.

Medicare Approved
Medical Supplies

★ ★ ★

Sales & Rentals
629-8052

104 W. Commerce
Eastland

Insurance Boost Asked

A 13.8 per cent average hike in homeowners insurance coverage will be the subject of a State Insurance Board hearing August 4.

The industry is also seeking an increase of 4.7 per cent in fire coverage for dwellings.

Texas Insurance Advisory Association is further seeking elimination of 10 per cent discounts on three-year fire and extended coverage policies.

Short Snorts

Governor Briscoe approved 77 action grants and 25 planning grants totaling \$5.9 million to reduce crime and improve the criminal justice system.

Senator Tati Santiebhan of El Paso served as acting governor of the state part of last week, due to absence of both Governor Briscoe and Lieutenant Governor Bill Hobby.

Comptroller Bob Bullock continued shutting down businesses in Fort Worth, Hurst, Irving, Dallas, Mineral wells and Killen for failure to pay back state and city sales taxes.

Texas Water Rights Commission approved a proposed Corps of Engineers plan to control natural salt pollution in the Brazos River Basin, but disagreed over financing it.

The State Treasury Department as of June was earning interest on \$1.16 billion in time deposits at annual rates of more than \$81.4 million a year.

State spending soared to an all time high of \$962.1 million during May.

**Parasites Should
Be Controlled**

Controlling internal parasites can be the most important health management practice for swine producers to perform. Internal parasites cause lung and intestinal damage and losses can range from \$1.50 to \$3 per pig.

The first step in controlling internal parasites in hogs is to practice a pasture rotation and renovation program. Although parasite eggs can live in the soil for several years, soil tillage and pasture rotation can reduce the exposure of pigs to the eggs.

Since sows pick up large numbers of worm eggs on their bodies during the gestation period, they should be washed thoroughly before farrowing. Baby pigs suckling clean sows are less likely to have large numbers of worms.

A routine sow-worming program is recommended to reduce internal parasites in sows as well as to reduce the number of worm eggs that baby pigs pick up from their mothers. Sows should be wormed at breeding time and again shortly before farrowing.

Once pigs are weaned, they should be treated with a worm medication. Since there is no one medication to kill all worms, producers may want to have the pigs' fecal sample examined by a veterinarian to determine what parasites are present. Then an effective medication can be recommended.



Fishing Permits

**At Lake Leon
Now On Sale**

Annual lake permits will expire Monday, Sept. 1, 1975. The new permits will go on sale Friday, August 15, 1975. Annual fishing permits and day permits can be purchased anywhere on Lake Leon. Annual boat permits must be bought at the information office or from a lake patrolman.



From The Living Bible

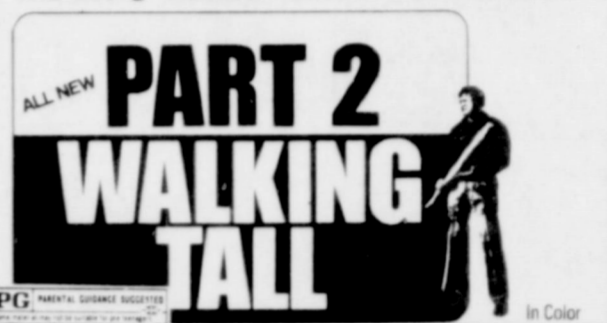
"Let not your heart be troubled. You are trusting God, now trust in me. There are many homes up there where my Father lives, and I am going to prepare them for your coming. When everything is ready, then I will come and get you, so that you can always be with me where I am. If this weren't so, I would tell you plainly. And you know where I am going and how to get there." "No, we don't," Thomas said. "We haven't any idea where you are going, so how can we know the way?"

Majestic Theatre

Eastland 629-1220

Thurs. Last Day. No Passes

The story Buford Pusser wanted told...



Special Fri. Late Show 11 p.m.
"Savages From Hell"

Fri. Thru Mon. Mat. Sat. 2 p.m.

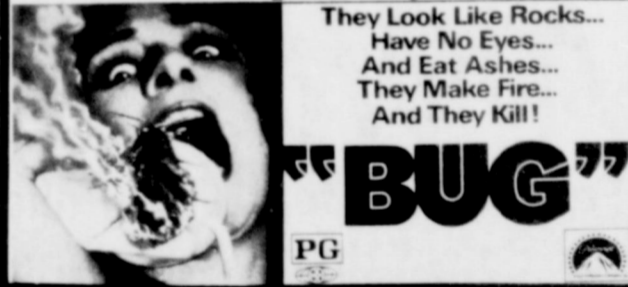
CAUGHT IN A WORLD WHERE THEY DON'T BELONG THEY HAVE TO ESCAPE!



Eastland Women's Club House
Benefit Showing Tues. Only



Coming Wed. Aug. 20



SCHOOL DAYS!

Now Is The Time To Choose Your Children's Back-To-School Wardrobe

At
Young Age Shop

120-A Main Ranger

Just In
Billy The Kid Shirts And Jackets--Sizes 4-12

Girls Town
Pants, Blouses, Jumpers, Dresses--Sizes 2-14

Also Sandy Shaws For The Young Juniors.

"Use Our Lay-A-Way Plan"

Jean Pat

SHOW STARTS AT DUSK

RANGER DRIVE-IN THEATRE
WEDNESDAY & THURSDAY
AUGUST 13-14

When he stops talking... start running!

Metro-Goldwyn-Mayer presents
Tony Anthony in
the **SILENT STRANGER**

FRIDAY-SATURDAY-SUNDAY
AUGUST 15-16-17

MGM METROCOLOR Released thru United Artists PG

"SOMETHING HIT US... the crew is dead... help us, please, please help us!"

AIRPORT 1975

An all NEW movie inspired by the film "AIRPORT" based on the novel by Arthur Hailey.

CHARLTON HESTON
KAREN BLACK GEORGE KENNEDY GLORIA SWANSON HELEN REDDY
EREM ZIMBALIST JR. SUSAN CLARK SID CAESAR LINDA BLAIR DANA ANDREWS
ROY THINNES NANCY OLSON ED NELSON MYRNA LOY AUGUSTA SUMMERLAND

An all NEW film...
AIRPORT 1975
A UNIVERSAL PICTURE
TECHNICOLOR - PANAVISION

THE PICTURE YOUR NEIGHBORS ARE TALKING ABOUT.

\$7.50 PER SQ. FT.
ONLY TEXAS' #1 MODULAR HOME DEALER COULD DO IT!

MODULAR HOME FOR UNDER **\$122.00** MONTH
1344 SQ. FT.
15 YEAR FHA FINANCING
3 BEDROOMS WITH CARPET
FIREPROOF SHEETROCK WALLS

MOVE IN FOR LESS THAN **\$950.00** DOWN
ENERGY CONSERVATION INSULATION PACKAGE
2x4 WALLS

Abilene Mobile Homes
4618 N. 1st 672-6466

Swine Specialist Speaks To Producers

On Thursday, August 21, local hog producers will have the opportunity to attend a one night meeting on hog production. The meeting will begin at 7:30 p.m. in the Farm Bureau Building in Eastland.

Guest speaker for the program will be Dr. Bill Thomas, Swine Specialist with the Texas Agricultural Extension Service. Dr. Thomas has been associated with the swine industry in Texas for a number of years, having worked on numerous research projects and at stock shows, and also judges at stock shows all over the nation.

As most people know, producers and consumers alike, that the current hog market is real good. This is reflected in our higher prices for pork at the store. But the high prices paid for hogs is not always indicative of the profits made by the producers. Production costs have increased right along with the increased market price, and it still requires sound production practices to maintain a profitable hog operation.

Dr. Thomas will present the latest information available on swine production and will answer any questions that may come up. We feel like it will be a real good program to encourage anyone interested to come.

Thursday, August 14, 1975

Do You Remember

BY HERMAN DEMPSEY

As always, young men used their vacations from school to obtain jobs and earn some money for themselves. This was true in the community just prior to the official entry into World War II by the United States. The young men realized it would be just a matter of time until they would become a part of the fighting forces. One young man some two years before the United States declared war, was working during the summer on a ranch near his home town. He was helping others dig a hole to install a cattle guard for a pasture road. There were many rocks at the location and it was hard work digging the hole by hand. The boy noticed an airplane high overhead. He remarked that he wished it was one of those German dive bomber and he would drop a bomb right in their hole. It would be easier to dig them. The kid observed all the planes that came over and said that if he could, he was going to join the Air Force and learn to fly those airplanes himself. It was not long until he had his chance. He passed all the tests required to qualify for pilot training. He applied himself and learned quickly. He was selected to train for fighter pilot service. The instructor's reports indicated this young man was ready for combat service and would give a good accounting for his participation in any competition under any conditions. He was assigned to a fighter group in the European Theater of operations. It did not take long for him to earn an "ace" rating in this operation. He had destroyed more than enough enemy planes to qualify for the rating. Things were not doing so good in the Pacific Theater of operations so he was reassigned to serve a hitch in that area. During a short period of time, he earned the right to be declared an "ace" in this theater also. The community was proud of their native son.

Could It Happen Again?

Qualify for a \$1,500 tax deduction. Next year... every year.

If you work for yourself, work at a small firm, or work for a large corporation, there's a new law that could save you a lot of money. Here's how: if you're not currently participating in a qualified retirement plan (most Americans aren't), you can set up your own Individual Retirement Annuity. Contributions to your annuity, up to \$1,500 a year (or 15% of your earned income, whichever is less) are fully tax deductible. 100% of your I.R.A. is subtracted from your gross income when figuring taxes.

It's like giving your own money to yourself. And deducting it, instead of paying taxes on it as usual. Some call it a tax shelter.

Your Southland Agent can answer any questions you may have. Send him this coupon... it'll be to your benefit. Next year, and every year 'til retirement.

Southland Life INSURANCE COMPANY
M.H. PERRY
Box 568
Eastland, 76448
629-1566 or 629-1095

Please provide me with more detailed information about how I can qualify for a tax deduction up to \$1,500 and save for retirement at the same time.

Name _____
Address _____
City _____ State _____ Zip _____
Birthdate _____

Good News

Jone's Sportswear

Accepting Applications For Experienced And Inexperienced Sewing Machine Operators

Jone's Sportswear
300 Pine Street
Ranger, Texas

GOODYEAR SERVICE STORES

BACK-TO-SCHOOL BONUS DAYS

ON THE SPOT FINANCING INSTANT CREDIT

FREE Back-To-School GIFT CERTIFICATES for Clothes and Shoes with your purchase of any Major Appliance or Television!

BONUS NO. 1 \$7.50 GIFT CERTIFICATE FREE with the purchase of \$100 to \$150*	BONUS NO. 2 \$10 GIFT CERTIFICATE FREE with the purchase of \$151 to \$225*	BONUS NO. 3 \$15 GIFT CERTIFICATE FREE with the purchase of \$226 to \$300*	BONUS NO. 4 \$20 GIFT CERTIFICATE FREE with the purchase of \$301 to \$400*	BONUS NO. 5 \$25 GIFT CERTIFICATE FREE with the purchase of \$401 to \$500*	BONUS NO. 6 \$30 GIFT CERTIFICATE FREE with the purchase of \$501 and UP*
--	--	--	--	--	--

BUY NOW — GET ONE OF THE ABOVE GIFT CERTIFICATES — FREE!

<p>9" DIAGONAL</p> <p>SF1702YL General Electric MONOCHROME TV</p> <ul style="list-style-type: none"> • "SF" Chassis—contains integrated circuitry and many Solid State devices for dependable reception. • AGC Automatic Gain Control—maintains constant picture level when changing stations. • 70-Position Solid State UHF Tuner • Daylight Bright Picture Tube. • Weighs only 12 lbs. <p>BONUS DAYS PRICE \$88</p>	<p>19" DIAGONAL</p> <p>QB-7421 100% SOLID STATE G.E. COLOR TV</p> <ul style="list-style-type: none"> • 100% Solid State "Energy Saver" Chassis. Solid State is the key to efficiency and economy in this chassis. • Black Matrix Spectra-Brite™ IV Picture Tube—color dots surrounded by a jet black matrix background for brilliant picture performance. • One Touch Color™ System—beautiful color pictures with a touch of a button. • Automatic Color Control (ACC)—helps maintain constant color intensity. <p>BONUS #3 With This Item \$488</p>	<p>25" DIAGONAL</p> <p>MB9204/BPN G.E. CONSOLE COLOR TV</p> <ul style="list-style-type: none"> • 100% Solid State "Energy Saver" Chassis—Solid State is the key to efficiency and economy in this chassis. • Modular Chassis Design—permits on the spot diagnosis and repair in your home. • Black Matrix Spectra-Brite™ IV Picture Tube—color dots surrounded by a jet black matrix background for brilliant picture performance. • One Touch Color™ System—beautiful color pictures with a touch of a button. • Custom Picture Control—only one control to customize your color picture. • Fine Furniture Styling—created by master craftsmen to reflect styling authenticity. <p>BONUS #6 With This Item \$675</p>	<p>19" DIAGONAL</p> <p>CD7316WD GENERAL ELECTRIC COLOR TV</p> <ul style="list-style-type: none"> • GE ReliColor Chassis—incorporates many Solid State components for dependable performance. • GE Spectra-Brite™ Picture Tube—brilliant phosphor dots for a bright, rich color picture. • AFC Automatic Fine Tuning Control—locks in fine tuning automatically. • 70 Position Solid State UHF Tuner—"click-in" channel selection convenience. • Antennas—fold-down dipole for VHF; multi-directional loop for UHF reception. • Heavy Duty Fold-Down Luggage Type Handle. • Weight—61 lbs. <p>BONUS #4 With This Item \$369</p>
---	---	--	--

More For Less!

Feature for feature - dollar for dollar there is no finer home investment!

TREND-SETTING FEATURES:

- CENTRAL AIR CONDITIONING
- JIB HEATING
- TWO CAR GARAGE
- Separate Utility Room
- Large Covered Overhang
- Drop In Oven and Range
- Hood and Fan in Kitchen
- Custom Styled Vanities
- Silent Light Switches

Eastland's Quality Builders
H & W Development Co.

Complete Building Service
One Call Does It All

FHA-VA-CONVENTIONAL Financing Available
216 S. Seaman
629-1702

G.E. MOTHER'S ENERGY SAVERS FROM GOODYEAR!

<p>GREAT WASHER! SENSATIONAL PRICE!</p> <ul style="list-style-type: none"> • Balanced Load Control • Heavy-Duty GE Motor • Large-capacity perforated wash basket • 3 wash-and-rinse temperature combinations. • Three water-level selections. • Permanent Press cycle with cool-down. • Activated soak cycle. <p>CBBDR VINYL WOODGRAIN EXTERIOR 8.3 CU. FT. CHEST FREEZER only 35 1/2" wide and counter-top high! \$266</p> <p>BONUS #3 With This Item \$249</p> <p>Add \$10 for color WASS00P</p>	<p>AUTOMATIC DRYER WITH PERMANENT PRESS CYCLE</p> <ul style="list-style-type: none"> • 3 Temperature Selections—Normal, Delicate and Fluff. • Permanent Press Cycle • Manual Selection of Drying Time up to 130 Minutes. • Separate Start Button. • Axial Air Flow—warmed air is pulled through clothes load. • "Up-Front" Lint Filter. • Large Loading Port—easy to load and unload. <p>\$188</p> <p>BONUS #2 With This Item \$188</p> <p>Add \$10 for color DDE5300P</p>
---	--

GOODYEAR SERVICE STORES
Glenn Dickson, MGR.

315 E. Main
629-2662
Eastland

OPEN ALL DAY SATURDAY

Golf Scramble

Lakeside Country Club will have a golf scramble Sunday, August 17. Titlist golf balls will be given to the winners. Tee off time is 1:30. Everyone is invited to come out and play. (8-13, 8-17)

Bowling Meet

Set For Aug. 19

There will be a meeting of the Eastland County Women's - Bowling Association in Eastland on August 19, 1 the Fiesta Bowl at 7:30 p.m. All members of the Association are urged to attend.

Oil News

Ausanka Oil Operation of Wichita Falls will drill No. 2-A J.J. Hawkins as a proposed 4,200 foot wildcat in Eastland County.

Location is five miles southeast of Ranger on a 320 acre lease. It spots 3,000 feet from the south and 1,950 feet from the west lines of Spires & Dooley Survey, Ap77.

Rhodes Drilling Co. of Abilene completed Marble Falls Gas well in the regular field 16 miles south of Cisco.

It is No. 1 O.V. Cooper, spotting 1,500 feet from the south and 467 feet from the east lines of Lot 12, John F. Sapp Survey 34.

Absolute open flow was 2,400,000 cubic feet of gas daily. It had a gas-liquid, hydrocarbon ratio of 107,000-1 of 44 gravity.

Production is from perforations at 2,874-84 feet, treated with 2,000 gallons of 15 percent acid. Operator set the 4 1/2 inch casing at 3,029 feet, total depth.

Brannan Energy Inc. of Fort Worth filed application to re-enter to 2,500 feet an abandoned project 4 1/2 miles south of Ranger.

It is No. 1 Fox located on an 88 acre lease. Site is 660 feet from the north and 330 feet from the east lines of Lot 30, League 2, McLennan CSL Survey, A-369.

It was plugged Dec. 7, 1967, at 3,852 feet as W.V. Edwards No. 3 R.W. Fox.

Mineral Exploration Co. of Arlington completed No. 1 Gage in the regular field five miles north of Rising Star.

Location is 330 feet from the south and west lines of Section 36, Lavaca CSL Survey, A-350.

OUR NEIGHBORS

If you and your neighbor's dog are on good terms, offer to "pet sit" when his master goes away.



Don't jump to conclusions about your neighbors. If one is a member of the Teamsters Union, don't assume he's the stereotyped truck driver. A teamster may be a leader in the United Way campaign, a deacon in a church and a very good neighbor.

When your child and a neighbor's child have a serious quarrel, remember that the neighbor probably thinks that his child is right also.

August 14, 1975



Desdemona Homecoming Reunion Termed Success

BY F. JAMES DABNEY

Lt. Col. (Ret.) Bobby Burleson, President of the Desdemona Homecoming and School Reunion Association, said Saturday afternoon that this year's celebration was a huge success and that "approximately 400 persons attended".

As in the past, the reunion and homecoming was held in

the old Desdemona school building. The building's combination gymnasium and auditorium was the scene of all activities, with persons coming from as far away as Phoenix, Ariz.

J.T. Craig, a former Desdemona school student, was awarded a certificate and recognized as the person who came the greatest distance to attend the reunion, by Master of Ceremonies Burleson.

Mrs. Iva Buchan, of Desdemona, was awarded a plaque honoring her as the oldest woman present. Mrs. Buchan, who will be 93 years old on her next birthday, has lived in Desdemona since 1920. She and her husband, the late Jim Buchan, moved to Desdemona from Ellison Springs about four miles southwest of the former oil boom town. Mrs. Buchan now lives alone and spends most of her time crocheting and taking care of her home and yard.

Mrs. Buchan was also recently honored by the Eastland County Historical Society upon the unveiling of a memorial plaque located on FM road 8, about midway between Desdemona and Gorman.

Mrs. Buchan was the former Iva Browning, and was born in a log cabin near Ellison Springs in 1883. There is a long history concerning the springs, which, during the great Ranger oil boom supplied drinking water to the then growing community. Mrs. Buchan remembers that a pipe line was laid overland from the Springs, to Ranger, and that owners of the still producing springs sold water to Ranger for \$50 per month.

The Springs are located about 1/2 mile north of the marker, and can be reached by driving north on a caliche road and walking a short distance down a rocky glade where a concrete settling basin about 10 ft. square and two feet deep catches the cool, clear running water as it pours from between layers of large, flat rocks on a hillside.

Persons in attendance at the latest homecoming and school reunion visited the Springs and gathered in front of Wisdom's Grocery Store in Desdemona, and rehashed old times, and how the Duke No. 1 blew in in 1917, catching fire, and making a blaze and roar that could be seen and heard in Ranger, about 14 miles to the north.

Another person recognized and honored during Saturday ceremonies was Mrs. Ella Tidwell, who has lived in Desdemona for 84 years.

There are few vestiges of the boom now remaining in Desdemona and area. Gone long ago is the old Lone Star Hotel, a large, two-story frame building that burned some years ago. Also gone, of course, is the "Globe Clothiers", where local residents allegedly caused a riot in the store to "encourage" to owners to leave town.

On display during the homecoming were scores of priceless photographs owned by Mr. and Mrs. Bill Greenhaw. The photographs were used by a major oil company to publicize Desdemona during its hey-day. One photo shows main street,

apparently after a heavy rain, with scores of cars, trucks, and pipe hauling wagons bogged down in mud, with tall wooden derricks lining main street. The picture also shows a large sign, calling the public's attention to the First National Bank. The bank, its officers, and deposits are no longer in existence, but the brick building remains. Also missing from the present-day scene is the two story Masonic building which also burned in the late '40's.

Following Clark's welcoming address, Eastland County School Superintendent Jimmy Hughes spoke briefly, followed by Dr. George Brazzell, Cisco Junior College instructor, who recognized individuals who were presented awards.

Others on the program were the Rev. Bob Cope, Gorman; and Mrs. Oleta Webb, and Mrs. Margaret Henslee, who presided over the memorial service.

Officers of the Homecoming Association are Bobby Burleson, president; Bill Greenhaw, vice president; and Clyde Wright of DeLeon, secretary-treasurer.

Thoughts

From The Living Bible

A hot-tempered man starts fights and gets into all kinds of trouble. Pride ends in a fall, while humility brings honor. A man who assists a thief must really hate himself! For he knows the consequence but does it anyway. Fear of man is a dangerous trap, but to trust in God means safety. Do you want justice? Don't fawn on the judge, but ask the Lord for it! The good hate the badness of the wicked. The wicked hate the goodness of the good.



Mrs. Iva Buchan displays regulation size American flag that she crocheted in honor of the Bicentennial Celebration. Even though Mrs. Buchan will soon be 93 years old, she still actively crochets afghans, bed spreads, table cloths, and tends to her routine household chores.



Mrs. Iva Buchan, 92, of Desdemona, displays plaque honoring her as "Oldest Women" in attendance. (Dabney Photos)

ELLISON SPRINGS
(OLD MILL WATER)

USED FOR CENTURIES BY INDIANS INHABITING THE REGION, NAMED FOR JAMES MADISON ELLISON (1783-1864), A NATIVE OF ALABAMA, WHO WAS THE FIRST SETTLER IN THIS SECTION OF EASTLAND COUNTY, ERECTING A CABIN NEAR THE SPRINGS IN OCT. 1858. HE SOON MARRIED ELIZA M. GOUGH, A MEMBER OF ANOTHER PIONEER FAMILY, AND HAD 3 CHILDREN.

DURING THE CIVIL WAR, FRONTIERSMEN ORGANIZED MILITIA COMPANIES FOR MUTUAL PROTECTION AGAINST THE INDIANS. ELLISON JOINED THE COMPANY MUSTERED FROM EASTLAND, SHACKLEFORD, AND CALLAHAN COUNTIES, ON AUG. 9, 1864. A GROUP OF 12 SCOUTS FROM THE COMPANY WAS ATTACKED NEAR THE SPRINGS, AND TOOK REFUGE IN ELLISON'S CABIN. THE COMMANDER, CAPT. NICHOLSON GIBERT, AND SERGEANT KEITH WERE KILLED, AND ELLISON, TOM SMERT, AND TOM CALDWELL WOUND. ELLISON WAS DRAINED FOR 16 HOURS. HIS BROTHER, JOHN, AN ACTIVE FIGHTER, BECAME THE CAPTAIN OF THE COMPANY.

Mrs. Iva Buchan of Desdemona stands next to recently unveiled Historical Plaque honoring Ellison Springs.

CITIZENS REALTY

820 W. Main Eastland
629 - 1769 or 629 - 2404

295 Acres, 40 Acres Of Peanuts, 60 Acres In Coastal- 14 Acres Lovegrass - Good 25 Acre Oat Field, 2 Irrigation Wells, Lots Of Deer

29% Down.

RAY MOODY ASSOCIATE
1 - 725 - 7279
WAYNE DURHAM ASSOCIATE
629 - 2743

10 DAY SPECTACULAR

SALE POLYGLAS RADIALS

Save \$13 to \$19 on whitewall radials

\$35

48" VALVE: AR78-13 SIZE

Size	Regular Price	SALE PRICE
AR78-13	\$48.10	\$35.00
BR78-13	\$51.55	\$38.66
DR78-14	\$53.60	\$40.20
ER78-14	\$54.55	\$40.91
FR78-14	\$58.95	\$44.21
GR78-14	\$61.45	\$46.08
GR78-15	\$63.05	\$47.28
HR78-15	\$70.70	\$53.00
JR78-15	\$73.35	\$55.00
LR78-15	\$76.65	\$57.48
AR70-13	\$52.30	\$39.22
BR70-13	\$56.00	\$42.00
ER70-14	\$59.25	\$44.43
GR70-14	\$66.80	\$50.10
GR70-15	\$68.60	\$51.45

Plus \$1.93 to \$3.48 F.E.T. depending on size and old tire

CUSTOM WHEEL CLEARANCE

CRAGAR-E.T.-MOTOR WHEEL

\$7-\$10-\$15 and up

QUANT.	SIZE	DESCRIPTION	PRICE
4	14"	Repo Mag Whls	\$15 ea.
4	15x6	Chrome Reverse	\$30 ea.
4	13"	Mag Wheels	\$30 ea.

QUANT.	SIZE	DESCRIPTION	PRICE
4	14"	A.J. Foyts	\$15 ea.
2	15"	Motor Spinner	\$30 ea.
2	14"	Cragar	\$35 ea.
2	15"	Chrome Reverse	\$35 ea.
2	14"	Chrome Reverse	\$20 ea.

Popular Sizes And Types Priced To Sell

SPECIAL SAVINGS ON MANY MORE GOODYEAR PRODUCTS TOO!

QUANTITY	ITEM	SALE PRICE
5	Home Canning Kits	\$15.95 ea.
5	Lawn Chairs	\$3.95 ea.
5	Tennis Sets	\$6.50 ea.
1	BBQ Grill	\$27.95 ea.

CAK & HOME LINE LISTINGS

QUANTITY	ITEM	SALE PRICE
2	Smoke Cookers	\$35.95 ea.
24	Iron Pad Cover	69c ea.
4	BBQ Tool Sets	\$2.49 ea.
4	TV Trays	\$4.49 ea.
1	4700 CFM Cooler	\$219.95
1	30-30 CFM Cooler	\$189.00

FLOOR MODEL CLEARANCE - SAVE! SAVE! SAVE!

QUANTITY	ITEM	PRICE	QUANTITY	ITEM	PRICE	QUANTITY	ITEM	PRICE
1	25" Color TV	\$499.95	2	GE Dish-washer	\$319.95	2	WH 14,000 BTU	\$339.95
1	14" Color TV	\$298.00	1	GE Dryer	\$169.95	1	WH Dish-washer	\$219.95
1	19" Color TV	\$378.00	1	GE Dryer AV	\$179.95	1	Trash Compactor	\$199.95
1	25" Color TV	\$719.95	1	GE Air Codn.	\$309.95	1	Vent Hood	\$39.95
			1	GE Cooktop	\$89.95	1	12" Refrigerator	\$329.95

Sale Ends Aug. 23rd.
315 E. Main Eastland 629-2662

GOODYEAR

4 Ways to Buy at Goodyear
• Cash • Our Own Customer Credit Plan • Master Charge • BankAmericard
Glenn Dickson, MGR

Carbon News

By Mrs. Bob Hastings 639-2517

Mr. and Mrs. Brauner Files, David and Kathy have returned from a vacation trip through Oklahoma, Kansas, Iowa, Missouri and Arkansas. They visited friends in Toledo, Ohio, and relatives in Kingsland, Arkansas.

Mr. and Mrs. Robbie Stuteville and Shannon visited in Dallas last week.

Relatives of Mr. and Mrs. Woodrow Speer of Houston received a message Tuesday morning that the Speers were injured in a car wreck near their home in Fort Worth. Woodrow is still critical but some improved in a Houston hospital. Ruth was dismissed from the hospital later.

Mrs. Ima Partin had the misfortune to fall Tuesday night in front of her home. Her hip was badly injured and she was

taken to Eastland Memorial Hospital.

Mr. and Mrs. R.D. Threet attended the wedding of their niece Miss Claudia Campbell and Mr. Joe McKinney in Cisco Friday evening.

J.E. Vaughn and daughter Mrs. Johnny Gilliam of Midland visited Mrs. Callie Vaughn Monday and Tuesday.

Johnny (Pete) Holloway of Arlington passed away last Tuesday in an Arlington hospital of an apparent heart attack. Burial was in Murray Memorial Cemetery at 4 p.m. Thursday, with Bakker Funeral Home in charge. Mr. Holloway grew up on a farm near Carbon. He was married to Lucy Baker. Survivors include his wife Lucy; two sons, Bobby and Jimmy Don of the home; two daughters, Glenda Ruth Ritter of Abilene

and Dean Lynch of Arlington; four sisters, Dessie McCullough of Foxworth, Opal Hays of Carbon, Velma Harris of Sweet-water, and Jewel Cron of Houston; three brothers, Bud Holloway of Carbon, Leck Whitley of Eastland, and Louie Whitley of Eastland.

Mrs. Pete Huddleston, Larry and Marilyn of Fort Worth spent Friday night with her parents Mr. and Mrs. Cullen Rogers.

Mr. and Mrs. Maurice Vaughn of Eastland visited the Vern Jacksons and Hep Jacksons Saturday evening and attended church services at the Baptist Church.

Mrs. Vinnie Henson visited Mr. and Mrs. John Webb of Desdemona Sunday.

Mr. and Mrs. Raymond Lindsey of Roswell, N.M., are visiting Mr. and Mrs. Robert Harbin this week.

Mr. and Mrs. Sam Clark of Fort Worth visited their aunts Mrs. Myrtle Maness, Mrs. Lonnie Bohannon, Mr. and Mrs. Buster Johnson last week.

Mr. and Mrs. J.R. Harle have returned to their home in Fort Worth after visiting his parents Mr. and Mrs. Henry Harle and Charlene.

Mr. and Mrs. R.D. Threet had visiting with them part of last week Jimmy Barton and son Joe of Seguin.

Tommy Baker is visiting his brother Buddy Baker of Irving this week.

Bill Matthias of Arlington visited relatives here Sunday.

Mr. and Mrs. Tommy Simmons and family of Kentucky are visiting Rev. and Mrs. Delbert Smith.

Mr. and Mrs. Richard Jackson of Seminole spent Saturday night with Mrs. Vivia Henson.

Tips For Property Safety

- 9. Record the serial numbers and model numbers of all office machines to aid in their identification should a burglary occur.
- 10. Report all suspicious persons or cars seen in the vicinity of your business so that members of the Police Department can investigate.
- 11. If you should be the victim of a burglary, do not disturb the location until officers have arrived and made their investigation.

SUGGESTED PROPERTY SAFEGUARDS FOR YOUR HOME

- 1. Equip your outside doors with locks that have drop or slide bolts. Spring locks can be opened within a matter of seconds with only a thin sheet of plastic needed as a burglary tool.
- 2. Always leave your garage doors closed. Do not advertise the fact that you are away from home by displaying an empty garage.
- 3. If you have a sliding glass door in your home, make it more secure by cutting a broom stick or other piece of wood to wedge behind it so that it cannot be opened from the outside even if the lock is broken.
- 4. If you are to be away from home for an extended period contact the patrol division of the police department and advise them you will be away and when you expect to return. Stop all deliveries for the period you will be away.

SOCIETY APPOINTS '75-'76 MEMBERS

Eastland County Commissioners Monday appointed 1975 and '76 members of the Eastland County Historical Society.

The members include Mike Collins and Mrs. A.L. Murrell, both of Eastland; Berry Greenwood of Carbon; Gene Baker of Gorman; Pat Collins of Ranger; and Mrs. Emma Steele and Mrs. Edna Butler, both of Rising Star.

Teaching Staff Complete

The Eastland Independent School District Board of Trustees hired three new teachers for the 1975-'76 school year. They are: Joe Bagwell, head basketball coach; Ronnie Hughes, coach; and Jan Beakow, 5th grade teacher. They also have three teachers returning to the schools this year. They are: Don Griffin, 2nd Agriculture teacher; Diane Young, Kindergarten; and Jeannie Griffin, high school teacher.

Elementary school teachers and the grades they teach are: First grade teachers: Loys Allmand, Jan Cooper and Becky Siebert; Second grade-Patsy Coats, Christy Dallas; Third Grade-Mildred Turner and Marjorie Young; Fourth grade-Mildred Adair and Hazel Green; Fifth grade-Jan Beskow and Bob Blair; Sixth grade-Opal Little and Elizabeth Welch. Reading-Lois Boies, Jo Ann Hill; Plan A-Sandi Alsup, Mrs. Cedric Bettis and Teachers Aid-Mrs. Mary Lou Siebert; Speech Therapist-Fay Crick.

High school lunch staff are: Mrs. Louise Stansell, supervisor; Ella Thompson, manager; Mrs. Billie Mahoney.

County Budget Postponed

Eastland County department heads presented their portions of the county's budget to the Eastland County Commissioners Tuesday at a public hearing for the budget.

Commissioners deferred action on the budget until a future meeting.

A THOUGHT FOR THE WEEK

MONTY HOWARD

Did you ever put something in the wrong place and wonder where it was? Of course you have. We all have. Sometimes when the thing shows up, we ask the silly question, "How did it get there?" We know the answer. It got there because we put it there.

Similar reasoning can apply, in a way, to religion. People put God in the wrong place. It may sound peculiar, but we can put God in the right place. It can even be said we can put God in His place, if we want to. And this is said without smart alecky semantics.

We know God is in Heaven. But he is elsewhere too. Instead of placing Him in that uncharted area "way up there," why don't we put Him where we can find Him all the time? We go to HIS house of worship on Sunday and then return to OUR home. Why not bring Him along home with us? When we put Him in our home, where most of us need Him most, we always know where He is...

ARRINGTON FUNERAL HOME

310 S. Lamar St. Eastland - 629-2611

M. L. TERRELL

REAL ESTATE

FARM BUREAU BLDG. - HIGHWAY 80 EAST

PHONE 629-1725 - NIGHTS 629-2443

SMALL ACREAGE

- 3 bedroom home on pavement with city water with 30 acres near Lake Leon, \$37,500.
- Small tracts of land near Lake Leon.
- 4 Acres at Olden, well water, city water, orchard, with trailer home, \$15,000.
- 8 Acres with 3 bedroom house at Olden \$17,500
- 36 Acres near Olden. Will G.I.

HOUSES

- 2 bedroom, 1 bath home on Daugherty Street, \$7,350.
- 8 City lots sited for trailer park, \$6,500.
- Store building, station, living quarters, fixtures and stock at Morton Valley \$8,000.
- Duplex on South Walnut, shown by appointment only, \$6,850.
- 3 bedroom, 1 bath, on Bassett Street \$7,850
- 2 Bedroom, nice home on Patterson Street.
- 4 Bedroom home on corner lot with 1 1/2 bath, \$25,000. Shown by appointment only.
- 3 Bedroom home on corner lot South Bassett Street, Beauty Shop and equipment, 4 stations, nice building.

FARMS AND RANCHES

- 80 Acres southwest of Cisco with 2 bedroom home, \$31,500.
- 120 Acres on Sabanoo River, Pecan trees, deer and turkey, 1/2 minerals. Good terms.
- 50 acres north of Eastland with city water on pavement \$400 per acre.
- 140 acres close to Eastland with 2 bedroom home, good barns, good fences, \$450 per acre.
- 74 Acres with cultivation on county road north of Eastland \$400 per acre.
- 143 Acres northwest of Ranger with 52 acres of peanuts, \$375 per acre.
- 150 acres south of Eastland, 140 acres in coastal, good fences on county road, city water \$425 per acre.
- 150 acres north of Eastland on pavement with 77 acres of cultivation, with city water, \$400 per acre.
- 160 acres southeast of Ranger, deed, 1/2 minerals \$300 per acre.
- 177 Acres with 4 bedroom home south of Ranger. Some improved grasses, good fences. \$350 per acre.
- 198 acres with 3 bedroom home on pavement with city water, 70 acres of cultivation, near Lake Leon.
- 204 Acres near Eastland, on pavement, fair fences, good water, some minerals.

- 224 acres, improved grasses with good fences. Good set of pens, \$10,000. Owner financed.
- 215 Acres near Olden with good fences, good stock tanks, \$325 per acre.
- 260 Acres close to Eastland with 3 bedroom home, city water, fair fences.
- 220 Acres northwest of Cisco, with cultivation on pavement, no minerals, \$210 per acre with good terms.
- 320 Acres, all improved grasses with good fences, 1/2 minerals, \$350 per acre with good terms.
- 320 Acres near Carbon, 60 Acres of coastal, fair fences, 1/2 minerals, \$315 per acre.
- 486 Acres near Lake Leon, with 2 bedroom rock home, with irrigation and good fences on pavement.
- 377 Acres in Stephens County with lots of deer, good fences.
- 544 Acres with coastal and other improved grasses, good terms, some minerals.
- 815 Acres south of Cross Plains with deer and turkey, approx. 1/2 minerals.
- 1455 Acres near Albany with Approximately \$500 month oil income on pavement, \$210 per acre.
- 2000 Acre ranch in Bosque County, extra nice, improvements, owner will finance.
- 4200 Acres in King County. All minerals, \$100 per acre. Owner will finance.

We have other tracts large and small, and all listings will be appreciated.

RODGER TERRELL
Home Phone 629-2896

M. L. TERRELL
Home Phone 629-2443
Eastland, Texas

OFFICE PHONE 629-1725
FARM BUREAU BLDG.
HIWAY 80 EAST
EASTLAND, TEXAS REAL

Southern Television Systems Inc

CHURCH SERVICES

CHURCH OF GOD
Main & Connellee
Rev. Ronald Bear

Sunday School 9:45 a.m.;
Morning Worship 11:00 a.m.;
Evening Worship 7:00 p.m.;
Wednesday Night Service, 7:30 p.m.;
Ladies Prayer Meeting 8:15 a.m. Thursday.

CALVARY BAPTIST
Rev. L.C. Williams

Sunday School 10:00 a.m.;
Morning Worship 10:45 a.m.;
Training Union 6:30 p.m.;
Evening Worship 7:00 p.m.;
Wednesday night Service 7:30 p.m.

FIRST BAPTIST CHURCH
N. Seaman St.
Rev. J.L. Norris

Sunday School 9:30 a.m.;
Morning Worship 11:00 a.m.;
Baptist Training Union 6:00 p.m.;
Evening Worship 7:00 p.m.;
Wednesday Night Service 7:00 p.m.

HARMONY BAPTIST CHURCH
Rudy Fambrough,
Minister

Sunday School 9:45 a.m.;
Morning Worship 11:00 a.m.;
Evening Worship 7:00 p.m.;
Wednesday Night Service 7:00 p.m.

FIRST PRESBYTERIAN CHURCH
Rev. Robert W. Marsh

Sunday School 10:00 a.m.;
Morning Worship 11:00 a.m.

FIRST CHRISTIAN DISCIPLES OF CHRIST
Steven Church

Sunday School 9:30 a.m.;
Morning Worship 10:55 a.m.;
Evening Worship 6:00 p.m.

FIRST CHURCH OF GOD
212 W. Valley
Sam R. Wilson, Pastor

Sunday School, 9:30 a.m.;
Morning Worship, 10:45 a.m.;
Evening Worship, 7:30 p.m.;
Midweek Service, 7:30 p.m.

ASSEMBLY OF GOD
1608 W. Commerce
G.L. Huffman, Pastor

Sunday Morning Worship, 10:00 a.m.;
Sunday Night Service, 7:00 p.m.;
Wednesday Night Service, 7:30 p.m.;
Friday Night C.A. Service, 7:30 p.m.

ST. FRANCIS CATHOLIC
Priest John Mitchell

Liturgy Saturdays at 6:30 p.m.

CHURCH OF CHRIST
Daugherty St.

Sunday School 9:30 a.m.;
Morning Worship 10:20 a.m.;
Evening Worship 6:00 p.m.

HOLY TRINITY EPISCOPAL CHURCH
Priest Raleigh Denison

Sunday School 11:00 a.m.;
Holy Communion 11:00 a.m.

EASTLAND CHRISTIAN SCIENCE SOCIETY
Corner of Plummer and Lamar

Sunday Morning Services, 11:00 a.m.;
Services on first Wednesday of month 7:30 p.m.
All are welcome.

FIRST UNITED METHODIST CHURCH
(Rev. Ben Marney)

Sunday School 9:45 a.m.;
Morning Worship 11:00 a.m.;
Evening Worship 6:00 p.m.;
Youth Meeting 7:00 p.m. Sunday;
Cora Davis Prayer Group 9:30 a.m. Wednesday;
Choir Practice Wednesday 7:30 p.m.

UNITED PENTECOSTAL CHURCH
Rev. E.D. Norman

Sunday School 9:45 a.m.;
Morning Worship 11:00 a.m.;
Evening Worship 7:30 p.m.

NORTH OSTROM ST. CHURCH OF CHRIST
H.S. Lewis

Worship 10:30 a.m.; Evening Worship 5:00 p.m.;
Wednesday Evening Service 6:00 p.m.;
Daily Pray Service Monday thru Friday, 6:00 p.m.

FIRST BAPTIST Rev. Haston Brewer

Sunday School 9:45 a.m.;
Morning Worship 11:00 a.m.;
Training Union 6:15 p.m.;
Evening Worship 7:30 p.m.

SOUTHSIDE PENTECOSTAL
107 New Street.
A.J. Woodard

Sunday School 9:45 a.m.;
Sunday Evening Service, 7:30 p.m.;
Midweek Service, 7:30 p.m. Thursday

BETHEL BAPTIST
Rev. Paul Edwards, Pastor

Sunday School 9:45 a.m.;
Morning Worship 11:00 a.m.;
Evening Training Union 6:00 p.m.;
Evening Worship 7:00 p.m.

FULL GOSPEL CHURCH
Claude Harris, Pastor

Sunday Morning Worship, 10:30; Sunday Evening Worship 7:00; Wednesday Evening - Worship 7:00. All denominations welcome to study and worship with us.

OLDEN CHURCHES
BAPTIST CHURCH
Rev. Howard Meeker

Sunday School 10:00 a.m.;
Morning Worship 11:00 a.m.;
Evening Prayer Service 7:00 p.m.;
Evening Worship 7:30 p.m.;
Wednesday Night Service 7:00 p.m.

CHURCH OF CHRIST
Damon Smith

Bible Class 10:00 a.m.;
Morning Worship 11:00 a.m.;
Evening Worship 7:00 p.m.

FLATWOOD CHURCH OF CHRIST
Wilkie E. Moore

Sunday School 9:45 a.m.;
Morning Worship 10:30 a.m.;
Evening Worship 6:00 p.m.;
Wednesday Evening 7:00 p.m.

CARBON CHURCHES
CARBON FIRST BAPTIST
Rev. Delbert Smith, Pastor

Sunday School 10:00 a.m.;
Morning Worship, 11:00 a.m.;
Training Union, 6:00 p.m.;
Evening Worship, 7:00 p.m.;
Wednesday Night Service, 8:00 p.m.

CHURCH OF CHRIST
Jack Landrum

Sunday School 10:00 a.m.;
Morning Worship 10:50 a.m.;
Evening Worship 6:00 p.m.;
Wednesday Night Worship 7:30 p.m.

FIRST UNITED METHODIST
Rev. C.C. Shultz

Sunday School 10:30 a.m.;
Morning Worship 9:30 a.m.

MANGUM BAPTIST CHURCH
Rev. A.J. Thomas

Sunday School 10:00 a.m.;
Morning Worship 11:00 a.m.;
Training Union 6:00 p.m.;
Evening Worship 7:00 p.m.;
Wed. Evening Worship 7:00 p.m.

FULL GOSPEL CHURCH (Charismatic)
Claude Harris, Pastor

Sunday School (from nursery through adults) 10:00 a.m.;
Sunday Morning Worship 10:50 a.m.;
Evening services for young people 6:00 p.m.;
Regular Sunday Evening Worship 7:00 p.m.;
Wednesday N Night Worship 7:00 p.m.
Everyone is welcome to attend.

Quality Quantity Quikness

And Reasonable Prices

Relax At Hollands Drive In

Highway 80 West Of Eastland

Phone In Orders

Dial 629-2215 Member TRA

CI 1206P

if you can't pass up a great buy . . . this is for you!

THE CI 1206P ELECTRONIC PRINTING CALCULATOR

Come in and compare these features . . . then compare our price, features and quality with any of the competition. If you need a **good calculator** and can't pass up a great deal you'll buy one! You may even buy two!

FEATURES

- ✓ FOUR FUNCTION
- ✓ 12 DIGIT CAPACITY
- ✓ FULLY BUFFERED KEY BOARD
- ✓ CONSTANT KEY
- ✓ % CALCULATION FOR MARK UP AND DISCOUNT
- ✓ ROUND OFF KEY
- ✓ FLOATING IN/FLOATING AND FIXED OUT DECIMAL
- ✓ ADD MODE
- ✓ ROLL-OVER KEY BOARD (FOR FAST TOUCH OPERATION)
- ✓ TOTAL RECALL
- ✓ SILENT START-STOP OPERATION

and compare this **\$269⁰⁰**

ALSO:

Canon Desk Calculators \$59⁹⁵

At The
Telegram Office
A LIFETIME OF DURABILITY
FOR A LIFETIME OF DEPENDABILITY!

Hunting, Fishing Licences Sale Aug. 11

AUSTIN - A total of one million combination hunting and fishing, resident hunting and exempt hunting licenses are winging their way to license sales deputies and Texas Parks and Wildlife Department offices across the state.

Mailed August 8, the licenses should be available for sale to sportsmen during the week of August 11.

They will be valid for use on September 1.

P&WD officials say that the 1975 - 76 licenses remain much the same as last year's, with buck and antlerless deer tags and trukeys tags printed on waterproof, tear - resistant paper.

License fees also are unchanged - \$8.75 for a combination hunting and fishing licenses, \$5.25 for resident hunting and 25 cents for a resident exempt hunting license.

There are the usual spaces for white - winged dove and federal migratory waterfowl stamps. New this year is a \$3.25 archery stamp required in addition to the valid hunting license for every archer who hunts wild deer, bear, turkey and javelina during any open archery season in which longbows and arrows may be used. Like the whitewing and waterfowl stamps, the archery stamp must be signed across its face by the person using the stamp.

Department consignment officials said that no fishing licenses will be mailed out to sales deputies at this time since the \$4.25 fishing licenses are valid for one year from date of purchase and do not necessarily have to be renewed Septmeber 1.

The 1975 - 76 issue of hunting and sport fishing regulations also is available free where hunting and fishing licenses are sold.

LAKE PROPERTY

- Approximately 12 acres land with 950 square ft. house, good water frontage, Lake Leon, wooden pier at waterfront, nice trees, variety of fruit, garden spot, etc. Will G.I. \$17,000.
- Deeded lot, 4 bedroom house, 1 1/2 bath, Lake Leon, \$14,000.
- 24 Acres land approximately 1500 ft. water front, consider 2 G.I.'s \$24,000.
- 16 Acres Lodge and 6 rental cabins, large recreation building Possum Kingdom, for sale or trade, clear of debt, terms available.

HOMES

- 2 bedroom frame house, 75 x 100 ft. lot, \$8,750 existing loan \$4,200, payments \$69 per month, Ranger.
- 3 bedroom, 115 Scurry St., Gorman, \$11,500. Terms considered.
- One bedroom frame house, bath, dining room - kitchen combination, 3 lots, nice trees, storage, \$6,500. 1415 Harrell St., Eastland.
- 2 bedrooms frame home, close in, Eastland, 500 S. Green, \$7,500. Loan balance, \$75 per month, \$11,750.
- Completely remodeled 3 bedroom frame house, dining room, den, utility room, 2100 sq. ft. double garage with storage, nice trees, several extra lots, plus rent house, and mobile home rental space in Cisco.
- 2 bedroom frame house, 8 acres approximately 5 miles out, city water and well.
- 8 1/2 acres Carbon on pavement.

KINCAID REAL ESTATE
100 South Seaman, Eastland, Texas
817 - 629 - 1781

J.D. Vandergriff - Nite Phone 629 - 8137
Sunni Scott - Nite Phone 734 - 2159, Gorman

Robert Kincaid - Nite Phone 629 - 2721
629 - 2815

What's Your Handle?

C.B. or not C.B.
That appears to be the question for a lot of Eastlanders.

C.B. is short for citizen's band radio, and of all electronic fads, it's definitely into its own. Many there are who have extra antenna on their automobiles, pickups and/or rooftops at home. And if, while driving down the highway, you spot another driving who appears to be eating a black apple, chances are good that he's on a "C.B. microphone".

He could be talking to his office, home, with another "mobile" friend, or more likely with truck drivers. It's a popular past time hereabouts, with Int. 20 nearby.

And the C.B.'ers language is almost a tongue unto itself, relying heavily on the well known ten-code wherein certain numbers attached to the number ten, mean certain things:

"What's your 10-20?" (i.e.: where are you?)
"That's a big 10-4". (Yes, affirmative.)

Truck drivers (and others) depend on the C.B. to keep up with the Highway Patrolmen (Smokies), and you'll hear a lot of reference to mile-post markers: ("You're clear to 441") Or warnings issued: "There's a smoky at 359 taking pictures (Using radar)".

Or if yours is a suspicious looking auto, you may get referred to as being in a "plain wrapper". (unmarked patrol car).

But, of course, there's a lot of C.B.'ing that such chatter (which is technically forbidden). For instance, there's a C.B. club here (and in most towns) whose key purpose is to be of use in the case of emergencies. They're affiliated with a national organization called REACT and the purpose is jto be used by law enforcement agencies, civic defense units and others in periods of emergencies.

Texas Dept. of Public Safety

Sgt. Jerry Mathews is president of the Eastland club which has an active membership.

In one town a woman left a rest home and promptly disappeared. In that town the Police Department looked for the woman for one hour before an officer called headquarters and remarked that he needed some help from local citizens band radio operators.

The officer didn't have to mention it again. Within 10 minutes 27 cars gathered on a specified parking lot and the operators began helping in the search.

As it happened, the police found the woman just as the citizens began helping in the search. However, this story serves to highlight the willing and helpful attitude of the CB clubs.

With interest in CB radios sweeping the country, the CB club has enjoyed incredible growth during the last few months.

They said that the truck drivers initiated the use of CB radios to keep track of "Smokes", (highway patrol and other law enforcement agencies that monitor highway traffic.)

Once the truckers started using the devices, other motorists recognized a good thing and bought their own sets.

Of course, it is illegal to use a CB radio for such purposes but one has to be caught in the act before one can be charged with the offense. This is, reportedly, very hard to do.

One factor that drives the authorities wild is the use of "Handles", (code names). When a CB operator "talks skip", he signs on and off with names such as "woodchuck, goat man, buffalo man", etc.

The clubs discourage the use of such names although it realizes that the illegal names will continue to be used.

The proper procedure for calling another CB operator is to give one's call number (license number), give the other operator's number, talk, and then sign off with the call number.

This rule, along with a multitude of others, is cheerfully ignored by the majority of CB operators because, 90% of all CB operators don't know or understand the CB rules set forth by the Federal Communications Commission (FCC).

The FCC rule book read like an income tax return. In addition to watching for "smokey", people buy CB radios so that they communicate in situations where a telephone is not available.

Examples of this include isolated oil field workers, truckers passing each other on the highway, motorists stranded on the highway, and members of trailer caravans trying to keep track of each other. A mobile CB unit has an effective range of approximately 12 miles.

Idle gossip is forbidden on CB but some people do it anyway. With 23 main AM channels and 46 "side band" channels, CB operators have a choice of 69 different channels to use.

A side band channel is one that is located between two of the main channels. Returning to the main channel, No. 9, is for emergency use only. Channel 19 is called the "truckers" channel" and is used by a large portion of CB'ers.

Some complain about the lack of courtesy that some CB'ers, especially the young, have for other users. It is not unusual for



JIM WORTMAN WITH EARS ON

some of these people to interrupt conversations already in progress. Some use abusive language.

The club has little control over the abusers since so many CB'ers in this area do not belong to the organization.

A license to operate a CB unit costs \$4 for five years. This is down from the former \$20 fee for the same number of years. The FCC lowered the price to encourage more people to buy licenses for their units so that the FCC can monitor CB traffic more efficiently.

To buy a license, a person needs to be 18, an American citizen, and certify that he understands the rules and regulations of operating a CB unit.

To get into the CB game, a prospective operator will lay out approximately \$150 for a mobile unit complete with antenna. The more powerful base, or home, unit with an antenna will cost about \$750.

Some dedicated radiohobbyists have classed CB'ing, as being miniature ham operating, and generally you'll find that the true ham operators (who operate on more expensive and more sophisticated equipment with very rigid rules) don't look favorably on the C.B. operators.

Perhaps among the most objectionable traits of the C.B.'ers (in addition to those who truly abuse it with foul language) are the many who twist and change common words and phrases into what becomes a sing-song pattern.

If for instance one of your acquaintances frequently says "negative" to you, you can bet he's a C.B.'er who for unknown reasons just doesn't know how to say "no", or "negative".

Sheriff's Report

The Eastland County Sheriff's office reports one burglary in Ranger at the Ranger General Hospital so far this week. They reported oil was stolen north of Eastland and two saddles were stolen south of Ranger.

FOOTBALL . . .

Continued From Page 1

The West was forced to punt to the East but the East could do nothing with the ball and punted it back to the West. The West took the ball on their own 43 yard line. After an incomplete pass, Jeff Reed got the passing game cranked up again and hit Lonnie Fisher of Iowa Park for a 57 yard touchdown. The kick was wide to the left and the West led 19-13 with three minutes and 5 seconds to play in the game.

Marvin Williams returned the East kickoff to his own 48 yard line in a fine twisting run. Two plays later, however, Tony Harkins picked off a Mike Vickers pass near mid-field and returned it to the East 45 with only two minutes and 26 seconds left to play.

David Beezley gained 11 yards to the 34 yard line and the spectators were beginning to look for the exits. It was at this point that Morren chose to step into action and personally put the seven points necessary for victory on the scoreboard. Only 38 seconds were left on the scoreboard clock when the Eastland back sped into the end zone.

It was an outstanding finish to an outstanding game. You could not have written a more perfect script-unless you were for the West.

The snap from center was fumbled on the extra point try and the score remained 13-13 with eight minutes and 37 seconds left to play in the ball game.

The West took the kickoff and could do nothing with it. With a second down and seven yards to go, Mark Keys made a fine open field tackle that prevented a long gainer by the West.

Gene Veals and their ground game to work. Veals took the kickoff and returned it to the West 48 yard line. After a short ground gainer, Veals then carried for eight yards and an East first down.

Veals carried for four more yards and Scottye Ratliffe carried for seven more yards and another East first down.

Veals and quarterback Vickers combined for nine and a half yards on the next three plays. This left the East with a fourth and a half yards to go as the third quarter came to an end.

On the first play of the fourth quarter, little Scottye Ratliffe picked up the first down over Louis Mendoza. This left the East with a first and goal to go situation from the seven yard line.

It was time for a little more Veals. The 5'10", 170 pound running back carried twice in a row to the one foot line. Marvin Williams then powered over the left side of his line for the tying touchdown. The entire time consuming drive came on the ground.

The West took the kickoff and could do nothing with it. With a second down and seven yards to go, Mark Keys made a fine open field tackle that prevented a long gainer by the West.

65th Annual Fox Reunion

The annual Fox Family Reunion was held Sunday, August 3, at the Olden Gym. Approximately 150 attended. This was the 65th reunion for the Fox family.

A business meeting preceded the noon lunch. Officers elected for the following year are: President, Harvey Fox of Olden; Vice President, Abb Fox of Lubbock; Reporter, Arieta Mace of Eastland; Secretary and Treasurer, Lottie Fox of Olden; Chairman of Grounds Committee, Q.Z. Rainey of Carbon; Food Committee, Ada V. Morren of Eastland; Edith DeLaney of Breckenridge; Hattie Weathers, Cisco; and Jimmy Hughes, Olden.

Program Committee, Jeanne Schleppe, Olden and Wanda Rainey, Carbon.

Gifts were presented to the following: Mrs. Kizzie Fox of Stamford for being the oldest attending.

Lissa Fox, daughter of Celand Fox of San Francisco, Calif., for the youngest attending.

Gerald Kendrick for traveling the farthest. He lives in San Francisco, Calif.

Following the noon lunch a program was presented with Tonya Franklin of Dallas being singer and master of ceremonies. Other entertainment was by the "Cliftons" of Clyde, featuring Darla Clifford as vocalist, Marty, Marty III and John Clifford and Ray Walker. There was a group singing also.

The reunion will be held in Olden Gym in 1976 unless plans are changed.

Those attending were: Latha Taylor, Mrs. Ida Carley and Family of Lancaster, Norma Papp, Kevin Wharton, Tiffany Mace, Mr. and Mrs. Vervel Vinson, Mr. and Mrs. Chuck Cale and Shannon of Abilene.

Bud Fox of Duncanville, Mr. and Mrs. William Fox and family from Azle, Howard Shirley Fox and Mr. and Mrs. Gerald Kendrick of California, Mr. and Mrs. John Harkins of Fort Worth, Mr. and Mrs. Cecil Crowder, Mr. and Mrs. James (Tibb) Fox, Mr. and Mrs. Loyd Jones, Mr. and Mrs. Bruce Jones and Bob, Mr. and Mrs. Earl Hyatt and Sam, Mr. and Mrs. John Reese, from Grand Prairie; Mr. and Mrs. Woodrow Fox, Mr. and Mrs. T.W. Fox, Mr. and Mrs. Andy Taylor from Gatesville.

From Eastland were - Raymond Fox, Mr. and Mrs. Dick Yielding, Mr. and Mrs. Walter Fox, A.E. (Bud) Fox, Mrs. Shirley Lynch and sons Mark, Steve and David, Mr. and Mrs. Jack Mace, Bob Mace, Rose Mary Wood, B.W. Robertson, Randy Wharton, and Ada V. (Cox) Morren.

From Ranger: Mrs. Oral Fox, Janie White, Terri Kay White, Georgia May Rush;

Sheryl Goods of Odessa, Brownie, Teddy, Sandy and Judy Williams of Monahans; Nick and Kathy Fox



Jane Krantz, Brent Parker Exchange Vows

Jane Ellen Krantz and Brent Keith Parker exchanged marriage vows Friday, August 8, in the home of Mr. and Mrs. Rudy Parker in Eastland. Rev. Steve Church officiated.

The bride is the daughter of Mr. and Mrs. Jim Krantz of

Lake Leon and the granddaughter of Mr. and Mrs. Carl Page of Ranger.

The bridegroom is the son of Mr. and Mrs. Rudy Parker of Eastland and grandson of Mr. and Mrs. Roden Parker of Lindsey, Okla.

The maid of honor was Mila Kincaid of Eastland and best man was Pat Rich of Eastland.

The bride's parents hosted the reception in their home.

The couple will reside in Olden.

Foster Home Receives Memorial

Memorial gifts given in honor and memory of friends and loved ones are of significant importance to the program at Foster Home in Stephenville. Executive Director, Richard M. Blythe, says, "We appreciate our friends who choose to use Foster Home as a means to express their love and compassion for friends and loved ones in times of sorrow and illness."

This week Foster Home received a gift in memory of Robert N. Lewis of El Paso, Texas, from The H.S. Lewis family of Eastland.

Serving At Altus

ALTUS, OKLA.--Now serving at Altus AFB, Okla., with an Air Force Communications Service unit is Staff Sergeant Kelly L. Wyatt, son of Mr. and Mrs. Bill Wyatt of 302 W. Sadosa, Eastland.

Sergeant Wyatt, a communications specialist, was previously assigned at Tempelhof Central Airport in Berlin.

The sergeant is a 1967 graduate of Carbon High School. His wife, Sandra, is the daughter of Mr. and Mrs. A.L. Stone of Plantersville, Ala.

and Tonya Franklin of Dallas, Darla Clifford, John Clifford, Marty Clifford and Marty Clifford III and Roy Walker of Clyde; Billy Richardson of Kermit, and Mr. and Mrs. James Pruett of Midland.

IF YOU MISS YOUR TELEGRAPH CALL 629-2214

Complete Car Service . . .
Bring your car to us for any type of repair. We give you fast, quality service. Stop in.

Reasonable
SCOTT PAINT AND BODY WORKS
629-2372
300 W. Commerce
Sam Beggs-Owner

RESPONSIBLE... RELIABLE... READY-TO-GO

AMBULANCE SERVICE

2504 AUG 71 M.P. 50



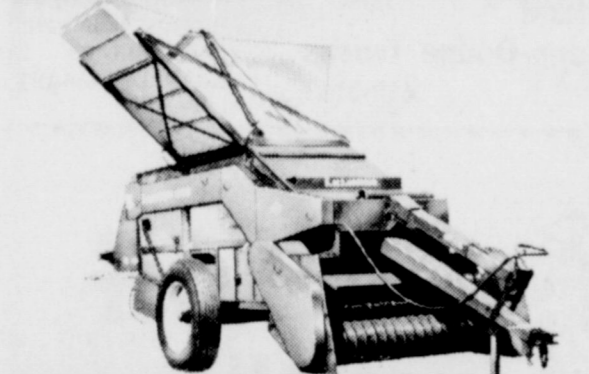
Assurance . . . It Matters

Depend on us when there's a need for immediate ambulance service. Call us day or night for fast action.

Modest Rates
Arrington Funeral Home

Ph. 629-2611

DEALER'S CHOICE.



THE LILLISTON 1500 PEANUT COMBINE.

You bet your life the Lilliston 1500 Peanut Combine is our choice. There's nothing better than selling the best, and we can assure you this precision machine is still a solid #1 in its field. Highly perfected and superbly engineered, the Lilliston has one more thing going for it--factory field service that is second to none in the entire farm industry. In the Lilliston, you have the perfect combination: The best working for you and the very best support behind you.

It Stays With You.

Squiers Farm Store

514 W. Main Eastland, Texas 76448

National Farmers Union Insurance Companies
LARRY ARMSTRONG
104 Commerce RCG Building
Eastland, Texas 629-1342

Offering Complete Multiple-Line Insurance Service

One-Stop Insurance Service for Home, Family and Farm

GENERAL REVENUE SHARING ACTUAL USE REPORT (5)

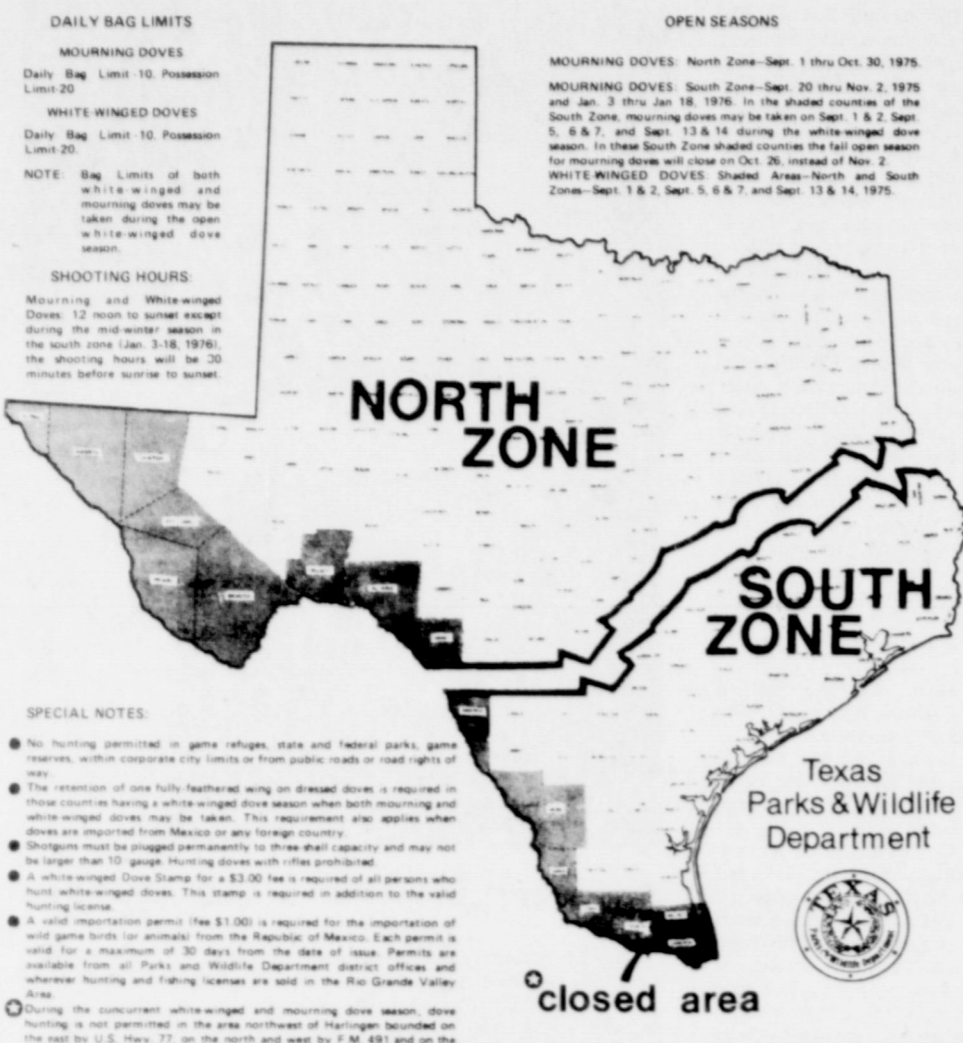
GENERAL REVENUE SHARING PROVIDES FEDERAL FUNDS DIRECTLY TO LOCAL AND STATE GOVERNMENTS. YOUR GOVERNMENT MUST PUBLISH THIS REPORT ADVISING YOU HOW THESE FUNDS HAVE BEEN USED OR OBLIGATED DURING THE YEAR FROM JULY 1, 1974, THRU JUNE 30, 1975. THIS IS TO INFORM YOU OF YOUR GOVERNMENT'S PRIORITIES AND TO ENCOURAGE YOUR PARTICIPATION IN DECISIONS ON HOW FUTURE FUNDS SHOULD BE SPENT. NOTE: ANY COMPLAINTS OF DISCRIMINATION IN THE USE OF THESE FUNDS MAY BE SENT TO THE OFFICE OF REVENUE SHARING, WASHINGTON, D.C. 20226.

(A) CATEGORIES	(B) CAPITAL	(C) OPERATING MAINTENANCE	THE GOVERNMENT OF EASTLAND CITY
1 PUBLIC SAFETY	\$	\$ 6325	has received General Revenue Sharing payments totaling \$23,854
2 ENVIRONMENTAL PROTECTION	\$	\$ 2303	during the period:
3 PUBLIC TRANSPORTATION	\$	\$ 1698	ACCOUNT NO. 44 2 067 003
4 HEALTH	\$	\$ 1170	EASTLAND CITY 486
5 RECREATION	\$	\$	1974
6 LIBRARIES	\$	\$	EASTLAND, TEX 76448
7 SOCIAL SERVICES FOR AGED OR POOR	\$	\$	
8 FINANCIAL ADMINISTRATION	\$	\$ 746	
9 MULTIPURPOSE AND GENERAL GOVT	\$	\$	
10 EDUCATION	\$	\$	(D) TRUST FUND REPORT (refer to instruction D)
11 SOCIAL DEVELOPMENT	\$	\$	1 Balance as of June 30, 1974 \$ 7,147
12 HOUSING & COMMUNITY DEVELOPMENT	\$	\$	2 Revenue Sharing Funds Received from July 1, 1974 thru June 30, 1975 \$ 23,854
13 ECONOMIC DEVELOPMENT	\$	\$	3 Interest Received or Credited (July 1, 1974 thru June 30, 1975) \$
14 OTHER (Specify)	\$	\$	4 Funds Released from Obligations \$
15 TOTALS	\$	\$ 14,204	5 Sum of lines 1, 2, 3, 4 \$ 30,701
NONDISCRIMINATION REQUIREMENTS HAVE BEEN MET			6 Funds Returned to ORS \$
(E) CERTIFICATION: I certify that I am the Chief Executive Officer and with respect to the entitlement funds reported herein, I certify that they have not been used in violation of either the priority expenditure requirement (Section 103) of the matching funds provision (Section 104) of the Act.			7 Total Funds Available \$
Signature of Chief Executive			8 Total Amount Expended (Sum of line 15 column B and column C) \$ 14,294
Date			9 Balance as of June 30, 1975 \$ 16,407

Lewis Tiner 8-12-75 Date
City Manager

(F) THE NEWS MEDIA HAVE BEEN ADVISED THAT A COMPLETE COPY OF THIS REPORT HAS BEEN PUBLISHED IN A LOCAL NEWSPAPER OF GENERAL CIRCULATION. I HAVE A COPY OF THIS REPORT AND RECORDS DOCUMENTING THE CONTENTS. THEY ARE OPEN FOR PUBLIC SCRUTINY AT City Hall

MOURNING DOVE • WHITE-WINGED DOVE Hunting Regulations 1975-76



7 Day Dove Season

AUSTIN—Two major departures from tradition will mark the coming white-winged and mourning dove seasons: seven days of white wing hunting and full-day mourning dove hunting in the South Zone January season.

Record numbers of white wings in the Rio Grande Valley this summer prompted Texas Parks and Wildlife Commissioners to set a seven-day season on the birds, the longest in 32 years.

The white wing season will run Sept. 1, 2, 5, 6, 7, 13 and 14, in Brewster, Cameron, Culberson, El Paso, Hidalgo, Hudspeth, Jeff Davis, Kinney, Maverick, Presidio, Starr, Terrell, Val Verde, Webb, Willacy and Zapata Counties, from noon until sunset on each day with bag limit of 10 daily and 20 in possession—limits which apply to all Texas dove seasons.

All-day mourning dove shooting will be Jan. 3-18, 1976, in the southern quarter of Texas, from one-half hour before sunrise to sunset. The first portion of the split season for the South Zone will be Sept. 20-Nov. 2, except in those counties having a white-winged dove season where it will be Sept. 20-Oct. 26. Traditional noon-to-sunset hunting hours apply during the fall season.

The North Zone retains the long-established straight season of Sept. 1-Oct. 30, 1975. For many years, Texas has been the only state in the Central Management Unit without full-day mourning dove hunting. TP&W Migratory Game Bird Program Director Dr. Hal Irby sought and received the full-day hunting option from U.S. Fish and Wildlife officials.

Texas Parks and Wildlife Commissioners at their July 25 hearing in Austin directed Irby and the Wildlife Division staff to implement an experimental all-day hunt for the coming season.

"The 16 days in January of all-day hunting," said Irby, "will be to test hunter acceptance of the option and to initially determine its effects, if any, on the resource."

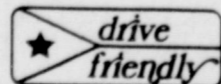
Mourning dove harvest during the January split has been low the past two years. Irby felt that most of the birds taken during the morning hours would be by quail hunters who accidentally flush a dove.

"Mourning doves have been on a slow decline in Texas since 1972," said Irby. "Full-day hunting statewide would not be wise this year."

All of the new regulations were adopted by the commission within the framework established by the U.S. Fish and Wildlife Service, which released the maximum allowable rules for Texas and the Central Management Unit earlier this week after study of migratory bird population reports and discussion with member states and interested agencies.

An increase in nesting whitewings in areas previously closed to hunting also brought commission approval to open dove hunting during the September season in the portion of the state south of a line extending along U.S. Hwy. 281 between the city limits of Hidalgo and Brownsville.

August 14, 1975



Hospital News

Patients in the Ranger General Hospital Wednesday, August 13, 1975, were:

- W. E. Reed
- Jack Rawls
- Billy Jo Clark
- Kathleen Nowak
- Riley Miller
- Susie Vinson
- Etta Stouard
- Betty Goforth
- Oma Underwood
- Eugene Proctor
- James Dunlap
- Ira Files
- Michael Ewing
- Lela Cross
- Myrtle Downs
- Barbara Mallory
- Lora Evans
- R.C. Van Zandt
- Cluster Moats
- Johnny Riffle
- Juanita Garza
- Baby Girl Garza
- Bryan Parks
- Rhone Parks
- George Norris

Patients in the Eastland Memorial Hospital Wednesday, August 13, 1975, were:

- Robert McCowen
- Marvin Martin
- Virgie Jarrett
- Peter Laird
- Pauline Kelly
- Annie Hodnett
- Vera Harris
- Yvonne Revels
- Imabe Clark
- Nina McMillan
- Ollie McGuire
- Lisa McCullough
- Inar Parten
- Aubrey Guy
- Wesley Spivey
- Lester Collum
- David Livingston Sr.
- Doyle Adams
- Lillie McClelland
- Beulah Conner
- Horace Lane
- Joe Carlton
- Robin Kerr
- Janie Stephenson
- J. B. Pratt
- J. C. Duggan
- Florence Miller
- Velma Hunt
- Marene Johnson
- Evelyn Stewart
- Vestal Roberts
- Carrie Grimes
- Mary Jo Eaves
- Belle Jones
- Barbara Wood
- Ima Threet
- Charles Ann Espinoza
- Sally Evans
- Ruby Squiers
- Anna Harris
- Elver Everton
- Elgar Butler
- Clara Heatley
- Sue Hamilton
- Jewel Martin
- Dorothy Gawlik
- Erra Byrd
- Mildred Davis
- Charlene Wright
- Velma Gryder
- Georgie Miller
- Estelle Stephens
- Henry Werley
- Arther Lasater
- Winnie Hancock
- Loretta Shook
- Clyde Custer
- Shirley Ables
- Ronnie Pipkin
- Bryan Johnson
- W.B. Overcash
- Bobby McDonnell
- Kathy Stanley
- Baby Girl Wright

COUNTY NEWS

The following proceedings were had in the Court of Civil Appeals, Eleventh Supreme Judicial District of Texas August 8, 1975:

AFFIRMED

Gloria Hart et al. v. Helen Sue Rogers, Guardian (Opinion by Judge McCloud)-Palo Pinto

Texaco, Inc. v. E.H. Pursley, Jr., et al. (Opinion by Judge Walter)-Nolan

MOTIONS SUBMITTED

Lana Vonne Sharp et al. v. G.C. Stacy et al. Appellant's motion for rehearing.-Eastland

Darrell Lynn Edmonds v. The State of Texas. Appellee's motion to dismiss the appeal-Taylor

William Andress Jr. v. American Youth Camps, Inc. et al. Appellant's motion for rehearing-Dallas

Gilbert D. Ramone v. Paul Mani, M.D. et al. Appellee's motion to extend time to file briefs-Taylor

Inez Williams, Executrix of the Estate of H.F. Williams, deceased v. W.M. Little. Joint motion to extend time to file appellee's brief-Comanche.

MOTIONS GRANTED

Gilbert D. Ramone v. Paul Mani, M.D. et al. Appellee's motion to extend time to file briefs-Taylor

Inez Williams, Executrix of the Estate of H.F. Williams, deceased v. W.M. Little. Joint motion to extend time to file appellee's brief.-Comanche.

MOTIONS OVERRULED

Lana Vonne Sharp et al. v. G.C. Stacy et al. Appellant's motion for rehearing.-Eastland

Darrell Lynn Edmonds v. The State of Texas. Appellee's motion to dismiss the appeal-Taylor.

William Andress, Jr., v. American Youth Camps, Inc. et al. Appellant's motion for rehearing.-Dallas

Texas Rural Electric Leaders Elect Comanche Resident



BILL MCGINNIS

After organizing, few members of the group had taken part in their cooperative or politics, but their high bills provided a sudden reason to do so.

Linsted said his group found the problem didn't lie with the co-op or its wholesale power supplier, but with high natural gas prices, and that they could resolve their problem better by working with their co-op than against it. He said, "I want to remain a co-op member because I can help direct destiny that way. I couldn't if I got my power from a commercial electric company."

Linsted concluded that today the successful co-op will be the one that is an open operation, and one that encourages its members to take part in it."

Rep. Wilson also encouraged political involvement. He gave his key for successful political involvement: "Think clearly, trust your fellow man dearly, love God sincerely." He said nobody can think clearly without a positive mental attitude, and that territorial integrity only became part of the new Texas Public Utility Act because of electric cooperatives' positive attitude toward the Legislature. Berl M. Springer, vice-presi-

dent of Southwestern Public Service Company, Amarillo, said that cooperatives and commercial electric companies have a choice in their future transactions. "We can Moderate our attitudes and demands on each other and survive by working together as we generally have in the past, or we can go our separate ways and perish", he said. Springer also said that his company doesn't see the new Texas Public Utility Commission as advocates, but as arbiters.

REA Administrator David A. Hamil of Washington, D.C., said that while most rural areas in Texas now have power available, rural electrification has not ended. "The job is not done", he said. "We will be improving the existing service for a long time to come, even in the most sparsely settled areas."

During the business session, delegates passed 20 resolutions, including one that urged co-ops to encourage each of their members to become politically involved. They also elected Elton McGinnis of Eldorado and Alton Higginbotham of Floydada to three-year terms on the TEC board of directors.



Health & Beauty Briefs

For Younger Looking Skin

Smoking is bad for the skin, according to a study conducted by a California internist who concluded that there is a strong association between prolonged smoking and "crow's feet" wrinkles around the eyes.

Soaps can be too drying for skin past the teen years. Substituting another washing agent has proved useful in many cases. pHisoDerm, a creamy liquid cleanser, is reported to replace natural oils lost during washing with ordinary soap, and is therefore suitable for all age groups including for those with mature skin.

Physicians warn against using hot water routinely for washing skin. A good skin cleanser such as pHisoDerm is effective when used in warm water, or even cold. Scrubbing the skin is advised against at any age, including for teenagers.

A medicated cream such as pHisoAc that is used to help fight the pimples of adolescents can be used for occasional breakouts experienced by older women.



Cattleman's Restaurant

Offering: Home Style Lunches

11 a.m. - 2 p.m.
6 days A Week

Fresh
Homemade
Pies

Each Friday Night
6 p.m. - 10 p.m.
Fish Night
(All You Can Eat)
\$2.25
With Tea And All
The Trimmings

Delicious
Steaks

Fixed The Way
You Like Them

Cattleman's Restaurant

Highway 80 East

Hours: 6 a.m. - 10 p.m.

Eastland

- 1973 Buick Century: 4-Door Pwr & Air, Low Milage Extra Clean \$3,000.00
- 1974 Ford Torino: Pwr & Air \$2300.00
- 1974 Duster: Pwr & Air - Low Milage Lease Car Warranty \$3350.00
- 1974 Dodge Dart: 4 Door Pwr & Air, Low Milage, Lease Car Warranty \$3375.00
- 1974 HD 1 Ton Chevrolet Dual Fuel Tanks & Speed Trams \$3500.00
- 1972 Pinto 3-Door Runabout: 4 Sp, Air, Good Economy Car. \$1500.00

McCathren Motor Co.
Of Eastland
Chrysler-Plymouth-Dodge-Dodge Trucks
215 S. Seaman 629-8151



Bill Roberts

Invites you to shop and compare for the best used car prices in Eastland County.

1/2 Off All Summer Merchandise

Excluding Jewelry

Quetta's Sports Wear Boutique
1H 20 Next To Ramada Inn
Eastland 629-8030

CITIZENS REALTY

820 WEST MAIN STREET,
EASTLAND COUNTY'S
VOLUME
RESIDENTIAL DEALER
629-1769 629-2404

BEFORE SCHOOL STARTS, you should get settled into this enchanting family home. In RANGER, two bedrooms, one large bath, nice living room, formal dining room, modern kitchen with breakfast bar, central heat, one car garage with workshop and storage. Nice yard, assume loan.

IF TWO WILL DO and if you're looking for an equity buy with a low equity, here it is. One bath and one car garage, located in a friendly Eastland neighborhood. Established yard on two lots. Call today.

ONCE IN A BLUE MOON does a house of such charm and quality come on the market. In RANGER, we have a nice three bedroom brick home, one and a half baths, one car garage, central heat and air. Financing.

TAKE A SEC... ee bedroom ought up to arage, extra nice location.

RETIRE WITH INCOME, home and rental property in East Cisco, a good buy at today's market prices. It doesn't cost a fortune to look.

IDEAL LOCATION for truck terminal or other business purposes. Corner lot fronts Hwy. 6, close to downtown Eastland. Good set of scale, warehouse with 8,000 sq. ft. excellent for investment.

DON'T BUY! these choice lot

THERE' A show place ho Stylishly arran two bath, two

'today's' standa 'today's' standa

INVESTIGATED or here - a ting house, e bedroom, 'd expect in

SOLD

SOLD

SOLD

IT'S ALL HE pression of the bedroom, two i

SOLD

COUNTRY HOME ON HILL, three miles east of Cisco on Hwy. 80. 4.5 ACRES, three bedroom, two bath, covered enclosed patio, fenced. Self - clean range, dishwasher, disposal, antenna and rotor, drapes, carpet, two car garage, landscaped, country living, with city conveniences.

THIS TIME nxious to sell. you. Three DHS, will talk

SOLD

COUNTRY ACRE. 1.47 bath, two car garage. Many 'ailable. Low

SOLD

NOT EVERYONE IS ATTACHED, and we have just the perfect investment for you. Two bedrooms, one bath, nice yard, comfortable, PRIVATE.

NEWLY WEDS or newly retired - here's the perfect home for a couple! Three bedroom, one bath, redecorated, choice location.

ARTISTIC ENGLISH, a rare find in Eastland's Valley View Estates. Get in on the ground floor of th new proposed home. Are to begin foundation soon. Watch it progressing into a lovely three bedroom, two bath dream for your family.

(XX?)! s- good buy on t loan, low equ

WOULD Y? that is! New ster bedroom, kitchen, back entry, two car

HA financing.

OWNER READY TO TALK TRADE! MAKE OFFER. Hand-some four bedroom home. Isolated master, three full baths. Roomy Kitchen, back entry drive, carpet, paneling, central heat and air, assume loan.

WIFE PLEASER, large four bedroom, two bath home in Cisco. Has fireplace, double carport, large lot, pretty yard. Good location, FHA financing

UNHEARD OF! In Cisco, about two year old brick home, six rooms, central heat and air, low monthly payments approximately \$90. Call now

Hours: 8 - 6 Mon. - Fri.; 8 - 2 Sat. - 4 Sun.

CALL US -- WE CARE

B.G. BROWN - BROKER 629-8082

KARLA BROWN - BROKER 629-8082

Richard E. Ward - Associate 442-3524

Beñ Ward - Associate 442-3524

DORIS NORTON - ASSOCIATE 653-2263

drive friendly logo

**Invitational Tournament
Held At Lone Cedar**



**Airman Moore
Assigned To Lowry**

SAN ANTONIO—Airman David G. Moore, son of Mr. and Mrs. Willie B. Moore of Gorman, has been assigned to Lowry AFB, Colo., after completing Air Force basic training.

During his six weeks at Lackland AFB, Texas, he studied the Air Force mission, organization and customs and received special instruction in human relations.

The airman will now receive specialized training in an Air Force specialty.

Airman Moore is a 1974 graduate of Gorman High School.

Lone Cedar Ladies Golf Association hosted a one day Invitational Tournament Thursday, August 7, 1975.

Reservations were received in advance for 60 ladies from many area cities. Coffee and donuts were served during registration. A "Country Kitchen" decoration theme was carried out in the dining room where lunch was served following play.

Association president, Mrs. Varge Daniel, commented that the many preparations for the tournament were truly a team effort on the part of association members; many working on several committees. Mrs. Daniel expressed special thanks to Lone Cedar members who so generously provided their golf carts for the convenience of visiting golfers. This accommodation added much to the success of this event.

RESULTS OF TOURNAMENT: Medalist—Judy Casey, Abilene; Longest Drive—Ilene Cotton, Cisco; Low Putts—Letha Stafford, Cisco.

CHAMPIONSHIP FLIGHT: Low Gross—Judy Casey; First Low Net—Pauline Rice, Brownwood; Second Low Net—Daphne Hays, Abilene; Third Low Net—Nadine Jones, Abilene.

FIRST FLIGHT: Low Gross—

Alva Jones, Ranger; First Low Net—Helen Martin, Stephenville; Second Low Net—Lou Grider, Cross Plains; Third Low Net—Evelyn Daniel, Eastland.

SECOND FLIGHT: Low Gross—Betty Doyle, Eastland; First Low Net—Bonnie Rice, Eastland; Second Low Net—Nita Spurgers, Abilene; Third Low Net—Ruby Williams, Abilene.

THIRD FLIGHT: Low Gross—Grace Winingar, Eastland; First Low Net—Butch Zellman, Cisco; Second Low Net—Pat Shook, Eastland; Third Low Net—Janice Ray, Eastland.

Sheila and Kamilla Crabtree of Carrollton spent last week with their grandparents, Mr. and Mrs. Preston Crabtree.

Mr. and Mrs. Parks Poe visited their daughter and family Mr. and Mrs. Bob Sikes of El Campo during the weekend.

Mr. and Mrs. Edgar Altom spent the weekend with their daughter and family Mr. and Mrs. Donald Tow.

Visiting Mrs. Cleo Greenwood last week were her sister Mrs. Emily Graves and a niece, Mrs. Wanda Shelby of Phoenix, Ariz.

**Life Of Christ
Production Closes**

The summer productions of the Kendrick Religious Pageant "the life of Christ" will come to a close this weekend with the final performances being Friday and Saturday, August 15 and 16, at 9 p.m.

During this summer's productions, the cast has presented the complete life of Christ from the birth through the resurrection to an audience from six states of the nation as well as many areas and cities from the State of Texas. Many churches have sent groups by the bus load to view the productions. Many reports from these groups have come to the cast that numerous lives have been changed since viewing the presentation.

The cast and the Kendrick Family have thoroughly enjoyed the summer productions and all are looking forward to the first Friday night in June 1976, when the summer productions will again begin.

We hope that those in this area that have not had the opportunity to attend the pageant this summer, will make a special effort to attend this Friday or Saturday night, as we feel that everyone should see this presentation.

Birthday Party

The August birthday party will be held at Northview Nursing Center Thursday, Aug. 21st at 2 p.m. The Volunteers will be honoring Mrs. Lula Fox's birthday.

All friends and relatives are invited to attend.

**Volunteer Firemen
Collecting
Contributions**

Eastland Volunteer firemen are now collecting contributions for their Rural Fire Truck which is due to arrive in the latter part of October.

If anyone would like to send a check to the fund they are asked to address their envelope to: Eastland Volunteer Fire Dept., Eastland Texas.

Many people who live in the City of Eastland have become a custom to hearing the truck referred to as a Rural Fire Truck which is correct. But in a Volunteer Department a truck such as the one ordered can be easily operated and water attained through the pump much faster than through a pumper which would hook up to a fire plug. Thus when any fire call is received by the fire dept. the new truck would be one of the first to have water on the fire.

Eastland News

Mr. Clarence Hastings underwent surgery Monday morning at Harris Hospital in Fort Worth.

He is recuperating now. If anyone would like to write or send cards to Mr. Hastings, his address is Clarence Hastings, Room 275, Harris Hospital, 1300 West Cannon Street, Fort Worth, 67104.

**Haunted Mansion Casts Eerie
Shadows in Disney's
"Escape to Witch Mountain"**

MENLO PARK—A genuine haunted mansion born of death and despair casts strange shadows in Walt Disney Productions' supernatural thriller, "Escape to Witch Mountain."

The cavernous Victorian country house, now a private school in Menlo Park, Calif., was transformed briefly into an orphanage for location scenes in the movie about two youngsters with occult powers.

Built in 1880, its 60 rooms were never occupied by the original owners: a prominent San Franciscan and his bride who met a tragic, untimely end.

Carmelita Coleman, wife of the Honorable James V. Coleman, was just 19 years old when construction began on their magnificent town house at rural Menlo Park.

Before ever moving into it, Carmelita was killed while unpacking her husband's valise in their San Francisco home. A loaded revolver, which fell from the valise, fired a bullet into her body when it struck the floor.

James Coleman abandoned their Menlo

Park mansion and it remained unoccupied until 1922. During those years of dilapidation it was called a haunted house, and Stanford students used to dance in the moonlight on its lace-edged balustrades and porches.

In 1925 the old Coleman mansion became the Peninsula School of Creative Education. Today, painted swamp green, its walls ablom with murals and childish graffiti, it stands as a fascinating combination of prim past and permissive present. It is seen as Pine Woods children's home in "Escape to Witch Mountain," a thriller about two young orphans and a multi-millionaire who covets their psychic power.

Eddie Albert, Ray Milland, Donald Pleasence, Kim Richards, 10, and Ike Eisenmann, 12, star in the color by Technicolor Buena Vista release, directed by John Hough and produced by Jerome Courtland under the executive producerhip of Ron Miller.

Robert Malcolm Young wrote the screenplay from a book by Alexander Key.

Fri.-Sat.-Sun.-Mon. Aug. 15 -18 Mat. Sat. 2 p.m.

RAWLINS MONUMENTS
SINCE 1884
MONUMENTS OF DISTINCTION
BAKKER FUNERAL HOME
PHONE 629-1734

BAKKER FUNERAL HOME

629-1726

"VACATION TIME"

FOR INSURANCE ON YOUR BOAT AND MOTOR TRAVEL TRAILER OR TRIP ACCIDENT COVERAGE

CONTACT
D.L. Kinnaird
General Insurance

207 W. Main 629-2544
SINCE 1919
General Multiple Line Agency

Buy Wisely . . . Pay Promptly . . .

Protect Your Credit

If you are not enjoying the advantages of Credit buying, let us help you open a charge account. Your home town merchants welcome a new charge customer. Many of Life's luxuries and good things are enjoyed by those who have good CREDIT and use their credit ratings.

★ MEMBERSHIP ★

Baird's TV	King Motor Co.
Bray's	Kinnaird Insurance Co.
C-Wholesale Tire Co.	McCathren Motor Co.
Central Drug	Perkins Implement
City Garage	Poe Floral
Coats Furniture	Robertson TV
DeFord Exxon Co. USA	Smith Plumbing
Eastland Memorial Hospital	So-Lo Auto Parts
Eastland National Bank	Southern TV Systems
Eastland Service Parts	Southwestern Bell Telephone
Eastland Telegram	Stephen Printing
Freysschlag Insurance Agency	Super Save Grocery
Fullen Motor Co.	Texas Electric Service Co.
Goodyear Tire and Rubber Co.	Turner, Scaberry & Warford
H&R Lumber Co.	Vassarette Credit Union
	Western Auto Assoc. Store

Eastland Merchants Credit Association
310 North Daugherty Eastland, Texas 76448

EASTLAND Is Really
OLD FASHIONED
We Believe In Giving 100 Cents Worth for a Dollar...

Some things change, but the good old-fashioned integrity of your Hometown merchants is always the same. They believe in giving you full value . . . and usually, extra value . . . for the dollars you spend with them. That's why, when you shop at home, you'll get more of the newest and finest in modern products and services, for less. See for yourself . . . and save.

Shop The
Eastland Telegram Advertising

BETTER VALUES **WIDER PRICE RANGE** **FRIENDLY SERVICE** **FAMOUS BRANDS** **SHOP WITH CONFIDENCE**

Keep your cool!

1. Make sure the weatherstripping on your windows and doors is doing its job; keeping the cool air in and sealing the hot air out.
2. Keep the flue closed inside your fireplace while it isn't being used. A chimney can draw off a lot of cool air.
3. When the hot sun rays are beating against your windows, draw the drapes until it has changed position. Drapes with insulated linings are best to ward off the heat.
4. If you have changeable filters in your air conditioner, change them at least every thirty days. Clean your filter(s) as frequently if they are not changeable.

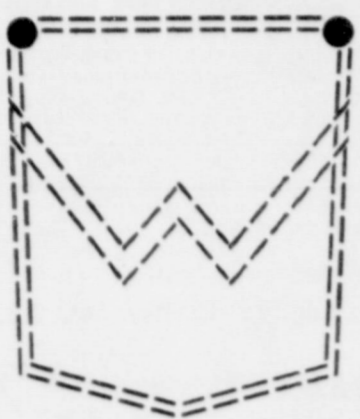
Energy is Valuable . . . don't waste it!

The Electric Cooperatives of The Brazos System

COMANCHE COUNTY ELECTRIC COOPERATIVE ASSOCIATION
COMANCHE, TEXAS

BACK TO SCHOOL

junior-misses
Wrangler



Guaranteed. If this garment should prove defective in any way return it directly to us for a replacement or refund at our option. Wrangler, Greensboro, N.C. 27420. Remember the "W" is Silent.

Blue Denim
100% Cotton
Big Bells
\$10⁹⁹



GIRLS'
DRESSES
For Back-To-School
50% Cotton
50% Polyester
No Iron
\$5⁹⁵

From
HEIDENHEIMER'S

THE NEW LOOK WITH

** Allee **

Flared Bottoms

NEVER IRON!

PERMANENT PRESS

- WASH IT!
- DRY IT!
- WEAR IT!

Always Pressed
OVEN-SET FOREVER

BOYS'
COLORED JEANS

Red, Navy, Brown, Blue, Green
Slims and Regulars
1-7 **\$3⁹⁹**
8-16 **\$4⁹⁹**



Soft
Comfortable!
With Suede Tip
Blue And White or
Gold And Black

Men's And Boy's 3 1/2 - 6
\$10⁹⁹
6 1/2 - 12
Boy's 12 1/2 - 2
\$9⁹⁹



Men's And Boy's
Deck Oxford Or Loafer

- New wedge mold
- New Herringbone design outsole
- Full cushion insole and arch
- Self color binding and stitching
- Sturdy two-piece upper
- Reinforced counter
- Washable

\$4⁹⁹

**BACK-TO-SCHOOL
COMFORT COMBINATION**

\$5⁹⁹ Pair



Men's
**Basketball
Oxfords**
\$6⁹⁹ Pair

TRACK SHOE

- Heavy duck seamless upper
- Contrasting color tape back stay
- 3 contrasting color stripes
- Contrasting color U-throat
- Anti-scut white toe cap
- Large aluminum eyelets
- Washable



Knee-High
**STRETCH
SOCKS**
Of Nylon

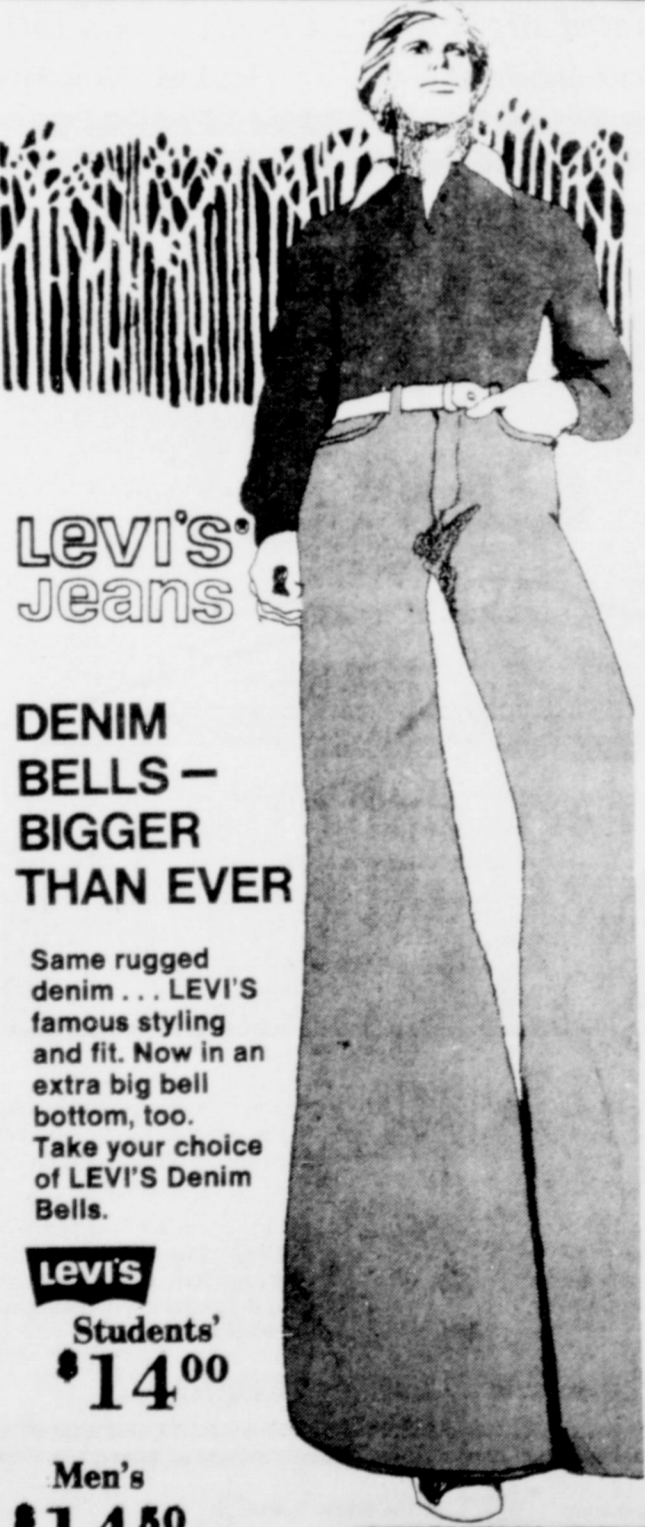
Colorful... fun.
Multi-striped toe
socks, and flowery
designs. One size.

\$1⁵⁰

BACK-TO-SCHOOL
With HI-BROWS
Shoes



Brown
5 to 10
\$18⁹⁹



**Levi's
Jeans**

**DENIM
BELLS -
BIGGER
THAN EVER**

Same rugged
denim... LEVI'S
famous styling
and fit. Now in an
extra big bell
bottom, too.
Take your choice
of LEVI'S Denim
Bells.

Levi's
Students'
\$14⁰⁰

Men's
\$14⁵⁰



White
Black
Brown
Fortune

\$10⁸⁸

semi-annual
Sale

**Fortune
Shoe Co.**

SALE



VALUES TO
^{\$26⁵⁰}

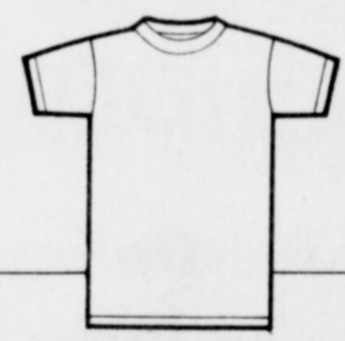
\$18⁸⁸

HEIDENHEIMER'S

**"They've
reduced
our
prices...
but not our comfort!"**



FRUIT OF THE LOOM
UNCONDITIONALLY GUARANTEED



Men's
TEE SHIRTS
SIZES S,M,L,XL

3/\$3¹⁹

Boy's **3/\$2²⁹**

Men's **KNIT BRIEFS**

SIZES 28-44

3/\$2⁹⁹

Boy's **3/\$2²⁹**



ATHLETIC SHIRTS

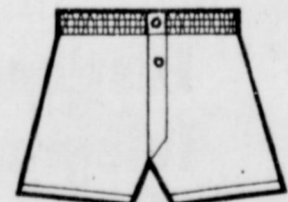
Men's SIZES S,M,L,XL,XXL

3/\$2⁷⁹

Men's
**WASH & WEAR
SHORTS**

SIZES 28-52

3/\$4⁰⁹



This quality underwear is styled for comfort and good fit. Because the fabric is 100% cotton, it's wonderfully absorbent and perfectly washable. Where there's elastic, it's made to stand up under lots of wearings and washings. Fruit of the Loom... they keep making it better—not expensive.