





Left to Right: Emmett Powell, Betty Lane, Jo Kathryn Harris, Laura Lee Herring, Patsy Emm Sparks, Frances Beskow, Johnny Lou Hart, Connard Reeves, Jack Germany, Peggy McFarland, Glen Wood, Norma Jean Walters, Curtis Jackson, Ruth Lawson, Pat Green, Jorelia Lambert, Wid Crawford, Mrs. C.W. Hoffman, Earl Francis, Mrs. Paul McFarland, Mrs. H.H. Durham, Corky Harkrider, Mrs. Earl Francis. Center Middle Row: Julie Lawson, ?, Bertie Bowen. Front Row: Nealan Vaughn, Betty Harkrider, Heidi Throne, Dorothy Throne, Nancy Harkrider, and Negro John D. Harvey, pictured at the Talent Program and Community Play, 1938.



Ken Williams is new Eastland City Pool lifeguard for the year 1975. Ken will be lifeguard and manager of the pool with Mrs. Ben Sancillo as desk manager. Pool hours are from 1:00 p.m. to 6:00 p.m. each day.



SENIOR GIRLS FOOTBALL TEAM, 1928 - - On March 28, 1928, the senior girls of Eastland High School defeated the junior girls 7 - 0. Back Row: coaches Hayden Osborne and G.C. Smith. Second Row: Ettoil Robason, Doris Johnson, Maydell Sikes, Capt. Anna May Hunt. Front Row: Daphne Grisham, Winnifred Pentecost, Evelyn Taylor, Mary Cox, Virginia Weaver, Ivy Payne, Aline Williams.

**Shakespeare Fiber Glass** Now **\$39<sup>95</sup>**  
**DOUBLE TRUCKERS**  
 Co-Phased To Increase Gain On **Each**  
 Tractor Trailer Rigs, And Station Wagons

Pearce Simpson Pirate  
**23 CHANNEL CB With Meter \$119<sup>95</sup>**

Realistic TRC-55 With Digital Clock,  
**BASE STATION CB \$229<sup>95</sup>**  
 PA, SWR Meter, Delta Tune, RF  
 Gain In Wood Grain Case

Public Address And  
**ALL PURPOSE EXTERNAL SPEAKERS**  
 By Qual-Comp **Each \$9<sup>95</sup>**

Realistic  
**PATROLMAN PRO 77-A \$149<sup>95</sup>**  
 UHF Hi-Lo Scanner 8 Channels

**BAIRD'S TV & RADIO SHACK**  
 115 West Main Street - Phone 817-629-1334  
 EASTLAND, TEXAS 76448  
 Master Charge Bank Financing

We stock the complete line of Formby furniture care products you've seen demonstrated on television. For the same amazing results, try Formbys.

Furniture Refinisher  
 Tung Oil Finish  
 Furniture Cleaner  
 Lemon Oil Polish  
 Furniture Repair Kit  
 H&R LUMBER  
 715 W. Main Eastland  
 Call 629-2104  
 Authorized Dealer for  
 Formby Furniture Refinishing  
 & Furniture Care Products

**Rate Hike**

Continued From Page 1

basis throughout the city so that as many as possible can enjoy them.

Mr. Lasater was thanked for his untiring efforts in behalf of the city's bicentennial observance.

M.G. Key appeared before the commission regarding his request to secure affluent from the new city sewer plant to be used for irrigation. Details are to be worked out in the project which has been given approval by the various government agencies involved in the project.

Commissioner Mike Siebert was asked to assist in drawing up the legal arrangements between Mr. Key and the city.

The commission in other business agreed to pay West Texas Construction Co. their monthly estimate of \$20,623.66 for work completed on the sewer plant.

The postponement on the gas price increase will delay the hike until September. The ordinance requires two readings (the commission meets once each month) and a 30-day waiting period. However the company has the option of taking the matter to the Railroad Commission if the city has not acted upon the matter within 60 days from the date of filing the request (June 9).

Mr. Simmel explained that the increase will be asked in all towns served by the company. He said in his request: "As you know, the cost of gas is skyrocketing. In 1970, this Company's weighted average cost of gas was approximately 18c per thousand cubic feet. Today, our weighted average cost of gas is approximately 73c per thousand cubic feet. The

cost of gas continues to rise because gas companies, pipeline companies, electric utilities and large industrial consumers are all actively seeking new gas supplies. The competition for new gas is fierce. Because the price of gas at the wellhead in the State of Texas is not regulated, competition is setting the effective rate that we must pay for gas.

"All of the gas-purchase contracts that this Company has acquired in the last three to four years have automatic escalating clauses in them. Even if the Company buys no new gas, the price will continue to rise. When we last appeared before you (1972) to seek a new gate rate, we were paying about 30c per thousand cubic feet for gas at the wellhead. Today, we are paying \$1.50 and up.

"This company must continue to buy gas in order to keep our reserves up to the point where we can serve all our customers. Lone Star Gas is committed to providing the best service possible to all our customers. This is evidenced by the large sums of money we have spent on new pipelines and underground storage facilities. These two items allow us to effectively serve our customers when the demand for gas is extremely high. No residential or commercial customers have experienced gas shortages during the last several years, when other cities and other customers in the southern part of the state were having this difficulty.

"The Company has made a conscientious effort to keep our serve up to the highest possible standards without an unnecessarily large number of employees. "Lone Star Gas asked for rate relief in testimony presented before the Railroad Commission

on March 3-6 of this year. This testimony was presented in accordance with Gas Utilities Docket 588. Essentially, the Company asked for two things: (1) an intracompany gate rate that recognizes the impact of increasing costs on Lone Star Gas Company and (2) 100% flow-through of additional gas costs on a monthly basis. Also appearing before the Commission on March 3-6 were witnesses for over 100 cities represented by the Texas Utilities Advisory Council.

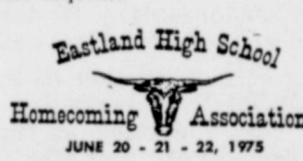
"On April 28, 1975, the Railroad Commission issued an Interlocutory Order on GUD 588. That order set the intracompany gate rate at 94.19c per MCF. This gate rate, temporary in nature, was based upon the uncontested portion of the cities' testimony before the Railroad Commission. The temporary order was effective May 1, 1975. (Lone Star asked \$1.20 per MCF).

"Lone Star Gas is asking your city to recognize a new gate rate of 94.19c per MCF. This is not a rate deficiency request. The new gate rate is an expense that our distribution system began paying to our Transmission Division on May 1 of this year. The new rate (94.19c MCF) includes the Lo-Vaca flow-through and all of the 65%, six month flow-through provisions as granted by the Railroad Commission.

"The new gate rate will not increase the Company's rate of return in your city.

"It will only help Lone Star Gas maintain its current status. "The conclusion is that Lone Star Gas must request this rate adjustment in order to: (1) meet rising operating costs and maintain current standards of service, (2) obtain sufficient capital to permit necessary facility expansion and (3) meet rising gas costs.

"I respectfully urge your favorable consideration of this rate request."



**Look Who's New**



**Richard Hattox**

**Completes Course**

FT. BENNING, GA.--Private Richard L. Hattox, 18, son of Mr. and Mrs. Raymond T. Hattox, Gorman, received a Parachutist Badge marking his successful completion of the airborne course at the Army Infantry School here.

He underwent a rigorous physical training program, then tested his ability by jumping from 34-foot and 250-foot towers. The final week he was required to make five actual jumps.

**GOLDEN EAGLE LODGE**  
 P. O. BOX 866  
 RED RIVER, NEW MEXICO 87558  
 505-754-2227  
 EDDIE & BARBARA DRY

**20 UNITS**  
 15 Apartments and 5 Room with Bath  
 Color TV in Every Unit  
 Completely Winterized  
 Wall-to-Wall Carpeting

Good Listening Music in Every Unit  
 Outdoor Fireplace - Patio - Bar-B-Que Pits  
 One Day Deposit Required to Hold Reservations.

**Altman's Style Shop**  
 Says. . . .  
**Welcome Homecoming Visitors**  
 We Hope You Have Time To Pay Us A Visit.  
 Many Of You Remember Our Firm As  
 "The Fashion" Then And Now As  
 "The Place To Shop" In Eastland.  
 Do Come See Us While You're In Town  
**Altman's Style Shop**  
 North Side Of Square In Eastland

**FREE MOVIE FUN FOR HOMECOMING Saturday, 10 a.m. MAJESTIC THEATRE**

**THE NEW AFRICAN ADVENTURES!**

**LIVING FREE**

COLUMBIA PICTURES with CARL FOREMAN presents "LIVING FREE" by JOY ADAMSON starring NIGEL DAVENPORT SUSAN HAMPSHIRE with GEOFFREY KEEN based on the book by JOY ADAMSON screenplay by MILLARD KAUFMAN Music by SOL KAPLAN Executive Producer CARL FOREMAN Produced by PAUL RADIN Directed by JACK COUFFER

**Sponsored By Eastland Telegram For Homecoming Entertainment**

**BAKKER FUNERAL HOME**

629-1726

**BUY WISELY . . . PAY PROMPTLY . . .**

**PROTECT YOUR CREDIT**

If you are not enjoying the advantages of Credit buying let us help you open a charge account. Your home town merchants welcome a new charge customer. Many of Life's luxuries and good things are enjoyed by those who have good credit and use their credit ratings.

**★ MEMBERSHIP ★**

Baird's TV	King Motor Co.
Bray's	Kinnaird Insurance Co.
C-Wholesale Tire Co.	McCathren Motor Co.
Central Drug	Perkins Implement
City Garage	Poe Floral
Coats Furniture	Robertson TV
DeFord Exxon Co. USA	Smith Plumbing
Eastland Memorial Hospital	So-Lo Auto Parts
Eastland National Bank	Southern TV Systems
Eastland Service Parts	Southwestern Bell Telephone
Eastland Telegram	Stephen Printing
Freysschlag Insurance Agency	Super Save Grocery
Fullen Motor Co.	Texas Electric Service Co.
Goodyear Tire and Rubber Co.	Turner, Seaberry & Warford
H&R Lumber Co.	Vassar Credit Union
	Western Auto Assoc. Store

**Eastland Merchants Credit Association.**  
 310 North Daugherty  
 Eastland, Texas 76448

**CALL M.H. Perry TODAY**  
 104 N. Lamar  
 629-1566 629-1095

**Life, Mortgage - Educational - Tax Sheltered Retirement Hospitalization, Disability Income, Group And Cancer**

**Tony Lowrance Dirt Contractor**  
 Sand & Gravel Hauling - Yard Grading & Leveling - Backhoe Service  
 Install Concret Septic Tanks  
**Call 629-2795**

**CITIZENS REALTY**  
 EASTLAND COUNTY'S VOLUME RESIDENTIAL DEALER  
 629-1769 629-2404

ALMOST FINISHED! You can pick interior colors in this colonial, three bedroom, two bath brick home. Nice two car garage, excellent location in West Cisco.

END THAT SEARCH. Here's a large brick home, near the Eastland Elementary School. This one has everything. Over 1700 sq. ft., three bedroom, two baths, carpet throughout, cathedral ceiling in living room, fenced yard. Low equity.

MAN WITH TWO HOUSES AND ONE WIFE, says sell one house! Extra nice four bedroom, two bath Blue Flame, available for occupancy in appx. two weeks. Loaded with extras like the natural woodburning fireplace, dishwasher, disposal, eye level oven. New carpet, choice location in Cisco, friendly neighborhood.

BEST OF TWO WORLDS, nostalgic charm with custom designed provisions for modern living. Elegant two story Southern home in exclusive area. Magnificent trees on lovely corner lot in Eastland. Four large bedrooms, formal living and dining rooms.

DOUBLEWIDE, WITH IMPROVEMENTS! The total house, very attractive, three bedrooms, two full baths, Total Electric, with central heat and air. All built - ins including icemaker refrigerator and dishwasher. Near elementary school in Eastland with fenced yard and large workshop in back. Drapes included.

ALLCRAMMEDTOGETHER? There's plenty of space for everyone in this spacious Cisco property. Pleasant neighborhood, back entry drive, to add to the enjoyment of FOUR large bedrooms, THREE baths, carpeting, central heat and air, brick veneer. Assume loan.

CONSIDERING BUILDING? We have the perfect location on S. Ostrom in Eastland, near Valley View Addition. Excellent for mobile home site, walking distance to all schools.

TAKE TIME NOW to see this total electric home, less than six months old, owner moving asking low equity and assume 7 7/8 percent loan. Three bedrooms, two baths, plenty of closet space, carpet.

INFLATION KILLER, with a monthly payment of only \$99.95. Here's a nice two bedroom frame that's here to stay. Located on a spacious lot, in a pleasant neighborhood, Eastland.

IF YOU'VE ONLY JUST BEGUN, start with three bedrooms, two baths, large den. Brick veneer, carpet, assume original loan and enjoy the low payment of \$136, west Cisco.

OLDER BUT NICE, WELL BUILT, with formal living room, including natural wood burning fireplace and formal dining area. Fresh paint, new carpet, vacant and waiting! Excellent location, Eastland.

BE QUICK, so you can know the pleasure of living in Eastland's Valley View Addition. Large master bedroom split away from other two bedrooms. Vaulted ceiling with rustic cedar beams to add to the beauty of this lovely Texas - Style home. FHA financing.

MOVE INTO LUXURY with this new home soon to be constructed in Eastland, Crestwood Addition. Large bedrooms with double walk - in closets in master bedroom. Unique entry with beautiful stone hearth on natural wood burning fireplace, FHA financing.

ONE OF EASTLAND'S MOST PRESTIGIOUS ADDITIONS, CRESTWOOD! An exquisite new home, for just the right family. Beautiful landscaping by Nature to match this three bedroom home. Extra large master bedroom split away from others. Ultra modern kitchen and sunken floor in family room with vaulted ceiling and lovely fireplace. Back entry garage, a perfect plan, FHA financing available.

3851 ACRES, \$200 per acre with minerals, \$150 per acre without. Existing loan of \$100 per acre.

486 ACRES, near Lake Leon, 400 ac. cultivation \$530 per acre.

170 ACRES, near Lake Leon, 160 acres in coastal, \$447 per acre.

DAIRY 200 ACRES, irrigation well with equipment, improved grasses, double six, 3 bedroom home, Erath Co. \$900 per acre.

425 ACRES, Young Co., no minerals, improved grasses, six tanks, deer, \$300 per acre

300 ACRES, 78 ac. peanuts, 40 ac. love grass, balance in coastal, Near Gorman, \$435 per acre.

116 ACRES, Comanche Co., on Hwy. 16, \$350 per acre.

295 ACRES, 40 ac. peanuts, 14 ac. love grass, 60 ac. coastal, 25 ac. oat field, two irrigation wells, deer, Desdemona \$395 per acre.

58 ACRES, South of Lake Leon, 13 ac, cultivation \$350 per acre.

160 ACRES, 120 ac. peanuts, near Gorman, \$450 per acre.

175 ACRES, SE Eastland Co., 60 ac. cultivation \$325 per acre.

116 ACRES, in Callahan Co., 35 ac. cultivation, \$350 per acre.

58 ACRES, Morton Valley, 11 ac. coastal, \$450 per acre.

132 ACRES, Lake Leon, \$9600 down, Bal. 7 1/2 percent, 2 tanks, \$300 per acre

331 ACRES, 500 pecan trees, springs, 30' deep lake, water overflow 9 mos. of year, all coastal, Comanche Co. \$625 per acre.

160 ACRES, near Gorman, 60 ac. peanuts, 2 wells, \$550 per acre

B.G. Brown - Broker  
 442-1631  
 Karla Brown - Broker  
 442-1631  
 Richard E. Ward - Associate  
 442-3524  
 Beth Ward - Associate  
 442-3524

**Doris Norton - Associate**  
 653-2263  
**Wayne Durham - Associate**  
 629-2743

**Hospital News**

Patients in the Ranger General Hospital Tuesday afternoon were:

Ellie Lambert  
 Evie Shoemaker  
 Nina Rogers  
 Maryetta Arwood  
 Genieva Meglasson  
 E.M. Mills  
 Nettie Womble  
 Nancy Hamilton  
 Eva Dunlap  
 Doshia Dunaway  
 Lawrence Long  
 Clyde Boyd  
 Harry Justice  
 Eugene Talent  
 Elvie Pogue  
 S.R. Davis  
 Eula Hart  
 O.A. Hattton  
 Sue Steward

Patients in the Eastland Memorial Hospital June 17, 1975, were:

Hattie Graves,  
 Patsy Blackstock  
 Della Carter  
 Hildegard Everrett  
 Ruth Carter  
 Lavelle Morton  
 Prebble Chaney  
 Nora Carroll  
 Alvin Truesdell

Dalton Phillips  
 Thomas Lockhart  
 Joe Griffin  
 Emory Hallmark  
 William Kilgore  
 Johnnie Weatherford  
 Ardeth Copeland  
 Della Reynolds  
 Katherine Estes  
 Mary Blevins  
 Ida Lewis  
 William Murphy  
 Frank Hallmark  
 Connie Lovell  
 Lucille Roberts  
 Alma Green  
 John Ledbetter  
 John McKinney  
 Henry Wilson  
 Sarah Mueller  
 Belva Chapman  
 Fannie Turner  
 Julia Martin  
 Doris Morrow  
 Roxie Hensley  
 Janice Grice  
 Suzann Brown  
 Nancy Lowrance  
 Marie Boyett  
 Vina Johnston  
 Marjorie Young  
 Trannie Lasater  
 Maude Bourland  
 Evy Clark  
 Faye Wilcox  
 Bert Rabb  
 Lonnie McBride  
 Earnest White  
 James Young  
 Patricia Mayfield  
 Sheila Tipton  
 Vernie Allen  
 Maxine Lowrance  
 Pearl Hobbs  
 Melvin Carmack  
 Michael Burns  
 Richard Robinson  
 Baby Boy Mayfield  
 Baby Boy Tipton

**LASATER DEPARTMENT STORE** in Gorman is having a Big Inventory Clearance Sale. Prices are slashed. All sales final. No exchanges. No refunds. Located in old Henderson Variety Store building. t-48

**Big Pictures** RANGER DRIVE-IN THEATRE  
 Show Starts At Dusk

Wednesday  
 THURSDAY  
 FRIDAY  
 June 18-19-20

**THE DEVILS TRIANGLE**  
 The Greatest TRUE LIFE MYSTERY of the Century  
 Featuring VINCENT PRICE  
 THEY VANISHED  
 Without a trace - over a 1000 people and 100 planes and ships in an area of the Atlantic Ocean known as...

DID SPACEMEN VISIT EARTH IN ANCIENT TIMES? NOW WE HAVE PROOF!  
**CHARIOTS OF THE GODS?**  
 TECHNICOLOR®  
 Released by Sun International Productions, Inc. ©1972

SATURDAY & SUNDAY  
 June 21-22

THE TREASURE IS THERE FOR ANYONE WHO WANTS IT!  
 ...THE SHARKS ARE WAITING FOR EVERYONE WHO TRIES IT!

**Sharks' TREASURE**  
 A CORNELL WILDE Film  
 Written Produced and Directed by CORNELL WILDE COLOR  
 United Artists

**WASHINGTON**  
 "As it looks from here"  
**OMAR BURLESON**  
 Congressman 17th District

WASHINGTON, D.C. - - "GIVE AN INCH AND TAKE A MILE" is applicable to most things with which the Federal Government deals. A case in point, and one which will be resolved in the very near future, relates to the Water Pollution Control Act passed in 1972.

IN THIS LAW, THE CORPS OF ENGINEERS WAS GIVEN AUTHORITY to issue permits for dredge and fill disposals. The Corps has applied the Act only in "Navigable" waters but the Federal Court has ruled that this was too narrow an interpretation and ordered the regulations revised. The Corps of Engineers has now invited public comment and statements will be accepted until June 30.

THE TEAM "NAVIGABLE WATERS," as now interpreted, can include practically all lakes, streams, rivers and wetlands in the United States. The record is silent on what Congress intended but it opened the door to this broad definition. This is another instance of what the fine print can mean for authority never intended. TO THE CREDIT OF THE ARMY CORPS OF ENGINEERS it is not their initiative that this unprecedented power is proposed to be exercised. Instead, it is the Courts which in recent years have legislated in about everything that affects our national life.

A LITERAL READING OF THE LAW AND THE COURT ORDER says that any time one wants to drop something into any body of water, whether it is private property, ditches, stock ponds or whatever; then a permit must be obtained from the Corps of Engineers. Conceivable, this can mean a farmer or rancher could not enlarge his stock tank, deepen an irrigation ditch or even plow in certain places without a Corps of Engineers permit. It is so absurd to be unbelievably ridiculous. At this moment, if this reasoning were strictly applied to its full limit, no doubt hundreds of people are now violating the law and could be fined up to \$25,000 a day and even imprisoned.

THE DEPARTMENT OF AGRICULTURE IS OPPOSING THE COURT'S interpretation with the statement that it "would set off a bureaucratic growth that would require many farmers to run to a Federal official for a permit to perform much of what is now normal farm work" and characterizes such action as a harassment to farmers and ranchers trying to grow this Nation's food supply.

HERETOFORE, THE ACTIVITIES OF THE ARMY ENGINEERS, except for the building of lakes, has been mainly in the coastal areas. But such a regulation as this could be applicable to places like our Big Country, where we never dreamed that this bureaucratic invasion could occur.

ASIDE FROM THE RED TAPE AND THE COST OF

For ALL Your Insurance Needs: Life, Health, Auto, Property, Farm and Ranch, Liability, Commercial  
**LARRY ARMSTRONG**  
 104 Commerce  
 RCG Building  
 Eastland, Texas  
 629-1342

**National Farmers Union Insurance Companies**

MAINTAINING A bureaucracy, it would stake out an ill - conceived role for the Federal Government in land - use decisions, a matter better left to local and limited State control. Once machinery of this nature is put in place, it can turn into a monster by what appears to be an almost limitless expansion by the Courts, bureaucrats and those not given to common sense or respect for the ability of local authority to deal with any such problem.

MANY MUNICIPAL GOVERNMENTS WOULD BE HANDICAPPED, if now absolutely powerless, to cope with these requirements.

LEGISLATION HAS BEEN INTRODUCED TO PREVENT THESE THINGS FROM Happenings. Clear definitions are needed as to what was intended in the 1972 law. Hearings will be held by the Public Works Committee of the House of Representatives before the June 30 deadline. Since legislation is slow and the time is short, we will try to get

Every year, you know, Red Cross touches the lives of millions upon millions of Americans. Rich. Poor. Average. Black. White. Christian and Jew. With support. With comfort. With a helping hand when they need it.

**Would you help this kid?**

**The Home of Your Dreams - for Real!**

Let Us Show You A HOME

**NOW** Is The Time To Buy!  
 See Our Sites

Nothing Down On VA Loans  
 Low Down On FHA Loans  
 Conventional Loans Also Available  
 Choice Location Still Available

**H & W Development Co.**  
 216 S. Seaman Eastland  
 629-1702

**ALL NEW STEEL SEATS**

**RANGER JAYCEES**

**RODEO**

**JULY 10-11-12**  
 THURS.-FRI.-SAT.

14th ANNUAL + OPEN +  
 8:30 P.M.

**NELSON-SILVIA BELT BUCKLE AWARDED IN EACH EVENT!**

**DANCE**  
 HELD AT RODEO BARN EACH NIGHT

**BAREBACK BRONC BULL RIDING STEER WRESTLING GIRLS BARREL RACE CALF ROPING TEAM ROPING CLOWNS**

**RALPH FISHER - SPECIALITY ACT & BULLFIGHTER**

**RANGER, TEXAS**

### Mountain Top United Pentecostal Church Announces Anniversary

The Mountain Top United Pentecostal Church announces the coming Homecoming and Pastor-Church Anniversary, which will include a Bar-B-Q supper Saturday from 5:00 to 7:15 p.m. and Sunday dinner served on the grounds. The church is located on Highway 183 south of Cisco in the Romney Community. The church serves people of Cisco, Rising Star, Carbon, Pioneer, and many of the Eastland County towns.

The services will be nightly at 7:30, with Rev. J.T. Pugh, past National Home Missions Director of the United Pentecostal Church International, speaking the 26th and 27th. Rev. Pugh presently pastors the progressive First United Pentecostal Church of Odessa. Rev. Pugh

began his ministry in this area of the state, and attended Bible College at the school once located at Mountain Top.

Rev. T.H. Chapman will be speaking the night of the 28th and 29th. Rev. Chapman is presently the District Superintendent of the Texaco District of the United Pentecostal Church, International. This area includes the West Texas part of our state, and all of the New Mexico area. Rev. Chapman attended the Bible College once located at Mountain Top.

Both of these men are in constant demand as speakers throughout the United Pentecostal Fellowship. Rev. Chapman resides at the Headquarters for the Texaco District located in Amarillo, where he was pastor of a growing church

prior to accepting the leadership of the Texaco District some six years ago.

Rev. John C. Jones accepted the pastorate of the Mountain Top Church March 1968, and has seen the church grow from some 20 in attendance to the largest rural church of any denomination in this entire area. It was only last Sunday that the church had 100 in attendance, with over 30 out due to the summer. An unusual amount of adults attend Sunday morning Bible class taught by the pastor... it is not unusual for there to be 55 to 70 adults in that class, beside those adults involved in teaching other classes. This has happened when many rural churches have had to close their doors due to lack of attendance. The Mountain Top Church is in the process of a building fund to provide a beautiful new church and educational facilities.

Funds are being received from interested individuals across the state.

The public is invited to attend these services the 26th thru the 29th. There will be many officials from the organization present for these services and people from as far away as Nebraska will be present for these special services. Saturday night will be given to special singing from groups across the state, and the Texas Bible College of Houston. You are invited to attend this great singing and Bar-B-Q.

Sunday during the usual

### Use Tax Allocation

AUSTIN-Comptroller Bob Bullock sent checks worth \$28.8 million Friday to more than 800 towns and cities in the third round of monthly city sales tax rebates.

Bullock said the June payments were considerably higher than the previous two months because of big end-of-the-quarter tax payments made by merchants following the April 30 deadline for reporting taxes they collected from the public in January, February and March.

Bullock converted the city sales tax payments to a monthly system in April to get away from the old quarterly rebate system which had been in use since the start of the city sales tax and which forced cities to wait 60 to 90 days for their money.

"The interest along--at 6%--on the \$16 million we paid in April and the \$19.9 million we paid in May was worth a good quarter of a million dollars to the cities just by not having to wait until now for a quarterly payment", Bullock said.

Every city which has adopted the 1% local tax received payments this month regardless of the size of the rebate. Payments in the first and second month of each three-month cycle are not made on

Sunday School time, there will be a special time for the honor of the Pastor/Church Anniversary. Special honor will be given to past pastors, history of the church, and faithful long-time members. Dinner will be served to those attending, and that will take place from 12:30 to 1:30, allowing a time of fellowship following.

Rev. Jones is now serving the church for the eighth year. He also serves in the official position of District Chaplain for the Texas District of the United Pentecostal Church, International; sectional Home Missions director, and on the National Commission of the Board of Chaplains. He is presently speaking in Lufkin daily in an effort to train chaplains, and just returned from Baton Rouge, La., where he spoke to ministers in a national seminar. His yearly travels constantly take him to various parts of the southern United States, as he ministers to various groups.



REV. JOHN C. JONES

### City Sales And

rebates of less than \$500.	
Cisco	\$5,921.18
Eastland	\$6,443.68
Gorman	\$1,429.05
Ranger	\$5,086.19
Rising Star	\$1,411.98



# Give till it helps.



### Real Estate Auction Sale

Friday, June 20 - 1:30 p.m.

At the Regal Cafe Building, 1 1/2 block west of stop light and adjoining Fisher Used Car Lot, in Ranger, Texas. Property of Mr. and Mrs. E.R. Overstreet.

Building and all lots of this property, to be sold to the highest bidder, plus 5 tourist cabins on same property. The cabins can be repaired at not too much expense, and bring in a steady income. The building can be used for any number of businesses as it has ample parking space.

1 Air conditioner - Servel, 5 ton, gas operated, and for heating or cooling.

Terms: 10 percent down day of sale, and the balance to be paid within 30 days.

Actioneer & Real Estate Broker  
Don Estes

Tel. 817 AC 758-2516

Desdemona, Tex. 76445

## Do You Remember

BY HERMAN DEMPSEY

An old man and his grown daughter moved into the community and opened a general store. The wife and mother had died leaving the old man to finish raising the daughter.

The location of the store was ideal for the community people as well as the oil field workers who passed back and forth to their work. It developed into a thriving business and soon the daughter bought some attractive clothing. The eligible young men began to take notice of the attractive young lady. She finally settled down to going with two she had picked out as being most suitable for her husband. One of the men was older but appeared to have money. He was driving a real nice model T car. The other man was about her age and had an acceptable car. She just did not know which one of the men she should choose.

On a Friday morning, the older man came by the store and told her to get her clothes

packed and be ready when he returned. He would go to the County Courthouse for the marriage license and be back soon. She agreed and was relieved in deciding which of the two men to marry. She had finished packing her things and was dressed in her best clothes for her wedding day when the younger man came into the store. She told him what was going on and he said for her to load her things in his car and he would take her with him to get the license and get married. They hurriedly loaded her things and left together.

When the older man returned with the license, he was told by the father what had happened. Being the kind of man that he was, he was very put out due to his having purchased the license. He went back to the courthouse and tried to get his money back but the clerk kindly said she was sorry but they could not return the dollar and six bits for the license.

Could It Happen Again?

### Higginbotham Lumber Co.

Of Eastland

Has Moved To 311 W. Main Still On The Same Block.

Company Manager Jack Elliott Would Like To Emphasize That Higginbotham Lumber Co. Has No Affiliation With H & R Lumber Co. Which Many People Have Been Lead To Believe During The Time Higginbotham Were In The Remodeling Stage.

Let Higginbotham Of Eastland Supply You With Your Building Needs, If We Cannot Save You Money Then We Do Not Deserve Your Business.

### Higginbotham Lumber Co.

311 W. Main

Eastland, Texas

629-1311

**New Arrivals**  
**At The Young Age Shop**

Number Shirts \$5<sup>00</sup> to \$7<sup>50</sup>  
Sizes Toddler To Men's Large  
Name Printed Free

Sales Rack NOW \$3<sup>00</sup> And \$5<sup>00</sup>  
Boys Shorts And Bathing Suits NOW \$4<sup>00</sup>  
Girls Bathing Suits NOW \$5<sup>00</sup>

Be Sure To Shop Our Bargain Basket Two Racks Miscellaneous 25% Off

**NEW FLEA MARKET**  
**EACH SAT. & SUN. THRU SUMMER MONTHS**  
**DOWNTOWN RISING STAR, TEXAS**  
**INSIDE TABLES & SPACES AVAILABLE**  
- \$2<sup>00</sup> DAY  
**OUTSIDE SPACES - \$1<sup>00</sup> DAY**  
**SATURDAY & SUNDAY**  
**W.G. (Bill) Reed**  
**The Second Hand Store**  
P.O. Box 452 Rising Star, Texas 76471

**JUTE-BEADS-RINGS-DOWELS BOOKS**  
**POTS-POTS-POTS**  
**DECOUPAGE PATCHWORK MENAGERIE SHADOW ART**  
**LIVE PLANTS SPANISH POTTING SOIL PATIO SET**  
**24 Hr. Film Processing**  
In By 5:00  
Back At 9:00 a.m.  
**Morren's Plumbing And Gift Shop**  
1013 West Main 629-2092

### Majestic Theatre

Eastland 629-1220  
Thursday Last Day

**CHARLES BRONSON IN BREAKOUT**  
A COLUMBIA PICTURES Release A.P.B. Vista Feature  
Starts Fri. Thru Tues. Mat. Sat. & Sun. 2 p.m.

**where the red fern grows**  
A CLASSIC IN OUR TIME  
A TRUE STORY  
Special Fri. Late Show 11 p.m.  
Free Kid Show Sat. 10 a.m. Sponsored By Eastland Telegram

**The NEW Adventures of ELSA's Cubs!**  
Searching for a man was a way of life.  
COLUMBIA PICTURES THE SINGLE GIRLS HALF CLAUDE - ALL BAD!  
LIVING FREE WITH ADAMSON

**THE SINGLE GIRLS**  
HALF CLAUDE - ALL BAD!  
LIVING FREE WITH ADAMSON

# Never Before

AND...MAYBE...NEVER AGAIN

the BOSS says... **SELL**

All Of Those 1/4 PAGE Ads In All Papers  
Cisco Press  
Eastland Telegram  
Ranger Times  
Rising Star

Even If We Take A Loss!!!

Through June **QUARTER-PAGE AD SALE!**

OUR REGULAR \$36<sup>00</sup> SELLER **QUARTER PAGE \$24<sup>00</sup> IN ONE PAPER** Per Issue  
SAVE \$8<sup>00</sup>  
Either Paper  
**4 QUARTER PAGE ADS \$60<sup>00</sup> ONLY**

Each Paper One Time **Save \$20<sup>00</sup>**

WE HAVE LAYOUTS TO FIT EVERY NEED... PHONE TODAY WHILE THE SELECTION IS LARGE!  
Cisco 442-2244  
Eastland 629-1707  
Ranger 647-1101  
Rising Star 643-4141

## Beat Inflation With This 1/4 Page Sale





**Sister Ruth**  
**INDIAN READER & ADVISOR**  
**SHE IS THE ONLY ONE WHO CAN HELP WITH**  
**ANY PROBLEM THAT YOU MAY HAVE,**  
 Such as love, courtship, marriage, divorce, lawsuits, etc. if you are suffering from sickness or harmful habits, see her for help. Just one visit will convince you that this great lady is here to help you.

8 a.m. to 10 p.m.  
**First Time In This Area**  
**1615 North Oak Ave.**  
 MINERALWELLS, TEXAS ON HIGHWAY 281 NORTH

**OPEN SEVEN DAYS**

**COUNTY NEWS**

The following proceedings were had in the Court of Civil Appeals, Eleventh Supreme Judicial District of Texas June 13, 1975:

**APPEAL DISMISSED**  
 The City of Coahoma v. Howard County Water Control and Improvement District No. 1--Howard.

**MOTIONS SUBMITTED**  
 Billy B. Williams v. Southern Trust & Mortgage Company, et al. Appellant's motion to return the record.--Dallas

Doyle L. Bridges et ux. Pitzer Realtors, Inc. and Dorothy Watkins, et al. Appellee's motion for rehearing.--Erath

The City of Coahoma v. Howard County Water Control and Improvement District No. 1. Appellant's motion to dismiss.--Howard

Darrell Lynn Edmonds v. The State of Texas. Appellant's motion to file statement of facts.--Taylor

Joe Ed Glover v. Bill Elliston dba Elliston-Archer Funeral Home. Appellee's, Charles W. Reagan Jr., and Bill Ellison, motion for extension of time to file briefs.--Baylor

John W. Willis v. Gerald T. Waters, et al. Appellant's motion to amend brief.--Dallas

John W. Willis v. Gerald T. Waters, et al. Appellant's motion to strike part of the original brief.--Dallas

John W. Willis v. Gerald T. Waters, et al. Appellant's motion to reverse and remand.--Dallas

John W. Willis v. Gerald T. Waters, et al. Appellee's, Gerald T. Waters, R. Brian Hunsaker, North Dallas Bank & Trust Co., and B.E. Parker, motion to strike brief or dismissal of case.--Dallas

John W. Willis v. Gerald T. Waters, et al. Appellee's, Gerald T. Waters, R. Brian Hunsaker, North Dallas Bank & Trust Co., and B.E. Parker, motion for extension of time to file brief.--Dallas

**MOTIONS GRANTED**  
 The City of Coahoma v. Howard County Water Control

and Improvement District No. 1. Appellant's motion to dismiss.--Howard

Joe Ed Glover v. Bill Elliston dba Elliston-Archer Funeral Home. Appellee's, Charles W. Reagan Jr., and Bill Ellison, motion for extension of time to file briefs.--Baylor

John W. Willis v. Gerald T. Waters, et al. Appellant's motion to amend brief.--Dallas

John W. Willis v. Gerald T. Waters, et al. Appellant's motion to strike part of original brief.--Dallas

John W. Willis v. Gerald T. Waters, et al. Appellee's, Gerald T. Waters, R. Brian Hunsaker, North Dallas Bank & Trust Co., and B.E. Parker, motion for extension of time to file brief.--Dallas

**MOTIONS OVERRULED**  
 Billy B. Williams v. Southern Trust & Mortgage Company, et al. Appellant's motion to return the record.--Dallas

Doyle L. Bridges et ux v. Pitzer Realtors, Inc. and Dorothy Watkins, et al. Appellee's motion for rehearings.--Erath

Darrell Lynn Edmonds v. The State of Texas. Appellant's motion to file statement of facts.--Taylor

John W. Willis v. Gerald T. Waters, et al. Appellant's motion to reverse and remand.--Dallas

John W. Willis v. Gerald T. Waters, et al. Appellee's, Gerald T. Waters, R. Brian Hunsaker, North Dallas Bank & Trust Co., and B.E. Parker, motion to strike brief or dismissal of case.--Dallas

**Home Demonstration News**

This week Mrs. R.W. Gordon of Ranger and Mrs. Sue Taylor of Cisco represented Eastland County club ladies and attended a planning meeting in Comanche for the annual four-county Home Demonstration Camp. Representatives from Comanche, Brown, and Eastland counties developed plans for the day's activities which will be held on Thursday, July 24, in Comanche. This year's four-county HD Camp will be held in the Comanche Junior High School Cafetorium.

If you are going to be freezing or canning food for your family this summer, don't forget to attend the Food Preservation Workshop on Wednesday, June 18, in the Texas Electric Reddy Room in Eastland. The morning program on pressure cooker and waterbath methods will begin at 10 a.m. The afternoon program will start at 1:30 p.m. and include freezing and drying techniques.

It's important to have your pressure canner gauge tested each year. Accurate canner gauges and canners with all parts in good working order can help families to be assured of safe foods.

The Home Demonstration Council has purchased a new electric canner gauge tester for testing gauges. Homemakers can have their canner gauges tested every Tuesday morning in the Extension Service Office, basement of courthouse.

The home demonstration ladies are testing canners as a service, and charging a \$2.00 fee for this service to homemakers.

All you need to bring is your canner lid for the test to be made.

With many gardens in big production right now, our office has been getting many requests for how to freeze new potatoes. To freeze Irish potatoes, select potatoes the size of walnuts. Scrub well in cold water to remove skins, or wash and scrape. Heat in boiling water--5 to 8 minutes, depending on size. Cool, drain, package and freeze immediately. If you would like a free copy of the Extension bulletin "Frozen Foods", request it from the Extension Office.

**Small Towns Must Not Be Forgotten**

Washington, D.C. - Senator Lloyd Bentsen, candidate for the Democratic Presidential nomination, today accused the Ford Administration of treating Americans who live in rural areas as second class citizens by failing to implement the Rural Development Act.

Bentsen, who co-sponsored the Rural Development Act in 1972, said, "The present administration is neglecting the needs of millions of Americans who live in rural areas. It is trying to create a second class citizenry who will lack adequate fire protection, water and waste disposal systems and employment opportunities."

He said the administration spent \$56 million out of a total \$397 million authorized by Congress for fiscal year of 1975.

No money was spent for planning grants for water and waste disposal projects, rural fire prosecution grants and planning grants for rural development, Bentsen said.

"This has been a consistent pattern of recent Republican administration," Bentsen said. "Over the last three years only 11 percent of the total funds authorized by Congress have been spent."

"Rural areas and small towns are part of the American heritage and must not be forgotten now."

Thursday, June 19, 1975

**THREE LITTLE WORDS**  
 Those three words, says the American Cancer Society, sum up prevention of skin cancer. If exposure to the sun can't be helped, use a screening lotion or wear a hat and long-sleeved shirt

**ROOFING**  
 Doyle Squires, Contr., Olden, Texas. 653-2212. Call after 6 p.m.

**Aluminum Plates**  
**25¢ Each**  
**At The Telegram**

**MEET THE PAGEANT CAST**

The Kendrick Religious Pageant "THE LIFE OF CHRIST" presented each Friday and Saturday night at 9:00 p.m. between Eastland and Cisco on U.S. Hwy 80, would like for you to meet the cast.



**KING HEROD:** left, played by Earl Dry of Cisco. Mr. Dry is the General Manager and charge of sales of the Lone Star F&D Head Company in Albany. Mr. Dry holds a Bachelor of Science Degree from Hardin Simmons University. He has played parts in the Easter Pageant for two years and is also seen in the summer productions playing the part of Simon Peter.



**GABRIEL:** played by Ann Harris, daughter of Mr. and Mrs. J.T. Harris, Sr., of Breckenridge. She is a 1970 graduate of BHS with honors of Who's Who in American High Schools in Math. Ann also holds an Associate in Science Degree from CJC and plans to begin work this fall in the LVN school. She is currently employed as a secretary for the Walls Industries in Breckenridge. Ann is one of the original cast members in the Easter Pageant, and has held parts in all eleven productions. She also plays the adulterous woman and Martha, Lazarus' sister, in the summer productions.

Mr. Dry, Ann Harris, the entire cast and the Kendrick Family, invite everyone to come to the summer productions and meet them personally. Especially, we wish to invite all of the EHS Exes to attend while you are in town this weekend.

**SUMMER CLEARANCE**  
**SAVE \$1**  
**On Women's BLOUSES**

Entire Stock	NOW	Women's DRESS SALE	NOW
Reg. \$7.50	\$6.50	All Summer Styles	\$16.99
Many Styles	\$14.99	Reg. \$20.00	To \$32.99
		SAVE \$4	

**WOMEN'S SPORTSWEAR**  
 For Summer Many Styles Colors, Tops, Shells, Pants, Blazers

Reg. \$7.00	SAVE \$2	NOW \$5.99
\$20.00		\$18.99

**ONE GROUP JEANS**  
 FOR WOMEN BY Hillbilly

Most All Sizes **50% Off**

**SAVE \$2**  
**Men's SLACKS**  
 Double Knits Solid Colors

Fancies	Patterns	NOW
Reg. \$13.00	To \$25.00	\$11.00 To \$23.00

**SAVE \$1**  
**MEN'S SHIRTS**  
**SHORT SLEEVES**

Reg. \$5.50	NOW \$4.50
To \$13.00	To \$12.00

**SPORT AND DRESS**

**ONE GROUP STRAW HATS**  
**REDUCED**

Reg. \$5.00	SAVE \$1	NOW \$4.99
\$12.00		To \$11.95

**SHOE SALE!**  
**WOMEN'S**  
**SUMMER STYLES**

Reg. \$7.00 To \$9.00	NOW \$6.99
\$10.00 To \$12.00	To \$15.99

**MEN'S SHOES**  
**REDUCED**

Reg. \$18.00	SAVE \$9.00	NOW \$9.00
To \$40.00		To \$20.00

**BOY'S SANDALS**  
**LEATHER STYLES**

Reg. \$5.00	NOW \$4.00
-------------	------------

**Many Items REDUCED TO CLEAR**

**ONE GROUP WOMEN'S DRESSES**  
**50% Off**

**Bray's**  
 EASTLAND - RANGER  
 EASTLAND COUNTY'S FAMILY STORE  
 FEATURING NATIONALLY ADVERTISED BRANDS OF MERCHANDISE  
 Store Hours - 9 a.m. - 5 p.m.

**One Group SPORTSWEAR**  
 For Women  
**50% Off**

**WANT MORE INCOME?**  
**Here's Your Opportunity**

If you have reached the top of your income potential, this ad may be important to you. MFA Insurance Companies is looking for an ambitious individual with past successful employment to assume the responsibilities of an ESTABLISHED MULTIPLE-LINE agency in Eastland. Two year training program with salary plus commission begins with 2 weeks intensive training in our home office at our expense. MFA is one of Mid-America's leading Multiple-line Companies selling auto, fire, business, life and health insurance.

If you are interested in

- (1) personal independence through a business of your own
- (2) unlimited income potential
- (3) opportunity for yearly bonus and exciting expense-paid trips
- (4) affiliation with a company which enjoys a reputation of integrity and service

You owe it to yourself and your family to see if you qualify for this position. No previous insurance experience required.

**ACT NOW!**  
**Call Weekdays 9 Till 12**  
**1 Until 4:30**  
**Call Collect Dallas 661-2104**

**M-F-A INSURANCE**  
 SHIELD OF SHELTER

**LAKE COUNTRY CYCLE SALES**  
**Introducing Indian and Honda**

**AVAILABLE AGAIN!**  
**"The Ranger Story"**

Pick-up A "10-Pack" For \$6.00 and Resell Your Place For A \$4.00 Profit! \$1.00 Each AT THE TIMES

Get your cycle now and enjoy the summer months to the fullest. We have 75 motorcycles in our showroom - both new and used. We give the highest trade-ins and the best service.

**Lake Country Cycle Sales**  
 Parts And Service

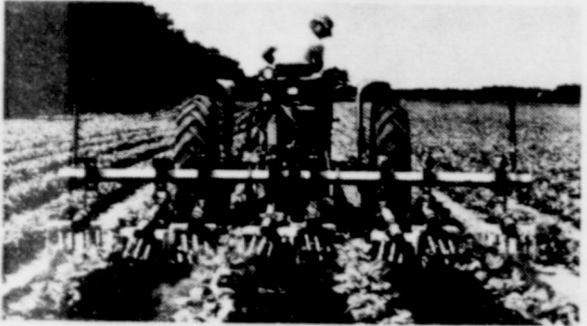
2105 East Walker Breckenridge 559-2693

# NEED CROP INSURANCE?



Wet, cool weather at planting time? Chemicals washed away? Sudden soil-crusting? The weeds and grass that are certain to come during a late growing season can rob you of your profits. With time running out, why gamble?

## GET THE BEST CROP INSURANCE



The one, the only, the original Lilliston-Lehman

# ROLLING CULTIVATOR

• cultivates at speeds up to 10 mph, pre-emerge to tool bar high • builds beds, bars off—won't harm tender crop root systems • mulches tough crusts • aerates the soil • incorporates chemicals well into soil

Your Best Crop Insurance, The **ROLLING CULTIVATOR** Is Waiting for You NOW at

**SHULTS IMPLEMENT CO.**

817-643-4311

Rising Star, Texas

Dear Friend,

July 4, 1975, Cisco, Texas, will have a Fourth of July Celebration. Among the many activities of the day, some of us "Flea Market Enthusiasts" want to have us a Flea Market area.

So, an area will be roped off at the Lake Cisco Park (north 3 miles from Cisco) for the Flea Market area. All of the various activities of the day will be at the Park.

Stalls will be provided within the roped-off area, for our pickups. We may sell from the "tailgate" or from a table. (Bring your own table.) Please plan to come. We want to meet you.

Mail to us the little form below, along with \$1.00 for the stall - - let's have fun. The stall fee will be used to help launch the pending program for our Bicentennial.

Plan to come in on or before 10 o'clock Friday morning and ask for us. We will want to help you get set up.

Mr. and Mrs. Roy V. Cartee  
Chairmen

Chamber of Commerce  
P.O. Box 1192  
Care of The Cartees  
Cisco, Texas 76437

You bet we want to be with you on the 4th of July. Please reserve us a stall. Enclosed find the \$1.00 stall fee for the Flea Market.

Your Name

Your City and Address

**Rentals**  
**Steam Liner**  
**Carpet Cleaner**  
(You've Seen It  
Advertised On T.V.),  
Tillers, Mowers,  
Edgers, Sprayers,  
& More!  
See Gene At  
**WARDS**

### RCG Leasing, Inc.

Medicare Approved

Medical Supplies

★ ★ ★

Sales & Rentals

629-8052

104 W. Commerce

Eastland

**CARPET CLEANING**  
**Steam Liner**

**WARD**

**COUPON**  
**SPECIAL \$39.50**  
Limited Time Only  
• Wall-to-wall Carpets  
• Living Room, Hall  
• Dining Room  
• Frantz Sales Agency  
214 W. Main  
629-2618

# GORDON SPOT

BY DE GORDON

Some folks called last week to ask if it was too late to spray pecan trees. If the young nuts have not been damaged by the casebearers it's not too late to spray. On the other hand, if the nuts have not been damaged by now, they probably will get by without damage from the little worm.

There does not appear to be a heavy infestation of the pecan nut casebearer this year. Reports so far from various sections of North and Central Texas indicate very minor second generation damage. The reason for this is not clear, but the "old timers" will tell you that this is common in years following a late spring freeze. Certainly the last two to three years when light infestations occurred bear this out.

These same "old timers" will also tell you it is the freeze that kills the insects. This is not true reports Dr. Earl Puls, Area Horticulturist. The more likely reason is that the freeze kills the young shoots on which the first generation larvae feed. With the food supply destroyed and with no resupply available for about two weeks, the larvae probably perish of starvation. Hence, we have very few second generation moths available to lay eggs on the nuts.

It would be wise to keep a close watch on your pecans. The casebearer may yet immerse and inflict heavy damage. Native trees in the river bottoms appear at this point to generally have a light infestation, attributable to the freeze damage incurred.

We may find a build-up occurring in early July, at that time we expect the third generation.

A new grass, Callie bermuda grass, developed by the Mississippi Agricultural and Forestry Experiment Station, is receiving widespread recognition, and plantings are increasing throughout the southeastern United States. However, the new grass has not been released as a variety due to lack of

sufficient animal performance data.

Planting material for the new grass has been distributed to more than 1,300 producers since 1972.

Callie bermuda grass appears to do well in the same areas suited for Coastal bermuda. It has some cold tolerance as plantings have survived in southern Oklahoma and Missouri. However, its drought tolerance under Texas conditions has not been evaluated. The new grass has a wider leaf and much larger stolous than Coastal. It is reported to be a good competitor with other grasses.

According to Mississippi tests, Callie is equal or superior to Coastal in yield of dry forage and similar in protein content when grown under the same conditions.

Warm weather and rains over a big part of Texas have combined to provide ideal conditions for the most serious

livestock pest in the State--the ever menacing screwworm.

Stockmen should be particularly alert for this flesh-eating pest at this time because infestations can build up rapidly in late spring and early summer unless all cases are reported as soon as possible.

**Police Dispatch**  
629-1728

## Ranger Rodeo Queen Contest

Entry Blank

Name:

Address:

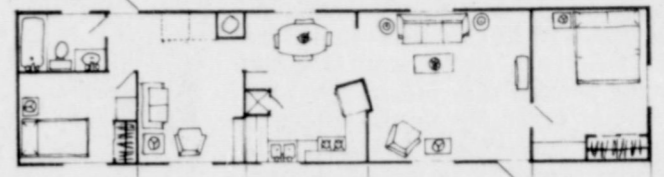
Age..... Single ..... Married.....

Sponsor's Name and Address...

Mail or bring this blank and photo to: Polly Alexander, Queen's Contest Chairman, 806 Cherry Street, Ranger

## Family Pleasers

THAT WILL PLEASE YOUR BUDGET TOO!



14' WIDE - 3 BEDROOMS - UNDER \$107 PER MONTH

FHA LOW INTEREST LOANS  
AND TEXAS LARGEST SELECTION  
OF MODULAR HOMES

Texas' Largest Dealer

**Abilene Mobile Homes**  
4618 N. 1st 672-6466

FHA LOANS

# John Deere "Hay Day" Demonstration and Sale

This Friday, June 20th

ALL DAY DEMONSTRATION

using the John Deere

- ★ 1209 Mower Conditioner
- ★ 346 Baler
- ★ the new 500 round Baler
- ★ PZ Cyclomower
- ★ PZ Haybob

From 10:00 a.m. 'til dark

Free Refreshments

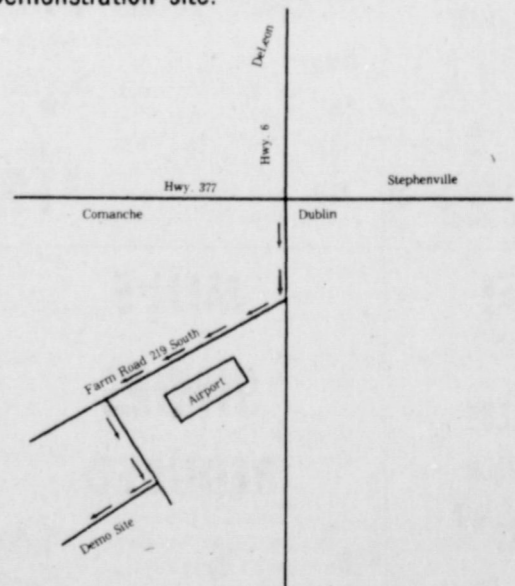
Barbecue dinner on the site at 6:30 p.m.

Sale prices will be honored Friday & Saturday only!

Register for FREE Prizes to be given away

### Directions to the demonstration site

At the intersection of Hwy. 6 and 377 in Dublin, turn south of Hwy. 6. Go 4/10, mile and turn right on Farm Road 219 South. Follow FM 219 past the Dublin Airport. Continue 219 for another mile and take the first gravel road to the left. Follow signs to the John Deere Hay Day Demonstration site.



# Bramlett Implement

Stephenville, Tx.

Inc.







**Jaycee's Hold Installation Banquet**

Eastland Jaycees conducted their annual Installation Banquet Saturday, June 14, in the Eastland County Sheriff's Posse hall north of Eastland.

Master of ceremonies for the banquet was long-time Jaycee Rex Morgan of Eastland, with Banquet Chairman Gary Moore aiding in preparations.

Members of the Eastland Jaycee-ette organization were responsible for decorations and a part of the food which was served. Chairman of the barbecue preparation was Rex Morgan.

Chuck Owens, National Director for Area IIA from Gainesville conducted the installation ceremonies. Offices for the Eastland Jaycees for the 1975 year are: President, Don Baird; 1st Vice President, Larry Rollins; 2nd Vice President, Phillip Arther; Secretary, Steve Haines; Treasurer, Tom Holland; and State Director, Phillip Rollins. Directors are Mel

Herweck, Ted Martin, Gary Moore and Jimmy Wheeler.

Mary Lee of Mineral Wells Jaycee-ettes performed installation Ceremonies for the Eastland Jaycee-ette chapter.

Officers for 1975 are: President Barbara Morgan; Vice President Elaine Herweck; Secretary-Treasurer, Wanda Baird; and State Director, Celya Holland.

Don Baird presented awards to outgoing president Mel Herweck, Rex Morgan for Outstanding Jaycee of the Year, and Steve Haines, Outstanding New Jaycee, and Gary Moore, Outstanding Jaycee of the Quarter.

State Director Phillip Rollins presented Strawn with inner Region Travel Trophy, and Mineral Wells with the outer region award.

The Eastland Jaycees wish to express their gratitude to the Eastland County Sheriff's Posse Association for the use of their meeting hall.



From left to right: Outstanding New Jaycee, Steve Haines; Outstanding Jaycee of the Year, Rex Morgan; and Outstanding Jaycee of the Quarter, Gary Moore. (Photo by Kay Daniel)



President Don Baird, left, presents Mel Herweck with the outgoing president's award with the club's gratitude for a job well done.



Mary Lee of Mineral Wells administers the oath of office to the four new Jaycee-ette officers. From left to right they are: Celya Holland, Elaine Herweck, Wanda Baird and Barbara Morgan.

**Visitors**

Mrs. Solora Gilkey had weekend guests in her home over the weekend. They were Mr. and Mrs. M.L. Poole of Houston, Mr. and Mrs. Randy Bullard (her granddaughter) and Renae Kay of Jackson, Mississippi, and Mr. and Mrs. James Gilkey and Lisa of Graham.

The family met at Possum Kingdom Saturday and had a picnic.

**Donations Coming In For Eastland County Dispatch CB Unit**

These are the present donations that have been given toward the purchase of an emergency help CB unit for the Eastland County Dispatch. They will monitor channel 9 (nation wide emergency help channel 24 hours a day, 7 days a week). The regular call channel will be channel 11.

Eastland National Bank, Frost Sales Agency, Western Auto, Robertson TV Sales & Service, McCathren Motors, Central Drug, Fullen Motor Co., Bill Wyatt Tire Co., Eastland Drug, Freyschlag Insurance Co., Eastland Telegram, Pipkin Motor Co., Bill

Green, Scott Body Works, Baird's TV and Radio Shack, KERC Radio, James Wright, Cisco Kid CB Club, and Big Country CB Club.

If anyone wishes to donate, please contact Jim Wortman and Freddie Pevehouse with the Big Country CB Club. In Cisco contact Richard Robinson or Danny Claborn. In Rising Star contact Dean Baily or Nick Nichols.

Read The Classifieds!

**BICENTENNIAL BELLS**



On the 200th birthday of America, you can give a present that really rings true as a symbol of the past, present and future of this country.

An appealing little Liberty Bell has been cast as a sturdy, safety-lock key chain or pendant on a fashionable 24 inch chain. Each comes in a long-lasting silver-plate finish with the hand-rubbed look of old pewter. Emblazoned on them is the date 1776 and a tricornered hat such as those worn by the Minutemen in their struggle for liberty; and the date 1976 and a space helmet like those worn by the astronauts of today and tomorrow.

You can find these Bicentennial items in fine jewelry and department stores, or send \$4.50 for each key ring and each bell pendant to M. Weiner Co., Inc., 373 Washington St., Boston, Mass. 02108, so you can participate in the beginning of another Belle Epoch in America.

**GET A PART-TIME JOB THAT OFFERS RAISES.**



THE ARMY RESERVE. IT PAYS TO GO TO MEETINGS.

**IF YOU MISS YOUR TELEGRAM CALL 629-2214**

*Lloyd Armstrong*  
**Photographer**

- Portraits
- Weddings
- Commercial
- Copying Old Photos

*A Member of the Professional Photographers of America*

200 S. Oaklawn - Eastland,  
629-1677

**BUY & SELL**  
New & Used Merchandise Furniture  
Appliance-Anything Of Value

**NOW OPEN DAILY**

**SEWING MACHINE SALES & SERVICE** NEW & USED

We Repair All Makes & Models

**Wright Auction Co.**  
Eastland  
106 S. Seaman 629-2468

*Welcome Home Exes* **SAVINGS SALE** *With A Gigantic 1/4 Off*

**1/4 Off**  
All Fabrics  
Except Black & White Knits

Starts Thurs. June 19th



**1/4 Off**  
All Summer Merchandise  
(Excluding Jewelry)

Hours: Mon. Thru Sat. 9:30 - 5:30

**Rita's Fashion Fabrics**  
629-8020

**The Fashion Barn**  
Next To The Ramada Inn

**Quetta's Sports Wear Boutique**  
629-8030

Eastland, Texas