

Services For Mrs. Crowell Held Wednesday

Mrs. Pearl P. Crowell, 77, of Eastland, died at 8:30 p.m. Monday in Eastland Memorial Hospital after a lengthy illness. Services were at 10:30 a.m. Wednesday in First United Methodist Church in Eastland. The Rev. Ben Marney, pastor, officiated. Burial followed in Eastland Cemetery, directed by Arrington Funeral Home.

Born Oct. 25, 1897, in Breckenridge, she married Frank Crowell Jan. 18, 1921, in Eastland. She had lived in Eastland 55 years. She was a Methodist and a member of the Thursday Club, Delphian Club and the Women's Society of Christian Service.

Survivors include her husband; two daughters, Mrs. Mary C. White and Mrs. Frances C. Crossley, both of Houston; a sister, Monte Myrick of Moran; and six grandchildren.



CHAMBER OF COMMERCE board of directors meeting at noon Thursday, Manager James Wright reports. It's a luncheon meeting at the Ramada Inn and all directors urged to be present.

THE NOT - so - small joys of being a country editor: A good while ago before a trip we wrote that we'd never been much further than Tater Hill or at best on a neighbor's flat bed truck to a summer revival at a rural church. Since that time there's been a letter from far away thanking us for harking back memories of that little old hill near Carbon that stood on their homelands; a letter appreciating our remembering that father who took the truck; and most recently a telephone call from a member of that rural church advising that they were having a revival again, and they thought maybe we'd like to come again.

Local newspapers are read and re-read.

LET'S REMEMBER to tell County Judge Scott Bailey and Commissioner Danny Woods how pretty the courthouse looks, both inside and out. Scouts report that there's an effort underway to maybe restore and put back into pretty use the two old streetlights on each side of the courthouse square. Utility Men Wilbur Simmel and Frank Sayre have agreed it would be a good project and are busy figuring it out.

Snakebites very seldom kill.

Some 45,000 persons are bitten by snakes each year in the United States, says the Texas Medical Association.

Of the 45,000 bites, some 8,000 are by venomous snakes. Despite these many bites by poisonous snakes, deaths from snake venom poisoning have not exceeded 12 per year in the past five years.

In some 20 percent of the bites of poisonous snakes, no venom is actually injected.

While there are more than 3,000 species of snakes, only 300 or so are sufficiently poisonous to be of danger to man. In the United States, there are some 120 species of snakes, about 20 of which are venomous. These latter include rattlesnakes, cottonmouth water moccasins, copperheads and coral snakes.

Injection of anti-venom as soon as possible after the bite is highly important in treatment.

Incisions over the fang marks and suction from the cuts are helpful only within the first 30 minutes after the bite. A tourniquet above the bite may help. The patient should be kept warm, not allowed to walk or be given alcohol, and should be given constant reassurance.

The most important act following snakebite is to get the victim to a hospital or doctor as quickly as possible. New studies have shown that the anti-venom is most effective when given within four hours of a bite, the earlier the better. It is of less value if delayed for eight hours and of questionable value after 24 hours.

Court Appoints Election Officials

The Eastland County Commissioners' Court met in regular session Monday, August 25, 1975. All members were present with County Judge Scott Bailey presiding.

The following election officials were appointed to hold general and special elections for the coming year: The Honorable Danny Woods, County Commissioner, nominated in Precinct 1, Eastland; W.J. Stone with Mrs. Marcus O'Dell as an alternate.

The Honorable Jack Blackwell, County Commissioner, nominated in Precinct 2, Olden; Mrs. Jim Everett and Mrs. Eunice Hamilton as an alternate.

In Precinct 3, Ranger, Charles Arnet and Alternate Mrs. L.H. Hagaman.

Precinct 4, Desdemona, L.E. Clark and as alternate Mrs. Dorothy Roberts.

GARAGE SALE

Eastland Music Study Club will have a Thrift Sale on Friday, August 29, at Mrs. J.F. Francis' garage, 2002 W. Commerce, beginning at 8 o'clock in the morning until 5 o'clock in the afternoon. Please bring your donations to the garage on Thursday, August 28, so they can be arranged early.

Marjorie van Hoose
Club Reporter

**FULLEN
MOTOR CO.
PUNCH LINE
OF THE WEEK**

Flattery is the art of telling a person exactly what he thinks of himself.

EASTLAND TELEGRAM

Eastland, Texas 76448: Today's Center For Tomorrow's Future!

Volume 46 Number 69 Thursday, August 28, 1975 10¢ EACH

5,000? How Near, How Far?

Preliminary figures indicate, and a study now being made may show that Eastland's population has reached the magic number 5,000.

At mid-decade, halfway between official census time, educated estimates at best point

the way toward actual city population.

Latest estimates released by the Department of Commerce are good, but not very fresh, being based on July 1, 1973, computations.

The City of Eastland has done a lot of growing in many respects since that point in time.

A utility meter survey this week shows that there are presently 1,616 water meters (total; some in, some out of the city limits); 1,400 active gas meters within the city limits; 1,595 (commercial and residential) electric meters within the city limits; 1,170 television cable connections within the city limits; and 3,414 telephones out of the Eastland exchange which would be both in and out of the city limits.

By making certain meter adjustments to reflect apartment units which might be served by one meter, but actually serving more than one family unit, educated projections may be made to show true population totals. For instance there are 68 units at the Sabine Terrace Apartments, served by one meter, and there are other such instances where meter-count has to be adjusted to show the true picture.

And by using a formula which is based on statistics evolved from the actual 1970 census report, a pretty good "guesstimate" of today's Eastland population can be achieved.

The 1970 statistics showed that there were 2.8 people served by each meter, so by adjusting say only the Sabine Terrace Apartment and adding 68 to the total gas meters, one comes up with a potential 1,468 meters, and applied to the 2.8 persons formula, a population of 4,110 would be indicated.

The study now being conducted is further expanding the multiple-apartment on-one-meter approach to hopefully come up with a more-perfect meter total to be applied to the 2.8 formula. There are several other such multiple-unit on-one-meter cases being considered.

Applying the 2.8 formula to the electric in-city total gets right at 4,466, but the 1,595 total in city includes both commercial and residential, so the residential-only total of 1,297 figure would be necessary and applied to the 2.8 formula gives 3,632, which doesn't take into consideration the multiple units. Adjusting for Sabine Terrace would bring the total up by 190 to 3,822, with other cases of adjustment possible.

Eastland's city limit boundaries are set by its 1919 charter which can't be changed until the population reaches 5,000 (without the danger of losing home-rule designation)-or, and if the new state constitution passes which would permit the

charter to be changed with a 1,500 population, without losing home-rule designation.

Eastland's population jumped from 3,178 in 1970 to 3,325 on the July 1, 1973, estimate, an increase of 4.6 during the same period Carbon gained two from 264 to 222 or an 0.8 increase; Cisco, up from 4,160 to 4,211, 1.2 increase; Gorman, up from 1,236 to 1,307, 5.7 increase; Ranger, lost 91, from 3,094 to 3,003, a 2.9 drop; and Rising Star recorded a boost of 8.8 percent, up to 1,098 from 1,009.

Assuming even a continued population annual increase of 4.6 percent for Eastland (and that appears to be a very conservative percent of gain), total for July 1, 1975, would be 3,619.

Most would contend that the city's growth has been greater since July 1, 1973, than before. Could it be twice as great? There's been a lot of new homes built, a lot of people have moved to Eastland and the high school enrollment is higher than it has ever been.

What if the increase, instead of 4.6 percent, was more like 9.2 since mid-1973. The population on July 1, 1975, would have been 4,913.

Maybe the rate of growth was greater. The in-depth study now in progress could tell.

Utility connections in neighboring towns continue to grow too.

Disciples Take Firm Stands

The Christian Church, Disciples of Christ, meeting in National Assembly, has taken definite stands on a number of important issues of the day, according to a special report to the Telegram.

Positions have been taken on world hunger, capital punishment and abortion, according to Robert Friendly, public information director, in a telephone interview this week.

Local pastor and Mrs. Steve Church were among the some 8,000 attending the assembly in San Antonio. The representatives to the Assembly passed a resolution urging cooperation in the 1974 World Food Conference, and asking individuals to adopt different life styles, emphasizing one sacrificial meal per week.

After much debate the Assembly adopted a stand of being definitely against capital punishment, and later expressed opposition to any attempt to legislate a religious opinion on abortion, and urging local churches to minister individually in cases of unwanted pregnancies.

Jury Finds Juarez Guilty; Gets 35 Years

Jury was selected Monday for the trial of Francisco Talamantes Juarez of Odessa. Juarez was picked up September 8, 1974, for being involved in the

delivery of what was supposed to be 23 ounces of heroin in Ranger on that day.

He was one of the five principal parties in this transaction.

Cisco: 3,363 telephones in that exchange; 954 television cable connections; 2,400 electric meters; 1,900 gas meters; and 1,668 water meters.

Ranger: 2,358 telephones, 991 cable connections; 1,396 electric meters; 1,300 gas meters; and 1,300 water meters.

Services Held Thursday For Mrs. McMillan

Mrs. Nina McMillan, 83, died at 3:30 a.m. Wednesday, August 13, 1975, in Eastland Memorial Hospital from a short illness.

Funeral services were held at 3 p.m. Thursday, August 14, in Higginbotham Funeral Chapel with Rev. Marion Dennis officiating. Burial was in Murray Memorial Cemetery at Carbon.

Born Jan. 3, 1892, in Milam County, she had lived in the Gorman area most of her life. She was married to Miles McMillan on August 5, 1909, in Carbon. They celebrated their 66th wedding anniversary August 1. She was a member of the Baptist Church.

Survivors are her husband; four sons, Raymond of Dallas, W.E. of Fort Worth, L.A. (Gus) of Borger, and E.L. (Corky) of Perryton; one daughter, Mrs. William Bettis of Boston, Mass.; also four brothers and three sisters; eight grandchildren and four great-grandchildren.

Pallbearers were W.C. Browning, Graydon Baze, Enoch Cook, Hulon Lasater, Thurman Jay and Check Smith.

Funeral For Andy Harris Wednesday

Andrew M. (Andy) Harris, 4, son of Mr. and Mrs. Gerald Harris of Eastland, died at 5:05 a.m. Tuesday in Eastland Memorial Hospital after a lengthy illness. Services were at 4:30 p.m. Wednesday in Bakker Funeral Home Chapel.

The Rev. Price Madison, chaplain of Hendrick Memorial Hospital in Abilene, officiated. Burial was in Eastland Cemetery.

Andrew was born Dec. 23, 1970, in Rockenhausen, Germany, and he moved to Eastland in 1972.

Survivors include his parents; a sister, Manuela of the home; and grandparents, Mr. and Mrs. J.A. Harris of Eastland.

A Reminder

Pictures will be taken Thursday for students at Elementary, Junior High and High School.



Coach Dallas Looks Into Crystal Ball For Mavericks

A little bigger Maverick grid squad and its many fans move down to Winters Friday night for a test scrimmage with the Blizzards and Head Coach Doug Dallas sees a good year ahead for the Eastland High School aggregation.

Picking up two new footballers this week, his charges now number 48 (45 in the seventh and eighth grades) and the head mentor sees the 1975 Mavericks as not only showing a little more size, but also displaying quality, in execution and attitude.

He and his staff report themselves happy with the Mavericks scrimmage with - Cross Plains here last week when in 40 plays the Buffaloes were held to 69 yards and in the same number of tests, the locals gained 285 yards.

Up through the first scrim-

Services Held Wednesday For Glen Graham

Glen Graham, 71, of Eastland, a retired printer, died at 9:40 a.m. Monday in Eastland Memorial Hospital after a lengthy illness. Services were at 2:30 p.m. Wednesday in Bakker Funeral Home Chapel.

The Rev. Paul Edwards, pastor of Bethel Baptist Church, officiated. Burial was in Eastland Cemetery.

Born May 15, 1904, in Mount Vernon, Ill., Mr. Graham married Lois Fox Sept. 18, 1926, in Oklahoma.

Mr. Graham moved to Eastland in 1929 and was employed by Victor Cornelius Inc. of Eastland for 30 years until his retirement in 1968.

He was a member of the Knights of Pythias Lodge in Eastland.

Survivors include his wife; a son, Jack of Eastland; a daughter, Mrs. Georgia (Cecil) Harr of Fort Worth; his mother, Mrs. Ida Graham of Benton, Ill.; two brothers, Gene of Benton, Ill., and Jack of Chicago; eight grandchildren and one great-grandchild.

Pallbearers were Ray Pryor, Darwin Miller, Robert Lawson, Eldris Gattis, Bill Jordan and Bill Keith.

mage, we were looking for football players, Coach Dallas says, but beginning this week, we will be looking for position players, as the team begins to shape up.

The coach was featured speaker this week at both the Rotary and Lions meetings as he highlighted the season ahead. Something new in the scrimmage last week was a full scouting report which the coach called most beneficial in spotting errors and helping shape the team.

De Gordon was program chairman and introduced the coach. President Ray Pryor presided.

The team is showing youth with a lot of sophomores, he said, and our goal is to be able to execute our plays faultlessly.

Analyzing the season the coach sees the opener with Dublin here as most challenging with a new coach there and a dedicated ball club coming to town. Ranger? Well, anything can happen when neighboring teams play, he said.

Moving into district he pointed out that Eastland has the fewest number of men to pick from: Cisco has 65 out for football; Breckenridge, 85; Hamilton, 65; Comanche, 75; Coleman, 75; and Clyde, 100.

He sees Cisco with 20 lettermen seniors as a power and Hamilton equipped with its complete defensive and offensive line veterans. Of course Comanche won it last year, so they're expected to be packed with power this year. There's new coaching staffs both at Coleman and Clyde, so there's a chance of seeing brand new team organization.

Of Breckenridge he says the young man Robinson there will undoubtedly, if he can remain uninjured, become a really outstanding football player.

Looking further down the line, Coach Dallas reported that district alignment changes will be reported in October and there's a chance that Breckenridge go toward the northeast, so there could be some changes in the next two years' schedules.

The coach complimented his staff which includes Don Adair,

Robert McPherson, Ronnie Hughes and Tom Bagwell. He pointed out that his staff not only attempts to teach sports, but at the same time also tries to help the young public school students to become good individuals.

Services Friday For W. N. Bourdeau

William N. Bourdeau, 90, of Ranger, retired general contractor, died at 11:25 a.m. Tuesday at his home after a lengthy illness.

Rosary will be said Thursday at 8:00 p.m. in the chapel of Killingsworth Funeral Home. Mass will be celebrated Friday at 10:00 a.m. at St. Rita's Catholic Church with the Rev. Joseph Scanton of Lewisville, officiating. Interment will be in Evergreen Cemetery under the direction of Killingsworth Funeral Home.

Born Sept. 27, 1884, in Bridport, Vt., Mr. Bourdeau moved to Ranger in 1919.

He married Agnes T. Mooney Sept. 21, 1917, in Coalinga, Calif. Mr. Bourdeau was a member of St. Rita's Catholic Church.

Survivors include his wife; two sons, William L. of Ranger and John E. of Graham; two daughters, Mrs. Frank (Mary) Reilly of Atherton, Calif., and Mrs. Robert (Cecilia) Gabrysch of Houston; a sister, Mrs. Robert (Clara) Mundy of Bridport, Vt.; and 11 grandchildren.

Pallbearers will be C.P. Bourdeau, C.W. Bourdeau, Arthur Camacho, Bill Miller, Everett McGee, R.C. Worth, John E. Bourdeau Jr., and Joe Camacho.

Bonnie Garner and Ottie Pittman visited relatives in Dyersburg, Tennessee and Lexington, Tenn., last week.

FREYSLAG
Insurance
weather

Chance of Thunderstorms - Continued Warm With High Near 90.

Grandparents Brag Corner . . .

Gena Barton Age 4

Parents: Mr. and Mrs. Gene Barton

Grandparents: Mr. and Mrs. R.D. Threet
Mrs. Enna Baker



NEW MANAGER AT CHI - CHI'S - Steve Blair, left, manager of Chi-Chi of Texas Inc. Restaurant at the Ramada Inn (which he has managed for the past ten months) introduces his successor, Bob Chelette of Hico, who has assumed management of the Eastland Restaurant. Mr. and Mrs. Blair have been promoted by Chi-Chi and will serve as opening manager for the firm in its expansion to Austin and San Antonio. Mr. Chelette has been in the food service business for the past ten years. He and his wife and three daughters will move to Eastland from Hico where his wife is a native. He's originally from Lake Charles, La. He served as opening manager for Terry's Restaurants as well as other top firms.

CLASSIFIED ADS

THE EASTLAND TELEGRAM

Thursday, Aug 28, 1975

629-1707

FOR SALE

COUNTRY HOME ON HILL, 3 miles East of Cisco, 4.5 ACRES of beautiful land, three bedrooms, two baths, TOTAL ELECTRIC, covered enclosed patio, fenced, self-clean range, dishwasher, disposal, antenna and roter, drapes, carpet, two car garage, landscaped. Easy Terms. CITIZENS REALTY, 820 W. Main, Eastland, 629-2404, nights 629-8082. t-1f

FOR SALE--Sturdy wheat seed, at the grainery. See Bob Shults at Shults Implement or phone 817-643-4311. t-69

FOR SALE--Like new. Bundy Alto LSaxophone and case. Used less than 1 school year. Asking \$285.00. Call 653-2437. t-69

FOR SALE--Clean 1966 Mustang, 6 cyl., AC., standard, good tires. \$695. 629-8117. t-71

PORCH AND YARD SALE--Moving into smaller house. Kitchen utensils, linens, lamps, decorator items, curtains, desk, men's shirts size small, girls and ladies clothes, child's organ. Many other bargains. 500 West 2nd. Sunday from 8 a.m. to 6 p.m. t-69

FOR SALE New Mobile Homes. FHA financing available. VA financing now available. Many models and sizes to choose from. Low down payment. Low monthly payments. Eastland Direct Factory Outlet, Olden, Texas. Office phone 653-2432 or home phone 629-2117. t-1f

FOR SALE--In Exclusive Eastland area with large shade trees and beautiful landscape yard. 2 bedroom, 1 bath with natural wood burning fireplace. Large rooms. Central heat and air. 2 car garage. Call 629-1702 for appointment.

MISC. FOR SALE--SAVE BIG! Do your own rug and upholstery cleaning with Blue Lustre. Rent electric shampooer. Perry Bros. t-68

FOR SALE--Well kept carpets show the results of regular Blue Lustre spot cleaning. Rent electric shampooer. Coats Furniture. t-68

FOR SALE--14' fiberglass boat, 35 horsepower Evinrude, dilly trailer. \$425.00. Call 629-2046 or see at 309 E. Wilson. t-68

FOR SALE--Hybrid hay. \$1.75 bale. Call 653-2223 in Olden. p-71

FOR SALE--Big selection of construction paper. Just in time for school. Priced to sell. Eastland Telegram. t-1f

FOR SALE--30c compasses for 10c while they last. Eastland Telegram. t-1f

FOR SALE--3 wheel bicycle, like new. \$125. Call 629-1513 after 5 p.m. or weekends. t-69

FOR SALE--Reduced prices on registered miniature poodle puppies. This week only August 34 thru August 29. \$25 each, real bargains. Call 629-1211. t-68

FOR SALE--1974 Mustang II, V-6 with air, deluxe interior, vinyl door strips and pin striped, 14,000 miles. \$3,250. Call 629-2793. t-73

FOR SALE--Snare drum. Complete. School approved brand. Call 629-2390 after 4 p.m. t-69

FOR SALE--75 CC Yamaha Motorcycle, good running condition or would trade for milk cow or bred heifer and pay difference. Call 629-2742. t-70

FOR SALE OR TRADE--Older model flat bed Chevrolet pickup, 4 speed transmission, good tires and new battery. Gene Falk, Lake Leon. 647-1037 t-69

FOR SALE BY OWNER--6 month old, 3 bedroom, brick home. 2 car garage, central air, built-ins, plush shag carpet. Beautiful brick paneling in living room and dining room. Small down payment and assume payments. Call 442-2544 t-70

FOR SALE--7 1/2 acres with 2 bedroom home on pavement. 5 miles from Eastland, 2 miles from Lake Leon. Call 817-629-1838. t-70

FOR SALE--Old duplex on front of lot 100 x 200. No building restrictions. 1001 S. Bassett St., Eastland. Contact M.J. Yoden, 2547 Medcliff, Santa Balona, Calif. Phone 805-963-9260. t-70

FOR SALE

FOR SALE 2 bedroom home or will trade for lake property. Call 629-1654. t-70

FOR SALE Extra fuel tanks complete hook-up 442-2289.

FOR SALE Unprocessed Colorado Honey, 1 and 2 lb. jars. Call 442-1317 or come by 1611 Ave. D., Cisco. Will deliver if necessary. t-70

REGISTERED Chihuahua puppies for sale. \$35.00 each. 653-2223 in Olden. t-71

HOUSE FOR SALE Crestwood Addition 503 Oakwood Phone 629-2948

FOR SALE Used Norge dryer with instructions book. Needs repairs. \$35 cash. Call 629-2413. t-1f

FOR SALE IN OLDEN: 2 bedroom, paneled, carpeted house with washer and dryer hookup. Has pecan trees. 647-1890. t-70

FOR SALE--AKC Registered Brittany Spaniel Puppies Excellent blood line. Call 629-1786. t-72

FOR SALE--2 year old mare, 1/2 quarter horse, gentle, broke to ride. 1 large saddle, 1 small saddle. Call Olden Mobile Home Park. 653-2220. t-74

FOR SALE--Pickup camper on trailer. Also hay grazer, hay well fertilized. \$1.25 a bale. 629-2068 anytime after 5. t-75

FOR SALE--75 acres of land. Improved, 3 spring tanks and barn. Coastal and love grass and peanut acreage. \$450 acre. 1 mile west of Cisco. Call 629-2068 anytime after 5. t-75

FOR SALE--CLEAN expensive carpets with the best. Blue Lustre is America's favorite. Rent shampooer. Coats Furniture. p-70

MISC. FOR SALE--THE amazing Blue Lustre will leave your upholstery beautifully soft and clean. Rent electric shampooer. Perry Bros. t-70

MISC. FOR SALE--chairs, files, safes, fire files, tables, cash and carry. Save 20-50%. Large selection. 9 to 5:30 weekdays. Saturday 9-1. Value City, 1030 Butternut, Abilene. t-76

FOR SALE--1968 Pontiac, 4 door sedan, good tires, beautiful light blue color, blue vinyl upholstery, power breaks and steering, air, will sell \$150 under market value. Call 629-1731 or 629-2083. t-69

HOUSE FOR SALE BY OWNER--4 rooms and bath and partially furnished. 406 E. 7th, Cisco. Phone 629-1040. t-78

FREE 15 head Longhorn Cattle (cows, calves and bull) with the purchase of my farm: 140 acres, six room house, five dirt tanks, 29% down, balance 6%. Ed Sargent, 629-2468 or 629-1859 after 5 p.m. t-1f

THRIFT SALE--106 N. Connellee, dolls, baby things, sweaters and caps, pot holders, pillow cases, etc. Thursday, Friday and Saturday 9-5. t-69

WANTED--single woman looking for nice efficiency apartment. Commutes to Stephenville to work on M.A. degree. 647-1937. t-70

FOR SALE

ALL SIZES

Wash jeans, corduroy and permanent press work - pants, \$2.50 pr. Ladies and girls shoes, choice \$2.00 pr.; 3 prs. for \$5. Ladies nylon horses, 4 prs. for \$1. CISC0 ARMY SURPLUS. 1201 Ave. D. 442-3620.

FOR SALE--3 bedroom, 2 bath brick home, central heat and air, 2 car garage. Call 629-2348. Large lot. Easy terms. t-73

WANTED

CUSTOM HAY BALING Call Hollis Williams 442-1933 Hay Hauling Also Available t-76

HELP WANTED--Experienced electricians, sheet metal workers and air conditioner service man. Contact Tom Wimberly, 1200 W. Walker, Ph. 817-559-3388, Breckenridge. t-68

HELP WANTED--Cook, young man going to school especially considered. Apply Pit Grill, 308 E. 1-20, Cisco. t-69

WANTED--Cooks and waitresses at the White Elephant in Cisco. See Paul Gill or Mike Sabo. t-1f

WANTED--Ranger General Hospital needs RN's as well as an RN supervisor. Excellent salary and benefits. Call 647-1156. t-1f

WANT TO BUY or lease, one to one and one-half acres outside city limits with access to highway. Tel. 647-3590 after 10 a.m. t-1f

WANTED--Middle age couple to live in small furnished house on premises. Rent free, plus salary for woman to assist with household duties, two in family. No hard work involved, ideal, permanent position for couple. Worth investigating. Write P.O. Box 695, Eastland, Texas. Give name and address, will contact you. t-1f

HELP WANTED--Man to work in lumber yard, over 40 years old. Must have commercial drivers license. Experience not necessary, but helpful. Work week 47 hours per week. Several fringe benefits free to employees besides salary. Apply in person--no phone calls please. Applicant does not have to live in Eastland. Higginbotham Bartlett Company, 311 West Main, Eastland. t-70

LVN Wanted--Good Salary and benefits. Contact Mrs. Nix at Northview Center, 401 W. Moss, Eastland, Texas. t-1f

WANTED--Young mother would like to babysit at her home. Monday-Sat. Good care and meals. 629-2276. t-69

WANTED Carpenter work, building or remodeling. All general carpenter work. Free estimates. Call 629-1654. U.V. Williams.

WANTED Bass & Steel Guitar Player. Contact Ray Ishmael, Box 402, Carbon.

WANTED Hay Baling, Call 629-1591 or see Elmer Sullivan in Olden, Texas. t-83

SUDAN HAY \$1.75 per bale. About 12,000 bales. Sell any amount. Contact Henry Wilson, Okra, Texas. t-665

HELP WANTED--Lady for maid work, 3 hours daily. \$2.00 per hour. Eastland Motel, 1504 W. Main. t-70

WANTED TO BUY--Used guns. 629-1128 or 629-2446 after 6 p.m. t-1f

Eastland Telegram 629-1707

NOTICE



MASONIC LODGE NO. 467 Meets second Thursday of each month at 8:00 p.m. in the Masonic Hall. Call Joseph Housson, W.M., at 629-1314 or L.E. Huckabay, Sec'y, at 629-1391 for information.

FOR RENT

FOR RENT: Furnished private 3 room cottages with carports. Daily, weekly, or monthly. Pleasant Place Motel, west edge of Eastland. Call 629-8871. t-1f

FOR RENT--Mobile home spaces. \$20 per month. Call 629-2022. t-1f

FOR RENT--3 bedroom brick home, 617 S. Madera. 629-2430.

FOR RENT--2 rooms and bath. Close in. Cable paid. Call 629-2396. t-69

FURNISHED OR UNFURNISHED APARTMENTS: RENT If 1, 404 Oaks Apartments, 1304 Royal Lane, Cisco 442-3232 442-2709

FOR RENT--3 bedroom house, 702 W. Patterson. t-71

FOR RENT--Attractive 1 and 2 bedroom apartments. Also nice bedroom and bath. All bills paid including cable. Call 629-1731 or 629-2125. t-1f

FOR RENT--Mobile Home and mobile home spaces 653-2220. t-1f

HILLSIDE APARTMENTS: Attractive one-bedroom and efficiencies. All utilities paid including TV cable. Call 629-8097 or 629-2812. p-1f

NOTICE

NOTICE--Beginning French classes Tuesday evenings from 5 to 6. Call 629-2406 after 5 p.m. t-68

SINGER SEWING MACHINE Repair Center. Servicing all makes. New and used for sale. Complete line of parts. Our work is guaranteed. 629-1604. t-76

Eastland Telegram

629-1707

H.V. OBRIEN PUBLISHER AND EDITOR Second Class Postage paid at Eastland Texas under Act of Congress on March 1870

Published semi-weekly Thursdays and Sundays by Eastland County Newspapers Inc. SUBSCRIPTION RATES: By carrier in city, 15 cents a week or 65 cents a month; one year by mail in county \$5; city P.O. Boxes \$6; one year elsewhere in state \$7; out of state, \$10.00 per year.

NOTICE: Any erroneous reflection upon the character standing or reputation of any person, firm or corporation, which may appear in the columns of this newspaper will be gladly corrected upon being brought to the attention of the editor.

"All real estate advertised in this newspaper is subject to Federal Fair Housing Act of 1968 which makes it illegal to advertise 'any preference, limitation, or discrimination based on race, color, religion, sex, or national origin, or an intention to make any such preference, limitation, or discrimination.'"

"This newspaper will not knowingly accept any advertising for real estate which is in violation of the law. Our readers are informed that all dwellings advertised in this newspaper are available on an equal opportunity basis."

NOTICE

WEE WASH LAUNDRY Coin operated. You wash or we will. Pick up and delivery service in city. Tuesday and Thursday. Open 6:30 a.m. to 9:00 p.m. Attendant on duty Monday thru Friday. 106 E. Plummer in Eastland. 629-2081 in Eastland or 647-1346 in Ranger. t-1f

NOTICE--For your aluminum storm windows, screens, doors, window awnings, and carports, call Otis Coleman. 629-1644. t-1f

Do our companies give Bumper Discounts; Driver Training Credit; National Safety Council's Defensive Driving Course Credit; Second Car Credit; Dividends and Easy Payment Plans for all eligible policy holders? You bet! Come see us. Freyschlag Insurance Agency on North Side of Square.

Custom hay baling call Hollis Williams 442-1933. Hay hauling also available. t-68 mm

Person to person health insurance

It can help pay soaring hospital and surgical bills. Call me.

James O. Wortman 705 W. Main St Eastland Ph. 629-1096

STATE FARM MUTUAL Automobile Insurance Co. Home Office: Bloomington, Illinois

HOME INSURANCE

James O. Wortman 705 W. Main St Eastland Ph. 629-1096

WATKINS DEALER Vera Sherrill 406 S. Bassett, Eastland Leave name and address during day. Phone 629-8019

GREGORY PLUMBING & HEATING 629-2753 Res. 639-2340

Mercers Appliance Repair. Dishwashers, washers, dryers, stoves, disposals, and ovens. G.R. Mercer, Olden, Texas. 653-2473

NOTICE--We still have some new grain drills available. Shults Implement, Rising Star. Phone 817-643-4311. t-71

NOTICE--Male puppy to give away. Call 629-2507 before 3 p.m. t-69

AREA DISTRIBUTORSHIP 1st time offering full or part time year round business--Ideal for men or women. We establish your accounts, you replace merchandise. Investment required. \$2,395.00 to \$10,290.00. Phone Mr. Richards collect 314-997-3800 or write including phone number to P.O. Box 28235, St. Louis, Missouri, 63132. t-69

BOWER ELECTRIC Residential, commercial - and industrial wiring. New or old construction, house power specialists. For 220 volt appliances. Eastland. Call 629-1003. t-1f

WIESEN'S MAGNETIC SIGNS All Types Tel. 647-1676 or 647-1665 in Ranger

City Cab 629-2812

J&F POODLE GROOMING 14 MILES SOUTH OF CISC0 ON HIGHWAY 206. PHONE 725-6540

CUSTOM HAY BALING Done by bale or on half And done right Bill Wilson Bill Sullivan 629-8093 629-1205 t-1f



SEALED POWER ENGINE PARTS COLUMBUS SHOCKS WHITAKER WIRE

So Lo Auto Parts 817-629-2158

Open Saturday Till 4:00 p.m.

DOUG LUCAS MANAGER

300 S. SEAMAN EASTLAND, TEXAS 76448



QUALITY IS NO ACCIDENT

Custom New Homes Turn Key Service From Plans To Financing

B.G. BROWN CONST. CO., INC. 820 W. Main, Eastland 629-2404 Nights 629-8082



Central Drug North Side Of Square

PRESCRIPTIONS

Filled Promptly And Accurately



JUST CALL For All Your Drug Needs WE DELIVER

Scott Paint & Body Works

★ Body & Fender Work

★ Wrecks Rebuilt ★ Painting

629-2372 300 W. Commerce

WHITE PINE ELECTRIC is open for business and is here to stay. 24 hour service with licensed men on duty. Commercial, residential and industrial and mobil home electrical repair. Denver Stagner Jr., owner 629-2881. t-1f

"We handle anything but litterbugs" GOODE PEST CONTROL Phone 629-1179 after 3:00 310 N. Ammerman.

Roaches, Ants, Termites, Moths, Spiders, ALL GUARANTEED

Singer Sewing Machine Repair Center Servicing all makes. New and Used for Sale. Complete line of parts. WRIGHT AUCTION COMPANY 106 S. Seaman 629-2468

NOTICE--Mattresses. Complete bedding made by Western Mattress Co., San Angelo. Best quality, low price, renovate or exchange new. Every other Wednesday. They're guaranteed. For home appointment call Lois Meazell, 629-2703, leave name. t-1f

SENKEL'S CABINET SHOP 303 N. College Phone 629-1269 after 5:00. Custom Built Cabinets. Mobile Home Set-up, and Repair, Remodeling and General Carpentry Work. Richard Senkel Owner

SCOTTY'S BARN MISCELLANEOUS PAINTING 1315 S. Lamar Eastland, Tex. I paint lawn furniture - appliances - stock trailers - metal awnings - boat trailers - metal gates - Corral panels - tractors - Also polish and wax Automobiles. Come by, or Call L.A. Scott t-1f

\$50 reward for return of brown Chihuahua puppy 10 weeks old, taken from carnival grounds. Call 629-2961 or contact Joy O'Brien 1306 S. Seaman. t-74

BUCK KNIVES

FAMOUS FOR HOLDING AN EDGE



Available At H & R Lumber 715 West Main 629-2104

RESPONSIBLE... RELIABLE... READY-TO-GO

AMBULANCE SERVICE 2504 AUG 71 M.P. 50



Assurance ... It Matters

Depend on us when there's a need for immediate ambulance service. Call us day or night for fast action.

Modest Rates

Arrington Funeral Home

Ph. 629-2611

Solar Interiors

Offering Complete Designer Service For An Efficient And Beautiful Home.

Draperies, Carpeting, Upholstery, Wallcoverings, Furnishings, Accessories, Kitchen Planning Electrical Layouts And Furniture Floor Plans.. No Charge For First Visit.

For Information Call: Comanche (915) 356-3590 Dallas (214) - 369-3690 Interiors by Bennie Simpson B.F.A. EHS, 1969

A-1 SALES DALE JERRY MASTOM 215 S. WALNUT-EASTLAND PHONE DAY-NIGHT 629-2102

ROOFING SIDING

COMPLETE REMODELING ALL TYPES HOME REPAIRS

NEW HAIL GUARD SIDING - WITH 15 YEARS ON FINISH 25 YEARS ON SIDING NON-PROTATED GUARANTY!

VINAL IS FINAL WE HANDLE SOLID VINAL SIDING SOLID COLOR ALL THE WAY THROUGH SCRATCHES DO NOT SHOW BEAUTY-INSULATION-DURABILTY 20 YEAR PRORATED GUARANTY

CALL 629-2102 FOR FREE ESTIMATE ON ANY REPAIR JOB PROMPT COURTEOUS SERVICE

NOTICE

ROOFING
Doyle Squires, Contr., Olden, Texas. 853-2212. Call after 6 p.m.

Lakeside Country Club will have a scramble this Sunday, August 31. Tee-off time will be 1:30. Everyone is invited to come out and play. Titlest golf balls will be given to the winners.

CITIZENS REALTY

820 W. Main Eastland
629-1769 or 629-2404



49 Acres Near Eastland
Nice 2 Bedroom Home
City Water
175 Pecan Trees
Two Tanks
Good Barn With Working Pens

RAY MOODY ASSOCIATE
1-725-7279
WAYNE DURHAM ASSOCIATE
629-2743

CITIZENS REALTY

820 WEST MAIN STREET
EASTLAND COUNTY'S
VOLUME
RESIDENTIAL DEALER
629-1769 629-2404



NOTHING LASTS FOREVER, and this won't either! A two bedroom home with one bath and one car garage. Located in a friendly Eastland neighborhood. Established yard on two lots. All this for only \$11,000. Owner will carry mortgage, payments under \$100 per mo.

"THIEVES" will think twice before they consider this house, even though FHA has made it a steal, payments are just over \$100 a month, with an 8 1/2 percent loan over 360 months. Located in RANGER just across from the Catholic church, it has two large bedrooms with a king-size bath. Spacious living room and formal dining room. Modern kitchen with breakfast bar, utility room, central gas heat and air. One car garage with workshop in back and plenty of storage. Nice yard fenced, fruit trees. Low equity and assume loan.

THE TIME TO BUY is now. The owner is anxious to sell. This Cisco property is ready for you. Three bedrooms, two baths, two car garage. Close to CHS.

SOMETHING SPECIAL waiting for you in RANGER. Move into this three bedroom home for ONLY \$350 down, carrying 8 1/2 percent. 60 months. With payments of slightly over \$150 per month. You can enjoy your own home with fireplace and one car garage, nice yard, central heat and air, carpet, utility room.

MATURITY AND CLASS, enjoy a serene Cisco neighborhood on corner lot, big trees. This three bedroom, two bath older home is nice. Natural wood burning fireplace in family room, carpet, roomy.

DON'T SMOTHER MOTHER, handsome four bedroom home. Isolated master bedroom, three full baths, luscious gold shag carpeting throughout, Super Big kitchen, separate large utility room, back entry drive, paneling, central heat and air, MAKE OFFER! West Cisco.

TAKE ADVANTAGE of the opportunity to own this lovely Eastland home. Large y... rooms, one bath, central heat and air, carpet, corner lot, financing available.

COUNTRY HOME ON HILL, three miles east of Cisco on Hwy. 80. Four and a half ACRES, three bedroom, two bath, covered enclosed patio, fenced. Self-clean range, dishwasher, disposal, antenna and rotor, drapes, carpet, two car garage, landscaped, country living, with city conveniences.

FREE SQUIRRELS!! No charge for the squirrels playing in the big oak trees around this charmer. It's a two bedroom doll house, in Cisco. Low equity and assume loan.

NEWLY WEDS or new here's the perfect home for a couple! Three bedroom, decorated, choice location, Eastland.

WE HAVE A CORNER lot two bedroom frame, it comes with easy care home, nice yard.

RETIRE WITH INCOME, home and rental property in East Cisco, a good investment in today's market. It doesn't cost a fortune to look.

ARTISTIC ENGLISH, a rare find in Eastland's Valley View Estates. Get in on the ground floor of this new proposed home. Are to begin foundation soon. Watch it progressing into a lovely three bedroom, two bath dream for your family.

UNHEARD OF!! In Cisco about two year old brick home, six rooms, central heat and air, carpet, NE Cisco, low monthly payments, \$90.

IT'S YOUR MOVE, quick possession on this 1971 Tornado mobil home. Two bedroom, 1 bath, 12' x 52', perfect for weekend retreat at lake or your own lot in town, \$500 equity and assume loan, \$84 month.

NO PINCH'N. That's right. No space or price pinch with this large four bedroom home in Cisco. Blue Flame with built-in, eye level oven, dishwasher, disposal, natural wood burning fireplace, new carpet and paint. LOW down payment.

IDEAL LOCATION, minimal or other business purposes. Corner lot fronting on Hwy. 80, 1,000 sq. ft. excellent for investment.

DEAR YOUNG PEOPLE. Are you tired of renting? Privacy is priceless and that's what you will have in this two bedroom, one bath cottage in Eastland. Call today for details.

FIRST TIME OFFER, nice on this two bedroom home in Eastland. Workable figures. FHA financing available.

YOU CAN STOP LOOKING for a lovely two bedroom home in Cisco. One bath, nice neighborhood, all it needs is YOU.

SEVEN DIGIT LIVING FOR FIVE is a feeling you will have living in this home. All superior taste in design. Pride of ownership is apparent in all respects. 3 spacious bedrooms, 2 plush baths, extra large den paneled with vaulted beamed ceiling, including natural wood burning fireplace, ultra-modern kitchen, an abundance of storage space with versatile additional room for game room or fourth bedroom. Extra well groomed lawn. Storage building in back, back entry drive, 6 ft. cedar fence. Pleasant, friendly Eastland neighborhood.

Hours: 8-6 Mon.-Fri.; 8-2 Sat. 1-4 Sun.

B.G. BROWN - BROKER

629-5882

KARLA BROWN - BROKER

629-5882

Associate

Associate

Associate

CALL US - WE CARE

629-5882

629-5882

Associate

Associate

Associate

Associate

Associate

Rhodes Helps

In Colonial Win

Al Beiberger tied the Colonial CC course record and won himself \$500. Geiberger's 33-30 round tied the in-competition 63 shot by Dale Douglass in the 1970 NIT. Geiberger was the low professional, of course, and his team of Bob Durree, Bill Miller, R.M. Reed Jr., and Norman Rhodes assisted him to the winning pro-am trophy. With the handicaps, the team had a 20-under 50!

Geiberger also won the TPC Championship.

Third Annual County Hay Show

Scheduled September 30

The third annual Eastland County Hay Show is planned for September 30. Anyone who has produced or purchased hay this year is urged to enter one bale in each class. The deadline for entering the hay is September 8. The Eastland County Rural Development Committee is sponsoring the show again this year.

Committee members emphasize that it will cost the producer only the hay he enters and in return he will get a protein analysis on each bale and will find out how it classifies in terms of quality.

Considering the rising cost of producing and harvesting hay, high quality hay has never been more important, the committee says. The purpose of the show is to encourage efficient, economical and profitable production of high quality forage.

An exhibitor may leave his hay at any one of the following farm stores between now and September 8: Brown's Feed Store or Gorman Milling Company in Gorman; Squires Farm Store, Perkins Implement Company; C&D Feed Store or Eastland Grain and Seed in Eastland; Ratliff Feed and Seed in Ranger; Carbon Farm Supply in Carbon; Jones Feed and Seed Store or Shults Implement Company in Rising Star; Thornton's Feed Mill or Farm and Ranch Supply in Cisco.

A producer may enter one bale in each class which includes: Coastal, Bermuda Grass; other perennial grasses (including Johnson grass and Love grass); Sorghum-sudan hybrids and forage sorghums; oats, and other winter annual grasses; Alfalfa and other legumes; and legume-grass mixtures.

The hay show will be held at the Eastland County Livestock show barn. Dr. Neal Pratt, Extension Forage Specialist, will be the hay judge and guest speaker. He will discuss hay quality and ways of improving hay quality.

The entry deadline is set for September 8, so there will be time to get protein analyses made before the hay show.

The Rural Development Committee is composed of: DeMarquis Gordon, County Agent; David Martin, ASCS Director; Charlie Henderson, FHA Supervisor; and Ronald Bailey, District Conservationist.

Roping Club

To Have Jackpot Roping

The Gorman Roping Club will have a jackpot calf and steer roping at their arena Sunday, August 31, at 1:00 p.m. The event is open to all ropers. Books open at 11:30 a.m. and close at 12:30 p.m. For the jackpot calf it will be \$7.00 for a one header. The Steers will be \$14. There will be a concession stand on the grounds and everyone is invited.

City Sales Tax Rebates Issued

Comptroller Bob Bullock issued City sales tax rebates recently worth \$19.9 million and announced a new plan to give cities their proportionate share of an partial collections for delinquents.

In the past, money from delinquents was applied first to the state's claim and only after that was totally paid off did the city get its money.

"It was wrong for the cities to be playing second fiddle," Bullock said. "In more than 800 cities the five per cent sales tax is a four - and - one - split, so that's exactly how we are going to rebate it."

Bullock said he doesn't look for the new plan to bring significantly more money to cities but "It will get them their share a lot faster than when they had to bring up the rear."

This month's \$19.9 million in rebates to the cities is significantly higher than the \$11.4 million rebates last month. August is the second month of the three month

rebate cycle which includes two months of relatively small rebates followed by a larger "Clean up" in the third month. Net payment in the Eastland County are a is: to Eastland is \$4,500.23; to Gorman is \$1,105.88; and to Ranger is \$5,500.99.

New Food Stamps

Food stamp recipients will be able to exchange old food stamps for new ones after the old stamps expire on August 31, 1975, the U.S. Department of Agriculture announced today.

Until Aug. 31, food stamp recipients may use their old stamps in authorized retail food stores. After that date, recipients will be able to exchange the old stamps at local food stamp offices designated by state agencies. The exchange will be dollar for dollar, new food stamps for old.

USDA introduced the new food stamp series on March 1, 1975. The new \$1, \$5 and \$10 denominations replace the 50 cent, \$2 and old \$5 stamps.



JOB PRINTING



For Big Events!

A very special occasion needs a very special printer. Ask us.

Your Local Newspaper

It's HAPPENING now

Week-End Retreat!

5 Acre to 22 Acre Tracts Of Wooded, Secluded Land. North Of Eastland. Owner Will Finance, With Down Payments Starting From \$260. LOW Monthly Payments!

Electricity To Sites, Possibility For Stock Tanks, Deer And Game.

Call Office For More Information And Directions To Sites. Come By And Select Your Own Autumn Haven Retreat.

820 West Main Street
Eastland, Texas

SATURDAY-SUNDAY
629-1769 9 A.M.-5 P.M.

CITIZENS REALTY

CITIZENS REALTY



820 W. Main
Eastland
629-1769 or 629-2404

WE SELL FARMS - -
NOT JUST LIST THEM

70 ACRES, located on IH 20 between Cisco and Eastland, Live oaks, four nice tanks, \$5,000 down or G.I.

140 ACRES, North of Cisco, Tank, native grass, creek, deer, turkey, TERMS, \$265 an acre.

21 ACRES, SW of Cisco, Highway frontage, plenty of good water, 1972 Mobile home, 14' x 76', good condition.

65 ACRES Near Scranton, 40 ac. cultivation, large older home, fruit trees, spring, good water well, out buildings.

36 ACRES - OLDEN, \$15,000, may use your G.I. on this one.

30 ACRES - South of Cisco - - Owner will finance, 3/4 minerals included.

486 ACRES Lake Leon - 350 acres in cultivation, plenty irrigation, water, 4 wheel movements, 2 bedroom home.

116 ACRES - COMANCHE COUNTY - - 26 acres peanut allotment, fronts on Hwy. 16 with country roads on two sides, owner will divide.

30 ACRES - COMANCHE COUNTY - - All in coastal, oak trees, three tanks, two wells, windmill, very nice place, barn and lots.

40 ACRES - COMANCHE COUNTY - - All in coastal, stock tanks, cross fenced, two wells, windmill, hay barn and cattle pens.

85 ACRES - COMANCHE COUNTY - - all in coastal, older house, nice creek, three tanks, 5 to 6 ac. timber, cattle pens.

123 ACRES - COMANCHE COUNTY - - All in coastal, stock tank, well, Duster area.

26 ACRES - ERATH COUNTY - will accept G.I., highway frontage, 7 ac. coastal, creek, city water.

8 ACRES - OLDEN - three bedroom, two bath older home, out building, more acreage joining this one, 90 percent loan.

58 ACRES - between Lake Leon and Desdemona - good natural place for lake. 13 acres in cultivation - use your G.I. on this one.

295 ACRES - 40 ac. peanuts, 14 ac. lovegrass, 60 ac. coastal, good 25 ac. oatfield, two irrigation wells, deer, turkey, 29 percent down.

175 ACRES - EASTLAND COUNTY - 75 ac. in cultivation, 30 ac. peanuts, balance in timber, make offer.

151 ACRES - EASTLAND COUNTY - Frontage on IH 20 one mile out of Cisco, native grass, three tanks, (one 30' deep), good cattle land. We will help you get a loan on this one.

331 ACRES - COMANCHE COUNTY - Fronts on Hwy. 16, 500 pecan trees, springs, 30' lake, water overflows 3/4 of the year, all in coastal, twelve hundred ninety three acres available for lease with this one.

150 ACRES - EASTLAND COUNTY - 140 ac. in coastal, one irrigation well, 5 miles south of Eastland, oil production with or without mineral rights, \$24,000 down.

300 ACRES - EASTLAND COUNTY - 78 ac. peanuts, 75 ac. coastal, 42 ac. lovegrass, three bedroom home, three irrigation wells, with equipment, \$20,000 down.

160 ACRES - EASTLAND COUNTY - 120 ac. peanuts, near Gorman.

143 ACRES - EASTLAND COUNTY, 40 ac. lovegrass, 11 ac. coastal, 52 ac. open field, three irrigation wells, 350 gallons per minute, ONLY \$13,625 down.

134 ACRES - COMANCHE COUNTY - 30 ac. peanuts, 100 ac. coastal, 100 pecan trees, 20 ac. bottom land, two irrigation wells, irrigation equipment for 30 ac.

425 ACRES - YOUNG COUNTY - improved grasses, six tanks, deer, quail, good hunting, beautiful country.

275 ACRES, 165 ac. in improved grasses, balance in timber. Lots of deer, older house, \$20,000 down.

Hours: 8-6 Mon.-Fri. WAYNE DURHAM ASSOCIATE
1-725-7279 8-4 Sat. 629-2743
1-2 Sun.

B.G. BROWN - BROKER
629-8082

HEIDENHEIMER'S
SIDEWALK DAYS

Big \$1.00 Table

All Items In Limited Number And Broken Sizes

Men And Boy's

BELTS

SWIM SUITS

JEANS

SPORT SHIRTS

KNIT SHIRTS

NECK TIES

HATS

WALKING SHORTS

(Waist Sizes To 30 only)

Girls, Misses And Ladies

PETTICOATS

JEANS

BLOUSES

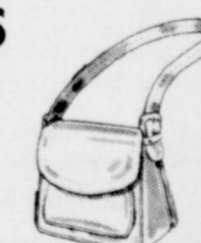
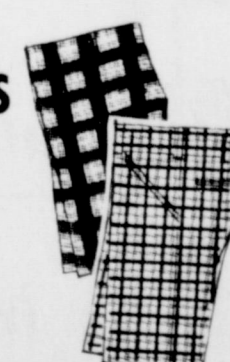
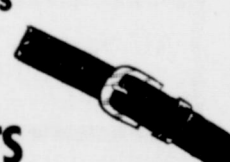
BAGS

SWIM SUITS

KNIT TOPS

SHORTS

SHOES



Plus One Rack Of Higher Priced Men's And Women's, Boys And Girls Goods That Will Be Reduced To Give-Away Prices

Safe-Dependable-Insured
VERNON'S MOBILE HOME
TOWING
 Local or Long Distance
 F.V. HAYDEN
 108 East Maple
 817-559-3584
 Breckenridge

Birth defects are forever. Unless you help.

Tony Lowrance Dirt Contractor

Sand & Gravel Hauling - Yard Grading & Leveling - Backhoe Service

Install Concret Septic Tanks

Call 629-8191

**Qualify for a
\$1,500 tax deduction.
Next year... every year.**

If you work for yourself, work at a small firm, or work for a large corporation, there's a new law that could save you a lot of money. Here's how: if you're not currently participating in a qualified retirement plan (most Americans aren't), you can set up your own Individual Retirement Annuity. Contributions to your annuity, up to \$1,500 a year (or 15% of your earned income, whichever is less) are fully tax deductible. 100% of your I.R.A. is subtracted from your gross income when figuring taxes.

It's like giving your own money to yourself. And deducting it, instead of paying taxes on it as usual. Some call it a tax shelter.

Your Southland Agent can answer any questions you may have. Send him this coupon... it'll be to your benefit. Next year, and every year 'til retirement.

Southland Life

INSURANCE COMPANY

M.H. PERPY
 Box 568
 Eastland, 76448
 629-1566 or 629-1095

Please provide me with more detailed information about how I can qualify for a tax deduction up to \$1,500 and save for retirement at the same time.

Name _____
 Address _____
 City _____ State _____ Zip _____
 Birthdate _____

Majestic Theatre

Eastland 629-1220

Now Thru Saturday

**Carol Jo Hummer—
A working man who's
had enough!**



WHITE LINE FEVER

COLUMBIA PICTURES presents AN INTERNATIONAL CINEMEDIA CENTER PRODUCTION
 Starring JAM-MICHAEL VINCENT • KAY LENZ in "WHITE LINE FEVER"
 Co-starring L. G. JONES and SUM RICKENS in "DUSTY"
 Written by KEN FRIEDMAN and JONATHAN KAPLAN
 Produced by JOHN KEMENY • Directed by JONATHAN KAPLAN

Special Fri. Late Show 11 p.m.

"The Loners" R

Sun.-Mon. Sun.-Mon.-Tues.

Something strange is happening in the town of Stepford.



THE STEPFORD WIVES

A very modern suspense story from the author of Rosemary's Baby.

COLUMBIA PICTURES and PALOMAR PICTURES INTERNATIONAL Present THE STEPFORD WIVES
 KATHARINE ROSS, PAULA PATTON, PETER MACFARLAN, NANCY NEWMAN, TINA LOUISE, CAROL ROSSER and
 FRANK O'NEAL in "The Stepford Wives" Based on the book by IRVING LEVIN. Screenplay by WILLIAM GOLDMAN
 Music Composed and Conducted by MICHAEL SMALL. Executive Producer GUSTAVO BEHR. Produced by EDGAR J. SCHERICK
 Directed by BRYAN FORBES. A Palomar Pictures Associates Production

Coming "Jaws"

STATE CAPITAL Highlights AND Sidelights

by Lyndell Williams

TEXAS PRESS ASSOCIATION

AUSTIN — Campaigns for and against a new Texas constitution are getting off the ground.

Proponents of the far-reaching revision to be voted on November 4 have opened an Austin headquarters under the direction of former State Supreme Court Chief Justice Robert W. Calvert and State Rep. Ronald Earle of Austin.

Opponents, for the time being led by State Sen. Peyton McKnight of Tyler, are setting up shop in an office building across the street.

First copies of a proposed voter's guide to the revision document were placed in the mail last week. They

present complete text of the eight propositions to be voted on, with a comparison summary of the "old" and "new" constitutional provisions.

Acknowledged opposition has centered largely on the proposal for annual sessions of the legislature — a 140-day session during odd-numbered years and a 90-day meeting on even-numbered years.

House Speaker Bill Clayton and Lt. Gov. Bill Hobby, concerned over effect of the opposition, asked an attorney general's opinion on whether the short, even-year session could be limited by law or legislative rule to budgetary and

emergency matters.

Their proposal immediately stirred strong disapproving comment from both proponents and opponents of revision, indicating, perhaps, a hot campaign during the next three months.

Ouster Rules Drawn

A Senate committee approved rules for the impeachment trial by 31 senators of 229th District Judge O. P. Carrillo September 3.

Carrillo personally appeared at the committee hearing with his attorneys. Leon Jaworski, the former Watergate prosecutor, who will be special counsel to the Senate presiding officer, urged proceedings be conducted "on a high plane in strict accord with the rules."

The committee tentatively approved live broadcast news coverage of the trial and recommended a gag rule to restrict comments by senators on proceedings in which they sit as court and jury.

Carrillo subsequently has been indicted by a Jim Wells County grand jury. He already faced a September 8 trial date on an income tax case in federal court at Corpus Christi and an October 2 hearing by a Judicial Qualifications Commission master in removal proceedings.

Allowable Wide Open Again

The Railroad Commission set the oil allowable for the 42nd straight month at 100 per cent of potential.

Commissioner Jim Langdon said a 15 per cent shortfall is expected in interstate gas pipelines this winter.

Any action by the federal government to take Texas gas reserves to make up for shortages in other states would amount to "a rape of Texas," Langdon commented.

"If it is a cold winter, and indications are that it will be, things are going to be pretty tough, gentlemen," Langdon told oil and gas company representatives at the Commission's meeting to set the allowable.

AG Opinions

A state representative who intentionally charges expenditures to the state in excess of the authorized amount is subject to prosecution under the penal code, Atty. Gen. John Hill held.

In other recent opinions, Hill concluded:

- Teachers cannot be school board members in the same district which employs them.
- Beginning September 1, judges must contribute six per cent of their annual compensation paid by the state to their retirement fund, legislators eight per cent.

- A motion for discovery rather than the Open Records Act is the appropriate means for access to information in a welfare recipient's case file concerning pending criminal charges against him.

- There is no law authorizing Wharton County to cease operation of the county's Nightingale Hospital, other than by lease.
- Texas Board of Dental Examiners may not require dental assistants to register with the Board and pay an annual fee nor permit employment of more than one dental hygienist per dentist.

employment of more than one dental hygienist per dentist.

- A member of the board of commissioners of the Port of Houston Authority may also be a member of the Texas Amusement Machine Commission.

- A board of regents may not compel a college faculty member or employee to take a leave of absence without pay while campaigning for public office in a school district, city or other local governmental district, but may require that for candidates for any other public office.

- Information on inventories from grain warehouse reports of the Department of Agriculture is not subject to disclosure under the Open Records Act.

Appointments

Gov. Dolph Briscoe named Dr. June Hyer of Seabrook, Howard Richards of Beaumont and John Fainter of Houston to the economy-hunting Joint Advisory Committee on Government Operations.

Briscoe appointed James H. Keeshan of Montgomery as district attorney for the ninth district (Montgomery, Polk, San Jacinto and Waller counties), and K. Baker of Carthage as 123rd district judge (Shelby and Panola counties).

The Governor picked Rudy Day of Dallas as chairman of the new Texas Committee on Indochinese Resettlement.

He reappointed Dr. Everett D. Wilson of Huntsville and Dr. John Mack Prescott of College Station to the State Board of Examiners in the Basic Sciences.

Cadar Parr of Irving September 1 becomes associate commissioner for occupational education and technology.

COUNTY NEWS

The following proceedings were had in the Court of Civil Appeals, Eleventh Supreme Judicial District of Texas August 22, 1975:

MOTIONS SUBMITTED

W.A. Steed et al v. Texas Power and Light Company. Appellee's motion to file supplemental transcript and exhibits. --Dallas.

The Celotex Corporation v. The State of Texas. Second motion for extension of time to file transcript and statement of facts. --Fisher.

Sibert Oil Company of Texas et al v. O.L. (Jack) Burney. Appellants' motion for extension of time to file briefs. --Scurry.

Wayne Qualls v. J.R. Weatherall. Appellant's first motion for extension of time to file briefs. --Knox.

MOTIONS GRANTED

W.A. Steed et al v. Texas Power and Light Company. Appellee's motion to file supplemental transcript and exhibits. --Dallas.

The Celotex Corporation v. The State of Texas. Second motion for extension of time to file transcript and statement of facts. --Fisher.

Pearson-Sibert Oil Company of Texas et al v. O.L. (Jack) Burney. Appellants' motion for extension of time to file briefs. --Scurry.

Wayne Qualls v. J.R. Weatherall. Appellants first motion for extension of time to file briefs. --Knox.

**Police
Dispatch
629-1728**

"WHAT'S LEFT" SPECIALS FOR THURSDAY, AUGUST 28th

Group 16 Half Slips \$1.00 Each 9 Slips	Group 9 Men's Union Suits All Cotton \$1.00 Each
Group 11 Pairs Canvas Shoes \$2.00 Per Pair	Group 8 Pair Shoes \$5.00 Per Pair
Group 30 Pair Men's Slacks \$5.00 Per Pair Alterations Extra	Group 18 Men's Dress Shirts \$3.00 Each
Group 7 Men's Hats \$1.00 Each	Group 6 Men's Suits Values to \$125.00 \$25.00 Each Alterations Extra
All Sales Final THE MAN'S STORE No Returns Rob Elliott CISCO	

Cattleman's Restaurant

Offering: Home Style Lunches 11 a.m. - 2 p.m. 6 days A Week

Fresh Homemade Pies	Each Friday Night 6 p.m. - 10 p.m. Fish Night (All You Can Eat) \$2.25 With Tea And All The Trimmings	Delicious Steaks Fixed The Way You Like Them
---------------------------	--	---

Cattleman's Restaurant

Highway 80 East Hours: 6 a.m. - 10 p.m. Eastland

Thursday, August 28, 1975

FEDERAL SAVINGS & LOAN Association
 P.O. BOX 117
 RANGER, TEXAS 76470

We will be closed for Labor Day
 Monday, Sept. 1, 1975

Please arrange your banking business accordingly

SHOW STARTS AT DUSK

RANGER DRIVE-IN THEATRE NOW

LOOKOUT... She's Legal Now!

SHE'S SHOWING 'EM HOW
TO MAKE GOOD....
BEING BAD!



You gotta love Annie 'cause lovin's what Annie does best.

RESTRICTED

SHE'S THE POP TOP PRINCESS WITH THE RECYCLABLE CAN!

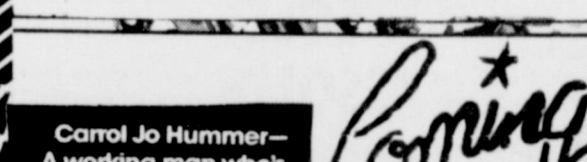


Jindsay Bloom Joe Higgins Raymond Danton Larry Mahan

SIX PACK ANNIE



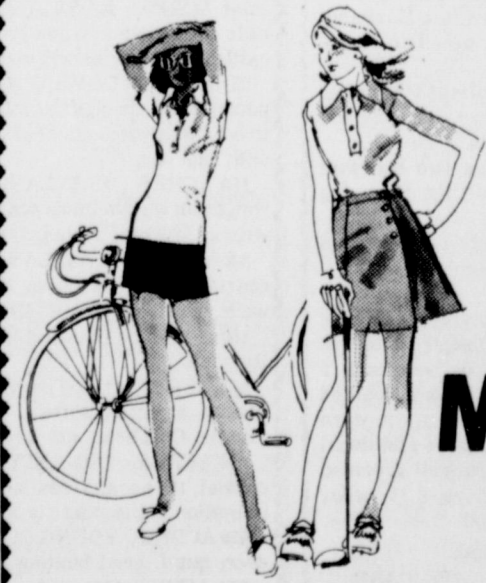
Stubby Kaye Louisa Moritz Doodles Weaver



Carol Jo Hummer—A working man who's had enough!

WHITE LINE FEVER

A COLUMBIA PICTURES INTERNATIONAL CINEMEDIA CENTER PRODUCTION



**1/2 off
All
Summer
Merchandise**

Excluding Jewelry

Quetta's Sports Wear Boutique

IH 20 Next To Ramada Inn
 Eastland 629-8030

Thursday,
August 28, 1975

If it's true that misery loves company, how come we can't learn to enjoy getting caught in traffic jams?

HEADQUARTERS for CB RADIOS
Accessories - Installations
THE CLABORN - GORR COMPANY
807 Aven. D., Cisco, Tex. 442 - 3642



Eastland Pump & Construction

H.L. "Hoot" Ferguson

Backhoe Sewer Lines Box 693
Ditching Water Lines Eastland, Texas
Dirt Work 817-629-2311

CLIP AND MAIL TODAY

LEARN TO EARN

With America's Largest Tax Service

BLOCK

JOB INTERVIEWS AVAILABLE FOR BEST STUDENTS

INCOME TAX COURSE

• Includes current theory, and application as practiced in Block offices from coast to coast.
• Choice of days and class times.
• Certificate awarded upon graduation.

ENROLL NOW!

Classes Start: Sept. 10
Day 9:00-12:00, Nite 7-10
mon. & Wed.

104 W. Commerce Eastland

Contact the BLOCK office
2638 So. 14th, Abilene, 79605 698-7573

Please send me free information about the H&R Block Income Tax Course. This is a request for information only and places me under no obligation to enroll.

NAME _____
ADDRESS _____
CITY _____ PHONE _____
STATE _____ ZIP CODE _____

CLIP AND MAIL TODAY

- 1973 Buick Century: 4-Door Pwr & Air, Low Milage Extra Clean **\$3,000**
- 1974 Duster: Pwr & Air-Low Milage Lease Car Warranty **\$3350**
- 1975 Duster: Low Milage Demonstrator, Still Under Warranty 6 Cyl Automatic, Power & Air **\$3,775**
- 1975 Dodge Dart Sport: Low Milage, Demonstrator, 6 Cyl, Automatic, Still Under Warranty Power Steering & Air **\$3,775**
- 1975 Plymouth Sport Fury: 2-Door, Automatic, Air & Power With Cruise Control, Low Milage-Executive Car, Still In Warranty **\$4,450**
- 1975 Fury Custom: 4-Door, Automatic, Air & Power, Low Milage, Still In Warranty. **SEE TO BELEIVE**

McCathren Motor Co.

Of Eastland

Chrysler-Plymouth-Dodge-Trucks
215 S. Seaman 629-8151

Do You Remember

BY HERMAN DEMPSEY

With the oil field activities settling down to normal productions, operation and the declining of exploration and drilling of new wells in the communities, the population of the area was being made up of families that were stationed in the locations for indefinite periods of time. This means the children went to school locally and returned on a stabilized condition from school term to term. From this increased school enrollment, there were more students to provide athletes for sports activities. This situation was inviting to more qualified coaches for the various sports. There was more finance to obtain the services of the higher class coaches. Football was the most popular sport and was given the most attention. High school football developed to such an extent, one of the community teams went all the way to the state playoffs. This team was defeated only by a Fort Worth team for the state champion-

ship. The people in these localities had become accustomed to the good teams each year and when the oil field activities began to drop off, moving many families out of the areas, the local people started recruiting prospective players for the teams. Recruiting in these days required that some means of supporting the athletes had to be established to keep the boy in high school for the length of his eligibility to play ball. In some cases, the boy was given a job at the fire station where he received his food and lodging as well as pay for serving as a fireman. In other cases the father of the boy was given a job in the area so that the boy could play ball. Even with all this effort, the effective performance of the teams continued to decline until they had to be placed in lower classification and compete with other teams that were more closely the same size school in enrollment.

Could It Happen Again?

Hospital News

Patients in the Ranger General Hospital Wednesday, August 27, 1975, were:
Jay McGee
Della Jones



Bill Roberts

Invites you to shop and compare for the best used car prices in Eastland County.

Elizabeth Munnerlys
George Norris
Bryan Parks
Gerald Ingle
Janie Villanueva
Leona Hill
Erma Parks
Florence Urban
Frances Daffern
Jesse Franklin
Toby Baker
Robert Tucker
Bea Allen
James Brackeen
Ellie Lambert
Janice Roberts
Raymond West

Patients in the Eastland Memorial Hospital Wednesday, August 27, 1975, were:

Walter Ledbetter
Ather Lasater
Edna Barnes
Maude Bourland
Maggie Christian
Annie Hodnett
Vena Maples
Myrtle Clark
Bertha Richardson
Forrest Gleghorn
Cliff Wilson
Florence Roper
Inar Parten
Aubrey Guy
Mozelle Martin
Grace Ashton
Katherine Estes
Lewis Starr
Adrian Cushman
Lula Pery
Ethelene Niver
Horace Lane
R.E. Baggett
Leo Pitts
Edward Ratcliffe
Robert Peasley
Darrell Shortes
Florene Miller
Estelle Stephens
Rosa Burton
Marene Johnson
Pearl Whitley
Vestal Roberts
Loretta Cagle
Minnie Lay
Patsy Ables
Barbara Wood
Elvie Pillow
Myrna Lewis
Grace Pilgrim
Lula Walker
Dorothy Mueller
Anna Harris
Elver Everton
Hubbard Gilbert
Anela Lyerla
Winnie Coleman
Joan Smitherman
Ava Kay Hight
Laverne Stuard
Johnnie Baze
Fannie Turner
Mary McCoy
Betty Joy Snow
Maria Garcia
Eleanor Guajardo
Judy Overcash
Billy Sullivent
Karen Gillean
Phyllis Mahaney
Leola Alderman
Emma Fletcher
Kathlyn Gleghorn
Twila Purdom

RCG Leasing, Inc.

Medicare Approved

Medical Supplies

★ ★ ★

Sales & Rentals

629-8052

104 W. Commerce
Eastland

Rita's Fashion Fabrics

I-20 East \ Next To Ramada Inn \ - 629-8020

One Group

Summer Knits

Reduced From \$3.98 - \$4.98

To

\$1.98 yd.

One Group

Fall Knits

Reduced From \$3.98 - \$4.98

To

\$2.98 yd.

Be Sure And Register

Monday - Saturday For Free

Gift Certificates

You Do Not Have

To Be Present To Win

(2) **\$100.00**
Gift Certificates

(4) **\$25.00**
Gift Certificates

Drawing - August 30

Quetta's Sportswear Boutique

I-20 East \ Next To Ramada Inn \ - 629-8030

Reductions

On All Remaining

Summer Stock

Values To \$59.95

Reduced To

\$5.00 - \$25.00

More For Less!

Feature for feature - dollar for dollar there is no finer home investment!

TREND-SETTING FEATURES:

- CENTRAL AIR CONDITIONING AND HEATING
- TWO CAR GARAGE
- Separate Utility Room
- Large Covered Overhang
- Drop In Oven and Range
- Hood and Fan in Kitchen
- Custom Styled Vanities
- Silent Light Switches



Complete Building Service
One Call Does It All

FHA-VA-CONVENTIONAL
Financing Available
216 S. Seaman
629-1702

Anniversary

End Of Month Sale

If The End Of The Month Finds Your Pocketbook Lite We've Got The Bargains To Suit You Just Right

If Tom Needs A Sport Coat or Sue Needs A Dress Come See Us At Young Age We Have Them For Less From Infant To Junior "Which Fit Mama Too"

We're Packed To The Brim With Good Bargains For You!

1 Group Boys Clothes 1/2 Price And Less

1 Bargain Basket Of 50 Items Now 2/75

1 Big Box Boys Long Sleeve Knit Shirts 1/2 Price

3-6x Girls This Group Is Small But We Have Some Real Bargains While They Last

Infant Boys or Girls Summer Outfits 1/2 Price

Toddler 1-4 Boys And Girls Some Pants, Some Tops, Some Dresses All 1/2 Price

7-14 Girls Dresses Pants-Skirts-Tops Marked To Clear 1/2 Price And Less

Jr. Girls Market To The Bone Practically Giving Them Away! You Won't Believe It Till You See It!

Basket Baby Shoes \$300 Pair

Young Age Shop

Ranger, Texas

Quarterback Club Totals 312

Forty new members were added to the Quarterback Club this week, bringing the total to 312 members. The membership team consisting of Buddy Haun, Norman Aven, and James Massey was leading the drive with 75 members, followed by Ken Reese, W.J. Stone, and Ralph Stevens with 70 members.

Two other teams consisting of Doyle Maxwell, Jack Mace, Emmett Lasater and Dale Bakker, Johnny Morren and Bill Culpepper had surpassed the goal of 60 members.

Some of the members added thus far were: Mr. and Mrs. Tommy Alford, Mr. and Mrs. Vernon Mahan, Mr. and Mrs. Roy Swift, Howard King, Richard Britt, Mr. and Mrs. Rex Morgan, Bob Day, Bob Phillips, Mr. and Mrs. James Massey, Mr. and Mrs. Gene Bagwell, Gene Frost, Danny Woods, Gilbert Garces, Mr. and Mrs. Neiman Smith, Mike Siebert, Mr. and Mrs. Virgil Seaberry, Dr. and Mrs. F.H. Lund, Don Stoner, Ronnie Patton, Vernon Humphrey.

Don Griffin, James Sherrill, Elwood Ragland, David

Weems, Kenneth Hill, Mr. and Mrs. Bob Galey, Mr. and Mrs. Jim Wortman, George Carter, Bill Roberts, Dr. and Mrs. H.J. Bulgerin, Pat Turner, Ronald Bailey, Roy Petty, Buddy Carter, Mr. and Mrs. B.W. Robertson, and Mr. and Mrs. Steve Blair.

Return

Mrs. Adele Whitten and G.A. Earp have returned from a visit with Mr. and Mrs. Jack Whitten of Versailles, Mo., where Mr. Earp said he got in some fishing and they also visited the Missouri State Fair at Sedalia. They also visited Mrs. Nell Fortenberry of Decatur; Mr. and Mrs. David E. Whitten of McKinney who took them to see the Texas Rangers and Baltimore Orioles Baseball game Friday night. There they visited Mr. and Mrs. E.L. Smith of Bridgeport and returned home Sunday.

Mrs. Ethel Mitchell of Graham spent last week with her sister Mrs. Della Davis.

Thursday, Aug 28, 1975

Southern Television Systems Inc

CHURCH SERVICES

CHURCH OF GOD Main & Connellee Rev. Ronald Bear	NORTH OSTM ST. CHURCH OF CHRIST H.S. Lewis Norman Carlisle
Sunday School 9:45 a.m.; Morning Worship 11:00 a.m.; Evening Worship 7:00 p.m.; Wednesday Night Service, 7:30 p.m.; Ladies Prayer Meeting 8:15 a.m. Thursday.	Worship 10:30 a.m.; Evening Worship 5:00 p.m.; Wednesday Evening Service 6:00 p.m.; Daily Pray Service Monday thru Friday, 6:00 p.m.
CALVARY BAPTIST Rev. L.C. Williams	FIRST BAPTIST Rev. Haston Brewer
Sunday School 10:00 a.m.; Morning Worship 10:45 a.m.; Training Union 6:30 p.m.; Evening Worship 7:00 p.m.; Wednesday night Service 7:30 p.m.	Sunday School 9:45 a.m.; Morning Worship 11:00 a.m.; Training Union 6:15 p.m.; Evening Worship 7:30 p.m.
FIRST BAPTIST CHURCH N. Seaman St. Rev. J.L. Norris	SOUTHSIDE PENTECOSTAL 107 New Street A.J. Woodard
Sunday School 9:30 a.m.; Morning Worship 11:00 a.m.; Baptist Training Union 6:00 p.m.; Evening Worship 7:00 p.m.; Wednesday Night Service 7:00 p.m.	Sunday School 9:45 a.m.; Sunday Evening Service, 7:30 p.m.; Midweek Service, 7:30 p.m. Thursday
HARMONY BAPTIST CHURCH Rudy Fambrough, Minister	BE THEL BAPTIST Rev. Paul Edwards, Pastor
Sunday School 9:45 a.m.; Morning Worship 11:00 a.m.; Evening Worship 7:00 p.m.; Wednesday Night Service 7:00 p.m.	Sunday School 9:45 a.m.; Morning Worship 11:00 a.m.; Evening Training Union 6:00 p.m.; Evening Worship 7:00 p.m.
FIRST PRESBYTERIAN CHURCH Rev. Robert W. Marsh	FULL GOSPEL CHURCH Claude Harris, Pastor
Sunday School 10:00 a.m.; Morning Worship 11:00 a.m.	Sunday Morning Worship 10:30, Sunday Evening Worship 7:00, Wednesday Evening Worship 7:00. All denominations welcome to study and worship with us.
FIRST CHRISTIAN DISCIPLES OF CHRIST Steven Church	OLDEN CHURCHES BAPTIST CHURCH Rev. Howard Meeker
Sunday School 9:30 a.m.; Morning Worship 10:55 a.m.; Evening Worship 6:00 p.m.	Sunday School 10:00 a.m.; Morning Worship 11:00 a.m.; Evening Prayer Service 7:00 p.m.; Evening Worship 7:30 p.m.; Wednesday Night Service 7:00 p.m.
FIRST CHURCH OF GOD 212 W. Valley Sam R. Wilson, Pastor	FLATWOOD CHURCH OF CHRIST Wilkie E. Moore
Sunday School, 9:30 a.m.; Morning Worship, 10:45 a.m.; Evening Worship, 7:30 p.m.; Midweek Service, 7:30 p.m.	Sunday School 9:45 a.m.; Morning Worship 10:30 a.m.; Evening Worship 6:00 p.m.; Wednesday Evening 7:00 p.m.
ASSEMBLY OF GOD 1608 W. Commerce G.L. Huffman, Pastor	CARBON CHURCHES CARBON FIRST BAPTIST Rev. Delbert Smith, Pastor
Sunday Morning Worship, 10:00 a.m.; Sunday Night Service, 7:00 p.m.; Wednesday Night Service, 7:30 p.m.; Friday Night C.A. Service, 7:30 p.m.	Sunday School 10:00 a.m.; Morning Worship, 11:00 a.m.; Training Union, 6:00 p.m.; Evening Worship, 7:00 p.m.; Wednesday Night Service, 8:00 p.m.
ST. FRANCIS CATHOLIC Priest John Mitchell	CHURCH OF CHRIST Jack Landrum
Liturgy Saturdays at 6:30 p.m.	Sunday School 10:00 a.m.; Morning Worship 10:50 a.m.; Evening Worship 6:00 p.m.; Wednesday Night Worship 7:30 p.m.
CHURCH OF CHRIST Audy Moore, Minister	FIRST UNITED METHODIST Rev. C.C. Shultz
Sunday School 9:30 a.m.; Morning Worship 10:20 a.m.; Evening Worship 7:00 p.m.	Sunday School 10:30 a.m.; Morning Worship 9:30 a.m.
HOLY TRINITY EPISCOPAL CHURCH Priest Raleigh Denison	MANGUM BAPTIST CHURCH Rev. A.J. Thomas
Sunday School 11:00 a.m.; Holy Communion 11:00 a.m.	Sunday School 10:00 a.m.; Morning Worship 11:00 a.m.; Training Union 6:00 p.m.; Evening Worship 7:00 p.m.; Wed. Evening Worship 7:00 p.m.
EASTLAND CHRISTIAN SCIENCE SOCIETY Corner of Plummer and Lamar	FULL GOSPEL CHURCH (Charismatic) Claude Harris, Pastor
Sunday Morning Services, 11:00 a.m.; Services on first Wednesday of month 7:30 p.m. All are welcome.	Sunday School (from nursery through adults) 10:00 a.m.; Sunday Morning Worship 10:50 a.m.; Evening services for young people 7:00 p.m.; Regular Sunday Evening Worship 7:00 p.m.; Wednesday Night Worship 7:00 p.m. Everyone is welcome to attend.
FIRST UNITED METHODIST CHURCH (Rev. Ben Marney)	
Sunday School 9:45 a.m.; Morning Worship 11:00 a.m.; Evening Worship 6:00 p.m.; Youth Meeting 7:00 p.m. Sunday: Cora Davis Prayer Group 9:30 a.m. Wednesday; Choir Practice Wednesday 7:30 p.m.	
UNITED PENTECOSTAL CHURCH Rev. E.D. Norman	
Sunday School 9:45 a.m.; Morning Worship 11:00 a.m.; Evening Worship 7:30 p.m.	

Talley's Return

Mr. and Mrs. I.E. Talley have returned home from a trip to Amarillo. While there, they visited a sick relative. One night they ate dinner at one of Furr's Cafeterias. While there, they ran into Mr. and Mrs. Wes Izzard. Wes has worked for years at the Amarillo Globe News. Also he has been commentator for the radio and TV. Mr. Talley had done Wes' barber work for years.

Mr. and Mrs. Talley received word from their niece and her husband, Dr. and Mrs. Charles Saunders. They have sent them from Saigon to Greece where they will work in a large hospital. Mrs. Saunders is an R.N. and did work at Baylor in Dallas. They have two children: Karion and Danny.

Recent visitors in the home of Mr. and Mrs. Talley were Mr. and Mrs. Roy Selby. They are supervisors in the Dallas County Boys' Home. They have about 50 boys to supervise.

Tax Review

Still In Progress

Response continues to be good to the city's request that individual property owners review their renditions with the city in order to bring up tax revenues without a general across-the-board re-evaluation program or tax increase at this time.

A number of citizens with more expensive homes have voluntarily increased their renditions after reviewing their present values compared to earlier renditions.

Others are being requested to do the same in an effort to bring about as near equalization as possible. Most of the more obvious inequities are being reviewed with a view toward fair evaluations without the need and expense of considering professional appraisals.

The assessment is one-fourth of the current market value and the city tax rate is \$2.50 a hundred. Persons wishing to review their renditions may do so by contacting City Manager Lewis Tiner at City Hall. The telephone number is 629-1754.

Honor Roll

Steven Mark Parsons of Route 1, was among 615 students at the University of Texas who was named to the School of Communication honor roll for the spring semester.

Mr. and Mrs. Bob Richardson of Los Angeles, California, visited his sister and family Mr. and Mrs. Al Novak last week.

Mr. and Mrs. Eddie Pietraszek will be visiting friends in Mexico and Missouri for ten days.

Coach Dallas Speaks To Rotary

The Eastland Rotary Club met Monday for their regular meeting. Jim Pat Miller had the program and invited Coach Doug Dallas to speak at the meeting. Coach Dallas explained about their new athletic program and talked on the coaching staff.

There was one out of town guest, Mr. Val Sealander of Crawley, La.

Ken Reese has announced the club will not meet on September 1, Labor Day.

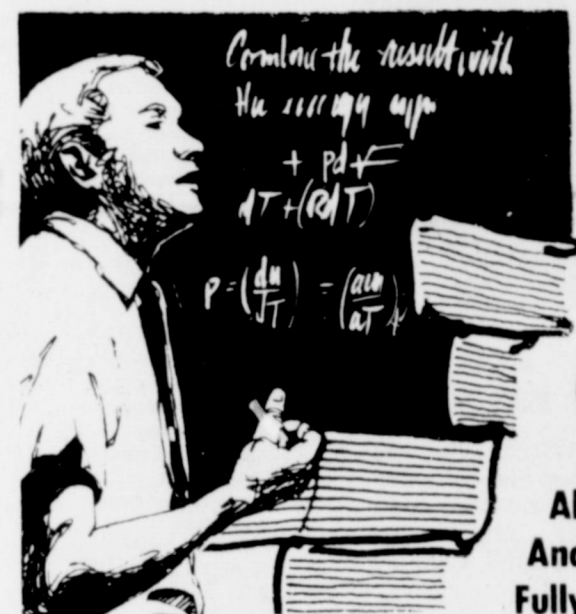
On September 8, Mr. Charles Marshall will be in charge of the program.

Visiting Mr. Mrs. Dave Putman last weekend were their daughter and family Mr. and Mrs. Earl Dyer and son of Waco, also a friend Bob Neil of Dallas visited in the home on Sunday.

Mr. and Mrs. J.L. Stanford of Livingston visited her brother and family, Mr. and Mrs. Edgar Altom during the weekend.

Bakker Funeral Home

629-1726



UNCERTAIN ABOUT COLLEGE?

CISCO JUNIOR COLLEGE

Offers A Night School Program That Will Allow You To Stay At Home, Keep Your Job, And Take Up To Twelve Hours Of Low-Cost, Fully-Accredited College Work.

NIGHT SCHOOL SCHEDULE

DAYS	COURSES	TIME	COURSE DESCRIPTION
MONDAY	Auto Mechanics 113*	5:30-8:15	Fuel, Lub., & Cooling System
	Auto Mechanics 253*	8:00-10:30	Piston, Crankshaft, Rod Assembly
	Psychology 113	6:30-9:30	General Psychology
	Math 113	6:30-9:30	College Algebra
	Typing 133*	6:30-9:30	Secretarial Typing
	Typing 173*	6:30-9:30	Intermediate Typing
TUESDAY	English 113	6:30-9:30	Advanced Typing
	Government 223	6:30-9:30	English Composition and Rhetoric
	Photography 113*	6:30-9:30	State and Local Government
	Welding 123*	5:30-8:15	Basic Photography
WEDNESDAY	Auto Mechanics 113*	5:30-8:15	Oxygen-Acetylene
	Auto Mechanics 253*	8:00-10:30	Arc Welding IV
	Typing 133*	6:30-9:30	Lab-Fuel, Lub. & Cooling System
	Typing 173*	6:30-9:30	Lab-Piston, Crankshaft, Rod Assembly
	Typing 213*	6:30-9:30	Lab-Secretarial Typing
	Business 233	6:30-9:30	Lab-Intermediate Typing
THURSDAY	English 213	6:30-9:30	Lab-Advanced Typing
	History 113	6:30-9:30	Business Law
	P.E. 111	6:30-9:30	Readings in English Literature
	Welding 123*	5:30-8:30	History of the U.S. to Reconstruction
	Welding 233*	8:15-10:30	Bowling
			Lab-Oxygen-Acetylene

*THESE CLASSES MEET TWICE PER WEEK, COMBINING LECTURE AND LABORATORY

LOW STATE-SUPPORTED COSTS--1 hr-\$44.00; 3 hrs-\$46.75; 4 hrs-\$52.00; 6 hrs-\$57.50; 7 hrs-\$63.25; 9 hrs-\$69.25; 10 hrs-\$76.00; 12 hrs-\$109.00. These costs are for tuition and fees and do not include costs of textbooks or lab fees for all courses having labs.

REGISTRATION-- Thursday Evening, August 28, 6:30-8:00 p.m.

At The C.J.C. Student Union Building

FOR INFORMATION ON DAY CLASSES AT CJC, CONTACT THE DEAN OF DEAN OF ADMISSIONS.

FOR MORE INFORMATION CONTACT DEAN OF ADMISSIONS: CISCO JUNIOR COLLEGE CISCO TEXAS 817-442-2567

CJC-"TOP BRAND IN THE BIG COUNTRY"

AN EQUAL OPPORTUNITY EDUCATIONAL INSTITUTION AND EMPLOYER

CLASSES BEGIN WEEK OF SEPTEMBER 2



TP&W Survey Shows Bright Picture For Dove Season

Thursday, August 28, 1975

AUSTIN--A mid-August survey of Texas Parks and Wildlife Department biologists, game wardens and information officers across the state paints a relatively bright picture for upcoming North and South Zone mourning dove seasons.

Generally, where there are grains or weed seeds there are birds.

But knowing the fickle nature of mourning doves, P&WD officials are quick to warn that predictions made even the day before the season opener can quickly change.

Statewide dove project leader Jim Dunks said, overall, that

hunters have a 60% chance for a good dove hunt opening day September 1, in the North Zone.

Long-time dove project worker John Roberson said the Edwards Plateau and Central Texas Blackland Prairie have produced a dove crop well above average, even after some early failures because of spring storms.

According to Roberson, the length of time the harvested Central Texas maize fields remain unplowed will determine to a large extent how long doves remain in the area. After farmers plow under the fields the doves often leave.

Game wardens in the Georgetown and Belton areas of Central Texas report very good dove populations around the maize fields. Continuing rains are providing a late ragweed, doveweed and sunflower crop which should hold birds in the area.

With the exceptions of the western parts of the state, shooting around water holes will not be as productive as in dryer years. Ample rains over most of Texas should scatter the birds and keep them from concentrating around one water supply.

Ample food also will scatter the doves.

Wildlife biologist Dick DeArment in the Panhandle town of Wheeler said the most important factor in his area is the some 300,000 acres of sunflowers which are gaining in popularity with farmers as a cash crop and fields of them are spreading across the caprock. This will spread the birds over a wider part of Northern Texas.

DeArment warned, however, that thick sunflower fields make it hard to find downed birds and encouraged the use of dogs to retrieve birds.

In the Trans-Pecos and Permian Basin of far West Texas, P&WD Information and Education Officer Rodger McKown of El Paso speculated that hunting should be good in the irrigated valleys around the Rio Grande and in other irrigated agricultural areas near Pecos and Balmorhea.

Weeds in the higher elevations away from the Rio Grande have not matured as yet and will not be available in time for the Labor Day opening.

McKown also reported an increasing number of white-winged doves stretching as far west as the El Paso area town of Fabens. The Trans-Pecos counties of El Paso, Hudspeth, Culberson, Jeff Davis, Presidio, Brewster and Terrell are open to white-wing hunting September 1, even though they receive little of the attention given to lower Rio Grande Valley counties.

Game wardens patrolling the Midland-Odessa area report many mourning doves, and the seasons should be a good one barring adverse weather.

In the Possum Kingdom region, warden John Wood and biologist Larry Holland report large numbers of doves in the counties of Hamilton and Comanche around grain fields which are being combined.

The doves are still scattered because food is plentiful and few concentrations have formed so far.

But in the Dallas-Fort Worth area, information officer W.R. Long said that changing land use patterns in the rapidly urbanizing region have all but eliminated most dove hunting.

Around Mineral Wells to the west doves are still abundant with prospects for good shooting.

In the easternmost part of the state, a few small concentra-

tions of birds are reported in the Piney Woods by extension biologist Jimmy May of the P&WD. The area is not known for its dove hunting and very few birds are to be found.

Much the same is the case in southeast Texas. Biologist Gary Spencer of Silsbee blames numerous heavy rains for the lack of local dove production. Frequent violent storms in the Beaumont-Port Arthur area with winds up to 50 miles per hour have destroyed flimsy mourning doves nests. Birds are paired which could indicate they still are attempting to nest.

San Antonio and most of Bexar County have the same problem as the Dallas-Fort Worth Metroplex--dwindling agricultural land and few remaining doves. Local game wardens in the San Antonio area report no large concentrations of doves.

But elsewhere in South Central Texas--in Medina, Frio, Wilson and Karnes Counties--it promises to be a good season.

Like the Trans-Pecos, Bexar County has an increasing population of white-winged doves, but biologists and wardens warn hunters that the white-wings are off limits in the San Antonio region.

P&WD officials urge dove hunters to consult a copy of the 1975-76 mourning dove and white-wing hunting regulations



Army Specialist Four Steven P. McGough, receives the US Army Good Conduct Medal from Captain James T. Taylor Jr., (Left) Commander of Headquarters Company. McGough Awarded Medal

before taking to the field. North and South Zone hunting, white-wing hunting, closed areas and all-day hunting during the winter for the South Zone present a complicated picture for shotguns.

This year's Dove Map is available where hunting and fishing licenses are sold and at most P&WD offices.

FORT INDIANTOWN GAP, PA.--Specialist Four Steven P. McGough, son of Mrs. Wanda England of 609 West Sadosa, Eastland, has been awarded the U.S. Army Good Conduct Medal at Fort Indiantown Gap, Pennsylvania, for exemplary behavior, efficiency and fidelity during three years of Army service. Presentation was made by Captain James T. Taylor Jr., Commander of Headquarters Company. Specialist McGough is assigned to the U.S. Army Garrison's Billeting Office at Fort Indiantown.

The Specialist began Army duty on January 27, 1972, and completed basic training at Fort Polk, La. After attending Supply School at Fort Lee, Virginia, he was assigned to Fort Sam Houston, Texas. Prior to Fort Indiantown, Specialist McGough served for two years in Germany.

Married to the former Mary Ann Wells of Beeville, the Specialist and his wife are the parents of one daughter, Mallisa Ann. They are residents of 6084 Weavertown Road, Lebanon, Pa.

HOLIDAY NOTICE!

EASTLAND NATIONAL BANK

Will be

CLOSED

LABOR DAY

MONDAY

SEPT. 1, 1975

Please arrange your banking business accordingly.

EASTLAND NATIONAL BANK

EASTLAND, TEXAS

Member FDIC

M. L. TERRELL

REAL ESTATE

FARM BUREAU BLDG. - HIGHWAY 80 EAST

PHONE 629-1725 - NIGHTS 629-2443

SMALL ACREAGE

3 bedroom home on pavement with city water with 30 acres ear Lake Leon, \$37,500.

Small tracts of land near Lake Leon.

4 Acres at Olden, well water, city water, orchard, with trailer home, \$15,000

8 Acres with 3 bedroom house at Olden \$17,500

36 Acres near Olden. Will G.I.

HOUSES

2 bedroom, 1 bath home on Daugherty Street, \$7,350.

8 City lots suited for trailer park, \$6,500.

Store building, station, living quarters, fixtures and stock at Morton Valley \$8,000.

Duplex on South Walnut, shown by appointment only, \$6,850.

3 bedroom, 1 bath, on Bassett Street \$7,850

2 Bedroom, nice home on Patterson Street.

4 Bedroom home on corner lot with 1 1/2 bath, \$25,000. Shown by appointment only.

3 Bedroom home on corner lot South Bassett Street, Beauty Shop and equipment, 4 stations, nice building.

FARMS AND RANCHES

80 Acres southwest of Cisco with 2 bedroom home, \$31,500.

120 Acres on Sabanno River, Pecan trees, deer and turkey, 1/2 minerals. Good terms.

50 acres north of Eastland with city water on pavement \$400 per acre.

140 acres close to Eastland with 2 bedroom home, good barns, good fences, \$450 per acre.

74 Acres with cultivation on county road north of Eastland \$400 per acre.

143 Acres northwest of Ranger with 52 acres of peanuts, \$375 per acre

150 acres south of Eastland, 140 acres in coastal, good fences on county road, city water \$425 per acre.

150 acres north of Eastland on pavement with 77 acres of cultivation, with city water, \$400 per acre.

160 acres southeast of Ranger, deed, 1/2 minerals \$300 per acre.

177 Acres with 4 bedroom home south of Ranger. Some improved grasses, good fences, \$350 per acre.

198 acres with 3 bedroom home on pavement with city water, 70 acres of cultivation, near Lake Leon.

204 Acres near Eastland, on pavement, fair fences, good water, some minerals.

224 acres, improved grasses with good fences. Good set of pens, \$10,000. Owner financed.

215 Acres near Olden with good fences, good stock tanks, \$325 per acre.

260 Acres close to Eastland with 3 bedroom home, city water, fair fences.

220 Acres northwest of Cisco, with cultivation on pavement, no minerals, \$210 per acre with good terms.

320 Acres, all improved grasses with good fences, 1/2 minerals, \$350 per acre with good terms.

320 Acres near Carbon, 60 Acres of coastal, fair fences, 1/2 minerals, \$315 per acre.

486 Acres near Lake Leon, with 2 bedroom rock home, with irrigation and good fences on pavement.

377 Acres in Stephens County with lots of deer, good fences.

544 Acres with coastal and other improved grasses, good terms, some minerals.

815 Acres south of Cross Plains with deer and turkey, approx. 1/2 minerals.

1455 Acres near Albany with Approximately \$500 month oil income on pavement, \$210 per acre.

2000 Acre ranch in Bosque County, extra nice, improvements, owner will finance.

4200 Acres in King County. All minerals, \$100 per acre. Owner will finance.

We have other tracts large and small, and all listings will be appreciated.

RODGER TERRELL
Home Phone 629-2896
M.L. TERRELL
Home Phone 629-2443
Eastland, Texas

OFFICE PHONE 629-1725
FARM BUREAU BLDG.
HIWAY 80 EAST
EASTLAND, TEXAS

NOTICE

The Adult Education Course kicks off with 28 enrollees. Registration is still open for this class. They will be meeting on Monday and Thursday nights from 6:30 to 9:30 p.m. and you

IMPORTANT

Check your ad the First Day it appears. In event of errors, please call immediately to have it corrected. No Claims will be allowed for more than one incorrect insertion.

The publishers liability shall be limited to only the amount of space consumed by these errors.

will be able to come when you can. There will be three teachers with classes held in the Eastland High School cafeteria. All workbooks will be furnished free of charge.

There will be no meeting on Labor Day, and the first class will be Sept. 4, beginning at 6:30 p.m. For more information you may call Bob Blair after 4 p.m. at 629-2370 or Ima Ruth Taylor at the high school 629-2646.

THRIFT SALE--106 N. -
Connellee. Dolls, baby things, sweaters and caps. Pot holders, pillow cases, etc. Thursday, Friday, and Saturday 9-5. 1-69

National Farmers Union Insurance Companies

LARRY ARMSTRONG
104 Commerce RCG Building
Eastland, Texas
629-1342

Offering Complete Multiple-Line Insurance Service

AUTO

FARM AND PERSONAL LIABILITY

HOMEOWNERS

FARMOWNERS

CROP HAIL

FIRE

HOSPITAL

LIFE

One-Stop Insurance Service for Home, Family and Farm

TELEGRAM WANT ADS GET RESULTS!

Thoughts

When God began creating the heavens and the earth, the earth was at first a shapeless, chaotic mass, with the Spirit of God brooding over the dark vapors. Then God said, "Let there be light." And light appeared. And God was pleased with it, and divided the light from the darkness. So he let it shine for awhile, and then there was darkness again. He called the light "daytime," and the darkness "nighttime." Together they formed the first day. Genesis 1:1-5



Sun.-Mon.-Tues.

These are the Stefford wives, women whose efficiency in maintaining a household is astonishing but frightening, and part of an insidious plan by the men in the New England suburban community to complete dominance of their wives -- (left to right) Toni Reid, Carol Mallory, Tina Louise, Katharine Ross, Paula Prentiss, Barbara Rucker, Nanette Newman and Judith Baldwin.

"Chi Chi"

OF TEXAS, INC.

Steven L. Blair
General Manager

Mexican Food Special

Your Favorite Mexican Food Prepared The Way You Like It.

Only \$3.20

Price Includes Tax & Drink

Call For Reservations 629-2655

A THOUGHT FOR THE WEEK

MONTY HOWARD

Sorrowful expressions are heard with blended emotions of shame and regret every time one hears of an assassination, murder or a violent sudden death. . . . Panicky pleas and promises all too often pantomime identical words and letters heard so many, many times before. But the vicious repetitions continue. Human life these days seems to be a cheap commodity.

This attitude is a sad indictment of our times. The indictment is even more disgraceful in connection with traffic and highway deaths. Why - - WHY is it that so many people fail to realize a steering wheel attached to three tons of automobile steel is far more dangerous, far more LETHAL than any trigger action gun ever invented? Why - - WHY is it that people seem so indifferent to the horrible fact that in just the last thirty years - - we repeat - - in only THIRTY years, Americans have splashed more blood on highways and killed more people by automobile, than those killed on less bloodied battlefields in ALL our wars since 1775?

For your own protection, and for the safety of others, remind yourself of this every time you get behind the wheel, especially on week ends or holidays. . . .

ARRINGTON FUNERAL HOME

Eastland - 629-2611 310 S. Lamar St.

For Lease

* Approximately 500 Square Feet Of Office Space

* Large Reception Area With Two Small Offices

* Central Heat & Air

* Ground Level On Square

RCG Leasing Building

104 West Commerce 629-8052 In Eastland

All Types Of Sewing

629-1371

From 9:00 a.m. - 5:00 p.m.

Janie Sanders

Purse Pleasers

Hollands Drive In

Quality, Quantity, Quickness
And Reasonable Prices

Highway 80 West Of Eastland

Phone In Orders 629-2215 Member TRA

Kincaid's Real Estate Corner

LAKE PROPERTY

Approximately 12 acres land with 950 square ft. house, good water frontage, Lake Leon, wooden pier at waterfront, nice trees, variety of fruit, garden spot, etc. Will G.I. \$17,000.

Deeded lot, 4 bedroom house, 1 1/2 bath, Lake Leon, \$14,000.

24 Acres land approximately 1500 ft. water front, consider 2 G.I.'s \$24,000.

16 Acres Lodge and 6 rental cabins, large recreation building Possum Kingdom, for sale or trade, clear of debt, terms available.

HOMES

2 bedroom frame house, 75 x 100 ft. lot, \$8,750 existing loan \$4,200. payments \$69 per month, Ranger.

3 bedroom, 115 Scurry St., Gorman, \$11,500. Terms considered.

One bedroom frame house, bath, dining room - kitchen combination, 3 lots, nice trees, storage, \$6,500. 1415 Harrell St., Eastland.

2 bedrooms frame home, close in, Eastland, 500 S. Green, \$7,500. Loan balance, \$75 per month, \$11,750.

Completely remodeled 3 bedroom frame house, dining room, den, utility room, 2100 sq. ft. double garage with storage, nice trees, several extra lots, plus rent house, and mobile home rental space in Cisco.

2 bedroom frame house, 8 acres approximately 5 miles out, city water and well.

8 1/2 acres Carbon on pavement.

LAND

160 acres irrigated peanut farm completely equipped, 70 acres peanut allotment, excellent fences, Gorman area \$600 per acre.

135 acres peanut farm, 47 ac. allotment, orchard, 4 wells, \$350 per acre, terms or trade in for larger place.

107 acres, 8 miles northeast of Rising Star, two - thirds farm, creek, some peanuts, owner financing 20 percent down, \$325 per acre.

130 acres Ranger, trees, old improvements, some coastal, \$350 per acre. Terms.

150 acres, good house, on pavement, Rising Star area, live creek and springs, \$35,000.

130 acres Lake Leon area on pavement, \$300 per acre.

125 acres peanut farm, old house, barns, Carbon area \$315 per acre.

50 acres, 3 miles from Eastland. Trees, tank, 1/2 minerals, \$19,750.

350 acres, well, several tanks, some cultivation \$275 per acre, terms available.

480 acre farm, Colorado City for sale or trade for Eastland County property, \$210 per acre.

One section grass, live creek, excellent hunting, \$275 per acre. terms.

1100 improved ranch \$325 per acre.

Large ranches and farms, up to 150,000 acres, Texas and adjoining states, please contact for details.

KINCAID REAL ESTATE
100 South Seaman, Eastland, Texas
817 - 629 - 1781
J.D. Vandergriff - Nite Phone 629 - 8137
Sunni Scott - Nite Phone 734 - 2158, Gorman

Robert Kincaid - Nite Phone 629 - 2721 629 - 2815

Thursday, August 28, 1975

Carbon News

By Mrs. Bob Hastings 639-2517

The menu for the Carbon school cafeteria to be used the week of Sept. 1-5 is as follows:

Of course there will be no school on Monday, Sept. 1, for Labor Day.

Tuesday, Sept. 2--Spaghetti and meat balls, green beans, slaw, hot rolls, chocolate cake, milk.

Wednesday--Johnny Knows It, Black eye peas, carrots, corn bread, genie bars, milk.

Thursday--Corn dogs, corn, rice, orange juice, corn bread, jello, milk.

Friday--Hamburgers, onions, tomatoes, pickles, lettuce, potato chips, peaches, milk.

Mr. and Mrs. Lillian Reynolds and Wayne of Saginaw spent the weekend with their parents the W.E. Reynolds and family and Glen Justice family.

Mr. and Mrs. Herman Jordan visited his brother and family, Mr. and Mrs. Jodie Jordan of Lubbock during the weekend.

Mr. and Mrs. Bob Richardson of Los Angeles, Calif., and Mrs. Al Novak of Lake Leon visited Mr. and Mrs. W.E. Walker on Monday.

Mr. and Mrs. Jerry Crow and family of Anchorage, Alaska,

visited his aunts Mrs. Ethel Lovell and Mr. and Mrs. Mike Morgan part of last week.

Mrs. L.V. Jackson attended the WMU House Party in Waco last week.

Mrs. Bill Cavanaugh of Perkins, Okla., returned home Sunday after being at the bedside of her mother, Mrs. Opal Hays who underwent surgery in the Blackwell Memorial Hospital last week. Mrs. Hays is feeling much better.

Mrs. Della Bryant visited her daughters and their families Mr. and Mrs. Sam Walker and Mr. and Mrs. Ted Eubanks of Fort Worth last week.

Mrs. R.B. Murray has sold her home here to Mr. and Mrs. Duane McDaniel of Gorman. She will be moving to an apartment in Gorman this week. The McDaniels will be moving into their new home soon.

Mr. and Mrs. T.D. Whitehorn of Lafayette, Ark., visited Mrs. Ruth Craighead Sunday on their way home from a trip to Colorado Springs, Colorado.

Mrs. Mabel Payne spent the weekend with her son and

Mrs. Harry Hall Celebrates 90th Birthday



Mrs. Harry Hall celebrated her 90th birthday August 16, 1975, at the home of her grandson Morris W. Claborn and family in Dallas. Mr. and Mrs. A.M. Claborn of Trent, Mrs. Harry Hall of Carbon, David H. Claborn and family of Dallas, Keith Claborn and wife of Midlothian, and Judy Claborn Burke and family of Denver, Colo., gathered for the celebration.

The dinner was served on the patio overlooking the swimming

families Mr. and Mrs. Jerry Payne of San Angelo.

Mr. and Mrs. Roy Reeves, Perry and Polly of Fort Worth visited Mr. and Mrs. Collin Campbell during the weekend.

Visiting Mr. and Mrs. Busbee Johnson Sunday were George Johnson of Midland, Mr. and Mrs. Joe Fields, Michael and Caylea of Mineral Wells, Mr. and Mrs. Johnny Scitern and Chris of Gorman, Mr. and Mrs. Fred Walker, Marla and Malli of Krum, Mr. and Mrs. Vernon Fields and Lyndell of Kokomo.

Mr. Johnson, George, Mrs. Scitern and Chris visited Mr. Bascomb Johnson of Lawndale Nursing Home in Gorman and had a picture made of the five generations. Young Chris Scitern is Mr. Bascomb Johnson's youngest great-great-grandson.

Mr. and Mrs. Bob Laird and boys of Abilene were Sunday visitors of Mr. and Mrs. Henry Harle and Charlien.

Mrs. Dorothy McCrum and Billie Lightfoot of DeLeon spent Sunday with Mr. and Mrs. Buck Weston.

pool surrounded by beautiful tropical plants.

Gifts and the birthday cake inscribed "Happy Birthday Grannie Hall 90" with one candle were displayed. A dinner was served after which all gifts were opened. Mrs. Hall was so overcome by so much love and attention she could only say like Tiny Tim "May God bless you all". It was the first 100% celebration including six grandchildren: Mike and Jason Claborn, Melanie and Dave Claborn, Drue and Clay Burke.

Clyde Acton Hall was born in Blount County, Alabama, August 16, 1885, the daughter of Dr. Aaron Edward Acton and wife Martha. They arrived in Comanche, Texas, February, 1888, with two children Clyde and Albert Edward who was 6 weeks old.

Dr. Acton practiced dentistry until 1919.

Clyde graduated from Comanche Public High School with the class of 1903.

She was at a noon prayer meeting at the home of Pastor of the First Baptist Church in Comanche in May, 1900, when the light of Christ came into her soul and she was baptized on Oct. 1, 1900. The thin skin of ice was broken in baptism for her and a school mate, Golda Kirk.

She taught her first school at Mercer Gap, Comanche County. The only time she had ever been in a one-teacher school some of the pupils were nearly as old as she was. It was the year they began grading country schools, 1903-1904.

The next year she taught at Sipe Springs, Comanche County, a three-teacher school with Charlie Foote principal and Miss Kinchen of DeLeon intermediate as primary teacher first

three grades.

On Oct. 11, 1905, she married Harry Hall, a rancher of Sipe Springs. The summer of 1906 they joined the exodus from Sipe Springs to Jones County when the town of Hamlin was organized and in 1907 they built their first home there.

She joined the First Baptist Church when they were meeting over a store building. Later she was a charter member of the Ladies Study Club.

The years 1910-12 found them on their ranch in Moore County near Dumas where their first child, Mae Dee was born in 1911. The winters were so severe they returned to Hamlin where a son, Abe was born in 1914.

December, 1919, found them in Carbon where Mr. Hall had a dry goods store in 1900. Here Harry Clyde was born in 1920. Mrs. Hall joined the First Baptist Church when services were held under an all-weather tabernacle in February, 1920. She was active as a Sunday School teacher, in B.Y.P.U. and W.M.U. At that time Rev. P.D. O'Brien was pastor. The church members were a close knit family in love and fellowship.

In 1923 when W.H. Puett moved to Plainview, Harry Hall bought his store and stock. Thus they transferred from ranching to merchandising - again.

Mrs. Hall was full-time clerk now. She transferred her W.O.W. membership to Carbon and was a substitute teacher from the time Albert Pierce was superintendent of the school through the administration of Supt. Truman Robertson. She was a charter member of Carbon '38 Study Club. The club library was in their store. In other outside activities, she enjoyed her 20 years as Carbon correspondent for each of the Eastland newspapers, giving up the job because of eyesight. Mrs. Hall has had five eye operations which have been successful. She still reads. After her bible studies, she is interested in genealogy, having worked with Alabama historians and genealogist Will F. Franke and Mrs. Faye Acton Oxford of Birmingham, Ala., and Dr. Geo. Acton of Plain Dealing, La. She continued to work on her own family trees at her home where she lives alone.

Being a descendant of Capt. Thos. Leef Va., and Tenn., through her grandmother, Winifred Lee, sister of Need-

ham Lee Sr., she is cousin to President Zachary Taylor, and also Gen. Robert E. Lee.

On the Action side, grandfather was John Acton whose wife Jane Roberts was born on the Atlantic. These people are the parents of Nancy Acton Bailey whose husband Britt is buried standing up near Arlington, Texas.

Her mother's father, George Washington Green Turnham served with the Land Department with President Jefferson Davis in Montgomery Alabama, during the Civil War. Genealogy comes naturally. Mrs. Hall comes from healthy stock, but is accident prone. She does not leave home unless accompanied by some of the family. She lives

alone and enjoys cooking "Grandma's Teacakes" and trying new recipes. She does her visiting by telephone. She has two living children: Mrs. A.M. Claborn of Trent, and Harry C. Hall of El Paso.

Visitors

Recent guests of Mr. and Mrs. J.C. Allison were, Nelson Allison, Marion Luper and David Davis of Odessa. More recent guests were Rev. and Mrs. Grady Allison of New York City. Rev. and Mrs. Allison were on a return trip from the Ghost Ranch near Santa Fe, New Mexico. This is an adult study center consisting

of 21,000 acres for United Presbyterian of U.S.A. Rev. Allison is coordinator of the Program Planning Agency of World Wide Missions for the United of Evangelism. He was invited to lead a seminar, August 4-11 on evangelism and leaders from California, Iowa, Arizona, New Mexico, Texas and other states attended the seminar. Plans were made and studied as to how to get the dechurched, the so-called unloved back into the beloved community, - church.

Those attending the WMU House party in Waco from Eastland were Mrs. Myrtle Richardson, Mrs. Lone Bounds, Mrs. H.W. Sims, Mrs. Fred Keith, Mrs. Dalton Hardin.

Your Automobile Insurance

Are You Between
25 And 50?

If So, Contact Us For Your
Automobile Insurance.

If You Don't, We Both Lose
Money.

CALL

D.L. Kinnaird
General Insurance

207 W. Main

629-2544

SINCE 1919

"Your Automobile Insurance Specialist"



Texaco Station
For Lease

Interstate Highway 20
And Highway 80, Eastland

Contact:
Richard N. Hasten
915-672-8465 - Nights,
915-692-7987 or Write
P.O. Box 27, Abilene

For Those Of You Who Have Already Made Application For
Social Security Direct Deposit, The Government Has Accepted All Your Forms
For The Safe And Convenient Deposits Of Social Security Checks.

... We Hoped ... We Planned
For September, But With The Wide
Acceptance. . .

Your Check Will Continue To Come
Directly To You For A Few Months

If You Haven't Filled Out The Necessary Forms,
Come In When It Is Convenient.

It's Fast--- It's Easy



EASTLAND NATIONAL BANK
EASTLAND, TEXAS

FDIC

