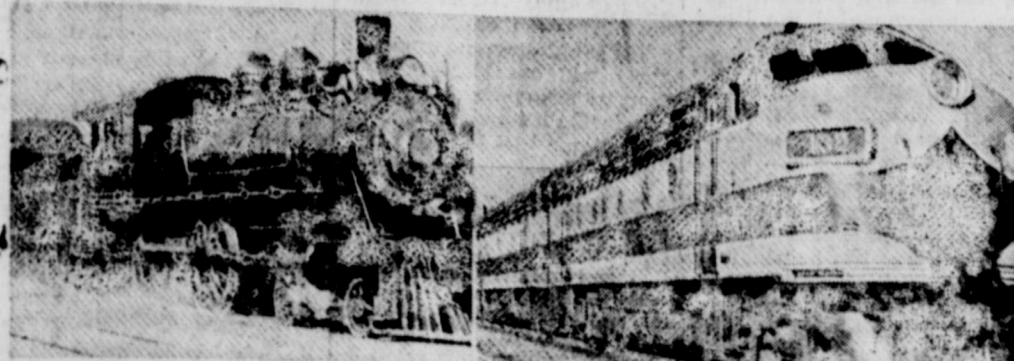




THE NEW CAR CAPITAL

EASTLAND, TEXAS, THURSDAY, NOVEMBER 14, 1963

PRICE 10c



ONE OF THE FIRST — At the left is one of the first kinds of steam engines to ever roll into the Eastland station. Most of these are now placed at various places as reminders of the changing world. The other is the modern diesel electric locomotive in service today. A number of improvements have been made between these two trains.

Eastland's T&P Railway 'Steamless' for Many Years

By LARRY GOLDSTON

Do you remember when the last steam locomotive came through Eastland? Local Agent D. Davis, who has been with the Texas and Pacific Railroad over 45 years sure does.

In those 45 years he has lived in Ranger, Gordon, Midland, and Eastland. When Mr. Davis first started working for the TP, his job was telegraphy. He has been the station agent for several of the Texas towns.

Passing through Eastland every day are four passenger trains and 10 freight trains.

During the boom days of the '20s the TP railroad had over 10,000 employees, but since that time, the number has taken a large decrease.

The TP and Missouri railroads combined, have over 11,000 miles of track.

The last steam engine passed through Eastland in 1955. During the boom days, when Eastland saw an increase in every respect, the Eastland depot had about 36 employees.

The only train robbery to occur in Eastland County, happened in 1882. As the train pulled up to the station a group of men rushed the train and demanded all of the cash aboard. A group of Texas Rangers were in the passenger car so the fireworks started. One robbery was wounded and this led to the capture of the others. They were given a penitentiary sentence.

The base stations are located about every 20 miles. Ranger is a base station, others west are Cisco, Baird, and Abilene. The base station has a radio contact with the train in their locality as a train comes through.

Now only 4 men are in the section crew, they also have a much longer area.

The TP railroad is about 95 years old, and at one time Eastland was going to be made a terminal. A turntable was installed, but after the boom days it was taken up and installed elsewhere. Now days there is little need for turntables because the locomotives can go in either direction.

During the boom days of the '20s the TP railroad had over 10,000 employees, but since that time, the number has taken a large decrease.

The TP and Missouri railroads combined, have over 11,000 miles of track.

The last steam engine passed through Eastland in 1955. During the boom days, when Eastland saw an increase in every respect, the Eastland depot had about 36 employees.

The only train robbery to occur in Eastland County, happened in 1882. As the train pulled up to the station a group of men rushed the train and demanded all of the cash aboard. A group of Texas Rangers were in the passenger car so the fireworks started. One robbery was wounded and this led to the capture of the others. They were given a penitentiary sentence.

The base stations are located about every 20 miles. Ranger is a base station, others west are Cisco, Baird, and Abilene. The base station has a radio contact with the train in their locality as a train comes through.

Now only 4 men are in the section crew, they also have a much longer area.

The TP railroad is about 95 years old, and at one time Eastland was going to be made a terminal. A turntable was installed, but after the boom days it was taken up and installed elsewhere. Now days there is little need for turntables because the locomotives can go in either direction.



ALICE FRAZER ... on Who's Who List

Alice Frazer On Who's Who List At McMurry

Alice Frazer, McMurry College senior student, has been named in the 1963-64 list of Who's Who in American Colleges and Universities. Miss Frazer is the daughter of Mr. and Mrs. D. E. Frazer, 808 West Valley.

Students are chosen to Who's Who on a certain percentage of the school's enrollment on the basis of their scholarship, character, leadership, and service to the school. In McMurry Who's Who members are nominated by the whole faculty, student council and student senate. A team made up of Dr. Joe Humphrey, administrative assistant to the president of McMurry; Dr. S. B. Thompson, dean of men; Mrs. Arvale Chappell, dean of women; Marshall Wilhamson, student body president; and Dickie Clemmer, senate leader; approve the new Who's Who members.

Miss Frazer is majoring in elementary education. Also on the McMurry campus she is a member of Student Education Association Social Club, Vice-President of TIP Social Club, Secretary of Senate and Sophomore Class favorite. She was also Totem Beauty and runner-up for Reservation Princess.

Motorists Are Complying With New Speed Laws

Motorists generally are complying with the recently legalized 70-mile per hour speed limit, Sgt. Roger Sosebee of Texas Highway Patrol said Tuesday. However, the increase from the previous 60-mile limit has resulted in faster-moving traffic.

Sgt. Sosebee also warned that many drivers of pickups and lightweight commercial vehicles appear unaware that truck limits were not raised when the new passenger car travel rate went into effect. Daytime speed limit for trucks, he reminded, is 60 miles per hour, nights 55.

Pickups and lightweight commercial vehicles come under the classification of trucks.

Funeral Services For Oscar Hanna Held Tuesday

Oscar Hamilton Hanna, 80, died at 1:30 p. m. Sunday, November 10, in the Eastland Memorial Hospital where he had been a patient for five weeks.

The body was moved from Hamner Funeral Home, Monday, to Nacogdoches and funeral services were held at 10 a. m., Tuesday, in the Martinsville Church of Christ in Martinsville with burial in the Martinsville Cemetery.

Born November 26, 1882 in Selma, Alabama, Mr. Hanna had lived south of Eastland about a year, making his home with his son, Ira. He was a retired painter and paper hanger.

Survivors include three sons, Ira, Bernard, and Milton, all of Eastland; three brothers, Waldo, Alden and Frank, all of Nacogdoches, and one sister, Mrs. Mattie Justice of Nacogdoches.

Musingwear To Build New Plant In Arkansas

Musingwear has announced plans to build a new branch plant in Arkadelphia, Arkansas. The existing facility in that city is one of four plants manufacturing brassieres under Musingwear's Hollywood Vassarrette label. The other Hollywood Vassarrette Brassiere plants are located throughout Texas, including the local Hollywood Vassarrette plant here.

The new Musingwear plant will have 21,600 square feet of floor space and will be built on a four and one half acre site on Highway 67 North of Arkadelphia. The brick and tile structure will house completely modern equipment.

County Votes For Poll Tax, Trapper; Says No To Permits

1,995 Votes Cast In This County

HOW THE COUNTY VOTED

	Poll Tax		Welfare		Jefferson		Vet. Ld.		Doe Permits		Trapper		Total
	F	Agn.	F	Agn.	F	Agn.	F	Agn.	F	Agn.	F	Agn.	
EASTLAND	112	315	270	158	125	230	199	265	116	298	269	152	437
RANGER	117	194	215	73	102	148	146	124	113	181	191	108	316
OLDEN	31	32	47	15	19	36	40	21	26	36	39	23	65
GORMAN	37	148	91	91	31	139	72	105	57	114	57	120	186
CARBON	20	62	52	24	29	36	39	30	36	40	27	52	83
DESDEMONA	3	67	44	24	15	45	44	18	28	35	39	30	70
KOKOMO	8	8	12	5	7	8	13	5	6	12	12	5	19
RISING STAR	46	129	111	57	45	93	73	52	77	30	109	32	141
NIMROD	6	14	13	8	5	14	14	9					21
CISCO	229	394	455	161	217	358	344	254	185	426	387	231	640
ABSENTEE	4	3	7	0	5	2	5	2	4	3	5	2	7
INCOMPLETE UNOFFICIAL TOTALS	613	1366	1317	616	600	1109	889	825	648	1175	1135	755	1985

IN SAFETY TALK 'Men, Women, Children Are Three Causes of Fire', Speaker Says

"Fires don't just happen — they are caused," Joe Smetana, Safety Director of the Texas Farm Bureau, pointed out in two graphic fire demonstrations that were held Friday in Gorman High School and Eastland High School.

He went on to name the three causes for most fires: "Men, Women and children."

In the 45-minute program, Smetana used a variety of demonstration equipment and material placed on tables to dramatize seven basic facts about fires; its use, and control; (1) what fire is; (2) how to control fires; (3) the fact that nothing is fire-proof; (4) kitchen fires and their control; (5) fuel vapors; (6) the power of petroleum products; and (7) house old wiring and overloaded electrical circuits.

Using a "fire triangle board," Smetana illustrated that fire is like a three-legged stool — it can't work with one of the legs missing. The "legs" fire depend on are 1) fuel 2) heat and 3) air. He stated that in American homes these three things come together in deadly and destructive combination ever 57 seconds an average of 1,500 home fires every day, causing more than 5,000 deaths in homefires every year.

Creating quite a loud explosion from 2 single drops of gasoline, Smetana stated that one gallon of gasoline contains approximately 155,000 drops and under ideal conditions, could produce an explosion force equal to the power of at least 30 sticks of dynamite.

After demonstrating how fires can be caused by overloaded electrical circuits and improper fusing, Smetana pointed out that many fires of this type are blamed on faulty wiring. He suggested that "faulty thinking" is involved more often than a "faulty wiring".

The demonstration, which was brought to the two schools under the sponsorship of the Eastland County Farm Bureau, is part of a longrange fire prevention program now being conducted by the Texas Farm Bureau Safety Department.

County Reports Five Accidents During Weekend

Five auto accidents in Eastland County over the weekend were reported by Texas Highway Patrol headquarters, Eastland.

Four of the five traffic mishaps resulted from pavements slicked by drenching rains. Only two persons were injured and both were slightly injured.

Mrs. Nancy J. Maxwell of Baird suffered minor injuries in a three-car accident just west of Cisco on Highway 80 Friday at 3:40 p. m. Skids caused the pileup.

Billy Ray Eudy of Cisco also was injured slightly Friday night at 11:20 p. m. when he lost control of his car just west of Eastland on Highway 80. Patrolmen said Eudy fell asleep at the wheel.

Guylynn Quinn Is Nominee For FFA Sweetheart

Miss Guylynn Quinn, daughter of Mrs. Alma Quinn, is one of the three nominees for FFA sweetheart for 1963.

Guylynn is a senior in Eastland High School and is a cheerleader. She is president of the Tri Hi Y and of the Sub Deb Club. She was also cheerleader her freshman year.

The Sweetheart of the FFA will be revealed at a later date.

Miss Maxwell Services Held On Wednesday

Miss Lillie E. Maxwell, 82, died at 8 p. m. Monday at Stamford Memorial Hospital.

Miss Maxwell, blind since she was 13, suffered a stroke Sunday in Aspermont, where she was visiting in the home of her brother, J. H. Maxwell.

Funeral services were held at 3 p. m. Wednesday in Hamner Funeral Home Chapel in Eastland. Burial was in Eastland Cemetery. Kinney Funeral Home of Stamford was in charge of local arrangements.

Born Nov. 6, 1881, in Georgia, Miss Maxwell recently moved to Anson from El Paso to make her home with a sister.

Survivors include two sisters, Mrs. Rosa Carmon of Anson and Mrs. Minnie Nealy of Abilene; and one brother, J. H. Maxwell of Aspermont, Texas.

W. S. C. S. Bean Dinner To Be Served Nov. 15

The Woman's Society of Christian Service of the First Methodist Church will serve a bean dinner with all the trimmings, including home made pie and coffee, in the Fellowship Hall, Friday, November 15, from 11 a. m. until 1 p. m. Price of the meal will be 90 cents.

Tickets may be obtained from any member of the W.S.C.S., at Smitty's Jewelry, or at the door.

FRIDAY AT 7:30 Mavericks Take On Clyde After Sad Ranger Defeat

The scrappy Eastland Mavericks will close out the 1963 grid season when they clash with the Clyde Bulldogs in Maverick Stadium Friday at 7:30 p. m.

After last Saturday's heart-breaking loss to Ranger, 16-14, the Mavericks will be going for a victory to write "finale" to their season. The Ranger game, which had been postponed because of rain, belonged to the Mavericks for 46 minutes of the game, but the fired up Ranger team put on the steam in the last minutes and "extra points" spelled the difference.

The Mavericks took the lead early when Mike Miller recovered a Bulldog fumble in the opening minutes of the game, and Quarterback Jerry McCullough plunged over from the one for initial tally, then followed minutes later by firing a nine-yard scoring strike to end Stan Underwood to top off a 56-yard drive. The two-pointer failed after the first TD, but was good after the second to give Eastland a comfortable 14-0 lead.

Ranger rallied after giving up two TDs, when Bulldog Quarterback Johnny McGee combined with End Ronnie Hinds on a 10 yard scoring aerial to climax a 42-yard march. Halfback L. H. Pounds ran for the two-point conversion to set the stage for the breathtaking finish.

Trailing 14-8, the Bulldogs started a drive on the Eastland 48-yard line and moved to a first down on the Maverick one, and Eastland held for three downs before McGee went over on the fourth. That tied like a knot, 14-14. McGee found the hole again for the two-pointer, to hand Eastland the loss.

It'll be another pack of Bulldogs Friday night with Clyde, and Coach John Tate's squad is preening from a Saturday victory over Cross Plains, 39-22.

Ranger has been victorious over Clyde, 26, 21; as was Albany, 28, 0; Anson, 14-12; Haskell, 25-14. Clyde undid Santa Anna 20-0.

OTHER FRIDAY GAMES Cross Plains at Albany.

For AUTO LOANS see Eastland National Bank EASTLAND, TEXAS

1,995 Votes Cast In This County

Eastland Countians patterned the state trend in demanding that the poll tax be retained as a requirement for voting in Saturday's special state constitution amendment election.

In the same election, voters, by almost a two-to-one majority, expressed their desire to retain a county trapper, and were almost as a decisive in their rejection of continuing the unlimited issuance of doe permits in the county.

The two county referendum propositions had stirred quite a bit of interest and probably accounted for the vote turnout — which, while it wasn't large, was greater than is generally expected for an amendment election.

Incomplete county returns showed a vote of 1,985. Boxes from Scranton and Pioneer hadn't reported early in the week, but with only an estimated 24 votes at Scranton and some 30 at Pioneer, these returns weren't expected to change the results.

The ten-box total showed that county voters prefer the poll tax as a voting requirement by 1,366 to 613. The proposition read in part: "FOR or AGAINST amending the constitution" to make the poll tax a voting requirement; so the voters voted against the amendment.

A total of 1,175 voters, from ten boxes, are against the issuance of an "unlimited" number of permits to kill doe in the county. In favor of continuing the practice were 648.

The program wherein the county assists in the employment of a trapper to help control the county of predatory animals was endorsed by 1,135 voters compared to 755 against the program.

One of the other three state constitutional amendments was defeated in the county, with 600 in favor of the proposition concerning the Jefferson County Welfare program, with 1,009 against. The veterans land amendment barely carried with 883 for and 825 against. The No. 2 welfare amendment carried handily, 1,317 for, 616 against.

State Representative Wayne Gibbons has assured Eastland County voters that he will introduce a bill asking that the county be placed under the management of the Parks and Wildlife Commission if the vote indicated that the majority of the people were opposed to the present unlimited issuance of doe permits.

It is assumed that the county commissioners will adopt an order continuing the county's participation in the trapper program in view of the mandate by the voters.

Cisco, as usual, polled the heaviest, with 640 voters turning out, compared to 437 in Eastland, and 316 in Ranger. Estimates were that the turnout was about a third of average, or total voting strength.

County Reports Five Accidents During Weekend

Five auto accidents in Eastland County over the weekend were reported by Texas Highway Patrol headquarters, Eastland.

Four of the five traffic mishaps resulted from pavements slicked by drenching rains. Only two persons were injured and both were slightly injured.

Mrs. Nancy J. Maxwell of Baird suffered minor injuries in a three-car accident just west of Cisco on Highway 80 Friday at 3:40 p. m. Skids caused the pileup.

Billy Ray Eudy of Cisco also was injured slightly Friday night at 11:20 p. m. when he lost control of his car just west of Eastland on Highway 80. Patrolmen said Eudy fell asleep at the wheel.

Guylynn Quinn Is Nominee For FFA Sweetheart

Miss Guylynn Quinn, daughter of Mrs. Alma Quinn, is one of the three nominees for FFA sweetheart for 1963.

Guylynn is a senior in Eastland High School and is a cheerleader. She is president of the Tri Hi Y and of the Sub Deb Club. She was also cheerleader her freshman year.

The Sweetheart of the FFA will be revealed at a later date.

Miss Maxwell Services Held On Wednesday

Miss Lillie E. Maxwell, 82, died at 8 p. m. Monday at Stamford Memorial Hospital.

Miss Maxwell, blind since she was 13, suffered a stroke Sunday in Aspermont, where she was visiting in the home of her brother, J. H. Maxwell.

Funeral services were held at 3 p. m. Wednesday in Hamner Funeral Home Chapel in Eastland. Burial was in Eastland Cemetery. Kinney Funeral Home of Stamford was in charge of local arrangements.

Born Nov. 6, 1881, in Georgia, Miss Maxwell recently moved to Anson from El Paso to make her home with a sister.

Survivors include two sisters, Mrs. Rosa Carmon of Anson and Mrs. Minnie Nealy of Abilene; and one brother, J. H. Maxwell of Aspermont, Texas.

W. S. C. S. Bean Dinner To Be Served Nov. 15

The Woman's Society of Christian Service of the First Methodist Church will serve a bean dinner with all the trimmings, including home made pie and coffee, in the Fellowship Hall, Friday, November 15, from 11 a. m. until 1 p. m. Price of the meal will be 90 cents.

Tickets may be obtained from any member of the W.S.C.S., at Smitty's Jewelry, or at the door.

Pullman Reports To Rotary On U. S. Missile Progress

Pullman was introduced by Frank Sayre, program chairman for the day.

"We face an enemy patiently, relentlessly and fiercely vowing to destroy us and our institutions. Imagine the position of the United States and the free world today without our Nike air defense system," Pullman declared.

"Our cities no longer need fear the threat of manned enemy aircraft," he said. "But the threat has shifted to enemy missiles."

During his four-day junket, Pullman was flown from Dyess Air Force Base, Abilene, to Fort Bliss near El Paso. He subsequently visited the McGregor Firing Range, the White Sands National Park and White Sands Missile Range in New Mexico, headquarters.

Continued on page Two

Read and Use the Want Ads!

CALL MA 9-1707

ANNOUNCEMENTS

MASONIC LODGE NO. 467

Meets second Thursday of each month at 7:30 p. m. In the Masonic Hall. Call Joe W. Anderson, MA 9-2331, for information or L. E. Huckaby, Sec., 9-1391, for information.

EASTLAND ROTARY CLUB

Meets each Monday noon at White Elephant Restaurant in Eastland. Gordon Goldston, president.

SPECIAL NOTICE

LOST: Black Sabastain sweater at football game Friday night. Reward. Finder please contact Eastland Telegram. tf

AVON COSMETICS

Need two ladies who are qualified to become Avon representatives in Eastland, to help take care of the Christmas business. For information write Mrs. Sidney Ellis, P. O. Box 2264, Abilene, Phone ORchard 2-6850. 78

SEWING: Dressmaking, curtains, draperies and slipcovers. Call Mrs. Turner, MA 9-2286. 517 E. Foch. tf

SPECIAL NOTICE: Painting, carpenter work. All types home improvements and home repairs. No job too small. Call R. C. Turner "Home Services", MA 9-2286. 517 E. Foch. tf

SPECIAL NOTICE — The D. L. Houie's Shop invites you to visit Babylon while the stock is full. Gift items, Belgian linen hand - screened towels; Vera's scarves, hand - screened. Use lay-away. tf

SPECIAL NOTICE — Any type hay baled. Regular hay 30c. Peanut hay 25c. Have two new Holland balers. 24-hour service. Phone I. B. Walker, 2501, Olden, collect. tf

NOTICE — Call us for residential and commercial wiring. Also pole setting and line construction. Slatton Electric, 800 W. 10th, Cisco. Call HI-2-1965. tfc

HELP WANTED — Eastland Steam Laundry. Phone MA-9-2613. tf

NOTICE: For repairs of all kinds of office machines, call the Eastland Telegram. tf

NOTICE: Volume buying enables us to pass saving on to our customers. Large selection of General Electric television and stereo. Come in for demonstration — today. Goodyear Service Store, Eastland. tf

NOTICE: Clean, high tread used tires. Going at \$3.00 and up. Stop by your Goodyear Service Store — today! 308 E. Main, Eastland. tf

NOTICE — Now's the time to select your Masterpiece Christmas Cards at our office. Come see the complete lines, from the budget series to the executive classics. Values and beauty with Masterpiece. Eastland Telegram. tf

NOTICE: Your Electrolux representative, A. J. Lindsey, Rt. 2, Ranger, Texas. Phone MI 7-1485. 83

NOTICE OF SALE
Trustees of the Eastland Independent School District will accept bids for the purpose of selling one 1953 Model Chevrolet Pick-Up at the Business Office in the high school until 12:00 Noon December 3, 1963. Vehicle may be inspected at the high school and bid forms may be secured at the Business Office. The Board reserves the right to reject any and all bids.
Wendell F. Siebert
Superintendent
Eastland Ind. School District

MERCHANDISE

FOR SALE: Border Collie Pups. Age six months. Contact Johnny King, MI 7-1510 in Ranger. 22

FOR SALE: Big fat young hens for sale. For eating or for laying. 50c each. Call MA 9-1918, Jeff Laughlin. tf

FOR SALE: Be ready for deer season. One 30-30 Winchester, model 94, lever action, with recoil pad. Like new. Must forfeit. See at Eastland Telegram. tf

FOR SALE: 1959 Chevrolet 1/2 ton pickup; 1958 Chevrolet 1/2 ton pickup; 1957 Chevrolet 1/2 ton pickup; 1955 Chevrolet 1/2 ton pickup; 1953 Chevrolet 1/2 ton pickup; 1952 Ford 3/4 ton, 4 speed transmission; 1950 Chevrolet 1/2 ton pickup. Bill Hunter at Rushing Motor Co. Bank financing. 74

FOR SALE: Fat hens, 50c ea. Kendrick Poultry Farm. Highway 80. 74

FOR SALE: Five registered Chihuahua puppies. Mrs. Luther Murray, Carbon. 74

FOR SALE: 10 inch Power Craft table saw with jointer and 1 hp motor. Phone MA 9-1097. tf

FOR SALE: Every family can own a GE home freezer. Upright models and chest type. Prices start at \$189.95. Use your credit at Goodyear Service Store. 308 E. Main, Eastland. tf

FOR SALE: Office desk and TV antenna. Phone MA 9-2090. tf

FOR SALE — Insulated hunting boots, \$14.95; Insulated underwear, \$7.95 up; 30-30 shells, \$2.95 box; 30-06 shells, \$3.95; Hooded sweatshirts and all types gear, guns and ammo. Get ready now. We trade guns. Bruce Pipkin Sport Center. tf

FOR SALE: We have 10 new 1963 General Electric refrigerators in stock which must be sold before the 1964 models are introduced. Prices start at \$179.95. Come in and let's talk trade at your Goodyear Service Store, Eastland. tf

FOR SALE: Nice 2 bedroom home. City sewage and utilities except uses butane gas. New solid foundation. 50x150 foot fenced lot and garage. \$650 cash, easy monthly payments of balance of \$5350. Last house on South Daugherty Street. Immediately available. Elsie Glenn. tf

RENTALS

FOR RENT: Three bedroom cottage 503 S. High on top of park hill. Close to school. Newly painted inside and out. \$39.50. Call MA 9-1033 or MA 9-1417. tf

FOR RENT: 3 bedroom home near high school. Call MA 9-1534 or see 315 N. Connellee. 74

FOR RENT: Dandy two bedroom furnished cabins with kitchenettes. Ideal for weekends during winter. Good rates. Lynn's Lake Lodge, Lake Cisco. Phone HI 2-2064 tfc

FOR RENT: Furnished two bedroom apartment. 611 W. Plummer. tf

FOR RENT: Two bedroom house in good condition. Call MA 9-2239 or see at 1306 S. Lamar Street. tf

FOR RENT: 3 room furnished apartment. 608 W. Patterson. Phone MA 9-2096. tf

FOR RENT — Lovely furnished apartments — (or unfurnished and use your furniture) with all utilities paid and with maid service, from \$65 monthly complete. Comfortable private rooms with private tile baths, maid service, only \$39.50. Why pay taxes, upkeep, maintenance, gas, lights and water, when you can save money and live really comfortably with us? Plenty of nice people are already living with us and welcome you into our circle of friends. Call us today, MA 9-1718 — The Village Hotel. Tell your friends about us too. tf

FOR RENT — Large private one-bedroom garage apartment. Clean and in good condition. MA 9-2413 or see at 1201 S. Seaman.

REAL ESTATE

FOR SALE: 160 acre farm located 8 miles northwest Gorman. J. C. Morris, 1108 London, Vernon, Texas, P. O. Box 227. 80

WALKER'S
Dressing Plant
Custom Dressing
Phone D. J. Walker
Eastland MA 9-1192

FOR SALE: Trailer house and two lots. Located 417 N. Daugherty. \$550. Contact #17 N. Green. 75

FOR SALE: One 3 bedroom house on 413 N. Daugherty. Two 2 bedroom houses 415 N. Daugherty and 415 N. Green. \$50 down payment. Lower than rent. Do own financing. Modern Homes Construction Co. Phone collect PE 2-4085 or write P. O. Box 12381, Fort Worth. 76

FOR SALE: 1408 South Seaman, 3 bedroom, living room, dining room, bath, nice orchard, 240 foot lot paved and curbed, \$4,000. Call MA 9-2017

FOR SALE: or Trade for Real Estate — Our home and business at 901 and 903 Pershing St. See A. H. Powell at 901 Pershing St. in Ranger. tf

FOR SALE: 3 bedroom brick home, 2 car garage, built in electric kitchen, 1 1/2 baths, fenced yard. Already in loan. Low equity. MA 9-1163. tf

FOR SALE: OR TRADE: Modern six unit motel with three bedroom residence. Located on U.S. Highway 80, Eastland, phone MA 9-1328. tf

FOR SALE: 3-bedroom, den, dining room, 1 1/4 baths, central heating, car-port, city water, irrigation well. 1/2 acre, young bearing fruit trees, berries. Will consider 2-bedroom home in trade. See Jeff Woods, Olden. tf

EMPLOYMENT

ATTRACTIVE POSITION: Man or woman 25-26. Good personality and appearance. Ready to accept position immediately if selected. Part time work available. No traveling. Write full to personnel manager, Stanley Scott, Box 297, Mineral Wells, Texas. 74

HELP WANTED: At once. Rawleigh dealer in E. Eastland Co. or Eastland. See Mrs. Mary Hester, Rt. 1, Rising Star or write Rawleigh, TXK 1020-3, Memphis, Tenn. 74

CANCER INSURANCE
SEE
M. H. PERRY
MA 9-2275 MA 9-1095

See ahead with
M. H. PERRY
107 W. Main, MA 9-2275
MA 9-1095

He sells
FAMILY PROTECTION
Let him show you how little it costs to see ahead — and be sure.
Southland Life
Insurance Company

HAIRDRESSER
Beauty Shop
1302 S. Seaman (rear)
Phone MA 9-1430
Monday-Tuesday-
Wednesday
7.50 permanents will be 5.95
lash and brow dyes 1.00

PERMANENTS
\$12 Lanolin Waves \$8.50
\$10 Creme-Oil Waves \$7.50
Other waves \$10 and up
Basham Beauty Bar

NOTICE
Wanted: responsible party to take up payments on Singer Stile-O-Matic. Payments only \$5.40 per month. Write Glen Haley, credit manager, 159 S. Graham St., Stephenville, Texas.

MATTRESSES
Save up to 50% renovating choice of color and firmness. Complete bedding. Made and guaranteed by WESTERN MATTRESS CO., San Angelo. Phone MA 9-1342 or MA 9-1364, Eastland and leave address.

Kennedy Visit Includes Several Historic Firsts

AUSTIN — The whirlwind visit of President Kennedy to Texas Nov. 21-22 will include a number of historic firsts:

1) It will be the first time Mrs. Kennedy has accompanied the President on an official trip since the death of her infant son in August.

It will be the first time the First Lady has been to Texas, and the first time she has ever accompanied the President on a political tour.

2) It will be the first time in Texas history that the President, Vice President and Governor have all appeared on the same program.

3) The \$100-a-plate dinner Nov. 22 in Austin will mark the first time a President of either party has helped raise funds in the state with a personal appearance.

Tickets to the dinner at Austin's Municipal Auditorium are being sold by 62 members of the State Democratic Executive Committee. They also can be purchased by mail from the SDEC Office at 1010 Lavaca Street in Austin.

The President and Vice President will dedicate new facilities at the School of Aerospace Medicine in San Antonio before attending a Houston dinner honoring long-time Congressman Albert Thomas in Houston on Nov. 21.

The next day, he and his party will breakfast in Fort Worth and appear at a luncheon in Dallas before coming to Austin.

Mr. and Mrs. Roscoe Abbott have had as their guests their daughter, Mrs. Roger Froehlich and children of Abilene.

It's Time To Act

(An Editorial)

Communities that face loss of business revenue through the re-routing of Highway 80 in the Interstate 20 program have little choice in the matter as everything is covered by law. But the communities can appeal to the authorities to delay the action as long as possible.

The Highway 80 section from Fort Worth to Abilene has a lot of miles of roads that need attention far worse than the 35 miles or so through Eastland County. With the completion next year of the six mile stretch from Cisco west to the county line, Eastland County will be completely crossed by a four-lane road.

Weatherford with its five traffic lights and courthouse circle presents much more to delay and slow down traffic than Cisco, Eastland and Ranger combined. And the stretch of highway from Weatherford to Ranger Hill certainly should be rebuilt before anything more is done elsewhere on the busy road.

It makes good sense for the work to be done first where it is needed most, regardless of which highway district is involved. This plan probably would result in no changes in the Eastland County re-routing of cities for at least five years. Working first where work is needed most would make especially good sense if something happened to delay or end the over-all program. The bad bottlenecks would be eliminated, Eastland County, with its four-lane traffic, couldn't be classed as a very bad situation.

It might not be a bad idea for the three cities of the county to send a committee to Austin to appear before the State Highway Commission to request a "let's work first where it's needed most" approach. Eastland County has nothing to lose, and something might be gained.

Law Enforcement Officers Meet At Gorman Monday

The newly organized Eastland County Law Enforcement Officers Association met for their third meeting at the Brown Jug Cafe in Gorman Monday night.

Due to the fact that the Business Men's Organization of Gorman was meeting on the same night the groups met jointly. The Officers Assoc. has expressed their appreciation to the Business men for the meal.

Sgt. Roger Sosebee of Eastland, president, presided over the business session. Other officers include first vice-president, Chief S. E. Parkinson of Cisco, second vice-president, Jug Dennis, constable of Gorman, and Lefty Sublett, secretary treasurer, of Eastland.

After the business session Patrolman E. M. Rogers presented the outline of the program on road blocks and the group joined in group discussion.

Pullman —

(Continued from Page One.)
ters of the North American Air Defense Command and the Air Force Academy near Colorado Springs, Colo.

The Eastlander described his observations of actual firings of the Nike Hercules, the Nike Ajax and the deadly Hawk which pursued and destroyed both ground and air targets. Pullman's party also saw actual work in progress on development of the new Nike Zeus now in actual production at the White Sands Missile Range in New Mexico. Over 15,000 civilian and military personnel are employed on the project, Pullman said.

The Nike Hercules, Pullman explained, can destroy a target moving in excess of 2,000 miles per hour at an altitude over 150,000 feet. It can intercept a single aircraft or — with a nuclear warhead — destroy an entire formation of planes or a guided intercontinental missile. The capability of the Nike Zeus as a defense weapon far exceeds that of the Hercules, he added.

"When you actually see and understand what is being done for the defense of our country, the money spent doesn't matter," Pullman declared. "It's worth every nickel."

The former American Legion commander said purpose of Army Air Defense Command's "Operation Understanding" is to brief local leaders on the importance of activity in the area of national defense.

WHEEL BALANCING WHEEL ALIGNING COMPLETE BRAKE SERVICE

VIC'S AUTO REPAIR
306 W. Main
MA 2-1111

FREE Estimates On RE-ROOFING
Or Repair Your Old Roof. Residential and Commercial
Roofing Co. Eastland
Noble Squiers
Phone MA 9-2370

LAUNDRY PICKUP DELIVERY
SEND YOUR LAUNDRY TO US
Take washday out of your services. So easy — so convenient — so inexpensive home, use our professional

CISCO Steam Laundry
Bill Roney, New Agent
Phone MA 9-2122, Eastland

COMPLETE Car Care — Try Us

OBIE'S HUMBLE SERVICE STATION
802 W. Main
MA 9-8866

EASTLAND AUTO PARTS MACHINE SHOP
300 S. Seaman
MA 9-2158

FULLY-EQUIPPED AUTOMOTIVE VALVE GRINDING BRAKE DRUM TURNING HEAD SURFACING VALVE JOBS BLOCK BORING SLEEVE INSERTING VALVE SEATING

COMPLETE LINE AUTOMOTIVE TRUCK TRACTOR PARTS
ALWAYS IN STOCK

AUTO PARTS
300 S. Seaman MA 9-2158 EASTLAND

READ THE CLASSIFIEDS
Insurance and Real Estate
D. L. KINNAIRD
Life - Fire - Auto - Farm
Police - Bonds
42 years in the Insurance Business in Eastland

READ THE CLASSIFIEDS

EASTLAND TELEGRAM
Eastland County Record established in 1931, August 31, 1951. Chronicle established 1897 established 1923. Entered as second class Post Office in Eastland, Texas under the Act of March 3, 1879.

Published Semi Weekly — Thursdays and
By Eastland County Newspapers,
H. V. O'BRIEN, Editor
One week by carrier in city
One month by carrier in city
One year by mail in county
One year by mail out of state

NOTICE TO PUBLIC — Any erroneous reference to the character, standing or reputation of any person or corporation which may appear in the columns of this newspaper will be gladly corrected upon receipt of the attention of the publishers.

This company has been in operation since 1942 selling policies to be primarily for burial purposes. We write to \$600 and our policies are paid in cash allows freedom in the selection of the Director of your choice.
Ages from 1 month to 90 years.
For further information come by to
Hamner Funeral Home, 301 S. Lamar, P. O. Box 431 Dial MA 9-2613

Hamner Life Insurance Co.
Ben E. Hamner, President

1 WAY TO DRIVING COSTS
KEEP CAR SAFETY SERVICED . . .
Prevent accidents due to faulty car care. See us for thorough service now.
Complete Auto Repairs Safety Inspection
24 HOUR WRECKER SERVICE
Phones MA 9-2270 Night MA 9-2224
ALLEN AUTO REPAIR
A1 RUSHING MOTOR 215 SOUTH SEAMAN

question
Can Pontiacs possibly keep on getting better and better and better?

Answer

More than 70,000 people bought new Pontiacs and Tempests during October.

SEE WHY AT YOUR AUTHORIZED PONTIAC DEALER

MUIRHEAD MOTOR CO.
301 W. Commerce St. Eastland, Texas

RE • 1625

WORTH FOOD MART

RE SIGN OF QUALITY!

EFFECTIVE THURSDAY THRU SATURDAY

BONUS S & H GREEN STAMPS

WHEN YOU REDEEM THESE COUPONS AND MAKE THE PURCHASES INDICATED!

STEAK	Round or Sirloin Thrifty-Cut Baby Beef	Lb.	75¢
T-BONE STEAK	Thrifty-Cut Baby Beef	Lb.	95¢
SLICED BACON	Rath Blackhawk	Lb. Pkg.	49¢

PREMIUM PRODUCE FEATURES!

APPLES	Extra Fancy-Washington State Red Delicious or Winesaps	Lb.	15¢
	Golden Delicious-Extra Fancy	Lb.	19¢
ORANGES	Mexico-Fancy Valencia	Lb.	15¢
COCOANUTS	Large Honduras	Each	15¢

Spread	2 Lb. Box	59¢
Pineapple	Sliced - No. 1 1/4 Can	25¢
Chili	No. 300 Can	43¢
Spaghetti Dinner	12 oz. Pkg.	49¢
Waffles	10 oz. Pkg.	39¢
	Frozen 6 5 oz. Pkgs.	69¢
Tooth Paste	Tube	69¢

RUMP ROAST

Or Pike's Peak - Thrifty Cut
Baby Beef Lb. **75¢**

Breaded Oysters

KAPTAIN KRUSTY
Frozen - 7 oz. Pkg. **49¢**

Frozen Shrimp

KAPTAIN KRUSTY - Frozen
Peeled and Deveined
8 oz. Pkg. **69¢**

Colombo Pizza

Cheese-Sausage or Pepperoni
12 Inch Size - Ea. **89¢**

Plain Chili

El Chico - No. 300 Can **43¢**

OXYDOL DETERGENT

Large **33¢**

CLIP AND SAVE!

50 Bonus S&H Green Stamps with this coupon & purchase of Any Cut of BEEF ROAST
Void After Sat., Nov. 16, 1963

WORTH FOOD MART

You'll Love Those Extra Christmas Gifts You Can Get With S&H GREEN STAMPS



FREE!

MONTEGO STAINLESS SOUP SPOON

WITH COUPON AND PURCHASE OF \$10.00 OR MORE
ADDITIONAL COUPON 50¢ AND \$5.00 PURCHASE
REQUIRED FOR EACH ADDITIONAL FEATURED PIECE

VOID AFTER SUN., NOV. 17, 1963

RUTABAGAS	WAXED	Lb.	5¢
CRANBERRIES	OCEAN SPRAY	Lb. Cello Bag	29¢
PEANUTS	Raw - Bulk - Packed	Lb.	29¢
Napkins	12 Ct. Box	35¢	
Detergent	Giant Box	75¢	
Peas	2 No. 300 Cans	29¢	
Biscuits	3 10 Ct. Cans	29¢	

CLIP AND SAVE!

50 Bonus S&H Green Stamps with this coupon & purchase of Three Lbs. Any Variety of APPLES
Void After Sat., Nov. 16, 1963

WORTH FOOD MART

CLIP AND SAVE!

50 Bonus S&H Green Stamps with this coupon & purchase of A 10 Lb. Cello Bag U.S. No. 1 RED POTATOES
Void After Sat., Nov. 16, 1963

WORTH FOOD MART

CLIP AND SAVE!

100 Bonus S&H Green Stamps with this coupon & purchase of A \$1.15 4-Pk. Size LIQUID DIET FOOD
Void After Sat., Nov. 16, 1963

WORTH FOOD MART

CLIP AND SAVE!

50 Bonus S&H Green Stamps with this coupon & purchase of 1 Jar of Kraft's French Dressing or KRAFT'S PREPARED SALAD DRESSING
Void After Sat., Nov. 16, 1963

WORTH FOOD MART

CLIP AND SAVE!

50 Bonus S&H Green Stamps with this coupon & purchase of A 1 Lb. Pkg. of Kraft's PARKAY MARGARINE
Void After Sat., Nov. 16, 1963

WORTH FOOD MART

CLIP AND SAVE!

50 Bonus S&H Green Stamps with this coupon & purchase of A 16 oz. Pkg. Pillsbury Instant MASHED POTATOES
Void After Sat., Nov. 16, 1963

WORTH FOOD MART

CLIP AND SAVE!

50 Bonus S&H Green Stamps with this coupon & purchase of An 18 in. x 25 Ft. Roll of H. D. KAISER ALUM. FOIL
Void After Sat., Nov. 16, 1963

WORTH FOOD MART

CLIP AND SAVE!

50 Bonus S&H Green Stamps with this coupon & purchase of Two Jars or More Any Ass't. HEINZ BABY FOOD
Void After Sat., Nov. 16, 1963

WORTH FOOD MART

CLIP AND SAVE!

50 Bonus S&H Green Stamps with this coupon & purchase of A 12 Oz. Jar of PET MILK
Void After Sat., Nov. 16, 1963

WORTH FOOD MART

CLIP AND SAVE!

50 Bonus S&H Green Stamps with this coupon & purchase of An 11 oz. Jar of COFFEEMATE
Void After Sat., Nov. 16, 1963

WORTH FOOD MART

CLIP AND SAVE!

50 Bonus S&H Green Stamps with this coupon & purchase of A Giant Size Box of SURF DETERGENT
Void After Sat., Nov. 16, 1963

WORTH FOOD MART

CLIP AND SAVE!

50 Bonus S&H Green Stamps with this coupon & purchase of A 22 oz. Roll of SOIL-OFF CLEANSER
Void After Sat., Nov. 16, 1963

WORTH FOOD MART

CLIP AND SAVE!

50 Bonus S&H Green Stamps with this coupon & purchase of A 15 Ct. Pkg. of Chl-Net Paper COMPARTMENT PLATES
Void After Sat., Nov. 16, 1963

WORTH FOOD MART

CLIP AND SAVE!

50 BONUS S&H Green Stamps With This Coupon & Purchase of 16 oz. Pkg. of Dromedary PITTED DATES
Void After Sat., Nov. 16, 1963

WORTH FOOD MART

CLIP AND SAVE!

50 BONUS S&H Green Stamps With This Coupon & Purchase of A 13 1/2 oz. Can of Planter's COCKTAIL PEANUTS
Void After Sat., Nov. 16, 1963

WORTH FOOD MART

CLIP AND SAVE!

50 BONUS S&H Green Stamps With This Coupon & Purchase of Eight (8) 3 oz. Pkgs. of ROYAL GELATIN
Void After Sat., Nov. 16, 1963

WORTH FOOD MART

CLIP AND SAVE!

50 BONUS S&H Green Stamps With This Coupon & Purchase of Any Two (2) Boxes of 2 Pkgs. of LIPTON'S SOUP MIXES
Void After Sat., Nov. 16, 1963

WORTH FOOD MART

CLIP AND SAVE!

100 BONUS S&H Green Stamps With This Coupon & Purchase of A 10 Oz. Jar of Chase & Sanborn INSTANT COFFEE
Void After Sat., Nov. 16, 1963

WORTH FOOD MART

CLIP AND SAVE!

50 BONUS S&H Green Stamps With This Coupon & Purchase of A 3 oz. Jar of LIPTON'S INSTANT TEA
Void After Sat., Nov. 16, 1963

WORTH FOOD MART

CLIP AND SAVE!

50 BONUS S&H Green Stamps With This Coupon & Purchase of Two (2) 8 oz. Bottles of Wishbone Italian or French LOW CALORIE DRESSING
Void After Sat., Nov. 16, 1963

WORTH FOOD MART

CLIP AND SAVE!

50 BONUS S&H Green Stamps With This Coupon & Purchase of An 18 oz. (12 Ct. Pkg.) of Keathley PECAN PIES pkg. 49¢
Void After Sat., Nov. 16, 1963

WORTH FOOD MART

CLIP AND SAVE!

50 BONUS S&H Green Stamps with this coupon & purchase of A 1 Lb. Pkg. of Swiss Miss INSTANT COCOA MIX
Void After Sat., Nov. 16, 1963

WORTH FOOD MART

CLIP AND SAVE!

25 BONUS SH GREEN STAMPS With This Coupon and Purchase of A 1-Lb. Pkg. Rath's Blackhawk FRANKFURTERS
Void After Sat., Nov. 16, 1963

WORTH FOOD MART

CLIP AND SAVE!

50 BONUS S&H Green Stamps With This Coupon & Purchase of (4) No. 303 Cans of Any Style DEL MONTE WHITE or GOLDEN CORN
Void After Sat., Nov. 16, 1963

WORTH FOOD MART

CLIP AND SAVE!

50 BONUS S&H Green Stamps with this coupon & purchase of Two (2) No. 2 1/2 Cans - Any Style DEL MONTE PEACHES
Void After Sat., Nov. 16, 1963

WORTH FOOD MART

CLIP AND SAVE!

50 BONUS S&H GREEN STAMPS With This Coupon and Purchase of Two (2) No. 303 Cans of DEL MONTE SPINACH
Void After Sat., Nov. 16, 1963

WORTH FOOD MART

CLIP AND SAVE!

50 BONUS S&H Green Stamps with this coupon & purchase of Three (3) No. 1/2 Cans of Del Monte CHUNK TUNA . . . 3 cans \$1.00
Void After Sat., Nov. 16, 1963

WORTH FOOD MART

CLIP AND SAVE!

50 BONUS S&H GREEN STAMPS with this coupon & purchase of 2 of A \$1.00 Size Bottle of Normal or Dry BRECK SHAMPOO
Void After Sat., Nov. 16, 1963

WORTH FOOD MART

School and Texas Technological College. He is the son of Mr. and Mrs. Tom J. Haley, long time residents of Eastland.

He entered the employ of the telegraph company in its International Communications Department at the company's national headquarters in New York City. Mr. Haley subsequently served in various administrative and supervisory positions at headquarters and Washington, D. C.

In 1958 he was appointed to the Government Department of Special Representative in that present assignment.

READ CLASS

Tom C. Haley Receives New Appointment

Kenneth W. Heberton, vice president of the Western Union Telegraph Company, has announced the appointment of Tom C. Haley as Assistant Director-Government Relations with headquarters at Washington, D. C.

Haley, born in Gorman, is a graduate of Eastland High

Local Interest Being Shown In Soil Conservation

There is considerable interest in Soil Water and Plant Conservation on the part of farmers and ranchers in the Eastland County portion of the Upper Leon and Palo Pinto Soil Conservation District.

Interest is evident in the number of requests for assistance in the development and application of conservation plans received by E. E. McAllister and his staff and the Soil Conservation Service office.

Some 76 applications for participation in the Great Plains Conservation program have been received. The first step in the processing of these applications is determination of field by field or pasture by pasture treatment needs for maintenance and improvement. From information furnished to the landowners by the Upper Leon Soil Conservation District and the Soil Conservation Service, the landowners and operators make the decisions for a conservation plan for their unit. It is possible for the operator to receive technical assistance and cost share assistance in the application of his plan.

Soil Conservationists E. E. McAllister, Bill Garner, and Eddie Simms are currently assisting Bill Harrison, W. C. Tickner, O. C. Stroud, Jerry McHaffey, P. E. Squyres and Clyde Yarbrough in the development of land treatment program for conservation on their unit.

Converting of marginal cropland to pasture and rangeland, range and pasture are two of the major treatments being carried out as a part of farmers and ranchers conservation plans.

Conservation plans, in operation, will provide stability to agriculture in Eastland County during the dry periods that occur.

Interested persons desiring more information concerning the soil, water, and plant conservation program in Eastland County may contact C. M. "Clint" McCain, Upper Leon Soil Conservation District Supervisor, on the local Soil Conservation Service.

Hospital News . . .

- Roy Murry, Moran, medical.
- Ronald Bunch, medical.
- Pat McPherson, Cisco, medical.
- Fannie Frost, medical.
- Lavesta Myers, Ranger, medical.
- Minnie Faye Wilson, medical.
- Peggy Winfrey, Rising Star, OB.
- Lillie Clower, Lamesa, medical.
- Lucille Teat, surgical.
- Fannie B. Hagar, medical.
- Avie Allgood, medical.
- Sharon Stedum, medical.
- Della Eddy, medical.
- Cuba Morris, Ranger, accident.
- Eva Taylor, medical.
- Ethel Aildredge, medical.
- Myrtle Broiles, Carbon, medical.
- Pearl Young, medical.
- Jeanette Harris, medical.
- Ruth Branch, medical.
- May Harrison, medical.
- Mary Barton, medical.
- Melissa Naylor, medical.
- G. W. Adams, Rising Star, medical.
- H. L. McGuire, Olden, medical.
- Josie Robinson, medical.
- Jesse Camp, Rising Star, surgical.
- Hattie Ragsdale, surgical.
- Mable White, medical.
- Emma Martin, medical.
- Estelle Littleton, medical.
- Tresa Knowlton, Cisco, medical.
- Carolyn Wilson, Rising Star, OB.
- Belinda Whittet, medical.
- Ruth Butler, surgical.
- Viola Guthrie, medical.
- Roxie Bankhead, Santo, medical.
- Robert Lawson, medical.
- Eldon Jay Daniels, medical.
- Tana Sue Weems, medical.
- Pauline Lewis, surgical.
- Mike Perry, medical.
- Sharon Sayre, medical.
- Ruby Layton, surgical.
- R. E. Floyd, medical.
- Olivia Carothers, medical.
- Ida Arnold, accident.
- L. M. Miller, Gorman, medical.
- T. K. Kirton, medical.
- Nora Payne, medical.
- Linda McCallum, OB.
- Irene Stephens, Ranger, medical.
- Forrest C. Reynolds, Ranger, medical.
- L. C. Freeman, medical.
- Baby Boy Winfrey, Rising Star, new baby.
- Baby Boy Boy, Rising Star, new baby.
- Baby Girl McCallum, new baby.



DOGS AND PEOPLE — The area around the Eastland County Livestock Raisers' Arena north of Eastland on the shores of Lake Eastland was aswarm Saturday with people and coon dogs. Hundreds turned out for Battle Creek Club's Wild Coon Hunt and Bench Show. Events got under way at 1 p. m., followed by judging of both registered and grade dogs, and the hunting went on into the night. Spectators were arm, fall day under the sun. (Staff Photo) plentiful and the dogs seem to enjoy the w

COON HUNT AND BENCH SHOW HELD IN EASTLAND NOV. 9

A total of 166 dogs made the first Annual V. K. C. Licensed Show and Hunt a very successful event. The Bench Show and night hunt was sponsored by the Battle Creek Coon Hunter's Club.

Many spectators and participants were at the Sheriff's Posse Barn at Eastland, Saturday, November 9th, to make this a great gathering of hunters and friends.

Hunters traveling as far as Newburg, Missouri participated in the night hunt. Dude Rancher from Waco was there with his Ranch Wagon with hot food and coffee for hunters coming in during the night.

The time events started at 1 p. m. and lasted till 2 p. m. The winners of these events were: Treeing Contest: Louis Mote with Blue Jack from Dublin; Barrel Contest; J. L. Douglas with Lead, from Sherman; and The Hole, Log and Keg was won by Ralph Morton with his Night Rider dog.

The Bench Show started at 2 p. m. with the Black and Tans. Winners in the Black and Tans were, Best of Breed: Male, Black Pilot owned by B. J. Hastings of Cisco and Female, Little Angel owned by Ronnie Hastings. Blue Tick: Best of Breed: Female,

Blue Lady owned by H. D. Willingham, and Male, Blue Lobo owned by H. D. Willingham. English: Best of Breed: Female, Cindy's Cry B a b y owned by J. T. Hicks of Valley Mills. Plott: Best of Breed: Male, K'Wow, owned by Harold Pomykal of Troy, Texas and Female, Mize Lola owned by H. D. Willingham, Cisco. Red. Bone: Best of Breed: Male, Bosque River Lucky owned by J. T. Hicks of Valley Mills, and Female, Red Ginger owned by Les Threet of Cisco. Treeing Walker: Best of Breed: Male, Williams Creek Loud owned by Jack Barden of Valley Mills and Female, Denton's Bess owned by John Smith of Abilene.

Best Male of Show was a Black Pilot owned by B. J. Hastings, Cisco and best female of show was Denton's Bess owned by John Smith of Abilene.

Trophies went to ten high scoring dog winners in the Registered Class Night Hunt. Winners were: 1st, H. D. Carlisle, Newburg, Missouri with Mo Nig; 2nd, Q. D. Innon, Mineral Wells with Ripple's Pawner; 3rd, J. H. Gonc, Mineral Wells with Bussey's Punch; 4th, Troy Hanley, Bayne, with Texas Wind; 5th,

10th place tie went to I. D. Innon, Mineral Wells with Blue Sue and John Smith, Abilene, with Denton's Bess. Ten trophies which were awarded to grade dogs were 1st, Carroll Hogan, Carbon with Bosque; 2nd, Bill Fraiser, Gorman, with Red; 3rd, Charles Newman, with Puddin; 4th, Jack Graham, Eastland with Lady; 5th, Cleo Steel, Brownwood of Sidney with Dot; 8th, James Johns, Eastland, with Cry; 9th, Danny Young, Eastland, with Clara Young; and 10th, Dude Rancher of Waco with Molly.

J. D. Snodgrass, Belton, with Leon River Blue Pat; 6th, J. D. Swan, Bayne, with White's Lucky Boy; 7th, L. C. Pomykal, Troy, with Pomykal's Major, with Hasting's Little Sister; 9th, Jack L. Bates, Keller, with Bates Yucca Jud; and 10th place tie went to I. D. Innon, Mineral Wells with Blue Sue and John Smith, Abilene, with Denton's Bess.



JUDGE POPE

Brother Of Area Man In Race For Supreme Court

Judge Jack Pope, 50 year old West Texan and brother of Bill Pope, rancher in Eastland and Callahan counties, has announced his decision to run for the place on the Supreme Court being vacated by the retirement of Judge Frank Culver.

Currently serving as associate justice of the Court of Civil Appeals in San Antonio, Judge Pope brings 18 years of judicial experience to the race for Supreme Court. His present court served more than two million Texans with one of the heaviest dockets in the state. Eighty petitions carrying nearly 2,000 signatures of attorneys from 55 counties of the state requested Judge Pope to enter the race.

One of the authors of "The Right to Trial by Jury," Judge Pope has personally written more than 500 opinions which are found in 134 volumes of the law reports. In addition to being the recipient of many judicial and legal honors, he has been active in the Boy Scouts of America and other organizations, teaches a Sunday School class in the Church of Christ, and is active in all those fields where he can study the needs of the people.

Judge Pope, son of Dr. and the late Mrs. A. J. Pope of Abilene, is a descendant of Andrew Jackson Berry, a liberty County resident who fought at San Jacinto with Sam Houston to win Texas' independence. His nomination is subject to the Democratic primary, 1964.

Eastland Group Greets Abilene CofC Delegates

Thirty-two Abilene businessmen and civic leaders representing a cross section of the wholesale and jobbing industry were greeted by a delegation from the Eastland Chamber of Commerce here Tuesday morning on the second of seven stops in an area goodwill tour.

Heading the welcoming committee at Eastland was Charlie Terrell, chamber manager; James Smith, Chamber president and Pat Miller, chamber vice president. Also meeting the Abilene group were Eastland City Manager Lewis Tiner, B. W. Robertson, Bob Perkins, Charles Freyschlag, Frank Sayre, Jim Parks, Don Viergever, and Frank Deaton.

The group boarded a chartered bus at the Abilene Chamber of Commerce at 7:00 a. m. to begin the all-day tour which was to take them to the neighboring cities of Cisco, Eastland, Ranger, Breckenridge, Woodson, Throckmorton, and Albany.

Co-sponsors are the wholesale and jobbing and area goodwill committees of the Abilene chamber headed by Ivan Flynn and Nib Shaw, respectively.

At Cisco, the visitors were welcomed by Mrs. Thelma Albright, secretary of the Cisco Chamber of Commerce, who was waiting with a pot of hot coffee.

The Breckenridge Rotary Club hosted the goodwill travelers at its noon luncheon. Entertainment was provided by the Abilene Christian College A Cappella Men's Quartet.

Hobby Bazaar To Begin Thursday

The display of hand craft work by area residents will be open to the public at 1 p. m. Thursday, Nov. 14, in the Hobby Bazaar at the American Legion Hall in Cisco, according to Mrs. Winston Heidenheimer, publicity chairman for the sponsoring Cisco Art Club.

The three day bazaar will feature various kinds of hand craft and hobbies, and there will be no admission charge to see the exhibits. Hours will be 1 p. m. to 6 p. m. on Thursday; 9 a. m. to 6 p. m. on Friday, and 9 a. m. to 7 p. m. Saturday.

Hillcrest Food Market

WHEN YOU RUN OUT — RUN IN
1401 WEST MAIN - PHONE MA 9-1600

SMALL FRESH DRESSED
HENS 35c

GOOCH'S BLUE RIBBON
SLICED BACON lb. 49c

GOOCH'S BLUE RIBBON
ALL-MEAT WEINERS lb. 49c

GOOCH'S BLUE RIBBON
PICNICS 3 Lb. Can \$1.89

MORTON'S — 14 oz., Lemon, Chocolate, Coconut, S'berry
Cream Pies Each 39c

FROZEN
Strawberries 10 oz. Pkg. 5 for \$1.00

CHUCK WAGON
BEANS 303 Cans 2 for 25c

KIMBELL'S
BISCUITS 3 for 25c

DECKER'S
OLEO 2 Lbs. 35c

KIMBELL'S — White, Chocolate, Yellow
CAKE MIXES 19 oz. box 3 for \$1.00

MRS. TUCKER'S
SHORTENING 12 3 3 Lb. Ctn. 49c

RED POTATOES 10 Lb. Bag 35c

DEL HAVEN
BLEACH 2 qts. 35c

KIMBELL'S ALL-PURPOSE
DETERGENT Giant Box 55c



'64 OLDS

WHERE THE ACTION IS!

REAR: SUPER 88 HOLIDAY SEDAN
CENTER: DYNAMIC 88 CONVERTIBLE
FOREGROUND: JETSTAR 88 HOLIDAY COUPE

*Now there are three 88 series...
and the new Jetstar 88
is the lowest priced of all!*

VISIT YOUR LOCAL AUTHORIZED OLDSMOBILE QUALITY DEALER... WHERE THE ACTION IS!

PIPKIN OLDS - CADILLAC

314 W. Main Street Eastland, Texas

DON'T MISS THE AWARD-WINNING "GARRY MOORE SHOW" - TUESDAY NIGHTS - CBS-TV

NEWSPAPERS ARE TOP SALESMEN

Television, like radio before it but to a far greater degree, has brought about major changes in the advertising picture. It has been an aggressive competitor with the other media, and its appetite for the advertising dollar, with the cost of producing even Grade B programs running to comparatively astronomical sums, seems insatiable.

But the power of the written word still gets top recognition.

An announcement from Sears, Roebuck and Company will interest those who like to read as well as to stare. Last year the figure was \$58 million, which represented 71.2 per cent of Sears' total retail media expense. The balance went to advertising through circulars, magazines, radio and television, and other media.

A spokesman tells the story: "This is tangible evidence of our continuing faith in the potency of newspaper advertising. From the day Sears opened its first retail store, the company has made greater and greater use of newspapers. It is obvious that Sears store managers continue to regard the newspaper as their major medium for more than historical reasons. Their evaluation is based on the day-to-day results in their stores."

Television advertising is a catch-as-catch-can affair — you have to be looking at the set at the moment and it's gone in an instant. Print is durable and the prospective buyer can scan and consider it at his leisure.

THE EASTLAND TELEGRAM

and Pam Geyer, also a skit by Cross Plains Lions Club members, Howard McGowan and Doyle Birchfield.

Sixteen other Lions Clubs, including four members from the Abilene Club were represented.

Staff Sgt. William J. Carter, a fire protection supervisor in Sembach, Germany for a period of temporary duty under Operation Short Spurt, the Air Force's overseas rotational unit at Lincoln, Nebraska following O.S.S. tour.

He is the son of Mr. and Mrs. Jess E. Carter, Route 1, Rising Star, and attended Rising Star High School. His wife Rachel is the daughter of Mr. and Mrs. John Bean of Maiden, N. C.

Mr. and Mrs. Dixon Boggs visited in Lawn last week with their daughter, Mrs. Loyd Gonzales and the two grandchildren, Kevin and Karen Kay.

Mr. Gonzales, former band director at Rising Star, is teacher and band director at Jim Ned High School.

John G. Rickerson, representing Lederle Laboratories, one of the three major drug firms in the United States, was the speaker for the Tuesday afternoon meeting of the Rising Star Parent-Teachers Association which met at the High School study hall on November 12. Dr. Steve Semeniuk introduced the speaker.

Mr. Rickerson's talk was on "Values in Health."

Little Cecelia Harrell, daughter of Mr. and Mrs. Jeff Harrell of Lake Brownwood and granddaughter of Mr. and Mrs. R. E. Darnell of Rising Star is scheduled to undergo heart surgery in the near future in Dallas. The surgery will be for the purpose of putting a band around the pulmonary artery, a procedure that has had to be delayed until the little Miss grew a little older.

Mr. and Mrs. A. W. Wright of Long Branch and Mr. and Mrs. W. S. McCann of Cross Plains were recent visitors in the Albert Parkinson home near Romney.

Mr. and Mrs. Lawton Thompson and sons of Eastland visited with his mother,

Mrs. J. L. King and Mr. King, by Horace Geyer who was coming from the post office across the street.

All accounts and customers records were destroyed by the flames which broke out in the desk where they were filed.

Co-hostesses for the tea were Mrs. Cecil Joyce, John Joyce and Jack Joyce.

Many friends and relatives called and presented gifts to Mrs. Montgomery, and wished her many more happy birthdays.

A fire of undetermined origin destroyed the office records of the Richburg Welding Shop, while the owner was outside the building. His attention was called to the fire

by Horace Geyer who was coming from the post office across the street.

All accounts and customers records were destroyed by the flames which broke out in the desk where they were filed.

Co-hostesses for the tea were Mrs. Cecil Joyce, John Joyce and Jack Joyce.

Many friends and relatives called and presented gifts to Mrs. Montgomery, and wished her many more happy birthdays.

A fire of undetermined origin destroyed the office records of the Richburg Welding Shop, while the owner was outside the building. His attention was called to the fire

Local Firemen Attended A&M Fireman's School

Texas A & M operates the only school in the state which allows students to set fire to its buildings. The students don't take their work lightly, however. It's part of their training to become better firemen.

Fire Chief Guy Robertson, Ira J. Carmack, and Jim Hutcherson of the Eastland Fire Department attended the Fireman's School held at Texas A&M in July.

well as the latest fire fighting techniques.

Students practice what they have learned on a 25 acre training site under realistic conditions.

Although some of the students are rookies, many fire chiefs return year after year for refresher courses, Henry D. Smith, chief of the school, reports.

Training is conducted under auspices of the Firemen's and Fire Marshals' Association of Texas.

CISCO TRANSFER

And
STORAGE

15 E. Main
Phone MAIN 9-2044

Local and long distance moving
Office and Trucks in Eastland

Call for Appointments

on Wash - Grease

Oil Changes

ROLLINS & SONS

GULF SERVICE

500 W. MAIN
MAIN 9-8840

We Give S&H Green Stamps

A&P MONEY-SAVING MID-MONTH COFFEE SALE!

1-LB. BAG - NOW	Rich and Full-Bodied	1-LB. BAG - NOW	Vigorous and Winey	1-LB. BAG - NOW
49¢	55¢	55¢	59¢	59¢

JANE PARKER FRUIT CAKES

RED CHERRIES 1 1/2 - lbs. \$1.49

MIXED FRUIT CUT 3 lbs. \$2.89

WHITE PINEAPPLE 5 lbs. \$3.99

SURF Detergent 59¢

TEA BAGS 95¢

AP

Potatoes 10 Lb. Bag 49¢

Cabbage 5¢

Red Delicious Apples 2 Lbs. 25¢

Cucumbers Each 4 for 19¢

EGGS 3 Doz. \$1.00

POTATOES 3 15-oz. Cans 25¢

TOMATOES 3 13 1/2-oz. Glass 19¢

PINEAPPLE 10¢

Ground Beef 3 lbs. \$1.00

SLICED BACON 1-lb. 49¢

PORK ROAST 3-lb. 35¢

RIB STEAKS lb. 79¢

CORNISH HENS 39¢

BOLOGNA 29¢

BACON 79¢

NEW BLUE RIBBON MILK

Buttermilk 48¢

Skim Milk 48¢

SULTANA SALAD DRESSING 1/2-Gal. 69¢

ANN PAGE STRAWBERRY PRESERVES 2-lb. 69¢

ANN PAGE TOMATO SOUP 3 10 1/2-oz. Cans 29¢

ANN PAGE BLENDED SYRUP 1-pt. 8-oz. 49¢

ANN PAGE TOMATO KETCHUP 2 14-oz. Btls. 33¢

A&P FLAVORFUL INSTANT COFFEE 10-oz. 99¢

FLEISCHMANN'S REGULAR CORN OIL MARGARINE 1-lb. 39¢

Prices Good Thru Nov. 16, 1963

Clip These Coupons

100 Extra Plaid Stamps

With this Coupon and Purchase of A BOTTLE OF 60 VITAMINS ONE-A-DAY \$1.96

100 Extra Plaid Stamps

With this Coupon and Purchase of LUSTRE CREME LIQUID SHAMPOO \$1.19

100 Extra Plaid Stamps

With this Coupon and Purchase of COLGATE ADULT TOOTH BRUSH Each 89¢

50 Extra Plaid Stamps

With this Coupon and Purchase of OUR OWN INSTANT TEA 3-oz. 69¢

50 Extra Plaid Stamps

With this Coupon and Purchase of FLOOR CLEANER AND POLISH DRI-BRITE 1-pt. 11-oz. 98¢

50 Extra Plaid Stamps

With this Coupon and Purchase of ANN PAGE GROUND PAPRIKA 4-oz. 45¢

25 Extra Plaid Stamps

With this Coupon and Purchase of ANN PAGE BROAD, FINE OR EXTRA WIDE NOODLES 1-lb. 35¢

25 Extra Plaid Stamps

With this Coupon and Purchase of WHITE HOUSE NON-FAT DRY - 8-QT. INSTANT MILK 1-lb. 9 3/5-oz. 63¢

25 Extra Plaid Stamps

With this Coupon and Purchase of A&P YELLOW POPCORN 2-lb. 25¢

LUX LIQUID 1-pt. 6-oz. 61¢

LUX SOAP 2 Reg. Bars 21¢

LUX SOAP 2 Bath Bars 29¢

LIFEBOUY 2 Reg. Bars 23¢

LIFEBOUY 2 Bath Bars 33¢

PINK SWAN LIQUID DETERGENT 12c Off Label 77¢

CHICKEN BREASTS 5-lb. Box \$2.29

PORK SPARE RIBS 3 to 5-lb. Average 29¢

CHUCK ROAST lb. 55¢

You Couldn't Pick a Better Time -

... than right now, in the midst of rapidly changing values and creeping inflation, to have your insurance needs and present coverages carefully surveyed and accurately appraised. Are you carrying too much insurance, too little or none at all? Are you sure your policy covers what you think it does? A survey by this agency might be enlightening and help you to get more out of your insurance dollar. There is no obligation. The service is free.

EARL BENDER & COMPANY

Eastland, (Insurance since 1924) Texas

Clip-On Heater

BY **Dearborn**

Hangs On Wall - Saves Floor Space

Small in size, large in heating ability. Features Dearborn's exclusive Cool Safety Cabinet and Forward Heat Flow. Economical to operate. Can be installed in minutes. Available in 10, 18, and 25 thousand BTU's.

Free Delivery
Free Installation
From 19.95

Coats FURNITURE

RCA VICTOR DAYS

FREE! WHEN YOU BUY THIS

5 DYNAGROOVE STEREO RECORDS
Top Stars! 54 Selections

RCA VICTOR PORTABLE TV

159.95

STEREO with FM-AM and FM Stereo Radio

Robertson TV Sales & Service
EASTLAND

COUNTY HD CLUBS HAVE ANNUAL ACHIEVEMENT DAY

The Home Demonstration Clubs of Eastland County held their annual Achievement Day in the First Christian Church Annex, in Eastland, on November 6, 1963. Exhibits, made by the club members during the year, were displayed during the day, and a bake sale was held during the morning.

A covered dish luncheon was served at noon with several special guests and the club members attending. Following the luncheon, the regular meeting of the Home Demonstration Council was held.

Approximately 90 club members attended the event. The public also viewed the exhibits during the day.

The winners, in each exhibit, were announced during the regular Council meeting as follows:

EDUCATIONAL EXHIBITS: 1st. Lake Cisco H.D. Club ("Overweight"); 2nd. Olden H. D. Club ("Up-Dating A Garment"); and 3rd. North Star H. D. Club ("Grooming");

REPORTERS BOOKS: 1st.

Olden H. D. Club, 2nd. Word H. D. Club, and 3rd. Flatwood H. D. Club;

COOKIES: 1st. Mrs. C. T. Brockman, Morton Valley H. D. Club, 2nd. Mrs. Lon Horn, Flatwood H. D. Club, and 3rd. Mrs. Dick Yielding, Flatwood H. D. Club;

APRONS: 1st. Mrs. Jack Knox, North Star H. D. Club, 2nd. Mrs. Lon Horn, Flatwood H. D. Club, and 3rd. Mrs. A. H. Brown, Flatwood H. D. Club;

CRAFTS: 1st. Mrs. Jessie McKeivain, Olden H. D. Club, 2nd. Mrs. Dick Yielding, Flatwood H. D. Club, and 3rd. Mrs. W. Ballinger, Flatwood H. D. Club;

NEEDLEWORK: 1st. Mrs. H. Lawrence, Olden H. D. Club, 2nd. Mrs. Cora Plumley, Word H. D. Club, and 3rd. Mrs. Jack Lusk, Flatwood H. D. Club;

CANNED GOODS: A. Fruits and Vegetables, 1st. Mrs. H. L. Short, Word H. D. Club, 2nd. Mrs. Joe Bond, Morton Valley H. D. Club, and 3rd. Mrs. Jack Lusk, Flatwood H. D. Club; B. Jams, Jellies and Pre-

Staff News

Mr. and Mrs. John White of Odessa visited his sister, Mrs. O. T. Hazard and his brother and sister-in-law, Mr. and Mrs. Wayne White the last weekend in October and gathered with Mrs. White's brother and sisters, Mr. and Mrs. F. S. Crawley, Mr. and Mrs. Jake Crawley and others of the family at their sisters, Mrs. Letha Rogers, for a surprise birthday party in her honor.

Mr. and Mrs. R. C. Reeves and family recently visited his

services, 1st. Mrs. Joe Bond, Morton Valley H. D. Club, and 2nd. Mrs. Marguerite Reger, Word H. D. Club;

C. Pickles and Relishes, 1st. Mrs. Joe Bond, Morton Valley H. D. Club, 2nd. Mrs. H. L. Short, Word H. D. Club, and 3rd. Mrs. Marguerite Reger, Word H. D. Club.

Cash prizes were given to the winners, as well as their ribbon. The Olden Home Demonstration Club received the prize for the most new members during the year, with seven new members.

mother, Mrs. Cox, who is confined in the rest home in Haskell.

Miss Annie Parson, was a business visitor in Eastland last Friday.

Mr. and Mrs. Wynn of Fort Worth are visiting his cousin, Mrs. M. A. Abel, for several days.

Those who visited in the home of Mr. and Mrs. T. E. Pope, October 28, when they celebrated his 80th birthday, were his sons, Mr. and Mrs. Dale Pope and family of Eunice, New Mexico, Mr. and Mrs. Royce Pope and family of DeLeon, his sister and sister-in-law, Mrs. Raymond Rogers and Mrs. Minnie Poe of Anson, his niece, Mrs. Walter Mitchell of Strawn, and Mr. and Mrs. Gid Blackwell of Cheaney and others.

Mrs. M. A. Abel attended a homecoming in Woodson Saturday. She formerly lived there.

Mrs. O. T. Hazard attended the funeral of Mrs. Jess Hendricks in Ranger Saturday at the funeral home. Mrs. Hendricks formerly lived here.

Rev. Lively Brown and family of Georgetown were out at their lake side home (Staff Village) Saturday and Saturday night.

MD Drive Is Set For November 18

It is again time for the Volunteer Firemen's March for Muscular Dystrophy. The drive will be held Monday night, November 18, at 7 p. m. The firemen will be assisted by Boy Scouts of Troops 10 and 6.

The cause and a cure for MD is still unknown. One breakthrough was discovered last December, but is one of only temporary arrest. This is felt to be an important step, and research is continuing.

Men of science and a sizable segment of the nation's citizens have joined together in the conquest of this dread disease that is one of the greatest challenges in medical history. There are approximately 200,000 victims of this disease.

Muscular Dystrophy is a chronic disease of the muscles. It is manifested by a gradual weakening of the voluntary muscles. Once the disease starts, it follows a steady downhill course.

Your contributions will be to help the continuation of research and for patient service. Please give!

MAVERICK BAND TO MARCH IN CONTEST AT SAN ANGELO

The Eastland High School Maverick Band will be among more than 50 West Texas High School bands competing in Region II University Interscholastic League marching contests Saturday at San Angelo Public Schools Stadium.

Each band will have eight minutes to perform on the stadium's football field. Using less than five or more than eight minutes will bring an automatic penalty.

Bands must report to an inspection area 30 minutes before scheduled to march. The Maverick band members plan to leave Eastland at 6 a. m. Saturday and return around 10 p. m.

Class CCC competition for junior highs will open the schedule. Opening at 9 a. m. will be San Angelo's Edison Junior High. Following in order, at eight-minute intervals, will be Robert E. Lee of San Angelo, Reagan of Sweetwater, and Madison, Franklin, Mann, Lincoln and Jefferson, all of Abilene.

Lamar and Travis Junior highs of Snyder, the only Class CC entries, will march at 10:04 and 10:13 A. M., respectively.

Class B competition will begin at 10:20 A. M. when Bron-

te High School takes the field. At eight-minute levels, others in Class B include Roby, Loraine, Trent, Moran and Rochester.

Jim Ned High of Tuscola will lead off Class A contests at 11:08 a. m. Others in order, scheduled at eight minute intervals, are Roscoe, Merkel, Rotan, Baird, Santa Anna and Eldorado.

Following a lunch break, Ozona High will resume Class A competition at 1:28 p. m. Following will be Ranger, Albany, Eastland, Early of Brownwood, Clyde, Goldthwaite and Cross Plains.

Ballinger's Bearcat Band will kick off Class AA competition at 2:32 p. m. Others, in order, will be Winters, Coleman, Dublin, Brady, Mason, Comanche, Hamlin, Haskell and Cisco.

Breckenridge High opens Class AA events at 3:52 p. m. to be followed by Lake View of San Angelo, Brownwater, Newman of Sweetwater, Colorado City, Snyder and Stephenville.

San Angelo Central marches at 4:48 p. m. in Class AAAA, to be followed by Cooper and Abilene highs at 4:56 and 5:04 p. m., respectively.

Arthur Dies In Nursing

A retired Ranger resident six years, Arthur died at 6:55 M. in the Sunrise Home in Eastland.

Retired Baptist C. Edmonds held funeral services Wednesday in Killingsworth Chapel.

Mr. Lockhart in Hamilton moving to the community in 1963. He was married in 1925 and had three children.

Survivors include Mrs. Harry Eger; a half sister, Stewart of Los Angeles; and a nephew, Mr. Lockhart.

Palmetto paid to most of the funeral expenses.

Approximate the Angora are in Texas.

WE GIVE GOLD BOND STAMPS

Dollar Days

FEATURING WHITE SWAN FINER FOODS!

- WHITE SWAN Pork and Beans 10 1/2-Oz. Cans \$1.00
- WHITE SWAN Ketchup 3-Quart Jars \$1.00
- WHITE SWAN Golden Cream Style Corn 7-3oz. Cans \$1.00
- WHITE SWAN Tomato Juice 4-4oz. Cans \$1.00
- WHITE SWAN Choice of Grinds COFFEE 1-Pound Canister 59c
- RATH BLACK HAWK SLICED BACON . . . lb. 49c
- RATH RACORN SLICED BACON . . lb. 39c
- RATH BLACK HAWK Pure Pork Sausage . lb. 39c
2 lbs. 75c
- RATH BLACK HAWK WEINERS pkg. 39c
- Rath Black Hawk, Fully Cooked Ready to Eat
- HAM 3 lb. can \$2.79

- WHITE SWAN Chunk Style Light Meat Tuna 4 Reg. Cans \$1.00
- WHITE SWAN All Green Cut Asparagus 5 1/2-Pkgs. \$1.00
- WHITE SWAN Whole Blue Lake Green Beans 4-3oz. Cans \$1.00
- WHITE SWAN Whole or Strained Cranberry Sauce 5-16-Oz. Cans \$1.00
- WHITE SWAN or SNOWDRIFT SHORTENING 3-Pound Can 55c
- WHITE SWAN Luncheon Peas 6-3oz. Cans \$1.00
- WHITE SWAN Fruit Cocktail 5-3oz. Cans \$1.00
- WHITE SWAN Sliced or Halves Peaches 4 No. 2 1/2 Cans \$1.00
- WHITE SWAN Luncheon Meat 3-12-Oz. Cans \$1.00
- WHITE SWAN Peach, Apricot or Pineapple Preserves 3-18-Oz. Tumblers \$1.00

WHITE SWAN Tea Bags 5c
8-Count Box

WHITE SWAN TOMATO CATSUP 6 \$1.00
14-Oz. Bottles

- PRICES GOOD THROUGH SATURDAY, NOVEMBER 16
- BANQUET Frozen Assorted DINNERS 11-Oz. Package 39c
 - Beef Tacos EL CHICO Frozen 13-Oz. Package 49c
 - Strawberries CAL-TREAT Frozen 10-Oz. Package 19c
 - French Fried Potatoes SOMERDALE Frozen 10-Oz. Package 25c
 - Planter's Mixed Nuts 13 1/2-Oz. Can 79c
 - Gaines-Burgers Dog Food 18-Oz. Package 45c
 - Tang Instant Breakfast Drink 7-Oz. Jar 39c
 - Nine Lives Cat Food 2-6-Oz. Cans 29c

GLADIOLA ALL PURPOSE or SELF-RISING FLOUR 5-Pound Bag 43c

GLADIOLA ALL PURPOSE or SELF-RISING FLOUR

- MCCORMICK Poultry Seasoning 7-8-Oz. 19c
- MCCORMICK Black Pepper 4-Oz. 37c
- MCCORMICK Pumpkin Pie Spice 1 1/2-Oz. 27c
- NONE SUCH Mince Meat 9-Oz. 29c
- Cereal Post Toasties 12-Oz. Box 29c
- Cereal Crispy Critters 8-Oz. Box 33c
- SUNSHINE Hi-No Crackers 10-Oz. Box 29c
- DROMEDARY Pitted Dates 8-Oz. Package 27c

Oxydol Detergent Giant Box 77c

Dash Detergent Giant Box 75c

SWANSDOWN Layer CAKE MIXES Assorted Flavors Reg. Box 29c

SUPER SAVINGS ON HEALTH and BEAUTY AIDS!

STYLE HAIR SPRAY Plus Tax 69c
Reg. \$1.19 Size

Prell Shampoo Reg. 49c
Arid Deodorant Reg. 49c
St. Joseph's Aspirin Reg. 49c

DECKER'S Hickory Smoked PICNICS 27c
6 to 8-Pound Average Pound

BABY BEEF CLUB STEAK 1 lb. 89c

BABY BEEF LOIN STEAK 1 lb. 89c

Russet Potatoes 10 Lbs. 49c

MacMoys SUPER SAVE Home Owned—Home Operated 400 S. Seaman

Extra Fancy Washington Red Delicious Apples 1 lb. 15c

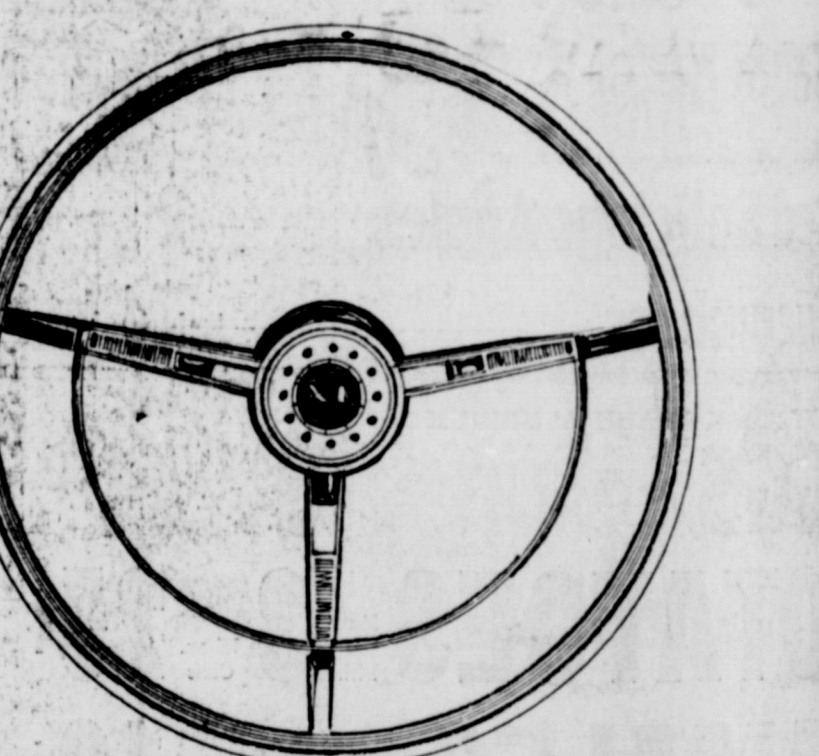
It's low... it's lovely... it's Dearborn

with the famous Cool Safety Cabinet

The Dearborn Crest blends into all decorative schemes. Because of the Cool Safety Cabinet, you can use it as an extra table... put books, ash trays, even a potted plant on top! Newly designed Glo-Brite radiants, Forward-Flow Circulation, and improved, original features provide better heating for your home!

...that's why Only a Dearborn will do!

WESTERN AUTO ASSOCIATE STORE
Corner Commerce & Lamar



Lie Detector

(now in operation at your Ford Dealer's)

To people who don't believe in hollow claims we Ford Dealers issue a special invitation!

Everybody claims their cars are the smoothest, most thrilling, best handling. But ours are! To prove the truth of this, test-drive them!

Take the wheel of a '64 Ford and discover a new breed of ride, ruggedness and response that will convince you better than any words we might say. Enjoy a few delicious moments of truth... today!



HOOD KING MOTOR CO.
108 E. Main EASTLAND

SAFEWAY

13,000 WINNERS IN "THE PRICE IS RIGHT"

at **SAFEWAY...**

THE BRIGHTEST, NEWEST FUN GAME OF THE YEAR —

Redeem Your PROCTER & GAMBLE COUPONS at SAFEWAY On OXYDOL, DASH and GLEEM TOOTH PASTE

- ★ Over 13,000 Winners
- ★ You May Win \$500⁰⁰

1 WIN \$100⁰⁰ CASH

When you have collected cards with all four words "The" "Price" "Is" "Right" bring them to Safeway for your \$100.00 Cash Prize. Don't forget each card can be a Jackpot winner.

2 WIN MERCHANDISE

If the card you have is a merchandise winner, the item will appear below the "TV Big Winner Number."

3 WIN BONUS PRIZE!

Each card contains a "TV Big Winner Number." Any and all cards can be played against any "TV Big Winner Number." If you have a number that matches exactly the amount won by the show's big TV winner, which will be announced by Bill Cullen at the end of the program, bring the card to Safeway and you may win up to \$500.00 CASH. Save all "The Price Is Right" cards and play each week for the duration of the game. Winning number will be posted each week at Safeway, in case you miss the TV show.

Rules: Pick up your FREE Game card at Safeway. No Purchase required. One FREE card per store visit to adults only. Purchasers not favored. No need to pass through a checkstand. Secure your free card at either end of checkstand or from any store employee, other than in Meat Department.

BIG WINNERS IN "THE PRICE IS RIGHT"



\$100.00 WINNER WILLIE CLEMMERS, JR. 2502 SE. 15th STREET MINERAL WELLS

- 2 Bath Bars 29¢
- 2 Bath Bars 33¢
- 32-Oz. Can 71¢
- 12-Oz. Plastic 35¢
- 12-Oz. Plastic 35¢
- 2 80-Ct. Pkg. 29¢
- 4 Roll Pkg. 37¢

Surf All-Purpose Detergent. (White Magic Detergent... Giant Box 53¢)

Enriched Flour Kitchen Craft All-Purpose. 10-Lb. Bag 75¢

Baby Food Gerber's Fruits and Vegetables. Strained for easy feeding. 6 4 1/2-Oz. Jars 59¢

Cling Peaches Highway Brand. Yellow Cling Slices or halves. 4 No. 2 1/2 Cans \$1.00

- 24 Oz. Box 35¢
- 19 Oz. Box 27¢
- Large Box 28¢
- Large Box 27¢
- Large Box 25¢
- Large Box 28¢
- 28 Oz. Bottle 69¢

'A' Eggs 39¢

Bakery Specials!

Meat Bread 19¢

Rolls 31¢

Rolls 23¢

Toastin' Bread 25¢

Facial Tissue Truly Fine. White or assorted colors. 2 400-Ct. Boxes 39¢

Apple Jelly Empress. Pure, full flavor. Made from the finest fruits. 3 20-Oz. Jars \$1.00

THE LIFE BOOK OF CHRISTMAS

Vol. Three "The Merriment of Christmas" \$1.49 Each

Complete Set 3 volumes, plus Hi-Fi Record. \$5.96

INDIVIDUAL BOOK OR RECORD... \$1.49 Each

Ham Corn 79¢

Sauce 49¢

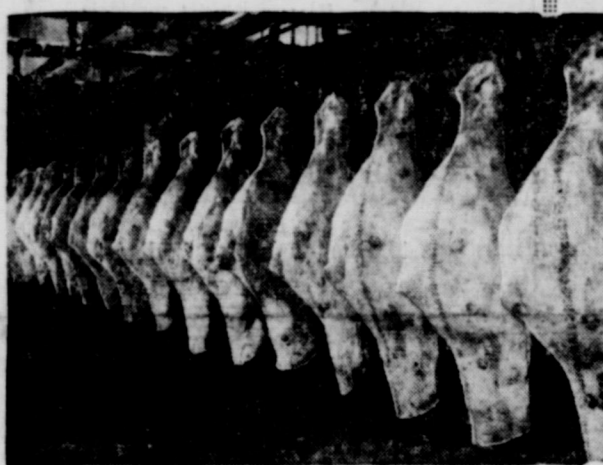
Meals 49¢

Meals \$1.00

Safeway Guarantee!
Every item at Safeway is sold on a Moneyback Guarantee. This means the full purchase price will be cheerfully refunded on any item that does not give you complete satisfaction. Shop Safeway with Confidence!

This Coupon Worth 100 FREE GOLD BOND STAMPS
Plus your regularly earned Gold Bond Stamps with the purchase of 6-Lb. Armour's Star CANNED HAM
Coupons Expire November 16, 1963.

This Coupon Worth 100 FREE GOLD BOND STAMPS
Plus your regularly earned Gold Bond Stamps with the purchase of 12-Oz. Jar AIRWAY INSTANT COFFEE
Coupons Expire November 16, 1963.



Pork Roast 35¢

Other Meat Values!

Canned Ham \$4.99

Armour's Star, Pear Shape Boneless, No-Waste. 6-Lb. Can

Folger's Coffee 69¢

All Grinds. (2-Lb. Can... \$1.37) 1-Lb. Can

Nescafe Instant Coffee 75¢

The all-coffee. 6-Oz. instant coffee. Jar

Prices Always Right on Safeway Produce!

Lucerne Tortillas 15-Count Package. Always Fresh. 9-Oz. Pkg. 15¢

Party Dips 29¢

Lucerne. * Bacon and Horseradish * French Onion * Chili Bean 8-Oz. Ctn.



Delicious Apples 15¢

Red Delicious. Washington State. Extra Fancy. Perfect for school lunches. Lb.

Texas Yams 29¢

U.S. No. 1. 2 Lbs.

Cucumbers 5¢

U.S. No. 1. Each

Celery Hearts 29¢

U.S. No. 1. 2-Ct. Pkg.

Mexican Hamlin

Oranges 25¢

U.S. No. 1. Prime source of Vitamin C. Lbs.

Prices and Coupons Effective Thurs., Fri. and Sat., Nov. 14, 15 and 16, in Eastland

We Reserve the Right to Limit Quantities. No Sales to Dealers.



SAFEWAY

Chuck Roast 39¢

Baby Beef. So economical and nutritious. Serve roast for Sunday Dinner. (Arm Roast Baby Beef. Lb. 49¢) Lb.

Round Steak 69¢

Or Sirloin Steak. Baby Beef. Serve either of these delicious steaks often. Lb.

T-Bone Steak 79¢

Baby Beef. Broiled or grilled... It's always a favorite. Lb.

Short Ribs 29¢

Or Brisket. Baby Beef. Perfect for braising. Lb.

Rump Roast 69¢

Baby Beef. A grand main course. Lb.

Chuck Steak 49¢

Baby Beef. Shoulder Chuck Steak. Lb.

Rib Steak 69¢

Baby Beef. Economical, tender, tasty. Lb.

More Values!

Instant Rice 39¢

Town House. Easy to prepare. Fluffy and tender. 14-Oz. Box

Parkay Margarine 27¢

Contains liquid vegetable oil. 1-Lb. Pkg.

Starkist Tuna 91¢

Chunk Light Meat. Perfect for quick snacks. 3 cans

Planter's Peanuts 39¢

Cocktail Peanuts. (13 1/2-Oz. Can... 89¢) Can

This Coupon Worth 50 FREE GOLD BOND STAMPS
Plus your regularly earned Gold Bond Stamps with the purchase of 10-Lb. Bag U. S. No. 1 RUSSET POTATOES
Coupons Expire November 16, 1963.

This Coupon Worth 50 FREE GOLD BOND STAMPS
Plus your regularly earned Gold Bond Stamps with the purchase of 4-Oz. Can Crown Colony Ground PURE BLACK PEPPER
Coupons Expire November 16, 1963.

This Coupon Worth 50 FREE GOLD BOND STAMPS
Plus your regularly earned Gold Bond Stamps with the purchase of 2-Lb. Carton LUCERNE COTTAGE CHEESE
All Styles
Coupons Expire November 16, 1963.

COURT OF CIVIL APPEALS

The following proceedings were had in the Court of Civil Appeals, Eleventh Supreme Judicial District of Texas:

Reversed and Remanded

Kermit Wholesale Lumber Company, Inc. v. Billy Stanfield. (Opinion by Judge Collings.)

Robert H. Bowyer v. Levy's of Tucson. (Opinion by Judge Collings.)

Reversed and Remanded with Instructions

Odell Nelson et al v. Manuel Enriquez. (Opinion by Judge Walter).

Motions Submitted

Callihan Interests, Inc. et al v. Natalie K. Halepeska et al. Appellants' motion for oral argument.

Virgil C. Moore v. Marie E. Mathis et al. Appellant's motion to stay issuance of mandate.

C. W. Newsom v. Minnie L. Newsom. Appellee's motion for rehearing.

Ima Ruth Adams et al v. Calvin Truett Simmons et al. Appellants' motion for extension of time to file briefs.

Motions Granted

Virgil C. Moore v. Marie E. Mathis et al. Appellant's motion to stay issuance of mandate.

Ima Ruth Adams et al v. Calvin Truett Simmons et al. Appellants' motion for extension of time to file briefs.

Motions Overruled

Callihan Interests, Inc. et al v. Natalie K. Halepeska et al. Appellants' motion for oral argument.

C. W. Newsom v. Minnie L. Newsom. Appellee's motion for rehearing.

Kimmell Is New Livestock Raisers Ass'n. President

Sam Kimmell, Cisco, was recently named as President of the Eastland County Livestock Raisers Association. The new president who ranches in both Eastland and Stephens County, replaces Ross Wilson, Gorman, prominent Hereford breeder.

Glyn Gilliam, Eastland banker, with ranching interests in the Waco area, was named Vice-President. Gilliam has been serving as vice-president for the past year. He will continue as a director.

Bob Green, Gorman was named as secretary. C. M. McCain, Eastland rancher who has served as treasurer for many years was re-named to the same post.

New directors include Don Bradford, Dr. John Foster and Norman Richardson, Ranger; Robert Kincaid, Morton Valley and from Cisco, Ervin Phippen, Gaston Boyd and Gene Agnew.

Holdover directors from the Cisco area include Tom Toland, Walter Kurklin and Park Plambeck; Grover Mosier, Carbon; E. C. Bramlett, Ed Harrison and Ross Wilson,

Gorman; Keith McDonald and B. S. Dudley, Jr., Ranger; C. E. Bridge, Desdemona; Gilbert Copeland, Olden; H. L. Gey, George Steel and Joe Criswell, Rising Star; W. L. Sims, J. M. Cooper, Roger Blackmon, Pete Tindall, Brandy Humphreys, Bernard Hanna, Raymond Beck, Ben McKinnis and Waverly Massengale of Eastland.

The date for the annual three day livestock show next spring was set for March 12, 13 and 14th.

Parks & Wildlife Reports On Deer In Edwards Area

Demonstrating the services performed by the State Parks and Wildlife Department is a report just released on the deer population in the Edwards Plateau.

The report is as follows: Rod Marburger, Wildlife Biologist, reports that the recent deer census indicates an overall increase in the deer population for the 21 county Edwards Plateau District. Of particular interests was the high Fawn production, which ran as much as 97 per cent of the total population in one county.

Because of the findings during this years census, antlerless deer hunting permits are being issued for the 196 hunting season in greater numbers than were issued for the 1962 season. Some new areas are expected to be added to areas which were hunted last year.

Marburger also reports the deer generally will reach the hunting season in only fair condition. Many deer in the granite county, where the dry weather was prevailed over most of the growing season, are in less desirable condition than those in the limestone area. If the drought continues over the region the deer will very likely suffer extreme losses from cold weather and development is better in most areas this year because of early spring rains that provided food during the time antlers were developing. Antlers were already formed when dry weather started.

It is interesting to note that the highest increase in the fawn crop in 1963 occurred in Llano, Gillespie and San Saba Counties, where die-offs occurred in 1962. This shows the ability of deer to bounce back after the population has been reduced.

Wider Bridges Being Made In State Program

AUSTIN — The headlights of two automobiles hurtling toward each other at an aggregated 140 miles an hour pierce the night on a lonely stretch of highway in East Texas. The beams fuse momentarily at the center of a bridge as each car inches to the right. Meeting at the bridge, the cars whoosh by one another without incident.

Run-of-the-mill as such an episode may seem — it occurs thousands of times each day and night — an accident has nevertheless been prevented. It has been prevented by the widening of the bridge to allow cars an additional measure of meeting room.

The widening of narrow bridges, and many another measure to make Texas highways safer, is part of the State Highway Safety and Betterment Program of the Texas Highway Department. In a relatively unsung way, the program accounts for the saving of many lives on Texas highways every year.

A \$20 million installment in this program to make \$4.5 billion worth of existing Texas highways better and safer was approved today by the Texas Highway Commission.

The Commission authorized the \$20 million expenditure during the coming year to improve about 2,300 miles of U.S. and State highways under the 1964 State Highway Safety and Betterment Program.

For safety and convenience, the annual program systematically upgrades the 65,000 mile Texas highway network, construction of which has cost \$4.5 billion since the Highway Department's inception in 1917.

Work will be done on about 45 projects in some 150 Texas counties in the 1964 program. The projects include such improvements as reconstruction, resurfacing, widening of traffic lanes, replacement and widening of bridge and drainage structures and approaches, base strengthening, and rebuilding of shoulders.

Such items are counted a significant factor in a decrease of more than 25 per cent in the fatality rate on primary highways in Texas during the last decade.

Hereford, Texas, is known as the "town without a toothache" because of the flourish in its water.

Unusual, but not extreme
Lavish, yet budget-priced



MASTERPIECE
personalized
CHRISTMAS CARDS

Eastland Telegram



THE INDEPENDENT AGENT IS ON YOUR SIDE

Your local independent insurance agent is free to recommend insurance coverage which gives you the exact protection you need... sound protection at the most economical cost — without obligation to any one insurance company.

If you have a loss, or claim, he's nearby to help you... he is on your side to see that you get prompt and fair payment. He cuts through red tape and expedites details.

Your best assurance of being correctly and economically insured is through your Local Independent Agent who represents one or more companies of The MILLERS Insurance Group of Texas.



The Millers
Insurance Group OF TEXAS

The Millers Mutual Fire Insurance Company of Texas
The Millers Casualty Insurance Company of Texas
The Millers Life Insurance Company of Texas

HOME OFFICE FORT WORTH, TEXAS, SINCE 1898
MILLERS INSURANCE AVAILABLE LOCALLY FROM

EASTLAND INS. AGENCY
514 W. Main Street

Compare for yourself... If you can find a better diamond ring value than this gorgeous Encore... take it!



FULL CARAT
OF DIAMONDS...
(\$1000 weight)
\$275.00

Breathtaking beauty... in this exciting 7-diamond wedding set... distinctively crafted in original 14k gold setting.

Encore
by the makers of STARFIRE Diamond Rings

1/3 Carat \$107.50
3/4 Carat \$212.50

Congratulations to Ranger Junior College!

D. E. PULLEY JEWELRY
203 MAIN — RANGER, TEXAS

Valiant/64 style



With all the compacts there are around to choose from in 1964, isn't it nice for you that one of them has earned the name "the best all-around compact"? Makes your choice easy. Makes your driving comfortable and economical, too. All you have to do is select the model and color Valiant that appeals to you the most. Come in and make your deal on a 1964 Valiant today!

HERE'S HOW YOU ARE PROTECTED BY VALIANT'S 5-YEAR/50,000-MILE ENGINE AND DRIVE TRAIN WARRANTY. Chrysler Corporation warrants for 5 years or 50,000 miles, whichever comes first, against defects in materials and workmanship and will replace or repair at a Chrysler Motors Corporation Authorized Dealer's place of business, the engine block, head and internal parts, intake manifold, water pump, transmission case and internal parts (excluding manual clutch), torque converter, drive shaft, universal joints, rear axle and differential and rear wheel bearings of its 1964 automobiles, provided the owner has the engine oil changed every 3 months or 4,000 miles, whichever comes first, the oil filter replaced every second oil change and the carburetor air filter cleaned every 6 months and replaced every 2 years, and every 6 months furnishes to such a dealer evidence of performance of the required service, and requests the dealer to certify (1) receipt of such evidence and (2) the car's then current mileage.

Best all-around compact!

Rushing Motor Company
215 South Seaman
Blevins Motor Company
514 W. Main

HAMNER FUNERAL HOME
Ben E. Hamner, Owner

Serving Eastland County since 1915. Ambulance and funeral service. Our ambulances are oxygen equipped and air conditioned. Through our nation-wide connections with other funeral directors, we can handle any funeral from any point in America. We offer the assurance of knowing that we can relieve the family of the burdens incident to any death away from home.

Eastland Dial MA

SERVICE



Service for all makes... Lubrication specialists (wheel pack, U-joint pack, etc.) Make our station your auto service center — whether you drive an old or a new automobile.

McCRACKEN'S MOBIL SERVICE STATION
BOB HOGAN, Mgr.
302 W. Main — MA 9-2220

WE GIVE GOLD BOND STAMP

SALE

SALE

GAS RANGE DEALER FAIR



Caloric
Model C56CT

NOW \$195
you'll save \$34.50

What a price! — the lowest possible on this feature-packed, top quality Gold Star Award gas range. Caloric new Compact is a full 36 inches wide and offers cooking conveniences for the money than other comparably priced ranges... including the Keep-Warm oven with the new 140° temperature setting. Keeps serving-hot for hours without over-cooking or drying out. Burner-with-a-Brain makes all your pans automatically clean. Removable oven and broiler doors simplify cleaning. Spacious storage compartment, handsome clock and control center and easy-to-clean porcelain finish are available in pink, yellow, turquoise, copper-tone or chrome at slight additional cost.

BUY NOW AND SAVE

LONE STAR GAS COMPANY

TO THE MAVERICKS . . . WE'RE BEHIND YOU ALL THE WAY

EASTLAND vs CLYDE

FRIDAY NIGHT, 7:30 P. M., THERE

MAVERICK 1963 SCHEDULE

Oct. 6 — Eastland 12, Comanche 7
 13 — Open date
 20 — Eastland 13, Cisco 34
 27 — Eastland 39, Gorman 0
 Nov. 4 — Eastland 33, Rising Star 6
 11 — Eastland 30, De Leon 8
 18 — Eastland 0, Baird 6
 25 — Eastland 0, Albany 40
 Nov. 1 — Eastland 48, Cross Plains 0
 8 — Eastland 14, Ranger 16
 15 — Clyde, here *

District Games
 District Games at 8 p. m.
 District Games at 7:30 p. m.



SHARON WILSON, Head Cheer Leader
 Judy Phillips, Sherry Butler, Sue Underwood
 Jill Price and Guylynn Quinn,

MAVERICK ROSTER

E	Jim Wright	178	Senior
E	Stanley Underwood	150	Junior
E	Norman Rhodes	140	Junior
E	Mickey Sargent	140	Junior
T	David Taylor	170	Junior
T	Dan Phillips	165	Junior
T	Mike Jones	170	Junior
G	Bill Garner	155	Senior
G	Don Griffin	165	Junior
G	Wayne Waldon	155	Junior
B	Jim Moylan	205	Senior
B	Joe Cooper	160	Senior
B	Gaylon Griffin	140	Junior
B	Gary Graham	170	Senior
B	Mike Miller	140	Junior
B	Jerry McCullough	140	Soph.
C	David Hazard	150	Soph.
C	Gary Rollins	160	Junior



Phillips 66 Ser. Station
 W. Main — Phone MA 9-1644

EASTLAND SUPPLY CO.
 Oil Field Supplies
 15 E. Main — MA 9-1595

AND MRS. DON PIERSON

Perkins Implement Co.
 E. Main — Ph. MA 9-2666

Eastland Steam Laundry
 Owned — B. W. Lasater
 Ph. MA 9-2613

EASTLAND AUCTION CO.
 Hwy. 80 East — MA 9-1758

MODERN DRY CLEANERS
 Approved Sanitone Service
 10 S. Seaman — MA 9-1344

Mobil Oil Co.
Standlee McCracken
 Consignee

ROY'S REPAIR SERVICE
 Roy and Stella Gann
 205 S. Lamar — MA 9-2474

Hill Crest Food Market
 When you run out — run in
 1401 W. Main — Ph. MA 9-1600

Obie's Humble Service Station
 802 W. Main — MA 9-8866

Western Auto Associate Store
 J. L. Pittman, Owner
 Corner Lamar & Commerce
 Ph. MA 9-2011

Kinnaird Insurance
 and Real Estate Agency
 207 W. Main — MA 9-2544

Eastland Service Parts Co.
 112 E. Commerce — MA 9-1733

Majestic Theater

TOOMBS & RICHARDSON
Drug Store
 108 S. Seaman — MA 9-1475

Harelik's Department Store
 212 W. Main

QUARTERBACK CLUB

EASTLAND DRUG STORE
 201 S. Main — MA 9-2112

CENTRAL DRUG
 Free Delivery — Dale Troutt, Owner

ALTMAN'S
 "Smart Women's Wear"
 North Side of Square

Freyschlag Insurance Agency
 North Side of Square
 Ph. MA 9-2275

EMERGENCY PHONE NUMBER
 TO CONTACT
 MAVERICK STADIUM:
 MA 9-1678
 for Ten-Ten C. B. Club radio contact.



Texas Electric Service Co.
 F. N. Sayre, Mgr. — MA 9-2651

THE MEN'S SHOP
 Correct Styles for Men and Boys
 James Smith, Owner

CITY GARAGE
 J. J. Finley, Proprietor
 Engine, Starter, and Generator Work
 103 White St. — MA 9-1709

Eastland Memorial Hospital

Eastland National Bank
 "On the Square" — Member FDIC

Village Barber Shop
 George Carter

HOOD KING MOTOR CO.
 Ford Sales and Service—On the Square
 Phone MA 9-1786

Pools Dry Cleaners
 "City Wide Delivery"
 209 S. Lamar Ph. MA 9-2055

Graham's Trim Shop
 709 W. Main — Ph. MA 9-2266

Otis Coleman Humble Products
 400 E. Main St. — Ph. MA 9-8882

WHITE ELEPHANT CAFE
 724 W. Main — MA 9-8831

Texas Lightweight Aggregate Co.
 Producers of Concrete Aggregates
 C. W. Martin — Ph. MA 9-2060

Jordan's Drive In
 Hwy. 80 East
 Louise and Harry Jordan

Eastland Iron & Metal Co.
 Henry, Tillie and Saul Pullman

KOEN SALVAGE
 Your Scrap Iron and Metal Dealer
 Hwy. 80 West — MA 9-2649

B&W CLINIC
 H. J. Bulgerin, M. D.
 B. B. Alexander, M. D.
 310-30 Petroleum Bldg.

Rushing Motor Co.
 Herman Rushing — Bill Hunter
 Chrysler Products, Plymouth, Valiant
 215 S. Seaman — Ph. MA 9-2430

Goodyear Service Store
 Neal Edwards, Mgr.
 306 East Main — Ph. MA 9-2662

Dr and Mrs. M. A. Treadwell, Jr.

Earl Conner Jr.

Sheriff and Mrs. Lee Horn

H. R. (Pop) Garrett

CHAMBER OF COMMERCE
 Charles Terrell, Mgr.



SOUTHERN TELEVISION SYSTEMS CORPORATION
 CISCO — EASTLAND — RANGER — USE OUR TELEVISION CABLE FOR BETTER FOOTBALL VIEWING —

Courthouse Records

Oil & Gas Leases
Court Proceedings
Property Transfers
Marriage Licenses

Suits Filed
 Adrian Swindle vs. Pallack ow et al vs. Gorman Ind.

Paper Co., a corporation, damages.
 State of Texas vs. Southwestern Peanut Growers Assn. et al, a suit to escheat personal property and/or monies to the State of Texas said monies being held by Southwestern Peanut Growers Assn. et al.
 Mrs. Floy Morrison, a widow et al vs. Gorman Ind.

RAWLINS MONUMENTS
 SINCE 1888
 WEATHERED PHONE LY 4-2728

RANGER DRIVE-IN

HIGHWAY 80 EAST ON RANGER HILL

ADULTS 50c KIDDIES UNDER 11 FREE
 Box Office Opens 6:30 Show Starts 7:00

THURSDAY - FRIDAY - SATURDAY
 NOVEMBER 14 - 15 - 16

THE DEADLIEST OIL EMPIRE OF THEM ALL!!!
BLACK GOLD
 From WARNER BROS.

PLUS OUR SECOND FEATURE

Gay Purpée
 The voice of JUDY GARLAND
 IN WARNER'S ALL-ANIMATED PRODUCTION

and the voices of ROBERT GOULET • RED BUTTONS • HERMIONE GINGOLD • PAUL FREES

SUNDAY - MONDAY - TUESDAY
 NOVEMBER 17 - 18 - 19

THE YOUNG RACERS
 MARK DAMON • WILLIAM CAMPBELL • LUANA ANDERS — THE INTERNATIONAL PLAYGIRLS

School District, Gorman, Texas, et al, for Declaratory Judgment and injunction.

Gerald W. Gunn et ux and next Friend for Gerald Anthony Gunn, a minor, vs. Wallace Doyle Johnson, damages.
 A. W. Walden et ux vs. Joe Coats, damages.

Marriage License
 Leandrew Tyson and Lue Evelyn Washington.
 John Wesley Graham and Dianna Jean Robertson.

Probate
 Geddes E. Black to W. B. Wright, application to probate will.
 J. Joe Lawton to W. B. Wright and Joann E. Cochran, application to probate will.

Instruments Filed
 John J. Boen to Helen Coalson Boen, quit claim deed.
 Jimmie Bates et ux to James H. Parrack, warranty deed.

H. C. Bowers et ux to Higginbotham Bros. and Co., material Mechanics lien.
 T. E. Bucy to The Public, affidavit.

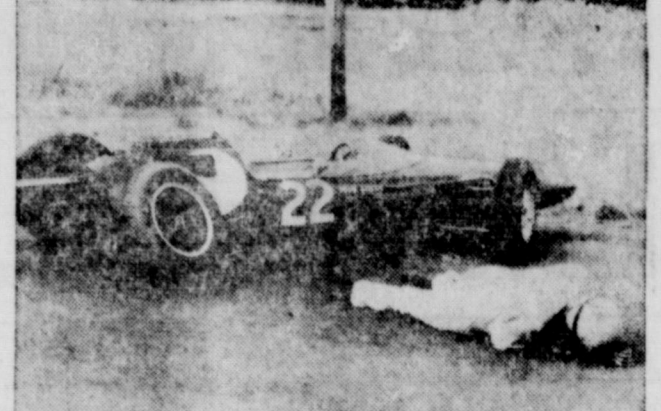
W. J. Britain et ux to C. M. Britain, mineral deed.
 A. P. Broiles et ux to E. J. Capers et ux, warranty deed.
 City of Cisco to H. A. Bible, cemetery deed.

City of Gorman to L. B. Richards, cemetery deed.
 Dewey Cox, Jr., to Lessie G. Chilton, quit claim deed.

Georgia Crossnoe to United Southern Contractor Inc., material mechanics lien and assignment.
 Celtic Oil Corporation to Lico Petroleum Corporation, quit claim deed.

Celtic Oil Corporation to Lico Petroleum Corporation, quit claim deed.
 Celtic Oil Corporation to Lico Petroleum Corporation, quit claim deed.

RACING COLOR ON RANGER SCREEN



Mark Damon lies unconscious on Grand Prix track after a dramatic accident in the color thriller "The Young Racers" playing Sunday through Tuesday on your Ranger Drive-In Theater screen.

City of Ranger to Ranger Jr. College, warranty deed.
 Florence Delaney to C. R. Tyler, release deed of trust.
 Mayme Estes to H. A. Bible, warranty deed.

First National Bank, Gorman to Gorman Peanut Company, partial release deed of trust.
 First Federal Savings and Loan Assn., Ranger to Bill Johnston et ux, release deed of trust.

Federal Land Bank, Houston to W. E. Cooper et ux, release deed of trust.
 Eddie L. Grisham et ux to Dale E. Trout, deed of trust.

A. L. Grice et ux to Roy D. Blair et al, warranty deed.
 Whit L. Graham to J. C. Caraway, Jr., grazing assignment lease.
 Billy J. Gregg et ux to

Jack L. Mitchell, et ux, warranty deed.
 Weldon C. Hill et ux to City of Rising Star, easement.
 Roy Hickman to Amicable Life Insurance Company, assignment deed of trust.

Harris, Harington Benges et ux, deceased to the Public, proof of heirship.
 Don Harris to Billy J. Gregg, release deed of trust.

S. E. Hazard et ux to Ben E. Hamner, warranty deed.
 Luther L. Hayes et ux to R. F. Dolgener, Jr. to First Federal Savings and Loan Assn., Ranger, material mechanics lien and assignment.

R. C. Irwin to K. E. Falls, release abstract of judgement.
 W. M. Jarrell to Jarbe Oil Co., assignment Oil gas lease.
 W. M. Jarrell to J. F. A. Schlvetter, assignment oil, gas lease.

Donovan Jenkins et ux to City of Rising Star, warranty deed.
 Bell W. Johnston et ux to Danny Eavens, warranty deed.
 R. M. Johnson et ux to First National Bank, Cisco, assignment oil, gas, lease.

Alvin Kitchens et ux to Federal Land Bank, Houston, deed of trust.
 C. R. Krapf et ux to Olbie Fein, warranty deed.

Mary S. Moseley et al to Lessie G. Bearden, warranty deed.
 Maggie Murray et vir to Clifford Seabous, warranty deed.
 Gladys Pippen et al to Henry E. Burrell et ux, warranty deed.

F. P. Pratt to Bryan Parks, warranty deed.
 B. R. Rodgers et ux to Clifford J. Harter, warranty deed.
 J.F.A. Schlueter to Jarbe Oil Co., assignment oil, gas lease.

Bruce Stovall to B. T. Stovall et ux, release deed of trust.
 H. H. Tompkins et ux to S&M Supply Company, warranty deed.

H. H. Tompkins et ux to SM Supply Company, bill of sale.
 H. H. Tompkins et ux to The Public, designation homestead.
 Rosa Tarver to Delbert R. Tarver, assignment lease.

Dale E. Trout et ux to Eddie L. Grisham et ux, warranty deed.
 Texas Pacific Coal and Oil

A SAD STORY

FOR SALE

Behind many "For Sale" signs there is a sad story: A family borrowed more than they could afford to pay for a home, or payments and interest rates were too high; the home had to be sold, often at a loss. This tragedy could often be avoided if the families would seek help from a home loan specialist, such as our Association.

We work with you to arrange for a loan that's as easy to handle as monthly rent.

FIRST FEDERAL SAVINGS & LOAN ASSOCIATION

204 Main Ranger, Texas MI 7-1611

'64 Jet-smooth Luxury CHEVROLET

Chevrolet Impala 4-Door Sport Sedan



Now how are the high-priced cars going to explain this!

Here are looks, luxury and comfort that you'd expect to set you back plenty—if they came from anybody but the people at Chevrolet.
 Fresh-minted styling with clean uncluttered lines that give the '64 Jet-smooth Chevrolet its feeling of new length and lowness. Rich new interiors with supple fabrics. Foam-cushioned front and rear seats and door-to-door carpeting—now standard in all models, including the modestly priced Biscaynes. And, of course, the niceties of Body by Fisher craftsmanship.
 You've got a wealth of power to pick from—engines from a peppery 140-hp 6 to a 425-hp V8! And you've got the '64 Jet-smooth ride to cushion you from road noise and vibration.
 Been promising yourself luxury like this someday? Your someday is here, as your dealer will gladly show you. *Optional at extra cost.

Ask about a SMILE-MILE Ride and the Chevrolet Song Book at your Chevrolet dealer's.

FULLEN MOTOR COMPANY INC.
 305 E. Main EASTLAND Phone MA 9-2676

PLAN NOW BRING YOUR FAMILY & FRIENDS

SUNDAY BUFFET DINNER

11:30 to 2:00 P. M.

— Menu —

CHOICE OF MEATS
 Turkey & Dressing
 Roast Beef - Ham and Other Meat Dishes
 Two Vegetables
 Soup or Salad
 Dessert Drink
 Hot Rolls

1.25

Childs Plate — 75¢

VICTOR HOTEL COFFEE SHOP
 Cisco, Texas

Company to Joseph E. Seagram and Sons, Inc., conveyance.

O. A. Thackerson et ux to Austin Flint, trustee for AMB J Investments, deed of trust
 Estate of Mrs. Virginia Wood, deceased to the Public, certified copy probate.

O. F. Walker et ux to E. L. Dennis, quit claim deed.
 O. F. Walker et ux to Eulan L. Dennis, warranty deed.

O. J. Weiser et ux to Earl Scott et ux, warranty deed.
 C. B. Webster to Joe Webster et al, assignment oil, gas lease.

Hall Walker to Nolah Hubbard, quit claim deed.
 Jerry L. Wilson et ux to First Federal Saving and Loan Assn., Ranger, deed of trust.

E. D. Ware et ux to C. R. Tyler, warranty deed.
 Mack White et ux to Amicable Life Insurance Company, assignment vendors lien and deed of trust.

Estate of Charles S. B. Woodruff, deceased to the Public, certified copy probate.
 Wesley Walker to E. H.

JOY DRIVE-IN
 CISCO - EASTLAND HIGHWAY
 Open 6:45 - Starts 7:00

Thursday - Friday

"Rio Bravo"
 In Color
 John Wayne

Saturday - Sunday

"20,000 Leagues Under the Sea"
 Walt Disney's
 In Color
 Kirk Douglas
 James Mason

Mills, deed of trust. Estate O. P. Weiser, deceased to O. J. Weiser Indv. & Ind. Exr. to Bank, Houston vendors lien.

MAJESTIC

LAST L Shaped Room Sunday

"Sex is not a forbidden word!"

SHAPED ROOM

A CINEMATIC

AUDIENCE DESIGNATION TEXAS MOTION PICTURE BOARD OF AS ADULT ENTERTAINMENT NO CHILDREN'S TICKETS SOLD

FRIDAY - SATURDAY
 Shows Friday - 5:00 - 8:00 | Shows Sat. - 1:30

HE HAD THE POWER TO SEE THROUGH CLOTHES... FLESH... and WALLS!

THE MAN THE X-RAY

RAYM

Friday at 6:20 - 9:30 | PLUS | Saturday at 11:30

THE MOST VICIOUS KILLER THE WEST HAS EVER KNOWN

TERROR AT BLACK FALLS

Distributed by BECKMAN FILM CORPORATION

ON SALE NOW

GAS RANGE DEALER FAIR

What can this modern gas range do that a comparable electric model can't? Plenty!

Even women who cook on electric ranges admit they have the controllability that Gas gives you. When you turn the gas flame "on", it's "on" instantly... turn it "off" instantly. There's no hangover-heat to cause overers and no pot-shuffling necessary with gas. Another exclusive is smokeless broiling — the flame eats up so you can keep the broiler door closed. This means cooler, smoke-free kitchen — only with gas! How about flame-kissed flavor for steaks and burgers? Only flame does it. But the big plus is economy... another reason why 8 out of 10 homemakers prefer cooking with gas. See the beautiful new automatic gas ranges on sale at the Gas Range Dealer Fair at Gas Appliance Dealers and Lone Star Gas!

CLEAN, MODERN, COOL, AUTOMATIC

GA