

Ribbon Cutting And Opening Religious Diorama Held Sunday

Ribbon cuttings and Grand Opening of the Religious Diorama took place early this morning after the Kendrick Easter Pageant on highway 80 between Eastland and Cisco. Tours, on Easter Sunday of the Diorama will be every hour on the hour. On other days the tours be held from 10 a.m. to 5 p.m.

The Diorama has been under construction for the past four years. This Diorama is Texas only religious diorama, and is the largest one of its kind in the nation, with 16,500 square feet of floor space. There will be scenes from both the New and Old Testaments set realistic as is possible, complete with the running River of Jordan for the baptism of Jesus; the burning pits of Hell; and on through to pearly gates to the Kendrick's rendition of Heaven.

Each of you are invited to come and bring someone with you. Church groups and clubs are especially urged to come as a body and enjoy the fellowship of Christianity.

ECT To Salute Shakespeare

April 23, 1564, marks the birthday of William Shakespeare in Stratford-upon-Avon in Warwickshire, England.

412 years later, April 23, 1976, the Eastland Civic Theatre will honor this event at Bell Hurst Playhouse by presenting various speeches and scenes from the plays and serving cake and appropriate refreshments to all present.

The area "learning establishments" are hereby invited to participate - faculties and students - in this third annual celebration, which will begin at half - past seven next Friday evening.

Reservations for the event may be made by telephone, 629-1141.

DONT FORGET

Ralph Cain, manager of Lakeside Country Club, announces that it is now open for playing. Memberships are now being taken and cart sheds are available for rental.

Should you need special additional information concerning this project or the Easter Pageant feel free to contact the Kendrick Family at 817-629-2732.

Famous Texas

By Sarah Drennen Gann
There is a vast domain
Of many a thriving county,
And Texas' glory e'er shall reign.
In history's golden bounty.

Bexar has its Alamo.
Where Texans took their stand.
And all around are fertile fields
Of onion, cabbage land.

Tarrant has its helium plant,
And Dallas has its Fair-Parker
Is a melon patch.
And cotton fields are rare.

Deaf Smith raises teams of mules
To pull on Texas roads;
Potter has its fields of gas.
And Eastland has its toads.

Wichita has a Leghorn farm.
And hunt its sweet potatoes;
DeWitt has its turkey trot,
And Cherokee, tomatoes.

Rice fields thrive in Jefferson.
Fort Bend is "Sugar Land."
Ellis grows its cotton yet,
Brazoria, sulphur sand.

Palo Pinto has its health resort.
Her scenery, too, doth lure;
Swisher has an eye on hogs;
Van Zandt has salt to cure.

Old Burnet has its granite.
And El Paso has its copper;
Presidio has its silver mines;
Say, Texas is a whopper.

Erath has its mines of coal.
Red River raises corn;
Lubbock has a "Tech" out there,
Where finest folks are born.

Crockett has its sheep of fame.
And goats, they say, are there.
Denton gives us golden wheat.
And Hockley, grass and air.

I love the old Bluebonnet State
That boasts of wealth and size;
I am a Texan square and straight.
For I was born is Wise.



Congressman Jack Hightower, Eagle Scout Johnny Wayne Aimes, and his parents Mr. and Mrs. Wayne Aimes.

Lawmen Saluted At Banquet

Beautiful patriotic decorations set the theme for Law Day in Eastland County this week.

All Eastland County law enforcement officers were honored Friday evening as citizens turned out to join in thanking them at the Law Enforcement Appreciation Banquet VI.

U.S. Rep. Jack Hightower of Vernon was the guest speaker and in a welcomed low-key delivery, challenged his listeners to join the renaissance of new respect for God, for the community and for each other.

He especially saluted the lawmen because of their dedication, and also told them that they are fortunate to work and live in an area where people do still respect them, "and young people look up to them."

Appeals Court Justice Austin McCloud, who introduced the speaker, called him a "law and order man" and "people sleep better at night knowing men like Rep. Hightower are serving in Congress."

Coming in for special honor was young Johnny Wayne Aimes, son of Mr. and Mrs. Wayne Aimes, who was presented his Eagle Scout award by Rep. Hightower. The new Eagle Scout is a member of Troop 103.

Entertainment was provided by Lyndell Perryman and Dorothy Shaw, both of Ranger, who sang.

Special guests included Harriet Whatley, state president of the Federated Women's Club, and State Rep. Joe Hanna.

The Wendell T. Siebert Elementary School audience heard Rep. Hightower say that he is optimistic about the future and that in spite of the many breakdowns that do exist in our society today, that he's confident that the pendulum will swing back toward more widespread respect and law and order.

Law Enforcement Association president County Judge Scott Bailey presided and other officers present were Laverle Ames, first vice president; Ben Sancillo, second vice president; and Louis Hollywood, secretary-treasurer.

In charge of decorations were Mrs. Dale Bakker, Mrs. Jerry Mathews, Mrs. Wade Freeman and Mrs. Ronald Bailey.

John Morren was program chairman for the event.

"We adults today are certainly being watched by the younger generation and we

EASTLAND TELEGRAM

Eastland, Texas 76448 Today's Center For Tomorrow's Future!

Sunday, April 18, 1976 15¢ EACH Volume 47 Number 32



Pauline Lewis Honored At Retirement

Pauline Lewis was honored with a retirement party at the Vassarite of Munsingwear's Plant Friday afternoon. Mrs. Lewis started her career with Vassarite more than 25 years ago, on March 5 1951 at the old East main building. She retired April 9, 1976 which was also her birthday. She was presented with a watch for 25 years of service, and with a retirement plaque by plant manager, Gene Johnson. Mrs. Lewis received a number of gifts and flower arrangements. And a birthday cake with the inscription-Happy Birthday and retirement, Pauline.

Her two sons, Harvey Lewis and his wife Sharron of Childress and James Charles Lewis and his wife Barbara of Eastland also attended the party. Jim Gilmer and Don Diergever of the Paris plant also attended the party and former plant manager, Stella Goforth now retired, also was there.

Refreshments of cookies and drinks were served to all of the plant employees. Several retired employees also attended the party.

When it comes to economy, you've got to give us Americans a lot credit.

Continued Cloudy with Chance of Rain.

FULLEN MOTOR PUNCH LINE

FREYSCLAG Insurance WEATHER

Freight & Depot Hearing Set May 12-13

The Railroad Commission public hearing on T&P's request to close the Eastland freight station will be held in Eastland, according to an announcement by State Rep. Joe Hanna's office Friday.

County Judge Scott Bailey reports that he was contacted Friday morning by Chuch Munson of the State Railroad Commission to determine if the hearing could be held in the County Commissioners Courtroom. Permission was granted and dates set for the hearing are

Wednesday and Thursday, May 12 and 13.

Because of the availability of services including motel, restaurant and airport facilities, the Strawn hearing will also be held at the Eastland Courtroom, the Commission spokesman told Judge Bailey.

The Eastland hearing will be held Wednesday, May 12, the Strawn hearing Thursday.

Rep. Hanna, Judge Bailey, The City of Eastland and a number of others had filed requests with the commission

asking that the hearing be held in Eastland County so that local residents could more conveniently appear to be heard.

T&P Railway filed application with the Railroad Commission to close the Eastland and Strawn freight stations and handle the service out of Abilene.

Eastland Attorney Cyrus Frost, who represented Eastland successfully in 1971 in a similar attempt to close the station has agreed to assist in this effort to keep the facility open.

A strategy planning session is scheduled for early next week to make arrangements for best presenting Eastland's case to the Commission in the hearing.

Quite a number of Eastland Countians have already filed protest with the Commission regarding the proposed closing.

T&P officials visiting in Eastland this week with various officials stated that the proposal to close the Eastland station was "a streamline effort in order to provide the same services through a telephone system to an Abilene computer terminal." They indicated that the request was not for economy reasons.

First Baptist Observing 100th Anniversary

The First Baptist Church of Eastland is observing their 100th Anniversary with a Century Celebration Revival. The Revival started Sunday, April 18 and will continue for 8 days, concluding with an Old-Fashioned Homecoming Day, Sunday, April 25.

All members and former members and friends are being urged to participate during the 15-service events. (The seven living former pastors will participate in this Celebration. The seven represent an almost continuance pastorage back to 1936. Each will be preaching during the eight-day program.

The Old Fashioned Homecoming on the 25th will also feature "Dinner on the grounds," old-fashioned singing, preaching and as might be expected, a lot of old time visiting as the Homecoming is celebrated.

Virginia Seeling, a native of Eastland will bring special music for the Friday and Saturday evening and Sunday morning services.

Church music director, Dr. Wylie Peebles, will be in charge of music for all services. And a nursery will be provided for each service.

The Rev. Haston Brewer, present pastor since 1961, will be preaching in the 11 a.m. service Easter Sunday.

The Rev. H.J. Starnes, pastor 1943-1945, will preach that evening service at the 7:30 p.m. service, and at the 10 a.m. Monday morning service.

The Rev. J.I. Cartledge, pastor 1936-1938, will preach in the Monday 7:30 p.m. service and the 10 a.m. Tuesday service.

The Rev. Franklin Swanner, pastor from 1941-1942, will preach in the Tuesday, 7:30

p.m. and the Wednesday 10 a.m. service.

The Rev. Melvin Rathaal pastor 1951-1954, will preach at 7:30 p.m. Friday service 10 a.m. Thursday service.

The Rev. Fred Porter, pastor 1945-1947 will preach in the Thursday 7:30 p.m. and 10 a.m. Friday service.

The Rev. Lloyd Chapman pastor 1947-1951, will preach at 7:30 p.m. Friday service.

The Rev. Harvey Kimbler, pastor 1954-1960 will preach in the Saturday 7:30 p.m. and the Sunday 11 a.m. and Sunday 7:30 p.m. service.

All Sports Banquet May 4

The All Sports Banquet will be held May 4, 1976 at 7:30 p.m. in the Wendell Siebert Elementary, sponsored by the Eastland Quarterback Club.

Wally Bullington, Athletic Director at Abilene Christian College, will be guest speaker at the banquet.

According to ticket chairman, Dale Bakker, tickets are now on sale for \$4.00 per person. Tickets may be purchased from any Quarterback Club member, the Eastland National Bank, the Eastland Telegram, Chamber of Commerce, or KERC.

Spring Clean-Up April 19-May 1

Eastland Civic and Garden Club announces that the annual spring clean up will be April 19 through May 1st.

City Manager, Lewis Tiner has scheduled trucks to pick up additional loads during this time. Anything to be hauled away should be placed by garbage cans.

Louis Hollywood Issues Statement For Sheriff's Post

Deputy Sheriff Louis A. Hollywood, who announced his candidacy in January for the office of Sheriff of Eastland County in the May 1st Democratic primary, has issued the following statement:

Louis Hollywood graduated from Travis High School in Austin, Texas, in 1969, and has attended Cisco Junior College. He is married to the former Jill Ann Medford of Cisco and they attend the First Christian Church of Cisco.

Hollywood has served Eastland County for the past two years as deputy sheriff. He started in the law enforcement field in January, 1971, as dispatcher for the Cisco Police Department and was promoted to patrolman in January, 1972, and then promoted, in May, 1973, to sergeant. He has over four hundred hours of classroom training including courses in law, jail operations and management, drug law enforcement, and communications. He is currently serving his second term as secretary-treasurer for the Eastland County Law Enforcement Association of which he has been a member for the past five years.

About his candidacy, Hollywood says, "The only promise I make to the citizens of Eastland County, is that, if elected, I will do my best to protect and serve all of the people, fairly and honestly, at the least expense possible to the taxpayers. I also wish to take this opportunity to ask for the vote and support of all Eastland County citizens, and to tell you that your vote and support will be greatly appreciated."

PTO To Meet

Siebert Elementary School PTO will meet Tuesday, April 20 at 3:30 p.m. Officers for the coming year will be installed. Mr. Harold Price, Jr. High principal will be the speaker.

The sixth grade Cadet Band will perform. A babysitter will be provided in room 6.

An informal reception and refreshments will follow the meeting.



EASTLAND RIFLE AND PISTOL CLUB TROPHY SHOOT - - Held Sunday, April 11, 1976. Trophy winners were (back row, left to right) Roger Woodall, .22 cal. rifle; Lowell Thomas, skeet; Jim Williams, center fire pistol. (Front row left to right) Ken Hudson, black powder; Wayne Huff, small bore rifle, large bore rifle, 200 yards and high overall trophy; Roger George, .22 pistol, large bore. This was the first trophy shoot for the club. The club will sponsor shoot every month. There were eight events.

Brag Corner

LANCE ALLEN STURM, 13 months

PARENTS:
Mr. and Mrs. Roy Lynn Sturm

GRANDPARENTS:
Mrs. Virginia Hilliard
Mr. and Mrs. Paul J. Sturm



Steve Johnson, Doke Johnson, Randy Collins, Linda Amburn and Jana Raglan rehearsing for the senior play to be presented April 29.

FOR SALE

FOR SALE -- Like new 18-foot inboard, outboard boat, seat 12, 225 hp Buick Motor, OMC steering drive. Very low hours. Call 629-1711 or evenings, 629-1262. t-tf

FOR SALE -- GIANT four feet by 15 inch, by 21 inch styrofoam ice chests with lids. Excellent for big picnics, fishing, storage, etc. Only \$5.00 each at Poe Floral, Eastland. t-tf

FOR SALE -- 1973 Yamaha 125 street and dirt bike. Brand new motor. Excellent condition. 629-1665 or 629-8166. t-tf

FOR SALE: Dugan 16 foot Gooseneck stock trailer, excellent condition, electric brakes, new tires. Call 629-2402. t-tf

FOR SALE--1 Brahma bull 3 years old. Call 629-1584 after 5 weekdays.

FOR SALE -- Peanut, candy and gun vending business in Eastland. Requires \$1,238.00 cash and few hours weekly. TEXAS KANDY COMPANY, 1327 Basse Rd., San Antonio, Texas, 78212 include phone no. t-32

NOW UNDER CONSTRUCTION--new 3 bedroom, 2 bath brick home with central heat and air, 2 car garage, natural wood burning fire place, built-in kitchen appliances, large dining area, dressing area in master bedroom. Located in exclusive Eastland area on large wooded lot. Call H&W Development Co., 629-1702 t-tf

FOR SALE -- 995 acres good grass land, 14 miles south of Eastland. Metal cattle corral, tanks, and creek. Deer and bird hunting. Fenced and cross fenced. \$275 per acre. 817-281-2921, Mrs. Wilma Brown, 5912 Hanson Drive, Fort Worth, 76148. t-39

FOR SALE -- 1970, 4 door Oldsmobile, Delta 88. Beautiful beige and bronze color. Power steering, brakes and air. 629-1731 if no answer call 629-2081. t-32

FOR SALE -- Two 48" attic fans. Suitable for repair shop or factory. Call 629-1731 or 629-2083. t-32

MISC. FOR SALE -- IT'S terrific the way we're selling Blue Lustre for cleaning rugs and upholstery. Rent electric shampooer. Perry Brothers. t-32

FOR SALE -- Morris Console AM - FM Radio with stereo record player - 60" wood cabinet \$85. Solid oak buffet and table makes a desk or extends out to 7 ft. table, \$95. Call 629-1811 after 5 p.m. t-32

FOR SALE -- 3 bedroom house. Has 1 1/2 baths, carpeting, single garage, large yard with fenced back yard. Great location, near all schools. 609 S. Dixie, call 629-2837 or 629-1100. t-tf

FOR SALE -- 1970, 4 door Oldsmobile, Delta 88. Beautiful beige and bronze color. Power steering, brakes and air. 629-1731 if no answer call 629-2083. t-32

FOR SALE -- 1959 Flatbed pickup. Good condition 629-9022. t-32

FOR SALE -- House with senced back yard. See at 500 S. Green. t-32

FOR SALE -- New split level home. 2250 feet. 4 bedroom, 2 1/2 bath, 3 car garage. \$40,000. Ask for Daniel Williams, 629-2805. t-tf

FOR SALE -- First cabin mobile home for your lot on the lake. 14 feet by 52 feet, 2 bedrooms, electric stove, central heat, front porch, sliding glass doors, priced for quick sale. See it on our mobile home lot. Eastland Direct Factory Outlet, Interstate 20, Olden, phone 653-2432 or 629-2117. t-33

FOR SALE -- New pickup canopy. Very attractive bargain. 629-2805. t-33

LEGAL NOTICE
 The Upper Leon Soil and Water Conservation District will accept sealed bids for a Bermuda grass sprigger; bids to be mailed or delivered to C&D Feed Inc., N. Seaman, Eastland, where the sprigger may be inspected.

Bids will be opened Friday, April 23, 1976, at 10 a.m. at C&D Feeds, Inc. The District reserves the right to reject any and all bids. (4-11, 4-15, 4-18)

GARAGE SALES

GARAGE SALE -- 501 Oakwood April 23 and 24. Starting at 1 p.m. the 23rd until Sunday afternoon the 24th. Furniture, dishes, children clothes and all types of clothes, misc. t-33

FOR SALE

FOR SALE -- 1974 Yamaha, 250 Endourea, \$700. Call 629-8009. t-36

Singer Sewing Machine, portable \$41.00. We also clean, oil and adjust all makes and models and carry a good line of parts. 629-1604. t-33

WE CAN BUILD for you a new 3 bedroom brick home with central heat and air. Low down payment. Monthly payments \$65 if you qualify. For more information call H&W Development Co., 629-1702, t-tf

FOR SALE New roto tiller fully warranted, 5 hp Briggs and Stratton, oil bath, chain drive, \$199.95. Call 653-2284, Olden.

FOR SALE -- Hybrid Sudan Seed \$11.86 CWT. 98 percent pure seed. 70 percent germination. ISC Warehouse Feeds, 705 St. Charles St., Eastland Texas, 629-2891. t-tf

FOR SALE -- 12' Van Brunt grain drill, \$200. 629-8376. t-32

FOR SALE -- You saved and slaved for wall to wall carpet. Keep it new with Blue Lustre Rent electric shampooer. Coats Furniture. t-32

SALE Special on gooseneck trailers. Limited time. Call 442-1912 or 442-3085, Cisco. t-33

FOR SALE -- My antique pocket watch collection. Prices start at \$40 and up call 629-2781 t-34

FOR SALE -- Potted plants, tomatoes, peppers, flowers. At brick house next to Olden Mobil Home Park. Call 653-2220. t-33

NEW MOBILE HOMES. FHA FINANCING AVAILABLE. Many models and sizes to choose from. Low down payment. Low monthly payments. Eastland Direct Factory Outlet, Olden, Texas, Office phone 653-2432 or home phone 629-2117. t-tf

Desks, chairs, files, safes, fire files, tables, cash and carry. Save 20-50. Large selection. 9-5:30 weekdays. Saturday 9-1. Value City, 1030 Butternut, Abilene t-tf

NOTICE -- Back in Business for your construction needs: Commercial - residential and farm buildings. Concrete - carpenter and so forth. All kinds of roofing. Call Aden Elmire Construction Co. 629-2525. t-tf

ADD A PATIO OR CARPORT Call 629-8271 For Free Estimates. t-39

A complete line of irrigation equipment. Submersible, centrifugal, and turbine. Pumps, pipe, fittings, volume gun, and circle system. Let us help you with your irrigation needs. Machine Shop and parts for pump repairs. Test Pit Facilities. Also come take a look at our Herbicide - Chemical Applicator for chemical distribution through irrigation lines. Largest supply in Central Texas. KIMMELL IRRIGATION SUPPLY INC. Highway 6, DeLeon, Texas, 76444. Phone 817-893-6266.

FOR SALE -- New pickup home lot. Eastland Direct Factory Outlet, Interstate 20, Olden, phone 653-2432 or 629-2117. t-33

FOR SALE -- 1970, 4 door Oldsmobile, Delta 88. Beautiful beige and bronze color. Power steering, brakes and air. 629-1731 if no answer call 629-2083. t-32

FOR SALE -- 1959 Flatbed pickup. Good condition 629-9022. t-32

FOR SALE -- House with senced back yard. See at 500 S. Green. t-32

FOR SALE -- New split level home. 2250 feet. 4 bedroom, 2 1/2 bath, 3 car garage. \$40,000. Ask for Daniel Williams, 629-2805. t-tf

FOR SALE -- First cabin mobile home for your lot on the lake. 14 feet by 52 feet, 2 bedrooms, electric stove, central heat, front porch, sliding glass doors, priced for quick sale. See it on our mobile home lot. Eastland Direct Factory Outlet, Interstate 20, Olden, phone 653-2432 or 629-2117. t-33

LEGAL NOTICE
 The Upper Leon Soil and Water Conservation District will accept sealed bids for a Bermuda grass sprigger; bids to be mailed or delivered to C&D Feed Inc., N. Seaman, Eastland, where the sprigger may be inspected.

Bids will be opened Friday, April 23, 1976, at 10 a.m. at C&D Feeds, Inc. The District reserves the right to reject any and all bids. (4-11, 4-15, 4-18)

LEGAL NOTICE
 The Upper Leon Soil and Water Conservation District will accept sealed bids for a Bermuda grass sprigger; bids to be mailed or delivered to C&D Feed Inc., N. Seaman, Eastland, where the sprigger may be inspected.

Bids will be opened Friday, April 23, 1976, at 10 a.m. at C&D Feeds, Inc. The District reserves the right to reject any and all bids. (4-11, 4-15, 4-18)

WANTED

WANTED -- 2 to 3 bedroom, nice rent house. Call Bill Wyatt, 629-1024. t-32

WANTED -- salesmen needed, full or part time, all commission. Write Rickmar Advertising, Box 367, Weatherford, Texas, 76086. t-32

RAQUET STRINGING services done professionally. Bring your rackets to Collins Hardware, 604 Avenue D. Cisco. t-35.

WANT TO DO babysitting during week days in my home or yours. Preferably small children for working mother. 629-1665 or 629-8166. t-tf

HELP WANTED - Secretary for steady part - time work. Good typing ability. Please write Employment, Box 29, Eastland Telegram, Eastland, Texas, giving name, address and telephone number, regarding your experience, qualifications and references. Would consider qualified college student. t-tf

WANTED--Painting Jobs. No job is too small! 639-2378, after 5. t-38

NEED HELP SEWING? Private lessons given in my home. \$3 per hour. Joy Campbell, 647-1019, Ranger. t-39

HOME NEED REMODELING?? Call Timberline Construction Co. 629-8271 for Free Estimates t-39

FOR RENT -- Large 2 bedroom, 1 bath, unfurnished home, fireplace, 2 car garage, waterfront. \$150 month - lease, 1/4 mile north of Burk's Store. Inquire at Burk's Store. t-32

FOR RENT - Furnished private 3 room cottages with carpets. Monthly. Pleasant Place Cottages, west edge of Eastland. Call 629-8876. t-tf

FOR RENT--Attractive 1 and 2 bedroom apartments. Also nice bedroom and bath. All bills paid including cable. Call 629-1731 or 629-2125. t-tf

HILLSIDE APARTMENTS Attractive one bedroom and efficiencies. All utilities paid including TV cable. Call 629-8097. tf

Furnished or Unfurnished Apartments For Rent. Royal Oaks Apartments, 1304 Royal Lane, Cisco 442-3232 or 442-2709.t-tf

FOR RENT--Mobile Homes and mobile home spaces. 653-2220. t-tf

POLITICAL CALENDAR
 The following persons have authorized this newspaper to announce their candidacy subject to action by the May 1, Democratic Primary.

COMMISSIONER, PCT. 1 Danny Woods
 STATE REPRESENTATIVE Joe Hanna
 Bob Vaught
 COUNTY SHERIFF Ronnie (R.B.) White
 Johnnie W. Morren
 Louis Hollywood
 Benny Moseley
 CONSTABLE PCT. 1 Bill Hunter
 STATE SENATE 22nd DISTRICT Tom Creighton
 TAX ASSESSOR COLLECTOR Mrs. Nancy Trout

FOR RENT--Mobile Homes and mobile home spaces. 653-2220. t-tf

FOR RENT--Mobile Homes and mobile home spaces. 653-2220. t-tf

FOR RENT--Mobile Homes and mobile home spaces. 653-2220. t-tf

FOR RENT--Mobile Homes and mobile home spaces. 653-2220. t-tf

FOR RENT--Mobile Homes and mobile home spaces. 653-2220. t-tf

FOR RENT--Mobile Homes and mobile home spaces. 653-2220. t-tf

FOR RENT--Mobile Homes and mobile home spaces. 653-2220. t-tf

FOR RENT--Mobile Homes and mobile home spaces. 653-2220. t-tf

FOR RENT--Mobile Homes and mobile home spaces. 653-2220. t-tf

NOTICE

\$ NEW DOG \$ BREEDERS NEEDED
 Start now raising purebred dogs for PROFIT. Get highest prices Coast to Coast. IF YOU QUALIFY, we assist all new breeders in every phase of the business. Possible to turn 1/2 acre of your idle ground into a \$10,000 yearly income or more. CALL today 318-865-0567 or write (include your phone number)--KENNELS, 376 Leo Ave., Shreveport, La 71105. t-36.

BOWER ELECTRIC Residential, commercial and industrial wiring. New or old construction, house power specialists. For 220 volt appliances. Eastland Call 629-1003. t-tf

WILLIAMSON AUTOMOTIVE
 Tune-ups General Repair 215 S. Seaman 629-2012 t-tf

NOTICE--Mattresses. Complete bedding made by Western Mattress Co., San Angelo. Best quality, low price, renovate or exchange new. Every other Wednesday. They're guaranteed. For home appointment call Lois Mezell, 629-2703, leave name. t-tf

NOTICE-- For your Carpenter Work Needs, Small or Large Jobs, call U.V. William, 629-1654. t-tf

Northwest Exterminating Termite Pest Control Tree and Lawn Spraying Free inspection and estimate 647-3576 Ranger, Texas

Concrete Work and House Leveling Footings, Foundations, Slabs and Patios Jim Garner Const. Co. P.O. Box 582, Eastland, TX Phone 653-2295.t25

FOR SALE BUSINESS PROPERTY
 Old Cottage Inn cafe building and property on Hwy. 80 near Ranger College. Phone 647-9350.

PIANO & ORGAN TUNING \$15 in town or out. Also do repair work. Call 965-4278. t-38

SENKEL'S CABINET SHOP
 303 N. College Phone 629-1269 after 5:00. Custom Built Cabinets. Mobile Home Set-up, and Repair, Remodeling and General Carpentry Work. Richard Senkel Owner

BUCK KNIVES
 FAMOUS FOR HOLDING AN EDGE

Available at **H & R Lumber 715 West Main 629--2104**

MORE
 cars are insured with us than with any other company. Find out why now!

STATE FARM
 Mutual Automobile Insurance Company Home Office: Bloomington, Illinois

FAMILY PROTECTOR
 Call: James O. Wortman 705 W. Main St. Eastland Ph 629-1096

STATE FARM
 Mutual Automobile Insurance Company Home Office: Bloomington, Illinois

FAMILY PROTECTOR
 Call: James O. Wortman 705 W. Main St. Eastland Ph 629-1096

STATE FARM
 Mutual Automobile Insurance Company Home Office: Bloomington, Illinois

FAMILY PROTECTOR
 Call: James O. Wortman 705 W. Main St. Eastland Ph 629-1096

STATE FARM
 Mutual Automobile Insurance Company Home Office: Bloomington, Illinois


FAMILY PROTECTOR
 Call: James O. Wortman 705 W. Main St. Eastland Ph 629-1096

STATE FARM
 Mutual Automobile Insurance Company Home Office: Bloomington, Illinois

FAMILY PROTECTOR
 Call: James O. Wortman 705 W. Main St. Eastland Ph 629-1096

STATE FARM
 Mutual Automobile Insurance Company Home Office: Bloomington, Illinois

NOTICE

MASONIC LODGE NO. 467

 Meets second Thursday of each month at 8:00 p.m. in the Masonic Hall. Call Joseph Housson, W.M., at 629-1314 or L.E. Huckabay, Sec'y, at 629-1391 for information.

Mercers Appliance Repair. Dishwashers, washers, dryers, stoves, disposals, and ovens. G.R. Mercer, Olden, Texas. 653-2473

BASS RIG FOR SALE
 45 hp. motor - troll motor - dilly trailer - Top tenner - fiber glass boat. Can be seen at 205 S. Oaklawn. Call 629-1744(work) or 629-1575 (home).

Complete Car Service ...
 Bring your car to us for any type of repair. We give you fast, quality service. 3 op in.

Reasonable SCOTT PAINT AND BODY WORKS
 629-2372 300 W. Commerce Sam Beggs-Owner

So-Lo Auto Parts
 300 S. Seaman 629-2158
 Open Sat. Till 4:30 Doug Lucas Mgr.

Reasonable SCOTT PAINT AND BODY WORKS
 629-2372 300 W. Commerce Sam Beggs-Owner

Reasonable SCOTT PAINT AND BODY WORKS
 629-2372 300 W. Commerce Sam Beggs-Owner

Reasonable SCOTT PAINT AND BODY WORKS
 629-2372 300 W. Commerce Sam Beggs-Owner

Reasonable SCOTT PAINT AND BODY WORKS
 629-2372 300 W. Commerce Sam Beggs-Owner

Reasonable SCOTT PAINT AND BODY WORKS
 629-2372 300 W. Commerce Sam Beggs-Owner

Reasonable SCOTT PAINT AND BODY WORKS
 629-2372 300 W. Commerce Sam Beggs-Owner

Reasonable SCOTT PAINT AND BODY WORKS
 629-2372 300 W. Commerce Sam Beggs-Owner

Reasonable SCOTT PAINT AND BODY WORKS
 629-2372 300 W. Commerce Sam Beggs-Owner

Reasonable SCOTT PAINT AND BODY WORKS
 629-2372 300 W. Commerce Sam Beggs-Owner

Reasonable SCOTT PAINT AND BODY WORKS
 629-2372 300 W. Commerce Sam Beggs-Owner

Reasonable SCOTT PAINT AND BODY WORKS
 629-2372 300 W. Commerce Sam Beggs-Owner

Reasonable SCOTT PAINT AND BODY WORKS
 629-2372 300 W. Commerce Sam Beggs-Owner

Reasonable SCOTT PAINT AND BODY WORKS
 629-2372 300 W. Commerce Sam Beggs-Owner

Reasonable SCOTT PAINT AND BODY WORKS
 629-2372 300 W. Commerce Sam Beggs-Owner

Reasonable SCOTT PAINT AND BODY WORKS
 629-2372 300 W. Commerce Sam Beggs-Owner

Reasonable SCOTT PAINT AND BODY WORKS
 629-2372 300 W. Commerce Sam Beggs-Owner

Reasonable SCOTT PAINT AND BODY WORKS
 629-2372 300 W. Commerce Sam Beggs-Owner

Reasonable SCOTT PAINT AND BODY WORKS
 629-2372 300 W. Commerce Sam Beggs-Owner

NOTICE

WATKINS DEALER Vera Sherrill
 Leave name and address during day. Phone 629-8019

SINGER SEWING MACHINE REPAIR CENTER
 Servicing all makes New and Used for Sale Complete line of parts. WRIGHT AUCTION COMPANY 106 S. Seaman 629-2468

C. B.'s New Stock
 • MIDLAND
 • ROYCE
 • TEABERRY
 • GLEN-TRONIX
 • NEW-TRONIC ANTENNAS
 Bruce Pipkin's Motor Co.

GREGORY PLUMBING CO.
 629-2753 629-8301
 Res. 639-2340

EASTLAND TELEGRAM
 629-1707
 110 W. Commerce Eastland, Texas 76448
 H.V. O'BRIEN PUBLISHER AND EDITOR

Second Class Postage paid at Eastland, Texas, under Act of Congress in March, 1870. Published semi-weekly Thursdays and Sundays.

SUBSCRIPTION RATES: By carrier in city, 30 cents a week or 90 cents a month; one year by mail in county, \$7.00; City P.O. boxes \$7.00; one year elsewhere in state, \$10.00; out of state \$12. year.

NOTICE: Any erroneous reflection upon the character, standing or reputation of any person, firm or corporation, which may appear in the columns of this newspaper will be gladly corrected upon being brought to the attention of the editor.

"This newspaper will not knowingly accept any advertising for real estate which is in violation of the law. Our readers are informed that all dwellings advertised in this newspaper are available on an equal opportunity basis."

"All real estate advertised in this newspaper is subject to Federal Fair Housing Act of 1968 which makes it illegal to advertise any preference, limitation, or discrimination based on race, color, religion, sex, or natural origin, or an intention to make any such preference, limitation, or discrimination."

Purse Pleasers
 Hollands Drive In
 Quality, Quantity, Quickness And Reasonable Prices
 Highway 80 West Of Eastland
 Phone In Orders 629-2215 Member TRA

I.S.C. WAREHOUSE FEEDS
 705 St. Charles St. 817-629-2891 Eastland, Texas
 STORE HOURS
 Mon - Fri. 8:00 a.m. to 5:30 p.m.
 Sat. 8:00 a.m. to 12:00 noon
 Clayton Biggs, Sales Mgr. 629-2777
 CASH, F.O.B., & VOLUME DISCOUNT

SEED
 Hybrid Sudan 70 Percent Germ -- \$11.86 cwt.
 Grain Sorghum 80 percent Germ -- \$25.80
 Red Top Cane 70 percent Germ -- \$14.25

OTHER SEED - IN STOCK
 Hegari - Kaf - R - Dan
 K.R. Blue Stem - Klein Grass
 Lawn Bermuda Grass Seed

(Other varieties we can get in 2 - 3 days)
FERTILIZER
 We plan to be equipped for bulk fertilizer by the last of this week.
 CHECK WITH US! THANK YOU!!

SEED
 Hybrid Sudan 70 Percent Germ -- \$11.86 cwt.
 Grain Sorghum 80 percent Germ -- \$25.80
 Red Top Cane 70 percent Germ -- \$14.25

OTHER SEED - IN STOCK
 Hegari - Kaf - R - Dan
 K.R. Blue Stem - Klein Grass
 Lawn Bermuda Grass Seed

(Other varieties we can get in 2 - 3 days)
FERTILIZER
 We plan to be equipped for bulk fertilizer by the last of this week.
 CHECK WITH US! THANK YOU!!

SEED
 Hybrid Sudan 70 Percent Germ -- \$11.86 cwt.
 Grain Sorghum 80 percent Germ -- \$25.80
 Red Top Cane 70 percent Germ -- \$14.25

OTHER SEED - IN STOCK
 Hegari - Kaf - R - Dan
 K.R. Blue Stem - Klein Grass
 Lawn Bermuda Grass Seed

(Other varieties we can get in 2 - 3 days)
FERTILIZER
 We plan to be equipped for bulk fertilizer by the last of this week.
 CHECK WITH US! THANK YOU!!

SEED
 Hybrid Sudan 70 Percent Germ -- \$11.86 cwt.
 Grain Sorghum 80 percent Germ -- \$25.80
 Red Top Cane 70 percent Germ -- \$14.25


OTHER SEED - IN STOCK
 Hegari - Kaf - R - Dan
 K

J R B

SUPERMARKETS

Brownwood, Coleman, Cross Plains, Abilene, Ranger, Eastland, Cisco, DeLeon, Albany, Brady, Wichita Falls, Stamford, Llano, Hamlin, Springtown, Bridgeport, Newark.

Unbeatable Values!

We feature national brands! And you get  Green Stamps, too!

Unbeatable Stamps!

We Honor U.S. Government Food Stamps

Double Stamps

Wed., & Sat.

\$2.50 Or More Purchase

Thru Sat., April 24, 1976

We Reserve The Right To Limit Quantity
NO SALES TO DEALERS

UNBEATABLE PRICE

USDA GRADE A WHOLE ONLY

FRYERS

39¢

PLUS  STAMPS

JRB Meats Are U.S. Government Inspected. If For Any Reason You Are Not Satisfied, We Will

Cheerfully Return Your Money.

FINE FOR COOKOUTS

FRYER LEG

BOSTON BUTTS

PORK STEAKS

BOSTON BUTT

PORK ROAST

GROUND BEEF

DECKER

BACON

ARMOUR STAR

DINNER FRANKS

ARMOUR STAR

FRANKS

lb.

lb.

lb.

lb.

12 oz. Pkg. each

2 lb. Pkg. each

12 oz. Reg. or Beef each

47¢

99¢

93¢

99¢

\$1.19

\$2.69

89¢

ARMOUR STAR

SMOKEES

OSCAR MAYER

SAUSAGE

GLOVER JUMBO

BOLOGNA

GLOVER 12 oz.

LUNCHEON MEAT

BEEF TENDA MADE HEAT & SERVE

PATTIES OR FINGERS

DANKWORTH

BEEF PATTIES

CHEDDAR OR COLBY PARADE

CHEESE

12 oz. Pkg. each

\$1.09

\$1.49

89¢

89¢

99¢

\$1.09

\$1.09

99¢

UNBEATABLE PRICE

USDA GRADE A CUT UP

FRYERS

43¢

PLUS  STAMPS

COME OVER & SAVE

FAMILY PACK

GROUND BEEF

79¢

PLUS  STAMPS

SPLIT FINE FOR BAR - B - Q

SPLIT FRYERS

47¢

JRB REGULAR OR SANDWICH SLICED

BREAD

3/1⁰⁰

GERBERS STRAINED

BABY FOOD

MEATS EXCLUDED

7/1⁰⁰

UNBEATABLE VALUE

PARADE MACARONI & CHEESE

DINNERS

7 oz. Boxes

6/1⁰⁰

PLUS  STAMPS

DOLLAR DAY SALES

SEASIDE

BUTTER BEANS

DEL MONTE

FRUIT COCKTAIL

PARADE

DOG FOOD

PARADE

CAT FOOD

PARADE TRASH CAN

TRASH CAN LINERS

PARADE LAWN & LEAF

LAWN & LEAF BAGS

HEINZ ALL FLAVORS

BAR-B-Q SAUCE

HEINZ ALL VARIETIES

RELISH

HEINZ

CATSUP

NABISCO AMERICAN FRIES

POTATO SNACKS

KEBLER DELUXE

COOKIES

JOHNSON FAVOR

FURNITURE POLISH

JOHNSONS SHOUT

PREWASH

JOHNSONS FUTURE

FLOOR FINISH

JOHNSONS STEP SAVER

FLOOR FINISH

GOLD MEDAL

FLOUR

REYNOLDS 12" x 20"

FOIL

SUGAR SWEETENED CANISTER PACK

KOOL AID

SUGAR SWEETENED

KOOL AID

UNSWEETENED

KOOL AID

REYNOLDS

BROIL IN BAGS

CARNATION INSTANT SLENDER 4'S

DIET DRINK

PETER PAN SMOOTH OR CRUNCHY

PEANUT BUTTER

SKINNERS SHORT CUT

MACARONI

JEFFY POP IN BUTTER

POPCORN

300 Can

303 Can

300 Can

300 Can

10 Ct. Box

5 Ct.

16 oz. Bottle

9 oz. Jar.

32 oz. Bottle

5 oz. Box

13 oz.

12 oz.

20 oz. Can

27 oz. Bottle

16 oz.

10 lb. Bag

GIANT SIZE

ALL FLAVORS 32 oz.

ALL FLAVORS 2 qt.

ALL FLAVORS REG. SIZE ENV.

10" x 16" Size

28 oz. Jar

24 oz. Pkg.

5 oz. Pan.

4/1⁰⁰

3/1⁰⁰

8/1⁰⁰

8/1⁰⁰

79¢

79¢

75¢

55¢

95¢

59¢

79¢

\$1.29

\$1.49

\$1.79

99¢

\$1.85

\$2.39

\$1.89

45¢

6/69

59¢

99¢

\$1.55

83¢

49¢

DAIRY & FROZEN FOODS

MIRACLE

MARGARINE

PARKAY SOFT

MARGARINE

PILLSBURY

BISCUITS

KRAFT PURE

ORANGE JUICE

MORTONS

POT PIES

PARKAY MAXI TUB

MARGARINE

GANDYS

YOGURT

TONY'S

PIZZAS

GANDYS QUALITY CHECKED

ICE CREAM

PEPPERIDGE FARM

TURNOVERS

FLEISCHMANN'S

EGG BEATERS

MORTONS

DINNERS

HAM EXCLUDED

6 Stick Pkg.

49¢

Two 8 oz. Tubs

59¢

SWEET MILK OR BUTTERMILK 8 Ct. Cans

8/1⁰⁰

1/2 Gal. Bottle

99¢

ALL VARIETIES 8 oz.

4/1⁰⁰

1 lb. Bowl

59¢

REGULAR OR SLIM & TRIM

29¢

OR PEPPERONI 11"

\$1.29

ALL FLAVORS 5 Qt. Bucket

\$2.49

ALL VARIETIES 12 oz.

69¢

16 oz.

89¢

HAM EXCLUDED

49¢

HEALTH & BEAUTY AIDS

CLAIROL FINAL NET

HAIR SPRAY

REG. OR UNSCENTED

1 oz. Reg. \$1.39

79¢

EARTH BORN BABY

SHAMPOO

8 oz. Reg. \$1.85

99¢

GILLETTE RIGHT GUARD BRONZE

DEODORANT

7 oz. Reg. \$1.29

89¢

DISMIS

DISPOSABLE DOUCHE

3's Reg. \$1.69

\$1.29

BIG 32 oz. Size

PLASTIC TUMBLERS

Reg. 59¢

3/1⁰⁰

EKCO

CAN OPENERS

Reg. 69¢

49¢

GARDEN FRESH PRODUCE

Calif. Large

STRAWBERRIES

Texas Fresh

GREEN ONIONS

Large Head

LETTUCE

Texas Fresh

CABBAGE

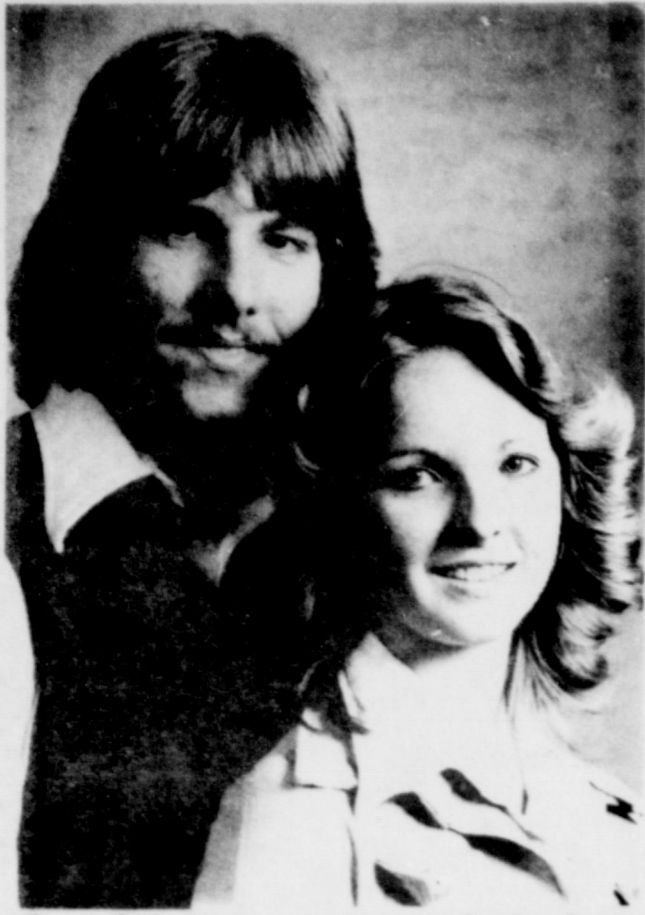
Red New Crop

POTATOES

Pint

49¢

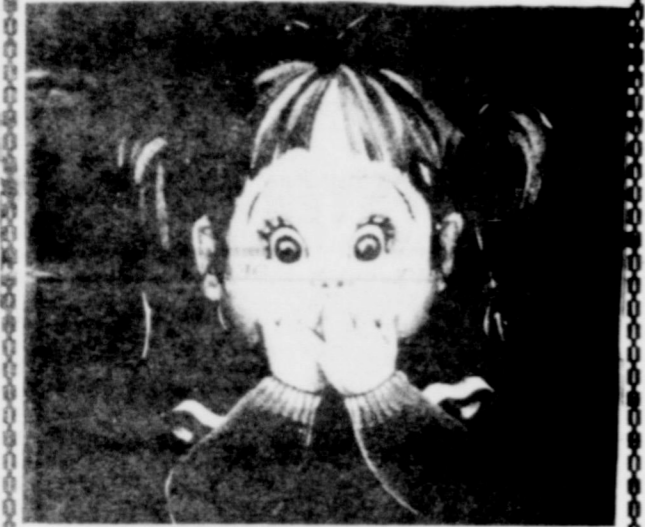
Bunch



Dr. and Mrs. James A. Green of Garden Grove, California, announce the engagement and approaching marriage of their daughter, Brenda Kay, to Martin Ray Gohlke, son of Dr. and Mrs. Luther R. Gohlke of Ranger. The wedding will be August 7, 1976, in Buena Park Church of Christ, Buena Park, California.

HAPPY EASTER
From
Cactus & Calico
120 A Main 647-1414

"I Didn't Know That!"



Quality Is No Accident
B.G. BROWN CONST. CO., INC.
820 W. Main, Eastland
629-1769

ROW BUSTER GARDEN PLOW

The Row Buster by Carter Brothers is the best designed garden plow on the market today. It is well built and rugged to give dependable service for many years. Standard features include a tractor grip tire that can be filled with water for better traction; belt and chain drive; both horizontal and vertical adjustments of the front wheel and a powerful engine with reduction gear. The adjustable plow footing fits all standard garden plow kit attachments and allows for plowing depth control.

Available At
Western Auto
Associates Store
201 S. Lamar Eastland 629-2011

HOSPITAL NEWS

Patients in the Ranger General Hospital Saturday, April 17, 1976, were:
Helen Hagaman
T.C. Wylie
Fred Gilbert
A.C. Pierce
Callie Lee
Alleen Neeley
Eva Mills
James Hazlewood
Ellen Deal
Lillie Houghton
Allie Thorn
Necye McDonald
Mary Cheney
Jack Pittman
C.J. Broyles
Doris McCoy
Mary Thompson
Edgar Cotton
J.W. McDonald
Linda Slemmons
Baby Girl Slemmons
M.B. Hernandez

Patients in the Eastland Memorial Hospital Saturday, April 17, 1976, were:
Nancy Thompson
Darlene Gary
Amelia Vera
Gloria Scott
Walter Wharton
Nina Hart
Anna Harris
Neta Fay Parsons
Iola Green
Sirvelia Roberts
Hazel Stone
Minnie Perdue
Marie Long
Ollie Eaves
Elsie Sanders
Lisa Purdom
Bertha Richardson
Myrtle Fry
Willie Jo Carter
Hugh Johnston
Laverne Hutton
Betty Beggs
Ruby Stafford
Vernon Carter
Lula Walker
Winna St. Clair
Beatrice Murphy
Jessie Ellis
Rebecca Ross
Gay Kirk
David Hazard
Lois Morton
Effie Sharp
Thomas Lockhart

Maggie Christian
May Dell Petree
Jesse Hittson
Leo Bailey
Robert Langford
B.E. Rutherford
Florine Davis
Maggie Pirtle
Vera Schlaepfer
Oleta Foster

Patients in the E.L. Graham Memorial Hospital Saturday, April 17, 1976, were:
Jean Sublett
Zelda Ball
Maude Burns
Mittie Bisbee
Bertie Medford
Mart Agnew
Addie Ackers
Herman Reimers
Claude Simmons
David Beason
David Lee
James McCoy
Opal Blackstock
Eva Jackson
Douglas Burns
Vallie Parker
Baby Girl Sublett

When A Tornado Approaches

Seek inside shelter, preferably in a tornado cellar, underground excavation, or a steel-framed or reinforced concrete building of substantial construction. **STAY AWAY FROM WINDOWS!**

IN CITIES OR TOWNS
In office buildings--go to an interior hallway on the lowest floor, or to the designated shelter area.
In factories--Workers should move quickly to the section of the plant offering the greatest protection in accordance with advance plans.
In shopping centers--go to a designated shelter area--not to your parked car.
In homes--the basement offers the greatest safety. Seek shelter under sturdy furniture if possible. In homes without basements, take cover in the center part of the house, on the lowest floor, in a small room such as a closet or bathroom, or under sturdy furniture. Keep some windows open, but stay away from them!
Mobile homes are particularly vulnerable to destructive winds. Proper tie-downs to prevent turning will minimize damage. A warden should be appointed in mobile-home parks to scan the skies and listen to radio and television for warnings. There should be a designated community shelter where residents can assemble during a tornado warning. If there is no such shelter, do not stay in a mobile home during a tornado warning. Seek refuge in a sturdy building or a ditch, culvert, or ravine.

Livestock Report

The market of Ranger Livestock Auction was \$2.00-3.00 higher on a run of 506 head of cattle according to Fred Rogers reporter.

Other comments: The market here today was fully \$2.00-\$3.00 higher on all classes of cattle. Buyer attendance real good.

Butcher calves: choice, 36-38; good 33-35.

Cows: cutters, 30-33; canners 25-30; stockers, \$200.00-250.00.

Bulls: bologna, 35-38; stockers, 40-45.

Stocker Steer Calves: choice, 49-52.50; good, 46-48; medium, 44-46.

Stocker Heifer Calves: choice, 39-42.50; good 37-39; medium, 35-37.

Feeder Steer Yearlings: choice, 44-46.50; good, 42-44; medium, 40-42.

Feeder Heifer Yearlings: choice, 39-41; good 37-39; medium, 35-37.

Cows and Calves: good, 275-325; plain, 200-250.

NOTICE

We now have

GOLF CARTS
BATTERIES

Tow-Bars
Rentals & Sales

Sales & Service

Sunlighter
Headache Racks
Pickup Boxes

Farm Bureau Tires

All type **HITCHES**
Sales & Service
Installation

GILBERT GULF
500 W. Main
Eastland 629-8805

County 4-Her's To Hold Clothing Project June 24

By Susan McMillan
Eastland County 4-Her's are beginning clothing projects for 1976 in preparation for County Dress Revue. The Revue has been tentatively set for June 24th, 1976. The purpose of this is for members who make garments to enter them in construction and appearance competition. A record book of the work they've done on this project is also judged.

There are four levels of Clothing the members may work in. These are: Level I Ready Set Go with Clothing, Level II In the Know with Clothing, Level III Clothing Reflections, and Level IV Uniquely You (self Determined project.) All of these include four main areas of study: social roles, textiles, economics, and creation and design.

The 4-H clothing program is designed to provide opportunities for youth to: develop skills in planning, buying and constructing clothing; develop abilities in selection accessories; develop an understanding of "self" so that the individual may select and make clothing which is becoming and expressive of the personality; develop grace, good posture, and good grooming habits; and learn to work and share with others.

Anyone interested in participating in a project should contact the Extension Office, 629-2222.

NOTICE

The Aggie Muster for Possum Kingdom Lake area, Young, Eastland, Stephens, Shackelford and Throckmorton Counties, will have its annual meeting April 21st, at Pitcock cabin, Possum Kingdom Lake. Starting at 5:30 p.m. The program will be given by Mrs. Toby Rives.

WASHINGTON, D.C.--Congressman Omar Burleson announces that the American Revolution Bicentennial Administration in Washington is according official recognition to Carbon and Rising Star as Bicentennial communities.

Previous approval of Carbon and Rising Star has been given by the Texas Commission at Austin.

It's a FUN FAMILY THING
Read the Want Ads.

Republican Women To Hold Covered Dish Luncheon

The Republican Women's Club will have a covered dish luncheon on Tuesday, April 20th at 12 noon in the home of Mrs. H.J. Bulgerin, 1800 W. Plummer.

The Essay Contest winners for the RWC Bicentennial project will be revealed and the cash awards will be presented.

Members and interested persons are asked to call 629-2991 or 629-2565 by Monday afternoon if they plan to attend.

Canner Testing Every Tuesday

Accurate pressure canner gauges and canners with all parts in good working order can help you be assured of safe home canned foods. With the canning season coming soon, now is the time to have your pressure canner gauges checked for accuracy.

Canner gauges will be tested every Tuesday morning in the County Extension Service Office (basement of Courthouse) between the hours of 9:30 and 11 a.m. If you wish to have your pressure canner gauge tested, you only need to bring the lid to your pressure canner.

The testing of pressure canner gauges is being sponsored by the Eastland County Home Demonstration Clubs, and the charge is \$2.00 a canner lid. Home Demonstration Club members will be in charge of the testing each Tuesday.

Free food preservation bulletins are also available in the County Extension Office to anyone interested.

TEXAS PRESS ASSOCIATION
MEMBER 1976

On May 1st, you, the citizens of Eastland County, go to the polls to select a candidate for sheriff. Ronnie (R.B.) White is a candidate for that office. He is 34 years old, married for 13 years and has two children ages 9 and 4. If for any reason Ronnie does not get by to see you in person, please take this as a personal invitation for your vote and support.



Thank You, Ronnie (R.B.) White
Candidate for Sheriff

QUALIFICATIONS AND EXPERIENCE FOR EASTLAND COUNTY SHERIFF ARE:

- Over 900 hours of special training in law enforcement.
- 36 credit hours of college in law enforcement and related subjects.
- Special training in: Civil Defense, Radiological Monitoring, Medical Self Help, and Current Advanced First Aid.
- A certified peace officer through Texas Commission on Law Enforcement Officer Standards and Education.
- Former member of the Department of Public Safety as Highway Patrolman.
- Over 8 years serving the public in law enforcement and fire protection.

Pol. Adv. Pd. For By R.B. White & Friends

MY PLATFORM IS AS FOLLOWS:

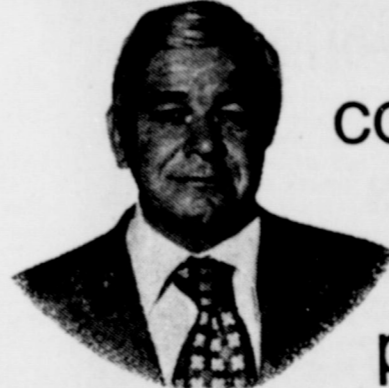
- No promise, except to work hard and do my best to serve all the people.
- Honesty
- experience -- knowledge
- No political obligations to anyone
- Good judgment in all cases with fairness to all
- Let each case merit the action taken
- To operate the office with efficiency
- And as little expense to the taxpayer as possible
- To keep good reliable employees
- To take care of all county equipment entrusted to me.
- Always working to the best interest of the young people of the county
- TO SERVE ALL THE PEOPLE

For Lease

Approximately 500 Square Feet Of Office Space
Large Reception Area With Two Small Offices
Central Heat & Air
Ground Level On Square

RCG Leasing Building
104 West Commerce 629-8052 In Eastland

SENATOR TOM CREIGHTON



Is against collective bargaining and the right to strike for public employees.

Many Eastern states and cities, due to state laws which permit state and and city employees to bargain collectively and unions which ignore laws forbidding strikes by public employees, are nearing bankruptcy. I want to be sure that never happens in Texas.

Union garbage men in New York City are paid \$18,000 a year. Strikes frequently stop garbage pick up and police and fire protection. Teachers in many Eastern cities have walked out in labor disputes, totally shutting down public schools for months at a time.

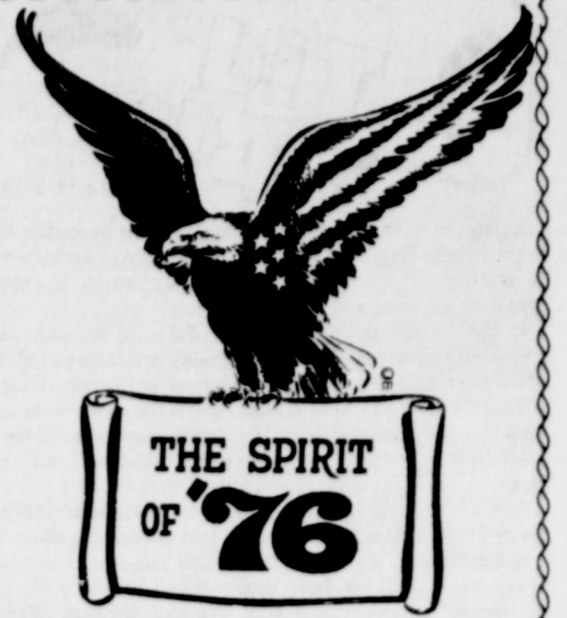
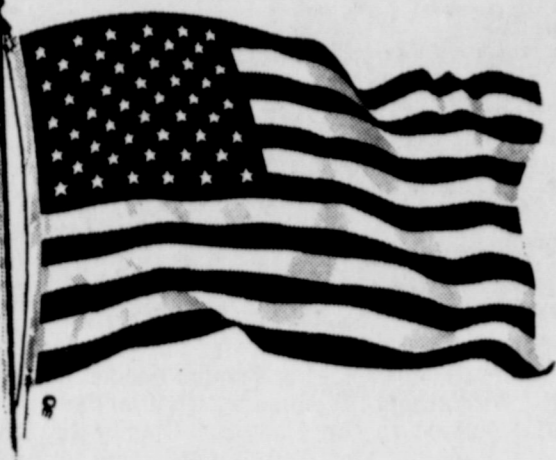
I don't believe that is what the citizens of Texas and the 22nd District want from their public employees. My opponent favors collective bargaining for public employees. I don't.

EVERYONE BENEFITS FROM THE HEALTHY ECONOMY IN TEXAS, including public employees. By using their right to collective bargaining and the threat of strikes, the public employees of New York have driven the nation's largest city to the edge of bankruptcy. Other cities, such as Detroit, are in nearly as much trouble.

AS LONG AS I AM IN THE TEXAS SENATE, I will be working to prevent that from ever happening here. I'll be working against greater collective bargaining rights for public employees. I'll be working to keep our right-to-work laws. And I'll be working to maintain a tax system in Texas that will continue to attract companies wishing to move here from the East--companies that don't like what is going on there any more than you and I do.

Elect **TOM CREIGHTON**
STATE SENATE DISTRICT 22
...YOUR SENATOR

Political Advertising Paid For By Tom Creighton/102 E. Hubbard - Mineral Wells, Texas



**NO. 1
EASTLAND
AMBULANCE SERVICE
ARRINGTON FUNERAL HOME**

629-2611

**No.
1**



EULA ARRINGTON CAUBLE
Owner



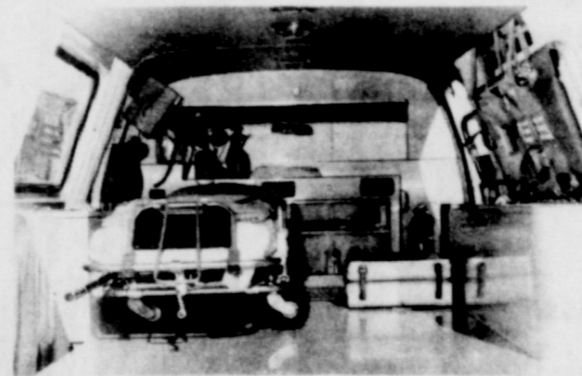
BOBBY BOUDREAUX
Mortician
Emergency Medical
Technician
First Aid Instructor



DELBERT BIGGS
LVN
Emergency Medical
Technician



SHERRY NEAL
RN
Emergency Medical Technicial



JACKIE ARRINGTON
Ambulance Attendant



MACK WALKER
Ambulance Attendant

EASTLAND'S OLDEST

57 YEARS

**FUNERAL SERVICE
FOR EASTLAND**

ARRINGTON FUNERAL HOME

301 S. Lamar

Ph. 629-2611

BURIAL INSURANCE
PRE - NEED
FUNERAL ARRANGEMENTS



EXPERIENCE
UNDERSTANDING
FRIENDLINESS

NO. 1

**AMBULANCE
SERVICE**

Tid Bits

by HVO

As summer vacation time looms, you're probably hearing the call for the ideal get-away spot, preferably close to home with lots of exciting fun things for you and your family to enjoy, without spending an arm and a leg.

If there's the faint cry of sea gulls in the call, mixed with sparkling beaches and Gulf surf by day and interesting things to do in the evenings, chances are it's Galveston Island calling you.

That Texas Fun - Spot is sending out the word: they want you to visit this Bicentennial year. And when you do you'll not find what you found for so many years there. It's strictly a family resort area now.

And it's no great task for Eastland Countians to get there. From the red light at Main and Seaman, just go south on State Highway 6, and keep going. In fewer hours than you might imagine (six or seven depending on how many times you stop to photograph bluebonnet fields) you'll find yourself through Waco, College Station, and just past Hempstead you find that 6 turns into 290 into Houston. Of course, Houston is the one big obstacle to Galveston for us. But there's a way: on the north side of Houston, go west on by-pass 610; look for Int. 10 and take the East exit, then look for Highway 75 south which is the Gulf Freeway and will take you non-stop through Houston and to Galveston. (Of course, it takes less time to say all this than it does to do it on the busy freeways, but if I can do it, surely you can too.) There's an alternate if you want to take the time and miles to go "around" Houston by way of Sugarland, etc.

Either way, Galveston is worth it. As one of the three national Bicentennial Festival USA cities, Galveston Island has assumed a major role in the country's 200th birthday celebration. They're expecting to host more than three million visitors and there's exciting plans in the making for every one of them.

At a recent press preview, we had an ample sampling of the Galveston plans. A really day-long treat is Sea - Arama Marineworld where you'll see trained - with - love fish and animals performing (many from the now - defunct Seven Seas), and plan to spend a day at the park because it takes that long to view it all.

Our visit was a whirlwind, in a Bicentennial Press Preview, but rewarding in all ways: certainly to see how old buildings are being reclaimed and turned into usable historic treasures. (Bright idea for many in Eastland County.) Our visit began with brunch and tours of Ashton Villa, with welcomes by the city, chamber and historical officials. We spent the afternoon at Sea - Arama with a Texas barbecue served alongside their enormous indoor aquarium: We ate with giant sharks, rays, and other denizens of the deep looking over our shoulders.

The next day took us for a walk - through of the Strand area where old Galveston is being turned into a modern and exciting "Victorian Quarter" which will have as much or more appeal than the French Quarters in New Orleans. The old Opera House there is now put back into good use. Artists abound.

Along the Strand, another broad-based Bicentennial project is preserving Galveston's Wall Street of the Southwest - the best collection of 19th century iron-front architecture surviving outside of Philadelphia.

The once - decaying business district now houses gas - lighted strips of shops, sidewalk cafes and artists' studios in an area where sightseers come face to face with wharf workers and shrimp fishermen plying their sea trades at Galveston's docks, two blocks away.

A boat tour took us to the Port of Galveston to see the major shipping wharfs and out into the Gulf where deep - sea fishing is a special treat. The Admiral of the Texas Navy was our host. Near the jetties in "International Water", dolphins abounded.

Later stops included the American National Insurance Co. home office building and archives, including the vast art collection including much photography and the extra - special visit to the University of Texas Medical Branch, a complex of seven different hospitals including the famous Shriners Children's Burn Center.

A shrimp boil at Seawolf Park was highlighted by night - time tours of World War II armaments including a walk through a submarine.

A new 200 - acre state park has been created on the island, and ground - breaking ceremonies were held in mid - February for a \$1.5 million new amphitheater at the park which will be used in part to tell the story of the Karankawa Indians, who controlled Galveston, "Snake Island", before 1816.

And an additional 400 - acre park, for recreational purposes only, has been dedicated to Galveston by the U.S. Bureau of Outdoor Recreation.

The area and the homes and wharfs within walking distance will be the focal point for activities with Bicentennial themes this year.

- - The Shrimp Festival, April 30 to May 2, will highlight the traditional blessing of Galveston's mosquito fleet, and locations along the wharfs will serve boiled shrimp and other seafood specialties.

- - The Oleander Festival, May 14 - 16, will include a parade, balls and sightseeing trails past rows of purple - red flowers first brought to the West through Galveston.

- - Festival on the Strand, June 26 - 27 and July 4, will highlight arts and craft exhibits and the historic significance of the Strand and adjacent homes.

The Glow of Christmas, Dec. 5 - 7, will feature candlelight tours, 19th century music and refreshments at Ashton Villa.

- - Dickens Evening on the Strand, Dec. 11, will convert the entire Strand area into a replica of 19th century life into which visitors are invited to wear costumes of the period and sample the English food and boutique offerings as they stroll amid gas lights.

- - Joy to the World, Dec. 4 - 18 will be a Bicentennial holiday celebration through arts and the environment.

Among the Strand's permanent showplaces are the earliest national bank in the state, the First National, which now houses art and ballet workshops, photo studios and the headquarters of the Galveston County Cultural Arts Council, and the nearby Trueheart - Adriance Building, the first old commercial building ever restored in the state, which is now home to the Junior League.

Visitors also browse through The Old Strand Emporium or pause at a sidewalk table of the quaintly furnished Cafe Torrieff (which its owner named for an antique brand of Flemish coffee). Strolling sketch artists have begun to frequent the Strand, to capture its lively scenes and personalities, and there are continuous showings of etchings, paintings, drawings and metal sculptures at Loft - on - Strand Inc.

On Broadway, Galveston's showplace for historic homes and architecture, new zoning ordinances protect homesites rich in Texas history, and several of the most notable have been open for tours.

Ashton Villa, at 24th and Broadway, serves as Galveston's Bicentennial headquarters and is the jumping - off spot for walking tours into the life - styles of 19th century Galveston.

Other Bicentennial projects that rate as tourist attractions include:

- - The Galveston Historical Foundation's purchase of The Elissa, the last known square - rigged merchant sailing ship to visit Galveston. Now being restored to class in Greece, the ship will be brought back to Galveston and placed in Sea Wolf Park on Pelican Island later this year. It was built in 1877 and is the third oldest merchant sailing ship still afloat.

"What we're doing won't be self - detonating like a Bicentennial firecracker. It's a long - range way of correcting urban maladies through productivity.

"Culture usually follows affluence, but here it's been reversed because the historians and the artists have been the innovators who got it all moving."

Galveston Island, we found, wants visitors and they're pledged to entertain them and make them want to come back often.

Folk Life Festival

Response to the Folk Life Festival has been overwhelming this year. Over 30 booths have been reserved, and are still coming in. This third annual affair will undoubtedly be the best yet!

The purpose of the Folk Life Festival, sponsored by the Civic League, is to show people the arts, crafts, and "old ways" of doing things... things that were once necessary for survival.

Saturday, April 24, will be the first day for the Fol Folk Life Festival. The hours are from 10 - 10.

Sunday, April 25, the Festival will open with a religious service presented by the Christian Outreach Team from McMurtry College at 9:45. This popular group of Christian men invite all that will to join them for this service. Sunday School classes have been invited to attend this service. It will close in time for people attending to return to their own churches for their service.

The clubs and organizations of Cisco have been very cooperative in again joining in for both fun and profit. Ten percent of the profits earned by each booth goes to the Civic League. The League has been helpful in donating money to school activities, the city park and swimming pool, the Child Care Center, and many similar needy civic projects.

Exhibitors returning are Cisco College Women; Bertha Reimer - lye soap; ABC Plant Garden; Methodist Youth, balloons and fish pond; Mrs. Ruth Lambert, caricatures; Senior Citizens, handmade items; Mrs. John Conrad, spinner; Cisco Art Club, art works; Cisco Garden Club, plants; Methodist Women, homemade jelly; Service Club, homemade candy; Delphian Club, baked goods; Boy Scouts, building a tower and rope ladder; Aubrey Simpkins, tin can art.

Those making their first appearance this year are: Jim Webb, hollowing out a canoe



Residents of Eastland Manor Nursing Home in Eastland are shown taking a much needed rest after their "Walkathon" Wednesday that added an additional \$210.00 to the Eastland County March of Dimes Campaign. Mrs. Truman Maynard, Activities Director at Eastland Manor, organized the drive for residents of the home and said that attendance was "enthusiastic" among those able to attend. Nursing Home Administrator Lou Nix said it is hoped that the "Walkathon" can be a yearly event.

Mrs. Dewey Cox of Ranger, County March of Dimes Chairman, was present for the 1 p.m. outing on West Commerce Street, and gave a "great big thank you" to Mrs. Nix and Mrs. Maynard for aiding the County's effort toward the March of Dimes and an eventual hoped - for cure for Cancer. (Photo by James Dabney).

EASTER

723 MAR 74 M.P. 31

May the light of Easter shine down on you in all its glory. To everyone we extend our warm wishes for a happy, holy holiday, one rich in love, faith and brotherhood. Peace to all.

Bethel Baptist Church

from cypress log; Morren's Macrame; Mr. and Mrs. John Armistead, Indian baskets, pen and ink paintings; H.W. Cunningham, jewelry from deerhorns, poprocks and other natural materials; Jana Wright, candle maker; Dan Young, ferrier; Mrs. A.B. Allen, decoupage and crafts; Mrs. Truly Carter, plants and crafts; Ann Abdias, weaver; Donna Falcuoni, Spoon rings; Drucilla Arnold, pressed and dried flower arrangements; FHA Club; Roger Rick, furniture and objects from tree trunks; Trey Kendall and Dickie Seider, Antique clocks; and John Smith, lapidary.

A hoedown from Albany will be entertaining participants Saturday night. Sugar and Spice Square Dancers will perform at different times throughout the Festival. Steve Smith, a CJC student, will sing and play his guitar.

Chalupas will be sold again this year, as well as cornbread and beans and homemade bread.

Corn on the cob will be sold by the Cisco Credit Women.

An old - fashioned cake walk will be scheduled at different intervals through the Festival.

The Cisco Civic League and participants invite all Cisco and area people to come and join in the fun, and help to make this the best Folk Life Festival yet!

Sunday, April 18, 1976

VACATION SPECIAL

One 1971 Ford pickup, extra clean, 37,000 miles, with a 26 ft. Firecraft 5th wheel travel trailer, fully self contained, extra clean. 1306 S. Mulberry, Eastland, 629 - 8279. Both units air conditioned. t-37

CARD OF THANKS

I would like to express my appreciation for the lovely cards, flowers and visits I received while in the Eastland Hospital recently.

A special thanks to Dr. Treadwell, Dr. Garrett and the nurses and staff for the good care and kindness shown to me.

Mrs. Horace Lane

Lobo Barber Style Center

Easter Special

1000-Watt Hair Dryer - \$18.95
(Free Styling Brush With Each Dryer)
For \$2.00 More Off This Low Price, Come By For A Hair Style.

(Men's or Women's)

Also Register For A 1000-Watt Hair Dryer And Other Grooming Products To Be Given Away In April.

709 Ave. D. Cisco 442-9979
Jim Roberts Fred Castleberry Tommy Brooks

SALE

On Something Everyday Come See

- Building Materials
- Hardware
- Paint
- Posts
- Fence
- Cement
- Windows

Big Assortment
• Tools
• Home Furnishings

The One-Stop Do-It-Yourself Store

The House Of 1001 Wonders

J-B Jones-Blair PAINT Largest Selection

H and R Hardware & Lumber
715 W. Main
629-214 Eastland

STUDIO SPECIAL

Our Place

705 Ave. D. Cisco
Wed. & Thurs., April 21-22
10 a.m. To 5 p.m.

8x10 LIVING COLOR

89¢

Special Offer!

We Show Proofs
Portraits from Pose of Your Selection
Additional Portraits Available at Discount Prices
COLOR by BGB Enterprises, Inc.
Box 1256 Mineral Wells, Texas

Bakker FUNERAL HOME

306 W. PLUMMER • EASTLAND • PH. 629-1726

Dear friends,

To provide the funeral service most people want requires personnel, facilities and equipment, and their availability 24 hours a day. For this reason, the total charge for funeral service is related to the cost of the casket selected, but is not solely determined by it. The average cost of the above services per funeral far exceeds the cost of the casket.

Respectfully,
Oale O. Bakker

Beginning April 4... Limited Quantities

ANNUAL SPRING Sale!

A savings of \$35.05 on a 40-Pc. Service for 8 in Oneida's HEIRLOOM STAINLESS

40-Piece Service for 8
8 Teaspoons, 8 Knives, 8 Place Forks, 8 Salad Forks, 8 Place Spoons plus handsome storage tray.
\$124.95
Reg. \$160.00

20-Piece Service for 4
Four each of the 5 pieces listed above in gift box. **\$62.50**
Reg. \$80.00

SAVE ON COMPLETER SETS

- American Colonial*
- Shelley*
- Michelangelo*
- Rembrandt*
- Dover*
- Will 'O' Wisp*

5-Pc. Hostess Set
Cold Meat Fork, Butter Knife, Gravy Ladle, Sugar Spoon, Pod. Tablespoon
\$23.95 Reg. \$32.00

Set of 2 Tablespoons
\$9.95 Reg. \$12.00

ONEIDA
The Artistic, Dependability, Beauty of a Tradition

*Trademarks of Oneida Ltd.

Central Drug

Ph. 629-2681
Prescription Specialists

100th Birthday To Be Celebrated At First Baptist With 7 Former Pastors

A BRIEF HISTORY OF THE FIRST BAPTIST CHURCH OF EASTLAND, TEXAS

Some time in the summer of the year 1876, a meeting of the Baptists in the town of Eastland was called to meet in a saw mill situated near where the colored school building once stood for the purpose of organizing a Baptist Church. (204 North Rosewood Street).

It is not known just who responded to the call, but the church was organized by Rev. Lingo, a laborer at the mill, the participants in the organization sitting on the logs brought there to be made into lumber. The names of all of those participating in the organization is also not known other than Rev. Lingo but it is reasonable to suppose that J.S. Bedford, A.J. Stuart, and J.E. Yarborough were among the number as they appear as trustees of the church in a deed from Connellee, Daugherty and Ammerman to Bedford, Stuart and Yarborough, conveying lots eleven and twelve, Block - C - 2 in the town of Eastland. It is known that Henry Van Geem was one of the original organization and it is highly probable that Savana Stuart, wife of A.J. Stuart, was also a member of the body.

We have no record of the accomplishments of this body other than the acquisition of the lot mentioned.

In February of 1880, the following named brothers and sisters were organized into a church under the name "The Missionary Baptist Church of Eastland": A.J. Stuart and wife Savana and daughter Leonora, J.S. Bedford, H. Van Geem, ? Walters, Joseph Udall, Chas. Jenkins, and wife Minnie, Eddie and William Townsend, ? Cherry, W.M. Perkins, Doratha Holland, Esther East, Lottie Duckworth, ? Perkins

(probably the wife of W.M. Perkins) and Martha Drake. This organization was a member of the Red Gap Association in 1880, and the records of the Association show that the church had an increase in membership of eight, two by baptism and six by letter.

On December 25, 1881, the following named people organized under the same name: Thomas Johnson and wife Dianna, Henry Van Geem and wife M.J. Van Geem, J.C. Lockhart, S.M. Holland and wife L.E. Holland, A.J. Stuart, A.C. Chandler and wife M.J. Chandler, Fannie Cox, M.A. Schnick, Mary Shannon, and L.B. Skelton.

No reason is given on the records for this organization but the late Henry Van Geem stated to the writer that it was on account of the majority of the church to change from one Association to another but did not remember whether it was from The Texas Baptist Conference to The Baptist General Association or the other way around.

Rev. W.B. Long was the first pastor of the latter organization and served until sometime in 1883.

The first home of the church was erected in 1882 with the help of a loan of \$250.00 from the American Baptist Home Mission Society. It was a frame structure which stood just south of the Alhambra Hotel, on lots 11 and 12 of Block C - 2 on South Seaman Street and was the second church building to be erected in Eastland. This building was used until 1905 when a frame building was erected at the present location which was used until 1927 when the present building was erected.

The above history notes were written by the late Ed T. Cox about 1940. He also included brief notes about the following pastorate: from 1880 to 1940: L.S. Knight, 1883; Z.T. Eaton, 1888; C.H. Ray, 1890; B.F. Chastain, 1893; I.D. Hull, 1896; E.M. Hunt, 1898; J.L. Mayes, 1899; H.R. Moran, 1907; G.W. Parks, 1908; J.B. Parrock, 1912; R.L. Estes, 1912; J.M. Parker, 1914; W.H. Ingle, 1916; J.M. McMahan, 1918; W.J. Nelson, 1921; W.T. Turner, 1929; O.B. Darby, 1933; Fred C. Eastham, 1935; J.I. Cartledge, 1937; Jones M. Weathers, 1939. During this period, records are scarce and growth of the church apparently was slow. In 1921 there were 279 church members with 160 average in Sunday School. In 1932 the annual report shows 572 church members, 288 enrolled in Sunday School and gifts totaling \$4,363.64. The church at that time was valued at \$44,000.00.

Pastors serving since 1940 were: Franklin E. Swanner, 1942; H.J. Starnes, 1943; Fred Porter, 1945; Loyd M. Chapman, 1948; Melvin Rathel, 1951; Harvey Kimbler, 1954; and Haston Brewer since 1961.

A Mexican mission was established and supported during the forties. The enrollment reached 30 at one point, but the work was hindered by the resignation of the Mexican pastor in 1947.

Under the leadership of the Pastor, Melvin Rathel, the church started a mission on West Main Street in May, 1954. It was organized into a church (Bethel Baptist) in May, 1956.

In 1950, the church purchased the building at 101 West Plummer which was an office building built by Prairie Oil and Gas Company. The church has remodeled and air conditioned the building into a

very usable educational and office space.

More recently the church has purchased the property at 410 and 414 South Lamar Street for future building needs.

The church has established a building fund with the gift of 200 shares of Standard Oil of New Jersey, stock given by Mr. and Mrs. Dave P. Carlton in memory of her father, Judge B.W. Patterson. Later they added 50 shares of Exxon stock. Many memorials have been added to this fund.

In 1974, the church purchased two 12 passenger vans to begin a Bus Ministry and the church still maintains the Radio Ministry that was begun in 1953.

The present church membership stands at 955, with 542 of these being resident members. The Sunday School enrollment is 461 and in ad-

Thoughts

And remember that your heavenly Father to whom you pray has no favorites when he judges. He will judge you with perfect justice for everything you do; so act in reverent fear of him from now on until you get to heaven. God paid a ransom to save you from the impossible road to heaven which your fathers tried to take, and the ransom he paid was not mere gold or silver, as you very well know. But he paid for you with the precious life-blood of Christ, the sinless, spotless Lamb of God.

1 Peter 1:17-19

In 1975, the church gave \$97,480.07 to all causes with \$23,778.72 going to mission causes.

The church sponsors a Sunday School class at Valley View Nursing Home.

EDDIE'S UPHOLSTERY Custom Upholstery and Refinishing 205 N Dixie Eastland, 629-1304. 134

SMALL ENGINE PARTS

BRIGGS & STRATTON

Lawnmower & Tiller Repair
Briggs & Stratton Service Dealer
New Engines & Parts In Stock
Rebuilt Lawnmowers
RHODES SMALL ENGINE PARTS
206 Neblett St.
Ph. 629 - 2415
Eastland, Texas



FIVE GENERATIONS - - Bill Anderson of Eastland, Jennifer Diane Wages, 10 months, of Nacogdoches; Mrs. Edna Patterson of Goldthwaite; Mrs. Otto Doggett of Goldthwaite; and Mrs. George (Debbie) Wages of Nacogdoches. Mr. and Mrs. Bill Anderson have resided in Eastland for the past 12 years. Their daughter, Mrs. George (Debbie) Wages is a graduate of EHS and Tarleton State University.

REPORT OF CONDITION

Consolidating domestic subsidiaries of the
Consolidating domestic and foreign subsidiaries of the

Eastland National Bank of Eastland, City
Name of Bank
In the state of Texas at the close of business on 3-31-76 1976
published in response to call made by Comptroller of the Currency, under title 12, United States Code, Section 161
Charter number 14299 National Bank Region Number

Statement of Resources and Liabilities		Thousands of dollars
		THOUSANDS
ASSETS		
Cash and due from banks		1,892
U.S. Treasury securities		2,383
Obligations of other U.S. Gov't. agencies and corps.		5,740
Obligations of States and political subdivisions		2,866
Other bonds, notes, and debentures		NONE
Federal Reserve stock and corporate stock		8
Trading account securities		NONE
Federal funds sold and securities purchased		
under agreements to resell		900
Loans, Total (excluding unearned income)	7,124	
Less: Reserve for possible loan losses	107	
Loans, Net		7,017
Direct lease financing		NONE
Bank premises, furniture and fixtures, and other assets representing bank premises		282
Real estate owned other than bank premises		NONE
Investments in unconsolidated subsidiaries and associated companies		NONE
Customers' liability to this bank on acceptances outstanding		NONE
Other assets		371
TOTAL ASSETS		21,459
Demand deposits of individuals, prtshps., and corps.		6,400
Time and savings deposits of individuals, prtshps., and corps.		12,504
Deposits of United States Government		37
Deposits of States and political subdivisions		1,008
Deposits of foreign govts. and official institutions		NONE
Deposits of commercial banks		28
Certified and officers' checks		119
TOTAL DEPOSITS		20,096
Total demand deposits	7,234	
Total time and savings deposits	12,862	
Total deposits in foreign offices		NONE
Federal funds purchased and securities sold under agreements to repurchase		NONE
Liabilities for borrowed money		NONE
Mortgage indebtedness		NONE
Acceptances executed by or for account of this bank and outstanding		NONE
Other liabilities		128
TOTAL LIABILITIES (excluding subordinated notes and debentures)		20,224
Subordinated notes and debentures		NONE
Preferred stock a. No. shares outstanding NONE (par value)		
Common stock a. No. shares authorized 5,000		
b. No. shares outstanding 5,000 (par value)		100
Surplus		150
Undivided profits		985
Reserve for contingencies and other capital reserves		NONE
TOTAL EQUITY CAPITAL		1,235
TOTAL LIABILITIES AND EQUITY CAPITAL		21,459
Average for 15 or 30 calendar days ending with call date:		
Cash and due from banks		1,766
Fed. funds sold and securities purchased under agreements to resell		911
Total loans		7,110
Time deposits of \$100,000 or more in domestic offices		476
Total deposits		19,966
Fed. funds purchased and securities sold under agreements to repurchase		NONE
Liabilities for borrowed money		NONE
Standby letters of credit outstanding		NONE
Time deposits of \$100,000 or more in domestic offices:		
Time certificates of deposit in denominations of \$100,000 or more		125
Other time deposits in amounts of \$100,000 or more		351

I, James W. Reid
Name
Vice-President & Comptroller
Title

of the above-named bank do hereby declare that this report of condition is true and correct to the best of my knowledge and belief.

James W. Reid
Signature
4-15-76
Date

We, the undersigned directors attest the correctness of this statement of resources and liabilities. We declare that it has been examined by us, and to the best of our knowledge and belief is true and correct.

Wilson
Stuart
Holland
Grover
Directors

"We Handle Anything But Litter Bugs"
GOODE PEST CONTROL
Mr. Jimmy Maples Has Now Joined Goode Pest Control.
Call 629-1984 Or 629-1179
Roaches, Ants, Termites, Moths, Spiders
ALL GUARANTEED

Little Girls Clothes
Size 4 - 14
Jr. Sizes 3 - 15
Ladies Sizes
6 - 20
New Spring Arrivals
Now Carrying Dresses
SWIM WEAR

School Lunches
MONDAY APRIL 19
Barbecue beef on bun
French fries
Round-up salad
Applesauce
TUESDAY APRIL 20
Corn dogs
Pinto beans
Buttered cabbage
Lettuce wedges
Corn bread
Fruit cobbler
WEDNESDAY APRIL 21
Roast beef & gravy
Winged potatoes
Buttered lima beans
Lettuce & tomato salad
Sliced bread
Cake squares
THURSDAY APRIL 22
Beef stew with
Vegetables
Cabbage slaw
Corn bread
Cinnamon rolls
FRIDAY APRIL 23
Hamburgers
Buttered corn
Potato chips
Jello

Town Square Fashions
104 S. Seaman Eastland

Buy Wisely . . . Pay Promptly . . .
Protect Your Credit
If you are not enjoying the advantages of Credit buying, let us help you open a charge account. Your home town merchants welcome a new charge customer. Many of Life's luxuries and good things are enjoyed by those who have good CREDIT and use their credit ratings.
★ MEMBERSHIP ★
Baird's TV & Radio Shack
Bray's Department Store
B.G. Brown Construction
Bower Electric
C-Wholesale Tire Co.
Central Drug
City Garage
Coats Furniture
DeFord Exxon Co. U.S.A.
Eastland Direct Factory Outlet
Eastland Memorial Hospital
Eastland National Bank
Eastland Service Parts
Eastland Telegram
Freyshlag Insurance Co.
Fullen Motor Co.
Goodyear Tire & Rubber Co.
Hollywood Vassar Credit Union
H&R Lumber Co.
King Motor Co.
Kinnaird Insurance Co.
McCathern Motor Co.
Montgomery Ward
Perkins Implement Co.
Poe Floral
Robertson TV
Smith Plumbing
So-Lo Auto Parts
Southern TV Systems
Southwestern Bell Telephone
Super Save Groceries
Swinson's Industrial Engine & Auto Repair
Texas Electric Service Co.
Turner, Seaberry & Warford
Eastland Merchants Credit Association
209 Exchange Building Eastland, Texas 76448

SALE TIME
Is Anytime You Give Us Opportunity To Help You With:
• SEED
• FERTILIZER
• CHEMICALS
• VET SUPPLIES
Wayne & Acco Feeds
Sweetwater Cotton Oil
FREE DELIVERY
Check Us FIRST!
Jay Carter President
C & D FEED INC.
301 N. Seaman
629-2173

Walls

Garment Plant Experience or Walls Will train you.

\$2.76 hr. base-incentive pay system

\$2.30 hr. minimum rate

6 Holidays, 5 paid

Two weeks vacation, week of December 25th and July 4th with a Vacation Bonus Pay Plan.

Retirement and Profit Sharing Plan for all fulltime employees.

Hospitalization Program with Major Medical.

Employee Discount in Outlet Stores.

Air-Conditioned Plant.

Qualified Management and Supervisors.

Advancement opportunity. Apply now at:

WALLS INDUSTRIES INC.
222 N. Baylor
Breckenridge, Texas

An Equal Opportunity Employer

Rebekahs And Oddfellows Holds Meet

The Oil Belt District Association of Rebekahs and Oddfellows met in DeLeon Lodge Hall Thurs. night 7:30 p.m.

Velma Pool president presiding Vice-President-Evelyn Purcell-Mineral Wells 1st Vice President-Lois Nicks-Stephenville. Treasurer-Opal Heath-DeLeon. chaplain-Ruth Otwell-DeLeon.

Welcome address was given by the new mayor of DeLeon and Response to the address by J. Henry Cox of Stephenville. A very impressive Memorial Service and draping the Charter was given by Stephenville Lodge. Eastland Rebekah Lodge gave a comedy skit "Good ol' Days" dressed in Bicentennial costumes. Those attending from Eastland were Mr. and Mrs. Cecil Cope, Mr. and Mrs. Harvey Basham, Mr. and Mrs. Hugh Mahafey, Kaye Alsbrock.

Business was changing the Pr Capita Tax member and changing the meetings to the third Tuesday in April and October each year. The next

meeting will be in Mineral Wells on October 19th at 8 p.m.

The meeting was cut short because of the weather.

New officers installed for the next District Oil Belt Association were: President-Evelyn Purcell-Mineral Wells, Vice President-Lois Nicks-Stephenville, 1st Vice President-Lula Mae Basham-Eastland, Secretary-Anne Scott-Mineral Wells, Treasurer-Sister Sampley-Mineral Wells.

Attends Convention

Standlee McCracken, Mobil distributor in Eastland has returned home after attending the annual convention of the Texas Oil Marketers Association in San Antonio.

He reported that major discussions at the convention centered on price control, government over-regulation of the oil industry and unreasonable gasoline vapor control rules.

Sgt. Odis O'Bannon To Brigade

Yongsan, Korea--Army Sergeant Odis G.L. O'Bannon, whose wife, Judy, lives in Gorman, Tex., was assigned on March 30 to the 19th Support Brigade in Korea.

The sergeant, a material handling supervisor with the 305th Supply and Service Company of the brigade's 227th Maintenance Battalion in Yongsan, entered the Army in March 1971 and was last stationed at Ft. Carson, Colo.

Morton Valley H-D Club Holds Meet

The Morton Valley H.D. Club met Wed. P.M. for their regular scheduled meeting with Mrs. Ora Roberts Presiding. Mrs. R.W. Gordon led us in the clubs, theme, creed, and prayer.

Mrs. B.A. Blair gave the Devotional. Ada Tankersley read the former minutes and they were approved, and she called the roll which was answered with "What frustrates me the most".

Seven from our club attended the District T.H. Da. meeting March the 31st at the 4-H center in Brownwood Lake, and all reported a nice time.

We were delighted to have Josie K. Nix back with us after a long absence.

We discussed our Funday trip to Granbury which is in the near future, and some of the members showed their lop robes they had made for the rest homes!

Janet Thomas gave us a wonderful lesson on Electrical repairs you can do. She stressed it was real good to have your wiring checked pretty often in your attic.

Mrs. H.C. Pounds was hostess and she was unable to be present-but sent her refreshment over by another member. Those present who enjoyed the delicious goodies of sandwiches, punch, nuts, cheese spread, potatoe chips were, Ora Roberts, Mrs. R.W. Gordon, Ada Tankersley, Addie Moseley, Polly Smith, Josie K. Nix, Leta Brockman, Zettie Green, Emily Hortsell, Murie Level, Flora Kincaid, Evil Blair, Bertha Asher, Bernice Tankersley, our agent Janey Thomas, and two young granddaughters of Mrs. Smith.

Read The Classifieds



After winning a race, a driver loses his passenger, who soars through the air for a rough landing in Universal's "Sidecar Racers."

Majestic Thurs.-Fri.-Sat., Apr. 22-24 7:30 p.m.

M. L. TERRELL REAL ESTATE

— HIGHWAY 80 EAST —
PHONE 629-1725 NIGHTS 629-3943

HOMES

3 bedroom, 2 bath new home, brick with fireplace on corner lot with built-in ins. Well financed.

3 bedroom, 1 bath home, paneled and carpeted in good location. Nice house. \$21,000.00

3 bedroom, 1 bath in good location. \$18,500.00

2 bedroom house on Mulberry Street with corner lots.

Nice 2 bedroom home with central heat, paneled and carpeted; has extra lot on Gilmer Street. \$13,500.00

New duplex under construction, carpeted, central air and heat, with garages and storage.

New 3 bedroom, 2 bath home under construction on corner lot.

3 room house, 7 1/2 lots in Eastland. \$4,800.00

2 bedroom house with some carpet on large lot. \$12,500.00

1 bedroom house, new construction on large lot. \$6,500.00

At Morton Valley: station, store building, fixtures. \$6,500.00

Duplex on South Walnut Street. \$5,750.00. SOLD

3 bedroom, 1 bath, 2 lots, fruit trees, double garage, corner lot in Cisco.

2 - 3 bedroom, 2 bath homes, 9 lots in Cisco.

6 lots in the City of Ranger good location.

2 lots in Olden with 2 bedroom house on corner lot. \$10,500.00. SOLD

2 bedroom, 1 bath house on South Bassett. SOLD

SMALL ACREAGE

8 acres Northwest of Olden with city water

8 acres located on Interstate near Ranger

5 acres at Morton Valley with 3 bedroom house and barns with good fences, and city water

11 acres at Olden, with nice rock home with carpet and paneling, lots of fruit trees, good fences, nice barns and city water.

36 acres near Olden with city water

40 acres, partially fenced on pavement with city water. \$16,000.00. Easy terms.

65 acres, all fenced with creek running through it. Owner will finance.

FARMS AND RANCHES

75 acres West of Cisco, 1 mile off I - 20 with good fences and some improved grasses. \$350.00 per acre

300 acres 1 mile East of Eastland with 1 mile of Leon River, good fences and half minerals. \$375.00 per acre.

208 acres with 3 bedroom home, 80 acres of cultivation, water well. Northwest of Eastland. Terms can be arranged.

160 acres south of Cisco with Highway frontage, good fences.

328 acres in Stephens County. \$262.00 per acre.

320 acres with all improved grasses, good fences, 1/2 minerals. \$350.00 per acre with good terms. SOLD

160 acres with a 3 bedroom home, fireplace, 2 good tanks, natural gas, on pavement, city water with some love grass

150 acres South of Eastland, 140 acres in coastal, good fences on County Road with city water. \$425.00 per acre

143 acres Northwest of Ranger, with 52 acres of peanuts. \$375.00 per acre.

74 acres with cultivation on County Road North of Eastland with city water on pavement. \$400.00 per acre

120 acres of Sabanna River, pecan trees, deer and turkey, half minerals. Good terms.

140 acres close to Eastland with 2 bedroom home, good barns, good fences, \$450.00 per acre.

815 acres south of Cross Plains with deer and turkey. Approximately half minerals.

1450 acres near Albany with approximately \$900.00 a month oil income, on pavement. \$225.00 per acre.

1297 acres in Eastland County with some cultivation and improved grasses, good place.

150 acres North of Eastland on pavement with 77 acres of cultivation, and city water. \$400.00 per acre.

138 acres, 11 acres peanut allotment, 5 miles West of Rising Star. \$235.00 per acre.

604 acres near Putnam, fair fences, with three stock tanks. \$210.00 per acre.

80 acres Southwest of Cisco, good fences, two stock tanks, and half minerals, with a 2 bedroom home.

163 acres, 3 bedroom home, all coastal, good fences, and barns. Located in the Carbon area. \$475.00 per acre. SOLD

668 acres, some improved grasses with a 2 bedroom house, good barns, good well water. Located in Stephens County.

163 acres, 25 acres coastal, 17 acres love grass, lots of pecan trees on Sabanna River, 3 1/2 miles Southwest of Gorman.

160 acres Southeast of Ranger with deer and half minerals. \$300.00 per acre.

198 acres with 3 bedroom home on pavement with city water, 70 acres of cultivation near Lake Leon.

224 acres improved grasses with good fences and good set of pens. \$10,000.00 down, owner will finance. \$315.00 per acre. Location near Carbon. SOLD

491 acres in Eastland County with nice brick home, some coastal, fenced and cross fenced. Approximately half minerals. Shown by appointment only.

215 acres with good fences and good stock tanks. Near Olden.

486 acres near Lake Leon with 2 bedroom home, irrigation and good fences on pavement.

695 acres in Eastland County with some river bottom. \$315.00 per acre.

306 acres near Eastland on Leon River with 106 acres coastal, bermuda and remaining improved grasses, ample irrigation. Water and equipment for all of tract. 7 stock tanks, pecan trees, good fences, metal corrals and a 40 x 72 all-steel barn, also other out buildings.

We Have Other Listings

Large and Small
All Listings Will be Appreciated.

Office Phone 629 - 1725
Hiway 80 East
Eastland, Texas

RODGER TERRELL
Home 629 - 2896

PAT MAYNARD
Home 629 - 8063

M.L. TERRELL
Home 629 - 2443

Kincaid's Real Estate Corner

HOUSES

3 bedroom frame home, living room, dining room, kitchen, utility area with washer, dryer, bath, newly paneled throughout, single car garage and storage room. Offered completely furnished, new Spanish tile floor, large master suite with hide-a-bed, color TV, dining room furniture, style bedroom suite, one brass bed and chest, one set twin beds, stove, refrigerator and other misc. items, all included at the price of \$11,200.00.

SOLD

Large 3 bedroom frame, large living and dining room combination, bath, garage, pecan trees, garden spot, large lot, located 115 Scurry St., Gorman. \$10,500.00. Consider Terms.

LAKE PROPERTY

16 1/2 acres - Possum Kingdom, 2200 ft. frontage, 6 lodges: Main lodge 2775 sq. ft. (2) 1352 sq. ft., (3) 1944 sq. ft. (4) 1640 sq. ft. (5) 1144 sq. ft., (6) 1066 sq. ft. Recreation bldg. 3600 sq. ft. All completely furnished, own water system, butane system, sewer system, boat dock boat launching ramp, all in good repair. For Sale or Trade.

21 acres of land Lake frontage on 3 sides, 10 ft. water frontage, road frontage, 30 acres irrigated from wells, 1/2 mile highway, excellent building site, 260 acres approx. buildings, 3/4 mile highway, excellent buy at \$325.00

SOLD
SOLD
SOLD

SMALL TRACTS OF LAND

3 1/2 acres highway frontage, trees, good building site, \$2000.00

12 acres all coastal, 4 outskirts of Anson. Also has hog sheds and farmland. Completely fenced and cross fenced with hog wire. \$1000.00

SOLD

63 1/2 acres of land, secluded and rough, good grass, improved varieties sown, no minerals, good tank, excellent deer and bird hunting 3/4 mile off pavement, 6 miles from town. \$300.00 per acre. Terms available, would consider G.I. plus cash.

Two 11 acre tracts that adjoin, tank water on both, highway frontage, not far out, good open grass land with scattered trees, city water possible. \$16000.00 each tract. G.I.

101 acres good improved native pasture, close in, some trees, some creek bottom, net fences, 2 good tanks, good deer and bird hunting. City water possible. \$375.00 per acre. Terms.

70 acres coastal, good net wire fences, 2 pastures, well, tank, barns, close in. \$400.00 per acre. City water possible.

10 acres coastal, close in, good fences, \$400 per acre. Will take G.I. plus cash. City water possible.

36 acres brush land, close in, city water, excellent location, \$14,000.00. Will G.I.

107 acres, good fences, barns, south of Carbon, 2 tanks, one well, 85 percent minerals. \$350.00 per acre

135 acres n.w. ris. good water wells, some orchard, good peanut. \$350.00 per acre, make us an offer. On pavement. \$1500.00. Will G.I.

SOLD

FARMS AND RANCHES

237 acres, excellent grass land, scattered clumps of live oaks, good highway frontage and excellent location, 2 tanks, city water possible. \$350.00 per acre, good terms can be arranged.

320 acres, highway frontage, 60 ac. cultivation, now in K.R. bluestem, creek, well, 4 tanks, good net wire fences, excellent terms can be arranged. \$325.00 per acre.

840 acres improved ranch, nice house, barns, corrals, several pastures and traps, 3 wells, 8 tanks, 2 springs, good location, on pavement, good bird and deer hunting, fish in tanks, good net fences. \$350.00 per acre. Excellent terms.

1000 acres good grass land, 2 wells, 8 tanks, good net fences, no bldgs., pavement, good location, \$300.00 per acre. Excellent terms.

650 acres rolling, semi open grass land, some bottom and river frontage, good fishing in river, pecans, several good tanks, 1 water well, 40 ac. coastal, 25 acres grain, excellent deer hunting, air strip, net wire fences, 2 houses, 35 miles from city limits Fort Worth \$350.00 per acre, excellent terms. 16 percent down balance to be arranged 8 1/2 percent interest.

1068 acres highly improved ranch located on Paluxy River, welded pipe corrals, landing strip and hangar, good barns, exceptionally nice 3500 sq. ft. home, 3 other houses, 80 acres coastal, 45 acres grain, excellent fishing, deer and bird hunting, 50 miles from downtown Fort Worth. \$600.00 per acre. Excellent terms. 15 percent down, balance to be arranged 8 percent interest.

We have for sale or trade large ranches, irrigated farms, all sizes anywhere in the Southwest. Also motels, office buildings, shopping centers, commercial property of all types. Contact us for whatever you need.

ROBERT M. KINCAID REAL ESTATE

100 South Seaman Eastland, Texas

629 - 1781

Robert M. Kincaid Night Phone 629 - 2815

ENJOY THE Wonders of Easter

1110 MAR 75 M.P. 20

Be alive! Be aware of Spring and the coming of brighter days. Let March's winds and April's showers clear your life for newer things.

Commodor Hotel

Electronic Analysis Tune-Ups

State Inspections · General Repair · Certified Technician · Wheel Balancing

Brakes

Williamson Automotive

215 S. Seaman Ph. 629-2012

Joe Williamson, Jr. Certified By N.I.A.S.E.

master charge

Some important things to know (and teach your kids) about power lines.

The most important thing to know and remember about power lines is that they have enough voltage to cause a serious shock.

If your children want to fly kites, be sure they fly them in an open area well away from any overhead power lines. And never try to rescue a kite from a power line or pole. Call us instead.

If you're installing a new television or CB antenna, be sure enough distance is allowed so that even a falling antenna would miss the power line. Don't try to

do the job on a windy day. And if you drop the antenna, let it fall, because it may touch a line on the way down. If your antenna comes to rest on a power line, don't touch it. Call us immediately.

Whenever you're working with long metal objects such as ladders, pipes, gutters or tree trimmers with metal poles, be sure to stay clear of power lines.

Caution the kids about climbing in trees next to power lines. Tell them never to touch the lines under any circumstances.

We hope you'll follow these safety rules around your house and neighborhood. They're very important.

Texas Electric Service Company

F. N. SAYRE, Manager, Phone 629-2651

The B.G. Brown Companies

B.G. BROWN CONSTRUCTION CO. INC.

CITIZENS REALTY WE CAN SELL YOUR HOUSE

CROWN FOOD STORES

RICHARD E. WARD - CONSTRUCTION

WESTERN MINI STORAGE WAREHOUSES

BETH WARD - COMPTROLLER

B.G. BROWN, INC.

KARLA BROWN - MORTGAGE FINANCING

OAK HILL SUBDIVISION

629 - 1769

820 WEST MAIN STREET EASTLAND



R
REALTOR

A HOME IS a savings account when it has charm plus a dollar value, you haven't seen in years, located in the exclusive wooded area of OAK HILL SUBDIVISION in RANGER. 3 bedrooms, 2 baths plus all extras, double garage. **SOLD** - Two bedrooms, too cute to turn into an investment home. LAKE LEON area. Included are many extras plus all modern - day labor - saving devices. **FREE SQUIRRELS!!!** No charge for the squirrels playing in the big oak trees around this

charmer. It's a two bedroom doll house, good location. IN CISCO, small equity and assume loan. **THERE'S A TRICK TO HAPPY LIVING** - We offer here a showplace home, stylishly arranged, three bedrooms, 2 baths, 2 car garage. Nearing completion. FHA financing available. WEST CISCO. **IF TWO WILL DO** recently rejuvenated and ready for occupancy. 2 bedrooms, 1 bath, 1 car garage, large corner lot, near Young School IN RANGER. **ALL CRAMMED TOGETHER** see this super nice total electric doublewide, near all schools in EASTLAND, 3 bedrooms, 2 baths, corner lot. **INSTANTLY APPEALING**, the minute you walk into this lovely home in EASTLAND, enjoy this two bedroom, two bath, one car garage. Extra deep lot for garden spot. Assume loan. **DOUBLE WIDE WITH IMPROVEMENTS!** The total home very attractive, 3 bedrooms, 2 bath, 2 car carport, corner lot, carpet throughout. Central heat, CISCO. **PARTICULAR PEOPLE** want to see this nice brick three

bedroom, two bath, two car garage, corner lot, storage in EASTLAND. Assume loan. **WATCH YOUR INVESTMENT. NOT YOUR RENT RECEIPTS** less than a year old, total electric, established yard, 3 bedrooms, 2 bath, 2 car garage, established yard West Cisco, assume loan. **TAKE ADVANTAGE** of the opportunity to own this lovely EASTLAND large yard, two bedrooms, carpet, corner lot, 2 car garage. Storage. FHA financing available. **WE'RE EXPECTING** offers galore on this two bedroom, one

bedroom, two bath, two car garage, corner lot, storage in EASTLAND. Assume loan. **WATCH YOUR INVESTMENT. NOT YOUR RENT RECEIPTS** less than a year old, total electric, established yard, 3 bedrooms, 2 bath, 2 car garage, established yard West Cisco, assume loan. **TAKE ADVANTAGE** of the opportunity to own this lovely EASTLAND large yard, two bedrooms, carpet, corner lot, 2 car garage. Storage. FHA financing available. **WE'RE EXPECTING** offers galore on this two bedroom, one

bath home in CISCO, corner lot near middle school, carpeted. **SNEAK A PEAK** at this new brick home in Valley View annex, under construction. 3 bedrooms, 2 bath, 1 car garage, central heat and air. Five percent interest. Near all schools in EASTLAND. **AWOL MEANS "A World of Living"** in this sharp 3 bedroom, 2 bath home. Many fine features. Lovely lot atop small hill Valley View Estates in EASTLAND. **SUPER SPANISH** home located in OAK HILL SUBDIVISION in RANGER.

Sunday, April 18, 1976

Doyle E. Squiers Contractor

Built Up Roofs
And Shingles

All New Work Guaranteed

Ph. 653-2212

After 6 p.m.

Olden Texas 76466

SPECIALS AT Jammie's

by Evelyn Wheat

CISCO, TEXAS

Monday Night: Fried Catfish Buffet

ALL YOU CAN EAT

Tuesday Night: Mexican Food Buffet

ALL YOU CAN EAT

Wednesday Night: Fried Chicken

FINGER LICKEN' FRIED CHICKEN

Thursday Night: Bar-B-Que Beef

PIT COOKED

Friday Night: Rib Eye Steak

SALAD BAR

Salad Bar

Friday-Saturday-Sunday Nights

STATE CAPITAL Highlights AND Sidelights



by Lyndell Williams
TEXAS PRESS ASSOCIATION

AUSTIN—Texas will be a battleground of presidential candidates this month. Ninety-eight Democratic delegates and 96 Republican delegates will be selected in the May 1 presidential preference primary—among the top half dozen from any state.

Democrats will pick another 32 delegates and their 70 alternates in the June 19 state convention. Republicans will name only four delegates at their June convention.

Republican Ronald Reagan, in addition to his Texas campaign swing this week, plans additional visits April 13-14 and April 29-30.

President Ford reportedly will spend this weekend in Texas and return April 28-29.

Democrat front-runner Jimmy Carter will be in the state April 20 and probably again just before the May 1 primary. His son, Chip, tried the Texas water last weekend.

U.S. Sen. Lloyd Bentsen, seeking favorite son Democratic designation as well as re-election, is spending nearly fulltime on the campaign trail this month. George Wallace's support-

ers say he will show up soon after this week's Wisconsin primary.

Democrat Fred Harris is expected April 27-30 and perhaps for a warmup visit earlier.

Session Pushed

Legislators continued to shower Gov. Dolph Briscoe with proposals for a special legislative session to curb skyrocketing utility bills. They ranged from tax relief schemes to special low-low rates for small homeowners. Briscoe apparently encouraged the special session speculation, but made no firm promises.

Comptroller Bob Bullock warned that fiddling with the utility tax structure would save the consumer no more than "chicken feed" on electric and gas bills. Bullock suggested legislators concentrate on turning around the rate structure which now provides lowest rates to largest users and highest rates to homeowners.

Law Protested

Food and beverage "chains" are concerned about Alcoholic Beverage Commission plans to enforce strictly a law require-

ing liquor license holders to be three-year residents of Texas—or corporations to be majority-owned by Texans.

ABC Commissioner Luke Robinson has backing of the commission in enforcing the law, which may stop sales of beer, wine and whiskey in many national supermarket, hotel and restaurant chain outlets.

More Revenue Promised

Comptroller Bullock claims changes in office procedures can bring in another million dollars a year in interest to the state.

Bullock proposes to earn the additional money by getting tax revenue to the bank faster pending records processing. Tax receipts would go directly to a treasury suspense fund.

Courts Speak

A divided State Supreme Court concluded unmarried fathers have no constitutional right to be involved in lives of their children.

The Court of Criminal Appeals reversed two Dallas murder convictions and a conviction for fraudulent misrepresentation in sel-

AG Opinions

Texas Water Quality Board has power to set water quality standards for waters occupying privately-owned beds connecting with public waterways. Atty. Gen. John Hill held.

In other recent opinions, Hill concluded: Water Quality Board has no general authority to engage in land use planning. The comptroller may require county or probate clerks to file reports on list of claims.

A barber cannot be denied a license renewal because he is in jail.

Short Snorts

Directors of 65 state agencies said they support government economy measures, but feel employees should get inflation-fighting pay raises.

Texas unemployment moved up to tenth of one per cent last month, bringing to 5.4 per cent the jobless rate.

R.C.G. Leasing, Inc.

104 W. Commerce On The Square
Eastland, Texas 629-8052

Hospital Equipment & Sickroom
Supplies Sales & Rentals To
Care For Your Patient At Home

Hospital Bed & Rails
Wheel Chairs
Walkers
Bedside Commodes
Crutches
Inhalation Therapy Equipment
Wheelchair Cushions
Skin Care Pads
Under Pads

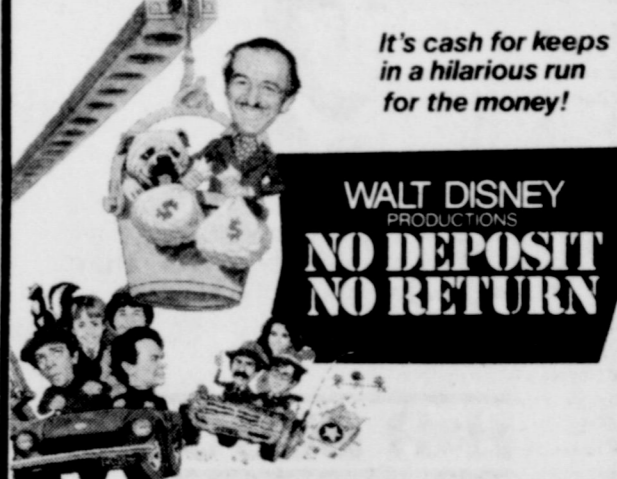
Medicare & Medicaid Approved

Majestic Theatre

Eastland 629-1220

Now Thru Tues. 7:30 p.m. Mat. Sun. 2 p.m.

THE BIG HEIST!



It's cash for keeps in a hilarious run for the money!

WALT DISNEY PRODUCTIONS
NO DEPOSIT NO RETURN

David NIVEN, Darren McGavin, Don Knotts,
Herchel Bernard, and Barbara Feldon

Thurs.-Fri.-Sat. 7:30 p.m.

Burning the track like it's never been burned before!

SIDECAR RACERS



Two guys,
one girl,
and
no brakes!

BEN MURPHY • WENDY HUGHES • JOHN CLAYTON • PETER GRAVES
JON CLEARY • TOM SCOTT • EARL BELLAMY
A UNIVERSAL PICTURE • TECHNICOLOUR

CUSTOM POWER CUSHION POLYGLAS

America's Best-Selling Tire

\$25

A78-13 blackwall with trade

Blackwall	Price
E78-14	\$30.95
F78-14	\$33.95
G78-14	\$35.62
G78-15	\$36.49
H78-15	\$39.25
J78-15	\$39.95

Plus \$1.75 to \$3.03 F.E.T., depending on size.

Here's America's best-selling tire - no wonder it's used on so many 1976 new cars! Two-ply polyester cord body for ride, two fiberglass cord belts for strength, plus a long wearing tread that really hugs the road. It's a real performer.

'All-Weather' 78

\$17	\$22.45	\$24.70
B78-13 blackwall with trade	E78-14	F78-14
	\$25.80	\$26.95
	G78-14	G78-15

blackwall with trade
Plus \$1.82 to \$2.65 F.E.T., depending on size. WHITEWALLS available at slightly higher prices. Other sizes low priced too.
• Polyester cord body • Bias-ply construction • Low budget-saving price

'Custom Polysteel' Radial

\$39.95	Whitewall	Price
	DR78-14	\$53.04
	HR78-14	\$65.44
	GR78-15	\$62.36
	HR78-15	\$67.04
	JR78-15	\$69.52
	LR78-15	\$72.60

AR78-13 whitewall with trade
Plus \$1.98 to \$3.47 F.E.T., depending on size. Other sizes low priced too.
• As advertised on TV • Two steel cord belts • Sure-footed handling

Lube and Oil Change

\$8.88 Up to 5 qts. of major brand 10 30 grade oil.

- Complete chassis lubrication & oil change
- Helps ensure long wearing parts & smooth, quiet performance
- Please phone for appointment
- Includes light trucks

Front-End Alignment

- Complete analysis and alignment correction to increase tire mileage and improve steering safety
- Precision equipment used by experienced mechanics helps ensure a precision alignment

\$11.88 Any U.S. made car - parts extra if needed. Excludes front-wheel drive cars.

Brakes Your Choice

2-Wheel Front Disc: Install new front disc brake pads • Inspect front wheel bearings • Inspect hydraulic system and rotors (does not include rear wheels)

OR

4-Wheel Drum-Type: Install new brake linings all four wheels • Replace front wheel bearings • Inspect brake fluid.

\$56.95 Additional parts extra if needed.

GOOD YEAR

See Your Independent Dealer For His Price. Prices As Shown At Goodyear Service Stores. Services Not Available At Starred Locations.

8 Ways to Buy

- Cash • Goodyear Revolving Charge
- Our Own Customer Credit Plan
- Master Charge • BankAmericard
- American Express Money Card
- Carte Blanche • Diners Club

GOOD YEAR

Glenn Dickson, MGR.
315 E. Main Eastland 629-2662

RANGER DRIVE-IN THEATRE

Show Starts At Dusk

AMERICA ON PARADE

LAST TIME SUNDAY 18th

CHARLES BRONSON
in ALISTAIR MACLEAN'S
"BREAKHEART PASS" United Artists

Coming Next

YO-HO-HO a haunting he will go!

Free wheeling...fun loving... HE'S OUTA SIGHT!

WALT DISNEY
BLACKBEARD'S GHOST

PETER USTINOV • DEAN JONES • SUZANNE PLESHETTE
ELSA LANCHESTER • BAKER REID


Letters to the Editor

Dear Editor:
The Grant Town Riding Club of Mingus, Texas is having an open Playday, April 25, at 1:30 p.m. Trophies and ribbons will be awarded. High point trophy will also be awarded. Events will be Western Pleasure, Barrels, Poles, Flags and Potatoe Race. There will be four classes: PeeWee, Junior, Intermediate, and senior. A concession stand will be open for your convenience. Grant Town Riding Club arena is located 2 blocks West of the Trio Club in Mingus, Texas.
We will truly appreciate your help in advertising this playday for us.
Thanking you in advance,
Grant Town Riding Club
Freddie H. Johnson,
President

HAVE SOMETHING TO SELL?
TRY A CLASSIFIED

Millican Back Hoe Service
511 Seaman 629-2977
Dirt Work & Complete Septic Tank Service
Cleaning & Installing

GIFTS FOR ALL OCCASIONS
Dinner Ware - Glass Ware - Hanging Planters - Flower Pots - Decorative Plaques.
Frankoma, Hull, York, Pfaltzgraff and Marshel Pottery
See the "County Charm" Electric Range
HOUSE OF WEBSTER Ceramics
Highway 80 East
Phone (817) 629 - 2121 EASTLAND, TEXAS 76448

Henry Block has 17 reasons why you should come to us for income tax help.

Reason 2. At H & R Block our price is based on the complexity of your return. The simpler the return, the less we charge.
H&R BLOCK
THE INCOME TAX PEOPLE
Phone 629-8121
104 W. Commerce - Eastland

Wrangler Jeans IN Irregulars Denmin, Checks & Solids \$6.98 Large Size Blouses
Ladies Western Suits \$55.00 Value \$25.00
Wrangler 100% Cotton Western Shirts \$4.98
Monday April 12-18 Only
B & H TRADING POST
EASTLAND, TEXAS

Courthouse NEWS

APRIL 14 NEW CAR REGISTRATIONS
Mrs. Carmen J. Lantz--Ford-San Antonio.
Johnny Cagle--Chev Pu--Cisco.
LeRoy Blanks--Chev. Pkpu--Carbon.
Cliff Clancy--Ford pkpu--Eastland.
Gordon M. Cannon--Buick 4dr.--Eastland
Bill R. Robinson, Chev 4 dr.--Gorman.
Graydon W. Baze, Chev. pkpu.--Gorman.
Clinton O. Revels, Chev pu.--Gorman.
John Underwood, Chev. pu.--Gorman.
Tex. Elec. Serv. Co., Chev. 2dr.--Gorman.
L.B. Looney, Chev. Pu.--Dublin.
Sid Burton, Chev. Pu.--Comanche.
K.B. Riffle, Ford 4 dr.--Putnam.
Shaklee Corp., Ford 4 dr.--

Eastland.
Robert D. Proctor, Chev 2 dr.--Eastland.
Tom Herris, Chev pkpu.--Eastland.
J.R. Clements, Ford 4 dr.--Arlington.
Gary Moore, Ford pkpu.--Atlanta.
Francis M. Rollins, Ford 4dr.--Eastland.
Don Kinnard, Ford 4 dr.--Eastland.

91st DIST. COURT
Mary Louise Barnes vs. Aud Howard Barnes--Divorce
Rebecca Lynn Chambers vs. James Clinton Chambers--Divorce
H.D. Maxtin vs. Nat'l Security Life and accident Insurance Co.--Suit for Insurance Costs.
Commercial Credit Corp. vs. Dewey L. Kennemer--Suit on Loan.
Milwaukee Co. Dept of Public Welfare and Jack Lovell vs. Connie Lovell a/k/a Connie Romain and Connie Hamm--Reciprocal Child support.
David Maacham vs. Brenda Meacham--Divorce.

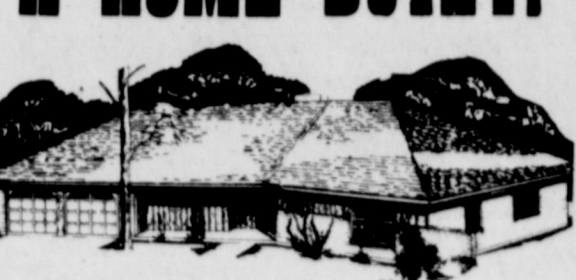
MARRIAGE LICENSE
Cheyenne D. Taylor and Sharon Gail James.
Robert Ross Sysis and Lesvia Oneida Lujane.
Jack Hubert Tucker Jr. and Peggy Lynn Bullock.
William Joe Holt and Brenda Kay Chapman.
INSTRUMENTS FILED CO. CLERKS OFFICE
Estate of Alvery, decd to B.H. Thomas and others--OGL.
Frank Ausanka to 1st Wichita Nat'l Bk--H/S.
Frank Ausanka to 1st Wichita Nat'l Bk--Deed of Trust.
Henry J. Baxley to Mid-States Homes, Inc.--Resignation a d apt of sub trustee.
Zona M. Buford to Ollie Susan Dula--Warranty Deed.
Zona M. Buford to Mary Ellen Nix--Warranty Deed.
Bible Baptist Church to William E. Conner--Warranty Deed.
Dr. H.C. Brown to Earl Keener--Lake Lease.
Mae Brown to Earl Brown--Power of Atty.
Minnie Ola Bennett to LaVerne Elkiff and others--warranty Deed.
B.G. Brown Const. Co. to Delbert R. Grace and wife--Warranty Deed.
Emma Lou Benton and others to Richard N. Burgess--Warranty Deed.
Richard N. Burgess to Jerry Mehaffey--Deed of Trust.
B.G. Brown Const. Co to 1st St. Bk--Ranger--Deed of Trust.
Steve Carl Ballew and wife to Don S. Adams--Warranty Deed.
William E. Conner to Charles Taylor--Warranty Deed.
James H. Carr and wife to Horace R. Rhyne and wife--Warranty Deed.
Kenneth R. Calvert and wife to Keith Insulation Co to M.M Lt. Assn.
Victor Cornelius and wife to Max L. Rightmer, Trustee--Quit claim deed.
Victor Cornelius and Wife to Max L. Rightmer, Trustee--Warranty deed.
W.L. Curtis and wife to J.E. Gardner and wife--Warranty deed.
W. L. Curtis and wife to the Public--Affed.
Roy Dennis and others to 1st Nat'l Bk--Cisco--Deed of Trust.
Tom Dunn, Trustee to 1st St. Bk--Ranger--Trustees Deed.
Eastland Nat'l Bk. to Jerry D. Lowrance and wife--Rel. Deed of Trust.
J.H. Eubanks to Calvin Michelson--OGML.
Larry Douglas Eubank and others to Calvin Michelson--ogml.
Raymond L. Erwin to Jesse

Lee Daniel, Jr.--Royalty Int.
Eastland Nat'l Bk. to Tri-Mark Dev. Inc.--Rel Deed of trust.
Tommy E. Eaves to Marjorie-Deed of trust.
1st Nat'l. bk. Cisco to A.R. Westfall, Jr. and wife--Rel Deed of Trust.
Fenson Mining Co. and others to the Public--Declaration of unitize of operation.
1st Nat'l. bk. Cisco to City of Ranger--R/W.
Lucie Lillian Frayer Estate to the Public--Cert. of no inheritance tax due.
Tillman L. Fonville and wife to Keith Insulation Co. to M M Lt. and assn.
1st Nat'l. bk., Cisco to John Smith and others--Rel. Deed of trust.
Fine Pet. Energy Inc. to Edmund J. Schaefer--OGML.
Taine Pet. Energy Inc. to Roland Tiraconda--Asgn. OGML.
1st Nat'l. Bk. Gorman to L.U. Maynard and wife--Rel Deed of trust.
1st St. Bk.--Ranger to James H. Corr and wife--Rel. D/Tand V/L.
T.C. Fisher and wife to Margie B. Fox--Warranty Deed.
Burla Jane Garner to Dewey Cox, Jr.--Quit Claim Deed.
Lilla Bertha Gardner, decd to the Public--Certified copy Probates.
Layne Gregory and others to James L. Pittman--Warranty Deed.
Alton R. Gardner to James Gardner--M/D.
Ben P. Greer to O.M. Crowder--Warranty Deed.
Ruby Lee Griffin and others to Audy Moore--Warranty Deed.
Ransom Horne, Jr. to John David Baker and others--asgn OGL.
Geneva S. Hill decd to the Public--Certified copy probate.
S.W. Hughes to T.E. Whipple to the Public--Certified copy judgement.
Ralph C. Hart to Tommy G. Warford and others--asgn Royalty Int.
Ralph C. Hart to Susan F. Buckles and others asgn Royalty Int.
Ross Hodges to City of Ranger--R/W.
Brooks B. Herring to Arie B. Herring--Power of Atty.
I.S.C. Warehouse Feeds and others to 1st Nat'l. Bk. Brown--wood--F/S.
I.S.C. Warehouse Feeds and others to 1st Nat'l. Bk. Breckenridge--Deed of Sale.
Bobby G. Jones and wife to Olney Savings Ass.--Deed of trust.
Margaret Terry Jobe, decd to the Public--Certified copy probate.
Roger Kingberg to Alvin Reinhard and wife--Rel-D/T and MML.
Carl E. Krog, decd to the Public--Certified copy probate.
Della Jane King and others to A.P. Fambrough--Quit Claim Deed.
Doris M. Kent to B.G. Brown Const. Co--Rel D/T and V/L.
Jerry D. Lowrance and wife to I.S.C. Warehouse Feeds--Warranty Deeds.
Laurel Energy Co. Inc. to Laurel operating Inc.--asgn OGL.
Laurel Energy Co. Inc. to Laurel Operating Inc.--asgn OGL.
Jim Littlefield and others to William D. Speed and wife--Warranty Deed.
Mineral Exploration Co. to Ransom Horne Jr.--asgn OGL.
J.L. Mauney to R.B. Harper and wife--Rel. V/L and D/T.
Geo. A. Moore and Wife to LeVerle Ames and others--Warranty deed.
Dean Madison to 1st Nat'l. Bk. Cisco--Deed of trust.
Tim Mitchell to Luther Loudomy Jr.--F/S.

Mid States Homes Inc. to I.V. Pennington and others--Rel MML.
John C. Mathis and wife to Travis Williams and wife--Warranty Deed.
Douglas Wayne Mims to J.E. Gardner--OGL.
L.U. Maynard and wife to 1st Nat'l Bk.--Deed of trust.
L.L. McIlvain and wife to Keith Insulation Co.--MML and asgn.
Wilbert E. Norton to Mrs. Atha Williamson--Warranty Deed.
W.B. Norton and others to Alta Williamson and others--Warranty Deed.
Gilbert Pelton and others to Natural Gas Finders Inc.--OGL.
Pressed Steel Product Co. to S.L. Warehouse Co. --Lse.
Jerry M. Pruitt, Trustee to Ted Fields--Warranty Deed.
J.C. Poe to Robert J. Poe and others--Warranty Deed.
Robert J. Poes and others to J.C. Poe--Warranty Deed.
C.L. Pittman and wife to Lydia B. Clem--Warranty Deed.
Quick Way Gro. to the Public--assumed name.
City of Ranger to Mrs. Ruby Del Henry--Cemetery Deed.
City of Ranger to Le Verle Ames--Cemetery deed.
Horace R. Rhyne and wife to Olney Savings Assn--Deed of trust.
Horace R. Rhyne and wife to James F. Carr and wife--deed of trust.
Kenneth Ruse and wife to H.C. Fox and wife--Warranty Deed.
Mrs. W.S. Ray to Jerry Winfrey--OGML.
Republic Nat'l. Life Ins. Co. to Bernise B. Willingham--Rel D/T.
Douglas Ivy Sellums to Comanche Crude Oil Corp.--OGML.
A.G. Sander to D.A. Keener--ASGN Lake Lease.
William E. Smith and wife, decd to the Public--Proof of Heirship.
John R. Shaw, Jr. to Roseann Vincent--OGL.
John R. Shaw, Jr. to Walter Vincent and others--asgn OGL.
John R. Shaw to Clark E. Vincent--OGL.
Ona L. Scott and others to Ralph C. Hart--OGL.
Cora D. Sparks to C. Sam


Sparks--Power of atty.
Felix F. Sparks to C. Sam Sparks--Power of atty.
William D. Speed and wife to Olney Savings Assn--Deed of trust.
Tri-Mark Dev. Corp. to Bobby G. Jones and wife--Warranty Deed.
United States to Dupont Caribbean, Inc.--Notice Tax Lien.
Union Central Life Ins. Co. to Southeastern Resources Corp.--ogmy.
Ellen Vannaman and husband to Lorene R. Ivey--Warranty Deed.
Veterans Land Board to Alford Inman Taylor--Deed
A.R. Westfall Jr. and wife to Roy Dennis and others--Warranty Deed.
Emory C. Walton, Sub. Trustee to Mid-States Homes Inc.--Trustees Deed.
Atha Williamson and others to 1st Fed. S&L assn.--Deed of trust.
Danny White to James A. Rutherford Jr. and wife--Extension MML.
Pauline Winfrey to Jerry Winfrey--Power of atty.

Barn Dance To Be Held At Carbon
A Barn Dance will be held Saturday, April 24, at 8:00 p.m. in the Birdsong Peanut Barn in Carbon. The Barn Dance will be sponsored by the Carbon 4-H Club. Admission will be \$1.50 each. All money will go to the Carbon Youth Fund for a tennis court and to the Carbon Fire Department.
Everyone - young and old - is invited to come out to the Barn Dance.
Thoughts of "Justice" for Eastland County "THERE IS NOTHING SO POWERFUL AS TRUTH"
Pd. Pol. Adv By Ronnie (RB) White and Friends


It's A Great Time for Gettin' A HOME BUILT!

H & W DEVELOPMENT
216 S. SEAMAN
629-1702
EQUAL HOUSING OPPORTUNITIES

AMERICA'S BEST HOUSING BUY


Delivered And Set Up
On Your Lot. 60 x 24 Feet
Double Wide Home Only
3-Bedrooms
1 3/4 Baths
Living Room
Dining Room
Full Den
Plush Furniture
Monthly After Small Down Payment
Eastland
DIRECT FACTORY OUTLET
1-20 Olden, Texas Phone 653-2432 Or 629-2117

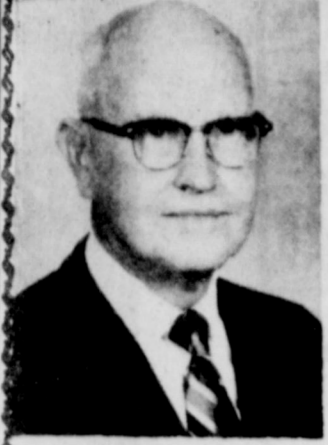
Johnnie W. Morren Sheriff Eastland County

-Presently Serving As-
Police Chief (7 years)
Truant Officer
Civil Defense Director
Vice President
Eastland School Board
- Also -
Texas Certified
Peace Officer
Over 300 Hours
Special Training
Veteran Of World War 11 & Korean Conflict

As Your Sheriff, I Pledge:
1. To be available 24 hours a day.
2. To aid other law enforcement departments and agencies throughout the County.
3. To immediately institute a patrol of Eastland County rural areas.
4. To continue to work with the young people in Eastland Eastland County.
5. To "involve" the public in crime prevention through the use of 2 - way radio equipment and the hundreds of Citizen Band Radios now in operation.
6. To aid in crime prevention through property identification, with property identification numbers being kept on file in the Sheriff's Office.
7. My obligation will be to YOU, the citizens of Eastland County.
Pd. Pol. Adv. By V.S. Day, Campaign Treasurer

The Light Touch

By Clint Bray
Inflation is the price we pay for those government benefits everybody thought were free.
Weather forecasters are becoming more accurate, but they're still several hours behind arthritis.
A fool and his money are soon parted. The rest of us wait until tax time.
Retirement is a wonderful time of life. It's like being on strike, only you don't have to picket.
Trouble with alarm clocks is they always go off when you're trying to sleep.
We'll help you wake up at Bray's in Eastland and Ranger with super summer clothes at affordable prices.

Greetings
2 New Luxurious Air Conditioned Homes
THE ULTIMATE IN NURSING HOMES
And Extended Care Facilities
Mr. & Mrs. Morris Shook--Coordinators
Private & Semi-Private Rooms
Full Time Social Activities Program
"We Invite Your Inspection"
24 HOUR NURSING SERVICE
Chapel
Lounge
Telephones
Beauty Shop
Cable TV
Barber Shop
Luxurious Dining & Recreation Room
Organ, Piano & Game Tables
EASTLAND MANOR Lou Nix-Adm. 629-2686 1405 W. COMMERCE
VALLEY VIEW LODGE Virginia Pence-Adm. 629-1779 700 S. OSTRUM

CITIZENS REALTY

820 W. Main WE SELL FARMS
Eastland REALTOR NOT JUST
629 - 1769 or 629 - 2404 LIST THEM
160 ACRES - GORMAN AREA, Peanut Allotment, Highway Frontage, Good Financing.
140 ACRES - North of CISCO, Tank, Creek, Highway Frontage, Owner Financing, only \$265 per acre.
52 ACRES - Near EASTLAND and LAKE LEON, Large tank - creek, all in coastal, 20 percent down.
58 ACRES - EASTLAND COUNTY, 15 Acres cultivation, excellent place for Lake, lots of trees.
160 ACRES - GORMAN, 100 acres peanuts, 150 acres in cultivation, financing available.
41 ACRES - CISCO, Coastal, Lovegrass, nice tank, owner financing.
640 ACRES - WEST TEXAS, 10 percent down, Owner financing, only \$106 per acre, sandy soil.
85 ACRES - COMANCHE COUNTY, all in coastal, tank, water well, creek, barn.
4 ACRES - CISCO AREA, Good building site, highway frontage.
Hours: WAYNE DURHAM - ASSOCIATE
8 - 6 Mon. - Fri. 629 - 8212
8 - 2 Sat. 1 - 4 Sun.
B.G. BROWN - BROKER
629 - 8082



Rev. H.J. Starnes



Rev. J.I. Cartlidge



Rev. F.E. Swanner



Rev. C.M. Ratheal



Rev. Fred Porter



Rev. Lloyd Chapman



Rev. Harvey Kimbler

it's our

ANNIVERSARY CELEBRATION

And We're Inviting

You To Join Us In Celebrating 100 Years FIRST BAPTIST CHURCH, EASTLAND

110 W. Plummer

— 15 SPECIAL SERVICES —

7 Former Pastors - 8 DAY

CELEBRATION REVIVAL

BEGINNING **EASTER SUNDAY,**
APRIL 18, 11 a.m.

THROUGH **HOMECOMING SUNDAY**
APRIL 25, 7:30 p.m.



Rev. Haston Brewer
Pastor

SCHEDULE

April 18 - Sunday

11 a.m.: Rev. Haston Brewer, Pastor
7:30 p.m.: Rev. H.J. Starnes, '43-'45

April 19 - Monday

10 a.m.: Rev. Starnes
7:30 p.m.: Rev. J.I. Cartlidge, '36-'38

April 20 - Tuesday

10 a.m.: Rev. Cartlidge
7:30 p.m.: Rev. Franklin Swanner, '41-'42

April 21 - Wednesday

10 a.m.: Rev. Swanner
7:30 p.m.: Rev. Melvin Ratheal, '51-'54



Wylie Peebles
Music Director
All Services

April 22 - Thursday

10 a.m.: Rev. Ratheal
7:30 p.m.: Fred Porter, '45-'47

April 23 - Friday

10 a.m.: Rev. Fred Porter
7:30 p.m.: Rev. Lloyd Chapman, '47-'51

April 24 - Saturday

7:30 p.m.: Rev. Harvey Kimbler, '54-'60

April 25 - Sunday

11 a.m.: Rev. Kimbler
7:30 p.m.: Rev. Kimbler



Virginia Soelig
Eastland Native
Special Music
Fri. & Sat. Nights
& Sun. Morning

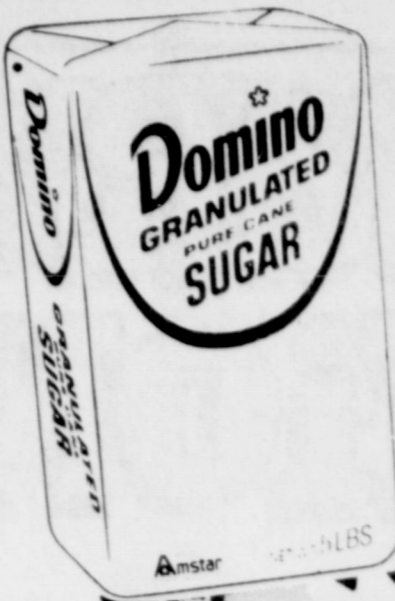
— Nursery For All Services —

**SUNDAY, APRIL 25, To Be Observed As
HOMECOMING SUNDAY**

★ Dinner On The Grounds ★ Old-Fashioned Singing, Preaching

You Have A Special Invitation To Worship In Every Service And Join In Our
100th Anniversary Celebration It'll Be A Good Time Of Revival And Reliving The Good Ole Days!

**P.S. Even If You're Not An
Old-Timer, Be Assured That
You're Welcome
At
FIRST BAPTIST CHURCH**



RUSSET
POTATOES
10-Lb. Bag **89¢**

GOLDEN RIPE
BANANAS Lb. **19¢**

FLORIDA FRESH
CORN 2 Ears **29¢**

FLORIDA
KY BEANS Lb. **29¢**

NEW POTATOES
FRESH DUG
Pound **19¢**

DOMINO
PURE CANE
SUGAR
5-Lb. Bag **39¢**

LIMIT 1 WITH PURCHASE OF 4 G.E. LIGHT BULBS,
ANY SIZE, AT REG. PRICE

SNOWDRIFT
3-Lb. Can **88¢**

LIMIT 1 WITH \$10.00 OR MORE GROCERY PURCHASE EXC. CIGARETTES

\$UPER \$AVE
MARKETS



FRESH GROUND
CHUCK
Pound **\$1⁰⁰**



'MIX or MATCH'
DEL MONTE CUT
GREEN BEANS 16-Oz.
SPINACH 15-Oz.
CREAM STYLE or WHOLE KERNEL
GOLDEN CORN 17-Oz.
or
NEW POTATOES 16-Oz.
4 Cans \$1⁰⁰



DEL MONTE YELLOW CLING
SLICED or HALVES
PEACHES
29-Oz. Can **49¢**

USDA GOOD BEEF SALE

SIRLOIN STEAK Pound **\$1⁵⁹**
T-BONE STEAK Pound **\$1⁶⁹**
CLUB STEAK Pound **\$1⁴⁹**
Blade Cut ROAST Pound **89¢**
CHUCK ROAST Pound **\$1⁰⁵**
RUMP ROAST Pound **\$1¹⁹**
COOKED HAM 5-Oz. Pkg. **\$1⁰⁹**

COOKED HAM 5-Oz. Pkg. **\$1⁰⁹**

BEEF RIBS Pound **59¢**

BLEACH
PUREX Gal. Btle. **59¢**

QUANTITY RIGHTS RESERVED



SAMMY'S PRIDE
BACON 1-Lb. Pkg. **\$1³⁹**

SAMMY'S PRIDE
FRANKS 12-Oz. Pkg. **59¢**

GOOCH
GERMAN SAUSAGE 12-Oz. Ring **\$1⁰⁹**

DECKER'S
CANNED HAM 3-Lb. Can **\$6⁷⁹**
FRYING CHICKEN LIVERS 1-Lb. Pkg. **99¢**

MARYLAND CLUB
COFFEE 1-Lb. Can **\$1³⁹**



DELSEY
BATHROOM TISSUE
4-Roll Pkg. **69¢**

PRICES GOOD THROUGH SATURDAY, APRIL 24

FROZEN FOODS
WEST PAC
SACK-O-CORN 8 Ct. Pkg. **89¢**
GOLDEN NIP
ORANGE JUICE 4 6-Oz. Cans **89¢**
WEST PAC
BROCCOLI SPEARS 3 8-Oz. Boxes **89¢**
WEST PAC
MIXED VEGETABLES 3 10-Oz. Boxes **89¢**

DEL MONTE
CATSUP 26-Oz. Btle. **59¢**
SCOTTIES
FACIAL TISSUE 2 200-Ct. Boxes **99¢**
CORONET
TOWELS 2 Jumbo Rolls **89¢**
GOLDEN HARVEST
FRUIT JARS 12 Pints **\$2²⁹**
GOLDEN HARVEST
FRUIT JARS 12 Quarts **\$2⁵⁹**

KEEBLER'S DELUXE GRAHAM or FUDGE STRIPE
COOKIES Reg. Pkg. **79¢**
DEL MONTE
TOMATO JUICE 46-Oz. Can **49¢**
DEL MONTE
SWEET PEAS 3 17-Oz. Cans **\$1⁰⁰**
DEL MONTE
TOMATO SAUCE 7 8-Oz. Cans **\$1⁰⁰**
DEL MONTE
FRUIT COCKTAIL 3 17-Oz. Cans **\$1⁰⁰**

SUPER SAVE

G.A. WHITE Manager
629-1191 400 S. Seaman