

COVERING EASTLAND COUNTY
THE ONLY PLACE YOU CAN READ THE MOST IMPORTANT NEWS IN THE WORLD — ALL THE NEWS ABOUT YOU, YOUR FAMILY AND YOUR FRIENDS!
EASTLAND, TEXAS, THURSDAY, FEBRUARY 14, 1963

PRICE 1¢

idBits
By H.V.O.

Several not-so-feeble winter finally got going with sprinkles today, the cold spell was full force as the new sun.

Weatherman James reported total moisture of .29 of an inch, with five inches of snow falling, and a trace again.

Moisture is much needed the month of January. 25 of an inch fell—look three "spells" to the two snows last mounted to a two and a half. Smith reports.

Notice a story on this at the late attempt of with the 11th Civil Appeals by our to the West.

Share our feelings, send that you let our Wayne Gibbens fastest way possible. telephone number 8-1580.

Man Fined \$100 For Carrying Gun

Rites for Howard

WEATHER NEWS

Election Judges Appointed At Commissioners Meeting

Special and general election judges in Eastland County for the next two years were appointed Monday at the regular meeting of Eastland County Commissioners.

Appointed were the following: Kokomo, J. C. Donaldson and Wayne White; Nimrod, Ed Towne and W. E. Lusk; Pioneer, Doss Alexander and B. C. Brown and Scranto, F. S. Boland and B.O. Speagle.

Eastland, Don Pierson, Grover Hallmark, R. N. Wilson and Mrs. Myrtle Richardson.

Ranger, Calvin Brown, B. V. Cooper, Mrs. H. P. Davenport and Mrs. W. N. Bourdeau. Olden, Mrs. Jim Everett, C. J. Langlitz, Marvin Hutto and Mrs. G. P. Copeland.

Gorman, W. G. Baker, E. G. Henderson, Mrs. Willa D. Orm by and Mrs. Jessie Parker. Carbon, H. M. Gilbert, A. E. Guy, Mrs. Wanda Bryant and Mrs. Ruby L. Norris.

Desdemona, L. E. Clark, Mrs. Ford Reid, Mrs. Dorothy Greenhaw and Mrs. R. O. Buckley.

Rising Star, Raymond Gray, Love Shults, Fred Price and Mrs. Lila White.

Cisco, J. V. Heyser, Leo Phagan, W. R. Huestis and O. W. Kean.

E. E. Layton of Eastland was re-appointed supervisor for

absentee voting in Eastland County.

Since the voting precinct No. 9, Okra, has been discontinued, Commissioners considered the possibility of re-numbering precincts to fill that vacancy.

Commissioners re-designated the Eastland National Bank as County Depository for the next two years.

The meeting was concluded with the routine order of paying accounts made during the past month.

Battle for Court on Again Round No. ?

Marshalling their forces Wednesday were several segments of interest in Eastland to "fight again" the battle for keeping the 11th Court of Civil Appeals in Eastland.

Responding to a report that legislation will be proposed to move the court, spokesmen for several groups were issuing statements.

President A. D. Taylor of Chamber of Commerce said that the chamber will oppose the move, as it did in 1959, and that a meeting will be held Thursday afternoon at which time formal action will be taken.

County Judge Scott Bailey said that he believes the bill will never make it out of committee. It didn't in 1961, and we are well represented on this matter now, he said.

"I will personally continue to oppose this move as I did in 1961, and I believe that the Commissioners Court will do likewise," Judge Bailey said.

Attorney R. E. Grantham of Cisco, president of Eastland County Bar Association, said: "In 1959, it appeared that there might be a move in the legislature to attempt to move the 11th Court of Civil Appeals from Eastland to Abilene. At that time, the Eastland County Bar Assoc. unanimously adopted a resolution expressing its disapproval of, and opposition to, such a move.

"There has been no meeting of the association since the introduction of such a bill in the legislature yesterday (Tuesday), but I am confident that at our next meeting, the bar will be of the same opinion as it was in 1959 and will oppose the bill, introduced by the Abilene legislators.

Members of the court refrained from making statements, but indicated that since they each have homes here, would be reluctant to move.

A bill which would move the seat of the 11th Court of Civil Appeals from Eastland to Abilene was introduced into the House of Representatives late Tuesday.

The measure, numbered H. B. 518, was co-authored and introduced by Taylor County's two representatives, Allen Glenn and Raleigh Brown.

Sen. David Ratliff of Stamford, who represents Abilene

and Taylor County in the upper house, said in response to a reporter's question, "I don't know a thing in the world about it."

Ratliff said "they (Glenn and Brown) haven't contacted me." Ratliff added, "It seems to me that for the sake of Abilene, it would be better for someone west of Abilene to show an interest in it."

Rep. Wayne Gibbens of Breckenridge who represents Eastland County in the House said he would have no comment until he looks at the bill. He had not heard of its introduction until the Reporter News told him. Sen. Tom Creighton could not be contacted.

Since the appellate court was established in Eastland in the 1920's, there have been from time to time several proposals that it be moved, but none of the efforts to do so has got off the ground.

The Glenn-Brown bill makes no changes in the district for the three-justice court. It simply provides that it be moved.

"This is something which needed to be done a long time ago," Rep. Brown told the Reporter News.



NO INJURIES—No injuries were reported when the truck pictured above overturned about 11 a.m. Monday. Icy road conditions were blamed for the mishap. The truck was loaded with approximately 43,000 pounds of frozen chickens. (Photo by Capps Studio)

Yard Opening As Scheduled

Opening of the Wagon Yard in Eastland is still scheduled Saturday in spite of bad weather the early part of the week.

The vacant lot at 200 East Main St. is going to be turned into a "trading center" for the county, under the sponsorship of the Eastland Chamber of Commerce.

Graders, set to go to work on the lot Monday, were delayed by the bad weather, but work is expected to be completed in time for Saturday's opening, Dale Troutt, chairman of the project, has announced.

"Swappers, traders and peddlers" will be welcome, and the site is planned as a convenient spot for the barter of goods of all kinds.

Ice Blamed For Accident

Icy road conditions were blamed for a car-truck crash near Ranger about 11 a.m. Monday in which both drivers escaped without serious injury.

Highway Patrolman Elwood Rogers said that a truck-trailer driven by Virgil Holt Beckham of Oxford, Ala., overturned in the mishap.

An auto driven by Charles M. Rafeuhre of Dallas was the other vehicle involved, according to the patrolman.

The investigating officer said the accident happened about .8 of a mile west of Ranger on U.S. Highway 80 and that both were headed west.

The driver of the auto lost control of his vehicle, and the car spun around and hit the right side of the truck, the officer said. The truck then spun out of control and overturned.

The truck is owned by the Ed Hopson Produce Co. of Oxford, Ala.

Rogers said no charges were filed against either driver.

43 Young Men Participate In FFA Program in Eastland

The Eastland F.F.A. Chapter, consisting of 43 members, will join the other Future Farmers of America in recognizing National F.F.A. week Feb. 16-23.

The officers of the Eastland chapter are: President, Jimmy Yancey; Vice Pres. Joe Herring; Sec., Bill Garner; Treas., Stanley Underwood; Reporter, Mike Lewis and Sentinel Ricky Glenn.

These members are also enrolled in vocational agriculture in Eastland High School. One of the requirements of vocational agriculture is that each of the boys must have a supervised farming program.

The Eastland F. F. A. Chapter's supervised farming program consist of swine, sheep, and beef cattle projects.

For most of the chapter members, the highlight of the year will be the annual Eastland County Livestock Show. Entered in the 1963 East-

Bond Rate To Be 3.98

Interest rate for the \$525,000 school bonds will be 3.9830 was agreed by the school board during a regular meeting Tuesday evening.

The estimated rate earlier had been 4.04 per cent, but the board and the Dallas financial advisory firm agreed on the new percentage at the lengthy meeting.

Date for the election to decide the site for the new elementary school building will be set at the next regular board meeting, scheduled next Tuesday evening.

Data regarding both the 11 and 30-acre tracts will be given the public through this newspaper, regarding costs, advantages and disadvantages of both sites.

Morris Dudley, of Dallas, indicated that the bonds will be sold soon, in view of the current good market.

Voters in the Eastland district enthusiastically approved the bond issue in an election Saturday, which carried almost three-to-one in favor.

Bailey, Commissioners To Attend Conference

County Judge Scott Bailey and Commissioners Glenn Justice and Buck Collins will be among those from every section of Texas who are expected on the Texas A&M campus for their fifth annual conference scheduled for Sunday and Monday.

All meetings, according to V. G. Young of the Texas Agricultural Extension Service which co-sponsors the annual meeting with the County Judges and Commissioners' Association of Texas, will be held in the Memorial Student Center.

Assistant Attorney General C. J. Davis Jr., will discuss "Legal Matters Concerning Commissioners' Courts"; "Right-of-way Problems" will be discussed by Texas Highway Department Engineer A. H. Christal; and "Traffic Control

Funeral Services Held Monday For Mrs. Jordan, 63

Funeral services for Mrs. J. Y. Jordan, 63, of 1306 S. Bassett, were held Monday at 2:30 p.m. in the Church of Christ in Eastland.

Ike Traylor, Church of Christ minister from Carbon, officiated the services. Interment was in the Eastland Cemetery under the direction of Hamner Funeral Home.

Mrs. Jordan was born March 24, 1899 in Myrtle, Mo. She died Saturday in the Eastland Memorial Hospital.

She was married to J. Y. Jordan Aug. 10, 1919 in Eastland, where she had lived for the past 44 years.

Survivors include her husband; four sons, J. Y. Jr. of Midland, Thomas Lee of Temple, Billy Bruce of Eastland and Landon of Monahans; three daughters, Mrs. Margaret Powers of Monahans, Mary Woodall of Eastland, and Mrs. Betty Worth; and 15 grandchildren.

Palbearers were of Eastland, Jack Green, Darwin Ford, Darwin Miller, Howard Snyder and Edmund DeBrag.

Grand Jury Back in Session

The 9th District Court grand jury was due to convene Wednesday and was expected to consider the murder of Mrs. Florence Hussey of Cisco.

The jury recessed last Friday after returning nine indictments—one for auto theft, four for cattle theft and four for burglary.

Four of the capias have been returned and one man tried and sent to the state penitentiary.

Joe Ellis Stanley, indicted for the theft of an auto from Johnny Parrott, Dec. 9, 1962, in Eastland, waived a jury and pleaded guilty before District Judge T. M. Collie Monday morning. Eastland Attorney Frank Sparks was court-appointed to represent Stanley.

Sentenced to three years in the state pen, Stanley was taken by sheriff's deputies to Huntsville Tuesday morning.

The three cattle theft indictments named Roy Don Brown, Eddy Williams and Paul Lee Exline.

Capias in the burglary indictments have not been returned.

SEASON CLOSER Girls Win; Boys Drop 2 to Clyde

The Eastland B boys lost to Clyde Tues. night. The score was Clyde 47, Eastland 36.

Mike Miller, Mike Jones, Wayne Walden, Larry Wilson, and Norman Rhodes made up the starting lineup. Miller started the game by making the first free shot.

Miller was also highpointer with 21 points. Jones had 7 points, Rhodes and Wilson each had 2 points. Walden had 4 points. Mike Siebert, Larry Earley and Gary Rollins were on hand to help but nothing seemed to work.

The Eastland girls clipped Clyde, by winning 70-55.

Kay Morton couldn't seem to miss the basket at Clyde. She made 26 free shots and two field goals totaling 30 points and was also high point girl.

Judy Seaberry followed with 27 points, 10 of which were free shots. Wanda Arther came across with 12 points. Carole McCleskey, Carolyn Thomas, and Becky McAlister did a tremendous job of rebounds. The score at the half was Eastland 43, Clyde 25.

The Eastland varsity told a (Continued On Page Six)

Munsingwear-Eastland Provides \$494,000 Yearly Payroll Here

The Munsingwear payroll makes a substantial contribution to the purchasing power of Eastland.

180 employees on the Munsingwear-Eastland payroll receive over \$494,000 yearly. According to national average turnover, this figure results in \$2,965,860 worth of sales in this community, meaning more business for the butcher, the baker, and the cabinet maker.

Think of the purchasing power of your Munsingwear dollar—5,026,881 pounds of meat at 59 cents per pound, 16,662 tons of flour, or 208 homes at an average cost of \$14,250 per home.

Big business results from big business.

Munsingwear, Inc. endeavors to be a good, responsible citizen of this community. True the payroll dollars are important. However, Munsingwear realizes that it takes more than money to make a company really important to an area and strives to gain the respect, confidence, and the friendship of the employees and the residents of the communities in which it operates branch plants.

By providing excellent working conditions with proper climate, lighting, and em-

ployee facilities, it provides a good place to work with good wages, above average insurance benefits, retirement plans and vacation schedules. Another objective is to have understanding, sympathetic management in all of its plants.

Personnel are encouraged to participate in community affairs and to assist with local projects and, in general, to contribute to the community by being active citizens.

When Munsingwear came to this area, it offered many women the opportunity to work, supplementing the family income. At the same time, these women were learning a true skill, one that they can practice until retirement days. Munsingwear hopes that by teaching a skill they are helping their employees and the community. People who are proud of their work are generally proud of their homes and their communities.

Eastland is a good place to live; we want Munsingwear to be a good place to work.

There is a desire on the part of Munsingwear to see your town grow and prosper. We want old employers to stay and new industry to move in. From a human standpoint, we do not

Role of The Ag Teacher

What has happened in Agriculture during the last half century?

If you are a close observer of the Agricultural Industry—your reply would no doubt be—plenty!!! In fact, few would question that we have had a revolution in the last half century.

The agricultural abundance in America is the envy of people throughout the world. Yet, during the last half century, the number of acres and man power utilized in agricultural production has decreased while production has increased. This points to advance technology which has been most effectively applied to give the world its best fed and clothed nation in the history of mankind.

The Smith-Hughes Act of 1917 gave the states of our nation the ignition for a program, which has sparked the agricultural revolution. The Vocational Agriculture Teacher

(Continued on Page 8)



W. L. (DUB) SIMS
... local instructor

Ger

5c

CARROTS
Cello Bag
2 1 Lb. Bags 25c

ions 2 Lbs. 15c
2 Lbs. 15c

EASTLAND TELEGRAM

Eastland County Record established in 1931, consolidated August 31, 1951. Chronicle established 1887, Telegram established 1923. Entered as second class matter at the Post Office in Eastland, Texas under the Act of Congress of March 3, 1879.

Published Semi Weekly—Thursdays and Sundays
By Eastland County Newspapers, Inc.
H. V. O'BRIEN, Editor

One Week by carrier in city	.15
One month by carrier in city	.65
One year by mail in county	2.95
One year by mail out of state	6.95

NOTICE TO PUBLIC—Any erroneous reflection upon the character, standing or reputation of any person, firm or corporation which may appear in the columns of this newspaper will be gladly corrected upon being brought to the attention of the publishers.

Call MA 9-1707 for Classified Ads

NOTICE

To Farmers Union members

All 1962 membership dues must be in the State Office by March 1 in order for Eastland County to receive its bonus. Dues can be mailed to the State Office or paid to Wayne Eaves, presi., D. B. Warren, vice president, Mrs. Hardie Tidwell, sec-treas., or to any director.

Safety Association Gives Winter Driving Rules

During the past three weeks, hundreds of Texas drivers have been involved in needless accidents, the Texas Safety Association reported today.

J. O. Musick, General Manager of TSA, said accident experience during the recent bad weather shows drivers are getting into trouble mainly because they don't know, or ignore the basic rules of safe winter driving.

"Skidding, always a hazard on ice or snow if vehicles are not handled properly, is causing most of the trouble," he said.

The safety director cited improper stopping on ice and snow as the major driver error.

"One of the basic rules in stopping under these conditions is to keep wheels rolling in order to maintain steering control. The inexperienced driver slams on his brakes and locks his wheels. Then he starts skidding instead of rolling," Musick explained.

"When that happens, something else has got to stop him, and that is usually an accident."

He advised motorists to "pump" their brakes, lightly and quickly to let the front wheels roll normally between brake applications.

"Skidding on slick snow and even glare ice can be prevented.

Countless cars, buses and trucks travel annually over snow and ice-covered roads without experiencing too much difficulty or delay," he said.

"The average motorist can drive safely on ice or snow if he will learn to anticipate steering movements and slow down in advance of making them."

Musick also gave motorists some suggestions on getting started on ice or snow.

"To start out feed the gas very gently, holding the accelerator steady just as soon as the car moves," he said. "Increase the gas only when it can be done without spinning the wheels."

"Keep the car pulling steadily because you need moderate power, not speed. Don't falter or hesitate because this may cause a stall or throw you into a skid," he added.

Among other specific causes of skidding listed by Musick were:

- 1) driving too fast on curves,
- 2) swerving suddenly,
- 3) applying brakes too suddenly or too hard,
- 4) accelerating or decelerating suddenly,
- 5) driving too fast on a bumpy road or when crossing railroad tracks or icy ruts,
- 6) changing to lower gear ratio on icy surfaces or at too fast of a speed,
- 7) failing to anticipate ice patches and
- 8) failure to use reinforced tire chains when severe snow and ice conditions prevail.

"If you do skid don't panic," Musick warned. "If your rear wheels skid right, steer right. If they skid left, steer left to recover."

In concluding, Musick reminded motorists that even if bad weather seems to be over, don't count on it and on your luck to keep you out of trouble.

"In Texas it doesn't take a meteorologist to know there may still be wintry driving conditions giving us trouble for some weeks to come. — Any old timer can verify this."

Munsingwear -

(Continued from page 1)
...er improving living standard for all.

Munsingwear, Inc., now entering its 77th year, is approaching \$50 million in sales. This company, founded on an idea, nurtured on vision and research, has helped to diversify and expand the economies of many cities throughout the United States.

Nearly 5,000 people are employed by Munsingwear in its 17 plants throughout the country. The annual payroll is in excess of 16 million dollars. Diversification and creativity have made Munsingwear the fashion leaders and pace setters in both men's and women's apparel. Although Munsingwear started in the underwear business, it has grown to become important in other apparel fields.

In 1951, by the acquisition of the Vassar Company in Chicago, it obtained a strong position in the women's girdle field. In 1957 it added a well-known line of brassieres by acquiring the Hollywood Maxwell Company. The brassiere and girdle business have been consolidated into the Hollywood Vassarette Division of Munsingwear.

The women's lingerie, which for many years was sold under the trade name "Munsingwear," has recently been added to the Hollywood Vassarette Division, presenting a complete range of intimate apparel under the trademark "Hollywood Vassarette."

In addition to the very modern line of underwear and sleepwear made for men and boys, Munsingwear added a few years ago a line of golf shirts and bowling shirts which have been readily accepted by consumers throughout the United States and now provide a sizeable contribution to the total Munsingwear picture.

Munsingwear plays an important role in the exploration of space through the David Clark Company of Worcester, Massachusetts. In the early years of the second world war, the Clark Company developed a pressure suit to prevent black-out by fighter pilots. That suit has gone through many stages of development and refinement and, as a result of continuous research in that field, the David Clark Company has supplied many thousands of suits of this style to fighter pilots and pilots of high-altitude planes stationed around the world.

That same research in the development of the experimental 15 space ship exploration "flight" suits has also been continuously carrying on research work to help develop manned flights of greater distance.

TedBits -

(Continued from page One)
Local Packer J. O. Earnest with inspected meat.

Earnest doesn't sell any of his meat locally, but we understand that a condition exists in our town that isn't exactly good.

Reports are that occasional stock is sold here that doesn't have the inspected stamp and which doesn't meet health requirement standards.

There is a city ordinance against this and stiff punishment provided for offenders.

Guess you know that telephone installations in Eastland were up last year—89 more than a year ago.

Cos meter connections were up eight and electric meters remained about the same.

RUMMAGE SALE

The choir of the First Methodist Church will sponsor a rummage sale Friday and Saturday in the vacant building on the southwest corner of the square.

Mrs. Pat Miller announced that men and children's clothing will be available.

SINGING SET

The regular singing of the Eastland County Singing Convention will be held in Gorman Sunday beginning at 1:30 p.m.

Three top quartets as well as directors will be on hand for the regular event.

The public is cordially invited to attend.

INGROWN NAIL HURTING YOU?
Immediate Relief!
A few drops of GUTGRO® bring blessed relief from tormenting pain of ingrown nail. GUTGRO® softens the skin underneath the nail, allows the nail to be cut and thus prevents further pain and discomfort. GUTGRO® is available at all drug counters.

M. H. PERRY KNOWS LIFE INSURANCE
107 W. Main Eastland
Call him . . . MA 9-2275 or MA 9-1095

Southland Life
INSURANCE COMPANY
Home Office • Southland Center • Dallas

100 Attend TESCO's Open House

Approximately 100 persons excluding employees attended open house at the Texas Electric Service Company Monday from 8 a.m. until 5 p.m.

The door prize, an electric toaster, was won by Edgar Alton of 607 S. Walnut, Eastland.

GOLDEN AGE NURSING HOME
104 East 4th Street Cisco Phone 11
24 Hour Nursing Care, Good Meals - Special State Licensed and Approved For Welfare Patients
Jerry Stephens Administrator Mrs. Ora M. Forgy, Director of Nursing

FEBRUARY FASHION SPECIAL



MODE O'D
EASTLAND

3.9

A smart line to be for spring into summer is the pin stripe show it in an acetate cotton blend that sure-fire hit. Shirtsness released from pleats, and the button band new slant classic Sizes 14

the FFA EMBLEM



NATIONAL FFA WEEK, FEB. 16-23

The national emblem of the Future Farmers of America is significant and meaningful in every detail. Used by members in all recognized units of the organization, it is made up of five symbols: the owl, the plow, and the rising sun, within the cross section of an ear of corn which is surmounted by the American eagle. Upon the face of the emblem appear also the words "Vocational Agriculture" and the letters "FFA." The owl is symbolic of wisdom and knowledge; the plow is the symbol of labor and tillage of the soil; the rising sun is emblematic of progress and the new day that will dawn when all farmers are trained and have learned to cooperate; the cross section of an ear of corn represents common agricultural interests since corn is native to America and grown in every State; and the eagle is indicative of the national scope of the organization. The emblem is protected by copyrights.

we join in saluting the FFA program in Eastland.

Eastland National Bank

'On the Square' Member F.D.I.C.

March Movies For Majestic

- "A GIRL NAMED TOMINO" - Laurence Harvey, France Nuygen, Martha Hyer
- "THE BAYERN" from Elmer Allen Fox-Vincent Price, Peter Loren, Boris Karloff
- "DAYS OF WINE & ROSSES" - Jack Lemmon, Lee Remick
- "SON OF FLURBE" - Walt Disney's sequel to "Absent-Minded Professor" - Fred Murray, Nancy Olson, Ed Wynn, Kameron Wynn
- "40 FOUNDS OF TROUBLE" - filmed in Disneyland - Tony Curtis, Suzanne Pleshette, Phil Silvers
- "BILLY BUDD" - Robert Ross, Peter Ustinov
- "DIAMOND HEAD" - filmed in Hawaii - Charlton Heston, Yvette Mimoux, George Chakiris, France Nuygen, James Darren
- "THE BOOK" - Erik Douglas, Nick Adams, Robert Walker
- "PAPA'S DELICATE CONFECTION" - Jackie Gleason, Glynis Johns, Charlie Ruggles.

Read The Classifieds

Read The Classifieds

OPEN UNDER NEW MANAGEMENT
ROLLINS & SONS
GULF SERVICE
500 W. MAIN

WE BUY AND SELL USED FURNITURE
Phone MA 9-1740
WAYNE JACKSON

COMPLETE FURNITURE & UPHOLSTERING
Used Furniture
Couches & Chairs
Eddie's Upholstery
Spain's Feed Store Bldg.
311 N. Seaman
Phone MAIn 9-1304

A portrait of that grand child or loved one means a lot to each parent and grandparent, so why not let A & C STUDIO make that grandchild portrait now so you will always remember how he or she looked and too, your children would like a living portrait of you Mother and Dad.
SEE
A&C STUDIO today
201 S. Seaman

Aim And Purpses Of The FFA

The primary aim of the Future Farmers of America is the development of agricultural leadership, cooperation and citizenship. The specific purposes for which this organization was formed are as follows:

1. To develop competent, aggressive, rural and agricultural leadership.
2. To create and nurture a love of country life.
3. To strengthen the confidence of farm boys and young men in themselves and their work.
4. To create more interest in the intelligent choice of farming occupations.
5. To encourage members in the development of individual farming programs and establishment in farming.
6. To encourage members to improve the farm home and its surroundings.
7. To participate in worthy undertakings for the improvement of agriculture.
8. To develop character, train for useful citizenship, and foster patriotism.
9. To participate in cooperative effort.
10. To encourage and practice thrift.
11. To encourage improvement in scholarship.
12. To provide and encourage the development of organized rural recreational activities.

We join in saluting the FFA programs in this county.

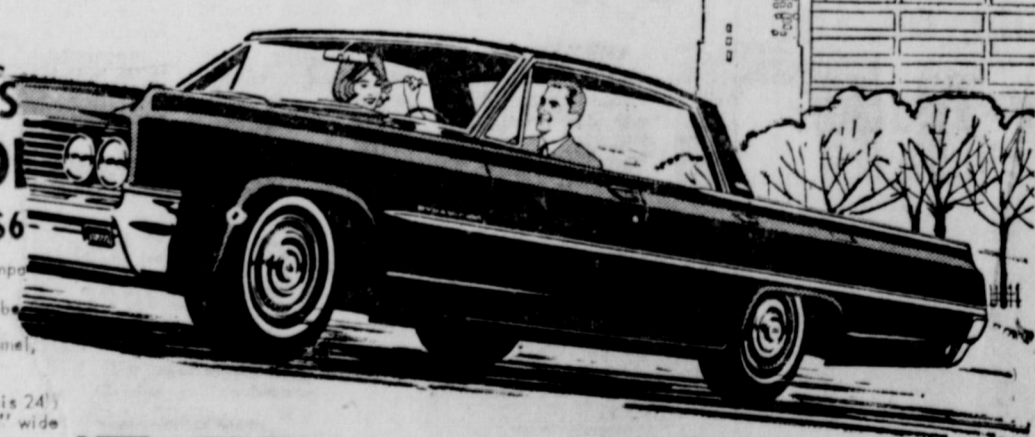
Comanche County Electric Co-Op.
Main Office: 201 W. Wright St. Comanche, Tex. Ph. 356-2533
W. J. Parks Manager
Local Office: 315 W. Main Eastland, Tex. Ph. MA 9-20

NATIONAL FFA WEEK - FEB. 16-23

TRY IT FOR SIZE...

ALL S
LAD
REG \$6

- * Folds compact
- * Black rubber
- * White enamel finish
- * Top step is 24" and 12 1/2" wide



EXTRA IT FOR VALUE!

38 on the road and lines . . . elegant art . . . 280-h.p. with all that, -priced full-size -ium-price field!

New style to delight you! Rocket action to excite you!

Dynamic 88
OLDSMOBILE
Something Extra" about owning an OLDSMOBILE!
LOCAL AUTHORIZED OLDSMOBILE QUALITY DEALER

DELIVER RIPPIN OLDSCADILLAC
Main Street Eastland, Texas

Star News

Miss Cayley attended Cies Junior College and was employed during the summer by the State Highway Department at Ft. Land.

Agnew was an outstanding athlete at Rising Star and is a star member of the ACC varsity basketball team.

At the reorganization meeting last week in Eastland, Cecil Smith of Rising Star, vice-chairman of the County Sewerage Sanitation Program, announced that Eastland County is to send other counties in contributions to keep the program going.

Only \$4,000 of a quota of \$13,000 has been reached, he

Rising Star has contributed a little more than \$900 toward a needed sum of \$2,500 to insure the controls being continued in this area, he added.

The county was designated into five districts and each will service the program by using the bank in the district as a depository for contributions.

Charlie Tyler, vice president of the First State Bank, Rising Star, was named treasurer for local funds.

Others designated in the Rising Star district to help cover the drive are Ole and Joe Criswell, Merlyn Jones, C. T. Barton, Pea Fore, George Stroebel, M. M. Sheffield, Jim Ray Cox, and E. H. Law-

A double ring ceremony was read by Rev. H. K. Neely Jr., pastor of the First Baptist Church in Rising Star, for Linda Ruth Harris and Harvey Eugene Clark Tuesday, Jan. 29, at 6 p.m. before the altar of the church.

Parents of the couple are Mrs. June Harris of Rising Star and Mr. and Mrs. Martin L. Clark of Cies.

The bride was given in marriage by her uncle, Earl Harris, of Cies.

A reception was held in the Fellowship Hall of the church immediately following the ceremony.

The couple were both students at Rising Star High

School and will make their home in Cies.

A miscellaneous shower was held for the couple at the home of Mrs. Berna Lee Clark from 7 to 9 p.m. Thursday, Jan. 30.

Bowling News

Thursday Night Men's League Wins-Losses

Fiesta Lanes	114	46
Jordan's Drive Inn	197	53
Hollywood	90	70
Vassarite	90	70
El Royal Insurance Agency	90	70

T&P Oil 86 74
Lumber, Cies 85 75
First National Bank Cies 89 89
Peterson Agency 60 91
Volunteer Fire Dept. 66 94
Cornelius Printing 64 96
National Guard 60 100
Texas Electric Service Co. 49 111

High Team Three Games
Fiesta Lanes 2696
Jordan's Drive Inn 2516
Volunteer Fire Dept. 2261

High Individual Three Games
Freddie Rowch 592
Holman Bagwell 578
V. Childers 559

High Team Game
Fiesta Lanes 887
Fiesta Lanes 882

Jordan's Drive Inn 865
High Individual Game
Freddie Rowch 273
M. G. Cartwright 236
V. Childers 212

New! Gillette SLIM Adjustable Razor

NEW LOW PRICE \$1.50

with Super Blue Blades

YOU CAN GET RELIEF FROM HEADACHE PAIN

STANBACK gives you FAST relief from pains of headache, neuralgia, neuritis, and minor pains of arthritis, rheumatism. Because STANBACK contains several medically approved and prescribed ingredients for fast relief, you can take STANBACK with confidence. Satisfaction guaranteed!

Test STANBACK against any preparation you've ever used.

STANBACK PILLERS

10¢ 25¢ 69¢ 98¢

N.C.Q. HEAVY BEEF SALE

Finest Quality Heavy Beef Priced LOWER Than You'd Pay for "Ordinary" Beef Elsewhere

FILL YOUR FREEZER!

Steaks Steaks

- UND Heavy Beef Round A Family Favorite Lb. 79¢
- KNICS COOKED Ready To Eat Lb. 45¢
- AST Heavy Beef Chuck Lb. 49¢
- CON Armon's Star Sliced Lb. 49¢
- R LIVERS Jesse Jewell Frozen 3 8-oz. Pkgs. \$1.00
- STICKS Taste O-Sea Frozen Lb. Pkgs. 59¢

WORTH FOOD MART

The SURE SIGN OF QUALITY!

CLIP AND SAVE!

50 BONUS S&H GREEN STAMPS With This Coupon and Purchase of 2 Lb. or More of Worth Quality Fresh Ground Beef Void After Saturday, Feb. 16, 1963

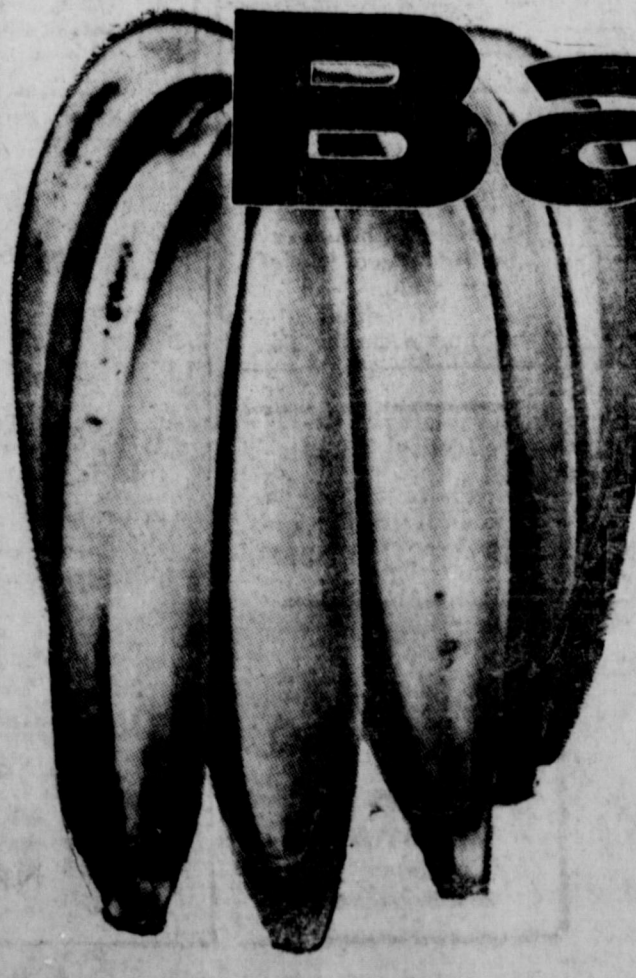
WORTH FOOD MART

- RUMP ROAST "W.C.Q." Lb. 69¢
- HAMS Swift's CANNED 6 3/4 Lbs. 6.29
- ARM ROAST Heavy Beef Shoulder Lb. 59¢
- TOMATOES Hunt's Solid Pack 6 No. 300 Cans \$1.00
- PET MILK Evaporated 7 Tall Cans \$1.00

- Frozen Food Features**
- PIES Libby's-Beef Chicken-Turkey 5 8-oz. Pkgs. \$1.00
 - COLI SPEARS Libby's 2 10-oz. Pkgs. 49¢
- CLIP AND SAVE!**
- 50 S&H GREEN STAMPS Coupon and Purchase of 2 Lb. Can (All Grinds) of Libby's Coffee & Sanborn Coffee After Saturday, Feb. 16, 1963
- WORTH FOOD MART**
- CLIP AND SAVE!**
- 50 S&H GREEN STAMPS Coupon and Purchase of 2 Pkgs. of Betty Crocker Cake Mixes After Saturday, Feb. 16, 1963
- WORTH FOOD MART**
- CLIP AND SAVE!**
- 50 S&H GREEN STAMPS Coupon and Purchase of 1 Lb. Bag of Supreme Fig Bars After Saturday, Feb. 16, 1963
- WORTH FOOD MART**
- CLIP AND SAVE!**
- 50 S&H GREEN STAMPS Coupon and Purchase of 4 oz. Pkg. of Accent After Saturday, Feb. 18, 1963
- WORTH FOOD MART**

- PEACHES Hunt's Yellow Cling Halves or Slices 4 No. 2 1/2 Cans \$1.00
- COCKTAIL Hunt's-Mixed Fruit Cocktail 6 No. 300 Cans \$6.00
- TOMATO JUICE Hunt's 4 46-oz. Cans \$1.00
- Tomato Catsup Hunt's 6 14 oz. Btl. \$1.00
- Tomato Sauce Hunt's 10 8 oz. Cans \$1.00
- Apricots Hunt's - Whole Unpeeled 4 No. 2 1/2 Cans \$1.00
- Tomato Catsup Hunt's 4 20 oz. Btl. \$1.00
- Tomato Paste Hunt's 8 8-oz. Cans \$1.00
- Trellis Peas Early June 2 No. 303 Cans 25c

- Hunt's Pears 4 No. 300 Can 1.00
- Frito Chili PLAIN No. 2 Can 59¢
- Hunt's Tomatoes Stewed No. 300 Can 23¢
- Welch's Grape Jelly 20 oz. Jar 39¢
- Liquid Shampoo Lustré Creme Large Size 43¢
- Hair Spray Lustré Creme Jumbo Size Plus 7c Tax 69¢



Bananas

Golden Ripe Cabananas

2 Lbs. 25¢

- APPLES Washington State Ex. Fry. Winesaps Lb. 15¢
- TOMATOES Ripe-Firm Slicers Lb. 19¢
- Green Cabbage Fresh-Firm Heads Lb. 6c
- Anjou Pears Extra Fancy Lb. 19c
- Yellw Onions U. S. No. 1 - Utah Waxed 2 Lbs. 15c
- Rutabagas 2 Lbs. 15c
- CARROTS Cello Bag 2 1 Lb. Bags 25¢

SELL AND PROFIT... BUY AND SAVE... GET A BETTER JOB... HIRE GOOD HELP!

Read and Use the Want Ads!

CALL MA 9-1707

ANNOUNCEMENTS

EASTLAND CHAPTER NO. 290 O. E. S.
 Meets the first Tuesday of each month at 8 p.m. in the Masonic Hall. Call Mrs. Pebble Boles, Sec., for information. MA 9-2733.

MASONIC LODGE NO. 467
 Meets the second Tuesday of each month at 7:30 p.m. in the Masonic Hall. Call C. J. Langitz for information or E. Huckabay, Sec., 9-1495, for information.

EASTLAND ROTARY CLUB
 Elephant luncheon Monday. Call Miss George, 3-1495, for a check Monday.

SPECIAL NOTICE

NOTICE: THE GREEN LANTERN GIFT SHOP
 Open 5:30 to 10:00 P. M. weekly. All the Saturday and Sunday. Located on Lake Leon. Phone MA 9-3610. Ranger.

FENCE CONSTRUCTION by hour or contract, work guaranteed. See James Furry at Pioneer on West 356. Cross Plains, Texas. 14

SPECIAL NOTICE: Rent Blue Lustre Electric Carpet Shampooer for only \$1 per day. Coats Furniture and Carpet Co. 14

NOTICE—Men in 30s interested in meeting woman; object matrimony. Call HI 2-2078, Cisco.

FOR TRADE: 3 books Plaid stamps and 2 books Green stamps for Gold Bond stamps. Call MA 9-2413. 15

NOTICE: Income tax service each Friday at 4 p.m. thru Saturday. Also night appointments. 269 Main St. Phone MI 7-3426, Ranger. Novita Tompleton.

FOR LEASE: Nice clean two bedroom house 709 S. Hal-bryan. No small children. Call MA 9-3290. 16

NOTICE: See Wompek's Nursery between Gorman and De Leon for the latest peaches and fruit tree varieties. Also a wide selection of roses and landscape plants. 17

SPECIAL NOTICE: Sewing machines—Necchi, Elna and other fine brands. Parts and service on all makes. Gorman Auto Supply. Phone RE 4-5300, Gorman or drop in to see us. 18

SPECIAL NOTICE: Supplement your income while you earn the World Book Encyclopedia. Complete with Education plan. For details without cost or obligation write Mrs. Lorene Parker, 774 Clinton, Abilene. 19

TRUCKS FOR SALE
 Wheel Drive 3/4 Ton, I.H.C. with Winch on Front, 1/2 Ton 4 Wheel drive Jeep, 56 Dodge, 54 Ford, 59 I.H.C. & Other Pickups, New Scouts & Pickups in Stock. Johnston Truck & Supply Cross Plains. 14

FOR SALE: One 1951 Minneapolis Moline Universal tractor on busline. One 1951 Minneapolis Moline one-way. Six foot International tandem disc harrow. Contact H. H. Courtesy, MA 9-1310. 14

PERSONAL
 If you are lonely, broken hearted, troubled in spirit or burdened by a sick and you can't find comfort, consolation and peace at First Methodist Church. 15

MEN—If you are not attending any other Sunday School Class contact the 9:49 Bible Class at First Methodist Church where you will receive a cordial welcome. 16

Complete Automobile Service
 Ignition
 Brakes
 Minor Tune-ups
 "Your Best Battery Buy"
 Night Hours. Call 2653
 A-1 AUTO SUPPLY 1004 W. Main MA 9-2077

AUTOS FOR SALE

FOR SALE: 1949 Olds. Good running car. Lot of miles left in car. Call MA 9-1305. 14

FOR SALE OR TRADE: 1959 Chevrolet 2 door Impala hard top. Has everything and already financed. MI 7-1914, Ranger. 15

AUTO FOR SALE by owner. 1959 two door Ford in good condition. Radio and heater. Good white wall tires. Call MA 9-1707 before 5 p.m. 16

FEMALE HELP WANTED
 WANTED—Several women to represent a first class insurance company in this county for hospitalization insurance. Liberal commission, leads furnished. Write Box A, in care of Eastland Telegram immediately. 14

WANTED: Experienced heating operator. Must be dependable and run show in Village Hotel while I am ill. Ruby Crawley, 1320 S. Seaman, Phone MA 9-1423. 15

POSITION WANTED
 WANTED a job in any of these fields: office girl, drug store, drive-in or dept. store. Attend Draugho's Business College. For information call Miss Jean Smith, MA 9-1568. 14

MERCHANDISE
 Authentic Reproductions Victorian Lamps
 Exciting new colors
GREEN LANTERN GIFT SHOP
 Located At Lake Leon
 Ph. MI 7-3610

FOR SALE: Angus bulls 10-15 months of age. Championship breeding, all sired by top Highland Bardolier bulls. Priced from \$225.00 to \$325.00 each, based on age and quality. May be seen at my ranch 7 miles east of Rising Star on road to DeLeon or call Ranch Foreman, Rising Star, (Night) Dick Goldston, 643-6263 or R. W. Sartor, 643-2351, Luther T. McClung. 15

FOR SALE: A few choice Car-nathian Walnut trees left. Good for shade and nuts. Reserve yours today. B. B. Freeman Nursery and Orchard, Route one, Ranger, Chaney community. 17

EXQUISITE gifts for everyone anytime. Hallmark cards. The Gift House, Cisco. 16

RENTALS
 FOR RENT: Large unfurnished house. Close in. Apply 209 W. Patterson. 16

FOR RENT: Newly decorated 6 room house. Large garden. Chicken house and lot. Storage room, 2 miles from Court House. Call MA 9-1982. 16

FOR RENT: Large unfurnished apartments in duplex. 611 W. Plummer. 17

FOR RENT: 2 bedroom house. Apply 567 S. Madera. 17

FOR RENT: Lovely furnished or unfurnished apartments. any size, bills paid, maid and hotel services included, very reasonable. Also comfortable rooms with tile baths only \$39.95 monthly. Throw away your high bills and troubles and come live with us. Mrs. Robinson, manager, Village Hotel, MA 9-1716. 16

REAL ESTATE
 FOR SALE: Going grocery and market. Under same management for past 15 years. Well located, on corner of Main Street and Highway 80. Modern fixtures, low rent, small investment will handle. Contact Lowell Boyd, (owner) Baird, Texas. Phone 41292. 14

FOR SALE: 3 bedroom house, 2 baths, 460 by 100 lot. Garage, Carport, barn, \$2,500 cash, finance balance, \$8,500 total. D. L. Kinnaird Agency. Phone MA 9-2544. 3

FOR SALE: Three bedroom home, close in, on nice small lot. Good neighborhood. \$5,750.00. After 5 p.m. and weekends. 508 S. Daugherty. 17

FOR SALE: 2 three bedroom houses located near West Ward school. Three bedroom home in Morton Valley. All are good buys M. A. Treadwell, phone MA 9-2017. 15

FOR SALE: 389 acres of good mesquite grass land near Moran in Shackelford County. Plenty of water, some cultivation. Contact Austin Flint, Cisco, HI 2-2412. 15

FOR SALE: Main St. Service Station. 50 by 150 corner lot; 3 tanks, \$750 cash, finance balance. Total \$4,000. D. L. Kinnaird Agency. Phone MA 9-2544. 15

FOR SALE: 610 S. Hillcrest. Living, dining room, kitchen and den. Built-in range, fire-place, central heat and air. Three bedrooms, two tile baths, seven closets, double garage. M. A. Treadwell Sr. Sr. MA 9-2017. 15

FOR SALE: 700-acre Ranch in Palo Pinto County. Improvements include modern 5 BR house with 2 1/2 baths, fire-place, den, good water; 50 acres bottom land, fine grass, many pecan trees, good fences. Has wonderful lake site, bordering Hwy. 84. Might consider trade for land or income property. Contact Austin Flint, Phone HI 2-2412, Cisco. 15

FOR SALE: Four room modern house. Good condition. 401 S. Oak. \$2500 for quick sale. D. L. Kinnaird Agency, phone 2544. 14

FOR SALE: Beautiful 3-bed- room home in Hillcrest Addition Central Heat, brick trim. Only \$650 down payment, plus closing, and about \$70 per month. 504 S. Hillcrest, Call MA 9-1495. 6

FOR SALE: New 3 bedroom house, 2 baths, close to school, on paved street, chain link fence. \$450 for FHA equity, finance balance. D. L. Kinnaird Agency. Ph. MA 9-2544. 3

FOR SALE OR TRADE: Will sell or trade equity in modern, roomy three bedroom home in Abilene for lake or local property. Has chain-link fence and down-drought air. Call MA 9-2413 or MA 9-1707 or write Box 29. 17

New! Gillette SLIM Adjustable Razor

You turn dial from 1 to 9 for the exact setting that matches your skin and beard.

NEW LOW PRICE \$1.50 (limited)

with Super Blue Blades

For plumbing, carpenter work, painting and floor covering CALL Don Daniels MA 9-1315

USED CAR Sale

NOW IN PROGRESS A-1 USED CAR SUPER MARKET SALE

SUPERMARKET SELECTIONS SUPERMARKET PRICES

- 60 Ford Fairlane 4-door. Radio and heater.
- 61 Low mileage Fairlane 500, Ford 4-door Sedan. Radio, heater, overdrive. Factory air.
- 58 Fairlane 500 Ford. Radio, heater, automatic transmission.
- 59 Galaxie 2-door Sedan. Radio, Heater, Overdrive. Air conditioned.
- 57 Ford Fairlane Sedan. Radio, heater
- 56 Ford 6-Cyl. 4-door sedan. Standard transmission and heater.
- 59 Ford Galaxie 4-door Sedan. Radio, heater, Cruiseomatic Drive, Factory air.

Many Models Not Listed. Priced to Sell NOW SAVE CASH TODAY COME TO

Hood King Motor Co. EASTLAND, TEXAS

Legal Notice

LEGAL NOTICE
 Notice is hereby given to the Public that the City of Eastland will consider bids for a five-year grazing lease on a certain tract of land of approximately 100 acres of the NW 1/4 of section 13, H&TC R.R. Survey, Eastland County, Texas and being a tract of land owned by the City of Eastland, lying adjacent to Ringling Lake, exclusive of said lake and the public grounds bordering the lake. All lease bids are to be submitted to Lewis Tinsley, City Manager, City of Eastland, on or before March 1, 1963, to be to be from Aug. 9, 1963 to Aug. 9, 1968. This advertisement for bids supercedes the asking for bids, published Jan. 27, 1963.

REMEMBER This Number MA 9-1101

Betty's Flower Shop

200 N. Green Eastland

COMPLETE SELECTIONS

EASTLAND AUTO PARTS MACHINE SHOP

300 S. Seaman MA 9-2153

FULLY - EQUIPPED

AUTOMOTIVE VALVE GRINDING BRAKE DRUM TURNING HEAD SURFACING VALVE JOBS BLOCK BORING SLEEVE INSERTING VALVE SEATING

COMPLETE LINE AUTOMOTIVE TRUCK TRACTOR PARTS ALWAYS IN STOCK

AUTO PARTS
 300 S. Seaman MA 9-2153 EASTLAND

FOR ALL FINE FABRICS WOOLITE

Especially for wool-cashmeres

Wash them at Home. Buy this at

ROGERS GROCERY
 Phone MA 9-2292

Insurance and Real Estate

D. L. KINNAIRD

Life - Fire - Auto - Farm Policy - Bonds

42 years in the Insurance Business in Eastland

MODERNIZE Your PLUMBING NOW and SAVE!

Get A Plumbing Check-up

Don't wait for plumbing problems to develop. Let us inspect pipes and fixtures now! There's no charge.

PHONE MAIN 9-2422

Smith's PLUMBING

HEATING — AIR CONDITIONING
 114 NORTH SEAMAN ST. — EASTLAND, TEX.

4-H'er Wins Calf; Another Misses Top Division

An Eastland County 4-H'er won himself a calf in the scramble at the San Antonio Livestock Show last week and another "almost" saw his calf placed in the top brackets of the show.

Royce Harris, 15, son of Mr. and Mrs. A. W. Harris, of Scranton caught himself a calf and thereby earned \$35 for his 4-H project.

Scotty Koonce, 9, son of Mr. and Mrs. Joe Ben Koonce of Delema saw his short-horn calf place fifth in a class of 15, but for quite a while expected it to be in the first four division.

The show placed only four. Assistant County Agent Egger Blackmon reported, and Scotty's calf was in that fourth spot until the very last.

Two other county boys tried but failed to land a calf in the scramble—Andy Hamilton, 14, of Ranger, and Herbert Casey Jr., 13, of Carbon.

Scotty's calf is expected to provide stiff competition in the county show next month.

INGROWN NAIL HURTING YOU? Immediate Relief!

A few drops of OUTGRO, being blessed with the power of the Holy Spirit, will soften the skin under the nail, allow the nail to be cut and thus prevent further pain and discomfort. OUTGRO is available at all drug stores.

T. L. FAGG REAL ESTATE

Property Management Home and Farm Loans

Sen. Creighton's Election Bill Is Being Studied

AUSTIN—Eugene M. Locke, chairman of the State Democratic Executive Committee told the Senate Committee on Privileges and Elections last week that the SDEC favored Senator Tom Creighton's Bill revising and clarifying the Texas Election Code.

He reminded the Senators that the election study committee which proposed the revision had been formed at the suggestion of the SDEC.

The bill was given a hearing by the Senate Committee Thursday morning, and, at Sen. Creighton's request, sent to a subcommittee for two weeks.

Locke said, "We (the SDEC) recognize the ambiguities which exist in the present Election Code and feel that the bill does a good job of correcting the ambiguities and filling in the gaps in the present legislation."

The State Chairman said there were one or two things in the bill that he suggested might be changed in the spirit of the purpose of the bill, but that these were minor and did not detract from the tremendous job the study committee had done.

WANTED
 Good clean automobiles. Any make—Any Model Considered.

BLEVINS MOTOR CO.
 See Jay Blevins, Ph. MA 9-2433 513 West Main Eastland

43 Young Men -

(Continued from page One) which they have livestock to raise and breed to, large their herds.

The F.F.A. chapter also participates in extra curricular activities.

The members of the Eastland Chapter are in the final stages of a candy sale to raise money for a chapter Father and son banquet to be held in the Spring.

Also, during F.F.A. week the chapter intends to have the annual green hand initiation at which time the first year boys, "green hands", are initiated into the chapter as Chapter Farmers.

Read the Classifieds

MATTRESSES

Save up to 50% renovating choice of color and firmness. Complete bedding. Made and guaranteed by WESTERN MATTRESS CO., San Angelo. Phone MA 9-1342, Eastland and leave address.

SATURDAY FEED SPECIALS

Special Mix Feed 2.14%
Creep Pellets 3.20%
Breeder Cubes 66.00 per ton
C-S Pellets 4.38%
Protein Blk 85.00 per ton

FREE ROPE WITH PURCHASE OF TON OR MORE

C. P. CLOUD & RIPPY BROS
WOOL & MCHAIR AND FEED
 210 S. RUSK B. R. RIPPY RANGER

MONUMENTS

SINCE 1884 WEATHERPROOF MONEY

ANY MAKE - ANY MODEL

1916 SIMPLEX-CRANE

Yesterday's Service Methods are Out-Dated too!

Service for all makes... minor tune-ups, complete brake service. Lubrication specialists (wheel pack, U-joint pack, etc.) Make our station your auto service center—whether you drive an old or a new automobile.

ROY'S MOBIL SERVICE STATION
 302 W. Main — MA 9-2220

TUNE-UP FOR SAFER, SMOOTHER DRIVE

COMPLETE AUTO REPAIRS

24 HOUR WRECKER SERVICE

Phones MA 9-2270 Night MA 9-2224

ALLEN AUTO REPAIR
 AT RUSHING MOTOR 215 SOUTH SEAMAN

Behind many "For Sale" signs there is a sad story: A family borrowed more than they could afford to pay for a home, or payments and interest rates were too high; the home had to be sold, often at a loss. This tragedy could often be avoided if the families would seek help from a home loan specialist, such as our Association.

We work with you to arrange for a loan that is easy to handle as monthly rent.

FIRST FEDERAL SAVING LOAN ASSOCIATION
 204 Main Ranger, Texas

SATURDAY FEED SPECIALS

Special Mix Feed 2.14%

Creep Pellets 3.20%

Breeder Cubes 66.00 per ton

C-S Pellets 4.38%

Protein Blk 85.00 per ton

FREE ROPE WITH PURCHASE OF TON OR MORE

C. P. CLOUD & RIPPY BROS
WOOL & MCHAIR AND FEED
 210 S. RUSK B. R. RIPPY RANGER

FEWAY

Exceptional Bargains to Clear Warehouse Space!

BIG FEBRUARY SALE!

Values Galore!

- Fortening** Velkay. For all your cooking needs. **3 Lb. 59¢**
- Biscuits** Mrs. Wright's Canned Biscuits. Sweetmilk or Buttermilk. **6 8-Oz. Cans 43¢**
- eam Corn** Town House. Golden Cream Style. **6 No. 303 Cans 79¢**
- mpbell's Soup** Tomato. **3 No. 1 Cans 33¢**
- ut Juice** La Lani Pineapple. **3 46-Oz. Cans 79¢**

Frozen Foods!

- Spinach** Bel-air Frozen. Chopped, or Leaf or Turnip Greens. **5 Reg. Pkgs. 89¢**
- Baby Okra** Bel-air Frozen. Whole Okra or Blackeye Peas. **4 Reg. Pkgs. 89¢**
- Raspberries** Bel-air Frozen. **2 10-Oz. Pkgs. 49¢**
- Whiting** Captain's Choice Frozen. **1 1/2-Lb. Pkg. 39¢**
- Halibut Steaks** Captain's Choice Frozen. **1-Lb. Pkg. 79¢**
- Maxwell House Coffee** Regular & Drip Grind. **1-Lb. Can 65¢**
- Hydrox Cookies** Sunshine. Fill the cookie jar. **1-Lb. Cello Pkg. 49¢**
- Miracle Margarine** Kraft, Excellent table spread. **1-Lb. Can 29¢**
- Ballard Biscuits** Sweetmilk or Pillsbury Buttermilk. **3 8-Oz. Cans 79¢**

Mix 'Em or Match 'Em Frozen Foods!

- ★ **Beef Pies** Manor House Frozen. **6 8-Oz. Pies 1.19**
- ★ **Turkey Pies** Manor House Frozen.
- ★ **Chicken Pies** Manor House Frozen.
- ★ **Green Peas** Bel-air Frozen.
- ★ **Cut Corn** Bel-air Frozen Whole Kernel.
- ★ **Potato Patties** Bel-air Frozen.
- ★ **Hash Brown Potatoes** Bel-air Frozen.
- ★ **Strawberries** Bel-air Frozen Sliced. **5 Reg. Pkgs. 1.19**
- ★ **Lima Beans** Bel-air Frozen Ford Hook.
- ★ **Mixed Vegetables** Bel-air Frozen.
- ★ **Broccoli Spears** Bel-air Frozen.
- ★ **Cauliflower** Bel-air Frozen.
- ★ **Fish Sticks** Captain's Choice Frozen Precooked. **4 Reg. Pkgs. 1.19**
- ★ **Green Beans** Bel-air Frozen Cut.
- ★ **Green Peas** Bel-air Frozen. **2 Giant Pkgs. 1.19**
- French Fries** Bel-air Frozen Crinkle Cut Potatoes. **3 2-Lb. Pkgs. 1.19**
- Peach Pie** Bel-air Frozen. Real Fruit Pie with tender-flaky crust. **1 1/2-Lb. Pie 35¢**
- Strawberries** Bel-air Frozen Whole. **1 1/2-Lb. Cello Pkg. 69¢**

Coupon Worth 50 Gold Bond Stamps
 Regularly earned Gold Bond Stamps with the purchase of
No. 300 Cans Frito PLAIN CHILI
 Coupon Expires February 16, 1963.

Coupon Worth 25 Gold Bond Stamps
 Regularly earned Gold Bond Stamps with the purchase of
1-Lb. Pkg. Busy Baker CRACKERS
 Coupon Expires February 16, 1963.

Coupon Worth 50 Gold Bond Stamps
 Regularly earned Gold Bond Stamps with the purchase of
7-Oz. Can REDDI-WIP
 Coupon Expires February 16, 1963.

Bakery Features!

- Raisin Bread** Skylark. Not Iced. (Reg. 27¢) Full of plump juicy raisins. **1-Lb. Loaf 19¢**
- Nut Snails** Mrs. Wright's (2¢ Off). A taste delight. **7-Oz. Pkg. 23¢**
- Brown & Serve Rolls** Skylark. **13-Oz. Twin. Pkg. 23¢**
- White Bread** Mrs. Wright's. Sliced Regular or Sandwich. **2 1/2-Lb. Lb. 49¢**
- Cole Slaw** Lucerne. Ready to serve. **1-Lb. Ctn. 29¢**
- Roquefort Dressing** Lucerne. **8-Oz. Reg. 49¢ Jar 39¢**
- Ice Cream Nut Roll** Lucerne Deluxe. **24-Oz. Pkg. 79¢**

Safeway Guaranteed Produce!

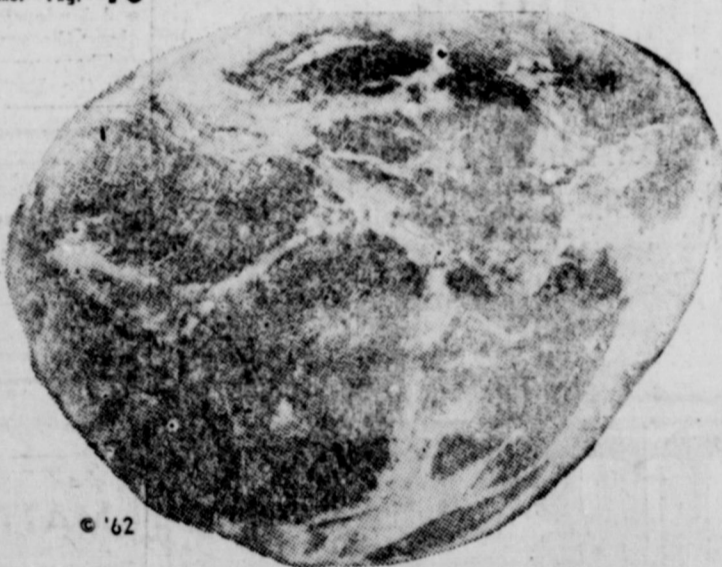
- Potatoes** U. S. No. 1 Red. **10 Lb. Bag 39¢**
- Apples** Winesap, Washington State Extra Fancy. **15¢ Lb.**

Michigan Peat The perfect soil conditioner. **100-Lb. Bag \$1.99**



Safeway Guaranteed Meats!

- Smoked Picnics** Lb. Average tender meat. Slightly pink. Slightly textured. **Lb. 29¢**
- Bacon** Day Brand. Breakfast treat. **Lb. 2.89¢**
- Chops** Smoked Center Cut. **Lb. 85¢**
- Beef Steaks** Buttered Beef. **Lb. 79¢**
- Smoked Sausage** Dankworth Hickory Smoked. **Lb. 69¢**



Safeway Superb Lamb!

- Leg-O-Lamb** U.S.D.A. Choice Lamb. Flavorful, tasty and nutritious. **Lb. 65¢**
- Lamb Shoulder** U.S.D.A. Choice Lamb Square Cut. No necks. **Lb. 43¢**
- Shoulder Chops** U.S.D.A. Choice Lamb. **Lb. 49¢**
- Rib Chops** U.S.D.A. Choice Lamb. **Lb. 85¢**

- Ice Cream** Lucerne Cherry Capri. **1/2-Gal. 79¢**
- Gelatin Salad** Strawberry Flavor. Ready to serve. **15-Oz. Ctn. 19¢**
- Cookies** Melrose. Lemon Sugar, Coconut and Oatmeal or Pecan. **13 1/2-Oz. Pkg. 29¢**
- Airway Coffee** Grind it yourself. (2-Lb. Bag 51.00) 8.9 **1-Lb. 53¢**
- Strained Honey** Empress. Unto pasted for flavor. **24-Oz. Jar 59¢**
- Pancake Mix** Kitchen Craft Buttermilk. **2-Lb. Pkg. 29¢**
- Instant Coffee** Maxwell House. True Coffee Flavor. **17-Oz. Jar \$1.33**
- Tenderleaf Tea Bags** Orange Pekoe tea leaves. **49 Cts. 67¢**
- Colgate Dental Cream** For whiter teeth and sweeter breath. **6 1/2-Oz. Tube 49¢**
- Scot Tissue** White or Assorted Colors. (1,000-Ct. Rolls... 2 for 27¢) **4 650 Ct. Rolls 39¢**
- Sliced Beef** Town House. Fancy. **No. 303 Can 10¢**
- Covered Cherries** Bosh's. With 12 Oz. Nuts. **Box 49¢**
- Whole Oysters** Sea Trader. Serve oyster slow. **6-Oz. Can 29¢**

More Values!

This Coupon Worth 25 Free Gold Bond Stamps
 Plus your regularly earned Gold Bond Stamps with the purchase of
5-Lb. Bag VALENCIA ORANGES
 Coupon Expires February 16, 1963.

Redeem this coupon for 100 FREE GOLD BOND STAMPS
 With purchase of 27¢ or more (Excludes Cereals) One Per Family. Expires February 16, 1963.

This Coupon Worth 50 Free Gold Bond Stamps
 Plus your regularly earned Gold Bond Stamps with the purchase of
1-Lb. Beef or Pork Beef BEEF ROAST
 Coupon Expires February 16, 1963.

More Safeway Values!

- Swan Liquid Detergent** For Fine Fabrics. **12-Oz. Plastic 31¢**
- Wisk Liquid Detergent** Blue Liquid detergent. **32-Oz. Can 65¢**
- Fab Detergent** For all your washday problems. **Large Box 32¢**
- Breeze Detergent** All-Purpose detergent. **Large Box 33¢**
- Lux Soap** Complexion Purifier. Assorted colors. **2 Bath Bars 23¢**
- Lux Liquid Detergent** For lovelier hands. **12-Oz. Plastic 35¢**
- All Detergent** With controlled suds. **Giant Box 75¢**
- Handy Andy Cleaner** Liquid with ammonia. **28-Oz. Bottle 69¢**

- Mellorine** Joyett. Assorted Flavors. **1/2-Gal. Ctn. 39¢**
- Velveeta** Kraft Cheese Spread. **2-Lb. Pkg. 79¢**
- Kleenex** Facial Tissue. Aque, White or Pink. **2 400 Ct. Boxes 49¢**
- Delsey Tissue** White or Assorted Color. **7 Roll Pkg. 23¢**
- Gleem Tooth Paste** Large Tube **39¢**

SAFEWAY

Prices and Coupons Effective Thurs., Fri. and Sat., Feb. 14, 15 and 16 in Eastland

We Reserve the Right to Limit Quantities. No Sales to Dealers.

Change of Location

New Office Hours
Appointment only

Fort Worth:
806 S. Lake St.
Ed 6-4133

Eastland:
Every other week
Friday-Saturday morning
MA 9-1376

JAMES C. WHITTINGTON, M.D.
Eye, Ear, Nose, Throat

**Parade of U.S. Music
Is Study Club Program**

Mrs. T. E. Richardson was program leader for "Parade of American Music" Wednesday, Feb. 6, at 8:30 p.m. at the regular meeting of the Eastland Music Study Club. Mrs. Vayge Daniel, preside.

conducted the business session during which all business coming before the club was disposed of.

She then introduced Mrs. Richardson for the program dedicated to the Parade of America Music for the National Federation of Music Clubs.

A musical tribute to the flag, "The Star Spangled Banner", Key-Smith was sung in unison accompanied by Mrs. Do. H. Russell, pianist.

Mrs. Richardson then presented Mr. and Mrs. Pat Miller, guest artists for the afternoon, in songs with Mrs. Donald L. Kinaird Sr., pianist. They announced their own numbers: "The Wayfaring Stranger", arranged from an old Southern melody; "Madame Jeannette", words by Edward Lockton and music by Alan Murray; "Oh No John", arranged by Theron W. Kirk; "Deep River", a spiritual arranged by Frederic Fay Swift and "The Big Brown Bear" by Mana-Zucca.

An entertaining and interesting review of the book "One Hundred Years of Music in America" by Paul Henry Lang was presented by Mrs. J. H. Lee.

Refreshments of hot coffee, cookies and nuts were served to the following: Mr. and Mrs. Pat Miller, Mrs. W. S. Fisher, Mrs. L. B. Harris, T. E. Richardson and Mmes. R. L. Carpenter, J. N. Cooper, Vayge Daniel, Mike George, Marvin Reed, Donald L. Kinaird Sr., Donald L. Kinaird Jr., J. H. Lee, Eos Parker, Joseph M. Pickett, T. E. Richardson, Don H. Russell, H. O. Satterwhite and Miss Marjorie van Hoose.

Read The Classifieds



MRS. GLENN SCALLORN AND MRS. E. M. ROGERS
... Beta Sigma Phi Sweethearts (A&C Studio)

**Sweethearts Crowned
At Beta Phi Banquet**

Mrs. E. M. Rogers of the Zeta Pi Chapter and Mrs. Glenn Scallorn of the Xi Alpha Zeta Chapter were crowned sweethearts of their respective chapters at the annual Beta Sigma Phi Valentine Sweetheart Banquet held Saturday evening in the Lone Cedar Country Club.

Mrs. Art Johnson, sponsor of the Zeta Phi Chapter, crowned Mrs. Rogers.

Mrs. Scallorn was crowned by Mrs. Glyn Gilliam, last year's sweetheart.

The valentine motif was carried out in decorations. The main table held a centerpiece of red and white carnations. Each individual table was centered with a heart made of

carnations. Place settings were miniature hearts.

Walls of the club were decorated with cupid's hearts.

Menu for the evening consisted of steak, baked potatoes, asparagus, pie, rolls and tea.

Entertainment followed the banquet at the Club.

**Bridge Players
Invited To
Gorman Sat.**

Lone Cedar Duplicate Bridge Club held the regular Saturday afternoon session with seven and one-half tables of players participating from Gorman, Ranger, Eastland, Stephenville and Cisco.

First place winners were Mrs. Dick Bearman and Mrs. E. L. Graham, both of Cisco. Second were Mrs. George Fee and Mrs. Thelma Albright, both of Cisco, and third, Mrs. James Morris and Mrs. Joe Collins, both of Ranger, Mr. and Mrs. Keith Whitt, Gorman, were fourth.

Girls -

(Continued from page 1) story of a different tune. Clyde carried them 72-45.

Treadwell was high point man with 15. Hendrick came dribbling forward to suck up 12 points. Beck and Wilson each had 2 points. Moylan had 9 points. Russell had 4, and Underwood had 1 free shot. Moylan, Treadwell, Beck, Russell, and Wilson started the team to action, but Hendrick and Underwood came in all alone the game to help.

These were the final games for the Eastland edge teams.

CHICK'S RADIO AND TV
103 E. Main
Service Calls \$2.50
All work guaranteed
Phone MAIn 9-1374
Day or Night

**SPECIAL
Wash and Grease
\$2.50**

McCracken Mobil Service
302 E. Main
Phone MAIn

MAJESTIC

NOW THRU
Thur. & Fri. 5:15-10:15
Sat. — 1:15-3:15
9:15



Adult 75c
Discount 50c

HILL CREST FOOD MARKET

WHEN YOU RUN OUT — RUN IN
1401 WEST MAIN - PHONE MA 9-1376

- Decker's Ranch Style or regular sliced **BACON** 2 Lbs.
- Decker's All Meat **BOLOGNA**
- Decker's **OLEO**
- Idaho **POTATOES** 10 Lbs.
- Gebhardt's **CHILI** No. 2 1/2 qt.
- County-Kist **CORN** whole kernel 2 12 oz. ct.
- Snowdrift **SHORTENING** 3 lb. Ct.
- Fulger's—(limit one, please) **INSTANT COFFEE** 10 oz. pk.
- Hines **KETCHUP** 14 oz. pk.
- Sweetheart or Town-Talk **BREAD** 2 lb. pk.
- Parade **PEACHES** No. 2 1/2 qt.
- Kuner **TOMATO JUICE** 46 oz. ct.
- Kimbell **POP CORN** lb. pk.
- Foremost Assorted Flavors **MELLORINE** 1 1/2 Gal.

SPECIAL
16x20 BROWNTONE PORTRAIT
AND FRAME
COMPLETE — ONLY
14.50

Reg. \$25.00 Value

Available: Friday and Saturday, Feb. 15th and 16th.

We can copy any photograph and make you an 8x10 for only \$1.95 or a dozen billfold size for \$3.95

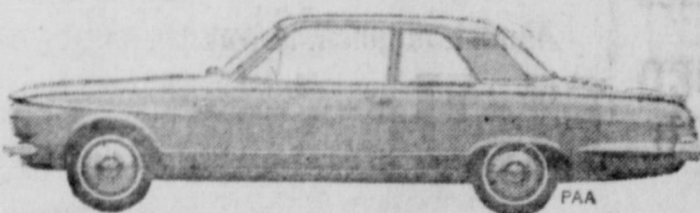
Located east of the square, next to Mode O'Day.

A & C STUDIO

Ph. MA 9-2616

**NOW
VALIANT
PRICES START
BELOW
FALCON OR
CORVAIR!**

That's right! The completely restyled Valiant is now priced to start lower than both Falcon and Corvaire. In fact, nine of the ten other compacts on the market today have higher starting prices than Valiant. For proof, see the Manufacturers'



Suggested Retail Prices for the lowest priced models. See this new Valiant, examine all its fine features, and relate them to the low starting prices. You'll say Valiant is the best all-around compact that anybody has come up with yet!



*Your Authorized Plymouth-Valiant Dealer's Warranty against defects in material and workmanship on 1963 cars has been expanded to include parts replacement or repair, without charge for required parts or labor, for 5 years or 50,000 miles, whichever comes first, on the engine block, head and internal parts; transmission case and internal parts (excluding manual clutch); torque converter, drive shaft, universal joints (excluding dust covers), rear axle and differential, and rear wheel bearings, provided the vehicle has been serviced at reasonable intervals according to the Plymouth-Valiant Certified Car Care schedules.

SEE THE BEST ALL-AROUND COMPACT ANYBODY HAS COME UP WITH YET!

Rushing Motor Company
215 South Seaman
Blevins Motor Company
514 W. Main

**ROCK-BOTTOM
CLEARANCE SALE**
Check These \$1. Specials

HATS GLOVES SKIRTS
BAGS BLOUSES
BRAS FOUNDATION GARMENTS
ALL FOR \$1. EACH

DRESSES

Fall & Winter
ONE GROUP \$1
ONE GROUP \$2.99
ONE GROUP \$5
ONE GROUP \$10
ALL OTHERS DRASTICALLY REDUCED

Don't miss this SALE... We're clearing the store to make room for new spring merchandise...

**ALTMAN'S
STYLE SHOP**
109 W. MAIN
EASTLAND

during the evening and were registered in the bridal book flanked with blue candles. The bride-elect's chosen colors of blue and white were carried out in decor. An arrangement of white blossoms accented with blue decor centered the table which was laid in white over blue. Appointments of silver completed the table setting. Guests were greeted by Miss Seay, Mrs. A. L. Seay, mother of the bride-elect, and Mrs. Griffith, grandmother of the honoree.

Read The Classifies

Mrs. Crawford Leader For Thursday Club Meet

Mrs. Pat Crawford, program leader for "Stepping Stones to World Federation", announced the program and gave the quotation, "Club women of the world are freedom's guardians", at the Thursday meeting of the Thursday Afternoon Club held in the Women's Club.

The meeting was opened with the Club Collect given in union. Mrs. Turner Collier, president, conducted the business meeting when reports were given by the officers. Mrs. Cecil Collings gave a report on the Eastland Library. The club voted to keep the state song "Texas Our Texas."

Mrs. Joseph Perkins led a discussion on the needs and problems of our home town after which she conducted a very interesting questionnaire, "Why Am I a Club Member", with all members participating. This was followed by a very informative talk on what women are doing in Texas, the United States, and in other nations.

A Litany on Freedom was given and the program closed with a salute to the flag and

singing of "The Star Spangled Banner."

The following members answered roll call: Mmes. Harold Bulgerin, Turner Collier, Cecil Collings, Pat Crawford, Fred Davenport, W. S. Fisher, Cyrus B. Frost, Ben Hamner, C. W. Hoffman, James Horton, Donald Kinnaird, W. P. Leslie, Frank Lovett, Arthur Murrell, W. D. R. Owen, Joseph M. Perkins, T. E. Richardson, E. R. Townsend and Esco Walter.

Mrs. Siebert To Host Meet Of Las Leales

Mrs. Wendell Siebert will be hosting for a program on "The Lost Generation" Monday when Las Leales Club members hold their regular meeting.

Roll call will be answered with "The Roaring Twenties."

Mrs. James Young will present "F. Scott Fitzgerald, Interpreter of the Jazz Age" and "Ernest Hemmingway, Man and Writer" will be given by Mrs. Anna Grace Bumpass.

Kokomo News

Mr. and Mrs. Willie Henderson of Oliver Springs visited with his brother, Mr. and Mrs. John W. Henderson, one day last week.

Mr. and Mrs. W. A. Brandon of Menard spent Wednesday night with their niece and family, the Glen Jordans.

Mr. and Mrs. Alvin Lasater visited in Rising Star Saturday with the Skeet Clarks and in Okra with the Chuck Elliotts.

Miss Linda Bryan spent the weekend in Fort Worth with friends.

Mrs. Brenda Jennings and Miss Cecelia Belyeu of Stephenville and Larry Schmidt of Fort Worth visited with Mr. and Mrs. Odie Rodgers and Johnny Earl on Saturday night.

Mrs. J. C. Timmons and Vance Laminack of Gorman visited with the Rodgers family on Sunday afternoon.

Mr. and Mrs. Benny Chupp and Leslie of Midland spent the weekend with her parents, Mr. and Mrs. Cullen Rodgers.

Mr. and Mrs. Pete Snider have been in Temple for the past several days where Pete underwent more foot surgery. Mrs. Lon Snider, Mr. and Mrs. Ted Snider and Layon, George, Duane and Penny Snider visited with the Pete Sniders in Temple on Sunday. They report that Pete was doing fine.

Mrs. W. F. Bryant was a dinner guest of the John W. Hendersons on Sunday and they all attended the singing in DeLeon in the afternoon.

Visiting with the Clifford Maloney at their home near Okra on Friday night were Mrs. Dwight Gothard of O'Brien, Mrs. H. C. Whorton of Carbon, Mr. and Mrs. Jim Jordan and Mrs. Glenn Jordan, Glenda and Teddy. The occasion was to celebrate Maloney's 14th birthday.

Mr. and Mrs. Ouyelle Johnson report that their son, Cary Lee, who was injured in an automobile accident is better and

was transferred to an army hospital in San Antonio for further treatment.

Mr. and Mrs. R. Q. Graham and Mrs. Delmon Eaves and children visited in Eastland on Sunday afternoon with Mr. and Mrs. Capu Norton who have recently returned to Eastland from New Mexico.

Mr. and Mrs. Veri Garrett and Mr. and Mrs. Jimmy Little and children spent the weekend in Abilene with Mr. and Mrs. Jerry Hallmark.

Mr. and Mrs. A. B. Eaves spent the weekend in Brady with their daughter and family The David Lorrances. Mr. and Mrs. Lowrance are the proud parents of a baby daughter, Laquita Lee, who was born on Saturday, Feb. 9. She weighed six pounds and four and one-half ounces.

Readers Write

EDITOR

Will you please do something for me? I had a light heart attack recently, I've been blessed with many get well cards from many of my friends in Eastland.

I'll not be able to answer all of them—am afraid it would put me back in the hospital! Could you pass the word along that I am out of the hospital now and am recuperating at home.

Incidentally, "I love those dear hearts and gentle people . . . And they will never ever let you down!" Believe me, I know!

I hope you enjoy Eastland as much as we did. Sincerely, I-Rue Usery Broussard P. O. Box 341 Bronte, Tex.

Read the Classifieds

Any Way You Look At It -

... there seems to be no way of escaping the on-rushing tide of casualties and loss of properties connected with moving vehicles. It was the highest in history last year, and with an expected increase in transportation fatalities each year we can expect more of the same. All of which leads us up to the suggestion that insurance won't save your life or keep your car out of the garage, but it will help pay the bills. Most people are adequately insured. Are you?

EARL BENDER & COMPANY
Eastland, (Insurance since 1924) Texas



Everybody's Talking About...

Dearborn

AREA HEAT

Want to neat your home better ... at less cost ... with greater convenience? Then come in and let us tell you about Dearborn Area Heat!

Western Auto Associate Store
110 So. Seaman Eastland

GIVE Round-Up STAMPS

Valentine's Day
GOD VALUES



Hydrox Cookies
SUNSHINE Pound Package 45¢
Supreme Crackers
Saltine Pound Box 31¢

Regular Can	19¢	ASSORTED FLAVORS	3 3-Oz. Packages	25¢
Quart Bottle	49¢	Jell-O	2 7-Oz. Pkgs.	27¢
No. 2 1/2 Can	19¢	MACARONI or SPAGHETTI	Pound Can	57¢
MAXWELL HOUSE COFFEE				
Pound Can 59¢				
SCOTTIES FACIAL TISSUES				
Assorted Colors 400-Ct. Box 23¢				
SPAM VEG-ALL GOULASH				
SERVES SIX FOR \$1.00				
FREE RECIPES IN OUR STORE!				

DAVE
MARKETS

HONEY BOY SALMON	53¢	HORMEL'S SPAM	12-Oz. Can	43¢	
VEG-ALL LARSEN'S	2 303 Cans	35¢	Beef Stew AUSTEX	24-Oz. Can	49¢
Plain Chili AUSTEX	300 Can	49¢	Tamales AUSTEX	24-Oz. Can	37¢
BOOTH Frozen PERCH	Pound Package	49¢	SOMERDALE Frozen STRAWBERRIES	10-Oz. Pkg.	19¢
GOLDEN NIP Frozen ORANGE JUICE	6-Oz. Can	19¢	BANQUET Frozen DINNERS	Assorted Varieties Regular Package	39¢
new FAB heavy duty formula					

WALK FULLY COOKED READY-TO EAT
SLIMMAN HAMS 3 Lb. Can \$2.89
CHUCK ROAST lb. 49¢

MacMOY'S Super Save
Home Owned—Home Operated 400 S. Seaman
Carrots Cello Bag 2 for 25¢

FREE
Estimates On
RE-ROOFING
Or Repair Your Old Roof.
Residential and Commercial
Roofing Co. Eastland
Noble Squiers
Phone MA 9-2370

SAVE MONEY
Have Your Smooth Tires RETREADED
SPECIAL 7.95
Any Size Passenger Tire
12 MONTH GUARANTEE
Jim Horton Tire Service
East Main Eastland



Jack ...



Robinson

Almost as quick as you can say it, you're back in your lane again

One of the special joys of driving a Chevrolet to 425 horsepower sees to that. Short-stroke advanced-design engines that respond with smooth free-breathing efficiency unknown in the auto industry a few brief years ago. And coupled with that power is the kind of precise even-keel handling that puts you in complete control every self-assured instant you're at the wheel. Where do you get your hands on that wheel? Your Chevrolet dealer's, naturally.

JET-SMOOTH
CHEVROLET
Keeps Going Great

Note—Bonanza Buys on four entirely different kinds of cars at your Chevrolet dealer's Show

FULLEN MOTOR COMPANY
305 E. MAIN EASTLAND

Hall...
showing...
for her

the home of...
Talley, Ok...
ax Duckworth...
City, Steve...
one, B. F. Al...
Alford and the...
family, all of Odean.

HAMNER FUNERAL HOME
Ben E. Hamner, Owner

Serving Eastland County since 1924 with ambulance and funeral service. Our ambulances are oxygen equipped and air conditioned. Through our nation-wide connections with other funeral directors, we can handle a funeral from any point in America. We offer this service knowing that we can relieve the family of all burdens incident to any death away from home.

Eastland Dial MA 6-2611

**FURNITURE
CARPET
APPLIANCES**

Quality Merchandise at Every Day Low Prices
FREE DELIVERY—NO CARRYING CHARGES ON FURNITURE and CARPETS FOR 1 FULL YEAR

Ranger Furniture Exchange
"BRASHIER'S"

123 N. Rusk Ranger Phone MI 7-1404

Mrs. Bourdeau, Deputy Grand Matron Honored at Tea Sunday

Mrs. W. L. Bourdeau, Deputy Grand Matron of District 3, Section 4, Grand Chapter of Texas, Order of the Eastern Star, was honored with a tea held Sunday afternoon at Lone Cedar Country Club.

Ranger Chapter No. 275 was host chapter. Greeting guests were Meses. H. H. Oliver, Vernon Deffenbach, and Miss Ann McEver. Mrs. G. C. McGown registered guests.

Members in the receiving line were Mrs. Bourdeau, Mrs. Jack Rawls, Worthy Matron, Mrs. J.

B. Easterling, Clyde, District Deputy Grand Matron, Mrs. Oscar Wise, Moran, Grand Representative, and G. C. McGown, Worthy Patron.

Assisting at the tea table were Meses, Linda Forney, Jack Sledge, Buck Wallace, and Auda Lummas.

Valentine Motif was carried out in decorations. Approximately 95 guests attended.

Role Of -

(Continued from page One) has played the major role in the education of our farm and ranch people as they work together with other agencies, commercial and governmental research and the local communities.

W. L. (Dub) Sims is in the midst of his first year as Agriculture teacher in Eastland.

The curriculum of Vocational Agriculture has been considered as much revolution as Agriculture itself. Some major items in the first Vocational Agriculture classes included seed corn selection, harness repair, elementary pruning of plants, and running of terrace lines.

The 1963 Vocational Agriculture Student in our 875 high schools throughout the State will find that he is studying complex plan and breeding programs, complete conservation programs for our land and other natural resources, and spending an important amount of time in the areas of business management of the farm.

In the farm shop, he will be studying electricity, machine farm construction, welding and the management of expensive farm machinery and equipment.

Several of the hand lessons last week in Eastland was the first step toward up-dating the Shop facilities for the local schools.

The Vocational Agriculture Teacher must be well trained to cope with the ever increasing complexities of Agriculture, and he must be alert to the challenging needs of the Agriculture he serves.

The farm jobs known to the farm boy of half century ago have moved to town. The wood he chopped, the water he drew for livestock, the hand milking chores, the laborious household and farmstead chores are now performed by machines and conveniences not dreamed of in his day.

There are large numbers of workers employed in agricultural occupations and professions to support the efficient farmer of today. More will be needed in the years to come and the Vocational Agriculture Teacher will have an important part in the training needed by these farmers and workers in the Agricultural Industry.

A chemical firm manager said recently, "Agricultural Science is calling youth." By 1970 over 20,000 additional scientists will be needed to feed the nation's population. This is a 40 per cent increase over today. Careers in agricultural chemistry, biology, and marketing, to name a few, must come from students in schools today. Spacemen will need food, possibly grown aboard the capsules, the chemist said. His plea to Future Farmers? Stay and train in Agricultural Technology.

The Vocational Agriculture Student's challenges of tomorrow are the Vocational Agriculture Teacher's role in Agriculture today.

• Read The Classifieds

POE FLORAL

- We're Not Too Big
- We're Not Too Small
- We're just the right size to give you the most personalized service in Eastland

- Creative arrangements of permanent flowers.

- Completely stocked at all times

When Its Flowers Say It With Ours

MA 9-1711 609 W. Main Eastland

Mrs. George Feted With Farewell Party

Members of the Xi Alpha Zeta Chapter of Beta Sigma Phi honored Mrs. Mike George with a farewell party Thursday, Feb. 7, in the home of Mrs. Bill Leslie.

Mrs. George, a Beta Sigma Phi member for 3 1/2 years, is moving with her family to Paris, Tex. in the near future. Refreshments of coffee cake, cake and coffee were served to those attending.

Mrs. George was presented with many lovely gifts.



TEA HONOREE—Mrs. W. L. Bourdeau, District Deputy Grand Matron, Order of the Eastern Star, was honored Sunday with a tea at Lone Cedar Country Club. Standing left to right - G. C. McGown, Worthy Patron, Mrs. Reba Rawls, Worthy Matron, and Mrs. Bourdeau. (Photo by Capps Studio.)

Official Nationwide Consumer Testing Institute Report:

**PLYMOUTH WINS PERFORMANCE TEST.
PLYMOUTH WINS GAS ECONOMY TEST.**

It happened in the second big meeting of Ford Galaxie "500", Chevrolet Impala and Plymouth Fury at Riverside, Cal.—in a "Showdown" Plymouth asked for. The cars were all V-8s, comparably equipped. And Nationwide Consumer Testing Institute was there to conduct the competition and see to it that its strict rules were followed. When it was over, Plymouth had victories in almost every performance test, plus victory in the all-important economy run. Plymouth for '63 also has the only 5-year/50,000-mile warranty* in the tough Plymouth-Ford-Chevrolet league. See your dealer. Plymouth's on the move.

ZERO-TO-SIXTY		CITY PASSING	
PLYMOUTH.....	11.99 sec.	PLYMOUTH.....	278 ft.
CHEVROLET.....	13.64 sec.	CHEVROLET.....	279 ft.
FORD.....	18.01 sec.	FORD.....	305 ft.
QUARTER-MILE		HIGHWAY PASSING	
PLYMOUTH.....	18.04 sec.	PLYMOUTH.....	462 ft.
CHEVROLET.....	18.99 sec.	CHEVROLET.....	516 ft.
FORD.....	20.53 sec.	FORD.....	554 ft.
KILOMETER RUN		EMERGENCY STOP	
PLYMOUTH.....	33.43 sec.	FORD.....	120 ft.
CHEVROLET.....	34.44 sec.	PLYMOUTH.....	125 ft.
FORD.....	37.59 sec.	CHEVROLET.....	133 ft.
ECONOMY RUN		GO-STOP-PARK	
PLYMOUTH.....	18.77 mpg.	PLYMOUTH.....	2:32 min.
CHEVROLET.....	17.04 mpg.	FORD.....	2:44 min.
FORD.....	16.14 mpg.	CHEVROLET.....	2:57 min.
HILL CLIMB		3/4-MILE CLASSIC	
CHEVROLET.....	15.00 sec.	PLYMOUTH.....	2:51.74 min.
PLYMOUTH.....	15.44 sec.	CHEVROLET.....	2:55.67 min.
FORD.....	16.00 sec.	FORD.....	3:04.89 min.

**Incomplete third heat



*Your Authorized Plymouth-Valiant Dealer's Warranty against defects in material and workmanship on 1963 cars has been expanded to include parts replacement or repair, without charge for required parts or labor, for 5 years or 50,000 miles, whichever comes first, on the engine block, head and internal parts, transmission case and internal parts (excluding manual clutch), torque converter, drive shaft, universal joints (excluding dust covers), rear axle and differential, and rear wheel bearings, provided the vehicle has been serviced at reasonable intervals according to the Plymouth-Valiant Certified Car Care schedule.

PLYMOUTH DIVISION CHRYSLER MOTOR CORPORATION

FOUNDER'S SALE! MILD AND MELLOW EIGHT O'CLOCK 3-LB. BAG \$1.45

COFFEE 49

RED CIRCLE
1-LB. BAG **55c**
3-Lb. Bag **\$1.59**

BOKAR COFFEE
1-LB. BAG **59c**
3-Lb. Bag **\$1.69**

GROUND BEEF
"Super-Right" 10 lbs. **\$3.95**

Black Chili
53c

All Cut and Wrapped for Your Freezer at No Extra Cost!

BEEF SALE

- HINDQUARTER lb. 59c
- BEEF LOINS lb. 79c
- CHUCK ROAST lb. 49c
- GROUND BEEF lb. 49c

- "SUPER-RIGHT" HEAVY CALF
- T-Bone Steaks lb. 89c
- Sirloin Steak lb. 79c
- Plate Stew Meat lb. 29c
- CHUCK ROAST lb. 49c
- ARM ROAST lb. 59c
- ROUND STEAK lb. 89c

- ALLGOOD BRAND SLICED
- BACON 2-lb. Pkg. 79c
- SKINLESS SLICED BEEF
- LIVER lb. 49c

- 50 EXTRA PLAID STAMPS WITH "SUPER-RIGHT" PORK SAUSAGE 2-lb. Bag 99c
- 25 EXTRA PLAID STAMPS WITH "SUPER-RIGHT" FRESH PORK LINKS 1-lb. Pkg. 55c
- 25 EXTRA PLAID STAMPS WITH "SUPER-RIGHT" SMOKIES 12-oz. Pkg. 63c
- 25 EXTRA PLAID STAMPS WITH YOUNGBLOOD'S DRUMSTICKS 1-lb. Pkg. 49c
- 50 EXTRA PLAID STAMPS WITH A&P POPCORN 2-lb. Bag 29c

- GREEN BEANS Red Dart 16-oz. Can 10c
- Blue Lake Cut Can 10c
- DRIED PINTOS Benco 2-lb. Pkg. 19c
- PEACHES Goodrich 4 29-oz. Cans 85c
- Irregular Freestone
- PRUNE JUICE Lady Betty 40-oz. Decanter 49c

- Valentine Candy**
- BEAUX & ARROWS 1-lb. Pkg. 29c
 - GUM HEARTS 1 1/2-lb. Pkg. 29c
 - SWEETHEARTS 12-oz. Pkg. 29c
 - CANDY HEARTS 13-oz. Pkg. 29c
 - CHERRIES 12-oz. Box 45c

Your dreams come true with PLAID STAMPS
AP Super Markets

CHERRY PIE
39c

100 Extra Plaid Stamps

VIENNAS Round Up Brand

CAT FOOD Fun Brand

ORANGES California Navel

TEXAS YAMS Fertilizer



50c Plaid Stamps
With this Coupon and HARTZ MOUNTAIN CAT LITTER

25c Plaid Stamps
With this Coupon and JANE FRASER BROWN TWIN ROLLS

25c Plaid Stamps
With this Coupon and ANN PAGE ITALIAN SPAGHETTI

25c Plaid Stamps
With this Coupon and 12-oz. CTN. WHITE HOUSE INSTANT MILK

25c Plaid Stamps
With this Coupon and NABISCO FIG NEWTONS

100 Extra Plaid Stamps
With a Purchase of \$10.00 or more (excluding Cops)

VIENNAS Round Up Brand

CAT FOOD Fun Brand

ORANGES California Navel

TEXAS YAMS Fertilizer