



COVERING EASTLAND COUNTY
THE ONLY PLACE YOU CAN READ THE MOST IMPORTANT NEWS IN THE WORLD -- ALL THE NEWS ABOUT YOU, YOUR FAMILY AND YOUR FRIENDS!

31-NO. 181

EASTLAND, TEXAS, THURSDAY, FEBRUARY 7, 1963

PRICE 10

VOTERS WILL PICK SITE LATER

Ballots To Be Marked Saturday For New Elementary, Gym, Shop

COMFORTABLE, TOO Air-Conditioned Building Will Be More Efficient

Eastland Independent School District voters approve the \$525,000 bond issue Saturday, a new central elementary school will be constructed and the students, attending the existing elementary schools will be merged into a single air-conditioned building that will afford Eastland elementary school facilities unequalled in the area.

Construction of the air-conditioned building can be done at virtually the same cost of the non-air conditioned structure, and Texas building engineers are convinced that it is cheaper to maintain the air-conditioned building than the non-air conditioned building over a period of years.

Costly window construction and year to year maintenance of the same, make the conventional type of construction an expensive item.

Most of the window area in the air conditioned building is eliminated, to effect a saving in construction and to provide a better insulation.

It is only reasonable to assume that any instructional program would be improved in a properly air-conditioned building.

Teachers and pupils alike should be more productive in this type of environment.

Industry has already been convinced that there is a marked increase in the efficiency of any office when it is air conditioned. If the same holds true in the air conditioned office, why would not the same hold true in the school classroom.

Negro Youth Admits Theft At T&P Depot

A 13-year old Negro youth from Eastland was apprehended Friday night by City Patrolman Neil Seaborn and admitted forcing entry into the T&P Depot on Thursday night.

After breaking a window, the youth entered the depot and took four ticket books all of which were recovered.

The break-in was discovered Friday morning and investigated by Police Chief Ray Laney and Patrolman Ira Carnark.

Chief Laney said that since the boy was a minor, his name could not be revealed and that he will appear before the Juvenile Court.

ity to provide all reasonable assistance in this preparation.

Merging the two schools into a single building would make possible better utilization of library books and teaching aids, and an improved teacher-pupil ratio.

A more effective system of grouping at the various grade levels would also be possible, and the needs of the individual child could be more adequately met.

The modern cafeteria would be large enough to conveniently and efficiently serve the entire student body, and the same facilities would be available for many community functions.

Robert Purdom Dies Sunday; Rites Tuesday

Robert H. Purdom, 74, a resident of Eastland for 36 years, died Sunday evening in the Eastland Memorial Hospital.

Services were held Tuesday at 2:30 p.m. in the Hamer Funeral Chapel. Interment was in the Flatwood Cemetery.

Born March 17, 1888, in Rector, Ark. Mr. Purdom was married to Janie Smith on May 3, 1908 in Rector.

Surviving are the wife; three children, Mrs. Lucy Patton, Mrs. Margaret Ensor and Luther Purdom, all of Eastland; two brothers, Clyde Purdom of Rector, Ark. and Homer of Michigan; three sisters, Mrs. Edna Fide of Piggott, Ark., Miss Pearl Purdom of Rector and Mrs. Emma Heffner of Missouri; 25 grand-children and 26 great-grandchildren.

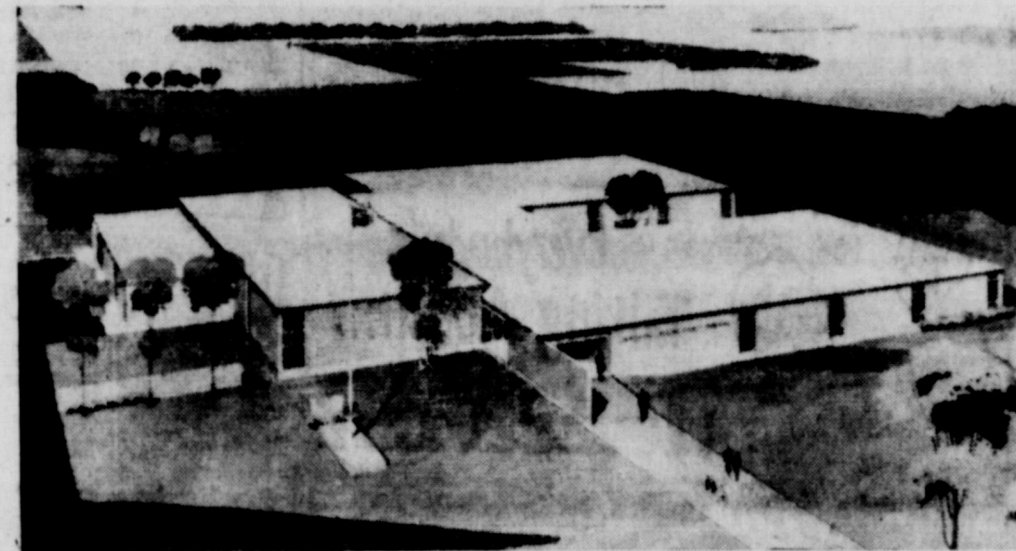
MEETING SET

The next meeting of the newly organized 10-10 Club has been set for Tuesday at 7:30 p.m. at the American Legion Hall.

Anyone in the county who is interested in the citizen's band radio club is cordially invited to attend the meeting.

ELDER TAKES OVER DUTIES AS COUNTY FOOD OFFICIAL

J. W. Elder, Sr., of 416 Pine, Ranger, assumed the duties as U.S.D.A. Surplus Foods Administrator for Eastland County on February 1.



PROPOSED ELEMENTARY SCHOOL—Voters decide Saturday on this proposed elementary school building. Designed by Boone and Pope, architectural firm of Abilene, the plant will provide some 16 air conditioned classrooms as well as a modern cafeteria.

TWO DEFICIENCIES Path for a 'Clean Slate' Being Cleared by School Board

Passage of the school bonds in Saturday's election will be a giant step toward getting the Eastland school system off the Texas Education Agency's "warning" list.

At the time of the last school accreditation visit made by the Division of School Accreditation of the agency on April 6, 1961, six deficiencies were listed by the inspection team that existed in the Eastland Independent School District.

Four of the six related directly to the operation of the Negro school in this district.

Since that time, the Negro school has been closed and Negro children in grades one through 12 have been enrolled in the white schools of the district, after voters approved such a move, 344 to 66 in a November, 1961, election.

The other two deficiencies pointed out that the gymnasium and the vocational agriculture shop were inadequate.

Last September, the Texas Education was officially notified that within the next few months the voters of the district would have an opportunity to vote on a school bond issue that would make it possible for the district to remove the last two remaining deficiencies.

Future visits to the Eastland district have been definitely postponed until the district has had a reasonable amount of time to correct these deficiencies.

Voters in the district will decide Saturday on the issuance of bonds for the construction of an elementary building, a gym and vocation shop.

able for the district to remove the last two remaining deficiencies.

Future visits to the Eastland district have been definitely postponed until the district has had a reasonable amount of

time to correct these deficiencies.

Voters in the district will decide Saturday on the issuance of bonds for the construction of an elementary building, a gym and vocation shop.

Public Meeting

High School Auditorium

Thursday

7 p.m.

Informal question and answer session

Questions and Answers

Q—Where will the new elementary school be located?

A—The site will be selected by voters of the district at an election to be called by the board after the community has been advised as to the advantages and disadvantages of two proposed sites.

Q—Where are the two sites?

A—The 30-acre tract lies at the south end of Madera St., and the 11-acre tract is located at the south end of Walnut and Dixie Sts.

Q—The school owns the 30-acre tract now?

A—Yes. It is paid for.

Q—How much will the 11-acre tract cost?

A—About \$8,000.

Q—Won't the 11-acre tract eventually be next to the highway?

A—Yes.

Q—What is the amount of the bond issue?

A—\$525,000.

Q—What is the maximum amount the board would be authorized to spend?

A—\$525,000.

Q—Does the school now have a maintenance tax?

A—Yes. The amount of \$1 on each \$100 of rendered evaluation.

Q—What is the proposed maintenance tax for the 63-64 school year?

A—\$1 on the \$100 rendered evaluation.

Q—Does this mean that there is no proposed increase in maintenance tax for that school year?

A—Yes.

Q—Must a voter live in the city to be eligible to vote?

A—No, but he must live in the Eastland Independent School District.

Q—Must the voter have property rendered prior to the election to be eligible to vote?

A—Yes.

Q—If a person does not own real estate property, could he render personal property such as an automobile, jewelry, furniture, etc?

A—Yes.

Q—Will the gym be used (Continued on Page 7)

"OYM" Presentation Will Highlight Jaycee Banquet

Presentation of the "Outstanding Young Man" will highlight the second annual Junior Chamber of Commerce banquet to be held this evening (Thursday) at 7 p.m. at the Lone Cedar Country Club.

Tickets are now on sale at the Men's Shop, Chamber of Commerce office, the Corner Prue and Eastland National Bank for \$1.50 each, according to an announcement by Jaycee President James K. Smith.

Nombed for the honor of outstanding young man of the year are Claver Hallmark, Roger Blackmon and James K. Smith. Hallmark was also nominated for the honor at last

year's banquet.

Featured speaker for the evening will be Paul Harmon Jr. of Fort Worth, assistant vice president of the First National Bank there and a life member of the Fort Worth Jaycees. He served as president of that club in 1957-58.

Harmon is active in state and national junior chamber organizations, and coached the team that won the Junior Division Pee Wee Football Championship and assistant coach for the baseball championship team in 1962.

The public is cordially invited to attend the annual event.

Polls Open at 8 a.m. For \$525,000 Vote

Voters in the Eastland School District will go to the polls Saturday and decide on the proposed \$525,000 bond issue for new school construction.

If the election carries, the voters will then later be asked to voice their opinion in the form of another vote as to where they want the elementary school located.

In as much as the school board has two sites under consideration, both of which have advantages and disadvantages, it has been decided to leave it up to the voters as to which site will be selected for the elementary building.

Polls will open at 8 a.m. Saturday in the lounge on the first floor of the courthouse, and a steady stream of voters is expected — if the weather is good. Polls will close at 7 p.m.

The ballot is simple, and voting should be a quick operation. There will be 13 election workers on duty to help expedite the voting as smoothly as possible.

There are two propositions on the ballot—both simple "for" and "against" questions.

One will be for, or against, a maintenance tax, and the other for, or against, the issuance of bonds and the levying of the tax in payment thereof.

If a voter wishes to vote "for" the entire proposition, he should mark through the two "against" positions. If he desires to vote "against" the entire program, he should mark through the "for" propositions.

Voters who are qualified for this election will be those who are at least 21 years of age, "residents" of the school district, who have lived in the state for a year and in the county for at least six months.

Every voter must, of course, have a valid "1962" poll tax receipt or be exempt.

For a bond election of this nature, voters must also have property, real or personal (such as an automobile) rendered for taxation, prior to the election day.

Nell Hightower, school tax collector, reported that business has been brisk in her Exchange Building office, with residents making sure their property is rendered so that they will be eligible to vote.

Any who are doubtful still have Thursday and Friday to check with the school tax office.

Facilities will be available for rendering at the courthouse Saturday but officials are encouraging voters to check and render prior to Saturday to prevent a deluge of renderers on that day.

The election officials are even providing for those who may have misplaced or lost their poll tax receipts. All who do not have the actual receipt will be asked to sign an affidavit that they do have them "somewhere" or that they are exempt.

Selection of site for the elementary building has been somewhat of a headache for the

board because some have expressed dissatisfaction with the 30-acre tract owned by the school, and in an effort to offer the public exactly what they want, the board has explored several sites in order to pick the best for the school and the public.

Choice appears to have narrowed to two—the original 30-acre tract, and a 11-acre tract located four blocks east of it, both lie south of Sadosa St. and the 11-acre tract faces east on Walnut St.

During a five-hour board meeting Monday, members decided that it would be best to "leave it to the voters".

So if the election Saturday carries in favor of the bonds, another election will be called immediately for the selection of the site. In the interim, the board will furnish the public all the available information through this newspaper regarding the two sites—both advantages and disadvantages of both sites, and let the public decide.

R. P. (Buddy) Haun, Resident Highway Engineer, met with the board Monday and expressed the Highway Department's regret that the site adjacent to Walnut St. is being considered because of the safety factor.

The department, he explained, always in its planning tries to move the highways away from schools, and will be faced in this instance with the school possible moving to the highway. Walnut is earmarked as the route for Highway 6's passage through the city in a few years.

There would be a multitude of safety hazards, he pointed out, and the erection of chain-link fence bordering the highway would preclude the paved way from being an asset to the school.

Other facilities proposed in the bond issue are for a new gymnasium to be located on the present junior high grounds where ample parking will be available. The gym will be used by both high school and west ward physical education programs, and be ideal from the spectators' point of view for Interstate League basketball competition.

The two present gyms will continue to be used, it was reported, as long as they are safe for supplementing the increased physical education program.

Cost of the project is expected to increase taxes only five cents per hundred rendered (Continued on page 4)

Sample Ballot

PROPOSITION NO. 1

"FOR MAINTENANCE TAX"

"AGAINST MAINTENANCE TAX"

PROPOSITION NO. 2

"FOR THE ISSUANCE OF BONDS AND THE LEVYING OF THE TAX IN PAYMENT THEREOF"

"AGAINST THE ISSUANCE OF BONDS AND THE LEVYING OF THE TAX IN PAYMENT THEREOF"

"FOR THE ISSUANCE OF BONDS AND THE LEVYING OF THE TAX IN PAYMENT THEREOF"

"AGAINST THE ISSUANCE OF BONDS AND THE LEVYING OF THE TAX IN PAYMENT THEREOF"

"FOR THE ISSUANCE OF BONDS AND THE LEVYING OF THE TAX IN PAYMENT THEREOF"

"AGAINST THE ISSUANCE OF BONDS AND THE LEVYING OF THE TAX IN PAYMENT THEREOF"

"FOR THE ISSUANCE OF BONDS AND THE LEVYING OF THE TAX IN PAYMENT THEREOF"

"AGAINST THE ISSUANCE OF BONDS AND THE LEVYING OF THE TAX IN PAYMENT THEREOF"

"FOR THE ISSUANCE OF BONDS AND THE LEVYING OF THE TAX IN PAYMENT THEREOF"

"AGAINST THE ISSUANCE OF BONDS AND THE LEVYING OF THE TAX IN PAYMENT THEREOF"

"FOR THE ISSUANCE OF BONDS AND THE LEVYING OF THE TAX IN PAYMENT THEREOF"

"AGAINST THE ISSUANCE OF BONDS AND THE LEVYING OF THE TAX IN PAYMENT THEREOF"

"FOR THE ISSUANCE OF BONDS AND THE LEVYING OF THE TAX IN PAYMENT THEREOF"

"AGAINST THE ISSUANCE OF BONDS AND THE LEVYING OF THE TAX IN PAYMENT THEREOF"

"FOR THE ISSUANCE OF BONDS AND THE LEVYING OF THE TAX IN PAYMENT THEREOF"

"AGAINST THE ISSUANCE OF BONDS AND THE LEVYING OF THE TAX IN PAYMENT THEREOF"

"FOR THE ISSUANCE OF BONDS AND THE LEVYING OF THE TAX IN PAYMENT THEREOF"

"AGAINST THE ISSUANCE OF BONDS AND THE LEVYING OF THE TAX IN PAYMENT THEREOF"

idBiTs
By H.V.C.

will be a public meeting Friday night at 7 p.m. in the high school auditorium to discuss school building projects.

board has decided that it will still be some question in the public's mind about the program and want to give the opportunity to everyone to understand the projects.

public is welcome and it is an informal question and answer session.

a meeting was held with the Lions Club and a few pertinent questions were answered for the club wound up by voting a note of appreciation to the school board for their effort and the work which they are carrying out at the present time.

Bill Walters asked for a crippled child who he wanted to go to the annual Crippled Children's Kermesse this summer. He knows some youngsters, 15 and 16, let a Lioness, and the club will arrange to can't be that child to have a vacation.

Joel Reeves, secretary, local selective service, received a surprising week.

Ray Fitzhugh, Marine recruiter, presented her special plaque, noting her assistance to the services.

Ray, who has called on for quite a while, is transferred to Okinawa. His replacement, a Sgt., was with him on his Eastland this week.

Deputy A. M. Hearn, reported a total of 3,894 poll taxes bought in Eastland this year.

does not include the certificates issued these haven't been yet.

Education For Election

Application for petition for local option election to incorporate city limits was filed Tuesday with Eastland County Commissioner Smith.

Commission stipulates the sale of alcoholic beverages premises consumption.

will, this will be the local option election to be held in Ranger within a

three prior election, was defeated.

Application filed Tuesday for 10 signatures of voters in Ranger.

Fire Fires

firemen were called because of three minor fires.

There was a grass fire on the Leon site of James. Light damage was reported.

Smoke damage was reported at the J. O. Earnest home. According to a fire got out of control burning out the smoke.

There was a grass fire on the roadside of Highway 6, Morris. Firemen extinguished with no damage reported.

REYSCHLAG Insurance presents the WEATHER NEWS



J. W. ELDER, Sr.

RAIN 7:04; set 5:25; clear sets 6:31; fair in a.m.

Unlimited Taxation?

An Editorial

Saturday is election day, and voters in the Eastland Independent School District will exercise their Democratic right in voicing their opinion about an extensive building program to improve the present school system.

Just about everyone is agreed that "something's got to be done" about the town's elementary school buildings. Sports fans know that better gymnasium facilities are needed, and those interested in vocational agriculture know that present shop facilities leave a lot to be desired.

In fact the state education agency has repeatedly reminded us about the latter two areas.

The school board realized all this and called in specialists to help them come up with the best answers. After months of study and un-countable hours of head scratching, the board has proposed the \$525,000 bond issue to help correct and improve the district's facilities.

Voters Saturday will either put their stamp of approval on the plans—or reject them.

This newspaper has always believed that good schools are among this or any other town's greatest assets. Realizing that "school news" is important news to our readers, we have attempted to keep the public informed about the board's activities—both trivial and significant.

There has been some talk that the bond election Saturday will give the board "unlimited" taxation powers. Any who have thought this through or made inquiries, knows that such a statement is simply an "implication" not based on facts.

The board has always had that power so to speak. They have had the "legal" right even during the court-order operation to increase tax valuations up to 100 per cent of actual value. The board has kept the valuation at near 75 per cent because that was all that has been needed to operate the school and meet the debt requirements.

It's unthinkable that the board would raise taxes or evaluation above what is actually needed to operate and pay for the school. The board is made up of local men who are in business or practice a profession in our town. It may be trite to say, but "they pay taxes, too, you know."

The board's willingness to leave to the voters the decision of where the elementary building will be placed is a good indication, it seems, of their constant desire for fairness with the people.

If the bond election doesn't carry Saturday, it's entirely possible that it will cost the school district (and that is us) more money in the immediate future for repairs and renovations of the present facilities, than were the cost to be spread over a 30 year period.

The polls open at 8 a.m.

EASTLAND TELEGRAM

Eastland County Record established in 1931, consolidated August 31, 1961. Chronicle established 1887, Telegram established 1923. Entered as second class matter at the Post Office in Eastland, Texas under the Act of Congress of March 3, 1879.

Published Semi Weekly—Thursdays and Sundays
By Eastland County Newspapers, Inc.
H. V. O'BRIEN, Editor

One Week by carrier in city15
One month by carrier in city65
One year by mail in county 2.95
One year by mail out of state 6.95

NOTICE TO PUBLIC—Any erroneous reflection upon the character, standing or reputation of any person, firm or corporation which may appear in the columns of this newspaper will be gladly corrected upon being brought to the attention of the publishers.

Leadership Program Given At WMU Meet

A round-table discussion on leadership was held in the

home of Mrs. Becky Murphy Thursday evening for members of the Woman's Missionary Union of the Mangum Baptist Church.

The meeting was opened with prayer led by Mrs. Corrine Wood. Mrs. Lenis Rice read



Want to heat your home better ... at less cost ... with greater convenience? Then come in and let us tell you about Dearborn Area Heat!

Western Auto Associate Store

110 So. Seaman Eastland

C-C Membership?

It is the hope of the Chamber of Commerce Officers and members that this question will be asked and answered many times during the next few weeks. They also hope that in the future when new business or individuals ask that question there will be many more voices to answer the query.

On Tuesday night, February 5th, at 7:00 P. M., in the Texas Electric Community Room a film entitled "What Is A Chamber of Commerce" will be shown to members and prospective members of the Chamber. This film was prepared by the United States Chamber of Commerce and will give those attending an excellent description of the Chamber's job.

It is also the hope that this gathering of the people will aid the Chamber Board of Directors to prepare their program of work for the ensuing year.

The time for action is now upon us—Are we to continue to grow, to bring in new industries, to improve our economy, to bring new people into our city—for all these things a large, active Chamber is necessary.

SUPPORT YOUR CHAMBER OF COMMERCE.

the prayer calendar in the absence of Mrs. Rachel Clower. Prayer for the missionaries was led by Mrs. Lee May followed by the devotional presented by Mrs. Billie Wood.

The meeting was dismissed with prayer led by Mrs. Allene Hughes.

Mrs. Murphy served refreshments of date cookies, cake and led by Mrs. Lee May followed members, Mmes. Mattie Donelson, Riddle Brown, Lenis Rice,

Lee May, Stella McBe, Corrine Wood, Allene Hughes and Billie Wood.

WE BUY AND SELL USED FURNITURE
Phone MA 9-1740
WAYNE JACKSON

COMPLETE FURNITURE & UPHOLSTERING
Used Furniture Couches & Chairs
Eddie's Upholstery Spain's Feed Store Bldg.
311 N. Seaman
Phone MA 9-1304

HOLY TRINITY EPISCOPAL CHURCH
710 S. Seaman
Rev. William Ralph Woods
Sunday
9:30 a.m. Church School
10:30 a.m. Morning Prayer
10:45 a.m. Holy Communion and Sermon
Wednesday
6:15 a.m. Morning Prayer

6:30 a.m. and 10:30 a.m. Communion
5:50 p.m. Evening

CHRISTIAN SCIENCE
Sunday
9:45 a.m.: Sunday service.
11 a.m.: Sunday matinee.
Wednesday
7:30 p.m.: Mid-week

CHERRY LUSCIOUS

WILD CHERRY ICE CREAM

WILD CHERRY is tangy, tart and tingling! Every creamy spoonful has a freshness—a taste that cherries can give. Get Boswell's CHERRY Ice Cream today.

Boswell's

SATURDAY FEED SPECIALS

Special Mix Feed 2.14%
Creep Pellets 3.20% — 3.30
Breeder Cubes 66.00 per ton
C-S Pellets 4.41%
Protein Blk 85.00 per ton

FREE ROPE WITH PURCHASE OF TON OR MORE

C. P. CLOUD & RIPPY BROS

WOOL & MCHAIR AND FEED

210 S. RUSK B. R. RIPPY RANG

74.5% vote Valiant best in nationwide consumer survey



"Like to test-drive the 1963 compacts?" That's what Nationwide Consumer Testing Institute—a completely independent company—recently asked 3600 typical drivers in 18 cities across the country.

The people were asked to test-drive two compacts. Some picked Corvair and Valiant. Some picked Falcon and Valiant. Some wanted to try Rambler or Chevy II. The course included all kinds of normal driving.

Drivers circled the course twice (once in each car) with N.C.T.I.'s trained interviewers firing questions all the way. Which of these cars do you prefer for acceleration? Ride? Steering? Styling? Finally: which is the best all-around value?

The surprising results:

Compact preference	Rambler	Valiant	Chevy II	Valiant	Corvair	Valiant	Falcon	Valiant	four compacts	Average Valiant
Interior styling	25%	75%	30%	70%	27%	73%	44%	56%	33%	67%
Exterior styling	24	76	48	52	39	61	41	59	38	62
Quality of workmanship	38	62	40	60	36	64	44	56	40	60
Acceleration	17	83	48	52	21	79	25	75	28	72
Passing power	17	83	45	55	21	79	24	76	27	73
Roominess	35	65	56	44	30	70	44	56	41	59
Steering	26	74	31	69	37	63	29	71	31	69
Ride	27	73	33	67	29	71	26	74	29	71
BEST ALL-AROUND VALUE	17	83	34	66	24	76	27	73	25.5	74.5%

Two things were not tested—price and warranty. But remember that Valiant is just about the lowest-priced car made in the U.S.A. today. And that Valiant carries America's longest and best new-car warranty—5 years or 50,000 miles.* Ask your Plymouth-Valiant Dealer for your own independent test drive in The New Valiant.

*Your Authorized Plymouth-Valiant Dealer's Warranty against defects in material and workmanship on 1963 cars has been expanded to include parts replacement or repair, without charge for required parts or labor, for 5 years or 50,000 miles, whichever comes first, on the engine block, head and internal parts; transmission case and internal parts (excluding manual clutch); torque converter, drive shaft, universal joints (excluding dust covers); rear axle and differential and rear wheel bearings, provided the vehicle has been serviced at reasonable intervals according to the Plymouth-Valiant Certified Car Care schedule.

Best all-around compact anybody has come up with yet...VALIANT!



In Dallas, 74% voted Valiant best value.



In Syracuse, 78% voted Valiant best value.



In Los Angeles, 77% voted Valiant best value.

PLYMOUTH DIVISION CHRYSLER MOTORS CORPORATION

The Road To Bankruptcy . . .

30 YEARS OF UNLIMITED TAX BONDS!

WHY GIVE A SCHOOL BOARD A 'BLANK CHECK' OR 'KEY' TO YOUR POCKETBOOK?

VOTE AGAINST

"MAINTENANCE" TAX

ON FEB. 9

Listen To KERC - Feb. 6, 7, 8, 9 for TRUTH

Ad Paid for by Taxpayers League for Lower Taxes

WORTH FOOD MART

SURE SIGN OF SAVINGS!



Prices Effective: Thursday-Friday & Saturday

Steak BONE THRIFTY CUT BABY BEEF

Thrifty-Cut Baby Beef Round or Sirloin

Lb. **89^c**
Lb. **99^c**

SMOKED BACON Swift's Premium

Swift's Premium

Lb. **53^c**

WATER TUNA 2 NO. 1/2 CANS **59^c**

ROAST RUMP OR PIKES PEAK THRIFTY CUT

Lb. **79^c**

BEAN BEANS 10 NO. 300 CANS **\$1⁰⁰**

BEEF BACON FISHER'S

Lb. **69^c**

POTATO JUICE 4 NO. 300 CANS **39^c**

PERCH FILLETS TASTE OF SEA

Lb. **49^c**

EGG BELLORINE TAYLORS HOME MAID ALL FLAVORS

3 1/2 GAL. CTNS **\$1⁰⁰**

WATER SEEDALE PEARS NO. 2 1/2 CAN

29^c

WATER CHEON MEAT TREET 12-OZ. CAN

39^c

TOOTH PASTE ECO. SIZE **45^c**

LIMA BEANS SEASIDE

2 NO. 300 CANS **29^c**

POOL Prell Concentrate Eco. Size **63^c**

GOLDEN CORN Libby's C.S. or W.K.

4 No. 303 Cans **69^c**

SPRAY Plus 8c Tax **79^c**

MEAT PIES Swanson's Beef - Chix - Turkey

4 8 Oz. Pkgs. **99^c**

WATER MATIC 22-oz. Pkg. **45^c**

T.V. DINNERS Swanson's ALL VARIETIES

11 - Oz. **59^c**

LIQUID Cleanser 26-oz. Btl. **69^c**

FRUIT PIES Swanson's All Flavors

2 Pkgs. Of 2-5 oz. Pies **59^c**

WATER BATH Soaky Ea. **69^c**

VEL BEAUTY BAR

2 Reg. Bars **39^c**

URGENT FAB Large Size **32^c**

VEL BEAUTY BAR

2 Btl. Bars **49^c**

WATER KERS Sunshine Krispy 1-Lb. Box **31^c**

PRODUCE FEATURES

POTATOES U. S. NO. 1 RUSSET **10 Lb. Cello Bag 59^c**

ORANGES CALIFORNIA NAVAL SWEET & JUICY **Lb. 19^c**

CARROTS 2-LB. CELLO BAG **19^c** **ONIONS** YELLOW U. S. NO. 1 **2 LBS. 15^c**

APPLES ROME BEAUTY EXTRA FANCY **LB. 15^c** **CELERY** PASCAL TENDER & CRISP **STALK 19^c**



National Egg Cooking Contest
Final Entry Blanks are Packed in
SUNCO—Large Egg Cartons
Finals: Chicago, Ill. May 16-17, 1963

MYSTERY COUPON
HEADQUARTERS

CHECK YOUR MYSTERY COUPON NUMBERS IN OUR STORE
\$150,000 in Prizes!

Detergent - For Automatic Washers
SALVO 5c Off Label 24 Tab. Box-Net **36^c**
Detergent For Dishes
THRILL 22-oz. Plastic **61^c**

EM YOUR P&G COUPONS!

HURRY!! HURRY!! PICK UP YOUR FREE SWEEPSTAKE'S CARD TODAY!
YOU HAVE UNTIL FEBRUARY 16th TO COMPLETE YOUR CARD



\$250 WINNER—Mrs. J. D. Nichols, Ranger
Had a \$50 Card
And Five Lucky Horseshoes



MRS. J. C. BERRY, EASTLAND
Had \$100 Card
And Three Luck Horseshoes



MRS. EDNA BLACKWELL, RANGER
Had a \$20 Card
And Five Lucky Horseshoes



Paper Sale

KLEENEX WHITE OR COLORED 3c OFF 2 600 CT. BOXES NET. **59^c**
TOILET TISSUE DELSEY WHITE OR COLORED 2 2-RL. PKGS. **49^c**
KLEENEX TOWELS 2-RL. PKG. **39^c**
TABLE NAPKINS KLEENEX 2 50-CT. PKGS. **39^c**
KOTEX SLENDER LINE. SUPER. REGULAR 2 12-CT. PKGS. **69^c**
WONDERFORM BELTS REG. **39^c**

SKINNER LONG OR CUT **SPAGHETTI** 2 7-oz. Pkg. **27^c**
LIGHT CRUST YELLOW **CORN MEAL** 2-Lb. Pkg. **21^c**
STOUX HONEY 16-oz. Jar **41^c**

CLIP AND SAVE!
100 BONUS S&H GREEN STAMPS
With This Coupon and Purchase of
A 10-oz. Jar
Chase & Sanborn Inst. Coffee
Void After Saturday, Feb. 9, 1963
WORTH FOOD MART

CLIP AND SAVE!
25 BONUS S&H GREEN STAMPS
With This Coupon and Purchase of
A 1-Lb. Pkg.
Rath Franks
Void After Saturday, Feb. 9, 1963
WORTH FOOD MART

CLIP AND SAVE!
25 BONUS S&H GREEN STAMPS
With This Coupon and Purchase of
2-Lb. Cello Bag
Trappey's Frozen Sliced Yams
Void After Saturday, Feb. 9, 1963
WORTH FOOD MART

CLIP AND SAVE!
50 BONUS S&H GREEN STAMPS
With This Coupon and Purchase of
A 12-oz.
Chon King Chinese Dinner
Void After Saturday, Feb. 9, 1963
WORTH FOOD MART

CLIP AND SAVE!
50 BONUS S&H GREEN STAMPS
With This Coupon and Purchase of
One Qt.
Kraft Miracle Whip
Void After Saturday, Feb. 9, 1963
WORTH FOOD MART

CLIP AND SAVE!
25 BONUS S&H GREEN STAMPS
With This Coupon and Purchase of
A 15-oz. Can of
Doxsee Clam Chowder
Void After Saturday, Feb. 9, 1963
WORTH FOOD MART

SELL AND PROFIT... BUY AND SAVE... GET A BETTER JOB... HIRE GOOD HELP!

Read and Use the Want Ads!

CALL MA 9-1707

ANNOUNCEMENTS

EASTLAND CHAPTER NO. 280 O. E. S.

Meets the first Tuesday of each month at 8 p.m. in the Masonic Hall. Call Mrs. Pebble

Boles, Sec., for information. MA 9-2733.

MASONIC LODGE NO. 467

Meets second Thursday of each month at 7:30 p.m. In the Masonic Hall. Call C. J. Langlitz for information or L. E. Huckabay, Sec., 3-1321, for information.

EASTLAND ROTARY CLUB

Elephant for noon luncheon. Call Mike George, 3-1495, for each Monday.

SPECIAL NOTICE

NOTICE: THE GREEN LANTERN GIFT SHOP
Open 5:30 to 10:00 P. M. weekly. All day Saturday and Sunday. Located on Lake Leon. Phone MI 7-3610 Ranger.

CONTRACTORS' NOTICE OF TEXAS

HIGHWAY CONSTRUCTION
Sealed proposals for constructing 7.779 miles of grading, structures, base, and surfacing from US 183, 5.0 Miles North of Rising Star, West to FM 569 on Highway No. FM 2731, covered by R 2728-3-1 & A 2728-3-2 in Eastland County, will be received at the Highway Department, Austin, until 9:00 A.M., February 16, 1963, and then publicly opened and read.
Plans and specifications including minimum wage rates as provided by Law are available at the office of R. P. Haun, Jr., Resident Engineer, Eastland, Texas, and Texas Highway Department, Austin. Usual rights reserved.

NOTICE: Carpets clean easier with the Blue Lustre Electric Shampooer only \$1 per day. Coat's Furniture and Carpet Co. 12

FOR TRADE: 3 books Plaid stamps and 2 books Green stamps for Gold Bond stamps. Call MA 9-2413. tf

NOTICE: Income tax service each Friday at 4 p.m. thru Saturday. Also night appointments. 309 Main St. Phone MI 7-3426, Ranger. Novilla Templeton.

FOR LEASE: Nice clean two bedroom house. 709 S. Halbryan. No small children. Call MA 9-2290. tf

NOTICE: Retired Air Force man needs part time or full time employment. Route work preferable, but will consider anything within reason. F. M. Rollins, MA 9-1805. tf

NOTICE: See Wornack's Nursery between Gorman and De Leon for the latest peach and fruit tree varieties. Also a wide selection of roses and landscape plants. tf

SPECIAL NOTICE: Sewing machines—Necchi, Elna and other fine brands. Parts and service on all makes. Gorman Auto Supply. Phone RE 4-5300, Gorman or drop in to see us. tf

SPECIAL NOTICE: Supplement your income while you earn the World Book Encyclopedia. Complete with Education plan. For details without cost or obligation write Mrs. Lorene Parker, 774 Clinton, Abilene. tf

TRUCKS FOR SALE

B2
Wheel Drive 3/4 Ton, L.H.C. with Winch on Front, 1/2 Ton 4 Wheel drive Jeep, 56 Dodge, 54 Ford, 59 L.H.C. & Other Pickups, New Scouts & Pickups in Stock. Johnston Truck & Supply Cross Plains 14

FOR SALE: One 1951 Minneapolis Moline Universal tractor on butane. One 11-disc Minneapolis Moline one-way. Six foot International tandem disc harrow. Contact B. H. Courtney, MA 9-1340. tf

LOST AND FOUND

A4
LOST: Female lemon and white pointer bird dog. Answers to name "Teller." Number on vaccination tag 125599. Reward. Phone 2724. Olden or Eastside Barber Shop, Eastland. 14

PERSONAL

A5
If you are lonely, broken hearted, troubled in spirit or burdened with a sin-sick soul, you can find comfort, consolation and peace at First Methodist Church. tf

MEN—If you are not attending any other Sunday School Class come to the 9:49 Bible Class at the Methodist Church where you will receive a cordial welcome. tf

AUTOS FOR SALE
BI
FOR SALE OR TRADE: 1959 Chevrolet 2 door Impala hard top. Has everything and already financed. MI 7-1914, Ranger. tf

AUTO FOR SALE by owner. 1959 two door Ford in good condition. Radio and heater. Good white wall tires. Call MA 9-1707 before 5 p.m.

BUSINESS OPPORTUNITIES
C
WANTED: Woman to CLEAN house one day per week. Call MA 9-2746 after 4 p.m. 11

SPARE TIME INCOME
Refilling a d collecting money from new type high quality dispensers in this area. No selling. To qualify you must have car, \$540, to \$1440, cash, seven to twelve spare hours weekly. Highly profitable way to increase monthly income. Can expand. For personal interview write P. O. Box 612, Aurora, Colorado. Include phone.

LOOK: Splendid Rawleigh business available in City of Eastland. Exceptional opportunity for industrious person. C. S. Eldridge, Deedema write Rawleigh: Dept., TXB-1020-18, Memphis, Tenn.

POSITION WANTED
E5
WANTED a job in any of these fields office girl drug store, drive-in or dept. store. Attended Draughon's Business College. For information call Miss Jean Smith, MA 9-1568. 14

MERCHANDISE

K
JUST ARRIVED:
Oil Paintings, life size Ring-neck Pheasants by Katz—Price \$300.00 Pair. **THE GREEN LANTERN GIFT SHOP** Lake Leon — Phone MI 7-3610, Ranger.

EXQUISITE gifts for everyone anytime. Hallmark cards. The Gift House, Cisco. tf

RENTALS

L
FOR RENT: Large unfurnished house. Close in. Apply 209 W. Patterson. tf

FOR RENT: Newly decorated 6 room house. Large garden. Chicken house and lot. Storage room. 2 miles from Court House. Call MA 9-1982. tf

FOR RENT: Large unfurnished apartments in duplex. 611 W. Plummer. tf

FOR RENT: 2 bedroom house. Apply 507 S. Madera. tf

FOR RENT: Lovely furnished or unfurnished apartments, any size, bills paid, maid and hotel services included, very reasonable. Also comfortable rooms with tile baths only \$39.95 monthly. Throw away your high bills and troubles and come live with us. Mrs. Robinson, manager, Village Hotel, MA 9-1716.

FOR RENT: Nice clean furnished duplex. Three rooms and private bath. All bills paid. 607 W. Moss. Phone MA 9-1209. tf

REAL ESTATE

M
FOR SALE: at 415 N. Daugherty St. 2 bedroom home. No down payment. \$39.98 per month. Contact or write Modern Homes Construction Co., Fort Worth. P. E. 2-4085, P.O. Box 12381. II

FOR SALE: 3 bedroom house, 2 baths, 460 by 100 lot. Garage, Carport, barn. \$2,500 cash, finance balance. \$8,500 total. D. L. Kinnaird Agency. Phone MA 9-2544. 3

FOR SALE: Three bedroom home, close in, on nice small lot. Good neighborhood. \$5,750.00. After 5 p.m. and weekends. 508 S. Daugherty. tf

FOR SALE: 2 three bedroom houses located near West Ward school. Three bedroom home in Morton Valley. All are good buys M. A. Treadwell, phone MA 9-2017.

FOR SALE: Main St. Service Station. 50 by 150 corner lot. 3 tanks, \$750 cash, finance balance. Total \$4,000. D. L. Kinnaird Agency. Phone MA 9-2544.

FOR SALE — 5-room house and 2 lots in Cisco. House completely redecorated. Close to Cisco High School. Call Claud Boles, MA 9-2548. tf

FOR SALE: To move good 4 room house. MI 7-1149, Ranger.

FOR SALE: 510 S. Hillcrest. Living, dining room, kitchen and den. Built-in range, fireplace, central heat and air. Three bedrooms, two tile baths seven closets, double garage. M. A. Treadwell Sr. Sr. MA 9-2017. tf

FOR SALE—700-acre Ranch in Palo Pinto County. Improvements include modern 5 BR house with 2 1/2 baths, fireplace, den, good water; 50 acres bottom land, fine grass, many pecan trees, good fences. Has wonderful lake site, bordering Hwy 80. Might consider trade for land or income property. Contact Austin Flint, Phone HI 2-2412, Cisco. tf

FOR SALE: Four room modern house. Good condition. 401 S. Oak. \$2500 for quick sale. D. L. Kinnaird Agency, phone 2544. tf

FOR SALE: Beautiful 3-bedroom home in Hillcrest Addition Central Heat, brick trim. Only \$650 down payment, plus closing, and about \$70 per month. 504 S. Hillcrest, Call MA 9-1495. 6

FOR SALE: New 3 bedroom house, 2 baths, close to school, on paved street, chain link fence. \$450 for FHA equity, finance balance. D. L. Kinnaird Agency. Ph. MA 9-2544. 3

FOR SALE OR TRADE: Will sell or trade equity in modern, roomy three bedroom home in Abilene for lake or local property. Has chain-link fence and down-drought air. Call MA 9-2413 or MA 9-1707 or write Box 29. tf

FOR SALE
M
FOR SALE: Good used lumber. 1x12, 1x16, 1x4, 2x4, 2x6, 2x10 and 2x12. Separate or by truck load. Also 1957 V-8 Dodge dump truck and 1955 tandem wheel Chevrolet truck with 20 ft. steel flat bed. H. D. Hollis, Rising Star. Phone 642-3982. 11

WANT TO BUY, RENT

N
WANTED: Am moving to Eastland. Need a 2 or 3 bedroom house will go to pay and sign long term lease for right house. Phone MA 9-2654. 12

USED CAR Sale

NOW IN PROGRESS

A-1 USED CAR SUPER MARKET SALE

SUPERMARKET SELECTIONS SUPERMARKET PRICES

- '60 Ford Fairlane 4-door. Radio and heater.
- '61 Low mileage Fairlane 500, Ford 4-door Sedan. Radio, heater, overdrive. Factory air.
- '58 Fairlane 500 Ford. Radio, heater, automatic transmission.
- '59 Galaxie 2-door Sedan. Radio, Heater, Overdrive. Air conditioned.
- '57 Ford Fairlane Sedan. Radio, heater
- '56 Ford 6-Cyl. 4-door sedan. Standard transmission and heater.
- '59 Ford Galaxie 4-door Sedan. Radio, heater, Cruiseomatic Drive. Factory air.

Many Models Not Listed. Priced to Sell NOW

SAVE CASH TODAY COME TO

Hood King Motor Co. EASTLAND, TEXAS

Ballets -

(Continued from page One)
valuation. Present rate is \$1.50 per hundred—\$1 of which goes for maintenance and 50 cents for debt retirement. New rate would be \$1.55, provided conditions remain fairly stable, the board has reported.

BEAUTIFUL BLOUSES



spring entry... filigree lace... **1.99**

• Filigree lace—newest way to adorn cotton. From a charming collection of new white spring blouses, our button front jewel neckline overblouse with front border and hem of deep filigree lace. Sizes: 32/38.

MODE O'DAY

Eastland

Attention Taxpayers of Eastland Independent School District: If the school bond issue passes, Eastland will owe more than Cisco or Ranger. Why repeat the road to bankruptcy? Vote AGAINST the school bond issue.
Paid for by League for Lower Taxes.

FOR ALL FINE FABRICS

WOOLITE
Especially for wool—cashmeres
Wash them at Home. Buy this at
ROGERS GROCERY
Phone MA 9-2292

FREE

Estimates On **RE-ROOFING**

Or Repair Your Old Roof. Residential and Commercial

Roofing Co. Eastland
Noble Squiers
Phone MA 9-2370

THEY SAVED FOR IT!

They saved the down payment and borrowed the rest of the cash from us to buy their dream home. So can you.



ASK ABOUT OUR HOME LOANS

FIRST FEDERAL SAVINGS & LOAN ASSOCIATION
204 Main Ranger, Texas MI 7-1611

EXPERIENCED LUMBER YARD HELP WANTED

Young man 30 to 40 years old to wait on retail trade. Must have knowledge of lumber, paint and hardware. Salary based on experience. Write to P. O. Box 218 Mineral Wells, Texas.

Read The Classifieds

EASTLAND AUTO PARTS MACHINE SHOP

300 S. Seaman MA 9-2158

FULLY EQUIPPED
AUTOMOTIVE
VALVE GRINDING
BRAKE DRUM TURNING
HEAD SURFACING
VALVE JOBS
BLOCK BORING
SLEEVE INSERTING
VALVE SEATING

COMPLETE LINE
AUTOMOTIVE TRUCK TRACTOR PARTS
ALWAYS IN STOCK

AUTO PARTS
300 S. Seaman MA 9-2158 EASTLAND

Attention Taxpayers of Eastland Independent School District: If the national trend of population decline continues in Eastland, those left will pay UNLIMITED TAXES for unlimited tax bonds for the next thirty years. Vote AGAINST the school tax issue.
Paid for by League for Lower Taxes.

Insurance and Real Estate
D. L. KINNAIRD
Life - Fire - Auto - Farm
Polio - Bonds
42 years in the Insurance Business in Eastland

MATTRESSES
Save up to 50% renovating choice of color and firmness. Complete bedding. Made and guaranteed by WESTERN MATTRESS CO., San Angelo. Phone MA 9-1342, Eastland and leave address.

Group Proposes Location For Grade School

The following list of names were submitted to the Eastland Telegram this week in regard to a proposed location for the new elementary school building. We, the undersigned, who are property owners in the Eastland School district, wish to express our preference for 11 1/2 acre site for the new school building, which is bounded on the east by Walnut street:

- Mrs. Ed Castleberry
- 418 S. Connellee
- Mrs. S. M. Hagar
- 412 S. Connellee
- Mrs. T. M. Johnson
- 405 S. Connellee
- Mrs. May Harrison
- 303 S. Daugherty
- Mrs. J. A. Hallmark
- 103 E. Valley
- Mrs. L. D. Harris
- 416 N. Lamar
- Mrs. E. Clyde Fisher
- 304 S. Oak
- Mrs. Eddie B. Hurt
- 505 Conner
- Mrs. Mabel Blackmon
- 210 N. Ammerman
- Mr. and Mrs. W. L. Wharton
- 401 S. Daugherty
- Bertha Box
- 415 S. Connellee
- Nora D. Woods
- 610 W. Commerce
- Mrs. Annie Terry
- 612 W. Valley
- Mrs. O. O. Mickle
- Mr. and Mrs. A. D. Dunlap
- 416 N. Lamar

Court of Civil Appeals

The following proceedings were had in the Court of Civil Appeals, Eleventh Supreme Judicial District of Texas: Motions Submitted

J. E. Walling et al v. John Kimbrough et al. Appellants' motion to advance or postpone submission date.

Pauline Ardis Klein v. Robert E. Klein. Agreed motion for extension of time to file Appellee's brief.

W. T. Waggoner Estate v. Wilmer Gleghorn. Joint motion for extension of time for filing briefs.

Motions Granted
J. E. Walling et al v. John Kimbrough et al. Appellants' motion to advance or postpone submission date. This cause is reset for submission on Friday, February 15, 1963.

Pauline Ardis Klein v. Robert E. Klein. Agreed motion for extension of time to file Appellee's brief.

W. T. Waggoner Estate v. Wilmer Gleghorn. Joint motion for extension of time for filing briefs.

Read The Classifieds

REMEMBER This Number MA 9-1101

Betty's Flower Shop

209 N. Green Eastland

COMPLETE SELECTIONS

POE FLORAL

- We're Not Too Big
- We're Not Too Small
- We're just the right size to give you the most personalized service in Eastland
- Creative arrangements of permanent flowers.
- Completely stocked at all times

When Its Flowers Say It With Ours

MA 9-1711 609 W. Main Eastland

Delay Pruning Freeze Damaged Trees, Shrubs

Don't cut back damaged shrubs that have defoliated or had their leaves browned by the recent record-breaking low temperatures, advises County Agent J. M. Cooper. Chances are good, he says, that only the leaves were damaged. However, he doesn't rule out the possibility of damage to twigs, main branches or even the roots of the less hardy species or varieties.

An immediate examination of the trunks may reveal no fresh tissue beneath the bark and this indicates damage, he says. It is easier to evaluate winter damage in the spring, after new growth starts, he adds, but even then weakened branches often put out new growth which later dies.

Corrective pruning can begin as soon as it can be assumed that new growth is lacking or will remain very sparse. Cut out the dead or weak wood well below the damaged area, leaving only strong growth, Cooper advises. Do this, he adds, after

HAMNER FUNERAL HOME

Ben E. Hamner, Owner
Serving Eastland County since 1920 ambulance and funeral service. Our ambulances are oxygen equipped and air conditioned. Through our nation-wide connection other funeral directors, we can handle a funeral from any point in America. We offer this knowing that we can relieve the family burdens incident to any death away from

Eastland Dial MA 9-2544

Hamner Life Insurance Company

Ben E. Hamner, President
This company has been in operation since 1942 selling policies to be used primarily for burial purposes. We write from \$600 and our policies are paid in cash, allows freedom in the selection of the Director of your choice.

Ages from 1 month to 90 years. For further information come by to see

Hamner Funeral Home, 301 S. Lamar, Eastland, P. O. Box 431 Dial MA 9-2544

ANNOUNCING . . .

PIP KIN



BILL MORTON

Is now associated with Pipkin Motor Co., and invites his friends to bring their auto repair work to him.

The addition of Morton plus

ED WATSON

who has been with Pipkin Motor Co. for many years, now offers the most complete auto repair service in this area.

314 W. Main MA 9-2630



Libby's Sweet Peas
Garden Fresh Peas.

5 No. 303 Cans **\$1**

Libby's Spinach
Ready for the pot.

Serve spinach and hard-boiled eggs.

7 No. 303 Cans **\$1**

Libby's Corned Beef
and Beef Hash. Fully cooked.

3 15 1/2-Oz. Cans **\$1**

Libby's Bartlett Pears
Pears and Lucerne Cottage Cheese.

Make a tempting salad anytime.

4 No. 303 Cans **\$1**

Libby's Peanut Bar
For after school snacks.

11 1/2-Oz. Pkg. **49¢**

Crisco Shortening
For all cooking, baking and frying.

1-Lb. Can **35¢**

Libby's Krunch Cookies
All the cookie jar.

15-Oz. Pkg. **49¢**

Trend Detergent
Note the low price.

Giant Box **49¢**

Libby's Chip-O's
Lucerne Perry Dips.

10 1/2-Oz. Pkg. **49¢**

Thrill Liquid
Detergent. Cuts grease fast.

12-Oz. Plastic **35¢**

Libby's Mixes
Country Kitchen Assortment.

Reg. Pkg. **39¢**

Trend Liquid
Detergent. For dishes and fine fabrics.

22-Oz. Bottle **49¢**

Libby's Cust Mix
Makes perfect crust.

20-Oz. Pkg. **39¢**

Purex Bleach
Liquid. Extra cleaning power.

Quart Plastic **23¢**

Libby's Shortening
For all your baking.

3-Lb. Can **69¢**

Paper Napkins
Charmin. White luncheon napkins.

2 20-Ct. Pkgs. **27¢**

Libby's Prem
Sandwiches.

12-Oz. Can **49¢**

Charmin Tissue
Assorted Colors, to match any bathroom.

2 Roll Pkg. **29¢**

Libby's Tuna
Meat. Serve a casserole.

6 1/2-Oz. Can **35¢**

Vigo Dog Food
Blue Label or Yellow Label.

2 1-Lb. Can **21¢**

- Pineapple Libby's Crushed. Easy to use. 2 No. 1 Cans **29¢**
- Green Beans Libby's Whole Beans. No. 303 Can **25¢**
- Golden Corn Libby's Whole Kernel. 2 No. 303 Cans **39¢**
- Brown Beans Libby's With Pork & Tomato Sauce. 2 14-Oz. Cans **29¢**
- Corned Beef Libby's. Serve with cabbage. 12-Oz. Cans **55¢**
- Cunk Tuna Sea Tender. Light Meat. 4 6 1/2-Oz. Cans **\$1.00**
- Green Giant Corn Cream Style. 2 No. 303 Cans **39¢**
- Nob Hill Coffee (2-Lb. Can \$1.07) 1-Lb. Can **55¢**
- Cake Mix Mrs. Wright's. White or Yellow. (Now at Safeway.) 19-Oz. Pkg. **27¢**
- Cake Mix Mrs. Wright's. Angel Food. (Now at Safeway.) 16-Oz. Pkg. **39¢**
- Grape Jelly Pure Empress Old Fashion. (Two 20-Oz. Jars 59¢) 3 9 1/2-Oz. Jars **59¢**
- Brocade Soap Complexion Multi-Colors. 10 Reg. Bars **49¢**
- Tortillas Lucerne. (12-Ct. Pkg.) Now at Safeway. 9-Oz. Pkg. **19¢**

Libby's Blackeye Peas
Libby's Fresh Peas.

3 No. 300 Cans **39¢**

Libby's Beef Stew
Libby's. Serve with Malrose Crackers.

2 24-Oz. Cans **89¢**

Libby's Fruit Drink
Libby's Pineapple-Grapefruit.

4 45-Oz. Cans **\$1.00**

Check These Values!

Libby's Cling Peaches
Highway. Sliced or Halves. Yellow Cling.

4 1 1/2 Cans **89¢**

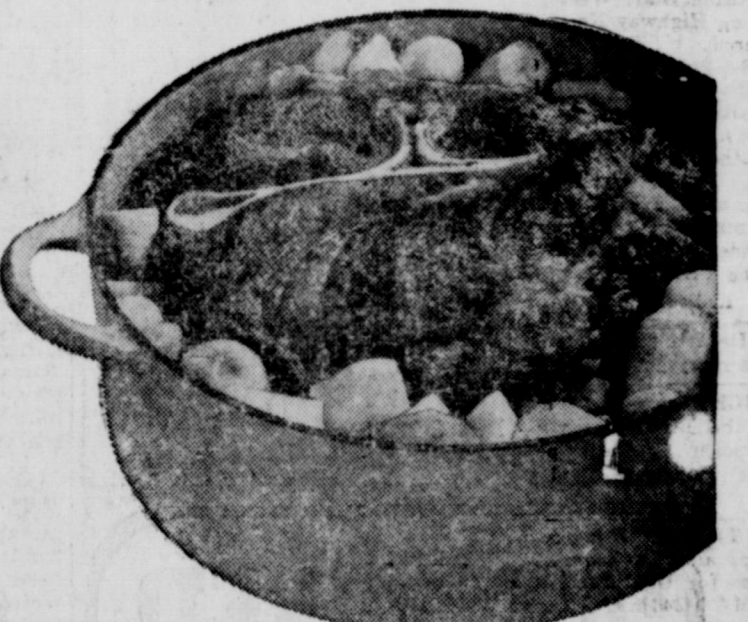
Libby's Margarine
Coldbrook. So Economical.

3 1-lb. Prints **39¢**

Safeway Superb Meats!

Chuck Roast
(Arm Roast... Lb 59¢)
U.S.D.A. Choice Grade Heavy Beef.
Serve your family this delicious roast for Sunday dinner.

45¢ Lb.



Brisket
U.S.D.A. Choice Grade Heavy Beef.

39¢ Lb.

Franks
Skinless. Safeway Brand or Swift Premium.

49¢ 1-Lb. Pkg.

Picnics
Canned. Any Brand.

5 -Lb. Can **\$2.98**

More Meat Values!

- Chicken Livers** Delicious Pan Fried. 8 Oz. Pkg. **29¢**
- Chicken Gizzards** Delicious in soups. Lb. **39¢**
- Chicken Backs** Economical. For soups. Lb. **19¢**
- Rath Daintees** Rath Blackhawk. 1 1/2 to 3-Lb. Avg. Lb. **79¢**
- Sausage** Wingate. Regular or Hot. 2-Lb. Roll **69¢**

Safeway Fresh Produce!

Potatoes No. 1 Russets
Perfect for any purpose and so nutritious.

10 -Lb. Bag **59¢**



Oranges Valencia. Juicy and flavorful.

5 -Lb. Bag **49¢**

New Potatoes Florida U. S. No. 1. Perfect for New England Boiled dinner.

3 Lbs. **29¢**

Radishes 2 6-Oz. Cello Bags **15¢**

Celery Pascal. Large Stalk **19¢**

Miracle Whip
Salad Dressing. Made Salad Dressing Quart Jar 39¢

49¢ Quart Jar

Bakery Features!

Multi-Grain Bread
Skyhart. For food health. (Reg. 23¢)

19¢ 1-Lb. Loaf

Rye Bread
Skyhart. For cheese and cold cuts.

20¢ 1-Lb. Loaf

Hot Dog Buns Mrs. Wright's. (8-Ct. Pkg.) 11-Oz. Pkg. **19¢**

French Rolls Skyhart. Poppysseed. (2¢ off.) 10 1/2-Oz. Pkg. **21¢**

This Coupon Worth 50 Free Gold Bond Stamps
Plus your regularly earned Gold Bond Stamps with the purchase of
SIX — 1-Lb. Cans Armour's DASH DOG FOOD
Coupon Expires February 9, 1963.

This Coupon Worth 200 Free Gold Bond Stamps
Plus your regularly earned Gold Bond Stamps with the purchase of
Any Half or Whole SMOKED HAM
Coupon Expires February 9, 1963.

This Coupon Worth 25 Free Gold Bond Stamps
Plus your regularly earned Gold Bond Stamps with the purchase of
2-Lb. Cello Bag Town House PINTO BEANS
Coupon Expires February 9, 1963.

This Coupon Worth 50 Free Gold Bond Stamps
Plus your regularly earned Gold Bond Stamps with the purchase of
TWO — No. 2 Cans WOLF PLAIN CHILI
Coupon Expires February 9, 1963.

This Coupon Worth 25 Free Gold Bond Stamps
Plus your regularly earned Gold Bond Stamps with the purchase of
Head of Fresh CAULIFLOWER
Coupon Expires February 9, 1963.

Redeem this coupon for
100 FREE GOLD BOND STAMPS
With Purchase of \$10.00 or more (Excluding Cigarettes)
One Per Family • Expires February 9, 1963.

Prices and Coupons Effective Thurs., Fri. and Sat., Feb. 7, 8 and 9, in Eastland. We Reserve the Right to Limit Quantities. No Sales to Dealers.

SAFEWAY

TO ATTEND MEET

Mrs. Harvey E. Bazham and her son, Lonnie Joe, will be in Dallas Sunday and Monday to attend the All-Texas Beauty Show which will be held in the Adolphus Hotel there. They will return to Eastland on Monday night.

CHICK'S RADIO AND TV
103 E. Main
Service Calls \$2.50
All work guaranteed
Phone MAIn 9-1374
Day or Night

M. H. PERRY
KNOWS LIFE INSURANCE
107 W. Main
Eastland
Call him . . . MA 9-2275
or MA 9-1095

Southland Life
INSURANCE COMPANY
Southland Center • Dallas

Court News

Probate

Lillie Irene Smith, deceased, application to probate will. Marriage Licenses

Harvey Eugene Clark and Linda Ruth Harris. James Allen Whitehead and Mrs. Mary Alice Morgan.

Suits Filed

The following suits were filed for record in the 91st District Court last week: L. B. Cuipepper, et al vs. Dept. of Public Safety of The State of Texas, application for stay order.

Virginia Rowch vs. Robert Rowch, child support. Don H. Elliott vs. Jess W. Cole, suit on note.

First State Bank of Rising Star, Texas vs. D. E. Stewart, suit on note.

Orders and Judgments

The following orders and judgments were rendered from the 91st District Court last week:

William B. Griffith vs. Charlotte Gale Griffith, judgment. Geneva Louann Dendy vs. G. E. Dendy, judgment.

James Manufacturing Co. vs. J. H. Tidwell, dba Tidwell Turkey Hatchery, order

of dismissal. William R. Royal vs. Muriel V. Royal, order.

William R. Royal vs. Muriel V. Royal, judgment.

Mrs. J. S. Turner vs. E. R. Logan, et al, order.

Mrs. J. S. Turner vs. E. R. Logan, et al, judgment.

L. B. Cuipepper, et al vs. Dept. of Public Safety of State of Texas, order.

Harold Johnson Brawner vs. Sallie Marie Brawner, judgment.

The following instruments were filed for record in the County Clerk's office last week:

W. Jack Anderson, et al to Doyle Karnes, deed of trust. W. Jack Anderson, et al to Joylie Karnes, MML. L. M. Abel to Roy D. Blair, quit claim deed. Mary June Bunch to Doyle Karnes, deed of trust. Mary June Bunch to Doyle Karnes, MML. H. J. Blackmore to Neil A. Moore, oil and gas lease.

Raymon Bryan, et ux to First Federal S&L Assn. of Ranger, deed of trust. Marvin G. Bridges to Charles E. Saigling, assignment oil and gas lease. Marvin G. Bridges to Charles E. Saigling, assignment oil and gas lease. Marvin G. Bridges to Charles E. Saigling, deed of trust. Monroe T. Byrd to Mrs. Alma Burns, deed of trust.

Alma Burns, et ux to Monroe T. Byrd, warranty deed. John E. Collins to E. O. (Pete) Hallmark, et ux, release deed of trust. L. E. Clark to Federal Land Bank of Houston, second lien agreement. F. E. Caraway, et al to E. M. Ory Ford, assignment of lease.

Mrs. Emma Faye Callaman Deffenbach, Gdn. of estate of Artie Humphreys, to The State of Texas, guardian's deed.

N. J. Dillard to E. L. Hollingshead, release vendor's lien and deed of trust. Donna Sue Day to Roy D. Blair, warranty deed. Miles G. Eryn, et ux to Troy Johnson, warranty deed. Jack R. Edmiston, et ux to The State of Texas, right of way.

First Federal S&L Assn. of Ranger to C. L. Pittman, et ux, release deed of trust. Federal Land Bank of Houston to Bernice McAfee, et al, release deed of trust. Austin Flint to First National Bank of Cisco, assignment of liens. Green Acres to The Public, assumed name. Green Acres No. 2 to The Public, assumed name.

W. D. Battis to Austin Flint, deed of trust. James Dee Jett, Jr., et ux to Federal Land Bank of Houston, deed of trust. Thomas M. Greene, et ux to Chas. L. Nunn, et al, warranty deed. J. A. Holloway, et ux to Troy Johnson, warranty deed. J. A. Holloway, et ux to Troy Johnson, mineral deed. Aaron E. Hensee vs. Ray Caudle, abstract of judgment.

Aaron E. Hensee vs. Roger McCurdy, abstract of judgment. Herbert S. Hilburn, trustee, to The State of Texas, deed. Charlie E. Harris to Walter O. Jett, warranty deed. Luther Glen Harnes, et ux to Rogers McCurdy, et ux, warranty deed. Walter O. Jett, et ux to First Federal S&L Assn. of Ranger, deed of trust. Nell John, et al to Bettie Mae Clark, deed.

B. R. Lyerla, et ux to Monroe Walker, release of easement. Lenton Lanham to Central Building Products Co.,

deed of trust. Emma C. Lobaugh, et al to T. M. Collie, warranty deed. Mary Colquitt Laubach, et vir to Great Western Drilling Co., oil, gas and mineral lease. Stella Martin, et vir to The State of Texas, deed. Trudy Baker Mathela, et vir to Raymon Bryan, et ux, release vendor's lien.

Bertha L. Mehaffey, Gdn. to Veterans Land Board of Texas, warranty deed. Bertha L. Mehaffey to Veterans Land Board of Texas, warranty deed. Troy L. McKillip, et ux to First Federal S&L Assn. of Ranger, deed of trust. Pan American Sign Co. to The State of Texas, quit claim deed. Pool's Cleaners to The Public, assumed name.

Paul E. Rowch, et ux to Ethel Juanita Rowch, warranty deed. Ethel Juanita Rowch to Robert Grammer, et ux, warranty deed. R. V. Robinson, et al to Veterans Land Board of Texas, warranty deed. Sunrise Manor to The Public, assumed name. The State of Texas vs. Glen Hubbard, abstract of judgment.

The State of Texas vs. Martin E. Lutkin, dba The Steak House, abstract of judgment. Dorothy Shahan, et al to H. L. Gray, et ux, warranty deed. Steve Semeniuk, et ux to Jack Schlenker, et ux, warranty deed. Mollie Scott Shelton, et al to W. A. Lindley, warranty deed. Stephenville Savings & Loan to Marshall E. Jolly, et ux, release vendor's lien and deed of trust. Spang & Co. of Texas to Cisro Junior College, warranty deed. Charles E. Saigling to Marvin G. Bridges, assignment oil and gas lease.

Charles E. Saigling of Marvin G. Bridges, assignment oil and gas lease. Charles E. Saigling to Marvin G. Bridges, release deed of trust. Jack K. Smith, et ux to Federal Land Bank of Houston, assignment of vendor's lien. Neil Taylor vs. Glen Hubbard, abstract of judgment. Neil Taylor vs. Dale M. Thompson, abstract of judgment. Trigood Oil Co. to American Metal Climax, Inc., assignment oil and gas lease.

Trigood Oil Co. to American Metal Climax, Inc., assignment oil and gas lease. Burl Atwell Turner, deceased, to The Public, proof of heirship. Mrs. J. S. Turner to M. A. Treadwell, et ux, warranty deed. John Delano Taylor, et ux to The State of Texas, right of way. United States of America to Charlie E. Harris, release deed of trust. Veterans Land Board of Texas to Durant Samuel Buchanan, contract of sale & purchase.

Veterans Land Board of Texas to Thomas D. Goodwin, contract of sale & purchase. P. Bingham Woods to Dewey Cox, Jr., mineral deed. Rilla Margaret Scott Williams to The Public, affidavit. Daisie Woodruff, et al to Marjorie W. Barber, et al, power of attorney. B. W. Wooley, Gdn., to Federal Land Bank of Houston, transfer vendor's lien. B. W. Wooley to Federal Land Bank of Houston, transfer vendor's lien.

EHS Girls Win; Boys Lose To Cross Plains

The Eastland girls conquered Cross Plains, there Tuesday in a decisive score of 40 for Eastland, and 33 for Cross Plains.

The first quarter Arther got the game off with 5 free shots. Wanda Arther was also high point girl with 20 points. Judy Seaberry had 11 points. Kay Morton followed with 9 points.

On the starting line up were Judy Seaberry, Wanda Arther, and Kay Morton at Forward position. Carole McCleskey, Carolyn Thomas, and Becky McAllister at Guard position. The guards did a tremendous job of retrieving the ball. The game was tied with 5 minutes left on the clock, the score 31 points for each team.

The Eastland "B" team was clipped by Cross Plains. The score was Cross Plains-33, Eastland-32.

This game was also tied up with 5 minutes left to play. Cross Plains stalled the ball for one minute, but Miller came through with a layup to make the score 33-32. The high point man for Eastland was Miller with 17 points. Other

points were made as follows: Knoles-1, Walden-9, Jones-3, and Wilson-2.

The Eastland varsity team was thrashed also by Cross Plains. The final score was Cross Plains-42, Eastland-30.

High point man for Eastland was Treadwell with 16 points. Moylen followed with 6. Wilson and Beck each had 2 points. Russell had 4 points.

The next will be against Ranger, here, on Feb. 8.

Emmett Powell Speaks At Meet Of Farmers Union

Emmett Powell of the A.S.C.S. Office in Eastland presented a feed grain program Monday evening at the regular meeting of the Eastland County Farmers' Union held in the Carbon auditorium.

The meeting was called to order by Wayne Eaves, president.

Powell suggested that anyone interested in the grain program drop by his office for information and assistance.

E. J. Lee of Henrietta was present and explained the Farmers' Union insurance plan.

The program was followed by a talent show composed of Carbon students. Refreshments were served at the close of the meeting.

Camp Fire Girls Honor Parents At Party Friday

Members of the Kodawi Camp Fire Girls honored their parents at a party Friday evening at 7:30 o'clock in the home of Mr. and Mrs. Robert Perkins. The girls presented a program on their achievements for the year. They made cookies, candy, and cupcakes which were served with punch and coffee. Members of the organization are Mary George Perkins, Ann Whittington, Darlene Lovelace,

Karen Ford, Dianne Young, and Carolyn Love.

Read the Cl... Attention To Eastland Independent District: Why are you paying more for your educational debt with building give the school blank, signed check pocketbook. Vote the school board. Paid for by Legislature Taxes.

HILL CREST FOOD MARKET

WHEN YOU RUN OUT - RUN IN
1401 WEST MAIN - PHONE MA 9-1

Decker's All Meat **BOLOGNA**

Good, Market-Sliced **SLAB BACON**

Small **HENS**

Decker's **OLEO**

Snowdrift **SHORTENING** 3 lb. C

Parade Ethelra **PEACHES** 4 2 1/2 C

Delhaven Cut **GREEN BEANS** 2 303 C

Gold Cross **MILK** 3 Tall C

Van Camp **TUNA** 5 Can

Foremost Assorted Flavors **MELLORINE** 1/2 Gal

Frozen **PIES** peach, apple, cherry. 3 For

White Swan **INSTANT COFFEE** 6 oz Jar

Wapco **PICKLES** sour or dill qt. btl

Delhaven Liquid **DETERGENT**


ANY MAKE - ANY MODEL!

1916 SIMPLEX-CRANE
Yesterday's Service Methods are Out-Dated too!
Service for all makes . . . minor tune-ups, complete brake service. Lubrication specialists (wheel pack, U-joint pack, etc.) Make our service your auto service center — whether you drive an old or a new automobile.
ROY'S MOBIL SERVICE STATION
302 W. Main — MA 9-2220

of dismissal. William R. Royal vs. Muriel V. Royal, order. William R. Royal vs. Muriel V. Royal, judgment. Mrs. J. S. Turner vs. E. R. Logan, et al, order. Mrs. J. S. Turner vs. E. R. Logan, et al, judgment. L. B. Cuipepper, et al vs. Dept. of Public Safety of State of Texas, order. Harold Johnson Brawner vs. Sallie Marie Brawner, judgment. The following instruments were filed for record in the County Clerk's office last week: W. Jack Anderson, et al to Doyle Karnes, deed of trust. W. Jack Anderson, et al to Joylie Karnes, MML. L. M. Abel to Roy D. Blair, quit claim deed. Mary June Bunch to Doyle Karnes, deed of trust. Mary June Bunch to Doyle Karnes, MML. H. J. Blackmore to Neil A. Moore, oil and gas lease. Raymon Bryan, et ux to First Federal S&L Assn. of Ranger, deed of trust. Marvin G. Bridges to Charles E. Saigling, assignment oil and gas lease. Marvin G. Bridges to Charles E. Saigling, assignment oil and gas lease. Marvin G. Bridges to Charles E. Saigling, deed of trust. Monroe T. Byrd to Mrs. Alma Burns, deed of trust. Alma Burns, et ux to Monroe T. Byrd, warranty deed. John E. Collins to E. O. (Pete) Hallmark, et ux, release deed of trust. L. E. Clark to Federal Land Bank of Houston, second lien agreement. F. E. Caraway, et al to E. M. Ory Ford, assignment of lease. Mrs. Emma Faye Callaman Deffenbach, Gdn. of estate of Artie Humphreys, to The State of Texas, guardian's deed. N. J. Dillard to E. L. Hollingshead, release vendor's lien and deed of trust. Donna Sue Day to Roy D. Blair, warranty deed. Miles G. Eryn, et ux to Troy Johnson, warranty deed. Jack R. Edmiston, et ux to The State of Texas, right of way. First Federal S&L Assn. of Ranger to C. L. Pittman, et ux, release deed of trust. Federal Land Bank of Houston to Bernice McAfee, et al, release deed of trust. Austin Flint to First National Bank of Cisco, assignment of liens. Green Acres to The Public, assumed name. Green Acres No. 2 to The Public, assumed name. W. D. Battis to Austin Flint, deed of trust. James Dee Jett, Jr., et ux to Federal Land Bank of Houston, deed of trust. Thomas M. Greene, et ux to Chas. L. Nunn, et al, warranty deed. J. A. Holloway, et ux to Troy Johnson, warranty deed. J. A. Holloway, et ux to Troy Johnson, mineral deed. Aaron E. Hensee vs. Ray Caudle, abstract of judgment. Aaron E. Hensee vs. Roger McCurdy, abstract of judgment. Herbert S. Hilburn, trustee, to The State of Texas, deed. Charlie E. Harris to Walter O. Jett, warranty deed. Luther Glen Harnes, et ux to Rogers McCurdy, et ux, warranty deed. Walter O. Jett, et ux to First Federal S&L Assn. of Ranger, deed of trust. Nell John, et al to Bettie Mae Clark, deed. B. R. Lyerla, et ux to Monroe Walker, release of easement. Lenton Lanham to Central Building Products Co.,

NICK MILLER
presents
A SPECIAL SALE of
Fine Quality
Suits Sport Coats Top Coats
at
1/2 OFF
of regular price plus \$5.00
• This is a select group from our regular stock and you will find a good selection in most sizes.
• These prices good Through Saturday, Feb. 9.
• Alterations additional.
Nick Miller
The Man's Store
Cisco

GAS DRYER SALE
EASY TERMS
\$179.95 plus tax
NORGE AUTOMATIC GAS DRYER, the only dryer with 4 ways to dry including stop-n-dry. Choice of heat settings for any fabric you wash. 5-year warranty with one year on the motor. Largest capacity dryer cylinder, 6 cu. ft. for free tumbling action and wrinkle-free drying. WITH HAIR DRYER ACCESSORY \$189.95 plus tax for that professional "Beauty Shop" hair drying. Attaches easily to dryer port.
SPECIAL OFFER
Come in and order
2 PAIR NYLONS \$1.00
Regular \$2.50 value. Your choice of size, length and style. Sunny or Taupe Beige.
GET 5 TIMES MORE FOR YOUR MONEY WITH A GAS DRYER
LONE STAR GAS COMPANY

MAJESTIC
NOW THRU SAT.
Thur. - Fri. - 5:30 - 8:15
Sat. - 12:30 - 3:15 - 6:00 - 8:45
THE TWIN CITADELS OF SIN!

SODOM AND GOMORRAH
"...Then the Lord rained upon Sodom and upon Gomorrah brimstone and fire..."
LOT'S WIFE TURNS INTO A PILLAR OF SALT!

SODOM AND GOMORRAH
"...Then the Lord rained upon Sodom and upon Gomorrah brimstone and fire..."
LOT'S WIFE TURNS INTO A PILLAR OF SALT!
SODOM AND GOMORRAH starring STEWART GRANGER PIPER ANGELL STANLEY BAKER ROSARINA PUGESIA PIK BATTAGLIA GIACOMO ROBERTO STUART ANGELO ALBERTI PAUL HENRECHT GORFELLO LOMBARDI Directed by ROBERT ALDRICH Music by MILESO ROSICA Executive Producer MAURITIO LORBERI Sales by DEUTSCHE A LITANUS PRODUCTIONS A GORFELLO LOMBARDI and JOSEPH E. LEVINE PRESENTATION Released by 20TH CENTURY FOX


IMPALA 4-Door 9-Passenger

IMPALA 4-Door 6-Passenger

BEL AIR 4-Door 9-Passenger

BEL AIR 4-Door 6-Passenger

BISCAYNE 4-Door 6-Passenger

CHEVY II Nova 400 4-Door

CHEVY II 100 4-Door
Pick your wagon, pick your horses, & GO Chevrolet
Choose from 10 different 1963 Chevrolet, Chevy II & Greenbrier Wagons with all kinds of 4, 6 & V8 power at your Chevrolet dealer's ONE-STOP SHOPPING CENTER
If most station wagons strike you as just box with wheels underneath, take a look at the and you'll change your mind fast! Five big smooth Chevrolet beauties with room for everything but the kitchen sink . . . three lively low cost family-size Chevy II's . . . and Greenbrier Sports Wagons with up to twice the room most of the wagons you'll pass with that Corvair-rear-engine traction. All are built to haul and stay beautiful longer. Look them over now!
CHEVROLET
Keeps Going Great
Now—Bonanza Buys on four entirely different kinds of cars at your Chevrolet dealer's Showroom
FULLEN MOTOR COMPANY INC.
305 E. MAIN EASTLAND PHONE MA 9-2676

CARBON BAPTIST CHURCH
 Rev. Jimmy Turner, pastor

SUNDAY
 10 a.m.: Sunday School
 11 a.m.: Morning Worship
 6:30 p.m.: BTU
 7:30 p.m.: Evening Worship

MONDAY
 2 p.m.: WMU

WEDNESDAY
 7 p.m.: Prayer Service

Look Who's New
 Mr. and Mrs. Darrell Basham of 2903 E. Sadosa have announced the birth of a son, Darrell Lynn, who was born at 2:05 p.m. Thursday, Jan. 31, in the Eastland Memorial Hospital.

At birth, Darrell Lynn weighed five pounds and 12 ounces.

He has one sister, Delaine, four and a half years old.

Grandparents are Mr. and Mrs. H. E. Basham and Mr. and Mrs. O. L. Johnson, all of Eastland.

Great-grandparents include Mr. and Mrs. J. M. Smith of Eastland, Mrs. Rachel Johnson of Gorman and Mr. and Mrs. George Milholen of Hot Springs, Ark.

Mrs. R. P. Smith of Ft. Is. Tex. is the baby's paternal great-great-grandmother.

Mrs. Mitchell Joins Faculty At Cisco College

Mrs. Veneta Mitchell, registered nurse, has joined the faculty at Cisco Junior College and will teach vocational nursing, according to announcement by president G. C. Mogue.

Mrs. Mitchell, a native of Carbon, graduated from Methodist hospital school of nursing in Lubbock in 1952. Upon graduation she served as an army nurse from 1943-44. For the past six years Mrs. Mitchell has been employed in Cisco as a private duty nurse.

During the 20 week pre-clinical period of the vocational nursing program Mrs. Mitchell will instruct the 21 students

currently enrolled in various subjects and skills required before a graduate can become a licensed vocational nurse.

She will also work with the students at intervals as they progress in their clinical work which will be done in one of the four affiliated hospitals.

Subjects that Mrs. Mitchell will teach include vocational adjustments, community health, body structure and function, nutrition, common emergency needs, administration of medicine, the life span and vocational skills. The vocational skills course consists primarily of study and practice in the following areas: medical and surgical, obstetric, pediatric and newborn nursing.

Of the 21 students enrolled, seven are from Albany, six from Eastland, four from Brooksville and four from Cisco. The course is designed to cover a full 52 weeks of study, qualifying the graduates to take the state board examination for licensed vocational nurses.

Lake Leon Is Sceduled For Ramp Construction

Lake Leon, Eastland's newest lake, is the scene of one among 26 boat ramps programmed for construction by the Texas Highway Department.

Locations of the 26 ramps now being programmed were selected on the basis of the water area to be served and the number of boat registration fees in the area.

The department has announced the completion of the first ramp to be built at Lake Tawakoni in Rains County, North Texas.

Along with the travel program of the Highway Department go certain travel services such as boat ramps, maintenance of park roads and some 1,000 roadside parks, and operation of Tourist Bureaus at key entry points to the state.

The boat ramps will offer water lovers year-round launching spots at no charge.

Each site will include not only the launching ramp, but also a parking area, access road, incinerator, signing and landscaping.

Funds to build the ramps come from surplus boat registration fees. In 1959 the Texas Legislature passed the Water



SAVE MONEY

Have Your Smooth Tires RETREADED

SPECIAL 7.95

Any Size Passenger Tire

12 MONTH GUARANTEE

Jim Horton Tire Service

East Main Eastland

FIRST METHODIST CHURCH
 Wm. S. Fisher, Pastor
 215 S. Mulberry

SUNDAY
 9:45 a.m.: Church School
 10:55 a.m.: Worship Service
 6:15 p.m.: Youth Fellowship
 7 p.m.: Evening Worship

TUESDAY
 9:30 a.m.: W.S.C.S.

GOLDEN AGE NURSING HOME

104 East 4th Street Cisco
 24 Hour Nursing Care. Good Meals - State Licensed and Approved For Patients

Jerry Stephens Administrator Mrs. Ora M. Foy Director of Nursing

Any Way You Look At It

... there seems to be no way of escaping the on-rushing tide of casualties and losses connected with moving vehicles, the highest in history last year, and with the increase in transportation facilities we can expect more of the same. All leads us up to the suggestion that won't save your life or keep your car garage, but it will help pay the bills. Are you adequately insured. Are you?

EARL BENDER & COMPANY
 Eastland. (Insurance since 1924)

FURNITURE CARPET APPLIANCE

Quality Merchandise at Every Day Low

FREE DELIVERY—NO CARRYING ON FURNITURE and CARPETS FOR 1 FULL YEAR

Ranger Furniture Exchange
 "BRASHIER'S"
 123 N. Rusk Ranger Phone

Change of Location

New Office Hours Appointment only

Fort Worth: 806 S. Lake St. Ed 6-4133

Eastland: Every other week Friday-Saturday morning MA 9-1376

JAMES C. WHITTINGTON, M.D.
 Eye, Ear, Nose, Throat

Attention Taxpayers of Eastland Independent School District: The \$575,000 bond issue is over ONE MILLION DOLLARS, if you include interest. Is it right to pass this debt to your children? Vote AGAINST the school bond issue.

Paid for by League for Lower Taxes.

PERMANENTS
 \$10 Creme-Oil Waves \$6.50
 \$12 Creme Oil Waves \$7.50
 \$12 Lanolin Waves \$8.50
 Other waves \$10 and up

Basham Beauty Bar

WE GIVE Round-Up STAMPS

Maryland Club

COFFEE

2 Pound Can \$1.19

QUANTITY RIGHTS RESERVED

WHITE SWAN Coffee 2-Pound Can \$1.09

PRICES GOOD THROUGH SATURDAY, FEBRUARY 9

Giant Savings
 You'll Save Every Time You Shop at Super Dave!

LIGHT CRUST FLOUR ...the Enriched, All Purpose Flour 5-Pound Box **49¢**

WHITE SWAN Seedless Concord GRAPE JAM 18-Oz. Tumbler **23¢**

SKYWAY Strawberry PRESERVES Jumbo 2 1/2 Pound Jar **79¢**

- Rath's Blackhawk All Meat
- Bologna** Lb. 39¢
- Rath's Blackhawk Pure Pork
- Sausage** Lb. 33¢
- Rath's Blackhawk Hot Link
- Sausage** Lb. 49¢
- Rath's Blackhawk Smoked
- Bacon Squares** Lb. 29¢
- Baby Beef
- Club Steak** Lb. 89¢
- LIPTON'S TEA BAGS 100-Count Package \$1.15
- MARYLAND CLUB INSTANT COFFEE 10 Oz. Jar \$1.19
- STAR-KIST Green Beans
- CHUNK STYLE TUNA** Regular Can 29¢
- WESTERN MAID Ketchup or Pickle
- DILL PICKLES** Jumbo 3 1/2 Oz. Jar 49¢
- NIBLET'S Whole-Kernel **CORN** 12-Oz. Can 19¢
- WISHBONE Italian **DRESSING** 8 Oz. Jar 35¢
- HAWAIIAN **PUNCH** 3 1/2 Oz. Can \$1.00
- HAWAIIAN **PUNCH BASE** Pint Bottle 49¢
- LIPTON'S TEA 1/2-Pound Pkg. **WHITE SWAN** 27¢

TOILET TISSUE

NORTHERN

4 Roll Pkg. 29¢

EL CHICO Frozen Mexican or Enchilada DINNERS Reg. Pkg. **39¢**

JOHNSTON'S Frozen Green **APPLE PIE** Large Family Size **79¢**

TOOTH PASTE **GLEEM** Regular 69¢ Size **59¢**

ANTI-ACID **MILK of MAGNESIA** Reg. 63¢ Size **53¢**

VELVEETA

2-Pound Box 69¢

KRAFT'S Cheese Food

VELVEETA 2-Pound Box **69¢**

SOAP **Lava** Regular Bar **13¢**

SOAP **Ivory** 4 Personal Size Bars **27¢**

PREMIUM **Duz** Starter Size **59¢**

DETERGENT **Oxydol** Reg. Box **35¢**

LIQUID **Joy** 22-Oz. Plastic **55¢**

DETERGENT **Tide** Regular Box **32¢**

SOAP **Zest** Bath Bar **23¢**

SOAP **Zest** Regular Bar **15¢**

LIQUID **Thrill** 22-Oz. Plastic **63¢**

FABRIC SOFTENER **Downy** 33-Oz. Plastic **79¢**

CLEANSER **Comet** Giant Can **23¢**

DETERGENT TABLETS **Salvo** Giant Box **79¢**

CHEER

DETERGENT

Giant-Box 65¢

Car Buyers' Bulletin

What do they have to compete with our middleweight Fairlane



not a thing!

Fairlane is in a class by itself. It gives you the winning combination of big-car room, ride, performance—yet it handles and costs more like the compacts!

To illustrate, let's compare the middleweight Fairlane with the compact Chevy II which some people mistakenly feel is in the same class. Fairlane is almost 15 inches longer. It has more leg room, front and rear—and 3 1/2 cubic feet more trunk space! Choice of two spanking V-8's or a spunky Six!

Next, compare the middleweight Fairlane with the big Chevy. Fairlane is a foot shorter, far easier to handle. Yet, amazingly, Fairlane has more effective leg room... about the same effective head room... actually the same trunk space! Plus Ford's exclusive saving twice-a-year or 6,000-mile maintenance! Yet it is priced hundreds lower—even lower than some compacts! Come see your Ford Dealer... compare for yourself!

GREATEST CHOICE OF QUALITY CARS UNDER ONE ROOF...SEE YOUR

HOOD KING MOTOR CO
 100 E. Main Eastland Ph. MA 9-1700

RATH'S BLACKHAWK SLICED BACON Lb. **49¢**

RATH'S BLACKHAWK ALL MEAT FRANKS Lb. **55¢**

MacMOY'S Super Save

Home Owned—Home Operated 400 S. Seaman

Washington Red Delicious Apples Lb. 19¢