



COVERING EASTLAND COUNTY
THE ONLY PLACE YOU CAN READ THE MOST IMPORTANT NEWS IN THE WORLD -- ALL THE NEWS ABOUT YOU, YOUR FAMILY AND YOUR FRIENDS!

NO. 154

EASTLAND, TEXAS, THURSDAY, NOVEMBER 15, 1962

PRICE 10¢

idBits
By H.V.O.

FRIDAY NIGHT
Maverick Quarterback
meet Thursday at 7:30
the Chamber of Com-
merce for an important
President Glen Scal-
lorn announced.

are being drawn for
Football Recogni-
tation.

you noticed how nice
Parker's building
had the old
blasted off?

Store on the
north side of
is sure looks nice
with the pretty raw
nowing.

the south side of
are going to have to
toes because that
is sure looking "up-
wards."

Trout's new Cen-
ter in the renovated
building is one more
to our town. It's
and beautiful.

the other end of that
block the Eastland
Stores are continuing
liquidation sale and
lady managers that
bargains were
ter.

Benton manages
store; Mrs. Opal
has the ready-to-
go on the corner; and
Gallagher operates
store. They're all in
and handy as can be.

you don't try to get
with anyone Friday,
chances are, just a
body will be "out
woods."

season opens Friday
so be sure to wear
red.

we've been wondering
the significance of the
work which looks
blotter on the new
program about
try, we're prepared to

M. Terrell came in
this week and asked
help him with the cor-
recting for the name of
technological test which
"ink-blot" technique.

could only remember
starts with an "r",
entered to help him
answer, so began
local doctors' offices
correct name.

resses and receptionists
first office were amu-
sur request, but went
work hunting for us.
they also conferred
their counterparts in
ices).

to the medical pro-
Eastland, we learn-
Mr. Terrell that the
test is "Rorsch-
ck."

was a double-bonus
District Clerk and Mrs.
continued on page 2)

PREYSLAG
Insurance
Agency
presents the
WEATHER
NEWS

FORD - T&P 'Mis-Trial' Claimed, 'Re-Trial' Asked

A petition has been filed in 91st District Court asking the re-trial of the Ford vs. Texas & Pacific Railway damage suit case.

If granted, it will be the third time that the case has

been brought to trial in this court. A hearing will probably be held soon.

The first trial was declared null and void for alleged irregularities in the jury room, and a similar charge is being made now concerning the second trial, just completed.

In both the first trials, the jury found in favor of the railroad, awarding no damages to the family of Tommy Ford, Ranger High School football player who was killed in an auto-train collision at the Main St. Crossing in Ranger in February of 1960.

The first trial was held in January of 1961, and a petition asking a re-trial was filed in February of 1961. New trial was granted on March 24, 1961. The Ford family asked \$26,014.75.

Re-trial was completed a fortnight ago in the local court, and a request for a new trial filed on Nov. 5th.

The petition says in part: "Motion for a new trial and requests the court to set aside the heretofore granted judgment here in and grant plaintiffs a new trial for the following reasons:

1. "One or more of the jurors that was selected in the case was guilty of misconduct in that said jurors were prejudiced against the plaintiffs and decided to find in favor of the defendant before the submission of the courts charge.

"2. One of the jurors was guilty of misconduct in that said juror introduced into the jury's deliberation matters that were not offered into evidence and that the same was considered by the jury in reaching their verdict.

"3. The court erred in overruling each and all of plaintiffs objections and exceptions to the court charge.

"4. The court erred in admitting into evidence over plaintiffs objections, defendant's photographs as exhibits of the crossing in question.

"5. The court erred in overruling plaintiffs objections to defendant's improper argument to the jury of defendant's counsel where in said counsel was stating the law to the jury erroneously."

The jury answered a court charge, which contained 30 special issues, among which they found, "It was not the result of an unavoidable accident."

Jurors in the case included: G. C. Stroebel, William E. Austin, John C. Koen, J. L. Stafford, H. W. Hill, J. D. Yardley, Ben Weiser, Garland Dean, J. W. Harper, J. H. Tidwell, Clint McCain and L. M. Threet.

Additional Doe Tags Due Here

All the county's doe tags are gone—but more are on the way.

The original allotment of 200 tags has already been distributed at the county clerk's office, and 300 more are expected Thursday afternoon.

There will be 100 exempt tags in the new shipment and 200 to be sold.

There were 100 to be given and 100 to be sold at 50 cents each in the first allotment.

The free tags are given to persons under 17 years of age and to land-owners who plan to hunt on their own property.

Possession of the tags does not in any way preclude the need for a valid hunting license, it should be noted.

Board Hires Architect

Boone and Pope, Abilene architectural firm, was employed by the Eastland School Board Tuesday night to plan the proposed new elementary school for Eastland.

The board has been consulting various firms for the past few months concerning the forthcoming project.

Services Held Wednesday For Fred D. Hale

Funeral services were held Wednesday at 2:30 p.m. in the Hamner Funeral Chapel, Eastland, for Mr. Fred D. Hale, who died Tuesday at 5:30 a.m. in the home of a daughter, (Continued on page 2)



Cong. Omar Burleson and H. R. Garrett . . . before speech

OMAR BURLESON IS SPEAKER AT LUNCHEON IN EASTLAND

The time will come in the not so distant future when this nation will probably have to invoke blockades and sanctions against "all" Communist bloc countries, Cong. Omar Burleson said in this county Tuesday.

Speaking before a joint noon talk, Cong. Burleson said that he is "satisfied" with the present method of disarmament in Cuba.

Asked if there might not be some concern of the "visual" inspection of missiles aboard out-bound ships, he said that he "understands" that modern methods of photography are being relied upon in determining the actual existence of missiles aboard the ships.

He had, he said, suggested to President Kennedy that the blockade also include petroleum imports.

The congressman, a native of Jones County, began his talk by saying that it is a "relief to be back among the people" where he can talk, exchange views and evaluate current needs.

Cisco men attending the meeting were Charles Sandler, James McCracken and Carl Lamb.

Burleson was introduced by H. R. (Pop) Garrett, Marcus O'Dell, Lions club vice president, presided at the joint meeting, in the absence of President Bill Walters.

The speaker was called "an outstanding American citizen" (Continued on page 2)

TRIAL SET NOV. 19th Roberson Attorney Dismissed

A motion has been granted in 91st District Court releasing Eastland Attorney Frank Sparks as counsel for Mrs. John T. Roberson of Ranger.

The order, signed by Judge T. M. Collie, was rendered after Sparks requested he be released as counsel. Mrs. Roberson was indicted in February by a grand jury for "assault with intent to murder."

The charge reads in part, "With malice aforethought, in and upon Nancy Pennington, did make an assault with the intent then and there to murder the said Nancy Pennington."

Sparks said in his request for release, that Mr. and Mrs. Roberson have been notified that the case is set for trial on Monday, Nov. 19th.

\$20,000 Pay Increase Okayed For County Officials, Employees

An "across-the-board" 10 per cent pay increase for all Eastland County officials and employees, with the constables getting a 25 per cent increase, was okayed by commissioners' court after a day of discussion Monday.

Yet to be settled are inequities among the salaries of first deputies in several offices. In-

dications were that these will be "taken care of" later.

The raises are to become effective as of November 1, meaning that elected officials and employees will be getting more money in their next pay check. Total cost of the in-

crease was expected to be approximately \$20,000 a year. Deliberation on salaries be-

gan about 11:15 a. m. Monday and was completed at 3:45 p. m. The commission had agreed at a previous meeting to increase on the 10 and 25 per cent basis, and had advertised to notify the public.

County Auditor C. H. O'Brien was on hand and explained for the commissioners the amount of present salaries and how much they would be with the increase. In order to facilitate bookkeeping, the court agreed to round off to the next highest dollar each salary, after the 10 per cent figure.

As the talks got under way before noon, the county judge's salary was first discussed and it was shown that his present salary is \$417.90 per month, and with the increase will be \$460.

Commissioners' salaries are \$349.67 — will be \$385. The county judge's secretary — was \$247.80; now \$273.

At this point Buck Collins of Rising Star suggested that salaries of the county employees should be handled separately from those of the elected officials.

"If we just raise everyone 10 per cent, we're still going to have some people out of line. In place of helping it, we're getting it more out of balance," he said.

Partial explanation for the difference in salaries is that a general 13 per cent raise in 1957 for everybody, and a five per cent raise in 1960 for employees only, it was explained.

Other positions and increases are:
Janitor — was \$204; now \$225.

Engineer — was \$229.20; now (Continued on page 6)

Ranger Voters To Vote On Beer, Saturday, Dec. 8th

A local option election for the legal sale of beer in the incorporate city limits of Ranger is set for Saturday, December 8.

Eastland County Commissioners ordered the election at their regular meeting Monday in the Court House.

The election will be held in the Ranger City Hall with Calvin Brown as election judge.

A petition containing 342 signatures was returned to the office of County Clerk Johnson Smith on Thursday of last week.

A total of 328 of the signatures qualified. A minimum of 284 signatures of qualified voters are required for a local option petition.

This figure is derived from the last preceding general election during which presi-

dential electors were voted upon.

The motion to hold an election was entertained by County Judge B. M. Bennett. The motion was made by Commissioner Carl Lamb and seconded by Commissioner Buck Collins.

During the course of business, a spokesman for the First Methodist Church in Eastland met with the Commissioners and asked for a reduction of County taxes on the old Perry building.

The building was deeded to the church on June 1, 1962 by A. F. Perry and was vacant for five months.

Since the church is a non-profit organization and there was no income taken in during the five month period, the spokesman has asked for a reduction of City, School and County taxes.

In discussing the matter with City officials, the spokesman was told that "The City could do nothing about reducing the taxes." The Eastland School district pro-rated the taxes, he said.

To prevent "Cluttering" (Continued on page 2)

TV System Progress Report

Construction of Southern Television Systems Corp.'s Ranger facilities is expected to get under way in about 30 days, Manager Glen Scallorn of Eastland has announced.

Currently, contracts are being finalized with Texas Electric Service Co. for pole space.

Lease arrangements for tower site has been completed and equipment is being shipped in for the new system.

A physical pole check is being conducted at this time, Scallorn said.

In reporting the progress of the system, he invited Ranger citizens to call the Eastland headquarters if they have further questions. The number is MAin 9-1580.

MD Drive Is Slated For Monday, 7 p.m.

This is the time of the year when the public is given the opportunity to help victims of Muscular Dystrophy.

The Eastland Firemen, with the help of Boy Scouts and Explorers, will make the drive for contributions to this cause on Monday, Nov. 9, at 7 p. m.

The nation's First Lady, Mrs. John F. Kennedy, is again serving as Honorary Chairman.

As the drive is begun, news on the research report is one of progress on all fronts.

There are no outstanding developments but quite steady achievements are being made.

One of the important areas of research is the influence of nerves on the muscle metabolism and the changes that occur in the proteins of muscles during normal development and the development of Muscular Dystrophy.

Muscular Dystrophy Association of America is recognized charitable organization and all donations are tax deductible. The Association supports the Institute of Muscle Diseases in New York City and hundreds of research projects around the world. It also provides for patient service such as physical therapy, wheelchairs, lifts and braces.

The West Texas Rehabilitation Center in Abilene is one of the patient service centers receiving aid from this campaign.

Now Showing At The MAJESTIC IN EASTLAND

"Lolita"
FREE PASSES

To Those Who Find Their Names Set Bold Face Type Among The

CLASSIFIEDS!

Mavericks Go For 6-4 For Season at Clyde

The Eastland Mavericks will close out a highly successful season as they work for a six-four season Friday night at Clyde.

Clyde holds the second-place district slot — right behind power-house Albany. Eastland shares a three-way tie with Ranger and Cross Plains at the present time for the cellar.

Win or lose Friday, the Mavericks will have had a wonderful season. From a team that was burdened with a 0-10 record last year, Coach Millard Glasses' chargers

have already earned themselves a 5-4 record.

Aside from the off-night with Cross Plains the team has gone forth with valor at every outing.

Taking Clyde would be the frosting for a fine season, they are agreed.

Half-back Jimmy Moyian got a finger broken last week and may not get to carry quite as often as usual, but will undoubtedly be in there plowing though.

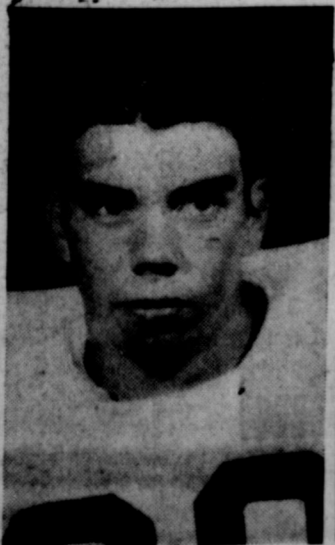
The game will be in Clyde beginning at 7:30 p. m. and it will be the last of the season for the Eastland team.



JOE HERRING . . . 240 lb. tackle



DICKIE BYARS . . . 150 lb. guard



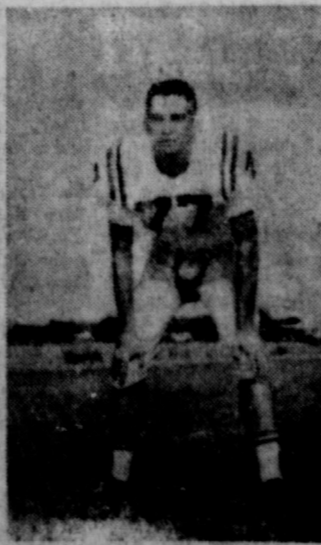
GARY GRAHAM . . . 165 lb. back



DON GRIFFFIN . . . 160 lb. guard



GAYLON GRIFFFIN . . . 140 lb. back



DAVID TAYLOR . . . 165 lb. tackle



JOHN MOYLAN . . . 145 lb. back



BILL GARNER . . . 150 lb. tackle



LARRY HOWLE . . . 170 lb. end



DAN PHILLIPS . . . 160 lb. tackle



STANLEY UNDERWOOD . . . 145 lb. end



MIKE JONES . . . 160 lb. center

EASTLAND TELEGRAM

Eastland County Record established in 1931, consolidated August 31, 1951. Chronicle established 1887, Telegram established 1923. Entered as second class matter at the Post Office in Eastland, Texas under the Act of Congress of March 3, 1879.

Published Semi Weekly—Thursdays and Sundays
By Eastland County Newspapers, Inc.
H. V. O'BRIEN, Editor

One Week by carrier in city15
One month by carrier in city65
One year by mail in county 2.95
One year by mail out of state 6.95

NOTICE TO PUBLIC—Any erroneous reflection upon the character, standing or reputation of any person, firm or corporation which may appear in the columns of this newspaper will be gladly corrected upon being brought to the attention of the publishers.

Hospital News

Patients in the Eastland Memorial Hospital are the following:
Louise Willman, medical
Woodrow E. Watson, medical
Clarence W. Medford, medical

Ruth Ann Calloway, surgical, Rising Star
Alice Y. Ools, medical
Willie O. Neil, accident
Cora R. Hardin, medical, Brownwood

Mrs. Lee Graham, medical, Ranger
Arvel W. Aston, medical
Charles Harlow, medical
Ollie Porter, medical, Cross Plains
Wanda Jean Nergler, medical
Lois Ann Sims, surgical
Lora Norris, accident
Lillian A. Stephenson, surgical

Cal. Cisco
William R. Erwin, medical, Cisco
Eva Lou Taylor, medical
Emma Welch, medical
Mrs. Thelma Kuhn, medical, Olden

Bobbie June Taylor, surgical, Cisco
W. C. Poe, medical
Elbert W. Gourley, medical
LaVerne L. Allgood, medical
Maud Collins, medical
Robert Hill, medical
L. E. Sublett, medical
Winona Parkinson, surgical, Cisco

Albee Smith, medical
Grady Pipkin, medical
Betty Lanell Nelms, surgical
Terry Lee Cox, accident
Jack D. Byrd, accident

Read the Classifieds

RISING STAR NEWS

Singing Officers Elected Sunday

Officers were elected at the November meeting of the Rising Star Singing Class Sunday afternoon at the American Legion Hall.

Everett Parker was re-elected to serve as president for the coming year. Others re-elected were Lee White, first vice president; Henry Carter, second vice president; and Mrs. Lee White, secretary-treasurer.

Rising Star Singing Class meets each second Sunday afternoon of the month at 2 p. m. except when the Eastland County Singing Convention holds its quarterly meeting each January, April, July and October. On these dates the local group dismisses and attends the County Convention which is always an all-day affair.

Singers from Baird, Brownwood, Breckenridge, Cisco, Cottonwood, Cross Plains, and Sipe Springs were in attendance at the November meeting in Rising Star.

Peanut dryers have been installed in the city market building and the hum of the motors has been heard for the past several days. The initial drying plant was one which Gene Hill has had in operation at his farm near Okra. He also did custom drying for some of his neighbors.

Mr. Hill, in moving to the market building, has added new and larger equipment for speeding up the process of drying peanuts. The plant is the trailer system. Peanuts are hauled in trailers of 5,000 pound capacities to the dryers and processed without unloading. The plant has automatic heat control to prevent overheating, and is capable

of drying 50 tons of peanuts in 24 to 36 hours, according to Mr. Hill.

It has been estimated that approximately two-thirds of the peanut crop is yet to be harvested and Mr. Hill hopes to handle a major part of the Rising Star area crops.

Next year, he plans to expand his operational drying system to full capacity, he stated.

Miss Sue Lack, freshman student at Cisco Junior College from May, was named homecoming Queen at the Saturday night half-time activities at the game between Ranger Junior College and Cisco Junior College. Miss Lack was elected by the student body, but her name was not revealed until the game.

Sue is the daughter of Mr. and Mrs. A. Lack of Route two, May and a member of the Wrangler Belles. She is a 1962 graduate of May High School and has been an active participant in various high school activities. She was Drum major, district basketball team member, FFA sweetheart, Most Popular and class favorite and is now nominee for Ag Sweetheart at CJC.

Mr. and Mrs. Jeff Harrell of Lake Brownwood have announced the birth of a daughter, Cedilia Kay, who was born Friday, Nov. 2, in the Memorial Hospital in Brownwood. At birth, she weighed five and one-half pounds.

Maternal grandparents are Mr. and Mrs. R. E. Darnell of Rising Star. Mr. and Mrs. Robert M. Harrell of Brownwood are the paternal grandparents.

Beta Upsilon Members Hear Panel Program

Members of Beta Upsilon Chapter of Delta Kappa Gamma met Saturday at 2:30 p. m. in the Women's Club and were told, "It is no secret that a distinguishing characteristic of the 960's is the intellectual and cultural revolution that is now sweeping America. To this new come revolution the contributions of recognized women leaders is noteworthy."

Such contributions by women in the areas of government, education and religion are presented by a panel composed of Mmes. Lois Marshall, Virginia Inzer and Beulah Smith. Reports from the recent regional meeting held in Coleman were given. Of particular interest to the membership was the Grants-in-Aid program. This program provides educational opportunities for deserving younger students. This is in addition to the regular scholarship program for graduate study and doctorate work for society members.

Isadore Grimes, president, presided for the regular business session. Mrs. Ella Andres White was welcomed back to Beta Upsilon membership. She is a charter member of the chapter, but while teaching in the Junior College at Big Spring, her membership was transferred there.

Hostesses for the meeting were Mmes. Miriam Bledsoe, Lela Lloyd, Olga Fay Parker and Myrl Reed.

Attending from Eastland were Mmes. Virginia Inzer, Lois Marshall, and Beulah Smith; from Ranger were Miss Anna McEver; from Baird, Misses Isadore Grimes and Alda Nordyke; from Cisco, Mmes. Josephine Clements, Miriam Bledsoe, Minnie Hill, Lela Lloyd, Alice McCantles, Iva Nixon, Bertha Mehaffey, Olga Fay Ford, Dee Peters, Ruby Lee Pirtle, Myrl Reed, Ella White, Ina Stamey and Misses Mayme Estes and Louise Snoddy.

Services -

(Continued from page 1)
Mrs. Andy Taylor, 413 Pershing, Eastland.

Rev. W. S. Fisher, pastor of the First Methodist Church of which Mr. Hale was a member, officiated the services. Interment was in the Eastland Cemetery under the direction of Hamner Funeral Home.

Mr. Hale was born in Erath County on April 6, 1886 and had lived in and around Eastland for 20 years. He lived in Abilene for 12 years and was employed in the men's department of Thornton's Store there.

He was married to Leona Mae Oxford on June 6, 1910 in Clarendon, Texas. She preceded him in death in January of 1958 and is buried in the Eastland Cemetery.

Survivors include two daughters, Mrs. Andy Taylor of Eastland and Mrs. P. G. Cullen of Fort Worth; one son, Leon Hale of Bryan; four grandchildren; three sisters, Mrs. Nellie Minnie of Gordon, Mrs. Arda Boggs of Eastland and Mrs. Ruth Campbell of Amarillo; one brother, H. E. Hale of Oakwood, Texas.

TidBits -

(Continued from page 1)
Roy Lane.

In fact it all happened so fast that it left the grandpa a little breathless, he says.

At about 5:15 p.m., he learned that he had a new grandson. Less than an hour later, he learned also that he had a new granddaughter.

The new son in the family was born to Mr. and Mrs. Bobby Lane of Henrietta, and the new granddaughter is the daughter of Mr. and Mrs. Dean Sutton of Abilene.

A duplicate bridge tournament open to all area towns will be held at the Cisco Junior College library in Cisco at 7:30 a.m. Monday, Nov. 19. Fees will be \$1.00 per person. All proceeds will go to the Cisco Community Chest.

(Read the Classifieds)

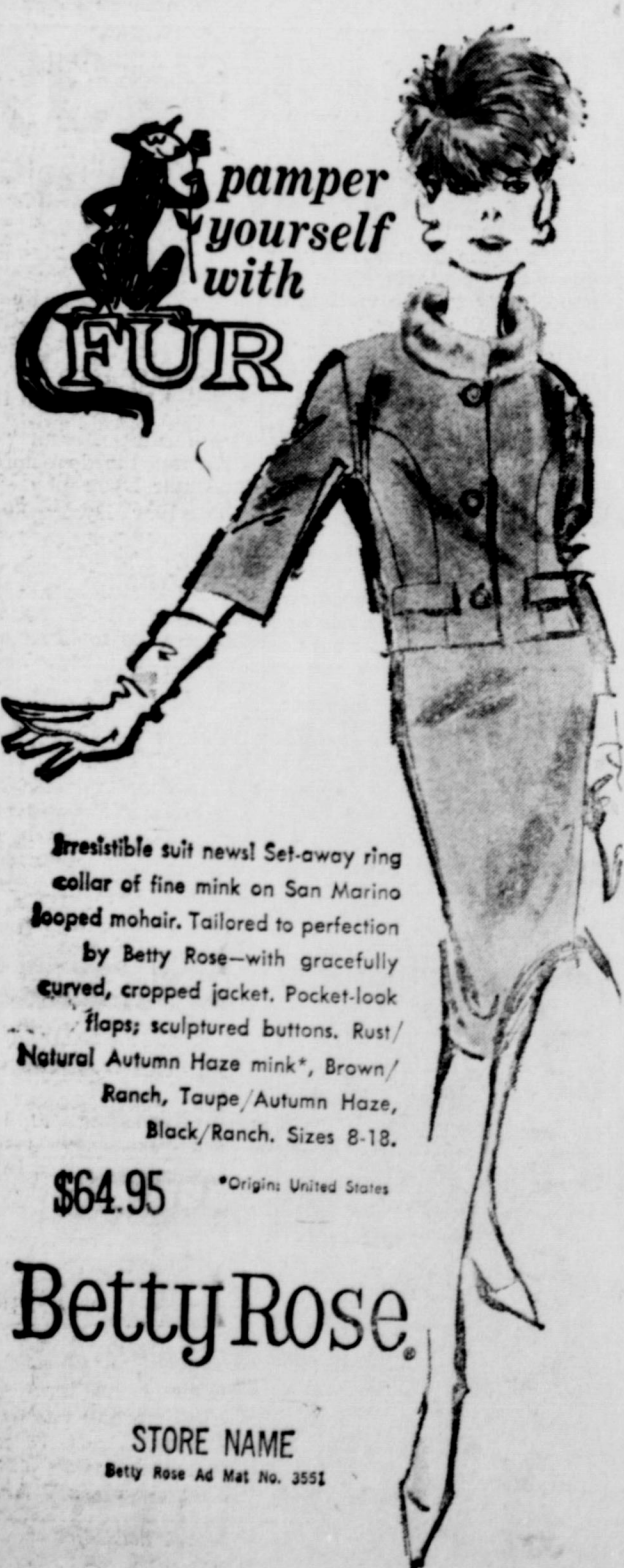
WINTER RADIATOR CONDITIONING FROM \$2.75 PER GALLON

ROY'S MOBIL SERVICE
302 W. Main St.

First class auto service; wash and grease; all major brands oil.

Round-up Stamps with every purchase
Drop your auto by for service while you shop on the near-by square

Try us once, and you'll like our service.



pamper yourself with FUR

Irresistible suit news! Set-away ring collar of fine mink on San Marino looped mohair. Tailored to perfection by Betty Rose—with gracefully curved, cropped jacket. Pocket-look flaps; sculptured buttons. Rust/Natural Autumn Haze mink*, Brown/Ranch, Taupe/Autumn Haze, Black/Ranch. Sizes 8-18.

\$64.95 *Origins United States

Betty Rose

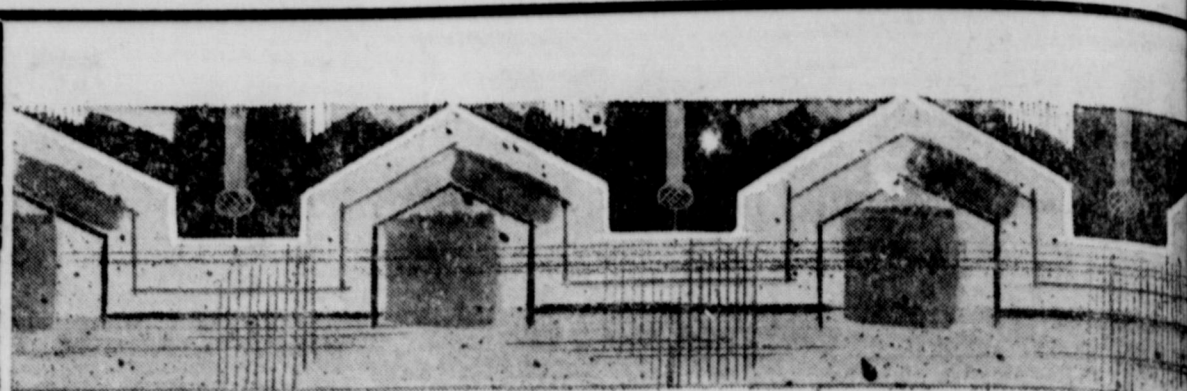
STORE NAME
Betty Rose Ad Mat No. 3551

See our collection of suits in double knit fine woven and pure silk.

ALTMAN'S STYLE SHOP
109 W. Main Eastland

A portrait of that grandchild or loved one means a lot to each parent and grandparent. So why not let A & C STUDIO make that grandchild portrait now so you will always remember how he or she looked and too, your children would like a living portrait of you Mother and Dad.

SEE
A&C STUDIO
today
201 S. Seaman



The CURTAIN has gone UP . . .

ON EASTLAND'S FINEST NEWEST ADDITION

CENTRAL DRUG OPEN HOUSE

All of Our Friends Are Cordially Invited To Come In Saturday For Our Formal Open House, And Browse Around In The All New CENTRAL DRUG.

FURNISHED & STOCKED

With You In Mind



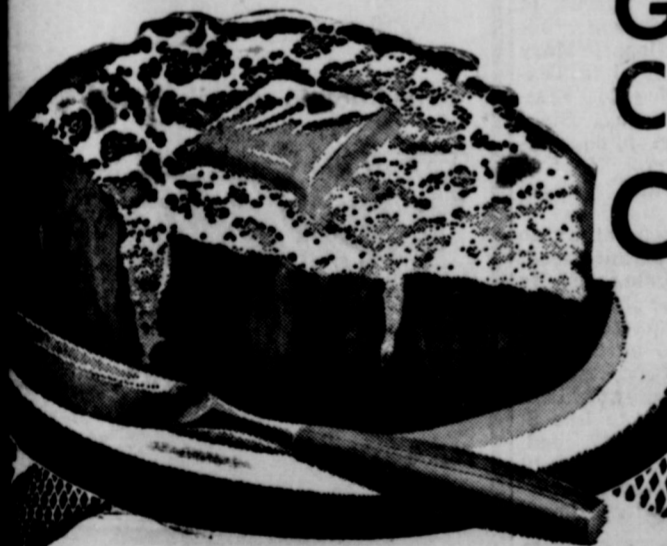
WORTH FOOD MART

SURE SIGN OF SAVINGS!



- Pork Loins Half or Whole Lb. 49¢
- Pork Loins Loin or Rib End 2 to 3 Lb. Avg. Lb. 39¢
- Pork Sausage Rath Blackhawk Lb. 39¢
- Pork Chops Lean Center Cuts Lb. 69¢
- Pork Ribs Small Lean Ribs Lb. 49¢

- Knapp Captain Krusty Peeled and Dewined 8 oz. Pkg. 99¢
- Shrimp LIVERS Frozen 1-Lb. Pkg. 69¢
- Shrimp RINGS Mrs. Chessher's. Frozen 8 oz. Pkg. 29¢
- Frozen Food Features
- Pumpkin Pies Pumpkin - Mince or Apple - 8 Inch 39¢
- Yams Trappey's 2 Lb. Cello Bag 39¢
- Yams Libby's 4 10 oz. Pkgs. \$1.00
- Yams Libby's 4 10 oz. Pkgs. \$1.00
- Yams Libby's Sliced 4 10 oz. Pkgs. \$1.00
- Yams Food Mart 24 Ct. Pkg. 25¢



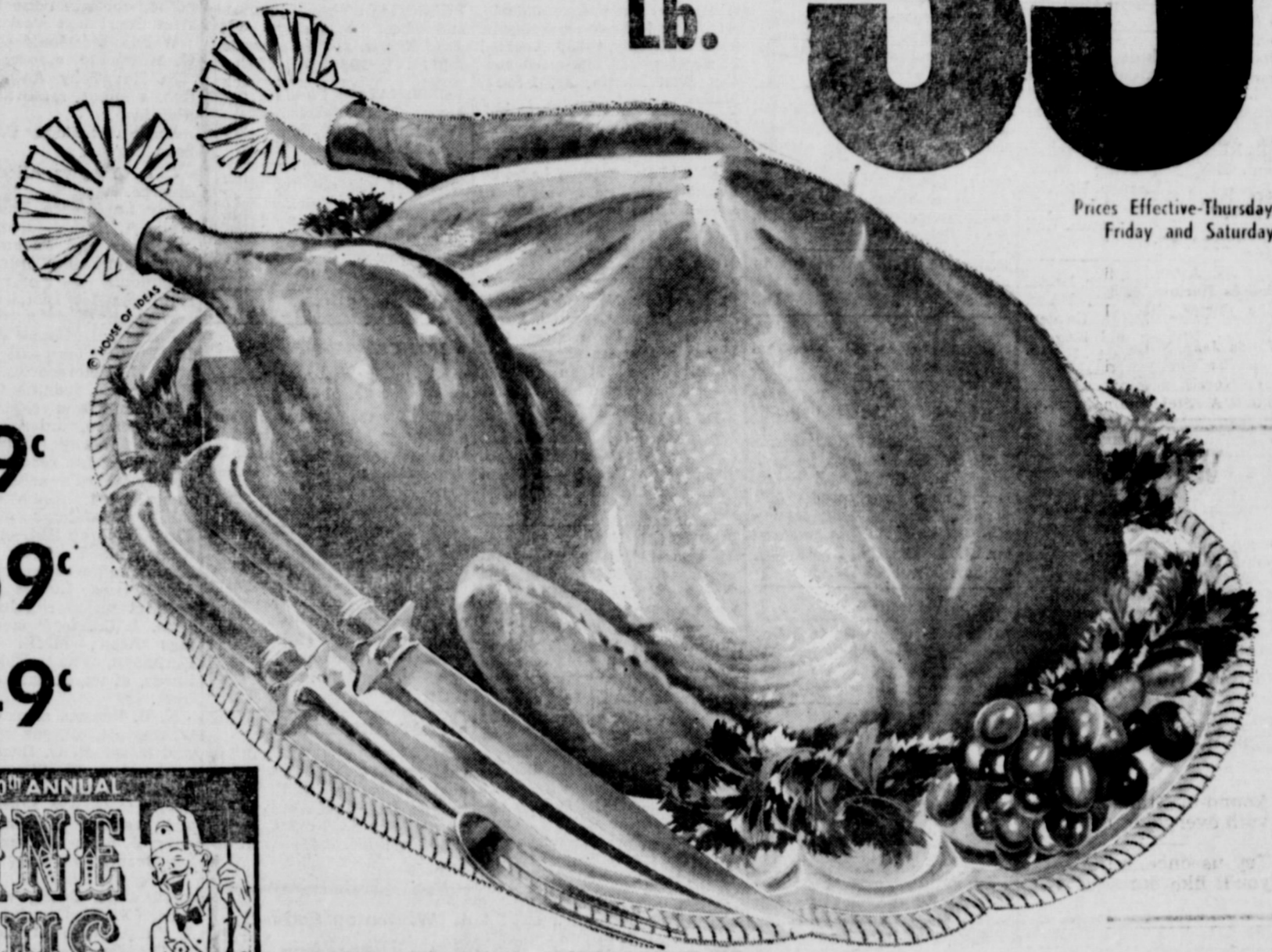
Russet-U. S. No. 1-Cello Bag
Potatoes
 Lbs. Only
59¢

TURKEYS

Sunco TOMS-'Grade A'
 16 to 22 Lb. Avg. Weight

Lb. **35¢**

Prices Effective-Thursday
 Friday and Saturday



MOSLAH TEMPLE'S 20th ANNUAL
SHRINE CIRCUS
 Get Your
FREE TICKETS
 From
WORTH FOOD MART
 Before Saturday, November 17th
WILL ROGERS COLISEUM

- HEN TURKEYS SUNCO-Grade A 10-14 Lb. Avg. Lb. 39¢
- CRANBERRIES Ocean Spray Whole or Jellied 2 16 oz. Cans 35¢
- LIBBY'S PUMPKIN No. 303 Cans 10¢
- MARGARINE Kraft-Miracle 2c Off Label - Net 2 1-Lb. Pkgs. 49¢

- GREEN BEANS Del Monte Cut 3 No. 303 Cans 69¢
- CUT YAMS Sugary Sam-A Thanksgiving Favorite No. 2 1/2 Can 19¢
- COFFEE Maxwell House All Grinds Lb. Can 59¢
- Chunk Tuna Chicken of the Sea 2 No. 1/2 Cans 59¢
- Fruit Cocktail Hunt's 6 300 Cans \$1.00
- Pickles Whitfield - Candied Crisps - 16 oz. Jar 39¢
- Corn Meal Light Crust - White or Yellow 2 Lb. Box 19¢
- Tooth Paste Gleen Eco. Size 45¢
- Liquid Shampoo Prell - Med. Size 39¢

Comstock	Lipton's
Pie Apples 2 No. 2 Cans 49¢	Tea Bags 48 Count Package Ea. 59¢
Kleenex - Table	Zee
Napkins 2 50 Ct. Pkgs. 49¢	Waxed Paper 100 Foot Roll Ea. 19¢

- APPLES Rome Beauty Extra Fancy Lb. 19¢
- CRANBERRIES Ocean Spray 1 Lb. Box 25¢
- PASCAL CELERY Stalk 15¢
- GRAPEFRUIT Florida Ruby Reds Lb. 10¢
- Carrots Cello Pkg. 2 1-Lb. Bags 25¢
- Radishes 2 Cello Pkgs. 15¢
- Fresh Dates 10 oz. Pkg. Pitted 35¢
- Fresh Dates 12 oz. Pkg. Unpitted 35¢

CLIP AND SAVE!
 50 BONUS S&H GREEN STAMPS
 With This Coupon and Purchase of
 40 oz. Box of Betty Crocker
 Bisquick
 Void After Saturday Nov. 17, 1962
WORTH FOOD MART

CLIP AND SAVE!
 50 BONUS S&H GREEN STAMPS
 With This Coupon and Purchase of
 A 1/2 Gal. Can of
 Aero-Wax
 Void After Saturday Nov. 17, 1962
WORTH FOOD MART

CLIP AND SAVE!
 50 BONUS S&H GREEN STAMPS
 With This Coupon and Purchase of
 (2) Two No. 303 Cans of Our Darling
 Cream Style Corn 2 cans 39¢
 Void After Saturday Nov. 17, 1962
WORTH FOOD MART

CLIP AND SAVE!
 50 BONUS S&H GREEN STAMPS
 With This Coupon and Purchase of
 (2) Two 17 oz. Pkgs. of Pillsbury
 Cake Mixes - 2 pkgs. 69¢
 Void After Saturday Nov. 17, 1962
WORTH FOOD MART

CLIP AND SAVE!
 25 BONUS S&H GREEN STAMPS
 With This Coupon and Purchase of
 Any Roll of Kaiser H. D.
 Aluminum Foil
 Void After Saturday Nov. 17, 1962
WORTH FOOD MART

CLIP AND SAVE!
 100 BONUS S&H GREEN STAMPS
 With This Coupon and Purchase of
 A 3-Lb. Can of Rath's
 Canned Ham
 Void After Saturday Nov. 17, 1962
WORTH FOOD MART

CLIP AND SAVE!
 25 BONUS S&H GREEN STAMPS
 With This Coupon and Purchase of
 A 1-Lb. Cello Pkg. of Rath's
 Frankfurters
 Void After Saturday Nov. 17, 1962
WORTH FOOD MART

SELL AND PROFIT... BUY AND SAVE... GET A BETTER JOB... HIRE GOOD HELP!

Read and Use the Want Ads!

CALL MA 9-1707

FOR RENT

FOR RENT: Three bedroom unfurnished house. 302 S. Connellee, Phone MA 9-1522. tf

FOR RENT: This space, to be used by person wanting to buy, sell, rent or buy. Telegram classifieds don't cost—they pay. tfe.

FOR RENT: Four room furnished apartment. Newly redecorated. Book cases, Walk-in closets. Extra bed. Air conditioned. Close in. Bills paid. MA 9-1062. tf

FOR RENT: Three room furnished apartment. Car-port. Bills paid. Two blocks from Court House. Phone MA 9-2613. tf

FOR RENT: Nice garage apartment. Bedroom, living room, kitchen, lots of storage. Utilities and cable furnished. Extra quiet and private. \$50 a month. Call MA 9-2413. tfe

FOR RENT: Six room house. Large yard. Chicken house. Storage room. Large Garden. On lake. Fishing and boating. 2 miles from Court House. Call MA 9-1982. tf

FOR RENT: Large furnished or unfurnished apartments in duplex. 611 W. Plummer. tf

FOR RENT: Lovely furnished or unfurnished apartments, any size, bills paid, maid and hotel services included, very reasonable. Also comfortable rooms with tile baths only \$39.95 monthly. Throw away your high bills and troubles and come live with us. Mrs. Robinson, manager, Village Hotel, MA 9-1716.

WE HAVE a big and beautiful stock of things for everybody. The Gift House, Cisco, tfe

FOR RENT: Three room furnished apartment. Private bath. 107 E. Sadosa. Phone MA 9-1095. tf

SPECIAL NOTICE
SPECIAL: Parker ink. Ten cents (10¢) a bottle. Assorted black colors. Eastland Telegram. tfe.

SPECIAL NOTICE: Hate to mention it, but it's almost tax time. Let us ease your pain with our handy aids—inventories, sheets, forms, and all kinds of bookkeeping supplies. Eastland Telegram.

SPECIAL NOTICE: Sewing machines—Necchi, Elna and other fine brands. Parts and service on all makes. Gorman Auto Supply. Phone RE 4-5390, Gorman or drop in to see us. tf

FOUND — A perfect way to get rid of those discards at a profit. Sell them with a Telegram Classified. tf

NOTICE: Any type hay baled promptly and efficient. Also can condition your hay. I. B. Walker, call 2501, Olden collect. tf

NOTICE: Rent Blue Lustre Electric Carpet Shampooer for only \$1.00 per day. Coats' Furniture and Carpet Co. 101

Insurance and Real Estate
D. L. KINNAIRD
Life - Fire - Auto - Farm
Police - Bonds
42 years in the Insurance Business in Eastland

EASTLAND ROTARY CLUB
Elephant for noon luncheon
Call Mike George, 9-1495, for each Monday.

CHICK'S RADIO AND TV
103 E. Main
Service Calls \$2.50
All work guaranteed
Phone MA 9-1374
Day or Night

INGROWN NAIL HURTING YOU?
Immediate Relief!
A few drops of OUTGRO® bring blessed relief from the burning pain of ingrown nail. OUTGRO® loosens the skin underneath the nail, allows the nail to be cut and thus prevents further pain and discomfort. OUTGRO® is available at all drug counters.

SPECIAL NOTICE: Piano tuning. M. J. Kennamey is in your city. Phone MA 9-1242. 109

MISC FOR SALE
FOR SALE: Equity in two bedroom FHA home. See any evening after 6:30 p.m. 525 E. Conner. tf

FOR SALE: Fat and ready for your freezer, grain fed calves. Phone 2374, Olden. tf

FOR SALE: 510 S. Hillcrest. Living, dining room, kitchen and den. Built-in range, fireplace, central heat and air. Three bedrooms, two tile baths seven closets, double garage. M. A. Treadwell Sr. Sr. MA 9-2017. tf

FOR SALE: Rubber insulated hunting boots, \$8.95; Insulated underwear — mens, ladies, children—\$7.95 up; Rain covers, \$6.95; Sleeping bags and many other items for the outdoorsman. Bruce Pipkin Sport Center. tf

FOR SALE: Firewood cut to order. Fred Brown. Phone MA 9-1823. 102

YES you can sell bicycles or roller skates with Telegram classifieds. tf

PEOPLE read the Telegram classifieds. You're reading this one. tf

FOR SALE: Shetland pony, 2 years old. Gentle and broke. Duroc male registered, 175 pounds. Hereford bull, coming two years old. Subject to register. J. D. Griffin, Route one, Carbon. Phone 3443. tfe

A. J. Blevins Jr.
FOR SALE: Boys 26 inch Red Ranger bicycle. New tires. A-1 condition. Contact City Garage. tf

HELP WANTED
HOW do you know you can't sell it? Have you tried a Telegram Classified? tf

USE as many as 20 words to describe your "for rents", "for sales", or "what have you", for only 60 cents per insertion. tf

REAL ESTATE
FOR SALE OR TRADE: Will sell or trade equity in modern, roomy three bedroom home in Abilene for lake or local property. Has chain-link fence and down-drought air. Call MA 9-2413 or MA 9-1707 or write Box 29. tf

MIS WANTED
WANTED: Vacant corner and adjoining lots. Must be well located. Phone MA 9-2003 week ends or after 5 p.m. on weekdays. tf

SPECIAL NOTICE: Typewriter and office machine repair. Machines to loan while yours is being repaired. Call the East and Telegram, MA 9-2413. tf

FOR SALE CHEAP—Clothes pins. Owner has purchased the ULTIMATE in clothes drying, an ELECTRIC clothes dryer see: B. D. Frazier, MA 9-2651. 100

FOR SALE: Large 6 room house. Big walk-in pantry. Garage. Large storage room. Mrs. Frankie Collins, 500 S. Seaman or phone MA 9-1394. tf

Typewriters, Adding Machines, Cash Registers, New and Reconditioned, Bought, Sold and Rented. STEPHENS TYPEWRITER CO., 417 S. Lamar, St., Eastland.

FOR SALE: Twin tank aqua lung and accessories. Call HI 2-3028 or write 1210 Park Drive, Cisco. 100

WANTED
Good used automobiles
Any make—Any Model
Considered.
BLEVINS MOTOR CO.
See Jay Blevins.
Ph. MA 9-2433
513 West Main
Eastland

EASTLAND CHAPTER NO 280 O. E. S.
Meets the first Tuesday of each month at 8 p.m. in the Masonic Hall. Call Mrs. Pebble

MASONIC LODGE NO. 467
Meets second Thursday of each month at 7:30 p.m. in the Masonic Hall. Call C. J. Langitz for information or L. E. Huckabay, Sec., 9-1391, for information.

WE BUY AND SELL USED FURNITURE
Phone MA 9-1740
WAYNE JACKSON

FOR SALE: Nice business for couple or family at bargain price. Can see 6:30 p.m. to 7:30 p.m. at 205 N Daugherty. Call MA 9-1695. tf

FOR SALE: Our three bedroom Hillcrest home, 2 tile baths, central air and heat. 306 S. Oaklawn. Write 6107 N. E. 15th Street, Midwest City, Okla. tf

FOR SALE: Our three bedroom Hillcrest home, 2 tile baths, central air and heat. 306 S. Oaklawn. Phone MA 9-1742.

FOR SALE: Three bedroom house and lot. Lot 50 x 150. Completed on the outside, wiring and sheet rock inside. This week only \$3990. Located in Eastland. If interested contact Paul Martin, FE 1-8351, Dallas. tf

Millard Glass
FOR SALE: 2 three bedroom houses located near West Ward school. Three bedroom home in Morton Valley. All are good buys. M. A. Treadwell, phone MA 9-2017.

FOR SALE: Neat five room frame house. Carpeted. Large fenced yard. Pecan trees. Water well. Carport with storage room. Phone MA 9-1163 after 5 p.m. or on weekends. tf

FOR SALE: Three bedroom home, close in, on nice small lot. Good neighborhood. \$5,750.00. After 5 p.m. and weekends. 508 S. Daugherty. tf

FOR SALE: New 3 bedroom home located at 502 East Conner Street, 2 baths, all electric Country Kitchen with dishwasher, disposal, vent hood, automatic range and oven. Central heating and refrigerated air conditioning for year around comfort. Large double garage designed for future expansion into a huge family den. Brick construction with full insulation for economy and maximum comfort. Beautiful tree shaded lot in a perfect neighborhood. FHA Quality approved construction. Only \$5500 total down payment, with monthly payments principle and interest only \$75.37 per month. Call Don Kinnaird Jr. today to see this lovely home for your family. Call MA 9-2544. tf

MIS WANTED
WANTED: Vacant corner and adjoining lots. Must be well located. Phone MA 9-2003 week ends or after 5 p.m. on weekdays. tf

NEED a baby sitter, a car port, a lawn mower, a job, an apartment, an assortment of flower seeds? Use Telegram Classifieds. tf

WANTED: To demonstrate that employers and employees can be united with Telegram Want Ads. tfe.

If you are lonely, broken hearted, troubled in spirit or burdened with a sin-sick soul, you can find comfort, consolation and peace at First Methodist Church. tf

FOR SALE: 147.2 acre farm. 4 miles north Eastland. Good land; grass. Plenty water. Modern improvements. School and mail route. MA 9-1286. 410 S. Ostrom. 102

EASTLAND SERVICE PARTS CO.
Auto & Truck PARTS
IN STOCK & OVER NIGHT DELIVERY
LOWEST PRICES ANYWHERE
Independently - Owned
Nationally - Affiliated
CALL US FIRST!
AUTO PARTS
MA 9-1733
(Clip This Coupon and Place It Near Your Telephone)

THURMAN ELECTRIC
Electric Motor Rewinding and Repair. 202 S. Seaman, Eastland.

POE FLORAL
Eastland 609 W. Main

HELP WANTED: Insurance agent needed for old established debit. With car under age 50. Nice yearly earnings. Apply 258 Burger, Abilene, Texas, at 7:30 a.m. 100

WANTED: Woman to do housework and cooking six days a week. Apply 610 S. Lamar. 101

YOU can rent that spare bedroom with a Telegram Classified! tf

PERSONALS
WANTED — An opportunity to prove that Telegram Classifieds work hard for you. tf

PERSONAL: Wheel alignments and wheel balancing. Vic's Auto Repair. 306 W. Main MA 9-2111. 104

PERSONAL: Please come home. G. I. taken another Telegram subscription. We'll both have one now. tfe.

MEN—If you are not attending any other Sunday School Class come to the 9:49 Bible Class at the Methodist Church where you will receive a cordial welcome. 105

Mrs. Glen Scallorn

NOTICE

"The City of Eastland is open to an individual or store that would like to distribute nationally known hot metal paint that will withstand up to 2200 F. thru sudden and drastic temperature changes. Used on industrial engine exhausts, fireboxes, tractors, steamlines etc. or anywhere where metal surfaces are exposed to cruel temperatures. Field proven by long years of use. No investment. No stock need be kept. Simply forward orders to plant. If interested please write Warren H. Cooper, 1108 Douglas, Odessa, Tex. for details." tf

Whitenton Radio & TV Service
is now located in Western Auto Store East side of square. Phone MA 9-2011. All work guaranteed.

LOST AND FOUND
LOST: Gruen rectangular white gold wrist watch, with white gold link band. Will finder return to Mrs. H. H. Durham for reward. 909 S. Seaman. MA 9-1353, or leave at Telegram office. tfe.

COMPLETE FURNITURE RE-FINISHING & UPHOLSTERING
Eddie's Upholstery
Spain's Food Store Bldg.
311 N. Seaman

WANTED
10 FAMOUS
JOHNSON SEA HORSE "Milestone Engines"
Check At
Bruce Pipkin Sport Center
Eastland

WANTED
When You Care
Enough To Send
The Very Best Dial
MA 9-1711
All Colors
Mum Plants 3.50 & up
Mixed
Potted Plants 2.50 & up
Creative arrangements of permanent flowers in lovely vases - Nice Christmas gifts.

GOLDEN AGE NURSING HOME
104 East 4th Street Cisco Phone HI 2-3458
24 Hour Nursing Care, Good Meals - Special Diets
State Licensed and Approved For Welfare Patients
Jerry Stephens Administrator
Mrs. Ora M. Forgy, L. V. N. Director or Nurses

HAMNER FUNERAL HOME
Ben E. Hamner, Owner
Serving Eastland County since 1924 with ambulance and funeral service. Our ambulances are oxygen equipped and air conditioned. Through our nation-wide connections with other funeral directors, we can handle a funeral from any point in America. We offer this service knowing that we can relieve the family of all burdens incident to any death away from home.
Eastland Dial MA 9-2611

Court News

Probate
Lena McDonough, deceased, application to probate will. J. V. Harbin, deceased, application to probate will. William Thomas, deceased, application to probate will.

Marriage Licenses
Don Elmer Rodgers and Rena Collie Allen.

Suits Filed
The following suits were filed for record in the 1st District Court last week:
Wanda McDonald vs. Odie G. McDonald, divorce.
In Re: Tony Anthony Jordan, a minor, removal of disabilities.

Orders and Judgments
The following orders and judgments were rendered from the 1st District Court last week:
Barbara L. Pogue vs. Billy D. Pogue, temporary order.
V. W. Peterson vs. Vonna V. Peterson, judgment.
State of Texas vs. Mrs. John T. Roberson, order.

The following instruments were filed for record in the County Clerk's office last week:
Billy R. Adams, et ux to First Federal S&L Assn. of Ranger, deed of trust. H. M. Bassett to Bert Duncan, et ux, deed of trust. Lonnie Joe Bennett, et ux to Higginbotham Bros. & Co. to Pioneer Savings Assn., MML. D. S. Buchanan, et ux to Eldress M. Gattis, et ux, release deed of trust.

N. B. Benson, et ux to Geo. W. Stewart, oil, gas and mineral lease. R. O. Buckley, et ux to Geo. W. Stewart, oil, gas and mineral lease. W. A. Brown to Geo. W. Stewart, oil and gas and mineral lease. Perry J. Barnes, et ux to Roy Lee Barnes, warranty deed.

Jack Chamberlain, Sr., et ux to Cora Davis, warranty deed. T. F. Canafax to E. A. Hatten, warranty deed. T. F. Canafax to E. A. Hatten, release of vendor's lien. W. R. Crocker, Sub. trustee to Modern Homes Finance Co., resignation of Sub. trustee. Estate of Charlie Price Cooper, deceased, to The Public, ce probate.

Century Life Insurance Co. to J. L. Stafford, et ux, release deed of trust. City of Eastland to Bert Peyton, cemetery deed. Bert Duncan, et ux to H. M. Bassett, warranty deed. Annie Day to John F. Willingham, warranty deed. W. H. Davis, et ux to Geo. W. Stewart, oil, gas and mineral lease. Dallas Credit Corp. vs. R. F. Underwood, abstract of judgment. J. H. Ervin to W. C. James, et ux, warranty deed.

George C. Fraser, III, et al to Fox-Hart-George Pipe Line Co., deed of trust. Bess Oleson Franklin, et vir to James V. Heyser, Jr., warranty deed. First Federal S&L Assn. of Breckenridge to Eldress Gattis, et ux, release of vendor's lien and deed of trust. First Federal S&L Assn. of Ranger to Jesse E. Pitman, Sr., et ux, release MML.

First Federal S&L Assn. of Ranger to Jesse E. Pitman, Sr., et ux, release MML. G. C. Fitzhugh, et ux to R. F. Vann, warranty deed. Will Graham, Adm. Est. of Jerusha A. Cathey, deceased, to W. L. Wharton, Jr., administrator's deed. Gene M. Gardner, et ux to O. C. Cunningham, mineral deed. Clyde Grissom to The State of Texas, corrected right-of-way and easement.

Eldress Gattis, et ux to Edmund F. Gallagher, Sr., et ux, warranty deed. Edmund F. Gallagher, Sr., et ux to First Federal S&L Assn. of Ranger, deed of trust. J. J. Grisham, et ux to Geo. W. Stewart, oil, gas and mineral lease. Geneva Petroleum Co. to The Public, assumed name. Hood King Motor Co. to The Public, assumed name.

Jack Henson, deceased to The Public, proof of heirship. Jack Henson, Jr., et al to T. C. Huckaby, warranty deed. T. C. Huckaby to Commercial State Bank of Ranger, deed of trust. Mattie Hood, et al, deceased, to The Public, proof of heirship. T. W. Howard, et ux to Geo. W. Stewart, oil, gas and mineral lease.

W. M. Hammond, et ux to Geo W Stewart, oil, gas and mineral lease Charles D Howard, et ux to Geo. W. Stewart, oil, gas and mineral lease. Thomas Irwin, et ux to Devotie Jordan, quit claim deed. C. E. Johnson, et ux to Emery L. Booth, warranty deed. A. S. Johnson, et al to Geo. W. Stewart, oil, gas and mineral lease Morris Jeffries to First Federal S&L Assn. of Ranger, deed of trust. Tony Anthony Jordan to The Public, ce order removing disabilities. Tony Anthony Jordan to Devotie Jordan, quit claim deed. Roy Jordan, et al to Devotie Jordan, quit claim deed. Joe Jarrett, et ux to Devotie Jordan, quit claim deed. King Motor Co. to The Public, assumed name.

Loveard King to Eldress Gattis, et ux, release MML. James Leftwich to Modern Homes Finance to Virgil T. Seaberry, Jr., resignation of trustee and appointment of sub. trustee. Vernie Long, et ux to First Federal S&L Assn. of Ranger, deed of trust Lone Star Gas Co. vs Gordon Woods, abstract of judgment to Virgil T. Seaberry, Jr., appointment of sub. trustee. Lucy A. Maine to Edward T. Maine, assignment of interest. J. M. Mathews, et ux to Texas Electric Service Co., easement and right-of-way. B. E. Miller to J. H. Ervin, quit claim deed. John W. McKinney to Charlotte Hastings, power of attorney.

James P. McCracken, et ux to Dennis Cotten, warranty deed. J. D. McMaster, et ux to W. R. Burleson, warranty deed. Jimmy Dean Nichols, et ux to Mrs. Florence Delaney, transfer vendor's lien and deed of trust. Ceilon Parsons to W. F. Turner, deed of trust. Julia E. Parker, et al, deceased, to The Public, proof of heirship.

Tom S. Rainey, et ux to Geo. W. Stewart, oil, gas and mineral lease. S&S Oil Co. to Twin Mountain Oil Corp., assignment oil and gas lease. Chas. S. Sandler to West Texas Produce Co., warranty deed. C. G. Stephens, et ux to Roy B. Smith, et ux, correction deed. J. Davis Smith, et ux to Federal Land Bank of Houston, deed of trust.

R. L. Sharp, et ux to Geo. W. Stewart, oil, gas and mineral lease. J. M. Sparks, et ux to Geo. W. Stewart, oil, gas and mineral lease. Mary Beulah Turner, et al to Texas Electric Service Co., easement and right-of-way. B. L. Templeton, Indv. and attorney-in-fact to Geo. W. Stewart, oil, gas and mineral lease.

A. D. Thompson, et ux to Luther James, warranty deed. Carrie Gann Underwood to The Public, proof of heirship. T. A. Utley, et ux to W. F. Turner, lease agreement. United States of America to C. E. Gann, notice of tax lien. Ira J. Uttz, et ux to Lee S. Dulin, et ux, warranty deed. M. L. Wade, Jr. to W. H. Hall, Jr., release of judgment. West Texas Produce Co. to

The Public, assumed name. W. L. Wharton, Jr., et ux to First Federal S&L Assn. of Ranger, deed of trust. N. S. Woods to The Public, affidavit of fact. L. Warner, et al to C. R. Lasater, warranty deed. J. H. Windland et ux to Vernie Long, et ux, warranty deed.

Jack Henson, deceased to The Public, proof of heirship. Jack Henson, Jr., et al to T. C. Huckaby, warranty deed. T. C. Huckaby to Commercial State Bank of Ranger, deed of trust. Mattie Hood, et al, deceased, to The Public, proof of heirship. T. W. Howard, et ux to Geo. W. Stewart, oil, gas and mineral lease.

W. M. Hammond, et ux to Geo W Stewart, oil, gas and mineral lease Charles D Howard, et ux to Geo. W. Stewart, oil, gas and mineral lease. Thomas Irwin, et ux to Devotie Jordan, quit claim deed. C. E. Johnson, et ux to Emery L. Booth, warranty deed. A. S. Johnson, et al to Geo. W. Stewart, oil, gas and mineral lease Morris Jeffries to First Federal S&L Assn. of Ranger, deed of trust. Tony Anthony Jordan to The Public, ce order removing disabilities. Tony Anthony Jordan to Devotie Jordan, quit claim deed. Roy Jordan, et al to Devotie Jordan, quit claim deed. Joe Jarrett, et ux to Devotie Jordan, quit claim deed. King Motor Co. to The Public, assumed name.

Loveard King to Eldress Gattis, et ux, release MML. James Leftwich to Modern Homes Finance to Virgil T. Seaberry, Jr., resignation of trustee and appointment of sub. trustee. Vernie Long, et ux to First Federal S&L Assn. of Ranger, deed of trust Lone Star Gas Co. vs Gordon Woods, abstract of judgment to Virgil T. Seaberry, Jr., appointment of sub. trustee. Lucy A. Maine to Edward T. Maine, assignment of interest. J. M. Mathews, et ux to Texas Electric Service Co., easement and right-of-way. B. E. Miller to J. H. Ervin, quit claim deed. John W. McKinney to Charlotte Hastings, power of attorney.

James P. McCracken, et ux to Dennis Cotten, warranty deed. J. D. McMaster, et ux to W. R. Burleson, warranty deed. Jimmy Dean Nichols, et ux to Mrs. Florence Delaney, transfer vendor's lien and deed of trust. Ceilon Parsons to W. F. Turner, deed of trust. Julia E. Parker, et al, deceased, to The Public, proof of heirship.

Tom S. Rainey, et ux to Geo. W. Stewart, oil, gas and mineral lease. S&S Oil Co. to Twin Mountain Oil Corp., assignment oil and gas lease. Chas. S. Sandler to West Texas Produce Co., warranty deed. C. G. Stephens, et ux to Roy B. Smith, et ux, correction deed. J. Davis Smith, et ux to Federal Land Bank of Houston, deed of trust.

R. L. Sharp, et ux to Geo. W. Stewart, oil, gas and mineral lease. J. M. Sparks, et ux to Geo. W. Stewart, oil, gas and mineral lease. Mary Beulah Turner, et al to Texas Electric Service Co., easement and right-of-way. B. L. Templeton, Indv. and attorney-in-fact to Geo. W. Stewart, oil, gas and mineral lease.

A. D. Thompson, et ux to Luther James, warranty deed. Carrie Gann Underwood to The Public, proof of heirship. T. A. Utley, et ux to W. F. Turner, lease agreement. United States of America to C. E. Gann, notice of tax lien. Ira J. Uttz, et ux to Lee S. Dulin, et ux, warranty deed. M. L. Wade, Jr. to W. H. Hall, Jr., release of judgment. West Texas Produce Co. to

The Public, assumed name. W. L. Wharton, Jr., et ux to First Federal S&L Assn. of Ranger, deed of trust. N. S. Woods to The Public, affidavit of fact. L. Warner, et al to C. R. Lasater, warranty deed. J. H. Windland et ux to Vernie Long, et ux, warranty deed.

Jack Henson, deceased to The Public, proof of heirship. Jack Henson, Jr., et al to T. C. Huckaby, warranty deed. T. C. Huckaby to Commercial State Bank of Ranger, deed of trust. Mattie Hood, et al, deceased, to The Public, proof of heirship. T. W. Howard, et ux to Geo. W. Stewart, oil, gas and mineral lease.

W. M. Hammond, et ux to Geo W Stewart, oil, gas and mineral lease Charles D Howard, et ux to Geo. W. Stewart, oil, gas and mineral lease. Thomas Irwin, et ux to Devotie Jordan, quit claim deed. C. E. Johnson, et ux to Emery L. Booth, warranty deed. A. S. Johnson, et al to Geo. W. Stewart, oil, gas and mineral lease Morris Jeffries to First Federal S&L Assn. of Ranger, deed of trust. Tony Anthony Jordan to The Public, ce order removing disabilities. Tony Anthony Jordan to Devotie Jordan, quit claim deed. Roy Jordan, et al to Devotie Jordan, quit claim deed. Joe Jarrett, et ux to Devotie Jordan, quit claim deed. King Motor Co. to The Public, assumed name.

Loveard King to Eldress Gattis, et ux, release MML. James Leftwich to Modern Homes Finance to Virgil T. Seaberry, Jr., resignation of trustee and appointment of sub. trustee. Vernie Long, et ux to First Federal S&L Assn. of Ranger, deed of trust Lone Star Gas Co. vs Gordon Woods, abstract of judgment to Virgil T. Seaberry, Jr., appointment of sub. trustee. Lucy A. Maine to Edward T. Maine, assignment of interest. J. M. Mathews, et ux to Texas Electric Service Co., easement and right-of-way. B. E. Miller to J. H. Ervin, quit claim deed. John W. McKinney to Charlotte Hastings, power of attorney.

James P. McCracken, et ux to Dennis Cotten, warranty deed. J. D. McMaster, et ux to W. R. Burleson, warranty deed. Jimmy Dean Nichols, et ux to Mrs. Florence Delaney, transfer vendor's lien and deed of trust. Ceilon Parsons to W. F. Turner, deed of trust. Julia E. Parker, et al, deceased, to The Public, proof of heirship.

Tom S. Rainey, et ux to Geo. W. Stewart, oil, gas and mineral lease. S&S Oil Co. to Twin Mountain Oil Corp., assignment oil and gas lease. Chas. S. Sandler to West Texas Produce Co., warranty deed. C. G. Stephens, et ux to Roy B. Smith, et ux, correction deed. J. Davis Smith, et ux to Federal Land Bank of Houston, deed of trust.

R. L. Sharp, et ux to Geo. W. Stewart, oil, gas and mineral lease. J. M. Sparks, et ux to Geo. W. Stewart, oil, gas and mineral lease. Mary Beulah Turner, et al to Texas Electric Service Co., easement and right-of-way. B. L. Templeton, Indv. and attorney-in-fact to Geo. W. Stewart, oil, gas and mineral lease.

A. D. Thompson, et ux to Luther James, warranty deed. Carrie Gann Underwood to The Public, proof of heirship. T. A. Utley, et ux to W. F. Turner, lease agreement. United States of America to C. E. Gann, notice of tax lien. Ira J. Uttz, et ux to Lee S. Dulin, et ux, warranty deed. M. L. Wade, Jr. to W. H. Hall, Jr., release of judgment. West Texas Produce Co. to

The Public, assumed name. W. L. Wharton, Jr., et ux to First Federal S&L Assn. of Ranger, deed of trust. N. S. Woods to The Public, affidavit of fact. L. Warner, et al to C. R. Lasater, warranty deed. J. H. Windland et ux to Vernie Long, et ux, warranty deed.

IN HOSPITAL
Mrs. J. W. ... of Route two, ... Hospital following home last Thursday tained broken legs. According to wife's condition is satisfactory.

C-C Board Meet Due Thursday

A talk by incoming President A. D. Taylor and discussion of Christmas plans will be features of a Chamber of Commerce Board of Directors meeting at noon Thursday.

The board meets each third Thursday, but will probably move next month's meeting up to the second Thursday because of Christmas week activities, Manager Lee Ellis has announced.

The Thursday meet will be at the White Elephant Restaurant.

Card of Thanks

Thank you my friends in Cisco, Eastland, and Ranger for your thoughtful kindness and sympathetic understanding during the illness and death of my sister, Mary Catherine Strane. Leslie Jones Sanders

ATTENTION PEANUT GROWERS

If at any time we may assist you with marketing problems, please call on us here to serve you.

Southwestern Peanut Grower's Ass'n.
Box 338 Gorman, Texas

Hamner Life Insurance Co.

Ben E. Hamner, President
This company has been in operation since 1942 selling policies to be primarily for burial purposes. We write to \$600 and our policies are paid in full allows freedom in the selection of the Director of your choice.

Ages from 1 month to 90 years.
For further information come by to Hamner Funeral Home, 301 S. Lamar, P. O. Box 431 Dial MA 9-2611

LET VIC

WINTERPROOF YOUR CAR NOW

J. B. MORTON, who has 15 years experience with General Motors Vehicles, is now associated with our firm.

In addition to our other services, we have

AUTOMATIC TRANSMISSION
ADJUSTED • EXCHANGED • REPAIRED
VIC'S AUTO REPAIR
MA 9-2111

CHRISTMAS SPECIAL

8x10 BLACK AND

Honor, Country Las Leales Program

Club members of the Las Leales program on "Duty, Honor, Country," as quoted in the program, is impossible unless there is something in faith." Following a program of singing, members of the club were given a special luncheon. Each member was given a small gift. The luncheon was held at the home of Mrs. J. T. Gregory.

RESSES
50% renovating and firmness. Made and made in WESTERN CO. San Antonio 9-1342, Eastland address.

RAWLINS' DENTISTS

(SINCE 1884)
WATERFORD, PHONE LY 2-2726

Better Ones are Offered -
We shall continue to represent old line companies which have stood the acid test of years and personalized service for more than 75 years. The Stock Company group of agencies system which means that you are dealing with a local agent. He is your representative and readily available, especially in your own area. There are many other desirable features but this one alone will solve most insurance problems.

W. BENDER & COMPANY
(Insurance since 1924) Texas

Club Dinner Is Hosted By Jack Lusks

Mr. and Mrs. Jack Lusks were host and hostess to members of the Friendship Club and their guests Friday evening for the annual Thanksgiving dinner. The dinner was served buffet style from a table laid in pale green and centered with an autumn arrangement of leaves, gold and green mums and baby mums. Miniature turkey figures surrounded the centerpiece.

PERSONALS
Mr. and Mrs. Clyde Turner have returned home after a month's visit in the home of Mr. and Mrs. Melvin Ohlsen, in Midwest City, Okla. They visited with their granddaughter and daughter, Wanda Turner, while the Ohlsens were in Washington, D. C., where Mr. Ohlsen attended an institute conducted by the Internal Revenue Department.

Pauline Ramsey attended the regular meeting of the 17th District Dental Assistant Society Tuesday, Nov. 6, at the Women's Club in Abilene. Nineteen members and guests were in attendance to see films presented by W. A. Colvin, representative of the Pine Line Service Co. of Lubbock. The film was "Mouth to Mouth Resuscitation."

Helen Turner has returned home after a trip to Washington, D. C. where she was met by Mr. and Mrs. Melvin Ohlsen. She accompanied the Ohlsens to Indianapolis, Ind., for a visit with relatives, then to their home in Midwest City, Okla. She returned to Eastland with Mr. and Mrs. Clyde Turner.

Miss JoAnn Yancey Honored With Shower

Miss Jo Ann Yancey, bride-elect of Ronnie Johnson, was honored with a bridal shower in the home of Mrs. Glen Gray, Eastland, Saturday evening from 7 to 9 p.m.

Hostesses with Mrs. Gray were Mrs. Ita Parrish of Eastland and Miss Tommie June Sharpe of Olden.

Receiving guests were Mrs. Gray, Miss Yancey, Mrs. L. D. Yancey, mother of the bride-elect, and Mrs. Fred C. Johnson, mother of the prospective bridegroom.

The registry table held the bride's book and a yellow and a white dahlia in a low ceramic bowl.

Refreshment table was laid with a white linen cloth and centered with a fall arrangement of white chrysanthemums in a crystal compote. Yellow candles flanked each side of the arrangement. Appointments were of crystal and silver. White napkins inscribed with Jo Ann and Ronnie in yellow completed the table.

Miss Sharon Johnson, sister of the prospective bridegroom, poured punch and Mrs. Don Lowrance sister of the bride-elect served the cake squares. Nuts and white and yellow mints were also served.

The house was decorated throughout with fall flowers. Approximately 35 guests called during the evening.

LAS LEALES MEET
Members of Las Leales Club will meet Monday at 7:30 p.m. in the Woman's Club for a Thanksgiving program.

Mrs. J. T. Gregory will present "Four Dreams of Man" by John Furbay.

Hostesses for the evening will include Miss Vera Johnson, Mrs. An Grace Bumpass, Mrs. Floyd Robertson and Mrs. J. C. Whitley.

**Jane Mayers To Be Wed To
Jonah Finley**

Mrs. Vera Mayers Trott of Lubbock has announced the engagement and approaching marriage of her daughter, Jane Mayers, to Jonah J. Finley.

The prospective bridegroom is the son of Mr. and Mrs. J. J. Finley of Eastland.

The couple will be married Saturday, Dec. 15, at 8 p.m. in the Harmon Baptist Church in Morton Valley.

All friends and relatives of the couple are invited to attend the ceremony.

MEETING TODAY
Mrs. T. E. Richardson will be hostess and program leader for a meeting of the Thursday Afternoon Club this afternoon at 3:15 p.m. in the Woman's Club.

Program theme for the day will be "Stepping Stones to World Federation."

Presenting the program, "Women's Clubs in Foreign Lands" will be Mrs. Joseph M. Perkins.

Willene Lee Honored With Bridal Shower

Miss Willene Lee, bride-elect of Jimmie Dell Rodgers, was honored with a bridal shower Saturday, Nov. 3, in the home of Mrs. K. J. Lee.

Hostesses for the party were Mrs. W. L. Hagar, Pauline Summers, Don Morris, H. A. Cogburn, Clyde Moore, A. L. Seay, K. J. Lee and Miss Barbara Rodgers.

Guests were received by Miss Lee, Mrs. E. H. Lee, Mrs. Reese Rodgers and Mrs. Mickey Craig.

The serving table was covered with a white lace cloth over blue and was centered with an arrangement of white pom pom mums and carnations with accents of blue in a silver compote. The bride-elect's chosen colors of blue and white were carried out in all decor. Appointments of silver complimented the setting.

Coffee and cake were served to approximately 30 guests.

RETURNS HOME
Charlie Van Geom of Fort Worth has returned to his home after visiting in the home of his father, W. L. Van Geom and Mrs. Van Geom.

Fair Condition
Terry Lee Cox and Jack D. Byrd were reported to be in fair condition in the Eastland Memorial Hospital following an automobile accident Sunday morning on West Highway 80. Cox received a broken right arm and Byrd received serious head lacerations. The two were returning from Cisco when the driver of the car apparently fell asleep and collided with the car in front of them.

(Read the Classifieds)

CHECK IN NOW FOR YOUR PRE-WINTER CAR CHECK-UP!

COMPLETE AUTO REPAIRS

24 HOUR WRECKER SERVICE

ALLEN AUTO REPAIR
AT RUSHING MOTOR CO.
215 SOUTH SEAMAN

Phones
MA 9-2270
Night
MA 9-2224

COME TO A&P AND GET EVERYTHING GOOD FOR THANKSGIVING!

Thrift-Giving FESTIVE FOODS **Gift-Giving PLAID STAMPS!**

TURKEYS U.S.D.A. INSPECTED OVEN READY

(14 LBS. UP) **Toms** lb. **35¢**

(10 LBS. UP) **Hens** lb. **39¢**

BROIL, FRY OR BAKE
YOUNG TURKEYS 10 LBS. **43¢**

A&P

PRICES GOOD THRU NOV. 17TH

A&P SPECIAL COFFEE SALE
MILD & MELLOW
EIGHT O'CLOCK

1-LB. BAG **49¢**
SAVE 6c

3-Lb. Bag **\$1.45**
SAVE 14c

RICH & FULL-BODIED RED CIRCLE

1-LB. BAG **55¢**
SAVE 4c

3-Lb. Bag **\$1.59**
SAVE 12c

VIGOROUS & WINEY BOKAR COFFEE

1-LB. BAG **59¢**
SAVE 2c

3-Lb. Bag **\$1.69**
SAVE 8c

Neuhoff's Smoked Canned Hams 5 Lbs. **\$4.59**

Dixieland Pride **Chicken Livers** 8 oz. Pkg. **29c**

Chicken Gizzards Lb. Pkg. **29c**

Sultana **Sliced Pineapple** No. 2 Size **25c**

OUR OWN **Tea** 5c Off Label 1/2 Lb. **49¢**

ANN PAGE No. 303 Can **Pumpkin** **10¢**

Jane Parker Pumpkin Pie **39¢**

Super-Right-Thick Sliced Bacon 2 Lbs. **89c**

Fresh Pork Loin **Roast** Rib End, 5 Ribs Lb. **39c**

Loin End Lb. **45c**

Jane Parker - Stuffing **Bread Mix** 8 oz. Pk. **25c**

Hip-O-lite Marshmallow **Creame** 16 oz. Jar **25c**

Rainbo - 12 oz. Jar **Dill Gherkins** 2 For **49c**

FLORIDA JUICE
Oranges 25 EXTRA STAMPS 5 Lb. Bag **49c**

Apples RED ROME 2 Lbs. **29c**

Potatoes RED 25 Lb. Bag **89c**

250 EXTRA PLAID STAMPS With the Purchase of the Following Items:

100 EXTRA PLAID STAMPS WITH Jane Parker **FRUIT CAKE** over 2/3 fruit & nuts

5-Lb. Size **\$3.99**

25 EXTRA PLAID STAMPS WITH LINDSEY **OLIVES** Med. Pined Ripe No. 1 Can **35¢**

25 EXTRA PLAID STAMPS WITH ANN PAGE **SYRUP** Pancake and Waffle 1-pt., 8-oz. Btl. **39¢**

WISCONSIN Cranberries Lb. Box **25c**

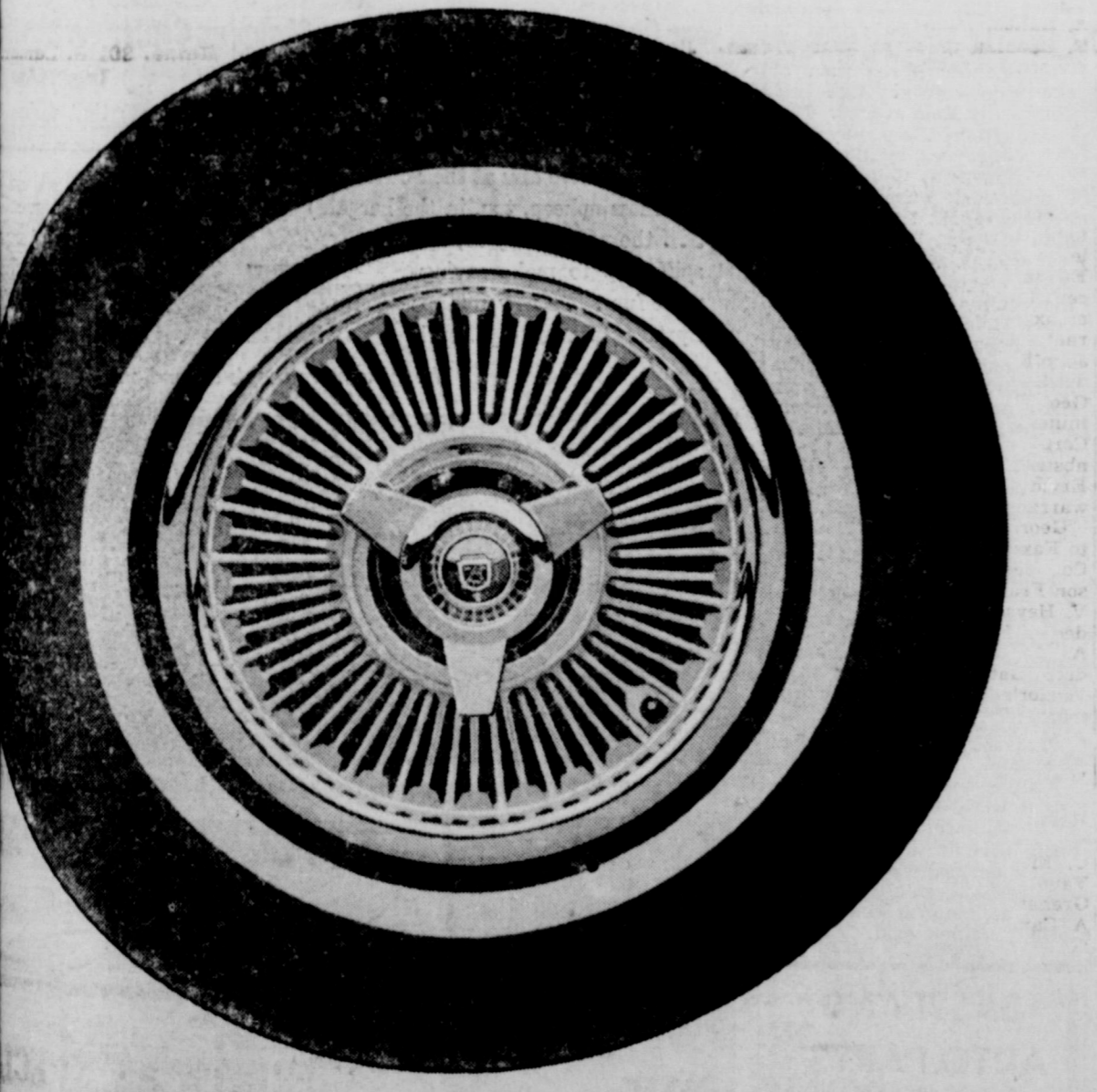
Yams 3 For **29c**

RAINBO - 12 oz. Jar Swt. Gherkins 3 For **\$1**

MAYONNAISE Ann Page Really Fine Qt. **49¢**

Nabisco Cookie Sale!
CHOCOLATE PINWHEELS - 12 1/4-oz.
FANCY GRAHAMS - 14-oz.
STRIPE SHORTBREAD - 12 1/4-oz.

45¢ **AP Food Stores**



Call...for a \$10 million ride!

Spent more than \$10,000,000 to develop a new, smoother in the '63 Ford Galaxie! Your Ford Dealer invites you to just 10 minutes in the driver's seat! You'll roll smoothly on all roads at all speeds, at all times! Only the wheels feel the difference! This new ride in the Ford Galaxie is so incredibly smooth you can't describe it! You have to drive a Galaxie yourself! The easy mile, all the new handling ease will be a revelation!

TRY IT TODAY - SEE YOUR FORD DEALER

HOOD KING MOTOR CO.
100 E. Main Eastland Ph. MA 9-1786

Gorman Youths Awarded Top 4-H Club Honors At Dinner

Two Gorman 4-H Club members were awarded top honors Saturday night as some 150 persons gathered at Cisco Junior College cafeteria for the annual achievement banquet. The winners were Robert Whitt, 14 and Joy Love, 15.

White, the gold star boy winner, is the son of Mr. and Mrs. Keith Whitt and is a freshman at Gorman High School. His honors included outstanding work with Hereford cattle and other activities in the Gorman chapter.

Miss Love, who received the gold star award for girls, is the daughter of Mr. and Mrs. Melva Love and is a sophomore at Gorman High School. She has been in 4-H Club work for five years with an outstanding record.

The top awards as well as achievement certificates were presented by County Judge B. M. Bennett as follows:

Achievement — Ruby Wende and Darwin Pharr, Nimrod; Toni Beth Lawrence, Gorman and Eddie Kincaid, Morton Valley.

Agriculture — Tommy Lee and Kathy Boyd, Cisco, and Johnny Cantwell and Willie Cantwell, Ranger.

Beef — Sandra Warlick,

Rising Star; Larry Don Williamson, Ranger, Robert Whitt, Gorman, and Lynne Pippen, Cisco.

Clothing — Nancy Justice and Sharon Harbin, Carbon; Linda Pharr, Nimrod, and Elizabeth Parr, Gorman.

Dairy — Rodger Wilkerson, Scranton; Randall Hale and Theo Hale, Cisco; and Jerry Morgan, Scranton.

Dairy foods — Elaine Windham and Peggy Howton, Ranger.

Dress review — Margaret Porter, Gorman; Kathy Kincaid, Morton Valley, and Carolyn Morgan, Scranton.

Electric — Johnny Moylan and Steve Perdue, Eastland, and Rudy Mendoza and Johnny Hill, Ranger.

Entomology — Darel Gonnell, Cisco.

Field crops — Bobby Maynard, Rising Star, and David Boland and Royce Harris, Scranton.

Garden — David Cox, Eastland; James A. Agnew, Cisco; Alan Robinson, Ranger, and Bruce Wyatt, Carbon.

Home economics — Joy Love, Gorman; Carolyn Plambeck, Cisco; and Carolyn Hope, Ranger.

Leadership — Loresta Love, Ranger; Mike Wood, Cisco;

Rodney Harrelson, Nimrod, and Carolyn Thomas, Olden. Poultry — Brad White, Ranger, and Gregg Emfinger, Eastland.

Recreation — Tony Lovrance and Sandra Teague, Rising Star; and Teddy McCulloch, Scranton.

Safety — Sandra Eudy and Linda Kanady, Scranton.

Swine — Judy Pharr, Nimrod; Bobby Williams, Gorman; Kenny McCulloch, Scranton; and Mack Wolf, Rising Star.

Tractor — Dale Carlile, Nimrod.

Public speaking — Mary Clark, Eastland.

The clover certificate was presented to leaders as follows: Jimmy Horn, Lloyd Armstrong and Ben McKinnis, all of Eastland; Glen Justice, Bob Green, Ross Wilson, Mrs. L. L. Burns, Mrs. W. D. Preston, Mrs. Bill Parr, Mrs. Glen Justice, Mrs. Joyce Eaves and Mrs. Rooney Williams, all of Gorman.

Jimmy Lee, Gaston Boyd, Irving Pippen, Mrs. Park Plambeck and Mrs. Jimmy Lee, all of Cisco; Robert Kincaid, Mrs. Gordon Clark and Mrs. Robert Kincaid, all of Morton Valley; Jerald Cagle, L. J. Williamson, Mrs. L. J. Williamson, Mrs. Adra Fox and Wayne Brock, all of Olden; C. E. Bridge, Desdemona; Jack Cozart and Mrs. F. D. Carlile, Nimrod; Mrs. L. A. Harbin, Carbon; Mrs. R. L. Hope and Mrs. Melva Love, Ranger.

The program opened with

Pay Hike -

(Continued from page 1)

Elevator Operator — now \$205.

Health officer — was \$76.70; now, \$85.

Tax assessor-collector — was \$417; now \$460.

Deputy collector — was \$275; now \$303.

At this point in the afternoon deliberation, Commissioner Glen Justice called a halt and asked:

"What's the story behind Mary Nicholas (first deputy in the county clerk's office) getting less than other first deputies?"

(He was referring to a comparison of first deputies in the

invocation by County Agent J. M. Cooper, Rodney Harrelson, master of ceremonies, gave the welcome talk, with the response by Scott Bailey. Special entertainment was presented by the Gorman and Carbon 4-H Clubs.

Special guests included Mr. Bailey, Judge Bennett, County Agent and Mrs. Cooper, Mr. and Mrs. Glen Justice, Mr. and Mrs. Ross Wilson, Mr. and Mrs. Waverly Massengale, and J. W. Sitten.

The program arrangements were in charge of Roger Blackmon, assistant county agent, and Beverly Nicholson, county home demonstration agent. The dinner was catered by Eubank's Cafeteria of Cisco.

clerk and tax offices.) Commissioner Tip Arthur suggested that the idea started a long time ago when women were not paid as much as men because they were not heads of households.

It was decided to go on through the salary talks and come back to the differences.

Deputy tax assessor — was \$300; now, \$330.

Six tax deputies — (each per month) was \$210.64; now \$232.

County clerk — was \$417.91; now \$460.

First deputy, clerk's office — was \$247.80; now \$273.

Another deputy — was \$210.64; now \$232.

Two other deputies — each; was \$223.02; now \$246.

Two half-time clerks — was \$115; now \$123 each.

District attorney — was \$459.43; now \$506.

His secretary — was \$247.80; now \$273.

Sheriff — was \$417.91; now \$460.

First deputy sheriff — was \$300; now \$330.

Office deputy — was \$232.02; now \$246.

Jailer — was \$185.85; now \$205. (Plus food and lodging).

Female deputy — was \$40; now \$44.

District Clerk — was \$417.91; now \$460.

First deputy clerk — was \$247.80; now \$273.

County treasurer — was \$298.30; now \$329.

County agent — was \$214.88; now \$237. (\$60 of which is for transportation).

Assistant county agent — was \$113.94; now \$126. (\$41.66 for transportation.)

County Home Demonstration agent — was \$175.89; now \$194. (\$41.66 for transportation.)

Assistant county HD agent — same as assistant agent. (These figures represent the amount the county contributes to agents' salaries only, and does not affect the amount paid by the Extension Service.)

As a result of the 25 per cent increase, constables in Eastland, Cisco and Ranger will now be paid \$94 per month, rather than \$75; those in Rising Star and Gorman, \$125 rather than \$100; and in Desdemona, \$32 rather than \$25.

Commissioner's employees' salaries will vary. Arthur has one man at \$275, who will get \$303, and five men at \$250, who will be raised to \$275.

Justice has three men at \$250 who will get \$275 and Collins five men at \$260. Carl Lamb from Cisco pays his five employees by the hour.

At this point Collins asked if something wasn't going to be done about the chief deputies salaries.

It was pointed out that another inequity exists in that the county treasurer will receive \$1 less than one of the chief deputies.

For quite a while the trucks on Highway 80 made the only noise heard in the courtroom as the men pondered the salaries.

"First time in four years that somebody didn't have something to say," Lamb noted.

"I think one person is just as much entitled to a raise as another if the responsibilities are equal," Justice said.

Arthur made the motion to raise all salaries 10 per cent except the constables and theirs 25 per cent effective Nov. 1st.

Budge B. M. Bennett called the vote.

Collins asked "Are we going to work it out?"

"We'll settle the equalities later," Arthur said.

"It's not right when county employees aren't getting as much as some secretaries in town," Collins said.

County Building Committee Hears Preliminary Reports

There won't be a single acre of cotton in Eastland County in 1975, if the current trend in the decreasing cotton acreage continues, a large group of Eastland Countians learned Thursday evening.

This fact and others came out of preliminary reports now being compiled by special committees of the Eastland County Program Building Committee.

In 1950 there were 23,000 acres of cotton in this county," County Agent J. M. Cooper reported, "and in 1960, there were only 936. If the percentage of decrease continues, there will only be 136 acres in 1965 and '0' acres in 1975."

Cooper read from a report which he is working on, on the county's agricultural background.

Committee Chairman Henry Schaefer, presided, and introduced guest speaker, Garland H. Marshall, Resource Development Specialist, Agricultural Extension Service of A&M College.

Marshall commended the group, which was county-wide representative, but scarce Thursday due to conflicting meetings, and told them that technological advances have af-

fecting both urban and rural populations.

He said that a broad-based committee is necessary in order to "take the broad look" that is needed to prepare a long-range program to be used to strengthen the economy and help the social standing of the county.

He explained how the County Program Building Committee, the executive committee (yet to be named in this county), and the technical action panel work together in this program.

The technical action panel (TAP) is composed of Homer P. Cole, supervisor of the Farmers Home Administration, chairman; E. E. McAllister, supervisor of the Soil Conservation Office here; and Emmett Powell, Agricultural Stabilization and Conservation Committee chairman.

Top study committees are being prepared, detailed data sheets on as many areas of economy as human resources of this county.

After the reports are complete they will be analyzed to determine major problem areas, avenues of needed emphasis and goals to be sought.

Next meeting date will be determined by the County agents who will begin meeting with the individual committees to check and assist in their research.

Tom Wilson, Eastland bank president, submitted a 13-point outline of standing roles and these will be acted upon at the next regular meeting of the committee.

County of this county's meeting at the Texas Electric Service Co. conference room in Eastland, were Miss Anny Love, Mrs. B. M. Bennett, and R. C. Russell, district agricultural agent, also of Starbuckville.

Other 2-to 4 from Cooper's report showed the number of acres increasing from 1,990 in 1927; and in 1930, 1,927; and in 1935, 1,800; in 1940, 1,700; in 1945, 1,500; in 1950, 1,300; in 1955, 1,100; in 1960, 936; and in 1965, 736; and in 1970, 536; and in 1975, 336; and in 1980, 136; and in 1985, 136; and in 1990, 136; and in 1995, 136; and in 2000, 136; and in 2005, 136; and in 2010, 136; and in 2015, 136; and in 2020, 136; and in 2025, 136; and in 2030, 136; and in 2035, 136; and in 2040, 136; and in 2045, 136; and in 2050, 136; and in 2055, 136; and in 2060, 136; and in 2065, 136; and in 2070, 136; and in 2075, 136; and in 2080, 136; and in 2085, 136; and in 2090, 136; and in 2095, 136; and in 2100, 136; and in 2105, 136; and in 2110, 136; and in 2115, 136; and in 2120, 136; and in 2125, 136; and in 2130, 136; and in 2135, 136; and in 2140, 136; and in 2145, 136; and in 2150, 136; and in 2155, 136; and in 2160, 136; and in 2165, 136; and in 2170, 136; and in 2175, 136; and in 2180, 136; and in 2185, 136; and in 2190, 136; and in 2195, 136; and in 2200, 136; and in 2205, 136; and in 2210, 136; and in 2215, 136; and in 2220, 136; and in 2225, 136; and in 2230, 136; and in 2235, 136; and in 2240, 136; and in 2245, 136; and in 2250, 136; and in 2255, 136; and in 2260, 136; and in 2265, 136; and in 2270, 136; and in 2275, 136; and in 2280, 136; and in 2285, 136; and in 2290, 136; and in 2295, 136; and in 2300, 136; and in 2305, 136; and in 2310, 136; and in 2315, 136; and in 2320, 136; and in 2325, 136; and in 2330, 136; and in 2335, 136; and in 2340, 136; and in 2345, 136; and in 2350, 136; and in 2355, 136; and in 2360, 136; and in 2365, 136; and in 2370, 136; and in 2375, 136; and in 2380, 136; and in 2385, 136; and in 2390, 136; and in 2395, 136; and in 2400, 136; and in 2405, 136; and in 2410, 136; and in 2415, 136; and in 2420, 136; and in 2425, 136; and in 2430, 136; and in 2435, 136; and in 2440, 136; and in 2445, 136; and in 2450, 136; and in 2455, 136; and in 2460, 136; and in 2465, 136; and in 2470, 136; and in 2475, 136; and in 2480, 136; and in 2485, 136; and in 2490, 136; and in 2495, 136; and in 2500, 136; and in 2505, 136; and in 2510, 136; and in 2515, 136; and in 2520, 136; and in 2525, 136; and in 2530, 136; and in 2535, 136; and in 2540, 136; and in 2545, 136; and in 2550, 136; and in 2555, 136; and in 2560, 136; and in 2565, 136; and in 2570, 136; and in 2575, 136; and in 2580, 136; and in 2585, 136; and in 2590, 136; and in 2595, 136; and in 2600, 136; and in 2605, 136; and in 2610, 136; and in 2615, 136; and in 2620, 136; and in 2625, 136; and in 2630, 136; and in 2635, 136; and in 2640, 136; and in 2645, 136; and in 2650, 136; and in 2655, 136; and in 2660, 136; and in 2665, 136; and in 2670, 136; and in 2675, 136; and in 2680, 136; and in 2685, 136; and in 2690, 136; and in 2695, 136; and in 2700, 136; and in 2705, 136; and in 2710, 136; and in 2715, 136; and in 2720, 136; and in 2725, 136; and in 2730, 136; and in 2735, 136; and in 2740, 136; and in 2745, 136; and in 2750, 136; and in 2755, 136; and in 2760, 136; and in 2765, 136; and in 2770, 136; and in 2775, 136; and in 2780, 136; and in 2785, 136; and in 2790, 136; and in 2795, 136; and in 2800, 136; and in 2805, 136; and in 2810, 136; and in 2815, 136; and in 2820, 136; and in 2825, 136; and in 2830, 136; and in 2835, 136; and in 2840, 136; and in 2845, 136; and in 2850, 136; and in 2855, 136; and in 2860, 136; and in 2865, 136; and in 2870, 136; and in 2875, 136; and in 2880, 136; and in 2885, 136; and in 2890, 136; and in 2895, 136; and in 2900, 136; and in 2905, 136; and in 2910, 136; and in 2915, 136; and in 2920, 136; and in 2925, 136; and in 2930, 136; and in 2935, 136; and in 2940, 136; and in 2945, 136; and in 2950, 136; and in 2955, 136; and in 2960, 136; and in 2965, 136; and in 2970, 136; and in 2975, 136; and in 2980, 136; and in 2985, 136; and in 2990, 136; and in 2995, 136; and in 3000, 136; and in 3005, 136; and in 3010, 136; and in 3015, 136; and in 3020, 136; and in 3025, 136; and in 3030, 136; and in 3035, 136; and in 3040, 136; and in 3045, 136; and in 3050, 136; and in 3055, 136; and in 3060, 136; and in 3065, 136; and in 3070, 136; and in 3075, 136; and in 3080, 136; and in 3085, 136; and in 3090, 136; and in 3095, 136; and in 3100, 136; and in 3105, 136; and in 3110, 136; and in 3115, 136; and in 3120, 136; and in 3125, 136; and in 3130, 136; and in 3135, 136; and in 3140, 136; and in 3145, 136; and in 3150, 136; and in 3155, 136; and in 3160, 136; and in 3165, 136; and in 3170, 136; and in 3175, 136; and in 3180, 136; and in 3185, 136; and in 3190, 136; and in 3195, 136; and in 3200, 136; and in 3205, 136; and in 3210, 136; and in 3215, 136; and in 3220, 136; and in 3225, 136; and in 3230, 136; and in 3235, 136; and in 3240, 136; and in 3245, 136; and in 3250, 136; and in 3255, 136; and in 3260, 136; and in 3265, 136; and in 3270, 136; and in 3275, 136; and in 3280, 136; and in 3285, 136; and in 3290, 136; and in 3295, 136; and in 3300, 136; and in 3305, 136; and in 3310, 136; and in 3315, 136; and in 3320, 136; and in 3325, 136; and in 3330, 136; and in 3335, 136; and in 3340, 136; and in 3345, 136; and in 3350, 136; and in 3355, 136; and in 3360, 136; and in 3365, 136; and in 3370, 136; and in 3375, 136; and in 3380, 136; and in 3385, 136; and in 3390, 136; and in 3395, 136; and in 3400, 136; and in 3405, 136; and in 3410, 136; and in 3415, 136; and in 3420, 136; and in 3425, 136; and in 3430, 136; and in 3435, 136; and in 3440, 136; and in 3445, 136; and in 3450, 136; and in 3455, 136; and in 3460, 136; and in 3465, 136; and in 3470, 136; and in 3475, 136; and in 3480, 136; and in 3485, 136; and in 3490, 136; and in 3495, 136; and in 3500, 136; and in 3505, 136; and in 3510, 136; and in 3515, 136; and in 3520, 136; and in 3525, 136; and in 3530, 136; and in 3535, 136; and in 3540, 136; and in 3545, 136; and in 3550, 136; and in 3555, 136; and in 3560, 136; and in 3565, 136; and in 3570, 136; and in 3575, 136; and in 3580, 136; and in 3585, 136; and in 3590, 136; and in 3595, 136; and in 3600, 136; and in 3605, 136; and in 3610, 136; and in 3615, 136; and in 3620, 136; and in 3625, 136; and in 3630, 136; and in 3635, 136; and in 3640, 136; and in 3645, 136; and in 3650, 136; and in 3655, 136; and in 3660, 136; and in 3665, 136; and in 3670, 136; and in 3675, 136; and in 3680, 136; and in 3685, 136; and in 3690, 136; and in 3695, 136; and in 3700, 136; and in 3705, 136; and in 3710, 136; and in 3715, 136; and in 3720, 136; and in 3725, 136; and in 3730, 136; and in 3735, 136; and in 3740, 136; and in 3745, 136; and in 3750, 136; and in 3755, 136; and in 3760, 136; and in 3765, 136; and in 3770, 136; and in 3775, 136; and in 3780, 136; and in 3785, 136; and in 3790, 136; and in 3795, 136; and in 3800, 136; and in 3805, 136; and in 3810, 136; and in 3815, 136; and in 3820, 136; and in 3825, 136; and in 3830, 136; and in 3835, 136; and in 3840, 136; and in 3845, 136; and in 3850, 136; and in 3855, 136; and in 3860, 136; and in 3865, 136; and in 3870, 136; and in 3875, 136; and in 3880, 136; and in 3885, 136; and in 3890, 136; and in 3895, 136; and in 3900, 136; and in 3905, 136; and in 3910, 136; and in 3915, 136; and in 3920, 136; and in 3925, 136; and in 3930, 136; and in 3935, 136; and in 3940, 136; and in 3945, 136; and in 3950, 136; and in 3955, 136; and in 3960, 136; and in 3965, 136; and in 3970, 136; and in 3975, 136; and in 3980, 136; and in 3985, 136; and in 3990, 136; and in 3995, 136; and in 4000, 136; and in 4005, 136; and in 4010, 136; and in 4015, 136; and in 4020, 136; and in 4025, 136; and in 4030, 136; and in 4035, 136; and in 4040, 136; and in 4045, 136; and in 4050, 136; and in 4055, 136; and in 4060, 136; and in 4065, 136; and in 4070, 136; and in 4075, 136; and in 4080, 136; and in 4085, 136; and in 4090, 136; and in 4095, 136; and in 4100, 136; and in 4105, 136; and in 4110, 136; and in 4115, 136; and in 4120, 136; and in 4125, 136; and in 4130, 136; and in 4135, 136; and in 4140, 136; and in 4145, 136; and in 4150, 136; and in 4155, 136; and in 4160, 136; and in 4165, 136; and in 4170, 136; and in 4175, 136; and in 4180, 136; and in 4185, 136; and in 4190, 136; and in 4195, 136; and in 4200, 136; and in 4205, 136; and in 4210, 136; and in 4215, 136; and in 4220, 136; and in 4225, 136; and in 4230, 136; and in 4235, 136; and in 4240, 136; and in 4245, 136; and in 4250, 136; and in 4255, 136; and in 4260, 136; and in 4265, 136; and in 4270, 136; and in 4275, 136; and in 4280, 136; and in 4285, 136; and in 4290, 136; and in 4295, 136; and in 4300, 136; and in 4305, 136; and in 4310, 136; and in 4315, 136; and in 4320, 136; and in 4325, 136; and in 4330, 136; and in 4335, 136; and in 4340, 136; and in 4345, 136; and in 4350, 136; and in 4355, 136; and in 4360, 136; and in 4365, 136; and in 4370, 136; and in 4375, 136; and in 4380, 136; and in 4385, 136; and in 4390, 136; and in 4395, 136; and in 4400, 136; and in 4405, 136; and in 4410, 136; and in 4415, 136; and in 4420, 136; and in 4425, 136; and in 4430, 136; and in 4435, 136; and in 4440, 136; and in 4445, 136; and in 4450, 136; and in 4455, 136; and in 4460, 136; and in 4465, 136; and in 4470, 136; and in 4475, 136; and in 4480, 136; and in 4485, 136; and in 4490, 136; and in 4495, 136; and in 4500, 136; and in 4505, 136; and in 4510, 136; and in 4515, 136;

Pre-Thanksgiving Sale



Deep-Smoke Flavored and Juicy

HAM 35¢

So Economical for a wide variety of family uses.

Shank Portion, Lb.

Half or Whole

49¢

Center Slices

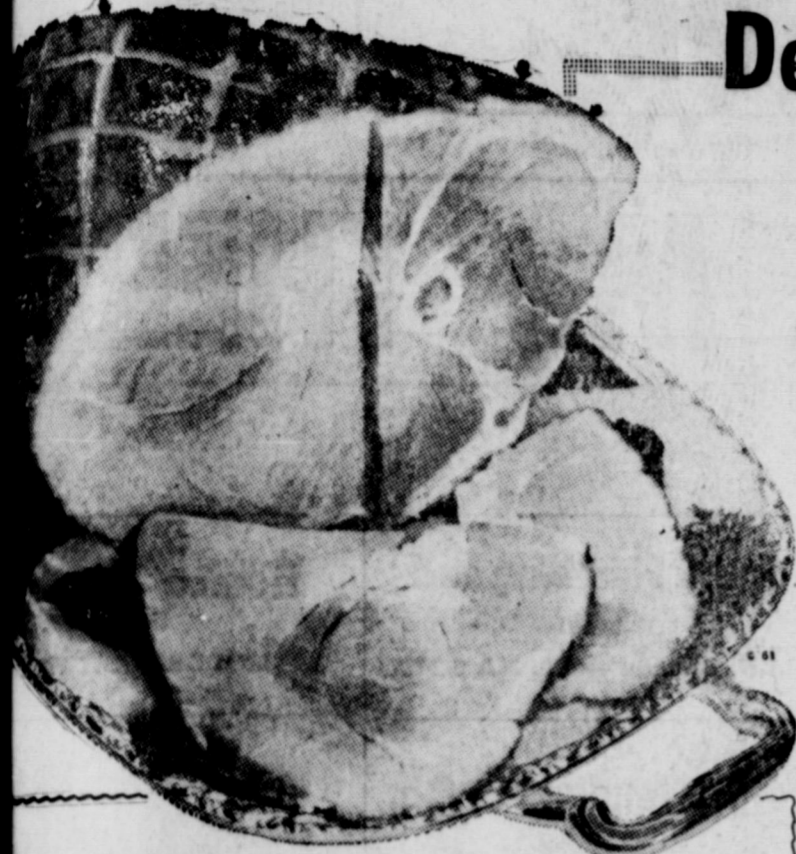
85¢

Butt Portion

45¢

Center Cut Roast

75¢



USDA Government Inspected and Graded "A."

TURKEYS

Young Hens 10 Lbs. and Up. **35¢** Lb.
Young Hens 10 Lbs. and Up. **39¢** Lb.

Pork Roast Fresh Picnic cut. Economical and nutritious. Lb. **33¢**

Pork Sausage Wingate, Regular or Hot. Truly a breakfast treat. 2-Lb. Pkg. **79¢**

Oysters Gulf Coast. 12 Oz. Can **95¢** Oysters West Coast. 12 Oz. Medium Size. Can **69¢**

This Coupon Worth 50 Free Gold Bond Stamps
Plus your regularly earned Gold Bond Stamps with the purchase of
1/2-Gal. Ctn. Frozen Dessert LUCERNE ICE MILK
Three popular flavors.
One Per Customer • Coupon Expires November 17, 1962.

Waffles Bel-air Frozen. 6 count. 5 Oz. Pkg. **10¢**
Prunes Town House Breakfast Prunes. 1-Lb. Cello Pkg. **29¢**
Frito Chili With Beans. 3 No. 300 Cans **\$1.00**
Fig Bars Busy Baker. Vanilla or Whole Wheat. 2-Lb. Pkg. **35¢**

THE WORLD WE LIVE IN by the Editors of LIFE

"The Earth and The Universe" **VOLUME 3**

Now on Sale

\$1.29 Per Copy



Only at Safeway can you get this wonderful 3-volume edition of LIFE'S exciting natural history of Earth.

EXCLUSIVE AT SAFEWAY!

COMPLETE YOUR SET!

Cranberry Sauce Cape Cod Jellied. No. 300 Can **15¢**

Piced Peaches Old Ivory. No. 2 1/2 Cans **35¢**

Fancy Pumpkin American Beauty. No. 303 Can **10¢**

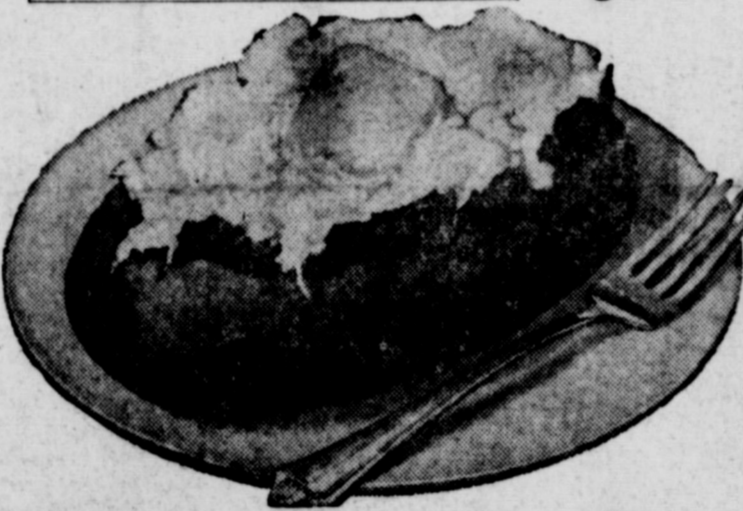
Lucerne Milk Evaporated. No better milk in a can. 6 14 1/2 Oz. Cans **75¢**

Grape Jam Or Peach or Plum Jam. Shasta. 32-Oz. Jar **45¢**

Circle Margarine 1-Lb. Can **31¢**

Men's Veg-All No. 303 Can **19¢**

W Mein Noodles No. 300 Can **17¢**



Safeway Guaranteed Produce!

Potatoes Red, U. S. No. 1. Hearty food for hearty eaters. 10-Lb. Bag **39¢**

Parsley Crisp and green. Bunch **10¢**
Onions Yellow, adds to any meat dish. Lb. **5¢**
Coconuts Juicy chunks, tasty tidbits. 2 For **29¢**
Dates Waldorf, Unpitted, plump and soft. 1-Lb. Pkg. **43¢**

Give Safeway Gift Certificates.
★ \$10.00 Denomination ★ Turkey
★ \$5.00 Denomination ★ Ham

Pascal Celery U. S. No. 1. Large Stalk **9¢**

Texas Yams Kiln Dried, U. S. No. 1. Lb. **10¢**

Cranberries Fresh Ocean Spray. 1-Lb. Cello Pkg. **19¢**

Emperor Grapes Red and Juicy. Lb. **19¢**

Lux Toilet Soap Assorted colors. Rich and creamy, with Lux mildness. 2 Bath Bars **23¢**

Rinso Blue Detergent Blues as it washes. Large Box **27¢**

Silver Dust Detergent Blue. Fortified with extra bluing power. Large Box **33¢**

Breeze Detergent Perfect for everything, family wash, dishes too. Large Box **33¢**

Surf Detergent Works wonders in your washing machine. Large Box **25¢**

Vim Tablets Heavy Duty Detergent. For Washday problems. 40 Ct. Box **54¢**

All Detergent The original controlled suds. 24 Oz. Box **34¢**

Extra Fluffy All Detergent. A high sudsing detergent. 3 Lb. Box **75¢**

Bakery Features!

Rye Bread 1-Lb. Loaf **19¢**

Cinnamon Rolls Mrs. Wright's. (2¢ off.) For breakfast or brunch. 8-Count. 11 1/2 Oz. Pkg. **23¢**

Ring Cakes Blaines assorted. 15-Oz. Pkg. **39¢**

Stuffing Bread Mrs. Wright's. Available Friday. 1 1/2-Lb. Loaf **25¢**

Mince Pie Or Pumpkin Pie. Bel-air Frozen. Big 8" Family Size. 1 1/2-Lb. **39¢**

More Safeway Values!

Corn Meal Kitchen Craft Yellow Enriched. 5-Lb. Bag **29¢**

Vanilla Extract Westag. Imitation flavor. 4-Oz. Bottle **10¢**

Giant Surf (Or White Magic Detergent.) Giant Box ... 53¢ **59¢**

Lifebouy Soap Coral, White or Pine. The active soap for active people. 2 Bath Bars **33¢**

Paper Towels Northern. Assorted colors. A color for every kitchen. 2 Roll Pkg. **39¢**

Northern Tissue White or assorted colors. A color for every bathroom. 4 Roll Pkg. **37¢**

Red Heart Dog Food Assorted flavors. Dogs love it — It loves dogs. 3 1-Lb. Cans **47¢**

Lux Liquid Detergent. For everything you wash, give it Lux care. 12 Oz. Plastic **35¢**

Swan Liquid Detergent. New pink liquid for dishes. 12 Oz. Plastic **35¢**

Wisk Liquid Blue liquid laundry detergent. 16-Oz. Can **34¢**

Pure Black Pepper Trader Horn. Zesty seasoning. 4-Oz. Can **29¢**

This Coupon Worth 25 Free Gold Bond Stamps
Plus your regularly earned Gold Bond Stamps with the purchase of
1-Lb. Bag Fancy and Extra Fancy JONATHAN APPLES
Coupon Expires November 17, 1962.

This Coupon Worth 50 Free Gold Bond Stamps
Plus your regularly earned Gold Bond Stamps with the purchase of
TWO — Rolls of Kitchen Craft ALUMINUM FOIL
Coupon Expires November 17, 1962.

This Coupon Worth 50 Free Gold Bond Stamps
Plus your regularly earned Gold Bond Stamps with the purchase of
TWO — 22-Oz. Jars Zippy WHOLE DILL PICKLES
Coupon Expires November 17, 1962.

This Coupon Worth 50 Free Gold Bond Stamps
Plus your regularly earned Gold Bond Stamps with the purchase of
OUR — 6-Oz. Cans Bel-air Frozen ORANGE JUICE
Coupon Expires November 17, 1962.

Redeem this Coupon for **50 FREE GOLD BOND STAMPS**
with purchase of \$5.00 or more (Excluding Cigarettes)
One Per Customer • Coupon Expires November 17, 1962.



Prices and Coupons Effective Thurs., Fri. and Sat., Nov. 15, 16 and 17

In Eastland

We Reserve the Right to Limit Quantities. No Sales to Dealers.

M

Joyett, Flavors Serve 4 pie top

TO OUR TEAM . . . WE'RE BEHIND YOU ALL THE WAY

EASTLAND vs CLYDE

FRIDAY NIGHT, 7:30 P. M., THERE



Chamber of Commerce

Quarterback Club

Central Drug
Free Delivery Dale Troutt, owner

Altman's
'Smart Women's Wear'
North Side of Square

Freyschlag Insurance Agency
North Side of Square
Ph. MA 9-2275

Texas Electric Service Company
F. N. Sayre, Mgr.
Phone MA 9-2651

Village Barber Shop
George Carter

Pools Dry Cleaners
'City Wide Delivery'
209 S. Lamar Ph. MA 9-2055

Otis Coleman Humble Products
400 E. Main St.—Ph. MA 9-8882

Texas Lightweight Aggregate Company
Producers of Concrete Aggregates
C. W. Martin—Ph. MA 9-2060

Jordan's Drive In
Hwy. 80 East
Louise and Harry Jordan

Koen Sa'vage
Your Scrap Iron and Metal Dealer
Highway 80 West Ph. MA 9-2649

Obie and Dec Humble Ser. Station
802 W. Main—Ph. MA 9-8866

The Men's Shop
Correst Styles for Men and Boys
James Smith, owner

City Garage
J. J. Finley, Proprietor
Engine, Starter and Generator Work
103 White St. — Ph. MA 9-1709

Foremost Dairy Products
Clyde Manning, Mgr.
Eastland — Ph. MA 9-1701

Eastland National Bank
'On the Square'—Member FDIC

Hood King Motor Co.
Ford Sales and Service
On the Square — Ph. MA 9-1706

Graham's Trim Shop
709 W. Main — Ph. MA 9-2266

White Elephant Cafe
724 W. Main — Ph. MA 9-8831

Lindley Paint and Body Works
'All Work Guaranteed'
110 S. Bassett — Ph. MA 9-2240

Eastland Iron & Metal Co.
Henry, Tillie and Saul Pullman

Hill Crest Food Market
When you run out—run in
1401 W. Main — Ph. MA 9-1600

Western Auto Associate Store
J. L. Pittman, owner
East side of square Ph. MA 9-2011

Smith Plumbing and Tin
114 N. Seaman — Ph. MA 9-2422

Perkins Implement Co.
116 E. Main — Ph. MA 9-2666

Eastland Steam Laundry
Home Owned — B. W. Lasater
Ph. MA 9-2613

Jeanette's Fabric Shop
Mr. and Mrs. L. D. Harris
West side of square

Eastland Auction Co.
Hwy. 80 East — Ph. MA 9-1758

Modern Dry Cleaners
Approved Sanitone Service
210 S. Seaman — Ph. MA 9-1344

Mobil Oil Co.
Standlee McCracken, Consignee

Poe Floral
'When It's Flowers—Say it With Ours'
609 W. Main — Ph. MA 9-1711

Roy's Repair Service
Roy and Stella Gann
205 S. Lamar — Ph. MA 9-2474

Eastland Auto Parts
Mr. and Mrs. Frank Deaton
300 S. Seaman — Ph. MA 9-2158

Rushing Motor Co.
Herman Rushing — Bill Hunter
Chrysler Products, Plymouth, Valiant
215 S. Seaman — Ph. MA 9-2430

Romco - Eastland
MODERN ARTWARE

Mr. and Mrs. Victor Cornelius

Judge and Mrs. Turley Collie

Mr. and Mrs. J. C. Allison

H. R. (Pop) Garrett

Sheriff and Mrs. Lee Horn

Majestic Theater

Eastland Medical Surgical Clinic
404 W. Commerce—Ph. MA 9-

Crowell Lumber Co.
715 W. Main — Ph. MA 9-

Goodyear Service Store
M. L. Smith, mgr.
306 East Main — Ph. MA 9-

Lone Star Gas Co.
A. G. Goldston, Mgr.
313 W. Main — Ph. MA 9-

SOUTHERN TELEVISION SYSTEMS CORPORATION

MAVERICK 1962 SCHEDULE

Sept. 7 — Mavs. 20, Comanche 14
Sept. 14 — Open date
Sept. 21 — Mavs. 20, Cisco 18
Sept. 28 — Mavs 26, Gorman 0
Oct. 5 — Mavs. 44, Rising Star 6
Oct. 12 — DeLeon 18, Mavs 14
Oct. 19 — *Baird 38, Mave 14
Oct. 26 — *Albany 41 Mavs 14
Nov. 2—*Cross Plains 12, Mavs 0
Nov. 9 — *Mavs 26 Ranger 14
Nov. 16 — * Clyde There
* District Games at 7:30
Others at 8 p.m.

Eastland Drug Store
201 S. Main — Ph. MA 9-2112

Hanna Hardware & Lumber Co.
201 N. Seaman — MA 9-2104

Miller's Phillips 66 Service Station
513 W. Main Phone MA 9-1644

Eastland Supply Co.
Oil Field Supplies
115 E. Main MA 9-1595

Mr. and Mrs. Don Pierson

Eastland Service Parts Co.
112 E. Commerce MA 9-1733

MAVERICK ROSTER

Position Name
Quarterback Tommy Beck
Right Halfback Jody Cooper
Fullback Jimmy Moylan
Left Halfback Gary Graham
Right End Larry Howle
Left End Stanley Underwood
Center Jim Wright
Right Tackle Butch Phillips
Left Tackle David Taylor
Right Guard Dickie Byars
Left Guard Ray Edwards

Potatoes
10 lbs. 49c

FURNITURE CARPET APPLIANCES

Quality Merchandise at Every Day Low Prices
FREE DELIVERY — NO CARRYING CHARGES
ON FURNITURE and CARPETS
FOR 1 FULL YEAR

Ranger Furniture Exchange

"BRASHIER'S"
Ranger Phone MI 7-1404

Humble Will Broadcast Five Games

Five Southwest Conference football games will be broadcast over radio Saturday by Humble Oil and Refining Company. In addition, Humble will co-sponsor the live telecast of the Perdue-Minnesota game. The Arkansas-SMU game will be broadcast at 1:45 p.m. over KWKC, Abilene and WFAA-WBAP, Dallas and Fort Worth. The Baylor-Air Force Academy game will be broadcast at 2:15 p.m. over KBWD, Brownwood and WRR, Dallas. The Rice-Texas A&M game will be broadcast at 1:45 p.m. over KRBC, Abilene and KRLD, Dallas. The TCU-Texas game will be

broadcast at 1:45 p.m. over KNIT, Abilene and WFAA-WBAP, Dallas and Fort Worth. The Texas Tech - Colorado game will be broadcast at 1:45 p.m. over KCUL, Fort Worth. The Perdue-Minnesota game will be telecast at 1 p.m. over KRLD, Dallas and KPAR-TV, Sweetwater/Abilene.

Bowling Results

Thursday Night Couples League

W	L
Bryan-Carter	13 3
Eastland Venetian	
Blind Co.	11 5
Smallwood-Heard	10 6
Bagwell-Temple	9 7
Beaird-VanOver	7 9
Rowch-Hudgens	6 10
Pylant-Earrest	5 11
Johnson-Elder	3 13
HIGH TEAM THREE GAME	
Eastland Venetian	
Blind Co.	1832
Bryan-Carter	1765
Johnson-Elder	1765
High Individual Three Games	
Tony Jordan	521
Lewis Tiner	519
Leo Gann	501
High Team Single Games	
Johnson-Elder	671
Bagwell-Temple	642
Eastland Venetian	
Blind Co.	640
High Individual Single Game	
Tony Jordan	201
Sammis Elder	199
Lewis Tiner	190

• FREE •

Estimates On RE-ROOFING

Or Repair Your Old
Roof.
Residential and
Commercial

Roofing Co. Eastland

Noble Squiers
Phone MA 9-2370

CHURCH NEWS

OLDEN BAPTIST CHURCH
Olden
Sunday
9:45 AM
11:00 AM
6:00 PM
7:00 PM
WEDNESDAY
7:30 PM

FLATWOOD CHURCH OF CHRIST
Thurman Carter, Pastor
Flatwood
Sunday
10:00 AM
11:00 AM
7:00 AM

FIRST PRESBYTERIAN CHURCH
Rev. Eugene Surface, Pastor
Sunday
10:00 a.m. - Church School
11:00 a.m. - Divine Worship
12 noon - Monthly meeting of the Church Session on the Sunday after the first Wednesday.
Tuesday
9:30 a.m. - United Presbyterian Woman meet on the first and the third Tuesdays of each month.

CHURCH OF GOD
Corner Lamar and Valley
Pastor
Rev. Joe Downs
Sunday
10 a.m.: Sunday School
11 a.m.: Sermon
6:45 p.m. Youth Fellowship
7:30 p.m.: Sermon
WEDNESDAY
7:30 p.m.: Prayer Service

ST. FRANCIS CATHOLIC CHURCH
Rev. Joseph L. Van Winkle, C.L.C.M.
SUNDAY MASS
1st and 3rd Sunday at 9:30 a.m.
2nd, 4th and 5th Sunday at 11 a.m.
Every Tuesday Mass at 6:30 p.m. Holy Days Mass at 7:15 a.m.

FIRST CHRISTIAN CHURCH
Corner Olive & Lamar
Sunday
9:45 Church School
11:00 Morning Worship
7:00 Evening Vespers
WEDNESDAY
5:00 Junior Choir
6:30 Adult Choir

CALVARY BAPTIST
207 N. OAK ST.
SUNDAY
10 a.m.—Sunday School
11 a.m.—Morning Worship
7 p.m.—Prayer Service
7:30 p.m.—Evening Worship

BETHEL BAPTIST CHURCH
Rev. Henry Littleton, Interim
Sunday
9:45 a.m.: Sunday School
11 a.m.: Morning Worship
7 p.m.: Training Union
8 p.m.: Evening Worship
WEDNESDAY
6:15 p.m.: Primary teachers and officers meet
7:30 p.m.: Midweek prayer
8:15 p.m.: Choir practice

FIRST BAPTIST CHURCH
Rev. Haston Brewer, Pastor
108 W. Plummer
Sunday
9:45 a.m.: Sunday School
11 a.m.: Morning Worship
6:15 p.m.: Training Union
7:30 p.m.: Evening Service
TUESDAY
9:30 a.m. & 1 p.m.: WMU

CARBON BAPTIST CHURCH
Rev. Jimmy Turner, pastor
Sunday
10 a.m.: Sunday School
11 a.m.: Morning Worship
6:30 p.m.: BTU
7:30 p.m.: Evening Worship
MONDAY
2 p.m.: WMU
WEDNESDAY
7 p.m.: Prayer Service

UNITED PENTECOSTAL CHURCH
208 N. Dixie
Rev. Freddie Waldrep
Sunday
9:45 a.m.: Sunday School
11 a.m.: Morning Worship
7:45 p.m.: Evening Service
WEDNESDAY
7:45 p.m.: Prayer Meeting
SATURDAY
7:45 p.m.: Pentecostal Conquerers.

CARBON METHODIST CHURCH
James W. Waller, Pastor
Carbon
Sunday
10:00 AM
1:00 AM

CHURCH OF CHRIST
Corner of Plummer and Daugherty
Sunday
9:30 a.m.—Bible Class For All Age Groups.
10:20 a.m.—Morning Worship
2:00 p.m.—Visitation of Shut-ins.
6:00 p.m.—Young Peoples' Meeting.
7:00 p.m.—Evening Worship.
WEDNESDAY
9:30 a.m. — Ladies' Bible Class.
7:00 p.m. — Prayer Meeting and Bible Study.

(Read the Classifieds)



Bring Your
BATTERY
TROUBLES
To Us!
Group One Fits Most
6 Volt Cars

8.95
Exchange

Jim Horton
Tire Service

East Main St. MA 9-1420
EASTLAND, TEXAS

FIRST METHODIST CHURCH
Wm. S. Fisher, Pastor
215 S. Mulberry
Sunday
9:45 a.m.: Church School
10:55 p.m.: Worship Service
6:15 p.m.: Youth Fellowship
7 p.m.: Evening Worship
TUESDAY
9:30 a.m.: W.S.C.S.
WEDNESDAY
7:30 p.m.: Choir rehearsal
Wesleyan Guild every 1st & 3rd Wednesdays

Official Board Monday after 1st Tuesday
Five Commissions — every 1st Monday
CHRISTIAN SCIENCE
Sunday
9:45 a.m.: Sunday School
11 a.m.: Sunday morning service.
Wednesday
7:30 p.m.: Mid-week Service
The public is cordially invited.



Pay For Your Home Repairs On Easy Monthly Terms

If your home needs more than a few flowers to beautify it — then see us now for a low-cost home improvement loan that's tailored to your needs and your budget!

FIRST FEDERAL SAVINGS & LOAN ASSOCIATION

204 Main Ranger, Texas MI 7-1611

STOCK LIQUIDATION

SALE

Still in full swing!
Ideal time to do your Christmas Shopping
STORE NO. 1

Mens Long Sleeve Sport Shirts Reg. 3.98
2.17

Ladies Dusters Reg. 3.98
2.17
5.00

Ladies Taper Pants Reg. 6.98
STORE NO. 2

Genuine Reptiles Values to \$29.95 Only
Baby Booties: assorted colors
Velvet — Satin — Crochet
GROUP I \$1.00 — GROUP II \$2.17

STORE NO 3
Girls Taper Pants : Corduroy and Twill
Reg. 2.98 - 3.98 NOW **1.89 - 1.99**
2 Piece Suits Jr. Petite Sizes — Fri. Sat. Only
Reg. 13.98 NOW **8.99**

Ladies dresses Fall and Winter Reg. 7.98
NOW **5.99**

OUTLET STORE
Mens Jackets Dress and Casual Values to \$18.00
NOW **2.99 to 8.97**

Mens Dress Pants Wash and Wear Values to 9.95
NOW **3.37**

Ladies Berkshire Slips Reg. 3.95 Now **2.37**

EASTLAND DISCOUNT STORES

Clip-on GAS HEATERS



BY Dearborn

Dearborn's Clip-On series of unvented wall heaters are small in size . . . large in heating ability. A Clip-On heater is the answer when floor space is limited . . . hangs on the wall. Quick and easy installation. Clip-On heaters offer many outstanding Dearborn features:

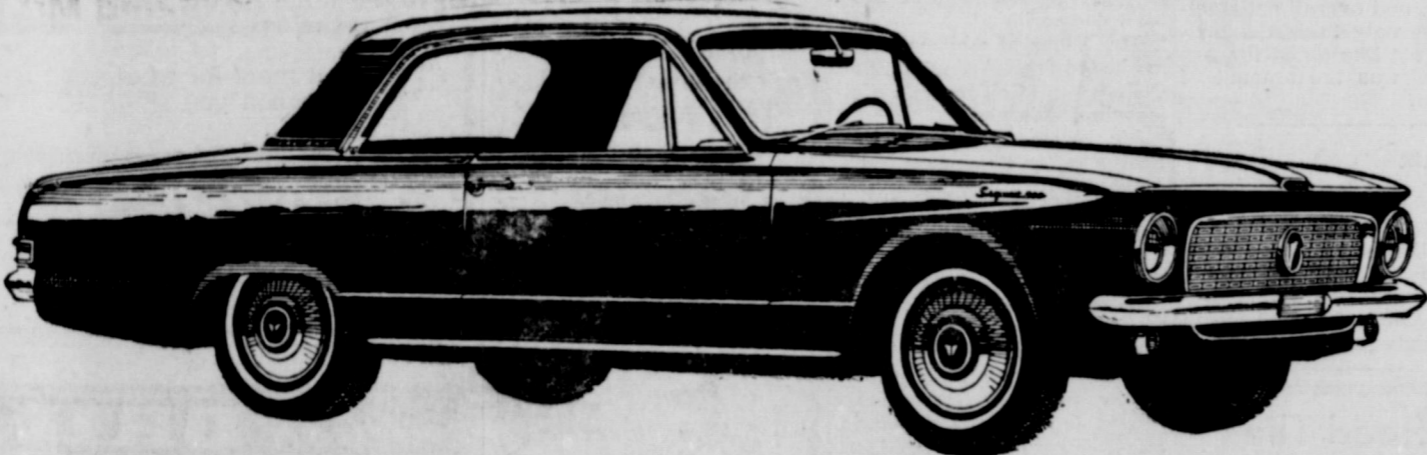
- Cool Safety Cabinet
- Forward Heat Flow
- Hi-Crown, Drilled-Part Burner
- Stainless Steel Radi
- Enclosed Controls
- Blue Flame Manual Pilot
- Economical Operation

Select the powerful Clip-On heater when floor space is important. Available in 10, 18, and 25 thousand BTU's.

FROM **\$19.95**

COATS FURNITURE & Cpts. Ltd.

First BIG change in compacts—'63 Valiant



First BIG change in quality—5-year warranty*!



Yes, Valiant is the first compact to be completely restyled. And Valiant is the first low-price compact that backs up its quality in writing with a 5-year or 50,000-mile warranty. For 1963, Valiant does everything a compact ought to do . . . and more. We say it's the best all-around compact anybody has come up with yet. You'll agree, once you see and drive it.



*Your Authorized Plymouth-Valiant Dealer's Warranty against defects in material and workmanship on 1963 cars has been expanded to include parts replacement or repair for 5 years or 50,000 miles, whichever comes first, on the engine block, head and internal parts; transmission case and internal parts (excluding manual clutch); torque converter, drive shaft, universal joints (excluding dust covers), rear axle and differential, and rear wheel bearings, provided the vehicle has been serviced at reasonable intervals according to the Plymouth-Valiant Certified Car Care schedules.

Drive the '63 Valiant:

Rushing Motor Company
215 South Seaman

Blevins Motor Company
514 W. Main

Heating Equipment Check Recommended

Heating equipment should be checked now to help assure maximum comfort and safety during the coming winter months.

This reminder came today from Lone Star Gas Company Manager Gordon Goldston, who urged that heating equipment be checked before cold weather sets in. Goldston suggested these safety precautions:

1. Have heating equipment and vent pipes inspected for safe and economical operation.

If adjustments are required, call a qualified serviceman. 2. Be sure that your heating equipment has a source of fresh air. See that the gas burns with a bright blue flame.

3. Use only metal connectors approved by the American Gas Association. Do not use rubber hose.

4. Keep clothing, furniture, curtains and other combustible materials away from heating equipment.

"By taking these simple yet essential precautions," Goldston said, "homeowners will eliminate possible accident hazards and will make their homes comfortable for the winter season."

The roll which was answered by the following members and guests: Mmes. Mat'ie Watson, Mabel White, Fannie Lockhart, May Harrison, Nora Vaught, Millie Drake, Wilnie Bassett, Amanda Morris, Josie K. Nix, Rose Day, Pebble Boles and Miss Sallie Day. Guests included Mmes. Guy Quinn, Iona Sikes, Minnie Williams, Christenson, McMillen and Gladys Harris.

All enjoyed the birthday cake baked by Mrs. Castleberry for Mrs. Reva Horn, who was unable to attend the meeting.

Browsing with Bev

When frozen food thaws in your home, it is always necessary to discard it?

Research studies reveal that if the temperature of the food has not risen above ordinary refrigerator temperature (40 degrees F.) then you may consider refreezing it — provided it has acceptable order, texture and color.

The process of refreezing in itself introduces no hazard: If the partially thawed food is safe to eat, it is safe to refreeze.

A rise in a food's temperature up to thawing impairs color, flavor, and texture, and the refreezing period caused further loss of quality. If the total time involved is short enough, there may be quality left to justify refreezing.

No health hazard is involved if the temperature of the food has not risen above ordinary refrigerator temperature. Food-poisoning bacteria have never been found to grow at temperature below 38 degrees F., and they grow very slowly between 38 and 45 degrees. Other bacteria can grow slowly at these or even lower temperatures, and they cause off-flavors that spoil foods but do not cause food poisoning.

Rapid freezing of steaks makes them lighter and brighter and more tender. An impartial taste panel rated frozen steaks better than not-frozen steaks — in flavor, tenderness, and overall satisfaction. The only thing the tasters did not like about the frozen beef was the amount of juiciness.

ON TOUR

Marine Sergeant Phillip E. Golob, son of Mrs. Opal L. Golob of 1209 S. Seaman, Eastland, has departed from El Toro Marine Corps Air Station, Santa Ana, Calif., for a 13 month tour of duty in the Far East.

• Read The Classifieds



GAS makes every pot automatic.

You're in luck with a new GAS range! They're on sale and they're wonderful!

Take Burner-with-a-brain for example. It manages the flame to hold exactly the temperature you set. Lets you turn your back on the most delicate sauces, the most critical simmering. And never a boil-over nor a scorch!

But that's just one lucky charm about new GAS ranges. They also give you the coolest, cleanest cooking you can find. You broil smokelessly (with the broiler door closed). You avoid "hangover heat" on the top burners, because "off" means "off" with GAS!

Beautiful design, more automatic features, unbeatable economy... they're all yours in the new GAS ranges. (Luckiest of all, they're on sale! So buy now.)

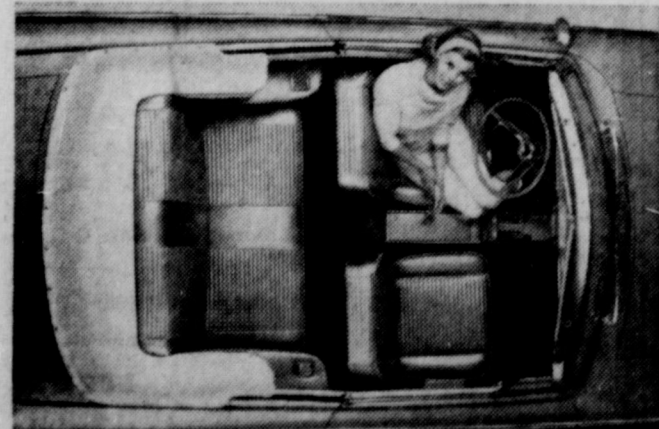
GAS APPLIANCE DEALERS lucky days gas range sale LONE STAR GAS COMPANY



FOR '63...THE ECONOMY KING HAS BRAND-NEW ZING

All-new 1963 Rambler American 440-H hardtop. Bucket seats, console standard.

New! Bucket-Seat Hardtop Priced Rambler-Low



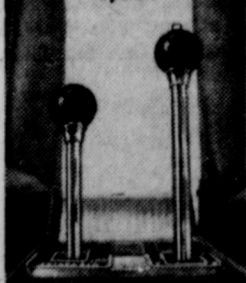
Sporty Rambler American convertible with power top standard. Bucket seats, console optional.

You won't believe anything so smart and spirited could boast such a low price tag. Another reason Rambler sales are smashing all records. In the new Rambler American 440-H hardtop, two-toning, bucket seats, console, 138-hp Six are standard. See new hardtops, convertibles, sedans, wagons at your dealer!

American Motors—Dedicated to Excellence

RAMBLER '63

Twin-Stick Floor Shift...exciting, new sports-car option



PIPKIN MOTOR COMPANY, 314 West Main



MRS. GERALD BAGWELL nee Janice Stephen

Miss Stephen, G. H. Bagwell Repeat Vows

Mrs. Tony Stephen of Souden, Minnesota announces the marriage of her daughter, Janice Ann, to Mr. Gerald H. Bagwell, son of Mr. and Mrs. Holman Bagwell of Ranger.

The couple was married at 2 o'clock November 3, in St. Luke's Catholic Church in Irving. Only the immediate family was present.

The bride is an employee of Central Airlines at Love Field in Dallas. The groom is employed by All State Insurance Company of Dallas. They will make their home at 2802 West Grauwlyer in Irving.

Special Guests Presented By EHS Beta Club

Rev. H. K. Neely and Wayne Nance were special guests at an assembly program presented by the Beta Club of Eastland High School on Wednesday, Nov. 7.

Students were first led in pledge of allegiance by Terry Treadwell followed by prayer led by Verell Boon. Kay Morton, Beta Club president, addressed the student body after which she introduced Carol Walter, who presented Rev. Neely and Wayne Nance.

Rev. Neely is pastor of the First Baptist Church in Rising Star and a graduate of Baylor University and Southwestern Baptist Theological Seminary. He will soon complete his Doctor's degree.

Mr. Nance of Abilene was a graduate from Arlington State College and Golden Gate College in California.

Mr. Nance sang "The Lord's Prayer" after which Rev. Neely spoke to the students on the four dimensions of an individual.

The program was closed with the installation of new Beta Club members for this year. The following members received Beta pins, cards and certificates: Elaine Berger, Collin Cagle, Jimmy Finley, Cy Frost, Janie Harris, Jan Lewis, Judy Lewis, Dan Phillips, Judy Phillips, Anna Smith, Shirley Smith, Jan Taylor, Terry Treadwell and Jean Hanna.

SMALL BUSINESS LOANS DUE TO BE EASIER TO OBTAIN

Small businessmen in this area should find it easier to get a bank-Small Business Administration loan as the result of a new lending program now in effect, according to Robert E. West, SBA Regional Director.

The new program was developed jointly by SBA and the American Bankers Association. Mr. West said. SBA Administrator John E. Horne and Sam M. Fleming, President of the American Bankers Association, have urged all of the Nation's commercial banks to participate.

"This loan plan has the full and enthusiastic backing of the American Bankers Association," Mr. West said. "I believe the banks in the Dallas area will find it offers them substantial advantages and will help them do a better job of meeting the term credit needs of their small business customers."

"Under this new program it should be easier for small businessmen to obtain secured term loans — up to 10 years — from their banker, with the Federal Government underwriting a large part of the transaction.

"In essence," Mr. West said, "the program is this: The banks will make and service the loans and provide at least half of the loan funds, with SBA providing the remainder. The bank's share of a loan will be repaid before SBA starts collecting a cent on its share of the loan principal."

As explained by Mr. West, here is the way the program works: If a small businessman needs, say \$100,000, for qualified business purposes — and can repay the loan in 10 years — SBA will advance up to \$50,000 of the money, with the bank taking a corresponding share. All repayments on the principal of the entire loan will go to the bank for the first 5 years. SBA will defer collection on its share until after the bank's share has been retired.

"Under this program the small businessman needing a loan will deal entirely with his bank," Mr. West said. "He need never visit an SBA office."

"One of the greatest needs of small businessmen is long-term loans to help them expand and create more jobs,"

he said. "SBA is aware that banks have ample resources to finance small business, but many of them are understandably reluctant to enter the term financing field. Yet longer maturities often are essential to properly finance some needs of the business concern. "We believe we have developed a loan plan which meets SBA's dual objectives of providing small business financing, while at the same time utilizing the resources of the private banking system," he said. "SBA will, in most instances, rely substantially on the bank's credit judgment, but sufficient safeguards are provided to protect the Government's interest." Mr. West said his office would work closely with the banks in this area and that SBA officials would be glad

to explain details of the loan plan to any businessman or SBA Regional Office in Arkansas, Louisiana and Texas. Branch offices are located in Rock, Ark., New Orleans, Oklahoma City, Houston, Lubbock and San Antonio.

Read Classifieds

T. L. FA REAL ES Property Man Home and Pe

Get a Kick out of Christmas Shopping AT MODE O'DAY

MODE O'DAY is full of gifts in greater assortment than ever before. New Styles by the to please sister cousin or any member of your family.

You can take advantage of our lay a way shopping, a small will hold your purchases. With your shopping tactically completed, relax and truly enjoy the holidays. Stop in today.

SPECIAL
For the first time in our history we will Finest Quality "Seamless Nylon" Hosiery Priced at 2 pr. for \$1.00

"You'll get more for what you pay... when you shop MODE O'DAY"

MODE O'DAY

Eastland

REMEMBER This Number MA 9-1101



Betty's Flower Shop

200 N. Green Eastland

COMPLETE SELECTIONS

PERMANENTS
\$10 Creme-Oil Waves \$6.50
\$12 Creme-Oil Waves \$7.50
\$12 Lonsolin Waves \$8.50
Other waves \$10 and up
Bechem Beauty Bar

MAJESTIC

LAST DAY SHOWS AT: 5:45 — 9:10

LOLITA

Rated As ADULT Entertainment No Children's Tickets

FRIDAY AND SATURDAY

Open Fri. — 5:00 — Open Sat. 12:45



ALSO

Love in a land where the law ends... **the Savage Guns**

RICHARD BAXTER, DON TAYLOR, ALAN WOOD, PAUL DUFFY

RANGER DRIVE

Adults 50c Kiddies Under 11 Free Bargain Nite Each Wednesday 50c Car Box Office Opens 6:30 — Show Starts At

THURSDAY — FRIDAY — SATURDAY



THE TARTARS vs THE VIKINGS! METRO GOLDWYN MAYER ORSON WELLES VICTOR MATURE "THE TARTARS" TECHNICOLOR

SUNDAY — MONDAY — TUESDAY

BEEP-BEEP THE ADVENTURES OF THE ROADRUNNER

Plus Our Second Feature NOTHING COULD BE SWELLER THAN THE 2-FOR-1 COMBINATION FAMILY SHOW OF THE

The Most Beloved of all Albert Payson Terhunes Dog Stories!

