

Thursday, January 22, 1976

EASTLAND

Volume 47
Number 7

TELEGRAM

10 Pages

Eastland, Texas 76448 Today's Center For Tomorrow's Future!
10¢ EACH

City Okays Sub-Division Ordinance On First Reading; Makes Paving Plans

A sub-division ordinance has been approved on first reading, a citizen was denied permission to tie into existing sewer and water main lines and study is continuing on improvement work for the dam at Eastland Lake, as the result of a lengthy City Commission meeting Monday evening at City Hall.

All Commissioners were present and special guests included Mrs. Pat Shook and son, Boy Scout Tony, who was visiting the meeting as required for merit badge achievement.

First to appear was Mike Collins who asked permission to tie into existing sewer mains in the city and existing water mains, extended onto property south of Crestwood Addition. He stated that he was not asking annexation and that the line work would be done at no cost to the city.

A motion to table by Commissioner Bill Hoffmann died for lack of a second, but a

second motion by Commissioner Mike Siebert to deny the request passed.

Local Soil Conservation Supervisor Ronald Bailey visited the Commission in connection with work at Eastland Lake. The Texas Water Rights Commission in letters state that the dam at Eastland Lake is not high enough, and the Commission formally asked the SCS to check into the possibilities of whether asked - for improvement would qualify on a cost - share basis. Mr. Bailey agreed to assist in every way possible.

The commission decided to buy a rebuilt motor and transmission at \$500 for the most - recently bought police car which now has 85,000 miles on it.

The Commission - drafted sub - division ordinance was reviewed section by section and on a motion by Hoffmann, seconded by Commissioner Charles Marshall, the vote was in favor of acceptance.

It was agreed by the City Commission that City Employees Fireman Ronnie White and Police Chief John Morren, both candidates for County Sheriff, will be asked to go on leave of absence 30 days prior to the May 1 Democratic Primary election.

In a series of requests from Commissioner Hoffmann it was decided to pave a few

D.L. Kinnaird Insurance Agency Moving Jan. 26

Eastland's oldest Insurance Agency, D.L. Kinnaird Insurance, is moving, January 26, to the new Terrell Real Estate Building on Highway 80 east, in Eastland.

The friendly folks at Kinnaird's, Don, Sallie and Patricia, invite you out to their new offices.

The location is out of the downtown traffic and has plenty of parking. The new, larger offices will help them serve you better.

Kinnaird's has been serving Eastland since 1919 with Home, Auto, Business and High Risk Insurance. Their telephone number will remain 629 - 2544.

blocks in the west part of town, sell three city houses, buy new fire hoses for the city's rural fire truck, and enter into an extensive city tax re - evaluation program.

Streets designated for paving as soon as weather and work force is available (asphalt is now held by the city) include: two blocks on Oak St., north from High School Hill; Ostrom St. from Sadosa St. to the new gym; and College St., from Main to Commerce Sts.

The vote was finally unanimous on the paving after a lengthy discussion of other streets that need paving, the need for major water - line renovation, and the possibility of a bond issue to take care of the various needs.

It was decided to sell the two residences on S. Daugherty St., and the house near the cemetery (retaining the land there) as these are vacated by city employees. The hospital board has expressed interest in the property on Daugherty St.

City Manager Lewis Tiner was instructed to purchase new red hoses for the city's rural fire truck.

FFA Participates In Abilene Show

Nine members of the Eastland Chapter of the Future Farmers of America participated in the annual Abilene Livestock Show. The show was held at the Taylor County Coliseum January 18, 19, 20 and 21st.

Exhibiting fat lambs from Eastland FFA were Clyde Henson, Mike Simmel, Tony Wood, Rex Morgan and Mark Pruitt.

Tommy Culppeper, Steve England, Mike Stutts and Kenneth Underhill showed barrows in the Swine Division.

The regional show is open to all junior exhibitors from 33 different counties in the West Texas area.

Rites For Green Infant Held Saturday

Mrs. Ferne Green, Yvonne and Neil Barton and Howard and James Reid attended graveside services - held at 11 a.m. Saturday, January 17th in San Angelo for Heather Corrine Green, who was born Wed. Jan. 14th, 1976. She was taken to surgery immediately and died Jan. 15th, she lived 28 hours in intensive care.

Coach and Mrs. Otis Green are the parents. She had one sister Holly almost 6 years old. The maternal grandmother is Mrs. Corrine Hasty of San Angelo and many Aunts, Uncles and Cousins also survive.

God must have needed a beautiful tiny angel in Heaven.

The Commission agreed to enter immediately into a major city - wide tax re - evaluation program, with members for a valuation board to be named locally, in an effort to increase city revenue without increasing taxes.

Tree Planting At City Park Saturday

A special tree planting ceremony will be held at the City Park in Eastland Saturday afternoon. The program is sponsored by the Eastland 4 - H Club, the Texas Forestry Service, and the Texas Forestry Association as an official Bicentennial project. The ceremony will take place at 3:00 p.m. January 24, in the park.

A highlight of the ceremony will be the dedication and planting of a "Liberty Tree" by the Eastland 4 - H Club.

The Liberty Tree is a "Tejas" variety pecan. Pecan is the state tree of Texas, and "Tejas" (the Spanish word for Texas) is a new variety which grows well throughout the state and produces abundant shade and tasty nuts. It will be a living memorial to the Bicentennial in Eastland.

This Bicentennial pecan is called a Liberty Tree after the famous elm in colonial Boston under which the first act of public resistance occurred in 1765 - the hanging in effigy of a newly - appointed stamp tax officer. This tree was a symbol of resistance to British rule, and many towns planted or dedicated their own Liberty Trees.

Participating in the event will be Eastland 4 - H members and adult leaders; Emmett Lasater, Eastland Bicentennial Chairman; and Dan Childress, President of the Eastland County Pecan Growers Association. The public is invited to attend.



Ronnie White, candidate for Eastland County Sheriff. This photograph was not available at the time he made his original announcement.

Brag Corner



DANA ELAIN 6 months
PARENTS: Mr. and Mrs. Dale Squiers
GRANDPARENTS:
Mr. and Mrs. C.T. Harp
Mr. and Mrs. Noble Squiers
GREAT - GRANDPARENTS:
Mrs. Mary Annie Henderson
Mrs. Anna Squiers

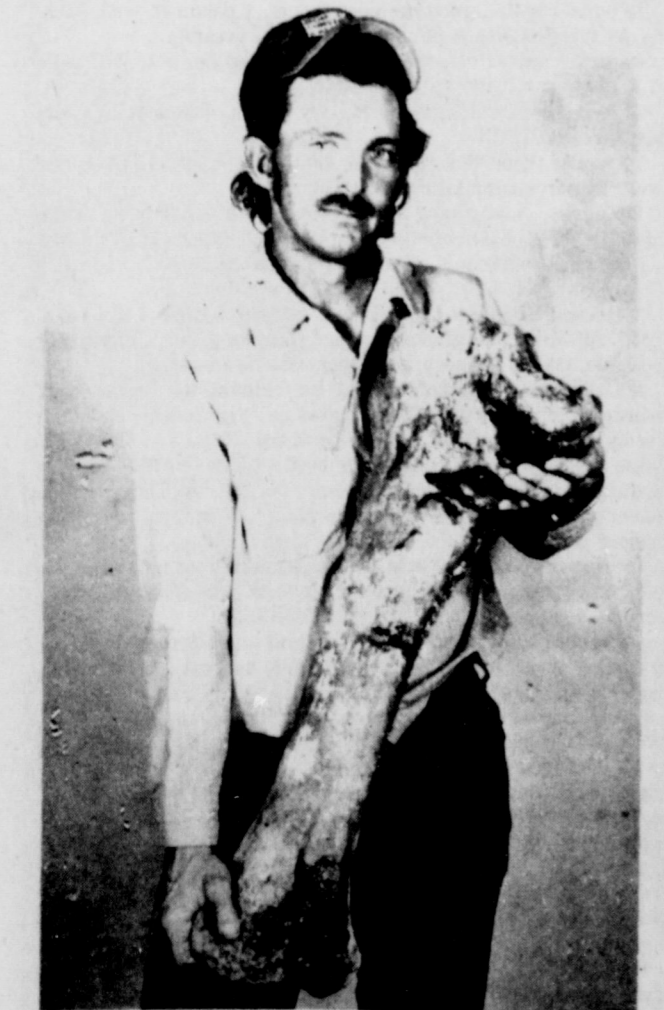
Nancy Trout Asks Voters For Second Term



Mrs. Nancy Trout has authorized this newspaper to announce that she is a candidate for re - election to the office of Eastland County Tax Assessor - Collector.

Mrs. Trout was chief deputy for Edgar Altom and upon his retirement, was elected to the office.

Mrs. Trout said that she will issue a formal statement at a later date.



LYNDELL GARRETT, a dozer operator for Bob Carroll Construction Co., is pictured with the largest found Mammoth bone discovered recently. The Company was working near Mansker Lake when the discovery was made.



Maverick Band Rehearsal For Concert

A spectacular concert combining the seven school and college bands of Eastland County will be held on Thursday evening, January 22, at the Cisco Junior College Auditorium. The program is set for 7:30 p.m.

The concert is planned as a Bicentennial event, and is the second in Cisco Junior College's Bicentennial Series for 1975 - 76. CJC Band Director Douglas Fry is coordinating the program.

High school bands from Cisco, Eastland, Ranger, Gorman, and Rising Star will participate, as will the junior college bands from Cisco and Ranger. Each of the directors from the various schools will conduct one selection on the program.

Stage crew personnel at CJC are currently building a special stage extension out into the auditorium's orchestra pit to handle the 200 - plus musicians making up the county band.

Selections and directors for the concert will include:

"The Star Spangled Banner", Sousa - Damrosch arrangement, directed by Mr. Douglas Fry of Cisco Junior College;

"America 1776" by Billings, directed by Mr. Paul Fullerton of Rising Star;

"Duty, Honor, Country" by Harold L. Walters and narrated by Wyley Peebles, chairman of the Fine Arts Department of CJC, directed by Mr. Andy Taylor of Gorman;

"The Stars and Stripes Forever" by John Philip Sousa, directed by Mr. Arthur Nutt of Ranger High School;

"Ceremony of Allegiance" by Don Gillis, with narration by Mr. Peebles, directed by Mr. Jerry Frazier of Ranger Junior College;

"The Blue and the Gray", civil war fantasy by Clare Grundman, directed by Mr. G. Lynn Low of Cisco High School; and

"America the Beautiful" by Carmen Dragon, directed by Mr. Bobby Bingham of Eastland.

There will be no charge for admission, and the general public has been cordially invited to attend the concert. Seating will be on a first come, first serve basis, Mr. Fry said.

Neville Speaks Out On Channel 5 Major Issue

Ladies and Gentlemen, my name is John Neville, manager of Southern Television Systems Corp. which includes the TV cable system in Eastland, Texas. In recent months there has been a major issue involving the Eastland Cable Company, Eastland TV cable subscribers, and KRBC TV Channel 9 Abilene.

The Federal Communications Commission has set forth a group of complicated rules governing CATV distant imported signals. One of these rules states that any minor market cable system that has more than 1,000 customers and lies within 55 miles of a TV station, must, upon request by that TV station, protect their simultaneous programming. This we are doing at this time.

The point I would like to make is that this rule is not compulsory unless the TV station in question requests the program protection. You see, the rule allows for bargaining on a local level. KRBC does not have to request protection. It is their choice.

Long before this issue became public I invited the KRBC station manager and his chief engineers down to look at the other NBC station to show them that it was, and is, in fact, an inferior picture in comparison with Channel 9's picture. I explained the reason we want KXAS Channel 5 on the cable is to back up KRBC during periods of time when they are not coming in clearly for one reason or another. Of course we also want to offer the non-duplicated programming of KXAS.

(We are entitled to do both by regulation.) KRBC's engineer agreed that the KXAS signal was an inferior picture. Furthermore, I personally offered to carry Channel 9 on another of our systems which lies outside of their protection zone. We are, in fact, carrying KRBC on that system because we believe that people should have a choice as to what station they want to watch.

The station manager at KRBC said he would certainly appreciate our carrying his station on another cable system but that he felt he could not withdraw his request for protection in Eastland. This is fine if he feels this way.

Naturally, after we begin clocking out KXAS Channel 5 our customers wanted to know why. Our answer was then, and still is, "because KRBC requested simultaneous program protection".

Shortly thereafter Channel 9's station manager was contacted by some citizens of this community who asked him to

relax his station's demands—he did not.

Then a petition was circulated asking Abilene merchants to try to get Channel 9's demands relaxed.

I personally wrote a letter to the editor of the Abilene Reporter News trying to explain our position.

Some ads were taken out in the Reporter News again trying to get KRBC to relax their demands. My picture appeared in one of the ads but only because the equipment in the picture belongs to this cable company.

I have said all of this so that I might emphasize the following points: (1) This is not a compulsory rule until a TV station requests a cable system to abide by it. KRBC does not have to exercise their option of requesting protection. (2) We, as a cable company, are complying with the FCC rules and regulations. (3) The issue is not between the FCC and Eastland cable company, but it is between KRBC and several citizens of Eastland. (4) By far the simplest solution to the problem would be for KRBC to withdraw their request for protection.

If they do not withdraw their request, we as a cable company will continue to protect them and they must in turn contend with the people of Eastland.

Thank you for your time and patience.

Science has made fantastic strides in the last decade - it's now only 40 years behind the comic books.

Read The Classifieds

FULLEN MOTOR CO.
PUNCH LINE OF THE WEEK

FREYSLAG Insurance
WEATHER REPORT

Warmer Thru Thursday. High Near 60.

Eastland Teams To Host Cisco

Eastland teams will host Cisco squads here Friday night in continuing District 9 - AA basketball action.

Breckenridge laid it on the Mavericks, 90 - 61 here Tuesday night, but the Mavericks retaliated with a big 77 - 44 win over the visiting Breck girls.

In other 9 - AA action, Coleman beat Hamilton 69 - 53 and Cisco beat Clyde, 67 - 50.

The Eastland Jr. High School teams are reportedly scheduled for action in a tournament in Breckenridge this weekend.

Breckenridge scored 30 second - quarter points and broke away from Eastland for a 90 - 61 District 9 - AA basketball victory. Breckenridge had four players in double figure scoring.

BOYS
Eastland: Bowles 12, Johnson 6, Haun 4, Horton 16, Sharp 13, Wilson 2, Mahan 8, Totals 24 13 61

Breckenridge: Crider 10, Dean 12, Nowlin 18, Taylor 4, Robertson 16, Jones 8, Rhoades 8, Collins 8, Spencer 4, Loggains 2. Totals 41 8 90
Eastland: 16 14 10 21 - - 61
Breckenridge 16 30 28 16 - - 90

GIRLS
Eastland: Price 14,

Rotary Club Holds Meet

The Rotary Club met Monday, January 19 at the Ramada Inn according to president, Ken Reese. Grover Hallmark had to program and brought a classification talk on Banking. January 26, Ken Reese will have a slide-talk show on the "most Important Man". Bob Boudreaux will have the program on Feb. 2 and will have Joe Hanna as the speaker.

Mr. and Mrs. J. Selz of Stephenville visited Mrs. Adele Whitten during the weekend.

Pinkerton 31, Wilson 8, Crabtree 14, Bulgerin 4, Krantz 3. Totals 33 11 77
Breckenridge: Larson 22, Boland 17, Cavanaugh 3, Honea 2. Totals 18 8 44
Eastland: 23 24 22 10 - - 77
Breckenridge: 16 9 3 16 - - 44

Returns Home

Mrs. Buelah Holcomb and Mrs. Ray Brickman have returned to their home in California after visiting in Eastland for several weeks with their Mother and Grandmother, Mrs. Minnie Williams, who resides at Valley View Lodge.

Mrs. Glenn Stennett and children of Cisco visited Mr. and Mrs. Dave Putman Thursday night.

Mr. and Mrs. Pat Bryant and baby of Pettigrew, Ark. were visiting recently with Mr. and Mrs. J.L. Riggan.

CLASSIFIED ADS

FOR SALE

PORCH SALE - 400 E. Valley, Jan. 22, 23, 24. Day bed, baby bed, 2 small chest of drawers, cook stove, 1970 Chevelle SS, misc. items. t-7

FOR SALE-Full Blood Irish Setter Puppies, 200 W. Virginia, trailer #2 after 5. Call 629-8349 t-10

FOR SALE - 1972 Chrysler, 4 door hard top, Brougham, 60,000 miles, \$2,000. 1969 Opel sport coupe, 629-1179. t-9

FOR SALE - Brand new combination sofa bed, motorola TV 15" with stand, coffee table, end table, table lamp, refrigerated air conditioner practically new, almost new mattress full size, recliner chair, at real bargain prices. Call 734-2873 between 11 a.m. and 2 p.m. daily. t-11

FOR SALE - Total electric mobil home, 14 x 65 on 2 lots. Shag carpet, self-cleaning GE electric range. Good location in Eastland. Call 629-2330 after 5 p.m. t-11

FOR SALE-Long Branch Polled Hereford Farm. Registered Bulls for sale and registered Duroc - Bores. 817-249-1776. Will be at farm on weekends.

ONE OF A KIND--Our 13 year history has proven a KWIK KAR WASH to be one of the highest investment return businesses known. We provide financing, site analysis, construction and service. Call Ray Ellis, collect (214) 243-3521. t-7

FOR SALE BY OWNER--Home in lovely Hillcrest Addition, corner of Commerce and Hillcrest. Carpet throughout, central heat and air, 1 1/2 baths, 2 car garage. Located on 2 landscaped lots with 17 large oak trees, St. Augustine grass, pecan and fruit trees. Call 629-2516. t-11

NOW UNDER CONSTRUCTION--New 3 bedroom, 2 bath brick home with central heat and air, 2 car garage, natural wood burning fire place, built-in kitchen appliances, large dining area, dressing area in master bedroom. Located in exclusive Eastland area on large wooded lot. Call H&W Development Co., 629-1702 for Gary. t-11

FOR SALE - A natural wood burning fireplace to warm your toes with, enclosed by attractive 3 bedroom, 1 1/2 bath, Ranch Style Home. It's total electric with a dishwasher, stove, central heat and central air, carpet throughout, cathedral ceilings, attached two car garage. Situation on two-thirds acre, plenty of room for the best of gardens. Many more features. Call for appointment 629-2875. t-11

FOR SALE - 1973 El Camino, 31,000 miles 629-2090. t-11

FOR SALE - 1969 Caprice 2 door, hard top, 350, V8, loaded, new paint and radial tires, vinyl top and rally wheels. Good condition. See at 109 N. Connelley or call 629-1386. \$1150. t-11

FOR SALE - 30 gallon electric water heater; piano that needs repair; old gas cook stove; school bus seats. Call 817-734-2378. t-10

FOR SALE - 1968 Chevrolet, 4 door, V8, automatic, air. Will consider trade. Call 817-734-2378. t-10

FOR SALE - IT'S inexpensive to clean rugs and upholstery with Blue Lustre. Rent electric shampooer. Coats Furniture. t-8

FOR SALE - Small saw mill. Belsaw No. 8. \$450.00. Call 817-326-4322, Granbury, Texas. t-8

FOR SALE--Beautiful 3 year old Dunn filly. Call 629-2204. t-12

Used Singer Touch and Sew Sewing Machine. Does everything. \$39.50 portable Also repair, clean, oil and adjust all makes and models. 629-1604. t-12

LUZIER COSMETICS For the very best in all types of skin care. Foundation-liquid and cream-translucent powders. Lovely gifts. Call 653-2220. t-5

FOR SALE

NOTICE-For your aluminum storm windows, screens, doors, window awnings, and carpentry, call Otis Coleman, 629-1644. t-11

For Sale - 15 4-10 peanut allotment in Eastland County. 1056 lb. per acre yield. Bob L. Pierce, Box 222, Wink, Texas.

FOR SALE-62 Ford. Vinyl top, air, heater, radio. Bargain. 807 Halbryan, Eastland, Texas.

FOR SALE: 1971 12 x 60 mobile home set up on rented lot. Excellent location. Must sell, make offer. 647-3106.

FOR SALE-Irrigation pump, 4 inch Berkeley pump with 6 cylinder corvette engine, fixed for butane. 30 feet suction hose with check valve, mounted on trailer. Call 629-2727. t-12

Used Sewing Machine. Straight Stitch, \$32.50. We also clean, oil and adjust all makes and models. 629-1604.

BUCK KNIVES

FAMOUS FOR HOLDING AN EDGE

Available At H & R Lumber 715 West Main 629-2104

Desks, chairs, files, safes, fire files, tables, cash and carry. Save 20-50%. Large selection. 9-5:30 weekdays. Saturday 9-1. Value City, 1030 Butternut, Abilene. t-11

FOR SALE-Couch and chair \$125; reclining rocker \$10; 1 coffee table and end table set \$75; 1 coffee and end table set for \$65. Also new Maytag gas dryer \$200. 610 Walnut St., Ranger. Call 647-1155. t-11

Unprocessed Colorado Honey, 1 and 2 lb. jars. Call 442-1317 or come by 1611 Ave. D., Cisco, after 6. Will deliver if necessary. At home some weekends. t-12

FOR SALE - 1970 Hornet 2 door. Also, 1965 Kaiser Jeep, 6 cylinder. Call 629-2052. t-11

NEW MOBILE HOMES. FHA FINANCING AVAILABLE. Many models and sizes to choose from. Low down payment. Low monthly payments. Eastland Direct Factory Outlet, Olden, Texas. Office phone 653-2432 or home phone 629-2117. t-11

Sturdy sheet iron carpet for as little as \$245.00. 2 car carpet only \$365.00. 629-2805. t-11

FOR SALE - 1969 Chevelle Super Sport, 396 board out to 427 motor, 2 door, blue with black vinyl top, 4 speed, in good condition. Munsing. Transmission. \$800. Call 629-1675 for Roy after 6:00. t-13

TEXAS ALMANAC 1976-1977 just arrived at the Eastland Telegram. \$2.50. Get yours

IRRIGATION EQUIPMENT - A complete line of irrigation equipment. Submersible, centrifugal, and turbine. Pumps, pipe, fittings, volume guns and circle system. Let us help you with your irrigation needs. Machine shop and parts for pump repairs - test pit facilities. Also come take a look at our Herbicide - Chemical Applicator for chemical distribution through irrigation lines. Largest supply in Central Texas. KIMMEL IRRIGATION SUPPLY, INC. Highway 6, DeLeon, Texas. Phone 817-893-6266. t-11

FOR SALE

FOR SALE - Antique wall telephone, excellent, \$145; antique crank phonograph, beautiful wood cabinet, \$125; new model 1100 automatic 12 gauge, used 4 times, \$165; model 700 .243 Winchester with 4 power Weaver scope, \$145; 1974 QASO Honda, \$145; Pioneer SR202 revibrator for amplified system \$100; Large GE microwave oven, cost \$365, sell for \$250. 629-8026 after 4 p.m. t-8

MISC. FOR SALE - FOR better cleaning, to keep colors gleaming, use Blue Lustre carpet cleaner. Rent electric shampooer. Perry Brothers. t-8

ABILENE TRAILER SALES featuring W - W Horse and Cattle Trailers. First quality trailers. Parts and service for all makes. Compare prices, 3608 Pine, 673-5911. t-16

FOR SALE to be moved. Used steel canopy, 48' x 18'. Phone 817-559-2388. t-15

FOR SALE 1-71 Ford tractor 2000-202.9 hrs with 6' Mower, Post Hole Digger and 2 pt. Mold Board Plow-\$3,600
1-12' Steel Creep Feeder-\$175
6-10" Steel Feed Troughs at \$25.00 each-\$150
1-12' Steel Hay Rack-\$65
1-4' Diameter Water Trough-\$40
1-6' Diameter Water Trough-\$65
1-Squeeze Chute-\$525
1-14' Covered Trailer with brakes-\$825
16-Rolls 1 1/2 gauge U.S. Barb wire at \$20 each-\$320
9-Bundles Short Stays at \$10 each-\$90
4-Rolls 2 1/2' Hog Wire-USS at \$25 each-\$100
1-Electric Fence Charger-\$40
1-12'-9" Creosoted Posts-\$8
2-14'-5" Creosoted Posts at \$12 each-\$24
1-Post Puller-\$50
10-Sacks-Sack Crete Cement at \$2.50 each-\$25
1-Ski Boat with trailer and motor-\$600
Call 629-2724 Friday nites Saturdays and Till Noon Sundays

VERNON W. THAMES P.O. Box N DeSoto, Texas 75115

FOR RENT-Attractive 1 and 2 bedroom apartments. Also nice bedroom and bath. All bills paid including cable. Call 629-1731 or 679-2125. t-11

FOR RENT- Mobile Homes and mobile home spaces 653-2220. t-11

Furnished or Unfurnished Apartments For Rent. Royal Oaks Apartments, 1304 Royal Lane, Cisco, 442-3232 or 442-2709. t-11

HILLSIDE APARTMENTS Attractive one bedroom and efficiencies. All utilities paid including TV cable. Call 629-8097. t-11

Connell Welding Service all Types of Farm and Shop Welding. 24 hr. service. 647-3606. Rt. 1 Box 153.

ATTENTION HUNTERS AND TRAPPERS Fur buyer will be in Cisco at WHITE ELEPHANT RESTAURANT each Wednesday from 4 p.m. till 4:30 p.m. We buy green and dry furs of all kinds. Skin case all furs (like opossums), not open up the middle. We also buy deer hides. Well handled furs bring TOP PRICES!! NORTHWESTERN FUR COMPANY Colorado City, Texas

Light Carpentry Work Remodeling 629-8045 John Mason t-20

ROOFING Doyle Squires, Cont., Olden, Texas. 653-2212. Call after 6 p.m.

MISSING FROM pasture north of town. 11 month old black bull calf about 400 lbs. Anyone knowing where -about please call Mae Plowman. 629-2204. t-8

Asphalt paving. Parking lots, driveways. Free estimates. All work guaranteed. Contact Doyle Roberts, 647-3521, Ranger, Texas. t-10

J&F POODLE GROOMING-14 MILES SOUTH OF CISCO ON HIGHWAY 206. PHONE 725-6540

NOTICE

Above all a good roof. Eastland Roofing Co. Free estimates. 629-2805. t-11

FARM AND RANCH SUPPLIES - Reject portable corral panels on special. Priced at \$1.00 per running foot. Fambrough Gate Co., Cisco, Texas. 15

BOWER ELECTRIC Residential, commercial and industrial wiring. New or old construction, house power specialists. For 220 volt appliances. Eastland. Call 629-1003. t-11

CUSTOM MADE LEATHER GOODS. Handbags, Wallets, Belts. 629-8045. t-15

FOR RENT

FOR RENT - House 3 to 4 bedroom, 2 1/2 baths. \$140 month. Junction, Texas. 446-2149. t-10

FOR RENT-Furnished private 3 room cottages with carports. Daily, weekly, or monthly. Pleasant Place Motel, west edge of Eastland. Call 629-8878. t-11

FOR RENT- Mobile Homes and mobile home spaces 653-2220. t-11

FOR RENT- Mobile Homes and mobile home spaces 653-2220. t-11

Furnished or Unfurnished Apartments For Rent. Royal Oaks Apartments, 1304 Royal Lane, Cisco, 442-3232 or 442-2709. t-11

NOTICE

SANDRA'S INCOME TAX SERVICE 304 S. Neblett 629-1105 Mon.-Fri. 9-5 Specializing in 1040 and 1040A. Quick Service. \$5 and up. t-10

Attention Hunters and Trappers Fur buyer will be in Cisco at WHITE ELEPHANT RESTAURANT each Wednesday from 4 p.m. till 4:30 p.m. We buy green and dry furs of all kinds. Skin case all furs (like opossums), not open up the middle. We also buy deer hides. Well handled furs bring TOP PRICES!! NORTHWESTERN FUR COMPANY Colorado City, Texas

Light Carpentry Work Remodeling 629-8045 John Mason t-20

ROOFING Doyle Squires, Cont., Olden, Texas. 653-2212. Call after 6 p.m.

MISSING FROM pasture north of town. 11 month old black bull calf about 400 lbs. Anyone knowing where -about please call Mae Plowman. 629-2204. t-8

Asphalt paving. Parking lots, driveways. Free estimates. All work guaranteed. Contact Doyle Roberts, 647-3521, Ranger, Texas. t-10

J&F POODLE GROOMING-14 MILES SOUTH OF CISCO ON HIGHWAY 206. PHONE 725-6540

NOTICE

WIESEN'S MAGNETIC SIGNS All Types Tel. 647-1676 or 647-1665 in Ranger

SENKEL'S CABINET SHOP 303 N. College Phone 629-1269 after 5:00. Custom Built Cabinets, Mobile Home Set-up, and Repair, Remodeling and General Carpentry Work. Richard Senkel Owner

Complete Car Service... Bring your car to us for any type of repair. We give you fast, quality service. Stop in.

Reasonable SCOTT PAINT AND BODY WORKS 629-2372 300 W. Commerce Sam Beggs-Owner

WATKINS DEALER Vera Sherrill 406 S. Bassett, Eastland Leave name and address during day. Phone 629-8019

Men's Wranglers Large Assortment B&H TRADING POST 311 North Seaman Eastland, 629-2885

NOTICE - For your Carpenter Work Needs, small or large jobs, call U.V. Williams, phone 629-1654. t-11

"We handle anything but litterbugs" GOODE PEST CONTROL Phone 629-1179 after 3:00 310 N. Ammerman Roaches, Ants, Termites, Moths, Spiders. ALL GUARANTEED

NOTICE--Mattresses. Complete bedding made by Western Mattress Co., San Angelo. Best quality, low price, renovate or exchange new. Every other Wednesday. They're guaranteed. For home appointment call Lois Mezell, 629-2703. leave name. t-11

STATE FARM FAMILY PROTECTOR Call: James O. Wortman 705 W. Main St. Eastland Ph. 629-1096 State Farm Life Insurance Company.

Purse Pleasers Hollands Drive In Quality, Quantity, Quickest And Reasonable Prices Highway 80 West Of Eastland Phone In Orders 629-2215 Member TRA

Arnold Laundry 106 E. Plummer 629-2820 Open 6:30 a.m. To 9:00 p.m. 7 Days A Week Will Pickup And Delivery

QUALITY IS NO ACCIDENT Custom New Homes Turn Key Service From Plans To Financing B.G. BROWN CONST. CO., INC. 820 W. Main, Eastland 629-2404 Nights 629-8082

Custom New Homes Turn Key Service From Plans To Financing

B.G. BROWN CONST. CO., INC. 820 W. Main, Eastland 629-2404 Nights 629-8082

Custom New Homes Turn Key Service From Plans To Financing

B.G. BROWN CONST. CO., INC. 820 W. Main, Eastland 629-2404 Nights 629-8082

NOTICE

MASONIC LODGE NO. 467 Meets second Thursday of each month at 7:30 p.m. in the Masonic Hall. Call Joseph Housson, W.M., at 629-1314 or L.E. Huckabay, Sec'y, at 629-1391 for information.

GREGORY PLUMBING & HEATING 629-2753 Res. 639-2340

MOBILE HOME SERVICE Anchoring, Underskirting, Electric, and Plumbing Set-ups. JAMES STAGNER 647-1343

Mercers Appliance Repair. Dishwashers, washers, dryers, stoves, disposals, and ovens. G.R. Mercer. Olden, Texas. 653-2473

WATKINS DEALER Vera Sherrill 406 S. Bassett, Eastland Leave name and address during day. Phone 629-8019

EASTLAND ROTARY CLUB Mondays-- 12 noon Ramada Inn

Men's Wranglers Large Assortment B&H TRADING POST 311 North Seaman Eastland, 629-2885

NOTICE - For your Carpenter Work Needs, small or large jobs, call U.V. Williams, phone 629-1654. t-11

"We handle anything but litterbugs" GOODE PEST CONTROL Phone 629-1179 after 3:00 310 N. Ammerman Roaches, Ants, Termites, Moths, Spiders. ALL GUARANTEED

NOTICE--Mattresses. Complete bedding made by Western Mattress Co., San Angelo. Best quality, low price, renovate or exchange new. Every other Wednesday. They're guaranteed. For home appointment call Lois Mezell, 629-2703. leave name. t-11

Purse Pleasers Hollands Drive In Quality, Quantity, Quickest And Reasonable Prices Highway 80 West Of Eastland Phone In Orders 629-2215 Member TRA

Arnold Laundry 106 E. Plummer 629-2820 Open 6:30 a.m. To 9:00 p.m. 7 Days A Week Will Pickup And Delivery

QUALITY IS NO ACCIDENT Custom New Homes Turn Key Service From Plans To Financing B.G. BROWN CONST. CO., INC. 820 W. Main, Eastland 629-2404 Nights 629-8082

Custom New Homes Turn Key Service From Plans To Financing

B.G. BROWN CONST. CO., INC. 820 W. Main, Eastland 629-2404 Nights 629-8082

Custom New Homes Turn Key Service From Plans To Financing

B.G. BROWN CONST. CO., INC. 820 W. Main, Eastland 629-2404 Nights 629-8082

NOTICE

SCOTT'S BARN MISCELLANEOUS PAINTING & METAL CRAFT 13315 S. Lamar, Eastland. 1 paint lawn furniture - appliances - stock trailers - metal awnings - boat trailers - metal gates - corral panels - tractors - also polish and wax automobiles. Come by, or call L.A. Scott. t-11

Need Sewing Done? See Fay Perkin, 401 W. 10th, Cisco, Texas, 442-3812. t-12

WANTED

HELP WANTED - Nursery worker needed for Bethel Baptist Church. If interested call 629-1052 or 629-2484. t-7

TEXAS OIL COMPANY needs mature person, male or female for short trips surrounding Eastland. Contact customers. We train. Write T.W. Dick, President Southwestern Petroleum, Fort Worth, Texas. E.O.E. T+ 1/2

Thursday, Jan 22, 1976

Kincaid's Real Estate Corner

HOUSES 3 bedroom frame home, living room, dining room, kitchen, utility area with washer, dryer, bath, newly paneled throughout, single car garage and storage, corner lot, offered completely furnished, new Spanish style living room suite with hide a bed, color TV, dining room furniture, Spanish style bedroom suite, one brass bed and chest, one set twin beds, stove, refrigerator and other misc. items, all included at the price of \$11,200.00. Large 3 bedroom frame, large living and dining room combination, bath, garage, pecan trees, garden spot, large lot, located 115 Scurry St., Gorman. \$10,500.00. Consider Terms.

LAKE PROPERTY 16 1/2 acres. Possum Kingdom, 2200 ft. frontage, 6 lodges: Main lodge 2775 sq. ft. (2) 1352 sq. ft., (3) 1944 sq. ft. (4) 1640 sq. ft. (5) 1144 sq. ft., (6) 1066 sq. ft. Recreation bldg. 3600 sq. ft. All completely furnished, own water system, butane system, sewer system, boat dock boat launching ramp, all in good repair. For Sale or Trade. 24 acres of land Lake Leon, over 1400 ft. water frontage, road frontage on 3 sides, needs a developer. \$24000.00. 100 acres, 3/4 mile water frontage with 30 acres irrigated from wells, 1/4 mile highway frontage, pecans, deer and quail hunting, excellent building site. \$350.00 per acre. 260 acres approx. 1 1/2 miles water frontage, good house, out buildings, 3/4 mile highway frontage, pecans, 35 ac. cult. an excellent buy at \$325.00 per acre.

SMALL TRACTS OF LAND 3 1/2 acres highway frontage, trees, good building site, \$2000.00. 12 acres all coastal, 4 irrigation wells, outskirts of Anson. Also has hog sheds and farrowing set up, completely fenced and cross fenced with hog wire, will G.I. \$12000.00. 25 acres, creek bottom land, highway frontage, good tank \$10000.00. 63 1/2 acres of land, secluded and rough, good grass, improved varieties sown, no minerals, good tank, excellent deer and bird hunting 3/4 mile off pavement, 6 miles from town. \$300.00 per acre. Terms available, would consider G.I. plus cash. Two 44 acre tracts that adjoin, tank water on both, highway frontage, not far out, good open grass land with scattered trees, city water possible. \$16000.00 each tract. G.I. 101 acres good improved native pasture, close in, some trees, some creek bottom, net fences, 2 good tanks, good deer and bird hunting. City water possible. \$375.00 per acre. Terms. 70 acres coastal, good net wire fences, 2 pastures, well, tank, barns, close in. \$400.00 per acre. City water possible. 40 acres coastal, close in, good fences, \$400 per acre. Will take G.I. plus cash. City water possible. 36 acres brush land, close in, city water, excellent location, \$14,000.00. Will G.I. 107 acres, good fences, barns, south of Carbon, 2 tanks, one well, 85 percent minerals, \$350.00 per acre 135 acres n.w. rising Star, several good water wells, some orchard, good peanut allotment, asking \$350.00 per acre, make us an offer. On pavement. Financing available.

FARMS AND RANCHES 237 acres, excellent grass land, scattered clumps of live oaks, good highway frontage and excellent location, 2 tanks, city water possible, \$350.00 per acre, good terms can be arranged. 320 acres, highway frontage, 60 ac. cultivation, now in K.R. bluestem, creek, well, 4 tanks, good net wire fences, excellent terms can be arranged. \$325.00 per acre. 840 acres improved ranch, nice house, barns, corrals, several pastures and traps, 3 wells, 8 tanks, 2 springs, good location, on pavement, good bird and deer hunting, fish in tanks, good net fences. \$350.00 per acre. Excellent terms. 1000 acres good grass land, 2 wells, 8 tanks, good net fences, no bldgs., pavement, good location, \$300.00 per acre. Excellent terms. 650 acres rolling, semi open grass land, some bottom and river frontage, good fishing in river, pecans, several good tanks, 1 water well, 40 ac. coastal, 25 acres grain, excellent deer hunting, air strip, net wire fences, 2 houses, 35 miles from city limits Fort Worth \$350.00 per acre, excellent terms. 16 percent down balance to be arranged 8 1/2 percent interest. 1068 acres highly improved ranch located on Paluxy River, welded pipe corrals, landing strip and hangar, good barns, exceptionally nice 3500 sq. ft. home, 3 other houses, 80 acres coastal, 45 acres grain, excellent fishing, deer and bird hunting, 50 miles from downtown Fort Worth. \$600.00 per acre. Excellent terms. 15 percent down, balance to be arranged 8 percent interest.

We have for sale or trade large ranches, irrigated farms, all sizes anywhere in the Southwest. Also motels, office buildings, shopping centers, commercial property of all types. Contact us for whatever you need. ROBERT M. KINCAID REAL ESTATE 100 South Seaman Eastland, Texas Robert M. Kincaid 629-1781 Night Phone 629-2815

Card Of Thanks

We would like to express our thanks and appreciation to our wonderful family and friends who helped make our Golden Anniversary such a beautiful occasion. We want to thank Donna Brown for the lovely cake, Poe Floral for the flower arrangement, Steve Haines for the photography work. We also want to thank each and everyone who brought gifts. We received many lovely things. Each person who attended our anniversary party will be part of many memories which we will cherish forever. Mr. and Mrs. B.W. Hobbs

CARD OF THANKS We wish to take this means of expressing appreciation to friends for the prayers, visits, beautiful flowers, letters and cards sent during our stay in the hospital. May God's richest blessings be with those whose thoughtfulness will long be remembered. Mr. and Mrs. Vernon H Humphreys, James and Lea Wright Clint and Nancy Humphreys

CARD OF THANKS We wish to thank the Eastland Chamber of Commerce and the committee for choosing us as Farm Family of the Year. Our special thanks to County Agent De Gordon and the late J.M. Cooper for their help in our farming operations. R.D., Betty and Truet Ray Hart

Federal Retirees Plan Dinner Meeting

The National Association of Retired Federal Employees, Chapter 555, will hold the first meeting of the New Year Monday night, January 26, 1976. The dinner meeting will be at 6 p.m. at the Ramada Inn in Eastland, followed by a 7 p.m. program. Mr. and Mrs. Al Van de Putte of Ranger will furnish the program.

President Aubrey Goss of Rising Star will preside over a short business session. Pending legislation concerning retirees will be discussed and plans made for the programs and projects for the NARFE meetings held each last Monday night through November. All members and area Civil Service Retirees interested in the organization are urged to attend. No reservations are necessary for the dinner. The \$3.00 fee will include the tax and tip and visitors are always welcome.

From The Living Bible

Don't brag about your plans for tomorrow — wait and see what happens. Don't praise yourself; let others do it! A rebel's frustrations are heavier than sand and rocks. Jealousy is more dangerous and cruel than anger. Open rebuke is better than hidden love! Wounds from a friend are better than kisses from an enemy! Even honey seems tasteless to a man who is full; but if he is hungry, he'll eat anything! A man who strays from home is like a bird that wanders from its nest.

Updating Hem Lengths For Today's Fashion

COLLEGE STATION -- Fashionable shirts and dresses are hanging unworn in many closets -- simply because they're too short for today's styles.

But many of these can be "recycled" at little expense to become useful and enjoyable additions to a wearable wardrobe. Mrs. Becky Culp, area clothing specialist, suggests.

She's with the Texas Agricultural Extension Service, the Texas A&M University System.

County 4-Hers Plan Activities

The Eastland County 4-H Council met recently. Plans for county-wide 4-H activities were made by the club representatives.

Sarah Slaton of Gorman 4-H Club, was elected as treasurer for the Council.

Jeanne Housel of Rising Star 4-H Club, Revise Laminack of Gorman 4-H Club, gave a report on the District 4-H Council meeting they attended in Hamilton.

Other plans made by the Council members included planning an end of the year trip. The 4-Hers plan to visit Pate Museum of Transportation for an overnight trip and other sights in the Fort Worth - Dallas area.

Jeanne Housel will prepare news of Eastland County 4-H activities for the District 4-H news letter.

Council members attending the meeting were: Theresa Scott, Neil Scott, Jeanne Housel, and Ken Housel of Rising Star 4-H; Revise Laminack and Sarah Slaton of Gorman 4-H Club; Karen Plowman, Nancy Cross and Sherry Kidd, of Eastland 4-H Club. Others attending were Mrs. Susan McMillan and Mrs. Janet Thomas, County Extension Agents.

REA Loan Approved

WASHINGTON, D.C. -- Congressman Omar Burleson announces the approval of a \$997,000 REA loan to the Erath County Electric Cooperative Association, with headquarters at Stephenville, serving Erath, Eastland, Palo Pinto, Stephens, Young, Bosque, Comanche, Coryell, Hamilton, Hood and Somervell Counties.

The purpose of the loan is to finance service for 700 additional consumers; to finance 66 miles of distribution line; and to finance system improvements.

ROOFING
Doyle Squires, Cont., Olden, Texas, 653-2212. Call after 6 p.m.

BELLE'S Western Patterns



1273
Men's Curved Yoke Shirt
The top-stitched shirt curved yokes has front band closing collar and band, long set-in sleeves pleated to cuffs and shirt tail hem.
Printed pattern #1273 in sizes 14 to 17. Send \$1.75 for this pattern... add 50¢ handling and postage. Send to:
Belle's Patterns
P. O. Box 841 - Dept. 416
Hurst, Texas 76053

"Spend a few minutes visualizing possibilities on the too - short clothes. Would the hem allowance add enough needed length? If so, check to see if the old hemline would show. If it does, consider whether or not rows of trim or narrow tucks could be used for camouflage and still look as though they were planned as part of an original garment."

"Once the hem allowance is successfully let down, think through ways the hem edge could be finished. Is it best to add a facing, bind the raw edge, or turn under a narrow width and topstitch?" she said.

She suggested some other possibilities if letting down the hem allowance doesn't provide enough needed length.

-- Is the garment design and fabric design suitable for adding a contrasting ruffle or band at the hemline?

"To avoid looking 'tacked on', contrasting fabric or trim added at the hemline often also needs to be positioned higher on the garment - for example, as pockets, belts, cuffs, trim or applique."

-- For straight or gathered skirts, cut without A - line seams, one or more rows of fabric bands or trim inserted above the hemline may work.

-- Dresses without waistline seams can be successfully lengthened by adding fabric inserts at the waistline for a mock belted look or as a midriff to be worn either belted or unbelted.

-- Long and closed vests, tunics or overblouses are excellent lengthening accessories. Adding a yoke or lightweight fabric to the underneath section of the skirt or dress easily lengthens the hemline.



An early warning system against influenza has been put into operation in Texas through the Texas Department of Health Resources.

Dr. M.S. Dickerson, chief of the TDHR's Bureau of Communicable Disease Services, says outbreaks of influenza can have traumatic effects on a community, cutting sharply into school attendance and the ranks of the working public.

The severe and disruptive effects of epidemic influenza on a community can be mitigated, however, by the early detection and early diagnosis of an outbreak," said Dr. Dickerson.

"This is accomplished by a thorough surveillance system that is presently operational throughout the state of Texas."

In the past, the Department of Health Resources has received weekly reports of notifiable communicable disease in the state from reports of private physicians. These "Flu-like" illness reports, which are still continuing, are published by the Department in its "Texas Morbidity This Week". But in addition to these physician reports, influenza surveillance is placing another finger on the pulse of the disease.

Influenza is being monitored through 19 school systems, 12 industries and 13 large hospitals. These monitoring units are distributed in such a way as to detect illness in any part of the state at any time. Weekly data is regularly communicated to the Bureau of Communicable Disease Services.

Selection of schools, hospitals and industry for reports wasn't just by chance. When influenza enters a community, one of the first changes noted, says Dr. Dickerson, is an appreciable rise in the number of patients

seen in outpatient clinics and emergency rooms. "Daily and weekly changes will be watched," he said.

"Although influenza affects all age groups," said Dr. Dickerson, "age-specific prevalence rates are highest among primary and secondary school children at the onset of an epidemic. Thus, this population serves as a good index for influenza activity."

School and industrial absenteeism and hospital emergency room visits give a quantitative estimate of current influenza activity.

The Department of Health Resources utilizes its Public Health Region operation and big city health departments in channeling information into Austin. Through them, local doctors and hospitals have been alerted to look for influenza symptoms in patients.

Just appearing to have influenza isn't good enough for the Department. Laboratory confirmation is necessary for influenza, as well as the particular strain. Proper testing equipment for throat swabs and blood serum specimens have been provided to reporting points around the state. The specimens taken may be tested in regional laboratories or the main laboratory in Austin.

"If we can get an early alarm, we can pinpoint the outbreak and individuals can set up certain safeguards. Those with upper respiratory infections can stay home and not spread the infection. The success of the program is tied in with early detection and prevention," said Dr. Dickerson.

As the New Year got underway, Dr. Dickerson said there had been no outbreaks of influenza in the state.

"But," he added, "it may be coming." Influenza of the A-Victoria strain has been isolated in Hawaii. Since there is heavy travel between Hawaii and the mainland, it can be expected to be brought in, Dr. Dickerson said.

Health departments in Austin, Fort Worth, Houston, Dallas, Waco and Amarillo, together with Public Health Region headquarters in Harlingen, Abilene, El Paso, Lubbock and Tyler, are primary reporting points. They receive reports from other towns and from hospitals near them. These hospitals are: Henricks in Abilene; Shannon in San

Angelo; Medical Center in Tyler; Memorial in Corpus Christi; Mercy in Laredo; R.E. Thomason in El Paso; Providence and Hillcrest in Waco; Methodist in Lubbock; Northwest Texas in Amarillo; Parkland in Dallas; Brackenridge in Austin; John Peter Smith in Fort Worth; and Ben Taub in Houston.

Dr. Dickerson said this reporting system can be used also for reporting other communicable diseases and is another way in which the Department of Health Resources is working for a healthier Texas.

Millican Back Hoe Service

511 Seaman 629-2977

Dirt Work & Complete Septic Tank Service

Cleaning & Installing

R.C.G. Leasing, Inc.

104 W. Commerce On The Square
Eastland, Texas 629-8052

Hospital Equipment & Sickroom

Supplies Sales & Rentals To

Care For Your Patient At Home

Hospital Bed & Rails
Wheel Chairs
Walkers
Bedside Commodes
Crutches
Inhalation Therapy Equipment
Wheelchair Cushions
Skin Care Pads
Under Pads

Medicare & Medicaid Approved

Year-End SALE

HEIDENHEIMER'S

Your Family Store In Cisco

Ladies' & Misses' COATS 30% OFF	MEN'S & BOYS' PAJAMAS 20% OFF
Ladies SPORTS WEAR 30% To 50% OFF	MEN'S & BOYS' ROBES 30% OFF
LADIES' & MISSES' GOWNS, P Js, ROBES 30% OFF	MEN'S & BOYS' DRESS PANTS 20% OFF
Group Of Children's SPORTSWEAR 50% OFF	MEN'S & BOYS' JACKETS 20% OFF
Ladies DRESSES, SWEATERS, BLOUSES 30% OFF	MEN'S & BOYS LEISURE SUITS 20% OFF
Children's, Ladies, Men's HOUSESHOES 20% OFF	BIG GROUP MEN'S SUITS 30% OFF <small>Value to '89</small>
BEDSPREADS, BATH MATS, RUGS 20% OFF	ONE GROUP MEN'S LONG SLEEVE DRESS & SPORT SHIRTS SHIRTS 20% off

HEIDENHEIMER'S

AMERICA'S BEST HOUSING BUY

Delivered And Set Up

On Your Lot. 60 x 24 Feet

Double Wide Home Only **\$130⁰⁰** Monthly After Small Down Payment

3-Bedrooms
1 1/2 Baths
Living Room
Dining Room
Full Den
Plush Furniture

Eastland

DIRECT FACTORY OUTLET

1-20 Olden, Texas Phone 563-2432 Or 629-2117

Opens 6:30 Show Starts at 7:00

RANGER DRIVE-IN THEATRE

FRIDAY-SATURDAY-SUNDAY
JANUARY 23rd-24th-25th

Wild Wonderful

Sinful

Laughing

Explosive

NASHVILLE

RESTRICTED

TEXAS PRESS ASSOCIATION
MEMBER 1976

Eastland Pump & Construction
H.L. "Hoot" Ferguson
Box 693
Eastland, Texas
817-629-2311

Backhoe Sewer Lines Water Lines Dirt Work

Farmers Losing Control Of Ag Policy

COLLEGE STATION -- Farmers are finding it increasingly difficult to be heard in Washington. "Producer interests in agricultural policy are taking a secondary position to interests of foreign policy, consumerism and labor. Secretary Butz is no longer calling the shots on farm policy. Unless farmers are able to take charge, farm programs may actually be a noose around the producer's neck." That's the contention of Dr.

Ronald Knutson, economist in marketing and policy for the Texas Agricultural Extension Service, who spoke at an Extension Service Press Day banquet at Texas A&M University yesterday evening, January 13. "Producers must consolidate if they are to regain a position of control over agricultural policy," emphasized the Texas A&M University System economist.

Knutson listed two critical policy questions on which producers must evaluate their position: (1) in whose interest is agricultural policy going to be made? (2) How much government involvement should there be? The economist noted that the overriding concern of producers is the question of the conditions under which they will have access to international markets. "Food has become an integral part of the policy of detente. As such, it may be used either as a carrot or a stick in diplomacy. The carrot policy involves freely exporting to make foreign governments more dependent on the United States as a source of supply. The theory behind this is that a

foreign power will not bite the hand that feeds it. "On the other hand, the stick policy makes access to U.S. grain dependent on support of U.S. policy by the recipient government. If food is used as a stick, the producer is in danger of being denied free market access from time to time." While food diplomacy receives a lot of attention, organized labor and consumerism stand as even greater threats to producer access to foreign markets, argued Knutson. In both 1973 and 1975, the impact of exports on domestic food prices was the primary reason for export controls. This reflects the fact that President Ford listened to George Meany more than to producers or Secretary Butz. "Target prices, food reserves and the future of commodity programs stand as the major domestic farm policy issues," noted Knutson. "Farmers feel that in return for full production there must be reasonable assurance that prices will not fall below production costs. They are opposed to reserves because they lower prices. Commodity programs such as those on rice and peanuts appear to be on the way out.

"For agricultural producers to get a fair shake in future farm policies, they must make their voices heard -- as one strong body rather than as individual commodity groups. Farmers need a strong right hand in Washington or else they will have to continue catering to the whims of those who desire to use agriculture as a pawn," emphasized the economist.



Fall Knit Material Reduced To \$2.29 & \$2.98

1 Group 45" Fabrics
2 For The Price Of ONE

Rita's Fashion Fabrics

I-20 East Next To Ramada Inn
629-8020

The Nurse-Midwife Gives Modern Maternal Health Care

by Carmela Cavaero, C.N.M.
Director, Nurse-Midwifery Program
College of Nursing,
Medical University of
South Carolina

Since we believe very strongly in family-centered maternity care, we invite the woman's husband, or any other person she chooses, to come with her to prenatal visits so we can discuss any questions they have. If they wish to be together during labor and delivery, we ask them to attend our childbirth education classes.

see clinic patients and private patients whose obstetricians have told them of our services. It is up to the woman to decide if she wants our care, provided, of course, her pregnancy is entirely normal.

At the satellite clinics, a number of women now seek regular prenatal care. The professional or health attention we provide spares them traveling 75 or 80 miles to Charleston for a regular visit. All patients who go to satel-

Meeting Needs
The role of the college-edu-



IT'S NOT ONLY PROUD RELATIVES who crowd around a nursery window. Candace Duran, R.N. (center), a student in the nurse-midwifery program at Medical University of South Carolina, joins program director, Carmela Cavaero, C.N.M. (right), and Sister Mary Norma Pacento, C.N.M., on morning rounds of the maternity floor. Certified nurse-midwives are on 24-hour call for labor and delivery.

lited nurse-midwife takes on special significance in a state like South Carolina, where we have a high infant mortality rate and areas where there is an acute shortage of doctors and other professional health care personnel.

By training nurse-midwives to bring those services needed by a woman and infant for healthy outcome of pregnancy to understaffed areas, we will help improve delivery of maternal and infant health care where they are needed most.

We teach our students how to respond to both the physical and emotional needs of the mother. In order to guide a woman through pregnancy, labor, and delivery, we not only need to know what is normal, but what signals a risk to mother or baby. At the first sign of complications, we call in the obstetrician. At University Hospital we

lite clinics are delivered at the hospital. This ensures a patient's access to the modern facilities that are her best guarantee of a healthy delivery. And if there are complications, mother and baby are protected by physicians and nurses who specialize in intensive care techniques.

Follow-up Care

After the baby is born, we continue to see mother and infant at postpartum visits. During this time, the mother may have problems that we can help her with, either directly, or through referrals to other health and social services. Since family planning is a major concern, we give her the information she needs in this area as well.

If nurse-midwives have come a long way, we still have a long way to go. And we're anxious to go the distance.

AUTO SERVICE

For More Good Years In Your Car

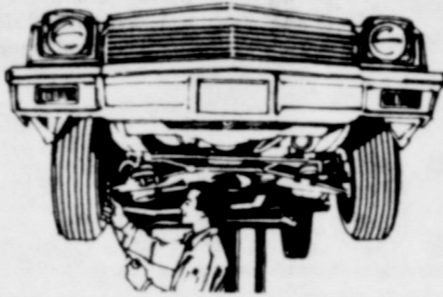
Lube and Oil Change

- Complete chassis lubrication & oil change
- Helps ensure long wearing parts & smooth, quiet performance
- Please phone for appointment
- Includes light trucks

\$8.88 with oil filter

\$4.88

Up to 5 quarts of major brand 10/30 grade oil. 10/40 grade \$1.50 extra.



Front-End Alignment

\$9.88

Any U.S. made car -- parts extra if needed. Excludes front-wheel drive cars.

- Complete analysis and alignment correction -- to increase tire mileage and improve steering safety
- Precision equipment, used by experienced mechanics, helps ensure a precision alignment

Engine Tune-Up

\$32.95

Add \$4 for 8 cyl., \$2 for air cond.

\$4 less for cars with Electronic Ignition

- With electronic equipment our mechanics fine-tune your engine, installing new points, plugs & condenser
- Helps maintain a smooth running engine for maximum gas mileage
- Includes Datsun, Toyota, VW & light trucks

Brakes-Your Choice

\$36.95

Additional parts extra if needed.

- 2-Wheel Front Disc: Install new front disc brake pads • Repack and inspect front wheel bearings • Inspect hydraulic system and rotors (does not include rear wheels)

OR

- 4-Wheel Drum-Type: Install new brake linings all four wheels • Repack front wheel bearings • Inspect brake hydraulic system, add fluid.

Lone Cedar Country Club Holds Membership Meeting Thursday

The Annual Membership meeting of Lone Cedar Country Club will be held beginning at 7:30 p.m. Thursday, President James Wright has announced.

This is a most important meeting, he said, and we urge all members to be present because the annual election of officers and directors will be held.

drive

Western Patterns

SIZES 6 TO 18 \$2.00



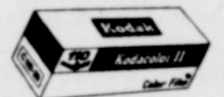
LADIES' BODY SUIT

The body suit has a snap fastened crotch and elastic at the leg edges. There are six variations featuring front laced opening or rolled collar, and either long or short sleeves and sleeveless styles.

Printed pattern #1252 in sizes 6 to 18. Send \$2.00 for this pattern... add 50¢ handling and postage. Send to:

Belle's Patterns
P.O. Box 841 - Dept. 416
Hurst, Texas 76053

Try Morren's Gift Shop For Over Night Film Processing.



Morren's Plumbing And Gift Shop

1013 West Main 629-2092

AUCTION

SATURDAY JANUARY 24, 1976 10:00 a.m.
GORMAN, TEXAS

Listings to date, consisting of: 1974 - "4030" John Deere Diesel Tractor with cab and air, 1969 - "4020" John Deere Diesel Tractor, (3) "H" Farmalls, (2) "H" John Deeres, 1968 - "1020" John Deere Gasoline Tractor, "600" Ford Tractor with front end loader, "A" Farmall tractor, old model Moline, (3) double tool bar chisel plows, (2) John Deere and (1) M.F. Moldboards, Jefferson Chisel Plow, 4 bt. Ferguson Plow, (7) grain drills, (4) "Long" and (2) John Deere 12' Tandem Discs, 6' tandem disc, 4 row tool bar, 4 row I.H.C. planter, 4 row bedder, 5 row M - F Lister, 5 row Lister with power markers, 4 row rotary cultivator, (3) 2 row Ford cultivators, 3 row Lister, 3 pt. 8 disc one-way (2) 3 pt. blades, 4 row stalk cutter, (3) shredders, (3) side delivery rakes, 3 pt. tiller, inverter peanut digger, super "Long" peanut combine, 1964 - peanut combine, (2) old model peanut thrashers, (3) peanut diggers, 3 pt. danuser post hole digger (2) old "Long" combines, 4" turbine water pump, (26) 40' joints 4" pipe, (24) 30' joints 3" sprinkler pipe, 72' - 8" well casing pipe, irrigation pipe trailer, new gooseneck trailer, 6 x 20' gooseneck stock trailer, 14' Hale open top stock trailer, new 6 x 16' and 5 x 16' all metal covered stock trailer, (2) old trailer houses, pickup camper, lot of 2 x 4's lumber, air compressor, 1974 Chevrolet 1/2 ton pickup, jeep with 4 wheel drive, 1950 Studebaker peanut truck, 1950 Chevrolet peanut truck plus tools, sweeps, busters, foot pieces, and other farm related items too numerous to list. Loadert tractor available. No charge, courtesy of auctioneer.

For further information contact: Troy Johnson, Phone 817 - 734 - 5367, Gorman, Texas.

Lic. Tx. - GC 76 - 0258
(Full Time Auctioneer)
P.O. Box 55, Lawn, Texas
Ph. 915 - 583 - 2244
Lunch Available

Buy Now At Low Goodyear Prices

Our All-Weather 78 polyester cord tire provides a thrifty fit for American cars...and budgets

Plus \$1.88 to \$2.69 F.E.T., depending on size, and old tire. Whitewalls just \$3 more.



\$16

B78-13 blackwall

Fits Models of
Chevy II
Dart
Falcon
Maverick
Mustang
Valiant

\$21

E78-14 blackwall

Fits Models of
Barracuda
Camaro
Century
Challenger
Charger
Chevelle
Chevy II
Comet
Coronet
Cougar
Fairlane
Falcon
Firebird
Matador
Montego
Mustang
Nova
Omega
Rebel
Ventura

\$23

F78-14 blackwall

Fits Models of
Barracuda
Chevelle
Cutiass
F-85
Falcon
Firebird
GTO
LeMans
Matador
Montego
Satellite
Tempest

\$25

G78-14 blackwall

Fits Models of
Ambassador
Century
Chevelle Wagon
Coronet
Cutiass
Cyclone
F-85
LeMans
Skylark
Torino

\$26

G78-15 blackwall

Fits Models of
Catalina
Chevrolet
Ford
Fury
Grand Prix
Impala
Monte Carlo
Polaris
Thunderbird

GOODYEAR
For more good years in your car

7 Easy Ways to Buy

- Cash • Our Own Customer Credit Plan
- Master Charge • American Express Money Card
- Diners Club • Carte Blanche
- BankAmericard

GOODYEAR

Glenn Dickson, MGR.

315 E. Main Eastland
629-2662

Carbon News

By Mrs. Bob Hastings 639-2517

If we should get rain from those clouds that would be most welcome news.

The Carbon School cafeteria menu for the week January 26 - 30 will be as follows:

Monday - Spaghetti with meat sauce, green beans, lettuce and tomato salad, genie bars, milk

Tuesday - Beef and gravy on hot biscuits, blackeyed peas, slaw, apricot cobbler, milk

Wednesday - Turkey and dressing, peas, cranberry sauce, peaches, milk

Thursday - Corny dogs, pinto beans, spinach, chocolate cake, milk

Friday - Hamburgers, potato chips, lettuce, tomatoes, pickles, onion, jello, milk

The seventh and eighth grades of Carbon School and their sponsor, Mrs. Judy Hickman, will have a bake sale on January 24, Saturday, beginning at 9:00 a.m. at the Sandlin Skelly Station in Carbon.

Rev. and Mrs. Delbert Smith and Dulin Sandlin attended the Texas Baptist Evangelism Conference in Fort Worth on Tuesday.

Mrs. Clyde Hall has returned from a visit with her daughter and family Mr. and Mrs. Athol Claborn of Merkel.

Mrs. Tim Stacy visited her parents, Mr. and Mrs. Charlie Jock of Corsicana part of last week. Mr. Jock has been in a

Decorator Tips

By Sandy Reese

Lighting should never be taken lightly. It should be one of the most carefully handled elements in a room. However, just having sufficient light is only the beginning. Lighting effects can create a mood and even camouflage less attractive elements in a room.

There are two major kinds of electrical lighting, portable and built-in. Built-in lighting and chandeliers supply general lighting, while lamps are used for specific lighting as well as general lighting.

The minimum number of lamps needed to create balanced or even lighting should be used. This will avoid giving the room a cluttered look. This minimum lighting must provide specific light for special tasks at a desk, piano or game table, however. More than five lamps are seldom needed in an average living room. Lamps should be chosen after the furniture has been arranged. This way the lamps will be right for the settings and tasks.

The height of each lamp and lamp table should be scaled so that the shade of each lamp in the room is approximately the same distance from the floor, an average of 38 to 42 inches. This gives an orderly appearance and improves the overall lighting.

Lamps can be used in pairs or may all be unmatched. Even the lamps flanking a sofa need not be identical if their overall height is approximately the same.

Lamp shades are an important part of the total appearance of any lamp. It should be simple in design and proportionate in size to the base. The diameter of the bottom of the shade affects the amount of available light. Table lamps with a 16-inch diameter across the bottom for instance, will spread the light enough for reading at a nearby couch. A more narrow shade tends to limit reading comfort. The diameter at the bottom should be just a little wider than the diameter of the top. The depth of the shade is also important. If it is too shallow (short) the bulbs will show and the whole lamp will appear awkward. The shade should usually be less than half the height of the base and should be adjusted so that the bottom of the shade is just even with the top edge of the base.

Dense shades should have a white lining so that the light will be reflected up to the ceiling and down to the table or surface beneath it. Dark linings will absorb much of the light and reduce reflection. An opaque or dense shade will not affect the quality or color of light because the light does not pass through the shade. It simply reflects and distributes the light above and below the lamp.

A translucent shade is one that the light actually passes through. Therefore, this type of shade should be dense enough to hide the bright area made by the bulb. Natural colors such as white, off-white and beige are the only satisfactory colors for a translucent shade. A colored shade would distort the color of the light and even change the color balance of the room.

Some Do's and Don'ts for lamp selecting are:
 Don't use over-scaled lamps.
 Don't use ornate ruffled or fringed shades. These detract from the beauty of the lamps.
 Don't use more than two matched pairs of lamps in a room.

Do be sure that the lamp suits the area where it will be used in style, texture, and color.
 Do make sure that a lamp is fitted with the correct bulbs and gives satisfactory light for its particular location and purpose.

Do make sure your lamps are wired correctly if you make them yourself or have someone wire them for you.
 Do plan table and lamp arrangements so that all shades in a room are at approximately the same level.

Thursday Afternoon Club Holds Meet

Historic waterways were discussed at the January 15th meeting of the Thursday Afternoon Club, carrying out the Bicentennial theme in the course of study "Present and Past United". After the regular business session presided over by Mrs. H.L. Hassell, President, Mrs. C.L. Bigby, Program Leader, led the members in the pledge to the American Flag, and introduced the members who were on the program for the afternoon.

Mrs. Charles E. Terrell gave an interesting and informative talk on the origin and duties of the Coastguard and its place in the first line of defense in time of war or peace. Her subject was "From Sea to Shining Sea".

Mrs. Floyd Robertson's talk was on Inland Waterways and she told of the part the whaling ships played in the development of our country and also of the riverboats which were used for transportation of people and materials on our largest rivers.

Mrs. Roy Young gave the history of the ships of Galveston during its early years. Hostesses Mmes T.E. Richardson and H.E. Van Geem served delicious cookies, nuts and coffee to the following members: Mmes W.J. Cauble, D.L. Childress, L.E. Corbell, Pat Crawford, J.O. Earnest, J.F. Francis, Pearson Grimes, Herman L. Hassell, James Horton, Marene Johnson-Johnson, Arthur Murrell, Guy Patterson, Joseph M. Perkins, E.G. Rice, T.E. Richardson.

LEGAL NOTICES

In compliance with provision article 6687-9, sec. 4 (b), V.A.C.S. of Texas. Notice is hereby given to the unknown owners and or lien holders of all rights, titles and interest in and to the hereinafter named motor vehicle. That the said vehicles are abandoned in the City of Eastland, Eastland County - Texas. And the same shall be sold at public auction Tuesday, February 10, 1976 at Allens Auto Repair located at 405 South Seaman Street, Eastland, Texas. To Wit: 1-1962 Ford - Fairlane 500, 2R42L119547, 1974 Texas GHF-703. The foregoing described vehicle is stored and being held at Allen's Auto Repair, 405 S. Seaman Street, Eastland, Texas, and notice is hereby given to owners and or lien holders to make claim for the same vehicle within twenty days from date. Failure of any owner and or lien holders to exercise their right to reclaim vehicle within time provided shall be deemed the waiver of all rights, titles and interests in and to said vehicle and their consent to the sale of the here and above described vehicle at a public auction. Dated this 20th day of January, 1976.

Johnnie W. Morren
 Chief of Police
 City of Eastland
 Eastland County
 Texas

INVITATION TO BID NOTICE
 The City of Cisco is inviting sealed bids for the purchase of a car for the Police Department. The specifications are as follows:
 1976 four-door sedan (Malibu, Satellite, Torino, or equal medium size)
 114" - 118" Wheel base
 V-8 Motor 350 to 390 Cu. in.
 4 barrel carburetor
 Dual exhaust
 Power Steering
 Heavy duty shocks
 Power disc brakes
 Heavy duty alternator
 Heavy duty battery
 Heavy duty seats
 Tinted windshield
 Radio
 Factory air conditioner
 Arm rests
 Color-metallic blue to be same as existing cars
 Automatic transmission

The City Council reserves the right to reject any or all bids, to accept the proposal of any bidder and to waive any or all informalities.

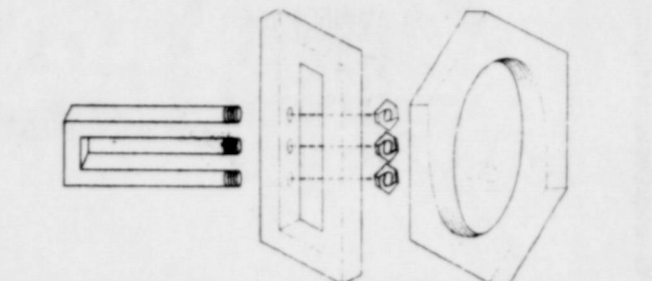
Bids will be received at the City Manager's office of the City of Cisco, Box 110, until 5:00 p.m., Jan 27, 1976, and then opened at the regular Council meeting at City Hall on Jan. 27, 1976.

Trade-in is a 1973 Ford Police Special which can be inspected at City Hall in Cisco. Quote bids with and without trade-in.



IT'S GOOD to report that Vernon Humphreys is home following major surgery in Dallas, and is reported to be recovering satisfactorily. Mrs. Anna Barbara Kinnaird is now home and following her recent eye surgery is reportedly enjoying seeing colors again. Super, super congratulations to Eastland's W.Q. Verner and Mrs. Homer Ferguson of Cisco, who were married last Friday morning. John Nevill of Southern TV did an outstanding job in telling his company's and Eastland's story in the filming that KRBC graciously provided. Re-emphasized is the fact that it's basically a matter of choice: KRBC has the choice of deciding that Eastland is a unique situation in which Southern is in a position of offering extra-special inducements (in carrying KRBC over its other systems in this area when it really doesn't have to). No other cable system in KRBC's area can offer a similar agreement, and from the way we understand it, the FCC is most concerned with agreements being worked out on the local level which are in the best interest of the public. So the choice is KRBC's.

WE ALL have days when nothing seems to fit or work, so maybe this little graphic will make us all feel better:



WEST CENTRAL Texas Council of Governments has been designated as Area Agency for Aging and County Judge Scott Bailey recently held a meeting here for representatives from each town in the county, at which Mrs. Chris Kyker of AAA explained the program, and a study is now being made to determine the feasibility of implementing some of the programs for the aging in this county. Many of us have sat on aging committees since the late County Agent J.M. Cooper initiated the thinking here in the mid-'60s, and it often seems that all we've done is age, but in fact there are some good programs going and perhaps this new approach could bring and provide even more and better services for our superior citizens.

FARMERS LOSING CONTROL OF AG POLICY -- An economist for the Texas Agricultural Extension Service contends that producer interests in agricultural policy are taking a secondary position to interests of foreign policy, consumerism and labor. Unless farmers are able to take charge, farm programs may actually be a noose around the producer's neck. Producers must consolidate if they are to regain a position of control over agricultural policy. Farmers must make their voices heard if they are to get a fair shake in future farm policies.

GROWING POINSETTIAS -- If you received a poinsettia plant for Christmas, try to bring the plant into flower for Christmas 1976. Although the plant will lack a little of the quality of the original poinsettia, it can be a rewarding experience to grow your own poinsettia, contends a landscape horticulturist for the Texas Agricultural Extension Service. Once the plant loses its color, store it in a cool location until about mid-April. Then cut the stems back to six inches above the ground, replot the plant, keep it in a sunny location, and water and fertilize it until new growth occurs. Pinch back new shoots until mid-August, leaving three or four leaves on each shoot. Keep the plant in complete darkness from 5 p.m. to 8 a.m. starting the first week in October and continuing until Thanksgiving.

"OUTLOOK" DISCUSSIONS AT SCHOOL -- A special session to provide "outlook" information on livestock, cotton, grain and the money market will be one of the highlights of the 24th Texas Farm and Ranch Credit School for Commercial Bankers, February 9 - 11, at Texas A&M University. Other discussions will deal with the changing political, market and financial environments. Special sessions are also planned on agricultural loans and for bank directors. An in-depth Agricultural Credit Analysis Workshop will be held February 11 - 13, according to an economist with the Texas Agricultural Extension Service.

COUNTY JUDGES, COMMISSIONERS TO PARLEY -- The 18th annual conference of the County Judges and Commissioners of Texas will deal with issues that are today's problems, such as ambulance service, solid waste disposal and law enforcement. The conference which will be held February 3 - 5 at Texas A&M University will also feature discussions on national and state legislation, agricultural markets and policy, the state comptroller's office and the Jail Standards Commission, announces a county officials program specialist for the Texas Agricultural Extension Service.

M. L. TERRELL REAL ESTATE
 HIGHWAY 80 EAST
 PHONE 629-1725 NIGHTS 629-2443

- HOUSES**
- "New" 3 bedroom, 2 bath, brick home with central air and heat. Home has a fireplace and is in an exclusive addition of Eastland.
 - Nice 2 bedroom, 1 bath home with central air and heat. Located on Seaman Street. \$16,800.00.
 - Under construction, new 3 bedroom, 2 bath, brick home. Nice corner lot. Well financed.
 - 2 bedroom, 1 bath house on 2 lots, located in Olden. \$10,500.00.
 - Nice 3 bedroom, 1 1/2 bath, home with large den, central air and heat, location is South Dixie.
 - Nice 3 bedroom, 1 bath home, carpeted, with central heat. Good location. Shown by appointment only. \$21,000.00
 - 4 bedroom, 3 bath house on Dixie. Shown by appointment only.
 - 2 bedroom, 1 bath carpeted home. Good location. \$18,500.00.
 - 2 bedroom, 2 bath home with fireplace, corner lot on Mulberry Street.
 - 3 bedroom, 2 bath home with fireplace, could be arranged for a duplex.
 - 8 city lots suited for trailer park. \$6,500.00.
 - 6 city lots in Ranger, well located
 - Store building, station, living quarters, fixtures and stock at Morton Valley. \$8,000.00.
 - 3 bedroom, 1 1/2 bath, carpeted, central air and heat, corner lot, approximately 3 years old.
 - 2 bedroom house, completely carpeted and paneled, central heat with extra lot. \$13,500.00 d SMALL ACREAGE
 - 1 acre with a 3 bedroom, 2 bath, home in Olden.
 - 2 tracts on Interstate 20 near Cisco, ILL G.I.
 - 26 acres near Eastland with city water \$12,600.00.
 - 11 acres with 2 bedroom, rock home extra nice, good barns, city water, on pavement, North of Eastland.
 - 5 acres, 3 bedroom, fireplace, den and 2 bath home, Northwest of Cisco \$25,000.00 d 8 acres on Interstate, Ranger, Texas. Good location.

- FARMS AND RANCHES**
- 80 acres Southwest of Cisco, good fences, two stock tanks, and half minerals, with a 2 bedroom home.
 - 163 acres, 3 bedroom home, all coastal, good fences, and barns. Located in the Carbon area. \$475 per acre.
 - 668 acres some improved grasses with a 2 bedroom house, good barns, good well water, located in Stephens County.
 - 160 acres Southeast of Ranger, deer and 1/2 minerals. \$300 per acre.
 - 198 acres w/3 bedroom home on pavement with city water, 70 acres of cultivation near Lake Leon.
 - 245 acres, 7 miles Southeast of Eastland with city water, 1/2 minerals, \$325 per acre.
 - 224 acres improved grasses with good fences and good set of pens. \$10,000 down. Owner will finance. \$315 per acre. Location near Carbon.
 - 215 acres near Olden with good fences and good stock tanks.
 - 491 acres in Eastland County with nice brick home, some coastal, fenced and crossed fenced. Approximately 1/2 the minerals. Shown by appointment only.
 - 320 acres near Carbon, 60 acres of coastal, fair fences, 1/2 minerals. \$315 per acre.
 - 486 acres near Lake Leon with 2 bedroom rock home, irrigation, and good fences, on pavement.
 - 695 acres in Eastland County with some river bottom, \$315 per acre.
 - 306 acres near Eastland on Leon River with 106 acres coastal bermuda and remaining improved grasses, ample irrigation. Water and equipment for all of tract. 7 stock tanks, pecan trees, good fences, metal corrals and a 40 x 72' all steel barn, also other out buildings.
 - 328 acres in Stephens County \$262.50 per acre.
 - 320 acres with all improved grasses, good fences, 1/2 minerals, \$350 per acre with good terms.
 - 160 acres with a 3 bedroom home, fireplace, 2 good tanks, natural gas, on pavement, city water with some love grass.
 - 150 acres South of Eastland, 140 acres in coastal, good fences on County Road with city water. \$425 per acre. d 143 acres Northwest of Ranger, with 52 acres of peanuts, \$375 per acre.
 - 74 acres with cultivation on County Road North of Eastland with city water on pavement. \$400 per acre.
 - 120 acres on Sabanna River, pecan trees, deer and turkey, 1/2 minerals. Good terms.
 - 74 acres North of Eastland with city water on pavement. \$400 per acre.
 - 140 acres close to Eastland with 2 bedroom home, good barns, good fences, \$450 per acre.
 - 544 acres with coastal and other improved grasses, good terms, some minerals.
 - 815 acres south of Cross Plains with deer and turkey. Approximately 1/2 minerals.
 - 1450 acres near Albany with approximately \$500 a month oil income, on pavement. \$210 per acre.
 - 1297 acres in Eastland County with some cultivation and improved grasses. Good place.
 - 138 acres, 11 acres peanut allotment, 5 miles West of Rising Star. \$235 per acre.
 - 604 acres near Putnam, fair fences with three (3) stock tanks. \$210 per acre.
 - 150 acres north of Eastland on pavement with 77 acres of cultivation and city water, \$400 per acre.

WE HAVE OTHER LISTINGS
 LARGE AND SMALL
 ALL LISTINGS WILL BE APPRECIATED

RODGER TERRELL
 Home Phone 629 - 2896
 M.L. TERRELL
 Home Phone 629 - 2443
 Eastland, Texas

OFFICE PHONE 629 - 1725
 HWY 80 EAST
 EASTLAND, TEXAS

MONUMENTS

CISCO MONUMENT WORKS
 LOYAL & DORIS LUNDSTROM - Owner
 CURBING LAST DATES **442-9995**
 708 E S CISCO TEX

Bakker FUNERAL HOME
 306 W. PLUMMER • EASTLAND • PH. 629-1726

Dear friends,

A speaker recently said, "The most prevalent community sin is lack of appreciation. Who ever thinks of thanking public officials, our school board members, the various commissioners, etc. for a job well done?" Most of us are lax in this respect. Conscientious public servants deserve an occasional compliment and do certainly appreciate it.

Respectfully,
Ode O. Bakker

IF IT'S DIRTY WE CAN CLEAN IT!

HERLEY'S MAINTENANCE

Professional's With
 10 Years Experience.

For All Your Home
 Carpets, Strip Floors,
 Wash Walls, Clean Windows
 Or Just Vacuum & Dust

 References
 Call Us in Eastland
 629-8231

I.S.C. WAREHOUSE FEEDS

705 St. Charles St.
 817 - 629 - 2891
 Eastland, Texas
 (West of Depot, North of tracks)

STORE HOURS
 Monday - Saturday 7:30 a.m. to 1 p.m.

For Service After 1, Call
Clayton Biggs, Sales Mgr.
 629-2777

Jerry Lowrance and Don Lowrance
 629 - 1941 Owners 629 - 1181
 CASH, F.O.B., & VOLUME DISCOUNT

This Weeks Special Jan. 19 - 24

PURINA HORSE & MULE FEED

6% Per Hundred F.O.B.
 (No Additional Discounts On Specials)

Remember us for all your prescriptions

Central Drug 629-2681 **North Side Square**

SICK ROOM SUPPLIES

Eastland Is A BASKETBALL Town!!



Standing left to right: Hjaridist Dunn, Deborah Crabtree, Karen Plowman, Jill Price, Sandy Alldredge, Donna Crabtree, Cynthia Pinkerton. Middle left to right: Yvonne Wilson, Emily Perkins, Jan Maynard, Gail Swift, Brenda Adams, Coach Charlotte Mason. Bottom left to right: Judy Krantz, Claudia Bulgerin, Kelly Stone, Sherry Wheat. (Not pictured, manager Becky Kincaid.)

EASTLAND HIGH SCHOOL BOYS AND GIRL BASKETBALL SCHEDULE

- Dec. 8 - - Ranger - - Here
- Dec. 9 - - Boys, Dublin, There
- Dec. 9 - - Girls - - ACHS - - Here
- Dec. 11 - 12 - 13 - - Girls
Hardin Simmons Tournament
Boys Gorman Tournament
- Dec. 16 - - Girls ACHS - - There
- Dec. 19 - - Cisco - - Here
- Dec. 22 - 23 - 24 - - Brownwood
Christmas Tournament
- Jan. 2 - - Coleman - - There
- Jan. 6 - - Comanche - - Here
- Jan. 9 - - Hamilton - - There
- Jan. 13 - - Clyde - - Here
- Jan. 16 - - Open
- Jan. 20 - - Breckenridge - - There
- Jan. 23 - - Cisco - - Here
- Jan. 27 - - Coleman - - Here
- Jan. 30 - - Comanche - - Here
- Feb. 3 - - Hamilton - - Here
- Feb. 6 - - Clyde - - There
- Feb. 10 - - Open
- Feb. 13 - - Breckenridge - - Here

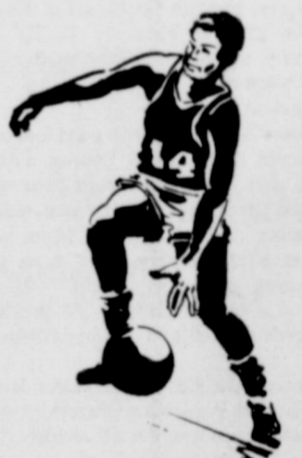


EASTLAND JUNIOR HIGH REVISED BASKETBALL SCHEDULE

- Dec. 8 - - DeLeon (7th, 8th) - - Here
- Dec. 11 - - Carbon (7th) - - There
- Dec. 15 - - DeLeon (7th, 8th) - - There
- Dec. 18 - - Ranger (7th, 8th) - - Here
- Jan. 8 - - Ranger (7th, 8th) - - There
- Jan. 15 - - Cisco (8th) - - There
- Jan. 22 - - Clyde (7th, 8th) - - There
- Feb. 2 - - Comanche (7th, 8th) - - There
- Feb. 5 - - Clyde (7th, 8th) - - Here
- Feb. 9 - - Comanche (7th, 8th) - - Here
- Jan. 22 - 23 - 24 - - Breckenridge Tournament



TOP ROW: Coach Bagwell, Doug May, Jerry Boles, Sylvester Wilson.
Bottom: Lon Mahan, Doak Walker, Aaron Arnold, and Mark Pruitt.



THIS PAGE IS SPONSORED BY BOOSTERS WHO URGE YOU TO BACK
THE SCHOOLS

EBA Iron Inc.

Hollands Drive In

Steven Printing &
Photography

Baird's TV & Appliance

Hillcrest Food Market

Texas Electric
Service Company

Eastland National Bank

City Garage

Bray's

D.L. Kinnaird
General Insurance

Maverick Barber Shop
WAYNE STENNETT AND FLOYD WILLIAMS

Bakker Funeral Home

Eastland Medical
& Surgical Clinic

Dairy Queen

Eastland Telegram

Quetta's
Sportswear Boutique



SOUTHERN TV CABLE SYSTEM

Thursday, January 22, 1976



GIFTS FOR ALL OCCASIONS

Dinner Ware -- Glass Ware -- Hanging Planters -- Flower Pots -- Decorative Plaques.

Frankoma, Hull, York, Pfaltzgraff and Marshel Pottery

See the "County Charm" Electric Range

HOUSE OF WEBSTER
Highway 80 East
Ceramics
Phone (817) 629-2121 EASTLAND, TEXAS 76448

STATE CAPITAL
Highlights
AND Sidelights
by Lyndell Williams

AUSTIN — School superintendents and board presidents have been invited to a statewide hearing here, January 26, on Atty. Gen. John Hill's recent opinion outlawing many student fees.

The State Board of Education has upheld Texas Education Commissioner M.L. Brockett's order for local districts to stop collec-

tion of the fees immediately.

Brockett on October 10 instructed districts to abide by Hill's October 1 opinion. The Hill ruling applied to such fees as those charged for workbooks, driver education and uniform rental for band members.

If it stands, the opinion will require local districts to dig up \$22 million more this school year to replace the lost fees, according to a Texas Education Agency study.

State Board of Education Chairman Joe Kelly Butler named a special committee headed by E.R. Gregg of Jacksonville to study the issue.

Butler said he hopes the panel will have an interim report in time for the board's February 14 meeting.

Allowable Set

Texas Railroad Commission set the February oil allowable—for the 47th straight month—at 100 per cent. There was one exception—the East Texas

field, held to 86 per cent.

Meanwhile, oilmen expressed concern the federal government may be maneuvering to take over the oil industry. They said they will outline views on proposed Federal Energy Administration rules at a meeting of the Commission next month.

February nominations by buyers totalled more than 3.9 million barrels a day, 18,123 down from January.

Economy Studied

A new Joint Advisory Committee on Government Operations will study governmental reorganization and try to come up with ideas to curtail creation of new agencies.

One proposal is to require that all legislation proposing new agencies be accompanied with an authoritative note spelling out the function and program to be performed.

Committee spokesmen also commented on lack of state control over soaring higher education expenditures.

Cutback Ordered

Texas Youth Council will reduce its community assistance grants due to Gov. Dolph Briscoe's decision to hold back \$2 million in appropriated funds for the purpose.

The grants were expected to go to probationary programs. Plans were scratched for a third "halfway house" to serve youngsters returning from youth reform institutions to local communities.

Courts Speak

Texas Supreme Court held that \$2.5 million worth of imported items in a warehouse at Farmers Branch are exempt from local property taxes, but it may have to reconsider. The U.S. Supreme Court, switching a 100-year-old position, said state and local governments can tax imported merchandise.

In other recent opinions, the high court concluded: —A couple hurt in a motorcycle wreck is entitled to \$106,683 from the City of Denton due to a faulty traffic signal.

—A Kroger Company appeal from a \$25,700 judgement in a case where a teen-aged grocery checker was imprisoned on a theft charge should be dismissed.

—A trial court decision to throw out an insurance company's \$9,000 suit against a Dallas law firm (alleging a legal mistake) is proper.

AG Opinions

Attorney General Hill found the Coordinating Board Texas College and

University System cannot turn down campus construction projects on the basis of cost per square foot.

In other recent opinions, Hill decided:

—There is no minimum World War II length of service requirement to qualify for a college tuition exemption.

—Presentation of a driver's license in court is an absolute defense to a charge of operating a motor vehicle without having a license in one's immediate possession.

—Firemen's relief and retirement funds in affected cities are eligible to receive an annual apportionment from the state appropriation.

Rebound Reported

Texas Industrial Commission's Executive Director Jim Harwell reports a significant rebound in industrial development during the last quarter of 1975.

Harwell told TEC the increase in economic activity may be proof the recessionary trend is at an end in Texas.

A record number of 16 industrial prospect visits were made during the September - December period, compared to only nine the same quarter last year. The number of current active prospects increased to 478 from 333 during the last quarter of 1974.

Short Snorts

U.S. Sen. Lloyd Bentsen launched his senatorial reelection campaign with an eight-city tour.

Governor Briscoe has named J.B. Potts of Post to the Brazos River Authority Board of Directors. He appointed Louis E. McClish of Amarillo to the Texas Pest Control Association and A.D. Clark III of Tyler to be Smith County criminal district attorney.

Don Butler, Austin city attorney, will be the Texas Municipal League's new utility counsel.

A House sub-committee will conduct hearings on public employee collective bargaining effects.

Railroad Commission Candidate Walter Wendlandt switched to the Republican party.

A Dallas fund-raising dinner cleared about \$140,000 to help Governor Briscoe pay off some old campaign debts.



"LOVE, HATE, FEAR, ANGER, AND OTHER LIVELY EMOTIONS" BEST SELLER BY GALLWOOD, \$2.00 BY MAIL AND RECEIVE FREE CATALOG OF BOOKS ON ASTROLOGY, DREAMS, SELF-REALIZATION, PROSPERITY, INSPIRATION, METAPHYSICS, ESP, PSYCHISM, MIND POWER, HEALING, UFO'S, AND PURPOSE.
THE JUNIPER TREE
BOX 5045, PASADENA, TEX. 77503

Fall Greetings
2 New Luxurious Air Conditioned Homes
THE ULTIMATE IN NURSING HOMES
And Extended Care Facilities
Mr. & Mrs. Morris Shook-Coordiators
Private & Semi-Private Rooms
Full Time Social Activities Program
"We Invite Your Inspection"
24 HOUR NURSING SERVICE
Chapel Lounge Telephones
Beauty Shop Cable TV Barber Shop
Luxurious Dining & Recreation Room
Organ, Piano & Game Tables
EASTLAND MANOR 629-2686 1405 W. COMMERCE
VALLEY VIEW LODGE 629-1779 706 S. OSTRUM

BARGAIN BASKET
In Ranger 309 Main
Open 10 A.M. To 2 P.M.
Monday Thru Saturday
Clothing For Infants, Toddlers, Girls, Boys, Juniors
Marked \$1.00 To \$6.00

BABY SHOES	\$3.00
GIRL PAJAMAS	\$2.00
BRAS	\$1.50
HALF SLIPS	\$1.50
BOYS JEANS	\$4.00
BOYS SHIRTS	\$2.00 & \$3.00

For Lease
* Approximately 500 Square Feet Of Office Space
* Large Reception Area With Two Small Offices
* Central Heat & Air
* Ground Level On Square
RCG Leasing Building
104 West Commerce 629-8052 In Eastland

CHAMPION
MODULAR HOME
28 BEAUTIFUL FEET WIDE

Texas' Largest Dealer is proud to introduce the CHAMPION modular home by the nation's largest builder, Champion Homes. The CHAMPION has over 1550 sq. ft. of pure living space, 3 huge bedrooms, den and bath and 1/4. FLAMEPROOF DRYWALL interior paneling and ceilings throughout and lots of carpet. The best part is that you can have the CHAMPION installed on your lot for under \$140 a month on an FHA loan.

UNDER \$140.00 A MO. 1550 SQ. FT.
Abilene Mobile Homes
4618 N. 1st 672-6466

FEDERAL SAVINGS & LOAN Association TELEPHONE 647-8277
POST OFFICE BOX 117, RANGER, TEXAS 76470

Statement of Condition as of December 31, 1975

ASSETS	
Mortgage Loans and Other Liens on Real Estate	\$8,567,517.00
All Other Loans	412,760.69
Real Estate Owned and in Judgment	7,465.19
Loans and Contracts made to Facilitate Sale of Real Estate	7,713.09
Cash on Hand and in Banks	760,167.03
Investments and Securities	290,740.87
Fixed Assets Less Depreciation	124,378.25
Deferred Charges and Other Assets	135,408.51
Total Assets	\$10,306,150.63

LIABILITIES AND NET WORTH	
Savings Accounts	\$9,251,399.84
Advances from Federal Home Loan Bank	None
Other Borrowed Money	None
Loans in Process	317,145.00
Other Liabilities	218,569.87
Specific Reserves	5,027.23
General Reserves	371,000.00
Surplus	143,008.69
Total Liabilities and Net Worth	\$10,306,150.63

OFFICERS
Felton P. Brashier, President
W. P. Watkins, M. D., Vice President
Billy R. Herod, Exec. Vice Pres., Sec'y.
Reba C. Rawls, Vice President, Treasurer
Jerry D. Davis, Jr., Asst. Secretary
Dewey C. Cox, Jr., General Counsel

DIRECTORS
Felton P. Brashier
W. P. Watkins, M. D.
Billy R. Herod
Reba C. Rawls
Dewey C. Cox, Jr.
Lester Crossley
Col. B. Mills

This is our **FINAL CLEARANCE**
With 50% discount on many items. This is an end of season clean-up of broken sizes.
SALE ENDS SATURDAY JANUARY 31st.

GROUP Men's Dress Slacks Now 1/2 of Regular Price Alterations Extra	GROUP Men's Suits, Sport Coats and Leisure Suits Now 1/2 of Regular Price Alterations Extra	GROUP Men's Dress Felt Hats Now 1/2 of Regular Price
GROUP Men's Long Sleeve Sport Shirts and Dress Shirts Now 1/2 Price	"SHRINK TO FIT" Levi Jeans Reg. \$12.25 to \$13.25 Now 1/2 Price	GROUP Jarman and Pedwin Shoes and Boots Now 1/2 Price
GROUP Men's Sweaters Now 1/2 Price	GROUP Ladies HANES Hose Reg. \$1.65 to \$1.75 Now 50c Pair	GROUP Men's Jackets Now 1/2 Price "Our Leathers Included"

No Lay Aways
No Approvals
THE MAN'S STORE
Bob Elliott
CISCO
No Returns
All Sales Final

JFC Contractors

Ditching, Water Lines, Gas Lines,
Sewer Lines, Road Bores

Call Jerry Wilson
647-1943 Or 629-8020

Majestic Theatre

Eastland 629-1220

Thurs. Fri. Sat. 7:30 P.M. Mat. Sat. 2 P.M.

DOUBLE DISNEY ADVENTURE
ROUSING ACTION! THRILLING EXCITEMENT!



WALT DISNEY'S

Treasure Island
...BOBBY DRISCOLL
ROBERT NEWTON - BASIL SYDNEY
TECHNICOLOR

Dr. Syn
alias The Scarecrow
...PATRICK MCGOOGHAN
TECHNICOLOR

Sun. Mon. Tues. 7:30 P.M.

What happens when you're a N.Y. cop
sent to France to bust
a dope ring and...

- You can't speak French
- The French cops hate you
- Your own people have set you up...



GENE HACKMAN EXPLODE
FRENCH CONNECTION
2 ITS A WHOLE NEW SET UP

Coming Feb. 1-2-3

The Life and Times of **GRIZZLY ADAMS**
COLOR BY DELUXE

HOSPITAL NEWS

Patients in Ranger General Hospital Wednesday, January 21, 1976, were:
Catherine McNabb
Ruth Ridling
Audie Gibson
Alice Heath
Bertha Tankersley
Rosa Saiz
E.M. Mills
Jesse Price
Anna McEver
Inez Erwin
Don Roberson
Donald Points
Homer Goforth
Charlen Harris
Esther Luttrell
Mary Kyle
Jesse Nucke
Lynn Gentry
O.E. Hise
Mae Weaver
Stanley Day

Patients in the Eastland Memorial Hospital Wednesday, January 21, 1976, were:
Herman Grigg
Harvie Boykin
Vergie Smith
Mattie Mitchell
Manon Cox
Mary Williams
Mary Sneed
Maggie Christian
Rose Goode
Kenneth Payne
Luther Fulfer
Mildred Davis
Beverly Hogan
Oleta Foster
Charles Rivers
Tillie Pullman
Lewis Starr
Samuel Ruble
Jean Coleman
Hattie Pace
Tommy Alford
Ray Laney
Myrtle Cogburn
Fannie Turner
Sophie Harris
Artie Perdue
Ada Gambin
Bertha Richardson
Arlene Fischer
Linnie Sage
Sarah Ervin
Mamie Pynes
Helen Plew
June Lovell
Minnie Gattis
Marcos Castro
Joe King
Travis Wellbourn
Shelby Anderson
Mary Stewart
W.T. Duckworth
Willard Vogel
Lon Mahan
Dewey Kennemer
R.V. Lewis
Clifford Fehl
Herbert Ellis
Ginger Mangum
Willie Wylie
Dessie Bennett
Alma Harris
Willie Collins
Diane Carlile
Lucille Roberts
Hattie McNeely
Lena Williams
Sarah Stokes
Modell Daniel
Pauline Love
Sheri Powell
Roxie Theous
Almarie Fox
Mary Harden
Fay Harbin
Ruth Layton

Patients in the E.L. Graham Memorial Hospital Wednesday, January 21, 1976, were:
Charley Phippen
Elmer Fleming
Vivyan Donovan
Dortha McCoy
Eva Moore
Dora Decker
Ella Crain
Myrtle Collings
Gabe Massey
Loanna York
Walter Lowery
Ernest Creech
Kay Gray
Charlie Bragg
William Hollander
Dorothy Donovan
Mable Robinson
Bonnie Reames
Frances Wolf
Clara Capers
Roxie Morrison
Minnie Nelson
Mitzi Strickland
Minnie Holloway
Sandra Stuard
Pearl White
Burdell Grozier
Eva Stroebel

Postal Service Seeks Bids

The U.S. Postal Service is asking for bids to construct a new building at Olden, it has been announced.

Action came recently as the result of continued on the part of Olden citizens to secure modern facilities for their post office.

P.S. is interested in leasing a building built to specifications, Olden Postmaster Mrs. Jim Everett says.

Closing date for posting the confidential bids will be Feb. 19, 1976. Information concerning specifications may be secured from Dallas District, U.S. Postal Service, P.O. Box 3, Dallas, Texas, 75221.

The Postal Service is seeking as much publicity about the bid requests as possible, without cost to the Service.

General specifications are for 874 square feet enclosed with a 100 sq. foot loading platform and driveway, parking and maneuvering space variable with the site plan. Total site to be approximately 12,500 square feet, within the general vicinity of the present post office.

R.G. "BUCK" WHEAT REAL ESTATE

STAR SPECIAL

\$350 assumes this lovely 1973 model 3 bedroom, 2 1/2 mobile home. Underpinned on a concrete foundation. All utilities hook-up. Also lease the 2 acres it's located on. It's a small ranch with a well-fenced and cross-fenced. Pecan trees--fruit trees--berry vines and storage buildings. Call Now!!

50 Acres close in to Ranger. Will divide this from 1 to 50 acres. City water available. A real pretty area.

2 bedroom home with furniture and 10 acres between Carbon and Gorman. Good well water. A tremendous view from the top of the hill. This one will G.I. at \$15,000.

344 Acres - Terms Available Bryson Area \$260. per acre.

462 Acres - Hedley area Hwy. Frontage 1/4 min. with leasing rights. 265 Acres cultivated. \$185. Acre.

Other Larger tracts of land available.

We are eager to give prompt attention to your buying and selling needs. Call us today.

BUCK WHEAT

647-1887 (Broker)

GARY W. Gilman

629-2875 (Associate)

Short Course In Beef Cattle Offered

Beef cattle marketing, improved pasture management and keeping the herd healthy will be topics discussed in a beef cattle short course at Ranger, January 26, 27, and 28. The short course will be conducted by the Extension Service for the benefit of cattlemen in Eastland County, reports County Agent De Gordon. The three night short course will be held in the library auditorium at Ranger Junior College. All sessions begin at 7:30 p.m.

Three Agricultural Extension Service specialists from Texas A&M University will speak at the short course.

Dr. Ernest Davis, Livestock Marketing Specialist, will discuss the cattle market and the beef outlook on Monday night, January 26. He will also discuss marketing decisions which will yield the maximum profit potential.

County Teachers

Federal Credit Union To Meet Thursday

The annual meeting of the Eastland County Teachers Federal Credit Union will be held Thursday, January 22, at 6:30 p.m. at the Cisco High School Homemaking Department in Cisco. It was announced. All members are urged to attend, and any teacher is invited to join.

On Tuesday night, A.C. Novosad, Extension Pasture Specialist, will talk about recommended grasses, management and utilization of forages for grazing and hay. Dr. James Armstrong, Extension Veterinarian, will discuss the Brucellosis program and identification and prevention of common diseases of cattle on Wednesday night.

The short course will be open to everyone interested in beef cattle production, Gordon says. No fee will be charged for attending the short course.

Help Stop Crime--Engrave Appliances

Electric engravers will be available for free public use beginning Monday at the County Sheriff's Office, Sheriff L.E. Sublett has announced.

The program is being initiated in an effort to recover stolen and lost merchandise. Persons may take their small appliances to the sheriff's office for engraving of licensed numbers or the engravers may be borrowed, with a file kept at the sheriff's office.

This system has been found to be effective in properly identifying items which have been stolen and - or lost so that return may be made to the owner. Further information about the program may be obtained from Sheriff Sublett and deputies in his office.

Henry Block has 17 reasons why you should come to us for income tax help.



Reason 5. If the IRS should call you in for an audit, H & R Block will go with you, at no additional cost. Not as a legal representative...but we can answer all questions about how your taxes were prepared.

H&R BLOCK

THE INCOME TAX PEOPLE

Phone 629-8121

104 W. Commerce - Eastland

CITIZENS REALTY



820 W. Main Eastland

629-1769 or 629-2404

WE SELL FARMS - NOT JUST LIST THEM

2 ACRES - EASTLAND COUNTY, existing two bedroom home with wood burning fireplace. City water with a water well, fenced. FHA finance. **SOLD**

52 ACRES - EASTLAND COUNTY, Large deep tank, creek, timber, lots of deer. All in one tract. **SOLD**

58 ACRES - LAKE LEON, 13 acres cultivation. Creek. Good investment. **SOLD**

70 ACRES - LOCATED ON LAKE LEON, live oak, High-way frontage. \$5000 down. **SOLD**

134 ACRES - MITCHELL COUNTY, on IH 20. Good cotton allotment. Priced to sell.

140 ACRES - EASTLAND COUNTY, NORTH OF CISCO. Creek, tank, native grass. \$265 per acre. Owner finance.

175 ACRES - EASTLAND COUNTY, 130 acres peanuts. 75 acres cultivation. Lot of deer. Terms.

300 ACRES - GORMAN AREA, 78 acres in peanuts. 3 bedroom home. 75 acres coastal. Owner will finance.

486 ACRES - ON LAKE LEON, 350 acres in cultivation. Plenty of irrigation water. Irrigation equipment. 2 bedroom home. City water.

RAY MOODY - ASSOCIATE
1-725-7279

Hours:
8-6 Mon. - Fri.
8-2 Sat.
1-4 Sun.

WAYNE DURHAM - ASSOCIATE
629-8212

B.G. BROWN - BROKER
629-8082



Thursday,

January 22, 1976

Control Your Gas Consumption With INSULATION

Will Bring Them Down.

We Can Blow Walls With 1" Hole

FIRE PROOF'S!!

672-5243 Or 647-1745

CALL **M.H. Perry** TODAY
104 N. Lamar
269-1566 629-1095

Life, Mortgage - Educational
- Tax Sheltered Retirement
Hospitalization, Disability Income,
Group And Cancer

CITIZENS REALTY



820 WEST MAIN STREET,
EASTLAND COUNTY'S
VOLUME
RESIDENTIAL DEALER
629-2404

HARD TIMES hit this lovely home. It is desperately need to sell this immaculate new home. **SOLD** two bath dream home in CISCO. Comfortable new carpeted yard, corner lot. Large two car garage, plush carpeting and wall coverings. Central heat and air, established yard, ASSUMPTION.

MOVE IN CONDITION, this freshly painted two bedroom, one bath home in EASTLAND is carpeted, has extra large closets, sewing room could be third bedroom. Lovely formal dining room and living room is highlighted by the relaxing sounds of a crackling and sizzling log burning fireplace. Unusual lot, low equity with immediate possession. Assumption.

SOLD, SOLD, SOLD, almost all of our listings have sold and we have so many looking in this area. If you have been thinking about selling, find out about our GUARANTEED BUY, and start looking for that new home, TODAY.

CHAMPAGNE TASTE AND A TIGHT BUDGET will get you this luxurious brand new home in CISCO. It carries a low down payment of ONLY \$500 and includes all the amenities found in higher priced homes. Built - in range, carpet in family room, brick exterior. Central heat and air. Monthly payments of ONLY \$65 to the qualified buyer.

EXCEPTIONAL HOME SITE, build on this choice lot in EASTLAND'S Valley View Estates Addition, one of the few left in that exclusive area. Start now and you will be moving in by Spring. FHA financing available.

"FREEZIN' SEASON" is here! Spend your winter evenings before a roaring fire in this spacious 21' x 21' den with a lovely hearth and mantel. Luscious carpeting in this new home in CISCO. Three large bedrooms, two baths and double car garage. Many extras like wall coverings and special entry hall tile are to be enjoyed. FHA Financing available.

ALREADY APPRAISED and waiting for the lucky new owner of this pleasant three bedroom home in RANGER. You'll get a good buy at this price cause this one has lots of room. Central heat and air, nice established yard, excellent location. Call today.

AN OUTSTANDING "GUY" WILL "BUY" this handsome two story custom built home for his family. Magnificent detailing, exquisite design, laying on the edge of CISCO with lots of room for rest and recreation. Three large bedrooms, two baths, double car. Financing.

A BEAUTY THAT ISN'T SKIN DEEP, but quality clear to the bone, is the making of this gorgeous new home going up in the exquisite new OAK HILL SUBDIVISION, RANGER. Three spacious bedrooms with isolated master bedroom. Vaulted ceiling in family room with rustic cedar beams add to the beauty of the Texas Style emphasis throughout this luxurious new home. FHA financing available.

NIT PICKERS WELCOME but we warn you it will be tough finding anything wrong with this perky three bedroom, two bath, two car garage home, in RANGER, like new. Less than a year old, owner transferred asking low equity, no qualifying, immediate possession.

WAITING FOR WHAT???? Excellent floor plan, quality construction and decorating takes this three bedroom home out of the realm of the ordinary and into the realm of beauty. Vacant and ready for YOU, situated in West Cisco, near CHS.

"WE CAN'T BELIEVE IT" but the owner of this home located in EASTLAND'S Hillcrest Addition has priced this at a bargain. Perfect for beginners, two bedrooms, one bath mobile home. E Equity payment include ALL furniture WITH washer. Fenced yard, assume loan and have low payments of ONLY \$88 per month.

GET WHAT YOU PAY FOR, if you want full value for every dollar look at this well priced bedroom home in RANGER. Listen for the song of the **SOLD** bird this spring while enjoying the well established yard with custom soft grass; fenced, fruit trees. FHA Financing available.

BATTLE OF THE BULGE?? BUILT IN 1976!! Come by 1307 W. 11th and inspect this gracious new home being constructed in CISCO. Pick your own decor, see the convenient floor plan for "today's happy living" FHA financing available.

YOUR OWN SCENE! If you are looking for a bargain, this is it. Needs remodeling and restoration, a handy man's dream priced to sell in AS IS condition. Situated on two 100' x 150' lots at the corner of Rusk and Blackwell Rd., RANGER. Easily made into a two bedroom doll house.

NOT JUST ANOTHER home plus income but an investment in comfort, safety and convenience. Near everything in CISCO, priced to sell.

BREAK, ONE - NINER, for that "Fraidy Cat" who's wanting to change that ole "home - 20", but can't make up his mind. C'mon good buddy, give a "shout - shout". We'll take care of your REAL ESTATE needs, buying or selling. P.S. We speak "plain English", too.

629-1769

B.G. BROWN - BROKER
629-8082

KARLA BROWN - BROKER
629-8082

Richard E. Ward - Associate
442-3524

BeU Ward - Associate
442-3524

CALL US - WE CARE



Doris Norton - Associate
653-2263

Sewing Machine Operators

Needed At

Vassarette Of Munsingwear

No Experience Necessary

Equal Opportunity Employer

Starting Rate \$2.00 Per Hr.

After 9 Weeks Training \$2.40 Per Hr.

After 6 Months Training \$2.50 Per Hr.

Can Earn More On Piece Rate Incentive System.

9 Paid Holidays

Company Paid Retirement Plan

Excellent Insurance Plan Hospitalization And Life

2 Weeks Paid Vacation After 3 Years

Working Hours 7:30 To 4:00 p.m.

Other Numerous Company Benefits

Apply At 202 North College Eastland, Texas

Vassarette

Pioneer Club Emphasizing Early Day Woman For Bicentennial

The Pioneer Club of Eastland is celebrating the bicentennial year by emphasizing the role of the early pioneer woman.

At the October luncheon held in the home of Mary Logan, 700 West Moss Street, the history of the Pioneer Club was read and discussed. Things of interest concerning the early meetings and activities of the club were brought out in the program following the bountiful luncheon.

After Sallie Garrett, chaplain, said grace, food was served buffet style with guests being seated in the dining room and at a smaller table in the living room.

The president, Laverne Wingate, presided over the business meeting. Two new members, Irene Cornelius and Margaret Tow, were welcomed. Thanks was expressed to Mrs. Logan for her

hospitality.

Members present were: Laverne Wingate, Sallie Garrett, Gertrude Richardson, Pauline Lee, Irene Cornelius, Margaret Tow, Winnie Bassett, Arie Herring, Nora Wilkinson, Bea Burkett, Mary Logan and a guest, Mary Hood.

Lorine Crawford hosted the Christmas dinner in the true spirit of the season with beautiful decorations. After the giving of thanks for all blessings - especially God's great gift of His Son, a dinner of smoked turkey with numerous side dishes was enjoyed by all.

The president, Laverne Wingate, introduced Carol and Steven Church, minister of the First Christian Church, who brought an interesting and enjoyable program on the customs of Christmas. He read, "What is Christmas", by Carol Bessent Hayman, giving the

true meaning of Christmas.

Carol Church joined her husband in telling of their own family Christmases - the opening of the presents, the ornaments on the tree, and the memories stored for another year. Each memory took us deeper into the heart of Christmas. We were reminded of the three aspects of the season - peace, love and joy - which can abide with us the whole year through, giving us hope that the bicentennial year will bring a new dedication and consecration. The program ended with the singing in unison of "Joy to the World".

The group then gathered in the den for the exchange of gifts after which the club's closing song, "Blest Be the Tie", was sung.

Members present were: Laverne Wingate, Mary Hood, Sallie Garrett, Mary Logan, Nina Hastings, Fannie Lockhart, Nora Wilkinson, Opal Clifton, Winnie Bassett, Fannie O'Brien, Pauline Lee, the hostess Lorine Crawford and co-hostess Edith Townsend, and two guests Carol and Steven Church.

The next meeting will be January 22, in the home of Winnie Bassett for a covered dish luncheon. The program will continue the role of the

pioneer woman. All members are urged to attend.

Las Leales Meet

The Las Leales Club met in the Club House January 19. Roll call was answered with "As Abe Said".

"Love is Eternal" by Irving Stone was reviewed by Sally Kinnaird.

Hostesses were Verna Johnson and Sally Kinnaird. Members present were Marie Boney, Lois Marshall, Nancy Pryor, Alma Hassell, Mary Lou Siebert, Elaine Glenn, Sandra Reese, Opal Little and Lillian Horton.

Pre-School Speech Evaluation

The public schools are providing free screening services for 3 and 4 year old children whose parents feel may need extra help in speech or language acquisition. The screening will take place in the High School Auditorium on Monday, Jan. 26 from 8:30 a.m. until 3:00 p.m.

Please bring your child if you feel this service could benefit them.

Hospital Reports

Mrs. Clara Bisbee, long time resident of Eastland, recently suffered a broken hip at her home in Fort Worth. She is now a patient in the Fort Worth Osteopathic Hospital, Room 308, 1000 Montgomery Street, Fort Worth, Texas.

George Fields of Corpus Christi is scheduled to undergo surgery. Friends may send cards to him at 4830 Moravain Drive, Corpus Christi, Texas 78415.

WANT TO BUY or lease, one to one and one-half acres outside city limits with access to highway. Call 647-3590 after 10 a.m. t-1f

WANTED--LVN for 3 to 11 shift; better than average working conditions. Salary and other benefits. Apply in person or call Western Manor, Ranger, 647-3111. t-1f

WE CAN BUILD for you a new 3 bedroom brick home with central heat and air. Low down payment. Monthly payments \$65 if you qualify. For more information call H&W Development Co., 629-1702, for Gary. t-1f

POLITICAL CALENDAR

The following persons have authorized this newspaper to announce their candidacy, subject to action by the May 1, Democratic Primary.

COMMISSIONER, PCT. 1
 Danny Woods
 STATE REPRESENTATIVE
 Joe Hanna
 COUNTY SHERIFF
 Ronnie [R.B.] White
 John Morren
 Lois Hollywood
 CONSTABLE PRECINCT 1
 Bill Hunter
 STATE SENATE
 22nd DISTRICT
 Tom Creighton
 TAX ASSESSOR - COLLECTOR
 Mrs. Nancy Trout

Mr. and Mrs. B.W. Hobbs Honored On 50th Anniversary

Mr. and Mrs. B.W. Hobbs of Carbon were honored on their Fiftieth Anniversary Saturday, January 17.

The reception was held in the couple's home in Carbon by their children.

Ninety-one friends and relatives came by to congratulate the couple.

All their children attended. They were: Mr. and Mrs. L.G. Purdom, Mr. and Mrs. Bob Hobbs, Mr. and Mrs. Tommy McCoy, Mr. and Mrs. Charles Bowles, Mrs. Jim Hallmark, Mr. and Mrs. Rickie Hobbs, Mr. and Mrs. Danny Hobbs, and Mrs. Marvella Hobbs (daughter-in-law).

Grandchildren attending were: Debbie, Dale, Tommy and Shelly McCoy; Mr. and Mrs. Calvin Griffin; Mr. and Mrs. Johnny Hensley; Tammy and Scotty Hallmark; Will, Kevin and Bruce Hobbs; Cindy Scott and Shannon Hobbs; Brad and Kimberly Hobbs; Bill Hobbs; Robert Bowles; Lisa Purdom; Carolyn Williams; Janie Stephenson; Sharon Edwards; and Mr. and Mrs. Mike Purdom.

Great-grandchildren present were: Stephanie Griffin; Jerry, Chris, Marty, Carey and Margie Hensley; Lori Arnold and Diana Williams; Jeannie Edwards; Tiffany Purdom, and Tony and Chad Stephenson.

Other friends and relatives attending were: Mr. and Mrs. Marvin Lewis, Bob Notgrass and children, Mr. and Mrs. Herman Notgrass, Mr. and Mrs. Jimmy Maples and Chris, Clarice Seago, Mrs. Frank Hallmark, Rev. and Mrs. E.C. Rodgers and sons, Mr. and Mrs. Lonnie Thomas, Mr. and Mrs. I.O. Ross, Ora Lee Lawrence, Mr. and Mrs. A.J. Thomas, Mr. and Mrs. A.J. Lindsey, Mr. and Mrs. Sam Collins, Cheryl and Joyce Walker, H.C. Thomas, Weldon and Kerry Thomas, Agnes Sullivent, Marlene Harris, Sharon Simmons, Joyce and Debbie

Van Dyke, Wanda and Donna Baird.

The beautiful three-tiered gold and white cake was made by Donna Brown.

Steve Haines, photographer, made pictures of the couple, their family, etc.

There was lots of visiting and picture taking going on, and everyone seemed to have a wonderful time.

Farmers Tax To Be Topic At Meet Friday

Farmers' Income Tax reporting will be the topic of a meeting Friday, Jan. 23. The meeting, which is being conducted by the Agricultural Extension Service will be held at the Texas Electric Reddy Room. It will begin at 9:30 a.m. and will last until 3:00 p.m. or as long as there are questions concerning income tax.

County Agent De Gordon said the meeting is planned to help farm families with their income tax reporting. Everyone who has a question and needs help on their 1975 farm tax report is encouraged to attend the meeting.

James S. Denton Jr., will discuss the new changes in the income tax for the 1975 tax year. He will discuss investment credit, depreciation, capital gains and losses, deductions and other items of importance on the tax forms. Denton is Area Economist - Management for the Agricultural Extension Service.

The Farmers' Tax Guide will be available to everyone. Gordon said a source of farm record keeping books will be revealed. Everyone is welcome to attend any part or all of the meeting, the agent said.

Attends Bi-Centennial Shreveport Party

Mr. and Mrs. H.T. Weaver spent last weekend in Shreveport, La., visiting their daughter and her family, Dr. and Mrs. W. Douglas King, Leighann, Elizabeth and Billy. On Saturday evening they attended a "Happy Birthday U.S.A. Party" hosted by Dr. and Mrs. King and Mr. and Mrs. Felix Wheeler Jr. The Bicentennial affair was held at the Shreveport Convention Center on the River Front in downtown Shreveport.

The 750 guests attending the party were entertained by Mrs. Margaret Jones, soloist, various speakers, and a Combo

Members Of YH Hold Yule Dinner

Members of the Young Homemakers and their husbands had a progressive dinner in December at the homes of Mrs. Joe Pierce, Mrs. Herman Glueck and Mrs. Stanley Underwood. The club took Christmas gifts to the Valley View Nursing Home.

The January meeting was held at the Bank Community Room. Ms. Vickie Connell gave the program on "Your Credit Rating".

CB Club To Meet

Big Country CB Club met January 19, at TESCO Service Center.

Twelve members were present. A film of our Bicentennial '76 was shown on our 200 years of existence. It was a very educational film.

A suggestion was made to design a plaque or design for the Club. All members were asked for their ideas.

All REACT members are urged to attend our next meeting on February 2.

H.E. Basham, Reporter

Read The Classifieds

EASTLAND TELEGRAM
 629-1707
 110 W. Commerce
 Eastland, Texas 76448

H.V. O'BRIEN
 PUBLISHER AND EDITOR

Second Class Postage paid at Eastland, Texas, under Act of Congress in March, 1870. Published semi-weekly Thursdays and Sundays.

SUBSCRIPTION RATES: By carrier in city, 20 cents a week or 80 cents a month; one year by mail in county \$7.00; city P.O. boxes \$7.00; one year elsewhere in state \$10.00; out of state \$12.00 per year.

NOTICE: Any erroneous reflection upon the character, standing or reputation of any person, firm or corporation, which may appear in the columns of this newspaper will be gladly corrected upon being brought to the attention of the editor.

"This newspaper will not knowingly accept any advertising for real estate which is in violation of the law. Our readers are informed that all dwellings advertised in this newspaper are available on an 'equal opportunity basis'."

"All real estate advertised in this newspaper is subject to Federal Fair Housing Act of 1968 which makes it illegal to advertise 'any preference, limitation, or discrimination based on race, color, religion, sex, or natural origin, or an intention to make any such preference, limitation, or discrimination.'"

ANNOUNCING

Eleanor Byers Has Joined Ruth's Beauty Salon

Monday - Friday

102 N. Oaklawn

629-1231

More For Less!

Feature for feature - dollar for dollar there is no finer home investment!

TREND-SETTING FEATURES:

- CENTRAL AIR CONDITIONING AND HEATING
- TWO-CAR GARAGE
- Separate Utility Room
- Large Covered Overhang
- Drop In Oven and Range
- Hood and Fan in Kitchen
- Custom Styled Vanities
- Silent Light Switches



Complete Building Service
 One Call Does It All

FHA-VA-CONVENTIONAL
 Financing Available
 216 S. Seaman
 629-1702

PITT GRILL

Fine Food



1-20 HIGHWAY
 CISCO (East Exit)
 OPEN 24 HOURS
 SERVING YOUR FAVORITE STEAKS ANYTIME-DAY OR NIGHT

BREAKFAST SUGGESTIONS

Served Round the Clock

Pitt Grill Special Breakfast—Two Eggs, Chopped Sirloin Steak, Hash Brown Potatoes, Texas Toast and Jelly. 2.00

TWO Eggs, Any Style, HAM, BACON or SAUSAGE, Served with Toast, Jelly and Hash Brown Potatoes 1.60
 ONE Egg, Any Style, HAM, BACON or SAUSAGE, Served with Toast, Jelly and Hash Brown Potatoes 1.40
 Pitt Grill Cream Waffle, with Butter and Syrup80
 With Ham, Bacon or Sausage 1.50
 Pecan Waffle with Butter and Syrup90

SIDE ORDERS
 Bacon70
 Ham70
 Rudy Farms Sausage (Patties) .70
 Hash Brown Potatoes . . .45
 French Fries45
 Toast and Jelly30

TWO Eggs, Any Style with Toast, Jelly and Hash Brown Potatoes90
 ONE Egg, Any Style with Toast, Jelly and Hash Brown Potatoes70

JUICES
 Chilled Orange Juice . . .30
 Chilled Grapefruit Juice . .30
 Chilled Tomato Juice . . .30

ENJOY THESE AND THE OTHER FINE FOODS AT OUR CLEAN AND FRIENDLY PLACE!

TO BETTER SERVE YOU

We're Moving To New, Larger Offices With Adequate Parking Out Of Down Town Beginning Monday, January 26 Our Offices Will Be In The All New Terrell Real Estate Building Highway 80 East - Eastland

D.L. Kinnaird Insurance

Eastland's Oldest Agency

P.O. Box 310

Telephone Number Remains 629-2544

Service Since 1919

- ★ Home
- ★ Auto
- ★ Business
- ★ High Risk

- ★ Don
- ★ Sallie
- ★ Patricia

Requirements And Provisions Of Sub-Divisions To Achieve Uniform City Services

Copies of the sub-division ordinance, passed on first reading by the City Commission this week, are available for inspection at the city hall.

A second reading is required, and there is a possibility that a public hearing on the ordinance will be held.

Generally the ordinance contains standard provisions setting out basic requirements for the developer or sub-divider in an effort to achieve uniform city services.

Extent of city participation for sub-division has been and is still a matter of debate. Some hold that in the interest of progress, that the city should do all that it can to encourage new housing developments. Major drawback is that with the city's limited available funds, it is questionable as to whether the city can afford to contribute to new areas.

Opponents to participation hold that the city's first

responsibility is to the residents who are already within the city limits and deserve as much help as possible for improved water lines, paving and other city services.

The ordinance under consideration as it now stands and as it was approved on first reading provides as follows:

The developer shall be required to construct at his expense, all streets, alleys, sidewalks, sanitary sewers and water mains.

The City of Eastland will furnish street signs and street lights, to the extent that they are necessary.

However, upon the passage of this ordinance, it will be the policy of the City of Eastland to participate with the developer in the installation and construction of all sanitary sewers and water mains as follows: The City of Eastland will furnish the necessary labor to connect and lay the sewer and water mains and to place same in the appropriate places.

However, it is specifically understood that the developer will construct any ditch that is required for the sewer or water mains and furnish all pipe and any necessary connections or equipment to connect said water and sewer mains. It is further understood that back filling will be the responsibility of the sub-divider or developer.

Jon Rodriquez Guest Speaker At Lions Club Meet

"Cooperate with your local law enforcement officers", was the strong advice of Crime Prevention Specialist John Rodriquez, speaker in Eastland this week.

Speaking for members of the Lions Club at their Tuesday luncheon, the Abilene Police explained the basic function of the infant Crime Prevention program and told of its as yet, small but significant accomplishments.

President Ray Pryor presided and guests included Sheriff L.E. Sublett and Police Chief John Morren. Vice President Monroe Rollins announced that the zone Sweetheart Banquet will be held in Cisco on Feb. 13, with wives and Lions meeting for a banquet, food for which will be prepared by Lions.

Program Chairman Emory Walton announced that Tom Ward will have the program next week and introduced Rodriguez.

An eight-year Police veteran, first detailed the gigantic increase in crime, stating that FBI figures show that one out of four families will be affected by crime in a year. "But you don't have to put up with it," he said, "You can fight back."

The Crime Prevention program was launched in 1969 at the University of Louisville, Ky., borrowed from the British, and began in Texas in 1974, with six pilot programs, one of which is in Abilene. Abilene has 124 city officers (one for each 750 population while one per 1,000 is average), with three patrol companies of 12 men each and an 82 square mile city to patrol. "That's why we need help," he said, "we can't be everywhere at once."

"Be concerned and offer to help," he urged. Among the programs in the C.P. plan are making available free the electronic engravers which may be used to identify (with drivers license numbers, please) personal items of value. Hottest theft item right now is C.B. radios, he said. The plan also offers a security survey in which team members physically inspect and make recommendations of homes and businesses for locks, lighting and shrubbery.

Neighborhood groups are being formed in which residents join in helping police their area for suspicious persons, participating in programs to pick up newspapers, turn on lights and generally helping being "their neighbors' keepers."

Another phase is instruction in rape prevention and advice in handling child molesting cases. "You are a part of the enforcement too, you know," he said, "as you sit on juries and help in bringing criminals to justice."

Crime costs big money, he said, in higher insurance premiums, maintaining courts, training special officers, operating the penal system and helping rehabilitate parolees. Rodriguez said he lived in Eastland through the sixth grade, and that if he lives long enough to retire, he plans to retire here.

Area Merchants Warned Of Bills

Area merchants have been asked to inspect all \$20 bills used to transact business, said Eastland County Sheriff Lefty Sublett Tuesday.

An Eastland business has just received an altered bill, he said. A method of splitting a \$20 bill and gluing the ends to smaller bills was used in a purchase. He said that by splitting a \$20 bill, two bills can be made from one. Such false bills also are reportedly being passed in the Breckenridge area, he said.

Eastland County Livestock Show - March 18-19-20



City And S.C.C. To Work Together Lake Dam

The City of Eastland and Soil Conservation Service is working together in an effort to correct what is reported to be deteriorating conditions of the Eastland Lake Dam, located northwest of the city.

The Texas Water Rights Commission's latest report to the city is as follows, in a letter dated January 14:

"Reference is made to the Commission letter of November 24, 1975, and to your reply dated December 19, 1975. Thank you for your letter. In the Commission letter, you were informed that a hydraulic adequacy study of Lake Eastland Dam was to be undertaken and that you would be advised of the results of the study."

"That work is now complete. The structure, as it now exists, is not adequate to pass the SCS class (c) freeboard hydrograph

without overtopping the dam. This criteria was used because of the development downstream of the dam and because of the associated possibility of loss of life should the dam fail. It is recommended that you obtain the services of a registered professional engineer, one experienced in dam design, construction and maintenance, to evaluate the structure, to determine the appropriate test flood criteria, and to prepare cost estimates and necessary modification plans for upgrading the structure to acceptable safety standards.

"Prior to making definite plans, we feel that it would be appropriate and would benefit the City to recommend informal communications between yourself and Mr. Jack Chitwood, Supervisor of the Hydrology Section of this

Agency. A visit to this office, preferably in company with a Consulting Engineer of your choice, will best accomplish this need; however, a phone call to Mr. Chitwood (512-475-4311) will also serve to provide more exact information to you. In your letter, you explained that if the repairs required were excessive, "the City may prefer to displace the dam." That certainly is not the intent nor desire of this Agency; accordingly, we would hope that more direct communication can be arranged and will be of benefit to the City of Eastland.

"Your letter also advised this Agency that an SCS engineer would inspect Lake Eastland Dam on December 29, 1975, and would prepare an estimate of the cost to repair deficiencies previously reported at the structure. We would appreciate knowing the results of that inspection.

"Please keep us informed of your plans. If there are questions, do not hesitate to contact this office at any time.

Very truly yours,
TEXAS WATER RIGHTS COMMISSION
By Noble J. Campbell, P.E.
Deputy Head, Dam Safety Section

Family Names In History

(More from the Archives of Eastland Centennial Memorial Library.)

FAMILY NAMES IN HISTORY

BRIGHAM
What connection between San Jacinto battle and old Eastern ancestors?

From History of Marlborough, Mass. by Charles Hudson.

"Asa Brigham born August 31, 1788, married Rebecca Babcock at Framingham. Moved to Louisiana in 1816 and then to Texas in 1831.

He was one of the signers of the Declaration of Texas Independence and afterwards became treasurer of the Republic, an office he held until his death in 1844. A Texas paper at that period spoke of him in highest praise. He had three children. Only the youngest, Benjamin, is spoken of. He was slain in the Battle of San Jacinto on his 21st birthday."

On page 191, Frank Talbert in "The Day of San Jacinto" writes:

"The days following the battle brought personal suffering to Mirabeau Lamar, too, but not because of hostility from the men. The young Georgia Colonel was as much of a hero as ever in the eyes of his comrades - in - arms after the battle.

Like Rusk, Lamar had a close friend who had been critically wounded in the fighting. His name was Pvt. Benjamin Rice Brigham and he was a member of Calder's Company. He was 19 years old. (Editorial Note - - family records say it was his 21st birthday.)

The evening before the battle, the enthusiastic youngster had appealed to his friends in the company for someone to substitute for him on guard duty, saying:

"Boys, I've stood guard for two nights in a row and am detailed again tonight. I want to be fresh for the battle tomorrow. I'd sure give somebody a pretty to take my place."

Francis J. Cook, another young private, agreed to do Brigham's guard stint that night, and Lamar's friend had gotten his rest. The boy fell during the charge on the Mexican works, and on the 22nd, lay close to death." His father, Asa Brigham

served as commissary to the army.

Eastland has Brigham descendants - - the late James Horton's mother was a Brigham, daughter of a doctor from Massachusetts and Mrs. Joseph Perkins is a Brigham descendant. The immigrant Brigham was Thomas Brigham on the ship "Susan and Elynn" (from London) April 18, 1631. He was born in London, married Mary Hurd 1637, settled in Watertown, Mass. They had five children.

In the fifth generation, Lewis Brigham, son of Asa and Elizabeth (Warren) married Mary Rice. They had five children.

The 6th generation Asa, son of Lewis and Mary, named for his grandfather, came to Texas in 1831.

Two hundred years from arrival of the immigrant Thomas in 1631.

Sales Of Bonds \$173,952

Sales of Series E and H United States Savings Bonds amounting to \$173,952 in Eastland County were reported.

Sales for the 11 month period totaled \$12,174 for 58 percent of the 1975 sales goal of \$300,000.

Sales in Texas during the month amounted to \$18,748,419, while year - to - date sales totaled \$220,550,066 for 94 percent of the yearly sales goal of \$234.3 million.

Among those visiting Mr. Gus Earp and Mr. and Mrs. Jim Jackson last weekend were Mr. and Mrs. Joe Earp of Knox City, John Earp of Wienert, Mr. and Mrs. Fox Middleton of Rising Star, also Dr. N. Wesley Earp and daughter, Mr. and Mrs. James B. Earp and family of Denton, Mr. and Mrs. Joe R. McBeth and J.R. McBeth of Andrews, Mr. and Mrs. Billy Stringer of Floydada.

Guests in the home of Mr. and Mrs. H.T. Weaver this weekend will be Mr. and Mrs. C.R. Sims of Albuquerque, N.M. The Sims will be here to attend the 50th wedding anniversary of Mr. and Mrs. Chas. Underwood, to be held Saturday afternoon, January 24, th in Gorman. Mr. Sims and Mrs. Underwood are brother and sister. Mr. and Mrs. Weaver will also attend the celebration.

Assets Over \$10,000,000

At year - end 1975, the assets of Ranger Savings reached \$10,306,150. This was an encouraging 15 percent over a year ago, Bill Herod, Executive Vice President, reported today.

First Federal paid a record amount of interest to its savings depositors, \$568,780, and added \$40,000 to its reserves, bringing the total reserves up to \$514,008.

"While savings deposits were generally up for this year", Herod said, "we were contending with a continuation of the inflation, the recession and a tendency in the later part of the year for our savers to seek investments paying a higher rate." Herod said that during 1975 there was a general uncertainty on the part of the American public; they actually didn't know whether to spend or to save.

"We look forward to our Bicentennial year, 1976, and hope that the new year will bring us some respite in our economic problems and that we will receive enough savings deposits to allow us to take care of the mortgage lending needs of this area." Herod said that in 1975 First Federal financed a total of 175 homes in this area. Total mortgage loans made

during the year by First Federal were more than \$1,500,000.

Saturday was a beautiful day. You mean you didn't go anywhere or accomplish anything? Sixty-three people from Eastland and surrounding area had a bang-up time at a Turkey Shoot. The shoot was held on the new Eastland Rifle and Pistol Club shooting range located in the Southwest corner of the Eastland Airport property. From 10:00 a.m. till dark competitive shooting took place in Skeet, Large and Small Bore Rifle, Large and Small Bore Pistol, and Black Powder Shooting. Toothsome large frozen turkeys were won by the following: Rocky Bunting, DeLeon; Jerry Robinson, Eastland; Wayne Huff, Eastland; Roger Woodall, DeLeon; Rudy Parker, Eastland; Ken Lyster, Eastland and Lee Snead, Ranger.

Look for the announcement of the next Turkey Shoot coming soon, but don't wait to join the club. For ten dollars you can become a member and shoot when you please. Contact Kenny Paine, president; Jim Williams, vice president; Dick Johnson, secretary; Floyd Williams, membership chairman; or any member.

Mr. and Mrs. Benny Kinard and Mrs. Opal Chriswell of Rising Star visited Mr. and Mrs. W.L. Owen and Mrs. Iris Reed on Sunday.

Farmers Union Plans Thursday Meeting

The Eastland County Farmers' Union will meet at 7:00 p.m. on Thursday evening, November 22, at the Pantry Cafe in Gorman.

Larry Armstrong of Eastland will present a program on Farmers' Retirement Income and other insurance related matters. Mr. Armstrong is the insurance agent for the Eastland County Farmers' Union.

Everyone is welcome to attend this important meeting.

Mrs. T. Langlitz spent the weekend with her daughters and families, Mr. and Mrs. Fleton Holloway, Mr. and Mrs. Lois Dunlap and Mrs. Margaret Caraway.

WANTED TO BUY--Compost mill. Call collect Strawn 672-5664. Ask for Mr. Frank. t-17

C. B.'s New Stock
• MIDLAND
• ROYCE
• TEABERRY
• GLEN-TRONIX
• NEW-TRONIC
ANTENNAS
Bruce Pipkin's
Motor Co.

Eastland

AMERICAN REVOLUTION BICENTENNIAL

E D E E

Stationery

Letterheads

Envelopes

No Extra Charge

Order Now At Your Local Eastland County Newspapers

Eastland 629-1707
Ranger 647-1101

Cisco 442-2244
Rising Star 643-4141
