


J R B

SUPERMARKETS

BROWNWOOD, COLEMAN, CROSS PLAINS, ABILENE, RANGER, EASTLAND, CISCO, DE LEON, BRADY, WICHITA FALLS, STAMFORD, LLANO, HAMLIN
NO SALES TO DEALERS

Unbeatable Values!

Unbeatable Stamps!

We feature national brands! And you get  Green Stamps, too!

We Honor U.S. Government Food Stamps

DOUBLE STAMPS
Wednesday
& Saturday
Prices Effective
Thru Sat., March 15

UNBEATABLE PRICE

SWIFT TEND - R - LEAN

PORK CHOPS
FAMILY PACK

89¢ lb.

PLUS  STAMPS

JRB MEATS ARE U.S. GOVERNMENT INSPECTED. IF FOR ANY REASON YOU ARE NOT SATISFIED, WE WILL CHEERFULLY RETURN YOUR MONEY.

SWIFT TEND - R - LEAN

PORK ROAST SPECIAL TRIM lb. **79¢**

FRANKS ARMOUR CAMPFIRE 12 oz. PACKAGE **69¢**

BACON COLUMBIA SLICED SLAB lb. **69¢**

BACON JRB 1 lb. CARTON OUR VERY BEST lb. **\$1.29**

PORK LIVER MARKET SLICED lb. **19¢**

BEEF LIVER MARKET SLICED lb. **59¢**

CALF LIVER MARKET SLICED lb. **69¢**

SHOP MADE PURE PORK **PORK SAUSAGE** lb. **79¢**

ARMOUR EXCELLENT **SALT PORK** FOR SEASONING lb. **69¢**

SWIFT 12 OZ. PACKAGE **LUNCH MEAT** BOLOGNA, SALAMI, OR SPICED LUNCHEON Each **89¢**

HOT LINKS GOOCH BLUE RIBBON lb. **89¢**

BEEF PATTIES, PORK PATTIES, STEAK FINGERS TENDAMADE PRODUCTS lb. **89¢**

GOOCH BLUE RIBBON **GERMAN SAUSAGE** 12 oz. Each **99¢**

BACON SWIFT PREMIUM 12 oz. PACKAGE Each **99¢**

UNBEATABLE PRICE

SWIFT TEND - R - LEAN

PORK CHOPS
CENTER CUT

\$1.09 lb.

PLUS  STAMPS

UNBEATABLE PRICE

SWIFT TEND - R - LEAN

PORK CHOPS
WAFFER THIN

\$1.19 lb.

PLUS  STAMPS

We Reserve The Right To Limit Quantity
NO SALES TO DEALERS

BUTTERFIELD SHOESTRING **POTATOES** 2 1/2 can" **29¢**

DEL MONTE **SAUERKRAUT** 303 Can **29¢**

DEL MONTE PINEAPPLE, TOMATO OR PRUNE **JUICE** 46 Oz. Can or 32 oz. Bottle **59¢**

HUNTS **PEACHES** 2 1/2 Can **49¢**

HUNTS **TOMATOES** 300 Can **29¢**

HUSKY **DOG FOOD** 8 300 cans **\$1.00**

NABISCO OREOS **COOKIES** 15 oz. Pkg. **79¢**

KAL KAN ALL VARIETIES **DOG FOOD** 14 oz. Can **29¢**

MR. COFFEE **COFFEE FILTERS** **79¢**

DAIRY & FROZEN FOODS

MORTONS **POT PIES** CHICKEN, BEEF, TURKEY OR TUNA **5/\$1.00**

GANDY'S **ICE CREAM** 5 Qt. Bucket **\$2.29**

IMPERIAL **MARGARINE** 1 lb. Qtrs. **69¢**

MORTONS **DINNERS** EXCLUDING HAM AND BEEF **39¢**

MORTONS **CREAM PIES** **49¢**

CHEF BOY - AR - DEE **PIZZAS** LARGE **79¢**

BIRDS EYE AWAKE **ORANGE JUICE** 12 oz. **39¢**

BLUE BONNET **MARGARINE** 1 lb. Qtrs. **69¢**

FLEISCHMANN'S CORN OIL **MARGARINE** 1 lb. Qtrs. **73¢**

CHEFFON WHIPPED **MARGARINE** 1 lb. Tubs **79¢**

PROMISE SOFT **MARGARINE** Two 8 oz. Tubs **79¢**

WIN \$32,000 plus a '75 Chrysler Cordoba

EXTRA BUY 3 GET \$1.50 FREE Mail-in Offer

89¢ FAB Detergent

99¢ PALMOLIVE Dishwashing Liquid

19¢ AJAX Cleanser

29¢ IRISH SPRING Deodorant Soap

Pick Up Sweepstakes Entry Blank and Refund Form in Store

UNBEATABLE PRICE

SWIFT TEND - R - LEAN

PORK STEAK
SEMI - BONELESS

89¢ lb.

PLUS  STAMPS

PARADE SWEET **PEAS**

303 Can

29¢

BAKERITE **SHORTENING**

3 lb. Can

\$1.39

UNBEATABLE PRICE

GOLD MEDAL **FLOUR**

5 lb. Bag

79¢

PLUS  STAMPS

DRISTAN 24'S **SINUS TABLETS** **99¢**

Reg. \$1.69

DENTA FRESH **DENTURE CLEANSER** 2 oz. **69¢**

Reg. 98¢

BRIGHT SIDE **SHAMPOO** 11 oz. **89¢**

Reg. \$1.79

CLAIROLS NICE 'N EASY **HAIR COLOR** ALL COLORS **\$1.99**

Reg. \$2.50

IT'S HERE! IT'S FREE!

IDEABOOK 75

Over 1500 beautiful SirH gifts. Get your copy while they last.

WILSONS **VIENNA SAUSAGE**

5 oz. Can

29¢

UNBEATABLE PRICE

FRANCO AMERICAN **SPAGHETTI**

15 oz. Can

19¢

PLUS  STAMPS

DEL MONTE **CATSUP**

32 oz. Bottle

59¢



ARROW **PINTO BEANS**

2 lb. Bag

59¢

PLUS  STAMPS

GARDEN FRESH PRODUCE

POTATOES 10 lb. **39¢**

CABBAGE lb. **9¢**

GRAPEFRUIT Ruby Red lb. **19¢**

AVOCADOS 4/\$1.00

CELERY Large Stalk **29¢**

UNBEATABLE PRICE

TOP WAVE CHUNK **BONITA**

FLAT CAN

35¢

PLUS  STAMPS

FOLGERS INSTANT **COFFEE**

10 oz. Jar

\$1.89



Texas Land Value Increases During 73-74

COLLEGE STATION - - - (Spl) ... The state's rural land market has softened a bit, but the slight decline in value is just a slow - down and not a land break.

Dr. Ivan Schmedemann, resource economist with Texas A&M University's Real Estate Research Center, says the market is still strong. However, the per cent increase in 1974 was 16 per cent, compared to 20 per cent the year

before.

Speaking to a record 600 - plus members of the 17th annual County Judges and Commissioners Conference Thursday in College Station, he said Texas' biggest land value increases during 1973 - 74 occurred in the upper Rio Grande Valley and the El Paso area, both with 50 per cent or more.

The Dallas region saw a 40 to 50 per cent rise, and the

Houston area had 30 to 40 per cent.

During 1972 - 73, the 50 per cent or more category belonged to the Lower Rio Grande Valley. Land values jumped 40 to 50 per cent in the Houston, El Paso and San Antonio areas.

The economist based his figures on rural land 10 acres or more in size.

Schmedemann pointed out to the fact that rural land quality is not always a guide to market value. For example, Brazos County's rolling, post oak uplands, not noted for soil fertility, are in the \$1,000 and acre range. Highly fertile Brazos bottomlands go for \$550 to \$800 per acre.

He said gasoline rationing, if it comes, will probably have a negative effect on the land market, particularly if such real estate is far from urban centers.

Another speaker, Dr. A.V. Wolfe, management professor at A&M, advised the commissioners to be wary of federal "technical help." he also urged conference members not to panic and "run into the arms of civil service type" systems in the fact of outside pressures.

He said union efforts to organize employees is looming ever larger. Organizers will have an easy time if county governments don't pay attention and keep their house in order.

The conference (Feb. 5 - 6) at the Aggieland Inn was sponsored as part of the Texas Agricultural Extension Service's County Officials Program in cooperation with the County Judges and Commissioners Association of Texas.

Texas Rangers All The Way

BY BILLY MARTIN
Manager, Texas Rangers
I think the Texas Rangers are strong enough to go all the way in 1975. I believe we can win the American League West Division, win the playoff and win the World Series.

The Rangers showed the most improvement in baseball last year. We came from last place, 37 games back, to second place, five games back. We were in contention until the waning days of the season and in head - to - head meetings with the World Champion Oakland A's we won 10 of 18 games.

There is no doubt that Oakland has been dealt a crushing blow with the loss of Catfish Hunter, a 25 - game winner. This, to my mind, automatically lifts the Rangers into the role of favorite in a tough division. It figures to be a battle, close all the way. Oakland still will be rugged. So will Kansas City and Minnesota, which came on strong in the late going last season.

Read The Classifieds!

Pick up and delivery service within city or bring your laundry by 106 East Plummer Street and pick up later. For further information call 629-2098 after 6:30 p.m. 1-29

'We Will Not Be Confused By The Facts'

Bob Vaught Candidate For City Commission

In an article appearing in this newspaper on March 6, 1975, Lone Star Gas Company would have citizens of Eastland believe that the Company's return on its utility residential and commercial service in Texas "has been reduced to virtually nothing, primarily due to increasing gas costs."

Mr. Hulcy, senior vice president, also stated that 1974 net income of the company's utility division was down 22%.

I would like to ask Mr. Hulcy the following questions:

1. Is the return he speaks of based on a cost of service which includes return on investment in plant stated on original cost, or one of the mythical concepts of fair value or reproduction costs?

2. What was Lone Star's return on equity capital for its system wide operations? What was the return on equity on what Lone Star considers to be its non-utility operations? I presume large industrial customers are considered non-utility which raises the question as to whether or not the residential and commercial customers - are subsidizing the industrial customers.

3. Mr. Hulcy states 1974 income was down 22%. I ask Mr. Hulcy: down from what? What is

your point of reference. Mr. Hulcy? If it is 1973 profit, is there not the possibility that those profits were excessive?

The questions I have asked Mr. Hulcy are only a few of the many, many involved in the effective regulation of utility rates, and it is these questions I will be discussing - through the news media, and it is because of these unanswered questions - that I am proud to stand for a strong State Utility Commission. Our present City Commission under date of January 29, 1975, wrote our State Senator and State Representative opposing the creation of such a commission. As concerned rate payers let's write our City Commission and ask, or demand, these letters be rescinded. Then let's write our own letter to these two gentlemen expressing our own opinion. I have never believed in delegating the right to think for myself.

I believe my expertise in the field of utility regulation resulting from several years employment by the Federal Power Commission qualifies me to raise all above questions. As a member of your City Commission I sincerely believe I can be of service to the citizens of Eastland during these trying times of sky-rocketing utility rates.

Your Vote For Me On April 1, 1975 Will Be Appreciated

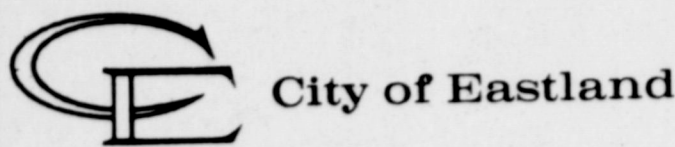
(Pd. Pol. Adv. By Bob Vaught)

Excerpt From Regular Meeting Of The Eastland City Commission Held January 20, 1975

A motion was made by Commissioner Charles Marshall that the city of Eastland join the utility Advisory Commission of the Texas Municipal League and that the City write letters to the State Senator and Representative that the City of Eastland was opposed to a State Utility Commission. Commissioner Dale Bakker seconded the motion and all voted aye.

APPROVE: *W.Q. Verner*
W.Q. Verner Chairman of the Board

ATTEST: *Lewis Tiner*
Lewis Tiner City Secretary



Mr. Tom Creighton
Capital Station
Austin, Texas 78701
January 29, 1975

Dear Mr. Creighton,

At the regular meeting of the Eastland City Commission held January 21, 1975 the Eastland City Commission voted unanimously to join with the Texas Municipal League in their effort to assist the Cities of Texas devise a more effective method to regulate those utilities that they are responsible for regulating. The Eastland City Commission also voted unanimously to oppose the creation of a State Utilities Commission.

We would be very grateful to you if you would take the foregoing into consideration when it comes time to make a decision regarding the State Utilities Commission.

It is always gratifying to know that we have capable representation on all matters that come to your attention.

Sincerely,

Lewis Tiner
City Manager
City of Eastland
LT/rs

(Pd. Pol. Adv. By Bob Vaught)

EASTLAND CO. TV & APPLIANCE

Authorized Factory Sales & Service
Zenith - Quasar - Whirlpool
900 W. 8th Phone 442-1433

SHUGART COUPON

Thursday, March 13

Brittain Discount Center

108 West Commerce South Side Of Square
Eastland



9
WALLET SIZE
COLOR PORTRAITS
99¢

ASK About Our
FREE
8 x 10
OFFER

Extra charge
for
GROUPS

BUY & SELL

New & Used Merchandise Furniture
Appliance-Anything Of Value

NOW OPEN DAILY

SEWING MACHINE SALES
& SERVICE NEW & USED

We Repair All Makes & Models

Wright Auction Co.

Eastland
106 S. Seaman 629-2468



LamPro



Lam-Pro "KAYAK"

- * STURDY - STABLE - SAFE
- * KEEL TYPE REINFORCED BOTTOM WITH FLOTATION SEAT
- * LENGTH 10 FT. - WIDTH 39" - DEPTH 11"
- * WEIGHT APPROXIMATELY 35 LBS.

LIST \$140.00 New
One Used \$100.00
One Used \$60.00
See at 413 S. Walnut
Eastland, Texas
Cliff Clary
MA-92540

Sunday, March 9, 1975

Notice

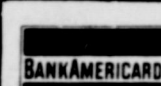
The residents of Valley View Lodge are interested in starting an Arts and Crafts Workshop. We need the help of the general public in obtaining materials for creative crafts.

If you have any quilting scraps, old hose for stuffing purposes, thread, artificial flowers, lumber scraps, spray paint, or anything that might help in Arts and Crafts that you would like to donate please leave them at Valley View Lodge or contact Judy Chaney.

Judy Chaney
Director of Activities

Store Hours
9 - 5 Daily

perry's
Eastland



Store Hours
9 - 5 Daily
Quantity Limited

White Elephant SALE

Asstd. LADIES BRAS 50¢ Ea.	Odd & End PANTY HOSE Values To \$1" NOW 33¢	100% POLYESTER DOUBLE KNIT Reg. \$2" SALE PRICE \$1.79 Yard	Zipper Type LUGGAGE Reg. \$7" SALE \$4.00	Slightly Damaged MAGNUS ORGAN 1 Only Reg. \$69" SALE \$27.50
Reg. \$1" 50¢ Ea. PURSES Reg. \$3" \$1.00	Odd & End LADIES SHOES Reg. \$3" SALE \$1.00 Pr.	2 Only HAIR DRYERS Reg. \$19" SALE \$10.00	Swing Type CURTAIN ROD Reg. \$1" SALE 77¢	1 Assortment WATCH BAND'S 1/2 PRICE
Asstd. MATERIAL Values To \$1" Yd. SALE 47¢ Yd.	Children's SKIN TIGHTS Reg. \$1" SALE \$1.00	Odd & Ends LADIES GIRDLE'S Reg. \$2" \$1.44 SALE	2 Only ASH TRAY'S Reg. 77¢ Ea. SALE 47¢ Ea.	
Corduroy CRAWLERS Reg. \$2" SALE \$1.66	Odd & End LACE 3¢ Yard	SWAG LAMP'S Reg. \$39" SALE \$25.00	Kitchen REMINDER BOARD \$1.00 Ea.	SWAG LAMPS Reg. \$22" \$18.00 SALE Reg. \$18" \$12.00 SALE

Mammoth

Additions To

H & R Lumber

In Eastland

We Are Now Carrying A Complete Line Of Grumbaker Art & Craft Supplies, From Easels To Sketching Paper. And Not To Mention A Large Line Of Quality Paint.

H & R Lumber Co.

715 W. Main
629-2104



SIGN OF SPRING

SIX FLAGS TO INTRODUCE NEW ATTRACTIONS FOR 1975

Arlington, Texas - Six Flags Over Texas will unveil results of a million dollar attraction and improvement program when the park begins its 1975 season March 15.

Heading the list of new entertainment features are a glittering nighttime parade and a major illusion show.

A new thrill ride, called the Rotoriculous, will be introduced prior to the summer tourist season, as will an antique airplane ride designed for children.

All the new features are themed around the "inventions" of Prof. Cyrus Cosmo, a costume character developed exclusively for Six Flags Over Texas.

Each evening Prof. Cosmo is joined by a group of his costumed friends in The Incredible Electric Light Brigade Parade. Cosmo clambers aboard his brilliantly lighted Cosmo-Mobile to lead such marchers as Capt. Dynamo, King Electro, the Electrophant, and Father Light through the streets of Six Flags. A brass band heads the parade lineup which features electrically powered, animated floats, illuminated with hundreds of blinking lights.

Cosmo, described by his creators as a "part-time inventor, part-time illusionist, and full-time showman," is also the star of the Cyrus Cosmo Wonder Show. He displays his wit and talent with baffling illusions, starting with a trick in which he makes himself appear from "nowhere." And as the show progresses strange things happen at Cosmo's command, including passing neon tubes through his assistant's body.

The magic show will be staged in Six Flags' Music Mill Theater on days when no name entertainers are appearing there.

Six Flags' younger guests can take a flight aboard a tiny antique biplane when they visit the C. Cosmo Flying Machine Co. It's a new feature in the park's Confederate section.

Early in the summer Six Flags will open the new Rotoriculous ride.

"The addition of the illusion show and the night parade will mean that Six Flags Over Texas' visitors can enjoy more than three and a half hours of shows.

"In addition to the new attractions for 1975, many areas of the park have taken on a totally new look as part of our continuing improvement program. Visitors will find the park more beautiful than ever."

Prof. Cyrus Cosmo will make his first public appearance at the park's grand opening ceremony March 15. Six Flags Over Texas will be open on weekends from 10:00 a.m. until 10:00 p.m. during the spring months. Daily operation begins May 24.

The LVNA Division No. 64 Stephenson, R.N., will present will meet Monday, March 10, at the program on "Hospital 7 p.m. at the Eastland Asepsis." Memorial Hospital. Mrs. Faye Cisco will be the host.



YOU'RE FUNNY LOOKIN' - A young visitor to Six Flags Over Texas meets the theme park's newest featured character, Prof. Cyrus Cosmo. The humorous costumed figure is the star of Six Flags' new night parade and his own magic and illusion show, the Cyrus Cosmo Wonder Show.

Sunday, March 9, 1975

Easter Dainties, For The Girl Who Loves To Look Pretty. Perky, Pert & Oh - So Pretty

Jill

Sizes 1 To 6x

Other's Up To The Junior Miss

BY *dotty Dan*

Sizes 1 - 7
Other Styles Up To Size 0 - 14

Young Age Shop
Ranger, Texas

The Home of Your Dreams - for Real!

7 3/4% VA & FHA Available!

Nothing Down On VA Loans
Low Down On FHA Loans
Conventional Loans Also Available
Choice Location Still Available

H & W Development Co.
216 S. Seaman Eastland
629-1702

Bob Murphy To Speak At Area Lions Club Banquet

Some 200 persons are expected to attend an interzone Lions Sweetheart Banquet at the Corral Room of the Victor Hotel here Friday, March 14, at 7 p.m., according to an announcement.

The Lions Clubs of Breckenridge, Cisco, Eastland, Ranger and others of the area are expected to have members and their ladies in attendance.

Bob Murphy of Nacogdoches, prominent attorney and after-dinner speaker, will address the group. Known as the philosopher of the Piney Woods country, Murphy is in demand as a speaker throughout the state and the nation.

W.R. Auvenshine, president of the Ranger Lions Club, will serve as master of ceremonies. Other clubs will participate in the program. An entertainment feature will be presented by the music department of Cisco Junior College.

Local arrangements were begun handled by President Earl Goo, Vice President Truman Kirk and Secretary Ralph Glenn. The Cisco club will not hold its regular luncheon of March 12th as the dinner meeting will count as the week's gathering.

Dr. Edward Uvacek Jr. To Be Guest Speaker

Dr. Edward Uvacek Jr., Extension Livestock Marketing Specialist and Professor at Texas A&M University will be the featured speaker at a livestock marketing meeting Thursday night, March 13, 1975, at 7:30 p.m. at Breckenridge Stockyards. The event will be co-sponsored by the Stephens County Beef and Range Committee and Stephens County Cattleman's Association. The one night livestock marketing clinic will be very informal and all area people are urged to attend.



BOB MURPHY

The Stephens County Cattleman's Association will meet in conjunction with the clinic.

Dr. Uvacek, a nationally known figure, will speak on the past, present and future livestock situation. The specialist has stated that the cattle industry could be on an upward move "due to decreased grain prices, lowered interest rates and slightly increased cattle prices over the country." "We are very fortunate to get the highly sought after speaker due to many state and national commitments, and he should bring us an interesting program", says Stephens County Agent Doyle Meadows.

First Planning For Shakespeare Performance

The first planning session for the Shakespeare performance this year will be held Monday, March 10, at 7:30 p.m.

Ideas on the production and program itinerary will be discussed. Members of the committee are: Richard Rosander, Sherry Phillips, Sharon Terrell, Don Werley, Don Werley and Mrs. Virginia Russell.

Any interested in participating in the planning of this year's Shakespeare Project is invited to Bell-Hurst Playhouse Monday night.

The Shakespeare Production will be held April 23 in honor of the Playwright's Birthday.

SEE THE ANNUAL RATTLESNAKE ROUND-UP And WILDCAT SHOW (Antiques, Coins, Guns) ALSO THE WORLD'S RATTLESNAKE SACKING CHAMPIONSHIP

March 15 And 16

At The Brownwood Coliseum

Saturday: 10 A.M. To 10 P.M.
Sunday: 10 A.M. To 6 P.M.

\$1500.

In Trophies And Prizes

CITIZENS REALTY

CITIZENS REALTY YOUR RESIDENTIAL SPECIALIST

Large older home, recently remodeled. 3 bedrooms, carpet. Freshly painted exterior. Approximately 1488 square feet in this home located on oversized lot in Eastland. \$250 down.

Looking for a 3bedroom home with central heat and air? This 3 year old brick home is located near Cisco High School and the new City Park. All built - ins. Pay equity and assume loan.

Nice 2 bedroom, 1 bath home on corner lot in Cisco. This two year old brick home with central heat can be yours on a loan assumption. \$950 down and \$136 monthly payments.

Brick 3 bedroom, 2 bath home with central heat and air available in Eastland. You can choose your own carpet to be installed. \$350 down.

3 bedroom, 2 bath brick home under construction in Cisco. Drop by 1408 Simms and see this home go up. Choose your own interior decor. \$1000 down

1974 14 x 70 mobile home. 2 bedroom, 2 bath. Large living room. Central heat. All built - ins and refrigerator. \$750 down and assume payments of \$115 per month plus lot rent.

Two nice lots on hill with view in Eastland, near schools. 62 x 150. Only \$300 down and \$31 monthly.

Corner lot in Eastland, near center of town. Ideal for mobile home or new home. 50 x 150. \$250 down. Close to schools.

135 acres - 46.7 acres peanut allotment. 4 irrigation wells. Good terms. Located north of Cross Plains.

CITIZENS REALTY
829 West Main
Eastland, Texas
629 - 2404
629 - 1769

Wayne Durham - Associate
629 - 2743

B.G. Brown - Broker
442 - 1631

Karla Brown - Broker
442 - 1631

NEW! BERNINA

Bernina 830

New elegance, simplicity and versatility in a sewing machine! The all-new Bernina 830 is the modern way to sew. Compact shape, stronger construction, easier maintenance, a super selection of built-in stretch stitches, the new Bernina 830 puts fun back into sewing! There is NO major stitch the Bernina 830 cannot sew. See your nearby Bernina Dealer for a demonstration.

Rita's Fashion Fabrics
Int. 20 East Of Eastland Next To Ramada Inn
629-8020

Majestic Theatre
Eastland 629-1220
Sun. - Mon. 7:30 Only

For \$10,000 they break your arms.
For \$20,000 they break your legs.
Axel Freed owes \$44,000.

The Gambler

A Robert Chartoff-Irwin Winkler Production A Karel Reisz Film
James Caan
"The Gambler"

Co-starring Paul Sorvino Lauren Hutton Written by James Toback
Produced by Irwin Winkler and Robert Chartoff
Directed by Karel Reisz Music Scored by Jerry Fielding
In Color A Paramount Pictures Release

Thurs. - Fri. 7:40 Only Sat. 2:20 - 7:30 & 9:46

SWISS FAMILY ROBINSON

JOHN DOROTHY JAMES JANET
MILLS MCGUIRE MACARTHUR MUNRO HARUKANA KIRK CIRCIBAN PARKER

Fri. Late Show 11 P.M. \$1.00 Adm.

"One of the Best Movies of 1974."
-Gene Shalit, NBC-TV

"HARRY & TONTO"
"HARRY & TONTO" - ART CARNEY
Costarring ELLEN BURSTYN as Shirley GERALDINE FITZGERALD LARRY HAGMAN as CHIEF DAN GEORGE

RANGER DRIVE-IN THEATRE
Boxoffice Opens 7:30 Show Starts at 8:00

LAST TIMES SUNDAY
March - 9th

DOUBLE FEATURE

GOLDIE HAWN HAL HOLBROOK... THE GIRL FROM PETROVKA

PLUS this SECOND BIG PICTURE

LIFE... LOVE... SURVIVAL... THE GREATEST ADVENTURES OF ALL

A MARTIN RANSOFF PRODUCTION
THE WHITE DAWN

Coming Next

BURT REYNOLDS "THE LONGEST YARD"
EDDIE ALBERT
ED LAUTER MIKE CONRAD

WATCH OUR BIG PARADE OF
HITS

BIRDS DO IT BEES DO IT

MOONRUNNERS

DEAN MARTIN "MR. RICCO"

BURT REYNOLDS "W. WORD AND THE DIXIE DANCEKINGS"

Sunday,
March 9, 1975

The Light Touch



By Clint Bray

Parents bear infants, bore teenagers, and board new-lweds.

Civilization is a system under which you pay a nickel to park your car so you won't be fined three dollars while spending twenty cents for a dime cup of coffee.

Police are getting a course in courtesy. Next thing you know, they'll have to say, "Hands up, please".

Lady we know says she occasionally yearns for the good old days, when women were just the opposite sex, not the opposite.

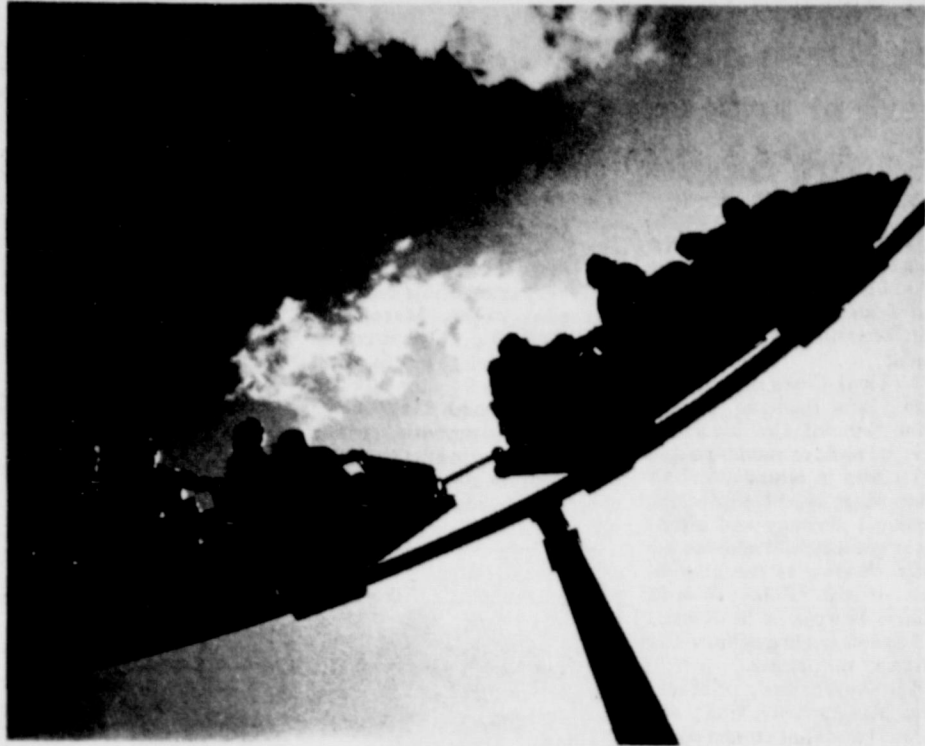
One good thing about inflation: when you don't buy something now, you save a lot more than if you hadn't bought it before.

You STILL save at BRAY'S in Eastland and Ranger. Your dollar stretches when you shop at BRAY'S.

FOR SALE

- Hitches (Any Make Cars)
 - Hitch-Balls
 - Tow Bars
- RENTALS:
- Tow-Dollies
 - Tow-Bars
 - Trucks & Trailers
 - Hitches

Gilbert Gulf Service
500 W. Main
629-8805
Eastland, Texas
Also Farm Bureau
Tires & Batteries



SKYWARD - The Big Bend ride at Six Flags Over Texas is silhouetted against the noonday sky. The 55-mile-an-hour thrill ride is one of the major attractions at the huge Texas theme park. Six Flags Over Texas begins its 1975 season March 15.

Six Flags Over Texas To Unveil Million Dollar Improvement Program

Six Flags Over Texas will unveil results of a million dollar attraction and improvement program when the park begins its 1975 season March 15.

Heading the list of new entertainment features are a glittering night time parade and a major illusion show. A new thrill ride, called the Rotorulous, will be introduced prior to the summer tourist season, as will an antique airplane ride designed for children.

All the new features are themed around the "inventions" of Prof. Cyrus Cosmo, a costume character developed exclusively for Six Flags Over Texas.

Each evening Prof. Cosmo is joined by a group of his costumed friends in The Incredible Electric Light Brigade Parade. Cosmo clammers aboard his brilliantly lit Cosmobile to lead such marchers as Capt. Dynamo, King Electro, the Electrophant, and Father Light through the streets of Six Flags. A brass band heads the parade lineup which features electrically powered, animated floats, illuminated with hundreds of blinking lights.

Cosmo, described by his creators as a part-time inventor, part-time illusionist, and full-time showman, is also the star of the Cyrus Cosmo Wonder Show. He displays his wit and talent with baffling illusions, starting with a trick in which he makes himself appear from "nowhere". And as the

show progresses strange things happen at Cosmo's command, including passing neon tubes through his assistant's body.

The magic show will be staged in Six Flags' Music Mill Theater on days when no name entertainers are appearing there.

Six Flags' younger guests can take a flight aboard a tiny antique biplane when they visit the C. Cosmo Flying Machine Co. It's a new feature in the park's Confederate Section.

Early in the summer of Six Flags will open the new Rotorulous ride. The 13 speed thrill ride, housed in a specially-designed, octagonal building features an elaborate "light and sound experience".

Projections on multiple screens combine with bright, flashing lights and strange sound effects to give the ride a mind-boggling outer space aura.

The new attraction, unique in the theme park world, is currently under construction in the Good Times Square area.

Six Flags General Manager Dan Howells said, "A lot of imagination has been put into the new characters, shows, and rides, and we think our guests will find the results exciting."

"The addition of the illusion show and the night parade will mean that Six Flags Over Texas' visitors can enjoy more than three and a half hours of shows."

"In addition to the new attractions for 1975, many areas

of the park have taken on a totally new look as part of our continuing improvement program. Visitors will find the park more beautiful than ever."

Prof. Cyrus Cosmo will make his first public appearance at the park's grand opening ceremony March 15. Six Flags Over Texas will be open on weekends from 10:00 a.m. until 10:00 p.m. during the spring months. Daily operations begin May 24.



H.L. Ferguson & Tony Lowrance

Backhoe Service
Digging, Ditching,
Sand & Gravel Hauling

CALL IN EASTLAND 629-2795

Now's The Time To Do Grass Seeding And Sprigging

If you are planning to do some grass seeding or bermuda grass sprigging this year, now is the time to get started, according to Monty Gearner of the Soil Conservation Service in Eastland.

The months of March and April are usually the optimum dates for planting in this area because of the mild temperatures and generally adequate moisture supply. In addition, there are two steps essential to any successful grass planting. First, preparation of a good firm seedbed prior to planting time and second, selection of good quality seed of adapted species and varieties of healthy spriggs for planting.

Grasses which you might want to consider include Coastal bermuda grass, Weeping love grass, Klein grass-Selection 75, or maybe a range grass mixture depending on your production needs and the type of land you have.

As a service to the farmers and ranchers, the Upper Leon Soil and Water Conservation District has available grass seeding drills and one-row sprigging machines which may be leased for a small fee. For more information on leasing this equipment contact C&D Feed, Inc., in Eastland.

FOR SALE

FOR SALE-Slightly used deluxe balanced juicer fully automatic. Liquefies, blends, grates, chops, mixes, dry grinds. Would be ideal for rest home or hospital. \$65.00. Call 442-1303.

MEMBER
TEXAS PRESS ASSOCIATION

You Are
Cordially Invited
To Attend
The Fourth Annual
JAN HERRING ART EXHIBIT
On Display
In The Lobby
And Conference Room
Of The
EASTLAND NATIONAL BANK
During Banking Hours
March 10, 1975 - March 21, 1975

CATTELMANS RESTRAUNT
Eastland, Texas. 629-1761
Featuring Home Cooked Meals
Steaks, With Baked Potatoes Anytime.
Sunday Thru Friday - 6 A.M. - 10 P.M.
Friday - Fish Night - All You Can Eat - \$1.95

There's a Plaid in Your Future

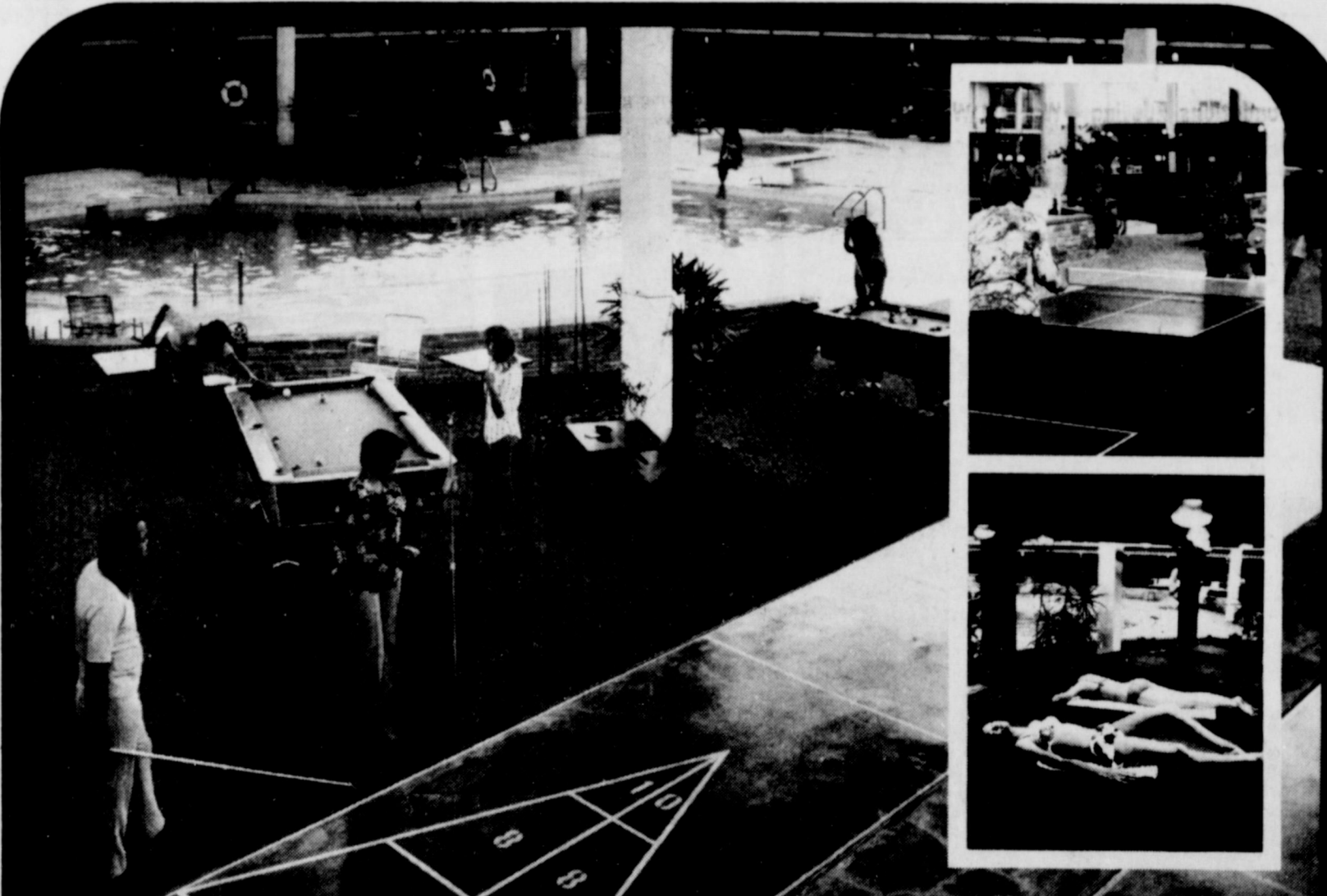
Botany 500 gives each man a little more than he expects.

Make it a subtle, elegant Botany 500 plaid. In a crisp, light, right-for Spring and Summer Dacron worsted blend. With the bold, custom-look shape that's so definitely the look of today. Like this trim, perfectionist Botany 500 model with deep center vent, suppressed waist, well-defined shoulders and sweeping lapels. Everything about it is plotted to make you look slim, masculine and affluent, as if you'd spent hours with a custom tailor. And it has all of the meticulous hand-finishing and expensive looking detail for which Botany 500 is famous, so you know it will look as great after years of wear and dry cleaning as it does when you buy it. From

\$125.

THE MAN'S STORE
Bob Elliott
CISCO

Botany 500 linings are Sanitized[®] for hygienic freshness.



The 48 Hour Vacation!

The 48-Hour Vacation is yours, close to home, where 78° weather is guaranteed in the new, enclosed SOLARDOME... and all your money goes for fun instead of transportation!

Just outside your door, you can splash in the pool... or join the fun at the ping-pong and pool tables, shuffleboard courts and putting green... relax under the sun lamps or in the sauna and whirl-

pool baths... or workout on the exercise machines. There's poolside food service too... plus fine food in our restaurant and lively entertainment nightly in our private club.

Bring the family or get a group together for a 48-Hour Vacation in the SOLARDOME. Call now for reservations and rate information. Children under 12 stay free!

San Angelo Holiday Inn & SOLARDOME

333 RIO CONCHO DRIVE SAN ANGELO, TEXAS 76901 PHONE (915) 655-8151

Picture & Needle Point FRAMES \$3 ⁰⁰ Up	Neckless COIN HOLDERS \$4 ⁹⁵ Each
SHOWER CURTAINS In A Variety Of Colors	
The Original CROCK POT \$24 ⁹⁵	G.E. CAN OPENERS With E-Z Clean \$12 ⁹⁵
Mr. Coffee COFFEE MAKERS & Replacement Filters	ONLY \$36 ⁹⁵
VANITYS, That Will Beautify Any Bathroom In Several Different Styles And Colors	
Hanging BASKETS & Dried FLOWERS, With A Large Selection Of Shapes And Colors	
Morren's Plumbing And Gift Shop 1013 West Main 629-2092	

A-1 SALES
BETWEEN PERRYS AND MODE-O-DAY
BUSINESS 629-2102 HOME 629-2464
TERRY - JERRY and DALE MASTON

VINAL STORM WINDOWS
Mount outside your present windows
Provides Double Window Insulation
Saves on fuel consumption

ALUMINUM REPLACEMENT WINDOWS AND STORM DOORS
Economical · Lasting Beauty
Practical · Stops Drafts

CUSTOM BUILT-CAR PORTS PATIOS-PORCHES-STORAGE SIDING-VINAL-INSULATED

All Types Of Remodeling Inside-Outside- Foundations Roofing - We Will Work By The Hour At Reasonable Rates Or We Will Give You A Turn Key Price On Labor & Material

WE WILL USE YOUR MATERIAL OR WILL FURNISH THE MATERIAL WE OFFER YOU SKILLED WORMANSHIP AT REASONABLE PRICES-CALL US NOW - FOR -

FREE ESTIMATE
Phone 629-2102

BUY WISELY . . . PAY PROMPTLY . . .

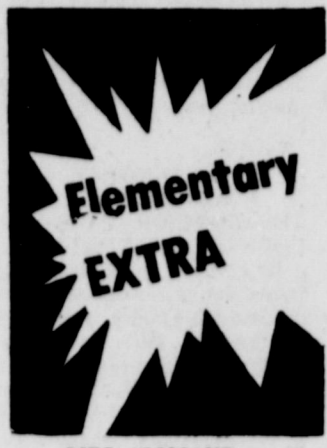
PROTECT YOUR CREDIT

If you are not enjoying the advantages of Credit buying let us help you open a charge account. Your home town merchants welcome a new charge customer. Many of Life's luxuries and good things are enjoyed by those who have good credit and use their credit ratings.

★ MEMBERSHIP ★

Baird's TV Sales Bray's Department Store C-Wholesale Tire Co. Central Drug City Garage Coats Furniture Deford-Exxon Co. Eastland Memorial Hospital Eastland National Bank Eastland Service Parts Eastland Telegram Freyshlag Insurance Agency Fullen Motor Co. Goodyear Tire and Rubber Co. H & R Lumber Co. King Motor Co.	Kinnard Insurance Agency McCathern Motor Co. Perkins Implement Store Poe Floral Robertson TV Sales Smith Plumbing Co. So-La Auto Parts Store Southern TV Systems Southwestern Bell Telephone Squiers Farm Store Stephen Printing Co. Super Save Gro. Texas Electric Service Co. Vassarette Credit Union Western Auto Associate Store
--	--

Eastland Merchants Credit Association.
310 North Daugherty
Eastland, Texas 70448



MRS. ALLMAND
We finished studying about the U.S. flag this week and now we are studying about Texas. Many of us did not know the state bird or flower or what our flag looks like.

We have also looked forward to open house all week and we have enjoyed our visitors.

We are improving each week on our reading, writing and math. Another group started reading in Green Feet this week.

MRS. DALLAS SECOND GRADE
We are excited about open house. We lost a girl. Her name is Pilar. We are learning about the animal groups. We made a book about the four food groups. We have pictures of our selves on balloons.

Kim McPherson

MRS. YOUNG THIRD GRADE
We have been learning about prime numbers. We have been busy making things for open house. We have been talking about even and odd numbers. We have been multiplying by tens and hundreds. A number of our parents have eaten with us this week.

Dana Easter

MRS. TURNER THIRD GRADE
March is a special time. Rooms are full of springtime. Chrystal gardens everywhere. Peas, corn, okra, here. Petunias, Zinnias, Phlox

There Public School Week
It's time for open house
People and children...quite as a mouse.

Art is a part
Of our good luck
We're running short
'Cause we can't make a buck

Birthdays! Birthdays!
Children having great days.
In many ways.
Ricky's, Jeanette's
Big Day--Birthdays!

Our helpers this week:
Well, lets just take a peek
Jill, not Will!
Charles, not Carl!

Lunchroom Manners
Don't you peek!
Bekky Rollins and Wilson
Enisor
Good manners this week.

Good Citizenship.
Look! Don't peek!
Kathy Watson and Jim
Hutchison
Citizens of the Week.

We're practicing for a show.
Sorry but I have to go.

Sincerely
Sheila Reed

Pioneer Club Holds Meeting

Members of the Pioneer Club met Thursday, Feb. 27, in the home of Mrs. Lorene Crawford for their monthly covered dish luncheon. After assembling in the beautifully decorated living room, members and guests stood and held hands while the Chaplain, Mrs. Sallie Garrett, led a prayer of thanks for the wonderful fellowship and bountiful food.

The tables were set with lovely hand crocheted place mats of various colors and flower arrangements.

After the luncheon, Mrs. Laverne Wingate, president, called the meeting to order. She read some of the original by-laws and called attention to the only charter member present, Sallie Garrett. Minutes of the last meeting, in the home of Mrs. Nora Wilkinson, were read and approved. A get-well card was signed by each one present to be sent to Mrs. Arie Herring in the local hospital. Roll call was answered by each quoting a Bible verse. A love offering was taken as no dues are assessed.

Mrs. Pauline Lee, program chairman, spoke on "What We Think--We Are", by Dr. Gaston Foote. She began with an excerpt from Leroy Brownlow's book, "A Time To Laugh--Or Grandpa Was a Preacher", and finished with a whimsical poem "If We Only Could".

Mrs. Wilkinson gave a lovely reminiscence entitled, "Home-sick". She finished with the song, "Someone Will Be Waiting".

Mrs. Wingate read "Why Worry!"

After joining hands and singing "Blest Be The Tie That Binds", the club adjourned.

Members present were - Mmes. Sallie Garrett, Johnnie Laughlin, Laverne Wingate, Pauline Lee, Mary Ella Logan, Berta Burkett, Winnie Bassett, Nora Wilkinson, Fannie Lockhart, Nina Hastings, Josie Nix and the hostess Lorene Crawford.

Two guests were also present Mmes: Edith Townsend and Lillian Cromwell.

The next regular meeting will be March 27 in the home of Mrs. Johnnie Laughlin, 602 S. Mulberry. All members are urged to be present.

School Menu

- MONDAY, MARCH 10**
Franks with cheese
Pinto beans
Buttered cabbage
Lettuce & tomato salad
Corn bread
Fruit cobbler
- TUESDAY, MARCH 11**
Roast beef & gravy
Whipped potatoes
Green beans
Lettuce wedges
Hot rolls
Cake squares
- WEDNESDAY, MARCH 12**
Fish sticks
French fries
Green peas
Carrot sticks
Sliced bread
Brownies
- THURSDAY, MARCH 13**
Hamburgers
Pork & beans
Potato chips
Cookies
- FRIDAY, MARCH 14**
Student School Holiday

MRS. GREEN FOURTH GRADE
We have been very busy on math. Everybody will be glad when visitors week is over. Some people in our class have made things out of rocks. We have been painting fingerpaints and everybody is very busy. Some children have been sick. In science we planted beans and corn. Lance Bailey is the head in reading the most books. Angela Hammond moved back to her home town.

Patri Spurlen

TONY'S DISCOUNT MEAT MARKET
701 W. Main
Eastland 629-8161

Meat Inspected

Ground BEEF	lb. 59 ^c
Chuck ROAST	lb.
All Meat BOLOGNA	lb. 89 ^c
Loin, Round, T-Bone & Club STEAK	lb. 98 ^c
Fresh PORK LIVER	lb. 29 ^c
Cut & Wrapped 1/2 BEEF	lb. 69 ^c

Open 8 a.m. To 6 p.m.
Mon. Thru Sat.

Audience Enchanted By Victor Niedzwiecki

Victor Niedzwiecki enchanted his audience with his outstanding keyboard skill during his concert Feb. 14, at the First Methodist Church in Eastland. Presented by the Eastland Music Study Club, Niedzwiecki, known for his ambitious repertoire, opened his adeptly devised program with a superb presentation of Scarlatti's Sonata IX in A Minor.

Niedzwiecki painted a vivid images of Moussorgski's Pictures at an Exhibition, with professional color and skill. He carried his audience through the mood of each of the ten themes of the musical exhibition. The artist exhibited intense concentration and conveyed a passionate feeling for this work, as he painted in pastels, vibrant colors, black and gray. His strengths were in the reoccurring Promenade, the Great Gate of Kiev, and the Catacombs. The Ballet of the Chicks in Their Shells was a delight for the audience.

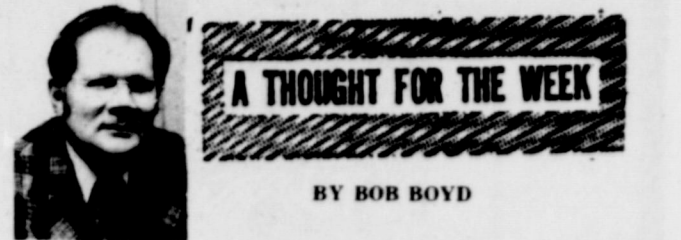
Niedzwiecki interpreted the Gershwin number, a Prelude, with an exacting rhythm and perfect timing...sliding through

ninth and demanding syncopations with ease and joy.

Niedzwiecki's characteristic variety of program was exemplified as he moved from Gershwin's syncopation into the entire Volume I of Chopin's Etudes. His truly sovereign command of these 12 compositions was remarkable. Of particular note was his strength on the upper chromatic notes in the A Minor Etude. He displayed an artist's awe for the works of Chopin and gave to the compositions his gifted, powerful interpretations.

Not every pianist possesses the stamina to present a program of this magnitude. Niedzwiecki's name is synonymous with power and dynamic skill at the keyboard. He is no subordinate to the piano; he commands it with absolute authority and rare musical intelligence.

Niedzwiecki readily established rapport with his audience and his passion and joy were contagious. The audience responded with a standing ovation and departed the concert with an air of celebration.



A THOUGHT FOR THE WEEK
BY BOB BOYD

How and when can one label a person a success - or failure? For example, do you remember who said, "I do the very best I know how, the very best I can, and I mean to keep doing so"?

The man who said that had many heartbreaking reverses. In his time, many people classed him a failure. His record showed a business failure in '31...defeated for Legislature in '32...another business failure in '33...elected to Legislature in '34...his sweetheart died in '35...he had a nervous breakdown in '36...defeated for Speaker in '38...defeated for Elector in '40...again defeated for Congress in '43...finally elected to Congress in '48 but then defeated for the Senate in '55. Finally, in '60 he was elected PRESIDENT!

A failure? NO! A success? Certainly. Who was the man who lived through the frustrations, the despair of so many defeats? Who was the man who proved there is no such thing as lasting defeat for one who strives to succeed? The immortal Abraham Lincoln!.....

Bob Boyd
Arrington Funeral Home
301 S. Lamar St.,
Eastland, 629 - 2611.

CARPET CLEANING

Spring Special

MIKE'S CARPET CARE
Eastland's Steam-Cleaning Service

INTRODUCES
SPRING-CLEANING
20% Off Regular Price
FREE ESTIMATE'S
Call - 629-8129

Now's the time to get your air conditioning ready for another summer.

At this time of year, your air conditioning serviceman can probably work your call more easily into his schedule. He'll get your unit ready to deliver dependable and efficient cooling all through the summer.

Although Texas Electric does not service, sell or install air conditioning equipment, we do want you to get full value and top efficiency from your electric service. That's especially important since the cost of electricity is increasing.

A properly maintained air conditioning system cools with maximum efficiency and that's an important step towards efficient use of energy.

For more ideas on how to use your electric service wisely, call us, we'd like to help.

TEXAS ELECTRIC SERVICE COMPANY
F. N. SAYRE, Manager, Phone 629-3651

LEGAL NOTICES

LEGAL NOTICE
CITATION BY PUBLICATION
THE STATE OF TEXAS
To: The unknown stockholders of Pinto-Stephens Oil Company, a defunct corporation, and the unknown heirs,

unknown stockholders of Pinto-Stephens Oil Company, and all persons claiming any title or interest under conveyance dated September 21, 1918, from B.B. Walker to Banker Oil & Refining Co. recorded in Volume 121, Page 127 of the Deed Records of Eastland County, Texas, Defendants in the cause numbered and styled hereunder.

Records of Eastland County, Texas, and under conveyance dated September 21, 1918, from B.B. Walker to Banks Oil & Refining Co. recorded in Volume 121, Page 127 of the Deed Records of Eastland County, Texas, Defendants in the cause numbered and styled hereunder.

You are hereby commanded to appear before the Honorable 91st District Court of Eastland County, Texas, at the Court-house in Eastland, Texas, at or before ten o'clock a.m. of the first Monday next after the expiration of forty-two days from February 20, 1975, to date of issuance of this Citation, by filing written answer of the Plaintiffs' Original Petition filed in said Court on February 20, 1975, numbered 20637 on the docket of said Court, and styled "Joy W. White, et al vs. The Unknown Stockholders of Pinto-Stephens Oil Company, et al."

The nature of this suit, briefly stated, is one of trespass to try title and to remove cloud from the title; for cause of action Plaintiffs were lawfully in fee simple seized and possessed of realty situated in Eastland County, Texas, and legally described as an undivided one-half interested in and to all the oil, gas and other minerals in, on and under the following described lands situated in Eastland County, Texas, to-wit:

FIRST TRACT: Beginning on the West line of Blk. No. 4 (which was the five-acre tract deeded F.M. Ward by I. Searcy on April 4, 1882, by deed recorded in Vol. "G", page 71 of the Deed Records of Eastland County, Texas) at a stone for corner from which a P.O. bns North 45 W. vrs; Thence West 27-1/2 North 231 vrs to a stone in prairie; Thence South 27-1/2 West 122 vrs to NW corner of Block No. 7 (which was the five-acre tract deeded to J.S. Mosby by I.G. Searcy on April 1, 1882, by deed recorded in Vol. "G", page 62 of Deed Records of Eastland County, Texas) Thence East 27-1/2 South 231 vrs to a stone on the West line of town survey (meaning original town of Ranger, Texas); Thence North 27-1/2 East 122 vrs to the place of beginning, and containing 5 acres, more or less, and being the five-acre tract which was deeded to William KAshe by I.G. Searcy on April 3, 1882, by deed recorded in Vol. "G", page 66 of Deed Records of Eastland County, Texas, and being the property that was acquired by S.W. Bobo in two separate deeds, one for three acres from O.R. Riddel and wife of record in Vol. 60, page 327 of Deed Records of Eastland County, Texas, and the other

for two acres from J.W. Harrell and wife of record in Vol. 60, page 329 of Deed Records of Eastland County, Texas.
SECOND TRACT: Beginning at the NW corner of the survey of five acres made for F.M. Ward, a stone for corner; Thence North 61-1/2 West 231 vrs a stone for corner from which an elm bns South 23 West 4 vrs; Thence South 27-1/2 West 122 vrs a stone for corner; Thence South 62-1/2 East 231 vrs a stone on West boundary line of said Ward Survey; Thence North 27-1/2 East 122 vrs to the place of beginning, and containing five acres of land, more or less, and being the five acre tract of land which was deeded to W.F. Melton by I.G. Searcy on Nov. 19, 1897, by deed recorded in Vol. 34, Page 455 of Deed Records of Eastland County, Texas, and being the property that was acquired by S.W. Bobo as the first tract described in deed from P.C. Mansker and wife to S.W. Bobo dated April 3, 1902, and of record in Vol. 46, page 176 of Deed Records of Eastland County, Texas.

THIRD TRACT: 10-four-fifths acres, more or less, and being the West portion of the following described sixteen acre tract, to-wit: Beginning at the SE corner of a survey sold to G. Gerdes a rock pile for corner; Thence South 61-1/2 East 360 vrs a rock pile for corner; Thence South 28-1/2 West 255 vrs to NE corner of a subdivision sold Mansker, a rock pile for corner; Thence North 61-1/2 West 360 vrs a rock pile for corner; Thence North 28-1/2 East 255 vrs to the place of beginning, and containing sixteen acres except the East 320 ft described in warranty deed from S.W. Bobo and wife to Mrs. Nannie Walker, dated Nov. 6, 1912 and of record in Vol. 97, page 397 of the Deed Records of Eastland County, Texas (said East 320 ft described in said deed to Mrs. ZNannie Walker includes, but does not convey to her, 1-one fifth acre theretofore conveyed by S.W. Bobo and wife to N.P. Hames by two separate deeds).

FOURTH TRACT: Beginning at a post in the T&P Ry Co. right of way line fence at the NE corner of a ten acre tract sold J.M. Gholson by W.R. Hodges and wife by deed recorded in Vol. 53, page 592 of Deed Records of Eastland County, Texas, for SE corner of this tract; Thence North 26 deg 25' East with said right of way fence 748 vrs to a corner in the NBL of the Francis Blundell Survey for NE corner; Thence West with original NBL of said Blundell Survey 537 vrs to stone of NW corner of this tract; Thence South 28 deg 30' West 612 vrs with the East line of the Nannie Walker 26.37 acre tract to its SE corner for SW corner this tract; Thence South 61 deg 30' East 150 vrs to stake for corner, same being the NE corner of a five acre tract heretofore sold Mrs. Page; Thence North 28 deg 30' East 107 vrs stake for corner, same being the NW corner of J.C. Rhodes tract; Thence South 61 deg 30' East 336.5 vrs to the place of beginning, and containing 55.97 acres, more or less, and being the tract of land conveyed to S.W. Bobo by W.R. Hodges and wife by deed dated December 14, 1903 and recorded in Vol. 53, page 592, Deed Records of Eastland County, Texas, less 26.37 acres sold Mrs. Nannie Walker

and that the Defendants unlawfully entered upon said premises and ejected Plaintiffs therefrom and unlawfully withheld from them possession thereof, and that Plaintiffs pray for title to and possession of said land and for removal as a cloud upon their title a certain oil, gas and mineral lease dated November 21, 1974, from Joe T. Gray, as Receiver for the Defendants in Cause No. 26,539 in the District Court of Eastland County, Texas, recorded in Volume 624, Page 339 of the Deed Records of Eastland County, Texas, and for such other and further relief to which Plaintiffs are entitled, all as more fully shown by the Plaintiffs' petition of file in this Court.

If this Citation is not served within ninety days after the date of its issuance, it shall be returned unserved.

The officer executing this writ shall promptly serve it and make due return thereof according to the requirements of the law and the mandates hereof.

Issued Under My Hand And The Seal Of Said Court at Eastland, Texas on this 20 day of February, A.D. 1975.

Joe T. Gray
By Mary Jane Rouch, Deputy Clerk of the District Court, 91st Judicial District of Eastland County, Texas (2-23, 3-2, 3-9, 3-16)

LEGAL NOTICE
PUBLIC HEARING NOTICE
City of Eastland, P.O. Box 749, Eastland, Texas, 76448, has applied to the Texas Water Quality Board for an amendment to Permit No. 10637 for a

discharge not to exceed an average flow of 400,000 gallons per day of domestic sewage effluent from the municipal sewage treatment plant which is located at the east end of Smith Street, Eastland, Eastland County, Texas. The treated domestic sewage effluent will be used partly for irrigation (14%) and the remainder will be discharged into the South Fork of the Leon River, thence into Leon Reservoir, thence into the Leon River, thence into Little River, thence into the Brazos River. A public hearing on this application will be held in the Stephen F. Austin State Office Building Room 618 1700 N. Congress Avenue Austin, Texas 9:00 a.m. April 11, 1975

to receive evidence on the conditions, if any, under which the amended permit may be issued, and to determine whether State Certification in accordance with Section 401 of the Federal Water Pollution Control Act Amendments of 1972 may be issued. Preliminary information available to the staff of the Texas Water Quality Board indicates that a waste discharge conforming to the conditions shown in the proposed permit would not unreasonably impair the quality of waters in the State.

Additional data will be developed at the hearing, but further technical information

concerning any specific aspect of the discharge, if available, can be obtained by writing the Texas Water Quality Board, P.O. Box 13246, Capitol Station, Austin, Texas, 78711. (3-9-75)

LEGAL NOTICE
NOTICE OF SALE
THE STATE OF TEXAS
COUNTY OF EASTLAND

By virtue of an Order of Sale issued out of the District Court of Eastland County, Texas, on February 27, 1975, on a judgment rendered in said Court on November 1, 1974, in favor of J.F. McMillan d/b/a M&F WELL SERVICE VS. TEXCALCO, INC., Cause No. 26,394 on the docket of said Court, I, the undersigned, did on March 4, 1975, at 11:30 o'clock a.m. levy on the following real estate lying and being situated in Eastland County, Texas, as the property of TEXCALCO, INC., to-wit:

Oil, Gas and Mineral Lease dated May 26, 1972, from Buryl M. Rodgers, a widow, lessor to Joseph L. Brown, lessee, covering 503 acres, more or less, being the 2nd, 3rd and 4th Tracts only out of the 823 acres covered by this lease, as follows:

2nd Tract: 163 acres, the East 1/2 of Section 11, D&DA Lands, Eastland County, Texas.

3rd Tract: 20 acres, more or less, that portion of the NW/4 of Section 30, H&TC Ry. Co. Lands, Block 1, lying West of

Curry Comb Creek in Eastland County, Texas.

4th Tract: 320 acres, more or less, all of the South 1/2 of Section 30 H&TC Ry Co. Lands, Block 1, in Eastland County, Texas.

and as further described by said oil, gas and mineral lease in the Deed Records of Eastland County, Texas, as recorded in Volume 603, Page 582-85.

together with all oil and/or gas wells, buildings, appurtenances, materials, machinery, tanks, pipe, tubing, pumping equipment, and supplies located on said leasehold estate.

You are further notified that on April 1, 1975, being the first Tuesday in said month, between the hours of ten o'clock a.m. and four o'clock p.m. on said day, at the courthouse door in said Eastland County, Texas, all the right, title and interest of the said TEXCALCO, INC. in and to the above-described property will be offered for sale,

and sold at public auction, for cash.

WITNESS MY HAND This 4th day of March, A.D. 1975.

L.E. Sublett, Sheriff, Eastland County, Texas
By: Louis A. Hollywood, Deputy

(3-9, 3-16, 3-23)

Show To Be Held

An art show will be held in Cisco from the 13th of March thru the 21st. This is sponsored by the Cisco Chamber of Commerce during their regular office hours. All paintings must be at the Chamber of Commerce office on the 13th with the judging to take place that night. Paintings must be originals only with each artist limited to two paintings with any subject matter or medium. Ribbons will be awarded in both professional and amateur divisions. Anyone in Eastland County may participate.

Quality **Quantity**
And Reasonable Prices **Quickness**

Relax At Hollands Drive In
Highway 80 West Of Eastland

Phone In Orders
Dial 629-2215

Member TRA

Custom New Homes
Quality Materials & Workmanship
Complete Service Including Financing

Visit us at our new location and find out how easy it is to own your own home.

B.G. BROWN CONSTRUCTION CO., INC
Residential Specialists

820 W. Main
629 - 2404
Nights - 442 - 1631

DID YOU KNOW?

Announcing ---
Shorty Aleock
Mechanic

Pipkin Motor Co.

Caution!



A medicine chest that's a jumble of old medicines and other health supplies can be a danger instead of a help. Clean up and clear out now, then stock up with us.

Central Drug
North Side Of Square

Thursday, March 13

9 99¢

KING SIZE WALLET CREATIVE COLOR PORTRAITS FOR ONLY



NO LIMIT

Extra Charge for GROUPS

GET PICTURES MADE OF GRANDPA, GRANDMA, DAD, MOM AND ALL THE LITTLE ONES AT THESE SAME LOW PRICES!

SHUGART COLOR PHOTOS

ASK About Our FREE 8 x 10 OFFER

Brittain Discount Center
108 West Commerce South Side Of Square Eastland

Will pick up and deliver laundry twice a week, or you may bring it by the house. For information call 442-3161 in Cisco. 604 W. 14th. t-28

SOUTHLAND LIFE INSURANCE

M.H. PERRY

104 N. Lamar

629-1566
629-1095



BAKKER FUNERAL HOME

629-1726

SUPER \$AVE MARKETS

Shamrock Specials!

PUREX BLEACH 64-Oz. Btle. 25¢

CHUCK ROAST Pound 89¢

PEACHES 29-Oz. Can 49¢

BATHROOM TISSUE 2-Roll Pkg 39¢

ORANGE JUICE 5 6-Oz. Cans \$1.00

TOWELS 39¢

SUGAR 5-Lb. Bag \$1.89

GREEN BEANS 3 16-Oz. Cans \$1.00

HAIR LACQUER 99¢

SHAMPOO 95¢

MINI PADS \$1.89

MODISS \$1.89

CEPACOL MOUTHWASH \$1.09

FIRM & FREE \$1.79

SUPER \$AVE

G.A. WHITE Manager
629-1191 400 S. Seaman