



Mark it down:
Be Here Saturday
2nd Annual
Peanut Bowl Day

Carol MacMoy, EHS Senior, Will Reign Over Bowl Events

Reigning over Peanut Bowl Day will be Carol MacMoy, Eastland High School Senior. Queen Carol will grace the sponsoring Jaycee float in the 2:30 p.m. parade through downtown Eastland and will be presented officially to the thousands who are expected for the event Saturday night.

Daughter of Mr. and Mrs. H. B. MacMoy, Queen Carol is a 17-year-old brunette who has participated in County royalty before. She is an excellent horsewoman and has represented Eastland three times as cowgirl sweetheart at the Southwestern Exposition and Fat Stock Show, as well as having participated in several beauty contests. She was runner-up for the county queen and the Farm Bureau queen.

A member of the Socialite Club and the YMCA, Queen Carol was chosen Monday night from a bevy of county beauties.

The queen's court will consist of Princesses Susan K. Griffin, Carbon freshman; Jackie Reese, Scranton senior; Charlene Stacy, Desdemona sophomore; Carolyn Brock, Olden sophomore; Linda

Harrison, Gorman junior; Barbara Craig, Ranger Junior College sophomore; Paula Coats, Cisco Junior College freshman; and Mary Jo Awalt of Rising Star.

All will ride in chariots of honor in the gigantic parade and make appearances at the Ranger Jr. College-Cisco Jr. College football game.



Her Majesty, Peanut Bowl Queen Carol MacMoy
... photo by A&C Studio

Peanut Bowl Day Schedule

8 a.m.—Twirling Contest (West side, square)
2:30 p.m.—Parade
4 p.m.—Skyshow (Airport)
5:15 p.m.—Miss Texas Banquet (Pay ticket only at Lone Cedar Country Club)
8 p.m.—Ranger-Cisco college football (Maverick Stadium)

Ford Offering Low Maintenance In 12 Models

Featuring a crisp, fresh approach to Ford's classic straight-line styling, the 1962 Ford Galaxie incorporates major engineering advancements that reduce recommended owner maintenance to a convenient "twice-a-year" level.

For the first time, the popular Ford Galaxie is being offered in twelve models in two series: The Galaxie and the new Galaxie "500" series.

The 1962 Galaxie is the first regular production vehicle in automotive history to have a factory recommended 6,000-mile service interval.

Lee A. Iacocca, Ford Motor Company vice president and general manager of the Ford Division, said that in addition to the many self-maintenance features introduced on the Galaxie last year, 1962 Galaxies will offer:

—30,000 mile lubrication for wheel bearings.

—A factory installed radiator coolant good for 35 degrees below zero and with a normal change interval of 30,000 miles or two years.

—Extended fuel filter life of 30,000 miles.

—A recommended oil change interval of 6,000 miles.

"These features, coupled with our 30,000-mile major lubrication schedule, self-adjusting brakes, double-wrapped aluminum muffler, and specially processed underbody parts," Mr. Iacocca said, "mean that the average 12,000-mile-a-year Galaxie owner will require normal maintenance on his vehicle only once every six months."

The 1961 Ford Galaxie models will be introduced by Hood King Motor Co., Friday.

The sculptured body of the 1962 Galaxies gives the appearance of actual motion to its unmistakable (Continued on Page Two)

State Jaycee Executive To Be Here for Bowl Day

The Eastland Jaycees, who have worked night and day, setting the stage for their Second Annual Peanut Bowl, will be joined Saturday by state Jaycee officials.

Among a whole list of notables to be on hand for the event will be Lewis Timberlake of Stamford, State Jaycee president; B. R. Rowland of Abilene, state vice president; and Bill Davis of Arlington, executive vice president.

Timberlake, elected president for the 1961-62 year at the state convention in San Angelo several months ago, will speak at the banquet honoring Miss Texas at the Lone Cedar Country Club, Saturday at 6:15 p.m.

The 29-year-old state prexy is assistant vice president of the Western Republic Life Insurance Co.

He has been an active Jaycee for the past nine years and has participated in all Stamford projects sponsored by his club and served as director, secretary, state director, 2nd vice president and 1st vice president.

His duties as president include administrative work at the state headquarters in Grand Prairie, coordination for the state's various projects, visitations throughout Texas and attendance at state and national Jaycee meetings.



LEWIS TIMBERLAKE
... state Jaycee prexy

BY COMMISSIONERS

Pay Increases for Deputies To Be Aired In Special Meet

A special meeting has been called for Friday at 10 a.m. by the Eastland County Commissioners to discuss pay increases for certain county employees.

To be considered will be pay boosts for the first deputy in the county clerk's office and the first deputy in the sheriff's department.

Commissioners voted to reclassify two employees for pay purposes, during a regular meeting last Monday.

Mrs. Laverne Key, secretary to District Attorney Earl Conner, was reclassified as a first deputy for pay purposes, at the request of Conner.

Conner estimated that her pay

would be increased from \$216 per month to 248, which is equal to most other first deputy salaries.

Before the three commissioners who were present could vote on a resolution to reclassify Mrs. Key, County Judge John Hart requested that his secretary, Mrs. Betty Welford, also be reclassified as a first deputy.

Tip Arthur amended his original resolution to include Mrs. Welford, and the vote was given unanimous approval.

County Clerk Johnson Smith came into the commissioner's second-floor courtroom, during the salary discussion, and sat down at

the commissioner's table, and made a request for his first deputy.

Smith said that his deputy, Miss Mary Nichols, was receiving \$248 per month, and requested that she be raised \$50 per month, to give her a salary equal to that of two deputies in the county tax assessor-collector's office.

Arthur told Smith that the reason that the tax deputies had been given \$50 pay increase, was because they were men.

"We shouldn't discriminate between men and women," Smith answered.

Judge Hart then suggested that Deputy John Willingham deserves a pay increase.

The other commissioners and Smith agreed that Willingham should be given a raise, but no action was taken.

B. M. Bennett of Gorman told Smith, "If we raise your deputy, we'll have to raise everybody."

"I don't think your request is unreasonable, but I don't want to do anything to day," Arthur told him.

Smith was reluctant to a suggestion that the matter be postponed until a later date.

There are five first deputies on the county payroll. Salaries for two have been adjusted upward, and Willingham's seem certain for increase.

This would leave salaries for Miss Nichols and Mrs. Nelda Ruthford, chief deputy in District Clerk Roy Lane's office, at the \$248 level.

There are six deputies in the county clerk's office (four full-time and two part-time employees); seven in the tax assessor-collector's

office; three in the sheriff's department; one each in the district clerk's office, Judge Hart's office; and Auditor C. H. O'Brien's office.

Judge Hart recommended, and the commissioner's agreed, to meet Friday at 10 to iron out the pay problems.

Chevrolet And Chevy II At Fullen Friday

Chevrolet's passenger car line-up for 1962 features extensive restyling and major mechanical changes for its standard models plus a new complete line of smaller cars to be known as Chevy II.

This will bring the company's 1962 passenger car line-up to 32 models—highest in its history—available in the Corvair, Corvette, Chevy II and standard Chevrolet lines. These cars will be on display in Eastland beginning Friday at Fullen Motor Co., 305 E. Main St.

The new Chevy II is larger than the Corvair but smaller than Chevrolet's regular car. Station wagons, a hardtop sport coupe and a convertible are included among nine models in the new line which emphasizes simplicity in styling and maximum functionalism in design.

Although the Chevy II design is basically conventional, it offers new front-mounted four- and six-cylinder engines, integral frame and body construction with bolt-on front end and an industry exclusive in tapered plate rear springs. Both three-speed manual and automatic transmissions will be available.

From a styling standpoint, the standard Chevrolet for 1962 reflects the greatest change, although Corvair models and the Corvette will also feature a number of appearance changes as well as new exterior colors and interiors.

The new standard Chevrolet features a crisp, tailored look. The 1962 models have completely new sheet metal, grille work, bumpers and ornamentation, as well as new exterior colors and restyled interiors. New roof lines for sedans and the Impala sport coupe also highlight the new styling.

A number of mechanical changes and modifications will improve performance, durability and economy of 1962 models.

Among the major changes are a new 327 cu. in. V8 engine, a new weight-saving Powerglide automatic transmission and tires with advanced two-ply design.

The new V8 engine is rated at 250 horsepower. It replaces the 348 cu. in. engine except for use in heavy trucks. Its performance equals the 348, but fuel economy and engine operating efficiency are both improved.

The redesigned Powerglide will be used with the new V8 engine and both the four- and six-cylinder engines of the Chevy II line. Extensive use of aluminum helps save 85 pounds of weight.

The new tires give improved fuel economy and ride quality while retaining load-carrying abilities, strength and durability of (Continued on Page Three)

County Employees Insurance Will Go Up in November

Eastland County employees who participate in the county's group insurance plan will be paying higher premiums after Nov. 1st.

Vernon L. Clement, representative for the Blue Cross-Blue Shield Co. of Texas, explained to County Commissioners Monday that the past year's expenses had forced the company to increase the pre-

mum rate about 15 per cent.

The increase will amount to 66 cents per month more for each individual participant; \$1.43 more for each family of three; and \$1.76 more for a family.

The county pays the premiums for the precinct road employees but does not pay for others.

County Auditor C. H. O'Brien was told that the total premium increase will amount to \$59.07 per month for the total county insured group.

County Judge John Hart signed the agreement with the company, following the approval of the commissioners.

Banker's Parents Undergo Surgery In Lubbock

The parents of Tom Wilson, president of the Eastland National Bank, were both in a Lubbock hospital where they have undergone surgery.

Wilson's mother, Mrs. C. C. Rockwell had been in the hospital for about a week and was scheduled for surgery Tuesday morning.

Monday night, Wilson's father, C. C. Rockwell was injured in an auto accident in Lubbock.

The family's home is in Hereford.

He underwent emergency surgery that night.

Mr. and Mrs. Wilson were in Lubbock to be with his parents during the early part of the week.

Ilene Fox Elected Olden FFA Sweetheart

Ilene Fox, daughter of Mr. and Mrs. J. A. Fox, has been elected sweetheart of the Olden Future Farmers of America and will represent the chapter at the District Sweetheart contest in Stephenville Dec. 4th.

Ilene is a senior, a member of the basketball team and president of the Future Homemakers of America.

New Plymouths Due Friday In Eastland

A whole new look sets the 1962 Plymouth distinctly apart from all its predecessors among low-priced standard-size automobiles.

And Plymouth's crisp new look in design, concept and construction delivers a completely new feel in ride, handling and performance, with valuable new savings in fuel economy and maintenance.

"The 1962 Plymouth is so totally new and different in so many ways, and so far ahead of any other car we ever introduced, that it's impossible to compare it with anything we've ever known before," C. E. Briggs, vice-president of Chrysler Corporation and general manager of the Chrysler-Plymouth Division, declared.

The new Plymouths will be on display at Blevins Motor Co., 514 W. Main St., and Rushing Motor Co., 215 S. Seaman St. Friday.

Heading a long list of important design innovations, new improvements and benefits engineered into the 1962 Plymouth are: new center of balance for an all-new riding feel; greater fuel economy, up to 7 per cent better than (Continued On Page Four)

THANKS TO FRIENDS

Joyce Has A Piano And Already Knows 2 Tunes

By CAROLYN COLLINS

"I want to thank Eastland County for taking a part in getting me a piano, and Lovelace and Gregory Distributing Co. for their time to bring it out to my home. I have wanted one so long. May God bless each one of you."

This was the short and sincere letter received from Joyce who received a piano from the people of Eastland and the surrounding area.

Joyce's home was temporarily broken when one of her parents developed a dread disease. She had wanted a piano for a long time and was granted her wish by the kind-hearted people of this area.

If those who donated money, the piano and their time could have heard the young child say "I have already learned two tunes" they would be amply rewarded for their kindness.

Joyce began piano lessons this week from one of Eastland's teachers.

One year's lessons were donated by the teacher so that Joyce might receive full benefit from the gift extended to her through kindness.

The piano, which was stored by Sig Faircloth's Feed and Supply, was donated and the money contributed, was used for the expense

of repairing and tuning the piano. To assist Joyce in her lessons, money was also donated for sheet music.

Even though Joyce is young (about 11) and has received hard knocks from the world she has also learned of the kindness shared by those in the world.

'62 Chrysler Due Friday At Rushing

Chrysler's 1962 model cars are new in appearance, improved in performance and unchanged in size, with emphasis on the new 300 sports series.

The 1962 Chrysler is positioned as the prestige line in the medium priced field and will be on display Friday at Rushing Motor Co., 215 S. Seaman St.

In the Chrysler line-ups is the expansion of the 300 line of high performance cars, which now become available in a lower price range than previous 300 series cars. There also will be a 300H, carrying on the tradition of pre-

(Continued On Page Four)

Band Booster's Rummage Sale September 29, 30

The Eastland Band Booster Club will hold a rummage sale Friday and Saturday, Sept. 29th and 30th, in the empty building on the northeast corner of the square.

Mrs. Jack Carothers is chairman for the sale.

Mrs. E. C. Johnston, who heads the white elephant department, has named the following committee: Mmes. Sila Decker, Wanda Lusk, Parks Poe, Artie Liles and Pat Miller.

Helping Mrs. Roy Gann with the ladies-ready-to-wear department will be Mmes. Mildred Sayer, Lee Spadling, Lavern Key and Miss Edna Strippie.

Mrs. M. A. Trendwell heads the children's clothes department; Mrs. Milabeth Copeland the men's wear; and Mrs. Ellis Slaughter, the jewelry department.

SEE and Drive the 1961 PONTIAC... fresh point of view and wide track too! MUIRHEAD MOTOR CO.

Rangers - Wranglers Clash At 8 Saturday

In the second annual Peanut Bowl game coming up between Ranger Junior College and Cisco Junior College Sept. 30 in Eastland, Ranger Junior College prospects are far from promising.

With two defeats already under their belts and the added disadvantage of being a young and inexperienced ball club outweighed 21 pounds to the man, the Rangers will go into the game as the underdogs. Cisco is loaded with returning lettermen, and have one loss, and one fresh victory to their credit. In addition, as Cisco lost the bowl game last year to Ranger, the Wranglers are keenly desirous of taking the trophy away from Ranger this year.

Ranger, on the other hand, may come up with many surprises, for last week's game showed improvement and revealed potentiality not evident in the game against Wharton. A surprise upset is not, however, a surprise to the ones who plan it.

Probable starting lineup will be:

RJC RANGERS			
No.	Name	Pos.	Wt.
11	Dub Higginbotham	QB	165
20	Robert Moore	HB	155
31	Humberto Romero	HB	155
30	William McAlister	FB	165
60	George Cotter	C	200
51	Winfrey Shipp	G	200
62	Joe Morrow	G	180
74	Paul Free	T	185
70	James Lee	T	225
80	James Potts	E	190
82	Jerry Key	E	190

CJC WRANGLERS			
No.	Name	Pos.	Wt.
83	Danny Wasik	E	195
86	Clevie Powell	E	200
75	David Pursley	T	235
71	Ralph Widocki	T	225
60	Jimmy Walker	G	215
61	Gerald Darr	G	185
50	Delbert Brewster	C	240
11	Billy Porter	QB	180
33	Steve Howell	FB	200
43	Bill Griffin	HB	170
22	Jimmie Phillips	HB	175

Olden School Board Announces Opposition to County Consolidation

Independent School Board of trustees has been second board in the county to publicly oppose current plans to consolidate high schools in the county.

In favor of opposition at this time. The seven-man Olden board voted unanimously during a special session Monday night.

In April, 1960, the Olden board agreed to enter into a study of such a consolidation.

Friday, Saturday 'Lite-Up Time' In Eastland

Don't forget! Put a light in your window Friday and Saturday nights for the Peanut Bowl.

Everybody in Eastland is being asked to "keep 'em burning" all night Friday and Saturday in honor of the Peanut Bowl Activities. Leave on your inside and outside lights, the Jaycees ask, so there'll be a glow all over the city.

A study was made in the county, along with representatives of Ranger and Eastland schools, Supt. Travis Hilliard said Wednesday, and when the committee rejected the plan as inadequate, the Olden board agreed with the committee and the matter was dropped.

The board felt then and now, Hilliard said, that such a consolidation would serve no real advantage to high school students in Olden or to the citizens themselves.

At the time of the study, the board emphasized, he said, that no commitments were to be made and that they were considering the project as they felt they must consider any means that concerns the welfare of this community and its young people.

It is the feeling of the group

that it should publicly be stated, Hilliard said, that the board was not then and is not now endorsing the consolidation.

W. A. Kelley is president of the school board.

Official Visitors Due Masons Tonight

All Royal Arch and all Select Master Masons are urged to be present Thursday night at 8 p.m.

The District Deputy Grand High Priest and the Grand Visitor will make their official visit, C. J. Langstiz, Eastland secretary, has announced.

HOME IMPROVEMENT LOANS At Lowest Rates EASTLAND NATIONAL BANK "On the Square" MEMBER F.D.I.C.

Freyschlag Insurance Agency presents the NEWS WEATHER

Months Total Rainfall
4.85
0.05
2.77

Eastland Telegram

Eastland County Record established in 1883, consolidated August 31, 1961. Chronicle established 1887, Telegram established 1923. Entered as second class matter at the Post Office at Eastland, Texas under the Act of Congress of March 3, 1879.

TIMES PUBLISHING COMPANY
Published Semi-Weekly—Thursdays and Sundays
Owens Dick and Joe Dennis, Publishers
H. V. O'Brien, Editor

One week by carrier in city	.15
One month by carrier in city	.65
One year by mail in County	2.95
One year by mail in state	4.95
One year by mail out of state	6.95

NOTICE TO PUBLIC—Any erroneous reflection upon the character standing or reputation of any person, firm or corporation which may appear in the columns of this newspaper will be gladly corrected upon being brought to the attention of the publishers.

CLASSIFIED

CALL MA 9-1707

Cards of Thanks charged for at rate of \$2.00 Each

For Rent

FOR RENT: 3 bedroom house with 2 baths. Available Oct. 1st. Paul Taylor. Ph. Main 9-2168.

FOR RENT: Modern furnished four room apartment. Phone MA-9-1062.

FOR RENT: Three room furnished house. Apply 500 South Bassett after 5:30 p.m.

FOR RENT: Five room house and bath. Call at 209 W. Patterson.

WANT TO RENT: House outside of city limits from one-half to 100 acres. Call MA 9-1371.

FOR RENT: Modern four room apartment. Phone MA 9-1062.

FOR RENT: Four-room furnished duplex. Call MA 9-2186.

FOR RENT: Furnished two bedroom apartment in duplex. 611 Plummer.

FOR RENT: Furnished apartment. Two rooms and bath. Bills paid. Close in. 212 W. Patterson.

FOR RENT: Three large furnished rooms and bath. Phone MA 9-1559.

FOR RENT: Lovely furnished or unfurnished apartments, a n y size, bills paid, maid and hotel services included, very reasonable. Also comfortable rooms with the bath only \$39.95 monthly. Throw away your high bills and troubles and come live with us. Mrs. Robinson, manager, Village Hotel, MA 9-1716.

FOR RENT: Furnished duplex. Phone MA 9-2326.

FOR RENT: Water well drilling. All sizes - all depths. Phone HI 2-3784. Cisco R. F. Caraway.

NOTICE: Let me break and (or) sow your land. Contact B. H. Courtney, Main 9-1340.

ATTENTION FARMERS: Disc sharpening on your farm. Call collect W. G. Phillips, HI 9-4963 or HI 9-2987, Breckenridge.

SPECIAL NOTICE: Call MA 9-1707 or write Box 29, Eastland for parts and services on all makes and models sweepers. A set of steak knives free with each demonstration of a Kirby vacuum sweeper. The all in one machine with a lifetime guarantee. You are under no obligation to buy. Jerry D. Fisher.

NOTICE: Wanted—Binder to cut 15 acres of cane. Will pay anything reasonable. See cane on M. A. Clyatt. 3 miles North West of Eastland. Phone MA 9-1811.

NOTICE: Any type hay baled promptly efficiently. I. B. Walker. Phone 2501, Olden.

NOTICE: Call MA 9-2066 for your moving problems. 1 article or a moving vanload - local only. Wootens Mobil Service Station.

JONES Mattress and Upholstery, Box 693, Breckenridge. Phone HI 9-4891. Call or write for free estimates. Free pick-up and delivery.

ANNOUNCEMENTS

EASTLAND ROTARY CLUB
Meets in White Elephant for noon luncheon each Monday. Call Mike George, 9-1495, for information.

EASTLAND JAYCEES
Meet at 7:30 p.m. in Texas Electric Conference Room each second and fourth Thursday. For information call Grover Hallmark, 9-1751 or 9-1379.

LADIES GOLF AUXILIARY
Meets at Lakeside Country Club for noon luncheon the second Tuesday of each month. For information call Mrs. Max Beazley, 9-2478.

ATTEND THE CHURCH OF YOUR CHOICE EACH SUNDAY

EASTLAND REBEKAH LODGE NO. 177
Meets at 7:30 p.m. in the IOOF Hall on the second and fourth Tues. of each month. For information call Corrie Harlow, vice grand, MA 9-1429.

MASONIC LODGE NO. 467
Meets second Thursday of each month at 7:30 p.m. in the Masonic Hall. Call Floyd B. Nichols, W. M. Phone MA 9-1227, or L. E. Huckabay, Sec., 9-1391, for information.

EASTLAND CHAPTER NO. 280 O. E. S.
Meets the first Tuesday of each month at 8:00 p.m. in the Masonic Hall. Call Mrs. Nelle Earley W. M. 9-2044, for information. Mrs. Helen Shaw, Sec.

FOR SALE: 6.5 mm Japanese; 7.7 mm Japanese ammunition. \$4.00 box. Sunshine Laundry.

NOTICE: All Fiesta Bowl passes expire this month, Sept. 30. Thank you, Eastland Fiesta Bowl.

FOR SALE: Have some good buys. Existing houses, large and small. Good location, good finances. This is the time to use your GI benefit. Let me show you. M. A. Treadwell, Sr., MA 9-2017.

FOR SALE: By owner, small house. Good condition. New double garage and patio. Youngstown kitchen with garbage disposal. Also hotpoint electric range and Magic Chef gas range, and other household furnishings. Shown by appointment only. Phone MA 9-2440.

FOR SALE: Conn cornet complete with case. A-1 condition. Bargain. Mr. Shaw, MA 9-8881.

Take up payments on 61 Kirby sweeper with all attachments. Jerry Fisher, 1314 Corto, Graham. Phone LI 9-3658 or call MA 9-1707, Eastland.

SPECIAL: 75 dresses values to \$8.99 sale \$2.99. Slips, half slips, sleepwear, 99c; nylons two pair for \$1.00. Mode O'Day, Eastland.

FOR SALE: Mahogany buffet and mirror. Lounge chair, steel card table set; portable washer. MA 9-2191 after 6 p.m.

Real Estate

FOR SALE: Beautiful residential lot on the corner of Marsh and East Conner. Large trees and deep shade. Only \$1500. Don Pierson, MA 9-1033.

FOR SALE: 100 x 100 ft. lot at 601 S. Seaman. See O. H. Dick.

FOR SALE: New homes for sale, all three bedrooms with 1 1/2 baths all FHA approved, small down payment, and small monthly payments like rent. Inspection invited any time on East Conner Street. Why throw away rent? Build an equity savings. Ask about our guarantee repurchase plan if you should have to move. Call Don Pierson, MA 9-1033, or Donald Kinnaird Jr., MA 9-2544.

FOR SALE: 160 acres, 30 in cultivation, five room house with bath. Burn and out buildings. Good well of water, three tanks, 7/8 minerals. Six miles south and one mile west of Eastland. Phone MA 9-1807. \$100 per acre.

FOR SALE: Cheap one 9x9x9 foot building covered with aluminum metal. See Owens Dick at Eastland Telegram Office. Phone MA 9-1707.

FOR SALE: Hey, coin collectors. Now you can get genuine Whitman coin folders for just 25c each at the Telegram office. Coin books describing all coins and value of coins (with pictures) also available for as low as \$1. EASTLAND TELEGRAM.

FOR SALE: Good clean oat seed. Phone John Little MA 9-1967.

FOR SALE: Peddle type Singer sewing machine. Bargain. Mrs. C. T. Lucas.

FOR SALE: New two bedroom house, 1704 Commerce. Needs some finish work. \$2100 cash or will take small down payment and finance. Box 1427 Abilene.

FOR SALE: Aluminum screen doors, aluminum storm doors, aluminum screens and aluminum awnings. Check our low prices. Eastland Venetian Blind Mfg. Co., 405 South Seaman. Phone MA 9-2566.

FOR SALE: Raleigh Products. Phone MA 9-2066. Wootens Mobil Service Station.

FOR SALE: Office desk, \$25.00. Eastland Telegram.

FOR SALE: Three bedroom, two tile baths, one year old, 306 S. Oaklawn. Business property 214 South Seaman. Phone MA 9-1742.

FOR SALE: In Cisco new home with three bedrooms, two baths, only \$350 down and \$55 payments (principal and interest) per month. Ask about our guaranteed repurchase if you should move. Call Don Kinnaird MA 9-2544 or MA 9-1116.

CANCER Insurance

Coverage for the individual or the family. (No Age Limit)

CANCER ACCOUNTS FOR ALMOST 1/5th OF ALL DEATHS IN USA.

M. H. PERRY

107 West Main
Office Phone MA 9-2275
Res. Phone MA 9-1095

FURNITURE

for the Entire Home

Carpet - Rugs
All Prices

Be Sure To Check With

Coats FURNITURE

LAKE LEON BOAT-TEL BOAT STALLS
Now Available

RENT BY MONTH OR YEAR
Modern Cabins
Call Ranger MI 7-1311
for Reservations or Information
Ralph Lockwood, Manager



CHRYSLER'S NEW SPORT—Chrysler's for '62 introduces a new sports type high performance line of auto, bearing the renowned New Yorker. On show Friday at Rushing Motor Co., 215 S. Seaman St.

'Ole Man Peanut To Be Toasted By Marching, Academic Musicians

There'll be brass and percussion aplenty all day Saturday, in Eastland, blaring forth in honor of 'ole man peanut and the annual Peanut Bowl festivities.

Starting Saturday morning at 8, the twirling contest will be held on

the west side of the square. The bands will be doing their part in the afternoon parade which gets under way at 2:30 p.m.

Music-makers will be doing their bit at the prelude to the Ranger Jr.-Cisco Jr. College football tilt, when the Cisco Jr. College drill team presents a pre-game demonstration, immediately prior to the presentation of Miss Texas who will be a special guest here.

Linda Loftis of Fort Worth,

Socialites to Enter Float in Peanut Parade

The senior girl's Socialite Club of Eastland High School has made plans to enter a float in the annual Peanut Bowl Parade scheduled for Saturday afternoon.

The theme of the float will carry out the goal of the club which is "To further the social life of high school students." The girls representing the club on the float will show several different phrases of a high school student's social life.

Also, of course, the float will in some way represent the traditional peanut of Eastland County.

Lesson Is Given By Mrs. Watson

Mrs. J. W. Watson presented the lesson from the book, "The Man From God," to members of the Martha Group of the Christian Woman's Fellowship this week.

The meeting was held in the home of Mrs. L. D. Keith at 704 W. Sadosa.

Prior to the lesson Mrs. W. H. Drake presented the devotional.

Attending were Meses. E. A. Beskow, T. L. Cooper, Guy Robinson, J. W. Watson, J. H. Evatt, W. H. Drake, Mattie Miller, R. L. Carpenter, R. I. Malone, H. F. Ferrell, L. D. Keith, George Saltee and Miss Sallie Day.

Special guests were Mrs. Ray Poole, president of the CWF, and Mrs. Marjorie Heckendorn.

Ford

(Continued from Page One)
classic Ford lines. This appearance of movement is emphasized in the recessed Thunderbird-like rear window, and in the forward thrust of the roof itself.

The rear fenders, with a peak line in their upper surface, parallel the roof line to further the impression of forward movement and envelop the large taillight in the rear. Three sculptured wind splits, one on each fender and another running lengthwise through the center of the hood, are repeated in effect in the rear fender and rear fenders.

While the new Galaxie is slightly shorter and fractionally narrower than the 1961 model, the large passenger compartment is the same size as 1961. Large door openings coupled with Ford's convenient two-position door stops, make entering and leaving the Galaxie an easy and natural movement.

The ideal dimensions and easy steering of the 1962 Galaxie result in greater parking ease and maneuverability.

There are 12 models in the Galaxie and Galaxie 500 series: Galaxie 2- and 4-door; Galaxie 500 2- and 4-door sedans and hardtops and a convertible. In the station wagon series five spacious vehicles are offered; the 4-door 6-passenger Ranch wagon, 4-door 6- and 9-passenger Country Sedans, and 4-door 6- and 9-passenger Country Squires.

Miss Texas and third runner-up for Miss America, will be presented just before the kick-off.

At half-time, a spectacle will unfold, beginning with a six-minute demonstration by the famous Poly Marching "100" from Fort Worth Polytechnic High School.

The Ranger Jr. College drill team will follow with a five-minute show.

The Peanut Bowl Queen, selected last Monday night will be presented to the accompaniment of music by the Eastland High School band.

Bands from the county will then consolidate to present a series of special demonstrations.

County band participants and their directors are: Ranger, William Auvenshine; Cisco, Brice Ritchie; Gorman, Alton Roan; and Eastland, Phil Hewett.

Numbers will include "Brass to the Fore," "Eyes of Texas," "Hail, Hail," and the "Star Spangled Banner." Each will be done with appropriate formations.

— READ THE CLASSIFIEDS —

Joy Drive-In

Cisco - Eastland Highway
Opens 7:00 - Closes 9:00

THURS. - FRI. - SAT.

"Teenage Millionaire"

Jimmy Cianton
SUN. - MON. - TUES.

"Picnic"

In Color
Kim Novak
WILLIAM HOLDEN
Opens 7:00 - Closes 9:00

Church Notes

Last-minute changes and additions to church notices appearing on another page of this edition are as follows:
First Baptist — Time changes for Sunday evening as follows:
Elementary choir, 5:30 p.m.; youth choir, 5:15; training union, 6:15; and evening worship, 7:30.
Eastland Ministers' Assoc. — meets Tuesday at 8 a.m., White Elephant Restaurant.

Eastland Lions Hear Brazilian Coffee-Grower

Raphael M. Ruiz, agronomist on a state experiment station at Campinas, State of Sao Paulo, Brazil, has been in Eastland County studying the growing, harvesting, storage and marketing methods of peanuts this week.

He and his wife arrived Sunday and were to leave Thursday it was said.

He studied wheat growing in Kansas, soybean production in Illinois, corn growing in Missouri and rice raising in Louisiana and along the Texas coast.

He arrived in the States in June and will return to Brazil in October.

He discussed coffee growing in his native country at the Lions Club Tuesday.

He speaks several languages including Spanish, Portuguese, Italian and French.

FIRST CHRISTIAN
Olive & Lamar
Ray Heckenroth
SUNDAY
9:45 a.m.: Church
11 a.m.: Morning
7 p.m.: Evening
MONDAY
3 p.m.: C.W.F. meet
WEDNESDAY
5 p.m.: Junior
6:30 p.m.: Adult

HOLY TRINITY
710 S. Seaman
The Rev. Wm. Ralph
SUNDAY
9:15 a.m.: Church
10 a.m.: Morning
Holy Communion.
MONDAY
7:30 p.m.: Vestry
the home of Mr. Vaught.

Socialites Club to Sen

The members of the Club of Eastland wish to participate in

Until recently the club consisted of only a limited number of members.

All girls of the club are considered members.

They find possible to

AN INTERSTATE THEATRE

MAJESTIC

WELCOME TO ALL VISITORS TO 1961
FOOTBALL CLASSIC "PEANUT BOWL"

THURSDAY - FRIDAY - SATURDAY
ALL THE EXCITEMENT OF THE FRONTIER'S MOST DANGEROUS

RICHARD BOONE GEORGE HAMILTON PATTON O'CONNELL
A ROBERT L. ENGERS PRODUCTION
A THUNDER OF DRUMS

SAT. MIDNIGHT SHOW 11:30 P. M. - ALL SEASONS
SUN. - MON.

SUSAN STRASBERG RONALD LEWIS ANN TODD
A HAMMER FILM PRODUCTION A COLUMBIA PICTURES RELEASE
SCREENPLAY BY CHRISTOPHER YOUNG
DIRECTED BY ROBERT ALTMAN

TUESDAY - WEDNESDAY
THE BIG GAMBLE COMING
6 lines x 2 col. 12 lines 2 cols. x 1/2 inch



Above is the striking Chrysler 300 2-door hardtop. Deep, contour bucket seats (lower left) are an exciting option on this model.

CHRYSLER '62

FEATURES THE NEW FULL-SIZE 300

...A HIGH PERFORMANCE SPORTS SERIES IN A POPULAR PRICE RANGE!



IT'S A NEW CHRYSLER 300! With a price that puts "300" performance and luxury well within your reach. You get your choice of two bucket seat interiors; big V-8 engines ranging from standard 305 to breath-taking 380 horsepower; three body styles that nobody can mistake for a compact.

Check out the other Chryslers, too. The smart-buy Newport and the luxury New Yorker. Enjoy Chrysler-engineered motoring... with smooth, stable torsion-bar suspension... with solid, quiet Unibody... with details like new chassis fittings that need lubrication only at 32,000-mile intervals.

Nothing ho-humdrum about these stout Chrysler '62s! Drive one! There's nothing as exciting to own as a big one from Chrysler!



PLUS A NEW FULL-SIZE NEWPORT, ONLY... \$2,964*

*Chrysler's suggested retail price for 4-door sedan, exclusive of destination charges. White wall tires extra.

NEWPORT - 300 - NEW YORKER... AGAIN NO JR. EDITIONS TO COMPROMISE YOUR INVESTMENT!

YOUR CHRYSLER DEALER INVITES YOU TO TUNE IN THE WORLD SERIES ON NBC-TV AND RADIO... AND VISIT HIS "OCTOBER OPEN HOUSE." YOU MAY WIN ONE OF 180 NEW 1962 CARS TO BE AWARDED FREE BY CHRYSLER CORPORATION.

BLEVINS MOTOR CO. • 514 W. MAIN

District P-TA Meet Discuss Safety

The Parent Teacher Association will hold a safety assembly at the Eastland Oct. 9th at 2 p.m. Parents and teachers are invited. There will be no school on Oct. 10th. The assembly is for the purpose of informing and instructing parents and teachers in safety matters applicable to all areas including family, school, and community activities. The assembly will be placed upon the agenda of the P-TA meeting which will be open from 7:15 a.m. at the Eastland auditorium. The assembly will be held at 11:15 a.m. by Mrs. Stan-ley, District 1 President, and Mrs. O'Dell.



MRS. MARCUS O'DELL
P-TA president

Glynn Covington, Engineer for Lone Star Co. will talk. Luncheon series at Eastland Gymnasium 11:15 a.m. (Oct. 9th) Texas Elec. film on safety. Panel discussion on safety. Education in Schools of Eastland High School. Instructor in Driver's Education, Mrs. J. B. Smith, Health Chairman, will be invited to attend.

Now Have Washed Ice Seven Days Weekly

Wells Dalton
22 West Main
MA 9-2220

SPECIAL

THROUGH OCT. 6TH

Guardian Maintenance Lubrication with Exhaust System Check—

Only **99¢**

economical One-Stop Service

COMPLETE QUALITY LUBRICATION WITH EXHAUST SYSTEM CHECK

- Factory-Trained Mechanics
- Genuine Parts
- Modern Equipment
- Quick Service

PIPKIN

OLDS. & CADILLAC

Phone MA 9-2636

Fancy "New-Crop" HEN Turkeys

"SUNCO" U. S. Grade "A" and U. S. Gov't, Inspected!
10 to 14 Lbs. Avg. Buy one For Now, One For the Big Holiday Season Ahead!

33¢

Lb.

Prices Effective Thursday, Friday and Saturday

Best Meats—Best Values!

Chuck Roast	With Controlled Quality Heavy Beef	Lb.	39¢
Sliced Bacon	Armour's Star	Lb. Pkg.	65¢
Beef Arm Roast	"W. C. Q." Heavy Beef Shoulder	Lb.	49¢
Beef Patties	Yearling Frozen, Cubed	18-oz. Pkg.	79¢
Pork Sausage	Famous "Tennessee Farm"	2-Lb. Roll	\$1.19
Rainbow Trout	Taste O'Sea Frozen	10-oz. Pkg.	49¢

Coffee.. 59¢

Maryland Club Lb. Can

WORTH FOOD MART

The SURE SIGN OF QUALITY!

Plus 25 Extra Stamps With Coupon Below

Frozen Foods Features!

New! From the Kitchens of "SARA LEE"

Apple & Spice Cake	14-oz. Pkg.	79¢
Chopped Broccoli	2 10-oz. Pkgs.	35¢
Libby's Spinach	2 10-oz. Pkgs.	35¢

Always Fresher... by Far!

Red Potatoes

U.S. No. 1 McClures 10-Lb. Poly Bag **39¢**

Delicious Apples	Extra-Fancy Red, Washington or Virginia	Lb.	25¢
Seedless Grapes	Fancy Thompson, Sweet and Juicy	Lb.	19¢
Crisp Carrots	Young and Tender, Extra-Crunchy	2-Lb. Cello	19¢
Large Tomatoes	California Fancy Vine-Ripened	Lb.	19¢
Sweet Potatoes	East Texas Puerto Rican	Lb.	10¢
Waxed Rutabagas	Minnesota Turnips	Lb.	6¢
Yellow Onions	U. S. No. 1 Colorado	Lb.	5¢

Health and Beauty!

Colgate Tooth Paste	Economy Size Tube	65¢
Prell Liquid Shampoo	Giant Botl.	\$1.00

Now's The Time to Layaway Your Choice of Famous "DELUXE TOYS" for Christmas

CLIP AND SAVE!

Redeem This Coupon for EXTRA 25 FREE S&H GREEN STAMPS with Purchase of 1-lb. Can... 59¢

MARYLAND CLUB COFFEE

Void After Sat., Sept. 30, 1961

WORTH FOOD MART

CLIP AND SAVE!

Redeem This Coupon for EXTRA 50 FREE "S&H" GREEN STAMPS with Purchase of 5-lb. Bag

PILLSBURY FLOUR

Void After Sat., Sept. 30, 1961

WORTH FOOD MART

CLIP AND SAVE!

Redeem This Coupon for EXTRA 50 FREE S&H GREEN STAMPS with Purchase of 22-oz.

CHIFFON LIQUID DETERGENT

Void After Sat., Sept. 30, 1961

WORTH FOOD MART

CLIP AND SAVE!

Redeem This Coupon for EXTRA 25 FREE S&H GREEN STAMPS with Purchase of 1-lb. Pkg.

ALLSWEET MARGARINE

Void After Sat., Sept. 30, 1961

WORTH FOOD MART

CLIP AND SAVE!

Redeem This Coupon For Extra 50 FREE S&H GREEN STAMPS with Purchase of 4 Regular Cans

FRISKIE DOG OR CAT FOOD

Void After Sat., Sept. 30, 1961

WORTH FOOD MART

CLIP AND SAVE!

Redeem This Coupon For Extra 25 FREE "S&H" GREEN STAMPS with Purchase of 303's Cans

(2) Del Monte Fruit Cocktail

Void After Sat., Sept. 30, 1961

WORTH FOOD MART

CLIP AND SAVE!

Redeem This Coupon For Extra 100 FREE S&H GREEN STAMPS with Purchase of Any Two Pkgs.

CHUN KING CHINESE DINNERS

Void After Sat., Sept. 30, 1961

WORTH FOOD MART

CLIP AND SAVE!

Redeem This Coupon for EXTRA 50 FREE S&H GREEN STAMPS with Purchase of 2-Lb. Ctn.

FOREMOST COTTAGE CHEESE

Void After Sat., Sept. 30, 1961

WORTH FOOD MART

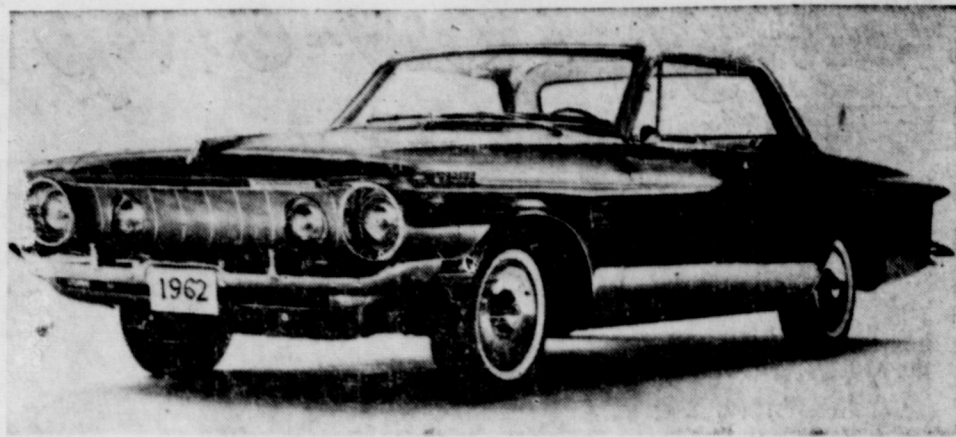
Hospital News

Patients in the Eastland Memorial are:

Mrs. Stone, medical
George E. Denny, medical
Miss Hazard, medical
C. A. Mayo, medical
Mrs. Ethel Geynolds, surgical
Mrs. Lizzie Hamilton, medical
Mrs. Josephine White, medical
Dr. William L. Anderson, medical, Cisco

Mrs. Morelle Martin, medical
Mrs. Bernice Lee, medical
R. L. Keller Sr., surgical
Danny Arnold, medical, Carbon
W. H. Bone, medical
J. M. Wilcoxen, medical
Willard Liles, surgical
Mrs. Wanda Keller, surgical
Gail Warren, surgical

Dismissed were Mrs. Delle Grubb
William Hubert, Mary Woodall,
Francis Hamilton, Ellen Snoddy
and Mrs. James Wood and baby boy.



PLYMOUTH NEW LOOK—The Fury 2-door hardtop is one of 23 new models which Plymouth introduces to the low-priced field for 1962 at Blevins Motor Co., 514 W. Main St., and at Rushing Motor Co., 215 S. Seaman St., Friday.

— READ THE CLASSIFIEDS —

'62 Chrysler

Continued From page one

vious 300 limited production models.

Chrysler 300 cars will be available with a choice of three high performance engines, ranging up to 380 horsepower. In limited production will be a 405-horsepower short ram induction engine.

Improvements in all three series—New Yorker, 300 and Newport—include a new compact transmission, engine refinements which provide better cooling, surer choke operation, quieter operation and improved fuel economy; a new quieter starting gear, lubricant-sealed chassis fittings, and a more efficient power braking system.

The most pronounced exterior styling change in the 1962 Chrysler is the smooth side profile with accent on the front of the car. The new front section has gracefully canted headlights framing a powerful-looking grille. The cross bar grille which identified the 300 G is the highlight of the 300 series. The New Yorker has a distinctively massive grille, while the Newport grille is a handsome grid pattern.

The Newport and the new 300 series are built on a 122 Yorker retains its 126 inch wheelbase.

Chrysler offers 15 models in 1962. The Newport series features a complete range of body styles including a 2-door hardtop, convertible coupe, 4-door sedan, 4-door hardtop and a 6 and passenger 4-door hardtop station wagon. The New Yorker is offered as a 4-door sedan, a 4-door hardtop and a 6 and 9 passenger 4-

door hardtop station wagon. The 300 is available as a 2-door hardtop, convertible coupe and 4-door hardtop. The 300H will be offered as a convertible and 2-door hardtop.

New Plymouth

Continued From page one

1961; new stepped-up performance, up to 11 per cent ahead of 1961; full unit construction, with 7-dip anti-corrosion protection; new self-adjusting brakes; new transmission parking lock on instrument panel; 32,000-mile lube cycle on major chassis points; new steering gear system for easier surer handling; new concentric gear-shift for manual transmission cars; improved Torsion Aire suspension for smoother, quieter ride; new automatic transmission, with lower smaller tunnel hump; new printed electrical circuits for instrument cluster, and new-concept forced air heating and ventilating system.

Economy of operation always has been, and continues to be one of the foremost advantages of Plymouth, whose time-proved 225-cubic inch inclined 30-D Economy Six engine and 318-cubic inch standard 8-cylinder Fury V-800 engine both have scored victories in the Mobilgas Economy Run, where Plymouth has won in its class for five straight years.

Improved fuel economy is achieved again in the 1962 Plymouth with its highly efficient new transmission and torque converter.

Economy of maintenance also accrues from a new extended 4,000 mile oil change cycle.

TidBits

Continued From page one

west side of the building and the bright sunlight, by some as yet unexplained manner, is projecting a perfect COLORED image of the outside scene onto the flat, light packing cases stored inside.

It's a perfect image in true colors of everything that goes on along the street near the storehouse.

If a car goes down the street, you can see it on the packing case screen.

When Upchurch first discovered it, the image was right-side-up. But it changes—sometimes up and sometimes down.

Apparently some element of physics is at play hereabouts, and anyone who might know a little about optics is invited to provide an answer, so says Mr. Hammer.

Down Lamar St. in the other direction, at the Majestic Theatre, Mr. Bill Samuels, has made arrangements for an optical treat called "A Thunder of Drums" for Eastlands festive weekend.

Unlike the oddity at the warehouse, "Thunder" has an exciting plot and in Mr. Samuel's theatre the accommodations are second-to-none.

It's a brand new Indian and Cavalry thriller, and early look revealed that it's the kind of picture that just about everybody hereabouts likes.

Don't want to reveal too much, but it's about a young lieutenant who learns about soldering—the hard way. You'll like it.

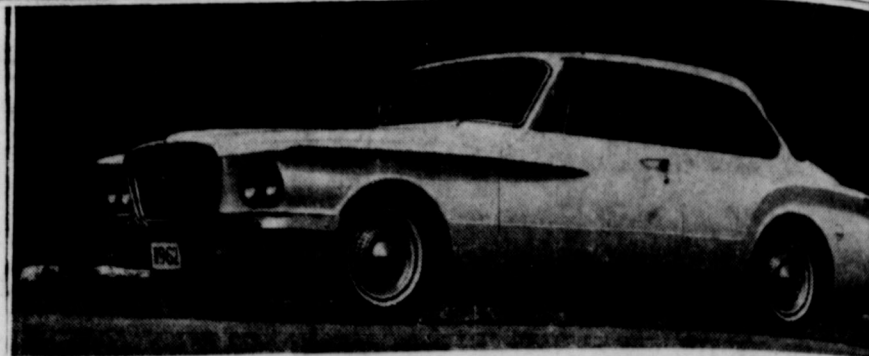
Man, 68, Held On Assault Charges

Lone Star Gas Company officially turned on natural gas service for the town of Santo, Palo Pinto County, Wednesday afternoon at a ceremony to be attended by citizens of Santo and the gas company.

L. D. McClish, Santo merchant, turned the valve at Lone Star's Santo measuring station on the north edge of town to signify the beginning of natural gas service. The town had previously been served by individual butane tanks.

Lone Star will initially serve 100 customers in Santo. The town will be included in the firm's Eastland distribution district and will be served from Lone Star's office in Ranger.

— READ THE CLASSIFIEDS —



VALIANT SIGNET 200—Valiant's all-new entry into the low-priced compact car field, combines the sporty silhouette of the popular 2-door hardtop with sports-car interiors featuring bucket seats. There are seven Valiant models and you can see them Friday at Rushing Motor Co., 514 W. Main St., and Blevins Motor Co., 215 S. Seaman St.

Lone Star Gas Now Serving Santo Customers

A 68-year-old Muleshoe resident is being held in Eastland County Jail and will face grand jury action in connection with an assault and attempted rape of an 86-year-old Rising Star area woman.

County Sheriff Lee Horn, who arrested him in Rising Star last week and brought him to Eastland, said that Justice of the Peace Benny Butler denied bond.

The assault allegedly happened at the elderly woman's home about a mile and a half east of the Romney cemetery. She reportedly was washing dishes at the time the man came into the house and assaulted

— was hospitalized at Rising Star Hospital and was expected to have been released sometime this week.

Goats Shot Near Ranger

Investigation is underway in connection with the shooting of five goats on the John Robertson ranch, east of Ranger.

County Sheriff Lee Horn reported the goats were shot sometime Sunday night, and that one had died.

The incident happened just south of the Rogers Station near Highway 80.

Fill Cracks And Holes Better PLASTIC WOOD

Handles like putty. Hardens like wood. The Genuine—Accept No Substitute.

HELLO! CENTRA DRUG

DALE TROUTT, Owner

SPECIAL PRICES FOR SATURDAY

30TH OF SEPTEMBER

PEANUT - BOWL - DAY

PEANUT - BOWL REMINDER—

Plan To Spend

All Day Saturday In Downtown Eastland For The Biggest Entertainment of The Year

Fill Cracks And Holes Better PLASTIC WOOD

Handles like putty. Hardens like wood. The Genuine—Accept No Substitute.



Come In—

And Register

For The BIG CASH PRIZES

To Be Given Away At The Game

Make Central Drug Your Saturday Headquarters

And Enjoy Watching Eastland County Grow

LOOK AT PLYMOUTH NOW!



Completely new for '62! New Forward Flair design! New beauty inside! New quality! New durability!

Look at the exciting '62 Plymouth! Completely new in the way it looks, drives and saves, this full-size Plymouth now brings you the beautiful difference in the low-price field. Whatever make you're driving, you owe it to yourself to look at Plymouth now!

Plymouth's Forward Flair design is an entirely new design concept in Plymouth's field. Slender new dimensions all around. A gleaming new grille. A tailored, tapered hood. A rakish new roof line. And Plymouth unveils the richest interiors it has yet used to dress a car. The handsome fabrics display unmistakable good taste. There's new quality everywhere. Careful workmanship is obvious in the interior fabrics, in the choice of appointments, in the way everything works and keeps right on working.

When you put your foot down in this great new Plymouth, you surge to cruising speed about 10% faster than last year's quick Plymouth got you there. Then you merely point Plymouth the way you want to go. Plymouth stays on course, because of its improved center-of-balance. And Plymouth brings you what is probably the best gas mileage of any full-size car. Plus 32,000-mile lube on major chassis points. There's never been a car like this one on your block or anywhere else. Look at the completely new 1962 Plymouth now! See your dealer today!

The Beautiful Difference in the Low-price Field

THE NEW PLYMOUTH.

Quality-engineered by Chrysler Corporation

Bernhard Altmann

TAKES A STAND FOR THE CARDIGAN WITH A DIFFERENCE



The distinctive Bernhard Altmann touch in luxurious, light-and-warm two-ply lambswool, the very best, imported from Austria. Rich ribbing at v-neck and cardigan front, pockets and cuffs. Hand-fashioned raglan sleeve. The casual, yet correct, look for a man's leisure hours. A host of handsome colors.

James Smith

MENS SHOP

EASTLAND



Texas Products Sale!

*SUPPORT TEXAS PRODUCTS
...they support TEXAS!*

SAFEWAY



Dog Food SAVE 41¢ **12 59¢**
Top Kick. Canned in Highland. 1-Lb. Cans

Flour DISCOUNT PRICE **10 69¢**
Harvest Blossom. For everything you cook. 1-Lb. Bag

Lard DISCOUNT PRICE **3 45¢**
Armour's Star Pure. Produced in Fort Worth. 1-Lb. Ctn.

Sugar DISCOUNT PRICE **5 49¢**
Imperial Pure Cane. Packed in Sugarland. 1-Lb. Bag

Sunshine Cookies Orbit Cream Sandwich Baked in Dallas. 12 1/4-Oz. Pkg. **39¢**

Nabisco Cookies Peanut Cream Patties. 6 1/2-Oz. Pkg. **29¢**

Morton Potato Chips Packed in Dallas. 4-Oz. Pkg. **25¢**

La Lani Pineapple Crushed. 2 No. 1 Cans **29¢**

Wolf Plain Chili Canned in Corsicana. No. 1 Can **39¢**

Austex Chili Plain. Canned in Austin. No. 300 Can **49¢**

Bluebonnet Margarine Made in Dallas. 1-Lb. Ctn. **28¢**

Ranch Style Beans Canned in Ft. Worth. 2 No. 300 Cans **29¢**

Barbecue Beef Ireland's chopped or sliced. Canned in Wichita Falls. No. 300 Can **69¢**

Quaker Quick Oats Perfect breakfast cereal. 2 18-oz. Pkg. **43¢**

Mother's Oats CAS. Delicious for breakfast. 42-Oz. Pkg. **55¢**

Crisco Shortening Canned in Dallas. 1-Lb. Can **37¢**

Fluffo Shortening Golden. (6¢ off label). Made in Dallas. 3 Lb. Can **73¢**

Morton Salt Plain or Iodized. Boxed in Grand Saline. 2 26-Oz. Boxes **25¢**

Ivory Snow Soap Powder. Made in Dallas. Large Box **33¢**

Aluminum Foil Alcoa. Raw materials from South Texas. 12-inch. 2 25-ft. Rolls **69¢**

Clorox Bleach Liquid. Bottled in Houston. Quart Bottle **21¢**

Personal Ivory Soap So gentle. Made in Dallas. 4 Bars **25¢**

Camay Soap White Complexion. Made in Dallas. 2 Reg. Bars **21¢**

FRYERS **25¢**
U.S.D.A. Inspected for Wholesomeness and Graded "A". Plump and tender. Raised in Texas. Fancy Whole.



Skinless Franks Sterling. Perfect for Winner Roast. 1-Lb. Pkg. **39¢**

Round Steak Or Sirloin. Baby Beef. Raised in Texas. 1-Lb. **79¢**

Cannad Picnics Armour's Star. Ready-to-eat. 3 Lb. Can **\$1.89**

T-Bone Steak Baby Beef. Raised in Texas. 1-Lb. **89¢**

Wingate Sausage Regular or Hot. Made in Garland. 2 Lb. Pkg. **79¢**

Sliced Bacon Armour's Star. Made in Fort Worth. 1-Lb. Pkg. **65¢**

Texas Baked Breads!

Texas Toastin' Bread Skylark. Thick, one-inch Slices. Baked daily in Dallas. 1 1/2-Lb. Loaf **25¢**

French Bread Skylark foil wrapped. Reg. 25¢. Baked daily in Dallas. 1-Lb. Loaf **19¢**

Twin Rolls Skylark Brown and Serve. "2¢ Off." Baked daily in Dallas. 13-Oz. Pkg. **23¢**

Bread Ballerina. Baked Daily in Dallas. 1 lb. loaf **25¢**

SAFEGWAY COUPON
This Coupon Worth 25 FREE GOLD BOND STAMPS
Plus your regularly earned Gold Bond Stamps with the purchase of
1-Lb. Pkg. Poppy SLICED BACON Sliced and Packaged in Garland. Limit one coupon per customer, please! Coupon Expires September 30, 1961.

SAFEGWAY COUPON
This Coupon Worth 50 FREE GOLD BOND STAMPS
Plus your regularly earned Gold Bond Stamps with the purchase of
10-Lb. Bag Red POTATOES Grown in Hereford. Limit one coupon per customer, please! Coupon Expires September 30, 1961.

SAFEGWAY COUPON
This Coupon Worth 50 FREE GOLD BOND STAMPS
Plus your regularly earned Gold Bond Stamps with the purchase of
1/2-Gal. Lucerne Party Pride ICE CREAM Cartoned in Fort Worth. Coupon Expires September 30, 1961.

SAFEGWAY COUPON
This Coupon Worth 25 FREE GOLD BOND STAMPS
Plus your regularly earned Gold Bond Stamps with the purchase of
1-Lb. Carton Lucerne COTTAGE CHEESE Made in Fort Worth. Coupon Expires September 30, 1961.

SAFEGWAY COUPON
This Coupon Worth 50 FREE GOLD BOND STAMPS
Plus your regularly earned Gold Bond Stamps with the purchase of
FOUR — No. 303 Cans Gardenside TOMATOES Canned in Alamo. Coupon Expires September 30, 1961.

Lettuce **15¢**
Crisp and Crackling fresh. Perfect for Salads. Grown in Hereford, Texas. Large Head

Tomatoes Red, ripe and firm. 10 Oz. Ctn. **10¢**

Grapes Tokey, California's Finest, Fresh and flavorful. 2 Lbs. **25¢**

Detergent DISCOUNT PRICE **69¢**
Breeze. (7¢ off label.) (White Magic... Giant Box 55¢) Box

Tooth Paste SAVE 10¢ **31¢**
Crest. (8¢ off label.) Large Tube

Alcohol SAVE 7¢ **10¢**
Hospital Brand. Bottled in Seagoville. Pint Bottle

Tide Detergent Made in Dallas. Large Box **32¢**

Oxydol Detergent Made in Dallas. Box **33¢**

SAFEGWAY COUPON
This Coupon Worth 100 FREE GOLD BOND STAMPS
Plus your regularly earned Gold Bond Stamps with the purchase of
FOUR — 10-Oz. Pkgs. Bel-air Frozen SLICED STRAWBERRIES Coupon Expires September 30, 1961.

Juice SAVE 10¢ **4 1/2-Lb. Cans** **\$1**
Town House Grapefruit. Canned in Donna.

Lima Beans SAVE 20¢ **12 300 Cans** **\$1**
Large Dry, Dry Blackeye Beans or Mexican Style Beans. Canned in Denton.

Bleach DISCOUNT PRICE **15¢**
Liquid. Removes stubborn stains. Quart Bottle

Salad Dressing DISCOUNT PRICE **39¢**
Piedmont. Made in Denison. Quart Jar

Corn Meal SAVE 14¢ **5 29¢**
Kitchen Craft White Enriched. 1-Lb. Bag

Cheer Detergent (3¢ off label.) Made in Dallas. Large Box **29¢**

Dreft Detergent Germaseptic. Made in Dallas. Large Box **33¢**

SAFEWAY
Prices and Coupons Effective Thurs., Fri. and Sat., Sept. 28, 29 and 30 in Eastland. We Reserve the Right to Limit Quantities. No Sales to Dealers.

Personals

Nell Caton of Dallas visited her father, Dr. J. H. Caton of 700 W. Moss St. over the weekend.

Mr. and Mrs. Mike George, Danes and Rene' spent the weekend in Fort Worth visiting in the home of their parents, Mr. and Mrs. Elmer Lockwood and Mrs. Mary George.

Robert Norris, who is attending North Texas State University spent the weekend in the home of his parents, Mr. and Mrs. Earl Norris.

Mrs. R. L. Ragland of Graham visited her daughter and family, Mr. and Mrs. Jim H. Parks and Lana.

Mrs. Connie Cogburn and Mrs. Bill Norwood and baby of Abilene visited with friends in Eastland last week.

Mrs. Mary Morgan has returned home after visiting with Mr. and Mrs. Jim Campbell in Hurst.

Mr. and Mrs. Don Jeffcoat are moving to Abilene Friday. Mr. Jeffcoat is an accountant for Builders Ready Mix.

Mr. and Mrs. J. L. Roper have returned home from a month's visit with their daughters, and son-in-law, Mr. and Mrs. Bill Jeter and family of Chester, N. Y., and Lt. Col. and Mrs. D. A. Jones in Washington, D. C.

The Ropers toured New York City and other points of interest in New York. They also toured Washington.

Mr. and Mrs. Polk Valliant of Olney are guests in the home of Mr. and Mrs. Roy Justice.

Guests in the home of Mr. and Mrs. M. L. Keasler over the weekend were their son and family, Mr. and Mrs. R. M. Keasler and children, Kay and Joe Bob, of Fort Worth.

Mr. and Mrs. Charles Ross and children, Charla and Wynon, of De Leon visited in the home of his sister and brother-in-law, Mr. and Mrs. Billy John Keith, Sunday.

Visiting in Dallas over the weekend were Dr. and Mrs. Fehrman Lund and children. They visited Mrs. Lund's brother and his family, Mr. and Mrs. A. S. Landgraf. They also attended the Lutheran Hour Rally in the Will Rogers Colosseum.

Mrs. Hattie Baker has returned home from a visit with her son, Roy D. King, his wife and three children in Cincinnati, Ohio.

Miss Sandra Drake of Abilene spent Friday and Saturday with her aunt and uncle, Mr. and Mrs. Eddie Gallagher. On Sunday word was received that Mrs. Gallagher's father, John M. Jones, had been hospitalized in Ballinger. Miss Drake accompanied the Gallaghers to Ballinger.

Visiting in the home of Mr. and Mrs. L. W. Dalton was Mr. and Mrs. Joe Dalton of Hamilton over the weekend.

Mr. and Mrs. Don Webb of Fort Worth and Mrs. Webb's mother, Mrs. Patrick, of Fort Worth spent the weekend in the home of Mr. Webb's parents, Mr. and Mrs. Dewey Webb.

Mrs. Frances Young returned this week from a visit with her daughter and son-in-law, Mr. and Mrs. Burt Norris, in Austin.

Mr. and Mrs. Joan McAllister spent Monday night in the home of Mr. and Mrs. E. E. McAllister in Abilene.

Miss Sandra Lasater and Miss Lookingbill spent the weekend in the home of Miss Lasater's parents, Mr. and Mrs. Tom Lasater. Miss Lasater is attending nursing school in Stephenville.

Mr. and Mrs. Ray Norris spent the weekend in Austin visiting with their son and daughter-in-law, Mr. and Mrs. Burt Norris.

Texas Federation of Women's Clubs to Meet in Austin

The State Board of Directors Meeting and Workshop of The Texas Federation of Women's Clubs will be held at the Headquarters Building in Austin on Tuesday and Wednesday, October 3-4.

Mrs. Harry Griffiths, State President, will preside at the business session. Austin clubwomen who are members of the State Board will be hostesses for the meeting.

This meeting is not only for the appointed members of the Board, but is for all federated club presidents and any member who would like to come and hear firsthand the objectives of this second year of the administration, as well as the outstanding guest speakers. Mrs. Griffiths has just returned from Washington, where she attended the General Federation Board Meeting and will bring to the Texas women the reports of that meeting. She will also give a report on her trip to Finland in June.

The pre-convention meetings will begin on Monday evening for the District President, Board Presidents, Board of Trustees and Executive Committee. The General Assembly will be at 10:00 A. M. on Tuesday morning. At that time the women will be welcomed.

The J. R. Laniers had as visitors from Abilene Saturday, their daughter, Mrs. R. A. Lafavre, and her son, James.

Mr. and Mrs. J. A. Harris have as guests their daughter-in-law, Mrs. Donald L. Harris and daughters, Valerie and Selena of Fort Worth.

Visiting in the home of Mr. and Mrs. Jim Patton is their son, PFC Billy Ray Patton, who is home on a 10 day furlough from Fort Dix, N. J. PFC Patton will be stationed at Fort Hood after his furlough.

Mr. and Mrs. Joe West of Campbellton spent the weekend in the home of Mrs. West's parents, Mr. and Mrs. Jim Patton.

Mr. and Mrs. Wayne Bailey and children spent the weekend in Dallas visiting friends.

— READ THE CLASSIFIEDS —

Miss Dreinhofer To Wed Dr. Boucher Oct. 1

The Heidelberg, Miss., Methodist Church will be the setting Oct. 1 for the wedding of Miss Dana Lynn Dreinhofer of 648 Haynes and Dr. James A. Boucher, who is stationed in Washington state at Lareen Air Force Base.

She is the daughter of Mr. and Mrs. William Charles Dreinhofer of Heidelberg, and the granddaughter of Mr. and Mrs. C. E. Owen of Eastland and the niece of Mrs. Ella White of Ranger. The prospective bridegroom is the son of Dr. and Mrs. Harold E. Boucher of Wauseon, Ohio.

Miss Dreinhofer was graduated from Memphis State University.

Sorority Holds Hawaii Luai in M. George Home

Mr. and Mrs. Mike George were host and hostess for a Hawaii Luai last week for members and guests of the Xi Alpha Zeta Chapter of Beta Sigma Phi.

Japanese lanterns lighted the backyard where the scene was set for the Luai. The guests were served Hawaiian Shishu Kabob, candied sweet potatoes, salad, homemade bread, punch and banana nut cake.

Attending were Mr. and Mrs. George, Mr. and Mrs. Bill Leslie, Mr. and Mrs. Bill Walters, Mr. and Mrs. James Smith, Mr. and Mrs. J. O. Tanner, Mr. and Mrs. Norman Watson, Mrs. Mary Jane Arther, Mrs. Art Johnson, Mr. and Mrs. Glyn Gilliam and Mr. and Mrs. Glen Scallorn.

Kick-Off Dance Plans Are Made By Double Sevens

Final arrangements are made for the Kick-Off dance to be held in the American Legion Hall Sept. 29 by the Double Seven Club at the meeting of the club Friday.

Ann Freyschlag was hostess to the club in the home of her parents, Mr. and Mrs. Charles Freyschlag.

The club meeting was opened by the club motto and the Lord's Prayer. An open discussion was held on entering a float in the Peanut Bowl Parade.

Refreshments of Cokes, cookies and sandwiches were served to Carolyn McClesky, Judy Seaberry, Wanda Arther, Lavern Hensley, Nora Jordan, Julie Frost, Judy Lewis, Becky McAllister, Ann Freyschlag, Carol Walter, Shirley Smity, Kay Morton, Nancy Pryor, sponsor and her daughters, Deborah and Patty.

29th anniversary sale

Come in and register now for the FREE \$15 Wardrobe to be given away.

FREE

Jewel-toned Fall look pocketeer

The stripe's the thing for Fall, especially when it has stand-out pockets on the full skirt. Acetate-and-cotton with eye-catching stripes. Pockets and sleeves have ruffled trim. Sizes 10-16.

7.99

MODE O'DAY

East Side of Square — Eastland

The Ford in your future will be here tomorrow!

Starting tomorrow at your Ford Dealer's, you will discover a line of Fords so long, so new, so varied that everyone will find his personal Ford—the car that fits his pleasure and needs precisely! For those who want a true luxury car, there are two distinguished new series of Galaxies—both swift as a rumor, silent as a secret. With Thunderbird styling, and quality that sets a new industry standard, the 1962 Galaxies give you every essential feature of far costlier cars. If you are looking for economy without

compromise, look to America's favorite compact: this year there are more Falcons than ever to choose from—13 in all. Falcon fanciers will find unprecedented variety—from a new wagon that seats eight to a Falcon Squire Wagon with the rich woodlike finish of the famous Country Squire. Pick the Ford in your future with this confidence: every 1962 Ford is built to a standard of quality so high that it will change all your ideas of how fine, how quiet, how enduring a car can be.



GALAXIE 500 CLUB VICTORIA (foreground)
... GALAXIE TOWN SEDAN (background)
... The Galaxy 500—new in name, new in luxury—is for those who want all of the elegant extras. The 1962 Galaxy makes

it easier than ever to move up to fine-car luxury—at the low Ford price. All Galaxies are beautifully built to be more service-free. They go 30,000 miles between major lubrications, 6,000 miles between oil

changes and minor lubrications. Brakes adjust themselves automatically.



FALCON SQUIRE WAGON... Brand new for '62, it's sleek and sophisticated. Inside, it is available with Futura bucket seats and console! Outside, it has elegant woodlike steel side paneling.



FALCON FORDOR SEDAN... Just one of 13 Falcons for 1962, this 4-door sedan has an improved version of the Falcon Six engine that last spring recorded the best gas mileage for a Six or Eight in the 25-year history of the Mobilgas Economy Run.

'62 Fords

Features of the future—now

HOOD KING MOTOR COMPANY

100 E. Main

EASTLAND

Phone MAin 9-1786

OUR SALE

on America's favorite dinnerware
Franciscan earthenware

Through Saturday October 7th



4-piece place settings open stock value 5.90 all active patterns included

3.69

SMITTY'S Jewelry

East Side of Square

Phone MA 9-1290

CONGRATULATIONS



RICHARD FLETCHER

502 SO. SEAMAN, EASTLAND
LEADING AGENT SEPTEMBER FOR

KEY WESTERN LIFE INSURANCE CO.

ABILENE

OLD LINE

LEGAL RESERVE



Rave Bra and Skippies girdle by Formfit

Approved MACHINE WASHABLE by GOOD HOUSEKEEPING MAGAZINE

Underfashion care is easy, easy, easy when you wear MACHINE WASHABLE underfashions by Formfit. Just toss them in the washer... they come out sparkling clean and fresh. Superior construction and finest fabrics mean longer wear. Check all Formfit underfashions for the approved MACHINE WASHABLE Good Housekeeping tag.

RAVE BRA No. 589. The most comfortable bra you've ever worn. Elastic stitching joins cup and band, gives flexible fit. Elastic back band breathes with you, elastic releases in back strap give freedom to stretch and bend. Extra low-cut underarm, U-scoop back. White broadcloth. 32A to 38C. \$3.95.

SKIPPIES Pantie Girdle No. 815. Light, lacy, airy patterned nylon power net. Long leg style to give extra thigh control. Satin elastic front and back panels for flattening. Waistline style. White. S.M.L. \$5.00.

HARELIKS INC.

Courthouse News And Records

Marriage Licenses

Royce Eugene May and Shirley Laverne Hogan.
William S. Kendall and Mel-anie Genevieve Newman.
Charles Thurman Pylant and Doris Lynn Bownds.

Suits Filed

The following suits were filed for record in the 91st District Court last week:
Sam Mayo, et al, vs. Mattie Wright, et al, title and possession of land and damages.
Clarence G. Malloy, et al, vs. Richard Slaughter, et al, damages. Commercial State Bank of Ranger vs. United Fidelity and Guaranty Co., suit to collect on bond.

Orders and Judgments

The following orders and judgments were rendered from the 91st District Court last week:
Nadine Clement, et vir vs. Charles S. Coln, d/b/a Gorman Mfg. Co., order of dismissal.
Clarence G. Malloy, et al vs. Richard Slaughter, et al, judgment.
Ex Parte: Val Jeanne Loudder, a minor, order of dismissal.
Clarence G. Malloy vs. Richard Slaughter, et al, order appointing

guardian ad litem.
Gladys Morton, et al, vs. Russell Hill, executor, et al, judgment.
Gladys Morton, et al, vs. Russell Hill, executor, et al, order.
Connie Robinson vs. Jessie Robinson, judgment.

Oscar G. Lanier, Sr. vs. Darrell Knight, et al, order.
Reyford L. Brown vs. Texas & Pacific Railway Co., order of dismissal.

Dunlop Tire & Rubber Corp. vs. Glen V. Hamner, d/b/a Hamner Tire Shop, judgment.

H. C. Dakan vs. R. B. Dakan, judgment.
Emory V. Ford vs. Texas & Pacific Railway Co., order.

The following instruments were filed for record in the County Clerk's office last week:

H. T. Brooks to Harlie L. Swann, warranty deed. H. J. Bulgerin to Jim Edison to First Federal S & L Assn. of Ranger, MML. C. V. Brown to Larry Wilcox, deed of trust. C. V. Brown to The Public, designation of homestead. Henry J. Bailey to Mid State Homes, Inc. to Weldon Parkhill, resignation of trustee and appointment of trustee.

Jack Bibby to Rutherford & Steel Co., MML. Roy D. Blair to The Public, designation of homestead. Roy D. Blair to Stephenville S & L Assn., deed of trust. H. C. Bowers to Jack Bibby, warranty deed. C. E. Claborn to Mrs. E. A. Gray, warranty deed.

Phineas Alexander Cox to W. H. Hoffman, warranty deed.

Coastal States Gas Prod. Co. to The Public, gas unit designation and pooling agreement. Bobert Beniah Carswell to Burnice H. Coleman, quit claim deed. Laura Fay Duncan to Ruby Grace Aycock, power of attorney. Minnie Ellison to Frances Candler, mineral deed. Willie Mae Edwards to H. T. Brooks, deed of trust.

Willie Mae Edwards to H. T. Brooks, quit claim deed. Fourth National Bank of Tulsa, Trustee to J. B. Barnes, assignment of oil and gas lease. (5 of these). First Federal S & L Assn. of Ranger to L. A. Howell, warranty deed. First Federal S & L Assn. of Ranger to Ralph L. Derrick, release deed of trust.

Ernestine Callahan Farnsworth to T. J. Collins, release oil and gas lease. J. M. Flournoy to Lydia D. Korten, assignment overriding royalty interest. (4 of these). J. M. Flournoy to Ben Wirkkala, assignment of overriding royalty interest. (3 of these). J. M. Flournoy to Ben Wirkkala, assignment of payment. First Federal S & L Assn. of Ranger to Bruce Butler, release deed of trust. First National Bank of Gorman to Roy D. Blair, partial release deed of trust. First National Bank of Cisco to G. R. Nance, release deed of trust. B. J. Greenhaw to Gordon Woods, warranty deed. A. L. Grice to The Public, designation of homestead. B. F. Grice to A. L. Grice to First Federal S & L Assn. of Ranger, MML. B. F. Grice to First Federal S & L Assn. of Ranger, deed of trust.

Great Expectations Oil Corp. to Estate of Aaron Cohen, assignment oil and gas lease. L. A. Howell to First Federal S & L Assn. of Ranger, deed of trust. W. H. Hoffmann, receiver to G. A. Bloomquist, receiver's deed. Bobby J. Housh to E. P. Crawford, quit claim deed.

Minnie Lenora Hill to Marcus Lee Hill, Jr., five warranty deeds. James E. Horton, to Horace E. Horton, deed of trust. F. B. Joyce to H. C. Bowers, quit claim deed. W. G. Kirk to The Public, affidavit. Roy L. Lane, Clerk 91st District Court to The Public, certificate.

J. H. Littleton to J. T. Gregory, warranty deed. Modern Homes Construction Co. to Modern Home Mortgage Co., transfer MML. Modern Home Mortgage Co. to Modern Home Development & Finance Co., transfer MML. Modern Home Development & Finance Co. to Pioneer Finance Co., transfer MML. R. L. McKinney to J. D. Lauderdale, partial release vendor's lien and deed of trust.

CLASSIC GALAXIE STYLING — The 1962 Ford Galaxie line features a crisp, fresh approach to Ford's classic styling. This is the Galaxie 500 Sunliner convertible,

one of 12 models in the line. Large door openings, coupled with Ford's convenient two-position door stops, make entering and leaving the Galaxie an easy and natural movement. Hood King Motor Co., 100 E. Main St., will show the Ford Friday.



FORD TRUCKS FOR '62 — The Ford F-100, (top) and Falcon Sedan Delivery (bottom), are two members of Ford's 1962 fleet of light duty trucks. The F-100 one-half ton pickup is powered by the Ford "223" six or optional "292" V-8. The three-man cab features wide-opening doors with no dog-leg and handle-operated latches that make the tailgate easy to open and close. The Ford line will be on display Friday at Hood King Motors, 100 E. Main St.

farm semi-trailers for a five dollar fee providing the gross weight is not less than 4,000 or more than 10,000 pounds.

Farm trailers weighing less than 4,000 pounds, gross weight, are still exempt from registration by statute. Those exceeding 10,000 pounds, gross weight, must register as a regular commercial trailer.

Capt. C. W. Bell, license and Weight Service of the Dept. of Public Safety, advised however that any vehicle bearing the five dollar plate must not:

- (1) exceed 30 MPH,
- (2) be operated for hire,
- (3) have steel or metal wheels in contact with the pavement and

it must be equipped with an adequate hitch to remain secure to the towing vehicle and be operated and equipped in conformity with all other provisions of the law.

Violation of any of the above sections of the law nullifies the five dollar registration fees and penalties prescribed by law.

SINGER

Sales - Service - Rentals and Repairs
D. L. MORTON
Phone MAin 9-2084

PENNY PINCHING SALE!

COME IN FOR OUR **purse saver specials**

QUANTITY RIGHTS RESERVED

STAR KIST GREEN LABEL TUNA Reg. Can 25¢
Chunk Style

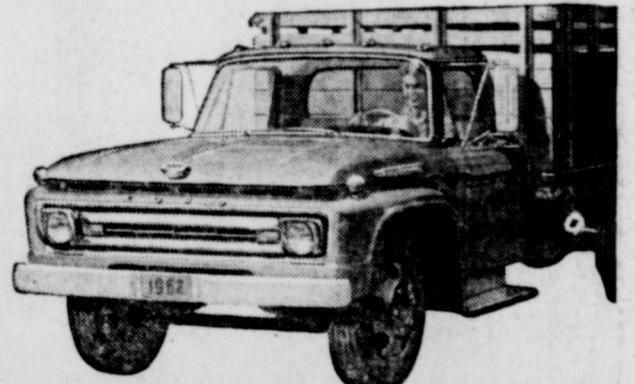
PRICES GOOD THROUGH SATURDAY, SEPTEMBER 30

Ground Beef 3 Lbs. 1.00	BAMA GRAPE or RED PLUM JAM 18-Oz. Tumbler 29¢	Without Beans 300 Can 39¢ AUSTIN chili
Pork Liver Lb. 29¢	BREMNER SALTINE CRACKERS Pound Box 19¢	COOKIES - 33¢ 10¢-Oz. Cello Pkg. COUNTY KIST PEAS 2 303 Cans 35¢
Blackhawk Pure Pork Sausage 2 Lbs. 79¢	BIG MIKE DOG FOOD 3 300 Cans 19¢	0-CELO SPONGE 16-Oz. Box 39¢
Banquet COMPLETE DINNERS All Varieties Including Beef Enchilada and Mexican Style Your Choice 11-Oz. Pkg. 49¢	MARYLAND CLUB COFFEE 69¢ REGULAR GRID	SUPER SAVE MARGARINE 19¢
IDAHO RUSSET Potatoes 10 Lbs. 49¢	HEINZ BABY ORANGE JUICE 4 1/2-Oz. Can 10¢	BETTY CROCKER BROWNIE MIX 29¢
CALIFORNIA VINE RIPEN Tomatoes 19¢	DEL MONTE FRUIT COCKTAIL 2 1/2-Can 35¢	MINUTE MASHED POTATOES 23¢ 6 1/2-Oz. Box
WHITE SWAN INSTANT COFFEE 6-Oz. Jar 59¢	CONCHO PEEL TOMATOES 2 303 Cans 25¢	ALCOA ALUMINUM FOIL 25-Ft. X 12-In. Roll 33¢
WHITE SWAN SHORTENING 3 Pound Can 69¢	SWEETHEART FLOUR "Mighty Sweet Savings" 5-Pound Bag 33¢	NIAGARA STARCH 21¢ 12-Oz. Box
AUSTIN TAMALES 300 Can 25¢	TOMATO LIBBY 46-Oz. Can 29¢	MCCORMICK BLACK PEPPER 4-Oz. Can 39¢
PANNING'S BREAD and BUTTER PICKLES 15-Oz. Jar 25¢	NIBLETS CORN OF MEXICORN 12-Oz. Can 19¢	
WAPCO WHOLE BEETS 2 303 Cans 29¢		
LIBBY CORNED BEEF HASH 16-Oz. Can 39¢		

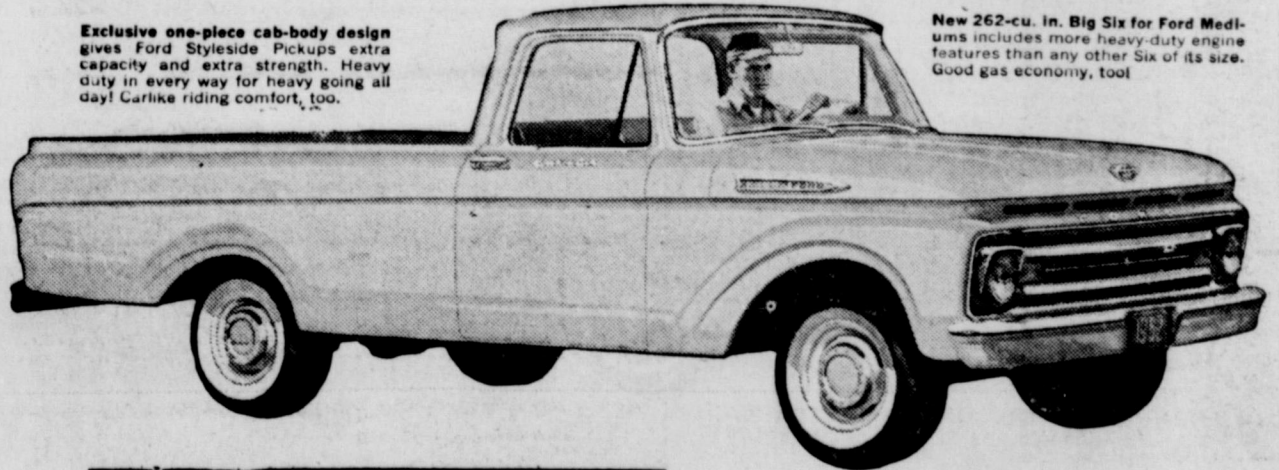
COME SEE new Ford Trucks for '62



America's best selling van—and small wonder! Priced far under popular conventional 6 1/2-ft. panels but has larger loadspace (204 cu. ft.)! It can save \$100 a year on gas, oil, tires.



New 262-cu. in. Big Six for Ford Mediums includes more heavy-duty engine features than any other Six of its size. Good gas economy, too!



Exclusive one-piece cab-body design gives Ford Styleline Pickups extra capacity and extra strength. Heavy duty in every way for heavy going all day! Curlike riding comfort, too.

COME SAVE

with full-time economy

Come meet the trucks that make saving money a full-time business... the new Ford Trucks for '62... a selection of over 600 models in all! Come see the truck that's right for your job, whatever your job. Come see the trucks you can buy and operate at lower cost... trucks that can save you money mile after mile, load after load, year after year!

Ford's full-time economy only starts with low price. It includes savings on gas and oil. It includes savings on tires and on maintenance—wherever there's a chance to save. Come in today and let us show you how. Check out the facts. Work out a deal.

FORD TRUCKS COST LESS

SAVE NOW... SAVE FROM NOW ON!
PRODUCTS OF FORD MOTOR COMPANY

COME IN!!!!

HOOD KING MOTOR COMPANY

100 E. Main

EASTLAND

Phone MAin 9-1786

THICK SLICED BACON 2 Lbs. \$1.09

Gooch Blue Ribbon

WEINER

3 Lb. 99¢

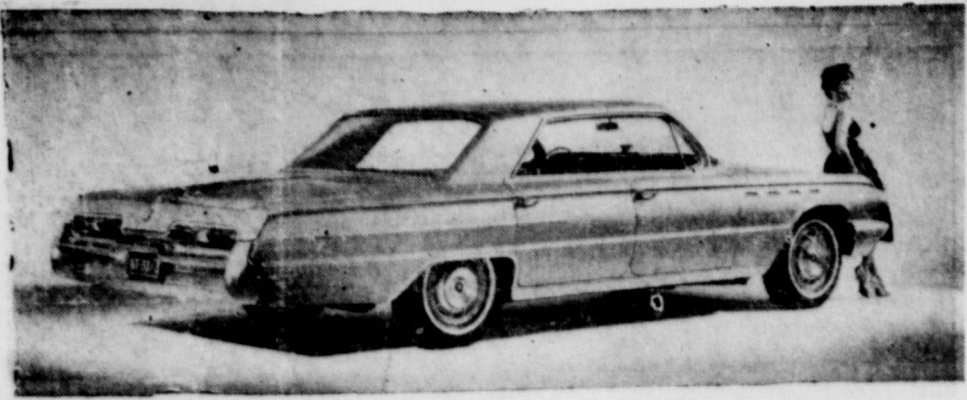
MacMOY'S Super Save

400 S. Seaman

Wisconsin Longhorn

CHEESE

1 Lb. 59¢



BUICK FOR '62—The Clean, uncluttered styling of Buick for 1962 is exemplified in the Electra 225 series with its sporty new roofline and its tailored rear decklid with the windsplit down the center. The long, sweeping lines of the front and rear fenders make the car look bigger without increasing its size. The new roofline with its wide,

sloping rear pillars identify the Electra 225 series, one of the most luxurious cars in the fine car field. On display Friday at Muirhead Motor Co., 301 W. Commerce St.

Social Security Minimum Benefit Up for Sept.

Recent changes in the Social Security Act changed the minimum benefit rate from \$33 to \$40 per month, R. R. Tuley, Jr., manager of the Abilene social security of-

fice, explained to day. The change will affect only those beneficiaries whose benefit rate has been less than \$40, and who applied for benefits after having reached age 65.

Anyone who is receiving "reduced benefits" may continue to receive amounts less than \$40. For instance, anyone who applies for benefits before reaching age 65, and who receives less than the earlier \$33 minimum, will not receive \$40 under the new law, but

will receive a proportionate increase.

Beneficiaries need not do anything to bring about the increase, Tuley explained. The change will be reflected in the check for August 1961, to be received early in September.

A pamphlet explaining all of the changes brought about by the 1961 amendments may be obtained from the Abilene office without charge, by letter, card or phone call.

VIC'S AUTO REPAIR

DAY PHONE MA 9-2111 — NIGHT PHONE MA 9-2111

CONSERVATION NOTES

Bumper Tall Grass Crop Expected; Best Since '49

A priceless tall grass seed crop is now maturing on much of our local rangeland. Prospects are better than they have been in many years for a bountiful seed crop.

A truly good seed crop of such grasses as little bluestem and Indian grass have not been matured in this immediate vicinity since 1957 and 1958.

Our present crop on these grasses appears to be equal to those we had in 1948 and 1949.

Weather conditions inducing truly bumper seed crops on tall grasses occur rather infrequently in this vicinity. It seems as if Mother Nature knows that if rangeland is not abused, seed will seldom be needed.

This year a dry spring held back the growth of many undesirable plants which seed in the spring and compete for moisture with our better grasses.

In late June and July heavy rains forced out abundant seed stalks on better later seeding grasses and such as little bluestem, sideoats grama, Indian grass, and sand lovegrass.

Seed stalks dominated the landscape throughout the country side.

Our recent rains fell at exactly the right time after hurricane Carla to mature the seed on both

little bluestem and Indian grass, unfortunately the rain was a few weeks late for most of the sideoats grama seed.

A large portion of the sideoats seed crop had already blasted when the rains fell.

After drought and many years of overuse many of our pastures are in sore need of seed.

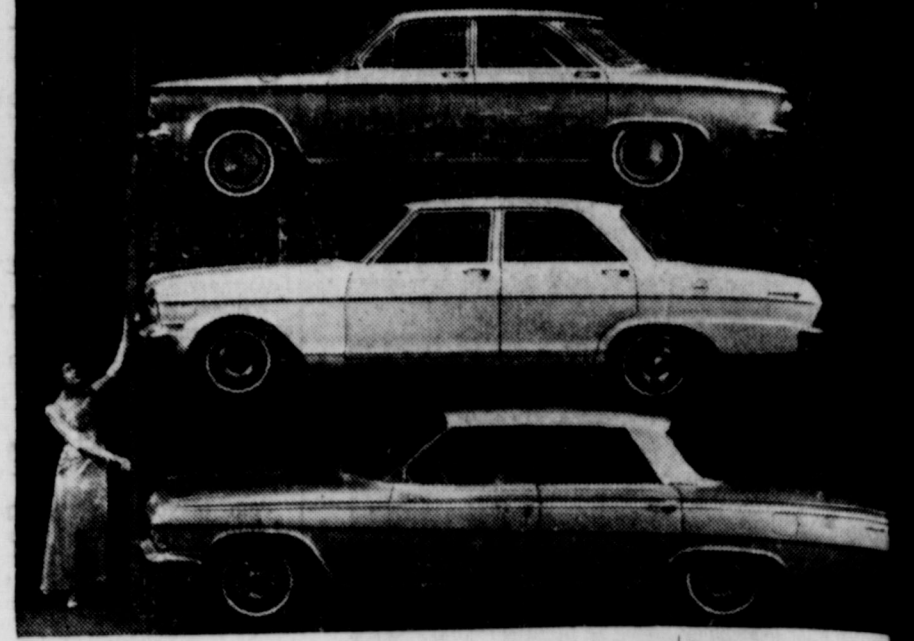
Better grasses need to be increased on practically every acre of our rangeland. However this year's grass seed crop can be a welcome blessing on run down pastures only through the skillful management of livestock.

In only a few days most of the grass seed will pass from the bloom stage to the dough stage.

At this time grazing animals seem to relish the seed themselves. If at all possible livestock should be removed from those pastures where seed is most needed until after frost when the mature seed will shatter.

Next spring, given favorable moisture, when the seed germinate, livestock should again be moved through another critical period. Until the young seedlings are well established livestock will pull them up by their roots.

Skillful stockmen have learned they must keep their eyes on their grass and work with Nature in every season.



3 FOR 1962—The wide range of choices Fullen Motor Company, Eastland Chevrolet dealers, will offer for 1962 is hinted in this

three-car photo. Pictured to compare over-all length are (top to bottom), the 180-inch Corvair 4-Door Sedan; the 183-inch Chevy II 4-door sedan, and the Impala

Sport Sedan which measures 186 inches. They are representative of the 32 passenger car models on display Friday.

Local Women Clubs to Open In October With Festivities

Vacations are over and the schools have begun thus giving the signal that the club year is beginning. A few of Eastland's clubs have already begun their new year but October seems to be the opening month.

LAS LEALAS

October 2nd is the opening date for Las Lealas Club. The first meeting will be an evening tea hosted by members of the yearbook committee, Miss Gladys Green, Mrs. D. L. Kinnaird, Mrs. Maurice Dry and Mrs. Anna Grace Bumpass. Mrs. Homer Smith, president, will also be a hostess.

The Woman's Club will be the scene of the tea, Miss Verne Johnson will review the book "Many a Voyage" by Louisa Grace Erdman.

Las Lealas Club meeting the Loyal Ones, has twenty-two members at the present time. The club was organized and federated as a Junior Thursday Club in 1933 and reorganized as a Senior Club in 1938.

Mrs. Smith heads the slate of officers to serve during 1961-62. Other officers include Mrs. Rudolph Little, vice-president; Mrs. J. C. Whatley, secretary; Mrs. H. L.

Hassell, treasurer; Mrs. Maurice Dry, project chairman; Mrs. Opal Cross, historian; Mrs. Thura Taylor, federation counselor; Miss Johnson, reporter and Mrs. D. E. Frazer, parliamentarian and critic.

CIVIC LEAGUE AND GARDEN CLUB

The Lone Cedar Country Club will be the scene of the opening meeting for the 225 members of the Civic League and Garden Club October 11.

The luncheon will begin at 12:15 and reservations must be made with Mrs. Robert Perkins, chairman, on Monday prior to the luncheon. Tickets for the luncheon are \$1.50.

Mrs. Frank Sayre, president will head the executive board which will be hosts for the opening meeting. Hostesses include Mrs. Pat Crawford, yearbook chairman, Mrs. Art Johnson, who is arranging the decorations, Mrs. D. L. Troutt, Mrs. J. F. Collins, Mrs. Mike George, Mrs. A. W. Cartledge, Mrs. H. T. Weaver, Mrs. James Pipkin and Mrs. May Harrison.

The object of the Civic League and Garden Club, which was

organized in 1917, is to "age and advance the public life of Eastland through the efforts of club as a body and as individuals."

MUSIC STUDY CLUB OF EASTLAND

"Musical Bingo" will be the feature of the meeting of the Music Study Club in the Woman's Club October 11. Operas and old masterpieces will be the subjects of the musical bingo.

Mrs. J. H. Lee will slate officers at the meeting to begin at 8:00 p.m. Officers include Mrs. Varice-president; Mrs. Get second vice-president; Mrs. Taylor, recording secretary; Mrs. Clara Cockrell, treasurer. "What to Listen for" by Aaron Copland is the study chosen for the year.

Being organized in 1920, the Music Study Club is federated to the Texas Federation of Woman's Clubs in Eastland. The Music Study Club is a member of the Texas Federation of Music Clubs on October 11.

THURSDAY AFTERNOON

Mrs. R. D. Burton, president of the Thursday Afternoon Club, will be the hostess for the opening of the new club members of the Thursday Afternoon Club.

Members of the yearbook committee will be hostesses for the tea in the home of Mrs. Hamner, chairman of the book committee, at 1001

man October 5th at 4 p.m. Assisting Mrs. Hamner are Mrs. I. C. Inzer, Mrs. H. Gerin and Mrs. James H.

The Thursday Afternoon Club was organized and federated in 1916, owns and operates Eastland Public Library and is in charge of the front porch in the Peanut Bowl. "Stimulating Studies" course of study planned Thursday Club.

Mrs. Burton's slate of officers includes Mrs. R. L. Young, president; Mrs. Eco Walby, vice-president; Mrs. Bulgerin, recording secretary; Turner Collier, treasurer; Milburn Long and Mrs. Frost Sr., members of the House Board.

4 Others May

5 Organizations Plan To Sponsor Scout Work

"Give the youth of our country the leadership necessary to keep the heritage that men have died for," Sam Morrison challenged Boy Scout leaders in Eastland at a banquet Monday night.

Speaking at the "Together, We Organize" dinner at the First Methodist Church, Morrison of Mineral Wells, told of a recent survey in Dallas which showed that not a single Boy Scout in that city had been arrested for any offense in the past year.

Five organizations committed themselves to organize one or more Scout units and four other organizations indicated that they would seek the approval of their board of directors for sponsorship. Groups present and their choices were:

First Methodist Church of East-

land and Ranger, an explorer post each; First Methodist Church of Cisco, a cub pack; the Cisco Rotary Club, Scout troop; Cisco Jaycee Club, Explorer post; Olden P-TA, Scout troop and Cub pack; Gorman Fire Department, Scout troop and cub pack; and DeLeon Northside Baptist Church, Scout troop.

After Morrison's speech, Aaron Kupperman, district chairman of Breckenridge, told of the need of scouting in the towns represented, and John Schoolfield, Eastland district scout executive, explained the ten steps of organization.

The Rev. William Fisher, pastor First Methodist Church, gave the invocation, the Rev. Wallace J. Shelton, Brownwood District Superintendent of Methodist Churches presided over the meet, and the Creath Davis, gave the benediction.

Mrs. S. Harris Hosts Luncheon

Mrs. Stanley Harris hosted a luncheon for guests and members of the Zeta Phi Chapter of Beta Sigma Phi last week in her home in Baird.

The luncheon was given in honor of the rushees, Mrs. James Varner, Mrs. Clyde Moore, Mrs. Bennett Ragsdale and Mrs. E. M. Rogers.

Mrs. Harris served baked ham and all the trimmings to the rushees, Meses. E. M. Watts, Don Jeffcoat, A. L. Burnham, Mike Collins and Jackie Lee.

Quick Relief of HEADACHE

For relief of headache, neuralgia and neuritis pain, take STANBACK'S combination of medically-proven ingredients compounded specifically to speed up pain-relieving action. Many doctors recommend the ingredients in STANBACK. Get genuine STANBACK Powders or Tablets—unconditionally guaranteed to relieve pain fast.



HOW OLD IS YOUR MUFFLER?



FREE MUFFLER INSPECTION

Don't wait! A faulty, old muffler can kill you with deadly exhaust fumes. Let us inspect your muffler absolutely free. If you need a new one...

*** FAST AND EXPERT SERVICE!**
Official Inspection Station

ALLEN AUTO REPAIR

Phone MA 9-2270—Night Phone MA 9-2224
AT RUSHING MOTOR CO.—215 SOUTH SEAMA

Now here—a great new exclusive from Buick

ADVANCED THRUST

Moves power forward for arrow-straight going

It puts the engine ahead like the tip of an arrow • It tames "wind wander" and road sway • It sweeps you forward in a hush of luxury • It turns the floor hump into foot space.

WHAT IT IS—Buick's big new move: It positions the great new Wildcat V-8 and Turbine Drive way up front over Buick's front wheels.

WHAT IT DOES—As the engine went forward, the floor hump went DOWN. And, the forward weight makes wheel response far quicker, cornering far surer, ride far smoother.

WHY YOU'LL LOVE IT—It's the closest you can come to sports car handling in a passenger car. Distances shrink before its 3/4-G thrust. Hills disappear. Lean on curves is gone because the frame's gone wider. Winds don't make you wander. It's going at its Buick best!

'62 BUICK

MUIRHEAD MOTOR CO.

301 W. Commerce

Eastland, Texas

MA 9-1707 for Classified Ads —

SMALL SAVER...
LARGE SAVER...



YOU'RE WELCOME HERE!

Whether you do your saving a few dollars at a time, or have a substantial reserve to invest safely at a time of need, you'll like our insured savings accounts. Savings here earn a better-than-average rate. Each saver's funds are insured up to \$10,000. Like the nice people who are here to serve you.

First Federal Savings & Loan
Association of Ranger

Ranger, Texas Phone MI 7-1611

Carbon News

Hogan Sisters Are Wed In Double Ceremony

The home of Mr. and Mrs. Jim Hogan was the scene of a double wedding Saturday evening at 7:30 when their daughters, Miss Jo Ann Hogan and Miss Shirley Hogan, were married to Mr. John Hull son of Mr. and Mrs. Hull of Cisco, and Miss Shirley Hull was married to Mr. Gene May, son of Rev. and Mrs. Bud May, of the Mangum community. Both were single ring ceremonies and were performed by Rev. Lee Fields.

The brides were dressed identically in white cotton satin street length dresses and wore a small white hat with a short veil and white accessories. They carried a white carnation corsage atop a white Bible. A large basket of white gladiolus stood on each side of the improvised altar.

Attendants for Mr. and Mrs. Hull were Mr. and Mrs. Lynn Hogan and Mr. and Mrs. May's attendants were Jerry May and Miss Nancy Berston.

Following the ceremonies the white wedding cake was served from a table laid with a white net cloth by Misses Bertha Taylor, Janet Waller, Diane Nicholas and

Linda and Kay Thackerson. About 45 guests attended the wedding and reception.

After a short wedding trip, both couples are living in Cisco where the husbands have employment.

Mr. and Mrs. Lother Harris of Midland spent the weekend with his mother, Mrs. Willie Harris, and son, Gilford.

All the children of Mr. and Mrs. Jim Hogan were present Sunday when their newly wed daughters, Mrs. Jo Ann Hull and Mrs. Shirley May and their husbands were feted with a post-wedding dinner. Other children present were Mr. and Mrs. Tommy Nicholas and children of Abilene, Mr. and Mrs. Oscar Thackerson and children of Cisco Mr. and Mrs. Carol Hogan and children of Carbon, Mr. and Mrs. Lynn Hogan and children of Eastland, and Bob Hogan and family of Gorman.

Mr. C. L. Rogers received a message Sunday announcing the death of his sister, Mrs. Sallie Kizzlar, 73 of El Monte, Calif. Who passed away there Saturday night. Funeral services were held in El Monte on Tuesday. Mrs. Kizzlar was born in Arkansas and later moved to Texas and lived around Gorman for a number of years prior to the family moving to California some 25 years ago.

Survivors include ten children and three other brothers and two sisters.

Mr. and Mrs. George Goss of Rising Star and Mrs. Mary Goss of Brownwood visited Mrs. Wade Clark last week.

Mr. and Mrs. Floyd McBee spent the weekend with their son, George McBee and family of Bryan.

Mr. and Mrs. J. H. Pittman of Eastland visited Mr. and Mrs. Don Boatwright Sunday.

Mr. and Mrs. Raymond Turner of Rising Star visited their son, Jim Turner, and family Sunday and attended evening services at the Baptist Church.

Mr. and Mrs. Monte Montgomery and daughter of Fort Worth visited his mother, Mrs. P. M. Montgomery, and her parents, Mr. and Mrs. W. J. Greer, Sat.

Bryan L. Butler of Bryan visited his parents, Mr. and Mrs. E. R. Butler, also Gene Butler and family a short time Sunday. Richard Clark of Fort Worth also visited in the Gene Butler home.

Mrs. Henry Hines visited her daughters, Mrs. L. D. McCurry, and family in Austin, and Mrs. Charles Adair and family in Houston last week.

Emmett Woodward and family of Abilene, H. D. Lenz and family and David Loran and wife of Brady visited their parents, Mr. and Mrs. A. B. Eaves Sunday.

James Casey and family of Fort Worth and Guy Warden and family of Irving visited their parents, Mr. and Mrs. J. D. Griffin, Sunday.

Mr. and Mrs. L. M. Norris visited in Stephenville Sunday.

The Carbon Wolverines defeated Sidney last Thursday night 26 to 6. The entire team showed improvement on their blocking and running plays. The offense was paced by the running of Marvin Cates and Eddie Frasier, Cates scoring three touchdowns on long runs and Frasier scored his T.D.'s

on a 50 yard run and also added the 2 extra points.

The outstanding blocking was done by Jerry Lasater, Charlie Stephenson, Danny Arnold and James Arnold. The team as a whole has improved considerably over their previous games.

We play Brooksmith there Thursday night, Sept. 22, and Pottsville here Thursday night Sept. 29.

NEWS FROM STAFF

Mr. and Mrs. Bill Munn of Andrews, Mr. and Mrs. Slim Adams of De Leon and Mrs. Zona Griffin were in the vicinity recently.

Mrs. M. A. Abel and her brother and sister-in-law, Mr. and Mrs. Joe Crawford of Abilene left the first of this week to visit relatives in California.

Mrs. Era Slaughter and daughters visited Mrs. Slaughters' sisters and brother-in-laws, Mr. and Mrs. C. L. Henderson and Mr. and Mrs. Floyd Crawley Sunday.

Mrs. Mary Hemphill of Mineral Wells was in this vicinity recently and was guest at the home of Mr. and Mrs. Jim Coop for their Golden Wedding celebration Sept. 10. Mrs. Hemphill will be remembered as Miss Mary Wheeler and formerly lived here.

Mrs. Wayne White, Mrs. O. T. Hazard and Mrs. Earl Williamson visited with Mr. and Mrs. Jeff Woods and Mr. and Mrs. J. T. Horn in Olden Sunday afternoon.

Mr. Smith, Olden was a business visitor in this community Sunday.

Mr. and Mrs. A. E. Crosby and Mrs. O. T. Hazard attended services Sunday night at the Bethel Baptist Church in Eastland.

Rev. Ray Rodgers of Eastland will fill his regular appointment for the last time Sunday. He resigned on the last church day.

Earl Dick of Phoenix, Ariz.,

was in the vicinity recently having stopped over en route back to Arizona after taking their daughter, Sharon, to Waco where she attends Baylor University. He and Mrs. Dick visited relatives in Olden and Eastland also. Understand Mr. Dick did a lot of squirrel hunting and took several frozen ones home with him.

Farmers are beginning to sow fall grain or prepare the land for sowing as it was so very dry before the recent good rain that they were unable to sufficiently prepare the soil.

— READ THE CLASSIFIEDS —

**Insurance
and
Real Estate
D. L. KINNAIRD**

Life - Fire - Auto - Farm
Policy - Bonds
42 years in the Insurance
Business in Eastland

**• FREE •
Estimates On
RE-ROOFING**

Or Repair Your Old Roof.

Residential and
Commercial
**Eastland
Roofing Co.**
Noble Squires
Phone MA 9-2370

FRIDAY

A New World of Worth from Chevrolet for '62!



'62 Impala Sport Coupe—with a roof line that looks like a convertible's

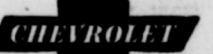
'62 CHEVROLET

Rich new styling with Jet-smooth ride!

Here's everything a car fancier could want. Fresh-minted style that comes to a climax in the sportiest sport coupe you've seen yet. A road-gentling Jet-smooth ride. A new choice of V8 skedaddle. Rich Body by Fisher interiors. Beauty that's specially built to stay beautiful. Here in '62 is more than ever to please you from the make that pleases most people.

It's like owning an expensive car without the expense. Check it over from its clean-thrusting prow to its rakish rear deck. Look inside the deep-well trunk. Then—head for the open highway. That sittin'-on-satin feeling you get in Chevrolet's famous Jet-smooth ride at work—with a pliant Full Coil spring cushioning at each wheel. The standard six and V8 are triggered to do special things on regular gas, and for real hair-trigger reflexes you have a choice of four optional-at-extra-cost V8's with out-

put all the way up to 409 hp. ■ Hard-working helpers (like the new steel front fender underskirts that guard against corrosion) give this '62 its built-for-keeps beauty. Even the heater and defroster come as standard equipment this year. This is the kind of car that will make you feel luxurious all over, and your Chevrolet dealer will be only too happy to show you how easy it is to have one of your own.



Corvair Monza Club Coupe

THE '62 CORVAIR MONZA

Meet the car that puts sport in the driver's seat! Bigger new brakes and Corvair's renowned rear-engine traction offer just about the surest footed going on the road. A new Monza Station Wagon makes its debut. And all models sport freshly tailored upholstery inside matched by easy new styling accents outside.

This jim-dandy's got the stuff that drivers dote on. ■ Backstage you have a standard aluminum air-cooled engine that turns up 80 hp. (or if you like more razzmatazz, one that uncorks 102 hp*). ■ Sure enough, there's independent suspension on all four wheels to keep the ride as amiable as ever. Inside, you'll find a heater and defroster, cigarette lighter, dual sunshades, front-door armrests and automatic choke as standard equipment on most models. ■ There are lots of reasons for liking what's new—and tried and true—in the '62 Corvair. And your dealer's eager to tick 'em off for you.

*Optional at extra cost.



Chevy II 300 2-Door Sedan

HERE'S THE NEW CHEVY II

Here's modern basic transportation in a totally new line of cars with all the solid, time-tested Chevrolet virtues—plus some surprises you've never seen on any car before. A full line of saucy new-size models. Thrifty? Choice of a frugal 4- or spunky 6-cylinder engine (in most models). Roomy? Sedans seat six solid citizens. Price? A real pleasant surprise!

This plucky new Chevy II comes about as close as a car can to perpetual motion. ■ All nine models (station wagons, a hardtop, even a convertible will soon be available in the lineup) are designed to save you money and service. Major front-end sections, including fenders, bolt on for easy replacement in case of damage. The heater and defroster are yours as standard equipment. Tough—but ever-so-gentle—Mono-Plate rear springs eliminate the friction of old-fashioned multi-leaf springs. ■ And, maneuverable and sensibly sized as this Chevy II is, it gives you the kind of room that'll make many a "big" car wonder how it's done.

See the '62 Chevrolets, the new Chevy II's and '62 Corvairs at your local authorized Chevrolet dealer's

FULLEN MOTOR COMPANY INC.

305 E. MAIN

EASTLAND

PHONE MA 9-2876

Call by number. It's faster on foot.

SOUTHWESTERN BELL TELEPHONE COMPANY





**TELEPHONE
TALK**

by Arthur H. Marx, Jr., Manager

TELEPHONE SERVICE NEAR NORMAL AFTER HURRICANE CARLA STRIKES

Hurricane Carla has come and gone, and I know we were all glad to see her go. Even though we were not directly affected here in Eastland, I, like to tell you a little of what she did to telephone service on the Gulf Coast and what Southwestern Bell did about it. It's an interesting and dramatic story.

As Carla faded northward after her terrible blow at the Gulf Coast, she left behind:

- damage totalling \$6 1/2 million to telephone facilities
- 144,000 telephones knocked out along a 500-mile stretch of coastal front and inland points
- miles of telephone lines and poles flattened in a twisted maze of wire and splintered wood
- 15 Southwestern Bell exchanges completely isolated, including Freeport, Bay City, and El Campo, along with 28 other communities

Telephone people were ready for the emergency. Before the winds and rains had subsided, Southwestern Bell had men and equipment rolling to the disaster area to restore crippled telephone service.

An army of 5,400 telephone men from many cities and states was hastily assembled in the Galveston - Corpus Christi-Victoria area. More than 900 came from points in North Texas, Oklahoma, Arkansas, Kansas, and Missouri.

Equipment Flown In

At the same time, the company flew emergency generating equipment for electric power in to the storm area from many places in our five-state territory. From other cities in North Texas, special mobile radio trucks converged on the stricken area to help bridge the gap left by the silenced telephones, relay emergency messages, and maintain contact with the "outside world."

These joined forces with the men, trucks, and other emergency equipment which Southwestern Bell already had sent into the area as a precautionary measure when hurricane warnings were first issued.

Operators From West Texas

While repair crews began the work of restoration, 150 telephone operators from Lubbock, Amarillo, Abilene and other West Texas points were sent to Houston and other storm-hit cities to help handle the tremendous volume of long distance calls... many of them vital messages from police, public health, civil defense, and other agencies.

With skill, determination, and co-ordinated teamwork Southwestern Bell people worked 'round the clock until all circuits were restored and all telephones back in service (where the condition of homes and business permitted). Telephone service in the disaster area is now back to normal. It was a tremendous job, carried out under trying conditions at top speed.

When Hurricane Carla struck, telephone people "came through" 100 per cent in the emergency. Southwestern Bell's "telephone team" of men and women again demonstrated their ability to meet the challenge of the storm in the highest tradition of "The Spirit of Service."

WORKING FOR YOU

Local conditions here were also affected to the extent that your long distance operators in Cisco handled 3,522 more calls than normal from Sunday, September 10th through Saturday, September 16th. Also, to provide faster service, instead of working a normal five day week, we called on every available operator to work six days during the emergency.

TO OUR TEAM . . . WE'RE BEHIND YOU ALL THE WAY

PEANUT BOWL GAME

Saturday Night

8:00 P. M.

Cisco College vs Ranger College



Central Drug

FREE DELIVERY
Dale Trout, Owner

Muirhead Motor Co.

BUICK — PONTIAC — OPAL
Sales and Service Phone MA 9-1731

Altman's

"Smart Women's Wear"
North Side of Square

Texas Lightweight Aggregate Company

Producers of Concrete Aggregates
C. W. Martin Phone MA 9-2060

Jordan's Drive In

Hwy. 80 East Louise and Harry Jordan

Reed Oil Company

13 Major Brands Oil — Quart 35c
501 E. Main Phone MA 9-8890

Eastland National Bank

"On the Square" Member F. D. I. C.

Lovelace Transfer & Storage

Local and Long Distance Moving
Since 1929

R. M. Sneed

General Oil Field Construction
Office Phone MA 9-1756
Res. Phone MA 9-2424

Hill Crest Food Market

When You Run Out — Run In
1401 West Main Phone MA 9-1600

Western Auto Associate Store

J. L. Pittman, Owner
East Side of Square Phone MA 9-2011

SOUTHERN TELEVISION SYSTEMS CORPORATION

Freyschlag Insurance Agency

North Side of Square Phone MA 9-2275

Texas Electric Service Company

F. N. Sayre, Mgr.
Phone MA 9-2651

Condye Barber Shop

Located in Village Hotel

Smitty's Jewelry

East Side of Square
Phone MA 9-1290

Pools Dry Cleaners

"City Wide Delivery"
209 S. Lamar Phone MA 9-2055

Otis Coleman

HUMBLE PRODUCTS
400 East Main Phone MA 9-1741

Koen Salvage

Your Scrap Iron and Metal Dealer
Highway 80 West Phone MA 9-2649

Obie and Doc Humble Service Station

802 West Main Phone MA 9-8866

The Men's Shop

Correct Styles for Men and Boys
James Smith, Owner

City Garage

J. J. Finley, Proprietor
Engine, Starter and Generator Work
103 White St. Phone MA 9-1709

Foremost Dairy Products

Clyde Manning, Mgr.
Eastland Phone MA 9-1701

Alma's Beauty Parlor

311 W. Main Phone MA 9-1060

Hood King Motor Co.

FORD SALES AND SERVICE
On The Square
Phone MA 9-1786

Scott Paint and Body Works

300 W. Commerce Phone MA 9-2372

Graham's Trim Shop

708 W. Main Phone MA 9-2266

White Elephant Cafe

724 W. Main Phone MA 9-8881

Eastland Supply Co.

"Oil Field Supplies"
115 E. Main Box 671 Phone MA 9-1595

Lindley Paint & Body Works

"All Work Guaranteed"
110 S. Bassett Phone MA 9-2240

Miller's Phillips 66 Service Station

513 W. Main Phone MA 9-1644

Smith Plumbing and Tin

114 S. Seaman Phone MA 9-2422

Perkins Implement Co.

116 E. Main Phone MA 9-2666

Eastland Steam Laundry

Home Owned—Phone MA 9-2613
B. W. Lasater, Owner

Jeanette's Shop

Mr. and Mrs. L. D. Harris
West Side of Square

Brown Plumbing Co.

Mr. and Mrs. Truman Brown
214 E. Neblett Phone MA 9-1736

Gregory Milk Distributing Co.

Bordens Dairy Products
Serving Eastland, Stephens, Brown,
Comanche and Coleman Counties
Phone MA 9-1100 Eastland

Eastland Auction Company

Hwy. 80 East Phone MA 9-1100

Modern Dry Cleaners

Approved Sanitone Service
210 S. Seaman MA 9-1100

Standlee McCracken Consignee Mobil Oil Co.

Poe Floral

"When It's Flowers—Say It With Our"
609 W. Main Phone 9-1100

Roy's Repair Service

Roy and Stella Gann
205 S. Lamar Phone MA 9-1100

MAVERICK 1961 SCHEDULE

Sept. 1—Comanche 21, Mavs 0
Sept. 8—Cisco 41 Mavs. 0
Sept. 15—Ranger 14 Mavs. 0
Sept. 22—Dublin, 52 Mavs 0
Sept. 29—Open
Oct. 6—De Leon Here

Oct. 13—Early* There
Oct. 20—Albany* There
Oct. 27—Cross Plains* Here
Nov. 3—Santa Anna* There
Nov. 10—Clyde* Here

*Conference Games—Begin at
7:30 p.m.

Eastland Chamber of Commerce

Eastland
Iron & Metal Co.
Henry, Tillie and Saul Pullman

Barton Oil Co.
(Reseller)
Humble Products

MAVERICK ROSTER

No.	Name	Pos.	Wt.
10	Mike Graham	B	140
12	Tommy Beck	B	150
20	Gary Graham	B	160
24	J. D. Ables	B	135
25	Jody Cooper	B	145
42	Buddy Moser	B	160
40	Manuel Herrera	B	130
50	Mike Jones	C	145
52	Bob Cartwright	C	200
65	Gayle Chaney	G	160
67	Bob O'Steen	T	195

69	Dickie Byars	G	155
70	Jimmie Moylan	T	185
80	Clark Conner	E	145
82	Johnny Shoemaker	E	130
86	Lupe Fuentez	E	135
84	Larry Howle	E	155

Coaches: Jimmy Hughes, Howard
Payne; Bennett Ragsdale, Texas
A & M; Joe Ingram, Baylor.
Managers: Mike Perry, Joe Mor-
ris, Mike Lewis and Woody Shaw.

Give You Texas

...was, perhaps, the last of the orators in the grand hall and handsome, with the toga could have been appropriate for him. In an impressive manner, his form of utterance, his were long, his diction

SINGER

Service - Rentals and Repairs
L. MORTON
Main 9-2084

FOOTEN'S

WEIGH PRODUCTS
East ablin
Service - We fix wash and grease.

Business Appreciated
JUST CALL
Main 9-2066

Me For Your

Real Estate
Needs

Build To Suit You

TREADWELL, SR.
Main 9-2017

HAMNER FUNERAL HOME

Ben E. Hamner, Owner

Serving Eastland County since 1924 with balance and funeral service. Our ambulances are equipped and air conditioned.

Through our nation-wide connections with other funeral directors, we can handle a funeral from any part of America. We offer this service knowing that we can relieve the family of all burdens incident to death away from home.

Eastland Dial MA 9-2611

Dining at ITS BEST

OPENING THIS WEEKEND

IN TIME FOR THE PEANUT BOWL

COMPLETELY REMODELED

HOME-MADE PASTERIES
SEA FOODS --- STEAKS
MEXICAN DINNERS

Family Dinners

tempting food, served in a pleasant, modern atmosphere, at a reasonable price. Up to "Eating-Out" enjoyment — and what's going to be the Order of the Day "Casey's."

Casey's will be a complete restaurant where you can drop by "for a cup" with friends at mid-morning, have an economical lunch at noon, (not far from your place of work), and dinner with your family in the evening. And everytime you come in you'll receive a friendly welcome and the best in food.

Downtowner's SPECIAL: 75¢ Lunch

Casey's Fine Foods

"South Side Of Square—Formerly Majestic Cafe"

The Medal of Honor...

Ask not what your country can do for you; ask what you can do for your country.
Pres. John F. Kennedy

ABOVE AND BEYOND

Master Sergeant Cleo L. Rodriguez, U. S. Army
Training Center, Caribbean, Fort Buchanan, Puerto Rico.

Date and place of action: February 9, 1945, Manila, Philippine Islands, Pacific Theater of Operations, World War II.



C. L. Rodriguez
1954

MSgt Rodriguez received the nation's highest military decoration for distinguishing himself by conspicuous gallantry in action in the Pacific Theater of Operations during World War II.

Rodriguez, then a private first class, was an automatic rifleman with Company B, 148th Infantry Regiment. On February 9, 1945, when his platoon was attacking the strongly defended PACO Railroad Station during the battle for Manila, they were blocked 100 yards from the station by intense fire from 300 enemy soldiers.

On his own initiative, Rodriguez and a comrade continued forward to a house 60 yards from the objective. Although under constant enemy fire and observation, the two men remained in this position for an hour, firing at targets of opportunity... killing more than 30 enemy soldiers and wounding many more.

Moving closer to the station they discovered a group of enemy replacements attempting to reach the pillboxes; they opened fire killing more than 40 of the enemy.

Enemy fire became more intense as Rodriguez and his companion advanced to within 20 yards of the station. Covered by his companion, Rodriguez boldly moved up to the building, threw grenades through a doorway, killing seven of the enemy and destroying a 20mm gun and a heavy machine gun.

With their ammunition running low, the two men started to return to the American lines, alternately providing covering fire for each other's withdrawal.

During this movement, Rodriguez's companion was killed. In two and a half hours of fierce fighting the intrepid team had killed 82 enemy personnel and had completely disorganized their defense. This action paved the way for the subsequent overwhelming defeat of the enemy at this strong point.

Rodriguez's companion during this action was Pfc. John N. Reese, Jr., Oklahoma, who was posthumously awarded the Medal of Honor for this same action.

Two days after the PACO Station action, Rodriguez again enabled his comrades to advance when he singlehandedly killed six of the enemy and destroyed a well-emplaced 20mm gun.

At a later date in Manila, during the same campaign, Rodriguez knocked out a 40mm gun, killed 18 of the enemy and captured a mint building. At the time, Rodriguez commented, he did not know what was in the building, thinking they were just sand bags, when actually they were bags full of Japanese money. For this action, Rodriguez was awarded the Silver Star, the Army's third highest award for gallantry in action.

Besides the Medal of Honor and the Silver Star, Rodriguez holds two Bronze Star Medals for valor, six Purple Hearts and the Combat Infantryman's Badge.

Born in San Marcos, Tex., Rodriguez joined the Army in 1943. Army News Service Feature By SPS James E. Huff

charge of the tour bawled me out for making such a suggestion. (It so happened too that the incumbent had named a relative of his as a postmaster.)

His violent reaction so antagonized me—plus the desire to try to help my friend—that I arranged for a photo of Judge Garrett being pushed in one of the picturesque little sight-seeing carts by another county judge; also the suggestion was made that, when the vice president entered the gate, Judge Garrett be in the

crowd and join in the applause. Then next day the papers carried the picture and said that Judge Garrett was on hand to "join in welcoming" Garner.

Clyde Garrett was in Eastland County when oil was discovered and he made a fortune which was swept away when the boom collapsed. But he did not let the experience banish his smile or yankish his spirit but went on to a career of distinguished public service. He was capable and conscientious—a genial gentleman.



Joe, the ice cream man, was in the habit of driving his daily decorated wagon down the street with bells ringing and flags flying, to attract children. When the children would come to buy his ice cream, Joe would stop on the spot to accommodate them.

One day Joe attracted a large group of children and stopped to sell his ice cream. He stopped his wagon several feet from the curb, and the children were standing in the street beside it, buying ice cream bars. Just as Sally started back to the curb with her ice cream bar, a speeding car veered to miss Joe's cart and struck her.

Sally's parents sued both the driver of the car and Joe for the injuries Sally had received. Could Joe be held liable?

Some courts have held that liability for damages suffered by a child as the result of his or her responses to such an attraction may be imposed, even though the actual injury was inflicted by another automobile using the street. The reason for such a decision is that people selling or delivering goods on a public highway could reasonably expect that children would be attracted to a vehicle, especially one as gaily decorated as Joe's wagon. These courts have reasoned that the danger inherent in thus attracting children to the street should be foreseen and guarded against by the person creating the attraction.

Joe had not properly parked his wagon. He had stopped several feet from the curb, causing the children to step into the street to buy his ice cream, which they did with little or no thought of the danger.

Joe should obey the traffic laws the same as everyone else, particularly since his customers sometimes forget.

(This newsfeature, prepared by the State Bar of Texas, is written to inform—not to advise. No person should ever apply or interpret any law without the aid of an attorney who is fully advised concerning the facts involved, because a slight variance in facts may change the application of the law.)

Vegetable Consumption On Increase

Americans today eat more vegetables on the average, per person, than their grandparents did 50 years ago, according to a report issued recently by the U. S. Dept. of Agriculture.

But the report indicates there has been a shift in consumption away from fresh vegetables.

This decrease in the use of fresh vegetables has been offset by marked increases in consumption of processed vegetables during recent years, the report shows.

Vegetable consumption per capita is about 15 percent greater today than it was 50 years ago.

City householders are larger consumers of vegetables than are rural dwellers, but the difference is narrowing as commercial supplies become more widely available in rural areas. High income groups are larger consumers of vegetables than are those with lower incomes.

Per capita consumption of potatoes, sweet potatoes, and dry beans and peas is much less today than it was 50 years ago. However, increased use of potatoes in various processed forms has halted the decline of consumption of this product, and the processing of sweet potato items has slowed a downward trend in their use.

Looking ahead, it appears likely that per capita use of ve-

table and potatoes may not change much during the next 10 years, though further shifts to processed forms are indicated.

LACASA LINES

Mr. and Mrs. Joe Jackson and children, Shirley and Robert Joe attended the professional football game at Dallas between the Dallas Cowboys and Pittsburgh Steelers, last Sunday.

Mrs. Cordia Lambert is visiting her brother, George Glascock and wife at Crescent, Texas.

Mr. and Mrs. Charles Raney returned to Topeka, Kansas, Saturday.

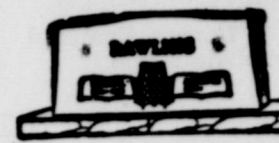
Mr. and Mrs. Fat Herrington and Larry and her father, Jim McNabb went to Altus, Oklahoma for a family reunion of Mr. McNabb's family, Friday. The reunion was held Saturday at the home of another daughter, Mrs. Edna Keeton. Others attending were his sons, Skinny McNabb of Clovis, New Mexico, Herman, and Herschel McNabb of Quanah and their families. The Herringtons returned home Sunday.

Mrs. Clark McNabb is ill at the home of her daughter, Mrs. C. T. Bott at Ranger.

—Read The Classifieds—

KELLER'S FIX-IT SHOP

Eastland, Texas
MOTOR REWINDING
No Motor too Small or too Large.



SINCE 1884

... quality workmanship and efficient service, approved throughout this area.

ALEX RAWLINS & SONS

Weatherford Phone LY 4-2726 Texas
Designers and Builders of Monuments Since 1884

Southern Television Systems Corp. Village Hotel



CALL US
and we will
WIRE YOU

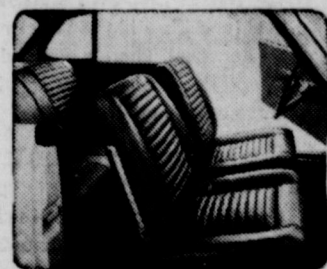
Watch Your Favorite TV Program
• Comedy • Western
• Sports • Drama

Phone MA 9-1716

Today, see the new

VALIANT

for '62... featuring the exciting new Signet 200



STYLE LEADER OF THE COMPACTS

Above and right: the Valiant Signet 200 displays its distinctive different grille, exterior trim and handsome identifying medallion.

At left: here is the stunning new interior trim offered you as standard equipment in a Valiant Signet 200.



America's lowest-priced hardtop with bucket seats!

Look at this sports-minded Signet 200—just introduced! Inside, king-size bucket seats. Custom-tailored interior trim. The Valiant Signet 200 clearly says: now it's enjoyable to be economical!

Proof? Plenty! Start with styling. Valiant has an attractively pleasing new-car personality all its own. Here's a distinctively different automotive design originated by Valiant for Valiant!

Improved torsion-bar suspension, new-design tires give Valiant limousine-like roadability—yet the Valiant keeps all the cornering control and finger-tip handling ease of the carefree compact it is.

Valiant is priced up to several hundred dollars less than many other compacts. Figure, in addition to low price, lower insurance rates,

half-as-often oil change, 32,000-mile lube cycle on major chassis points—plus Valiant's high resale value—and you see why many full-size car owners switch to Valiant.

So do yourself the favor of finding out what a great buy Valiant is. Your Plymouth-Valiant dealer will welcome you. See the style leader of the compacts!

Nobody beats VALIANT for value!

QUALITY-ENGINEERED BY CHRYSLER CORPORATION



—Local and Long Distance Moving Since 1929—

Hamner Life Insurance Company

Ben E. Hamner, President

This company has been in operation in this section since 1942 selling policies to be used primarily for burial purposes. We write from \$100 to \$600 and our policies are paid in cash, which allows freedom in the selection of the Funeral Director of your choice.

Ages from 1 month to 90 years.
For further information come by to see us at
Hamner Funeral Home, 301 S. Lamar, Eastland
P. O. Box 431 Dial MAin 9-2611

EARL BENDER & COMPANY

INSURANCE

Serving Eastland Since 1924

REPRESENTING ONLY OLD LINE CAPITAL STOCK COMPANIES

Pat Miller, Manager

Eastland,

Texas



CHURCH OF THE NAZARENE

Clarence Manners, Pastor
West Main at Connellee

SUNDAY
10 a.m.: Sunday School
11 a.m.: Morning Worship
7:30 p.m.: N.Y.P.S.

MONDAY
7:30 p.m.: Teen-age Bible Study

WEDNESDAY
7:30 p.m.: Prayer service

FRIDAY
12 Noon: Prayer and Fasting.
The Church of "Shining Lights" on Sunday Nights.

CHRISTIAN SCIENCE

Sunday

9:45 a.m.: Sunday School.
11 a.m.: Sunday morning service.

Wednesday

8 a.m.: Mid-week Service
The public is cordially invited.

FIRST PRESBYTERIAN CHURCH

Walnut and Valley Streets
Rev. Eugene H. Surface, Minister

SUNDAY
10 a.m.: Church School
11 a.m.: Divine Worship.

TUESDAY
9:30 a.m.: The Meeting of the Women's Association of the Church.

BETHEL BAPTIST CHURCH

Rev. Jimmy Roberts, Pastor

SUNDAY
9:45 a.m.: Sunday School
11 a.m.: Morning worship
6:30 p.m.: Training Union
7:30 p.m.: Evening Worship

TUESDAY
3:30 p.m.: WMU, Sunbeams and Junior G.A.'s

WEDNESDAY
6:15 p.m.: Primary teachers and officers meet

7:30 p.m.: Midweek prayer
8:15 p.m.: Choir practice

THURSDAY
8 p.m.: Intermediate G.A.'s

JEHOVAH'S WITNESSES

Curtis Boase
204 N. Dixie St.

SUNDAY
3 p.m.: Watchtower Bible Study

WEDNESDAY
8 p.m.: Mid-week Bible study

FRIDAY
7:30 p.m.: Service meeting

8:30 p.m.: Theocratic Ministry school

FIRST METHODIST CHURCH

215 S. Mulberry
Wm. S. Fisher, Pastor

SUNDAY

9:45 a.m.: Church School

10:55 p.m.: Worship Service

6:15 p.m.: Youth Fellowship

7 p.m.: Evening Worship

TUESDAY

9:30 a.m.: W.S.C.S.

WEDNESDAY

7:30 p.m.: Choir rehearsal

Wesleyan Guild every 1st & 3rd Wednesdays

Official Board Monday after 1st Tuesday

Five Commissions — every 1st Monday

FIRST BAPTIST CHURCH

Rev. Haston Brewer, Pastor

Plummer & Lamar Sts.

SUNDAY

9:45 a.m.: Sunday School

11 a.m.: Morning Worship

6:45 p.m.: Training Union

8 p.m.: Evening Service

TUESDAY

9:30 a.m. & 1 p.m.: WMU

Mission Study and Luncheon

WEDNESDAY

6:45 p.m.: Sunbeam Band

Royal Ambassadors

Girl's Auxiliaries

S.S. Superintendents

7 p.m.: Teacher's Meeting

7:45 p.m.: Prayer Meeting

8:30 p.m.: Church Choir

BETHEL BAPTIST CHURCH

Rev. Jimmy Roberts, Pastor

SUNDAY

9:45 a.m.: Sunday School

11 a.m.: Morning worship

6:30 p.m.: Training Union

7:30 p.m.: Evening Worship

WEDNESDAY

6:15 p.m.: Primary teachers and officers meet

7:30 p.m.: Midweek prayer

8:30 p.m.: Choir practice

THURSDAY

7:30: Covered dish supper

Desdemona News

Get Acquainted Party Held by Community

A "get acquainted" party was held at the high school Friday night Sept. 15th at 8 p.m. with people of the community attending.

The teachers were introduced to the audience, the school board, bus drivers and cooks were also introduced.

Freshmen of Desdemona High were acknowledged and initiated. Ladies of the community donated cakes and pies to be auctioned. Thanks to Buddie Stacy watermelons were also auctioned. Proceeds from the auction are to help buy new basket ball suits.

The credit for the success of the party will be handed to the comedian and auctioneer, Don Estes, who rightfully deserves our special thanks.

Mr. and Mrs. Morgan Roberts are building a new house and they expect to be ready to "move in" by Oct. 1st.

Mrs. Bona Abernathy has completed a room on the west side of Mr. and Mrs. J. J. Sparkman's house and now occupies the same. Mrs. Abernathy sold her house place to Ometa Lewis and the tile house to Mr. and Mrs. John (Bill) Allen. The Allens will move to their new place as soon as the Morgan Roberts get moved to their new home.

Mrs. Lovel Johnson and son of Amarillo were here on the weekend visiting her parents, Mr. and Mrs. Anse Brown.

Mr. and Mrs. Atlas Griffith of Baird spent the weekend here with his parents, Mr. and Mrs. Jess Griffith. Mrs. Griffith returned home with them for a two weeks visit.

Mr. and Mrs. Mabrey Greenhaw left Sunday for their home in Petersburg after spending several days here with relatives.

Mr. and Mrs. Ott Ragland and a sister, Mrs. Mary Herald spent part of last week in Oklahoma and Mrs. Harrell remained for an extended visit.

Mrs. Bobbie Jean Hanna and daughters Marsha and Julia of Eastland spent Sunday with her parents, the Horace Lanes.

Miss Rainey Honored with Party
Miss Joyce Rainey was honored on her 16th birthday with a party in the home of her sister, Mrs. David Lewis.

Beautiful Park surrounds spacious home for the chronically ill. Large recreation room, clean live dining hall, 24 hr. care. State and National bership. Call Hillcrest, Cisco, Texas.

FOR SALE
Lots On Lake Lee

Choice lots in vicinity. Not leased—But desirable.

J. F. CONNELL
Route 2
MA 9-1931

MATTRESSES

Save up to 50% renovating choice of color and firmness. Complete bedding. Made and guaranteed by WESTERN MATTRESS CO., San Angelo. Phone MA 9-2689, Eastland and leave address.

See Us For

FURNITURE • APPLIANCE

CARPETS

Every Day Low Prices Means Savings For You
No carrying charges on furniture for 1 full year

FREE DELIVERY

Ranger Furniture Exchange

"BRASHIER'S"

123 N. Rusk

Ranger

Phone MI 7-1

REPAIR

REPAINT

MODERNIZE ..



you save when you buy quality building materials

NO DOWN PAYMENT
UP TO 60 MONTHS TO PAY

Higginbotham-Bartlett

Company

Jack Elliott, Mgr.

301 W. Main — Phone MA 9-1311

SEE THE WORLD SERIES IN

RCA VICTOR COLOR

Color Day Oct. 4, 9 a.m. To 12

The FARREL Deluxe Series 213-7-75-M 20" sq. in. picture

The Most Trusted Name in Color Television
First in compatible color

Better than ever with RCA's new High Fidelity Color Tube!
as little as

EASY PAYMENTS

Up to 30% Brighter Picture
Easier color-keyed tuning
Unsurpassed performance from many hard-to-get stations with the "New Vista" Tuner

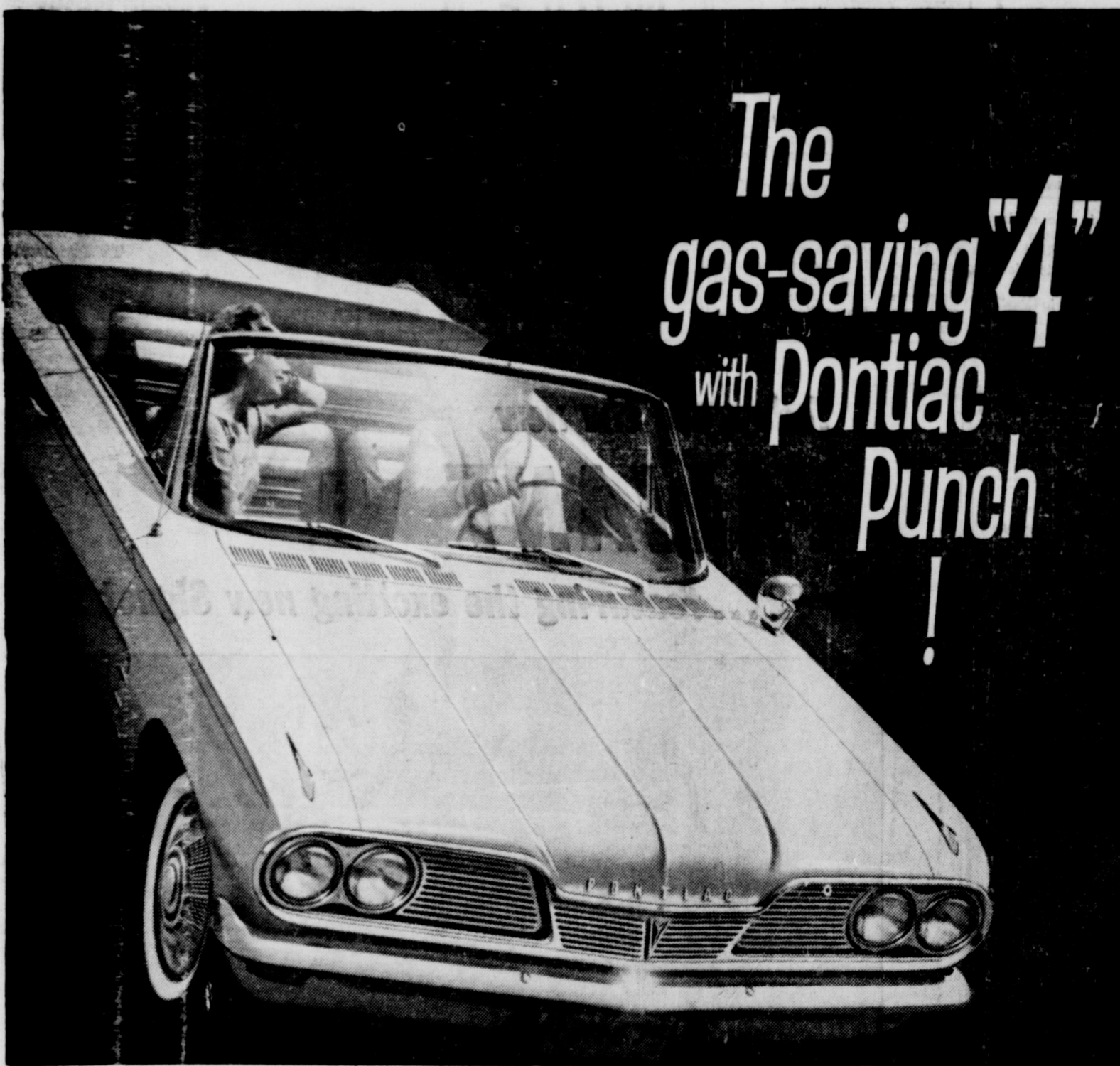
COME IN—YOU HAVE TO SEE FOR YOURSELF!

ROBERTSON TV

SALES & SERVICE

South Side of Square

Ph. MA 9-1



The gas-saving "4" with Pontiac Punch!

PONTIAC TRIGGERS ANOTHER TEAM OF WINNERS. Every one is a fancy mover. Convertible. Sedan. Wagon. Two Coupes. Choice of 110, 115, 120 or 140 h.p., gas-saving 4-cylinder engine. A couple of extra cost options: Put on a 4-barrel carb and get 166 h.p. The citizen who wants even more can go for an aluminum V-8 option that pulls 185 horses.

TEMPEST HAS A FRONT ENGINE/REAR TRANSMISSION! (The only American car with this feature.) It gives Tempest equal weight at every wheel. It has biting traction on the bricks or in the mud. Tires last longer. Brakes take hold like they mean it. The front floor is practically flat (no big hump in the middle). Tempest seats six—easily!

Drive America's only front engine/rear transmission car... it's balanced like none of the others!

TEMPEST HAS INDEPENDENT SUSPENSION—FRONT AND REAR! Each wheel (and it's a big 15" one) moves up and down independently of the opposite wheel. There's no solid axle in the rear. Result: Firm ride on pavement, soft ride in the bouncelocks! Swing axles in the rear help the Tempest to carve out clean, firm curves.

PLUSH NEW SERIES—THE LE MANS (LUH-MAHNZ). The Tempest Convertible and Coupe are out this year in special custom trim. Call them the Le Mans! They both have sports-type bucket seats, full carpeting, floor mounted stick shift, acceleration rear axle option—no extra cost. Extra cost option: 4-speed gearbox. Take one out—it's a going machine!

TODAY! '62 TEMPEST

PONTIAC'S NEW TEMPEST IS ON DISPLAY TODAY AT YOUR LOCAL AUTHORIZED PONTIAC DEALERSHIP.

MUIRHEAD MOTOR CO.

305 E. MAIN

PONTIAC SALES & SERVICE

EASTLAND

SEE THE VICTOR BORGE SHOW ON CBS-TV • SEPTEMBER 27