

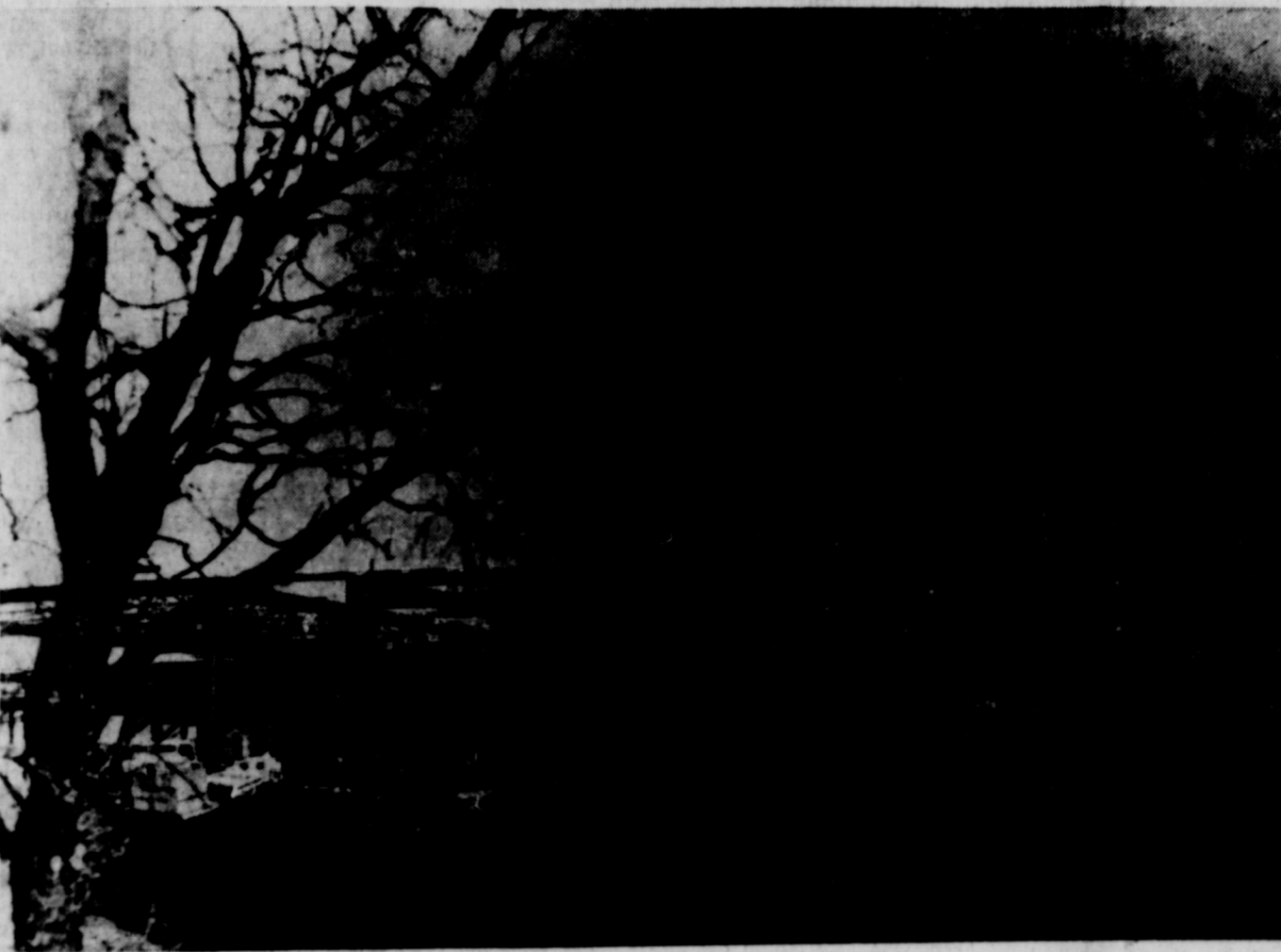


THE NEW CAR CAPITAL

EASTLAND, TEXAS, SUNDAY, JANUARY 26, 1964

PRICE 10c

SCHOOLHOUSE IN THE MAKING . . .



'ON SCHEDULE' — That's the word on construction of Eastland's new elementary class-room building on the south side of town. General Superintendent for Contractors Kinnard and Beck is Johnny Merrell. Representing Architects Boone and Pope is Mr. Green. Other associate contractors are on the job too, including Bond Electric and Murrell Johnson Steel Co. Only a few days have been missed due to bad weather and the projects is expected to be finished by August, and contain 16 classrooms, a cafeteria (combination lunch room and auditorium) and administrative offices. Work is moving fast too on the gymnasium, being built on the West Ward grounds. The new elementary building will be used in place of the two present elementary buildings. (Staff Photo)

Sheriff's Race Biggest Test As Filing Deadline Approaches

Eastland County political contests are few as deadline nears for filing. Office seekers have but one week, until Monday, Feb. 3rd, to toss their hats into races. The county sheriff's race appears to be the most hotly contested thus far with four announced candidates, and Incumbent Lee Horn still silent as to his plans.

The County Commissioner, post of Precinct One (Eastland and Ranger) has drawn three including Incumbent J. B. (Tip) Arther. Announced for sheriff are

J. B. Williams, J. J. (Jake) Honea, Ray Sue, and R. A. (Bob) Patterson.

Seeking the commissioner office are E. W. (Bud) Griffin, O. R. (Ott) Ervin and Arther.

Edgar Altom is unopposed thus far for County Tax Assessor-collector.

EASTLAND UPSETS CLYDE 65-64 FOR DISTRICT TIE

The Eastland Mavericks withstood a desperate fourth-quarter rally by the CLYDE bulldogs here Friday night in a District 10A battle which eliminated the loser from a tie for the loop leadership.

Eastland managed to post a narrow 65-64 win despite the 24 points gained by Clyde in

the final eight minutes of play. Eastland is now tied with Ranger atop the six-member league with 4-1 record.

The score was tied three times before Clyde finally managed to pull ahead for the first time when Kenneth Rogers hit a free throw to make the score 8-7.

The Mavericks moved the ball down the court and 15 seconds later regained the lead on a lay-up by Mike Miller. Then the Mavericks began to pull away from its visitors, leading 17-10 by the end of the first quarter.

Terry Treadwell hit a basket to open the second period as Eastland scored its ninth straight point while holding Clyde scoreless. Eastland finished the first half with a 34-29 lead.

The Mavericks continued to widen the margin between the two district foes during a "freezing" cold Clyde third period when Eastland scored 24 points to 13 for Clyde. Eastland's largest margin of points was 15, which it first reached with 4:03 left in the third chapter when Treadwell scored a layup to make the score 50-35. At the end of the third period the score was 60-45.

But, Clyde came back to finish strong and scored 12 points during the first half of the final quarter while limiting Eastland to only two.

Clyde continued to rip the nets as they narrowed the gap to one point, 65-64, with 21 seconds left on a jump shot by Howe.

Eastland got a chance to ice the game away with eight seconds to go when Haden Wilson stepped to the free throw lane for a one-and-one. He missed the first shot and Clyde took the rebound, but failed to get the ball down court before the clock ran out.

Treadwell finished the night with 30 points, Mike Miller, 13, Jim Moylan 8, Stanley Underwood 8, and Jimmy Wright and Hayden Wilson with 2 each.

Eastland boys also won the B game, 38-37, with Jim Herdridge high with 9 and Homer Terry 8.

The Eastland girls team lost their contest, 52-36. Carolyn Key scored 16 points, Marsha Treadwell 10, Janie Harris 8 and Mary Clark 2.

The first Democratic primary is Saturday, May 2nd, with the run-off date set for June 6th.

Eastland Constable Porter Woods is challenged for his office by Allen Squyres.

As yet there are no opponents for the district judge and district-county attorney offices.

New election laws now permit absentee voters to make application ahead of time, and beginning March 3rd, these requests will be accepted by the county clerk's office. Absentee voting by personal appearance or by mail at the county courthouse will be from April 12 through the 28th, or the first primary.

Only five days remain in which to secure poll taxes — still a requisite for Texas voting. Deadline is midnight Friday.

The County convention will meet on Saturday, May 9th, to elect delegates to the state convention. Hour and place to be determined by the county executive committee when it meets on March 16th to draw for ballot positions and other business.

The commissioners court will appoint election judges during the February term.

There are 13 voting precincts in the county:

Eastland, Ranger, Olden, Gorman (includes Staff), Carbon, Desdemona (includes Alameda), Kokomo, Rising Star (includes Cook, Long Branch, and Romney), Okra, Pioneer, Nimrod (Sabana), Cisco (Dothan, and Pleasant Hill) and Scranton.

Conservation Is Lions Fare; Bulb Sale Planned

There are presently 33 county projects under contract and 87 applications for contracts under the Great Plains Soil Conservation program, E. E. McAllister, office manager of the Eastland Soil Conservation Service, told the Eastland Lions Club Tuesday.

In describing the work being done for conservation of the precious soil and water, Mr. McAllister pointed out that several practices are now being utilized in this county under the Great Plains program. These include pasture planting, range seeding, brush control, fencing (not border fences), diversion terraces, pine lines, filed terraces, and others.

Wendell Siebert was program chairman, and introduced the conservation specialist, who explained that his office is responsible for administration of the program which allows from three to 10 tens of planned conservation improvements.

"It's a voluntary program," he said, "and its purpose is to minimize the erratic climatic conditions which prevail in the Great Plains States." Conservation is very important when one stops to realize that today only about six per cent of the population is actively engaged in stewardship of the soil. With the 1960 population reporting 178 million people, the prospects are that by 2010, this country's population will be 270 million, he said. "We all need to be concerned with conservation."

President Marcus O'Dell presided, and during a board of directors meeting following the regular noon luncheon, it was decided to conduct a light bulb sale in the near future to raise money to be used in the forthcoming glaucoma clinic, which is being planned.

Bill Waters was named chairman of the bulb sale and further announcements will be made later concerning this project.

But, Clyde came back to finish strong and scored 12 points during the first half of the final quarter while limiting Eastland to only two.

Clyde continued to rip the nets as they narrowed the gap to one point, 65-64, with 21 seconds left on a jump shot by Howe.

Eastland got a chance to ice the game away with eight seconds to go when Haden Wilson stepped to the free throw lane for a one-and-one. He missed the first shot and Clyde took the rebound, but failed to get the ball down court before the clock ran out.

Treadwell finished the night with 30 points, Mike Miller, 13, Jim Moylan 8, Stanley Underwood 8, and Jimmy Wright and Hayden Wilson with 2 each.

Eastland boys also won the B game, 38-37, with Jim Herdridge high with 9 and Homer Terry 8.

The Eastland girls team lost their contest, 52-36. Carolyn Key scored 16 points, Marsha Treadwell 10, Janie Harris 8 and Mary Clark 2.

The county convention will meet on Saturday, May 9th, to elect delegates to the state convention. Hour and place to be determined by the county executive committee when it meets on March 16th to draw for ballot positions and other business.

The commissioners court will appoint election judges during the February term.

There are 13 voting precincts in the county:

Eastland, Ranger, Olden, Gorman (includes Staff), Carbon, Desdemona (includes Alameda), Kokomo, Rising Star (includes Cook, Long Branch, and Romney), Okra, Pioneer, Nimrod (Sabana), Cisco (Dothan, and Pleasant Hill) and Scranton.

Demo Chairman Urges Payment 1964 Poll Taxes

"This year's poll tax payment really gives the voter a lot of action for his \$1.75," A. E. Crawley of Ranger, chairman of the Eastland County Democratic executive committee, declared Wednesday.

Over Eastland County, he pointed out, there'll be numerous municipal elections, school trustee ballotings, junior college board referendums and possibly special elections during the remainder of 1964, in addition to the two Democratic primaries — on May 2 and June 6 — and the general election on November 2.

"Eastland County citizens should not fail to pay their poll taxes and to participate in all elections — local state and national," the Democratic chairman urged. "Every citizen should assume this democratic responsibility and should be qualified — through payment of the poll tax on or before Jan. 31 — to exercise constitutional right to vote."

Final deadline for payment, he reminded, is only five days away.

The county leader also asserted that the Democratic Party in Eastland County and over Texas — as well as nationally — is now united, drawn closer together since the tragic assassination of the late President John F. Kennedy and elevation of a Texan, Lyndon Baines Johnson, as the nation's chief executive.

In proportion to its size, the whale eats the smallest animals, few larger than a shrimp.

Demo Chairman Urges Payment 1964 Poll Taxes

"This year's poll tax payment really gives the voter a lot of action for his \$1.75," A. E. Crawley of Ranger, chairman of the Eastland County Democratic executive committee, declared Wednesday.

Over Eastland County, he pointed out, there'll be numerous municipal elections, school trustee ballotings, junior college board referendums and possibly special elections during the remainder of 1964, in addition to the two Democratic primaries — on May 2 and June 6 — and the general election on November 2.

"Eastland County citizens should not fail to pay their poll taxes and to participate in all elections — local state and national," the Democratic chairman urged. "Every citizen should assume this democratic responsibility and should be qualified — through payment of the poll tax on or before Jan. 31 — to exercise constitutional right to vote."

Final deadline for payment, he reminded, is only five days away.

The county leader also asserted that the Democratic Party in Eastland County and over Texas — as well as nationally — is now united, drawn closer together since the tragic assassination of the late President John F. Kennedy and elevation of a Texan, Lyndon Baines Johnson, as the nation's chief executive.

In proportion to its size, the whale eats the smallest animals, few larger than a shrimp.

"This year's poll tax payment really gives the voter a lot of action for his \$1.75," A. E. Crawley of Ranger, chairman of the Eastland County Democratic executive committee, declared Wednesday.

Over Eastland County, he pointed out, there'll be numerous municipal elections, school trustee ballotings, junior college board referendums and possibly special elections during the remainder of 1964, in addition to the two Democratic primaries — on May 2 and June 6 — and the general election on November 2.

"Eastland County citizens should not fail to pay their poll taxes and to participate in all elections — local state and national," the Democratic chairman urged. "Every citizen should assume this democratic responsibility and should be qualified — through payment of the poll tax on or before Jan. 31 — to exercise constitutional right to vote."

Final deadline for payment, he reminded, is only five days away.

The county leader also asserted that the Democratic Party in Eastland County and over Texas — as well as nationally — is now united, drawn closer together since the tragic assassination of the late President John F. Kennedy and elevation of a Texan, Lyndon Baines Johnson, as the nation's chief executive.

In proportion to its size, the whale eats the smallest animals, few larger than a shrimp.

"This year's poll tax payment really gives the voter a lot of action for his \$1.75," A. E. Crawley of Ranger, chairman of the Eastland County Democratic executive committee, declared Wednesday.

Over Eastland County, he pointed out, there'll be numerous municipal elections, school trustee ballotings, junior college board referendums and possibly special elections during the remainder of 1964, in addition to the two Democratic primaries — on May 2 and June 6 — and the general election on November 2.

"Eastland County citizens should not fail to pay their poll taxes and to participate in all elections — local state and national," the Democratic chairman urged. "Every citizen should assume this democratic responsibility and should be qualified — through payment of the poll tax on or before Jan. 31 — to exercise constitutional right to vote."

Final deadline for payment, he reminded, is only five days away.

The county leader also asserted that the Democratic Party in Eastland County and over Texas — as well as nationally — is now united, drawn closer together since the tragic assassination of the late President John F. Kennedy and elevation of a Texan, Lyndon Baines Johnson, as the nation's chief executive.

In proportion to its size, the whale eats the smallest animals, few larger than a shrimp.

"This year's poll tax payment really gives the voter a lot of action for his \$1.75," A. E. Crawley of Ranger, chairman of the Eastland County Democratic executive committee, declared Wednesday.

Over Eastland County, he pointed out, there'll be numerous municipal elections, school trustee ballotings, junior college board referendums and possibly special elections during the remainder of 1964, in addition to the two Democratic primaries — on May 2 and June 6 — and the general election on November 2.

"Eastland County citizens should not fail to pay their poll taxes and to participate in all elections — local state and national," the Democratic chairman urged. "Every citizen should assume this democratic responsibility and should be qualified — through payment of the poll tax on or before Jan. 31 — to exercise constitutional right to vote."

Final deadline for payment, he reminded, is only five days away.

The county leader also asserted that the Democratic Party in Eastland County and over Texas — as well as nationally — is now united, drawn closer together since the tragic assassination of the late President John F. Kennedy and elevation of a Texan, Lyndon Baines Johnson, as the nation's chief executive.

In proportion to its size, the whale eats the smallest animals, few larger than a shrimp.

"This year's poll tax payment really gives the voter a lot of action for his \$1.75," A. E. Crawley of Ranger, chairman of the Eastland County Democratic executive committee, declared Wednesday.

Over Eastland County, he pointed out, there'll be numerous municipal elections, school trustee ballotings, junior college board referendums and possibly special elections during the remainder of 1964, in addition to the two Democratic primaries — on May 2 and June 6 — and the general election on November 2.

"Eastland County citizens should not fail to pay their poll taxes and to participate in all elections — local state and national," the Democratic chairman urged. "Every citizen should assume this democratic responsibility and should be qualified — through payment of the poll tax on or before Jan. 31 — to exercise constitutional right to vote."

Final deadline for payment, he reminded, is only five days away.

The county leader also asserted that the Democratic Party in Eastland County and over Texas — as well as nationally — is now united, drawn closer together since the tragic assassination of the late President John F. Kennedy and elevation of a Texan, Lyndon Baines Johnson, as the nation's chief executive.

In proportion to its size, the whale eats the smallest animals, few larger than a shrimp.

"This year's poll tax payment really gives the voter a lot of action for his \$1.75," A. E. Crawley of Ranger, chairman of the Eastland County Democratic executive committee, declared Wednesday.

Over Eastland County, he pointed out, there'll be numerous municipal elections, school trustee ballotings, junior college board referendums and possibly special elections during the remainder of 1964, in addition to the two Democratic primaries — on May 2 and June 6 — and the general election on November 2.

"Eastland County citizens should not fail to pay their poll taxes and to participate in all elections — local state and national," the Democratic chairman urged. "Every citizen should assume this democratic responsibility and should be qualified — through payment of the poll tax on or before Jan. 31 — to exercise constitutional right to vote."

Final deadline for payment, he reminded, is only five days away.

The county leader also asserted that the Democratic Party in Eastland County and over Texas — as well as nationally — is now united, drawn closer together since the tragic assassination of the late President John F. Kennedy and elevation of a Texan, Lyndon Baines Johnson, as the nation's chief executive.

In proportion to its size, the whale eats the smallest animals, few larger than a shrimp.

"This year's poll tax payment really gives the voter a lot of action for his \$1.75," A. E. Crawley of Ranger, chairman of the Eastland County Democratic executive committee, declared Wednesday.

Over Eastland County, he pointed out, there'll be numerous municipal elections, school trustee ballotings, junior college board referendums and possibly special elections during the remainder of 1964, in addition to the two Democratic primaries — on May 2 and June 6 — and the general election on November 2.

"Eastland County citizens should not fail to pay their poll taxes and to participate in all elections — local state and national," the Democratic chairman urged. "Every citizen should assume this democratic responsibility and should be qualified — through payment of the poll tax on or before Jan. 31 — to exercise constitutional right to vote."

Final deadline for payment, he reminded, is only five days away.

The county leader also asserted that the Democratic Party in Eastland County and over Texas — as well as nationally — is now united, drawn closer together since the tragic assassination of the late President John F. Kennedy and elevation of a Texan, Lyndon Baines Johnson, as the nation's chief executive.

In proportion to its size, the whale eats the smallest animals, few larger than a shrimp.

CHAMBER OF COMMERCE salutes

see page Six

Couch Is Moved To Abilene Jail

Chester E. Couch, 40-year old Abilene man, was transferred Friday from Eastland County jail to the Taylor County jail in Abilene to await action this week before a grand jury. He recently was given a suspended sentence in 91st District Court on assault charges in connection with the wounding of Chief S. E. Parkinson of the Cisco Police Department.

Couch had been in jail since the trial awaiting a \$5,000 peace bond in this county and a \$10,000 bond in Taylor County, where he was wanted in connection with the Dec. 15 death of an Abilene man.

P. J. Desimone of Clearwater, Florida is spending a few weeks with Mr. and Mrs. Herman Walter and Sonny.

Over 100 tornados a year strike the U. S.

Two School Posts Up For Election

Terms of school board members Truitt Gregory and Morris Jones expire this year, and while neither have filed for re-election yet, it is assumed that they will because of the schools current building program, with which they are familiar.

Election will be the first Saturday in April, with deadline for filing 30 days prior to that date.

Mr. Jones is completing the unexpired term of the Rev. H. E. Hallenbeck who resigned last year when he moved from Eastland.

Other members are Chairman M. H. Perry, Willard Griffin, Dr. Bob Alexander, Dr. J. O. Jolly and Dr. Ferdinand Lund.

Drs. Jolly and Lund were re-elected last year.

TO ELECT OFFICERS

New officers will be elected when the Eastland County Pecan Growers Association holds its mid-winter meeting at 7 p. m. Thursday, Jan. 30, at the Texas Electric Service Company Conference room. The spring field day will be set and other business transacted. Anyone interested was invited to attend.

WORKERS NAMED

Mothers To March Here Monday From 6 to 9 p.m.

When you turn on your porch light Monday evening, you'll be saying "Yes" to the annual March of Dimes Drive, and "Welcome" to the Eastland mothers as they march between the hours of 6 and 9 p. m.

Mrs. Jack Lusk, Eastland drive chairman, has announced her zone chairmen, and workers, and asks cooperation of the citizens of Eastland in the continued fight for polio patients, arthritis victims and the fight against birth defects.

Mrs. Lusk has announced these workers, and expressed appreciation to them, and to others whose names were not available at press time:

Mrs. A. K. Garrett and Helper Mrs. Guy Robinson; Mrs. A. R. Gaeta; Willie Speaker; Mr. and Mrs. Floyd Elkins; Mrs. Russell Hill and Helper Mrs. Norman Watson; Mrs. Joe Pool and Helper Mrs. R. T. Magness; Mrs. Gordon Wadley; Mrs. W. L. Speaker and Helper Mrs. R. T. Magness; Mrs. Ray Carey; Mrs. John Foster and Helper Mrs. Larry Marshall; Mrs. Clyde Benton and Helper Mrs. Ruby Barton; Mrs. Guy Sherrill and Helper Mrs. Steel Hill; Mrs. Glyn Gilliam and Helper Mrs. Ann Johnson; Mrs. Allen Rushing; Mrs. Jim Parks; Mrs. Winston Boles; Mrs. J. E. Turner and Helper Mrs. Earline Tipps; Mrs. Mike Collins and Helper Mrs. Wayne Bailey.

Money will be turned in at the City Hall between the hours of 6 to 9 p. m. If you plan to be away from home during those hours, you may leave your contributions at the City Hall during those hours, Mrs. Lusk said.



FREDDY MILLER ...ETSC graduate

Freddy Miller Takes Degree

Freddy Glenn Miller, son of Mr. and Mrs. Cyrus Miller, 1506 W. Valley St., Eastland, graduated from East Texas State College Tuesday, Jan. 21st at 10 a. m.

Miller received the Bachelor of Business Administration Degree. He is a 1960 graduate of Eastland High School and is a member of Sigma Chi Fraternity.

His parents attended the commencement exercises at which 180 students were graduated.

DAR PLANS TO MEET Charles Crawford DAR Chapter will meet Monday, Jan. 27 at 3 p. m. in the home of Mrs. N. A. Brown in Cisco for the election of officers. Mrs. J. E. T. Peters will serve as co-hostess. All members were urged to attend.

A Brief History Of Eastland ---From The Council's Minutes

(Text of a talk given by City Manager Lewis Tiner, based on research from the minutes of the Eastland City Council. Mr. Tiner delivered the talk Monday for The Eastland Rotary Club)

City incorporated April 12, 1897 — as a town of more than 200 and less than ten thousand population and June Kimble was the first mayor.

First official order issued by the town of Eastland was that the town Marshall post \$250 bond. The original committee on ordinances made its first report to the aldermen April 19, 1897.

First fire protection was when town bought six fire extinguishers in Aug. 1897, purchased at \$8, each and bought with the understanding that they would be paid for in four months.

The town hired its first employee August 7th, 1897. He was W. T. Harbin and was hired at \$1. per day, or \$2. a

day for himself and his team. At that time each Citizen was expected to work on the streets," his fair share of the time." No substitutes allowed unless the man substituted was as capable as the man he was to replace.

The first town plat was authorized August 14, 1897, with the stipulation that the cost not exceed \$5. W. D. Connelley was allowed \$15. for preparing and assessing the first tax roll. The towns first equalization board convened in Sept. 1897.

Some of the earliest Taxes taken from the minutes: Salesmen or peddlers of patented medicines were charged \$25. by the town. "Nine or

Ten" pin alleys taxed \$25. annually.

"From every person bringing off a fight between dogs and bulls or between bears and dogs \$125. for each performance. A chicken fight could be held for \$12.50."

On Sept. 8th, 1899, the town adopted charter passed by the 26th. Legislature and the first Corporation court was established.

The towns first water contract was with Eastland Water Co. (Source of supply not defined.) Payment was \$1. for 1 year.

The first mention of a newspaper was Nov. 14th, 1900. (Paper was Chronical.)

First fire hose bought about this time.

"The Quarantine was continued against Cisco and Ranger with the following rule to let any person pass into Eastland from said towns upon a health certificate from health officer." Two Dr's Signature

Continued on page two

Plan for the future and Open a Savings Account at

Eastland National Bank
"The Old Bank"
EASTLAND, TEXAS

NUMBER 93

Bits

E.V.G.

Clifton reports
puppies
to give away.
shed at MA 9-

message
"big snow" —
16th — that
Eastland was
going to a
at Eastland
an airman
the U. S.
day visited Pal-
in the Medit-
D. is aboard

guess, there
"making" letters
Never has
so covered
the Editor".
written mess-
clippings.
in our letters
ings we can
age. Grant-
becoming as
performance" as
refreshing to
ents from
more would
to pass their
eves, etc. a-

the latest:
endent" up at
smells former-
of the Majestic
land) sends a
Denison Her-
publicity shot,
city, Texas.
ine, holding
ene, reading
ms and sneak
see the dis-
oming South-
ow beginning
Dallas. From
na. Mrs. Dovic
ally from Ris-
a clipping of
it appeared in
Daily Leader,
m by the edi-
talked with
him all about
Old Rip
and his hotel in
Editor devot-
to the County's
scribed by Mrs.
slugging for

from T. Sgt.
nder with the
es a clipping
Okonawa Morn-
editorial, and
ed's ordinance
mple of increas-
(?) protec-
mple sentence:
ent protects us
ons aboard and
ome. It even
protect us from
metimes, in the
vernment, each
own arch

to the "smok-
ill the postman

your plans for
y 2nd? To far
That's a good
entioning it now.
at May 2nd is
and wouldn't it
an "old fash-
Party" in East-
and evening?
the natural ad-
the election re-
ssembled right
about every-
know the re-
as possible, so
at a special day
Who handles the
that's erected

page six

yschlag
FRANCE
ents the
ATHER
NEWS
ARING
set 5:11
is 5:08
in A. M.

Read and Use the Want Ads!

CALL MA 9-1707

ANNOUNCEMENTS

MASONIC LODGE NO. 467
Meets second Thursday of each month at 7:30 p. m. in the Masonic Hall. Call Joe W. Anderson, MA 9-2331, for information or L. E. Huckaby, Sec., 9-1391, for information.

EASTLAND ROTARY CLUB
Meets each Monday noon at White Elephant Restaurant in Eastland. Mac Beazley, president.

SPECIAL NOTICE

NOTICE: Let me figure your income tax. Will be in my office each Saturday. 309 Main St. Phone MI 7-3426. Novilla Templeton.

SPECIAL NOTICE: Painting, carpenter work. All types home improvements and home repairs. No job too small. Call R. C. Turner "Home Services", MA 9-2286. 417 E. Foch.

NOTICE: Have Veteran Land Board Paper. Would like to buy small farm. Write Box 1385, Big Spring, Texas.

NOTICE: Your Electroflux representative, A. J. Lindsey, Rt. 2, Ranger, Texas. Phone MI 7-1485.

NOTICE: For repairs of all kinds of office machines, call me Eastland Telegram.

SPECIAL — Had your tires checked lately? Let us check for defects, balance and rotate your tires for only \$7.95. All five tires. Goodyear Service Store — Eastland.

BLUE Lustre — not only rids carpets of soil but leaves pile soft and lofty. Rent electric shampooer \$1. Costs Furniture Company.

NOTICE: Decorated Valentine cakes for mother, wife or partner. Call Mrs. Fred Brown, MA 9-1223.

MATTRESSES

Save up to 50% renovating choice of color and firmness. Complete bedding. Made and guaranteed by WESTERN MATTRESS CO., San Angelo. Phone MA 9-1342 or MA 9-1304, Eastland and leave address.

EASTLAND AUTO PARTS MACHINE SHOP

300 S. Seaman
MAIn 9-2158

FULLY EQUIPPED

AUTOMOTIVE
VALVE GRINDING
BRAKE DRUM TURNING
HEAD SURFACING
VALVE JOBS
BLOCK BORING
SLEEVE INSERTING
VALVE SEATING

COMPLETE LINE
AUTOMOTIVE
TRUCK TRACTOR
PARTS

ALWAYS IN STOCK

AUTO PARTS

300 S. Seaman MAIn 9-2158
EASTLAND



SEND YOUR
LAUNDRY TO US

Take washday out of your services. So easy — so convenient — so inexpensive! home, use our professional

CISCO

Steam Laundry
Bill Roney, New Agent
Phone MA 9-2122, Eastland

EMPLOYMENT

WANTED: Bachelor to live and work on ranch. Good salary and board. Must not drink. Write Box 107 or call HI 9-2193, Breckenridge, Texas.

HELP WANTED: Someone in my home five days a week, 7:30 a. m. to 3:30 p. m. 309 S. Osborn or call MA 9-1478.

WANTED: Ladies to live and work with children. Must be white, unencumbered, have a high school education and be between the ages of 35 and 55. Experience in teaching is advantageous but not required. The positions offer good salaries, comfortable living quarters, and challenging and rewarding work. Send a brief summary of your qualifications to Box D, Eastland Telegram.

MERCHANDISE

FOR SALE — Slightly used 11 ft. GE refrigerator, \$169.95; 36" used gas range, \$39.50; slightly used 36" GE electric Ranger, \$99.00; 11-foot refrigerator, \$59.95. Goodyear Service Store, Eastland.

FOR SALE: RCA Victor stereo console 1962 model. Excellent condition. Owner left town. Mrs. Clyde Turner, 2 blocks north of Hiway Barn.

FOR SALE: Coastal Bermuda grass. Four cents per pound. E. B. Jacks, Phone 5-3595 Dublin or Highway 16 below Desdemona.

FOR SALE — Change over tires going at 4 for \$43.00 plus tax. New 14" Goodyear tires for as low as 2 for \$22.00 plus tax. Seconds available in many sizes with drastic reduction in price. Mud and snow tire prices start at \$12.95 plus tax, size 670-15 nylon 4 ply. Stop in today and let's talk trade. Goodyear Service Store, Eastland.

FOR SALE — Slightly used 11 ft. GE refrigerator, \$169.95; 36" used gas range, \$39.50; Slightly used 36" GE electric Ranger, \$99.00; GE automatic washer, good condition, \$49.50; 11-foot refrigerator, \$59.95. Goodyear Service Store, Eastland.

FOR SALE: Silver gray Mouton, lip length, \$25. See at Modern Cleaners.

USED MOTOR SALE: Two 35 hp Johnson electric start motors, \$250 each; one Evinrude 34 hp electric start motor, \$275; 12 hp Wizard, \$80; 12 hp Seaking, \$35; 25 hp Wizard, \$45; 7 1/2 hp Elgin, \$22.50; 10 hp Johnson, \$50; 10 hp Scott Attwater, \$37.50. Bruce Pipkin Sport Center.

WANT TO SELL: General Electric portable dishwasher, \$40. Call at noon or after 6 p. m. Olden, 2531.

RENTALS

FOR RENT: Four room furnished apartment with garage. See at 203 N. Dixie.

FOR RENT: Dandy two bedroom furnished cabins with kitchenettes. Ideal for weekends during winter. Good rates. Lynn's Lake Lodge, Lake Cisco. Phone HI 2-2064.

FOR RENT: Perfect little 3-bedroom cottage, ideally located on top of Park Hill (at 503 S. High St.). Newly redecorated inside and out, and handy to schools. Economical at \$39.50. Call MA 9-1033 or MA 9-1417.

FOR RENT — Lovely furnished apartments — (or unfurnished and use your furniture) with all utilities paid and with maid service, from \$65 monthly complete. Comfortable private rooms with private tile baths, maid service, only \$39.50. Why pay taxes, upkeep, maintenance, gas, lights and water, when you can save money and live really comfortably with us? Plenty of nice people are already living with us and welcome you into our circle of friends. Call us today, MA 9-1716 — The Village Hotel. Tell your friends about us too.

REAL ESTATE

FOR SALE: Three bedroom house with large storage room and car port. Also extra lot. Close to new school house. Suitable for couple or with school age children. Apply 209 West Patterson.

FOR SALE: OR TRADE: Modern six unit motel with three bedroom residence. Located on U.S. Highway 80, Eastland, phone MAIn 9-1328.

FOR SALE — Seven room house newly redecorated. Can be financed. Located at 1211 Ave. A, Cisco. Would consider trade. Also 16 acres good grassland two miles north of Cisco. See or call J. H. Taylor, 1307 Ave. A, Cisco. HI 2-1433.

Political Announcements

This newspaper is authorized to announce the following candidates for public office subject to action of the Democratic primary election on May 2, 1964.

For Commissioner, Precinct 1:
E. W. (Bud) GRIFFIN
O. R. (Ott) ERVIN
J. B. (Tip) ARTHUR

For Sheriff:
J. B. WILLIAMS
J. J. (Jake) HONEA
RAY SUE
R. A. (Bob) PATTERSON

For Tax Assessor-Collector:
EDGAR ALTON

For Constable, Precinct 1:
ALLEN SQUYRES

LEGAL NOTICES

Will not be responsible for any debts contracted by any other than myself on or after this date. Roxie Theous Bryan.

6 Extinguishers Fire Protection In '67, Tiner Says

Eastland's first fire protection equipment consisted of six hand fire extinguishers, purchased in August of 1897, the Eastland Rotary Club members learned at their meeting Monday.

"The extinguishers cost \$8 each," City Manager Lewis Tiner said, "and the city agreed that they would be paid for in four months."

Frank Deaton was program chairman and introduced Mr. Tiner. President Mac Beazley presided and welcomed Dr. J. H. Caton and Jim Horton, who were ill and absent from the club the previous week.

Secretary Don Vieregger introduced the following guests: Sam Kimmell, Standlee McCracken, Dr. Wayne Reynolds and W. B. Wright, all of Cisco; and Bill McRobbins of Dallas.

(Text of Mr. Tiner's talk appears on another page in this newspaper and is suitable for clipping for its historical significance.)

Methodist WSCS To Begin Study

The Woman's Society of Christian Service of the First Methodist Church of Eastland will meet Tuesday morning, January 28, at 9:30 a. m., at the church, for the first lesson of the study, "The Christian Mission in Southern Asia," with Mrs. Jim Horton as leader.

Mrs. T. M. Collie will lead the devotion. Other taking part on the program will be Mrs. V. Cyrus Barcus, E. S. Perdue, and L. C. Brown.

All days services with dinner on the ground was held at the Bible Baptist Church Sunday January 19th. Visitors from Fort Worth, Gorman, Eastland, Stephenville, and various other places were present.

Visiting his nephew Rev. Derrel Dosey and family was an uncle, Mr. and Mrs. Crow of Fort Worth.

PERMANENTS
\$12 Lanolin Waves \$8.50
\$10 Creme-Oil Waves \$7.50
Other waves \$10 and up
Basham Beauty Bar

Insurance and Real Estate

D. L. KINNAIRD
Life - Fire - Auto - Farm
Polio - Bonds

42 years in the Insurance
Business in Eastland

Auction Report

A total of 818 cattle, 126 hogs, and 76 sheep and goats were sold to 88 buyers at the Eastland Auction sale Tuesday. There were 217 sellers. Prices were butcher bulls, 15 to 18.60; stocker bulls, (wt. 700 to 900), 18 to 22.50; butcher cows, 9 to 15.10; stocker cows, 12 to 19.75; canners and cutters, 8 to 12.50; butcher calves, 19 to 21.75; stocker calves (lt. choice) 23 to 26.75; stocker calves (hvy. choice) 18 to 23.75; pairs of cows and calves, 130 to 215; butcher hogs 14 to 15.50, and sows 11 to 13.50.

EASTLAND MEMORIAL HOSPITAL

Alice Smith, medical.
Avie Allgood, medical.
Margaret Clements, medical.
Connie Dent, medical.
Pearl Jackson, medical.
Virginia Hogan, medical.
Carrie Flowers, medical.
Opal Kelly, medical.
Ethel Alldredge, surgical.
Alene Berry, surgical.
Wanda Keown, Gordon, medical.
Rebecca Murphy, Carbon, surgical.
Roxie Porter, Cross Plains, medical.
James Ashley, medical.
Elva Aitom, Cisco, medical.
Cuba Morris, Ranger, accident.
Eva Taylor, medical.
Artie Perdue, surgical.
Sherry Norris, medical.
Beulah Mosely, Clyde, medical.
Eddie McGough, Abilene, medical.
Ottie Millican, medical.
Dora Higginbotham, Cisco, medical.
A. C. Walton, accident.
Sam Conville, Gorman, surgical.
Tince Davenport, medical.
Herbert Mathews, medical.
Carol Webb (baby), medical.
Josie Robinson, medical.
H. J. Lee, Ranger, medical.
Roy Smith, medical.
F. L. James, Olden, medical.
Pearl Noble, medical.
Nannie Robinson, medical.
Laura James, Gordon, medical.
Georgie Sledge, Cisco, medical.
C. R. Neeley, Ranger, medical.
Pearl Bourland, medical.
Cheryl Soebebe, medical.
Geneva Stephenson, medical.
W. M. Morris, Ranger, medical.
Minnie Sealett, Cisco, accident.
Aletha Gosnell, Cisco, medical.
J. A. Gay, medical.
Julia Boyd, Rising Star, medical.
T. J. Kirton, medical.
Myner Winter, surgical.
Pearl Hobbs, accident.
Mae Bisbee, Cisco, surgical.
Ethel Lovell, Carbon, surgical.
Nora Payne, medical.
L. E. Sublett, surgical.
Annie Sublett, medical.
Silas Williams, medical.
Dennis Ruby, medical.

Regular Meeting Is Held By Sorority Monday

Xi Alpha Zeta Chapter of Beta Sigma Phi Sorority held its regular meeting Monday in the home of Mrs. A. D. Taylor.

Business meeting was held and reports were given from all committees. Mrs. James Smith presented the program entitled "We Exchange Time For Experience."

Coffee, tea, cake and homemade candies were served to the following members present: Mmes. Bill Bass, Glyn Gilliam, Bill Leslie, Tommy Magness, James Smith, Don Vieregger, Bill Walters, Norman Watson, Lawrence Maloney and the hostess, Mrs. Taylor.

WALKER'S Dressing Plant
Custom Dressing
Phone D. J. Walker
Eastland MA 9-1192

GET READY FOR THE NEW YEAR BY TAKING CARE OF YOUR AUTOMOBILE NOW WITH OUR TUNE-UP Special

OFFICIAL AUTO SAFETY CENTER
Complete Auto Repairs
Safety Inspection Center

24 HOUR WRECKER SERVICE
Phone MA 9-2270
Night MA 9-2224

ALLEN AUTO REPAIR
A1 RUSHING MOTOR CO.
215 SOUTH SEAMAN

AND NOW'S THE TIME TO BEAT THE RUSH ON INSPECTIONS

Olden WMU Has Program Monday

The Olden WMU met at the Baptist Church Monday, for the Circle program "Citizens of Two Worlds."

The call to prayer, from Royal Service, was given by Miss Nannie Almon with scripture reading Matt. 6:19-34, who also led the opening prayer.

Mrs. J. D. Browning introduced the program, reminding everyone of characteristics and privileges of a citizen.

"Who is a Citizen" was explained by Mrs. Myrtle Warren, who also led in discussion of this question.

What does the Bible say about Christian Citizenship? The answers to this important question was taught by Mrs. E. W. Griffin, using scriptures, Matt. 22: Romans 13: 1 Peter 2: and James 4.

Mrs. O. M. Jackson pointed out guide lines which would help us determine our actions concerning Christian principles, and led a discussion of five points, God our Creator, Love for our Neighbor, the second mile, and others.

Mrs. Pete Rogers explained the responsibilities of a Christian in a democratic community, using quotations from the late Pres. Kennedy, Dr. Geo. Truett, and others.

The closing meditation was given by Mrs. Browning, who reminded members that one of the projects is to read the new testament through, with all members participating.

The average age of Nobel prize winners in science is 40 years.

GENERAL AUTO REPAIR

VIC'S AUTO REPAIR
306 W. Main
MA 2-1111

HISTORY

(Continued from Page One)
were honored. Town had two Quarantine guards in addition to regular Marshall.

The first typewritten minutes appeared in 1902. The first Telephone Co. Franchise was granted in Oct. 1903. It was granted to Western Telephone and Telegraph Co. Rates were \$1.50 for business and \$1 for residents.

The town appointed its first "Scavenger" (garbage collection) in June of 1909 and first mention made of town dump.

The first bids to care for city funds were received April 18th, 1910. Two banks competing — First State and City National. The First State was awarded the money — paying 6 1/4 percent on average daily Bal. for month.

On April 18th, 1910, committee on ways and means was authorized to spend as much as \$10 on a suitable dump grounds.

On minutes for May, 1910, minutes again appear in long hand. (Repossed typewriter?)

The City of Eastland was incorporated the 7th day of Nov. 1910, and hereafter is referred to as A City.

The City's first Bond Issue was passed in December 1910. Interest on bonds was 6 percent and issue for \$15,000. First tax was 25 cents per \$100 valuation. City was authorized to issue up to \$25,000 in bonds without election.

The first Electric Franchise was granted in May of 1911 to M. Westbrook — for 20 years. Apparently nothing was ever done and another Franchise was granted to Eastland Light and Power Co. in April of 1912. A. K. Bass and R. O. Bass apparently owned the Co.

The first water rates established were flat rates and it appeared that very few meters existed. A bakery could have water all year for \$12.00, a 10 room hotel \$24. Manufacturing was at a 10 cent per M. rate.

The first mention of a serious water shortage was in the summer of 1913.

The First Street improvement bonds were issued in Oct. 1915. The issue was \$8,000.00 and was 6% money. 40 year pay.

In 1915 the Mayor was E. A. Hill the Commissioners were W. A. Martin, R. J. Williams, T. M. Tooms.

In the spring of 1918 the City had to turn to water wells along the Leon for water. It was piped to town and a line laid for that specific purpose.

In July 1918, the City declared Gas or Oil wells inside the City limits to be a nuisance.

The first Gas Ordinance was passed and gave Eastland Gas Co. a franchise to run 40 yrs. Summer of 1918.

The City's first large Water Bond issue was passed in Feb. 1919 — Amount was \$40,000. 6 percent money. In March 1919 a \$60,000 bond issue was passed for sewer plant.

About this time 15 men were elected to frame new City Charter. The fifteen men were — R. E. Sikes, Tom Harrell, H. P. Brelsford, M. Hill, J. A. Littleton, T. L. Pagg, A. D. Barrow, Walter Gray, L. A. Hightower, Don H. Biggers, F. A. Jones, J. A. Beard, Eugene Day W. B. Sutton and R. S. Harris.

The Commission form of Government was established the 20th day of June 1919. First Commissioners were: Cyrus Frost, Joseph Weaver, Clyde Garrett, J. H. Chetam, and W. S. Wolfe. W. Lander was the first City Manager.

The Charter for the City was adapted about July, 1919. Bonds were voted for New City Hall in August of 1919. The issue was for the amount of \$100,000.

August, 1919, City voted 104 to 3 to Sell \$200,000. in bonds to improve streets and alleys — still 6 percent money. North Seaman and North Lamarr streets were the first paved.

In 1925 the City Leases the present City Park from the T&P Railway. The original lease was for 25 yrs. and T&P was paid \$25.

In 1925 the city voted another bond issue for \$100,000, to improve streets.

In 1952 the City issued bonds totaling \$250,000 to purchase Lake Eastland.

In March of 1927 the city took over the management of the Eastland Cemetery. Incidentally prior to this time records are non-existent. Many graves cannot be identified at this time.

Members of the commission in 1927 were Perry Sales, Luther Bean, H. Brelsford, and Earl Bender.

The years of 1927 and 1928 saw a large portion of the street work underway. Water and sewer lines were also being laid as fast as possible.



Eastland County Record established in 1891 August 31, 1951. Chronicle established 1923. Entered as second class Post Office in Eastland, Texas under the Act of March 3, 1879.

Published Semi Weekly — Thursdays and Saturdays
By Eastland County Newspapers
H. V. O'BRIEN, Editor

One week by carrier in city
One month by carrier in city
One year by mail in county
One year by mail in state
One year by mail out of state

NOTICE TO PUBLIC — Any erroneous character, standing or reputation of any corporation which may appear in the newspaper will be gladly corrected upon to the attention of the publishers.

value — today assessed value is 2,623,889. Tax rate \$2.50 per hundred.

In January 1929 City purchased Seagraves special pump and ladder fire truck. Truck cost about \$10,000. (still in use)

In 1929 the City owed something like \$1,000,000 — (From the minutes it was evident that financial troubles were not too far away — All this money was 6 percent money and tax collections were falling.)

In 1930 A severe water shortage developed. Texas Electric Service came to the cities rescue and let them have water from the Power plant Lake free — the water was transported to town in an abandoned gas line — service of which was donated. Texas Electric also furnished pumps free.

Texas Electric's first rates were mentioned in 1930. Severe financial troubles were apparent in 1931. A committee of 25 men were appointed to try to find some solution to the Cities problem.

All local Banks were closed and city funds were transferred to Fort Worth.

In 1932 Alex Clarke, M. L. Keasler, Frank Castleberry, and T. M. Johnson were on the Commission.

In 1933 Guy Parker was hired as City Manager — Served about a year and left to enter banking.

In 1933 the City funds were transferred back to the Eastland National Bank.

The period from 1933 to 1938 seemed to be relatively quiet except for some local politics. The ever pressing debt kept the City from almost all activity except trying to meet payments.

Mr. C. W. Hoffmann was elected to the Commission in 1935 and served until 1943.

ROLLINS & SONS GULF SERVICE
Call for Appointments on Wash - Grease Oil Changes
500 W. MAIN
MAIN 9-8840
We Give S&H Green Stamps

ATTENTION
People with peanut allotments: Subdividing 8000 acres finest virgin land in heavy water belt. Highly suited for peanuts. Selling in tracts from 80 acres up. Small down payments. 15 year term. Some land available for rent, if you have peanut allotment. Located in Gaines County, Tex.

J. W. Chapman & Sons
3212 34th Street
Lubbock, Texas
Phone SW 9-4321

This company has been in operation since 1942 selling policies to be primarily for burial purposes. We write to \$600 and our policies are paid in full allows freedom in the selection of the Director of your choice.

Ages from 1 month to 90 years. For further information come by to Hamner Funeral Home, 301 S. Lamar, P. O. Box 431

Hamner Life Insurance Co.
Ben E. Hamner, President

Bring Ball Troubles To
JIM H...
Tire S...
EAST...
COMP...
Car Care - Try Us
O B...
HUN...
SERVICE...
802 W...
MA 9...
This company has been in operation since 1942 selling policies to be primarily for burial purposes. We write to \$600 and our policies are paid in full allows freedom in the selection of the Director of your choice. Ages from 1 month to 90 years. For further information come by to Hamner Funeral Home, 301 S. Lamar, P. O. Box 431

FARM BUREAU PRESIDENT PAYS POLL TAXES

Farm Bureau President, Vice President, Senator, Congressman and Congressman-at-large. They may do this by obtaining from their tax assessor-collector during a 30-day period following the amendment's adoption a poll tax receipt marked "not paid."

"Farm Bureau advocated and worked for retention of the poll tax," DeVaney said. "Our efforts now to encourage eligible citizens to pay their poll tax is a follow up on our campaign of last fall."

De Vaney pointed out that the Farm Bureau is non-partisan and does not endorse any candidates of any party. However, the farm organization does encourage its members to become active in the work for candidates of their choice.

"Only by participating in the free selection of our elected representatives can we as citizens fulfill our rightful duties," the Farm Bureau leader said.

"Therefore, we urge all citizens of voting age, especially farmers and ranchers and their families, to pay their poll tax and make sure they will have a voice in this year's important elections."

Browsing With Bev

A revolutionary new granular nonsift flour — which has the same nutritional value as regular enriched flour and gives excellent baking results under testing — may enable homemakers to throw away their flour sifters and stop worrying about messy kitchens when they bake.

The flour has an individual feature that makes it really special. It is "instantized," which means it dissolves instantly in warm or cold water without lumping, and the flour particles are uniform and granular and look like dry milk solids and pour like salt. It won't pack as conventional flour often does. The instant dissolving quality insures

smooth sauces and gravies, makes batter preparation easier and allows short-cut methods and recipes.

You can substitute instantized flour in any recipe calling for all-purpose flour. The new product is without altering the amount easier to use since it doesn't fly around as much as conventional flour. It's dustfree and easily transferable from bag to canister to bowl, manufacturers claim.

Warming up your auto in the driveway before you go to work these wintery mornings

can have a harmful — even fatal — effect on nearby evergreen and deciduous shrubs. Exhaust fumes have been known to kill needles and entire branches of evergreens.

Both evergreens and deciduous plants absorb the fumes through the lenticels and breathing pores on their bark. Then, often months later, the shrubs develop what looks like singed leaves and branches.

Secondary effects may cause the plants to break their winter dormancy. Flower and leaf buds will form and, of course, will be killed by cold winds and low temperatures.

COUNTY 4-H'ERS SHOW STOCK AT ABILENE STOCK SHOW

Eastland Co. 4-H'ers attended the Abilene Fat Stock Show and did well this past week, according to Roger Blackmon, ACAA. The 4-H'ers from this County entered 13 Lambs and 6 Steers in the highly competitive Regional Show.

Those exhibiting were: Kathy and Buster Boyd of Cisco, 3 lambs, Bobby and Tommy Lee, Cisco 2 lambs and 2 steers; Ivy and Britt Ferguson of Cisco 5 lambs; Reg-

The Eastland Co. group did better in the steer show, placing 4 of the 6 steers entered. Reggie Underwood placed his Hereford steer, "Rog", 8th in a class of 49 Heavyweight steers. In the lightweight steer class, Tommy Lee placed his Angus steer, "Pete" 10th, Carter Hounsel placed his Angus steer "Eclipse" 17th, and Cynthia Hounsel placed her Angus steer "Billy", 21st in the class of 49 top notch steers. Reggie's steer was bred by his father Mr. R. V. Underwood of Carbon. Tommy Lee's steer was bred by Pete Dun-

ning of Abilene. Both of the Hounsel's, Cynthia and Carter's steers, were bred by their grandmother, Mrs. W. S. Carter of Rising Star.

Ass't County Agent, Roger Blackmon, expressed pride and appreciation for the work and recognition won by the 4-H boys and girls and their parents. He felt that the locally bred steers competed very well with steers from throughout the county. Blackmon also expressed appreciation for the fine spirit of cooperation among the 4-H families from throughout the county.

1964 CHEVROLET WINNER CHEVELLE

WORTH FOOD MART

The SURE SIGN OF SAVINGS!

Prices Effective: Monday Thru Wednesday

You too may win one of these beautiful Chevilles or a 1964 Gold Cadillac (or \$5,000.00) or \$1000.00 — \$500 — \$200 — \$150 — \$100 — \$25 — \$10 — \$5 or a Gold Plated Initialed Pin-Set with a Genuine Cultured Pearl. It's FREE — NO PURCHASE IS REQUIRED TO WIN.

PICK UP YOUR GOLD RUSH BIG MONEY CARD TODAY!

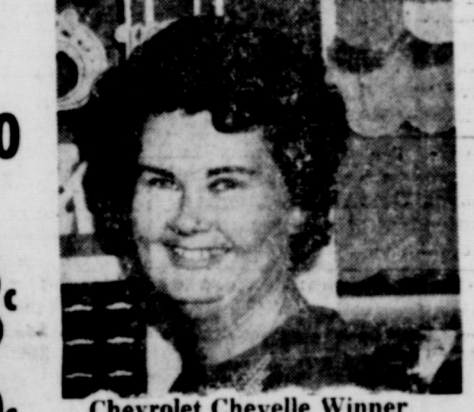
RULES OF THE GAME

PICK UP YOUR GOLD RUSH BIG MONEY CARD AT WORTH FOOD MART. NO PURCHASE REQUIRED. ONE FREE POINT TICKET PER STORE VISIT TO ADULTS ONLY. PURCHASERS NOT FAVORED. SECURE YOUR FREE "POINTS TICKETS" AND GOLD RUSH "BIG MONEY CARDS" AT THE GOLD RUSH BOOTH OR FROM ANY STORE EMPLOYEE, OTHER THAN IN THE MEAT DEPARTMENT. CARD IS VOID IF SEAL HAS BEEN TAMPERED WITH.

WORTH FOOD MART EMPLOYEES, THEIR IMMEDIATE FAMILIES AND CHILDREN UNDER 16 YEARS OF AGE ARE NOT ELIGIBLE TO PARTICIPATE IN THE GAME.



Mrs. Clarence E. Reid



Chevrolet Chevelle Winner Mrs. Pauline Lyday



Gold Cadillac Winner Mrs. N. H. Fleming

DOUBLE S&H GREEN STAMPS ON WEDNESDAY WITH Purchase of \$2.50 or More

CUT OKRA TRAPPEY'S 2 No. 303 Cans 35¢

PRIDE Johnson's Furniture Polish 8-oz. Can 59¢

PIZZA Colombo's Cheese Frozen — 8-inch 59¢

PIZZA Colombo's Sausage Frozen — 8-inch 69¢

CUT CORN Libby's Frozen Poly Bag 24-oz. 29¢

Jergens' Lotion Regular \$1.00 Size Plus 7c Tax 69¢

HAIR SPRAY Lanolin Plus Reg. 99c Size Plus 7c Tax 69¢

CLIP AND SAVE!

30 Bonus S&H Green Stamps with this coupon & purchase of A 24-oz. Can of Armour's BEEF STEW

VOID AFTER WED., JAN. 29, 1964

WORTH FOOD MART

CLIP AND SAVE!

30 Bonus S&H Green Stamps with this coupon & purchase of Three (3) 4-oz. Cans H-I-C FRUIT DRINKS

VOID AFTER WED., JAN. 29, 1964

WORTH FOOD MART

Meat Features!

GROUND BEEF Worth Quality 35c Lb. or **3 Lbs. \$1.00**

Swift's Premium Thick

SLICED BACON **2 Lb. Pkg. 98¢**

SLICED BOLOGNA Swift's Premium Lb. **49¢**

Kapitan Krusty Frozen

BREADED SHRIMP **2-8 oz. Pkgs. 89¢**

Grocery Features!

SHORTENING Snowdrift **3 Lb. Can 49¢**

HORMEL SPAM Luncheon Meat **12 oz. Can 39¢**

TOILET TISSUE Zee-Assorted Colors **4 Roll Pkg. 33¢**

Zee Assorted Colors

PAPER TOWELS 225 Ft. **2 Jumbo Rolls 49¢**

ZEE NAPKINS White or Rainbo Colors **4 80 Ct. Pkgs. 39¢**

ZEE WAX PAPER **100 Foot Roll 19¢**



TEA BAGS Lipton's 100 Count Package **99¢**

Produce Features!

AVOCADOS Medium Size **Each 10¢**

GRAPEFRUIT Florida-Extra Fancy-Red **Lb. 12¢**

CARROTS Fresh & Crisp **2 1-Lb. Cello Bags 25¢**

CLIP AND SAVE!

30 Bonus S&H Green Stamps with this coupon & purchase of A 14-Inch x 20-Foot Roll Kaiser BROILING FOIL

VOID AFTER WED., JAN. 29, 1964

WORTH FOOD MART

CLIP AND SAVE!

30 Bonus S&H Green Stamps with this coupon & purchase of A 5-Lb. Bag of GOLD MEDAL FLOUR

VOID AFTER WED., JAN. 29, 1964

WORTH FOOD MART

CLIP AND SAVE!

25 Bonus S&H Green Stamps with this coupon & purchase of A 6-Bottle Ctn. of COCA-COLA

VOID AFTER WED., JAN. 29, 1964

WORTH FOOD MART

CLIP AND SAVE!

100 Bonus S&H Green Stamps with this coupon & purchase of A 10-oz. Jar Chase & Sanborn INSTANT COFFEE

VOID AFTER WED., JAN. 29, 1964

WORTH FOOD MART



IN THE HOUSE? THINK OF A personal extension phone

extension phone for her very own... own room... gives her the privacy, freedom and feeling of responsibility she wants and need. Does the teen-at your house have a personal extension phone? Just ask her.

WESTERN BELL

Courthouse Records

- Oil & Gas Leases
- Court Proceedings
- Property Transfers
- Marriage Licenses

Glenn Hamner vs. Willie Lee Hamner, divorce.
First State Bank of Rising Star vs. James Claud, suit on

note and foreclosure of chattel mortgage.
Lone Star Gas Company vs. Bill Williams dba Bill Williams Material Co., debt.
Joy Dean Yates vs. William Dewey Yates, divorce.
State of Texas vs. Roy Stokes, D.W.I., Transfer from County Court.

Marriage Licenses
Mike Vunovich and Mrs. Lois Hynum.
Don Mitchell and Mrs. Bettie Thomas.

AN INTERSTATE THEATRE

MAJESTIC

SUNDAY - MONDAY - TUESDAY
Open Sun. 12:45 - Shows 1:15 - 4:30 - 7:45
Open Mon.-Tues. 4:30 - Shows 4:45 - 8:00

THE STORY OF A YOUNG AMERICAN AND HIS RISE TO PRINCE OF THE CHURCH. FILMED IN ITS ACTUAL LOCALS: NEW ENGLAND, THE SOUTH, VIENNA AND ROME.

THE CARDINAL

AN OTTO PREMINGER FILM

THE CARDINAL STARRING TOM TRYON, ROMY SCHNEIDER, CAROL LYNLEY, JILL HAWORTH, RAF VALLONE, JOHN SAXON, JOSEF MEINRAD, BURGESS MEREDITH, OSSIE DAVIS, DOROTHY GISH, TULLIO CARMINATI, MAGGIE McNAMARA, BILL HAYES, CECIL KELLAWAY and JOHN HUSTON as GLENNON Also: Bobby (More) and his Adora-Belles

ADULT 75c STUDENT 50c CHILDREN 25c

WEDNESDAY ONLY

THIS WEEK ONLY ON WEDNESDAY

ALL SEATS 15c

Open 4:45 Show 5:00 - 7:20 - 9:45

JAMES STEWART JOHN WAYNE JOHN FORD

The Man Who Shot Liberty Valance

RANGER DRIVE-IN

Highway 80 - East on Ranger Hill

ADULTS 50c KIDDIES UNDER 11 FREE
Boxoffice Opens 6:30 - Show Starts at 7:00

LAST TIMES SUNDAY, JANUARY 26

THE MOST TITANIC MONSTERS OF ALL TIME CLASH HEAD-ON!

SEE!
King Kong Hurt an Entire Train in Destruction!
Godzilla's Radioactive Flame Burn Out Entire Cities!
King Kong Gaugs Out A Mountainside!
Godzilla Snatch Jets From the Skies and Smash Them to Earth!

KING KONG vs. GODZILLA

IN COLOR

FRIDAY - SATURDAY - SUNDAY
JANUARY 31 - FEBRUARY 1 - 2

DORIS DAY & JAMES GARNER

INVITE YOU TO WATCH THEM ENJOY

ROSS HUNTER ARWIN presents

The Thrill of it All!

IN COLOR

CO STARRING ARLENE FRANCIS

Universal Release

Instruments File

Jack L. Agnew to E. E. Parker, Jr., deed of trust.
Henry J. Bailey to Mid-State Home Inc. to Mid-State Home Inc. to Earl Conner, Jr., appointment of trustee, resign of trustee.
W. J. Bryan, et al to Charles W. Richter, et ux, warranty deed.
Bankers Life Company to J. T. Roberson, et ux, deed of trust, partial release.
Linnie Brashear to Valentine Longoria, warranty deed.
R. E. Bradshaw, et ux to Mechanic's lien.
R. E. Bradshaw, et ux to First Federal Savings and Loan, Ranger, deed of trust.
Burton Lingo Company to E. Neal Callerman, Abstract of judgment.
City of Cisco to R. E. Grantham, Cemetery deed.
O. B. Cargile to Evelyn P. Cargile, power of attorney.
O. Barney Cargile to Evelyn P. Cargile, power of attorney.
George O. Carter, et ux to Fred A. Walker, et ux, warranty deed.
The public, Proof of heirship.
Consumers Acceptance Company of Texas to Janet Norris West, abstract of judgment.
City of Rising Star to the Housing Authority of the City of Rising Star, warranty deed.
C. E. Davis to B. J. Noth, Quit Claim deed.
Bobbie Duhamel, et al to Carrell Smith, warranty deed.
Eastland National Bank to Homer T. Robinson, warranty deed.
Eastland National Bank to Carl Elliott, Release deed of trust.
First Federal Savings and Loan, Ranger to J. O. Jolly, Jr., et ux, Release deed of trust.
J. A. Fox, et ux to J. E. Whisenant, correction warranty deed.
First Federal Savings and Loan, Ranger to H. T. Gray, et ux, Release of mortgage and deed of trust.
Bell P. Franklin, A. G. Olson, et al to J. M. Flournoy, Oil, J. M. Flournoy to Lone Star Producing Company, assignment of oil and gas lease.
Carrie Mae Fisher to J. B. Marlow, Quit Claim deed.
Robert William Garner to the public, In Re: Robert William Garner to remove disability as minor.
Great Expectations Oil Corporation to Pan American Petroleum Corporation, et al, conveyance.
Graridge Corporation to Texas Electric Service Company, bill of sale.
Great Expectations to Pan American Petroleum Corporation, conveyance and assignment not production pay people.
B. H. Greer, et ux to Bryant Taylor, warranty deed.
Jessie Harris to Corliss May Hunter, warranty deed.
Eloise Davenport Hearon, et al to C. A. Livingston, warranty deed.
J. C. Holloway and Sandra Lynn Holloway to Jerry Warren, warranty deed.
Arlis C. Hartsell, et ux to First National Bank, Cisco, deed of trust.
Norman G. Igo to Great Western Drilling Company, assignment of oil and gas lease.
Cecil E. Jennings, et al to Great Western Drilling Company, assignment of oil and gas lease.
David C. Lewis, guardian of the estate of David Curry Lewis, et al to Charles W. Richter, et ux, guardian deed.
David Lewis Curry, Jr. Estate, et al to the public, certified copy of probate.
Floyd Lassiter, et ux to First Federal Savings and Loan, Ranger, deed of trust.
Wayne Webb, material mechanics lien.
Lone Star Gas Co. to Texas Electric Service Co., right of way and easement.
Jessie Ophelia Lemley, to Warren Lightfoot Edith Gray et al, warranty deed.
Betty Ann Meador vs. James Elbert Meador, certified copy judgement.
Betty Ann Meador to James Elbert Meador, Bill of sale.
Betty Ann Meador to James Elbert Meador, quit claim deed.
E. S. Martis et ux to J. M. Green et ux, quit claim deed.
Minnesota Mutual Life Insurance Co. to John D. Harvey et ux, release deed of trust.
Woods, warranty deed.
Thomas B. Marlow and Arrie Marlow, deceased, to the Public, proof of heirship.
W. A. Martin et ux to Joseph M. Perkins, warranty deed.
Montana Properties Inc. to the Chase Manhattan Bank, mortgage and D. T. and Pledge and assignment of Prod.
Richard W. Moore et ux to Arlis C. Hartsell et ux, warranty deed.
H. R. McCary to L. C. Phagan, release of lease.
Elroy C. McCannies et al to Floyd Lassiter et ux, warranty deed.
Minnie Donovan McCannies and Jess P. McCannies, deceased, to the Public, proof

of heirship.
Carrah Stephens Norton to the State of Texas, deed.
E. E. Parker, Jr. et ux to Jack L. Agnew, warranty deed.
H. W. Porter et al to Great Western Drilling Co., assignment of oil, gas lease.
L. E. Phillips et al to Vernon Phillips et ux, warranty deed.
J. B. Pratt et ux to Richard W. Moore, release of vendors lien.
Charles W. Ritcher et ux to deed of trust.
Homer T. Robinson to Eastland National Bank, deed of trust.
J. T. Roberson et ux to State of Texas, deed.
Rockwell Bros. to First Federal Savings and Loan Ranger, material man's lien contract.
T. D. Russell to Bill Swindle, warranty deed.
Rio Bravo Oil Co. to Great Western Drilling Co., pooling and unitization agreement.
Howell Sledge et ux to M. A. Treadwell, Sr., deed of trust.
Howell Sledge et ux to M. A. Treadwell, Sr., construction acceptantk of building.
Howell Sledge et ux to Eastland National Bank, deed of trust.
W. M. Shipman to Texas Electric Service Co., easement and right of way.
Robert Q. Sone et ux to J. R. Morrow et ux, warranty deed.
Sun Appliance and Electric Inc. vs. Ranger Plumbing Co., abstract of judgement.
M. A. Treadwell, Sr. to Eastland National Bank, assignment of lien.
Raymond E. Thompson et ux to First National Bank, Cis-

co, to Cisco Lumber and Supply Co., material mechanics lien and assignment.
Noel Wayne Williams to O. R. Williams et ux, warranty deed.
Willie Beatrice Zirkle et vir to Donald S. Chalk, warranty deed.
Frank Pearce Curry, application to probate will.
Bess Rowe Nix, application to probate will.

C. M. Murphy, application to probate will.
Ola C. Wilson, application to probate will.
Ada M. Wood, application to probate will.
T. M. Lovell and Liddie Lovell, application for guardianship.
Earnest J. Maxwell, application to probate will.
Lela Stone, application to probate will.

DR. O. W. DANA

Physician and Surgeon, D. O.
Practice Limited to the Medical Management of Overweight Problems

Hours: Mon. thru Fri. 8:30 to 5:30 - Closed Tuesday
Sat. 8:30 to 12:00 Afternoon by Appointment

Box 215 Springtown, Texas Phone 523-7234

BILL B. HART

Announces

The Opening of an Office

for the General Practice of Law

at

201 Exchange Building

EASTLAND

AGAIN IN 1964 IT'S RUBY SPRINGER INCOME TAX SERVICE

AT THE SAME PLACE

320 West Main Street
Ranger, Texas

Office will open 1 p.m. January 2, 1964
Office Open daily, 9 to 5 and Saturdays 9 to 12 noon.

COME IN EARLY - If a refund is due, you could probably use it NOW.

THANK YOU VERY MUCH

Ruby Springer Ranger, Texas
320 W. Main Phone MI 7-3230



MONOWALL

WEATHERFORD

VALENTINE'S DAY SWEETHEART

Photo Special

TWO FOR THE PRICE OF ONE

Special COUPLES with Each 8x10 Portrait - Receive EACH INDIVIDUAL FREE Offer Expires Feb

JAY'S STUDIO

111 Main RANGER

A SAD STORY

FOR SALE



We work with you to arrange for easy to handle as monthly rent

FIRST FEDERAL SAVINGS LOAN ASSOCIATION

204 Main Ranger, Texas

ROOM BY ROOM TEMPERATURE CONTROL


ONLY WITH FLAMELESS ELECTRIC HEAT

TEXAS ELECTRIC SERVICE COMPANY
FRANK SAYRE, Manager Phone MA 9-2651



An exclusive comfort feature of flameless electric home heating is automatic room control of temperature. With built-in electric wall, floor or baseboard units, each room can have its own thermostat and own automatically controlled temperature, which can be raised or lowered as desired without overheating or underheating the rest of the house. You use the amount of heat you want, when and where you want it, without waste or discomfort. See your electrical contractor soon about modern electric heating for your home. Or call us for information.

Ask about our low rate electric home heating



The Churches

Bethel Baptist Church
H. B. Terry, Pastor
Sunday School: 9:45 a. m.
Morning Worship: 11 a. m.
Training Union: 6:30 p. m.
Evening Worship: 7:30 p. m.

First Baptist Church, Colored
Sanford Norris, Pastor
Sunday School: 9:45 a. m.
Morning Worship: 11 a. m.
Training Union: 5:40 p. m.
Evening Worship: 7 p. m.

Mangum Baptist Church
Jackie Heath, Pastor
Sunday School: 10 a. m.
Morning Worship: 11 a. m.
Training Union: 6:30 p. m.
Evening Worship: 7:30 p. m.

First Baptist Church, Olden
L. Bruce Stovall, Pastor
Sunday School: 10 a. m.
Morning Worship: 11 a. m.
Training Union: 6 p. m.
Evening Worship: 7 p. m.

Harmony Baptist Church, Morton Valley
Leroy Marvil, Pastor
Sunday School: 10 a. m.
Morning Worship: 11 a. m.
Evening Worship: 7 p. m.

First Church of Christ, Scientist
321 S. Lamar — Reading Room, 201 W. Plummer
Sunday School: 9:45 a. m.
Sunday Services: 11 a. m.

First Church of God
Joseph L. Downs, Pastor
501 South Lamar
Sunday School: 9:45 a. m.
Morning Worship: 11 a. m.
Frienddays: 6:30 p. m.
Evening Worship: 7 p. m.
Youth Fellowship: 8 p. m.

North Lamar Baptist
Homer Hall, Pastor
312 North Lamar
Bible School: 10 a. m.
Morning Worship: 11 a. m.
Prayer Meeting: 6:30 p. m.
Evening Worship: 7:30 p. m.

A Floral Memo:

ARRISH

NS AND

ES THE

WER

OP

Corner of White Sts.

ING A

E FLORAL

VICE

WER

OP

Green St. 8-1101

call MA 9-1075

CISCO TRANSFER

And STORAGE

315 E. Main
Phone MAIn 9-2044

Local and long distance moving
Office and Trucks in Eastland

SH AND GREASE

PECIAL

AVE \$1.00

ASH \$2.50

OB

\$1.00 GREASE JOB FREE

ILLIPS 66

TELEPHONE MA 9-8826

MINER FUNERAL HOME

Ben E. Hamner, Owner

Eastland County since 1924 with funeral service. Our ambulances equipped and air conditioned. Through our nation-wide connections with funeral directors, we can handle a funeral point in America. We offer this service that we can relieve the family of all incident to any death away from home.

Dial MA 9-2611

Much New in the News —

more stringent provisions have been the state's safety responsibility law which effective on January 1, 1964. The new law much heavier penalties against those involved in an accident while driving a vehicle. Since liability insurance is now a can't be caught out without it. Call us tomorrow may be too late) for full coverage will adequately protect you under the

BENDER & COMPANY
(Insurance since 1924) Texas



'HELP' — That's what a lot of would-be ex-smokers are saying about now, in Eastland, and other points. This is another cartoon which resulted from Eastland's recent no-smoking ordinance. Harold Maples of the Fort Worth Star-Telegram is the artist.

Morton Valley HD Club Has Meet Wednesday

Members of the Morton Valley Home Demonstration Club met Wednesday, January 22, at the Club house with 14 members answering roll call with, "What Other Clubs are Doing".

Mrs. Homer White led the club in giving the motto pledge and prayer in unison. Mrs. G. M. Hargus gave the devotional.

The program was a panel discussion on T.H.D.A. and Mrs. R. K. Gordon was nominated as T.H.D.A. delegate. Hostesses for the next meeting will be announced later. Refreshments of a variety of cookies, salted nuts and pecans were served by Mrs. Joe Bond.

Those present were Mmes. C. T. Brockman, G. M. Hargus, H. N. Sherman, Homer White, E. L. Danley, M. V. Harrison, H. C. Pounds, Josie K. Nix, H. C. Thompson, L. E. Orms, J. O. Rexroat, D. J. West, R. K. Gordon, and Joe Bond.

Mexican Dinner Fetes Sorority And Husbands

Husbands and members of Xi Alpha Zeta Sorority of Beta Sigma Phi were entertained Thursday night with a Mexican Supper in the home of Mr. and Mrs. Bill Walters.

Mexican decorations were noted throughout the house.

Following the supper, games were enjoyed by the following Mr. and Mrs. Bill Bass, Mr. and Mrs. Glyn Gilliam, Mr. and Mrs. Richard Johnson, Mr. and Mrs. Bill Leslie, Mr. and Mrs. R. T. Magness, Mr. and Mrs. Lawrence Maloney, Mr. and Mrs. James Smith, Mr. and Mrs. A. D. Taylor, Mr. and Mrs. Don Viergever, Mr. and Mrs. Norman Watson, Mrs. Marene Johnson and Mr. and Mrs. Walters.

Friendship Club Meets In Home Of Mrs. Denny

The Friendship Club met Thursday, January 23 in the home of Mrs. H. E. Denny.

Those present were Mmes. Jessie McBee, Lon Horn, Cecil Cox, B. H. Clifton, Lee Horn, O. M. Wilkerson, Jack Lusk, and the hostess.

Cards were sent to several shut-ins and a friendship card was sent to Mrs. Clyde Walker of Dallas, who is a former member of the club.

Refreshments of cake, coffee, cokes, openface sandwiches and nuts were served.

The next meeting will be in the home of Mrs. Lon Horn on February 6.

Mr. and Mrs. A. E. Crosby were Eastland and Olden visitors Thursday.

Mrs. M. A. Abel and Mrs. O. T. Hazard attended the regular 3rd Sunday singing at Gorman and visited C. L. Henderson in the hospital there.

Need For Missionaries In Northwestern States Is Program For YWA

The YWA's of the First Baptist Church met Wednesday night at the church. The program, given by Mrs. Kenneth Thompson, was a home missions.

She stressed the need for churches and missionaries in the Northwestern States. As an example, she pointed out that in South Dakota only one person in 1,000 belong to a Southern Baptist Church, compared to one out of every three in Alabama.

Members present were Sharon Spradling, Sharon Sayre, Lois Ann Sims, Sharon Hall, and Janice Watson, and Mrs. Lou Ann Hart.

The YWA's voted to meet every second and fourth Wednesday night at 6:45 p. m. at the church unless otherwise designated. They invite all girls who are sophomores in high school or older to join.

Mrs. Maurice Hazard of Eastland visited Sunday evening with Mrs. O. T. Hazard.

H. C. THOMPSON'S HONORED ON 50th WEDDING ANNIVERSARY

Mrs. W. B. Stewart and family of Fort Worth honored her parents, Mr. and Mrs. Harvey C. Thompson, with a reception celebrating their Golden wedding anniversary at the Woman's Club in Eastland Sunday afternoon.

In the receiving line with Mr. and Mrs. Thompson and Mr. and Mrs. Stewart were Mrs. Sallie Cline, Fort Worth; Mr. and Mrs. Tol Roberts, Brady, sisters of Mrs. Thompson; and Mrs. Emma Thomason of Albany and Abilene, sister of Mr. Thompson.

Other close relatives present were Mr. and Mrs. Henry Lee Perry, Gainsight; Mr. and Mrs. Cecil Thompson, Irving; Mrs. Becky Thorpe, Breckenridge; M. E. Graves, Bedias.

Fred Roberts and Linda Brady; Mrs. Mattie Baggett, Eastland; Mrs. Josie Dooley and Alta Mae, Ranger; Mrs. Josie K. Nix, Eastland; Mr. and Mrs. Billy Gerald Thompson, Ranger; Mr. and Mrs. John Harrison, Eastland; Mr. and Mrs. T. C. Weaver, Ranger; Mr. and Mrs. Clifton D. Beck, Breckenridge; and Mr. and Mrs. Jack Robinson, Ranger.

Approximately 100 guests called during the afternoon.

Miss Debbie Stewart, granddaughter of the Thompsons, presided at the registry, which was centered by a lovely arrangement of yellow roses and green grapes in a milk glass bowl.

Miss Jan Stewart, another granddaughter, and Mrs. Josie K. Nix presided at the serving table, where the twin centerpieces were the tiered wedding cake and a beautiful bouquet of yellow roses. The appointments were of crystal and silver. Mrs. Harrison, Mrs. Robinson and Mrs. Beck alternated at the table.

Mrs. B. G. Thompson, Mrs. Weaver and Mrs. Paul Langford showed the gifts.

An arrangement of gold mums and gold candelabrum flanked the piano.

Mrs. Thompson and Mrs. Stewart wore corsages of yellow roses. Mr. Thompson and Mr. Stewart wore yellow rose boutonnières.

Mr. and Mrs. A. E. Crosby recently visited their son and daughter in-law, Mr. and Mrs. Lonnie Crosby of Snyder. One of their children was confined to the hospital there.

Accidents annually kill over 100,000 persons in the U. S.

Martha Circle Meets In Home Of Mrs. Robinson

The Martha Circle of Christians Womens Fellowship of the First Christian Church met Monday, January 20, in the home of Mrs. Guy Robinson.

Group chairman, Mrs. J. W. Watson called the meeting to order and opening prayer was given by Mrs. Ray Cameron.

Mrs. Harvey Drake gave the devotional on "The New Year". Mrs. Watson gave the lesson for the afternoon assisted by Mrs. R. L. Carpenter and Mrs. George Sallee. The lesson was "These Sermons in Stone".

During the business session it was decided to have a bake sale, Friday, January 24, in the Church annex. Reports of sick members were given.

Next meeting will be held Monday, January 27, in the home of Mrs. Harvey Drake.

Pecan pie, coffee and cokes were served to the following members, Mmes. N. T. Johnson, Ray Cameron, R. L. Carpenter, George Sallee, A. D. Webb, M. G. Cartwright, C. M. Oakley, J. R. Gilbreath, Joe Tow, Henry Ferrell, O. M. White, E. A. Beskow, Harvey Drake, Sallie Day, J. W. Watson and Guy Robinson.

25th Anniversary Of WSCS & Guild To Be Observed

The Woman's Society of Christian Service and the Wesleyan Service Guild of the First Methodist Church of Eastland will meet in a special joint session at the church Wednesday night, January 15, at 7 p. m., to observe the 25th anniversary of the W.S.C.S. and Guild.

It was in the war-torn world of 1940 that three uniting bodies of Methodism came together and the several organizations of women united to form the Woman's Society of Christian Service and the Wesleyan Service Guild of the Methodist Church. There were seventy-five years of rich heritage in the founding of this union, and its leaders showed courage, wisdom, and Christian commitment in their far-sighted planning.

The Woman's Division of Christian Service has designated the period between January 19, 1964 and June 1966 as the time for the observance of the Twenty-fifth Anniversary of the W.S.C.S. and the Guild, and the meeting in the Eastland church Wednesday night will usher in this observance.

The program will be as follows: Hymn—"God of Grace and God of Glory"; Prayer by Mrs. Ed F. Willman; Scripture — Mrs. D. E. Frazer; Meditation — Mrs. Harold Durham; Anniversary Message and Goals — Mrs. Fred Davenport; Annual Guild Report — Mrs. Joe Stephen; and Litany and Prayer — Mrs. W. P. Leslie.

Double Seven Club Meets In Seabourn Home

The Double Seven Club met in the home of Donna Seabourn January 21.

The club voted on a coat-hanger sale to be held February 1.

Refreshments of tuna and cheese sandwiches, cookies, cokes, potato chips were served to the following: Dixie Young, Sue Underwood, Kay Lewis, Shirley Reid, Jeanne Wright, Janette Waldon, Jodie Cameron, Connie Statten, Marilyn Huckaby, Gloria Lippard, Connie Grieger and the hostess, Donna Seabourn.

The next meeting will be Feb. 4.

Double Seven Club Meets In Seabourn Home

The Double Seven Club met in the home of Donna Seabourn January 21.

The club voted on a coat-hanger sale to be held February 1.

Refreshments of tuna and cheese sandwiches, cookies, cokes, potato chips were served to the following: Dixie Young, Sue Underwood, Kay Lewis, Shirley Reid, Jeanne Wright, Janette Waldon, Jodie Cameron, Connie Statten, Marilyn Huckaby, Gloria Lippard, Connie Grieger and the hostess, Donna Seabourn.

The next meeting will be Feb. 4.

Double Seven Club Meets In Seabourn Home

The Double Seven Club met in the home of Donna Seabourn January 21.

The club voted on a coat-hanger sale to be held February 1.

Refreshments of tuna and cheese sandwiches, cookies, cokes, potato chips were served to the following: Dixie Young, Sue Underwood, Kay Lewis, Shirley Reid, Jeanne Wright, Janette Waldon, Jodie Cameron, Connie Statten, Marilyn Huckaby, Gloria Lippard, Connie Grieger and the hostess, Donna Seabourn.

The next meeting will be Feb. 4.

Double Seven Club Meets In Seabourn Home

The Double Seven Club met in the home of Donna Seabourn January 21.

The club voted on a coat-hanger sale to be held February 1.

Refreshments of tuna and cheese sandwiches, cookies, cokes, potato chips were served to the following: Dixie Young, Sue Underwood, Kay Lewis, Shirley Reid, Jeanne Wright, Janette Waldon, Jodie Cameron, Connie Statten, Marilyn Huckaby, Gloria Lippard, Connie Grieger and the hostess, Donna Seabourn.

The next meeting will be Feb. 4.

Double Seven Club Meets In Seabourn Home

The Double Seven Club met in the home of Donna Seabourn January 21.

The club voted on a coat-hanger sale to be held February 1.

Refreshments of tuna and cheese sandwiches, cookies, cokes, potato chips were served to the following: Dixie Young, Sue Underwood, Kay Lewis, Shirley Reid, Jeanne Wright, Janette Waldon, Jodie Cameron, Connie Statten, Marilyn Huckaby, Gloria Lippard, Connie Grieger and the hostess, Donna Seabourn.

The next meeting will be Feb. 4.

FOR SALE

160 acres grass land with one half mineral right.
\$90.00 per acre. N. E. 1/4 of Section 23, Block 3
H&TC Survey, Eastland county. 3 miles west on Hwy. 80, then south 2 miles. Hedley pasture.

T. G. HEDLEY

1205 Sunset Drive Wewoka, Okla.

More than 2 million users say,

"Get Dearborn"

Cabinet so cool you can use it as an extra table... grow potted plants on top! Dearborn's "fine furniture look" tastefully blends into your decorative scheme.

Cabinet so safe you never worry about burned fingers or scorched rugs, drapes, furniture.

Inside the cabinet, **Forward-Flow Circulation** provides continuous, evenly balanced heat throughout your rooms.

... that's why millions agree...

Only a **Dearborn** will do!

WESTERN AUTO ASSOCIATE STORE EASTLAND

MA 9-2011 201-203 S. Lamar

NOTICE TO TAXPAYERS

YOUR 1963 TAXES MUST BE PAID BY JAN. 31 TO AVOID PENALTY

JANUARY 31st IS ALSO THE LAST DAY TO PAY YOUR YOUR 1963 POLL TAX TO VOTE IN 1964

Necessary Information and Money must be in the hands of Tax Collector, or Deputy, by Midnight of Jan. 31st.

Every person who will reach the age of twenty-one years after the first day of January, 1963, and before the day of a following election—shall be entitled to vote at said election and it shall not be necessary that said person shall have paid his poll tax but must obtain an exemption certificate at least 30 days prior to an election in which he offers to vote. But if they become 21 before January first 1963, they must pay poll tax before they can vote.

an exemption certificate.

Those who were 61 years of age BEFORE JAN. 1, 1964 are entitled to vote without

● Poll Tax Receipts are available in Cisco, Ranger, Rising Star, Gorman.

J. C. ALLISON

EASTLAND COUNTY
TAX ASSESSOR-COLLECTOR

The Readers Write

EDITOR:

To further your effort of Eastland banning cigarette's. How wonderful that the whole world would be, if this could be done. You know, I don't think Eastland was doing that just for publicity. If that were true, they sure got plenty of it. Seem to have spread around the world.

You have to hand it to Eastland, they know how to get something started.

It is from a personal experience that I write this letter. Hoping in the mean time it might help some one. Dec. 16th, 1963, we put away a favorite brother. It hurt us all so much. He was hardly 70, living at Childress.

On Wednesday before his death, we went to see him, he had a light stroke, but knew us. The following Sunday we went to see him again. He was lying unconscious on his death bed. Dying with cancer of the lungs, he passed away that night. He had been a heavy smoker until about a year ago, he took to smoking a pipe. "Alas too late."

We can't say smoking caused his death, that is something even doctor's don't know I've smoked a few cigarettes in my life, but was never able to inhale them. I don't try any more, more than that a lot of my relatives, laid them aside, or come right out, and threw

them away. Another little, or perhaps BIG, thing was a couple from Ranger was in my home last week, and they said, "Oh, we have quite smoking."

So see after all, maybe your idea of at least trying to ban cigarettes might have helped some one. I'm sure for you. I don't mind if you publish this letter, maybe it will still help some one.

Sincerely
Mrs. J. L. "Punk" Thornton
Box 147
Cisco, Texas

The following is a copy of an editorial which appeared in the Wichita Falls paper and sent to Eastland by John Schofield, former Eastland resident and local Scout Executive.

Fine Smoke Screen
It was a fine smoke screen that the Eastland Texas City Council laid down the other day when it outlawed cigarettes. It brought the town a package of King-sized publicity, without tax, and a side from igniting a few fuming citizens, did no real harm.

When the smoke cleared, Mayor Don Pierson said the Eastland council didn't really mean to send anyone to jail — just wanted them to quit the habit. Anyway, the penalties of the proposed ordinance, he added, would not be enforced because they were unenforceable. Reason enough.

But lest you consider the Eastland gambit a failure — all smoke and no fire — then put this in your pipe and puff on it; with little more than a news nose, alert to public relations, it managed to get Eastland mentioned throughout America. For less than that, many cities spend fortunes.

So don't get lung cancer criticizing Eastland. It passed a phony ordinance, but it did not pass up a golden opportunity for basking in the limelight of national fame.

As a matter of fact, such



HONOR GRADUATE — Specialist 4th Class Homer L. Carroll, son of the late Mrs. Fannie Belle Carroll of Eastland, and nephew of Mrs. Jewell Reeves, was one of four honor graduates of a class of 133 Army men who graduated from the Seventh Army Non-Commissioned Officers Academy recently in Germany. Young Carroll, who attended Eastland High School, received the Gen. Douglas MacArthur Award for leadership. He is assigned to the adjutant general's corps and works in the personnel section, stationed at Stuttgart, Germany.

publicity for Eastland seems to be a habit. We remember, not at all vaguely, the story about Old Rip, the horned frog, that some years ago was carried around the world with an "EASTLAND, TEXAS" date line.

(Mr. Bailey Bryant showed us this clipping from the Lubbock Avalanche Journal which appeared in their letters column.)

Here we go again! I thought that the people of this country had learned a lesson from the terror caused by liquor prohibition, but obviously it has not, at least in some sections.

Legislation is usually sound in theory, and often in practice. However, recent legislation in Eastland borders on insanity. I realize that it was to take a stand on recent reports of tobacco and disease, but for years, various religious groups have tried in vain to legislate righteousness and for a civic group to attempt to legislate health, even in theory is sheer madness. If the ordinance could or should be enforced, I wonder which prominent Eastland citizen would rise to power as the "Tobacco Bootleg King."

C. Wilson Spikes
Lubbock.

EDITOR:

I am trying to contact my father, Obed Laughton Woods. The only thing I know about him is that he was born in your town. I am now 29 years old and have four children who would also like to see him.

Mrs. Frances Bee Smith
610 Nestoria Lane
Aptos, Calif., 95062

OLDEN NEWS

By MRS. TOM SHARPE
Mr. and Mrs. H. C. Craven were in Houston last Sunday and Monday. Mr. Craven reported to M. D. Anderson Hospital for a check-up.

Mr. and Mrs. Gene Williamson and family of Graham visited in the home of his parents, Mr. and Mrs. Lee Williamson over the weekend.

Mr. and Mrs. Bert Ray Kent and children visited Mrs. Kent's parents, Mr. and Mrs. Dick Vann of Carbon Sunday afternoon.

Mrs. Johnny Jarrett of Dallas visited in the home of Mrs. Stella Jarrett this week.

Mrs. Sims visited in the home of her daughter, Mrs. Billy Adams Monday afternoon.

Mr. and Mrs. Buster Elliott and Marvin visited in Winters Sunday with their son and brother, James Lee Elliott.

Mr. and Mrs. Lewis Todd of Burkburnett and Mr. and Mrs. Polk Valliant visited in the home of Mr. and Mrs. Homer Lawrence and Sharon Wednesday. Mrs. Valliant and Mrs. Lawrence are sisters.

Mr. and Mrs. Don Joiner and daughter of Fort Worth spent Friday night with Mrs. Joiner's parents, Mr. and Mrs. H. C. Craven.

Rav Lester of Abilene visited his mother, Mrs. Lula Lester Tuesday.

Misses Susie and Eunice Hamilton attended the funeral of their uncle, Mr. W. P. Hamilton of Stephenville Sunday.

Kokomo News

We're glad to see this moisture falling even if it is in the form of sleet and snow. It is needed badly.

Mrs. Bishop Craddock of Gustine visited with Mr. and Mrs. Alvin Lasater and Ina Margaret over the weekend.

Kenneth and Donald Eaves of Comanche spent the weekend with Mr. and Mrs. Delmon Eaves and family. Mr. and Mrs. Neil Eaves of Comanche visited with them on Sunday.

Mrs. George Eppler and children of San Angelo visited with Mr. and Mrs. Albert Hendricks and Sylvia on Sunday. Paula, Billy and Edward Eppler also visited with Teddy Jordan on Sunday afternoon.

Mr. and Mrs. Jim Jordan were shopping in Breckenridge last Wednesday.

Word was received here last week that Mrs. Carr Sessum was seriously ill in a Roby Hospital. We hope that Mrs. Sessum is rapidly recovering.

Mr. and Mrs. Albert Hendricks visited in Breckenridge on Monday with an aunt and uncle, Mr. and Mrs. D. D. Gray.

Mrs. Bishop Craddock of Gustine was a visitor at the Kokomo Baptist Church on Sunday morning.

Mr. and Mrs. L. R. Higginbottom and Bobby of San Angelo spent the weekend here at their place. They also visited with Mr. and Mrs. Lee Roy Higginbottom and Leesa.

Rev. and Mrs. Jackie Heath, Sue Lynn, Cynthia and Sondra of Fort Worth visited recently with Mr. and Mrs. Pete Snider and family.

Mrs. Florence Richardson of Oliver Springs was visiting with her sister, Mrs. Buel Bryan on Friday.

Mr. and Mrs. Claude Fuller and family were visiting with the Glenn Jordan family on Friday night.

Mr. and Mrs. Byron Laminack of Lake Jackson, Lyndon Laminack of Austin, Mr. and Mrs. F. C. Eaves of Gorman, Kenneth, Donald, Mack and Delores Eaves of Comanche were visiting with Mr. and Mrs. Delmon Eaves and family on Saturday night.

Mrs. Neal Gilbert, Lisa and Stephen of Sweetwater have been visiting with her parents, Mr. and Mrs. Odie Rodgers, while Neal is away on business. They attended the morning and evening services at the Kokomo Baptist Church on Sunday. Mrs. Gilbert served as pianist for the evening service. Joyce was church pianist during her teenage years at Kokomo and it was nice to hear her play again.

Kathy Browning and Kay Browning of Gorman were visitors at the Kokomo Baptist Church on Sunday night.

Mr. and Mrs. Albert Hendricks and Sylvia were dinner guests of Mr. and Mrs. Claude Fuller and family on Sunday.

Mr. and Mrs. Bob Sessum of Carbon visited in Roby on Friday and Saturday with his mother, Mrs. Carra Sessum, who is very seriously ill in the Roby hospital. Mrs. Phyllis Sessum visited in Roby on Sunday and they report that there was no noticeable change in Mrs. Sessum's condition.

Mr. and Mrs. Theron Flatt and Lila Ruth of De Leon were visiting with his sister, Mrs. Claude Fuller, and family on Sunday afternoon.

TIDBITS
(Continued from Page 1)

on the square? We've asked and got a "Well, I think the Jaycees do." What about it Chamber of Commerce, Jaycees? The excuse for coming to Eastland that is day is ready made. All we need to do is add a little extra incentive.

Cisco has a good thing going with their beauty contest on July 4th. Ranger has re-instituted its rodeo and it looks like a permanent attraction in that town. There was a time when Eastland's City Park was a beehive of activity. You can't plan these things the night before. Now's the time.

The soap-box is yours

PIN CHATTER

By LYNELL TEMPLE

Saturday morning there were 24 nervous and excited juniors at Fiesta Bowl for the Junior League. Small-fry Stacy Roberts picked up the 4-7-10 split. Steve Beck set a 116 average, and little June Cox was beaming over the 105 average she set.

If you are looking for an instructor, you need someone like Bob Cartwright. Bob bowls in three leagues and his lowest average is 183. On the couples league he has a 187 average and on the other league a 186 average. Bob's high game is 278. His high series is 708.

Recently Bobbie Ramey whipped up a 568 series. Her games were 202, 188, and 178. Bowling less than a year, Bobbie has a high average of 167.

OLDEN WINS 18-B TILT FROM GORMAN, 48-42

The Olden Hornets extended their 18-B record to 3-1 Tuesday night by overcoming the Gorman Panthers, 48-42.

The Panthers won in a girls' game, 45-31. Bobby Boyett led scoring for Olden with 25 points, while Bobby Rogers hit 14 for Gorman.

GORMAN: Bobby Rogers 4 6 14; Rogers 5 1 77; Watson 0 5 5; Smith 2 1 5; Clark 2 0 4; Seory 0 2 2; Sutton 0 1 1; Totals 13, 16 42.

OLDEN: Bobby Boyett 10 5 25; Thomas 0 1 1; Patton 0 1 1; Walker 5 0 10; Fox 2 0 4; Reeves 3 1 7; Totals 20 8 48.

ODEN 17 27 36 48
GORMAN 12 17 32 42

THE EASTLAND CHAMBER OF COMMERCE

JEANETTE'S FABRIC SHOP

You might call this special Chamber of Commerce member a "well-protected" firm.

Jeanette's Fabric Shop, located at 105 S. Lamar St. on the west side of the square, has two employees, and therein lies the protection. Employee Mrs. Wells Dalton is the wife of Eastland Justice of the Peace Wells Dalton, and Employee Mrs. Clyde Fisher, is wife of Eastland City Policeman Clyde Fisher.

"Yes, sir, we're well protected," Owner Mrs. Jeanette Harris of St. says.

The little shop is a favorite spot of all the seamstresses in this area fabrics and accessories, including ladies hats, gloves, jewelry and firm does approximately \$30,000 volume a year, Mrs. Harris says.

Payroll is about \$2,000 a year, she says. A member of the Eastland Chamber of Commerce since 1956, a meager beginning. Opened in 1950 in a small apartment on S. Seaman five boxes of material, the business has grown and grown. Mrs. Harris shop to 311 Main St. in 1956 and to her present location two years ago.

"I am happy to say that I have never gone into debt for merchandise," she proudly says, "Since I started in a small way and gained year by year to do this."

Mr. and Mrs. L. D. Harris lived in Royce City in Rockwall County until 1936. Mr. Harris (Bucky) is employed with the Leon Plant.

A busy woman, Jeanette is a member of the Civic League and attends the Baptist church.

The year just ended was good, she says, and although she has plans for enlargement or expansion, the shop and its protected looking forward to a bright future in Eastland, she says.

"I'd like to see the chamber and the local merchants 'get together' in Eastland," Jeanette says.

Mr. and Mrs. Harris have two children and three grandchildren. L. Harris of Athens, father of two children; and Mrs. Jo Cathryn S. Harris, mother of a daughter.

The Eastland Chamber of Commerce proudly salutes this member who has proved that from modest beginnings, big things frequently develop.

"CHAMBER MEMBERSHIP IS GOOD BUSINESS"



BISCUITS WHITE SWAN 3

CORN DEL MONTE CREAM STYLE 2 No. 201 C

PEAS DEL MONTE JUNE 2 No. 303 C

TUNA VAN CAMP'S No. 1 F

TOILET TISSUE ZEE 4-Roll P

CARAMELS KRAFT 14-oz. P

SHORTENING WHITE SWAN 3 Lb. C

CAKE MIX DUNCAN HINES — White, Yellow, Devil Food 18-oz. P

VIENNAS CAS AGRANDE No. 1 C

MARGARINE WESTERN RANCH Lb. P

SWIFT PREMIUM Sliced Bacon Lb. 49¢ SWIFT SWEET RASHER Sliced Bacon

FRESH Ground Beef Lb. 39¢ Center Cut Chops

RUSSETT Potatoes 10 Lbs. 49¢ FIRST CUT Pork Chops

Double GOLD BOND STAMPS Every Wednesday

AT MAC MOY'S SUPER SAV 400 S. Seaman EASTLAND MA 9-1

FREE
Estimates On
RE-ROOFING
Or Repair Your Old Roof.
Residential and Commercial
Roofing Co. Eastland
Noble Squiers
Phone MA 9-2370

WASH AND GREASE SPECIAL
SAVE \$1.00
WASH JOB \$2.50
RECEIVE \$1.00 GREASE JOB FREE
PHILLIPS 66
TELEPHONE MA 9-8826

RCA VICTOR
"The Pick of the Portables"
• Light and Lively
• Bright, clear picture
• Front Sound
• PRICE INCLUDES BEAUTIFUL FREE DELUXE ROLL-AROUND STAND!

\$144.95
Includes Free Stand
WIN A FREE RCA VICTOR PORTABLE
Just Register... Nothing To Buy... Nothing to Write No Obligation
ROBERTSON RADIO & TV
REPAIR SERVICE
100 W. Commerce EASTLAND MA 9-1625