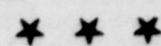




The orchestra leader got there by facing the music.



Four-H Contests Set for Saturday

County 4-H elimination contest will be held Saturday, April 1 at the Eastland High School. The contests held will be safety, Public Speaking, and electricity at 9 a.m. and at 1 p.m. The Share-the-Fun Festival program will begin.

Joy Love and Martha Foster Take 4-H Honors

Forty-six parents, boys and girls, were present Monday night, March 27 to admire the 4-H girls as they competed in the annual Foods Demonstration Contest.

Revival Begins Sunday Morning At Desdemona

Revival services at the First Baptist Church in Desdemona will begin Sunday morning and continue through April 9.

4 Is Deadline to Lose Peanut Acreage

ment, or 75 percent of it, must be planted and harvested this year if it was unplanted or released in the past two seasons, otherwise half of the allotment will be lost.

Carbon Baptist Church Revival Begins Sunday

Carbon Baptist Church will begin a Spring revival Sunday morning and the meeting will continue through April 9.



REV. JIM TURNER to lead revival

HOME IMPROVEMENT LOANS At Lowest Rates See Your EASTLAND NATIONAL BANK "On the Square" - Member FDIC



BACKING DAVISSON—George Davison, former state representative from Eastland County and now a professor at Hardin-Simmons University, is shown cutting a cake presented him by Circle K students at H-SU this past week.

Longtime Carbon Resident Dies; Services Today

Charley R. Jackson, 73, former resident of Carbon, died Tuesday in Odessa where he had been for three months. He was a longtime resident of Carbon.

Mother-Daughter Party Planned For April 4

Eastland's Mother-Daughter Party will be at 6:30 p.m. Tuesday, April 4 at the High School gym.

McCains Attend PCA Stockholders Meet In Houston

Mr. and Mrs. C. M. McCain of Route 1, Eastland attended the fifth annual stockholders' meeting of the Federal Intermediate Credit Bank of Houston and the Production Credit Association of Texas, held in the Shamrock Hilton Hotel in Houston, March 26-28.

School Trustee Elections Are Set Saturday

School trustee elections will be held in all Eastland County districts Saturday.



PILOT TO BE SKY PILOT—Canadian Pacific Airline pilot Tom Elden catches up on some school work between flights. He is studying at the University of British Columbia to be a minister and logs 3,000 miles a week between classes.

Four-H Club Members Win Big Share of Show Honors

Eastland County 4-H Club boys and girls captured a large number of championships in the Eastland County Livestock Show held March 24-25, according to Curtis L. Boase, assistant county agent.

Services Held Today for Area Rancher

Charlie Rasmussen, 78, Stephens County rancher since 1910, died at 6:30 p.m. Wednesday at his home in southeast Stephens County after a long illness.

Make Your Mark For HALLMARK For J. C. President

(Pd. Pol. Adv.)

Make Your Mark For HALLMARK For J. C. President

(Pd. Pol. Adv.)

Make Your Mark For HALLMARK For J. C. President

(Pd. Pol. Adv.)

Make Your Mark For HALLMARK For J. C. President

(Pd. Pol. Adv.)

Make Your Mark For HALLMARK For J. C. President

(Pd. Pol. Adv.)

Make Your Mark For HALLMARK For J. C. President

(Pd. Pol. Adv.)

Easter Service Set for Sunday

Plans have been announced for the annual community Easter Sunrise service to be held at 6:30 a.m. Sunday at the First Baptist Church. The service is sponsored by the Eastland Ministerial Association.

Most Eastland churches will participate in the service. Rev. Bill Penland will deliver the Easter message. Rev. Penland is pastor of the Harmony Baptist Church. Phillip Hewitt will lead singing.

Here is the order of worship: Prelude—Mrs. James Young. Call to Worship—Rev. Benny Hagan. Hymn—"Christ Arose." Invocation—Rev. Ralph Woods. Hymn—"Christ the Lord Is Risen Today."

Higher Interest Offered On Old Series E Bonds

The latest extension offered on the oldest Series E Savings Bonds at a full 3-3/4 per cent annual interest rate is a boon to the thousands of people in this county who still hold bonds bought between May 1941 and May 1949.

Services Held Today for Area Rancher

Charlie Rasmussen, 78, Stephens County rancher since 1910, died at 6:30 p.m. Wednesday at his home in southeast Stephens County after a long illness.

Make Your Mark For HALLMARK For J. C. President

(Pd. Pol. Adv.)

Make Your Mark For HALLMARK For J. C. President

(Pd. Pol. Adv.)

Make Your Mark For HALLMARK For J. C. President

(Pd. Pol. Adv.)

Make Your Mark For HALLMARK For J. C. President

(Pd. Pol. Adv.)

Make Your Mark For HALLMARK For J. C. President

(Pd. Pol. Adv.)

Make Your Mark For HALLMARK For J. C. President

(Pd. Pol. Adv.)

Make Your Mark For HALLMARK For J. C. President

(Pd. Pol. Adv.)

Scripture Reading—Rev. W. E. Hallenbeck Jr. Prayer—Rev. James Campbell. Offering—Rev. Eugene Surface. Special Music—First Baptist Church. Morning Message—Rev. Bill Penland. Hymn—"He Lives." Benediction—Rev. Haston Brewer. Postlude—Mrs. James Young.

Mrs. Mary Morris Buried Saturday In Strawn Rites

Mrs. Mary Morris, 67, passed away in the Ranger General Hospital Thursday, March 23, following a long illness.

Mrs. Morris was born in Wymer County in January 28, 1894. She married Stanley Morris May 11, 1915 in Strawn and had lived in Strawn all her married life. She was preceded in death by her husband some ten years ago.

Rosary was said at 9:15 p.m. Friday and requiem Mass was recited at St. John Catholic Church Saturday morning March 25, with the Rev. Julius Sprit officiating. Interment was in Mt. Marion cemetery, with Malcom Funeral Home in charge of arrangements.

Survivors include five sons, Johnny, Julius, and Gene of Strawn, S. W. of Gordon and Eddie of Breckenridge; three daughters, Mrs. Albert Schwesig and Mrs. K. C. Dixon of Strawn and Mrs. E. G. Galik of Mingus. Five brothers, Henry Nowak and Adolph Nowak of Gordon, Joe and Stephen of Strawn and John of Mineral Wells; two sisters, Mrs. Ben Jones of Strawn and Mrs. Joe Holby of Gordon; and 17 grandchildren.

Eastland Student Is Featured In Baptist Standard

A photo-story on an Eastland student's life at Hardin-Simmons University will appear in this week's issue of the Baptist Standard, state Baptist newspaper with the largest circulation of any publication in Texas.

The story will feature Kathy Williamson, daughter of Mr. and Mrs. D. F. Williamson, who is a junior religious education major at Hardin-Simmons in Abilene.

She and John Robert Baker, H-SU student from Wichita Falls, were picked as representatives of more than 11,000 students attending nine Baptist schools for the photo story, which tells what the students believe to be the advantages of attending a church-supported college.

The photo-story is part of an eight-page special section on Christian education published March 29 by the Standard. Other articles in the series include the story of a professor at Baylor University, an article telling how Baptist churches can support Baptist schools, and a story promoting a proposed \$28 million-four-year fund campaign for new building and equipment at Baptist colleges.

The Baptist Standard is distributed to more than 365,600 Baptist homes weekly.



KATHY WILLIAMSON chosen from 11,000

SEE and Drive the 1961 PONTIAC... fresh point of view and wide track too! MUIRHEAD MOTOR CO.

AIR CONDITION YOUR CAR Any make - Sales and Service. Otis Coleman Humble Service Phone MA 9-1741

Eastland Telegram

Eastland County Record established in 1931, consolidated August 31, 1951. Chronicle established 1887, Telegram established 1923. Entered as second class matter at the Post Office in Eastland, Texas under the Act of Congress of March 3, 1879.

TIMES PUBLISHING COMPANY

Published Tri-Weekly—Tuesdays - Thursdays - Sundays
Onous Dick and Joe Dennis, Publishers
Virgil E. Moore, Editor

One week by carrier in city 15
One month by carrier in city 65
One year by mail in county 2.95
One year by mail in state 4.95
One year by mail out of state 6.95

NOTICE TO PUBLIC—Any erroneous reflection upon the character standing or reputation of any person, firm or corporation which may appear in the columns of this newspaper will be gladly corrected upon being brought to the attention of the publishers.

CLASSIFIED

Cards of Thanks charged for at rate of \$2.00 Each

Misc. For Sale

BARGAINS: Automatic washer and kitchen range. Both in excellent condition. A low priced for quick sale on either or both. Call Norman Guess, MA 9-1545.

FOR SALE: Seven acres on Lake Leon. Property located just south of Lake Leon bridge. Beautiful building sites. B. M. Bennett. Phone 5543, Gorman.

FOR SALE: All kinds and sizes creosoted posts and poles. Crowell Lumber Company.

FOR SALE: Astralite light bulbs guaranteed five years or 10,000 burning hours 69c each. Hammon Furniture, W. C. Hammon Authorized dealer.

COASTAL BERMUDAGRASS SPRIGS, dug fresh daily, \$5.00 cwt. at farm. Ton or more delivered. No noxious weeds or grass. Two-row sprigger loaned free. Millard Richman, De Leon, Ph. 3723 or 5917.

FOR SALE: Piano, Olden Baptist Church \$25 See I. E. Talley.

FOR SALE: 50 x 100 brick building. 300 Block on Lamar St. Phone Grady Pipkin at residence or office.

FOR SALE: Lot 100 x 109. 600 S. Seaman. Phone MA 9-1707. O. H. Dick, Eastland Telegram.

FOR SALE: Tomato and pepper plants 1 1/2 miles east on old Hwy 80. Ruth's Gardens.

FOR SALE: International W-30 Tractor on steel and 8 disc breaking plow. Both in good condition, priced to sell. Mrs. O. T. Hazard. Phone MA 9-2777, Staff.

FOR SALE: Easter bunnies. \$1.00 each. Call Roy Stroud, MA 9-1916.

For Rent

FOR RENT: Unfurnished 4 room duplex. Call MA 9-2186.

FOR RENT: Furnished 2 bedroom apartment in Duplex. 611 Plummer.

FOR RENT: Lovely apartments, with living, dining, bedrooms and kitchen, furnished or unfurnished at very reasonable rates. Also comfortable single rooms with tiled baths for only \$39.50. No stairs to climb, elevator equipped. Delicious food in our coffee shop and steam heated for really warm and comfortable living. Maid service is always included. Throw away your cares and high expenses and come live with us. The Village Hotel, Mrs. Robinson, manager—call me today, MA 9-1715.

FOR RENT: 3 room furnished house, 402 E. Sadosa. Call MA 9-2032.

FOR RENT: Four rooms and bath house, two bedrooms. Alice Spear, 410 E. Sadosa. Phone MA 9-1263.

FOR RENT: Three bedroom house, 708 S. Seaman. See Monroe Walker, 306 N. Dixie.

FOR RENT: 3 room furnished house, 402 E. Sadosa. Call MA 9-2032.

FOR RENT: Four rooms and bath house, two bedrooms. Alice Spear, 410 E. Sadosa. Phone MA 9-1263.

FOR RENT: Three bedroom house, 708 S. Seaman. See Monroe Walker, 306 N. Dixie.

Autos for Sale

FOR SALE: 1953 model 2-ton Ford truck, located at Magnolia Pipe Line Company's warehouse, Olden, Texas. Mail sealed bids to Magnolia Pipe Line Company, Box 1073, Midland, Texas, Attn: Mr. W. M. Harris.

For Lease

FOR LEASE: 37 acres land two houses on highway 80, two miles west of Ranger. Modern. See John Lee Roper, Eastland.

EARN WHILE LEARNING

Air Conditioning
Refrigeration - Heating
Tool-Die Making
Tool-Die Design
Drafting
Electronics
Auto Mechanics

All Courses Fully Approved.
Write Box 29, Eastland Telegram.

Misc. Wanted

WANTED: Carpentry, remodeling, roofing, siding or any type of carpentry work. All work guaranteed. U. V. Williams, 203 E. Main Call MA 9-2071.

WANTED: We will do your yard work, hauling of any kind plus hauling of mulching. Phone MA 9-1396.

Special Notice

NOTICE: Let me break and (or) sow your land. Contact B. H. Courtney, MA 9-1340.

NOTICE: Trucking. Cattle hauling—any time any where. Phone MA 9-2464, E. R. Overstreet.

POWER SPRAYING: Trees, shrubs and under houses. I also have new dirt for yards and fertilizer and rake and haul leaves. Other yard work. Phone MA 9-2434.

SPECIAL NOTICE: Piano Tuning. M. J. Kennamer is in your city. Phone MA 9-1146.

SPECIAL NOTICE: Enroll for October Kindergarten. MA 9-2460. Ferne Green Savage.

SPECIAL NOTICE: Piano Tuning. M. J. Kennamer is in your city. Phone MA 9-1146.

SPECIAL NOTICE: Will keep two elderly ladies in my home. Box 678, Olden. Phone 2291.

MATTRESSES

Save up to 50% renovating choice of color and firmness. Complete bedding. Made and guaranteed by WESTERN MATTRESS CO., San Angelo. Phone MA 9-2689, Eastland and leave address.

County Surveyors Office

Box 492 — Phone MA 9-2639
Courtroom, Eastland, Texas
• Land Surveying and Mapping
• Civil Engineering
• Sub-Division Design and Layout
• Oil Field Surveying
R. T. MAGNESS, JR.
Reg. Prof. Engineer
County Surveyor
T. P. MOBLEY, Reg. Public Surveyor
HI 9-3644, Breckenridge

Real Estate

FOR SALE: House, 305 South Neblett.

FOR SALE: Five room house on pavement. 175 foot lot. \$3,200. Ben Hamner.

FOR SALE: House, 501 S. Virginia after 5 p.m.

FOR SALE: 5 room house, 301 South Oak Lawn.

FOR SALE: Five room house, one acre land in Olden. Inquire Kellar's Fix-It Shop, 202 South Seaman.

FOR SALE: Two story brick business building. Good rental contract. T. L. Fagg, Petroleum.

PERMANENT SPECIAL

Mon., Tue., Wed., Each week \$5.00
No permanents after 5 p.m.
BASHAM BEAUTY BAR

Insurance and Real Estate

D. L. KINNAIRD
Life - Fire - Auto - Farm
Polio - Bonds
42 years in the Insurance
Business in Eastland

ATTEND THE CHURCH OF YOUR CHOICE EACH SUNDAY

Reviews and Stylorama Presented At March Meeting of Las Leales

The regular meeting of Las Leales Club was held March 20 at 7:30 p.m. in the Woman's Club. Mrs. Maurice Dry gave a brief review of "books that shook our lives." Books reviewed were "Common Sense," Thomas Paine; "Uncle Tom's Cabin," Harriet B. Stowe; "How the Other Half Lives," Jacob Reese; "The Grapes of Wrath," John Steinbeck; "The Jungle," Upton Sinclair; "Mein Kampf," Adolf Hitler and "Outline of Psychoanalysis," Sigmund Freud. The seven books were illustrated by John Grath, who said "these are the few books that survive the test of time. They are remembered best because they helped work changes in our lives. Some helped bring about laws to protect public safety, some stimulated changes in our social and political structure and at least one cast light on the deepest workings of our minds." The review was well given and most enlightening and informative. Following the review Mrs. Floyd Robertson presented a preview of spring with a Stylorama. Modeling fashions from Altman's were Mrs. Claud Maynard, who wore a red silk suit by Miller Cupaioli. The suit was accented by black calf shoes and bag. Her hat was of Pillbox fashion by Sharon. Jewelry of fresh water pearls and white gloves complimented the suit. Over the ensemble Mrs. Maynard wore a full length coat of white wool by Betty Rose. Mrs. C. G. Uffleman wore an Ann Murray frock of light blue cotton with a look of silk and multi colored shoes with matching bag. She wore a White Leghorn hat. Her jewelry of bittersweet color picked up and emphasized the coloring of her shoes. Mrs. E. J. Turner was attired in a gold Jeannie Durrell shirt-waist with green shoes and bag and a black straw hat by Sharon. Each model changed accessories to make two completely different outfits from each dress. Mrs. Turner then showed a four-piece "Slim-Gym" set by Zanzen. The Stylorama was graciously received by the audience. Members of the hostess committee were Mrs. D. E. Frazer, H. L. Hassell, T. E. Richardson, and W. A. Leslie. Club president, Mrs. Homer Smith, welcomed guests and then turned the meeting over to the hostess chairman, Mrs. Frazer. The clubhouse was beautifully decorated throughout with spring flowers and the table held an attractive arrangement of yellow chrysanthemums and appointments of silver. Mrs. Richardson poured coffee which was served with nuts and cookies. Among those attending were Mrs. J. M. Cooper, Homer Smith, R. D. Burton, Thura Taylor, Anna Grace Bunniss, W. P. Leslie, W. A. Leslie, Wayne Caton, A. D. Taylor, James Young, James Horton, Jack Carothers M. S. Dry, I. C. Inzer, Irene Hightower, J. C. Whately, M. H. Perry, Wendell Siebert, Rudolph Little, Patty Sims, T. E. Richardson, D. E. Frazer, H. L. Hassell, Claud Maynard, E. J. Turner, C. G. Uffleman and Miss Loretta Morris.

The Childrens Center

PLAY GROUP
• Supervised Play
• Stories
• Games
• Music
• Nature Study
Age four through 6
Monday thru Friday
From 9 to 12 or by the day

DAY NURSERY
• Supervised Play
• Large out door play ground
• Hot Lunch
• Mid-morning and mid-afternoon refreshments
• Rest period
Age 3 through 6
Monday thru Saturday
From 8 to 5

Experienced Kindergarten Teacher in charge. Transportation arranged. Serving Eastland. Olden, Ranger. Staff and Desdemona.

MRS. PAT MILLER
MA 9-1446

ANNOUNCEMENTS

EASTLAND LIONS CLUB
Meets each Tuesday, noon in the White Elephant cafe. Call James Smith, 9-2648 for information.
EASTLAND

EASTLAND ROTARY CLUB
Meets in White Elephant for noon luncheon each Monday. Call Frank Deaton, 9-1168, for information.

LONE CEDAR LUNCHEON CLUB
Meets at Lone Cedar Country Club at 1 p.m. the first Friday of each month. For information call Mrs. James Horton, 9-1259.

EASTLAND JAYCEES
Meet at 7 p.m. in Texas Electric Conference Room each Thursday. For information call Dick Spaiding, 9-1359.

LADIES GOLF AUXILIARY
Meets at Lakeside Country Club for noon luncheon the second Tuesday of each month. For information call Mrs. Max Beazley, 9-2478.

THURSDAY AFTERNOON CLUB
Meets in Woman's Club at 3 p.m. the first and third Thurs. of each month. For information call Mrs. Ronald Burton, 9-2594.

ZETA PI, BETA SIGMA PHI
Meets the first and third Monday of each month at 7:30 p.m. Call Mrs. Mike Collins, 9-1571, for information.

EASTLAND REBEKAH LODGE NO. 177
Meets at 7:30 p.m. in the IOOF Hall on the second and fourth Tues. of each month. For information call Corrie Harlow, vice grand, MA 9-1429.

AMERICAN LEGION AUXILIARY
Meets the second Monday of each month at 7:30 p.m. in the Legion Hall. Call Mrs. Medie Pautot, 9-2156, for information.

MORTON VALLEY HOME DEMONSTRATION CLUB
Meets the second and fourth Wednesdays in the Morton Valley Clubhouse at 2 p.m. Call Mrs. G. M. Hargus, 9-1870, for information.

CIVIC LEAGUE AND GARDEN CLUB
Meets the second Wednesday of each month at 3 p.m. in the Woman's Club. For information call Mrs. Tom Stamey, 9-2418.

V. O. HATCHER BKS 2441 AUXILIARY
VETERANS OF WORLD WAR I Meet the second Monday of each month, 7:30 p.m., Legion Hall. Call Mrs. W. M. Coppock, MA 9-2542 for information.

EASTLAND COUNTY CHAPTER
No. 555, N.A.R.C.E.
Meets second Saturday of each month, 3 p.m., education bldg. First Baptist Church, Eastland. Contact Ed Willman, Phone MA 9-1647.

LAS LEALES CLUB
Meets the first and third Monday of each month in Woman's Club at 7:30 p.m. For information call Mrs. Homer Smith, 9-2232.

WOMAN'S MISSIONARY UNION OF FIRST BAPTIST CHURCH
Meets each Tuesday at 9:30 a.m. at the church. Call Mrs. Gordon Goldston, 9-1152, for information.

EASTLAND HOSPITAL AUXILIARY
Meets quarterly in the Texas Electric Conference Room. Call Mrs. Jack Frost, 9-2265, for information.

WOMAN'S SOCIETY OF CHRISTIAN SERVICE
Meets each Tuesday of the month at 9:30 a.m. in the Methodist Church. Circle meetings are held the last Tuesday of each month.

LYDIA meets 3 p.m. on second and fourth Mondays. Call Mrs. D. S. Buchanan, 9-2321, for information.
ESTHER meets 3 p.m. on second and fourth Mondays. Call Mrs. Joe Tow, 9-1538, for information.
PRISCILLA meets 9:30 a.m. second and fourth Monday. Call Mrs. Lon Horn, 9-1160, for information.
RACHEL meets 9:30 a.m. first and third Thursdays. Call Mrs. Varge Daniel, 9-2507, for information.
RUTH meets 7:30 p.m. on fourth Monday. Call Mrs. Cyrus Miller, 9-1048, for information.

C. W. F. GROUPS:
LYDIA meets 3 p.m. on second and fourth Mondays. Call Mrs. D. S. Buchanan, 9-2321, for information.
ESTHER meets 3 p.m. on second and fourth Mondays. Call Mrs. Joe Tow, 9-1538, for information.
PRISCILLA meets 9:30 a.m. second and fourth Monday. Call Mrs. Lon Horn, 9-1160, for information.
RACHEL meets 9:30 a.m. first and third Thursdays. Call Mrs. Varge Daniel, 9-2507, for information.
RUTH meets 7:30 p.m. on fourth Monday. Call Mrs. Cyrus Miller, 9-1048, for information.

Witnesses to Commemorate Death of Christ

All persons of good will are invited to be present when Jehovah's Witnesses, in 22,000 congregations throughout the world, assemble on Thursday, March 30, after 6 p.m., to commemorate the death of Jesus Christ, it was announced today by Bob Williams, spokesman for the Eastland group. The Eastland congregation will meet at the Kingdom Hall, 204 North Dixie Street. The time will be 8 p.m. The meeting will be opened with song and prayer. A discourse will follow, setting forth the significance of the occasion. At the appropriate time the emblems, unleavened bread and red wine, will be served after Jehovah's blessing has been asked separately in connection with each. The meeting will be closed with song and prayer, after all present have been invited to have part in special field service arrangements. Williams announced other meetings for the week as follows. Friday at 7 p.m., the weekly service meeting. At 8 p.m., the Theocratic Ministry School. Every one interested in Bible education are welcome to meet

FOR REAL PIT COOKED Barbecue TRY THE Barbecue Pit Hwy. 80 East RANGER Gene Townsend, Owner

Rebekah Lodge to Sponsor Bake Sale

The Eastland Rebekah Lodge, 177 will sponsor a bake sale to be held Saturday in the Safeway Store.

The sale begins at 8:30 a.m. Saturday and is to last all day. Members of the Lodge cordially invite the public to attend this sale.

— READ THE CLASSIFIEDS —

LUMBER FOR SALE ALL KINDS

Flooring — hardwood flooring — 2x4; 2x6; 2x8; 2x12; shiplap; steel beams; all types of plumbing; brick; building tile.
Tearing down old school building on Church of God Camp Grounds west of City—starts Monday — see salesman on job — bargain prices.

AUTO CLEAN UP TIME

SEAT COVERS
New Patterns — Beautiful Fabrics
ARM RESTS
DOOR PANELS
HEAD LINERS
TRUNK LINERS
—ALSO—
FURNITURE UPHOLSTERING

Graham's Trim Shop
708 W. Main Phone MA 9-2266

ATTEND THE CHURCH OF YOUR CHOICE EACH SUNDAY

Hamner Life Insurance Co.
Ben E. Hamner, President
This company has been in operation since 1942 selling policies to be used for burial purposes. We write from \$600 and our policies are paid in cash, which freedom in the selection of the Funeral of your choice.
Ages from 1 month to 90 years.
For further information come by to Hamner Funeral Home, 301 S. Lamar, Eastland, Texas P. O. Box 431 Dial MA 9-1446

TODAY... IT IS EASIER TO OWN A HOME THAN YOU THINK

Our years of experience in planning mortgage loans, plus reasonable interest rates make it possible for anyone who can rent to own a place of their own.

If you would like to buy, build or refinance a home, stop in. Get the latest information without the slightest obligation.

First Federal Savings & Loan Association of Ranger

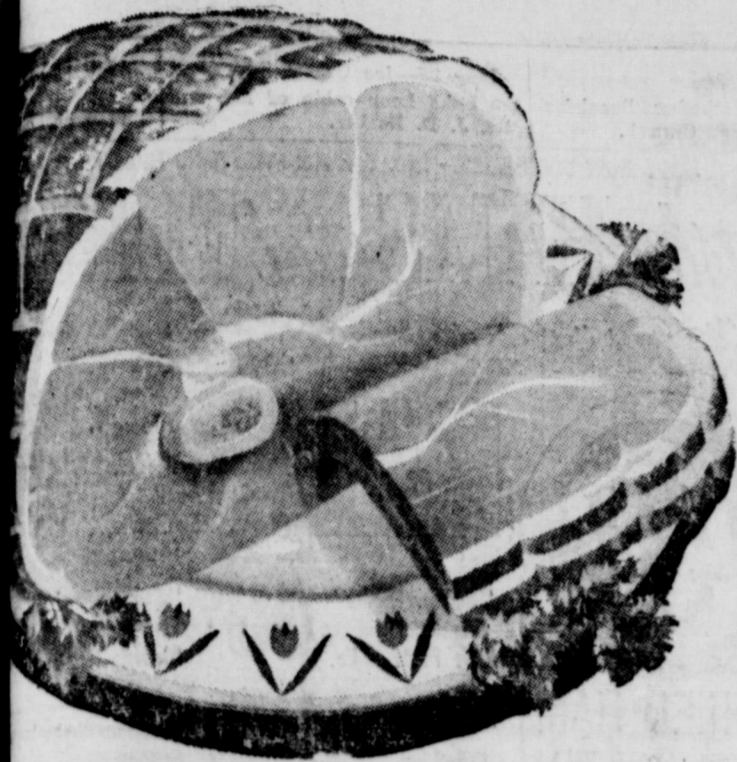
204 Main Ranger, Texas Phone MA 9-1446

'LIGHT AS A FEATHER'

yet with perfect year 'round comfort... that's our new Dacron-and-Worsted suit by LOUART of California. See the new heart-lifting patterns and colorings... the casually elegant style of LOUART'S design. Come in and try it on... and see how well it looks and fits.

59.50
Sizes 36 to 40
Regular 37 to 44
Long 38 to 44
Short

James Smith Mens Store EASTLAND



it's Worth . . . for **THRIFTY**
Easter Feasts!

All Worth Food
Marts Will Be
CLOSED
EASTER



Finest Hams

HICKORY-SMOKED, ARMOUR'S STAR or Hormel's "DAIRY"

Shank Portion Approximately 1/3 of Ham Lb. **35¢** **Half or Whole** 14 to 18 Lbs. Avg. Lb. **45¢**

Ham Center Slices Smoked Lb. **89¢**

Cooked Hams Half or Whole, 12-14 Lbs. Avg. Lb. **59¢**

Canned Hams 3 Lb. Can **2⁷⁹**

Pork Sausage Lb. Roll **35¢**

Imported Canned Hams Plumrose 2 -Lb. Can **2.29**

Philadelphia Cream Cheese 2 3-oz. Pkgs. **29¢**

Pineapple Chunks

Dole Fancy Hawaiian 2 211's Cans **39¢**

Heavy Duty Foil

Reynolds' Aluminum—For Baking Your Ham or Turkey 25-Ft. Roll **59¢**

Small, Young—New Crop

Open Turkeys Fancy, Easter Crop, Gov't. Graded "A" & Selected, 8 to 12 lbs. Avg. Lb. **43¢**

Spray Cranberry Sauce 16-oz. Can **25¢**

LARGE EGGS DOZEN **45¢**

Art & Play Kit Includes Dipper & Mystic Pencil Each **49¢**

Easter Egg Color Dye 6-Colors Pkg. **15¢**

Food Color Pack 4's Pkg. **25¢**



Prices Effective Thursday, Friday & Saturday

ELLORINE Taylor's Home-Made, All Flavors, Save 47¢

3 1/2-Gal. Ctns. **1⁰⁰**

Pet Milk Evaporated 7 Tall Cans **1⁰⁰**

KE MIXES Duncan Hines Deluxe All 19-oz. Varieties

2 19-oz. Pkgs. **69¢**

Olives Towie—7 1/2-oz. Thrown Queens or 7 3/4-oz. Stuffed Queens or Manzanillas 3 Jars **1⁰⁰**

RAWBERRIES Silverdale, Frozen Sliced, Ideal for 'Berry Shortcake

3 10-oz. Pkgs. **69¢**

Grape Juice Welch's 3 24-oz. Bottles **1⁰⁰**

Sweet Potatoes Trappey's Whole Large Can **29¢**

Black Pepper McCormick's Ground 4-oz. Can **39¢**

Le Sueur Peas 2 303's Cans **49¢**

Frozen Foods!

's Rolls 2 24's Pkgs. **49¢**

pey's Yams 2 14-oz. Pkgs. **59¢**

-Whip Dessert Topping 6-oz. Can **59¢**

mp Peeled, Devined, Individually Quick Frozen 12-oz. Pkg. **99¢**

Sticks 3 8-oz. Pkgs. **1⁰⁰**

Always Fresher by Far!

LETTUCE Firm, Crisp, Fresh & Cool Head **10¢**

Green Onions Fresh, Large Bunches Bunch **5¢** **Pascal Celery** Crisp, Crunchy 2 Stalks **25¢**

Radishes Crisp, Red 2 Cello Pkgs. **15¢** **Large Lemons** Juicy 6 For **19¢**

Carrots Young, Tender 2 -Lb. Cello **25¢** **New Potatoes** Florida, Freshly-Dug 2 Lbs. **15¢**

Pecan Halves Azar 9-oz. Pkg. **89¢** **Spiced Peaches** Hemet Whole 3 2 1/2's Cans **79¢**

Toni Regular, Super, Gentle Refill—Reg. \$2.00 Home Permanent Plus Tax **1.19** **Dinner Napkins** Scotkins 3 50's Pkgs. **69¢**

CLIP AND SAVE!

Redeem This Coupon for EXTRA
50 Free S & H Green Stamps
with Purchase of Flower Seed Pack
Cottage Cheese Foremost, 24-Oz. **49¢**
Void After Sat., April 1, 1961—Limit One

WORTH FOOD MART

CLIP AND SAVE!

Redeem This Coupon for EXTRA
50 Free S & H Green Stamps
with Purchase of Two Packages
(2) **Colombo's Pizza**
Void After Sat., April 1, 1961—Limit One

WORTH FOOD MART

CLIP AND SAVE!

Redeem This Coupon for EXTRA
50 Free S & H Green Stamps
with Purchase of 8-oz. Bottle
Wishbone Italian Dressing
Void After Sat., April 1, 1961—Limit One

WORTH FOOD MART

AND SAVE!

Redeem This Coupon for EXTRA
50 Free S & H Green Stamps
with Purchase of 3 8-oz. Pkgs. Taste O'Sea
3 Pkgs. \$1.00
Void After Sat., April 1, 1961—Limit One

WORTH FOOD MART

CLIP AND SAVE!

Redeem This Coupon for EXTRA
50 Free S & H Green Stamps
with Purchase of 8-oz. Pieces and Stems
First State Mushrooms
Void After Sat., April 1, 1961—Limit One

WORTH FOOD MART

CLIP AND SAVE!

Redeem This Coupon for EXTRA
50 Free S & H Green Stamps
with Purchase of 2 Jumbo Rolls
(2) **Zee Paper Towels**
Void After Sat., April 1, 1961—Limit One

WORTH FOOD MART

CLIP AND SAVE!

Redeem This Coupon for EXTRA
50 Free S & H Green Stamps
with Purchase of 2-oz. Bottle, McCormick
Vanilla Extract, 2-oz. **45¢**
Void After Sat., April 1, 1961—Limit One

WORTH FOOD MART

CLIP AND SAVE!

Redeem This Coupon for EXTRA
50 Free S & H Green Stamps
with Purchase of
5-Lbs. Gladiola Flower
Void After Sat., April 1, 1961—Limit One

WORTH FOOD MART

Sub-Deb's Attend Meeting Tuesday

The regular meeting of the Sub-Deb Club was held Tuesday in the home of Sharon Wilson with the president, Linda Butler, presiding.

The meeting was called to order after which Shelia Sneed led the group in the Lord's Prayer. The minutes were read by the secretary, Jeanne Morren.

Final plans were made for the hayride to be held April 14 and Darlene Kliener was elected a new member.

Refreshments of cokes, tuna and pimento sandwiches, fritos, potato chips, olives, cookies and candy were served to the following: Cecelia Copeland, Gail Mace, Sharon Day, Jo Ann Yancey, Marilyn Lusk, Joy White, Janie Harris Shelia Sneed, Sue Hallmark, Jan Lewis, Jeanne Morren, Linda Butler and the hostess, Sharon Wilson.

The meeting was adjourned until the next meeting which will be held April 11 in the home of Jo Ann Yancey.

NEWS FROM CARBON

A group of young people from Hardin-Simmons University had charge of the morning and evening services at the Baptist Church last Sunday in the absence of the pastor, Rev. Turner, who has been in a revival at Anson. Monty Allen of Wichita Falls delivered the sermon at the morning hour and O. Davis of Albuquerque, N. M. brought the message at the evening hour.

Charles Elmore of Sheffield had charge of the song services at both hours and rendered special numbers with Miss Glenda Smith of Kermit at the piano. Miss Carmen Perez of Corpus Christi gave a short testimony at the evening hour. The group were house guests of the Frank Park family.

Mr. and Mrs. Earl Roberson and son and Mrs. Claud Mauldin of Littlefield visited Mr. and Mrs. J. W. Guy over the weekend and all attended a family reunion at DeLeon Sunday.

Carril Sandlin of Texas Tech, Lubbock, is spending the Easter holidays with his parents, Mr. and Mrs. D. D. Sandlin.

Mr. and Mrs. C. L. Rogers visited their son, Mickey Rogers and family, in Fort Worth recently.

Mr. and Mrs. Babe Lanier of Abilene visited Mr. and Mrs. E. R. Butler last week. Mrs. Hattie Seatrunk visited her son, Lavette Seatrunk, last week. He is in the Hendrick Memorial Hospital, Abilene recovering from major surgery. His room number is 331. Mrs. Seatrunk is now at the home of her son, Sam, in Odessa.

Mrs. Bernice Mangum returned home last week from a visit with her daughter, Mrs. Gene Burett and family, of Carlsbad, N. M. Her daughters, Miss Ann Mangum of McMurry College, Abilene and Mrs. Sue Lindsey and children of Eastland, visited her over the weekend.

Visitors of Mr. and Mrs. Buddy Eaves Sunday were Mr. and Mrs. Dreyton Lenz and Mr. and Mrs. David Loranec of Brady, Mr. and Mrs. Wayne Eaves and

ENTRY BLANK ACADEMY AWARD SWEEPSTAKES

THIS IS NOT AN ACADEMY BALLOT... IT IS YOUR CHANCE TO GUESS HOW THE EXPERTS WILL VOTE ON THE AWARDS

CONTEST RULES: 1. Mark on X opposite the nominee you choose... 2. It is necessary to mark a choice... 3. Entries must be received... 4. All contestants agree to accept the decisions of the judges on final.

Form for Academy Award Sweepstakes with categories: Best Motion Picture, Best Original Screen Song, Best Performance by an Actor, Best Performance by a Supporting Actor, Best Original Story and Screenplay, Best Performance by a Supporting Actress, and Date of Entry.

Mr. and Mrs. Richard Eaves of Gorman, Mr. and Mrs. Bill Eaves of Cisco, Mr. and Mrs. Emmett Woodward of Abilene, Tommy Eaves, stationed at Fort Meade, Maryland Mr. and Mrs. Tidy Eaves and Mr. and Mrs. Delman Eaves of Kokomo. Mr. and Mrs. D. D. Sandlin, visited their son, Jimmy Sandlin and family of Abilene, last Friday. Lester Nichols and family of Odessa visited his parents, Mr. and Mrs. John Nichols, last weekend.

Mr. and Mrs. Gene Butler and children accompanied by her brother, Richard Clark of Fort Worth, Ohio last Saturday for Fowler, Ohio to spend the Easter holidays with their parents, Mr. and Mrs. Ford Clark. Mrs. Dollie Clark has returned home after an extended visit with her daughter, Mrs. Nell John of Brehman. Mr. and Mrs. J. F. Guy and Don visited relatives in Proctor recently. Mr. and Mrs. R. V. Sandlin of Lubbock have been visiting the D. D. Sandlin family this week. Mr. and Mrs. Ernest Burns of Copperas Cove have been visiting her sister and her husband, Mr. and Mrs. Zinn Phillips. Mr. and Mrs. Leak Lane and Dandra of Cisco and Mr. and Mrs. Everett Harris of Rising Star visited with Mr. and Mrs. Elbert Jackson Sunday.

FORMER RESIDENT VISITS

Mr. and Mrs. M. B. Griffin of Lubbock, former residents of Eastland, are visiting this week in the home of Mrs. Griffin's brother and sister-in-law, Mr. and Mrs. Floyd L. Elkins.

GO TO CHURCH SUNDAY

SINGER Sales - Service - Rentals and Repairs D. L. MORTON Phone MAIN 9-2084

See Me For Your Real Estate Needs Will Build To Suit You M. A. TREADWELL, SR. Phone MA 9-2017

See Us For FURNITURE • APPLIANCES CARPETS Every Day Low Prices Means Savings For You! No carrying charges on furniture for 1 full year FREE DELIVERY Ranger Furniture Exchange "BRASHIER'S" 123 N. Rusk Ranger Phone MI 7-1404

HAMNER FUNERAL HOME Ben E. Hamner, Owner Serving Eastland County since 1924 with ambulance and funeral service. Our ambulances are oxygen equipped and air conditioned. Through our nation-wide connections with other funeral directors, we can handle a funeral from any point in America. We offer this service knowing that we can relieve the family of all burdens incident to any death away from home. Eastland Dial MA 9-2611

DISCOUNT PRICES GARCIA MITCHELL 300 SPINNING REEL Regular 32.50 DISCOUNT PRICE 21.88 GARCIA ABU-MATIC MOD. 170 REEL Regular 29.95 DISCOUNT PRICE 19.88 GARCIA ABU-MATIC MOD. 140 Regular 22.50 DISCOUNT PRICE 14.88 HEDDON SPINNING ROD 7 FOOT Regular 14.95 DISCOUNT PRICE 8.88 Spinning Line Trilene 40% off 8 Lb. thru 25 Lb. Example: 10 Lb. 2.00 List DISCOUNT PRICE 1.20 SHYSTER LIKE LURES 49c EA. ASSORTED LURES LINES LIGHTS FLY BOXES 50% OFF FLOATING Minnow Bucket \$1.98 Castling Line 50 Yards 59c Spinning Line 8 to 25 Lb. 100 Yds. 1.00 Golf Balls WILSON 49c ea. Marine Hardware 40% off Toys-40% off Rubber Balls 2 for 25c Tennis Rackets 3.95 to 17.25 Chest High Waders 2 Pair Only 14.95 BRUCE PIPKIN'S (DISCOUNT) SPORT CENTER

COMPLETE AIR CONDITIONING SALES and SERVICE SMITH PLUMBING AND TIN PHONE MA 9-2422 114 N. Seaman

Balance your books... with the Original FINE POINT Lindy AUDITOR'S Ball Point Pen 1460F Long 7" perfectly balanced writing instrument designed for auditors, accountants, bookkeepers and others who need a fine ball point pen for extreme legibility. ONLY THE AUTHENTIC NATIONALLY ADVERTISED LINDY PEN CARRIES THE LINDY UNCONDITIONAL GUARANTEE. DO NOT ACCEPT SUBSTITUTES-LOOK FOR "LINDY" ON THE PEN! GIANT INK SUPPLY 49c LINDY AUDITOR'S PEN (FINE POINT) 403 ACTUAL SIZE LONG 7" NON-REFILLABLE 12 DRILLIANT INK COLORS Color of Pen is Color of Ink BLUE • BLACK • RED GREEN • TURQUOISE BLUE-GREEN • GOLD BROWN • LAVENDER ORANGE • BLUE-BLACK MAROON manufactured by LINDY PEN CO., INC., Culver City, Calif., U.S.A. Eastland Telegram Office South Side of Square

Senior Activities

March 31—through April 3—Easter holidays.

April 7—Baptist Banquet to be held in the First Baptist Church.

April 13—Stage Band Concert.

April 14—District Track Meet.

April 16—Autobiography Tea to be held in the home of Miss Verna Johnson, senior sponsor.

April 19—Senior sponsored program, Tradewinds, to be held at 2:30 p.m. in the Eastland High School Auditorium.

April 20—Christian Church Ranch Supper at the First Christian Church.

April 21—Teacher's Banquet and Regional Track Meet.

April 28—Senior Hobo party, a progressive supper with Mrs. Burt Savage, chairman.

May 5—State Track Meet and Junior-Senior Banquet to be held in the Gymnasium.

May 12—Junior-Senior Slave

Special Easter Movie Planned For Children

Saturday morning at 10:30 a giant Easter Fun Show sponsored by Montgomery Ward of Ranger and K E R C of Eastland will play host to the younger set of Eastland County.

The sponsors have free tickets for all the kids. All they have to do is go by the Store and radio station and ask for a free ticket to the special showing... at the special show thru the courtesy of the Orange Crush Co. every child who buys an Orange Crush at the theatre will be given a free chance to win 8 Easter Bunnies.

The showing starting at 10:30 will run about two hours. The program for the morning will not be shown at the regular show which will start at 1 o'clock Saturday. Saturday nite the Majestic will have a pre-Easter midnight showing of the years outstanding circus picture, "Hippodrome". The show will start at 12 o'clock. "Hippodrome" will also show Sunday and Monday.

ATTEND THE CHURCH OF YOUR CHOICE EACH SUNDAY

T. L. FAGG REAL ESTATE Property Management Home and Farm Loans

NOTICE FRESH DRESSED FRYERS and Fresh Dressed Hens At The Plant PHONE MA 9-1200 WALKER Dressing Plant

WE RECOMMEND Garner's Farm Tax Record Completely Meets All Income Tax Requirements NOW COMPLETE WITH SOCIAL SECURITY RECORDS APPROVED BY TAX EXPERTS BANKERS AND FARMERS EVERYWHERE SIMPLE ECONOMICAL COMPLETE \$1.75 PER BOOK Plus Sales Tax MADE FOR THE FARMER WHO WANTS THE BEST IN PROTECTION AND SERVICE AT LOWEST POSSIBLE COST Eastland Telegram

CANCER Insurance (No Age Limit) Coverage for the individual or the family. M. H. PERRY 107 West Main Office Phone MA 9-2275 Res. Phone MA 9-1095

Breakfast. May 17—Methodist Breakfast at the Methodist Church. May 25—Ice Cream Supper at the Lake Leon cabin of Mr. and Mrs. J. D. Barker. May 28—... May 29—Gr...

Easter HAMs and TURKIEs A&P BOILED HAM "Super-Right" 12 oz. Sliced 79c "Super-Right" Smoked Ham 49c "Super-Right" Smoked Shank Portion lb. "Super-Right" Smoked Center Slices lb.

TURKEYS Hens or Toms ALL GOOD SLICED BACON CANNED HAMS 8 Lb. Can 5.99 Super-Right Semi-Boneless Ham Half or Whole 69c Cap'n John's Fish Sticks 10-oz. Pkg. 29c C-J Breaded Shrimp 10-oz. Pkg. 45c Gulf Princess Peeled & Deveined Shrimp 3 Lb. Bag 3.99 Boiled Ham 12-oz. Cap'n John's Flounder Fillets C-J Breaded Shrimp 2 Lb. Slab Bacon, by the piece Slab Bacon, sliced, rind on Slab Bacon, sliced, rind off

10¢ OFF the regular low price on the 6-oz. jar of the FRESHEST INSTANT COFFEE MONEY CAN BUY! 6-oz. Jar 79c

SUITANA Fruit Cocktail 3 30-oz. Cans \$1 SPARKLE Gelatine Dessert 4 3-oz. Pkgs. 29c A&P GRAPE JUICE 2 24-oz. Btls. A&P WHOLE BEET 16-oz. Can SUNSHINE PIMENTOS 2 2-oz. Jar GRAPEFRUIT JUICE A&P 2 46-oz. Cans Lindsay Pitted MEDIUM RIPE OLIVES 300 Cans NIBLETS MEXICORN 2 12-oz. Cans DEL MONTE PEAS Early Garden 2 16-oz. Cans DEL MONTE CORN Cream Style Golden 2 16-oz. Cans A&P MELLORINE Ass't'd Flavors 1/2-gal. Cin.

Easter Treats WORTHMORE DEC. Nut & Fruit Egg 8-oz. Size 29c WORTHMORE CHOC. MARSHMALLOW Rabbits Pkg. of 10 19c WORTHMORE EASTER Basket Mix 13-oz. Pkg. 29c ASST. FRUIT Jelly Eggs 1-lb. Pkg. 25c LUDEN CHOC. Lambie Pie 8-oz. Size 35c BODDA MARSHMALLOW Bunnies Pkg. of 7 19c WORTHMORE COCONUT Cream Eggs 11-oz. Box 35c Fresh Produce Specials Bananas Ruby Red Lb. Grapfruit Ruby Red Lge. Size 4 for Strawberries Pt. Ctn. U. S. No. 1 Russet Potatoes 5 Lb. Bag Green Onions Fresh Bunch Cello Radishes 2 pkgs. Lettuce 2 Lvs. Hds.

MA 9-1707 for Classified Ads —

SINCE 1884
... quality workmanship and efficient service, approved throughout this area.

ALEX RAWLINS & SONS
Phone LY 4-2726 Texas
Designers and Builders of Monuments Since 1884

Getting the Job Done—

A good answer to the student's question, "What is Success?" The same answer will serve for the rest of us who operate in business, engage in a profession, or those who work for the division line between success and failure is drawn at the end. This is what the banker, the real estate broker or the doctor when he closes a real estate deal and sees that the life of his client is adequately insured by a home-town

EARL BENDER & COMPANY
Insurance since 1924 Texas

NEWS FROM DESDEMONA

Health in this community hasn't been too good the past few days. Ike Abernathy, who has been ill for quite a while, is now considered in serious condition and is a patient in the Gorman Hospital.

Maborn Wilcoxin who spent the weekend in the Eastland Hospital was able to return home Monday.

Mrs. Emma Quinn has been quite ill in the hospital at Gorman but is now at home.

Mrs. Charles Genovay has been ill at her home here but is now considered improved.

Mrs. Joe Murrell is home again after spending the past several days in the Gorman Hospital.

Attendance at the different churches Sunday was good. Visitors at the First Baptist Church were Mrs. Stanley Powers and Mrs. Jimmie Burleson and son of Fort Worth.

The spring revival at the First Baptist Church will begin April 2. Rev. Teaff of Moran will be the evangelist and the Rev. Moody will direct song services.

The public is cordially invited to attend.

Mr. and Mrs. Junior Davis and his mother, Mrs. Hattie Davis, spent the weekend in Fort Worth with a sister and daughter, Mrs.

Faye Illey and family. The Illey children, Richard and Phill, returned home with their grandmother to spend a week. Mr. and Mrs. Doc Finley of Carlton and her sister, Mrs. Mad-dux of Lubbock visited recently with their Aunt Sarah Eaton.

Mrs. Doey Williams, Mrs. Dorothy Roberts and daughters, Brenda and Ulenda, were in Brownwood on business.

Mr. and Mrs. Rob Lewis, Mrs. Sylvia Abernathy and Mrs. Abbie Ash were in Gregton over the weekend visiting with Mrs. Alla Thierbard and family.

Mr. and Mrs. W. A. McMillan of Abilene visited here Wednesday with old friends, Mr and Mrs. H. T. Lane. The McMillans were here as formen of the Magnolia Plant several years ago.

Mr. and Mrs. Charles Nick spent the weekend here with her parents, Mr. and Mrs. J. D. Mc-Masters, while enroute to Jal, N. M. where they are to make their home. McMasters will be employed by the El Paso National Gas Company.

Mrs. Vella Roberts had all of their children home the past Sunday for an Easter family reunion.

Mr. and Mrs. H. O. Fien and David of Fort Worth were here over the weekend with his mother, Mrs. Ollie Fien, and while here the family and Lonnie Clayton visited Maborn Wilcoxin in the Eastland Hospital.

Mrs. Phelps visited here this week with her daughter, Mr. and

Mrs. Winford Lindley and Kelley Vernele.

The Owen family of Fort Worth were here one day last week to visit the W. H. Davis family.

Mrs. Nancy Partain left Sunday for an extended visit in Azle with a daughter, Mr. and Mrs. Roy Jones.

The Bernard Keith family of Cisco were here Saturday visiting his mother, Ethel Keith, and the Pug Gutherys.

Quilting Party Held

Mrs. Helen Arnold was hostess to a quilting bee held recently. Attending were Mes. Hattie Tate, Gussie Ragland, Bunny Lane, Bobbie Glasson, Lora Abel,

Officers Elected At Xi Alpha Zeta Meeting Monday

Officers were elected Monday night at the regular meeting of the Xi Alpha Zeta Chapter of Beta Sigma Phi when they met in the home of Mrs. Bill Walters.

Newly elected officers were Mrs. Mike George, president; Mrs. Bill Walters, vice president; Mrs. Virgil Moore, recording secretary; Mrs. Bill Leslie, corresponding secretary; and Mrs. James Smith, treasurer.

Mrs. Moore presided over the business meeting in the absence of the club president. The slate of officers was presented and unanimously accepted.

Mrs. Walters gave a brief history of Beta Sigma Phi followed by the program given by Mrs. George. She reviewed the book "The Listener" by Taylor Caldwell.

Meringue pie, coffee and cokes were served to all present. Members attending the meeting were Mes. George, Walters, Moore and Smith.

Guests attending were Mes. Donna Crocker, Betty Tanner, Ann Johnson and Jeanie Taylor.

VISITS SISTER

Mr. and Mrs. Olan Rutherford of El Centro, Calif., visited Tuesday afternoon in the home of Mrs. C. E. Johnson, Rutherford's sister. They were enroute to California after spending three weeks in Texas.

Accompanying the Rutherfords to California were Mrs. T. H. Garrett of Kosse, mother of Mrs. Rutherford, and Mrs. Walter Boatler of Thanton.

Mrs. Rutherford reported a nice trip with their families including a trip to East Texas which they said that every good Texan should see.

ATTEND THE CHURCH OF YOUR CHOICE EACH SUNDAY

Buna* Abernathy, Beulah Williams, Maud Fuqua, Doey Williams, Alice Burleson, Ethel Keith, Mae Eldridge, Nona Grimshaw, Lillie Buchan, Iva Buchan, Myrtle Reid, Maggie Foote, Benton Echols, Nanny Guthery, Alta

Parks, Zelma Williamson, Polly Brown, Dorothy Roberts and the hostess.

Little Shirley Shipman was honored March 1 with a birthday party at her home.

Attending were Ronda Duke,

Becky Smith, Michael, Debra and Pat Hall, Troy Dale and Joey Wilcoxin, Ulenda Roberts, Derenda Sharp, Gary, David and Danny Erwin.

Hot chocolate, cake and popcorn balls were served.

You can squeeze six into a phone booth



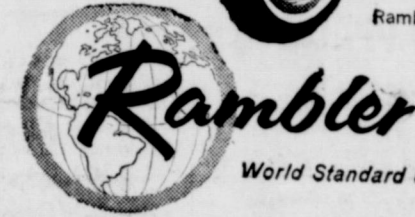
... or into one of the small compacts



... but if you want to seat six adults in comfort



... you need the all-purpose compact, Rambler Classic, the only compact for six 6-footers



World Standard of Compact Car Excellence

SMOKED HAM

HALF OR WHOLE LB. **49¢**

DEL MONTE TOMATO SAUCE 10 Cans \$1.00
DEL MONTE SPINACH 7 Cans \$1.00
DEL MONTE CATSUP 11 Oz. \$1.00
DEL MONTE GOLDEN CORN 5 Cans \$1.00
DEL MONTE PINEAPPLE or TOMATO JUICE 3 Big 46-Oz. Cans \$1.00
DEL MONTE TOMATOES 4 Cans \$1.00
DEL MONTE GREEN BEANS 4 Cans \$1.00
DEL MONTE WHOLE NEW POTATOES 6 Cans \$1.00
DEL MONTE WHOLE GREEN BEANS 4 Cans \$1.00
DEL MONTE CREAM STYLE or WHOLE KERNEL 5 Cans \$1.00
DEL MONTE DELICIOUS FRUIT COCKTAIL 5 Cans \$1.00

EASTER SALE

RUSSET Potatoes 10 Lbs. **59¢**
CENTRAL AMERICAN Bananas 2 Lbs. **25¢**
CALIFORNIA—Large Heads Lettuce Each **15¢**
DEL MONTE Yellow Cling PEACHES Halves or Sliced **1.00**
DEL MONTE EARLY GARDEN PEAS 5 Cans **1.00**
DEL MONTE TUNA 4 Reg. Cans **1.00**
DEL MONTE MARY WASHINGTON All Green ASPARAGUS 3 Cans **1.00**
DEL MONTE Sliced or Crushed PINEAPPLE 6 Cans **1.00**
CRISCO FLUFFO 3 Pound Can **79¢**



WHITE SWAN COFFEE 59¢
IMPERIAL PURE CANE SUGAR 10 Pound Bag **99¢**
RATH BLACK HAWK Sliced Bacon Lb. **59¢**
Smoked Hams Center Slices Lb. **89¢**
ARMOUR'S STAR BONELESS Canned Picnics 3 Lb. Can **1.99**

NEUHOFF LONE STAR THICK SLICED BACON 2 Lbs. **95¢**
MacMOY'S Super Save 3-lb. can **3.25**
 400 S. Seaman Home Owned—Home Operated

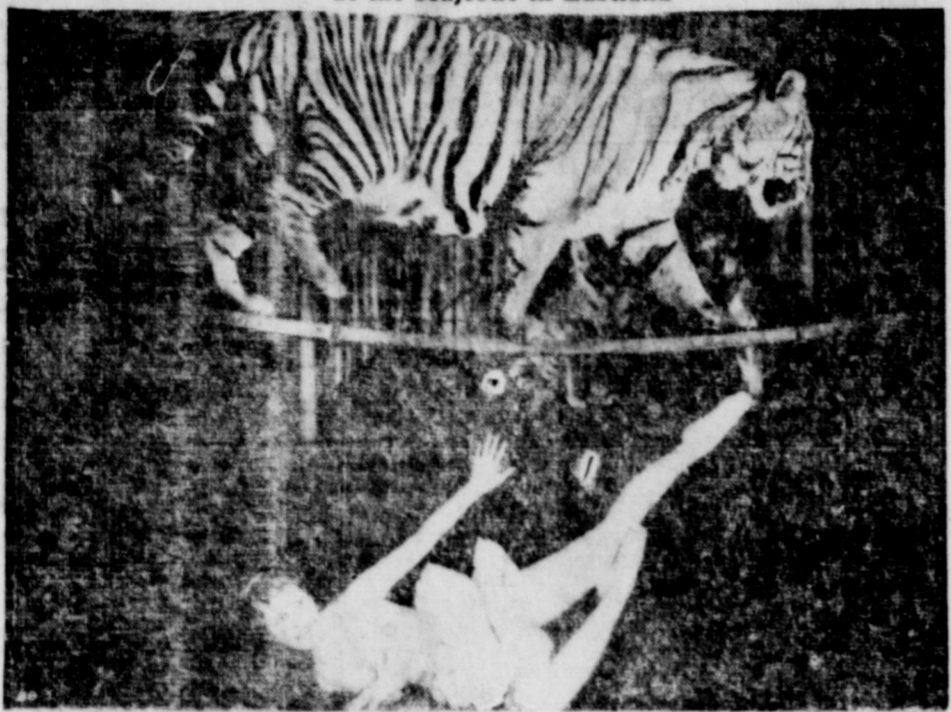
FASHION for EASTER ACCESSORIES

Choose from over 160 Bags
 Selection of 175

- Straw-leather bag
- New fashion-belts
- Wide-brimmed fabric toque
- Leather handbag
- Tailored gloves
- Little veil hat
- Crown hat veiled
- Gay tapestry bag
- Straw cloth bag
- Smart straws to control sun and wind!

Harelik's Dept. Store Easter Headquarters

Special Midnite Show Saturday at 11:30 and Sunday and Monday at the Majestic in Eastland



THE LADY AND THE TIGER... Margit Nunke as the lady makes an unparalleled appearance with Raja, the tiger, in one of "Hippodrome's" most exciting moments. Filmed in color, "Hippodrome hat, an international circus background.

T V LOG

Table listing TV programs for Channel 9 (KABC, Abilene) on Thursday, Friday, and Saturday.

Table listing TV programs for Channel 4 (KRLD, Dallas) on Thursday, Friday, and Saturday.

Table listing TV programs for Channel 11 (KTUV Fort Worth) on Thursday, Friday, and Saturday.

Table listing TV programs for Channel 5 (WBAP, Fort Worth) on Thursday, Friday, and Saturday.

Table listing TV programs for Channel 8 (WFAA, Dallas) on Thursday, Friday, and Saturday.

Civic League Members and Guests Attend Danish Luncheon Wednesday

The atmosphere of the Woman's Club was filled with the excitement of "olden day Vikings" Wednesday at the 12 noon luncheon of the Civic League.

Hospital

Patients in the Eastland Memorial Hospital are: Mrs. Bruce Butler, medical; Mrs. Virgil Maynard, medical; Mrs. Nettie Smith, medical; M. M. McMichael, medical; J. M. Wilcox, medical, Demonstra; Mrs. Julia Perkins, medical; W. H. Watkins, medical; Mrs. Tommie Grace Sneed, medical; Carbon; Mrs. Frances Rains, surgical; Mrs. J. F. Hays, Carbon, medical; Mrs. Myrtle Warren, Olden, medical; Mrs. Mildred Angstadt, medical; Leonard T. Florence, medical; C. W. Hoffmann, Sr., medical; Mrs. Stella Duncan, medical; Earnie Rich, medical; Mrs. Ottilie Millican, medical; Rudolph Reich Cisco, medical; Dismissed were: Mrs. Gertrude Williams, Mrs. Mary Jenkins and baby girl, Mrs. Juddie Graves, J. C. Duggan, Mrs. Tracy Nichols and baby girl, Mrs. Josephine Taylor and Marsha Cagle.

Regular Meeting Of Co-Ed Club Is Held Tuesday

Members of the Co-Ed Club met Tuesday for their regular meeting in the home of Betty Hallmark.

Tot Kindergarten Is Closed Friday With Easter Party

The Tot Class of Green Kindergarten closed the year with an Easter party Friday as there will be no kindergarten on Good Friday.



Dear Sir: We wish to express our appreciation for the excellent write ups and advertising that you gave us for the parade this year.

ATTEND THE CHURCH OF YOUR CHOICE EACH SUNDAY

Advertisement for 'SPECIAL EASTER FUN SHOW' featuring a cartoon rabbit character. Includes showtimes and ticket information.

NOTICE—Special Easter Party Feature will be shown Only One Time—10:30 a.m.

Advertisement for 'THE MAJESTIC' featuring Steve Reeves in 'THE WHITE WARRIOR'. Includes showtimes and promotional text.

Advertisement for 'THE GUNFIGHT AT JOEL MCCRACKEN' featuring Joel McCrea. Includes showtimes and promotional text.

Advertisement for 'HIPPODROME' featuring a circus performance. Includes showtimes and promotional text.

Regular Meeting Of CWF is Set for Tuesday

The Monday meeting of the Christian Women's Fellowship of the First Christian Church has been postponed until April 4.

ATTEND THE CHURCH OF YOUR CHOICE EACH SUNDAY

FURNITURE for the Entire Home

Advertisement for Coats Furniture, featuring a variety of home furnishings and services.

Advertisement for Armstrong ceiling installation kit, featuring a man installing a ceiling and promotional text.

Advertisement for 'Joy Drive-In' featuring 'THE GRASS IS GREENER' with Cary Grant, Deborah Kerr, and Robert Mitsu.

Advertisement for 'DIXIE Drive-In' featuring 'FOR THE LOVE OF MIKE' with Richard Basehart and a dog.

Advertisement for 'RANGER DRIVE-IN' featuring 'BLISTERING' with Robert Mitchum and a machine gun.

Advertisement for 'Pollyanna' featuring the title character and promotional text.

Advertisement for 'THE FACTS OF LIFE' featuring a man and a woman, with promotional text.

Advertisement for 'BOB HOPE & LUCILLE BALL' featuring the comedy duo and promotional text.

Advertisement for 'Community Television, Inc.' with contact information and promotional text.

Advertisement for 'Crowell Lumber Co.' with contact information and promotional text.

Happy Easter from Safeway



EASTER EGG SPECIALS!

Large "A" Eggs 2 Doz. **89¢**
Breakfast Gems, Grade "A" Quality, Lrg. size.

Large "AA" Eggs 2 Doz. **49¢**
Cream 'O the Crop, Grade "A" Quality, Lrg. size.

Food Coloring 2 Pkg. **23¢**
Crown Colony — Pkg. of four 1/2-Oz. bottles.

Easter Specials!

Hemet Spiced Peaches Whole No. 2 1/2 **25¢**
8-11 ct. Can

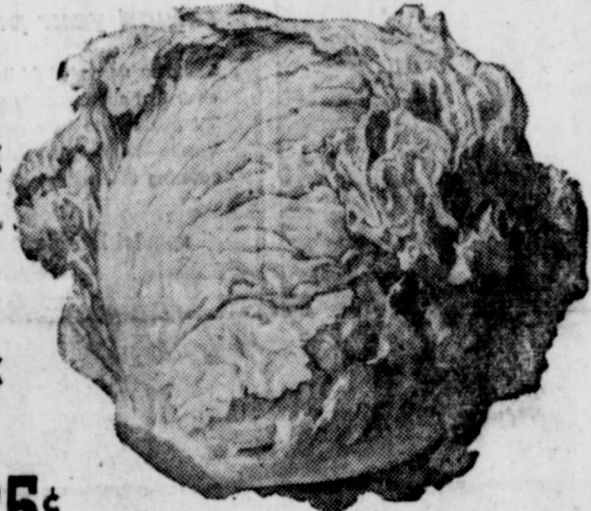
Jell Well Gelatin Assorted flavor 3 3-Oz. **19¢**
Gelatin Desserts, Pkgs.

Whole Chicken Banquet® 3 -Lb. **89¢**
A whole chicken in a can. Easy-to-serve, 4-Oz. Can

Del Monte Beans Whole Green, 2 No. 303 **49¢**
Cans

Safeway Produce

Lettuce 10¢
Most popular salad vegetable. Large Firm, crisp and hefty heads. Head



Tomatoes 19¢
Red, ripe and firm. Perfect slicer. 13-Oz. Ctn.

Texas Yams Delicious served with hams. 2 Lbs. **25¢**

Fresh Radishes Add zest to salads. 6-Oz. Cello.
Green Onions Fresh from the garden flavor. Bunch. Each Only **5¢**

Strawberries Fresh. Pint Box **39¢**
Gardener's Special!
Michigan Peat 100-Lb. Bag **\$1.99**
A perfect soil conditioner.

Safeway Easter Values!

Salad Dressing Piedmont — Made fresh! Sold fresh! Quart Jar **39¢**

Safeway Flour Kitchen Craft Enriched. (10-Lb. Bag ... 83¢) 5 -Lb. Bag **43¢**

Cane Sugar Imperial or Domino. 5 -Lb. Bag **51¢**

More Safeway Values!

Ladies' Hose Truly fine beige plain-seam, 60 gauge, 15 denier. Reg. price 69¢ pr. or 2 pr. \$1.29. 2 Pair **\$1.19**

Aluminum Foil Reynold's Heavy Duty. 18 inch size. 25-Ft. Roll **59¢**

Prices and Coupons Effective Thurs., Fri. and Sat., March 30, 31 and Ap. 11 in Eastland
We Reserve the Right to Limit Quantities. No Sales to Dealers.

HAMS

SMOKED SHANK PORTION
Serve an Armour's Star or Samuel's Mohawk Smoked Ham. 16-22 Lb. Avg. For flavor serve with Ocean Spray Cranberry Sauce. **Lb. 29¢**

Butt Half Perfect for baking. Lean and tender. **Lb. 47¢**

Center Slices Perfect for making sandwich snacks. **Lb. 89¢**



Imported Plumrose Hams
Canned. Extra lean. Ready-to-eat.
1-Lb. Can \$1.25 | 2-Lb. Can \$2.25 | 3-Lb. Can \$3.39

Hen Turkeys 39¢
Yearling Ready-to-cook. U.S.D.A. Inspected and Grade "A." 12 to 16-Lb. average. **Lb.**

Ley-O-Lamb An Easter favorite. Lb. **69¢** **Pork Roast** Boston Butt. Extra lean. Lb. **45¢** **Hams** Rath Hickory Smoked canned 3-Lb. Can **27¢**

Zippy Sweet Pickles Whole. 22-Oz. Jar **39¢**

Fluffiest Marshmallows Serve with yams. 1-Lb. Cello **29¢**

Ice Cream Lucerne Party Pride — Vanilla, Chocolate, Strawberry or Neapolitan. 1/2-Gal. Ctn. **75¢**

Pillsbury Best Flour For baking. 25-Lb. Bag **\$2.10**

Baker's Coconut Angel Flake. 3 1/2-Oz. Can **21¢**

Hydrox Cookies Sunshine — For parties. 11 1/4-Oz. Pkg. **37¢**

Reddi-Starch Simons — Spray on. 16-Oz. Can **69¢**

Blossom Time Milk In two 1/2-Gal. ctns. Gal **93¢**

Apple Butter Bama. Perfect for serving with meats. 29-Oz. Jar **29¢**

Cottage Cheese Lucerne. Regular Farm Style. Chive, low calorie or dry curd. 2-Lb. Ctn. **49¢**

Lipton Tea Bags For easy to serve hot tea. Orange Pekoe. 16-Ch. Bag **67¢**

Instant Lipton Tea Orange Pekoe. Easy to serve. 16-Ch. Bag **53¢**

Lipton Tea Orange Pekoe — For a refreshing drink. 16-Ch. Bag **43¢**

Pineapple Del Monte Sliced. Perfect for salads. 3 No. 1 Cans **49¢**

Potatoes Safeway Town House Whole Sweet. No. 3 Can **29¢**

Strawberries Bel-air Frozen Sliced. For topping pastries. 2 10-Oz. Pkgs. **49¢**

Bakery Special of the Week!
HOT CROSS BUNS
Curtsy — 12-Oz. 8-count, Pkg. **25¢**

Slenderway Bread Skylark — Regular 25¢ value. 1-Lb. Loaf **19¢**

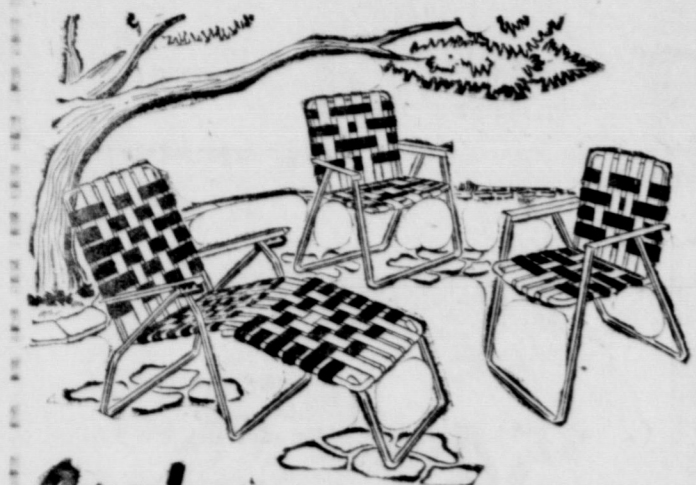
Club Rolls Reg. 23¢. "2¢ off." Skylark — 6-count. 12-Oz. Pkg. **21¢**

Barbecue Bread Skylark — Foil wrapped. 1-Lb. Loaf **25¢**

SAFEWAY Gives those Valuable GOLD BOND STAMPS
your nearest Redemption Center is 443 Walnut, Abilene

SAFEWAY
Conveniently Located to Serve you at 504 E. Main, Eastland
Copyright 1960, Safeway Stores, Incorporated

SALE BEGINS **FRIDAY MARCH 31** BRASHBURN **RUNS THROUGH APRIL 8**

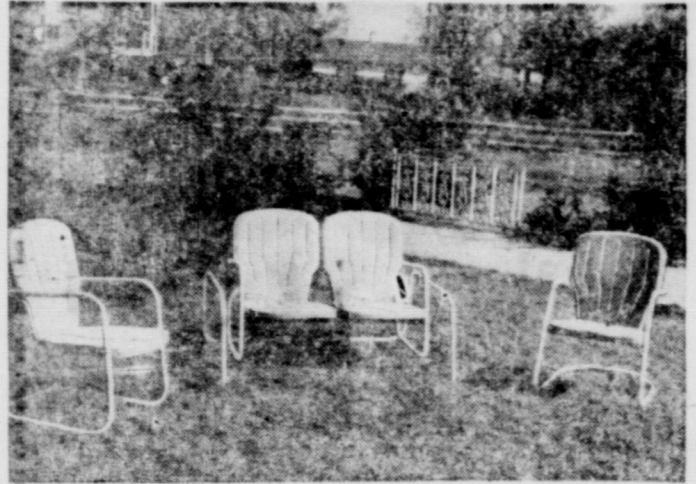


Cool comfort from Practical durable comfort . . . perfect for outdoor lounging or indoor T.V. viewing. The folding chaise lounge and the chair of 100% Saran strips and mirror-polish aluminum construction are completely weatherproof. Chair and lounge both feature the patented telescopic "slide action" arms for greater sturdiness and easier folding.

- Two Chairs
- One Chaise Lounge

ALL THREE PIECES . . . \$20⁴⁰

METAL SET
Glider and Two Chairs



Choice of Red, Green or Yellow
REGULAR 17.95
GLIDER 16.15
REGULAR 5.95
CHAIR or ROCKER 5.40

7 PIECE DINETTE SUITE



36-Inch Round Table
Extends to 60 Inches
6 Matching Chairs **89⁴⁰**

5-Piece Dinette **\$49⁴⁰**
30 x 48-Inch Table

5-Piece Dinette **\$69⁴⁰**
Regular 109.50

9-Piece Dinette **\$79⁴⁰**
72-In. Table, 8 Matching
Chairs. Reg. 109.50



**NOTHING TO BUY
JUST COME IN
REGISTER YOUR NAME TODAY**

A fabulous new reclining chair . . . and to introduce it we're making it possible for you to win one, free! Just come in, register . . . if your name is drawn, this luxurious new recliner by the makers of the famous Stratolounger is yours, free. Don't wait. Come in today!

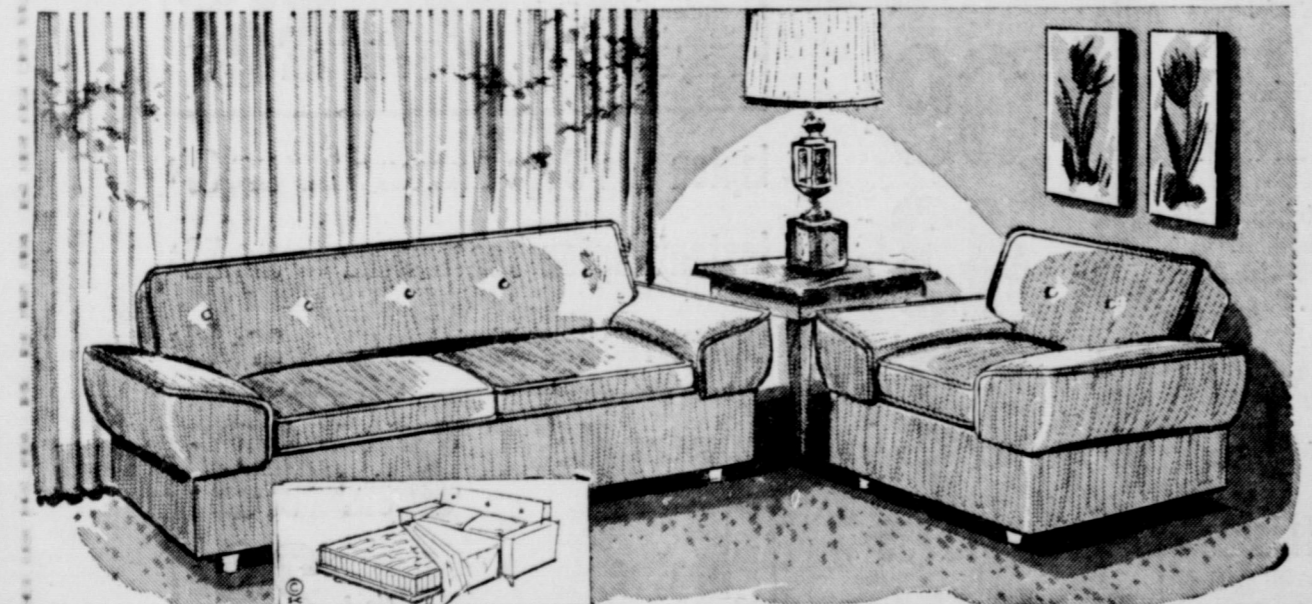


Save on this chair now... and if you're a winner... we'll refund your purchase price.

Stunning new straight-line styling . . . the famous chair that automatically goes from closed to special TV position to fully reclined! Gorgeous colors in Vinelle—the more durable, glove-soft, more luxurious covering that whisks magically clean in an instant.

special introductory low price
\$59⁴⁰

New Beauty For Double Duty



2 PIECE SLEEPER VALUE

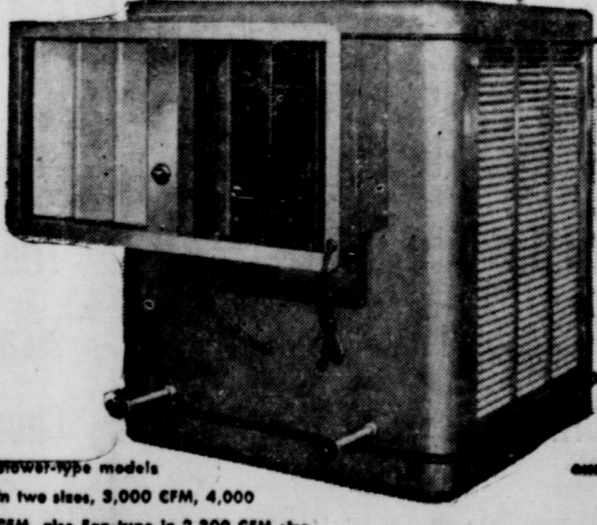
- Foam Cushions
- Innerspring Mattress
- Matching Chair
- Choice of Fabric and Color

REGULAR 249.95 **\$189⁴⁰**



Dearborn EVAPORATIVE COOLER

Here's the wise buy for thrifty families! Dearborn Evaporative Coolers will keep your home *highland cool* . . . and keep cooling costs down. Costs less to buy, less to operate, gives you all the cool dust and pollen free air your home needs for comfortable, healthful living.



and it's loaded with quality features

- Smart copper-tone finish
- Flush mounted — fits any standard double-hung window
- Adapter kit available for installation in casement window
- Recirculation pump standard equipment
- Two-speed motor . . . one knob control
- Coals or Ventilates
- Galvanized and Bonderized to prevent rust or corrosion
- Tier-drop water distribution
- Directional air-flow louvers

DRW87-type models
In two sizes, 3,000 CFM, 4,000 CFM. Also Fan-type in 2,000 CFM size.

Dollar-Wise it's Dearborn
\$114⁴⁰
Reg. 134.95 — Plus 3% Tax

10% ON
During Anniversary
Entire Sale

- KING**
- 78 x 80 Inch Foam
 - Two 39 x 80 Inch B
 - Two Bed Frames
 - One 78 Inch Brass

- BUNK**
- Two 3' 3" Bunk Bed
 - Two Link Springs
 - Two Innerspring M
 - One Guard Rail

27" Foam M
Rollaway
19.4

FREE
FIRST PRIZE .
SECOND PRIZE .
THIRD PRIZE .

GOLD SEAL AND A
VINYL LIN

- 12 Foot Width
- Regular 1.69 Sq. Yd.

- 10 PIE**
- 1 Sofa
 - 2 Platform Rockers
 - 2 Step Tables

LIVING
TWO-PIECE L

- Foam Cushions
- Choice of Colors

10% to 40%
No Carrying Cha
On Furniture

RANGER, TEXAS
123 N. Rusk Street
Phone MI 7-1404

RANGER FURNI

40TH ANNIVERSARY SALE

**DISCOUNT
CHANDISE
Anniversary Sale!
Sung Held Back**

WINE BED
Reg. 229.50 **\$179⁴⁰**

SPECIAL
Reg. 89.50 **\$74⁴⁰**

Throw Pillows
Reg. 1.00 Each Now 79¢
2 For 1⁴⁰

PRIZES
WATERLOUNDER CHAIR
B-B-CUE GRILL & CART
HOUSE DOG-A-MATIC

PLATFORM ROCKER
Sturdy Construction 2 for 33.00
Foam Seat
CLASS Value Each **17⁴⁰**

PIDIO SUITE
CHOICE OF COLORS **\$114⁴⁰**

SPECIAL
Reg. 189.50 **\$139⁴⁰** With Trade

On All Merchandise Sale
Free Delivery
Terms To Suite

Don't just dream about them. Have them!

...those heavenly carpets by LEES



100% WOOL SOLIDS OR TWEED. REGULAR 7.95 SQUARE YARD **6.40**
100% FILAMENT NYLON IN HEAT SET PATTERN. REG. 8.95 SQUARE YARD **7.40**
70% WOOL, 30% NYLON REGULAR 6.45 SQUARE YARD **4.95**
100% WOOL WILTON EXTRA VALUE. REGULAR 11.95 SQUARE YARD **8.95**
ALL PRICES INCLUDE TACKLESS INSTALLATION OVER 40-OZ. RUBBERIZED PADDING

Now '40 off!

FOR YOUR OLD STOVE IN TRADE ON THIS NEW

1961 GAS RANGE **TAPPAN**

Reg. 199.50 **169⁴⁰** With Trade

SIZZLE 'N SIMMER BURNERS. Tappan's revolutionary new burners are now faster than any ever made — greater speed and economy with lowest turn-down possible.

LIFT-OFF OVEN DOOR. Eliminates stretching and reaching to clean the far corners of oven interior. Lifts off easily and is easy to replace.

SWING-OUT SMOKELESS BROILER. For broiled foods with that delicious flame kissed flavor. Swings out on hinged door. Broiler pan and slotted grid adjusts to 3 heights.

Open Stock Maple



9-PIECE SUITE \$149⁴⁰
• SIX CHAIRS
• FORMICA TOP TABLE
• BASE
• HUTCH

BIG DISCOUNT ON ALL USED

FURNITURE

HOOVER Constellation
This is the canister that has everything. Walks on air, has double stretch hose, ten second bag change, powerful motor, and the most efficient rug and floor nozzle. **19⁴⁰** Only Reg. 49.50



REGULAR 59.95

Only **\$54⁰⁰**

Hoover Representative
Will Be In Our Store To Demonstrate and Handle any Service Problems.

2 PIECE BEDROOM SUITE

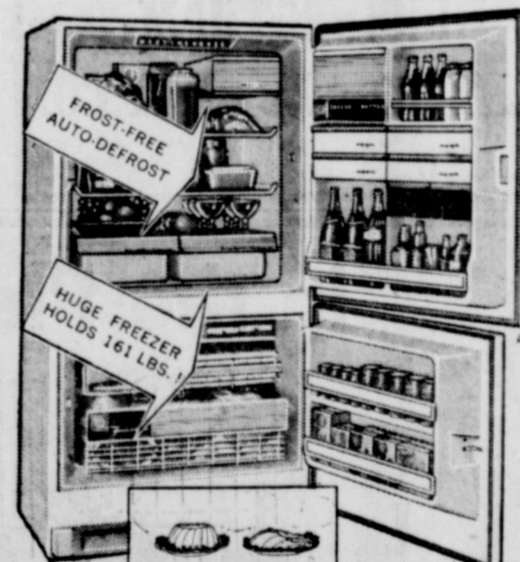


Similar To Illustration **\$69⁴⁰**
Regular 89.50 NOW

GREAT BUY FOR BIG FAMILIES

New Cold Injector **WESTINGHOUSE** Frost-Free

REFRIGERATOR with Separate Home Freezer



CHILLS FASTER THAN ANY OTHER!

Refrigerator space aplenty . . . plus a terrific separate freezer! **12 STORE-AND-SERVE UNITS** go to table or counter! Child-safe **MAGNETIC DOOR** opens at a touch . . . has Ceramior magnet with lifetime guarantee. **GLIDE-OUT SHELVES.** New **CUBE EJECTOR** showers non-stick cubes into **CUBE SERVER.** 11 exclusive Color Panels combine with 5 refrigerator colors for choice of **55 COLOR COMBINATIONS** . . . give choice of a little or a lot of color.

Reg. 529.95 **399⁴⁰** With Trade

The "Shape of Tomorrow" . . . fits in to look built-in



YOU CAN BE SURE . . . Westinghouse

12 Ft. Upright Freezer Reg 289.95 **224⁴⁰**

15 Ft. Chest Freezer Reg 319.95 **239⁴⁰**

FURNITURE EXCHANGE

RANGER, TEXAS
123 N. Rusk Street
Phone MI 7-1404

— Call MA 9-1707 for Classified Ads —

Court of Civil Appeals

Affirmed
 3572 Lillian A. Weyel et al v. Board of Firemen, Policemen & Fire Alarm Operators' Trustees of San Antonio et al. (Opinion by Judge Walter) Bexar
 3607 Commercial Credit Corporation et al v. Paplo Flores. (Opinion by Judge Collings) Taylor
 3612 City of Abilene v. William L. Bailey et al. (Opinion by Judge Grissom) Shackelford
 3623 C. L. Yeatman, Jr. v. Jack Nelms. (Opinion by Judge Walter) Coleman

Motion Submitted
 3637 Cameron Co. Water Control & Improvement Dist. No. 5 v. James M. George et al. Agreed motion for extension of time to file Appellees' brief. Cameron
 Motion Granted

Social Security Trust Funds Show Increase

Income to the two trust funds out of which social security benefits are paid exceeded outgo by \$648 million during the year ending Dec. 31, 1960, according to R. R. Tuley, Jr., district manager of the Abilene social security office.

"The 21st annual report of the trustees of the two funds also gives fiscal and calendar year estimates for the following 5 years, 15 years, and for the longrange future up until the year 2025," Tuley said.

These figures, based on provisions of the present social security law, show that income to the two funds during the 1960's and on into the long range future will be sufficient to cover all outlays for benefits.

Income to the old-age and survivors insurance trust fund during calendar year 1960 exceeds outgo by \$184 million. Total disbursements for the year amounted to just under \$11.2 billion. Total income for the year was close to \$11.4 billion. At the end of the year, the fund stood at \$20,324,000,000.

Total income to the disability insurance trust fund during 1960 exceeded outgo by \$464 million. Disbursements totaled \$604 million, and income totaled \$1,068 million. At the end of the year, assets of this fund totaled \$2,289,000,000.

"The estimates for the 5 years following 1960," Tuley said, "show that under present law, total income to the old-age and survivors insurance trust fund over the 5-year period will amount to \$70.8 billion." Total outgo during that period will come to \$67.0 billion with a total excess of income over outgo amounting to \$3.8 billion. At the end of December 1965, the assets of the old-age and survivors insurance trust fund are expected to amount to \$24.2 billion.

During these same 5 years, the assets of the disability insurance trust fund are expected to grow from the present \$2.3 billion to \$2.7 billion. Total income over the 5 years is estimated at \$5.9 billion and total disbursements at \$5.5 billion.

"By the end of December 1970" Tuley said, "the trustees estimates are that the old age and survivors insurance trust fund will have grown to \$46.6 billion. On the same date, disability insurance trust fund assets are estimated at \$4.1 billion."

"Persons desiring more detailed data are invited to write to Box 5168; Abilene, and ask for booklet number 36, Facts About

Ticklers By George



"The boys at the office gave me this birthday present—a cushion to save wear on my pants."

Dividends May Be Taxable States IRS

Dividends received by taxpayers during 1960 may be subject to special tax saving rules when filing federal income tax returns, Arthur E. Fogle Jr., Administrative Officer Internal Revenue Service, Abilene, said today.

Taxpayers with questions on this subject may get Document No. 5060, Investment Income, by contacting the IRS office.

"One check or money order does the job. Two checks or money orders confuse Uncle Sam," Fogle reminded taxpayers paying self-employment tax that this tax is a part of their total tax and should be paid in one remittance with their tax returns.

Computation of self-employment tax is made on separate Schedule C or separate Schedule F, which with attached Schedule SE should be filed with taxpayers' individual income tax returns.

Fogle also said that some expenses which you incur or pay as an employee are deductible on page one of Federal Tax Forms 1040 or 1040W . . . some are deductible on page two . . . still others are not deductible at all. He admits that special rules covering employee business expenses on tax returns for 1960 are not simple.

The IRS office, 951 N. Third Street in Abilene, has a free booklet that covers the waterfront on this subject, however, it's Document 5014, "Employee Expenses."

GO TO CHURCH SUNDAY

the OASDI Trust Funds; OASDI is short for Old-Age, Survivors, and Disability Insurance," Tuley concluded.

ATTEND THE CHURCH OF YOUR CHOICE EACH SUNDAY



Bring Your BATTERY TROUBLES To Us!

Group One Fits Most 6 Volt Cars

8.95

Exchange

JIM HORTON Tire Service

East Main St. MA 9-1420 Eastland, Texas

"NOW ON THE SQUARE"
KELLAR'S FIX-IT SHOP
 202 SOUTH SEAMAN
 WANTED
 Lawn Mowers, Repaired, Small Appliances, Yard and Garden Tools.

INGROWN NAIL
 Imm...
 A few drops of OTCOR... bring relief from tormenting pain of ingrown nail. OTCOR... softens the skin... breaks further pain and discomfort. OTCOR is available at all drug counters.

Does Your Car Drive Like An Antique?



PUT YOUR CAR "IN TUNE" WITH THE TIMES . . . NOW!
Get Your Car Ready for Summer Driving
 PHONE MA 9-2270
 NIGHT PHONE MA 9-2224

EXPERT AUTO REPAIRS

ALL MAKES AND MODELS
OFFICIAL INSPECTION STATION

ALLEN AUTO REPAIR

AT RUSHING MOTOR CO.
215 South Seaman

UNITED STATES STEEL PRODUCTS

CORRUGATED ROOFING

29 Gage All Lengths from 6' thru 12'

V-DRAIN ROOFING

29 Gage All Lengths from 6' thru 12'
\$9.75 per square, any amount

35" GOAT WIRE \$11.50
 BARB WIRE \$7.00
 These Prices Good for Limited Time or Until Present Stocks Are Depleted

Higginbotham-Bartlett Co.

301 W. Main Jack Elliott, Mgr. Phone MA 9-1311

That EXTRA ROOM You've always NEEDED!

Want to modernize? Need to repair? Like to add on? You would, but you lack the money? Now that problem can be easily solved. Title I FHA loans are now available at the Eastland National Bank. Check with your banker or one of the three lumber companies listed in this ad.

FOR DETAILS SEE:
EASTLAND NATIONAL BANK
CROWELL LUMBER CO.
HANNA HARDWARE AND LUMBER
HIGGINBOTHAM-BARTLETT LUMBER CO.

Lumber and Materials for MODERNIZING Your Home

TITLE I FHA LOANS available to home owners for any type of permanent improvements.

No Down Payments up to 60 Months To Pay

CLEAN UP PAINT UP FIX UP FOR HOME AND CITY BEAUTIFUL

You can do it NOW with a LOW COST Bank Loan.

Model for model...there are 18 Chevrolets lower priced than any other full-sized car!

Leave it to these Jet-smooth Chevies to go easy on your family budget! All told there are 18 Chevrolets—V8's and 6's—priced lower than comparable competitive models*. Sumptuous Impalas, sprightly Bel Airs, bottom-priced Biscaynes and a whole stable of wonderful new wagons. And every one of them has a road-gentling Jet-smooth ride. Body by Fisher refinements and dozens of engineering details you'd expect only in the most expensive makes. Look them over at your Chevrolet dealer's one-stop shopping center and see how easy it is to drive out in just the one you want!

* Based on comparison of manufacturers' suggested retail prices (including Federal tax) for models with 118-inch wheelbase or above.

See the new Chevrolet cars, Chevy Corvairs and the new Corvair at your local authorized Chevrolet dealer's

FULLEN MOTOR COMPANY INC.

305 E. MAIN EASTLAND PHONE MA 9-2676

Dine Out ...Tonight

in the Pleasant

POLKA DOT RESTAURANT

Call Strawn 2401 for Dinner Party Reservations

In our completely remodeled dining room. Good service and fine food is our specialty

Clubs and Private Parties Welcome.

The Polka Dot Restaurant

Strawn, Texas