

By Clint Bray

The Light Touch

Remember the good old days--when a teenager went into the garage and came out with a Lawn-mower?

Singles bar: a "meet" market.

When we describe someone's faults, that's analysis; if he does it to us, that's criticism.

Of all the tie racks ever made, we have yet to see one that beats a doorknob.

And nothing beats the summer sale at BRAY'S in Eastland and Ranger.

Hospital Notes

Patients in Eastland Memorial Hospital Saturday morning were:

Alma Green
Jessie Plummer
Lula Walker
Homer White
Harry Chambers
Stella Thurman
Pearl Williams
Weltha Dunn
Daisy Motley
Methal Thompson
Laverne Stuard
Vernie Allen
Velma Honea
Maggie Christian
Billy Mathis
Albert Cogburn
James Seabourn

Pam Garrett
Minnie Bilbrey
Arthur Walton
C.B. Harris
Robert Nealy
Oliver Ashton
Ima Boles
Nina Fauth
ruby Gilmore
Grady Rogers
Glen Graham
Mary McCoy
Minnie Perdue
James Barnes
Barney Brannon
William Murphy
Ollie Eaves
Dicie Fonville
Wendell Siebert
Jesse Cox
Jacqueline Bush
Mildred Newton
Rebecca Carlisle

Jewel Walker
Deborah Williamson
Lilly Rodgers
tibitha Rainey
Grace Lewis
Donald Walker
David Fambrough
Bernice Stephen
Hazel Henderson
Angela Foster
Baby Girl Foster

Patients in Ranger General Hospital Saturday morning were:

Walter Snead
F.S. Pearsall
Cookie Griggs
Jessie Franklin
Joan Olsen
Ruth Wheeler
Tony Ash
Melba Love

J.D. Barker
Patsy Collins
Mamie Hazard
Myrtle Moon

Sunday, July 7, 1974

HEARING AID SALES
SALES AND SERVICE

Batteries and Repair
Work on all Brands.

John W. Clinton

Box 1206
Cisco, Texas
Ph. 442-2168

DID YOU KNOW?

Automobile Service Tips

CONTACT SET - A SWITCH THAT TURNS THE IGNITION COIL ON AND OFF TO FIRE THE SPARK TO EACH CYLINDER. CONTACTS (POINTS) GRADUALLY WEAR CAUSING LOSS OF POWER AND POOR MILEAGE. USEFUL LIFE - ABOUT 10,000 MILES.

Time-Up \$950 Plus Parts

Pipkin Motor Co.

J R B

SAVES YOU MOST SERVES YOU BEST

BROWNWOOD, COLEMAN, CROSS PLAINS, ABILENE, RANGER, EASTLAND, CISCO, DE LEON, BRADY, WICHITA FALLS, LLANO, STAMFORD.

NO SALES TO DEALERS

JRB MEATS ARE U.S. GOVERNMENT INSPECTED. IF FOR ANY REASON YOU ARE NOT SATISFIED, WE WILL CHEERFULLY RETURN YOUR MONEY.

- Maryland Club 1 lb. Can **89¢**
- COFFEE** 25¢ Coupon
- All Jumbo **DETERGENT** 40¢ Coupon **\$2.09**
- Skinnners Thin **SPAGETTI** 12 oz. **39¢**
- Automatic Dishwashing Powder **CASCADE** Giant Size 15¢ Coupon **59¢**
- Zesta Keebler **CRACKERS** lb. **49¢**
- Rich N Chips, Keebler **COOKIES** **69¢**
- Lipton Family Size **TEA BAGS** 24's **89¢**
- Chicken Of The Sea **TUNA** Light Chunk 1/2's **49¢**
- Jell-O **GELATIN** 3 oz. **2/31¢**
- Gold Medal **FLOUR** 5 lb. Bag **79¢**

DOUBLE GREEN STAMPS

WEDNESDAY & SATURDAY
Eastland, Ranger, Cisco

We Have Savings! YOU Buy for Less!

Prices Good Monday - Saturday
We Honor Government Food Stamps

- BACON** Swift Premium 1 lb. Carton **99¢**
- CHUCK ROAST** Texas Heavy Fed Beef **69¢**
- CHUCK ROAST** Texas Heavy Fed Beef Seven Bone **79¢**
- ARM ROAST** Texas Heavy Fed Beef Round Bone **89¢**
- FAMILY STEAK** Texas Heavy Fed Beef **99¢**
- STEW MEAT** Texas Heavy Fed Beef Lean Boneless **\$1.09**

- GROUND BEEF** Family Pack 3 lbs. Or More **69¢**
- GROUND BEEF** Extra Lean **89¢**
- HAM** Swift 3 lb. Can **\$3.69**
- FRANK** Swift Premium 1 lb. Pkg. **79¢**
- BEEF PATTIES, PORK PATIES, STEAK FINGER** Hormel 12 oz. Pkg. **79¢**

- | | | | |
|---|---|--|--|
| HAIR SPRAY Protein 21 Reg. \$2.25 99¢ | TABLETS Anacin 100's Reg. \$1.79 \$1.29 | TABLETS Dristan 24's Reg. \$1.59 99¢ | NASAL MIST Dristan Reg. \$1.39 89¢ |
|---|---|--|--|

- PEPTO BISMOL** Reg. 79¢ Liquid 4 oz. **49¢**
- POTATO PEELER** Ecko No. 3P Reg. 45¢ **29¢**

- Sanka INSTANT COFFEE** 8 oz. 40¢ Coupon **\$1.89**
- POTATOE CHIPS** Pringle 4 1/2 oz. **43¢**
- POTATOE CHIPS** Pringle Twin Pac **79¢**
- DETERGENT** Bold Giant Size 10¢ Off Label **97¢**
- SALAD OLIVES** Towie Salad 10 oz. **69¢**
- SAUCE** La Choy Brown 5 oz. **33¢**
- PEANUT BUTTER** Parade 18 oz. Jar **69¢**
- SPAGHETTIE SAUCE** Ragu 15 oz. **55¢**
- SPINACH** Del Monte 303 can **29¢**
- MIXED VEGETABLES** Mixed Allens 300 can **2/47¢**

- GARDEN FRESH PRODUCE**
- Calif. White **POTATOES** lb. **19¢**
- Sana Rosa **PLUMBS** lb. **39¢**
- Texas New Crop **PEACHES** **39¢**
- Red **ONIONS** lb. **29¢**
- Yellow **SQUASH** lb. **19¢**

We Reserve The Right To Limit Quantity
NO SALES TO DEALERS

- J.R.B.
- MELLORINE** 1/2 Gal. **57¢**
- Fisherboy **FISH STICKS** 8 oz. **39¢**
- Minute Maid 100% Pure Florida **ORANGE JUICE** 6 oz. **4/\$1**
- Minute Maid 100% Pure Florida **ORANGE JUICE** 12 oz. **49¢**
- Minute Maid 100% Pure Florida **ORANGE JUICE** 16 oz. **79¢**
- Gandy's **YOGART** 1/2 Pt. **4/\$1**
- Bluebonnet **MARGARINE** 1 lb. Qtrs. **49¢**
- Fleischmann's **MARGARNE** 1 lb. Qtrs. **67¢**
- Imperial **WHIP MARGARINE** 1 lb. Tubs **59¢**

25¢

WITH THIS COUPON
1-pound Can of Maryland Club Coffee

89¢

Cash value 1-20¢ Limit one per customer

COUPON EXPIRES 7-13-74

25¢

15¢

22 fl. oz. (1 pt. 6 fl. oz.)

GIANT SIZE

Joy **55¢**

ONLY

GOOD ONLY AT JRB WITH THIS COUPON

OFFER EXPIRES 7-13-74

15¢

40¢

SAVE 40¢ With This Coupon
When You Buy A 8 oz. Jar Of

SANKA **\$1.89**

Instant Coffee

OFFER EXPIRES 7-13-74

40¢

15¢

GIANT SIZE
- 2 LB 3 OZ. -

Cascade **59¢**

ONLY

WITH THIS COUPON

JRB

GOOD ONLY AT OFFER EXPIRES 7-13-74

15¢

LOW, LOW PRICE!

Joy Giant **DISHWASHING LIQUID** **55¢**

15¢ Coupon

Final Touch **FABRIC SOFTNER** **59¢**

33 oz. 20¢ Coupon

PLUS GREEN STAMPS

20¢

Final Touch FABRIC SOFTNER 33 oz. **59¢**

WITH THIS COUPON Limit 1 coupon per bottle purchased

JRB

GOOD ONLY AT OFFER EXPIRES 7-13-74

20¢

ENERGY

Conserve it... Expend it... **Carefully!**

6 Ways Everyone Can Help!

1. USE ELECTRICITY EFFICIENTLY

Guard against waste with adequate wiring . . . even line distribution.



2. SEAL OUT COLD

Storm windows keep cold, drafts out . . . precious heating warmth in. They help cut fuel costs, too!



3. SLOW DOWN & SAVE GAS

Ease up on your car's accelerator and ease up on gas bills while cutting high fuel consumption.



5. CHECK YOUR HEATER'S EFFICIENCY

Have fuel tanks serviced and cleaned regularly.



4. SEAL IN HEAT

Save on home heating bills . . . conserve fuel with insulation that keeps warmth inside.



6. TUNE UP FOR BETTER MILEAGE

Tuned-up vehicles perform better . . . deliver more miles per gallon of gas.



This ad Sponsored by

EASTLAND TELEGRAM

We're in the throes of a national crisis. There's a shortage of available energy. Unless each of us does his part in conservation there won't be enough fuel and electricity for all of us. Probably you're already doing your share . . . by maintaining lower speed limits, guarding against the waste of heating fuel and electricity. For the role you are playing in seeing us all through this crisis we wish to commend you. And encourage your fine efforts and cooperation.

..LET'S ALL PULL TOGETHER!

Miss Osteen And Jim Lawless Repeat Wedding Vows Saturday In Olden

Miss Shirley Jo Osteen became the bride of Jim Keith Lawless in a ceremony Saturday at the Olden Baptist Church with Rev. Harold Meeker officiating.

The vows were said beneath an arch decorated with green and white. Candelabra were on each side and large baskets of flowers on pedestals decorated the setting. The aisles were decorated with blue and white satin bows.

The bride, given in marriage by her father, wore a formal gown of white organza. A-line, with dainty cotton venise lace flowers that trimmed the demure high collar. The empire bodice was touched with seed pearls. Pearls and lace also highlighted the sheer sleeves.

Her mantilla was of nylon illusion trimmed with matching venise lace on a camelot style headpiece.

Miss Karen Hunter was maid of honor. Miss Vickie Lynn Osteen, sister of the bride, was bridesmaid. They wore long flowered gowns with butterfly sleeves and long white satin ribbons fell from the waist. Each carried a long stemmed red rose.

Dale Minchew was best man. Candle lighters and ushers were Brenda Adams and Judy Crantz of Lake Leon. They wore identical long gowns of soft blue double knit and wore white corsaged.

Betty Ruth Miller was flower girl. She also wore a blue dress with white and blue flowers in her hair and carried a basket decorated with flowers, which held blue and white pom poms.

Wedding music was by Mrs. Harold Meeker. Special music was played by Brenda Adams and sung by Lynnett and James Meeker.

Following the ceremony a reception was held in the Sunday school.

The bridal table was decorated with lace over blue with blue and white flowers. The three tiered cake was decorated with blue and white with swans and silver bells. Mrs. Frank Collins, Miss Adams and Miss Crantz served cake and punch.

For her trip the bride chose a red and white dress with daisy corsage and white accessories. After a short trip the couple will live in Eastland until the groom goes into the Air Force in August.

Parents of the couple are Mr. and Mrs. Jerry Osteen of Olden and Mrs. Alice Lawless of 701 W. Sadosa, Eastland.

Visiting From Odessa

Visiting Mrs. J.E. Underwood are her children: John and family from Odessa, Larry Underwood and girls from Olden, Mrs. Larry Robles and family from Dallas, SP4 Richard L. Underwood from Vicenza, Italy.



MR. AND MRS. JIM LAWLESS

CONTRACTORS' NOTICE OF TEXAS HIGHWAY CONSTRUCTION

Sealed proposals for constructing 5.643 miles of ACP from Fr: 1.5 mi. e. of Ranger to 1.0 mi. W. of SH 16 on Highway No. IH 20, covered by C 7-6-33 in Eastland County, will be received at the Highway Department, Austin, until 9:00 a.m., July 24, 1974, and then publicly opened and read.

Plans and specifications including minimum wage rates as provided by Law are available at the office of R.P. Haun, Resident Engineer, Eastland Texas, and Texas Highway Department, Austin. Usual Rights Reserved.

CONTRACTORS NOTICE OF TEXAS HIGHWAY CONSTRUCTION

Sealed proposals for constructing 10.217 miles of ACP from Carbon SE to Comanche Co. Line on Highway No. SH 6, covered by C 257-4-13 in Eastland County, will be received at the Highway Department, Austin, until 9:00 a.m., July 25, 1974, and then publicly opened and read.

Plans and specifications including minimum wage rates as provided by Law are available at the office of R.P. Haun, Resident Engineer, Eastland, Texas, and Texas Highway Department of Austin. Usual rights reserved.

TRAVEL LOWME
 • 5th Wheel Trailers
 • Travel Trailers
 • Camping Trailers
ONE STOP For All Your Needs
 • SALES - SERVICE
 • INSURANCE - FINANCING
 • PARTS - ACCESSORIES
673-3140
 3000 East Hwy 80 At Interstate 20

FOR SALE OR TRADE--3 bedroom, 2 bath unfinished house. Corner of Commerce and College. Can use a mobile home. Am on job Monday, Wednesday and Friday. Phone 629-1648, after 4 p.m. t-62

SEWING MACHINES-- New and used. We also clean and adjust all makes and models. Carry good line of parts. Call 442-3283, Cisco or 629-1630 in Eastland.

500 Work Pants. All sizes. \$1.00 Each
 1/2 inch drive air compact wrenches. \$49.95
CISCO ARMY SURPLUS
 1201 Ave D 442-36720

Valuable Lake Area Land
 Now you can own 5 acres or more of valuable "lake area" land for less than the cost of many 1/2 acre lake lots.
 Beautiful wooded, wild game areas... plus, enough land for gardening, coastal bermuda, homesites, and abundant country living... just minutes away from the 18 hole Lake Proctor Country Club.

TRACT SIZE	PER ACRE
5 ac.	\$1,080
10 ac.	\$980
15 ac.	\$880
17.24 ac.	\$780

Call Now or Stop By
PECAN TRAILS LAND OFFICE
 Proctor, Texas
 on Hwy. 377
 Free Refreshments
 And Information
 Proctor 817-879-2749
 Stephenville 817-965-3135

CANCER INSURANCE
 UP TO
\$100,000
M.H. Perry
 104 N. Lamar
 629-1566

Lovely 3 bedroom brick home. Near new. 2 bath, central heat and air, chain link fence in rear. Gas grill in back. Paved street and located in the fine part of town.

Fine 3 bedroom frame dwelling

Older solid house. Good Location \$3500

Garl D. Gorr
 Real Estate Brokerage
 ph Day 442-3642
 ph Night 442-1642

LUZIER Fine Cosmetics
 announces the appointment of
Judy Donaldson
 as a trained Cosmetic Consultant.
 801 Commerce,
 Ph. 629-2012.

Brick Cleaners Needed At Once.
\$15 Per 1000 Bricks Cleaned.
Minimum 500 Per Day Cleaned;
Otherwise, \$12 Per 1000.
 Apply
210 S. Seaman At Commerce
Morrow Wrecking Co.

WANT TO BUY or lease, one to one and one-half acres outside city limits with access to highway. Tel. 647-3590 after 10 a.m. t-1f

FARMER BUS LINES
 Wichita Falls to San Antonio
 Passenger and Freight Service
 Southbound from Eastland--operates Mondays, Wednesdays, Fridays.
 Northbound from Eastland--operates Tuesdays, Thursdays, Saturdays. t-59

H.L. Ferguson Backhoe Service
 Digging, Ditching, Hauling, Gravel And Sand, Eastland
 Call 629-2081

Wednesday, July 10th
9 99¢
 KING SIZE WALLET CREATIVE COLOR PORTRAITS FOR ONLY
 NO LIMIT
 Extra Charge for GROUPS
 GET PICTURES MADE OF GRANDPA, GRANDMA, DAD, MOM AND ALL THE LITTLE ONES AT THESE SAME LOW PRICES!
SHUGART COLOR PHOTOS
 ASK About Our FREE 8 x 10 OFFER
Brittain Discount Center
 108 West Commerce S.Side Of Square

Dearborn Air Coolers
 Quality-built for durability and dependability

A. RECIRCULATION PUMP Utilizes high impact polystyrene and brass for long, trouble-free operation.
B. SEAMLESS WATER PAN One piece of heavy-coated galvanized steel. No seams or corners to encourage rust.
C. EFFICIENT WATER DISTRIBUTION Keeps each pad evenly moist for complete cooling.
D. SELF-ALIGNING BEARINGS Blower shaft bearings are mounted on a cushion of synthetic rubber so the shaft stays perfectly aligned and protected from excess wear. Also assures quieter operation.
F. WHISPER-QUIET OPERATION Cushion mounted motor and blower shaft bearing for longer life and quieter operation.

Dearborn
 DIVISION OF ADDISON PRODUCTS COMPANY
Western Auto
 701 S. Lamar 629-2011

City Of Eastland Equilization Board
Will Meet July 10th
From 9-11 A.M.
At The City Hall

Arrington Funeral Home

Pre-Arranged Funeral Service
Burial Insurance Policies
Phone 629-2611
Friendly, Personal Service
A Pillar In This Area For 58 Years

Revival Church Of God
 Corner Of Main & Connellee
July 7-13 7:30 Nightly
Kenneth Adams
 Evangelist
Come If You Need Salvation, Healing, Deliverance, Baptism Of The Holy Spirit.

Change filters regularly. It takes very little energy on your part.

Replacing disposable filters or cleaning permanent type filters as required, is one of the easiest ways to help your cooling system do its job more efficiently and economically. Clogged filters restrict the air flow your air conditioning unit needs, making the unit work harder and longer — which uses more electricity. Here are some additional ways to help your air conditioning keep its cool: Don't put lamps or other heat-producing appliances in the immediate vicinity of the thermostat. Keep the outdoor unit free of shrubbery or other obstructions that might prevent proper air circulation.

Insulation can pay for itself by lowering your cooling (and heating) costs. You can save as much as 20% or more on energy consumption if your home is insulated to meet FHA standards. For efficiency and economy, set the thermostat at 78-80 degrees. For each degree above 75 degrees, the energy used for cooling is reduced by 5%.

For more ideas on using energy wisely around your home, come by Texas Electric or request our free efficiency tips booklet on the comment portion of your electric service bill.

TEXAS ELECTRIC SERVICE COMPANY
 F. N. SAYRE, Manager, Phone 629-2651

In Pursuit Of A Summer Tan

Now that the summer sun is its hottest, you should use extra care when you go out in the sun. Otherwise, you could spend days recuperating.

The Food and Drug Administration warns that while Americans spend fifty million dollars a year to get a tan, many people will end up scorched.

FFDA has published a pamphlet to provide some tips to prevent a burn. Single copies of IN PURSUIT OF A SEUMER TAN are available free from Consumer Information, Pueblo, Colorado 81009.

If you have the time, take the sun in easy stages. The first day out sat out only forty minutes! The next forty-five. Then, fifty. After that your skin will probably have thickened enough to stay out as long as you want. But at the end of those short times, get out of the sun. Indoors.

SHUGART COUPON
Wednesday, July 10th
Brittain Discount Center
 108 West Commerce S.Side Of Square

9
WALLET SIZE
COLOR PORTRAITS
99¢

ASK About Our **FREE** 8 x 10 OFFER. Extra charge for GROUPS

Sunday, July 7, 1974

BAKKER Funeral Home

Dear friends,

The American flag, which is such an impressive part of a military funeral, is supplied without cost by the U.S. government.

After the funeral ceremony, the flag is awarded to the next of kin. Your funeral director performs the duty of coordinating all aspects of a military funeral.

Sincerely,
Carl C. Bakker

M-F-A INSURANCE

When you carve out your future...

start with the basics...with shelter from the unexpected. Start with MFA Insurance.

For Information Call
Richard Rossander
 Agent
 Ph. 629-2563
 Eastland, Texas

SHIELD OF SHELTER



Students from Eastland High School were among approximately 175 yearbook staff members and advisors participating in the fifth annual Angelo State University Yearbook Workshop held on the San Antonio campus June 24-28. The five day program included sessions on all aspects of yearbook production in addition to numerous social and recreational activities.

Those attending from left to right are: Carol Terrell, daughter of Mr. and Mrs. M. T. Terrell of 308 Ammerman; Debra Woods, daughter of Mr. and Mrs. Danny Woods; Victori Wilson, daughter of Mr. and Mrs. H. T. Wilson of 512 S. Ammerman; Shirley Thompson, daughter of Mr. and Mrs. H. L. Thompson of 607 S. Madera; and Sharon McCloud, daughter of Mr. and Mrs. Austin O. McCloud of 515 Lamar.

Preacher Says By George Sims

A FLOWER CALLED HONESTY

Is honesty the best policy? How about a white lie? Sometimes we have to tell a partial truth! To be honest is being true to oneself?

Webster's dictionary says "honesty" is a state of being; to be honorable; to be held in respect; to be creditable; to be commendable. The definition continues and tells what honesty refrains from: lying, cheating and stealing.

Honesty has taken a back seat to deception in our day. People who find Christianity a religion to attend on Sunday, fail to live the life which it is. We vote Congressmen and government leaders into office. They say they will vote against gambling and drinking and abortion. In their private lives they do a little gambling; drink of alcoholic beverages is the common norm; and their morality is often questionable. He will never be able to betray what he is. If he is deceiving the public and we know it and vote for him anyway, we should not expect him to vote the way we think but the way that he is. Where are our Christian politicians? Even here in Eastland, if you have enough money, you can move some people around. What a person is, will finally determine his actions, and not what we hope or think he should be.

Honesty is a state of being. It is a judgement that you pass upon yourself. Consider an action that you intend to do or have performed. You begin by examining what it is going to do for you and second, what it will do to the other fellow. Maybe he will not find out and then no one will be hurt because of it. From those observations we judge whether or not we are honest or dishonest. Should you decide that the action is dishonest, yet you do it anyway and bear the guilt, you are only being true to your dishonest self. Man is a valuing being. In your central self where you live, the gut level of life, you value. Values come from the deep mind into the conscious mind where thoughts and attitudes are formed and expressed through actions and habits.

The ninth commandment says that thou shalt not bear false witness. It means that you will not lie if you wish to be a healthy human-emotionally, mentally, spiritually and physically. If you believe ill health is better than health, then I cannot talk to you. If you agree that health is better than ill health, we can dialogue. We have the commandments, so that to be obedient to the negative principles we can move to the positive. Thou shalt not lie is a negative principle. It says if thou shalt be real, do not lie. This destroys inner trust and relatedness. You will come to the place where you do not know who you are. Your character deteriorates and right seems wrong and wrong seems right.

As a Christian, I am not bothered with legalism but I do struggle with submerged legalism. The head and heart do not operate in unity. Sin did this. I do not have honesty in myself.

Can We Afford A Car

BRIDGEPORT* ILL. Leader: "With the increasing costs of driving our cars, we sometimes wonder if we can continue to afford it. The costs of operating a car includes, besides gasoline, such items as license, insurance, repairs and depreciation. Most of us forget that a very large percentage of the cost goes on even while the car sits in the garage."

BUY WISELY . . . PAY PROMPTLY . . .

PROTECT YOUR CREDIT

If you are not enjoying the advantages of Credit buying let us help you open a charge account. Your home town merchants welcome a new charge customer. Many of Life's luxuries and good things are enjoyed by those who have good use their credit ratings.

★MEMBERSHIP★

Bairds TV & Appliance
 Bray's Department Store
 Central Drug
 City Garage
 Coats Furniture
 Exxon Co. USA
 Eastland Memorial Hospital
 Eastland National Bank
 Eastland Service Parts
 Eastland Telegram
 Freyschlag Ins. Agency
 Fullen Motor Co.
 Goodyear Tire & Rubber Co.
 H & R Lumber
 Hollywood Vasserette Credit Union

King Motor Co.
 Kinnaird Ins. Agency
 Perkins Implement Co.
 Robertson TV Sales
 Scott Paint & Body Shop
 Smith Plumbing Co.
 So-Lo Auto Parts
 Southern TV Systems
 Southwestern Bell Telephone
 Squiers Farm Store
 Stephen Printing Co.
 Super Save Gro.
 Texas Electric Service Co.
 Turner, Seaberry & Warford
 Western Auto Store

Summertime Food Savings

SUPER SAVE MARKETS

Frozen Foods

STRAWBERRIES 4 10-Oz. Pkg. \$1.00
BIRDS EYE COOL WHIP 4.5-Oz. Can 49¢
ORANGE JUICE 5 10-Oz. Cans \$1.00

MAXWELL HOUSE INSTANT COFFEE 10-Oz. Jar \$1.99

MARYLAND CLUB COFFEE 1-Lb. Can 79¢

JEWEL SHORTENING 42-Oz. Can \$1.19

Star-Kist TUNA 6.5-Oz. Can 49¢

STAR-Kist TUNA 5-Oz. Can 49¢

FIRESIDE SALTINE CRACKERS 1-Lb. Box 39¢

CHEESE SLICES 8-Oz. Pkg. 59¢

MARGARINE 1-Lb. Can 45¢

WHEATIES 18-Oz. Box 75¢

LUCKY WHIP 8-Oz. Can 69¢

CRUET KIT Each 29¢

VEG. STEW 24-Oz. Can 49¢

SHAMPOO 79¢

TOOTH PASTE 79¢

BAYASPIRIN 3300 Value \$1.19

BAYER ASPIRIN 3300 Value \$1.19

DETERGENT COND. ALL 157 Oz. Box \$2.59

3 Lifebuoy 3 Bath Size With This Coupon \$2.59

DECKER'S KORN KIST BACON 49¢

POTATOES 8 Lb. Bag \$1.19

GREEN BEANS 16-Oz. 79¢

GOLDEN CORN 17-Oz. 79¢

PEAS 17-Oz. 79¢

4 LUX 4 Beauty Bars \$1.00

CUT YAMS 30-Oz. Can 49¢

BIG RED 64-Oz. Btl 69¢

3 Cans **89¢**

Final Touch 33-Oz. 69¢

Southern Television Systems Inc.

CHURCH SERVICES

CALVARY TEMPLE ASSEMBLY OF GOD
 1408 W. Cogginville
 Sunday morning worship 10:00 a.m.; Sunday night service 7:00 p.m.; Tuesday night midweek service 7:00 p.m. John Pratt, pr. or. 629-1623.

EASTLAND CHRISTIAN SCIENCE SOCIETY
 Corner of Plummer and Lamar
 Sunday morning services 11:00. Services on first Wednesday of month 7:30 p.m. All are welcome.

FIRST UNITED METHODIST CHURCH
 Rev. Ben Marney
 Sunday School 9:45 a.m.; Morning Worship 11:00 a.m.; E Young People's Meet 6:00 p.m.; Sunday Evening Worship 7:00 p.m.; Ladies Prayer Group 9:30 a.m.; Wednesday: Choir Practice Wednesday 7:30 p.m.

UNITED PENTECOSTAL CHURCH
 Rev. E.D. Norman
 Sunday School 9:45 a.m.; Morning Worship 11:00 a.m.; 5 Evening Worship 7:30 p.m.

NORTH OSTRUM ST. CHURCH OF CHRIST
 H.S. Lewis
 Worship 10:30 a.m.; Evening Worship 5:00 p.m.; Wednesday Evening Service 7:00 p.m.

FIRST BAPTIST
 Rev. Haston Brewer
 Sunday School 9:45 a.m.; Morning Worship 11:00 a.m.; Evening Worship 7:30 p.m.

BETHEL BAPTIST
 Rev. Bill Beths
 Sunday School 9:45 a.m.; C Morning Worship 11:00 a.m.; Ev Training Union 4:00 p.m.; Evening Worship 7:00 p.m.

CALVARY BAPTIST
 Rev. L.C. Williams
 Sunday School 10:00 a.m.; Morning Worship 10:45 a.m.; Training Union 6:00 p.m.; Evening Worship 6:30 p.m.; Wednesday Night Service 7:00 p.m.

FIRST BAPTIST CHURCH NO. SEAMAN ST.
 Rev. G.L. Norris
 Sunday School 9:30 a.m.; Morning Worship 11:00 a.m.; Baptist Training Union 4:00 p.m.; Evening Worship 7:00 p.m.; Wednesday Night Service 7:00 p.m.

HARMONY BAPTIST CHURCH
RUDY FAMBROUGH Minister
 Sunday School 9:45 a.m.; Morning Worship 11:00 a.m.; Evening Worship 7:30 p.m.; Wednesday Night Service 7:30 p.m.

MANGUM BAPTIST CHURCH
 Rev. A.J. Thomas
 Sunday School 10:00 a.m.; Morning Worship 11:00 a.m.; Training Union 6:00 p.m.; Evening Worship 7:30 p.m.

ST. FRANCES CATHOLIC
 Priest John Mitchell
 Mass Saturdays at 6:30 p.m.

FIRST PRESBYTERIAN CHURCH
 Rev. Robert W. Marsh
 Sunday School 10:00 a.m.; Morning Worship 11:00 a.m.

FIRST CHRISTIAN DISCIPLES OF CHRIST
 Steven Church
 Mo. Sunday School 9:30 a.m.; Morning Worship 10:55 a.m.; Evening Worship 6:00 p.m.

CHURCH OF GOD
 Main & Conellie
 Rev. Ronald Bear
 Sunday School 10:00 a.m.; Morning Worship 11:00 a.m.; Family Training 6:00 p.m.; Evening Worship 7:00 p.m.; Wednesday Night Service 7:30 p.m.

CHURCH OF CHRIST Daugherty St.
 Jim Pennington
 Sunday School 9:30 a.m.; Morning Worship 10:20 a.m.; Evening Worship 6:00 p.m.

HOLY TRINITY EPISCOPAL CHURCH
 Priest Raleigh Denison
 Sunday School 11 a.m.; Holy Communion 11 a.m.

CARBON FIRST BAPTIST
 Rev. Delbert Smith
 Sunday School 10:00; Morning Worship 11:00 a.m.; Ev Training Union 5:30 p.m.; Evening Worship 6:30 p.m.; Wednesday Night Service 8:00 p.m.

CHURCH OF CHRIST
 Jack Landrum
 Sunday School 10:00 a.m.; Morning Worship 10:50 a.m.; Evening Worship 6:00 p.m.; Wednesday Night Worship 7:30 p.m.

FIRST UNITED METHODIST
 Rev. C.C. Shultz
 Sunday School 10:30 a.m.; Morning Worship 9:30 a.m.

OLDEN BAPTIST CHURCH
 Rev. Howard Meeker
 Sunday School 10:00 a.m.; Morning Worship 11:00 a.m.; Evening Prayer Service 7:00 p.m.; Evening Worship 7:30 p.m.; Wednesday Night Service 7:00 p.m.

CHURCH OF CHRIST
 Frank Kibourn
 Bible Class 10:00 a.m.; Morning Worship 11:00 a.m.; Evening Worship 7:00 p.m.

FLATWOOD CHURCH OF CHRIST
 Willie E. Moore
 Sunday School 9:45 a.m.; Morning Worship 11:00 a.m.; Evening Worship 6:00 p.m.; Wednesday evening 8:00 p.m.

SOUTHSIDE PENTECOSTAL CHURCH
 Rev. A.J. Woodard 107 New St.
 Wed. night 7:15

SUPER SAVE 629-1191 400 S. Seaman G.A. WHITE Manager



Our dining won't put the bite on you.

Step up to The CHARLESTON HOUSE RESTAURANT for a refreshing change of pace... outstanding decor and mouth-watering steaks and seafood. For breakfast, lunch, or a leisurely dinner capped with an entertaining visit to our SWAN INN LOUNGE, you'll love every exciting bite... especially our check that doesn't bite.

The CHARLESTON HOUSE RESTAURANT & SWAN INN LOUNGE

RAMADA INN
120 & Hwy 570
Eastland, Texas

Transamerica Hospitality, Inc.
A Real Difference In Hospitality.

STATE CAPITAL Highlights AND Sidelights



by Lyndell Williams
TEXAS PRESS ASSOCIATION

AUSTIN, Tex. — A flood of Mexican aliens, estimated at more than a million a year, is pouring into Texas, according to a new Texas Good Neighbor Commission report.

More than half the illegal entrants cross the Rio Grande into Texas.

Good Neighbor Commission said the number of such entries is greater than the total number of immigrants who entered the U.S. legally from all the countries of the world.

Last year, the GNC noted, 575,000 deportable Mexican aliens were found in the U.S., and immigration officials figure one escapes for every one apprehended. Sophisticated smuggling techniques aid the crossings.

Immigrations have a

social and economic impact in virtually all regions, since the aliens move on to metropolitan areas all over the U.S. in search of better jobs and safety from arrests.

Top AFL-CIO officials promptly called for tough new state laws making it an offense to hire illegal aliens, punishable by stiff fines or prison terms.

DEMOCRATS TO DELAY — Democrats are still in a dither about whether they should "recess" their September 17 state convention until September 19 to avoid a conflict with a high Jewish holy day.

A rules change to allow the delay will be aired at a special meeting of the State Democratic Executive Committee in Austin July 16.

If hotel rooms can be made available September 19, SDEC will consider the change (to keep the convention from falling on Rosh Hashana, the Jewish New Year). But a three-fourth majority is necessary to order the rules amendment.

APPOINTMENTS — Clyde Johnson of Bulverde and San Antonio was named by Gov. Dolph Briscoe to the Texas Water Quality Board, succeeding the late Gordon Fulcher of Atlanta.

Briscoe also named E. Carl Dillard of Pearsall to the State Judicial Qualifications Commission. He reappointed five State Health Advisory Committee members and appointed as new Committee members Mrs. Edd Henard of Wellington, Mrs. Emma Nugent of Orange, Mrs. H.L. Long of Kilgore, Mrs. Marie Bynum of Longview, Rogers Wilson of Austin, W.W. Manley of Terrell, Rev. Claude Black of San Antonio, Domingo Pena of Corpus Christi, Ernest Coker Jr. of Conroe, Ronnie Boules of Pecos and Ed Baker of Arlington.

AG OPINIONS — Atty. Gen. John Hill held a newspaper's donating free space to an official's column when he is a candidate for reelection is not a campaign contribution under the law.

In other recent opinions, Hill concluded:

• A county commissioner may not be paid for serving as appointed lawyer for an indigent defendant.

• Texas Water Development Board has a duty to approve or disapprove plans for proposed levees along any stream subject to floods or overflows.

• An appointed attorney who represents both an indigent criminal defendant in district court and a juvenile in juvenile court the same day may not receive more than one fee.

Beauty By MARY KAY
For complimentary facial ONEIDA HALBROOKS
647-1829
1-59

FOR COASTAL SPRIGGING
Call
H.L. Perrin, Jr.
Tel. 647-1028
In Ranger

EMPLOYMENT OPPORTUNITY

Experienced tire serviceman for immediate permanent employment with chain store Tire Firm in Breckenridge.

Above Average Salary and all benefits for above average employer. Apply in Person.

Joe Hudspeth's Inc.
701 W. Walker St.
539-5446
Breckenridge, Texas
Neal Edwards, Mgr.

WELFARE ROLLS DECLINE — Fewer Texans got welfare benefits last year, the Department of Public Welfare reported.

The department's annual report showed Old Age Assistance was down from an average of 210,000 monthly in 1972 to 182,000 in 1973.

Aid to Families with Dependent Children declined from a peak of 121,588 in February 1973 to 118,681 families in July.

COURTS SPEAK — The State Supreme Court held unconstitutional a new state law regulating juke boxes and other coin-operated amusement machines.

Attorney General Hill called on the U.S. Supreme Court to accelerate a Texas case challenging impoundment of water pollution funds by President Nixon.

Austin, San Antonio and Lower Colorado River Authority called on the Third Court of Civil Appeals to require the Texas Railroad Commission to force Lo Vaca Gathering Company to live up to its gas supply contracts.

The Court of Criminal Appeals upheld a life sentence given a Dallas man for assault to murder a police officer.

A hearing was set in the Supreme Court for July 17 on whether two elderly sisters can get back \$100,000 and 7,500 acres of land they gave to the Stephens County Museum, Inc.

The high court ordered the Dallas Court of Civil Appeals to take another look at adequacy of a \$4,146 damage award given a Van Zandt County man who was bitten on the hand by a neighbor's hog.

OIL ALLOWABLE SET — The statewide oil allowable for July was fixed by the Railroad Commission, for the 28th straight month, at a 100 per cent level.

Major crude oil buyers asked for 3,843,362 barrels of oil daily in July, a decrease of 36,087 from June.

Commission Chairman Jim Langdon pointed out that the U.S. still imports 1.5 billion barrels of crude annually — a "very long way" from self-sufficiency.

Exceptions to the 100 per cent order were East Texas and Kelly-Snyder fields which were restricted to 86 per cent production.

BEAUTIFICATION AWARDS MADE — Seven cities received Governor's

Community Achievement Awards for outstanding community beautification projects during the last year.

Winning cities were Stanton (under 2,500); Eastland (2,501 — 5,000); Athens and Jacksonville (5,001 — 10,000); Lufkin (10,001 — 20,000); New Braunfels (20,001 — 60,000) and San Antonio (over 60,000).

Eighty-six communities

submitted entries in the competition. Awards were made at the seventh annual meeting of the Beautify Texas Council here.

BUDGET HEARINGS START — Hearings of the 1976-77 state budget — the first to use the new zero-base system — are under way.

Some of the early requests by state agencies reviewed by the Legislative Budget Board and the

governor's office are running almost twice current spending.

Requests, under the new plan, are divided into three levels — bare minimum, middle bracket and highest feasible.

Sunday, July 7, 1974

Member 1974 TEXAS PRESS ASSOCIATION

STOCK UP
for another Great
EASTLAND COUNTY RODEO SEASON

at

GREER'S
WESTERN STORE

in Ranger

Ranger Jaycee Rodeo-

July 11-12-13

Eastland County
Junior Rodeo

July 18-19-20



- Tony Lama Boots
- Kids Acme Boots
- Bradford, Bailey Hats
- To, Rel Belts
- Levis & Wranglers
- American Hats
- Lady Wrangler
- Karman Shirts
- Lady Karman Sets

GREER'S WESTERN STORE

In Ranger

Eastland County Western Wear Headquarters.

BIG SALE

SUMMER CLEARANCE
SALE STARTS FRIDAY !!
ALL SUMMER MERCHANDISE

Misses And Juniors

1/3 OFF

Now Reduced To

Quetta's Fashion Boutique

629-8030
Int. 20-West Of The Ramada Inn Eastland

Box Of 3 Maxfli

free Golf Balls

With Each Set Of 4 1st. Line Or Premium Passenger And Pick Up Tires.

And

Look At This:

A Fill Up Of Gasoline With Each Set Of 4 Dunlop Or Seiberling Steel Belted Radial Tires

Another Price Increase Is Coming July 1st Beat The Price Increase

G 78 X 15 Steel Belted Radial TIRES Set Of 4 ONLY \$229 ⁹⁵ Plus Tax	L 78 x 15 Steel Belted Radial TIRES Only \$249 ⁹⁵ Plus Tax
H 78 x 15 Steel Belted Radial TIRES Only \$239 ⁹⁵ Plus Tax	

LIMITED STOCKS IN SOME SIZES
WE HONOR
BEAT THE SPRING PRICE INCREASES
WE HAVE YOUR SIZE ON SALE

Set Of 4 Tires Mounted And Balanced Plus A Fill Up with Gas

C WHOLESALE TIRE CO
FORMERLY JIM HORTON TIRE SERVICE
BRING YOUR TIRE TROUBLES TO US
403 E. MAIN EASTLAND, TEX. Phone 629-2922

REMODELED GRANDSTAND ALL NEW STEEL SEATS

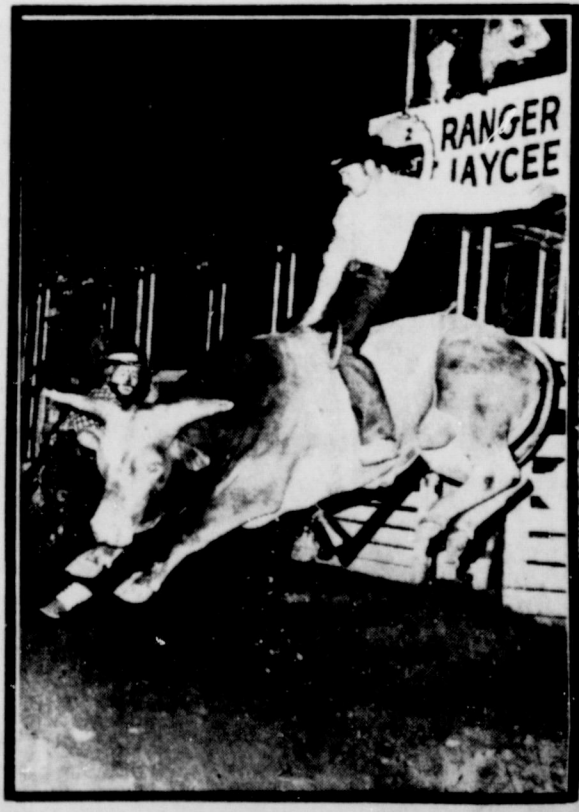
RANGER JAYCEES

12th ANNUAL + OPEN + 8:30 P.M.

NELSON-SILVIA BELT BUCKLE AWARDED IN EACH EVENT!

DANCE HELD AT RODEO BARN EACH NIGHT

RODEO



JULY 11-12-13

THURS.-FRI.-SAT.

- BAREBACK BRONC BULL RIDING
STEEB WRESTLING
GIRLS BARREL RACE
CALF ROPING
RESCUE RACE
CLOWNS

GEORGE TAYLOR — Fighting Bulldog, Black Lite Trick Roping, Comedy Horse.

RANGER, TEXAS

A weekly public service feature from
the Texas State Department of Health

Accent on Health

J.E. PEAVY, M.D., Commissioner of Health

Mention a case of childhood poisoning and none generally thinks of a host of potentially lethal household substances which a child could have imbibed, not knowing the dangers involved.

But officials at the State Health Department are quick to emphasize that the dangers of poisoning are not restricted to items within the home. Potential sources of poison thrive in backyards and gardens all across Texas. The little know sources of these poisons - common, garden-variety plants.

Most plants are harmless. Many are poisonous under certain conditions. A few are poisonous under all conditions. More than 700 species of plants

Hearing Aid Sales and service and repair on all brands. John W. Clinton, Box 1206, Cisco, Texas 442-2168

in the United States are known to have caused death or illness.

Each year about 12,000 children in this county chew or swallow potentially poisonous plants.

The poisonous nature of a plant is caused by the presence of one or more kinds of substances. There are some substances which are themselves toxic to animals; and alkaloid, for example, is the toxic principle in poison hemlock. Other substances are peptially harmless but may decompose to form toxic products soon after eaten - an example is glucoside, a sugar produced in wild cherry which changes to form the highly toxic prussic acid. Some substances are formed by the action of micro-organisms on plants: a fungi on moldy hay forms decomposition products, some of which may be toxic. Still other substances are absorbed directly from the soil and stored in harmful quantities in the tissues of

certain plants: selenium, for example, may be found in some species of locoweeds, or potassium nitrate may be present in oats.

To the average person, the term "poisonous plant" suggests on that poisons upon contact, causing a mild or severe dermatitis or skin irritation.

Texas certainly has its share of the plants known to be capable of causing such variations, says the State Health Department officials. Possibly the most familiar are the leaves, bark, and fruit of poison ivy and poison oak.

But did you know that hairy leaves and stems of parsnip and lady slippers, the milky juice of purgessm, and the leaves of cultivated primrose are also caous of dermatitis? Lily bulbs and stalks, stinging nettles and vanilla beans likewise have toxic qualities, and are capable of producing severe skin irritations.

Most poisonous plants are harmful only when they are eaten. In the case of nitrate-containing plants, the nitrate content is reduced to the toxic substance. This substance then enters the blood stream and changes the red pigment of the blood in such a way that it is incapable of transporting oxygen to body tissues. The result is suffocation.

Poisonous mushrooms, mostly toadstools, cause more than 100 fatalities in this country each year. Daffodile bulbs, larkspur seeds, lily of the valley flowers, and jasmine berries are all harmful if eaten. So, too, are the leaves of the poinsettia and oleander bush, and all parts of buttercups, rhododendrons, and laurels. In some plants, only particular parts are toxic. A classic example is the rhubarb which has a perfectly edible stalk, but contains a deadlyb poison in the leaf.

Contact poisoning can be prevented best by learning to recognise the plants and avoiding them. Of course, it is always prudent to wear protective clothing such as leggings and gloves when venturing into areas where poison plants are know to grow.

If you are exposed to a poisonous plant, immediately wash the contacted area with laundry soap and a water to remove toxic resins.

Measures can also be taken to prevent the accidental eating of plants. Keep children away from the plants and teach them not to chew plants stems or to put plant parts, such as berries, or buds, in their mouths.

If your child does eat a plant, and you are uncertain whether it is poisonous, immediately call a doctor. He, in return will contact on of the 21 Poison Control Centers near you for



The Consumer Alert

by John L. Hill
Attorney General

In just a few weeks, we can expect another Texas hurricanes season, since historically most of our big storms have occurred from August to October. And we just came through our traditional spring tornado months.

As, Texas, we are familiar with natural disasters and the misery they can bring because we have suffered through some of the worst: the Great Galveston Storm of 1900, Hurricanes Carla and Beulah and the Lubbock Tornado are just a few.

Often the worst aspect of a disaster is the aftermath, when victims face the heartbreak of cleaning up and the strenuous task of rebuilding.

It is often said at this point, too, that consumer fraud becomes another problem to be faced by residents trying to pick up the pieces.

At a time when many are confused, tired, and vulnerable, it is unfortunate but true that unscrupulous persons may move in to take advantage of the situation.

Many consumers decisions and transitions are necessary to get back to normal after a disaster. And most will require the expenditure of large amounts of cash or heavy use of credit.

Attorneys in Our Consumer Protection Division warn that consumers who find themselves in such situations should use extreme caution before making major purchases or home repairs.

Most businessmen and repairmen are honest, reliable, and just worthy, in such trying circumstances will attempt to be as fair as possible with consumers.

But many times the reports of a disaster will bring as in lux of itinerant salesmen and repairmen - many from out-of-state - who are determined to make their fortunes at

emergency medical and antidote information. Take your child to the nearest hospital, and if possible bring a piece of the suspected plant with you so it can be analyzed for possible toxic substances.

the expense of others.

These "hit and run" operators who sell goods and services door-to-door may never deliver what they promise, but instead, will drive off to new territory with a consumer's money or a contract that they may immediately sell to a finance company.

Our consumer Protection attorneys recommended that you take a few precautions that may save the money and anguish associated with disaster frauds.

Do not pay in advance for materials or repairs. Remember that high pressure and scare tactics are often the mark of a phony deal. Make sure that a contractor or salesman has a permanent place of business, preferably in your area. Get at least three estimates before selecting a contractor for any construction work. Insist that all estimated include a starting and completion date, description of the work to be performed and they type of materials to be used, total cost, guarantees provided, and method of payment (lump sum upon completion, installment etc.). When you have selected a contractor, ask for a written contract based on his estimate. Make sure before sign that you understand all parts, that there are no blanks, and that they contractor himself has signed first.



GOING OUT OF BUSINESS

Everything Must Go. \$1.00 Items

Going 25¢ On The Dollar. Can't Believe Until You See.

J & Y BARGAIN STORE

107 East 9th Cisco

ANNOUNCING

Our annual Anniversary Sale, beginning July 10th thru July 31st. As all our friends and customers know we have A one cent sale in the pass, however we are aware pennies are scarce (don't want bubble gum).

We have decided to have two for the price of one Sale.

Also we have early fall goodies if you want to start your fall wardrobe---

So come in browse, grab the bargains try on or just visit, we will be glad to see you.

Please dont ask to put sale's on Lay-A-Way.

Janet's Tops & Bottoms

Homer At Pine (Park Place Apts.) Ranger, Texas 647-3515

A Home Of Your Own...
There's Nothing Like It



EQUAL HOUSING

Security... happiness can be yours with your own home.

H & W Development Co.

216 S. Seaman Eastland
629-1702

Majestic Theatre

Phone 629-1220 Eastland

SUN.-MON.-TUES.

The Graduate
Goodbye Columbus
Summer of '42
The Last Picture Show

Every so often
there's a movie
that people relate to
in a special
kind of way

The Paper Chase
is such a movie.



The Paper Chase

BEST PICTURE
THOMAS HOPKINS - LINDSAY BUCKNER - JOHN HOUSEMAN - THE PAPER CHASE
Produced by ROBERT C. THOMPSON and RODRICK PALL, Directed by JAMES BRIDGES
Screenplay by JAMES BRIDGES, Story by JOHN JAY OSBORN, Jr., Music by JOHN WILLIAMS
Color by MCA
PG - PARENTS STRONGLY CAUTIONED
Some Material May Be Inappropriate for Children Under 13

Feature Time 7:15 & 9:23 P.M.

Starting Wed. John Wayne As McQueen

Be your own keeper.

It would be great if we could protect you and your family from accidents, but all we can do is remind you to take time to be safe. If you want to be your brother's keeper, start with yourself.

National Safety Council



If you don't like thinking about safety, think where you'd be without it.

RANGER DRIVE-IN THEATRE
Last times Sunday
SHOW STARTS AT DUSK
JULY 7

BOY, HAVE WE GOT A VACATION FOR YOU...

WESTWORLD
PG PANAVISION METROCOLOR MCA

Wednesday • Thursday • Friday

TAKE A BITE AND FEEL ALL RIGHT!

BURT REYNOLDS "WHITE LIGHTNING"

LEWY GARDNER-LAVEN presents
BURT REYNOLDS "WHITE LIGHTNING" starring JENNIFER BILLOWE, NED BEATTY • BO HOPKINS • MATT CLARK • Produced by ARTHUR GARDNER and JAMES V. LEWY
PG-13 Screenplay by WILLIAM NORTON - Directed by JOSEPH SARGENT United Artists