



Think Progressively It Works!

COVERING EASTLAND COUNTY EASTLAND, TEXAS, SUNDAY, JANUARY 29, 1961 No. 116

Mail Questionnaires to Be Sent Out by Jaycees

Two hundred Eastland citizens will have the opportunity to say what they think is wrong with Eastland and what steps should be taken to correct the wrongs. Eastland Jaycees will mail out questionnaires to that many citizens Thursday. The 200 names have been selected by a Jaycee committee made up of Donald Kinnaird Jr., John Megason and Ben McKinnis. Jaycees are asking that each person who receives the questionnaires fill them out and return them in five days. Addressed and stamped envelopes are enclosed with the questionnaires. A spokesman for the club said, "We are attempting to find out what the average Eastland citizen thinks our town needs to develop. A careful study of all answers will be made and our club is going to do what it can to make Eastland a better place to live. What we need now is the cooperation of

Final Rites Held Tuesday For Mrs. Boswell

Funeral services were held at 2 p.m. Tuesday at the University Methodist Church in Austin for Mrs. G. C. Boswell, of Austin, former Ranger resident who died Sunday. She had been ill the past year and died at the home of a daughter, Mrs. Joe Frantz, in Austin. She was the wife of the late Dr. G. C. Boswell, a former superintendent of Ranger Public Schools and President of Ranger College. She was the daughter of the late Rev. W. M. Murrell, for many years Methodist district superintendent in Abilene. Survivors include Mrs. Frantz, and another daughter, Mrs. Thomas Moss of Houston, and two grandchildren.

Local Jaycees to Journey to Cisco For Cage Action

Eastland Jaycees will be out to seek revenge Monday night when they invade Community Gymnasium in Cisco to take take on the Cisco Junior Chamber of Commerce team in a return engagement. Proceeds from this game will go to the Cisco Golden Gloves team. Eastland Jaycees donated profits of the first game to the local United Fund. Cisco won the first game and Eastland will be out for revenge. Jim Webb is the star of the Cisco team and Wayne Bailey has paced the Eastland five. Game time will be 7:30 p.m.

Leo Stambaugh Jr. Gets Degree at Texas A & M

Leo Stambaugh Jr., a 1956 graduate of Eastland High School graduated from Texas A & M College with a BS degree in industrial education Jan. 21. Stambaugh will be employed by Texas Power and Light Co. in Dallas. He is the son of Mr. and Mrs. L. P. Stambaugh Sr. of Vernon, former Eastland residents. Mr. and Mrs. Stambaugh and son Jim, a freshman student at ACC, attended the mid-term commencement exercises.

Import Duty On Foreign Oil Demanded by Bailey

Rep. Scott Bailey this week introduced a resolution in the Texas House of Representatives calling on Sen. Ralph Yarborough to introduce and sponsor legislation to impose an import duty of \$1.50 per barrel on the foreign oil importations that "are creating grave financial evils." Bailey, who represents Eastland, Callahan and Shackelford counties, said such an import duty is needed since there are hundreds of wells throughout Texas without pipeline connections and whereas, small farmers, land owners and royalty owners in the state are being deprived of much needed bonus and rental monies. Rep. Bailey told the Telegram that little has been done so far

News From Area Towns

Wood to Speak at Gorman
Coach Gordon Wood, who guided the Brownwood Lions to the Class 3-A state football championship, will be the speaker at the annual Jaycee Panther football banquet in Gorman Thursday, Feb. 2. Tickets are \$1.25 per plate and the menu will consist of 12-ounce T-Bone steaks. The Banquet will be held in the Gorman Fire Hall. —The Gorman Progress

Club Honors Contributors
A chicken supper sponsored by the Union Center Community was enjoyed by some 100 members and their friends Friday, Jan. 20. The supper was spread in the new building of the Union community center and was given in appreciation of members and guests who had made donations toward the building. —The Rising Star Record

Livestock Show Winners Listed
Winners of engraved trophies at the Comanche County Junior Live Stock Show included: Danny Davis of Gustine, champion commercial steer; Lenward Caraway of DeLeon, champion milk fed steer; Walter McCullough of Newburg, champion fine wool lamb; and Wesley Mathis of DeLeon, champion fat arrow. —The DeLeon Free Press

Pioneer School to Be Sold
Pioneer school building, which has been unused for a number of years, is being offered for sale through sealed bids by its present owner, the Pioneer Community Club. Buildings on the Pioneer school campus were contributed to that community when the Pioneer school was consolidated with Cross Plains. Land will not be sold. —Cross Plains Review

Gas Service Interrupted
Interruption in gas service Sunday night presented a serious threat. City officials point out, however, it was an occurrence over which they had no control. The service break was caused by the switching of supply wells. Pressures at first grew very low and many stoves went out. Others continued to arily burn, however, the new well threw such pressure into lines that flickering flames were snuffed out and raw gas poured dangerously into local homes. City employees had no knowledge the well switch was to take place and, therefore, had no opportunity to warn householders. The only precautionary measures available to them—sounding of the fire alarm—was taken. —Cross Plains Review

United Fund Is Step Nearer As \$600 Comes In

Eastland's United Fund took a big step forward this past week when more than \$600 came in. The Fund is still short of its goal by about \$850, however. Dick Spalding, drive chairman, said the fund has now reached \$6200. He said that a number of larger contributors have not yet made their annual contributions and he urged them, and any other person who has been missed in this year's campaign to mail their checks today to the United Fund, in-care-of the Eastland National Bank.

Raymond Lusk and Patricia Liles Play for Jaycees

Eastland Jaycees held their monthly dinner meeting Thursday night in the White Elephant restaurant and heard John Megason explain the club's new community development project. Megason told Jaycees that "a man endowed with enthusiasm makes a majority." He said the Junior Chamber of Commerce as a club endowed with enthusiasm certainly makes a majority. Entertainment for the night was provided by Phillip Hewitt, Eastland High band director. Patricia Liles and Raymond Lusk, E.H.S. students, performed for the group. Lusk played a baritone solo accompanied by Miss Liles on the piano. Dick Spalding, president, presided over the meeting. Guests included Horace Horton, president of the Eastland Chamber of Commerce, and Archer Marx and Don Kincaid, Cisco Jaycees. Joe Orr, a Fort Worth Jaycee director, spoke briefly on Jaycee work throughout the state.

FFA, 4-H Members Can Win Big Prizes

A contest offering four Future Farmers of America and 4-H Club boys and girls some outstanding prizes was announced today by the management of the Majestic Theatre and the Eastland Telegram. The awards, which will go to two boys and two girls, will be made in conjunction with a special showing of Signal Pictures new smash hit, "Tomboy and the Champ." The contest opens today and will end at midnight Feb. 7. To be eligible to win all a FFA or 4-H club boy or girl has to do is write, in 50 words or less, "Why I Would Like to Raise a Blue Ribbon Winner." The contest opens today and will end at midnight Feb. 7. To be eligible to win all a FFA or 4-H club boy or girl has to do is write, in 50 words or less, "Why I Would Like to Raise a Blue Ribbon Winner." That should be a snap for the county's farm youth who have been raising a lot of blue ribbon winners in recent years. All 4-H and FFA boys and girls in the county are eligible. There will be many prizes for the four winners. A complete list of prizes will be announced in the Telegram next week. All entries must be postmarked not later than midnight Feb. 7. Winners will be notified by phone Wednesday, Feb. 8 and awards will be presented on stage of the Majestic in Eastland at 8 p.m. Thursday, Feb. 9. "Tomboy and the Champ" is a family movie which features the Katy, Texas Future Farmers of America chapter and the 4-H Club Congress in Chicago. Stars are Andy Moore, Ben Johnson and Jesse White. The story features a 13-year-old Texas rancher who wins a calf at a county fair calf scramble. She calls him Champy. Her struggle to make Champy a blue ribbon winner is the story of America's 4-H and FFA boys and girls. It could happen here as well as it did in Katy, Texas. Entries to the contest should be mailed as soon as possible to Contest Editor, Tomboy and the Champ Contest, Eastland Telegram, Box 29, Eastland. The entry blank below, or a duplication, should be sent with each entry.

OFFICIAL ENTRY BLANK
"Why I Would Like to Raise a Blue Ribbon Winner" Contest

Name _____
Parents' Name _____
Address _____
Name of Club _____
Phone Number _____ Age _____

Mail Today to CONTEST EDITOR, "TOMBOY AND THE CHAMP CONTEST", Box 29, Eastland Telegram, Eastland.

Two Inch Snow Blankets Entire Eastland County

Nine Indictments Are Returned by Local Grand Jury

Nine true bills were returned by the Eastland County Grand Jury which was in session this past week. Only one of the persons indicted had been identified on records kept in the District Clerk's office Friday afternoon. No capias had been returned on the other eight indictments. Orville Lee Durham faces driving while intoxicated charges. The case was transferred from County Court. Four burglary indictments were returned, two were for theft over \$50, and there was one indictment each for attempt to pass forged instruments and swindling.



DAVE PICKRELL named new president



JACK FROST secretary and treasurer

Clyde Smashes Eastland Hopes On Cage Court

Clyde smashed down any hopes Eastland's boys and girls still entertained of winning the District 10-A basketball championships Friday night, defeating the Mavs 55-45 and the Mavettes 51-33. The Dogs also won the boys' B team encounter 25-20. The boys game was a close contest most of the way. Clyde is undefeated in district play, but the Mavericks made a game of it. At halftime the score was 27-24 after 16-16 first quarter. Clyde jumped out front by a 44-35 margin in the third period, then coasted to victory. Ray Denny scored 15 points for Eastland and Mickey Garner had 13. Wanda Arther was high scorer for the Mavettes, getting 23 of the 33 points scored. Tuesday night Eastland will journey to Early of Brownwood to begin second half play.

County Court Docket Gathers Five New Cases

Five cases have been filed in Eastland County Court in the past few days and three of the cases on pleas of guilty. Norman Lowrance pleaded guilty to three counts of "making" false statements" and court costs and fines on each charge amounted to \$54. The other two cases filed for driving while intoxicated. Benny Paul Zumas and Lee Carl Cooke were so charged.

Livestock Auction Report

Here is the report from Tuesday's sale at the Eastland Livestock Auction Co.: Cattle 800, hogs 220. Six packer buyers, four locker plant buyers, 189 individual consignors and 134 individual buyers present. Fat calves \$22 to \$24; stocker calves \$24 to \$28; stecker yearlings \$20 to \$24; slaughter bulls, light bulls \$20 to \$22.40, heavy bulls \$17 to \$19; butcher cows, \$14 to \$16; cows and calves pairs, \$125 to \$265; butcher hogs \$17 to \$18; butcher sows, \$14 to \$15. Not enough sheep and goats to establish a market.

More Snow and Sleet Forecast for Sunday

Eastland got a glistening two inch cover of snow in the early hours Saturday and the weatherman has indicated that Sunday's menu will bring more of the same. The snow, which fell between midnight and 5 a.m., left the city blanketed. It is the heaviest snow to fall here in the last few years. The mercury dropped to 18 degrees in Eastland Friday night and the high for the day was just 31 degrees. Temperatures remained below the freezing mark all day Saturday and sub-freezing weather is also predicted for Sunday. Occasional freezing rain or sleet with a strong possibility of more snow is the prediction. Hazardous highway conditions were created in the area and officials urged only travel when absolutely necessary. All roads in this area remained open but the usual traffic problem was created on Highway 80 on Ranger Hill. Many trucks and cars had to have help getting up the slick hill. The local snow is just part of a snow-and-ice storm which has spread over most of the state. The Panhandle and South Plains have received severe weather. The snowfall here was general over a wide area.

Eastland March On Polio Set Monday Night

Eastland's annual Mothers March on Polio will be held Monday at 6:30 p.m., Mrs. Jack Lusk, city chairman, announced today. Mrs. Lusk said volunteers would call on persons who leave their porch lights on throughout the city. City Hall will be headquarters for the march. Envelopes have already been passed out at all schools. Each child who contributes will receive a tiny crutch.

Olden Mothers To March On Polio Monday

Olden's Mothers March on Polio will be held Monday night, Mrs. Carl Boustead, chairman, announced today. All mothers were asked to meet at the homemaking cottage at 7 p.m. and Olden citizens were asked to leave on their porch lights if they wish to donate.

Officers Elected At Lone Cedar Country Club

New officers of the Lone Cedar Country Club were elected Thursday night and the three largest towns in the county all are represented on the executive staff. Dave Pickrell of Ranger is newly elected president, Dick Bearman of Cisco is vice president and Jack Frost of Eastland is secretary-treasurer. The Board of Directors also voted to offer 50 new associate memberships to the club. The associate memberships will cost \$60 annually, plus dues. Plans were also announced to enlarge locker room space at the club and build a pro shop. Work is expected to get underway in the immediate future so that the pro shop will be in use by this summer.

Johnny Jones Is Honor Student at Cisco College

Johnny Jones, a 1960 graduate of Eastland High School, has received honors by being named on the Dean's list for outstanding grades at Cisco Junior College. Jones plans to teach after completing college. His major is business administration and education. He attended Ranger College last summer before enrolling at CJC. Because of his outstanding (Continued on Page Two)

FROM OUR FILES

January 29, 1941
Miss Marie Conway of Ranger has received special recognition from Alpha Lambda Delta, freshmen honorary society, at Texas State College for Women. A scholarship equal to a years tuition was awarded Miss Conway for her scholastic achievement. The Eastland County Soil building program is taking most of the time of the county agent and his assistant at present, according to reports. Elmo Cook, county agent, announced last since Jan. 1, he and the assistant county agent have run terrace line and pasture contour furrow lines on 334 acres of land. January 29, 1951
A little over \$400 has been collected in Eastland for the Dimes drive, it was estimated Thursday. County chairman of the polio campaign said although no county figures had been compiled the drive seems to be progressing at a steady pace. Poll tax payments so far indicate that Eastland County may have one of its lightest voting years in recent history, County Tax Assessor-Collector Stanley Webb said Thursday. At this time only 1229 poll tax receipts had been issued compared to a total of 5905 last year.

New Texas Travel Maps Available Now

The 1961 Texas Official Highway Travel Map -- with Over 60,000 Miles of Motoring Pleasure -- as its theme -- is now available to the general public. Free copies of the new Texas motoring map may be obtained by writing the Texas Highway Department, P. O. Box 5064, Austin or at highway district offices or travel bureaus. County tax offices have map cards on hand requesting copies of the map. Multiland-divided highway map now completed and charted on map total 2,067 miles, and includes the finished sections of the National System of Interstate Defense Highways located in state. More than 350 farm market and ranch-to-market miles have been added to year's map. Approximately 1,000 miles of the state's near 10,000-mile Farm-to-Market System are shown on the map of the 26,857 miles of Interstate, U. S. and State highways shown. Roadside parks having picnic facilities are marked on map with a green dot. All on a new 1961 map of 52 State Parks are also their location indicated by (Continued on page 2)

Cigaret Machine Is Recovered After Burglary

Vandals or burglars stole a pound cigarette machine from land this past week, but it was recovered undamaged. The machine was taken from Dalton's Mobil Station, but dated it later by the street on Daugherty. It had been broken into and no money was missing.



JOHNNY JONES on Dean's list

EASTLAND NATIONAL BANK "On The Square" MEMBER F. D. I. C.

RE... LAND Moore picked up the day to call one Tol-account happen- Toledo's nicest Cornelius hap- that it was one after he answered and speak to the at the other informed him was "out to then asked about chef. the cashier said, for lunch too." case then Victor of you people making?" the produce had his recently. Safe- watermelons to sell in the the trick, of the melons were summer ports. A took a long sec- produce items a chance to buy this week. it wasn't fun- too. You know are. to own two he happened to parked in the ice during the ice into both cars, damage to both. the new veep at National Bank, little poem "The America." is the author passing along, TV, at an see the villain dies even the eyes drawing guys; near! tations there may running for the seats post than We've lost count, are 18 candid. post at present. large number of ample: the filling of the indivi- the race really have a chance to but they figure to get some to look around the guy with a like Smith or a \$50 pot and the hat. Every out would list our bid. This may not reason for get- for the Sen- you it's as good present candidates strong possibility special elections in Eastland and during this year." Persons by their poll tax nothing but a with in such an contain that a bal- than a mouth ever shelled out that they do so today. you're interested, money goes into fund, so it will more ways than

Eastland Telegram

Eastland County Record established in 1881, consolidated August 31, 1961. Chronicle established 1887, Telegram established 1928. Entered as second class matter at the Post Office in Eastland, Texas under the Act of Congress of March 3, 1879.

TIMES PUBLISHING COMPANY

Published Tri Weekly—Tuesdays - Thursdays - Sundays
Onous Dick and Joe Dennis, Publishers
Virgil E. Moore, Editor

One week by carrier in city 15
One month by carrier in city 65
One year by mail in County 2.95
One year by mail in state 4.95
One year by mail out of state 6.95

NOTICE TO PUBLIC—Any erroneous reflection upon the character, standing or reputation of any person, firm or corporation which may appear in the columns of this newspaper will be gladly corrected upon being brought to the attention of the publishers.

CLASSIFIED

Cards of Thanks charged for at rate of \$2.00 Each

Misc. For Sale

FOR SALE: Baby calves. Kendrick's Dairy, Eastland - Cisco Highway.

FOR SALE: Snack Place and fixtures. Rent building. Quitting business for other interests. Phone MA 9-2546 or MA 9-1973 or come by 810 W. Plummer.

FOR SALE: Five room house on pavement. 175 foot lot. \$3,200. Ben Hamner.

FOR SALE: Shade trees. 1/2 price. Bill Hunter, Rushing Motors.

PEAFOWLS FOR SALE: M. G. Key, Route 62, Eastland. Call MA 9-1843 after 5 p.m.

FOR SALE: 1951 Z-A moline tractor. Good condition. Vernon Fields, Rte 1, Gorman.

FOR SALE: Practically new table saw and jointer with motors. Bargain price. Phone MA 9-2243.

FOR SALE—Sudan hay. Call MA 9-2257 after 5:30.

For Rent

FOR RENT: Small furnished house. Close in. Apply 209 W. Patterson.

FOR RENT: Two bedroom house. 1413 South Seaman. Call Basham Beauty Bar.

FOR RENT: Three furnished apartments. Close in. Bills paid. Couple or single person preferred. Phone MA 9-2613.

FOR RENT: 4 room modern furnished apartment. Call MA 9-1062.

FOR RENT: Five room house call Everett Plowman, Corner Drug.

FOR RENT: Furnished or unfurnished 2 bedroom apartment in Duplex. 611 Plummer.

FOR RENT: Small furnished house. Apply 612 West Patterson.

FOR RENT: Lovely apartments with living, dining, bedrooms and kitchen, furnished or unfurnished at very reasonable rates. Also comfortable single rooms with tiled baths for only \$39.50. No stairs to climb, elevator equipped. Delicious food in our coffee shop and steam heated for really warm and comfortable living. Maid service is always included. Throw away your cares and high expenses and come live with us. The Village Hotel, Mrs. Robinson, manager—call me today, MA 9-1716.

FOR RENT: Two bedroom house. 1404 S. Seaman near South Ward school. Phone MA 9-1650.

SINGER
New Sewing Machines
\$59.50 up
Vacuum Cleaners .. \$49.50
Floor Polishers .. \$29.95
Rentals by week or month
Service All Makes
Phone MA 9-2084
D. L. Morton
Representative

T. L. FAGG
REAL ESTATE
Property Management
Home and Farm Loans

HAMNER FUNERAL HOME
Ben E. Hamner, Owner
Serving Eastland County since 1924 with ambulance and funeral service. Our ambulances are oxygen equipped and air conditioned.
Through our nation-wide connections with other funeral directors, we can handle a funeral from any point in America. We offer this service knowing that we can relieve the family of all burdens incident to any death away from home.
Eastland Dial MA 9-2611

Real Estate

FOR SALE: I have several real bargains. Three bedroom homes. Good financing. M. A. Treadwell Sr. Phone MA 9-2017.

FOR SALE: Large 2 bedroom home. See at 1208 S. Seaman. By owner. Phone MA 9-1085.

FOR SALE: Two bath, two bedroom house on Oaklawn. Central heating, large lot, double garage. Call after 5 p.m. MA 9-2321.

FOR SALE: House 305 South Neblett.

FOR SALE: Five room house to be moved. Located northwest Eastland. Contact B. H. Courtney. Phone MA 9-1340.

FOR SALE OR RENT: Five room house between 200-300 block on Dixie Street. Sunshine Laundry, MA 9-8812.

FOR SALE: Two large bedroom house. Easily made three bedrooms on two lots on corner. Reasonable. Phone MA 9-1412.

FOR SALE OR TRADE
House with 2 lots, \$1500; House with 6 lots, \$1850. Located on North Oaklawn in Hillcrest Addition. See T. L. Fagg or Ph. MA 9-2619 or S. D. Beggs, Star Rt., Carbon. Ph. 2546.

Special Notice

NOTICE: Oil field construction work. Setting tank batteries, pipe lining and connection work. Phone H. C. Montgomery, MI 7-3417, Ranger.

NOTICE: Let me break and (or) buy your land. Contact B. H. Courtney, Main 9-1340.

Eastland Masonic Lodge No. 467
Reg. Stated meetings 2nd Thursday of each month, at 7:30 p.m.
H. C. Pounds, W. M.
L. E. Huckaby, Secretary

"Now On the Square"
KELLAR'S FIX-IT SHOP
202 South Seaman
We Do All Types of Minor Repairs at Competitive Prices.

NOTICE: Sewing children dresses. Call Main 9-2027.

NOTICE: I would like to keep children in my home during the day. See at 412 E. Sadosa anytime.

Misc. Wanted

WANTED: Person to care for elderly lady, for room and board. Call at 513 Halbryan.

Autos for Sale

FOR SALE: 1953 Ford. 602 S. Connellee.

MATTRESSES
Save up to 50% renovating choice of color and firmness. Complete bedding. Made and guaranteed by WESTERN MATTRESS CO., San Angelo. Phone MA 9-2689, Eastland and leave address.
ATTEND THE CHURCH OF YOUR CHOICE EACH SUNDAY

Christian Science

Continuous benefits are available to all through a fuller comprehension of God as Love. This idea will be enlarged upon at Christian Science services Sunday in the Leeson - Sermon entitled "Love." Readings from the Bible will include this selection from 1 John (4:9): "In this was manifested the love of God toward us, because that God sent his only begotten Son into the world, that we might live through him."

The closing citation to be read from "Science and Health with Key to the Scriptures" by Mary Baker Eddy states (6:17-18): "God is Love." More than this we cannot ask, higher we cannot look, farther we cannot go."

The Golden Text is from Jeremiah (9:24): "Let him that understandeth and knoweth me, that I am the Lord which exercise loving-kindness, judgment, and righteousness, in the earth."

ATTEND THE CHURCH OF YOUR CHOICE EACH SUNDAY

MAJESTIC IN EASTLAND
TODAY AND MONDAY
FEATURES:
Sunday-2 - 3:50 - 5:50 - 7:50 - 9:40
Monday-5:20 - 7:20 - 9:30
IT'S A REAL LAFF HIT... JUST FOR YOU AND YOU!

SUSAN HAYWARD - JAMES MASON
The Marriage-Go-Round
CINEMASCOPE - COLOR BY DE LUXE
Adults 40c Student 40c
Children 25c With Disc. Card

TUESDAY One Day Only

Road Show Engagement!
Adults 90c - Student 65c
NO CHILDREN TICKETS

A Celebrity at 26
Tel. Tortured Miserable!
His Fame LOVE! MUSIC!

You'll Always Remember LISZT AND CAPUCINE!

SONG WITHOUT END
The Story of **DIRK BOGARDE**
GENEVIEVE PAGE
CAPUCINE
PATRICIA MORGAN - VAN DELLY - MARICETA HERTZ - LEO JACOB
CINEMASCOPE - EASTMAN COLOR
FEATURES: 5 - 7:20 - 9:40

Starting Wednesday A Real Fun Show!

The Wackiest Ship in the Army
A FRED KOHLMAR PRODUCTION
COLUMBIA PICTURES
Adults 40c Student 40c
Children 25c With Disc. Card
FEATURES: 5:20 - 7:20 - 9:30

MATTRESSES
Renovating Re-making Re-spring

EASTLAND MATTRESS AND SPRING CO.
306 East Main Street
New in Eastland but not new in the business; 12 years experience. We are making a special get acquainted offer: Your cotton mattress converted to innerspring only \$22.95, reg. \$26.95. Cotton mattress made like new, only \$10.95. For information call your slumber number: MA 9-2131.

One Day Service Pick Up and Delivery
Typewriters Adding Machines Cash Registers
BUY - SELL - RENT
EARL F. STEPHENS
417 S. Lamar St - Eastland
New Telephone No. MA 9-2319

All American Music Program Is Given At DAR Meeting Monday

The Charles Crawford Chapter of the Daughters of the American Revolution, whose membership is composed from Cisco, Eastland and Ranger, met in the home of Mrs. A. F. Taylor, Eastland, Monday Jan. 23 for a program on American Music. Mrs. Edward F. Horrigan, of Ranger, Regent, presided.

Business transacted was the annual election of officers to serve from May 1961 through May 1964. Elected were: Regent, Mrs. Edward F. Horrigan; Vice-Regent, Mrs. Joe Clements; Chaplain, Mrs. F. C. Williams; Recording Secretary, Mrs. Alex Spears; Corresponding Secretary, Mrs. W. W. Wallace; Treasurer, Mrs. Frank Harrell; Registrar, Mrs. Bernice C. McCrea; Historian, Mrs. S. A. Kimmell; and Parliamentarian, Mrs. N. A. Brown. Mrs. Frank Harrell was elected delegate to the 62nd Annual State Conference to be held in Dallas at the Sheraton Hotel, February 16-18, with Mrs. Homer Slickner as alternate and Mrs. Bernice C. McCrea as alternate for the Regent. Other alternates named were the chapter officers.

A memorial tribute was paid to the late Mrs. Frank Castleberry who was a charter member of the chapter by passing a Resolution of Appreciation of Service. Mrs. Grady Pipkin rendered a vocal selection accompanied by Mrs. Don Kinard.

Mrs. Taylor presented artists for the program. Mrs. Hallmark was vocalist, accompanied by Mrs. Kinard. Mrs. Don Russell was the feature speaker with a commentary program on the history of American Composers with emphasis on those of the 20th century. Her talk was illustrated with records revealing the beauty and depth of these compositions. One featured was "Rhapsody in Blue," one of the most loved compositions of this century.

Refreshments were served the hostesses, Mrs. Taylor, O. F. Chastain, W. D. R. Owens and Charles E. Terrell. Mrs. Joseph M. Perkins presided at the tea table.

Those present were: Ranger members, Mmes. Horrigan, James M. Brown, P. C. Long, and Miss Marjorie Maddocks; Eastland

members, Mmes. O. F. Chastain, W. D. R. Owens, Joseph M. Perkins, A. F. Taylor, and Charles E. Terrell; Cisco members, Mmes. G. E. Berry, N. A. Brown, J. E. Caffrey, Joe Clements, A. R. Doty, J. E. Elkins, Wayne Hagle, Harvey Hale, Frank Harrell, Sam Kimmell, Joe Lawton, Bernice C. McCrea, W. C. McDaniel, Phillip Pettit, Roy Reed, Alex Spears, Homer Slickner, W. W. Wallace, D. E. Waters, and T. C. Williams, and Miss Dorothy Perkins of Midland.

Social Calendar

Monday, Jan. 30
7:30 p.m. — Members of the Oddfellow Lodge will meet in the IOOF Hall.

8 p.m. — Regular meetings of the Circles of the Christian Women's fellowship will be held.

Tuesday, Jan. 31
2 p.m. — "Basic Christian Beliefs" will be program given by Mrs. Davenport at the WSC meeting. Guest speaker will be Mrs. George Corse.

Wednesday, Feb. 1
7:30 p.m. — The Wesleyan Service Guild will hold their regular meeting in the Methodist Church.

3:30 p.m. — "Parade of American Folk Music" will be program of the Music Study Club meeting when Mrs. Marvin Hood will be leader.

Thursday, Feb. 2
2 p.m. — Mrs. Wiley Harbin will host the meeting of the Flatwood Home Demonstration Club.

3 p.m. — "International Affairs" will be led by Mrs. Tom Wilson at the Thursday Afternoon Club.

3 p.m. — Mrs. Norman Watson will host members of the Rachel Group of the CWF.

Hospital

Patients in the Eastland Memorial Hospital are the following:

- Mrs. Jean Stone, surgical
- Carrie Reese, medical
- Mrs. Clemments, medical
- Herman Stroud, Ranger, medical
- Mrs. Margie Herring, medical
- J. B. Anderson, Goran, surgical
- Horace Gibson, medical
- Miss Eunice Clemmer, Cisco, medical
- F. B. Poe, medical
- Floyd A. Woods, Ranger, surgical
- Mrs. Allie Helms, Cisco, surgical
- Mrs. Ila V. Lane, Cisco, surgical
- Mrs. Lora Norris, medical
- Mrs. Margie Baggett, surgical
- R. P. Sneed, medical
- Mrs. Lily McClelland, medical
- Mrs. Mary McCoy, medical
- Frank Hernandez, accident
- Mrs. Nancy Jones, medical
- Mrs. Annie Hunt, Ranger, medical
- Mrs. Ina Edwards, medical
- Dismissed were: W. W. Graham, C. M. Cox, Mrs. Hallie Brooks, Mrs. Eula Lanier, Mrs. Willie Hardin, Frank Vaughn and Mrs. Lois Mezell.

Visiting Sunday in the home of Mrs. S. M. Hagar were Mr. and Mrs. Carl McGough, Mr. and Mrs. Herschell Smith, Don and Brenda, Mrs. O'Beria Todd, Miss Patricia Tucker, Miss Sandra Webb Delbert Hagar, Mrs. Charlie Webb Eastland, and Mr. and Mrs. W. T. Hagar of Ranker.

WEEKLY CROSSWORD PUZZLE

National Flag

HORIZONTAL
1 Depicted is the flag of —
8 Its capital is —
13 Blame —
14 Below —
15 Scrap of food —
16 Spanish wrap —
18 Finish —
19 Sign of zodiac —
20 Gore —
21 Fruit drink —
22 Babylonian deity —
23 Comparative suffix —
24 Thick slice —
25 Belongs to her —
29 Exist —
30 From (prefix) —
31 Half an em —
32 Measure of area —
33 Season —
35 This country includes the island of —
38 Symbol for Iridium —
39 Any —
40 Permit —
42 Pertaining to the sun —
47 Shoshonean Indian —
48 Oath —
49 Instant —
50 Nothing —
51 Omnit —
53 Uneasy —
55 Freshen —
56 Landed properties

VERTICAL
1 French schools —
2 Breakfast food —
3 Preposition —
4 While —
5 Speechless —
6 Spoken —
7 Nevada city —
8 Type space —
9 Not (prefix) —
10 Notion —
11 Sore —
12 Commands —
17 Toward —
25 Cain's brother —
26 Twisted —
27 Pile —
28 Unbleached —
33 This country produces —
34 Interstice —
36 Inborn —
37 Anoints —
41 One of a pair —
42 Simmer (symbol) —
43 Either —
44 Italian coins —
45 Playing cards —
46 Repose —
47 One —
52 Down —
54 Tantalum (symbol) —

Here's the Answer

New Texas

(Continued)
triangle. Two State Parks have this year's State Park at Santa State Park. Major lakes shown on the countless rivers streams. Cities and towns total 1,827. Cities the state's dozen also included — Beaumont, Corpus El Paso, Fort Lubbock, San Antonio, Wichita Falls. Panoramie on the reverse of 14 full-color views along the miles of the Texas. A section entitled "Texas" boils data on Texas' and industrial university. More than 1600 official Highway 1960 edition included—in-state, dozens of foreign-of-state and foreign-quests continue as Texas becomes well-known as a

Johnny J.

(Continued)
grades he has take 21 hours of work, which is the able. His load counting, economic, Texas business math. Johnny will year work session. He is a National Education State Teachers the Texas State tion, and the cation Associat

LACASA LINES

Mrs. Gilbert Brown of Brownwood, Texas, a student in Howard Payne College, has been visiting her parents, Mr. and Mrs. Wilson Watson, the past week in between semesters.

Carla and Karen Templeton of Abilene have been visiting their grandparents, Mr. and Mrs. A. O. Templeton.

Robert and Randy Gray of Garland are visiting their grandparents, Mr. and Mrs. John Gray.

A Fellowship honoring Mr. and Mrs. Dave Mitchell and sons, Jimmy Dave and Ricky, was held after church at New Hope Baptist Church, Sunday night. Dave and family will soon move to Jal, New Mexico.

A number of people from this community attended the funeral of Mrs. Lyle Mace at Graham and

interment at Ranger. Mrs. Mace, the former Fern Litton, once lived in this community. She was the daughter of Mrs. Jack Beck of Ranger and a cousin of Mrs. Gail McGowan of this community. She passed away at a Graham Hospital Monday.

Cheryl Sims at EHS

Cheryl Sims, daughter of Mr. and Mrs. Jack Sims, Route 2, enrolled in Eastland High School this week. Cheryl has attended Baird High School where she was a cheer leader. She is a sophomore. Mr. and Mrs. Sims moved here several months ago.

LEGAL NOTICE

NOTICE OF SELECTION OF DEPOSITORY

Notice is hereby given that the Commissioners' Court of Eastland County, Texas will receive applications to be made in accordance with law, by any interested banks in Eastland County for designation as the county depository for county and school funds for the ensuing two years.

Said applications will be considered by the court at its regular place of meeting in the Court House at Eastland, Texas on February 13, 1961 at 10:00 O'Clock A. M., and will at such time let a contract therefor; all such applications to be made as required by law.

John S. Hart, County Judge of Eastland County, Texas

PHON

FOR COMPLETE AUTO ALL MAKES AND MODELS
OFFICIAL INSPECTION STATION
ALLEN AUTO REPAIR
AT RUSHING MOTOR CO.
215 SOUTH SEAMAN

GET ACQUAINTED SPECIAL

(For Two Weeks Only)

- PULL FRONT WHEELS
- CHECK BRAKE LINING
- ADJUST ALL BRAKES

ONLY \$1⁰⁰

J. W. "Shorty" Harper Service Manager
Doyle Burns, Mechanic
Stan Lynn, Mechanic and Trimmer
Roy Thackerson, Wash and Lubrication

See us for any mechanical needs to your car
Automatic Transmission Specialist, Motor Overhauls, Motor Tune-Ups.

Blevins Motor Co.
514 W. Main Phone MA 9-2131

RANGER DRIVE-IN
HIGHWAY 60 EAST ON RANGER HILL
Boxoffice Opens 6:45 — Show Starts at 7:00
Adults 50c—Kiddies Under 11 Free
Only Eastland County Drive-In Open All Year
SUNDAY MONDAY - TUESDAY

FRANK SINATRA · DEAN MARTIN · SAMMY DAVIS JR.
PETER LAWFORD · ANGIE DICKINSON
"OCEANS 11"
From WARNER BROS. TECHNICOLOR PANAVISION
STORY BY RICHARD CONTE - CESAR ROMERO - PATRICE WYMORE - JOEY BISHOP
SCREENPLAY BY RICHARD CONTE - CESAR ROMERO - PATRICE WYMORE - JOEY BISHOP
DIRECTED BY RICHARD CONTE - CESAR ROMERO - PATRICE WYMORE - JOEY BISHOP

'New England States' Is Program Given At Las Leales Meet Monday

Miss Verna Johnson presented an interesting account of her trip to the New England states to members of Las Leales Club Monday evening in the Woman's Club.

Miss Johnson, who was presented by Mrs. H. L. Hassell, gave a picturesque description of the colonial scenes. She told of her visit to the first church which was built in Bennington, Vermont, in 1805. The church, which is considered as one of the finest church buildings of the country, and the cemetery, the oldest in the state, are considered as the "colonial shrine" of Vermont.

"The lengthy shadow of one man—Thomas Jefferson" is the description of the University of Virginia as repeated to the club members by Miss Johnson.

In New York City Miss Johnson attended three musical stage shows, "Take Me Along", "My Fair Lady" and "The Music Man".

Miss Johnson concluded her program with a quotation from George Washington, "Let us raise a standard to which the wise and honest can repair; the rest is in the hands of God."

Plans were made for a "Rumage Sale" to be held Feb. 3rd and 4th in the Leslie building. Mrs. Hassell presided over business meeting in the absence of Mrs. Homer Smith, president.

Mrs. Hassell and Miss Johnson served nut and fruit bread, salted nuts, mints and coffee to Misses Anna Grace Bumpass, Wayne Caton, J. M. Cooper, Opal Cross, Maurice Dry, D. E. Frazer, P. L. Kinnaird Jr., Floyd Robertson, Carrol Shelton, Wendell Siebert, Thura Taylor and J. C. Whatley.

Report Indicates Increased Broiler Production Due

The nation's broiler industry during the past 20 years has established a remarkable record of growth because of widespread and popular acceptance of broilers by consumers. Just 20 years ago, Marshall Miller, extension poultry marketing specialist, points out that the average American ate only 1.97 pounds of broiler annually. Ten years ago the figure stood at 8.65 pounds but today it stands at 23.65 pounds per capita.

Miller believes the upward trend will continue but at a more modest rate. As for 1961, he says indications now point toward even high-

er production. Total hatchery supply flock pullets placed ran 7 per cent higher for the first 10 months of 1960 than for the same period in 1959. These are the flocks which supply the hatching eggs for the broiler industry, Miller explains. Since Sept. 1, 1960, broiler chick production has been averaging about 15 per cent above the previous year.

Broiler prices to the producer in 1961 are likely average close to those of 1959. Principal factors, according to Miller, are the prospective larger supply of broiler and other poultry meat plus increased supplies of red meats. The leveling-off of the general economy is not a serious factor in the broiler price picture. Miller points out that broilers are already relatively low in price compared with other maincourse foods.

Because of the troubled situation, Miller suggests to producers that they and truckers deliver to the processing plant broilers free of skin and flesh blemishes—an improvement which could add millions of dollars annually to producers income.

Also that all segments of the industry cooperate in a program to reduce condemnations and that broilers be identified at the retail outlets as to known quality and wholesomeness.

Last but of major importance, Miller suggests that everyone con-

NEWS FROM OLDEN

Mrs. Myrtle Warren left by plane to visit her son, Bud Warren and family, in Galveston. She will then fly on to Pensacola, Fla. where she will meet her daughter and family, Mr. and Mrs. Carl Falkenberry, and return to Alabama with them for a visit.

Visitors in the home of the Tom Marlows were Mr. and Mrs.

needed with the broiler industry know and strive to meet the demands of consumers as related to the industry.

T. O. Marlow and family of Arlington.

Mr. and Mrs. Durwood Smith of Decatur were the weekend guests in the home of her parents, Mr. and Mrs. J. D. Herrell.

Mr. and Mrs. Bobby Sims of Olney visited his grandparents, Mr. and Mrs. Charlie Sims, recently.

Mr. and Mrs. Hanyes of Muleshoe, parents of Mr. Hanyes, have been visiting here with the Ed Hanyes family.

Mr. and Mrs. John Cooper and Susan of Mineral Wells visited with the Dee Cooper family Sunday.

Miss Barbara Cook and Benny Frasier were married at her home here Friday night. They will make their home at Kokomo.

Miss Deolores Cooper, a Texas and Charles Wade of Mineral Wells Sunday.

If anyone has any news please call 2562.

Mr. and Mrs. Lee McGuire are visiting their daughter, Mrs. Raymond Stark and son Raymond, Jr., in Odessa for a few days.

Freddie Rowch of San Angelo visited with his mother, Mrs. Ethel Rowch, some this week.

Travis Reese spent the weekend with his family. He is in Waxahatchie on a job for Band W Construction Co.

Mr. and Mrs. C. B. O'Brien visited with their daughter and family, Mr. and Mrs. Charles Verner

ATTEND THE CHURCH OF YOUR CHOICE EACH SUNDAY

VISIT US IN OUR NEW HOME

RCA Victor TV

Many Models to Choose From

RCA Radios

TV AND RADIO REPAIR SERVICE

All Work Guaranteed to Please

SOUTH EAST CORNER OF SQUARE

ROBERTSON RADIO & T. V.

Phone 9-1625

SINCE 1884

... quality workmanship and efficient service, approved throughout this area.

ALEX RAWLINS & SONS

Weatherford Phone LY 4-2726 Texas

Designers and Builders of Monuments Since 1884

German Luncheon Held by Civic League Wed.

In contrast to the snowy weather, an air of Genutlichkeit prevailed throughout the German luncheon sponsored by the Civic League, Wednesday at the Woman's Club.

More than 60 guests were greeted by the hostess committee consisting of Mrs. F. W. Graham, Charles Freyschlag and W. A. Leslie.

The tables were decorated with fresh red roses and the following menu was served. Kohn schnitz mit Fleisch; Heisse Kartoffel Salat; Breiartige Laib; Rote Ruben mit sauer sauce; and Frueht Torte und Kaffee.

The door prize went to Mrs. Clyde Grissom. Mrs. Bill Crocker won high bridge score and Mrs. Russell Hill, the 42 prize.

The next luncheon, Feb. 22, will feature French dishes. Mrs. James C. Whittington will be chairman of the hostess committee.

DALLAS TIMES HERALD for sale Daily and Sunday at Greyhound Bus Station

WORTH FOOD MART

The SURE SIGN OF QUALITY!

Giant Savings on Giant Bag

GRAPEFRUIT

Texas Juicy, Sweet, Red - Tree-Ripened
LESS THAN 1 1/2c PER SERVING!

20 -Lb. Bag **69c**

Prices Effective Monday, Tuesday and Wednesday



build resistance! build energy!

Citrus Sale!

FRESH, CANNED, FROZEN — ALL AT BIG SAVINGS

- TEXAS ORANGES** Juicy Hamlins 5 -Lb. Cello 39c
- SUNKIST LEMONS** Or Pure Gold 6 For 25c
- Pink Grapefruit** Texas Famous Ruby-Red Lb. 7 1/2c
- Navel Oranges** California Sweet Lb. 19c
- Fancy Tangerines** Florida Zipper-Skin 2 Lb. For 25c
- ORANGE JUICE** Libby's, Del Monte or Texusun 3 - 46-oz. Cans 1⁰⁰
- GRAPEFRUIT JUICE** Texusun Natural 2 46-oz. Cans 49c
- Hi-C DRINKS** Orange, Pineapple-Grapefruit, Grape or Orange-Pineapple 3 46-oz. Cans 89c

Double "S & H" Green Stamps Wednesday
With Purchase of \$2.50 or More

- Pillsbury's FLOUR** 5 -Lb. Bag 49c
- Maxwell House, 10c Off Label COFFEE** -Lb. Can (Net) 59c
- BALLARD SWEET-MILK BISCUITS** 3 Cans 25c
- MINNESOTA VALLEY EARLY JUNE PEAS** 2 30's, Cans 25c
- KRAFT PEACH OR APRICOT PRESERVES** 20-Oz. Jar 39c
- HOMEPOLK WHOLE SWEET POTATOES** 2 No. 3 Cans 49c
- NEW! LIPTON'S TOMATO SOUP MIX** 2 2's Pkgs. 49c
- DISINFECTANT LYSOL** 59c Size 49c
- PLAIN — NO BEANS WOLF CHILI** Big No. 2 Can 59c
- PHILLIPS' 12-OZ. MILK OF MAGNESIA** 59c Size 43c
- 2c OFF LABEL, MARGARINE ALLSWEET** 2 (Net) 1-Lb. Pkgs. 45c
- INJECTOR BLADES CUSTOM SCHICK** 10's Pkg. 69c

Meat Values!

- Fresh, Sliced Pork Liver** Lb. 29c
- Swift's Premium Sliced Bacon** Lb. Pkg 59c
- Swift's Premium Brown & Serve Sausage** 8-Oz. Pkg. 49c
- Underwood's Frozen Barbecued Beef** 14-Oz. Pkg. 89c
- Frozen, Tender Yearling Beef Patties** 18-Oz. Pkg. 79c

Frozen Juices!

- Libby's Tangerine Juice
 - Orange - Grapefruit Libby's Blended
 - Libby's Grapefruit Juice
 - Dole Blended
 - Pineapple - Orange Juice
- Your Choice, Mix or Match **5** 6-oz. Cans **89c**
- Libby's Orange Juice**
- 12-oz. Can **49c** ★ **2** 6-oz. Cans **49c**

CHURCH OF SUNDAY
URE
ome
Rugs
ces
ck With
URE
oney
olid
ed
ANGE
x 14
x 15
IGHTLY
TON
rice
A 9-1420
XES
ee Us For
RE • APPLIANCES
CARPETS
w Prices Means Savings For You!
charges on furniture for 1 full year
FREE DELIVERY
Furniture Exchange
"BRASHIER'S"
Ranger Phone MI 7-1404
ing
RLY
e
s important
the EXTRA money that comes your
houses, dividends, and so on—is a fine
lose FEW dollars taken out of EVERY
put to WORK in an insured savings ac-
really mount up. Try it and see. You
"windfall" to get the things you want,
ed for them!
ederal Savings & Loan
ciation of Ranger
Ranger, Texas Phone MI 7-1611

Uncle Sam, your bank, and you



How this 20-year-old partnership helps keep America strong

Since May 1941, America's banks have sold nearly 2 billion separate U.S. Savings Bonds at no cost to the Government or the purchasers. To give you some idea of the time involved: if you merely handed out that many Bonds at the rate of 1 a second for 10 hours a day, it would take you 152 years to reach the bottom of the pile.

Why have the nation's banks and bankers carried on this vast project of information, service, and issuance of U.S. Savings Bonds?

A winning team. For one reason, the Bond Program and the Banking business have grown together. Hand in hand, they've helped make Americans the saving-est people in the world.

Folks who save Bonds get the thrift habit. They soon learn other forms of saving and investment. They become better all-around

bank customers. And Bond owners are better credit risks.

Another thing bankers are interested in: Bond dollars help keep America strong. A good reason for the banking business or any business to get behind the Bond program.

What you buy at the Bond Window. When your banker advises you to buy U.S. Savings Bonds, he's recommending an investment guaranteed to grow: \$18.75 becomes \$25 in 7 years, 9 months, and grows to \$36.25 in another 10 years. They can be cashed in any-time with interest. And if they're lost or destroyed, the Treasury Department replaces them free.

Why not take this advice offered by the nation's bankers. Buy and hold U.S. Savings Bonds—for the things you want, and the Peace to enjoy them.

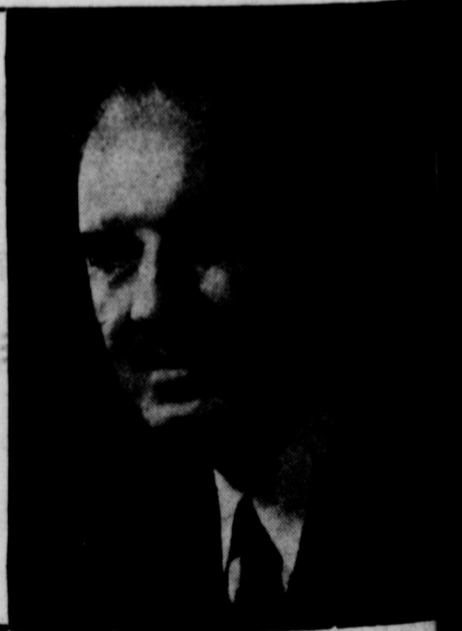
**"America's Banks are proud to
be part of the Bond Program,"**

*says Carl A. Binson, President, Valley National Bank,
Phoenix, Arizona, and President, American Bankers Assn.*

"We believe it is good for America, an economic stabilizer; it is good for the individual and the community; and it is good for banking. The promotion of Savings Bonds has helped to make savers out of non-savers, to revitalize the American tradition of thrift, and to build savings in all forms to record levels.

"The American Bankers Association congratulates the Nation and the public on the 20-year success story of the U.S. Savings Bonds Program, and pledges its vigorous continued support."

Carl A. Binson



You save more than money with

U.S. Savings Bonds



For 20 years America's newspapers have published U. S. Savings Bonds ads at no cost to the Government. The Treasury Department is grateful to The Advertising Council and this newspaper for their patriotic support.



OUT YOUR HEALTH

variety, rather than nuclear. Things have changed. Say you stay up for 20 hours a day. If you follow this routine for a week or so at a time, first thing you'll notice is your hands jumping from nervousness. A dull ache will begin gnawing at the base of your skull. You'll be picky and indifferent toward food.

You'll be quarrelsome—projecting casual remarks all out of proportion. It will sound like an insult when someone says hello. You might think a good night's sleep will fix you up. Maybe it will—

on the surface. The nervousness might leave you and the headache might disappear. It could be that a single night of sleep will give you the sweet disposition that was formerly sour grapes.

But it's all on the surface. During the stretch of sleeplessness your heart may have been strained, your blood pressure increased, your digestion upset.

Sleep gives the human body a chance to recover from the fatigue of one trying day before the assault of the next. And it has to be natural to be beneficial. That's why sleeping potions are undesirable as a steady diet.

A few hints may help you get a better night's sleep. Do your heavy thinking before supper. Make it a rule that after the evening meal your brain gets a rest. Subdue the lights around the house. Lights keep you alert, besides being tough on the power bill.

Get lots of fresh air. Sitting quietly on the porch might encourage the relaxation so necessary for dropping off into sound sleep. So might a short drive—if you avoid main travelled roads. Reading light fiction is also relaxing, but stay away from the gory private eye stuff.

Develop a bedtime ritual, the more sedate the better, to condition your mind for bed. And when you do retire, deliberately try to blank out those random thoughts that steal into your mind. (A weekly feature from Public Health Education, Texas State Department of Health.)

Milk Production Outlook Good For Sixty-One

Increasing population and the government price support program are expected to keep milk prices stable in spite of expanded production in 1961 which may exceed 1960 by one billion pounds or more.

The North Texas Producers Association, through its publication, the North Texas Dairyman, has made this appraisal on the basis of 1961 outlook about like this:

1. In 1961 it appears that total milk production will show an increase of about one billion pounds over 1960 and will be at a record high level.

2. Recent declines in beef cattle prices and their expected continuing decline in 1961 indicate higher milk production.

3. Due mainly to an increasing population and to the government price support program milk prices are expected to remain stable. The key to any improvement in milk prices is the level of price supports, to be announced in April. Through March of 1961 it appears that prices will average slightly higher than they were in 1960.

4. Per person consumption of milk continues to decline. Consumption of milkfat has continued its long term decline but consumption of non-fat milk solids has increased.

5. The number of dairy farms has declined about 50 per cent during the last 10 years but the volume of milk produced on such farms has increased about 15 per cent during the same period. This increase is due to higher production per cow and larger herds. "Dairy farmers in Texas," the

I Give You Texas

By BOYCE HOUSE

C. P. J. Mooney, who was editor of the Memphis Commercial Appeal when I entered newspaper work, had been an editor in New York City. He remarked to us reporters that New Yorkers regard people from anywhere else as hicks, while as a matter of fact,

North Texas Dairyman points out, "are now undergoing significant adjustments. It is estimated that an investment of about \$75,000 is the minimum needed to operate an efficient dairy farm at current prices. This will, no doubt, continue to increase.

"It boils down to the fact that dairy farming will be more and more specialized, and less of an in-and-out occupation for other farmers or for those living and working in town who try to dairy on the side. It also boils down to the hard fact that those who attempt to enter dairying on a shoestring or those now in dairying who cannot operate economically and efficiently enough will not succeed and will not be in the business of producing milk."

New Yorkers are the biggest hicks in the country. Any happening, however small, will draw a crowd in New York, he said. In fact, sometimes something needn't happen at all and he told about two men, who were walking along, when they suddenly stopped and began to gaze upward. Two or three others stopped and looked—then eight or ten; and, in a little while, the sidewalk was blocked by people gazing into the sky, trying to see something which wasn't there.

Mr. Mooney was a master in coining clever descriptions. There was one Memphis politician who was placed in office by the anti-Crump forces (of which the editor was a leader). After getting in power, the man changed sides and Mr. Mooney wrote an article referring to the politician as "Flapjack Charley", a d d i n g. "They don't build political fences too high for him to jump."

Did you ever hear of a snipe hunt? It is the Old South's equivalent to a West Texas badger fight.

The greenhorn is told to take his place in the woods with a lantern and a sack—while the others explain that they will go on the other side of the woods and drive the snipes toward him. The lantern—(it is night)—will attract the snipes and it will be simple for him to put them in

INGROWN NAIL HURTING YOU? Immediate Relief! A few drops of OUTGROW bring blessed relief from tormenting pain of ingrown nail. OUTGROW softens the skin underneath the nail, allows the nail to lie flat and thus prevents further pain and discomfort. OUTGROW is available at all drug counters.

COMPLETE AIR CONDITIONING SALES and SERVICE WITH PLUMBING AND TIN PHONE MA 9-2422 114 N. Seaman

Hammer Life Insurance Company Ben E. Hammer, President This company has been in operation in this area since 1942 selling policies to be used primarily for burial purposes. We write from \$100 to \$50,000 and our policies are paid in cash, which allows you in the selection of the Funeral Director your choice. Ages from 1 month to 90 years. For further information come by to see us at Hammer Funeral Home, 301 S. Lamar, Eastland P. O. Box 431 Dial MAin 9-2611

You don't have to be dependent after age 65! Investigate SOUTHLAND LIFE'S SENIOR-CITIZEN Cash-A-Day HOSPITALIZATION PLAN Call me today for complete details on this economical protection plan! Southland Life Insurance Company

New! Gillette Adjustable Razo. 9 Settings for Superb Shaves. NOW \$1.95

WE RECOMMEND Garner's Farm Tax Record Completely Meets All Income Tax Requirements NOW COMPLETE WITH SOCIAL SECURITY RECORDS APPROVED BY TAX EXPERTS BANKERS AND FARMERS EVERYWHERE

Small Business Adm. Announces New Loan Program

C. W. Ferguson, Regional Director of the Dallas Small Business Administration, announced today a new type of loan by his Agency in which banks may participate for as little as two years, while SBA continues its part of the credit a longer period of time.

Ferguson said he believed that banks who are accustomed to lending for short periods will be encouraged to participate with the Small Business Administration. The new type loan would assist them in financing small firms by advancing part of the funds for a short period while SBA funds would be on long terms. The plan does not provide the private participating institutions any preference in the collateral for the loans. Banks participating in the new type loans will be permitted to receive all payments of principal made within 60 days of due date. Interest will be apportioned between the bank and SBA according to their respective unpaid balances.

In the case of default the respective rights of the Small Business Administration and the bank will be fixed in recoveries out of liquidation of collateral in proportion to their respective unpaid balances as of the date of delinquency.

The bank will have the option to renew its participation or to purchase the entire balance of the loan when the loan is satisfactorily functioning during the early years. Further information concerning SBA lending policies is available from the SBA Regional Office located at 1000 Main St., Dallas.

Eastland Telegram Insurance and Real Estate D. L. KINNAIRD Life - Fire - Auto - Farm Polio - Bonds 42 years in the Insurance Business in Eastland

You're Invited to See One of Our Modern Homes at the East Corner of East Commerce and also at 613 South McJera.



"THE FLEETWOOD" A DOLLAR AND A DEED TO YOUR LOT IS ALL YOU NEED PAYMENTS AS LOW AS \$31.58 per month WE INSURE YOUR PAYMENTS WHEN YOU ARE SICK OR HURT! SEE US BEFORE YOU BUY

Local Representative: Mrs. Charles Brooks, 613 S. Madera

CLIP AND MAIL THIS COUPON FOR ILLUSTRATED FOLDER TO: MODERN HOMES CONSTRUCTION CO. P. O. Box 12381, Ft. Worth, Texas

SOMETHING NEW FOR EASTLAND E. O. D. WATCH FOR DETAILS IN THIS NEWSPAPER

60 MONTHS LOANS NO DOWN PAYMENT ESTIMATES FREE NO OBLIGATION

The Most Complete Line of Building Materials in Eastland County McGinbotham-Bartlett Co. Jack Elliott, Mgr. Phone MA 9-1311

SPECIALS FOR... WEDNESDAY

STANDARD TREASURY OF LEARNING BOOKS Vol. No. 1 29c Vol. No. 2 99c Thru No. 20 Knowledge Is The Most Precious Gift You Can Give To Your Child! Now Yours! At Almost Incredibly Small Cost!

WHITE SWAN BISCUITS VAN CAMPS TUNA NO. 1 FLAT 19c MRS. TUCKERS SHORTENING BAYERS ASPRIN 100s 79c SIZE 62c HIP-O-LITE MARSHMALLOW CREME W. P. BLEACH

PLUS DOUBLE R & B STAMPS Wednesday at SUPER DAVE

We Purchased at Auction the Following and Pass the Value to You! First Come - First Served. Prices Good Till Mds. Sold! 13.95 Continental 2-transister Radio ea. \$5.00 5.95 4-Pc. Blue Flame Perfume Set ea. \$3.35 1.29 Shop and Work Caps with Ear Flaps ea. 85c 99c Work Tools, Vices, Wrenches, Levels, Saws, etc. ea. 45c 98c Volk Alum. Stem Pipes ea. 49c 1.98 Household Scales ea. 85c

ARMOUR'S STAR SLICED BACON LB. 59c BABY BEEF SHORT RIBS LB. 39c PURE PORK SAUSAGE LB. 39c RATH CEDAR FARM THICK SLICED BACON 2 LB. 95c

PORK CHOPS POUND 69c

MacMOY'S Super Save 400 S. Seaman Home Owned—Home Operated

First Methodist Church

Church School begins at 9:45. Morning worship service is at 10:50 with the pastor, Rev. James H. Campbell bringing the message titled "The Power of the Word". The choir will present a favorite anthem. The organ music will include the prelude "The King of Love My Shepherd Is" by Ashford. The offertory will be "Berceuse" by Lemaire and the Postlude "Rejoice in the Lord" by Kern will conclude the service.

The youth Fellowship meets at 6:15. The evening worship is at 7 o'clock. The pastor again will bring the sermon, discussing the subject "The Meaning of Enlightenment". Will Siebert will direct the service.

The Women's Society of Christian Service will meet for a covered-dish luncheon at the church Tuesday at 12 o'clock. The Bible study course "Basic Christian Beliefs" will follow the luncheon. Mrs. W. F. Davenport is leader of the study and will present the Secretary of Spiritual Life for the Cisco District, Rev. Mrs. George

Corse who will bring the first lesson of the study. All women of the church are invited to attend. Bring a covered-dish and your place settings. The circle leader will be hostesses for the luncheon.

The Mission Study and supper had to be postponed last Wednesday evening due to inclement weather. We plan to have the study and supper this Wednesday with the Rev. Raymond Burton as guest speaker.

The Methodist Men's Club will reorganize at the next meeting which is the last Tuesday night in February. All who desire to be members of the club will receive a membership card and club pin.

37 Years of Continuous Service-

... is a long-time record for any business or profession to achieve. But years without growth are wasted and growth without achievement is impossible. My, how we have grown these 37 years! So with renewed energy and with every modern facility to serve you, we approach the future with confidence. And in the mood of a school boy we can in all sincerity say to our many friends and customers "thank you" and Happy New Year.

EARL BENDER & COMPANY

Eastland, (Insurance since 1924) Texas

See Me For Your Real Estate Needs Will Build To Suit You M. A. TREADWELL, SR. Phone MA 9-2017

Bethel Baptist Church

Morning worship at the Bethel Baptist Church begins with Sunday School at 9:45 a.m. James Pittman is superintendent and Truett Gregory is assistant.

Rev. Jimmy Roberts will bring the 11 a.m. message and also the evening message. Eddie Pietroszek, music director, will direct the choir for both services.

Evening worship begins at 6:30 with Training Union. This Sunday night is talent night at the church. The program will feature musical numbers and readings by the Juniors down through the Beginners Department of Training Union. Mrs. Tom Clark will direct the program. Church service starts at 7:30 p.m. Choir practice is at 8:30 p.m. Wednesday at 6:45 p.m. there will be a teachers and officers planning meeting for all persons who work with the Juniors, Intermediates and Young People in Sunday School.

Mrs. Gene Boney, the departmental Sunday School superintendent, urges all teachers and officers to attend this meeting in the educational building.

Wednesday at 7 p.m. in the auditorium of the church Rev. Roberts will teach the first lesson of the Bible Study Course on the Book of First Corinthians.

The study course will be conducted on each of the four Wednesday nights through the month of February. The pastor has requested that each member read the book through three or four times.

Veterinarians Expecting Large State Meeting

The Texas Veterinary Medical Association will have the largest attendance in its 48-year history when it meets in Houston next week, Dr. H. T. Barron, president, predicted.

The Association's membership also is at an all-time high, Dr. Barron said, citing a phenomenal increase in membership among the state's veterinary doctors from 375 at the beginning of 1960 to 721 at the end of the year.

"We hope to have at least 400 veterinarians registered at the Houston convention," the Taylor, Texas, practitioner said. "Our membership increase is due to a strong and re-vitalized program of member service and public relations we undertook in October, 1959. In addition, our convention committee, headed by Drs. King Gibson and Austin Weedn of Houston, have put together the finest program I have ever seen for a gathering of veterinary medical men."

Dr. Barron said the program also contains many elements of entertainment and interest for the Ladies Auxiliary of TVMA and predicted attendance of at least 175 wives.

The two-day meeting, beginning with business sessions on Monday, Jan. 30, will be formally opened at luncheon that day, with attendance of 600 anticipated.

Dr. John B. Truslow, M. D., executive director of the University of Texas Medical Branch in Galveston, a nationally recognized medical educator, will be the keynote speaker.

Dr. Truslow's theme will be the importance of veterinary medicine and research to human health, and the inter-relationship between veterinary and human medicine.

Other speakers during the first afternoon's session include Dr. Alvin A. Price, dean of the School of Veterinary Medicine at Texas A & M College, and Dr. Jacques Jenny of the University of Pennsylvania, widely known specialist in bone and joint equine practice.

Dr. Victor J. Cabasso of New York, an equally well-known authority on distemper and similar

diseases among domestic pets, also will speak on the first panel, as will Dr. Delano L. Proctor of Lexington, Ky., famed race horse specialist.

Dr. Barron said social events are planned for both Monday and Tuesday evenings, the latter being the organization's annual and President's Ball. On occasion new officers and will be installed, he said.

EASTLAND

OPPORTUNITY DAYS

ARE COMING...

Friday - Saturday

Look for the big ad in Thursday's Eastland Telegram listing the big bargains you can find at:

Perry Bros., Altman's, Men's Shop, Jeannettes, Smith's Store, Quality Shoe Service, Smitty's Jewelry, Harelik's, Western Auto, Mode-O'Day, Canaris Studio, Hammon Furniture, Coat's Furniture

McGraw Motor Company

CARS DODGE-STUDEBAKER TRUCKS
461 South Seaman Phone MA 9-1244
Parts and Service

SATURDAY		SUNDAY		MONDAY	
9:00 Shari Lewis	4:30 Saturday Prom	12:45 Air Force	7:00 Nat. Velvet	7:00 Dave Garroway	3:30 Hollywood
9:30 King Leonardo	5:00 Movie	1:00 Hrid. of Truth	7:30 Tab Hunter	9:30 Play Trunch	5:30 3 Stooges
10:00 Fury	6:30 Bonanza	1:30 March Dimes	8:00 Chevy Chase	10:00 Price Is Right	6:00 News
10:30 Lone Ranger	7:30 Tall Man	4:30 Devotions	9:00 Loretta Young	11:00 Truth or Con.	6:15 Huntley Rept.
11:00 True Story	8:00 The Deputy	5:00 Cal. Debates	9:30 Your Life	11:30 Could Be You	6:30 On Farm
11:30 Def. Diary	8:30 Nation's Future	5:30 News	10:00 News	12:00 News, Withr.	7:00 Sid. of Frta.
12:00 Mr. Wizard	9:00 Lower on Trial	6:00 Shirley Temple	10:10 Weather	12:15 Devotions	7:30 Wells Fargo
12:30 Basketball	9:30 Gospelairs		10:15 Com. Pres.	12:20 3 Stooges	8:00 Klondike
2:30 Parade	10:00 Texas News			1:00 Jan Murray	8:30 Dante
3:30 Bowling	10:10 Weather			1:30 Loretta Young	9:00 B. Stowick
4:00 Capt. Gullant	10:15 Movie			2:00 Dr. Malone	9:30 Bowling
				2:30 From Roots	10:00 News
				3:00 Room for Dad	10:10 Weather
					10:15 Jack Paar

SATURDAY		SUNDAY		MONDAY	
8:30 Party Time	4:30 Gourmet	7:00 Cartoons	1:30 Sports	7:30 Cartoons	3:15 Secret Storm
9:00 Capt. Kangaroo	5:00 Wrestling	7:15 Faith Today	3:00 Tomorrow	8:00 News	3:30 Edge of Nite
10:00 Magic Land	6:00 News	7:45 Bible Says	4:30 College Bowl	8:15 Cap. Kangaroo	4:00 Movie
10:30 Roy Rogers	6:15 Police Rept.	8:00 Unitarians	5:00 I Love Lucy	9:00 Lelaune Show	5:15 Perry Time
11:00 Sky King	6:30 Weather	8:15 Hymns	5:30 20th Century	9:30 Video Villone	6:00 News
11:30 Mighty Mouse	6:30 Perry Mason	8:30 Way of Truth	6:00 Leslie	10:00 I Love Lucy	6:10 Weather
12:00 Spotlight	7:30 Checkmate	8:45 Church	6:30 Dennis	11:00 Love of Life	6:15 News
12:15 Extra	8:30 Have Gun	9:00 Christ. Science	7:00 Ed Sullivan	11:30 Search for Tr.	6:20 Tell Truth
12:30 Farm & Grdn.	9:00 Gunsmoke	9:15 Catholic Rept.	8:00 G. E. Special	11:45 Guiding Light	7:00 Pete & Gladys
1:00 Movie	9:30 Death Valley	9:30 Church	8:30 Jack Benny	12:00 News	7:30 Buddy
1:30 Big Picture	10:15 Weather	10:00 Camera 2	9:00 Candid Camera	12:15 Beauty Sci.	8:00 Danny Thomas
2:00 Scheherazade	10:20 People & Places	11:00 Theatre	9:30 What's my Line	12:30 As Wild. Turas	8:30 Andy Griffith
2:30 Movie	10:30 Movie/Time	12:00 News	10:00 News, Withr.	1:00 Full Circle	9:00 Hennessie
4:00 Answer	12:40 Yester	12:15 Cartoons	10:15 News, Withr.	1:30 House Party	9:30 June Allyson
		12:45 Homes	10:30 Movie/Time	2:00 Millanair	10:00 News
		1:15 Doc Hays	12:00 Yester	2:30 Verdick Jr.	10:15 Weather
				3:00 Brighter Day	10:30 News
					10:30 Movie/Time

SATURDAY		SUNDAY		MONDAY	
12:00 Calliope	6:00 Clubhouse	6:59 Sign On	2:00 Matinee	11:30 Cartoons	5:30 Amos 'N Andy
12:30 Big Picture	6:30 Amas & Andy	7:00 Westerns	3:30 Kingdof of Sea	12:00 News	6:00 W. Woodpecker
1:00 Matinee Th.	7:00 Theatre	8:30 Crusades	4:00 Movie	12:15 Information	6:30 News
3:00 Theatre	7:30 Movie	9:00 Herald of Truth	6:00 News	12:30 Trile w. Father	6:55 Weather
4:30 Movie	10:00 West Point	9:30 Christophers	6:30 Adventure	1:00 Matinee	7:00 Bold Journey
5:00 Theatre	10:30 Theatre	10:30 Westerns	7:00 Global Zobel	3:00 Sula	7:30 Yagabond
		11:00 Church	7:30 7 League Bts.	3:30 I Married Joan	8:00 Albarne Alert
		12:00 Information	8:00 Spencer Tracy	4:00 Bugs Bunny	8:30 Wrestling
		1:00 Gospel	10:00 Int. Det.	4:30 Popeye	10:00 26 Men
		1:30 Church	10:30 News	5:00 3 Stooges	10:30 News
			11:00 Movie		11:00 Theatre

SATURDAY		SUNDAY		MONDAY	
7:00 Today on Farm	3:30 Bowling	8:00 Christophers	5:00 Meet Press	5:55 Newsreel	5:30 Popeye
7:30 Farm Page	4:00 Capt. Gullant	8:30 Christ. Science	5:30 People Funny	6:00 Cont. Clism.	5:55 Newsreel
8:00 Story Time	4:30 Sat. Prom	8:45 Man to Man	6:00 Shirley Temple	7:00 Dave Garroway	6:00 News
8:15 Light Time	5:00 Showcase	9:00 Radar	7:00 Nat. Velvet	9:00 Dough Re Mi	6:10 Weather
8:30 Children Show	6:30 Bonanza	9:30 Televisions	7:30 Tab Hunter	10:00 Price Is Right	6:30 Americans
9:00 Shari Lewis	7:30 Tall Man	10:30 Faith for Today	9:00 Loretta Young	10:30 Concentration	7:30 Wells Fargo
9:30 King Leonardo	8:00 Deputy	11:00 Church	9:30 Your Life	11:00 Truth	8:00 Klondike
10:00 Fury	8:30 Nation's Future	12:30 Movie	10:00 Texas News	11:30 Could Be You	8:30 Dante
10:30 Lone Ranger	9:30 Dangerous	1:00 Basketball	10:15 Weather	12:00 News	9:00 B. Stowick
11:00 True Story	10:00 News	4:00 Golf	10:25 News Final	12:30 DateLine	9:30 Bowling
11:30 Def. Diary	10:15 Weather	4:30 Chet Huntley	10:30 Movie/Time	1:30Way of Life	10:00 Texas News
12:00 Danger	10:25 News			1:30 Loretta Young	10:15 Weather
12:30 Basketball	10:30 Sports			2:00 Dr. Malone	10:25 News Final
				2:30 From Roots	10:30 Sports
				3:00 Comedy Th.	10:35 Jack Paar
				3:30 Hollywood	12:00 Middle News
				4:00 Family Th.	12:05 Newsreel
					12:10 Late Show

SATURDAY		SUNDAY		MONDAY	
7:30 Ag. on Parade	6:00 Expedition	8:00 This Is Life	5:00 Yag. America	7:25 Devotional	5:00 Robin Hood
7:45 Thr. Park, Ia	6:30 Roaring 20's	8:30 Sacred Heart	5:30 Walt Disney	7:30 Alomanc	5:30 Cartoon Strip
8:00 Sat. Special	7:30 Beaver	8:45 Faith at Work	6:30 Maverick	7:50 News	6:00 Newsreel
10:00 Hop. Cassidy	8:00 L. Walk	9:00 Movie	7:30 Lowman	8:00 Felix the Cat	6:10 News
10:30 Fannies	9:00 Fight	10:45 Bruce Alger	8:00 The Rebel	8:30 Showcase	6:15 Weather
11:00 Funtime	9:50 Make Spare	12:00 Church	8:35 Closeup	10:00 Julie Benell	6:22 Sports
12:00 Soapy Sales	10:00 Newsreel	12:30 Pip	9:30 W. Churchill	11:00 Court	6:30 Cheyenne
12:30 Pip	10:10 News	1:00 Dan Smoot	10:00 Newsreel	11:30 Love That Bob	7:30 Surfside &
1:00 Basketball	10:15 Weather	1:30 Ya. Ask for It	10:10 News	12:00 The Texon	8:30 Adv. Parade
3:00 Life of Riley	10:22 Sports	2:00 Music	10:15 Weather	12:30 Queen for Day	9:30 Peter Gunn
3:30 Sweet Success	10:30 Theatre	3:00 Bridge	10:22 Sports	1:00 About Faces	10:00 News
4:00 Bowling	11:00 Theatre	3:30 Fannies	10:30 Op. Anallith	1:30 Medic	10:10 News
5:00 Golf		4:00 Paul Winchell	12:00 News	2:00 Day in Court	10:15 Weather
		4:30 Rocky		2:30 Rd. to Reality	10:22 Sports
				4:00 Bandstand	10:30 Tomstons
				3:00 Beat Clock	11:00 Theatre
				3:30 Who Do Ya	12:30 News
				4:00 Amer. Band.	

First Baptist Church

Sunday—Sunday School convenes at 9:45; Morning Worship, 11 with Dr. W. O. Beazley preaching; Associational G. A. Council at Second Church, Ranger, 2:45; Graded choirs, 5:30; Training Union, 6:30 and Evening Worship Service, 7:30.

Monday—Monthly Training Union Planning Meeting with covered dish supper at 6:45; promotional with Mr. A. E. Hallford in charge at 7:15 and departmental meetings at 7:30.

Tuesday—The Home Mission hook, "The Dreamer Cometh" will be presented by Miss Mabel Moon, Breckenridge, beginning at 9:45. Early American decorations and menu will be used for the covered dish luncheon from 12:00 to 1:00. Mrs. J. O. Jolly will have charge of the Round Table group from 1:00 to 2:00. All of the ladies are invited.

Wednesday—Sunday School superintendents and youth auxiliaries will meet at 6:45; A film, "Preparing To Teach" will be shown at the Teacher's Meeting at 7; Church business meeting and Bible study at 7:45; and Adult choir at 8:30.

First Christian Church

SUNDAY SERVICES
9:45 a.m. Church School
11 a.m. Morning Worship
7 p.m. Evening Vespers

INGROWN NAIL HURTING YOU? Immediate Relief!

A few drops of OUTGROW bring blessed relief from tormenting pain of ingrown nail. OUTGROW loosens the skin underneath the nail, allows the nail to be cut and then grows further pain and discomfort. OUTGROW is available at all drug counters.

NOTICE
FRESH DRESSED FRYERS and Fresh Dressed Hens
At The Plant
PHONE MA 9-1200
WALKER Dressing Plant

SAFEMAY

Another fine household gift!

FLINT-WARE by **EKCO**

10" Skillet

yours with **GOLD BOND STAMPS**

Shop Safeway and lower your total food bill plus get valuable GOLD BOND Stamps. With Gold Bond Stamps you can get many fine household products because it takes less books to get the item of your choice. Shop Safeway and save GOLD BOND STAMPS.

and remember ...

Wednesday Is Double Gold Bond Stamp Day at Safeway (With the purchase of \$2.50 or more.)

This Is National Kraut and Frankfurter Week

Sauerkraut 2 CANS NO. 303 29¢
Safeway Town House. Delicious served with franks

Sauerkraut 16-oz. Bag 29¢
Van Holten Redi-Pack. Delicious with spareribs.

Libby Vienna Sausage 5 NO. 1/2 CANS \$1.00
Rich in proteins.

Safeway Produce

CABBAGE 5¢
Fresh, firm heads. Perfect for cooking or making cole slaw. Lb.

ONIONS 5¢
Yellows. Round and firm. Perfect for cooking. Lb.

Radishes 5¢
Fresh and flavorful. 6-oz. Cello

Rutabagas 5¢
Add variety to your menu. Lb.

Safeway Meats

Skinless Franks 3 LB. PKG. 99¢
Perfect for serving with sauerkraut. Or for making delicious hot dogs.

All Meat Franks 1-Lb. Pkg. 49¢
Safeway. Nothing could be finer than all meat franks and sauerkraut.

All Beef Franks 1-Lb. Pkg. 59¢
Pork Neckbones Neatly and Flavorful. Lb. 19¢

SAFEMAY
Prices Effective Mon., Tue., Wed., Jan. 30, 31 and Feb. 1, in Eastland

For Good Looking You Can't Beat TV Cable Looking!
Community Television, Inc.
"Call today and get five channels tomorrow"
Village Hotel Phone MAIn 9-1716