



Think Progressively It Works!

VOLUME 31

EASTLAND, TEXAS, THURSDAY, JANUARY 19, 1961

No. 112

Joe Tanner to Retire As Chamber Manager April 1

Twenty-Eight Years Of Service Will End



H. J. TANNER plans to retire

H. J. Tanner, manager of the Eastland Chamber of Commerce for the past 28 years, announced today that he plans to retire April 1.

Tanner's announcement came at the monthly Chamber of Commerce board of directors meeting held today in the White Elephant restaurant. Only a few weeks ago the dean of West Texas' chamber managers had been awarded a new one year contract.

Tanner's announcement came after a committee named by Horace Horton, president, had reported on a possible retirement program. Details of the retirement were not available at presstime.

Tanner has been a leader in the effort to get new industry to locate in Eastland. He is given much of the credit for Hollywood Vassarette choosing Eastland for the company's large manufacturing plant.

He has also been active in the West Texas Chamber of Commerce and has been a speaker at numerous WTCC conventions. During his work with the Eastland CC the WTCC once chose Eastland as the site for their annual convention.

Horton said no plans have been made as yet to replace Tanner.

Two Eastland Men Enlist In US Air Force

Robin D. Peacock, 22, grandson of Mrs. H. O. Hearn, 1305 S. Seaman, and Alvin C. Keller, 13, son of Mr. and Mrs. Raymond L. Keller, Route 2, enlisted in the Air Force Wednesday at Abilene and were sent to Lackland AFB, San Antonio, for basic training.

Upon completion of basic training they will attend a technical training school in the Mechanical Career field, the field they selected before enlisting in the Air Force.

Closely Follow Instructions, Says IRS Director

Here's how you can get better service from your District Internal Revenue Service office, according to Ellis Campepe Jr., Dallas District Director.

"Closely follow the instructions accompanying each return, bill or notice.

"Be certain you enclose with your remittance the properly completed form, or the Director's copy of the bill or notice as indicated. It's a good idea to paper clip—not staple—these to your check or money order.

"When your account number is stated, enter it on your check.

"Type or print your name and address wherever required.

"Mail your remittance a papers to the proper Internal Revenue office—and don't forget that the final date for filing returns for 1960 is April 15."

"Typing or printing your name and address on your 1960 tax return could mean the difference between receiving an eligible refund or not.

The IRS representative said district office still has many fund checks from other offices which can't be delivered due to illegible writing on the taxpayer's part.

"Farm Business Expenses, 'Farm Inventories' and 'Crop Losses and Thefts'—these are included in the 'Farmer's Tax Guide,' now available from Internal Revenue, or agricultural agents.

According to Fogie, the official booklet will help many tax problems for farmers and ranchers.

Fogie reminded everyone every little hole in those tax forms now being mailed taxpayers by Uncle Sam means all its own. He said 1040A card received in the office is pre-punched with specific relating to your 1960 tax return.

(Continued On Page Four)

GRAY MATTER

Joe Says Forty Years Ago Was Good Enough

Editor's Note: The opinion expressed in this column are those of the writer and not this newspaper. In this case the editor firmly disagrees with Mr. Gray's opinions.

By JOE GRAY

stepped-up on the home courts tell us the houses will be the immediate for lengthen in one addition will not of one area.

We have been able individual that he will stand store in created by Nel which will feat will be the third of the firm. His found Jan. 27.

found one you are about Stanley Mobil con without contributed for the old and Bernard Hardward did a lumber for Frank Lumber.

Boaters Com come out we the Hollywood slogan was. All," in case as we are.

Kellar move in the square. the building the Studio.

Buildings on the up, slowly but to do what business in the

ainly gaining entertainment. of soon become entertainment already.

the nicest in many miles, the rink opened are all looking opening of the a year-round

er months we get track, and main thoroughfare in a widening project of highway 81, which passes through that beautiful little city.

The citizens of Itasca promptly reminded the highway people that the trees were planted in the first place only 25 years before at the special suggestion of the highway department and they, the citizens of Itasca, didn't think it necessary to cut them down now.

When the people of Texas voted for a system of farm to market roads we didn't vote for all of this fence moving and curve rounding the highway boys set out

Under the new Chamber of Commerce program the organization will sponsor three big trade promotions annually in addition to the Christmas program which has been the only Chamber of Commerce trades event in recent years.

Horton named a three man committee headed by John Megason to work out details for the promotions. Luce Pittman and Obie Duncan are the other members. Dick Spalding and Virgil Moore were named as advisors to the committee and Horton will also assist the committee's work.

No definite programs have been worked out and the committee will have a free hand. One probable promotion will be an effort to lend a helping hand to the Livestock Raisers Association during the County Livestock Show in March. Tentative plans call for selection of the outstanding 4-H or Future Farmer of America member in the county. The win-

SEE and Drive the 1961 PONTIAC... fresh point of view and wide track too! MUIRHEAD MOTOR CO.

71 33 4.0 4.19 1.37 4.19 25.83

CHLAG AGENCY

71 33 4.0 4.19 1.37 4.19 25.83

SEE and Drive the 1961 PONTIAC... fresh point of view and wide track too! MUIRHEAD MOTOR CO.

Horn's Claim... Is Challenged

L. A. Horn, who will celebrate his 85th birthday, Sunday, told a reporter Tuesday he thought he was the oldest living native of Eastland.

Wednesday morning J. L. Brashears walked into the Telegram office with the information he has Mr. Horn topped. Brashears will be 89 years old in May and was born seven miles east of Eastland in a log cabin near the Leon River.

"I grew up drinking free water out of the Leon," he declared, "but now I have to pay for it."

Brashears is still very active and is in charge of sales at the livestock auction barn.

Jury Expected To Get Ford vs. T&P Case Today

The jury is expected to get the Emory Ford vs. Texas and Pacific Railway case this afternoon after four days of hearing testimony.

Judge Turner Collie presented the jury with the charge this morning and attorneys were making their final arguments in 91st District Court in Eastland.

The case, a damage suit resulting from the death of a Ranger High School boy, Tommy Ford, last year at the T&P crossing in Ranger, began Monday.

Resolution In Memory Of Seaberry Is Passed

A resolution in memory of living children, Mrs. Cyrus B. Frost Jr. and Virgil T. Seaberry Jr., both of Eastland, Texas; two sisters, Mrs. Effie Wilkins of Weatherford, Texas, and Mrs. Hubert Toombs of Eastland, Texas; and four brothers, Lloyd and Emmett Seaberry of Poolsville, Texas, and Warren and Dean O. Seaberry of Weatherford, Texas.

Whereas, God in His infinite wisdom, called from these earthly labors Mr. Virgil T. Seaberry of Eastland, Eastland County, Texas, November 16, 1960; and

Whereas, Mr. Seaberry was born in the community of Poolsville in Parker County, Texas, but resided for the most part of his life in Eastland, Eastland County, Texas, where he made his most valuable contribution to his community, state, and nation; and

Whereas, After his graduation from The University of Texas School of Law in 1915, he entered in the practice of law at Paint Rock, Texas; and

Whereas, he entered the service of his country in 1917, and held the rank of First Lieutenant in Army Artillery, and in 1920 returned to the practice of law with his late partner, John Turner, at Eastland; and

Whereas, This well-known attorney and West Texan has distinguished himself in his profession and has long been identified with State Bar activities, having served as President of the State Bar of Texas in 1957-58, Vice President in 1956-57, Chairman of the Board of Directors in 1954-1955, Chairman of the State Bar Rules Committee in 1955-1958, and was State Bar delegate to the Federal Judicial Conference for the Fifth Circuit in 1956-1959; and

Whereas, Mr. Seaberry was elected to the 1960-61 "Who's Who in America" and was also recently elected to the College of Trial Lawyers; and

Whereas, Mr. Seaberry was an active civic worker, a former mayor of the town of Eastland, and an active member and teacher of the First Methodist Church of Eastland; and

Whereas, Virgil T. Seaberry was an able organizer, an effective speaker, and an attorney of outstanding ability, a man who will long be remembered for his friendliness and cheerful manner, as well as for his devotion to his church, family, and profession; now, therefore, be it

Resolved, by the Senate of Texas that when the Senate adjourns today, it do so in honor and respect to the memory of this distinguished citizen and that a page in the Senate Journal be set aside in his memory and that a copy of this resolution be sent to his surviving children.

EASTLAND NATIONAL BANK "On The Square" MEMBER F. D. I. C.

Peanut Growers To Send Wilson To Farm Meeting

Ross Wilson of Gorman, manager of Southwestern Peanut Growers Association, will attend the big conference of agricultural leaders from all over the nation, to be held in Washington Jan. 26.

His attendance results from an invitation recently received from Secretary of Agriculture, Designate, Orville L. Freeman. The conference is being called to consider policies and programs for American agriculture.

Recommendations are scheduled to be presented by the presidents of the five general national organizations having broad farmer membership, as planned at the recent exploratory conference held on Jan. 5 in New York at the invitation of President-Elect Kennedy.

The Southwestern Peanut Growers Association is invited to submit in writing any formal recommendations it wishes to make.

"The conference will be a day long session, out of which it is hoped will develop a sound and broad base of consultation, discussion and cooperation among leaders of farm organizations and from which there may emerge a general agreement on the goals we seek for American agriculture and a broad consensus with regard to programs essential to achieve these goals," Wilson said.

Shelton Explains Need for Better PE Program Here

Eastland schools need a better physical education program and school officials are doing what they can to improve the situation.

That's the story members of the West Ward and South Ward P-TA's heard Tuesday night from Carol Shelton, head coach.

Shelton explained the physical education program in local schools, saying that he firmly believes that a good PE program helps students both physically and mentally.

Members of the two organizations made their final vote to combine the two P-TA groups and in the future the organization will be known as the Eastland Elementary Schools P-TA.

A vote on by-laws of the organization will be held at the next monthly meeting. Mrs. Horace Horton presided over the meeting.

Dr. Lee Pierce To Be Speaker at Christian Church

Dr. Lee C. Pierce, director of church relations at Texas Christian University, will speak at the regular morning service Sunday at the First Christian Church.

Dr. Pierce has held many pastorates and taught Bible college courses at one time and has served on many national boards and committees of the Brotherhood of the Disciples of Christ.

Bethel Baptist Open House to Honor Pastor

Members of the Bethel Baptist Church will host an open house Sunday from 2 to 4 p.m. in the education building of the church to introduce to Eastland citizens Rev. and Mrs. Jimmy Roberts and daughter, Sara Ruth.

No invitations are being sent out, but the general public and particularly other ministers have been cordially invited. Rev. Roberts is the new Bethel Church pastor.

CROSS PLAINS NEXT

Albany and Eastland Split In Cage Games

Albany's boys edged the Mavericks 47-45, here Tuesday night in District 10-A basketball, but the Eastland girls reversed the situation by posting a 48-46 victory.

Both games were close as the score indicates and either one of the tilts could have gone either way. Friday night the Mavs and Mavericks will play their third district games when they journey to Cross Plains.

The Mavericks were paced to their victory by Judy Seaberry who scored 30 points, Wanda Art-et scored 14 points, Joyce Robinson two and Kay Morton two.

Mickey Garner was the Maverick high pointer for the night garnering 18 points. Ray Dendy had 11, James Lewis eight, Tommy Beck four, Clark Conner two and Red McClesky two.

The Mavs made a good game of it, as the score indicates, but

the locals weren't clipping anywhere near as well against Albany as they did against Early in their opener. The Mavs didn't get the ball to their men under the basket, who have been helping Coach Joe Ingram's charges a lot, and the guards had to carry the scoring. McCleskey, for instance, scored 18 points against Early, but he barely handled the ball against Albany.

In other district games Clyde's boys beat Santa Anna, 54-22; and Cross Plains downed Early, 62-40.

In girl's action Early won, 48-28, over Cross Plains, and Santa Anna defeated Clyde, 44-40.

Clyde and Cross Plains boys now lead with clean slates and Santa Anna and Early girls remain undefeated.

EASTLAND NATIONAL BANK "On The Square" MEMBER F. D. I. C.

Your United Fund \$7159. A vertical bar chart showing a scale from \$1000 to \$8000. The bar reaches the \$7159 mark.

Check Your Choice For U. S. Senator. List of names: JIM WRIGHT, WILLIAM BLAKLEY, JOHN TOWER, WILL WILSON, HENRY GONZALES, ARTHUR GLOVER, CHESTER BROOKS, MAURY MAVERICK. Now Go Pay Your Poll Tax So You Can Vote For Your Favorite April 4. (Jan. 31 Is Final Deadline)

Eastland Telegram

Eastland County Record established in 1931, consolidated August 31, 1961. Chronicle established 1887, Telegram established 1928. Entered second class matter at the Post Office in Eastland, Texas under the Act of Congress of March 3, 1879.

TIMES PUBLISHING COMPANY

Published Tri Weekly—Tuesdays - Thursdays - Sundays
Onous Dick and Joe Dennis, Publishers
Virgil E. Moore, Editor

One week by carrier in city 15
One month by carrier in city 65
One year by mail in County 2.95
One year by mail in state 4.95
One year by mail out of state 6.95

NOTICE TO PUBLIC—Any erroneous reflection upon the character or reputation of any person, firm or corporation which may appear in the columns of this newspaper will be gladly corrected upon being brought to the attention of the publishers.

CLASSIFIED

Cards of Thanks charged for at rate of \$2.00 Each

Misc. For Sale

FOR SALE: Television, record player combination. Good condition. No antenna. Call MA 9-1171.

FOR SALE: Snack Place and fixtures. Rent building. Quitting business for other interests. Phone MA 9-2546 or MA 9-1973 or come by 810 W. Plummer.

FOR SALE: Five room house on pavement. 175 foot lot. \$3,200. Ben Hammer.

FOR SALE: Shade trees. 1/2 price. Bill Hunter, Rushing Motors.

FOR SALE: Almost new automatic washer. \$75.00. Phone Norman Guess, MA 9-1033 or MA 9-1545.

WANTED: Responsible party with good credit in this area to assume attractive balance on a small upright piano; also one spinet piano and a nice mirror type piano. Wright Mack McBrayer Piano Company, 1313 E. Main.

FOR SALE

1957 Electric caddy, cream color, \$350.00.

1958 Electric caddy. Completely reconditioned, repainted with new batteries, \$500.00. These carts have good chargers.

1957 Electric caddy repainted, reupholstered, charger needs repair and old batteries, \$300.00.

1957 Electric caddy, repainted and new upholstery. Good batteries, year old, with good charger \$400.00.

1958 Cushman with six new batteries and top. Good heavy duty charger, \$400.00.

1959 Cushman, new battery and top, good charger, \$400.00.

Two 1960 Cushman with tops good chargers, good batteries, \$550.00 each.

1956 Fairway Kind. New paint used batteries, \$300.00.

Two Fairway Kings with new batteries and new paint, completely overhauled. These are ready for some good service. \$400.00 each. James V. Dixon, 610 NE 7th Andrews, Texas. Phone 32216 at night.

FOR SALE: 40 pigs and shoats 13 sows. 1 registered boar. Lee Coates. Phone 2154, Carbon.

FOR RENT: Two bedroom house. 1413 South Seaman. Call Basham Beauty Bar.

FOR RENT: Three furnished apartments. Close in. Bills paid. Couple or single person preferred. Phone MA 9-2613.

FOR RENT: 4 room modern furnished apartment. Call MA 9-1062

FOR RENT—Five room house call Everett Plogman, Corner Drug.

FOR RENT: Lovely apartments, with living, dining, bedrooms and kitchen, furnished or unfurnished at very reasonable rates. Also comfortable single rooms with tiled baths for only \$39.50. No stairs to climb, elevator equipped. Delicious food in our coffee shop and steam heated for really warm and comfortable living. Maid service is always included. Throw away your cares and high expenses and come live with us. The Village Hotel, Mrs. Robinson, manager—call me today, MA 9-1716.

FOR RENT: Furnished or unfurnished 2 bedroom apartment in Duplex. 611 Plummer.

FOR RENT: Small furnished house. Apply 612 West Patterson.

Real Estate

FOR SALE: I have several real bargains. Three bedroom homes. Good financing. M. A. Treadwell Sr. Phone MA 9-2017.

FOR SALE: Large 2 bedroom home. See at 1208 S. Seaman. By owner. Phone MA 9-1085.

FOR SALE: Five room house, bath, back porch. New carpet. Might consider renting to right party. 502 S. Seaman, Claud Hammett.

FOR SALE: New three bedroom home, two baths, excellent location. See by appointment only. Phone MA 9-2518.

FOR SALE: Two bath, two bedroom house on Oaklawn. Central heating, large lot, double garage. Call after 5 p.m. MA 9-2321.

FOR SALE: House 305 South Neblett.

FOR SALE: Four room house sleeping porch. Four lots. \$1750.00. Phone 2531, Olden after 5 p.m.

FOR SALE: Five room house to be moved. Located northwest Eastland. Contact B. H. Courtney. Phone MA 9-1340.

FOR SALE OR RENT: Five room house between 200-300 block on Dixie Street. Sunshine Laundry, MA 9-8812.

FOR SALE: Two large bedroom rooms. Easily made three bedrooms on two lots on corner. Reasonable. Phone MA 9-1412.

FOR SALE OR TRADE

House with 6 lots, \$1500; House with 6 lots, \$1850. Located on North Oaklawn in Hillcrest Addition. See T. L. Fagg or Ph. MA 9-2619 or S. D. Beggs, Star Rt., Carbon. Ph. 2546.

SINGER

New Sewing Machines \$59.50 up
Vacuum Cleaners - \$49.50
Floor Polishers - \$29.95
Rentals by week or month

Service All Makes
Phone MA 9-2084
D. L. Morton
Representative

Special Notice

NOTICE: Oil field construction work. Setting tank batteries, pipe lining and connection work. Phone H. C. Montgomery, MI 7-3417, Ranger.

NOTICE: Let me break and (or) own your land. Contact B. H. Courtney, Main 9-1340.

Eastland Masonic Lodge No. 467

Reg. Stated meetings 2nd Thursday of each month, at 7:30 p.m.
H. C. Pounds, W. M.
L. E. Huckaby, Secretary

NOTICE: Nursing, will care for elderly patient in private home. Prices reasonable. Call HI 2-2367, Cisco.

"Now On the Square"

KELLAR'S FIX-IT SHOP
202 South Seaman
We Do All Types of Minor Repairs at Competitive Prices.

See Me For Your Real Estate Needs

Will Be Glad To Suit You
M. A. TREADWELL, SR.
Phone MA 9 2017

PIANO TUNING AND REPAIRING

G. W. Collum
former band teacher of Eastland

Write 1425 Victoria
Abilene, or call locally
MA 9-2507

T. L. FAGG REAL ESTATE

Property Management
Home and Farm Loans

Misc. Wanted

HELP WANTED: Woman to prepare noon meal, wash dishes. Phone MA 9-2118.

ARTHRITIS?

I have been wonderfully blessed in being able to return to active life after suffering from head to foot with muscular soreness and pain. Most all joints seemed affected. According to medical diagnosis, I had Rheumatoid Arthritis, Rheumatism and Bursitis. For free information write:

MRS. LEIA S. WIER
2805 Arbor Hills Drive—516
P. O. Box 2695
Jackson, Mississippi

FOR SALE

1959 Olds 98, four door, hard-top, full power, air conditioner, A-1 in every way.

Priced for quick sale . . .
\$2,475.00

FOR SALE

If you hate gas pumps you better buy this one — 1959 Opel station wagon. Air conditioned. Only 9,000 actual miles. Original price \$2,690. Our price—

\$1,650.00

MUIRHEAD MOTOR CO.

301 W. Commerce
Eastland

EXCEPTIONAL OPPORTUNITY
Reliable man or woman from this area to distribute complete line of cigarettes, candy, nuts, or gum through new automatic vendors. No selling, we will establish accounts for you. To qualify party must have car, references, a cash capital of \$900 which is secured by inventory. Excellent earnings part time—Full time more. For personal interview give phone, etc. Write P. O. Box 156, Rochester, Minnesota.

MATTRESSES

Renovating
Remaking
Box
Springs

EASTLAND MATTRESS AND SPRING CO.
306 East Main Street

New in Eastland but not new in the business; 12 years experience. We are making a special get acquainted offer: Your cotton mattress converted to innerspring only \$22.95, reg. \$26.95. Cotton mattress made like new, only \$10.95. For information call your slumber number: MA 9-2131.

One Day Service
Pick Up and Delivery

LEGAL NOTICE

THE STATE OF TEXAS:
COUNTY OF EASTLAND:
NOTICE OF SALE OF REAL ESTATE

By virtue of an order of sale issued out of the 28th District Court of Travis County, Texas, on a judgment rendered in said Court on the 25th day of October, 1960, in favor of the United

MAJESTIC THEATRE

LAST TIMES TODAY
Audi's 60c - Child 25c
FRIDAY & SATURDAY

THE 3 WORLDS OF GULLIVER
In SUPERDYNAMATION
KEVIN MATHEWS
JO MORROW
JUNE THORNBURN

Adults 60c - Child 35c
SUN. - MON. - TUES.

Where the Boys Are
COLUMBIA PICTURES presents
A COLUMBIA RELEASE

Adults 60c - Child 25c

Gala "Screwball" Midnite Show!
SATURDAY, JAN. 21st — 11:30 P. M.

WACKY IS THE WORD FOR IT!
COLUMBIA PICTURES presents
JACK LEMMON **RICK NELSON**
The **WACKIEST SHIP** in the **ARMY**
CINEMASCOPE AND EASTMAN COLOR

NOTICE: The Majestic Theatre will not be responsible for busted buttons due to excessive belly laffs!!!!

LET'S ALL GO! ALL SEATS 90c

RANGER DRIVE-IN

Boxoffice Opens 6:45 — Show Starts at 7:00
Adults 50c—Kiddies Under 11 Free
Only Eastland County Drive-In Open All Year
THURSDAY - FRIDAY - SATURDAY

...the night people who live and love while the city sleeps!

The Subterraneans
TODAY'S STRANGE YOUNG REBELS!
LESLIE CARON
GEORGE PEPPARD
JANICE RULE - RODDY McDOWALL

FREEVUE EVERY SATURDAY NITE
SUNDAY - MONDAY - TUESDAY

ALL THE YOUNG WOMEN WILL LOVE 'ALL THE YOUNG MEN'

ALAN SIDNEY LADD **POITIER**
ALL THE YOUNG MEN

Presenting **JAMES DARREN** **GLENN CORBETT** **MORT SARR** **ANA ST. CLAIR**
and **INGEMAR JOHANSSON** in his first big role! Written, Produced and Directed by HALL BARILETT

Federal Life Insurance Company v. B. D. Watkins, Jr. and W.J.W. Investment Company in the case styled United Federal Life Insurance Company vs. B. D. Watkins, Jr. and W.J.W. Investment Company, being Cause No. 10,000, docket of such Court, I did on the 13 day of January, 1961, at 9 o'clock A. M. levy upon the following described tract and parcel of land situated in the County of Eastland, State of Texas, as the property of the said B. D. Watkins, Jr. and W.J.W. Investment Company, to-wit:

All that certain lot, tract or parcel of land lying and being situated in the Town of Ranger, Eastland County, Texas, known and described as Lot No. Three (3) and the East Thirty-Five Feet (E. 35 ft.) of Lot No. Two (2), Block No. Twenty One (21), of the Original Town of Ranger, Eastland County, Texas, known commonly as the Gholson Hotel property, together with all improvements thereon situated;

and on the 7th day of February, 1961, being the first Tuesday of said month, between the hours of 9:00 o'clock A. M. and 4:00 o'clock P. M. on said day, at the Courthouse door of said County, call offer for sale and sell at public auction, for cash, all the right, title and interest of the said B. D. Watkins, Jr. and W.J.W. Investment Company in and to said property.

If such property cannot be found, or should the proceeds of said sale or sales be insufficient to satisfy said judgment, interest and costs of suit, and the further costs of execution and sale then out of the property of the said B. D. Watkins, Jr., subject to execution there will be made said money or any balance thereof remaining unpaid.

Dated at Eastland County, Texas, this 13 day of January, 1961.

Lee Horn
Sheriff of Eastland County, Texas

ATTEND THE CHURCH OF YOUR CHOICE EACH SUNDAY

STRICTLY FRESH

Experience is what make a fellow who makes the same mistake twice from admitting it the third time around.

Overheard by the water cooler: "Gure I'm neurotic. It's the only normal thing about me."



WHAT CAN I BUY FOR A NICKEL?

One of the few benefits of this inflationary era is that a kid can't get sick on a nickel's worth of candy any more.

The trouble with political jokes is that sometimes they get elected.

The best super salesman we've ever heard about is the fellow who sold two milking machines to a farmer with only one cow—and then took the cow as down payment.

ATTEND THE CHURCH OF YOUR CHOICE EACH SUNDAY

McGraw Motor Comp

CARS DODGE—STUDEBAKER Parts and Service

661 South Seaman

Table with TV schedules for Channel 9 (KABC, Abilene) on Thursday and Friday.

CHANNEL 4 (KRLD, Dallas)

Table with TV schedules for Channel 4 (KRLD, Dallas) on Thursday and Friday.

CHANNEL 11 (KTVT Fort Worth)

Table with TV schedules for Channel 11 (KTVT Fort Worth) on Thursday and Friday.

CHANNEL 5 (WRAP, Fort Worth)

Table with TV schedules for Channel 5 (WRAP, Fort Worth) on Thursday and Friday.

CHANNEL 8 (WFAA, Dallas)

Table with TV schedules for Channel 8 (WFAA, Dallas) on Thursday and Friday.

FOR COMPLETE AUTO

ALL MAKES AND MODELS OFFICIAL INSPECTION STATION

ALLEN AUTO REPAIR
AT RUSHING MOTOR CO.
215 SOUTH SEAMAN

For Good Looking You Can't Beat TV Cable

Community Television

'Call today and get five channels tomorrow

Village Hotel



Quality, Cash Savings plus *S. & H.* Green Stamps!

Prices Effective Thursday, Friday and Saturday — Limit Rights Reserved

GIANT TIDE CHUNK TUNA

America's Favorite
Detergent, 10c off label!

Giant Pkg.
(Net)

59¢

3 1/2's
Cans **79¢**

WOLF CHILI Plain, No Beans

Big No. 2 Can Just **59¢**

SWEET POTATOES

Homefolk Whole **2** No. 3 Squat Cans **49¢**

SMOKED HAMS

Swift's Premium,
Smoked, 14 to 18 Lbs. Avg.
High in Quality...
Low, Low in Price!

Shank
Portion
Lb.

39¢

Half or Whole Hams Lb. **49¢**

Ham Center Slices Lb. **99¢**

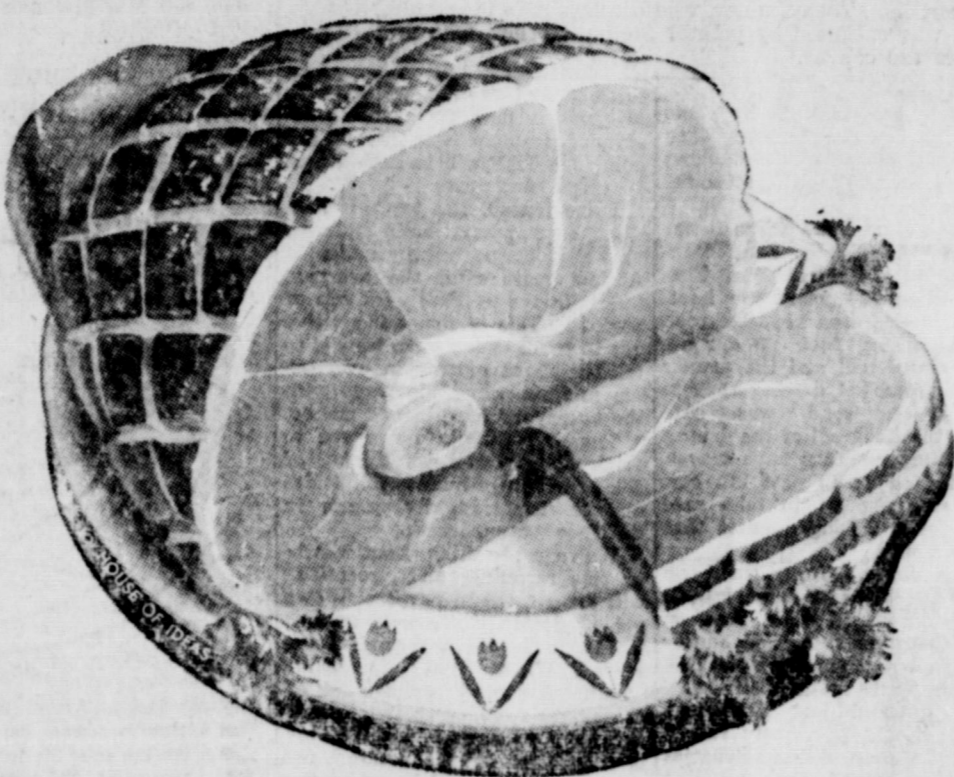
Willsbury's New, Improved COOKIES MIXES

Crunch • Orange • Gold • White
Spice • Chocolate Fudge
Dutch Devil's Food

Match **3** Pkgs. **1⁰⁰**

ALMONDS Lb. Pkg. **29¢**

CHERRIES 12-oz. Pkg. **45¢**



Feast your eyes on Freezer Buys!

Banquet
Meat Pies Chicken, Beef or Turkey

5 8-oz. Pkgs. **1⁰⁰**

Simple Simon Pumpkin or Mince, or
Libby's Fruit Pies

Family Size Pkg. **39¢**

Libby's Frozen
Sliced Peaches

5 10-oz. Pkgs. **1⁰⁰**

Leaf or Chopped
Libby's Spinach

8 10-oz. Pkgs. **1⁰⁰**



Finest Quality Meats!

Premium Bacon Swift's Sliced Lb. Pkg. **55¢**

Frankfurters Hormel's "Dairy" Brand Lb. Pkg. **49¢**

Premium Bologna Swift's Sliced Lb. **49¢**

Cocktail Shrimp Peeled, Deveined, Gulf Princess 12-oz. Pkg. **99¢**

Pork Sausage Tennessee Farm "Whole Hog" **2** -Lb. Roll **1¹⁹**

Morgan's Red, Sour, Pitted
Pie Cherries **2** 303's Cans **39¢**

Hunt's
Stewed Tomatoes **2** 303's Cans **35¢**

Assorted Flavors
Red Heart Dog Food **6** 1-Lb. Cans **79¢**

Texasun
Orange Juice **3** 46-oz. Cans **1⁰⁰**

Niblets Golden, Whole Kernel
Corn or Mexicorn **3** 12-oz. Cans **49¢**

or Match!

Your Choice!

Mix or Match!

CHOPPED BROCCOLI
BLACKEYED PEAS
CORN, Cut or Cream
WHOLE BABY OKRA
BEANS, Libby's Cut or French

5 Pkgs. **1⁰⁰**

Famous "Libby's" Brand
• CORN-ON-TH COB, 2 ears
• LIMA BEANS, Baby or Fordhook
• SLICED STRAWBERRIES

Mix or Match **4** Pkgs. **1⁰⁰**

• JEAN'S FROZEN ROLLS (24's)
• WOODY'S CORNY DOGS, 2's
• WOODY'S PECAN PIES, 2's
• ONION RINGS, Taste O'Sea

Your Choice **4** Pkgs. **1⁰⁰**

Cocktail Tacos 28 or More Per Package 11-oz. Pkg. **49¢**

Finest Fruits & Vegetables

HAMANGES Texas, Sweet, Juicy Hamlins **5** -Lb. Cello **39¢**

WESAP APPLES Washington State Extra Fancy Lb. **19¢**

WEARS Washington Extra Fancy Lb. **19¢** **SWEET POTATOES** East Texas Lb. **15¢**

CELERY Crisp and Crunchy Stalk **12¢** **CRISP CARROTS** California, In Cello **2** 1-Lb. Pkgs. **29¢**



Colgate
Tooth Paste Economy 69¢ Tube **53¢**

Pepsodent "Life-Line"
Tooth Brushes Reg. 89¢ Value **63¢**

Antiseptic
Listerine Reg. 59¢ 7-oz. Botl **44¢**

CLIP AND SAVE!
Redeem This Coupon for EXTRA
50 Free S & H Green Stamps
with Purchase of 2 1-Lb. Pkgs. Taste O'Sea
(2) OCEAN PERCH
Void After Saturday, January 21, 1961—Limit One

CLIP AND SAVE!
Redeem This Coupon for EXTRA
50 Free S & H Green Stamps
with Purchase of 10-oz. Decorated Tumbler
Big Top Peanut Butter
Void After Saturday, January 21, 1961—Limit One

CLIP AND SAVE!
Redeem This Coupon for EXTRA
100 Free S & H Green Stamps
with Purchase of Grip-Kote
6-MONTHS FLOOR WAX
Void After Saturday, January 21, 1961—Limit One

CLIP AND SAVE!
Redeem This Coupon for EXTRA
50 Free S & H Green Stamps
with Purchase of 5-Lb. Ctn.
LIGHT CRUST FLOUR
Void After Saturday, January 21, 1961—Limit One

CLIP AND SAVE!
Redeem This Coupon for EXTRA
50 Free S & H Green Stamps
with Purchase of 8-Oz. Botl.
Wishbone Italian Dressing
Void After Saturday, January 21, 1961—Limit One

Moore About-

(Continued from Page One) now where they will find one.

Near Verse: A man should never tear his hair When jilted by his lady fair. She isn't apt to be enthralled

The lease bit more if he is bald. That's it for now.

ATTEND THE CHURCH OF OUR CHOICE EACH SUNDAY

See Us For FURNITURE • APPLIANCES CARPETS Every Day Low Prices Means Savings For You! No carrying charges on furniture for 1 full year FREE DELIVERY Ranger Furniture Exchange "BRASHIER'S" 123 N. Rusk Ranger Phone MI 7-1404

it's saving REGULARLY... that's important Saving part of the EXTRA money that comes your way — gifts, bonuses, dividends, and so on—is a fine idea. But it's those FEW dollars taken out of EVERY paycheck and put to WORK in an insured savings account here that really mount up. Try it and see. You won't need a "windfall" to get the things you want, when you've saved for them! First Federal Savings & Loan Association of Ranger 204 Main Ranger, Texas Phone MI 7-1611



FINGER PAINTING MASTERPIECE—Some critics say this painting is just being palmed off as art. Others, including its owner, Mrs. Thea Tanner, who displays it in Stockholm, Sweden, think it's great. The piece was executed by painter Stellan Morner, who first pressed his hands in paint, then onto the canvas.

Gray Matter-

(Continued from Page One)

to do. We merely voted to hot top the existing roads. We didn't intend for the highway boys to take an acre or two on every farmer's farm to put in a curve. It was not the purpose of farm to market roads to see that all curves would accommodate traffic at 60 miles an hour.

The purpose of farm to market roads was to get the farmer out of the mud in wet weather and out of the dust in dry weather. This could have been accomplished a lot cheaper than it was accomplished.

And there is not need of taking in so much right of way to put in a highway as the Texas Highway Department takes in most cases. It's getting to be a standing joke that a man can't walk across a Texas highway right-of-way between sun-up and sundown without using a horse the right-of-way are so wide.

Right here in Eastland County at the old Central School traffic to Cisco on Highway 80 we have the unusual situation of a cemetery within the confines of the right-of-way.

And by the way, the highway department is negligent in keeping up the fences around this highway. We ought to all write a letter or two to Austin demanding that something be done about maintaining fences on this cemetery as that's part of the plan.

I guess in a few more years the highway men will want to move the graves but if I'm around when that time comes they're going to get an argument out of me on that.

In rebuilding the Cisco-Moran road all they had to do was repave the existing road instead of replanting the road. If by some foolish change the highway men think that road isn't engineered safe and sound they've got something to learn.

At one time Lake Cisco dance hall was the biggest den of iniquity in all of Central West Texas, or about 20 years the bootleggers in this area kept the road hot delivering their wares to the dance hall and the drunks kept the road hot driving back to Cisco. If that road was safe enough to handle all of the drunks and bootleggers that have traveled it in the years past it's certainly safe enough to take care of the sober driving done in that vicinity today.

Every dime being spent on routing the highway around Lake Cisco is a wasted dime. And on top of that they've spoiled one of the best parks and picnicking areas in Texas with their lousy highway mound just like the State of Texas previously ruined one of the best fish hatcheries when they closed the one just below Cisco dam.

So, when it comes to rerouting Highway 6 over Walnut, I say no. They will have to set the curbs back to close to the homes along the street, cut down far to many trees (remember it takes as long to grow a tree as it does to grow a highway engineer and the tree is a lot prettier) and ruin the value of too much home-owner property along Walnut.

If by chance I should be selected to sit on a jury to fix the condemnation value of piece of property involved in one of these suits I'd make it dagblamed expensive for the highway department that the people would rise in righteous wrath demanding that the highway people cease this foolish business of rerouting every highway that comes along.

From a military standpoint the highway system is worthless. In case of an invasion it would be of as much value to enemy as it would be to our own troops. General Omar Bradley proved that to the Germans in World War II. We made better use out of the German autobands than the Germans did.

From need, rerouting of highways is foolish in most instances. I drove to Carbon Sunday afternoon and met one car in 10 miles. That's not enough traffic to justify rerouting a highway that has stood the test of time for 40 years. And for 40 years it didn't have an expensive over pass over the T&P Railway. We don't need one now that the railway doesn't have enough traffic to more than barely keep the rails from rusting. In the days this road was first built the T&P was a busy railroad. There haven't been any wrecks at all lately on this inter-

section. And even if we were to overpass it now we have no assurance that the way things are going the T&P will be in business 10 years from now.

Drive from Dallas to Corsicana. That road passes over an overpass that has no railway under it. A few years after the overpass was built the railroad went out of business. This is something we've got to think about when we get talking about putting in overpasses and rerouting highways with the taxpayers' hard-earned money.

These are things we've got to think about when we think of slicing off huge hunks of hillsides and leaving unsightly gashes in the face of our earth.

We've got to think about whether this rerouting and re-cutting will serve a useful purpose. We've got to decide if there is enough traffic to justify the expense involved. We've got to decide whether we need to have all of the curves rounded so that a half acre of good farm or pasture land is taken out of production for useless purposes and is put to the only existence of helping hold the earth together.

Militarily our highway system is for the birds anyway. This so-called limited access business the boys are now building didn't allow for enough clearance to get the equipment up and down the line we'll need if we have to move missiles over our highway system, so we can forget about it being of any military value whatever.

Thus the only purpose a highway system can be will be as a means to enable one car or truck to move from one point to another. We have been doing a pretty good job of that as it is, if the highway department will keep up the pavement.

Instead of rerouting Highway 6 the department could do something worthwhile by repaving it right where it is, but put down some paving that won't crumble the first time a truck comes rumbuling down the lane.

Closely- Continued from page One "Therefore," the IRS representative advised, "use the 1040A that came in the mail unless your income bracket has changed to make use of the simplified form impractical."

MATTRESSES Save up to 50% renovating. choice of color and firmness. Complete bedding. Made and guaranteed by WESTERN MATTRESS CO., San Angelo. Phone MA 9-2689, Eastland and leave address.

WEEKLY CROSSWORD PUZZLE Breed of Canine

Here's the Answer

1 Depleted breed of canines 2 This was developed in Mexico 3 Assault 4 Top of the head 5 Stimuli 6 Energize 7 Nuisances 8 Worms 9 Senior (ab.) 10 Musical note 11 Weep 12 Lettuce 13 Negative reply 14 Area measure 15 Symbol for cerium 16 Lines (ab.) 17 Through 18 Irish god of the sea 19 Symbol for tantalum 20 Old (br.) 21 Mountain nymph 22 Full 23 Prayer 24 Ascended 25 Learning 26 Adversary 27 Sables (ab.) 28 After-dinner sweets 29 SPINEL 30 Spindles of yarn 31 Flowers 32 Mother of Pearl

Continued from page One "Therefore," the IRS representative advised, "use the 1040A that came in the mail unless your income bracket has changed to make use of the simplified form impractical."

MATTRESSES Save up to 50% renovating. choice of color and firmness. Complete bedding. Made and guaranteed by WESTERN MATTRESS CO., San Angelo. Phone MA 9-2689, Eastland and leave address.

WEEKLY CROSSWORD PUZZLE Breed of Canine. Includes a crossword puzzle grid and a list of clues for a 'Breed of Canine' puzzle.

Pete Jameson Leads A&M Team To Judging Win

A. M. (Pete) Jameson, son of Mr. and Mrs. A. M. Jameson of Ranger won high individual honors in the collegiate wool judging contest held at the National Western Stock Show in Denver, Colo. Jameson had a score of 533 points in the contest and led his Texas A&M College team to top honors in the wool judging contest in the show. The Texas A&M team won over some of the nation's top rated agricultural colleges such as Montana State, Colorado State, Kansas State and Utah State.

Jameson also took second high individual honors in hog judging, although the A&M team failed to place in this event.

Jameson is a graduate of Ranger High School.

ATTEND THE CHURCH OF YOUR CHOICE EACH SUNDAY

Is Change-of-Life Making You Only Half a Woman?



Too tense too tired to be a real companion to your husband? Special women's medicine can relieve "hot flashes", weakness, nervousness... then you can enjoy life fully again! Has change-of-life left you so weak you feel only "half" alive? Suffocated by "hot flashes", constantly tense... so you can't be an affectionate wife and mother? Don't despair! Lydia Pinkham's Compound can relieve both tension and physical distress! In doctor's tests, Pinkham's gave dramatic help—without costly shots! Irritability is soothed. "Hot flashes" subside. Then most women can go "smiling through" change-of-life without suffering! If change-of-life has left you only "half" a woman, get Lydia E. Pinkham's Vegetable Compound from druggists. See how fast you can feel "all woman" again!

SLEEP 8 HOURS—WAKE UP TIRED? When due to simple iron-deficiency anemia, take Pinkham Tablets. Rich in iron, they start to strengthen your blood in one day!

Call MA 9-1707 for Classified NOTICE Due to the illness of Mr. McGraw our service department is closed. Mr. T. V. Cox will be on hand to help you with parts and car sales. We would like to take this opportunity to thank our friends and customers over the years for their patronage. McGRAW MOTOR COMPANY MR. AND MRS. LARRY McGRAW

You don't have to be dependent after age 65! Investigate SOUTHLAND SENIOR-CITIZEN Cash-A-Day HOSPITALIZATION Call me today for details on this exciting protection plan! M. H. PERRY 167 W. Main Office Ph. MA 9-2275 Res. Ph. MA 9-1095 Southland Insurance

SOMETHING NEW FOR EASTLAND E. O. D. WATCH FOR DETAILS IN THIS NEWSPAPER

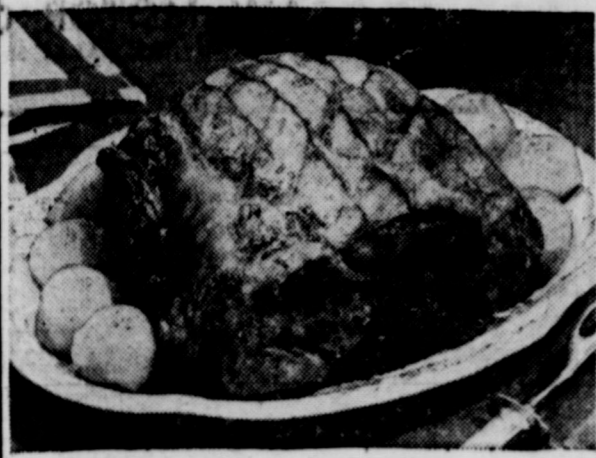
"THE MIGHTY MIDGET" THE WANT AD WHO DO THE Job for You For Just 7 You can run a seven word classified ad in this newspaper for THREE times. In this day and time that's really a bargain. Phone MA 9-1707 Eastland Telegram



Can you think of an easier way to save? When you join the U.S. Savings Bond Payroll Savings Plan, you save automatically... without even thinking about it. Is there a savings plan that's easier? Here's how it works: notify your employer that you want to join the Payroll Savings Plan. Tell him the amount you want to save each payday. He'll set aside your savings from your check and deliver your U.S. Savings Bonds. Make it easy on yourself—save the Payroll Savings Bond way where you work. The U.S. Savings Bonds you buy now pay 3 1/2% interest to maturity—and keep on earning for 10 years after maturity. What's more, you invest without risk under U.S. Government guarantee! You save more than money with U.S. Savings Bonds The U.S. Government does not pay for this advertising. The Treasury Department thanks for their patriotic donation, The Advertising Council and

SAFEWAY is the place for variety:

to Bake

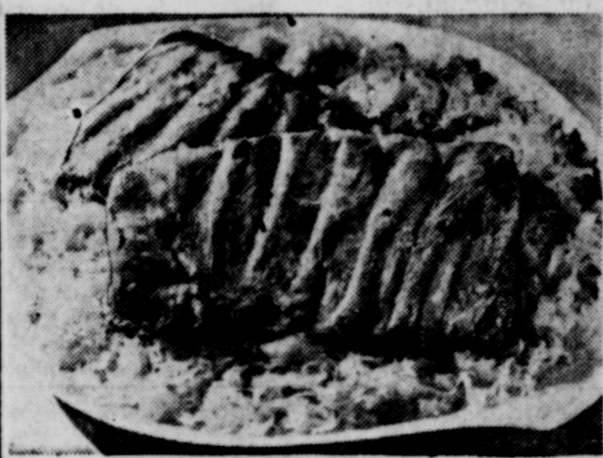


Smoked PICNICS

29¢

Full of fresh pork flavor. Delicious served with yams. 6-8-Lb. Average. Whole.

to Simmer



Spareribs

49¢

Pork — Small and lean. 1 1/2-3-Lb. avg.

Swift Franks

49¢

Or Safeway. Valuable 5¢ coupon in Swift's Franks.

Safeway Special Buys!

Salad Dressing

Piedmont — Made Fresh! Sold Fresh! Quart Jar 39¢

Pinto Beans

Town House — Nutritious and economical, too. 2-Lb. Cello 23¢

Edwards Coffee

All Grinds. (2-Lb. Can ... \$1.18) 1-Lb. Can 59¢



Red Potatoes

10.49¢

U. S. No. 1 — Ideal all purpose potatoes. Economical and easy to serve so many different ways.

Red Rome Apples

15¢

Texas Yams

2 Lbs. 25¢

Anjou Pears

1-Lb. 19¢

Brussels Sprouts

8-Oz. Pkg. 25¢

Turnips

2 Lbs. 25¢

Peaches

Sundown Elberta free-stone. Irregular pieces. 3 No. 2 1/2 Cans 69¢

Green Peas

Or Cut Whole Kernel Corn. Bel-air Frozen. 3 10-Oz. Pkgs. 59¢

Cookies

Nabisco Chocolate Pinwheel. Perfect for snacks. 12 1/4-Oz. Pkg. 47¢

Kleenex

Aqua, White, Pink or Yellow Facial Tissues. 400-Ct. Box 25¢

Del Monte Juice

3 46-Oz. Cans 89¢

Detergent

Safeway White Magic. For pride and praise. Giant Box 55¢

Del Monte Spinach

7 No. 303 Cans 89¢

Austex Chili

3 No. 300 Cans 89¢

Austex Tamales

4 No. 300 Cans 89¢

Canned Chicken

3 1/4-Lb. Can 89¢

Aluminum Foil

2 25-Ft. Rolls 69¢

Deviled Ham

No. 1/2 Can 21¢

Starkist Tuna

6 1/2-Oz. Can 33¢

Morton Salt

2 26-Oz. Boxes 25¢

Sunshine Cookies

9 1/2-Oz. Box 29¢

Florient Deodorant

5 1/2-Oz. Can 69¢

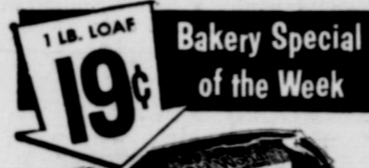
Shop Safeway for the finest quality meats.



Serve Fresh Eggs and Bacon!

Grade 'A' Eggs Breakfast Gems, Grade 'A' Quality, Large Size. Doz. 55¢

Large 'AA' Eggs Cream of the Crop, Grade 'AA' Quality, Large Size. Doz. 59¢



Regular 25¢ value.

Shylark Old World BLACK BREAD

French Rolls Shylark Poppysed. 10 1/2-Oz. 22¢

French Bread Shylark — Foil Wrapped. 1-Lb. Loaf 25¢

Donuts Cook Book Miniature Pkg. 39¢

SAFEWAY

to Fry

FRYERS

U.S.D.A. Inspected for wholesomeness and grade "A." Selected for superb quality eating pleasure. Plump, tender and juicy. Whole. Ready-to-cook.

Lb. 29¢

Pork Sausage

2.69¢

Wingate. Regular or hot.

Round Steak 89¢

U.S.D.A. Choice Grade Heavy Beef. "Naturally Aged." Full cut.

Armour's Bacon 55¢

Or Poppy Sliced. A truly breakfast treat.

Sandwich Bags Zee — Handy for packing lunches. 30-Ct. Pkg. 10¢

Liquid Vel Detergent Pink. 12-Oz. Bottle 35¢

Vel Detergent For washing clothes. Large Box 32¢

Ad Detergent Jumbo — For automatics. 10 Lb. Box \$2.29

Fab Detergent (20¢ off label.) King Size \$1.99

Vel Beauty Bar So gentle to the skin. 2 Reg. Bars 39¢

Palmolive Soap Pink. So nice to the skin. 2 Bath Bars 27¢

Palmolive Soap Pink. Makes bathing so nice. 3 Reg. Bars 29¢

Safeway Bargains!

Campbell's Soup Tomato. No. 1 Can 10¢

Melrose Crackers Perfect with soup. 1-Lb. Pkg. 19¢

Ice Cream Snow Star — Vanilla, Chocolate, Strawberry or Neapolitan. 1/2-Gal. Ctn. 59¢

Safeway Detergent Scampar Pink Liquid. 2 22-Oz. Cans 89¢

Ballard Biscuits Sweetmilk or Pillsbury buttermilk. 3 8-Oz. Cans 29¢

French Dressing Kraft. Pint Bottle 41¢

Pork & Beans 89¢

Blackeye Peas or Mexican Style Beans. 10 No. 300 Cans

Fruit Cocktail 89¢

Safeway Town House. Five delicious fruits. 4 No. 303 Cans

Safeway Tuna 89¢

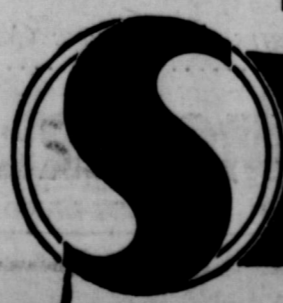
Sea Trader — Chunk light meat. 4 6 1/2-Oz. Cans

Peach Jam 49¢

Or Apricot Jam. Sheeta Pure. 2-Lb. Jar

SAFEWAY Gives those Valuable GOLD BOND STAMPS

Your nearest redemption center is 443 Walnut St., Abilene



SAFEWAY

Conveniently Located to Serve you at 504 E. Main, Eastland

© Copyright 1966 Safeway Stores, Inc.

Mangum WMU Members Attend Meeting Monday

The Women's Missionary Union of the Mangum Baptist Church met Monday at 2 p.m. in regular session.

Mrs. Lee Coates, president, called the meeting to order followed by the song "Jesus Loves Me" led by Mrs. Lee May. Mrs. R. L. Campbell offered the opening prayer.

Rev. B. L. May, pastor of the church, was present to teach the Bible study. He chose Luke 10:38-42 which was quite inspiring. Prayer was then given by Mrs. Pierce Murphy followed by an inspirational and self-searching talk by each member.

The meeting was closed with

prayer by the president, Mrs. Coates. It was announced that the Royal Service program will be held Monday at 2 p.m. in the church.

Attending were the following: Mimes R. L. Campbell, Lee Coates, B. A. May, Floyd McBee, G. E. Clower, E. R. Wood, Pierce Murphy, G. C. Flaherty and one visitor, Rev. May.

LETTERS TO THE EDITOR

Dear Mr. Moore,

Thank you for putting my meaning of Christmas in the paper. We are very proud to have publicity from South Ward. We enjoy hearing things about all schools in Eastland.

Your friend,
Tania Faircloth

Speedy Breakfast For Teen-Agers



"I like something that I can eat in a hurry," a teen-ager commented and her mother agreed. The answer? An orange flavored cereal nog with honey bran muffins. It takes just 5 seconds to whirl the cereal nog and the muffins are ready to eat just as fast! Such a speedy breakfast provides one-fourth of the recommended amounts of calories for a teen-age girl and one-third of the protein allowance.

If your teen-age daughter refuses to eat breakfast because she "doesn't have time," encourage her to try a cereal nog with muffins. It's quick, refreshingly different, and makes a good contribution towards meeting her daily nutritional requirements. During September—the 10th Anniversary of Better Breakfast Month, encourage your teen-agers to start each day with an adequate morning meal. They will feel better, work better, and be less fatigued throughout the entire morning.

Orange Cereal Nog

- 1 cup cooled cooked rolled oats, quick or regular, or cooled cooked hot whole wheat cereal, instant or regular
- 1 cup chilled orange juice
- 1 egg
- 2 tablespoons sugar
- 1/4 cup instant dry milk solids
- 1/2 cup chilled milk

Measure all ingredients into blender container. Blend about 5 seconds. If no blender is available beat until thoroughly mixed with hand or electric mixer. Chill if desired. Yield: 3 cups.

Hospital

Patients in the Eastland Memorial Hospital are the following:

Mrs. Pearl Noble, medical
Mrs. Eula Lanier, medical
Mrs. Lora Norris, medical
Randy Lee Burnham, medical
Mrs. Mae Edna Gattis, medical
James A. May, medical
Joe Huggins, Gordon, surgical
Barry Dale Adams, medical
Mrs. Willie Hardin, medical
Mrs. Margie Bagget, medical
Frank Vaughn, medical
David Walker, medical
Joyce Murray, and baby boy
R. P. Sneed, medical
A. V. Gilmors, medical
Mrs. Lilly McClelland, medical
Lovell Brown, medical
Miss Sandra Lasater, medical
Mrs. Nettie Parten and baby boy, Cisco
Mrs. Maxine Lowrance and baby girl
Mrs. Senta Squires, Ranger,

surgical
Mrs. Mary McCoy, medical
Mrs. Lois Meazell, medical
Frank Hernandez, accident
C. C. Cooper, Cisco, medical
Mrs. Mary Shipman, medical
Mrs. Nancy Jones, medical
Mrs. Annie Hunt, Ranger, medical
E. M. McCoy, medical
Mrs. Kate McCallum, medical
Mrs. Wessie Mae Johnson, surgical
Bert R. Kent, Olden, surgical
Mrs. Ina Edwards, medical
Patients dismissed were
Mrs. Frances Zernial, Mrs. Lillian Stephenson, L. C. Walker, Mrs. Novie Pafford, Raymond L. Matthews, Dean Collins, Mrs. Minnie Crosby, and Mark Allen Kleiner.

GO TO CHURCH SUNDAY

LUMBER FOR SALE

ALL KINDS

Flooring — hardwood flooring — 2x4; 2x6; 2x12; shiplap; steel beams; all types of plumb brick; building tile.

Tearing down old school building on Church of Camp Grounds west of City—starts Monday — salesman on job — bargain prices.



TELEPHONE TALK

by Arthur H. Marx, Jr., Manager

TELEPHONE IMPROVEMENTS FOR EASTLAND IN '61

As we move into the second year of the "Soaring Sixties," many of us in Eastland are busy with new plans for next year. The year ahead is always a new challenge... A new opportunity for each of us to do a better job.

Our job at the telephone company is to continue providing you with ever-improving telephone service.

One way of improving your telephone service is to offer you a wider range of things that make telephone service more convenient and enjoyable. Examples are the new Princess phone, color phones, wall phones, and the new home interphone now being introduced.

Another way is to expand the communications network, improve its quality, make it more efficient and trouble-free. Here are some of the improvements planned for Eastland:

1. We plan to replace some exchange open wire lines with cable.
2. Some lines will be raised over city streets to provide additional street clearance.
3. Some of the older exchange cables will be replaced with new cable.
4. Our present cable air pressure program will continue.

In 1961, we'll not only give you better service but we'll do it more efficiently. This is important, because greater efficiency helps fight inflation.

Our ability to achieve greater efficiency—through technical advance in the telephone business, innovations and new methods—helps make it possible for us to give you, at reasonable rates, telephone service that grows better year after year.

IMPORTANT NEW FILM ON NATIONAL DEFENSE

How safe are we from an enemy missile attack? A new color film, "Seconds for Survival," produced by the Bell System, offers a dramatic and positive answer.

The film, which is being offered for showings at church, school, civic, and business group meetings, is narrated by Raymond Massey and shows how the United States defense network guards against enemy attack.

Would your group or club like to see this movie? If so, just call the telephone business office to make arrangements. There's no charge, of course. I hope you can see it soon.

Call by number. It's twice as fast.

SOUTHWESTERN BELL TELEPHONE COMPANY

Mrs. Heckendorn Hosts CWF Members At Meeting Tuesday

The Lydia Group of the Christian Women's Fellowship of the First Christian church met Tuesday at 2:30 p.m. in the home of Mrs. Ray Heckendorn.

Mrs. J. W. Watson, group chairman, called the meeting to order after which Mrs. Heckendorn gave the opening prayer.

During the business session, Mrs. Watson announced plans of the bake sale to be held in the church annex Friday, Jan. 27. She also announced that the Lydia group will be hostesses to the monthly fellowship supper Friday at 6:30 p.m. The important meeting will be followed by fellowship and supper. All are urged to attend.

One new member, Mrs. George Saelee, was welcomed into the group.

Mrs. Watson presented an interesting lesson, "The Bread of Life," assisted by Mrs. Heckendorn.

The hostess served cherry pie and coffee to Mrs. Saelee, Watson, Dornhecker, Guy Robinson, Miss Sallie Day.

Four of the members were unable to attend due to illness. Cards were sent to Mrs. N. T. Johnson, N. L. Smitham, E. A. Beskow and Daisy Patterson.

The next regular group meeting

will be held Jan. 30 in the home of Mrs. Watson.



Freshest taste in toast!

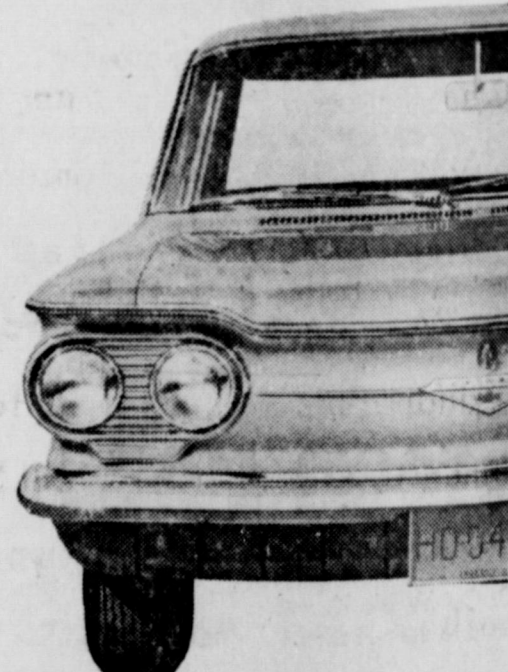


We thank you for...

THE BIGGEST YEAR IN CHEVROLET CAR HISTORY

featuring

AMERICA'S POPULAR PAIR



The best selling **CHEVROLET** & The "car of the year" **CORVAIR!**

Overwhelming acceptance of the new 1961 models introduced last fall—together with the tremendous success of the '60 Chevrolets—has sent Chevrolet passenger car sales to an all-time yearly high. More new Chevrolets and new Corvairs were delivered to more people during the past year than ever bought any make of car in a single year before. We and your Chevrolet dealer

thank you for your continuing confidence in, and preference for, Chevrolet. Your record-breaking purchases of Chevrolets have significance to everyone thinking of buying a new car this year, and—since sales of new 1961 Chevrolets and Corvairs continue at record-breaking levels—are a healthy indication of the inherent strength and vigor of our national economy.



See the new Chevrolet cars, Chevy Corvairs and the new Corvette at your local authorized Chevrolet dealer's

FULLEN MOTOR COMPANY

305 E. MAIN

EASTLAND

PHONE MA 9-2676

Pay Your **Poll Tax NOW!**

January 31 is The **LAST DAY** for Payment. **POLL TAX IS NOT** Included In Your Statement

Tax Collector


Eastland County

J. C. Allison

Call MA 9-1707 for Classified Ads -

Clearance Sale Now On

GIGANTIC JANUARY SALE



SAVE 20%

Silf Skin
GIRDLES & PANTIE GIRDLES

Now, during January only... save 20% off regular prices on Silf Skin's girdles that are knit from one continuous strand of the finest elastic yarn. Wonderful control... yet soft as a powder puff next to your skin. You'll love the look of you... the feel of you in Silf Skin! **SAVE NOW!**

regularly \$8 to \$12.95
NOW \$3 to \$7.95

WARELIKS INC



AROUND RANGER COLLEGE CAMPUS

By Ranger College Journalism Class

Personality of the Week
By Theodore Yap
Of the many personalities of the week that the Ranger College Journalism Class has presented, Pat Blakely, known to his friends as "Goggles," is one of the most interesting.

The son of Mr. and Mrs. Clyde Blakely of Seagraves, Texas, Pat graduated from Seagraves High School in 1958 and then came to Ranger College. From the time that he was in the sixth grade, he was interested in football, and he continued playing through high school. He was captain of high school team, and during this time his team won more football games than Seagraves High School had ever won. He was a letterman for

three successive years in high school and for another two year in college. He was captain of the 1959 Ranger College football team, and he was named on the All-Texas Conference team and received Honorable Mention of the All-Texas Junior College Team named by the Dallas Morning News.

Besides being a football star he was president of his class for three years in high school and was also an officer in several clubs, among which was Future Teacher of America, of which he was district president. This year he is secretary-treasurer of the sophomore class in Ranger College.

Well liked, Pat has a keen sense of humor and a ready wit. He is a tall, well-built athletic type with a quick mind.

Dancing, reading, and having fun with the group are his hobbies. He sings and tap dances and also plays the guitar and piano. Any kind of popular music is his favorite. His favorite entertainer is the Kingston Trio. An avid reader, his reading interests are wide and varied.

As to his future plans, Pat has not decided anything yet. But one thing he is sure of—he is going to finish his college education.

Sub-Deb's To Sponsor Bake Sale Saturday

A bake sale will be sponsored by members of the Sub-Deb Club Saturday at 8:30 a.m. in the Safeway and Worth food stores.

Chances will be sold on a cake to be given away.

Proceeds from the sale will be used to buy club sweaters for the members.

VISITING

Mr. and Mrs. R. M. Nabors of Fort Worth are in Eastland visiting in the home of Mrs. Zinnah Bourland, 315 E. Garvin.

Majestic Theatre Eastland Friday and Saturday



Jo Morrow and Lee Paterson are the two lovers in "THE 3 WORLDS OF GULLIVER," a Columbia release in SuperDynamation and Color.

Mrs. C. W. Boles Presides at WSCS Meeting Held Tuesday

The Woman's Society of Christian Service of the Methodist Church met at 2 p.m. Tuesday in the church parlor with Mrs. C. W. Boles, president, presiding. The meeting was opened with prayer by Mrs. A. E. Cushman. A short memorial service was conducted by Mrs. W. F. Davenport in memory of Mrs. Frank Castleberry, a member of the Society and a Circle leader.

Mrs. Taylor Smith introduced Mrs. John Smith of Strawn, president of the Woman's Society of Christian Service of the Cisco District. Mrs. Smith spoke on "The Beginning of New Things." She emphasized the new phases of the Quadrennial 1960-1964.

The district president announced the annual W.S.C.S. meeting at Polytechnic Methodist Church in Fort Worth which will be held March 21-23. The District meeting will be held in Olney on March 3.

Mrs. Roberts of Strawn accompanied Mrs. Smith.

A tea hour was held with Mrs. C. W. Boles, Taylor Smith, O. O. Mickle and Frank Deaton as hostesses.

The Circles will meet next week at 2 p.m.; Castleberry Circle with Mrs. A. F. Taylor and the White Circle with Mrs. O. M. White. All members are urged to attend.

Regular Meeting Of Las Leales Is Held Monday

Las Leales members met Monday in the Woman's Club for a brief business meeting with Mrs. Homer Smith, president, presiding.

Mrs. M. S. Day, hostess for the evening, presented Mrs. J. T. Gregory who presented the program on "How to Make or Break a Habit." The interesting discussion brought facts on how to distinguish between good and bad habits. She stated that we should learn to distinguish between habits and addictions and that one should be the master, not the slave, of habits. Also that habits can be priceless possessions but not when they possess you.

Mrs. Sandra Shelton played the recording "The Testing Time," a Paul Harvey selection.

Present were the following: Mmes. Wayne Cato, J. M. Cooper, Opal Cross, Maurice Dry, J. T. Gregory, H. L. Hassell, D. L. Kinney Jr., Carroll Shelton, Wendell Siebert, Homer Smith, J. C. Whately, James Horton and Miss Gladys Green.

Social Calendar

Thursday, Jan. 19

3 p.m.—The program of the Thursday Afternoon Club meet will be led by Mrs. Milburn Long assisted by Mmes. Sayre, Young and Kinnaird.

2 p.m.—Mrs. Genoa Brown will host members of the Flatwood Home Demonstration Club at their regular meeting.

12 noon—Mrs. T. E. Castleberry will host a covered dish luncheon for members of the Pioneer Club. Each is asked to bring his place setting.

Monday, Jan. 23

7:15 p.m.—The Melody Makers Junior Music Club will meet for their regular session in the home of Marcella and Patsy Slaughter, 207 S. College.

7:30 p.m.—The Oddfellow Lodge will hold their regular meeting in the IOOF Hall.

7:30 p.m.—Mrs. Hassell will be hostess at the regular meeting of Las Leales Club when the program will be "American Vista."

7:30 p.m.—Mrs. Jerry Leslie will host members of the Xi Alpha Zeta Chapter when Zeta Pi Chapter will be guests.

Tuesday, Jan. 24

7:30 p.m.—Members of the Rebekah Lodge will meet in the IOOF Hall for the regular meeting.

2 p.m.—Circles of the WSCS will meet.

Wednesday, Jan. 25

12 noon—The Civic League Spring luncheon will be held in the Woman's Club. For reservations call MA 9-2507. Reservations must be made by Monday.

2 p.m.—The Morton Valley Home Demonstration Club will meet in the clubhouse for their regular meeting.

Eastland Co. H. D. Council Meeting Is Held Recently

The Eastland County Home Demonstration Council met recently in the Texas Electric conference room.

The meeting was called to order by the new chairman, Mrs. Clint McCain. Business in general was discussed and the T.H.D.A. chairman reported that the State meeting would be held in Temple.

Rules were then revised, read and voted that they would be accepted. Mrs. Bela Tucker was appointed as council reporter.

TIME

to choose your new home today! Choose your new home from our picture plans, choose your lot, and your color scheme today! It costs no more to get first choice in our new three bedroom homes. We are ready to build on Conner street! Veterans still nothing down, non-veterans only \$350 down and payments like rent!

Why throw away rent dollars every month? Pay your rent dollars on your own home and create a savings for your family. See or call us today. We arrange all of the financing and red tape. No obligation, of course.

Village Homes
Suite 210 - Village Hotel
Don Pierson - MA 9-1033
Norman Guess - MA 9-1545

WE'RE MOVING!

DALTON'S MOBIL STATION

IS NOW LOCATED AT
302 WEST MAIN
NEXT DOOR TO PIPKIN MOTOR CO.

We urge customers who have been served by J. D. EARLEY to continue trading at their favorite MOBIL Station. And, of course, we invite all our friends and customers to visit us in our new location.

J. D. EARLEY
WELLS DALTON, Owner

SINCERE THANKS for your Friendship

AND YOUR FAITHFUL PATRONAGE

It has been a rare privilege to serve our many customers and friends during the past years. We appreciate all of your kindnesses and urge you to continue to trade with WELLS DALTON, who we assure you will offer fine service.

J. D. EARLEY

Hamner Life Insurance Company
Ben E. Hamner, President

This company has been in operation in this section since 1942 selling policies to be used primarily for burial purposes. We write from \$100 to \$500 and our policies are paid in cash, which allows freedom in the selection of the Funeral Director of your choice.

Ages from 1 month to 90 years.

For further information come by to see us at
Hamner Funeral Home, 301 S. Lamar, Eastland
P. O. Box 431 Dial MAIn 9-2611

37 Years of Continuous Service—

... is a long-time record for any business or profession to achieve. But years without growth are wasted and growth without achievement is impossible. My, how we have grown these 37 years! So with renewed energy and with every modern facility to serve you, we approach the future with confidence and in the mood of a school boy when in all sincerity say to our many friends and customers "thank you" and Happy New Year.

EARL BENDER & COMPANY
Eastland (Insurance since 1924) Texas

It Pays to Advertise—

... and most business men do some of it. The impact of advertising on the American psychology is evident in many ways. While honest and truthful advertising is said to make people unhappy with what they have, it also creates a desire for goods and services which they need. We know that people need insurance every hour of the day and to make them conscious of that fact, and to save them world's of trouble, we advertise.

EARL BENDER & COMPANY
Eastland (Insurance since 1924) Texas

ALEX RAWLINS & SONS

Weatherford Phone LY 4-2726 Texas

Designers and Builders of Monuments Since 1884

SINCE 1884
... quality workmanship and efficient service, approved throughout this area.

January SPECIALS

FREE INSTALLATION ON ALL CARPETS

100% Wool Wilton 3-Ply Yarns Truly a fine carpet. Reg. 11.95.	Sq. Yd. 8.95
100% Wool - Hi Lo Pattern Tweed, Regular 7.95 Sq. Yd.	SPECIAL 6.95
100% Nylon - Beige Color Regular 6.95 Sq. Yd.	SPECIAL 5.40
70% Wool - 30% Nylon Beige or Beige Tweed, Reg. 6.95 Sq. Yd.	SPECIAL 5.40

We have several Roll Ends at SPECIAL PRICES - Bring your measurements and SAVE!

-USED-

We have a large selection of Living Room Furniture... many of better than average!
You must see to appreciate!
Prices Start at \$10.00 for 2-Piece Suite

RANGER FURNITURE EXCHANGE
123 North Rusk RANGER Phone MI 7-1404

January SALE

MEN'S CLOTHING ENDS

SATURDAY, JAN. 28th

James Smith
MENS SHOP
EASTLAND

ATTEND THE CHURCH OF YOUR CHOICE EACH SUNDAY

Helps Heal And Clean Itchy Skin Rash!

Zemo—liquid or ointment—a doctor's antiseptic, promptly relieves itching, stops scratching and so helps heal and clear surface skin rashes. Buy Zemo Strength Zemo for stubborn cases!

Insurance and Real Estate

D. L. KINNAIRD

Life - Fire - Auto - Farm
Polio - Bonds

42 years in the Insurance Business in Eastland

Save Money



Good Solid Retreaded Tires

9⁹⁵ EXCHANGE

Size 750 or 800 x 14
670 or 710 x 15

Larger Sizes Slightly Higher

JIM HORTON

Tire Service

East Main St. MA 9-1420
Eastland, Texas

Apple Slices Are Fine With Mixed Cheese Dip

BY DOROTHY MADDOX

Ever serve "applesnacks"? They are crisp slices of red Delicious apples for the nibbling tray served with an interesting three-cheese dip. Friends in the State of Washington gave us this idea.

Three-Cheese Dunk

One cup cottage cheese, well drained, 1 cup grated cheddar cheese, 2 ounces bleu cheese, mashed, 2 tablespoons mayonnaise, 1 tablespoon horseradish, 1 teaspoon prepared mustard, 1/2 teaspoon Worcestershire sauce, 3 green onions, finely chopped, 1/2 teaspoon salt, 1/2 teaspoon celery salt, pepper.

Blend cheeses together. Add remaining ingredients. Pile in bowl. Serve with crisp, fresh apple slices.

Then from California came this salad recipe:

Belvedere Salad

(4-6 generous servings)
Three-quarters cup macaroni, 1 cup ripe olives, 1 (6 1/2-ounce or 7-ounce) can tuna, 2 hard-cooked eggs, 2 cups finely shredded cabbage, 1/2 cup mayonnaise, 2 teaspoons prepared mustard, 2 tablespoons vinegar, 1 teaspoon salt.



Dunking apple slices in a dip made of three cheeses will please guests as a meal appetizer or snack idea.

Drain oil from tuna, and flake coarsely. Dice eggs. Combine macaroni, olives, tuna, eggs and cabbage. Blend mayonnaise, mustard, vinegar and salt, and toss lightly with salad mixture.

ABOUT YOUR HEALTH

A staggering 11.7 billion dollars are spent for meals outside of the home each year in the United States among more than 200,000 eating places including restaurants, cafeterias, lunch counters and hot dog stands according to Texas Restaurant Association estimates.

The food service industry now ranks fourth among all American industries accounting for billions of dollars in buildings, equipment and payrolls each year.

Estimates place the number of eating establishments in Texas around 12,000 to 13,000.

Assuring safe standards and quality of this vast amount of food service in the responsibility of food inspectors operating under local ordinances.

Generally local ordinances are based on minimum standards and recommendations set by State and national health authorities who keep abreast of latest developments in the food handling industry.

Education is the keynote of safe food handling practices in local areas.

Local health departments conduct foodhandling courses aimed at instructing foodhandlers in safe methods of food service—ranging from the right way to wash glasses to the proper temperature for storing lettuce.

For areas not served by a local health department or maintaining their own food service course, the State Health Department's Public Health Education Division maintains a team of highly trained foodhandling instructors who travel about the State conducting varying population.

These three-day courses are directed toward every phase of food service, but concentrate on safe and sanitary handling of various kinds of food which need special care and attention.

The major rule is: hot things, hot; and cold things, cold.

The urgency for proper sterilization of utensils is also stressed and the various bacteria responsible for the majority of food poisoning are described and identified.

Understanding and appreciating the danger existing in food contaminated with bacteria organisms enables the food handler to conscientiously guard against them for the better health of his customers. (A weekly feature from Public Health Education Division, Texas State Department of Health.)

national health authorities who keep abreast of latest developments in the food handling industry.

Education is the keynote of safe food handling practices in local areas.

Local health departments conduct foodhandling courses aimed at instructing foodhandlers in safe methods of food service—ranging from the right way to wash glasses to the proper temperature for storing lettuce.

For areas not served by a local health department or maintaining their own food service course, the State Health Department's Public Health Education Division maintains a team of highly trained foodhandling instructors who travel about the State conducting varying population.

These three-day courses are directed toward every phase of food service, but concentrate on safe and sanitary handling of various kinds of food which need special care and attention.

The major rule is: hot things, hot; and cold things, cold.

The urgency for proper sterilization of utensils is also stressed and the various bacteria responsible for the majority of food poisoning are described and identified.

Understanding and appreciating the danger existing in food contaminated with bacteria organisms enables the food handler to conscientiously guard against them for the better health of his customers. (A weekly feature from Public Health Education Division, Texas State Department of Health.)

national health authorities who keep abreast of latest developments in the food handling industry.

Education is the keynote of safe food handling practices in local areas.

Local health departments conduct foodhandling courses aimed at instructing foodhandlers in safe methods of food service—ranging from the right way to wash glasses to the proper temperature for storing lettuce.

For areas not served by a local health department or maintaining their own food service course, the State Health Department's Public Health Education Division maintains a team of highly trained foodhandling instructors who travel about the State conducting varying population.

These three-day courses are directed toward every phase of food service, but concentrate on safe and sanitary handling of various kinds of food which need special care and attention.

The major rule is: hot things, hot; and cold things, cold.

The urgency for proper sterilization of utensils is also stressed and the various bacteria responsible for the majority of food poisoning are described and identified.

Understanding and appreciating the danger existing in food contaminated with bacteria organisms enables the food handler to conscientiously guard against them for the better health of his customers. (A weekly feature from Public Health Education Division, Texas State Department of Health.)

national health authorities who keep abreast of latest developments in the food handling industry.

Education is the keynote of safe food handling practices in local areas.

Local health departments conduct foodhandling courses aimed at instructing foodhandlers in safe methods of food service—ranging from the right way to wash glasses to the proper temperature for storing lettuce.

For areas not served by a local health department or maintaining their own food service course, the State Health Department's Public Health Education Division maintains a team of highly trained foodhandling instructors who travel about the State conducting varying population.

These three-day courses are directed toward every phase of food service, but concentrate on safe and sanitary handling of various kinds of food which need special care and attention.

The major rule is: hot things, hot; and cold things, cold.

The urgency for proper sterilization of utensils is also stressed and the various bacteria responsible for the majority of food poisoning are described and identified.

Understanding and appreciating the danger existing in food contaminated with bacteria organisms enables the food handler to conscientiously guard against them for the better health of his customers. (A weekly feature from Public Health Education Division, Texas State Department of Health.)



IT'S THE LAW in Texas

A public service feature of the State Bar of Texas

Legal Checkup is Safety Measure
Legal trouble is easier and cheaper to prevent than to cure.

Most wage earning, childbearing, home-buying, installment paying families don't see much need for a family lawyer.

Often under prodding, one may get a lawyer to write a will.

But can you tell a big legal risk from a small one? Can you spot the signs of legal trouble? Check with your family lawyer when:

1. Your status changes: upon coming of age, marriage, the birth of your children, buying a house, divorce or death. For you may then need to draft or revise your will, change your insurance, or re-figure your taxes.

2. You buy or sell. Look out for flaws in the papers before you go into debt, part with money, or sign anything involving big expenditures or long term obligations.

3. You enter into other contracts. Promise, spoken or written bind you if they call for a "consideration", something of value in return.

4. Someone threatens your rights. The law exists to defend them but with some rights you must take action yourself for them to work for you.

When you can bring your lawyer "live" facts (e.g. unsigned contracts, vexing tax returns you haven't filed), he can do much for you, and at a smaller cost than when you bring him "cold" facts (mistakes you have made which threaten trouble).

But above all, get both live and cold facts to him at once. For time may run out in many such situations. Your lawyer may be able to do something for you today, which he cannot do tomorrow.

Tell your lawyer what you want. Tell him all the facts, good or bad, and then keep him informed all along. He is sworn to keep what you tell in confidence and he cannot serve you well without full knowledge.

(This newsfeature, prepared by the State Bar of Texas, is written to inform—not to advise. No person should ever apply or interpret any law without the aid of an attorney who is fully advised concerning the facts involved, because a slight variance in facts may change the application of the law.)

Spring Luncheon To Be Held by Civic League Wed

The first in a series of four Civic League and Garden Club spring luncheons will be held Wednesday in the Woman's Club.

The Wednesday luncheon will feature palatable dishes of Germany. Each will be sold at the usual rate of \$1.25 per plate. Mrs. Wendt will cater the luncheon.

Reservations for the luncheon must be placed with Mrs. Varge Daniel at MA 9-2507 not later than noon on Monday. There will be no telephone solicitations.

There must be at least 40 reservations for the luncheon or an announcement of cancellation will be published.

VISITS IN EASTLAND AND RISING STAR

Mr. and Mrs. Tom Sharp and Tommie June of Olden visited in Eastland Sunday with Mr. and Mrs. Glen Gray and Russell. Later in the afternoon they visited in Rising Star with Mr. Sharp's father, Jim Sharp, and his sister and family, Mr. and Mrs. Bob Duggan.

NEWS FROM DESDEMONA

Rex Bailey is here this week visiting his mother, Mrs. Minnie Bailey.

A bridal shower was given for Mr. and Mrs. Earl Wayne Whitlock Saturday night at the school here. The young couple received an array of useful and beautiful gifts.

Mrs. Ethel May returned home Monday from the Gorman hospital where she has been a patient for almost a week.

Mrs. Lora Abel was in Valley Mills to attend the funeral of an uncle, Dee Duckworth.

Mrs. Nora Lane is spending this weekend in Eastland with her mother, Mrs. Amanda Rogers, who has been a bed patient for many months.

Mrs. Buna Abernathy returned home Saturday after spending a week at San Angelo with her son, Mr. and Mrs. Melvin Abernathy.

The Rob Guthery family of Irving spent Sunday with his parents, Mr. and Mrs. Roy Guthery. Mr. and Mrs. Charles Nicks of Mineral Wells spent the weekend here with her parents, Mr. and Mrs. J. D. Mc Masters.

The Dentelemans and children of San Angelo spent the weekend here visiting the Atlas Griffiths and the Jess Griffiths.

The H. T. Lanes were in Stephenville Sunday to attend the Golden Wedding anniversary celebration held in the home of Mr. and Mrs. Tommie Maxwell honoring Mr. and Mrs. Marvin Apple. Both men were former Magnolia employees and once lived here.

Mr. and Mrs. Blackie Foreman and children of Benbrook spent Sunday here with her parents, Mr. and Mrs. A. F. Lewis.

Mr. and Mrs. J. P. Quinn of Goldsmith were here over the weekend visiting his parents, Mr. and Mrs. Joe Quinn.

Mr. and Mrs. Steve Regian and children want to take this opportunity to send thanks to the people of this community who had a part in filling the large grocery boxes that was needed and welcomed by the whole family.

Mr. Regian is a patient in the Ranger General Hospital for an indefinite period of time.

Visiting with Ethel Keith Sunday afternoon were Mr. and Mrs. Fred Newton of DeLeon.

Mrs. Stell Joiner, Mr. and Mrs. Robert Abel and Larry Bob, and Mrs. Vernell Myers all visited with Mr. and Mrs. Hugh Abel over the weekend.

Attending the church of your choice each Sunday

Now! Gillette Adjustable Razor 9 Settings for Superb Shave

NOW \$1.95

READ THE CLASSIFIEDS

OPEN FOR BUSINESS

B&B GARAGE

C. E. CHANEY — BO HOOD

307 West Commerce Phone MA 9-2631

NEUHOFF LONE STAR THICK SLICED BACON

THE BIGGEST Values IN TOWN!

...and WE'VE got them!

MINUTE MASHED POTATOES 6 1/2 Oz. Box **19c**

CONCHITO GREEN BEANS 2 3/4 Oz. Cans **29c**

PRICES GOOD THROUGH SATURDAY, JANUARY 21

Picnics lb. **33c**

FRESH PORK Liver lb. **29c**

VELVEETA Cheese 2 Lb. Box **95c**

ARMOUR'S STAR SLICED Bacon lb. **55c**

ZEE TISSUE 4 Roll Pkg **33c**

YELLOW BOW DRIED APRICOTS 8-Oz. Bag **39c**

Everyone Loves SWEETHEART FLOUR 5 Pound Bag **39c**

Snowdrift SHORTENING 3 Pound Can **69c**

TEXAS Oranges 5 Lb. Bag **39c**

RUSSET Potatoes 10 Lbs. **59c**

ASCAL Celery Lge. Stalk **17c**

STAR-KIST CHUNK LIGHT TUNA

WAPCO Red Sour CHERRIES Pitted 30 Oz. Can **25c**

ARMOUR'S STAR SLICED Bacon

STAR-KIST CHUNK LIGHT TUNA

CHILI SUGAR WOLF BRAND BIG #2 Can **59c**

STAR-KIST CHUNK LIGHT TUNA Regular Can **29c**

PANTRY BRAND PINTO BEANS PRICED FOR SUPER SAVINGS 2 Pound Bags **25c**

WHITE SWAN INSTANT COFFEE 6-Oz. Jar **69c**

Maryland Club Coffee REGULAR GRIND 1 Pound Can **65c**

Miracle Whip Salad Dressing Quart Jar **49c**

PORK SAUSAGE lb. **39c**

MacMoy Super Save Home Owned-Home Operated 400 S. Seaman

CHILI CON-CARNE pound **39c**

SEE INAUGURATION and PARADE

In RCA Victor Color

Friday - 10:30 a.m. to 4.00 p.m.

ROBERTSON

T. V. SALES AND SERVICE
South Side of Square

HAMNER FUNERAL HOME

Ben E. Hamner, Owner

Serving Eastland County since 1924 with ambulance and funeral service. Our ambulances are oxygen equipped and air conditioned.

Through our nation-wide connections with other funeral directors, we can handle a funeral from any point in America. We offer this service knowing that we can relieve the family of all burdens incident to any death away from home.

Eastland Dial MA 9-2611

VISIT US IN OUR NEW HOME

RCA Victor TV

Many Models to Choose From

RCA Radios

TV AND RADIO REPAIR SERVICE

All Work Guaranteed to Please

SOUTH EAST CORNER OF SQUARE
ROBERTSON RADIO & T. V.
Phone 9-1625

NOTICE FRESH DRESSED FRYERS and Fresh Dressed Hens

At The Plant
PHONE MA 9-1200

WALKER Dressing Plant

FURNITURE for the Entire Home

★ **Carpet - Rugs All Prices**

★ **Be Sure To Check With**

Coats FURNITURE