



Pecan Show Set to Open



Services Held For Mrs. Dabney

Mrs. Maude Spence Dabney, age 90, passed away Tuesday morning in a Gainesville, Texas, hospital after a short illness. Mrs. Dabney was a resident of a Gainesville nursing home at the time of her death.

Funeral services were held Wednesday, December 3, at 2:00 p.m. in the Bakker Funeral Home Chapel with Minister Gary Adams officiating, assisted by Minister Hub Lewis. Burial will follow in the Eastland Cemetery under the direction of Bakker Funeral Home.

She was born Maude Spence Feb. 21, 1885, in Linden, Texas. She married Allen D. Dabney in Rising Star, Texas, in 1905. Judge Dabney preceded her in death in 1963.

Mrs. Dabney was prominent in Eastland church and club work prior to leaving Eastland in 1969. She was past president of the Eastland Civic League

and Garden Club, and the Eastland Music Study Club. She was also recognized statewide as an artist, and in particular her work in oil painting and china painting, and in the 1920's and 1930's was in demand as a judge of these arts throughout the state.

She was a lifelong member of the Church of Christ and until recently was active in women's activities of the church.

She is survived by three sons, Allen Jr. of Lubbock, James of Eastland, and Thomas of Gainesville; two daughters, Mrs. Melvin C. (Geraldine) Sullivan of Dallas, Miss Wanda Lynn Dabney of Abilene; one brother, E.T. Spence of Longview; two sisters Mrs. Cleo Frost of Kilgore and Mrs. Mattie Kate Harkrider of Austin; seven grandchildren and five great-grandchildren.

Pallbearers were Judge Earl Conner Jr., and grandsons.

Pecans in all forms will be on display at the Eastland County Courthouse Friday and Saturday, Dec. 5 and 6. They will be displayed in both the natural state and in baked goods, reports County Extension - Agents De Gordon and Janet Thomas. These items will also be sold to those who wish to buy. Growers will have pecans to sell throughout the show. Both shelled and unshelled pecans will be sold as the displays are taken down at noon on Saturday. The event will be the 23rd annual Eastland County Pecan Show and Bake Show sponsored by the Eastland Chamber of Commerce and the Eastland County Pecan Growers Association. The show will be held in the first floor lobby of the courthouse.

James Wright, Chamber of Commerce Manager, says visitors will see some of the best quality pecans in Texas as well as prize pecan pies, cakes, candies, nut bread and cookies. These items will also be sold when the show is over. A third feature will be a display of centerpieces using pecans in various forms.

Wright stated that parking meters will be sacked Friday and Saturday for the big event. He encourages everyone in the county and surrounding areas to come and see the Pecan Show Friday and Saturday.

The Home Demonstration Club members will operate a concession where coffee and food will be sold.

Plaques will be given for the Champion In-Shell Pecans, the Champion Shelling Pecans, the Champion Native Pecans and rosettes will be awarded to Reserve Champions. Ribbons will be awarded to the first, second and third place entries of each variety. In addition ribbons will be given for the largest pecans and the smallest pecans.

Dan Childress, president of the County Pecan Growers Association, estimates that about 200 entries of top quality pecans representing over 40 different varieties will be on display. Each entry consists of at least 40 pecans. They must have been grown in 1975 by the person entering the pecans in the show. All entries of pecans must be entered by 5:00 p.m. Thursday.

The Pecan Bake Show will feature five youth and adult divisions: pies, cakes, candy, nut bread, and cookies. All

entries must contain pecans in the ingredients. Entries of candy and cookies must have at least eight pieces to be accepted by the judging committee.

The baked goods and centerpieces must be entered and in place by 11:00 a.m. on Friday, December 5, when the judging will begin.

Judging for the pecan show will be done Friday afternoon by Dr. Earl Puls, Texas A&M University Extension Horticulturist and Mr. Lynn Copeland, Extension Resource Development Specialist.

Members of the Eastland Chamber of Commerce will help process pecan entries for the pecan show.

Visitors are welcome to attend the show at any time. The agents said that Saturday morning would be an excellent time to see the displays since all the judging will be complete and ribbons will be displayed with the winners.

FFA Chapter Participates In Award Banquet

Several members of the Eastland FFA Chapter accompanied vocational agriculture teachers Don Griffin and Charles Hutto to Hamilton to participate in the Cross Timbers District FFA Awards Banquet December 1.

Members attending were voting delegates Mike Simmel and Clyde Henson.

Susie Carter, FFA Sweetheart of the Eastland Chapter, participated with 16 other young ladies in the sweetheart contest.

Laurah Johnson received an engraved plaque for winning first place in district and area competition in ornamental horticulture. This was part of her supervised project program for last year.

John Hill received a plaque for District Star Greenhand for last year. This award goes to an outstanding first year vocational agriculture student with an excellent project program and leadership activities.

Les Atkinson, district star chapter farmer, will receive his award at the Oil Belt District banquet for his last year's work at Eastland. The Star Chapter Farmer is also based on outstanding project programs and leadership activities.

E.H.S. Basketball Teams To Compete In Stephenville Tournament This Weekend

Eastland High School basketball teams will be competing in the Stephenville Tournament this weekend beginning Thursday, as the frenzied cage season gets into full swing.

It was a 2-of-3 night in Ranger Monday as the Mavericks continued their winning ways, 48-27.

The Mavericks lost a close one, 48-43 to the Bulldogs. Boles was high for Eastland with 12, and Pinkerton lead the Mavericks with 27.

The Eastland JV Boys won 47-28.

Games Tuesday night will be in Gorman.

Thursday night the Junior High School Seventh Grade will be in Rising Star.

In the local gym Monday night, the seventh grade girls defeated Carbon, 26-24, and the seventh grade boys lost to Carbon 17-14.



TOP ROW: Coach Bagwell, Doug May, Jerry Boles, Sylvester Wilson. Bottom: Lon Mahan, Doak Walker, Aaron Arnold, and Mark Pruitt.

EASTLAND			
J. Boles	5	3	4 13
D. Johnson	4	0	5 8
L. Mahan	1	2	2 4
S. Wilson	2	0	2 4
A. Arnold	1	0	0 2
B. Haun	1	0	5 2
R. Wharton	3	0	5 6
R. Sharp	2	0	1 4
Totals	19	5	24 43

RANGER			
Elson	6	6	0 18
Butler	1	4	3 6
Monroe	3	0	3 6
Johnston	0	0	3 0
Rogers	8	2	3 18
Totals	18	12	12 48

EASTLAND			
Boles	4	0	5 8
Johnson	4	0	1 8
Mahan	2	0	2 4
Sharp	1	0	5 2
Haun	2	0	3 4
Wharton	1	0	2 2
Wilson	5	0	1 10
Totals	19	0	19 38

GORMAN			
Maxfield	5	5	2 15
Laminact	1	0	0 2
Troutman	0	0	2 0
Marble	0	2	1 2
Gibbs	5	3	3 13
Arnold	2	2	0 6
Good	0	2	1 2
Totals	13	14	9 40

Boys			
Ranger	14	9	14 48
Eastland	6	12	14 48
Jay Rogers and Bruce Elson	18	21	28 96
Girls			
Ranger	10	3	9 27
Eastland	13	17	20 48
Carrie Gehlb 12 (R); Pinkerton 72 (E); Boys B - Eastland 47, Ranger 78.			
Boys			
Eastland	8	6	12 38
Gorman	10	4	10 48
Gooden and Johnson, 8 each, Eastland; Maxfield, 15, Gorman.			

Hamm New Member Of E.P.D.

Newest member of the Eastland Police Department is Albert Lewis Hamm, retired 20-year military man.

He replaces Richard Trail who reigned recently and has joined the Breckenridge Police Dept.

Hamm is a double-veteran: four year Marine Corps and 11 years Air Force. He retired from the Air Force as a Tec. gt. in 1970 and had lived in Wichita Falls for 15 years prior to moving to Eastland County some eight months ago.

A native of Carden, Okla., he attended grade and high school in Pueblo, Colo., and received his GED in the Air Force.

During his Marine Corps service he saw duty in Guam,

Marianas Islands, Okinawa, Ryukyu Islands and the occupation of China.

As an Airman he served two tours of duty in Korea, was in Iceland and Turkey. His decoration include WWIIVM, APCM, FGM w-5 Br. Lps. SAEMR, NDSMW-1 Bras, AFEM, AFPCM, w-2 Br. Oks, AFLSA - 4 BR. OLC.

He and his wife Rachael, who parents live in Cisco, live south of Eastland. They have one daughter, Mrs. Sherry Harris of Wichita, Kansas; two sons, David E. of Stephenville and Bruce D. of Wichita Falls, and a son, deceased.

They have five grandsons and a granddaughter.



DOLLAR DAYS all around Eastland Thursday, Friday and Saturday. Local merchants invite one and all to check the home front first. You'll like the values, the friendly faces and the gas-saving convenience.

SANTA IS due to visit Eastland Saturday, Dec. 13, and Saturday, Dec. 20. Make plans to be here.

A PLATE of Christmas candy from Dinah Wilson's Kitchen, a regular columnist here, proves without a doubt that the lady knows her way around the cook stove. The goodies vanished like magic when exposed to the Telegram staff.

OUR PLANT produced Volume One, Number One of the Electra City Reporter this week. Publisher is June Hicks (formerly June Tucker, daughter of Mr. and Mrs. Robert Tucker of Pleasant Hill) and her son, Jim, is editor of the brand new publication. Another column, the Dublin Progress, is surely doing a fine job giving the voters in that town all the information about the \$885,000 bond election to be held there Saturday for a multitude of civic improvements.

CHOIR, FIRST United Methodist Church, will be special entertainment program for members of the Eastland Rotary Club when they host their Annual Ladies Night Monday, Dec. 8, at the Ramada Inn. School Board President James Reid was program this week for the club at the Monday Ramada meeting when he discussed school board planning activities.

COUNTY TAX Assessor - Collector Nancy Trout reports that contrary to earlier reports that her office would be mailing out voter re-registration form this month, this will not be done. On the advice of the State Attorney General's office, re-sign-up will be done AT THE OFFICE after February 1, she reports.

IT MAY BE TOO LATE: But among the many things we need to write our congressmen about is the Highway Trust Fund: Congress Needs to Act! 18,900 Jobs at stake!

Many jobs could be on the line in 1976 if Congress fails to enact legislation to extend the Federal Highway Trust Fund.

In December, Texas will have obligated all federal highway money available for work on the State System, placing the state in a critical situation of future highway construction.

Thousands upon thousands of construction and construction-related jobs are at stake, not to mention the staggering blow Texas would suffer economically.

Do something about it - today!

Texas Faces a crisis in its highway development program!

Those close to the construction scene in Texas predict that highway construction will drop substantially beginning next January if the Congress does not act on extension of the Federal Highway Trust Fund and authorize appropriations for a continuing highway program.

They further predict that 18,900 jobs would be eliminated immediately in the highway construction industry in Texas.

Grandparents Brag Corner

Kristy 6 Months

PARENTS: Mr. and Mrs. Bill Jones
 GRANDPARENTS:
 Mr. and Mrs. Bobby G. Jones
 Mrs. Jerry Kuhn
 Mr. Frank E. Kuhn

LOCAL NEWS

The Eastland Gun Club will hold a Skeet Shoot this Saturday at 10 a.m. at the Gun Club Range north of town. The shoot will be for members and their guests.

The Eastland AARP Chapter voted at a meeting on Friday, Nov. 28, to hold regular meetings on the third Friday of every month at 7:00 p.m. in the First Christian Church annex. It was decided, however, to hold no meeting in December.

The EHS Student Council will hold a Talent Show Dec. 15 at 7:30 p.m. at the High School Auditorium. Everyone is invited to attend. All high school organizations will have an act. Admission - \$1.00 adults, and 50 cents students.

FREYSCHLAG
 Insurance
 WEATHER REPORT
 Fair Through Thursday. After-noon Highs Near 70.

FULLEN
 MOTOR CO.
 PUNCH LINE

Burglar: "The police are coming! Quick, jump out the window!"
 Accomplice: "But we're on the thirteenth floor."
 Burglar: "Do as I say. This is no time to be superstitious."



WHEN CHRISTMAS EVE rolls around, everyone knows Santa Claus is hard at work delivering presents. During the summer, however, the jolly old elf does just what everyone else is doing—he goes on vacation. When the Texas Tourist Council reporter located him at his North Pole workshop, Santa confirmed that he's definitely planning to visit Texas next year. "My work takes me all over the world," Santa noted, "so I guess you could call me an authority on travel. I've seen a lot of fine places, but when I go on vacation, I always head for Texas. Your State has just about everything!"

FOR SALE

FOR SALE--Model T bodies, frames and parts. Also Model T pickup in fair condition. Call 653-2405 or 629-1591, after 6 p.m. t-98

FOR SALE--1957 V8 Ford pickup, new paint job, practically new tires with mud grips, can be seen at 602 S. Daugherty after 4 and on weekends, 629-2370. t-1f

For Sale - Motor cross or trail bike. Yamaha 100. All new parts. \$225. See at 401 S Walnut. t-1f

FOR SALE--1973 Yamaha RD 250 Motorcycle. Loaded with extras. Call 629-1460. t-98

MOTORCYCLE FOR SALE
 1975 Honda CB 200. Less than 600 miles, perfect condition, still under warranty. Must sell to pay for new baby. \$750. Call 734-2546, Gorman. t-2

FOR SALE--Brick home, Crestwood Addition, 503 Oakwood, 629-2948. t-99

FOR SALE
 New Mobile Homes. FHA financing available. VA financing now available. Many models and sizes to choose from. Low down payment. Low monthly payments. Eastland Direct Factory Outlet, Olden, Texas. Office phone 653-2432 or home phone 629-2117. t-1f

FOR SALE--Frigidaire washer and Wards dryer, 4 years old, both copper-tone. \$125. Call 629-1055. t-1f

CUTE RED brick home in Ranger, three bedrooms, 1 1/2 baths, central heat and air, one car garage. Established yard, large living room with den-dining room combination, range included. Citizens Realty. 629-1769 or 629-8082. t-1f

TEXAS ALMANAC 1976 - 1977 just arrived at the Eastland Telegram, \$2.50. Get yours while they last. t-1f

HORSE FOR SALE--Gelding 8 years old. Good 4-H horse. Trained some for barrels. Call 629-8034. t-2

FAMILY GARAGE SALE--722 S. Dixie, Dec. 5-6, 9 a.m. to 5 p.m. New console stereo, electric self-cleaning range, antique buffet, portable sewing machine, men, women and children's clothing of all sizes. Complete line of woodcraft items and coin necklaces for Christmas, numerous misc. A sale you won't want to miss! t-97

FOR SALE: Real Clean 196 1/2 ton Chevrolet six cylinder pickup, \$495. Inquire at Beck Apts., north of Ranger Lumber and Supply. t-98

FOR SALE--Couch and chair \$125; reclining rocker \$10; 1 coffee table and end table set \$75; 1 coffee and end table set for \$65. Also new Maytag gas dryer \$200. 610 Walnut St., Ranger. Call 647-1155. t-1f

For Sale - 1970 Honda Motorcycle 175. Perfect condition for sell cheap. 629-1222. t-100

FOR SALE--62 Ford. Vinyl top, air, heater, radio. Bargain. 807 Halbryan, Eastland, Texas.

FOR SALE--Long Branch Polled Hereford Farm. Registered Bulls for sale and registered Durox - Bores. 817-249-1776. Will be at farm on weekends.

Sturdy 12' x 24' carport built on your lot for as little as \$350. See Dan Williams at 1100 W. Conner or call 629-2805. t-103

FOR SALE - Wichita Pecans. 75 cents lb. These pecans are soft shell with approximately 60 percent kernel. Dan Childress. 629-2958. t-1f

For Sale - 4 Dryer chairs in perfect condition. 629-1222. t-100

Hay for Sale. 734-2074 after 6 p.m. t-100

FOR SALE

NOTICE--For your aluminum storm windows, screens, doors, window awnings, and carports, call Otis Coleman, 629-1644. t-1f

HAY FOR SALE
 \$1.35 a bale, stacked in the barn. Carbon, Texas, 639-2424. t-103

For Sale - 15 x 10 peanut allotment in Eastland County. 1056 lb. per acre yield. Bob L. Pierce, Box 222, Wink, Texas.

SEWING MACHINES--Christmas Specials. 20% off, new and used. We also repair, clean and adjust all makes and models. For an appointment call 629-1604. t-104

FOR SALE--Boat, motor and trailer. 629-2555. t-1f

NOW UNDER CONSTRUCTION--new 3 bedroom, 2 bath brick home with central heat and air, 2 car garage, natural wood burning fire place, built-in kitchen appliances, large dining area, dressing area in master bedroom. Located in exclusive Eastland area on large wooded lot. Call H&W Development Co., 629-1702 for Gary. t-1f

AVON
 NEED EXTRA \$5 TO MAKE CHRISTMAS MERRIER?? - Earn them as an Avon representative. Sell beautiful gifts, jewelry, cosmetics, more. I'll show you how. Call (915) 597-1446 before 9 a.m. or after 7 p.m. or write Mrs. Jeanette Chew, 1105 W. 12, Brady, Texas, 76825. t-97

For Sale - 1970 Hornet 2 door. Also, 1965 Kaiser jeep, 6 cylinder Call 629-2052. t-1f

FOR SALE--Make a bed sofa in good condition and 2 large lamps. Mike Collins, 629-1571, after 5 p.m. t-1f

FOR SALE--Firewood. Call 647-1417 after 5 p.m. t-97

FOR SALE--6 week Irish Setter puppies. 653-2437. t-98

FOR SALE--RCA portable TV, 18" with stand, \$50. Excellent condition. Electric range \$35. Dinette table and 4 chairs \$10. 316 N. Daugherty after 3:30. 629-8026. t-99

FOR SALE--Peanut hay, \$1.35 in the barn. 629-2370. t-1f

Cute puppies to give away. Call 629-1056. t-97

Desks, chairs, files, safes, fire files, tables, cash and carry. Save 20-50%. Large selection. 9:530 weekdays. Saturday 9-1. Value City, 1030 Butternut, Abilene. t-1f

Saladmaster Stainless Steel Cookware Sales and Service Box 1235, Cisco, 442-1357 t-3

FOR SALE--Unprocessed Colorado Honey, 1 and 2 lb. jars. Call 442-1317 or come by 1611 Ave. D., Cisco. Will deliver if necessary. t-98

FOR SALE--140 acres, 42 acres peanut allotment, improvements, 2 irrigation wells, wheel mover, call 734-2005. t-99

MEL'S BARBEQUE PLACE
 For Sale or Lease. Will carry note if sold. Contact 647-3576. Personal reason for selling. t-1f

FOR SALE--1975 Buick Electra 225, fully powered, 4 door, vinyl top, AM-FM tape combo, low mileage. Call 629-1768 during day or 653-2249 after 6 p.m. t-1f

REDUCE SAFE and fast with GoBese Tablets and E-Vap "water pills" Central Drug. t-95

For Sale - Ready to live in new modular Home and city lot in Ranger. 3 bedrooms, 2 baths, central heat, plush shag carpet, drapes and appliances. 15 year FHA Financing Available. The 5 percent Government tax rebate applies to this Home. Call Gary at 629-1702 or 629-2875. t-1f

WANTED

WANTED--Waitress needed at Cattleman's Restaurant. 2-10 shift. Apply in person. t-1f

WE CAN BUILD for you a new 3 bedroom brick home with central heat and air. Low down payment. Monthly payments \$65 if you qualify. For more information call H&W Development Co., 629-1702, for Gary. t-1f

WANTED
 Light carpentry work. Small remodeling jobs. Call 629-8045. t-98

Connell Welding Service all Types of Farm and Shop Welding. 24 Hr. Service. 647-3606. Rt. 1 Box 153

Applications are being accepted for the position of LVN on a 3 to 11 and 11 to 7 shifts and full or part time positions of RN. Contact Mrs. Doyleene Shipman, Director of Nursing Service or Richard D. Arnold, Administrator Blackwell - Hospital, Gorman, Texas, 734-2294. t-101

HELP WANTED--Dairy Queen of Ranger needs mature person to train for shift supervisor. Must be willing to work any shift. Paid vacation, insurance and retirement program. Apply in person or phone 647-3001.

ROOFING JOBS WANTED
 Ten years experience. - Guaranteed Work. 629-2805. t-101

WANT TO BUY or lease, one to one and one-half acres outside city limits with access to highway. Tel. 647-3590 after 10 a.m. t-1f

All types Mobile Home Repairs. 18 years experience - free estimates Pete's Mobile Home Service. 629-2722. t-100

WANTED--LVN for 3 to 11 shift; better than average working conditions. Salary and other benefits. Apply in person or call Western Manor, Ranger, 647-3111. t-1f

WANTED--LVN needed at Northview Center. Good salary and other benefits. 401 W. Moss, Eastland. t-1f

Will do baby sitting in my home. Mon. - Fri. Call 629-2316. t-100

FOR SALE

For Sale - Two home freezers. 1 upright - 1 chest type. Both rebuilt. Guaranteed to hold zero temperature. C.A. Timmons phone 629-1157. t-100

FOR SALE--'73 Monte - Carlo, 350, two barrel, all power, factory tape deck and air, low mileage. Call now 629-2975. t-97

Used Sewing Machine. Straight Stitch. \$32.50. We also clean, oil and adjust all makes and models. 629-1604.

NOTICE

NOTICE: Fur buyer will be at the Livestock Auction parking lot every Friday from 4:15 to 4:45 until last Friday in January. Red Veale Fur Company. 647-1906. t-99

PIPPEN DECORATING SERVICE--Blown acoustic ceilings, spray painting, tape bed and texture. References and free estimates. 442-1585, Cisco. t-1f

Remodeling, repairs, small jobs preferred. Free estimate. For information call 647-1163. t-2

NOTICE

White and Elna authorized sewing machine dealer. Repair all kinds, by factory trained mechanic. DAVIS FABRICS, 610 W. 2nd, Cisco. p-1f

INSULATED COVERALLS
 Men--\$19.95
 Boys--\$9.95
B&H TRADING POST
 311 N. Seaman, Eastland
 Phone 629-2885

BOWER ELECTRIC
 Residential, commercial - and industrial wiring. New or old construction, house power specialists. For 220 volt appliances. Eastland. Call 629-1003. t-1f

GARAGE OPENING:
 Mon., Nov. 17th at 609 E. 8th. Cisco. 9 a.m. to 6 p.m. 442-3407

 Kirby Vacuum Service is available in the Eastland area. If you are interested in the "OMEGA" Shag King or repair, call 629-2655 extension 223. t-103

FOR RENT

FOR RENT: Furnished private 3 room cottages with carports. Dairy, weekly, or monthly. Pleasant Place Motel, west edge of Eastland. Call 629-8873. t-1f

Furnished or Unfurnished Apartments For Rent. Royal Oaks Apartments, 1304 Royal Lane, Cisco, 442-3232 or 442-2709. t-1f

FOR RENT--Completely furnished five room house, two bedrooms, garage. Deposit, references, no pets, adults preferred. - Cable paid. Located at 1413 S. Seaman. Call after 8:30 a.m., Mrs. Basham, 629-2526. t-2

FOR RENT--Older type house, 6 room house, 3 acres of land in Olden. 629-1205. t-1f

FOR RENT--2 bedroom house in Eastland. 629-1205. t-1f

FOR RENT--Attractive 1 and 2 bedroom apartments. Also nice bedroom and bath. All bills paid including cable. Call 629-1731 or 629-2125. t-1f

FOR RENT--Mobile Homes and mobile home spaces 653-2220. t-1f

HILLSIDE APARTMENTS
 Attractive one bedroom and efficiencies. All utilities paid including TV cable. Call 629-8097. t-1f

NOTICE

Fontana's of DeLeon
 "Gorman's Largest Electrolysis Clinic"
UNWANTED HAIR
 Removed Permanently
 "By the ONLY medically approved method"
 Services - Grooming - Waxing - Electrolysis - E.A.T. Free - Private Consultations
 Call DeLeon 891-6377
 101 Houston Hwy. 6 & 141 DeLeon, Texas t-104

CURTIS FRAME SHOP
 Call 629-1535 after 5 p.m. Custom picture and document framing. t-104

Anti-Freeze Special
 3 1/2 Gallon

So-Lo Auto Parts
 300 S. Seaman
 629-2158
 Open Sat. Till 4:00
 Doug Lucas Mgr.

NOTICE

ATTRACTIVE 2 Car garage. Includes foundation, all materials and labor. \$2,395.00. 629-2805. t-101

NOTICE
 Unique Gifts, costume jewelry - metal crafts. 1315 S. Seaman. Scotty's Barn t-1f

ROOFING
 Doyle Squires, Cont., Olden, Texas. 653-2212. Call after 6 p.m.

Just arrived! Big selection of tape dispensers in an array of colors. Come by and select yours. Perfect for Christmas giving. Come by the Eastland Telegram

Do our companies give Bumper Discounts; Driver Training Credit; National Safety Council's Defensive Driving Course Credit; Second Car Credit; Dividends and Easy Payment Plans for all eligible policy holders? You bet! Come see us. Freyschlag Insurance Agency on North Side of Square.

MORE
 cars are insured with us than with any other company. Find out why now!

James O. Wortman
 705 W. Main St. Eastland
 Ph. 629-1096

STATE FARM
 Mutual Automobile Insurance Company
 Home Office, Bloomington, Illinois

FAMILY PROTECTOR

Call: James O. Wortman
 705 W. Main St. Eastland Ph. 629-1096
 State Farm Life Insurance Company

GREGORY PLUMBING & HEATING
 629-2753
 Res. 639-2340

JORDON WELDING SERVICE
 Shop or Field Welding
 Otis R. Jordan, 629-1043,
 207 S. College, Eastland, Texas

"We handle anything but litterbugs"
GOODE PEST CONTROL
 Phone 629-1179 after 3:00
 310 N. Ammerman
 Roaches, Ants, Termites, Meths, Spiders
 ALL GUARANTEED

NOTICE--Furnaces lit and cleaned. Heaters and cook stoves adjusted. Natural gas appliances repaired. Experienced. Reasonable rates. 629-2190. t-94

MASONIC LODGE NO. 467

Meets second Thursday of each month at 7:30 p.m. in the Masonic Hall. Call Joseph Housson, W.M., at 629-1314 or L.E. Huckabay, Sec'y, at 629-1391 for information.

WIESEN'S MAGNETIC SIGNS
 All Types
 Tel. 647-1676 or 647-1665 in Ranger

City Cab
 629-2812

J&F POODLE GROOMING
 14 MILES SOUTH OF CISCO ON HIGHWAY 206.
 PHONE 725-6540

Want to Sell-Buy-or-Trade? Put an ad in the Classifieds. Call 629-1707.

WATKINS DEALER
 Vera Sherrill
 406 S. Bassett, Eastland
 Leave name and address during day. Phone 629-8019

EASTLAND TELEGRAM
 629-1707
 110 W. Commerce Eastland, Texas 76448
H.V. O'BRIEN PUBLISHER AND EDITOR
 Second Class Postage paid at Eastland, Texas, under Act of Congress in March, 1870. Published semi-weekly-Thursdays and Sundays.
SUBSCRIPTION RATES:
 By carrier in city, 20 cents a week or 80 cents a month; one year by mail in county \$7.00; city P.O. boxes \$7.00; one year elsewhere in state \$10.00; out of state \$12.00 per year.
 NOTICE: Any erroneous reflection upon the character, standing or reputation of any person, firm or corporation, which may appear in the columns of this newspaper will be gladly corrected upon being brought to the attention of the editor.

This newspaper will not knowingly accept any advertising for real estate which is in violation of the law. Our readers are informed that all dwellings advertised in this newspaper are available on an "equal opportunity basis". "All real estate advertised in this newspaper is subject to Federal Fair Housing Act of 1968 which makes it illegal to advertise "any preference, limitation, or discrimination based on race, color, religion, sex, or natural origin, or an intention to make any such preference, limitation, or discrimination."

EASTLAND ROTARY CLUB
 Mondays--
 12 noon
 Ramada Inn

WANTED--Young mother wants to do babysitting in her home for working and shopping mothers. Will also do babysitting on weekend nights. 629-2881 and ask for Debbie. t-102

WANTED
 Responsible person to take up payments on 1975 Kirby. Payment \$180.12 or \$11.50 month. Call 442-2564, Cisco. t-102

SENKEL'S CABINET SHOP
 303 N. College
 Phone 629-1269 after 5:00.
 Custom Built Cabinets. Mobile Home Set-up, and Repair, Remodeling and General Carpentry Work.
 Richard Senkel
 Owner

Mercers Appliance Repair.
 Dishwashers, washers, dryers, stoves, disposals, and ovens. G.R. Mercer, Olden, Texas. 653-2473

For Christmas give a gift from the **EASTLAND PET SHOP**. Tropical fish, hamsters, and gerbils, 208 N. Oaklawn, Eastland. Open 9 to 6. Closed Sunday and Monday. t-102

WRIGHT AUCTION COMPANY
 106 S. Seaman 629-2468

Repair Center
 Servicing all makes. New and Used for Sale. Complete line of parts.

Complete bedding made by Western Mattress Co., San Angelo. Best quality, low price, renovate or exchange new. Every other Wednesday. They're guaranteed. For home appointment call Lois Mezell, 629-2703, leave name. t-1f

THRIFT SHOP
 505 East 7th, Cisco
 We are discarding and selling old items. We will take your good clean, sellable items and sell on commission. t-102

LIVEN UP YOUR LIFE AND EARN MONEY, TOO. Sell quality products made by the world's largest cosmetics company. Interested? Call (915) 597-1446 before 9 a.m. or after 7 p.m. or write Mrs. Jeanette CChew, 1105 W. 12th, Brady, Texas, 76825. t-96

FURS WANTED - Skinned or Unskinned. Market prices paid. 817-725-7350 Higginbottom. Box 291. Cross Plains, Tex. 76443 t-3

Going into Business? Let us help you with your supplies. If we don't have it we'll order it!! Eastland Telegram, south side of the square.

SCOTTY'S BARN MISCELLANEOUS PAINTING. 13315 S. Lamar - Eastland, Tex. 1 paint lawn furniture - appliances - stock trailers - metal awnings - boat trailers - metal gates - Corral panels - tractors - Also polish and wax automobiles. Come by, or Call L.A. Scott t-1f.

BUCK KNIVES
 FAMOUS FOR HOLDING AN EDGE



Available At
H & R Lumber
 715 West Main
 629-2104

Telegram
 629-1707

Dairy Queen
 BREAKFAST
 6-11 A.M.
 7 DAYS A WEEK
RANGER DAIRY QUEEN
 647-3001

Complete Car Service...
 Bring your car to us for any type of repair. We give you fast, quality service. Stop in.

Reasonable SCOTT PAINT AND BODY WORKS
 629-2372
 300 W. Commerce
 Sam Beggs-Owner

Purse Pleasers
Hollands Drive In
 Quality, Quantity, Quickness
 And Reasonable Prices
 Highway 80 West Of Eastland
 Phone In Orders 629-2215 Member TRA

QUALITY IS NO ACCIDENT



Custom New Homes
 Turn Key Service From Plans To Financing

B.G. BROWN CONST. CO., INC.
 820 W. Main, Eastland
 629-2404
 Nights 629-8082

A-1 SALES
 215 S. Walnut Eastland, Texas
 Phone 629-2102 Dale And Jerry Maston
 Qualified And Experienced Carpenters
 House Painting - Inside Or Outside
 Paneling - Sheetrock - Texturing
 Porches - Concrete Or Lumber
 Awnings - Car Ports - Patios

We Can Completely Remodel Your Present Home - Or Make Any Type Additions You May Require

We Specialize In Roofing And Siding Offering VINYL-HAILGUARD-AND INSULATED SIDING - We Will Measure Your Home - Explain The Qualities Of Our Different Sidings, And Give You A Free Estimate As To Cost.

We Handle Vinyl Storm Windows And Vinyl Or Aluminum Storm Doors

**Mobil Home Leveling And Underpinning
 Mobil Home Roof Coatings
 Mobil Home Porches - Awnings - Car Ports**

Whatever Your Home Repair Needs - From Broken Window Panes To Leveling Or A New Roof - Call Us For

FREE ESTIMATE OF COST

Thursday, December 4, 1975

ATTENTION HUNTERS AND TRAPPERS
 Fur buyers will be in Cisco at **WHITE ELEPHANT RESTAURANT** each Wednesday from 4 p.m. till 4:30 p.m. beginning December 3. We buy green and dry furs of all kinds. Skin case all furs, (like opossums), not open up the middle. We also buy deer hides. Well handled furs bring top prices!!
NORTHWESTERN FUR COMPANY
 Colorado City, Texas
 t-99



2513 JUNE 75 M.P. 48
Complete Car Service...
 Bring your car to us for any type of repair. We give you fast, quality service. Stop in.

Reasonable SCOTT PAINT AND BODY WORKS
 629-2372
 300 W. Commerce
 Sam Beggs-Owner

Beef Short Course Set For Dec. 15-18

A beef production short course for adult farmers will be held Dec. 15-18, under the sponsorship of the Eastland High School Vocational Agricultural Department according to Mr. Pruitt, Superintendent and Mr. Hutto and Griffin, teachers of Vocational Agriculture.

Dr. Elmer V. Krehbiel, Beef Production Specialist with the Vocational Agriculture Division of the Texas Education Agency and the Department of Animal Science at Texas A&M University will be the instructor for the course. He is headquartered at Texas A&M University.

Dr. Krehbiel is a native of Oklahoma. As a farm boy and FFA member, he had shown livestock and won many awards, including championships at the Southwestern Livestock Exposition in Fort Worth and at the American Royal Livestock Show in Kansas City.

He has a strong background in animal production and genetics. He received a B.S. Degree from Oklahoma State University in 1950, an M.S. degree from the University of Arkansas, in 1959, and a Ph. D. degree from Virginia Polytechnic Institute in 1966. His graduate studies were based on selection for type and reproduction performance of cow herds.

Between periods of formal training, Dr. Krehbiel worked with the beef cattle industry as artificial insemination technician, beef cattle herdsman and ranch manager in Oklahoma. He also served as beef cattle

research assistant in Arkansas, and animal geneticist for the USDA at Miles City, Montana. For the past two years prior to joining the Agricultural Education Specialist program he served as Area Livestock Extension Agent in Ohio.

The short course at Eastland is scheduled to begin December 15, at 7:00 p.m. in the Vocational Agriculture Building. Other meetings in the series will be held Dec. 16-18. During the dates the short course is in progress, Dr. Krehbiel will be available to assist cattlemen with individual problems and to provide on-the-farm instruction according to Charles Hutto and Don Griffin.

Cattlemen interested in attending the short course should write or call the superintendent of schools, Mr. Ray Pruitt, or the teachers of vocational agriculture, Mr. Griffin or Mr. Hutto. An entry fee of \$5 will be charged.

Beef Production Short Course certificates will be presented to each cattlemen who attends all the training sessions.

Dr. Krehbiel states that the

field of beef cattle production must take a close look at efficiency of production in the future. With land prices, feed and taxes rising, the producer is meeting more and more competition for the consumer's dollar at the meat counter. From the economic view of the beef cattle business, there is every indication that in comparing the producer of yesteryear and the producer of tomorrow, beef must be produced more efficiently in order to be a profit-making business. Dr. Krehbiel indicates that the beef production short course will deal with methods of producing beef at a lower cost and the ways of producing the kind of beef that the homemaker wants to buy. He also states that the course will include such important topics as cattle reproduction and pregnancy diagnosis, selecting bulls and replacement heifers, half crop percentages, and supplemental winter feeding. The course can be changed to meet the wishes and interests of the farmers and ranchers enrolled.

Short courses in beef production, as well as in other areas, are now available to farmers throughout the state under the cooperative program between Texas Education Agency and Texas A&M University," states Bob Jaska, associate professor, Department of Agricultural Education at Texas A&M University, who coordinates the program for Texas A&M.

"This cooperative program", states Jaska, "is designed to make the services of specialists available to conduct short courses under the supervision of public schools. Such a program will enable teachers of vocational agriculture to provide improved educational services to farm people."

Specialists are now available in the fields of beef production, farm electric wiring and safety, farm electric motors, arc welding, swine production, tractor maintenance, pasture and oxy-acetylene welding.

Thursday,

December 4, 1975

Hanna Named To Committee

AUSTIN--Rep. Joe Hanna of Breckenridge and Rep. Jon Newton of Beeville have been named to the Intergovernmental Relations Task Force of National Conference of State Legislatures by House Speaker Bill Clayton.

Clayton said the two Texas representatives were named to the energy committee because of their interest and involvement in the national policies considered by the task force.

The group will work toward a comprehensive national energy policy, natural gas regulation, Outer Continental Shelf management, power facility siting and construction and surface mining.

Both served on the committee last year. First committee meeting is Dec. 12-13, in Washington.

JOB PRINTING

DEAS-ART



Reflect The Image You Want

We know how to make your mailers, brochures, letterheads look like you. Consult our expert designers.

See Your Local Newspaper



Dairy Queen

BREAKFAST
6 - 11 A.M.
7 DAYS A WEEK
RANGER DAIRY QUEEN
647-3001

HAPPY Holidays

HEIDENHEIMER'S

Your Family Store In Cisco

The **GADGET TABLE**

Dozen Of Novelty Items Selected For An Unusual Gift At Budget Prices--More Items Than We Can Name But If You Need A Little Something Different See This Table



Magic **PILLOW CASES**
Of Bridal Acetate Satin
In Solids Or Prints

\$1.99 Each




Beacon BLANKETS
Pretty New Styles This Year
See The Patent
Designed With The Centennial In Mind
A Big Size **\$8.99**

Celeste, Automatic **ELECTRIC BLANKET**
With Finger Tip Control, Two Year Warranty 80% Polyester, 20% Acrylic With All Nylon Binding--Twin Or Double
Size On Sale Now For **\$18.88**

Give Them A Gift Together **COLORFUL SHEETS**
By Cannon--Montecello, A No Iron Muslin In Candy Stripes--Pink, Blue Or Gold--Double Sheets Each **\$5.99**
Matching Pillow Cases **\$3.99** Set Of 2

ROBES, GOWNS, PAJAMAS And SLIDES
Give Her Something Personal, Matching In 4 Up To The Minute Nylon Colors--A Big Selection To Choose From--Budget Prices

ROBES
Quilted Nylons, Warm Brushed In Solids Or Prints Waltz Or Long **\$8.99** To **\$14.99**



Mens **PAJAMAS**
And Robes Are Ideal For Gifts Big Assortments Available Robes **\$9.95** To **\$12.95**
Pjs **\$6.95** And Up

NOVELTY SOX
A Stocking Gift She Will Like High Styles, Some With Toes **\$1.00** To **\$3.95**

Give This Xmas--Mens **HOUSE SLIPPERS**
With Rubber Soles And Warm Shirting Linings **\$6.99** To **\$9.99**
Womens Suedene With Shirting Linings **\$6.95**



Misses Warm Knitted **GLOVES**
In A Big Assortment Of Styles And Colors **\$1.49** And Up Pair



Ladies **HANDBAGS**
Our Biggest Assortment Of The Fall Season **\$5.95** To **\$14.95**



NOVELTY CAPS
Of Nostalgic Knits--School Colors, Face Masks--Stretch To Size **\$1.99** Each

JIFFIES
New Colors And Styles In Polyester Knits Or Soft Vinyls--One Size Fits 3 Shoe Sizes--So You Can Just About Fit Him Correctly **\$5.50** And **\$6.00**

BEDSPREADS
Our Stock Includes Velvet Mist, Cannon Prints, Bates Aris And Prime Rib Solids By House Of Windsor **\$12.95** To **\$24.95**

TOWEL SETS
Give The Colorful Picnic Patterns So Pretty And Colorful Bath Size **\$2.99**
Wash Cloth **\$1.99** Hand Size **99c**



Boys **WESTERN SHIRTS**
By E & W-- Permanent Press In Fancies And Solids **\$6.95** Each

GIFT WRAPPED FREE

Poodle Tuft **BATHROOM SETS**
Stripes And Solids Big Selection At **\$7.99**



STATE CAPITAL Highlights AND Sidelights

by Lyndell Williams
TEXAS PRESS ASSOCIATION

AUSTIN — State health programs for the needy may have to be cut back after January 1 unless the State Welfare budget can be altered.

While the department may have \$100 million or

more in unspent state and federal funds for 1976-77, the money apparently cannot be transferred from other programs to health services.

Welfare Commissioner Raymond Vowell said a health program deficit in fiscal 1977 may run as high as \$76 million.

Welfare officials said they can operate within the overall appropriations available if they can move funds from program to program. However, the legislature has prohibited such transfers.

The State Board of Public Welfare authorized staff sessions with Gov. Dolph Briscoe and the Legislative

Budget Board to seek transfer power.

The alternative, according to Welfare Budget Analyst Wes Hjernevik, is reducing or discontinuing nearly all health services for the aged, blind, disabled and other welfare recipients.

Most of the shortage, Hjernevik said, is due to spiraling medical care costs.

Welfare officials are contemplating reducing hospital stay maximums from 30 to 15 days, discontinuing intermediate care nursing home payments, limiting drug prescriptions to two per month and cutting off payments for glasses, dentures and hearing aids.

Control to State

Texas Air Control Board said the federal government is giving the state management of air sampling programs January 1.

The Board will collect for federal study air samples in 14 places — a job now done by the Environmental Protection Agency.

Amarillo, Beaumont, Corpus Christi, Dallas, El Paso, Fort Worth, Houston, Lubbock, Matagorda County, Pasadena, Tom Green County, Austin, San Antonio and Wichita Falls are sampled areas. City workers will be called on to collect information. The Air Control Board samples air at 100 sites in a state program started seven years ago.

Blue Cross Extended

Blue Cross' Medicaid contract with the state was extended 60 days by the State Welfare Board, though the company won't permit audits of its administrative costs.

A company official indicated the state auditor may be permitted at last to check the "methodology" of its accounting system. But he did not say a real audit of the books would be permitted.

Carrillo Sentenced

District Judge O. P. Carrillo has been sentenced to five years imprisonment, five years probation and a \$22,000 fine for filing false income tax returns.

Carrillo still faces impeachment trial by the Senate (now scheduled to begin January 5) and a removal proceeding before the Texas Judicial Qualifications Commission.

An attorney for Carrillo and his brother, Duval County Commissioner Ramiro Carrillo, also sentenced on an income tax

violation, said the conviction will be appealed.

AG Opinions

Waste disposal districts have authority to issue bonds for acquisition, construction and repair of disposal systems subject to review by the attorney general, Atty. Gen. John Hill concluded.

In other recent opinions, Hill said:

A city may grant automatic rate adjustments to a utility.

Contributions to pay expenses of the Southern Governors Conference in Texas do not have to be reported as campaign or lobby expenditures.

A state university cannot use either appropriated or auxiliary enterprise funds to purchase liability insurance for its administrative officers and regents.

The legislature may constitutionally vest control of the Texas School for the Blind in five members of the State Board of Education.

separately taxable real property interest in facilities.

Short Snorts

A three-judge federal court in Austin continued an order blocking implementation of Texas, new voter registration law until it is approved by the U. S. Justice Department.

Texas has been voted top state for beautification work in the Keep America Beautiful competition.

Police Dispatch
629-1728

Dairy Queen
BREAKFAST
6 - 11 A.M.
7 DAYS A WEEK
RANGER DAIRY QUEEN
647-3001

"STEAMLINER"
Carpet Cleaning, Service Rentals
Professional Cleaning
Gene Frost
Ph. 629-1577 Eastland 647-3227 Ranger

don't get in a bind....

Save Taxes
In 75



SAVE MONEY
2 WAYS
right now!

How would you like to take up to an EXTRA \$1,500 tax deduction?
How would you like to see that same amount go into a savings plan that will grow and be your's 'down the road' when you are ready for it? M.H. Perry can tell you about it right now...
Phone him—629-1566 or 629-1095

Dairy Queen
BREAKFAST
6 - 11 A.M.
7 DAYS A WEEK
RANGER DAIRY QUEEN
647-3001

For Lease

- Approximately 500 Square Feet Of Office Space
- Large Reception Area With Two Small Offices
- Central Heat & Air
- Ground Level On Square.

RCG Leasing Building
101 West Commerce 629-8052 In Eastland

AMC Jeep
NOW IN STEPHENVILLE!

We Are Pleased To Announce The Addition Of American Motors And Jeep Vehicles To Our Line Of Fine Cars And Trucks! We Invite You To See Us For Sales, Parts, Or Service.

SPECIAL INTRODUCTORY PRICES
Just In Time For Christmas!

6 Cylinder
3 Speed
Brilliant Blue
\$2999
ONLY

Gremlin

Help Us Welcome AMC And Jeep. . . .
Register For A Fine Second Car
— 1967 Chevelle Malibu Sport Coupe —
TO BE GIVEN AWAY FREE - DEC. 24th

DWAIN BRUNER
CHEVY-AMC-JEEP
South Loop At Lillian 968-2135
Stephenville, Texas

Belle's Patterns
with a
WESTERN FLAIR



GIRLS' BLOUSE
The Girls' Blouse has six different looks. There are three different sleeve styles to mix with either a stand up collar or no collar at all.

Printed pattern #1245 in sizes 2 to 14. Send \$1.75 for this pattern . . . add 50c handling and postage. Send to:

Belle's Patterns
P.O. Box 841 — Dept. 416
Hurst, Texas 76053

R.C.G. Leasing, Inc.
104 W. Commerce On The Square
Eastland, Texas 629-8052

Hospital Equipment & Sickroom
Supplies Sales & Rentals To
Care For Your Patient At Home

Hospital Bed & Rails
Wheel Chairs
Walkers
Bedside Commodes
Crutches

Inhalation Therapy Equipment
Wheelchair Cushions
Skin Care Pads
Under Pads

Medicare & Medicaid Approved

Majestic Theatre
Eastland 629-1220

Return Engagement. Thurs.-Fri.-Sat., 7:30 p.m.

70 MILLION PEOPLE HAVE THRILLED TO "WALKING TALL, PART 1"
Now you can see the controversial and exciting climax in the life of a true American hero.

PART 2 ALL NEW WALKING TALL

starring **BO SVENSON** as Buford Pusser
BCP presents **PART 2 WALKING TALL**

also starring RICHARD JAECKEL • BRUCE GLOVER • ROBERT DOQUI • **NOAH BEERY** as Carl Pusser
written by HOWARD B. KREITSEK produced by CHARLES A. PRATT directed by EARL BELLAMY
music by WALTER SCHARF • from Cinema • An American International Release
*BCP is a service of Cox Broadcasting Corporation

Sun.-Mon.-Tues., 7:30 p.m.

More 'BITE' than "JAWS"
BURT REYNOLDS IS THE BAIT.

"MAN-EATER" PG

Coming For Christmas

An Event...
EARTHQUAKE PG

CITIZENS REALTY
820 WEST MAIN STREET,
EASTLAND COUNTY'S
VOLUME
RESIDENTIAL DEALER
629-2404

THE BEST THANKSGIVING YET, entertain your family and friends in this lovely Lake Cisco property. Mother can cook with ease in the spacious kitchen, water front lot with covered boat dock. Front and back yard completely curbed and fenced, three bedrooms and two baths, utility room.

NOT VANILLA!! Want a modern home in RANGER?? This one is not like all the rest. . . . ferred asking low equity and assume loan. NO R. **SOLD** begin packing and move into this nice three bedroom, 1 1/2 bath home with central heat and air, no credit check.

TOAST YOUR TOES around an open hearth fireplace in the twenty - six foot long living - den combination of this handsome three bedroom home soon to come into existence in W. CISCO. Nothing down for Veterans so call today, get in on the ground floor, watch it going up, pick your own decor, begin NOW to build your dream home. FHA financing available.

WE'RE EXPECTING... offers galore on this home and two acres north of EASTLAND. Wake up to a soft breeze and the nostalgic sounds of country living. Two extra large bedrooms, fully paneled, formal living room with an exquisite sunken den, including a beautiful log burning fireplace, city water, plenty room for pets and animals.

RETIRING or ASPIRING, consider additional income with four rental units in CISCO. Ample storage for maintenance equipment, ten pecan trees, storm shelter, trailer hookup. East CISCO. Good financing.

RELAXED COUNTRY LIVING, a short distance north of EASTLAND, two acres with a quaint, comfortable home, beside a small pecan orchard. Enough room to include animals and plan for a garden as well. Country quiet living, yet close in. Call today.

"GIFT WRAPPED IN CHARM" is what this lovely new home will soon become. New construction located on a beautiful hill top site in RANGER. Three large bedrooms coinciding with an ultra modern hollywood bath. Carpet, central heat and air, two car garage, all the extras you'd expect in a fine home.

This is the space we're reserving for YOU, list your home with CITIZENS REALTY...a "houseSold" name.

"HAPPY HOLIDAYS" are ahead for the lucky family who buys this darling three bedroom bath home in EASTLAND. An excellent location, **SOLD** modeled inside and out. Three fireplaces, central dishwasher, disposal, eye - level self - clean oven, elegant window treatments in every room, superb investment.

LONG WINTER evenings will be a pleasure in this cozy den, adjoining kitchen. This lovely Total Electric brick home in CISCO has three spacious bedrooms, hollywood bath, two car garage, luscious, thick carpeting throughout, ONLY \$1750 equity and assume existing loan, no closing costs, no credit check.

LIKE HORSES??? You will have a beautiful place to ride and keep your own horses with this lovely two bedroom home just touching EASTLAND city limits. Freshly remodeled, it has an impressive DOUBLE LOG BURNING FIREPLACE to shut out the cold winter's night. Total Electric and on city water. This is excellent income property also, with 175 pecan trees and a small orchard, steel cattle pens, good grass, and even a storm cellar. Call today.

PRIME COMMERCIAL PROPERTY, in Cisco, high traffic flow, solid investment, no delay, owner will finance. Call for details.

SUPER LAKE VIEW from this comfortable three bedroom home on Lake Leon, 1/2 acre, wide water frontage, dock on lake, fenced yard, also on city water.

RENT STOPPER we have a cute little doll house in GORMAN. Ready for the newly retired. Stop giving your money away and buy a **SOLD** the future, this sparkling two bedroom home is waiting for YOU.

629-1769

B.G. BROWN - BROKER
629 - 8082
KARLA BROWN - BROKER
629 - 8082

Richard E. Ward - Associate
443 - 3524
Beth Ward - Associate
442 - 3524

CALL US - WE CARE

REALTOR®
Doris Norton - Associate
653-2263

Processing
SPECIALS
For HUNTERS
(And Non-Hunters)
TONY'S

Beef Processing Retail Beef Market
(UNDER NEW MANAGEMENT)
BEEF PROCESSING 10¢ A Lb.
DEER PROCESSING \$15.00 A Head

Tony's Meat Mkt.
701 W. Main St. - Eastland - 629-8161

Over-The-Counter Retail Market
To Open Jan. 1

Thursday,
December 4,
1975

Oil News

A regular field was staked three miles southeast of Sabano as Ascot Oils No. 1 Wright. Having a proposed depth of 4,000 feet, it spots 330 feet from the north and 990 feet from the west lines of Section 16, Block 6, ETRR Survey. The lease is composed of 100 acres.

Potential has been taken at a well completed 5 1/2 miles northwest of Ranger in the Griffin and Anderson (Mississippi) Field.

It is John R. Shaw Jr., of Eastland No. 1-P J.W. Barnes, spotting 1,872 feet from the north and 2,150 feet from the

west lines of John P. Rohus Survey A-415.

Daily potential was five barrels of 39 gravity oil, plus 15 barrels of water. It is pumping from perforations at 3,410-25 feet, treated with 3,000 gallons of acid.

Operator set the 4 1/2 inch casing at 3,943 feet and the hole is bottomed at 3,967 feet.

Stephens County has gained site for a proposed 4,350 foot wildcat in the area 20 miles northwest of Ranger.

It is Hoyo Seco Production Co. of Rockwall No. 1 J. Roberson, located on a 160 acre lease.

Drillsite is 1,560 feet from the north and 330 feet from the east lines of Section 2, BAL Survey.

Southeastern Resources Corporation of Rising Star will drill No. 1 Curtis Alford as a proposed 3,750 foot wildcat in Eastland County.

Location is on an 80 acre lease 3 1/2 miles northeast of Rising Star.

It spots 660 feet from the south and 330 feet from the east lines of Section 35, Block 2, ETRR Survey.

Lt. Gov. Hobby Announces Appointments

Lieutenant Governor Bill Hobby today announced his appointments to the Joint Committee on Textile Industry Development created by House Concurrent Resolution 127 of the 64th Legislature.

They are: Senator Tom Creighton of Mineral Wells, Senator Grant Jones of Abilene, and Senator Kent Hance of Lubbock.

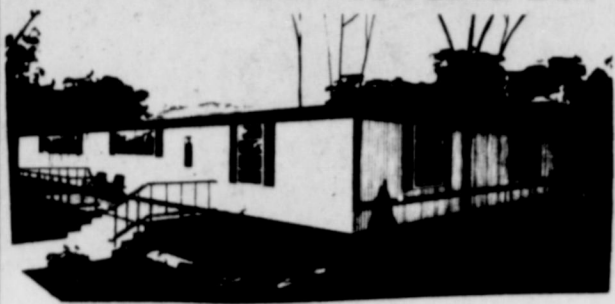
HCR 127 points out that while Texas leads the nation in the production of cotton, wool, and mohair, only 1.5 per cent is woven in this state. Each year, more than \$80 million worth of fabric is imported from other states and countries to supply the extensive apparel and garment industry in Texas.

The committee, made up of the three senators, three House members, and three citizens named by the governor, is charged with the responsibility of promoting and developing the textile industry in Texas.

"The potential economic benefits to be realized by this program are enormous," Hobby said. "The fruits of this committee's labor could accrue to many generations of Texans."

Dairy Queen
BREAKFAST
6 - 11 A.M.
7 DAYS A WEEK
RANGER DAIRY QUEEN
647-3001

AMERICA'S BEST HOUSING BUY



Delivered And Set Up

On Your Lot. 60 x 24 Feet

Double Wide Home Only
\$130⁰⁰
Monthly After Small Down Payment

- 3-Bedrooms
- 1 1/4 Baths
- Living Room
- Dining Room
- Full Den
- Plush Furniture

DIRECT FACTORY OUTLET

1-20 Olden, Texas Phone 563-2432 Or 629-2117



Dairy Queen
BREAKFAST
6 - 11 A.M.
7 DAYS A WEEK
RANGER DAIRY QUEEN
647-3001

Dairy Queen
BREAKFAST
6 - 11 A.M.
7 DAYS A WEEK
RANGER DAIRY QUEEN
647-3001

CHRISTMAS Gift Specials

Women's COATS REDUCED 25% Off
Reg. \$24⁹⁹ To \$49⁷⁵
NOW **\$18⁸⁴ To \$40**

Women's MIX MATCH SETS
By Rogue
Inner Visions Young Society
25% Off
Reg. \$20⁹⁹ To \$28⁹⁹
NOW **\$15⁷⁴ To \$21⁷⁴**

Men's SHOE SALE
Discontinued Styles
Nunn Bush Roberts
\$18⁰⁰ To \$40⁰⁰
NOW **1/2 Price**

Ready Tie \$4⁹⁰ \$5

Ties: prints, stripes, solids.

Women's Cuddle Orlon Plush Open Toe HOUSE SHOES
Beige & Pink **\$6**
All Sizes

Men's Royal Crest
LEATHER HOUSE SHOES
Many Styles All Sizes 7 To 13
\$10⁹⁹ To \$16⁹⁹

New Shipments
LORRAINE SLEEPWEAR
\$6 To \$16

GIFT WRAPPED FREE
ALL GIFTS BOUGHT AT BRAY'S

Bray's
DEPARTMENT STORE
EASTLAND - RANGER
EASTLAND COUNTY'S FAMILY STORE
FEATURING NATIONALLY ADVERTISED BRANDS OF MERCHANDISE
Store Hours - 9 a.m. - 5 p.m.

DOLLAR DAY\$

Brittain DISCOUNT Center
In Eastland South Side Of Square

LADIES PURSES
Assorted Styles, And Sizes,
Needlepoint, Vinyl, **\$2⁸⁸** Each
Denim, Gingham

ALKA-SELTZER
No Aspirin
36 Tablets **87^c**

ALCOHOL
39^c Medical Center
17^c Pint

TYLENOL
75^c
39^c 24 Tablets

Earth Born SHAMPOO
Apricot-Avocado
-Green Apple
\$1²⁹ 12 oz.

PANTY HOSE
One Size Fits All
4 Pairs For **\$1⁰⁰**

DENTU-CREME
73^c 3.9 oz.

Crest TOOTH PASTE
Regular Or Mint
7 oz. **79^c**

BAND-AIDS
67^c No. 5624

MIDOL
63^c 30 Caplets

Sinutab
12 Tablets **67^c**

Miss Breck HAIR SPRAY
Regular-Super Hold
Ultimate Hold-Unscented Super Hold **83^c**

Evenflo GLASS BOTTLES
4 oz. Or 8 oz. **29^c**

Coats & Clarks RUG YARN
37^c

Pond's DUSTING POWDER
5 oz. **77^c**

Gayla 3-Blade TRIMMER COMB
To Trim, Thin And Shape Hair **57^c**

ALBERTO BALSOM
Creme Rinse
3.5 oz. **19^c**

Polyester DOUBLE KNIT
First Quality **\$1⁴⁴** Yard



In The Kitchen

BY DINAH WILSON
The subject matter of this article today is candy making. If your first reaction to this is "I can't make candy", you are absolutely right. Read no further! If you think you can't, but you are willing to try, read on. Listed below are several recipes for candy and confections which are a must in your holiday planning. Try them all or just a couple, but try to make some kind of candy.

May we suggest that you develop the "Yes I Can" attitude. Read the directions thoroughly and assemble all the necessary ingredients for the recipe you select. You must have a candy thermometer, if you are a beginner, unless you have the art of testing the consistency of the candy in water, which this cook does not have.

Let's get started: DINAH'S "YES I CAN" RECIPES

DATE LOAF CANDY
3 c. sugar
1 c. evaporated milk
1/2 c. Light Karo

Mix ingredients in a saucepan (med.) and bring mixture to a boil, until it forms a soft ball.
Add:
1 box chopped dates
1 c. chopped nuts
Beat until creamy. Cool and roll mixture in a wet dish towel. Refrigerate until completely cool. Slice rolled candy in desired thickness.

TURTLES
[Chocolate Covered Pecans]
4 1/2 c. sugar
1 can evap. milk (13 oz.)
1 stick butter
Mix together in a large pan and boil for 6 minutes. Stir constantly as mixture has a tendency to scorch. Take off fire and add:
1 teaspoon vanilla
1 lg. jar marshmallow cream
1 lg. pkg. semi sweet choc. chips
4 c. pecan halves
Stir mixture until all the chips and marshmallow cream has melted. Drop mixture by tablespoonfuls onto waxed paper. Cool and eat. If mixture hardens before you have finished, add a few drops of warm water to soften.

PEANUT BRITTLE
1 c. sugar
1 c. Light Karo
2 c. raw peanuts
Combine all ingredients into a large pan. Cook over medium high heat until peanuts begin to brown and pop. (About 15 to 20 min.). Stir constantly. Add:
1 teaspoon baking soda
Quickly pour mixture onto a greased baking sheet. Cool and break into individual serving pieces.

BON-BONS
1 stick melted butter
2 boxes powdered sugar
1 can coconut
1 can eagle brand milk
4 c. chopped pecans
Mix together in a large mixing bowl. Roll into balls and place in freezer. When balls are frozen:
Melt in double boiler:
2 lg. pkg. chocolate chips
1/4 c. Gulf wax
Dip frozen balls into chocolate mixture. When coated, return to refrigerator or freezer until completely cool.

CREAM MINTS
1 box Betty Crocker Creamy Frosting Mix
2 Tablespoons butter
1/2 cup milk
Heat butter in milk over low heat until butter melts and mixture just begins to simmer. Remove from heat; stir in frosting mix. Heat over low heat, stirring constantly with rubber scraper. Cook 1 to 2 minutes. DON'T OVER COOK! Drop by spoonfuls on waxed paper. Cool.
To make flavored mints:
Add desired food coloring and flavoring.
Example:
1 teaspoon peppermint flavor
4 drops green food color
Or:
1 teaspoon cherry flavor
4 drops red color

There are hundreds of recipes you can use for holiday cooking. These are a few of my family's favorites. Maybe they will become your favorites too. GOOD LUCK!!
UNTIL NEXT TIME

DATE NUT BALLS
1 stick melted butter
1 c. sugar
1 egg
Mix together in a medium saucepan. Cook over medium heat for 10 minutes.
Add:
1 box chopped dates
3/4 c. pecans
Stir mixture until creamy.
Pour mixture over 3 c. rice krispies.
Stir mixture until all cereal is coated. When mixture is cool enough to handle, roll into small balls and coat with shredded coconut.

DIVINITY
3 c. sugar
3/2 c. light Karo
3/2 c. water
Boil in a medium saucepan until this mixture forms a hard ball.
Have ready:
2 egg whites
one-eighth teaspoon salt
Beat egg whites and salt until stiff in a large mixing bowl. Add syrup mixture slowly beating the mixture at high speed with your mixer all the time. Continue beating until mixture passes the glossy stage.
Add:
1 teaspoon vanilla
1 c. chopped nuts.
Continue beating mixture until it forms a peak when beater is lifted. Pour on buttered platter or drop by spoonfuls on waxed paper.

DEARBORN
STOVE COMPANY - DALLAS, TEXAS
A Division of Addison Products Company

Western Auto

201 S. Lamar-269-2011 Eastland
J.L. (Luce) Pittman Owner

Kincaid's Real Estate Corner

377 acres in north part of County. \$300 per acre.
36 acres near Olden, will G.I. \$15,000.
215 acres Eastland County. \$350 per acre.
16 acres, good sand, near Cross Plains, 1/2 minerals, 1 well, good fences, set up for hog farm. \$16,000.
12 acres near Cross Plains, good sand, close in. \$12,000.
12 acres Coastal with 4 wells and irrigation equipment, deep sandy loam soil. Will sell Texas Veteran. Near Anson.
550 acre ranch with 112 acres cultivation. Old house, corrals, barns, 5 tanks, 1 well, part minerals. \$150,000. Some terms.
160 acre peanut farm completely equipped. 70 acres peanut allotment. Gorman area. \$600 per acre
130 acres Ranger area, old improvements, some Coastal. Terms. \$350 per acre.
107 acres, 8 miles northeast of Rising Star, sandy land, 2 tanks, 1 well, 85 percent minerals. \$350 per acre.
41 acres, 4 bedroom, 4 bath house, barns, 100 pecan trees, good bottom land, with water from Palo Pinto Creek for irrigation. Strawn.
135 acres with 46 acres peanut allotment, peach trees, 4 wells. \$350 per acre.
640 acre ranch, excellent hunting, live creek. \$275 per acre.
1100 acre well improved ranch. House, corrals, \$325 per acre.
480 acres, Eastland County, 2 bedroom house, irrigation.
LAKE PROPERTY
Large two bedroom cabin, south side Lake Leon, fireplace, paneling, fruit trees, city water available.
16 acres Possum Kingdom Lodge, with 6 large sleeping cabins, large recreation building, water storage tanks, etc., for sale or trade. Terms available.
24 acres at Lake Leon. Staff community, approx. 1500 ft. of water front. \$24,000
Large 4 bedroom, 1 1/2 bath house on South side Lake Leon. One acre plus, \$14,000
HOMES
Two bedroom frame house, Eastland, nice corner lot, fenced back yard, \$11,750, assumable loan.
Three bedroom frame home completely remodeled, den, utility room, dining room, 2100 sq. ft. double garage with storage, nice trees, extra lots for garden, rent house and mobil home rental space in Cisco.
One bedroom house in Eastland, 3 lots, nice trees, \$6,500.
Three bedroom house in Gorman, terms considered, \$11,500.
Large lot in Gorman near school. \$600.
We have motels, commercial property, large farms and ranches up to 150,000 acres in Texas and adjoining states, please contact for details.
ROBERT M. KINCAID REAL ESTATE
100 South Seaman Eastland, Texas
Robert M. Kincaid 629 - 1781 Night Phone 629 - 2815

LEGAL NOTICE
Being certified by the Commissioner of Agriculture of the State of Texas for this purpose, the Mohair Council of America, 518 Central National Bank Building, San Angelo, Texas 76901, proposes a referendum election on February 10, 1976, under provisions of Article 55C, Vernon's Civil Statutes on the proposition of whether or not mohair producers in the following counties shall assess themselves an amount not to exceed 2 1/2 cents per pound on all mohair sold to be collected at the first point of sale, and to elect members for a 12-person commodity producers board to administer proceeds of such assessment to be used for advertising, promotion, market and product development, education and research programs designed to encourage production, marketing and use of Texas mohair.
Counties included in the referendum are: District 1 - Terrell, Crockett, Pecos, Brewster, Presidio and Jeff Davis. District 2 - Val Verde, Kinney, District 3 - Edwards, District 4 - Bandera, Real, Medina, Uvalde, District 5 - Mason, Llano, Gillespie, Kerr, Kendall, Comal, Blanco, District 6 - Schleicher, Menard, Sutton, Kimble, District 7 - Mills, Hamilton, San Saba, Coryell, Lampasas, Burnet, Hays, Travis, Williamson, Bell, District 8 - Irion, Sterling, Coke, Tom Green, Concho, McCulloch, Coleman, Runnels, Nolan, Taylor, Callahan, District 9 - Brown, Eastland, Comanche, Erath, Stephens, Palo Pinto, Jack, Parker, Hood.
The referendum and election will be held by physical ballot with voting place to be at each county ASCS office in the referendum area or in the county courthouse in counties that do not have ASCS office facilities. Polls will be open at 7 a.m. and close at 7 p.m. Producers who will be away from their particular voting box location on election day may obtain an absentee ballot from county agent offices, wool and mohair warehouses or from the Mohair Council of America. Absentee ballots must be mailed in the self-addressed envelope to the central balloting place at P.O. Box 222, San Angelo, Texas 76901, before midnight three days prior to the election date.
Any person within this referendum area engaged in the business of producing or causing to be produced mohair for commercial purposes is eligible to vote, including owners of ranches and their tenants and sharecroppers, if such person would be required to pay the assessment proposed.

Decorators Tips
By Sandy Reese
That wonderful, hectic holiday season is here again. You're wishing you had kept your New Year's resolution about doing your shopping early and being ready to relax and enjoy entertaining friends and relatives.
This was supposed to be the year you made those lovely decorations to give your home that warm, personal look which provides a nice welcome to holiday visitors. It isn't too late.
A nice decorator touch for your holiday table could be place mats you have made yourself from felt.
Simply cut rectangles the size you need for a place mat (about 12" x 18"), then cut small banner-like rectangles (about 4" long) and attach to the long edge of the mat. Attach silver bells to the tips.
No need to hem felt so you can sew these in a very short time.

Install Officers
The Senior Citizens met Friday evening, Nov. 28, at 7:00 in the First Christian Church annex to install officers for the coming year for the American Association of Retired Persons (AARP) in Eastland. The name given to the group was "The Eastland Chapter. There are now 90 members.
Newly elected president, Aubrey Van Hoy, called the meeting to order. Mr. Carl Val Smith from Waco installed these officers: President Mr. Aubrey Van Hoy, Vice President Mrs. Corrie Harlow, Treasurer Mrs. Miles Awalt, and Secretary Mrs. Zelma Lusk.
Nominating committee: Mrs. Ellen Reddick, Mrs. Bessie McCollum, Mrs. Vera Woodard, Mr. E. Bennett, Mrs. Ruby Bond.
Board members: Mrs. Lorraine Crawford, Mrs. LaVene Wingate, Mr. Miles Awalt, Mr. Harvey Basham and Mr. Roy Gann.
The chapter will meet each third Friday of the month at the First Christian Church annex.

Lions Opens Holiday Season
Fine music climaxed by Christmas songs suitable to open the holiday season was program for members of the Eastland Lions Club at their luncheon meeting Tuesday at the Ramada Inn.
Performer was Larry Barnes who performed on banjo and guitar, accompanied briefly by Program Chairman Jim Wright. President Ray Pryor presided and guests introduced included Bob Chelette, Norman Richard-

LEGAL NOTICE
Being certified by the Commissioner of Agriculture of the State of Texas for this purpose, the Mohair Council of America, 518 Central National Bank Building, San Angelo, Texas 76901, proposes a referendum election on February 10, 1976, under provisions of Article 55C, Vernon's Civil Statutes on the proposition of whether or not mohair producers in the following counties shall assess themselves an amount not to exceed 2 1/2 cents per pound on all mohair sold to be collected at the first point of sale, and to elect members for a 12-person commodity producers board to administer proceeds of such assessment to be used for advertising, promotion, market and product development, education and research programs designed to encourage production, marketing and use of Texas mohair.
Counties included in the referendum are: District 1 - Terrell, Crockett, Pecos, Brewster, Presidio and Jeff Davis. District 2 - Val Verde, Kinney, District 3 - Edwards, District 4 - Bandera, Real, Medina, Uvalde, District 5 - Mason, Llano, Gillespie, Kerr, Kendall, Comal, Blanco, District 6 - Schleicher, Menard, Sutton, Kimble, District 7 - Mills, Hamilton, San Saba, Coryell, Lampasas, Burnet, Hays, Travis, Williamson, Bell, District 8 - Irion, Sterling, Coke, Tom Green, Concho, McCulloch, Coleman, Runnels, Nolan, Taylor, Callahan, District 9 - Brown, Eastland, Comanche, Erath, Stephens, Palo Pinto, Jack, Parker, Hood.
The referendum and election will be held by physical ballot with voting place to be at each county ASCS office in the referendum area or in the county courthouse in counties that do not have ASCS office facilities. Polls will be open at 7 a.m. and close at 7 p.m. Producers who will be away from their particular voting box location on election day may obtain an absentee ballot from county agent offices, wool and mohair warehouses or from the Mohair Council of America. Absentee ballots must be mailed in the self-addressed envelope to the central balloting place at P.O. Box 222, San Angelo, Texas 76901, before midnight three days prior to the election date.
Any person within this referendum area engaged in the business of producing or causing to be produced mohair for commercial purposes is eligible to vote, including owners of ranches and their tenants and sharecroppers, if such person would be required to pay the assessment proposed.

LEGAL NOTICE
Being certified by the Commissioner of Agriculture of the State of Texas for this purpose, the Mohair Council of America, 518 Central National Bank Building, San Angelo, Texas 76901, proposes a referendum election on February 10, 1976, under provisions of Article 55C, Vernon's Civil Statutes on the proposition of whether or not mohair producers in the following counties shall assess themselves an amount not to exceed 2 1/2 cents per pound on all mohair sold to be collected at the first point of sale, and to elect members for a 12-person commodity producers board to administer proceeds of such assessment to be used for advertising, promotion, market and product development, education and research programs designed to encourage production, marketing and use of Texas mohair.
Counties included in the referendum are: District 1 - Terrell, Crockett, Pecos, Brewster, Presidio and Jeff Davis. District 2 - Val Verde, Kinney, District 3 - Edwards, District 4 - Bandera, Real, Medina, Uvalde, District 5 - Mason, Llano, Gillespie, Kerr, Kendall, Comal, Blanco, District 6 - Schleicher, Menard, Sutton, Kimble, District 7 - Mills, Hamilton, San Saba, Coryell, Lampasas, Burnet, Hays, Travis, Williamson, Bell, District 8 - Irion, Sterling, Coke, Tom Green, Concho, McCulloch, Coleman, Runnels, Nolan, Taylor, Callahan, District 9 - Brown, Eastland, Comanche, Erath, Stephens, Palo Pinto, Jack, Parker, Hood.
The referendum and election will be held by physical ballot with voting place to be at each county ASCS office in the referendum area or in the county courthouse in counties that do not have ASCS office facilities. Polls will be open at 7 a.m. and close at 7 p.m. Producers who will be away from their particular voting box location on election day may obtain an absentee ballot from county agent offices, wool and mohair warehouses or from the Mohair Council of America. Absentee ballots must be mailed in the self-addressed envelope to the central balloting place at P.O. Box 222, San Angelo, Texas 76901, before midnight three days prior to the election date.
Any person within this referendum area engaged in the business of producing or causing to be produced mohair for commercial purposes is eligible to vote, including owners of ranches and their tenants and sharecroppers, if such person would be required to pay the assessment proposed.

LEGAL NOTICE
Being certified by the Commissioner of Agriculture of the State of Texas for this purpose, the Mohair Council of America, 518 Central National Bank Building, San Angelo, Texas 76901, proposes a referendum election on February 10, 1976, under provisions of Article 55C, Vernon's Civil Statutes on the proposition of whether or not mohair producers in the following counties shall assess themselves an amount not to exceed 2 1/2 cents per pound on all mohair sold to be collected at the first point of sale, and to elect members for a 12-person commodity producers board to administer proceeds of such assessment to be used for advertising, promotion, market and product development, education and research programs designed to encourage production, marketing and use of Texas mohair.
Counties included in the referendum are: District 1 - Terrell, Crockett, Pecos, Brewster, Presidio and Jeff Davis. District 2 - Val Verde, Kinney, District 3 - Edwards, District 4 - Bandera, Real, Medina, Uvalde, District 5 - Mason, Llano, Gillespie, Kerr, Kendall, Comal, Blanco, District 6 - Schleicher, Menard, Sutton, Kimble, District 7 - Mills, Hamilton, San Saba, Coryell, Lampasas, Burnet, Hays, Travis, Williamson, Bell, District 8 - Irion, Sterling, Coke, Tom Green, Concho, McCulloch, Coleman, Runnels, Nolan, Taylor, Callahan, District 9 - Brown, Eastland, Comanche, Erath, Stephens, Palo Pinto, Jack, Parker, Hood.
The referendum and election will be held by physical ballot with voting place to be at each county ASCS office in the referendum area or in the county courthouse in counties that do not have ASCS office facilities. Polls will be open at 7 a.m. and close at 7 p.m. Producers who will be away from their particular voting box location on election day may obtain an absentee ballot from county agent offices, wool and mohair warehouses or from the Mohair Council of America. Absentee ballots must be mailed in the self-addressed envelope to the central balloting place at P.O. Box 222, San Angelo, Texas 76901, before midnight three days prior to the election date.
Any person within this referendum area engaged in the business of producing or causing to be produced mohair for commercial purposes is eligible to vote, including owners of ranches and their tenants and sharecroppers, if such person would be required to pay the assessment proposed.

LEGAL NOTICE
Being certified by the Commissioner of Agriculture of the State of Texas for this purpose, the Mohair Council of America, 518 Central National Bank Building, San Angelo, Texas 76901, proposes a referendum election on February 10, 1976, under provisions of Article 55C, Vernon's Civil Statutes on the proposition of whether or not mohair producers in the following counties shall assess themselves an amount not to exceed 2 1/2 cents per pound on all mohair sold to be collected at the first point of sale, and to elect members for a 12-person commodity producers board to administer proceeds of such assessment to be used for advertising, promotion, market and product development, education and research programs designed to encourage production, marketing and use of Texas mohair.
Counties included in the referendum are: District 1 - Terrell, Crockett, Pecos, Brewster, Presidio and Jeff Davis. District 2 - Val Verde, Kinney, District 3 - Edwards, District 4 - Bandera, Real, Medina, Uvalde, District 5 - Mason, Llano, Gillespie, Kerr, Kendall, Comal, Blanco, District 6 - Schleicher, Menard, Sutton, Kimble, District 7 - Mills, Hamilton, San Saba, Coryell, Lampasas, Burnet, Hays, Travis, Williamson, Bell, District 8 - Irion, Sterling, Coke, Tom Green, Concho, McCulloch, Coleman, Runnels, Nolan, Taylor, Callahan, District 9 - Brown, Eastland, Comanche, Erath, Stephens, Palo Pinto, Jack, Parker, Hood.
The referendum and election will be held by physical ballot with voting place to be at each county ASCS office in the referendum area or in the county courthouse in counties that do not have ASCS office facilities. Polls will be open at 7 a.m. and close at 7 p.m. Producers who will be away from their particular voting box location on election day may obtain an absentee ballot from county agent offices, wool and mohair warehouses or from the Mohair Council of America. Absentee ballots must be mailed in the self-addressed envelope to the central balloting place at P.O. Box 222, San Angelo, Texas 76901, before midnight three days prior to the election date.
Any person within this referendum area engaged in the business of producing or causing to be produced mohair for commercial purposes is eligible to vote, including owners of ranches and their tenants and sharecroppers, if such person would be required to pay the assessment proposed.

LEGAL NOTICE
Being certified by the Commissioner of Agriculture of the State of Texas for this purpose, the Mohair Council of America, 518 Central National Bank Building, San Angelo, Texas 76901, proposes a referendum election on February 10, 1976, under provisions of Article 55C, Vernon's Civil Statutes on the proposition of whether or not mohair producers in the following counties shall assess themselves an amount not to exceed 2 1/2 cents per pound on all mohair sold to be collected at the first point of sale, and to elect members for a 12-person commodity producers board to administer proceeds of such assessment to be used for advertising, promotion, market and product development, education and research programs designed to encourage production, marketing and use of Texas mohair.
Counties included in the referendum are: District 1 - Terrell, Crockett, Pecos, Brewster, Presidio and Jeff Davis. District 2 - Val Verde, Kinney, District 3 - Edwards, District 4 - Bandera, Real, Medina, Uvalde, District 5 - Mason, Llano, Gillespie, Kerr, Kendall, Comal, Blanco, District 6 - Schleicher, Menard, Sutton, Kimble, District 7 - Mills, Hamilton, San Saba, Coryell, Lampasas, Burnet, Hays, Travis, Williamson, Bell, District 8 - Irion, Sterling, Coke, Tom Green, Concho, McCulloch, Coleman, Runnels, Nolan, Taylor, Callahan, District 9 - Brown, Eastland, Comanche, Erath, Stephens, Palo Pinto, Jack, Parker, Hood.
The referendum and election will be held by physical ballot with voting place to be at each county ASCS office in the referendum area or in the county courthouse in counties that do not have ASCS office facilities. Polls will be open at 7 a.m. and close at 7 p.m. Producers who will be away from their particular voting box location on election day may obtain an absentee ballot from county agent offices, wool and mohair warehouses or from the Mohair Council of America. Absentee ballots must be mailed in the self-addressed envelope to the central balloting place at P.O. Box 222, San Angelo, Texas 76901, before midnight three days prior to the election date.
Any person within this referendum area engaged in the business of producing or causing to be produced mohair for commercial purposes is eligible to vote, including owners of ranches and their tenants and sharecroppers, if such person would be required to pay the assessment proposed.

LEGAL NOTICE
Being certified by the Commissioner of Agriculture of the State of Texas for this purpose, the Mohair Council of America, 518 Central National Bank Building, San Angelo, Texas 76901, proposes a referendum election on February 10, 1976, under provisions of Article 55C, Vernon's Civil Statutes on the proposition of whether or not mohair producers in the following counties shall assess themselves an amount not to exceed 2 1/2 cents per pound on all mohair sold to be collected at the first point of sale, and to elect members for a 12-person commodity producers board to administer proceeds of such assessment to be used for advertising, promotion, market and product development, education and research programs designed to encourage production, marketing and use of Texas mohair.
Counties included in the referendum are: District 1 - Terrell, Crockett, Pecos, Brewster, Presidio and Jeff Davis. District 2 - Val Verde, Kinney, District 3 - Edwards, District 4 - Bandera, Real, Medina, Uvalde, District 5 - Mason, Llano, Gillespie, Kerr, Kendall, Comal, Blanco, District 6 - Schleicher, Menard, Sutton, Kimble, District 7 - Mills, Hamilton, San Saba, Coryell, Lampasas, Burnet, Hays, Travis, Williamson, Bell, District 8 - Irion, Sterling, Coke, Tom Green, Concho, McCulloch, Coleman, Runnels, Nolan, Taylor, Callahan, District 9 - Brown, Eastland, Comanche, Erath, Stephens, Palo Pinto, Jack, Parker, Hood.
The referendum and election will be held by physical ballot with voting place to be at each county ASCS office in the referendum area or in the county courthouse in counties that do not have ASCS office facilities. Polls will be open at 7 a.m. and close at 7 p.m. Producers who will be away from their particular voting box location on election day may obtain an absentee ballot from county agent offices, wool and mohair warehouses or from the Mohair Council of America. Absentee ballots must be mailed in the self-addressed envelope to the central balloting place at P.O. Box 222, San Angelo, Texas 76901, before midnight three days prior to the election date.
Any person within this referendum area engaged in the business of producing or causing to be produced mohair for commercial purposes is eligible to vote, including owners of ranches and their tenants and sharecroppers, if such person would be required to pay the assessment proposed.

LEGAL NOTICE
Being certified by the Commissioner of Agriculture of the State of Texas for this purpose, the Mohair Council of America, 518 Central National Bank Building, San Angelo, Texas 76901, proposes a referendum election on February 10, 1976, under provisions of Article 55C, Vernon's Civil Statutes on the proposition of whether or not mohair producers in the following counties shall assess themselves an amount not to exceed 2 1/2 cents per pound on all mohair sold to be collected at the first point of sale, and to elect members for a 12-person commodity producers board to administer proceeds of such assessment to be used for advertising, promotion, market and product development, education and research programs designed to encourage production, marketing and use of Texas mohair.
Counties included in the referendum are: District 1 - Terrell, Crockett, Pecos, Brewster, Presidio and Jeff Davis. District 2 - Val Verde, Kinney, District 3 - Edwards, District 4 - Bandera, Real, Medina, Uvalde, District 5 - Mason, Llano, Gillespie, Kerr, Kendall, Comal, Blanco, District 6 - Schleicher, Menard, Sutton, Kimble, District 7 - Mills, Hamilton, San Saba, Coryell, Lampasas, Burnet, Hays, Travis, Williamson, Bell, District 8 - Irion, Sterling, Coke, Tom Green, Concho, McCulloch, Coleman, Runnels, Nolan, Taylor, Callahan, District 9 - Brown, Eastland, Comanche, Erath, Stephens, Palo Pinto, Jack, Parker, Hood.
The referendum and election will be held by physical ballot with voting place to be at each county ASCS office in the referendum area or in the county courthouse in counties that do not have ASCS office facilities. Polls will be open at 7 a.m. and close at 7 p.m. Producers who will be away from their particular voting box location on election day may obtain an absentee ballot from county agent offices, wool and mohair warehouses or from the Mohair Council of America. Absentee ballots must be mailed in the self-addressed envelope to the central balloting place at P.O. Box 222, San Angelo, Texas 76901, before midnight three days prior to the election date.
Any person within this referendum area engaged in the business of producing or causing to be produced mohair for commercial purposes is eligible to vote, including owners of ranches and their tenants and sharecroppers, if such person would be required to pay the assessment proposed.

LEGAL NOTICE
Being certified by the Commissioner of Agriculture of the State of Texas for this purpose, the Mohair Council of America, 518 Central National Bank Building, San Angelo, Texas 76901, proposes a referendum election on February 10, 1976, under provisions of Article 55C, Vernon's Civil Statutes on the proposition of whether or not mohair producers in the following counties shall assess themselves an amount not to exceed 2 1/2 cents per pound on all mohair sold to be collected at the first point of sale, and to elect members for a 12-person commodity producers board to administer proceeds of such assessment to be used for advertising, promotion, market and product development, education and research programs designed to encourage production, marketing and use of Texas mohair.
Counties included in the referendum are: District 1 - Terrell, Crockett, Pecos, Brewster, Presidio and Jeff Davis. District 2 - Val Verde, Kinney, District 3 - Edwards, District 4 - Bandera, Real, Medina, Uvalde, District 5 - Mason, Llano, Gillespie, Kerr, Kendall, Comal, Blanco, District 6 - Schleicher, Menard, Sutton, Kimble, District 7 - Mills, Hamilton, San Saba, Coryell, Lampasas, Burnet, Hays, Travis, Williamson, Bell, District 8 - Irion, Sterling, Coke, Tom Green, Concho, McCulloch, Coleman, Runnels, Nolan, Taylor, Callahan, District 9 - Brown, Eastland, Comanche, Erath, Stephens, Palo Pinto, Jack, Parker, Hood.
The referendum and election will be held by physical ballot with voting place to be at each county ASCS office in the referendum area or in the county courthouse in counties that do not have ASCS office facilities. Polls will be open at 7 a.m. and close at 7 p.m. Producers who will be away from their particular voting box location on election day may obtain an absentee ballot from county agent offices, wool and mohair warehouses or from the Mohair Council of America. Absentee ballots must be mailed in the self-addressed envelope to the central balloting place at P.O. Box 222, San Angelo, Texas 76901, before midnight three days prior to the election date.
Any person within this referendum area engaged in the business of producing or causing to be produced mohair for commercial purposes is eligible to vote, including owners of ranches and their tenants and sharecroppers, if such person would be required to pay the assessment proposed.

LEGAL NOTICE
Being certified by the Commissioner of Agriculture of the State of Texas for this purpose, the Mohair Council of America, 518 Central National Bank Building, San Angelo, Texas 76901, proposes a referendum election on February 10, 1976, under provisions of Article 55C, Vernon's Civil Statutes on the proposition of whether or not mohair producers in the following counties shall assess themselves an amount not to exceed 2 1/2 cents per pound on all mohair sold to be collected at the first point of sale, and to elect members for a 12-person commodity producers board to administer proceeds of such assessment to be used for advertising, promotion, market and product development, education and research programs designed to encourage production, marketing and use of Texas mohair.
Counties included in the referendum are: District 1 - Terrell, Crockett, Pecos, Brewster, Presidio and Jeff Davis. District 2 - Val Verde, Kinney, District 3 - Edwards, District 4 - Bandera, Real, Medina, Uvalde, District 5 - Mason, Llano, Gillespie, Kerr, Kendall, Comal, Blanco, District 6 - Schleicher, Menard, Sutton, Kimble, District 7 - Mills, Hamilton, San Saba, Coryell, Lampasas, Burnet, Hays, Travis, Williamson, Bell, District 8 - Irion, Sterling, Coke, Tom Green, Concho, McCulloch, Coleman, Runnels, Nolan, Taylor, Callahan, District 9 - Brown, Eastland, Comanche, Erath, Stephens, Palo Pinto, Jack, Parker, Hood.
The referendum and election will be held by physical ballot with voting place to be at each county ASCS office in the referendum area or in the county courthouse in counties that do not have ASCS office facilities. Polls will be open at 7 a.m. and close at 7 p.m. Producers who will be away from their particular voting box location on election day may obtain an absentee ballot from county agent offices, wool and mohair warehouses or from the Mohair Council of America. Absentee ballots must be mailed in the self-addressed envelope to the central balloting place at P.O. Box 222, San Angelo, Texas 76901, before midnight three days prior to the election date.
Any person within this referendum area engaged in the business of producing or causing to be produced mohair for commercial purposes is eligible to vote, including owners of ranches and their tenants and sharecroppers, if such person would be required to pay the assessment proposed.

LEGAL NOTICE
Being certified by the Commissioner of Agriculture of the State of Texas for this purpose, the Mohair Council of America, 518 Central National Bank Building, San Angelo, Texas 76901, proposes a referendum election on February 10, 1976, under provisions of Article 55C, Vernon's Civil Statutes on the proposition of whether or not mohair producers in the following counties shall assess themselves an amount not to exceed 2 1/2 cents per pound on all mohair sold to be collected at the first point of sale, and to elect members for a 12-person commodity producers board to administer proceeds of such assessment to be used for advertising, promotion, market and product development, education and research programs designed to encourage production, marketing and use of Texas mohair.
Counties included in the referendum are: District 1 - Terrell, Crockett, Pecos, Brewster, Presidio and Jeff Davis. District 2 - Val Verde, Kinney, District 3 - Edwards, District 4 - Bandera, Real, Medina, Uvalde, District 5 - Mason, Llano, Gillespie, Kerr, Kendall, Comal, Blanco, District 6 - Schleicher, Menard, Sutton, Kimble, District 7 - Mills, Hamilton, San Saba, Coryell, Lampasas, Burnet, Hays, Travis, Williamson, Bell, District 8 - Irion, Sterling, Coke, Tom Green, Concho, McCulloch, Coleman, Runnels, Nolan, Taylor, Callahan, District 9 - Brown, Eastland, Comanche, Erath, Stephens, Palo Pinto, Jack, Parker, Hood.
The referendum and election will be held by physical ballot with voting place to be at each county ASCS office in the referendum area or in the county courthouse in counties that do not have ASCS office facilities. Polls will be open at 7 a.m. and close at 7 p.m. Producers who will be away from their particular voting box location on election day may obtain an absentee ballot from county agent offices, wool and mohair warehouses or from the Mohair Council of America. Absentee ballots must be mailed in the self-addressed envelope to the central balloting place at P.O. Box 222, San Angelo, Texas 76901, before midnight three days prior to the election date.
Any person within this referendum area engaged in the business of producing or causing to be produced mohair for commercial purposes is eligible to vote, including owners of ranches and their tenants and sharecroppers, if such person would be required to pay the assessment proposed.


LEGAL NOTICE
Being certified by the Commissioner of Agriculture of the State of Texas for this purpose, the Mohair Council of America, 518 Central National Bank Building, San Angelo, Texas 76901, proposes a referendum election on February 10, 1976, under provisions of Article 55C, Vernon's Civil Statutes on the proposition of whether or not mohair producers in the following counties shall assess themselves an amount not to exceed 2 1/2 cents per pound on all mohair sold to be collected at the first point of sale, and to elect members for a 12-person commodity producers board to administer proceeds of such assessment to be used for advertising, promotion, market and product development, education and research programs designed to encourage production, marketing and use of Texas mohair.
Counties included in the referendum are: District 1 - Terrell, Crockett, Pecos, Brewster, Presidio and Jeff Davis. District 2 - Val Verde, Kinney, District 3 - Edwards, District 4 - Bandera, Real, Medina, Uvalde, District 5 - Mason, Llano, Gillespie, Kerr, Kendall, Comal, Blanco, District 6 - Schleicher, Menard, Sutton, Kimble, District 7 - Mills, Hamilton, San Saba, Coryell, Lampasas, Burnet, Hays, Travis, Williamson, Bell, District 8 - Irion, Sterling, Coke, Tom Green, Concho, McCulloch, Coleman, Runnels, Nolan, Taylor, Callahan, District 9 - Brown, Eastland, Comanche, Erath, Stephens, Palo Pinto, Jack, Parker, Hood.
The referendum and election will be held by physical ballot with voting place to be at each county ASCS office in the referendum area or in the county courthouse in counties that do not have ASCS office facilities. Polls will be open at 7 a.m. and close at 7 p.m. Producers who will be away from their particular voting box location on election day may obtain an absentee ballot from county agent offices, wool and mohair warehouses or from the Mohair Council of America. Absentee ballots must be mailed in the self-addressed envelope to the central balloting place at P.O. Box 222, San Angelo, Texas 76901, before midnight three days prior to the election date.
Any person within this referendum area engaged in the business of producing or causing to be produced mohair for commercial purposes is eligible to vote, including owners of ranches and their tenants and sharecroppers, if such person would be required to pay the assessment proposed.

LEGAL NOTICE
Being certified by the Commissioner of Agriculture of the State of Texas for this purpose, the Mohair Council of America, 518 Central National Bank Building, San Angelo, Texas 76901, proposes a referendum election on February 10, 1976, under provisions of Article 55C, Vernon's Civil Statutes on the proposition of whether or not mohair producers in the following counties shall assess themselves an amount not to exceed 2 1/2 cents per pound on all mohair sold to be collected at the first point of sale, and to elect members for a 12-person commodity producers board to administer proceeds of such assessment to be used for advertising, promotion, market and product development, education and research programs designed to encourage production, marketing and use of Texas mohair.
Counties included in the referendum are: District 1 - Terrell, Crockett, Pecos, Brewster, Presidio and Jeff Davis. District 2 - Val Verde, Kinney, District 3 - Edwards, District 4 - Bandera, Real, Medina, Uvalde, District 5 - Mason, Llano, Gillespie, Kerr, Kendall, Comal, Blanco, District 6 - Schleicher, Menard, Sutton, Kimble, District 7 - Mills, Hamilton, San Saba, Coryell, Lampasas, Burnet, Hays, Travis, Williamson, Bell, District 8 - Irion, Sterling, Coke, Tom Green, Concho, McCulloch, Coleman, Runnels, Nolan, Taylor, Callahan, District 9 - Brown, Eastland, Comanche, Erath, Stephens, Palo Pinto, Jack, Parker, Hood.
The referendum and election will be held by physical ballot with voting place to be at each county ASCS office in the referendum area or in the county courthouse in counties that do not have ASCS office facilities. Polls will be open at 7 a.m. and close at 7 p.m. Producers who will be away from their particular voting box location on election day may obtain an absentee ballot from county agent offices, wool and mohair warehouses or from the Mohair Council of America. Absentee ballots must be mailed in the self-addressed envelope to the central balloting place at P.O. Box 222, San Angelo, Texas 76901, before midnight three days prior to the election date.
Any person within this referendum area engaged in the business of producing or causing to be produced mohair for commercial purposes is eligible to vote, including owners of ranches and their tenants and sharecroppers, if such person would be required to pay the assessment proposed.

LEGAL NOTICE
Being certified by the Commissioner of Agriculture of the State of Texas for this purpose, the Mohair Council of America, 518 Central National Bank Building, San Angelo, Texas 76901, proposes a referendum election on February 10, 1976, under provisions of Article 55C, Vernon's Civil Statutes on the proposition of whether or not mohair producers in the following counties shall assess themselves an amount not to exceed 2 1/2 cents per pound on all mohair sold to be collected at the first point of sale, and to elect members for a 12-person commodity producers board to administer proceeds of such assessment to be used for advertising, promotion, market and product development, education and research programs designed to encourage production, marketing and use of Texas mohair.
Counties included in the referendum are: District 1 - Terrell, Crockett, Pecos, Brewster, Presidio and Jeff Davis. District 2 - Val Verde, Kinney, District 3 - Edwards, District 4 - Bandera, Real, Medina, Uvalde, District 5 - Mason, Llano, Gillespie, Kerr, Kendall, Comal, Blanco, District 6 - Schleicher, Menard, Sutton, Kimble, District 7 - Mills, Hamilton, San Saba, Coryell, Lampasas, Burnet, Hays, Travis, Williamson, Bell, District 8 - Irion, Sterling, Coke, Tom Green, Concho, McCulloch, Coleman, Runnels, Nolan, Taylor, Callahan, District 9 - Brown, Eastland, Comanche, Erath, Stephens, Palo Pinto, Jack, Parker, Hood.
The referendum and election will be held by physical ballot with voting place to be at each county ASCS office in the referendum area or in the county courthouse in counties that do not have ASCS office facilities. Polls will be open at 7 a.m. and close at 7 p.m. Producers who will be away from their particular voting box location on election day may obtain an absentee ballot from county agent offices, wool and mohair warehouses or from the Mohair Council of America. Absentee ballots must be mailed in the self-addressed envelope to the central balloting place at P.O. Box 222, San Angelo, Texas 76901, before midnight three days prior to the election date.
Any person within this referendum area engaged in the business of producing or causing to be produced mohair for commercial purposes is eligible to vote, including owners of ranches and their tenants and sharecroppers, if such person would be required to pay the assessment proposed.

LEGAL NOTICE
Being certified by the Commissioner of Agriculture of the State of Texas for this purpose, the Mohair Council of America, 518 Central National Bank Building, San Angelo, Texas 76901, proposes a referendum election on February 10, 1976, under provisions of Article 55C, Vernon's Civil Statutes on the proposition of whether or not mohair producers in the following counties shall assess themselves an amount not to exceed 2 1/2 cents per pound on all mohair sold to be collected at the first point of sale, and to elect members for a 12-person commodity producers board to administer proceeds of such assessment to be used for advertising, promotion, market and product development, education and research programs designed to encourage production, marketing and use of Texas mohair.
Counties included in the referendum are: District 1 - Terrell, Crockett, Pecos, Brewster, Presidio and Jeff Davis. District 2 - Val Verde, Kinney, District 3 - Edwards, District 4 - Bandera, Real, Medina, Uvalde, District 5 - Mason, Llano, Gillespie, Kerr, Kendall, Comal, Blanco, District 6 - Schleicher, Menard, Sutton, Kimble, District 7 - Mills, Hamilton, San Saba, Coryell, Lampasas, Burnet, Hays, Travis, Williamson, Bell, District 8 - Irion, Sterling, Coke, Tom Green, Concho, McCulloch, Coleman, Runnels, Nolan, Taylor, Callahan, District 9 - Brown, Eastland, Comanche, Erath, Stephens, Palo Pinto, Jack, Parker, Hood.
The referendum and election will be held by physical ballot with voting place to be at each county ASCS office in the referendum area or in the county courthouse in counties that do not have ASCS office facilities. Polls will be open at 7 a.m. and close at 7 p.m. Producers who will be away from their particular voting box location on election day may obtain an absentee ballot from county agent offices, wool and mohair warehouses or from the Mohair Council of America. Absentee ballots must be mailed in the self-addressed envelope to the central balloting place at P.O. Box 222, San Angelo, Texas

drive



R.G. "BUCK" WHEAT REAL ESTATE

422 Acres - 1/4 Minerals - Leasing right 37 acre peanut allotment - Home with tremendous view; located between Carbon and Gorman.

60 Acres and House close in to Ranger. Can Divide from 5 to 60 acres.

288 Acres - Terms available. Bryson apt. \$260. per acre.

344 Acres - Terms Available Bryson Area \$260. per acre.

462 Acres - Hedley area Hwy. Frontage 1/4 min. with leasing rights.

265 Acres cultivated. \$185. Acre.

Other Larger tracts of land available. We are eager to give prompt attention to your buying and selling needs. Call us today.

BUCK WHEAT

647-1881 (Broker)

GARY W. Gilman

629-2875 (Associate)

T.U.M.A. Warns Of Pasture Diseases

In the fall of the year, two pasture problems, nitrate and cyanide poisoning, may be the cause of cattle deaths, warns Dr. Jim Wilson, member of the Texas Veterinary Medical Association Public Information Committee. Prevention is the best solution, and every cattleman should know what to do in predicting and avoiding potential nitrate and cyanide problems.

Nitrate poisoning, also known as oat pasture poisoning, is caused by toxic levels of nitrates accumulating in rapidly growing ryegrasses, pastures recently top-dressed with nitrogen fertilizers and water run-off from such pastures, oat hay and stubble, corn stalks, sweet potato vines, careless weed, lambsquarter, ragweed, and nightshades.

However, special conditions are usually necessary for these

plants to become toxic-environmental conditions such as:

- (1) Three or four cloudy days.
- (2) Frost
- (3) Drought
- (4) 2, 4-D spraying on pastures

(5) Trampling
(6) Other factors that cause the sudden slowing or rapid increase of plant growth or sudden increase in palatability. Accumulation is usually greater in the plant stalks than the leaves, fruit or grain.

Symptoms of nitrate poisoning which are sudden and progress rapidly, are:

- (1) Stomach pain
- (2) Diarrhea
- (3) Difficult breathing
- (4) Muscle tremors, wobbling, collapse, head turned back in the blank, and death without struggle.

(5) The blood will be a chocolate brown, the gums will have a grayish-blue coloration, and in cases where the animal has eaten fertilizer, the intestines will be raw and bloody.

Unless treated, animals will die in three to four hours after the first symptoms.

Similarly, cyanide is a potent, rapid-acting poison that can accumulate to killer levels in most sorghums, sudan grasses, corn, Johnson grass, arrowgrass, flax and some other pasture grasses. Toxic levels of cyanide accumulate in these grasses under the same conditions that cause nitrate accumulation. The key is that any condition that retards plant growth, excessively stimulates young plant growth, or increases plant palatability may result in plants containing toxic levels of cyanide or nitrate.

As is characteristic with most acute poisonings, the symptoms of cyanide are violent and deadly within two hours if treatment is not initiated immediately. The symptoms are excitement, general muscle trembling, difficult, rapid breathing, slobbering, tearing, head curled back in the flank, dilated eyes, convulsions, unconsciousness, and death. The gums are bright red, and the blood is a bright cherry red.

Good pasture management can avoid cyanide and nitrate poisonings. Know what grasses are potential cyanide and nitrate accumulators, and the environmental conditions that make them dangerous. The only sure protection under these conditions is temporary removal of cattle from those pastures, but when this is impossible, allowing for taller plant growth and grazing only in the afternoon after frost is off the grass eliminates the danger to a great extent.

When a case occurs, the Texas Veterinary Medical Association recommends you call your local veterinarian immediately. Proper diagnosis, early treatment, and prevention of symptoms in the rest of your herd are extremely important. Your veterinarian is the best source of information about these deadly pasture diseases.

Sales Tax Distributed

December 4, 1975

Dairy Queen

BREAKFAST
6 - 11 A.M.
7 DAYS A WEEK
RANGER DAIRY QUEEN
647-3001

CITIZENS REALTY

820 W. Main Eastland
629-1769 or 629-2404

WE SELL FARMS - NOT JUST LIST THEM

40 ACRES - edge of EASTLAND - Pecan trees, creek road frontage - Easy Terms.

57 ACRES - Spacious 2200 Sq. Ft. New Brick Home, three bedrooms Large 20' ddep tank, Creek, All in coastal, 4 miles East of EASTLAND.

40 ACRES - North of CROSS PLAINS, near Pioneer community. Peanut allotment, Tank, County road ONLY \$300 per acre, will G.I.

41 ACRES - South of CISCO - Sandy type soil. Six ac. in Cultivation, 30 ac. coastal, four ac. Love grass - Tank - Underground water available. ONLY 20 percent DOWN Owner Financing.

42 ACRES - edge of CISCO, older home plenty of water, nice Spring - fed tank runs most of year, good fishing. 7 acres in coastal.

140 ACRES - North of CISCO - Good Deer hunting, plenty of Turkey, nice stock tank, creek, highway frontage. ONLY \$265 per acre, Owner will carry at 8 percent.

85 ACRES - COMANCHE COUNTY - All in Coastal, Creek Stock Tanks, Very Good Fences.

48 ACRES - COMANCHE COUNTY - 14' X 70' mobile home, excellent condition - improved grasses, outbuildings.

486 ACRES - Lake Leon, 330 acres in cultivation, two bedroom home, Lake frontage irrigation equipment, wheel movements pumps, large barn, Highway frontage, Terms.

640 ACRES - REAGAN COUNTY - Grassland, Sandy - type soil. \$106 per ac. Owner will carry at 8 percent, Only 10 percent Down.

160 ACRES GORMAN - 100 ac. dryland peanut allotment, Good Terms Only 22 percent Downpayment.

300 ACRES - GORMAN - 78 Ac. peanuts, Nice three home, 75 Ac on Coastal, three good irrigation wells, 42 ac. Love grass. Good Terms.

210 ACRES - Near Okra - 50 Ac. cultivation, one well, Four surface tanks. PRICED TO SELL.

RAY MOODY - ASSOCIATE
1-725-7279

Hours:
8-6 Mon. - Fri.
8-2 Sat.
1-4 Sun.

WAYNE DURHAM - ASSOCIATE
629-8212

B.G. BROWN - BROKER
629-8082

Try **Morren's Gift Shop**

For Over Night **Film Processing.**



Morren's Plumbing And Gift Shop

1013 West Main 629-2092

Dairy Queen

BREAKFAST
6 - 11 A.M.
7 DAYS A WEEK
RANGER DAIRY QUEEN
647-3001

Eastland Pump & Construction

H.L. "Hoot" Ferguson
Box 693
Eastland, Texas
817-629-2311

Backhoe Sewer Lines Water Lines
Dirt Work

BIRTH DEFECTS ARE FOREVER UNLESS YOU HELP MARCH OF DIMES

SAVE ON YOUR GAS AND ELECTRIC BILLS!!!

We can save you up to \$300.00 a year! Give us only a few minutes of your Time and let us explain the

SOLAR - THERM INSULATION SYSTEM
Call For Free Estimate
D & D INSULATION
Your Solar - Therm Dealer

672-5243 Strawn - - 647-1745 Ranger

Dairy Queen

BREAKFAST
6 - 11 A.M.
7 DAYS A WEEK
RANGER DAIRY QUEEN
647-3001

Fall Greetings

2 New Luxurious Air Conditioned Homes

THE ULTIMATE IN NURSING HOMES

And Extended Care Facilities

Mr. & Mrs. Morris Shook - Coordinators
Private & Semi-Private Rooms
Full Time Social Activities Program
"We Invite Your Inspection"

24 HOUR NURSING SERVICE

Chapel Lounge Telephones

Beauty Shop Cable TV Barber Shop

Luxurious Dining & Recreation Room

Organ, Piano & Game Tables

EASTLAND MANOR 629-2686
1403 W. COMMERCIAL

VALLEY VIEW LODGE 629-1779
700 S. OSTRUM

Christmas is coming

FREE GFIT WRAPPING

1/4 Off ALL LINGERIE

1st. Time 1 GROUP JEWELRY

1/2 Off

1/3 Off ALL WINTER COATS

SMUMMER SALE RACKS

Reduced To An Unbelievable \$1.00 & \$2.00

Quetta's Sports Wear Boutique

IH 20 Next To Ramada Inn
Eastland 629-8030

'TIS THE SEASON TO GET READY...

Score Early

For **DOLLAR DAYS**

And The Christmas Rush
Monday Through Saturday

ALL \$5.98 KNITS \$1.00 Off

ALL 45" MATERIAL 1/4 Off

Rita's Fashion Fabrics

I-20 East Next To Ramada Inn
629-8020

December 4, 1975

Blown Acoustic Ceiling
Spray Painting
Sheet Rock Finishing
ADEN ELMORE
629-2525 After 5 Eastland

BI-CENTENNIAL CELEBRATION

A YEAR TO U.S.A.'s 200th BIRTHDAY

Greer's Western Store IN RANGER

Pre-CHRISTMAS SALE

Santa's best friend

JEANS

Mens Checked Wranglers - Reg. 9.98 Now Only \$7.98
Mens Plaid Levis - Reg. 12.50 to 15.00 - \$2.00 off

SHIRTS

Mens Western Shirts - Reg. 11.98 to 13.98 - \$2.00 OFF
Ladies Sleeveless and Short sleeve Blouses - 20% off
Bulldog Sweatshirts - Reg. 3.75 Now Only \$2.99

SUITS

Group of Mens Suits (limited sizes) Reg. 75.00 to 80.00 - Now only \$59.98
Group of Mens Suits (Good suzes) Reg. 89.98 - Now only \$69.98
A few Casual Suit Jackets - Reg. 23.00 & 24.00 - Now Only \$16.98

BOOTS

All Men Tonly Lama Boots - 5.00 off Regular Price
Group of Assorted Tony Lamas - Reg. 55.00 - Now Only \$35.00

All Mens Acme Boots - 3.00 to 4.00 Off Regular Price
Group of Childrens Boots - 1/2 Off

HATS

Group of Assorted Bradfords (Limited sizes)
Reg. 20.00 to 30.00 Now Only \$15.00

COATS

Childs Lined Coats - Reg. 9.98 & 11.98 - Now \$8.50 & \$9.98
Childs Levi Jackets - Reg. \$9.00 & \$11.00 - Now \$7.98
Mens Windbreakers - Reg. \$7.98 to 10.98 Now \$5.98
Wrangler lined Corduroy Jacket - ONLY \$16.98
Wrangler Quilted Jacket - ONLY \$15.98
Polyfilled Quilted Coat - Reg. 37.50 - Now \$34.98
Plaid Mackinaw Fleece Collar - Reg. 49.50 - Now \$36.98
Suede Leather Jacket - Reg. \$69.98 - NOW \$64.98
Denim - look polyfilled coat - Reg. 42.50 NOW \$39.98
Extra Nice Smooth Leather Jacket - Reg. 149.50 NOW \$139.98
Corduroy Fleece Lined Jacket - Reg. 49.50 - NOW \$46.98
Leather Vest reg. 42.50 - NOW \$39.98
Quilted Vest - Reg. 19.50 - NOW \$17.98

here's a Christmas BONUS for you

A Christmas Ham for each family spending \$150.00 or more between Nov. 28 and Dec. 24.

From The Living Bible

Dear brothers, is your life full of difficulties and temptations? Then be happy, for when the way is rough, your patience has a chance to grow. So let it grow, and don't try to squirm out of your problems. For when your patience is finally in full bloom, then you will be ready for anything, strong in character, full and complete. If you want to know what God wants you to do, ask him, and he will gladly tell you, for he is always ready to give a bountiful supply of wisdom to all who ask him.

HOSPITAL NEWS

Patients in Ranger General Hospital Wednesday, December 3, 1975, were:
Estelle Adams
June Harris
Elizabeth Waugh
Pete Tindall
Wilma Westbrook
Charlie Nosek
Azalia Woods
Viola Gibson
O.C. Warden
Joe Neely
Doris Kostiba
Anna Jenkins
Clyde Campbell
Nellie Caraway
Olive Burns
Audie Templeton

Margie Byrd
Ada Falk
Kathleen Hagaman
Golda Dodd
Myrtle Ratliff
Anita Buchanan

Patients in the Eastland Memorial Hospital Wednesday, December 3, 1975, were:

Emily Perkins
Willard Verse
Audy Moore
Ruby Hite
Bertha Hagaman
Ola Walker
Mary Ponce
Brenda Hayden
Lydia Castillo
Connie Lawson
W.E. Dean
Wheeler Hammett
T.P. Coker
William Fetty
Baby Girl Lawson
Baby Boy Hayden
Baby Girl Castillo
Clara Lyeria
Sarah Stokes
Jovest Johnson
Ruby Johnson
Claudia Maynard
Cynthia Dean
D. Davis
Henry Agnew
Minnie Perdue
Della Carter
Lucille Smith
Georgia McKellar
Elma Bailey
Wanda Blair
Mazie Zellars
Royce Ingram
Clyde Fisher
Mary Evans
Pearl Whitley
Fannie James
Elsie Sanders
Sybil Legg
Olivier Ashton
Joe Petree
Roxie Hensley
Shirley Thompson
Mary Mehaffey
Fannie Turner
Josephine Brister
Kathy Rich
Leo Bailey
Vernie Allen
Ora Lee Franklin
Imabe Clark
Annie Sublett
Venna Maples
Hazel Henderson
Mildred Davis
Dessie Tucker
Dewey McQueary
Cecil Lindley
Henry McCleskey
Frankie Rodriguez
Ethelene Niver

Short Snorts
Governor Briscoe told a student group he is still thinking about running for a third term.
The Secretary of State's office is looking into corporate contributions to Texas politicians by major oil companies.
Texas Utilities Commission adopted new procedural rules.
Lo-Vaca Gathering Co., which sometimes had trouble supplying its own Texas customers, can start selling surplus gas out of state, under a Texas Railroad Commission ruling.

The State Democratic Executive Committee will meet December 8 in Fort Worth and consider rules which would speed the pace of slow-moving party conventions.
Blue Cross officials resisted a state audit of the insurance firm's internal practices as long as they deliver Medicaid services as contracted.
Texas Education Agency will launch a survey to determine how many Mexican pupils are attending the largest schools in Texas.

Boxoffice Opens 6:30 Show Starts at 7:00

RANGER

DRIVE-IN THEATRE

WILL BE CLOSED DECEMBER 8
THRU DECEMBER 25

FRIDAY-SATURDAY-SUNDAY
DECEMBER 5th-6th-7th



Back in 47 a gun was a roscoe, a private-eye was a Peeper, and murder was okay as long as nobody got hurt.



In fact, anything was okay with this Peeper on the case because he wouldn't know who-done-it even if he done it himself.

A ROBERT CHARTOFF IRWIN WINKLER PRODUCTION
MICHAEL CAINE NATALIE WOOD

PEEPER

A PETER HYAMS FILM
KITTY WINN - MICHAEL CONSTANTINE - LIAM DUNN
TIMOTHY AGOOLA CAREY - IRWIN WINKLER - ROBERT CHARTOFF
PETER HYAMS - W.D. RICHTER - KATHY LAUMER - RICHARD CLEMENTS



Dairy Queen

BREAKFAST
6 - 11 A.M.
7 DAYS A WEEK
RANGER DAIRY QUEEN
647-3001



We're Looking For New Listings!

IF YOU ARE CONSIDERING SELLING YOUR HOME WE RECOMMEND YOU DO IT NOW.



We have a long list of prospective buyers, but we are badly in need of listings.

For Professional Service In Buying or Selling

Call 629-1769 Today.

B.G. Brown, Realtor

- Member Texas Association of Realtors
- Member National Association of Realtors

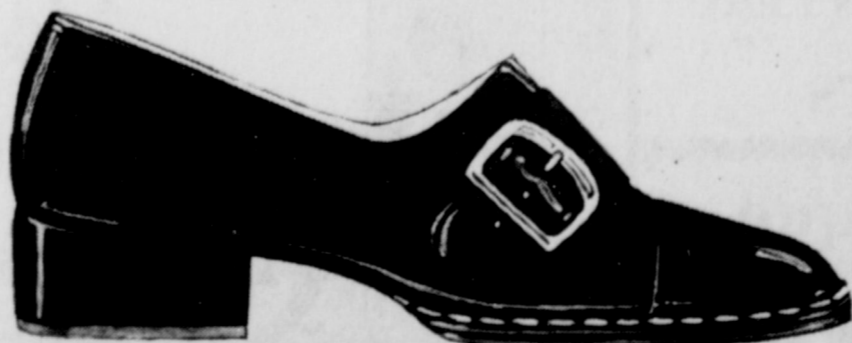
CITIZENS REALTY

820 WEST MAIN STREET.

JCPenney

We've got that great soft shoe in great fashion colors. While they last 5.99.

You've seen them. Smart buckle-front style. Snappy colors. Now feel them. Soft. Comfortable. So easy-on-the-feet. And at such an easy-on-the-budget-price, you can afford to have all the comfort you want. All the colors, too. Our slip-on casual has smooth, stitched urethane upper with composition sole. Choose camel, red, black or navy. In women's sizes 5 to 10M.



FREE GIFT WRAPPING

Christmas ease... by Enro

The unhurried nature of the far east sets the mood of our luxurious Kuru robe by Enro. Velvety soft velour of Arnel triacetate and nylon will keep a him or her comfortably warm throughout the cool winter months ahead. One size fits all in rich colors of Red... Blue... Brown... Green and Tan, all with contrast trim.

\$20.00

THE MAN'S STORE
Bob Elliott
CISCO



Carbon News

By Mrs. Bob Hastings 639-2517

The menu for the Carbon School cafeteria for the week December 8-12 is as follows:
Monday--Pizza, lettuce and tomato salad, corn, butter, milk.
Tuesday--Meat and potato casserole, green beans, carrots, hot rolls, butter, brownies, milk.
Wednesday--Fried chicken with gravy, mashed potatoes, peas, hot rolls, butter, peaches, milk.
Thursday--Macaroni and cheese, blackeyed peas, slaw, butter, chocolate milk

Friday--Hamburgers, lettuce, onions, tomatoes, pickles, french fries, jello, milk.

A city election will be held here in the teachers lounge at Carbon High School on Friday, Dec. 5, for the purpose of electing a city councilman to take the place of Mike McGinn who moved away. Polls will be open from 9 a.m. to 3 p.m. We hope a large number of our people will take time out to go and vote.

Mr. and Mrs. Ray Bilbrey.

Chad and Casey of Belton visited Mr. and Mrs. Harold Keith and Misty Sunday and Monday.

Dale Jackson of Fort Worth and Miss Lavada Jackson of Abilene spent the holidays with their parents, Mr. and Mrs. L.V. Jackson.

Thanksgiving dinner guests of Mr. and Mrs. W.E. Walker were Mr. and Mrs. L.R. Ussery and Mr. and Mrs. Joe Mercer of Weslaco, Mr. and Mrs. Wayne Walker and Kent of Odessa, Mr. and Mrs. Monte Walker and Tawney of Midland, Mr. and Mrs. Sandy Ussery and Heather Anne of Harvey, La.; W.M. Kelly of Lubbock, Bill Kelly of Snyder.

Mr. and Mrs. Danny Donaldson and family of Houston visited Mr. and Mrs. Truman

Bryant and Candi.

Rev. and Mrs. Delbert Smith visited friends in Odessa and Big Springs during the holiday weekend.

Mr. and Mrs. Ronald Payne, Ronnie and Jean Anne of San Angelo and Mrs. George Boles and Nancy of Odessa spent Thanksgiving weekend with Mrs. Mabel Payne.

Visiting Mrs. Nettie Berry were Mr. and Mrs. Don Williams and family of Abilene, Mr. and Mrs. Jerry Lyon and family of Mason, Miss Lena Berry and Mrs. Pauline Lovin of Hereford.

Mrs. Ted Eubanks of Fort Worth spent Monday with her mother, Mrs. Della Bryant.

Mr. and Mrs. Jim Hogan had all their children and most of the grandchildren and great-grandchildren in their home for Thanksgiving. They were Mr. and Mrs. Royce Kinard, Mr. and Mrs. Bill Carlton of Odessa, Mr. and Mrs. Carrol Hogan and family of Albany, Mr. and Mrs. John Hull of Brownwood, Mr. and Mrs. Lynn Hogan of Sterling, Colorado; Mr. and Mrs. Bob Hogan of Cisco, Mr. and Mrs. Gene May and family of Jacksboro, Micky Hogan and Mrs. Vicki Hess and children of Houston, Mr. and Mrs. Don Nicholas of Austin, Mr. and Mrs. Harold Schade of San Angelo, Mr. and Mrs. Tim Warren and Gregg of Stephenville, Mr. and Mrs. Joe Fields, Michael and Kaylea of Morton Valley, Mrs. Diane Bowden and Tommy and Danny Nicholas of Odessa, Miss Paula Hogan of Big Spring, also a brother and sister Mr. and Mrs. Charlie Petree, Mrs. Jewell Petree of Eastland, Mrs. Roger Petree and Michael of Carbon, also Gaylon Merritt.

Visiting Mrs. Myrtle Maness on Thanksgiving day were her grandchildren and friends Mr. and Mrs. James Crim and Gwen, Betty Cook, David Colley, Gary Cook and friend Terry, Lesley Cook and Susan Churchill all of Abilene.

Rev. and Mrs. Lee Fields were honored with a dinner on Saturday by their daughter and family Mr. and Mrs. Doug Kelley in their home at Graham. Other guests were Mr. and Mrs. Smokey Hale of Carbon, Mrs. Jesse Hagan of Cisco, Misses Kay Kelly of Austin and Ann Kelly of Wichita Falls. The occasion was the 50th wedding anniversary of the Fields.

Mr. and Mrs. Royce McGaha of Morenci, Arizona, have been visiting relatives here and returned home on Friday.

Mr. and Mrs. Don Waggoner of Bossier, La., spent the weekend with her parents, Mr. and Mrs. Garland Garrett.

Carroll Sandlin of Lubbock spent the weekend with his parents, Mr. and Mrs. Dulin Sandlin.

Mr. and Mrs. Henry Harle and Charlene spent Thanksgiving with Mr. and Mrs. Billy Harle of Henrietta.

Mr. and Mrs. Tom Beeler and family of Fort Worth, Mr. and Mrs. Gary Washburn of Arlington, visited Mr. and Mrs. Tom El Garrett during the weekend.

Thanksgiving day visitors in the home of Mr. and Mrs. Truman Been were Mr. and Mrs. L.G. Jackson of Bartlesville, Okla.; Mrs. Mary Black, Mr. and Mrs. Don Massengill and Rebecca, Mr. and Mrs. Rayneal Baze of Eastland, David Baze of A&M University, Mr. and Mrs. Wayne White of Ranger, Mr. and Mrs. Henry Hines of Carbon.

LETTERS TO THE EDITOR

Editor:
 I would like to take this time to show my great appreciation to Mr. Johnny Morren, and his city police force. I have been the Resident Manager of the Ramada Inn for close to four months now, and within this time, I have needed Mr. Morren's help on numerous occasions. He and his department, were on the scene within minutes of each occasion, and might I add that they dealt with every occasion in a very highly efficient manner.

I would like to extend my special thanks to Officer Jerry Rich and Sgt. Sedillio who patrol the Ramada Inn constantly.

I realize that in this day and age, crime is becoming a very great reality. I also realize that even though city forces are short handed, they are highly underrated. That is why I am writing you this letter, so that you, along with the citizens of Eastland, Texas, may join along with me, in acclaiming the Chief of Police and his force on a job well done.

Sincerely yours,
 Cecil Skaggs
 Resident Manager
 Ramada Inn, Eastland



Rev. Ronald Bear Accepts Position At Carlsbad, N.Mex.

Rev. Ronald Bear has resigned as pastor of the Church of God, Main and Connellee. He has accepted position as pastor and overseer at Carlsbad, N.M. In addition to serving as District Overseer of the Carlsbad District, he will be overseer of the Artesia, N.M., Church of God.

Rev. Bear and his wife Jane, have two children: Ronnie, 11, and Rhonda, 3.

The family came to Eastland in December, 1968. When he began as pastor here, they rented a vacant church building. The first service was held on January 5, 1969, and had 22 in attendance. The church was officially organized on January 26, 1969, with nine charter members.

During the time that Rev. Bear was pastor at Eastland, the interior of the church was remodeled with paneling, wall to wall carpet, theatre seats replaced with pews, refrigerated air conditioning installed, three Sunday School rooms, nursery and pastor's study completely remodeled, and two new rest rooms added. During

this time, a new parsonage was purchased and the old parsonage was turned into a fellowship hall with additional Sunday School rooms.

Record attendance was 105 on January 26, 1975. Attendance on the day of resignation was 80.

Rev. Bear received his Ordination, the highest rank of ministry in the Church of God, on March 21, 1972.

The Afternoon Group of Christian Women's Fellowship of the First Christian Church met Monday afternoon at 2:00 in the annex of the church with the chairman Mrs. Evelyn Daniels, presiding.

The meeting opened with a Christmas prayer by Mrs. Daniels.

The group decided to take a basket of joy to the patients in the Eastland Manor Nursing Home and send cards to members who are shut-ins and the members who were absent. Margaret Tow brought the lesson from the Book of

"Dignidad" translated means "Dignity". This story was about the Puerto Ricans and some of their concerns such as migration, self-identity, and culture.

The devotional pertaining to the lesson was brought by Jane Day. The group was dismissed with the C.W.F. Prayer.

Mrs. Daniels and Tow served cherry pie, topped with cream and nuts; dips and crackers, nuts and coffee to Mmes. Naomi Young, Mae Woods, Shirley Garrett, Jane Day, Winnie Bassett, and Berniece Tankersley.

CISCO MONUMENT WORKS
 LOYAL & DORIS LUNDSTROM - Owner
442-9995
 CURBING LAST DATES 700 E 8
 CISCO TEX

Reprint From: Wednesday Morning, November 12, 1975, Fort Worth Star - Telegram.

Say it in T-dollars

By JOAN BECK
 Chicago Tribune

The "T-dollar" concept suggested recently by Commerce Secretary Rogers C. B. Morton gives taxpayers a handy little yardstick to measure what federal government spending is going to cost them — personally.

Morton's T-dollar is the amount the average household must contribute for every billion dollars the federal government spends — and he calculates it to be \$14.06. The tab is higher, of course, for those in an above-average tax bracket.

So New York City needs more than \$3.5 billion to pay off debts falling due between now and June 30 and owes an over-all total of about \$13 billion. That comes to about \$49 and \$162 for every family in the nation. (It's easy to intellectualize about the fiscal hazards of default and romanticize about the cultural goodies of the Big Apple. But at gut level, how many taxpayers really want to kick in that kind of money to make sure New York City workers can continue to retire at half pay after 20 years on the job?)

So Anwar Sadat is expecting U.S. economic and military aid estimated at perhaps \$1 billion. And the Ford administration is asking for about \$2.3 billion for Israel. That's \$14.06 and \$32.31 in T-dollars out of the average family's bank account — and it's apparently just for starters. (It may make good diplomatic sense to try to entice Egypt into closer ties with the United States. But most taxpayers would prefer to put their family's tax dollars to work on cutting down violence in the streets where they live than to finance fighting in the Middle East.)

In T-dollars, the controversial food stamp program now costs the average family \$84.36 in taxes, enough for groceries for a couple of weeks. (That's not much if it would really solve the problem of hunger in America. But the level of cheating and abuse is now so high that many taxpayers feel justified in wishing they could spend at least part of the money for some better eating for themselves.)

As for the school lunch plan, costs will be up to \$2.8 billion for this fiscal year. That's almost \$40 per taxpaying household, something that bothered President Ford enough to veto the newest increases in the plan, but apparently didn't trouble Congress, which recently overrode the president's action.

President Ford is warning of a possible \$123 billion budget for the coming fiscal year — an average of \$5,947 for every one of the nation's households.

What's most frightening of all is the estimate by the Office of Management and Budget that about 72 per cent of the federal budget is now beyond control, made up of expenses which are fixed by law and destined to escalate next year no matter how hard President Ford and Congress work at trimming costs and programs.

The average family just can't afford the federal government any more — and that should be a major issue of the 1976 elections.

More For Less!

Feature for feature - dollar for dollar there is no finer home investment!

TREND-SETTING FEATURES:

- CENTRAL AIR CONDITIONING AND HEATING
- TWO CAR GARAGE
- Separate Utility Room
- Large Covered Overhang
- Drop In Oven and Range
- Hood and Fan in Kitchen
- Custom Styled Vanities
- Silent Light Switches

Eastland's Quality Builders
H & W Development Co.

Complete Building Service
 One Call Does It All

FHA-VA-CONVENTIONAL Financing Available
 216 S. Seaman
 629-1702

LADIES DAY

at the Lobo Style Center

Now Features:
 Ladies Blow-Dry Hair Designs

Monday: All Day By Appointments
 Weekdays: Limited Appointments For The Ladies
 These Styles Are Done In A Private Styling Booth
 On Weekdays Appointments, And Upon Request Monday.

Two Stylists To Serve You:
 Jan & Fred Are Looking Forward To Serving You.

LOBO BARBER STYLE CENTER

709 Ave. D Cisco 442-9979

No. 1 Ambulance Service In Eastland

BOBBY BOUDREAU
 Mortician
 Emergency Ambulance Attendant
 First Aid Instructor

EULIA ARRINGTON CAUBLE
 Owner

EDDIE UNDERWOOD
 Funeral Director
 Ambulance Attendant

Though Others Have Quit Ambulance Service Arrington Funeral Home Still Serves Because We Care

EASTLAND'S OLDEST 56 YEARS FUNERAL SERVICE FOR EASTLAND

JACKIE ARRINGTON
 Ambulance Attendant

DONNA UNDERWOOD
 Receptionist - Secretary

MACK WALKER
 Ambulance Attendant

ARRINGTON FUNERAL HOME

301 S. Lamar
 Friendly Personalized Service
 Ph. 629-2611

BURIAL INSURANCE PRE-NEED FUNERAL ARRANGEMENTS
 EXPERIENCE UNDERSTANDING FRIENDLINESS

Leona Bruce To Be Guest Thursday Club

Daughter of a Texas Ranger, who served also as a treasury agent, inspector for the Southwest Cattlemen's Association, and a sheriff — daughter of the first woman sheriff in the United States — and also a former deputy sheriff and postmaster — now with her husband, C. D. Bruce, operator of a ranch for breeding fine quarter horses and cattle at Santa Anna, Texas.

Told by her mother that she should write the story of her famous father, she produced first her book entitled TRICKHAM, TEXAS. This was a delightful record of the western area where she grew up and of the people who made the story possible.

Then she launched into the more formidable job of telling how the west grew up and a man who helped to make it law abiding and civilized — the Banister Who Was There when things began to happen.



LEONA BANISTER BRUCE
The Author
also of
"TRICKHAM, TEXAS"

Leona Bruce of Santa Anna will feature the guest day program for the Thursday Afternoon Club. The meeting will be held in the Women's Club at 3 p.m. as usual.

Leona Bruce is author of several books featuring ranch life. Her father was a Texas Ranger. Her mother, the first woman sheriff in the U.S. Her husband is now owner-operator of a ranch for breeding quarter horses and cattle at Santa Anna.

Besides her duties as a rancher's wife, she is civic minded and a club woman. She served as District President of Heart of Texas District from 1942 to 1944.

Thursday,
December 4, 1975

FOR SALE--1 Model A Farmall Tractor with cultivator and planter, 1 mole board breaking plow, 1 two disc breaking plow, 1 one way 5 disc breaking plow. Call 639-2425. Carbon, W.E. Walker. t-97



Christmas
Dreams

Long and lovely pastel nylon gowns to delight a Christmas angel. Come see all the new styles we have now for sizes S-M-L-XL. 0.00 to 0.00.

MODE O' DAY
West Side Of Square

Betsy Czigan Becomes Bride Of Lonnie Conner Nov. 22

Betsy Nell Czigan became the bride of Lonnie Clark Conner on Saturday evening, November 22, with Judge Earl Conner Jr., father of the bridegroom, officiating.

The bride is the daughter of Mr. and Mrs. Carl Lee Czigan of Houston, and the bridegroom is the son of Judge and Mrs. Earl Conner Jr., of Eastland, and grandson of Mrs. Rose Day of Eastland.

The vows were exchanged at the home of Mr. and Mrs. Don McGuirt in the presence of the families and close friends of the couple.

Miss Ellen Czigan of Houston, sister of the bride, was maid of honor. Best man was Don McGuirt.

The bride wore a gown of candlelight peau de soie overlaid with organza. The empire bodice and elbow length sleeves were of re-embroidered alecon lace. Lace motifs accented her chapel length train. Her shoulder

length veil was held by a band of small rosettes. She carried a bouquet of white rosebuds, baby's breath and fern.

The maid of honor was attired in a gown of peach colored chiffon. She carried a bouquet of peach-colored daisies and baby's breath.

At the reception following the ceremony, the bride's sisters, Miss Nora Czigan and Miss Amy Czigan served at the bride's refreshment table.

Judge and Mrs. Conner and Mrs. Russell Venn, aunt of the bridegroom, were hosts at a buffet supper honoring the wedding party on Friday evening at the home of Mrs. Venn.

The bride is a graduate of Toccoa Falls College in Toccoa Falls, Georgia.

The bridegroom was graduated from Eastland High School and Texas Christian University.

The couple will be at home at Holly Hurst Apartments, 1601 Holly Hurst, Houston, Texas.



(Photo by Jim Wortman)

MONDAY, DECEMBER 1 we returned to Green Tot Kindergarten after a nice long Thanksgiving vacation. We were surprised to find our Christmas tree up in the living room. Charles Howard Chaney put it up while visiting here. We also enjoy his huge snowman. We are trying to eat lots and rest so we will grow as tall as his snowman. We decorated our windows with trimmed Christmas trees, and made one to take home also. Jayna Holloway brought air plane plants for us to pot in small yellow cups to take home for our parents for an early Christmas gift. We enjoyed a cotton plant Mrs. G Green brought us from San Angelo, where she visited Coach and Mrs. Otis Green and Holly for one of her Thanksgiving dinners. The other one she had in Dallas with Yvonne, Neil Barton and Howard. Mrs. Finley brought us a 1976 calendar from City Service Garage. Mr. Jim Wortman surprised us and came and took our pictures. (We were all very good, but excited and surprised. bottom row: left to right, Tracey Wheeler, Tava Patton, Tammy Lyerla, Kim Sharp, Jayna Holloway, SECOND ROW: Susan Tankersley, Tracey Moore, Michael Wortman, Kevin Gilman, Michael Herweck, Ben David Coan, Mark Chaney, Teacher Mrs. Finley and Mrs. Green. We all said thank you Mr. Wortman. (We always have wonderful parents and many friends who are ind and thoughtful of kindergarten. - Ferne Green

SHUGART COUPON
Wednesday, Dec. 10
Brittain Discount Center
108 West Commerce South Side Of Square

9
WALLET SIZE
COLOR PORTRAITS
99¢

ASK
New Our
FREE
8 x 10
OFFER

Extra charge
for
GROUPS

DURABLE DEPENDABLE

POWERFUL! PERFORMANCE! LOW PRICE!

...everything just right with
EUREKA

Model 1424
\$79⁹⁵

Above-the-floor cleaning tools available at small additional cost.

Packed with high performance features and durability. Powerful headlight spotlights dirt. On-off toe switch. Wide wrap around furniture guard. Steel motor hood protects powerful motor.

EDGE KLEENER

Big disposable dust bag has a huge 560 cu. in. capacity!

Power driven beater bar brush roll loosens deep down dirt, tufts up crushed nap.

6-Way Dial-A-Nap® has settings for all carpets from flat pile to deep shag!

CLEANS SHAGS!

Free 6-Piece Set of Attachments With Each Cleaner

Coats Furniture

Free Delivery

Easy Terms Master Chg.

Patton Fabrics
301 N. Walnut 629-1235

POLYESTER KNITS
1-5 Yd. Lengths New Shipment **\$1.49**

METALLIC KNITS
In Time For Holiday
Reg. \$4⁰⁰ NOW **\$2⁹⁹**

THREAD 5 Spools For \$1⁰⁰	ELASTIC No-Roll 3 Yd. For \$1⁰⁰
---	---

Romco
STUD SETTER
Reg. \$9⁰⁰ NOW **\$7⁹⁸**

As Seen On TV

New Fall Goods

PITT GRILL
Fine Food

Our New Manager,
Wasif Ghazi
Suggest You

Try Our Delicious
BURRITOS
Topped With Home Made Chili And Cheese.
Served With Crisp Salad.

Great For Lunch Or Anytime

1-20 HIGHWAY
CISCO (East Exit)
OPEN 24 HOURS

2 For \$1⁶⁹ 1 For \$1¹⁹

Dine In Or Carry Out Service.

GIFTS FOR CHRISTMAS AND THE HOLIDAY SEASON

Stationery and perfumes are just two of the many gift suggestions we can offer you for the holiday season or any occasion. See our fine selection of gift items.

Central Drug
North Side Of Square
629-2681

Merry Christmas
S&H Green Stamps

At Altman's

Gift Ideas, Separates, Lingerie, Dresses, Coats, Jewelry, Blouses, Tops, Robes, Bags, Pantsuits And Sweaters

Our Gift To You Dollar Day Special
BLOUSES \$10⁰⁰ & \$5⁰⁰
SALE RACKS Reduced As Much As 1/2

Altman's Style Shop
North Side Of Square In Eastland

Need Insurance On

HOME

AUTOMOBILE

BUSINESS

For All Your Needs
Consult

Your Experienced Big "I" Agent

D.L. Kinnaird
General Insurance

207 W. Main 629-2544

Eastland's Oldest Insurance Agency
Serving Eastland Residents Since 1919

Steven Printing & Photography

Opens Monday December 8

110 N. Lamar 629-2682