

Census Shows County Drops

News is out and Eastland citizens aren't going very pleased with it. The census showed a big drop in population and towns in the county showed a loss.

News was released today at Max V. Mossholder, director of the 1960 census, said that the population of Eastland County dropped from 23,901, a drop of 5,041. A total of 2,252 persons left the county.

MOORE about... EASTLAND

Virgil E. Moore

A tip of the hat to all 6,120 Eastland County voters who went to the polls.

Voters in our county to a lot of people that believe in exercising their right to go to the polls.

One prediction before the election in an out-of-county paper which stated that less than half of Eastland county's voters would vote Saturday.

That was using only the names of those who had paid poll taxes. There were a few more voters who had not paid poll taxes.

Eastland County had a strong showing in the area politics in the primary of the 10 county 22nd district.

Callahan, Palo Pinto, Wise, Clay, Jack and county.

In the 14-county 17th district, Eastland ranked third behind Taylor and Parker counties.

Callahan, Comanche, Fisher, Hamilton, Jones, Palo Pinto, Scurry, Ford and Stephens counties.

How many people in our county were missed by the census takers? We've had two reports to us that they used, and we've forwarded them to the U. S. Census Bureau.

If you were missed please let us know by returning the advance report you received through the mail and today to the U. S. Census Office, 174 Cypress, Abilene, Texas.

Somehow that the Eastland box didn't have a return until about 10 p.m. in 15 minutes after the census.

See and Drive the New TURBINE DRIVE BUICK WITH THE WILDCAT ENGINE MUIRHEAD MOTOR CO.

MEYSLAG INSURANCE AGENCY presents the

HER NEWS

Cisco remains the biggest town in the county, but that town also showed the biggest loss. Cisco dropped from 5,250 in 1950 to 4,447 today, a loss of 783.

Eastland had a drop of 350 the report indicates. The town's population now stands at 3,276 compared to 3,626 in 1950.

"This figure is believed to be substantially correct but is subject to revision after the returns for nonresidents are credited to their proper locality and other routine checks have been made."

The official announcement of population will be made at a later date by the Director of the Bureau of the Census.

Outstanding HD Women Honored At Recent Meet

An honor award pin was presented to Mrs. Amanda Latch of Cisco as the Outstanding Home Demonstration woman in Eastland County Wednesday, May 4.

There were six nominees for the award chosen from the Home Demonstration clubs in the county. They were: Mrs. Clinton McCain, Flatwood; Mrs. Amanda Latch, Lake Cisco; Mrs. Phillis Kincaid, Morton Valley; Mrs. Will Ware, North Star; Mrs. L. W. Tucker, Pleasant Hill; and Mrs. Earnest Schaefer, Word.

All of these women are very outstanding and the Selection Committee, composed of Mrs. Charles Layton, Mrs. Iral C. Inzer and Mrs. Cecil Collings, all of Eastland, had a very difficult decision to make.

Mrs. Latch has been in Home demonstration work for 20 years and been active in local and county club activities as well as church and civic activities.

After the presentation of the award by Mrs. Charles Layton, chairman of the Selection Committee, Mrs. James Horton, of Eastland, showed slides of her recent tour of Africa.

Rev. James Campbell, pastor of the First Methodist Church, officiated at the services with interment in the Eastland Cemetery.

Mr. Brewer had land holdings in Eastland, Callahan and Taylor counties and was prominent in the farming and ranching fields.

Surviving him are his wife; one son, B. W. Brewer of Eastland; four daughters, Mrs. Frank Davis of Eastland, Mrs. J. P. Lovett of Olney, Mrs. W. B. Collie of Dallas and Mrs. R. G. Grisham of Abilene; one brother, J. T. Brewer of Ranger; one sister, Mrs. John Clemmer of Ranger; eight grandchildren and nine great-grandchildren.

All three school boards emphasized they were neither for the plan nor opposed to it, but were willing to make the study.

Serving on the committee with Dr. Whittington will be Wendell Siebert and Virgil Seaberry, of Eastland; Wilson Guest and G. B. Rush of Ranger; and Travis Hilliard and J. C. Everett of Olden.

Dr. Whittington has long pointed out that the county has nine school districts with nine high schools, and has maintained that a better school at a savings to the taxpayers could be had by having one high school.

EASTLAND NATIONAL BANK "On The Square" MEMBER F. D. I. C.



THE CHAMPS—South Ward's fifth graders continued their dominance of the elementary school football circles in Eastland Wednesday when they defeated West Ward, 6-0.

IN LOCAL SCHOOL TAXES

Trustees Say Deficit To Force Tax Increase

Eastland Independent School District taxpayers will receive notice in the immediate future that school taxes will be increased due to the fact that the district is faced with the possibility of a deficit at the close of the current school year.

Board members, after careful study, approved a 25 percent increase in the tax value of all property within the district beginning with the 1960 tax year.

Letters to all taxpayers will be mailed out Saturday. The Board of Trustees, in explaining the need for the increase, pointed out that in the last few years virtually

Funeral services were held Wednesday at 10 a.m. in the Hamner Funeral Home Chapel for Mrs. Emmie Harbin, 66, with Rev. Lee Fields officiating.

Mrs. Harbin died at 10:50 p.m. Monday in the Eastland Memorial Hospital. She was born June 11, 1893 in Louisiana.

Burial was held in the Weatherford cemetery.

Survivors include two sons: Claude Ray and Robert Lee; two sisters, Mattie Wood and Letha Buckbee; and one brother, Lonnie Hill.

Another week has passed as the school year scarpers to an end. From now on there will be many school activities closing the year out.

Last Friday night, the senior class presented its senior play for this year. There was a very nice crowd on hand and everyone seemed to enjoy it very much.

Virgil Seaberry To Appear On Judicial Program

Mr. and Mrs. V. T. Seaberry left Wednesday by plane for New Orleans where they will attend a judicial conference to be attended by several attorneys and all of the federal judges of the Fifth Circuit, covering the states of Texas, Louisiana, Mississippi, Alabama, Georgia and Florida.

Upon invitation and with other attorneys, Seaberry will appear on the program of a panel discussion of a case tried several months ago in the Federal Court at Abilene in which he represented Ford Motor Company.

deficit at the close of the current school year.

Trustees pointed out that maintenance of buildings has been restricted and a small amount has been expended each year for replacing worn out equipment and furniture.

Inflation was blamed for the needed increase, and the board declared that, "In order to operate our schools in the immediate future on a sound financial basis, and to make some of the needed improvements as recently recommended by the Texas Education

Simpson Cemetery Working Is Set For Saturday

Simpson Cemetery Association at Kokomo will hold an annual meeting Saturday at the Simpson Cemetery at 10 a.m.

Those who will be unable to attend may send their contributions for the up-keep of the cemetery to the First National Bank in Gorman, Howard John Donaldson, Rt. 1 Gorman, D. R. Parker, Rt. 1, Gorman, Joe McNeely, Rt. 1, Gorman.

Rhodes' Roundup

By ORAN RHODES

William Travis, Phil Lewis; Davy Crockett, Freddy Miller; Doctor Fox, Ronald Yancey; Smith, Martin Day; James Bonham, Freddie Stroud; the soldier, Otis Green; Pedro Gomez, David Whitten; the nurse, Beverly Moser; and James Bowie, Oran Rhodes.

Thursday night, the Eastland High School band, the sixth, and the seventh grade bands are going to be in concert in the high school auditorium.

Tomorrow night is the big night for many of E.H.S.'s Junior-Senior Banquet will be held tomorrow night in the gymnasium.

I suppose that about winds it up for this week. See you around town.

Recount of Votes Puts Collins And Clark In Run-off

Mark Clark and L. J. Collins will face each other in the second Democratic primary to decide who will be commissioner of Precinct 3 (Rising Star).

The Eastland County Democratic Executive Committee settled the issue of which two candidates will have their names on the second primary ballot in the Precinct 3 commissioner's race Wednesday when they joined the top three candidates in the race in asking 91st District Court Judge Turner Collie to allow them to canvass the votes in the Rising Star box.

Judge Collie agreed to allow the Committee the right to re-count the votes after the Committee found there were only 750 names on the precinct's tally list, while a total of 756 votes had been tabulated for the seven men in the commissioner's race.

Collins and Ervin Hull had tied for second place, complete but unofficial tabulations showed Monday. When the votes were re-tabulated by the Executive Committee Wednesday, however, Collins gained one vote to break the tie and end up in a runoff with Clark.

The present commissioner of Precinct 3, Bob Carter, finished fourth.

There were seven less votes tabulated by the Committee than in the original count. Mark Clark held his 168 votes in precinct, which has three other boxes besides Rising Star, and Hull still had 161. Collins gained one vote, getting 162, Dennis Clark's total of 80 was unchanged, Carter lost two votes to end up with 140, Darrell

W. White lost two to finish with 99, and C. F. Hubbard dropped four to end up with 119.

Had the new tabulation not broken the second place tie, Collins and Hull would have been forced to "cast lots" to decide which one of them would get their name on the second primary ballot.

Plans for this year's YMCA summer camps were announced this week by James K. Smith, "Y" president announced that two camps will be held, the first from June 20 to July 1 and the second from July 5 to July 15.

Day camp will be held at the City Park. Boys and girls ages six through 12 are eligible to participate.

The Day Camp is under the supervision of the Southwest Area Council of YMCA's. Cost for a period of two weeks will be \$8.

Saturday, May 21 at 9:30 a.m. a feature "Summer Program Review" will be held at the Majestic Theatre. The various summer activities will be explained and then parents will adjourn to register for their youngsters in the lobby.

Swimming junior air riflery and trampoline classes will be held. Special events will include Character Day, a trip through Horton Ceramics, sports events, and a special final day event.

Here's how a typical day at camp will go:

- 1. Entire group assemblies for morning devotional at 9 a.m. 2. Break up into activity groups with counsellors for swimming, archery, baseball, trampoline, volleyball, tennis and handicrafts. These groups will rotate. 3. Lunch. 4. Rest period—story telling. 5. Air riflery and crafts. 6. Group games.

Services to be Held Friday For Former Resident

Funeral services will be held Friday in North Tanawanda, N. Y. for Peter G. Woloszyn, a former resident of Eastland.

Mr. Woloszyn resided in Eastland for approximately 13 years and died Tuesday in a Veteran's Hospital in Buffalo, N. Y.

He is survived by his wife, Ethel, of Eastland; his parents; three brothers and three sisters.

County Demo Convention Set For Saturday

Eastland County Democrats will hold their county convention Saturday at 2 p.m. in the 91st District courtroom in the courthouse in Eastland.

Delegates from 12 of the county's 13 precincts are expected to be on hand since precinct conventions were held in all voting precincts except one.

The county will send eight delegates to the state convention.

Plans for 'Y' Day Camps Are Revealed

Plans for this year's YMCA summer camps were announced this week by James K. Smith, "Y" president announced that two camps will be held, the first from June 20 to July 1 and the second from July 5 to July 15.

Day camp will be held at the City Park. Boys and girls ages six through 12 are eligible to participate.

The Day Camp is under the supervision of the Southwest Area Council of YMCA's. Cost for a period of two weeks will be \$8.

Saturday, May 21 at 9:30 a.m. a feature "Summer Program Review" will be held at the Majestic Theatre.

Swimming junior air riflery and trampoline classes will be held. Special events will include Character Day, a trip through Horton Ceramics, sports events, and a special final day event.

Here's how a typical day at camp will go:

- 1. Entire group assemblies for morning devotional at 9 a.m. 2. Break up into activity groups with counsellors for swimming, archery, baseball, trampoline, volleyball, tennis and handicrafts. These groups will rotate. 3. Lunch. 4. Rest period—story telling. 5. Air riflery and crafts. 6. Group games.

Services to be Held Friday For Former Resident

Funeral services will be held Friday in North Tanawanda, N. Y. for Peter G. Woloszyn, a former resident of Eastland.

Mr. Woloszyn resided in Eastland for approximately 13 years and died Tuesday in a Veteran's Hospital in Buffalo, N. Y.

He is survived by his wife, Ethel, of Eastland; his parents; three brothers and three sisters.

County Demo Convention Set For Saturday

Eastland County Democrats will hold their county convention Saturday at 2 p.m. in the 91st District courtroom in the courthouse in Eastland.

Delegates from 12 of the county's 13 precincts are expected to be on hand since precinct conventions were held in all voting precincts except one.

The county will send eight delegates to the state convention.

CLOROX Bleach 1/2-Gal. 37 Jug

Lat... Cat... Cat... MONAD \$400 in prize money in the various shows and in the heavy litter contest.

County Demo Convention Set For Saturday

Sousa Award to be Given at Concert

The Eastland Schools band department, under direction of Phillip W. Hewett, will present a concert tonight in the High School auditorium at 8 p.m.

Featured event of the night will be the presentation of the John Phillip Sousa band award to the "most outstanding band student."

Three students have been nominated for the award. They are Raymond Lusk, a junior; Gracie Tankersley, a sophomore; and Eddie Sargent, a freshman.

The award is being presented for the first time here by the Eastland Music Club. It is presented in recognition for outstanding achievement and interest in instrumental music, for singular merit in loyalty and cooperation and for displaying, generally, those high qualities of conduct which school instrumental music strives to impart, and by nomination of fellow band members and confirmation of the band director and school officials.

AIR CONDITION YOUR CAR Any make — Sales and Service. Otis Coleman Humble Service Phone MA 9-1741



# Eastland Telegram

Eastland County Record established in 1931, consolidated August 31, 1961. Chronicle established 1887, Telegram established 1928. Entered as second class matter at the Post Office in Eastland, Texas under the act of Congress of March 3, 1879.

**TIMES PUBLISHING COMPANY**  
Published Tri-Weekly—Tuesdays - Thursdays - Sundays  
Onous Dick and Joe Dennis, Publishers  
Virgil E. Moore, Editor

One week by carrier in city . . . 1.10  
One month by carrier in city . . . 6.50  
One year by mail in County . . . 2.95  
One year by mail in state . . . 4.95  
One year by mail out of state . . . 6.95

**NOTICE TO PUBLIC**—Any erroneous reflection upon the character, standing or reputation of any person, firm or corporation which may appear in the columns of this newspaper will be gladly corrected upon being brought to the attention of the publishers.

## WANT ADS!

Cards of Thanks charged for at rate of \$2.00 Each

### MISC FOR SALE SPECIAL NOTICE

**FOR SALE OR TRADE:** Boat, dock, barbecue pit, picnic table. Phone 2579, Carbon after 5.

**FOR SALE OR RENT:** 57 acres stock ranch. Beulah Higgins 701 South Daugherty.

**FOR SALE:** Cots, Camp stools, tarpaulins, mosquito nets, tool boxes, gas can, work shoes & boots, comforts blankets, air mattress, water bags, tennis shoes, lockers. Many other items at low-low prices. **FOXHOLE PETE** Army Surplus Store.

**FOR SALE:** 100 good used khaki shirts size 12 to 14, suitable for boys and small men \$1.00, while they last.

**FOR SALE:** Lot in Ski View Addition, Lake Leon. Phone MAIN 2-1584.

**PLANTS FOR SALE:** Red cloud, porter and Texas sure crop tomato plants also hot and sweet pepper plants. See Dick Pennington on Desdemona Highway, Gorman.

**FOR SALE:** Two one ton air-conditioners. Call Mr. Shaw, MAIN 9-8881.

**FOR SALE:** Good Kitchen range. See at Eastland Telegram office.

**FOR SALE:** Steel oil drums. J. A. Davis, Gorman. Phone 98-W.

**FOR SALE:** Deep freeze. Phone MAIN 9-1928.

**FOR SALE:** Jersey milk cow and two month old calf. 1945 Allis Chalmers Tractor with five disc breaking plow in good condition. Two hogs will pig in June or July. One male hog. Six shoats three months old. All subject to register Yorkshire. Cotton McIlvain, Olden. Phone 2792.

**FOR SALE:** Antenna and new couch. Never been used. Call MA 2-2344.

**HUGE PATIO SALE:** New truckload of good "seconds", reduced prices on "number 1" merchandise, special offers on live and artificial plants. Horton Ceramics Factory Sales Room, Highway 80 East, Eastland, Texas. Open daily and Sunday afternoon.

**FOR RENT**

**FOR RENT:** Newly decorated apartments. Hillside. Phone MA 9-8847.

**FOR RENT:** Three bedroom unfurnished house. 302 S. Connellee. Phone MA 9-1522 or MA 9-1238.

**FOR RENT:** Two bedroom house in Olden. See Jeff Woods in Olden.

**FOR RENT:** Three room furnished house to single lady. Phone MAIN 9-1215.

**FOR RENT:** Three room apartment. Phone MAIN 9-2585.

**REAL ESTATE FOR SALE**

**FOR SALE:** House, 608 S. Bassett.

**FOR SALE:** Three bedroom house. Good location. Call MAIN 9-1485.

**FOR SALE:** Small four room house, double garage, 6/10 acre land at Morton Valley. M. L. Mueller, 507 Terril St., Ranger.

**FOR SALE:** Small four room house with bath to be moved from Gorman. See Shorty Lawrence, Gorman.

**FOR SALE OR LEASE:** Three acres, well improved. All modern. Close in on highway. Jack Chamberlain. Phone MA 9-1742.

**FOR SALE:** Two bedroom house 805 West Commerce. Have moved. Taking sacrifice for quick sale \$3500.00. On pavement near all schools. Car port and utility room. Fenced yard and lovely trees. For information call at 707 West Commerce.

**Attention Homeowners:** Enjoy privacy and a beautiful yard with one of our lovely fences. Chain link, Texas Red Cedar, Redwood-Patios-Brick, Western Cedar—Cinder Block. Our prices can't be beat. We stand behind every fence built. FHA Title I. No downpayment—36 months. First payment 45 days after installation.

**STEADMAN FENCE**  
Abilene, Texas  
Look for future display Hwy. 80, East of Cisco. Call me for free estimate today. Sales representative:  
Mrs. Louise Galloway  
HI 2-1201, Cisco

**MISC. WANTED**

**HELP WANTED:** Operator for shift unit. Eastland Steam Laundry. Call MAIN 9-2613.

**WANTED:** Car-hop. Dairy Treat.

**ATTEND THE CHURCH OF YOUR CHOICE EACH SUNDAY**

★ ★ ★ ★

**TRADE WITH YOUR HOMETOWN MERCHANTS**

**T. L. FAGG**  
REAL ESTATE  
Property Management  
Home and Farm Loans

**Insurance AND Real Estate**  
**D. L. KINNAIRD**  
Life - Fire - Auto - Farm  
Polio - Bonds  
40 years in the Insurance Business in Eastland

**POLICE**  
your savings and guard against inflation. The best way to do this is by trading at Pipkin's. Many people find that the **CHIEF** reason they can save at Pipkin's Auto Sales, 314 W. Main St., is that they price low and trade high. Yes, trading with us won't put the

**PINCHES**  
on the old budget either. We have Solid, Low mileage experienced cars, that would even delight the heart of an **OLD MAID!**

★ '59 Cadillac Cpe. De-Ville Air and power, electric windows and seat.  
★ '50 Chevrolet. Very clean.  
★ '59 Ford 4-door. \$1,595.00  
We have a good stock of new Olds and Ramblers.

**PIPKIN MOTOR CO.**  
314 W. Main Ph. MA 9-2636

**FOR RENT**

**FOR RENT:** Three room furnished house to single lady. Phone MAIN 9-1215.

**FOR RENT:** Three room apartment. Phone MAIN 9-2585.

**Special Offer on Converting Cotton Mattresses to Innersprings**  
Regular \$28.95  
Only \$24.95

All layer built, guaranteed 10 years. 2 Day Service.

**New Mattresses**  
at a good savings.  
**Jones Mattress Co.**  
CISCO 703 AVE. A  
Phone HI 2-2787

**Tomato Marketing Publication Is Released**

East Texas green-wrap tomato growers should consider the potential of marketing pink tomatoes in view of recent industry developments.

Farmers in the Grand Saline area of Van Zandt county have successfully grown and marketed



**Here They Are!**

We've got something mighty special for you — those famous Grand Ole Opry Stephens Work Pants . . . the work pants that give you all-day comfort and double wear, because they really are "a little bigger and a little better." Eight strong belt loops keep your belt in place; five pockets will come in mighty handy for you, and that famous Stephens styling will keep you looking neat all day long. It's Stephens for the very best in work pants, and WE'VE GOT 'EM!

**\$3.98**

**Stephens**  
A LITTLE BIGGER A LITTLE BETTER  
WORK CLOTHES and Play Clothes  
NATIONAL LIFE ADVERTISING

**ARMY SURPLUS STORE**  
North Side of Square

**ALEX RAWLINS & SONS**  
Designers and Builders of Monuments Since 1884  
Weatherford Phone LY 4-2726 Texas

**HOOD KING Ford Selling FAIR NOW GOING ON**

- Low down payments on new cars
- High trade-in values on your used cars
- Best bargains in town on used cars.

**Our New Fords and Falcons Are Selling Fast, so we have an extra large supply of good used cars.**

**YOU CAN GET YOUR BEST DEAL AT**

**Hood King Motor Co.**  
100 East Main Ph. MAIn 9-1786

pink tomatoes for a number of years. On the other hand, acreage devoted to growing green-wrap tomatoes steadily declines each year and in 1958 was only a fraction of the 1946 acreage.

Farmers raising green-wrap tomatoes are caught in a squeeze by competition from California and Florida due to the relatively short shipping season. The low yields per acre are also responsible for the acreage decline. In 1958 California averaged nearly 20,000 pounds to tomatoes per acre while the average for East Texas was just over 2,500 pounds per acre.

"Marketing East Texas Tomatoes," L-472, a new leaflet written by extension specialists should be of interest to every tomato grower in this area. Pink tomato production and marketing factors are discussed in the leaflet.

In discussing markets for pink tomatoes, the leaflet says out-of-state markets provide the biggest potential. One pink tomato packing shed in East Texas has operated successfully for a number of years by selling most of its tomatoes in the Midwest.

The suburban population around East Texas is growing rapidly and provides an expanding market for pink tomatoes. Most East Texas grocery stores now feature "home-grown" pink tomatoes, but the amount they can use is limited.

**Coastal Bermuda Continues to Make New Friends**

Coastal Bermuda grass continues to make new friends because of its adaptability and high yielding characteristics, says George McBee, extension pasture specialist at College Station.

Spring, says the specialist, is the optimum time for planting Coastal in most sections of Texas. Fall plantings are considered best in far South Texas. Plantings made now will give the plants time to become established before the beginning of the summer season.

McBee offers these suggestions for the successful establishment of a Coastal Bermuda pasture. Plant fresh, good quality sprigs. Plant in a moist seedbed which has been well prepared and is clean, level and firm. Planting Coastal in established stands of other perennial grasses usually results in a poor stand he advises.

He suggests planting in 36 or 42-inch rows with the sprigs at 36-inch intervals in the row. This spacing will require about 9 bushels of sprigs an acre. Closer row spacing will require more sprigs but will mean a faster grown cover and less competition from weeds.

McBee recommends that fertilization be carried out in accordance with soil test findings. He says it's ideal to put the fertilizer in a band 3-4 inches to the side and below where the sprigs are placed. If weeds or other grasses are expected to give the Coastal stiff competition, it may be advisable to wait until the Coastal is growing to put down the fertilizer. He says never broadcast fertilizer on land to be planted to Coastal Bermudagrass.

Don't, says the specialist, let the cost of establishing a Coastal pasture be a deciding factor. Consider the cost as a long-time investment and prorated it over several years. In some sections, the relatively new grass has furnished more than 180 pounds of hay per day per acre during the peak growth periods. And, he adds it makes mighty good hay should growth provide a surplus above grazing needs.



**OLD SALT**—Longshoreman Louis Podgornich gets uncovered from 10 tons of salt. He was buried when the load shifted on a freighter. Quick rescue work saved his life.

**THANK YOU . . .**

For the fine vote given me in Saturday's election, I shall ever strive to represent you in Congress in a manner worthy of your confidence. With deepest gratitude I acknowledge the special assistance of many, many friends who made the decisive victory possible.

**OMAR BURLE**

**THANK YOU VERY MUCH**

I am very grateful for the support given in last Saturday's election. Your continued back will be appreciated in the June 4th runoff voting. Your vote and support will be regarded by me as a mandate to work hard for good government and to continue my efforts to represent all of you people. I hope to see you in person before election day to tell you how grateful I am for your help and encouragement.

**PAUL BRASHEAR**  
Candidate for Re-election  
STATE REPRESENTATIVE

**HOOD KING**

**FIRE - THEFT - LIABILITY**

**D. L. KINNAIRD**  
GENERAL INSURANCE  
207 W. Main Phone MA

**CARS magazine reports The Lark is the best overall buy among all 23 American automobiles . . . including all other compacts.**

**BEST . . .** After judging The Lark—"the Best of the Compacts"—the editors of CARS enlarged their enthusiasm and declared The Lark, "The Best Overall Buy." Here's how they summed up their expert opinion in the June issue of CARS:

**MANY REASONS . . .** "The Lark will do anything and go anywhere the larger cars will, at a lower cost. . . The Lark is styled for both today and tomorrow, and engineered for hard, economical use. . . On any basis, this is a tough car to beat."

**FREE COPY . . .** Pick up your free copy of CARS buyer's guide at your Studebaker Dealer's.

With five of the six compacts, you have to compromise . . . but with The Lark, there's no compromise on selection, roominess, performance or luxury.

**The Compact Without Compromise**

**THE LARK BY STUDEBAKER**

**\$43.19\*** PER MONTH

\*Price may be even lower according to individual dealer's policy. Price includes all extra optional equipment, and local variables such as freight, insurance, state and local taxes. See dealer for details.

**SEE THE NEW STUDEBAKER CHAMP PICKUPS—HANDSOME, HUSKY, LOWEST-PRICED TO DATE**

**McGraw Motor Company 416 So. Seaman**

**TRADE WITH YOUR HOMETOWN MERCHANTS**

**Zemo Great Minor Burns.**

Zemo, a doctor's formula or ointment, soothes, minor burns, cuts, bruises, antiseptic, eases itching rashes, eczema, teen-age athlete's foot. Stops itching, aids faster healing. For cases, get Extra Strength.

**THANK YOU VERY MUCH**

I am very grateful for the support given in last Saturday's election. Your continued back will be appreciated in the June 4th runoff voting. Your vote and support will be regarded by me as a mandate to work hard for good government and to continue my efforts to represent all of you people. I hope to see you in person before election day to tell you how grateful I am for your help and encouragement.

**PAUL BRASHEAR**  
Candidate for Re-election  
STATE REPRESENTATIVE

**HOOD KING**

**FIRE - THEFT - LIABILITY**

**D. L. KINNAIRD**  
GENERAL INSURANCE  
207 W. Main Phone MA

**HOOD KING**

**FIRE - THEFT - LIABILITY**

**D. L. KINNAIRD**  
GENERAL INSURANCE  
207 W. Main Phone MA

**CARS magazine reports The Lark is the best overall buy among all 23 American automobiles . . . including all other compacts.**

**BEST . . .** After judging The Lark—"the Best of the Compacts"—the editors of CARS enlarged their enthusiasm and declared The Lark, "The Best Overall Buy." Here's how they summed up their expert opinion in the June issue of CARS:

**MANY REASONS . . .** "The Lark will do anything and go anywhere the larger cars will, at a lower cost. . . The Lark is styled for both today and tomorrow, and engineered for hard, economical use. . . On any basis, this is a tough car to beat."

**FREE COPY . . .** Pick up your free copy of CARS buyer's guide at your Studebaker Dealer's.

With five of the six compacts, you have to compromise . . . but with The Lark, there's no compromise on selection, roominess, performance or luxury.

**The Compact Without Compromise**

**THE LARK BY STUDEBAKER**

**\$43.19\*** PER MONTH

\*Price may be even lower according to individual dealer's policy. Price includes all extra optional equipment, and local variables such as freight, insurance, state and local taxes. See dealer for details.

**SEE THE NEW STUDEBAKER CHAMP PICKUPS—HANDSOME, HUSKY, LOWEST-PRICED TO DATE**

**McGraw Motor Company 416 So. Seaman**

**TRADE WITH YOUR HOMETOWN MERCHANTS**

**Zemo Great Minor Burns.**

Zemo, a doctor's formula or ointment, soothes, minor burns, cuts, bruises, antiseptic, eases itching rashes, eczema, teen-age athlete's foot. Stops itching, aids faster healing. For cases, get Extra Strength.

**THANK YOU . . .**

For the fine vote given me in Saturday's election, I shall ever strive to represent you in Congress in a manner worthy of your confidence. With deepest gratitude I acknowledge the special assistance of many, many friends who made the decisive victory possible.

**OMAR BURLE**

**THANK YOU VERY MUCH**

I am very grateful for the support given in last Saturday's election. Your continued back will be appreciated in the June 4th runoff voting. Your vote and support will be regarded by me as a mandate to work hard for good government and to continue my efforts to represent all of you people. I hope to see you in person before election day to tell you how grateful I am for your help and encouragement.

**PAUL BRASHEAR**  
Candidate for Re-election  
STATE REPRESENTATIVE

**HOOD KING**

**FIRE - THEFT - LIABILITY**

**D. L. KINNAIRD**  
GENERAL INSURANCE  
207 W. Main Phone MA

**HOOD KING**

**FIRE - THEFT - LIABILITY**

**D. L. KINNAIRD**  
GENERAL INSURANCE  
207 W. Main Phone MA





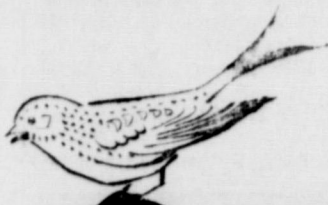
*Real Savings on Thrifty-Cut Baby Beef!*  
**Sirloin or Round Steak** Thrifty-Cut Baby Beef Lb. **79¢**

- T-Bone Steaks** Thrifty-Cut Baby Beef Lb. **89¢** **Sliced Bacon** Swift's Oriole Lb. **45¢**  
**Roast** Rump or Pike's Peak Thrifty-Cut Baby Beef Lb. **69¢** **Fish Sticks** Taste O'Sea Family Size Pkg. **59¢**  
**Beef Bacon** Fisher's Home Quality Lb. **59¢** **Sliced Bologna** Swift's Premium Lb. **49¢**

**WORTH FOOD MART**



**Maytime Money**



**Savers!**

Prices Effective Thursday, Friday and Saturday  
 Store Hours: Thursday & Friday 7:30 a.m. - 6 p.m. Saturday 7:30 a.m. - 7:30 p.m.

Featuring  
**Hunt's Big Dollar Sale!**

- PEACHES** Hunt's Yellow Cling, Sliced or 1/2's, SAVE 24c **4** Big No. 2 1/2 Cans **1 00**  
**COCKTAIL** Hunt's Fruit SAVE 11c **3** Big No. 2 1/2 Cans **1 00**  
**TOMATOES** Hunt's Hold-Pack Hand-Peeled **6** No. 300 Cans **1 00**  
**TOMATO JUICE** Hunt's **3** 46-Oz. Cans **79¢**

- COOKIES** Burry's Romper Room 12 Oz. Pkg. **39¢**  
**CAKE MIX** Cinch, All Varieties 17-Oz. Pkg. **25¢**  
**PIE CRUST** Pillsbury 10-Oz. Pkg. **19¢**  
**CLOROX** Bleach 1/2-Gal. Jug **37¢**

- More Good Buys!*  
 Hunt's **Tomato Paste** 6-Oz. Can **10c**  
 2c OFF **Parkay Margarine** Lb. Pkg. (Net) **23c**  
 Comet **Pre-Fluffed Rice** 12-Oz. Pkg. **19c**  
 Pioneer **Biscuit Mix** 2 Lb. Pkg. **49c**  
 Nabisco Crackers **Premium Saltines** Lb. Pkg. **29c**  
 Nabisco **Vanilla Wafers** 7 1/2-Oz. Pkg. **19c**  
 Royal, All Flavors **Instant Pudding** Pkg. **10c**

- Instant Coffee** Maryland Club 6-Oz. Jar **79¢**  
**Rose-Dale Pears** No. 2 1/2 Can **29¢**  
**Vienna Sausage** Mohawk, With Cereal 3 No. 1/2 Cans **25¢**  
**Tomato Sauce** Hunt's SAVE 16c 12 8-Oz. Cans **1.00**  
**Tomato Sauce** Hunt's SAVE 21c 4 No. 300 Cans **49¢**



**Lanolin-Plus** Plus Egg, Shampoo  
 Reg. \$2.00 16-Oz. Botl. **69¢**

- Catsup** Hunt's SAVE 17c 6 14-Oz. Bottls. **1 00**  
**Catsup** Hunt's Giant 4 20-Oz. Bottls. **1 00**



- CORN** Large, Golden Fancy Florida Well-Filled **3** Ears **19¢**

- LEMONADE** M. C. P. Frozen Pink or Regular 5 6-Oz. Cans **49¢**  
**Strawberries** Symphony Sliced 5 10-Oz. Pkgs. **99¢**  
**Reddi-Whip** Dessert-Topping 6-Oz. Can **39¢**

- Lemons** Large Sunkist or Pure Gold Lb. **15¢**  
**Low Squash** Banana or Crook-Neck Lb. **10¢** **Crisp, Crunchy Pascal Celery** 2 Large Stalks **25¢**  
**White Onions** Crystal Wax 2 Lbs. **13¢** **Young, Tender Crisp Carrots** 2 1-Lb. Pkgs. **19¢**

**WORTH FOOD MART**



READ THE CLASSIFIEDS

**COMPLETE AIR CONDITIONING SALES and SERVICE**

**SMITH PLUMBING AND TIN**

PHONE MA 9-2422  
114 N. Seaman

**REPAIRS!**

**FREE ESTIMATES**  
Insurance Claim Service

"We've seen plenty of wrecks drive through our doors, but we have yet to see one drive out."

**Lindley Paint & Body Shop**  
110 S. Bassett  
Ph. MA 9-2246

CARS POLISHED 12.50 to 15.00  
We Know Our Business

**PLAN NOW TO ATTEND CISCO JUNIOR COLLEGE SUMMER SESSION**

Courses Are Planned as Follows:

FIRST TERM	SECOND TERM
English 113	English 123
English 213	English 223
History 213	History 223
Government 213	Government 223
Algebra 113a	Trig 123
Intro. to Ed. 113a	Psychology 113

The courses listed above will be taught if as many as 10 or more students register for the work. Any other course listed in the catalogue will be offered if a sufficient demand arises.

Registration Date: June 6. Classes Begin: June 7.

Tuition and Fees: \$8.75 per Semester Hour

Address inquiries to: Registrar, Cisco Junior College, Cisco, Texas.

**TELEPHONE TALK**

by Archer H. Marx, Jr., Manager

**THE FULL STORY**

A great big vote of thanks would be yours, compliments of our fine group of long distance operators, if each of you would remember to give both letters and all digits when placing long distance call.

Giving your operator only four or five numbers rather than the MA 9 and then the last four numbers is insufficient or two reasons:

1. It could cause the call to be billed to a wrong town since your operator handles calls for some thirteen towns in this area.
2. When Eastland is connected to the nationwide customer long distance dialing network, and you yourself dial your long distance calls, it will be necessary for you to dial every letter and number. You business folks might also check to be sure your advertising carries two letters and five numbers.

Won't you help us out? Your operators would be most appreciative. By practicing this now, it will make it much easier to remember to do so in the future.

**PLAYING CUPID**

It's such a natural thing—sometimes it's almost automatic—for your phone to come to mind when you think of someone you love who's out of town. Yes, I suppose not day goes by that somebody in Eastland doesn't use the phone to remember a loved one.

So it's easy to see why an Air Force sergeant stationed in Iceland thought of telephone service when he wanted to send flowers to his wife back home for her birthday. His fellow wanted folks at the telephone company to have the flowers delivered and then charged to his telephone account.

Now, even though it wasn't possible to bill the flowers to his telephone account, the girls in Miss Clara Balen's service order group decided to help, anyway. They wrote they were sorry that the telephone company was unable to charge a florist bill to his phone, but they added his personal note: "However, we feel such thoughtfulness deserves special attention."

Then they picked out a birthday card and a dozen roses and had them delivered to the sergeant's wife.

The upshot of it was that the lives of two people—billions apart—were brightened by the thoughtfulness of a group of telephone girls who cared enough to find a way to help.

**WHAT ELSE IS SO DEPENDABLE**

Most folks don't realize it, but everytime you make a telephone call, your phone sets a new record for dependability.

And because it does, you needn't worry about wear and tear, replacement parts, or repair bills. When repairs are needed, there is no charge to you. I doubt whether there are many other things you have that are so free of trouble as your phone.

Call by number. It's twice as fast.

**SOUTHWESTERN BELL TELEPHONE COMPANY**

**Woman's Club Is Scene of Meet Of Thursday Club**

"Hands Among Our Golden Age Citizens" was the subject for the Thursday Afternoon Club when it met Thursday.

Mrs. Esco Walter opened the program by reading "Psalms" 100. A book review on "Gone are the Days" by Bruce Bell was given by Mrs. Ronald Burton. Closing the program, Mrs. Hubert Jones read a poem: "Maturity" by Thelma Hoffman.

During the business meeting, Mrs. Iral Inzer, president, presided. The minutes were read by Mrs. Ronald Burton, secretary.

Mrs. Tom Wilson won second place in the Vogue Sewing Contest at the State Convention in Austin.

The annual reports of the following officers were given: Mrs. Ronald Burton, secretary; Mrs. Larry Kinard, corresponding secretary; Mrs. Turner Collier, treasurer; Mrs. Cecil Collins, chairman of library committee; Mrs. Milburn Long, clubhouse board member; Mrs. Robert Perkins, reporter; Mrs. James Horton, historian; Mrs. Frank Lovett, critic; and Mrs. Frank Crowell, auditor.

The resignation of Mrs. Larry Kinard, effective the end of the club year, was accepted with regret and the motion was made and carried, that the club buy a portable evaporative cooler for the library.

Mrs. Murrell made the announcement about the "pot-luck" luncheon which will be May 17, the last meeting of the year.

The following members were present: Mmes. Ronald Burton, Turner Collier, Cecil Collins, Cyrus Frost, Ben Hamner, James Horton, Iral C. Inzer, Hubert Jones, Larry Kinard, W. P. Leslie, Milburn Long, Frank Lovett, W. A. Martin, Arthur Murrell, Robert Perkins, Frank Sayre, E. R. Townsend, Esco Walter, Tom Wilson, I. C. Heck and Roy Young.

**JOY DRIVE-IN** Open 7:15 Starts 7:45  
FRIDAY - SATURDAY  
Cisco - Eastland Highway

**RANDOLPH SCOTT**  
SHE WASN'T THE WOMAN HE'D BOUGHT... BUT SHE WAS THE WOMAN HE WAS GOING TO KEEP!

**COMANCHE STATION**  
with NANCY GATES  
CINEMASCOPE EASTMAN COLOR

**DIXIE Drive-In**  
EASTLAND RANGER HIGHWAY

Box Office Opens 7:15  
Show Starts 7:45  
Box Office Closes 9:45

Admission 50c — Children Under 12 Free  
Each Wednesday Is Bargain Night — Adults 25c  
THURSDAY - FRIDAY - SATURDAY, MAY 12, 13, 14

**"HELL BENT FOR LEATHER"**  
HELL BENT FOR ACTION!  
HELL BENT FOR THRILLS!

AUDIE MURPHY  
FELICIA FARR  
STEPHEN McNALLY

CINEMASCOPE - EASTMAN COLOR

PLUS: Color Cartoon and Sports Parade

SUNDAY - MONDAY - TUESDAY, MAY 15, 16, 17

**THIRD MAN ON THE MOUNTAIN**  
FROM WALT DISNEY A NEW HIGH IN THRILLING ACTION, SUSPENSE AND EXCITEMENT!

Michael RENNIE - James MacARTHUR - Janet MONRO - James DONALD - Verlet LON

PLUS: Two Color Cartoons

**RANGER DRIVE-IN**  
HIGHWAY 80 EASY ON RANGER HILL

Box Office Opens 7:00—Show Starts at Dusk  
Adults 50c—Kiddies Under 11 Free  
Only Eastland County Drive-In Open All Year

THURSDAY - FRIDAY - SATURDAY

**JOEL McCREA - VIRGINIA MAYO**  
Gun-hot, raw, primitive... they called him the maverick from nowhere!

**THE TALL STRANGER**  
ALL-ARTISTS PRODUCTION  
CINEMASCOPE-COLOR by DE LUXE

**FREEVIEW EVERY SATURDAY NIGHT**  
SUNDAY - MONDAY - TUESDAY

**THE MIGHTIEST MOTION PICTURE EVER CREATED!**

EDWARD SMALL PRESENTS  
**YUL BRYNNER**  
**GINA LOLLOBRIGIDA**

**SOLOMON and SHEBA**  
Released thru United Artists

Mrs. Willie Rockman, accident surgical  
Mrs. J. W. Watson, Eastland, medical  
Charlie Black, Eastland, medical  
Mrs. Lilly Noble, medical, Eastland  
Mrs. A. D. Hallmark, Cisco, medical  
Mrs. Ethel Rowch, Olden, medical  
J. M. Cooper, Eastland, medical  
Mrs. Edith Baker, Cisco, medical

Mrs. Barney Salter, Ranger, medical  
Pat Armstrong, Eastland, medical  
F. M. Wilhite, Eastland, medical  
Sammy Smith, Eastland, medical  
Sam McAfee, Eastland, medical  
Sidney Arther, Eastland, medical  
Miss Cecilia Haas, Eastland, surgical

Patients dismissed were:  
Mrs. Bill Wendy, Mrs. Charles Brooks, Mrs. Carolyn Lutenhouser, Sam Mayo, Mrs. V. A. Nichols, Mrs. John Hart, Mrs. Vaiera Walker, Louis Cavin Freeman, George Moore.

Patients in the Ranger General hospital from Eastland and Olden are:  
Mrs. Mary Loper, Eastland, medical  
Mrs. Ned Jones, Eastland, surgical

**Helps Heal And Cures Itchy Skin Rash**

Zemo—liquid or ointment—antiseptic, promptly relieving, stops scratching and helps heal and clear surface rashes. Buy Extra Strength Zemo for stubborn cases!

See The Dish Show Chevy Show in color Sundays, NBC-TV  
—the Pat Boone Chevy Showroom weekly, ABC-TV.

Air Conditioning—temperatures made to order  
—for all-weather comfort. Get a demonstration!

**HOTTEST CHEVY**

Impala 2-Door Sport Coupe

Why look beyond America's first-choice car for the things you want? They're the things that are making Chevy '60's hottest seller! You're up in a higher price bracket before you find a car with Body by Fisher, or one that rides as quietly and comfortably as Chevy with its Full Coil cushioning. Choose your '60 Chevrolet—any one of 18. Load up that vacation-sized trunk and take off in the year's sweetest traveler. Find out what it's like to be completely satisfied and have money left over.

**CHEVROLET**  
for economical transportation

Save—right now—during the Spring Fever Selling Spree at your local authorized Chevrolet dealer's

**FULLEN MOTOR COMPANY, INC.**  
EASTLAND  
305 E. MAIN PHONE MA 9-2676

**Westex Packing Co.**  
Formerly Earnest Food Locker  
RETAIL DIVISION  
Friday & Saturday Only

**Specials**

T-Bones	ECONOMY VEAL	1 lb.	49¢
Sirloin	ECONOMY VEAL	1 lb.	49¢
Chuck Roast	ECONOMY VEAL	Lb.	37¢
Club Steak	ECONOMY VEAL	Lb.	49¢
Ground Meat	ECONOMY	Lb.	35¢
Pork Sausage		4 Lbs.	1.00
Sliced Bacon	LEAN	Lb.	39¢
Seven Roast	CHOICE	Lb.	49¢
Loin Steak	CHOICE	Lb.	69¢
Minute Steaks		Lb.	69¢
Ground Meat	EXTRA LEAN	Lb.	49¢



# BARGAINS TO FILL YOUR FREEZER!

**SAFEWAY**



Safeway's frozen food display cases are brimful of a tremendous variety of perfect-frozen foods at unusual savings. Our fine meat department also joins in with exciting freezer specials. Take advantage of these money-saving bargains right now... well worth a special trip!

- Frozen Potatoes** Bel-air frozen crinkle cut French fries. **3 9-Oz. Pkgs. 49¢**
- Frozen Peaches** Bel-air frozen — Perfect dessert anytime. **3 12-Oz. Pkgs. 59¢**
- Grape Juice** Bel-air frozen — A delicious breakfast beverage. **3 6-Oz. Cans 49¢**
- Baby Okra** Bel-air frozen whole or Blackeye Peas. **3 10-Oz. Pkgs. 59¢**

- Chopped Collards** Bel-air frozen. **3 10-Oz. Pkgs. 49¢**
- Leaf Kale** Bel-air frozen — So easy to prepare. **3 10-Oz. Pkgs. 49¢**
- Lima Beans** Bel-air Frozen — Ford Hook. **3 10-Oz. Pkgs. 59¢**
- Golden Corn** Bel-air frozen whole kernel. **3 10-Oz. Pkgs. 59¢**
- Green Peas** Bel-air frozen — try them for dinner tonight. **3 10-Oz. Pkgs. 49¢**
- Mixed Vegetables** Bel-air frozen. In salads. **3 10-Oz. Pkgs. 59¢**
- Peas & Carrots** Bel-air frozen — Add to your menu. **3 10-Oz. Pkgs. 49¢**
- Leaf Spinach** Bel-air frozen — Garden fresh and nutritious. **3 12-Oz. Pkgs. 49¢**
- Frozen Rolls** Mrs. Wright's Parker House or Clover Leaf. **2 12-Ct. Pkgs. 29¢**
- Puffin Biscuits** Sweetmilk or buttermilk. **3 8-Oz. Cans 29¢**



## Meat Buys for Your FREEZER!

Cut and freezer wrapped at no additional cost.

It pays to buy meat from Safeway to stock up your home freezer.



**Side of Calf** U.S.D.A. Good Grade Calf. 125 to 200 pound average. **Lb. 49¢**

**Calf Hindquarter** U.S.D.A. Good Grade Calf. Untrimmed 65 to 75 pound average. **Lb. 59¢**

**Calf Forequarter** U.S.D.A. Good Grade Calf. 65 to 75 pound average. **Lb. 45¢**

**Sirloin Steak** U. S. Good Grade Calf. **Lb. 79¢**

**Chuck Roast** U. S. Good Grade Calf. **Lb. 45¢**

**Round Steak** or Swiss Steak. U.S. Good Grade Calf. **Lb. 89¢**

**T-Bone Steak** U. S. Good Grade Calf. **Lb. 89¢**

**Arm Roast** U. S. Good Grade Calf. **Lb. 55¢**

**Short Ribs** or Brisket. U. S. Good Grade Calf. **Lb. 29¢**

**Rump Roast** U. S. Good Grade Calf. **Lb. 79¢**

**Beef Round** U.S.D.A. Choice Grade Heavy Beef. **Lb. 59¢**

**Beef Loin** U.S.D.A. Choice Grade Heavy Beef. **Lb. 79¢**

**Green Beans** Bel-air frozen French style or Cut Green Beans. **3 9-Oz. Pkgs. 59¢**

**Frozen Shrimp** Captain's Choice breaded fan tail. **10-Oz. Pkg. 55¢**

**Lucerne Ice Milk** Vanilla or Chocolate low calorie. **1/2-Gal. Ctn. 49¢**

**100 SAFEWAY COUPON 100**  
 This Coupon Worth 100 (\$10.00 VALUE)  
**FREE GOLD BOND STAMPS**  
 Plus your regularly earned Gold Bond Stamps with the Purchase of  
**SIX — 6-Oz. Cans Bel-air Frozen LEMONADE**  
 Limit One Coupon Per Customer. Expires May 14, 1968.

**50 SAFEWAY COUPON 50**  
 This Coupon Worth 50 (\$5.00 VALUE)  
**FREE GOLD BOND STAMPS**  
 Plus your regularly earned Gold Bond Stamps with the Purchase of  
**THREE — 8-Oz. Manor House Frozen MEAT PIES**  
 Limit One Coupon Per Customer. Expires May 14, 1968.

### Safeway Buys!

- La Choy Chop Suey** Meatless. No. 303 Can. **35¢**
- Spam** Hormel — Perfect for sandwiches. 12-Oz. Can. **49¢**
- Wesson Oil** Makes fried foods taste better. Quart Bottle. **47¢**
- Lipton Tea** Instant — Orange Pekoe. For a refreshing drink. 1 1/2-Oz. Jar. **49¢**

### More Values!

- Chunk Tuna** Breast-O-Chicken Light Meat — Green Label. 4 1/2-Oz. Can. **33¢**
- Chunk Tuna** Chicken of the Sea — Light meat. 4 1/2-Oz. Can. **45¢**
- Banquet Dinners** Frozen Beef, Chicken, or Turkey. 11-Oz. Pkg. **55¢**
- Barbecue Beef** Ireland's. Sliced or shredded. No. 300 Can. **63¢**
- Eagle Chili Powder** Gebhardt's. 1-Oz. Bottle. **15¢**
- Pecan Pie** Woody's frozen — An easy to prepare dessert. 9 1/2-Oz. Pie. **79¢**
- Gladiola Flour** For all your baking needs. 5-Lb. Bag. **47¢**
- Sandwich Cookies** NBC Baronet Cream. 11-Oz. Pkg. **39¢**
- Sesame Crackers** Sunshine — Perfect snack anytime. 6 1/2-Oz. Pkg. **39¢**
- Potato Chips** Morton's — Perfect for parties or snacks. 4-Oz. Pkg. **25¢**
- Paper Plates** Bondware white — 9-Inch. 40-Ct. Pkg. **49¢**
- Shelf Paper** Bug proof — Assorted colors. 25-Ft. Roll. **45¢**

### Bakery Feature of the Week!

**RYE BREAD** Regular 23¢ value. Perfect for sandwiches. **1-Lb. Loaf 19¢**

**2¢ OFF Pastry Special!**  
**CINNAMON ROLLS** Mrs. Wright's — 8-count. Reg. 29¢ value. **1 1/2-Oz. Pkg. 27¢**

**Hot Dog Buns** Skylark — 8-count. 11-Oz. Pkg. **19¢**

**French Bread** Mead's. 1-Lb. Loaf. **25¢**

**Oatmeal Cookies** Melrose — For parties and snacks. 13 1/2-Oz. Pkg. **29¢**

**Grade 'A' Eggs** Breakfast Gems. Grade "A" Quality. Large Size. Doz. **47¢**

**Large 'AA' Eggs** Cream O' the Crop. Grade "AA" Quality. Large Size. Doz. **51¢**

### Safeway Produce

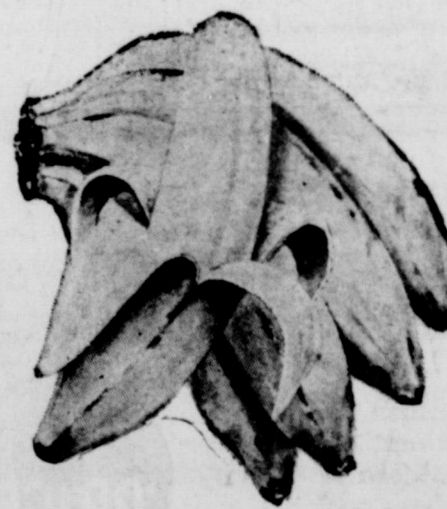
**BANANAS**

Golden-ripe tropical fruit. Ripened a better unhurried way to preserve their natural flavor. **Lb. 10¢**

**Lettuce** Crisp and crunchy fresh. **2 Heads 25¢**

**Cantaloupes** Texas' finest. Truly a breakfast fruit. **Lb. 15¢**

**Florida Oranges** Valencia. **Lb. 10¢**



**PINEAPPLE** Enchanted Isle Australian sliced or tidbits. **4 20-Oz. Can \$1.00**

**SHORTENING** Velkay — For all your baking or frying needs. **3-Lb. Ctn. 49¢**

**FLOUR** Kitchen Craft. (10-lb. bag... 79¢) **5-Lb. Bag 43¢**

**Aluminum Foil** Reynolds Wrap. 25-Ft. x 12-Inch Roll. **33¢**

**Wax Paper** Kitchen Charm. 100-Ft. Roll. **21¢**

**Canned Biscuits** Betty Crocker Home Style or buttermilk. 3 8-Oz. Cans. **29¢**

**Morton's Salt** Plain or Iodized. 2 26-Oz. Boxes. **25¢**

Prices and Coupons Effective Thurs., Fri. and Sat., May 12, 13 and 14 in. Eastland We Reserve the Right to Limit Quantities. No Sales to Dealers.



**SAFEWAY**

Conveniently Located to Serve you at 504 E. Main

**25 SAFEWAY COUPON 25**  
 This Coupon Worth 25 (\$2.50 VALUE)  
**FREE GOLD BOND STAMPS**  
 Plus your regularly earned Gold Bond Stamps with the Purchase of  
**1-Lb. Pkg. Captain's Choice Frozen Ocean Perch FILLETS**  
 Limit One Coupon Per Customer. Expires May 14, 1968.

**100 SAFEWAY COUPON 100**  
 This Coupon Worth 100 (\$10.00 VALUE)  
**FREE GOLD BOND STAMPS**  
 Plus your regularly earned Gold Bond Stamps with the Purchase of  
**2-Lb. Pkg. Captain's Choice Frozen Breaded Fantail SHRIMP**  
 Limit One Coupon Per Customer. Expires May 14, 1968.

**50 SAFEWAY COUPON 50**  
 This Coupon Worth 50 (\$5.00 VALUE)  
**FREE GOLD BOND STAMPS**  
 Plus your regularly earned Gold Bond Stamps with the Purchase of  
**TWO — 24-Oz. Bel-air Frozen FRUIT PIES**  
 Limit One Coupon Per Customer. Expires May 14, 1968.

**50 SAFEWAY COUPON 50**  
 This Coupon Worth 50 (\$5.00 VALUE)  
**FREE GOLD BOND STAMPS**  
 Plus your regularly earned Gold Bond Stamps with the Purchase of  
**1/2-Gal. Ctn. Party Pride SHERBET**  
 Limit One Coupon Per Customer. Expires May 14, 1968.



— Call MA 9-1707 for Classified Ads —

## GA Coronation Service Is Held Here Wednesday

The annual Coronation Service for Girl's Auxiliaries and Recognition Service for Royal Ambassadors of First Baptist Church of Eastland was held May 11, at 7:45 at the church.

Mrs. H. W. Sims, president of Woman's Missionary Union of the local church presided, and Mrs. C. A. Cain, president of the Cisco Baptist Association W.M.U. presented charges and crowned queens during the coronation. Mrs. D. L. Kinnard was organist and R. B. Hall, Jr. soloist.

Girls who passed the step of Maiden are: Karen Ford, Billie Lou England, Carolyn Goldston, Dianne Young, Clara June Smith, and Mary Herrera.

Ladies-in-waiting who were presented were: Andrea Rhodes, Mary Beth Hall, Dixie Young, Sharon Hall and Sharon Spadling.

Those attaining the step of princess were Marsha Treadwell, Ernie Mae Lane and Sally Perkins.

Girls who were crowned as queens were Anna Smith, Wanda Lane, and Roy Lynn Gann.

One queen-in-service was honored, Lois Ann Sims. This is an optional step for junior girls who wish to do extra missionary work.

Queen-with-cepter, an advanced step for intermediates, was he honor given to Sharon Sayre, Donna Ford, Janet Kimbler and Mary Ann Manning.

Carol Walter was recognized as queen regent and presented the cape award for her step.

Attendants for the Queens and advanced Queens who have been chosen by the girls were Melinda Grimes, Evelyn Chapman, Jimmy Sayre, Sammy Thomas, Audrey and Angela Lynn, Kirk Layton, Stephen and Clay Brewer, Jill Wright, Shirley Ford, Alan Jolly, Bonnie Lane, Ann Kelley, Johnny Paul Grimes, DeLynn Megason, and Bill Tibbs. Nanette De Ford and Cora Mae Carmack were candlelighters and Terry Treadwell and George Kimbler were trumpeters. Awards were presented by Patricia Liles and Gretchen Hailey.

G. A. Director is Mrs. Harvey Kimbler and Counselors are Mmes. Neal Edwards, R. D. Riley, Herbert Elrut, Dick Spalding, Gene Rhodes, George Wilcoxen and James Johnson. The G. A. Committee is made up of Mrs. M. A. Treadwell Jr., Mrs. Roy Rushing and Mrs. A. E. Hallford.

The Royal Ambassador Recognition Service honored the following boys: Page - J. D. Ables, Dickie Byars, Mike England, Tommy Freeman Squire - Bill Jones, Gary Upchurch, Stephen and Jerry Duker; Knight - Gary Graham; Ambassador - Terry Treadwell and Norman Rhodes; Ambassador Extraordinary - George Kimbler.

Counselors for the R. A. are Dr. M. A. Treadwell Jr., Dick Spalding, Neal Edwards, and James Johnson. Reviewing Council for R. A. is Johnny Grimes, George Ford, Frank Sayre, and Gordon Goldston.



AT CORONATION—Pictured from left to right are Terry Treadwell, Lois Ann Sims, Carol Walter and George Kimbler, who were honored Wednesday night at a coronation service for Girl's Auxiliaries and a Recognition Service for Royal Ambassadors of the First Baptist Church. Terry and Lois Ann were the two high juniors and Carol and George were the two high intermediates. (Canaris Studio Photo).

### Card of Thanks

We wish to thank our many friends and neighbors for their expressions of sympathy and kindness during the illness and death of our loved one.

The Family of Floyd Brewer

### Look Who's New

Mr. and Mrs. Dean Sutton of 6505 Ave. U., Lubbock, announce the arrival of a daughter, Becky Renee, who was born May 10 and

weighed seven pounds and three ounces.

Grandparents are Mr. and Mrs. Roy L. Lane of Eastland and Mr. and Mrs. Charlie Sutton of Ran-

**Funeral Directors**  
**HAMNER FUNERAL HOME**  
 Ben E. Hamner  
 Oxygen Equipped - Air Conditioned

Eastland Phone MA 9-2611      Cisco Phone Hillcrest 2-1211

AMBULANCE SERVICE ANY WHERE ANY TIME  
 Nominal Cost Burial Insurance For The Entire Family

## Field Seed

We have a good stock of peanut and other field seed—the best seeds for your spring planting needs.

We stock fertilizers of all types. See us for feeds, sprays, remedies. We pay top prices for eggs.

## Thornton Feed Mill

'Home of Circle T Feeds'  
 Phone HI 2-1122      CISCO      1200 Avenue D

# LIQUIDATION SALE

Nelson's of Odessa and San Angelo have purchased Anderson's stock and fixtures of Eastland. Entire stock to be liquidated, current fixtures for sale. Nelson's would appreciate a letter from you stating the kind of Ladies Store you like, the brands of coats, suits, and dresses you might like, and any suggestion you may have to make.

Anderson's will be open until 8 p.m. Friday for your shopping convenience.

## LADIES FAMOUS BRAND DRESSES

Choose Your Entire Summer Wardrobe From Our Terrific Value-Packed Collection

REG. 6.98	DRESSES	\$3.49
REG. 8.98	DRESSES	\$4.49
REG. 12.98	DRESSES	\$6.49
REG. 14.93	DRESSES	\$7.49
REG. 17.98	DRESSES	\$8.99
REG. 22.98	DRESSES	\$11.49

SIZES 5 to 15, 8 to 20  
 12 1/2 to 24 1/2 ... EVERY DRESS HAS FAMOUS LABEL

- WIDE SELECTION OF STYLES ...
- MANY WANTED FABRICS & COLORS ...

## LADIES BLOUSES

- SLEEVELESS
- SANFORIZED
- WHITE
- COLORS
- SIZES 32 to 38

1.98 Value      \$1

## CHILDREN'S DRESSES

Reg. 2.98 . Now \$1.49  
 Reg. 3.98 . Now \$1.99  
 Reg. 5.98 Now \$2.99

Choose from:

- Cinderella
- Facho and
- Shepards

1/2 PRICE

## LITTLE BOY'S SUITS

AND SPORT COATS

• CHOICE OF ENTIRE STOCK

SIZES: UP TO 6 YEARS OF AGE

1/2 PRICE

## LADIES SUITS

- Herman Marcus
- Edward Barry
- Bettjean
- Miller-Cupaioli
- Fashion-Bilt
- Ike Clark
- Imported Pure Silk
- Linens • Virgin Wool
- Tweeds

1/2 PRICE

REG. 19.98	1/2 PRICE \$ 9.99
REG. 29.98	1/2 PRICE \$14.99
REG. 39.98	1/2 PRICE \$19.99
REG. 49.98	1/2 PRICE \$24.99

## PANTS CAPRIS & JAMAICAS

Reg. 4.98 CAPRIS	Now \$ 2.49
Reg. 2.98 CAPRIS	Now \$ 1.49
Reg. 3.98 JAMAICAS	Now \$ 1.99
Reg. 2.98 JAMAICAS	Now \$ 1.49

- Hi-Rise Waist — Sizes 8 to 18 ...
- SOLID — PLAID — STRIPES — TONE on TONE
- EVERY WANTED COLOR FOR SPRING, SUMMER AND FALL ... WEIGHTS FOR SPRING, SUMMER AND FALL ...

## CHILDREN'S SOCKS

Boy's - Girl's - 3 1/2 - 10 1/2

• Reg. 29c	Now 15c
• Reg. 39c	Now 20c
• Reg. 49c	Now 25c
• Reg. 59c	Now 30c
• Reg. 69c	Now 35c
• Reg. 79c	Now 40c
• Reg. 89c	Now 45c

• Buster Brown • Bobby Sox  
 • Gordon • Stretch  
 • Princeton • Infants  
 • Texas • Cuff Sox

1/2 PRICE

## Little Boy's-Girl's FLANNEL - CHALLIS ROBES

COTTON PLAID  
 COTTON PRINTS  
 REG. 2.98      \$1.49

1/2 PRICE

# ANDERSON'S

111 WEST MAIN ST. — EASTLAND, TEXAS  
 Now Owned By Nelson's — San Angelo, Texas

NO PHONE OR MAIL ORDERS—PLEASE

Suzanne Patricia Conduct R

Misses Suzanne Patricia Liles were recital held Thursday at 8 p.m.

The program consisted of "Dancing Gaily," "Jane Caldwell," "Well and Clarine in the Valley," and "Clarine Britton." The program was given by Janice King, well and Clarine Pixies Good Night, and "Fifteen Men Boat" Burman by "Bobolink Boog Schaum and Wagon Ehnke by Patricia Liles and "Hoogie Junior" Ozona Hood; "Patricia Liles and Toni Washington," Hibbs, "Robinson and Betty by Carrie Faye

Beauty Special On Closed for May 13 Rinses, 25c 1416 S. Lamar

Alhambra • Private bath, comfortable, daily, weekly rates. • Office or small available. • Telephone service on 24 hours Ph. MA. 9

Visit Our Dining Room EASTLAND choose MONDAY Located across Coats Furnish Willard Grill Ph. MA 9-2557 Built by: Rice Memorial Co., H

Enjoy Down Close to everything redecorated rooms private baths, fans and heat, for only \$10 which includes delicious meals in Also apartments to any size for guests. Contact manager, the Village (formerly the Eastland)

NOT FRESH DRY and Fresh D He At The PHONE WAL Dressing

M. H. Perry is a good day future security insurance. SO LET'S MEET Southland Life Insurance 107 W. Office Ph. Residence Ph.



MA 9-1707 for Classified Ads—

IN AND SEE OUR COMPLETE SELECTION OF FINE

ARPET'S

to fit every budget to our own installation

nger Furniture Exchange

"BRASHIER'S" RANGER Phone 242

Dairy Cattle Needs Individual Feeding Program

Feed bills for a dairy herd can rapidly eat into profits if you are not careful. The total feed consumed by a herd may average out about right, but each cow is an individual and needs to be fed accordingly, points out Shannon Carpenter, a s s o c i a t e extension county agent-dairying.

A herd of 50 cows being fed one pound per day per cow more than needed will increase your feed costs \$45 per month when grain is priced at \$60 a ton.

MATTRESSES

Save up to 50% renovating, choice of color and firmness. Complete bedding. Made and guaranteed by WESTERN MATTRESS CO., San Angelo. Phone MA 9-2689. Eastland and leave address.

It costs even more to underfeed each cow by one pound grain per day, Carpenter continues. A cow underfed by one pound per day will produce at least two pounds less milk. At five cents per pound for milk, that amounts to a loss of \$150 a month with a 50-cow herd.

If one half the cows in a 50-cow herd are overfed one pound per day and the other half underfed one pound, the owner is spending \$97.50 more for feed each month than is necessary. The total pounds fed is right, but the pocketbook receives as severe jolt.

A good pair of scales should prove to be a good investment, Carpenter adds. Weighing the feed would insure that each cow gets her share of the total and should increase the dairyman's income, concludes the specialist.

ATTEND THE CHURCH OF YOUR CHOICE EACH SUNDAY

I GIVE YOU TEXAS

By Boyce House

By BOYCE HOUSE In Fort Smith, Ark., in 1925, I gathered material for an article, I visited the police station and an old-time officer, learning I was from Texas, asked if I'd ever been in Comanche. He remarked, "The last time I was there, five bodies were laying on the courthouse square."

Rep. Howard Green of Fort Worth used to be sports editor in Abilene. While attending high school, he wrote a sports article which won second place in a Texas contest—and first in a national contest.

Big Spring used to be the location of a big spring, (I am told) but it disappeared. Tired of having so many visitors ask where the spring was, citizens, back in the 1930's built one.

Neon signs are all right but they can't compare with that now-vanished sign in San Antonio, showing a cowboy roping a steer.

Post was named for C. W. Post, the cereal king ("grapnuts" was one of his products).

Tris Speaker, one of the all-time greats of baseball—was born (the old record book said) in Hubbard City—only don't call it that to an inhabitant; he'll tell you the name is Hubbard.

And people who lived in the general Brown—Eastland counties' area referred to a place as Maytown, which always seemed to displease the residents, who called

it May. The late Mark McGee, Fort Worth attorney, who had one of the keenest senses of humor I've ever known, was from there and so was W. R. Chambers, one

of the most esteemed members of the legislature in his day. Strawn is said to have had— at one time—the largest number of fine homes of any city between

Fort Worth and El Paso. This was early in the century when coal mining was in full swing and also several rich ranch families lived there.

ATTENTION PEANUT FARMERS

We Have Ample Stocks of Select, High Quality TOPPER BRAND SEED PEANUTS

... READY FOR PLANTING

- All Our Seed are Hand-Picked Graded No. 1 Peanuts
We Offer Seed in Large, Medium, Small Medium, and Pee Wee Sizes
All Seed are Graded For Uniformity
ALL SEED TREATED WITH DUST FREE METHOD
All our seed are produced from high grade, well matured farmers stock peanuts, purchased in Texas and Oklahoma by this company—and properly stored during the buying season. Each bag of seed peanuts bears a State tag—showing excellent germination results.

PLANT TOPPER PEANUT SEED FOR BEST RESULTS

SEE OUR LOCAL DEALERS LEWIS MORGAN — SIG FAIRCLOTH We Are Proud of Our Reputation For Quality Built Over a Period of 34 Years

DURHAM PEANUT CO. COMANCHE, TEXAS

McGraw Motor Co.

CARS

DODGE—STUDEBAKER Parts and Service

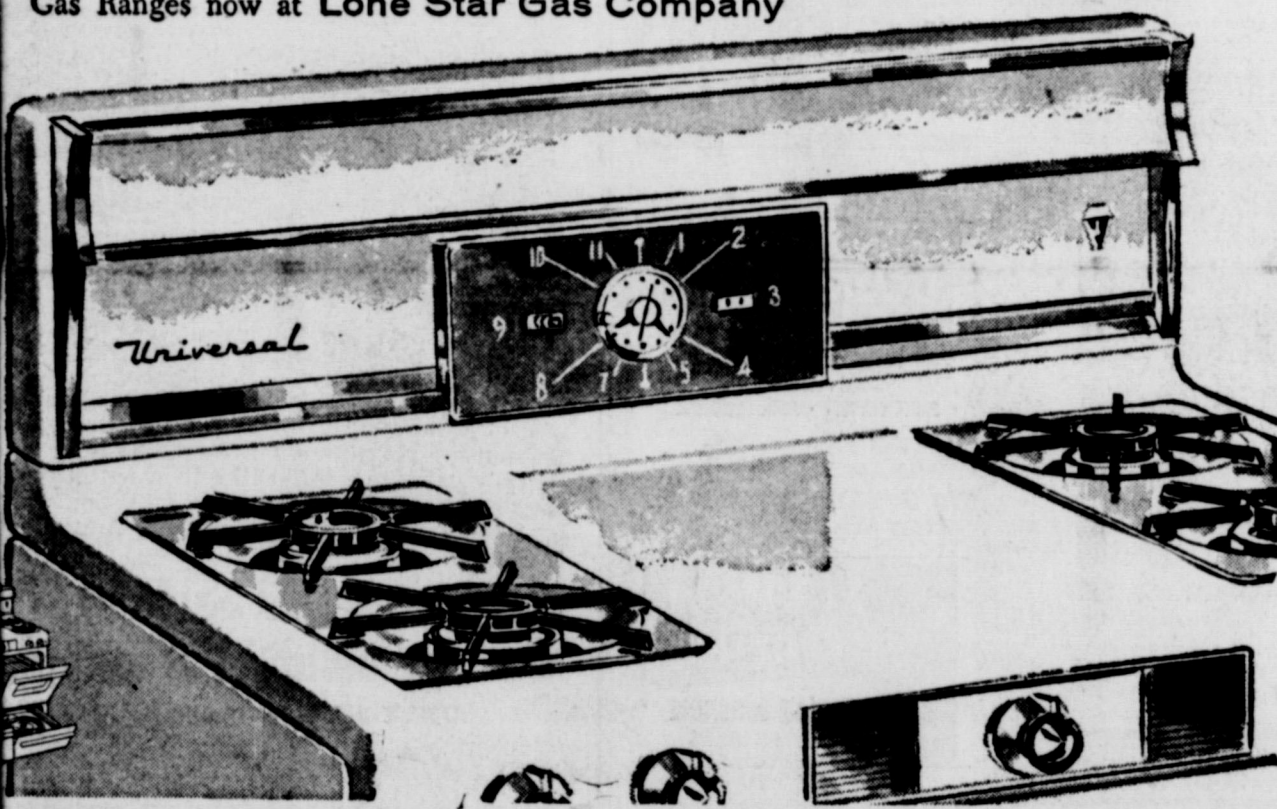
TRUCKS

461 South Seaman

Phone MA 9-1244

GET BUDGET SAVING PRICE NOW ON UNIVERSAL GOLD STAR GAS RANGE This top quality Universal Model 8072X has all 28 Gold Star requirements. You are assured most modern design, performance

and automation. Buy now at Lone Star Gas—\$309, less special \$59.05 trade-in. Easy terms. 36 months to pay. Features: • amazing gas burner-with-a-brain... foods won't burn! • plus one giant, two regular-size fast gas burners. 1001 settings. Lifetime burner guarantee. • picture-window oven with extra-thick fiberglass insulation, interior light, peek-switch, fresh-air circulation for perfect baking results, timer-clock. • huge storage compartment. Shop the Annual Spring Sale of Gold Star Award Gas Ranges now at Lone Star Gas Company



Texas Rated Fifth In Percentage of Trained Teachers

In five years Texas has dropped from second to fifth place in the percentage of college trained teachers in its elementary schools, latest national rankings show.

Oklahoma now leads the nation with 99.6 of its elementary teachers having four or more years of college. Arizona, Florida, and New Mexico also lead Texas, which is fifth with 95.6 per cent.

Both the border states of Oklahoma and New Mexico, as well as nearby Arizona, have higher average teacher salaries than Texas.

In 1953-54 Texas was in second place. At that time, Arizona was first and Oklahoma was down in seventh position.

By 1958-59, the latest figures available, Oklahoma had vaulted to first place on the strength of higher requirements and better salaries. Only 80 of Oklahoma's 21,400 teachers do not have at least a bachelor's degree.

In Texas, records of the Texas Educator Agency reveal that 1,772 out of the 82,088 total public school personnel did not have a college diploma in 1958-59. The majority of those were in the grades one through eight, where 1,509 teachers out of 49,828 failed to have degrees.

National rankings deal only with elementary teachers and with those having four or more years of college preparation, irrespective of degrees.

— READ THE CLASSIFIEDS —

Table with TV schedules for Channel 9 (RBC, Abilene), Channel 4 (KRLD, Dallas), Channel 11 (KFIZ, Fort Worth), Channel 5 (WBAP, Fort Worth), and Channel 8 (WFAA, Dallas). Columns include Day, Time, and Program Name.

Silence



More eloquent than any words is the silence of the 1960 Cadillac in motion. Eloquent, too, is the delighted look of the man who has just driven one for the first time. It says so unmistakably, "Never before, a car to compare with this!" It is a literal fact that you must concentrate to detect the sound of a 1960 Cadillac—except, of course, for the gentle whisper of the wind and the soft hum of the tires on the pavement. Your authorized Cadillac dealer invites you to try this unique driving experience.

VISIT YOUR LOCAL AUTHORIZED Cadillac DEALER PIPKIN MOTOR COMPANY 314 W. MAIN

BASEBALL SEASON IS HERE!

You can really enjoy the TV Games when you have Cable service Community Television, Inc.

Village Hotel Phone MA 9-1919



— Call MA 9-1707 for Classified Ads —

**LET'S GO Fishing!**

**EVERYTHING for the FISHING FAN**

**THE BEST IN FLIES and LURES**

For a complete line of fishing equipment drop by to see our stock. You can buy a complete outfit or add to your present equipment. And don't forget our low, low prices!

**Higginbotham-Bartlett Co.**  
Jack Elliott, Mgr.  
301 W. Main Phone MA 9-1311 or MA 9-1533

**READ THE CLASSIFIEDS**

**NOTICE**

**Lawn Mower Repairing**

- ★ New Mowers—Sales and Service
- ★ Will buy or trade for your old mower
- ★ Complete Auto Parts

**Eastland Auto Parts**  
300 S. Seaman Phone 9-2158

**Before Insurance Was Known—**

... tolling slaves hewed and wrought by hand. Life was cheap. And the idea of insurance would have been beyond understanding. Not so today. Insurance protection is indispensable both to the individual and industry. Without it the wheels of business and trade would stop. And the less one has the more important is insurance to him for he can least afford to lose what he has. So be prepared. We insure everything but the ashes and pay for them.

**EARL BENDER & COMPANY**  
Eastland. (Insurance since 1924) Texas

**Gleaners Party Is Hosted By Mrs. Pittman**

The Gleaners Sunday School class of the Bethel Baptist Church met Friday in the home of Mrs. J. H. Pittman for their class party and business session.

The house was beautifully decorated with roses. The members were dressed to carry out the theme of the "Tacky party," with Mrs. Susie May winning the prize.

Mrs. Tom Clark gave the opening prayer after which secret pals were revealed and gifts opened. All joined in singing "Happy Birthday" to Mrs. Clark as a gift was presented her.

Dr. Pepper and candy were served to the following present: James, C. O. Roderick, J. H. Garrett, A. O. Gist, A. J. Blevins, Jr., Charles McFatter, Curt Williams, Clark, Vera Kleiner, May, J. C. Allison, C. W. Moseley, J. S. Curtis, William Liles, Millie Thompson, Corrine Weatherby, one guest, Shelia Moseley, and the hostess, Mrs. Pittman.

**Trustees—**  
(Continued from Page One)

Agency, it will be necessary to increase the 1959 tax value of all property within the district by 25 percent beginning with the 1960 tax year.

Persons wanting to meet with the tax equalization board can

**LEGAL NOTICE**

**CONTRACTOR'S NOTICE OF TEXAS HIGHWAY CONSTRUCTION**

Sealed proposals for repair of prestressed concrete beam overpass 0.859 miles West of Erath County Line on Highway No. 120 covered by Project MC. 314-5-2 in Eastland County, will be received at the Highway Department, Brownwood, until 2:00 P.M., May 24, 1960, and then publicly opened and read.

Plans and specifications including minimum wage rates as provided by Law are available at the office of Gordon L. Smith, Supervising Resident Engineer, Eastland, Texas, and Texas Highway Department, Austin, Usual rights reserved.

call MA 9-2366 by May 23 for a personal appointment.

At present, real estate is assessed at about one-fourth of its actual value. The tax rate will not be changed, but the tax value of property will.

**ATTEND THE CHOICE**

**"EFFICIENT EXTERMINATION OF"**

- Roaches • Silver Fish
- Mice • Fleas • Ticks
- Scorpions and other Pests

Member National Pest Control Association

**Lester Humphreys**  
**PEST CONTROL SERVICE**  
Surety Bonded Termite Control

**It's Dole HAWAIIAN HARVEST TIME!**

**DOLE SLICED PINEAPPLE No. 2 Can 33¢**

**DOLE Chunk PINEAPPLE No. 211 Can 23¢**

**DOLE HAWAIIAN PINEAPPLE CRUSHED No. 2 Can 29¢**

**PINEAPPLE- GRAPEFRUIT DRINK 32-Oz. Can 23¢**

**BUDGET SLICED BACON 2 Lb. 69¢**

**SWIFT PREMIUM FRANKS Lb. 49¢**

**FRESH GROUND MEAT Lb. 45¢**

**LOIN STEAK GOOD QUALITY Lb. 75¢**

**PORK ROAST Lb. 39¢**

**NABISCO Premium Saltine CRACKERS Lb. Box 29¢**

**CHEF'S DELIGHT CHEESE SPREAD 2-Lb. Box 69¢**

**KRAFT'S SLICED HALF-MOON CHEESE 10-Oz. Pkg. 45¢**

**LIBBY'S POTTED MEAT 2 3/4-Oz. Cans 25¢**

**Crisco 4-coff 3 Pound Can 69¢**

**ZEE NAPKINS 2 80-Ct. Boxes 25¢**

**Prices Good Through Saturday**

**MacMOY'S Super Save**  
400 S. Seaman Home Owned, Home Operated

**SOCIAL CALENDAR**

**Sunday, May 15**

1:30 p.m. — The Eastland High School Alumni will meet in the High School.

3 p.m. — The organ students of Mrs. D. L. Kinnaird will be presented in a recital in the First Baptist Church. Members will be assisted by piano students of Mrs. A. F. Taylor.

**Monday, May 16**

7:30 p.m. — The members of the Xi Alpha Zeta chapter of Beta Sigma Phi will meet in the home of Mrs. Mike George with Mrs. Les Strawn giving the program.

7:30 p.m. — The Oddfellow Lodge will meet in the IOOF Hall for their regular meeting.

7:30 p.m. — The Pythian Sisters will hold their regular meeting in the Castle Hall, 106 Commerce.

7:30 p.m. — The members of Las Leales Club will meet in the Woman's club for the installation of officers.

7:30 p.m. — The Zeta Pi Chapter of Beta Sigma Phi will meet in the home of Mrs. James Smith.

**Tuesday, May 17**

2 p.m. — The Eastland Art Club will meet in the home of Mrs. Homer White for their regular meeting.

7:30 p.m. — The Order of the Eastern Star will meet for the initiation of officers and to honor new members.

**Wednesday, May 18**

7:30 p.m. — The Wesleyan Service Guild will hold their regular meeting in the Methodist Church.

3:30 p.m. — Mrs. Varge Daniel will be chairman of the hostess committee for the regular meeting of the Music Study Club with all the new members as co-hostesses. The meeting will be held in the Woman's Club.

**Thursday, May 19**

2 p.m. — Mrs. Ellen Horn will be hostess to the members of the Flatwood Home Demonstration club at their regular meeting.

**ATENR CHURCH SUNDAY**

**MAJESTIC EASTLAND TODAY - FRI. & SAT.**

**JERRY LEWIS**

**Visit to a Small Planet**

JOHN BLACKMAN • EARL HOLLIMAN

Adults 70c Children 35c  
**FRIDAY 11:30 MIDNIGHT SHOW 11:30 P. M.**

**THE GIANT BEHEMOTH**

GENE EVANS

— PLUS —

**THE Cosmic Man**

BRUCE BENNETT • JOHN CARRADINE

**A!! Seats — 60c STARTS SUNDAY**

**We Got Caught! Now See How We Catch Them**

**MAN ON A STRING**

ERNEST BORGNINE  
KENWIN MATHEWS

Regular Prices

**WHY SETTLE FOR LESS**

**CONSULT SCOTT Paint & Body Work**

300 W. Commerce

Finest complete mobile and pairing available equipped shop area.

★ 22 YEARS IN EASTLAND

★ ALL WORK GUARANTEED

★ FREE ESTIMATES ON Paint, Body, Frame Straightening Glass Replacement.

We specialize in Wreck Rebuilding Glass Replacement.

**PROMPT ACTION**

on your Home Loan Application

Because we are specialists in home-financing application gets prompt attention here... experienced loan people who know and understand local conditions. We'd like to work out a payment plan to fit your needs. When you're ready to buy or build, see us about the financing.

**First Federal Savings & Loan Association of Ranger**

ONLY 3% DOWN ON FHA LOANS

204 Main Ranger, Texas Phone 9-2366

**Rambler Sets New All-Time Sales Record**

**OVER 47,000 SOLD IN APRIL**

More people bought Ramblers in April than ever before in history. More people switched from other makes to Rambler. Here's why!

You get top quality at lowest price. Rattleproof Single-Unit\* construction... exclusive Deep-Dip\* rust-proofing... finest craftsmanship.

You get the widest choice of compact cars. 33 models, 17 station wagons.

You get proved economy. Proved by more than a million owners... proved in official economy runs.

Rambler resale value is proved tops. Your Rambler dealer can show you the proof. See him today.

**RAMBLER AMERICAN**  
America's Lowest-Price Family Car

**PIPKIN MOTOR COMPANY**  
314 W. MAIN