



ORE --- ABOUT - TLAND

April E. Moore

you haven't noticed
rather windy out
hadn't made that
myself until we got
back by a flying
which got on the
day.

We weren't so in-
wouldn't have en-
looking outside the
could see nothing
paper we decided
that someone must
one of those confetti
sides like they have

was step outside to
being honored and
time the barrel
same spot.

of course, the reason
all this wind in April
months have become
up. Mother Nature is
behind and hasn't
the calendar from
April. And it's easy to
We just don't hold to
of these Buck Rodg-
into space. It's enough
anything up, and we're
think it has.

gram carrier boys had
time throwing their
day. Several of the
to throw into the
get hit in the face
paper came back at
just going to have
ating more than six
windy days. You
throw against the
six pager.

has been hard on
probably the golfers
more than anyone.
these guys aren't going
just because the
wing the grass off the
grass and James Smith
really game the other
the wind was really
looked as if Smith
later after the wind
of his shots out of
number eight.

his letdown on No.
his second shot went
of the clubhouse and
the piano. Smith in-
was out-of-bounds,
declared he was not.
didn't want to argue, so
old Guess that if he
be-founds he could
man behind the piano.
later Guess finally

ation about these
is watching the pret-
y. It's amazing how
can hold a baby in
a bag of groceries in
and still keep the
blowing their skirts
heads. Naturally
About wouldn't
watching to see if
girls one of these mis-
rather material for

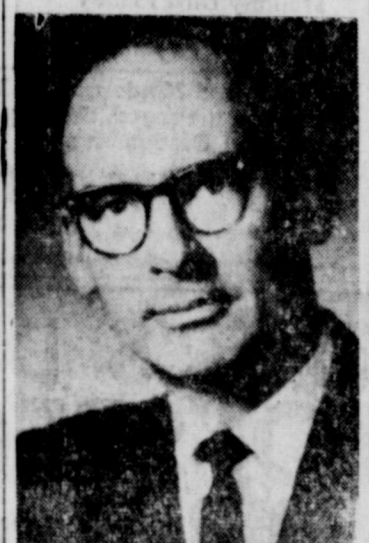
turned one thing about
watching. If you
to take part in the
you you a spot inside
thing so you'll get sand
sures sure as shooting
the looking is best.

weather has given us
problem too. Does
what to do when the
grass are left stand-
air when the sand de-
? We've about de-
a good deep rooted
bad after all. At
hold your top soil down.

to write more about
weather. We think it only
to mail this Amarillo
sign which landed in
ward to that Pand-
as soon as possible.

Six Stage Bands Slated To Compete for Honors

Like stage band music? If you do this should be your night for six stage bands will appear on the Eastland high school auditorium stage tonight beginning at 7:30. Stage bands from Eastland, Ranger, Cisco, Gorman and Rising Star will compete in the first jazz



REV. H. ROSS BUNCE
District Speaker

Methodists Hold District Meet In Eastland

A Methodist minister, who has been an educational administrator, audiovisual specialist and financial officer in India 12 years, will speak at the First Methodist Church in Eastland on Monday, April 17, at 7 p.m. at the district meeting of the Cisco District of the Methodist Church.

The Rev. H. Ross Bunce, Jr., whose American home is North Hills, Pa., has returned to the United States for a year's furlough from missionary service. During the last six years, Mr. Bunce has been manager of the Nathaniel Jordan Hostel in Moradabad in Northern India. The hostel houses from 100 to 150 Christian boys, who attend city schools many miles from their homes in the village. Parker Intermediate College is a Methodist primary and high school for boys with an enrollment of about 800.

Mr. Bunce has also served as director of audio-visual work and treasurer of mission funds for the Moradabad Methodist Conference. For five years after going to India in 1948, Mr. Bunce was manager of the Christian Boys' Hostel in the city of Budaun. On his return in 1961, he anticipates appointment to sales and distribution work in the Methodist Publishing House in Lucknow.

Born in Oak Park, Ill., Mr. Bunce spent his early life there and attended Albion College, Albion, where he was graduated in 1942. He received the bachelor of divinity degree from the Yale University Divinity School in 1947 and has done special study at the Kennedy School of Missions, Hartford, Conn., and Temple University, Philadelphia, Pa. He has been a pastor in Hatfield, Mass., and associate secretary of the Metropolitan Young Men's Christian Association in Philadelphia.

Mrs. Bruce is the daughter of Mr. and Mrs. C. K. Morgan of Walled Lake, Mich., and St. Petersburg, Fla. The Bunces have four children.

In connection with the meeting there will be a training session for all members of the Commission on Missions in the Cisco District of the Methodist Church.

EASTLAND NATIONAL BANK
"On The Square"
MEMBER F. D. I. C.



LINDA TRUESDELL
... the winner

contest to be held in this area in many years. Bands will be judged by classes.

Also on hand will be the Crowell High School stage band, which won the showmanship award in this year's Brownwood Stage Band festival. Admission prices will be 25c for students and 50c for adults.

Appearing with the Eastland stage band will be a quartet composed of Jan Taylor, Sherri Miller, Judy Lewis and Julie Frost. Judges will be Clyde Peterson, band director at Anson, Bill Mayes, band director at Stamford, and Earl Hesse, band director at Crowell.

The public has been urged to attend the contest and Phil Hewett, local band master, has predicted "music like there use to be in the '30's."

Straw Hat... ... Day Slated

It may a little windy, but Friday and Saturday are Straw Hat Days in Eastland. Eastland merchants will be featuring new straw hats those two days and it is officially time here now to put away the old felt for awhile.

Some of the newest and smartest styles in hats will be available here.

Donna Pugh Runner-Up In Beauty Contest

Well over 2000 guests were on hand for Ward's Fashion Show and beauty contest Tuesday night in Ranger as Ward's kicked off their spring Ward Week Sale.

A Breckenridge High School coed, Linda Truesdell, daughter of Mr. and Mrs. M. A. Truesdell of the Lacasa Community, was judged winner of the beauty contest and crowned Miss Ward Week. She won over nine other contestants from this area.

Runner-up was Donna Pugh of Eastland and third was Loretta Whitehead of Cisco. Others in the contest and fashion show were Barbara Crabb of Ranger, Tony Horton of Eastland, Elizabeth Nowak and Florence Cross of Strawn, Donna McKinzie of Gorman, Mary Craven of Olden and Rena Carr of Desdemona.

Miss Truesdell is no newcomer to winning contests. She was selected as the Buckaroo Queen at Breckenridge High School this year. She was FFA Sweetheart last year and also Sweetheart of the National Guard this year, going to the finals in that contest. She has been a cheerleader at Breckenridge for the past three years and on the Breckenridge honor roll all through high school.

On hand to provide entertainment for the crowd were Johnny Angel, popular young recording artist, the Teddie Bears of Ranger and the Tradewinds of Eastland. Mrs. Max Ohr of Ranger was winner of the big 19" portable Airline TV which was given away as a door prize. Mrs. McCleskey of Eastland won passes to the Majestic Theatre in Eastland.

Judges for the beauty contest were Johnny Angel, Mrs. Ella White of Ranger, Virgil Moore of Eastland, Charles Wallace of Breckenridge and Earl Labredo of Ranger.

Mrs. Marene Johnson of Eastland was narrator for the fashion show and Mrs. Franklin Bless of Ranger was director of the models. Ward Week will continue through Saturday, April 22.



DONNA PUGH
... runner-up



TO GIVE BOOK REVIEW—Naiad Key of Denton will be the featured reviewer when the Woman's Hospital Auxiliary of Eastland Memorial Hospital presents a Book Review Friday, April 28 at 10 a.m. in the Woman's Clubhouse. Naiad Key will review her own book, "Challenge." The author, wife of Scott Key, formerly lived in Eastland. "The Auxiliary is most fortunate to have the opportunity to present the talented reviewer and author to Eastland citizens," Mrs. Jack Frost, president, stated. Mrs. Virgil Seaberry and Mrs. Milton Fuller are co-chairmen of the ticket committee. Tickets will be on sale at \$1.25 each at Toombs-Richardson Drug Store early next week. Proceeds will be used to improve the hospital grounds.

PERKINS DISCOVERS

New Zealanders Compete To Have Finest Flowers

(Editor's Note: This is another in a series of stories about a round-the-world voyage being made by Mr. and Mrs. Joseph M. Perkins of Eastland.)

By JOSEPH M. PERKINS
We left Wellington on a fine moonlit night for Christchurch, one of New Zealand's largest cities. We came on one of the Union S. S. Company Inter-Island ships and had an unusually luxurious stateroom with one of the longest bathtubs that I have ever seen.

At Christchurch the next day we attended church and later hired a taxi for a drive through the city visiting flower lined streets where every home is surrounded with flowers. In fact, there is keen competition among residents who strive to have the finest display of flowers. Even streets compete with each other and the result is that Christchurch has an unusually fine and colorful display.

On the following morning we took the narrow gauge train to Greymouth, an interesting all day trip, first across the Canterbury plain where we saw many ships and later through mountainous terrain with deep gorges in which streams of clear blue water sparkled in the afternoon sunshine. The train carried no driver but it made three stops where tea and refreshments were available. From the train we saw some large birds that looked like small pheasants. We later learned that they are New Zealand doves.

The bus took us through towns and villages having such strange names as Tetahio, Okarito, Kaihiku and Hokitika, the latter being quite a large village. We passed through the old gold mining town of Ross, where in 1890-1900 there were 18,000 people. Today there are only 500.

Here at Fox Glacier we are staying at a fine resort hotel in the mountains within sight of Mt. Cook, the loftiest in New Zealand being 12,349 feet high. Several glaciers form in these high mountains and crawl slowly down toward the sea. Franz Josef and Fox are the largest. These glaciers are unique in that they lie within eight miles of the sea while most glaciers, other than those in the Arctic and Antarctic regions, are much further inland.

Applications for Incentive Wool Payments Ready

Applications for incentive payment on wool and unshorn lambs for the 1960 marketing year are ready to sign, Emmett Powell, officer manager for the Agricultural Stabilization and Conservation Committee, announced Thursday. Sales made between April 1, 1960 and March 31, 1961 are eligible for the incentive payment. If the sales receipts have not been turned into the county ASC office this should be done, Powell stated. All Applications must be signed not later than April 30.

beautiful black and white birds with a little color and that they are protected by the government. Later in the afternoon we were in the Southern Alps and the train went through many tunnels, one of which is five miles long.

Emerging from this longest one we found ourselves in the West Coast country, a tropical belt with heavy rainfall and great forests. It reminded me of the Isthmus of Tehuantepec in southern Mexico.

Next day we traveled by bus down the West Coast, sometimes within sight of the sea, but more often through forests and dense vegetation where ferns predominated. There appear to be countless varieties of ferns from the great tree ferns down to the tiny ones that grow out of the moss covered logs and on the sides of dead trees. The ferns, moss and lichens are everywhere in the forests and they are very beautiful.

The bus took us through towns and villages having such strange names as Tetahio, Okarito, Kaihiku and Hokitika, the latter being quite a large village. We passed through the old gold mining town of Ross, where in 1890-1900 there were 18,000 people. Today there are only 500.

Here at Fox Glacier we are staying at a fine resort hotel in the mountains within sight of Mt. Cook, the loftiest in New Zealand being 12,349 feet high. Several glaciers form in these high mountains and crawl slowly down toward the sea. Franz Josef and Fox are the largest. These glaciers are unique in that they lie within eight miles of the sea while most glaciers, other than those in the Arctic and Antarctic regions, are much further inland.

New Zealand is the base for much of the Antarctic exploration and the men are trained in mountain climbing and ice transport in these Southern Alps. In Wellington, I found that the British Antarctic exploration ship "Endeavour" had docked after her 1961 season in the South polar region. I went aboard and had a short visit with the captain, Commander (Continued on page two)

AIR CONDITION YOUR CAR
Any make — Sales and Service.
Otis Coleman Humble Service
Phone MA 9-1741

County 4-H Members Enter District Contest

Eastland Lions got a preview Tuesday of how Eastland County's entries in the District 8 4-H contests in Stephenville Saturday will fare.

Melbadean Hohertz, home demonstration agent, presented the program and J. B. (Tip) Arther was program chairman.

More than 850 boys and girls from 20 central Texas counties will compete in homemaking and farm skills at Tarleton State College Saturday. R. G. Burwell and Miss Annie Lucy Lane, district agents, will supervise the contests which include 28 categories.

Lions heard Debra Johnson, daughter of Mr. and Mrs. Wayman Johnson of Cisco, give a speech on "Freedom for Today." The 10-year-old won the county

4-H Senior Division speaking contest and the right to compete in the district contest.

Jan Taylor, daughter of Mr. and Mrs. Andy Taylor of Eastland and Janie Beck, daughter of Mr. and Mrs. E. D. Beck of Eastland, presented their Share the Fun contest entry. They sang "Side by Side" with a special 4-H Club arrangement.

Lions also learned how to make a salad. Doing the teaching were Kathy Kincaid and Alton Jo Fowler of Morton Valley Club. They will also be the county entries in the district contests.

Other county winners who will compete in Stephenville include: Junior Share-the-Fun Contest—Sandra Halbrooks-Twirlers from Ranger. Members of the twirling group include Teresa Huling, Cheryl Huffman, Pam Dennis, Jane Bradford, Kay Wilhelm, Betty Weeks, Linda White and Dorothy Oliver.

Public Speaking — Kenneth Johnson of Ranger.

Electricity Contest — Johnny Tennyson and Robert Hamilton of Cisco.

Dairy Judging Team — David Stewart, Jerry Morgan, Roger Wilkerson, Donnie Simmons, all of Scranton.

Tractor Driving—Ronnie Pack of Route 1, Gorman.

Senior Entomology Team—Jimmy Easter, Truly Clark and Phillip Gosnell, all of Cisco.

Junior Entomology Team—Gary Phipps, Mike Weed, Darrell Gosnell, Sidney Mahaney, all of Cisco.

Individual Dairy Foods Method Demonstration Contest — Ruby Wende of Nimrod.

Dairy Foods Team—Joy Love and Martha Lynn Foster all of Gorman.

The contests will be conducted in the TSC Home Economics building, Stephenville High School Home Economics Cottage, the Erath County Rural Electrification Co-op, the TSC College Farm and the TSC Agriculture Building.

A general assembly and awards program which is open to the public is scheduled at 3 p.m. Saturday in the TSC Main Auditorium. Co-Chairmen of the meeting are Findley Brewster, District 8 Boys State 4-H Council Delegate from Bell County, and Delores Cox, District 8 Girls 4-H Council Chairman from Brown County.

Winners of the district contests on the senior level will compete at the State 4-H Round-up to be held at College Station June 6, 7, and 8. State winners of nationally sponsored contests will represent Texas in November at the National 4-H Congress in Chicago. District Eight includes the

counties of Bell, Bosque, Brown, Burnet, Callahan, Comanche, Coryell, Eastland, Erath, Falls, Hamilton, Hill, Hood, Lampasas, Llano, McLennan, Milam, Mills, Somervell and Williamson.



ALVIN C. KELLAR
... gets new assignment

Alvin C. Kellar Is Assigned to Base In Kansas

Airman Alvin C. Kellar, son of Mr. Raymond L. Kellar of Rt. 2, Eastland, has been assigned to a unit of the Strategic Air Command at Forbes AFB, Kans., for training and duty as a Vehicle Operator. He recently completed basic military training at Lackland AFB.

Airman Kellar attended Eastland High School.

Airmen assigned directly to a duty station under basic training at Lackland will receive on-the-job training under highly-qualified technical specialists. Airmen are selected for these assignments on the basis of their interests, aptitudes, and the needs of the Air Force.

Personnel assigned directly to a duty station are immediately integrated into operational or training units of the USAF Aerospace Force.

Dates for 'Y' Summer Camp Are Announced

Dates for this year's YMCA Summer Day Camp have been set and Phillip Hewett has been named as director.

The camp will be held from June 26 through July 14. There will be one three week camp this year instead of two two week camps. And the camp hours will be from 8:30 a.m. until 12:30 p.m. daily.

Hewett said tentative plans call for a picnic day, a trip to Amon Carter Children's Museum, a n.d. Forest Park Zoo in Fort Worth.

Cost of the camp this year will be \$10.

Hewett said the "Y" directors decided on one three week camp because of the growing size of the camp and decided on the new hours because the limited size of the rest area.

State Singing Convention Set At Stephenville

The 29th annual session of the Texas State Singing Convention will be held in the recreation building in Stephenville Saturday and Sunday April 15 and 16.

The sessions will begin Saturday afternoon and Saturday night and all day Sunday.

The regular third Sunday singing at Bullock Community Center will be called off due to the State Singing Convention.

College Teacher Gives Views On Modern Chemistry

David Flinn, mathematics and chemistry teacher at Ranger College, is of the opinion that everything in modern times is controlled by chemistry. Chemistry is such a broad field that it is difficult to pinpoint any one of (Continued on page two)

HOME IMPROVEMENT LOANS

At Lowest Rates
See Your
EASTLAND NATIONAL BANK
"On the Square" - Member FDIC

PAGE ONE MUST

Little League Round-Up will continue through Friday with workouts this afternoon and again tomorrow at Little League Field beginning at 5 p.m. Friday the players auction is scheduled.

Eastland City Commissioners will hold their regular monthly meeting Monday at 7 p.m. at City Hall.

The Cross Timber Shrine Club President's Party will be held beginning at 7 p.m. Friday at Lone Cedar Country Club.

Jaycees will hold a business meeting tonight at 7 in the Texas Electric Service Co. conference room.

Registration for Teenage Baseball will be held Friday at 5:30 p.m. at Firemen's Field. All boys who will be 13 before Aug. 1 and who will not be 16 before Aug. 1 are eligible to play. Boys must bring their birth certificates.

Carbon High School seniors will present their class play, "Good Gracious, Grandma," Friday night at 8 in the school auditorium. Admission prices will be 25c for students and 50c for adults.

Raymond E. Beck of Eastland recently sold an outstanding registered Hereford bull to Dr. J. C. Wilson of Sherman, the Mid-Texas Hereford Association has announced.

SEE and Drive the 1961 PONTIAC... fresh point of view and wide track tool! MUIRHEAD MOTOR CO

The Telegram Speaks

William Blakley Is Best Choice... ...For United States Senate Post

(An Editorial)

Eastland County cast a vote for moderation in the first special Senate election April 4. County voters handed Jim Wright, who ran as a moderate, a lead of 587 votes over his nearest opponent in a race which drew 71 candidates.

Now Eastland County voters must make a decision between the two men who gained run-off positions. John Tower, the Republican, received 725 votes in this county and William Blakley, a Democrat, tallied 718. With the first choice backing these men have so closely divided, it will undoubtedly be the 1,312 votes Jim Wright received which will decide the race in our county.

The Telegram, after careful decision, announces its support for William Blakley. Both Blakley and Tower class themselves as conservatives. Examining the two men the Telegram finds that Tower is a radical conservative whereas Blakley has a more open mind.

Labels are misleading and dangerous. It seems to us that Tower would do almost anything to prove that he is the most conservative man in Texas. We do not like a radical, be he radical to the left, or radical to the right.

This is the time Texas needs a man who can and will think for himself, not a select group. We believe that William Blakley is far more capable of doing that job than is John Tower. We join the many Texas newspapers which are backing Blakley.

If the Republicans want to make this a two-party state—and we believe it should be—let them start at the bottom, not at the top. Let them start at the courthouse level, not at the highest post Texas voters have to offer.

We urge you to consider the records of these two men closely. We think when you do you will discover, as we have, that Blakley is the man for the Senate.

Eastland Telegram
Eastland County Record established in 1931, consolidated August 31, 1951. Chronicle established 1887, Telegram established 1923. Entered as second class matter at the Post Office in Eastland, Texas under the Act of Congress of March 3, 1879.

TIMES PUBLISHING COMPANY
Published Tri-Weekly—Tuesdays - Thursdays - Sundays
Onous Dick and Joe Dennis, Publishers
Virgil E. Moore, Editor

One week by carrier in city15
One month by carrier in city65
One year by mail in County2.95
One year by mail in state4.95
One year by mail out of state6.95

NOTICE TO PUBLIC—Any erroneous reflection upon the character standing or reputation of any person, firm or corporation which may appear in the columns of this newspaper will be gladly corrected upon being brought to the attention of the publishers.

CLASSIFIED

Cards of Thanks charged for at rate of \$2.00 Each

For Rent

FOR RENT: Unfurnished 4 room duplex. Call MA 9-2186.

FOR RENT: Furnished 2 bedroom apartment in Duplex, 611 Plummer.

FOR RENT: Lovely apartments, with living, dining, bedrooms and kitchen, furnished or unfurnished at very reasonable rates. Also comfortable single rooms with tiled baths for only \$39.50. No stairs to climb, elevator equipped. Delicious food in our coffee shop and steam heated for really warm and comfortable living. Maid service is always included. Throw away your cares and high expenses and come live with us. The Village Hotel, Mrs. Robinson, manager—call me today, MA 9-1716.

FOR RENT: Small furnished house. Call MA 9-1361.

FOR RENT: Three room apartment. Private bath. Carport. Phone MA 9-1559.

FOR RENT: Lovely apartments, with living, dining, bedrooms and kitchen, furnished or unfurnished at very reasonable rates. Also comfortable single rooms with tiled baths for only \$39.50. No stairs to climb, elevator equipped. Delicious food in our coffee shop and steam heated for really warm and comfortable living. Maid service is always included. Throw away your cares and high expenses and come live with us. The Village Hotel, Mrs. Robinson, manager—call me today, MA 9-1716.

FOR RENT: Small two bedroom house. Furnished, Close in. Apply 209 W. Patterson.

FOR RENT: 2 bedroom duplex. 210 E. Valley.

Special Notice

NOTICE: Let me break and (or) sow your land. Contact B. H. Courtney, Main 9-1340.

NOTICE: Trucking, Cattle hauling—any time any where. Phone MA 9-2464, E. R. Overstreet.

POWER SPRAYING: Trees, shrubs and under houses. I also have new dirt for yards and fertilizer and rake and haul leaves. Other yard work. Phone MA 9-2434.

SPECIAL NOTICE: Piano Tuning. M. J. Kennamer is in your city. Phone MA 9-1146.

FREE use of our Carpet Shampooer with purchase of Blue Luster shampoo. Coats Furniture and Carpet Co.

SPECIAL NOTICE: Piano tuning. M. J. Kennamer is in your city. . . . the man went to town yesterday. Call MA 9-1146.

SPECIAL NOTICE: Mr. and Mrs. W. A. Owen announce the necessity to move and operate their one-cone business to 519 S. Daugherty, three blocks south of City Hall. Watch for opening date.

WEEKEND SPECIALS: Dresses, \$2.99; slips and half slips, \$1.99; blouses, 99c; hose, 2 pairs \$1.00. Mable O'Day, East Side of Square.

ANNOUNCEMENTS

EASTLAND ROTARY CLUB

Meets in White Elephant for noon luncheon each Monday. Call Frank Deaton, 9-1168, for information.

EASTLAND JAYCEES

Meet at 7 p.m. in Texas Electric Conference Room each Thursday. For information call Dick Spalding, 9-1359.

LADIES GOLF AUXILIARY

Meets at Lakeside Country Club for noon luncheon the second Tuesday of each month. For information call Mrs. Max Beazley, 9-2478.

ATTEND THE CHURCH OF YOUR CHOICE EACH SUNDAY

ATTEND THE CHURCH OF YOUR CHOICE EACH SUNDAY

EARN WHILE LEARNING

**Air Conditioning
Refrigeration - Heating
Tool-Die Making
Drafting
Electronics
Auto Mechanics**

All Courses Fully Approved.

Write Box 29, Eastland Telegram.



**Bring Your
BATTERY
TROUBLES
To Us!**

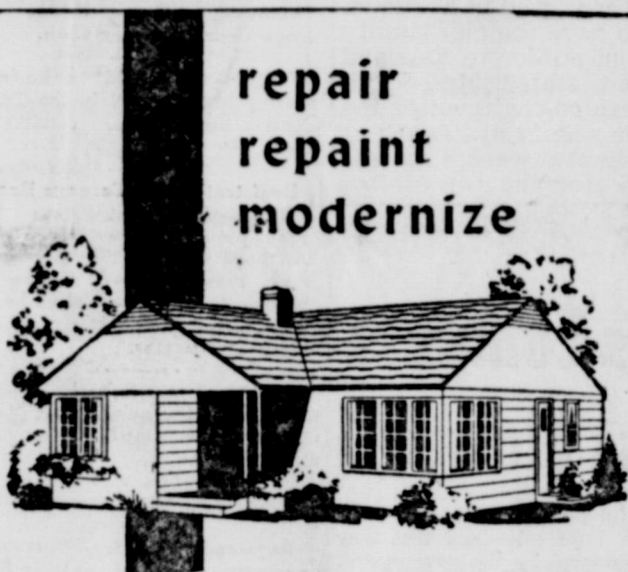
Group One Fits Most
6 Volt Cars

8.95

Exchange

**JIM HORTON
Tire Service**

East Main St. MA 9-1420
Eastland, Texas



**repair
repaint
modernize**

**No Down Payment . . . up to
60 MONTHS TO PAY**

Higginbotham-Bartlett Co.

301 W. Main

Jack Elliott, Mgr.

Phone MA 9-1311



**AUTO
CLEAN
UP
TIME**

SEAT COVERS

New Patterns — Beautiful Fabrics

ARM RESTS

• DOOR PANELS
• HEAD LINERS
• TRUNK LINERS

—ALSO—

FURNITURE UPHOLSTERING

Graham's Trim Shop

708 W. Main

Phone MA 9-2266

Hospital

Mrs. W. E. Lawson, medical
A. D. Dunlap, medical
Mrs. Martha Irby, medical, Rising Star
Mrs. Ruby Blakely, surgical
Lindell A. Levens, medical
J. A. Fisher, medical
Mrs. Amanda Morris, surgical
Mrs. Cecil Altom, medical
Mrs. Gertrude Mahan, medical, Gorman
Rhonda Archer, medical, Cisco
Patients in the Eastland Memorial Hospital are as follows:
Mrs. Velma Hunt, surgical
Angela Mize, medical
William E. Crawford, medical
Fred Hale, medical
Mrs. Blanche Douglas, medical, Cisco
Don Hazard, accident
Mrs. Frances Dickinson, surgical
Mrs. Ottie Millican, medical
Mrs. Tommie Grace, Sneed, medical
Mrs. Elsie Flensy, medical
Mrs. J. F. Hays, medical, Carbon
Cecil Altom, medical
Mrs. Ruby Denny, medical
Barney Hale, medical
Mrs. Mattie McPherson, medical, Cisco
Mrs. Norman Watson and baby boy
Leonard Florence, medical
Dismissed were:
Barney Hale, W. D. R. Owen, Mrs. Eula Mae West, Mrs. Billy Joe Smith, Rubin Gaeta, Mrs. Delia Botts and baby boy and E. M. Rogers.

—Read The Classifieds—

Misc. Wanted

SALESMAN WANTED: Earn \$100 to \$250 per week. Wanted salesmen to work on rural routes. Earn while you learn. Must have car. See Richard Pearce, Village Hotel, Eastland.

For Lease

FOR LEASE: 37 acres land two houses on highway 80, two miles West of Ranger. Modern. See John Lee Roper, Eastland.

New Zealand

(Continued from page one)

Humby, who gave me an account of the season's work. Scientists from several countries work in the Antarctic each summer and there is a free exchange of information among them. He said that the Russians are very cooperative down there. The men on the Antarctic ships are a picked lot and here in New Zealand they are called the "deep freeze men." Several of them have married New Zealand girls.

From here we will return to Christchurch and then go to the Scotch city of Dunedin near the south end of South Island.

New Oven Control Is Offered By Lone Star Gas

A remarkable new oven control which gives full temperature control down to 140 degrees is the newest of the modern gas range.

The new control, a gas exclusive, closely parallels the popular surface burner control "burner-with-a-brain," in accurate, automatic temperature control. The oven control is called "oven-with-a-brain."

Gas ranges with the oven control are now available. Special prices and liberal trade-in allowances on used ranges are being offered during a special Spring gas range campaign designed to acquaint the modern homemaker with the advantages of the "oven-with-a-brain." This campaign is being conducted by gas range dealers and Lone Star Gas Company during April and May.

The accurate temperature control down to 140 degrees is a definite first in cooking history. Tests have shown this is the ideal temperature for keeping food warm without continued cooking. A dinner may possibly be delayed for several hours, then served without losing its original flavor and appearance.

With the new oven control a roast cooked medium-rare will still be medium-rare several hours later. It can even be carved, arranged on a delicate china platter, returned to the 140 degree gas oven, and still be pink and tender when served.

The oven also is a boon to frozen food users. For example, a 7-pound turkey can be completely thawed in 2½ hours, rather than the usual 28 hours required in a refrigerator or 11 hours at room temperature.

The "oven-with-a-brain" also will reach the higher temperature setting of 500 degrees plus if desired. Now, today's homemaker can be certain her "oven-with-a-brain" gas range literally has everything under control.

MATTRESSES

Save up to 50% renovating choice of color and firmness. Complete bedding. Made and guaranteed by WESTERN MATTRESS CO., San Angelo. Phone MA 9-2689, Eastland and leave address.

College Teacher—

(Continued from Page One)
its modern uses, as there is nothing that we can sleep on, ride on, or eat on or with that does not have something to do with chemistry. It also plays a major part in respect to the control of health in the foods we eat.

This is Flinn's first year in the teaching field. He graduated from East Texas State at Commerce with a Bachelor's Degree

in math and chemistry presently working on degree there. As educational plans, Mr. Flinn is married to former Sarah Denton. They have two aged 13 months and

The Childrens Cen

PLAY GROUP

• Supervised Play

• Stories

• Games

• Music

• Nature Study

Age four through 6

Monday thru Friday

From 9 to 12 or by

the day

DAY NURS

• Supervised Play

• Large out do

• play ground

• Hot Lunch

• Mid-morning

• mid-afternoon

• refreshments

• Rest period

Age 3 through 5

Monday thru Sa

From 8 to

Experienced Kindergarten Teacher in charge, transportation arranged. Serving Eastland, Olden, Staff and Desdemona.

MRS. PAT MILLER

MA 9-1446

MOTHER'S DAY PHOTO SPECIAL 8x10 Portrait

A
Regular
\$5.50
Value

\$1.49
Each

NO LIMIT

FAMILY GROUPS 1.00 EXTRA

• All Work Guaranteed • Selection of Poses

Thursday Friday and Saturday Only

ORDER AS MANY AS YOU WANT!

All Sittings by Ray Howard

**PERRY'S
EASTLAND**



**PUT YOUR HOME IN THE
COMFORT ZONE!**

By adding another Bedroom, Bath, New Roof, Fire Place, Paint Job, Central Air Conditioning

**WE GIVE YOU FAST SERVICE ON
HOME IMPROVEMENT LOANS.**
Your home need not be paid for in order to get an improvement loan.

**FIRST FEDERAL SAVINGS &
LOAN ASSOCIATION
OF RANGER**

304 Main St.

RANGER, TEXAS

Phone MI 7-1611

WE RECOMMEND

Garner's

Farm Tax Record

Completely Meets All Income Tax Requirements NOW COMPLETE WITH SOCIAL SECURITY RECORDS

APPROVED BY TAX EXPERTS
BANKERS AND FARMERS EVERYWHERE

• SIMPLE • ECONOMICAL • COMPLETE

MADE FOR THE FARMER WHO WANTS THE BEST IN PROTECTION AND SERVICE AT LOWEST POSSIBLE COST

Eastland Telegram

We'll give you this

ceiling

installation

kit

when you

buy an Armstrong ceiling

FREE

to

Weekend Wonders. A Weekend

Wonder is someone who in-

stalls his own Armstrong ceiling.

The kit makes it easy. It contains a ceiling tile knife;

6" steel tape; chalk and chalk line; installation instruction

book; Weekend Wonder apron.

Get yours!

Crowell

Lumber Co.

715 W. Main

Phone MA 9-2411

Mrs. C. W. Mayo Celebrate Wedding Anniversary Sun.

Mrs. C. W. Mayo, 709 ... celebrated their anniversary with an ... Sunday from 2 to 5 ... home.

Miss Josephine Gra ... The Mayo home was decorated throughout with mums and other spring flowers. The serving table was laid with a crocheted cloth over gold satin and centered with a three tiered wedding cake and yellow iris. Gold punch, coffee and cake were served to approximately 60 guests attending.

Those in the house party were members of the Friendship Club.

Out of town guests attending included their son, Erle, of Coleman and grandson, Erle Jr. of Texas Tech in Lubbock, Mr. and Mrs. Harry Smith and Ma. and Mrs. W. H. Corn of Oklahoma City and Mr. and Mrs. Paul Hensler, Mary Hensler, John Nabors, Paul Frank Hensler and Frank Hess, all of Gatesville.

ATTEND THE CHURCH OF YOUR CHOICE EACH SUNDAY

CONDITION YOUR CAR

FOR ONLY **250⁰⁰**
Complete
Pipkin Olds - Cad - Rambler
Main, Eastland Phone MA 9-2636

COMPLETE AIR CONDITIONING SALES and SERVICE

WITH PLUMBING AND TIN
PHONE MA 9-2422
114 N. Seaman

You don't have to be dependent after age 65!

Investigate **SOUTHLAND LIFE'S SENIOR-CITIZEN Cash-A-Day HOSPITALIZATION PLAN**
Call me today for complete details on this economical protection plan!

Southland Life Insurance Company
ACCIDENT • HEALTH • HOSPITALIZATION • GROUP

HAMNER FUNERAL HOME

Ben E. Hamner, Owner
Serving Eastland County since 1924 with balance and funeral service. Our ambulances are equipped and air conditioned.
Through our nation-wide connections with other funeral directors, we can handle a funeral from point in America. We offer this service knowing that we can relieve the family of all burdens and to any death away from home.

Eastland Dial MA 9-2611

LET SAVINGS ANSWER



...when opportunity knocks

ance to transfer to a better job ... a bargain in home ... a buying opportunity on a car, furniture appliances—these are opportunities you can when you have the money in a savings account. to build your account by adding something pay day.

First Federal Savings & Loan Association of Ranger

Ranger, Texas Phone MI 7-1611



Quality You Can Count On—Savings You Can Count Up!

HUNT'S SALE!

Plus EXTRA SAVINGS with Famous "S&H" Green Stamps

These Low, Low Prices Effective Thursday, Friday and Saturday

Bartlett Halves
Pears

SAVE 25¢ 5 300's Cans

1⁰⁰



Tomato
Catsup

SAVE 14¢ 3 14-oz. Botts.

49¢



Cling
Peaches

SAVE 24¢ 4 Big 2 1/2's Cans

1⁰⁰



Fruit
Cocktail

SAVE 15¢ 5 300's Cans

1⁰⁰



Tomato
Juice

SAVE 16¢ 3 46-oz. Cans

89¢



Solid Pack
Tomatoes

SAVE 9¢ 4 300's Cans

69¢

SAVE 32¢ Hunt's Unpeeled
Whole Apricots

4 Big 2 1/2's Cans 1⁰⁰

SAVE 14¢ Hunt's
Tomato Sauce

6 8-oz. Cans 49¢

SAVE 14¢ Hunt's
Tomato Paste

5 6-oz. Cans 49¢

SAVE 24¢ Hunt's
Giant Catsup

4 20-oz. Botts. 1⁰⁰

SAVE 10¢ Dog Food
Ken-L-Ration

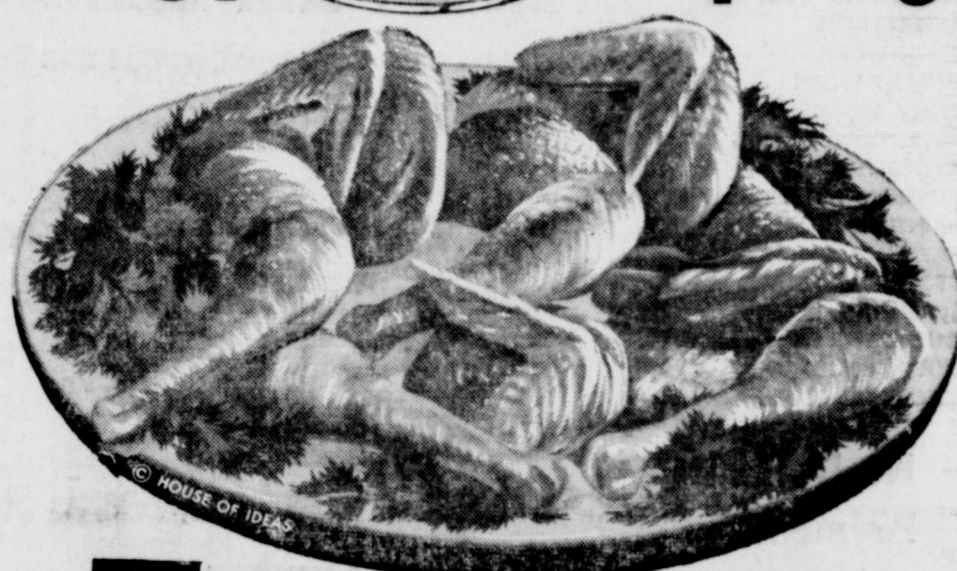
6 1-Lb. Cans 89¢

SAVE 5¢ White or Colors
Northern Tissue

8 Rolls 65¢

Cashmere Bouquet Talcum Large Can

Plus 6¢ Tax 49¢



Fryers

Armour's Star, Plump,
U. S. Government Inspected!

Whole Lb.

29¢

Fresher by Far!

Sunkist Lemons Large, Juicy

6 For 19¢

New Potatoes Fancy Florida

3 Lbs. 25¢

White Onions U. S. No. 1

Lb. 10¢

Cut-Up Lb. 33¢

Beef Chuck Roast "W. C. Q." Heavy Beef Lb. 49¢

Premium Bacon Swift's Sliced Lb. Pkg. 59¢

LETTUCE

Large, Firm,
Extra-Crisp

Head

10¢

Fresh Green
CABBAGE Lb. 5¢

Young, Tender
Crisp Carrots 2 -Lb. Cello 25¢

CLIP AND SAVE!

Redeem This Coupon For EXTRA

50 Free S&H Green Stamps

With Purchase of 24-Oz. Can

Libby's Beef Stew

Void After Sat., April 15, 1961—Limit One

WORTH FOOD MART

CLIP AND SAVE!

Redeem This Coupon For EXTRA

50 Free S&H Green Stamps

With Purchase of 5-Lb. White

Aunt Jemima Corn Meal

Void After Sat., April 15, 1961—Limit One

WORTH FOOD MART

CLIP AND SAVE!

Redeem This Coupon For EXTRA

50 Free S&H Green Stamps

With the Purchase of

5-Lb. Pillsbury Flour

Void After Sat., April 15, 1961—Limit One

WORTH FOOD MART

CLIP AND SAVE!

Redeem This Coupon For EXTRA

50 Free S&H Green Stamps

With Purchase of 2 Pkgs., Deluxe

(2) Pillsbury Cake Mixes

Void After Sat., April 15, 1961—Limit One

WORTH FOOD MART

CLIP AND SAVE!

Redeem This Coupon For EXTRA

25 Free S&H Green Stamps

With Purchase of Any Variety

Pillsbury Cake Frosting

Void After Sat., April 15, 1961—Limit One

WORTH FOOD MART

CLIP AND SAVE!

Redeem This Coupon For EXTRA

50 Free S&H Green Stamps

With Purchase of Giant 22-Oz.

Trend Liquid Detergent

Void After Sat., April 15, 1961—Limit One

WORTH FOOD MART

"Worth Controlled Quality"

Arm Roast Heavy Beef Shoulder Lb. 59¢

Worth Quality, Really-Fresh

Ground Beef Lb. 49¢

Gulf Princess, Frozen

Breaded Shrimp 10-oz. Pkg. 59¢

Rath's Buttered or

Pure Beef Steaks 8-oz. Pkg. 49¢

Old South, Frozen

Orange Juice 2 6-oz. Cans 45¢

M. C. P. Frozen

Lemonade Pink or Regular 4 6-oz. Cans 49¢

Senior Activities

April 13—Stage Band Concert.
April 14—District Track Meet.
April 15—Autobiography Tea to be held in the home of Miss Verna Johnson, senior sponsor.
April 19—Senior sponsored

program, Tradewinds, to be held at 2:30 p.m. in the Eastland High School Auditorium.
April 20—Christian Church Ranch Supper at the First Christian Church.
April 21—Teacher's Banquet and Regional Track Meet.
April 28—Senior Hobo party, a progressive supper with Mrs. Burt Savage, chairman.
May 5—State Track Meet and Junior-Senior Banquet to be held in the Gymnasium.

May 12—Junior-Senior Slave Breakfast.
May 17—Methodist Breakfast at the Methodist Church.
May 25—Ice Cream Supper at the Lake Leon cabin of Mr. and Mrs. J. D. Barker.
May 28—Baccalaureate Services.
May 29—Graduation Exercises.
ATTEND THE CHURCH OF YOUR CHOICE EACH SUNDAY



LITTLE LARGE—While not a perfect fit, this hardtop headgear delights 14-month old Mike Cahill, of Harrisburg, Pa. The handle makes things easy when a lady passes by.

'Mirror of the Past' Is Program Presented At Las Leales Meeting

Mrs. Anna Grace Bumpass and Miss Gladys Green presented a program on "The Mirror of the Past" to members of Las Leales Club when they met April 3 in the Woman's Club.

Mrs. T. E. Richardson, hostess for the evening, was program chairman.

"The Sword Over the Mantle" by J. Bryan III was reviewed by Miss Green. Bryan wrote his witty book about a man who was rocked in the "Cradle of the Confederacy" as he retells the martial yarns of his boyhood days in Richmond, Va. Mr. Bryan has proved the profound truth that the greatest sustaining force of the South in defeat was the Southern sense of humor. From the memories of his boyhood in Virginia, Mr. Bryan brought forth gentlemen who could laugh gaily as well as die gallantly.

"Civil War—A Fresh Appraisal" by D. W. Brogan was reviewed by Mrs. Bumpass. Brogan wrote a brilliant analysis of our great conflict, its causes and continuously echoing efforts of our culture. Brogan stressed that perhaps in no other way could the American experiment have been purged of the poisonous infection of slavery in this country.

Attending the meeting were

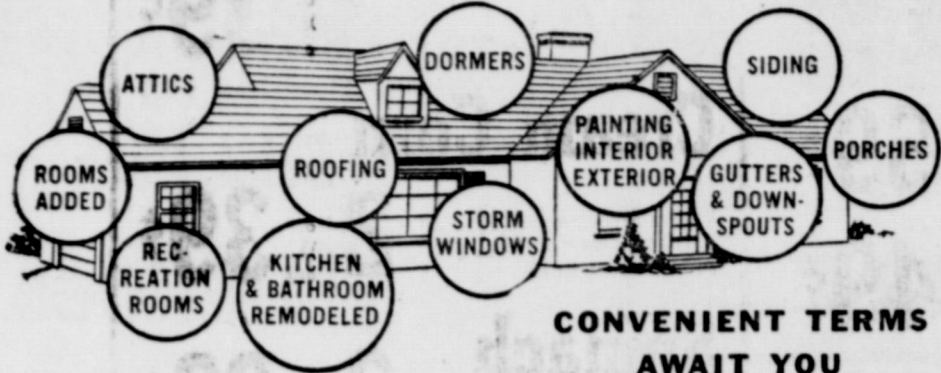
Mmes. Richardson, Bumpass, Wayne Caton, J. M. Cooper, Opal Cross, D. E. Frazer, D. J. Kincaid Jr. W. A. Leslie, Homer Smith, Thura Taylor, J. C. Whitley, James Young and Misses Gladys Green and Verna Johnson.



Better Your Living

COMPLETE HOME IMPROVEMENT SERVICE

Remodeling Specialists



ROOFING AND SIDING ADDITIONS
FLOOR AND WALL TILE ALTERATIONS
BRICK WORK
CEMENT WORK
FENCE WORK
RECREATION ROOMS
ATTICS FINISHED
KITCHENS MODERNIZED
PAINTING
PAPERING
STORM DOORS AND WINDOWS
SCREENING
GUTTERS
DOWNSPOUTS
ELECTRICAL WORK

No Down Payments
Up To
60 Months To Pay
You can do it NOW
with a LOW COST
Bank Loan

TITLE 1 FHA LOANS

AVAILABLE TO HOME OWNERS FOR ANY TYPE PERMANENT IMPROVEMENTS.

FOR DETAILS SEE:

Eastland National Bank

Crowell Lumber Co.

Hanna Hardware and Lumber

Higginbotham-Bartlett Lumber Co.

American Legion Spring Convention Set Saturday

Legionnaires and Auxiliary members from the 17th Congressional District will meet in Abilene on Saturday and Sunday, April 15-16, for their annual Spring Convention. Bob Patterson, Commander of the local American Legion Post, has announced.

Two Posts will be honored by being presented Citations for having exceeded their 1961 membership quota by the time of the convention. The Posts and their Commanders are: Comanche No. 232, Cleve Callaway and Hamilton No. 222, Leo F. Rendessy.

Registration will open in the lobby of the Windsor Hotel Saturday at 9:00 a.m. The convention will get under way at 1:30 p.m. in the Ball Room. Representatives from Dyess AFB will present a film based on operations of the Strategic Air Command and its relation to our National Security. At 3:30 p.m. a general discussion of internal organization within the Legion Posts will be conducted. A Stag Party will begin at 4:30 and at 7:30, there will be a banquet with Department Commander Pete E. Turner as speaker. The annual convention dance will begin at 9:00.

The joint session of the Legion and Auxiliary will be called to order at 9:45 a.m. by Commander Priddy. Colors will be advanced by Abilene Post No. 57. Invocation will be by George Newman, Chaplain of the Abilene Post. Dean Johnson will give the address of welcome. Commander Turner will address the session and E. L. "Stonevall" Jackson will conduct the Memorial Service.

Lunch will be served at 12 noon in the Windsor Ball Room.

The American Legion and Auxiliary will meet in separate business sessions with District Commander G. A. Bills presiding over

the Legion meeting. Commander Turner will again address the session and committee reports will be heard. District Officers, including Commander and Vice Commander, will be elected. Delegates and Alternates to the National Convention to be held in Denver, Colorado in September will also be elected.

ARMOUR'S STAR

SLICED BACON

LB. 55



PRICES GOOD THROUGH SATURDAY, APRIL 15

ARMOUR'S STAR FRANKS
Pound

49¢

BACON ENDS
3-Lb. Box

1¹⁵

CENTER CUT PORK CHOPS
Pound

69¢

WESSON OIL
Quart Bottle

59¢

MARGARINE
SUPER SAVE
Pound Carton

19¢

GREEN GIANT PEAS 303 Can 21¢
WHOLE KERNEL NIBLETS CORN 10-Oz. Can 19¢
GREEN GIANT MEXICORN 12-Oz. Can 19¢

QUANTITY RIGHTS RESERVED

SUGAR
IMPERIAL PURE CANE
5 Pound Bag

49¢

KRAFT'S SALAD DRESSING
MIRACLE WHIP

Pint Jar

29¢



FOLGERS COFFEE
Pound

69¢



KRAFT Miracle Whip
Salad Dressing

CONCHO CUT GREEN BEANS 2303 Cans 25¢
WHITE SWAN TURNIP or 303 Can 11¢
MUSTARD GREENS 11¢
W-P POWDERED DETERGENT Giant Box, 59¢
VET'S DOG FOOD 300 Can 10¢

CALIFORNIA Lettuce Head 13¢
RUSSET Potatoes 10 Lbs. 59¢
CENTRAL AMERICAN Bananas 2 Lbs. 25¢

SHORTENING
WHITE SWAN 3 Pound Can

59¢

GERBER'S BABY FOOD Strained
6 Regular Cans

53¢

TOILET TISSUE
ZEE 4 Roll Pack

33¢



ZEE NAPKINS
Assorted Colors
80-Count Package

10¢

Pork Liver

Pound 29¢

RATH BLACKHAWK PURE PORK

SAUSAGE

2 1/2 69¢

MacMOY'S
400 S. Seaman

Super Save
Home Owned—Home Operated

Neuhoff Lone Star Thick Sliced Bacon
2 Pounds 95¢



Where will you find a handsomer hardtop than this Impala Sport Sedan?

MORE PEOPLE ARE BUYING CHEVROLETS THAN ANY OTHER MAKE!

When one car outsells all the rest the way this new Chevrolet is doing—there's got to be a reason. And we can think of some pretty good ones. The clean-etched looks of the new Body by Fisher, for example. The eager brand of "git" that's under the hood. The easy way it handles. Plus the added advantage of extra-cost options like triple-turbine Turboglide.

But to sample all these reasons together, you have to get a Chevrolet out on the road. And there's where that Jet-smooth ride takes over, with its own gentle kind of

AND JUST ONE JET-SMOOTH RIDE WILL SHOW YOU WHY!

persuasion. If you weren't absolutely sure, you'd imagine you were riding in a far costlier car.

No wonder people are buying more Chevrolets than any other make! Chevrolets have more of what it takes to please people!



*Official R. L. Polk & Co. registration figures show full-sized Chevrolets outsold the second-choice make by a record-breaking margin in 1960—and Chevrolets continue to set the pace for the industry this year!

See the new Chevrolet cars, Chevy Corvairs and the new Corvette at your local authorized Chevrolet dealer's

FULLEN MOTOR COMPANY INC.

305 E. MAIN

EASTLAND

PHONE MA 9-2676



LIBBY'S DAYS

...at your **SAFEWAY**

Libby's Tomato Juice	A perfect breakfast beverage. Rich in Vitamins and proteins.	2 46-Oz. Cans	69¢
Libby's Fruit Cocktail	Five delicious fruits blended. Delicious in gelatin desserts.	3 No. 303 Cans	69¢
Libby's Blackeye Peas	Fresh. Firm, flavorful and nutritious.	4 No. 300 Cans	59¢
Libby's Potted Meat	Nutritious and economical. Perfect for sandwiches.	4 No. 1/4 Cans	49¢
Libby's Vienna Sausage	Rich in proteins.	2 No. 1/2 Cans	39¢

Libby's Green Beans	Cut. Summer garden freshness and flavor. On your table in minutes.	2 No. 303 Cans	39¢
Cream Corn	Cream Style Golden. Tender, golden kernels. A real flavor treat.	2 No. 303 Cans	39¢
Spinach	Rich in vitamins. Has a flavor all its own.	3 No. 303 Cans	39¢

Safeway Buys!

Vienna Fingers	Sunshine Cookies. For parties and snacks.	8 1/4-Oz. Pkg.	29¢
Banquet Dinners	Frozen Beef, Chicken or Turkey.	11-Oz. Pkg.	55¢
Chicken Pies	Banquet Frozen. Easy to serve.	8-Oz. Pkg.	25¢
Reynolds Wrap	Aluminum Foil. 12-inch size.	75-Ft. Roll	83¢
Kaiser Aluminum Foil	12-inch size.	2 25-ft. rolls	69¢
Crisco Shortening	So truly digestible.	8-Lb. Can	37¢
Golden Fluff	Shortening. (6¢ off label.)	3-Lb. Can	77¢

Bluebonnet Margarine	Everything's better with Bluebonnet on it.	1-Lb. Ctn.	28¢
Large 'AA' Eggs	Clean. Of the Crest. Grade 'AA' Quality. Large Size. Doz.		49¢



More Meat Buys!

Franks	Armour's Star or Safeway. Perfect for outdoor parties.	1-Lb. Pkg.	49¢
Canned Picnics	Armour's Star. Ready-to-eat. Easy-to-serve.	3-Lb. Can	\$1.99

Hi-C Drink	Orange-Pineapple or Grape.	3 46-Oz. Cans	\$1.00
Wax Paper	Kitchen Charm. For preserving leftovers.	100-Ft. Roll	19¢
Green Peas	Or Cut Corn. Bel-air Frozen.	2-Lb. Cello	59¢
Corn Oil	Safeway Nu Made Pure. Perfect for salads and other cooking needs!	Quart Bottle	59¢

SAFEWAY Gives those Valuable GOLD BOND STAMPS
your nearest Redemption Center
443 Walnut, Abilene

Bakery Feature of the Week!

Barbecue Bread	Skylark — In Foil Wrapper. Regular 25¢ value.	1-Lb. Loaf	19¢
Western Farm Style Bread	Wrapped in a polyethylene bag with a convenient "Flavor-Seal" Tab. Hours fresh.	1 1/2-Lb. Loaf	27¢
Jelly Snails	Mrs. Wright's — Regular. 25¢ value. "2¢ off."	7-Oz. Pkg.	23¢
Buttermilk Bread	Mrs. Wright's	1 1/2-Lb. Loaf	26¢
Crushed Wheat Bread	Skylark.	1-Lb. Loaf	21¢

Safeway Meats

Bacon	Smoked Half or Whole Slab. 8 to 12 pound average. Delicious served with eggs for a breakfast treat.	Lb.	39¢
--------------	---	-----	-----

Chicken Hens	U.S.D.A. Inspected for wholesomeness and U.S.D.A. Grade "A." 3 1/2 to 6-Lb. avg. Fancy.	Lb.	39¢
Pork Sausage	Wingate Regular or Hot. Seasoned just right. Economical too.	2-Lb. Pkg.	65¢
Pork Cutlets	Minor House. Quick and easy-to-prepare. A truly delicious treat.	1-Lb.	59¢

Libby's!

Libby Peaches	Sliced or halves.	303 Can	23¢
Pineapple Tidbits	For topping desserts.	No. 211 Can	23¢
Lima Beans	Garden Green. Tender and flavorful.	No. 303 Can	29¢

Safeway Produce

Bananas	Golden Ripe Tropical Fruit. Ripened a better unhurried way to preserve natural flavor.	Lb.	10¢
Red Apples	Washington State Extra Fancy Winesap. Ideal all purpose apple. Perfect for out-of-hand eating.	Lb.	15¢
Asparagus	Garden Fresh. Serve with your favorite cheese sauce.	Lb.	19¢
Pascal Celery	Perfect in salads. Healthful and flavorful.	Stalk	19¢

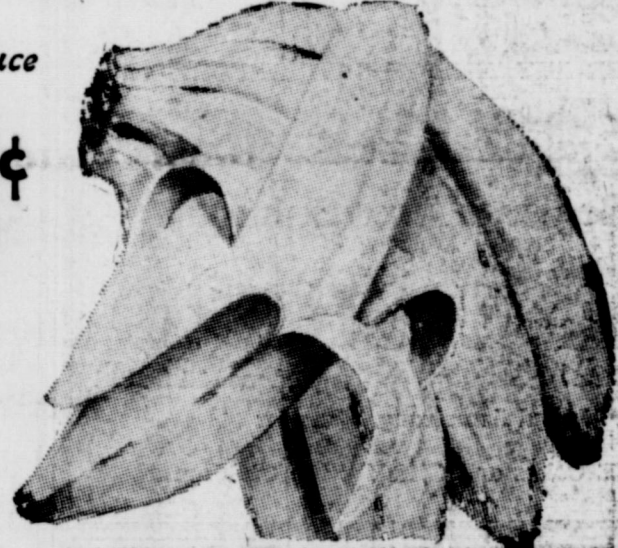
More Buys!

Vel Beauty Bar	Toilet Soap. For complexion care.	2 Reg. Bars	39¢
Pink Palmolive	Toilet Soap. No irritating deodorants.	3 Reg. Bars	29¢
Palmolive Soap	Contains no drying detergents.	2 Bath Bars	27¢
Fab Detergent	(20¢ off label.) For everything you wash.	King Size	\$1.05
Vel Detergent	(5¢ off label.) Cuts grease fast.	Large Box	27¢
Ad Detergent	(30¢ off label.) Jumbo. For automatic washers.	10-Lb. Box	\$1.99

Miracle Whip	Nu Made. 43c Salad Dressing.	Quart Jar	49¢
Apricots	Safeway Town House. Dried breakfast fruit.	8-Oz. Cello	29¢
Ice Cream	Snow Star. Vanilla, Chocolate, Strawberry or Neapolitan.	1/2-Gal. Ctn.	59¢
Cherry Pie	Bel-air Frozen. Large 8-Inch pie.	1 1/2-Lb. Pie	39¢

Libby's!

Spanish Rice	Perfect for casseroles.	2 15 1/2-oz. cans	43¢
Corned Beef	Nutritious, juicy and tasty.	12-Oz. Can	63¢
Beef Stew	A meal in a can.	24-Oz. Can	53¢



They're Here!

Watermelons	Thin rind. Rich, red and refreshing. 15-pound average.	Lb.	10¢
--------------------	--	-----	-----

Values Galore!

M & M Almonds	Chocolate covered.	4 1/4-Oz. Pkg.	29¢
M & M Candy	Plain Chocolate or Chocolate Peanut.	5 1/4-Oz. Pkg.	29¢
Comet Rice	Long Grain. Economical and easy-to-serve.	2 12-Oz. Pkg.	35¢
Colgate Deodorant	Florient Pine. Spice or Floral.	3 1/2-Oz. Can	79¢
Ajax Cleanser	Cuts grime in seconds.	2 14-Oz. Cans	33¢
Liquid Vel	Pink Detergent. Soaks dishes sparkling clean.	22-Oz. Bottle	61¢

Mrs. Wright's Candies	★ Assorted Toffee ★ Butterscotch Balls ★ Mint Balls ★ Assorted Sherbets	Your Choice Lb.	39¢
------------------------------	--	-----------------	-----

Prices Effective Thurs., Fri. and Sat., April 13, 14 and 15 in EASTLAND
We Reserve the Right to Limit Quantities. No Sales to Dealers.



SAFEWAY

DIXIE Drive-In
EASTLAND RANGER HIGHWAY

Boxoffice Opens 6:45 Show Starts 7:35
Boxoffice Closes 9:15

Admission 50c — Children Under 12 Free
Each Wednesday Is Bargain Night — Adults 25c
THURSDAY - FRIDAY - SATURDAY, APRIL 13, 14, 15

SEVEN WAYS FROM SUNDOWN
in Eastman Color

Audie MURPHY · Barry SULLIVAN

PLUS: Color Cartoon and Color Parade

SUNDAY - MONDAY - TUESDAY, APRIL 16, 17, 18

ANTHONY QUINN SAVAGE, SENSATIONAL DRAMA!
THE SAVAGE INNOCENTS

TECHNICOLOR YOKO TANI MALENO MALENOTTI NICHOLAS RAY
A Paramount Release

PLUS: Color Cartoon and Color Special

Don't Miss Our

GRAND OPENING

Saturday, April 15

REGISTER ANY TIME THIS WEEK FOR THE

\$35.90 Graflex 35mm Slide Camera

To Be Given Away Saturday

A & C STUDIO

311 West Main Phone MA 9-2616

Lloyd Armstrong, Manager

FREE Cokes and Gifts for the Children

RANGER DRIVE-IN
HIGHWAY 80 EASY ON RANGER HILL MI 9-1149

Adults 50c—Kiddies Under 11 Free
Boxoffice Opens 7:00 — Show Starts at Dusk

THURSDAY - FRIDAY - SATURDAY

GENE STRATTON-PORTER'S

Freckles

MARTIN WEST CAROL CHRISTENSEN
JACK LAMBERT STEVEN PECK

CINEMASCOPE COLOR by DE LUXE

Freevue Every Saturday Nite

SUNDAY - MONDAY - TUESDAY

This Picture Is Recommended for Adults Only

It shouts and sings with life... explodes with love!

Gable Monroe Cliff

the Misfits

John Huston production of
Co-starring Thelma Ritter Eli Wallach Arthur Miller
Produced by Frank E. Taylor Directed by John Huston Music by Alex North United Artists

Showing at The Majestic Thursday, Friday & Saturday

KONGA

Konga, now grown to tremendous proportions, clutches the body of his master Michael Gough, as the Army corners him near Big Ben after his rampage through the streets of London in this scene from American International's KONGA, a Herman Cohen Production in Color and Specta-Mation starring Margo Johns, Jess Conrad and Claire Gordon.

SINCE 1884

... quality workmanship and efficient service, approved throughout this area.

ALEX RAWLINS & SONS

Weatherford Phone LY 4-2726 Texas
Designers and Builders of Monuments Since 1884

TODAY FRI. - SAT. **MAJESTIC**

Adults 60c
Student 40c
Children 35c

"A Monstrous Product of Modern Science"

NOT SINCE "KING KONG" HAS THE SCREEN EXPLODED WITH SUCH FURY

KONGA in COLOR and SPECTAMATION

starring MICHAEL GOUGH · MARGO JOHNS · JESS CONRAD · CLAIRE GORDON · HERMAN COHEN
Directed by ADRIAN KANDEL and HERMAN COHEN · Screenplay by JOHN LEMONT · AMERICAN INTERNATIONAL PRESENTS

SAT. MIDNITE SHOW 11:30—ALL SEATS 60c

PAT BOONE
co-starring BUDDY DENNIS BARBARA HACKETT · O'KEEFE · EDEN

ALL HANDS ON DECK

CINEMASCOPE COLOR by DE LUXE

STRAW HAT DAY

FRIDAY AND SATURDAY

It's time for sunshine living and sunshine hats... and what a selection we have.

DRESS STRAWS PANAMAS

Sizes 6 3/4 to 7 1/2
Assorted colors
1.98 to 4.95

Western Straws

All types of straws
Brim 3 inches to 4 inches
1.98 to 4.95

HARELIK'S inc.

STRAW HAT DAY

FRIDAY AND SATURDAY

It's time for sunshine living and sunshine hats... and what a selection we have.

DRESS STRAWS PANAMAS

Sizes 6 3/4 to 7 1/2
Assorted colors
1.98 to 4.95

Western Straws

All types of straws
Brim 3 inches to 4 inches
1.98 to 4.95

HARELIK'S inc.

IT'S THE LAW
in Texas

A public service feature of the State Bar of Texas

LAW DAY

For the fourth consecutive year, May Day has a special significance in this country. May 1st will again be observed as LAW DAY U.S.A. This is a special day dedicated across our nation to observance of the fact that we have a government of law instead of men. It is particularly appropriate that Americans set aside this day each year to demonstrate to the world—and to ourselves—that our belief in individual freedom under law remains strong and unshakable.

Why is it that some men are able to live in freedom while others cringe under a rule of tyranny? We owe our rights and freedoms to our state and national constitutions, our laws, and our courts. In other lands, there are no rights and people are subjected to the edicts and whims of individuals unhampered by legal restraints.

Most of us tend to take it for granted that an individual is free to think for himself and that his rights are protected by law. We know without actually admitting it that our whole way of life is governed by this rule of law.

Law is the intangible force guaranteeing all of us freedom, peace and progress—ideals which have been and are, dependent upon the adequacy of our legal system and the protection awarded the individual by our courts.

On May 1st then this year and every year, with the nation's attention focused on LAW DAY U.S.A., it behooves us to rededicate our belief and faith in this rule of law that is the birthright of all Americans.

It is this liberty and equality under law that distinguishes our system of government from communism. Without laws and the courts, these freedoms we take so for granted would be meaningless.

Our respect for law is vital to the continued growth and strengthening of our nation; our thoughtful observance of LAW DAY U.S.A., in a real sense distinguishes America from those who today live under tyranny; it is our answer to communism. LAW DAY U.S.A. is the American way.

(This newsfeature, prepared by the State Bar of Texas, is written to inform—not to advise. No person should ever apply or interpret any law without the aid of an attorney who is fully advised concerning the facts involved, because a slight variance in facts may change the application of the law.)

Senior Mothers To Be Honored at 'Biography Tea'

Mothers of the 1961 seniors of Eastland High School will be honored at the annual autobiography tea for senior parents and relatives Sunday from 2 to 6 p.m. in the home of Miss Verna Johnson, senior co-sponsor.

Senior autobiographies, the product of a year's work, will be on display at this time.

Each of the 45 seniors will serve as host at various times during the tea.

Senior co-sponsors are Miss Johnson and Phillip Hewett.

ATTEND THE CHURCH OF YOUR CHOICE EACH SUNDAY

Good Planning Needed In Farm Pond Building

Thinking about building a farm pond? If you are, some careful planning is in order, says W. L. Ulich, extension agricultural engineer.

Ulich says the first step is to decide what the pond is going to be used for—irrigation, livestock water, fishing, recreation, etc. If it is to be used for irrigation, and you have a choice of sites, locate the pond as near as possible to the fields to be irrigated. If the pond is to furnish livestock water, put it where the animals can make maximum use of it.

The watershed for the pond should be large enough to supply your needs and keep water in the pond during dry periods, but not so large that it will create flood hazards during heavy rains. Watersheds may vary from 10 to 100 or more acres, depending on the rainfall and how much water you want to store. If possible, select a watershed covered with grass or woodland. If you cultivate part of the watershed, however, be sure to use erosion control measures so heavy rains won't wash a lot of silt into the pond, Ulich continues.

After you have selected a tentative site, test the soil to make sure it will hold water. The best soil is deep to bedrock, and is heavy, with a lot of clay. Try to avoid sites with rock outcroppings along the bank, or with rock or shale ledges near the surface. Also stay away from sites having sand, gravel, peat or marl through which the water might seep. The pond on a shallow borrow the dirt for the pond area itself, but some other area.

GO TO CHURCH SUNDAY

Open 7:00 - Closes Show Time 7:30

Cisco - Eastland Highway

THURSDAY - FRIDAY - SATURDAY

ELVIS PRESLEY
Near Elvis Sing 4 Wonderful Songs!

FLAMING STAR
CINEMASCOPE COLOR by DE LUXE

SUNDAY - MONDAY - TUESDAY, APRIL 16, 17, 18

The Famed "Monkey Trail" Held In Dayton, 1925 that Rocked the Nation.

'INHERIT THE WIND'

Spencer Tracy — Fredric March — Gene Kelly

T V LOG

CHANNEL 9 (KABC, Abilene)

THURSDAY	FRIDAY	SATURDAY
7:00 Today	6:30 Conf. Class	9:00 Shari Lewis
8:00 Today	7:00 Conf. Class	9:30 King Leonardo
9:00 Say When	7:30 Comedy Ph-ase	10:00 Fury
9:30 Play Yr Munch	8:00 Today	10:30 Lone Ranger
10:00 Parade	8:30 Play Yr Munch	11:00 True Story
10:30 Concentration	9:00 Price Is Right	11:30 Det. Diary
11:00 Truth or Con.	9:30 Happy	12:00 Mr. Wizard
11:30 Could Be You	10:00 Concentration	12:30 Basketball
12:00 News, Wthr.	10:30 Truth or Con.	1:00 Bowling
12:15 Devotions	11:00 Could Be You	4:00 Capt. Gallant
12:30 3 Stooges	11:30 Michael Shayne	
1:00 Queen for Day 10:10 News	12:00 News, Wthr.	
1:30 Loretta Young 10:15 Weather	12:15 Devotions	
2:00 Dr. Malone 10:15 Com. Pres.	12:30 3 Stooges	
	1:00 Queen for Day 10:10 Weather	
	1:30 Loretta Young 10:15 Com. Pres.	
	2:00 Dr. Malone 10:15 Movie	

CHANNEL 4 (KRLD, Dallas)

THURSDAY	FRIDAY	SATURDAY
7:30 Cartoons	7:29 Sign On	7:30 Theatre
8:00 News	8:15 Cartoons	9:00 Capt. Kangaroo
8:15 Cap. Kangaroo	8:00 News	10:00 Magic Land
9:00 Dec. Bride	8:15 Cap. Kangaroo	10:30 Roy Rogers
9:30 Video Village	9:00 Dec. Bride	11:00 Sign On
10:00 Clear Horizon	9:30 Video Village	11:30 Mighty Mouse
11:00 Love of Life	10:00 Clear Horizon	12:00 Spotlight
11:30 Search for Tr.	10:30 Love of Life	12:15 Extra
11:45 Guiding Light	11:00 Love of Life	12:30 Farm & Grds.
12:00 News	11:45 Guiding Light	2:30 Youth
12:15 Fashions in Fcs.	12:00 News	4:00 Answer
12:30 As Wild Turns	12:30 As Wild Turns	
1:00 Better or Worse	1:00 Full Circle	
1:30 House Pky.	1:30 House Pky.	
2:00 Millionaire	2:00 Millionaire	
2:30 Verdict Is Yrs.	2:30 Verdict Is Yrs.	

CHANNEL 11 (KTVT Fort Worth)

THURSDAY	FRIDAY	SATURDAY
6:30 Comedy	8:29 Sign On	12:00 School Story
6:40 Little Rascals	8:30 Theatre	1:30 Clubhouse
7:00 Jack La Lanne	9:00 Little Rascals	2:30 Theatre
7:10 Trb'l w. Pfr.	9:30 Jack La Lanne	4:00 Movie
7:30 News	10:00 Trb'l w. Pfr.	4:30 Movie
7:40 News	10:30 Rendezvous	5:00 Theatre
7:50 State Trooper	11:00 News	
8:00 News	11:30 Cartoons	
8:10 Movie	12:00 Matinee	
8:20 Movie	12:30 Married Jeon	
8:30 Movie	1:00 Bugs Bunny	
8:40 Movie	1:30 Popeye	
8:50 Movie		

CHANNEL 5 (WBAP, Fort Worth)

THURSDAY	FRIDAY	SATURDAY
5:55 Newsreel	5:55 Newsreel	7:00 Today on Farm
6:00 Cont. Class'm.	6:00 Cont. Class'm.	7:30 Farm Page
7:00 Today	7:00 Today	8:00 Planning
7:25 Weather	7:25 Weather	8:30 Mr. Magee
8:25 News	8:25 News	9:00 Short Lewis
9:00 Dough Re Mi	9:00 Dough Re Mi	9:30 King Leonardo
9:30 Play Yr Munch	9:30 Play Yr Munch	10:00 Pary
10:00 Price Is Right	10:00 Price Is Right	10:30 Lone Ranger
10:30 Concentration	10:30 Concentration	11:00 True Story
11:00 Tr. or Conseq.	11:00 Truth or Con.	11:30 Det. Diary
11:30 Could Be You	11:30 Could Be You	12:00 Downbeat
12:00 Noon News	12:00 Noon News	1:00 Basketball
12:30 Mystery	12:30 Mystery	3:30 Bowling
1:00 Queen for Day	1:00 Queen for Day	4:00 Capt. Gallant
1:30 Loretta Young	1:30 Loretta Young	
2:00 Dr. Malone	2:00 Dr. Malone	
2:30 From Roots	2:30 From Roots	
3:00 Com. Theatre	3:00 Com. Theatre	

CHANNEL 8 (WFAA, Dallas)

THURSDAY	FRIDAY	SATURDAY
7:25 Devotions	7:25 Devotions	7:30 Ag. on Parade
7:30 Cartoons	7:30 Cartoons	7:45 Thru Portals
8:00 Romper Rm.	8:00 Romper Rm.	8:00 Sat. Special
8:30 Early Show	8:30 Early Show	10:00 Quis 'Em
10:00 Julie Beall	9:30 Life of Riley	10:30 Funnies
11:00 My Ltt. Margie	10:00 Julie Beall	11:00 Funnies
11:55 News	10:30 Life of Riley	11:30 Funnies
12:00 Restless Gun	11:55 News	12:00 Soupy Sales
12:30 Love That Bob	12:00 Restless Gun	12:30 Pip
1:00 About Faces	12:30 Love That Bob	1:00 Basketball
1:30 Way of Life	1:00 About Faces	1:30 Life of Riley
2:00 Day in Court	1:30 Way of Life	2:30 Sweet Success
2:30 Gale Storm	2:00 Day in Court	4:00 Bowling
3:00 Beat Clock	2:30 Gale Storm	5:00 Golf
3:30 Who Do Ya	3:00 Beat Clock	
4:00 Amer. Band	3:30 Who Do Ya	
5:00 Robin Hood	4:00 Amer. Band	

For Good Looking You Can't Beat TV Cable Looking

Community Television, Inc.

'Call today and get five channels tomorrow'

Village Hotel Phone MA 9-2616

Theme Is for Xi Zeta Party

will be the theme of the day party planned by the Xi Alpha Zeta Beta Sigma Phi at the home of Mrs. Mike Moore.

will be held April 22 at the home of Mrs. Bill Walters. The party will feature food and decorations of the Mexican theme of the Zeta Phi Eta new Xi Alpha Zeta Beta Sigma Phi.

Leslie, president, presiding over the business session. The chapter voted to cast to aid the Couthatta, the 1962 state project, the social hour refreshment layer cake and served by the hostesses, Leslie, George Walcott, Moore and James K.

NEWS FROM CARBON

Funeral services for Jesse Zinn Phillips, 66, were conducted in the Carbon Baptist Church Saturday at 2:30 p.m. with Rev. Jim Turner, pastor, and Rev. Roger Butler, former pastor now of Elmdale, officiating. Interment was in Murray Memorial Cemetery of Gorman directing.

A verdict of suicide was ruled in the gunshot death of Mr. Phillips who passed away in the Gorman Hospital at 9 a.m. Thursday. He had been in failing health for the past two years with a lung condition. A resident of Carbon since 1926, he was born in Dublin April 3, 1895. He had operated a service station here for 19 years and for the past 12 years had owned and operated a grocery store. He was a member of the Carbon Baptist Church.

He was married to the former

Mary E. Burns in Gorman, who survives. Other survivors include one son, John Z. Phillips of San Leandro, Calif., one brother, Emory Phillips of Jal, N.M., four sisters, Mrs. W. B. Yates of Jal, N.M., Mrs. Nell Moore of Kermitt, Mrs. H. C. Gordon of Andrews, Mrs. W. E. Starks of Comanche; four grandchildren, three great-grandchildren and a host of other relatives.

Cassie Sue Nelson, daughter of Mr. and Mrs. Clifford Nelson, suffered second degree burns on her waist and back last Wednesday at school when her dress caught fire as she was warming by the stove. She was taken to the Gorman Hospital for treatment and although the burns have been very painful, her condition is good and she is improving nicely.

Mr. and Mrs. Elize Powell of Midland are visiting her mother, Mrs. J. F. Hays, who is seriously ill in the Eastland Hospital.

T-Sgt. Bob Jackson and family of San Francisco, Calif., and Mr. and Mrs. Richard Jackson of Seminole visited their parents, Mr. and Mrs. J. W. Jackson, this week.

Mr. and Mrs. C. L. Rogers spent Saturday night with their son, Mickey Rogers, and family of Fort Worth. Mrs. Rogers remained for a few days visit.

Mrs. Maude Noble of Lubbock visited friends here last week and attended the funeral of J. Z. Phillips Saturday.

Mr. and Mrs. Odis Skinner of Pampa visited their parents, Mr. and Mrs. Roy Skinner and Mr. and Mrs. George Norris, last weekend. Mr. and Mrs. Hoover Pittman of Eastland visited Mr. and Mrs. Dan Boatwright Sunday.

Hayden Greer of Abilene, I. G.

Greer and family and Betty Greer of Dallas, Larry Greer of Artesia, N.M., spent the weekend with their mother, Mrs. Mae Greer.

Mr. and Mrs. Jerry Metajek of Lubbock have been visiting their mother, Mrs. Ray Wyatt, who has been seriously ill in the Gorman Hospital following a heart attack but is much improved at this time.

Mr. and Mrs. Buster Martin of San Saba visited friends here Saturday and attended the Phillips funeral.

Mr. and Mrs. Clifford Harter of Plainview spent the weekend with her sister, Mrs. Wade White, and Mr. White. Visiting in the home Sunday were their daughters and families, Mr. and Mrs. Ed Clack of Cisco and Mr. and Mrs. Jim Everett of Olden.

Mr. and Mrs. A. D. Jackson of Fort Stockton and Mrs. Henry Sims of Graham visited their parents, Mr. and Mrs. A. S. Jackson over the weekend.

Leroy Craighead and family of Colorado City spent the weekend with his mother, Mrs. S. L. Craighead, and her mother, Mrs. Willie Harris.

Mr. and Mrs. Carl Knight and Mr. and Mrs. Frank Hurst of Fort Worth spent the weekend with their mother, Mrs. B. W. Knight and visited their sister, Mrs. Ray Wyatt, in the Gorman Hospital.

Mrs. Don Jordan and daughter and Mrs. Jack Abbott visited in Fort Worth recently.

Mr. and Mrs. Floy Murray visited relatives in Brownwood Sunday.

Mrs. Don Jordan and daughter visited Sgt. and Mrs. David Boca in Mineral Wells last Friday.

Mr. and Mrs. Sam Moss of Apan spent Saturday night and Sunday with Rev. Jim Turner and family and attended services of the Spring Revival at the Baptist Church.

Gabel On Ranger Screen



Clark Gable as he appears in his last picture "The Misfits" also starring Marilyn Monroe and Montgomery Clift. Showing Sunday thru Tuesday at the Ranger Drive In.

Annual Garden Pilgrimage And Style Show Held by Civic League

Against a background of colorful flowers and garden statuary, fashions for gardening and other morning activities were modeled Wednesday morning for Civic League and Garden Club members as they began their annual Garden Pilgrimage.

In the garden of Mrs. James Horton, models strolled along the path between blooming azaleas, ranunculus and anemones in varying shades of pink, red and purple. Their entrance was made through a gate in the rose covered redwood fence which enclosed the garden. Roses on the fence are the yellow Lady Banksia variety.

Mrs. Floyd Robertson, commentator, introduced the models as they approached the patio of the garden. She described their clothing which were from Altman's Style Shop.

Modeling were Meses. Vernon Humphrey, Jack Carothers, W. A. Leslie, Horace Horton, R. M. Sneed, J. O. Jolly, Charles Lay-

INGROWN NAIL HURTING YOU?
Immediate Relief!

A few drops of OUTGRO® bring blessed relief from tormenting pain of ingrown nail. OUTGRO® softens the nail underneath the nail, allows the nail to be cut and thus prevents further pain and discomfort. OUTGRO is available at all drug counters.

A focal point in the garden was a three-tier fountain and stone statue, surrounded by green plants and red geraniums and seen against a bamboo fence.

In the garden of Mrs. Clyde Grissom guests warmed themselves on the chilly morning before a fire in the large outdoor fireplace. They were served coffee and cookies.

A fountain statue of a small boy spilling water from the container he carries was the center of interest in the garden. The conservatory, which opens into the house, was bright with blooming geraniums and bougainvillea.

In the garden of Mrs. Alfred C. Baker, giant tulips in assorted colors were in bloom. A small, secluded area of the garden featured a bird bath and feeders. The placement of a large stone to serve as a natural bench invites the guest to linger in the peaceful setting.

In a separate garden area, screened by high foliage, strawberries and dewberries were in bloom.

Members of the hostess committee for the Pilgrimage were Meses. James Horton, J. F. Collins, Clyde Grissom, Herman Hassell, Alfred C. Baker, and Floyd Robertson.

Hamner Life Insurance Company

Ben E. Hamner, President

This company has been in operation in this since 1942 selling policies to be used primarily for burial purposes. We write from \$100 to our policies are paid in cash, which allows in the selection of the Funeral Director your choice.

Ages from 1 month to 90 years.

For further information come by to see us at **Funeral Home, 301 S. Lamar, Eastland P. O. Box 431 Dial MAin 9-2611**

Friday and Saturday STRAW HAT DAY

Be up-to-date... here's a hat that everybody says: IT'S 1961!



NEW DOBBS STRAWS

New clear colors! • New smart styling! • New lighter weights!

Live with the times... enjoy Dobbs new 1961 style and comfort advances: new flexible and lighter weight straws... vibrant clear tropical colors including new Sundust... contrasting bands and brim edge.

5.95

newest straw hat color for summer

STETSON STRAWS



Straws... in Collection of Styles To Give Cool Comfort



SUNDUST by DOBBS

OLD NUGGET

gentlemen and draw one of the most straws of the year—the Stetson Gold Nugget. This low telescope is crafted in the Ramie straw that lets air in and keeps out the sun. The smart, subdued colors are bright by a narrow, gold striped band and a golden nugget pin.

Inspired by the sun-drenched sands of Maracas Bay, Sundust is the color sensation of the season. See it in our complete line of Dobbs straws including the traditional Dobbs Milan, hand-crafted in Italy. A must for every man's summer hat wardrobe.

6.95

\$8.95

Men's and Boy's WESTERN HATS

from 2.98 to 10.00

Made by Stetson

James Smith
MENS SHOP
EASTLAND

FURNITURE

for the
Entire Home

★
Carpet - Rugs
All Prices

Be Sure To Check With



Are people getting smaller?

DR. X-RAY HAS THE ANSWER!

DETROIT MUST THINK WE'RE SHRINKING... TO GET INTO THESE "LOW BRIDGE" CARS!

MY X-RAY BOOKS SHOW ONLY A RAMBLER GIVES YOU A FULL VAST OF HEADROOM SEAT TO ROOF.

These X-Ray headroom comparisons show RAMBLER has more front seat headroom than any Big 3 make, including the highest priced.

FRONT HEAD (inches)

Rambler Classic	36.0	34.5
Chevrolet	33.5	34.0
Ford	33.5	33.9
Plymouth	33.5	33.5
Falcon & Comet	33.8	32.7
Special & F-45	34.0	33.6
Cougar	33.5	33.5
Valiant & Lancer	33.6	33.1

THREE CAR X-RAY BOOKS AT ANY RAMBLER DEALER

Get Rambler Excellence

DID YOU KNOW—most people believe all compacts are small inside, but those trying a Classic are amazed at its big-car room, with more front-seat headroom than any Big 3 make, including the highest priced? Compare the advantages over other cars as shown in the illustrated Car X-Ray Books, free at Rambler dealers.



Rambler Classic Custom, 6 or V-8

No other car is built like, saves like, lasts like the Classic with Rambler Excellence

- DEEP-DIP RUSTPROOFING, up to roof, lasts longest
- RATTLE-FREE, all-welded Single-Unit construction
- PROVED LOWEST UPKEEP—voted most trouble-free car
- PROVED LONG-TIME ECONOMY, outstanding gas savings



World standard of compact car excellence

PIPKIN MOTOR COMPANY, 314 West Main

Newly Organized Bethel Baptist WMU Holds First Meeting Tuesday

The newly organized Woman's Missionary Union of the Bethel Baptist Church held its first meeting with a business session program and covered dish luncheon Tuesday at 10 a.m. in the Educational Building of the church.

Mrs. A. J. Blevins, chairman of the nominating committee, opened the meeting with prayer after which the slate of officers was presented and voted in.

Newly elected officers are the following: Mrs. Tom Clark, president; Mrs. James Pittman, vice president; Mrs. John Garrett, secretary; Mrs. J. T. Gregory, enrollment chairman; Mrs. Jimmy Roberts, program chairman; Mrs. David Weems, Mission study chairman; Mrs. Marcus O'Dell, prayer chairman; Mrs. Gene Falk, community missions chairman; Mrs. L. C. Brown, stewardship chairman; Mrs. D. D. Allen, publication chairman; Mrs. J. C. Allison, publicity chairman and Mrs. J. O. Rexroate, social chairman.

Mrs. Wade Coan was elected Sunbeam leader; Mrs. Gene Boney, G. A. director; Mrs. Jimmy Stevens, Junior G. A. leader and Mrs. Eddie Pietraszek, Intermediate G. A. leader.

Mrs. Roberts gave the prayer of dedication for all new officers. WMU meeting dates were set for the second and fourth Tuesday of each month and will be held at 3:30 p.m. in the church. The next meeting will be held April 25.

Mrs. Blevins turned the meet-

ing over to the president, Mrs. Clark, who introduced the program leader, Mrs. Gene Boney.

Mrs. Boney gave an interesting program on "What WMU Is and Does." The closing prayer was led by Mrs. Wade Coan.

Following the invocation a delicious covered dish noon luncheon was served to the 19 members present.

— READ THE CLASSIFIEDS —

See Me For Your

Real Estate

Needs

Will Build To Suit You

M. A. TREADWELL, SR.

Phone MA 9-2017

T. L. FAGG

REAL ESTATE

Property Management
Home and Farm Loans

Keeping the Barn Door Shut—

... while the horse is still in the stable and your property adequately insured is good, sound advice for all classes of property owners. After the storm clouds have already gathered or the kitchen fire is out of control, it is too late then to begin planning your insurance needs. While you have time and before the need arises, let us help you plan a schedule that will give you the protection you should have when you need it.

EARL BENDER & COMPANY

Eastland, (Insurance since 1924) Texas

Does Your Car Drive Like An Antique?



PUT YOUR CAR "IN TUNE"
WITH THE TIMES... NOW!

Get Your Car
Ready for
Summer Driving

PHONE MA 9-2270

NIGHT PHONE MA 9-2224

EXPERT AUTO REPAIRS

ALL MAKES AND MODELS

OFFICIAL INSPECTION STATION

ALLEN AUTO REPAIR

AT RUSHING MOTOR CO.
215 South Seaman

DISCOUNT PRICES

GARCIA MITCHELL 300 SPINNING REEL	21.88
Regular 32.50	DISCOUNT PRICE
GARCIA ABU-MATIC MOD. 170 REEL	19.88
Regular 29.95	DISCOUNT PRICE
GARCIA ABU-MATIC MOD. 140	14.88
Regular 22.50	
HEDDON SPINNING ROD 7 FOOT	8.88
Regular 14.95	

Spinning Line Trilene 40% off
8 Lb. thru 25 Lb. Example: 10 Lb 2.00 List DISCOUNT PRICE 1.20

SHYSTER LIKE LURES
49¢ EA.

ASSORTED LURES LINES LIGHTS FLY BOXES
50% OFF

FLOATING Minnow Bucket \$1.98

Castling Line 50 Yards	59c
Spinning Line 8 to 25 Lb.	1.00
Golf Balls WILSON	49c ea.
Marine Hardware	40% off
Toys—40% off Rubber Balls 2 for 25c	
Tennis Rackets	3.95 to 17.25
Chest High Waders 2 Pair Only	14.95

BRUCE PIPKIN'S
(DISCOUNT)
SPORT CENTER

NEWS FROM DES DEMONA

The Spring revival at the First Baptist Church closed Sunday night with 13 new members coming in as candidates for baptism. Rev. Teaff of Moran was the visiting preacher and Rev. Moody

Smith, local pastor, directing the choir. Attendance was above average and visitors were present at almost every service.

Elmer Abernathy is home after spending several days in the Gorman Hospital.

Mrs. Joe Quinn is resting at home after spending a week in the Gorman Hospital. Elmer Lee Anderson and family

ily of Aztec, N. M. visited over the weekend in the home of his mother, Mrs. Sallie Anderson, and a sister, Mrs. Bill Greenhaw and family.

Little Julia K. Hanna of Eastland spent a few days last week with her grandparents, Mr. and Mrs. H. T. Lane.

Mr. and Mrs. Bennie Dean White and girls were here Sunday.

Mr. and Mrs. Rob Lewis were in Stephenville on business Monday.

Mabron Wilcoxson, who underwent surgery in the Eastland Memorial Hospital several days ago, was able to go to Odessa to visit with his daughter, Mr. and Mrs. E. Stewart.

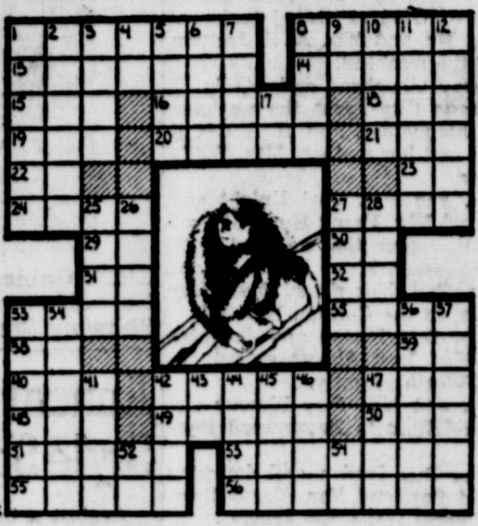
Don't forget the cemetery working which will be held here on April 28.

WEEKLY CROSSWORD PUZZLE

Gibbon

- HORIZONTAL**
- 1 Depicted
 - 8 It is found on the
 - 13 Balkan country
 - 14 Got up
 - 15 American poet
 - 16 Sink
 - 18 Cavity
 - 20 Mosquito
 - 21 Theory
 - 22 Hebrew deity
 - 23 Rough lava
 - 24 Pittance
 - 27 Native of Finland
 - 29 Correlative of either
 - 30 Hypothetical force
 - 31 Nickel (symbol)
 - 32 Earth goddess
 - 33 Endorse
 - 35 Seasoning
 - 38 Type measure
 - 39 While
 - 40 Likely
 - 42 Shield
 - 47 Suit
 - 48 Regret
 - 49 Wet
 - 50 Goddess of infatuation
 - 51 Expunge
 - 53 Slim
 - 55 Devil
 - 56 Offers
- VERTICAL**
- 1 Enervated
 - 2 Pansy seaport
 - 3 Encourage
 - 4 Parent
 - 5 Handle
 - 6 Egyptian river
 - 7 Ornament
 - 9 Measure of area
 - 10 French novelist
 - 11 Japanese volcano
 - 12 Petty naval officer
 - 17 Pronoun
 - 25 It has arms
 - 26 Ireland
 - 27 Mista
 - 28 Notion
 - 33 Burned
 - 34 Tainted
 - 36 Spot
 - 37 Compound ethers
 - 41 Group of players
 - 42 Arabian gulf
 - 43 Daybreak (comb. form)
 - 44 Blast
 - 45 Small island
 - 46 Observed
 - 47 With
 - 52 Thus
 - 54 North Dakota (ab.)

Here's the Answer



READ THE CLASSIFIEDS

YOU HAVE TO TRY IT TO BELIEVE IT!

New Gillette Super BLUE BLADE

10 for 69¢

FITS ALL GILLETTE RAZORS

Morning Coffee Honors Shirley Berry in Cisco

Miss Shirley Berry, bride-elect of Frank Strawn of Abilene, was honored at a morning coffee Friday from 9:30 to 11:30 a.m. in the home of Mrs. Gene Fitzgerald, Cisco.

Tea, coffee and cookies were served to the 25 present. Miss Berry, daughter of Mr. and Mrs. H. C. Berry, Eastland, received an electric skillet and other lovely gifts.

Mrs. J. Horton Reports Banquet Plans To WSCS

Mrs. James Horton reported on the Eastland County Teacher's Association annual banquet, to be served Friday, April 21, by the Woman's Society of Christian Service in the Fellowship Hall of the Methodist Church, at the society's regular meeting held Tuesday morning.

Mrs. H. J. Bulgerin announced the Youth Retreat to be held at the Bulgerin cabin on Lake Leon Friday from 4 to 8 p.m. and the society voted to pay the food expense.

Members then voted to send a letter of appreciation to the management of radio station KERC for their fine publicity of church affairs.

A covered dish luncheon will be held in the home of Mrs. Cecil Collings Tuesday, April 25, at which time all officers will receive instructions of their office duties. World Banks will be collected at this meeting.

Mrs. C. W. Boles reported that Dr. Bob Alexander, chairman of the official board, had appointed a committee consisting of Grover Hallmark, Grady Pipkin and C. W. Boles, to select the Lottie Castleberry Memorial to be placed in the church.

A covered dish supper will be held in the Fellowship Hall Friday at 7 p.m. followed by a pledge service. All members of the church are urged to attend. Rev. James Campbell will be in charge of the Spiritual Life program to be held Tuesday at 9:30 a.m.

Mrs. Bean, program chairman, was assisted by Mmes. T. M. Collier, O. M. White and James Horton. The program consisted of the last session of study on "Safe in Bondage."

Lone Cedar Club Greets Spring At Luncheon Friday

"Spring Flowers" was the theme used when members of the Lone Cedar Luncheon Club met Friday. Large straw baskets filled with Dutch iris, tulips and bridal wreath were placed throughout the dining area.

Small containers of pansies centered the quartet tables where the members were seated.

Mrs. Jim Bates of Ranger won the high score for bridge, Mrs. J. Petty of Strawn won the bingo prize and Mrs. Paul Woods won the door prize.

Members from Gorman were hostesses for the day. The hostess committee included Mmes. Keith Whitt, W. T. Shell, M. E. Shell, John Kimble and C. O. Alsbrook.

ATTEND THE CHURCH OF YOUR CHOICE EACH SUNDAY

White Elephant Rummage Sale Held Through

Due to the arrival of chandise, the rummage sale will continue through the week. The rummage and white sale is being held in the Building, north side of the

Mrs. James Horton, announced that the sale would be \$350 and that proceeds toward new carpet for the an's Club.

Again the public is urged to attend the sale by the

READ THE CLASSIFIEDS

SINGER

Sales - Service - Repairs

D. L. MORTON

Phone MAin 9-20

Get 4 pairs of stockings for the price of 3!

You get 1 extra pair of Berkshire stockings in every Bonus box of 3 pairs you buy!

Now for a limited time only, Berkshire makes this sensational offer! With every 3 pairs of Berkshire stockings you buy, you get a bonus pair without charge. You pay for three, get the fourth pair free! And, of course, these are the long-wearing nylons with the famous YLOC Run-Barrier. Two fashionable stocking styles to choose from. With seams or seamless. From \$4.05 the box. aoit-ef

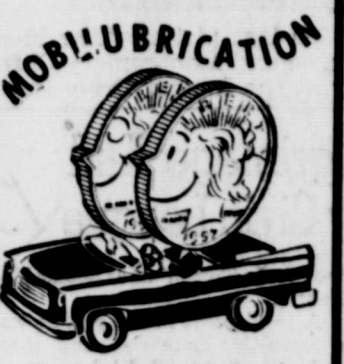
HARELIK'S Inc.

LIMITED QUANTIT

DON'T

Be A Stranger ... Come In And Get Acquainted

OUR



SAVES YOU MONEY

Mobil

Wells Dalton

302 West Main

Phone MA 9-2220

COLOR CONTEST FOR 101 DALMATIANS

The public has been invited to enter a color contest in connection with the motion picture, "101 April 26. Everybody but employ-

ees of the theatre and this newspaper are eligible to color the cartoon and compete for the

prizes — 10 free records from the picture and 15 free passes to the picture. Submit your entries

to The Eastland Telegram before noon Tuesday, April 25.



INTREPID GENTLEMEN JOIN, OR DIE!



Take up the cause

with us, dealers of 'BOTANY' 500 suits, against the slow death that conformity brings. Join our common cry for clothes that bear the NATURAL CUT. Meet with us, at our NOT UNWORTHY ESTABLISHMENT, to see our most EXCELLENT EXAMPLES of natural shoulder clothing.

FURTHER—when the time is at hand, TRY ON THESE SUITS, and see for yourself the virtues of the TRUE AND HONEST LOOK. And, rest assured, when you SEE FIT TO JOIN US, the amount set upon said suit of clothes will be, is, and ever shall be FAVORABLE AND SENSIBLE.

Let not another day go by without attention to this noble matter.

'BOTANY' 500®

tailored by **DAROFF**

suits, with the natural shoulder cut, only **59.50**

James Smith

MENS SHOP

EASTLAND

