

**NEW EMERGENCY TELEPHONE NUMBERS**  
 Fire Dept. MA 9-1122  
 Police MA 9-1277  
 Sheriff MA 9-1774  
 Hospital MA 9-1771

# Eastland Telegram

"COVERING EASTLAND COUNTY"



No. 30

EASTLAND, TEXAS, THURSDAY, FEBRUARY 11, 1960

No. 120

## MOORE about... EASTLAND

argil E. Moore

...it's an unusual ed-  
 ...brags about his city's  
 ...end, but that's what  
 ...ing today. It is hard  
 ...the improvements  
 ...been recorded at the  
 ...city dump in the last  
 ...The Telegram re-  
 ...so long ago that the  
 ...purchased a new  
 ...so that refuse could  
 ...instead of just dump-  
 ...we use the word  
 ...back there much like  
 ...to talk about getting  
 ...The machine isn't  
 ...new, but it is new to  
 ...of Eastland.



**FARM BUREAU "WEEK" PROCLAIMED**—Governor Price Daniel is shown signing a proclamation designating February 14-20 as "Farm Bureau Week" in Texas. Looking on are (left to right) J. H. West, Bishop, president of Texas Farm Bureau; Millard Shivers, Waco, TFB Director of Organization; and George K. Marshall, Leander, president of the Travis County Farm Bureau. Farm Bureau membership enrollment activities will be concentrated during this special "Week." County Farm Bureau's across the state have set quotas totaling more than 83,000. The 1959 membership of the TFB was 79,414.

## Farm Bureau Week Is Proclaimed By Gov.

Governor Price Daniel has cited agriculture as "the well-spring of our social and economic vitality" and set a statewide week-long observance in recognition of agriculture's contribution to Texas life.

In a proclamation signed Jan. 25, the Texas governor designated the week of Feb. 14-20 as "Farm Bureau Week" in Texas and urged all citizens "to cooperate in the recognition and observance of this week in an effort to publicize this important phase of our Texas life."

The special week coincides with the annual membership campaign of the Texas Farm Bureau, largest general farm organization in the state. The 1960 drive will be kicked off with a big Chairmen's Rally Feb. 11 in Waco attended by county FB presidents, and county and community membership chairmen. About 125 counties are planning intensive membership drives during the next two months.

County Farm Bureaus across the state have set individual county quotas totaling more than 83,000 members for 1960. This

## Eastland Girls Beat Olden; To Play Tonight

The Eastland Mavette B team downed the Olden girls, 29-26, Tuesday night.

Kay Morton led the locals with 16 points. Glenda Johnson scored eight and Joyce Robinson had five.

The Mavette A team will play Ballinger Thursday and Coleman Monday in final games of the year.

## Rhodes' Roundup

by Oran Wayne Rhodes

Hello Again!  
 Well, basketball season is almost over and this term is slipping very hard as the teachers are trying to make tracks in their books. Everyone seems to have homework all the time, but if you think about it, school is a place to learn and one must put something out to learn anything.

In basketball this past week the weakened Mavericks lost to Coleman and to Ranger. The Mavs couldn't do anything right last Friday night as Ranger beat Eastland for their first district win in over three seasons. The Eastland boys went to Winters Tuesday night and will go to Ballinger Friday night. The Eastland girls will go to Ballinger tonight and will host Coleman Monday night in the local gym to close out this year's roundball schedule.

Last Monday afternoon we had a special treat in the form of a program concerning freedom. The

**EASTLAND NATIONAL BANK**  
 "On The Square"  
 MEMBER F. D. I. C.

## Glassblower to Present School Program Friday

One of the few glassblowers practicing his art in America today, Ralph Melville, will present a program Friday at 9 a.m. in the high school auditorium.

The program is one of a series of Southern School Assemblies sponsored locally. All students are allowed to attend the program and the general public has been invited to attend.

A school spokesman said, blowing as it is commonly called, is one of the oldest known arts. Glassblowers were first believed to be workers of the "devil" because they worked with fire. Later because the art was kept secret in closed guilds, artisans were honored and encouraged to marry into royalty. It is an almost forgotten art in the country since so few people practice it today. In this machine age, Melville brings life to an ancient art which is created entirely free-hand and without the aid of models or molds.

"Thousands of people have stood in awe-stricken wonderment while Melville, master glass artist, fashioned beautiful creations from glass. By the skillful manipulation of his hands, the pressure of the lips and throat, he creates birds, animals and vases from simple tubes of glass; from small rods of glass. Only (Continued on page two)

## Johnny Reitz Orchestra at Country Club

Johnny Reitz and his orchestra will play for the Lone Cedar Country Club Valentine Dance Friday night at which time the club's Valentine Sweethearts will be named.

The event will be a return engagement for the dance band which has recently toured the West Coast where they appeared at the Oregon Centennial Exposition and the Sheraton-Portland Hotel.

"The Fabulous Alberto," comic dancer, choreographer and singer, will be featured with the orchestra as will the Coronets, young singing and dancing team.

Among places the show has appeared are the San Souci in Las Vegas, the Roxy Theatre in New York, the Montmartre in Havana, and the International Film Festival in Cannes.

At Lone Cedar last spring the orchestra featured a Parisian review.

## Ranchers Confuse Court By Asking Higher Bounty

You couldn't blame Eastland County commissioners if they seem a little confused over what to do about killing out bobcats and wolves in the county.

Two weeks ago a group of ranchers from various parts of the county met with the Commissioner. Court and requested more assistance in fighting predatory animals. The Court, which has been paying \$135 a month for some time now to help pay the cost of hiring a government trapper, agreed with the group and voted an additional \$100 a month to help hire a second trapper. The Court also agreed to pay the Eastland County Trappers Association \$500 as a lump sum to help defray expenses the Association has incurred in the past five months by hiring the second trapper.

Thus, pledged to pay \$235 a month until June 1, the Court thought they had settled the matter.

Th's week the situation cropped up anew, however. Several ranchers from the south part of the county near Rising Star attended the commission meeting and declared they would prefer a higher bounty on wolves and bobcats instead of paying the \$100 a month for the second trapper.

Led by Oscar Schaefer and Bob See and Drive the New TURBINE DRIVE BUICK WITH THE WILDCAT ENGINE MUIRHEAD MOTOR CO.

# Storm Damage Here Is Reported Heavy

## Antennae, Boats, Roofs Are Lashed

High winds caused damage throughout the Eastland area Tuesday and the city had what is believed to be the lowest barometer reading in history.

Tons of dust and sand, which tumbled over all of West Texas, had Eastland on the road map. Damage to boats and boat houses at Lake Leon was heavy and scores of television antennae were knocked down by the wind, which was clocked at a high of 76 miles per hour.

Damage was also reported to a number of house roofs, and a small hanger at Eastland Municipal Airport was blown partially down. A plane in the hanger owned by Homer Latham was not damaged, however. The big hanger was not damaged either.

Temperatures ranged from a high of 82 degrees to 25 degrees late that night. The barometer reading at 5:30 p.m. was 29.05 inches, reduced to sea-level. Normal reading for this area is slightly above 30 inches. The weatherman warned that readings in the range of 29.4 to 29.6 often occur during the tornado season. An extremely low humidity of 22 percent is believed to have kept storm clouds from forming.

Eastland was without long-distance telephone service during part of the afternoon Tuesday, and electrical service to some areas was also briefly knocked out.

The heaviest damage in the area was incurred at Lake Leon. Traffic at Lake Leon was probably heavier Tuesday afternoon than it has been in many weeks, as people were going out to check on their boat docks and boats. With all the concern there

## Scouts to Take Over Eastland This Saturday

Eastland Scouts will take over the City Saturday.

Scouts will hold down all official posts, and will patrol the city, giving fines to traffic breakers.

Tickets given out by the Scouts will state that they are Scout tickets. Proceeds will go to the two participating troops.

wasn't much that could be done except to stand and watch the wind and waves tear at the hapless docks and boat houses. Waves as high as five and six feet made it hazardous for anyone to attempt to get on a dock or enter a boat house. Several people attempted to remove their boats from the boat houses but the waves were so high that it couldn't be done.

Ed Richardson, Lake Leon ward reported that considerable damage was caused by the wind at the lake. Three boat docks were completely destroyed. The docks belonged to Dave Barker of Ranger, Wayne Jackson and Curtis Koen of Eastland. Docks belonging to Brownie King, Charles and Morris Campbell, Lloyd Bruce and Arthur Deffebach, all of Ranger, were badly damaged. Also, the O. D. Quarles dock at Frank and Earl's Lodge, was badly damaged. Many more docks were damaged to a less extent.

## Mrs. Putnam, Longtime Ranger Resident, Dies

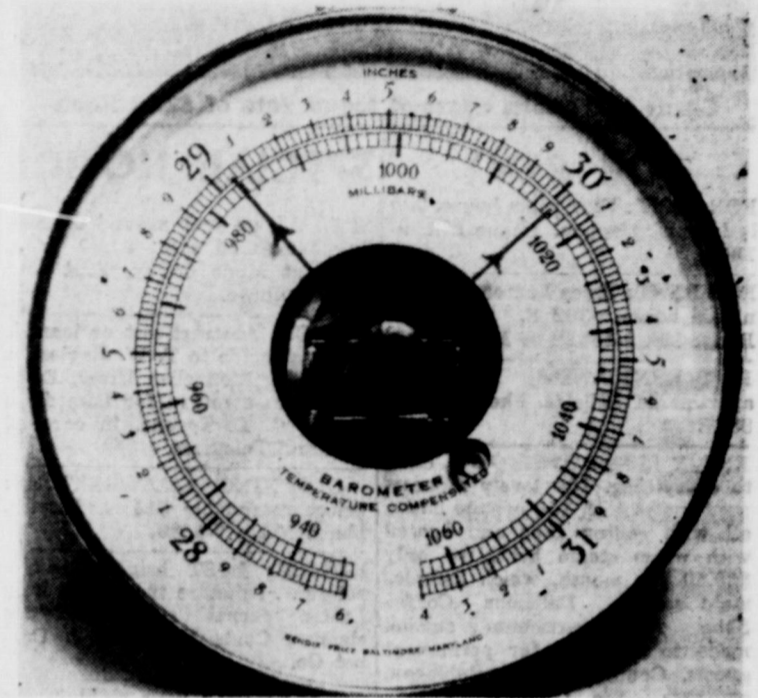
Mrs. Ollie Putnam, 78, a Ranger resident for the past 39 years, died at 1:30 a.m. Wednesday at the Ranger General Hospital, where she had been a patient since Saturday.

Mrs. Putnam was born Dec. 13, 1881 in St. Joseph, Mo., she moved to Ranger from Missouri in 1921. Funeral services were held at 2 p.m. Thursday at Killingsworth Funeral Chapel with the Rev. W. S. Buntun, pastor of the Caddo Baptist Church, officiating.

Burial was in Evergreen Cemetery.

Survivors include her husband, Charles C. Putnam of Ranger; one son, Albert V. Keller of Houston; one sister, Mrs. C. O. Little of Ranger; three brothers, Charles Dunham of Caddo, J. A. Dunham of Rich Hill, Mo., and George Dunham of Russellville, Ark.; six grandchildren and 10 great grandchildren.

Pallbearers were John F. Harty, Ray Williams, Gail D. Keller of Houston,



**HERE'S PROOF**—No one will deny that the Eastland area had high wind and dust Tuesday afternoon, and here's proof of just how big a drop the barometer took here. The picture was snapped at 5:30 p.m., during the height of the wind storm, which was clocked in the vicinity of 76 miles per hour. Needle at left shows barometer to be at what is believed to be an all-time low of 29.05 inches, reduced to sea-level. Normal reading for this area is shown by needle on right. (Moderne Studio Photo).

## Winters Edges by Mavs In Key Game

Eastland almost handed the Cisco Lobos the District 7-AA championship on a golden platter Tuesday night by upsetting the Winters Blizzards, but the circuit co-leaders held on to their tie with a 35-33 win in the third overtime period of the game.

The Mavs, playing without the services of big Otis Green and playing in Winters before a highly partisan crowd, made a game of it before losing to the same team which edged them by just one point in their first meeting.

Winters led 8-5 at the end of the first quarter and 17-11 at halftime in the defensive ballgame. It was 26-21 in favor of the Blizzards going into the final stanza, and the Mavs tied it 31-31 at the end of regulation play.

It looked like Eastland had the game in the first overtime, but Winters' James Williams sank two free shots with just five seconds left on the clock to tie it at 31-31. The Mavs held a two-point lead during most part of the second overtime period, too, but Williams sank a two pointer late in the period to tie the score at 33-33.

The Mav downfall came in the sudden-death third overtime. Walter Kraatz hit a jump shot to end it.

James Lewis was high point man for the Mavs with 12 points. John Wilson had five points, David Whitten scored six, Don Wilson five and Martin Day one.

The Mavs also lost the B game, falling 44-33 despite Clark Conners 14 point effort.

In other District 7-AA games, Cisco beat Coleman, 57-38, and Ballinger downed Ranger, 52-48. Cisco and Winters meet Friday night in Cisco to decide the district championship. Each have records of eight wins and one loss. Eastland will test Ballinger in Ballinger and Ranger plays Coleman in Coleman.

## Junior High Teams Post Twin Wins

Eastland Junior High basketball players scored two wins over Olden teams Tuesday night. The boys won, 23-13, and the girls took a 29-15 victory.

Mike Miller, Terry Treadwell and Jimmy Moylan each scored six points for the Eastland boys, but D. Fox was the game's high pointer, getting seven points for Olden.

In the girls game, Janie Harris led Eastland with 19 points and Linda Beard paced Olden with eight.

The Eastland boys were fresh from the Cisco tournament, in which they won consolation honors. The boys scored two wins over Baird, 40-19 and 42-16, and edged Seranton, 28-26 in the finals. Their only loss was to Clyde, the eventual champions.

The Eastland girls lost to Baird and Clyde in the tourney.

## New Library Books

Mrs. A. E. Cushman, Librarian

The Library Committee of the Thursday Afternoon Club announce the following new books received during January and thus far in February.

"California Street," a new novel by Niven Buch, of which is said, "it has depth of mood and character, and a story which is surpassing fine and warm and real."  
 "We Believe in Prayer"—Lawrence M. Brings compiles many statements of great people to make this book a living proof of the power of Prayer.

Two Memorial books: "The Best Loved Religious Poems" was given in memory of Billie Beth Boothman by her aunt and uncle, Mr. and Mrs. Turner Collier, and "Something to Live By" also in her memory.

Other adult books: "Art Guide" by Carvel Lee  
 "Rocks and Minerals"—Richard M. Pearl  
 "The Sea Around Us"—Rachel L. Carson  
 "Getting Along With People in

Business"—Wilson & Wright.  
 "America's National Capitol"—John Long

**Teen Age**  
 "A Tale of Two Cities"—Charles Dickens  
 "Model A Mule"—Robert J. Willis  
 "Wilderness Pioneer"—Carol Hoff

**Junior**  
 "Larry of Snowy Ridge"—Margaret Johnson  
 "Nathan Hale Puritan Boy"—Augusta Stevenson

"Briar"—Collie—Margaret Johnson  
 "The Horse Tamer"—Walter Farley  
 "Mystery at the Haunted House"—Govan and West  
 "Panther Eye"—Roy Snell  
 "Sod House Winter"—Clara Judson  
 "Prairie School"—Lois Lenski  
 "The Story of Rocks and Minerals"—David Seaman  
 "And to Think I Saw It on Mulberry Street"—Dr. Seuss

## PSYCHLAG

INSURANCE AGENCY

## OTHER NEWS

64  
 32  
 0  
 1.25  
 1.38  
 4.34  
 Cloudy and Cold

# Eastland Telegram

Eastland County Record established in 1881, consolidated August 31, 1951. Chronicle established 1887, Telegram established 1923. Entered as second class matter at the Post Office in Eastland, Texas under the Act of Congress of March 3, 1879.

**TIMES PUBLISHING COMPANY**  
Published Tri-Weekly—Tuesdays - Thursdays - Sundays  
Onous Dick and Joe Dennis, Publishers  
Virgil E. Moore, Editor

One week by carrier in city . . . . .15  
One month by carrier in city . . . . .65  
One year by mail in County . . . . .2.95  
One year by mail in state . . . . .4.95  
One year by mail out of state . . . . .6.95

**NOTICE TO PUBLIC**—Any erroneous reflection upon the character, standing or reputation of any person, firm or corporation which may appear in the columns of this newspaper will be gladly corrected upon being brought to the attention of the publishers.

## WANT ADS

Cards of Thanks charged for at rate of \$2.00 Each

### FOR RENT

**FOR RENT:** Four room house, two bedrooms, playpen. Phone MA 9-1263.

**FOR RENT:** Three bedroom unfurnished house. 302 S. Connellee. Phone MA 9-15522 or MA 9-1238.

**FOR RENT:** Newly decorated apartments. Hillside. Phone MA 9-8817.

**ENJOY LIFE DOWNTOWN,** close to everything. 100 lovely redecorated rooms with 100 private baths, all with ceiling fans and heated with warm steam heat, for only \$39.50 per month, which includes maid service. Delicious Coffee Shop. Also apartments custom made to any size for permanent guests. Contact Mrs. Robinson, manager, the friendly Village Hotel (formerly the Connellee, Eastland, Texas.

### MISC FOR SALE

**FOR SALE:** Five tube Philco radio. In excellent condition. Eastland Telegram.

**FOR SALE:** Small four room house with bath to be moved from Gorman. See Shorty Lawrence, Gorman.

**ELECTROLUX** (R) Cleaners factory rebuilt and guaranteed. Authorized Sales & Service. 1392 Saylors, Abilene. Ph. OR 3-1135.

**FOR SALE:** Brick Inquire Smith's Service Station, Oiden.

**FOR SALE OR LEASE:** Three acres, well improved. All modern. Close in on F highway. Jack Chamberlain. Phone MA 9-1742.

**FOR SALE:** Nice rooms and apartments with tile baths. \$5.00 up. Bill paid. 70 Apartments. Paramount Hotel, Ranger, phone 9504.

**FOR SALE:** Magic Chef Cook stove in good condition. Phone MA 9-1026.

**FOR SALE:** 1957 scooter. \$50. Ms 9-1405.

**FOR SALE:** T. V. antenna. 311 E. Valley.

**FOR SALE:** Fresh eggs. 40c per dozen. 3 miles south on Carbon Highway. Bill Claborn.

**FOR SALE:** Bedroom suite, breakfast table. See after 4 p.m. 304 S. Connellee.

**FOR SALE:** Clean barnyard fertilizer. 3 years old. Free from vegetation seed. Phone MA 9-1012.

## USED CARS

Still plenty of winter driving ahead. Come in and get our mid-winter hot spark special.

Install new Ford ignition points and condenser, inspect, clean and re-gap spark plugs, adjust ignition timing, adjust carburetor, test and adjust generator, regulate, test and adjust battery cables and carriers, test generator charge and out put, check thermostat and hoses.

Hood King offers for **7.50**

**Hood King Motor Co.**  
100 East Main  
Phone MA 9-1736

### Want To Lease

**WANT TO LEASE:** 200 — 300 acres land. Must have well, shade and good drainage. Phone MA 9-2667.

### AUTOS FOR SALE

**FOR SALE:** 1957 Ford. Like new. New tires just mounted. 410 E. Main St. Cisco. See after 6 p.m.

**FOR SALE:** 1954 Pontiac. One owner car. Good running condition. Mrs. Clyde Garrett. Phone MA 9-1485.

## Farm Bureau—

(Continued from Page One)  
and ranchers of Texas, through their various organizations, have worked for improvements in the economy and government of Texas.

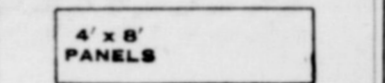
**Insurance AND Real Estate**  
**D. L. KINNAIRD**  
Life - Fire - Auto - Farm  
Polio - Bonds  
40 years in the Insurance Business in Eastland



Everyone Thinks It's Really Walnut!

"I'm so proud of my **MASONITE** Royalcote" **WALNUT GRAINED PANELING**"  
New Masonite<sup>®</sup> WALNUT GRAINED PANELS have all the beauty of natural walnut, plus the economy and lifetime durability of Masonite hardboards.  
**AVAILABLE IN 4 WALNUT GRAINS**  
Color Keyed to Complement Your Room Decor.

**CHAMPAGNE WALNUT #102**  
Light airy tone to brighten rooms, make them look larger.  
**ANTIQUE WALNUT #104**  
Rich, natural, deep brown tone of mellowed walnut.  
**ROSE WALNUT #103**  
Delightfully warm walnut grain with a light rose tinge.  
**MISTY WALNUT #100**  
Soft and light, with a cool misty grey tone.



4' x 8' PANELS

...and They're So Easy To Put Up!

Knot-free, uniformly smooth Royalcote Panels can be worked with ordinary household carpenter tools — never split, splinter or crack. Plain or grooved no finishing is necessary. Dense, extra hard construction makes them almost indestructible. A whisk of a damp cloth keeps them clean. For Rooms With a Lifetime of Beauty See **MASONITE** Royalcote WALNUT GRAINED PANELS at . . .

**JIM HORTON TIRE SERVICE**  
East Main St. - MA 9-1420  
Eastland, Texas

**YOU COME OUT AHEAD WITH A PIPKIN MOTOR CO. USED CAR**  
BEST QUALITY — BEST DEAL

'58 Cadillac Cpe. De Ville. Air. All power equipment. 21,000 actual miles. Perfect condition.  
'58 Olds Fiesta Station Wagon. Power brakes and steering. Perfect condition.  
'58 Chevrolet Nomad Station Wagon. Air cond., power steering & brakes. New tires. Perfect condition.  
'57 Ford 4-door Sedan. Automatic transmission. Power steering. A real good car.  
'52 Buick Super 4-Door.  
Good work car. . . . . 195.00

**SALE** On 1954 through 1958 Olds accessories . . . . . 1/2 PRICE

**PIPKIN MOTOR COMPANY**  
314 W. Main Phone MA 9-2636

Here is the text of the governor's proclamation:  
"Greetings:  
"Agriculture has long been recognized as the well-spring of our social and economic vitality. A vast number of Texans derive their principal income from farming and ranching activities.  
"The farmers and ranchers of Texas, through their various organizations, have crusaded by democratic procedures for a voice in the affairs of the State and for improvements in the economy and government of Texas.  
"These groups recognize the necessity and supreme importance of having an educated, prosperous, and organized agriculture in our state.  
"Therefore, I, as Governor of the State of Texas, do hereby proclaim February 14-20, 1960, as 'Farm Bureau Week' in Texas, and urge our citizens to cooperate in the recognition and observance of this week in an effort to publicize this important phase of our Texas life.  
"In official recognition whereof, I hereby affix my signature this 25th day of January, 1960. (Signed) Price Daniel, Governor of Texas."

TRADE WITH YOUR HOMETOWN MERCHANTS



**ALEX RAWLINS & SONS MONUMENTS**  
WEATHERFORD, TEX.  
Serving This Community Since 1884  
Phone LY4-2726

**RUBBER STAMPS**  
"24 HOUR SERVICE IF DESIRED"  
**EDDIE'S RUBBER STAMP SERVICE**  
407 SO. DAUGHERTY - P. O. BOX 644  
EASTLAND, TEXAS

## FEBRUARY ONLY



670 x 15  
750 x 14  
**RETREADED TIRES 7.50 Exchange**

**JIM HORTON TIRE SERVICE**  
East Main St. - MA 9-1420  
Eastland, Texas

## Glassblowers—

(Continued from Page One)  
by actually witnessing this work do people believe it can actually be done. Find his work and lecture fascinating as well as instructive.  
"Melville has created glass patterns for Corning Glass Works and 20th Century Fox Film Corporation. In his lecture, Melville not only traces the history of glass from the beginning but describes its many and important uses in industry today. His work

in the research laboratories of 20th Century Fox Film Corporation in creating miniatures for wigs and dresses of glass for famous stars, lend interest and color to his lecture. Samples of both wig material and glass cloth are displayed and never fail to cause comment. His lectures have been carried by many of the country's leading radio stations."

TRADE WITH YOUR HOMETOWN MERCHANTS

**REPAIRS!**  
**CARS POLISHED**  
12.50 to 15.00  
We Know Our Business

**FREE ESTIMATES**  
Insurance Claim Service  
"We've seen plenty of wrecks drive through our doors, but we have yet to see one drive out."  
**Lindley Paint & Body Shop**  
110 S. Bassett  
Ph. MA 9-2240

## —Call 601 for Classified Ads—

**NOTICE**  
**FRESH EGGS DAILY**  
(WHOLESALE PRICE TO EVERYONE)  
**GOOD, CLEAN JERSEY SWEET MILK**  
(From Blood-Tested Cows)  
PRICE 70c GAL.  
**KENDRICK DRIVE-IN DAIRY**  
Located On Eastland-Cisco Highway  
Phone MA 9-2732 — Eastland

## TRI-CITIES FURNITURE'S FIRST BIG ANNUAL

# CLEARANCE

<b>END TABLES</b> And <b>COFFEE TABLES</b>	Reg. 3.95 NOW <b>4<sup>95</sup></b>
<b>END TABLES</b> And <b>COFFEE TABLES</b>	Reg. 8.95 NOW <b>5<sup>95</sup></b>
<b>ROUND COFFEE TABLES</b>	Reg. 19.95 NOW <b>12<sup>95</sup></b>

# SALE

<b>2-PIECE LIVING ROOM SUITES</b>	Reg. 159.95 NOW <b>119<sup>95</sup></b>
<b>2-PIECE LIVING ROOM SUITES</b>	Reg. 139.00 NOW <b>99<sup>50</sup></b>
<b>2-PIECE LIVING ROOM SUITES</b>	Reg. 189.50 NOW <b>149<sup>00</sup></b>
<b>5-PIECE LIVING ROOM SUITES</b>	Reg. 129.50 NOW <b>97<sup>50</sup></b>

<b>HYDA BEDS</b>	Reg. 199.50 NOW <b>147<sup>95</sup></b>
<b>HYDA BEDS</b>	Reg. 149.50 NOW <b>119<sup>95</sup></b>
<b>HYDA BED ONE ONLY</b>	Reg. 299.50 NOW <b>194<sup>95</sup></b>
<b>One Only Foam Rubber Unit BOX SPRINGS AND MATTRESS</b>	Reg. 119.50 NOW <b>79<sup>50</sup></b>

## BED ROOM SUITES

## BED ROOM SUITES

<b>ONE ONLY DOUBLE DRESSER</b>	Reg. 59.50 Now <b>39.50</b>
<b>CEDAR CHEST</b>	Reg. 24.50 Now <b>17.50</b>
<b>Mattress AND Box Springs</b>	Reg. 69.50 Now <b>39.50</b>

## 3-Pc. BED ROOM SUITES

## 3-Pc. BED ROOM SUITES

<b>ONE ONLY BOOK CASE</b>	Reg. 34.95 Now <b>24.95</b>
<b>CEDAR CHEST</b>	Reg. 37.50 Now <b>25.00</b>
<b>MATTRESS ONLY</b>	Reg. 49.50 Now <b>25.00</b>

<b>FLOOR LAMPS</b>	Reg. 12.50 Now <b>8.95</b>
<b>IRONING BOARDS</b>	Reg. 9.95 Now <b>5.95</b>
<b>2-ONLY PLATE GLASS MIRRORS</b>	Reg. 29.50 Now <b>19.50</b>

<b>Wool Rugs</b>	Reg. 49.95 Now <b>39.50</b>
------------------	--------------------------------

<b>FLOOR LAMPS</b>	Reg. 8.75 Now <b>5.00</b>
<b>MATTRESS</b>	Reg. 99.00 Now <b>59.00</b>

<b>Tuftless and Box Springs</b>	9 x 12
---------------------------------	--------

**TRI-CITIES FURNITURE**  
East Side of Square  
Phone MA 9-

### SPECIAL NOTICE

**SPECIAL** on year around dresses. Regular \$6.99 and \$7.99 now \$3.99 at Mode O'Day, East side of the square.

**NOTICE:** Abstract lost or loaned. Abstract made to T. W. Eggleston in care of Connellee Hotel, Eastland. Please return for immediate use to C. L. Tyrone, in care of Eastland Telegram.

**CLOTHING ALTERATIONS:** prices reasonable 515 S. Bassett, phone MA 9-1680.

**NOTICE:** LOST bright carpet colors . . . restore them with Blue Lustre carpet and upholstery cleaner. Coats Furniture & Carpet Co.

**NOTICE:** Keep your child in my home while you work. Fenced play area Contact Mrs. Lois Dunlap, 805 W. Commerce.

**NOTICE:** Dance every Saturday night at Lakeview Club in Cisco. Dance to the music of Joe Marsh and the Rhythm Kings.

**CALLING ALL GIs:** Don't lose your GI benefits. Use it to buy a home for your family. M. A. Treadwell, Sr. Phone MA 9-2017.

**Eastland Masonic Lodge No. 467**  
Reg. Stated meetings 2nd Thursday of each month, at 7:30 p.m.  
H. G. Weathersby, W. M.  
L. E. Burkaby, Secretary

**A LOVEABLE HOME** for the aged . . . with a family atmosphere. 24-hour nursing, special diet. **GOLDEN AGE NURSING HOME** Mrs. Witt Springer  
Phone HI 2-2370 Cisco

**HEAR R. L. WALL**  
Over Station KERC  
Gospel of Christ Program  
Sunday, 8:30 a.m.

### REAL ESTATE FOR SALE

**FOR SALE:** House, 608 S. Bassett.

**MUST SELL:** 4 room house with cistern and well on 12 acres. T. M. Burleson, Rt. 2, Eastland.

**FOR SALE:** My home 4 miles N. W. Eastland. App. 28 acres openland net wire fenced, large 2 bedroom house with 2 baths, 3 car garage, 32 x 66 metal shed, 2 smaller out buildings, concrete storm cellar, pressure water system from earthen tank. Yard nicely landscaped with plenty shade trees. Electricity, butane, school bus route. Consider some trade. Contact B. H. Courtney, Rt. 2 Eastland. Phone MA 9-1817.

**FOR SALE:** Three bedroom house. Good location. Call MA 9-1485.

**FOR SALE:** 48 acres, six room house, bath. Two good wells, pressure water. Garage. Good land 1/2 mineral. One producing oil well and gas well. Free gas for house. On paved road 3 1/2 miles to town. 3 miles to lake. Would take house as trade in. Phone 9-1900.

### MISC. WANTED

Man to represent Industrial Supply Firm Full or part time. Call or write Great Western Supply P. O. Box 7121 Fort Worth, Texas. Phone TErminAl 4-2211".

Wanted: Ride to Sroggin Beauty School in Abilene. Phone MA 9-2460, Eastland.

WANTED: Yard work. Experienced. Phone MA 9-1012.

**Helps Heal And Clear Itchy Skin Rash!**  
Zemo—liquid or ointment—a doctor's antiseptic, promptly relieves itching, stops scratching and so helps heal and clear surface skin rashes. Buy Extra Strength Zemo for stubborn cases!  
**zemo**  
ATTEND THE CHURCH OF YOUR CHOICE EACH SUNDAY

# HOME MAKERS

*News and Views*

Mrs. Sandra Shelton  
Home Demonstration Agt.

Miss Willene Sockwell  
Assistant HD Agent

Wet weather, or even continuing dampness, is very hard on shoes. Here's first aid treatment. Take off those wet shoes as soon as possible. Leather is weak when wet. Wearing wet shoes will cause breaks in the leather or other damage. Once removed, stuff the shoes with soft paper or absorbent cloth to take up the moisture. Never use tension shoe trees; They may stretch the

leather out of shape. Dry the outside by patting with a soft cloth. Never rub. When inside moisture is absorbed, remove the stuffing and let the shoes dry slowly away from heat. Fast drying with heat makes leather shrink, harden or crack.

As the shoes dry, clean with saddle soap. Then rub in a little sulfonated castor oil with your hands. The oil, available at drug stores, keeps leather soft and pliable. Use only as much oil as the leather will absorb. Otherwise the shoes will be too greasy to take a polish. When shoes are soft and dry, polish with any good paste or cream. Two coats of polish may be needed to bring back the fresh look to the leather.

Suede shoes should be thoroughly dry before they are brushed or rubbed. Use a rubber sponge or stiff brush; never a wire brush. It may damage the soft suede. After brushing, spread on liquid suede dressing in one direction. When dry, brush in the opposite direction to life the nap. If further treatment is needed to restore the appearance, have them rebuffered or "vaporized" at a shoe repair shop.

Metallic yarns are used in many kinds of fabrics. They do give unusual or interesting effects to fabrics. However, they are a luxury fabric and call for special care and treatment when it comes to cleaning and handling.

Check before you buy. Find out if the garment or fabric can be washed, or if it must be dry-cleaned. The majority of these fabrics do dry clean satisfactorily. All metallic yarns are subject to abrasion; so avoid excessive rubbing. Use the acetate setting on the iron if you need to press. Imported metallic yarns of copper filament coated with gold or silver have a tendency to tarnish in dry cleaning. They may discolor from wear and perspiration. American-made metallic yarns usually dry clean satisfactorily and wear well. However, here are some exceptions.

Sunlight may affect the color. If the fabric has not been stabilized for shrinkage control, puckering of the fabric results after cleaning or washing because the textile yarn shrinks—the metallic yarn does not shrink. Spots or stains may, in some cases, leave a color change. If there is no label on the fabric or garment, check with your dry cleaner on suggested care.

### HOME ON FURLOUGH

Sgt. Leonard Aldridge Jr. departed Wednesday night to a base in Korea. He has been home on a 30 day furlough. He has previously lived in Abilene. He visited with his mother, Mrs. Don Daniel, 316 N. Green while on furlough.

ATTEND THE CHURCH OF YOUR CHOICE EACH SUNDAY

ERGOES SURGERY  
P. J. Cullen of Fort Worth, a former Eastland resident, is the daughter of Fred D. Hale of Eastland, underwent surgery at the hospital in Fort Worth. She is reported to be recovering satisfactorily.

MAJESTIC  
IN EASTLAND  
TODAY - FRI. & SAT.

DIETHE  
WORLD - REYNOLDS  
IN THE YEAR'S  
GREAT COMEDIES



THE GAZEBO

JOHN REINER JOHN MCGIVER  
CINEMASCOPE RGA REAR

STARTS SUNDAY

BELL BENT  
LEATHER

INTERNATIONAL PICTURE

## RANGER DRIVE-IN

Box Office Opens 6:30 — Show Starts 7:00  
Adults 50c—Kiddies Under 11 Free  
Only Eastland County Drive-In Open All Year

THURSDAY - FRIDAY - SATURDAY



TONY CURTIS  
JANET LEIGH  
The Perfect Furlough  
KEENAN WYNN • ELAINE STRITCH  
LES TREMAYNE  
MARCEL DALIO and LINDA CRISTAL

Freevue Every Saturday Nite

SUNDAY - MONDAY - TUESDAY



TEN SECONDS TO HELL

## THE SMOOTHEST STREET IN TOWN



## ...IS THE ONE UNDER A BUICK '60

IF YOU WERE CONVINCED that the Turbine Drive Buick '60 was the best riding car in America...  
IF YOU WANTED TO DESCRIBE this uncommon characteristic to other people...  
IF YOU THINK YOU COULD DO IT nearly so effectively as a little ride around the block in the Buick '60 could do it?

NEITHER DO WE... we don't know which is the best riding car in America, but it must be a Buick '60 if it rides any better than Buick's All-Time Best. Call your Buick dealer for a demonstration ride. His name is in the Yellow Pages.

Make a Turn in the Turbine Drive Buick '60

SEE YOUR LOCAL AUTHORIZED PONTIAC DEALER  
MUIRHEAD MOTOR COMPANY  
301 W. COMMERCE EASTLAND, TEXAS

# YOU SAVE 3 WAYS!

1. Highest Quality Price Without Quality Is Never A Bargain. Health is Important!
2. Lowest Prices Make the 30-Day Shopping Test and See How MUCH YOU SAVE at WORTH!
3. 'S & H' Green Stamps America's First and Foremost Cash Discount Stamps!



## A Sweetheart of a Sale!

Prices Effective Thursday, Friday & Saturday — Limit Rights Reserved

# CAKE MIXES

PILLSBURY DELUXE

- White • Golden
- Spice • Pineapple
- Orange or
- Chocolate Fudge

3 Pkgs. 79¢



# TUNA

Del Monte  
Chunk Style  
SAVE 32c

4 No. 1/2 Cans 100

# PEAS

Trellis  
Early June

No. 303 Can 10¢

# CLOROX

Bleach 1/2-Gal. Jug  
SAVE 8c

29¢

# VIENNAS

Hygrade Reliable, All-Beef

SAVE 17c 6 4-Oz. Cans 100

BAMA, DELICIOUS

Red Plum Jam 2 -Lb. Jar 35¢

PETER PAN, SAVE 23c

Peanut Butter 3 12-Oz. Jars 100

SWIFT'S PREMIUM FULLY-COOKED, 4 to 6 Lbs. Avg.

# COOKED PICNICS

Lb. Just 33¢

WIFT'S ORIOLE

SLICED BACON Lb. Pkg. 35¢

NORTH CONTROLLED QUALITY FINE HEAVY BEEF

CHUCK ROAST Lb. 49¢

MRS. CHESSHER'S FROZEN

FRYER BREASTS SAVE 30c Lb. Pkg. 69¢

U. S. NO. 1 IDAHO RUSSET

POTATOES 10 Lb. Cello 79¢

Delicious Apples Crisp, Red Lb. 19¢

Tender Carrots Young, Crisp 2 -Lb. Cello 12¢

Yellow Onions U. S. No. 1 Spanish Lb. 5¢

"W. C. Q." HEAVY BEEF ARM

Shoulder Roast Lb. 59c

WORTH QUALITY FRESH

Ground Beef Lb. 45c

LINK SAUSAGE, SMOKED

Neuhoff's Smokies 12-Oz. Pkg. 59c

BEEF, PORK or VEAL

Rath's Chop-Ettes 8-Oz. Pkg. 49c

# TISSUE

Zee, Family-Pack  
White or Colors

4 -Roll Pkg. 29¢

EGG

# SHAMPOO

Helene Curtis

\$1.89 Value 99¢

EL CHICO FROZEN (SAVE 20c)

Enchilada Dinners 12-Oz. Pkg. 39¢

BEEF TACOS El Chico Frozen 13 1/2-Oz. Pkg. 49¢

Don't Forget!  
"S & H" Green  
Stamps Are  
EXTRA Savings

# WORTH FOOD MART

### Hospital News

Patients in Eastland Memorial Hospital are:

Louie Corbell, Eastland, medical

J. B. Jessup, Eastland, medical

Cheryl Nelms, Eastland, medical

Linda Medford, Eastland, medical

Mrs. Arebell Underwood, Eastland, medical

Mrs. Gracie Reed, Carbon, medical

Mrs. J. B. Robinson, Eastland, medical

Floyd Nichols, Eastland, medical

Willard Liles, Eastland, medical

Tony Petree, Eastland, medical

Mrs. Janie Kuykendall, Cisco, medical

Mrs. Minnie Thomas, Eastland, medical

Mrs. Elzora Carter, Eastland, medical

Mrs. Florence Yancey, Eastland, medical

Mrs. H. J. Lane, Eastland, medical

Mrs. Lon Horn, Eastland, medical

Mrs. Pat Murphy, Eastland, medical

surgical

Mrs. Evie Blair, medical

Mrs. Carrie Hull, Cisco, medical

T. H. Landon, Eastland, medical

William O'Neal, Eastland, medical

Mrs. Viva Phillips, Eastland, medical

Mrs. Mary Crouch, Carbon, surgical

Mrs. C. W. Medford, Eastland, medical

Mrs. Margaret East, Eastland, medical

Mrs. Mae Hunt, Ranger, medical

Mrs. Annie Allison, Gorman, medical

### 4-H Club Members To Be Guests of Thursday Club

Mrs. Carrol Shelton announced that the members of the Thursday Afternoon Club had invited the sixth grade 4-H Club to be guests in the near future.

Mrs. Shelton made the announcement at the meeting held Tuesday afternoon at the school.

The meeting was opened by the president followed by the club motto, pledge and prayer, led by the vice president.

Contest sheets and rules were presented to each member by Mrs. Shelton. The contest will be held in March.

Twenty-five members attended. Doris Lewis, Patty Johnson and Lynn McElreath were guests.

### Hoover Pittman In Race for Constable's Post

J. H. (Hoover) Pittman is a candidate for Constable of Precinct 1.

(The Telegram regrets that it was erroneously reported in our Sunday edition that Pittman was a candidate for justice of the peace.)

Pittman, a longtime Eastland citizen, said he would make an effort to see all voters in the precinct and urged the support of all of his friends.

He will issue a formal statement at a later date.

### Storm-

(Continued from Page One)

er degree. Several boat houses had one or more anchoring cables broken. Property on the island around the open part of the lake suffered the majority of the damage.

Texas Electric Service Company's Leon Power Plant reported wind up to 70 miles per hour.

The winds were generally reported from all over the state. Abilene reported winds at 75 mph and Lubbock reported wind up to 90 mph.

TRADE WITH YOUR HOMETOWN MERCHANTS

### READ THE CLASSIFIEDS

#### Down on the Farm-

... insurance is the farmer's most dependable hired hand. You farmers know best how Mother Nature can play havoc with your home and other farm buildings, machinery, live stock and crops. Fire, lightning, windstorm and hail cause tremendous farm property losses every year. Sufficient insurance coverage can give you all the financial protection you will need. Then, when disaster hits, the hired hand—your insurance—will relieve you of your financial worries. Drop in soon for estimates and costs. No obligation.

**EARL BENDER & COMPANY**  
Eastland, (Insurance since 1924)



Your New Prescription Number Is  
**MA 9-2681**

**DAVIS DRUG COMPANY**  
114 West Commerce

### New! Gillette Adjustable Razor



**NOTICE**

**FRESH DRESSED FRYERS and Fresh Dressed Hens**

At The Plant  
PHONE MA 9-1200

**WALKER Dressing Plant**

### Court of Civil Appeals Eleventh District

**Motions Submitted**

3497 St. Paul Mercury Ins. Co. v. A. E. Jackman. Appellant's motion for rehearing. Anderson 3540 U. S. Truck Lines, v. Texaco, Inc. Agreed motion for extension of time to file brief of Appellee. Harris

**Motions Granted**

3540 U. S. Truck Lines v. Texaco, Inc. Agreed motion for extension of time to file brief of Appellee. Harris

**Motions Overruled**

3437 St. Paul Mercury Ins. Co. v. A. E. Jackman. Appellant's motion for rehearing. Anderson

**Cases Set for Submission Feb. 19**

3522 Dixon Management Corporation v. M. H. Montfort et al. Stephens

3523 George Steakley v. W. C. Williams et al. Howard

3524 Argonaut Underwriter Ins. Company v. Cecil Ellis. Nolan

3525 W. E. Glenn et al v. Agness Daniel et al. Erath

**INGROWN NAIL HURTING YOU? Immediate Relief!**

A few drops of OUGRO bring blessed relief from tormenting pain of ingrown nail. OUGRO softens the skin underneath the nail, allows the nail to be cut and thus prevents further pain and discomfort. OUGRO is available at all drug counters.

### How To Care For Carpeting

All too soon after the new carpet is laid you may notice a beat down traffic path.

Don't let it floor you. The carpet will stay new looking for years if you remove spots and traffic paths as they appear with Blue Lustre Carpet and Upholstery Cleaner. Blue Lustre literally erases the beat down areas without the necessity of cleaning entire carpet. One half gallon of Blue Lustre concentrate cleans three 9 x 12 rugs.

**Coats Furniture & Carpet Co.**  
EASTLAND, TEXAS

### Political Announcements

The Eastland Telegram has been authorized to announce candidates for public office in the Democratic first primary election May 7 as follows:

**FOR SHERIFF:**  
J. B. Williams, re-election  
Lee Horn  
W. E. (Bill) Reid  
Oscar M. (Hop) White

**FOR TAX ASSESSOR-COLLECTOR:**  
J. C. Allison (re-election)

**FOR STATE REPRESENTATIVE 76TH DISTRICT:**  
Paul Brashear (re-election)  
Don Kincaid

**FOR COUNTY COMMISSIONER PRECINCT NO. 1:**  
J. B. (Tip) Arther  
E. W. (Bud) Griffin  
O. R. (Ott) Ervin

**FOR STATE SENATE 22ND DISTRICT:**  
Tom Creighton, Palo Pinto Co.

**FOR CONGRESS, 17TH CONGRESSIONAL DISTRICT:**  
Roy Skaggs of Abilene

**FOR CONSTABLE PRECINCT 1:**  
J. H. (Hoover) Pittman

**"EFFICIENT EXTERMINATION"**

OF

- Roaches • Silver Fish • Ants
- Mice • Fleas • Ticks
- Scorpions and other Pests


Member National Pest Control Ass'n.

**Lester Humphrey**  
PEST CONTROL SERVICE

Surity Bonded Termite Control—

Roscoe Marsh, Mgr.  
525 E. Conner  
Ph. MA 9-1140

Whatever the season,  
There's always good reason\*



\* In experience and service.

**FOR SELLING YOUR SCRAP IRON AND METAL TO EASTLAND IRON & METAL CO. wanted for direct use...**

**STEEL MILL SCRAP**

- MIXED SCRAP IRON
- OIL FIELD CABLE
- MACHINERY CAST IRON
- TIN FOR OUR PRESS

**SMELTER SCRAP METAL**

- COPPER, ALL GRADES
- RED AND HARD BRASS
- RADIATORS, BATTERIES
- ALUMINUM, ZINC, BABBIT

Phone **EASTLAND** Phone  
MA 9-1522 IRON & METAL CO. MA 9-1522

OWNED AND OPERATED BY HENRY PULLMAN

# Westex Packing Co.

Formerly Earnest Food Locker  
**RETAIL DIVISION**  
Friday & Saturday Only

## Specials

Pork Roast	LEAN SHOULDER	Lb.	29¢
Sausage	PURE PORK	4 Lbs.	1.00
Pork Chops	LEAN CENTER CUT	Lb.	49¢
Pork Neck Bones		Lb.	15¢
Fresh Side Pork	SLICED	3 Lbs.	1.00
Bacon Thick	SLICED	2 Lbs.	69¢
Chuck Roast	ECONOMY	Lb.	39¢
T-Bone Steak	ECONOMY	Lb.	59¢
Loin Steak	ECONOMY	Lb.	59¢
Sirloin Steak	CHOICE BEEF	Lb.	79¢
Seven Roast	CHOICE BEEF	Lb.	49¢
Short Ribs		Lb.	29¢
Hamburger Patties		Lb.	49¢
Minute Steaks		Lb.	69¢

## WORTH MORE BECAUSE THEY WORK MORE!

Compare this list of Chevy advances with the features ordinary trucks are still talking about. You'll see why Chevy trucks get more work done in a day... why they go extra thousands of miles before trade-in time. These Sturdi-Bilt Sixties aren't just new, they're a full scale revolution!

**6'S SWORN TO SAVE**  
Chevy's 6-cylinder engines are set to squeeze extra miles out of every drop of fuel. They're long famous for low fuel consumption, high performance.

**SHORT STROKE V8'S**  
Power-packed for peak performance, Chevy's husky V8's make child's play out of the toughest hauls. They have a mind tuned to economy, too, that keeps costs down, profits up.

**SLICK NEW SUBURBAN CARRYALLS**  
These handsome new handy haulers "double in brass"—can transport eight passengers or up to 950 lbs. of payload. Rear and center seats are easy to remove and replace when necessary. For work or for pleasure, these double-duty beauties are best for both!

**TORSION-SPRING RIDE**  
Each front wheel, suspended independently of the other, is free to step individually over bumps. And shockproof torsion springs up front soak up the jars and jolts before they reach the body. With three rugged new tailored-to-the-truck rear suspensions to further reduce road shocks, Chevy gives you the smoothest truck ride you've ever felt.

**NO SHIMMY, NO WHEEL FIGHT**  
Drive a '60 Chevy. Just once. Right away you'll notice the absence of I-beam shimmy and wheel fight common on ordinary trucks.

**CABS FOR BIG GUYS**  
Big guys get a bigger break in a Chevy cab. There's plenty of space inside to stretch out and relax; more room for hats and hips, more room for wide shoulders and long legs. There's horizon-wide visibility through a windshield with 26% more glass area; a new see-at-a-glance instrument panel. Cabs are safer, too, up to 67% more rigid.

**NEW DOLLAR-SAVING PRICES**  
Chevrolet's low prices make big truck news for '60. They mean money in your pocket on model after model. Step-Vans, 4-Wheel Drives, many light-duty models with automatic transmissions—all are lower priced. Also, prices have been reduced on all optional V8's.

**SEE YOUR DEALER**  
It could be the most important visit you make in '60. When you've seen these new Chevies, you'll agree they're the world's most advanced trucks. Then drive one and find out why.

**1960 STURDI-BILT CHEVROLET TRUCKS**

See your local authorized Chevrolet dealer for fast delivery, favorable deals!

**FULLEN MOTOR COMPANY, INC.**  
305 E. MAIN EASTLAND PHONE MA 9-2676



**SAFEWAY**

*Hurry to Safeway For a Big*

**Winter Carnival OF VALUES**



*Snowballs of Values!*

**DETERGENT** 59¢  
 White Magic... None Better at Any Price. Giant Box

**SCAMPER** 49¢  
 Liquid Detergent... Perfect for Washing Dishes. 22-Oz. Can

**WHITE MAGIC ALL PURPOSE CLEANER**  
 Liquid - Cleans Fast, Yet Gentle! Can't harm woodwork or floors.

15-Oz. Bottle 29¢    28-Oz. Bottle 49¢

**COFFEE** 59¢  
 Maxwell House or Edward's All Grinds. Good to the Last Drop! 1-Lb. Can

**CORN MEAL** 29¢  
 Yellow. Kitchen Craft... Perfect for Cornbread or Muffins. 5-Lb. Bag

**GOLDEN CORN** 25¢  
 Highway Whole Kernels of Delicious Goodness. 2 12-Oz. Cans

**WHITE HOMINY** 27¢  
 Highway... Perfect Compliment to All Pork Dishes. 4 No. 300 Cans

**STRAWBERRIES** \$1.00  
 Bel-air Frozen... Sliced Berries. Perfect for Shortcakes. 3 16-Oz. Pkgs.

1-Lb. Can 59¢

5-Lb. Bag 29¢

2 12-Oz. Cans 25¢

4 No. 300 Cans 27¢

3 16-Oz. Pkgs. \$1.00

**SUNDAY, FEBRUARY 14, IS VALENTINE'S DAY...**

**Angel Food Cake** 39¢  
 Cookbooks... Delicious tender textured. 13-Oz. Cake

**Ice Cream** 69¢  
 Party Pride... Cherry Capri and other Flavors. 1/2-Gal. Ctn.

**Bisquick** 49¢  
 (20-Oz. Pkg... 25c) 40-Oz. Pkg.

**Puffin Biscuits** 29¢  
 or Betty Crocker. Sweetmilk or Buttermilk. 3 1-Oz. Cans

*Crisp, Fresh Produce!*

**ROME APPLES** 12¢  
 All-Purpose Apple. Delicious for Pies. Perfect for Baking. Lb.



**Carrots** 12¢  
 Texas' Finest. Crisp and Crunchy. 2-Lb. Bag

**Tomatoes** 19¢  
 Firm, Ripen Perfect for Slicing. Lb.

**ANJOU PEARS** 17¢  
 Dessert Fruit Supreme. Lb.

**AVOCADOS** 29¢  
 Perfect Touch When Added to Salads. 4 For

*Carnival of Values!*

**TOMATO JUICE** 29¢  
 Del Monte... Low in Calories and High in Nutrition. 46-Oz. Can

**KLEENEX TISSUE** 49¢  
 Facial Tissue... Assorted Colors. 2 400-Ct. Boxes

**WHOLE BEETS** 10¢  
 Town House... Fancy. Delight the Whole Family with Buttered Beets. No. 303 Can

**SPICED PEACHES** 19¢  
 Hemet Whole... Luscious Peaches with Just the Right Spices. No. 2 1/2 Can

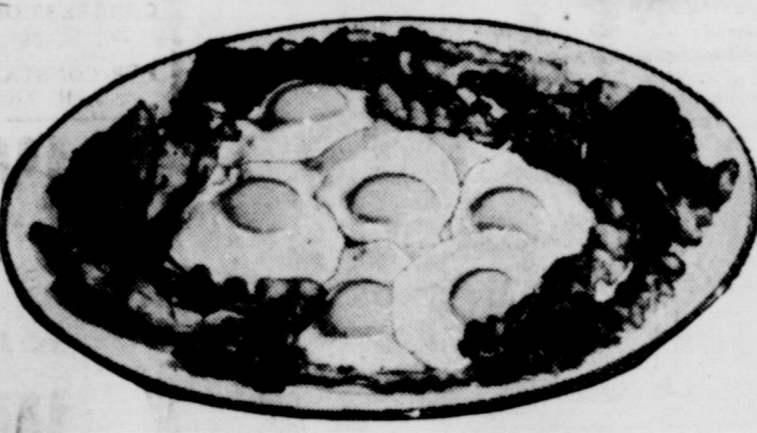
**DILL PICKLES** 49¢  
 Zippy, Whole Dills. Ideal for the Relish Dish. 2 22-Oz. Jars

*Enjoy Cherry Pie!*

**Cherry Pie** 39¢  
 Nearest Frozen... Over Ready. 24-Oz. Pie

**Pie Cherries** 35¢  
 Town House... Red, Sour, Pitted. 2 No. 303 Cans

**Safeway Thick Sliced BACON** 69¢  
 Delicious Breakfast Treat. Makes Wonderful Bacon-Tomato Sandwiches. These Thick Slices Retain the Perfect Flavor of that Wonderful Smoked Bacon. 2-Lb. Pkg.



**THICK, JUICY STRIPS OF BACON CALL FOR...**

**Grade 'A' Eggs** 42¢  
 Breakfast Gems. Grade "A" Quality. Large Size. Doz.

**Large 'AA' Eggs** 45¢  
 Cream of the Crop. Grade "AA" Quality. Large Size. Doz.

**Soap Powder** 59¢  
 White Magic... 40-Oz. Box

**Su-Purb Blue** 59¢  
 Detergent... Washes and Blues all in one! Giant Box

**Cleanser** 23¢  
 White Magic... Contains Chlorine Bleach. 2 14-Oz. Cans

**Brocade Soap** 29¢  
 Regular Size. Complexion Soap... Assorted Colors. 5 Bar Pkg.

**Brocade Soap** 39¢  
 Bath Size for Economy. Assorted Colors. 5 Bar Pkg.

**Green Beans** 59¢  
 Bel-air... Frozen. Cut Wax Beans or Cut Green Beans. 3 9-Oz. Pkgs.

**Crisco** 31¢  
 A Truly Digestible Shortening. 1-Lb. Can

**Chicken Hens** 39¢  
 U.S.D.A. Inspected for Wholesomeness. 3 1/2 to 6-Lb. Average. Lb.

**Veal Cutlets** 69¢  
 Serve Veal Cutlets Tonight! Delicious with French Fries. Lb.

**Safeway Franks** 49¢  
 All Meat. Or Armour's Star Brand. So Easy to Serve. 1-Lb. Pkg.

**U. S. Good Grade Calf**

**Sirloin Steak** 85¢  
 U.S.D.A. Good Grade Calf. Lb.

**Pork Spare Ribs** 25¢  
 3 to 5-Lb. Avg. Lb.

**T-Bone Steak** 95¢  
 U.S.D.A. Good Grade Calf. Lb.

**Bakery Special of the Week**

**1 LB. LOAF 19¢** (Regular 25c Value)

**Skylark BALLERINA BREAD**

**Iced Raisin Bread** 27¢  
 Skylark... Delicious Taste Treat. 1-Lb. Loaf

**Jelly Snails** 25c  
 7-Oz.

*Winter Specials!*

**WOLF TAMALES** 25¢  
 Perfect Treat on a Cold Winter Evening. No. 300 Can

**FRITO CHILI** \$1.00  
 With Beans... Taste Tempting Served with Tamales. 3 No. 300 Cans

**PORK & BEANS** 25¢  
 Van Camp... Nourishing and Full of Wonderful Flavor. 2 No. 300 Cans

**HIGHWAY CATSUP** 29¢  
 Wonderful Blend of Tomatoes and Spices. 2 14-Oz. Bottles

**2¢ OFF Bakery Special!**

**BROWN & SERVE ROLLS** 21¢  
 Skylark, Twin Rolls. (Reg. 23c) 13-Oz. Pkg.

**Pink Praise** 29¢  
 Deodorant Soap with Cold Cream. 2 Reg. Bars

**Fluffy All** 29¢  
 Extra Fluffy Detergent. (3c Off Label.) 19-Oz. Box

**Breeze** 33¢  
 Detergent... Delightfully Clean Odor. Large Box

**Lux Liquid** 37¢  
 Detergent... Mild and Gentle... Yet Speedy. 12-Oz. Can

**Paper Towels** 37¢  
 Northern... White or Assorted Colors. 2 Rolls

**Toilet Tissue** 37¢  
 Northern... White or Assorted Colors. 4 Roll Pack

**Wax Paper** 27¢  
 Cut-Rite... Double Waxed. 125' Roll

**Wax Paper** 21¢  
 Kitchen Charm. 100' Roll

**Aluminum Foil** 33¢  
 Reynolds. 25'x12" Roll

**Vigo Dog Food** 21¢  
 The Best Dog Food. 2 1-Lb. Cans

**Deviled Ham** 35¢  
 Underwood... Ideal for Snacks. 4 1/2-Oz. Can

**Starkist Tuna** 31¢  
 Chunk Style... Ideal for Salads. 4 1/2-Oz. Can

**Chunk Tuna** 31¢  
 Chicken of Sea... Green Label. 4 1/2-Oz. Can

**Meat Dinners** 55¢  
 Banquet... Frozen. Chicken, Beef or Turkey. 11-Oz. Pkg.

**Tomato Sauce** 29¢  
 Del Monte... Made from Selected Tomatoes. 3 8-Oz. Cans

**Sugarine** 65¢  
 Liquid Sweetener. So Economical. 4-Oz. Bottle

**White Karo Syrup** 25¢  
 Red Label. 1 1/2-Lb. Bottle

**Instant Coffee** \$1.00  
 Maxwell House... Full Flavored. 6-Oz. Jar

**Vanilla Wafers** 33¢  
 Nabisco... A Treat Anytime! 12-Oz. Box

**Potato Chips** 30¢  
 Working... 6-Oz. Bag

**SAFEWAY**

Conveniently Located to Serve you at 504 E. Main

—Call 601 for Classified Ads—

**WE'RE MODERN ...**

WE HAVE A NEW  
DIAL PHONE!  
OUR NEW NUMBER IS  
**MAin 9-1344**



**Modern Dry Cleaners**  
James Wright, Owner  
210 S. Seaman

Have Your Clothes Sanitone Cleaned ... and See The Difference

ATTEND THE CHURCH OF YOUR CHOICE EACH SUNDAY

**T. L. FAGG**  
REAL ESTATE  
Property Management  
Home and Farm Loans

Visit Our Display Yard In EASTLAND before you choose your **MONUMENT**

Located across street from Coats Furniture Co.  
**Willard Griffin, Dealer**  
Ph. MA 9-1091 — Eastland  
Built by: Riley-Gardner Memorial Co., Hamilton, Texas

**Shirley Smith Is Hostess to Meet Of Double Seven**

The Double Seven Club held their regular meeting Tuesday in the home of Shirley Smith. Julie Frost, president, called the regular meeting to order. Judy Lewis led the group in the opening prayer.

The group then discussed the skating party to be held Friday Feb. 19th from 7 to 10:30 p.m. The election of officers was then held with the outgoing president presiding. New officers are as follows: Judy Seaberry, president; Carol Walter, vice-president; Wanda Arther, secretary; Shirley Smith, reporter; Becky McAlister, parliamentarian and Ann Freyschlag, chaplain.

The meeting was adjourned and refreshments of punch, sandwiches and cherry tarts were served to Danye Sherman, Nora Jordan, Ann Freyschlag, Helen Lilly, Julie Frost, Judy Lewis, Carol Walter, Judy Seaberry, Wanda Arther and the hostess, Shirley Smith.

**Committees Set For Banquet To Be Held Saturday**

The Intermediates and Young People of the First Baptist Church will hold their annual Valentine Banquet Saturday night at 7 p.m. Serving on the food committee will be Mrs. Gordon Goldston, chairman, Shirley Smith, Patricia Liles, Judy Blevins and Mrs. Bouds.

R. B. Hall, musical director, will be in charge of the entertainment. The publicity committee will consist of Joe Ingram, chairman, George Kimbler and Dickie Byars. Mrs. Joe Ingram, chairman, and Carol Walter will have charge of the decorations for the affair.

Mrs. H. W. Sims will make reservations. All reservations must be made by Saturday if possible. They may be made by phoning the First Baptist Church.

ATTEND THE CHURCH OF YOUR CHOICE EACH SUNDAY

CALL 601 FOR CLASSIFIEDS

**Funeral Directors**  
**HAMNER FUNERAL HOME**  
Ben E. Hamner  
Oxygen Equipped - Air Conditioned

**Eastland** Phone MA 9-2611  
**Cisco** Phone Hillcrest 2-1211

**AMBULANCE SERVICE ANY WHERE ANY TIME**  
Nominal Cost Burial Insurance  
For The Entire Family

**FRESH EGGS DAILY**  
**SOUTHWESTERN POULTRY and LIVESTOCK COMPANY**  
(Formerly Kincaid Feed)

COME IN AND SEE OUR COMPLETE SELECTION OF FINE **CARPET'S**

★ Prices to fit every budget  
★ We do our own installation

**Ranger Furniture Exchange**  
"BRASHIER'S"  
123 N. Rusk RANGER Phone 242

NOTICE **EGGS ... 30c DOZEN**  
Friday, Saturday, Sunday  
KENDRICKS DAIRY — CISCO, TEXAS

**RUBY CRAWLEY BEAUTY S**  
announces the association of  
**ALMA QUINN**  
Specializing in Hair Shaping, Hair Styling  
Waves and Radio Waves.  
Phone **MA 9-2522** For Appointments  
LOCATED IN VILLAGE HOTEL



**OUR Quality LUMBER MAKES THE DIFFERENCE**

When you look around for lumber for building needs, don't settle for second best! Insist on top-quality and top-price! See us first! Our know-how and experience is yours for the asking! Whatever your building plans, give us a call!

**Higginbotham-Bartlett Co.**  
Jack Elliott, Mgr.  
301 W. Main Ph. MA 9-1311 or MA 9-1312  
ASK FOR FREE ESTIMATE! NO OBLIGATION

**McGraw Motor Co.**

CARS DODGE—STUDEBAKER TRUCKS  
461 South Seaman Parts and Service Phone MA 9-1244

**CHANNEL 9 (KRBC, Abilene)**

THURSDAY	FRIDAY	SATURDAY
6:30 Cont. Class.	3:00 Comedy Pi-hse	9:00 Howdy Duddy
7:00 Today	4:00 Adv. in Music	4:00 Com. Pre.
8:00 Today	4:30 Com. Pres.	9:30 Ruff-Reddy
9:00 Dough Re Mi	5:30 3 Stooges	10:00 Fury
9:30 Play Yr Hunch	6:00 News	10:30 Circus Boy
10:00 Price Is Right	6:10 Weather	11:00 True Story
10:30 Concentration	6:15 Huntley Rept.	11:30 Detect. Diary
11:00 Truth or Con.	6:30 Law of Plains	12:00 Mr. Wizard
11:30 Could Be You	7:00 Shotgun Slide	1:00 NEA Preview
12:00 News, Wthr.	7:30 J. Staccato	1:15 Basketball
12:15 Devotions	8:00 Meet Lincoln	3:30 Racing
12:30 Air Force	8:30 Ernie Fard	
12:35 3 Stooges	9:00 Bet Yr. Life	
1:00 Queen for Day	9:30 State Trooper	
1:30 Loretta Young	10:00 News	
2:00 Dr. Malone	10:10 Weather	
2:30 From Roots	10:15 Com. Pres.	

**CHANNEL 11 (KFJZ, Fort Worth)**

THURSDAY	FRIDAY	SATURDAY
8:29 Sign On	4:30 Popeye	11:59 Sign On
8:30 Mickey & A.	5:00 Susie	7:30 Silent Service
9:00 Little Rascals	5:30 Amos 'N Andy	12:00 Theatre
9:30 Jack La Lanne	6:00 M. Hound	12:55 Traffic Safety
10:00 Mike Wallace	6:30 Three Stooges	1:00 Theatre
10:30 Rendezvous	7:30 Rescue 8	2:45 Basketball
12:15 Ann Alden	8:00 Man Dawson	4:30 Matinee
12:30 Ranger Jim	8:30 Trackdown	6:00 Com. Pres.
1:00 Matinee	9:40 Phil Silvers	
3:30 I Mar'd Jean	9:30 Paul Coates	
4:00 Bugs Bunny	10:00 Theatre	

**CHANNEL 4 (KRLD, Dallas)**

THURSDAY	FRIDAY	SATURDAY
7:29 Sign On	3:00 Brighter Day	7:29 Sign On
7:30 Cartoons	3:15 Secret Storm	4:00 The Gourmet
8:00 News	3:30 Edge of Nite	7:30 Cartoons
8:15 Cap. Kangaroo	4:00 Movie	4:30 Com. Pre.
9:00 Red Rowe	5:15 Party Time	8:00 Cap. Kangaroo
9:30 On the Go	6:00 News	9:00 Heckle & J'kie
10:00 I Love Lucy	6:10 Weather	6:00 News
10:30 Dec. Bride	6:15 News	9:30 Mty. Mouse
11:00 Love of Life	6:30 Tell the Truth	6:20 Weather
11:30 Search for Tin	7:00 Betty Hutton	10:30 Lene Ranger
11:45 Guiding Light	7:30 Sea Hunt	11:00 Sky King
12:00 News	8:00 Zone Grey	11:30 Cam. Theatre
12:15 Newsreel	8:30 Marchion	12:00 Farm & Grdn.
12:30 As Wild Turns	9:00 Revelation Rev.	8:30 Have Gun
1:00 Better or Worse	10:00 News	9:00 Gunsmoke
1:30 House Party	10:15 Weather	9:30 D. Valley Days
2:00 Millionaire	10:30 Pie & Place	12:45 Baseball
2:30 Verdict is Yrs.	10:30 MovieTime	1:45 Ice Hockey
		3:15 Cartoons
		3:30 Travel for Fun

**CHANNEL 8 (WFAA, Dallas)**

THURSDAY	FRIDAY	SATURDAY
7:25 Devotional	5:30 Cartoon Strip	7:30 Ag. on Parade
7:30 Cartoons	6:00 Newsreel	5:00 Golf
8:00 Margie	6:10 News	7:45 thru Parthole
8:30 Ramper Em.	6:15 Weather	6:00 Lock Up
9:30 Life of Riley	6:22 Sports	9:00 Sun. Special
10:00 Julie Benell	6:30 Gale Storm	6:30 Dick Clark
11:00 Hour of Stars	7:00 Donna Reed	11:00 Hop. Cassidy
11:55 News	7:30 Red McCoys	7:00 High Road
12:00 Restless Gun	8:00 Pat Boone	11:30 Quiz Em.
12:30 Love That Bob	8:30 Untouchables	7:30 Live it to B'vr.
1:00 About Faces	9:30 Ernie Kovacs	12:00 Lunch w. Soupy
1:30 Medic	10:00 Newsreel	8:00 L. Welk
2:00 Day in Court	10:10 News	1:00 Afric. Patrol
2:30 Gale Storm	10:15 Weather	1:30 Robin Hood
3:00 Beat Clock	10:22 Sports	2:00 Citiz. Soldier
3:30 Who Do Ya	10:30 Mike Hammer	2:30 Sci. Fiction
4:00 Amer. Band.	11:00 Theatre	3:30 Danger Busi.
		4:00 Bowling

**CHANNEL 5 (WBAP, Fort Worth)**

THURSDAY	FRIDAY	SATURDAY
5:55 Newsreel	5:30 Downbeat	8:00 Cartoons
6:00 Cont. Cl'srm.	5:55 Newsreel	9:00 Howdy Duddy
7:00 Today	6:00 News	9:30 Ruff & Reddy
7:25 Weather	6:10 Weather	10:00 Fury
8:25 News	6:15 Huntley Rept.	10:30 Circus Boy
9:00 Dough Re Mi	6:30 Plainsman	11:00 True Story
9:30 Play Yr Hunch	7:00 Bot Masterston	11:30 Det. Diary
10:00 Price Is Right	7:30 J. Staccato	12:00 Matinee
10:30 Concentration	8:00 Mt. Mr. Lincoln	1:15 Basketball
11:00 Tr. or Conseq.	8:30 Ernie Ford	3:30 Racing
11:30 Could Be You	9:00 Groucho Marx	4:00 Sig Gun The.
12:00 Noon News	9:30 Lawless Years	
12:30 Great Life	10:00 Texas News	
1:00 Queen for Day	10:15 Weather	
1:30 Loretta Young	10:25 News Final	
2:00 Dr. Malone	10:30 Sports	
2:30 From Roots	10:35 Jack Paar	
3:00 Cam. Theatre	12:00 News	
3:30 Adv. Theatre	12:05 Newsreel	
4:00 Fam. Theatre	12:15 Late Show	

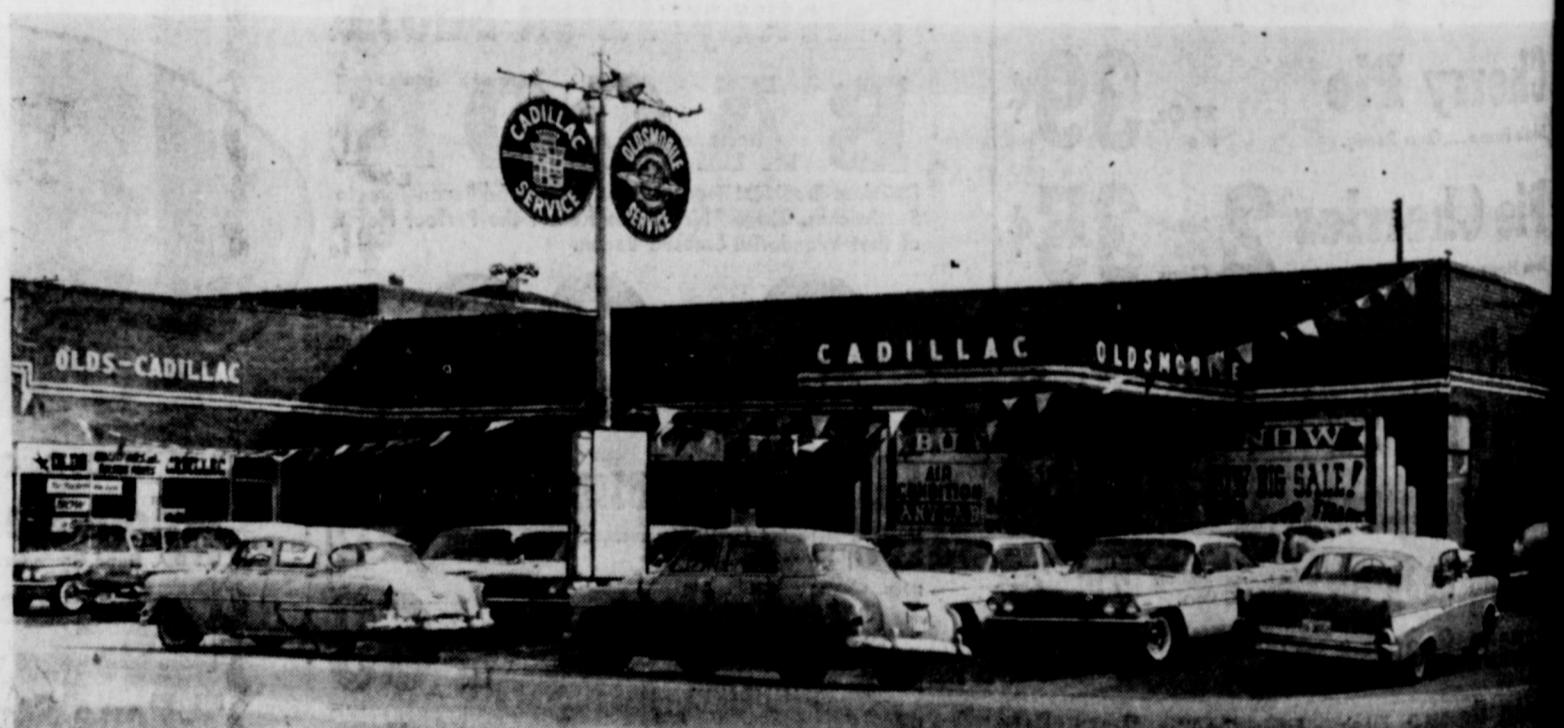
**TELEVISION AT ITS BEST**

You'll Enjoy The Best Programs From Five Channels With a Cable Antenna Connection. See Us Today.  
**Community Television, Inc.**

Village Hotel Phone MA 9-1716

**EASTLAND'S New Oldsmobile Dealer PIPKIN MOTOR CO.**

314 W. Main Eastland, Texas Phone MA 9-2636



"We're here to serve you and see that you're satisfied!"

Come In and get acquainted ... we'll really make you welcome!

The welcome mat is out, and you are cordially invited to drop in to look over our sales and service facilities. We're proud of them—as well as of our recent appointment as your Authorized Oldsmobile Dealer.

We would like to show you all there is to see—our modern showroom :: the new and complete service department: Most of all, we'd like to have you meet the people—the salesmen and service men—who make this an outstanding organization. Drop in soon :: you'll be glad you did.



COME IN FOR A RIDE IN A ROCKET!

Take a demonstration drive in a new Olds for 1960 with Quadri-Balanced Ride ... safe, stable, silent, smooth.

**OLDSMOBILE FOR '60**

THE FINEST THE MEDIUM-PRICE CLASS HAS TO OFFER!

Call 601 for Classified Ads—



**"Pipe Dreams" Take Shape with REGULAR SAVING**

Home of your own... a start in business... another "pipe dream" can become a reality. You open an insured savings account here and it regularly. Our good earnings, added twice and compounded, help you get the things you want. Start saving now with a convenient

**First Federal Savings & Loan Association of Ranger**  
 ONLY 3% DOWN ON FHA LOANS  
 RANGER, TEXAS Phone 820

**Chicken Dinner Is Sponsored by Colored Church**

Men of the First Baptist Church (colored) are sponsoring a barbecue chicken dinner Saturday in the annex of the church on North Lamar. Serving will begin at 11:30 a.m. Anyone wishing to have the dinners delivered may call MA 9-1224. Plates will cost \$1.00 each. Roston King will barbecue the chickens. Baked goods will be sold at the dinner.

**Mrs. E. L. (PETE) TUCKER**  
 304 E. Plummer  
 Phone MA 9-1637  
 Dealer and Distributor for the  
**GOODIER COMPANY**  
 of Dallas  
**MANUFACTURERS OF OVER 400 ITEMS FOR THE HOME AND FAMILY FOR 35 YEARS**

**Mrs. Sneed Hosts XI Alpha Zeta Members Monday**

Mrs. R. M. Sneed was hostess to the members of the XI Alpha Zeta chapter of Beta Sigma Phi Monday night in her home for the sorority's regular meeting. "What We Must Know About Communism" was the topic of the program presented by Mrs. Mike George and Mrs. Virgil Moore. They told of how communism first began and of communism at the present time. Mrs. Bill Collings presided in the absence of the president. The annual Valentine Banquet to be held Saturday in the Village Hotel Roof Garden was discussed and an announcement concerning the County Easter Seal drive was made. Refreshments of cake, nuts, olives, punch and coffee were served by the hostess from the serving table laid with a red cloth and centered with a Valentine tree. Coffee was served from a silver service and the napkins carried out the Valentine theme. Members present were the following: Mmes. Bill Collings, Le Strawn, Dorsey McElreath, Fehrman Lund, Willis Moore, Bill Leslie, Truman Brown, Mike George, Virgil Moore and the hostesses, Mrs. R. M. Sneed.

**SOCIAL CALENDAR**

**Monday, Feb. 15**  
 7:30 p.m. — The Oddfellow Lodge will hold their regular meeting in the IOOF Hall.  
 7:30 p.m. — The Pythian Sisters will meet in the Castle Hall for their regular meeting.  
 7:30 p.m. — Mrs. Parker will be hostess to the meeting of Las Lenles Club. "Man and Space" will be given by Mrs. Gregory and "Tomorrows Children" by Mrs. Jaton.  
**Tuesday, Feb. 16**  
 2 p.m. — The Eastland Art Club will hold their regular meeting in the home of Mrs. G. L. Wingate.  
**Thursday, Feb. 11**  
 7 p.m. — The Thursday Afternoon Club will sponsor a Game Tournament in the Woman's Club. Tickets are 50c. Bridge, 84, 42 and anasta will be played.  
**Saturday, Feb. 13**  
 3 p.m. — The Eastland County Chapter No. 555 NARC will hold their regular meeting in the Educational Building of the First Baptist Church.  
**Wednesday, Feb. 17**  
 7:30 p.m. — The Wesleyan Service Guild will hold their regular meeting in the Methodist Church.  
 3:30 p.m. — Mrs. E. C. Rangland will be the leader for the regular meeting of the Music Study Club.  
**Thursday, Feb. 18**  
 2 p.m. — The Flatwood Home Demonstration Club will meet in the home of Mrs. Jack Lusk for their regular meeting.  
 3 p.m. — The Thursday Afternoon Club will honor the Eastland County 4-H Clubs, EHS, Home-making classes and the EHS Future Homemakers at their regular meeting.

**Homebaked Goods To Be Sold By Band Boosters**

Homebaked goods will be sold by the Band Boosters as they hold their monthly bake sale Saturday in the Safeway Store. The sale will begin at 8 a.m. Members of the Band Boosters are planning to suit Eastland High School band in 1960. All proceeds of the sale will be used to suit the band.

**CALL 601 FOR CLASSIFIEDS**  
 FOR A TAXI... PHONE YOUR  
  
**Yellow Cab**  
**MA 9-1193**  
 Ruth Daniel  
 When you ride in a Yellow Cab... You are completely insured.

**FREE! THE BOOK THAT CAN SAVE YOU \$200-\$500 THIS YEAR**

**LOVE THAT LARK BY STUDEBAKER**

- NAMES NAMES.** "An Analytical Comparison of the U.S. Compact Cars" pulls no punches—get your free copy at your Studebaker Dealer.
- SAVES YOU MONEY.** Examine the facts in this handy buyer's guide. Judge for yourself how The Lark really stacks up against the others.
- STICKS TO FACTS—**official charts compare them all for quality, roominess, driving comfort, and ease of entry.
- DOCUMENTED PROOF.** Shows that one car offers you more selection, more satisfaction, more quality—more of everything you want. Discover all the facts and you'll love that Lark—now proven by more than a billion owner-driven miles. **QUALITY-BUILT BY THE QUALITY MAKER.**



SEE AND PRICE SIX STUNNING STYLES at your STUDEBAKER DEALER'S  
**McGraw Motor Company 416 So. Seaman**



**MacMOY'S Super Save**  
 400 S. Seaman Home Owned, Home Operated

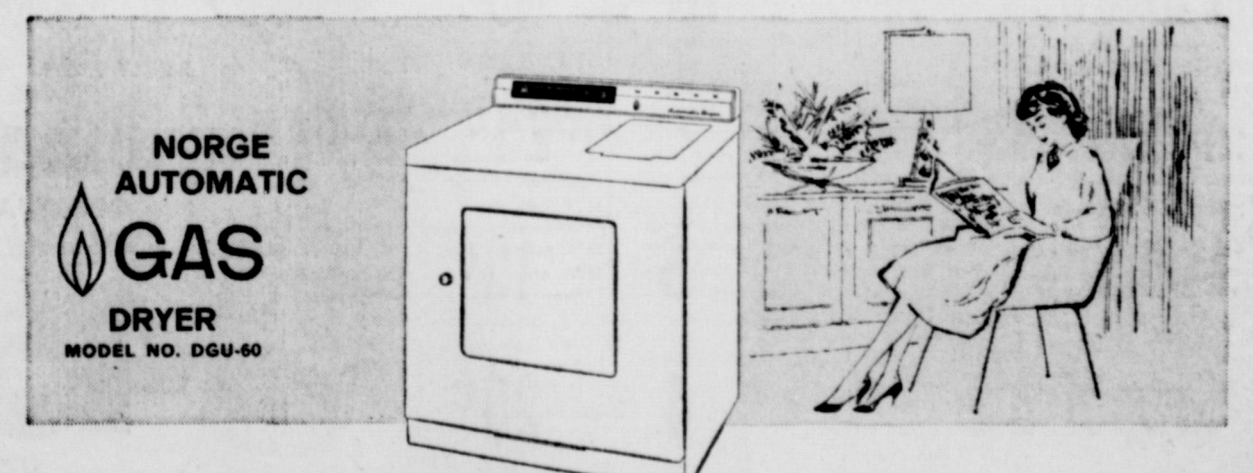
**\$UPER DAVE MARKETS**  
**EVERYONE LOVES OUR BARGAINS**

<b>FLOUR</b>	SWEETHEART Always 'Mighty Sweet' Savings	29¢
<b>CORN</b>	KOUNTY KIST Whole Kernel	25¢
<b>JUICE</b>	TEX-SUN GRAPEFRUIT	29¢

**SUGAR** Pure Cane **49¢** 5-Pound Bag

CRISCO	3-Pound Can	73¢
LIPTON TEA	1/4-Lb. Box	39¢
LIPTON TEA BAGS	16-Ct. Box	23¢
LIPTON INSTANT TEA	1 1/2-Oz. Jar	49¢
FRITO	No. 2	59¢
MAXWELL HOUSE COFFEE	6-Oz. Jar	89¢
RUSSET POTATOES	10 Lbs.	55¢
RED DELICIOUS APPLES	Lb.	15¢
CARROTS	2 Bags	15¢
GRAPEFRUIT	2 Ruby Red Lbs.	15¢
DOG FOOD	BIG MIKE 300 Cans	19¢
W-P DETERGENT	Liquid 22-Oz. Can	49¢
	Granulated Giant Box	59¢
BACON	2 Lb.	79¢
PICNICS	Lb.	27¢
FRANKS	3 Lb.	98¢
STEAK	Lb.	69¢
STEAK	Lb.	75¢
CRACKERS	Lb. Box	29¢
DREAM WHIP	2-Oz. Box	25¢

**Now...4-way NORGE with longest guarantee of all at special low price**



The Norge Gas Dryer gives you 4-way drying! Dries all fabrics faster, safer and more economically: tumble-dry with heat and air — tumble-dry with heat, no air — heat-and-air dry, no tumbling — or air-dry, no heat, no tumbling. You get a full 5-year warranty on all working parts, and 1 year on the motor. Made of specially treated steel, the Norge cabinet is guaranteed rust-proof! Dependable gas gives safe, gentle drying. No element to burn out. No expensive wiring needed. Just \$1.00 down. 36 months to pay. **\$179<sup>95</sup>** (cash price)

**GAS dries best for so much less!**  
 LONE STAR GAS COMPANY



OUR FOUNDER'S GUIDING PRINCIPLES... STILL BENEFIT MILLIONS

THE A&P POLICY: Always do: Do what is honest, fair, sincere, and in the best interest of every customer...

FOUNDER'S CELEBRATION BRINGS THIS GIGANTIC MEAT SALE!

- Alabama Girl Sliced Dills 3 48-oz. Jars \$1
Betty Crocker Cake Mixes White, Yellow or Devils Food 3 Pkgs. \$1
Del Monte All Green Asparagus 3 4 1/2-oz. Cans \$1
Del Monte Whole Spiced Peaches 3 30-oz. Jars \$1
Alabama Girl Whole Pickles Sour Dill or Kosher Dill 3 48-oz. Jars \$1

Mix or Match Dollar Sale

- Sultana Freestone Peaches Halves or Slices 4 30-oz. Cans 1.00
LeSueur Green Peas 4 16-oz. Cans 1.00
Kaiser Aluminum Foil Refills 4 25-ft. Rolls 1.00
Zee Wax Paper 200-ft. Roll 27c
Eatwell Grated Tuna Fish 6 6 1/2-oz. Cans 1.00
Del Monte Golden Corn Whole Kernel 6 16-oz. Cans 1.00
Del Monte Green Peas 6 16-oz. Cans 1.00
Libby Cut Green Beans Blue Lake 6 16-oz. Cans 1.00
Larsen's Veg-All Mixed Vegetables 6 16-oz. Cans 1.00
Whole & Cut Sweet Potatoes Sugary Skin 6 30-oz. Cans 1.00
Vanity Fair Facial Tissues (54 CM Label) 6 Pkgs. of 100 1.00
Sun Valley Margarine Solids 8 1-lb. Cans 1.00
Hunt Tomato Sauce 8 No. 300 Cans 1.00
Van Camp Pork & Beans 8 No. 300 Cans 1.00
Friskies Dog Food 8 1-lb. Cans 1.00
A&P Fancy Apple Sauce 8 16-oz. Cans 1.00
Bama Apple Butter 8 12-oz. Cans 1.00
A&P Golden Corn Cream Style 8 16-oz. Cans 1.00
Libby Tomato Juice 8 14-oz. Cans 1.00
Apple Keg Apple Juice 8 16-oz. Btls. 1.00

"Super-Right" Whole FRYERS U.S.D.A. Grade A 31c/lb.

SMOKED PICNICS Pound 35c

SUPER-RIGHT PORK ROAST Boston Butt Lb. 39c

CHICKEN Sara Lee 7 1/2-Oz. Pkg. 79c

"SUPER-RIGHT" HEAVY CALF SIDES 125 to 165 lb. Avg. 45c/lb.
HINDQUARTERS 55c/lb.
FOREQUARTERS 39c/lb.
LONGHORN CHEESE 55c/lb.
BACON 35c/lb.

ARMOUR'S PULLMAN STYLE HAMS 3-lb. size 2.59
TURKEYS 16 to 22-lb. 45c/lb.
TURKEYS 10 to 14-lb. 49c/lb.
BACON 2 lb. Pkg. 75c

CAP'N JOHN'S FROZEN PERCH FILLETS 1-Lb. Pkg. 43c

"SUPER-RIGHT" GROUND BEEF Pound 49c

TENNESSEE FARM PORK SAUSAGE 2 lb. Bag 119

"SUPER-RIGHT" PORK SAUSAGE 5 lb. Cloth Bag 139

CAP'N JOHN'S BREADED SHRIMP 2-lb. box 1.59

A&P YELLOW POPCORN 2 lb. Pkg. 19c

DAILY DOG FOOD Flavors: Fish - Meat - Liver 1-Lb. Can 3 cans 25c

NABISCO PREMIUM CRACKERS 2-lb. box 53c

NABISCO BACON FLAVORED THINS 8 3/4-oz. Pkg. 35c

NABISCO RITZ CRACKERS 12-oz. Box 31c

GARBAGE CANS 5-gal. 2.49

WORTHMORE CHOCOLATE PEANUTS 7 1/4-Oz. Pkg. 33c

Special Sale!



DETERGENT SURF Reg. Size 35c
DETERGENT BREEZE Gr. Size 77c
BLUE DETERGENT RINSO Reg. Size 32c

Fresh Produce Specials

RED DELICIOUS Apples Extra Nice 1-lb. 19c



GOLDEN RISE PLAIN OR BUTTERMILK BISCUITS 3 Pkgs. 20c

SULTANA PORK AND BEANS Lb. Can 10c

HYGRADE'S VIENNA SAUSAGE 6 For 1.00

V/ARWICK CHOC. COVERED CHERRIES 12-oz. Box 45c

"SUPER-RIGHT" ROAST BEEF 12-oz. Can 39c

BUNTE CONVERSATION HEARTS Midget or Fluted 13-oz. Pkg. 25c

JANE PARKER 8" SIZE CHERRY PIE SPECIAL 43c REG. 53c

SPANISH BAR Jane Parker Ea. 29c

ROLLS Jane Parker Brown 'n Serve 2 Pkg. of 12 31c

RAISIN BREAD Jane Parker 16-oz. loaf 21c

DONUTS Jane Parker Pkg. of 8 27c Pkg. of 12 35c

COFFEE CAKE Jane Parker Pineapple Twist Ea. 33c

ANN PAGE PROVES Fine Foods Needn't Be Expensive! Tomato Ketchup 14-oz. Btl. 35c

U. S. NO. 1 COLORADO RED Potatoes 10 1-lb. Bag 45c

REGA O BRAND Tomatoes Carton 25c

CALIFORNIA Lemons 6 For 19c

RUBY RED - Large Size Grapefruit 4 For 29c

Avocados Large Size 4 For 29c

YEL' OW Onions 2 Lbs. 9c

CELLC Carrots 2 1-lb. Bag 12c

TEXAS Oranges 5 1-lb. Bag 35c

Sail Detergent Qt. Size 53c

Liquid Handy Andy 1/2-lb. Pkg. 39c

ANN PAGE REALLY FRESH Mayonnaise QUART JAR EXTRA SPECIAL! 45c

Specials on FERTILIZERS Vertigreen 50-lb. Bag \$1.59 100-lb. Bag \$2.99 Michigan Peat 2 100-lb. Sacks \$3.98

ORANGE JUICE A&P Frozen 2 12-oz. Cans 55c

ORANGE JUICE A&P Frozen 4 6-oz. Cans 59c

STRAWBERRIES A&P Frozen Sliced 4 10-oz. Pkgs. 75c

PEANUT BUTTER Ann Page Smooth 12-oz. Jar 29c

WISK Liquid Detergent Qt. Can 71c

LUX Liquid Lge. Size 37c

LUX Liquid Detergent 22-oz. Can 65c

LUX SOAP 3 Reg. Bars 29c

LUX SOAP 2 Bath Bars 27c

For Automatic Washers DASH Jumbo Size 2.35

Detergent SAIL Reg. Size 23c

Bluebonnet Margarine 1-lb. Ctn. 25c

EXTRA SPECIAL! 10c off Sale! A&P'S PURE VEGETABLE SHORTENING dexo 3 1-lb. Cans 49c

JANE PARKER WHITE BREAD 1 1/2-lb. Loaf 23c