

Eastland Telegram

Eastland County Record established in 1931, consolidated August 31, 1951. Chronicle established 1887, Telegram established 1928. Entered as second class matter at the Post Office in Eastland, Texas under the act of Congress of March 3, 1879.

TIMES PUBLISHING COMPANY

Published Tri-Weekly—Tuesdays - Thursdays - Sundays
Onous Dick and Joe Dennis, Publishers
Virgil E. Moore, Editor

One week by carrier in city .15
One month by carrier in city .65
One year by mail in County 2.95
One year by mail in state 4.95
One year by mail out of state 6.95

NOTICE TO PUBLIC—Any erroneous reflection upon the character, standing or reputation of any person, firm or corporation which may appear in the columns of this newspaper will be gladly corrected upon being brought to the attention of the publishers.

WANT ADS!

Cards of Thanks charged for at rate of \$2.00 Each

FOR RENT

FOR RENT: Six room house and five acres. Phone MA 9-1091.

FOR RENT: Four room house, two bedrooms, playpen. Phone MA 9-1263.

FOR RENT: Three bedroom unfurnished house. 302 S. Connellee. Phone MA 9-15522 or MA 9-1238.

FOR RENT: Newly decorated apartments. Hillside. Phone MA 9-8847.

ENJOY LIFE DOWNTOWN, close to everything. 100 lovely redecorated rooms with 100 private baths, all with ceiling fans and heated with warm steam heat, for only \$39.50 per month, which includes maid service. Delicious Coffee Shop. Also apartments custom made to any size for permanent guests. Contact Mrs. Robinson, manager, the friendly Village Hotel (formerly the Connellee, Eastland, Texas.

FOR RENT: 4 room furnished apartment. Call MA 9-2186.

FOR RENT: Brick house. Corner Moss and Dixie. Call MA 9-1337.

MISC FOR SALE

FOR SALE: Second-hand cook stove. See Ruby Hughes, Olden.

OVER 1,000 records for sale. All popular artists. Stereo, Hi-fi, long-play albums. 45 RPM. Latest releases. Vinson Radio and TV Service. Ranger.

FOR SALE: Five tube Philco radio. In excellent condition. Eastland Telegram.

FOR SALE: Small four room house with bath to be moved from Gorman. See Shorty Lawrence, Gorman.

ELECTROLUX (R) Cleaners factory rebuilt and guaranteed. Authorized Sales & Service. 1892 Sayles, Abilene. Ph. OR 3-1186.

FOR SALE: Brick Insure Smith's Service Station, Olden.

FOR SALE OR LEASE: Three acres, well improved. All modern. Close in on highway. Jack Chamberlain. Phone MA 9-1742.

FOR SALE: Nice rooms and apartments with tile baths. \$5.00 up. Bill paid. 70 Apartments. Paramount Hotel, Ranger, phone 9503.

FOR SALE: 1957 scooter. \$50. Ma 9-1405.

FOR SALE: Cheap six automatic butane chicken brooders, 500 capacity and electric egg grader, starter and broiler type feeder. See Corine Woodall, 1404 S. Slay.

Want To Lease

WANT TO LEASE: 200 - 300 acres land. Must have well, shade and good drainage. Phone MA 9-2667.

USED CARS

WE

Have A Large Selection of LATE MODEL EXTRA CLEAN FORDS...

Both Cars and Trucks Hood King Motor Co. 100 East Main Phone MA 9-1786

INGROWN NAIL HURTING YOU?

Immediate Relief!

A few drops of OUTGRO bring blessed relief from tormenting pain of ingrown nail. OUTGRO softens the skin underneath the nail, allows the nail to be cut and thus prevents further pain and discomfort. OUTGRO is available at all drug counters.

WE'RE MODERN...

WE HAVE A NEW DIAL PHONE!
OUR NEW NUMBER IS
MAIn 9-1344



Have Your Clothes Sanitone Cleaned... and See The Difference



Modern Dry Cleaners
James Wright, Owner
210 S. Seaman

You get the best deal here USED CARS

1958 Oldsmobile 2 door Sedan. Fully equipped including air conditioner.

1954 Chevrolet 4-door Belaire Sedan.

1957 Cadillac coupe De Ville. Fully equipped including air conditioner. Extra nice. Priced for quick sale.

MUIRHEAD MOTOR COMPANY
301 W. Commerce Phone MA 9-1731

WHY SETTLE FOR LESS



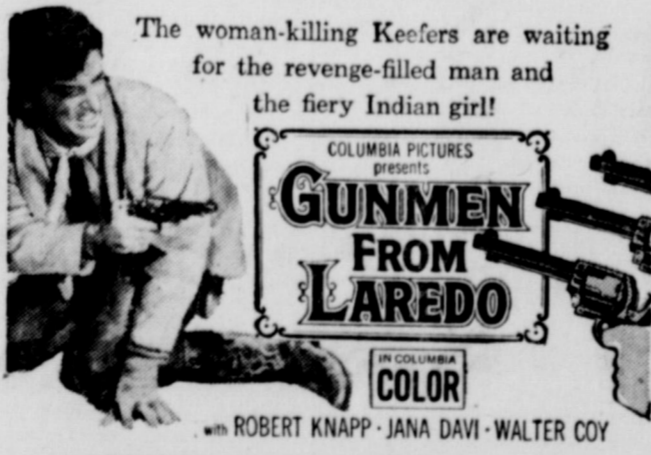
CONSULT SCOTT Paint & Body Works
300 W. Commerce

Finest complete automobile and truck repairing available. Finest equipped shop in this area.

★ 22 YEARS IN EASTLAND
★ ALL WORK GUARANTEED
★ FREE ESTIMATES ON...
Paint, Body, Frame Straightening, and Glass Replacement.
We specialize In Wreck Rebuilding and Glass Replacement.

RANGER DRIVE-IN

HIGHWAY 40 EAST ON RANGER HILL
Box Office Opens 6:30 - Show Starts 7:00
Adults 50c—Kiddies Under 11 Free
Only Eastland County Drive-In Open All Year
THURSDAY - FRIDAY - SATURDAY



FREEVUE EVERY SATURDAY NITE
SUNDAY - MONDAY - TUESDAY



THEY CAME TO CORDURA
GARY COOPER - RITA HAYWORTH
VAN HEFLIN - TAB HUNTER
WILLIAM GOETZ
RICHARD CONTE - MICHAEL CALLAN
DICK YORK
ROBERT ROSSEN

SCOUT SCENES

By JIM HORN
Troop 6 Scoutmaster

The Boy Scouts of troop 103 and 6 took over the city government Feb. 13 as a part of the National Boy Scout Week program to learn more about the operation of our city government. There were at least 25 boys on the job all during the day, although some of the local citizens may have thought that there were a lot more than that.

The Scouts were on the move handing out tickets to all the citizens who were overparked or any of the other things that they try to get by with every day. Both troops had a boy in each office of the city government as a combined effort. The two mayors were Larry Goldston of 6, and Bill Garner of 103. The two scoutmasters on the job were Norman Watson and Jack Willis. Both troops had their base at the police station in the city hall, where the luckless citizens were to pay their fines.

Although some of the citizens may have thought that it was just a big pain in the neck, the boys did learn a lot about the way our city government is run. The boys were on the job from eight o'clock to five o'clock p.m., and were working every second of the day.

Gorman Gatherings

By Mrs. R. E. Boucher

Frank Wyatt of Abilene spent the weekend visiting in the home of his brother, Mr. and Mrs. Ed Wyatt. He was also a visitor Sunday morning at the First Baptist Church.

The First Baptist Church was honored Sunday morning with a program of the work being done by the B.S.U. college students at North Texas State at Denton. Each song and each experience given was a real challenge to every young and adult person present. The auditorium was filled with people representing the various churches in the surrounding community a number of out-of-town guests and the home town congregation.

The young people are to be commended for the wonderful work they are doing. We know it takes faith and courage to undertake this great responsibility. The morning plate offering will go to missionary work of these young people.

Mr. and Mrs. Jesse Parker spent the weekend with their son and family, Mr. and Mrs. Gene Parker and son in Colorado City. They also stopped in Sweetwater and visited his niece, Mrs. Lavene Eaken.

Mrs. Jerry Clark and Jimmy of Abilene were Sunday visitors in the home of Mr. and Mrs. Marvin Nix. Jerry has resigned his position in the school and has entered Texas Tech at Lubbock. He is working on his masters degree.

ATTENDS WEDDING

Mr. and Mrs. Jack Mac and Bob, attended the wedding of Sylvia Alford, daughter of Mrs. R. L. Alford of Abilene, and Bill Moreland of Abilene, at the Assembly Church in Lancaster, Sycamore cousin to Mrs. Mac.

ATTEND THE CHURCH OF YOUR CHOICE EACH SUNDAY

NOTICE

FRESH EGGS DAILY
(WHOLESALE PRICE TO EVERYONE)

GOOD, CLEAN JERSEY SWEET MILK

(From Flood-Tested Cows)
PRICE 70c GAL.

KENDRICK DRIVE-IN DAIRY

Located On Eastland-Cisco Highway
Phone MA 9-2732 - Eastland

WANTED Clean Cotton RAGS

Eastland Telegram

Westex Packing Co

Formerly Earnest Food Locker
RETAIL DIVISION
Friday & Saturday Only

Specials

Pork Chops	CENTER CUT	Lb.	49
Pork Roast	LEAN	Lb.	29
Sausage	PURE PORK	4 Lbs.	1.00
Bacon Thick	SLICED	2 Lbs.	69
Seven Roast	ECONOMY	Lb.	39
Shoulder Roast	ECONOMY	Lb.	49
T-Bone Steak	ECONOMY	Lb.	59
Loin Steak	ECONOMY	Lb.	59
Hamburger	ECONOMY	Lb.	39
Roast	PIKES PEAK	Lb.	59
Roast	BONELESS RUMP	Lb.	59

Thrifty-Cut Baby Beef Sale!

REAL BONUS BUYS! FINE QUALITY! LOWEST PRICES! FILL YOUR FREEZER

Special Sale Prices Effective Thursday, Friday and Saturday

WORTH FOOD MART



Sirloin

Thrifty-Cut Baby Beef
STEAKS
 Lb. **69¢**



T-Bone

Thrifty-Cut Baby Beef
STEAKS
 Lb. **79¢**



Rib

Thrifty-Cut Baby Beef
STEAKS
 Lb. **69¢**

THRIFTY-CUT BABY BEEF

Round Steak Lb. **79¢**

THRIFTY-CUT BABY BEEF

Short Ribs Lb. **29¢**

FRESHLY-GROUND FROM "THRIFTY-CUT"

Ground Beef Lb. **45¢**

RATH'S SLICED

Blackhawk Bacon Lb. **43¢**

FRESH-SLICED

Pork Liver Lb. **23¢**

SWIFT'S PREMIUM

Sliced Bologna Lb. **45¢**

TASTE O'SEA FAMILY-SIZE

Fish Sticks Lb. **59¢**

TASTE O'SEA

Flounder Fillets Lb. **59¢**

FAMOUS HEINZ "57"

KETCHUP 14-Oz. Botl. **19¢**

HUNT'S FRUIT

COCKTAIL No. 300 Cans **1.00**

PEARS ROSE-DALE No. 2 1/2 Can **29¢**

RICE RIVER BRAND 2 -Lb. Pkg. **25¢**

CINCH ASSORTED VARIETIES

Cake Mixes 17-Oz. Pkg. **19¢**

KRAFT'S KITCHEN-FRESH

Mayonnaise Pint Jar **35¢**



Crust Mix BETTY CROCKER 20-Oz. Pkg. **33¢**

Potatoes STILWELL WHOLE 3 No. 300 Cans **25¢**

Tooth Paste Giant 53c Tube **39¢**

Dinners VARIETIES, FROZEN 11-Oz. Pkg. **49¢**

Pies FROZEN 5 8-Oz. Pkgs. **99¢**

RED POTATOES U. S. NO. 1 Delicious Dinner-Mate For Thrifty-Cut Baby Beef 10 -Lb. Cello **49¢**

LETTUCE FIRM HEADS **15¢**

LEMONS LARGEST JUICY Lb. **15¢**

ONIONS YOUNG TENDER 2 Bchs. **15¢**

WORTH FOOD MART

Suddenly, it's yours...something you've always wanted...with

GOLD BOND stamps!

now! at  **SAFEWAY**

Now, in addition to a Lower Total Food Bill, you get valuable Gold Bond Stamps with every purchase at Safeway. It's an *extra* dividend on every dime you spend! Giving Gold Bond Stamps is our way of saying a special "Thank You" for your loyal patronage.

GOLD BOND MEANS FREE FAMOUS-NAME GIFTS FOR YOU!
Yes, beautiful gifts are yours absolutely free with Gold Bond Stamps! Gifts you've dreamed about...by such well-known companies as Westinghouse, Ekco, Sunbeam, G. E. and many, many others. Look in the elegant, colorful Gold Bond Gift Catalog for famous gifts for you!

GOLD BOND GIFTS ARE YOURS FASTER!
Your Gold Bond savers books fill quickly...because every day more and more fine merchants are joining us in giving Gold Bond Stamps! Remember — it takes LESS books to get your Gold Bond gifts!

GOLD BOND GIFTS ARE YOURS SO EASILY!
Simply visit one of the modern, smartly decorated Gold Bond Gift Centers to be opened in Texas and select your gift from over 1500 name-brand items. Or if you're 20 miles away, shop the Gold Bond Gift Catalog. You can always count on prompt, courteous service whenever you redeem your Gold bond savers books!

FOR YOUR CONVENIENCE...NEW
STORE HOURS ARE:
Monday, Tuesday, Thursday and Friday
8 a.m. to 6 p.m.
Wednesday and Saturday
8 a.m. to 8 p.m.



Prices Effective Thursday, Friday and Saturday, Feb. 18, 19 & 20
Eastland

We Reserve the Right to Limit Quantities.
No Sales to Dealers

Start Shopping Today, the Thrifty Gold Bond Way!



Cornish Game Hens Armour's Star... 4 18-Oz. Hens Each **69¢**

Grapefruit Juice Town House... Grapefruit Juice. 2 46-Oz. Cans **49¢**

Collards Bel-air... Frozen Chopped. Garden Fresh. 2 12-Oz. Pkgs. **25¢**

Leaf Kale Bel-air, Frozen. 2 10-Oz. Pkgs. **25¢**

YAMS Texas' Finest. Delicious Candied and Topped with Marshmallows, or Serve Hot Baked Yams and Butter. 3 Lbs. **25¢**

Oranges Sunkist Navel. California's Finest. Lb. **12¢**

Head Lettuce Firm, Solid Heads. 2 Heads **25¢**

Fresh Pineapple Delicious in Fruit Salad. Each **29¢**

Applesauce Highway... Delicious Blend of Mellow Apples. 2 No. 303 Cans **25¢**

Lima Beans Highway... Large Dry Limas. 3 No. 300 Cans **25¢**

Asparagus Winslow... Fancy Cut. Allgreen. 2 No. 1 Cans **35¢**

Su-Purb Blue DETERGENT
Does Everything Giant in the Washer! Box **59¢**

Margarine Coldbrook... An Economical Table Spread. 2 1-Lb. Pkgs. **27¢**

Biscuits Mrs. Wright's... Buttermilk or Sweetmilk. 3 8-Oz. Cans **20¢**

Beef Steaks Manor House... Frozen. Breaded Ready to Cook. 8-Oz. Pkg. **39¢**

Cherub Milk Evaporated... Perfect for Baby... Cooking or Coffee. 3 14 1/2-Oz. Cans **40¢**

Shortening Royal Satin (8¢ Off Label). 3 Lb. Can **59¢**

Preserves Empress... Red Cherry. 10-Oz. Jar **25¢**

HAMS SHANK PORTION Lb. **29¢**

Half or Whole Ham Slices Delicate Pink. 18 to 24-Lb. Average. Lb. **39¢**
Center — Serve for Breakfast with Eggs. Lb. **79¢**

BUTTERED BEEF QUICK STEAKS 59¢
New at Safeway. 12 1/2-Oz. Pkg.

Canned Picnics Armour's Star... Boneless... 3 Lb. Can **179¢**

Round Steak U.S.D.A. Choice Grade Heavy Beef. Lb. **89¢**

Del Monte Peas Early Garden... Sweet and Tender. 3 303 Cans **49¢**

Cherry Pie Bel-air Frozen. Large 8" Size. Montmorency Cherries. Large 24-Oz. Pie **39¢**

Apple Butter Western Maid... Delicious With Biscuits. 54-Oz. Jar **39¢**

Pie Cherries Town House... Red Sour Pitted. 2 303 Cans **35¢**

Busy Baker SNAPS 49¢
★ Ginger ★ Lemon
★ Vanilla ★ Chocolate
2 Lb. Pkg.



now! a lower total food bill...plus **GOLD BOND** stamps at  **SAFEWAY**

READ THE CLASSIFIEDS

Helps Heal And Clear Itchy Skin Rash!

Zemo—liquid or ointment—a doc-
tor's antiseptic, promptly relieves
itching, stops scratching and so
helps heal and clear surface skin
rashes. Try Zemo.
Specially Zemo for
eczema, hives, sunburn, etc.

Olden P-TA to Meet Thursday

The Olden P-TA will hold the
monthly meeting Thursday in the
Olden gymnasium.
The seventh and eighth grades
will present the program for the
month.
All parents are urged to at-
tend the meeting.

Pony Express Centennial Will Be Celebrated In Nation During 1960

This year's centennial celebra-
tions of the famous Pony Express
will be largely a tribute to Ameri-
can youth. Postmaster Marene
Johnson observed today.
Most of the daring riders of
the famous mail-carrying service
which began April 3, 1860 between
St. Joseph, Mo. and Sacramento,
Cal. were very young men—many
of them in their teens, the post-
master noted, in giving these Pony
Express facts:
An advertisement of the times
in San Francisco, seeking Pony
Express riders, stated: "Wanted—
young, skinny, wiry fellows not
over 18. Must be expert riders,
willing to risk death daily. Orphan-
preferred. Wages \$25 a week . . ."
Young men entering Pony Ex-
press Service, operated by the

famous transportation firm of
Russell, Majors & Waddell, were
given a Bible.
Riders were required also to
take this oath upon entering ser-
vice:
"I hereby swear, before the
Great and Living God, that, dur-
ing my engagement, and while I
am an employe of Russell, Majors
& Waddell, I will under no cir-
cumstances, use profane language;
I will drink no intoxicating liq-
uors; that I will not quarrel or
fight with any other employe of
the firm, and that in every respect
I will conduct myself honestly, be
faithful to my duties, and so di-
rect all my acts as to win the con-
fidence of my employers. So help
me God."

The youthful Pony Express
riders consistently outran Indian
pursuers while carrying the mails
through the wilderness, often
through blinding snows and howl-
ing storms, and in extremes of
heat and cold. Only one Pony Ex-
press rider was lost to the Indians.
Johnnie Fry (or "Frey" accord-
ing to some writers) is credited
by some accounts with being the
first Pony Express rider to leave
St. Joseph on April 3, 1860. He
was little more than a boy when
he entered the Express service.
He was a native Missourian,
weighing less than 125 pounds. An
early account states:
"Though small in stature, he
was every inch a man. His run
was from St. Joseph to Seneca,
Kansas, about 80 miles, which he
covered in an average of 12 1/2
miles an hour, including all stops."
He later entered the Union Army,
and was killed in 1863 in a hand-
to-hand fight in which he was
credited with killing five assail-
ants before he was killed himself.

William "Bill" James, a native
Virginian, was credited at 18 with
being one of the best of the Pony
Express riders over a route in
Nevada through some of the most
savage Indian country.
According to Alexander Majors
of the Russell, Majors and Waddell
firm, in a book published in 1893
("Seventy Years on the Fron-
tier"), William F. "Bill" Cody was
a Pony Express rider, in his
early teens when he entered the
famous mail service. Cody is
credited with many notable feats,
including a ride aggregating 384
miles without any real rest period,
which is referred to by some
authorities as probably the long-
est continuous performance of
its kind—not only in the annals
of the Pony Express, but in any
other courier service in history.

None of the Pony Express
young men had an opportunity to
grow old in the Service. In Octo-
ber, 1861, the cross-country
telegram was completed and the
Pony Express was terminated. De-
spite its short life, it was credited
with many important contribu-
tions, including the fact that it
helped to keep East and West
joined during the early crucial
days of the Civil War.
Although the Pony Express was
short lived, it will be very much
alive this year.

Many pageants, celebrations
and other activities memorializing
the Pony Express are planned for
this 1960 Centennial year.
As a part of Centennial year
celebrations, the Post Office De-
partment will issue a new Pony
Express commemorative postage
stamp next July 19 at Sacra-
mento, together with a new com-
memorative stamped envelope to
be issued at St. Joseph.
On the same date, as one of
the major memorial events sched-
uled during the vacation season
this year, the National Pony Ex-
press Centennial Association plans

to reenact the Pony Express runs,
starting out—just as the Pony
Express did approximately 100
years ago—from both St. Joseph
and Sacramento.
The reenactments are expected
to require about 3 days each for
both the eastward and westward


runs. The original Pony Express
runs, across the 1966 mile origi-
nal route, required an average
of about 10 days, although it fre-
quently took less time. Lincoln's
inaugural address in 1861, for
example, was carried by the Pony
Express in less than 8 days.

READ THE CLASSIFIEDS
RUBBER STAMPS
24 HOUR SERVICE
EDDIE
RUBBER STAMPS
407 SO. DAUGHTERY
EASTLAND, TEXAS

**Need Your TV Antenna Fixed?
Have A Leaky Faucet?
Air Conditioner Need
Servicing?**
SEE US FOR ODD JOBS AROUND THE HOUSE
PHONE MA in 9-2205

Funeral Directors
HAMNER FUNERAL HOME
Ben E. Hamner
Oxygen Equipped - Air Conditioned
Eastland Phone MA 9-2611 Cisco Phone Hillcrest 2-1211
AMBULANCE SERVICE ANY WHERE ANY TIME
Nominal Cost Burial Insurance
For The Entire Family

COME IN AND SEE OUR
COMPLETE SELECTION OF
FINE
CARPET'S
★ Prices to fit every budget
★ We do our own installation
Ranger Furniture Exchange
"BRASHIER'S"
123 N. Rusk RANGER Phone 242

FEBRUARY ONLY

**670 x 15
750 x 14
RETTREADED
TIRES
7.50
Exchange
JIM HORTON
TIRE SERVICE
East Main St. - MA 9-1420
Eastland, Texas**

SOCIAL CALENDAR
Thursday, Feb. 18
2 p. m. — The Flatwood Home
Demonstration Club will meet in
the home of Mrs. Jack Lusk for
their regular meeting.
3 p. m. — The Thursday After-
noon Club will honor the Eastland
County 4-H Clubs, EHS, Home-
making classes and the EHS Fu-
ture Homemakers at their regular
meeting.
9 a. m. — Mrs. W. F. Davenport
will give the program at the reg-
ular meeting of the WSCS.
7:30 p. m. — The Past Matrons
Order of the Eastern Star will
hold their regular meeting in the
home of Mrs. Cecil Cox.
Monday, Feb. 22
7:30 p. m. — The Oddfellow
Lodge will hold their regular meet-
ing in the IOOF Hall.
7:30 p. m. — The Legion Hall
will be the meeting place of the
American Legion Auxiliary.
9 a. m. — The Circles of the
WMU will hold their regular meet-
ings.
7:30 p. m. — Mrs. Francis Wal-
ters will be hostess to the Xi Alpha
Zeta members. Mrs. Virginia Col-
lings will bring the program,
"Bare Feet in the Palace."
Tuesday, Feb. 23
7:30 p. m. — The Rebekah Lodge
will meet in the IOOF Hall.
7:30 p. m. — Mrs. Earline Sims
will present the program for the
Zeta Pi Chapter when it meets in
the home of Mrs. Marene Johnson
for the regular meeting.
Wednesday, Feb. 24
2 p. m. — The Morton Valley
Home Demonstration Club will
hold its regular meeting in the
Morton Valley clubhouse.

Spectacular Sale!
ONE GROUP
**BLOUSES, GOWNS, BRAS
PAJAMAS, ETC.**
Values to \$5.95
NOW **\$1.00**

Dresses
DRESSES... for girls
Regular \$2.98 to \$10.98
Now **\$1.50 & \$5.00**
One Rack DRESSES
\$5.98 to \$34.95
Buy One At Regular Price...
Get Second for... **\$1.00**

1/3 OFF
On All
SKIRTS
and
SWEATERS

Coats
WINTER AND EARLY SPRING
Regular \$34.95 to \$100
NOW — **\$25 each**

ALL
WINTER
HATS
Now...
\$1.00
1/2 PRICE
... or less for
Boys and Girls
clothing.
FOR GIRLS
Nine
Winter Coats
Values \$7.50 to \$15.00
Now...
FOR BOYS
Shirts and Pants
Reg. \$1.98 to \$3.98
Now **\$1 to \$2**

ANNOUNCING

THE PURCHASE OF THE WHITE ELEPHANT RESTAURANT

by

Mr. and Mrs. George Von Roeder

MENU SUGGESTIONS
• CHARCOAL STEAKS
(Soon)
• SPECIAL EVENING
DINNERS
• HOME COOKED
MEALS

—OPEN—
5 A. M. CLOSE 10 P. M.

We're proud to be in East-
land and pledge ourselves to
continuing to serve the peo-
ple of this area with fine
food at all times.



To Our Friends and Customers . . .
It has been your patronage and
co-operation that has made the
White Elephant Restaurant a place
that most of us enjoy.
This will announce the sale of
the White Elephant Restaurant to
Mr. and Mrs. George Von Roeder.
We feel that they are well qualified
to carry on and possibly improve
the type of food service that we
have tried to render.
Our Sincere Thanks To All.
Mr. and Mrs. Victor Cornelius

READ THE CLASSIFIEDS

"EFFICIENT EXTERMINATION"

OF

- Roaches • Silver Fish • Ants
- Mice • Fleas • Ticks
- Scorpions and other Pests

Member National Pest Control Ass'n.
Lester Humphrey
PEST CONTROL SERVICE

Surity Bonded Termite Control—

Moore About—

(Continued from Page One)
usually meet somebody new. Of course, everyone talks about going home and what they're going to do when they get back to the U. S.

"People never realize how much the U. S. means to them until they've lived in another country. The other day we were out at the base and at 4:30 they started lowering the flag to take it down for the night. Everyone that was out walking around stood at attention and faced the flag. I almost cried, it was so moving."

Noticed the following paragraph in The Cisco Press Tuesday:

day: "What are the immediate prospects of a one-county high school? Transportation for 300 high school students would cost Cisco \$22,000 yearly and require 10 additional buses and drivers. Moving our high school to the vicinity of Carbon would hurt business in Cisco. Eastland may lose a teacher this year because of the drop in the ADA (average daily attendance.) Ranger stands to lose two teachers for the same reason. Cisco is the only high school that is gaining in enrollment. However, regardless of the action taken on our high school, Cisco must maintain grade and junior high schools."

We lifted that paragraph from a long story written by Mrs. John Shingle and aren't trying to make an issue out of anything. In fact, we think Mrs. Shingle's story contained some important points.

Just for the record, we would like to point that Eastland this year gained one new teacher because of increased attendance. We understand that we may well lose the teacher we gained this year next year. It seems we are right on that breaking point, just as we are in football. One year we gain a teacher, and the next year we lose him.

Throughout, Mrs. Shingle's story she stressed Cisco's "poor facilities" and lingered on curriculum needs.

Sometimes we think we worry

Political Announcements

The Eastland Telegram has been authorized to announce candidates for public office in the Democratic first primary election May 7 as follows:

FOR SHERIFF:
J. B. Williams, re-election
Lee Horn
W. E. (Bill) Reid
Oscar M. (Hop) White

FOR TAX ASSESSOR-COLLECTOR:
J. C. Allison (re-election)

FOR STATE REPRESENTATIVE 76TH DISTRICT:
Paul Brashear (re-election)
Don Kincaid
Scott Bailey

FOR COUNTY COMMISSIONER PRECINCT NO. 1:
J. B. (Tip) Arther
E. W. (Bud) Griffin
O. R. (Ott) Ervin

FOR STATE SENATOR, DISTRICT 22:
Tom Creighton, Palo Pinto Co.
Floyd Bradshaw, Parker County

FOR CONGRESS, 17TH CONGRESSIONAL DISTRICT:
Roy Skaggs of Abilene

FOR CONSTABLE PRECINCT 1:
J. H. (Hoover) Pittman
Porter O. Woods

too much about the costs and the possible loss of business to us, and the education of our children too little.

We will check it to you for now, with this one bit of news. It is no longer a rich man's game. There are millions of poor players.

Funeral Service—

(Continued from Page One)

Mr. and Mrs. E. E. Ford, one sister Barbara A. 15, and one brother Emery E. Jr. 11, both of the home. Maternal grandparents, Mr. and Mrs. T. Y. Sunday of Iowa Colony, Texas, great grandmothers, Mrs. George Sunday of Montgomery and Mrs. M. M. Pouncey of Cleveland, Texas.

Pallbearers were Jim Robinson, Richard Jolly, James Henry, Charles White, Jerry Anderson, Homer Montgomery, Richard Robie and Bobby Fron.

ATTENDS FUNERAL

Mrs. Ethel Woloszyn of Eastland attended the funeral of her cousin, Dave T. Ryan Jr. in Nashville, Monday. Mr. Ryan passed away Saturday in Nashville.

Home Best Testing Laboratory

Many fine testing laboratories exist today, but the real test of quality is done in the modern home. Mrs. Homemaker is the best technician and has the last word.

A product that meets her high requirements and approval has really been tested. Blue Lustre has passed such tests over a period of years. Millions of carpets retain a beautifully clean appearance due to Blue Lustre care. One-half gallon cleans three 9x12 rugs. Apply with any make applicator or long handle brush.

Coats Furniture & Carpet Co.

T. L. FAGG
REAL ESTATE
Property Management
Home and Farm Loans

RUBY CRAWLEY BEAUTY SHOP
announces the association of
ALMA QUINN
Specializing in Hair Shaping, Hair Styling, Cold Waves and Radio Waves.
Phone **MA 9-2522** For Appointments
LOCATED IN VILLAGE HOTEL

REPAIRS!
FREE ESTIMATES
Insurance Claim Service
"We've seen plenty of wrecks drive through our doors, but we have yet to see one drive out."
Lindley Paint & Body Shop
110 S. Bassett
Ph. MA 9-2210

CARS POLISHED
12.50 to 15.00
We Know Our Business

Whatever the season,
There's always good reason*

*In experience and service.

FOR SELLING YOUR SCRAP IRON AND METAL TO EASTLAND IRON & METAL CO. wanted for direct use...

STEEL MILL SCRAP	SMELTER SCRAP METAL
MIXED SCRAP IRON OIL FIELD CABLE MACHINERY CAST IRON TIN FOR OUR PRESS	COPPER, ALL GRADES RED AND HARD BRASS RADIATORS, BATTERIES ALUMINUM, ZINC, BABBITT

EASTLAND IRON & METAL CO.
OWNED AND OPERATED BY HENRY PULLMAN

Phone MA 9-1522

TRI-CITIES FURNITURE'S FIRST BIG ANNUAL CLEARANCE SALE

All Sales Cash No Re-Funds No Trade ins. Bargains All Over The Store.

END TABLES And COFFEE TABLES Reg. 3.95 NOW 4⁹⁵	END TABLES And COFFEE TABLES Reg. 8.95 NOW 5⁹⁵	ROUND COFFEE TABLES Reg. 19.95 NOW 12⁹⁵	HYDA BEDS Reg. 199.50 NOW 147⁵⁰
2-PIECE LIVING ROOM SUITES Reg. 159.95 NOW 119⁹⁵	2-PIECE LIVING ROOM SUITES Reg. 139.00 NOW 99⁵⁰	2-PIECE LIVING ROOM SUITES Reg. 189.50 NOW 149⁰⁰	HYDA BEDS Reg. 149.50 NOW 119⁵⁰
5-PIECE LIVING ROOM SUITES Reg. 129.50 NOW 97⁵⁰	HYDA BED ONE ONLY Reg. 299.50 NOW 194⁵⁰	ONE ONLY Foam Rubber Unit BOX SPRINGS AND MATTRESS Reg. 119.50 NOW 79⁵⁰	
BED ROOM SUITES 3 Pc. Reg. 149.50 NOW 119⁵⁰	BED ROOM SUITES 3-Pc. Reg. 219.95 NOW 179⁹⁵	ONE ONLY DOUBLE DRESSER Reg. 59.50 NOW 39.50	ONE ONLY BOOK CASE GLASS DOORS Reg. 34.95 NOW 24.95
CEDAR CHEST Reg. 24.50 NOW 17.50	CEDAR CHEST Large 45 x 20 Reg. 37.50 NOW 25.00	FLOOR LAMPS 7-WAY LIGHTS WITH LIGHT IN BASE Reg. 12.50 NOW 8.95	FLOOR LAMPS Reg. 8.75 NOW 5.00
Mattress AND Box Springs Reg. 69.50 NOW 39.50	MATTRESS ONLY Reg. 49.50 NOW 25.00	IRONING BOARDS Reg. 9.95 NOW 5.95	2-ONLY PATE GLASS MIRRORS 30 x 40 Reg. 29.50 NOW 19.50
	MATTRESS Reg. 59.00 NOW 59.00	MATTRESS Tuftless and Box Springs Reg. 49.95 NOW 39.50	Wool Rugs 9 x 12 Reg. 49.95 NOW 39.50

OPEN THE TRUNK... PROVE HOW MUCH EASIER CHEVY IS TO LOAD!

- 1 Single key locking for convenience Who wants to play guess-which-key-opens-the-trunk? One key opens Chevy's trunk, doors, glove compartment and starts the car.
- 2 No loose wiring Chevy's luggage compartment keeps snagging wires away from your cargo for extra safety and easy stowing.
- 3 Wider storage space And you don't have to reach underneath anything to take advantage of Chevy's wide open spaces. Just load away in this big trunk.
- 4 As much as a foot-and-a-half wider trunk lid opening Chevy's wide deck lid lets you pack in the parcels from either side or the back, without twisting your spine out of kilter.
- 5 Up to 22.5% more usable luggage space in a Chevy You've got 30 cubic feet of solid air in Chevy's big trunk, and every cubic inch of it is right at your fingertips.
- 6 Deeper trunk for bulky loads You can stand most packages up in this deep well—no crushed groceries! Yet you needn't reach way down to unload.
- 7 Lower sill for easier loading Why should you hoist heavy bundles any higher than you have to? Chevy's sill is lowered for faster, easier loading.
- 8 And the gas tank filler tube doesn't take a big bite out of luggage room It's tucked away virtually out of sight and cargo area. Any way you look at it, Chevy takes mighty good care of your loads. You can open the door to all of Chevy's wonders at your Chevrolet dealer's. What's keeping you?

See The Dinah Shore Chevy Show in color Sundays, NBC-TV—the Pat Boone Chevy Showroom weekly, ABC-TV.

Drive it—it's fun-tastic! See your local authorized Chevrolet dealer for fast delivery, favorable deals.

FULLEN MOTOR COMPANY, INC.
EASTLAND
305 E. MAIN PHONE MA 9-2676

TRI-CITIES FURNITURE
East Side of Square Phone MA 9-2311

Call MA 9-1707 for Classified Ads



"Pipe Dreams" Take Shape with REGULAR SAVING

That home of your own... a start in business... or some other "pipe dream" can become a reality when you open an insured savings account here and add to it regularly.

First Federal Savings & Loan Association of Ranger

ONLY 3% DOWN ON FHA LOANS 204 Main RANGER, TEXAS Phone 820

Down on the Farm-

Insurance is the farmer's most dependable hired hand. You farmers know best how Mother Nature can play havoc with your home and other farm buildings, machinery, live stock and crops.

EARL BENDER & COMPANY

Eastland, (Insurance since 1924) Texas

First Church of Christ, Scientist Eastland, Texas

Cordially invites you to attend a Free Christian Science Lecture entitled

"Christian Science Proves That Life Has Both Meaning and Value"

By Elisabeth Carroll Scott, C. S. B. of Memphis, Tennessee

Member of the Board of Lectureship of The Mother Church, The First Church of Christ, Scientist, in Boston, Massachusetts

Tuesday, Feb. 23, 1960 8:00 p.m.

The Church Edifice

Corner Plummer and Lamar

ALL ARE WELCOME

PRE-SPRING SPECIALS

Cotton or Viscose Carpeting

CARPET COMPLETELY INSTALLED CARPET Over Heavy Rubberized Padding CARPET Pre-Spring Special Sq. Yd. 4.60 CARPET For Example... you can cover a 12 x 15 room for only \$92.00. CARPET

OUR ENTIRE CARPET STOCK IS SIMILARLY REDUCED

12-FT. ARMSTRONG or GOLD SEAL VINYL LINOLEUM

SPECIAL 12-Ft. Width Running Foot 1.69

DECORATOR PILLOWS

WIDE ASSORTMENT 1.00

2-PC. SLEEPER SUITE

Complete With Innerspring Mattress

Nylon Upholstery 179.50

9-PC. DINETTE SUITE

72-Inch Table 8 Foam Rubber Chairs 99.50

NO CARRYING CHARGE ON FURNITURE - FREE DELIVERY

Ranger Furniture Exchange

123 N. Rusk, Ranger

THE BRASHIER'S

Phone 242



JACK THE RIPPER

Jack the Ripper Story Brings Horror Of Baffling Crimes to Local Screen

Of all the real-life mysteries that have puzzled the brains and gripped the hearts of men and women throughout the civilized world, none has been more baffling than the identity of the criminal who terrorized London under the self-bestowed name of "Jack, The Ripper."

He thus signed a letter written in blood, gloating over the series of killings which shocked the world and which the law was never able to avenge. For the Ripper, after months of gruesome deeds, vanished without a trace.

The weird story has been brought to the screen in the new Embassy presentation, "Jack, The Ripper," released by Paramount Pictures which will open Thursday at the Majestic Theatre in Eastland. Authentic in background and essential facts, the film suggests a startling solution of the problem which left Scotland Yard guessing, as it has been guessing ever since.

While the Ripper was in full career he had the public in a state of panic. Famous literary figures, as well as thousands of ordinary folk, wrote to the newspapers, offering advice, criticizing the police, speculating as to the nature of a man capable of such atrocities.

A Conan Doyle, who has recently written his first Sherlock Holmes yarn, "A Study in Scarlet," wrote to Scotland Yard recommending the use of the Bertillon fingerprint system, then new. He believed the killer was a physician or medical man. (Doyle himself was a physician.)

Another rising author, George Bernard Shaw, gave a characteristic twist to the situation by writing:

"If the habits of duchesses only admitted of their being decoyed into Whitechapel backyards, a single experience in slaughter-house anatomy on an aristocratic victim might fetch in a round

half-million pounds for improving conditions and save the necessity of sacrificing our women of the people."

The police in desperation tried everything, including bloodhounds and the masquerading of stalwart detectives in women's dresses; but the Ripper fell into none of the traps. He simply stopped killing women, and the city could sleep again without the nightmare of his hidden menace.

"Jack, The Ripper" was produced, directed and photographed by Robert S. Baker and Monty Berman from a screen play by Jimmy Sangster. The original story was written by Peter Hammond and Colin Craig. In stellar roles are Lee Patterson, Eddie Byrne, Betty McDowell and Ewen Solon.

Art Club Views Rose Painting Exhibit Tuesday

Spring seemed to fill the atmosphere as members of the Eastland Art Club viewed the exhibit of rose paintings displayed by Mrs. G. L. Wingate.

Mrs. Wingate was hostess to members of the Eastland Art Club Tuesday afternoon. Mrs. Wingate greeted the guests at the door after which the guests viewed Mrs. Wingate's hand painted china.

After the business session the group painted on their paintings of various topics. Mrs. H. M. Hart, a visitor, did china painting during the afternoon.

Devils food cake and coffee was served to Mmes. W. W. Walters, Varge Daniels, Francis Urban, Joe Tow, Nora Hudson, W. E. Lawson, Sidney Seale, Ed Layton, and H. M. Hart by the hostesses, Mrs. Wingate.

Beta Sigma Phi Chapters Crown Valentine Sweethearts Saturday

Valentine sweethearts of the two local chapters of Beta Sigma Phi were crowned Saturday night at a banquet in the Village Hotel Roof Garden.

Mrs. Mike George was elected sweethearts from the Xi Alpha Zeta chapter and Mrs. Lon Kincaid was crowned from the Zeta Pi chapter. Princesses were Mrs. M. H. Perry of Xi Alpha Zeta and Mrs. James Smith of Zeta Pi.

The coronation took place before a background of red valentines shaped in a square and centered with a large red heart.

The banquet tables were centered with miniature trees bearing red hearts. The placecards were red hearts and arrows on a square of styrofoam. A valentine box of candy was at each plate.

Mrs. R. H. Sneed introduced Miss Judy Slaughter who presented the program for the evening. "Sweetheart of Beta Sigma Phi" and "Let Me Call You Sweetheart" were the songs sang by Miss Slaughter accompanied by Camille Lee. Both are from Cisco.

Entertainment followed the banquet. Mr. and Mrs. B. J. Parrish and daughters, Ballye and Debra, of Fort Worth spent the weekend with their parents, Mr. and Mrs. Don Parker and Mrs. Ita R. Parrish.

Card of Thanks

I wish to take this means of thanking everyone for their cards, letters, flowers, visits and words of encouragement to me during my recent stay in the hospital.

Special thanks to the wonderful nurses, to Dr. Alexander and Dr. Bulgerin for taking such excellent care of me, also to Brother Kimbler for his visits and prayers. May God bless each and everyone of you.

Mrs. L. A. Scott

Insurance AND Real Estate D. L. KINNAIRD Life - Fire - Auto - Farm Polio - Bonds 40 years in the Insurance Business in Eastland



OUR Quality LUMBER MAKES THE DIFFERENCE

When you look around for lumber and building needs, don't settle for second best! Insist on top-quality and top-service. See us first! Our know-how and experience is yours for the asking! Whatever your building plans, give us a call!

Higginbotham-Bartlett Co

Jack Elliott, Mgr. Ph. MA 9-1311 or MA 301 W. Main ASK FOR FREE ESTIMATE! NO OBLIGATION

HONESTLY! YOU CAN'T BEAT SUPER SAVE PRICES

Libby PICKLES 49c, PINEAPPLE 33c, BISCUITS WHITE SWAN 29c, JAM BAMA RED PLUM 29c, CORN WHITE SWAN 15c, W-P DETERGENT 59c, CAMPBELL'S TOMATO SOUP 25c, POTATOES 10, CABBAGE, APPLES, LEMONS, CHUCK ROAST, BACON, FRANKS, BEEF SHORT RIBS, HAMS, Snowdrift THE Premium SHORTENING 69c, FAB 65c, MacMOY'S Super Save 400 S. Seaman Home Owned, Home Operated