

THE WHEELER TIMES

(USPS 681-960)
VOLUME 72, NUMBER 29

THURSDAY, JUNE 29, 2006

SINGLE COPY **50c**

"Wheeler, town of friendship and pride."

21st Annual Chamber of Commerce

4th of July Celebration

A Full Day Of Activities —Fun For Everyone

CWE CHAT WITH EDITOR
By Louis C. Stas

Wheeler's 21st Annual 4th of July Celebration is set for Tuesday. Clear the calendar for the day and come to Wheeler for a fun day of activities.

—cwe—

Items for the paper will have to be in the office Monday morning. It will be necessary to get the paper ready on Monday so it can be printed on Wednesday.

—cwe—

I want to go participate in the celebration also and if I have the paper to put together, I will miss out.

—cwe—

I attended part of the Old Town Hoedown at Mobeetie Saturday evening. Fantastic. There is a group of people who are hard workers. They are dedicated to have done all that work restoring the Cataline School.

—cwe—

And, putting on this program was no small task. **Congratulations!**

—cwe—

Thanks to County Clerk Margaret Dorman for the use of some of her pictures. She was kind enough to bring the pictures to the office Saturday evening.

—cwe—

With rain predicted for a day or two last week we did manage to have enough to measure Friday morning—.07.

—cwe—

Yes, we stayed in Wheeler this past weekend and got a lot accomplished. Trees are very pretty to have in your yard, but man, keeping them trimmed is a lot of work.

—cwe—

Walk Across Texas Completes Walking

Below are the standings for the miles received. This was our last week to walk. The Wrap-Up Party will be held June 29th at the Church of Christ Activity Building at 6:00 pm. Bring your Wrap-Up Form with you or bring by the office for a prize!

Tooth Fairies	3075.7
Marshall Auto	1937
Misfits	1623.5
Texas Harts	1531.56
Dori's Dolls	1476.7
29ers	1434.25
Sweat Hogs	1189.6
Kelton Jaywalkers	1137.25
Youngsters	1136
Honest Annies	928.85
The Jammers	865
The Dust Busters	613.5
Sherrif's Posse	522.4
Light Walkers	349

The Twenty-first 4th of July Celebration will be held this year under the sponsorship of the Wheeler Chamber of Commerce. The activities start early Tuesday, July 4, with breakfast and end with the street dance in the 100 block of East Texas Street on the square.

Park activities begin at 10:00 A.M. Saturday morning and continue to dusk with the free fireworks display. The 1st Annual 1LT Ben Britt Memorial Fun Run/Walk registration will be at the courthouse square at 7:00 a.m.-7:30 a.m., race starts promptly at 7:35 a.m., Punt, Pass & Kick at the football field will start at 8:30 a.m.

Tuesday morning will open with breakfast with the St. Mary's Catholic Church at 801 Canadian Street, beginning at 6:30 A.M. You do not have to get up that early. Serving will continue for some time. This breakfast is a must in your day of activities.

The Fun run will be under the supervision of Kenna Howard. Individuals who signed up for the fun run early were charged a \$10.00 entry fee; those participating without pre-registering will have a \$12.00 fee. Each individual participating will receive a t-shirt; those registering on the day of the race may have to wait for their t-shirt.

It is not necessary to run; many just walk and enjoy the fellowship of fellow participants. The starting point for the run will be the west side of the courthouse square to avoid the crossing of highway 152. Male and female participants will be divided into five groups: 10 and under, 11-18, 19-30, 31-55, 55 and over. Ribbons will be presented.

Fun Run Sponsors are: First State Bank of Mobeetie and Wheeler, R & M Quality Car Wash, Cross Country Barn, The Sweat Shop, Hylands Pharmacy, Swatish Spa, Parkview Assisted Living, Parkview Hospital and Home Health, Bill, Carol, Shannon, Lisa and Kelli Scott, Marshall Auto, Wheeler Banking Center, Ware Chevrolet, Wheeler Vet Clinic, Wheeler Nursing & Rehab, Britt Ranch, Beck Oilfield Supply, Holmes Sporting Center.

Punt, Pass and Kick will be at 8:30 A.M. behind the legion building, north on Highway 83. Ben Ed Hillhouse and the Boy Scouts have been asked to chair this activity. This event is open to any youngster wishing to participate. The group will be divided by ages. Ribbons will be presented to winners at the track.

Participants of the parade will line-up in front of the Wheeler School, beginning at 9:00 a.m. The parade will start at 9:30 and continue down Main Street past the square and then to the City park. Prizes will be awarded for Best Overall Entry, Best Auto Entry, Best Kid's Entry, Best Horse Entry, Best Kid's Costume and Best Float. The parade is being sponsored by the Wheeler FFA and Ft. Elliott FFA. For more information, contact Jim Self at 826-

0290 or Kevin Meek at 826-5753.

At 10:00 A.M. the activities at the park will begin. Once again this year the chamber is offering a \$50 prize to the group with the most patriotic booth; judging of the decorations will be conducted by an appointed individual.

The park activities will kick-off with the raising of the flag and the singing of the National Anthem. Many activities are scheduled for the day, including live music.

Entertainment

Several groups and/or individuals will be performing at the park in the afternoon.

Park Activities

Both Spaces Available
Some of the activities scheduled at the park are Turtle Races, Swim Races, Water Polo, Chair Massages, The "non-profit" limitation no longer applies.

Groups and organizations wishing to have a booth at the park are asked to contact the Wheeler Chamber of Commerce office at 826-3408 by 4:00 P.M. Friday, June 30, 2006. Every effort is made to avoid duplication of booths. Early contact insures your type of booth.

Fireworks Display

Closing the activities at the park will be the annual Fireworks Display, scheduled for dusk. Public donations make the display possible. If you have not made a contribution, please do—checks may be mailed to the Wheeler Chamber of Commerce, P.O. Box 221, Wheeler, Texas 79096. Your contributions are appreciated and make the display possible. **It is illegal to set-off fireworks in the Park. City Ordinance!**

Street Dance

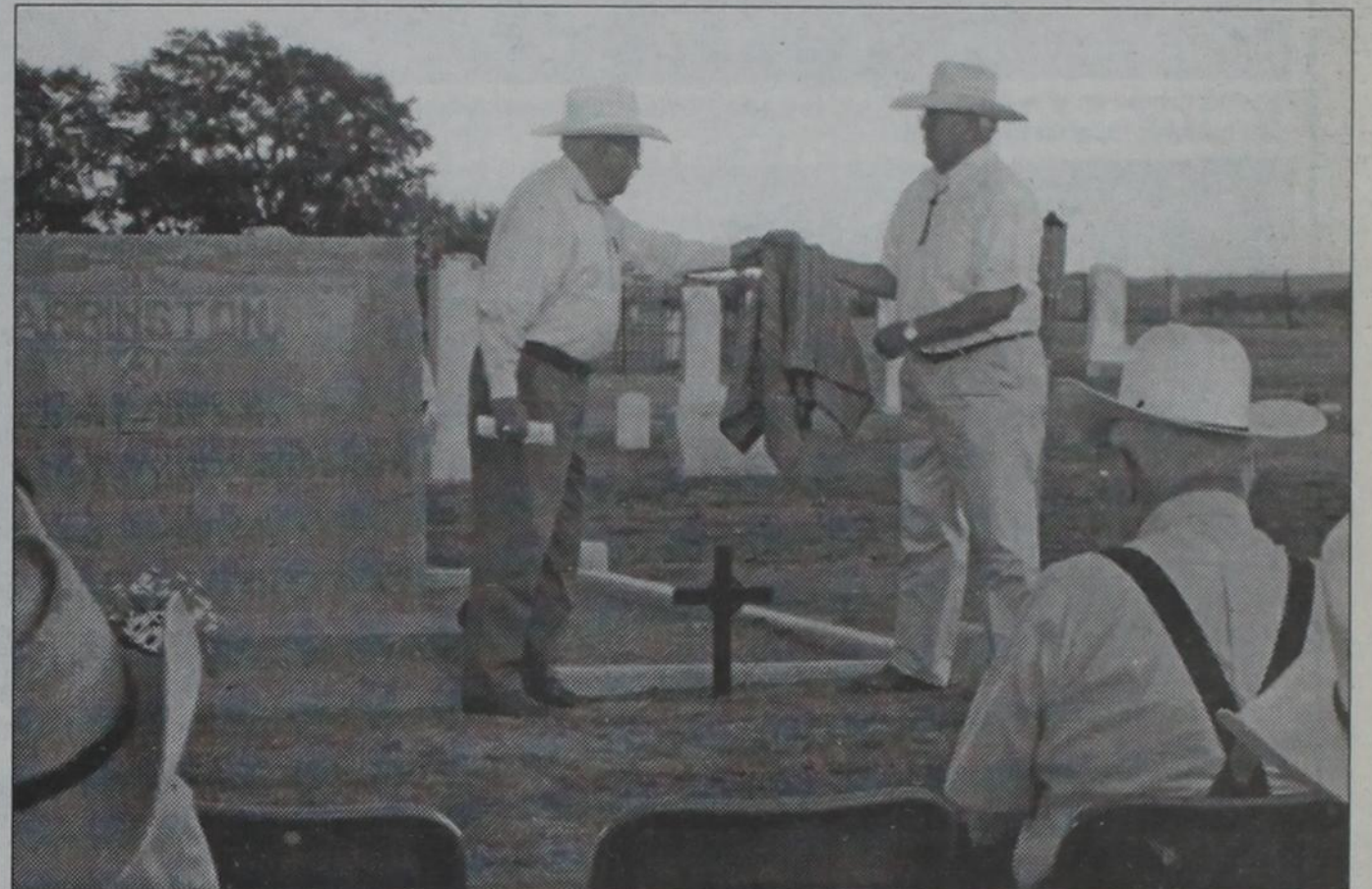
The street dance will again be held in the 100 block of East Texas—south side of the square. **Come on out and spend the day, you'll have a good time.**

Breast Cancer Tests Set For Parkview

The Don and Sybil Harrington Cancer Center Comprehensive Breast Center will conduct a Breast Cancer Screening Clinic at Parkview Hospital, 901 S Sweetwater, in Wheeler on July 10, 2006.

Breast cancer affects one in eight women. The key to winning the battle against cancer is early detection by having an annual breast exam, mammogram and performing a breast self-exam each month.

All exams are done by appointment only. Call (806) 356-1905 or 1-800-377-4673 for more information or to schedule an appointment.



MARKER DEDICATION: A Texas Ranger Marker dedication was held at the Mobeetie Cemetery Saturday evening, June 24, 2006, honoring Capt. George Washington Arrington, a Texas Ranger from 1875-1882. Gary Henderson, a former Texas Ranger and Sheriff of Hemphill County uncovered the cross and hands the covering to George Arrington, grandson of "Cap" Arrington.

Farmers' Market To Open Sat. July 1

The Third Annual Wheeler County Farmer's Market is tentatively set to begin Saturday, July 1st, at the covered shelter in the City Park. Market is from 8:00 a.m. to 12:00 noon, or until they sell out every Saturday until Sept. 2.

Market is open to agricultural products grown in Wheeler County including fruit, vegetables, nuts, eggs, and honey. All growers with gardens of any size are welcome to sell their products at the market.

Early produce most likely will be squash, potatoes, onions, okra, and peas.

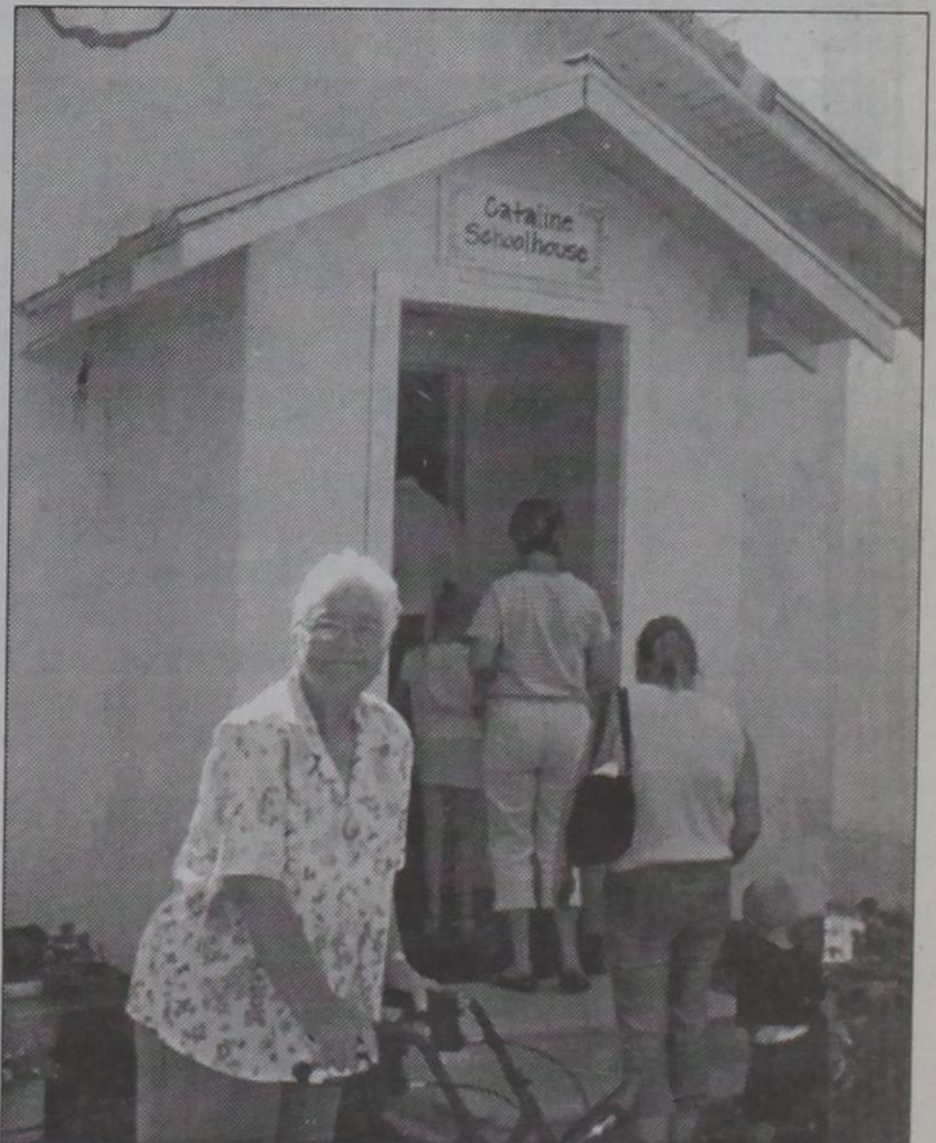
Wheeler FFA Is At Leadership Confer.

The Wheeler FFA Chapter attended the Area I FFA Leadership Conference held at Clarendon College on June 19-21, 2006. The Conference focused on helping the FFA Chapters develop leadership skills and activities.

Outstanding young men and women who serve as chapter officers and members, as well as their Agriculture Instructor were in attendance. Those attending from the Wheeler FFA Chapter were Lauren Fite—Vice President; Jonathan Hampton—Secretary; Olivia Locke—Treasurer; Stefan Tucker—Reporter; Diana Corral—Sentinel. The Area I FFA Region reaches to the top of the Panhandle, covering Amarillo and extending south to Lubbock. For more information about the Wheeler FFA Chapter, please call Jim Self at 826-3735.



RIBBON CUTTING: Suzanne Lohberger cuts the ribbon for the opening of the Cataline School for public viewing. Pictured to the left is Laura Lohberger. Delbert True, area author, gave the history of the school.



FORMER STUDENT: Marie Baker is shown here waiting in line to see her old school restored. Marie attended the school in the early twenties on the Alexander Ranch. The school teacher drove the school bus and picked up the students in a panel truck with no windows. She attended her fourth and fifth grade there. All there was at the location was the school and a cemetery.

Old Mobeetie Music Festival Planning Is Underway

'From the Heartland' to be featured at Old Mobeetie Music Festival.

If you listen closely you can hear bands scheduled to perform at the 2006 Old Mobeetie Music Festival beginning to tune their instruments. This year's celebration will be held on July 28, 29 and 30 on the beautiful grounds of the Old Mobeetie Jail Museum. You can expect to hear a fantastic array of bluegrass from the bands you love to hear and some soon to be fa-

vorites as well. On stage in Old Mobeetie for the first time will be "From the Heartland Bluegrass". This band is from Chickasha, Oklahoma. "From the Heartland" formed in the early part of 2004. In April 2005 they signed a recording contract with Platinum Plus Records out of Nashville. After recording their "One Little Kiss" album in May, they were able to debut it on the Gibson Theatre Stage at Fan Fair, Nashville in June of 2005. Members include Carl

Brown from Chickasha, Oklahoma on the banjo, dobro and backup vocals; Freddie Base from Tuttle, Oklahoma on guitar, lead and backup vocals; Kenny Terral from Moore, Oklahoma on mandolin, as well as lead and backup vocals; Mary Mayhew from Oklahoma City on fiddle and backup vocals; Janis Lindsey from Purcell, Oklahoma on bass and lead and backup vocals. The band is currently working on some new projects for their next album and looking forward to

touring the world.

Plan to arrive early to secure your favorite parking place as R.V. parking will still be on a first come, first served, basis. We have plenty of hookups and dry camp areas as well as sufficient handicap spaces.

ADMISSION

- Friday - \$8.00
- Saturday - \$10.00
- Weekend Pass - \$16.00
- Sunday FREE
- Children 12 & Under - FREE
- RV HOOKUPS
- \$10.00 per day or
- 10 days for \$75
- Days for \$55.00
- 7 Dry Camping \$4.00 per day

Three of this year's bands will be new to the Old Mobeetie stage, including The Perry Family of Ropesville, Texas, From the Heartland of Purcell, Oklahoma, and Wichita Mountain Bluegrass of Mt. Park, Oklahoma. Back by popular demand is Star Canyon of San Antonio, Texas. The Batten Family of Lubbock will be back on stage with their amazing bluegrass stylings as will the Larry Ford Band of Leedy, Oklahoma. The Duffin Family of Montague, Texas makes a return visit along with the Northfork Band of Lefors, Texas. The Magic City Cowboys of Magic City, Texas, will perform in their traditional time slot Saturday night with some of the best western swing you've ever heard! We are



PLAYING AT OLD MOBEETIE MUSIC FESTIVAL: "From the Heartland" will be playing July 28-30, members include (1-r) Mary Mayhew, Kenny Terral, Janis Lindsey, Freddie Base and Carl Brown.

WE'LL SEE YOU TUES., JULY 4th

THESE PICTURES SPONSORED BY:
FIRST STATE BANK

"The Bank with Friendly Service"

Wheeler Office:

1408 S. Alan Bean Blvd.
Wheeler, Texas
826-5546
Established 1906

Mobeetie Office:

First & Wheeler St.
Mobeetie, Texas
845-2311
Member: F.D.I.C.



COUNTRY NEWS
By Verna Fillingim



THE WHEELER TIMES

PAGE 2—Thursday, June 29, 2006

"Wheeler, town of friendship and pride."

Philippians 4:8: Finally Brethren, whatsoever things are true, whatsoever things are just, whatsoever things are pure, whatsoever things are lovely, whatsoever things are honest, whatsoever things are of good report; if there be any virtue and if there be any praise, think on these things.

Happy Birthday to Taylor McClendon, William G. Stiles IV, McDrea Morgan, Dave Johnson, Marisa Bonner, Tom Fisher, Chad Harrison, Todd Meek, Bernie Tapp, Josh McElroy, Opal Hefley on June 25; Betty Howard, Betty Chapman, Cody Clark, Billy Buckingham, Brian Shelton, Patricia Singleton on June 26; Pam Hibler, Kim Christner, Zack Johnson, Sue Vanpool, Christopher Smith, Kade Zybach, Dan Gatlin, Laramie Henry, Misty Gilmer, Zach Tipps, Logan Dan Gatlin, Megan Henderson on June 27, Rick Hefner, Terri Crowover, Brandon Hathaway, Lauren Sams, Valetta Frankenberg, Cody Howard, Ross Hennard, Carrie Ledbetter, Kori Smith, Jamie Mixon and Crystal Brooks on June 28; Chris Gallagher, Albert Jordan, Gail Sams, Paxton Wills, Shane Baird, Diane Brice, Dayla Cates on June 29; Brad Logan, Doug Helton, Megan Hampton, June Heare, Donald Hudgins III, Brian Baker, Ryan Baker, Taylor Sides on June 30; Shonda Smith, Betty Ann Touchstone, Kenneth Farris, Ashley Jones, Luinda Verden, Geary Burrows and Kenny Brdecko on July 1.

Happy Anniversary to Greg and Diane Estes on June 27; Sam and Barbara Meadows on June 26; Clifton and Tiffaney Fletcher, Clyde and Jane Dukes, Mack and Patty Ann Shields, Marshall and Mary Ann on June 28; Toby and Kara Newman on June 29; Ray and Barbara Anderson and Frank and Cathy Hooper on July 1.

First Sunday Singing will be at Gageby Church next Sunday at 6:00 p.m. Everyone invited to come sing and Fellowship together on July 2.

Wheeler Baptist Church will host the Wheel-a-long and church service at Wheeler Care Center next Sunday, July 2 at 3:00 p.m. Everyone invited.

The "Nearly Brothers and No Mountain Boys" band will be playing at Wheeler Care Center on Tuesday night, July 4, to entertain residents and visitors with their beautiful music. Thanks for coming. Everyone welcome.

No Wheeler Baptists Wednesday night suppers in July, but will resume when school starts. No Golden Agers in July at Wheeler Baptist. There will be other activities at 7:00 each Wednesday.

Ladies Day Out will Meet at Sotos Thursday, July 6 at 11:30. All ladies invited.

Good to have "Nearly Brothers and No Mountain Boys" Band come to Wheeler Care Center Tuesday night. Many residents out to enjoy the beautiful music. Robert Jones played the bass; Geoff Caldwell played the banjo; Gene Keelin played a guitar and Chuck Hartline the fiddle. Jim Jackson helped some on a guitar. Chuck and Daniel Keelin sang several songs. Thank you for coming. God bless you!

The band will come back July 4, Tuesday, at 6:30 if not too many conflicts.

Pray for Ray Brazeal, who was taken to Amarillo with stomach problems Tuesday night. He is home now.

Pray for Arvid Sword, who has been in Amarillo in the hospital. Running tests on kidneys and heart.

Glad to hear that Joyce Walker is doing well now after her recent gall bladder surgery. Has to be careful about lifting for awhile. Remember her in your prayers.

Nice to have a call from Renee Atherton's Mom, Barbara Liggett. Barbara was with Renee and she died very suddenly. Autopsy report showed severe coronary artery disease. We are so sorry. A sister, Angel Thomas, who lives near Darville, has Renee's 2 year-old. Barbara and John have the 9-year-old at Roxton and are thinking of moving back to this area so boys can grow up together. Remember them in your prayers.

About 20 youth have signed to go to Oklahoma Baptist University at Shawnee, Okla., next week, June 26-30, for Summit Camp. Pray for youth and counselors. Matt Koen, Tina Bond and Wes Bradstreet are going with the youth.

Briscoe Community Church is expanding. You will want to go by and see how pretty they are remodeling and building on to the church. They are also looking for a new preacher. Their pastor, Mark Eavitt, had a job transfer to further south. They hated to see him go and his family.

Jotana (Simmons) Henson was sponsor to go with girls to Girls Camp at Panfork last week. Girls going were Brittney Robinson, Micaela Dawson, Abby Bond and Genet Vannuys. They had a good time.

Sincere sympathy to family and friends of Tess Wilkinson, 94, of Canadian in her death. Funeral was Saturday at the Methodist church in Canadian. Survivors include two daughters, Sandy Waterfield and husband, Jim, and Shelly Behney all of Canadian.

Nice to have a call from an Army buddy of Willis', Homer Hudson. Didn't know Willis had died in De-

Remember Wayne Kuehler in your prayers. He is some better. Correction: Matt and Konnette Koen and Micah and Caleb are our new music and youth family at Wheeler Baptist Church. Micah and Caleb are twin sons, 3 1/2 years. Welcome. So happy to have you at Wheeler Baptist Church.

New Pastor at Mobeetie Methodist Church is John Ulrey and wife, Michelle, from Wellington. Dick Irvine, former pastor, is not preaching at this time. John also works for Greenbelt Electric.

Correction: Josh Bryant will be going back to OU at Norman, Okla., for college this fall. He only lacks a few hours being a senior. Expect you wondered who "Jake Britt" was, me, too.

Keep praying for Arvid Sword, he is still in Amarillo in the hospital and not doing well.

Glad to know that W. O. Jones is able to be back home in his house at Wheeler. He can't walk very well, but able to get around with a walker. Walking does help his legs. Keep praying for W.O.

W. O. is looking for someone to stay with him some.

Nice to have a phone call from LaJuana (McElroy) Caroland of Canadian. LaJuana was spending

a few days with her mom, Mayme McElroy on the King Ranch north of Canadian. Mayme had to have surgery on a foot, to remove bunions. So pretty painful and has to wear "the boot" to protect it and keep her foot elevated. LaJuana's two children, Lucas, 6, and Anika, 2, were with her. Lance and LaJuana and children live at Canyon. Lance helps maintain the golf course.

Kulani and Charlie McDermott and 5 children live at San Diego but came recently for a visit to the King Ranch and her folks. Charlie is in the Navy. Kulani is LaJuana's sister.

Claudia Marion and Cindy Chapman prepared the delicious Baked Potato and trimmings supper Wednesday night. Thanks!

Nice to visit with Jeff Herd at Wheeler Post Office Thursday. He is enjoying having son, Tyler Herd living with him now. Tyler is 15. Pray for Jeff's health problems. Jeff has a bad gall bladder, but doctors think he is not strong enough for surgery. Jeff is fighting for his life.

Quilting at Totty School Thursday were Jane Seitz, Melba Corcoran, Betty Rogers, Augusta Brown and Sydney Lynch. They were working on Augusta's quilt. They invite others to come join them.

For something tasty and different, try **Blackeyed Pea Combo**

1 pound bulk sausage or ham-burger meat.
1/2 cup chopped onions
1 can blackeyed peas (regular or with jalapenos)
1 can diced tomatoes
Brown and stir meat and onions. Add other ingredients and heat though and serve. (Chopped bell pepper may also be added before cooking meat. Salt and Pepper to taste.

Mable Pearston and son, David, Pearston from Weatherford, Tex., visited old friends, Eddie and Lavenna Pannell a few days. Nice to have them all out to Wednesday night supper and church at Wheeler Baptist. Come again. Mable had knee surgeries, but is doing well.

Wheeler Methodist Church and Allison Methodist Church enjoyed having new Pastor, Tom, and Sandra Woodward at their churches Sunday, Father's Day, June 18. Tom will preach at Allison at 9:00 and Wheeler at 11:00. Their two girls were with them, but no longer live at home. One had a husband and one a friend with her. Welcome Woodwards; they are from Snyder.

Mary Margaret Dodd's daughter Diane and husband, Jack. (Continued Page 6)



A good crowd was in attendance at the Old Town Hoedown on Saturday, June 24, at Mobeetie for the dedication of Cataline School



Those in attendance at the ribbon cutting found shade where they could. These are gathered in front of the Old Jail.



These young ladies, Junior High cheerleaders at Ft. Elliott were on hand at the Old Town Hoedown. They ran the concession stand and got food for those unable to stand in line for the chuckwagon feed. Pictured are (l. to r.) Marissa Keelin, Kailey Hudson, Peyton May, Sarah Horn and Sidney Mills.



The three young ladies let us look back in time to how a youngster seated in the Cataline school might have looked. The building has been restored and furnished with period furnishings of a one room school. Pictured are (front to back) Kaitlin Shields, Maddie Shields and Adley Gilmer.



These two men actually attended Cataline School. Jim Alexander on the left was a student for three months in 1938; he presently lives in Amarillo. Bill Donaldson of Allison attended the school for 8 years, starting in 1936.



The chicken fried steak with trimmings was served to those in attendance at the Old Town Hoedown. Maurita Stribling, second from the left, arrived and went over to see if there was anything she could do.



This group is enjoying the good chuckwagon food served at the Hoedown.

Country Chapel Wheeler, TX

- ★ Meets at 10:30 a.m. for Sunday Morning Services and Children's Church
 - ★ Every other Tuesday morning at 6:30 a.m. for Prayer.
 - ★ Saturday morning prayer at 7:00 a.m.
- For more information, call Country Chapel Church 806/826-3511

JENNINGS PLUMBING, HEATING & AIR CONDITIONING

P.O. Box 423 — Wheeler, Texas 79096

LARRY & BOBBY JENNINGS, Owners

Licensed, Insured & Bonded

(806) 826-3153

Licensed Septic Systems, & Site Evaluations



TX# TA017641E

"A Flush... Is Better Than a Full House!!!"

Wheeler Church of Christ

Our Vacation Bible School just ended an hour ago. Due to the hard work in the last few minutes, the Multi-Purpose Building that had been transformed into a first century Bethlehem Village now resembles the way we usually have it with all of the chairs and tables back up. So many people helped in so many different ways (I hope I don't forget someone here). Thanks to Maria Ford for her toy-making shop where everyone made things out of earthen ware. Thanks to Tammie Pike and her grain mill where they actually took the hard corn and crumbled it down as well as churn some butter. Thanks to Ronda Rutherford for helping the children make all sorts of interesting scents in the perfume shop. Thanks to Brenda McWhorter and Judy Woollard for their work in the bakery helping the children make homemade rolls. Thanks to Chandra Corse and Julie Barnett for their coin-making shop where the children learned about money in ancient times and even designed some coins themselves. Thanks to Stacy and Lisa McCasland for opening the Farmer's Market where all sorts of tasty (and a few not-so-tasty) foods that were available in Bible times could be found. Thanks to Lanette Lewis for helping the children make pretty designs on wood in the mosaic shop. Thanks to Bob Frankenbery and Buck Dollar for having a barnyard outside where the kids could pet a dog and see some pigeons and turtles (the calf wasn't tame enough to be here). Thanks to Pam Jones for teaching a lot of new songs. Thanks to Kenny Rutherford for letting the kids get a good workout outside, too. Thanks to Sheryl Lane, Donnetta Dollar, Bree McCasland, Robey Johnson, and Patricia Forrester for traveling with the children to each of these shops. Thanks also to Blaine Rutherford, Catlin Rutherford, and Ruby Jones for helping out in various spots during the day. A huge thanks to Kim Moore and Kim's Kitchen for supplying everyone with plenty of pizza. And thanks to everyone else who brought up plenty of cookies and drinks. VBS was great this year!

Shawn D. Johnson

An Invitation: You are cordially invited to attend any of the weekly services of the Wheeler Church of Christ which meets at 1001 S. Alan Bean Blvd, in Wheeler, Texas

Services:

Sunday Bible Study 9:30 A.M.
Sunday Morning Worship 10:30 A.M.
Sunday Night Worship 6:00 P.M.
Wednesday Bible Study 7:00 P.M.

The View of a Southern Woman

.... Southern California that is.

When Glenn Frosty Forrest ask me what I thought for my birthday, I said I could not think of a thing. After a few days of outrageous ideas from him, mostly fishing trips, I decided that I could use a big, new chicken house. When the shock of that was over, he said lets go pick out one, but I am also taking you on a birthday trip to somewhere you have never been. I told him I had lost my passport so he could forget that, but he said that he was taking me to Taos, New Mexico and then to Red River for 4 or 5 days. No stopping him when he sets his mind on something even though we just got home from a 4411 mile trip that covered 10 states. For some reason we ended up in Santa Fe, New Mexico. It is a wonderful place with tons of history, art galleries, shops and nice restaurants, not to mention the antique shops. He really knows me after only 3 short years of marriage. We did have a great time there and also in Taos, but the slower pace of Red River was what we needed after the time spent in those crowded cities. It is a beautiful place with tons of pine and Aspen trees on tall mountains and ski slopes. The hour ride up the ski lift was so nice in the clear mountain air that it reminded me of the many times I spent in the High Sierras in California. Even trout streams and clear lakes. We sat on the balcony of our motel room that overlooked the Red River and relaxed. Next day though, it was off to the art galleries and antique shops and touring the town. We found a beautiful, big lake down the hill that was a blue, blue color so we stayed there and visited with the people fishing. One man caught 2 beautiful trout and he was happy to pose for a picture with the largest one. He was using a Wal-Mart bag with water in it, hung in a tree as a means to keep his fish alive. Quite a clever way to keep them alive and safe.

Another family of Indians were on the other side of the lake and the man showed us his catch of 2 small trout. I wanted to tell him where the big ones were, but thought better of that idea. The wildflowers are so different from the ones in California and I have no idea what they were. Sure some nice ones. In the town of Eagle's Nest, we saw some huge orange poppies that were fabulous. Those I photographed. Do not think the people that lived there were home—anyway, no shots fired when I went into their yard. On our last morning, we went into a diner for breakfast. It smelled good when we entered and it advertised good family food. After ordering we noticed that most of the patrons had on black leather pants and jackets. Also notable were signs on the wall about bike runs, biker girl pictures and Harley-

Davidson signs. We had not noticed the sign on the top of the door that read, "Bikers Welcome", but the food was great and the waitress and patrons were very friendly. Probably they wondered what the old couple were doing in there—the wearing sandals and Glenn in a cowboy hat. On the way home, we passed more beautiful streams and some fishermen doing their thing. I ask Glenn if he brought our poles and he said no as this was my birthday gift and we did what I liked to do. Now that is a special man and I know it must have been hard for him to pass up those fishing holes for a look at

Wheeler County COURT RECORDS

List of instruments filed in the Wheeler County Clerk's Office from June 19, 2006 — June 23, 2006.
JUNE 19, 2006
 REVOCATION P. of ATTY.—Skip Morgan to Monique Cronce, 6-7-06.
 D.—J. D. Clay and Billy Kirk Clay,

those art galleries and antique shops. He is someone very special and very much loved.
 With love from a tired California transplant,
Betty Boydston.

5-10-06, SEC. 4, BIK. LXXXV, Shamrock.
 OL—John Bruce Bartlett to Chesapeake Exploration Limited Partnership, 5-8-06, Sec. 66, Blk. A-7, H&GN Ry. Company Survey.
 ROW—Dennis J. Hefley to Samson Lone Star Limited Partnership, 5-9-06, Pt. E 480 acs. Sec. 48, Blk. M-1, H&GN Ry. Company Survey.
 SURFACE LEASE/SALT WATER AGREEMENT.—Dennis J. Hefley to Samson Lone Star Limited Partnership, 5-9-06, E 1/2 NW 1/4 Sec. 48, Blk. M-1, H&GN Ry. Company Survey.
 ORDER APPT. GUARDIAN.—Nina Turner to Ex Parte, 4-25-05.
 ORDER AUTHORIZING SALE.—Nina Turner to Ex Parte, 3-23-06, Sec. 13, Blk. A-3, H&GN Ry. Company Survey.
 HEIRSHIP AFF.—Tracy Jolly to Troy M. Jolly, 1-6-06, See Instrument.
 RATIFICATION OL.—Tracy Jolly to Kay Lochmann, 1-6-05, W 1/2 Sec. 13, Blk. A-8, H&GN Ry. Company Survey.
 RATIFICATION OL.—Todd Clay, et al to Kay Lochmann, 11-30-05, W 1/2 Sec. 13, Blk. A-8, H&GN Ry. Company Survey.



RATIFICATION OL.—Tonya Hamilton to Kay Lochmann, 1-5-05, W 1/2 Sec. 13, Blk. A-8, H&GN Ry. Company Survey.
 EXT. MEMO OPTION AGREE.—Delmer Barefoot, et ux to Brigham Oil & Gas LP, 6-6-06, SW 1/4 Sec. 86 and S 1/2 Sec. 87, Blk. 13, H&GN Ry. Company Survey.
 MEMO OPTION AGREE.—Marie Belle Meigs Estate to Brigham Oil & Gas LP, 5-31-06, Sec. 88, Blk. 13, H&GN Ry. Company Survey.
 OL—Kenneth R. Vaughn to Brigham Oil & Gas LP, 5-31-06, Sec. 28, Blk. A-4, H&GN Ry. Company Survey.
 OL—Bud C. Scribner to Brigham Oil & Gas LP, 5-25-06, Sec. 28,

Blk. A-4, H&GN Ry. Company Survey.
 OL—Virginia Smith to Glasgow Resources LLC, 5-2-06, Sec. 16, Blk. L, J. M. Lindsey Survey.
 OL—Jeanne Cole to Glasgow Resources LLC, 4-5-06, Sec. 16, Blk. L, J. M. Lindsey Survey.
 OL—Robert Thomas to Glasgow Resources LLC, 4-5-06, Sec. 16, Blk. L, J. M. Lindsey Survey.
 OL—Stevie Thomas to Glasgow Resources LLC, 4-5-06, Sec. 16, Blk. L, J. M. Lindsey Survey.
 OL—Alan Dean Heard to Glasgow Resources LLC, 4-17-06, SW 1/4 Sec. 17, Blk. L, J. M. Lindsey Survey.
 OL—Donna Sosebee Jenkins to Glasgow Resources LLC, 2-10-06, S 1/2 NW 1/4; NE 1/4; SW 1/4 Sec. 6, J. Poitevent Survey.
 OL—Charles F. Doornbos Revocable Trust to Noble Energy Production Inc., 4-28-06, S 1/2 Sec. 30, Blk. A-8, H&GN Ry. Company Survey.
 OL—Charles F. Doornbos Revocable Trust to Noble Energy Production Inc., 4-28-06, N 1/2 Sec. 17, Blk. L, J. M. Lindsey Survey.
 OL—XTO Energy Inc. to Noble Energy Production Inc., 5-2-06, S 1/2 Sec. 30, Blk. A-8, H&GN Ry. Company Survey.

News, Views, Commentary
On KPDR, 90.5
 ... In Wheeler
 Weekdays 6:00 a.m. to 7 a.m.

Don't trust your car to just any insurance company.



Germania INSURANCE
 The Insurance Texans Trust
Todd Moore Insurance Agency, Inc.
 315 N. Main St. • Shamrock
 806.256.8911 • 1.800.687.3730

CONSIGNMENT AUCTION
SATURDAY, JULY 22, 2006
 At Wheeler County Show Barn
 Consignments must be in by Wednesday, July 5 to be advertised!
LYNDON LOYD AUCTIONEERS
806/826-5850

Steel Construction
Barns, Houses, Sheds, Carports, and etc.
Gulley
 Fax: 806/447-0153
 Pat-Home: 806/447-9705
 Cell: 806/205-0770
 Clint: 806/205-0646
 Scooter: 806/447-1122
 Cell: 806/930-9201

Wheeler Thriftway now has **A.T.M.**

THRIFTWAY SUPERMARKET

Your source for the freshest **PRODUCE • MEAT • DAIRY**

WHEELER COUNTY'S EXCLUSIVE SOURCE FOR PLAIN & SHURFINE PRODUCTS.

THRIFTWAY SUPERMARKET
 300 EAST OKLAHOMA
WHEELER
 826-5944 PHONE 826-3345 FAX

MARKET SQUARE THRIFTWAY
 205 EAST THIRD
SHAMROCK
 256-2481 PHONE 256-5060 FAX

Wheeler Thriftway now has **A.T.M.**

WHEELER PLUMBING
 511 S. Cheyenne
 New Construction
 Remodel
 Repair
 Sewer Service
 Septic Systems
 Site Evaluations
 Phone: **826-5907**
 MAX McQUEEN
 P.O. Box 754 Wheeler, TX

JULY 2006

This Calendar runs the last Thursday of Each Month and is available for Organizations & School Activities. Call: 806/826-3123 for listings.

SUNDAY	MONDAY	TUESDAY	WEDNESDAY	THURSDAY	FRIDAY	SATURDAY
1 HYLAND'S PHARMACY 109 East Texas — Wheeler Phone: 826-5561 DOUBLE COUPONS EVERYDAY Limit: 75¢-\$1.00 \$1.00 Coupons: \$1.00	2 FIRST STATE BANK OF MOBEETIE Mobeetie & Wheeler Member: F.D.I.C. JAIL AT MOBEETIE TEXAS	3 CROSS CAR CENTER • 24 Hour Wrecker Serv. • Auto Body Repair Phone: 806/826-5515 Intersection Hwy. 152 & 83 Wheeler, Texas	4 Wellington State Bank Wheeler • Memphis • Childress • Caradine Wheeler Banking Center 405 Alan L. Bean Blvd. P.O. Box 1040 Wheeler, Texas 79096 Phone: 826-3366 Member: F.D.I.C.	5 Wheeler Fire Dept. ... 7:00 P.M. WHEELER LADIES' DAY OUT—11:30 A.M. at Solo's Family Restaurant (Dutch) ... All Ladies Welcome	6 7 8	9 Family Visits Wheeler Care Cntr. ... 2:00 P.M. Church Wheeler Care Ctr. 3:00 P.M.
10 Family Visits Wheeler Care Cntr. ... 2:00 P.M. Church Wheeler Care Ctr. 3:00 P.M. Wheeler Nursing & Rehab	11 AF-AM Lodge 7:30 P.M. Wheeler S. Citiz. 6:00 P.M.	12 Wheeler Lions Club Mel's 6:00 A.M. WHEELER'S 21st ANNUAL 4TH OF JULY CELEBRATION	13 Mobeetie Fire Dept. 7:00 P.M.	14 Old Mobeetie, Texas, Assoc. Lodge Bldg. at Jail 7:00 P.M. Wheeler I.S.D. Bd. 6:30 P.M.	15	16 Family Visits Wheeler Care Cntr. ... 2:00 P.M. Church Wheeler Care Ctr. 3:00 P.M. Mobeetie Baptist Church
17 Family Visits Wheeler Care Cntr. ... 2:00 P.M. Church Wheeler Care Ctr. 3:00 P.M. Mobeetie Baptist Church	18 AF-AM Lodge 7:30 P.M. Wheeler City Council City Hall 7:00 P.M.	19 Wheeler Lions Club Mel's Diner 6:00 A.M.	20 Wheeler Fire Dept. ... 7:00 P.M.	21 22	23 Family Visits Wheeler Care Cntr. ... 2:00 P.M. Church Wheeler Community Church 3:00 P.M.	24 AF-AM Lodge 7:30 P.M. Comm. Court 10:00 A.M.
25 Family Visits Wheeler Care Cntr. ... 2:00 P.M. Church Wheeler Community Church 3:00 P.M.	26 AF-AM Lodge 7:30 P.M. Comm. Court 10:00 A.M.	27 Wheeler Lions Club Mel's Diner 6:00 A.M. Our Country Band .. 6:30 P.M.	28 Wheeler Fire Dept. ... 7:00 P.M.	29 30 31	32 33 34 35 36 37 38 39 40 41 42 43 44 45 46 47 48 49 50 51 52	

OLD MOBEETIE TEXAS MUSIC FESTIVAL
 JULY 28-30
 (Continued Page 6)

Oil & Gas NEWS

(New Location, Completion and Plugging Report made possible by Oil & Gas Reporting Service, 3930 Beaver St., Vernon, TX 76384. Doris Harrison, Phone: 940/552-6644.)

Week Ending June 22, 2006
Intentions to Drill
GRAY (EAST PANHANDLE) Cimarex Energy Co. of Colorado, #3 Glass 'A', 1480' from North & 400' from West line, Sec. 3,3,B&B, PD 3200'.
HEMPHILL (BUFFALO WALLOW Granite Wash) Forest Oil Corp., for the following wells: #6048 Irene Dixon, 990' from North & 1250' from West line, Sec. 48,A-2,H&GN, PD 12770'.
 #208 George, 2310' from North & 467' from West line, Sec. 8,M-1,H&GN, PD 12860'.
HEMPHILL (WILDCAT & BUFFALO WALLOW Granite Wash) Samson Lone Star, L.P., #3 Fillingim 'A' 89, 1980' from South & 467' from West line, Sec. 89,M-1,H&GN, PD 13000'.
HEMPHILL (HEMPHILL Granite Wash) Devon Energy Production Co., L.P., Prescott '21', Sec. 21,A-1,H&GN, PD 13000'.
 for the following wells:
 #2, 1980' from North & 1830' from East line of Sec.
 #3, 1980' from South & 467' from West line of Sec.
 #4, 1980' from North & 660' from West line of Sec.
 #5, 660' from North & West line of Sec.
 #9, 467' from South & East line of Sec.
HEMPHILL (WILDCAT & HEMPILL Granite Wash) Samson Lone Star, L.P., #16 Hobart Ranch '50', 467' from South & 2127' from East line, Sec. 50,A-2, H&GN, PD 13500'.
ROBERTS (WILDCAT & ALPAR-Pearson Brown Dolomite) Latigo Petroleum Texas, L.P., #11 Courson Ranch '135', 467' from North & 2120' from East line, Sec. 135,C,G&M, PD 4300'.

WES-TEX SERVICES

Has career opportunities in the following areas:
Transport Drivers
Bobtail Drivers
Kill Truck Drivers
Winch Truck Drivers
Hot Oil Drivers

Drivers must have a current CDL license with tank endorsement; Haz-Mat endorsement is encouraged. Training is available for qualified individuals. Applicants must meet DOT requirements, including drug/alcohol testing.

We Offer:
 Training
 Competitive Salary
 Medical Insurance
 Life Insurance
 Safety Incentive Program
 2 Weeks Paid Vacation
 Retirement Program
 Uniforms

Safety Equipment
 Short Term Disability
 Excellent Working Conditions and Hours
 Call 806-273-2362 to schedule an interview or visit our web site at www.wes-texaservices.com

ROBERTS (WILDCAT & ALPAR-PEARSON Brown Dolomite) Latigo Petroleum Texas, L.P., #11 Courson Ranch '136', 2280' from North & 1245' from West line, Sec. 136,C,G&M, PD 3800'.
ROBERTS (WILDCAT & NOTLA Atoka) Range Petroleum Co., #332 Stella Killebrew, 902' from North & 1469' from East line, Sec. 32,43,H&T, PD 10500'.
RECOMPLETION
ROBERTS (ST. CLAIR Granite Wash) Devon Energy Production Co., L.P., #3 Chambers '79', 550' from South & 1880' from West line, Sec. 79,B-1,H&GN, PD 11000'.
WHEELER (PANHANDLE) Viking Venturers, L.L.C., Pike, Sec. 34,13,H&GN, PD 3200'.
 for the following wells:
 #1, 1650' from South & East line of Sec.
 #2, 2310' from South & 1650' from East line of Sec.
 #3, 1650' from South & 2310' from East line of Sec.
 #4, 990' from South & 2310' from East line of Sec.
WHEELER (WILDCAT & BUFFALO WALLOW Granite Wash)

Samson Lone Star, L.P., #3248 Helley, 1130' from South & 525' from West line, Sec. 48,M-1,H&GN, PD 14000'.
WHEELER (FRYE RANCH Granite Wash 'A') Forest Oil Corp., #4010 Frye Ranch, 990' from North & West line, Sec. 10,A-3,H&GN, PD 14900'.
WHEELER (WILDCAT & STILES RANCH Atoka) Chesapeake Operating, Inc., #10 Miller '2', 2173' from South & 467' from West line, Sec. 2,A-3,H&GN, PD 18000'.
WHEELER (WILDCAT & STILES RANCH Granite Wash) EOG Resources, Inc., #7 Britt '7', 1000' from South & East line, Sec. 7,1,B&B, PD 15800'.
WHEELER (STILES RANCH Granite, Wash) Newfield Exploration Mid-Con., Inc., #1 Britt Ranch 'D' 5, 1000' from South & 1800' from West line, Sec. 5,2,B&B, PD 12900'.
RECOMPLETION
OIL Well Completions
ROBERTS (N.W. MENDOTA, S.W. Granite Wash) Devon Energy Production Co. L.P., #1398 Fields-Mahler, Sec. 98,C,G&M, spud 11-20-05, drlg. compl 12-12-05, tested 1-15-06, flowed 212 bbls. of 45.1 grav. oil + 130 bbls. water thru 32/64" choke on 24 hour test, GOR 5925/1, TD 10600', PBTD 10512' --
WHEELER (FRYE RANCH Granite Wash 'A') Dominion Oklahoma Texas E&P, Inc., #2 Ona Black '49', Sec. 49,A-3,H&GN, spud 1-29-06, drlg. compl 2-23-06, tested 3-15-06, flowed 37.1 bbl. of 52.2 grav. oil + 86 bbls. water thru 42/64" choke on 24 hour test, GOR 10593, TD 12365', PBTD 12273' --

Gas Well Completions
HEMPHILL (BUFFALO WALLOW Granite Wash) Forest Oil Corp., #1453 Barker, Sec. 53,M-1,H&GN, spud 2-9-06, drlg. compl 3-5-06, tested 5-3-06, potential 2331 MCF, TD 13455', PBTD 13348' --
HEMPHILL (BUFFALO WALLOW Granite Wash) Forest Oil Corp., #1007 Peak Bourassa, Sec. 7, 4,AB&M, spud 3-3-06, drlg. compl 3-21-06, tested 5-4-06, potential 1354 MCF, TD 12875', PBTD 12819' --
HEMPHILL (BUFFALO WALLOW Granite Wash) Forest Oil Corp., #3052A John C. Vise, Sec. 52, M-1,H&GN, spud 3-11-06, drlg. compl 4-2-06, tested 5-3-06, potential 751 MCF, TD 13500', PBTD 13394' --
HEMPHILL (BUFFALO WALLOW Granite Wash) Questar E&P Co., #5010 Prater, Sec. 10,4,AB&M, spud 1-20-06, drlg. compl 2-17-06, tested 4-1-06, potential 2937 MCF, TD 13177', PBTD 13032' --
HEMPHILL (BUFFALO WALLOW Granite Wash) Zephyr Lone Star Operating Co., L.L.C., #1025 Buckthal, Sec. 25,A-1,H&GN,

Want Ads

"Housekeeping position available. Good hours. Great benefits. Excellent work environment. No phone calls. Apply in person at Parkview Hospital, Wheeler." 6/8trn

HELP WANTED: Utility contractor looking for year round **Experienced High-Voltage Lineman** and Line Operators with a class A CDL License preferred and Apprentice Lineman. Work located out of State. Traveling a must. Needs Ambition. 1-800-669-5496. 6/29p

IMMEDIATE OPENING in the Canadian area for a gas utility distribution service technician. Salary based on experience. Company benefits available. Applications available at West Texas Gas, Inc., 411 S. Second St., Canadian, Texas or mail resume to WTG, Inc., P.O. Box 1005, Canadian, Texas 79014. WTG is an Equal Opportunity Employer. 6/29-7/13c

NEEDED: Licensed Vocational Nurses and Nurse Aides needed at Edward Abraham Memorial Home. We will train for Nurse Aide. Benefits include paid holidays, vacation, and health insurance. Apply at 803 Birch Street, Canadian or call 323-6453. EOE 6/29-7/6c

NEEDED: Housekeepers needed at Edward Abraham Memorial Home. Benefits include paid holidays, vacation and health insurance. Apply at 803 Birch Street, Canadian or call 323-6453. EOE 6/29-7/6c

REAL ESTATE APPRAISAL & SALES

Farm & Ranch Land Specialist
 State Certified Appraiser
 TEXAS SUNBELT SERVICES
Lavon Williams
 806/826-5232
 or 826-5803

FOR SALE: Fertilized Grass Hay for Sale. Call 663-0740 or 669-2582. 3/16trn

FOR SALE: Large, older house in Wheeler. Three bedrooms, 1 and 3/4 baths. Large kitchen-den combination. Fenced yard. 826.5843. 4/20trn

NEEDED: Hemphill County Hospital in Canadian, Texas is now taking applications for a Fulltime Registered Nurse (RN) for the 7am-7pm shift. Competitive Salary & Benefits. Contact: Rayanna Davina @806-323-6422 ext. 231. May fax resume to 806-323-8061. E-mail to rayanna.davina@hch.dst.tx.us 4/20trn

Listen to...
KPDR-FM, 90.5
 WHEELER, TEXAS

We'll See You Tuesday, July 4

TEXAS STATEWIDE CLASSIFIED ADVERTISING NETWORK

<p>TexSCAN Week of June 25, 2006</p> <p>ADOPTION Note: It is illegal to be paid for anything beyond medical and legal expenses in Texas adoption. HAPPILY MARRIED COUPLE wishes to adopt. Offering love - laughter - financial security. A warm bright future. Expenses paid. Please call Louise/Michael. 1-800-537-9257, Pin #12. PREGNANT? CONSIDERING ADOPTION? Talk with caring people specializing in matching birthmothers with families nationwide. Expenses paid. Toll free 24/7. Abby's One True Gift Adoptions, 1-866-413-6292. BUSINESS OPPORTUNITY ALL CASH CANDY Route. Do you earn \$800 in a day? Your own local candy route. 30 machines and candy. All for \$9,995. 1-888-625-5481, Multi Vend, LLC. BE YOUR OWN BOSS. Earn up to \$2000 a week. For FREE information, call Think Tank Marketing and Support Services, 1-888-262-1211. HIGH RISK - HIGH REWARD opportunity. Investment required. MUST have proven track record running a business or no need calling Liberty Tax Service franchise #10 by Entrepreneur Magazine. 1-800-545-1028. LOG HOME DEALERS WANTED. Great earning potential, excellent profits, protected territory, lifetime warranty, American Made - Honest Value. Call Daniel Boone Log Homes, 1-888-443-4140. NATIONAL SCHOLARSHIP PAGEANT and Talent Show is looking for energetic person to own and operate Local Franchise. All details and guidelines provided. Natura Miss United States of America, 1-866-202-4772.</p>	<p>DRIVERS 35 - 45 CPM. 970 mile average length of haul. Great benefits, home time and bonus. Contractors \$1.20 per mile. \$0 down Lease - NEW trucks. CDL-A + 3 months OTR. Local Orientation. Melton Truck Lines, 1-800-635-8669. DRIVER - COVENANT TRANSPORT has opportunities for CDL-A drivers in your area! No matter what your experience level is, we have what you're looking for. Now hiring Students, Solos, Teams. Lease Purchase and O/Os. Call today! 1-866-684-2519. EOE. DRIVER - HOME WEEK ENDS. Flatbed drivers can earn \$950+/week at PGT. Great benefits & equipment. Students with CDL-A welcome. Call 1-800-837-7748. DRIVERS/DRIVING SCHOOL graduates wanted. Tuition reimbursement. No waiting for trainees. Passenger policy. NO NYC. Guaranteed hometime. Dedicated and regional available. USA Truck 1-866-483-3413. DRIVERS - OTR \$4,000 Sign-on Bonus. Experienced Drivers, 1 year OTR. Major Refrigerated Carrier, 48 & Canada, great pay/lots of miles. Students welcome. Call FFE, 1-800-569-9232. DRIVERS - PAY INCREASE! \$1000 sign on for experienced OTR. Dedicated and regional available also. Owner operators, teams & CDL grads welcome. USA Truck 1-866-483-3413. DRIVERS, REGIONAL, DEDICATED. Great pay. Call 1-866-333-8801. For CDL training, call Swift Driving Academy, 1-866-333-8801, Ext. 17628. Financing available. Classes start every Wednesday. Reference #250. EOE. NATIONAL CARRIERS IS a growing Fleet offering Regional Franchise. All details and guidelines provided. Natura age and Lease Purchase Options. CDL-A required. 1-888-707-7729. www.nationalcarriers.com</p>	<p>EXAM PREP "POSTAL EXAMS" The average postal employee earns \$18/hour starting, average pay \$57K/year. Federal benefits, paid training and vacations. No experience needed. 1-800-584-1775, Ref#P4701. Fee required. (Not affiliated with the USPS.) HELP WANTED DATA ENTRY! Work from anywhere. Flexible hours. Personal computer required. Excellent career opportunity. Serious inquiries only. Stewart Marketing Group, 1-800-344-9636, Ext. 400. YOUNGQUIST BROTHERS, INC. Excellent job opportunity in South Florida. Positions available: Drillers, Derricks, Floor Hands. Excellent benefits package available after 90 days. Fax resume to: 1-239-489-4545 or contact Cliff at 1-239-489-4444. Must pass physical and drug test. Drug free workplace. HOMES FOR SALE HOME FINANCING Get Pre-Approved 100% loans or small down, based upon your circumstances. Perfect, Limited, Troubled Credit (Bankruptcy-OK) Call Mortgage Makers 1-512-292-4444 or 1-888-500-0000 (TMB#44749). MISCELLANEOUS AIRLINE MECHANIC - Rapid training for high paying aviation career. FAA predicts severe shortage. Financial aid if qualify - job placement assistance. Call AIM 1-888-349-5387. ATTEND COLLEGE ONLINE from home. Medical, Business, Paralegal, Computers, Criminal Justice. Job placement assistance. Computer provided. Financial aid if qualified. 1-866-858-2121. www.OnlineTideWaterTech.com REAL ESTATE A BARGAIN - 75 Acres - \$44,900. Rolling hills, good brush, rock outcroppings. Trophy deer habitat. Good highway access. Easy terms. Perfect for hunting retreat. Texas Land & Ranches, 1-877-542-6642.</p>	<p>MASTER PLANNED OCEAN FRONT community, homes starting mid-\$300K, gulf front lot! \$595K, on beautiful Mustang Island, near Corpus Christi, www.cinnamonsore.com, 1-866-551-0347. RANCH LIQUIDATION 100 Acres. Perfect for hunting retreat. Big buck area, plus turkey, dove, quail and more. Very private w/EZ highway access. \$59,900 w/financing. 1-866-899-5263. \$6.46 ACRES, SOUTHWEST of Rocksprings, end of road privacy, exotics, hogs, turkey, \$895 per acre, owner or TX Veterans financing. 1-800-876-9720. www.ranchenterprisesltd.com 150.53ACRES, W/ELECTRICITY 6000+ ft elevation, panoramic mountain views, excellent access, 1 hour east of Albuquerque and Santa Fe, \$550/acre, owner terms. Toll-free 1-877-797-2624. www.newmexranches.com 164+ ACRES, WEST TEXAS, northeast of Sanderson, whitetail, dove, quail and javelina. \$295 per acre, terms. 1-830-885-4578. www.ranchenterprisesltd.com STEEL BUILDINGS ALL STEEL BUILDING SALE! "Final Clearance." 20x28 now \$4200. 25x32 \$5800. 30x42 \$9200. 40x62 \$14,900. Limited, first come first served. Front end optional. Pioneer 1-800-668-5422. Quick delivery. STEEL BUILDINGS - FACTORY deals. Save \$\$\$ 40'x60' to 100'x200' Example: 50'x100'x12' = \$3,600/sq.ft. 1-888-467-4443. www.rigidbuilding.com Run Your Ad In TexSCAN! Statewide Ad... \$450 299 Newspapers, 1 Million Circulation North Region Only... \$195 100 Newspapers, 320,814 Circulation South Region Only... \$195 99 Newspapers, 487,364 Circulation West Region Only... \$195 100 Newspapers, 266,688 Circulation To Order: Call This Newspaper direct, or call Texas Press Service at 1-800-749-4793 Today!</p>
--	--	--	--

Sleep Apnea Patients End The Torture Of CPAP!

CPAP PRO is a patented breakthrough device that's more comfortable and effective than ordinary CPAP masks. That's because there are no straps or headgear to irritate your face. CPAP PRO stays in place all night long and allows you to twist and turn!

www.nomask.com
 1-800-921-8443
 No Charge To Eligible Medicare Patients!

COMPANY PAID CDL TRAINING!

Call now to find out about our recent pay increase!

- No Experience Needed!
- Great Benefits & 401K!
- No layoffs in 25 years!

Stevens Transport offers the best comprehensive training program for new drivers! Get your career rolling and enjoy exceptional earnings and great benefits from the #1 premier transportation carrier!

www.stevenstransport.com
 800-333-8595

CASH NOW

FOR STRUCTURED SETTLEMENTS, ANNUITIES and INSURANCE PAYOUTS
(800) 794-7310
 J.G. Wentworth means CASH NOW for Structured Settlements!

As seen on T.V.

Just Let Go.

Outback® eDrive™ Directions

- Install in Two Hours or Less
- Operate in 15 Minutes or Less
- Huge Payback

eDrive™ comes to you with an installation kit designed for your specific model. Clear, step-by-step instructions, with pictures, accompany all the right hoses, fittings and brackets to do the job. No special training is required. *2 hours is a typical installation time, which may vary by model.

If you already know the Outback™, it won't take the whole 15 minutes. Turn it on, start down the familiar A-B guideline and let go. That's it!

Add together the operating costs of the machine, labor and all inputs. Take that result times 10% to estimate the raw savings. Then add the value of improved farming, more uniform treatments, less driver skill needed and extended hours of operation. You may want eDrive™ on every machine you own by year end.

eDrive™ not only steers more accurately than humanly possible, it is the ONLY system that features "Contour Mode" that smoothly follows curves from the previous pass.

BOYD'S EQUIPMENT INC.
 7154 Canyon Drive • Amarillo
 806-356-9102 • 1-800-692-4060

Monday-Friday 8:00-5:30
 Saturday 9:00 - Noon

MEMBER 2006 TEXAS PRESS ASSOCIATION

MUSTANGS ARE STATE CHAMPIONS
WHEELER MUSTANGS BRING HOME CLASS 'B' STATE CHAMPIONSHIP
MUSTANGS WIN STATE!!

CWE THE WHEELER TIMES
 P.O. Box 1080
 Wheeler, Texas 79096
 Phone: 806/826-3123

Entered as second-class matter December 18, 1933, at the Post Office at Wheeler, Texas 79096, under the act March 3, 1879.

Postmaster: Send Address changes to The Wheeler Times, P.O. Box 1080, Wheeler, TX 79096-1080
Louis C. Stas, Owner & Publisher
SUBSCRIPTION RATES:
 Wheeler County...\$20.00 — Outside County...\$22.00

THE BUSINESS DIRECTORY

It pays to Advertise in The Wheeler Times
 826-3123 - wtimes@centramedia.net

Classified:
 Cash—\$4.00 for first 20 words
 Charge—\$6.00 for first 20 words
 15¢ for each additional word
 Open Rate: \$2.50 Per Col. In.
 Card of Thanks \$5.00

AUTO GLASS INSTALLATION, BODY REPAIR & 24-Hr. WRECKER SERVICE
CROSS CAR CENTER
 Phone: 826-5515
 WHEELER, TEXAS

Urgent news for people who took SEROQUEL.

Seroquel, an antipsychotic drug also known as Quetiapine, has been linked to diabetes, pancreatitis, diabetic ketoacidosis (DKA) and even death. If you or a loved one have experienced any of these health problems, call us now toll free at 1-800-THE-EAGLE for a free consultation. We practice law only in Arizona, but associate with lawyers throughout the U.S.

GOLDBERG & OSBORNE
 1-800-THE-EAGLE
 (1-800-843-3245)
www.1800theeagle.com

Offices in Phoenix and Tucson
 Open 7 days a week

BENZENE ALERT

If you or a loved one has been diagnosed with Acute Myelogenous Leukemia (AML) or Myelodysplastic Syndrome (MDS), please call us today toll free at 1-866-369-3476 to discuss your legal rights.

THE FOX LAW FIRM, P.C. 1-866-FOX-FIRM
 Principal Office-- Dallas, Texas
WWW.FOXFIRM.COM

Seroquel®

is a drug prescribed for various mental conditions. Recently, some experts have linked Seroquel® use with a possible increase in rates of diabetes, Neuroleptic Malignant Syndrome (NMS), and Tardive Dyskinesia (TD). If you or someone you know has been diagnosed with one of these disorders after taking Seroquel® please contact our office immediately for professional insight.

EXPERIENCE COUNTS
 Lawyers with over 75 years combined expertise and staff with over 80.

Ryan A. Krebs, M.D., J.D.
 Doctor-Lawyer in Full-time Law Practice
 Richard A. Dodd, L.L.C.
 Craig W. Brown, P.L.L.C.
 Timothy R. Cappolino, P.C.
 Board Certified Personal Injury Trial Law and Civil Trial Law by the Texas Board of Legal Specialization
 NO FEE FOR FIRST VISIT
 Cameron, TX
1-800-460-0606
www.defectivedrugslaw.com

NOTICE: While most advertisers are reputable, we cannot guarantee products or services advertised. We urge readers to use caution and when in doubt, contact the Texas Attorney General at 1-800-621-0508 or the Federal Trade Commission at 1-877-FTC-HELP. The FTC web site is www.ftc.gov.

Extend your advertising reach with TexSCAN, your Statewide Classified Ad Network.

Jones Family Has Reunion At Allison

The family of Troy and Lona Jones gathered at their home in Allison for a week of fun and visiting this past week. There was volleyball, horseshoes, touch football, computer games, basketball and the girls cleared the dining room for much serious scrap booking. Jeff and Troy Don built a new tree house in the location where tree houses have come and gone over the past sixty or so years. This one is definitely here for a long time. No plywood or old barn wood this time. Wheeler Lumberyard fixed them up with new materials and heavy wire for the guardrails. There are plans for a second level to be added next year. There was quad riding for all on the land their great-granddad and great-grandmother Lloyd and Myrtle had purchased back in the 1920's and 1930's. Troy and Lona bought the home place where he was born and the children, grandchildren and great-grandchildren enjoyed the sentimental values gained by just spending time here and hearing the old stories that were shared.

Families attending the get-together were Rick and Connie Carpenter from Lovington, New Mexico. Their three sons: Troy and wife, Sylvia, and children Nadia and Quinton from Chandler, AZ., Britton, from Peoria, AZ, and Chase and his girlfriend, Kendra, from Las Cruces, NM.

Jeff and Tanya, Bryce, Chloe Alexis (Lexi), and Parker from Phoenix, AZ.

Connie, Brad and Jeff are the children of Troy and Lona. Brad, Tina and their sons, Matt and Ryan from Glendale, AZ were not here but have not ruled out coming later this year.

Wednesday and Thursday Don and Carol Carpenter came down from Pampa to visit. They had a big interest in what was happening in the fact that a son and three of their grandsons and their greats were here. We enjoyed their visits very much.

Friday afternoon Troy's siblings joined us for a fun time including a huge Mexican Pile On Dinner

and a good ole Texas Panhandle summer storm with strong wind, rain, and hail. Jeff had planned Karaoke after dinner but the weather had some guests scurrying to get settled in Wheeler at The Bed and Breakfast. These guests are Harold Jones from Wheeler, Lee and Sharon Hall and their son Randy, wife Jennifer and daughters, Laney and Faith all from Amarillo. Their daughter Tammy and her husband, Bobby, and daughter Alisha were here from Wheeler, Bill and Kay Donaldson stayed for a while; they just live up the highway from Allison. We appreciate the effort all of you have made to come see our immediate family, that can't happen very often.

As vacation time was coming to a close late Saturday afternoon Bryce, Lexi and Parker went for a swim in a horse tank that had been cleaned and filled by Britton and Chase. The finale was thirty minutes of fireworks. Jeff and Britton put on quite a show for us.

We thank God for keeping our loved ones safe on the highways. They all traveled straight through, about 15 or 18 hours according to the number of Dairy Queens that they could pass without stopping.

We are so blessed to have our family who enjoys each other and Best Friends. And it has definitely been a great time for us. Our son-in-law Rick is a great cook, and loves to cook; he kept the kitchen full of wonderful foods including homemade ice cream for all of us. Connie came a week early and ages that she has never worked harder helping Mom get ready for "Our Gang."

If you Wheeler Times readers have gotten this far God Bless You. It's much more interesting when you are involved! We are a sentimental bunch and needed a record for our experience in Mamaw and Papaws early surroundings and now Nana and Pops place in TEXAS.

Sun. Nite Live
On KPDR, 90.5
... Live from Canadian
9:00 p.m. - 10:00 p.m.

ALLISON NEWS

By Juanita Boydston

O Praise the Lord, all ye nations: praise him, all ye people. For his merciful kindness is great toward us; and the truth of the Lord endureth for ever, Praise ye the Lord. O give thanks unto the Lord; for he is good: because his mercy endureth for every. Psalms 117: 1&2 118:1

The weather here in Allison is really beautiful, a little warm but really nice.

Roma and Billy June Brown journeyed to Amarillo, Texas to a doctor's appointment. She received an injection for her severe back pain. They stayed the night in the home of Warren and Charline Brown.

I'm glad to report that Aunt Billy June is feeling some better now. Praise God for that.

Curtis and Lil Boydston visited in the home of Roma and Billy June Brown. They enjoyed getting some fresh veggies out of Uncle Roma's garden.

Opal and Juanita Boydston visited in the home of Roma and Billy June Brown. They also enjoyed getting some fresh potatoes and veggies out of Uncle Roma's garden. He is always willing to share his garden with us. We appreciate it very much. Opal and Juanita enjoyed sharing a homecooked meal with Roma and Billy June Brown and their son Merlyn.

Friday, Curtis and Lil Boydston and Louise Boydston and Bennie and Gary Boydston enjoyed a homecooked meal in the home of Pearl Harrison.

Saturday evening, Pearl Harrison visited in the home of Louise Boydston and ate with her.

Sunday evening, Darrel and Johnnie Harrison visited awhile in the home of Pearl Harrison.

Eddy and Sheila Walker journeyed to Amarillo, Texas where they helped Justin and Tyler Walker celebrate their birthdays. Of course Stephanie, Addison and Alyssa were there along with some friends of Justin and Stephanie. They had a good celebration and lots of good visiting as well.

Louise Boydston's dinner guests in celebration of Bennie Boydston's birthday on Sunday were: Bennie and Debbie Boydston, Josh and Heather Archer, Jason Boydston and Alicia Reis, Pearl Harrison, Eddy and Sheila Walker, Cheryl Dupont and friend, Patrick Smith, Cody Dupont, Glenn and Betty Boydston, Opal and Juanita Boydston, Curtis and Lil Boydston, Vance and Carol Boydston.

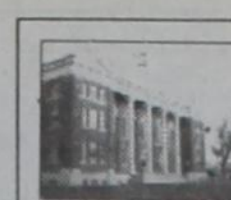
Bro. and Sis. Ben Corbitt of Pampa, Texas was in service in the United Pentecostal Church of Allison Sunday night. Bro. Corbitt preached a really good message from God. Also with them was Sis. Corbitt's brother, Eddy Teague. We really enjoyed having them with us.

Sunday night after church, Bro. and Sis. Corbitt, Eddy Teague, Eddy and Sheila Walker, Glenn and Betty Boydston, Curtis and Lil Boydston, Opal and Juanita Boydston gathered in the home of Louise Boydston and enjoyed fellowship and refreshments.

Louise Boydston and Pearl Harrison traveled to Elk City, Oklahoma on Tuesday to help Jimmy Wallace celebrate his birthday. Cheryl Dupont came over and ate with them too.

Ron Hall and Juanita Tincher visited Sunday night in the home of Opal and Juanita Boydston.

Glenn and Betty Boydston



THE WHEELER TIMES
PAGE 5—Thursday, June 29, 2006
"Wheeler, town of friendship and pride."

celebrated Betty's birthday by taking a trip. They journeyed to Santa Fe, New Mexico first and then on to Taos, then on to Eagle's Nest and on to Red River. They reported a very enjoyable time there. She had a great birthday. On their way home they stopped in Dumas, Texas and visited Uncle Len and Aunt Betty Brown for awhile.

Pete Gilmer journeyed to Amarillo, Texas on Friday on business and stayed the night in the home of his daughters, Becky and Jeannie Gilmer. Pete, Becky and Jeannie and Rodney and Linda Ingersoll enjoyed a delicious meal at the new Furr's Cafeteria. On Saturday, Pete and Jeannie enjoyed shopping for bargains at the garage sales. They reported finding several good bargains this time.

Saturday evening, Greg and Tiffany Boydston and son, Gavin visited in the home of Louise Boydston. Juanita Boydston stopped by and visited awhile with them as well.

Vance and Carol Boydston journeyed to Norman, Oklahoma on Wednesday and attended the Norman United Pentecostal Church. And on Thursday they both had doctor's appointments in Oklahoma City. They also visited their Aunt Annie while there. They arrived back in Allison on Sunday morning in time for church.

Monday, Vance and Carol Boydston and Opal and Juanita

Boydston enjoyed a good ole home cooked meal in the home of Curtis and Lil Boydston.

Juanita Tincher was blessed to get to attend Youth Camp at the Texico Campgrounds in Amarillo. Then the next week Ron Hall and Helen Forshee and Juanita Tincher all journeyed to Arkansas where she was blessed to attend another Youth Camp in Little Rock, Arkansas. Ron, Helen and Juanita returned back to Allison on Monday.

Tuesday, Ron Hall and Juanita Tincher visited awhile in the home of Opal and Juanita Boydston.

Wednesday, Curtis and Lil Boydston and Opal and Juanita Boydston traveled to Pampa, Texas where they enjoyed some shopping and attending to business.

Thursday, Opal and Juanita Boydston enjoyed visiting and a delicious home cooked meal in the home of Curtis and Lil Boydston and later they played a game of Mexican Train.

Sure good to have Curtis and Lil Boydston spending a few weeks in their Allison home. Curtis keeps his mothers yard mowed and she so appreciates him coming back often enough to keep that done.

Saturday, Lil Boydston, Pearl Harrison and Juantia and Opal Boydston visited awhile in the home of Louise Boydston.

God Bless and Keep ya'll til next time.

Africanized Bees Are Found In Area

Bees confirmed as the Africanized strain have been found in the Panhandle, prompting a word of caution from a Texas Cooperative Extension specialist.

Dr. Carl Patrick, Extension entomologist in Amarillo, said this summer he has received two to three samples of bees a week to send for testing, compared to two to three a month in the past.

"We just need people to understand we have them (Africanized honey bees) in the area, and there will be bees throughout the Panhandle that act a little more aggressively than they have in the past," he said.

The first confirmed case was collected Jan. 30 in Armstrong County, Patrick said. Since then, bees from Amarillo in Randall County were collected and tested positive on April 19, May 16 and June 1.

"We knew they had moved as far north as Swisher County in the past years, but this is the first year they've been found this far north," he said. "We haven't received anything from the northern Panhandle, but we have to assume they run throughout the area now."

Distinguishing between native honey bees and the Africanized strain cannot be done visually, Patrick said. All bees must be sent to the Texas Honey Bee Identification Lab in College Station to be confirmed through genetic tests or by measurements.

Africanized honey bees were brought to Brazil in 1956 to improve honey production of the European honey bee, he said. In 1957, containment measures failed and several swarms escaped into the countryside.

The Africanized bee passed or its aggressive traits through mating and began moving north at a rate of 200 to 300 miles per year, first entering Texas in 1990, Patrick said.

"These bees will not look different and the single bees out foraging among the flowers will not act any different than they always do," he said. "Usually, even the swarms you see in the open will not act any different."

The Africanized bees are more aggressive in protecting their brood, Patrick said. European honey bees may chase intruders up to 100 feet from the colony, but the Africanized bees will go as far as 400 feet.

The sting is the same whether the bee is European or Africanized, but many more bees will aggressively attack if it is the Africanized bee, he said.

"What we've learned over the years is certain things really irritate the Africanized bees," Patrick said. "They don't like small engines, such as lawnmowers, weed-eaters and chainsaws."

Also, the European honey bees tend to nest aboveground in houses, trees or vacant structures, he said. In addition to those nesting sites, Africanized bees also nest in holes in the ground, irrigation pipes, control boxes and underneath houses.

Patrick offered some advice for individuals coming in contact with any bees:

* Stay away or get away as quickly and as far as possible.

* Get into a vehicle or house or if it is a brushy area, put as much brush between the source of the bees and yourself.

* Call 911 if you witness someone being stung, and be sure to tell emergency personnel exactly what the situation is so they can come prepared to deal with the bees when trying to administer aid.

Scrape stingers from the body, don't try to pull them out. Each stinger has a venom sack and pulling only mashes more venom into the wound.

<http://honeybee.taniu.edu/>

First Annual Ben Britt Memorial

Fun Run/Walk

When: Tuesday, July 4, 2006

Registration 7-7:30 A.M., Race Starts 7:35 A.M.

Where: South Side of Courthouse Square

Fees: \$10:00 (Registration Deadline, June 28) receive shirts that day. \$12:00 Late Registration. Shirts will be ordered the day of race. You will be notified when shirts can be picked up at Chamber office.

Make check payable to: Wheeler Chamber of Commerce
Mail Entry to: Wheeler Chamber of Commerce, P.O. Box 221, Wheeler, TX 79096

NAME _____ Age _____

ADDRESS _____

PHONE Day _____ Night _____

T-SHIRT SIZE: Adults: S M L XL XXL XXXL

Child: 2-4 6-8 10-12 14-16

THERE WILL BE FIVE AGE GROUPS: 10 & UNDER, 11-18, 19-30, 31-55, 55 & Over

MEDALS WILL BE AWARDED TO THE FIRST MALE & FEMALE IN EACH GROUP.

WAIVER STATEMENT: ENTRY INVALID IF NOT SIGNED!

I fully understand that my participation in the Wheeler Fun Run/Walk can result in injury. I certify that I have decided to participate in this event with full knowledge that being physically fit and sufficiently trained are necessary to prevent injury to myself. I waive all claims against the Wheeler Fun Run/Walk and the sponsors or organizations of this event, or the employees, representatives or successors arising out of my participation in this event. This waiver shall be binding on my heirs, legatees, administrators, and assigns. Further, I hereby grant full permission to any and all of the foregoing to use any photographs, videotapes, recordings, or any other record of my participation in this event for any legitimate purpose.

Signature (Parent or Guardian if not 18) _____ Date _____

Sponsors:

R&M State Bank of Mobeetie

R&M Quality Car Wash

Cross Country Barn

The Sweat Shop

Hyland's Pharmacy

Paradise Spa

Parkview Assisted Living

Parkview Hospital & Home Health

Bill, Carol, Shannon, Lisa & Kelli Scott

Marshall Auto

Wheeler Banking Center

Ware Chevrolet

Wheeler Vet Clinic

Wheeler Nursing & Rehab

Britt Ranch

Beck Oilfield Supply

Holmes Sporting Center

WELCOME TO
FIRST UNITED METHODIST CHURCH
8TH AT MAIN - P.O. BOX 89 - WHEELER, TX 79096
CHURCH (806) 826-3114 - PARSONAGE (806) 826-3079

TOM WOODWARD,
Pastor

Sunday School 9:45 a.m.
Morning Worship 11:00 a.m.
Old Fashioned Hymn Singing
Sunday 5:30 p.m.
Community Evening Praise Service (180 Youth Center) 7:00 p.m.

GIFTS — AMBASSADOR CARDS

HYLAND'S PHARMACY

109 W. TEX. ST.—WHEELER, TEXAS
Phone: 806/826-5561

VITAMINS — FILM DEVELOPING

WHEELER COMMUNITY CHURCH

Rev. Alberta and Pat Helton
806-323-9849 or 826-5607
P.O. Box 544
Wheeler, TX 79096

801 Alan L. Bean Blvd.
Thursdays—7:00 P.M.
—WELCOME—

John 14: 6: "Jesus saith unto him, I am the way, the truth and the life; no man cometh unto the Father but by me."

21st Annual 4th of July CELEBRATION!

City Park Wheeler, Texas

Tuesday, July 4th

KICK OFF BREAKFAST
At St. Mary's Catholic Church
801 Canadian Street
6:30 a.m.

FUN RUN/WALK
7:00 a.m. - Registration
7:35 a.m. - Promptly Starts

PUNT/PASS/KICK
8:30 a.m. - Football Field

ENTERTAINMENT

FOOD GAMES FIREWORKS

Posters Compliments of Velasquez Group, LP

PARADE - 9:00 a.m.
Starts in front of School

ALL DAY PARK ACTIVITIES
10:00 a.m.

Activities Include: Turtle Races, All Day Entertainment & 3 on 3 Street Ball Tournament, Game Booths for Young & Old, Food, Food, & More Food, Swim Meet immediately following Turtle Race

FIREWORKS AT DUSK
STREET DANCE AFTER THE FIREWORKS

Country (from Page 2)

Cody from Graham retired this year after many years of teaching. Jack taught over 40 years and Diane 30 something. Have fun. Bud and Texas McCarroll also live at Graham. Bud is Mary's brother.

Guess I'm really getting to be a party pooper; I didn't go to Lake Texhoma to the Fillingim-Coker family reunion over the weekend. Would have been good to see everyone. And did not go to the Hoe-down at Old Mobeattie Saturday. Like they say: "The spirit is willing, but the flesh is weak", or lazy.

And did not go to Sam and Barbara Meadows 50th Anniversary. Happy 50th, Sam and Barbara. Especially hated to miss the Reunion and get to see everyone.

Many relatives and friends gathered at Country Chapel Sunday, June 25, after morning services to celebrate Summer Brooke Meller's first birthday with hamburgers, hot dogs and birthday cake and ice cream. Summer is the daughter of Bob and Jerry Meller and enjoyed it immensely. Happy Birthday, Summer Brooke.

Matt and Konnetta Koen and Caleb and Micah got moved in Friday and really appreciate all the help unloading and gifts of food. Pray for Konnetta and her allergy problems.

Earl and Betty Hustead came to Wheeler Care Center for Sing-along and message and prayer on Tuesday morning. Good service. Some of residents out to enjoy it were Ester Forrester, Ella Cross, Gelemmia Back, Johnnie Bird, Wayne Stanton, Edna Pearl Abernethy, Reba Wofford, Opal Hutchison, Robert, Rosalie Keelin and others. Rosalie played the piano.

Some calendars say June 21 is first day of summer. Kinda scary, as hot as it has been for over two months. But rain is forecast. We will take it!

So nice to have Shirley Fillingim and daughter, Lynn, and Rick Martin from Utah come by for a visit Wednesday afternoon. They spent Tuesday night with Juanita Fillingim and also visited Dick and Ruth Irvine and Martha Meek. They were driving a nice motor home with beds, bathroom, kitchen and a puppy. They planned to visit Lawrence and Wanda Fillingim and Bonnie Maddox at Tatum on the way to the Fillingim-Coker Reunion at Lake Texhoma over the weekend. So good to see them.

Our Flag
"Ladies and Gentleman, I give you the flag.
That flew over Valley Forge
Was torn into by the gray and the blue,
And bled through two World Wars
I give you the flag that burned in the street
In protest, in anger and shame
The very same flag that covered the men
Who died defending her name.
We now stand together, Americans all
Either by choice or by birth
To honor the flag that's flown on the moon
And changed the face of the earth.

History will show this flag stood a friend
To the hungry, the homeless and lost;
That a mixture of men as common as clay
Values one thing beyond cost
And they've signed it in blood
From Bunker Hill to Saigon, Kuwait, Bosnia, Kabul, Baghdad and Tokyo Ri.
I give you the flag that says to the world: Each man has a right to be free."
By Baxter Black in *Amarillo Globe*

Barbara Austin
Nice to have a nice, newsy letter from Barbara Austin. She lives in a complex not far from good shopping places. She enjoys the people there and all the pretty flowers and plants and trees. She takes a bus to Wal-Mart about every two weeks. They help get everything in the apartment for her. She can call the bus and it will come get her. Costs \$5 a round trip. The Church bus is free. She

can walk to some shopping places but can't carry a whole lot. She enjoys lots of fresh sea food. Barbara lives in New Brunsfels. Glad she is doing well. Walks a lot on her treadmill to keep her arthritis in check.

Barbara's son, Grey, and Diana took Barbara to a picnic in the park in Utopia to visit with her 3 grand-

THE WHEELER TIMES
PAGE 6—Thursday, June 29, 2006
"Wheeler, town of friendship and pride."

sons, Phil, Von and David and their families. When the park closed at 7:00, they all went to visit with Chuck and Ann Jones. They all

used to live at Briscoe. Thanks for writing.
"God be with you till we meet again."

Hear The
"Abundant Living Broadcast"
On KPDR, 90.5
... In Wheeler
Saturdays 9 a.m. to Noon

LARRY'S COMPUTERS
200 MAIN — Rear
CANADIAN, TX 79014
806.323.9622
lgatlin@larryscomputers.com

No Mileage Thursday—No mileage charges for on site service within the city limits of Wheeler on Thursday
Free Pick-up and Delivery—For in shop repairs, we will pick the computer up on Thursday, and bring it back to customer location the following Thursday (within City Limits of Wheeler)
Canadian Shop location is now open for Drop Offs and Pick-ups either Saturday or Tuesday 7:00 A.M. to Noon
We also offer same day emergency service 24/7

Services Performed: Virus Removal, Spy Ware Removal, Hardware and Software Problems, Networking and Server Management

MARSHALL'S
HEATING & AIR CONDITIONING
WHEELER, TX—PHONE: 664-5395—CELL: 662-7876

TRANE NOW DOING...
AIR DUCT CLEANING
It's Hard To Stop A Trane —24 Hour Emergency Service—

LICENSED & INSURED
License No. TACL022710E
Mark Marshall, Owner

Court (from Page 3)

tion Ltd., 6-14-06, See Instrument.
MEMO. OPERATING AGREE.—Newfield Exploration Mid-Continent Inc., et al to Piranha Partners, et al, 4-12-06, Sec. 2, Blk. H, W. H. Simpson Survey.

JUNE 23, 2006
RDT—Christopher L. Britten, et ux to Weldon W. Waiser, 6-21-06, Pt. W 1/2 Sec. 55, Blk. A-5, H&GN Ry. Company Survey.
C/C PROBATE—Susie Sims Lohberger to Ex Parte, 6-22-06.
C/C WILL—Susie Sims Lohberger to Ex Parte, 6-22-06, See Instrument.

C/C ORDER—Susie Sims Lohberger to Ex Parte, 6-22-06.
OL—Elwood Mooney, et ux to Land Services Inc., 5-26-06, S 1/2 NE 1/4 Sec. 5, IRR Survey.
OL—Lula M. Buice to Land Services Inc., 5-22-06, S 1/2 SW 1/4 and Pt. W 1/2 SE 1/4 Sec. 5, IRR Survey.
OL—Kem Barr Buice to Land Services Inc., 5-22-06, S 1/2 SW 1/4 and Pt. W 1/2 SE 1/4 Sec. 5, IRR Survey.

CORR. QCMD—J. P. Keeton Jr., et ux to Wilma Heffley, et al, 6-1-06, SW 1/4 Sec. 24, Blk. R.E., Roberts & Eddleman Survey.
OL—Donna Jean Moore, et al to Brigham Oil & Gas LP, 5-31-06, Sec. 13, Blk. A-5, H&GN Ry. Company Survey.
OL—Wendell Scribner to Brigham Oil & Gas LP, 5-25-06, Sec. 28, Blk. A-5, H&GN Ry. Company Survey.

OL—John Allan Moore to Brigham Oil & Gas LP, 5-31-06, Sec. 14, Blk. A-4, H&GN Ry. Company Survey.
OL—John Anthony Hansen to Brigham Oil & Gas LP, 5-10-06, Sec. 13, Blk. A-5, H&GN Ry. Company Survey.
MEMO. OPTION AGREE.—Cathy Christine Miller to Brigham Oil & Gas LP, 5-23-06, Sec. 88, Blk. 13, H&GN Ry. Company Survey.
EXT. OL—Barbara J. Seals to Brigham Oil & Gas LP, 4-28-06, Sec. 88, Blk. 13, H&GN Ry. Company Survey.
STATE LIEN—State of Texas to Shamrock Nursing Center LLC, 6-

9-06.
RDT—First State Bank of Mobeattie to Clyde Dukes Jr., et ux, 1-10-06, Lots 3-6, Blk. 13, Briscoe.
RDT—First State Bank of Mobeattie to Clyde Dukes Jr., et ux, 1-10-06, Lots 3-6, Blk. 13, Briscoe.
RDT—First State Bank of Mobeattie to Clyde Dukes Jr., et ux, 1-10-06, Lots 3-5, Blk. 13, Briscoe.

Oil (from Page 4)
spud 9-27-05, drlg. comp 10-13-05, tested 2-28-06, potential 1268 MCF, TD 11252' --
ROBERTS (GILL RANCH Granite Wash) Devon Energy Production Co., L.P., #3016 Gill, Sec. 16,44, H.A. Gill/J. Poitevent, spud 12-2-05, drlg. compl 2-21-06, tested 2-25-06, TD 12150', PBTD 11658' -- Plug-Back
WHEELER (STILES RANCH Granite Wash) Newfield Exploration Mid-Cod, Inc., #6 Britt Ranch '36', Sec. 36,A-3,H&GN, spud 1-24-06, drlg. compl 2-25-06, tested 5-23-06, potential, 1686 MCF, TD 15650', PBTD 15650' --
WHEELER (WEST PARK Granite Wash) Devon Energy Production Co., L.P. #3 Reid '9', Sec. 9,RE,R&E, spud 12-12-05, drlg. compl 1-12-06, tested 2-4-06, TD 14440', PBTD 14397' --
WHEELER (WEST PARK Granite Wash) Devon Energy Production Co., L.P. #4 Truman Zybach '16', Sec. 16,RE,R&E, spud 11-8-05, drlg. compl 12-4-05, tested 1-13-

District Court Filings
#11836—Jean LaDonna McAlpine vs Steven Douglass McAlpine, 6-8-06, Divorce.
#11837—The State of Texas vs 2001 Honda, et al, 6-13-06, Notice of Seizure and Forfeiture
#11838—Kenna Dianne Howard vs Devin Layne Howard, 6-15-06, Divorce.
#11839—The State of Texas vs \$11,303.00 et al, 6-19-06.

Canadian Supply & Redi-Mix
for all your Concrete Needs!
Jerry Smith, Owner
806-323-5379

06, TD 14500', PBTD 14410' --
Plugged Wells
HEMPHILL (ELLIS RANCH Tonkawa) Chesapeake Operating, Inc., #1501 Rush Snyder, Sec. 16, 43,H&TC, spud 9-15-82, plugged 4-3-06, TD 11000' (gas) --
HEMPHILL (N.W. MENDOTA Granite Wash) Mexico Energy Corp., #1 W.R. Campbell, Sec. 15, 1, I&GN, spud unknown, plugged 5-1-06, TD 12300' (gas) --
ROBERTS (WILDCAT) Range Production Co., #507 Courson Ranch S. PA-11, Sec. 7,A,H&GN, spud 3-25-06, plugged 5-6-06, TD 12451' (dry) --
ROBERTS (WILDCAT) Latigo Petroleum Texas, L.P., #7 Courson Ranch '158', Sec. 158,13,T&NO, spud 12-5-04, plugged 12-30-04, TD 9074' (dry) --
ROBERTS (LIPS Cleveland Chesapeake Operating, Inc., #1 David Wilson, Sec. 217,42,H&TC, spud 3-26-57, plugged 4-10-06, TD 10056' (gas) --
ROBERTS (PARSELL Lower Morrow) Mewbourne Oil Co., #2 Parsell Ranch 165, Sec. 165, 42,H&TC, spud 3-30-05, plugged 9-29-05, TD 11200' (dry) --
ROBERTS (QUINDUNO Albany Dolomite) Myriad Resources Corp., Form 1 in Sinclair Oil & Gas, for the following wells:
#2 William R. Cowan Tract 'A', Sec. 194,M-2,BS&F, spud 4-26-53, plugged 5-11-06, TD 4101' (gas) --
#4 W.R. Cowan Tract 'B', Sec. 194, M-2,BS&F, spud 8-13-57, plugged 5-9-06, TD 4122' (gas) --
SHERMAN (TEXAS HUGOTON) BP America Production Co., #1 Hill Estate, Sec. 105,1-T,T&NO, spud 1-12-55, plugged 11-7-05, TD 2825' (gas) -- Form 1 in The Shamrock Oil & Gas

Oklahoma Music Celebration To Premiere Friday

After two years of planning and six months of practice, Oklahoma Music Celebration will premiere June 30, 7:30 p.m. at the Sayre, Okla., High School Auditorium, 600 E. Hanna.

Tickets are \$10/person, with group and senior citizen discounts available.

Included in the production are songs made famous by Bob Wills, Merle Haggard, Garth Brooks, Toby Keith, Wanda Jackson, Reba McEntire, Vince Gill, Woody Guthrie, Patti Page, Roger Miller, Sheb Wooley and others.

Information about the program and the performers is available at oklahomamusiccelebration.com or 580-928-3355. The Sayre facility has comfortable seating for 800, air-conditioning, ample clean nice rest rooms and plenty of safe, well-lighted parking space for vans and buses.

Proceeds will be used to help restore Sayre's historic Stovall Theater on Main Street for community use.

Festival (from Page 1)

fortunate to have Frank Cleveland providing the sound once again and Gina Seitz will return for her second year as emcee.

The Mobeattie Volunteer Fire Department will be on hand providing another festival favorite, their legendary homemade ice cream and concession stand.

Seating is not provided for the festival so bring your comfortable lawn chairs and pick your favorite spot under the shade trees as you enjoy the sounds of good old fashion music on Friday night 6 p.m. to midnight, Saturday 10 a.m. to midnight and gospel music on Sunday from 9 a.m. until noon. Visitors can take part in the nightly picking and jamming throughout the campgrounds or enjoy the sounds of yesterday drifting through the air during a leisurely evening stroll.

For more information please call 806-845-2028, visit our website at www.mobeattie.com or email us at omjm@pan-tex.net

We're looking forward to our best festival yet. So, go on, tell your friends to circle the last weekend in July on their calendars and meet you underneath the shade trees at the Old Mobeattie Texas Music Festival.

Old Time Gospel Music
On KPDR, 90.5
... in Wheeler
Sundays 6 a.m. to 8 a.m.

Get the signal.™

TEXAS HAS GONE UNLIMITED
NOW YOU CAN CALL ANYONE, ANYTIME, FROM ANYWHERE IN THE STATE.



THE UNLIMITED STATEWIDE STOP COUNTING MINUTES PLAN

- UNLIMITED MINUTES DAY AND NIGHT
- UNLIMITED LONG DISTANCE TO THE U.S.
- UNLIMITED INCOMING TEXT MESSAGES

ALL FOR ONLY \$50 A MONTH!

FREE LG 1500 FOR A LIMITED TIME ONLY

2-YEAR AGREEMENT REQUIRED



Lifeline and Link-Up services are available in certain areas to customers meeting low income criteria. Call 1-800-261-8077 for more information.

1.800.882.4154

NOW buy Dobson Cellular products and services online at www.dobsoncellular.com.

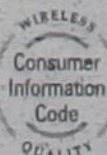
MOST LOCATIONS NOW OPEN SUNDAY!*

BORGER
Dobson Cellular
*905 N. Cedar
(806) 273-5656

PAMPA
Dobson Cellular
*2131 Perryton Hwy.
(806) 665-0500

PERRYTON
NOW OPEN SATURDAY
Dobson Cellular
918 S. Main
(806) 434-2090

Ace Commercial Radio
(806) 435-7131



Stop Counting Minutes statewide provides unlimited anytime minutes, anywhere your phone works within the state borders. Coverage cannot be guaranteed everywhere in the state. Customers may be charged roaming minutes on in-state calls when near a state border and using coverage originating from another state. Free long distance is applicable on calls made from the home calling area to anywhere in the U.S. Free LG 1500 Phone offer is only valid with a new, two-year agreement on select plans and does not include applicable taxes. Free phone may change without notice. LG 1500 phone available until July 20, 2006, or while supplies last. Promotions may vary by location and may not be available at authorized dealer locations. Service is contingent upon credit approval and annual agreement at which time a deposit may be required. An early cancellation fee of \$20 per remaining month of agreement applies if service is cancelled after the first 14 days of service. Activation fees may be up to \$45 to activate service. Other fees may range from \$2.50-\$3.75 per month. These fees may include but are not limited to compliance fee, network service fee, or roaming administration fee. Dobson Cellular approved phone is required for all rate plans. Airtime is billed in one-minute increments and from SEND to END. Long distance, roaming, taxes, surcharges and other terms and conditions may apply. Not all features, service options or offers are available on all devices, on all rate plans or available for purchase or use in all areas. All promotional offers may be extended or terminated at any time without notice. See sales representative for more details. ©2006 Dobson Cellular Systems TX2 June

