

# THE WHEELER TIMES

(USPS 681-960)  
VOLUME 71, NUMBER 18

THURSDAY, APRIL 14, 2005

SINGLE COPY **50c**

"Wheeler, town of friendship and pride."

## WHEELER TRACK TEAMS WIN 2005 DISTRICT MEET



**HIGH SCHOOL GIRLS TRACK:** With a first and a second place at the first two track meets for 2005, Wheeler is being well represented by these young ladies. They are (back row, l. to r.) Kenia Gellagos, Veronica Salazar, Lezli Finsterwald, Aspen Hathaway, Brooke Whi-  
(front, Katlin Rutherford, J'Shay McCasland, Brentney Taylor, Amanda Bond and Lacey Henson).



**HIGH SCHOOL TRACK:** Wheeler's 2005 High School track team is off to a good start with a first and a second in the first two meets of the season. Pictured here are (back row, l. to r.) Cameron Burton, Caleb Gaines, Josh Britt, Jansen Moore, Tyler Richardson, Mikel Tucker, (middle) Jake Benefield, Eric Mendoza, Kelley Timmons, Hayden Hartsfield, Steven McAlpine, Tyler McWhorter, (front) Dyrion Brown, Cole Hathaway, Jesus Gonzalez, Jesus McWhorter, Hector Emillano and Chace Horton.

### CWE CHAT WITH EDITOR

By Louis C. Stas

Once again, **CONGRATULATIONS, WHEELER TRACK TEAMS!** These young people took top honors over the weekend at the district track meet.

We had a very windy day on Monday, but what is new for the panhandle?

The benefit for the Hibler family was a success, thanks to the hard work of the Wheeler Lion's Club, Wheeler Methodist Men, local musicians and Wheeler Chamber of Commerce.

The entertainment could be compared to an "open mike" night. Three individuals came forward to sing.

Those of you who have been at Mel's on Friday night have prob-

(Continued Page 7)

### Graveside Services For Everett Dollar

The graveside service for Everett Dollar, former Allison ISD superintendent, will be at 2:00 p.m. Friday, April 15, 2005 at Zybach Cemetery. Lunch will be provided for the family by the Allison Community at the Allison United Methodist Church at noon.

### Mobeetie Cancels May 7 City Election

The City of Mobeetie election scheduled for May 7, 2005 has been canceled. Account no contested positions for Mayor presently held by Gordon Estes, Alderman Place 1 by Pam Jones and Place 2 by Patricia Kephart.

### Mobeetie Plans A City-Wide Cleanup

The City of Mobeetie will hold a city-wide cleanup Saturday April 16, 2005, beginning at 9:00 A.M. until 12:00 noon. Citizens who wish to assist in picking up trash, limbs and other rubbish please be at City Hall at 9:00 A.M. to receive trash bags for cleanup. The city council will serve free Hot Dogs and drinks at the end of the cleanup. Tree limbs can be piled on lot behind post office on Santa Fe street to be burned. Come on out and join the fun and help clean our city streets and alleys.

Signed: City Council of Mobeetie

### Wheeler Track Teams Win Dist. Meet; Lady Cougars Win Third

Wheeler hosted the district track meet on Friday, April 8, 2005. Wheeler Varsity boys and girls each placed first at the meet. Wheeler Mustangs earned 187 points with McLean second at 87 points. The Lady Mustangs earned 141 points; the second place winner was Lefors with 89 points. Ft. Elliott girls placed third at the meet with 75 points.

The top 4 in each event qualifies for the District 1-1A/2-1A Area Meet April 13 at Panhandle.

Wheeler boys' placings and events were:

High Jump: Tyler McWhorter, 4th, 5-4  
Pole Vault: Cole Hathaway, 4th, 7-6

Long Jump: Cameron Burton, 1st, 19-6; Hector Emilliano, 3rd, 19-2, Tyler McWhorter, 4th, 18-7  
Triple Jump: Cameron Burton, 2nd, 36-1  
Shot Put: Caleb Gaines, 1st, 37-1 1/2

Discus: Josh Britt, 1st, 132-7; Mikel Tucker, 3rd, 100-7

400 Relay: Wheeler, 2nd, 47.54  
800 Relay: Wheeler, 3rd, 2:22.09  
100: Tyler McWhorter, 2nd, 11.47

800 Relay: Wheeler, 1st, 1:39.32  
400: Kelley Timmons, 2nd, 60.45  
300 Hurdles: Samuel Hillhouse, 3rd, 49.87

200: Tyler McWhorter, 1st, 24.9; Samuel Hillhouse, 3rd, 26.35

1800: Dyrion Brown, 4th, 5:36.55  
1800 Relay: Wheeler, 3:45.89  
Wheeler girls, their placings and events were:

High Jump: Brentney Taylor, 2nd, 4-4; J'Shay McCasland, 3rd, 4-4

Long Jump: J'Shay McCasland, 1st, 14-10 1/2; Brentney Taylor, 2nd, 14-5 1/2

Triple Jump: Lezli Finsterwald, 1st, 30-5 1/2  
Shot Put: Amanda Bond, 1st, 35-7; Lacey Henson, 3rd, 30-7

Discus: Amanda Bond, 1st, 96-0 1/4  
Pole Vault: Samantha Chapman, 2nd, 5-0

400 Relay, Wheeler, 2nd, 54.64  
100: J'Shay McCasland, 3rd, 13.66

800 Relay: Wheeler, 1st, 1:59.98  
200: Lezli Finsterwald, 2nd, 29.56

1800 Relay: Wheeler, 4th, 5:05.5  
Ft. Elliott girls placings and events were:

High Jump: Alicia Reis, 1st, 4-6  
Long Jump: Tamara Hefley, 3rd, 13-8

Triple Jump: Sarah Zybach, 2nd, 30.1

400 Relay: Ft. Elliott, 3rd, 55.35  
100 Hurdles: Mayci Meadows, 3rd, 20.15  
800 Relay: Ft. Elliott, 2nd, 2:00.41  
1600 Relay: Ft. Elliott, 3rd, 5:04.1

### Services Are Tues. For Pauline Hefley

Pauline Evans Hefley, 88, died Saturday, April 9, 2005. Services were at 2 p.m. Tuesday, April 12, 2005 in First United Methodist Church with the Rev. Ricky Carstensen, pastor, officiating. Burial was in Gageby Cemetery by Wright Funeral Home.

Mrs. Hefley was born December 29, 1916, to the Rev. O.C. and Earl Jane Evans. She married Clifford Hefley on December 29, 1934. He preceded her in death on September 9, 2000, in Wheeler. Mrs. Hefley lived in the Gageby Community as an adult, moving to Wheeler in 1965.

She was very active in the United Methodist Church. She was involved in the Wheeler Library, the Thursday Review Club and the Garden Club. She loved to sew and loved to china paint. Of all her hobbies, she loved her garden the most. Before she became unable to play in her yard, she had such joy nurturing her beautiful flowers with love. She loved people, from the family to all who knew her. She loved her church. She felt so at home sitting in her seat at church. She touched so many lives with her love and caring. Her extended family included many devoted sisters who helped her through her last years. She was frail, but her heart was overflowing. She felt they were her "girls" and loved them all so much. The family wants to thank some very special people: Janice Scales, Pam Hibler, Joyce Carr, Mona Compton, Debra Ford, Dr. Mendiola, Lana Keisha with Odyssey Hospice and the staff at Parkview Hospital.

She was preceded in death by her husband; a daughter, Marra Sue; her parents; a sister, Val Massey; and two brothers, Eldred Evans and Gene Evans. Survivors include two daughters, Thelma Eralene Greene of Riverside, Calif., and Beth Alvey and husband, Jim, of Wheeler; two sons, Joe Hefley and wife, Camilla, of Cooper and David Hefley and wife, Phyllis, of Briscoe; two sisters, Laverna Fillingam and husband, Willis, of Wheeler and Mary Evans VanZandt and husband, J.W., of Hide-A-Way; nine grandchildren, Tony, Theresa, Kerri, Darren and Kristi Hefley and Todd, Tina, Jim Jr., and Mari Alvey; 11 great-grandchildren; and three nieces, Sunny, Carol, and Casey. The family suggests memorial be to First United Methodist Church.

### O.K.C. Address For Keegen Sullivan

Matt, Stephanie and Keegen Sullivan's address is: Children's Hospital % Matt and Stephanie Sullivan 940 NE 13th Street Room 4 Parent Hotel Oklahoma City, OK 73104.

### Mobeetie Council Meeting Held Mon.

April 11, 2005  
Meeting called to order at 7:00 p.m. by Louise Estes.  
Members present: Pam Jones, Louise Shorter, Emma Swigart, Patricia Kephart, and Mayor Gordon Estes.

Members absent: Gaylord Thompson  
Guest present: None  
Minutes for the March 2005 were read by Emma Swigart. Motion made by Patricia to approve minutes as read, seconded by Pam Jones. Motion approved 4-0.

The Financial report was read by Emma Swigart. Motion made by Emma to approve Financial report as read, seconded by Louise. Motion approved 4-0.

Review and consider approval of monthly Bills as presented. Motion made by Emma to approve monthly bills as presented, seconded by Pam. Motion approved 4-0.

New business: Approve certificate for unopposed candidates. Louise made motion to accept certificate of unopposed candidates, seconded by Emma. Motion approved 4-0.

Consider Cancellation of May 7, 2005 City Council Election. Motion was made by Pam to cancel election on May 7, 2005. Seconded by Louise. Motion approved 4-0.

Motion to hire Phil Richmond to spray city properties at the same fee as last year. Motion made by Emma, seconded by Pam. Motion approved 4-0.

Water report is Good!  
Mayor report: Plans were discussed and finalized.

Motion to adjourn at 8:05 by Louise. Seconded by Pam.



### Rites Read Monday For Cecil G. Mitchell

Cecil Garland Mitchell, 92, of Eldorado, OK, passed away April 9, 2005 at the Jackson County Hospital in Altus, OK.

Funeral services were Monday, April 11, 2005 at 2:00 p.m. at the Stewart Funeral Chapel in Hollis, OK. Burial was in the Eldorado Cemetery in Eldorado, OK. Cecil Mitchell was born October 13, 1912 in Eldorado, OK to Augustas and Minnie Anderson Mitchell. He graduated from Eldorado High School in 1933 and attended Draughn's Business College. He served as a Quarter Master in the Army Air Corps serving in Australia and New Guinea. He married Mildred Ruth 'Chick' Willis August 22, 1943 in Fort Worth, TX. He was a member of the Eldorado Church of Christ. Mr. Mitchell was a farmer and rancher in the Eldorado area. He was happiest when spending time with his family.

Mr. Mitchell is survived by his

(Continued Page 6)

### 'Court Of Honor' To Be Held April 17

Wheeler Boy Scout Troop 472 will hold an Eagle Scout Court of Honor Sunday, April 17, 2005, to recognize Landon Sams for attaining the Eagle rank. Other scouts in the troop will also be recognized at this time.

The Court of Honor will be held at the District Courtroom of the Wheeler County Courthouse.

Friends and family of members of Troop 472 are cordially invited to attend.

Active members of Troop 472 are Zack Andis, Payton Austin,

Josh Britt, Dawson Clark, Davis Corse, Spencer Ford, Aaron Gaines, Darren Gaines, Samuel Hillhouse, Jeremy Horton, Drew Howard, Jared McArthur, Terry Menefield, Jaten Moore, Luis Perez, Derek Parton, Tyler Richardson, Adam Robles, Brock Sabbe, Ricky Salas, Rolando Salas, Landon Sams, Chris Schubert, Kelley Timmons, Randy Trevino, Mikel Tucker, Stefan Tucker, Johnny Venzor and Kelby Vise.



**EAGLE SCOUT:** Landon Sams will receive his Eagle Scout Badge at the Honor Court scheduled in Wheeler on Sunday. Landon with the help of his fellow scouts put in many hours at the park erecting and painting the fence/railing.

### Commissioners Contract For Insurance, County Depository

Wheeler County Commissioner's Court met in regular session on Monday, April 11, 2005. Fifteen items were on the agenda when the court convened in the commissioner's courtroom at 10:00 a.m.

The court approved the minutes as presented.

The commissioners accepted the reports of the County Tax Assessor, County Clerk and District Clerk monthly reports. The tax assessor reported 96.6 of the 2004 taxes collected.

The court approved for payment the time sheets as presented. The bills presented to the court for payment were approved.

No action was taken on the courthouse restoration project.

### Graveside Services For Altamirano Child

Jassenia Lyzette Altamirano, 2-months-old, died, Thursday, April 7, 2005 at Wheeler, Texas.

Graveside services were at 2:00 P.M. Sunday, April 10, 2005 at the Wheeler Cemetery in Wheeler, Texas. Rev. Harvey Patterson, pastor of First Baptist Church of Mobeetie officiated. Burial was under the direction of Wright Funeral Home, Wheeler, Texas.

Jassenia Lyzette was born to Juan Manuel Altamirano and Vanessa Michelle Mendoza on February 5, 2005 in Pampa, Texas.

Survivors include her parents, Juan Manuel Altamirano and Vanessa Michelle Mendoza of Mobeetie, Texas; and sister, Brianna Ornelas, of Mobeetie, Texaas.

The burn ban was the seventh item on the agenda. The court will consider the situation in 2 weeks at the next court meeting.

The commissioners voted to allow ETC Oklahoma Pipeline, LTD to cross County Road O for installation of an oil and gas pipeline.

No action was taken on a request by ETC Oklahoma Pipeline, LTD to cross county roads P and 26 with an oil and gas pipeline.

The court voted to allow ETC

(Continued Page 5)

### Kitty Bell Taylor, 99 Graveside April 9

Kitty Bell Taylor, 99, died Wednesday, April 6, 2005 at Wheeler, Texas.

Graveside services were at 10:00 A.M., Saturday, April 9, 2005 at the Wheeler Cemetery in Wheeler with son, Rev. Jack Taylor, of Jacksonville, Florida and grandson, Rev. Andy Taylor, of Sayre, Oklahoma, officiating. Burial was under the direction of Wright Funeral Home, Wheeler, Texas.

Mrs. Taylor was born to Andrew and Ella Waggoner on March 3, 1906 in Archer City, Texas. She married Bob Taylor November 8, 1922 and he preceded her in death in 1983.

Survivors include 3 sons, R.C. Taylor of Coweta, Oklahoma, Jack Taylor of Wheeler, Texas, and Cliff Taylor of Jacksonville, Florida; 2 daughters, Doris Wickersham of Tulsa, Oklahoma and Beverly Brannan of Houston, Texas; 9 grandchildren; 21 great-grandchildren, and 3 great-great-grandchildren.



**THE CROWD:** A good crowd gathered Saturday evening at the Wheeler County Show Barn for the Hibler benefit. The Methodist Men and the Lion's Club cooked and served the hamburgers. The Wheeler Chamber of Commerce co-sponsored the activity.



THESE PICTURES SPONSORED BY:  
**FIRST STATE BANK**

"The Bank with Friendly Service"

Wheeler Office:

1408 S. Alan Bean Blvd.

Wheeler, Texas

826-5546

Established 1906

Mobeetie Office:

First & Wheeler St.

Mobeetie, Texas

845-2311

Member: F.D.I.C.



**COUNTRY NEWS**  
By Verna Fillingim



THE WHEELER TIMES

PAGE 2—Thursday, April 14, 2005

"Wheeler, town of friendship and pride."

Romans 1:17: Grace and Peace to you from God our Father and from the Lord Jesus Christ.

Happy Birthday to Frances Hefley, Ted McCurley, Colby Rowley, Alicia Hill, Terry Mick on April 17; Mike Bryant, Micah Kitchens, Cody Cook, Doris Huff, Cari Pigg, Mary Lou Carter, Ardell Simons and Quincy Weatherly on April 18; Dewayne Ford, Lewis Britt, Callie Christner, Melissa Hampton, Gene Ferguson, Artie Cook, Ernie Wood, Caaron McNeeley, Ray Giddens on April 19; Jennifer Maddox, Ann Porter, Ben Britt, Jana Corse, Jim Goding, Lee Scales on April 20; Mark Wright, Kate George, Jane Smith, Ruby McLaurin, Grant Meek, Betty Morrison, Jacob Forrester, Ray Forbes, Bonnie Meadows, Sarah Zybach, Elinita Key, Tonya Gilliland on April 21, Mike Miles, Tracy Keelin, Wynola Sanders, Lawrence Beckel, Bob Cornell, Susie Erwin on April 22; Robert Remy, Lindsey Mercer, Rebecca Robertson, Donovan McDerment, Thomas Fletcher and Tiffany Johnson on April 23.

Happy Anniversary to David and Shannon Gilmer and Mark and Melissa Hampton on April 18; Don and Willene Burke on April 19; Donald and Anita Reeves on April 20; Billy and Shelia Touchstone on April 21; Roger and Sabine Brown and Jerry and Ann Killingsworth on April 23.

Golden Agers will meet Thursday, April 21, at 12:00 for a delicious meal and visiting. Meat and vegetables will be provided. Bring a dessert. All over 50 years invited to Wheeler Baptist.

Nice to see Audrey Kinnaman and Evitte, who work at Alvey Tax Service at Maxeys Monday. Also Clint and Maurita Stribling, Doug Robertson, Charlie Brown and many more.

Ken Criswell took off Thursday from building Ospreys too keep Blain and Dagen while Lindsey went to Amarillo for her checkup. Doctor thought she was doing well, but has to be very careful for another month because of the very herniated disk causing pressure on nerves. Takes them awhile to heal. Keep praying! So glad Lindsey is doing well.

Weekend visitors to C. G. and Rosemary Dodd were their son, Joel, and Laura Dodd and Bradley, Brandi and Brandon from North Richland Hills. Mary Margaret Dodd enjoyed going out Saturday and eating lunch with them. They all ate at Maxeys on Sunday.

Wheeler Baptist church enjoyed special songs from Dennis and Emma Williams Sunday morning and Weldon Simmons Sunday night. All sounded really good. Thank you!

Chris Fillingim went to Iron River, Wisconsin to visit her Aunt Gladys and Uncle John Maslik; Gladys had fallen and had to be revived and is in I.C.U. Pray for her.

Some here for the funeral of Pauline Hefley are her sister, Mary Ruth, and husband, J. W. VanSant, from Lindale, Tx, Tina Dale and Emily from Ft. Smith, Ark. Also expected are Joe and Camilla Hefley from Cosper, Earline Hefley Green from California, Todd Alvey and family from Pampa, Lindsey Criswell and Dagen and Blain, James and Carol Jean Hardage from Hideaway.

A very special thank you to all the sweet ladies, who sat with Polly and loved and cared for her through the years, so she was able to stay in her own home. Thank you, too, to the Hospice people, who helped with her. God bless you everyone.

Friday good friends Mary Mitchell and Mary Margaret Dodd took Lula Buice to Canadian to Our Fillin Station for lunch to celebrate Lula's birthday and enjoyed the day. Happy Birthday, Lula. You are older than me for a few days.

Happy 80th birthday, Georgia Thomas. Her children are hosting a come and go reception Saturday, April 16, from 2-4 at First Christian Church, Canadian. Friends and relatives invited. No gifts please.

Many relatives and friends gathered at City Drug Bed and Breakfast Friday afternoon to honor Bob and Evangeline Wills on their 50th wedding anniversary, hosted by their family. Nice party. Delicious punch and cake. I'm glad Bob and Evangeline decided to retire in Wheeler after teaching several years here. Good to see their family members and grandkids. Happy 50th anniversary and many more!

Don and Peggy North took Lou Dean Douthit to Childress Tuesday, March 15, to meet Donald and Billie Stuckey and go to Roaring Springs. That was the big snow day.

Lou Dean and Donald and Billie Stuckey flew to Switzerland to visit LeAndra and Montie Whittenberg and Mathew, 7, and Kenna, 2. Lou Dean really enjoyed the trip and will be writing up a journal of her travels and what all they saw. Thank you, Lou Dean. She was gone nearly 3 weeks.

Moose Anderson was enjoying a visit from her son, Jim Anderson, daughter, Judy McReynolds, and granddaughter, Amy Fields, Saturday afternoon at Wheeler Care Center. They are from Miami.

My precious sister, Pauline Hefley, went to be with the Lord Saturday afternoon, April 9. It is sad to see her go, but so thankful no more suffering and what a glad reunion in heaven. We will join her some day. What a glad day for Polly. She had always been such

a kind, sweet sister to me. But I can't grieve for her. She has been in poor health for many years. I can just see her flitting around heaven, smiling and greeting everyone, giving hugs. She had been kinda comatose before she died, but roused and happily reporting talking to her daddy and mama, O.C. and Earl Jane Evans. Won't it be great to see all our loved ones there.

Amber Maddox will be 14 years old Monday, April 11. Good friend Stormy Lancaster spent the weekend with her. Saturday Amber's mom, Tammy Maddox, took the girls to Elk City to see a movie to celebrate. Happy Birthday, Amber.

Sincere sympathy to Jaun Altamirano and Vanessa Mendosa of Mobeetie in the death of their baby, 2 months old. We are so sorry. Bro. Harvey Patterson officiated at the graveside funeral at Wheeler Cemetery Sunday afternoon, April 10. A sister, Brianna Ornelas, survives. Many relatives and friends at the cemetery.

Nice to see Cheryl Fraley and Steven at Thriftway Saturday morning. Brady and Cynthia Hudson from Ripley, Okla., were coming for the weekend and they were all having supper together at Ray and Glenda Hudsons in Briscoe. Also from Ripley were Megan Hudson and friend, Jarrett Stokes. Also Rodney and Kerri Hudson and Kailey and Hayden, Sonya Hudson and Patrick, Ray and Glenda Hudson and Cheryl and Jeff Fraley and Steven from Allison for Saturday night supper and lots of visiting. God bless all you sweet people. We enjoyed seeing the Hudson kids grow up.

Sincere sympathy to family and friends of Kitty Taylor, 99, in her death at Wheeler Wednesday. She was a fine lady and having a glad reunion in heaven with her Savior and other loved ones. Graveside funeral at Wheeler cemetery Saturday, followed by lunch at Wheeler Baptist.

We had a nice group for Ladies' Day out Thursday, but missed several regulars. Having a delicious meal at Maxeys were Iona May, Marie Baker, Leona Coates, Emma Williams, Martha Meek and Verna Fillingim. Enjoyed the visit. Next Ladies' Day Out will be Thursday, May 5, 11:30 at Soto's. All ladies welcome.

Soto's Restaurant will no longer be open on Sundays. I sure don't blame them, but thought you might like to know.

Nice to see John C. and Rosemary Vise at Maxeys Monday. Remember them in your prayers. They are still a handsome couple.

Willa Fillingim visited Laurel and Ed Hershman Friday and ate lunch with them. She and Laurel needed to sign some papers at the bank.

Visiting the Hershmans Thursday were Linda and Dean Lieb from Morse and Edna May. Also visiting were Eddie and Lavenna Pannell. Laurel and Linda were

roommates and best friends in college. And are still good friends. Hershmans gave them all a tour of their beautiful home. Linda and Laurel went to college at W.T.

Brad and Stacci Reis have bought the Rob Hogan house and a few acres in the country. Brad and Stacci and Justin, Alicia Reis, Adrain Reis and Colbey Hanson have moved in. Best wishes.

Nice to have our pastor, Dennis and Emma Williams come for a little visit Monday. They were going on to Amarillo to visit Jeff Herd at B.S.A. Remember Jeff in your prayers.

Andy and Lisa Singleton and Phillip, 10, and Katie, 6, from Frisco have been visiting Lisa's dad, Harold Jones. Others joining them for lunch at Maxeys Sunday were Willa Fillingim, Charles and Lajo Crownover and Ed and Laurel Hershman.

Sylvia Shuler went to Stephenville over the weekend to visit Lori and Justin Barnes and Blake and Taylor and Tanner. There was a party Sunday afternoon to celebrate the twins, Taylor and Tanner's 6th birthday.

Lonnelle Kenady came down and got her mom, Lillian Lee, and took her to Amarillo for a weekend visit. Glad Lillian was able to go.

Ted and LaDell Atwood from Pampa visited her brother, Darville Atherton Friday at Wheeler Hospital and went out to his place, 13 miles east of Wheeler, and helped with many things. Darville has pneumonia. Remember him in your prayers.

James Hubble took his mom, Elva Wood, to the 50th Anniversary party for Bob and Evangeline Wills in Wheeler Saturday afternoon. Then they went to Shamrock and drove around a little. They came back by Mel's and got supper to go. Elva sure enjoys a chance to get out.

David and Rita Pearson went to Stamford to visit Albert and Mary Pearson and help Albert celebrate his 83rd birthday over the weekend. Happy Birthday, Albert.

Mary Newman has been doing volunteer work helping with the reading program, where Katie goes to school and enjoys it.

Heard that Ronnie Hungate was coming home to Mobeetie, April 8, but still has some problems. Keep praying for them all. Derrick is excited about Daddy coming home.

Sincere sympathy to friends and relatives of Lefty Langley, 87, of Amarillo in his death. Survivors include son, Carrol Langley, and wife, Elaine, who used to live at Mobeetie.

Many years ago, I did some volunteer work at the Abraham Home in Canadian, when asked how she was, one dear elderly lady always said, "I'm as lazy as a hound dog." The older I get, the more I tend to agree with that. I, too, often feel as lazy as a hound dog.

There were several residents and friends gathered in the dining

(Continued Page 6)



Dyron Brown and Jesus Gonzales compete in the 2 mile.



Brentney Taylor and Randy Barr run the finals of the 100 sprint.



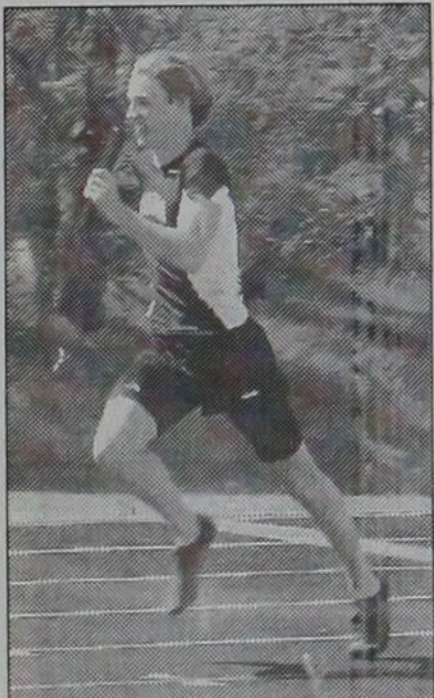
Tyler McWhorter runs the finals of the 100.



Amanda Bond warms up for the discus.



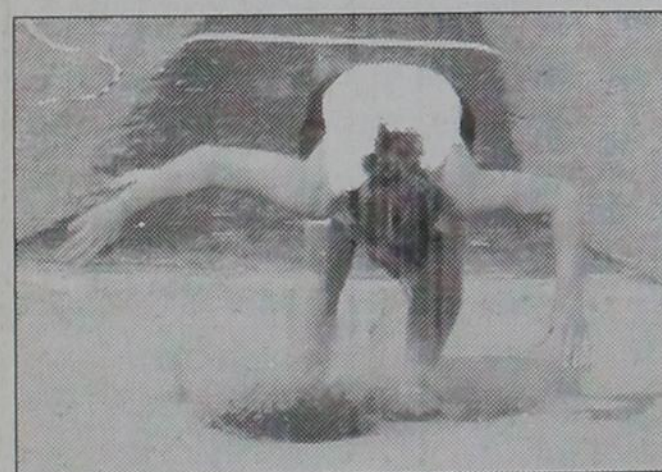
Josh Britt runs in the mile relay.



Lezil Finsterwald triple jumps.



Cole Hathaway pole vaults.



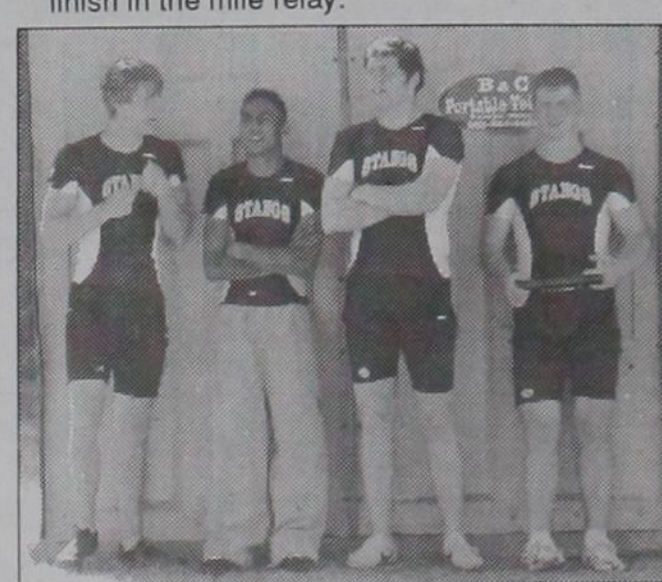
Cameron Burton is way out front in the mile relay.



Sarah Zybach jumps.



Mayci Meadows and Lacey Henson battle to the finish in the mile relay.



Cameron Burton, Hector Emiliano, Josh Britt and Cole Hathaway are members of the mile relay team.



Samantha Chapman pole vaults.



Cameron Burton, Hector Emiliano, Josh Britt and Cole Hathaway compete in the 100 finals.

Samuel Hillhouse beats Hayden Hartsfield as a 200 qualifier.

**WHEELER COMMUNITY CHURCH**



Rev. Alberta and Pat Helton

806-323-9849 or 826-5607

P.O. Box 544

Wheeler, TX 79096

801 Alan L. Bean Blvd. Thursdays—6:30 P.M.

John 14: 6: "Jesus saith unto him, I am the way, the truth and the life; no man cometh unto the Father but by me."

—WELCOME—

**MARSHALL'S HEATING & AIR CONDITIONING**

WHEELER, TX—PHONE: 664-5395—CELL: 662-7876



NOW DOING... AIR DUCT CLEANING

—24 Hour Emergency Service—

LICENSED & INSURED

License No. TACLB022710E

Mark Marshall, Owner

**Wheeler Church of Christ**

Starting this week, and then every Sunday through Mother's Day (May 8), in the Adult Bible Class at the Church of Christ in Wheeler, we will be studying from the short Old Testament book of Ruth. This is an interesting book that highlights the godly behavior and ambitions of two women: Ruth and her mother-in-law Naomi. Yet this book works in several other ways in addition to this. Historically, they are a part of the genealogy of King David, only a few generations before this future great King of Israel. This also means that they are a part of the eventual genealogy of Jesus. It would be a historical note of interest, in the same type of way that we today would be interested in knowing who the great grandparents of the Presi-

dent of the United States were.

There is one other specific reason that the book of Ruth is particularly valuable. It was written concerning the point of time that is the same as the preceding book in the Old Testament, the book of Judges. If you have ever read this book, you will discover that civilization at that time was extremely "icked. Even the supposed heroes in that book are riddled with flaws (Gideon is an admirably weakling, Samson is a morally reprehensible proberate, etc.). Was literally everyone at that time horrible? No, in the midst of this sinful society were these two women that are highlighted in this small book of Ruth.

Come join us on Sunday mornings at 10:00 a.m. for Bible study. You'll be glad you did!

Shawn D. Johnson

An Invitation: You are cordially invited to attend any of the weekly services of the Wheeler Church of Christ which meets at 1001 S. Alan Bean Blvd. in Wheeler, Texas

Services:

Sunday Bible Study ..... 10:00 A.M.  
Sunday Morning Worship . 10:55 A.M.  
Sunday Night Worship ..... 8:00 P.M.  
Wednesday Bible Study ..... 7:00 P.M.



Give unto the Lord, O ye mighty, give unto the Lord glory and strength. Give unto the Lord the glory due unto his name; worship the Lord in the beauty of holiness. The voice of the Lord is upon the water: the God of glory thundereth: the Lord is upon many waters. The voice of the Lord is powerful; the voice of the Lord is full of majesty. The Lord will give strength unto his people; the Lord will bless his people with peace. Psalm 29:1-4 & 11

The weather has been quite windy; but what do you expect in the Texas Panhandle. Other than being windy tho, it has been beautiful weather here in Allison, USA.

Glenn and Betty Boydston fished Friday with Eddy Walker in Spring Creek Lake. I hear that Eddy out fished them this time around. He caught enough fish for a fish fry on the lake and they enjoyed a delicious meal of the fish he caught and when they left the lake he was still catching them.

Friday evening, Glenn and Betty Boydston treated their pastor, Bro. M.C. McDaniel to a delicious birthday lunch at Soto's. His birthday is really later on, but they aren't going to be here so they treated him early.

Tuesday, Glenn and Betty Boydston traveled to Elk City, Oklahoma on business and they enjoyed shopping and then they enjoyed a very delicious meal at the Country Kitchen.

Louise Boydston journeyed to Amarillo, Texas last Friday and stayed the night with her daughter, Kim Thompson, and family. While

in Amarillo, Louise attended a dedication service at Northside United Pentecostal Church. Louise also visited her cousin, Edell Tedford in the afternoon.

On Saturday morning, Kim, Brittany and Chase rode to Elk City, Oklahoma with Louise and the children were fitted for clothes that they will wear at the wedding of Heather Boydston and Josh Archer. They visited Vivian and Jimmy Wallace for a little while before coming to Allison, Texas. Then they hurriedly cooked fish and hot dogs for Heather's 21st birthday. Those attending were: Bennie and Debbie and Jason Boydston, Kim, Brittany, Chase and Kimber Thompson from Amarillo, Texas and a friend of Kimber's, Trey, from Amarillo, Eddy Walker and Henry Dupont.

On Sunday they went to Sunday School then to the Wedding Shower for Josh Archer and Heather Boydston in the afternoon. They received a lovely shower with around fifty in attendance. The hostesses did a wonderful job of decorating and serving cake, punch, fruit, mints and nuts. Heather and Josh received a good variety of gifts. Really a nice shower.

Opal and Juanita Boydston accompanied Roma and Billy June Brown to Amarillo, Texas where Roma underwent some stress test at the V.A. on Thursday. They stayed in Motel 6 and Roma had more test on Friday morning. Opal and Juanita Boydston attended church services at Northside United Pentecostal Church as they were having special services for their newly remodeled church.

Vance and Carol journeyed to Norman, Oklahoma where they both had doctors appointments with Dr. Abbot in Oklahoma City.

While there, Vance volunteered to help men from the Southern Oaks Church to go to Alva and help clean up where storms had left limbs and trees scattered around the church there. Vance and Carol were gone four days and almost each day they enjoyed playing spinners with Curtis and Lil Boydston.

Last week, Bill and Kay Donaldson attended a Wedding Shower for Darena Lewis Walker.

Bill and Kay Donaldson journeyed to Amarillo, Texas where they enjoyed supper in the home

of Wallace Donaldson. Others there were: Diana and Duane Odneal of West Jordan, Utah, Roland and May Morse of Amarillo, Texas, Joe and Delores Whitten of Amarillo, Texas, Lee and Sharon Hall of Amarillo, Texas, and Harold and Carolyn Builderback of Amarillo, Texas.

While in Amarillo, Bill and Kay Donaldson visited awhile with Dawn, Daria and Katie Donaldson.

Lester and Clydene Hall and granddaughter, Leslie, and Nona Jones and Lee and Sharon Hall and Bill and Kay Donaldson all enjoyed a very delicious meal at



Calvert's Hilltop in Reydon, Oklahoma Sunday before the Wedding Shower for Heather Boydston and Josh Archer.

Graveside services for Everett Dollar, former Superintendent of Allison Schools will be at the Zybach Cemetery at 2:00 p.m. Friday the 15th. Lunch will be provided for the family by the Allison Community at the Allison United Methodist Church at noon on Friday. Mr. Dollar and his wife, Billie, and family were long time residents of the Allison, Briscoe and Wheeler communities. They were really nice people.

Last Tuesday night, Edna May was pleased to have Shirley and Clay Dennis of Dickson, Missouri and M.H. Smith of Amarillo to visit her. Shirley was a Warren before she married.

Friday, Dean and Linda Lieb of Stinnett, Texas visited in the home of Edna May.

Bret Begert flew to Nashville, Tennessee to attend a National Limousin Association Meeting. Bret returned home on Saturday.

Tuesday, Vance and Carol Boydston, Opal and Juanita Boydston accompanied Louise Boydston to Wheeler, Texas where they sang to the Wheeler Care Center residents. Vance, Carol,

Opal, Juanita and Louise enjoyed a delicious meal at Soto's after singing. Also they shopped at Thriftway before coming home.

Tuesday evening, Opal and Nita Boydston enjoyed a homecooked supper prepared by Carol in the home of Vance and Carol Boydston. They all enjoyed homemade ice cream and cake for dessert.

Wednesday, Vance and Carol Boydston and Opal and Juanita Boydston enjoyed a delicious meal prepared by Betty in the home of Glenn and Betty Boydston.

Saturday evening, Opal and Juanita Boydston visited in the home of Glenn and Betty Boydston while Glenn put new tags and window tag on Opal and Juanita's car. Thanks!! Glenn.

Sunday, Opal and Juanita Boydston enjoyed a delicious meal in the home of Louise Boydston. Others there were: Bennie and Debbie, Heather and Jason Boydston, Kim, Brittany, Kimber and Chase Thompson of Amarillo and Kimber's friend, Trey, also of Amarillo, Josh Archer, Vance and Carol Boydston, and Eddy Walker. Greg Boydston and son, Gavin, visited awhile before lunch.

May God Bless and Keep ya'll till next time.

**MOORE INSURANCE AGENCY**  
TODD MOORE  
P.O. Box 168  
315 N. MAIN ST.  
SHAMROCK, TX 79079  
806-256-8911

**FIRST UNITED METHODIST CHURCH**  
8TH AT MAIN - P.O. BOX 89 - WHEELER, TX 79096  
CHURCH (806) 826-3114 - PARSONAGE (806) 826-3079  
Sunday School ..... 9:45 a.m.  
Morning Worship ..... 11:00 a.m.  
Old Fashioned Hymn Singing  
Sunday ..... 5:30 p.m.  
Community Evening Praise Service (180 Youth Center) ..... 7:00 p.m.

**GIFTS — AMBASSADOR CARDS**  
**HYLAND'S PHARMACY**  
109 W. TEX. ST.—WHEELER, TEXAS  
Phone: 806/826-5561  
**VITAMINS — FILM DEVELOPING**

**The View of a Southern Woman**

... Southern California that is.

My dear son-in-law, Ron, called the other day and ask if we could push our visit up a month. He said the ice is almost off the lakes in their Ruby Mountains. I know the temperature is still in the 20's at night. He informed me that my daughter was having a birthday and he wanted Forrest Glenn Frosty and me to be there for her 45th. So we are leaving for vacation a month early and just hope we do not get snowed on or rained out. We should take a plane and it is probably not as expensive as driving, what with the price of gas, but we would miss so much. Glenn and I enjoy stopping for a beautiful scene or an antique store or a Wal-Mart for him. We enjoy being together and have a great time visiting the small towns and people. Of course there are drawbacks too. Glenn says this is the best time for fishing here and we need to get our garden in, but it will just have to wait. Laura is having a birthday. And that is not all. My sister, Shirley Tabler, wants us to visit her and it has been 13 years since we last saw each other. She lives at Clear Lake, California which is north of

San Francisco—a lot north. We are both looking forward to our visit and she said she would cook all the fish that Glenn catches. She has never met him and does not know what a good fisherman he is. Shirley has peacocks, a lot of them, a talking parrot, dogs, cats, chicken and who knows what else. Collecting animals runs in my family. Just hope we do not bring home anything alive. She would probably share her peacocks with me, but Glenn says, "I don't think so." I keep telling him that it is very hard for me to pet my goldfish! Several people said I might not want to come back from California after our visit there and my sister does have a few acres she might sell, but do not think there is a chance of staying as I love it here - weather and all.

**Blues Weekend Is Planned At Cheyenne**

Because even cowboys get the blues, the Coyote Hills Guest Ranch in the Black Kettle Grasslands scheduled its "1st Annual Blues Music Weekend" April 22-25.

Had lunch at the lake the other day with Eddy Walker and Sybil Clark. He spent several days at the lake fishing and "boy howdy" as Glenn would say, Eddy really caught the fish. He was pulling them out right and left. Sybil did a great job of cooking them and we really had a feast. We all sang happy birthday to him and there were candles for him to blow out, but I do not think I will discuss his age as he lives next door to us. We left the lake while he was still catching fish and having a wonderful birthday.

Until later..... Love, Betty Boydston

Nationally-known blues musicians Jesse Cahn of Oklahoma City will perform and will also hold seminars and offer private lessons. Cahn sings and plays guitar, harmonica, slide guitar, lap steel and percussion instruments and can provide tips for performing, recording and producing music.

People can go for dinner and music Saturday night for \$25 or make a weekend of it with a package deal of two nights at the hotel, four meals and a trail ride for \$135 per person.

Music lessons cost \$30/hour and must be scheduled in advance.

"If you don't like the blues, your momma didn't raise you right," an album cover by blues performer Amy Sutton, "Miss Amy" who performs frequently in Amarillo, proclaims. Nickles appear to be hoping local listeners will agree with her.

Web site at [www.coyotehillsguest ranch.com](http://www.coyotehillsguest ranch.com).

**LATE CLASSIFIED**  
Missing Since Sat., April 9  
Lost: Pup, 1/2 lab, 1/2 golden retriever. 3 mo. old. With any information, call 826-0619 or 663-9786.

Listen to . . .  
**KPDR-FM, 90.5**  
WHEELER, TEXAS



**Tayton Trace Aldridge** is the 13-month-old son of Tracy and Andrea Aldridge of Briscoe. He has an older brother, Tysen. Grandparents are Bevard and Diane Dukes of Briscoe and Jim and Jane Bonner of Amarillo. Great-grandparents are Nelda Dukes of Allison, Bob and Gena Zybach of Briscoe and Ernestine Knerim of Amarillo. Great-great-grandmother is Ruby Zybach of Briscoe.

For all your . . .  
**Insurance Needs, See Eastern Panhandle Insur. Agency, Inc.**  
117 W. Texas St.—Wheeler  
806/826-3573  
•Auto •Home •Life •Health  
•Commercial •Bonds

**THRIFTWAY SUPERMARKET**  
Your source for the freshest  
**PRODUCE • MEAT • DAIRY**  
**WHEELER COUNTY'S EXCLUSIVE SOURCE FOR PLAINS & SHURFINE PRODUCTS.**

**THRIFTWAY SUPERMARKET**  
300 EAST OKLAHOMA  
**WHEELER**  
826-5944 PHONE 826-3345 FAX

**MARKET SQUARE THRIFTWAY**  
205 EAST THIRD  
**SHAMROCK**  
256-2481 PHONE 256-5060 FAX

**A variety of homestead exemptions could lower your property taxes!**

A homestead exemption lowers the property taxes on your home by lowering its taxable value. If your home is valued at \$50,000 and you receive a \$15,000 homestead exemption, your home will be taxed as if it were worth \$35,000.

**Who qualifies for an exemption?**  
Anyone who owns a home on January 1 and uses it as a primary residence on that date is entitled to a \$15,000 homestead exemption to lower school taxes this year...and it doesn't matter if your home is a house, condominium or mobile home. Counties, cities and special taxing districts may also offer homestead exemptions.

**Are other exemptions available?**  
If you're disabled—or if you're 65 years old or older—you are entitled to an additional \$10,000 school tax exemption on your home. And if you qualify for the over-65 or disabled exemption, you're also entitled to a permanent, locked-in "ceiling" on the school property taxes on your home. (The county, city or junior college may adopt a tax ceiling to lock in 2005 taxes as the highest amount for 65 and older or disabled homeowners.) The over-65 homeowner's school tax ceiling transfers to the surviving spouse, if the spouse is 55 years of age or older at the time of death and lives in and owns the home. The age 65 or older homeowners (or their surviving spouses 55 years of age or older) also may transfer the percentage of school tax paid, based on their former home's school tax ceiling, to a new home.

**Do I have to apply each year?**  
No. If you had a homestead exemption on your home in 2004, you won't need to reapply for 2005 unless your chief appraiser requires it. However, if you haven't received an exemption on your present home—or if you've moved to a new home—you'll need to file for an exemption for 2005. If you are 65 this year, you may file for the age 65 or older exemption up to one year after the date you turned 65. And if you became disabled, you need to file for the disabled person's exemption.

**When and where should I file?**  
File applications by April 30 at your appraisal district office. If you need more time, contact us at:  
**WHEELER CENTRAL APPRAISAL DISTRICT**  
402 S. Main St.  
WHEELER, TX 79096  
For more information, stop in or call for a free copy of "Texas Property Taxes: Taxpayers' Rights, Remedies and Responsibilities"  
Or contact:  
Texas Comptroller Carole Keeton Strayhorn  
Property Tax Division  
P.O. Box 13528  
Austin, TX 78711-3528  
or call: 1-800-252-9121  
or on the Web at:  
[www.window.state.tx.us/taxinfo/proptax/proptax.html](http://www.window.state.tx.us/taxinfo/proptax/proptax.html)

A public service announcement courtesy of this newspaper.

**¡Varias exenciones de residencia pueden rebajar sus impuestos de propiedad!**

Una exención de residencia reduce sus impuestos de propiedad. Por ejemplo, si su residencia tiene un valor de \$50,000 y Ud. recibe una exención de \$15,000, sus impuestos se calcularán como si el valor de su residencia fuera de \$35,000.

**¿Quién califica para una exención?**  
Cualquier dueño de una residencia principal el día 1º de enero tiene derecho a una exención de residencia de \$15,000 este año para rebajar sus impuestos escolares... y no importa si la residencia es casa, condominio o casa móvil. (Los condados, municipios y distritos especiales de impuestos también pueden ofrecer exenciones de residencia.)

**¿Hay otras exenciones?**  
Si Ud. es incapacitado—o si tiene 65 años o más—tiene derecho a una exención adicional de \$10,000 en sus impuestos escolares de propiedad. Y si Ud. califica para la exención de 65 años de edad o más o está incapacitado, también tiene derecho a un "tope" permanente en sus impuestos escolares de residencia. El condado, la ciudad o una universidad de dos años también puede adoptar un tope de impuestos en los impuestos del 2005 como la cantidad más grande para los dueños de hogar de 65 años o más o incapacitados. La exención para los que ya cumplieron 65 años o más y el tope máximo se pueden transferir al esposo/esposa sobreviviente si el o ella tiene 55 ó más años de edad y es dueño/dueña de la casa en donde vive. Los dueños de 65 o más años de edad (o su esposa(o) sobreviviente de 55 años de edad más) también pueden transferir el porcentaje del impuesto escolar pagado, en base al tope de su casa pasada, a su nueva casa.

**¿Debo solicitarla cada año?**  
No. Si Ud. recibió una exención de residencia en el 2004, no hay necesidad de solicitarla de nuevo en el 2005—al menos que se lo pida su jefe de valoraciones. Sin embargo, si no ha recibido una exención en su residencia actual—o si ha cambiado de domicilio tendrá que solicitar una exención para el 2005. Si cumple 65 años durante este año, tiene hasta un año de esa fecha para solicitar una nueva exención. Si resultó incapacitado, tendrá que solicitar la exención de personas incapacitadas.

**¿Dónde y cuando debo solicitar mis exenciones?**  
Debe presentar su solicitud en la oficina local del distrito de valoraciones antes del día 30 de abril. Si necesita más tiempo, puede ponerse en contacto con nosotros antes:

**WHEELER CENTRAL APPRAISAL DISTRICT**  
402 S. Main St.  
WHEELER, TX 79096  
Si desea más información, visítenos y obtenga una copia gratis de "Impuestos Sobre la Propiedad en Texas: Derechos, Recursos y Responsabilidades del Contribuyente de Impuestos"  
o escriba a:  
Texas Comptroller Carole Keeton Strayhorn  
Property Tax Division  
P.O. Box 13528  
Austin, TX 78711-3528  
o llame: 1-800-252-9121  
o en la Web: [www.window.state.tx.us/taxinfo/proptax/proptax.html](http://www.window.state.tx.us/taxinfo/proptax/proptax.html)

Un servicio público cortesía de este periódico

**New To Area . . .**  
**OMEGA PORTABLE AIR CONDITIONING**  
... On Site Repair

Refrigerant Recovery      Walk In Freezers  
Walk In Coolers              Window Units  
Residential                      Commercial  
Semi-Trucks                      Farm Tractors

**SHANE ORR**                      (806) 231-8685

EPA Certified — Lic. #0459533837



LEGAL NOTICE

NOTICE OF APPLICATION OF MUTUAL ENERGY SWEPCO FOR AUTHORITY TO RECONCILE FUEL COSTS AND TO INCREASE FUEL FACTOR

On April 1, 2005, Mutual Energy SWEPCO doing business as Mutual Energy SPP ("ME-SWEPCO" or "Company") filed its application with the Public Utility Commission of Texas ("Commission") to obtain reconciliation of the Company's eligible fuel factor expenses incurred during 2004 ("Reconciliation Period"), and to increase its fuel factors. This filing was made pursuant to Section 36.203 of the Texas Utilities Code.

Commission Docket No. 25314 established the fuel reconciliation methodology for use in the ME-SWEPCO service territory until the advent of customer choice in that area. ME-SWEPCO's total under-recovery balance for the Reconciliation Period is \$1,596,997.32 (including interest). ME-SWEPCO seeks authority to collect that balance through a surcharge to be collected over a 14-month period, effective with the November 2005 billing month.

The Company's fuel reconciliation filing does not affect the Company's base rates that are currently in effect. All of ME-SWEPCO's customers are affected by the Company's application. The average effect on Residential Service customer using 1,000 kWh would be an increase of \$11.50 per month, or an 11.0% increase in total billings for the year.

In addition, Commission Docket No. 29331 established the methodology for calculating ME-SWEPCO's fuel factors. ME-SWEPCO seeks authority to increase its existing seasonal fuel factors pursuant to that methodology, effective with the June 2005 billing month.

The Company's fuel factor filing does not affect the Company's base rates that are currently in effect. All of ME-SWEPCO's customers are affected by the Company's application. The granting of the fuel factors requested in this application will result in an increase in billing for an average residential customer consuming 1,000 kWh per month of \$11.07, or approximately 10.5%. The proposed fuel factors by voltage type are as follows:

Voltage Level	Quarterly Fixed Fuel Factors			
	December - February	March - May	June - August	September - November
Transmission	.046588	.077407	.062593	.044663
Primary	.047698	.079152	.064054	.045747
Secondary	.051293	.084770	.068676	.049199

These changes will be subject to final review by the Commission in ME-SWEPCO's next reconciliation.

Persons with questions or who want more information on this application may contact Jeff C. Broad at 400 West 15th Street, Suite 610, Austin, Texas 78701 or by calling Mr. Broad at (512) 481-4555. A complete copy of this application is available for inspection at the address listed above.

The Commission has assigned Docket No. 30965, to ME-SWEPCO's application and an intervention deadline will be established. Persons who wish to formally participate in this proceeding, or who wish to express their comments regarding this application should contact the Public Utility Commission of Texas, Office of Consumer Protection, P. O. Box 13326, Austin, Texas 78711-3326, or call (512) 936-7120, or toll free at (888) 782-8477. Hearing- and speech-impaired individuals with text telephones (TTY) may call (512) 936-7136 or use Relay Texas (toll free) at 1 (800) 735-2989.

Oil & Gas NEWS

(New Location, Completion and Plugging Report made possible by Oil & Gas Reporting Service, 3930 Beaver St., Vernon, TX 76384. Doris Harrison, Phone: 940/552-6644.)

Week Ending April 7, 2005  
Intentions to Drill  
HEMPHILL (WILDCAT & ALLISON PARKS-Granite Wash)

Devon Energy Production Co., L.P., #2513 Bowers, 1650' from South & 467' from West line, Sec. 251, C.G.&MMB&A, PD 14500'.  
HEMPHILL (BUFFALOWALLOW Granite Wash) Patina Oil & Gas Corp., PD 13500', for the following wells:  
#5706P Holland 'C', 1440' from North & 2100' from West line, Sec. 57, M-1, H&GN.  
#5701 Holland 'C', 676' from North & 447' from West line, Sec. 54, M-1, H&GN (BHL: 719' from North & 330' from East line, Sec. 57, M-1, H&GN) Patina is taking over this

well from Dominion to recomplete. The Lease name changed from Holland '57' to Holland 'C'.  
Recompletion - Rule 37  
#5631P Keeton, 567' from South & 1630' from East line, Sec. 56, M-1, H&GN. Rule 37  
#4330P Meadows, 244' from South & 1291' from West line, Sec. 43, M-1, H&GN (BHL: 467' from South & 1920' from West Sec. line) Directional well  
#4402P Willis 'A', 600' from North & 2130' from East line, Sec. 44, M-1, H&GN. Rule 37  
HEMPHILL (WILDCAT & BUFFALOWALLOW Granite Wash) Peak Operating of Texas, L.L.C., #3046  
Dodd, 2400' from South & 660' from West line, Sec. 46, M-1, H&GN, PD 14000'.  
HEMPHILL (WILDCAT & FELDMAN Lower Morrow) Strat Land Exploration Co., #152 Detrixe, 1850' from North & 1320' from West line, Sec. 52, 42, H&TC, PD 11850'.  
HEMPHILL (WILDCAT & HEMPHILL Granite Wash) Cimarex Energy Co., Hobart Ranch, PD 13000' for the following wells:  
#1069, 467' from North & 617' from East line, Sec. 69, A-2, H&GN.  
#1270, 467' from North & 784' from East line, Sec. 70, A-2, H&GN.  
HEMPHILL (WILDCAT & HEMPHILL Granite Wash) Cimarex Energy Co., Petree, Sec. 3, 1, H&GN, PD 12800', for the following wells:  
#0703, 467' from South & West line of Sec.  
#0803, 467' from South & West line of Sec.  
HEMPHILL (WILDCAT & SOUTH HIGGINS Morrow) Peak Operating of Texas, L.L.C., #5049 New-comer, 1867' from South & 2630' from East line, Sec. 49, 42, H&TC, PD 12850'.  
HEMPHILL (WILDCAT & N.W. MENDOTA Granite Wash) Cimarex Energy Co., #8061 Flowers, 2300' from North & 1600' from East line, Sec. 61, B-1, H&GN, PD 10700'.  
ROBERTS (WILDCAT) Range Production Co., #178 Lowe, 1190' from South & 1074' from East line, Sec. 78, 2, I&GN, PD 5400'.  
ROBERTS (WILDCAT & ALPAR-LIPS St. Louis) Latigo Petroleum Texas, L.P., #4 Courson Ranch '136', 1300' from South & 467' from East line, Sec. 136, 5, G&M, PD 9500'.  
ROBERTS (WILDCAT & LIPS Morrow) Range Production Co., #103 Courson Ranch 'TEW', 648' from South & 1725' from West line, Sec. 3, 44, T.E. White, PD 10899'.  
ROBERTS (WILDCAT & N.W. MENDOTA, S.W. Granite Wash) Devon Louisiana Corp., #1606 Flowers 'C' 520' from South & 540' from West line, Sec. 6, --, BS&F, PD 11000'.  
ROBERTS (WILDCAT & RED DEER CREEK Granite Wash) Cimaron Energy Co., PD 10500', for the following wells:  
#0506 Byrum, 955' from North & 935' from East line, Sec. 6, B-1, H&GN.  
#0504 B. Byrum, et al, 2200' from North & 1550' from West line, Sec. 4, B-1, H&GN.  
#1526 Marion Osborne, 660' from South & 1860' from West line, Sec. 26, B-1, H&GN.  
WHEELER (WILDCAT & B&B Granite Wash) Chesapeake Op-

DISTRIBUTORS NEEDED  
Six Figure Income Potential  
First Year.

National company seeks honest, dependable person to service commercial accounts with NASCAR Collectible and Game Products. Part-time and full-time opportunities available. No Selling. No Overhead. You must have \$11,900 to invest now, 100% secured. Our company finances all future expansion! If you sincerely want to be paid what you are worth, and want to own your own business, call for confidential interview.  
1-800-854-2382 (PVS, Inc.)

Cerebral Palsy

NO FEE FOR FIRST VISIT

Cerebral palsy may be caused by professional neglect during prenatal care or childbirth. Its causes may include premature birth, birth trauma, and neonatal asphyxia (lack of oxygen). Call us for professional insight.

Ryan A. Krebs, MD, JD  
Doctor-Lawyer in full time Law Practice  
Richard A. Dodd, L.C.  
Timothy R. Cappolino, P.C.  
Board Certified Personal Injury Trial Law & Civil Trial Law, Texas Board of Legal Specialization  
Cameron, Texas

1-800-460-0606  
www.birthtraumalaw.com

VIAGRA DIET PILLS

Pharmaceutical Grade Alternative Without Prescription!  
(30 tabs) - blue 100mg \$89.95  
(60 tabs) - Save \$40.00 \$129.95  
(90 tabs) - Save \$70.00 \$179.95  
Phentrazine 37.5  
No Prescription Needed!  
(60 tabs) - blue & white \$89.95  
(120 tabs) - Save \$50.00 \$149.95  
(180 tabs) - Save \$90.00 \$209.95

Order Today 24 HR Order Line!  
Credit Cards & Check By Phone. Discreet & Confidential.  
TOLL FREE 1-888-527-0870 ext. 171  
Supplies Limited or Send Check or M.O. To:  
Order Now! P.E. LABS, 1025 SW 59th st  
OKLAHOMA CITY, OK 73109-4902  
Free Shipping!  
Order Online: WWW.USAVEONPILLS.COM 100% Guaranteed

PAID CDL TRAINING

Be miles ahead of the competition...

- \$35K 1ST YR
- \$65K 3RD YR
- Never a layoff!
- NO EXPERIENCE REQUIRED
- Great benefits

Stevens Transport offers the most comprehensive training program in the industry for new drivers, with classroom and over-the-road instruction. Get your career rolling and enjoy exceptional earnings, the most miles, and great benefits from the #1 premier transportation carrier!

For more info, call:  
800-333-8595

Texas Mesquite Art Festival  
in San Angelo at FORT CONCHO  
APRIL 15-17, 2005  
SPONSORED BY THE TEXAS MESQUITE ASSOCIATION  
FRI.: 4:00 pm - 9:00 pm • SAT.: 10:00 am - 7:00 pm • SUN.: 10:00 am - 4:00 pm  
Featuring original mesquite art, sculpture, furniture, turnings, architectural accents and more!  
- FREE ADMISSION -  
TOLL FREE 1-866-839-3378 • www.texasmesquiteassn.org

Want Ads

LOST: Man's wedding ring possible at the little league park on Saturday, April 2. Reward: 806-826-0261. 4/7

FOR SALE: 1998 Ford Windstar Mini Van. Good Condition. 826-3213 Day. 845-2025 Night. 3/31-4/7c

HOUSE FOR SALE: Allison Texas 669-2582 or 375-2540. 3/31-4/21c

FOR SALE BY OWNER: 3 BR, 2BA home in Wheeler. Large barn and fenced garden area, carport, and two producing pecan trees. Please call (806) 826-0036, leave message. 3/31rn

HELP WANTED: Must be willing to cook, run cash register and lottery. Apply in person at Speedy Mart. 8/5rn

FOR SALE: Seasoned Oak Firewood. Delivered & Stacked. 779-3284. 11/4rn

WANTED: Responsible party to take on small monthly payments on High Definition Big Screen TV. 1-800-398-3970. 4/14p

Cattle Ad: 35 head of Black Angus yearling bulls. Sires rep. GT Max, Northern Improvement, Sleep Easy, Fly Traveler, low to moderate BW, thick and beefy. 40 hd. of pure breed angus hfs. being bred now to Northern Improvement, BR Midland, 1407, and Twin Valley E161. Contracting now of Oct. delivery after preg. checked and all shots. Contact Thomas Angus, Gordon Thomas 580-655-4318 or M.580-497-7217. 3/3-5/12c

For Sale: New Holland Swather, Self-Propelled Diesel 1112. 14 ft. Header, Cab, Air Conditioner. PHO: 806/375-2316. 4/14-5/5p

Wanted: Someone to mow Zybach Cemetery. Call 375-2234 or 375-2574. 4/14-4/21p

Needed: Charge Nurse, 2-10 LVN, Prior LTC experience preferred, but will train. Also 2-10 CNA. Competitive pay. Contact Wheeler Nursing and Rehab. Donna Cox, DON, 1000 S. Kiowa. 4/14-4/21p

TRUCK DRIVERS NEEDED: Dunn's Tank Service Inc. Random drug testing. Start at \$14. per hour. Call 580-465-1687 or 580-303-0909. 3/24-4/14p

The Kelton I.S.D. is accepting bids for a depository to assist with the banking functions for ALL funds of the District for a two-year period beginning July 1, 2005 and ending June 30, 2007. Bids form and instructions are available from Jay Watson, Superintendent, at (806) 826-5795. Bids will be accepted until 12:00 noon, May 4, 2005. 4/7-4/14c

erating, Inc., #502 Reed, 660' from North & 2172' from East line, Sec. 2, --, C&M, PD 15000'.  
WHEELER (FRYE RANCH Granite Wash 'A') Peak Operating of Texas, L.L.C., #3012 Frye, 933' from North & 1707' from East line, Sec. 12, A-3, H&GN, PD 15000'.  
WHEELER (WILDCAT & LOTT (Continued Page 6)

THE WHEELER TIMES  
PAGE 4—Thursday, April 14, 2005  
"Wheeler, town of friendship and pride."

MEMBER 2005  
TEXAS PRESS ASSOCIATION

MUSTANGS ARE STATE CHAMPIONS  
WHEELER MUSTANGS BRING HOME CLASS 'B' STATE CHAMPIONSHIP!  
MUSTANGS WIN STATE!!  
THE WHEELER TIMES  
P.O. Box 1080  
Wheeler, Texas 79096  
Phone: 806/826-3123

Entered as second-class matter December 18, 1933, at the Post Office at Wheeler, Texas 79096, under the act March 3, 1879.

Postmaster: Send Address changes to The Wheeler Times, P.O. Box 1080, Wheeler, TX 79096-1080  
Louis C. Stas, Owner & Publisher  
SUBSCRIPTION RATES:  
Wheeler County...\$20.00 — Outside County...\$22.00

THE BUSINESS DIRECTORY

It pays to Advertise in The Wheeler Times  
826-3123 - wtimes@centramedia.net  
Classified:  
Cash—\$4.00 for first 20 words  
Charge—\$6.00 for first 20 words  
15¢ for each additional word  
Open Rate: \$2.50 Per Col. In.  
Card of Thanks \$5.00

AUTO GLASS INSTALLATION, BODY REPAIR & 24-Hr. WRECKER SERVICE  
CROSS CAR CENTER  
Phone: 826-5515  
WHEELER, TEXAS

HELP WANTED: Wheeler ISD is accepting applications for a bus driver and for a maintenance/grounds supervisor. Inquire at the business office 826-5241. 4/14-4/21c

FOR SALE: New Holland Swather, Self-Propelled Diesel 1112. 14 ft. Header, Cab-Air conditioner. Phone 806-375-2316. 4/14-5/5p

HELP NEEDED: Hemphill County Hospital in Canadian, Texas now taking applications for a Fulltime Registered Nurse for the 7am-7pm shift. Competitive Salary & Benefits. Contact: Tammye O'Neal @ 806-323-6422 ext. 231. May Fax resume to 806-323-8061. May also email resume to tammye.oneal@hch.dst.tx.us. 4/14-4/21c

The Kelton I.S.D. is accepting bids for Year 2005 Improvements (Roof Replacement). All bids must be submitted by 3:00 p.m. local time, April 26, 2005, at the Superintendent's Office, or sealed bids may be mailed directly to: Jay Watson, KISD, 16703 FM 2697, Wheeler, TX 79096, 806-826-5795. Plans and specifications are available and may be acquired from: Grimes and Associates, PO Box 65, Wolfthorpe, TX 79382, 806-863-2462, www.grimesengineering.com. A pre-bid conference will be held at 3:00 p.m. local time, April 19, 2005. All interested parties should meet at the Kelton Administration office, 16703 FM 2697, Wheeler TX. The Kelton ISD Board of Trustees reserves the right to reject any or all bids, and waive all formalities. 4/14-4/21c

★ AUCTION • FRED'S WELDING SHOP ★

SATURDAY • APRIL 23 • 10 A.M. • CLEBURNE, TX  
2401 N. MAIN STREET (TX-174) • BID LIVE OR ONLINE

Standard 250 Ton Press Brake AB250-12, HTC Shear 375-10A, Victor 14 x 40 Lathe, Kingsland 65XA Iron Worker, 77' Butler Gas Tanker, '82 Int'l Tractor Truck, '65 Mack B-61, Clark Forklift, '79 GMC Welding Truck w/14k orig. miles, White Forklift w/Cushion Tires, '91 Clement w/New Arm Upper Coupling, New Paint/Tarp, Welders, Plasma Cutters, Ramco Roll-in Band Saw, Over 150 Oxy/Acet Bottles, 25-Ton Sand Tower, 4-300 Gal. Tank Tower, LeROI Q250DP-E Generator Compressor, Power Tools, Rockwell 14" Band Saw, Giant Hydraulic H-Press! Inspection 8-10 a.m. Sale Day

MIKE JONES AUCTION GROUP • M. Jones, CAI, #6756  
mjauctions.com • 972-387-1110  
BidStar.com • Learn Auctioneering 972-387-4200

CASH NOW As seen on T.V.  
FOR STRUCTURED SETTLEMENTS, ANNUITIES and INSURANCE PAYOUTS  
(800) 794-7310  
J.G. Wentworth means CASH NOW for Structured Settlements!

TEXAS STATEWIDE CLASSIFIED ADVERTISING NETWORK

TexSCAN

<b>TexSCAN Week of April 10, 2005</b> <b>ADOPTION</b> Note: It is illegal to be paid for anything beyond medical and legal expenses in Texas adoption. A STABLE, LOVING Christian family wishes to adopt a child, newborn to 4 years, girl preferred. Please call Peggy/Walter, 1-866-209-1603. Enter PIN number 7356. PREGNANT? SINGLE PROFESSIONAL woman wishes to adopt a beautiful baby to fill her heart and home. Expenses paid. Susan, free call 1-866-205-6978, PIN 1633. <b>BUSINESS OPPORTUNITY</b> ARE YOU LOOKING for more than just a J.O.B.? Awesome opportunity to work from home! No selling! Free training! Free website! http://kelly.stayathomeandlovit.com. Click "Get More Info" today! <b>DRIVERS WANTED</b> A/CDL SOLO and team. Owner/Operators and company drivers! Several runs to choose from. Orientations in Del Rio. Call National Distributors Leasing, 1-877-334-9677, www.ndsin.com AVERAGE 2004 EARNINGS: Solos \$49,950, top team: \$154,222. This solo: \$70,526. XM Radio included, class A/CDL required. 1-2600 W 43rd., Odessa, Texas. Fax: 432-367-0709, call: 1-800-677-2747. <b>DRIVERS - \$1,000 SIGN-ON</b> for experienced teams! Earn 41 cents/mile. No NYC, pay on delivery and guaranteed hometime. USA Truck, 1-800-237-4642. <b>DRIVERS/A/CDL FLAT-BED DRIVERS</b> , \$50,000 yearly potential. High weekly miles. one year T/T experience. SMX, 1-800-247-8040, www.smxc.com <b>DRIVERS - \$1,000 SIGN-ON</b> for experienced teams! Earn 41 cents/mile. No NYC, pay on delivery and guaranteed hometime. USA Truck, 1-800-237-4642. <b>DRIVERS/A/CDL FLAT-BED DRIVERS</b> , \$50,000 yearly potential. High weekly miles. one year T/T experience. SMX, 1-800-247-8040, www.smxc.com <b>NOTICE:</b> While most advertisers are reputable, we cannot guarantee products or services advertised. We urge readers to use caution and when in doubt, contact the Texas Attorney General at 1-800-621-0508 or the Federal Trade Commission at 1-877-FTC-HELP. The FTC web site is www.ftc.gov/bizop	<b>DRIVER - COVENANT TRANSPORT.</b> Excellent pay and benefits for experienced drivers. Owner/Operators, solos, teams and graduate students. Bonuses paid weekly. Equal Opportunity Employer. 1-888-MORE PAY (1-888-667-3729). <b>DRIVERS/DRIVING SCHOOL</b> graduates wanted. Tuition reimbursement. No waiting for trainees. Passenger policy. No NYC. Guaranteed hometime. Dedicated and regional available. USA Truck, 1-800-237-4642. <b>DRIVERS - EX-MILITARY?</b> OUR kind of people. OTR experience with CDL or if you need training. Call 1-800-569-9232, Conwell Corp. <b>DRIVERS - \$1,000 SIGN-ON</b> for experienced OTR! No NYC! Dedicated and regional available also. Owner/Operators, teams and CDL graduates welcome. USA Truck, 1-800-237-4642. <b>LOOKING TO FILL</b> 15 positions from your area immediately: run flatbed, bulk tank or refrigerated. Control your earnings based on personal efforts. 1-800-771-6318, www.primemc.com <b>EMPLOYMENT OPPORTUNITY</b> L&W DIESEL SERVICE seeks experienced Diesel/Field Mechanic. Must have CDL. Apply in person at 2600 W 43rd., Odessa, Texas. Fax: 432-367-0709, call: 1-800-677-2747. <b>EMPLOYMENT/MEDICAL</b> <b>SURGICAL TECHNICIAN, FULL-TIME and PRN.</b> Exciting opportunity as a surgical technician in an ambulatory surgery center. Candidate MUST have previous hospital, outpatient or ambulatory surgical experience. Weekdays only. NO phone calls. Send resume to: Texas Surgical Center, 5609 Deauville Blvd., Midland, TX 79796.	<b>FINANCIAL SERVICES</b> <b>IMMEDIATE CASH!!!</b> US Pension Funding pays cash now for 8 years of your future pension payments. Call 1-800-586-1325 for a FREE, no-obligation estimate. www.uspensionfunding.com <b>LOANS BY PHONE.</b> Up to \$1,000 in 24 hours. No credit check! Bank account required. 1-888-350-3722 www.paychecktoday.com <b>FOR SALE</b> <b>ANY SIZE WATERBED mattress,</b> crib unit, wheel chair cushion, pet beds. Freightwaterbeds.com, 1-866-312-0207. KEEP THIS AD. <b>FREE 4-ROOM DIRECTV</b> system includes standard installation! 3 months FREE 50+ Premium Channels. Access to over 225 channels! Limited time offer. S&H. Restrictions apply. 1-800-264-3458. <b>INSURANCE</b> <b>AFFORDABLE HEALTH-CARE.</b> Family medical/dental from \$39.95 to \$149.95 entire family. \$35 office visits. \$10/\$20/\$40 Prescription Card. Pre-conditions accepted. Will beat competitors! 1-800-714-1525. <b>MISCELLANEOUS</b> <b>AIRLINE MECHANIC — RAPID</b> training for high paying career. FAA predicts severe shortage. FAA approved. Job placement assistance. AIM, 1-888-349-5387. <b>EARN DEGREE ONLINE</b> from home. Business, paralegal, computers. Job placement assistance. Computer and financial aid, if qualify. 1-866-858-2121, www.tidewatertechonline.com	<b>REAL ESTATE</b> 41.93 ACRES, END of road, corners large ranch, whitetail, exotics, hogs, turkey, \$895/acre, southwest of Rockspings. 1-830-257-5572, ranchenterprisesltd.com A BARGAIN 100 acres - \$44,900. Trophy whitetails. Rolling hills and draws, great access. Abundant turkey, quail, small game. More available. E-Z terms. Texas Land and Ranches, 1-866-899-5263. <b>BREWSTER COUNTY, 380+/-</b> acres, south of Sanderson, corner of ranch. Rough canyons and hills. Mule deer, quail, dove, javelina. \$185/acre, with 5% down, owner financed. 1-830-885-4578. <b>NEW MEXICO-20 ACRES</b> \$24,900. Scenic region, views, canyons, trees, rolling hills, wildlife. Enjoy hunting, hiking, horses, great climate. Power, great access. 100% financing. Call 1-877-822-LAND!
--	---	---	---

Run Your Ad In TexSCAN!  
Statewide Ad.....\$400  
36 Newspapers, 1.1 Million Circulation  
North Region Only.....\$175  
102 Newspapers, 381,000 Circulation  
South Region Only.....\$175  
101 Newspapers, 462,000 Circulation  
West Region Only.....\$175  
103 Newspapers, 254,000 Circulation  
To Order: Call This Newspaper direct, or call Texas Press Service at 1-800-749-4793 Today!

Extend your advertising reach with TexSCAN, your Statewide Classified Ad Network.



THESE PICTURES SPONSORED BY:

# THRIFTWAY SUPERMARKET

Your source for the freshest  
**PRODUCE • MEAT • DAIRY**

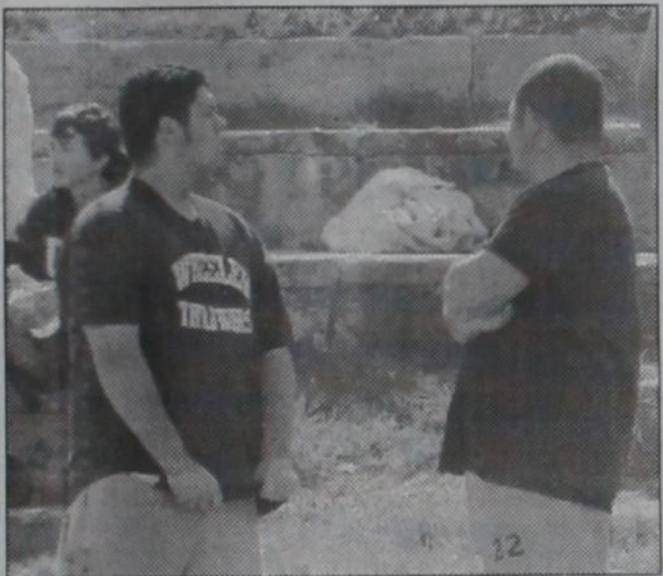
WHEELER COUNTY'S EXCLUSIVE  
SOURCE FOR PLAINS & SHURFINE PRODUCTS.



Tamará Hefley, Sarah Zybach and Hayden Hartsfield in between events at the meet.



Cameron Burton triple jumps.



Sarah Moon and Glory Hartsfield await their time to throw the discus.



Kelley Timmons runs the 400.



Josh Britt runs the second leg of the mile relay.



Cameron Burton runs his leg of the mile relay.



Cole Hathaway runs the first leg on the mile relay.



Tyler Richardson runs in the 100.



Brentney Taylor competes in the long jump.



Tyler Richardson and Jesus Gonzales compete in the 300 hurdles.



Sarah Moon and Glory Hartsfield await their time to throw the discus.



Lacey Henson takes 3rd in the shot put.

**THRIFTWAY SUPERMARKET**  
300 EAST OKLAHOMA  
**WHEELER**  
826-5944 PHONE 826-3345 FAX

## MOBEETIE NEWS

By: Sue Mayfield

Whoever has the key to this crazy wind please turn it down about four notches. This is getting old. Everybody's allergies are going berzerk. That 50 and 60 mph stuff last week was unreal. I'd much rather be able to open the house up for a fresh gentle breeze. Hope nobody had any major property damage. It helped prune some of our trees.

John McGinty has planted some new poplar trees in his yard. That wind last week broke off one of his trees, but it will just help make it get a better root system established. His yard is going to look so good.

Tuesday John and Dick Graham went to Amarillo to take care of Drs. appts. and business. The May's got some good news. The spot on Shelton's liver is okay for now. They'll definitely keep an eye on it. Shelton was probably born with that spot. So now Shelton doesn't have to worry about anything, just getting stronger and enjoying life.

Shelton is getting very good at zipping around on their go-cart. So he is getting stronger.

Thursday was a very sad day in our community. Our hearts and sympathy go out to Juan Altamirano and Vanessa Morales in the death of their infant daughter, Jassenia. So devastating. Sallie Adcock answered the call as Mobeetie's first responder. We are so lucky to have her. She gave precious little Jassenia CPR until the ambulance arrived. Virginia Ridgway and Kellie May also answered the page. Don't know what our town would do without these ladies.

Sallie and Virginia took Vanessa and followed the ambulance to Wheeler. They stayed with Vanessa until some of her family could be with her.

Graveside services for beautiful Jassenia Lyzette Altamirano, 2mo. old, were Sunday, April 10, 2005, at the Wheeler cemetery. Jassenia is also survived by her sister, Brianna Ornelas.

Our sympathy also goes out to Carroll and Elaine Langley in the loss of Carroll's dad, "Lefty" (W. M.) Langley, 87, of Amarillo. He passed away Thurs. and services were Monday, April 11.

Lefty is survived by his wife of 67 years, Jennie, and 2 sons and daughters-in-law, and 3 daughters and sons-in-law.

Carroll and Elaine and boys lived in Mobeetie for several years. They moved to Pampa about 14 years ago.

Greg and Diane Estes bought their place in old town.

What a nice surprise to have Peggy Dunn call me last Thursday to see what all the excitement in town was. Sure good to talk to you, Peggy.

Hope you got good news from your checkup and are feeling much better. Peggy had another heart scare. Was awakened one morning short of breath and feeling different. Dr. couldn't say for sure it was a heart attack, but sent her right to Amarillo.

Peggy got 2 more stents put in, spent a week in the hospital and two weeks with Bo and Kathy. They had a good visit.

Now they are going to check out an irregular heart beat that keeps reappearing. You're in our prayers, Peg.

Friday, Frances Guthrie of Pampa came over and spent the day with me. We had a very good visit. We've all been friends since Mearl worked for Pioneer Gas at Vega and Bob was at Hereford.

Sunday George and Quinton Mahambrought Sidney some more goodies to get his radio equipment and work on his house. They're going to get him fixed up with Dale Corcoran's help.

Sat. was a very good day to work cattle. (Just the way Joe Shelton had planned it. He had his crew all lined up.)

The Shelton family had been gearing up for this for several days. Shelton was very excited, because Nurse Brenda and her family were



THE WHEELER TIMES

PAGE 5—Thursday, April 14, 2005

"Wheeler, town of friendship and pride."

going to be his special guests for the day.

Through all his days with Nurse Brenda at the clinic in Amarillo he told her many stories of things that happened at Poppa Joe's. Working the spring calves was quite an anticemnt with a real chuck wagon dinner to top off the experiences of the day.

Brenda, her husband, daughter, Joy, 10, and Jordan, 13, are from Canyon, but arrived bright and early around 7:30 and Kellie took them out to greet the cowboys.

Shelton and Jackie Don had camped out Fri. nite with the rest of the cowboys, so they'd all be ready.

It was a very busy day. Everything went well and everyone had a good time.

The Romines always do a fanatastic job cooking the chuck wagon meals.

Sat. nite was a real adventure for the branding crew. Nanny even stayed down at the camp with Peyton, Jayton, Garrett and Jarrett in another tent. Then our beautiful rain and little hail storm blew through. But nobody surrendered and came back to town. They're a brave and hardy bunch.

Oh what fun!

Our deepest sympathy to the family and friends of Pauline Hefley. She was such a sweet lady and touched so many lives. She was always so proud of her children and grandchildren. She will be greatly missed.

I talked to Laura Fern Selby Mon. morning. She and Michelle are doing good.

It's definitely a small world. The preacher at her church, The River of Life, is a cousin to Kaye and Francis Dickey. It's a really great church.

Laura Fern has a friend at church that needs a small house or trailer to rent in Wheeler or Mobeetie, if you have one you could call me 806-845-1015.

Laura Fern said to greet everyone for her.

Kandi Jones and Harley went to Amarillo Mon. to be with Roberta and Don Williamson. Don is Kandi's step-father, he started having seizures about 10 min. apart Sun. The Drs. didn't know why yet, or what they were going to do for it.

Kandi was going to stay with Don Mon. so Roberta could go home to Fritch and get some rest. Harley would get to see Aunt Kellie some.

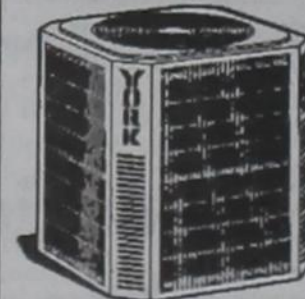
Your in our prayers Don. Kevin and Dakota were managing just fine Mon. Eve. Enjoying some "guy time" together and some computer games.

How was your week?  
Have a great one.

**Canadian Supply & Redi-Mix**  
for all your Concrete Needs!  
Jerry Smith, Owner  
**806-323-5379**

### JENNINGS PLUMBING, HEATING & AIR CONDITIONING

LARRY JENNINGS, Owner



TX# TACLB017641E

Licensed, Insured & Bonded

**(806) 826-3153**

Licensed Septic Systems, & Site Evaluations

**YORK**  
SALES & SERVICE



"A Flush... Is Better Than a Full House!!!"



**PERFORMER: Wesley Steen** sang "That Silver Haired Daddy Of Mine" for those in attendance at the Hiber Benefit on Saturday night. Wesley is a regular at the "First Sunday Singings" held each month at the different churches.

## SO EASY, NO WONDER 40 MILLION PEOPLE USE IT.

Get your refund in half the usual time — even faster with Direct Deposit — using IRS e-file. We'll prepare your return and file it with the IRS electronically. It's accurate, secure and fast, with proof of acceptance within 48 hours — It's paperless too!

Do you owe taxes? Get the benefits of IRS e-file and e-pay in a single step by electronic funds withdrawal (direct debit) or credit card. Ask how you can schedule an electronic withdrawal or make a credit card payment.

Come in or call us today.

### Charles Kuntz, CPA



111 W. Texas  
Wheeler, TX 79096  
(806) 826-5516

121 S. Main  
Shamrock, TX 79079  
(806) 256-3790

1-800-313-5516



## Country (from Page 2)

room at Wheeler Care Center Tuesday to hear the Boydston group from Allison Pentecostal Church and their spirited singing. Always enjoy it. Earl and Betty Husted are supposed to be back next Tuesday, April 12. We enjoy them, too. and Dennis and Emma Williams will be filling in when needed. Thank you to all you sweet people. One of my favorite things is Wheeler Care Church. From Allison singing were Juanita Boydston, Vance and Carol Boydston, Opal Boydston and Louise Boydston. Thank you! Also there were Helen Steen, Martha Meek and me.

Fl. Elliott's One Act Play was put on at Briscoe Thursday night for all who wanted to watch. It took place in an insane asylum with 2 guys playing some of the girl parts. They all did a great job. Big crowd there to watch. Some in the play were Vanessa Huff, Jessica Helton, Glory Hartsfield, Jay Hovey, Robbie Hovey, Andria Keelin, Tina Covalt, Kelsey Zybach, Tamara Hefley, Sarah Moon, Raysha Vandever and Megan Keelin. Director was Tyna Horn. Good job!

Preparing the delicious Mexican casserole pinto beans, salad and cornbread (Broccoli and other) for Wednesday night supper were Eddie and Lavenna Pannell and Bro. Dennis and Emma Williams. All very good. Others brought deserts. Thanks! Eddie said he had to work awfully hard. Poor guy!

Thanks for the watermelons, Ed and Laurel Hershman. You really know how to pick them. Of course they are purely for "Medicinal purposes", as the guys, who used to keep whiskey on hand would say. (Or so I've heard.) Surely do enjoy them, watermelons, that is.

My, what wild wind we've had especially Tuesday night and Wednesday. The Kentucky people aren't used to that. Monday, April 11, pretty wild, too.

Rosalie Keelin enjoyed a visit from twin sisters, Floy Larkin from Pampa and Joy Garrison from Borger, on Wednesday at the Wheeler Care Center. Good to see them. Rosalie played while the twins sang. Rosalie wrote a book about her family. She has been reading a chapter each morning to residents of the Care Center. They enjoy it. Rosalie is a talented lady with her piano playing and book writing.

We had a delicious meal and a good time at Wheeler Senior Citizens Tuesday night even if the weather and wind were a little stormy. Fun game of chicken foot. Ones there were Charlie and Daphne Sullivan, Martha Meek, Joyce Perkins, Mary Margaret Dodd and Verna Fillingim. Next meeting, Tuesday, May 3, at 6:00 p.m. You are invited.

Burma Shave Signs:  
The midnight ride  
Of Paul for beer  
Led to a warmer  
Hemisphere

Speed was high  
Weather was hot  
Tires were thin  
X marks the spot.  
Rick and Lucy

It was a special treat to see Rick and Lucy (Meadows) Lucas from Westport Kentucky come visit with Willis and me at Wheeler Care Center Wednesday. Lucy is the daughter of Roy and Lois (Meek) Meadows, now deceased. Willis and I grew up with Roy and Lois and went to school together at Briscoe and Canadian and W.T. So we've known Lucy and brothers, Eddie and Larry Meadows, all their lives. Lucy and Rick also visited with several relatives, while here. Some were Martha Meek,

Eddie and Leta Meadows, Laura and Brian Hughs, and Harrison, Cindy Hartsfield, Mark and Annette Meek, Evelyn Meek, Kathy Meek, Kay Gatlin, Amy and Dustin Hardesty from Amarillo (met at Pampa). Rick is Mission Director for Baptist Churches in Kentucky. A group recently went to Honduras and built 8 or 9 small houses, where needed. The people were so very pleased with the houses. Rick and Lucy both look so good and happy with their church and family.

### Lou Dean Douthit's Trip to Switzerland

This article is about a wonderful and once in a lifetime trip to Switzerland. In October, my daughter and son-in-law, Billie and Donald Stuckey, invited me to go with them to see their daughter and family, LeAndra and Montie Whittenberg, Matthew, 7, and Kenna, 2, who live in Basel, Switzerland.

I took them up on the invitation. We flew out of Dallas-Ft. Worth Airport on Mar. 17, 2005, at 3:00 p.m. and arrived in Zurich, Switzerland on Mar. 18, 2005. It was a 10 hour flight—no stop or changing of planes. Amazes me what you can see from 31,000 feet in the sky. The Whittenbergs met us at the airport and we went by car to Basel—about 50 miles from Zurich. Basel is located on the Rhine River on the northern border of Switzerland and has lots of buildings that date from 1000 A.D. The Whittenbergs live in an apartment, that is about 3 blocks from one of the gates on the river that was built in 1200 A.D. Lots of people walk or ride bicycles over there, but there are lots of cars too and gasoline is \$4.00 per gallon!! There are also "Trams" that go on rails all over the city. We went by car to Rodenburg, Germany—a town that was partially built in 1250 A.D. and it has a wall around the old

part that was built in 1100 A.D. in Rodenburg we also visited St. Jacob's Church (Protestant) which was partially built in 1311 and is still in service. On Easter Sunday we attended church with the Whittenbergs—The Basel Christian Fellowship—a non-denominational group of English speaking Christians, who seek to worship and serve God. Also visited France—went to Mulhouse, Colmar and over a mountain range, which still had snow and saw some skiers in action. Always had to be ready to show those passports in each country—going or coming out. Also went to Lucerne, Switzerland. Lots of tourists there and enjoyed the sights and Lake Lucerne and of course the Swiss Alps. Took a train ride to small village of Laufew—about 18 miles out of Basel. Switzerland is a beautiful country.

LeAndra's husband, Montie, took us to the Airport in Zurich on April 4 and we boarded the plane at 10:00 A.M. and landed at Dallas-Ft. Worth 11 hours later.

It is good to be home in Texas, but the trip to Switzerland was just great. My thanks to all who helped in anyway to make this trip of a lifetime available to me.

### Tina's Trip

Tina Bond's mom, Barbara Richardson, 59, has been having serious heart problems and is having tests and medications to see if her heart strengthens or gets worse. She is at her home in Naylor, Mo., now. Tina left Sunday, April 3, to go be with her. Tina flew from Oklahoma City to St. Louis, Mo. Tina's brother met her there. Tina got to spend a week with her at her house. Barbara saw the heart transplant team and may need to have a transplant. She can take care of herself, but not able to hold down a job. Pray for Barbara and her family. Ricky Bond and

Amanda and Abbey met Tina at Oklahoma City Sunday. We missed them at church. Tina missed visiting her grandmother, Fern Kidwell, at Wheeler Care for nearly two weeks. She usually visits Fern about 3 times a week.

Nice to have Juanita Fillingim come Monday and take me to lunch at Maxeys and a good visit. Thanks! Also nice to have a visit from Estelle McAdams and her mom, Vea Fillingim. Nice to have granddaughter, Lindsey Criswell come take me to the Evans get-together at City Drug. She came for the funeral and to visit David and Rita Pearson a few days. Blain and Dagen, too.

Thanks to all who have called or sent cards or showed their love and concern in the loss of my precious sister, Pauline Hefley. I love you, too.

There was Devil's Food Cake with ice cream at Dean and Georgia Tipps home Monday night to celebrate Amber Maddox's 14th birthday. Also there were Jimmy and Tammy Maddox and Jennifer. Happy Birthday Amber, God bless you!

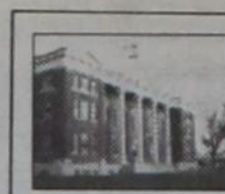
I had a request for this recipe, a favorite of many.  
Broccoli Cornbread  
2 boxes Jiffy Cornbread mix  
4 eggs  
12 oz. cottage cheese  
8 oz. frozen chopped broccoli  
about 1/2 cup chopped onion  
1 stick margarine

Melt margarine in 9x13 pan in 375 degree oven. Mix other ingredients together and then add margarine. Return to pan and bake about 30 minutes, or until brown in 375 degree oven-top rack. Let cool and cut in squares and freeze till needed. Microwave a piece or two or more as needed.

Nice to see the staff of Dr. Galutia's office eating together at Maxeys Monday and included Keri Hudson, Carrie Peach, Nina Willeford, Linda Archer and Phoebe Hartline.

### WILLS' ANNIVERSARY

Bob and Evangeline Wills' children and grandchildren hosted their 50th Wedding Anniversary celebration at City Drug Bed and Breakfast on Friday April 8 and included Robert and Lisa Wills and Andy and Sarah from Odessa, Wade and Shelly Wills and Paxton and Paige from Huntsville and Beth Wills from Mansfield. Very nice party. Other friends and relatives attending were James Hubble, Elva Wood, Dr. Louie and Gina Mendiola, LeRoy and Rhonda Meriwether and Stormie, Shelby McDaniel from Stratford, Ned Burrell, Jim and Betty Stinson from Laverne, Oklahoma, Cindy and Wes Bradstreet, Preston and Elsie Glazner, Larry and Bobby Jennings, Curtis and Jane Ann Hall, Ella Mae Wood, Ruth Wiley, Charles and Margaret Kuntz, Rita Smith, Jim and Sharon Wright, Donna Walsler, Jo June McDaniel from Kerrick, Ed and Laurel Hershman, Weldon and Delores



Simmons, Whit and Jean McDaniel and Kayla from Dumas, Betty Howard, Marie Baker, Leona Coates, Stacy McQueen, Sharon Miles, Martha Meek, Linda Hink, Verna Fillingim, Donneta Dollar, Dudley and Velda Miller, Beth Shelton, Ida Mae Goad, Bobbie Sue Baker, H.B. and Kathryn Krug, Donald and Anita Reeves, Buddy and Dianne Sparks and Nicholas, Margie Meadows, Janice Richards from Boyina, Roy and Nell Bradstreet, Dennis and Emma Williams, Becky Hardcastle, E.J. and Lavenna Pannell.

Pray for Joe Hefley of Cooper who is having some very serious eye problems. Good to visit with him and Camilla and Tony Monday evening as Evans family gathered to visit before Polly's funeral on Tuesday. When Joe and Camilla went to the eye doctor at Tyler, they had a good visit with old Briscoe classmate, Evalyn Free, who lives in Tyler. So good to visit with family at the City Drug Bed and Breakfast. Some we had not seen in quite some time.

"God be with you till we meet again."

## Oil News (from Page 4)

RANCH Granite Wash 'A') Chesapeake Operating, Inc., #2016 Lott, 660' from North & 1980' from West line, Sec. 16,3,CCSL, PD 15000'. WHEELER (WILDCAT & STILES RANCH Atoka) Chesapeake Operating, Inc., #2 Stiles Ranch '5', 467' from North & West line, Sec. 5, A-3, H&GN, PD 16000'. WHEELER (WILDCAT & STILES RANCH Granite Wash) Chesapeake Operating, Inc., #1 Stiles Ranch '23', 660' from South & East line, Sec. 23, A-3, H&GN, PD 15000'. WHEELER (WILDCAT & STILES RANCH Granite Wash) Newfield Exploration Mid-Con, Inc., #6 Britt Ranch B '45', 660' from South & West line, Sec. 45, A-3, H&GN, PD 15850'.

WHEELER (WILDCAT & STILES RANCH Granite Wash) Stallion Energy, Inc., #7025 Stiles, 990' from North & 467' from East line, Sec. 25, A-3, H&GN, PD 16000'.

### Oil Well Completions

ROBERTS (ALPAR-LIPS St. Louis) Latigo Petroleum Texas, L.P., #6 Courson Ranch '157', Sec. 15, 13, T&NO, spud 11-12-04, drlg. compl 11-30-04, tested 3-20-05, pumped 103 bbl. of 38 grav. oil + 47 bbls. water, GOR 204, TD 10100', PBDT 9600' --

ROBERTS (LIPS Mississippian) Latigo Petroleum Texas, L.P., #5 Courson Ranch '157', Sec. 15, 13, T&NO, spud 9-12-04, drlg. compl 10-5-04, tested 2-7-05, pumped 78 bbl. of 38 grav. oil + 12 bbls. water, GOR 154, TD 11030', PBDT 10949' --

### Gas Well Completions

HEMPHILL (BUFFALO WALLOW Granite Wash) B & W Operating, L.L.C., #4 Hefley '4', Sec. 4, 4, AB&M, spud 8-30-04, drlg. compl 9-16-04, tested 2-21-05, potential 1062 MCF, TD 11600'.

HEMPHILL (BUFFALO WALLOW Granite Wash) Peak Operating of Texas, L.L.C., #1253 Barker, Sec. 53, M-1, H&GN, spud 10-16-04, drlg. compl 11-2-04, tested 2-17-05, potential 2269 MCF, TD 14003', PBDT 12226' --

HEMPHILL (BUFFALO WALLOW Granite Wash) Peak Operating of Texas, L.L.C., #8053 Barker, Sec. 53, M-1, H&GN, spud 9-11-04, drlg. compl 9-28-04, tested 2-24-05, potential 2203 MCF, TD 12270', PBDT 12165' --

HEMPHILL (BUFFALO WALLOW Granite Wash) Peak Operating of Texas, L.L.C., #3048 Irene Dixon, Sec. 48, A-2, H&GN, spud 10-25-04, drlg. compl 11-12-04, tested 2-24-05, potential 1021 MCF, TD 12911', PBDT 12826' --

HEMPHILL (BUFFALO WALLOW Granite Wash) Peak Operating of Texas, L.L.C., #1359 L.A. Johnson, Sec. 59, M-1, H&GN, spud 10-17-04, drlg. compl 11-1-04, tested 2-24-05, potential 1198 MCF, TD 12226', PBDT 12135' --

HEMPHILL (BUFFALO WALLOW Granite Wash) Peak Operating of Texas, L.L.C., #6052 John C. Vise, Sec. 52, M-1, H&GN, spud 8-4-04, drlg. compl 9-4-04, tested 2-17-05, potential 1628 MCF, TD 12204', PBDT 12170' --

HEMPHILL (BUFFALO WALLOW Granite Wash) Peak Operating of Texas, L.L.C., #7052 John C. Vise, Sec. 52, M-1, H&GN, spud 9-11-04, drlg. compl 9-26-04, tested 2-17-05, potential 1517 MCF, TD 12820', PBDT 12288' --

HEMPHILL (S.E. CANADIAN Douglas) Devon Louisiana Corp., #7 Mathers Ranch, Sec. 15, 4, 1, H&TC, spud 5-15-04, drlg. compl 2-12-05, tested 2-12-05, TD 17700', PBDT 7925' -- Plug-Back - SWR #10 approved

HEMPHILL (S.E. CANADIAN Douglas) Latigo Petroleum Texas, L.P., #2096 J.O. Wells, Sec. 96, 4, 1, H&TC, spud 5-26-04, drlg. compl 6-4-04, tested 8-23-04, potential 246 MCF, TD 8320' --

HEMPHILL (S.E. CANADIAN Douglas) Mewbourne Oil Co., #1

Hoover '85', Sec. 85, 4, 1, H&TC, spud 1-3-05, drlg. compl 1-12-05, tested 2-20-05, TD 7950', PBDT 7650' --

ROBERTS (ST. CLAIR Granite Wash) Questar E&P Co., #6070 Christie Tipps 'A', Sec. 70, B01, H&GN, spud 1-17-05, drlg. compl 2-2-05, tested 2-28-05, potential 9266 MCF, TD 10045', PBDT 9920' --

WHEELER (ALLISON-BRITT 12350') Chesapeake Operating, Inc., #2032 Grayson, Sec. 32, RE, R&E, spud 12-14-04, drlg. compl 12-31-04, tested 2-3-05, potential 3535 MCF, TD 13086', PBDT 13040' --

WHEELER (BUFFALO WALLOW Granite Wash) Peak Operating of Texas, L.L.C., #1051 Finsterwald-Dobbs, Sec. 51, M-1, H&GN, spud 7-16-04, drlg. compl 8-5-04, tested 2-26-05, potential 901 MCF, TD 12269', PBDT 12260' --

WHEELER (WEST BRIT RANCH Granite Wash 'A') Stallion Energy, Inc., #4014 Britt, Sec. 14, A-3, H&GN, spud 10-1-04, drlg. compl 11-23-04, tested 2-17-05, TD 15410' --

WHEELER (STILES RANCH Granite Wash) Newfield Exploration Mid-Con, Inc., #7 Britt Ranch '36', Sec. 36, A-3, H&GN, spud 12-2-04, drlg. compl 1-8-05, tested 2-21-05, potential 5569 MCF, TD 14820', PBDT 14820' --

### Plugged Well

WHEELER (EAST PANHANDLE) JCB II Enterprises, L.L.C., #1A Wallace, Sec. 47, 23, H&GN, spud 12-15-51, plugged 11-29-04, TD 1990' (gas) Form 1 in Bluebonnet Oil Corp.

## Hospital Notes

### Assisted Living

Odra Christopher  
Verne Lohberger  
Opal Hefley  
Alvern Hutchison  
C. B. Brotherton

### New Admissions

4/3 Barbara Beck  
4/5 Robert Echols  
4/6 Jeff Herd  
4/7 Don North  
Darville Atherton

4/10 Eupha Mae Sorensen  
4/11 Opal Hutchison  
**Dismissals**  
4/7 Barbara Beck  
4/8 Jeff Herd

## Mitchell

(from Page 1)

wife, 'Chick' Mitchell; two sons, Cecil Jerry Mitchell and his wife, Lorraine, of Lamesa, TX and Danny Stephen Mitchell and his wife, Brenda, of Wheeler, TX; three grandchildren, Heath Mitchell and his wife, Tricia, of Wheeler, TX, Hillary Lindsey and her husband, Shawn, of Mustang, OK, and Hadley Mitchell of Weatherford, OK; two great-grandchildren, Tate and Trace Mitchell of Wheeler, TX; two sister, Faye Brittenham of Denton, TX and Virginia Henley of St. Petersburg, FL; and two nephews, Eddie Wayne Mitchell of Eldorado, OK and James Mitchell of Altus, OK.

## THANKS

We want to thank everyone for all the prayers, flowers, food and all the acts of kindness that was shown to our family during the loss of our Mother, Kattie Bell Taylor. It was all greatly appreciated. A special thanks to the First Baptist Church for feeding family and guests at noon on Saturday. Thanks to Country Chapel for food, flowers, and prayers. We thank Wheeler Care Center and Dr. Blacketter.

We request any memorial be sent to:  
Odyssey Health Care  
1000 South Jefferson  
Amarillo, Texas 79101  
The Taylor Family

**WALLACE MONUMENT COMPANY**  
MONUMENTS, CURBING,  
GRAVE COVERS  
Represented By: **Jim Wright**  
*Wright Funeral Home*  
Wheeler, Texas Phone: 806/826-5214

The Home Medical Store  
of Shamrock and Wheeler  
For All Your Home Medical  
Needs, Including Oxygen, Lift  
Chairs, Walkers, Beds, Scooters,  
Power Chairs A Much More!  
Contact...  
**Billy Robertson**  
901 S. Main  
Wheeler, TX 79096  
Pho: 806/826-3731  
Mobile: 898-0503

**WHEELER PLUMBING**  
511 S. Cheyenne  
New Construction  
Remodel  
Repair  
Sewer Service  
Septic Systems  
Site Evaluations  
Phone: 826-5907  
MAX McQUEEN  
P.O. Box 754 Wheeler, TX

## Greenbelt Electric Cooperative, Inc. 66th Annual Membership Meeting

Registration  
Business Session  
Election of Two Directors  
Drawing for Attendance Prizes  
Refreshments

Friday, April 22, 2005

Bura Handley  
Community Center  
Wellington, Texas

1:30 p.m. - Registration  
2:00 p.m. - Call to Order

**GRAND PRIZE DRAWING**  
**\$1000 CASH**



All members registering will receive a door prize and be registered for the attendance prize drawing.



**FannyMayLoans**

**\*\*NEW\*\***

We Offer:

- Loans
- mortgages, etc.

Call for more info.

1-866-267-3325



# Walk Across Texas Distance Reports; Tooth Fairies Lead

Stormed into action on March 1st with 43 degree temperatures. Fifteen dedicated participants showed up to start walking. I am so excited about everyone's enthusiasm this year. I know that we will walk farther and be healthier this year. Last year we walked more than any county in this district. We will be headed to South Padre Island 753 miles. We have 18 teams of 8 people walking in Wheeler County. That is 5 more teams than last year. Let's get healthy Wheeler County!!

Team members need to turn in miles to their captain by 10 am on Monday Morning. So that results can be posted in the newspaper. Captains are highly encouraged to use the Internet to enter their weekly team mileage. If a computer is not available to you, captains can come by the Extension office to enter their mileage on the web. Each week all captains who have their teams mileage entered by 11 am on Monday will have their name put into a drawing. That would mean 8 entries if miles entered every Monday on time.

Mark your calendar for April 29th "Don't Give Up Now" Breakfast 7:00 a.m. at the County Courthouse basement.

1st Tooth Fairies (Dr. Mike Smith)—367.4 (Almost to Junction)

2nd Energized 8 (Maggie Marshall)—327.35 (Just blew past Eden)

3rd Jay Walkers (Ronda Rutherford)—214.5 (Almost to Eden) 4th Dor's Dolls (Do)

5th Butler—183 (Wait up! Would you? Save us an Umbrella)

6th Doozies (Andrea Aldridge)—176.5 (Tumbling past Aspermont)

7th 29er's (Lori Baker)—164.4 (Flew through Guthrie)

8th Walkers Walkers (Joyce Walker)—134 (Almost to Guthrie)

9th Parrotheads (Kim Goad)—118.1 (Puffing through Paducah)

10th Sweat Hogs (Sue Stiles)—117 (Puffing through Paducah)

11th The Family Ties (Carl Scales)—98.5 (Almost to Paducah)

12th The Dust Busters (Lisa McCasland)—95.5 (Blew through Childress)

13th Lone Star Chicks (Deleana Whitaker)—89 (Blew through Childress)

14th Texas Two Steppers (Sallie Adcock)—86.5 (Blew through Childress)

15th Sheriffs Posse (Carrie Gaines)—76 (Blew through Childress)

16th The Jammers (Janet Stevens)—72.25 (Almost to Childress)

17th Texas Trekkers (Sonya Hudson)—68 (Almost to Childress)

18th New Teachers (Trisha Mitchell)—No miles reported

19th Walkie Talkies (Marla Ford)—No miles reported

20th Horny Toads (Kirby Barr)—No miles reported

Pedometer Rule

The Walk Across Texas program is to encourage the community to start walking to better their health. I ask that you do not wear a pedometer all day while you are working. This does not encourage you to walk more for your health.

The rules states that you may add up to 10 minute segments of continuous activity that makes you breath hard and sweat. Lets play fair and be healthy. Please pick up a Walk Across Texas Exercise Equivalent information sheet from the Extension office if you have any questions.

Thank you to our sponsors!

The Gold Sponsors are Britt Ranch, Great Plains Breeders Service, Inc., Dr. Mike Smith, DDS, The Sweat Shop and Marshall Discount Auto.

The Silver Sponsors are C & H Supply, Inc. and Dr. Mendiola.

We would like to thank these sponsors for their support and encouragement of a healthy community.

For more information, call the Extension office at 826-5243.

Walk Across Texas results will be posted at the Sweat Shop, in the local newspapers and on the website <http://walkacrosstexas.tamu.edu>.

Wheeler County Extension has a website. Check it out <http://wheeler-tx@tamu.edu>.

## Extension Office To Offer 'Tex. Friendly'

No business today can succeed for very long without giving customers quality service. Some of the most savvy clientele a business can serve are tourists.

The 'Texas Friendly' training program is available to area businesses, organizations and agencies interested in helping their employees develop the needed skills and best practices involved in outstanding customer service. This educational program is conducted by certified instructors. The curriculum was developed by Extension and the Department of Recreation, Parks and Tourism Sciences at Texas A&M University.

'Texas Friendly' helps employees understand the role of excellent customer service in their jobs. The program is focused on enabling employees to acquire information and practice skills to improve customer retention and community pride. In addition, employees are encouraged to apply skills that are beneficial personally and professionally.

Please encourage your employees to attend this training.

The program is offered free and will be held four different times.

Shamrock at the U-Drop Inn on April 19, 2005 at 9:00 a.m. and at 6:00 p.m.

Wheeler at the Church of Christ Activity Center on May 3, 2005 at 9:00 a.m. and at 6:00 p.m.

The training will last 1-1 1/2 hours.

Please RSVP to the Extension Office at 826-5243.

## Clarendon College 67th Alumni Reun'n

Graduates of Clarendon College will reunite during the 67th Annual Ex-Students Reunion on Saturday, April 16, on the Campus of Clarendon College, 1122 College Drive, in Clarendon, Tex.

This year's theme, *The 50s*, is in honor of the 1955 graduating class. As a special honor, 1955 graduates will receive a Clarendon College Golden Diploma. The graduating classes of 1970, 1975, 1980 and 1985 will also be recognized.

The reunion begins with registration and brunch at 10 a.m., in the Bairfield Activity Center. A brief alumni association business meeting will follow, from 11:15 a.m. to 12:30 p.m. Between 12:30 p.m. and 2:30 p.m., guests will tour campus facilities such as the Livestock and Equine Center, Baseball and Softball fields, Vera Dial Dickey Library, Regents Hall and Southwest Hall. Visits to the town of Clarendon include the newly renovated courthouse, the "Jewel of the Plains," and a visit to the Saint's Roost Museum. A silent auction will be available in the Vera Dial Dickey Library from 10 a.m. until 1 p.m., and 6 p.m. until 6:45 p.m. The Alumni banquet begins at 6 p.m. in the Bairfield Activity Center.

All Clarendon College ex-students, faculty and friends are invited to attend. Cost for brunch is by donation only. Tickets to the banquet are \$10. Guests are encouraged to RSVP for the banquet by noon, Friday, April 15, by calling 806-874-4813.

Clarendon College is a comprehensive community college committed to teaching and learning and to providing equal access to opportunities that assist in the holistic development of its constituents and community. In pursuit of that mission, the College provides academic transfer programs, workforce education programs, student services, developmental education courses, continuing education/community service courses and diverse cultural enrichment opportunities.

Clarendon College - Opening doors, changing lives.

## Max Thornberry To Host Acad. Forum

U.S. Representative Mac Thornberry's Amarillo office will host an Academy Forum in Amarillo to provide information to interested students and their parents about attending the United States service academies. The Forum will take place on Saturday, April 16.

Representatives from West Point, the Naval Academy, the Air Force Academy and the Air Force ROTC will give presentations and answer questions. Staff members from Thornberry's office will also be on hand to explain the application process. The Forum is designed for potential nominees in their junior or senior year of high school, but all students, parents, and counselors are invited to attend. This is the seventh year Thornberry has hosted Academy Forums.

"Graduates of the service academies are essential to the continued strength of our Armed Services. As we fight terror at home and abroad, we must remember that the officers produced by the academies will be the future leaders of our troops. This is one of the reasons I consider nominating young people to service academies a very important part of my job," Thornberry said.

As a member of Congress, Thornberry is allowed to nominate a limited number of students for each service academy. Applications for nomination must be submitted to Thornberry's office by December 1 of a student's senior year. After reviewing Congressional nominations, final selections and offers of acceptance are made by the service academies. Nominees who are accepted by the academies receive their education for free. In return, they agree to serve in the military for a minimum of five years after graduation.

The schedule for the Forum is as follows:

Saturday, April 16  
11:00 a.m. to Noon  
Amarillo Southwest Branch Library  
680 SW 45th Avenue

Clarendon College is a comprehensive community college committed to teaching and learning and to providing equal access to opportunities that assist in the holistic development of its constituents and community. In pursuit of that mission, the College provides academic transfer programs, workforce education programs, student services, developmental education courses, continuing education/community service courses and diverse cultural enrichment opportunities.

Clarendon College is a comprehensive community college committed to teaching and learning and to providing equal access to opportunities that assist in the holistic development of its constituents and community. In pursuit of that mission, the College provides academic transfer programs, workforce education programs, student services, developmental education courses, continuing education/community service courses and diverse cultural enrichment opportunities.

Clarendon College - Opening doors, changing lives.

News, Views, Commentary  
On KPDR, 90.5  
... in Wheeler  
Weekdays 6:20 a.m. to 7 a.m.



**THE AUCTION:** Local individuals and businesses donated items to be auctioned for the Hibler Benefit. Kenna Howard, chamber of commerce president, is shown here with a weed wacker to be auctioned by Paul Hathaway of Mobeetie.

## USDA Rural Development To Hold Forum On Programs

Bryan Daniel, State Director for Texas USDA Rural Development today announced a series of statewide forums to present communities with information on the many programs available from USDA Rural Development. The forums will be open to all current customers, prospective customers, and all other interested individuals and entities.

The forum for Armstrong, Briscoe, Childress, Collingsworth, Donley, and Hall Counties will be held Wednesday, April 20, 2005, 10:00 a.m. at Clarendon Jr. College, Bairfield Activity Center, 220 Regent Avenue, Clarendon, Texas.

The session will feature a presentation and discussion of all USDA Rural Development programs, in both direct and guaranteed lending opportunities, for rural utilities, community facilities, business and industry, single family and multi-family housing.

"USDA Rural Development is committed to making its programs and services available to all rural Texans, including individuals, small businesses, municipalities, community based organizations and traditionally underserved portions of the population. Through its support of sustainable development of communities, USDA Rural Development works to improve the quality of life in rural Texas," said Daniel.

USDA Rural Development's mission is to increase economic opportunity and improve the quality of life in rural communities throughout Texas. Through the numerous programs offered by USDA Rural Development, communities can improve the flow of capital to businesses and address the essential needs of housing, water, education and health care.

There is no cost to attend and all interested individuals are invited. To learn more or to make reservations to attend the forum, please call USDA Rural Development in Amarillo, Texas, at (806) 468-8600, Ext. 4.

There is no cost to attend and all interested individuals are invited. To learn more or to make reservations to attend the forum, please call USDA Rural Development in Amarillo, Texas, at (806) 468-8600, Ext. 4.

## Chat (from Page 1)

ably heard Bob Hink and Charlie Finsterwald. I hadn't—very enjoyable.

—cwe—

Bobbe Hill tells me the Court-house miniature is in shipment. As soon as it arrives, we will have a picture and will complete the taking of orders. Hopefully within the next two weeks.

—cwe—

Unknown to us at the time; six days after the arrival of Jennifer's birth, a young lady was born at Shamrock. This young lady became a part of our lives a few years later. **Happy Birthday, Liz Lovell Jackson**—one of our 'other kids'. Liz turns 30 on Friday, April 15.

—cwe—

We made a fast trip to OKC on Friday to help Jennifer through 'turning 30'. She did survive; we knew she would.

—cwe—

We returned to Wheeler Saturday evening in time for the Hibler Benefit. The food was delicious and the entertainment very entertaining.

—cwe—

I have to tell you about my latest purchase. Leaves are a problem both in the courtyard, in front of the basement and in the yard. We purchased a Toro Blower/Vacuum/Shredder. It is electric and it really works. I have two big trash bags of shredded leaves and still more to go.

—cwe—

And I am paying for it; I credit the leaves for my 'deep base voice'.

—cwe—

Dwight and Bob made it Monday evening for cards; with the cutting of the cards, they were partners. Barbara and I were partners and the winners for the evening. We won the first and the last game; losing the second game to Bob and Dwight.

—cwe—

Each of the commissioners reviewed the applications and made suggestions for the final cut, Commissioner Robert Nichols said.

"I looked for geographic diversity within the state, different experience, like utility experts, agriculture people, and opponents of the TTC," said Nichols.

Commission Chair Ric Williamson said the commission wants the committee to meet regularly.

"We'll ask them to review the department's options, pending decisions or thought processes as each option is made available to the commission," Williamson said. "They can make their comments individually or by a majority vote. We will have a cross-section of citizens to watch what we're doing."

The Trans-Texas Corridor is a proposed multi-use, statewide network of transportation routes in Texas that will incorporate existing and new highways, railways and utility zone. Specific routes for the TTC have not been determined. As envisioned, each route will include: separate lanes for passenger vehicles and large trucks, freight railways, high-speed commuter railways and infrastructure for utilities.

Last month, TxDOT formalized an agreement with Cintra-Zachry—an international group of engineering, construction and financial firms—a partnership to develop TTC-35, the first element of the Trans-Texas Corridor from Oklahoma to Mexico.

In other action, the commission approved a grant request for \$13 million from the Alamo Regional Mobility Authority to help fund costs for the development of the Loop 1604 Western Extension project in San Antonio.

## Ranch And Feedlot Interviews Offered

Interviews available for Clarendon College's Ranch and Feedlot Operations Program

With today's advances in technology, the face of ranching and feedlot operations is changing. Today's livestock producers can still be found working horseback, but they realize the importance and need for higher education and up-to-date knowledge about production and marketing.

The Ranch and Feedlot Operations program at Clarendon College is currently scheduling interviews with students interested in entering the program this fall. "The RFO program is a one-year program," said Laban Tubbs, RFO instructor. "We work with our students to help them develop the knowledge and skills necessary to take advantage of the many employment opportunities in the industry."

Since 1974, the RFO program has provided students with education necessary to succeed in a world of ever-changing and complex agricultural issues.

"Graduates of our program are employed in a variety of agricultural areas," said Tubbs. "The RFO program is successful because students gain hands-on training and development, as well as opportunities to meet and network with today's ag business leaders."

RFO students must complete academic coursework, as well as extensive field work conducted on ranches and in feedyards. It is not unusual for an RFO graduate to have logged 8,000 miles across Texas, Oklahoma, New Mexico and other states visiting top ranches, feedyards and agricultural centers.

To schedule an application interview with Clarendon College's RFO program, or for more information or questions, contact Laban Tubbs at 806-874-4840, or 800-687-9737, ext. 143, or via e-mail at [laban.tubbs@clarendoncollege.edu](mailto:laban.tubbs@clarendoncollege.edu).

Clarendon College is a comprehensive community college committed to teaching and learning and to providing equal access to opportunities that assist in the holistic development of its constituents and community. In pursuit of that mission, the College provides academic transfer programs, workforce education programs, student services, developmental education courses, continuing education/community service courses and diverse cultural enrichment opportunities.

Interviews available for Clarendon College's Ranch and Feedlot Operations Program

With today's advances in technology, the face of ranching and feedlot operations is changing. Today's livestock producers can still be found working horseback, but they realize the importance and need for higher education and up-to-date knowledge about production and marketing.

The Ranch and Feedlot Operations program at Clarendon College is currently scheduling interviews with students interested in entering the program this fall. "The RFO program is a one-year program," said Laban Tubbs, RFO instructor. "We work with our students to help them develop the knowledge and skills necessary to take advantage of the many employment opportunities in the industry."

Since 1974, the RFO program has provided students with education necessary to succeed in a world of ever-changing and complex agricultural issues.

"Graduates of our program are employed in a variety of agricultural areas," said Tubbs. "The RFO program is successful because students gain hands-on training and development, as well as opportunities to meet and network with today's ag business leaders."

RFO students must complete academic coursework, as well as extensive field work conducted on ranches and in feedyards. It is not unusual for an RFO graduate to have logged 8,000 miles across Texas, Oklahoma, New Mexico and other states visiting top ranches, feedyards and agricultural centers.

To schedule an application interview with Clarendon College's RFO program, or for more information or questions, contact Laban Tubbs at 806-874-4840, or 800-687-9737, ext. 143, or via e-mail at [laban.tubbs@clarendoncollege.edu](mailto:laban.tubbs@clarendoncollege.edu).

Clarendon College is a comprehensive community college committed to teaching and learning and to providing equal access to opportunities that assist in the holistic development of its constituents and community. In pursuit of that mission, the College provides academic transfer programs, workforce education programs, student services, developmental education courses, continuing education/community service courses and diverse cultural enrichment opportunities.

Interviews available for Clarendon College's Ranch and Feedlot Operations Program

With today's advances in technology, the face of ranching and feedlot operations is changing. Today's livestock producers can still be found working horseback, but they realize the importance and need for higher education and up-to-date knowledge about production and marketing.

The Ranch and Feedlot Operations program at Clarendon College is currently scheduling interviews with students interested in entering the program this fall. "The RFO program is a one-year program," said Laban Tubbs, RFO instructor. "We work with our students to help them develop the knowledge and skills necessary to take advantage of the many employment opportunities in the industry."

Since 1974, the RFO program has provided students with education necessary to succeed in a world of ever-changing and complex agricultural issues.

"Graduates of our program are employed in a variety of agricultural areas," said Tubbs. "The RFO program is successful because students gain hands-on training and development, as well as opportunities to meet and network with today's ag business leaders."

RFO students must complete academic coursework, as well as extensive field work conducted on ranches and in feedyards. It is not unusual for an RFO graduate to have logged 8,000 miles across Texas, Oklahoma, New Mexico and other states visiting top ranches, feedyards and agricultural centers.

To schedule an application interview with Clarendon College's RFO program, or for more information or questions, contact Laban Tubbs at 806-874-4840, or 800-687-9737, ext. 143, or via e-mail at [laban.tubbs@clarendoncollege.edu](mailto:laban.tubbs@clarendoncollege.edu).

Clarendon College is a comprehensive community college committed to teaching and learning and to providing equal access to opportunities that assist in the holistic development of its constituents and community. In pursuit of that mission, the College provides academic transfer programs, workforce education programs, student services, developmental education courses, continuing education/community service courses and diverse cultural enrichment opportunities.

Interviews available for Clarendon College's Ranch and Feedlot Operations Program

With today's advances in technology, the face of ranching and feedlot operations is changing. Today's livestock producers can still be found working horseback, but they realize the importance and need for higher education and up-to-date knowledge about production and marketing.

The Ranch and Feedlot Operations program at Clarendon College is currently scheduling interviews with students interested in entering the program this fall. "The RFO program is a one-year program," said Laban Tubbs, RFO instructor. "We work with our students to help them develop the knowledge and skills necessary to take advantage of the many employment opportunities in the industry."

Since 1974, the RFO program has provided students with education necessary to succeed in a world of ever-changing and complex agricultural issues.

"Graduates of our program are employed in a variety of agricultural areas," said Tubbs. "The RFO program is successful because students gain hands-on training and development, as well as opportunities to meet and network with today's ag business leaders."

RFO students must complete academic coursework, as well as extensive field work conducted on ranches and in feedyards. It is not unusual for an RFO graduate to have logged 8,000 miles across Texas, Oklahoma, New Mexico and other states visiting top ranches, feedyards and agricultural centers.

To schedule an application interview with Clarendon College's RFO program, or for more information or questions, contact Laban Tubbs at 806-874-4840, or 800-687-9737, ext. 143, or via e-mail at [laban.tubbs@clarendoncollege.edu](mailto:laban.tubbs@clarendoncollege.edu).

Clarendon College is a comprehensive community college committed to teaching and learning and to providing equal access to opportunities that assist in the holistic development of its constituents and community. In pursuit of that mission, the College provides academic transfer programs, workforce education programs, student services, developmental education courses, continuing education/community service courses and diverse cultural enrichment opportunities.

Interviews available for Clarendon College's Ranch and Feedlot Operations Program

With today's advances in technology, the face of ranching and feedlot operations is changing. Today's livestock producers can still be found working horseback, but they realize the importance and need for higher education and up-to-date knowledge about production and marketing.

The Ranch and Feedlot Operations program at Clarendon College is currently scheduling interviews with students interested in entering the program this fall. "The RFO program is a one-year program," said Laban Tubbs, RFO instructor. "We work with our students to help them develop the knowledge and skills necessary to take advantage of the many employment opportunities in the industry."

Since 1974, the RFO program has provided students with education necessary to succeed in a world of ever-changing and complex agricultural issues.

"Graduates of our program are employed in a variety of agricultural areas," said Tubbs. "The RFO program is successful because students gain hands-on training and development, as well as opportunities to meet and network with today's ag business leaders."

RFO students must complete academic coursework, as well as extensive field work conducted on ranches and in feedyards. It is not unusual for an RFO graduate to have logged 8,000 miles across Texas, Oklahoma, New Mexico and other states visiting top ranches, feedyards and agricultural centers.

To schedule an application interview with Clarendon College's RFO program, or for more information or questions, contact Laban Tubbs at 806-874-4840, or 800-687-9737, ext. 143, or via e-mail at [laban.tubbs@clarendoncollege.edu](mailto:laban.tubbs@clarendoncollege.edu).

Clarendon College is a comprehensive community college committed to teaching and learning and to providing equal access to opportunities that assist in the holistic development of its constituents and community. In pursuit of that mission, the College provides academic transfer programs, workforce education programs, student services, developmental education courses, continuing education/community service courses and diverse cultural enrichment opportunities.

Interviews available for Clarendon College's Ranch and Feedlot Operations Program

With today's advances in technology, the face of ranching and feedlot operations is changing. Today's livestock producers can still be found working horseback, but they realize the importance and need for higher education and up-to-date knowledge about production and marketing.

The Ranch and Feedlot Operations program at Clarendon College is currently scheduling interviews with students interested in entering the program this fall. "The RFO program is a one-year program," said Laban Tubbs, RFO instructor. "We work with our students to help them develop the knowledge and skills necessary to take advantage of the many employment opportunities in the industry."

Since 1974, the RFO program has provided students with education necessary to succeed in a world of ever-changing and complex agricultural issues.

"Graduates of our program are employed in a variety of agricultural areas," said Tubbs. "The RFO program is successful because students gain hands-on training and development, as well as opportunities to meet and network with today's ag business leaders."

RFO students must complete academic coursework, as well as extensive field work conducted on ranches and in feedyards. It is not unusual for an RFO graduate to have logged 8,000 miles across Texas, Oklahoma, New Mexico and other states visiting top ranches, feedyards and agricultural centers.

To schedule an application interview with Clarendon College's RFO program, or for more information or questions, contact Laban Tubbs at 806-874-4840, or 800-687-9737, ext. 143, or via e-mail at [laban.tubbs@clarendoncollege.edu](mailto:laban.tubbs@clarendoncollege.edu).

Clarendon College is a comprehensive community college committed to teaching and learning and to providing equal access to opportunities that assist in the holistic development of its constituents and community. In pursuit of that mission, the College provides academic transfer programs, workforce education programs, student services, developmental education courses, continuing education/community service courses and diverse cultural enrichment opportunities.

Interviews available for Clarendon College's Ranch and Feedlot Operations Program

With today's advances in technology, the face of ranching and feedlot operations is changing. Today's livestock producers can still be found working horseback, but they realize the importance and need for higher education and up-to-date knowledge about production and marketing.

The Ranch and Feedlot Operations program at Clarendon College is currently scheduling interviews with students interested in entering the program this fall. "The RFO program is a one-year program," said Laban Tubbs, RFO instructor. "We work with our students to help them develop the knowledge and skills necessary to take advantage of the many employment opportunities in the industry."

Since 1974, the RFO program has provided students with education necessary to succeed in a world of ever-changing and complex agricultural issues.

"Graduates of our program are employed in a variety of agricultural areas," said Tubbs. "The RFO program is successful because students gain hands-on training and development, as well as opportunities to meet and network with today's ag business leaders."

RFO students must complete academic coursework, as well as extensive field work conducted on ranches and in feedyards. It is not unusual for an RFO graduate to have logged 8,000 miles across Texas, Oklahoma, New Mexico and other states visiting top ranches, feedyards and agricultural centers.

To schedule an application interview with Clarendon College's RFO program, or for more information or questions, contact Laban Tubbs at 806-874-4840, or 800-687-9737, ext. 143, or via e-mail at [laban.tubbs@clarendoncollege.edu](mailto:laban.tubbs@clarendoncollege.edu).

Clarendon College is a comprehensive community college committed to teaching and learning and to providing equal access to opportunities that assist in the holistic development of its constituents and community. In pursuit of that mission, the College provides academic transfer programs, workforce education programs, student services, developmental education courses, continuing education/community service courses and diverse cultural enrichment opportunities.

Interviews available for Clarendon College's Ranch and Feedlot Operations Program

With today's advances in technology, the face of ranching and feedlot operations is changing. Today's livestock producers can still be found working horseback, but they realize the importance and need for higher education and up-to-date knowledge about production and marketing.

The Ranch and Feedlot Operations program at Clarendon College is currently scheduling interviews with students interested in entering the program this fall. "The RFO program is a one-year program," said Laban Tubbs, RFO instructor. "We work with our students to help them develop the knowledge and skills necessary to take advantage of the many employment opportunities in the industry."

Since 1974, the RFO program has provided students with education necessary to succeed in a world of ever-changing and complex agricultural issues.

"Graduates of our program are employed in a variety of agricultural areas," said Tubbs. "The RFO program is successful because students gain hands-on training and development, as well as opportunities to meet and network with today's ag business leaders."

RFO students must complete academic coursework, as well as extensive field work conducted on ranches and in feedyards. It is not unusual for an RFO graduate to have logged 8,000 miles across Texas, Oklahoma, New Mexico and other states visiting top ranches, feedyards and agricultural centers.

To schedule an application interview with Clarendon College's RFO program, or for more information or questions, contact Laban Tubbs at 806-874-4840, or 800-687-9737, ext. 143, or via e-mail at [laban.tubbs@clarendoncollege.edu](mailto:laban.tubbs@clarendoncollege.edu).

Clarendon College is a comprehensive community college committed to teaching and learning and to providing equal access to opportunities that assist in the holistic development of its constituents and community. In pursuit of that mission, the College provides academic transfer programs, workforce education programs, student services, developmental education courses, continuing education/community service courses and diverse cultural enrichment opportunities.

Interviews available for Clarendon College's Ranch and Feedlot Operations Program

With today's advances in technology, the face of ranching and feedlot operations is changing. Today's livestock producers can still be found working horseback, but they realize the importance and need for higher education and up-to-date knowledge about production and marketing.

The Ranch and Feedlot Operations program at Clarendon College is currently scheduling interviews with students interested in entering the program this fall. "The RFO program is a one-year program," said Laban Tubbs, RFO instructor. "We work with our students to help them develop the knowledge and skills necessary to take advantage of the many employment opportunities in the industry."

Since 1974, the RFO program has provided students with education necessary to succeed in a world of ever-changing and complex agricultural issues.

"Graduates of our program are employed in a variety of agricultural areas," said Tubbs. "The RFO program is successful because students gain hands-on training and development, as well as opportunities to meet and network with today's ag business leaders."

RFO students must complete academic coursework, as well as extensive field work conducted on ranches and in feedyards. It is not unusual for an RFO graduate to have logged 8,000 miles across Texas, Oklahoma, New Mexico and other states visiting top ranches, feedyards and agricultural centers.

To schedule an application interview with Clarendon College's RFO program, or for more information or questions, contact Laban Tubbs at 806-874-4840, or 800-687-9737, ext. 143, or via e-mail at [laban.tubbs@clarendoncollege.edu](mailto:laban.tubbs@clarendoncollege.edu).

Clarendon College is a comprehensive community college committed to teaching and learning and to providing equal access to opportunities that assist in the holistic development of its constituents and community. In pursuit of that mission, the College provides academic transfer programs, workforce education programs, student services, developmental education courses, continuing education/community service courses and diverse cultural enrichment opportunities.

Interviews available for Clarendon College's Ranch and Feedlot Operations Program

With today's advances in technology, the face of ranching and feedlot operations is changing. Today's livestock producers can still be found working horseback, but they realize the importance and need for higher education and up-to-date knowledge about production and marketing.

The Ranch and Feedlot Operations program at Clarendon College is currently scheduling interviews with students interested in entering the program this fall. "The RFO program is a one-year program," said Laban Tubbs, RFO instructor. "We work with our students to help them develop the knowledge and skills necessary to take advantage of the many employment opportunities in the industry."

Since 1974, the RFO program has provided students with education necessary to succeed in a world of ever-changing and complex agricultural issues.

"Graduates of our program are employed in a variety of agricultural areas," said Tubbs. "The RFO program is successful because students gain hands-on training and development, as well as opportunities to meet and network with today's ag business leaders."

RFO students must complete academic coursework, as well as extensive field work conducted on ranches and in feedyards. It is not unusual for an RFO graduate to have logged 8,000 miles across Texas, Oklahoma, New Mexico and other states visiting top ranches, feedyards and agricultural centers.

To schedule an application interview with Clarendon College's RFO program, or for more information or questions, contact Laban Tubbs at 806-874-4840, or 800-687-9737, ext. 143, or via e-mail at [laban.tubbs@clarendoncollege.edu](mailto:laban.tubbs@clarendoncollege.edu).

Clarendon College is a comprehensive community college committed to teaching and learning and to providing equal access to opportunities that assist in the holistic development of its constituents and community. In pursuit of that mission, the College provides academic transfer programs, workforce education programs, student services, developmental education courses, continuing education/community service courses and diverse cultural enrichment opportunities.

## Mutual Energy SPP Requests Permission To Increase Rates

Mutual Energy SWEPCO (ME SWEPCO), doing business as Mutual Energy SPP (ME SPP), has filed a request with the Public Utility Commission of Texas (PUCT) to reconcile fuel costs and increase fuel factors for electricity customers in the west Texas counties of Childress, Collingsworth, Donley, Hall and Wheeler.

The request was filed because the existing fuel factors have not met and currently do not meet the market price of natural gas used to generate electricity. Consequently, ME SPP has requested permission to increase the fuel factors used in calculating the total electricity bill and to recover through a surcharge the approximately \$1.6 million (including interest) in fuel costs not collected from January to December 2004.

If the request to increase fuel factors is approved as requested, the new fuel factors would go into effect in June. Residential customers using 1,000 kilowatt-hours of electricity a month would see their average monthly bill increase approximately \$11.07.

The beginning of the surcharge is timed to follow expiration in October of an existing \$3.52 monthly surcharge from the last fuel reconciliation. A second existing surcharge for \$3.84 per month will expire in January 2006. That sur-

charge was for the final fuel reconciliation when the area was served by West Texas Utilities. The expiration of the two existing surcharges will offset the proposed fuel factor change and proposed surcharge by approximately \$7.36 for residential customers using 1,000 kilowatt-hours of electricity a month.

If the surcharge request is approved as requested, residential customers using 1,000 kilowatt-hours of electricity a month would see their monthly bill increase approximately \$11.50 beginning in November 2005 and continuing through December 2006.

If the fuel factor increase and the surcharge are approved as requested, the price of electricity will increase from an average 10.9 cents per kilowatt-hour to an average price of 13.1 cents per kilowatt-hour. Even at the increased price, customers will be paying prices comparable to those paid by customers of WTU Retail Energy. This is the second fuel factor adjustment that ME SPP has requested since January 2002. By comparison, WTU Retail Energy has increased its fuel factor four times during the same period of time.

ME SPP serves the approximately 7,200 customers in the five west Texas counties because they are located in the Southwest Power Pool, which has not yet begun retail electric competition.

MESPP is a subsidiary of American Electric Power (AEP). AEP owns more than 36,000 megawatts of generating capacity in the United States and is the nation's largest electricity generator. AEP is also one of the largest electric utilities in the United States, with more than 5 million customers linked to AEP's 11-state electricity transmission and distribution grid. The company is based in Columbus, Ohio.

Mutual Energy SWEPCO (ME SWEPCO), doing business as Mutual Energy SPP (ME SPP), has filed a request with the Public Utility Commission of Texas (PUCT) to reconcile fuel costs and increase fuel factors for electricity customers in the west Texas counties of Childress, Collingsworth, Donley, Hall and Wheeler.

The request was filed because the existing fuel factors have not met and currently do not meet the market price of natural gas used to generate electricity. Consequently, ME SPP has requested permission to increase the fuel factors used in calculating the total electricity bill and to recover through a surcharge the approximately \$1.6 million (including interest) in fuel costs not collected from January to December 2004.

If the request to increase fuel factors is approved as requested, the new fuel factors would go into effect in June. Residential customers using 1,000 kilowatt-hours of electricity a month would see their average monthly bill increase approximately \$11.07.

The beginning of the surcharge is timed to follow expiration in October of an existing \$3.52 monthly surcharge from the last fuel reconciliation. A second existing surcharge for \$3.84 per month will expire in January 2006. That sur-

Mutual Energy SWEPCO (ME SWEPCO), doing business as Mutual Energy SPP (ME SPP), has filed a request with the Public Utility Commission of Texas (PUCT) to reconcile fuel costs and increase fuel factors for electricity customers in the west Texas counties of Childress, Collingsworth, Donley, Hall and Wheeler.

The request was filed because the existing fuel factors have not met and currently do not meet the market price of natural gas used to generate electricity. Consequently, ME SPP has requested permission to increase the fuel factors used in calculating the total electricity bill and to recover through a surcharge the approximately \$1.6 million (including interest) in fuel costs not collected from January to December 2004.

If the request to increase fuel factors is approved as requested, the new fuel factors would go into effect in June. Residential customers using 1,000 kilowatt-hours of electricity a month would see their average monthly bill increase approximately \$11.07.

The beginning of the surcharge is timed to follow expiration in October of an existing \$3.52 monthly surcharge from the last fuel reconciliation. A second existing surcharge for \$3.84 per month will expire in January 2006. That sur-

## Trans-Tex. Corridor Committee Selected

State officials' push for public input on the Trans-Texas Corridor continues to move forward with the creation today of a citizen's advisory committee and appointment of 21 members.

The Texas Transportation Commission approved the action at its monthly meeting, selecting the members from 251 applicants.

The Trans-Texas Corridor Advisory Committee will include: K. Stephen Bonnette, San Antonio; Marc Maxwell, Sulphur Springs; Louis Bronaugh, Lufkin; Ann O'Ryan, Austin; Tim Brown, Belton; Charles Perry, Odessa; Sid Covington, Austin; Jose R. Ramos, Buda; Deborah Garcia, El Paso; Wes Reeves, Amarillo; Sandy Greyson, Dallas; Grady W. Smither, Jr., Duncanville; Judy Hawley, Corpus Christi; Linda Stall, Fayetteville; Dr. Charles Henry, Lubbock; John Thompson, Livingston; Roger Hord, Houston; Martha Tyroch, Temple; Alan Johnson, Harlingen; Roy Walthall, Waco; and William B. Madden, Dallas.

Each of the commissioners reviewed the applications and made suggestions for the final cut, Commissioner Robert Nichols said.

"I looked for geographic diversity within the state, different experience, like utility experts, agriculture people, and opponents of the TTC," said Nichols.

Commission Chair Ric Williamson said the commission wants the committee to meet regularly.

"We'll ask them to review the department's options, pending decisions or thought processes as each option is made available to the commission," Williamson said. "They can make their comments individually or by a majority vote. We will have a cross-section of citizens to watch what we're doing."

The Trans-Texas Corridor is a proposed multi-use, statewide network of transportation routes in Texas that will incorporate existing and new highways, railways and utility zone. Specific routes for the TTC have not been determined. As envisioned, each route will include: separate lanes for passenger vehicles and large trucks, freight railways, high-speed commuter railways and infrastructure for utilities.

Last month, TxDOT formalized an agreement with Cintra-Zachry—an international group of engineering, construction and financial firms—a partnership to develop TTC-35, the first element of the Trans-Texas Corridor from Oklahoma to Mexico.

In other action, the commission approved a grant request for \$13 million from the Alamo Regional Mobility Authority to help fund costs for the development of the Loop 1604 Western Extension project in San Antonio.

State officials' push for public input on the Trans-Texas Corridor continues to move forward with the creation today of a citizen's advisory committee and appointment of 21 members.

The Texas Transportation Commission approved the action at its monthly meeting, selecting the members from 251 applicants.

The Trans-Texas Corridor Advisory Committee will include: K. Stephen Bonnette, San Antonio; Marc Maxwell, Sulphur Springs; Louis Bronaugh, Lufkin; Ann O'Ryan, Austin; Tim Brown, Belton; Charles Perry, Odessa; Sid Covington, Austin; Jose R. Ramos, Buda; Deborah Garcia, El Paso; Wes Reeves, Amarillo; Sandy Greyson, Dallas; Grady W. Smither, Jr., Duncanville; Judy Hawley, Corpus Christi; Linda Stall, Fayetteville; Dr. Charles Henry, Lubbock; John Thompson, Livingston; Roger Hord, Houston; Martha Tyroch, Temple; Alan Johnson, Harlingen; Roy Walthall, Waco; and William B. Madden, Dallas.

Each of the commissioners reviewed the applications and made suggestions for the final cut, Commissioner Robert Nichols said.

"I looked for geographic diversity within the state, different experience, like utility experts, agriculture people, and opponents of the TTC," said Nichols.

Commission Chair Ric Williamson said the commission wants the committee to meet regularly.

"We'll ask them to review the department's options, pending decisions or thought processes as each option is made available to the commission," Williamson said. "They can make their comments individually or by a majority vote. We will have a cross-section of citizens to watch what we're doing."

The Trans-Texas Corridor is a proposed multi-use, statewide network of transportation routes in Texas that will incorporate existing and new highways, railways and utility zone. Specific routes for the TTC have not been determined. As



# \$5,000 HOLE IN ONE OFFERED AT J'NAE GOAD GOLF TOURNEY

The 7th Annual Ja'Nae Goad Memorial Golf Tournament will offer a \$5000 prize for a Hole in One. This prize is sponsored by Blackwell & Associates of Canyon. The number 10 hole has been designated for the monetary award.

Items being offered for raffle are a coffee table made by R.L. Zybach, an Adirondack chair made by Kelsey Zybach, a framed watercolor by Sibly Clark, a quilt made by Tina Lee and a guided dove hunt for 2 donated by Buck Dollar and Britt Ranch. The items available for raffle are on display at Wheeler Banking Center during

the week and can be seen at Maxey's on the week-end. Entries are still being accepted for the tournament with tee times of 9:00 am and 2:00 pm available. Fees are \$35 and lunch is provided. All proceeds benefit the Ja'Nae Goad Memorial Golf Scholarship.

Hear The  
**"Abundant Living Broadcast"**  
**On KPDR, 90.5**  
... in Wheeler  
Saturdays 9 a.m. to Noon

# Wheeler County COURT RECORDS

List of instruments filed in the Wheeler County Clerk's office from March 31, 2005—April 8, 2005.

**March 31, 2005**  
RDT—First State Bank of Mobeetie to Anthony Mark Reed, et ux, 3-31-05, E 1/2 E 1/2 Sec. 3, Blk. 2, Brooks & Burleson Survey.  
C/C PROBATE—Hubert Thomas Wilkins Jr. to Ex Parte, 3-18-05, Sec. 25, Camp County School Land.  
C/C PROBATE—Patty J. Wilkins to Ex Parte, 3-18-05, Sec. 25, Camp County School Land.  
ROY./MD—Bank One Trust Com-

pany NA, Trustee, et al to Ingrid S. Bakke, et al, 3-15-05, 645.92 acs. Sec. 50 and all of Sec. 51, Blk. A-8, H&GN Ry. Company Survey.  
D—Ada Lou Lester to Jackie Don May Jr., et ux, 3-24-05, Lots 7-10, Blk. 107, New Mobeetie.

**APRIL 1, 2005**  
RDT—GNB Financial NA to Jown W. Monych III, 3-28-05, N 1/2 NW 1/4; SE 1/4 NW 1/4; SE 1/4 NW 1/4 4 Sec. 41, Blk. A-7, H&GN Ry. Company Survey.  
DVL—Della Sue Snider to Ike Finsterwald, et al, 3-31-05, See Instrument.  
DT—Ike Finsterwald, et al to First Ag Credit, FLCA, 3-31-05, See Instrument.

FTL—United States of America to Santiago Moya, et ux, 3-16-05.  
RATIFICATION OL—Cecil Clay Edwards to Chesapeake Exploration Limited Partnership, et al, 3-17-05, W 1/2 Sec. 70, Blk. A-7, H&GN Ry. Company Survey.  
RATIFICATION OL—William Wayne Edwards to Chesapeake Exploration Limited Partnership, et al, 3-17-05, W 1/2 Sec. 70, Blk. A-7, H&GN Ry. Company Survey.

RATIFICATION OL—Ruth Ann Edwards to Chesapeake Exploration Limited Partnership, et al, 3-24-05, W 1/2 Sec. 70, Blk. A-7, H&GN Ry. Company Survey.  
RATIFICATION OL—Loretta Edwards to Chesapeake Exploration Limited Partnership, et al, 3-25-05, W 1/2 Sec. 70, Blk. A-7, H&GN Ry. Company Survey.  
RATIFICATION OL—David Scott Edwards to Chesapeake Exploration Limited Partnership, et al, 3-28-05, W 1/2 Sec. 70, Blk. A-7, H&GN Ry. Company Survey.

RATIFICATION OL—Ida Marie Edwards Gergeni to Chesapeake Exploration Limited Partnership, et al, 3-17-05, W 1/2 Sec. 70, Blk. A-7, H&GN Ry. Company Survey.  
**APRIL 4, 2005**  
ROY./MD—Jesse Verlin Curry Jr. to J. M. Mineral & Land Co. Inc., et al, 3-29-05, Sec. 23, Blk. M-1, H&GN Ry. Company Survey.

EXT. DT—Rodney G. Klemm, et al to National Bank of Commerce, 3-18-05, 50 acs. SW part Sec. 60, Blk. 17, H&GN Ry. Company Survey.  
ROY./MD—Roger Jeffcoat to Royalty Clearinghouse Partnership, 3-30-05, Secs. 83, 84 and 99, Blk. A-5, H&GN Ry. Company Survey.

RDT—Panhandle-Plains Federal Land Bank Association, FLCA to John E. Jones, et ux, 2-2-05, See Instrument.  
OL—Vierson Oil & Gas Co. to Chesapeake Exploration Limited Partnership, 3-22-05, NE 1/4 NW 1/4 Sec. 21, Blk. A-3, H&GN Ry. Company Survey.

ASSIGN./B of SALE CONVEY.—C. Ralph Blodgett to Chesapeake Exploration Limited Partnership, 3-12-05, Sec. 64, Blk. A-7, H&GN Ry. Company Survey.  
ASSIGN./B of SALE CONVEY.—Carter E. Karr to Chesapeake Exploration Limited Partnership, 3-4-05, See Instrument.

SUB.-SURFACE EASEMENT—Mills Ranch & Co., Ltd., et al to Brigham Oil & Gas LP, 3-11-05, SW 1/4 Sec. 3, Blk. A-7, H&GN Ry. Company Survey.  
MEMORANDUM OPTION AGREE.—William F. Davis to Brigham Oil & Gas LP, 3-7-05, 619.80 acs. Sec. 65, Blk. 13, H&GN Ry. Company Survey.

EXT./AMEND. OL—William Don Rives to Brigham Oil & Gas LP, 3-4-05, E 1/2 Sec. 15, Blk. A-8, H&GN Ry. Company Survey.  
EXT. OL—William E. M Rives, et ux to Brigham Oil & Gas, 2-2-05, S 1/2 NW 1/4; SW 1/4 NE 1/4 Sec. 22, Blk. A-8, H&GN Ry. Company Survey.

EXT. OL—Willis Clifford Tinney, et ux to Brigham Oil & Gas, 2-2-05, W 1/2 N 363.7 acs. Sec. 34, Blk. A-8, H&GN Ry. Company Survey.  
ASSIGN. CONVEYANCE—Guild Family Trust to Driftwood LLC, et al, 3-31-05, See Instrument.

D—Alberto Guadalupe Chavez to Karla Hernandez, 3-31-05, 70' x 140' Sec. 4, T&NO Ry. Company Survey.  
DVL—Karla Hernandez to Daniel Sigala, et al, 3-31-05, 70' x 140' Sec. 4, T&NO Ry. Company Survey.

DT—Daniel Sigala, et al to Karla Hernandez, 3-31-05, 70' x 140' Sec. 4, T&NO Ry. Company Survey.  
D—Yreva Sue Topper to Michael Shorter, et ux, 3-31-05, Lot 12, Blk. 111, New Mobeetie.

ROY./MD—Arrowhead Resources Inc. to MAP2004-OK, 1-15-05, SE 1/4 Sec. 1, Blk. A-4, H&GN Ry. Company Survey.  
ROY./MD—Arrowhead Resources Inc. to MAP2004-OK, 1-15-05, N 113 acs. W 213 acs. N 426 acs. Sec. 2, D. Tindale Survey.

ROY./MD—Arrowhead Resources Inc. to MAP2004-OK, 1-15-05, N 113 acs. W 213 acs. N 426 acs. Sec. 2, D. Tindale Survey.  
ASSIGN.—TBA Petroleum to Samson Lone Star Limited Partnership, 3-28-05, See Instrument.  
OL—Robert Glynn Burrell to Sanguine Gas Exploration LLC, 1-25-05, N 124 acs. S 1/2 Sec. 33, Blk. A-7, H&GN Ry. Company Survey.



Neil K. Braverman, 3-29-05, Sec. 4, Blk. R.E., Roberts & Eddleman Survey.  
PARTIAL ASSIGN.—Chesapeake Exploration Limited Partnership to Sierra Resources Inc., 3-29-05, Sec. 4, Blk. R.E., Roberts & Eddleman Survey.

PARTIAL ASSIGN.—Chesapeake Exploration Limited Partnership to N/G Discovery LLC, 3-29-05, Sec. 4, Blk. R.E., Roberts & Eddleman Survey.  
UNIT DECLARATION—Chesapeake Exploration Limited Partnership, et al to Deborah Lynn Markham Jones, 10-15-04, W 1/2 Sec. 22, Blk. R.E., Roberts & Eddleman Survey.

MODIFICATION DT—Bluegrass Energy Enhancement Fund LLC to Bank of Oklahoma, NA, 1-15-05, See Instrument.  
C/C ROW—Nelda Dukes to Enbridge Pipelines (Texas Gathering) LP, 3-30-05, 15 acs. SE 1/4 Sec. 9, Blk. R.E., Roberts & Eddleman Survey.

D—Rosalyn Pruitt to Sam D. Pruitt, et al, 3-28-05, 161.2 acs. NW 1/4 Sec. 69, Blk. 17, H&GN Ry. Company Survey.  
CONVEYANCE ROY./MD—Alice Patterson to Carotex, 3-24-05, Sec. 91, Blk. A-5, H&GN Ry. Company Survey.

CONVEYANCE ROY./MD—David Jaquess to Carotex, 3-22-05, Sec. 91, Blk. A-5, H&GN Ry. Company Survey.  
MD—Doris Lee Teague Trust to Christian Family Care Agency Inc., et al, 2-17-05, NW 1/4 Sec. 6, Blk. A-2, H&GN Ry. Company Survey.

MD—Clemens 1990 Revocable Living Trust to Arrowhead Resources Inc., 2-23-05, N 113 acs. W 213 acs. N 426 acs. Sec. 2, D. Tindale Survey.  
MD—Hubert T. Wilkins III, et ux to Arrowhead Resources Inc., 2-5-05, Sec. 20, Camp County School Land.

MD—Hubert T. Wilkins III to Arrowhead Resources Inc., 2-14-05, N 1/2 SE 1/4 NE 1/4 Sec. 4, AB&M Survey.  
MD—Dana Wynne Clemens Hawk to Arrowhead Resources Inc., 2-25-05, N 113 acs. W 213 acs. N 426 acs. Sec. 2, D. Tindale Survey.

**APRIL 5, 2005**  
AFF. OF POSTING—Justin E. Myers, Sub. Trustee to The Public, 4-4-05, Lot 1 and N 7' of Lot 2, Blk. LXXXVI, Shamrock.  
SUB. TRUSTEES D—Michael Doss, et ux to Jerry Robertson, 4-5-05, Lot 1 and N 7' of Lot 2, Blk. LXXXVI, Shamrock.

D—Old Mobeetie Texas Association to Sidney Mahan, 4-4-05, Lots 7 and 8, Blk. 118, New Mobeetie.  
POA—Nadine E. Reynolds to Gary Hall, et al, 4-5-05.  
SECOND AMENDMENT DT—KCS Resources Inc. to Bank of Montreal, 3-31-05, See Instrument.

D—Jim Verden, et ux to David H. Gilmer, et ux, 4-4-05, 26.36 acs. out of 82.63 acs. NE 1/4 Sec. 59, Blk. A-8, H&GN Ry. Company Survey.  
David H. Gilmer, et ux to First State Bank of Mobeetie, 4-4-05, 26.36 acs. out of 82.63 acs. NE 1/4 Sec. 59, Blk. A-8, H&GN Ry. Company Survey.

RDT—First Ag Credit FLCA to Jim Verden, et ux, 4-4-05, See Instrument.  
RDT—First Ag Credit FLCA to Jim Verden, et ux, 4-4-05, See Instrument.  
PARTIAL RDT—First Ag Credit FLCA to Jim Verden, et ux, 4-4-05, 26.36 acs. out of 82.63 acs. NE 1/4 Sec. 59, Blk. A-8, H&GN Ry. Company Survey.

D—Lena M. Luman to Donald R. Vearner, et ux, 4-4-05, Lots 9 and 10, Blk. 59, WSSA, Shamrock.  
RDT—Bonnie Bail Bond Inc. to Ruth T. Wilkinson, 9-4-03, Lots 3 and N 1' of Lot 4, Blk. 2, Aldous Add., Shamrock.

OL—Miles Davis Boardman, et al to Map Resources Inc., 3-7-05, SE 1/4 Sec. 38, Blk. A-4, H&GN Ry. Company Survey.  
RDT—Mortgage Electronic Registration Systems Inc. to Orville Thompson, et ux, 3-21-05, Lot 8, Blk. 65, WSSA, Shamrock.

C/C JUDGMENT—Ruth Huckabee Drake, et al to Don Nelson, et ux, 4-5-05, N 3/4 N 1/2 SW 1/4; N 1/2 SW 1/4 SW 1/4 Sec. 36, Blk. 13, H&GN Ry. Company Survey.  
**APRIL 6, 2005**  
D—Leona Northcutt Coates to Jerry Lister, et ux, 1-1-05, Lot 15, Blk. 17, Wheeler.

S 100' Lot 3, Blk. LXV, Shamrock.  
CONVEYANCE—Enbridge Pipelines (East Texas) LP to Enbridge Pipelines (Texas Gathering) LP, 3-30-05, See Instrument.  
POA—Chase Mortgage Company West to Barrett, Burke, Wilson, Castle, Daffin and Frappier LLP, 8-6-03.

POA—First Horizon Home Loan Corporation to Stephen C. Porter, et al, 10-2-02.  
**APRIL 7, 2005**  
MD—National Minerals Corporation to L. Spinner Platt, 4-4-05, S 100 acs. Sec. 8, Blk. C, E. Montgomery Survey.

ASSIGN./B of SALE/CONVEY.—Holcomb & Company to Chesapeake Exploration Limited Partnership, 3-16-05, Sec. 64, Blk. A-7, H&GN Ry. Company Survey.  
ROW—Beulah F. Miller Revocable Trust to Enbridge Pipelines (Texas Gathering) LP, 3-22-05, Pt. E 318 acs. Sec. 19, Blk. A-3, H&GN Ry. Company Survey.

HOMESTEAD DESIGN. AFF.—Dennis Lowe to The Public, 4-6-05, Lots 1 and 2, Blk. 52, WSSA, Shamrock.  
DT—Dennis Lowe to National Bank of Commerce, 4-6-05, Lot 3, Blk. 52, WSSA, Shamrock.

ASSIGN./B of SALE/CONVEY.—Bill W. Stephan to James Reneau Seed Co., 12-4-04, NE 1/4 NE 1/4 SW 1/4 Sec. 51, Blk. 24, H&GN Ry. Company Survey.  
ASSIGN./B of SALE/CONVEY.—B & K Production to James Reneau Seed Co., 3-1-05, See Instrument.

ASSIGN./B of SALE/CONVEY.—Bill Stephan to Reneau Oil Co., 12-4-04, N 1/2 SE 1/4 NW 1/4; SE 1/4 NW 1/4 NE 1/4 Sec. 9, Blk. 27, H&GN Ry. Company Survey.  
DVL—Robert Andis, et ux to Karla Hernandez, et al, 4-6-05, Pt. Lot 9 and all of Lots 10 and 11, Blk. 35, Wheeler.

DT—Karla Hernandez, et al to Lending Street LLC, 4-6-05, Pt. Lot 9 and all of Lots 10 and 11, Blk. 35, Wheeler.  
**APRIL 8, 2005**  
PARTIAL RDT—First Ag Credit FLCA to Jerry Finsterwald, et ux, 3-31-05, Pt. Sec. 50, Blk. M-1, H&GN Ry. Company Survey.

RVL/RDT—Citizens Bank of Edmond to Robert Leroy Wall, et ux, 4-4-05, Lot 6 and N 40' Lot 7, Blk. 83, WSSA, Shamrock.  
D—George Garza, et ux to Daniel Garza, et ux, 2-23-05, Lot 12 and N 1/2 Lot 11, Blk. 26, Shamrock.

D—Keith Wayne Parsons to Cleve Parsons, 3-19-05, 10 acs. S 1/2 SE 1/4 Sec. 4, Blk. A-8, H&GN Ry. Company Survey.  
ASSIGN. OVERRID. ROYALTY—Samson Lone Star Limited Partnership to Robert D. McKenna, 4-1-05, Sec. 50, Blk. M-1, H&GN Ry. Company Survey.

PARTIAL ASSIGN. OL—Geodyne Nominee Corporation to Samson Lone Star Limited Partnership, 4-1-05, Sec. 50, Blk. M-1, H&GN Ry. Company Survey.  
MD—Joy Beth McQueen to Arrowhead Resources Inc., 3-3-05, Sec. 66, Blk. A-7, H&GN Ry. Company Survey.

MD—Abigail M. Deaver to Arrowhead Resources Inc., 3-28-05, N 1/2 Sec. 17, Blk. L, J. M. Lindsey Survey.  
MD—Paige E. Parks to Arrowhead Resources Inc., 3-1-05, Sec. 66, Blk. A-7, H&GN Ry. Company Survey.

D—Jerry Dan Hefley, et ux to Dennis Michael Howard, 4-8-05, Lot 12, Hefley Second Add., Wheeler.  
**District Clerk's Filing:**  
#11661—Judy Richmond vs Ronnie Seymour, 3-21-05, Divorce.

#11663—In Re to Minor Children, 3-23-05.  
#11664—Katie Click vs Jamey Sean Click, 4-4-05, Divorce.

**PERFORMER:** Charles Finsterwald came forward to perform "Ghost Chickens In The Sky" with Jill Lister.

## These pictures sponsored by . . . Charles F. Kuntz CERTIFIED PUBLIC ACCOUNTANT



**TENNIS:** The Wheeler High School 2005 tennis team is made of these students, (back row, l. to r.) Cole Hathaway, Jansen Moore, Tyler McWhorter, Landon Sams, Cameron Burton, Steven McAlpine, (middle) Brentney Taylor, Kenia Gellagos, Jonathan Hampton, Dyron Brown, Aspen Hathaway, (front) Olivia Lock, Lezli Finsterwald, Elizabeth Garcia, J'Shay McCasland and Heather Hampton.



**GOLF:** Wheeler is represented by these High School students at the U.I.L. tournaments. Pictured are (back row, l. to r.) Jarrod Haning, Steven McAlpine, Mikel Tucker, (front) Samantha Chapman and Cole Hathaway.



**BOY'S JUNIOR HIGH TRACK:** These young men represent Wheeler at the Junior High Track meets for 2005. They are (back row, l. to r.) Cezar Gonzales, Nick Hardcastle, Zack Andis, Clint Orr, Stephen Tucker, Gerardo Diaz, (middle) Kelby Vise, Braden Moore, Miguel Soto, Aaron Rincon, Nathan Benefield, Michael Mendoza, Josh Hardcastle, (front) Brock Sabbe, Jonathan Venzor, Darren Gaines, Adam Robles, Jacob Cassell, Aaron Gaines and Jonathan Eagles.



**JUNIOR HIGH GIRL'S TRACK:** Wheeler is being represented this year at the Junior High Track meets by these young ladies. Team members are (back row, l. to r.) Diana Corral, Bailey Richardson, Alejandra Venzor, Nicole Moore, Presley Thomas, (middle) Tracy Keelin, Macie Miller, Ashley Gallagher, Carley Owens, Sarah Miller, Sara Salazar, (front) Karina Pacheco, Marisela Duenas and Danna Gallardo.



**PERFORMER:** Charles Finsterwald came forward to perform "Ghost Chickens In The Sky" with Jill Lister.

**Palace Theatre**  
210 Main • Ciantrian  
(806) 323-5133  
www.palacetheatre.com

Starting Friday, April 15:  
**"Miss Congeniality 2"**  
Rated PG-13

Showtime:  
Fri. thru Thurs. .... 7:00 P.M.  
Sunday Matinee ..... 2:00 P.M.