

Wind (from Page 1)
 ternational
 10:30 Break
 10:45 Wind, Lesser Prairie-Chickens: The Role of a Candidate Species
John Hughes, U.S. Fish and Wildlife Service
 11:15 Wind Development and Wildlife Associated with Playa Wetlands
Dave Haukos, U.S. Fish and Wildlife Service and Texas Tech University
 11:45 Wildlife and Wind Summary Panel
Andy Kasner, Audubon Texas Jim Bergan, The Nature Conservancy of Texas Kathy Boydston, Texas Parks and Wildlife

Dr. Clint Boal, Texas Tech University
 12:15 Lunch and Legislative Presentation (Moderator: *Commissioner Mark Bivins*)
 Rep. David Swinford (Dumas)
 Rep. Warren Chisum (Pampa)
 Rep. John Smith (Amarillo)
 Sen. Robert Duncan (Lubbock)(tentative)
 Sen. Kel Seliger (Amarillo)
 Afternoon Moderator: *Rory Burroughs, Comprehensive Land Management*
 1:15 Competitive Renewable Energy Zones and Transmission
 Brian Almon, Texas Public Utilities Commission
 1:45 Land Appraisals and Real Estate Impacts
 Derry Gardner, Gardner Appraisal Group

2:30 Break
 2:45 Landowner Panel (Moderator, Glen Webb)
 Steve Hartmann, University Lands
 Mike Long, Horizon Landowner
 Jim Bergan, The Nature Conservancy-TX
 Monte Cluck, Texas Cattle Feeders Association
 L.H. Webb, Gray County Landowner
 Judge Donnie Allred (Oldham County)
 4:30 Panel Wrap-Up and Perspectives from the Day
 Kirby Brown, Texas Wildlife Association
 5:30 Social and Networking (Ambassador Hotel Atrium)
 6:30 Dinner
 Aug. 9, 2008

7:30 Coffee and Pastries Available (Ambassador Hotel Atrium)
 8:00 Depart for Wildorado Wind Ranch Field Tour
 Interactive Discussions with Edison Mission
 Landowner Perspective - Mike and Jan Baca
 11:30 Lunch and Wrap-Up

Hale (from Page 1)
 website, www.workeroftheyear.com
 Please take a minute to check it out. If you see Hale let him know we are proud to have him represent our company and industry.
 Patrick Simpson
 Senior Safety Manager
 Unit Texas Drilling LLC



THE WHEELER TIMES
 PAGE 6 — Thursday, July 31, 2008
 "Wheeler: town of friendship and pride."

Wheeler EMS Will Offer CISM Class

Wheeler E.M.S. and Parkview Hospital will be holding a CISM or Critical Incident Stress Management Class in Wheeler on August 1 and 2. This class is to train a team that can help emergency workers or other individuals after a high stress incident. You do not need to be an emergency worker to take this course. Anyone with a desire to help people can be on this team. After an incident a debriefing needs to be done within 24 to 48 hours to really be effective and we don't have access to a team close to Wheeler. If you are interested in this class, it will cost \$85.00 which includes your book.

Listen to . . .
KPDR-FM, 90.5
 WHEELER, TEXAS

Wheeler County's Exclusive source for Plains & Surfine Products!
 Your source for the freshest ★ PRODUCE ★ MEATS ★ DAIRY
 300 E. Oklahoma Ave. — Wheeler, Texas
 "Support Your Local Merchants" **806-826-5944**

PRICES GOOD
 WEDNESDAY JULY 30 THRU
 TUESDAY AUGUST 5, 2008



40 CT. 9 OZ. OR 36 CT. 10 OZ.
Solo Clear Plastic Cups
 MIX OR MATCH **2 \$4 FOR 4**



Meat Extravaganza



T-Bone Steak
 family pack
 preferred trim
\$5.79
 lb.



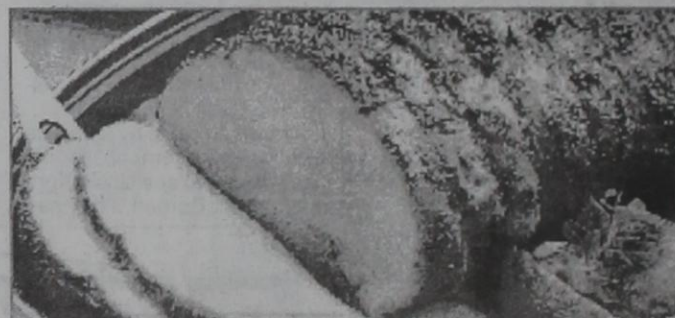
Sirloin Cut Pork Chops
 family pack
 bone-in
\$1.29
 lb.



Bottom Round Steak
 preferred trim boneless beef
\$2.59
 lb.



Fresh Ground Beef
 family pack
\$1.79
 lb.



Whole Center Cut Pork Loins
 boneless
\$1.99
 lb.



Split Fryer Breast
 family pack
 (previously frozen)
99¢
 lb.



Corn King Whole Boneless Ham
 (4 lb. net weight)
\$5.99
 ea.



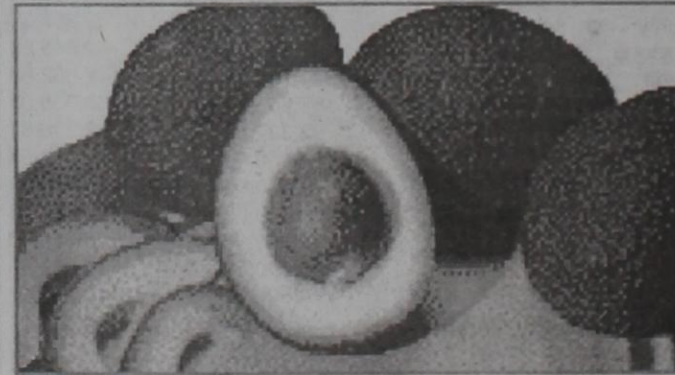
Covered Wagon Sliced Bacon
 10 lb. box
\$11.99
 ea.



Roma Tomatoes
 medium
10 for \$1



Spicy Jalapeño Peppers
69¢
 lb.



Salad Size Avocados
3 for \$1



Thriftway White Sandwich Bread
 24 oz.
99¢



Kraft Barbecue Sauce
 select varieties
 18 oz.
69¢



Ranch Style Beans
 select varieties, 15 oz. or
Van Camp's Pork and Beans
 15 oz.
2 for \$1

Our Jalapeños and Tomatoes are from tested and approved growing areas.