

THE WHEELER TIMES

VOLUME 42 NUMBER 43

THURSDAY, NOVEMBER 13, 1975

SINGLE COPY 10¢

WHEELER MEETS SILVERTON IN FINALE FRI.



APARTMENTS COMPLETE: The four 2-bedroom apartments built by Greater Wheeler Development Association, are complete and the first family moved in Friday. First to move in were Mr. and Mrs. Larry Reed and Chaney from Lubbock; Larry will be employed by Beef Cattle Co. The remaining three apartments have also been rented. The duplexes were made possible through a loan from Farmers Home Administration to help with the housing shortage in Wheeler; it is hoped these will be the first of several units to be built in Wheeler. The apartments are located in the 800 block of Stanley Street. In the picture above, Benita Reed and Chaney supervise the handling of house plants by Larry. Larry has been coaching in Lubbock and has been a part-time student at Lubbock Christian College where he majored in Biology and Physical Education; Benita is a music major. Work on the grounds at the apartments is yet to be completed; plans call for the paving of parking area.

It has been a long season for the two teams that will face each other Friday night on Nicholson Field and both the Wheeler Mustangs and the Silverton Owls will be trying to salvage a victory to close the '75 campaign.

A victory by the Mustangs would bring their season record to 4-6 and give them a 3-4 district record in their swan song in Class A for at least two years.

The Mustangs opened the 1975 football with a win over Lefors but hard times have befallen the black and gold since that opening victory and the Mustangs are wanting to win this last one to close out the year on the bright side.

Friday's game will be the last for eight of the Mustangs and they have all put in a lot of playing time in their careers on the gridiron.

Playing in their final game will be Bill McIlhenny, Mike Bradstreet, Von Chapman,

Rob Wills, Tommy Weaver, Kenneth Elliot, Dan Helton, and Terry Tidwell.

It is doubtful that Helton will see any action in the Silverton game as he is still recovering from a leg injury received in the Clarendon contest.

Don Brown will also miss the Silverton game and these two starters positions will be taken by Bo Guthrie at quarterback and Mike Izard at tailback.

Silverton, dropping down to Class B next year also, has played several of their district foes tough ball games until depth as taken its toll and will be no easy windup for the Mustangs.

The Mustangs JV wound up their season last week will be able to suit out for this game and the added depth certainly won't hurt the Mustangs chances.

Memphis Buries Mustangs

By David Britt

The Memphis Cyclones were denied for two quarters by a bunch of scrappy Wheeler Mustangs last Friday night, but then proceeded to really lay it on in the last half and routed the Mustangs 51-0.

Playing without 7 starters because of injuries and disciplinary reasons, the Mustangs were at a big disadvantage to begin with, but they overcame this from the opening kickoff with great effort and desire before finally succumbing to the powerful Cyclones.

Memphis parlayed their speed into most of their points as they took advantage of inopportune turnovers by the Mustangs in the final half to pour on the

Game Statistics	Wheeler	Memphis
First Downs	7	39
Yards Rushing	86	404
Yards Passing	69	75
Total Yards Gained	155	479
Passes & Completions	13-3	8-1
Opp. Passes Intercepted	0	1
Fumbles & Lost	10-5	6-2
Penalties	5-35	6-40
Punts & Average	9-32	4-38
Return Yardage	5	13
Total Plays	65	66

points. The Cyclones only completed one pass for them but it was a 75 yard bomb the second time they had the ball as Ricky Miller hit Steve Flemmons and the fleet junior ran away from the Mustangs to put Memphis on the scoreboard at 5:53. Kevin Vacca booted the extra point.

Mike Izard, who gained 82 of the 56 yards the Mustangs could muster on the ground, lost the ball via the fumble route at the Mustang 21 three plays before the end of the first quarter and it took the Cyclones just one play to light the scoreboard again. Charles Bryley scooted around right end on this jaunt and went over untouched. Vacca's kick was wide to the right and the Cyclones led by 13 which was the score at halftime.

The Mustangs threatened twice in the first half but could get no further than the Cyclones 29 and 25. On the second threat, Jim Verden tried a 43 yard field goal but Vacca broke through to block the attempt. Memphis put together a short 33 yard drive for their third touchdown with 3:40 to play in the third quarter following a short 22 yard boot by Verden from his end zone.

Don Cofer got the six pointer as he bounced through his right guard hole from the one and Vacca added the extra point for a 20-0 margin.

Memphis quickly added 13 more points in the remaining time for a 33-0 lead as the final 12 minutes got underway.

Pedro Salinas recovered another Izard fumble on the kickoff after the Cyclones third TD at the Mustangs 30 and Bryley got it all on a sweep around right end.

Forcing the Mustangs to punt after Bryley's run, the Cyclones had the ball at their 35 where Verden smacked into Miller and caused a tumble and Bill McIlhenny recovered at the Cyclones 36 but the break was short lived as Bo Guthrie returned the favor on first down and Memphis had the ball back at the 36.

Kirk Fields got another quick six for the Cyclones as he swept the Mustangs right side for 64 yards and with Gary Hall adding the one pointer, the Cyclones were ahead by 33-0 at 10:2 remaining in the third stanza.

The final quarter had just started when Randy Orcutt broke through and blocked Jim Verden's punt attempt at the Wheeler 31 and the Cyclones recovered at the Mustangs 20.

Memphis drove to the 11 and on fourth down, McIlhenny and Buddy Whiteley slammed Dick Hutcherson to the turf for a yard loss and the Mustangs took over at their 12. Fumbles have plagued Wheeler from the opening gun of the season and the Memphis game was no different in that respect. Izard lost a couple at left tackle and also lost the ball and Paul Gibbs recovered at the 10 to give Memphis another short trip to pay dirt.

Hutcherson banded over left tackle from 2 yards out at 8:01 of the final quarter and Memphis had a 39-0

Continued page 5

True Winners

Mustangs, the way you played last Friday night proved that you are true winners. You never gave up during the game, even though the odds were stacked against you, that's what real pride and victory is all about.

We have one more football game this season and just because it is the last does not mean it is less important than the one before.

This last game is perhaps the most important because it closes our 1975 football season. It would be very satisfying to close this season with a victory.

Fans, our team needs your support now just as much as at the first of the season, for some it will be the last football game they will play as a student of Wheeler High. Please come to the game and support your team.

I would also like to invite everyone to the pep rally tomorrow afternoon, it's our last chance to come to one this year. Not only does it mean a lot to the team for you to come, but it also means a lot to the rest of us to know that you care about our school.

I would like to thank all of the fans who went to Memphis last Friday night and I would also like to thank the fans who came out to support our Junior Varsity, Thursday night.

Let's close the season with a victory over the Silverton Owls!

WHS Pep Club

and There

Laurie Guthrie reception given by the Citizens, on last Sunday, proved to be a occasion. The reception were colorful all leaves and berries power arrangements on table. The guests were led by Mrs. W.A. Finley and Mrs. Lewis. Mrs. Paul Shumate and the guest. The table was lavishly with cornucopia, and leaves. At either crystal punch bowl silver coffee service. Trays held heaps of cookies, small different mints and Mrs. Claudy Brotherton, C.C. Killingsworth, Irma Kirk, and Ida Farber served the coffee and

the organization played piano. Several played numbers and enjoyed a session singing hymns led by Killingsworth. Twenty-six people were seated.

Out of town guests Mr. and Mrs. Grady Johnson, Mr. and Mrs. Brock, Pam, Judge J. Wendell Morgan, Jr. and Mrs. Pater, Vera Morgan, Eddie Sherwood, Sharnelle Rodgers, Lela E.G. Morrison, and Floyd McIntosh, 4em-

Weight returned home Tulsa, Oklahoma last where she had been relatives. She visited the interesting place she made a tour of Robert's University. She had a wonderful Saturday with her at the Senior Citizens Luncheon. She was glad to come home. Birthdays wonderful? It is night onto the one. I know because it happened to me week. Invited to lunch with others friend, with others in, drops in with gifts, personal and by family remembering. The little ones. Added up to a very day.

There are so many things my time this week. I'm offering is this handed to me by my Mrs. Jones Bowles, who in Pampa. You remember a way when girls were girls men were men haircut wasn't a hair cut? Best home? was a

thing unknown
And you had a grandma all your own
Whose nice soft lap was a grandchild's throne?
I DO.
When you had milk to drink when mom's were home to kiss a hurt
Did not need to go off to work
To keep poor dad from losing his shirt?
I DO.
When you had milk to drink and steak to eat
And once you lived on a quiet street
Needed no pill to get to sleep?
I DO.
I'm wondering about the kids of today
What memories they'll garner along the way
Will they take time to stop and pray?
I DO.
Mabel Powelson
By the way, your daughter, Kelly, is manager of the Payless Shoe Store in Pampa. She is doing a bang-up job. Recently, her store rated in the 2nd class of all the hundreds of such stores in the USA.

ALLISON Turkey Shoot

The Allison Jr. and Sr. classes are sponsoring a Trap Shoot Sunday, November 16, at 2:30 p.m. in Allison. Prizes to be given will be turkey, ham, and shells.

Tax Practitioner Workshops Set

The Texas Agriculture Extension Service is cooperating with the Internal Revenue Service in offering 8 Tax Practitioner Workshops across the state reports Dor. King, County Extension Agent.

The nearest workshop to our area will be held in Plainview, Texas, November 20-21. These two day workshops are specifically designed for tax practitioners who work extensively with farmers and ranchers.

Topics to be covered include What's New For 75, Residential Credit, Partnership Returns, Net Operating Loss Carryback, Investment Credit, Soil and Water Conservation, Land Clearing, Depletion on Timber (East Texas). For additional information, please contact the County Extension Office, 825-5243 for a brochure explaining more about the program.

Mrs. Annie Watts Rites Are Read

Services for Mrs. Annie M. Watts, 83 will be at 2 p.m. today at the First Baptist Church, with Rev. David Campbell, pastor, officiating. Burial will be in Wheeler Cemetery by Wright Funeral Home.

Mrs. Watts died Saturday in Amarillo. She moved to Amarillo three years ago from Wheeler where she had been a resident since 1929. Mrs. Watts was a Baptist.

Survivors include the widow, Albert, four sons, three daughters, one sister, 24 grandchildren, and nine great grandchildren.

Pallbearers were Nile Patterson, H. B. Kug, Wayne Edwards, Paul Topper, Bob Taylor, and Terrell Gunter.

Mrs. Richard Lee Buried In Austin

Mrs. Richard E. Lee, 76, Rt. 7, Box 764, Austin, died Wednesday. She was a longtime resident of Allison. Survivors are her husband, Richard E. Lee, Austin; and three sons, E. Lee, Austin; and three sons, Leo Lee, Richardson; Don Lee and Joe Lee, both of Austin. Funeral services were 3:30 P.M. Friday. Burial was in the Austin Memorial Park under the direction of Weed-Corley Funeral Home of Austin.

COLTS & JUNIOR VARSITY BOTH TUMBLE TO MEMPHIS

The Colts and Mustang JV were both defeated by Memphis last Thursday night on Nicholson Field, but the fans that missed the two games missed some good football that showed promise for better things to come for future Wheeler football.

Vocational Nursing School To Begin

The fourth class of the Shamrock General Hospital School of Vocational Nursing will begin February 16, 1976. There will be openings for eight new students in the new class. Applications are available at the business office of Shamrock General Hospital or from Mrs. Paula Parker, R.N., Director of the School. Mrs. Parker will be available at the hospital Monday through Friday to answer questions concerning the new class.

Advocate For The Handicapped

In today's climate of consumer activism, the Easter Seal Society—the nation's oldest and largest voluntary agency serving the handicapped—is placing new emphasis on its advocacy role in order to improve the quality of life for the nation's 23.6 million handicapped persons.

Long before the term became popular, the Easter Seal Society was considered by many to be an advocate for the handicapped by helping to reduce or eliminate the barriers to fulfillment of human needs. Easter Seals has provided service to individuals, influenced legislation and placed the case of the handicapped before the public.

But the new meaning of advocacy goes beyond physical restoration and sheltered of competitive job opportunities for handicapped children and adults. Easter Seals is extending its efforts to making sure that the disabled in all communities have equal opportunity for decent housing, adequate transportation, public school education, recreation, accessibility to buildings, services and cultural events that most of us take for granted in our daily lives.

Do your part to help handicapped children and adults. Contact your local Easter Seal Society to find out what you can do to become an advocate for the handicapped.

Rites Today For Daniel W. Clancy

Daniel W. Clancy, 72, died Monday at Weatherford, Okla., while moving back to Wheeler from Cookeville, Tenn. Services will be at 10:30 a.m. Thursday at Wright Funeral Home Chapel with Lee Henry, minister of Wheeler Church of Christ, officiating. Graveside services will be at 2 p.m. in Springcreek Cemetery in Sayre, Okla.

Continued page 5

Wheeler Co. Pro. New Manager

Danny Mitchell was hired as manager by the Board of Directors along with his wife, Brenda, and Maurine Brotherton as bookkeeper and clerk. Noel Glazner was hired as assistant manager and his wife, Debbie, as substitute clerk when needed.

Danny has previously been employed as assistant manager of the Altus Cotton Oil Mill and comes highly recommended as to his ability, integrity, and interest in doing a good job.

We have a good business that is desperately needed. Get behind the new manager and directors. Let them know that you appreciate them.

\$50 In Groceries

The Beta Sigma Phi is sponsoring a drawing for \$50 worth of groceries. Tickets are being sold for one dollar each from any sorority member.

The drawing will be held Saturday, November 22 at 2:00 at The Dot Shop.

RECEPTION: This serving table offering punch, cookies, coffee, nuts and mints greeted the guests of the Senior Citizens of Wheeler at a reception to show their meeting rooms which represent four months work by members of the group, Natural Gas Pipeline employees, Wheeler Kiwanis Club, the Wheeler Christian Athletes, and many other volunteers. The group requested a portion of the Old Hospital from the City to use for their meetings and after many hours of labor are able to meet twice a month in their own quarters which offer several carpeted game and meeting rooms and kitchen facilities. Financial assistance was given through a grant from PRPC. The Senior Citizens have reason to be proud of their facilities and anyone over 60 is invited to join the group for food, fellowship and games at 6:00 p.m. the first Monday of each month; the group also meets the third Monday evening at 6:30. Pictured above are (left to right) Mrs. Jess Crowder, Inez Wright, Mary Finsterwald, Irma Kirk, Ida Farmer, Mrs. C. C. Killingsworth, and Mrs. Claudy Brotherton.

Briscoe News

By Verola Parker

Bill and Mattie Jackson visited Ed and Sophia Helton while Sophia's sister, Beckie Zybach gave a demonstration for the home. Those attending were Beckie Irvine and Brenda visited Willis Fillingim Sunday, also.

They celebrated Allen and Gertrude Meadows' 60th Wedding Anniversary at the Roy Meadows home Sunday.

After church Wednesday night, Mrs. Tommie Tyson left for home. Visitors at the J.O. Helton's over the weekend were Elmer and Madell Piliers of Okla. City, Colie and Verola Parker, Juanelle Gwyn and Lale Stanning.

Mrs. Myrtle Hunter of Pampa spent Sunday night with the Cliff Walker's, Mr. and Mrs. Eli Sabbe were afternoon guest.

Visitors at the Colie Parker's home over the weekend were Hoyle Helton, Gwyn Manning, Adell Piliers, and Janice and Angie Parker.

Margaret McCree is home from Dallas. She had been down for a check-up and with her mother, who had a stroke. Debbie Owens spent the weekend with Carolyn Gilmer. They all visited the Willis Fillingim's Friday night and Sunday.

At the Willis Fillingim's Saturday night to celebrate birthdays were Andy and Randy, Torace and Juanita Fillingim, Dan, Rita, and Dallas, and many others. Jay visited in Abilene over the weekend with Cindy. Beckie Irvine stayed with David, Christy, and Jeanie Jones Friday. Phill Jones visited like Leahman Friday. Don Jones visited Eric

Lohberger Friday.

The Craft Clubs met at Helen Singleton's, November 8th. Beckie Zybach gave a demonstration for the home. Those attending were Beckie Irvine and Brenda visited Willis Fillingim Sunday, also.

Insurance-Tips

By Thurman Rives

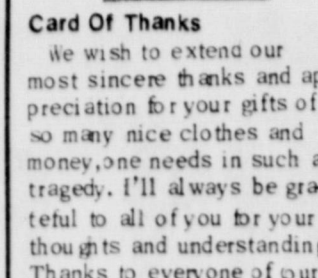


Don't Worry Gran-Pap. Hyar's Our Policy With

RIVES
INSURANCE AGENCY
"We put the sure in your insurance"
117 W. Texas St.
Wheeler, Texas
Phone: 826-5224

Card Of Thanks
We wish to extend our most sincere thanks and appreciation for your gifts of so many nice clothes and money, one needs in such a tragedy. I'll always be grateful to all of you for your thoughts and understanding. Thanks to everyone of our friends.
J.C. Brooks and Family

Card Of Thanks
A special thank you to the members of the Mobeetie and Wheeler Volunteer Fire Department for the fine job they did in putting out the grass fire on our place. Thanks to all the friends and neighbors who came to help.
The Gene Harrison



A Tall Dark Man Will Take You To

Pierce's Trading Post
"Furniture, Carpet, Plumbing & Appliances"
401 East Oklahoma
Phone: 826-5212

In ancient Egypt the cat was considered to be a symbol of the moon because it was more active after sunset!

LINES FROM LINDA

Linda Horton - Asst. CEA

Decorating is a continuous process-as a family's circumstances change, so will their home furnishings needs. Careful study and planning

is necessary to be a discriminating shopper in these days of increasing prices and decreasing quality of materials. Plan most major shopping for the bigger home furnishing sales in January and August. But the following guides are important no matter when you shop.

Avoid buying a roomful of advertised 'economy' furniture-at best it will be mediocre and probably last only a few years. Don't be carried away by an over-eager salesman or a so-called bargain. Remember that no matter what the cost, if a piece of furniture does not enhance the room, it is not a bargain.

Always shop with a tape measure. Know available space and size of door openings to get the piece into the home. Choosing one piece at a time, with a general theme in mind gives the rooms more personality and charm. Refinished older furniture and lots of plants can fill in for an 'eclectic' look.

Resist the temptation to get something that's appealing but in no way relate to other furnishings in the home. Look for simple pieces that can be used in several ways.

Take plenty of time shopping because furniture is a long term investment. Brass beds, popular at the turn of the century, are being reproduced in less expensive metals to satisfy current demand.

Made from anodized aluminum, the bed frames have a durable brass finish guaranteed not to tarnish, rust, chip, or peel.

The demand for this furniture now greatly exceeds even the most active past trends.

Take plenty of time shopping because furniture is a long term investment. Brass beds, popular at the turn of the century, are being reproduced in less expensive metals to satisfy current demand.

Made from anodized aluminum, the bed frames have a durable brass finish guaranteed not to tarnish, rust, chip, or peel.

The demand for this furniture now greatly exceeds even the most active past trends.

Take plenty of time shopping because furniture is a long term investment. Brass beds, popular at the turn of the century, are being reproduced in less expensive metals to satisfy current demand.

Made from anodized aluminum, the bed frames have a durable brass finish guaranteed not to tarnish, rust, chip, or peel.

The demand for this furniture now greatly exceeds even the most active past trends.

Take plenty of time shopping because furniture is a long term investment. Brass beds, popular at the turn of the century, are being reproduced in less expensive metals to satisfy current demand.

Made from anodized aluminum, the bed frames have a durable brass finish guaranteed not to tarnish, rust, chip, or peel.

The demand for this furniture now greatly exceeds even the most active past trends.

Take plenty of time shopping because furniture is a long term investment. Brass beds, popular at the turn of the century, are being reproduced in less expensive metals to satisfy current demand.

Made from anodized aluminum, the bed frames have a durable brass finish guaranteed not to tarnish, rust, chip, or peel.

The demand for this furniture now greatly exceeds even the most active past trends.

Take plenty of time shopping because furniture is a long term investment. Brass beds, popular at the turn of the century, are being reproduced in less expensive metals to satisfy current demand.

Made from anodized aluminum, the bed frames have a durable brass finish guaranteed not to tarnish, rust, chip, or peel.

The demand for this furniture now greatly exceeds even the most active past trends.

Take plenty of time shopping because furniture is a long term investment. Brass beds, popular at the turn of the century, are being reproduced in less expensive metals to satisfy current demand.

Made from anodized aluminum, the bed frames have a durable brass finish guaranteed not to tarnish, rust, chip, or peel.

The demand for this furniture now greatly exceeds even the most active past trends.

Take plenty of time shopping because furniture is a long term investment. Brass beds, popular at the turn of the century, are being reproduced in less expensive metals to satisfy current demand.

Made from anodized aluminum, the bed frames have a durable brass finish guaranteed not to tarnish, rust, chip, or peel.

The demand for this furniture now greatly exceeds even the most active past trends.

Take plenty of time shopping because furniture is a long term investment. Brass beds, popular at the turn of the century, are being reproduced in less expensive metals to satisfy current demand.

Court Records

LI ST OF INSTRUMENTS FILED IN THE OFFICE OF COUNTY CLERK AND DISTRICT CLERK OF WHEELER COUNTY, TEXAS FROM NOVEMBER 3 THROUGH NOVEMBER 7 1975

November 3, 1975
QCD--Sharon Lunsford to Joseph R Lunsford 10-31-75 75'x150' E 1/2 60 A-8 (Pt SD 6)

D-J E. Seen et ux to Joseph R Lunsford 10-31-75 75'x150' E 1/2 60 A-8 (Pt SD 6)

DT--Joseph R Lunsford to First St & Mobeetie 10-30-75 75'x150' E 1/2 60 A-8 Kpt SD 6)

MD--Callie N McCombs et vir to Patricia K Cook 10-27-75 All our int 2 Blks OS 2

APPT OF TRUSTEE--R M Warren Jr et al to Mildred Warren Hammond 9-25-75

MD--Royce E Lawson Jr to Kyle Ross Lawson undated 1/10 int N40 ac SE 1/4 21 Blk L

MD--Royce E Lawson Jr to Ruth Lawson Daffem---1975

1/10 int N40 ac SE 1/4 21 Blk Os 2

MD--Royce E Lawson Jr to D James Lawson---1975

1/10 int N40 ac SE 1/4 21 Blk L

MD--Royce E Lawson Jr to Julia Lawson Hooper---1975

1/10 int N40 ac SE 1/4 21 Blk L

OL--Virginia Wilkins Dewey to Malouf Abraham 9-11-75 N 1/2 Sec 7 Blk A-2

OL--Odell Haggeman et vir to Malouf Abraham 9-9-75 N 1/2 Sec 7 Blk A-2

OL--A T Jones et al to J Roger Allspaugh 8-6-75 W 1/2 Sec 13 Blk A-4

AOL--J Roger Allspaugh to Arkla Exploration Co 10-15-75

RDT--Federal Land Bk of Houston to Joe Evert Smith et ux 10-30-75 N 33 1/2 Sec 37 Blk A-4

D--Minnie Home to Alpha Skinner 9-9-75 N 50 feet Lot 4 Blk LIX Shamrock NOVEMBER 4, 1975 Election Day

November 5, 1975
D--Carl R Hebinck to Ashley W Rutherford et ux 9-30-75 Lot 9 S 1/2 Blk 8 2 Shamrock WSSA

DT--Ashley W Rutherford et ux to First Fed Saws and Loan Assn 9-22-75 Blk 8 2 Shamrock WSSA

AOL--Gulf Oil Corp to Phillips Petroleum Co 10-31-75 N 1/2 NW 1/4 Sec B Blk A-4

MML--Billy Beck et ux to Charles Thomson et al 10-29-75 Blks 3, 4 Shamrock, Aldous Adn

4 MD--C G Elmore et ux to Larry Gene Elmore et al 11-3-75 50'x40' int each child 1/2 & 1/4 Sec 32 Blk RE

MD--John A Connor et ux to Andrew C Shapiro 9-7-75 80'x100' int SE 1/4 Sec 25 Blk A-4

1/10 int N40 ac SE 1/4 21 Blk Os 2

MD--Royce E Lawson Jr to D James Lawson---1975

1/10 int N40 ac SE 1/4 21 Blk L

MD--Royce E Lawson Jr to Julia Lawson Hooper---1975

1/10 int N40 ac SE 1/4 21 Blk L

OL--Virginia Wilkins Dewey to Malouf Abraham 9-11-75 N 1/2 Sec 7 Blk A-2

OL--W H Riley et ux Chalfant, 1/10 ac 1/4 Sec 17 (To HNG Oil Co) NO 3--A D Eads et ux Pioneer Natural Gas 7-75 SE 1/4 Sec 37 Blk D--Alpha Skinner to Spillman 11-3-75 W 1/2 Lot 4 Blk LIX Shamrock AOL--Inco Oil and Gas to Amarex, Inc. 10-27-75 Sec 50 Blk A-7 RENTAL DIV ORDER (Betenbough et al to E Kelly 10-27-75 SW 1/4 Sec Blk A-7 AOL--Amarex, Inc. to Oil Corporation 10-31-75 Secs 49, 32, 31, 50 All A-4, A-7, Pt Sec 22 Blk L, P Stephen Keith Sur, Pt of Phifer Survey MML--Mac V Christensen et ux to Wheeler Lumber Co 10-31-75 Pt Sec 50 Blk A-4 NOVEMBER 6, 1975 DT--Reed Hill et ux to da Webber 11-6-75 W 1/2 33 1/2 Sec 48 Blk A-4 D--I B Christener et al Earl Lath an 11-5-75 Lot Blk 69 Shamrock, WSSA NOVEMBER 7, 1975 DT--Aurthur W Burrell et ux to Canadian Production Credit Assn D-1575 12 A-4 DT--William H Crosby et Far and Mer 8 Blk rock 11-6-75 Lot 3 Blk Shamrock Mont-Lew Ad ROY D--I Evert Smith et ux to Flag-Redem Oil Co 20-75 200'x646.5 int Sec A-4 Ora Mae Gilligan et ux slunken Drug, Inc. 11-24'x150' E 1/2 SW 1/4 & T DT--The Lomas & Nepton Co to Government Witege Assn 10-23-75 Lot 23 24 Blk F Wheeler, P Adn ROL--Arkla Exploration et al to Ona R Black et al 9-25-75 SE 1/4 50 Pt Blk A-3 Secs 5 Blk 51, ac Sec 3 Blk 1 BLS S/C C PROBATE PROC of Est R W Adams & June Adams Dece 10-2-75 N 1/4 53 Blk A-4 RENTAL DIV ORDER--Bennie Bennett Allstock to Birdie Bennett Allstock 19-75 N 1/4 Sec 15 Blk DISTRICT CLERK'S Of No 7 208 The Home Insurance Co vs Willie D L 11-6-75 Suit on Workmen Comp Ins MARRIAGE LICENSE Michael Kyees and Kath Jean Sullaway 11-3-75 Rona Lester Craft and Eunie Lee Simonsen 11-4-75 Alvin DeWitt Sellers and Stella May Smith 11-7-75 Freddie Leon Reece and Jan Mabel Hastings 11-7-75 Jimmy Wilson Tarbox and Mary Beth Qualls 11-7-75 Mel Gene Brindley and Wanda Clair Davis 11-7-

OL--W H Riley et ux Chalfant, 1/10 ac 1/4 Sec 17 (To HNG Oil Co) NO 3--A D Eads et ux Pioneer Natural Gas 7-75 SE 1/4 Sec 37 Blk D--Alpha Skinner to Spillman 11-3-75 W 1/2 Lot 4 Blk LIX Shamrock AOL--Inco Oil and Gas to Amarex, Inc. 10-27-75 Sec 50 Blk A-7 RENTAL DIV ORDER (Betenbough et al to E Kelly 10-27-75 SW 1/4 Sec Blk A-7 AOL--Amarex, Inc. to Oil Corporation 10-31-75 Secs 49, 32, 31, 50 All A-4, A-7, Pt Sec 22 Blk L, P Stephen Keith Sur, Pt of Phifer Survey MML--Mac V Christensen et ux to Wheeler Lumber Co 10-31-75 Pt Sec 50 Blk A-4 NOVEMBER 6, 1975 DT--Reed Hill et ux to da Webber 11-6-75 W 1/2 33 1/2 Sec 48 Blk A-4 D--I B Christener et al Earl Lath an 11-5-75 Lot Blk 69 Shamrock, WSSA NOVEMBER 7, 1975 DT--Aurthur W Burrell et ux to Canadian Production Credit Assn D-1575 12 A-4 DT--William H Crosby et Far and Mer 8 Blk rock 11-6-75 Lot 3 Blk Shamrock Mont-Lew Ad ROY D--I Evert Smith et ux to Flag-Redem Oil Co 20-75 200'x646.5 int Sec A-4 Ora Mae Gilligan et ux slunken Drug, Inc. 11-24'x150' E 1/2 SW 1/4 & T DT--The Lomas & Nepton Co to Government Witege Assn 10-23-75 Lot 23 24 Blk F Wheeler, P Adn ROL--Arkla Exploration et al to Ona R Black et al 9-25-75 SE 1/4 50 Pt Blk A-3 Secs 5 Blk 51, ac Sec 3 Blk 1 BLS S/C C PROBATE PROC of Est R W Adams & June Adams Dece 10-2-75 N 1/4 53 Blk A-4 RENTAL DIV ORDER--Bennie Bennett Allstock to Birdie Bennett Allstock 19-75 N 1/4 Sec 15 Blk DISTRICT CLERK'S Of No 7 208 The Home Insurance Co vs Willie D L 11-6-75 Suit on Workmen Comp Ins MARRIAGE LICENSE Michael Kyees and Kath Jean Sullaway 11-3-75 Rona Lester Craft and Eunie Lee Simonsen 11-4-75 Alvin DeWitt Sellers and Stella May Smith 11-7-75 Freddie Leon Reece and Jan Mabel Hastings 11-7-75 Jimmy Wilson Tarbox and Mary Beth Qualls 11-7-75 Mel Gene Brindley and Wanda Clair Davis 11-7-

OL--W H Riley et ux Chalfant, 1/10 ac 1/4 Sec 17 (To HNG Oil Co) NO 3--A D Eads et ux Pioneer Natural Gas 7-75 SE 1/4 Sec 37 Blk D--Alpha Skinner to Spillman 11-3-75 W 1/2 Lot 4 Blk LIX Shamrock AOL--Inco Oil and Gas to Amarex, Inc. 10-27-75 Sec 50 Blk A-7 RENTAL DIV ORDER (Betenbough et al to E Kelly 10-27-75 SW 1/4 Sec Blk A-7 AOL--Amarex, Inc. to Oil Corporation 10-31-75 Secs 49, 32, 31, 50 All A-4, A-7, Pt Sec 22 Blk L, P Stephen Keith Sur, Pt of Phifer Survey MML--Mac V Christensen et ux to Wheeler Lumber Co 10-31-75 Pt Sec 50 Blk A-4 NOVEMBER 6, 1975 DT--Reed Hill et ux to da Webber 11-6-75 W 1/2 33 1/2 Sec 48 Blk A-4 D--I B Christener et al Earl Lath an 11-5-75 Lot Blk 69 Shamrock, WSSA NOVEMBER 7, 1975 DT--Aurthur W Burrell et ux to Canadian Production Credit Assn D-1575 12 A-4 DT--William H Crosby et Far and Mer 8 Blk rock 11-6-75 Lot 3 Blk Shamrock Mont-Lew Ad ROY D--I Evert Smith et ux to Flag-Redem Oil Co 20-75 200'x646.5 int Sec A-4 Ora Mae Gilligan et ux slunken Drug, Inc. 11-24'x150' E 1/2 SW 1/4 & T DT--The Lomas & Nepton Co to Government Witege Assn 10-23-75 Lot 23 24 Blk F Wheeler, P Adn ROL--Arkla Exploration et al to Ona R Black et al 9-25-75 SE 1/4 50 Pt Blk A-3 Secs 5 Blk 51, ac Sec 3 Blk 1 BLS S/C C PROBATE PROC of Est R W Adams & June Adams Dece 10-2-75 N 1/4 53 Blk A-4 RENTAL DIV ORDER--Bennie Bennett Allstock to Birdie Bennett Allstock 19-75 N 1/4 Sec 15 Blk DISTRICT CLERK'S Of No 7 208 The Home Insurance Co vs Willie D L 11-6-75 Suit on Workmen Comp Ins MARRIAGE LICENSE Michael Kyees and Kath Jean Sullaway 11-3-75 Rona Lester Craft and Eunie Lee Simonsen 11-4-75 Alvin DeWitt Sellers and Stella May Smith 11-7-75 Freddie Leon Reece and Jan Mabel Hastings 11-7-75 Jimmy Wilson Tarbox and Mary Beth Qualls 11-7-75 Mel Gene Brindley and Wanda Clair Davis 11-7-

OL--W H Riley et ux Chalfant, 1/10 ac 1/4 Sec 17 (To HNG Oil Co) NO 3--A D Eads et ux Pioneer Natural Gas 7-75 SE 1/4 Sec 37 Blk D--Alpha Skinner to Spillman 11-3-75 W 1/2 Lot 4 Blk LIX Shamrock AOL--Inco Oil and Gas to Amarex, Inc. 10-27-75 Sec 50 Blk A-7 RENTAL DIV ORDER (Betenbough et al to E Kelly 10-27-75 SW 1/4 Sec Blk A-7 AOL--Amarex, Inc. to Oil Corporation 10-31-75 Secs 49, 32, 31, 50 All A-4, A-7, Pt Sec 22 Blk L, P Stephen Keith Sur, Pt of Phifer Survey MML--Mac V Christensen et ux to Wheeler Lumber Co 10-31-75 Pt Sec 50 Blk A-4 NOVEMBER 6, 1975 DT--Reed Hill et ux to da Webber 11-6-75 W 1/2 33 1/2 Sec 48 Blk A-4 D--I B Christener et al Earl Lath an 11-5-75 Lot Blk 69 Shamrock, WSSA NOVEMBER 7, 1975 DT--Aurthur W Burrell et ux to Canadian Production Credit Assn D-1575 12 A-4 DT--William H Crosby et Far and Mer 8 Blk rock 11-6-75 Lot 3 Blk Shamrock Mont-Lew Ad ROY D--I Evert Smith et ux to Flag-Redem Oil Co 20-75 200'x646.5 int Sec A-4 Ora Mae Gilligan et ux slunken Drug, Inc. 11-24'x150' E 1/2 SW 1/4 & T DT--The Lomas & Nepton Co to Government Witege Assn 10-23-75 Lot 23 24 Blk F Wheeler, P Adn ROL--Arkla Exploration et al to Ona R Black et al 9-25-75 SE 1/4 50 Pt Blk A-3 Secs 5 Blk 51, ac Sec 3 Blk 1 BLS S/C C PROBATE PROC of Est R W Adams & June Adams Dece 10-2-75 N 1/4 53 Blk A-4 RENTAL DIV ORDER--Bennie Bennett Allstock to Birdie Bennett Allstock 19-75 N 1/4 Sec 15 Blk DISTRICT CLERK'S Of No 7 208 The Home Insurance Co vs Willie D L 11-6-75 Suit on Workmen Comp Ins MARRIAGE LICENSE Michael Kyees and Kath Jean Sullaway 11-3-75 Rona Lester Craft and Eunie Lee Simonsen 11-4-75 Alvin DeWitt Sellers and Stella May Smith 11-7-75 Freddie Leon Reece and Jan Mabel Hastings 11-7-75 Jimmy Wilson Tarbox and Mary Beth Qualls 11-7-75 Mel Gene Brindley and Wanda Clair Davis 11-7-

OL--W H Riley et ux Chalfant, 1/10 ac 1/4 Sec 17 (To HNG Oil Co) NO 3--A D Eads et ux Pioneer Natural Gas 7-75 SE 1/4 Sec 37 Blk D--Alpha Skinner to Spillman 11-3-75 W 1/2 Lot 4 Blk LIX Shamrock AOL--Inco Oil and Gas to Amarex, Inc. 10-27-75 Sec 50 Blk A-7 RENTAL DIV ORDER (Betenbough et al to E Kelly 10-27-75 SW 1/4 Sec Blk A-7 AOL--Amarex, Inc. to Oil Corporation 10-31-75 Secs 49, 32, 31, 50 All A-4, A-7, Pt Sec 22 Blk L, P Stephen Keith Sur, Pt of Phifer Survey MML--Mac V Christensen et ux to Wheeler Lumber Co 10-31-75 Pt Sec 50 Blk A-4 NOVEMBER 6, 1975 DT--Reed Hill et ux to da Webber 11-6-75 W 1/2 33 1/2 Sec 48 Blk A-4 D--I B Christener et al Earl Lath an 11-5-75 Lot Blk 69 Shamrock, WSSA NOVEMBER 7, 1975 DT--Aurthur W Burrell et ux to Canadian Production Credit Assn D-1575 12 A-4 DT--William H Crosby et Far and Mer 8 Blk rock 11-6-75 Lot 3 Blk Shamrock Mont-Lew Ad ROY D--I Evert Smith et ux to Flag-Redem Oil Co 20-75 200'x646.5 int Sec A-4 Ora Mae Gilligan et ux slunken Drug, Inc. 11-24'x150' E 1/2 SW 1/4 & T DT--The Lomas & Nepton Co to Government Witege Assn 10-23-75 Lot 23 24 Blk F Wheeler, P Adn ROL--Arkla Exploration et al to Ona R Black et al 9-25-75 SE 1/4 50 Pt Blk A-3 Secs 5 Blk 51, ac Sec 3 Blk 1 BLS S/C C PROBATE PROC of Est R W Adams & June Adams Dece 10-2-75 N 1/4 53 Blk A-4 RENTAL DIV ORDER--Bennie Bennett Allstock to Birdie Bennett Allstock 19-75 N 1/4 Sec 15 Blk DISTRICT CLERK'S Of No 7 208 The Home Insurance Co vs Willie D L 11-6-75 Suit on Workmen Comp Ins MARRIAGE LICENSE Michael Kyees and Kath Jean Sullaway 11-3-75 Rona Lester Craft and Eunie Lee Simonsen 11-4-75 Alvin DeWitt Sellers and Stella May Smith 11-7-75 Freddie Leon Reece and Jan Mabel Hastings 11-7-75 Jimmy Wilson Tarbox and Mary Beth Qualls 11-7-75 Mel Gene Brindley and Wanda Clair Davis 11-7-

OL--W H Riley et ux Chalfant, 1/10 ac 1/4 Sec 17 (To HNG Oil Co) NO 3--A D Eads et ux Pioneer Natural Gas 7-75 SE 1/4 Sec 37 Blk D--Alpha Skinner to Spillman 11-3-75 W 1/2 Lot 4 Blk LIX Shamrock AOL--Inco Oil and Gas to Amarex, Inc. 10-27-75 Sec 50 Blk A-7 RENTAL DIV ORDER (Betenbough et al to E Kelly 10-27-75 SW 1/4 Sec Blk A-7 AOL--Amarex, Inc. to Oil Corporation 10-31-75 Secs 49, 32, 31, 50 All A-4, A-7, Pt Sec 22 Blk L, P Stephen Keith Sur, Pt of Phifer Survey MML--Mac V Christensen et ux to Wheeler Lumber Co 10-31-75 Pt Sec 50 Blk A-4 NOVEMBER 6, 1975 DT--Reed Hill et ux to da Webber 11-6-75 W 1/2 33 1/2 Sec 48 Blk A-4 D--I B Christener et al Earl Lath an 11-5-75 Lot Blk 69 Shamrock, WSSA NOVEMBER 7, 1975 DT--Aurthur W Burrell et ux to Canadian Production Credit Assn D-1575 12 A-4 DT--William H Crosby et Far and Mer 8 Blk rock 11-6-75 Lot 3 Blk Shamrock Mont-Lew Ad ROY D--I Evert Smith et ux to Flag-Redem Oil Co 20-75 200'x646.5 int Sec A-4 Ora Mae Gilligan et ux slunken Drug, Inc. 11-24'x150' E 1/2 SW 1/4 & T DT--The Lomas & Nepton Co to Government Witege Assn 10-23-75 Lot 23 24 Blk F Wheeler, P Adn ROL--Arkla Exploration et al to Ona R Black et al 9-25-75 SE 1/4 50 Pt Blk A-3 Secs 5 Blk 51, ac Sec 3 Blk 1 BLS S/C C PROBATE PROC of Est R W Adams & June Adams Dece 10-2-75 N 1/4 53 Blk A-4 RENTAL DIV ORDER--Bennie Bennett Allstock to Birdie Bennett Allstock 19-75 N 1/4 Sec 15 Blk DISTRICT CLERK'S Of No 7 208 The Home Insurance Co vs Willie D L 11-6-75 Suit on Workmen Comp Ins MARRIAGE LICENSE Michael Kyees and Kath Jean Sullaway 11-3-75 Rona Lester Craft and Eunie Lee Simonsen 11-4-75 Alvin DeWitt Sellers and Stella May Smith 11-7-75 Freddie Leon Reece and Jan Mabel Hastings 11-7-75 Jimmy Wilson Tarbox and Mary Beth Qualls 11-7-75 Mel Gene Brindley and Wanda Clair Davis 11-7-

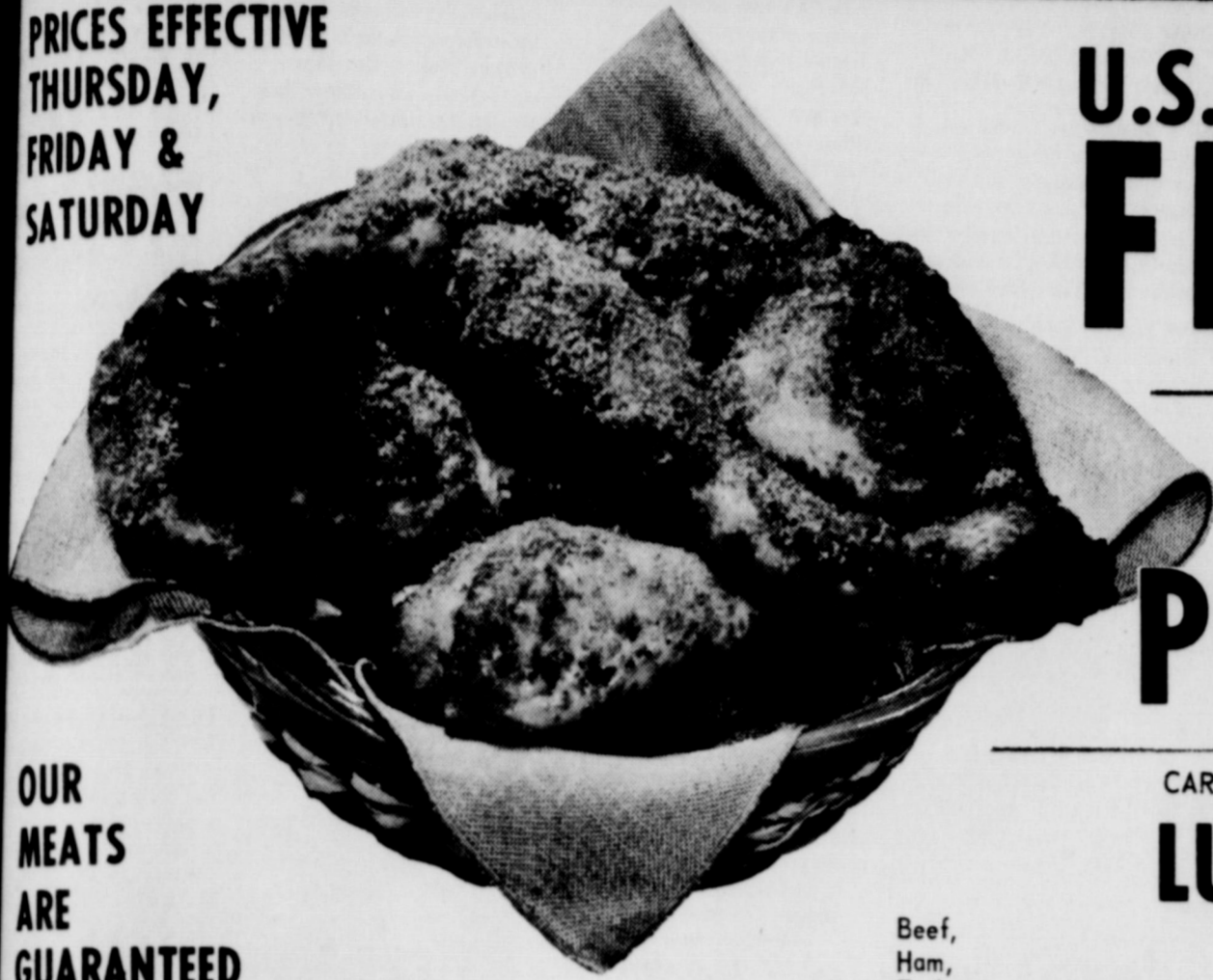
OL--W H Riley et ux Chalfant, 1/10 ac 1/4 Sec 17 (To HNG Oil Co) NO 3--A D Eads et ux Pioneer Natural Gas 7-75 SE 1/4 Sec 37 Blk D--Alpha Skinner to Spillman 11-3-75 W 1/2 Lot 4 Blk LIX Shamrock AOL--Inco Oil and Gas to Amarex, Inc. 10-27-75 Sec 50 Blk A-7 RENTAL DIV ORDER (Betenbough et al to E Kelly 10-27-75 SW 1/4 Sec Blk A-7 AOL--Amarex, Inc. to Oil Corporation 10-31-75 Secs 49, 32, 31, 50 All A-4, A-7, Pt Sec 22 Blk L, P Stephen Keith Sur, Pt of Phifer Survey MML--Mac V Christensen et ux to Wheeler Lumber Co 10-31-75 Pt Sec 50 Blk A-4 NOVEMBER 6, 1975 DT--Reed Hill et ux to da Webber 11-6-75 W 1/2 33 1/2 Sec 48 Blk A-4 D--I B Christener et al Earl Lath an 11-5-75 Lot Blk 69 Shamrock, WSSA NOVEMBER 7, 1975 DT--Aurthur W Burrell et ux to Canadian Production Credit Assn D-1575 12 A-4 DT--William H Crosby et Far and Mer 8 Blk rock 11-6-75 Lot 3 Blk Shamrock Mont-Lew Ad ROY D--I Evert Smith et ux to Flag-Redem Oil Co 20-75 200'x646.5 int Sec A-4 Ora Mae Gilligan et ux slunken Drug, Inc. 11-24'x150' E 1/2 SW 1/4 & T DT--The Lomas & Nepton Co to Government Witege Assn 10-23-75 Lot 23 24 Blk F Wheeler, P Adn ROL--Arkla Exploration et al to Ona R Black et al 9-25-75 SE 1/4 50 Pt Blk A-3 Secs 5 Blk 51, ac Sec 3 Blk 1 BLS S/C C PROBATE PROC of Est R W Adams & June Adams Dece 10-2-75 N 1/4 53 Blk A-4 RENTAL DIV ORDER--Bennie Bennett Allstock to Birdie Bennett Allstock 19-75 N 1/4 Sec 15 Blk DISTRICT CLERK'S Of No 7 208 The Home Insurance Co vs Willie D L 11-6-75 Suit on Workmen Comp Ins MARRIAGE LICENSE Michael Kyees and Kath Jean Sullaway 11-3-75 Rona Lester Craft and Eunie Lee Simonsen 11-4-75 Alvin DeWitt Sellers and Stella May Smith 11-7-75 Freddie Leon Reece and Jan Mabel Hastings 11-7-75 Jimmy Wilson Tarbox and Mary Beth Qualls 11-7-75 Mel Gene Brindley and Wanda Clair Davis 11-7-

OL--W H Riley et ux Chalfant, 1/10 ac 1/4 Sec 17 (To HNG Oil Co) NO 3--A D Eads et ux Pioneer Natural Gas 7-75 SE 1/4 Sec 37 Blk D--Alpha Skinner to Spillman 11-3-75 W 1/2 Lot 4 Blk LIX Shamrock AOL--Inco Oil and Gas to Amarex, Inc. 10-27-75 Sec 50 Blk A-7 RENTAL DIV ORDER (Betenbough et al to E Kelly 10-27-75 SW 1/4 Sec Blk A-7 AOL--Amarex, Inc. to Oil Corporation 10-31-75 Secs 49, 32, 31, 50 All A-4, A-7, Pt Sec 22 Blk L, P Stephen Keith Sur, Pt of Phifer Survey MML--Mac V Christensen et ux to Wheeler Lumber Co 10-31-75 Pt Sec 50 Blk A-4 NOVEMBER 6, 1975 DT--Reed Hill et ux to da Webber 11-6-75 W 1/2 33 1/2 Sec 48 Blk A-4 D--I B Christener et al Earl Lath an 11-5-75 Lot Blk 69 Shamrock, WSSA NOVEMBER 7, 1975 DT--Aurthur W Burrell et ux to Canadian Production Credit Assn D-1575 12 A-4 DT--William H Crosby et Far and Mer 8 Blk rock 11-6-75 Lot 3 Blk Shamrock Mont-Lew Ad ROY D--I Evert Smith et ux to Flag-Redem Oil Co 20-75 200'x646.5 int Sec A-4 Ora Mae Gilligan et ux slunken Drug, Inc. 11-24'x150' E 1/2 SW 1/4 & T DT--The Lomas & Nepton Co to Government Witege Assn 10-23-75 Lot 23 24 Blk F Wheeler, P Adn ROL--Arkla Exploration et al to Ona R Black et al 9-25-75 SE 1/4 50 Pt Blk A-3 Secs 5 Blk 51, ac Sec 3 Blk 1 BLS S/C C PROBATE PROC of Est R W Adams & June Adams Dece 10-2-75 N 1/4 53 Blk A-4 RENTAL DIV ORDER--Bennie Bennett Allstock to Birdie Bennett Allstock 19-75 N 1/4 Sec 15 Blk DISTRICT CLERK'S Of No 7 208 The Home Insurance Co vs Willie D L 11-6-75 Suit on Workmen Comp Ins MARRIAGE LICENSE Michael Kyees and Kath Jean Sullaway 11-3-75 Rona Lester Craft and Eunie Lee Simonsen 11-4-75 Alvin DeWitt Sellers and Stella May Smith 11-7-75 Freddie Leon Reece and Jan Mabel Hastings 11-7-75 Jimmy Wilson Tarbox and Mary Beth Qualls 11-7-75 Mel Gene Brindley and Wanda Clair Davis 11-7-

OL--W H Riley et ux Chalfant, 1/10 ac 1/4 Sec 17 (To HNG Oil Co) NO 3--A D Eads et ux Pioneer Natural Gas 7-75 SE 1/4 Sec 37 Blk D--Alpha Skinner to Spillman 11-3-75 W 1/2 Lot 4 Blk LIX Shamrock AOL--Inco Oil and Gas to Amarex, Inc. 1

SHOP ROARK'S for SERVICE AND SAVINGS!

PRICES EFFECTIVE
THURSDAY,
FRIDAY &
SATURDAY



U.S.D.A. GRADE A
FRYERS

WHOLE lb. **53^c**

WILSON'S CERTIFIED

**CENTER CUT
PORK CHOPS**

lb. **\$1⁶⁹**

CARL BUDDIG

LUNCHEON MEATS

2 3 oz. Pkg. **\$1⁰⁰**

Beef,
Ham,
Turkey,
Chicken,
Corned Beef
Pastrami

ORDER TODAY

LET US COOK YOUR
THANKSGIVING TURKEY
FOR YOU... YOU CAN
ENJOY THE FAMILY...
PICK YOUR TURKEY NOW!

OUR
MEATS
ARE
GUARANTEED
TO PLEASE

KIMBELL
FLOUR

10 lb. Bag **\$1⁵⁹**



One Quart

KRAFT
**MIRACLE
WHIP**
99^c

IMPERIAL
SUGAR

5 lb. Bag **\$1¹⁹**

BORDEN'S ORANGE FLAVORED
**BREAKFAST
DRINK**

2 lb. Jar **\$1⁹⁹**

ABISCO
**CREAM of
WHEAT**

28 oz. Box **83^c**

KOUNTRY FRESH
**CHEESE
SPREAD**

2 lb. Only **\$1⁶⁹**

ATIO
**FROZEN IN GRAVY
TAMALES**

39^c

COMET CLEANSER
2 Cons **85^c**

96 oz. Box
**FAMILY SIZE
DOWNY**

\$2⁷⁹

KOUNTRY FRESH
**COLBY
CHEESE**

10 oz. Pkg. **99^c**

MORTON
**MINI
DONUTS**

10 oz. Box **85^c**

BORDEN'S
**SOUR CREAM
& DIPS**

8 oz. Ctn. **49^c**

BORDEN'S
**COTTAGE
CHEESE**

12 oz. Pkg. **59^c**

IDAHO EXTRA FANCY
APPLES

lb. **25^c**

CALIFORNIA
CARROTS
2 1 lb. Pkg. **39^c**

RAW
PEANUTS lb. **55^c**

ROASTED
PEANUTS lb. **59^c**

NEW CROP
PECANS lb. **99^c**

NO. 1 CENTRAL AMERICAN
BANANAS

lb. **19^c**

NEW CROP
TURNIPS

lb. **19^c**

**BOB PATTERSON won last
week's Pick The Winner Contest.**



- OPEN MON.-SAT. 8 a.m. till 6:30 p.m.
- USDA FOOD STAMPS ACCEPTED
- FREE DELIVERY WITH \$2.50 PURCHASE
- FEATURING GUNN BROTHERS STAMPS

YOUR FRIENDLY HOME OWNED
AND OPERATED GROCERY STORE

KOUNTRY FRESH
BISCUITS

7 Cons Only **\$1**

KEEBLER
COOKIES

100 ct. Bag Reg. \$1.19 Now... **95^c**

KIMBELL
Plain or Iodized
SALT

2 1 lb. Pkg. **29^c**

J.V.

Continued from page 1
 This took over. Stopping this three, Memphis used up the remaining time in the third quarter and all but 22 seconds of the fourth period to quell any hopes of the Colts getting back in the game. Driving from their 11 to the Colt D, Memphis came up short on a pass and the Colts got the ball back on their 4 with 22 seconds to go in the game.

Christener broke for 4 out to the B and the Colts called time out with D seconds left. On the last play of the game, Benny Baker passed to Kevin Andis for 32 yards to the Memphis 46 but time expired and the Colts came up on the short end of the 140 score. After a scoreless first half, the Wheeler Mustangs JV broke the tie with a six pointer but finally were worn down by the Cyclones JV who got all of their D points in the last quarter. The first half was a de-

fensive battle with the aroused JV shutting down the Memphis attack. Curtis Ryan played a big part in this defense as he stunted from his linebacker spot time after time to drop the Cyclones ball carriers for a loss.

Taking over at the Memphis 44 early in the third quarter, the JV Mustangs used three plays to break the scoreless tie with Sammy Schaefer breaking loose over his left guard and going 37 yards for the touchdown Myron Jolly failed to run it in on the two point try and the Mustangs had a 6-0 lead that held up until the first play of the final quarter.

Curtis Ryan knocked a Memphis ball carrier out of bounds at the Mustang 3 after a run of 22 yards just before the third quarter ended and was injured on the play and Ryan's injury knocked a big dent in the Mustangs defensive efforts the rest of the way.

Memphis drove 30, 45, and 21 yards for their last three touchdowns of the game following two punts and a fumble recovery.

Send A BEEF Gift Certificate ANYWHERE!

The perfect gift for a shower, a wedding, or as a special "thank you". Now available at

FIRST NATIONAL BANK of Wheeler

Sponsored by Top 'O' Texas CowBelles

Mobeetie News

By Mrs. Wilber Beck

Richard Kysar is a patient in the Parkview Hospital in Wheeler, at this time.

Mrs. Tassie Leonard and Mrs. Dale Holland are patients in the Parkview Hospital this week.

Mrs. Maida Allen and Mrs. Jewel Leonard who have been patients in Parkview Hospital, recently are home and doing well at this time. Mr. and Mrs. J. B. Rector visited the lady's mother, Mrs. Walter Davis, who is residing in a Cheyenne Nursing Home at this time. Mr. and Mrs. T. A. Green-

house visited her sister, Mrs. Violet Hampton, who is very ill in the Parkview Hospital, Sunday afternoon. They also visited Mrs. Tassie Leonard, who was a patient there.

Mr. and Mrs. Gordon Estes attended to business in Amarillo, Wednesday last week. Mr. and Mrs. Wayne Leathman visited Mr. and Mrs. Jerry Jones and Cristina in Wheeler, Sunday evening. Mrs. Melba Burch and son, William, visited Mr. and Mrs. L. E. Keith and Mrs. Will Keith in Pampa, Thursday. Recent visitors of Mr. and Mrs. Bob Glamor were her sister and brother-in-law, Mr. and Mrs. Jim Ward of Broken Arrow, Oklahoma. Keith McLaughlin and sons, Kent, Jimmy, and Mike of Pampa, visited his parents, Mr. and Mrs. Brook McLaughlin last weekend. Mrs. Glynnda Leathman and son, Allen attended to business in Pampa, Tuesday. Mrs. Charlotte Coward took her mother, Mrs. Lillie Durham of Wichita Falls, to Childress to meet her sister, whom she will visit for a few days. Mr. and Mrs. J. H. Schner of Plainview, visited and attended to business in Mobeetie the first part of this week. Miles Nixon and Wade Greenhouse, sons of Mr. and Mrs. Vernie Nixon and Mr. and Mrs. Doyle Greenhouse of Dumas, spent the weekend with their grandparents, Mr. and Mrs. Aubrey Greenhouse. Mrs. Wilber Beck and her daughter, Mrs. Glynnda Leathman, visited Mr. and Mrs. L. E. Keith and Mrs. Will Keith, Thursday last week in Pampa. Ruth Keith and Wilber Beck are sisters.

GOOD VALUES

"JAWS" T-Shirts for Boys and Adults

A Group of Boys **Winter Caps 1/2 Price**

Men's Short Sleeve **Dress & Casual Shirts Reduced**

A Group of **Boys T-Shirts 1/2 Price**

New Selection of **Men's Winter Caps**

New Shipment of Necklace Sets

A Group of Mens **Oxfords & Slip-ons \$5.95**

McIlhany DRY GOODS

Phone 826-5638

FOR Everything YOU WEAR

Priced for SAVINGS

POTATOES 89¢ 10 lb. Bag

BANANAS 19¢ lb.

PORK & BEANS 3 303 \$1 Kimbell, Campbell or Van Camps

NOTEBOOK PAPER 200 Count 89¢

DEL MONTE Spinach 3 15 oz. Cans \$1

CORN BEEF HASH LIBBY'S 15 1/2 oz. Can 89¢

KIMBELL Instant TEA 2 oz. Jars 98¢

OREO COOKIES 15 oz. Pkg. 79¢

BORDEN'S ICE CREAM Round Carton 1/2 Gallon \$1.19

Capri 32 oz. Bath Oil 89¢

Swiss Steak lb. \$1.19

DECKER BACON 2 lb. Pkg. \$3.39

FAMILY STEAK Pound 98¢

CHUCK ROAST Pound 79¢

MEAT Is Our SPECIALTY

Let us process 1/2 Beef for you!

MOBEETIE GROCERY

Phone 845-7721 Mobeetie, Texas

MAKING FAMILY LIFE MORE FUN

PUT LOVE BACK IN YOUR LIFE

One of the main reasons why husbands and wives don't get along as well as they should is that they disagree on many things. Many marriage counselors agree, it is that they disagree on many things. A half hour of healthy reading, gardening, dancing, travel is an especially good way to get along. Discuss things freely. Cultivate fun things to share.

When whipping cream, make sure both the cream and the bowl are well chilled.

Other faults that are common to many marriages are: 1. Lack of communication. 2. Lack of respect. 3. Lack of understanding. 4. Lack of compromise. 5. Lack of patience. 6. Lack of forgiveness. 7. Lack of humor. 8. Lack of love. 9. Lack of faith. 10. Lack of hope. 11. Lack of charity. 12. Lack of kindness. 13. Lack of gentleness. 14. Lack of meekness. 15. Lack of self-control. 16. Lack of temperance. 17. Lack of moderation. 18. Lack of balance. 19. Lack of harmony. 20. Lack of peace. 21. Lack of joy. 22. Lack of peace of mind. 23. Lack of contentment. 24. Lack of satisfaction. 25. Lack of fulfillment. 26. Lack of meaning. 27. Lack of purpose. 28. Lack of direction. 29. Lack of focus. 30. Lack of clarity. 31. Lack of insight. 32. Lack of wisdom. 33. Lack of understanding. 34. Lack of compassion. 35. Lack of empathy. 36. Lack of sympathy. 37. Lack of kindness. 38. Lack of gentleness. 39. Lack of meekness. 40. Lack of self-control. 41. Lack of temperance. 42. Lack of moderation. 43. Lack of balance. 44. Lack of harmony. 45. Lack of peace. 46. Lack of joy. 47. Lack of peace of mind. 48. Lack of contentment. 49. Lack of satisfaction. 50. Lack of fulfillment. 51. Lack of meaning. 52. Lack of purpose. 53. Lack of direction. 54. Lack of focus. 55. Lack of clarity. 56. Lack of insight. 57. Lack of wisdom. 58. Lack of understanding. 59. Lack of compassion. 60. Lack of empathy. 61. Lack of sympathy. 62. Lack of kindness. 63. Lack of gentleness. 64. Lack of meekness. 65. Lack of self-control. 66. Lack of temperance. 67. Lack of moderation. 68. Lack of balance. 69. Lack of harmony. 70. Lack of peace. 71. Lack of joy. 72. Lack of peace of mind. 73. Lack of contentment. 74. Lack of satisfaction. 75. Lack of fulfillment. 76. Lack of meaning. 77. Lack of purpose. 78. Lack of direction. 79. Lack of focus. 80. Lack of clarity. 81. Lack of insight. 82. Lack of wisdom. 83. Lack of understanding. 84. Lack of compassion. 85. Lack of empathy. 86. Lack of sympathy. 87. Lack of kindness. 88. Lack of gentleness. 89. Lack of meekness. 90. Lack of self-control. 91. Lack of temperance. 92. Lack of moderation. 93. Lack of balance. 94. Lack of harmony. 95. Lack of peace. 96. Lack of joy. 97. Lack of peace of mind. 98. Lack of contentment. 99. Lack of satisfaction. 100. Lack of fulfillment. 101. Lack of meaning. 102. Lack of purpose. 103. Lack of direction. 104. Lack of focus. 105. Lack of clarity. 106. Lack of insight. 107. Lack of wisdom. 108. Lack of understanding. 109. Lack of compassion. 110. Lack of empathy. 111. Lack of sympathy. 112. Lack of kindness. 113. Lack of gentleness. 114. Lack of meekness. 115. Lack of self-control. 116. Lack of temperance. 117. Lack of moderation. 118. Lack of balance. 119. Lack of harmony. 120. Lack of peace. 121. Lack of joy. 122. Lack of peace of mind. 123. Lack of contentment. 124. Lack of satisfaction. 125. Lack of fulfillment. 126. Lack of meaning. 127. Lack of purpose. 128. Lack of direction. 129. Lack of focus. 130. Lack of clarity. 131. Lack of insight. 132. Lack of wisdom. 133. Lack of understanding. 134. Lack of compassion. 135. Lack of empathy. 136. Lack of sympathy. 137. Lack of kindness. 138. Lack of gentleness. 139. Lack of meekness. 140. Lack of self-control. 141. Lack of temperance. 142. Lack of moderation. 143. Lack of balance. 144. Lack of harmony. 145. Lack of peace. 146. Lack of joy. 147. Lack of peace of mind. 148. Lack of contentment. 149. Lack of satisfaction. 150. Lack of fulfillment. 151. Lack of meaning. 152. Lack of purpose. 153. Lack of direction. 154. Lack of focus. 155. Lack of clarity. 156. Lack of insight. 157. Lack of wisdom. 158. Lack of understanding. 159. Lack of compassion. 160. Lack of empathy. 161. Lack of sympathy. 162. Lack of kindness. 163. Lack of gentleness. 164. Lack of meekness. 165. Lack of self-control. 166. Lack of temperance. 167. Lack of moderation. 168. Lack of balance. 169. Lack of harmony. 170. Lack of peace. 171. Lack of joy. 172. Lack of peace of mind. 173. Lack of contentment. 174. Lack of satisfaction. 175. Lack of fulfillment. 176. Lack of meaning. 177. Lack of purpose. 178. Lack of direction. 179. Lack of focus. 180. Lack of clarity. 181. Lack of insight. 182. Lack of wisdom. 183. Lack of understanding. 184. Lack of compassion. 185. Lack of empathy. 186. Lack of sympathy. 187. Lack of kindness. 188. Lack of gentleness. 189. Lack of meekness. 190. Lack of self-control. 191. Lack of temperance. 192. Lack of moderation. 193. Lack of balance. 194. Lack of harmony. 195. Lack of peace. 196. Lack of joy. 197. Lack of peace of mind. 198. Lack of contentment. 199. Lack of satisfaction. 200. Lack of fulfillment. 201. Lack of meaning. 202. Lack of purpose. 203. Lack of direction. 204. Lack of focus. 205. Lack of clarity. 206. Lack of insight. 207. Lack of wisdom. 208. Lack of understanding. 209. Lack of compassion. 210. Lack of empathy. 211. Lack of sympathy. 212. Lack of kindness. 213. Lack of gentleness. 214. Lack of meekness. 215. Lack of self-control. 216. Lack of temperance. 217. Lack of moderation. 218. Lack of balance. 219. Lack of harmony. 220. Lack of peace. 221. Lack of joy. 222. Lack of peace of mind. 223. Lack of contentment. 224. Lack of satisfaction. 225. Lack of fulfillment. 226. Lack of meaning. 227. Lack of purpose. 228. Lack of direction. 229. Lack of focus. 230. Lack of clarity. 231. Lack of insight. 232. Lack of wisdom. 233. Lack of understanding. 234. Lack of compassion. 235. Lack of empathy. 236. Lack of sympathy. 237. Lack of kindness. 238. Lack of gentleness. 239. Lack of meekness. 240. Lack of self-control. 241. Lack of temperance. 242. Lack of moderation. 243. Lack of balance. 244. Lack of harmony. 245. Lack of peace. 246. Lack of joy. 247. Lack of peace of mind. 248. Lack of contentment. 249. Lack of satisfaction. 250. Lack of fulfillment. 251. Lack of meaning. 252. Lack of purpose. 253. Lack of direction. 254. Lack of focus. 255. Lack of clarity. 256. Lack of insight. 257. Lack of wisdom. 258. Lack of understanding. 259. Lack of compassion. 260. Lack of empathy. 261. Lack of sympathy. 262. Lack of kindness. 263. Lack of gentleness. 264. Lack of meekness. 265. Lack of self-control. 266. Lack of temperance. 267. Lack of moderation. 268. Lack of balance. 269. Lack of harmony. 270. Lack of peace. 271. Lack of joy. 272. Lack of peace of mind. 273. Lack of contentment. 274. Lack of satisfaction. 275. Lack of fulfillment. 276. Lack of meaning. 277. Lack of purpose. 278. Lack of direction. 279. Lack of focus. 280. Lack of clarity. 281. Lack of insight. 282. Lack of wisdom. 283. Lack of understanding. 284. Lack of compassion. 285. Lack of empathy. 286. Lack of sympathy. 287. Lack of kindness. 288. Lack of gentleness. 289. Lack of meekness. 290. Lack of self-control. 291. Lack of temperance. 292. Lack of moderation. 293. Lack of balance. 294. Lack of harmony. 295. Lack of peace. 296. Lack of joy. 297. Lack of peace of mind. 298. Lack of contentment. 299. Lack of satisfaction. 300. Lack of fulfillment. 301. Lack of meaning. 302. Lack of purpose. 303. Lack of direction. 304. Lack of focus. 305. Lack of clarity. 306. Lack of insight. 307. Lack of wisdom. 308. Lack of understanding. 309. Lack of compassion. 310. Lack of empathy. 311. Lack of sympathy. 312. Lack of kindness. 313. Lack of gentleness. 314. Lack of meekness. 315. Lack of self-control. 316. Lack of temperance. 317. Lack of moderation. 318. Lack of balance. 319. Lack of harmony. 320. Lack of peace. 321. Lack of joy. 322. Lack of peace of mind. 323. Lack of contentment. 324. Lack of satisfaction. 325. Lack of fulfillment. 326. Lack of meaning. 327. Lack of purpose. 328. Lack of direction. 329. Lack of focus. 330. Lack of clarity. 331. Lack of insight. 332. Lack of wisdom. 333. Lack of understanding. 334. Lack of compassion. 335. Lack of empathy. 336. Lack of sympathy. 337. Lack of kindness. 338. Lack of gentleness. 339. Lack of meekness. 340. Lack of self-control. 341. Lack of temperance. 342. Lack of moderation. 343. Lack of balance. 344. Lack of harmony. 345. Lack of peace. 346. Lack of joy. 347. Lack of peace of mind. 348. Lack of contentment. 349. Lack of satisfaction. 350. Lack of fulfillment. 351. Lack of meaning. 352. Lack of purpose. 353. Lack of direction. 354. Lack of focus. 355. Lack of clarity. 356. Lack of insight. 357. Lack of wisdom. 358. Lack of understanding. 359. Lack of compassion. 360. Lack of empathy. 361. Lack of sympathy. 362. Lack of kindness. 363. Lack of gentleness. 364. Lack of meekness. 365. Lack of self-control. 366. Lack of temperance. 367. Lack of moderation. 368. Lack of balance. 369. Lack of harmony. 370. Lack of peace. 371. Lack of joy. 372. Lack of peace of mind. 373. Lack of contentment. 374. Lack of satisfaction. 375. Lack of fulfillment. 376. Lack of meaning. 377. Lack of purpose. 378. Lack of direction. 379. Lack of focus. 380. Lack of clarity. 381. Lack of insight. 382. Lack of wisdom. 383. Lack of understanding. 384. Lack of compassion. 385. Lack of empathy. 386. Lack of sympathy. 387. Lack of kindness. 388. Lack of gentleness. 389. Lack of meekness. 390. Lack of self-control. 391. Lack of temperance. 392. Lack of moderation. 393. Lack of balance. 394. Lack of harmony. 395. Lack of peace. 396. Lack of joy. 397. Lack of peace of mind. 398. Lack of contentment. 399. Lack of satisfaction. 400. Lack of fulfillment. 401. Lack of meaning. 402. Lack of purpose. 403. Lack of direction. 404. Lack of focus. 405. Lack of clarity. 406. Lack of insight. 407. Lack of wisdom. 408. Lack of understanding. 409. Lack of compassion. 410. Lack of empathy. 411. Lack of sympathy. 412. Lack of kindness. 413. Lack of gentleness. 414. Lack of meekness. 415. Lack of self-control. 416. Lack of temperance. 417. Lack of moderation. 418. Lack of balance. 419. Lack of harmony. 420. Lack of peace. 421. Lack of joy. 422. Lack of peace of mind. 423. Lack of contentment. 424. Lack of satisfaction. 425. Lack of fulfillment. 426. Lack of meaning. 427. Lack of purpose. 428. Lack of direction. 429. Lack of focus. 430. Lack of clarity. 431. Lack of insight. 432. Lack of wisdom. 433. Lack of understanding. 434. Lack of compassion. 435. Lack of empathy. 436. Lack of sympathy. 437. Lack of kindness. 438. Lack of gentleness. 439. Lack of meekness. 440. Lack of self-control. 441. Lack of temperance. 442. Lack of moderation. 443. Lack of balance. 444. Lack of harmony. 445. Lack of peace. 446. Lack of joy. 447. Lack of peace of mind. 448. Lack of contentment. 449. Lack of satisfaction. 450. Lack of fulfillment. 451. Lack of meaning. 452. Lack of purpose. 453. Lack of direction. 454. Lack of focus. 455. Lack of clarity. 456. Lack of insight. 457. Lack of wisdom. 458. Lack of understanding. 459. Lack of compassion. 460. Lack of empathy. 461. Lack of sympathy. 462. Lack of kindness. 463. Lack of gentleness. 464. Lack of meekness. 465. Lack of self-control. 466. Lack of temperance. 467. Lack of moderation. 468. Lack of balance. 469. Lack of harmony. 470. Lack of peace. 471. Lack of joy. 472. Lack of peace of mind. 473. Lack of contentment. 474. Lack of satisfaction. 475. Lack of fulfillment. 476. Lack of meaning. 477. Lack of purpose. 478. Lack of direction. 479. Lack of focus. 480. Lack of clarity. 481. Lack of insight. 482. Lack of wisdom. 483. Lack of understanding. 484. Lack of compassion. 485. Lack of empathy. 486. Lack of sympathy. 487. Lack of kindness. 488. Lack of gentleness. 489. Lack of meekness. 490. Lack of self-control. 491. Lack of temperance. 492. Lack of moderation. 493. Lack of balance. 494. Lack of harmony. 495. Lack of peace. 496. Lack of joy. 497. Lack of peace of mind. 498. Lack of contentment. 499. Lack of satisfaction. 500. Lack of fulfillment. 501. Lack of meaning. 502. Lack of purpose. 503. Lack of direction. 504. Lack of focus. 505. Lack of clarity. 506. Lack of insight. 507. Lack of wisdom. 508. Lack of understanding. 509. Lack of compassion. 510. Lack of empathy. 511. Lack of sympathy. 512. Lack of kindness. 513. Lack of gentleness. 514. Lack of meekness. 515. Lack of self-control. 516. Lack of temperance. 517. Lack of moderation. 518. Lack of balance. 519. Lack of harmony. 520. Lack of peace. 521. Lack of joy. 522. Lack of peace of mind. 523. Lack of contentment. 524. Lack of satisfaction. 525. Lack of fulfillment. 526. Lack of meaning. 527. Lack of purpose. 528. Lack of direction. 529. Lack of focus. 530. Lack of clarity. 531. Lack of insight. 532. Lack of wisdom. 533. Lack of understanding. 534. Lack of compassion. 535. Lack of empathy. 536. Lack of sympathy. 537. Lack of kindness. 538. Lack of gentleness. 539. Lack of meekness. 540. Lack of self-control. 541. Lack of temperance. 542. Lack of moderation. 543. Lack of balance. 544. Lack of harmony. 545. Lack of peace. 546. Lack of joy. 547. Lack of peace of mind. 548. Lack of contentment. 549. Lack of satisfaction. 550. Lack of fulfillment. 551. Lack of meaning. 552. Lack of purpose. 553. Lack of direction. 554. Lack of focus. 555. Lack of clarity. 556. Lack of insight. 557. Lack of wisdom. 558. Lack of understanding. 559. Lack of compassion. 560. Lack of empathy. 561. Lack of sympathy. 562. Lack of kindness. 563. Lack of gentleness. 564. Lack of meekness. 565. Lack of self-control. 566. Lack of temperance. 567. Lack of moderation. 568. Lack of balance. 569. Lack of harmony. 570. Lack of peace. 571. Lack of joy. 572. Lack of peace of mind. 573. Lack of contentment. 574. Lack of satisfaction. 575. Lack of fulfillment. 576. Lack of meaning. 577. Lack of purpose. 578. Lack of direction. 579. Lack of focus. 580. Lack of clarity. 581. Lack of insight. 582. Lack of wisdom. 583. Lack of understanding. 584. Lack of compassion. 585. Lack of empathy. 586. Lack of sympathy. 587. Lack of kindness. 588. Lack of gentleness. 589. Lack of meekness. 590. Lack of self-control. 591. Lack of temperance. 592. Lack of moderation. 593. Lack of balance. 594. Lack of harmony. 595. Lack of peace. 596. Lack of joy. 597. Lack of peace of mind. 598. Lack of contentment. 599. Lack of satisfaction. 600. Lack of fulfillment. 601. Lack of meaning. 602. Lack of purpose. 603. Lack of direction. 604. Lack of focus. 605. Lack of clarity. 606. Lack of insight. 607. Lack of wisdom. 608. Lack of understanding. 609. Lack of compassion. 610. Lack of empathy. 611. Lack of sympathy. 612. Lack of kindness. 613. Lack of gentleness. 614. Lack of meekness. 615. Lack of self-control. 616. Lack of temperance. 617. Lack of moderation. 618. Lack of balance. 619. Lack of harmony. 620. Lack of peace. 621. Lack of joy. 622. Lack of peace of mind. 623. Lack of contentment. 624. Lack of satisfaction. 625. Lack of fulfillment. 626. Lack of meaning. 627. Lack of purpose. 628. Lack of direction. 629. Lack of focus. 630. Lack of clarity. 631. Lack of insight. 632. Lack of wisdom. 633. Lack of understanding. 634. Lack of compassion. 635. Lack of empathy. 636. Lack of sympathy. 637. Lack of kindness. 638. Lack of gentleness. 639. Lack of meekness. 640. Lack of self-control. 641. Lack of temperance. 642. Lack of moderation. 643. Lack of balance. 644. Lack of harmony. 645. Lack of peace. 646. Lack of joy. 647. Lack of peace of mind. 648. Lack of contentment. 649. Lack of satisfaction. 650. Lack of fulfillment. 651. Lack of meaning. 652. Lack of purpose. 653. Lack of direction. 654. Lack of focus. 655. Lack of clarity. 656. Lack of insight. 657. Lack of wisdom. 658. Lack of understanding. 659. Lack of compassion. 660. Lack of empathy. 661. Lack of sympathy. 662. Lack of kindness. 663. Lack of gentleness. 664. Lack of meekness. 665. Lack of self-control. 666. Lack of temperance. 667. Lack of moderation. 668. Lack of balance. 669. Lack of harmony. 670. Lack of peace. 671. Lack of joy. 672. Lack of peace of mind. 673. Lack of contentment. 674. Lack of satisfaction. 675. Lack of fulfillment. 676. Lack of meaning. 677. Lack of purpose. 678. Lack of direction. 679. Lack of focus. 680. Lack of clarity. 681. Lack of insight. 682. Lack of wisdom. 683. Lack of understanding. 684. Lack of compassion. 685. Lack of empathy. 686. Lack of sympathy. 687. Lack of kindness. 688. Lack of gentleness. 689. Lack of meekness. 690. Lack of self-control. 691. Lack of temperance. 692. Lack of moderation. 693. Lack of balance. 694. Lack of harmony. 695. Lack of peace. 696. Lack of joy. 697. Lack of peace of mind. 698. Lack of contentment. 699. Lack of satisfaction. 700. Lack of fulfillment. 701. Lack of meaning. 702. Lack of purpose. 703. Lack of direction. 704. Lack of focus. 705. Lack of clarity. 706. Lack of insight. 707. Lack of wisdom. 708. Lack of understanding. 709. Lack of compassion. 710. Lack of empathy. 711. Lack of sympathy. 712. Lack of kindness. 713. Lack of gentleness. 714. Lack of meekness. 715. Lack of self-control. 716. Lack of temperance. 717. Lack of moderation. 718. Lack of balance. 719. Lack of harmony. 720. Lack of peace. 721. Lack of joy. 722. Lack of peace of mind. 723. Lack of contentment. 724. Lack of satisfaction. 725. Lack of fulfillment. 726. Lack of meaning. 727. Lack of purpose. 728. Lack of direction. 729. Lack of focus. 730. Lack of clarity. 731. Lack of insight. 732. Lack of wisdom. 733. Lack of understanding. 734. Lack of compassion. 735. Lack of empathy. 736. Lack of sympathy. 737. Lack of kindness. 738. Lack of gentleness. 739. Lack of meekness. 740. Lack of self-control. 741. Lack of temperance. 742. Lack of moderation. 743. Lack of balance. 744. Lack of harmony. 745. Lack of peace. 746. Lack of joy. 747. Lack of peace of mind. 748. Lack of contentment. 749. Lack of satisfaction. 750. Lack of fulfillment. 751. Lack of meaning. 752. Lack of purpose. 753. Lack of direction. 754. Lack of focus. 755. Lack of clarity. 756. Lack of insight. 757. Lack of wisdom. 758. Lack of understanding. 759. Lack of compassion. 760. Lack of empathy. 761. Lack of sympathy. 762. Lack of kindness. 763. Lack of gentleness. 764. Lack of meekness. 765. Lack of self-control. 766. Lack of temperance. 767. Lack of moderation. 768. Lack of balance. 769. Lack of harmony. 770. Lack of peace. 771. Lack of joy. 772. Lack of peace of mind. 773. Lack of contentment. 774. Lack of satisfaction. 775. Lack of fulfillment. 776. Lack of meaning. 777. Lack of purpose. 778. Lack of direction. 779. Lack of focus. 780. Lack of clarity. 781. Lack of insight. 782. Lack of wisdom. 783. Lack of understanding. 784. Lack of compassion. 785. Lack of empathy. 786. Lack of sympathy. 787. Lack of kindness. 788. Lack of gentleness. 789. Lack of meekness. 790. Lack of self-control. 791. Lack of temperance. 792. Lack of moderation. 793. Lack of balance. 794. Lack of harmony. 795. Lack of peace. 796. Lack of joy. 797. Lack of peace of mind. 798. Lack of contentment. 799. Lack of satisfaction. 800. Lack of fulfillment. 801. Lack of meaning. 802. Lack of purpose. 803. Lack of direction. 804. Lack of focus. 805. Lack of clarity. 806. Lack of insight. 807. Lack of wisdom. 808. Lack of understanding. 809. Lack of compassion. 810. Lack of empathy. 811. Lack of sympathy. 812. Lack of kindness. 813. Lack of gentleness. 814. Lack of meekness. 815. Lack of self-control. 816. Lack of temperance. 817. Lack of moderation. 818. Lack of balance. 819. Lack of harmony. 820. Lack of peace. 821. Lack of joy. 822. Lack of peace of mind. 823. Lack of contentment. 824. Lack of satisfaction. 825. Lack of fulfillment. 826. Lack of meaning. 827. Lack of purpose. 828. Lack of direction. 829. Lack of focus. 830. Lack of clarity. 831. Lack of insight. 832. Lack of wisdom. 833. Lack of understanding. 834. Lack of compassion. 835. Lack of empathy. 836. Lack of sympathy. 837. Lack of kindness. 838. Lack of gentleness. 839. Lack of meekness. 840. Lack of self-control. 841. Lack of temperance. 842. Lack of moderation. 843. Lack of balance. 844. Lack of harmony. 845. Lack of peace. 846. Lack of joy. 847. Lack of peace of mind. 848. Lack of contentment. 849. Lack of satisfaction. 850. Lack of fulfillment. 851. Lack of meaning. 852. Lack of purpose. 853. Lack of direction. 854. Lack of focus. 855. Lack of clarity. 856. Lack of insight. 857. Lack of wisdom. 858. Lack of understanding. 859. Lack of compassion. 860. Lack of empathy. 861. Lack of sympathy. 862. Lack of kindness. 863. Lack of gentleness. 864. Lack of meekness. 865. Lack of self-control. 866. Lack of temperance. 867. Lack of moderation. 868. Lack of balance. 869. Lack of harmony. 870. Lack of peace. 871. Lack of joy. 872. Lack of peace of mind. 873. Lack of contentment. 874. Lack of satisfaction. 875. Lack of fulfillment. 876. Lack of meaning. 877. Lack of purpose. 878. Lack of direction. 879. Lack of focus. 880. Lack of clarity. 881. Lack of insight. 882. Lack of wisdom. 883. Lack of understanding. 884. Lack of compassion. 885. Lack of empathy. 886. Lack of sympathy. 887. Lack of kindness. 888. Lack of gentleness. 889. Lack of meekness. 890. Lack of self-control. 891. Lack of temperance. 892. Lack of moderation. 893. Lack of balance. 894. Lack of harmony. 895. Lack of peace. 896. Lack of joy. 897. Lack of peace of mind. 898. Lack of contentment. 899. Lack of satisfaction. 900. Lack of fulfillment. 901. Lack of meaning. 902. Lack of purpose. 903. Lack of direction. 904. Lack of focus. 905. Lack of clarity. 906. Lack of insight. 907. Lack of wisdom. 908. Lack of understanding. 909. Lack of compassion. 910. Lack of empathy. 911. Lack of sympathy. 912. Lack of kindness. 913. Lack of gentleness. 914. Lack of meekness. 915. Lack of self-control. 916. Lack of temperance. 917. Lack of moderation. 918. Lack of balance. 919. Lack of harmony. 920. Lack of peace. 921. Lack of joy. 922. Lack of peace of mind. 923. Lack of contentment. 924. Lack of satisfaction. 925. Lack of fulfillment. 926. Lack of meaning. 927. Lack of purpose. 928. Lack of direction. 929. Lack of focus. 930. Lack of clarity. 931. Lack of insight. 932. Lack of wisdom. 933. Lack of understanding. 934. Lack of compassion. 935. Lack of empathy. 936. Lack of sympathy. 937. Lack of kindness. 938. Lack of gentleness. 939. Lack of meekness. 940. Lack of self-control. 941. Lack of temperance. 942. Lack of moderation. 943. Lack of balance. 944. Lack of harmony. 945. Lack of peace. 946. Lack of joy. 947. Lack of peace of mind. 948. Lack of contentment. 949. Lack of satisfaction. 950. Lack of fulfillment. 951. Lack of meaning. 952. Lack of purpose. 953. Lack of direction. 954. Lack of focus. 955. Lack of clarity. 956. Lack of insight. 957. Lack of wisdom. 958. Lack of understanding. 959. Lack of compassion. 960. Lack of empathy. 961. Lack of sympathy. 962. Lack of kindness. 963. Lack of gentleness. 964. Lack of meekness. 965. Lack of self-control. 966. Lack of temperance. 967. Lack of moderation. 968. Lack of balance. 969. Lack of harmony. 970. Lack of peace. 971. Lack of joy. 972. Lack of peace of mind. 973. Lack of contentment. 974. Lack of satisfaction. 975. Lack of fulfillment. 976. Lack of meaning. 977. Lack of purpose. 978. Lack of direction. 979. Lack of focus. 980. Lack of clarity. 981. Lack of insight. 982. Lack of wisdom. 983. Lack of understanding. 984. Lack of compassion. 985. Lack of empathy. 986. Lack of sympathy. 987. Lack of kindness. 988. Lack of gentleness. 989. Lack of meekness. 990. Lack of self-control. 991. Lack of temperance. 992. Lack of moderation. 993. Lack of balance. 994. Lack of harmony. 995. Lack of peace. 996. Lack of joy. 997. Lack of peace of mind. 998. Lack of contentment. 999. Lack of satisfaction. 1000. Lack of fulfillment. 1001. Lack of meaning. 1002. Lack of purpose. 1003. Lack of direction. 1004. Lack of focus. 1005. Lack of clarity. 1006. Lack of insight. 1007. Lack of wisdom. 1008. Lack of understanding. 1009. Lack of compassion. 1010. Lack of empathy. 1011. Lack of sympathy. 1012. Lack of kindness. 1013. Lack of gentleness. 1014. Lack of meekness. 1015. Lack of self-control. 1016. Lack of temperance. 1017. Lack of moderation. 1018. Lack of balance. 1019. Lack of harmony. 1020. Lack of peace. 1021. Lack of joy. 1022. Lack of peace of mind. 1023. Lack of contentment. 1024. Lack of satisfaction. 1025. Lack of fulfillment. 1026. Lack of meaning. 1027. Lack of purpose. 1028. Lack of direction. 1029. Lack of focus. 1030. Lack of clarity. 1031. Lack of insight. 1032. Lack of wisdom. 1033. Lack of understanding. 1034. Lack of compassion. 1035. Lack of empathy. 1036. Lack of sympathy. 1037. Lack of kindness. 1038. Lack of gentleness. 1039. Lack of meekness. 1040. Lack of self-control. 1041. Lack of temperance. 1042. Lack of moderation. 1043. Lack of balance. 1044. Lack of harmony. 1045. Lack of peace. 1046. Lack of joy. 1047. Lack of

Allison News

Mrs. Lester Levitt
Word was received Wednesday that Mrs. Grace Lee, 76, of Austin passed away at a hospital there after suffering a heart attack at her home. Mrs. Lee was the only child of Mr. and Mrs. Charley Copeland, who lived in Allison in the early thirties. Mr. and Mrs. Clifton Boydston and Mr. and Mrs. Gary Boydston attended the

funeral at Austin, Friday. Rev. Mike Sullivan and Allen Reynolds attended the Workers Conference at the Baptist Church in Memphis, Thursday night. The next conference will be at Allison the first Thursday night in December.

Kimberly Kiker returned home last week from an Oklahoma City hospital where she had a major surgery. She has both legs in a cast and

will be confined to a wheelchair for several weeks. Mrs. Edith Levitt returned home Wednesday after spending a week with her son, Lynn and family, in Panhandle. She also visited Mrs. Nona Blake there.

Mrs. Sharon Hall underwent surgery at the Highland General Hospital in Pampa, Thursday. She is recovering rapidly. Mrs. Doris Newsom and Mrs. Edyth Donaldson spent Thursday night with their sister, Mrs. Edna May and Mr. May, at Pampa. Mr. and Mrs. Rex Miller were in Amarillo, Friday, on business.

Pat Huff spent a few days in the Hemphill Memorial Hospital in Canadian for treatment of an injury received recently while working cattle. His injury required some stitches on his eye and nose.

Mrs. W.H. Boydston and Juanita LaQuinta and Sue spent Friday night in Lumas with relatives and friends.

Rev. Vernon Neeley was guest speaker at the United Pentecostal Church, Tuesday, Wednesday, and Thursday night.

On October 27th, Mr. and Mrs. W.H. Boydston took all their children and families to the Ramada Inn in Elk

City for a steak supper. The Boydston's had recently celebrated their 45th Anniversary and the children surprised them with gifts at the restaurant. Many attended.

Bob Markham remains a patient in the Parkview Hospital.

School was dismissed Friday so the teachers could attend the TSTA in Amarillo.

Mr. and Mrs. Bob Young and Angel from Canyon were recent guest in the Kenneth Chandler's home. Mr. and Mrs. Bruce Harrison accompanied by Mr. and Mrs. Lee Townsley, from Crawford, Okla., visited J.D. Wallace and family at Raton, New Mexico. The Townsley went on to Walshburg, Colorado and visited

their son, Roy Townsley and family. The Harrison's also visited Mrs. Alice White in Lumas, La. Willis Harrison and family of Canyon, and relatives in Amarillo before returning home.

Mrs. Joe Walsh accompanied the Boydston's as far as Brownwood, Friday, and spent the night with relatives.

Mrs. L.W. Grayson spent sometime the past week with her mother, Mrs. L.S. Adesholt, who is a patient in Highland General in Pampa.

Mr. and Mrs. Johnny Crawford were Sunday guest in the Lawrence Crawford's home.

The Allison boys won over Sweetwater and the girls lost in the first basketball game of the season Friday night here. Jackie Donaldson was unable to play due to an injury to her knee in earlier practice. Jackie will undergo surgery in Amarillo.

Mr. and Mrs. Verne Lohberger are the proud grandparents of a new baby born to Mr. and Mrs. Howard Lohberger recently.

Mrs. Lary Elmore and daughters were in Pampa, Friday shopping and also visiting Mrs. Lee Hall in the hospital. Mr. and Mrs. Loyd Jones have been staying with Sharon much of the time.

Mrs. Claude McMillan from Wellington has been visiting her sister, Mrs. A.E. Dillioa and Mr. Dillon for a week.

Mr. and Mrs. Sandy Parsons from Wellington brought her to Allison.

Mrs. Ruth DeWolf from Sweetwater, was a dinner guest Sunday in the home of her sister, Mrs. Ona Black. J.R. Black and family visited Mrs. DeWolf Sunday night.

Zeland Rainey and family and Mrs. Eula Markham were dinner guests in the George Parker's home Sunday.

Pvt. Tony Boydston called

led the Vance Boydston's Sunday from Oahu Island in Hawaii.

Ronnie Chapman and family from Amarillo and Floyd Morse from Lumas and Kathy from White Deer visited in the Roy Morse's home over the weekend.

Mr. and Mrs. Bobby Hall and children from Shamrock visited in the Buster Key's home Saturday.

Mr. and Mrs. Dean Keys spent the weekend at Hooker, Oklahoma with her parents, The Leon Critters.

Sot Childress and family from Miami, Mrs. Bill Miller and Mrs. Weiss were dinner guest at the Rex Miller home Sunday.

Sunday guests in the Leon Lane home were Mr. and Mrs. Lane, Larry Lane and his fiancée, George Lane from Reydon, Mr. and Mrs. Jimmy Gilmer, Perry Elliot and family, Mr. and Mrs. David Gilmer and Melanie.

Nuptial Vows Are Exchanged

On Saturday, November 8, 1975, at the home of Mr. and Mrs. Lewis Rogers, 1131 S. Main in Wheeler, held a wedding ceremony.

Mary Beth Qualls was given in marriage by Lewis Rogers to Jimmy Wilson of Tarbox. The ceremony was performed by Charlie Whiteley. The closing prayer was led by Harold Moore of Wellington.

Mother of the bride was Mrs. William B. Grace of Oklahoma City. The parents of the groom was Mr. and Mrs. Clyde Tarbox of Lipscomb, Texas.

Irene Rogers served the bride as the matron of honor, Ray Calloway served the groom as bestman.

Following the ceremony, a reception was held with Linda Hink and Mary Pemasco serving at the brides table.

The couple will make their home at 9th and Sweetwater in Wheeler.

Ruby Zybach Is HD Club Hostess

Ruby Zybach was hostess to the Briscoe M.D. Club, November 4, at the Briscoe Club House.

Shortcuts in sewing were given by Emma Rogers and Evelyn Leek, who also talked on accessories.

Dressing or more casual look with accessories, she stated. Accessories are vital to the wardrobe because they add versatility. Satisfying individual needs for day to day change. They provide opportunities for creativity, individuality and an expression of one's personality. They also are a good way of up dating last years costume in an inexpensive way.

Refreshments were served to guests and members.



A NEW CONSTELLATION

Continental Congress passed a resolution that established the Stars and Stripes on June 14, 1777, but did not specify the arrangement of the thirteen stars on the blue union, except to say that they should represent a new constellation. As a consequence, according to the U.S. Marine Corps Reserve, we find a variety of forms. The first flag, popularly known as the Betsy Ross flag, had them arranged in a circle, based on the idea that no colony should take precedence.

BUTCHERING & PROCESSING PRICES
Beef processed, double wrapped 14¢ per pound
1¢ A Pound for Butchering
Pork processing including curing double wrapped 16¢ per pound
\$4.50 A head for butchering
We butcher Monday thru Friday 8 to 12 A.M. except holidays.
CALL FOR QUARTER - HALF - WHOLE BEEF PROCESSED
WE NOW HAVE CUTS OF PORK AND BEEF FOR SALE
SHAMROCK SLAUGHTER PLANT
N of City Phone 256-3241
Closing at Noon on Saturday

Blakemore
FRESH
PROTEIN FED CATFISH
"Dressed While You Wait"
BLAKEMORE MOTOR CO. BUILDING
Phone 25-3187
400 North Main Shamrock, Texas 79079

Save on Taxes!
... add to your retirement.
Individual Retirement Annuity for Modern Woodmen members.
Modern Woodmen of America
Federal Life Insurance
Home Office • Rock Island, Illinois
Robert L. Fincher
405 928-3157
Sayre, Okla. 73662

WILSON'S SANDWICH SPECIALS



WILSON'S CERTIFIED
BOLOGNA
12 OZ. PKG.
89¢



WILSON'S LUNCH MEATS
VARIETY PACK
12 OZ. PKG.
\$1.29

WILSON'S CORN KING
WATER ADDED -2 TO 4 LB. AVERAGE
Boneless \$2.19
HAM LB.



WILSON'S CERTIFIED
SLICED BACON
1 LB. PKG.
\$1.49¢

10¢ VALUABLE COUPON
WILSON'S CERTIFIED
FRANKS 12 OZ. PKG. **69¢**
WITH THIS COUPON
VOID NOVEMBER 15, 1975
LIMIT ONE COUPON PER CUSTOMER
THRIFTWAY

Pritchard's
SHAMROCK & WHEELER
Double Stamps Wednesdays
with \$2.50 or more Purchase

THRIFTWAY

PAINTING
Interior & Exterior
Commercial & Residential
Brush, Roller, and
Painting
No Job Too Large
(Except Skyscraper
or Too Small)
Reasonable Rates
Call:
DONALD FORD
(806) 826-3100
Wheeler, Texas

New portable
RINSE VAC
Gets carpets professionally clean.
New RINSE N VAC is the portable (38 lbs.) powerhouse. It cleans, rinses, and vacuums out dirt leaving your carpets professionally clean. RINSE N VAC does the job only professional steam cleaners could do before. At a fraction of the cost. Yes... RINSE N VAC cleans carpets cleaner... keeps the cleaner longer.
LOYD'S
Ben Franklin
408 South Main

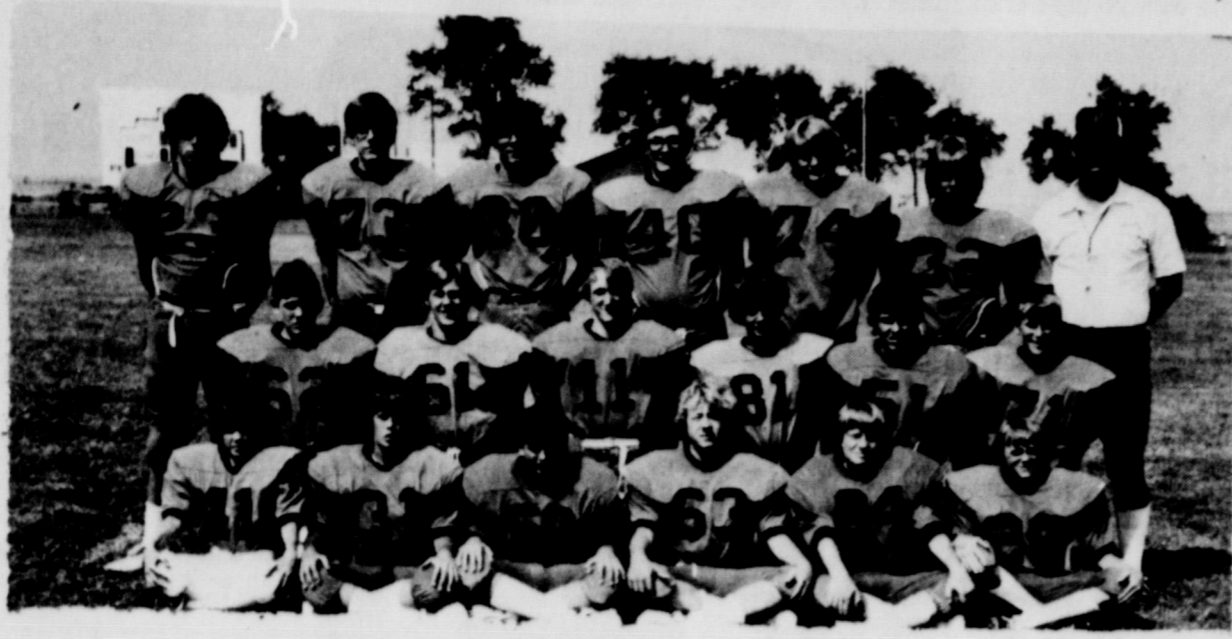
HYLAND WATER
Persons on a low sodium diet should avoid softened water. Most softeners use sodium to remove the hard salts — this increases natural sodium content of the softened water. The answer to the problem is to connect the water into the pipe to the heater only for laundry poses, leaving the water hard and of sodium content for cleaning, lawn watering, etc.
Filling your prescription our most important job.
PHYLANT PHARMACY
PH 826-556

WELL BRED SEPARATES



RALPH'S Originals
... gives you lots of looks for the money.
SHIRTS, SHIRT JACKETS, SKIRTS AND PANTS, ALL IN 100% DOUBLE KNIT IN A MYRIAD OF UP-TO-THE-MINUTE PATTERNS, SIZES 6 TO 20.

The Dot Shop
314 N. MAIN
Friendly Service



JUNIOR VARSITY PLAYERS:
 (Back row l to r) Dale Patterson, Curtis Forrester, Sammy Schaffer, Marvin Grimes, Curtis Ryan, Chad Conwell. (Middle row l to r) Tommy Christner, Mike Lee, Myron Jolly, Kent Vise, Miles Farnsworth, Jimmy Ryan. (Front row l to r) David Parker, David Wright, Bobby Risner, Ronal Stas, George Elliott, Johnny Sutton.

WHEELER MUSTANGS

VS.

SILVERTON OWLS

Friday, Nov. 14

7:30 P.M.

at Nicholson Field

WHEELER MUSTANGS

No.	Pos.	Wt.	Class
11	QB	155	Jr.
10	QB	140	Soph.
31	TB	155	Sr.
20	FB	185	Jr.
21	WB	135	Sr.
32	FB	150	Soph.
41	WB	120	Jr.
30	TB	137	Jr.
53	C	170	Sr.
50	C	135	Soph.
61	G	150	Sr.
71	G	150	Jr.
63	G	150	Jr.
64	G	130	Soph.
70	T	165	Soph.
72	T	170	Soph.
74	T	230	Jr.
23	E	150	Sr.
84	E	180	Sr.
80	E	130	Jr.
40	E	145	Soph.
82	E	150	Sr.
83	E	155	Sr.

Name	No.	Pos.	Wt.
Kirk Durhan	10	QB	92
David Strange	12	QB	137
Darrell Reynolds	15	QB	126
Brent Brannon	19	QB	125
Gary Younger	20	HB	124
Thomas Perkins	21	FB	90
Greg Blair	22	QB	136
Bryan Burson	25	HB	101
Doug McJimsey	30	HB	110
Wayne Reid	31	E	95
Brent Bean	32	HB	140
Tommy Lacy	35	FB	175
Brad Zeigler	40	HB	140
Rodney Bullock	41	E	92
David Francis	42	HB	112
Randy Clay	46	QB	145
Jeff Jones	50	C	150
Mitchell Simpson	51	C	135
Dayne Mayfield	52	T	211
Jace Francis	54	T	167
Jack Robertson	60	G	185
James Patton	61	G	129
Larry Stephens	64	G	109
David Williams	65	G	154
Gary Turner	66	G	163
Britt Gill	70	C	184
Earl Jarrett	71	T	142
Donald Thomas	72	T	160
Jim Wilson	74	T	150
Ken Sarchet	75	T	174
Kyle Bean	80	E	102
Carl Wilson	82	E	140
Glenn Kingery	84	E	125
Danny Perkins	85	E	140
Jackie Vaughn	87	E	155

Jr. Varsity

No.	Pos.	Wt.	Class
11	QB	120	FR.
40	TB	160	Fr.
30	FB	145	Fr.
31	WB	120	Fr.
20	WB	110	Fr.
21	WB	130	Soph.
51	C	120	Fr.
61	G	130	Fr.
62	G	125	Fr.
60	G	110	Fr.
63	G	125	Fr.
73	T	140	Soph.
74	T	145	Jr.
71	T	125	Fr.
84	E	115	Fr.
81	E	120	Fr.
83	E	130	Fr.
41	E	95	Fr.

COACHES:
 Jim Robinson, Head Coach
 Bill Higgins
 John Copeland
 Richard Gaines

BAKER AUTOMOTIVE
 WHEELER MILK CO.
 MANNA FAYE & ALBERT CHAPMAN
 NORA'S CAFE Odessa & Elwood Mooney
 HIBLER IMPLEMENT
 WEST MOTEL
 EDWARD'S "66" TRUCK STOP
 WHEELER FLOWER SHOP
 ROARK'S FINE FOODS
 McILHANY DRY GOODS
 WHEELER REDI-MIX
 WHEELER GAS CO.
 LEWALLEN INSURANCE AGENCY
 MARY WOFFORD

THE WHEELER TIMES
 LANCASTER DEPT. STORE
 McWHORTER'S TEXACO
 WHEELER VETERINARY CLINIC
 PRODUCTION CREDIT ASS'N.
 TRADING POST
 PETE BURTON FORD
 WHEELER LUMBER CO.
 FIRST NATIONAL BANK
 THE DOT SHOP Richard & Lynda Wallace
 JOHN C. VISE
 WHEELER COUNTY PRODUCE
 PRIME FEEDERS
 PRITCHARD'S THRIFTWAY

HYLAND'S PHARMACY
 WARE CHEVROLET CO.
 LEE HARDWARE & FURNITURE
 WHEELER FARM BUREAU
 George Richardson & Kenneth McCasland
 M & M GIN
 RIVES INSURANCE
 SPARLIN'S RESTAURANT
 WHEELER ABSTRACT
 SOUTHWESTERN PUBLIC SERVICE CO.
 GARRISON SERVICE
 BEEF CATTLE COMPANY
 SHIRA'S IMPLEMENT
 GLEN PORTER RANCH
 WRIGHT FUNERAL HOME
 SHAMROCK PRODUCTS

Dick 1
Obser

In obser
Golden W
sary, Mr.
Wright of
be feted
at the Li
Mobeeti
November
The fo
Shillerys
changed
19 5 at
They first
then mov
1942
Mr. Wri
dairy bus
and retire
1959.
Hosting
the ce
Mrs. Web

SUM
PROP

PI
OZ

tic
vis
sic
st
ar
an

ers
St
vic
tir
tiv
cia
au
sti
br
an
ta
otl

lat

str
tu
na
an
tal
be
za
the
tir
pre
ex
set
sio
ter
leg
tir
go
bil
pro
tic
sial
cor
cor
sio
me
an
cei
leg
tiv
lav
rec
do
aft
gei
tic
ses
od
90
nu
vel
up
fit
of
lat
ga
pri
the
ses

tiv
sta
ani
off
cor
tur
pa
go
cor
go
des
sta
mop
for
me
ser
dal
pre
ele
the
org
ini
mi
gr
cor
All
cie
tio
me
leg
reg
od
go
the
on

THIS WEEKS ITEM: CUP
Blue Heritage DINNERWARE

EACH BASIC PLACE SETTING WITH EVERY \$5.00 PURCHASE **49¢**



GRAIN FED BONELESS
CHUCK ROAST
\$1.09
LB.

GELATIN DESSERT
JELL-O
5 \$1
3 OZ. BOXES

Pritchard's Thriftway
Shamrock & Wheeler



- WILSON
Certified Franks 12 OZ PKG **79¢**
WILSON CERTIFIED Sliced Bologna 12 OZ PKG **89¢**
WILSON Variety Pack 12 OZ PKG **\$1.29**
GRAIN FED BONELESS Arm Roast 12 OZ PKG **\$1.29**
GRAIN FED BONELESS Chuck Steaks 12 OZ PKG **\$1.29**
RUDY'S FARM WHOLE - HOT OR MILD Hog Sausage 1-LB ROLL **\$1.59**

Instant Tea
Nestea 3-oz Jar **\$1.29**



STERNO ONE MATCH \$4.49 PER CASE (6 CT. CASE)
Fire Logs EACH **79¢**

WILSON'S CORN KING WATER ADDED
BONELESS HAM
2 TO 4 LB. AVG. **\$2.19**
LB.

NOT LESS THAN 80% LEAN
GROUND Chuck
EXTRA LEAN **99¢**
LB.

WILSON CERTIFIED
SLICED BACON
\$1.49
LB.



SUNSHINE KRISPY SALTINE
Crackers BOX **49¢**
16 OZ.

MORTON FROZEN
Honey Buns 9 OZ. PKG. **59¢**

BORDEN'S LITE LINE
CHEESE
12 OZ. PKG. **79¢**

THRIFTY GROCERY BUYS

LEMON JUICE	24 OZ. BTL.	69¢
NESTLE	12 OZ. PKG.	99¢
CHOCOLATE	2-LB. CAN.	\$1.79
NABISCO CHOCOLATE	12 OZ. PKG.	89¢
MAXWELL HOUSE	6 OZ. JAR.	\$1.59
SHURFINE	8 OZ. CANS	\$1.00
SHURFINE	38 OZ. BTL.	\$1.39

5¢ OFF LABEL HOUSEHOLD BLEACH
CLOROX
69¢
GAL. JUG

TWIN PACK
Alka-Seltzer
36 CT. PKG. **99¢**

TABLETS
SINAREST
20 CT. PKG. **\$1.09**

Coca Cola
32-oz Btls. **\$1.69**
6-Pack Crt

Sunkist
FLORIDA LARGE SIZE
TANGELOS
2 LBS. **39¢**

CALIFORNIA SUNKIST
ORANGES
2 39¢
LBS.

DETERGENT 10¢ OFF LABEL
TIDE
\$1.09
GIANT BOX

VALUABLE COUPON
GOLD MEDAL
Flour 5 LB. BAG **79¢**

WITH THIS COUPON VOID NOVEMBER 15, 1975
LIMIT ONE COUPON PER CUSTOMER
THRIFTWAY

VALUABLE COUPON
BETTY CROCKER BLUEBERRY
Muffin Mix 13 OZ. BOX **59¢**

WITH THIS COUPON VOID NOVEMBER 15, 1975
LIMIT ONE COUPON PER CUSTOMER
THRIFTWAY

VALUABLE COUPON
BREAKFAST CEREAL
Cheerios 10 OZ. BOX **49¢**

WITH THIS COUPON VOID NOVEMBER 15, 1975
LIMIT ONE COUPON PER CUSTOMER
THRIFTWAY

VALUABLE COUPON
BREAKFAST CEREAL
Total 8 OZ. BOX **49¢**

WITH THIS COUPON VOID NOVEMBER 15, 1975
LIMIT ONE COUPON PER CUSTOMER
THRIFTWAY

VALUABLE COUPON
KARO GREEN LABEL
Waffle Syrup QUART BTL. **99¢**

WITH THIS COUPON VOID NOVEMBER 15, 1975
LIMIT ONE COUPON PER CUSTOMER
THRIFTWAY

WASHINGTON
D'Anjou Pears LB **29¢**
TEXAS GREEN
Table Cabbage LB **10¢**

CALIFORNIA
Purple Top Turnips LB **19¢**
LARGE
Bell Peppers LB **39¢**

- MORE GROCERY VALUES**
- NONESUCH Mince Meat 9 OZ. PKG. **59¢**
 - LUCKY LEAF PUMPKIN Pie Filling 303 CAN **47¢**
 - AMERICAN BEAUTY Elbo-Roni 10 OZ. PKG. **35¢**
 - BETTY CROCKER SUPREME Brownie Mix 23 OZ. BOX **89¢**
 - FLOOR SHINE Klean'n Shine 14 OZ. CAN **\$1.19**
 - FUTURE ACRYLIC Floor Shine 27 OZ. BTL. **\$1.49**
 - FURNITURE POLISH, REG. OR LEMON Johnson's Pledge 7 OZ. CAN **89¢**

EAGLE BRAND
MILK
15 OZ. CAN **53¢**

DISHWASHER DETERGENT 13¢ OFF LABEL
CASCADE
79¢
35 OZ. BOX

- FROZEN FOODS & DAIRY VALUES**
- MINUTE MAID Orange Juice 3 6 OZ. CAN **89¢**
 - PATIO BEEF OR CHEESE ENCHILADA, COMBINATION OR FIESTA, MEXICAN Dinners EACH **49¢**
 - SHURFRESH SOFT Margarine 1-LB. BOWL **59¢**
 - SHURFRESH CRESCENT Dinner Rolls 8 OZ. CAN **49¢**

Try Our "Delicious"
Broasted Chicken **\$2.69**
1 Whole Fryer 8-Pieces

SHAMROCK & WHEELER WE GIVE 5 & H GREEN STAMPS

THRIFTWAY

SPECIALS GOOD NOV. 13-14-15-1975