

Pride Is At Stake In Mustangs and Tiger Game

Nothing is much harder for athletic teams than to attempt a comeback after being eliminated for practical purposes from a championship race and this is what faces the Wheeler Mustangs and McLean Tigers this Friday night in McLean.

Both the Mustangs and the Tigers met defeat last week with the Tigers coming out battered and bruised from their shellacking absorbed from the rebounding Memphis Cyclones.

McLean has a young ball club that is greatly improved over last year but injuries the past two weeks have cut into their efficiency. With both the Tigers and Mustangs sporting 1-2 records in district, pride in fighting back and trying to improve their records will be a big factor in the game.

This will be the last game between McLean and Wheeler as members of Class 2-A but not the end of a rivalry as both are dropping into District 1-B next year.

Wheeler will probably be without the services of their ace quarterback, Don Brown, for the Tiger tilt as Brown suffered a concussion in the loss to Shamrock.

If Brown is unable to play Bo Guthrie will be the Mustangs man under.

Mustangs Shutout By Shamrock IRISH 12-0

By David Britt
The host Shamrock Irish parlayed their fourth recovery of a Mustang fumble into a touchdown with just five seconds remaining in the third quarter to break a scoreless game and went on to blank the Wheeler Mustangs last Friday night 12-0.

The loss dropped the Mustangs to 1-2 in district and a 2-4 overall record. Once more the fumble bug hurt the Mustangs as it has in the past and three of the Mustang bobbles that were recovered by the Irish were in Wheeler country.

After taking the 6-0 lead into the final quarter, the Irish salted the game away with a time consuming drive of 79 yards for their second journey into the end zone.

Jackie Thompson punched in both the Irish TD's as the Mustangs drew their first whitewash of the season.

Shamrock took the opening kickoff and drove to the Wheeler 33 in seven plays but were flagged for delay of game and Bill McClary knocked down a third down pass which forced the Irish to boot the ball away.

After forcing a kick, the Mustangs had the ball at the Irish 47 but the drive was aborted at the Shamrock 30 when Steven Stokes fell on a David Massick fumble two plays before the initial quarter ended.

The Irish, aided greatly by two personal foul penalties against the Mustangs, used just three plays after recovering Massick's fumble to move to the Wheeler 25 where they coughed up the ball. Massick recovered an Alan Close bobble at the 25 to quell that Irish threat.

The ball turned into a hot potato at that point in the game and the Mustangs were forced to make two stands deep in their territory.

Bo Guthrie was knocked loose from the pigskin at the Wheeler 30 but Bob

THE WHEELER TIMES

VOLUME 42 NUMBER 40

Oct 23

COUNTY FUN NIGHT

Plans for the County-wide Fun Night are almost complete. The Wheeler Livestock Show Assn., sponsor of the fun night, met Monday night, October 20 to assign booth space and work out details.

The fun night will be held in the Wheeler County Agricultural Center from 6:00 thru 11:00 p. m. Saturday, October 25. There will be entertainment for all ages.

TIME AND TEMPERATURE

While everyone talks about the time and temperature, now they can talk about it accurately. To be installed on or about October 31 the new electronic display will alternately show the time and temperature every four seconds, or 21,600 readings every day, 365 days a year.

provide the most accurate and constantly valued information, the local time and temperature.

The display is maintained and guaranteed for life by its builder, American Sign and Indicator Corporation, Spokane, Washington which is the world's largest manufacturer of this type of equipment.

Of additional interest to Wheeler citizens, who will be setting their watches by First National's new display, is its reliability in the event of power failure. Although an electrical outage will darken the lampbank, an internal battery source and specially designed circuits automatically assure correct readings on the display when electricity is restored.

With its 14 inch high letters, this electronically sophisticated, digital display can be seen from a distance of 2 city blocks. And much like the town clock in years gone by, it will soon become an appreciated and looked-for landmark.

"In keeping with our desire to better serve the community we live in," said First National Bank, "we are installing the best equipment on the market to

Abusing Dump Ground

Local citizens are abusing dump grounds. For the maintenance of the dump and in order to conform with state law, it was necessary for the city to lock the dump and open it under supervision at specified times.

Since the fencing of the dump, the situation has grown increasingly worse with the fence being opened and trash being left at the gate and fence. Citizens are warned, the council will enforce the rules for the dumping of trash.

Carrying of trash from the dump is prohibited. The council will not tolerate the hauling of trash back into town. Persons carrying trash to the dump intend for it to stay there.

The city dump is open on Wednesday, 1-6 P.M.; Saturday, 10 a.m. to 6 p.m. Wheeler Citizens who pay sewer charges are not charged for dumping trash. Residents outside city limits are charged according to the sign at the dump.

Persons dumping along the roadway and at the gate of the dump can and will be prosecuted.

City Council

The Wheeler City Council met in regular session Monday evening. The meeting opened with a prayer and the minutes of the previous meeting were read and approved.

A report by Police Chief, Keith Miller, was given the council. Jerry Hefley reported on activities in the water and sewer department. Hefley expressed the need for a fire plug on the council approved the purchase.

Mr. Bowen from Canadian discussed the laying of sewer lines on Mobeetie and Reynolds Streets. It was decided to again take bids for the laying of the lines; the pipe for the project was purchased by the council some time back.

Richard Wallace, accountant, reported on receipts and disbursements. Jim Davis with General Telephone Co. met with the council to discuss a rate increase for the utility. After the discussion, it was determined he would meet again in November.

The McNeil Gin property on highway 152 will be put up for sale by sealed bid. Bids to be opened at the regular November meeting of the council.

WHEELER DROPS TO CLASS B IN INTERSCHOLASTIC REALIGNMENT

The Wheeler Public Schools received word this week from Austin that they have been dropped from Class A to Class B in all competition beginning with the fall term in 1976.

Every two years, the UIL, which governs all competition in the public schools in Texas, realigns all district competition as to classification and all schools remain in their prescribed classification for the following two years when the process is done again.

The UIL takes the ADM, in high school, average daily membership or enrollment, not the ADA or average daily attendance as some presume, for the two preceding years prior to alignment to reach their classifications.

This year's break from Class B to Class A was 125 ADM in high school and Wheeler's figure for the two years was 124.2, therefore the drop to Class B.

Members of the present District 2-A, of which Wheeler is a member, that dropped to Class B along with Wheeler were McLean and Silverton.

There will be 10 teams in football competition in District 1-B starting in 1976 with each team playing nine district games and one non district contest. The basketball, track, other sports, and literary event competition in District 1-B will be decided at a later date as some Class B schools in the area do not compete in football.

The members of the executive committee of the newly aligned District 1-B met in Berger Monday evening to draw up football schedules and set policy. Several of the schools wanted to break the district into zone competition in football but this was ruled out for 1976.

Wheeler, which has been in Class A the past 10 years, will be renewing rivalries that they had many years ago in Class B.

Members of District 1-B in football for 1976 will consist of: Wheeler, Lefors, Groom, McLean, Texline, Miami, Booker, Follett, Higgins, and Darrouzette. Several of these schools have been participating in 8 man football but that has been abolished after this year.

The Mustangs football schedule for the '76 season, with the non district game to be scheduled, is: Sept. 3, Open; Sept. 10, Follett, Here; Sept. 17, Darrouzette, Here; Sept. 24, Lefors, Here; Oct. 1, Groom, There; Oct. 8, Texline, Here; Oct. 12, Open; Oct. 22, McLean, There; Oct. 29, Miami, There; Nov. 5, Booker, Here; and Nov. 12, Higgins, There.

Kelton Library

To the Patrons of Kelton Community
Kelton School Library began a memorial plan in the library in the school year 1973-74. We have a memorial fund program where a lasting memorial to loved ones and friends may be made. We accept gifts of money to be used in selecting appropriate books to be placed on the shelves of the library. Inside the front cover of the book a memorial card is placed with the donor's name on it as well as the person to be honored. A card is also sent to the family of the honoree so they may know the memorial has been made.

Remember the lasting value of a memorial made in this way. For years these books will circulate through the hands of the children of the community preserving the memory of your loved ones from generation to generation.

The next time you consider making a memorial, remember the Kelton School Library and the lasting memorial you can make.

OPEN HOUSE

Kelton School is hosting an open house Sunday, Oct. 23 from 3:00-5:00 p. m. They have completed extensive remodeling. All surrounding communities, ex-teachers, students and interested persons are invited to attend. Refreshments will be served.

MOBEETIE HOMECOMING

Saturday, Nov. 1, is homecoming for Ex-Students of Mobeetie High Schools. The day will be something a little extra as not only are the 1930-31 graduates to be honored, but it has also been declared ELLIS LOCKE DAY.

Mr. Locke was high school principal and Athletic Coach the first year Mobeetie had a football team which was 45 years ago. This was also the start of his coaching career and only four of the 18 boys who came out for football that year had ever seen a football game.

At the end of the season the total score was 500 with seven wins and seven losses with one tie game.

This was also the first year to use the then new gymnasium and 31 games were played with 25 wins, 6 losses and three of these losses were only by 1 point.

The committee for ELLIS LOCKE DAY, Elwyn Dy-sart, Curley Owens and Snow Johnson especially urges all 1930-31 graduates to make a special effort to attend this special event.

Junior and Senior Classes of 1930-31 are urged to attend the reunion-get together planned from 1:00 to 5:00 p.m. with the Dutch Treat Luncheon at 5:30 and the homecoming program will start at 6:30 in the evening.

WHEELER WHIRLERS

The Wheeler Whirler Square Dance Club will hold an organizational meeting on Tuesday night, October 28 at 7:30 p.m. Plans for reorganization of the club will be the topic of discussion at the home of Steve Walker. All former members are urged to attend.

Powder Puff Football Game

The Senior Class is having a powder-puff football game Tuesday evening, Oct. 28, at 8:00 on Nicholson Field. Admission will be 50¢. Everyone should come and support the Senior Class.

Harvest Dinner

Don't forget the U.M.W. Harvest Dinner at the Allison United Methodist Church Saturday evening, November 1. Serving time will be from 6:00-9:00 p.m. Tickets are \$2.50 for adults, \$1.50 for children. Please try to attend!

Association Met

Tuesday evening, Oct. 14, 7:00 o'clock twelve members of the Old Mobeetie Association met in the community Church in Mobeetie. Sallie Harris, Chairman, presiding over the meeting.

Mrs. Harris reported the directors elected for the new year were: Bill Watson, E. Turnbow, Sallie Harris, Bernice Caldwell, Bernice Hall and Lottie Eva Denson. She reported the committee decided signed and recorded transferring the Old Jail to the Old Mobeetie Association. Mrs. Harris appointed Bernice Caldwell and Delba Burch as an insurance committee.

Meeting time has been changed from 4:00 to 7:00 each second Tuesday evening for the Old Mobeetie Association meetings. Members present were: Mr. and Mrs. Bob Galmor, Mr. and Mrs. Austin Caldwell, Tommie Tyson, Lottie Eva Denson, Glen Sherrill, Wilber Beck, Emalie London, Mildred Mickey and Robin Mickey.

Here & There

Mrs. Laura Guthrie has lovely weather. Some farmers are taking advantage of every minute. Could be worth millions dollars.

All fishing weather also. Bill and Nell Bradstreet been to Lake Proctor. They were with Bill and Taylor when Bill became ill. He is reported to be very ill.

In the week end Suzanne Cook, a teacher in our school, joined other relatives in a family reunion in Possum Kingdom. Her parents, Mr. and Mrs. Mel Block of Albuquerque were with the group. They were with Wheeler with Suzanne for an overnight stop. Mr. and Mrs. Ode Pike Kingsland are in town after business. At least that is the report. Think they just get home.

Patricia Horton Hopkins, of Albuquerque is here to spend a week with her mother, Sallie Harris and her aunt Nellie Morton.

Mrs. C. W. Whitely has just returned from a weeks visit in Oklahoma with her son.

We welcome Ruby Douglas to the Times staff. She is replacing Patricia Forrester at the vari-typist where she has been for nearly 2 years.

Ruby has lived in Wheeler, 106 N. Alan Bean, for about a year. She worked briefly at Roark's Grocery and at the SCS office. Her husband, Bill, works for the Highway Dept. They have two sons, Kirk and Jon who are in Jr. High school.

Patricia will continue to do book work at the Times office, I think simply because she can't stay away from such a grand force. She will also take care of a lot of her neglected home work and have more time for the Band Boosters.

Kathlene Cross has spent a couple of weeks in the Times office working over files, records and mailing lists. We enjoyed having Kathlene around.

Colts Are Nipped By Little Irish

The Wheeler Colts ran away with the battle of statistics with the Little Irish from Shamrock last Thursday night on Nicholson Field but came up on the short end of a 14-12 score.

Shamrock scored early on a 56 yard pass play and ran in the extra points which proved to be the difference in the game.

Benny Baker, who made 115 of the Colts 85 rushing yards, let the Colts right back field after the Shamrock touchdown but the drive stalled at the 15 but Shamrock couldn't go and had to punt.

The short kick only traveled to the 17 where Kevin Andis fielded the ball and nearly ran it back for a TD but was dropped on the 3.

It took Baker one play to get into the end zone and the Colts were being by 2 with 6:05 remaining in the half. The run for the tie was no good and the Little Irish held their narrow margin to

Continued page 7

Rites Read For Mrs. Rich Brown

Mrs. Rich Brown, a pioneer resident of Hemphill and Wheeler Counties, died at the Fernwood Nursing Home in Washington D. C., October 20. She was born in Mobeetie, Texas on June 4, 1888. Mrs. Brown had lived in Washington D. C. since 1967.

Funeral Mass will be held at the Sacred Heart Catholic Church in Canadian Thursday morning, October 23, at 10 a. m. The body will lie in state at the Hill-Stickley Funeral Home in Canadian, Wednesday evening, October 22, from 6 to 9 p. m.

Mrs. Brown is survived by her daughter, Mrs. Katherine Choate of Washington, D. C.; four grandchildren: Mrs. Carole LaMonte of Baltimore, Md., Kenneth Choate of Miami, Fla., Mrs. Billie McClellan of Stanton, Texas, Richard Brown of Wheeler, Texas; a sister and brother in Calif.; and three great grandchildren.

Bale of Cotton

The first bale of cotton for the season was delivered to the Kelton Gin Wednesday, October 15. The 1800 lbs. of cotton was hand picked and produced a 450 lb. bale.

The early bale of cotton was necessary to test the operation of the newly installed gin. The gin at Kelton burned to the ground in April and a gin was moved in from Spur, Texas. The move was completed Oct. 6.

Mrs. Doris Kirkland of Kelton covered two acres of cotton to pick enough open cotton necessary for the bale.

Parade Planned For Homecoming

Next week is homecoming and the Student Council is sponsoring the parade of homecoming floats.

There will be floats from each class and some of the organizations will be represented.

The parade will be open to the public if they wish to have a float. If they want to enter a tie contest there will be a \$20.00 fee. If not they can just have a float to add to the spirit for homecoming.

We would appreciate any participation from the towns people to help make this homecoming a success.

HOSPITAL NOTES

Old Admissions
10-10 Ada Black
Judy Hiser
10-11 Pearl Braxton
10-13 Ola Davis
Ruby Williams
10-14 Johnny Green

New Admissions
10-15 Peggy Rose
Glady's Valencia
10-18 Don Brown
Stephen Frances
Emma Weatherly
10-19 Bryant Richardson
Gorgi Smith
10-20 Wade Hampton
Jewel Leonard
Mary Haddox
10-21 Debbie Knight
Bob Makhani
Danny Doman
Homer Campbell

Dismissals
10-18 Nancy Hampton
10-20 Bryant Richardson
Judy Hiser
Claude R. Cox
Don Green
Don Brown
Essie Mitchell
Stephen Frances
Wade Hampton
Steve Alexander
George Smith
10-21 Bus Dorman

Abusing Dump Ground

Local citizens are abusing dump grounds. For the maintenance of the dump and in order to conform with state law, it was necessary for the city to lock the dump and open it under supervision at specified times.

Since the fencing of the dump, the situation has grown increasingly worse with the fence being opened and trash being left at the gate and fence. Citizens are warned, the council will enforce the rules for the dumping of trash.

Carrying of trash from the dump is prohibited. The council will not tolerate the hauling of trash back into town. Persons carrying trash to the dump intend for it to stay there.

The city dump is open on Wednesday, 1-6 P.M.; Saturday, 10 a.m. to 6 p.m. Wheeler Citizens who pay sewer charges are not charged for dumping trash. Residents outside city limits are charged according to the sign at the dump.

Persons dumping along the roadway and at the gate of the dump can and will be prosecuted.

Phone Problems? Call Mr. Davis

In case of re-occurring problems with telephone service, call Enterprise 372 and ask for Mr. Jim Davis.

Mr. Davis met with the council to request a rate increase for General Telephone Co. Mr. Davis was greeted with complaints on the service being given citizens on the exchange. The council gave a list of complaints known to them but ask citizens to report re-occurring problems to the business office with the hope of improving service.

Parade Planned For Homecoming

Next week is homecoming and the Student Council is sponsoring the parade of homecoming floats.

There will be floats from each class and some of the organizations will be represented.

The parade will be open to the public if they wish to have a float. If they want to enter a tie contest there will be a \$20.00 fee. If not they can just have a float to add to the spirit for homecoming.

We would appreciate any participation from the towns people to help make this homecoming a success.

Colts Are Nipped By Little Irish

The Wheeler Colts ran away with the battle of statistics with the Little Irish from Shamrock last Thursday night on Nicholson Field but came up on the short end of a 14-12 score.

Shamrock scored early on a 56 yard pass play and ran in the extra points which proved to be the difference in the game.

Benny Baker, who made 115 of the Colts 85 rushing yards, let the Colts right back field after the Shamrock touchdown but the drive stalled at the 15 but Shamrock couldn't go and had to punt.

The short kick only traveled to the 17 where Kevin Andis fielded the ball and nearly ran it back for a TD but was dropped on the 3.

It took Baker one play to get into the end zone and the Colts were being by 2 with 6:05 remaining in the half. The run for the tie was no good and the Little Irish held their narrow margin to

Continued page 7

Briscoe News

By Vetola Parker

Mr. and Mrs. Clarence Zybach were the honored guests when family and relatives gathered Saturday night at the home of Bob, Gena & Steve Zybach's. Clarence and Irene are celebrating their Golden Wedding Anniversary. Those attending besides the hosts and honored guests were: Mr. and Mrs. Carl Zybach from Slaton, Texas; Mr. and Mrs. Gaylord Brown, Ginger and Jim Goding from Fort Worth, Texas; Mr. and Mrs. Lew Powers, De Ruyter, New York; Mr. and Mrs. Sylvester Hamm, Waterville, Kansas; Mrs. Isla Salt, Belvedere, Kansas; Mrs. Florine Data, Los Angeles, Calif.; Mr. and Mrs. Jimmy Venable, Las Cruces, New Mexico; Mr. and Mrs. Curtis Hall, Kathy and Kent, of Canyon, Texas; Mr. and Mrs. Elbert Zybach; Mr. and Mrs. Bevard Dukes and Deidre; Mr. and Mrs. Wayne Zybach; Mr. and Mrs. Mike Good, Shane and Travis; Mr. and Mrs. David Zybach, Christy and Shawn and R. L. and Royce Zybach of Briscoe.

We had another frost Friday morning, Oct. 17th. Last Wednesday visitors at Helen Heltons were her brother Ross Hayes from Marianna and sister Fannie Bell and Archie Pace from Clarksville, Texas. Then on Thursday Mr. and Mrs. Joe Hayes from Phillips, Pearl Hammon from Stinnett; Mr. and Mrs. A. C. "T" Hayes from Ft. Worth; Joe Bill Hayes of Canadian; Jessie Fay Dixon of Stinnett; Mark and Annette Meek, Mr. and Mrs. Jimmy Helton and children of Wheeler. Mr. and Mrs. Lee White of Amarillo came on Friday and spent the week end. They picked Om a Lyr up brought her out to visit Sunday, she went to Amarillo with the Lee Whites. Sunday afternoon at Helen's were Janet Young and Sherry Pearson of Elk City. October 21 an ideal day. 55° sunny and pretty with fall coloring. Colie and Vetola Parker visited the Willie Parkers in Reardon, Okla. Thursday night and Saturday morning, they seemed to have the flu, all were better Saturday morning but Willie. A Pink and Blue shower

was given Saturday for Mrs. Eddie Meadows at Briscoe Cafeteria she received a lot of nice and useful gifts. The hostesses were Gay Purcell, Dorothy Walker, Karen Hefley, Bonnie Meadows, Lajo Crownover, Ruby Cole and Carol DeArment. The Chuck Jones family visited in Anadarko, Okla. Saturday

Essie, Donald and Charlie Finsterwald ate Sunday dinner with the Clarence Walters South of Canadian. Talked to Mrs. Lawrence Aderholt's daughter Rita Grayson Monday morning and Mrs. Aderholt is home doing just fine. Bob Markham came home Friday and we are glad to hear he was feeling pretty good Monday. Essie Finsterwald and boys attended Clarence and Irene Zybach's 50th wedding anniversary party Sunday afternoon.

Willie Fillingim and Brenda went to Pampa Sunday afternoon to see the movie Hiding Place. Curtis and Jane Ann Hall and children, Kathy and Brent of Canyon visited the David Zybachs over the week end. Keith and Todd Meek ate dinner with the Jack Meek's Sunday. Kathy Meek of Canyon visited her parents the Jack Meek's this week end. Jack and Evelyn Meek attended the Clarence Zybach's 50th anniversary party Sunday afternoon. Lucille Tipps spent Sunday night with the Dean Tipps family. Hoyle Helton spent Wednesday till Saturday in Wheeler with Jaunell Manning family. Colie and Vetola Parker visited Bob Markham in Wheeler hospital Tuesday. Tuesday night visitors at the L. J. Hudson's were Hoyle Helton and Vetola Parker. Colie and Vetola Parker visited the Claude Parker's Wednesday morning. Last Thursday at the Willis Fillingim home to celebrate Sharon Sumpter 11th birthday were Carla and Tom Bible, Jeff Baker, Darla, Diana and Dwayne Sumpter, Carolyn Gilmer, Brenda, Sharon, Lillie, Mona and Dennis Sumpter Todd and Lisa Meek. Dick and Ruth Irwin, Rick and Bekkie visited Leon and Vera Fillingim and their guest Glen and Mozell Thomas and David Saturday. Bill and Lori Finwick of Canadian ate dinner last Wednesday with Verna Fillingim and visited Sophia Helton and Willa Fillingim on her way home. Ray and Pat Hudson and Sharon of Borger ate dinner last Wednesday with the Lester Hudsons, the girls visited Billie Sue Stuckey, Ray worked some at the store. Weekend visitors in the Dayle Perry home were Mr. and Mrs. K. D. Louthet, the Odell Perry's from Wheeler visited Saturday and Sunday evening. E. F. Meadows in Wheeler, Okla. visited with the Donald Stuckey's Saturday and Sunday. Lon North was down from Pampa and spent Saturday and Sunday. Lois Hudson ate Sunday Dinner with Mr. and Mrs. B. F. Meadows in Wheeler. Mr. and Mrs. Ray Hudson from Borger was in Briscoe Wednesday, they ate dinner with Mr. and Mrs. L. J. Hudson. Ray did some work on the store building. Mr. and Mrs. Cliff Walker went to Oklahoma City Wednesday, where a three day training conference was held at the Lincoln Plaza Inn for postmasters sponsored by the Oklahoma National Association of postmasters. Postmasters from Oklahoma, Texas and Kansas attended the seminar. They left Saturday and visited with the Elmer Maxwells and Clarence Davis family at Porum, Okla. and spent the weekend with Mr. and Mrs. Ralph Criswell at Rogers, Arkansas, returning Monday.

Furniture-Appliance TOONS

By Pierce's Trading Post

Pin a CHRONIC LIAR down and he will lie STILL.



My Last Wish Was To Go To

Pierce's Trading Post

"Furniture, Carpet, Plumbing & Appliances"

401 East Oklahoma Phone: 826-5212

Insurance-Tips

By Thurman Rives



Ain't No Use Robbin Folks Around Hyar, They's All insured With

RIVES INSURANCE AGENCY

"We put the sure in your Insurance"

117 W. Texas St. Wheeler, Texas Phone: 826-5224

Bowen Plumbing & Ditching

Backhoe Work, Sewer, Gas and Water Hook-ups, Plastic Pipe and Septic Tank Sales & Installation


Also Septic Tank Cleaning

Route 1 Canadian, Texas 79014

Phone (806) 323-6937 or 5471 or 6478 Mobil Unit 100 Mobeetie 845-3151

Blakemore

FRESH PROTEIN FED CATFISH



"Dressed While You Wait"

BLAKEMORE MOTOR CO. BUILDING

Phone 253-3287

406 North Main Shamrock, Texas 79079

Court Records

LIST OF INSTRUMENTS FILED IN THE OFFICE OF THE COUNTY CLERK OF WHEELER COUNTY, TEXAS FROM OCTOBER 13 THRU OCTOBER 17, 1975

OCTOBER 13, 1975
 KOL--Hudson Ohio Oil Co to John B Zuerker et ux 10-3-75 NE 1/4 SE 1/4 17 BLK A-5
 QCD--Helen M Robinson to I L Cook 9-18-75 .0000 488 Min Int 5/8 Sec 48 Blk 2-4
 QCD--Margaret S Trumble to I L Cook 10-3-75 1/2 of 12/9600 MI 5/8 Sec 48 Blk 24
 AOL--Marie Lister to Neuhoff Oil and Gas Corp 9-25-75 Sec 12 Blk A-3
 AOL--Marie Lister to N A Steed et al 9-25-75 Sec 12 Blk A-3
 ROY D--Jex J Power to George A Donnelly Jr et al 10-9-75 12.5621 NW 1/4 40 A-8
 ROY D-- Eastland Oil Co to George A Donnelly Jr et al 10-9-75 Mesne Interests E 1/2 SE 1/4 32 NW 1/4 31 Blk A-8; N 21L 28ac E 1/4 14 Blk L; Pt 5 & Pt 8 Blk E
 DT--Chester J Beasley et ux to City Natl Bk in Sayre 10-10-75 7.04 ac SW 1/4 Sec 64 Blk 17
OCTOBER 14, 1975
 ROY D--Robert E Landreth to San F Hurt Jr et al 10-6-75 1/7 int 135 ac SE 1/4 & 1/16 int NE 1/4 Sec 8 Blk E
 AOL-- Gasanadarko Ltd to Malouf Abraham Co 10-8-75 Secs 36, 37 E 3/4 48 pt 47 M-1
 ROW--Isaac Carter et ux to El Paso Natural Gas Co 9-30-75 N 1/2 SW 1/4 Sec 5 IRR Co Sur
 ROW--Bessie M Ramsey to El Paso Natural Gas Co 9-30-75 2 2/3 NE 1/4 Sec 2 T&NO Ry Co Sur
 D--Claudine Clark to Donald E Clark et ux 7-2-75 Lot 10 W 1/2 11 Blk 8 Shamrock HSA
 DT--Bynum E Smith et ux to Lomas & Nettleton Co, The 9-11-75 100' x 165' Sec 50 A-8
 D--United States of America to Dorman W Thomas et ux 9-3-75 Lots 1, 2 Blk 3 Vise SD
 DT--Thomas W Dorman et ux to United States of America 10-8-75 Lots 1, 2 Blk 3 Vise SD
 D--Edward Leon Clay et al to Harry Alexander et ux 9-15-75 Lot 5 N 1/2 5 Blk 69, Shamrock, WSSA.
 RDT--United States of America to Elmer M Tinsley et ux 9-2
 et ux 9-30-75 Lot 15 Blk 11, Shamrock, PSA
OCTOBER 15, 1975
 QCD--Lois S Sharpsteen to I L Cook 10-3-75 1/2 of 12/9600 MI 5/8 48 Blk 24
 AOL--Minco Oil and Gas Co to Amarex Inc 9-30-75 225.36 ac S14s Phifer Survey 59.364 ac E 132
 37 ac Stephen Keith Survey
 OL--Bobby L Willis et ux to John C Vise 8-2-75 10 ac SE 1/4 Sec 52 Blk A-8
 AOL--John C Vise et ux to Yucca Petroleum Co 10-6-75 SE 1/4 Sec 52 Blk A-8
 EXT OL--Frank C Jackson to Phillips Pet Co 9-8-75 NW 1/4 Sec 47 Blk 24
 PARTIAL RDT--Houston Bk for Cooperatives to Associated Milk Producers, Inc 10-7-75 Pt W 1/2 Sec 5 Blk A-4
 A OF JUDGEMENT--David Lowrie vs Darrell Hutchison 10-15-75
 D--Lydis B McDonald Tywater et vir to Terence A Cook 10-15-75 N 1/2 NW 1/4 & N 1/2 NE 1/4 & SE 1/4 NE 1/4 Sec 11 Blk A-8
OCTOBER 16, 1975
 D--Nellie McNeill et vir to Theodore A Heide et ux 9-29-75 106 x 160' E 1/2 Sec 60 Blk A-8 (Pt Sub Div 6)
 DT--Theodore A Heide et ux to Nellie McNeill 9-29-75 106' x 160' E 1/2 Sec 60 Blk A-8 (Pt Sub Div 6)
 MD--F H Davidson et ux to Rita Beth Weakley et al 10-15-75 40 ac int each W 1/2 NW 1/4 & W 1/2 NE 1/4 Sec 20 Blk A-7
 D--Millie Avelette Isaacs to Jack W Toolen 5-6-19.

Look what we have for you during the PIONEER.



More farmers planted more Pioneer brand seed than ever before and it looks like their harvest will break all records. To celebrate that victory we have special incentives for Pioneer brand corn or sorghum producers.

Ask your dealer about these premiums.



FREE Gold Jacket - Help us record the results of this year's Pioneer brand corn and sorghum crop and you'll receive one of these smart-looking gold dacron/cotton jackets.

Seed Purchased	Discount
50 lbs	5%
100 lbs	10%
200 lbs	12%
300 lb over	15%

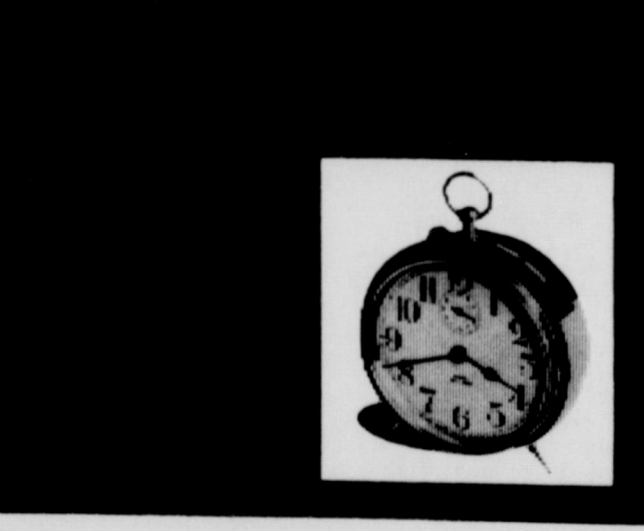
VOLUME INCENTIVE PRICES - the more Pioneer brand seed you buy the less each bag costs. Here are the volume discounts you'll earn.

Allison Grain & Farm Supply

ALLISON, TEXAS

PIONEER SEEDS

Some people won't give you the time of day.



But that's not us. We'll give you not only the time, but the temperature, with our brand spankin' new community service display. To be installed on or about Oct. 31. Service is the whole idea behind our business. So, we could think of no better way to express this than through the continuous, 24-hour time/temperature service this new display will provide. With each glance we hope it will remind you of the accurate, reliable financial services you'll find inside our offices.

We'll give you the time of day. Along with the temperature. And the best darn financial service this side of anywhere. Every time!

The Progressive First National Bank

Promoting Progress in the Wheeler Area

Mrs. Fred Wood Club Hostess

The '54 Study Club met Oct. 13, 1975 in the home of Mrs. Fred Wood with Mrs. Alta Jean Davis as co-hostess. President, Mrs. Floyd Davidson opened the meeting with the devotion. She read a poem offered to her by her mother. The poem was over a 100 years old. Mrs. Carroll Adams and Mrs. W. D. Mitchell reported on the Library news. Grants have been given by the city for the Wheeler County Library to be moved to the Nicholson Memorial Hospital building in the near future. The program was given by Mrs. Carroll Adams. The theme for the year is "The Bi-centennial Year 1776-1976." She told about some of the "Early Days of American History." We welcome Mrs. Jerry Fritchard as a new member of our club. Guest were Mrs. Lorene Errington and Mrs. Hazel Parks. Delicious refreshments were served to the following: Mrs. Carroll Adams, Mrs. Alta Jean Davis, Mrs. Floyd Davidson, Mrs. Lloyd Davidson, Mrs. W. D. Mitchell, Mrs. Jerry Prichard, Mrs. George Weems, Mrs. Betty Cox, Mrs. Lorene Errington, Mrs. Hazel Parks and the hostess Mrs. Fred Wood.

Anthony's COLD WEATHER SALE

314 N. MAIN SHAMROCK, TEXAS THURSDAY, FRIDAY and SATURDAY

Quilted Nylon Jackets Reg. \$99 **6.97**

Men's Thermal Underwear—Tops & Bottoms **2.77 ea. 2 for \$5.**

Ladies' Flannel Gowns and Pajamas **3.99 and 4.50**

RED WING SPECIAL INTRODUCTORY OFFER **20% OFF SAFETY SHOE HEADQUARTERS**

STEEL TOE SAFETY

Also Available With Steel Toe

B and D Widths

These Styles Are Available. Save up to \$7.39

Men's FLANNEL SHIRTS **\$3.99 or 3 for 10**

Boy's FLANNEL SHIRTS **\$2**

75 NW 1/4 Sec 28 Blk 17
 KOL--Kerr-McGee Corp
 Atchison Topeka and
 Fe Ry Co. 10-8-75 28.83
 ac N 1/2 N Sec 1 Camp Co
 Sch Land; 1875 ac Sec
 2 Blk C, Lot 1 Blk 3
 Briscoe
 ROL--Chevron Oil Co et
 to J C Bradstreet et al
 Secs 27, 33, 6, 15, 4, 34
 A-4
 DISCLAMER--Rex P
 et al to Minco Oil and
 Co 10-9-75 W 1/2 NW 1/4
 L
 D--Ruby Bathrope to
 sallyn Pruitt 10-9-75 Lot
 Blk 8 Shamrock
 D--Mary Kay Patton to
 Jacinta A Mefford 10-14-75
 Lots 6, 8 Blk 6 Shamrock
 DT--Jacinta A Mefford to
 United States of America
 10-14-75 Lots 7, 8 Blk 6
 Shamrock
 OL--William Bruce Ham
 ton et al to Arka Explor
 Co 9-17-75 Sec 40 Blk
 A-4

Continued page

HERE'S TO YOUR HEALTH

HYLAND WEAV

Can colds be avoided? W
 increase when the col
 heating season begins,
 cause the dry air in he
 rooms parches the nose
 throat membranes, whic
 then more susceptible t
 rus infection. Dry mu
 membranes cannot clea
 themselves by action of
 cilia (hairlike structu
 that move mucous up
 out of the respiratory
 tem, clearing away ger
 and viruses. If busi
 schools, and places of
 can be humidified to
 40% it should help
 duce the common cold
 fection.

PHYLAND PHARMAC

PH 826-556

Farmers Hog Mkt.

OPEN EVERY THURSDAY
 8:00 a.m. to 2:00 p.m.
 Brashers Sale Barn
 1-mile North on Highway 2
 Shamrock, Texas
Bob Richie PH. 236-25
 Day or Night
 HOG BUYER

TEXAS TALK

By George Richardson

Some folks are saying the most amazing thing about Beefalo may be that it's only breed on record more than one-half bull. Most cattlemen agree the new breed holds a lot of promise for the industry but many of them are hedging their prediction with a wait and see attitude. Founder of the breed, Bill Basolo, got everybody's attention last year by announcing the sale of a Beef bull for two and a half million dollars. And a lot of those in line to begin raising California-spawned breed quick to praise the animal's rapid gain on basically forage rations, hardy adaptation to sparse land and nutritious meat. One of the problems an extensive study done in Canada on an earlier beef buffalo cross which showed poor results. Promoters of American breed say the problems were all solved in today's Beefalo which is a quarter Hereford, three eighths Charolais and three eighths Buffalo.

Wheeler County Farm Bureau

Wheeler, Texas

SHUGART COUPON

Thurs., Oct. 30

Loyd's Ben Franklin 408 Main St. **9**

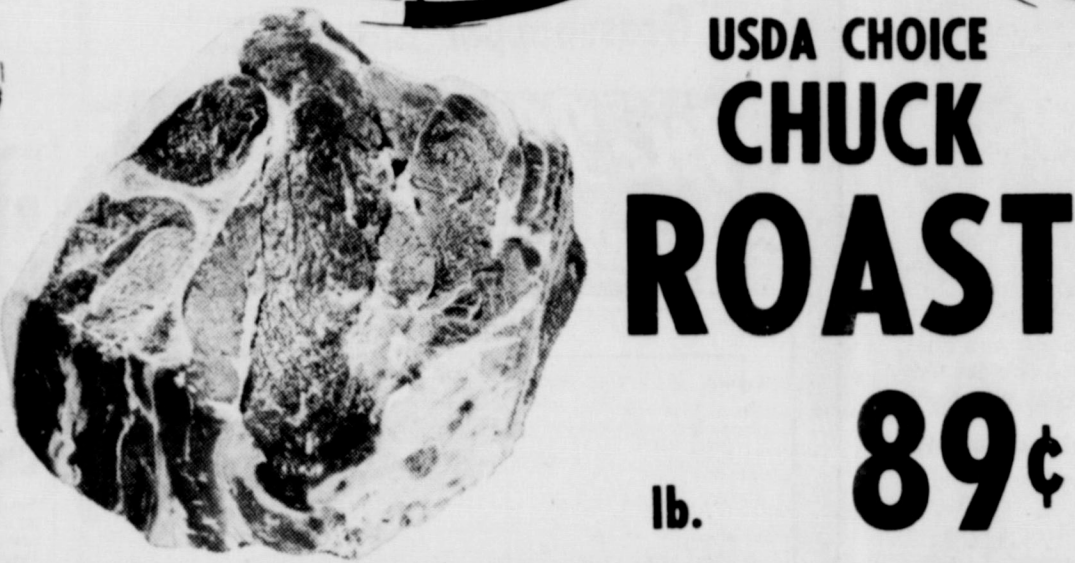
WALLET SIZE COLOR PORTRAITS **99¢**

ASK About Our **FREE 8 x 10 OFFER** Extra charge for GROUPS

BUDGET STRETCHERS

Prices Effective
Thurs.-Fri.-Sat.
October 23-25

**GO MUSTANGS!
BEAT
McLean**



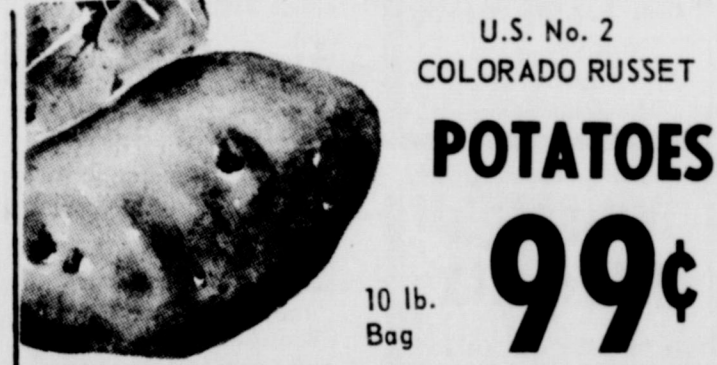
**Congratulations DAVID BRITT
Who won last weeks' Pick
The Winner Contest:**

BEEF SHORT RIBS
USDA CHOICE lb. **69¢**

BONELESS HAM
WILSON'S lb. **\$2.69**

9th BIG WEEK PICK THE WINNER CONTEST
at ROARK'S FINE FOOD

\$25.00 will be given each week during the High School Football Season to the winner of our PICK THE WINNER CONTEST. Each week 10 area High School games will be listed. You pick the winner and guess the total yardage of the Tie Breaker Game. The entry with the most winners picked and with the closest guess to the total yards gained in the Tie Breaker Game will win \$25.00. In the event of a tie the money will be divided between the winners. Play each week and Support your High School Team.



CRISP HEADS LETTUCE lb. **29¢**

CALIFORNIA TOMATOES **39¢**

All entries must be in the store not later than 6:00 P.M. Thursday, Oct. 23, 1975. You must be 18 or over to enter. Prize money will be divided in the event of a tie. Winner will be notified. No Purchase Necessary.

CIRCLE THE WINNER

Wheeler	vs	Clarendon
Memphis	vs	Silverton
Shamrock	vs	Wellington
Claude	vs	McLean
Barger	vs	Pampa
White Deer	vs	Fritch
Canadian	vs	Stinnett
Perryton	vs	Canyon
Stratford	vs	Cruver
Groom	vs	Texline

TIE BREAKER
TOTAL YARDAGE GAINED BY WHEELER AND CLARENDON WILL BE _____ YARDS.

NAME _____
ADDRESS _____
PHONE _____



PATIO BEEF TAMALES DINNER Reg. \$1.37 15 oz. **69¢**

MAKE A BETTER BURGER 3 oz. Box **45¢**

KOLD COUNTRY TV DINNERS 11 oz. Pkg. **55¢**

HUSKY DOG FOOD 15 3/4 oz. Cans **\$1.00**

COFFEEMATE COFFEE CREAMER 11 oz. Jar **65¢**

MORTONS GLAZED DONUTS 11 oz. Box **85¢**

DELICIOUS EATING LITTLE DEBBIES **73¢**

TONY'S SUPREME PIZZA Each Only **\$1.75**

BORDEN'S COTTAGE CHEESE 12 oz. Ctn. **61¢**

KIMBELL MUSTARD 1/2 Jar **39¢**

PRESTONE ANTI-FREEZE Gal. Only **\$.99**

King Size COKE 6 Bottle Carton **69¢**



- OPEN MON.-SAT. 8 a.m. till 6:30 p.m.
- USDA FOOD STAMPS ACCEPTED
- FREE DELIVERY WITH \$2.50 PURCHASE
- FEATURING GUNN BROTHERS STAMPS

**YOUR FRIENDLY HOME OWNED
AND OPERATED GROCERY STORE**

for all your . . .

PARTS NEEDS

see . . .

BAKER AUTOMOTIVE

116 East Texas Phone: 826-3273

Your **GREEN LIGHT** Auto Parts Store

Want Ads

FOR RENT: Trailer Space Black Gold Trailer Park Phone 826-5874. rtn

WANTED: Reliable full time farm and ranch man. Contact Bill Waters 806/669-6851 or 669-2494. Pampa.

REDUCE SAFE and fast with GoBese Tablets and E-Vap "water pills" Hyland's Pharmacy. 10tp

FOR SALE: Bantans six pure blood breeds and mixed. Phone: 826-5208. 1tp

WATCH FOOTBALL on a new R.C.A. We have a full line of new t.v.'s. L & F Repair. rtn

LOST: Billfold - Keep all funds but paper return to the Post Office. A. B. Watson 1tp

For Rent: Trailer Space \$20.00 a month Call 845-2721 or 845-3171

FOR SALE: 2 bedroom houses. Paul's Real Estate. Paul Topper. rtn

DRY CLEANING 8 lbs. \$4.00 City Cleaners & Fabrics 400 S. Main 826-3268

PAUL'S TRAILER PARK
Across Street From School
Trailer lots 40'x70'
Modern Underground Utilities
Gas and Water furnished
Individual Electric Meters
PAUL TOPPER - Ph. 8237 or 5931

FOR SALE: 1973 Premer 2 horse trailer, electric brakes. Phone: 826-3077. rtn

FOR SALE: Firewood-Locust, Oak, Cottonwood. Also Locust Post. Call after 5:00 p.m. Shamrock-256-2891. Briscoe-375-2256 or Wheeler 826-3182 1tp

HOUSE FOR SALE: 2 bedroom house 1 1/2 miles east of town. .66 acres, Call Gary Bray, 806-935-5989 after 6 or 806-935-3937 from 8:00 to 5:00 rtn

FOR SALE: 1-1970 Model F Gleaner Combine. 17' header, cab and Air Conditioner. See Wendell Morgan

Seamless Reinforced Concrete STORM SHUTTERS
227-4337
Fairview
Northwest Oklahoma Storm Shelter Co.

FOR SALE: Nearly new 30" gas range with "continuous clean" oven. \$150. Louis C. Stas, 826-3123. rtn

FOR SALE: 2 bedroom, 2 bath home on Alan L. Bean Call 826-5719 or 857-3141 in Pritch. rtn

Monuments, Grave Covers and Curbing. Complete finishing. Will Warren, Wheeler. rtn

FOR SALE: Lot 100 x 300 ft. 207 S. Stanley. Phone before five 826-3011, after five 826-5905. rtn

HOUSE FOR SALE: 2652 sq. ft. 4 bedroom, 2 1/2 baths kitchen appliances built-in, carpeted, all-electric, full size basement. Call after 5:00 826-3154. rtn

FOR SALE: 1974 Model 4-door Impala \$800 Mi. From Marvin Healey Estate. Call 375-2386 after 8 p.m. rtn

FOR SALE: Mobil Home Shop, Solid 14x52' Town and Country. 2 Bedroom, front kitchen. Cash for equity. 845-2231 Mobeetie. 2c

FOR SALE: Very fine junk for sale 110 S. Canadian - Friday 1tc

FOR SALE: Hand made gifts, pillows, hooked rugs, aprons, towels, pillow cases, house shoes, baby booties, etc., etc. Mrs. Cecil Clark, 700 Kiowa St. 2p

FOR SALE: Four bedroom house completely remodeled. New Carpeting, fireplace, den, 2 baths. Includes 4 lots and 22' x 40' steel building. \$26,000.00. Call after 6:00 p.m. 435-2424 rtn

HOMESTEAD 640 ACRES Millions of acres of public land still available! Government Land Survey, 155 Laws -- 20, Ukiah, Calif. 95482 6tc

THE BUSINESS DIRECTORY

TEXAS PRESS ASSOCIATION

MEMBER 1975

Published Every Thursday at Wheeler, Texas, By . . .

THE WHEELER TIMES
P.O. Box 1080
Phone: 826-3123

Louis C. Stas, Owner and Publisher
Entered as second-class matter December 18, 1933, at the Post Office at Wheeler, Texas 79096, under the act March 3, 1879.

Wheeler Lodge No. 1099 A.F. & A.M. MONDAY 7:00 P.M.
Percy Farmer, Sec'y.
Members Urged To Attend.
Visitors Welcome.

WRIGHT FUNERAL HOME
All Types Cemetery and Memorial Work
Phone: 806-826-5214

STORM-SCREEN WINDOWS
Permanent year-round protection. Changeable from inside. Easy to clean, powder-proof. Eliminates drafts. Cuts fuel bills. . . .
WHEELER LUMBER CO.
Phone 826-5543. Wheeler, Tex. Fine Service for Fine People.

TRACTORS - IMPLEMENTS PARTS AND SERVICE
HIBLER IMPLEMENT CO.
Wheeler, Texas

Let Me Write It . . .
GEO. RICHARDSON
All Types OF INSURANCE

NOTICE OF ASSURANCE
The Wheeler ISD hereby agrees that it will comply with Title IX of the Education Amendments, which provide that "No person in the United States shall on the basis of sex, race or natural origin, be excluded from participation or discriminated against, denied the benefits of or be subjected to discrimination under any education program or activity, receiving Federal financial assistance, with certain exceptions as specified in the law itself, and hereby gives assurance that it will take the measure necessary to effectuate this agreement. 2c

NEEDED: COMBAT ARM'S PEOPLE
If you qualify, we'll teach you a job, pay you while you learn, and give you one of the best benefit packages anywhere. Then you'll earn your keep and know a job. Join the people who've joined the Army.
Call 8, Call 806/665-2022 in Pampa for SFC Charles C. Reed.

FOR SALE: 1965 half ton 6 cylinder pickup. In good mechanical condition. Good rubber. Phone 826-3067

FOR SALE: 1974 Yamaha Enduro, Low mileage. Phone 826-3077 rtn

FOR SALE: Baled Hay - Gear hay in field. Elmer Simpson, Wheeler, Phone 826-3284 2tp

SEALED BIDS
The Wheeler ISD Board of Trustees will offer for sale by bid the following equipment:
5 Typewriters
5 Sewing machines with cabinets
1 Lawn mower (not operable)
Equipment may be seen by contacting School Business Office. Submit bids to Mrs. Vida Brown, Secretary, Board of Trustees, Wheeler Independent School District.

Bids will be opened November 13, at the regular Board Meeting. The Board reserves the right to reject any or all bids. 3tc

FOR SALE: Chucks, Bob White Quail, Paroh Quail, Pullets and fryers. Mares and Fillies. Call 323-6067 Canadian rtn

WANTED: Woman to live in with elderly woman or 5 days week, 9:00 a.m. til 5 p.m. Preferably middle aged or older mostly as companionship. Some light house keeping and reference required. Call 826-5830 or come by 500 Reynolds rtn

FOR SALE: Chuckars, Bob White Quail, Paroh Quail, Pullets and fryers. Mares and Fillies. Call 323-6067 Canadian rtn

WANTED: Woman to live in with elderly woman or 5 days week, 9:00 a.m. til 5 p.m. Preferably middle aged or older mostly as companionship. Some light house keeping and reference required. Call 826-5830 or come by 500 Reynolds rtn

FOR SALE: 1974 Yamaha Enduro, Low mileage. Phone 826-3077 rtn



Awards Won At Bantam Show

Vernon Shelton and William Cornell were participants in the Amarillo Bantam Show the weekend of October 18 and 19.

They are shown with their ribbons won at the show with their bantams. Vernon walked away with 9 first place blue ribbons and William came in with 4 first place and two second place ribbons.

The bantam show consisted of all different breeds in bantam types. The boys entered the Junior show.

There were some 70 to 80 chickens entered in the Jr. show and over 60 in the combined show. This years show was the largest bantam show ever held in Amarillo. There were entries from all over Texas and New Mexico. The judge for this show was L. C. "Corky" Higher of Norman, Oklahoma.

The boys have these as their FFA projects. They are already making plans to enter the spring show in March.

PERSONAL
Mrs. Albert Chapman, owner and operator of City Flower and Gift, along with her assistant Mrs. Donald Reeves and guest Mrs. Ben Riley of Oklahoma City attended Tall in Texas Design School October 12 in Hilton Inn Ball Room in Amarillo. School started at 9 a.m. with luncheon at 12:00 with lovely young models modeling newest fashions from stores in Amarillo. Three well known designers along with Nationally known Commentator Carolyn Bashlor, Savannah, Ga. This was a Christmas Design School and one of the best in years according to Mrs. Chapman.

Shamrock

Wills was on the spot a couple of plays later and recovered a Thompson fumble. Wheeler continued to flirt with disaster as an on rushing Irish nearly beat

the ball to Guthrie on first down and away the ball went again and Shamrock recovered at the Mustang 26. The penalty flag floated against the Irish on this trip and they drew two 15 yarders that helped force a punt from their own 47.

Game Statistics:	Wheeler	Shamrock
First Downs	10	16
Net Yards Rushing	155	196
Net Yards Passing	21	0
Total Yards Gained	176	196
Passes & Completions	6-1	2-0
Opp. Passes Intercepted	0	0
Fumbles & Fumbles Lost	6-4	2-2
Penalties & Yardage	9-79	4-60
Punts & Average	3-36	5-34
Return Yardage	5	0
Total Plays	55	60

Both clubs disdained the pass except in pretty obvious situations throughout the game and consequently the game developed into a ground eating contest.

The Mustangs had the only pass completion of the game and that was a 21 yarder from Don Brown to Dan Helton in the waning seconds of the contest.

After the knotted up first half, the Mustangs took the second half kickoff and made their best sustained drive of the game down to the Irish 17 but a motion penalty killed the momentum and a Jim Verden field goal try that would have been 43 yards was way short. Dan Helton and Terry

Tidwell led this drive through the line of the Irish defense a Mustang forward that was gouging good holes.

Tidwell picked up down at the Shamrock on the eighth play drive and it appeared the Mustangs were denied.

But, Tidwell kept the Mustangs from moving the 17 and then the fine moved the Mustang back to the 24.

Tidwell's number called at right tackle third down but the were waiting and the Mustang wingback another loss of 12.

Shamrock got a yard after the Mustangs' vicious threat before the game as if it would end in less deadlock.

Thoughts of the game vanished quickly. Brown, who played half injured, never after the Irish kick at Kingston draped a ball at that point for Irish.

Four running plays Irish on the Wheeler second down facing the Mustangs drew the distance penalty other personal foul. Thompson then started from 25 out to break goose eggs.

Helton blocked Thompson's kick on the point try but it really matter as the Irish led the game the next way.

Shamrock's last drive a touchdown started Irish 21 after Wheeler been forced to kick.

The Irish ran right Mustangs on the 79 march with Thompson breaking loose once he was hauled down Mustang secondary getting 25 yards on a burst up the middle.

From the Wheeler Irish got a free 11 on a personal foul once again against and Thompson scored the 2 four plays later.

McLean was very effective at last week and this is the Tige's main suit use an outside attack ly out of the wishbone was really hard to teach how effective McLean on either offense or last week as Memphis ply outlaced and out ned them from the jump.

Dan Helton had per his best game both off ly and defensively last week against the Irish was added in the num partment by wingback Tidwell.

The Mustangs coaching staff had praise for the terior of the Mustangs fensive front for doing commendable job of blocking in the offensive trench Tommy Weaver and Markham at guards and Verden and Tim Pattee tackles.

Kickoff for the Mustang Tiger tilt is 7:30.

New Merchandise Arriving Daily "JAWS" T-Shirts

Leisure Suits & M. Shirts
Sport Coats Sizes: 36 to 46
Boys Double Knit Pants
Flare Leg ON SALE
Ladies Long Sleeve Knit Blouses
Toe Socks
Coats by Juli de Roma
Grasshopper Shoes Assorted Colors

McIlhany DRY GOODS
Phone 826-5633 FOR Everything YOU WEAR

The Wheeler Abstract Company announces the acquisition of the Roberts County Abstract Company in Miami, Texas.

The office will be operated under the partnership of Dennis H. Porter and Ruth Rogers. The new phone number will be 868-5911.

Under the new system, orders and inquiries may be made at either office. The office manager at Wheeler will be Barbara Stas. Dennis Porter will manage the office at Miami.

In the near future, we hope to have the same full service at Miami that we now have at Wheeler. We hope to have your continued business.
Ruth Rogers

RADIATOR AND HEAD SHOP
Complete Radiator and Cylinder Head Work
301 E. 12th
Shamrock, Texas
Ph. 256-3151
Richard Blakemore - Owner

SAWS SHARPENED
Hand Saws - Skill Saws
Table Saw Blades
Chain Saws
Jointer Blades
Foley Equipment
R. St. John
Mobeetie

RENT OUR RINSE N VAC
Get carpets professionally clean.
New RINSE N VAC operates on the steam principle to get your carpets professionally clean. Portable and easy to operate. We'll show you how. RINSE N VAC is the powerhouse that cleans, rinses and vacuums out dirt and residues. RINSE N VAC cleans carpets cleaner - keeps them cleaner longer.
Rent for only 12.00 a day
LOYD'S Ben Franklin 826-5868

REPORT OF THE CONDITION OF THE First National Bank of Wheeler

IN THE STATE OF TEXAS, AT THE CLOSE OF BUSINESS ON SEPT. 30, 1975 PUBLISHED IN RESPONSE TO CALL MADE BY COMPTROLLER OF THE CURRENCY, UNDER SECTION 161, U.S. REVISED STATUTES

ASSETS	
Cash and due from banks	\$1,266,205.61
U. S. Treasury securities	249,765.63
Securities of other U. S. Government agencies and corporations	640,114.34
Obligations of States and political subdivisions	1,347,217.55
Other securities	6,000.00
Federal funds sold and securities purchased under agreements to resell	1,475,000.00
Loans	4,377,775.23
Bank premises, furniture and fixtures and other assets representing bank premises	13,953.51
Other Assets	
TOTAL ASSETS	\$9,376,031.87
LIABILITIES	
Demand deposits of individuals, partnerships and corporations	3,749,690.27
Time and savings deposits of individuals, partnerships and corporations	3,817,628.79
Deposits of United States Government	39,016.80
Deposits of States and political subdivisions	556,882.10
Deposits of commercial banks	146,488.08
Certified and officers' checks, etc.	
TOTAL DEPOSITS	\$8,309,706.04
(a) total demand deposits	\$4,140,617.81
(b) total time & savings deposits	\$4,169,088.23
Other liabilities	31,781.50
TOTAL LIABILITIES	\$8,341,487.54
Reserve for Bad Debts	42,334.15
TOTAL RESERVES ON LOANS AND SECURITIES	42,334.15
CAPITAL ACCOUNTS	
Equity capital - total	992,170.18
Common Stock-total par value	\$10,000
No. shares authorized	10,000
No. shares outstanding	10,000
Surplus	100,000.00
Undivided profits	192,210.18
Reserve for contingencies & other capital reserves	600,000.00
TOTAL CAPITAL ACCOUNTS	992,210.18
TOTAL LIABILITIES	\$9,376,031.87

I, Adrian R. Risner, Vice President, of the above-named bank do hereby declare that this report of condition is true and correct to the best of my knowledge and belief.
We, the undersigned directors attest the correctness of this report of condition and declare that it has been examined by us and to the best of our knowledge and belief is true and correct.
/s/ Charles R. Brown
/s/ O. B. Burton
/s/ L. T. Lee

THE W
... in an
our new
White Stag
the new
"CLAY"
Holiday Line
Dot S
...
IN
326-571
...
Thu
9
ORDER
...
Extra
Charg
for
GROU
...
S
C
...
Lo
...
Third
Anniversar
Sale
STUART'S FAB
At Blinker Signal on
Mobeetie - Ph. 845-2
Double Knit Solid 2
and Fancies
(Reg. 3.98 & 4.98) 3
Double Knit & Subst
and Fancies
(Reg. 2.98)
Other Tables \$2.29 & 1
Short Lengths - Double
...
Quilt Scraps
Flannels
Perma-Press Lengths
Domestics (Bleached
& Unbleached)
Domestic (Seconds)
Non Roll Elastic 3
Buttons & Zippers 105
WE HAVE A NEW SHIP
SALE ENDS OCT. 31

Mobeetie News

NOW WHITE STAG

... in and
... our new
... White Stag
... the new
... "CLAY"
... Holiday Line!

Dot Shop



**LEWALLEN
INSURANCE AGENCY**
ALL - LINES
325-5719 114 E. Texas

Thurs., Oct. 30
9 99¢
KING SIZE WALLET CREATIVE COLOR PORTRAITS FOR ONLY
ORDER PICTURES FOR CHRISTMAS NOW

**SHUGART
COLOR
PHOTOS**
Loyd's Ben Franklin
408 Main Street

By Mrs. Wilber Beck
Mobeetie was saddened to hear of the loss of Mrs. Arzia Corcoran's brother Irie Shahan in California last week. Mrs. Corcoran left for California, Friday last week. Our sympathy is extended to Mr. and Mrs. Corcoran and their family. Mrs. Gazelle Patterson is home from the Highland General Hospital in Pampa, following several weeks stay. She is recuperating nicely at this time. Odell Nelson of Antlers, Okla., visited with his cousin, Mr. and Mrs. Clarence Dyson last week. The gentlemen are cousins. Mr. and Mrs. Virgel Smith of Shawnee, Okla., visited the lady's sister and brother in law last weekend, Mr. and Mrs. Patterson. Mr. and Mrs. C.W. Burch visited their brother in law Jim Sackett in Pampa, Sunday afternoon. Mrs. Margaret Trout recently

Briscoe H. D. Club Meets

Dried flower arrangements was the program of the Briscoe Home Demonstration Club, which met October 7, in the club house, with Jane Kiker as hostess. Many attractive flower arrangements and singles were shown by Katie Finsterwald and Mary Dodd. Start gathering material for dried arrangements in the summer as well as fall. Spray them with clear plastic or varnish. Those present were: Effie Renfro, Ruby Zybach, Evelyn Meek, Neta Evans, Barbara Williams and Denise, Emma Rogers, Essie Finsterwald, Frances Heffley, Nancy Rogers, Mary Dodd, Katie Finsterwald and Christi, Irene Zybach and Jane Kiker.

GIRL SCOUTS
Girl Scout, troop 118, met Oct. 7, 1975. We discussed the badge "Home Health and Safety". This badge will help earn the Girl Scout "Sgn of the Star". The troop voted to give an award to the girls who wears her uniform every meeting. Scouts present at the meeting were Tywa Collins, Chandra Crockett, Michelle Cross, Monica Cross, Mona Jennings, Teresa Martin, Tracy Walker, Angel Weaver, Tracy Weaver, and leaders Mrs. Lasley and Mrs. Cross. Refreshments were served by Angel Weaver.

Mrs. Loretta Shera and son John of Lubbock came Sunday to visit a few days with Mrs. Jess Crowder.

Card of Thanks
We wish to thank everyone who showed their love and concern to us in the loss of our beloved one, Russell Hull. We appreciate the prayers, the visits, the telephone calls, the floral tributes and the memorials. God Bless Each of You: Mrs. Russell Hull Mr. and Mrs. Herndon Sloan Mr. and Mrs. Bill Eads Neta, Eldon and Brandie Eads

returned home following a two week visit with her daughter, Mr. and Mrs. Charles Mixon and family of Amhurst. Mrs. Jerry Jones and Christina of Wheeler and Mrs.

IMPORTANT Tax Savings!

Farmers
Salesmen
Small Business Owners
... the law permits you to set aside a substantial part of your annual income for retirement, tax free. You may be eligible for this saving. Ask me about Individual Retirement Annuities for Modern Woodmen members.



Robert L. Fincher
Route 2
Sayre, Okla. 73662

MODERN WOODMEN OF AMERICA

Fraternit Life Insurance
Home Office • Rock Island, Illinois

PAINTING

Interior & Exterior
Commercial & Residential
Brush, Roller, and Spray
Painting.
No Job Too Large
(Except Skyscrapers)
or Too Small.
Reasonable Rates
Call:
DONALD FORD
(806) 826-3106
Wheeler, Texas

Dr. M. V. Cobb

CHIROPRACTOR
Specializing In The
Examination And
Treatment of Spinal
And Nervous Disorders
256-2133
310 South Main
Shamrock, Texas

BUTCHERING & PROCESSING PRICES

Beef processed, double wrapped 14¢ per pound
1¢ A Pound for Butchering
Pork processing including curing
double wrapped 16¢ per pound
\$4.50 A head for butchering
We butcher Monday thru Friday 8 to 12 A.M. except holidays.
CALL FOR QUARTER - HALF - WHOLE
BEEF PROCESSED
WE NOW HAVE CUTS OF PORK AND BEEF FOR SALE
SHAMROCK SLAUGHTER PLANT
W. of City Phone 256-3241
Closing at Noon on Saturday

W.A. Leatherman and Allen attended to business and shopped in Amarillo, Saturday.

Weekend visitors of Mr. and Mrs. Tince Williams were Mr. and Mrs. Ronnie Stuart and baby son, Chad Wayne of Elk City and Mrs. Peggy Dunn of Wheeler. Mr. and Mrs. Stuart and baby also visited their parents, George Dunn and Mr. and Mrs. Calvin Stuart and brother Randy and Dennis Stuart while here.

Mr. and Mrs. Brooks McLaughlin attended to business and visited in Pampa Saturday morning. Mrs. Mary Brewer's nephew and family, Mr. and Mrs. Mac Vawter, Diane and Kenny of Okla. City visited last weekend. Saturday afternoon they and Mrs. Brewer visited Mr. and Mrs. Sid Talley and family in Miami and Mr. and Mrs. Orvel Brewer and family in Pampa. Sunday visitors of Mrs. Brewer were Mr. and Mrs. Earl Alexander of White Deer and Mr. and Mrs. Gary Grimes and girls of Amarillo.

Mrs. Melba visited and attended to business in Pampa Wednesday last week.

Mr. and Mrs. Ernest Gordon visited the Rev. and Mrs. L.V. Grace in Pampa Saturday. Mrs. Glynnda Leatherman attended to business in Pampa Thursday last week. Keith McLaughlin of Pampa visited his parents, Mr. and Mrs. Brooks McLaughlin Wednesday last week.

Mr. and Mrs. Glen Burnell of Odessa visited the lady's mother, Mrs. Eula Johnson during the weekend. Saturday they all went to Dumas to visit Mrs. Johnson's son's family Mr. and Mrs. Cary Johnson, Jack, Jessica and Cari Anne.

Coming home from Dallas following a week at the State Fair and Fat Sock Show Mr. and Mrs. Calvin Stuart visited relatives, Mr. and Mrs. Pap Castle, Mr. and Mrs. Ola Powell and Mr. and Mrs. Fred Castle in Shannon arriving home late Sunday evening. Mr. and Mrs. Ralph House returned home Friday night following two weeks touring and visiting in Calif. In Fresno they visited a daughter, Mr. and Mrs. Joe Alves, Joe Jr., Ralphie and Perry, Mrs. Claire Henderson an aunt and a cousin, Mr. and Mrs. Al Enzenbacher and Michael. While in Fresno they also attended the Fresno State Fair and visited old friends. Going to Castro Valley they visited Mrs. House's brother and sister and families, Mr. and Mrs. Donald Eldridge and Mr. and Mrs.

Daun C. La Rue. In Eureka Mr. and Mrs. House visited their daughter and family, Mr. and Mrs. Dennis Holstein Heather and Richie.

**Dr. Jack L. Rose
OPTOMETRIST**
121 Main St. - Shamrock
Phone 256-3203
Tues.: 9-5 Fri.: 2-5

Allison News

By Mrs. Bob Cornell
Tammy Cornell was a week end guest of the Bill Donaldson's while Bob, Mary Williams, Becky and Rusty Shelton were in Amarillo for the Bantam Show.

Troy Dean and Lona Faye Jones of Phoenix, Arizona visited the Lloyd Joneses. They came in Wednesday and will leave Monday by plane. Harold and family were there for lunch and the Bill Donaldson's, Lee Hall and the Leon Lane's were for supper. Lloyd and Myrtle will take Troy and Lona Faye to Amarillo to catch their plane to return home. The boys and girls scrimmaged in Cheyenne Saturday. They will play in Sweetwater Monday and again in Cheyenne Tuesday in preparation for their first game, November 6.

The Jr. High have their first game tonight. Let's support the teams. Joyce, Doyle and Debbie Cornell of Canadian came to visit Gertie and Anthony Saturday night.

Mr. and Mrs. Nachlinger of Pampa came down to visit Carol and Richard Kiker and family and to go chicken hunting. Willa Jean Shelton was in Amarillo to do some shopping and to attend the Bantam show.

Mrs. Hodges and family took the camper for them and spent some time fishing. They had real good luck and all enjoyed it.

LONG SHORT WIDE NARROW
A RUGGED BOOT FOR RUGGED COUNTRY
Red Wing Cures 5 a'clock Feet
RED WING
LANCASTER DEPARTMENT STORE

YOUR BEST FOOD BUY

HAMBURGER Pound
Short RIBS 73¢ lb.
ROUND STEAK \$1.49 lb.
Stew Meat 1.19 lb.
Sausage 2 lb. Pkg. \$2.78
Vegetable Juice 4 \$1
HAMBURGER BUNS 2 Pkgs. 89¢
BUNT CAKE MIX 24 oz. Box \$1.19
COFFEE Folgers 1 lb. Can \$1.39
Donuts 10 oz. Pkg. 89¢
Oleo Kountry Fresh Quarter 2 1 lb. Pkgs. \$1

OREO Cookies 15 oz. Pkg. 79¢
INSTANT TEA 2 oz. Jar 98¢
PORK & BEANS 3 303 Cans \$1

NOTEBOOK PAPER 200 Count 89¢
LETTUCE Pound 29¢
BANANAS lb. 19¢
RED APPLES 3 lbs. \$1
MOBEETIE GROCERY
Phone 345-2741

WHEELER COUNTY, TEXAS
Statement Of Receipts And Disbursements Of All Funds For The Twelve Months Ended September 30, 1975

Fund	Balance	Receipts	Bal & Rec.	Disb.	Balance
Jury	\$ 5,166.70	\$ -0-	\$ 5,166.70	\$ 3,155.00	\$ 2,011.70
R&B General	(11,317.05)	140,237.89	128,920.84	144,243.42	(15,322.58)
Pct. No. 1	15,735.31	28,663.55	44,398.86	26,501.00	17,897.86
Pct. No. 2	18,694.39	28,494.85	47,189.24	25,913.57	21,275.67
Pct. No. 3	22,002.21	28,522.90	50,525.11	29,715.30	20,809.81
Pct. No. 4	47,271.33	29,323.19	76,594.52	19,903.07	56,691.45
General	(17,353.52)	295,677.80	278,324.28	310,594.47	(32,270.19)
Courthouse & Jail	(270.87)	-0-	(270.87)	1,352.23	(1,623.10)
Lateral Road	35,568.30	69,459.15	105,027.45	69,804.27	35,223.18
Permanent School Fund	587.79	-0-	587.79	-0-	587.79
Revenue Sharing	74,734.28	58,476.66	133,210.94	62,453.44	70,757.50
Total	\$190,818.87	\$678,855.99	\$869,674.86	\$693,635.77	\$176,039.09

JERRIE MOORE, County Treasurer

Mobeetie FFA & 4-H Clubs

Mobeetie is quite proud of the showing made by their young people at the Dallas State Fair last week in Dallas.

Thirteen animals placed in the FFA and 4-H Clubs. Those who had animals placing were: Kathleen Selby-15th light Angus-Red ribbon for Grade; Shannon

Batton-7th Heavy Hereford-Red Ribbon for Grade; Zana Course-14th Middle Hereford-Red Ribbon for Grade; Kimberly Hathaway-16th Middle Hereford-Red Ribbon for Grade; Donna Quarles-20th Light Cross-Red Ribbon for Grade; Shonda Quarles-20th Light Cross-White Ribbon for

Court Records

Continued from page 2

MD--AM Wright to Helen Wright 4-175
Wright 4-171 1/8 int N/2 Sec 12 Blk 1 B&B Sur
D--Raymond C Chambers to Rodney C Chambers 10-13-75 NE 1/4 Sec 38 Blk A-4
OCTOBER 17, 1975
D--RM Holcomb et ux to James B Lantz et ux 10-15-75 75' x 150' Blk 20 Shamrock PBA
DT--James B Lantz et ux to First Fed Savings & Loan Assn 10-15-75 75' x 150' Blk 20 Shamrock PBA
D--Roy Barker et ux to John Monro et ux 10-10-75 E60 ft Lots 19, 20 Blk F Shamrock Potts Ad
DT--John A Monro et ux to First Fed Savings and Loan Assn 10-15-75 E60 ft Lots 19, 20 Blk F Shamrock Potts Ad
MD--Ben Parks, Jr to Ben Parks et ux 4-23-75 1/6 int NW 1/4 8 SH&NW 1/4 NW 1/4 2, NE 1/4 25 & 1/8 int NE 1/4 Sec 2 Blk RE
ROW--Jessie M Ramsey to El Paso Natural Gas Co 9-10-75 W 1/2 NE 1/4 Sec 2 T&NO Ry Co Sur
ROW--Benjamin F Westmoreland et ux to El Paso Natural Gas Co 9-23-75 NW 1/4 & N100 ac SW 1/4 2 JPoite-

vent
ROW--G P Kyseth et ux to El Paso Natural Gas Co 9-9-75 SE 1/4 Sec 2 T&NO Ry Co Sur
ROW--Gary Ronald Hardcastle et ux to El Paso Natural Gas Co 9-30-75 NW 1/4 Sec 6 IRR Co Survey
OL--Wm M Cotton et al to George W Arrington et al 10-3-75 NW 1/4 Sec 25 Blk A-4

Third Anniversary Sale

STUART'S FABRIC
At Blinker Signal on 152 Mobeetie--Ph. 845-2901
Double Knit--Short Lengths (Large Table) \$.98 yd.
Quilt Scraps .70 lb.
64 inch Domestic (Bleached or Unbleached) 1.79 yd.
Domestic (Seconds) .89 yd.
Non-Roll Elastic 3 yds. \$1
Buttons & Zippers 10% Off
- Sale Ends Oct. 31 -

Grade.
HEIFER SHOW
Dewayne Selby-9th Angus Summer Heifer; Kathleen Selby-3rd Angus Spring heifer; Jamie Batton-7th Hereford Summer Heifer; Shannon Batton-3rd Hereford Spring Heifer.
BARROW SHOW
Gary May-7th heavy Chester White; Randy Stuart-14th Light Hampshire; Kathleen Selby-6th Middle Spotted Poland China; Ronald Gudge-12th Middle Spotted Poland China; Roy Stribling-17th Middle Spotted Poland China; Gary May-15th Heavy Spotted Poland China; Roy Stribling-5th heavy Yorkshire; Ronald Gudge-10th heavy Yorkshire; Dewayne Selby-11th heavy Yorkshire; Greg Estes 12th heavy Yorkshire; other students taking animals were Dean Seitz, Dean Hathaway, Dale Hathaway, Wade Hathaway, James Lester and Dennis Stuart.
Parents and other adults making the trip to Dallas were Mrs. Alene Corse, Mrs. Laura Fem Selby, Paul Hathaway, Jim Batton, Melvin May, Gordon Estes, Don King, James Moffet, Mr. and Mrs. Don Quarles and Mr. and Mrs. Calvin Stuart.

New SWCD Directors

James Reneau of James Reneau Seed Co. Inc. was recently elected as Director of Zone 2 of the Wheeler County Soil and Water Conservation District. Zone 2 encompasses the southern portion of Wheeler County.
The election was an annual election during which a resident landowner is elected to a five year term. One member of the five man board is elected each year. Other current members are: Clarence Zybach, Paul Macina, Jr., Terry McCasland and Harold Loyd Lee.

Classified

FOR SALE: App. 240' of 6 ft. stockade fence with 2 gates. Call 826-5792 3c
FOR SALE: Two Queensland blue heeler pups, 1 male and 1 female, 9 wks. old. Both parents good working dogs. Call 826-5792 3c

COUNTY WIDE FUN NIGHT SATURDAY, OCTOBER 25

6:00-11:00 P.M. - WHEELER
Wheeler County Show--North Highway 83
35 BOOTHS
FOOD - FUN - GAMES - BARGAINS

- BINGO
- DUNKING BOARD
- FOOTBALL THROW
- BASKETBALL THROW
- COUNTRY STORE
- CARTOON THEATRE
- RING TOSS
- CANDLE SHOOT
- BOOK STORE
- STRING PULL

This ad sponsored by the following merchants and individuals

- ROARK'S FINE FOODS
- THE WEST MOTEL
- SHAMROCK PRODUCTS
- HARPER'S DEEP ROCK
- McILHANY DRY GOODS
- WHEELER GAS
- HIBLER IMPLEMENT
- THE WHEELER TIMES
- HYLAND'S PHARMACY
- GARRISON SERVICE
- RIVES INSURANCE
- BEEF CATTLE COMPANY
- LEE HARDWARE & FURNITURE
- ALBERT & HANNAH FAYE CHAPMAN
- TRADING POST
- WHEELER VETERINARY CLINIC
- LEWALLEN INSURANCE AGENCY
- PRIME FEEDERS
- THE DOT SHOP
- WHEELER FLOWER SHOP
- PETE BURTON FORD
- WHEELER LUMBER COMPANY
- WRIGHT FUNERAL HOME
- LANCASTER DEPT STORE
- FARM BUREAU
George Richardson & Kenneth McCasland
- M & M GIN
- FIRST NATIONAL BANK
- WHEELER REDI-MIX
- SOUTHWESTERN PUBLIC SERVICE
- WINDMILL DRIVE IN
- PRITCHARD'S THRIFTWAY
- PRODUCTION CREDIT ASSN.
- BAKER AUTOMOTIVE

GOODYEAR PERMANENT ANTI-FREEZE

3⁷⁹ Gal.

(THROUGH OCTOBER 31)

J. & J. SHAMROCK

Phone: 826-5525
West Highway 152

LANCASTER DEPARTMENT STORE

Wallo's BLIZZARD-PROF SPORTSMAN'S STYLE BLIZZARD PRUF INSULATED COVERALLS

50% Dacron Polyester, 50% Cotton Sateen. Permanent press finish. Strong sateen fabric laminated to Scott Apparel Foam. Fully nylon lined. Zippered breast pockets; 2 hip pockets, one zippered. Inside breast pocket. 2-way zipper front. Bi-Swing back. Elastic inserts at waist. Concealed knit storm cuffs. Snap adjustments at leg cuffs. Black • Olive • Hunters Red.
*DuPont Registered Trademark.

2500

Teen's Sizes, same features as above.

2200

INSULATED HEAVY DUTY COVERALLS BROWN DUCK

Heavy cotton duck canvas. Foam laminated. Heavy duty leg. Front and pocket zippers.

3000

Wallo's BLIZZARD-PROF INSULATED VEST

Quilted Nylon with 6.6 oz. Dacron 88 Polyester fiberfill insulation. 2 slash pockets. Long back. Wide color range.

1000

Wallo's BLIZZARD-PROF INSULATED JACKETS

Quilted Nylon **16**
Dacron 88 Polyester Fiberfill Insulation

CLEARANCE! MENS FELT DRESS HATS

2 to 2 1/2 inch Brims **8**

lost a yard and then...
incomplete but...
got all of the 15...
yards on another...
of the Irish right side...
kicked good again...
Wheeler had a comman-...
140 lead...
by Sammy Schaf-...
was recovered at the...
35 and from this...

point the Irish go on the scoreboard. Eight plays later, with a 15 yard personal foul against the Mustangs sandwiched in, the Irish cut the Wheeler lead to 14-6 and moved within six with a successful pass for the two points.
A mixup in the Mustang backfield resulted in a loose ball at the Wheeler 9 on the first play after the Irish kickoff and the Irish recovered. Shamrock scored

on a dive at left guard to tie the game 14-14 at 1:40 to go in the second quarter. Wheeler knocked on the scoring door three times in the last half before they were able to break through the stingy Irish defense on the Jolly to Conwell pass. The winning drive covered 43 yards and the touchdown came on a third and 15 situation at the Irish 25.

MUSTANG NEWSLETTER
ONLY 1 DAY LEFT TO GET READY TO BEAT MCLEAN
McLean has won 3 ball games this year and lost 3 which is a tremendous improvement over their record of 0-10 last year. We feel that if the Mustangs put forth a great effort they can beat McLean.
The Colts will play McLean tonight at 6:00 p.m.

at Nicholson Field. The J. V. is open this week but will suit up with the varsity tomorrow.
The outstanding players of the week are: Offensive back of the week; Danny Helton; Offensive Lineman of the week; Rick Markham; Defensive Back of the week; Danny Helton; Defensive Lineman of the week; Rick Markham.
Be sure to come out and watch the MUSTANGS BEAT MCLEAN. GET A TIGER!

To the Mustangs
I think I can safely say that we have some of the best football players in the state of Texas right here in Wheeler High School. This kind of talent is rare and hard to come by, and we are certainly lucky to have it. But ability isn't all that you have to have to be a winner. You have to have the "want to", if you don't have it, you will never be successful. Indifference is the first step to defeat, not only in a game,

but in life also.
Winning does not necessarily mean coming out on top every time. To me, winning means doing your best, trying hard, and in the end coming out with a clear conscience.
Mustangs, when it comes to winning or losing, YOU are going to have to make the final choice! The fans cannot help you, neither can the student body, the Pep Club, the Band, or your coaches! These people can only encourage you and guide you, the football team has to do the

playing!
Mustangs, you can still have a successful football season, but you must be a team. Two or three people cannot win a game, everyone has to work together.
Please remember that you will always have our support. You have the kind of fans who will never desert you, the kind of fans who would travel half way around the world just to watch you play.
Mustangs, you have the ability, do you have the "Want To"?
WHS Pep Club

COLTS
Shamrock had picked up one first down in the half, this on the touch-down pass, but they still controlled the scoreboard.
The second half kickoff returned 17 yards by Brown to the Colt 22. The Colts used more of the half of the quarter to go ahead touch-down in 11 plays.
Baker sprinted 22 yards

around right end to get the drive underway and then Jeff Christner bolted up the middle for 5 more to put the ball on the Shamrock 30.
It took the Colts nine more plays to get the six pointer as the Colts ground it out. Baker punched it in from 4 yards out over right guard.
Holding a 12-8 lead, the Colts went for 2 but the run once more was short.
A 15 yard face mask penalty on the following kickoff

gave the Little Irish excellent field position at the Colt 38 and they quickly took advantage of the situation and moved the 38 yards to paydirt in 7 plays and got their go ahead six pointer 33 seconds before the third period ended.
The Colts spent the entire fourth quarter in Shamrock territory but lost the ball on downs at the 27 and 5 yard lines and had a pass intercepted on the Little Irish 27 in the waning seconds.

WHEELER MUSTANGS

No.	Pos.	Wt.	Class
11	QB	155	Jr.
10	QB	140	Soph.
31	TB	155	Sr.
20	FB	185	Jr.
21	WB	135	Sr.
32	FB	150	Soph.
41	WB	120	Jr.
30	TB	137	Jr.
53	C	170	Sr.
50	C	135	Soph.
61	G	150	Sr.
71	G	150	Jr.
63	G	150	Jr.
64	G	130	Soph.
70	T	165	Soph.
72	T	170	Soph.
74	T	230	Jr.
23	E	150	Sr.
84	E	180	Sr.
80	E	130	Jr.
40	E	145	Soph.
82	E	150	Sr.
83	E	155	Sr.

Coaches: Bill McIlhany, Danny Helton and Terry Tidwell

Jr. Varsity

No.	Pos.	Wt.	Class
11	QB	120	FR.
40	TB	160	Fr.
30	FB	145	Fr.
31	WB	120	Fr.
20	WB	110	Fr.
21	WB	130	Soph.
51	C	120	Fr.
61	G	130	Fr.
62	G	125	Fr.
60	G	110	Fr.
63	G	125	Fr.
73	T	140	Soph.
74	T	145	Jr.
71	T	125	Fr.
84	E	115	Fr.
81	E	120	Fr.
83	E	130	Fr.
41	E	95	Fr.

COACHES:
Jim Robinson, Head Coach
Bill Wiggins
John Copeland
Richard Gaines

MUSTANG SOPHOMORES:



JEFF DAVIS



TIM PATTERSON



RANDY WEAVER

WHEELER MUSTANGS

VS. McLEANTIGERS

Friday, Oct. 7:30 P.M.

Colts Play McLEAN at Nicholson Field - 6:00 P.M.

1975 Mustangs Football Schedule

- *Oct. 24 McLean 7:30 T
 - *Oct. 31 Clarendon 7:30 H
 - *Nov. 7 Memphis 7:30 T
 - *Nov. 14 Silvertown 7:30 H
- JR. VARSITY**
- *Oct. 30 Clarendon 7:30 T
 - *Nov. 6 Memphis 7:30 H
 - *Nov. 13 Silvertown 7:30 T
- COLTS**
- *Oct. 23 McLean 6:00 H
 - *Oct. 30 Clarendon 6:00 T
 - *Nov. 6 Memphis 6:00 H
 - Nov. 13 Open

THIS AD IS SPONSORED BY FOLLOWING MERCHANTS AND INDIVIDUALS

- BAKER AUTOMOTIVE
- WHEELER MILK CO.
- HANNA FAYE & ALBERT CHAPMAN
- NORA'S CAFE Odessa & Elwood Mooney
- HIBLER IMPLEMENT
- WEST MOTEL
- EDWARD'S "66" TRUCK STOP
- WHEELER FLOWER SHOP
- ROARK'S FINE FOODS
- McILHANY DRY GOODS
- WHEELER REDI-MIX
- WHEELER GAS CO.
- LEWALLEN INSURANCE AGENCY
- MARY WOFFORD

- THE WHEELER TIMES
- LANCASTER DEPT. STORE
- McWHORTER'S TEXACO
- WHEELER VETERINARY CLINIC
- PRODUCTION CREDIT ASS'N.
- TRADING POST
- PETE BURTON FORD
- WHEELER LUMBER CO.
- FIRST NATIONAL BANK
- THE DOT SHOP Richard & Lynda Wallace
- JOHN C. VISE
- WHEELER COUNTY PRODUCE
- PRIME FEEDERS
- PRITCHARD'S THRIFTWAY

- HYLAND'S PHARMACY
- WARE CHEVROLET CO.
- LEE HARDWARE & FURNITURE
- WHEELER FARM BUREAU
George Richardson & Kenneth McCasland
- M & M GIN
- RIVES INSURANCE
- SPARLIN'S RESTAURANT
- WHEELER ABSTRACT
- SOUTHWESTERN PUBLIC SERVICE CO.

Don't Get . . . COLD FEET
at the ball game.
Keep your feet and legs warm with a Snug-Bug from the Band Boosters.

Mobeetie FFA & 4-H Clubs

Mobeetie is quite proud of the showing made by their young people at the Dallas State Fair last week in Dallas.

Thirteen animals placed in the FFA and 4-H Clubs.

Those who had animals placing were: Kathleen Selby-15th Light Angus-Red Ribbon for Grade; Shannon

Batton-7th Heavy Hereford-Red Ribbon for Grade; Zana Course-14th Middle Hereford-Red Ribbon for Grade; Kimberly Hathaway-16th Middle Hereford-Red Ribbon for Grade; Donna Quarles-20th Light Cross-Red Ribbon for Grade; Shonda Quarles-20th Light Cross-White Ribbon for

Grade.

HEIFER SHOW

Dewayne Selby-9th Angus Summer Heifer; Kathleen Selby-3rd Angus Spring heifer; Jamie Batton-7th Hereford Summer Heifer; Shannon Batton-3rd Hereford Spring Heifer.

BARROW SHOW

Gary May-7th heavy Chester White; Randy Stuart-14th Light Hampshire; Kathleen Selby-6th Middle Spotted Poland China; Ronald Gudgel-12th Middle Spotted Poland China; Roy Stribling-17th Middle Spotted Poland China; Gary May-15th Heavy Spotted Poland China; Roy Stribling-9th heavy Yorkshire; Ronald Gudgel-10th heavy Yorkshire; Dewayne Selby-11th heavy Yorkshire; Greg Estes-12th heavy Yorkshire; other students taking animals were Dean Seitz, Dean Hathaway, Dale Hathaway, Wade Hathaway, James Lester and Dennis Stuart.

Parents and other adults making the trip to Dallas were Mrs. Alene Corse, Mrs. Laura Fern Selby, Paul Hathaway, Jim Batton, Melvin May, Gordon Estes, Don King, James Moffet, Mr. and Mrs. Don Quarles and Mr. and Mrs. Calvin Stuart.

Court Records

Continued from page 2

MD--AM Wright to Helen Wright 4-1-75

Wright 4-1-71 1/8 int N 1/2 Sec 12 Blk 1 B&B Sur

D--Raymond C Chambers to Rodney C Chambers 10-13-75 NE 1/4 Sec 38 Blk A-4

OCTOBER 17, 1975

D--R M Holcomb et ux to James B Lantz et ux 10-15-75 75'x150' Blk 20 Shamrock PBA

DT--James B Lantz et ux to First Fed Savings & Loan Assn 10-15-75 75'x150' Blk 20 Shamrock PBA

D--Roy Barker et ux to John Monro et ux 10-13-75 E60 ft Lots 19, 20 Blk F Shamrock Potts Ad

DT--John A Monro et ux to First Fed Savings and Loan Assn 10-15-75 E60 ft Lots 19, 20 Blk F Shamrock Potts Ad

MD--Ben Parks, Jr to Ben Parks et ux 4-23-75 1/6 int NW 1/4 S 31 & NW 1/4 1, NW 1/4 2, NE 1/4 25 & 1/8 int NE 1/4 Sec 2 Blk RE

ROW--Jessie M Ramsey to El Paso Natural Gas Co 9-10-75 1/2 NE 1/4 Sec 2 T&NO Ry Co Sur

ROW--Benjamin F Westmoreland et ux to El Paso Natural Gas Co 9-23-75 NW 1/4 & N100 ac SW 1/4 2 J Poite-

vent ROW--G P Kyseth et ux to El Paso Natural Gas Co 9-9-75 SE 1/4 Sec 2 T&NO Ry Co Sur

ROW--Gary Ronald Hardcastle et ux to El Paso Natural Gas Co 9-30-75 NW 1/4 Sec 6 IRR Co Survey

OL--Wm M Cotton et al to George W Arrington et al 10-3-75 NW 1/4 Sec 2 Blk A-4

Third Anniversary Sale

STUART'S FABRIC
At Blinker Signal on 152 Mobeetie-Ph. 845-2901

Double Knit--Short Lengths (Large Table) \$.98 yd.

Quilt Scraps .70 lb.

64 inch Domestic (Bleached or Unbleached) 1.79 yd.

Domestic (Seconds) .89 yd.

Non-Roll Elastic 3 yds. \$1

Buttons & Zippers 10% Off

- Sale Ends Oct. 31 -

New SWCD Directors

James Reneau of James Reneau Seed Co. Inc. was recently elected as Director of Zone 2 of the Wheeler County Soil and Water Conservation District. Zone 2 encompasses the southern portion of Wheeler County.

The election was an annual election during which a resident landowner is elected to a five year term. One member of the five man board is elected each year. Other current members are: Clarence Zybach, Paul Macina, Jr., Terry McCasland and Harold Loyd Lee.

Classified

FOR SALE: App. 240' of 6 ft. stockade fence with 2 gates. Call 826-5792 3c

FOR SALE: Two Queensland blue heeler pups, 1 male and 1 female, 9 wks. old. Both parents good working dogs. Call 826-5792 3c

COUNTY WIDE FUN NIGHT

SATURDAY, OCTOBER 25

6:00-11:00 P.M. - WHEELER

Wheeler County Show--North Highway 83

35 BOOTHS

FOOD - FUN - GAMES - BARGAINS

BINGO

CARTOON THEATRE

DUNKING BOARD

RING TOSS

FOOTBALL THROW

CANDLE SHOOT

BASKETBALL THROW

BOOK STORE

COUNTRY STORE

STRING PULL

This ad sponsored by the following merchants and individuals

- ROARK'S FINE FOODS
- THE WEST MOTEL
- SHAMROCK PRODUCTS
- HARPER'S DEEP ROCK
- McILHANY DRY GOODS
- WHEELER GAS
- HIBLER IMPLEMENT
- THE WHEELER TIMES
- HYLAND'S PHARMACY
- GARRISON SERVICE
- RIVES INSURANCE
- BEEF CATTLE COMPANY
- LEE HARDWARE & FURNITURE
- ALBERT & HANNAH FAYE CHAPMAN
- TRADING POST
- WHEELER VETERINARY CLINIC
- LEWALLEN INSURANCE AGENCY
- PRIME FEEDERS
- THE DOT SHOP
- WHEELER FLOWER SHOP
- PETE BURTON FORD
- WHEELER LUMBER COMPANY
- WRIGHT FUNERAL HOME
- LANCASTER DEPT STORE
- FARM BUREAU
George Richardson & Kenneth McCasland
- M & M GIN
- FIRST NATIONAL BANK
- WHEELER REDI-MIX
- SOUTHWESTERN PUBLIC SERVICE
- WINDMILL DRIVE IN
- PRITCHARD'S THRIFTWAY
- PRODUCTION CREDIT ASSN.
- BAKER AUTOMOTIVE

GOODYEAR
PERMANENT
ANTI-FREEZE

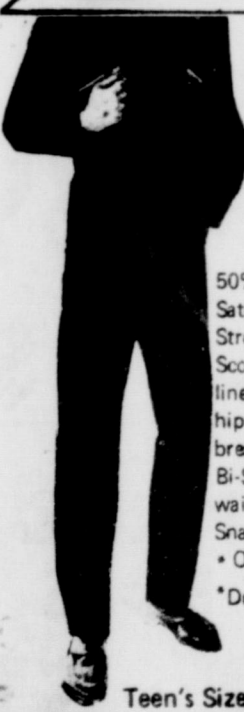
3⁷⁹
Gal.

(THROUGH OCTOBER 31)

J. & J. SHAMROCK

Phone: 826-5525
West Highway 152

LANCASTER
DEPARTMENT STORE



Walls'
BLIZZARD-PROF.
SPORTSMAN'S STYLE
BLIZZARD PRUF®
INSULATED
COVERALLS

50% Dacron* Polyester, 50% Cotton Sateen. Permanent press finish. Strong sateen fabric laminated to Scott Apparel Foam. Fully nylon lined. Zippered breast pockets; 2 hip pockets, one zippered. Inside breast pocket. 2-way zipper front. Bl-Swing back. Elastic inserts at waist. Concealed knit storm cuffs. Snap adjustments at leg cuffs. Black • Olive • Hunters Red.

*DuPont Registered Trademark.

25⁰⁰

22⁰⁰

Teen's Sizes, same features as above.



INSULATED
HEAVY DUTY
COVERALLS
BROWN
DUCK

Heavy cotton duck canvas. Foam laminated. Heavy duty leg. Front and pocket zippers.

30⁰⁰

Walls'
BLIZZARD-PROF.
INSULATED VEST

Quilted Nylon with 6.6 oz. Dacron 88 Polyester fiberfill insulation. 2 slash pockets. Long back. Wide color range.

10⁰⁰



Walls'
BLIZZARD-PROF.
INSULATED
JACKETS

Quilted Nylon 16
Dacron 88 Polyester
Fiberfill Insulation

CLEARANCE!
MENS FELT
DRESS HATS

2 to 2 1/2
inch
Brims

8

...st a yard and then
...incomplete but
...got all of the 15
...yards on another
...of the Irish right side.
...kicked good again
...eeler had a comman-
...140 lead.
...recovered after the
...and from this

...had picked up
...one first down in the
...half, this on the tou-
...pass, but they still
...alled the scorebard.
...second half kickoff
...returned 17 yards by
...Brown to the Colt 22
...the Colts used more
...half of the quarter to
...the go ahead touch-
...in 11 plays.
...sprinted 22 yards

WHEELER MUSTANGS

No.	Pos.	Wt.	Class
Don	QB	155	Jr.
Bobby	QB	140	Soph.
Danny	TB	155	Sr.
David	FB	185	Jr.
Terry	WB	135	Sr.
Dell	FB	150	Soph.
Tony	WB	120	Jr.
Mike	TB	137	Jr.
Bill	C	170	Sr.
Buddy	C	135	Soph.
Tommy	G	150	Sr.
Ricky	G	150	Jr.
Gary	G	150	Jr.
Kevin	G	130	Soph.
Jeff	T	165	Soph.
Tim	T	170	Soph.
Jim	T	230	Jr.
Kenneth	E	150	Sr.
Mike	E	180	Sr.
Darrell	E	130	Jr.
Randy	E	145	Soph.
Robert	E	150	Sr.
Von	E	155	Sr.

Jr. Varsity

No.	Pos.	Wt.	Class
Myron	QB	120	Fr.
Marvin	TB	160	Fr.
Sammy	FB	145	Fr.
David	WB	120	Fr.
Johnny	WB	110	Fr.
Chad	WB	130	Soph.
Miles	C	120	Fr.
Mike	G	130	Fr.
Tommy	G	125	Fr.
Bobby	G	110	Fr.
Ronal	G	125	Fr.
Curtis	T	140	Soph.
Curtis	T	145	Jr.
Jimmy	T	125	Fr.
George	E	115	Fr.
Kent	E	120	Fr.
Dale	E	130	Fr.
David	E	95	Fr.

COACHES:
Jim Robinson, Head Coach
Bill Wiggins
John Copeland
Richard Gaines

point the Irish go on the
scoreboard. Eight plays
later, with a 15 yard person-
al foul against the Mustangs
sandwiched in, the Irish
cut the Wheeler lead to 14-
6 and moved within six with
a successful pass for the
two points.
A mixup in the Mustang
backfield resulted in a
loose ball at the Wheeler 9
on the first play after the
Irish kickoff and the Irish
recovered. Shamrock scored

around right end to get the
drive underway and then Jeff
Christner bolted up the mid-
dle for 36 more to put the
ball on the Shamrock 30.
It took the Colts nine more
plays to get the six pointer
as the Colts ground it out.
Baker punched it in from 4
yards out over right guard.
Holding a 12-8 lead, the
Colts went for 2 but the run
once more was short.
A 15 yard face mask penal-
ty on the following kickoff

on a dive at left guard to tie
the game 14-14 at 1:40 to
go in the second quarter.
Wheeler knocked on the
scoring door three times
in the last half before they
were able to break through
the stingy Irish defense on
the Jolly to Conwell pass.
The winning drive covered
43 yards and the touchdown
came on a third and 15 sit-
uation at the Irish 25.

gave the Little Irish excel-
lent field position at the
Colt 38 and they quickly
took advantage of the situa-
tion and v
tion and moved the 38 yards
to paydirt in 7 plays and got
their go ahead six pointer
33 seconds before the third
period ended.
The Colts spent the entire
fourth quarter in Shamrock
territory but lost the ball
on downs at the 27 and 6
yard lines and had a pass in-
tercepted on the Little Irish
27 in the waning seconds.

MUSTANG NEWSLETTER
ONLY 1 DAY LEFT TO GET READY TO BEAT MCLEAN

McLean has won 3 ball
games this year and lost
3 which is a tremendous
improvement over their re-
cord of 0-10 last year. We
feel that if the Mustangs
put forth a great effort they
can beat McLean.
The Colts will play Mc-
Lean tonight at 6:00 p.m.

at Nicholson Field. The
J. V. is open this week but
will suit up with the vari-
sity tomorrow.
The outstanding players
of the week are: Offensive
back of the week; Danny
Helton; Offensive Lineman
of the week; Rick Markham;
Defensive Back of the week
Danny Helton; Defensive
Lineman of the week; Rick
Markham.
Be sure to come out and
watch the MUSTANGS BEAT
MCLEAN. GET A TIGER!

To the Mustangs

I think I can safely say
that we have some of the
best football players in the
state of Texas right here
in Wheeler High School.
This kind of talent is rare
and hard to come by, and we
are certainly lucky to have
it. But ability isn't all
that you have to have to be
a winner. You have to
have the "want to", if you
don't have it, you will ne-
ver be successful. Indiffer-
ence is the first step to de-
feat, not only in a game,

but in life also.
Winning does not neces-
sarily mean coming out on
top every time. To me,
winning means doing your
best, trying hard, and in the
end coming out with a clear
conscience.
Mustangs, when it comes
to winning or losing, YOU
are going to have to make
the final choice! The fans
cannot help you, neither
can the student body, the
Pep Club, the Band, or
your coaches! These
people can only encourage
you and guide you, the foot-
ball team has to do the

playing!
Mustangs, you can still
have a successful football
season, but you must be a
team. Two or three people
cannot win a game, everyone
has to work together.
Please remember that you
will always have our support
You have the kind of fans
who will never desert you,
the kind of fans who would
travel half way around the
world just to watch you
play.
Mustangs, you have the
ability, do you have the
"Want To"?
WHS Pep Club

MUSTANG SOPHOMORES:



JEFF DAVIS



TIM PATTERSON



RANDY WEAVER

WHEELER MUSTANGS

VS.

MCLEANTIGERS

Friday, Oct. 7:30 P.M.

Colts Play McLEAN at Nicholson Field - 6:00 P.M.

1975 Mustangs Football Schedule

- *Oct. 24 McLean 7:30 T
 - *Oct. 31 Clarendon 7:30 H
 - *Nov. 7 Memphis 7:30 T
 - *Nov. 14 Silverton 7:30 H
- JR. VARSITY**
- *Oct. 30 Clarendon 7:30 T
 - *Nov. 6 Memphis 7:30 H
 - *Nov. 13 Silverton 7:30 T
- COLTS**
- *Oct. 23 McLean 6:00 H
 - *Oct. 30 Clarendon 6:00 T
 - *Nov. 6 Memphis 6:00 H
 - Nov. 13 Open

THIS AD IS SPONSORED BY FOLLOWING MERCHANTS AND INDIVIDUALS

BAKER AUTOMOTIVE
WHEELER MILK CO.
HANNA FAYE & ALBERT CHAPMAN
NORA'S CAFE Odessa & Elwood Mooney
HIBLER IMPLEMENT
WEST MOTEL
EDWARD'S "66" TRUCK STOP
WHEELER FLOWER SHOP
ROARK'S FINE FOODS
McILHANY DRY GOODS
WHEELER REDI-MIX
WHEELER GAS CO.
LEWALLEN INSURANCE AGENCY
MARY WOFFORD

THE WHEELER TIMES
LANCASTER DEPT. STORE
McWHORTER'S TEXACO
WHEELER VETERINARY CLINIC
PRODUCTION CREDIT ASS'N.
TRADING POST
PETE BURTON FORD
WHEELER LUMBER CO.
FIRST NATIONAL BANK
THE DOT SHOP Richard & Lynda Wallace
JOHN C. VISE
WHEELER COUNTY PRODUCE
PRIME FEEDERS
PRITCHARD'S THRIFTWAY

HYLAND'S PHARMACY
WARE CHEVROLET CO.
LEE HARDWARE & FURNITURE
WHEELER FARM BUREAU
George Richardson & Kenneth McCasland
M & M GIN
RIVES INSURANCE
SPARLIN'S RESTAURANT
WHEELER ABSTRACT
SOUTHWESTERN PUBLIC SERVICE CO.

Don't Get . . COLD FEET
at the ball game.
Keep your feet and legs
warm with a Snug-Bug
from the Band Boosters.



**BLUE HERITAGE
IRONSTONE DINNERWARE**

THIS WEEK'S ITEM:
**FRUIT/
DESSERT PLATE**
EACH BASIC
PLACE SETTING
WITH EVERY
\$5.00 PURCHASE

49¢

CARNATION HOT
Cocoa Mix
12 Envelope
Crt. **\$1.00**

SHURFINE PURE VEGETABLE
Shortening
3 LB. CAN **\$1.39**

THRIFTWAY DAIRY ITEMS

- PILLSBURY CS OR BM **BISCUITS** 2 8 OZ. CANS **25¢**
- PILLSBURY TENDERFLAKE **BISCUITS** BUTTERMILK OR REGULAR 6 CT. CAN **19¢**
- MAXI-CUP SOFT PARKAY **Margarine** 1-LB. BOWL **69¢**
- PARKAY SOFT CORN OIL **Margarine** 2 8 OZ. TUBS **79¢**
- SQUEEZE PARKAY **Margarine** 16 OZ. BTL. **69¢**
- KRAFT CRACKER BARREL SHARP OR EXTRA **Sharp Cheese** 10 OZ. PKG. **\$1.19**
- PHILADELPHIA **Cream Cheese** 3 OZ. PKG. **19¢**
- KRAFT CHEDDAR RED MIDGET **Horn Cheese** 1 1/2 LB. HORN **\$1.99**

MORE GROCERY VALUES

MAYONNAISE
KRAFT 32 OZ. JAR **\$1.39**

Fireside Cookies
SUGAR VARIETIES: VANILLA, CHOCOLATE, STRAWBERRY, LEMON 5 1/2 OZ. PKG. **3 FOR \$1.00**

LAUNDRY DETERGENT
BREEZE
20% OFF LABEL KING-SIZE BOX **\$1.99**

THRIFTWAY FROZEN FOODS

- MINUTE MAID FROZEN **Orange Juice** 12 OZ. CAN **49¢**
- ORCHARD HILL FARM APPLE-CHERRY-BLUEBERRY **Fruit Pies** 3 8 OZ. PKGS. **\$1.00**
- SHURFINE FROZEN **Cut Corn** 10 OZ. PKG. **35¢**

Health & Beauty Aid Bonanza!



GRAIN FED BONELESS

CHUCK ROAST

\$1.09
LB.



GRAIN FED BONELESS

Chuck Steak

\$1.29
LB.

EXTRA LEAN NOT LESS THAN 80% LEAN

Ground Chuck

99¢
LB.

EXTRA LEAN BONELESS

Stew Meat LB. **\$1.29**

GRAIN FED TENDERIZED

Beef Cutlets LB. **\$1.89**

GRAIN FED BONELESS

Arm Roast LB. **\$1.29**

FARM

Fresh Catfish LB. **\$1.59**

HILLSHIRE FARMS SMOKED EXCELLENT FOR BREAKFAST

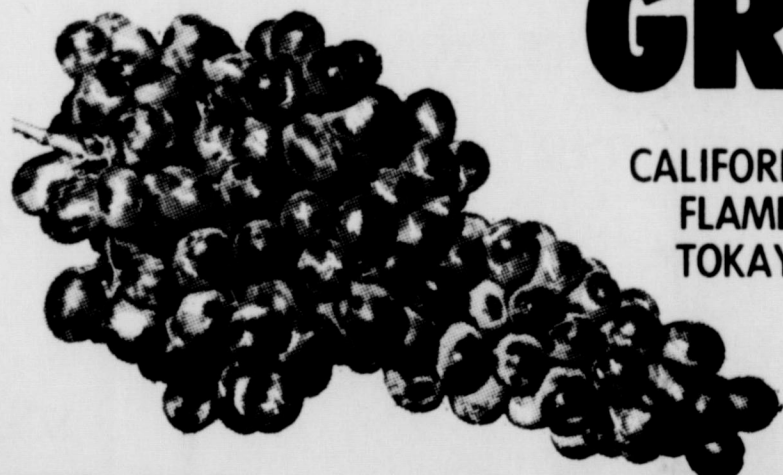
Sausage LB. **\$1.49**

ASSORTED PAPER
Scot Towels
JUMBO ROLL **49¢**

SHASTA CANNED
POP
REGULAR OR DIET 12 OZ. CANS **7 for \$1**

New Delicious
CHILI Burritos
or **Corn Dogs** **3 FOR \$1**
Broaster Cooked

PURE VEGETABLE COOKING OIL
CRISCO
48 OZ. BTL. **\$1.69**



GRAPES

CALIFORNIA
FLAME
TOKAY

29¢
LB.

- RED ROME-EXTRA FANCY **Apples** 4 LBS. **88¢**
- A HALLOWEEN FAVORITE **Pumpkins** LB. **10¢**

- EXTRA FANCY-LARGE **Bell Peppers** LB. **39¢**
- NEW CROP-ROASTED **Peanuts** 2 LB. BAG **\$1.19**

KEEBLER 13 1/2 OZ. FUDGE STRIPE OR 12 1/2 OZ. DELUXE GRAHAM CHOCOLATE COVERED
COOKIES
PACKAGE OF YOUR CHOICE **79¢**

Try Our Delicious
Broasted Chicken **\$2.69**
One Whole Fryer

MOUTHWASH
SCOPE
12 OZ. BTL. **79¢**

TOOTH PASTE
GLEEM II 7 OZ. TUBE **89¢**

HEAD & SHOULDERS
7 OZ. TUBE OR 11 OZ. LOTION EA.
SHAMPOO **\$1.19**

VICK'S REGULAR OR CHERRY
COUGH DROPS BOX **15¢**

VAPORUB
VICK'S 1.5 OZ. JAR **69¢**

CONTAC
NASAL MIST 15 CC BTL. **99¢**

Cough Syrup
VICK'S FORMULA 44 3 OZ. BTL. **99¢**

Cough Syrup
VICK'S FORMULA 44-D 3 OZ. BTL. **\$1.19**

NYQUIL
VICK'S 6 OZ. BTL. **\$1.39**

FOR COLDS & HAY FEVER RELIEF
CONTAC 20 CT. PKG. **\$1.99**

REGULAR OR UNSCENTED
Sure Deodorant 9 OZ. CAN **\$1.19**

THRIFTY GROCERY BUYS

NABISCO PREMIUM
SALTINE CRACKERS 16 OZ. BOX **53¢**

HI-C CANNED
Fruit Drinks 46 OZ. CAN **49¢**

SUNSHINE
Hydrox Cookies 15 OZ. PKG. **69¢**

HEINZ
Tomato Ketchup 14 OZ. BTL. **44¢**

SHURFINE VAC PAC WHOLE KERNEL
Golden Corn 3 12 OZ. CANS **\$1.00**

LIQUID-13% OFF LABEL
DOVE
22 OZ. BTL. **59¢**

FOLGER'S CRYSTALS
Instant Coffee 10 OZ. JAR **\$2.49**

ALL GRINDS - MAXWELL HOUSE
Coffee 2 LB. CAN **\$2.37**

ALL GRINDS - MAXWELL HOUSE
COFFEE
1 LB. CAN **\$1.19**

Shamrock & Wheeler We Give S&H Green STAMPS

THRIFTWAY

SPECIALS GOOD OCTOBER 23-24-25